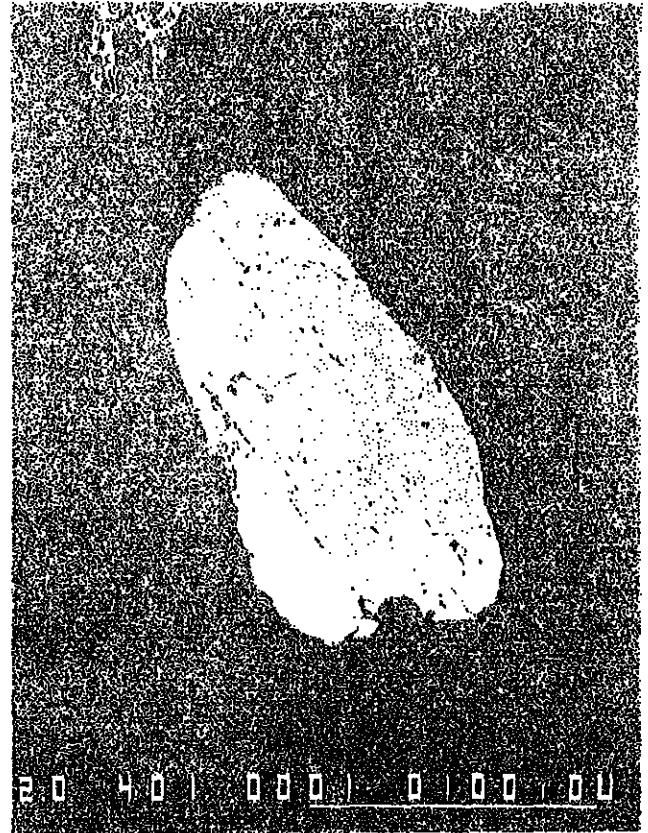
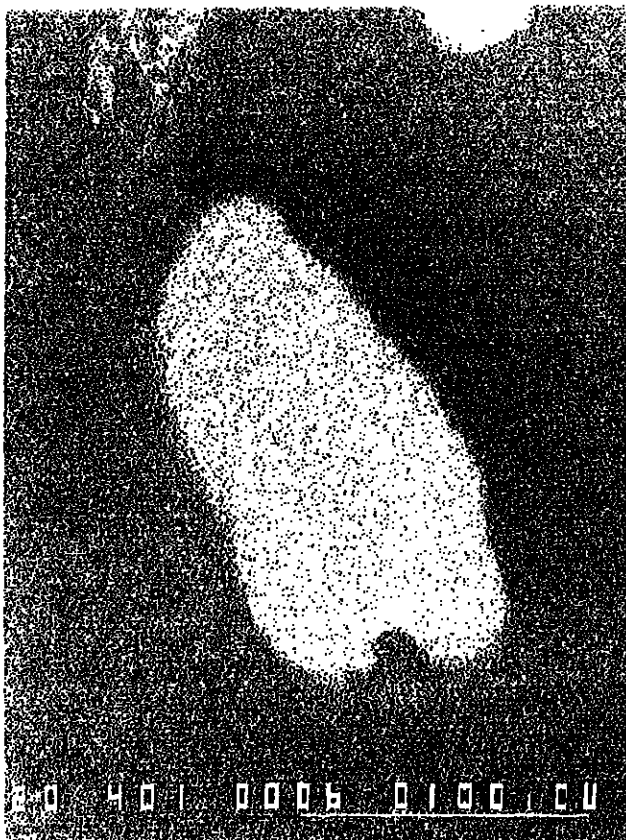




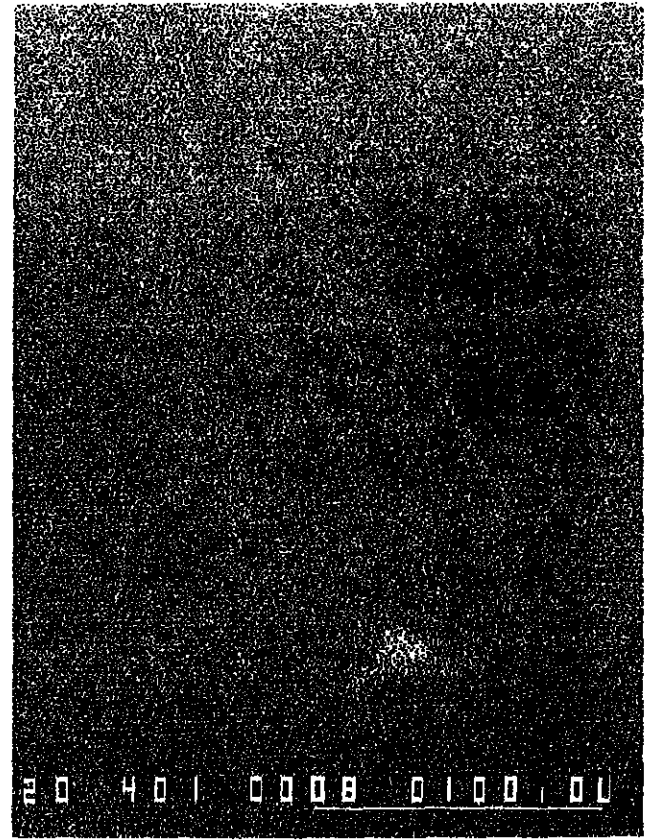
Compo



Compo



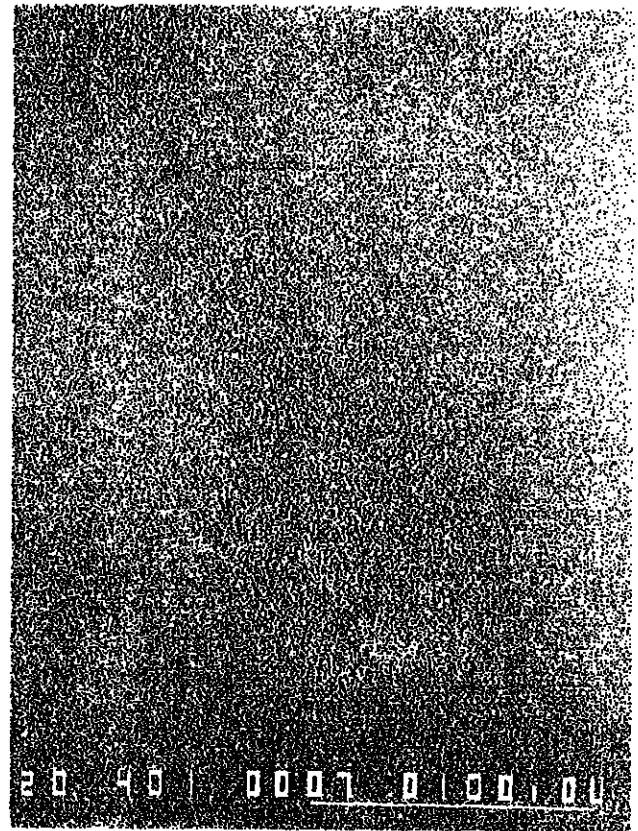
Ti



Fe



O



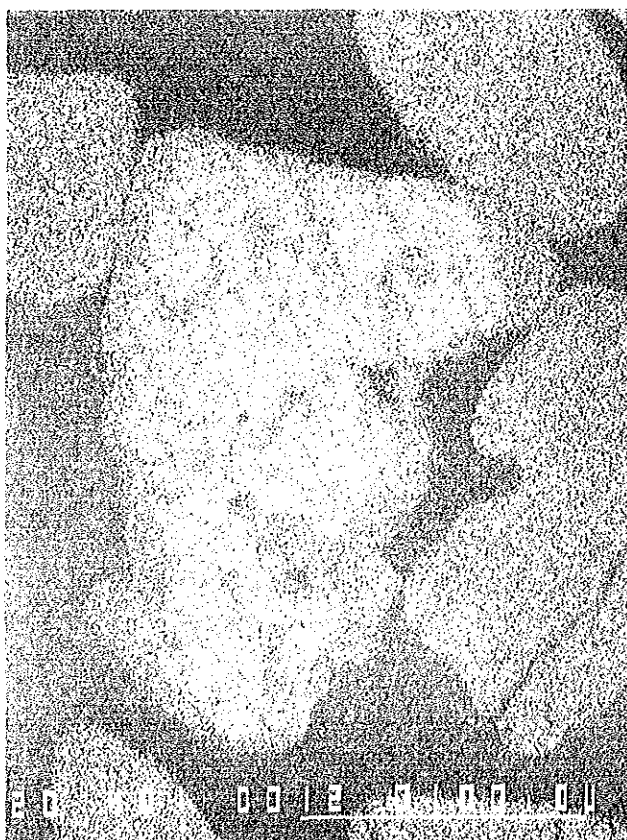
Ca



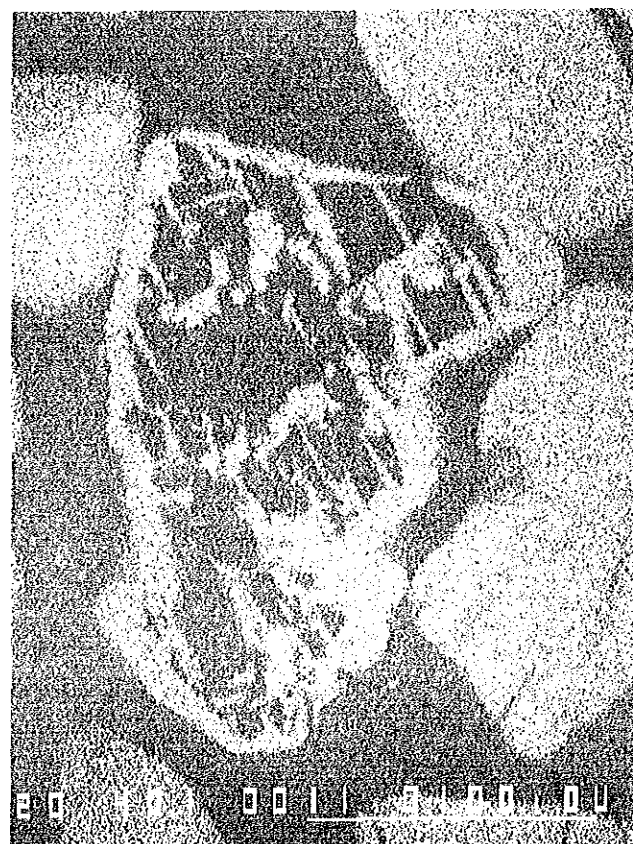
Compo



Compo



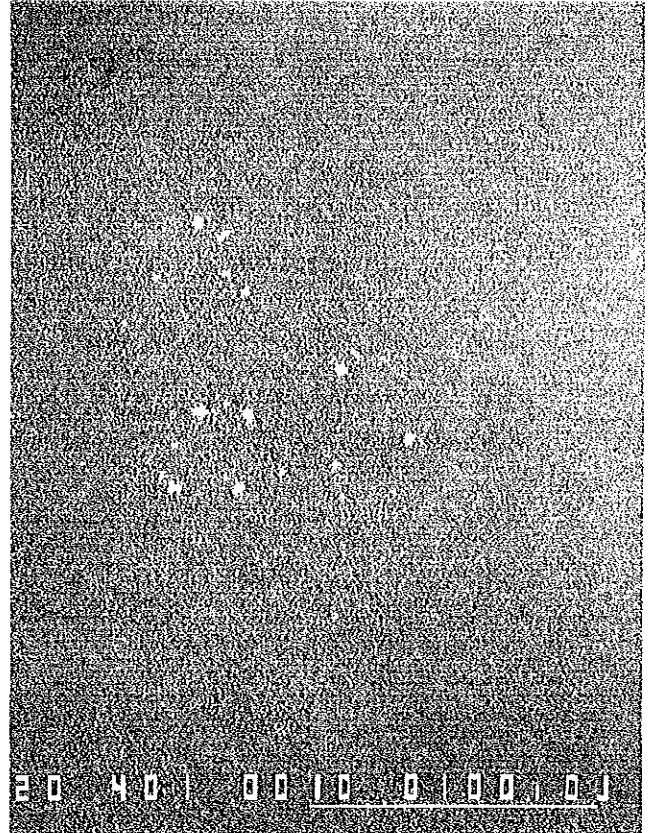
Ti



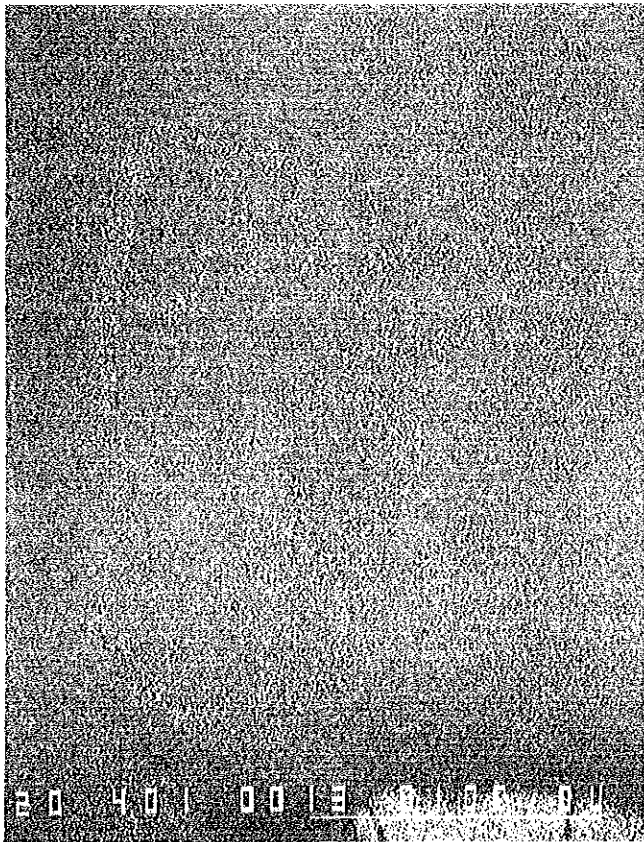
Fe



O



Ca



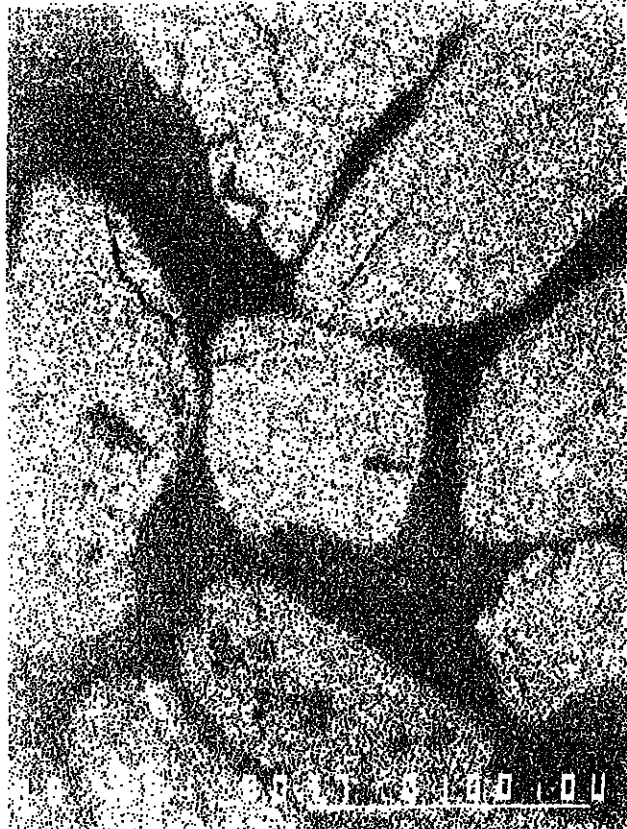
Mn



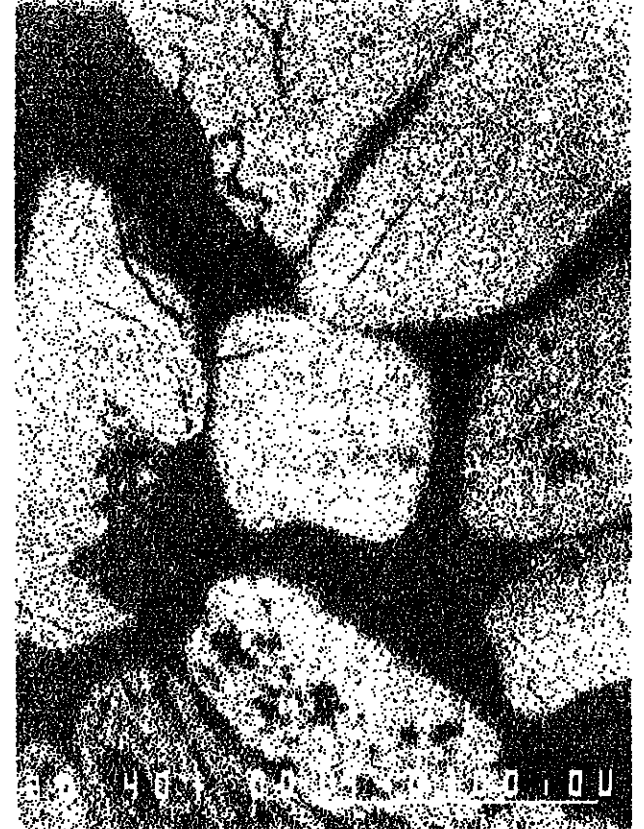
C



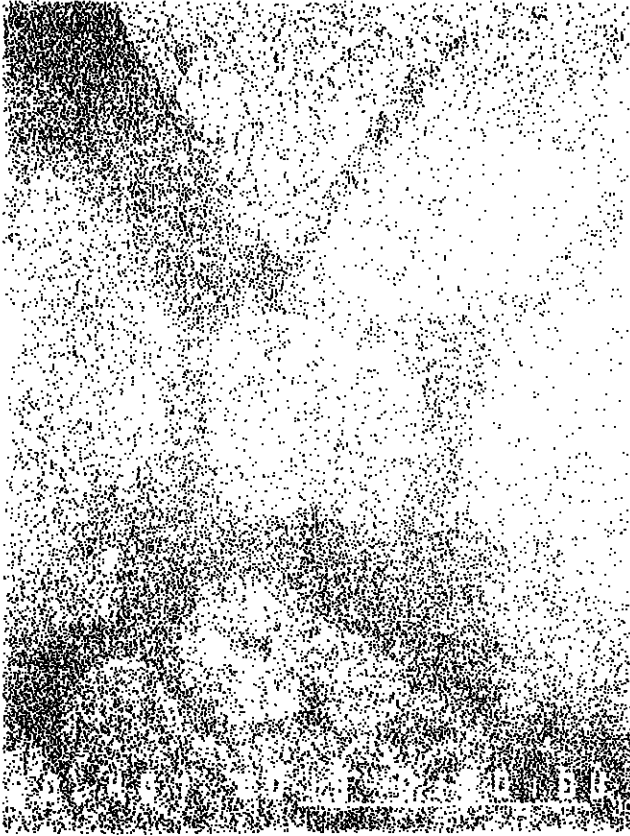
O



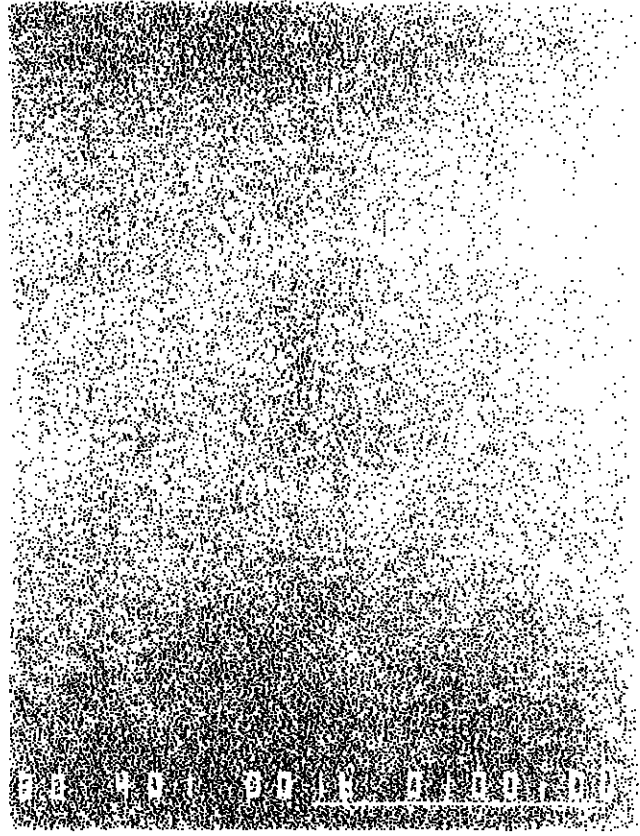
Si



Fe



O



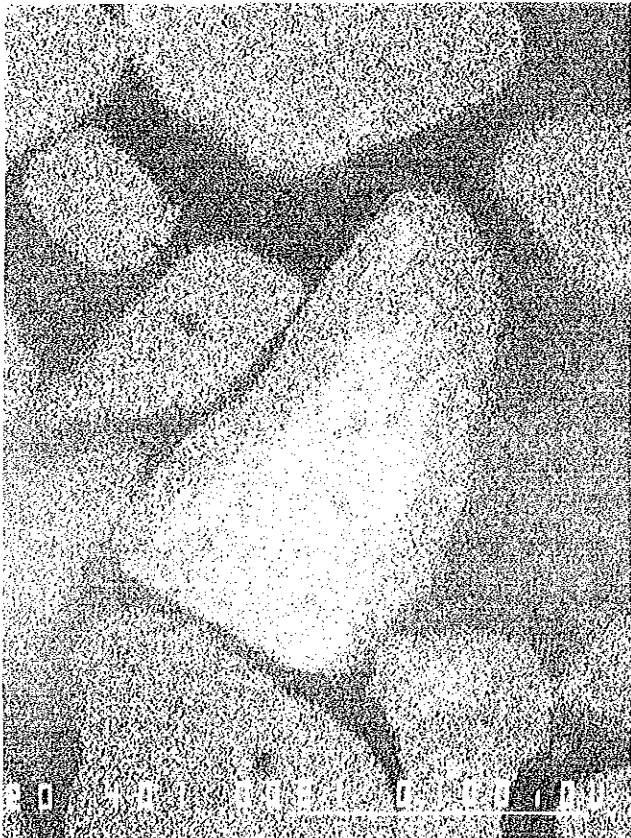
Cu



Compo



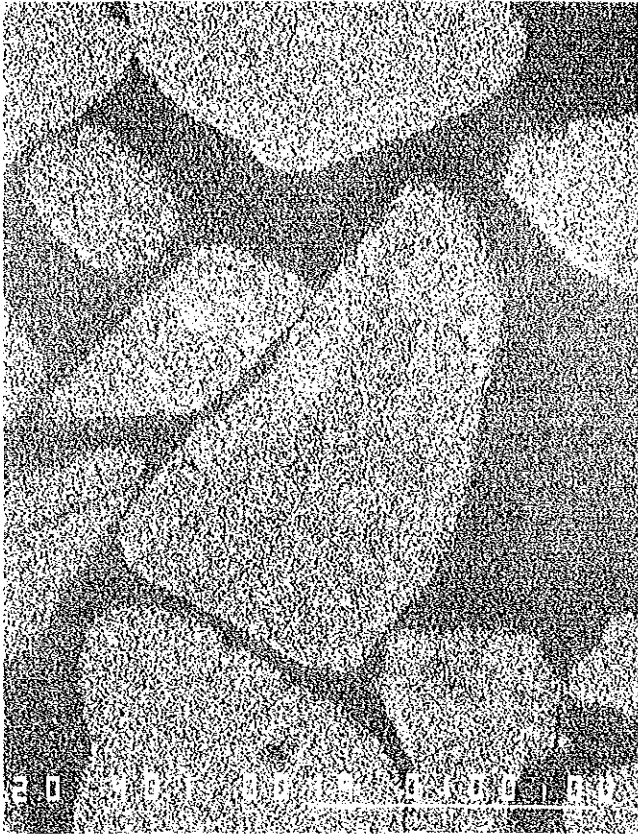
Compo



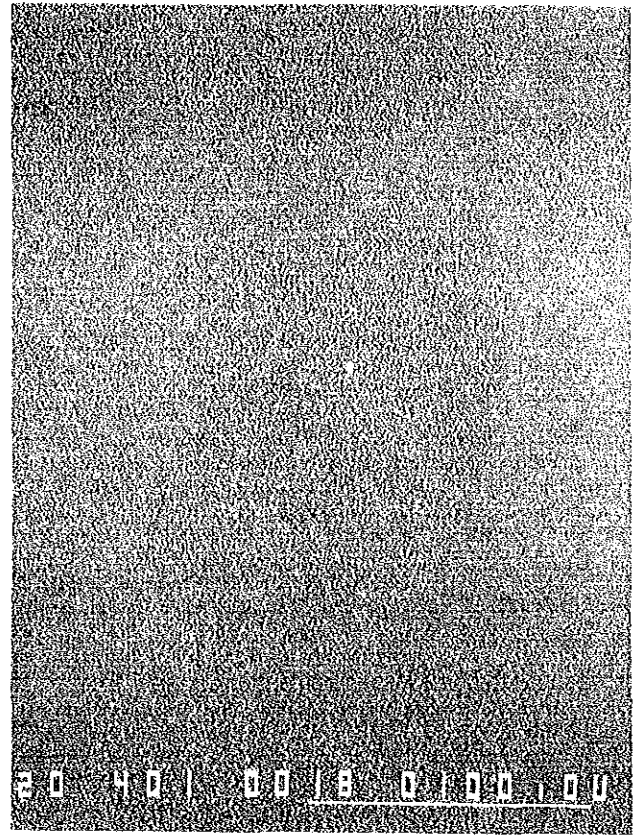
Ti



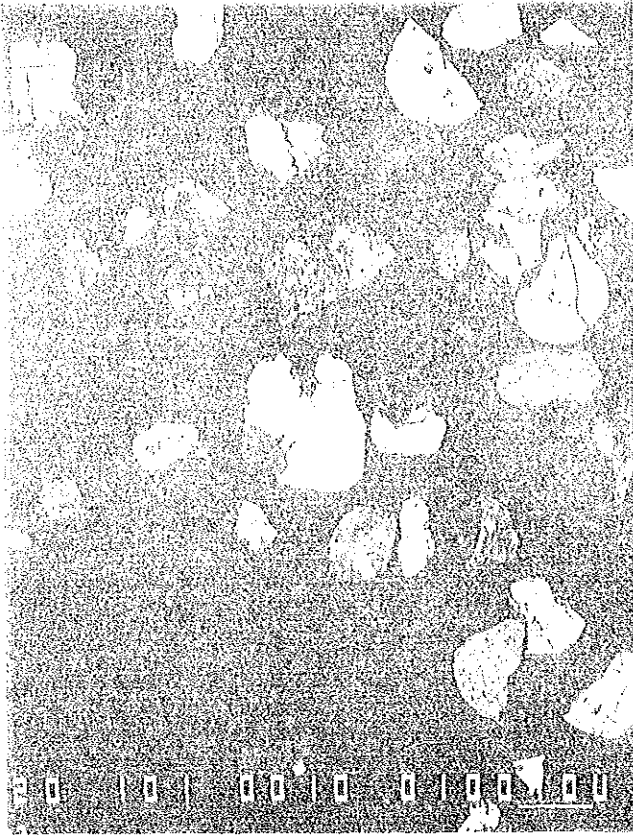
Fe



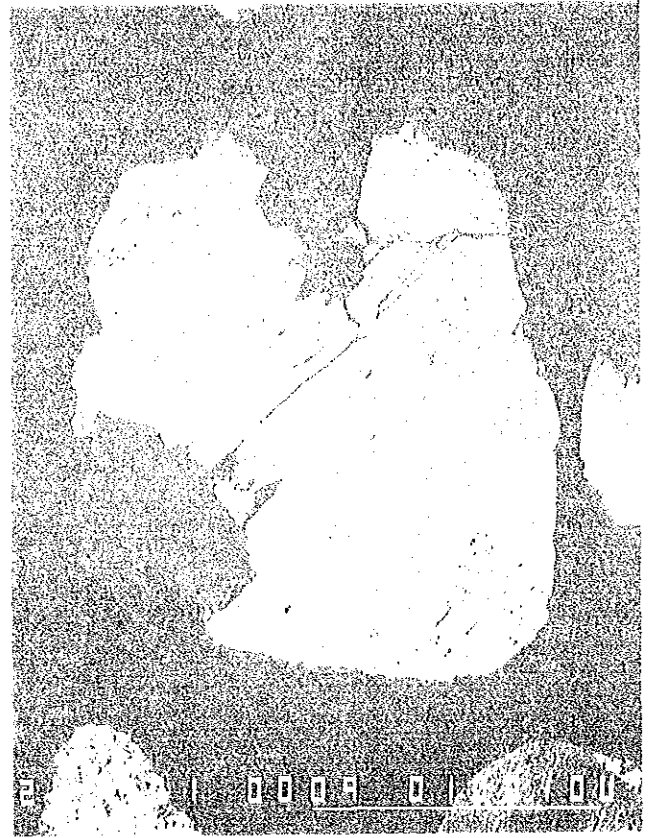
O



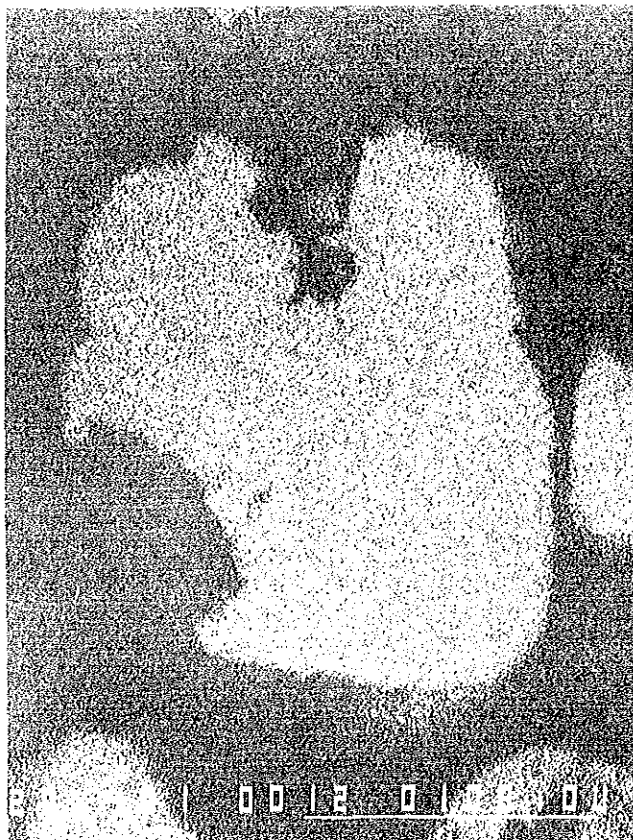
Ca



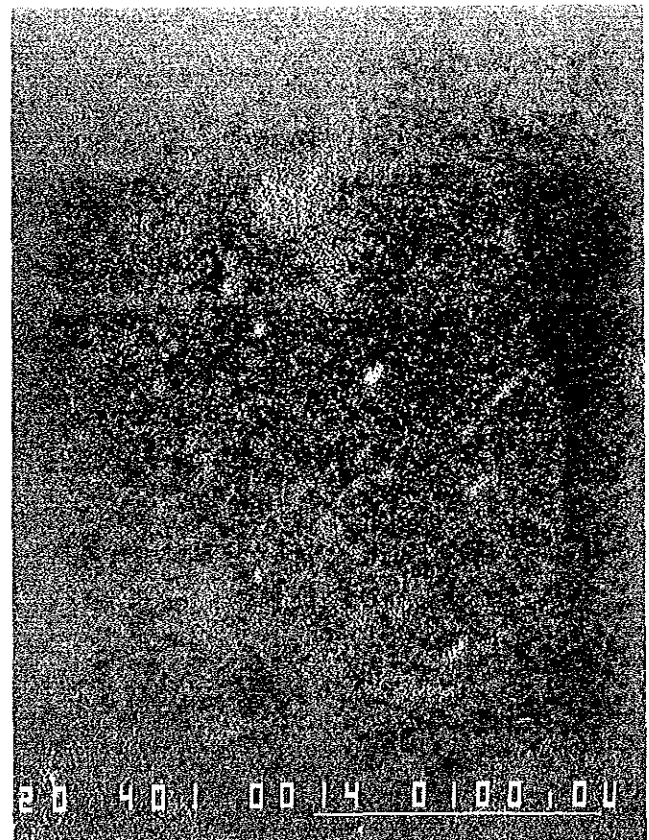
Compo



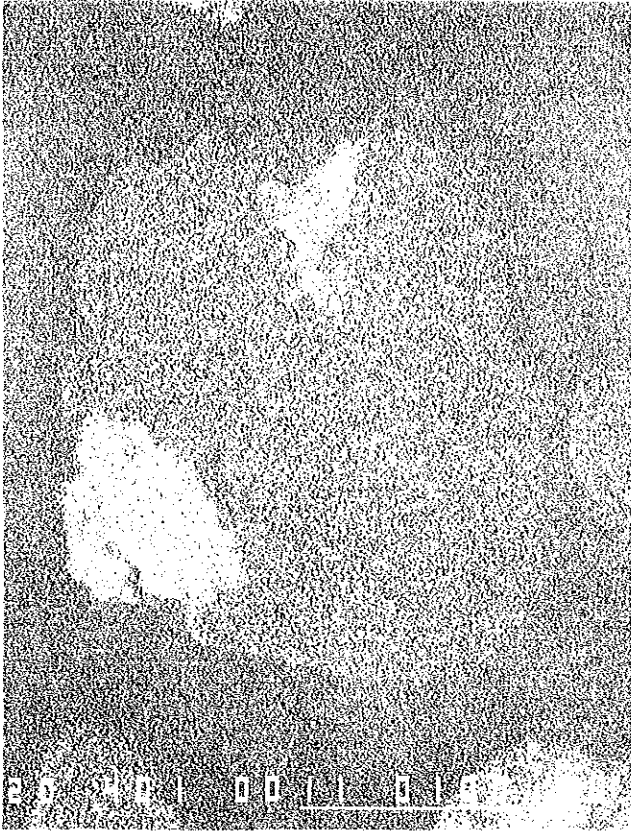
Compo



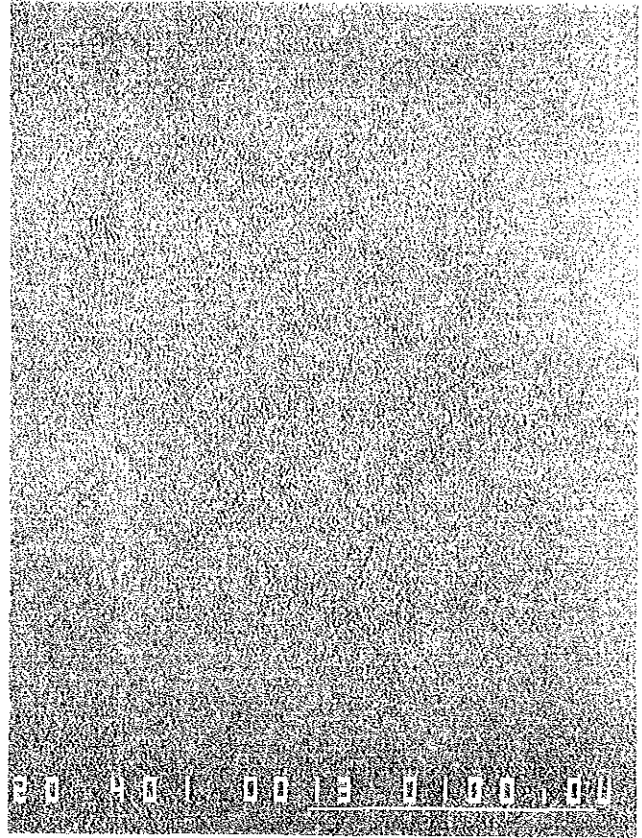
Ti



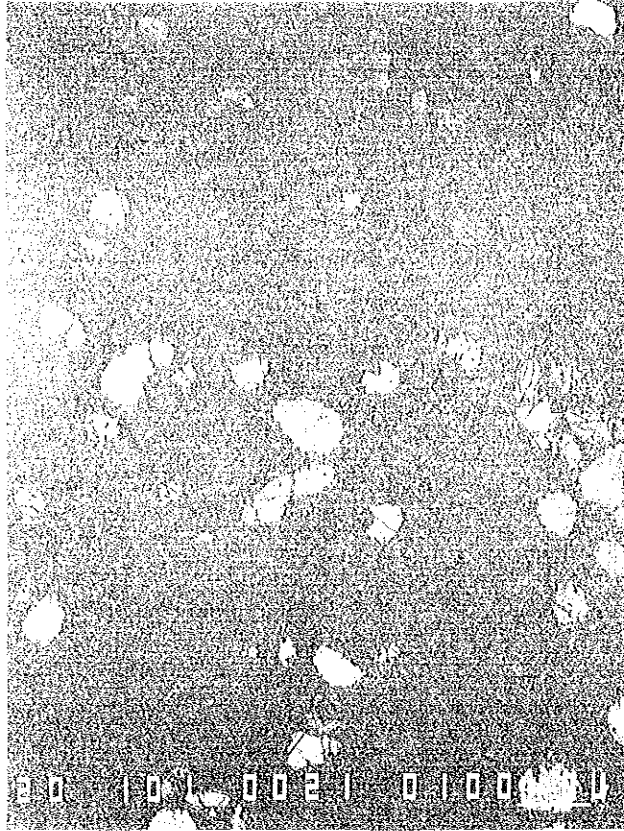
Fe



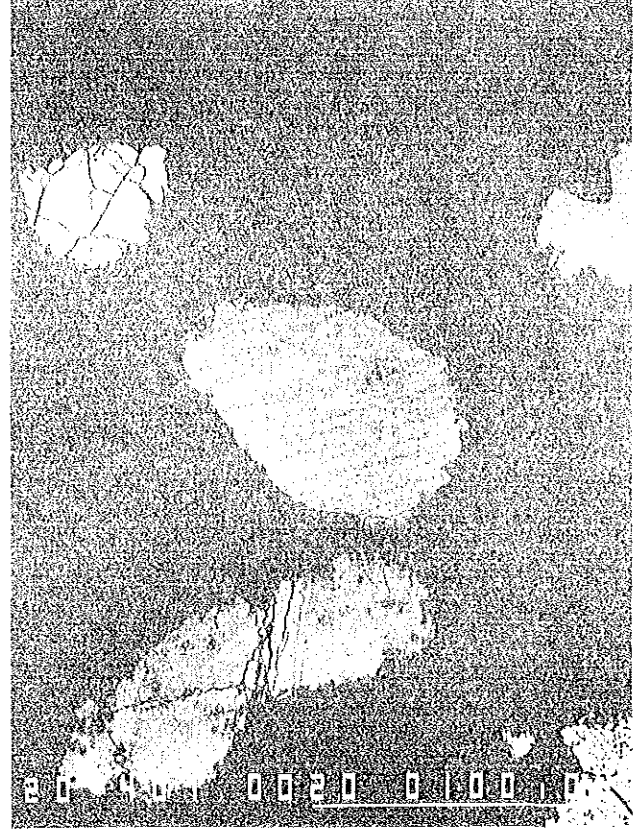
O



Ca



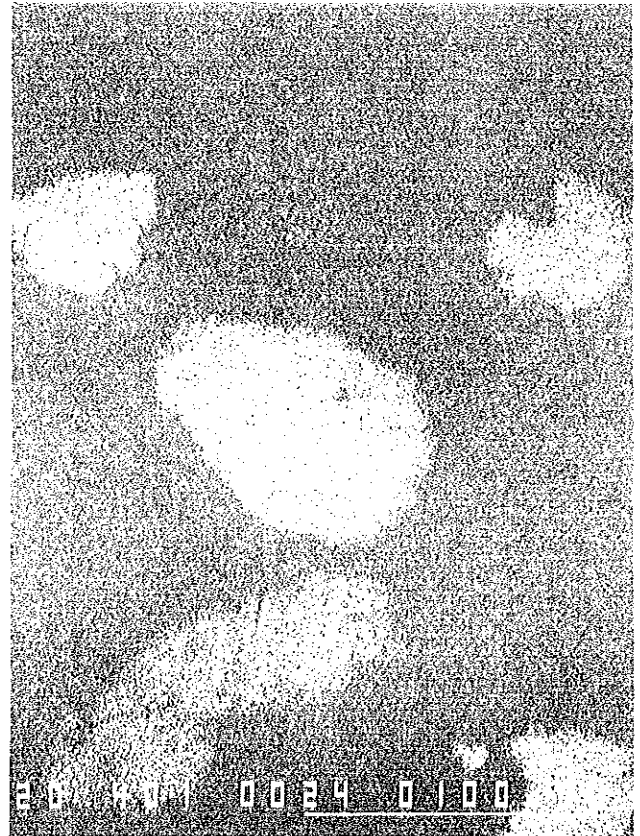
Compo



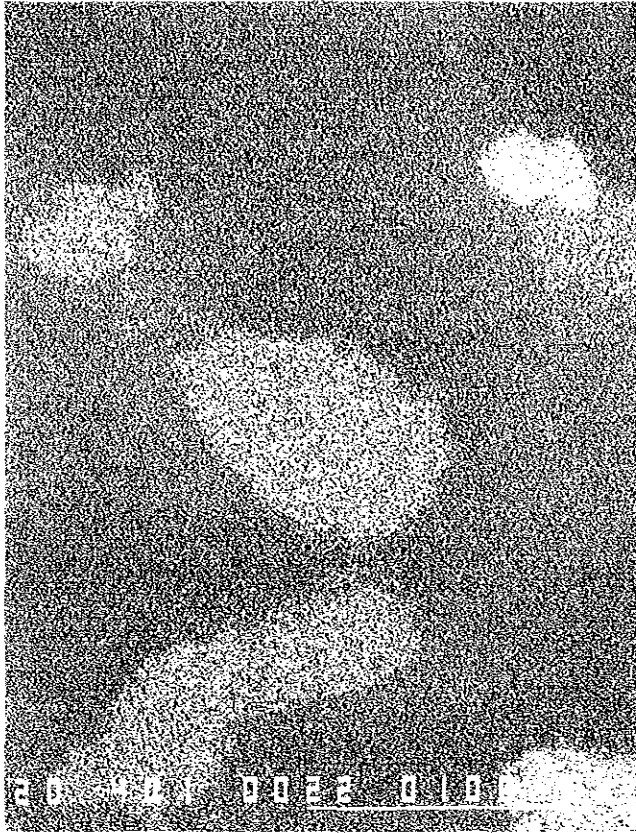
Compo



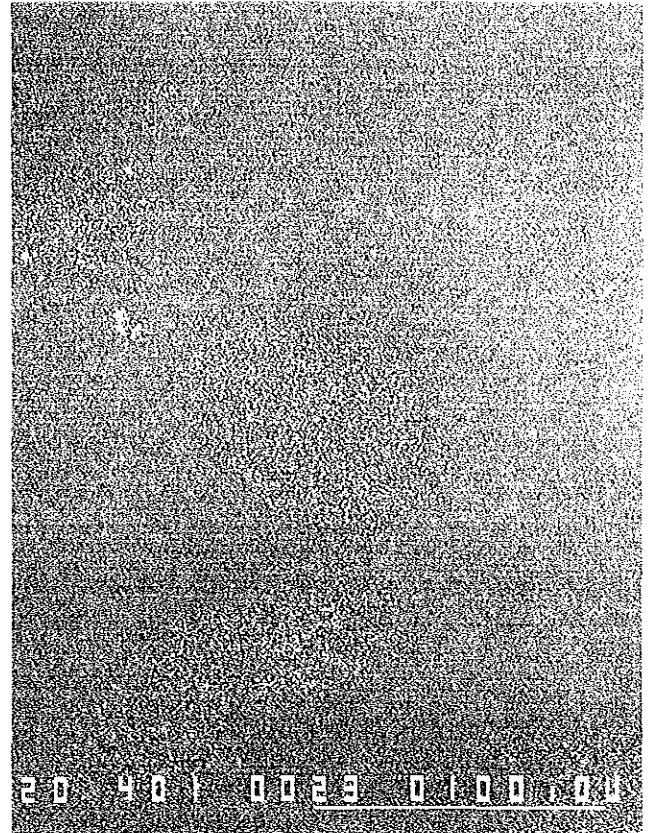
Ti



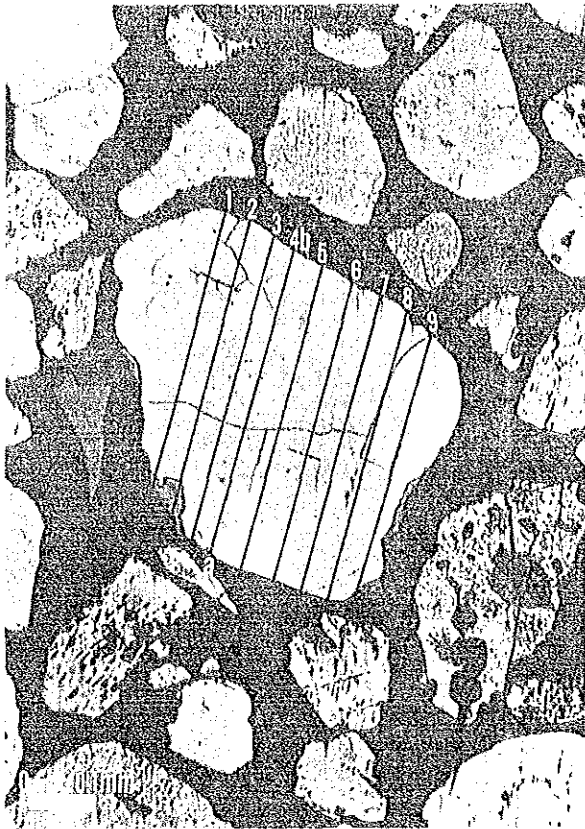
Fe



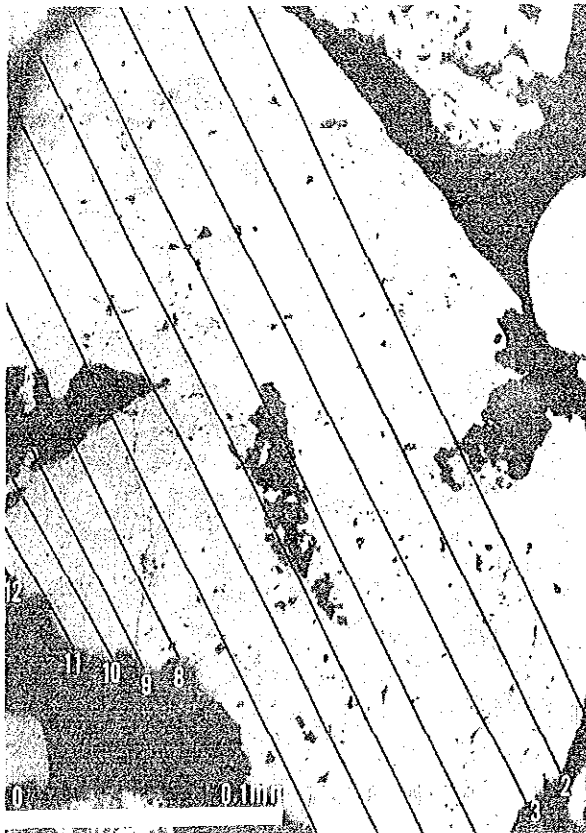
O



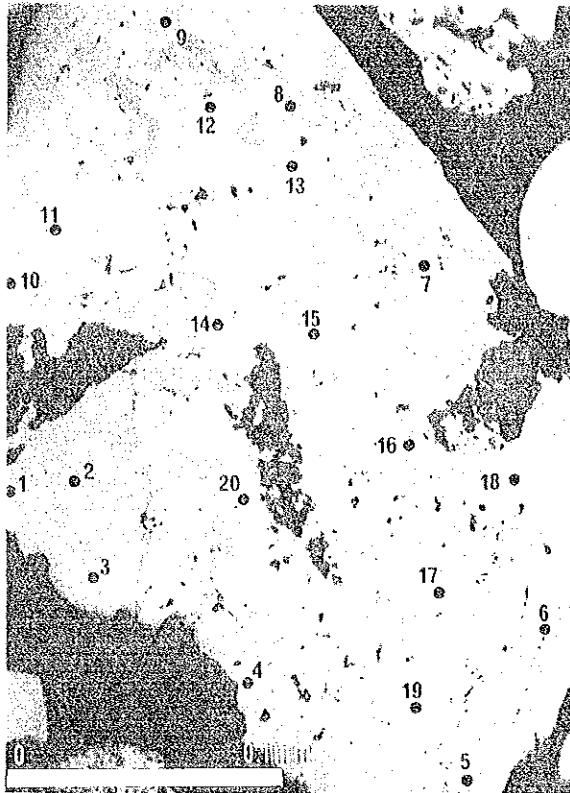
Ca



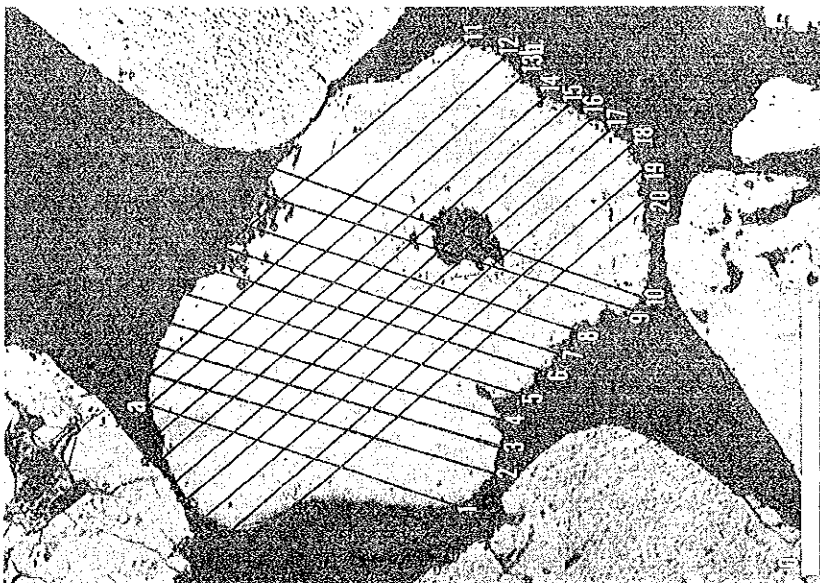
FILM NO.		NEGA NO.	
DATE		DATA	
PLACE	沙尾鉸床		
試料番号 (A) 91109 Le (イ)			
EPMA線分析			
透過 (-)		25倍	



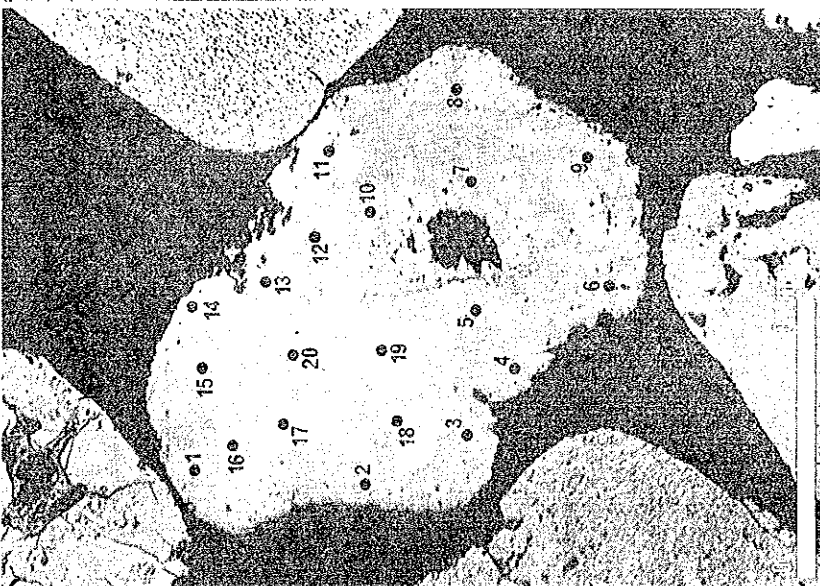
FILM NO.		NEGA NO.	
DATE		DATA	
PLACE	南山海鉸床		
試料番号 (C) 91102 Le (ロ)			
EPMA線分析			
透過 (-)		100倍	



FILM NO.		NEGA NO.	
DATE		DATA	
PLACE	南山海鈹床		
試料番号 91102 Le (口) (C) EPMA点分析 反射 (-) 100倍			



FILM NO.		NEGA NO.	
DATE		DATA	
PLACE	沙尾鈹床		
試料番号 91109 Le (ハ) (D) EPMA線分析 透過 (-) 100倍			



FILM NO.		NEGA NO.	
DATE		DATA	
PLACE	沙尾鈹床		
試料番号 91109 Le (ハ) (D) EPMA点分析 反射 (-) 100倍			

資料1-4 EPMA線・点分析位置図(2)