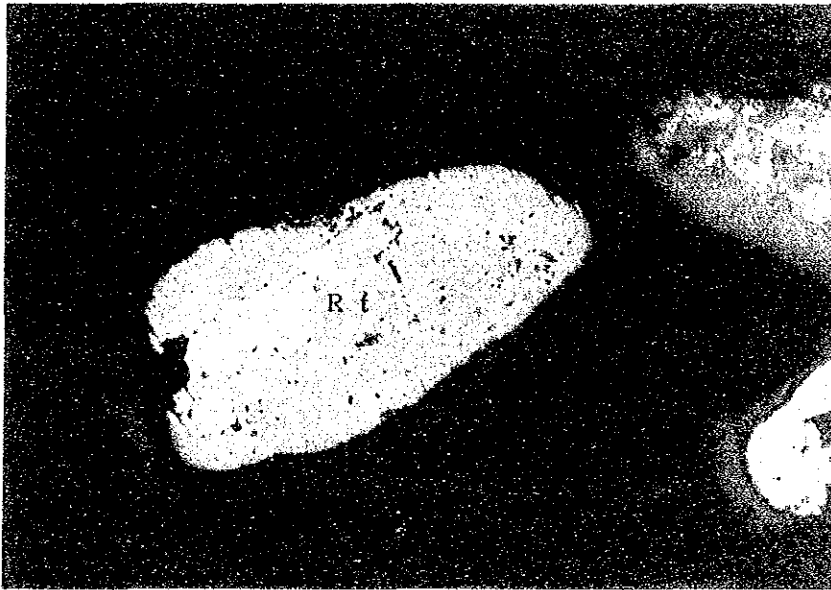




FILM NO.		NEGA NO.	
DATE		DATA	
PLACE	沙尾鉞床		
試料番号 (D) 91109 Lt (ハ) EPMA面分析 EPMA線分析 EPMA点分析 透過 (-) 100倍			

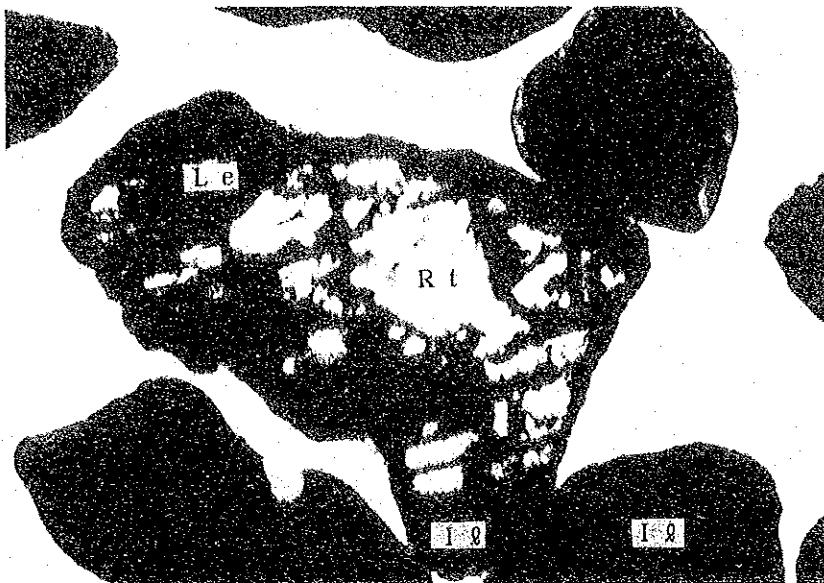


FILM NO.		NEGA NO.	
DATE		DATA	
PLACE	東里鉞床		
試料番号 (E) 223-12-1 Rt (イ) EPMA面分析 EPMA線分析 EPMA点分析 反射 (-) 100倍			

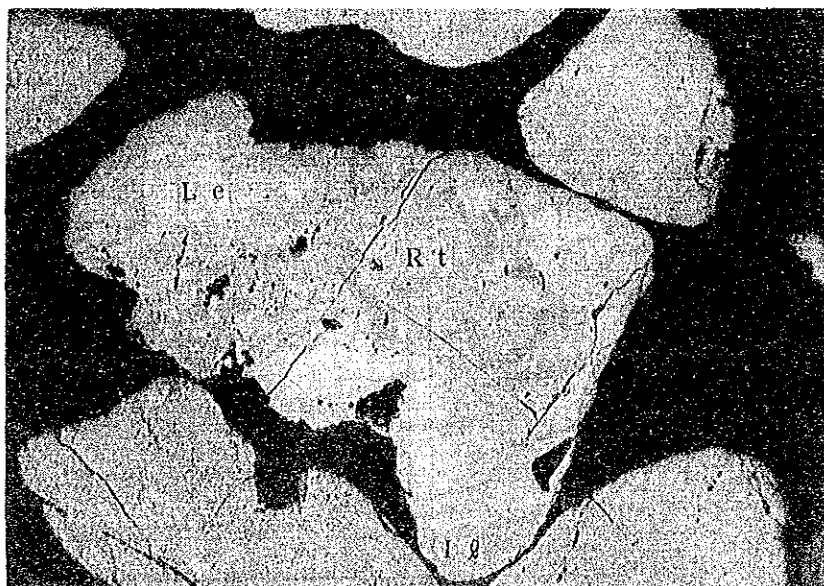


FILM NO.		NEGA NO.	
DATE		DATA	
PLACE	東里鉞床		
試料番号 (E) 223-12-1 Rt (イ) EPMA面分析 EPMA線分析 EPMA点分析 透過 (-) 100倍			

資料 1 - 2 EPMA 研磨薄片顯微鏡写真(3)



FILM NO.		NEGA NO.	
DATE		DATA	
PLACE	南山海鉍床		
試料番号 91101 Le (※) EPMA面分析 EPMA線分析 EPMA点分析 透過 (-) 100倍			

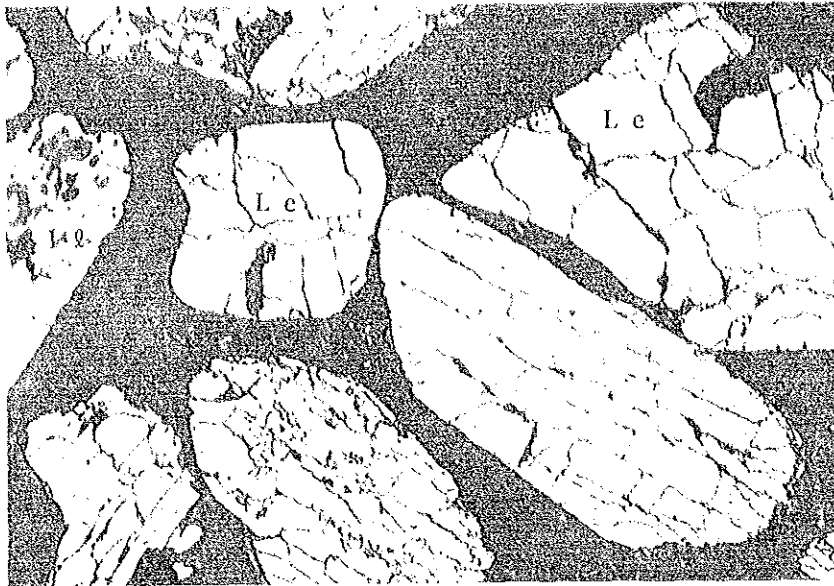


FILM NO.		NEGA NO.	
DATE		DATA	
PLACE	南山海鉍床		
試料番号 91101 Le (※) EPMA面分析 EPMA線分析 EPMA点分析 反射 (-) 100倍			

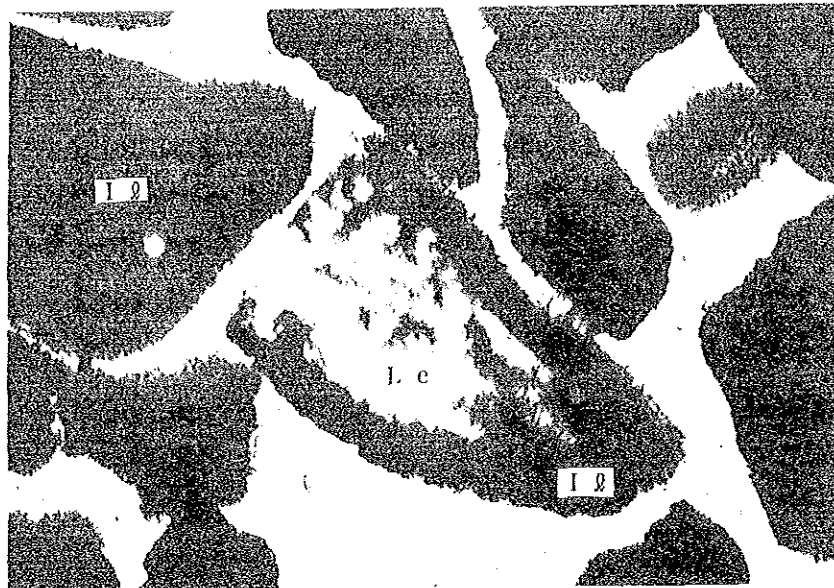


FILM NO.		NEGA NO.	
DATE		DATA	
PLACE	南山海鉍床		
試料番号 91101 Le (ト) EPMA面分析 透過 (-) 100倍			

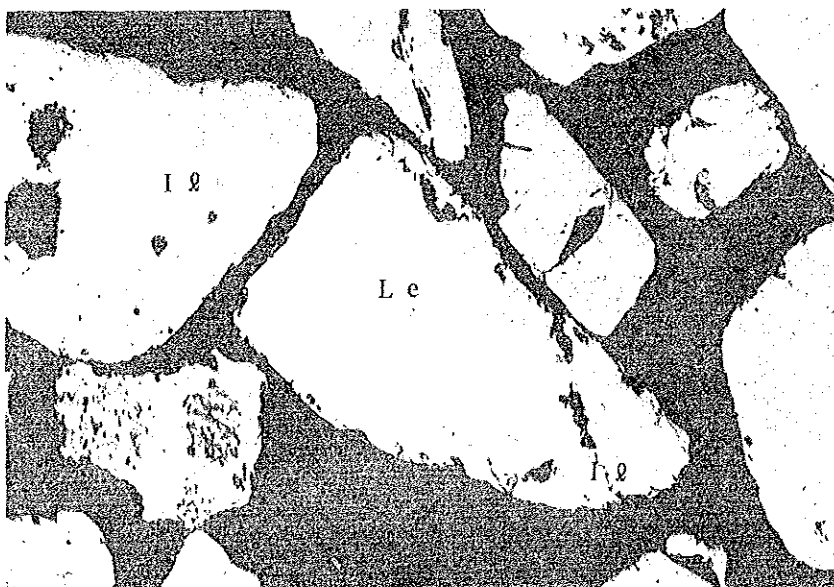
資料1-2 EPMA研磨薄片顕微鏡写真(4)
資-6



FILM NO.		NEGA NO.	
DATE		DATA	
PLACE	南山海鉾床		
試料番号 91101 Le (ト) EPMA面分析 反射 (-) 100倍			

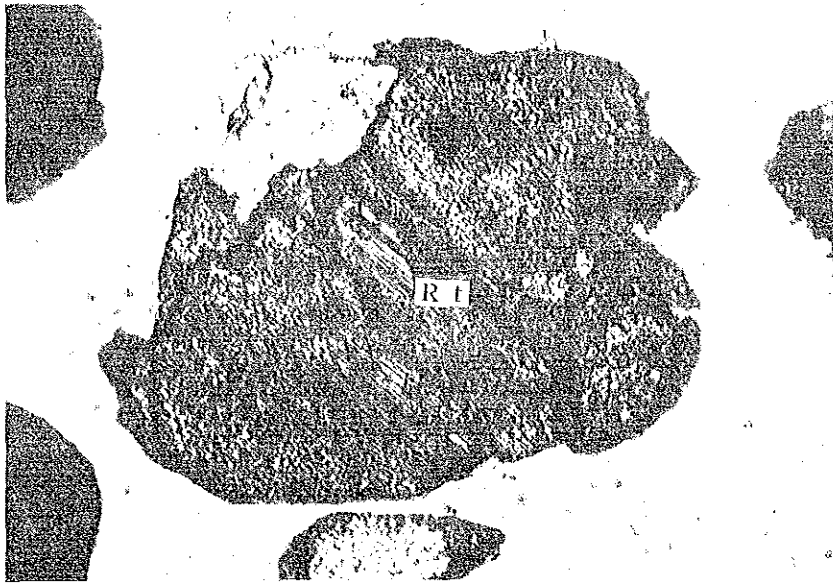


FILM NO.		NEGA NO.	
DATE		DATA	
PLACE	南山海鉾床		
試料番号 91102 Le (イ) EPMA面分析 透過 (-) 100倍			

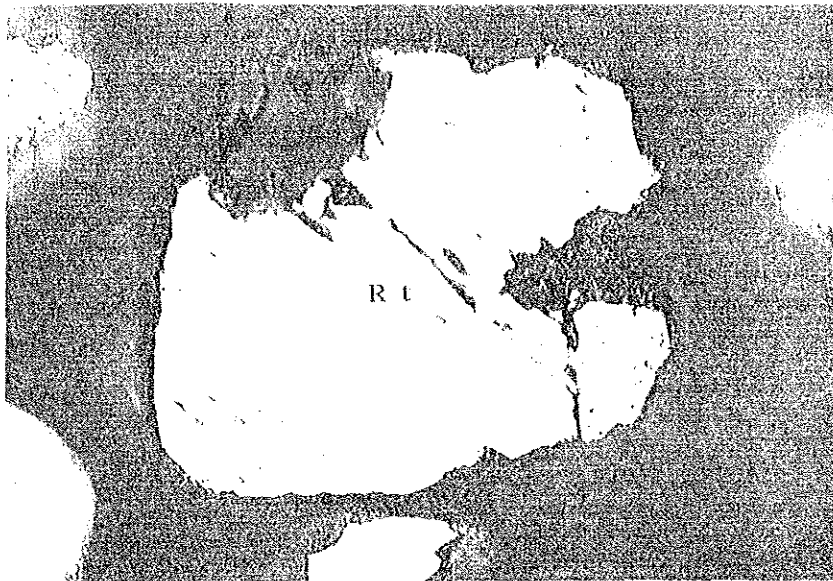


FILM NO.		NEGA NO.	
DATE		DATA	
PLACE	南山海鉾床		
試料番号 91102 Le (イ) 反射 (-) 100倍			

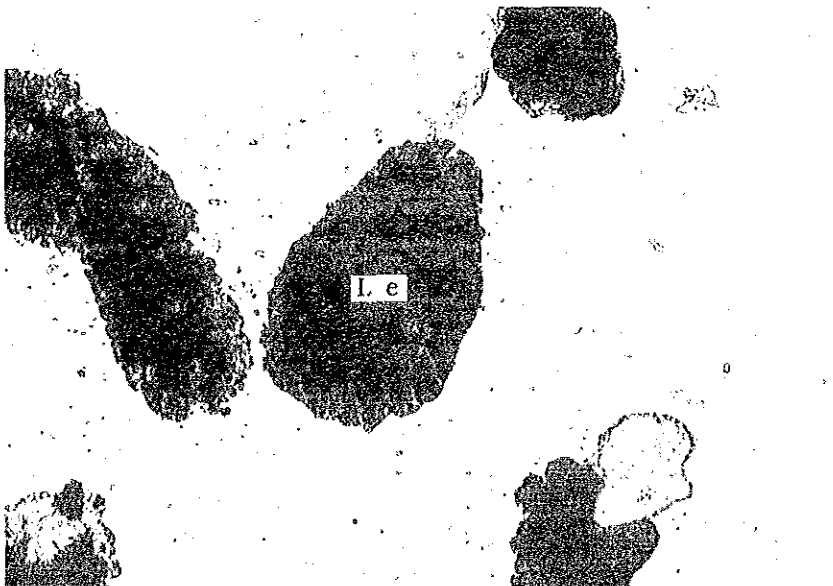
資料 1-2 EPMA 研磨薄片顕微鏡写真(5)
資-7



FILM NO.		NEGA NO.	
DATE		DATA	
PLACE	東里鉦床		
試料番号 223-12-1 Rt (ハ)			
EPMA面分析 EPMA線分析			
透過 (-)		100倍	

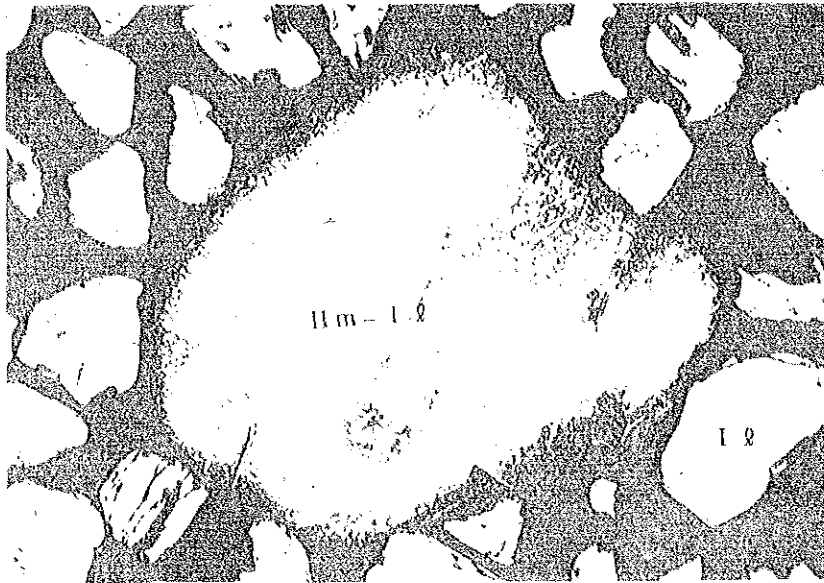


FILM NO.		NEGA NO.	
DATE		DATA	
PLACE	東里鉦床		
試料番号 223-12-1 Rt (ハ)			
EPMA面分析 EPMA線分析			
反射 (-)		100倍	



FILM NO.		NEGA NO.	
DATE		DATA	
PLACE	東里鉦床		
試料番号 223-12-4 Le (ホ)			
EPMA面分析 EPMA線分析			
透過 (-)		100倍	

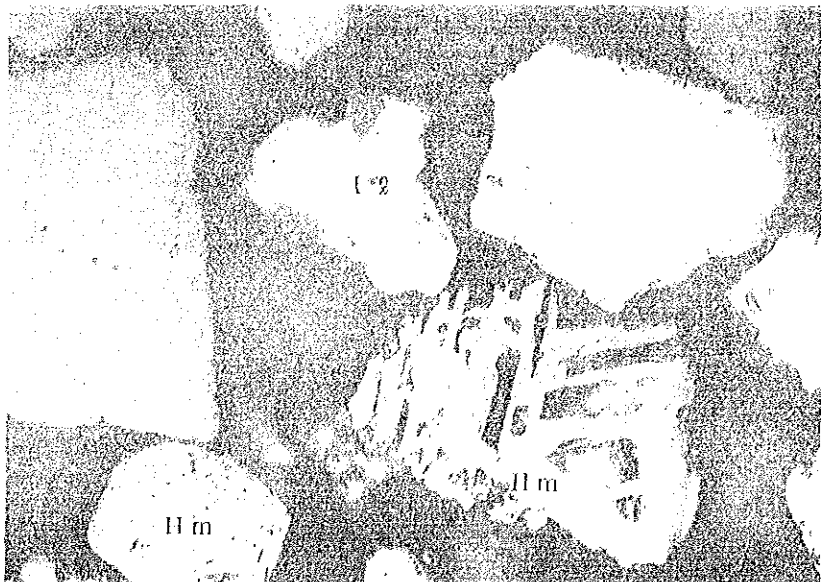
資料1-2 EPMA研磨薄片顕微鏡写真(6)



FILM NO.		NEGA NO.	
DATE		DATA	
PLACE	南山海鉦床		
試料番号 9 1 1 0 1 L e			
反射 (-)		5 0 倍	

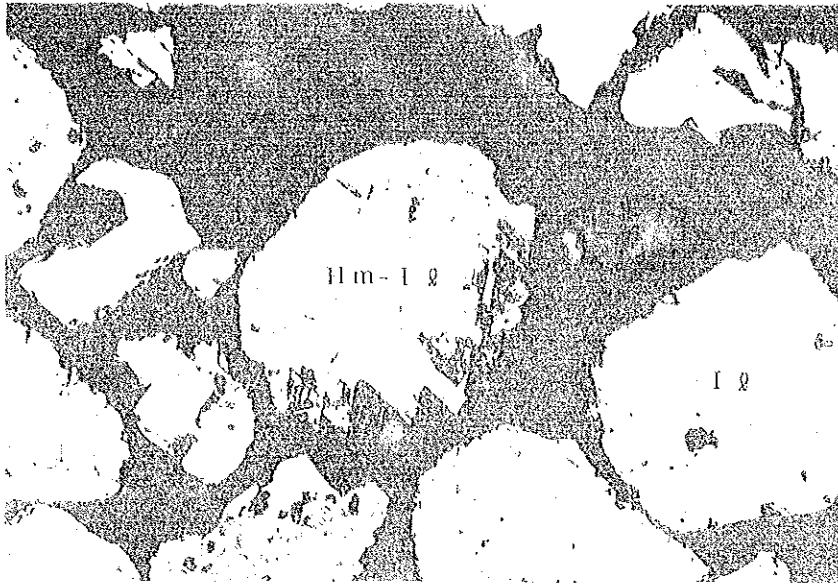


FILM NO.		NEGA NO.	
DATE		DATA	
PLACE	沙尾鉦床		
試料番号 9 1 1 0 6 L e			
反射 (-)		5 0 倍	

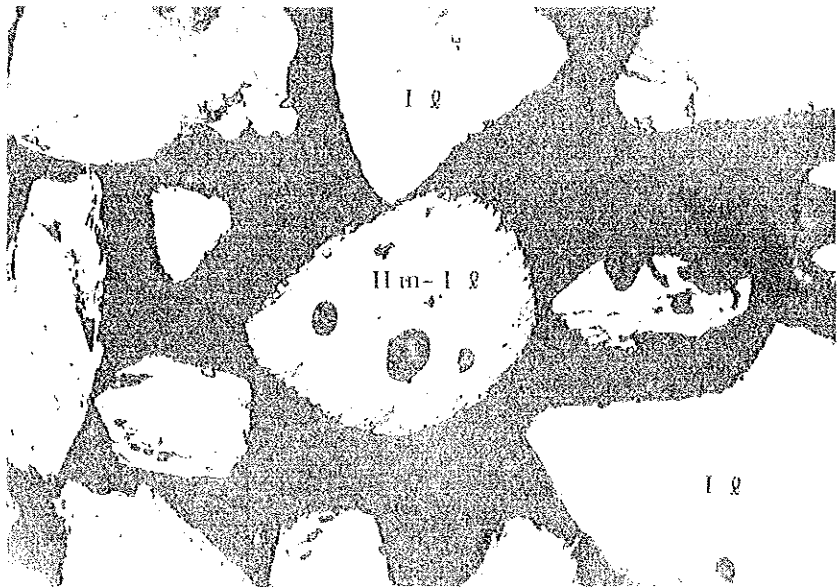


FILM NO.		NEGA NO.	
DATE		DATA	
PLACE	東里鉦床		
試料番号 2 2 3 - 1 2 - 2 I 2			
反射 (+)		1 0 0 倍	

資料 1 - 2 E P M A 研磨薄片顯微鏡写真(7)



FILM NO.		NEGA NO.	
DATE		DATA	
PLACE	東里鉦床		
試料番号 2 2 3 - 1 2 - 2 1 2			
反射 (-) 1 0 0 倍			

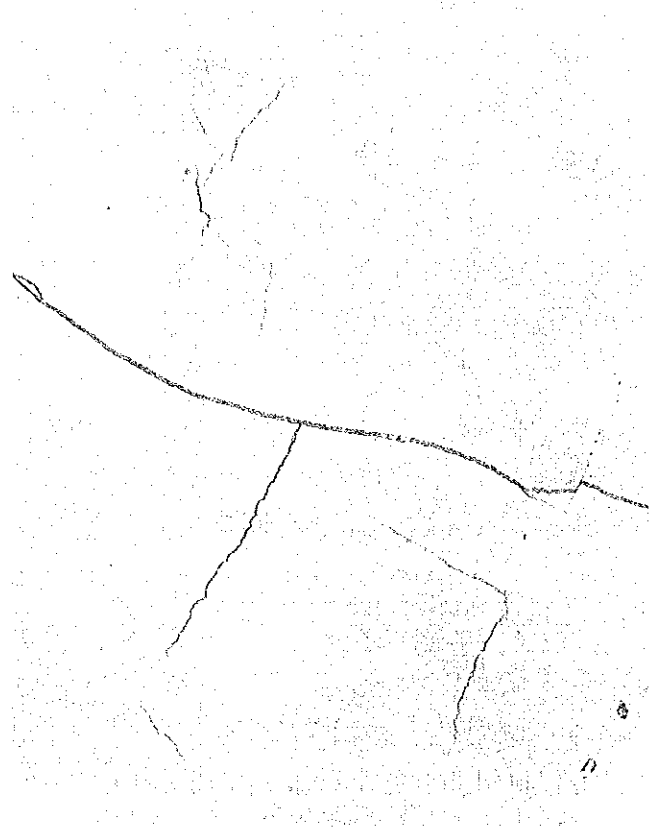


FILM NO.		NEGA NO.	
DATE		DATA	
PLACE	東里鉦床		
試料番号 2 2 3 - 1 2 - 2 1 2			
反射 (-) 1 0 0 倍			

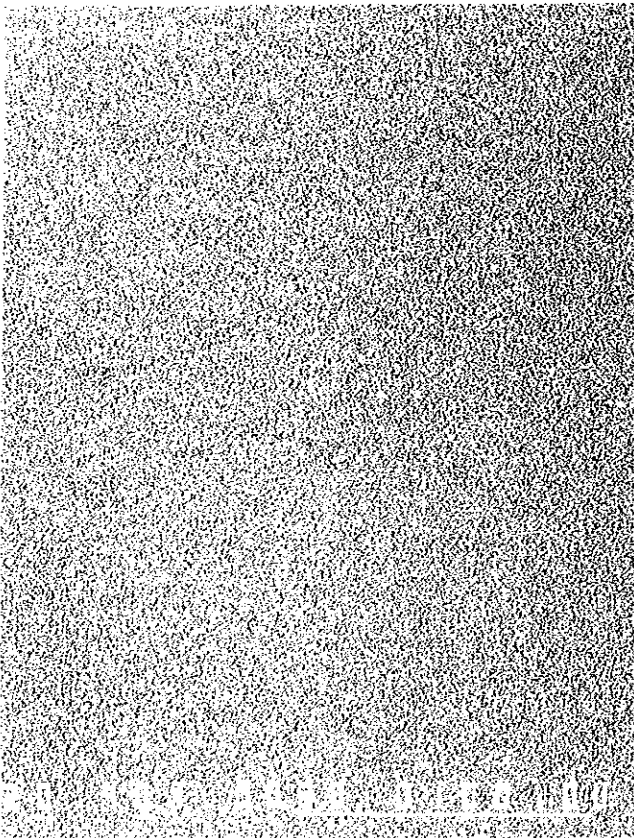
Specimen 沙尾鉾床 91109 Le (イ) ㊸



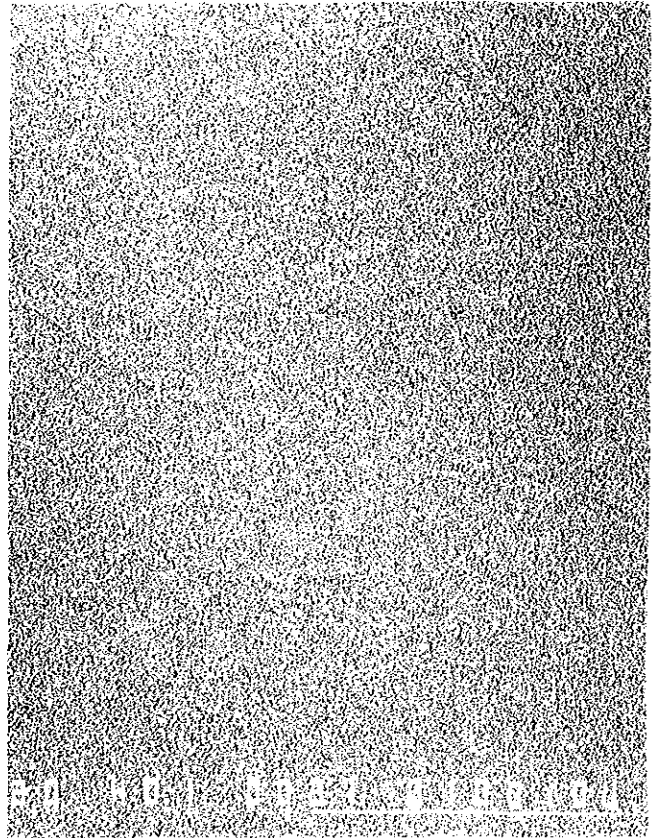
Compo



Compo



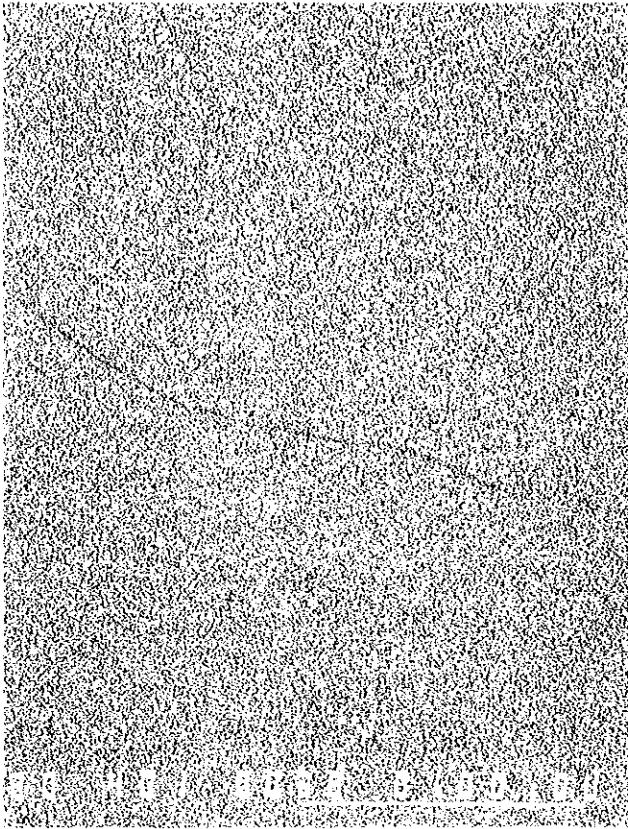
Ti



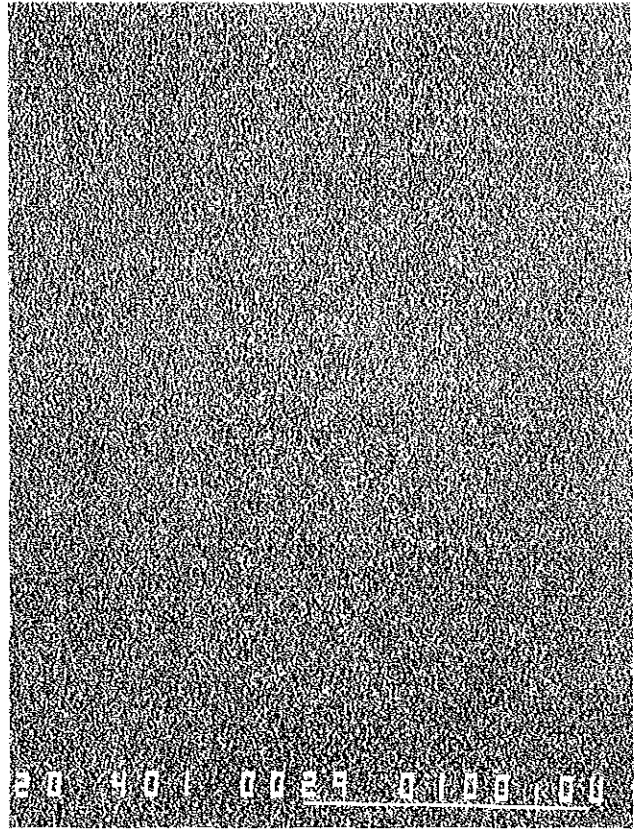
Fe

資料 1 - 3 EPMA面分析 (組成像) (I)

資 II



O



Ca



Compo



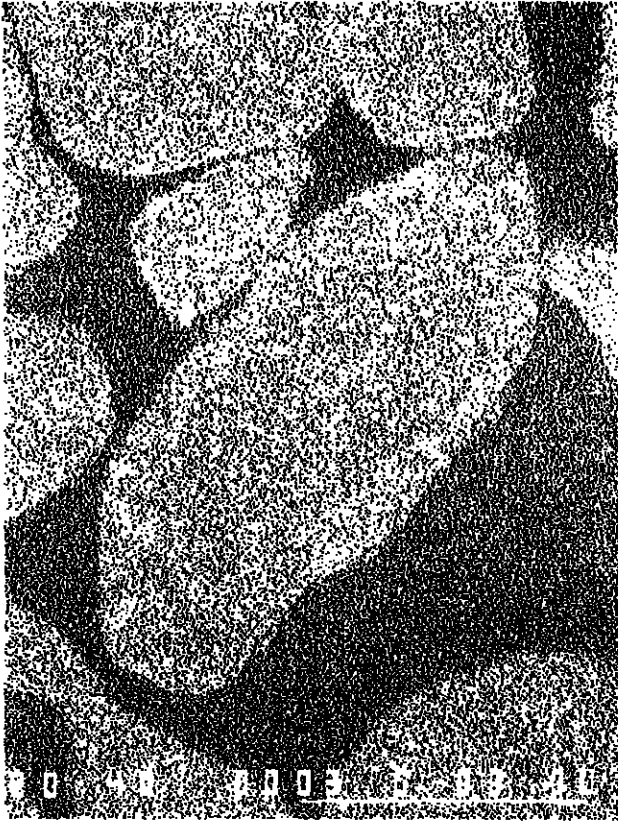
Compo



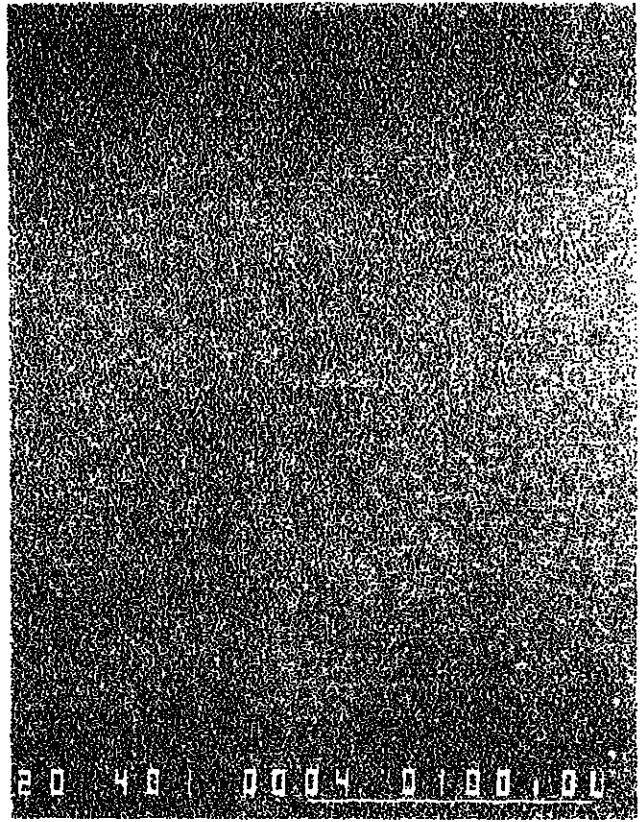
Ti



Fe



O



Ca



Compo



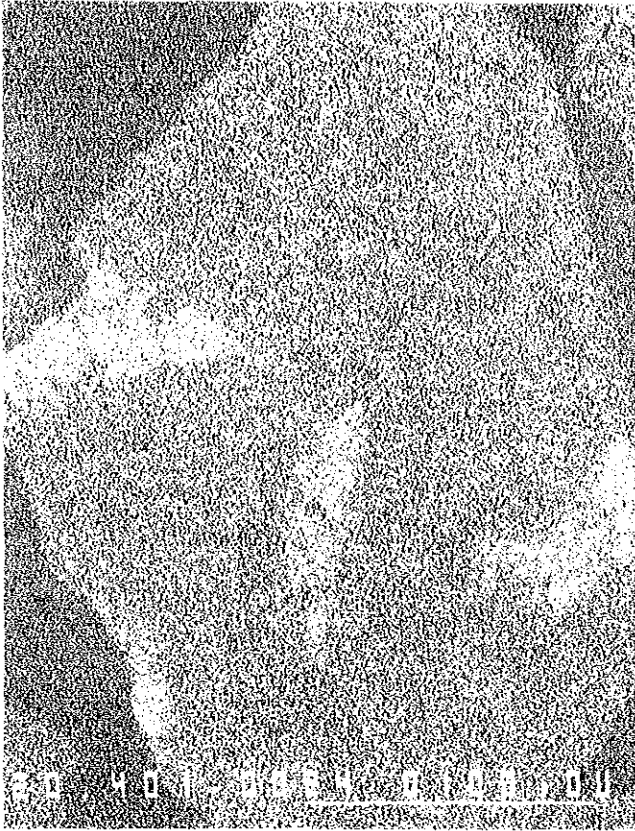
Compo



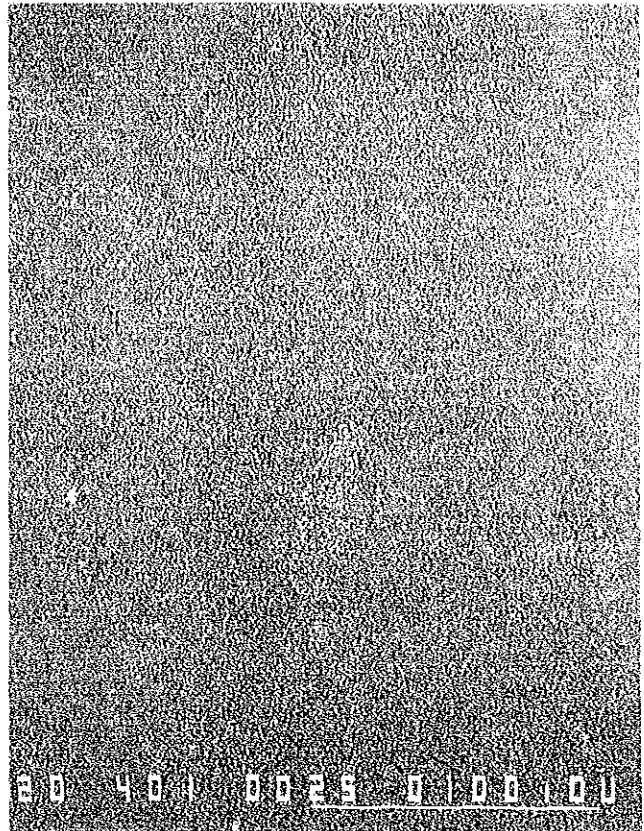
Ti



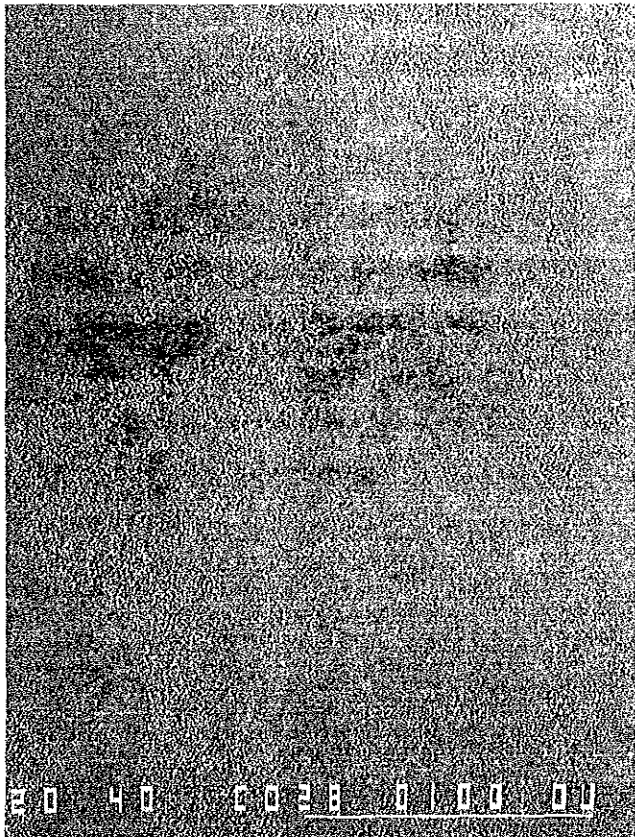
Fe



O



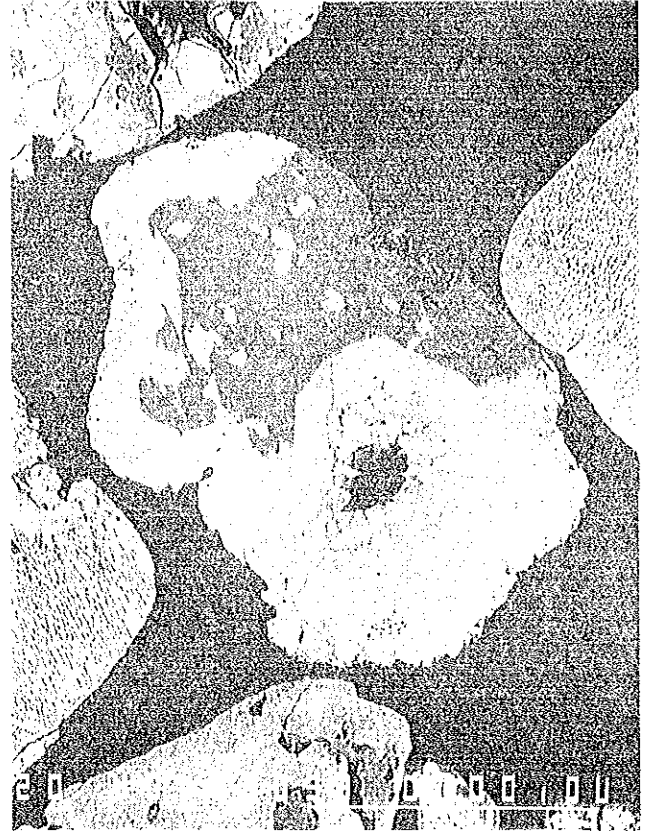
Ca



Mn



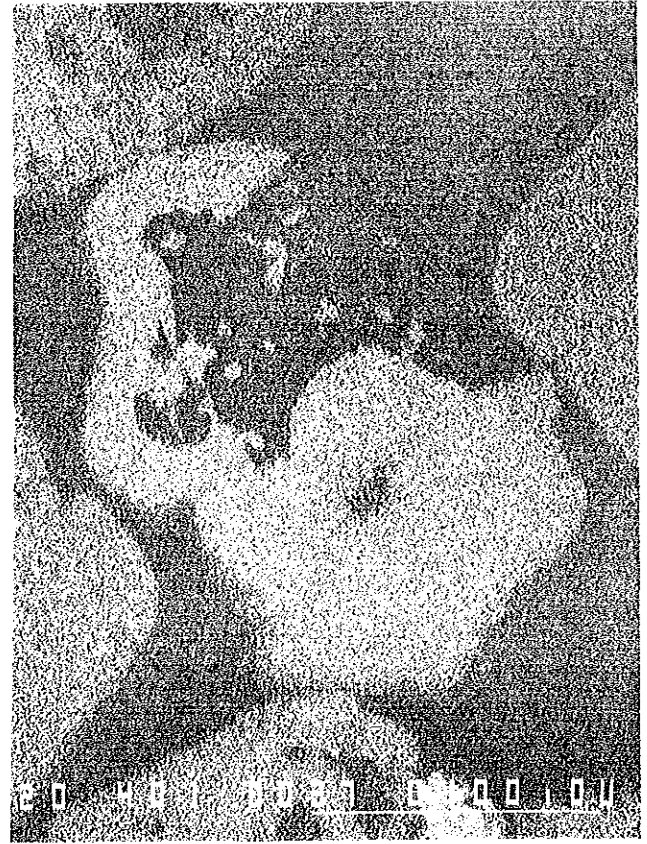
Compo



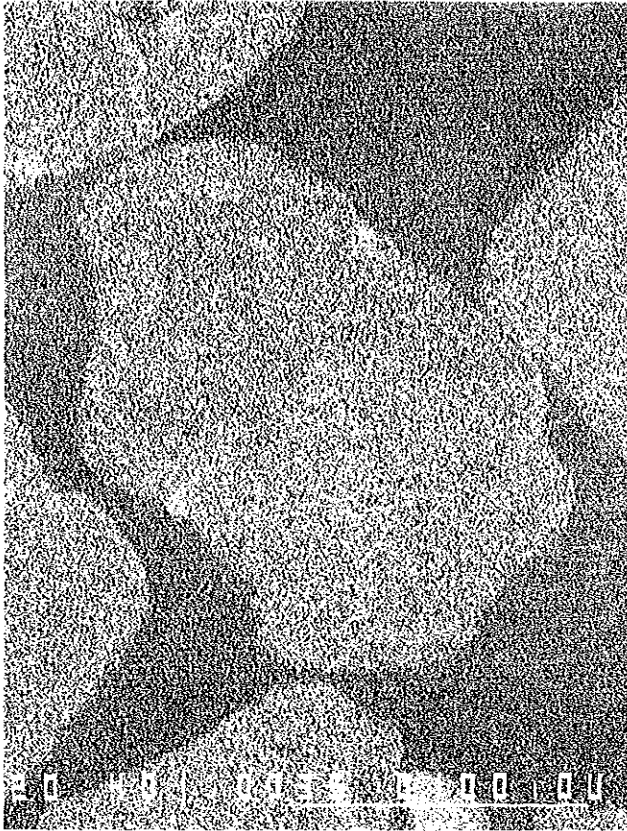
Compo



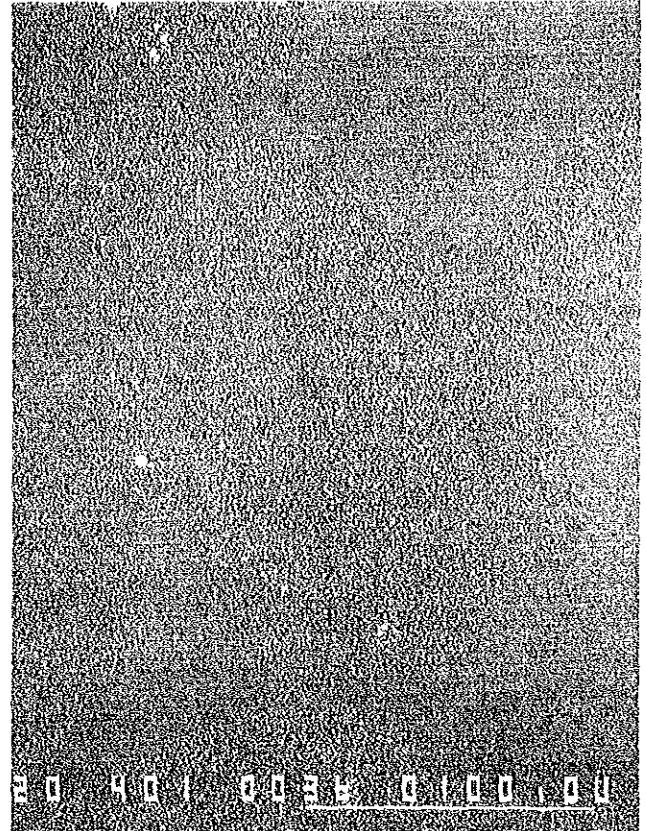
Ti



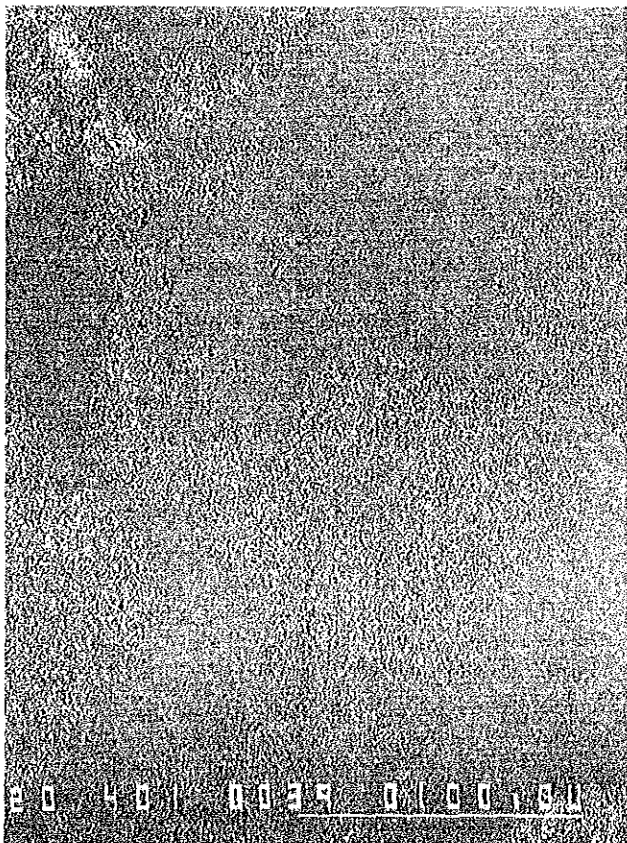
Fe



O



Ca



Mn