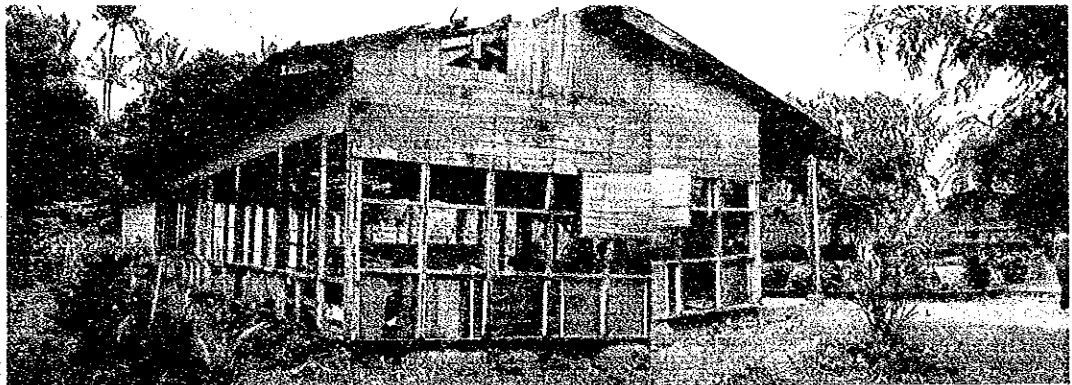




SANTANDER ELEMENTARY SCHOOL



SANTANDER ELEMENTARY SCHOOL



ARAS-ASAN ELEMENTARY SCHOOL
(RECIPIENT SCHOOL : NO. E-12)



LEGAWES ELEMENTARY SCHOOL



BUNYASAN ELEMENTARY SCHOOL

APPENDIX 2. MEMBER LIST OF THE BASIC DESIGN STUDY TEAM

(March 30, 1992 - April 18, 1992)

<u>NAME</u>	<u>ASSIGNMENT</u>	<u>AFFILIATION</u>
Mr. Masashi Kono	Team Leader	Assistant Director Grant Aid division Economic Cooperation Bureau Ministry of Foreign Affairs
Mr. Takeshi Watanabe	Planner	First Budget Division, Finance and Accounting Department, Japan International Cooperation Agency
Mr. Shiro Sasaki	Architectural Planner	Mohri, Architect and Associates, Inc.
Mr. Nobuhiro Mohri	Architectural Designer (1)	Mohri, Architect and Associates, Inc.
Mr. Yutaka Inagaki	Architectural Designer (2)	Mohri, Architect and Associates, Inc.
Mr. Akira Shibuya	Construction Planner & Cost Estimator	Mohri, Architect and Associates, Inc.

APPENDIX 3. ITINERARY OF THE STUDY TEAM

NO	MON/DY/YR.	ITINERARY					
1	Mar. 30 92 (Mo)	Lv. Narita 10:00AM → Arr. Manila 13:25PM: PR431 *E of J (Courtesy Call)	(Team E) E4, E6, S29, S30, S31, S33 S34, ALT. 3, 4, 21, 22		(Team F) Mar. 27: E20, E21, S66, S67, S69, S70, ALT. 15 Mar. 28: E22, S65, S68, S71, S72, ALT. 16, 17, 18, 30 Mar. 29: Surigao → Iloilo		
2	Mar. 31 (Tu)	*JICA Manila, DECS (Courtesy Call)	E5, S28, S32, S45, S47 ALT. 26, 27				
3	Apr. 1 (We)	* Region VI DECS Regional Office: Meeting (Team A·B·C·D) PR139 : Lv. Manila 5:05AM, Arr. Iloilo 6:00AM					
		(Team A) E12, E16, E17 S50, ALT. 8, 9 ALT. 10, 12, 28 (Iloilo)	(Team B) E13, S35, S36 S48, S49, S54 S59, ALT. 5, 24 (Iloilo)	(Team C) E7, E10, S37, S41, S42, S43, ALT. 6, 7 (Roxsas)	(Team D) S23, S24, S27 ALT. 2, 19, 20 (Kalibo)	(Team E) Join Team A	(Team F) Join Team B
4	Apr. 2 (Th)	E11, E19, S52 S62, S63, S64 ALT. 13, 14 (Iloilo)	E15, E18, S44 S53, S55, S56 ALT. 25 (Iloilo)	E14, S39, S40, S46, S51, S57, S58, S60, S61, ALT. 11 (Iloilo)	E1, E2, E3, E8, E9, S25, S26, S38, ALT. 1 (Iloilo)		
5	Apr. 3 (Fr)	*Region VI DECS Regional Office: Meeting *Meeting among Team members *Lv. Iloilo 3:15PM → Arr. Manila 4:10PM : PR144					
6	Apr. 4 (Sa)	*Meeting among Team members *Data collection & analysis					
7	Apr. 5 (Su)	*Mr. Watanabe : Lv. Narita 9:45AM → Arr. Manila 13:00 : JAL741 *Mr. Kono joined at Manila *Meeting among Team members, Data collection & analysis					
8	Apr. 6 (Mo)	*Courtesy call on Manila JICA *Meeting with Team Members					
9	Apr. 7 (Tu)	*Meeting with DECS *Data collection					
10	Apr. 8 (We)	*Meeting with DECS *Data collection					
①	Apr. 9 (Th)	*Meeting with DECS. Inspected model school of Phase III *Data collection & analysis					
12	Apr. 10 (Fr)	*Meeting with DECS, NEDA *Data collection					
13	Apr. 11 (Sa)	*Meeting among Team members *Data collection & analysis					
14	Apr. 12 (Su)	*Meeting among Team members *Data collection & analysis					
15	Apr. 13 (Mo)	*Meeting with DECS *Signing of Minutes					
16	Apr. 14 (Tu)	*Meeting with Manila JICA Office, Embassy of Japan *Mr. Kono and Mr. Watanabe : Lv. Manila 14:15PM → Arr. 19:20PM : JAL742					
17	Apr. 15 (We)	*Meeting with DECS. Inspected schools *Data analysis					
⑱	Apr. 16 (Th)	*Meeting among Team members *Data analysis					
⑲	Apr. 17 (Fr)	*Meeting among Team members *Summary & evaluation of the result of survey					
⑳	Apr. 18 (Sa)	Lv. Manila 7:00AM → Arr. Narita 12:15PM : NW004					

Note: Team A - Sasaki Team B - Inagaki Team C - Mohri Team D - Shibuya Teams E & F - Local Staff
○ Philippines national holiday

APPENDIX 4 LIST OF PERSONNEL INTERVIEWED

During the Basic Design Study's field survey period, the Study Team interviewed the following personnel:

(1) Concerned Personnel of the Philippine Side:

* DECS (Manila)

Isidro Carino	Secretary, DECS
Luis R. Baltazar	Under Secretary, DECS
Erinda C Pefianco	Under Secretary, DECS
Ramon C. Bacani	Assistant Secretary, DECS
Achilles B. del Callar	Executive Director, EDPITAF-DECS
Amelita A. Cruz	Deputy Executive Director, EDPITAF-DECS
Josephine F. Ramirez	Chief, AFSD and OIC, EDPITAF-DECS
Ma. Lourdes G. de Vera	Chief, EDPITAF, RPDD-DECS
Yolanda Ramo	Project Manager, EDPITAF, JAPS-PMU-DECS
Concesa P. Suganob	Desk Officer, EDPITAF, RPDD-DECS
Milagros T. Talinio	Desk Officer, EDPITAF, RPDD-DECS
Edgardo Marallag	Engineer, EDPITAF, JAPS-PUM-DECS
Marcelina Miguel	Director III, BEE-DECS
Ma. Paraluman C. Dulig	Project Dev. Officer III, EDPITAF, RPDD-DECS
Celirino Calinisan	Bureau of Secondary Education-DECS
Luis P. Purisima, Sr.	Director, PFD, Bureau of Secondary Education-DECS
Luis P. Purisima, Jr.	Engineer III, Bureau of Elementary Education-DECS
Alberto M. Bantugan	EPS II, Office of Planning Services-DECS

* DECS's Region VI

Pedro B. Trinidad	Regional Director, DECSRO VI
Romeo P. Bantias	Asst. Regional Director, DECSRO VI
Elmer A. Carbon	Chief, SED-DECSRO VI
Ophelia Zohuaga	Chief, EED-DECSRO VI
Ricardo G. Laralle	ESI-DECSRO VI

Jelix M Garzon	Chief, Secondary Education Div. -DECSRO VI
Ophelia Ahuaga	Chief, Elementary Education Div. -DECSRO VI
Antonio F. Layag	Asst. Chief, TVED-DECSRO VI
Jose L. Bugante	Supervisor, IA DECS Division of Iloilo
Daniel G. Santillan	Supervisor, IA DECS Division of Antique
Claudio M. Libutaque	Coordinator, IA DECS Division of Iloilo

* DECS's Region X

Makil U. Pundaodaya	Regional Director, DECSRO X
Francisco Mendoza	Division Superintendent, Surigao City
Eulalio Cortes	Division Superintendent, Surigao del Norte
Glorina Tremedal	Asst. Superintendent, Surigao del Norte
Mario Basalo	Physical Facilities Coordinator
Amado Soncio	Supervisor, Secondary Education

* National Economic Development Agency (NEDA)

Josefina Esquerra	Asst. Director, PIS-NEDA
Jojo Halili	Desk Officer, JICA Assisted Projects-NEDA

(2) Concerned Personnel of the Japanese Side

* Japanese Embassy in Manila

Mr. Hirokazu Arai	Ambassador
Mr. Isao Dekiba	First Secretary

* JICA Manila Office

Mr. Masataka Iijima	Resident Representative
Mr. Kikuo Takeuchi	Deputy Resident Representative
Mr. Harumi Ohkawa	Assistant Resident Representative
Mr. Makoto Kashiwaya	Assistant Resident Representative

APPENDIX 5. Minutes of Discussions

MINUTES OF DISCUSSIONS

ON

THE PROJECT FOR CONSTRUCTING PRIMARY
AND SECONDARY SCHOOLBUILDINGS (PHASE IV)

IN

THE REPUBLIC OF THE PHILIPPINES

MINUTES OF DISCUSSIONS
ON
THE PROJECT FOR CONSTRUCTING PRIMARY
AND SECONDARY SCHOOLBUILDINGS (PHASE IV)
IN
THE REPUBLIC OF THE PHILIPPINES

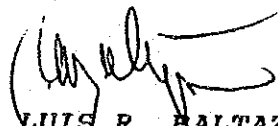
In response to the request of the Government of the Philippines, the Government of Japan decided to conduct a basic design study on the project for constructing primary and secondary schoolbuildings (Phase IV) and the Japan International Cooperation Agency (JICA) sent to the Philippines the study team headed by Mr. MASASHI KONO, Assistant Director, Grant Aid Division, Economic Cooperation Bureau, Ministry of Foreign Affairs of the Government of Japan from March 30th to April 18th, 1992. The team had a series of discussions on the project with the officials concerned of the Government of the Philippines and conducted a field survey in Region VI and Region X.

As a result of the study and discussions, both parties agreed to recommend to their respective Governments that the major points of understanding reached between them, attached herewith, should be examined towards the realization of the Project.

Manila, April 13, 1992



MASASHI KONO
Leader
Basic Design Study Team
Japan International Cooperation
Agency



LUIS R. BALTAZAR
Undersecretary
Department of Education,
Culture and Sports

A T T A C H M E N T

1. Project Title

The Project for constructing primary and secondary schoolbuildings (Phase IV)

2. Objective of the Project

The objective of the Project is to construct Typhoon-Resistant Pre-Fabricated Schoolbuildings with basic furniture in Region VI and Region X.

3. Government Organizations Related to the Project

Responsible and Coordinating Agency for the Project:

Department of Education, Culture and Sports (DECS)

Executing and Implementing Agency for the Project:

DECS-Educational Development Projects Implementing Task Force (EDPITAF)

4. Schools to be Covered by the Project

The list of schools where the primary and secondary schoolbuildings are to be constructed is attached as Annex 1.

5. Project Sites

The Project sites in Regions VI And X are shown in the map in Annex 2.

6. Major Items Included in the Project

The major items included in the Project are listed in Annex 3.

7. Tentative Floor Plans

The Tentative floor plans for the primary and secondary schoolbuildings are shown in Annex 4.

8. Grant Aid Program

1) The Government of the Philippines understands that Japan's Grant Aid Program includes the requirement of employing a Japanese consulting firm to implement the Project to provide the buildings and furniture.

2) The Study Team will convey to the Government of Japan the desire of the Government of the Philippines that the Government of Japan takes necessary measures in implementing the Project and provides necessary buildings and furniture under the Japan's Grant Aid Program.

- 3) The Government of the Philippines confirms that it will implement the necessary measures as listed in Annex 5 on condition that a Grant Aid by the Government of Japan will be extended to the Project.

g not

THE PROJECT FOR CONSTRUCTING PRIMARY & SECONDARY SCHOOLBUILDINGS
PHASE IV - Regions VI & X

LIST OF RECIPIENT SCHOOLS

ELEMENTARY

SCHOOL NAME

LOCATION

REGION VI

E- 1	DON E. LADRIDO MEMORIAL ELEMENTARY SCHOOL	Lambunao, Iloilo
E- 2	SAPIAN CENTRAL ELEMENTARY SCHOOL	Sapian, Capiz
E- 3	SIBALOM ELEMENTARY SCHOOL	Sibalom, Antique
E- 4	PONTEVEDRA CENTRAL SCHOOL	Pontevedra, Capiz
E- 5	CARLES CENTRAL ELEMENTARY SCHOOL	Carles, Iloilo
E- 6	RIZAL ELEMENTARY SCHOOL	Iloilo City
E- 7	BANATE CENTRAL ELEMENTARY SCHOOL	Banate, Iloilo
E- 8	BATUAN ELEMENTARY SCHOOL	Pototan, Iloilo
E- 9	BALASAN CENTRAL SCHOOL	Balasan, Iloilo
E-10	DONA VICENTA P. MONTIVEROS MEMORIAL SCHOOL	Roxas City
E-11	SIGMA CENTRAL ELEMENTARY SCHOOL	Sigma, Capiz
E-12	ARAS-ASAN ELEMENTARY SCHOOL	Tobias Fornier, Antique
E-13	CAWAYAN ELEMENTARY SCHOOL	New Washington, Aklan
E-14	JULITA ELEMENTARY SCHOOL	Libacao, Aklan
E-15	LACARON ELEMENTARY SCHOOL	Sibalom, Antique
E-16	BADIANG ELEMENTARY SCHOOL	Anilao, Iloilo
E-17	JALAUD ELEMENTARY SCHOOL	Barotac Nuevo, Iloilo
E-18	TIRING CENTRAL ELEMENTARY SCHOOL	Cabatuan, Iloilo

REGION X

E-19	SURIGAO PILOT SCHOOL	Surigao City
E-20	MAGPAYANG ELEMENTARY SCHOOL	Mainit, Surigao del Norte
E-21	VAZQUEZ ELEMENTARY SCHOOL	Surigao City
E-22	PILI ELEMENTARY SCHOOL	Malimono, Surigao del Norte

NOTE:

E-11 Sigma Central Elementary School shall not receive the Toilet Building, Overhead Water Tank, Electric Water Pump, Pump House, Water Supply and Plumbing Fixtures as part of the TRSOP Package since the school is a recipient of the JICA Rural Environmental Sanitation Project.

THE PROJECT FOR CONSTRUCTING PRIMARY & SECONDARY SCHOOLBUILDINGS
PHASE IV - Regions VI & X

LIST OF RECIPIENT SCHOOLS

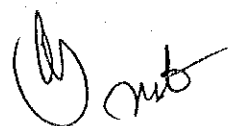
SECONDARY	SCHOOL NAME	LOCATION
R E G I O N V I		
S-23	CARLOS LOPEZ NATIONAL HIGH SCHOOL	San Dionisio, Iloilo
S-24	CASANAYAN NEWLY NATIONALIZED HIGH SCHOOL	Pilar, Capiz
S-25	CARIT-AN BARANGAY HIGH SCHOOL	Patnongon, Antique
S-26	PUTI-AN NEWLY NATIONALIZED HIGH SCHOOL	Cuartero, Capiz
S-27	NALOOK BARANGAY HIGH SCHOOL	Kalibo, Aklan
S-28	LAUA-AN BARANGAY HIGH SCHOOL	Lauan-an, Antique
S-29	DULANGAN NEWLY NATIONALIZED HIGH SCHOOL	Pilar, Capiz
S-30	CAPAGAO NEWLY NATIONALIZED HIGH SCHOOL	Panit-an, Capiz
S-31	CAMIROS BARANGAY HIGH SCHOOL	Anilao, Iloilo
S-32	BINALIUAN BARANGAY HIGH SCHOOL	Tigbauan, Iloilo
S-33	BADIANGAN NATIONAL HIGH SCHOOL	Banga, Aklan
S-34	TAFT NEWLY NATIONALIZED HIGH SCHOOL	Tapaz, Capiz
S-35	DAPDAP BARANGAY HIGH SCHOOL	Tigbauan, Iloilo
S-36	TINA BARANGAY HIGH SCHOOL	Badiangan, Iloilo
S-37	BATAD BARANGAY HIGH SCHOOL	Batad, Iloilo
S-38	CAMALIGAN BARANGAY HIGH SCHOOL	Batan, Aklan
S-39	BARASANAN BARANGAY HIGH SCHOOL	Tobias Fornier, Antique
S-40	SAN RAFAEL BARANGAY HIGH SCHOOL	Milag-ao, Iloilo
S-41	BINABAAN BARANGAY HIGH SCHOOL	Lambunao, Iloilo
S-42	CARVASANA BARANGAY HIGH SCHOOL	Calnog, Iloilo
S-43	NORTHERN BUGASONG BARANGAY HIGH SCHOOL	Bugasong, Antique
S-44	DACUTON NEWLY NATIONALIZED HIGH SCHOOL	Dumarao, Capiz
S-45	ALIBUNAN BARANGAY HIGH SCHOOL	Calnog, Iloilo
S-46	BUNGSUAN NEWLY NATIONALIZED HIGH SCHOOL	Dumarao, Capiz
S-47	ACAO BARANGAY HIGH SCHOOL	Cabatuan, Iloilo
S-48	CABUNGAHAN NATIONAL HIGH SCHOOL	Maayon, Capiz
S-49	LUCERO NEWLY NATIONALIZED HIGH SCHOOL	Jamindan, Capiz
S-50	BALIJUAGAN NEWLY NATIONALIZED HIGH SCHOOL	Roxas City
S-51	BOLDLACAO BARANGAY HIGH SCHOOL	New Lucena, Iloilo
S-52	LUCA BARANGAY HIGH SCHOOL	Ajuy, Iloilo
S-53	NAPNAPAN BARANGAY HIGH SCHOOL	Tigbauan, Iloilo
S-54	SIDO-SAN JUAN BARANGAY HIGH SCHOOL	Sibaloa, Antique
S-55	R.G. HECHANOVA MEMORIAL HIGH SCHOOL	Iloilo City
S-56	BARROC BARANGAY HIGH SCHOOL	Tigbauan, Iloilo
S-57	BULABUD BARANGAY HIGH SCHOOL	Malinao, Aklan
S-58	DON BENJAMIN JALANDONI, SR. MEMORIAL HIGH SCHOOL	Zarraga, Iloilo
S-59	PUYAS BARANGAY HIGH SCHOOL	Cabatuan, Iloilo
S-60	CALMAY BARANGAY HIGH SCHOOL	Janiuay, Iloilo
S-61	FATHER JULIAN C. RAGO MEMORIAL HIGH SCHOOL	Balete, Aklan
S-62	EGANA BARANGAY HIGH SCHOOL	Sibaloa, Antique
S-63	LAWIGAN BARANGAY HIGH SCHOOL	San Joaquin, Iloilo
S-64	ARDEMIL BARANGAY HIGH SCHOOL	Sara, Iloilo

THE PROJECT FOR CONSTRUCTING PRIMARY & SECONDARY SCHOOLBUILDINGS
PHASE IV - Regions VI & X

LIST OF RECIPIENT SCHOOLS

SECONDARY

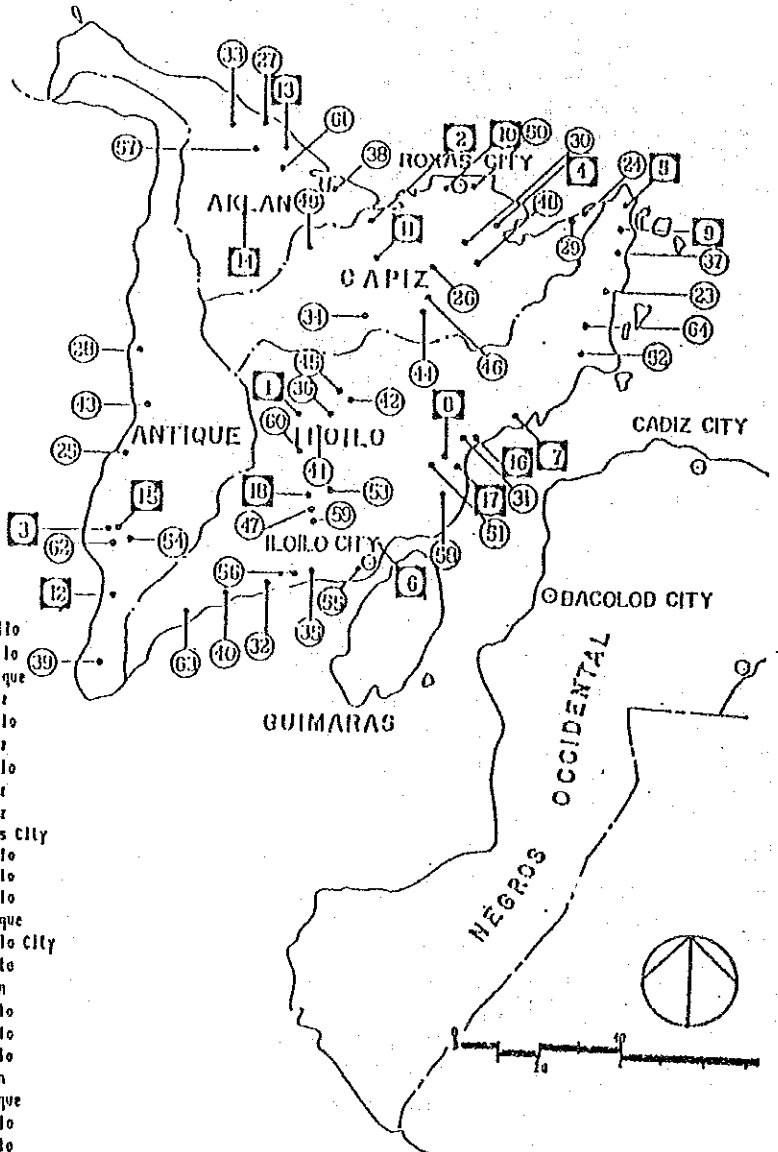
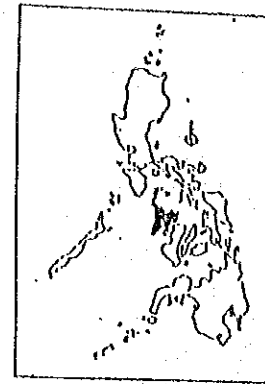
REGION X	SCHOOL NAME	LOCATION
S-65	STA. CRUZ BARANGAY HIGH SCHOOL	Placer, Surigao del Norte
S-66	IPIL BARANGAY HIGH SCHOOL	Surigao City
S-67	BALITE BARANGAY HIGH SCHOOL	San Francisco, Surigao del Norte
S-68	MASGAD BARANGAY HIGH SCHOOL	Malimono, Surigao del Norte
S-69	CANTAPOY BARANGAY HIGH SCHOOL	Malimono, Surigao del Norte
S-70	CAMPO NEWLY NATIONALIZED HIGH SCHOOL	Bacuag, Surigao del Norte
S-71	TIMAMANA BARANGAY HIGH SCHOOL	Tubod, Surigao del Norte
S-72	MAIN-AD BARANGAY HIGH SCHOOL	Mainit, Surigao del Norte



LIST OF RECIPIENT SCHOOLS

SCHOOL NAME	LOCATION
ELEMENTARY	
E-1 DON E. LABRIDO MEMORIAL ELEMENTARY SCHOOL	Iloilo
E-2 SAPIAN CENTRAL ELEMENTARY SCHOOL	Capiz
E-3 SIBALON ELEMENTARY SCHOOL	Antique
E-4 PONTEVEDRA CENTRAL SCHOOL	Capiz
E-5 CARLES CENTRAL ELEMENTARY SCHOOL	Iloilo
E-6 RIZAL ELEMENTARY SCHOOL	Iloilo City
E-7 BAHANE CENTRAL ELEMENTARY SCHOOL	Iloilo
E-8 BAIUAN ELEMENTARY SCHOOL	Iloilo
E-9 BALASAN CENTRAL SCHOOL	Iloilo
E-10 DUMA VICENTIA P. MONTIVEROS MEMORIAL SCHOOL	Roxas City
E-11 SIGMA CENTRAL ELEMENTARY SCHOOL	Capiz
E-12 ARAS-ASAN ELEMENTARY SCHOOL	Antique
E-13 CAVAYAN ELEMENTARY SCHOOL	Akian
E-14 JULITA ELEMENTARY SCHOOL	Akian
E-15 LACARON ELEMENTARY SCHOOL	Antique
E-16 BADIANG ELEMENTARY SCHOOL	Iloilo
E-17 JALAUD ELEMENTARY SCHOOL	Iloilo
E-18 FIRING CENTRAL ELEMENTARY SCHOOL	Iloilo

SCHOOL NAME	LOCATION
SECONDARY	
S-23 CARLOS LUPEZ NATIONAL HIGH SCHOOL	Iloilo
S-24 CASANAYAN DEVELY NATIONALIZED HIGH SCHOOL	Capiz
S-25 CARLI-AN BARANGAY HIGH SCHOOL	Antique
S-26 PUFFI-AN NEVLY NATIONALIZED HIGH SCHOOL	Capiz
S-27 HALOOR BARANGAY HIGH SCHOOL	Akian
S-28 LAVA-AN BARANGAY HIGH SCHOOL	Antique
S-29 BULANGAN NEVLY NATIONALIZED HIGH SCHOOL	Capiz
S-30 CAPAGAO NEVLY NATIONALIZED HIGH SCHOOL	Capiz
S-31 CAHIBOS BARANGAY HIGH SCHOOL	Iloilo
S-32 BIHALUAN BARANGAY HIGH SCHOOL	Iloilo
S-33 BADIANGAN NATIONAL HIGH SCHOOL	Akian
S-34 TATI NEVLY NATIONALIZED HIGH SCHOOL	Capiz
S-35 DAPDAP BARANGAY HIGH SCHOOL	Iloilo
S-36 TINA BARANGAY HIGH SCHOOL	Iloilo
S-37 BATAO BARANGAY HIGH SCHOOL	Iloilo
S-38 CAHALICAN BARANGAY HIGH SCHOOL	Akian
S-39 BARASAMAN BARANGAY HIGH SCHOOL	Antique
S-40 SAN RAFAEL BARANGAY HIGH SCHOOL	Iloilo
S-41 BIHARAH BARANGAY HIGH SCHOOL	Iloilo
S-42 CANYASAMA BARANGAY HIGH SCHOOL	Iloilo
S-43 NORTHERN BUGASONG BARANGAY HIGH SCHOOL	Iloilo
S-44 DACUDON NEVLY NATIONALIZED HIGH SCHOOL	Capiz
S-45 ALIBUHAN BARANGAY HIGH SCHOOL	Iloilo
S-46 BUNGSUAN NEVLY NATIONALIZED HIGH SCHOOL	Capiz
S-47 ACAO BARANGAY HIGH SCHOOL	Iloilo
S-48 CABUNGAHAN NATIONAL HIGH SCHOOL	Capiz
S-49 LUCERO NEVLY NATIONALIZED HIGH SCHOOL	Capiz
S-50 MALIQUAGAN NEVLY NATIONALIZED HIGH SCHOOL	Roxas City
S-51 BULULACAO BARANGAY HIGH SCHOOL	Iloilo
S-52 LUCA BARANGAY HIGH SCHOOL	Iloilo
S-53 HAPIAPAN BARANGAY HIGH SCHOOL	Iloilo
S-54 SITO-SAN JUAN BARANGAY HIGH SCHOOL	Antique
S-55 R.G. HECHANDYA MEMORIAL HIGH SCHOOL	Iloilo City
S-56 BARRUC BARANGAY HIGH SCHOOL	Iloilo
S-57 BULABUD BARANGAY HIGH SCHOOL	Akian
S-58 DON BENJAMIN JALAUDHII, SR. MEMORIAL HIGH SCHOOL	Iloilo
S-59 PUYAS BARANGAY HIGH SCHOOL	Iloilo
S-60 CALHAY BARANGAY HIGH SCHOOL	Iloilo
S-61 FATHER JULIAN C. RAGO MEMORIAL HIGH SCHOOL	Akian
S-62 EGANA BARANGAY HIGH SCHOOL	Antique
S-63 LAVIGAN BARANGAY HIGH SCHOOL	Iloilo
S-64 ARDENIL BARANGAY HIGH SCHOOL	Iloilo



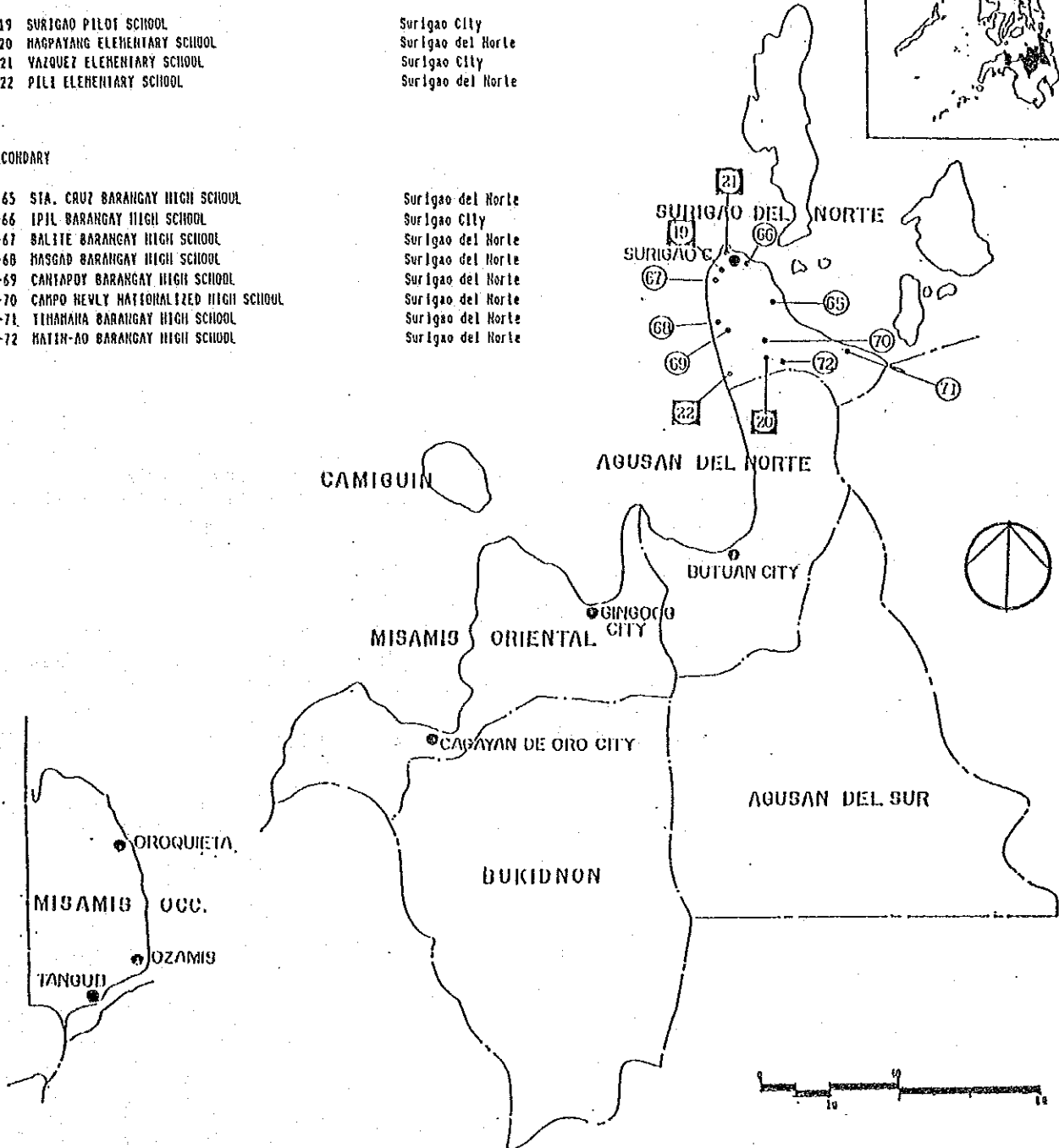
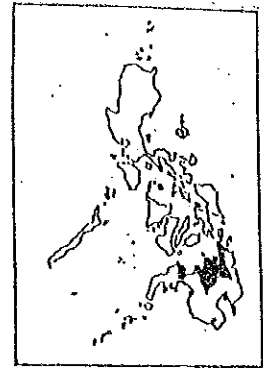
REGION VI

RECIPIENTS OF THE PROJECT FOR
CONSTRUCTING PRIMARY AND SECONDARY SCHOOL BUILDINGS
(PHASE IV)

LOCATION MAP OF RECIPIENT SCHOOLS IN REGION X

LIST OF RECIPIENT SCHOOLS

SCHOOL NAME	LOCATION
ELEMENTARY	
E-19 SURIGAO PILOT SCHOOL	Surigao City
E-20 HAGPAYANG ELEMENTARY SCHOOL	Surigao del Norte
E-21 VAZQUEZ ELEMENTARY SCHOOL	Surigao City
E-22 PILI ELEMENTARY SCHOOL	Surigao del Norte
SECONDARY	
S-65 STA. CRUZ BARANGAY HIGH SCHOOL	Surigao del Norte
S-66 IPIL BARANGAY HIGH SCHOOL	Surigao City
S-67 BALITE BARANGAY HIGH SCHOOL	Surigao del Norte
S-68 HANGAD BARANGAY HIGH SCHOOL	Surigao del Norte
S-69 CANTAPOY BARANGAY HIGH SCHOOL	Surigao del Norte
S-70 CAMPO HEVLY NATIONALIZED HIGH SCHOOL	Surigao del Norte
S-71 TINAHARA BARANGAY HIGH SCHOOL	Surigao del Norte
S-72 KATIH-AO BARANGAY HIGH SCHOOL	Surigao del Norte



REGION X

RECIPIENTS OF THE PROJECT FOR
CONSTRUCTING PRIMARY AND SECONDARY SCHOOL BUILDINGS
(PHASE IV)

[Handwritten signature]

THE MAJOR ITEMS INCLUDED IN THE PROJECT

1. Buildings

(1) Primary School

Classrooms
Toilets

(2) Secondary School

Classrooms
Science Laboratory
Toilets

2. Furniture

(1) Primary School

- Pupil's desks, chairs and side shelves
- Teacher's desks, chairs and storage cabinets
- Blackboards and bulletin boards

(2) Secondary School

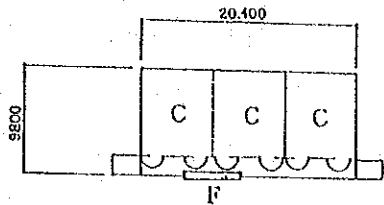
- Pupil's desks, chairs and side shelves
- Teachers's desk, chairs and storage cabinets
- Tables, stools and workbenches for science laboratory
- Blackboards and bulletin boards



FLOOR PLANS

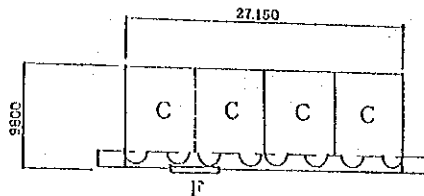
Annex 4

ELEMENTARY SCHOOL (2 TYPES)



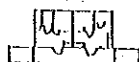
B TYPE

(162.0m²)



C TYPE

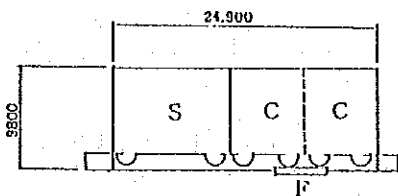
(216.0m²)



TOILET (COMMON TYPE)

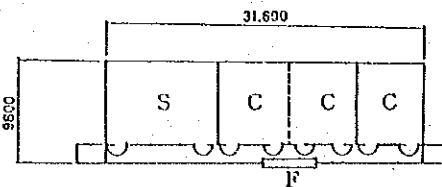
(24.5m²)

SECONDARY SCHOOL (4 TYPES)



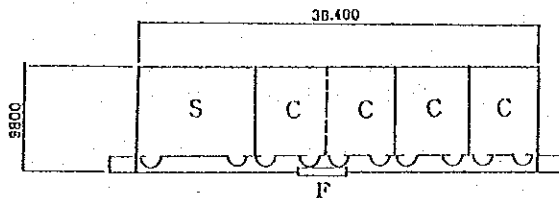
SA TYPE

(198.0m²)



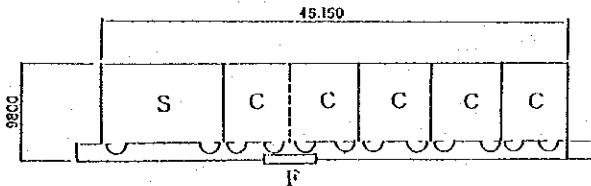
SB TYPE

(252.0m²)



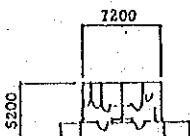
SC TYPE

(306.0m²)



SD TYPE

(360.0m²)



TOILET (COMMON TYPE)

(24.5m²)

LEGEND C: CLASS ROOM, S: SCIENCE LABORATORY, F: FLOWER BOX

Handwritten signature and initials

UNDERTAKINGS BY THE GOVERNMENT OF THE PHILIPPINES

1. To secure the sites for the Project.
2. To clear, level and reclaim the sites prior to the commencement of the construction.
3. To undertake incidental outdoor works such as gardening, fencing, etc.
4. To construct access roads to the sites prior to the commencement of construction (only in cases they are not available).
5. To provide facilities for distribution of electricity, water supply, drainage and other incidental facilities to the sites when needed.
6. To obtain building, occupancy and all necessary permits for the Project with respect to the laws and regulations in the Philippines.
7. To ensure necessary budget and personnel for the proper and effective maintenance of the schoolbuildings and furniture provided under the Grant Aid.
8. To provide exemptions for taxes and all other levies and duties and to ensure prompt unloading and customs clearances at the port of disembarkation in the Philippines for the materials provided under the Grant Aid.
9. To exempt Japanese nationals involved in the Project from customs duties, internal taxes and other fiscal levies which may be imposed in the Philippines with respect to supply of the materials and services under the verified contracts.
10. To accord Japanese nationals whose services may be required in connection with the supply of the materials and services under the verified contracts such facilities as may be necessary for their entry to the Philippines and stay therein for the execution of the Project.
11. To bear commissions to the Japanese foreign exchange bank for the banking services based on the Banking Arrangement, in accordance with the standard grant procedure.
12. To bear all expenses other than those to be borne by the Grant, necessary for the construction of the schoolbuildings as well as for the transportation and installation of pre-fabricated materials and equipment.

JICA