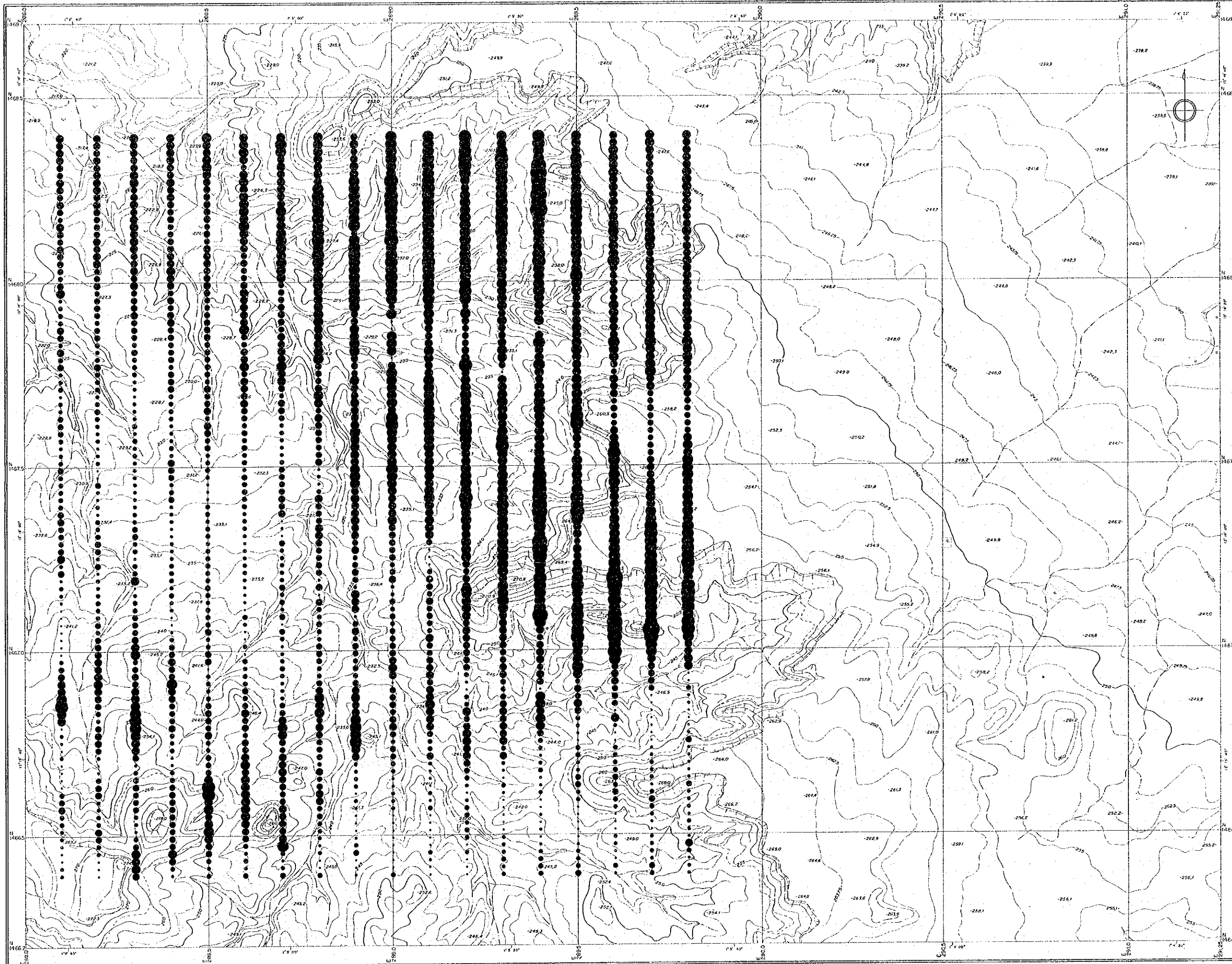


# SEFA NANGUE



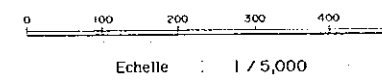
RAPPORT DE PROSPECTION MINIERE  
 DANS LA REGION DU LIPTAKO,  
 "VALLEE DE LA SIRBA"  
 REPUBLIQUE DU NIGER  
 TROISIEME ANNEE

**CARTE DES TENEURS  
 EN As**

CADRE GEOGRAPHIQUE

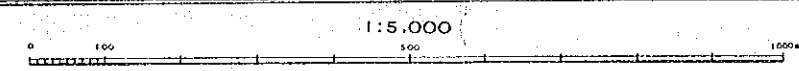
L'AGENCE JAPONAISE POUR LA COOPERATION INTERNATIONALE  
 L'AGENCE JAPONAISE MINIERE DES METAUX

FEVRIER 1992

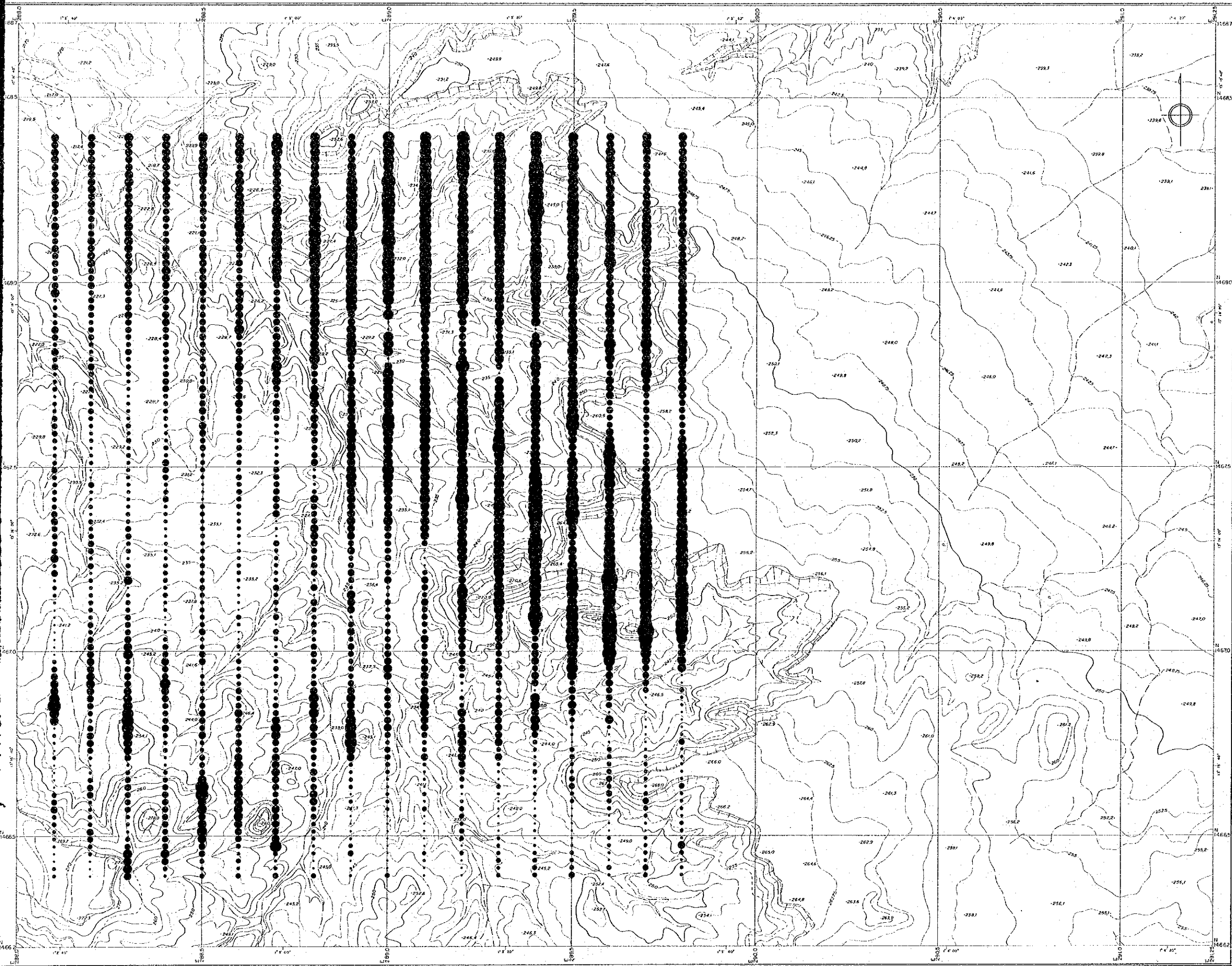


## LEGENDE

- As
- ≥ 1,000 ppm
  - IV 500 ppm
  - IV 400 ppm
  - IV 300 ppm
  - IV 200 ppm
  - IV 100 ppm
  - IV 50 ppm
  - IV 40 ppm
  - IV 30 ppm
  - IV 20 ppm
  - IV 10 ppm
  - IV 5 ppm
  - IV 1 ppm
  - < 1 ppm



SEFA NANGUE

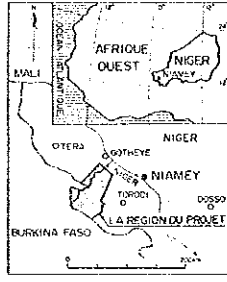
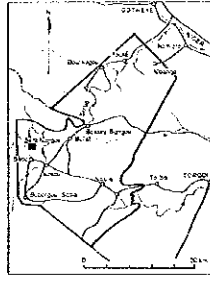


Pl. 12

RAPPORT DE PROSPECTION MINIERE  
DANS LA REGION DU LIPTAKO,  
"VALLEE DE LA SIRBA"  
REPUBLIQUE DU NIGER  
TROISIEME ANNEE

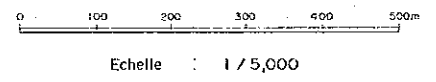
**CARTE DES TENEURS  
EN As**

CADRE GEOGRAPHIQUE

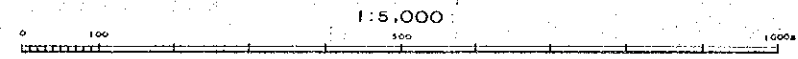
L'AGENCE JAPONAISE POUR LA COOPERATION INTERNATIONALE  
L'AGENCE JAPONAISE MINIERE DES METAUX

FEVRIER 1992



**LEGENDE**

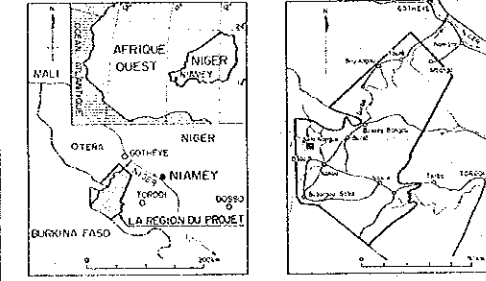
- As
- 1,000 ppm
  - 500 ppm
  - 400 ppm
  - 300 ppm
  - 200 ppm
  - 100 ppm
  - 50 ppm
  - 40 ppm
  - 30 ppm
  - 20 ppm
  - 10 ppm
  - 5 ppm
  - 1 ppm
  - 1 ppm



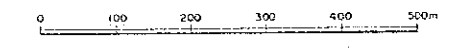
RAPPORT DE PROSPECTION MINIERE  
DANS LA REGION DU LIPTAKO,  
"VALLEE DE LA SIRBA"  
REPUBLIQUE DU NIGER  
TROISIEME ANNEE

**CARTE DES TENEURS  
EN As**

CADRE GEOGRAPHIQUE



L'AGENCE JAPONAISE POUR LA COOPERATION INTERNATIONALE  
L'AGENCE JAPONAISE MINIERE DES METAUX  
FEVRIER 1992

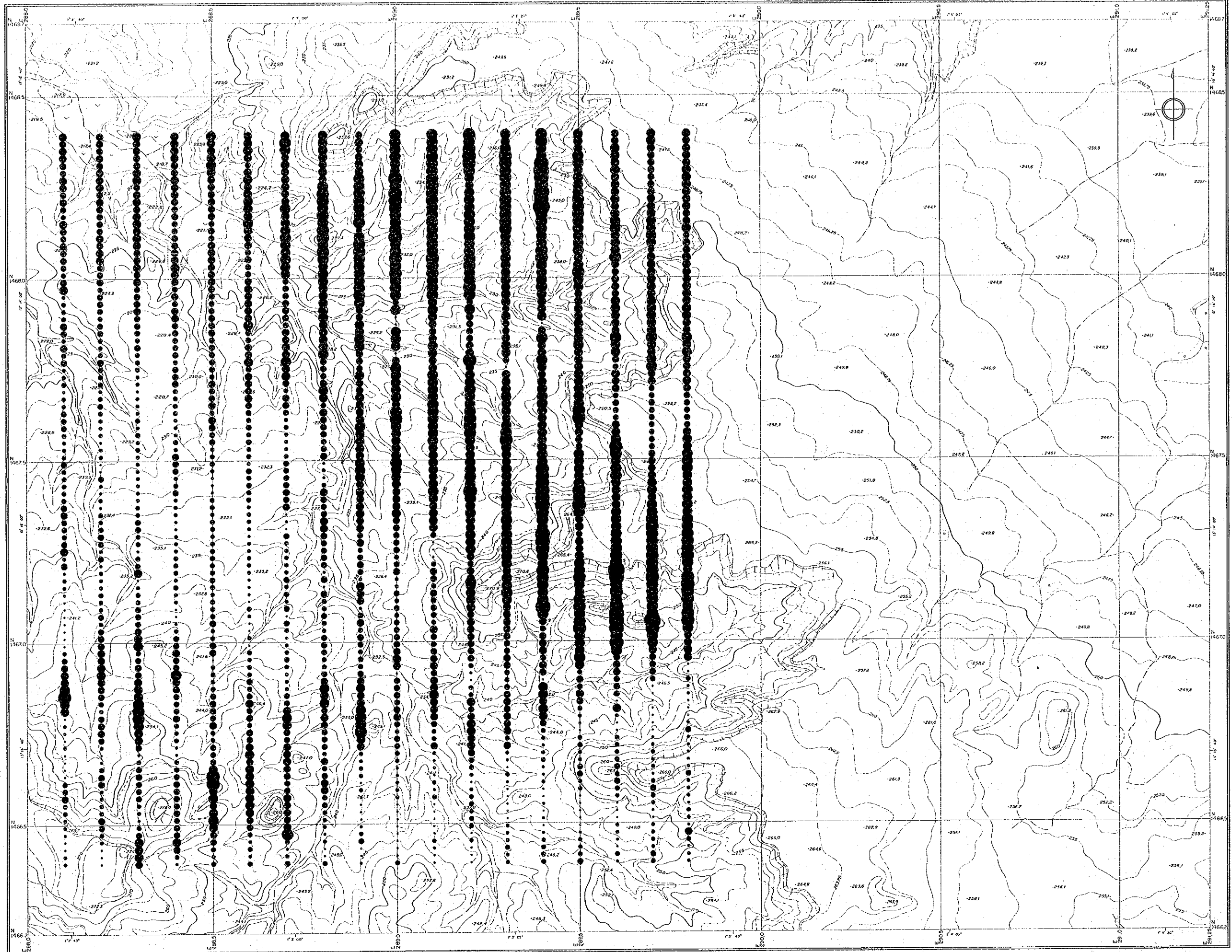


Echelle : 1 / 5,000

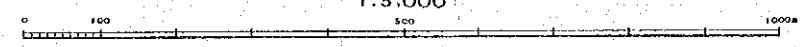
**LEGENDE**

As

- ≥ 1,000 ppm
- ≈ 500 ppm
- ≈ 400 ppm
- ≈ 300 ppm
- ≈ 200 ppm
- ≈ 100 ppm
- ≈ 50 ppm
- ≈ 40 ppm
- ≈ 30 ppm
- ≈ 20 ppm
- ≈ 10 ppm
- ≈ 5 ppm
- ≈ 1 ppm
- < 1 ppm



1:5,000

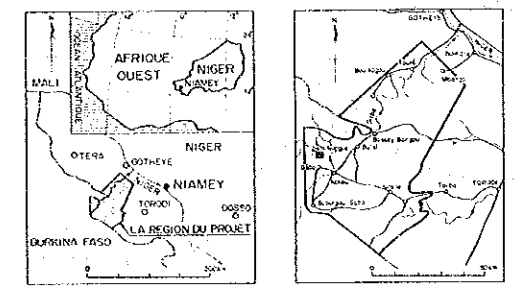




RAPPORT DE PROSPECTION MINIERE  
DANS LA REGION DU LIPTAKO,  
"VALLEE DE LA SIRBA"  
REPUBLIQUE DU NIGER  
TROISIEME ANNEE

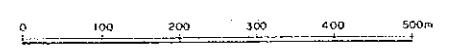
CARTE DES TENEURS  
EN As

CADRE GEOGRAPHIQUE



L'AGENCE JAPONAISE POUR LA COOPERATION INTERNATIONALE  
L'AGENCE JAPONAISE MINIERE DES METAUX

FEVRIER 1992

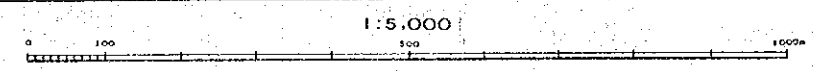
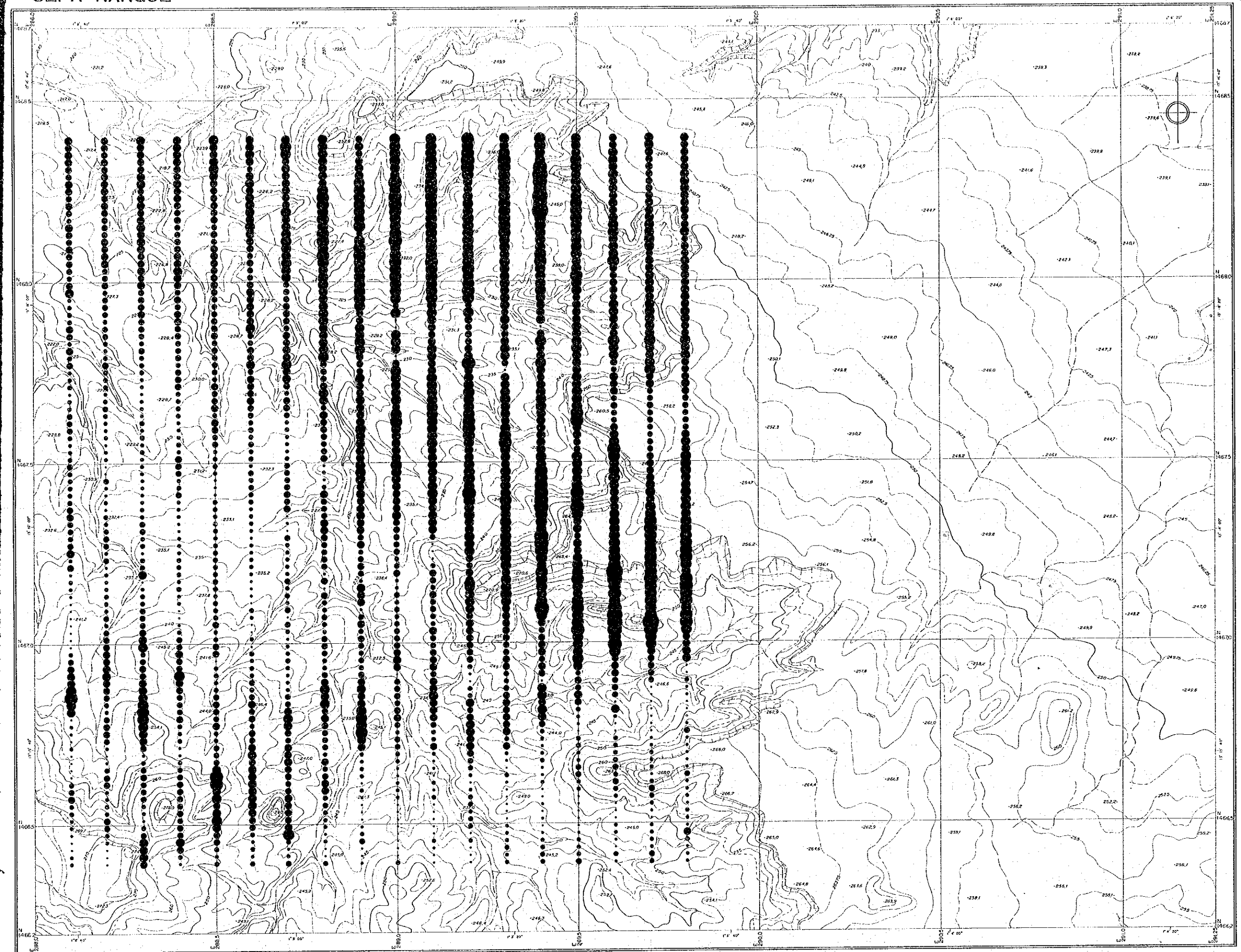


Echelle 1 / 5,000

LEGENDE

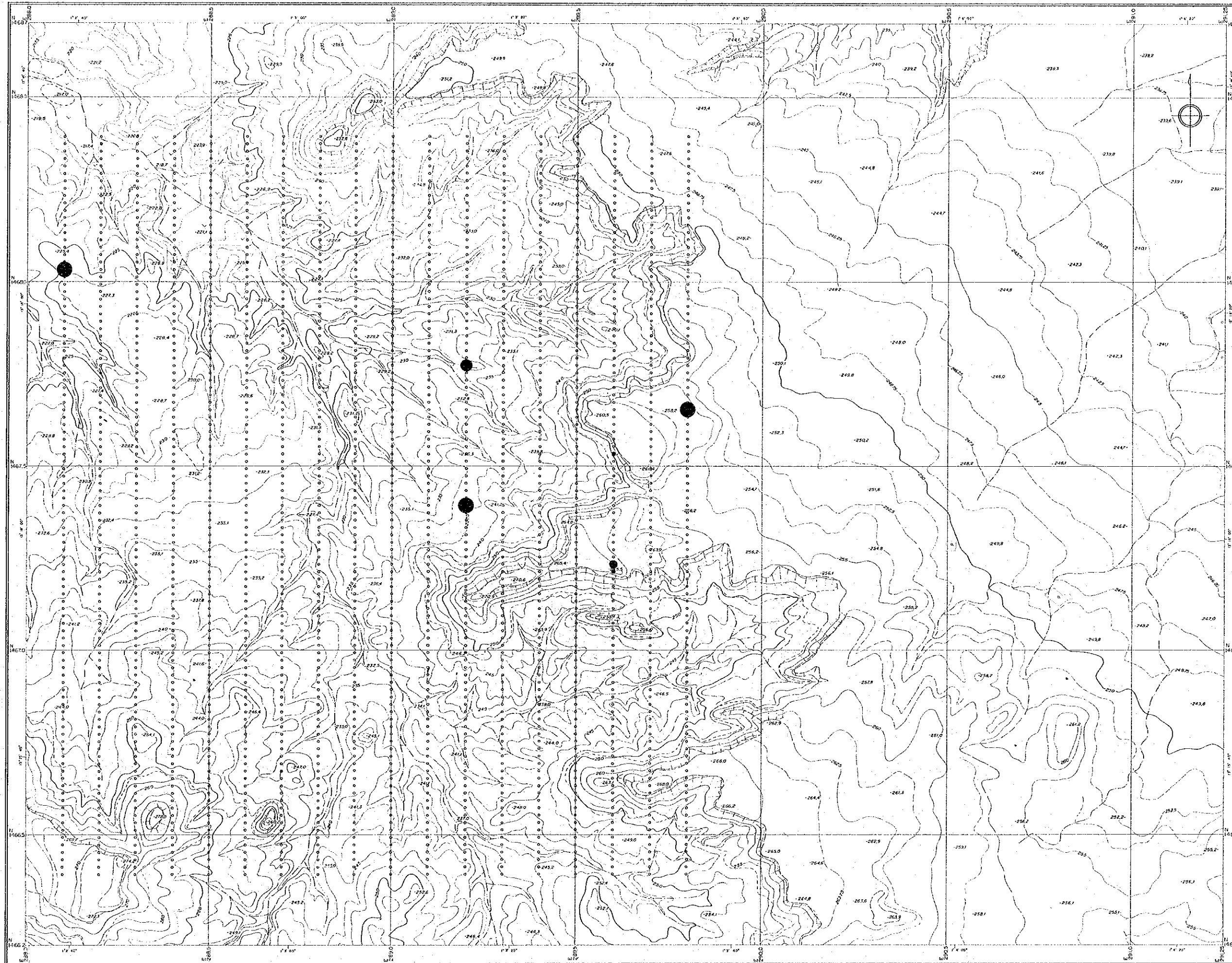
As

- ≧ 1,000 ppm
- IV 500 ppm
- IV 400 ppm
- IV 300 ppm
- IV 200 ppm
- IV 100 ppm
- IV 50 ppm
- IV 40 ppm
- IV 30 ppm
- IV 20 ppm
- IV 10 ppm
- IV 5 ppm
- IV 1 ppm
- V 1 ppm



1 : 5,000

# SEFA NANGUE



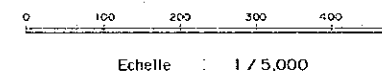
RAPPORT DE PROSPECTION MINIERE  
DANS LA REGION DU LIPTAKO,  
"VALLEE DE LA SIRBA"  
REPUBLIQUE DU NIGER  
TROISIEME ANNEE.

**CARTE DES TENEURS  
EN Ag**

CADRE GEOGRAPHIQUE

L'AGENCE JAPONAISE POUR LA COOPERATION INTERNATIONALE  
L'AGENCE JAPONAISE MINIERE DES METAUX

FEBRIER 1992

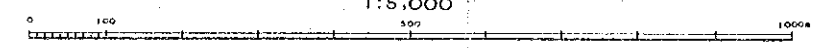


Echelle 1 / 5,000

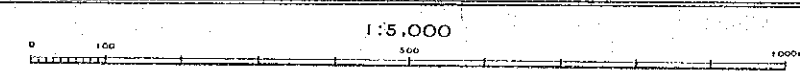
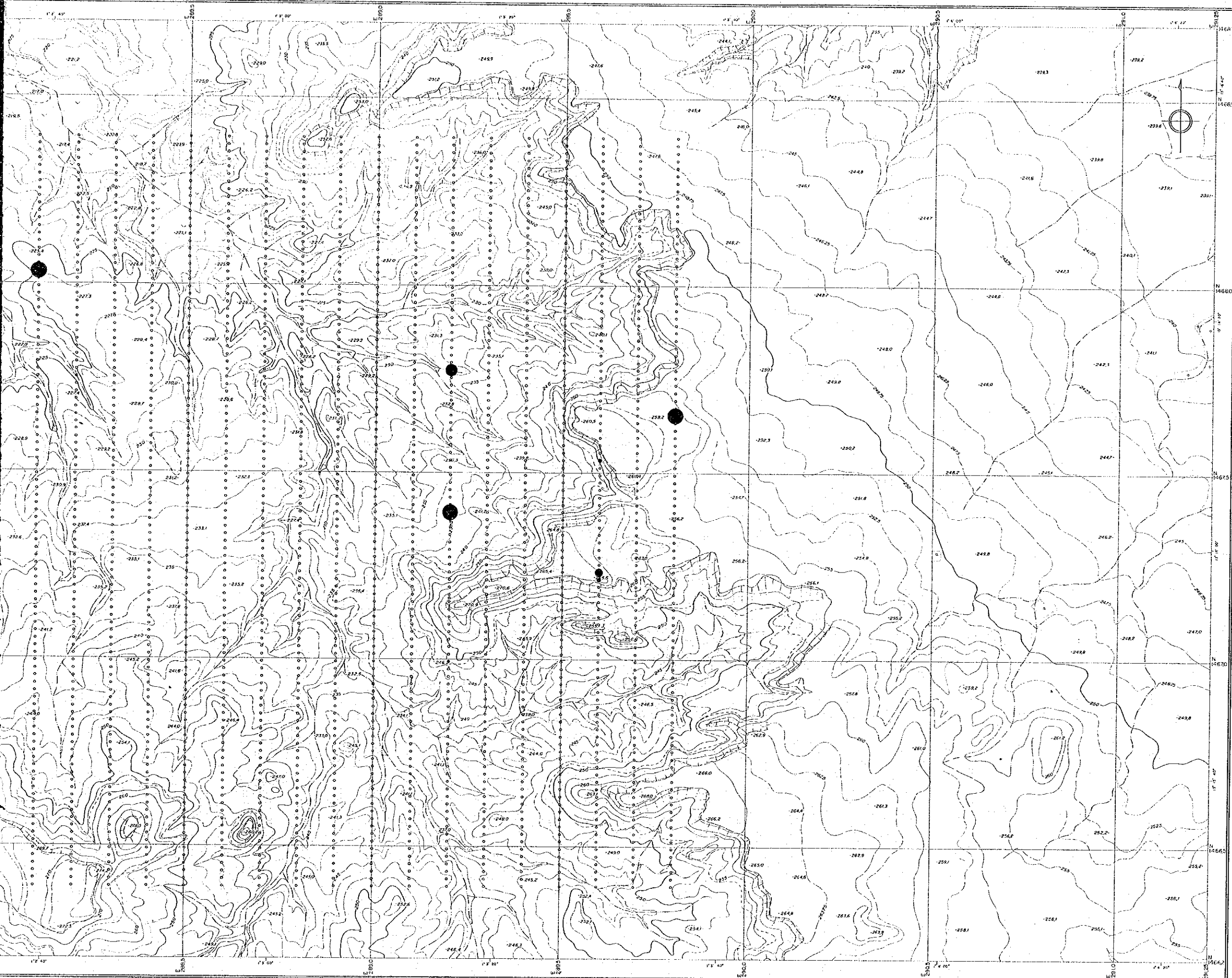
## LEGENDE

- Ag
- $\geq 0.5$  ppm
  - $\geq 0.4$  ppm
  - $\geq 0.3$  ppm
  - $\geq 0.2$  ppm
  - $< 0.2$  ppm

1:5,000



SEFA NANGUE

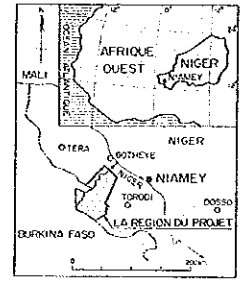
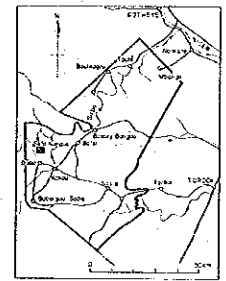


PI.13

RAPPORT DE PROSPECTION MINIERE  
DANS LA REGION DU LIPTAKO,  
"VALLEE DE LA SIRBA"  
REPUBLIQUE DU NIGER  
TROISIEME ANNEE

**CARTE DES TENEURS  
EN Ag**

CADRE GEOGRAPHIQUE

L'AGENCE JAPONAISE POUR LA COOPERATION INTERNATIONALE  
L'AGENCE JAPONAISE MINIERE DES METAUX

FEVRIER 1992



Echelle : 1 / 5,000

**LEGENDE**

Ag

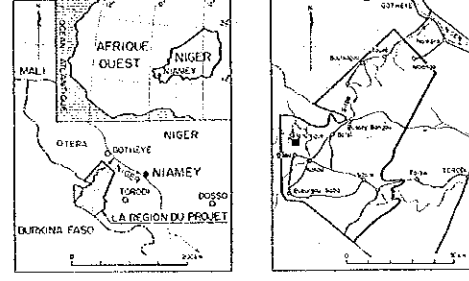
- ≈ 0.5 ppm
- ≈ 0.4 ppm
- ≈ 0.3 ppm
- ≈ 0.2 ppm
- < 0.2 ppm



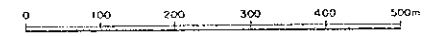
RAPPORT DE PROSPECTION MINIERE  
DANS LA REGION DU LIPTAKO,  
"VALLEE DE LA SIRBA"  
REPUBLIQUE DU NIGER  
TROISIEME ANNEE

**CARTE DES TENEURS  
EN Ag**

CADRE GEOGRAPHIQUE



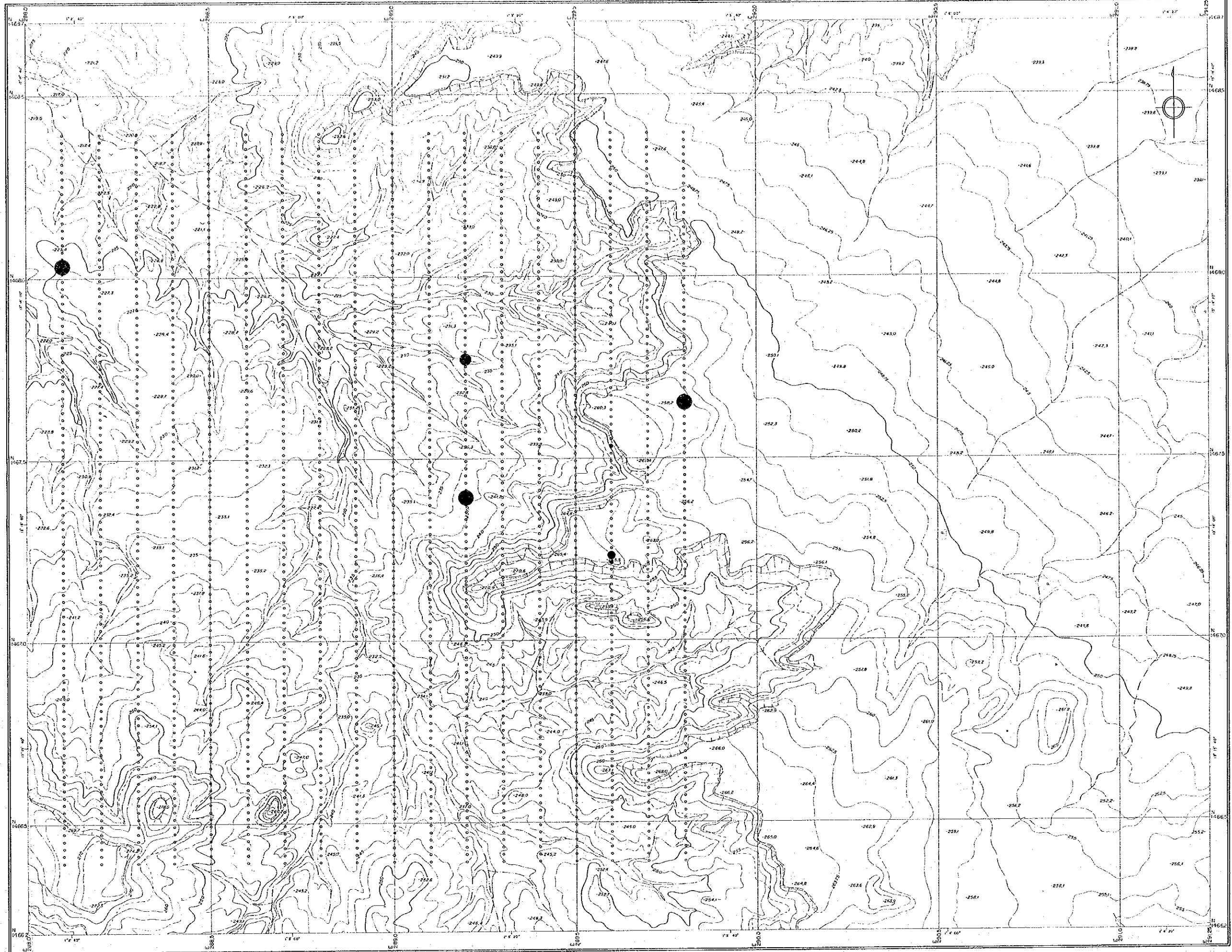
L'AGENCE JAPONAISE POUR LA COOPERATION INTERNATIONALE  
L'AGENCE JAPONAISE MINIERE DES METAUX  
FEVRIER 1992



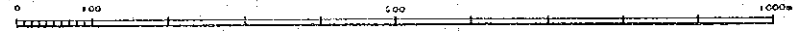
Echelle : 1 / 5,000

**LEGENDE**

- Ag
- ≥ 0.5 ppm
- ≥ 0.4 ppm
- ≥ 0.3 ppm
- ≥ 0.2 ppm
- < 0.2 ppm



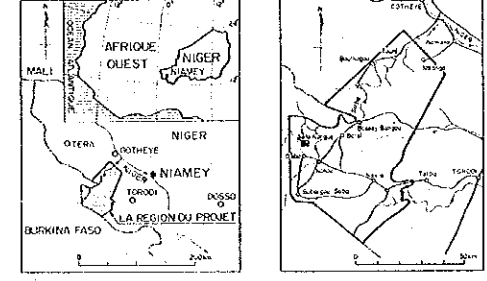
1:5.000



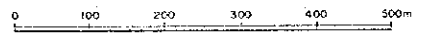
RAPPORT DE PROSPECTION MINIERE  
DANS LA REGION DU LIPTAKO,  
"VALLEE DE LA SIRBA"  
REPUBLIQUE DU NIGER  
TROISIEME ANNEE

**CARTE DES TENEURS  
EN Ag**

CADRE GEOGRAPHIQUE



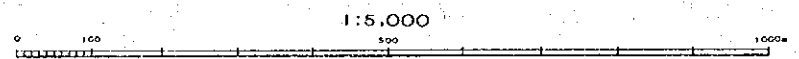
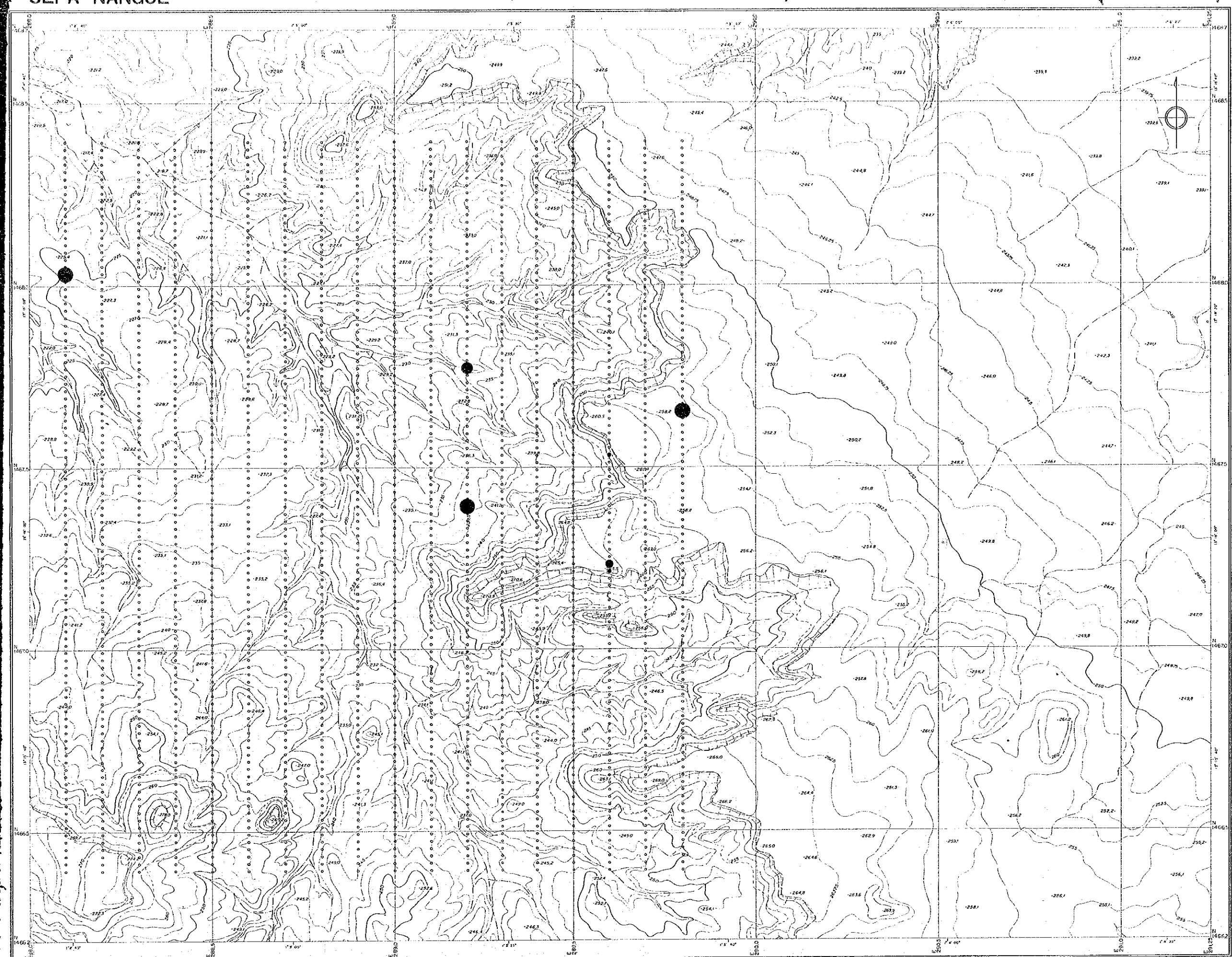
L'AGENCE JAPONAISE POUR LA COOPERATION INTERNATIONALE  
L'AGENCE JAPONAISE MINIERE DES METAUX  
FEVRIER 1992



Echelle : 1 / 5,000

**LEGENDE**

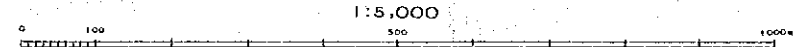
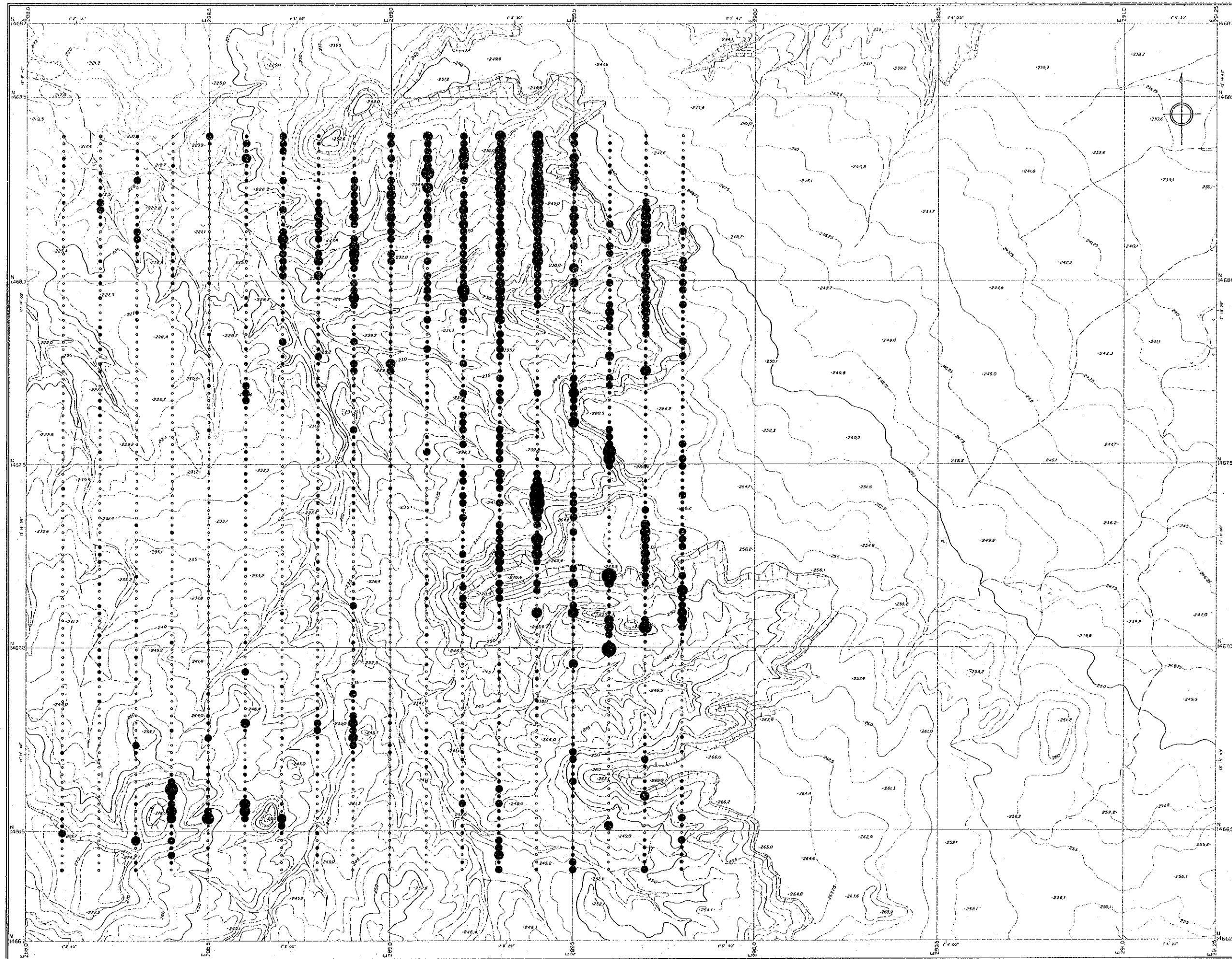
- Ag
- ≈ 0.5 ppm
- ≈ 0.4 ppm
- ≈ 0.3 ppm
- ≈ 0.2 ppm
- < 0.2 ppm



1 : 5,000



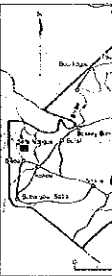
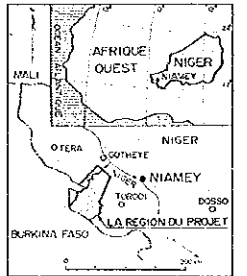
# SEFA NANGUE



RAPPORT DE PROSPECTION MINIERE  
DANS LA REGION DU LIPTAKO,  
"VALLEE DE LA SIRBA"  
REPUBLIQUE DU NIGER  
TROISIEME ANNEE

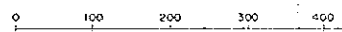
## CARTE DES TENEURS EN Sb

CADRE GEOGRAPHIQUE



L'AGENCE JAPONAISE POUR LA COOPERATION INTERNATIONALE  
L'AGENCE JAPONAISE MINIERE DES METAUX

FEBRIER 1992



Echelle : 1 / 5,000

### LEGENDE

Sb

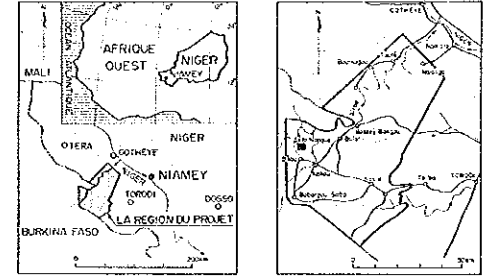
- IV 2.0 ppm
- IV 1.5 ppm
- IV 1.0 ppm
- IV 0.8 ppm
- IV 0.6 ppm
- IV 0.4 ppm
- IV 0.2 ppm
- < 0.2 ppm

# SEFA NANGUE

RAPPORT DE PROSPECTION MINIERE  
DANS LA REGION DU LIPTAKO,  
"VALLEE DE LA SIRBA"  
REPUBLIQUE DU NIGER  
TROISIEME ANNEE

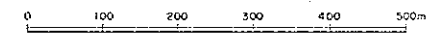
## CARTE DES TENEURS EN Sb

CADRE GEOGRAPHIQUE



L'AGENCE JAPONAISE POUR LA COOPERATION INTERNATIONALE  
L'AGENCE JAPONAISE MINIERE DES METAUX

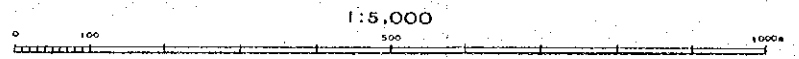
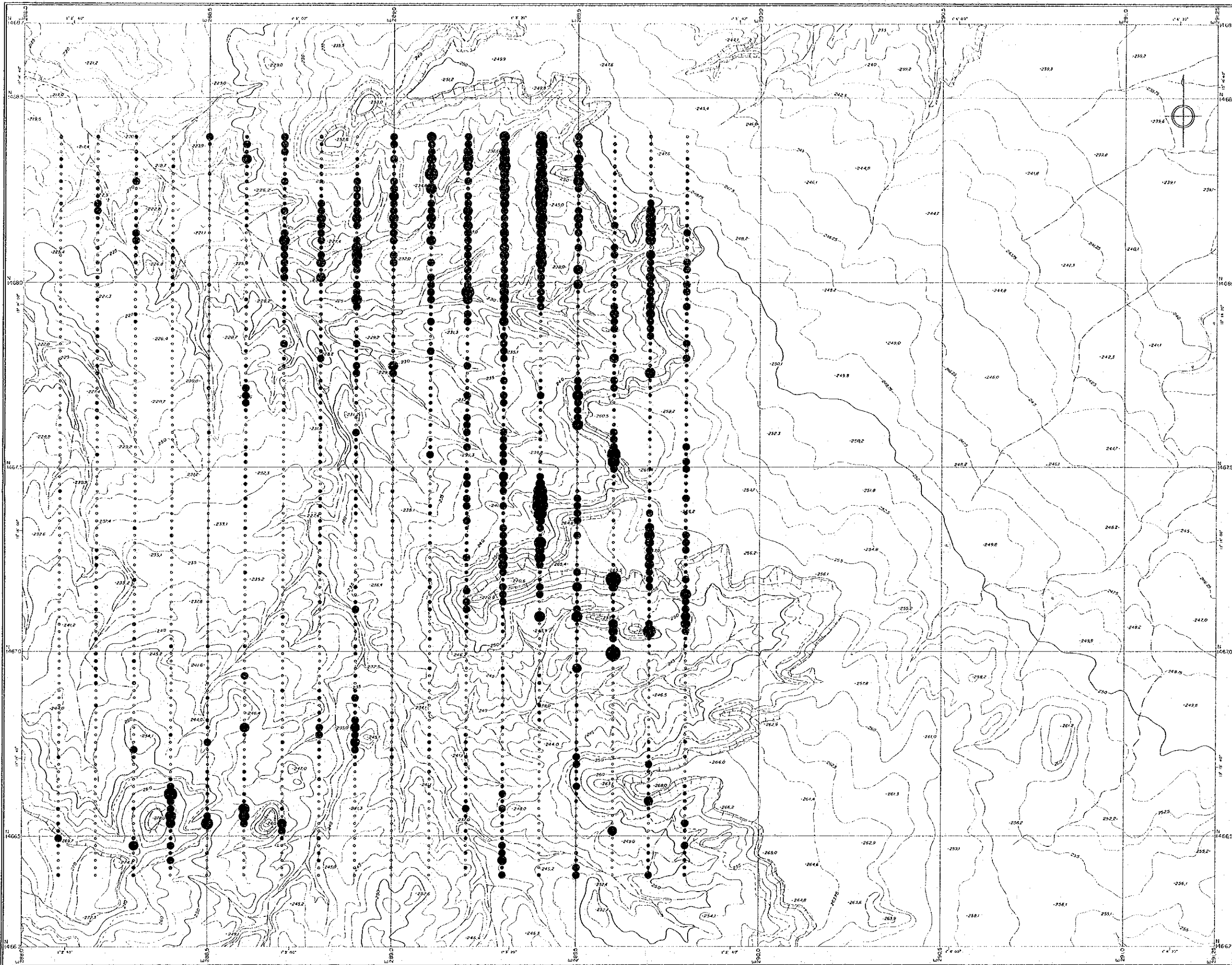
FEBRIER 1992



Echelle 1 / 5,000

### LEGENDE

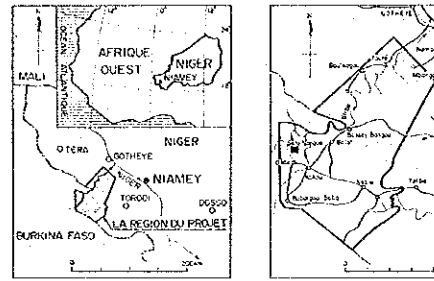
- Sb
- ≈ 2.0 ppm
  - ≈ 1.5 ppm
  - ≈ 1.0 ppm
  - ≈ 0.8 ppm
  - ≈ 0.6 ppm
  - ≈ 0.4 ppm
  - ≈ 0.2 ppm
  - < 0.2 ppm



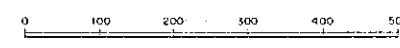
1:5,000

**CARTE DES TENEURS  
 EN Sb**

CADRE GEOGRAPHIQUE



L'AGENCE JAPONAISE POUR LA COOPERATION INTERNATIONALE  
 L'AGENCE JAPONAISE MINIERE DES METAUX  
 FEVRIER 1992

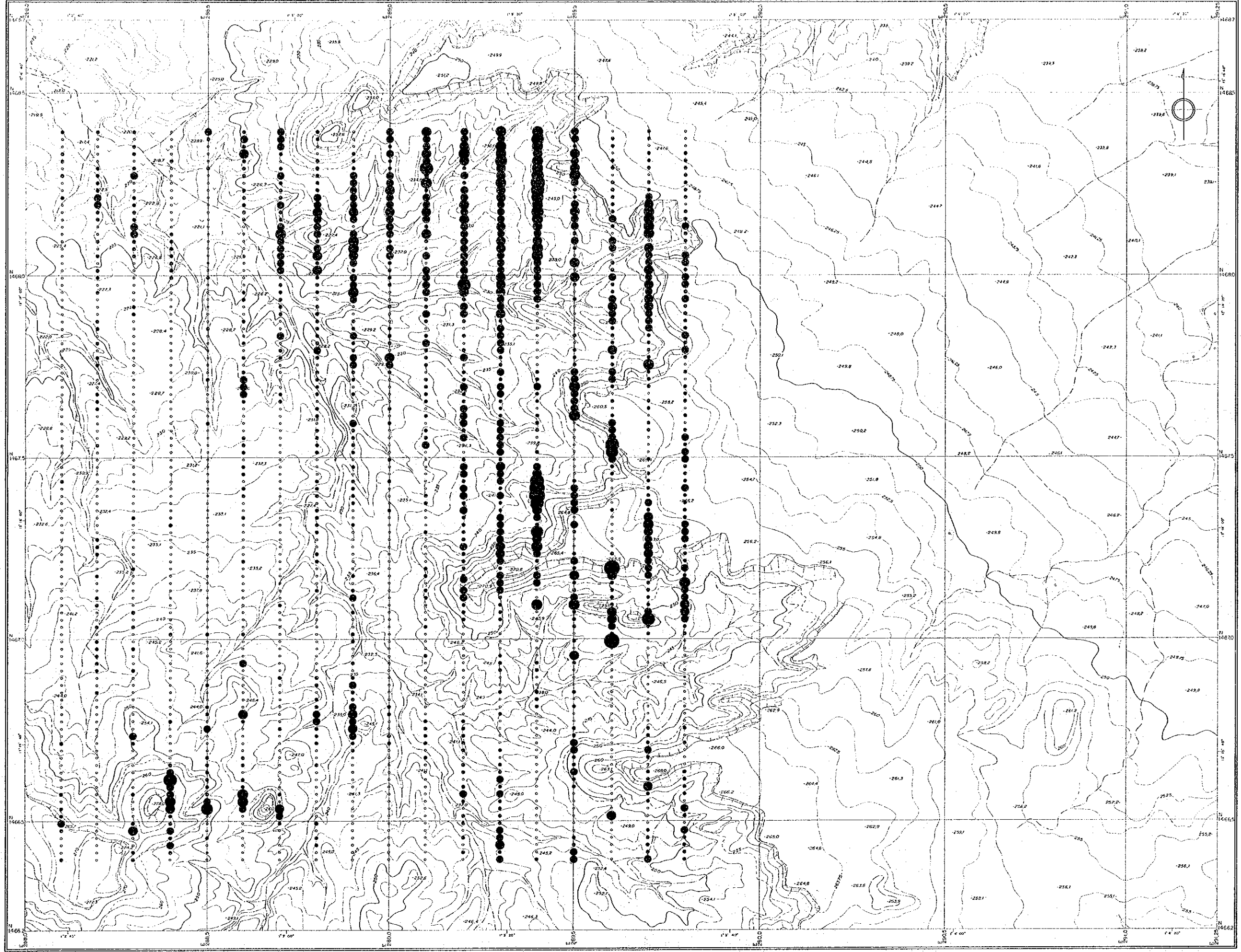


Echelle : 1 / 5,000

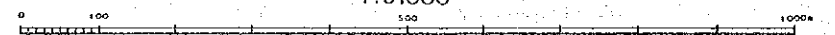
**LEGENDE**

Sb

- ≥ 2.0 ppm
- ≥ 1.5 ppm
- ≥ 1.0 ppm
- ≥ 0.8 ppm
- ≥ 0.6 ppm
- ≥ 0.4 ppm
- ≥ 0.2 ppm
- < 0.2 ppm



1:5.000

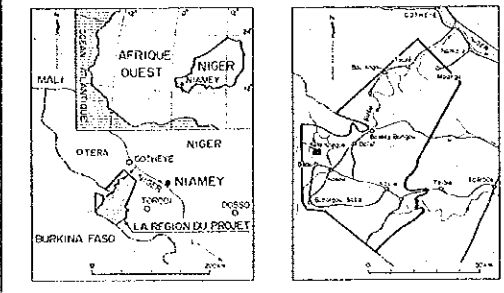




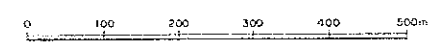
RAPPORT DE PROSPECTION MINIERE  
DANS LA REGION DU LIPTAKO,  
"VALLEE DE LA SIRBA"  
REPUBLIQUE DU NIGER  
TROISIEME ANNEE

**CARTE DES TENEURS  
EN Sb**

CADRE GEOGRAPHIQUE



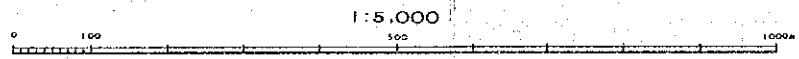
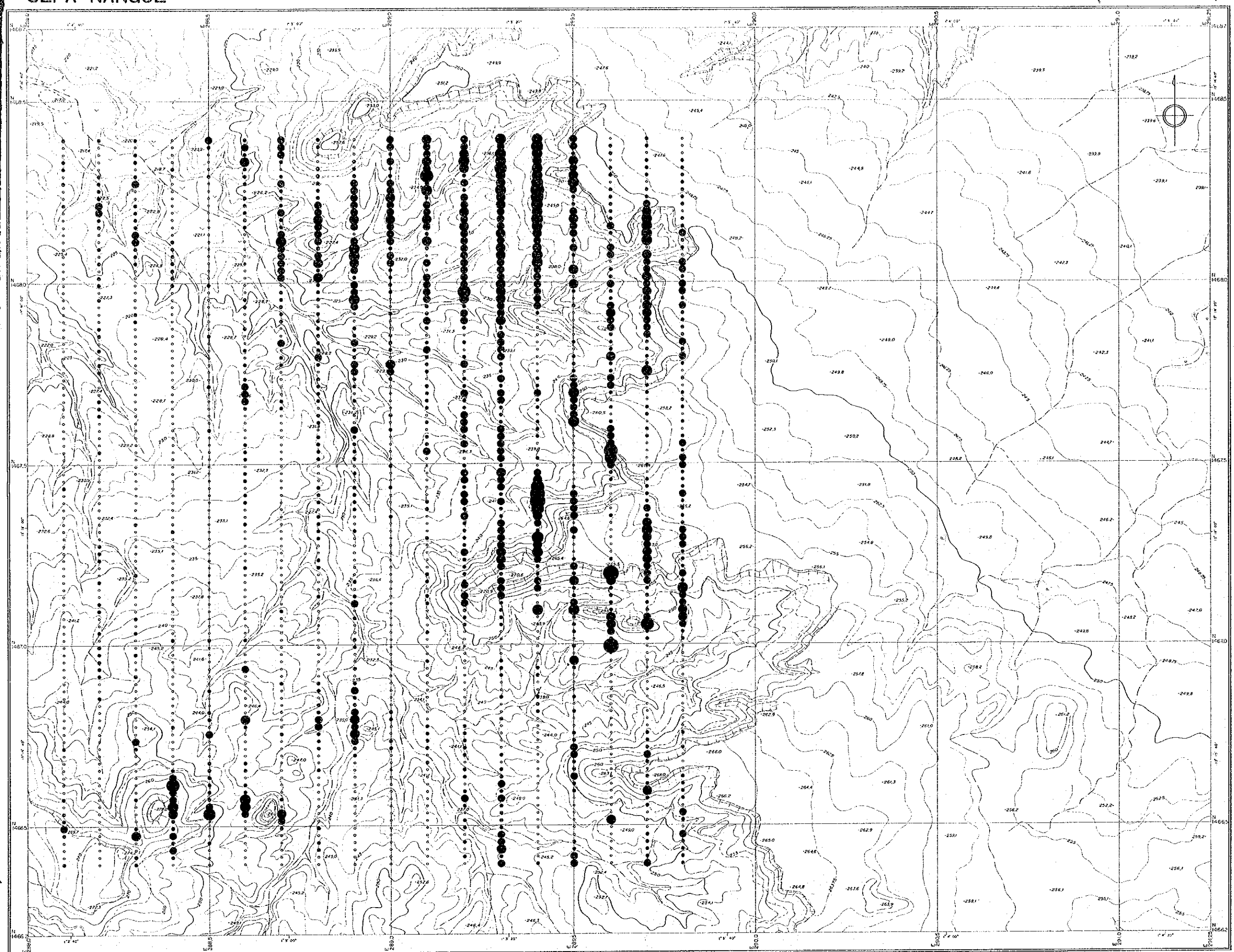
L'AGENCE JAPONAISE POUR LA COOPERATION INTERNATIONALE  
L'AGENCE JAPONAISE MINIERE DES METAUX  
FEVRIER 1992



Echelle : 1 / 5,000

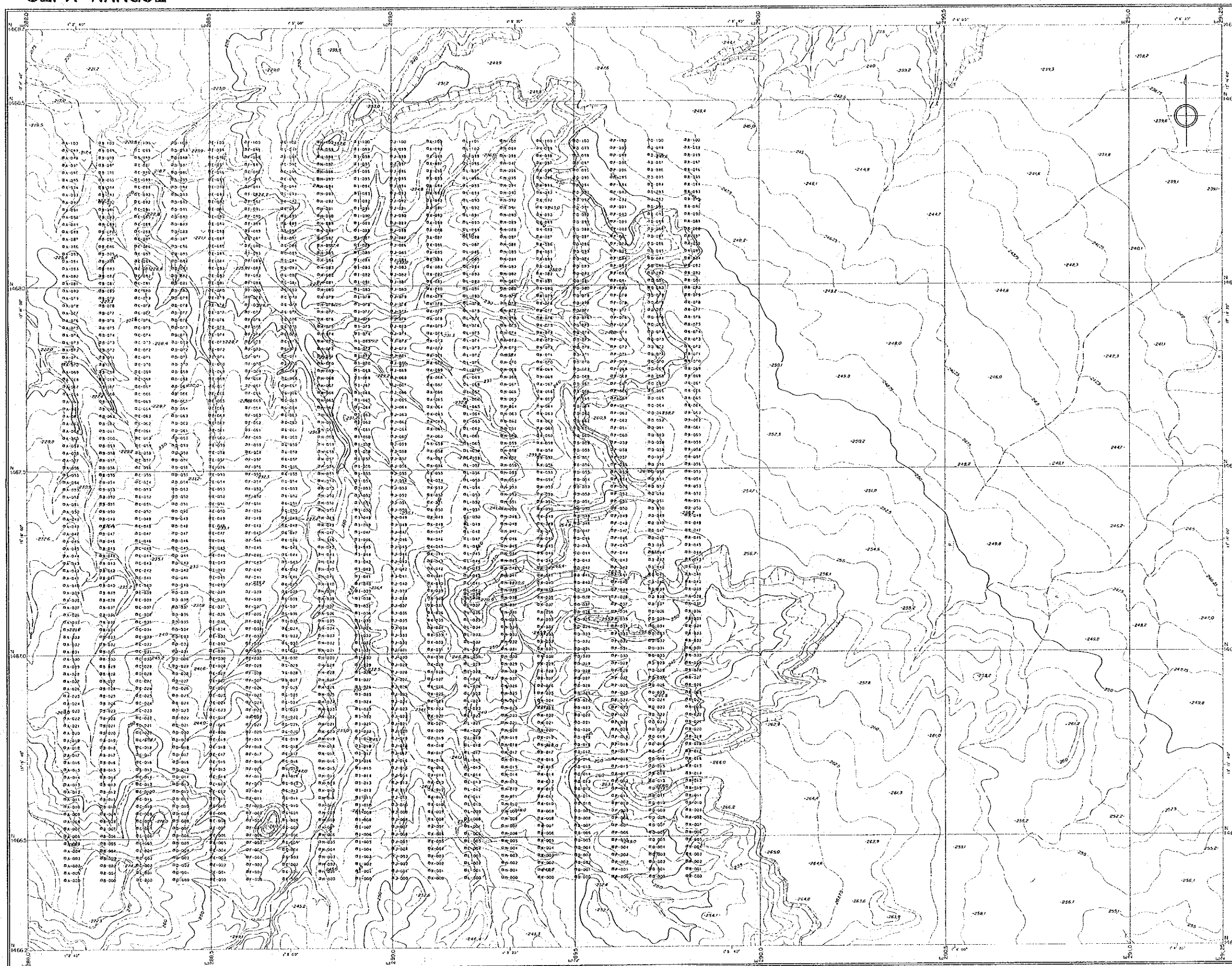
**LEGENDE**

- Sb
- ≈ 2.0 ppm
  - ≈ 1.5 ppm
  - ≈ 1.0 ppm
  - ≈ 0.8 ppm
  - ≈ 0.6 ppm
  - ≈ 0.4 ppm
  - ≈ 0.2 ppm
  - < 0.2 ppm



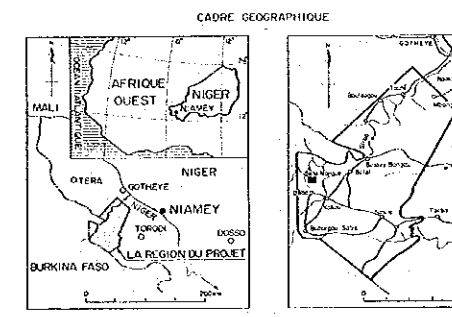
1 : 5,000

SEFA NANGUE

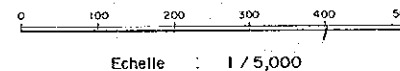


RAPPORT DE PROSPECTION MINIERE  
DANS LA REGION DU LIPTAKO,  
"VALLEE DE LA SIRBA"  
REPUBLIQUE DU NIGER  
TROISIEME ANNEE

GEOCHIMIE DES SOLS:  
PRELEVEMENT DES ECHANTILLONS



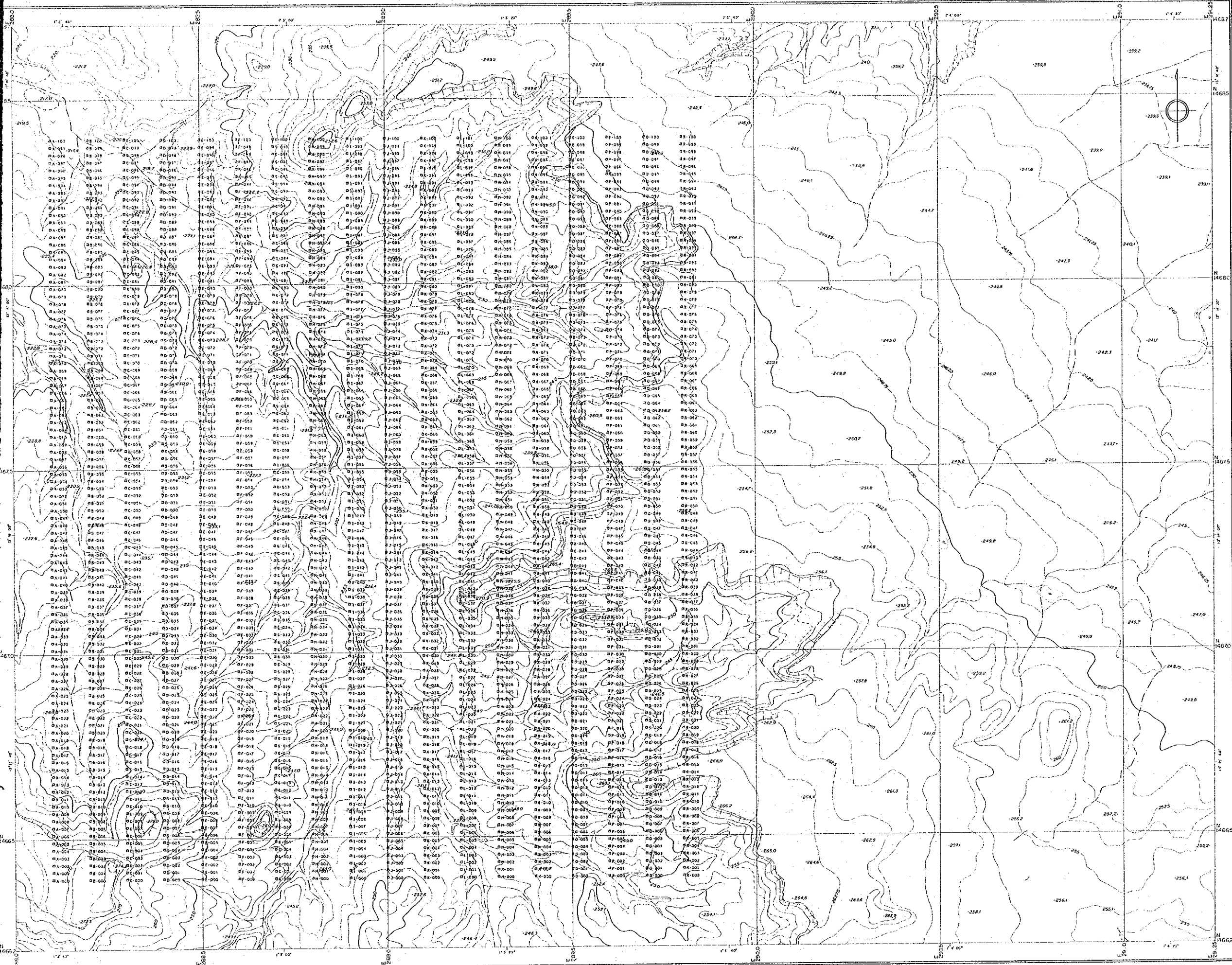
L'AGENCE JAPONAISE POUR LA COOPERATION INTERNATIONALE  
L'AGENCE JAPONAISE MINIERE DES METAUX  
FEBVRIER 1992



Echelle : 1 / 5,000

1 : 5,000

SEFA NANGUE



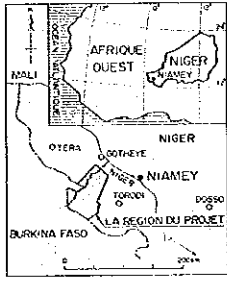
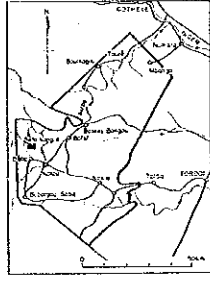
1 : 5,000

PI.15

RAPPORT DE PROSPECTION MINIERE  
DANS LA REGION DU LIPTAKO,  
"VALLEE DE LA SIRBA"  
REPUBLIQUE DU NIGER  
TROISIEME ANNEE

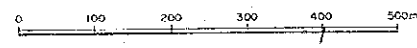
**GEOCHIMIE DES SOLS:  
PRELEVEMENT DES ECHANTILLONS**

CADRE GEOGRAPHIQUE

L'AGENCE JAPONAISE POUR LA COOPERATION INTERNATIONALE  
L'AGENCE JAPONAISE MINIERE DES METAUX

FEBVRIER 1992



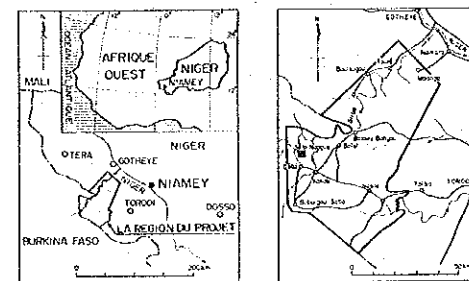
Echelle : 1 / 5,000



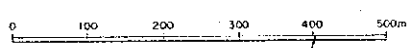
RAPPORT DE PROSPECTION MINIERE  
DANS LA REGION DU LIPTAKO,  
"VALLEE DE LA SIRBA"  
REPUBLIQUE DU NIGER  
TROISIEME ANNEE

GEOCHIMIE DES SOLS:  
PRELEVEMENT DES ECHANTILLONS

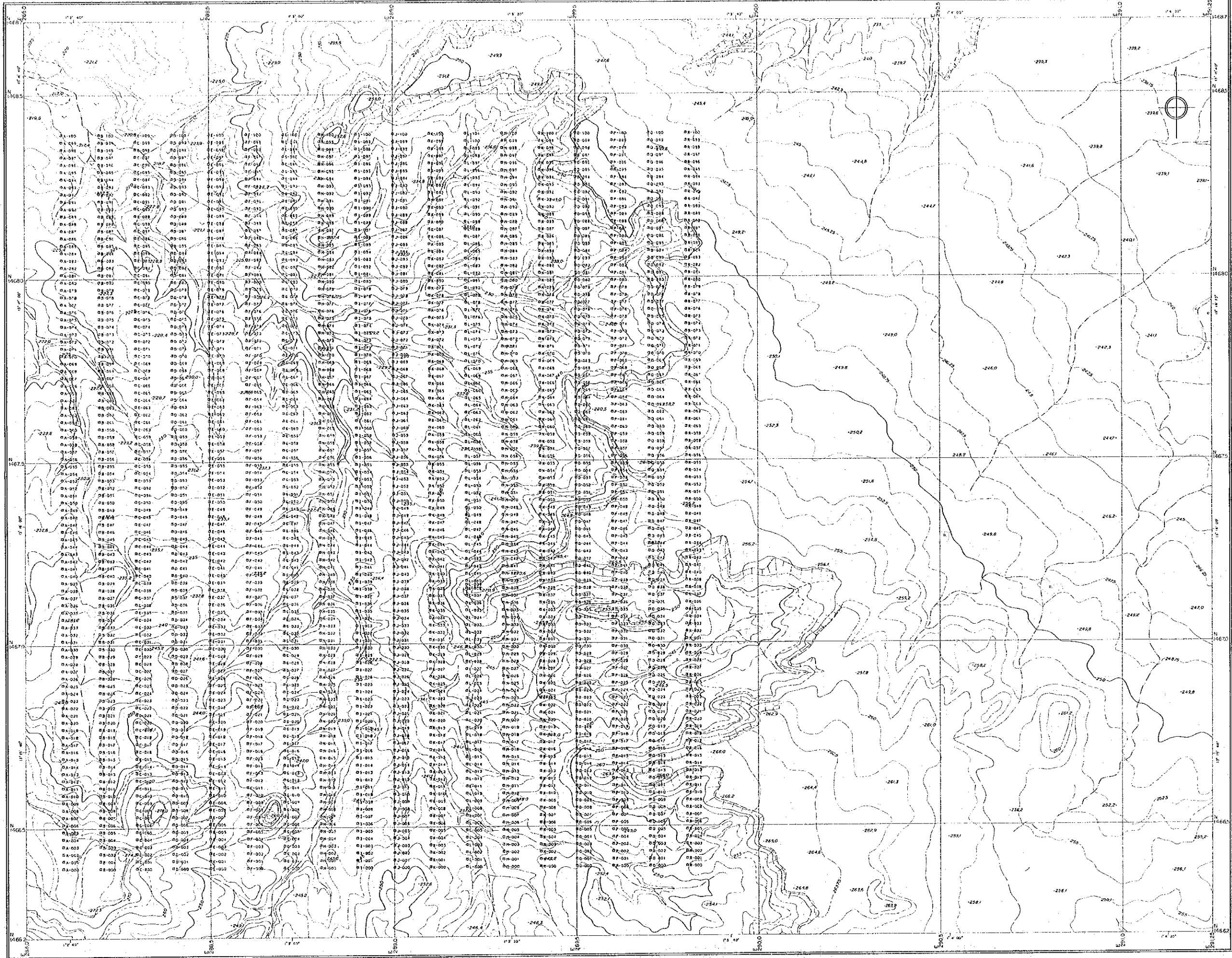
CADRE GEOGRAPHIQUE



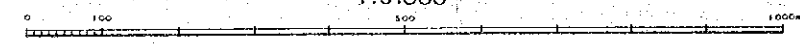
L'AGENCE JAPONAISE POUR LA COOPERATION INTERNATIONALE  
L'AGENCE JAPONAISE MINIERE DES METAUX  
FEVRIER 1992



Echelle 1 / 5,000



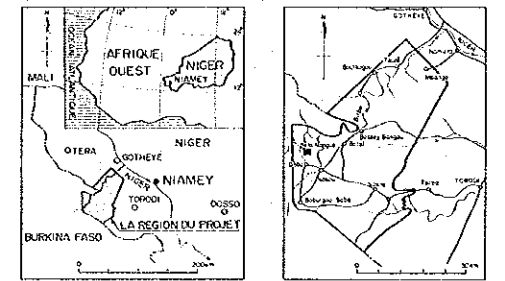
1 : 5,000



RAPPORT DE PROSPECTION MINIERE  
DANS LA REGION DU LIPTAKO,  
"VALLEE DE LA SIRBA"  
REPUBLIQUE DU NIGER  
TROISIEME ANNEE

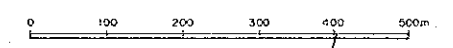
GEOCHIMIE DES SOLS:  
PRELEVEMENT DES ECHANTILLONS

CADRE GEOGRAPHIQUE

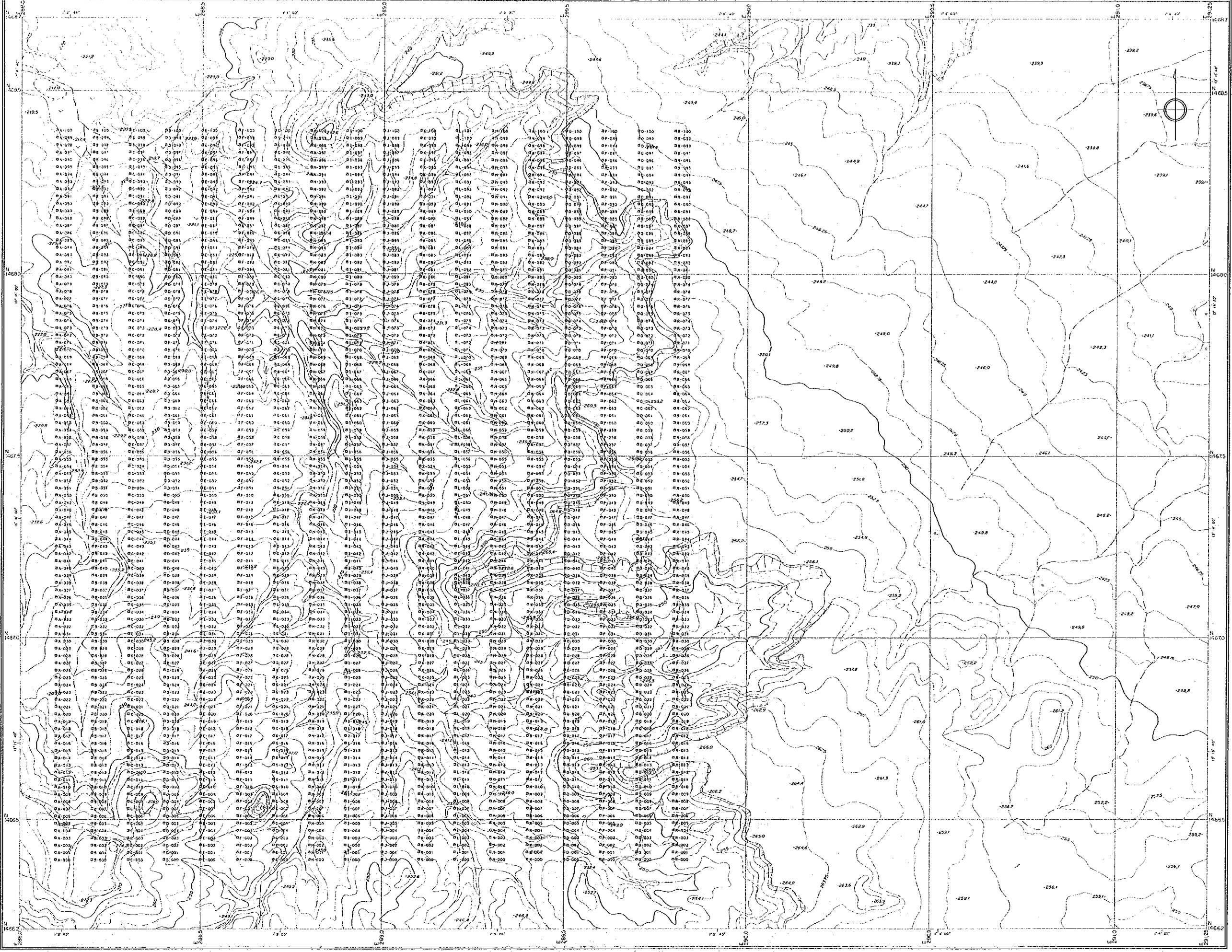


L'AGENCE JAPONAISE POUR LA COOPERATION INTERNATIONALE  
L'AGENCE JAPONAISE MINIERE DES METAUX

FEVRIER 1992



Echelle : 1 / 5,000



1 : 5,000

