

|                         | NAME OF SCHOOL                      | DISTRICT          |
|-------------------------|-------------------------------------|-------------------|
| 49                      | Banilad Barangay High School        | Nasugbu           |
| 50                      | Bayorbor Barangay High School       | Mataas na Kahoy   |
| 51                      | Tinurik Barangay High School        | Tanauan           |
| 52                      | Boot Barangay High School           | Tanauan           |
| 53                      | Cahil Barangay High School          | Calaca            |
| 54                      | Sta Anastacia Barangay High School  | Santo Tomas       |
| <b>D. BATANGAS CITY</b> |                                     |                   |
| 55                      | Tabangao BHS                        | Batangas City     |
| 56                      | Sto. Nino Barangay High School      | Batangas City     |
| 57                      | Conde Labac HS                      | Batangas City     |
| 58                      | Banaba West                         | * * Batangas City |
| <b>E CAVITE</b>         |                                     |                   |
| 59                      | Caluangan Barangay High School      | * Magallanes      |
| 60                      | Kaong Barangay High School          | * Silang          |
| 61                      | Ligtong Barangay High School        | * Rosario         |
| 62                      | Cavite Provincial Science HS        | * Maragondon      |
| 63                      | Lumil Barangay High School          | * Silang          |
| 64                      | Dasmaringas Relocation School-Annex | * Dasmaringas     |
| 65                      | Palocpoc BHS                        | * Mendez          |
| 66                      | Alfonso M. High School              | Alfonso           |
| 67                      | Halang Banay-Banay BHS              | * * Amadeo        |
| 68                      | Pangil BHS                          | * * Amadeo        |
| 69                      | Maragondon Mun. HS                  | * * Maragondon    |
| 70                      | Tagaytay City                       | * * Tagaytay      |
| 71                      | General Vito Belarnioc BHS          | * * Silang        |
| 72                      | Munting Ilog BHS                    | * * Silang        |
| <b>F. QUEZON</b>        |                                     |                   |
| 73                      | Concepcion Barangay High School     | * Plaridel        |
| 74                      | Infanta Prov'l High School          | * Infanta         |
| 75                      | Camohaguin Barangay High School     | * Gumaca          |
| 76                      | Talipan Baranagay High School       | * Pagbilao        |
| 77                      | Palisa Barangay High School         | * Tiaong          |
| 78                      | Amontay Barangay High School        | * Pitogo          |
| 79                      | Tongohin Barangay High School       | * Infanta         |
| 80                      | Bagopaye Barangay High School       | * Mulanay         |

\* TRSBP Phase III Recipient.

\*\* Not Listed in BD Minutes of Discussion.

|               | NAME OF SCHOOL                    | DISTRICT        |
|---------------|-----------------------------------|-----------------|
| 81            | Ilayang Yuni Barangay High School | Mulanay         |
| 82            | Abuyon National High School       | San Narciso     |
| 83            | Hinguin Barangay High School      | Padre Burgos    |
| 84            | Guinayangan Barangay High School  | Guinayangan     |
| 85            | Patnanungan Barangay High School  | Pitogo          |
| 86            | Dagatan Barangay High School      | Dolores         |
| 87            | Canda Barangay High School        | Sariaya         |
| G. AURORA     |                                   |                 |
| 88            | Ditumabo Barangay High School     | * San Luis      |
| 89            | Dinalungan Barangay High School   | Poblacion       |
| 90            | Dilasag Barangay High School      | Dilasag         |
| H. MARINDUQUE |                                   |                 |
| 91            | Bangbang Barangay High School     | Gasan           |
| 92            | Matalaba Barangay High School     | Sta. Cruz S.    |
| 93            | Tigwi Barangay High School        | Torrijos        |
| 94            | Tagum Barangay High School        | Sta. Cruz East  |
| 95            | Bognuyan Barangay High School     | Gasan           |
| 96            | Ipil Barangay High School         | Sta. Cruz Nort  |
| 97            | Argao Barangay High School        | Mogpog          |
| 98            | Cawit Barangay High School        | Boac South      |
| I. PALAWAN    |                                   |                 |
| 99            | Sicsican Barangay High School     | Puerto Princesa |
| 100           | Aborlan Barangay High School      | Aborlan         |
| 101           | Palawan Barangay High School      | San Jose        |
| 102           | Roxas N.C. High School            | Roxas           |
| 103           | Bahile Barangay High School       | Puerto Princesa |
| 104           | Bato Barangay High School         | Taytay          |
| 105           | Abo-abo Barangay High School      | Brookes Point   |
| 106           | San Vicente Barangay High School  | San Vicente     |
| 107           | Caramay Barangay High School      | Roxas           |
| J. ROMBLON    |                                   |                 |
| 108           | Alcantara Barangay High School    | Tablas          |
| 109           | Espana Barangay High School       | San Fernando    |
| 110           | Agnipa Barangay High School       | Romblon         |

\* TRSBP Phase III Recipient.

\*\* Not Listed in BD Minutes of Discussion.

| NAME OF SCHOOL               |  | DISTRICT       |
|------------------------------|--|----------------|
| <b>K. LIPA CITY</b>          |  |                |
| 111                          | Inosloban Marawoy Barangay High School | Lipa City      |
| 112                          | Sapak Barangay High School *           | Lipa City      |
| 113                          | Anilao Barangay High School *          | Lipa City      |
| <b>L. OCCIDENTAL MINDORO</b> |  |                |
| 114                          | Looc Municipal High School             | Looc           |
| 115                          | Barahan Barangay High School           | Sta. Cruz      |
| 116                          | Concepcion Barangay High School        | Calintaan      |
| 117                          | Tillik Barangay High School            | Lubang         |
| 118                          | Ligaya Barangay High School            | Sablayan       |
| <b>M. ORIENTAL MINDORO</b>   |  |                |
| 119                          | Quinabigan Barangay High School        | Pinamalayan    |
| 120                          | Dayhagan Barangay High School          | Bongabong      |
| 121                          | Bulbugan Barangay High School          | Gloria         |
| 122                          | Barcenaga Barangay High School         | Naujan         |
| 123                          | Alcadesma Barangay High School         | Bansud         |
| 124                          | Canubing BHS * *                       | Calapan West   |
| <b>N. SAN PABLO</b>          |  |                |
| 125                          | San Cristobal BHS * *                  | San Pablo City |
| <b>III. REGION VI</b>        |  |                |
| <b>A. AKLAN</b>              |  |                |
| 126                          | Liloan Barangay High School *          | Malinao        |
| 127                          | Bulabud Barangay High School *         | Malinao        |
| 128                          | Fr. Julian C. Rago Mem. H/S *          | Balete         |
| 129                          | Camaligan Barangay High School *       | Batan          |
| 130                          | Nalook Barangay High School *          | Kalibo         |
| <b>B. ANTIQUE</b>            |  |                |
| 131                          | Barasanan Barangay High School *       | T. Fornier     |

\* TRSBP Phase IV Recipient.

\*\* Not Listed in BD Minutes of Discussion.

|                      | NAME OF SCHOOL                 |    | DISTRICT     |
|----------------------|--------------------------------|----|--------------|
| 132                  | Carit-an Barangay High School  | *  | Patnongon    |
| 133                  | Egana Barangay High School     | *  | Sibalon      |
| 134                  | Sido-San Juan Barangay H/S     | *  | Sibalon      |
| 135                  | Gamad Sto. Tomasy Barangay H/S | *  | T. Fornier   |
| 136                  | Laua-an Barangay High School   | *  | Laua-an      |
| 137                  | Barbaza Barangay High School   | *  | Barbaza      |
| 138                  | Pis-anan NHS                   | ** | Sibalon      |
| 139                  | General Leandro Fullon NHS     | ** | Hamtic       |
| <b>C. CAPIZ</b>      |                                |    |              |
| 140                  | Taft National Barangay H/S     | *  | Tapaz        |
| 141                  | Dacuton National Brgy. H/S     | *  | Dumarao      |
| 142                  | Capagao National Brgy. H/S     | *  | Panit-an     |
| 143                  | Lucero National Brgy. H/S      | *  | Jamindan     |
| 144                  | Casanayan National Brgy. H/S   | *  | Pilar        |
| 145                  | Dulangan National Brgy. H/S    | *  | Pilar        |
| 146                  | Putian National Brgy. H/S      | *  | Cuartero     |
| 147                  | Sapian National Brgy. H/S      | *  | Sapian       |
| 148                  | Ivisan National High School    | ** | Ivisan       |
| <b>D. ROXAS CITY</b> |                                |    |              |
| 149                  | Balijuagan Barangay H/S        | *  | Roxas City   |
| 150                  | Bago National Brgy. H/S        | *  | Roxas City   |
| <b>E. ILOILO</b>     |                                |    |              |
| 151                  | Bolalacao Barangay High School | *  | Bolalacao    |
| 152                  | Barroc Barangay High School    | *  | Oton         |
| 153                  | Pili Barangay High School      | *  | Ajuy         |
| 154                  | Dapdap Barangay High School    | *  | Tigbauan     |
| 155                  | Carvasana Barangay High School | *  | Calinog      |
| 156                  | Alibunan Barangay High School  | *  | Alibunan     |
| 157                  | Camiros Barangay High School   | *  | Anilao       |
| 158                  | Carlos Lopez Na'l. H/S         | *  | San Dionisio |
| 159                  | Don B. Jalandoni St. Nat. BH/S | *  | Zarraga      |
| 160                  | Acao Baranay High School       | *  | Cabatuan     |
| 161                  | Tina Barangay High School      | *  | Badiangan    |
| 162                  | Puyas Barangay High School     | *  | Cabatuan     |
| 163                  | Calmay Barangay High School    | *  | Janiuay      |
| 164                  | Luca Barangay High School      | *  | Ajuy         |

\* TRSBP Phase IV Recipient.

\*\* Not Listed in BD Minutes of Discussion.

|                             | NAME OF SCHOOL                    |    | DISTRICT       |
|-----------------------------|-----------------------------------|----|----------------|
| 165                         | Batad Barangay High School        | *  | Batad          |
| 166                         | Binabaan Barangay High School     | *  | Lambunao       |
| 167                         | Ardemil Barangay High School      | *  | Sara           |
| 168                         | San Luis Newly Nationalized HS    | *  | Sara           |
| 169                         | Banate National High School       |    | Banate         |
| 170                         | Lemery National High School       |    | Lemery         |
| 171                         | Malitbog Barangay High School     |    | Calinog        |
| 172                         | Leganes National High School      |    | Leganes        |
| 173                         | Ajuy High School                  |    | Ajuy           |
| 174                         | Lambunao Municipal High School    |    | Lambunao       |
| 175                         | Alomodian National Com. H/S       |    | Alimodian      |
| 176                         | Zarraga National High School      | ** | Jaland Norta   |
| 177                         | Mina NHS                          | ** | Mina           |
| <b>F. ILOILO CITY</b>       |                                   |    |                |
| 178                         | Jalandoni Mem. HS Bo. Obrero Ext. | *  | Iloilo City    |
| 179                         | R. G. Hechonova Brgy. High School | *  | Iloilo City    |
| 180                         | Jaro High School                  | *  | Iloilo City    |
| 181                         | La Paz National High School       | ** | La Paz         |
| <b>G. NEGROS OCCIDENTAL</b> |                                   |    |                |
| 182                         | Miranda Barangay High School      |    | Pontevedra     |
| 183                         | Gulljungan Barangay H/S           |    | Cauayan        |
| 184                         | Toboso Barangay H/S               |    | Toboso         |
| 185                         | Cabacungan Barangay H/S           |    | La Castellana  |
| 186                         | Manapla High School               |    | Manapla        |
| 187                         | Hinigaran National High School    |    | Hinigaran      |
| 188                         | Sagay National High School        |    | Sagay          |
| 189                         | Escalante Provincial H/S          |    | Escalante      |
| 190                         | La Castellana Prov'l High School  |    | La Castellana  |
| 191                         | Tapi Prov'l High School           |    | Kabankalan     |
| 192                         | Buenavista BHS                    | ** | Escalante      |
| 193                         | Himamaylan NHS                    | ** | Himamaylan     |
| <b>H. SAN CARLOS CITY</b>   |                                   |    |                |
| 194                         | Don Carlos Ledesma Nat'l. H/S     |    | San Carlos Cty |
| 195                         | Quezon Barangay High School       |    | San Carlos Cty |

\* TRSBP Phase IV Recipient.

\*\* Not Listed in BD Minutes of Discussion.

| NAME OF SCHOOL         |                                     | DISTRICT           |
|------------------------|-------------------------------------|--------------------|
| <b>I. LA CARLOTA</b>   |                                     |                    |
| 196                    | Dona H. S. Benedicto Nat'l. H/S     | La Carlota         |
| 197                    | La Granja Ext.                      | La Granja          |
| <b>J. BAGO CITY</b>    |                                     |                    |
| 198                    | Ramon Torres National H/S           | Bago City          |
| 199                    | Ramon Torres National H/S           | Taloc Ext.         |
| 200                    | RTNHS-Sagasa Ext.                   | * * Bago City      |
| <b>K. SILAY CITY</b>   |                                     |                    |
| 201                    | DMLMHS HPCo. Ext.                   | Silay City         |
| 202                    | Guimbalaon Ext.                     | Silay City         |
| <b>L. GUIMARAS</b>     |                                     |                    |
| 203                    | Buenavista Mun. High School         | New Poblacion      |
| 204                    | Jordan National High School         | Poblacion          |
| 205                    | Trinidad V. C. Sta Teresa Newly H/S | Sta Teresa         |
| 206                    | Getulio Newly NHS                   | * * Buenavista     |
| 207                    | East Valencia Newly NHS             | * * Buenavista     |
| 208                    | Liningwan Newly NHS                 | * * Jordan         |
| 209                    | Salvacion Newly NHS                 | * * Nueva Valencia |
| <b>M. BACOLOD CITY</b> |                                     |                    |
| 210                    | Domingo Lacson National H/S         | Bacolod City       |
| 211                    | Luisa Medel High School             | Bacolod City       |
| 212                    | Luis Hervisa National H/S           | Bacolod City       |
| 213                    | Brgy. Singkang Airport NH/S         | Bacolod City       |
| 214                    | Bata High School                    | Bacolod City       |
| <b>N. CADIZ CITY</b>   |                                     |                    |
| 215                    | Dr. Vicente Gustilo Mem. H/S        | Cadiz City         |
| 216                    | Cadiz Viejo Barangay H/S            | Cadiz Viejo        |
| 217                    | Caduhaan Barangay High School       | Bgy. Caduhaan      |
| 218                    | Tiglawigan Barangay High School     | Bgy. Tiglawigan    |
| 219                    | Villacin National H/S               | Cadiz City         |

\* TRSBP Phase IV Recipient  
\*\* Not Listed in BD Minutes of Discussion.

| NAME OF SCHOOL         |                                | DISTRICT           |
|------------------------|--------------------------------|--------------------|
| IV. REGION X           |                                |                    |
| A. AGUSAN DEL NORTE    |                                |                    |
| 220                    | Jaliobong National High School | Jaliobong          |
| 221                    | Carmen Municipal High School   | Carmen             |
| B. AGUSAN DEL SUR      |                                |                    |
| 222                    | Sibagat Mun. High School       | Sibagat            |
| 223                    | Bayugan Mun. High School       | Bayugan            |
| C. SURIGAO DEL NORTE   |                                |                    |
| 224                    | Sta. Cruz Barangay High School | * Placer           |
| 225                    | Matin-ao Barangay High School  | * Mainit           |
| 226                    | Balite Barangay High School    | * San Francisco    |
| 227                    | Timamana Barangay High School  | * Tubod            |
| 228                    | Masgad Barangay High School    | * Malimono         |
| 229                    | Canapoy Barangay High School   | * Malimono         |
| 230                    | Campo Barangay High School     | * Bacuag           |
| 231                    | Albor M. High School           | Cadiano            |
| 232                    | Tag-abaca HS                   | * * Basilisa       |
| D. SURIGAO CITY        |                                |                    |
| 233                    | Ipil Barangay High School      | * Surigao City     |
| 234                    | San Juan Barangay High School  | Surigao City       |
| E. CAGAYAN DE ORO CITY |                                |                    |
| 235                    | Lapasan BHS                    | Cagayan de Oro Cty |
| 236                    | Agusan NNHS                    | Agusan             |
| F. BUTUAN CITY         |                                |                    |
| 237                    | Banza Barangay High School     | Butuan City        |
| G. BUKIDNON            |                                |                    |
| 238                    | Libonan Mun. HS                | Libonan            |
| 239                    | Malitbog Nationalized HS       | Malitbog           |

\* TRSBP Phase IV Recipient

\*\* Not Listed in BD Minutes of Discussion.

## 1.5 Abbreviations

|          |  |
|----------|--|
| ADB      | Asian Development Bank   |
| AIDAB    | Australian International Development Assistance Bureau   |
| ARMM     | Autonomous Region in Muslim Mindanao   |
| ATEP     | Agricultural Technology Education Project  |
| BSE      | Bureau of Secondary Education  |
| CAR      | Cordillera Administrative Region   |
| CENTREXs | Centers of Excellence  |
| CIDA     | Canadian International Development Agency  |
| CSR      | Cohort Survival Rate   |
| DBM      | Department of Budget and Management  |
| DECS     | Department of Education, Culture and Sports  |
| DLCs     | Desired Learning Competencies  |
| DPMCs    | the Divisional Project Management Committees   |
| EDPITAF  | Educational Development Projects Implementing Task Force                                       |
| EEC      | European Economic Community  |
| EFA      | Education for All  |
| ESF      | Economic Support Fund  |
| FAPE     | Fund for Assistance to Private Education   |
| GTZ      | Deutsche Gesellschaft für Technische Zusammenarbeit<br>(German Technical Cooperation)          |
| H.E      | Home Economics   |
| I.A.     | Industrial Arts  |
| IMC      | Instructional Materials Corporation  |
| JICA     | Japan International Cooperation Agency   |
| JAPs-PMU | Japanese Assisted Project - Project Management Unit  |
| MIS      | Management Information System  |
| NCEE     | National Collegiate Entrance Examination   |
| NCR      | National Capital Region  |
| NEDA     | National Economic and Development Authority  |
| NLRC     | National Learning Resource Center<br>for Teacher Training in Science and Mathematics Education |
| NSEC     | the New Secondary Education Curriculum   |
| OPS      | Office of the Planning Services  |
| PASMEP   | Philippine-Australia Science and Mathematics Education Project                                 |
| PATVP    | Philippine-Australia Technical and Vocational Education Project                                |
| PBME     | Project Benefit Monitoring and Evaluation  |
| P.E.H.M  | Physical Education, Health and Music   |



|          |  |
|----------|--|
| PMU      | Project Management Unit  |
| PRODED   | The Program for Decentralized Education Development  |
| RLSs     | Regional Leader Schools  |
| RPDD     | Research & Project Development Division  |
| RPMCs    | the Regional Project Management Committees   |
| SED      | Secondary Education Division   |
| SEDSP    | the Secondary Education Development Sector Project   |
| SEDP     | Secondary Education Development Program  |
| STC      | Special Technical Committee  |
| STIP     | the Science Teaching Improvement Project   |
| TRSBP    | Typhoon-Resistant School Building Project  |
| TTIs     | Teacher Training Institutions  |
| UNESCO   | United Nations Educational Scientific and Cultural Organization                            |
| UP-ISMED | University of Philippines - Institute for Science and Mathematics<br>Education Development |
| USAID    | United States Agency for International Development   |

1.6 DECS Budget for Regional Operations(1990 to 1992)

(Unit : 1,000peso)

| Region | 1990              |           |                 | 1991              |           |                 | Total      |
|--------|-------------------|-----------|-----------------|-------------------|-----------|-----------------|------------|
|        | Personal Services | MOOE      | Capital Outlays | Personal Services | MOOE      | Capital Outlays |            |
| NCR    | 1,661,817         | 366,777   | 306,363         | 1,684,705         | 425,496   | 303,680         | 2,413,881  |
| CAR    | 322,851           | 76,755    | 79,461          | 324,566           | 81,535    | 64,092          | 470,193    |
| I      | 995,180           | 203,708   | 142,718         | 1,004,633         | 215,585   | 112,385         | 1,332,603  |
| II     | 631,973           | 123,396   | 112,857         | 641,570           | 136,479   | 81,710          | 859,759    |
| III    | 1,265,331         | 216,227   | 201,710         | 1,284,216         | 244,597   | 148,514         | 1,677,327  |
| IV     | 1,842,360         | 272,391   | 341,573         | 1,869,220         | 325,582   | 291,296         | 2,486,098  |
| V      | 1,061,048         | 153,339   | 220,303         | 1,075,857         | 171,996   | 178,600         | 1,426,453  |
| VI     | 1,504,916         | 218,217   | 416,118         | 1,518,617         | 246,784   | 260,709         | 2,026,110  |
| VII    | 933,849           | 125,174   | 120,899         | 945,543           | 166,423   | 102,786         | 1,214,752  |
| VIII   | 899,409           | 134,671   | 200,312         | 902,166           | 172,987   | 144,652         | 1,219,805  |
| IX     | 706,790           | 138,067   | 168,185         | 717,213           | 160,713   | 148,720         | 1,026,646  |
| X      | 803,699           | 158,641   | 158,861         | 817,053           | 169,277   | 118,909         | 1,105,239  |
| XI     | 896,070           | 147,503   | 168,340         | 912,771           | 181,623   | 138,550         | 1,232,944  |
| XII    | 725,663           | 132,142   | 154,245         | 726,248           | 153,770   | 121,175         | 1,001,193  |
| Nation | 0                 | 0         | 0               | 0                 | 0         | 40,000          | 40,000     |
| Total  | 14,250,956        | 2,467,008 | 2,791,945       | 14,424,378        | 2,852,847 | 2,255,778       | 19,533,003 |

| Region | 1992              |           |                 | Total      |
|--------|-------------------|-----------|-----------------|------------|
|        | Personal Services | MOOE      | Capital Outlays |            |
| NCR    | 2,524,947         | 349,229   | 223,078         | 3,097,254  |
| CAR    | 486,736           | 95,323    | 31,857          | 613,916    |
| I      | 1,525,206         | 174,949   | 87,149          | 1,787,304  |
| II     | 870,170           | 116,522   | 40,790          | 1,027,482  |
| III    | 1,896,354         | 313,845   | 160,900         | 2,371,099  |
| IV     | 2,765,728         | 290,759   | 255,798         | 3,312,285  |
| V      | 1,671,679         | 322,906   | 168,581         | 2,163,166  |
| VI     | 2,227,959         | 315,533   | 71,811          | 2,615,303  |
| VII    | 1,404,950         | 176,846   | 88,776          | 1,670,572  |
| VIII   | 1,378,355         | 142,712   | 55,972          | 1,577,039  |
| IX     | 1,093,094         | 175,161   | 116,079         | 1,384,334  |
| X      | 1,217,165         | 211,712   | 128,215         | 1,557,092  |
| XI     | 1,364,393         | 189,833   | 140,690         | 1,694,916  |
| XII    | 1,063,408         | 120,426   | 208,859         | 1,392,693  |
| Nation | 22,258            | 8,865     | 117,933         | 149,056    |
| Total  | 21,512,402        | 3,004,621 | 1,896,488       | 26,413,511 |

Source : DBM

Remarks:

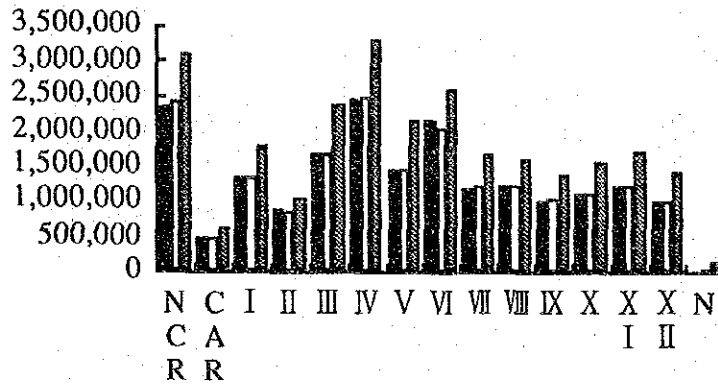
Budget for Nation : Appropriated to any of Regions finally

MOOE : Maintenance and Other Operating Expenses

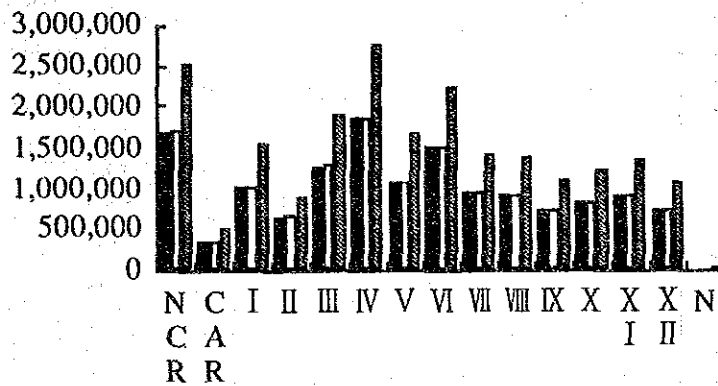
# 1.7 Regional Operations Budget in DECS Budget

(Unit : 1,000 peso)

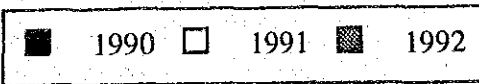
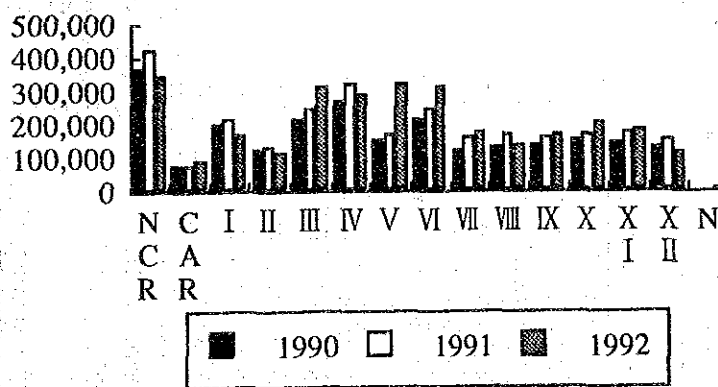
Budget for Regional Operations



Budget for Personal Services in Each Region



Budget for MOOE in Each Region



### 1.8 Index of Occupational Services Position Titles and Salary Grades

| Secondary School Level    |       | Salary Schedule          |       |        |        |        |        |        |        |        |        |
|---------------------------|-------|--------------------------|-------|--------|--------|--------|--------|--------|--------|--------|--------|
| Position Title            | Grade | Position Title           | Grade | 1st    | 2nd    | 3rd    | 4th    | 5th    | 6th    | 7th    | 8th    |
| Specialized Training      |       | Master Teacher I         | 16    | 2,000  | 2,020  | 2,040  | 2,061  | 2,081  | 2,102  | 2,123  | 2,144  |
| Training Assistant        | 8     | Master Teacher II        | 17    | 2,752  | 2,779  | 2,807  | 2,835  | 2,864  | 2,892  | 2,921  | 2,950  |
| Training Specialist I     | 11    | Master Teacher III       | 18    | 2,917  | 2,946  | 2,976  | 3,005  | 3,036  | 3,066  | 3,097  | 3,127  |
| Training Specialist II    | 15    | Master Teacher IV        | 19    | 3,102  | 3,133  | 3,164  | 3,196  | 3,228  | 3,260  | 3,293  | 3,326  |
| Training Specialist III   | 18    | Head Teacher I           | 13    | 3,309  | 3,342  | 3,375  | 3,409  | 3,443  | 3,477  | 3,512  | 3,547  |
| Training Specialist IV    | 22    | Head Teacher II          | 14    | 3,540  | 3,575  | 3,611  | 3,647  | 3,684  | 3,721  | 3,758  | 3,795  |
| Training Specialist V     | 24    | Head Teacher III         | 15    | 3,800  | 3,838  | 3,876  | 3,915  | 3,954  | 3,994  | 4,033  | 4,074  |
|                           |       | Head Teacher IV          | 16    | 4,091  | 4,132  | 4,173  | 4,215  | 4,257  | 4,300  | 4,343  | 4,386  |
| School Administration     |       | Head Teacher V           | 17    | 4,418  | 4,463  | 4,507  | 4,552  | 4,598  | 4,644  | 4,690  | 4,737  |
| Ass't S. S. Principal I   | 17    | Head Teacher VI          | 18    | 4,786  | 4,834  | 4,883  | 4,932  | 4,981  | 5,031  | 5,081  | 5,132  |
| Ass't S. S. Principal II  | 18    | Special Ed. Teacher I    | 13    | 5,201  | 5,253  | 5,306  | 5,359  | 5,413  | 5,467  | 5,521  | 5,577  |
| Ass't S. S. Principal III | 19    | Special Ed. Teacher II   | 14    | 5,670  | 5,726  | 5,784  | 5,841  | 5,900  | 5,959  | 6,018  | 6,079  |
| S.S. Principal I          | 18    | Special Ed. Teacher III  | 15    | 6,199  | 6,261  | 6,323  | 6,386  | 6,450  | 6,515  | 6,580  | 6,646  |
| S.S. Principal II         | 19    | Guidance Counselor I     | 10    | 6,798  | 6,866  | 6,935  | 7,004  | 7,074  | 7,145  | 7,216  | 7,288  |
| S.S. Principal III        | 20    | Guidance Counselor II    | 11    | 7,478  | 7,553  | 7,628  | 7,704  | 7,781  | 7,859  | 7,938  | 8,017  |
| S.S. Principal IV         | 21    | Guidance Counselor III   | 12    |        |        |        |        |        |        |        |        |
| School Teaching           |       | Guidance Coordinator I   | 13    | 17,075 | 17,246 | 17,418 | 17,592 | 17,768 | 17,946 | 18,125 | 18,307 |
| Teacher I                 | 10    | Guidance Coordinator II  | 14    |        |        |        |        |        |        |        |        |
| Teacher II                | 11    | Guidance Coordinator III | 15    |        |        |        |        |        |        |        |        |
| Teacher III               | 12    |                          |       |        |        |        |        |        |        |        |        |

Source: INDEX OF OCCUPATIONAL SERVICES POSITION TITLES

AND SALARY GRADES, DBM

Source: INDEX OF OCCUPATIONAL SERVICES POSITION TITLES

AND SALARY GRADES, DBM

## 1.9 Assessment of Trainers in the Follow-up Workshop

Frequency of Trainers' Ratings in the Follow up Workshop by Region

| Region | Number | I/MR   | M/S     | S       | VS     | O |
|--------|--------|--------|---------|---------|--------|---|
| NCR    | 31     | 2      |         | 10      | 17     | 2 |
| CAR    | 29     | 1      |         | 15      | 13     |   |
| I      | 30     | 1      |         | 18      | 11     |   |
| II     | 29     | 1      |         | 13      | 15     |   |
| III    | 30     |        |         | 20      | 10     |   |
| IV     | 29     | 4      |         | 12      | 12     | 1 |
| V      | 28     | 1      |         | 13      | 11     | 3 |
| VI     | 30     | 2      |         | 18      | 10     |   |
| VII    | 29     | 6      | 3       | 13      | 7      |   |
| VIII   | 29     | 2      |         | 20      | 7      |   |
| IX     | 30     | 1      |         | 25      | 3      | 1 |
| X      | 30     |        |         | 26      | 4      |   |
| XI     | 30     | 3      |         | 15      | 12     |   |
| XII    | 30     | 3      |         | 15      | 11     | 1 |
| Total  | (6.52) | (0.78) | (60.20) | (35.95) | (2.07) |   |
|        | 414    | 27     | 3       | 233     | 143    | 8 |

I/MR: Incomplete Rating

M/S : Moderately Satisfactory

S : Satisfactory

VS : Very Satisfactory

O : Outstanding

Mean and Standard Deviation of Trainers' Ratings by Region

| Region | Number<br>of Trainers | Mean<br>Rating | Standard<br>Deviation |
|--------|-----------------------|----------------|-----------------------|
| NCR    | 29                    | 87.731         | 7.746                 |
| CAR    | 28                    | 83.171         | 6.948                 |
| I      | 29                    | 82.321         | 6.887                 |
| II     | 28                    | 83.795         | 5.867                 |
| III    | 30                    | 83.630         | 5.636                 |
| IV     | 24                    | 85.162         | 7.442                 |
| V      | 27                    | 86.169         | 6.272                 |
| VI     | 28                    | 82.828         | 5.333                 |
| VII    | 23                    | 80.870         | 8.515                 |
| VIII   | 27                    | 80.902         | 6.909                 |
| IX     | 29                    | 79.064         | 5.917                 |
| X      | 30                    | 79.425         | 5.946                 |
| XI     | 27                    | 82.278         | 7.174                 |
| XII    | 27                    | 82.189         | 7.974                 |

Frequency of Trainers' Ratings in the Follow-up Workshop by subject area

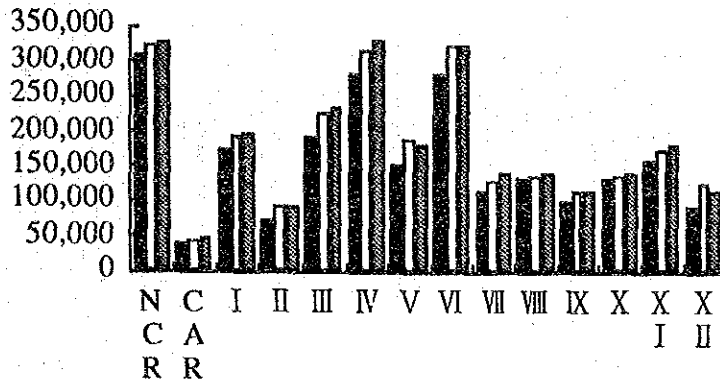
| Subject Area       | Number     | Incomplete Rating | MS       | S          | VS         | O        |
|--------------------|------------|-------------------|----------|------------|------------|----------|
| English            | 56         | 9                 |          | 44         | 3          |          |
| Values Education   | 55         | 1                 |          | 37         | 17         |          |
| Physical Education | 28         | 2                 | 2        | 23         | 1          |          |
| Health             | 28         |                   |          | 11         | 17         |          |
| Music              | 27         | 3                 |          | 11         | 13         |          |
| Pilipino           | 56         | 3                 |          | 19         | 28         | 6        |
| Social Studies     | 55         | 4                 |          | 19         | 30         | 2        |
| Home Economics     | 28         | 1                 |          | 21         | 6          |          |
| Industrial Arts    | 26         |                   | 1        | 15         | 10         |          |
| Agro/Fishery       | 28         | 3                 |          | 23         | 2          |          |
| Business Tech.     | 27         | 1                 |          | 10         | 16         |          |
| <b>Total</b>       | <b>414</b> | <b>27</b>         | <b>3</b> | <b>233</b> | <b>143</b> | <b>8</b> |

Mean and Standard Deviation of Trainers' Ratings by Region

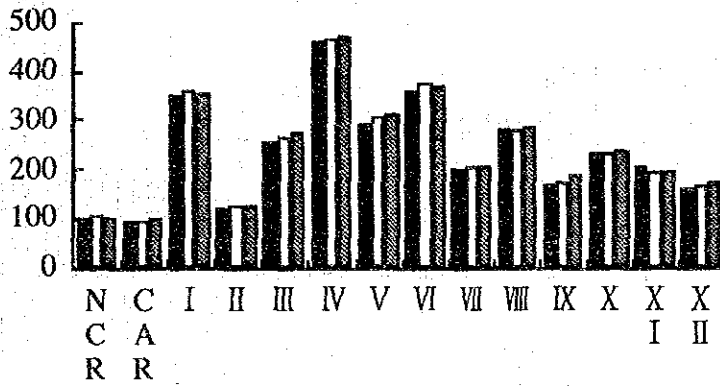
| Subject            | Number | Mean   | Standard Deviation |
|--------------------|--------|--------|--------------------|
| English            | 47     | 75.031 | 5.003              |
| Values Education   | 54     | 81.359 | 7.179              |
| Physical Education | 26     | 76.846 | 6.570              |
| Health             | 28     | 86.539 | 5.379              |
| Filipino           | 53     | 86.775 | 6.329              |
| Social Studies     | 51     | 86.382 | 5.953              |
| Home Economics     | 27     | 81.974 | 3.396              |
| Industrial Arts    | 24     | 82.528 | 5.887              |
| Agro/Fishery       | 25     | 80.553 | 3.479              |
| Business Tech.     | 26     | 85.548 | 6.898              |
| Music              | 24     | 85.799 | 6.565              |

### 1.10 Comparative Graphs of Secondary Education Indicators

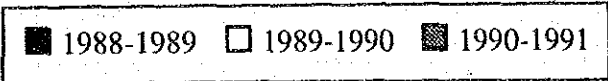
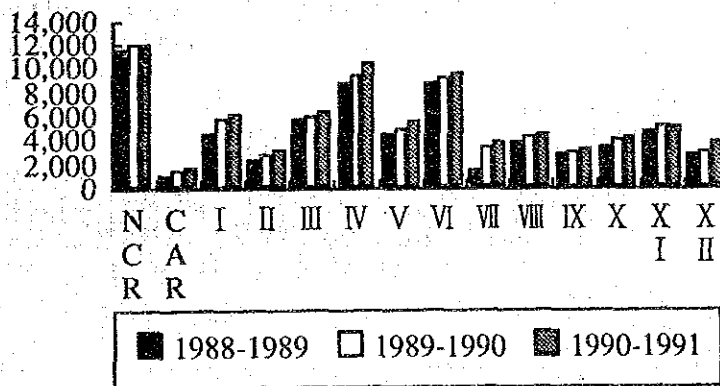
Number of Students in Each Region



Number of Schools in Each Region

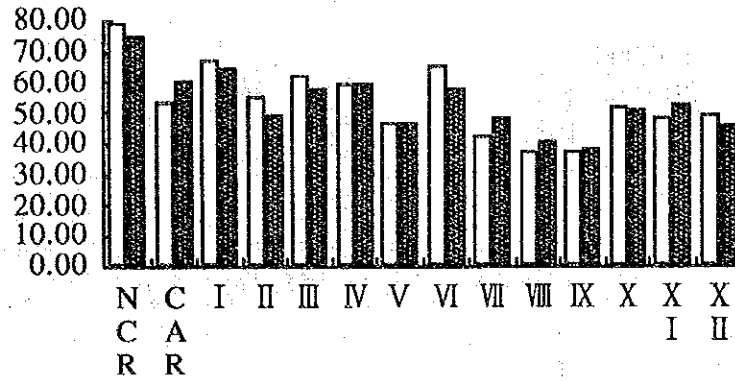


Number of Teachers in Each Region



(Unit : %)

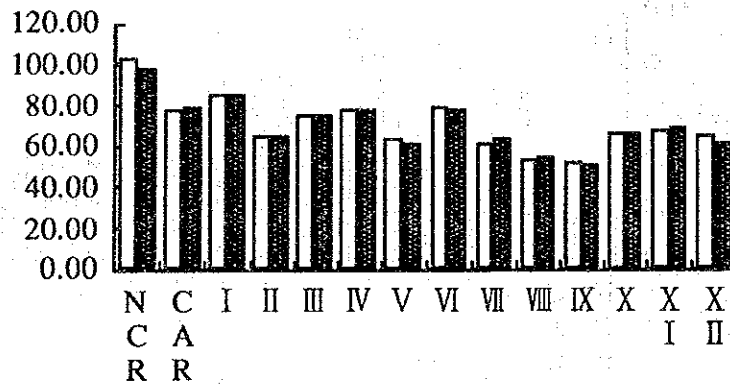
Participation Rate in Each Region



(including national and private secondary schools)

(Unit : %)

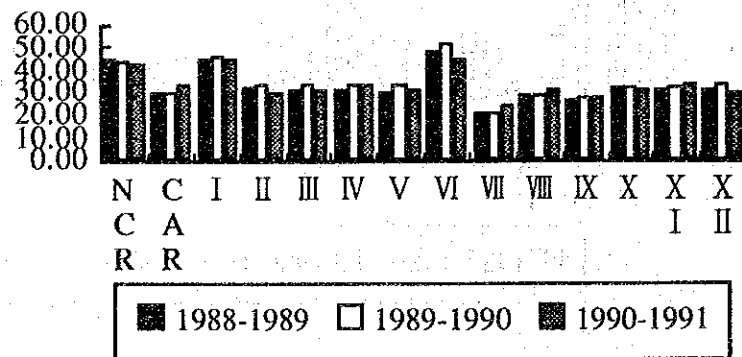
Enrolment Rate in Each Region



(including national and private secondary schools)

(Unit : %)

Participation Rate of National Secondary School in Each Region





1.10 (2) Secondary Education Indicators in Each Region

| Region | Participation Rate(%) |      |           |       |           |       | Dropout Rate(%) |       |           |       |           |      | NCEE Results |                 |
|--------|-----------------------|------|-----------|-------|-----------|-------|-----------------|-------|-----------|-------|-----------|------|--------------|-----------------|
|        | 1988-1989             |      | 1989-1990 |       | 1990-1991 |       | 1988-1989       |       | 1989-1990 |       | 1990-1991 |      | Region 1991  |                 |
|        | Nat'l                 | Prt  | Nat'l     | Prt   | Total     | Nat'l | Prt             | Nat'l | Prt       | Total | Nat'l     | Prt  | Total        | (Average Score) |
| NCR    | 44.61                 | n.a. | 44.00     | 35.13 | 79.14     | 42.08 | 32.47           | 74.55 | 8.30      | n.a.  | 8.89      | 3.74 | 6.67         | 119.72          |
| CAR    | 29.32                 | n.a. | 29.23     | 24.17 | 53.40     | 33.33 | 27.00           | 60.33 | 4.06      | n.a.  | 6.93      | 4.80 | 6.01         | 131.04          |
| I      | 44.93                 | n.a. | 46.34     | 21.06 | 67.40     | 44.55 | 19.95           | 64.50 | 3.67      | n.a.  | 4.60      | 3.63 | 4.31         | 121.20          |
| II     | 31.93                 | n.a. | 33.41     | 21.41 | 54.82     | 29.49 | 20.02           | 49.51 | 5.02      | n.a.  | 6.13      | 4.75 | 5.60         | 113.70          |
| III    | 30.62                 | n.a. | 33.33     | 28.75 | 62.08     | 30.43 | 26.96           | 57.39 | 3.63      | n.a.  | 6.39      | 4.10 | 5.34         | 123.50          |
| IV     | 31.29                 | n.a. | 32.75     | 26.65 | 59.40     | 32.65 | 26.94           | 59.59 | 6.32      | n.a.  | 6.83      | 3.85 | 5.53         | 117.84          |
| V      | 29.73                 | n.a. | 32.96     | 13.60 | 46.56     | 30.97 | 15.32           | 46.29 | 5.58      | n.a.  | 6.98      | 4.99 | 6.39         | 109.65          |
| VI     | 47.69                 | n.a. | 51.96     | 13.16 | 63.12     | 45.01 | 12.37           | 57.88 | 5.32      | n.a.  | 6.97      | 3.82 | 6.31         | 104.56          |
| VII    | 20.48                 | n.a. | 20.57     | 21.78 | 42.35     | 24.36 | 23.97           | 48.33 | 4.73      | n.a.  | 6.88      | 4.69 | 5.80         | 112.55          |
| VIII   | 28.87                 | n.a. | 28.64     | 8.96  | 37.60     | 30.79 | 9.85            | 40.65 | 5.97      | n.a.  | 11.51     | 5.52 | 10.18        | 102.56          |
| IX     | 26.08                 | n.a. | 26.92     | 10.17 | 37.09     | 27.48 | 10.89           | 38.37 | 5.25      | n.a.  | 7.29      | 5.58 | 6.84         | 113.62          |
| X      | 32.16                 | n.a. | 32.01     | 19.38 | 51.39     | 30.82 | 19.70           | 50.52 | 5.48      | n.a.  | 8.12      | 5.60 | 7.20         | 112.38          |
| X I    | 30.50                 | n.a. | 31.57     | 16.45 | 48.02     | 33.61 | 18.78           | 52.39 | 6.20      | n.a.  | 7.35      | 4.70 | 6.45         | 109.38          |
| X II   | 30.93                 | n.a. | 33.68     | 15.12 | 48.80     | 30.17 | 15.87           | 46.05 | 11.40     | n.a.  | 6.80      | 5.47 | 6.39         | 115.26          |
| Nation | 33.54                 | n.a. | 34.98     | 20.74 | 55.72     | 33.82 | 20.89           | 54.71 | 6.04      | n.a.  | 7.27      | 4.35 | 6.21         | 116.24          |

| Region | Participation Rate(%) |      |           |       |           |       | Dropout Rate(%) |       |           |       |           |     | NCEE Results |                 |     |       |
|--------|-----------------------|------|-----------|-------|-----------|-------|-----------------|-------|-----------|-------|-----------|-----|--------------|-----------------|-----|-------|
|        | 1988-1989             |      | 1989-1990 |       | 1990-1991 |       | 1988-1989       |       | 1989-1990 |       | 1990-1991 |     | Region 1991  |                 |     |       |
|        | Nat'l                 | Prt  | Nat'l     | Prt   | Total     | Nat'l | Prt             | Nat'l | Prt       | Total | Nat'l     | Prt | Total        | (Average Score) |     |       |
| NCR    | 86.69                 | n.a. | 84.62     | 93.00 | 88.09     | 78.86 | 81.05           | 79.78 | 3.164     | n.a.  | 3.079     | 976 | 1,598        | 3,239           | 956 | 1,622 |
| CAR    | 75.96                 | n.a. | 71.62     | 82.47 | 76.20     | 69.06 | 81.25           | 74.17 | 417       | n.a.  | 454       | 423 | 440          | 473             | 436 | 457   |
| I      | 81.72                 | n.a. | 83.58     | 83.94 | 83.69     | 85.41 | 82.41           | 84.46 | 499       | n.a.  | 531       | 507 | 524          | 559             | 511 | 544   |
| II     | 76.47                 | n.a. | 73.94     | 81.01 | 76.09     | 72.55 | 78.97           | 75.07 | 601       | n.a.  | 712       | 613 | 670          | 733             | 645 | 696   |
| III    | 69.81                 | n.a. | 78.98     | 78.08 | 78.52     | 78.34 | 74.95           | 76.65 | 769       | n.a.  | 848       | 980 | 904          | 857             | 986 | 911   |
| IV     | 73.91                 | n.a. | 79.29     | 80.40 | 79.81     | 79.69 | 78.44           | 79.11 | 606       | n.a.  | 676       | 729 | 698          | 703             | 760 | 726   |
| V      | 59.08                 | n.a. | 68.95     | 89.83 | 74.62     | 66.40 | 80.88           | 70.62 | 523       | n.a.  | 610       | 545 | 589          | 585             | 568 | 579   |
| VI     | 76.75                 | n.a. | 89.02     | 86.47 | 88.42     | 89.82 | 81.85           | 87.84 | 774       | n.a.  | 857       | 577 | 778          | 863             | 582 | 783   |
| VII    | 79.30                 | n.a. | 60.98     | 81.21 | 70.72     | 63.92 | 78.56           | 70.76 | 559       | n.a.  | 626       | 736 | 676          | 687             | 766 | 723   |
| VIII   | 67.42                 | n.a. | 61.44     | 81.41 | 65.43     | 63.76 | 80.00           | 67.16 | 470       | n.a.  | 486       | 539 | 497          | 494             | 563 | 508   |
| IX     | 71.68                 | n.a. | 73.39     | 76.31 | 74.26     | 64.07 | 77.78           | 67.67 | 600       | n.a.  | 653       | 564 | 628          | 597             | 587 | 594   |
| X      | 72.94                 | n.a. | 71.33     | 84.41 | 76.17     | 66.27 | 78.29           | 70.52 | 564       | n.a.  | 589       | 491 | 549          | 590             | 503 | 554   |
| X I    | 58.54                 | n.a. | 72.60     | 73.15 | 72.82     | 69.55 | 74.53           | 71.28 | 767       | n.a.  | 893       | 544 | 733          | 928             | 552 | 753   |
| X II   | 57.90                 | n.a. | 74.84     | 86.18 | 78.63     | 74.91 | 79.31           | 76.42 | 558       | n.a.  | 744       | 518 | 656          | 657             | 511 | 601   |
| Nation | 73.57                 | n.a. | 76.65     | 82.95 | 79.05     | 74.97 | 78.79           | 76.41 | 679       | n.a.  | 748       | 671 | 718          | 755             | 682 | 727   |

Source: DECS Statistical Bulletin 1988-1989, 1989-1990, 1990-1991

Objective Regions

| Region | Cohort Survival Rate(%) |      |           |       |           |       | Average Number of Students per One School |       |           |       |           |     |       |       |     |       |
|--------|-------------------------|------|-----------|-------|-----------|-------|---|-------|-----------|-------|-----------|-----|-------|-------|-----|-------|
|        | 1988-1989               |      | 1989-1990 |       | 1990-1991 |       | 1988-1989                                 |       | 1989-1990 |       | 1990-1991 |     |       |       |     |       |
|        | Nat'l                   | Prt  | Nat'l     | Prt   | Total     | Nat'l | Prt                                       | Nat'l | Prt       | Total | Nat'l     | Prt | Total |       |     |       |
| NCR    | 86.69                   | n.a. | 84.62     | 93.00 | 88.09     | 78.86 | 81.05                                     | 79.78 | 3,164     | n.a.  | 3,079     | 976 | 1,598 | 3,239 | 956 | 1,622 |
| CAR    | 75.96                   | n.a. | 71.62     | 82.47 | 76.20     | 69.06 | 81.25                                     | 74.17 | 417       | n.a.  | 454       | 423 | 440   | 473   | 436 | 457   |
| I      | 81.72                   | n.a. | 83.58     | 83.94 | 83.69     | 85.41 | 82.41                                     | 84.46 | 499       | n.a.  | 531       | 507 | 524   | 559   | 511 | 544   |
| II     | 76.47                   | n.a. | 73.94     | 81.01 | 76.09     | 72.55 | 78.97                                     | 75.07 | 601       | n.a.  | 712       | 613 | 670   | 733   | 645 | 696   |
| III    | 69.81                   | n.a. | 78.98     | 78.08 | 78.52     | 78.34 | 74.95                                     | 76.65 | 769       | n.a.  | 848       | 980 | 904   | 857   | 986 | 911   |
| IV     | 73.91                   | n.a. | 79.29     | 80.40 | 79.81     | 79.69 | 78.44                                     | 79.11 | 606       | n.a.  | 676       | 729 | 698   | 703   | 760 | 726   |
| V      | 59.08                   | n.a. | 68.95     | 89.83 | 74.62     | 66.40 | 80.88                                     | 70.62 | 523       | n.a.  | 610       | 545 | 589   | 585   | 568 | 579   |
| VI     | 76.75                   | n.a. | 89.02     | 86.47 | 88.42     | 89.82 | 81.85                                     | 87.84 | 774       | n.a.  | 857       | 577 | 778   | 863   | 582 | 783   |
| VII    | 79.30                   | n.a. | 60.98     | 81.21 | 70.72     | 63.92 | 78.56                                     | 70.76 | 559       | n.a.  | 626       | 736 | 676   | 687   | 766 | 723   |
| VIII   | 67.42                   | n.a. | 61.44     | 81.41 | 65.43     | 63.76 | 80.00                                     | 67.16 | 470       | n.a.  | 486       | 539 | 497   | 494   | 563 | 508   |
| IX     | 71.68                   | n.a. | 73.39     | 76.31 | 74.26     | 64.07 | 77.78                                     | 67.67 | 600       | n.a.  | 653       | 564 | 628   | 597   | 587 | 594   |
| X      | 72.94                   | n.a. | 71.33     | 84.41 | 76.17     | 66.27 | 78.29                                     | 70.52 | 564       | n.a.  | 589       | 491 | 549   | 590   | 503 | 554   |
| X I    | 58.54                   | n.a. | 72.60     | 73.15 | 72.82     | 69.55 | 74.53                                     | 71.28 | 767       | n.a.  | 893       | 544 | 733   | 928   | 552 | 753   |
| X II   | 57.90                   | n.a. | 74.84     | 86.18 | 78.63     | 74.91 | 79.31                                     | 76.42 | 558       | n.a.  | 744       | 518 | 656   | 657   | 511 | 601   |
| Nation | 73.57                   | n.a. | 76.65     | 82.95 | 79.05     | 74.97 | 78.79                                     | 76.41 | 679       | n.a.  | 748       | 671 | 718   | 755   | 682 | 727   |

**I.11 Each Number of Schools, Students and Teachers in Each Region**

| Region | 1988-1989       |                  |                  | 1989-1990 |         |       | 1990-1991 |           |           |        |         |         |
|--------|-----------------|------------------|------------------|-----------|---------|-------|-----------|-----------|-----------|--------|---------|---------|
|        | School<br>nat'l | Student<br>nat'l | Teacher<br>nat'l | nat'l     | private | total | nat'l     | private   | total     | nat'l  | private | total   |
| NCR    | 98              | 310,112          | 11,706           | 105       | 250     | 355   | 323,251   | 243,936   | 567,187   | 12,016 | 8,181   | 20,197  |
| CAR    | 94              | 39,240           | 1,265            | 96        | 79      | 175   | 43,624    | 33,396    | 77,020    | 1,639  | 1,105   | 2,744   |
| I      | 352             | 175,780          | 4,650            | 360       | 163     | 523   | 191,286   | 82,676    | 273,962   | 5,973  | 2,437   | 8,410   |
| II     | 122             | 73,293           | 2,499            | 127       | 93      | 220   | 90,404    | 57,030    | 147,434   | 2,863  | 992     | 3,855   |
| III    | 253             | 194,550          | 5,933            | 265       | 196     | 461   | 224,671   | 191,990   | 416,661   | 6,154  | 4,647   | 10,801  |
| IV     | 463             | 280,601          | 8,914            | 467       | 334     | 801   | 315,360   | 243,635   | 559,495   | 9,548  | 6,322   | 16,070  |
| V      | 292             | 152,732          | 4,580            | 310       | 146     | 456   | 189,239   | 79,505    | 268,744   | 4,951  | 2,283   | 7,234   |
| VI     | 363             | 281,132          | 8,804            | 377       | 149     | 526   | 323,267   | 85,956    | 409,223   | 9,409  | 2,455   | 11,864  |
| VII    | 203             | 113,455          | 1,669            | 206       | 169     | 375   | 128,968   | 124,375   | 253,343   | 3,481  | 3,149   | 6,630   |
| VIII   | 280             | 131,535          | 3,900            | 283       | 73      | 356   | 137,464   | 39,314    | 176,778   | 4,323  | 1,240   | 5,563   |
| IX     | 169             | 101,409          | 2,860            | 174       | 71      | 245   | 113,705   | 40,044    | 153,749   | 3,098  | 1,003   | 4,101   |
| X      | 233             | 131,340          | 3,589            | 232       | 161     | 393   | 136,754   | 78,998    | 215,752   | 4,112  | 2,286   | 6,398   |
| X I    | 206             | 158,081          | 4,713            | 194       | 164     | 358   | 173,321   | 89,177    | 262,498   | 5,207  | 1,959   | 7,166   |
| X II   | 164             | 91,559           | 2,860            | 168       | 106     | 274   | 124,915   | 54,878    | 179,793   | 3,176  | 1,463   | 4,639   |
| Total  | 3,292           | 2,234,819        | 67,942           | 3,364     | 2,154   | 5,518 | 2,516,729 | 1,444,910 | 3,961,639 | 75,950 | 39,722  | 115,672 |

| Region | 1988-1989       |                  |                  | 1989-1990 |         |       | 1990-1991 |           |           |        |         |         |
|--------|-----------------|------------------|------------------|-----------|---------|-------|-----------|-----------|-----------|--------|---------|---------|
|        | School<br>nat'l | Student<br>nat'l | Teacher<br>nat'l | nat'l     | private | total | nat'l     | private   | total     | nat'l  | private | total   |
| NCR    | 101             | 245              | 346              | 101       | 245     | 346   | 327,129   | 234,180   | 561,309   | 12,177 | 7,862   | 20,039  |
| CAR    | 97              | 79               | 176              | 97        | 79      | 176   | 45,881    | 34,471    | 80,352    | 1,766  | 1,125   | 2,891   |
| I      | 354             | 161              | 515              | 354       | 161     | 515   | 198,003   | 82,271    | 280,274   | 6,351  | 2,370   | 8,721   |
| II     | 127             | 91               | 218              | 127       | 91      | 218   | 93,148    | 58,672    | 151,820   | 3,304  | 1,572   | 4,876   |
| III    | 273             | 195              | 468              | 273       | 195     | 468   | 234,024   | 192,366   | 426,390   | 6,583  | 4,627   | 11,210  |
| IV     | 473             | 335              | 808              | 473       | 335     | 808   | 332,482   | 254,470   | 586,952   | 10,649 | 6,814   | 17,463  |
| V      | 313             | 148              | 461              | 313       | 148     | 461   | 183,046   | 84,054    | 267,100   | 5,632  | 2,356   | 7,988   |
| VI     | 374             | 147              | 521              | 374       | 147     | 521   | 322,603   | 85,545    | 408,148   | 9,724  | 2,376   | 12,100  |
| VII    | 205             | 168              | 373              | 205       | 168     | 373   | 140,912   | 128,644   | 269,556   | 3,951  | 3,228   | 7,179   |
| VIII   | 284             | 74               | 358              | 284       | 74      | 358   | 140,281   | 41,656    | 181,937   | 4,536  | 1,124   | 5,660   |
| IX     | 190             | 71               | 261              | 190       | 71      | 261   | 113,381   | 41,679    | 155,060   | 3,327  | 1,088   | 4,415   |
| X      | 236             | 164              | 400              | 236       | 164     | 400   | 139,193   | 82,566    | 221,759   | 4,314  | 2,228   | 6,542   |
| X I    | 195             | 170              | 365              | 195       | 170     | 365   | 180,915   | 93,792    | 274,707   | 5,304  | 2,783   | 8,087   |
| X II   | 172             | 108              | 280              | 172       | 108     | 280   | 113,047   | 55,186    | 168,233   | 3,925  | 1,592   | 5,517   |
| Total  | 3,394           | 2,156            | 5,550            | 3,394     | 2,156   | 5,550 | 2,564,045 | 1,469,552 | 4,033,597 | 81,543 | 41,145  | 122,688 |

Source :  
DECS Statistical Bulletin  
1988-1989, 1989-1990 AA  
1990-1991

Objective Regions

### 1.12 Requested Secondary Schools

#### REGION II (Cagayan Valley)

|                      | Name of School                 | District        | Enrolment (SY1990-1991) |        |        |        |        | No. of Teacher | 1992 Budget (P1,000) | Facility Available |     |    | Utility |      |
|----------------------|--------------------------------|-----------------|-------------------------|--------|--------|--------|--------|----------------|----------------------|--------------------|-----|----|---------|------|
|                      |                                |                 | Total                   | 1st YR | 2nd YR | 3rd YR | 4th YR |                |                      | CR                 | LAB | WS | Water   | Elec |
| <b>CAGAYAN</b>       |                                |                 |                         |        |        |        |        |                |                      |                    |     |    |         |      |
| 1                    | Baggao High School             | Baggao          | 795                     | 317    | 202    | 139    | 137    | 1,268          | 9                    | 1                  | NDA | +  | +       |      |
| 2                    | Cataoagan Dackel High School   | Gattaran        | 519                     | 160    | 157    | 110    | 92     | 1,097          | 9                    | 1                  | NDA | +  | +       |      |
| 3                    | Camasi High School             | Penablanca      | 939                     | 274    | 221    | 257    | 187    | 1,662          | 17                   | 1                  | 1   | +  | +       |      |
| 4                    | Ballesteros High School        | Ballesteros     | 400                     | 141    | 127    | 116    | 16     | 373            | 4                    | 1                  | 1   | +  | +       |      |
| <b>ISABERA</b>       |                                |                 |                         |        |        |        |        |                |                      |                    |     |    |         |      |
| 5                    | Mabini High School             | Gamu            | 265                     | 76     | 80     | 59     | 50     | 737            | 7                    | 1                  | NDA | +  | +       |      |
| 6                    | Callang High School            | San Miguel      | 723                     | 244    | 205    | 163    | 111    | 1,301          | 10                   | 1                  | NDA | +  | +       |      |
| 7                    | Don Mariano Marcos High School | Echaque         | 849                     | 277    | 251    | 171    | 150    | 1,972          | 6                    | 1                  | 1   | +  | +       |      |
| 8                    | Sta. Maria High School         | Sta. Maria      | 819                     | 215    | 223    | 220    | 161    | 431            | 12                   | 1                  | NDA | +  | +       |      |
| 9                    | Benito Soliven High School     | B. Soliven      | 626                     | 188    | 171    | 152    | 115    | 1,484          | 10                   | 1                  | 1   | +  | +       |      |
| 10                   | Ramon National High School     | Ramon           | 864                     | 271    | 241    | 184    | 168    | 2,055          | 9                    | 1                  | 1   | +  | +       |      |
| 11                   | Highway Region High School     | Echaque         | 233                     | 81     | 45     | 72     | 35     | 555            | 3                    | 1                  | 1   | +  | +       |      |
| <b>NUEVA VIZCAYA</b> |                                |                 |                         |        |        |        |        |                |                      |                    |     |    |         |      |
| 12                   | Bintawan national High School  | Villaverde      | 689                     | 204    | 195    | 152    | 138    | 2,069          | 9                    | 1                  | NDA | +  | +       |      |
| 13                   | Uddiawan National High School  | Solano          | 305                     | 106    | 82     | 63     | 54     | 1,714          | 6                    | 1                  | NDA | +  | +       |      |
| 14                   | Lamo National High School      | Dupax del Norte | 613                     | 165    | 154    | 171    | 123    | 2,116          | 10                   | 1                  | NDA | +  | +       |      |
| 15                   | Diadi National High School     | Diadi           | 616                     | 213    | 176    | 131    | 96     | 2,079          | 15                   | 1                  | 1   | +  | +       |      |
| 16                   | Paniki High School             | Bagabag         | 297                     | 88     | 71     | 69     | 69     | n.a.           | 8                    | 1                  | 1   | +  | +       |      |
| 17                   | Murong Barangay High School    | Bagabag         | 301                     | 80     | 79     | 46     | 96     | n.a.           | 8                    | 1                  | 1   | +  | +       |      |
| <b>QUIRINO</b>       |                                |                 |                         |        |        |        |        |                |                      |                    |     |    |         |      |
| 18                   | Saguday National High School   | Saguday         | 739                     | 214    | 200    | 167    | 158    | 2,152          | 12                   | 1                  | 1   | +  | +       |      |



## REGION IV (Southern Tagalog)

(2 of 2)

|                    | Name of School                       | District        | Enrolment (SY 1990-1991) |        |        |        |        | No. of Teacher | 1992 Budget (P1,000) | Facility Available |     |    | Utility |      |
|--------------------|--------------------------------------|-----------------|--------------------------|--------|--------|--------|--------|----------------|----------------------|--------------------|-----|----|---------|------|
|                    |                                      |                 | Total                    | 1st YR | 2nd YR | 3rd YR | 4th YR |                |                      | ICR                | LAB | WS | Water   | Elec |
| MARINDUQUE         |                                      |                 |                          |        |        |        |        |                |                      |                    |     |    |         |      |
| 91                 | Bangbang Barangay High School        | Gasan           | 545                      | 146    | 145    | 147    | 107    | 873            | 6                    | 1                  | 0   | +  | +       |      |
| 92                 | Matalaba Barangay High School        | South           | 365                      | 110    | 82     | 95     | 78     | 376            | 10                   | 1                  | 1   | +  | +       |      |
| 93                 | Tigwi Barangay High School           | Torrijos        | 320                      | 85     | 87     | 79     | 69     | 476            | 5                    | 1                  | 1   | +  | +       |      |
| 94                 | Tagum Barangay High School           | Sta. Cruz East  | 265                      | 60     | 61     | 70     | 74     | 574            | 10                   | 1                  | 1   | +  | +       |      |
| 95                 | Bognuyan Barangay High School        | GAsan           | 480                      | 144    | 130    | 108    | 98     | 808            | 6                    | 1                  | 1   | +  | +       |      |
| 96                 | Ipil Barangay High School            | Sta. Cruz East  | 271                      | 78     | 64     | 65     | 64     | 422            | 13                   | 0                  | 0   | +  | +       |      |
| 97                 | Argao Barangay High School           | Mogpog          | 229                      | 66     | 54     | 47     | 62     | 368            | 2                    | 1                  | 0   | +  | +       |      |
| 98                 | Cawit Barangay High School           | Boac South      | 260                      | 86     | 65     | 53     | 56     | 328            | 2                    | 0                  | 0   | +  | +       |      |
| PALAWAN            |                                      |                 |                          |        |        |        |        |                |                      |                    |     |    |         |      |
| 99                 | Sicsican Barangay High School        | Puerto Princesa | 245                      | 72     | 70     | 58     | 45     | 417            | 4                    | 1                  | 0   | +  | +       |      |
| 100                | Aborlan Barangay High School         | Aborlan         | 336                      | 111    | 98     | 80     | 47     | n.a.           | 4                    | 1                  | 0   | +  | +       |      |
| 101                | Palawan Barangay High School         | San Jose        | 404                      | NDA    | NDA    | NDA    | NDA    | n.a.           | 10                   | 1                  | 0   | +  | +       |      |
| 102                | Roxas N.C. High School               | Roxas           | 1,332                    | 452    | 336    | 329    | 215    | 3,645          | 17                   | 1                  | 3   | +  | +       |      |
| 103                | Bahili Barangay High School          | Puerto Princesa | 207                      | 62     | 59     | 43     | 43     | 325            | 4                    | 1                  | 0   | +  | +       |      |
| 104                | Bato Barangay High School            | Taytay          | 409                      | 133    | 118    | 80     | 78     | 742            | 5                    | 0                  | 1   | +  | +       |      |
| 105                | Abo-abo Barangay High School         | Brookes Point   | 253                      | 92     | 59     | 60     | 42     | 639            | 3                    | 0                  | 0   | +  | +       |      |
| 106                | San Vicente Barangay High School     | San Vicente     | 500                      | NDA    | NDA    | NDA    | NDA    | 704            | 9                    | 1                  | 1   | +  | +       |      |
| 107                | Caramay Barangay High School         | Roxas           | 325                      | 89     | 85     | 67     | 84     | 460            | 8                    | 1                  | 0   | +  | +       |      |
| ROMBLON            |                                      |                 |                          |        |        |        |        |                |                      |                    |     |    |         |      |
| 108                | Alcantara Barangay High School       | Tablas          | 467                      | 130    | 107    | 129    | 101    | 644            | 8                    | 1                  | 2   | +  | +       |      |
| 109                | Espana Barangay High School          | San Fernando    | 343                      | 100    | 90     | 77     | 76     | 551            | 12                   | 1                  | 3   | +  | +       |      |
| 110                | Agnipa Barangay High School          | Romblon         | 280                      | 85     | 75     | 60     | 60     | 365            | 6                    | 1                  | 0   | +  | +       |      |
| LIPA CITY          |                                      |                 |                          |        |        |        |        |                |                      |                    |     |    |         |      |
| 111                | Inosloban Maraway Barangay High Scho | Lipa City       | 1,094                    | 319    | 288    | 251    | 236    | 24             | 1,412                | 12                 | 0   | 0  | +       | +    |
| 112                | Sapak Barangay High School           | Lipa City       | 345                      | 103    | 83     | 76     | 83     | 10             | 381                  | 3                  | 1   | 1  | +       | +    |
| 113                | Anilao Barangay High School          | Lipa City       | 219                      | 68     | 73     | 46     | 32     | 7              | 331                  | 3                  | 1   | 1  | +       | +    |
| OCCIDENTAL MINDORO |                                      |                 |                          |        |        |        |        |                |                      |                    |     |    |         |      |
| 114                | Looc Municipal High School           | Looc            | 282                      | 68     | 65     | 84     | 65     | 488            | 5                    | 0                  | 0   | +  | +       |      |
| 115                | Baraban Barangay High School         | Sta. Cruz       | 238                      | 83     | 58     | 42     | 55     | 328            | 5                    | 0                  | 0   | +  | +       |      |
| 116                | Concepcion Barangay High School      | Calintaan       | 275                      | 94     | 76     | 68     | 37     | 281            | 4                    | 1                  | 0   | +  | +       |      |
| 117                | Tilik Barangay High School           | Lubang          | 242                      | 66     | 68     | 48     | 60     | 376            | 8                    | 1                  | 0   | +  | +       |      |
| 118                | Ligaya Barangay High School          | Sablayan        | 353                      | 122    | 89     | 77     | 65     | 372            | 6                    | 0                  | 0   | +  | +       |      |
| ORIENTAL MINDORO   |                                      |                 |                          |        |        |        |        |                |                      |                    |     |    |         |      |
| 119                | Quinabigan Barangay High School      | Pinamalayan     | 594                      | 186    | 183    | 124    | 101    | 18             | 889                  | 4                  | 1   | 0  | +       | +    |
| 120                | Dayhagan Barangay High School        | Bongabong       | 533                      | 146    | 153    | 118    | 116    | 11             | 576                  | 6                  | 7   | 1  | +       | +    |
| 121                | Bulbugan Barangay High School        | Gloria          | 625                      | 215    | 161    | 111    | 138    | 16             | 1,447                | 10                 | 1   | 1  | +       | +    |
| 122                | Barcenaga Barangay High School       | Naujan          | 1,141                    | 367    | 291    | 246    | 237    | 32             | 1,611                | 22                 | 1   | 1  | +       | +    |
| 123                | Alcadesma Barangay High School       | Bansud          | 400                      | 146    | 103    | 68     | 83     | 14             | 663                  | 8                  | 2   | 1  | +       | +    |
| 124                | Canubing BHS                         | Calapan West    | 706                      | 242    | 180    | 162    | 122    | 14             | n.a.                 | 5                  | 1   | 0  | +       | +    |
| SAN PABLO          |                                      |                 |                          |        |        |        |        |                |                      |                    |     |    |         |      |
| 125                | San Cristobal BHS                    | San Pablo City  | 256                      | 73     | 59     | 73     | 51     | 480            | 7                    | 0                  | 0   | +  | +       |      |



REGION VI (Western Visayas)

2 of 2

|     | Name of School                      | District        | Enrollment (SY 1990-1991) |        |        |        |        | No. of Teacher | 1992 Budget (Facility Available) |     |     |     | Utility |      |  |
|-----|-------------------------------------|-----------------|---------------------------|--------|--------|--------|--------|----------------|----------------------------------|-----|-----|-----|---------|------|--|
|     |                                     |                 | Total                     | 1st YR | 2nd YR | 3rd YR | 4th YR |                | (P1,000)                         | ICR | LAB | IWS | Water   | Elec |  |
|     | LA CARLOTA                          |                 |                           |        |        |        |        |                |                                  |     |     |     |         |      |  |
| 196 | Dona H. S. Benedicto Nat'l. H/S     | La Carlota      | 4,089                     | 1,081  | 978    | 1,053  | 977    | 142            | 11,023                           | 50  | 11  | 15  | +       | +    |  |
| 197 | La Granja Ext.                      | La Granja       | 627                       | 170    | 176    | 144    | 137    | 19             | n.a.                             | 13  | 0   | 0   | +       | +    |  |
|     | PAGO CITY                           |                 |                           |        |        |        |        |                |                                  |     |     |     |         |      |  |
| 198 | Ramon Torres National H/S           | Bago City       | 4,150                     | 1,179  | 1,086  | 1,033  | 852    | 134            | 14,662                           | 51  | 2   | 4   | +       | +    |  |
| 199 | Ramon Torres National H/S           | Taloc Ext.      | 382                       | 118    | 112    | 71     | 81     | 12             | n.a.                             | 10  | 2   | 3   | +       | +    |  |
| 200 | RTNHS-Sagasa Ext.                   | Bago City       | 629                       | 160    | 172    | 167    | 130    | 18             | n.a.                             | 8   | 1   | 1   | +       | +    |  |
|     | SILAY CITY                          |                 |                           |        |        |        |        |                |                                  |     |     |     |         |      |  |
| 201 | DMLMHS HPCo. Ext.                   | Silay City      | 302                       | 74     | 79     | 68     | 81     | 10             | n.a.                             | 8   | 0   | 0   | +       | +    |  |
| 202 | Guimbalaon Ext.                     | Silay City      | 453                       | 148    | 108    | 105    | 92     | 14             | n.a.                             | 10  | 0   | 0   | +       | +    |  |
|     | GUIMARAS                            |                 |                           |        |        |        |        |                |                                  |     |     |     |         |      |  |
| 203 | Buenavista Mun. High School         | New Poblacion   | 911                       | 224    | 220    | 220    | 247    | 22             | 1,225                            | 14  | 1   | 1   | +       | +    |  |
| 204 | Jordan National High School         | Poblacion       | 816                       | 240    | 185    | 181    | 210    | 24             | 1,150                            | 11  | 2   | 0   | +       | +    |  |
| 205 | Trinidad V. C. Sta Teresa Newly H/S | Sia Teresa      | 766                       | 256    | 192    | 169    | 149    | 20             | 1,018                            | 15  | 1   | 3   | +       | +    |  |
| 206 | Cetullo Newly NHS                   | Buenavista      | 204                       | 73     | 38     | 57     | 36     | 7              | 539                              | 4   | 1   | 1   | +       | +    |  |
| 207 | East Valencia Newly NHS             | Buenavista      | 312                       | 107    | 73     | 57     | 75     | 12             | 643                              | 6   | 1   | 1   | +       | +    |  |
| 208 | Liningwan Newly NHS                 | Jordan          | 493                       | 161    | 129    | 115    | 88     | 8              | 722                              | 10  | 1   | 0   | +       | +    |  |
| 209 | Salvacion Newly NHS                 | Nueva Valencia  | 484                       | 151    | 109    | 131    | 93     | 15             | 814                              | 9   | 1   | 0   | +       | +    |  |
|     | BACOLODO CITY                       |                 |                           |        |        |        |        |                |                                  |     |     |     |         |      |  |
| 210 | Doningo Lacson National H/S         | Bacolod City    | 3,814                     | 1,181  | 1,023  | 877    | 796    | 117            | 8,801                            | 50  | 4   | 2   | +       | +    |  |
| 211 | Luisa Medel High School             | Bacolod City    | 1,308                     | 351    | 343    | 332    | 282    | 55             | 3,028                            | 15  | 2   | 2   | +       | +    |  |
| 212 | Luis Hervisa National H/S           | Bacolod City    | 1,406                     | 416    | 355    | 338    | 297    | 51             | 3,640                            | 15  | 2   | 1   | +       | +    |  |
| 213 | Brgy. Singkang Airport NH/S         | Bacolod City    | 1,198                     | 391    | 289    | 305    | 213    | 40             | 2,462                            | 13  | 2   | 2   | +       | +    |  |
| 214 | Bata High School                    | Bacolod City    | 1,667                     | 480    | 426    | 425    | 336    | 65             | 3,450                            | 14  | 2   | 2   | +       | +    |  |
|     | CADIZ CITY                          |                 |                           |        |        |        |        |                |                                  |     |     |     |         |      |  |
| 215 | Dr. Vicente Gustilo Mem. H/S        | Cadiz City      | 3,939                     | 1,149  | 1,023  | 909    | 858    | 127            | 8,808                            | 60  | 1   | 3   | +       | +    |  |
| 216 | Cadiz Viejo Barangay H/S            | Cadiz Viejo     | 431                       | 134    | 119    | 98     | 80     | 16             | 1,075                            | 10  | 0   | 0   | +       | +    |  |
| 217 | Caduhaan Barangay High School       | Bgy. Caduhaan   | 689                       | 207    | 183    | 158    | 141    | 25             | 1,744                            | 16  | 0   | 0   | +       | +    |  |
| 218 | Tiglawigan Barangay High School     | Bgy. Tiglawigan | 553                       | 166    | 148    | 125    | 114    | 9              | 1,185                            | 10  | 2   | 2   | +       | +    |  |
| 219 | Villacin National H/S               | Cadiz City      | 562                       | 169    | 127    | 142    | 124    | 20             | 1,120                            | 10  | 1   | 1   | +       | +    |  |

## REGION X (Northern Mindanao)

|     | Name of School                 | District          | Enrollment (SY 1990-1991) |        |        |        |        | No. of Teacher | 1992 Budget (Facility Available) |     |     | Utility |       |      |
|-----|--------------------------------|-------------------|---------------------------|--------|--------|--------|--------|----------------|----------------------------------|-----|-----|---------|-------|------|
|     |                                |                   | Total                     | 1st YR | 2nd YR | 3rd YR | 4th YR |                | (P1,000)                         | ICR | LAB | WS      | Water | Elec |
|     | AGUSAN DEL NORTE               |                   |                           |        |        |        |        |                |                                  |     |     |         |       |      |
| 220 | Jaliobong National High School | Jaliobong         | 317                       | 111    | 80     | 63     | 63     | 9              | 368                              | 8   | 1   | 1       | +     | +    |
| 221 | Carmen Municipal High School   | Carmen            | 507                       | 157    | 147    | 100    | 103    | 15             | 898                              | 8   | 1   | 1       | +     | +    |
|     | AGUSAN DEL SUR                 |                   |                           |        |        |        |        |                |                                  |     |     |         |       |      |
| 222 | Sibagat Mun. High School       | Sibagat           | 592                       | 223    | 146    | 119    | 104    | 19             | 935                              | 10  | 1   | 1       | +     | +    |
| 223 | Bayugan Mun. High School       | Bayugan           | 1,572                     | 487    | 412    | 355    | 318    | 47             | 2,697                            | 26  | 1   | 1       | +     | +    |
|     | SURIGAO DEL NORTE              |                   |                           |        |        |        |        |                |                                  |     |     |         |       |      |
| 224 | Sta. Cruz Barangay High School | Placer            | 546                       | 155    | 146    | 121    | 124    |                | 688                              | 8   | 1   | 1       | +     | +    |
| 225 | Matin-ao Barangay High School  | Mainit            | 408                       | 146    | 116    | 80     | 66     |                | 520                              | 6   | 1   | 1       | +     | +    |
| 226 | Balite Barangay High School    | San Francisco     | 300                       | 89     | 82     | 67     | 62     |                | 374                              | 5   | 1   | 1       | +     | +    |
| 227 | Timamana Barangay High School  | Tubod             | 204                       | 68     | 57     | 31     | 48     |                | 356                              | 4   | 1   | 1       | +     | +    |
| 228 | Masgad Barangay High School    | Malimono          | 197                       | 64     | 53     | 45     | 35     |                | 356                              | 4   | 1   | 1       | +     | +    |
| 229 | Canapoy Barangay High School   | Malimono          | 217                       | 94     | 53     | 40     | 30     |                | 306                              | 6   | 1   | 1       | +     | +    |
| 230 | Campo Barangay High School     | Bacuag            | 572                       | 164    | 163    | 125    | 120    |                | 688                              | 12  | 1   | 1       | +     | +    |
| 231 | Albor M. High School           | Cadiano           | 593                       | 222    | 158    | 119    | 94     | 15             | 656                              | 4   | 2   | 1       | +     | +    |
| 232 | Tag-abaca HS                   | Basilisa          | 367                       | 132    | 87     | 84     | 64     | 10             | 323                              | 1   | 0   | 1       | +     | +    |
|     | SURIGAO CITY                   |                   |                           |        |        |        |        |                |                                  |     |     |         |       |      |
| 233 | Ipil Barangay High School      | Surigao City      | 356                       | 118    | 95     | 86     | 57     | 9              | 478                              | 6   | 1   | 1       | +     | +    |
| 234 | San Juan Barangay High School  | Surigao City      | 270                       | 107    | 79     | 44     | 40     | 7              | 72                               | 4   | 1   | 0       | +     | +    |
|     | CAGAYAN DE ORO CITY            |                   |                           |        |        |        |        |                |                                  |     |     |         |       |      |
| 235 | Lapasan BHS                    | Cagayan de Oro Ct | 679                       | 281    | 163    | 120    | 115    | 22             | 959                              | 2   | 1   | 1       | +     | +    |
| 236 | Agusan NNHS                    | Agusan            | 599                       | 184    | 148    | 157    | 110    | 19             | 859                              | 9   | 1   | 1       | +     | +    |
|     | BUTUAN CITY                    |                   |                           |        |        |        |        |                |                                  |     |     |         |       |      |
| 237 | Banza Barangay High School     | Butuan City       | 461                       | 167    | 121    | 91     | 82     | 17             | 653                              | 7   | 1   | 1       | +     | +    |
|     | BUKIDNON                       |                   |                           |        |        |        |        |                |                                  |     |     |         |       |      |
| 238 | Libonan Mun. HS                | Libonan           | 1,490                     | NDA    | NDA    | NDA    | NDA    |                | 1,984                            | 15  | 0   | 1       | +     | +    |
| 239 | Malitbog Nationalized HS       | Malitbog          | 232                       | NDA    | NDA    | NDA    | NDA    |                | 173                              | 4   | 0   | 0       | +     | +    |

Remarks 1 : Secondary schools attached to primary schools are no class room in column of class room.

Remarks 2 : Secondary school of n.a. in column of 1992 budget belongs to other educational institutions or mother secondary school on budget.



### 1.13 Classification List of Group of School

REGION II (Cagayan Valley)

| SCHOOL                           | DISTRICT         | GROUP OF SCHOOL |          |          |          |
|----------------------------------|------------------|-----------------|----------|----------|----------|
|                                  |                  | Bs+Bt           | Bs+At    | As+Bt    | As+At    |
| <b>CAGAYAN</b>                   |                  |                 |          |          |          |
| 1 Baggao High School             | Baggao           | ○               |          |          |          |
| 2 Calaoagan Dackel High School   | Gattaran         | ○               |          |          |          |
| 3 Camasi High School             | Penablanca       | ○               |          |          |          |
| 4 Ballesteros High School        | Ballesteros      | ○               |          |          |          |
| <b>ISABERA</b>                   |                  |                 |          |          |          |
| 5 Mabini High School             | Gamu             | ○               |          |          |          |
| 6 Callang High School            | San Miguel       | ○               |          |          |          |
| 7 Don Mariano Marcos High School | Echaque          | ○               |          |          |          |
| 8 Sta. Maria High School         | Sta. Maria       | ○               |          |          |          |
| 9 Benito Soliven High School     | B. Soliven       | ○               |          |          |          |
| 10 Ramon National High School    | Ramon            | ○               |          |          |          |
| 11 Highway Region High School    | Echaque          | ○               |          |          |          |
| <b>NUEVA VIZCAYA</b>             |                  |                 |          |          |          |
| 12 Bintawan national High School | Villaverde       | ○               |          |          |          |
| 13 Uddiawan National High School | Solano           | ○               |          |          |          |
| 14 Lamo National High School     | Dupaxz del Norte | ○               |          |          |          |
| 15 Diadi National High School    | Diadi            | ○               |          |          |          |
| 16 Paniki High School            | Bagabag          | ○               |          |          |          |
| 17 Murong Barangay High School   | Bagabag          | ○               |          |          |          |
| <b>QUIRINO</b>                   |                  |                 |          |          |          |
| 18 Saguday National High School  | Saguday          | ○               |          |          |          |
| <b>SUB TOTAL</b>                 |                  | <b>18</b>       | <b>0</b> | <b>0</b> | <b>0</b> |

## REGION IV (Southern Tagalog)

(1 of 2)

|    | SCHOOL                                  | DISTRICT        | GROUP OF SCHOOL |       |       |       |
|----|---|-----------------|-----------------|-------|-------|-------|
|    |   |                 | Bs+Bt           | Bs+At | As+Bt | As+At |
|    | RIZAL                                   |                 |                 |       |       |       |
| 19 | Malaya Barangay High School             | Pililla         |                 | ○     |       |       |
| 20 | F.P. Felix Municipal High School        | Cainta          | ○               |       |       |       |
| 21 | Antipolo Minicipal High School          | Antipolo        | ○               |       |       |       |
| 22 | Quisao Barangay High School             | Pililla         |                 | ○     |       |       |
| 23 | Tuna Balibago High School               | Cardona         | ○               |       |       |       |
| 24 | San Mateo Barangay High School          | San Mateo       |                 |       | ○     |       |
|    | LAGUNA                                  |                 |                 |       |       |       |
| 25 | Lingga Barangay High School             | Calamba East    | ○               |       |       |       |
| 26 | Masapang Barangay High School           | Victoria        |                 | ○     |       |       |
| 27 | Dayap Barangay High School              | Dayap           |                 | ○     |       |       |
| 28 | Pulong Sta. Cruz Barangay HS            | Calamba         |                 |       |       | ○     |
| 29 | Kabulusan Barangay High School          | Kabulusan       | ○               |       |       |       |
| 30 | Los Banos Barangay High School          | Los banos       | ○               |       |       |       |
| 31 | Calamba Barangay High School            | Calamba         | ○               |       |       |       |
| 32 | Camp Vicente Lim Barangay High School   | Canlubang       | ○               |       |       |       |
| 33 | Canlubang Barangay High School          | Canlubang       | ○               |       |       |       |
| 34 | Bukal Barangay High School              | Liliw           | ○               |       |       |       |
| 35 | Aplaya Barangay High School             | Sta Rosa        | ○               |       |       |       |
| 36 | Famy Barangay High School               | Famy            | ○               |       |       |       |
| 37 | San Juan Barangay High School           | Kalayaan        | ○               |       |       |       |
| 38 | Sampaguita Village Barangay High School | San Pedro       | ○               |       |       |       |
|    | BATANGAS                                |                 |                 |       |       |       |
| 39 | Laiya Barangay High School              | San Juan        |                 | ○     |       |       |
| 40 | P. Paterno Memorial High School         | Calaca          |                 | ○     |       |       |
| 41 | Lumbangan Barangay High School          | Nasugbu         | ○               |       |       |       |
| 42 | Wenceslao Trinidad Memorial HS          | Laurel          | ○               |       |       |       |
| 43 | Maabud Barangay High School             | San Nicolas     |                 | ○     |       |       |
| 44 | San Pedro Barangay High School          | Sto. Tomas      |                 | ○     |       |       |
| 45 | Sta. Clara Barangay High School         | Sto. Tomas      |                 | ○     |       |       |
| 46 | Luksuhin Barangay High School           | Calatagan       |                 | ○     |       |       |
| 47 | San Vicente Manalumpang BHS             | Tuy             |                 |       | ○     |       |
| 48 | Bilaran Barangay High School            | Nasugbu         |                 | ○     |       |       |
| 49 | Banilad Barangay High School            | Nasugbu         |                 | ○     |       |       |
| 50 | Bayorbor Barangay High School           | Mataas na Kahoy | ○               |       |       |       |
| 51 | Tinurik Barangay High School            | Tanauan         | ○               |       |       |       |
| 52 | Boot Barangay High School               | Nasugbu         |                 |       |       | ○     |
| 53 | Cahil Barangay High School              | Mataas na Kahoy |                 |       |       | ○     |
| 54 | Sta Anastacia Barangay High School      | Tanauan         |                 |       |       | ○     |
|    | BATANGA CITY                            |                 |                 |       |       |       |
| 55 | Tabangao BHS                            | Batangasu City  |                 | ○     |       |       |
| 56 | Sto. Nino Barangay High School          | Batangasu City  |                 |       |       | ○     |
| 57 | Conde Labac HS                          | Batangasu City  |                 |       |       | ○     |
| 58 | Banaba West                             | Batangasu City  | ○               |       |       |       |
|    | CAVITE                                  |                 |                 |       |       |       |
| 59 | Caluangan Barangay High School          | Magallances     |                 | ○     |       |       |
| 60 | Kaong Barangay High School              | Silang          |                 | ○     |       |       |
| 61 | Ligtong Barangay High School            | Rosario         | ○               |       |       |       |
| 62 | Cavite Provincial Science HS            | Maragondon      |                 | ○     |       |       |
| 63 | Lumil Barangay High School              | Silang          |                 | ○     |       |       |
| 64 | Dasmariñas Relocation School-Annex      | Dasmariñas      | ○               |       |       |       |
| 65 | Palocpoc BHS                            | Mendez          | ○               |       |       |       |
| 66 | Alfonso M. High School                  | Alfonso         | ○               |       |       |       |
| 67 | Halang Banay-Banay BHS                  | Amadeo          | ○               |       |       |       |
| 68 | Pangil BHS                              | Amadeo          | ○               |       |       |       |
| 69 | Maragondon Mun. HS                      | Maragondon      | ○               |       |       |       |
| 70 | Tagaytay City                           | Tagaytay        | ○               |       |       |       |
| 71 | General Vito Belarnioc BHS              | Silang          | ○               |       |       |       |
| 72 | Munting Ilog BHS                        | Silang          | ○               |       |       |       |
|    | SUB TOTAL                               |                 | 29              | 17    | 2     | 6     |

## REGION IV (Southern Tagalog)

(2 of 2)

|     | SCHOOL                                 | DISTRICT        | SCHOOL OF GROUP |       |       |       |
|-----|--|-----------------|-----------------|-------|-------|-------|
|     |  |                 | Bs+Bt           | Bs+At | As+Bt | As+At |
|     | QUEZON                                 |                 |                 |       |       |       |
| 73  | Concepcion Barangay High School        | Plaridel        | ○               |       |       |       |
| 74  | Infanta Prov'l High School             | Infanta         |                 | ○     |       |       |
| 75  | Camohaguin Barangay High School        | Gumaca          |                 | ○     |       |       |
| 76  | Talipan Barangay High School           | Pagbilao        |                 | ○     |       |       |
| 77  | Palisa Barangay High School            | Tiaong          |                 | ○     |       |       |
| 78  | Amontay Barangay High School           | Pitogo          |                 | ○     |       |       |
| 79  | Tongohin Barangay High School          | Infanta         |                 | ○     |       |       |
| 80  | Bagupaye Barangay High School          | Mulanay         |                 | ○     |       |       |
| 81  | Ilayang Yuni Barangay High School      | Mulanay         | ○               |       |       |       |
| 82  | Abuyon National High School            | San Narciso     | ○               |       |       |       |
| 83  | Hinguin Barangay High School           | Padre Burgos    | ○               |       |       |       |
| 84  | Guinayangan Barangay High School       | Guinayangan     |                 |       | ○     |       |
| 85  | Patnanungan Barangay High School       | Pitogo          | ○               |       |       |       |
| 86  | Dagatan Barangay High School           | Dolores         |                 | ○     |       |       |
| 87  | Canda Barangay High School             | Sariaya         |                 | ○     |       |       |
|     | AURORA                                 |                 |                 |       |       |       |
| 88  | Ditunabo Barangay High School          | San Luis        |                 | ○     |       |       |
| 89  | Dinalungan Barangay High School        | Poblacion       | ○               |       |       |       |
| 90  | Dilasag Barangay High School           | Dilasag         | ○               |       |       |       |
|     | MARINDUQUE                             |                 |                 |       |       |       |
| 91  | Bangbang Barangay High School          | Gasan           |                 | ○     |       |       |
| 92  | Matalaba Barangay High School          | South           | ○               |       |       |       |
| 93  | Tigwi Barangay High School             | Torrijos        | ○               |       |       |       |
| 94  | Tagum Barangay High School             | Sta. Cruz East  | ○               |       |       |       |
| 95  | Bognuyan Barangay High School          | Gasan           | ○               |       |       |       |
| 96  | Ipil Barangay High School              | Sta. Cruz East  |                 |       |       | ○     |
| 97  | Argao Barangay High School             | Mogpog          |                 | ○     |       |       |
| 98  | Cawit Barangay High School             | Boac South      |                 |       |       | ○     |
|     | PALAWAN                                |                 |                 |       |       |       |
| 99  | Sicsican Barangay High School          | Puerto Princesa |                 | ○     |       |       |
| 100 | Aborlan Barangay High School           | Aborlan         |                 | ○     |       |       |
| 101 | Palawan Barangay High School           | San Jose        |                 | ○     |       |       |
| 102 | Roxas N.C. High School                 | Roxas           | ○               |       |       |       |
| 103 | Bahili Barangay High School            | Puerto Princesa |                 | ○     |       |       |
| 104 | Bato Barangay High School              | Taytay          |                 |       | ○     |       |
| 105 | Abo-abo Barangay High School           | Brookes Point   |                 |       |       | ○     |
| 106 | San Vicente Barangay High School       | San Vicente     | ○               |       |       |       |
| 107 | Caramay Barangay High School           | Roxas           |                 | ○     |       |       |
|     | ROMBLON                                |                 |                 |       |       |       |
| 108 | Alcantara Barangay High School         | Tablas          | ○               |       |       |       |
| 109 | Espana Barangay High School            | San Fernando    | ○               |       |       |       |
| 110 | Agnipa Barangay High School            | Romblon         |                 | ○     |       |       |
|     | LIPA CITY                              |                 |                 |       |       |       |
| 111 | Inosloban Marawoy Barangay High School | Lipa City       |                 |       |       | ○     |
| 112 | Sapak Barangay High School             | Lipa City       | ○               |       |       |       |
| 113 | Anilao Barangay High School            | Lipa City       | ○               |       |       |       |
|     | OCCIDENTAL MINDORO                     |                 |                 |       |       |       |
| 114 | Looc Municipal High School             | Looc            |                 |       |       | ○     |
| 115 | Baraban Barangay High School           | Sta. Cruz       |                 |       |       | ○     |
| 116 | Concepcion Barangay High School        | Calintaan       |                 | ○     |       |       |
| 117 | Tilik Barangay High School             | Lubang          |                 | ○     |       |       |
| 118 | Ligaya Barangay High School            | Sablayan        |                 |       |       | ○     |
|     | ORIENTAL MINDORO                       |                 |                 |       |       |       |
| 119 | Quinablgan Barangay High School        | Pinamalayan     |                 | ○     |       |       |
| 120 | Dayhagan Barangay High School          | Bongabong       | ○               |       |       |       |
| 121 | Bulbugan Barangay High School          | Gloria          | ○               |       |       |       |
| 122 | Barcenaga Barangay High School         | Naujan          | ○               |       |       |       |
| 123 | Alcadesma Barangay High School         | Bansud          | ○               |       |       |       |
| 124 | Canubing BHS                           | Calapan West    |                 | ○     |       |       |
|     | SAN PABLO                              |                 |                 |       |       |       |
| 125 | San Cristobal BHS                      | San Pablo City  |                 |       |       | ○     |
|     | SUB TOTAL                              |                 | 21              | 22    | 2     | 8     |

## REGION VI (Western Visayas)

(1 of 2)

|     | SCHOOL                            | DISTRICT     | GROUP OF SCHOOL |       |       |       |
|-----|-----------------------------------|--------------|-----------------|-------|-------|-------|
|     |                                   |              | Bs+Bt           | Bs+At | As+Bt | As+At |
|     | AKLAN                             |              |                 |       |       |       |
| 126 | Liloan Barangay High School       | Malinao      |                 |       |       | ○     |
| 127 | Bulabud Barangay High School      | Malinao      |                 | ○     |       |       |
| 128 | Fr. Julian C. Rago Mem. H/S       | Balete       | ○               |       |       |       |
| 129 | Camaligan Barangay High School    | Batan        | ○               |       |       |       |
| 130 | Nalook Barangay High School       | Kalibo       |                 |       | ○     |       |
|     | ANTIQUÉ                           |              |                 |       |       |       |
| 131 | Barasanan Barangay High School    | T. Fornier   |                 |       |       | ○     |
| 132 | Carit-an Barangay High School     | Patnongon    | ○               |       |       |       |
| 133 | Egana Barangay High School        | Sibalon      | ○               |       |       |       |
| 134 | Sido-San Juan Barangay H/S        | Sibalon      |                 |       |       | ○     |
| 135 | Gamad Sto. Tomasy Barangay H/S    | T. Fornier   |                 |       |       | ○     |
| 136 | Laua-an Barangay High School      | Laua-an      |                 |       |       | ○     |
| 137 | Barbaza Barangay High School      | Barbaza      |                 |       |       | ○     |
| 138 | Pis-anan NHS                      | Sibalon      | ○               |       |       |       |
| 139 | General Leandro Fullon NHS        | Hamtic       | ○               |       |       |       |
|     | CAPIZ                             |              |                 |       |       |       |
| 140 | Taft National Barangay H/S        | Tapaz        | ○               |       |       |       |
| 141 | Dacuton National Brgy. H/S        | Dumarao      |                 |       | ○     |       |
| 142 | Capagao National Brgy. H/S        | Panit-an     |                 |       |       | ○     |
| 143 | Lucero National Brgy. H/S         | Jamindan     |                 |       |       | ○     |
| 144 | Casanayan National Brgy. H/S      | Pilat        |                 |       |       | ○     |
| 145 | Dulangan National Brgy. H/S       | Pilar        | ○               |       |       |       |
| 146 | Putian National Brgy. H/S         | Cuartaro     |                 |       |       | ○     |
| 147 | Sapian National Brgy. H/S         | Sapian       | ○               |       |       |       |
| 148 | Ivisan National High School       | Ivisan       |                 | ○     |       |       |
|     | ROXAS CITY                        |              |                 |       |       |       |
| 149 | Baliuagan Barangay H/S            | Roxas City   |                 |       |       | ○     |
| 150 | Bago National Brgy. H/S           | Roxas City   |                 |       |       | ○     |
|     | ILOILO                            |              |                 |       |       |       |
| 151 | Bolalacao Barangay High School    | Bolalaca     |                 |       |       | ○     |
| 152 | Barroc Barangay High School       | Oton         |                 | ○     |       |       |
| 153 | Pili Barangay High School         | Ajuy         |                 |       |       | ○     |
| 154 | Dapdap Barangay High School       | Tigbanan     |                 |       | ○     |       |
| 155 | Carvasana Barangay High School    | Calinog      |                 |       | ○     |       |
| 156 | Alibunan Barangay High School     | Alibunan     | ○               |       |       |       |
| 157 | Camiros Barangay High School      | Anilao       |                 |       |       | ○     |
| 158 | Carlos Lopez Na'l. H/S            | San Dionisio | ○               |       |       |       |
| 159 | Don B. Jalandoni St. Nat. BH/S    | Zarraga      |                 |       |       | ○     |
| 160 | Acao Baranay High School          | Cabatuan     |                 |       |       | ○     |
| 161 | Tina Barangay High School         | Badiangan    |                 |       |       | ○     |
| 162 | Puyas Barangay High School        | Cabatuan     |                 |       |       | ○     |
| 163 | Calmay Barangay High School       | Janiuay      |                 |       | ○     |       |
| 164 | Luca Barangay High School         | Ajuy         |                 | ○     |       |       |
| 165 | Batag Barangay High School        | Batad        | ○               |       |       |       |
| 166 | Binabaan Barangay High School     | Lambunao     | ○               |       |       |       |
| 167 | Ardemil Barangay High School      | Sara         |                 |       |       | ○     |
| 168 | San Luis Newly Nationalized HS    | Sara         |                 |       |       | ○     |
| 169 | Banate National High School       | Banate       | ○               |       |       |       |
| 170 | Lemery National High School       | Lemery       | ○               |       |       |       |
| 171 | Malitbog Barangay High School     | Calinogy     | ○               |       |       |       |
| 172 | Leganes National High School      | Leganes      | ○               |       |       |       |
| 173 | Ajuy High School                  | Ajuy         | ○               |       |       |       |
| 174 | Lambunao Municipal High School    | Lambunao     | ○               |       |       |       |
| 175 | Alomodian National Com. H/S       | Alimodian    | ○               |       |       |       |
| 176 | Tarraga National High School      | Jaland Norta | ○               |       |       |       |
| 177 | Mina NHS                          | Mina         | ○               |       |       |       |
|     | ILOILO CITY                       |              |                 |       |       |       |
| 178 | Jalandoni Mem. HS Bo. Obrero Ext. | Iloilo City  | ○               |       |       |       |
| 179 | R. G. Hechonova Brgy. High School | Iloilo City  |                 |       | ○     |       |
| 180 | Jaro High School                  | Iloilo City  | ○               |       |       |       |
| 181 | La Paz National High School       | La Paz       |                 | ○     |       |       |
|     | SUB TOTAL                         |              | 24              | 5     | 6     | 21    |

## REGION VI (Western Visayas)

(2 of 2)

| SCHOOL                                  | DISTRICT        | GROUP OF SCHOOL |          |          |          |
|---|-----------------|-----------------|----------|----------|----------|
|   |                 | Bs+Bt           | Bs+At    | As+Bt    | As+At    |
| <b>NEGROS OCCIDENTAL</b>                |                 |                 |          |          |          |
| 182 Miranda Barangay High School        | Pontevedra      |                 |          |          | ○        |
| 183 Guiljungan Barangay H/S             | Cauayan         | ○               |          |          |          |
| 184 Toboso Barangay H/S                 | Toboso          | ○               |          |          |          |
| 185 Cabacungan Barangay H/S             | La Castellana   | ○               |          |          |          |
| 186 Manapla High School                 | Manapla         | ○               |          |          |          |
| 187 Hinigaran National High School      | Hinigaran       | ○               |          |          |          |
| 188 Sagay National High School          | Sagay           | ○               |          |          |          |
| 189 Escalante Provincial H/S            | Escalante       | ○               |          |          |          |
| 190 La Castellana Prov'l High School    | La Castellana   | ○               |          |          |          |
| 191 Tapi Prov'l High School             | Kabankalan      | ○               |          |          |          |
| 192 Boanavista BHS                      | Escalante       | ○               |          |          |          |
| 193 Himamaylan NHS                      | Himamaylan      | ○               |          |          |          |
| <b>SAN CARLOS CITY</b>                  |                 |                 |          |          |          |
| 194 Don Carlos Ledesma Nat'l. H/S       | San Carlos Cty  | ○               |          |          |          |
| 195 Quezon Barangay High School         | San Carlos Cty  | ○               |          |          |          |
| <b>LA CARLOTA</b>                       |                 |                 |          |          |          |
| 196 Dona H. S. Benedicto Nat'l. H/S     | La Carlota      | ○               |          |          |          |
| 197 La Granja Ext.                      | La Granja       |                 |          |          | ○        |
| <b>PAGO CITY</b>                        |                 |                 |          |          |          |
| 198 Ramon Torres National H/S           | Bago City       | ○               |          |          |          |
| 199 Ramon Torres National H/S           | Taloc Ext.      | ○               |          |          |          |
| 200 RTNHS-Sagasa Ext.                   | Bago City       | ○               |          |          |          |
| <b>SILAY CITY</b>                       |                 |                 |          |          |          |
| 201 DMLMHS HPCo. Ext.                   | Silay City      |                 |          |          | ○        |
| 202 Guimbalaon Ext.                     | Silay City      |                 |          |          | ○        |
| <b>GUIMARAS</b>                         |                 |                 |          |          |          |
| 203 Buenavista Mun. High School         | New Poblacion   | ○               |          |          |          |
| 204 Jordan National High School         | Poblacion       |                 | ○        |          |          |
| 205 Trinidad V. C. Sta Teresa Newly H/S | Sta Teresa      | ○               |          |          |          |
| 206 Getulio Newly NHS                   | Buenavista      | ○               |          |          |          |
| 207 East Valencia Newly NHS             | Buenavista      | ○               |          |          |          |
| 208 Liningwan Newly NHS                 | Jordan          |                 | ○        |          |          |
| 209 Salvacion Newly NHS                 | Nueva Valencia  |                 | ○        |          |          |
| <b>BACOLODO CITY</b>                    |                 |                 |          |          |          |
| 210 Domingo Lacson National H/S         | Bacolod City    | ○               |          |          |          |
| 211 Luisa Medel High School             | Bacolod City    | ○               |          |          |          |
| 212 Luis Hervisa National H/S           | Bacolod City    | ○               |          |          |          |
| 213 Brgy. Singkang Airport NH/S         | Bacolod City    | ○               |          |          |          |
| 214 Bata High School                    | Bacolod City    | ○               |          |          |          |
| <b>CADIZ CITY</b>                       |                 |                 |          |          |          |
| 215 Dr. Vicente Gustilo Mem. H/S        | Cadiz City      | ○               |          |          |          |
| 216 Cadiz Viejo Barangay H/S            | Cadiz Viejo     |                 |          |          | ○        |
| 217 Caduhaan Barangay High School       | Bgy. Caduhaan   |                 |          |          | ○        |
| 218 Tiglawigan Barangay High School     | Bgy. Tiglawigan | ○               |          |          |          |
| 219 Villacin National H/S               | Cadiz City      | ○               |          |          |          |
| <b>SUB TOTAL</b>                        |                 | <b>29</b>       | <b>3</b> | <b>0</b> | <b>6</b> |

## REGION X (Northern Mindanao)

|     | SCHOOL                         | DISTRICT           | GROUP OF SCHOOL |       |       |       |
|-----|--------------------------------|--------------------|-----------------|-------|-------|-------|
|     |                                |                    | Bs+Bt           | Bs+At | As+Bt | As+At |
|     | AGUSAN DEL NORTE               |                    |                 |       |       |       |
| 220 | Jaliobong National High School | Jaliobong          | ○               |       |       |       |
| 221 | Carmen Municipal High School   | Carmen             | ○               |       |       |       |
|     | AGUSAN DEL SUR                 |                    |                 |       |       |       |
| 222 | Sibagat Mun. High School       | Sibagat            | ○               |       |       |       |
| 223 | Bayugan Mun. High School       | Bayugan            | ○               |       |       |       |
|     | SURIGAO DEL NORTE              |                    |                 |       |       |       |
| 224 | Sta. Cruz Barangay High School | Placer             | ○               |       |       |       |
| 225 | Matin-ao Barangay High School  | Mainit             | ○               |       |       |       |
| 226 | Balite Barangay High School    | San Francisco      | ○               |       |       |       |
| 227 | Timamana Barangay High School  | Tubod              | ○               |       |       |       |
| 228 | Masgad Barangay High School    | Malimono           | ○               |       |       |       |
| 229 | Canapoy Barangay High School   | Malimono           | ○               |       |       |       |
| 230 | Campo Barangay High School     | Bacuag             | ○               |       |       |       |
| 231 | Albor M. High School           | Cadiano            | ○               |       |       |       |
| 232 | Tag-abaca HS                   | Basilisa           |                 |       | ○     |       |
|     | SURIGAO CITY                   |                    |                 |       |       |       |
| 233 | Ipil Barangay High School      | Surigao City       | ○               |       |       |       |
| 234 | San Juan Barangay High School  | Surigao City       |                 | ○     |       |       |
|     | CAGAYAN DE ORO CITY            |                    |                 |       |       |       |
| 235 | Lapasan BHS                    | Cagayan de Oro Cty | ○               |       |       |       |
| 236 | Agusan NNHS                    | Agusan             | ○               |       |       |       |
|     | BUTUAN CITY                    |                    |                 |       |       |       |
| 237 | Banza Barangay High School     | Butuan City        | ○               |       |       |       |
|     | BUKIDNON                       |                    |                 |       |       |       |
| 238 | Libonan Mun. HS                | Libonan            |                 |       | ○     |       |
| 239 | Malitbog Nationalized HS       | Malitbog           |                 |       |       | ○     |
|     |                                | SUB TOTAL          | 16              | 1     | 2     | 1     |
|     |                                | TOTAL              | 137             | 48    | 12    | 42    |
|     |                                | G. TOTAL           |                 |       |       | 239   |









JICA