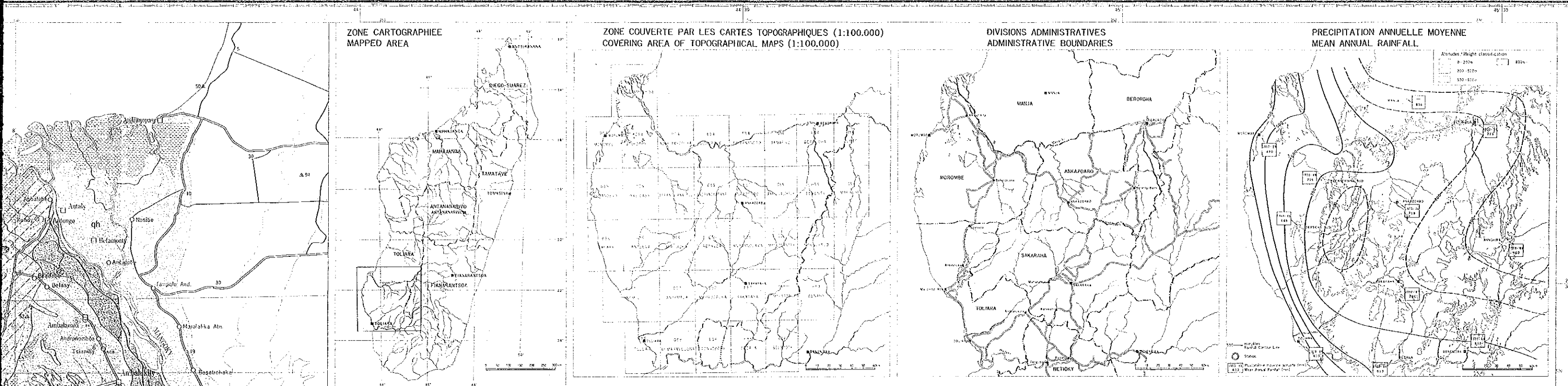
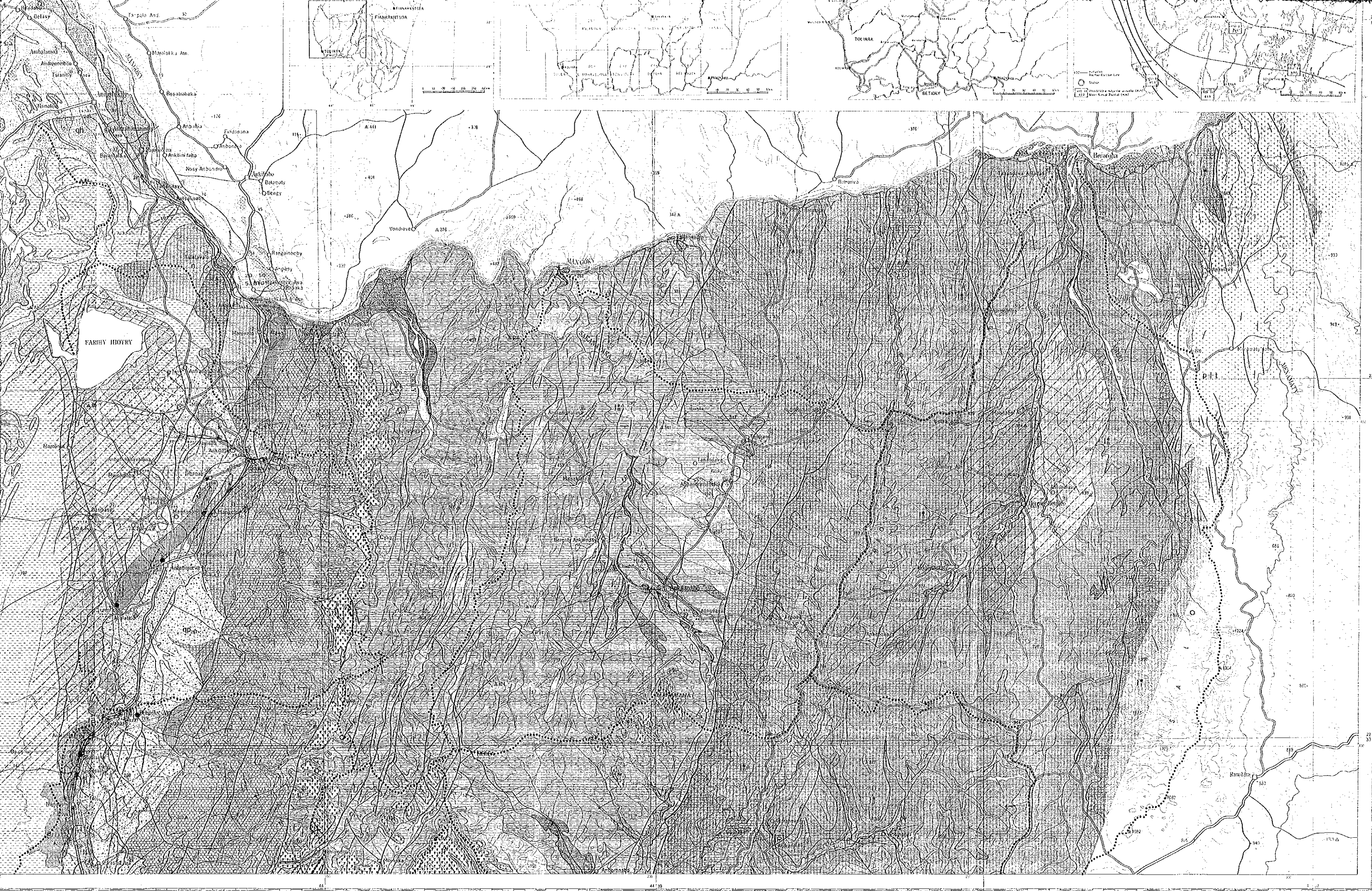
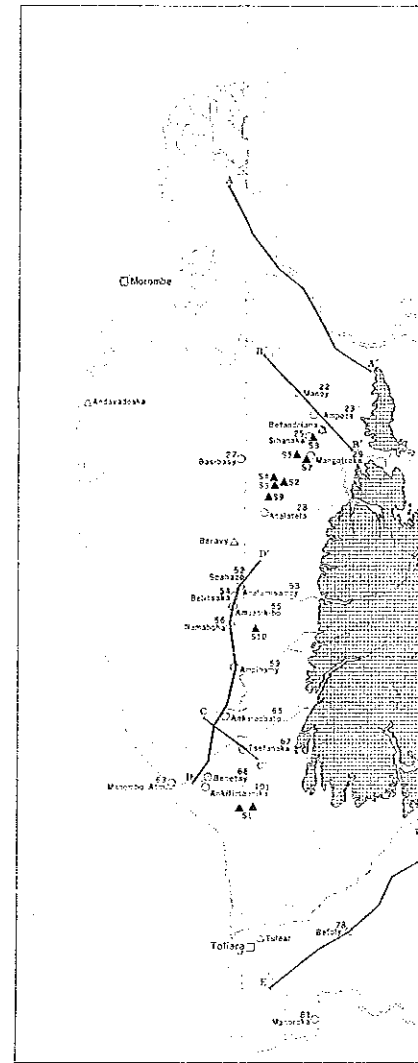
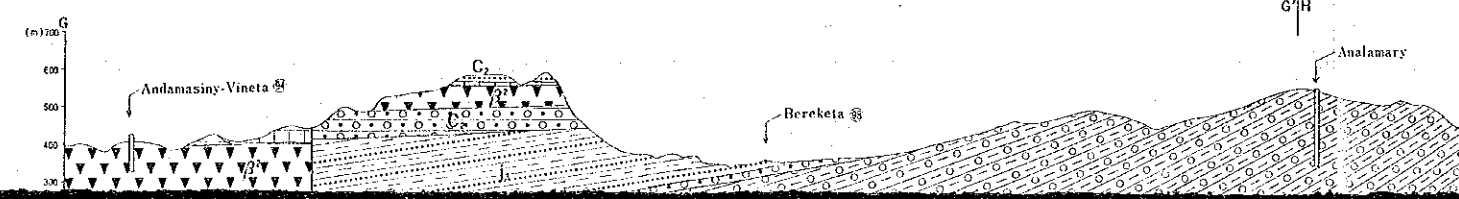
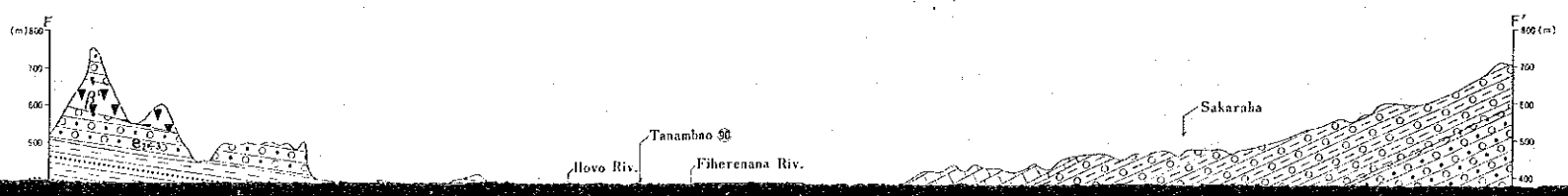
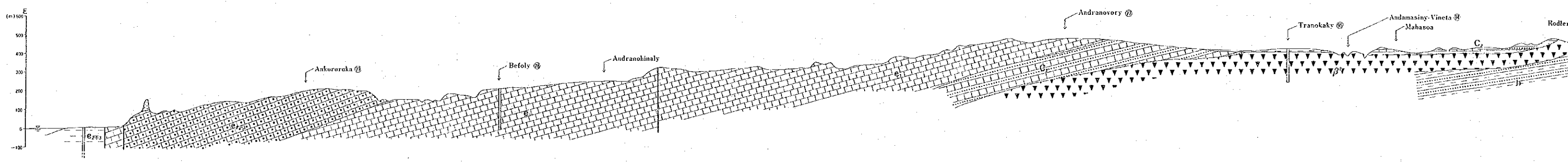
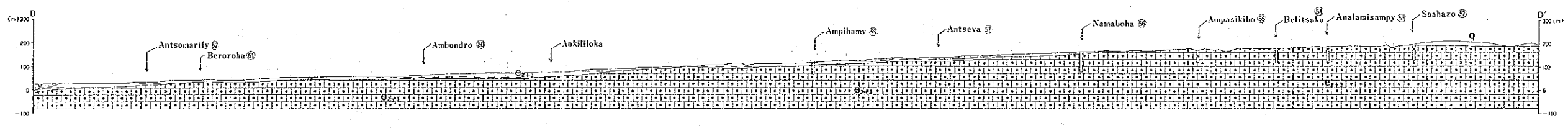
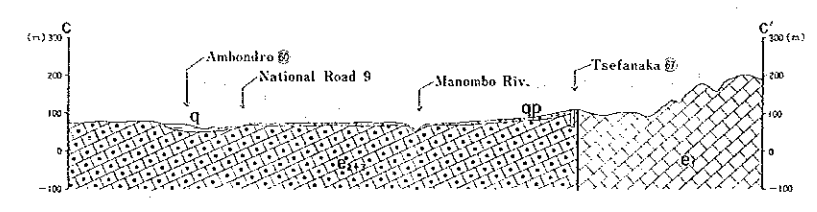
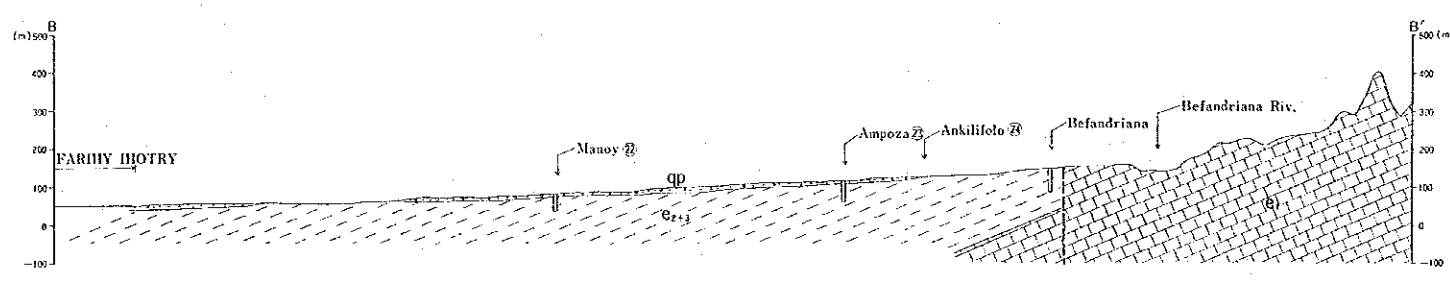
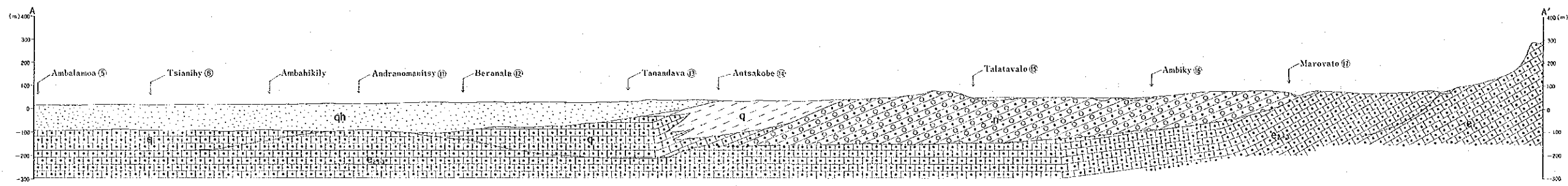


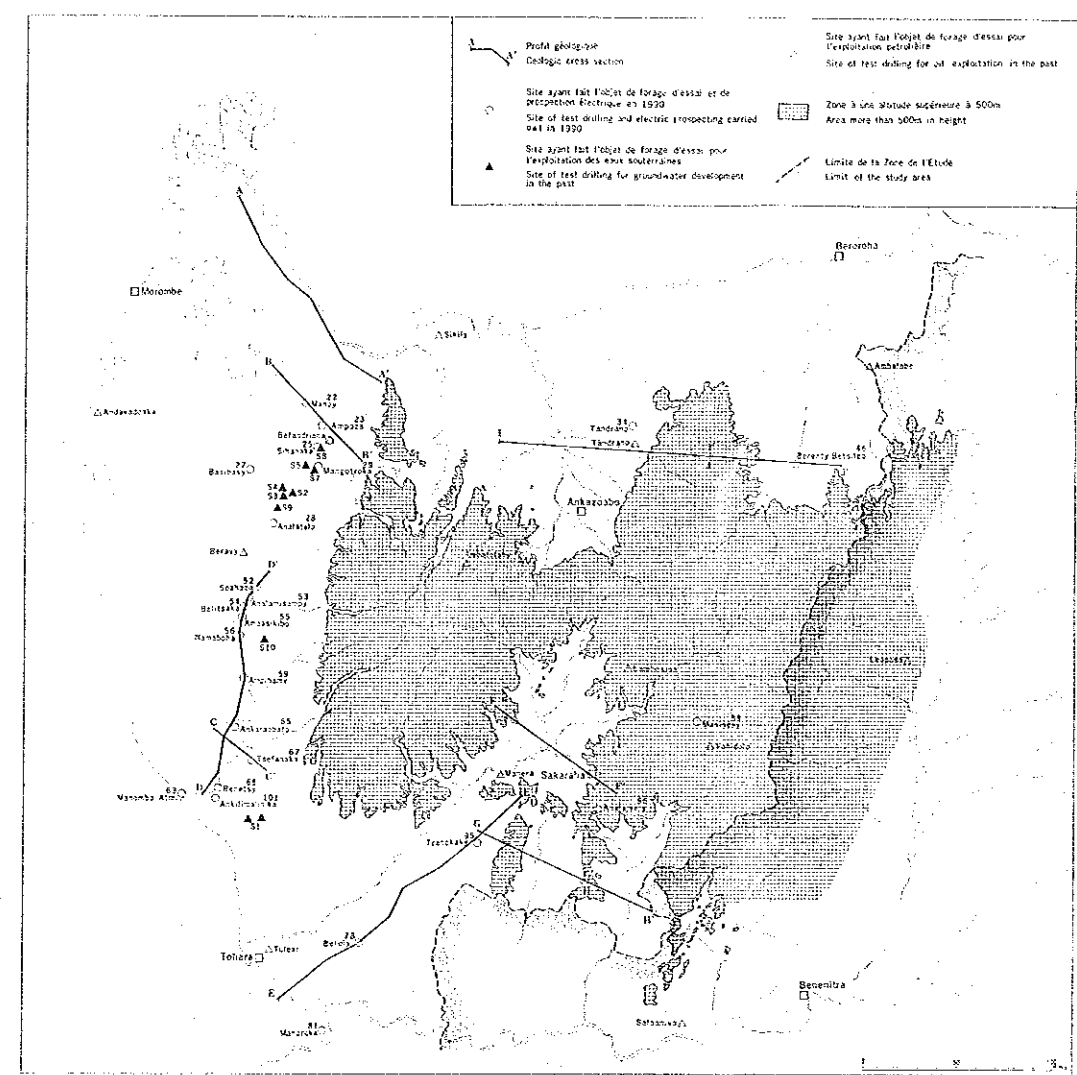
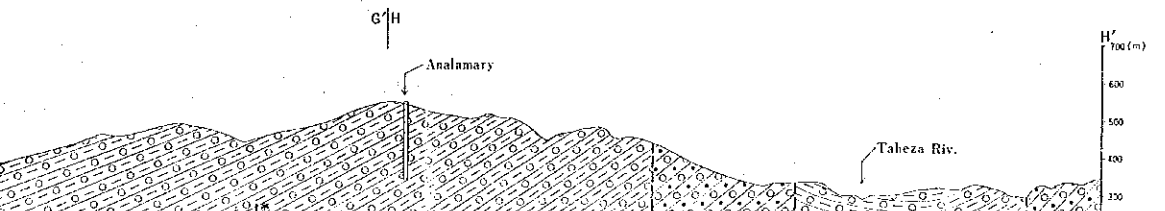
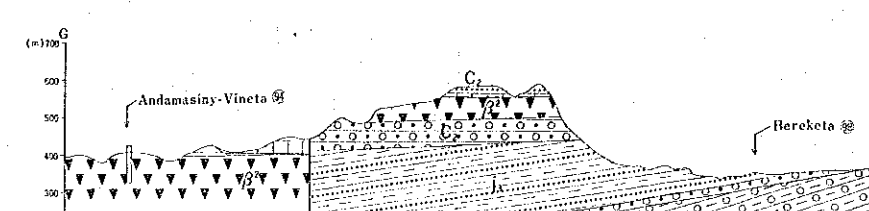
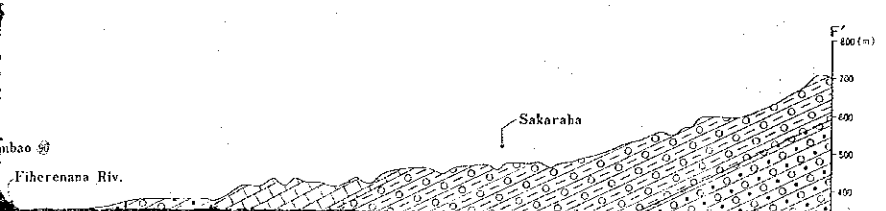
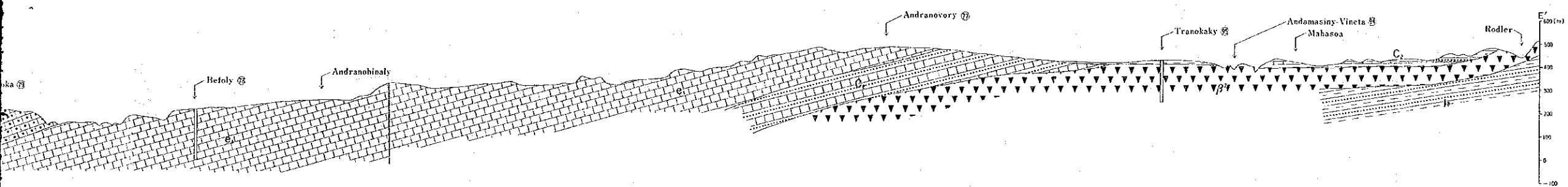
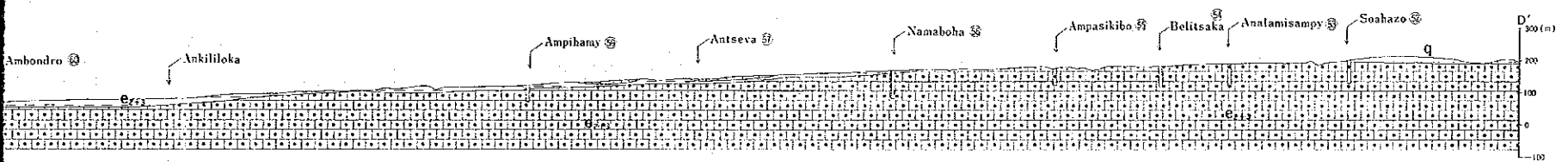
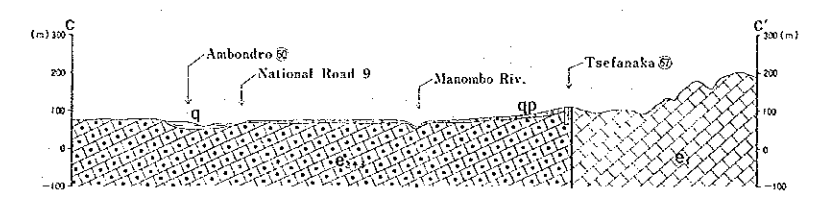
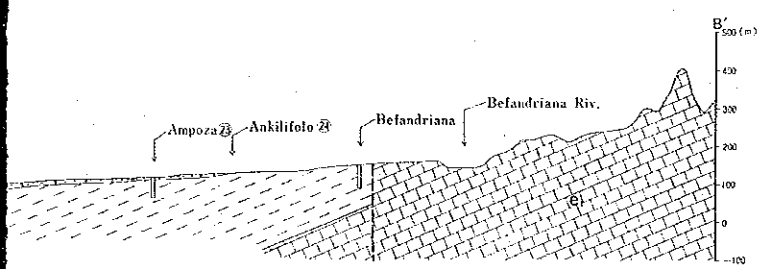
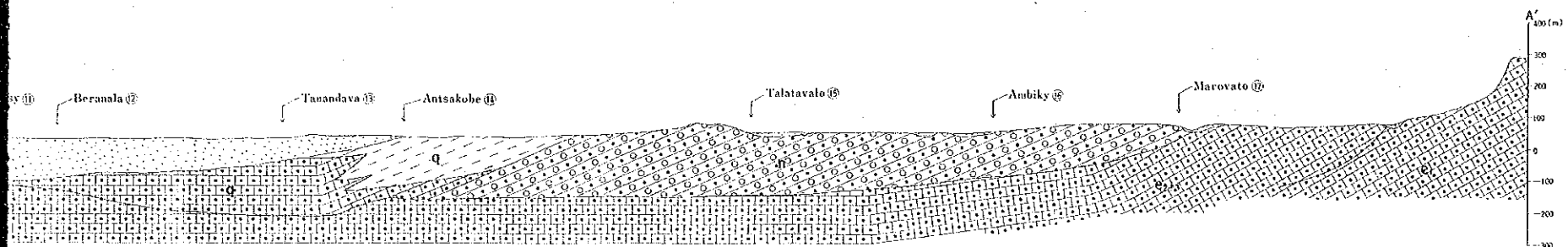
CARTE HYDROGEOLOGIQUE DE MADAGASCAR (1) RÉGION DU SUD-OUEST HYDROGEOLOGICAL MAP OF MADAGASCAR (1) SOUTH-WESTERN REGION

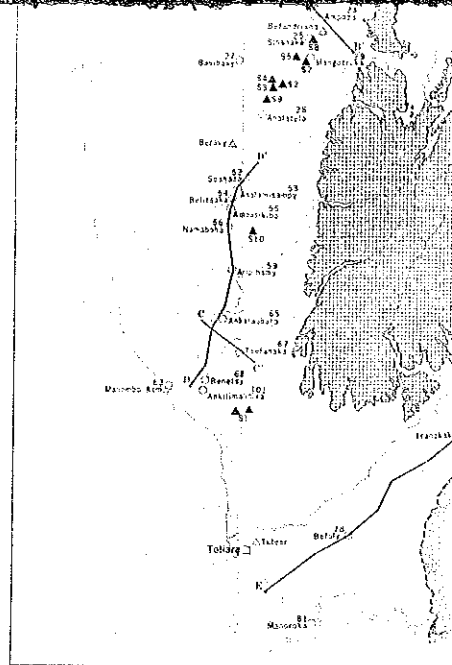
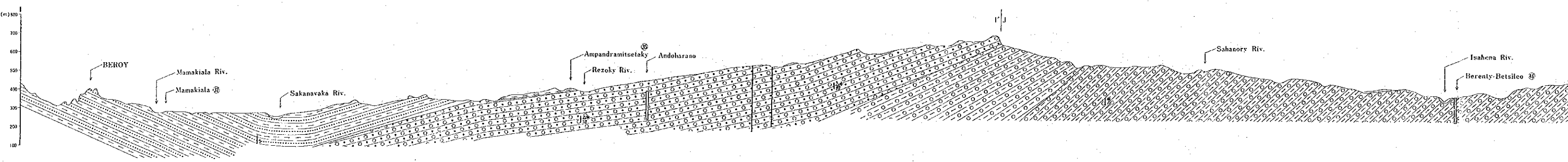
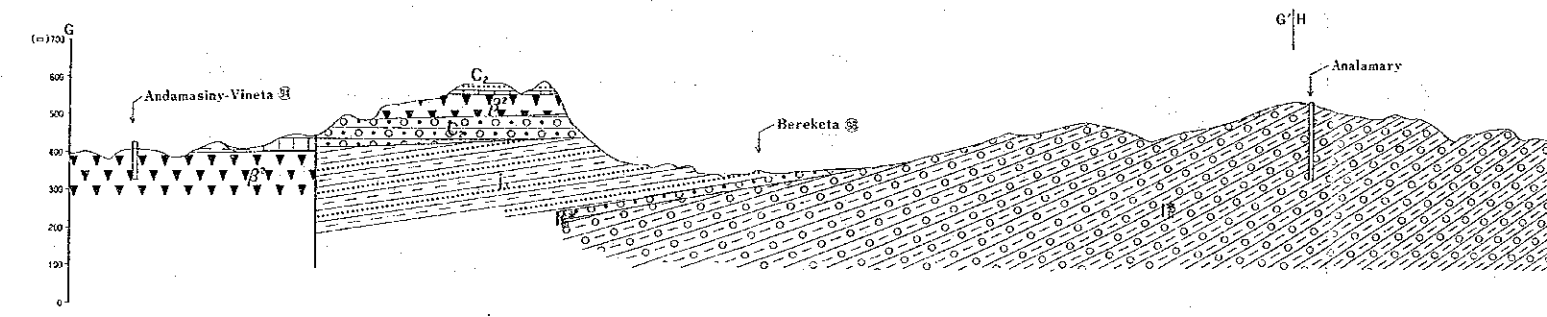
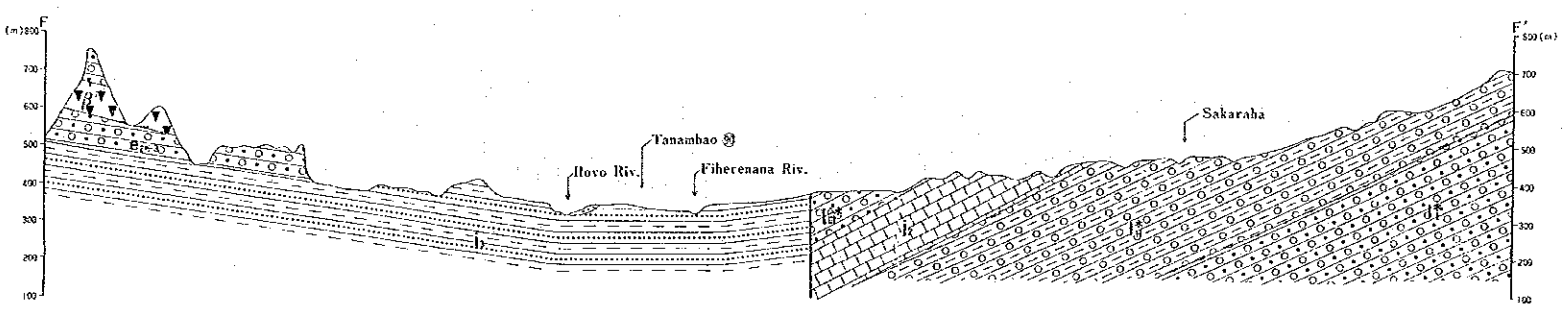
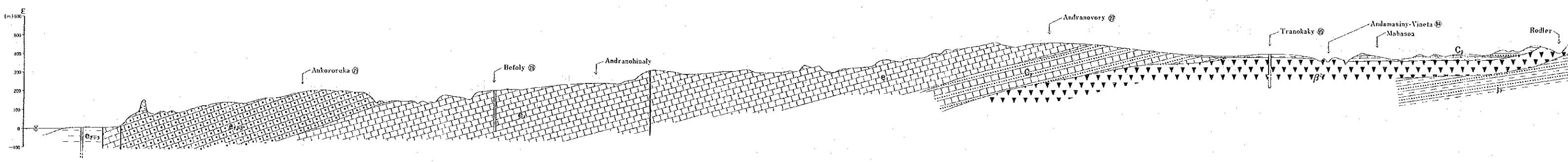
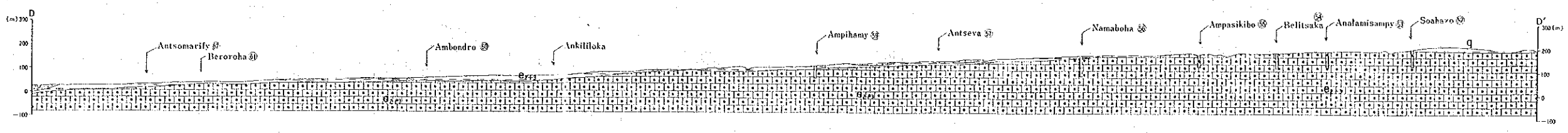
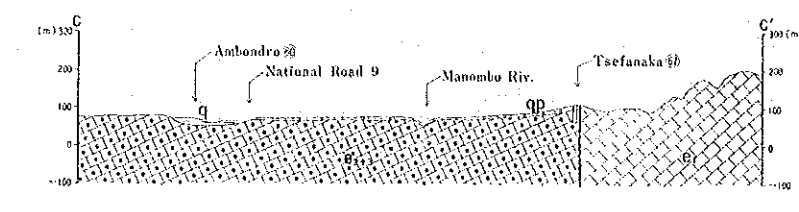
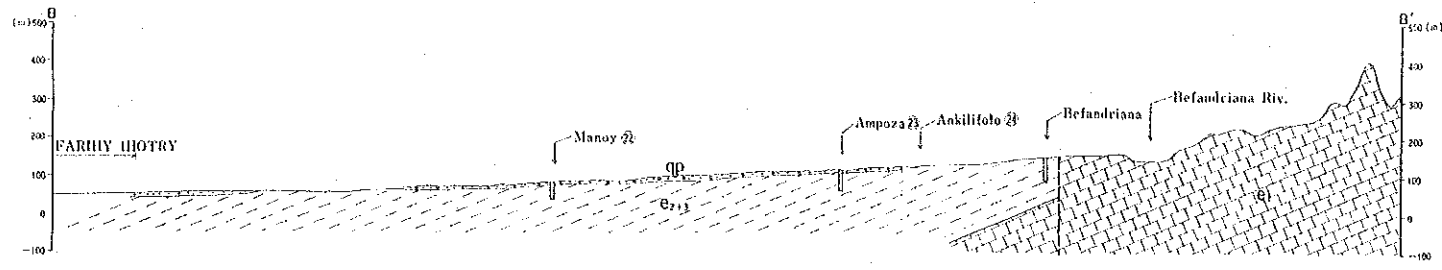


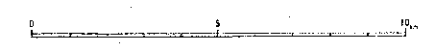
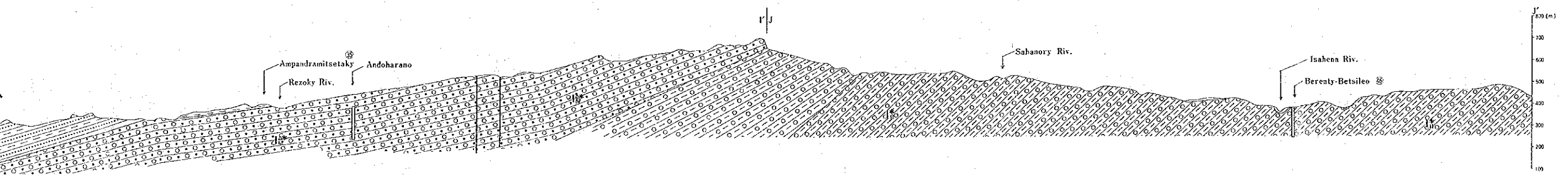
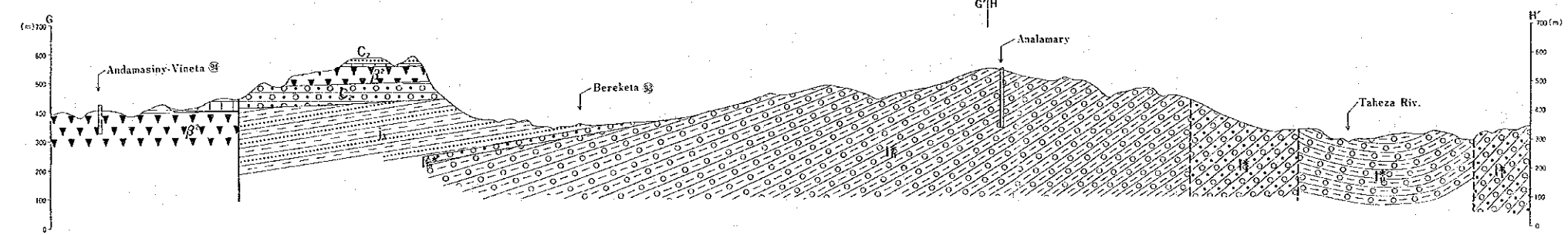
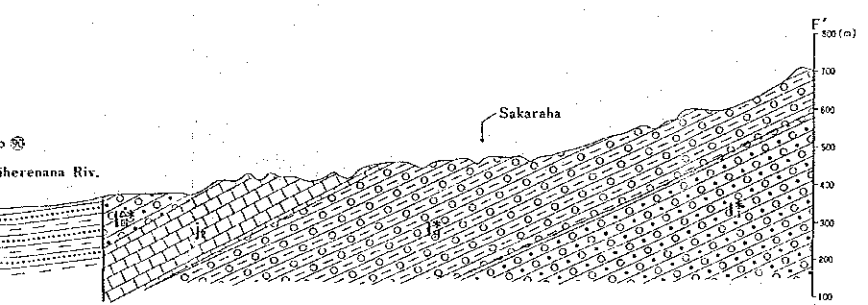
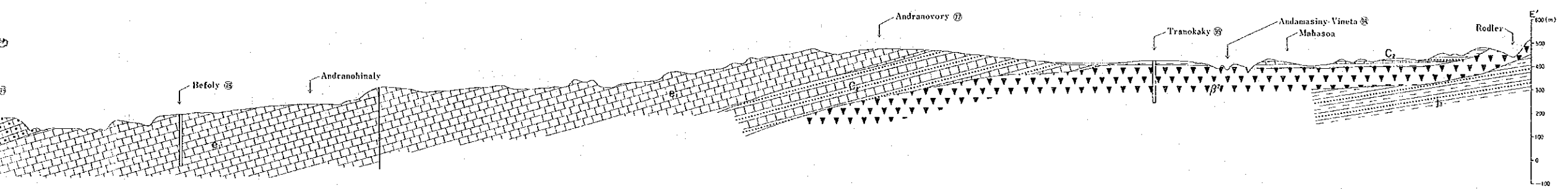
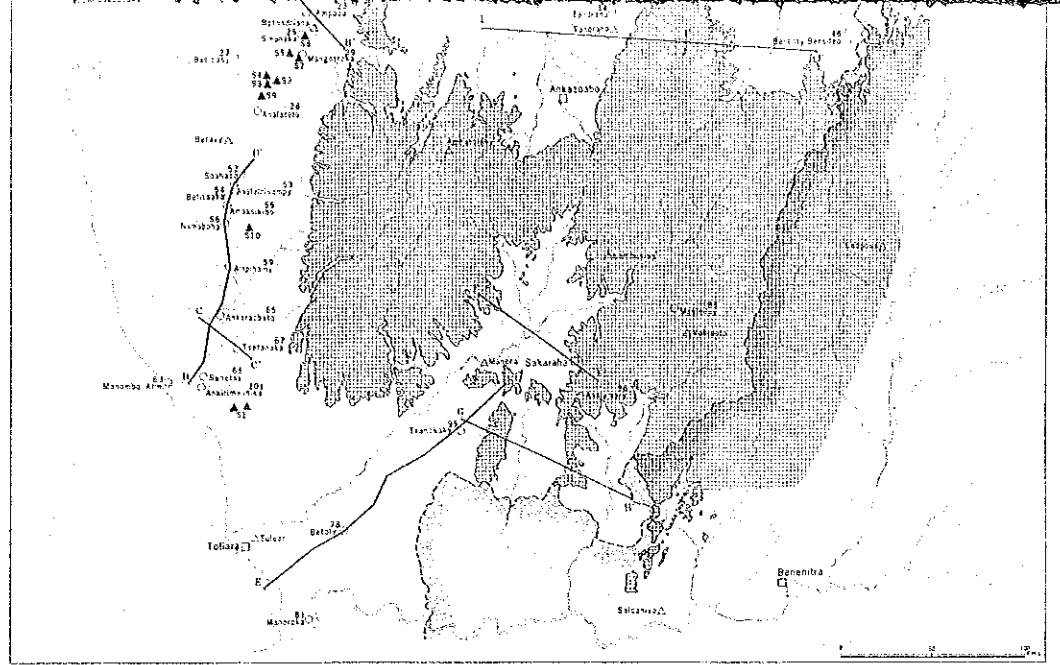
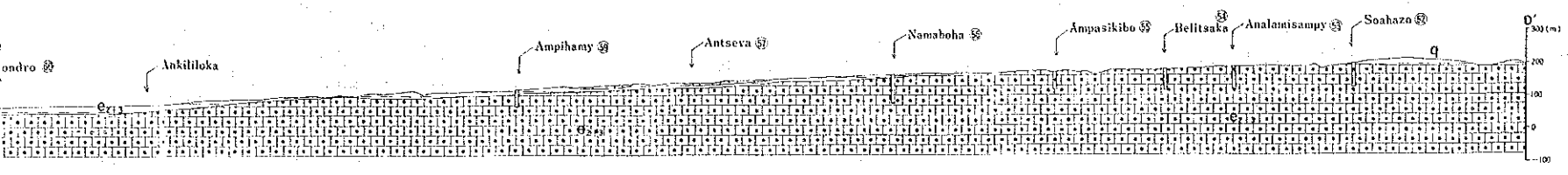
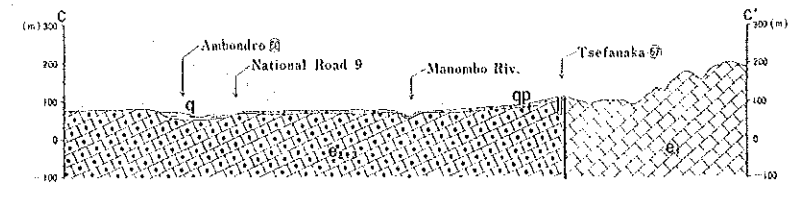
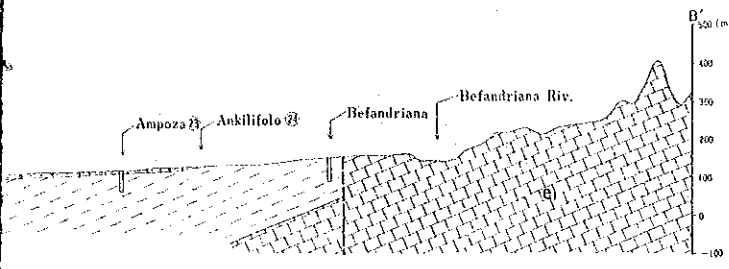


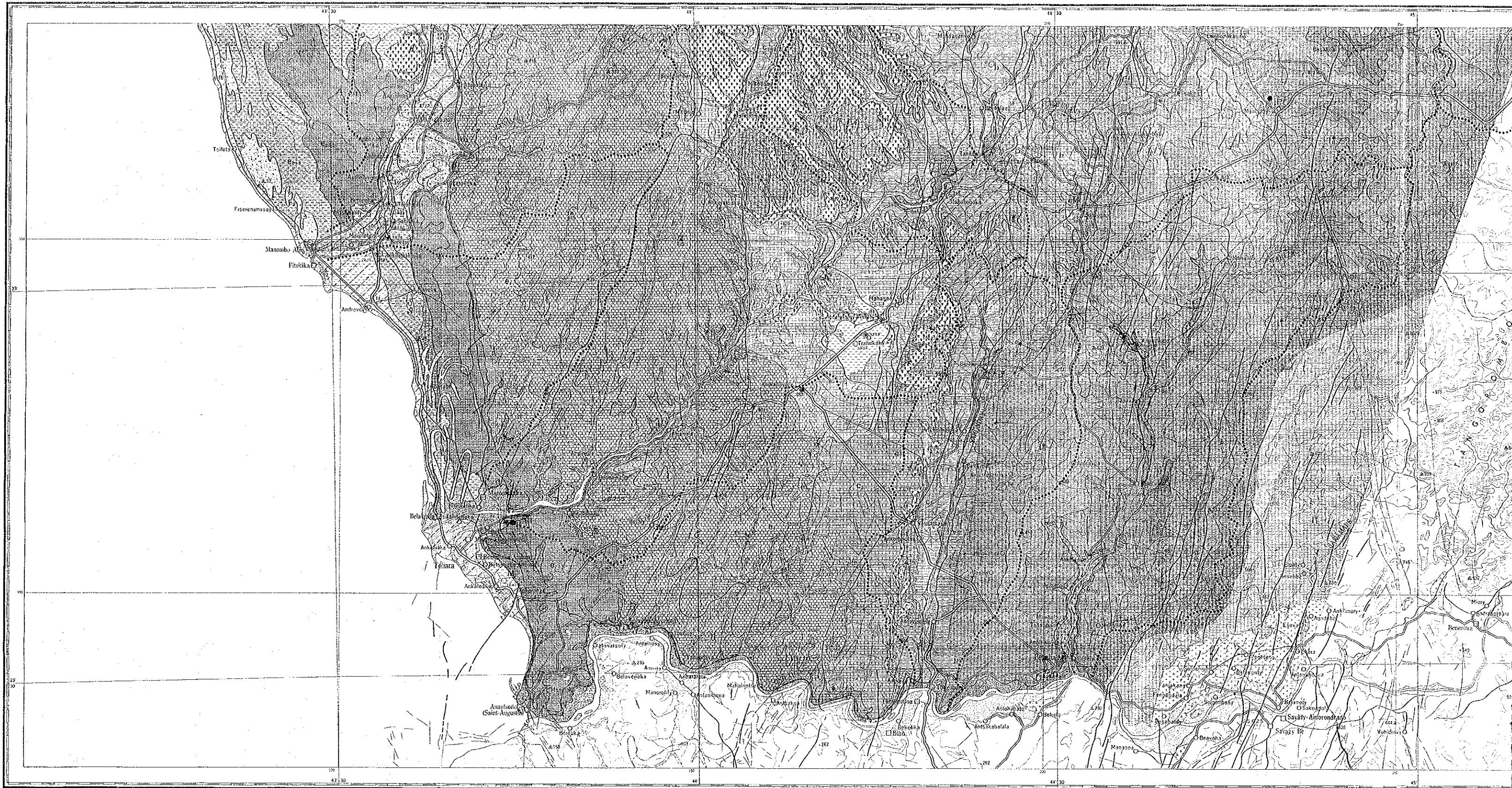












LEGENDE DE LA CARTE HYDROGÉOLOGIQUE
LEGEND OF THE HYDROGEOLOGICAL MAP

A. Lithologie
Lithologies

- Substratum (Més-Jurassique)
Basement complex (pre-Jurassic)
- Grès continentaux à grains moyens ou grossiers
Medium to coarse grained continental sandstone
- Grès continentaux avec silt
Continental sandstone with siltstone

B. Temps géologique
Geologic time

Quaternaire Quaternary	Alluvium		qh	q
	Miocène		qp	
	Néogène	Pliocène	n	N [*]
		Miocène		
Paléogène	Oligocène			
	Éocène			

C. Potentialités des eaux souterraines
Groundwater potentiality

- Intergranular Aquifers / Aquifères intergranulaires
- L'aquifère basement productif (Q=250-600/min) se situe entre 30-50m de profondeur (Class A1)
Highly productive aquifer (Q=250-600/min) exists between 30-50m in depth (Class A1)
 - L'aquifère basement productif (Q=250-600/min) se situe entre 50-100m de profondeur (Class A2)
Highly productive aquifer (Q=250-600/min) exists between 50-100m in depth (Class A2)
 - L'aquifère basement productif (Q=200-600/min) se situe entre 150-250m de profondeur (Class A3)
Highly productive aquifer (Q=200-600/min) exists between 150-250m in depth (Class A3)

D. Structure géologique
Geological structure

- Direction et inclinaison
Strike and dip
- Faille
Fault
- Linéament
Lineament

F. Indices des eaux de surface
Occurrence of surface water

- Cours d'eau permanent
Perennial river
- Cours d'eau intermittent
Seasonal river
- Lac permanent
Perennial lake

H. Stations d'observation hydrologique existantes
Existing hydrological observation station

- Station de mesure hydrologique
River gauging station
- Débit mesuré (m³/s)
Flow measurement (m³/s)
- Bassin versant (km²)
Catchment area (km²)

I. Autres
Others

- Courbe de niveau
Contour line
- Point géodésique
Triangulation point
- Point coté
Subordinate triangulation point