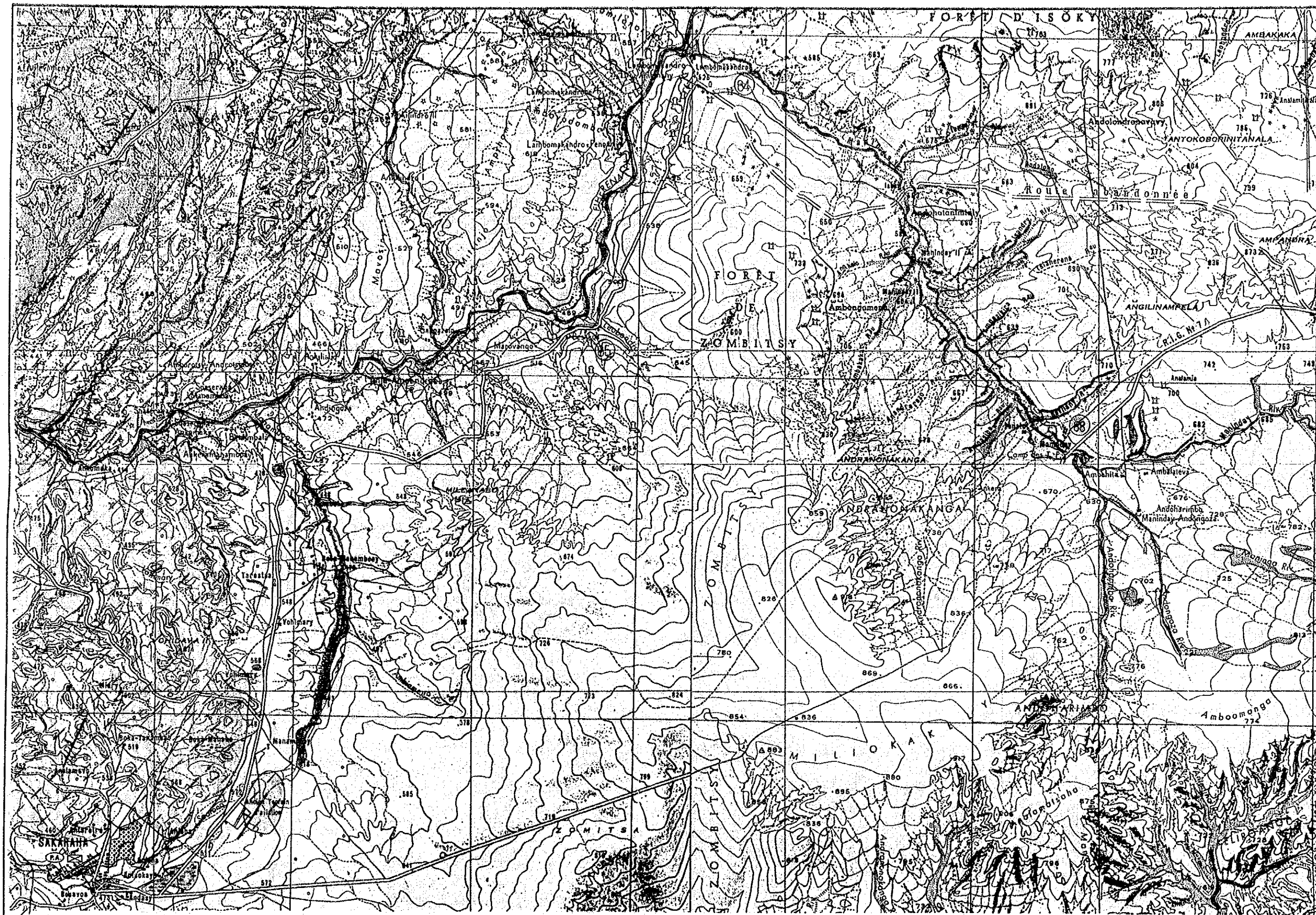


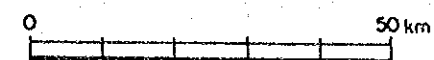
( Sheet G-56 ; 1/100,000 )





# HYDROGEOLOGICAL MAP

( Sheet F-57 ; 1/100,000 )







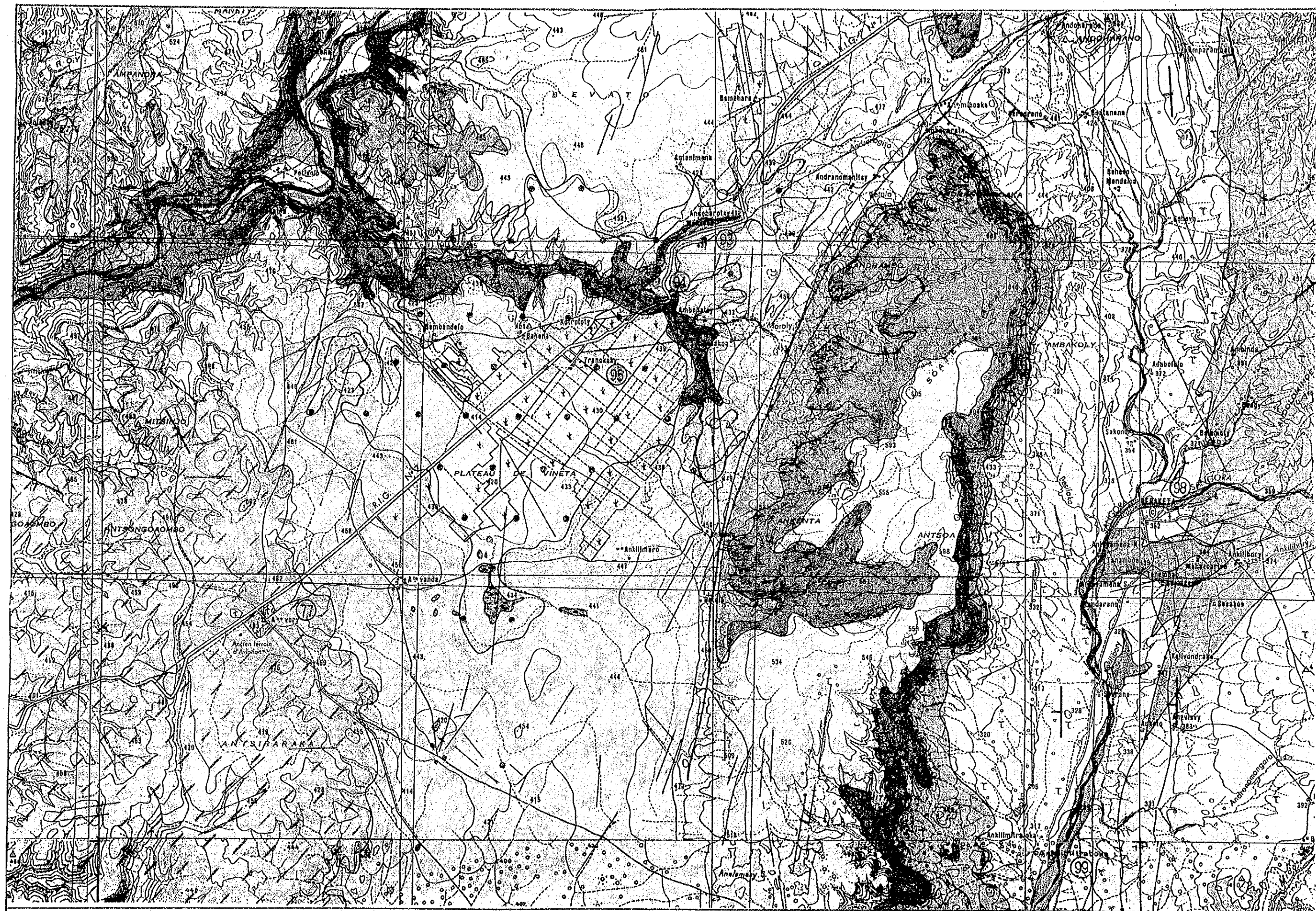
# HYDROGEOLOGICAL MAP

( Sheet F-57 ; 1/100,000 )

0 50 km







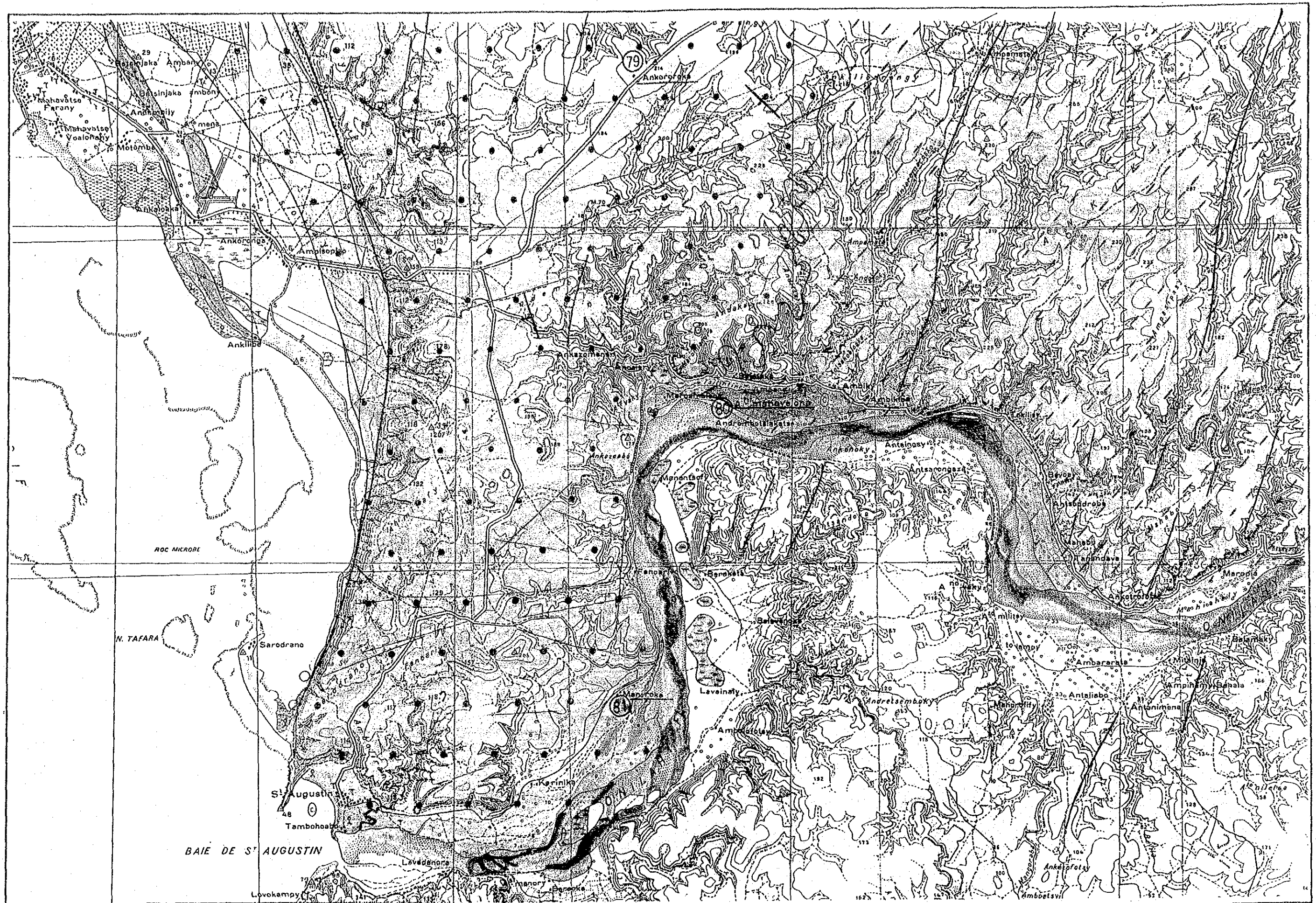
# HYDROGEOLOGICAL MAP

( Sheet E-57 ; 1/100,000 )

0 50 km







HYDROGEOLOGICAL MAP

( Sheet D-58 ; 1/100,000 )





## 2. RESULTS OF GEOPHYSICAL PROSPECTING







Table Results of Geophysical Prospecting and VLF Magnetotelluric Method (Phase 1)

Candidate Village			Electric Vertical Sounding			Candidate Village			Electric Vertical Sounding		
No.	Name	Elevation (m)	Points	Surveyed Depth (m)	Total (m)	No.	Name	Elevation (m)	Points	Surveyed Depth (m)	Total (m)
5	Ambalemoa	15	2	140, 155	295	75	Befanamy	15	6	30, 50, 30, 30, 23, 30	193
7	Namatoa	20	2	100, 100	200	76	Isivonoakelly	2	4	100, 100, 100, 50	350
13	Tanandava	30	3	120, 100, 200	420	77	Andranovory	483	2	200, 300	500
15	Talatavalo	50	2	200, 110	310	—	Andranohinaly		3		900
17	Marovato	74	4	300, 200, 170, 100	770	78	Befoly	215	3	300, 300, 300	900
25	Sihanaka	133	4	155, 200, 215, 100	670	80	Ambohimahaveloma	22	2	70, 100	170
27	Basibasy	105	2	300, 200	500	82	Labolana	582	4	300, 215, 220, 100	835
29	Mangotroka	148	3	200, 185, 100	485	83	Andranolava	534	2	215, 260	475
—	ANTANIMIEVA	150	1	300	300	84	Lambomakandro	526	3	200, 300, 200	700
34	Tandrano	400	3	300, 140, 130	570	88	Maninday	680	4	100, 100, 100, 100	400
35	Ampandramitsetaky	406	3	200, 200, 200	600	90	Tanambao(1)	346	3	155, 230, 130	515
39	Pisopiso	370	1	100	100	90	Tanambao(2)	346	2	185, 300	485
40	Tanandava	450	3	300, 170, 200	670	92	Mahaboboka	317	3	130, 100, 34	264
44	Soatanimbary	470	2	200, 120	320	93	Mahasoa	420	2	170, 140	310
46	Berenfy-Betsileo	390	3	140, 100, 110	350	94	Andamasiny-Vineta	420	2	200, 155	355
52	Soahazo	202	4	110, 100, 100, 100	410	95	Tranokaky	430	4	200, 215, 200, 200	815
—	Betsioky-Avaratra	219	4	130, 130, 100, 280	640	96	Analamary	544	3	155, 200, 200	555
54	Belitsaka	184	3	100, 100, 100	300	97	Antanimora	500	3	300, 200, 200	700
56	Namaboha	164	3	100, 100, 100	300	98	Bereketa	352	2	140, 200	340
58	Ankilimilavotoka	133	2	100, 100	200	99	Ankilimitaloka	317	2	155, 200	355
59	Ampihamy	122	2	100, 100	200	Total			139		20, 539
61	Beroroha	40	2	100, 100	200	VLF Magnetotelluric Method					
63	Manombo	2	2	100, 100	200	Candidate Village			Surveyed Space		
68	Benetsy	39	3	100, 100, 100	300	No.	Name	Points	Surveyed	Space	Total (m)
69	Andrevo	5	3	100, 100, 100	300	74	Miary	2	10mx180, 10mx46	2, 260	
A <sub>1</sub>	Tsonaoary	9	1	100	100	75	Befanamy	2	10mx120, 10mx119	2, 390	
A <sub>2</sub>	Androvakely	10	3	100, 110, 140	350	—	Betsioky-Ava.	2	10mx131	1, 310	
B	Botsiboysy	9	3	46, 60, 38	144	Total		6		5, 960	
C	Beravy	6	2	20, 30	50						
74	Miary	16	5	20, 38, 42, 34, 34	168						

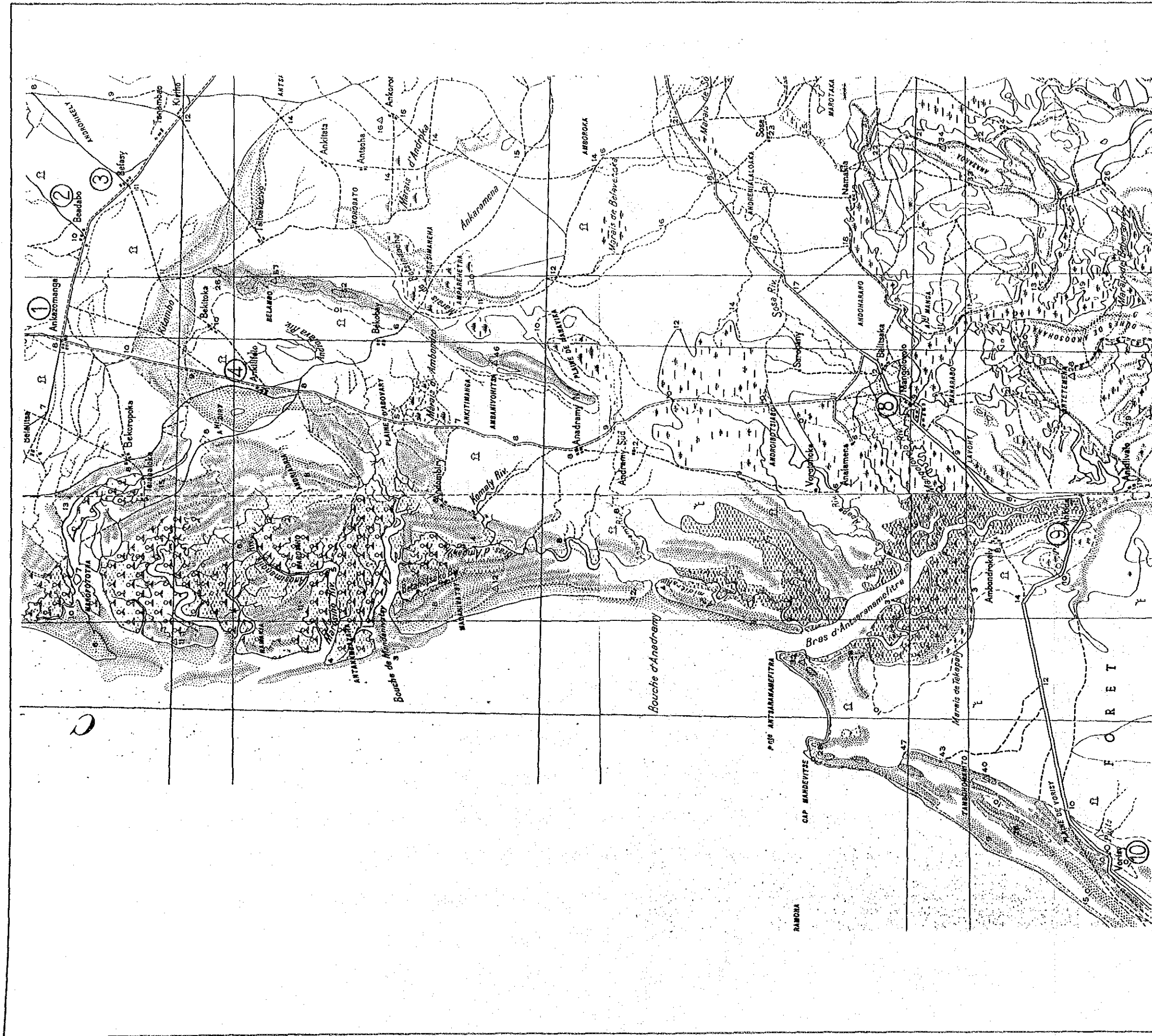


Table Results of Geophysical Prospecting and VLF Magnetotelluric Method (Phase 2&3)

Candidate Village			Electric Vertical Sounding			Candidate Village			Electric Vertical Sounding		
No.	Name	Elevation (m)	Points	Surveyed Depth (m)	Total (m)	No.	Name	Elevation (m)	Points	Surveyed Depth (m)	Total (m)
6	Tsianihy	17	2	300, 300	600	94	Andamasiny-Vineta	425	3	300, 200, 200	700
8	Mangolovolo	10	3	200, 200, 260	660	95	Tranokaky	430	3	200, 200, 200	600
11	Andranomanintsy	23	3	250, 300, 240	790	96	Analamary	544	2	300, 300	600
13	Tanandava	30	3	300, 300, 300	900	—	Toliaia	—	4	130, 300, 135, 200	815
14	Antsakoabe	36	2	300, 230	530	—	Ambolavenoka	—	1	300	300
16	Ambiky	51	3	300, 260, 300	860	Total (1)			91		
22	Manoy	83	3	155, 155, 155	465						
23	Amoza	117	3	155, 155, 155	465	Same Point with WADI					
25	Sihanaka	133	3	130, 170, 110	410	63	Manombo	2	6	100, 100, 100, 100, 100	600
28	Anatelo	164	2	200, 200	400			215		100	
34	Tandrano	400	2	300, 230	530	78	Befoly-2		13	100, 100, 100, 100, 100	1,300
37	Mamakiala	310	2	170, 200	370					100, 100, 100, 100, 100	
47	Arkilivalokely	475	2	245, 300	545					100, 100, 100	
49	Tanandava-Ant.	165	2	245, 300	545	Total (2)			19		
53	Analamisampy	190	3	155, 155, 155	465	Total (1)+(2)			110		
55	Ampasikibo	175	4	155, 155, 155, 100	565						
62	Antsamarify	58	3	155, 170, 155	480	VLF Magnetotelluric Method					
63	Manombo	2	2	100, 50	150	Candidate Village			Surveyed Points	Surveyed Space	Total (m)
65	Ankaraobato	75	3	155, 155, 155	465	No.	Name				
66	Andoharano	114	3	215, 185, 170	570	—	Masiakampy	1	10mx220		2,200
67	Tsefanoka	104	3	140, 155, 170	465	56	Namaboha	1	10mx254, 5mx1		2,545
68	Benetsy I	56	5	155, 155, 155, 300, 300	1,065	63	Manombo	1	10mx180		1,800
63	Tsifata	2	2	155, 155	310	78	Befoly	2	10mx180, 10mx300		4,800
66	Andoharano		1	245	245	—	Andranodeoka	1	10mx360		3,600
73	Ambolonkira	40	2	100, 130	230	Total			6		
78	Befoly-1		1	300	300						
81	Manoroka (I)	10	3	110, 110, 100	320						
81	Manoroka (II)	15	3	120, 140, 120	380						
86	Besakoa	720	3	140, 170, 140	450						
91	Ambahimalitsy	360	2	155, 155	310						







Electric Vertical Sounding

● surveyed point

VLF - Electromagnetic Sounding

○ surveyed point

⊙ Wells

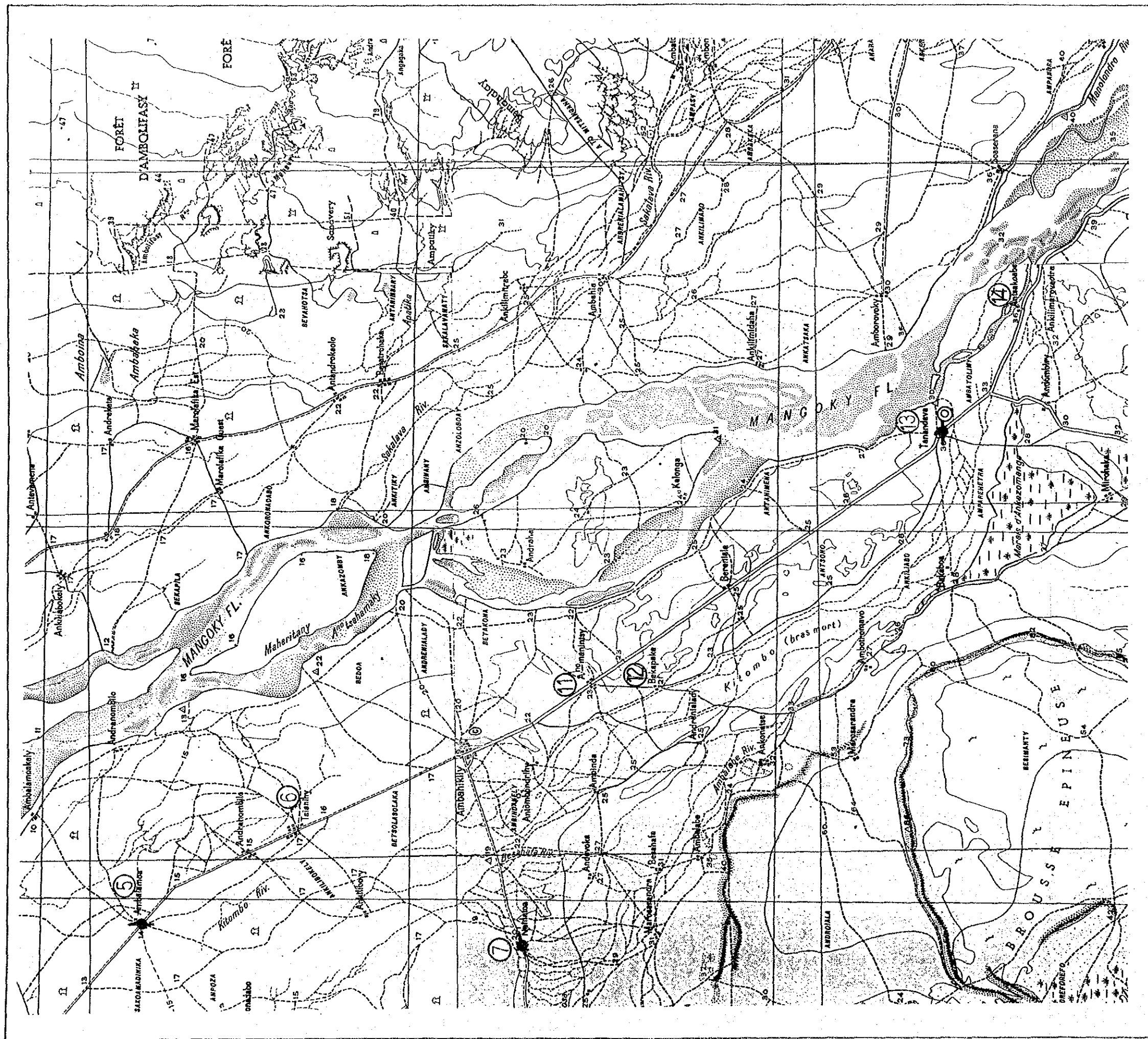
∩ Springs

⑤ Candidate Village for Water Supply Development

□ Candidate Village for Rehabilitation Survey



## LOCATION MAP OF GEOPHYSICAL PROSPECTING



## Electric Vertical Sounding

⑤ Candidate Village for Water Supply Development

● surveyed point

☐ Candidate Village for Rehabilitation Survey

## VLF – Electromagnetic Sounding

© Wells

○ surveyed point

U  
S  
S  
R  
S  
P  
R  
I  
N  
G  
S

# LOCATION MAP OF GEOPHYSICAL PROSPECTING