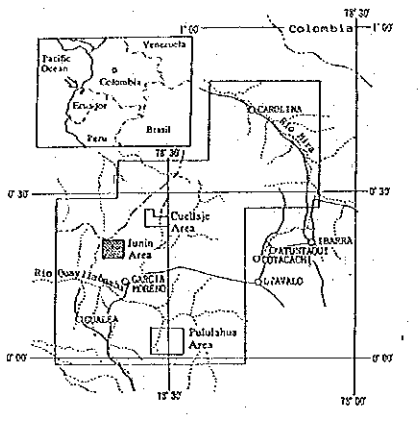


P1.11-2-1

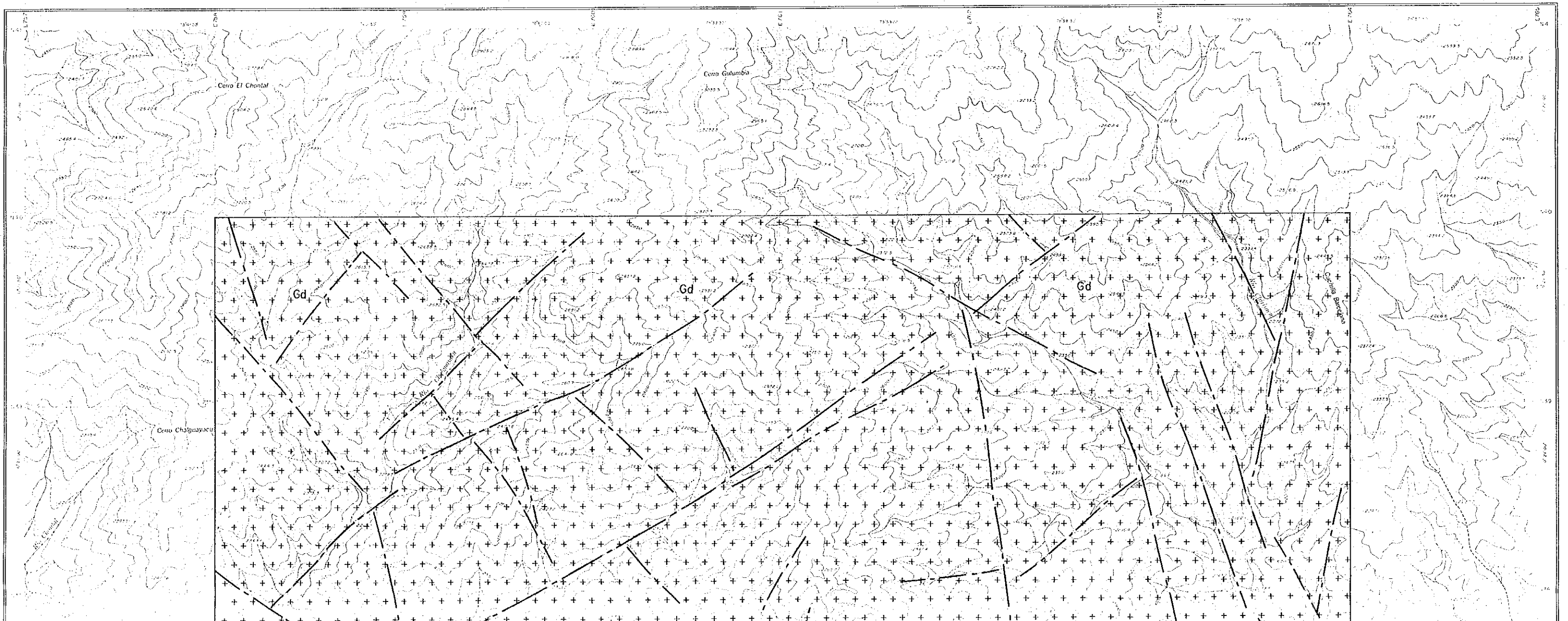
**MINERAL EXPLORATION
IN THE JUNIN AREA
REPUBLIC OF ECUADOR
PHASE I**

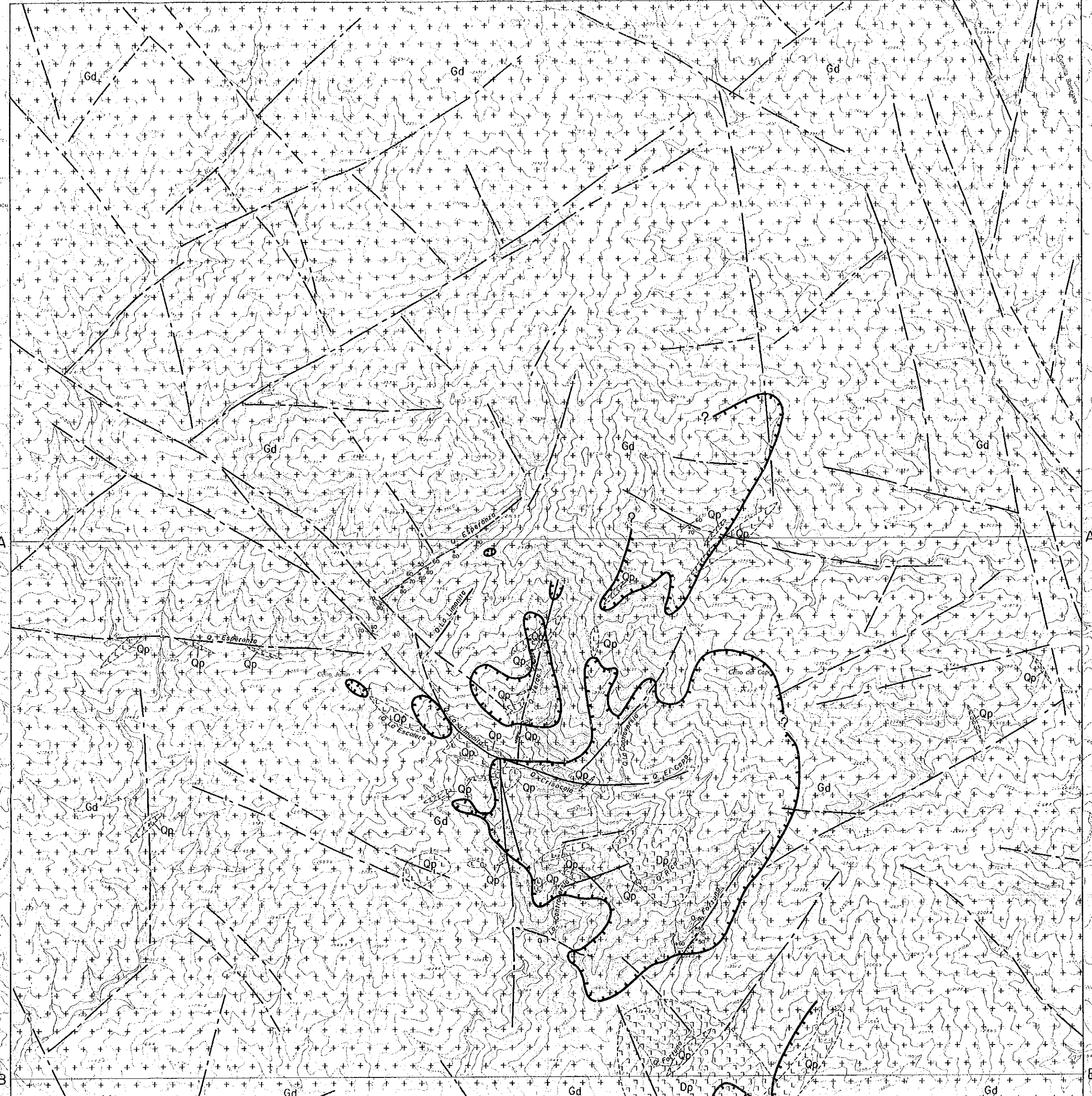
**GEOLOGIC MAP OF THE
SURROUNDING ZONE, JUNIN AREA
(1:10,000)**



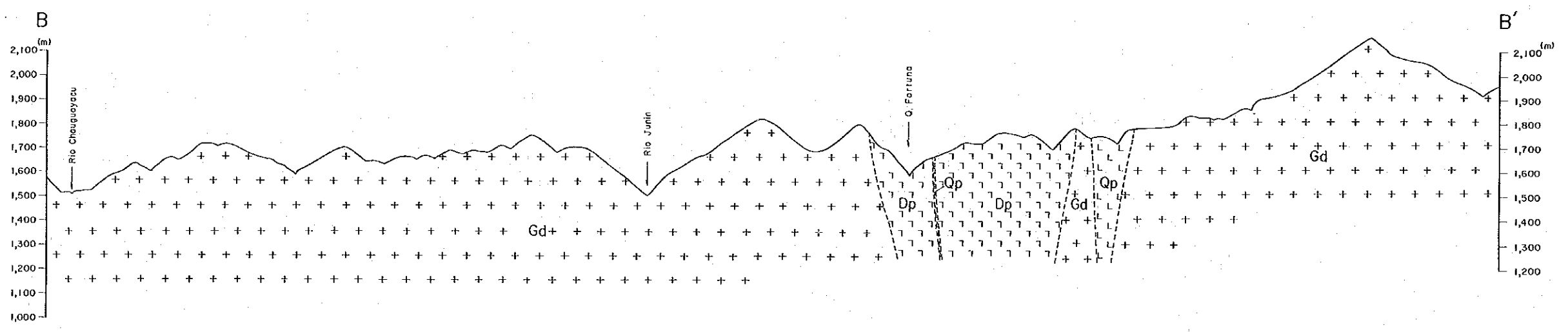
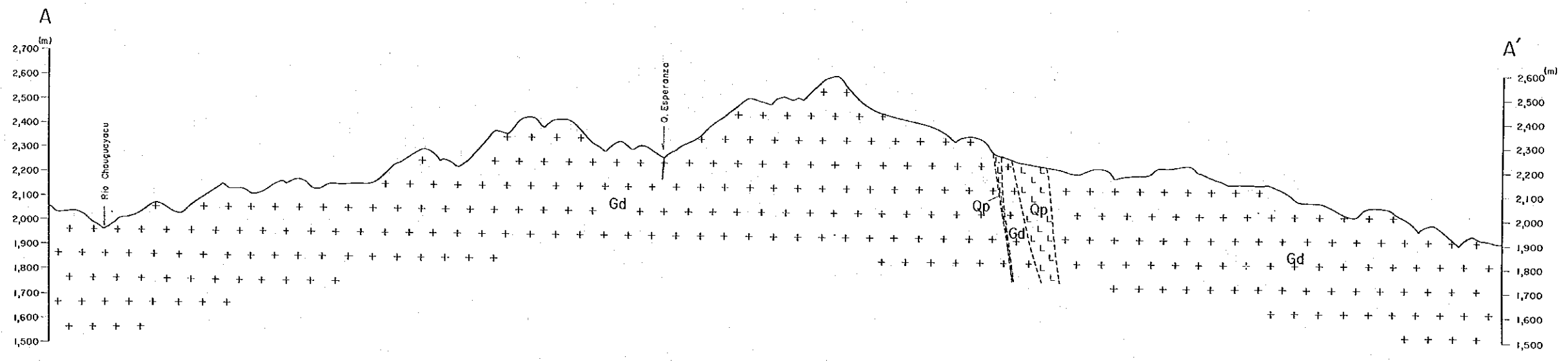
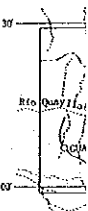
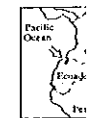
JAPAN INTERNATIONAL COOPERATION AGENCY
METAL MINING AGENCY OF JAPAN
FEBRUARY 1992

- LEGEND**
- Intrusive Rocks**
- Gd [++++] Granodiorite
 - Dp [|||||] Diorite porphyry
 - Qp [|||||] Quartz porphyry
- Structure**
- [---] Fault
 - [---] Lineament
 - [---] Geologic contact
- Mineralization**
- [---] Vein and veinlet
 - [...] Dissemination
- Alteration zone
(by field observation)**
- [---] Medium to strongly silicified zone





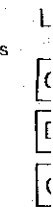




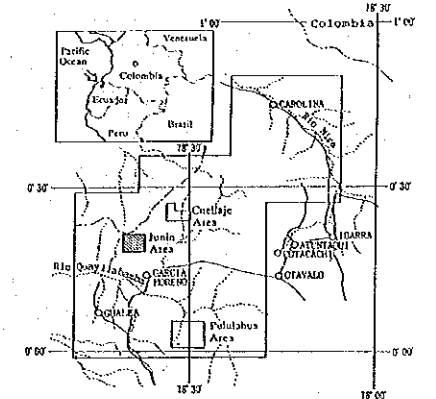
Intrusive Rocks

Structure

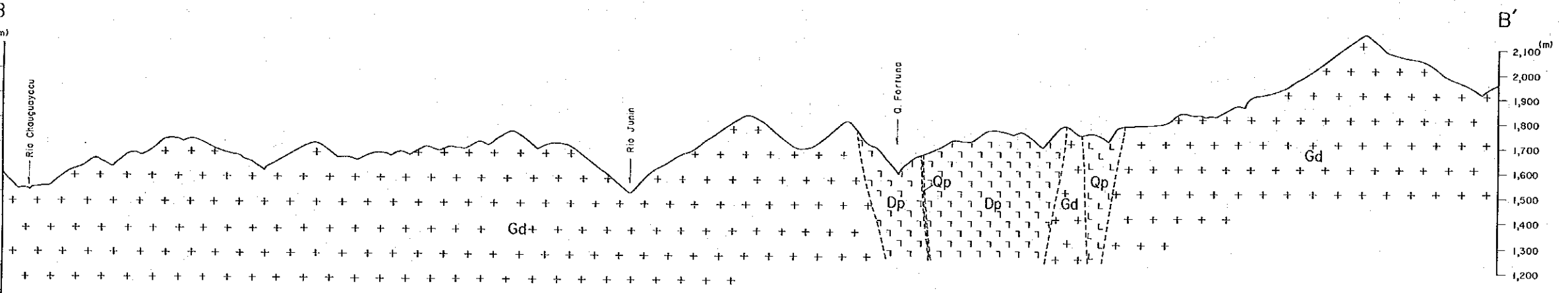
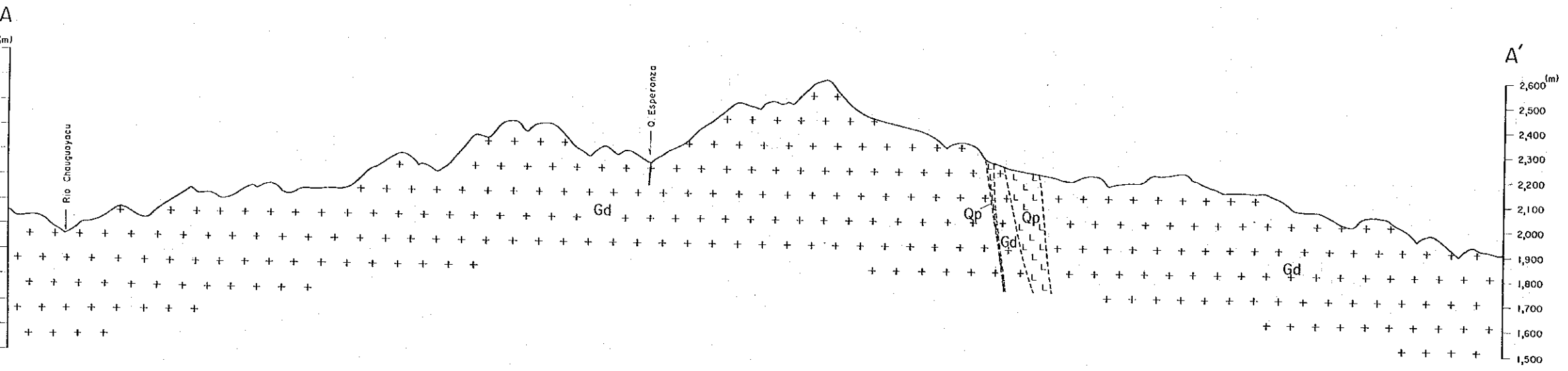
Mineralization



MINERAL EXPLORATION
IN THE JUNIN AREA
REPUBLIC OF ECUADOR
PHASE I
GEOLOGIC PROFILE OF THE
SURROUNDING ZONE, JUNIN AREA
(1:10,000)

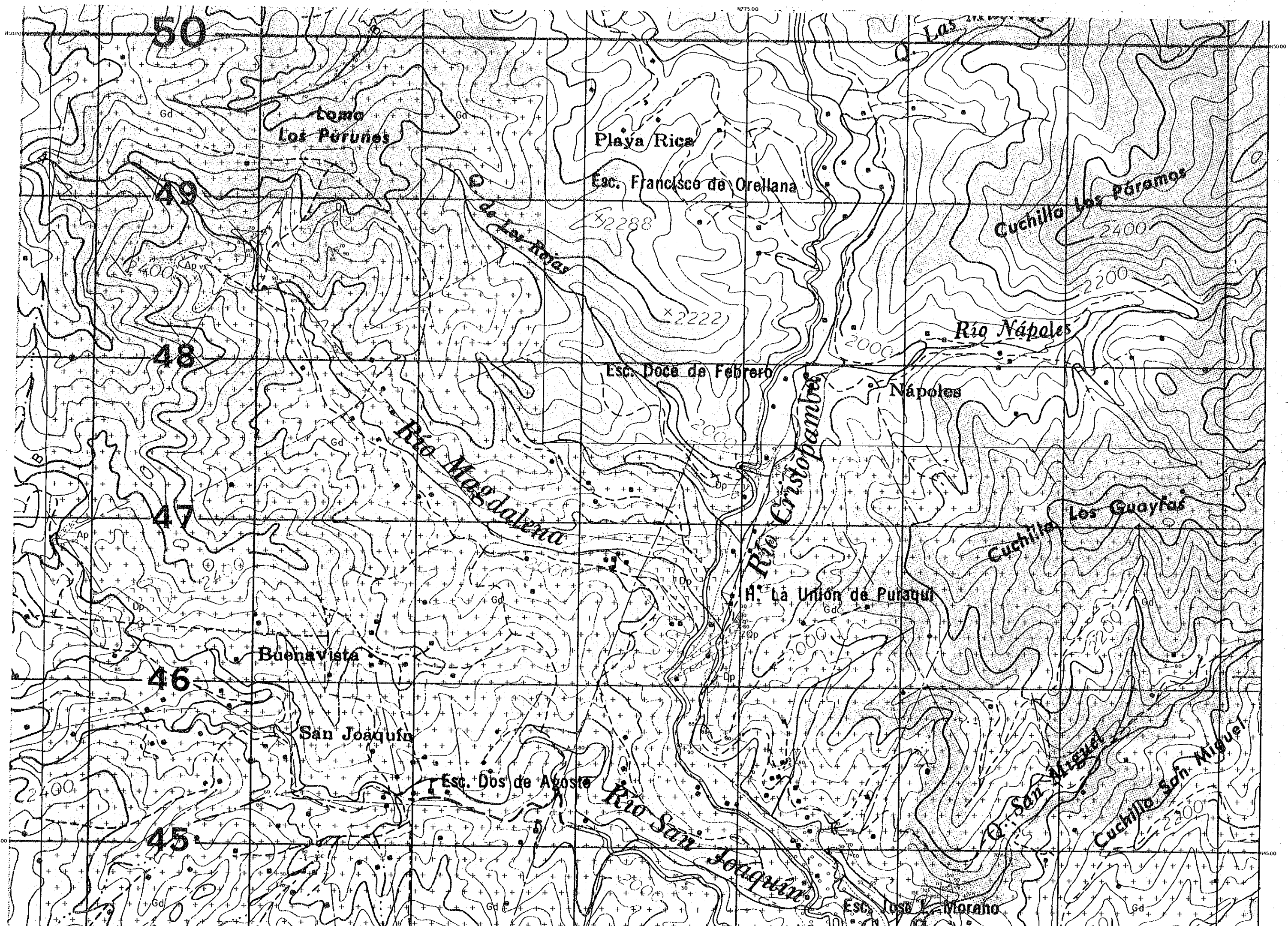


JAPAN INTERNATIONAL COOPERATION AGENCY
METAL MINING AGENCY OF JAPAN
FEBRUARY 1992



LEGEND

Intrusive Rocks	Gd	Granodiorite
	Dp	Diorite porphyry
	Qp	Quartz porphyry
Structure		Fault
		Geologic contact
Mineralization		Vein and veinlet
		Dissemination

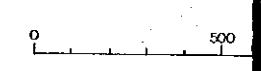


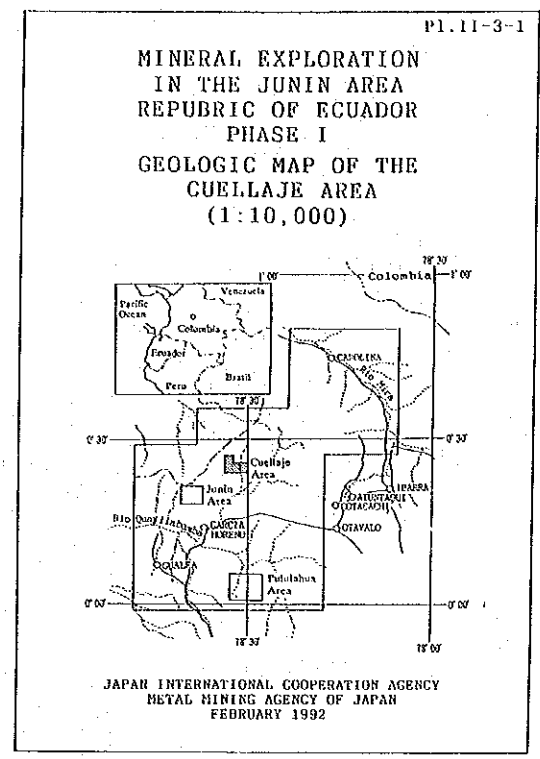
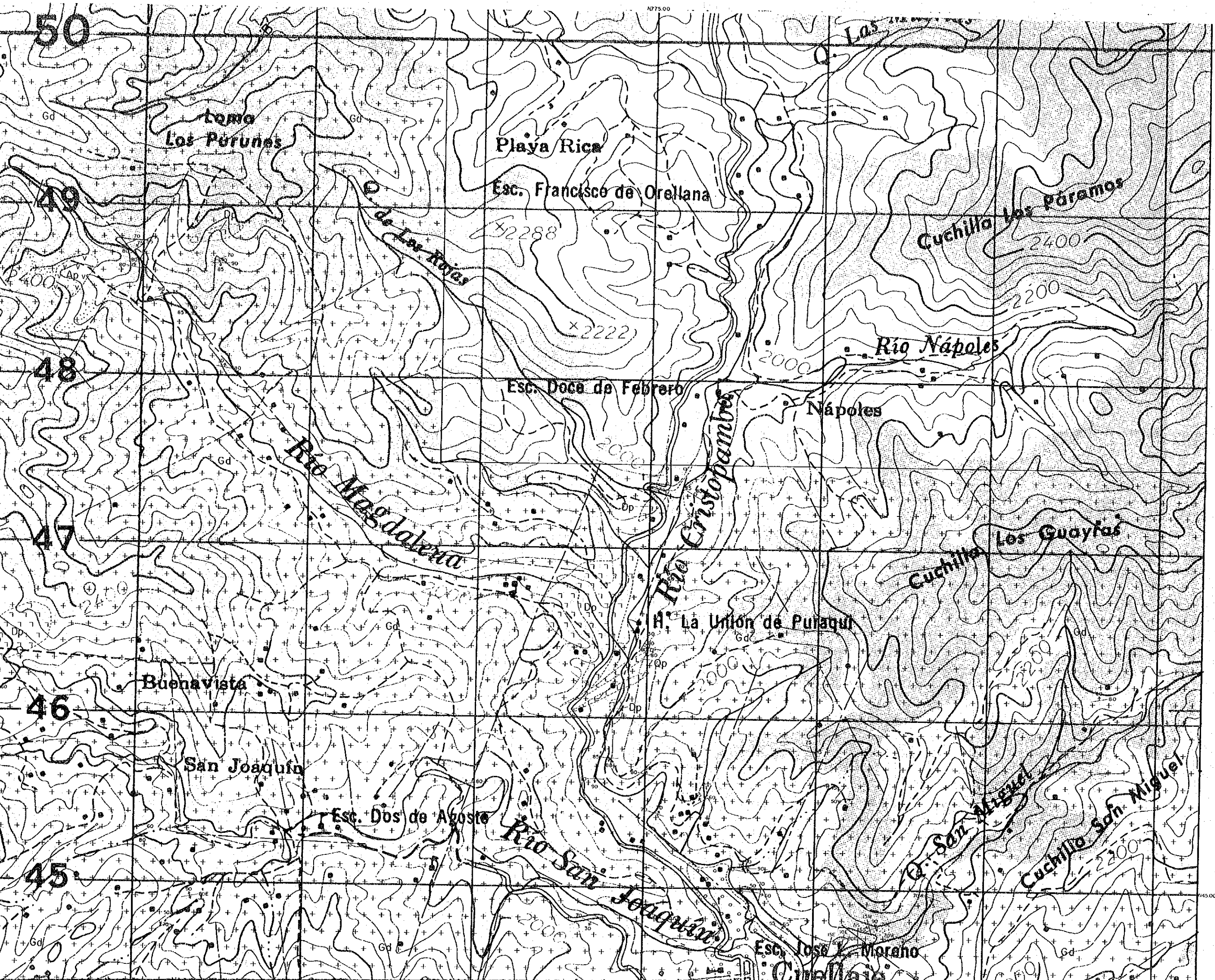
MINERAL EXP
IN THE JUN
REPUBLIC OF
PHASE
GEOLOGIC MA
CUELLAJE
(1:10,000)

JAPAN INTERNATIONAL CO
METAL MINING AGENT
FEBRUARY 1968

LEGEND

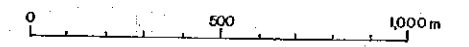
- Terrace Deposit t o o o
- Intrusive Rocks Gd + +
- Dp | | | |
- Ap | | | |
- Qp | | | |
- Structure
- Mineralization 60
50
40

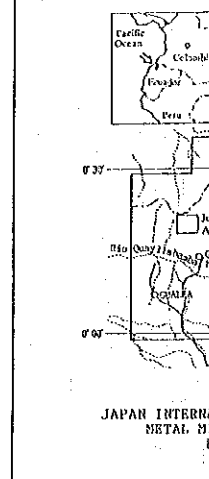
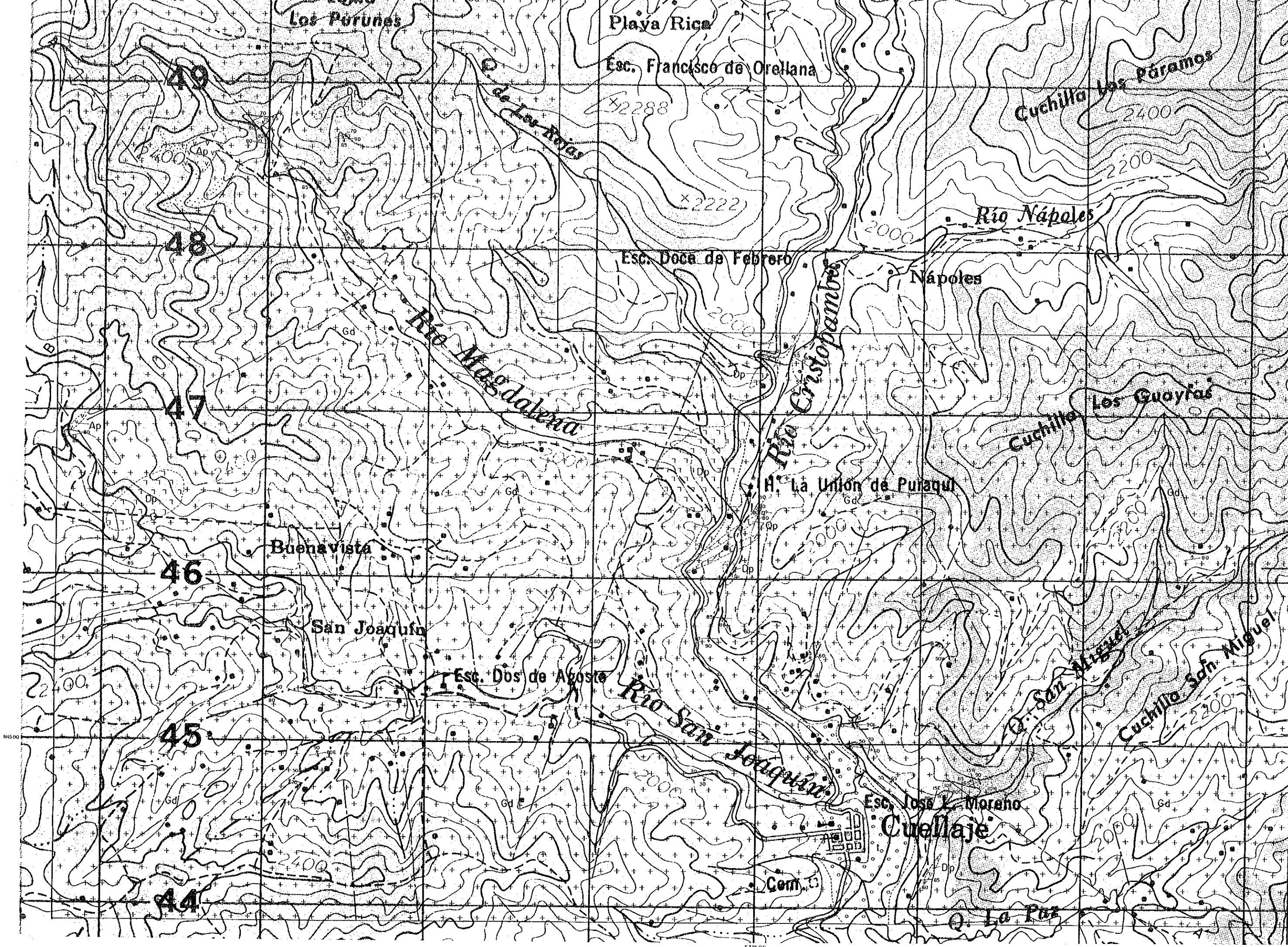




LEGEND

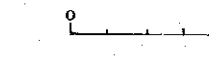
Terrace Deposit		Gravel, sand and mud
Intrusive Rocks		Granodiorite
		Diorite porphyry
		Andesite porphyry
		Quartz porphyry
Structure		Lineament
		Geologic contact
Mineralization		Vein and veinlet
		Dissemination

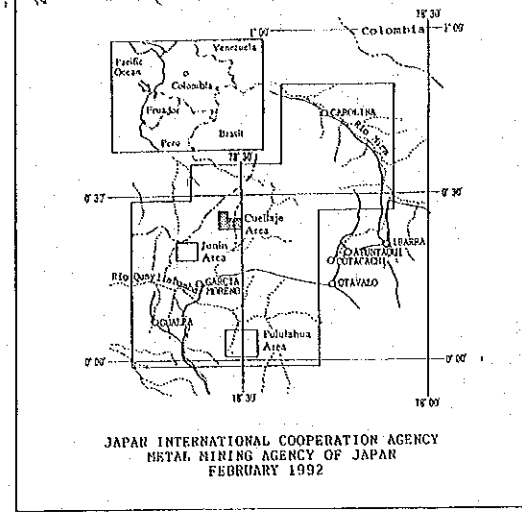
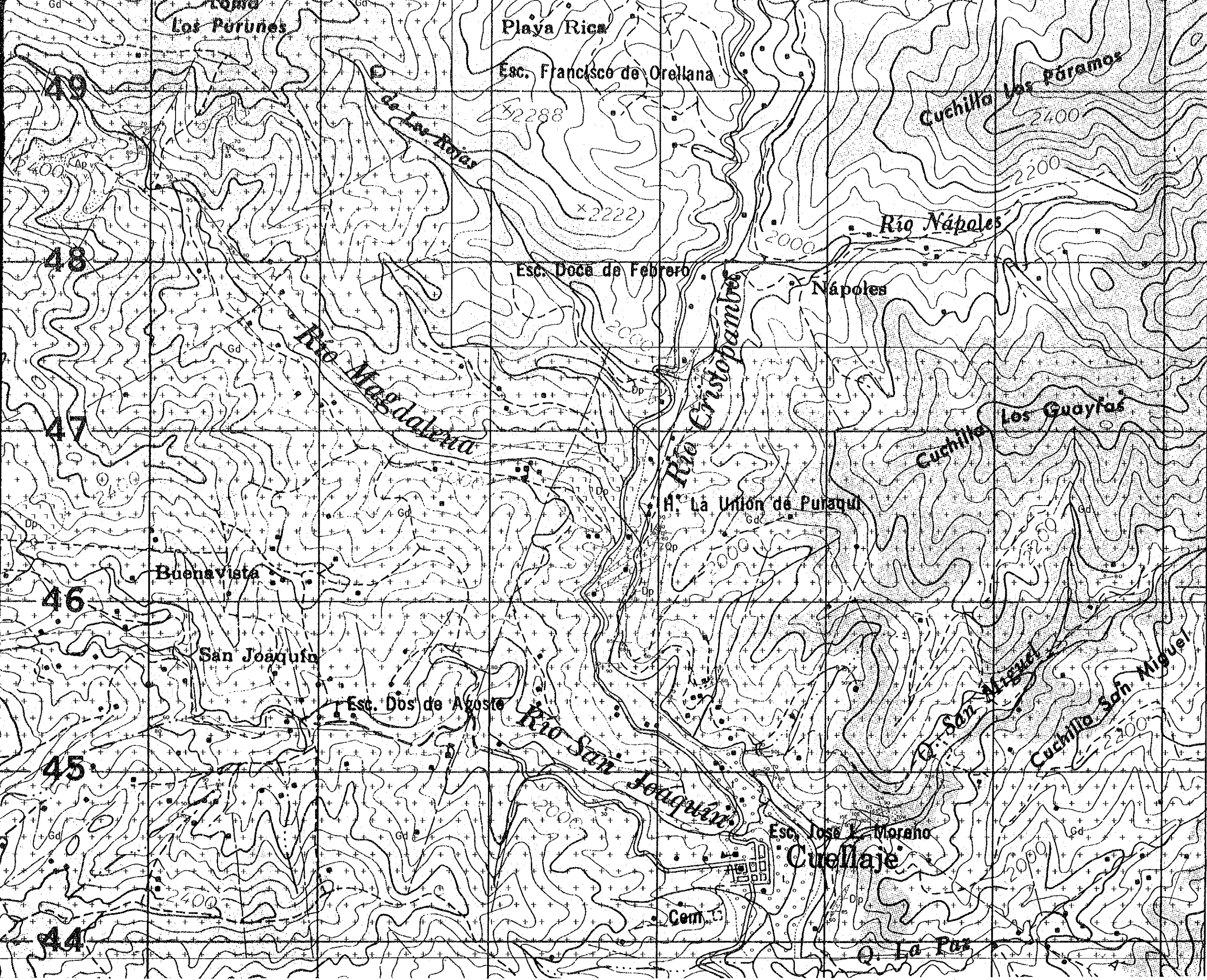




LEG

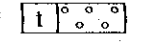
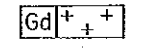
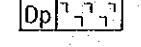
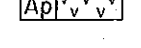
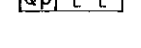
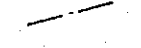

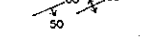

Terrace Deposit	[Ap]
Intrusive Rocks	[Gd]
Structure	[Symbol]
Mineralization	[Symbol]

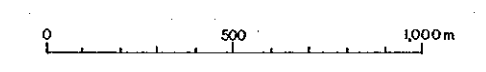


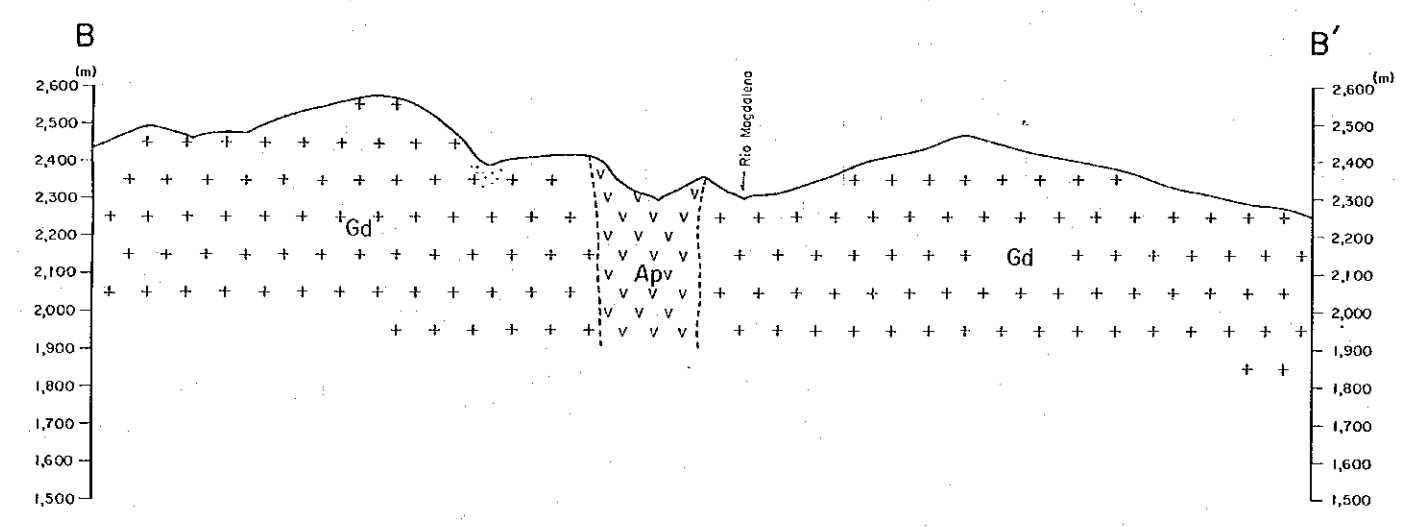
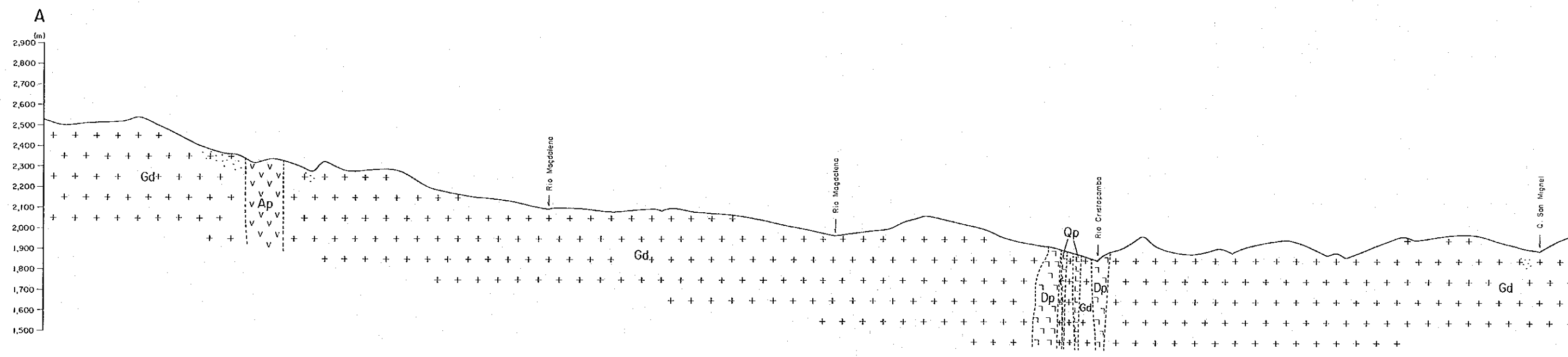


JAPAN INTERNATIONAL COOPERATION AGENCY
 METAL MINING AGENCY OF JAPAN
 FEBRUARY 1992

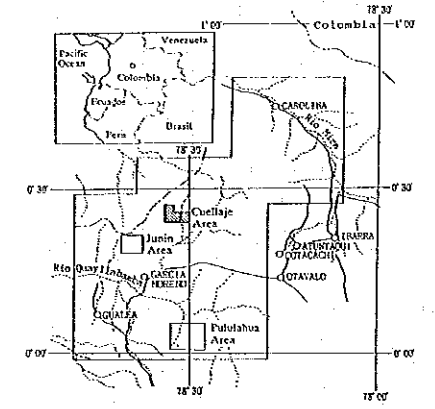
LEGEND

- Terrace Deposit  Gravel, sand and mud
- Intrusive Rocks  Granodiorite
-  Diorite porphyry
-  Andesite porphyry
-  Quartz porphyry
- Structure  Lineament
-  Geologic contact
- Mineralization  Vein and veinlet
-  Dissemination

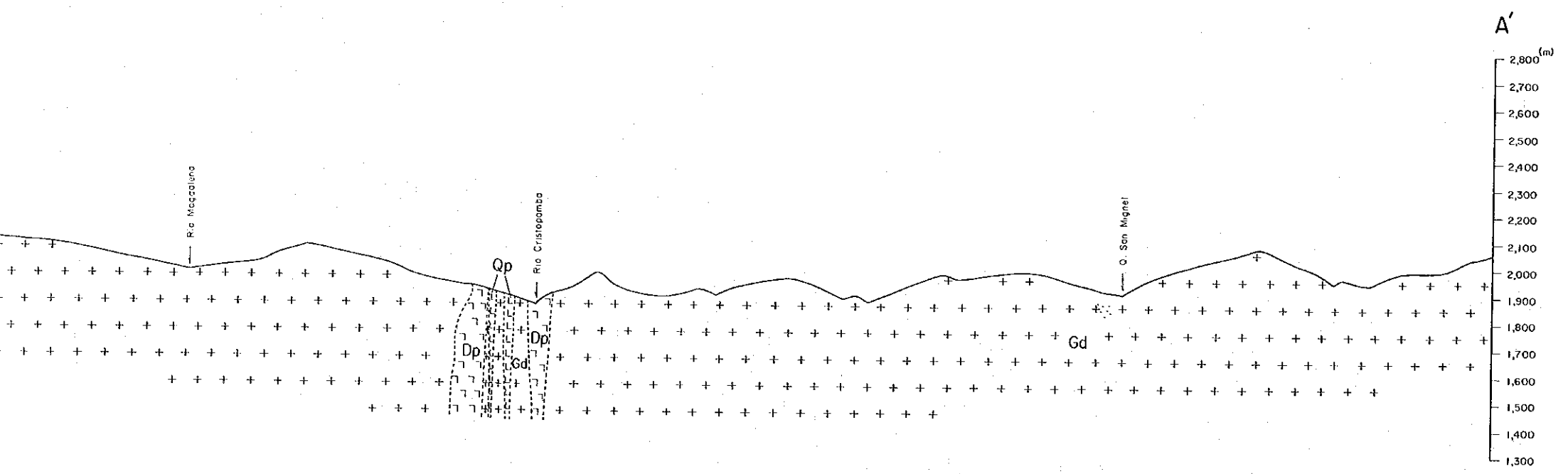




MINERAL EXPLORATION
IN THE JUNIN AREA
REPUBLIC OF ECUADOR
PHASE I
GEOLOGIC PROFILE OF THE
CUELLAJE AREA
(1:10,000)

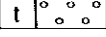
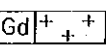
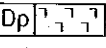
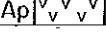
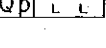
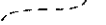
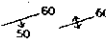



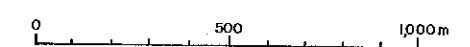
JAPAN INTERNATIONAL COOPERATION AGENCY
METAL MINING AGENCY OF JAPAN
FEBRUARY 1992

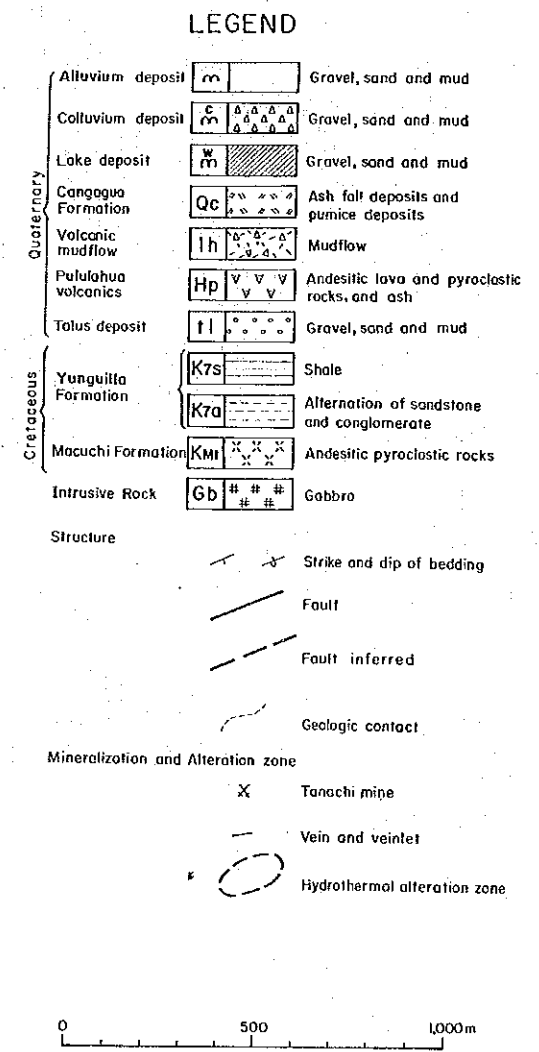
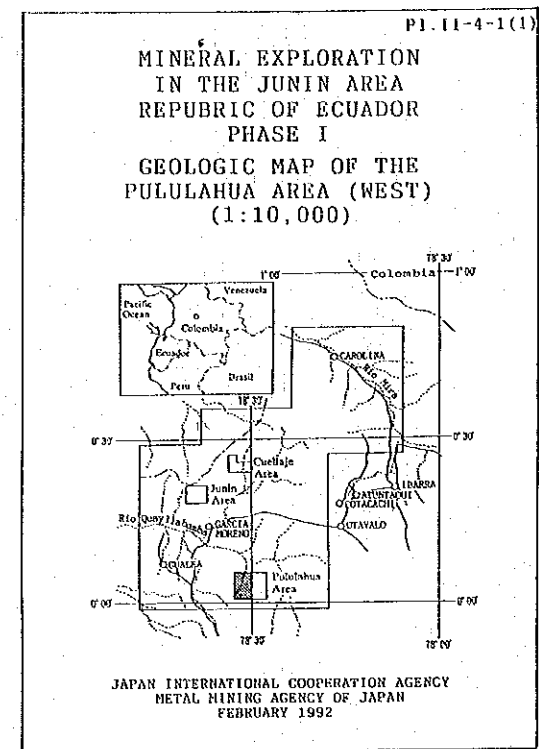
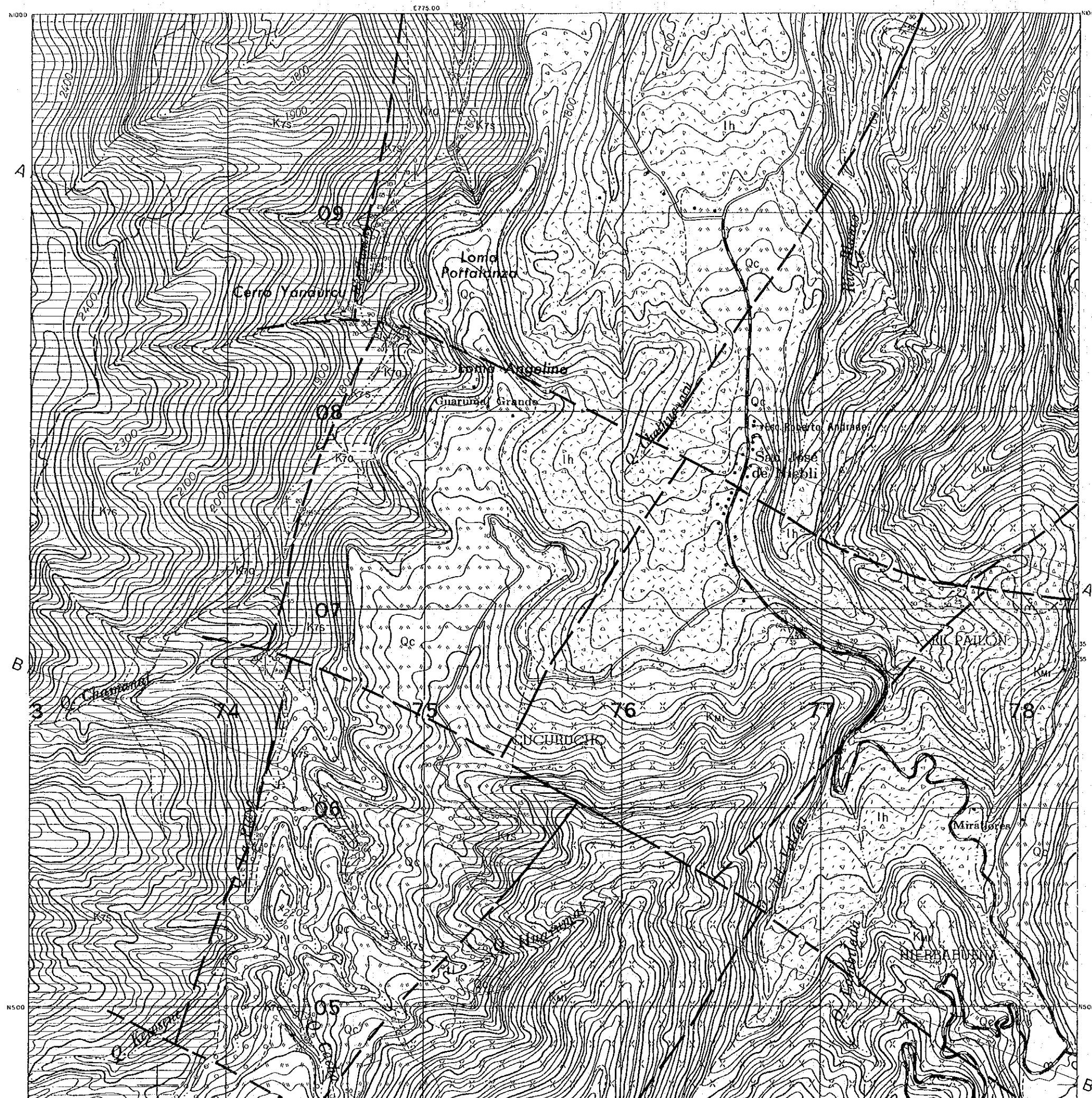


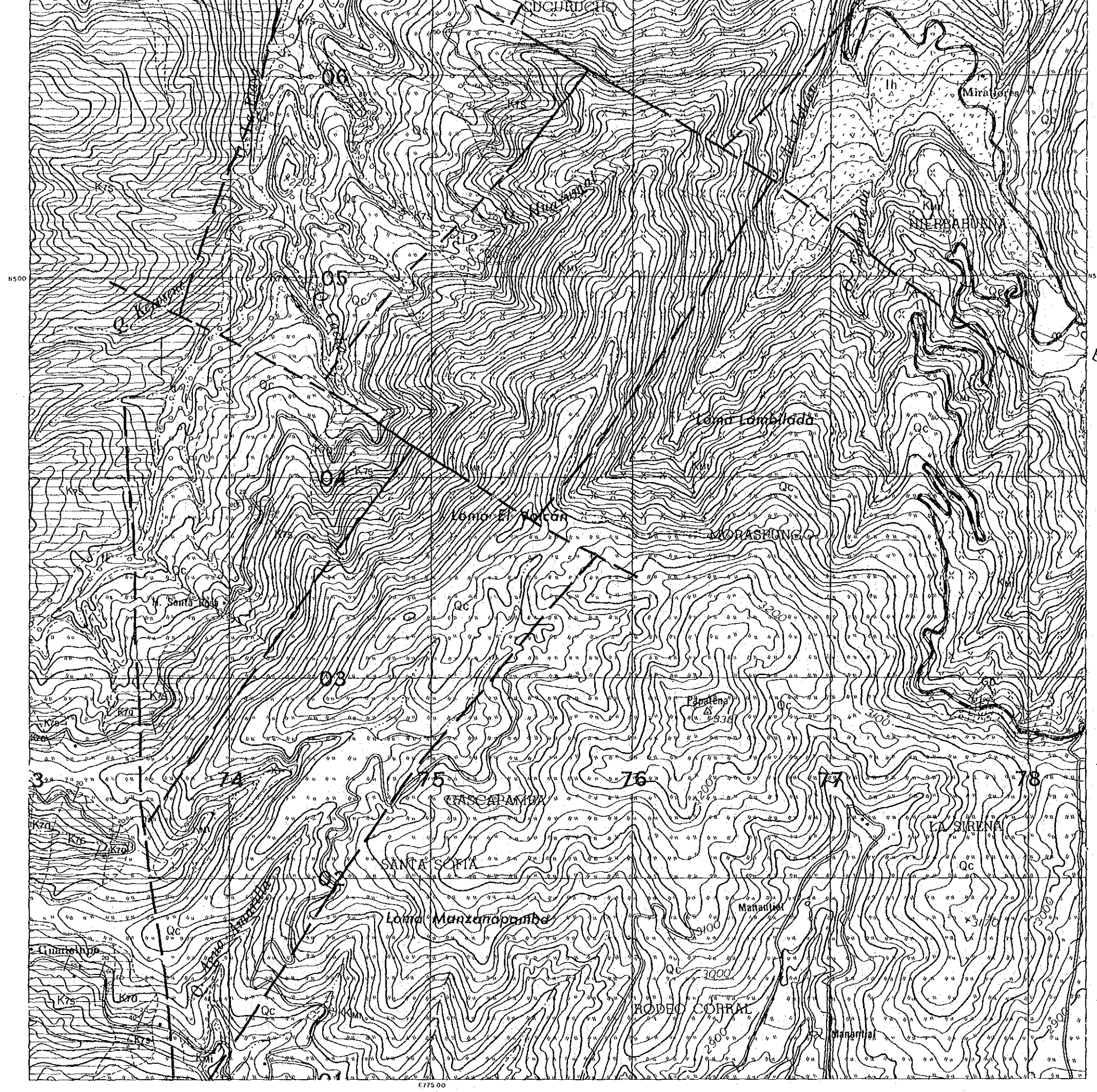
2,600 (m)
2,500
2,400
2,300
2,200
2,100
2,000
1,900
1,800
1,700
1,600
1,500

LEGEND

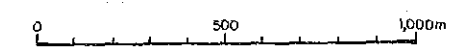
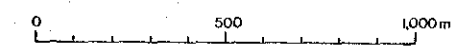
- Terrace Deposit
 -  Gravel, sand and mud
- Intrusive Rocks
 -  Granodiorite
 -  Diorite porphyry
 -  Andesite porphyry
 -  Quartz porphyry
- Structure
 -  Geologic contact
- Mineralization
 -  Vein and veinlet
 -  Dissemination

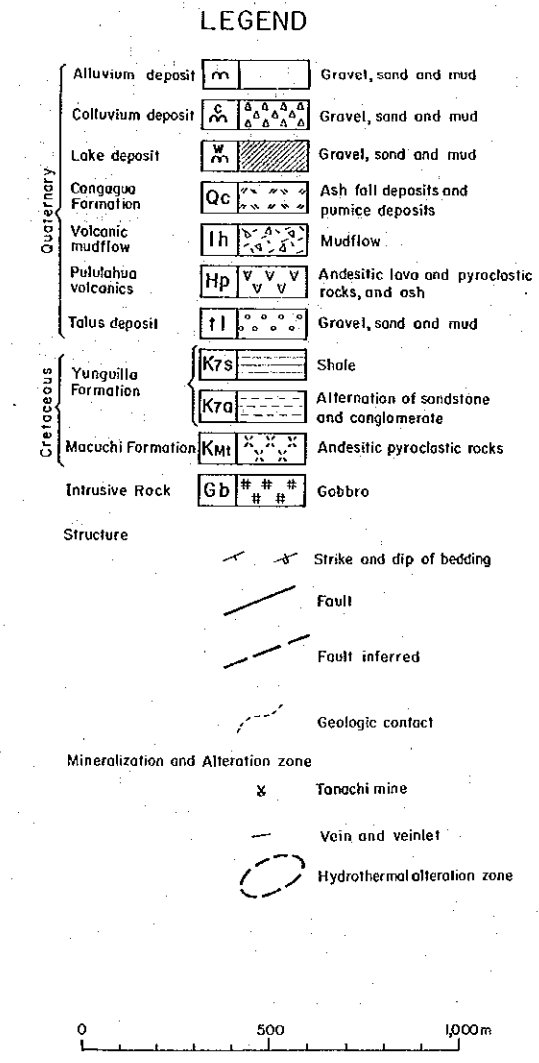
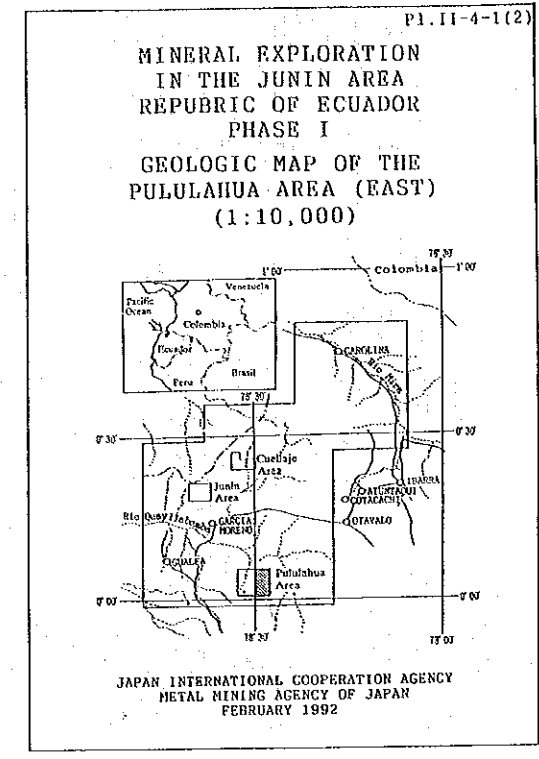
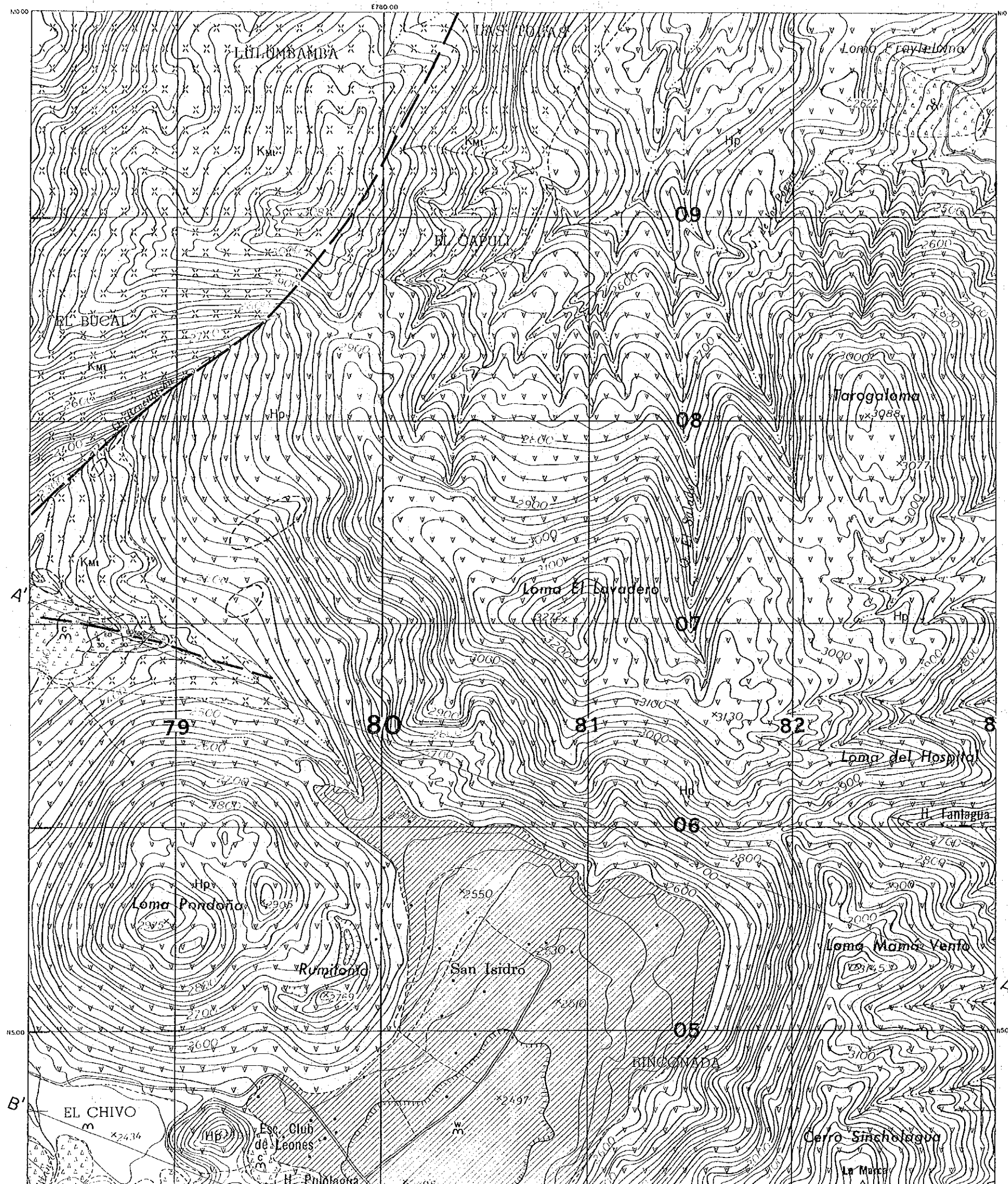


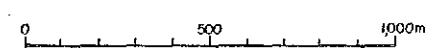
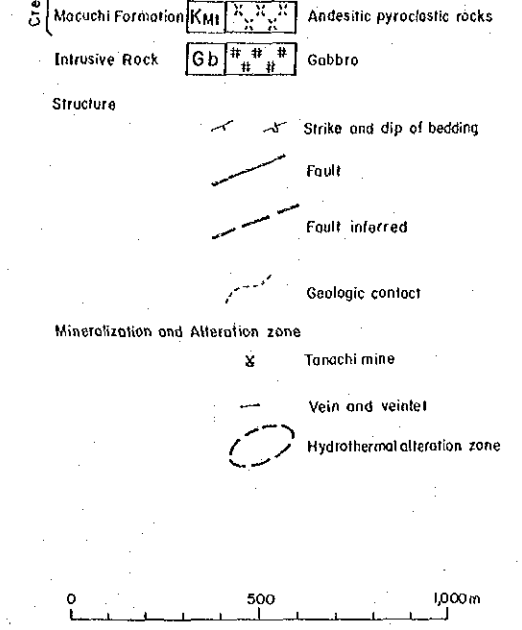
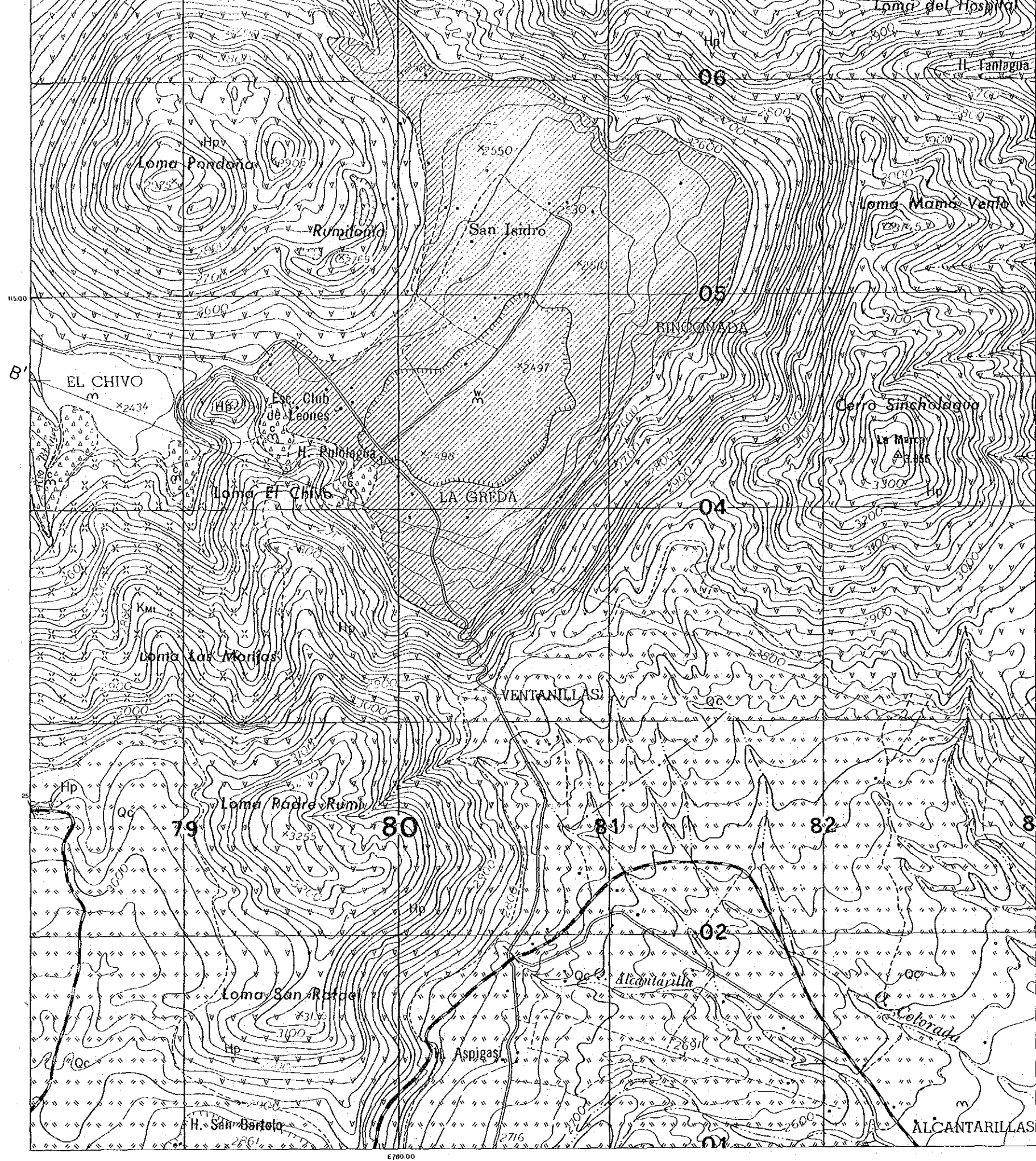


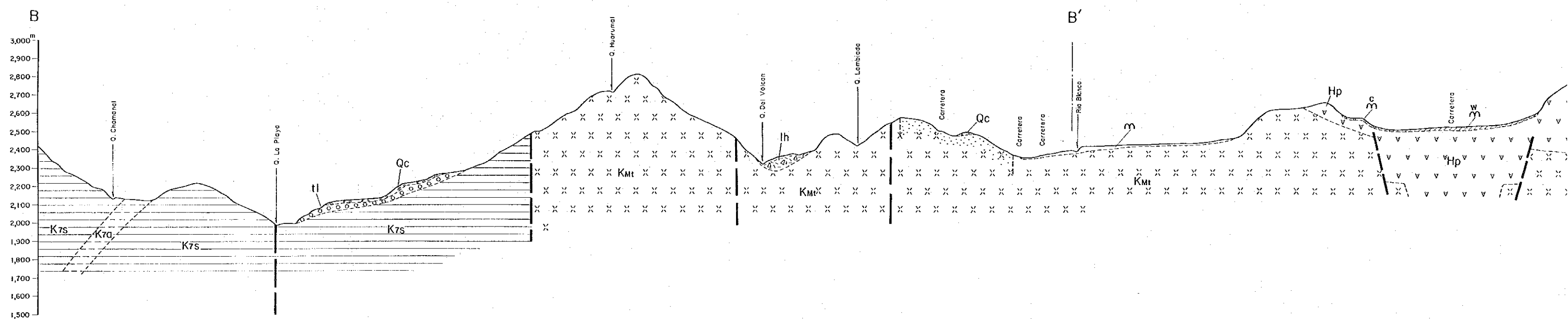
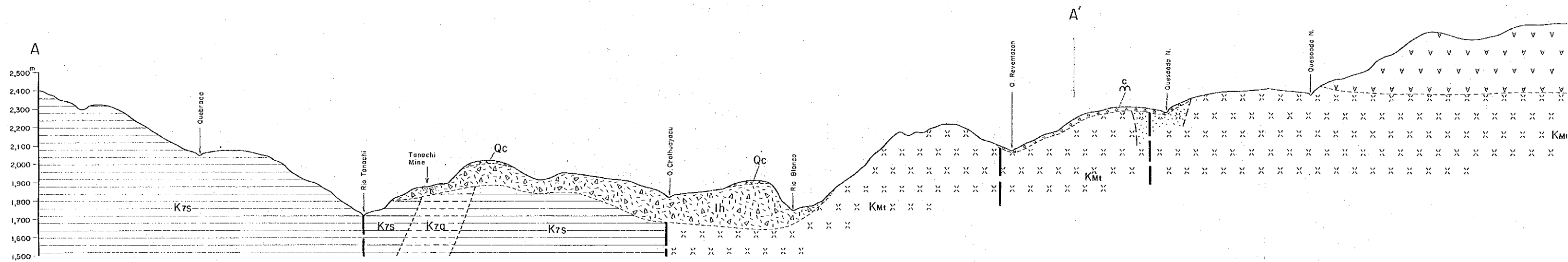


Cre Macuchi Formation Km Andesitic pyroclastic rocks
 Intrusive Rock Gb Gabbro
 Structure
 Strike and dip of bedding
 Fault
 Fault inferred
 Geologic contact
 Mineralization and Alteration zone
 Tanachi mine
 Vein and veinlet
 Hydrothermal alteration zone

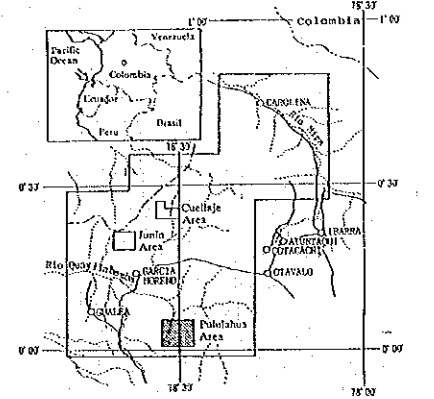




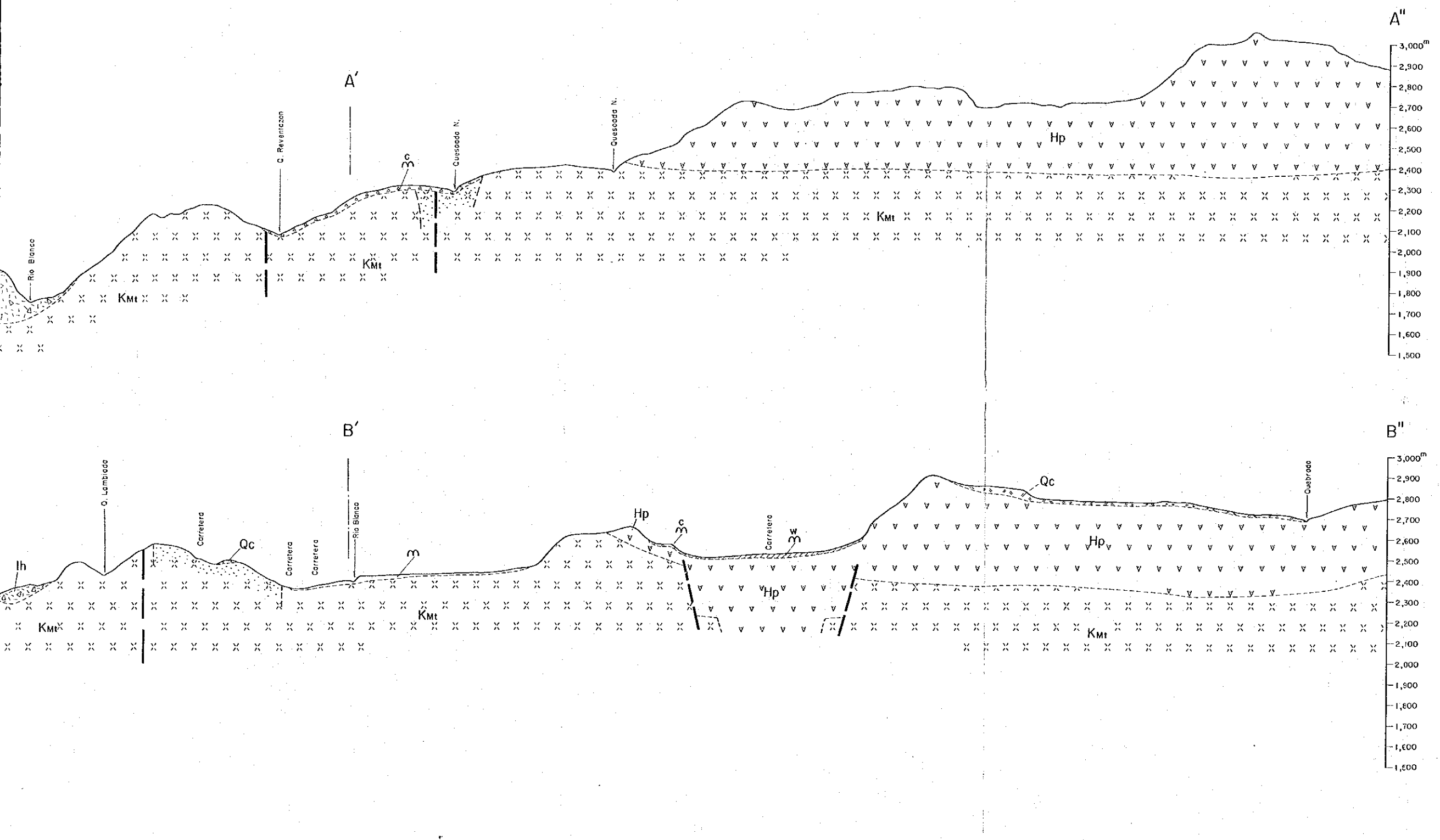




MINERAL EXPLORATION
IN THE JUNIN AREA
REPUBLIC OF ECUADOR
PHASE I
GEOLOGIC PROFILE OF THE
PULULAHUA AREA
(1:10,000)



JAPAN INTERNATIONAL COOPERATION AGENCY
METAL MINING AGENCY OF JAPAN
FEBRUARY 1992



LEGEND

Quaternary	Alluvium deposit		Gravel, sand and mud
	Colluvium deposit		Gravel, sand and mud
	Lake deposit		Gravel, sand and mud
	Congagua Formation		Ash fall deposits and pumice deposits
	Volcanic mudflow		Mudflow
	Pululahua volcanics		Andesitic lava and pyroclastic rocks, and ash
	Talus deposit		Gravel, sand and mud
Cretaceous	Yunguilla Formation		Shale
	Macuchi Formation		Alternation of sandstone and conglomerate
Intrusive Rock		Gabbro	
Structure		Strike and dip of bedding	
		Fault	
		Fault inferred	
Mineralization and Alteration zone		Geologic contact	
		Tanachi mine	
		Vein and veinlet	
		Hydrothermal alteration zone	

