

REPORT
ON
THE ECONOMIC AND SOCIAL SITUATION
IN
THE JUNIN AREA
REPUBLIC OF ECUADOR

(PAGE 1)

MARCH 1992

JAPAN INTERNATIONAL COOPERATION AGENCY
METAL MINING AGENCY OF JAPAN

MPN
CR(8)
92-068

REPORT OF THE COOPERATIVE METAL-
EXPLORATION OF THE JUNIN AREA
REPUBLIC OF ECUADOR

(PAGE 1)

MARCH 1992

MJ
MI
AC
JA

706
66.1
MPN

98

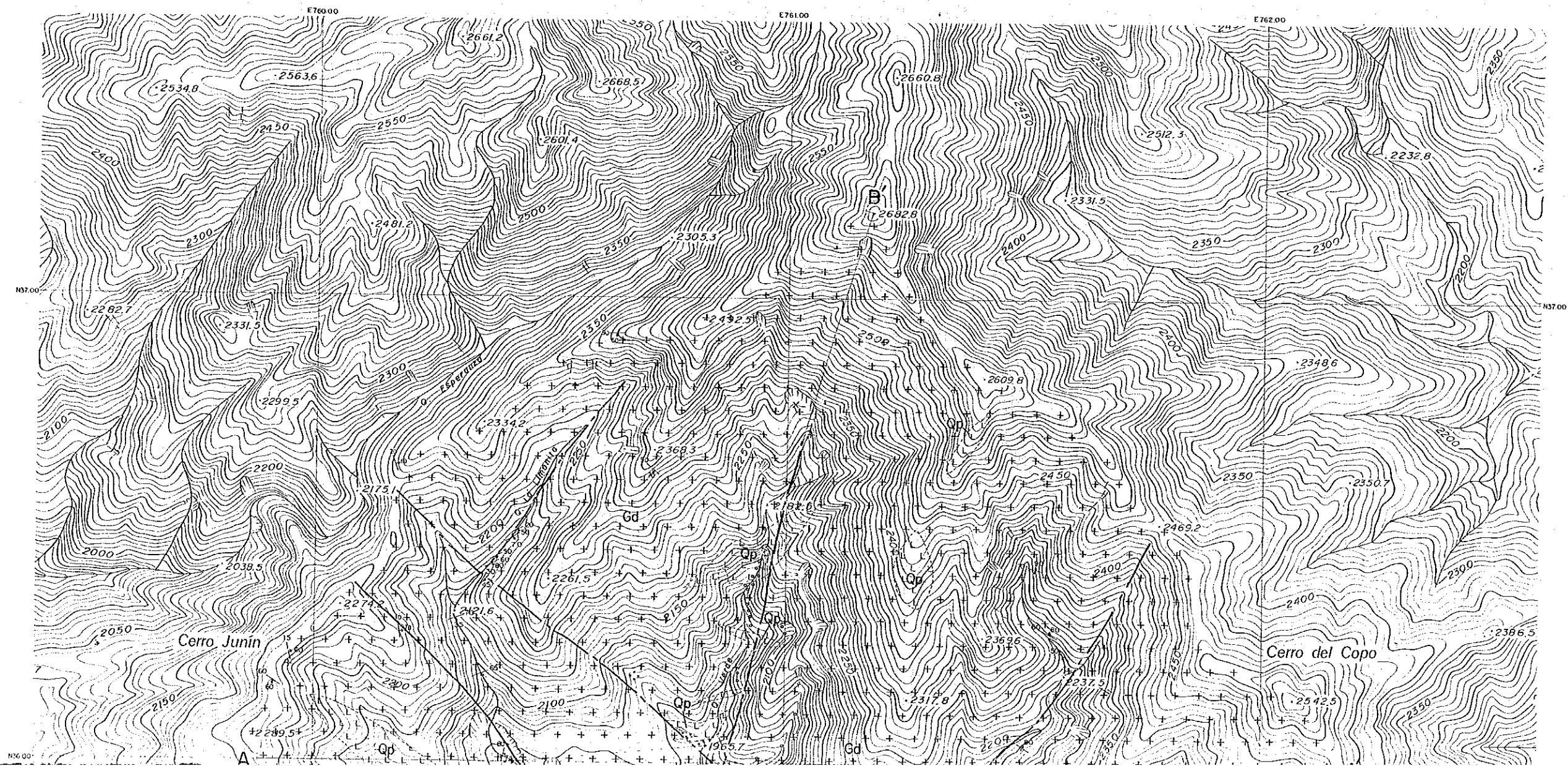
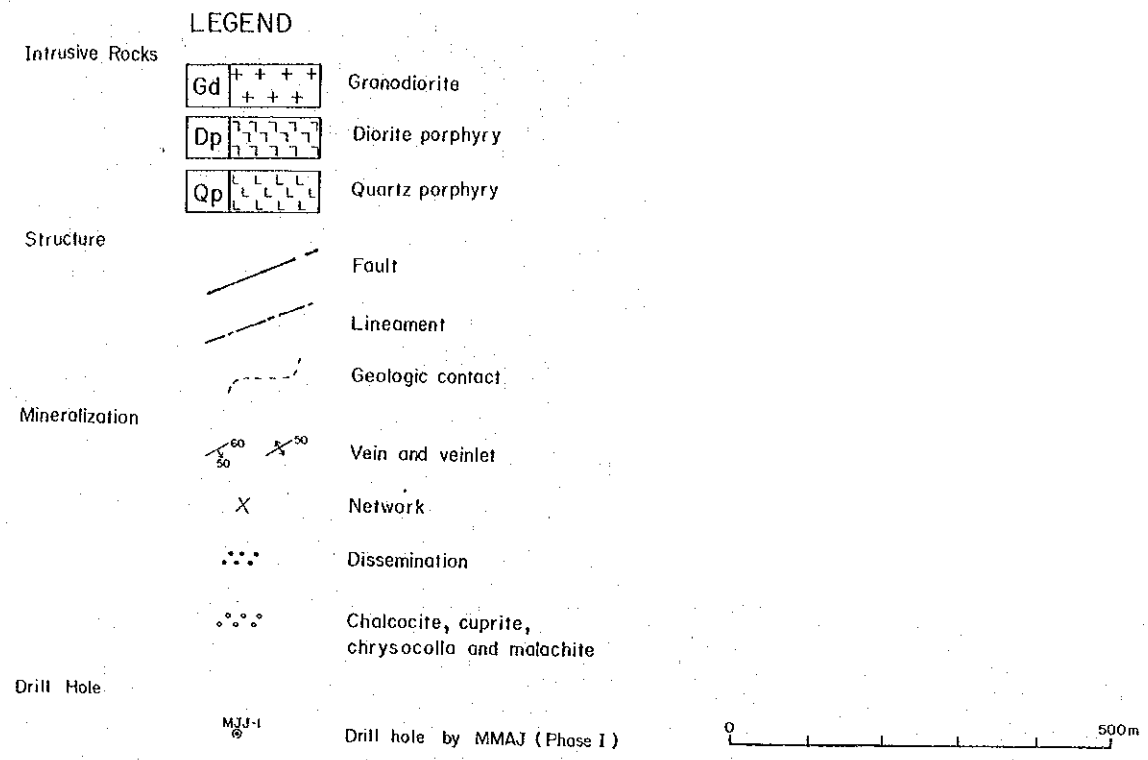
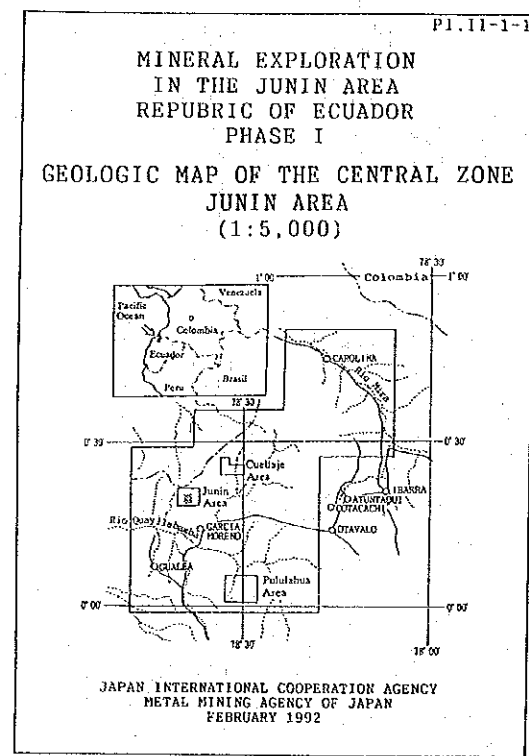
国際協力事業団

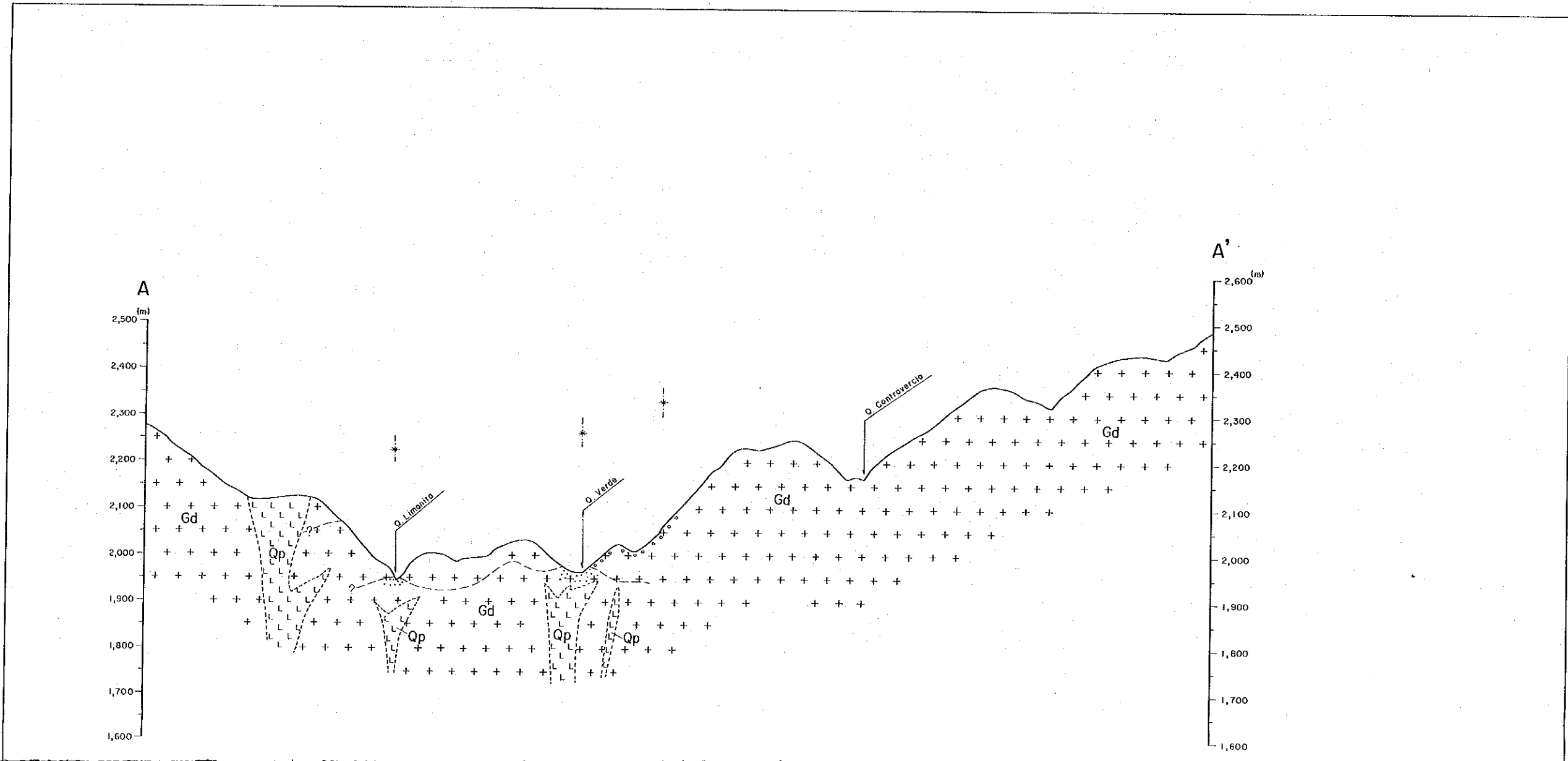
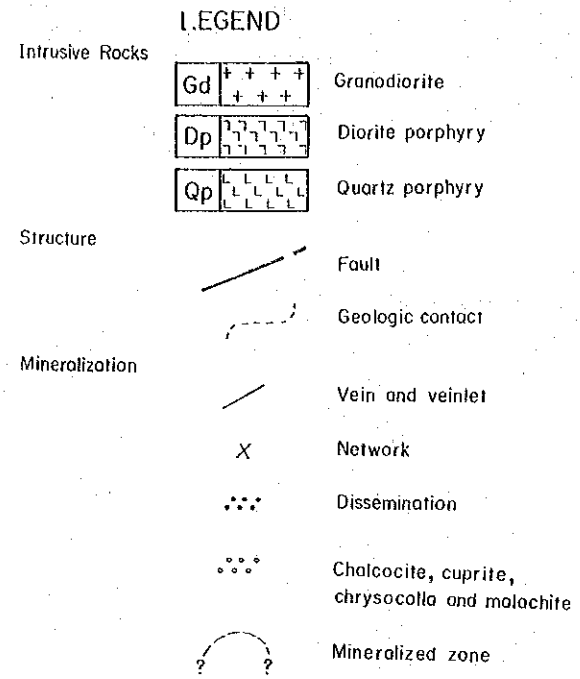
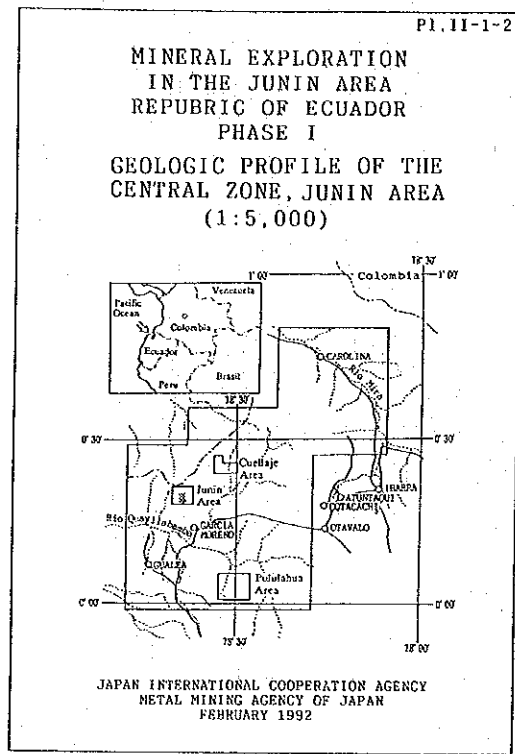
23873

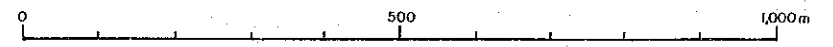
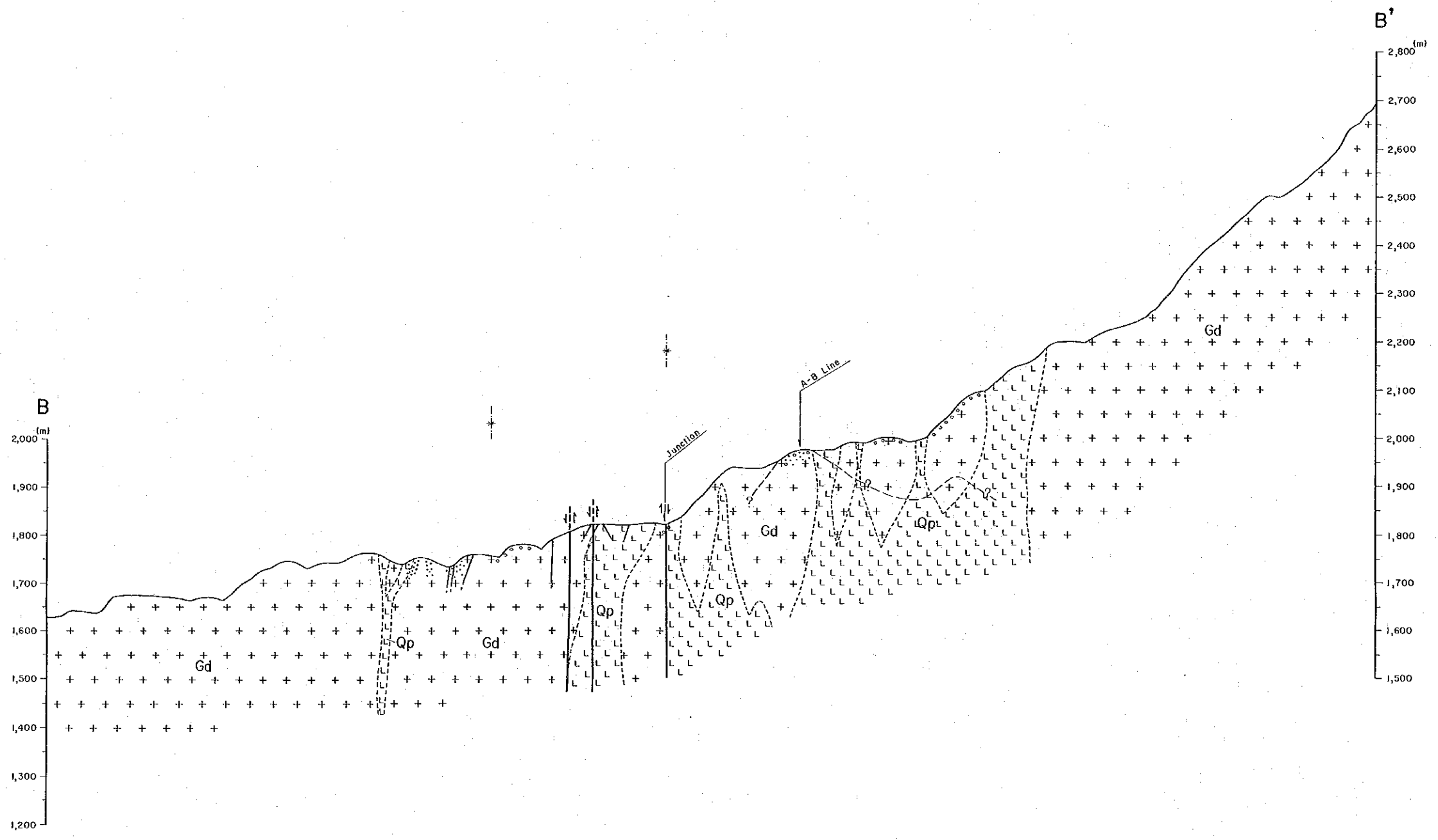
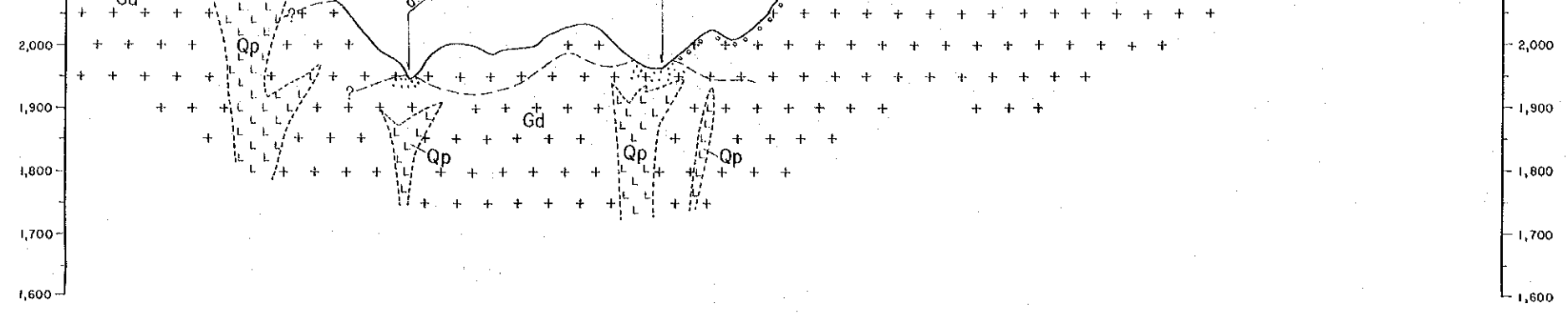
JICA LIBRARY



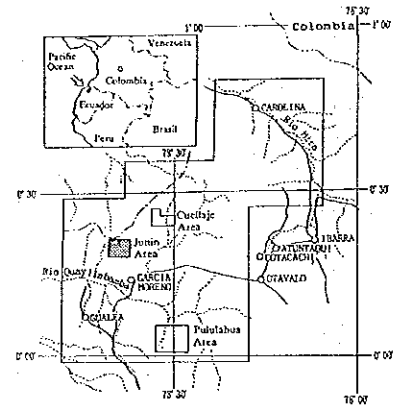
1098542 (2)





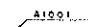


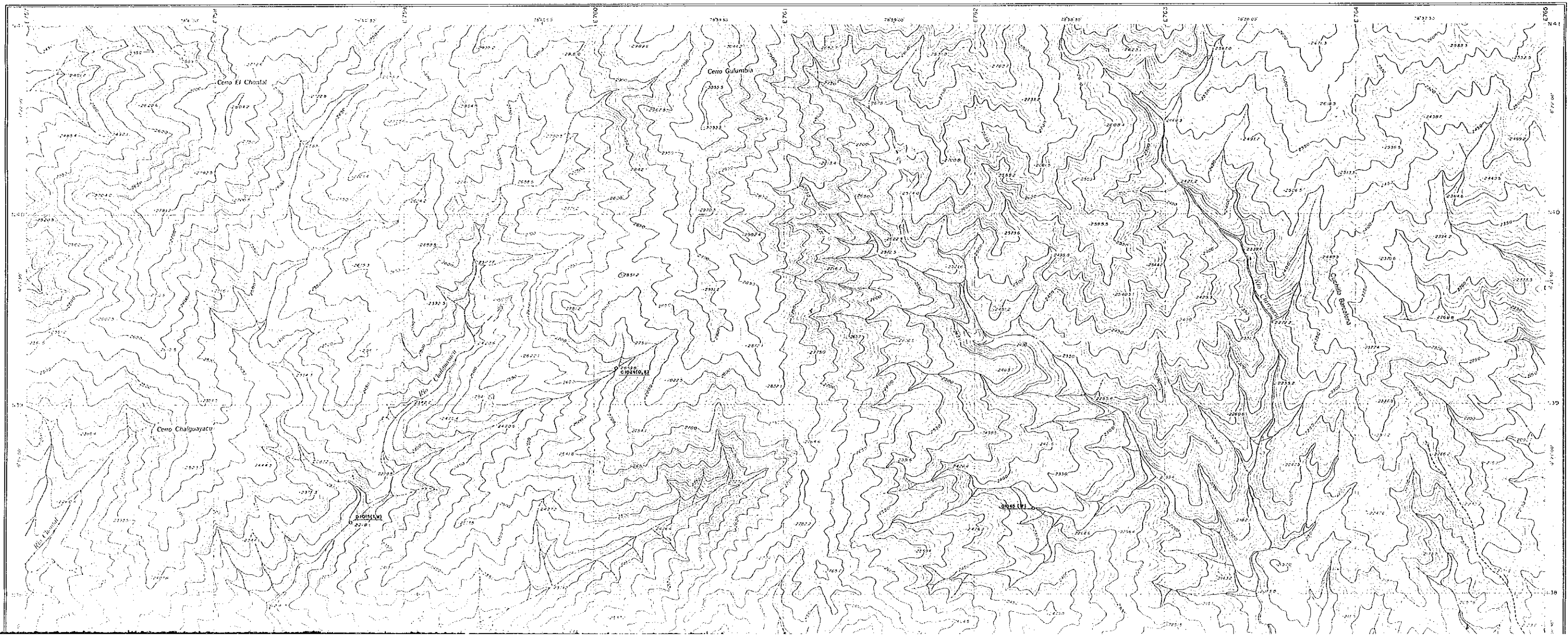
MINERAL EXPLORATION
IN THE JUNIN AREA
REPUBLIC OF ECUADOR
PHASE I
LOCATION OF ROCK AND ORE SAMPLES
OF THE JUNIN AREA
(1:10,000)

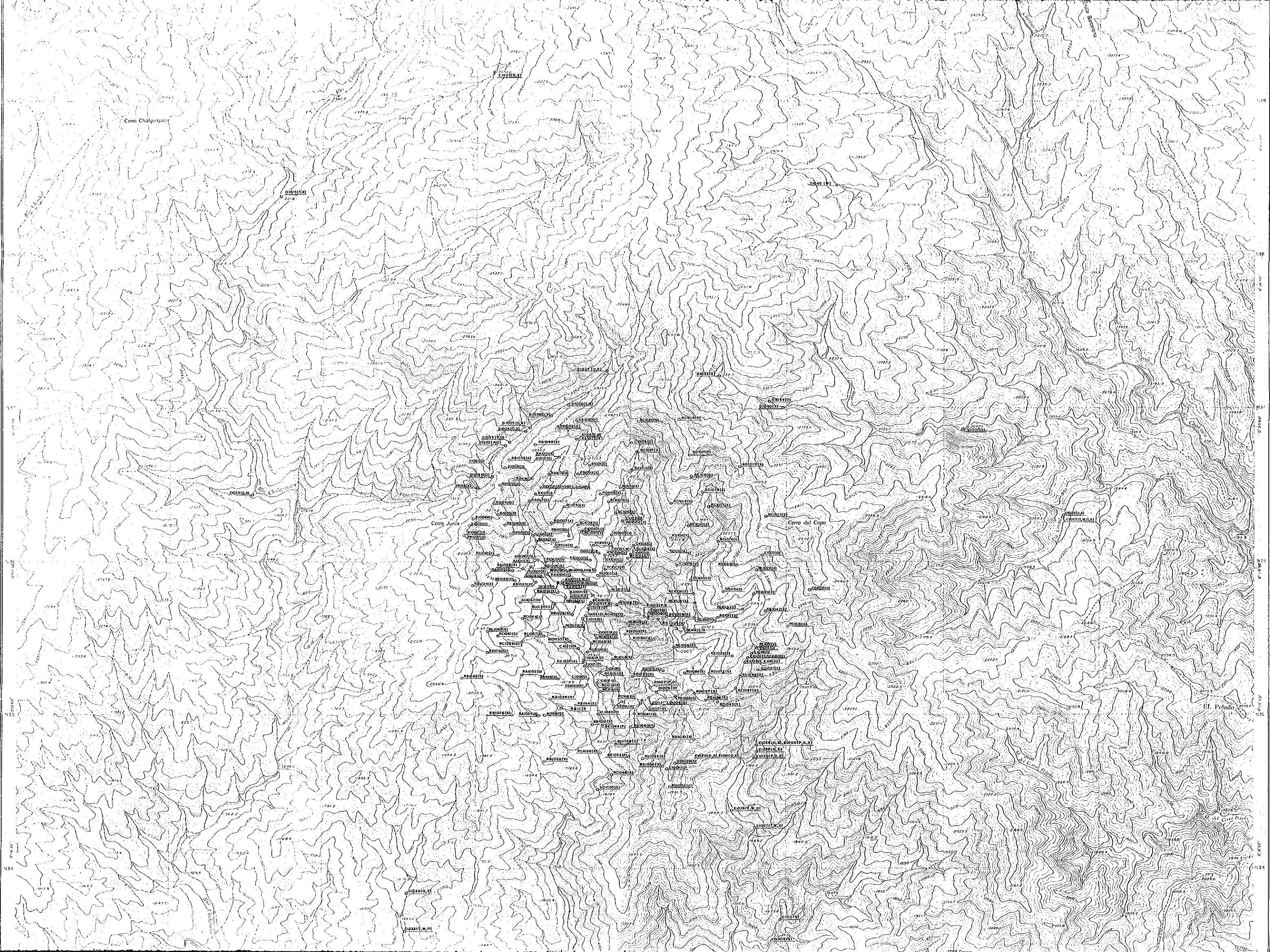


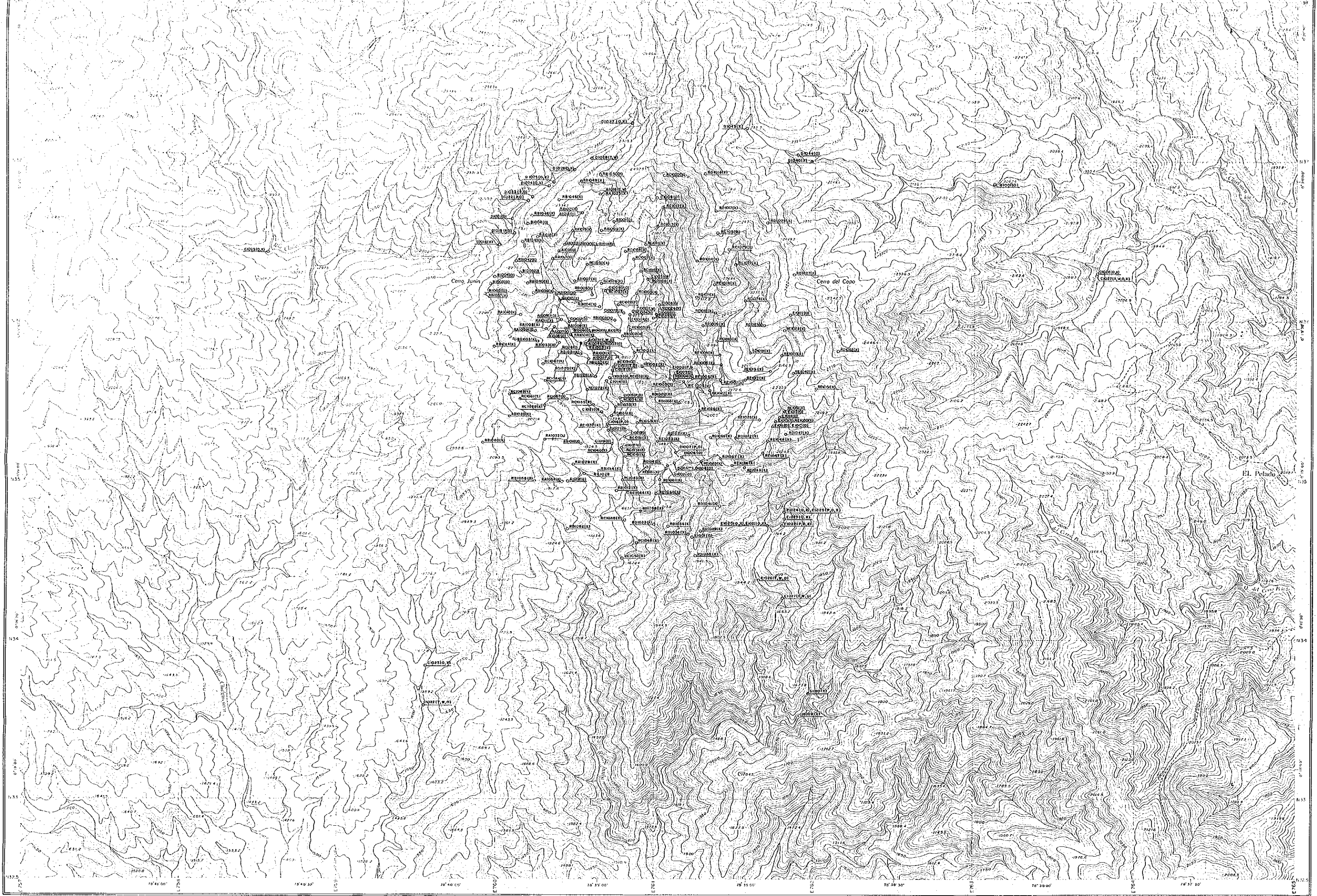
JAPAN INTERNATIONAL COOPERATION AGENCY
METAL MINING AGENCY OF JAPAN
FEBRUARY 1992

LEGEND

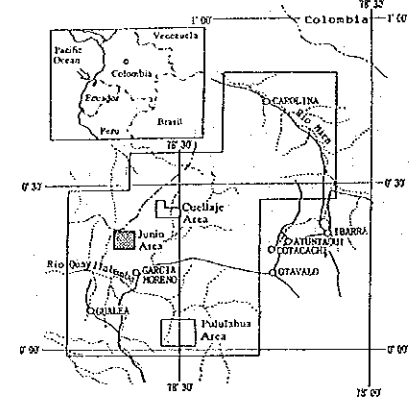
-  Sample point and its number
- T : Thin section
- X : X-ray diffraction analysis
- D : Dating
- W : Whole rock analysis
- P : Polished section
- O : Ore assay analysis







MINERAL EXPLORATION
IN THE JUNIN AREA
REPUBLIC OF ECUADOR
PHASE I
LOCATION OF GEOCHEMICAL ROCK AND
STREAM SEDIMENT SAMPLES OF
THE JUNIN AREA
(1:10,000)



JAPAN INTERNATIONAL COOPERATION AGENCY
METAL MINING AGENCY OF JAPAN
FEBRUARY 1992

LEGEND

- RC1001 Geochemical rock sample
- RA1001 Geochemical rock sample for T-Cu/So-Cu
- SX1021 Geochemical stream sediment sample

