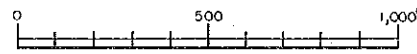
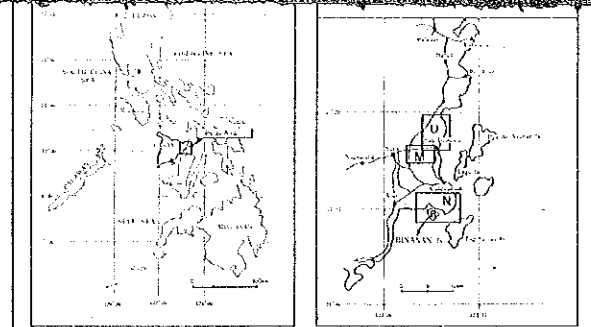
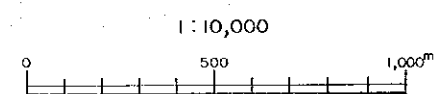


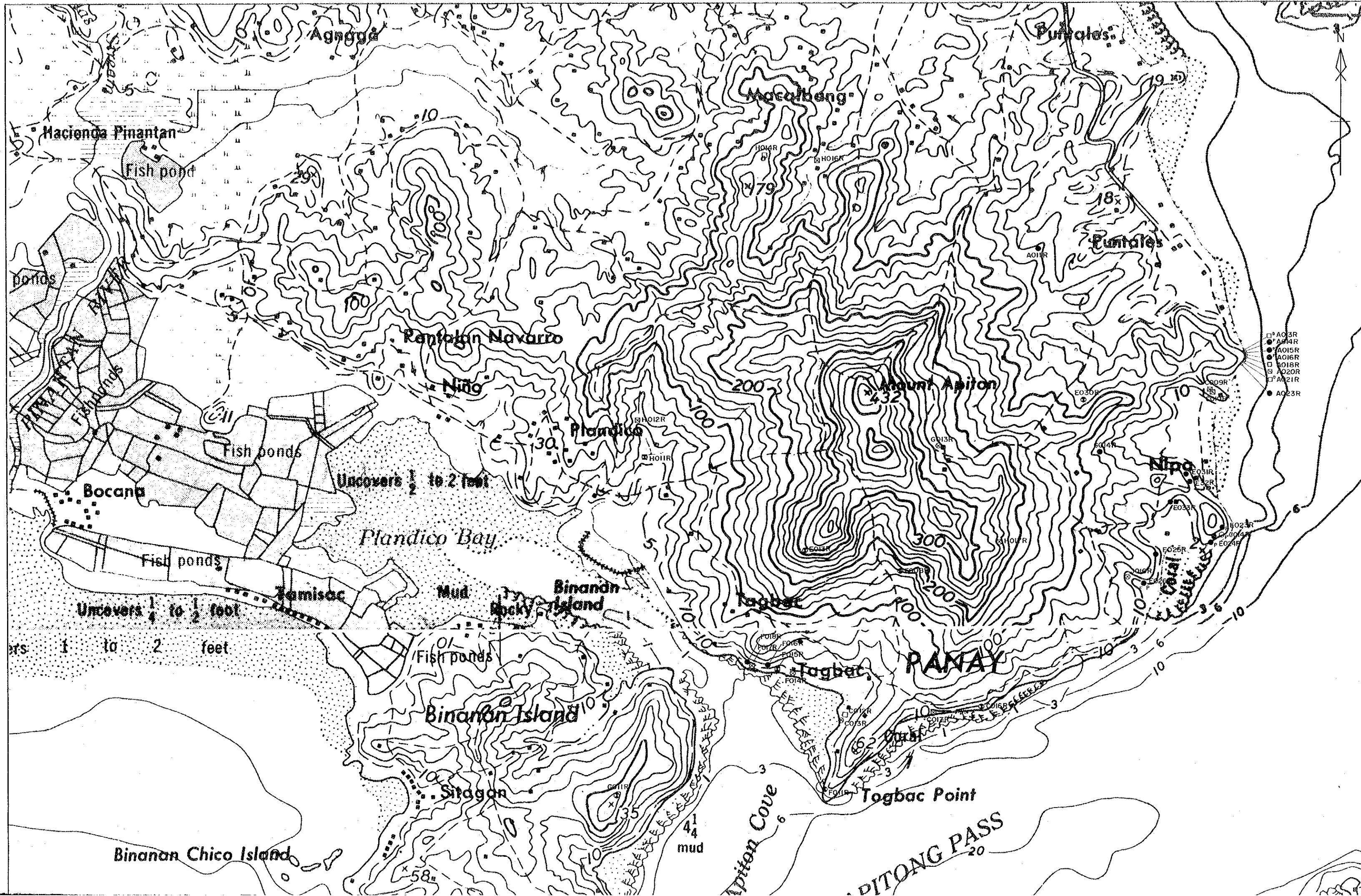
1:10,000

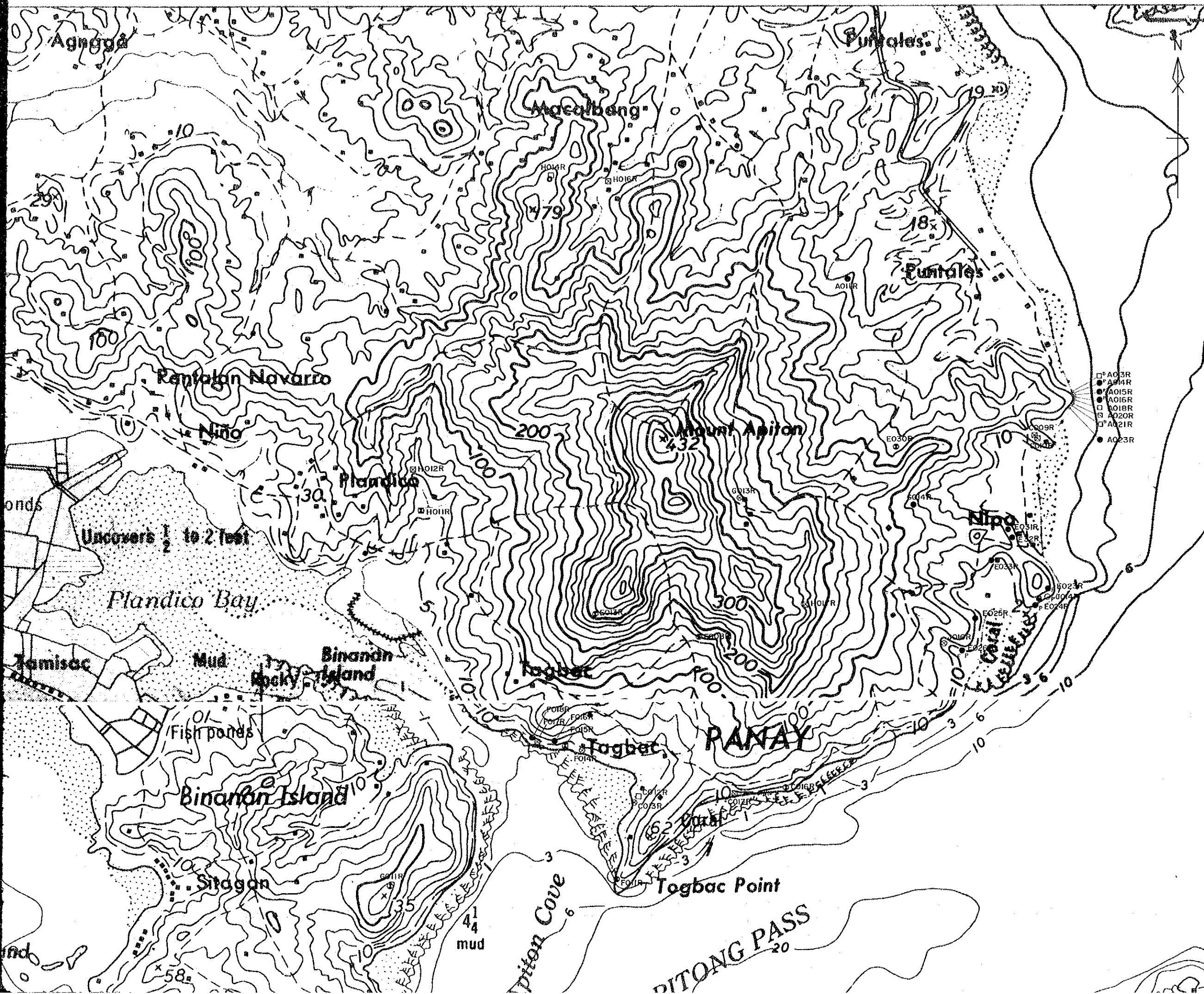




JAPAN INTERNATIONAL COOPERATION AGENCY
METAL MINING AGENCY OF JAPAN
BUREAU OF MINES and GEO-SCIENCES
FEBRUARY 1992





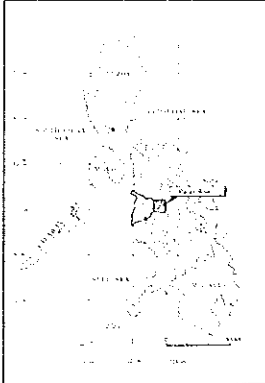
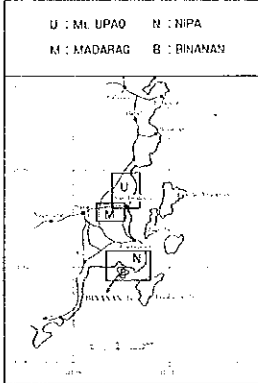


PL. 3-3

MINERAL EXPLORATION
IN
PANAY AREA
IN THE REPUBLIC OF THE PHILIPPINES

Rock Sample Location Map
Nipa, Binanan Area



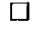



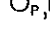
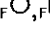

LOCATION INDEX

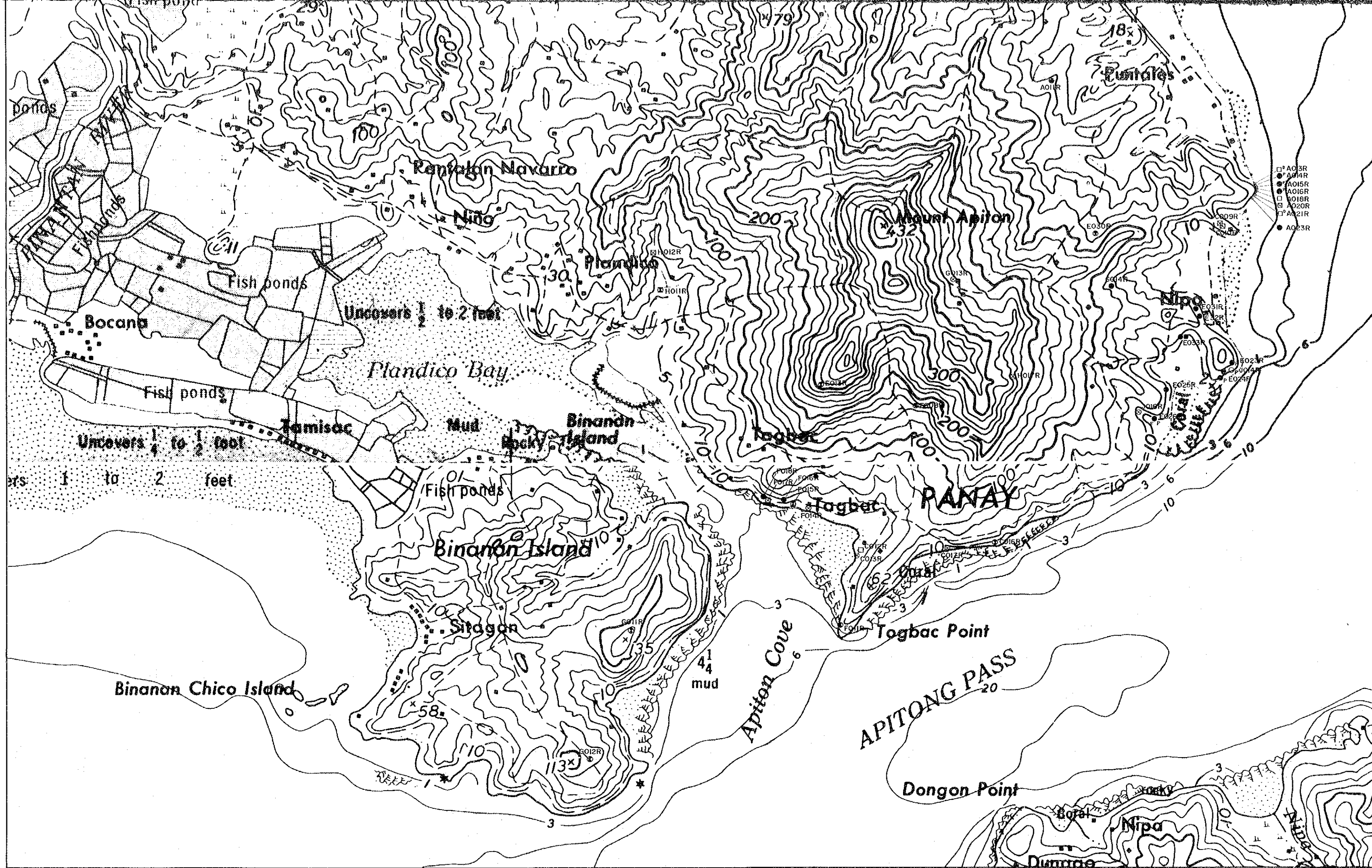



U : Mt. UPAO N : NIPA
M : MADARAG B : BINANAN

JAPAN INTERNATIONAL COOPERATION AGENCY
 METAL MINING AGENCY OF JAPAN
 BUREAU OF MINES and GEO-SCIENCES

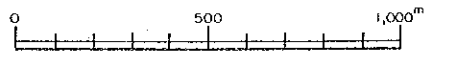
FEBRUARY 1992

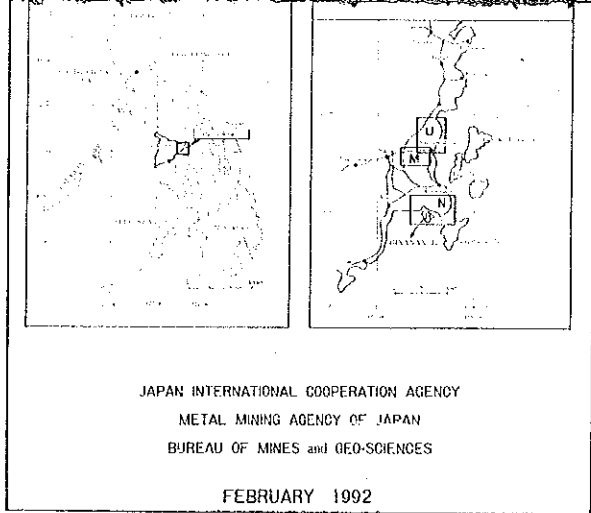
- LEGEND**
-  X-Ray Diffraction (XRD)
 -  Assay for Au, Ag, Cu, Pb, and Zn
 -  Whole Rock Analysis, and Thin Section
 -  XRD, and Assay (Au, Ag, Cu, Pb & Zn)
 -  XRD, Whole Rock Analysis and Thin Section
 -  XRD, Assay, Whole Rock Analysis and Thin Section
 -  Polished Section
 -  Measurement of Homogenization Temperature of Fluid Inclusion
 -  Age Determination (K-Ar)



- AO3R
- AO4R
- AO5R
- AO6R
- AO7R
- AO8R
- AO9R
- AO10R
- AO11R
- AO12R
- AO13R
- AO14R
- AO15R
- AO16R
- AO17R
- AO18R
- AO19R
- AO20R
- AO21R
- AO22R
- AO23R

1:10,000





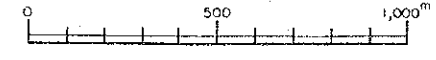
JAPAN INTERNATIONAL COOPERATION AGENCY
 METAL MINING AGENCY OF JAPAN
 BUREAU OF MINES and GEO-SCIENCES

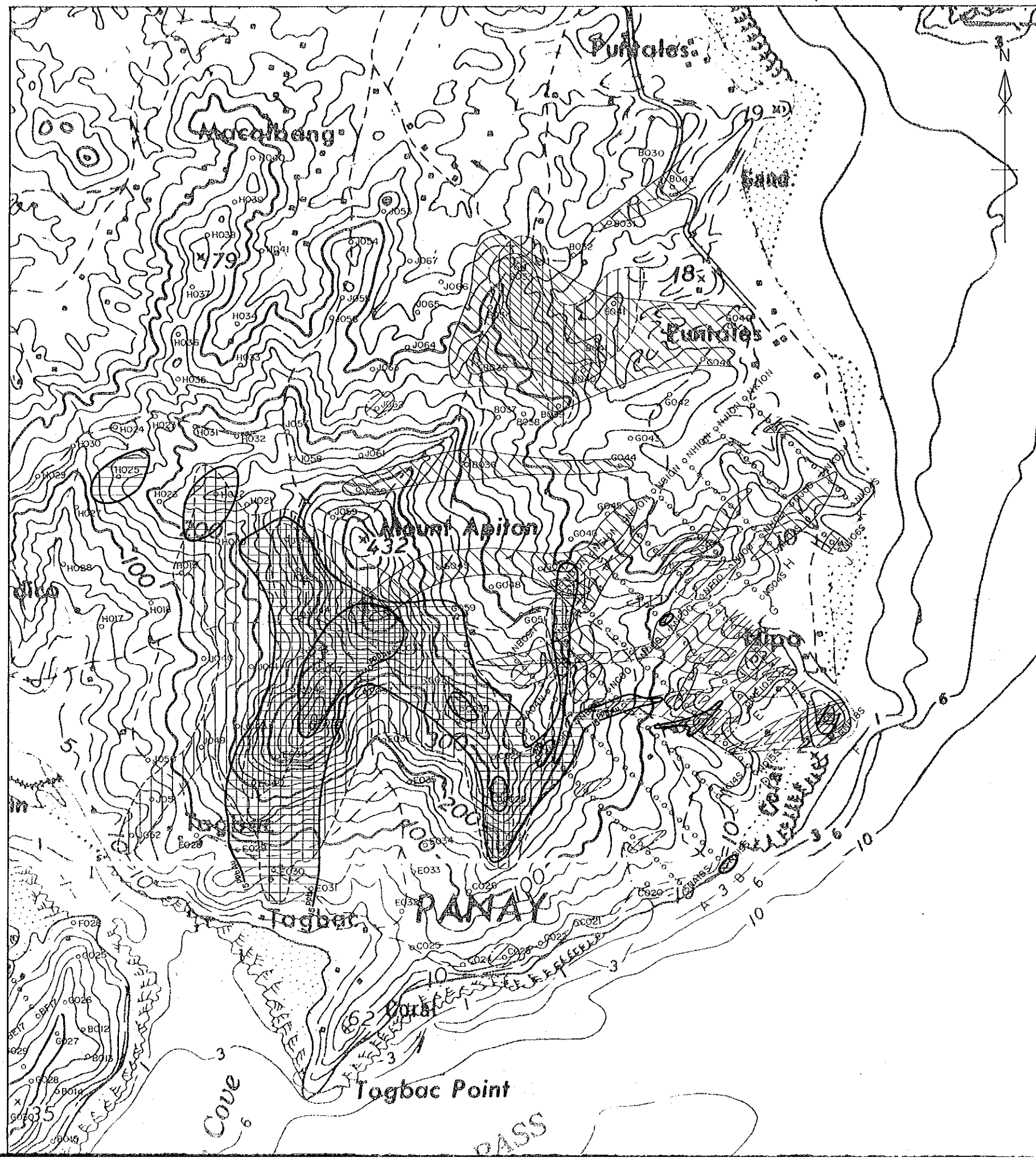
FEBRUARY 1992

LEGEND

- ⊗ X-Ray Diffraction (XRD)
- Assay for Au, Ag, Cu, Pb, and Zn
- Whole Rock Analysis, and Thin Section
- ⊙ XRD, and Assay (Au, Ag, Cu, Pb & Zn)
- ⊠ XRD, Whole Rock Analysis and Thin Section
- ⊡ XRD, Assay, Whole Rock Analysis and Thin Section
- _P, □_P Polished Section
- _F, □_F Measurement of Homogenization Temperature of Fluid Inclusion
- _D, □_D Age Determination (K-Ar)

1:10,000

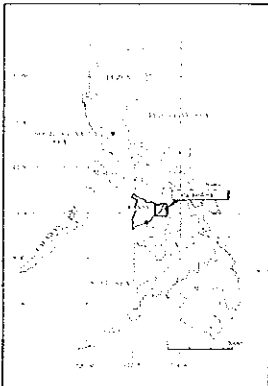




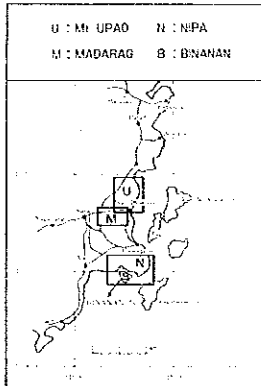
PL. 3-4

MINERAL EXPLORATION
IN
PANAY AREA
IN THE REPUBLIC OF THE PHILIPPINES
**Comprehensive Geochemical
Anomaly Map
Nipa Area**






LOCATION INDEX

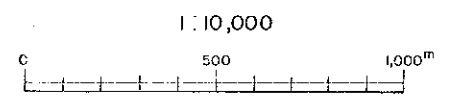
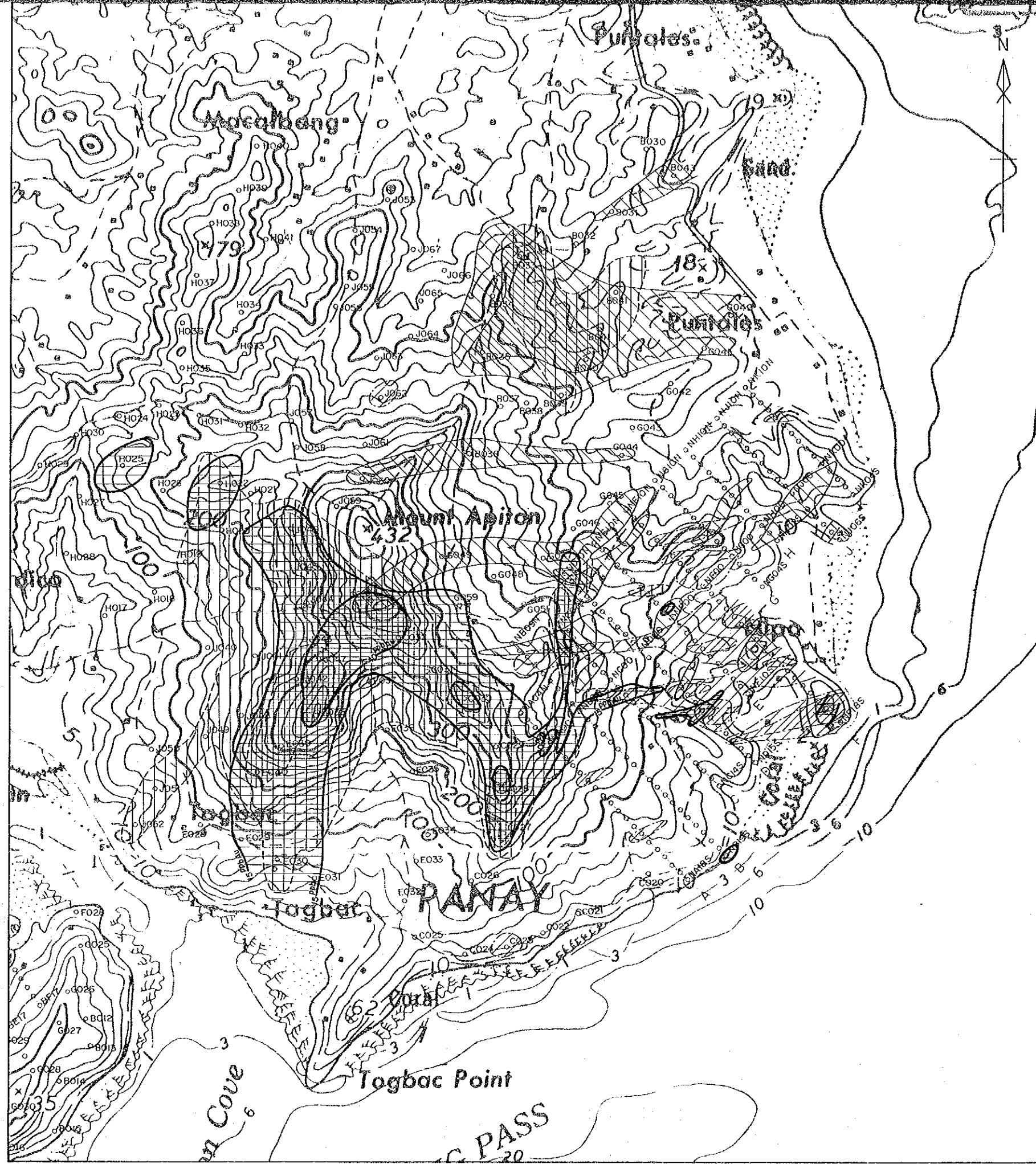


U : Mt. UPAO N : NPA
M : MADARAG S : BANANAN



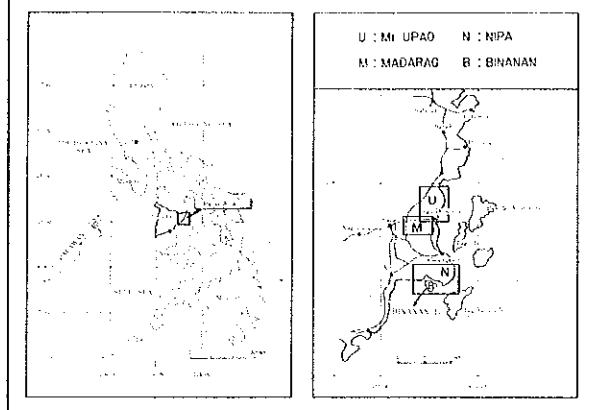
JAPAN INTERNATIONAL COOPERATION AGENCY
METAL MINING AGENCY OF JAPAN
BUREAU OF MINES and GEO-SCIENCES
FEBRUARY 1992

- LEGEND**
-  Strong Anomaly, Au
 -  Moderate Anomaly, Au
 -  P-1
 -  P-2
 -  P-3



MINERAL EXPLORATION
 IN
 PANAY AREA
 IN THE REPUBLIC OF THE PHILIPPINES
**Comprehensive Geochemical
 Anomaly Map
 Nipa Area**

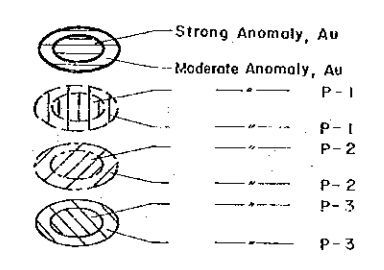
LOCATION INDEX

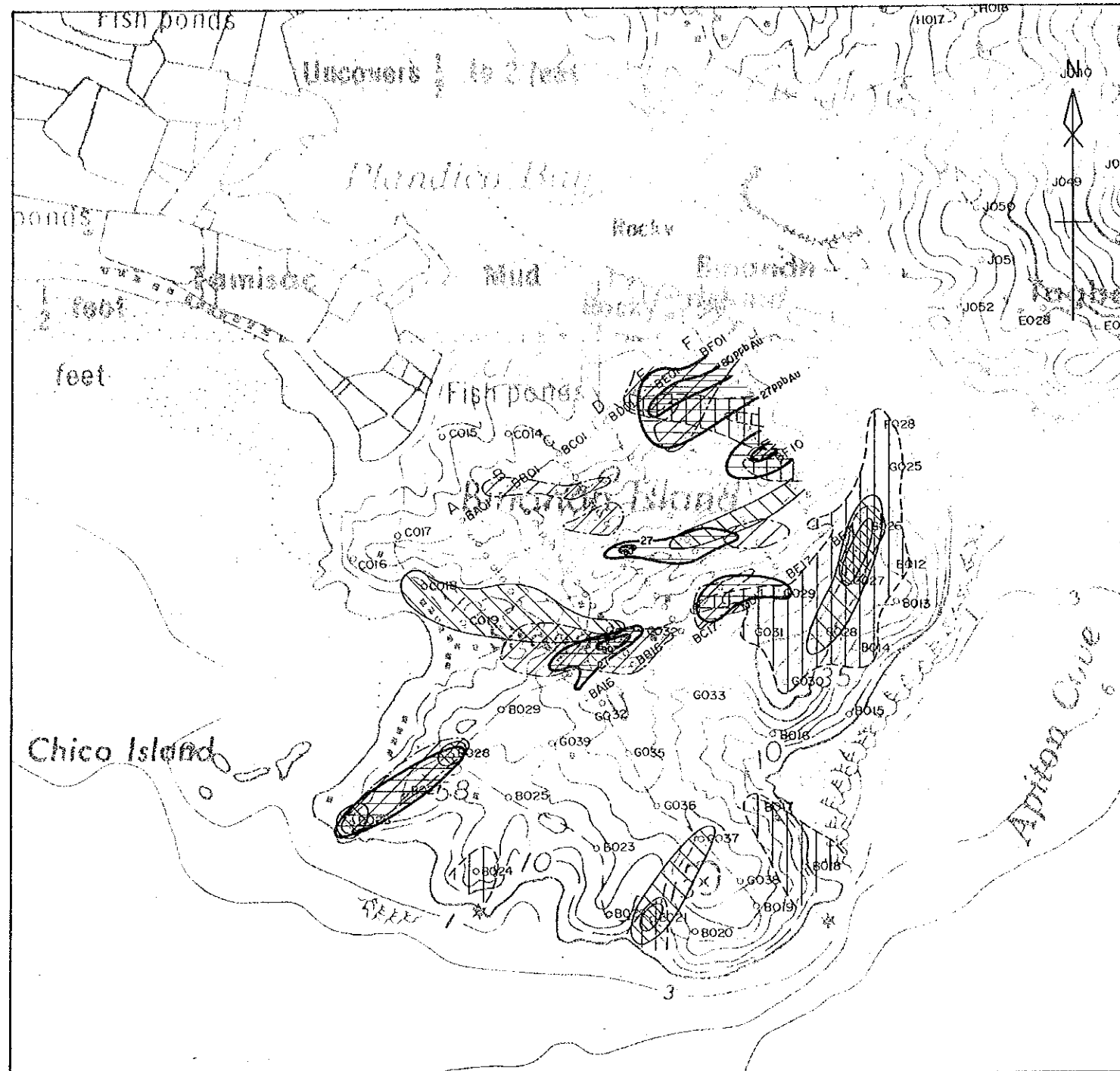


JAPAN INTERNATIONAL COOPERATION AGENCY
 METAL MINING AGENCY OF JAPAN
 BUREAU OF MINES and GEO-SCIENCES

FEBRUARY 1992

LEGEND





PL. 4-4

MINERAL EXPLORATION
IN
PANAY AREA
IN THE REPUBLIC OF THE PHILIPPINES
**Comprehensive Geochemical
Anomaly Map
Binanan Area**

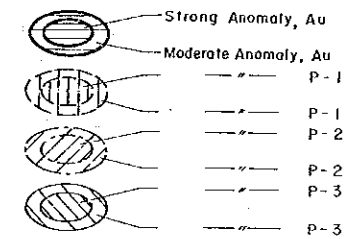
LOCATION INDEX

U : Mt. UP40 N : NIPA
M : MADARAG B : BINANAN

JAPAN INTERNATIONAL COOPERATION AGENCY
METAL MINING AGENCY OF JAPAN
BUREAU OF MINES and GEO-SCIENCES

FEBRUARY 1992

LEGEND

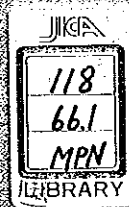


REPORT ON THE MINERAL EXPLORATION
IN THE REPUBLIC OF THE PHILIPPINES

PHASE I

SEPTEMBER 1985

M J
M I
A C
J A



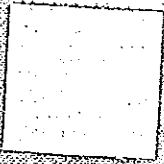
No. 36

**REPORT
ON
THE MINERAL EXPLORATION
MINERAL DEPOSITS AND
TECTONICS OF TWO
CONTRASTING GEOLOGIC
ENVIRONMENTS
IN
THE REPUBLIC OF THE PHILIPPINES
PHASE I
SOUTHERN SIERRA MADRE-POLILLO AREA
AND BOHOL-SIQUJOR AREA**

SEPTEMBER 1985

**JAPAN INTERNATIONAL COOPERATION AGENCY
METAL MINING AGENCY OF JAPAN**

MPN
CR (5)
85-199



国際協力事業団	
受入 月日 61. 8. 12	118
登録No. 15161	66.1 MPN

JICA