

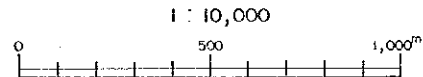
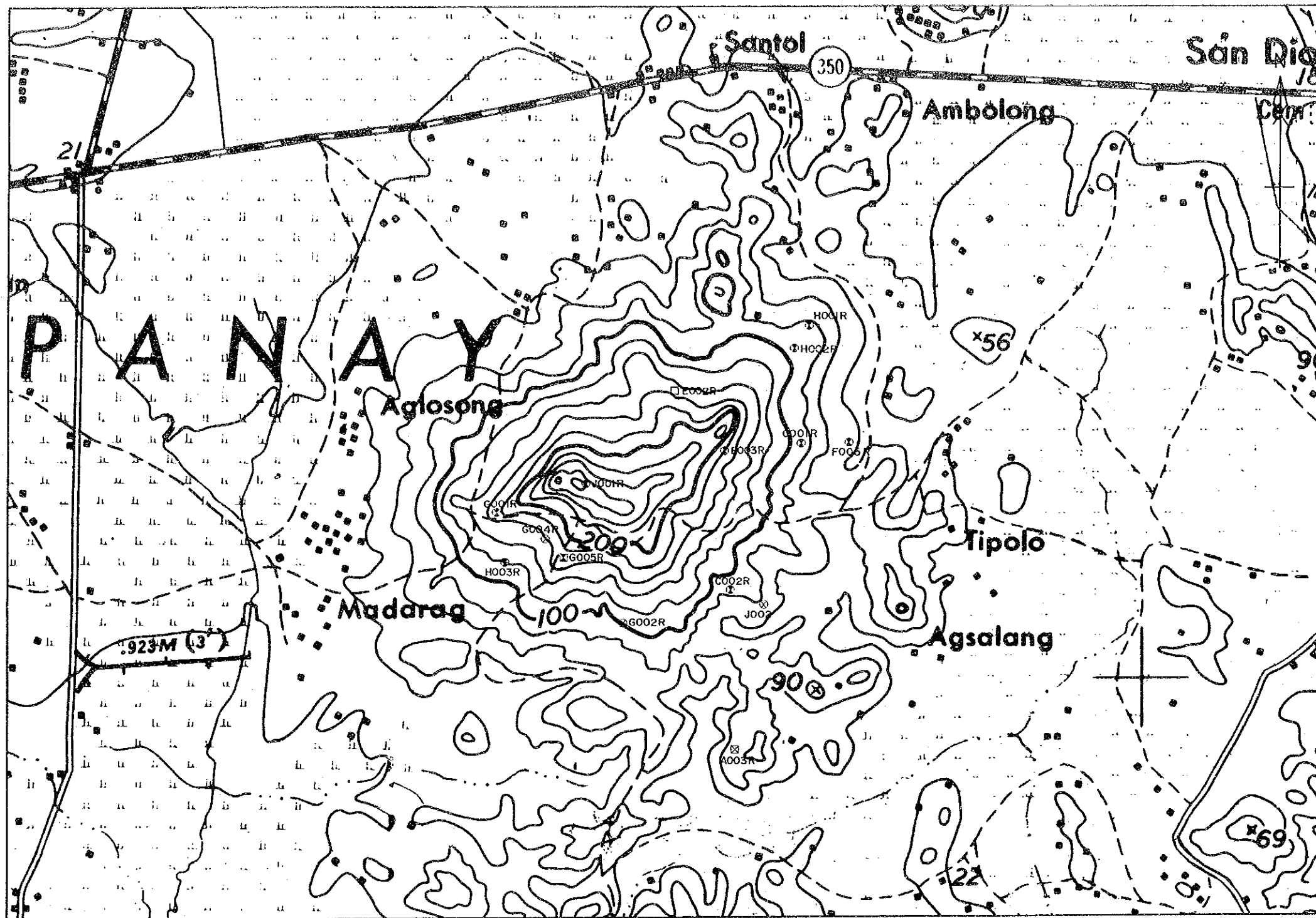
PL. 2-2

MINERAL EXPLORATION
IN
PANAY AREA
IN THE REPUBLIC OF THE PHILIPPINES
Soil Sample Location Map
Madarag Area

LOCATION INDEX

U : M. UPAO N : NIPA
M : MADARAG B : BINANAN

JAPAN INTERNATIONAL COOPERATION AGENCY
METAL MINING AGENCY OF JAPAN
BUREAU OF MINES and GEO-SCIENCES
FEBRUARY 1992

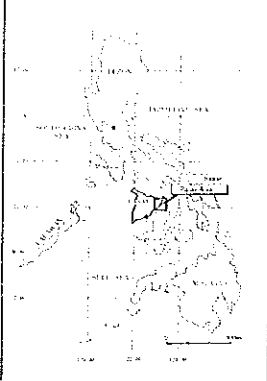


PL. 2-3

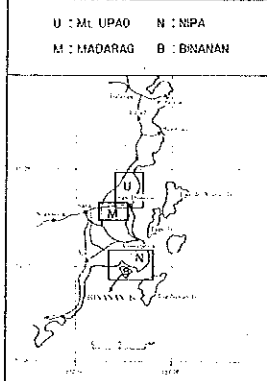
MINERAL EXPLORATION
IN
PANAY AREA
IN THE REPUBLIC OF THE PHILIPPINES

Rock Sample Location Map
Madarag Area

LOCATION INDEX



U : ML UPAG N : NSPA
M : MADARAG B : BANANAN

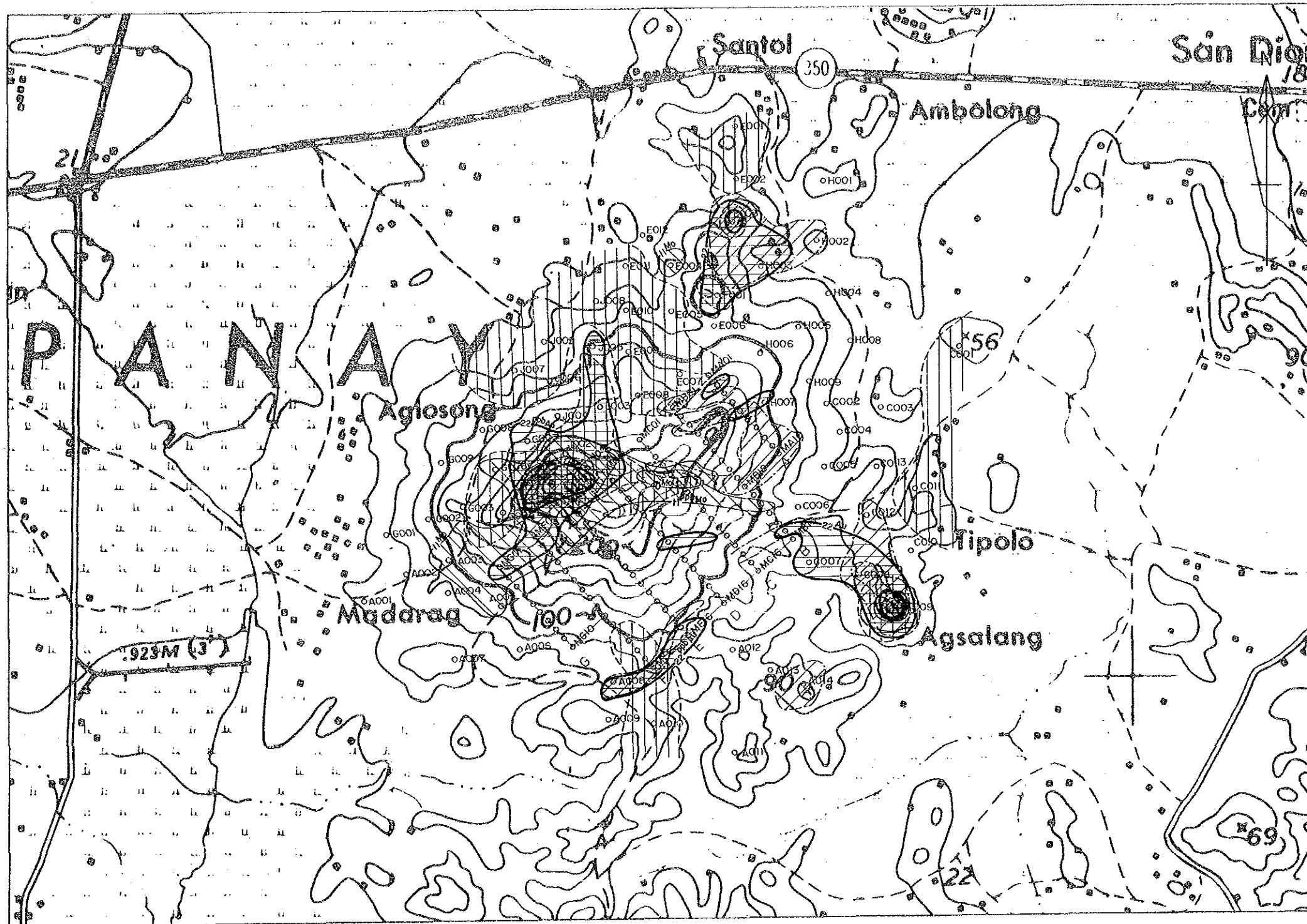


JAPAN INTERNATIONAL COOPERATION AGENCY
METAL MINING AGENCY OF JAPAN
BUREAU OF MINES and GEO-SCIENCES

FEBRUARY 1992

LEGEND

- ⊗ X-Ray Diffraction (XRD)
- Assay for Au, Ag, Cu, Pb, and Zn
- Whole Rock Analysis, and Thin Section
- ⊙ XRD, and Assay (Au, Ag, Cu, Pb & Zn)
- ⊠ XRD, Whole Rock Analysis and Thin Section
- ⊞ XRD, Assay, Whole Rock Analysis and Thin Section
- _p, □_p Polished Section
- _f, □_f Measurement of Homogenization Temperature of Fluid Inclusion
- ^D, □^D Age Determination (K - Ar)

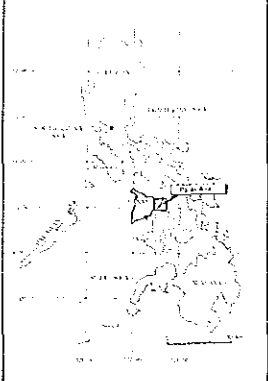


PL. 2-4

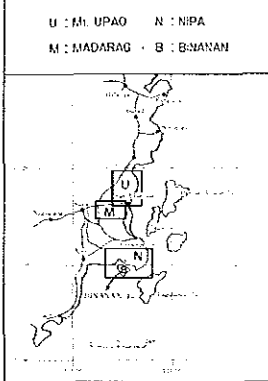
MINERAL EXPLORATION
IN
PANAY AREA
IN THE REPUBLIC OF THE PHILIPPINES

**Comprehensive Geochemical
Anomaly Map
Madarag Area**

LOCATION INDEX








U : M. UPAG N : NIPA
M : MADARAG B : BANANAN



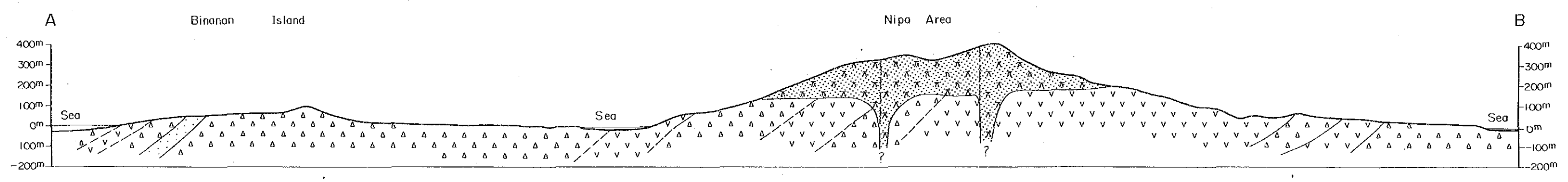
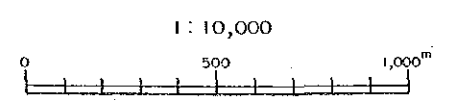
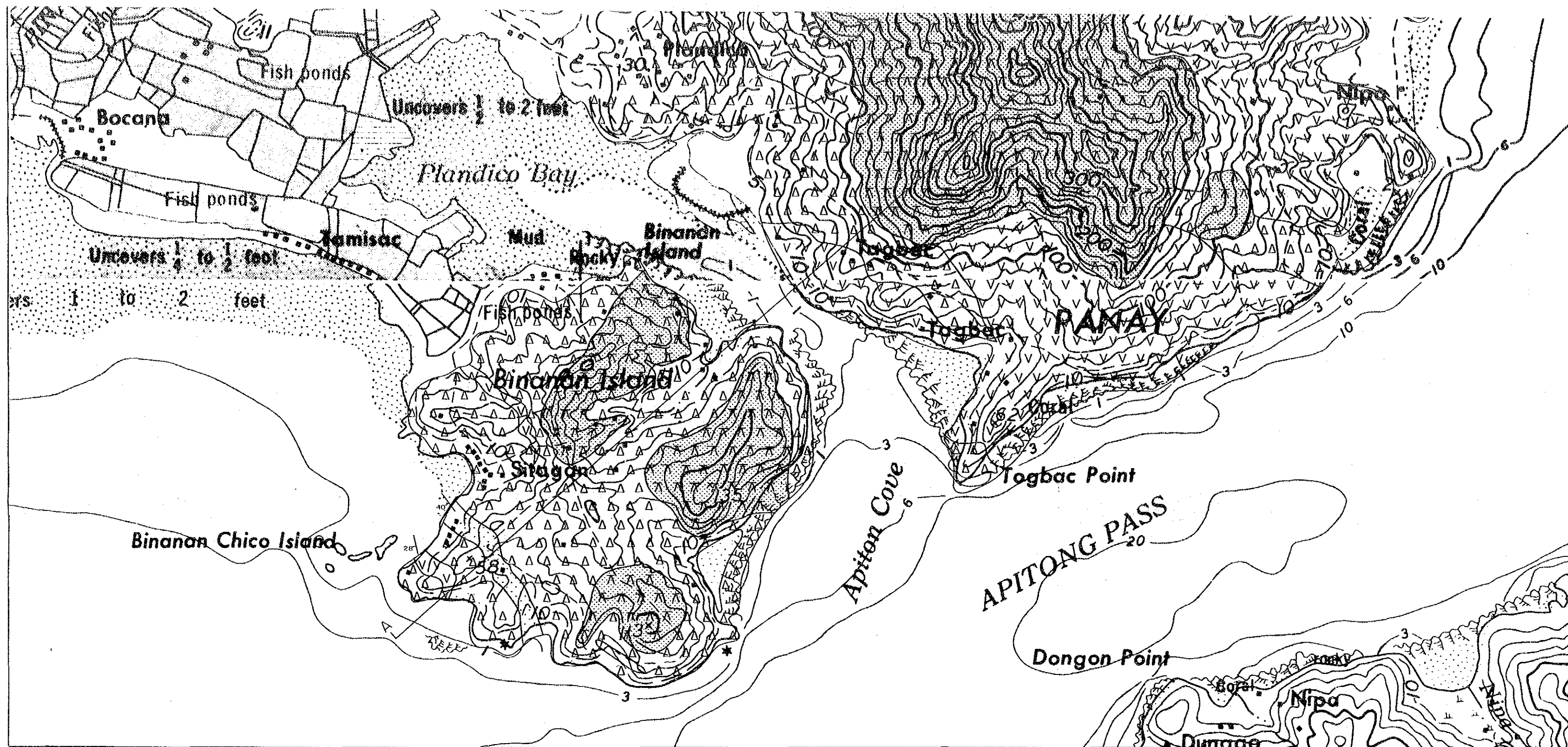
JAPAN INTERNATIONAL COOPERATION AGENCY
METAL MINING AGENCY OF JAPAN
BUREAU OF MINES and GEO-SCIENCES

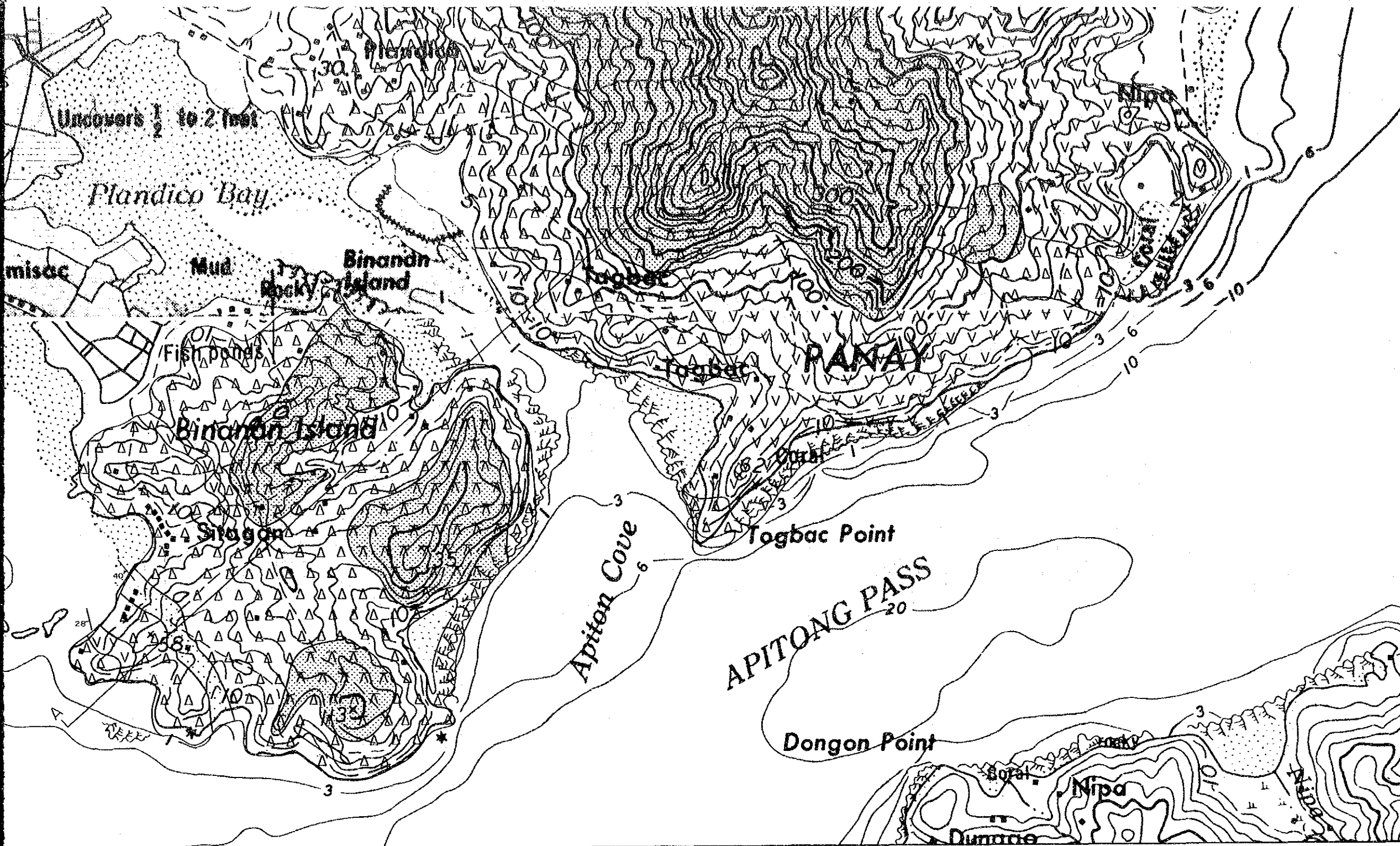
FEBRUARY 1992

LEGEND

-  Strong Anomaly, Au
-  Moderate Anomaly, Au
-  P-1
-  P-2
-  Mo

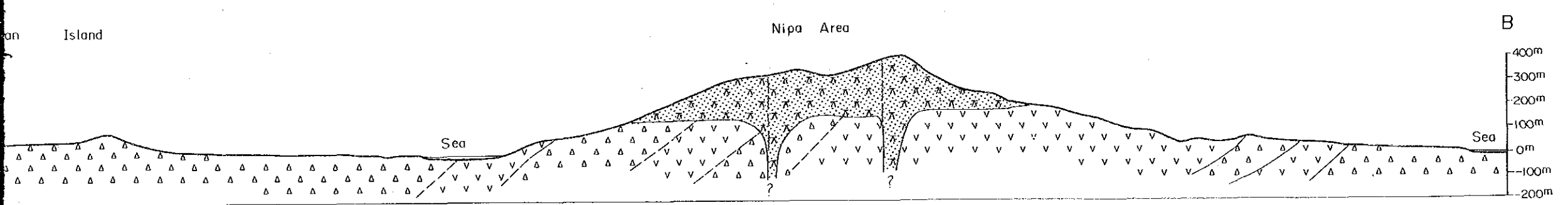
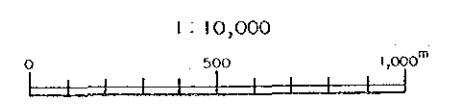


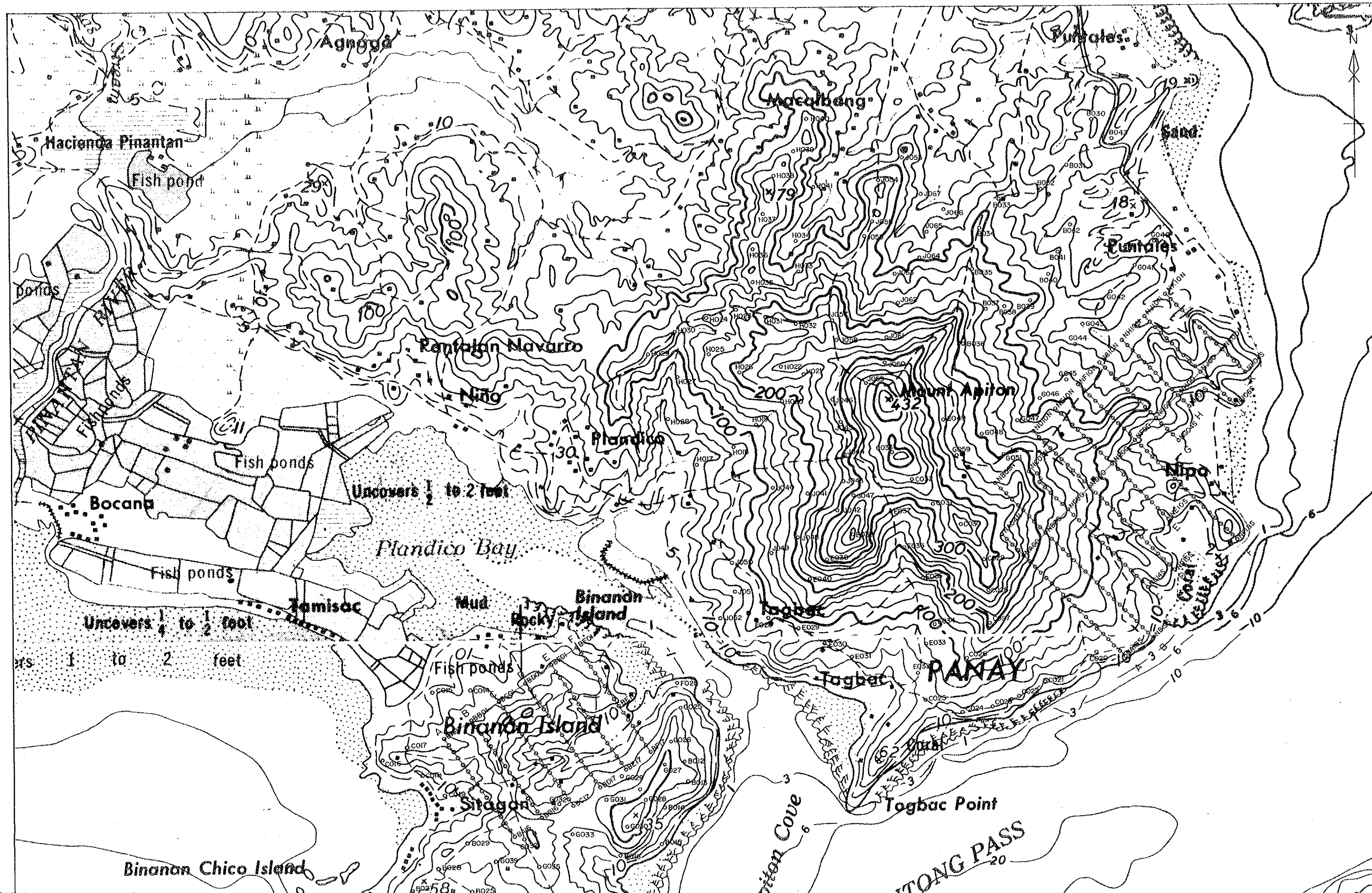


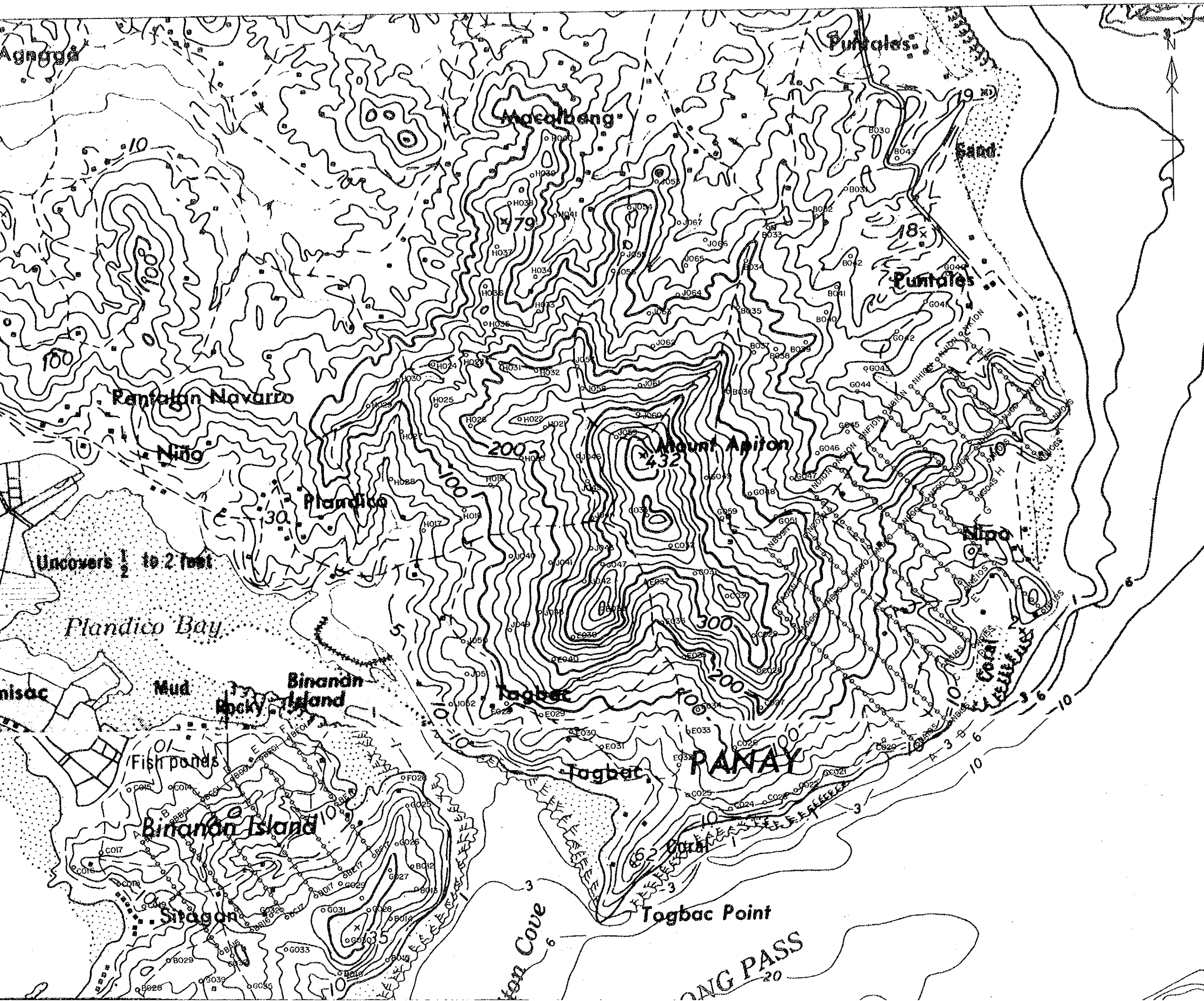


LEGEND

- | | | |
|------------------|--|--|
| Holocene | | Alluvium |
| Late Pliocene | | Andesite (intensively altered) |
| Early Paleocene | | Andesitic Agglomerate, Tuff Breccia, with minor Tuff |
| | | Andesite Lava |
| | | Tuffaceous Sandstone, Mudstone |
| Sibala Formation | | Mudstone |
| | | Quartz diorite |
| Intrusive Rock | | Dacite, Quartz Porphyry (dyke) |
| | | Gossan |
| | | Fractures |







PL. 3-2

MINERAL EXPLORATION
IN
PANAY AREA
IN THE REPUBLIC OF THE PHILIPPINES

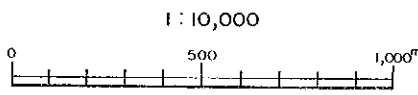
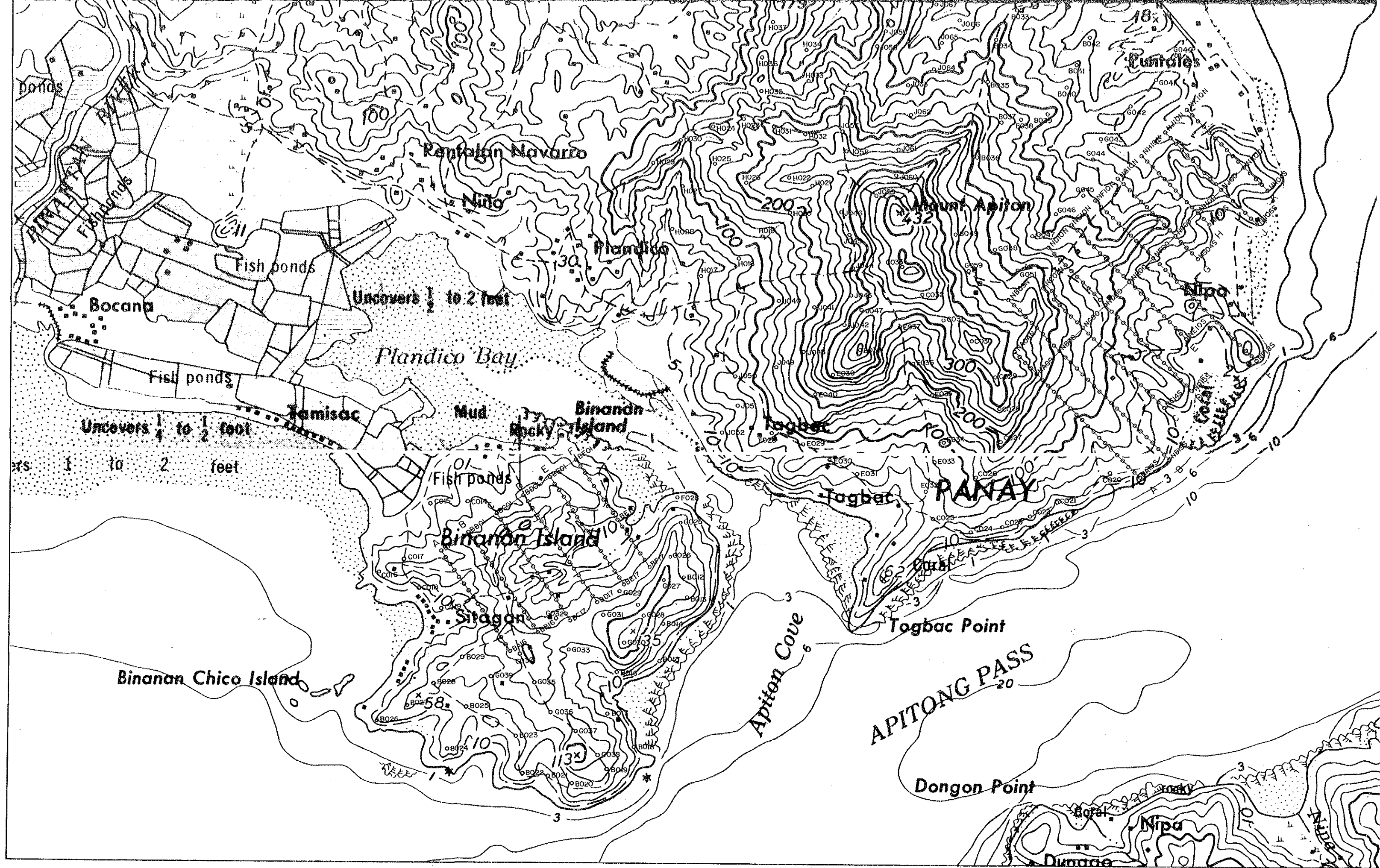
Soil Sample Location Map
Nipa, Bananan Area

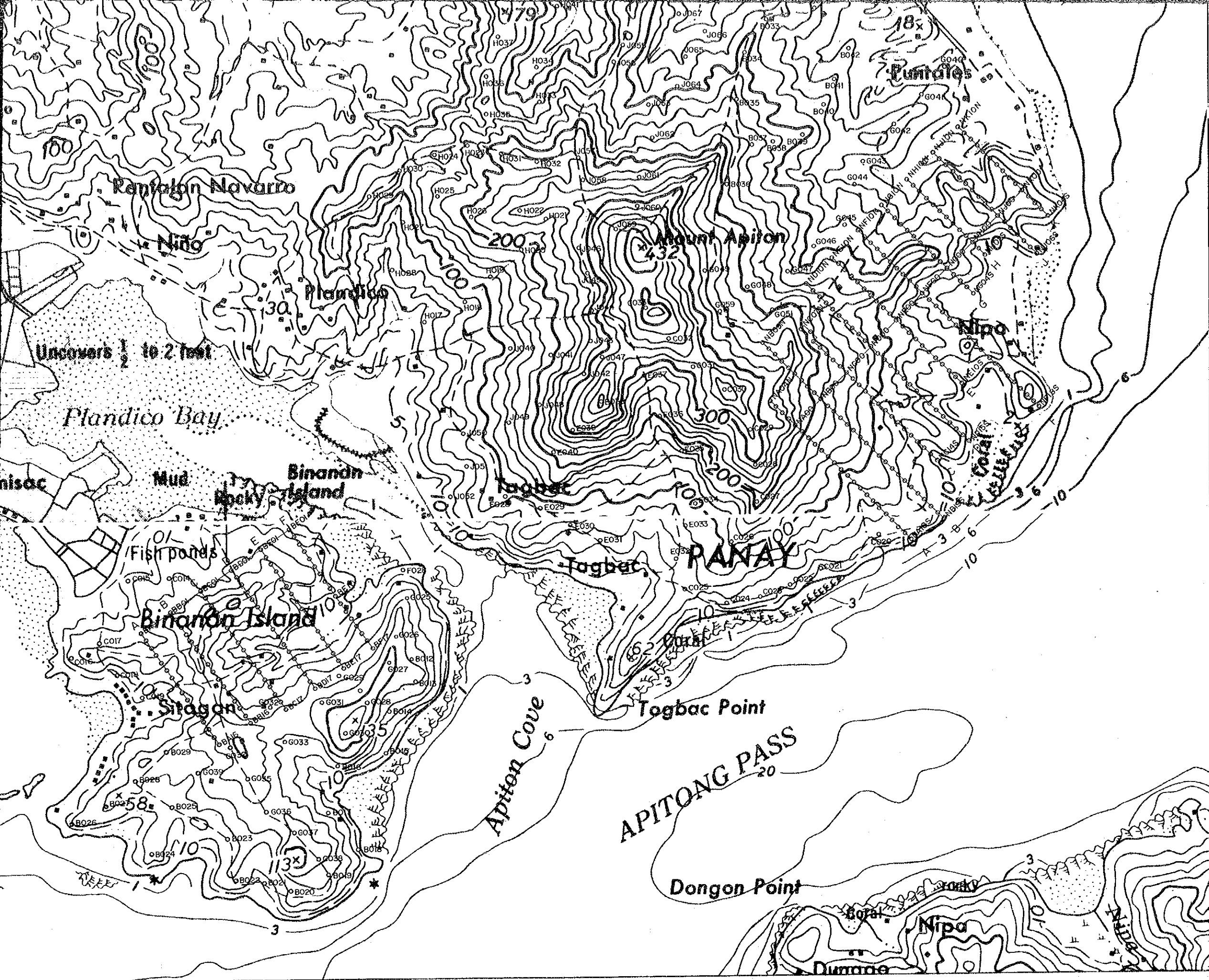
LOCATION INDEX

U : M: UPAG N : NIPA
M : MADARAG B : BINANAN

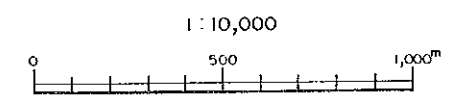
JAPAN INTERNATIONAL COOPERATION AGENCY
METAL MINING AGENCY OF JAPAN
BUREAU OF MINES and GEO-SCIENCES

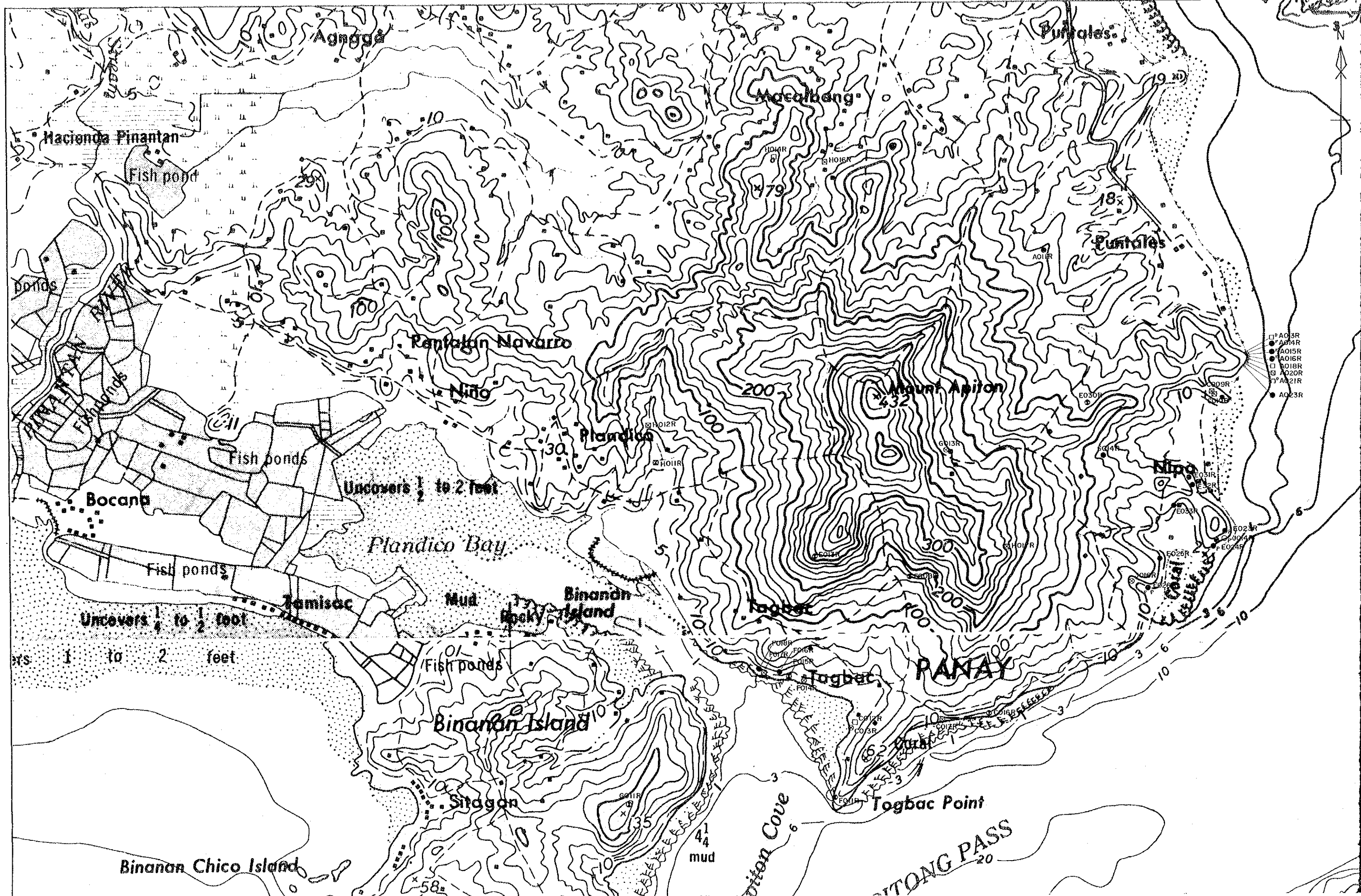
FEBRUARY 1992

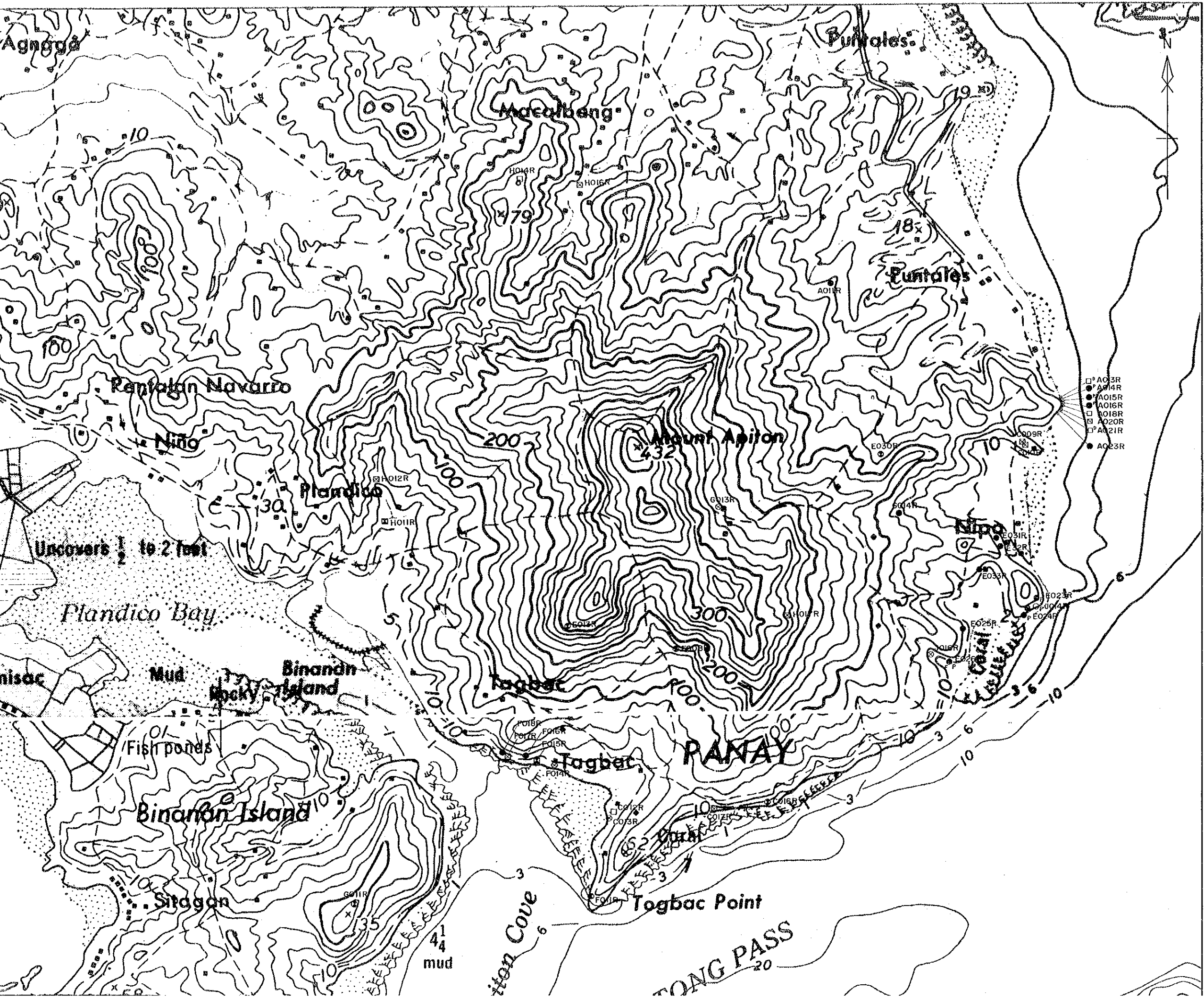




JAPAN INTERNATIONAL COOPERATION AGENCY
 METAL MINING AGENCY OF JAPAN
 BUREAU OF MINES and GEO-SCIENCES
 FEBRUARY 1992





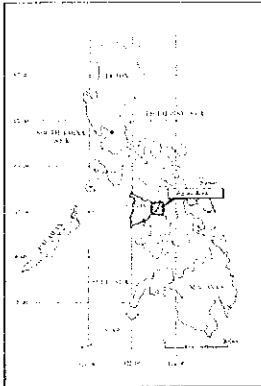
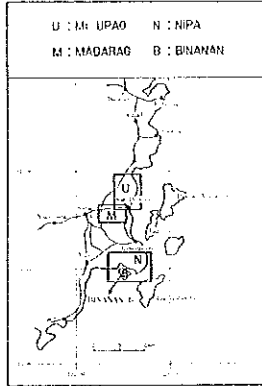


PL. 3-3

MINERAL EXPLORATION
IN
PANAY AREA
IN THE REPUBLIC OF THE PHILIPPINES

Rock Sample Location Map
Nipa, Binanan Area

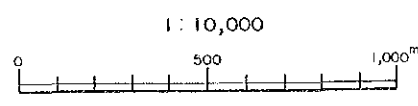
LOCATION INDEX

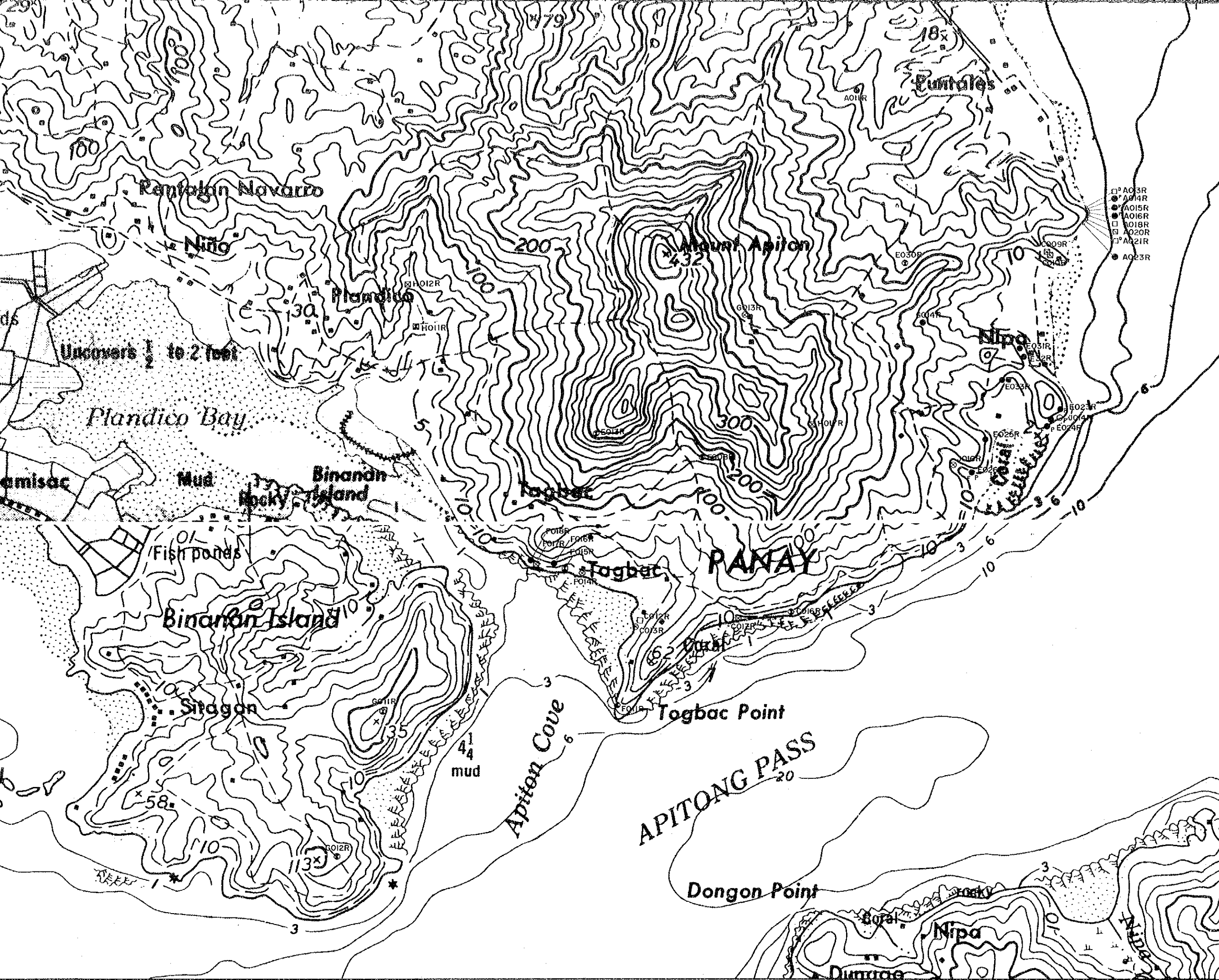



JAPAN INTERNATIONAL COOPERATION AGENCY
METAL MINING AGENCY OF JAPAN
BUREAU OF MINES AND GEO-SCIENCES

FEBRUARY 1992

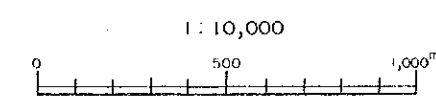
- LEGEND**
- ⊗ X-Ray Diffraction (XRD)
 - Assay for Au, Ag, Cu, Pb, and Zn
 - Whole Rock Analysis, and Thin Section
 - ⊙ XRD, and Assay (Au, Ag, Cu, Pb & Zn)
 - ⊠ XRD, Whole Rock Analysis and Thin Section
 - ⊞ XRD, Assay, Whole Rock Analysis and Thin Section
 - _p, □_p Polished Section
 - _f, □_f Measurement of Homogenization Temperature of Fluid Inclusion
 - ^o, □^o Age Determination (K - Ar)

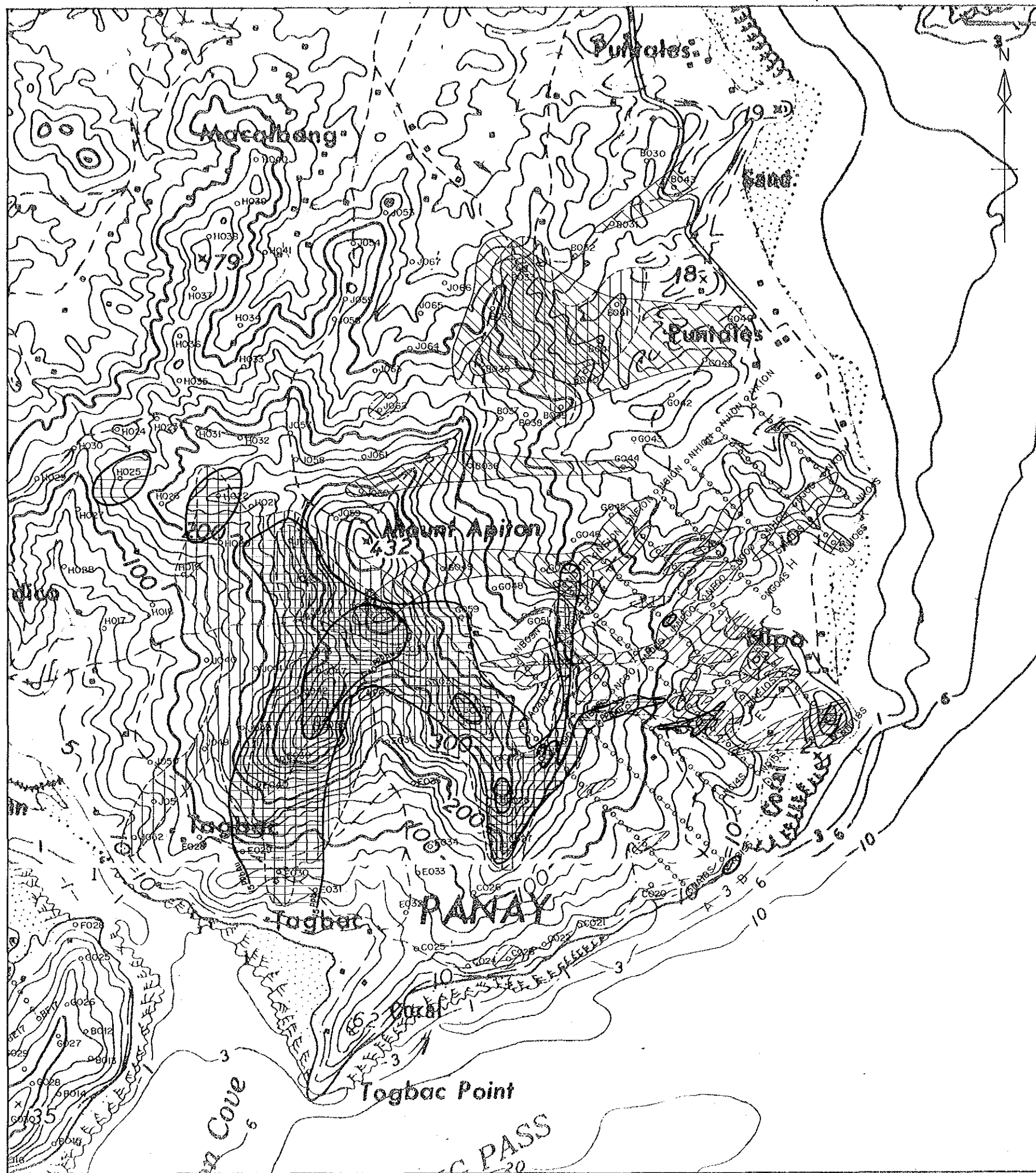




JAPAN INTERNATIONAL COOPERATION AGENCY
METAL MINING AGENCY OF JAPAN
BUREAU OF MINES and GEO-SCIENCES
FEBRUARY 1992

- LEGEND**
- ⊗ X-Ray Diffraction (XRD)
 - Assay for Au, Ag, Cu, Pb, and Zn
 - Whole Rock Analysis, and Thin Section
 - ⊙ XRD, and Assay (Au, Ag, Cu, Pb & Zn)
 - ⊠ XRD, Whole Rock Analysis and Thin Section
 - ⊞ XRD, Assay, Whole Rock Analysis and Thin Section
 - _P, □_P Polished Section
 - _F, □_F Measurement of Homogenization Temperature of Fluid Inclusion
 - _D, □_D Age Determination (K - Ar)

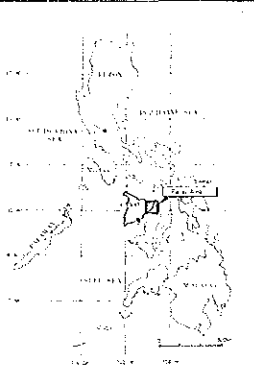
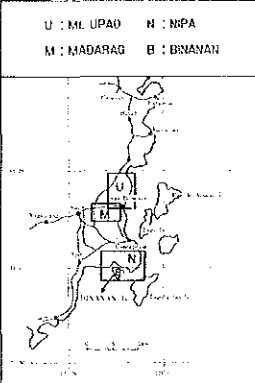




PL. 3--4

MINERAL EXPLORATION
IN
PANAY AREA
IN THE REPUBLIC OF THE PHILIPPINES
**Comprehensive Geochemical
Anomaly Map
Nipa Area**

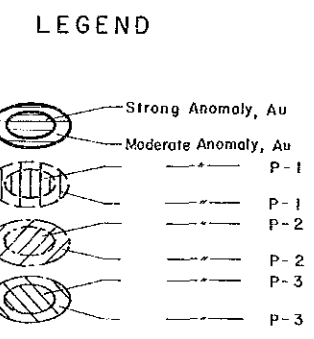
LOCATION INDEX

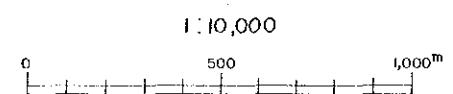
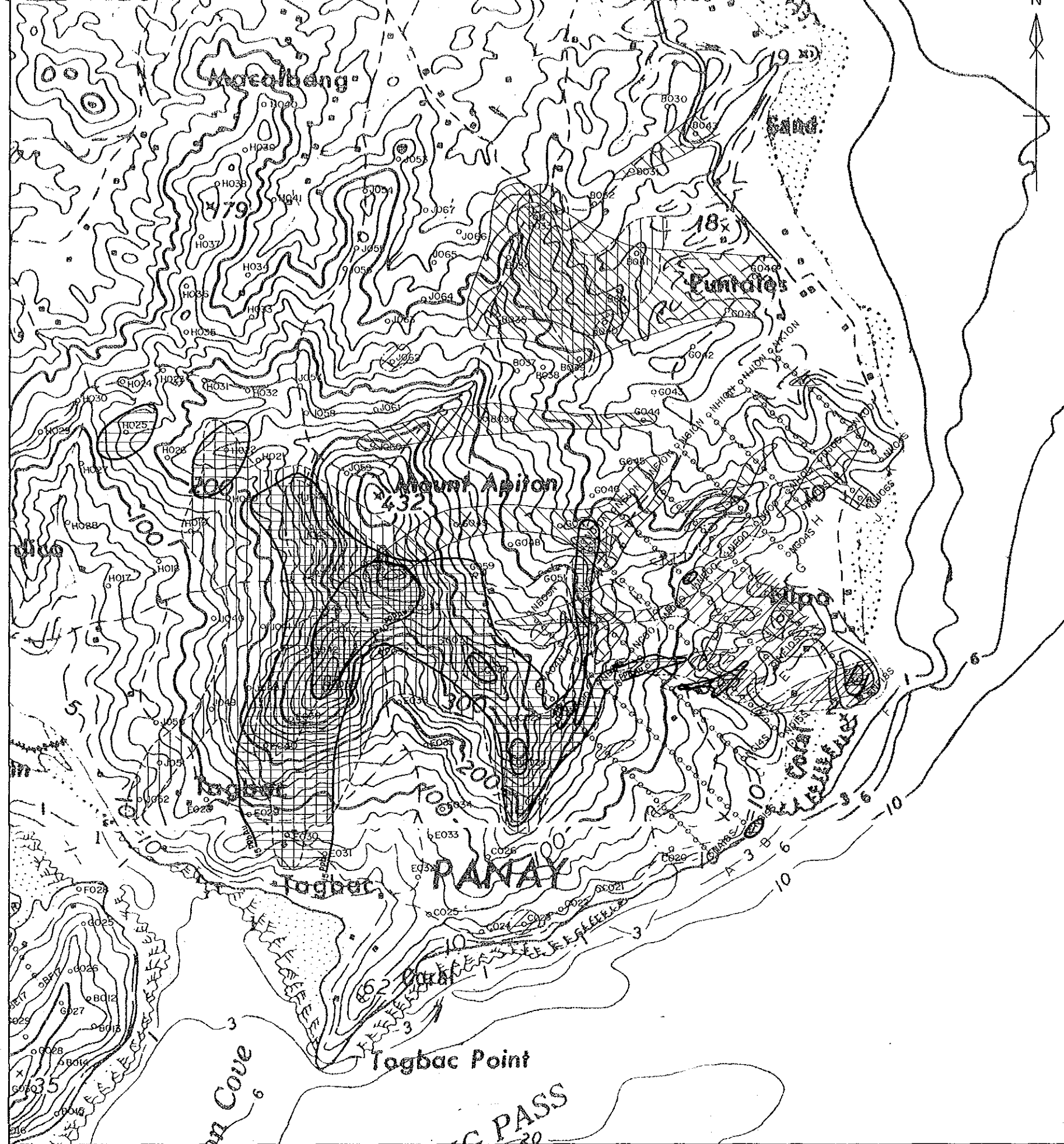



U : M. UPAD N : NIPA
M : MADARAG B : BRIANAN

JAPAN INTERNATIONAL COOPERATION AGENCY
METAL MINING AGENCY OF JAPAN
BUREAU OF MINES and GEO-SCIENCES

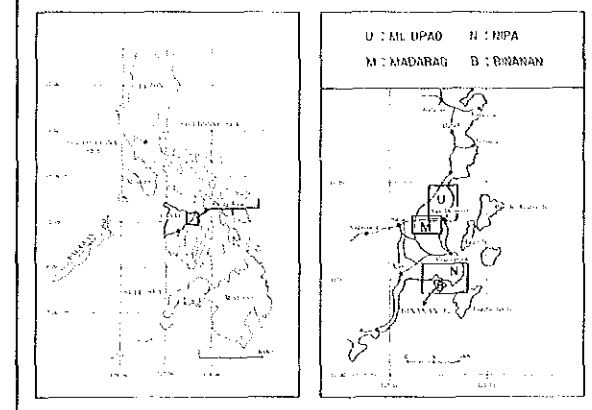
FEBRUARY 1992





PARAY AREA
IN THE REPUBLIC OF THE PHILIPPINES
Comprehensive Geochemical
Anomaly Map
Nipa Area

LOCATION INDEX

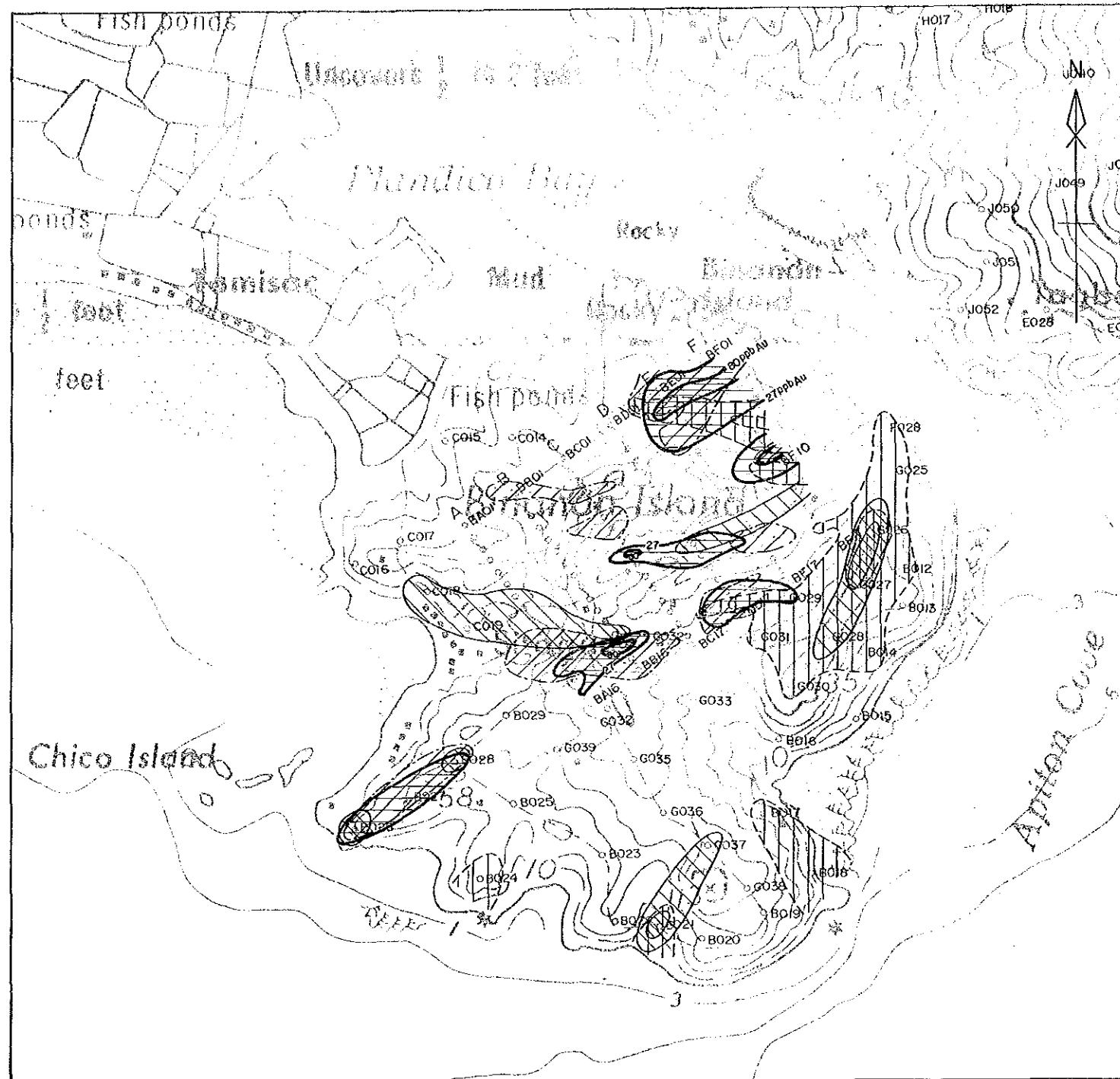


JAPAN INTERNATIONAL COOPERATION AGENCY
METAL MINING AGENCY OF JAPAN
BUREAU OF MINES and GEO-SCIENCES

FEBRUARY 1992

LEGEND

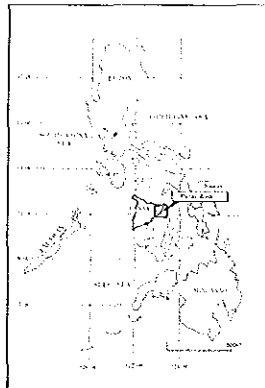
- Strong Anomaly, Au
- Moderate Anomaly, Au
- P-1
- P-1
- P-2
- P-2
- P-3
- P-3



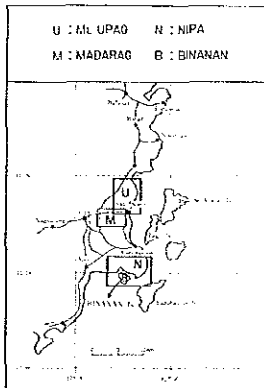
PL. 4-4

MINERAL EXPLORATION
IN
PANAY AREA
IN THE REPUBLIC OF THE PHILIPPINES
**Comprehensive Geochemical
Anomaly Map
Binanan Area**

LOCATION INDEX



U : Mt. UPAG N : NIPA
M : MADARAG B : BINANAN



JAPAN INTERNATIONAL COOPERATION AGENCY
METAL MINING AGENCY OF JAPAN
BUREAU OF MINES and GEO-SCIENCES

FEBRUARY 1992

LEGEND

- Strong Anomaly, Au
- Moderate Anomaly, Au
- P-1
- P-1
- P-2
- P-2
- P-3
- P-3

JICA