

Fig. 2-1 Location Map

	January, 1991		February			March		
	2nd decade	3rd	1st decade	2nd	3rd	1st decade	2nd	3rd
Data Collection. Discussion etc.		—	—	—	—	—	—	—
Elec. Exploration El Bote Parral New El Coco			—	—	—	—	—	
Boring Works El Bote Parral New El Coco			—	—	—	—	—	
Geo. Observation El Bote Parral New El Coco		—	—	—	—	—	—	
Measurements El Bote Parral New El Coco								
Remarks		1/21 Arrival in Mexico				3/6 Customs Cleared (Apparatus)	3/26 Leaving Mexico	

Fig.2-2 Progress in the field Investigation (Dry Season)

	J u l y , 1 9 9 1		A u g u s t			S e p t e m b e r		
	2nd decade	3rd	1st decade	2nd	3rd	1st decade	2nd	3rd
Data Collection, Discussion etc.	—			—		—	—	
Clearing of Boring Hole El Bote Parral New El Coco		—	—		—			
Leveling El Bote Parral New El Coco		—		—	—			
Boring Works El Bote Parral New El Coco		—			—	—		
Geo. Observation El Bote Parral New El Coco		—		—	—	—	—	
Measurements El Bote Parral New El Coco		—		—	—	—	—	
Remarks	7/15 Arrival in Mexico					9/17 Leaving Mexico		

Fig.2-3 Progress in the field Investigation (Rainy Season)



Fig. 3-2-1 Geological Plane Map (El Bote)

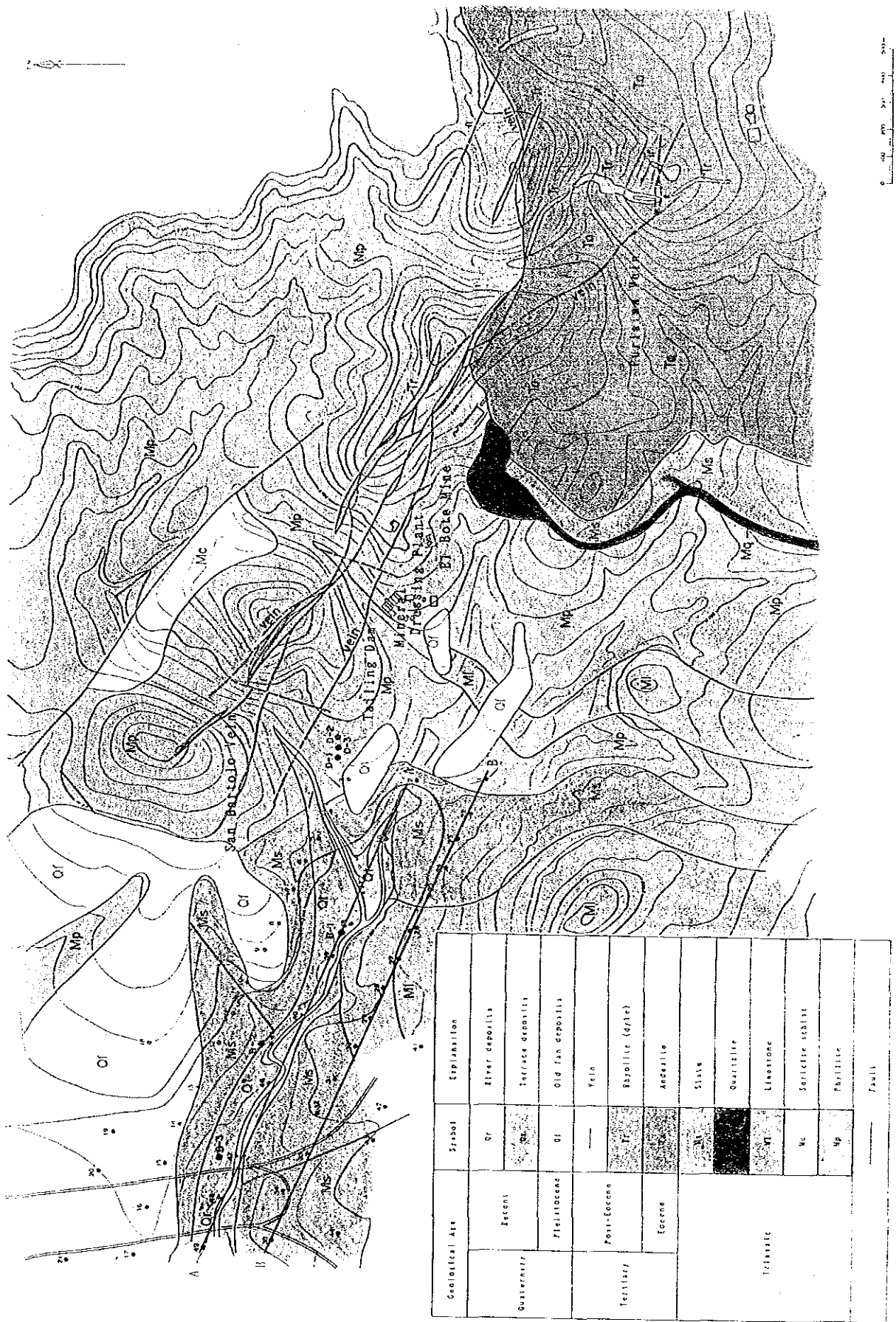
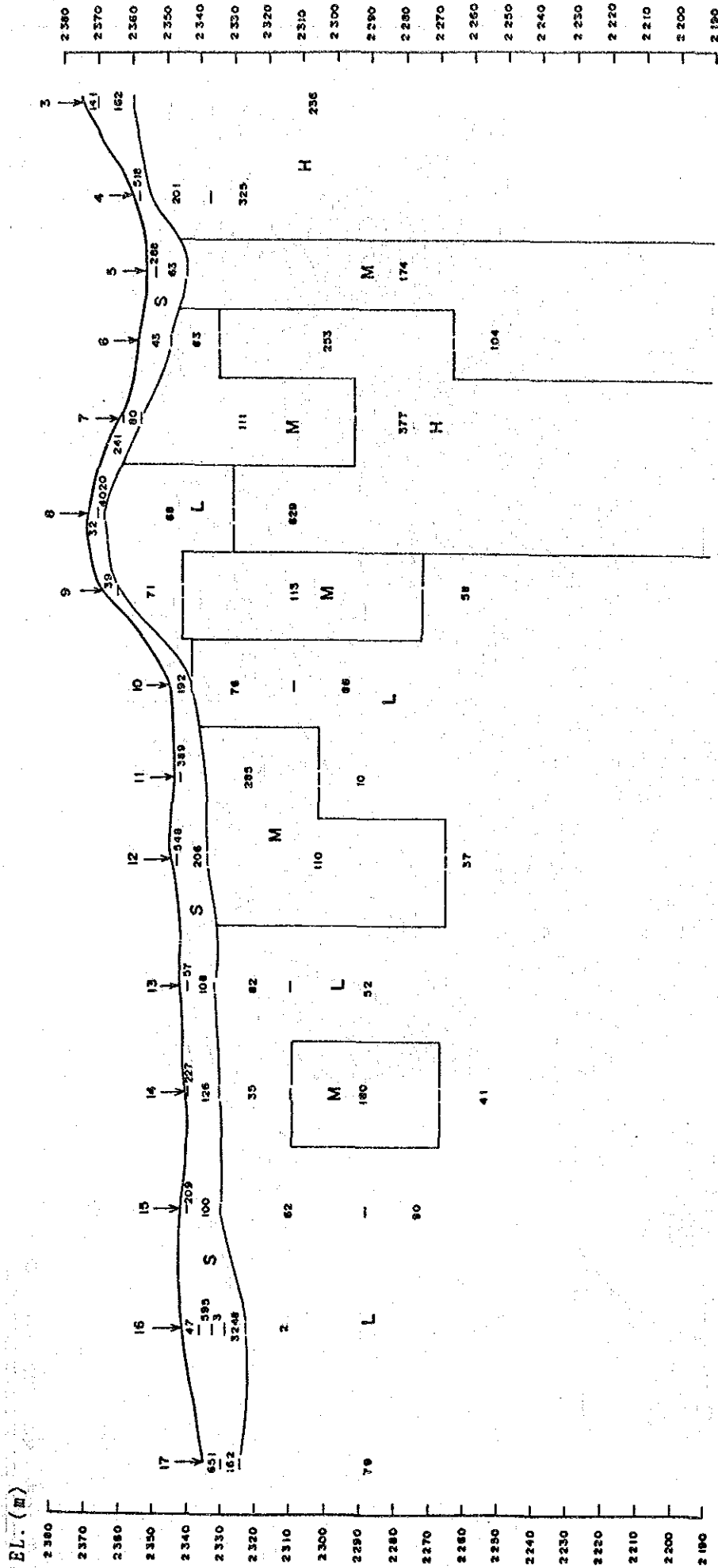


Fig. 3-2-1 Geological Plane Map (El Bote)



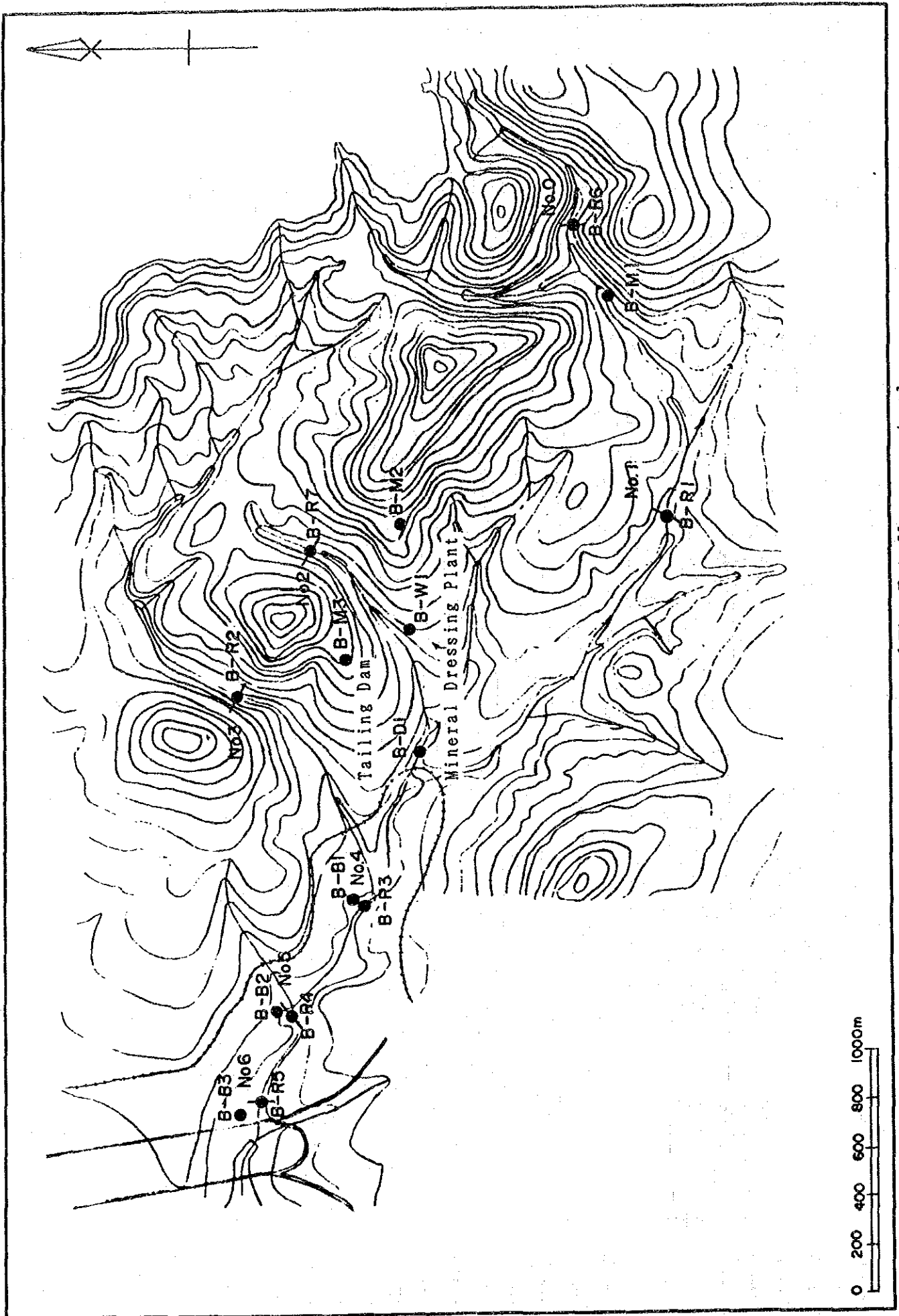
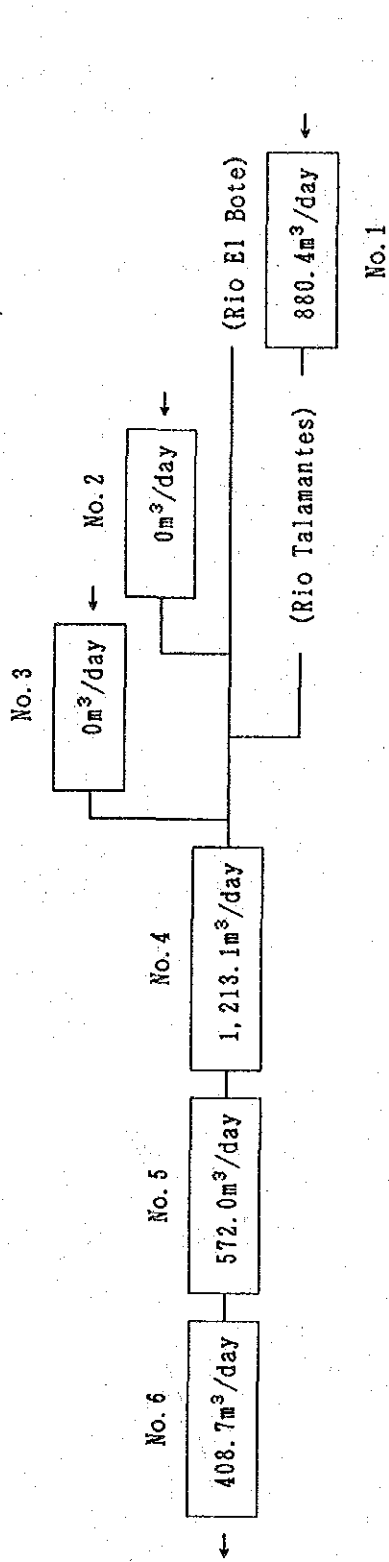


Fig. 3-4-1 Location Map of Flow Rate Measurement and Chemical Analysis of Water

Dry Season (20. Mar.)



Rainy Season (12 to 13. Aug)

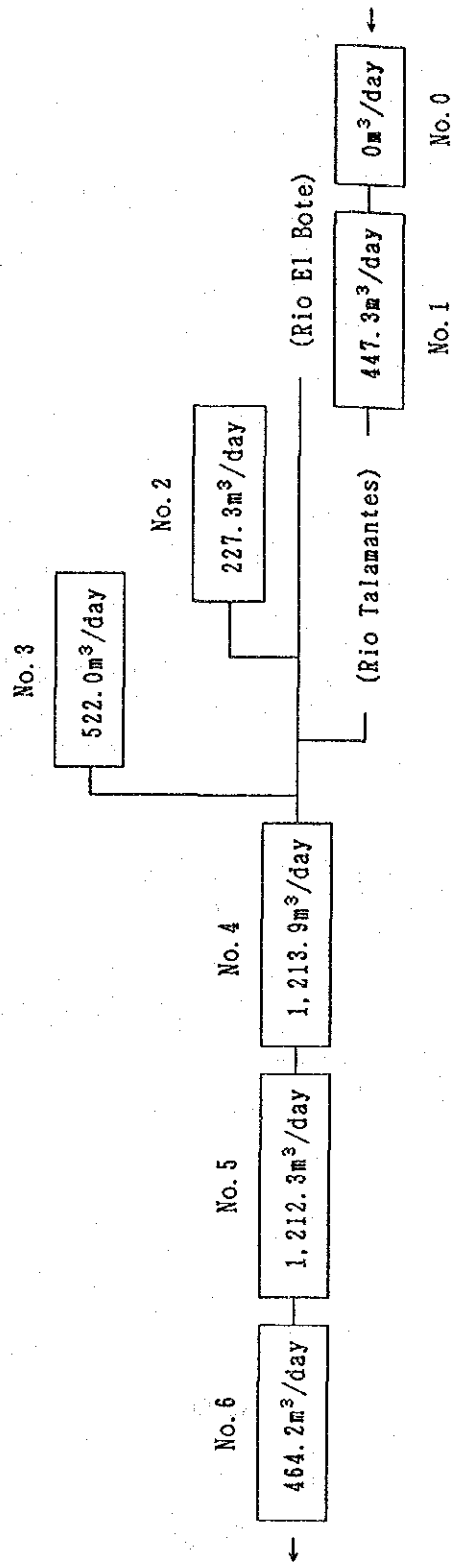


Fig. 3-4-2 Surface Water Balance (El Bote)

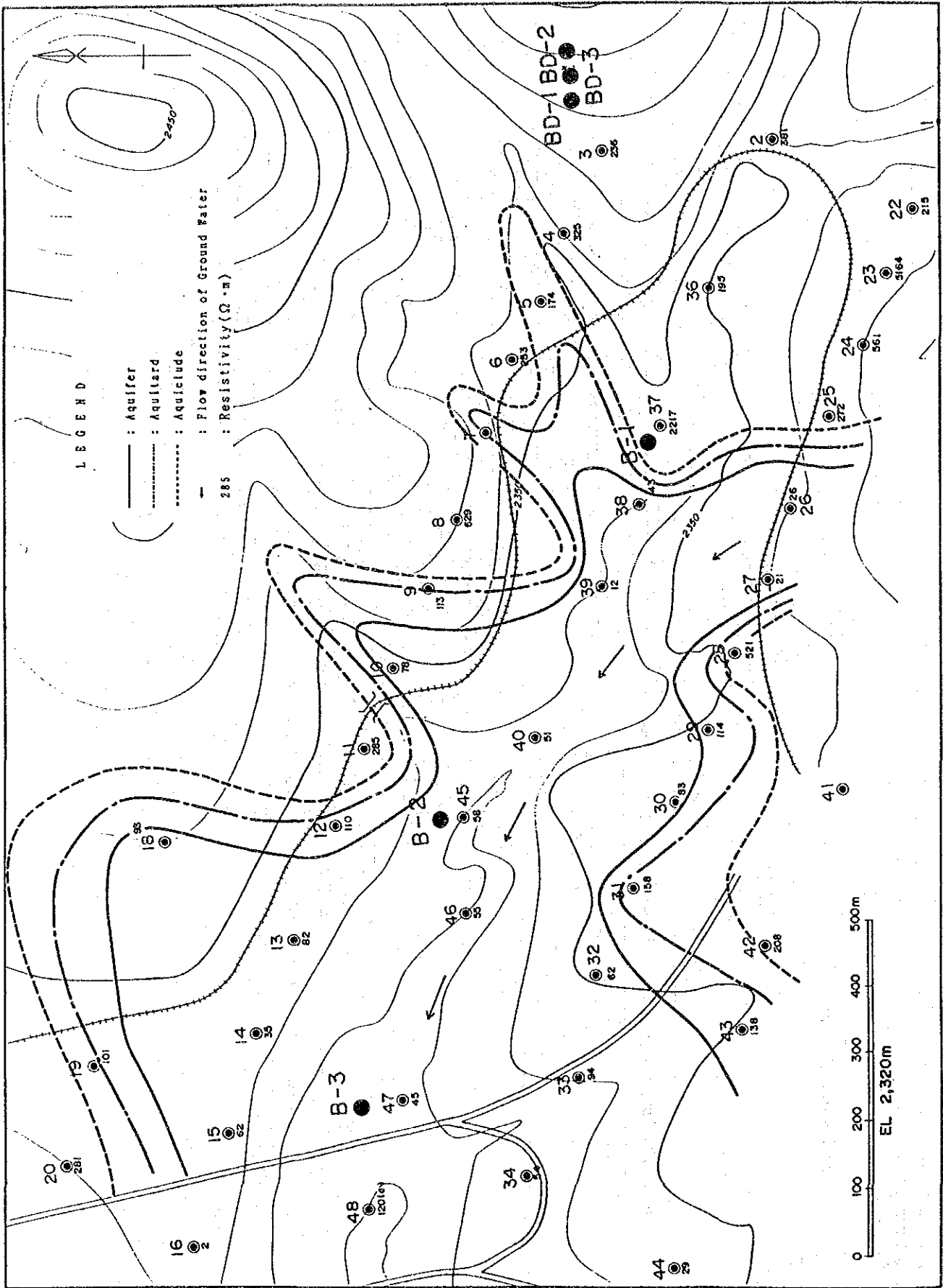


Fig. 3-4-3 Analysis Map of Ground Water Reservoir (Plane)

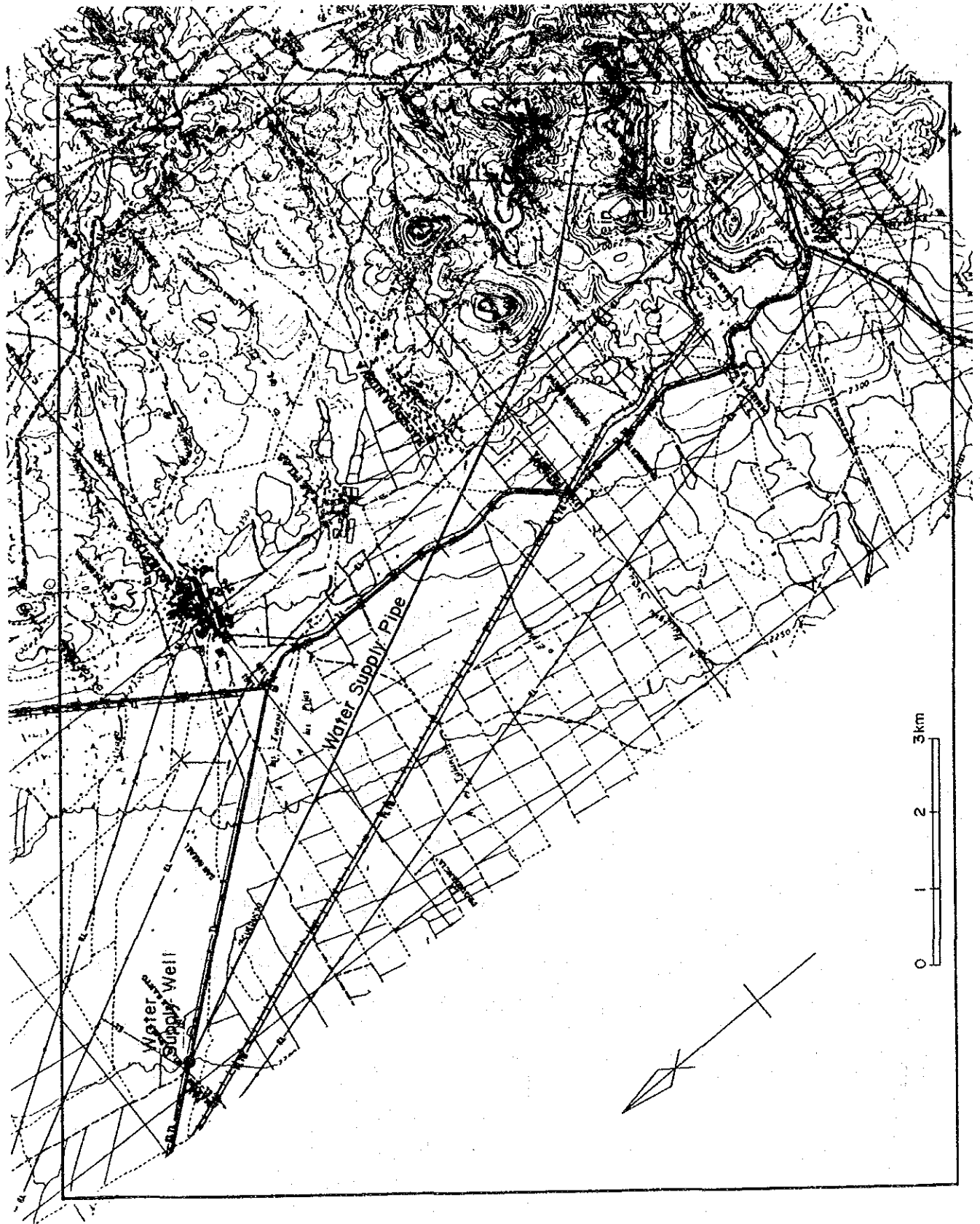


Fig. 3-4-5 Groundwater Simulation Area

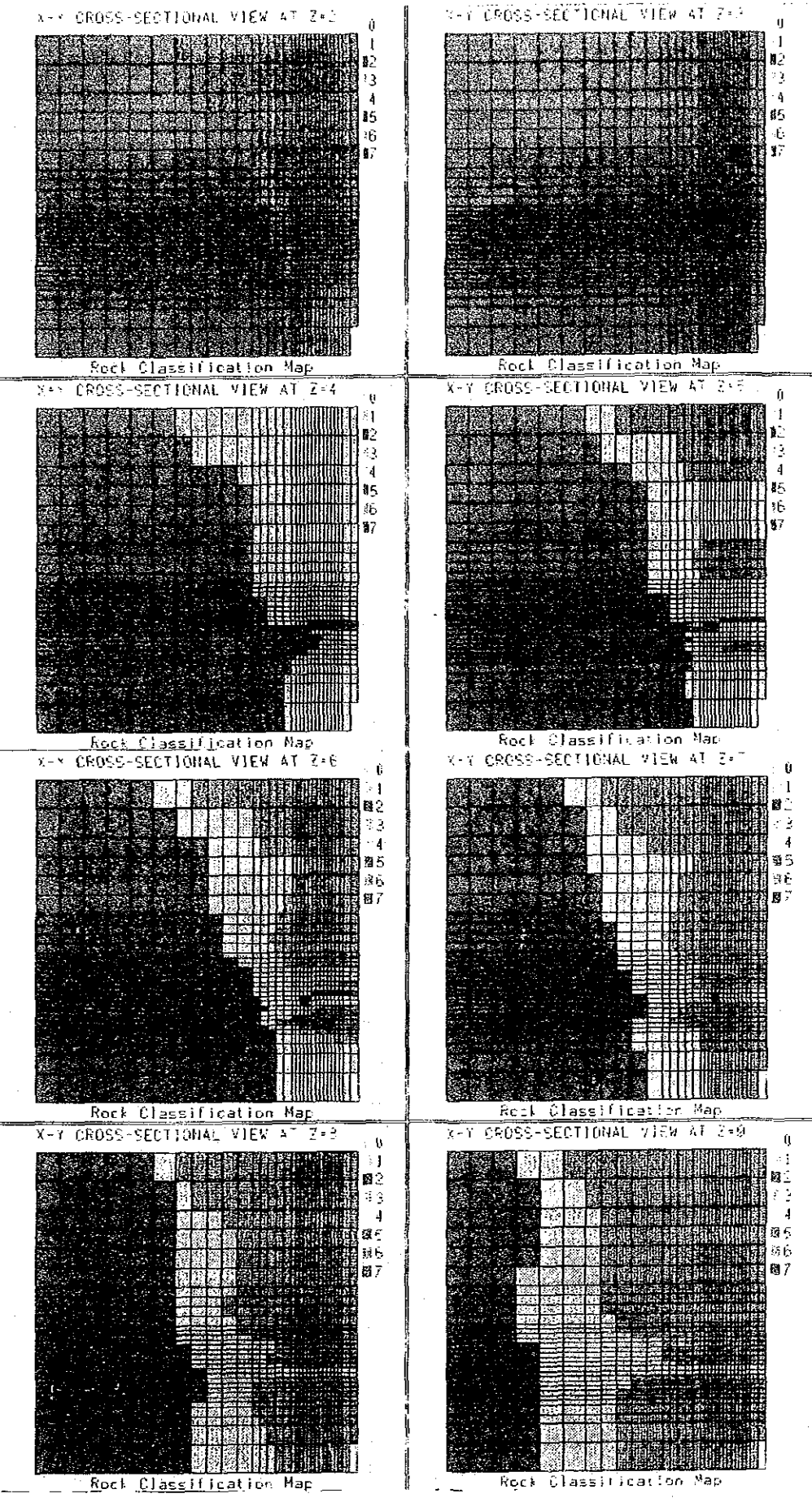
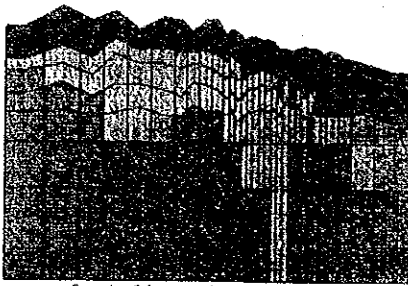


Fig. 3-4-6 Rock Classification Map (1)

Y-Z CROSS-SECTIONAL VIEW AT X=13

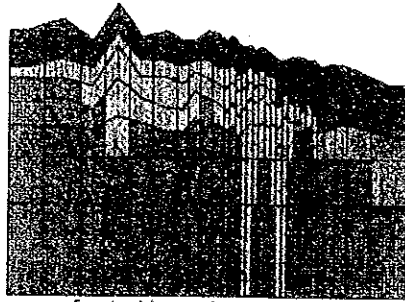
- 0
- 1
- 2
- 3
- 4
- 5
- 6
- 7



Rock Classification Map

Y-Z CROSS-SECTIONAL VIEW AT X=14

- 0
- 1
- 2
- 3
- 4
- 5
- 6
- 7



Rock Classification Map

Y-Z CROSS-SECTIONAL VIEW AT X=15

- 0
- 1
- 2
- 3
- 4
- 5
- 6
- 7



Rock Classification Map

Y-Z CROSS-SECTIONAL VIEW AT X=16

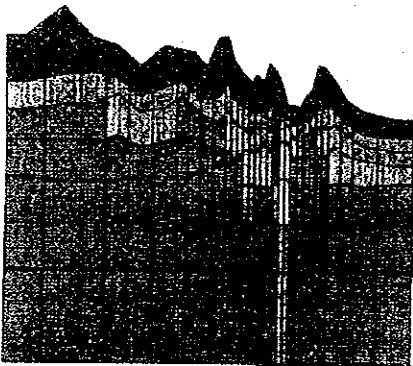
- 0
- 1
- 2
- 3
- 4
- 5
- 6
- 7



Rock Classification Map

Y-Z CROSS-SECTIONAL VIEW AT X=25

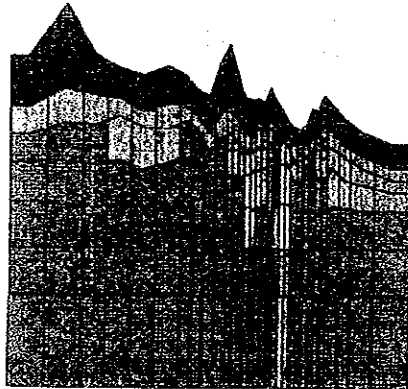
- 0
- 1
- 2
- 3
- 4
- 5
- 6
- 7



Rock Classification Map

Y-Z CROSS-SECTIONAL VIEW AT X=26

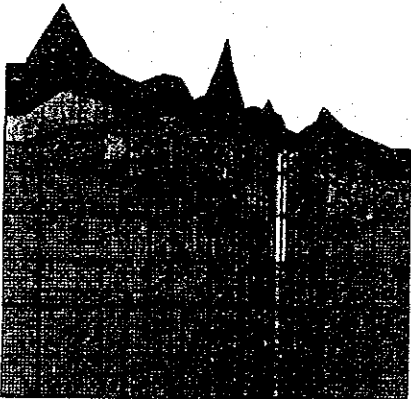
- 0
- 1
- 2
- 3
- 4
- 5
- 6
- 7



Rock Classification Map

Y-Z CROSS-SECTIONAL VIEW AT X=27

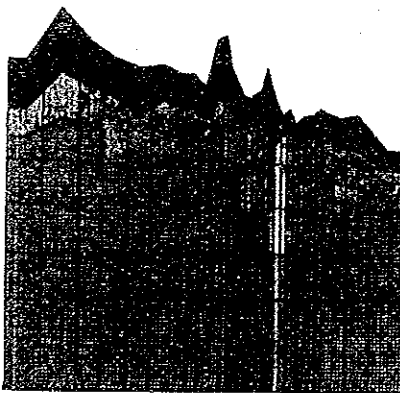
- 0
- 1
- 2
- 3
- 4
- 5
- 6
- 7



Rock Classification Map

Y-Z CROSS-SECTIONAL VIEW AT X=28

- 0
- 1
- 2
- 3
- 4
- 5
- 6
- 7



Rock Classification Map

Fig. 3-4-6 Rock Classification Map (2)

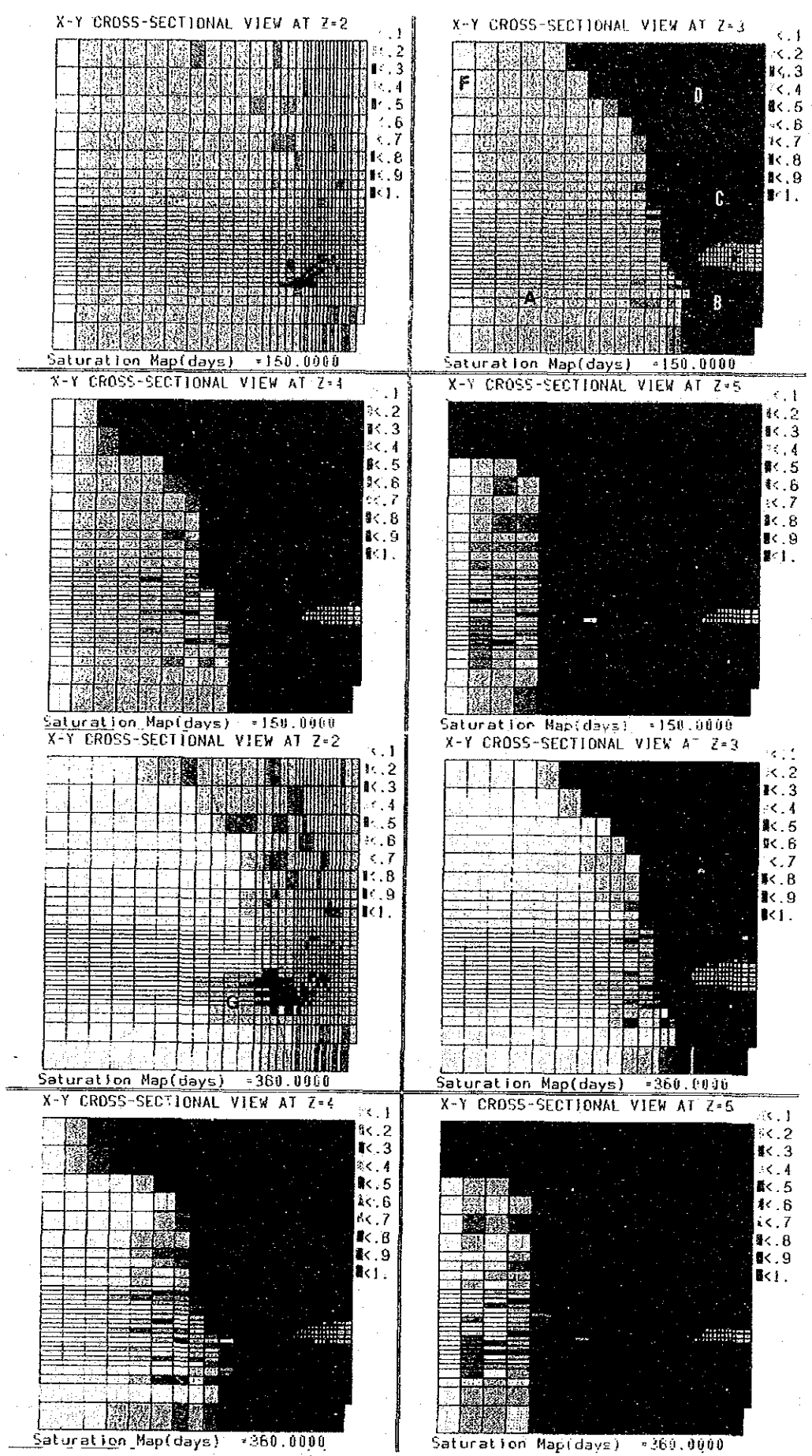
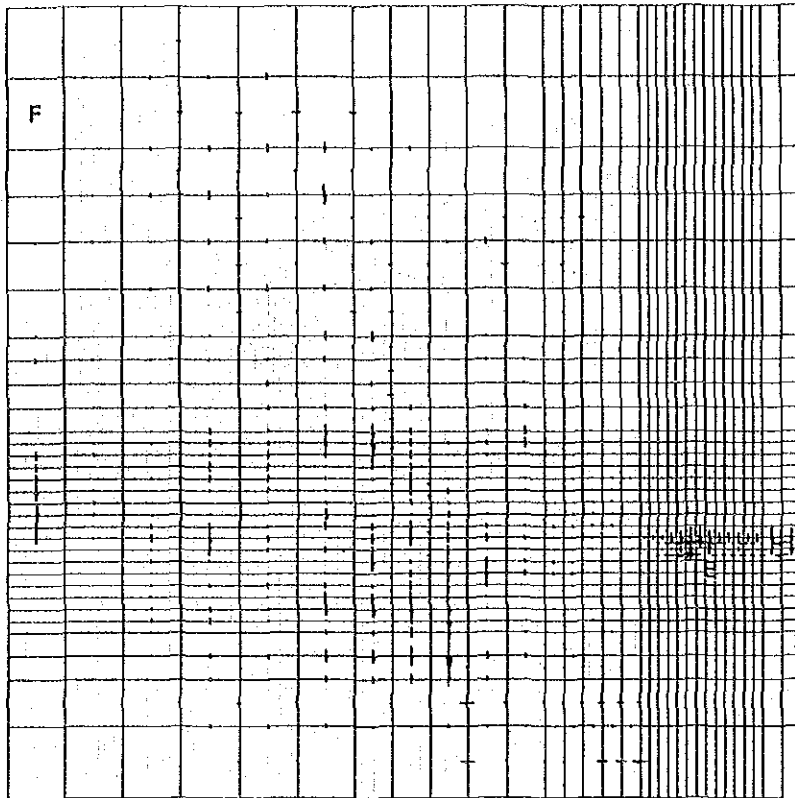


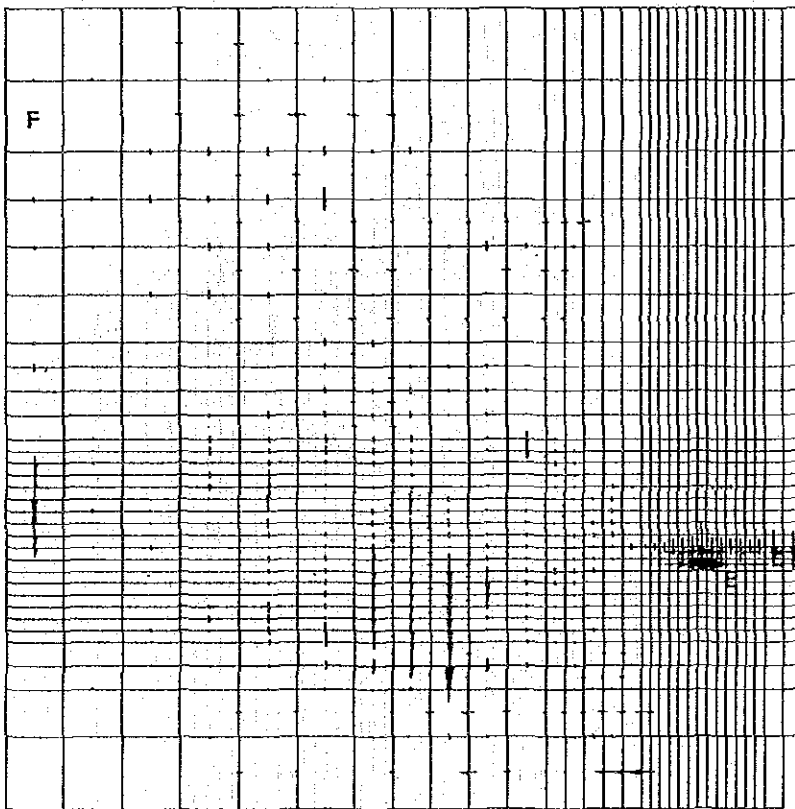
Fig.3-4-7 Groundwater Saturation Map

X-Y CROSS-SECTIONAL VIEW AT Z=7



Velocity MAP(days) =150.0000

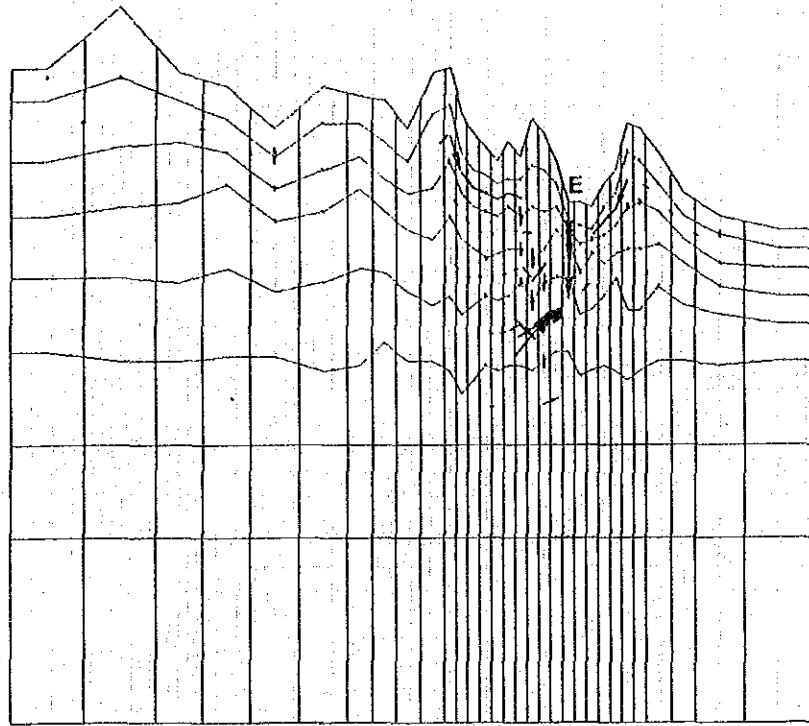
X-Y CROSS-SECTIONAL VIEW AT Z=7



Velocity MAP(days) =360.0000

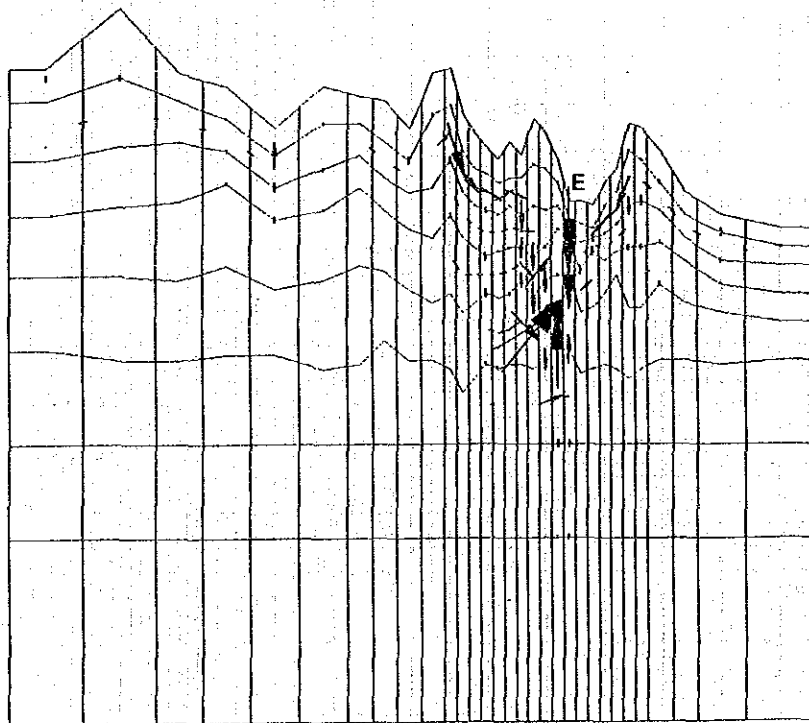
Fig.3-4-8 Groundwater Velocity Map (1)

Y-Z CROSS-SECTIONAL VIEW AT X=25



Velocity MAP(days) =150.0000

Y-Z CROSS-SECTIONAL VIEW AT X=25



Velocity MAP(days) =360.0000

Fig.3-4-8 Groundwater Velocity Map (2)

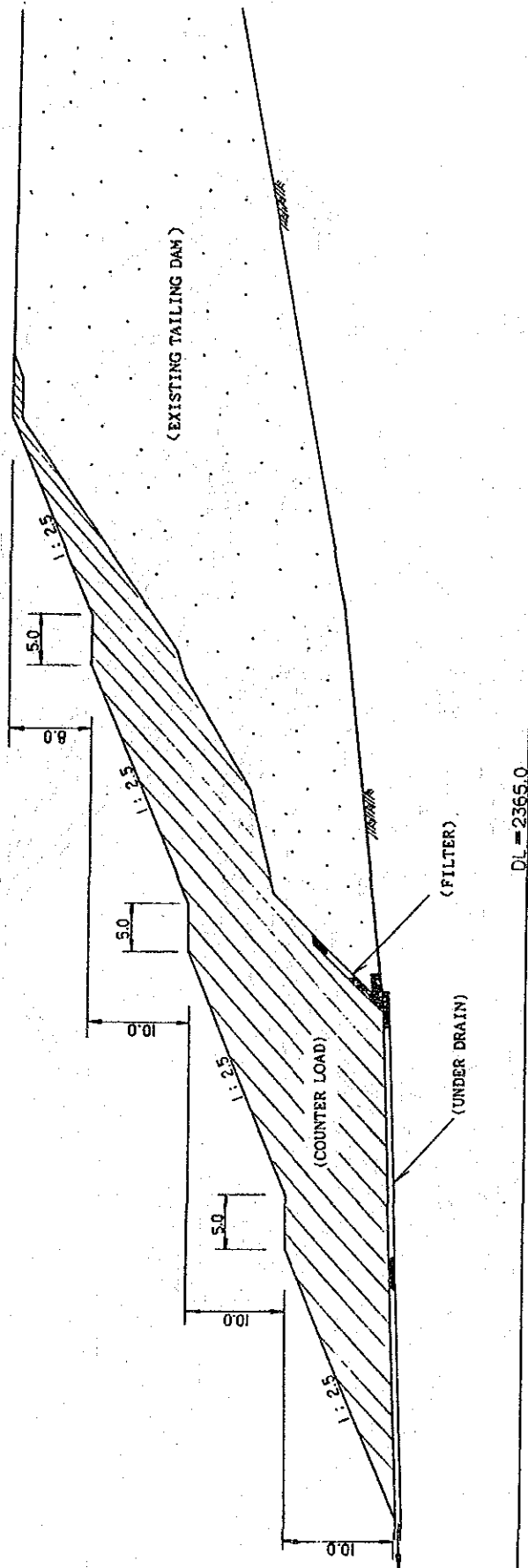


Fig. 3-9-1 The Model of Counter Load

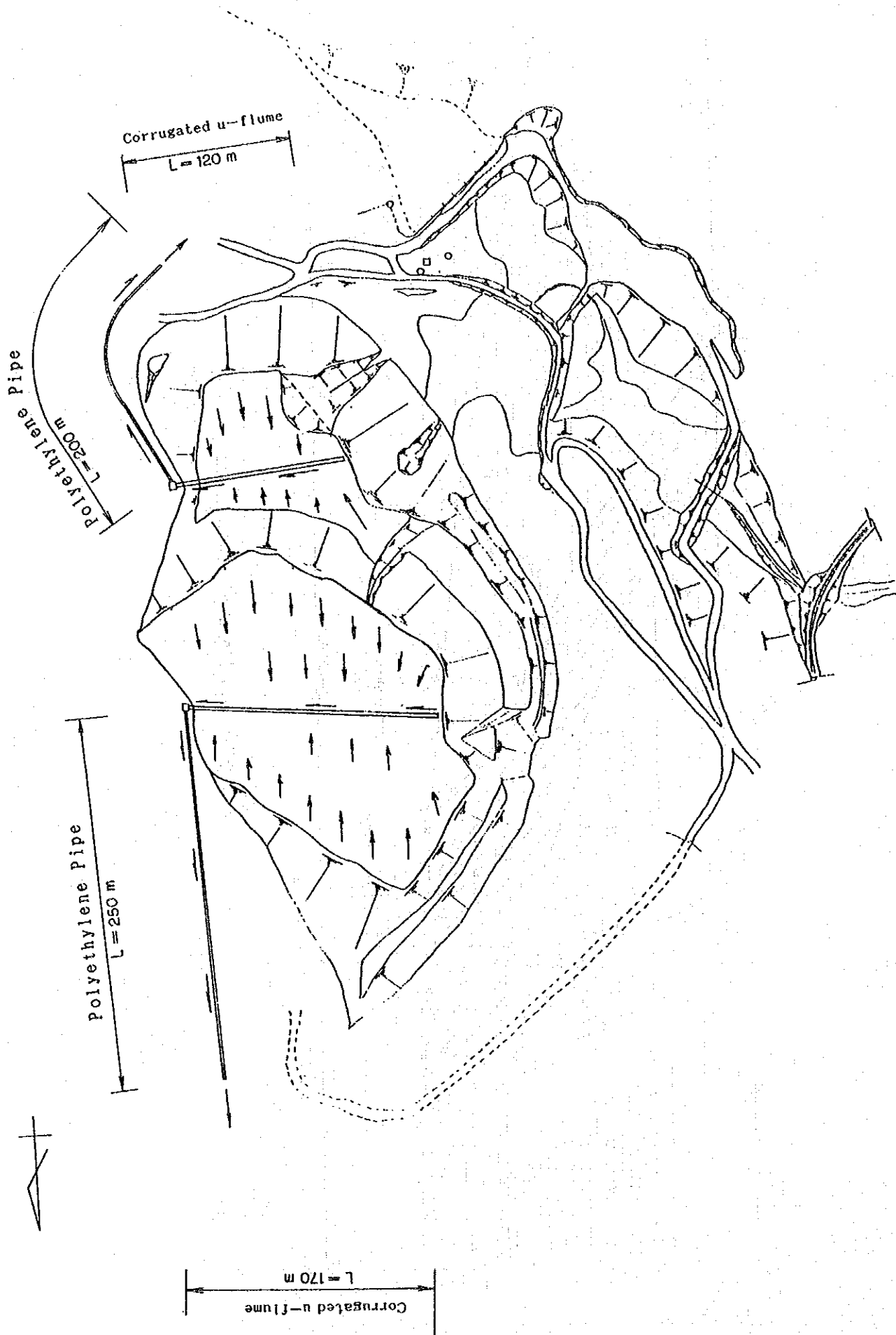


Fig. 3-9-2 Drainage Plan

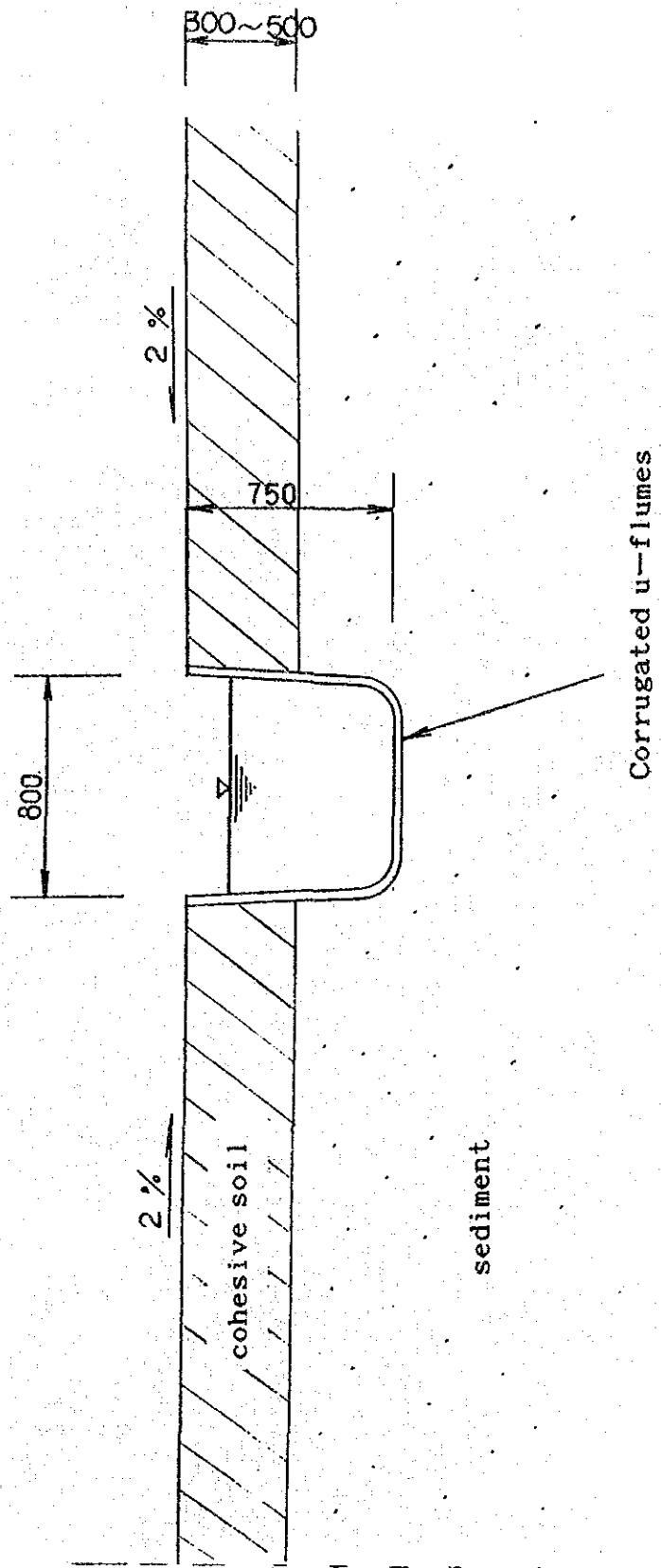


Fig.3-9-3 Typical Cross Section of Drainage

Geological Age		Symbol	Explanation
Quaternary	Recent	Qr	River deposits
		Qt	Terrace deposits
Tertiary	Oligocene	Td	Rhyolite (dyke)
		Ta	Dacite and Rhyolite
		And	Andesite
Early Cretaceous		A	Parral Formation; shale
		—	Fault

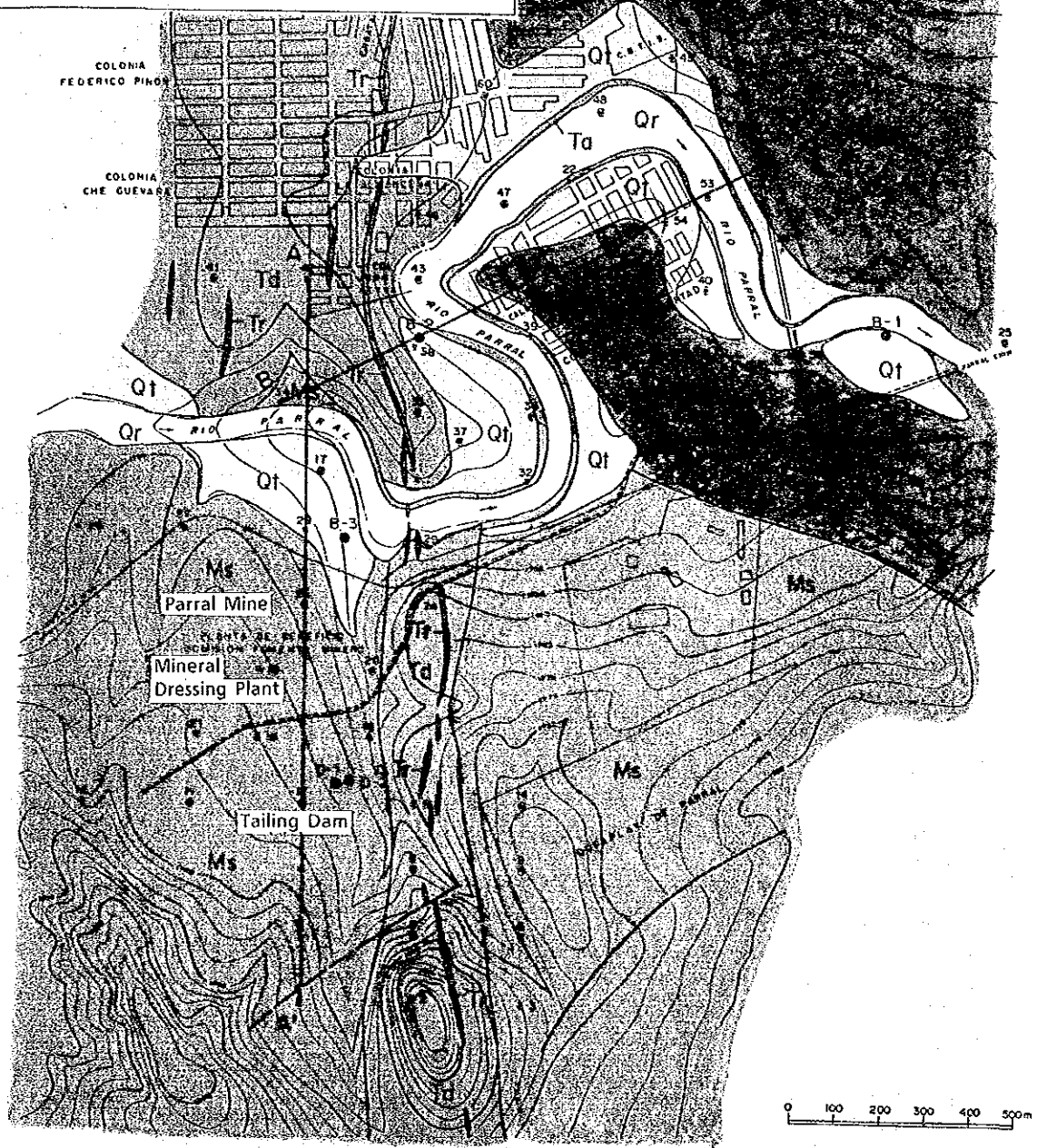


Fig. 4-2-1 Geological Plane Map (Parral)

Geological Age		Symbol	Explanation
Quaternary	Recent	Qr	River deposits
		Qt	Terrace deposits
Tertiary	Oligocene	Tr	Rhyolite (dyke)
		Td	Dacite and Rhyolite
		Ta	Andesite
Early Cretaceous		Ms	Parral Formation : shale
		—	Fault

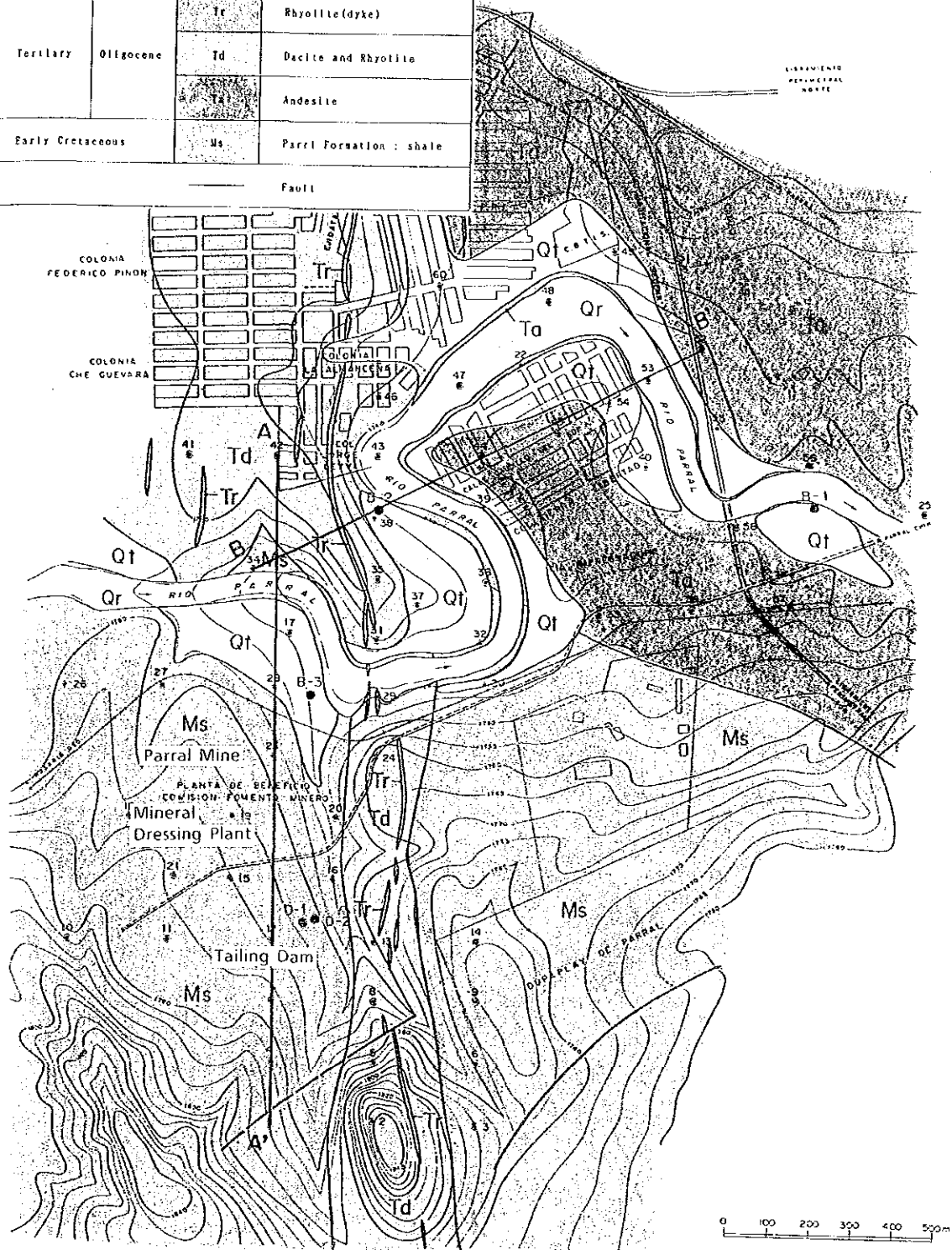


Fig. 4-2-1 Geological Plane Map (Parral)

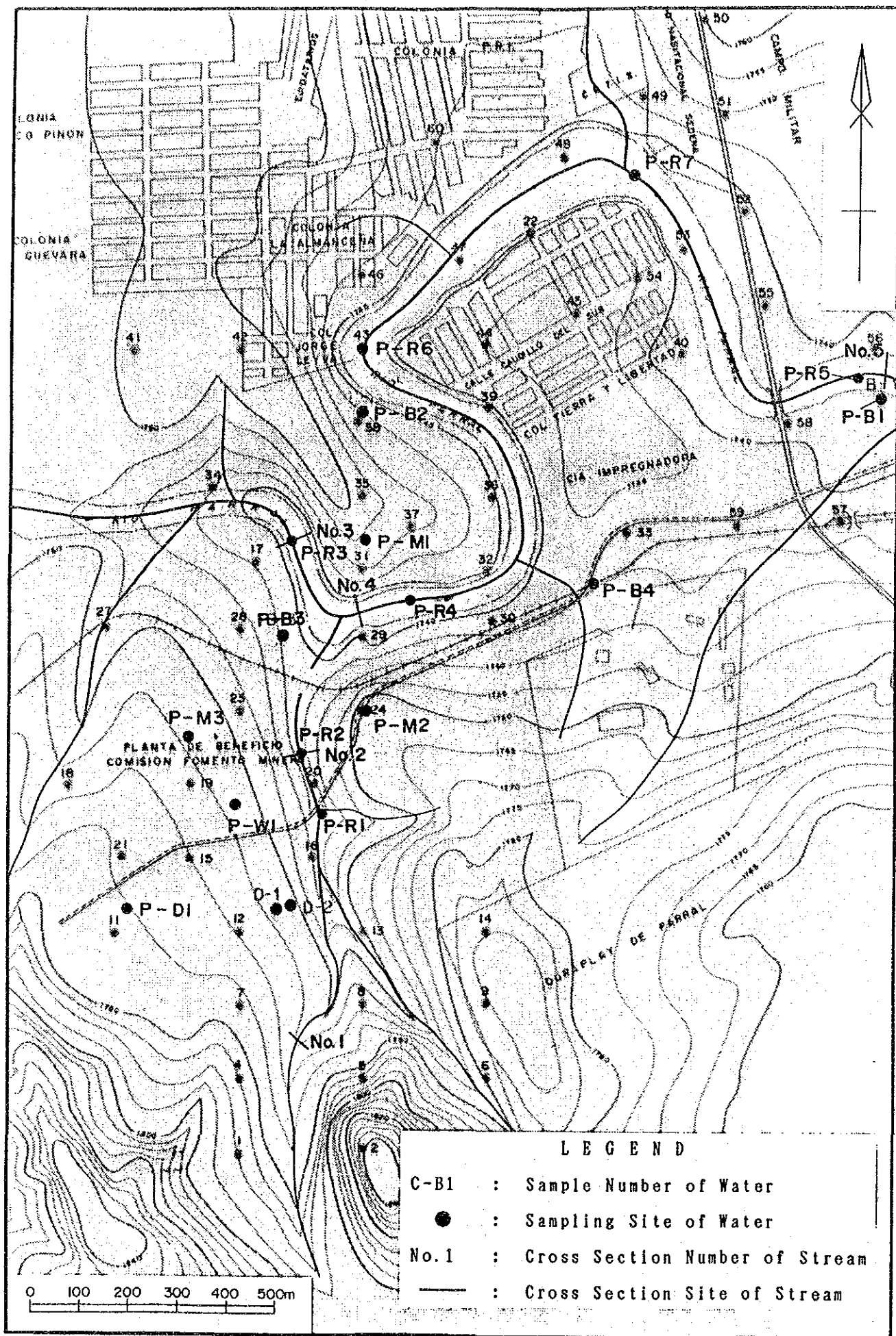


Fig. 4-4-1 Location Map of Flow Rate Measurement and Chemical Analysis of Water

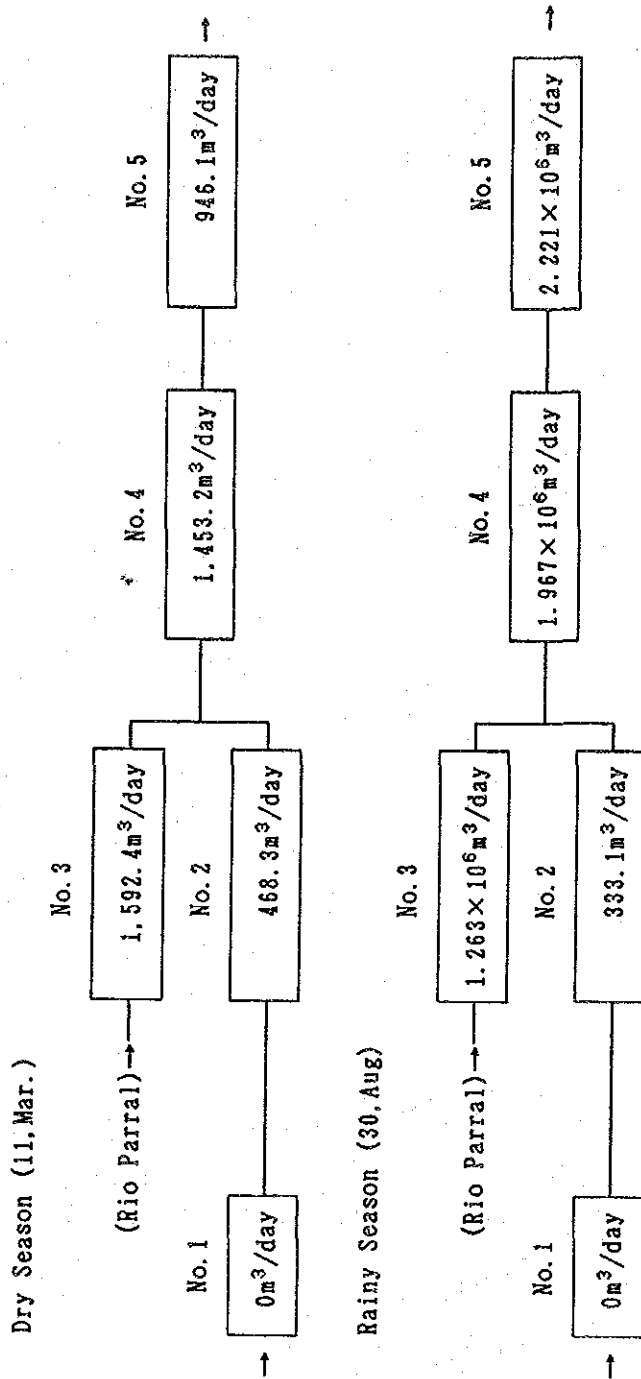


Fig. 4-4-2 Surface Water Balance (Parral)

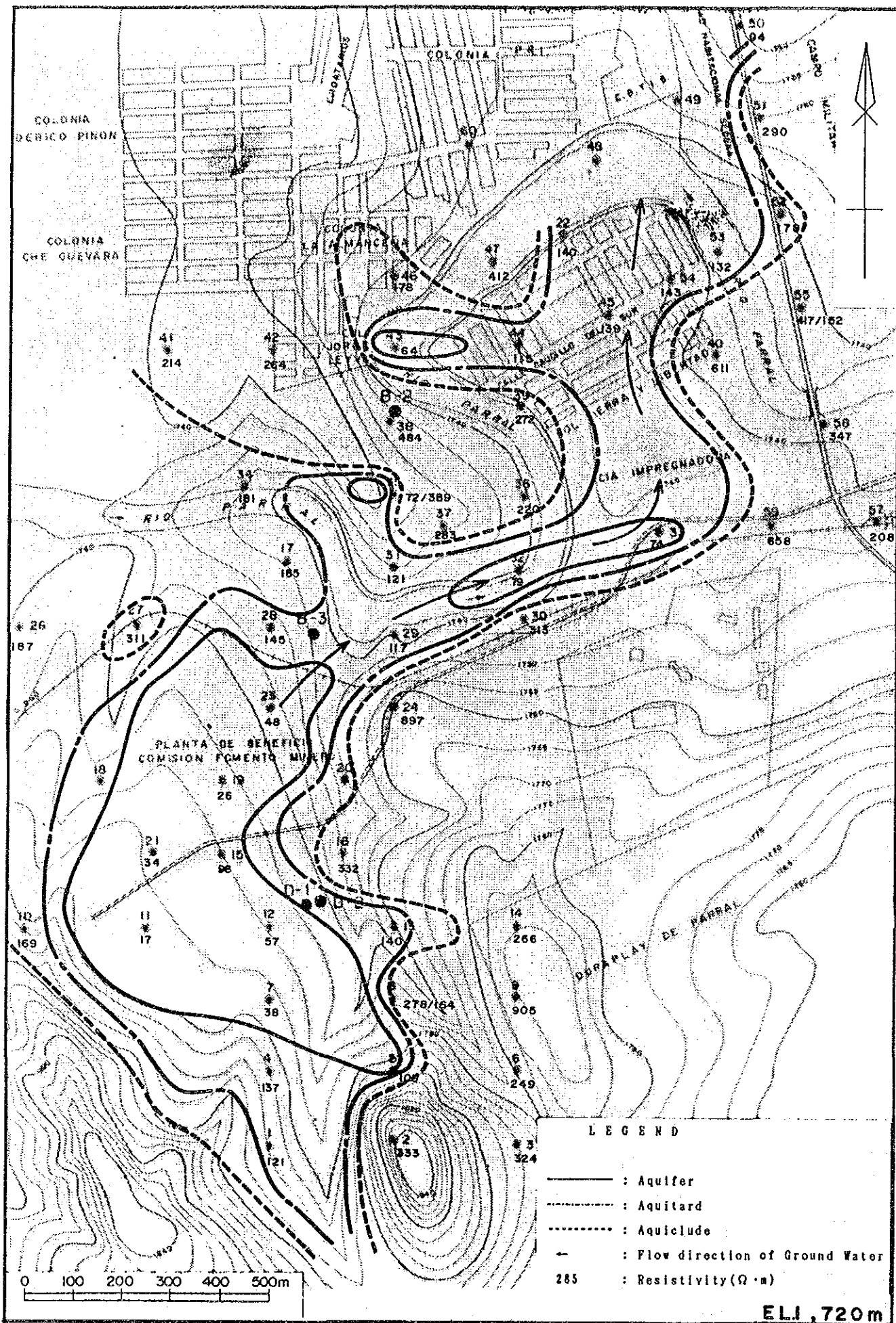


Fig.4-4-3 Analysis Map of Ground Water Reservoir (Plane)

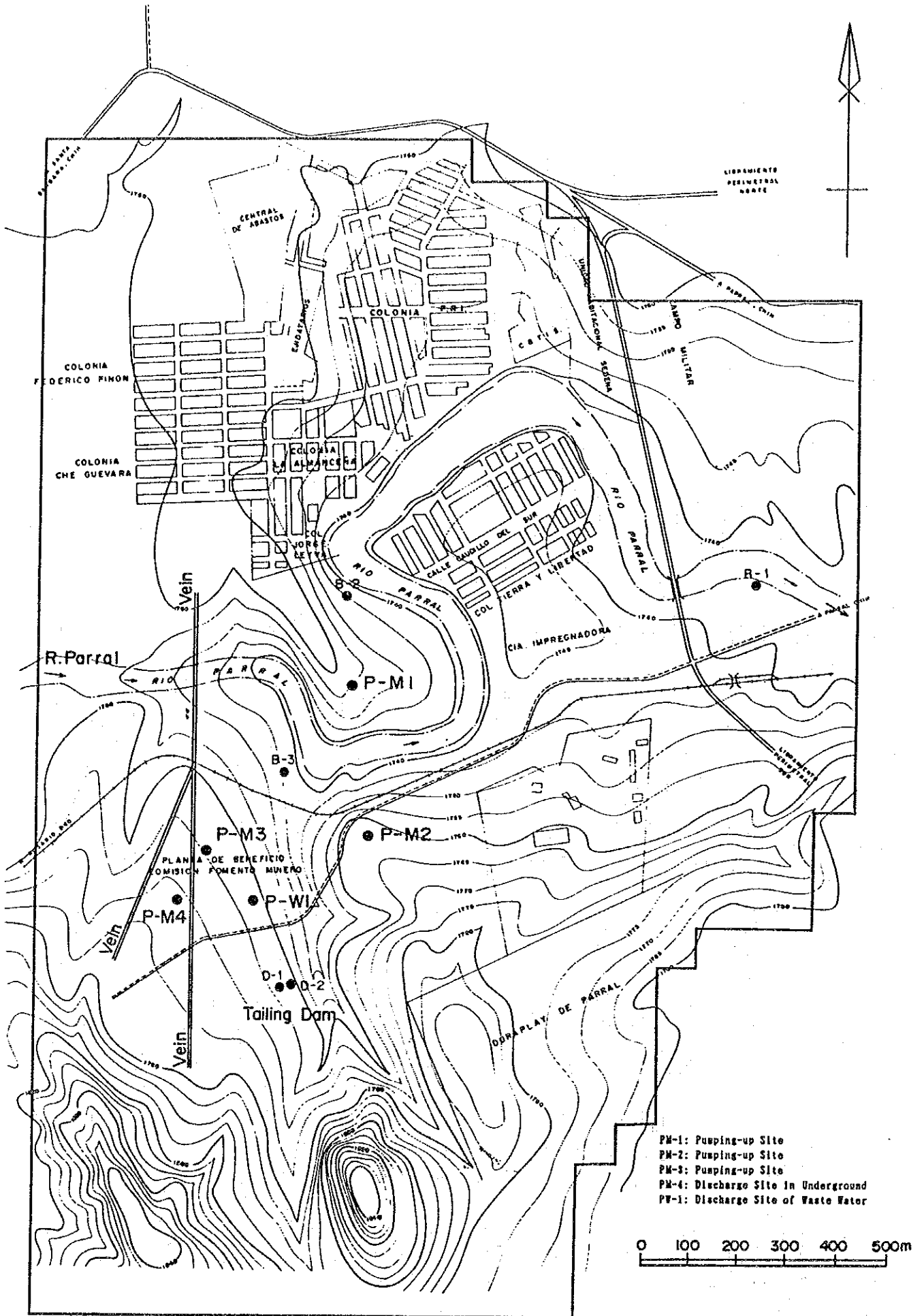
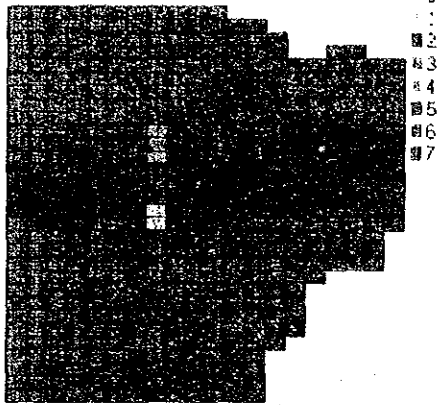


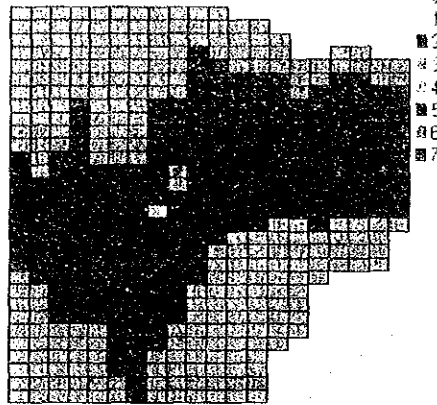
Fig.4-4-5 Groundwater Simulation Area

X-Y CROSS-SECTIONAL VIEW AT Z=2



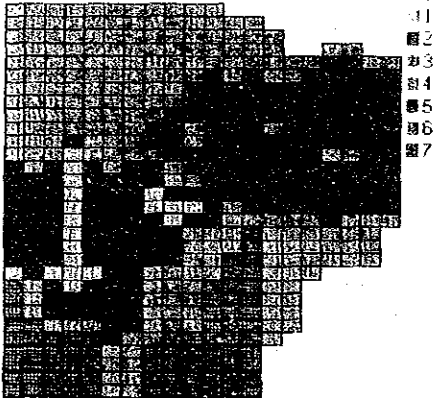
Rock Classification Map

X-Y CROSS-SECTIONAL VIEW AT Z=3



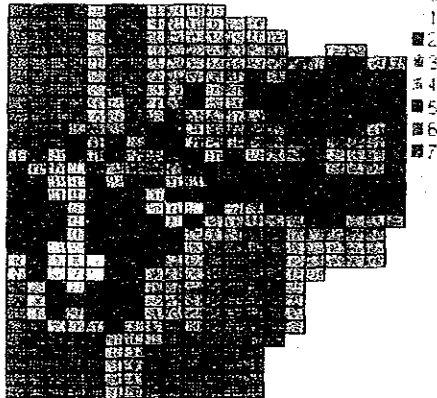
Rock Classification Map

X-Y CROSS-SECTIONAL VIEW AT Z=4



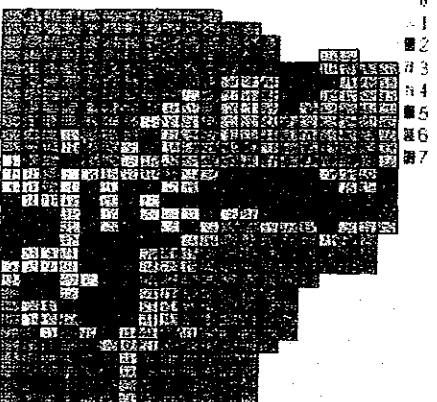
Rock Classification Map

X-Y CROSS-SECTIONAL VIEW AT Z=5



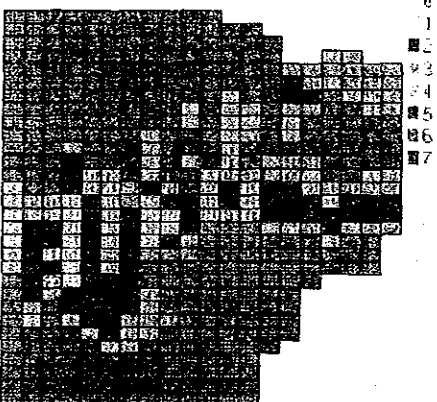
Rock Classification Map

X-Y CROSS-SECTIONAL VIEW AT Z=6



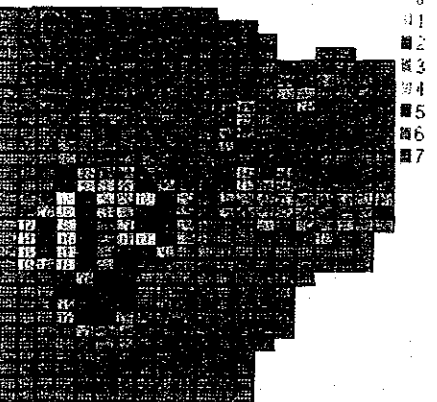
Rock Classification Map

X-Y CROSS-SECTIONAL VIEW AT Z=7



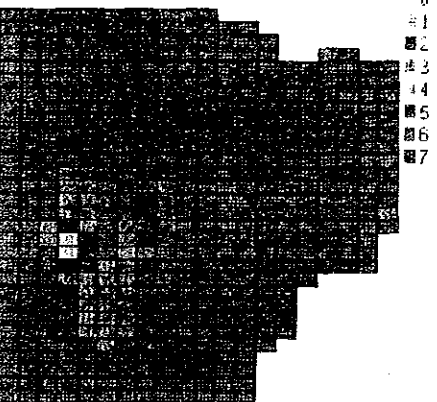
Rock Classification Map

X-Y CROSS-SECTIONAL VIEW AT Z=8



Rock Classification Map

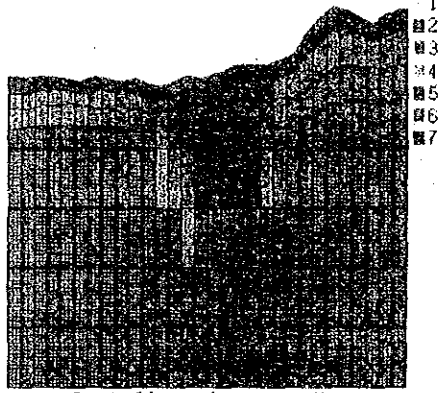
X-Y CROSS-SECTIONAL VIEW AT Z=9



Rock Classification Map

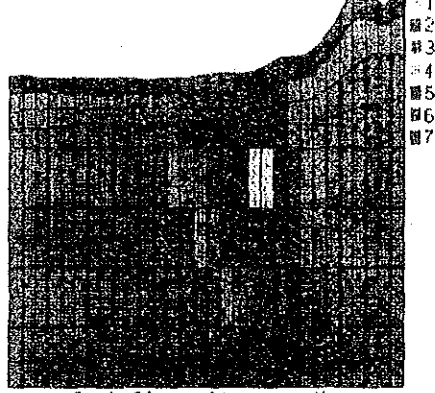
Fig. 4-4-6 Rock Classification Map (1)

Y-Z CROSS-SECTIONAL VIEW AT X=1



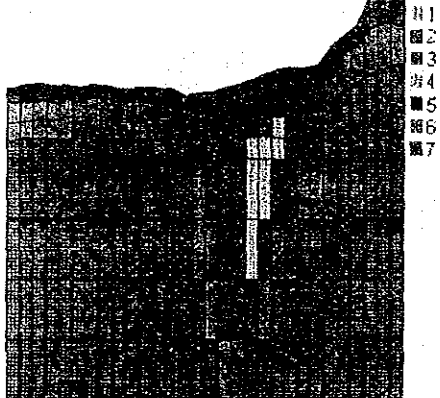
Rock Classification Map

Y-Z CROSS-SECTIONAL VIEW AT X=2



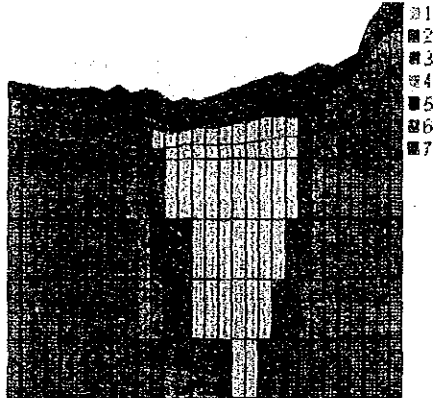
Rock Classification Map

Y-Z CROSS-SECTIONAL VIEW AT X=3



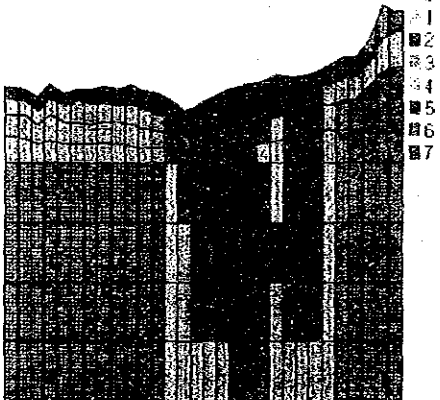
Rock Classification Map

Y-Z CROSS-SECTIONAL VIEW AT X=4



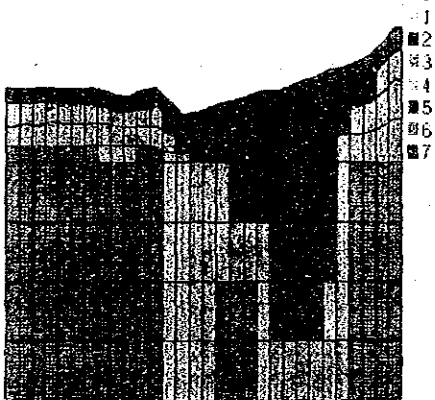
Rock Classification Map

Y-Z CROSS-SECTIONAL VIEW AT X=5



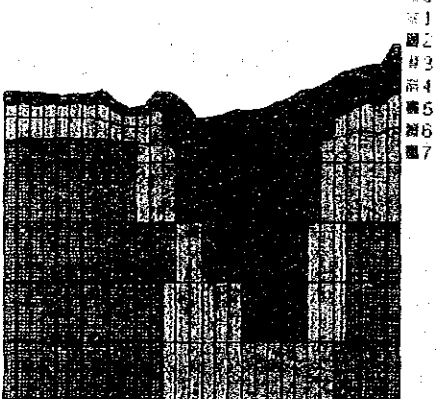
Rock Classification Map

Y-Z CROSS-SECTIONAL VIEW AT X=6



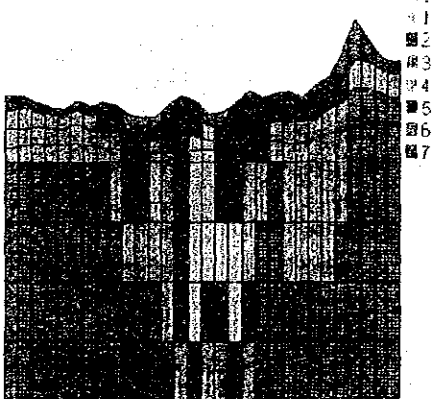
Rock Classification Map

Y-Z CROSS-SECTIONAL VIEW AT X=7



Rock Classification Map

Y-Z CROSS-SECTIONAL VIEW AT X=8



Rock Classification Map

Fig. 4-4-6 Rock Classification Map (2)

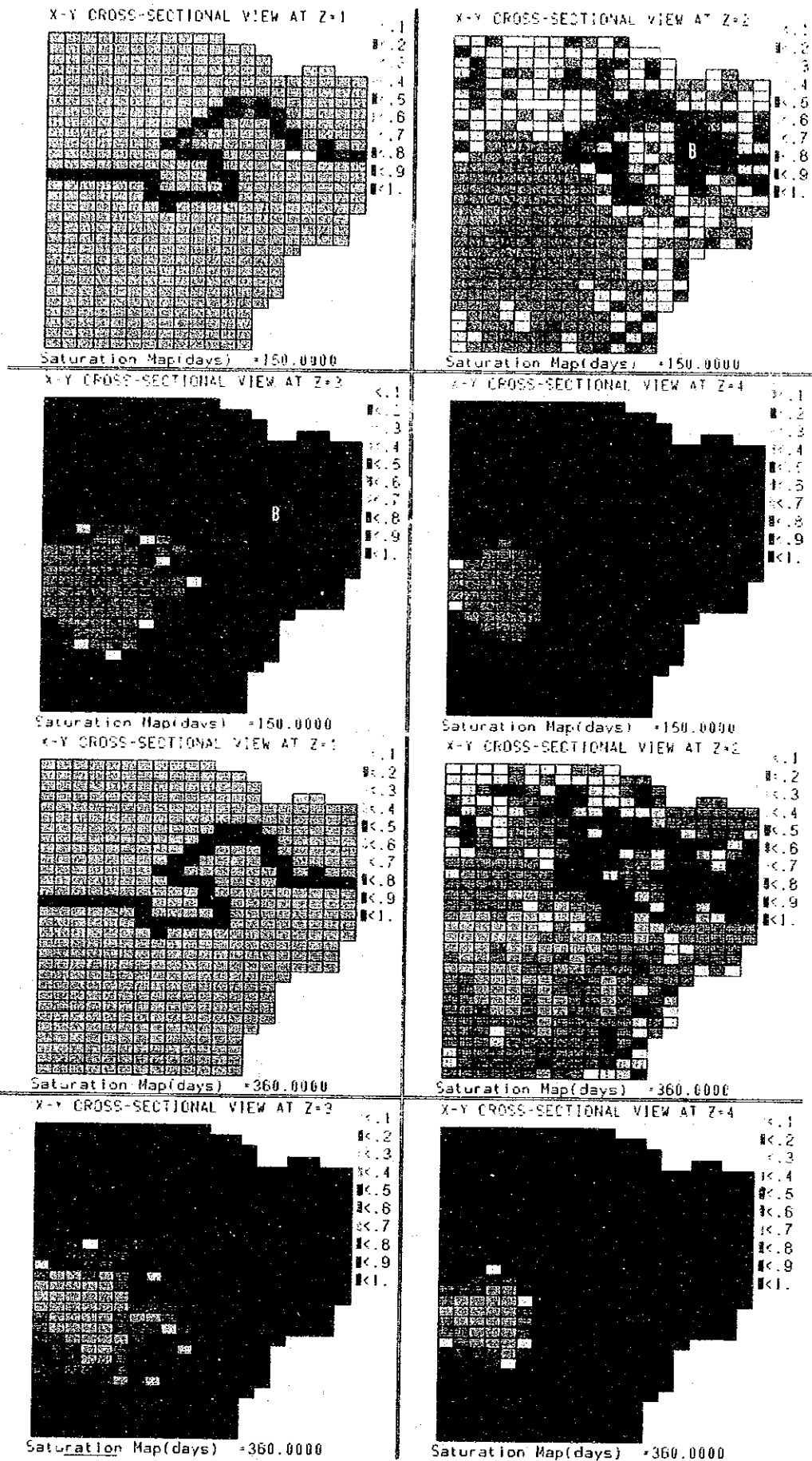
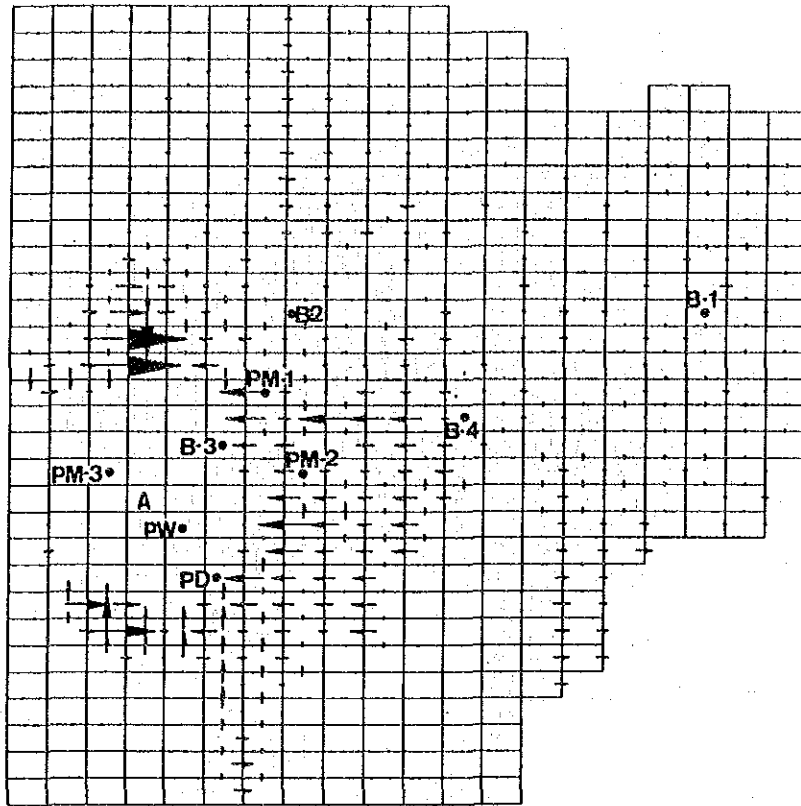


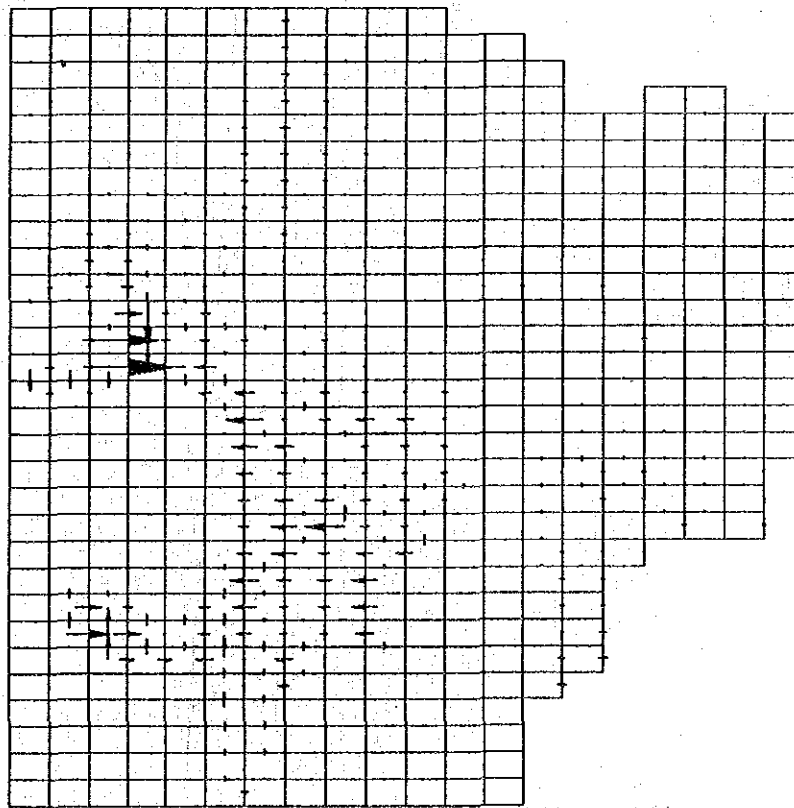
Fig.4-4-7 Groundwater Saturation Map

X-Y CROSS-SECTIONAL VIEW AT Z=4



Velocity MAP(days) *150.0000

X-Y CROSS-SECTIONAL VIEW AT Z=4



Velocity MAP(days) *360.0000

Fig.4-4-8 Groundwater Velocity Map

■ Cut and Bank
▨ Bank

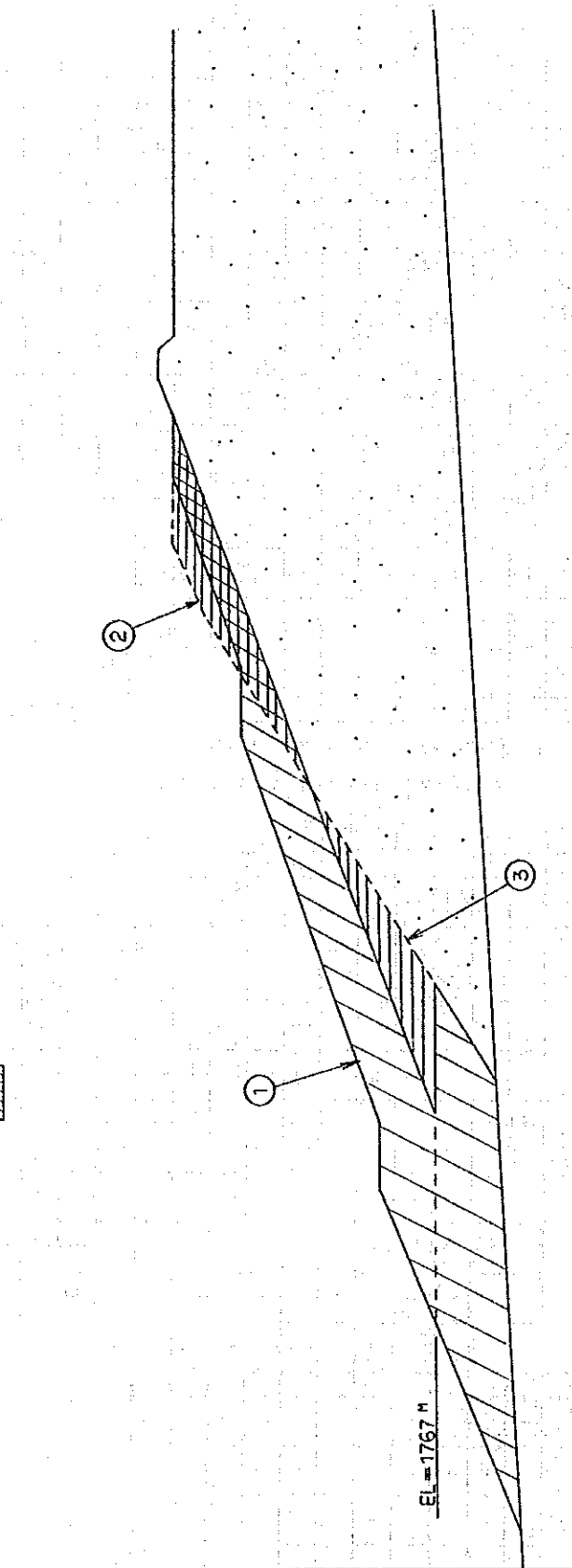


Fig. 4-9-1 The Model of Counter Load

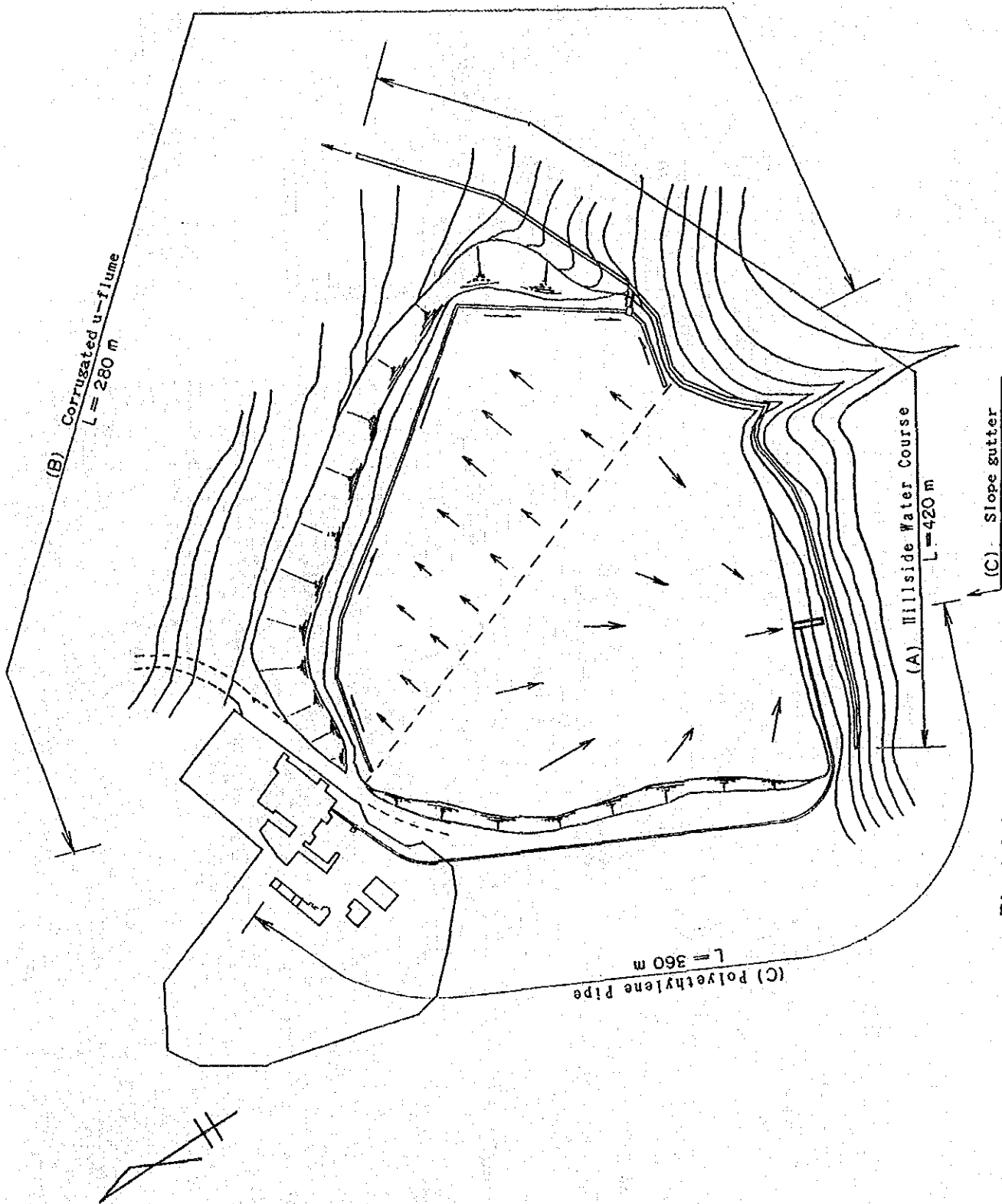


Fig. 4-9-2 Drainage Plan

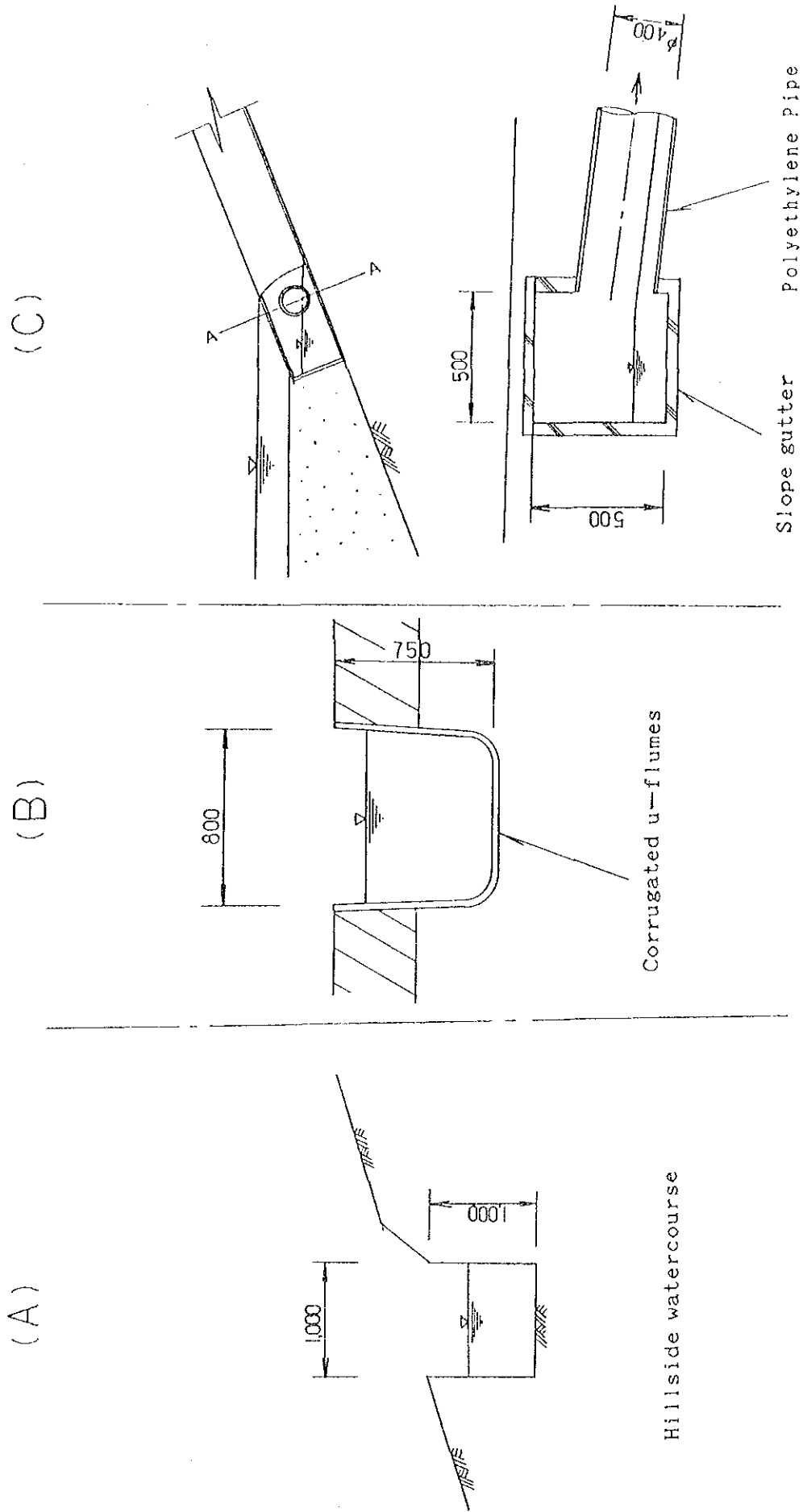


Fig.4-9-3 Typical Cross Section of Drainage

Geological Age		Symbol	Explanation
Quaternary	Recent	Qt	Talus deposits
		Qr1	River deposits
		Qr2	Recent terrace deposits
Pleistocene		Pt1	Pleistocene lower terrace deposits
			Pleistocene middle terrace deposits
			Pleistocene upper terrace deposits
Tertiary		Ta	Altered acidic rocks
		Tb	Toba pyroclastic rocks
		Tc	Extrusive rocks ; andesite
		Td	Intrusive rocks ; porphyrite
		Te	Intrusive rocks ; diorite
Pre-Tertiary			Slate (partly interrelated with sandstone)
			Fault



Fig. 5-2-1 Geological Plane Map (New El Coco)

Geological Age	Symbol	Explanation	
Quaternary	Recent	Qt	Talus deposits
		Qr1	River deposits
		Qr2	Recent terrace deposits
Pleistocene	Pleistocene	Pt1	Pleistocene lower terrace deposits
		Pt2	Pleistocene middle terrace deposits
		Pt3	Pleistocene upper terrace deposits
Tertiary	Tertiary	Ta	Altered acidic rocks
		Tb	Toba pyroclastic rocks
		Te	Extrusive rocks : andesite
		Ti	Intrusive rocks : porphyrite
		Td	Intrusive rocks : dacite
Pre-Tertiary	Pre-Tertiary	Slate partly intercalated with sandstone	
		Fault	

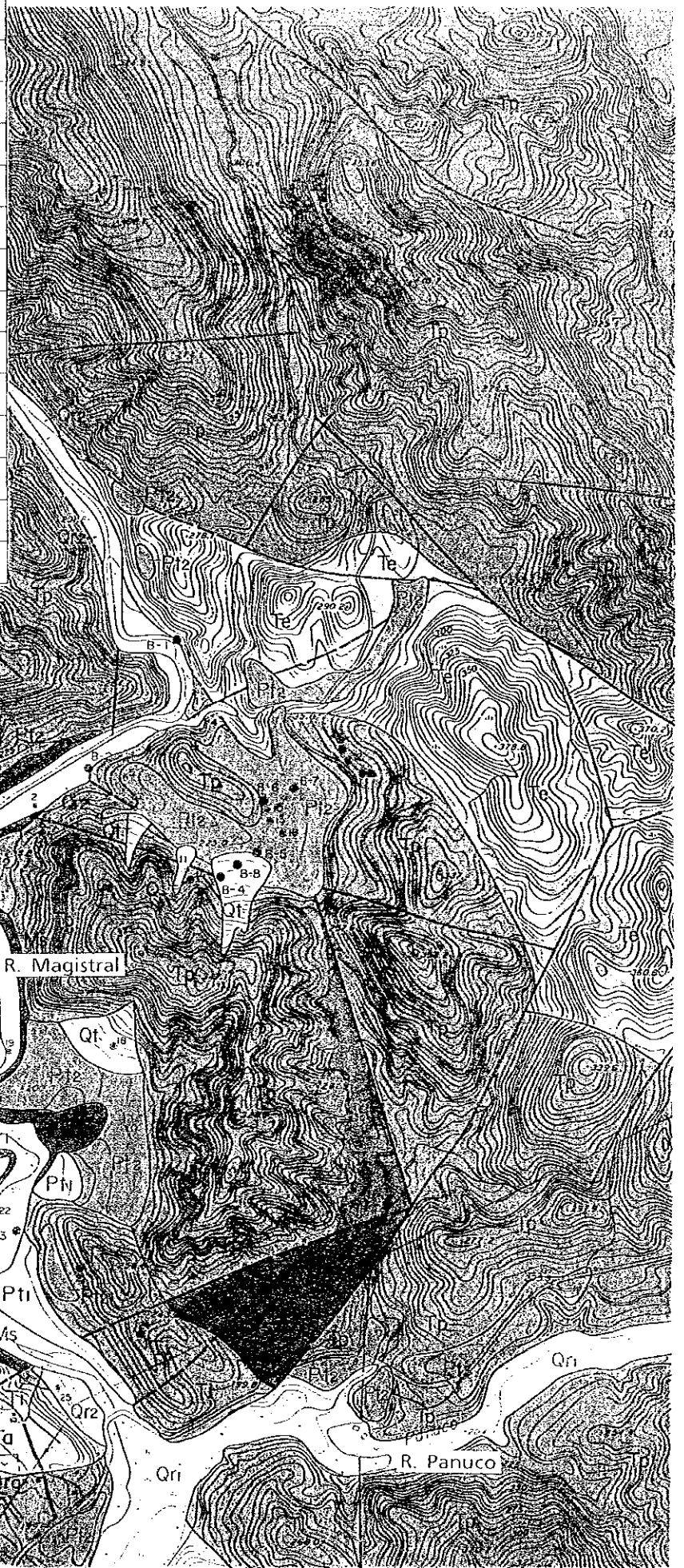


Fig. 5-2-1 Geological Plane Map (New El Coco)

