

資料 - 2

討議議事録 (R/D)

THE RECORD OF DISCUSSIONS
BETWEEN THE JAPANESE IMPLEMENTATION SURVEY TEAM
AND THE AUTHORITIES CONCERNED OF
THE GOVERNMENT OF THE REPUBLIC OF INDONESIA
ON THE JAPANESE TECHNICAL COOPERATION
FOR RESEARCH AND DEVELOPMENT OF INDONESIAN LOW GRADE NICKEL LATERITES
IN THE REPUBLIC OF INDONESIA

The Japanese Implementation Survey Team (hereinafter referred to as "the Team") organized by the Japan International Cooperation Agency (hereinafter referred to as "JICA") and headed by Mr. Keiji Iimura, Head of Technical Cooperation Division, Mining and Industrial Development Cooperation Department, JICA, visited from December 7 to December 15 for the purpose of working out the details of the technical cooperation program concerning the Project on Research and Development of Indonesian Low Grade Nickel Laterites (hereinafter referred to as "the Project").

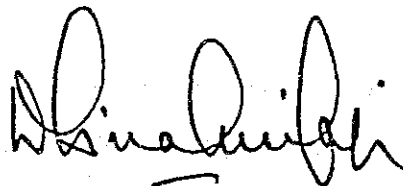
During its stay in the Republic of Indonesia, the Team exchanged views and had a series of discussions with the Indonesian authorities concerned in respect of the desirable measures to be taken by both Governments for the successful implementation of the above-mentioned project.

As a result of the discussions, both parties agreed to recommend to their respective Governments the matters referred to in the document attached hereto.

Bandung, December 14, 1987

飯村 吉 行

Mr. Keiji Iimura
Leader,
Implementation Survey Team,
Japan International
Cooperation Agency,
Japan



Prof. Dr. D.A. Tisna Amidjaja
Chairman,
Indonesian Institute of Sciences,
The Republic of Indonesia

THE ATTACHED DOCUMENT

I. COOPERATION BETWEEN BOTH GOVERNMENTS

1. The Government of Japan and the Government of the Republic of Indonesia will cooperate with each other in implementing the Project on Research and Development of Indonesian Low Grade Nickel Laterites for the purpose of developing human resources in the field of the treatment of low grade nickel laterites and thus contributing to the effective utilization of the mineral resources in the Republic of Indonesia.
2. The Project will be implemented in accordance with the Master Plan which is given in Annex I.

II. DISPATCH OF JAPANESE EXPERTS

1. In accordance with the laws and regulations in force in Japan, the Government of Japan will take necessary measures through JICA to provide at its own expense the services of the Japanese experts as listed in Annex II through the normal procedures under the Colombo Plan Technical Cooperation Scheme.
2. The Japanese experts referred to in 1 above and their families will be granted in the Republic of Indonesia, the privileges, exemptions and benefits as listed in Annex III and also will be granted the privileges, exemptions and benefits no less favourable than those accorded to experts of third countries or international organization performing similar missions in the Republic of Indonesia.

ees 5

III. PROVISION OF MACHINERY AND EQUIPMENT

1. In accordance with the laws and regulations in force in Japan, the Government of Japan will take necessary measures through JICA to provide at its own expense such machinery, equipment and other materials (hereinafter referred to as "the Equipment") necessary for the implementation of the Project as listed in Annex IV through the normal procedures under the Colombo Plan Technical Cooperation Scheme.
2. The Equipment will become the property of the Government of the Republic of Indonesia upon being delivered C.I.F. to the Indonesian authorities concerned at the ports and/or airports of disembarkation, and will be utilized properly and exclusively for the implementation of the Project in consultation with the Japanese experts referred to in Annex II.

IV. TRAINING OF INDONESIAN PERSONNEL IN JAPAN

1. In accordance with the laws and regulations in force in Japan, the Government of Japan will take necessary measures through JICA to receive at its own expense the Indonesian personnel connected with the Project for technical training in Japan through the normal procedures under the Colombo Plan Technical Cooperation Scheme.
2. The Government of the Republic of Indonesia will take necessary measures to ensure that the knowledge and experience acquired by the Indonesian personnel from technical training

evb 5.

in Japan will be utilized effectively for the implementation of the Project.

V. SERVICES OF INDONESIAN COUNTERPART AND ADMINISTRATIVE PERSONNEL

1. In accordance with the laws and regulations in force in the Republic of Indonesia, the Government of the Republic of Indonesia will take necessary measures to secure at its own expense the necessary services of Indonesian counterpart and administrative personnel as listed in Annex V.
2. The Government of the Republic of Indonesia will allocate the necessary number of suitably qualified personnel corresponding to each Japanese expert to be dispatched by the Government of Japan as specified in Annex II for the effective and successful transfer of technology under the Project.

VI. MEASURES TO BE TAKEN BY THE GOVERNMENT OF THE REPUBLIC OF INDONESIA

1. In accordance with the laws and regulations in force in the Republic of Indonesia, the Government of the Republic of Indonesia will take necessary measures to provide at its own expense :
 - (1) Land, buildings and facilities as listed in Annex VI;
 - (2) Supply or replacement of machinery, equipment, instrument, vehicles, tools, spare parts, and any other materials necessary for the implementation of the Project other than those provided through JICA under III above;

els Σ

- (3) Supply of raw ores mined from the mines at Pomalaa or Gebe;
 - (4) Transportation facilities and travel allowance for the official travel of Japanese experts within the Republic of Indonesia.
2. In accordance with the laws and regulations in force in the Republic of Indonesia, the Government of the Republic of Indonesia will take necessary measures to meet :
- (1) Expenses necessary for the transportation of the Equipment within the Republic of Indonesia as well as for the installation, operation and maintenance thereof;
 - (2) Customs duties, internal taxes and any other charges, imposed on the Equipment in the Republic of Indonesia;
 - (3) All running expenses necessary for the implementation of the Project.

VII. ADMINISTRATION OF THE PROJECT

1. The Deputy Chairman for Technical Sciences on behalf of the Chairman of Indonesian Institute of Sciences will bear overall responsibility for the implementation of the Project.
2. The Head of the Research and Development Centre for Metallurgy (hereinafter referred to as "RDCM"), as the Project Coordinator, will be responsible for the administrative and managerial matters of the Project.
3. The Head of Extraction Metallurgy Division (hereinafter referred to as "EMD"), RDCM, as the Project Leader, will be responsible for operational matters of the Project.

evs A.

4. The Japanese Chief Advisor will provide necessary recommendation and advice on technical and administrative matters concerning the implementation of the Project to the Project Coordinator and the Project Leader.
5. The Japanese experts will give necessary technical guidance and advice to the Indonesian counterpart personnel on matters pertaining to the implementation of the Project.
6. For the effective and successful implementation of the Project, a Joint Committee will be established with the function and composition as referred to in Annex VII.
7. The Organization Chart for the implementation of the Project is shown in Annex VIII.

VIII. CLAIMS AGAINST JAPANESE EXPERTS

The Government of the Republic of Indonesia undertakes to bear claims, if any arises, against the Japanese experts engaged in the Project resulting from, occurring in the course of, or otherwise connected with the discharge of their official functions in the Republic of Indonesia except for those arising from the willful misconduct or gross negligence of the Japanese experts.

IX. MUTUAL CONSULTATION

There will be mutual consultation between the two Governments on any major issues arising from, or in connection with this Attached Document.

elo A.

X. TERM OF COOPERATION

The duration of the technical cooperation for the Project under this Attached Document will be four (4) years from the Date of signing.

However, there will be a general review by the Joint Committee on the progress of the implementation of the Project during the third year of the cooperation period in order to assess whether the term of cooperation should be modified for the successful implementation of the Project.

ees

ANNEX I. MASTER PLAN

1. Objective of the Project

The Project aims at developing human resources in the field of the treatment of Indonesian low grade nickel laterites and thus contributing to the effective utilization of the mineral resources in the Republic of Indonesia.

2. Objectives of the Japanese Technical Cooperation

Objectives of the Japanese Technical Cooperation during the term of the cooperation are to provide technical guidance and advice to train Indonesian counterpart personnel as listed in Annex V.

3. Scope of the Project

A. Basic training in the field of the treatment of low grade nickel laterites ;

B. Training of research, tests, analysis and evaluation as follows for the effective utilization of low grade nickel laterites :

(1) Pyrometallurgy for laterites;

- a. Ore preparation
- b. Selective reduction

(2) Hydrometallurgy for laterites;

- a. Ammonia leaching
- b. Purification
- c. Recovery of basic nickel carbonate
- d. Solvent extraction
- e. Electrowinning

eco D.

- (3) Analysis for laterites;
 - a. Analysis of raw materials
 - b. Analysis of products
- (4) Operation of Pilot Plant.

ANNEX II. JAPANESE EXPERTS

Fields of the Japanese experts are as follows :

1. Chief Advisor
2. Coordinator
3. Experts in the field of;
 - (1) Pyrometallurgy
 - (2) Hydrometallurgy
 - (3) Analysis
 - (4) Operation of Pilot Plant

Note : Short-term experts may be dispatched, if necessity arises, for the installation or operation of the machinery and equipment provided by the Government of Japan and for any other objectives.

ANNEX III. PRIVILEGES, EXEMPTIONS AND BENEFITS

1. The Government of the Republic of Indonesia will grant exemptions from income tax and charges of any kind imposed on the living allowance and others remitted from abroad to the Japanese experts and their families.

ecc 5

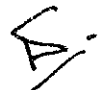
2. The Government of the Republic of Indonesia will grant exemptions from customs duties in respect of the importation of personal effects by the Japanese experts and their families as well as the importation of machinery and equipment relating to their activities.
3. The Government of the Republic of Indonesia will provide medical services and facilities to the Japanese experts and their families.

ANNEX IV. LIST OF THE EQUIPMENT

1. Supplemental equipment for Laboratory
2. Supplemental equipment for Pilot Plant
3. Other necessary equipment and materials to be mutually agreed upon for the effective implementation of the Project.

ANNEX V. LIST OF INDONESIAN COUNTERPART AND ADMINISTRATIVE PERSONNEL

1. Counterpart Personnel to the Japanese experts :
 - (1) Project Coordinator
 - (2) Project Leader
 - (3) Coordinator for Laboratory Experiment
 - (4) Coordinator for Pilot Plant Operation

ewo 

(5) Necessary number of Researchers and Technicians in the field of;

- a. Pyrometallurgy
- b. Hydrometallurgy
- c. Analysis
- d. Operation of Pilot Plant

2. Administrative Personnel :

- (1) Administration Officers
- (2) Clerical Staffs
- (3) Other necessary supporting staff mutually agreed upon

ANNEX VI. LAND, BUILDINGS AND FACILITIES

1. Land

Adequate land area will be provided by the Republic of Indonesia.

2. Building and facilities

The Government of the Republic of Indonesia will make available the following buildings and facilities to the RDCM provided by the Government of Japan to the Republic of Indonesia through the Grant-Aid Agreement;

- (1) Pilot Plant
- (2) Research Laboratories
- (3) Office rooms for the Japanese experts
- (4) Conference room
- (5) Others

ewo S.

ANNEX VII. THE JOINT COMMITTEE

1. Functions

The Joint Committee will meet at least once a year and whenever necessity arises, and work :

- (1) To formulate the Annual Work Plan of the Project in line with the Tentative Schedule of Implementation formulated under the framework of this Record of Discussions;
- (2) To review the overall progress of the Technical Cooperation Program as well as the achievements of the above-mentioned Annual Work Plan;
- (3) To review and exchange views on major issues arising from or in connection with the Technical Cooperation Program.

2. Composition

(1) Chairman : Deputy Chairman for Technical Sciences, LIPI

(2) Members

a. Indonesian Side

- 1) Head, Bureau of Inter-Institutional Cooperation in Science and Technology, LIPI
- 2) Head, RDCM
- 3) Head, EMD, RDCM
- 4) Personnel concerned with the Project designated by Chairman

b. Japanese Side

- 1) Chief Advisor
- 2) Coordinator

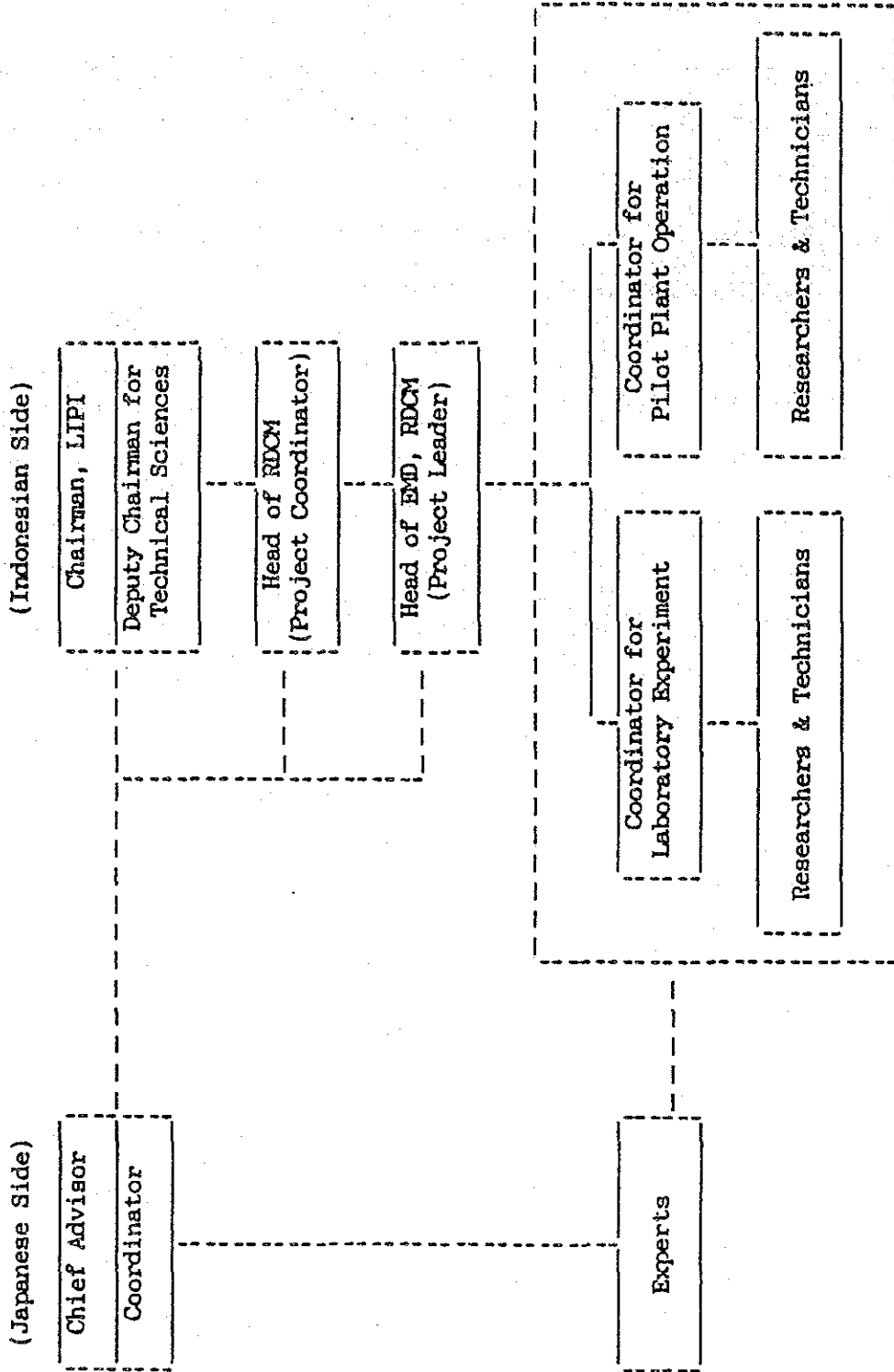
eto S.

- 3) The Japanese experts designated by the Chief Advisor
- 4) Representatives of JICA Indonesia office
- 5) Personnel concerned with the Project to be dispatched by JICA, if necessary.

Note : Official of the Embassy of Japan may attend the Joint Committee as observers.

205

ANNEX VII. ORGANIZATION CHART FOR THE IMPLEMENTATION OF THE PROJECT



est

TENTATIVE SCHEDULE OF IMPLEMENTATION
AND TECHNICAL COOPERATION PROGRAM
OF THE JAPANESE TECHNICAL COOPERATION FOR
RESEARCH AND DEVELOPMENT OF INDONESIAN LOW GRADE NICKEL LATERITES
IN THE REPUBLIC OF INDONESIA

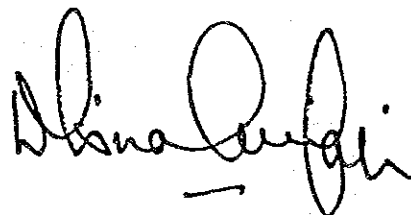
The Japanese Implementation Survey Team and the representatives of Indonesian Institute of Sciences have jointly formulated the Tentative Schedule of Implementation and The Technical Cooperation Program of the Project as annexed hereto.

These documents have been formulated in connection with Article I, Paragraph 2 of the Attached Document of The Record of Discussions signed between the Japanese Implementation Survey Team and Indonesian authorities concerned for the Technical Cooperation of Research and Development of Indonesian Low Grade Nickel Laterites in the Republic of Indonesia on condition that necessary budget will be allocated for the implementation of the Project, and are subject to change within the framework of the Record of Discussions when necessity arises in the course of implementation of the Project.

Bandung, December 14, 1987

飯村 圭一

Mr. Keiji Iimura
Leader,
Implementation Survey Team,
Japan International
Cooperation Agency,
Japan



Prof. Dr. D.A. Tisna Amidjaja
Chairman,
Indonesian Institute of Sciences,
The Republic of Indonesia

ANNEX I Tentative Schedule of Implementation

Phase(Site)	Phase I (BANDUNG)												Phase II (PUSPIPIEK)											
	1986			1987			1988			1989			1990			1991								
	Calendar Year	Fiscal Year		Calendar Year	Fiscal Year		Calendar Year	Fiscal Year		Calendar Year	Fiscal Year		Calendar Year	Fiscal Year		Calendar Year	Fiscal Year							
Term of the Project																								
Schedule of Grant Aid																								
Indonesian side																								
I. Staff Recruitment																								
II. Removing work																								
III. Operation of new research center																								
Japanese side																								
I. Dispatch of Survey Team																								
1) Preliminary Survey Team																								
2) Experts Survey Team																								
3) Implementation Survey Team																								
4) Consultation Team																								
5) Consultation Team																								
6) Consultation Team																								
7) Evaluation Team																								
II. Long-term experts																								
1) Chief Advisor																								
2) Coordinator																								
3) Pyrometallurgy																								
4) Hydrometallurgy																								
5) Analysis																								
6) Operation of Pilot Plant																								
III. Short-term experts																								
1) Metallurgy																								
2) Analysis																								
IV. Trainings of C/P personnel																								
1) Metallurgy																								
2) Analysis																								
V. Provision of Equipment and Machinery																								

226 5

ab
A

ANNEX H Technical Cooperation Program

Phase(Site)	Phase I (BANDUNG)												Phase II (PUSPIK)											
	1987			1988			1989			1990			1991			1990			1991					
	1986	1987	1988	1988	1989	1990	1989	1990	1991	1990	1991	1991	1990	1991	1991	1990	1991	1991	1990	1991				
Term of the Project																								
Schedule of Grant Aid																								
I. Review of past 5 years basic study																								
II. Preparative test using facilities in Bandung																								
1) Detail study of material ore																								
2) Basic study of reduction																								
3) Basic study of ammonia leaching																								
4) Basic study of solvent extraction and electrorefining																								
III. Planning of Pilot Plant Test																								
1) Preparation of technical management standards																								
2) Preparation of operation control standards																								
3) Preparation of plan of operation and test																								
IV. Basic study prior to Pilot Plant operation																								
V. Back-up test during Pilot Plant operation																								
VI. Preparation of Pilot Plant operation																								
1) Guidance for Pilot Plant operation																								
2) Guidance for raw materials, reagents and others																								
VII. Guidance for Pilot Plant operation																								
VIII. Accumulation and analysis of test data																								
IX. Arrangement of engineering data																								
X. Reporting of Pilot Plant test																								

COMPLETION OF BUILDING FACILITIES

JICA