

APPENDIX 13

PHOTOGRAPHS (TYPE OF DAMAGE)



Type A1: Accumulation of Ash Fall
on Road Surface (Urban Roads)



Type A1: Accumulation of Ash Fall
on Road Surface (Rural Roads)



Type A2: Accumulation of Ash Fall
inside Drainage Pipe (Urban Road)



Type A2: Accumulation of Ash Fall
inside Drainage system (Rural Road)



Type R1: Mud Flow on Road



Type R1: Mud Flow on Road



Type R2: Road Cut due to shifting flow



Type R3: Scouring of Embankment



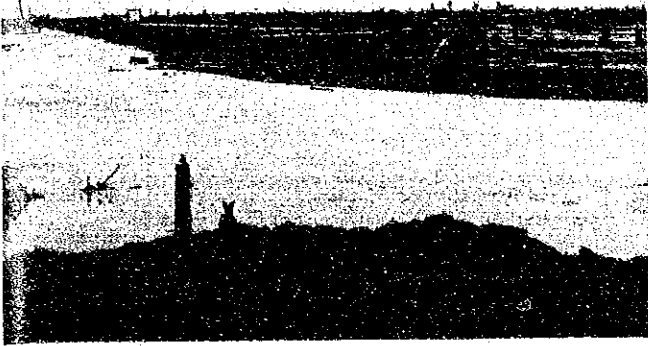
Type R3: Scouring of Embankment



Type B1: Tilting of Substructure



Type B2: Collapse of Bridge



Type B3: Cut of Bridge Approach



Type W1: Scouring of Riverbed



Type W2: Sediment of Riverbed



Type W2: Sediment of Riverbed



Type W3: cut of River Bank

