

NO.	DESCRIPTION	UNIT	QUANTITY	Unit Rate		Amount	
				Total (RWF)	Total (RWF)	Total (RWF)	Total (RWF)
15	System-4 R15						
	Preparation Works	L. S.					2,772,100
	Well Construction	unit	1.00	5,700,000			5,700,000
	Submerged Pump ϕ 40mm, 11kw	set	1.00	5,318,800			5,318,800
	Transmission Pipeline(DCIP ϕ 75mm)	m	1,900.00	10,300			19,570,000
	Reservoir Tank (40m ³)	unit	1.00	1,165,500			1,165,500
	Distribution Pipe PVC ϕ 30mm	m	3,300.00	2,016			6,652,800
	" PVC ϕ 50mm	m	1,830.00	2,028			3,711,240
	" PVC ϕ 75mm	m	2,870.00	2,532			7,266,840
	Generater 11kw	set	1.00	4,882,700			4,882,700
	Kiosk	set	5.00	130,000			650,000
	Pump House	L. S.	1.00	523,800			523,800
	Others	L. S.					8,732,100
	Total						66,945,880

NO.	DESCRIPTION	UNIT	QUANTITY	Unit Rate		Amount	
				Total (RWF)	Total (RWF)	Total (RWF)	Total (RWF)
16	System-4 R16						
	Preparation Works	L. S.					2,413,500
	Well Construction	unit	1.00	5,700,000			5,700,000
	Submerged Pump ϕ 40mm, 11kw	set	1.00	5,318,800			5,318,800
	Transmission Pipeline(DCIP ϕ 75mm)	m	1,800.00	10,300			18,540,000
	Reservoir Tank (20m ³)	unit	1.00	726,600			726,600
	Distribution Pipe PVC ϕ 30mm	m	3,080.00	2,016			6,209,280
	" PVC ϕ 50mm	m	2,820.00	2,028			5,718,960
	" PVC ϕ 75mm	m	0.00	2,532			0
	Generater 11kw	set	1.00	4,882,700			4,882,700
	Kiosk	set	5.00	130,000			650,000
	Pump House	L. S.	1.00	523,800			523,800
	Others	L. S.					7,602,500
	Total						58,286,140

NO.	DESCRIPTION	UNIT	QUANTITY	Unit Rate	Amount
				Total (RWF)	Total (RWF)
17	System-4 R17				
	Preparation Works	L. S.			2,176,900
	Well Construction	unit	1.00	5,700,000	5,700,000
	Submerged Pump ϕ 40mm, 7.5kw	set	1.00	2,659,400	2,659,400
	Transmission Pipeline(DCIP ϕ 75mm)	m	2,000.00	10,300	20,600,000
	Reservoir Tank (30m3)	unit	1.00	920,700	920,700
	Distribution Pipe PVC ϕ 30mm	m	2,590.00	2,016	5,221,440
	" PVC ϕ 50mm	m	1,430.00	2,028	2,900,040
	" PVC ϕ 75mm	m	680.00	2,532	1,721,760
	Generater 7.5kw	set	1.00	2,901,200	2,901,200
	Kiosk	set	3.00	130,000	390,000
	Pump House	L. S.	1.00	523,800	523,800
	Others	L. S.			6,857,300
	Total				52,572,540

NO.	DESCRIPTION	UNIT	QUANTITY	Unit Rate	Amount
				Total (RWF)	Total (RWF)
18	System-4 R18				
	Preparation Works	L. S.			2,420,600
	Well Construction	unit	1.00	5,700,000	5,700,000
	Submerged Pump ϕ 40mm, 5.5kw	set	1.00	2,223,300	2,223,300
	Transmission Pipeline(DCIP ϕ 75mm)	m	2,000.00	10,300	20,600,000
	Reservoir Tank (30m3)	unit	1.00	920,700	920,700
	Distribution Pipe PVC ϕ 30mm	m	3,410.00	2,016	6,874,560
	" PVC ϕ 50mm	m	1,880.00	2,028	3,812,640
	" PVC ϕ 75mm	m	1,710.00	2,532	4,329,720
	Generater 5.5kw	set	1.00	2,777,900	2,777,900
	Kiosk	set	5.00	130,000	650,000
	Pump House	L. S.	1.00	523,800	523,800
	Others	L. S.			7,625,000
	Total				58,458,220

NO.	DESCRIPTION	UNIT	QUANTITY	Unit Rate		Amount	
				Total (RWF)	Total (RWF)	Total (RWF)	Total (RWF)
19	System-4 R19						
	Preparation Works	L. S.					2,638,300
	Well Construction	unit	1.00	5,700,000			5,700,000
	Submerged Pump ϕ 40mm, 7.5kw	set	1.00	2,659,400			2,659,400
	Transmission Pipeline(DCIP ϕ 75mm)	m	2,000.00	10,300			20,600,000
	Reservoir Tank (30m ³)	unit	1.00	920,700			920,700
	Distribution Pipe PVC ϕ 30mm	m	5,490.00	2,016			11,067,840
	" PVC ϕ 50mm	m	3,030.00	2,028			6,144,840
	" PVC ϕ 75mm	m	580.00	2,532			1,468,560
	Generater 7.5kw	set	1.00	2,901,200			2,901,200
	Kiosk	set	6.00	130,000			780,000
	Pump House	L. S.	1.00	523,800			523,800
	Others	L. S.					8,310,700
	Total						63,715,340

NO.	DESCRIPTION	UNIT	QUANTITY	Unit Rate		Amount	
				Total (RWF)	Total (RWF)	Total (RWF)	Total (RWF)
20	System-4 R20						
	Preparation Works	L. S.					3,608,000
	Well Construction	unit	1.00	5,700,000			5,700,000
	Submerged Pump ϕ 40mm, 11kw	set	1.00	4,824,317			4,824,317
	Transmission Pipeline(DCIP ϕ 75mm)	m	3,300.00	10,300			33,990,000
	Reservoir Tank (40m ³)	unit	1.00	1,165,500			1,165,500
	Distribution Pipe PVC ϕ 30mm	m	3,460.00	2,016			6,975,360
	" PVC ϕ 50mm	m	1,910.00	2,028			3,873,480
	" PVC ϕ 75mm	m	3,730.00	2,532			9,444,360
	Generater 11kw	set	1.00	4,882,700			4,882,700
	Kiosk	set	6.00	130,000			780,000
	Pump House	L. S.	1.00	523,800			523,800
	Others	L. S.					11,365,100
	Total						87,132,617

NO.	DESCRIPTION	UNIT	QUANTITY	Unit Rate		Amount	
				Total (RWF)	Total (RWF)	Total (RWF)	Total (RWF)
21	System-4 R21						
	Preparation Works	L. S.					2,259,700
	Well Construction	unit	1.00	5,700,000			5,700,000
	Submerged Pump ϕ 40mm, 7.5kw	set	1.00	2,659,400			2,659,400
	Transmission Pipeline(DCIP ϕ 75mm)	m	2,200.00	10,300			22,660,000
	Reservoir Tank (20m3)	unit	1.00	726,600			726,600
	Distribution Pipe PVC ϕ 30mm	m	2,400.00	2,016			4,838,400
	" PVC ϕ 50mm	m	2,300.00	2,028			4,664,400
	" PVC ϕ 75mm	m	0.00	2,532			0
	Generater 7.5kw	set	1.00	2,901,200			2,901,200
	Kiosk	set	4.00	130,000			520,000
	Pump House	L. S.	1.00	523,800			523,800
	Others	L. S.					7,118,000
	Total						54,571,500

NO.	DESCRIPTION	UNIT	QUANTITY	Unit Rate		Amount	
				Total (RWF)	Total (RWF)	Total (RWF)	Total (RWF)
22	System-4 R22						
	Preparation Works	L. S.					1,693,500
	Well Construction	unit	1.00	5,700,000			5,700,000
	Submerged Pump ϕ 40mm, 3.7kw	set	1.00	1,929,400			1,929,400
	Transmission Pipeline(DCIP ϕ 75mm)	m	1,900.00	10,300			19,570,000
	Reservoir Tank (10m3)	unit	1.00	479,400			479,400
	Distribution Pipe PVC ϕ 30mm	m	1,210.00	2,016			2,439,360
	" PVC ϕ 50mm	m	290.00	2,028			588,120
	" PVC ϕ 75mm	m	0.00	2,532			0
	Generater 3.7kw	set	1.00	2,379,700			2,379,700
	Kiosk	set	2.00	130,000			260,000
	Pump House	L. S.	1.00	523,800			523,800
	Others	L. S.					5,334,500
	Total						40,897,780

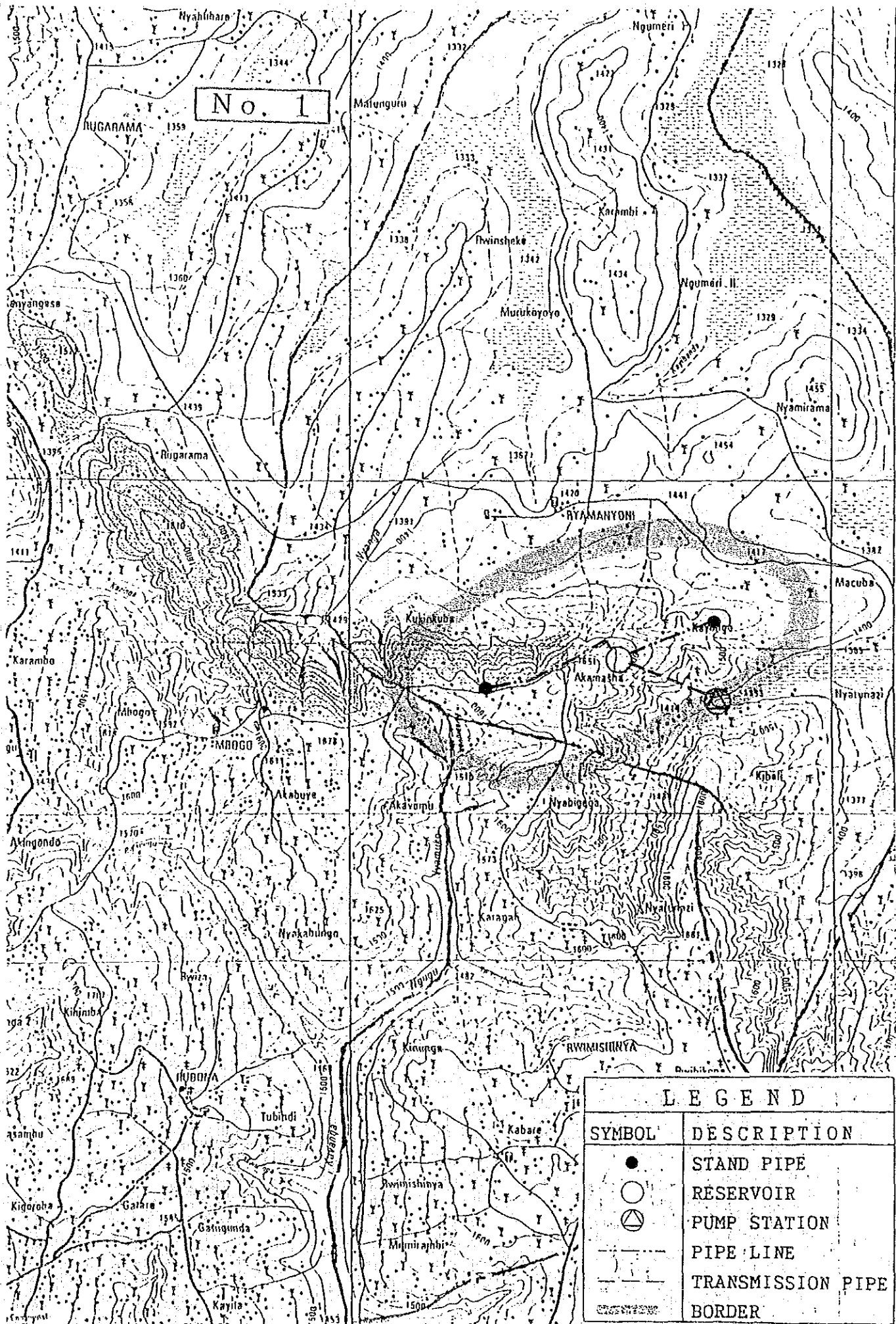
NO.	DESCRIPTION	UNIT	QUANTITY	Unit Rate		Amount	
				Total (RWF)	Total (RWF)	Total (RWF)	Total (RWF)
23	System-4 R23						
	Preparation Works	L. S.					5,343,300
	Well Construction	unit	2.00	5,700,000			11,400,000
	Submerged Pump ϕ 40mm, 11kw	set	2.00	5,318,800			10,637,600
	Transmission Pipeline(DCIP ϕ 75mm)	m	4,100.00	10,300			42,230,000
	Reservoir Tank (80m ³)	unit	1.00	2,016,300			2,016,300
	Distribution Pipe PVC ϕ 30mm	m	0.00	2,016			0
	" PVC ϕ 50mm	m	1,080.00	2,028			2,190,240
	" PVC ϕ 75mm	m	590.00	2,532			1,493,880
	" PVC ϕ 100mm	m	2,090.00	3,120			6,520,800
	" PVC ϕ 150mm	m	3,640.00	5,196			18,913,440
	Generater 11kw	set	2.00	4,882,700			9,765,400
	Kiosk	set	5.00	130,000			650,000
	Pump House	L. S.	2.00	523,800			1,047,600
	Others	L. S.					16,831,300
	Total						129,039,860

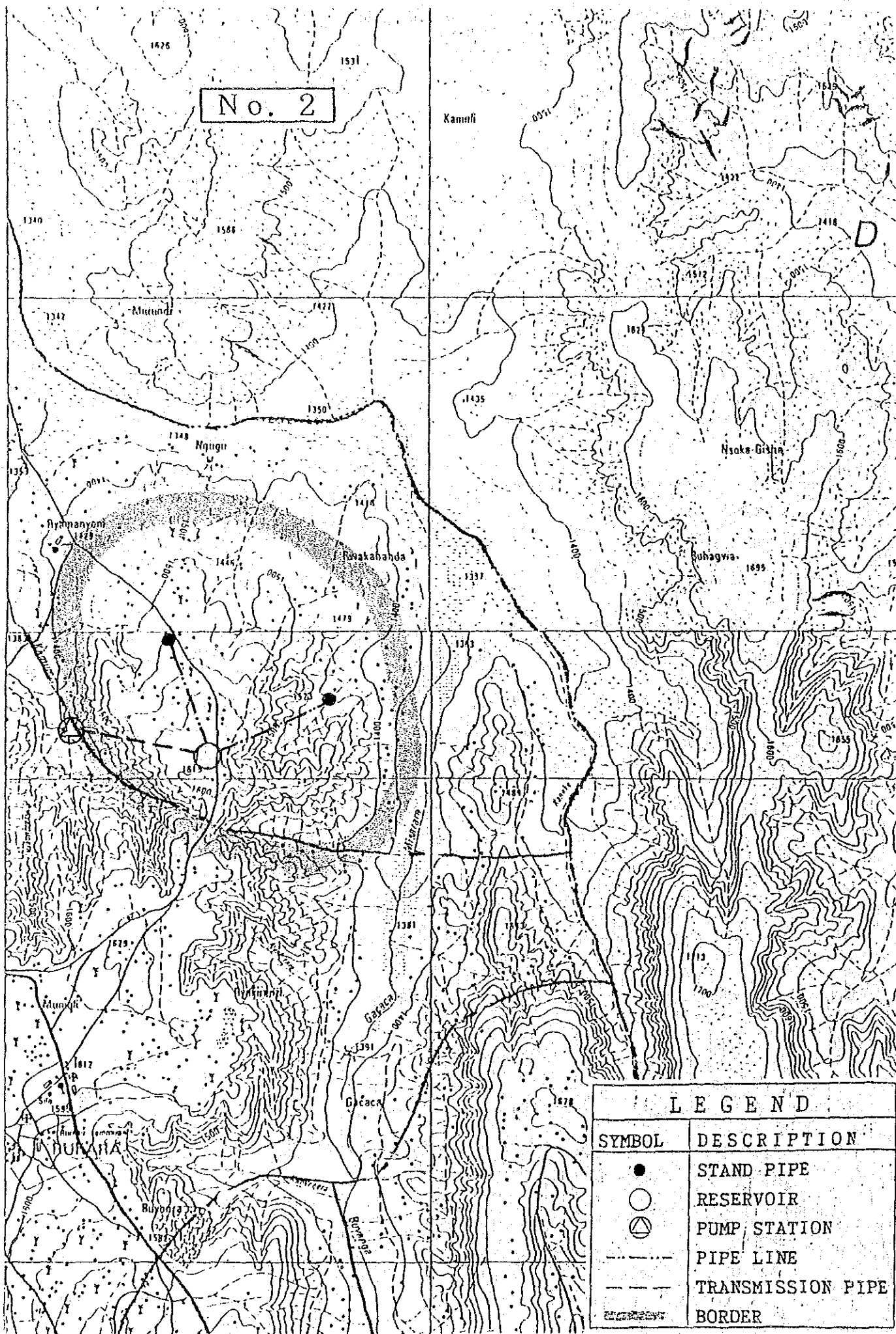
NO.	DESCRIPTION	UNIT	QUANTITY	Unit Rate		Amount	
				Total (RWF)	Total (RWF)	Total (RWF)	Total (RWF)
24	System-4 R24						
	Preparation Works	L. S.					3,252,700
	Well Construction	unit	1.00	5,700,000			5,700,000
	Submerged Pump ϕ 40mm, 11kw	set	1.00	5,318,800			5,318,800
	Transmission Pipeline(DCIP ϕ 75mm)	m	3,000.00	10,300			30,900,000
	Reservoir Tank (30m ³)	unit	1.00	920,700			920,700
	Distribution Pipe PVC ϕ 30mm	m	5,420.00	2,016			10,926,720
	" PVC ϕ 50mm	m	2,580.00	2,028			5,232,240
	" PVC ϕ 75mm	m	0.00	2,532			0
	Generater 11kw	set	1.00	4,882,700			4,882,700
	Kiosk	set	5.00	130,000			650,000
	Pump House	L. S.	1.00	523,800			523,800
	Others	L. S.					10,246,100
	Total						78,553,760

NO.	DESCRIPTION	UNIT	QUANTITY	Unit Rate		Amount	
				Total (RWF)	Total (RWF)	Total (RWF)	Total (RWF)
25	System-4 R25						
	Preparation Works	L. S.					3,786,600
	Well Construction	unit	1.00	5,700,000			5,700,000
	Submerged Pump ϕ 40mm, 11kw	set	1.00	5,318,800			5,318,800
	Transmission Pipeline(DCIP ϕ 75mm)	m	4,500.00	10,300			46,350,000
	Reservoir Tank (20m ³)	unit	1.00	726,600			726,600
	Distribution Pipe PVC ϕ 30mm	m	4,350.00	2,016			8,769,600
	" PVC ϕ 50mm	m	1,450.00	2,028			2,940,600
	" PVC ϕ 75mm	m	0.00	2,532			0
	Generater 11kw	set	1.00	4,882,700			4,882,700
	Kiosk	set	4.00	130,000			520,000
	Pump House	L. S.	1.00	523,800			523,800
	Others	L. S.					11,927,800
	Total						91,446,500

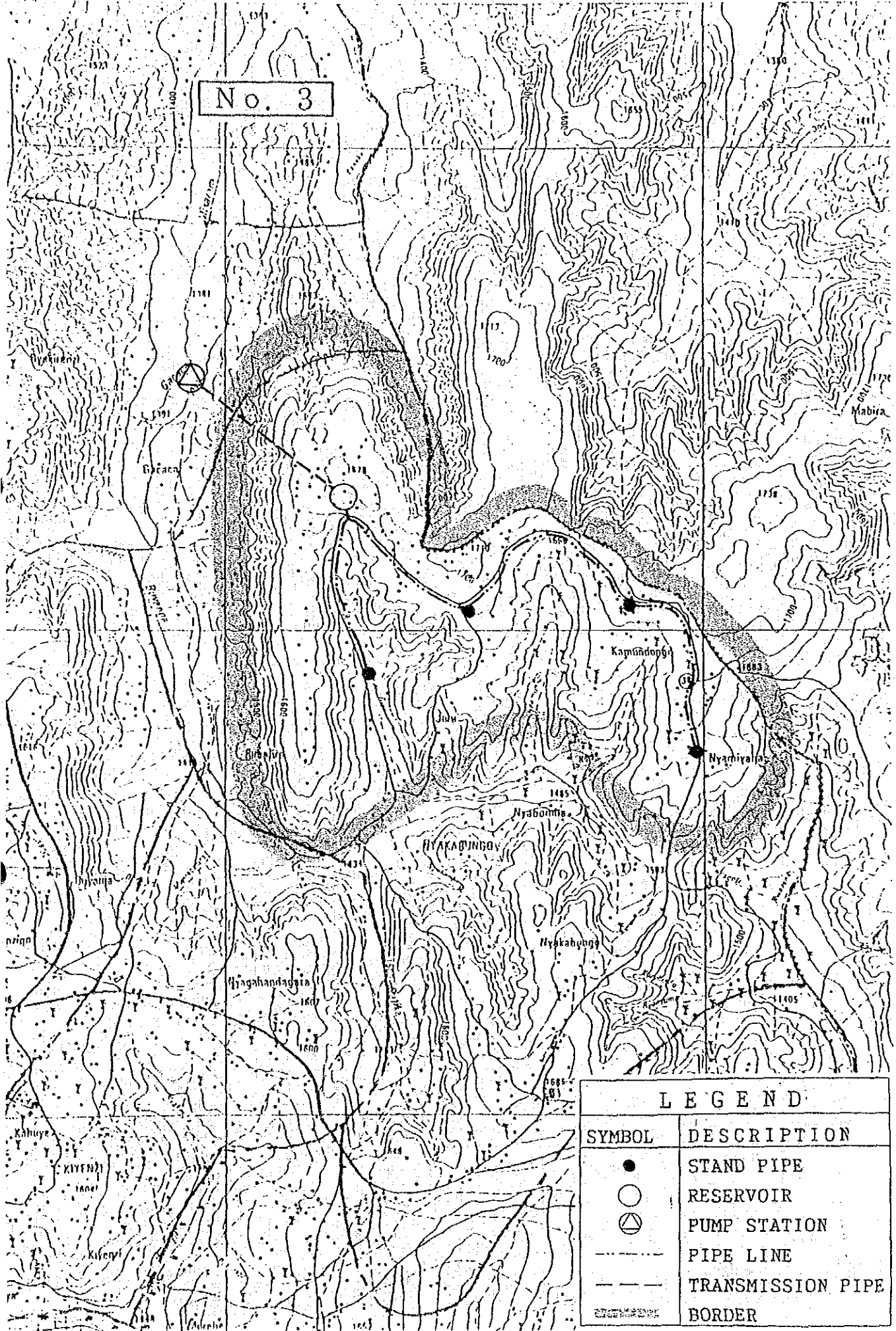
NO.	DESCRIPTION	UNIT	QUANTITY	Unit Rate		Amount	
				Total (RWF)	Total (RWF)	Total (RWF)	Total (RWF)
26	System-4 R26						
	Preparation Works	L. S.					7,512,000
	Well Construction	unit	2.00	5,700,000			11,400,000
	Submerged Pump ϕ 40mm, 11kw	set	2.00	5,318,800			10,637,600
	Transmission Pipeline(DCIP ϕ 75mm)	m	5,400.00	10,300			55,620,000
	Reservoir Tank (120m ³)	unit	1.00	3,248,200			3,248,200
	Distribution Pipe PVC ϕ 30mm	m	2,580.00	2,016			5,201,280
	" PVC ϕ 50mm	m	1,430.00	2,028			2,900,040
	" PVC ϕ 75mm	m	3,190.00	2,532			8,077,080
	" PVC ϕ 100mm	m	6,010.00	3,120			18,751,200
	" PVC ϕ 150mm	m	4,290.00	5,196			22,290,840
	Generater 11kw	set	2.00	4,882,700			9,765,400
	Kiosk	set	10.00	130,000			1,300,000
	Pump House	L. S.	2.00	523,800			1,047,600
	Others	L. S.					23,662,700
	Total						181,413,940

NO.	DESCRIPTION	UNIT	QUANTITY	Unit Rate	Amount
				Total (RWF)	Total (RWF)
27	System-4 R27				
	Preparation Works	L. S.			2,534,500
	Well Construction	unit	1.00	5,700,000	5,700,000
	Submerged Pump ϕ 40mm, 11kw	set	1.00	5,318,800	5,318,800
	Transmission Pipeline(DCIP ϕ 75mm)	m	2,000.00	10,300	20,600,000
	Reservoir Tank (30m ³)	unit	1.00	920,700	920,700
	Distribution Pipe PVC ϕ 30mm	m	3,730.00	2,016	7,519,680
	" PVC ϕ 50mm	m	2,070.00	2,028	4,197,960
	" PVC ϕ 75mm	m	200.00	2,532	506,400
	Generater 11kw	set	1.00	4,882,700	4,882,700
	Kiosk	set	4.00	130,000	520,000
	Pump House	L. S.	1.00	523,800	523,800
	Others	L. S.			7,983,700
	Total				61,208,240

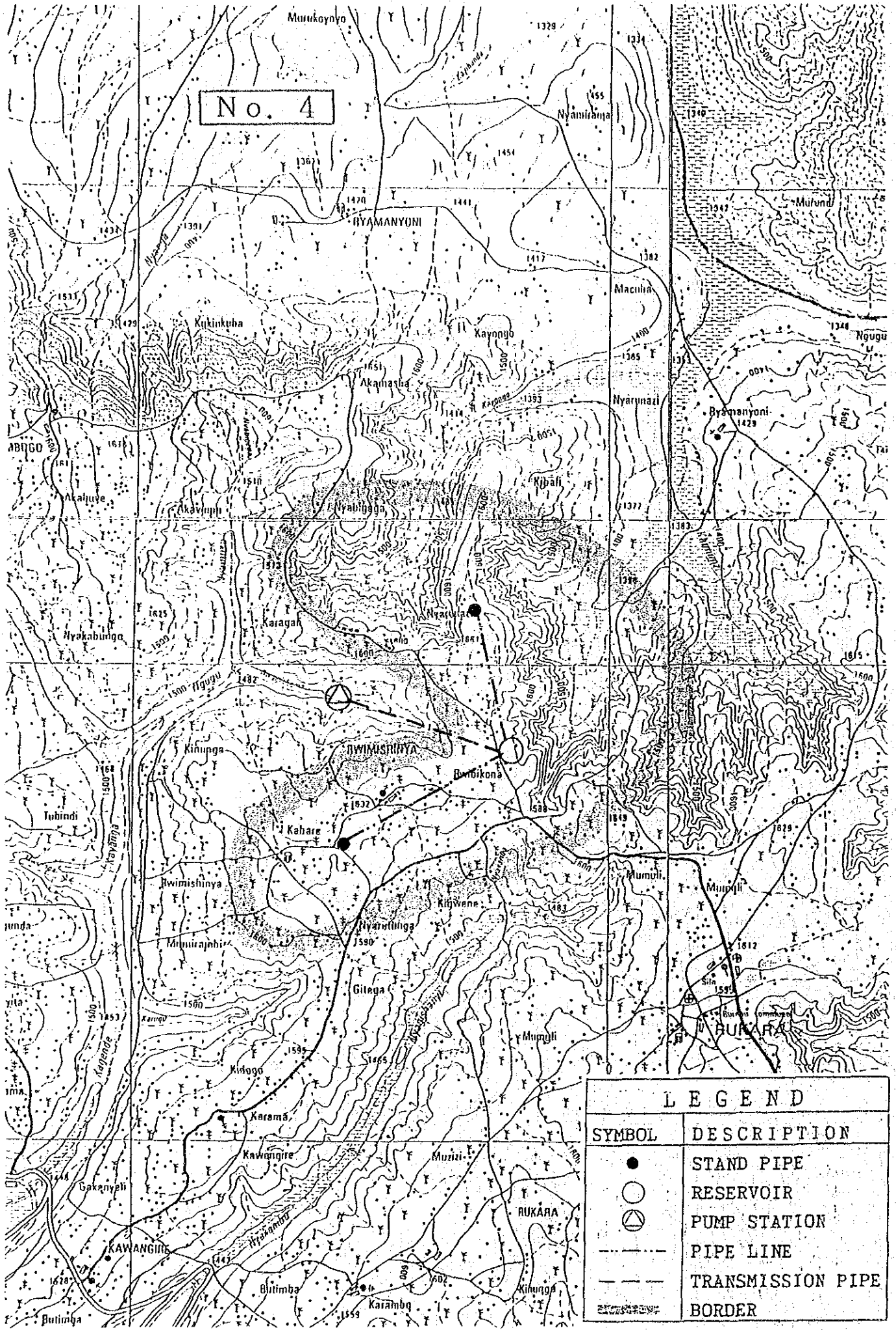




No. 3

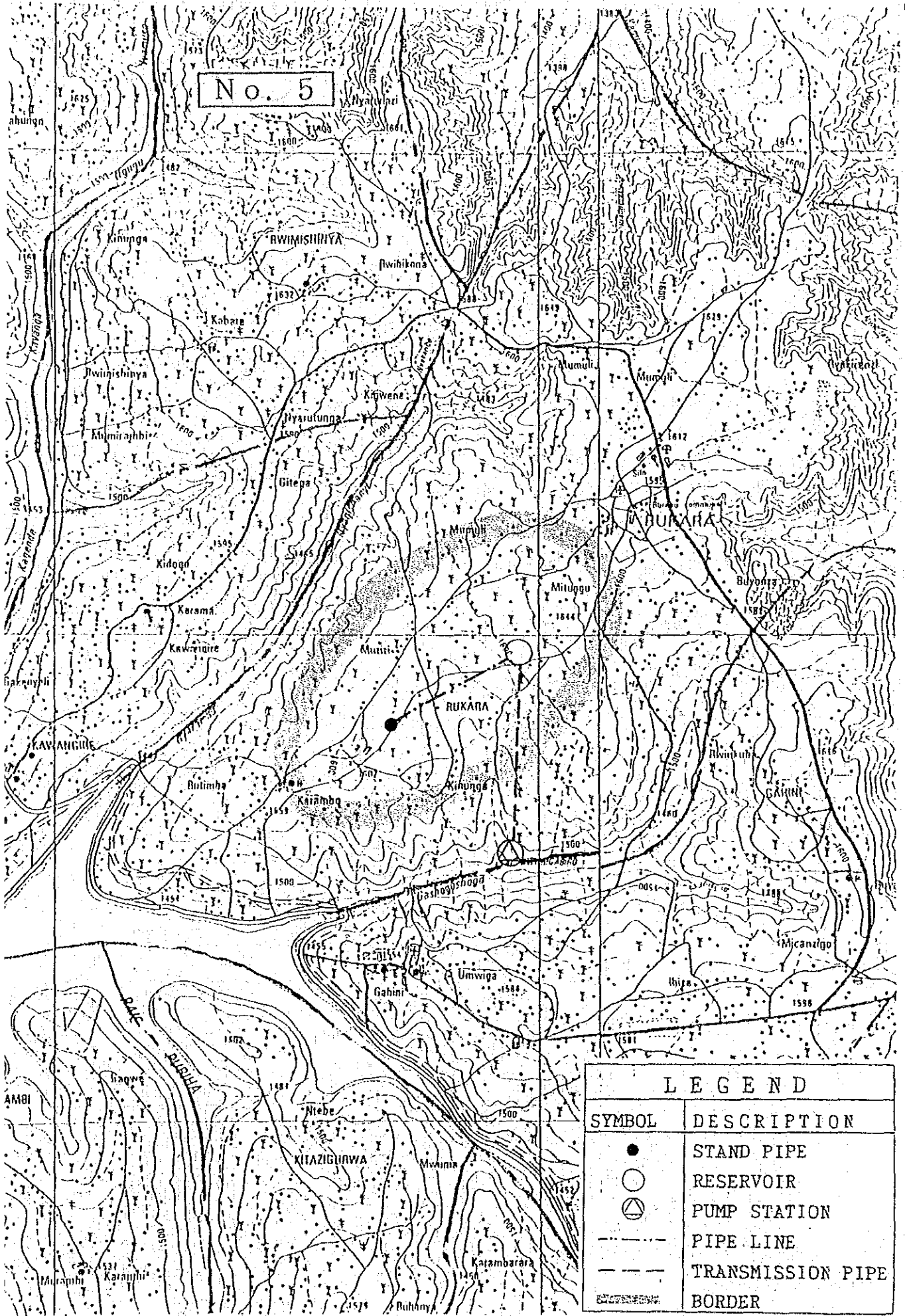


LEGEND	
SYMBOL	DESCRIPTION
●	STAND PIPE
○	RESERVOIR
⊗	PUMP STATION
- - -	PIPE LINE
—	TRANSMISSION PIPE
Shaded area	BORDER



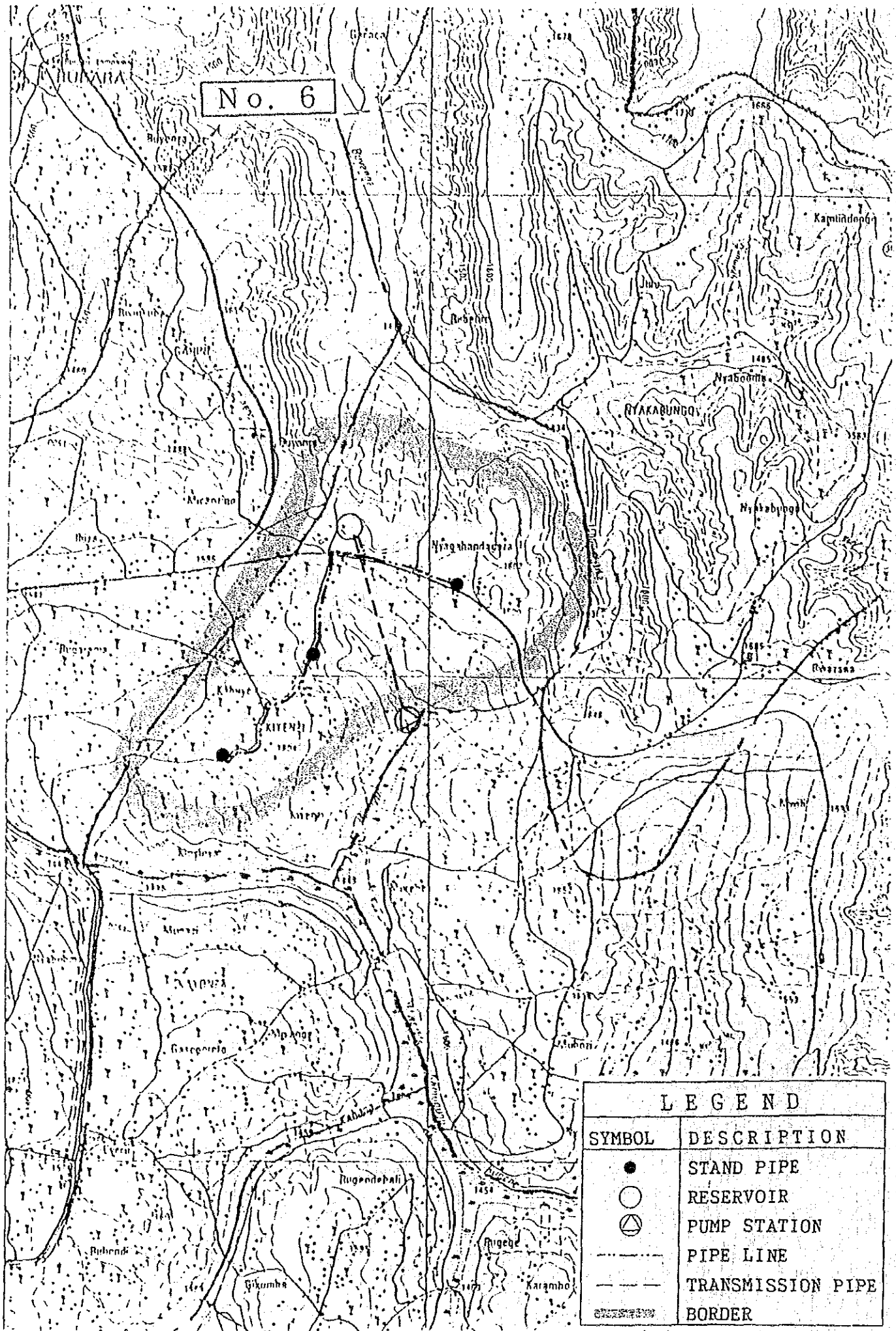
No. 4

LEGEND	
SYMBOL	DESCRIPTION
●	STAND PIPE
○	RESERVOIR
⊗	PUMP STATION
---	PIPE LINE
---	TRANSMISSION PIPE
---	BORDER

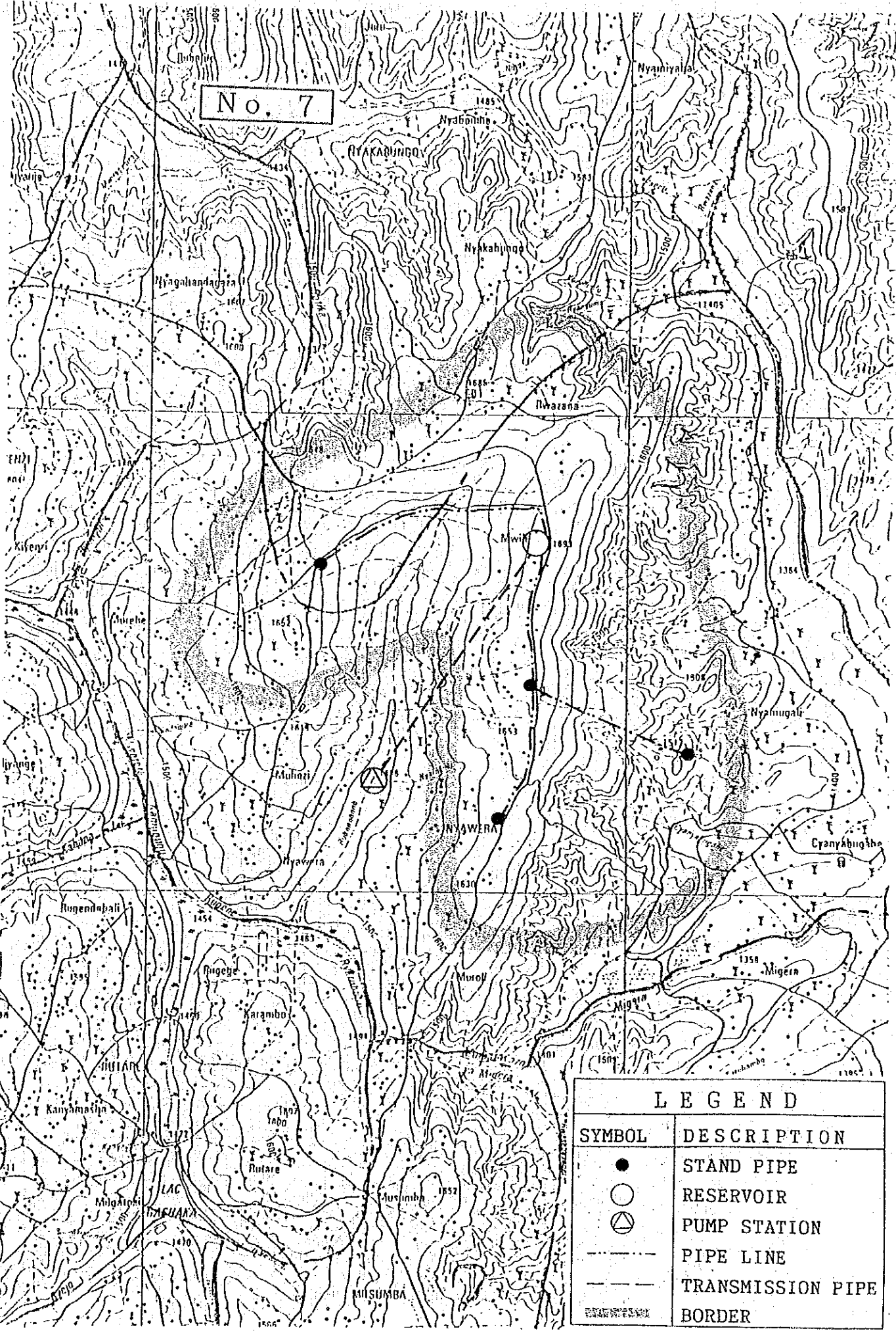


LEGEND	
SYMBOL	DESCRIPTION
●	STAND PIPE
○	RESERVOIR
⊙	PUMP STATION
---	PIPE LINE
---	TRANSMISSION PIPE
-----	BORDER

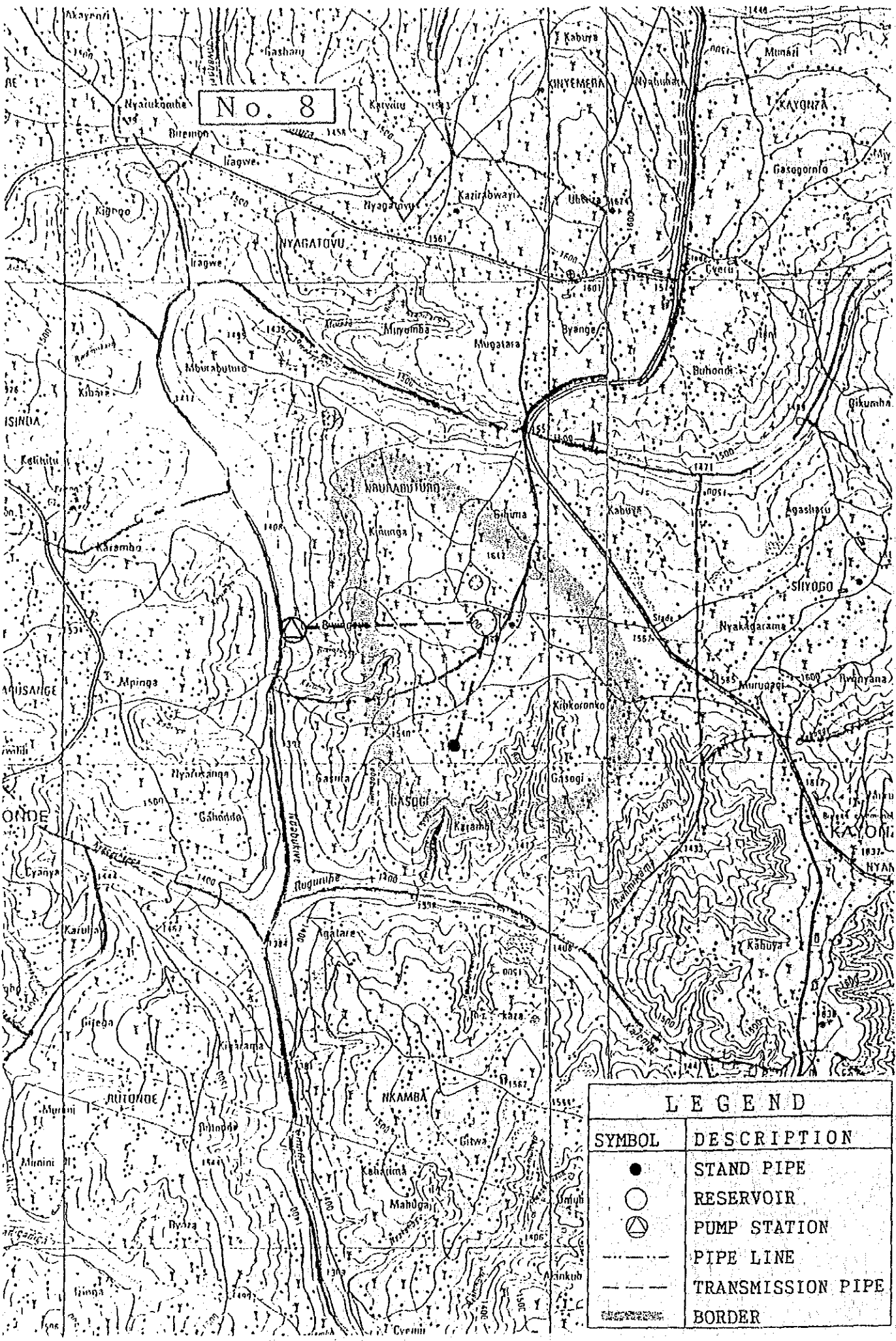
No. 6



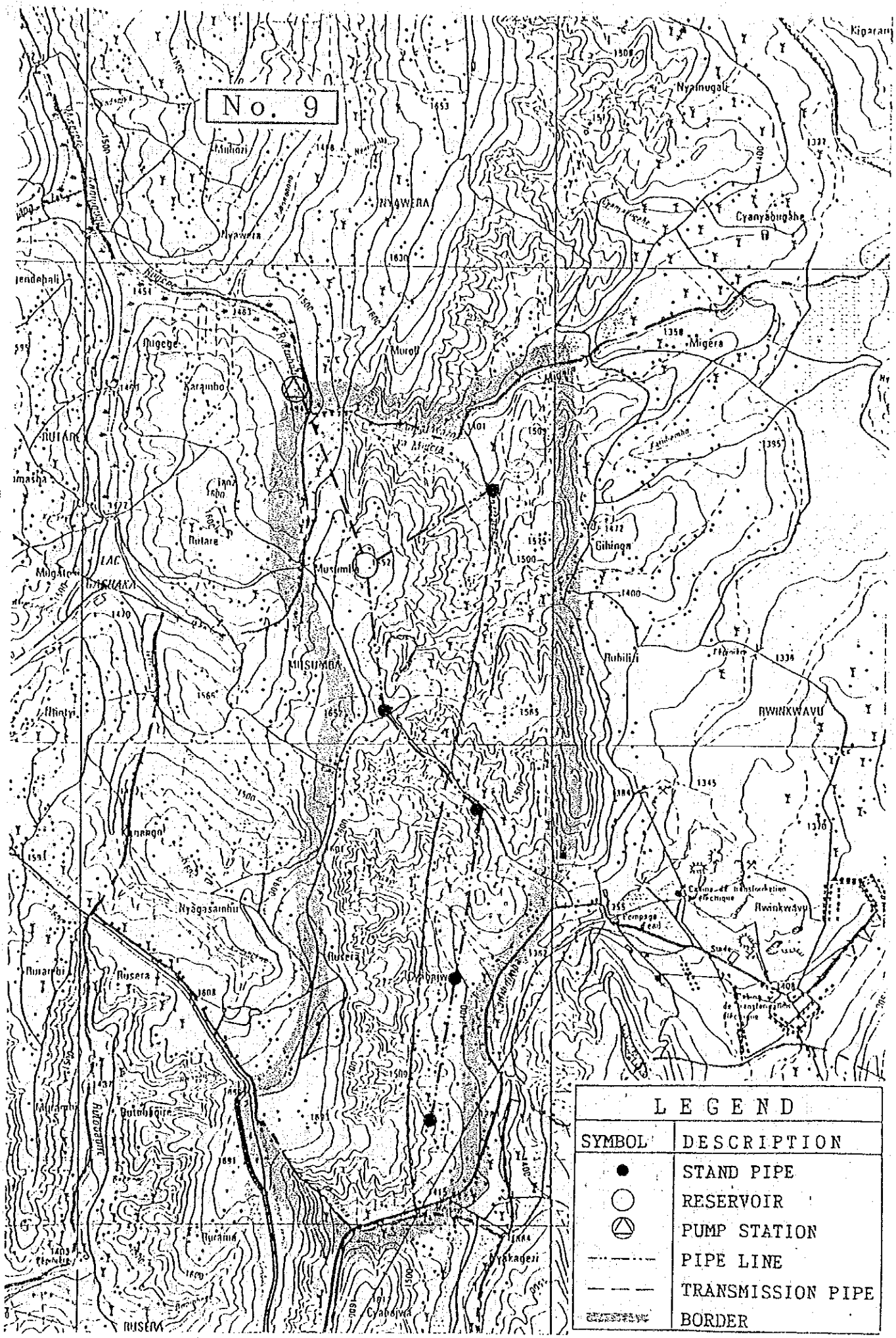
LEGEND	
SYMBOL	DESCRIPTION
●	STAND PIPE
○	RESERVOIR
△	PUMP STATION
---	PIPE LINE
---	TRANSMISSION PIPE
---	BORDER



LEGEND	
SYMBOL	DESCRIPTION
●	STAND PIPE
○	RESERVOIR
△	PUMP STATION
---	PIPE LINE
- - -	TRANSMISSION PIPE
=====	BORDER

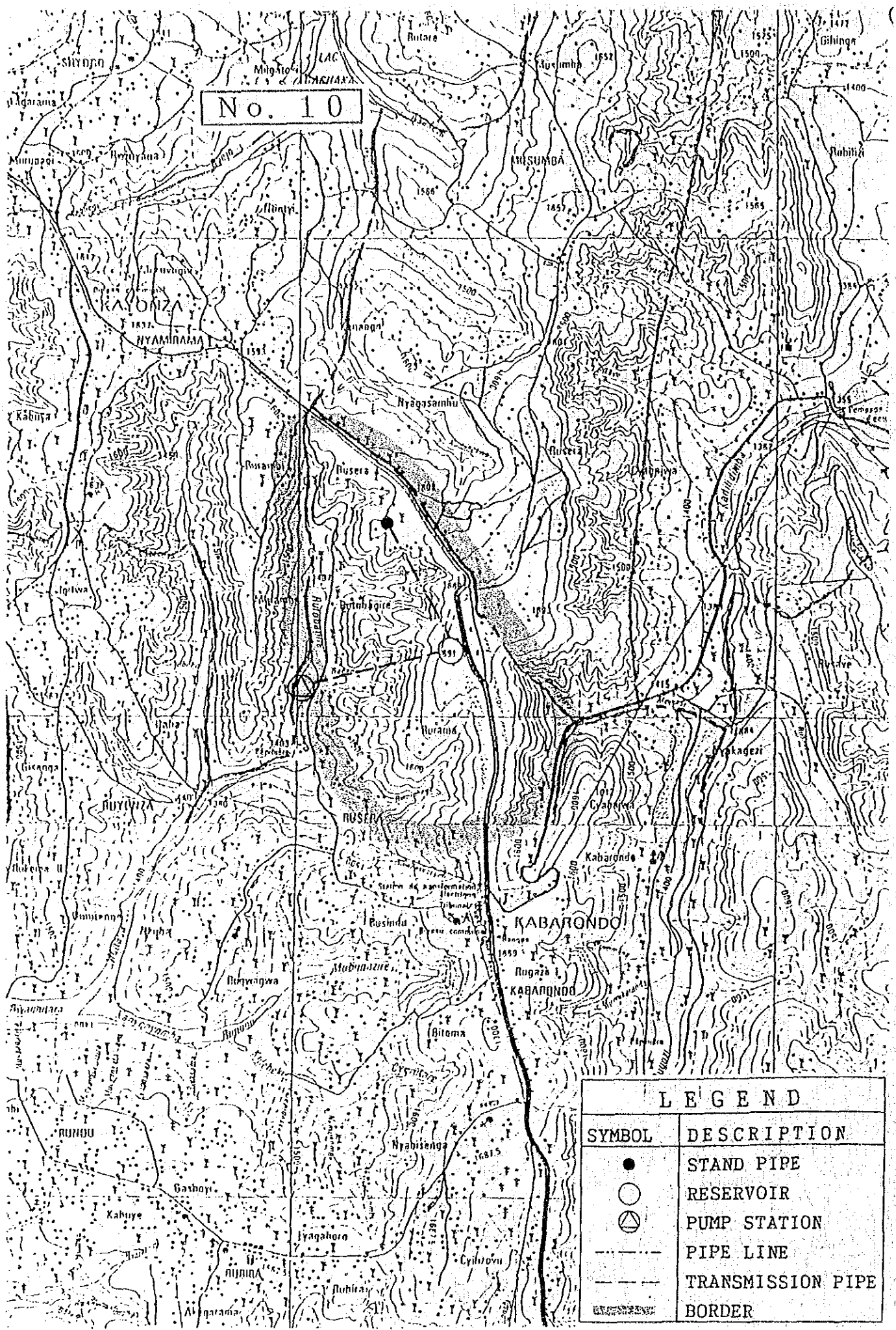


No. 9

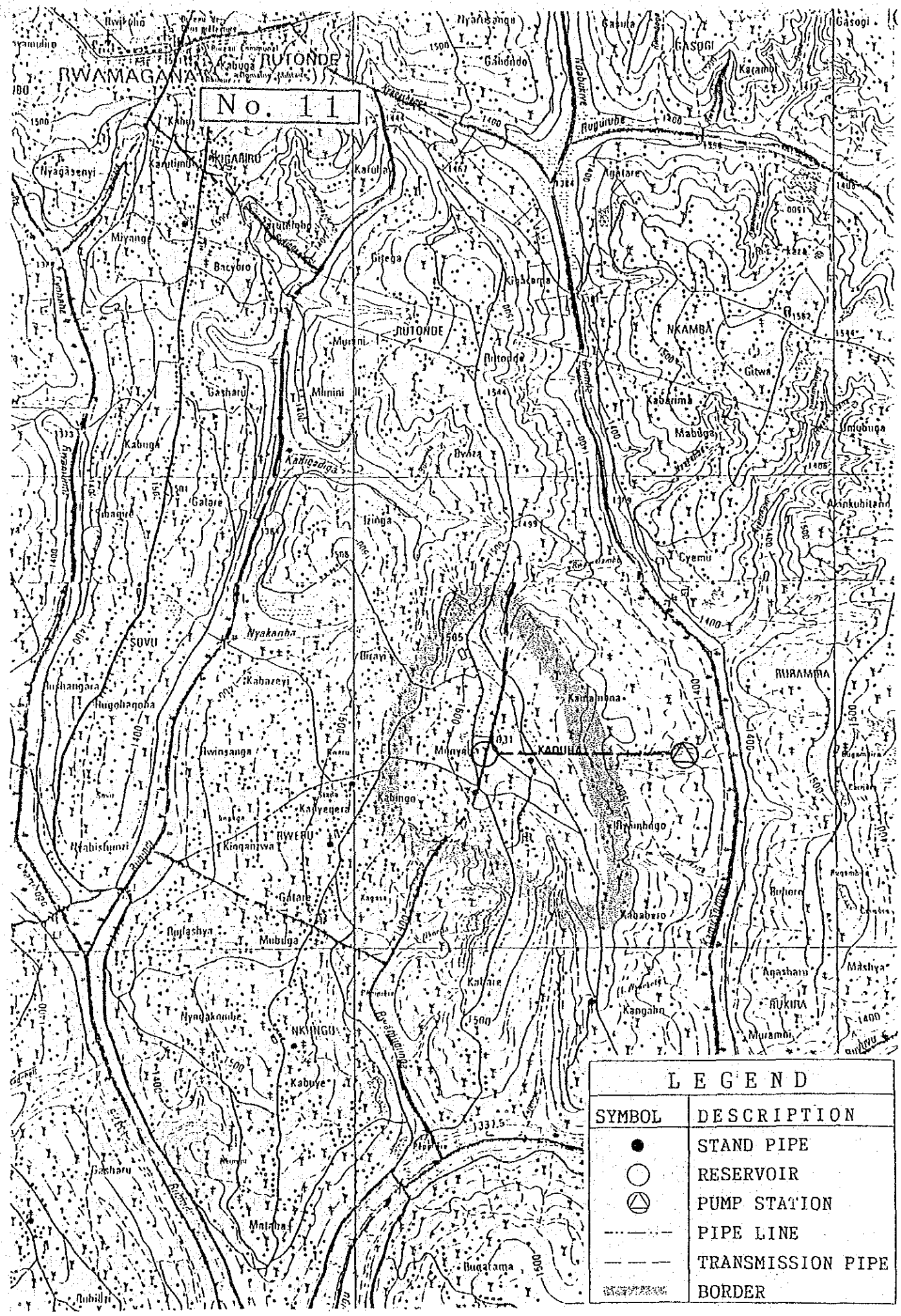


LEGEND	
SYMBOL	DESCRIPTION
●	STAND PIPE
○	RESERVOIR
⊕	PUMP STATION
---	PIPE LINE
- · - · -	TRANSMISSION PIPE
- · - · - · - · -	BORDER

No. 10

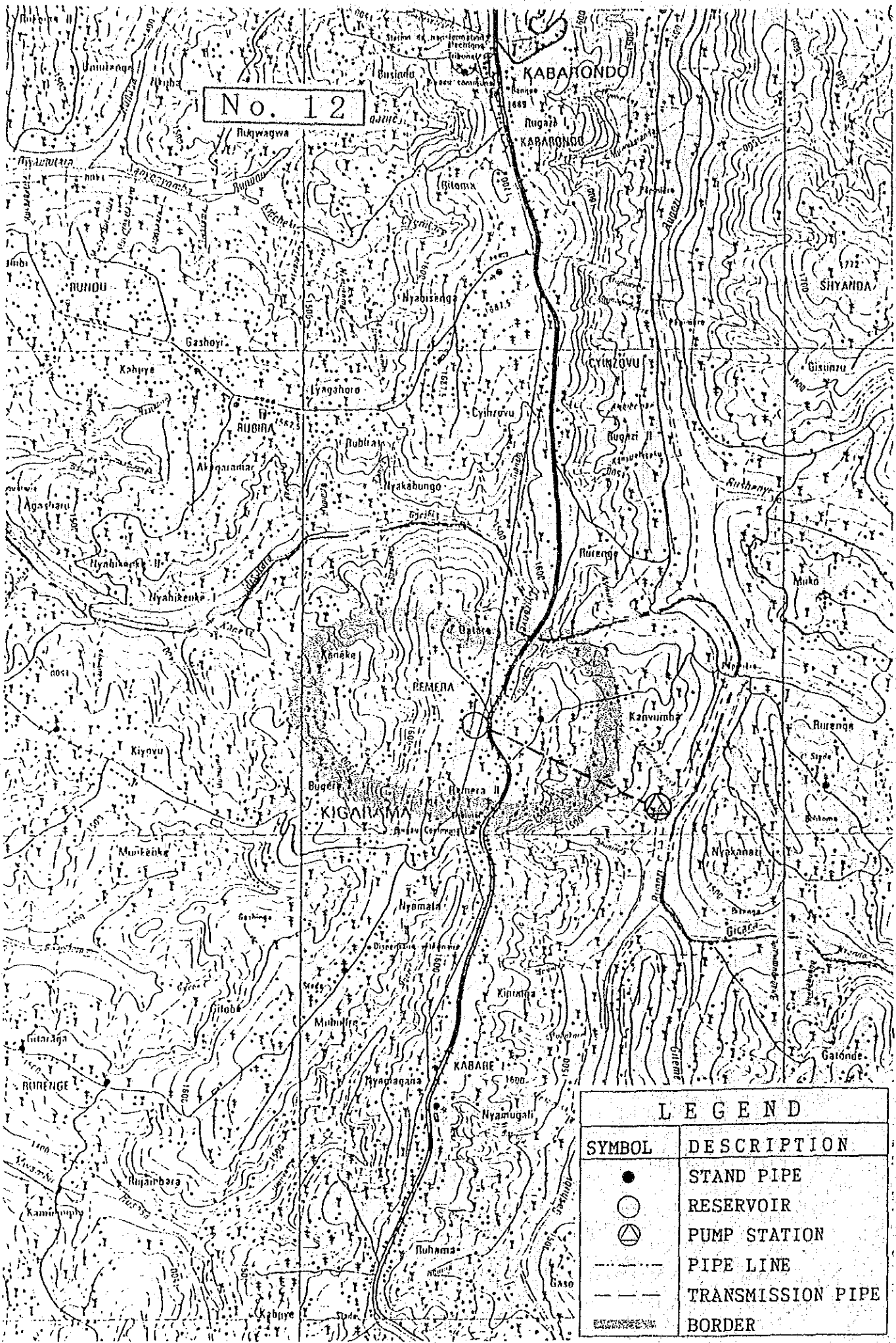


LEGEND	
SYMBOL	DESCRIPTION
●	STAND PIPE
○	RESERVOIR
⊕	PUMP STATION
---	PIPE LINE
---	TRANSMISSION PIPE
---	BORDER



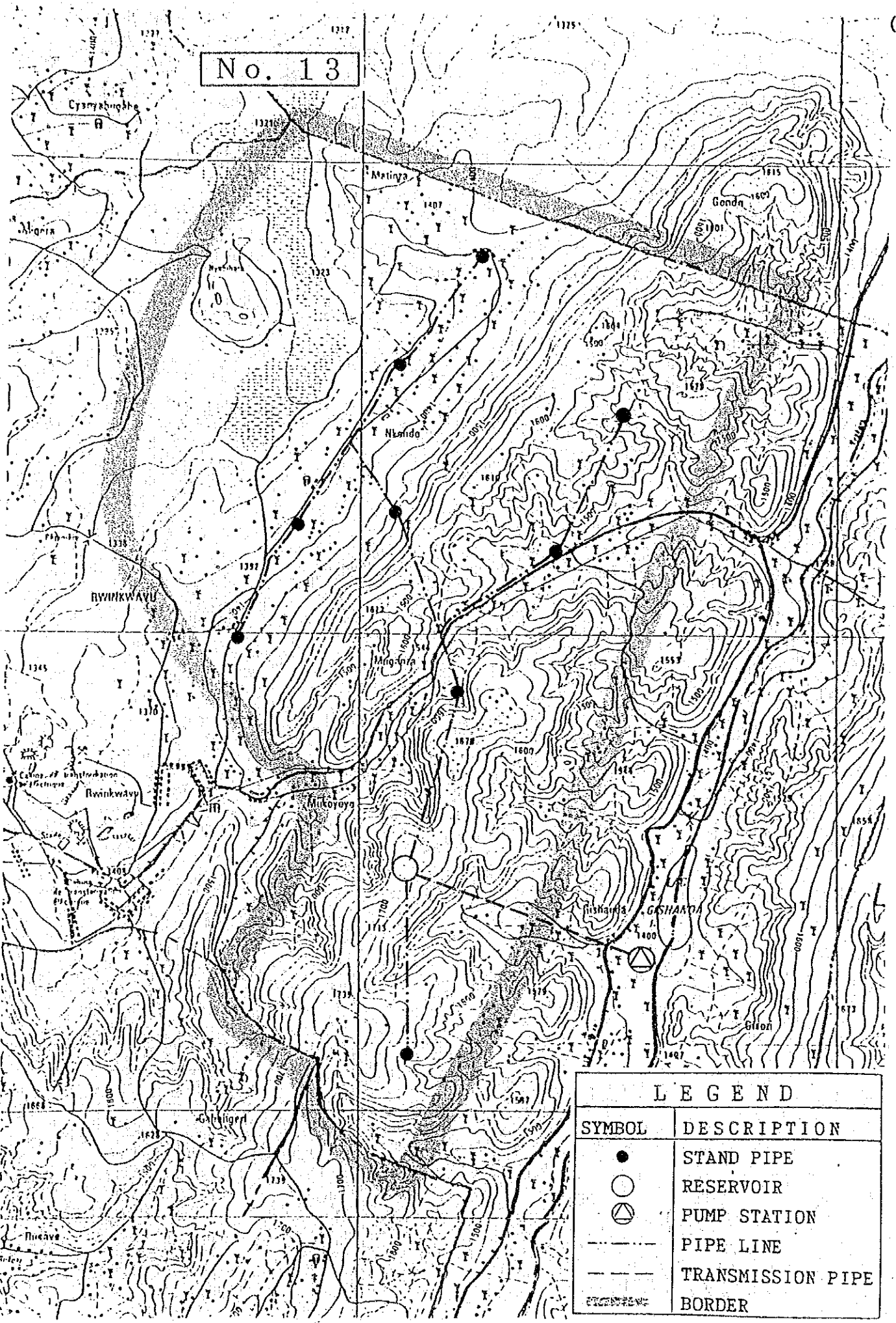
No. 11

LEGEND	
SYMBOL	DESCRIPTION
●	STAND PIPE
○	RESERVOIR
△	PUMP STATION
---	PIPE LINE
---	TRANSMISSION PIPE
---	BORDER



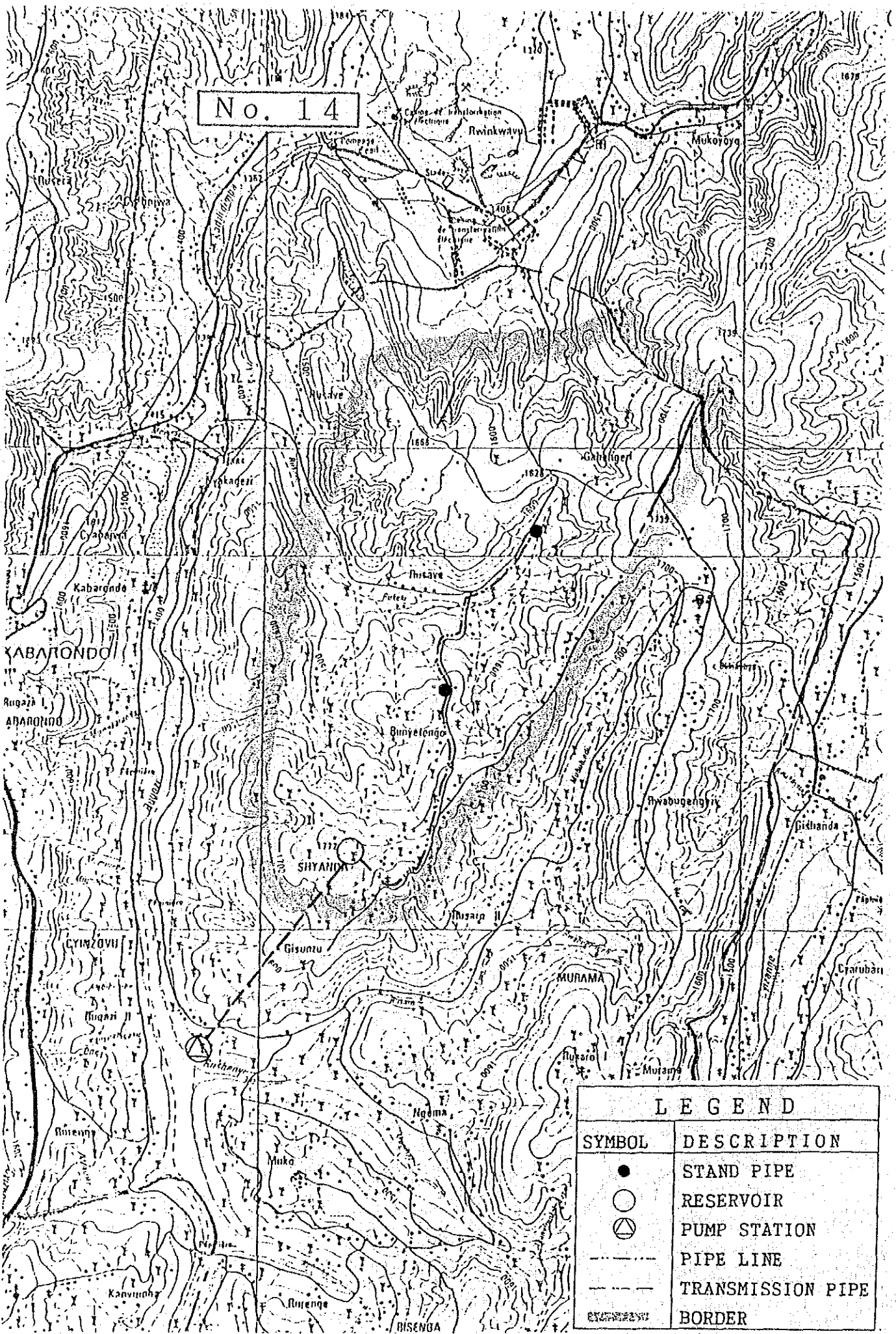
No. 12

No. 13



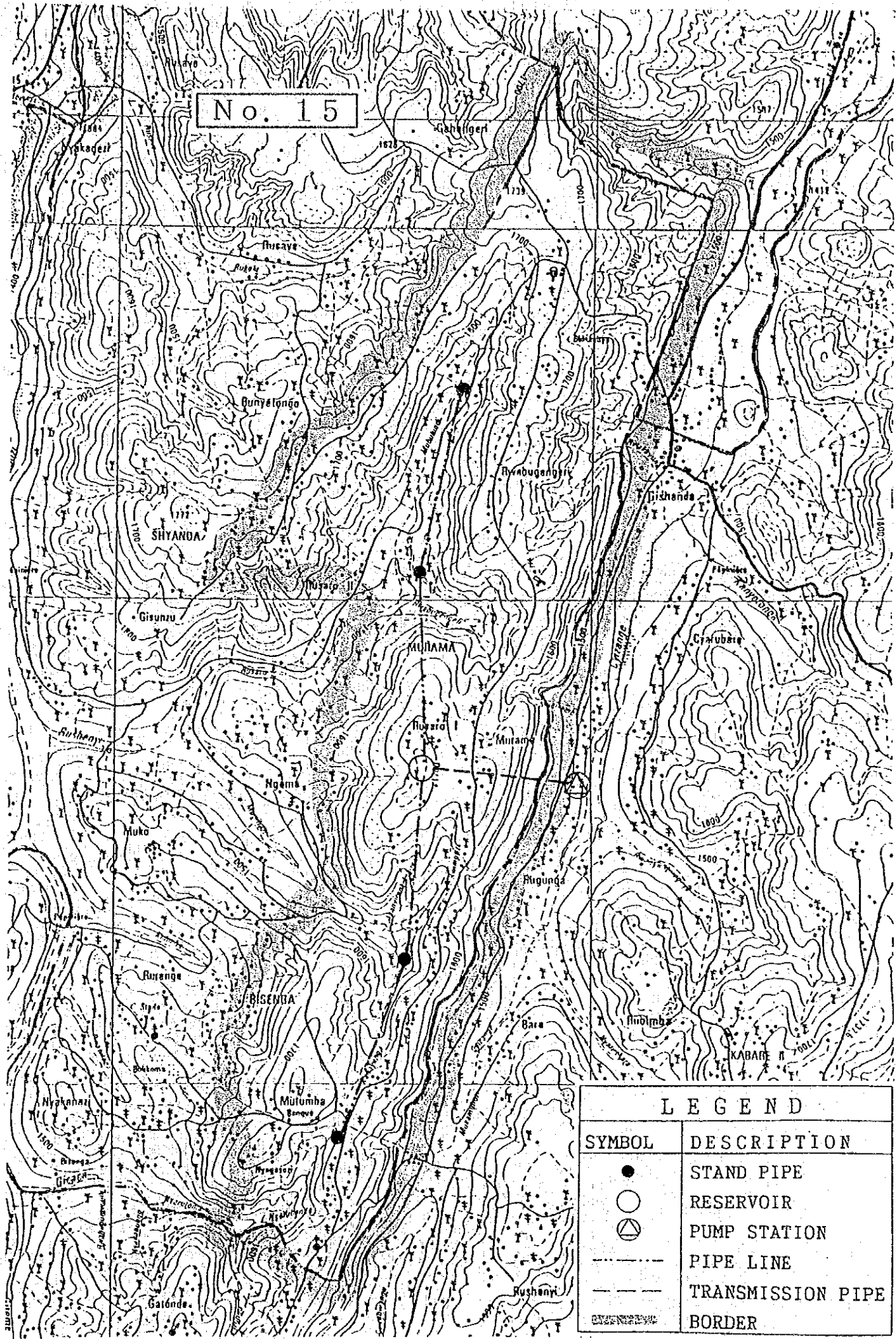
LEGEND	
SYMBOL	DESCRIPTION
●	STAND PIPE
○	RESERVOIR
⊙	PUMP STATION
---	PIPE LINE
- - -	TRANSMISSION PIPE
----	BORDER

No. 14



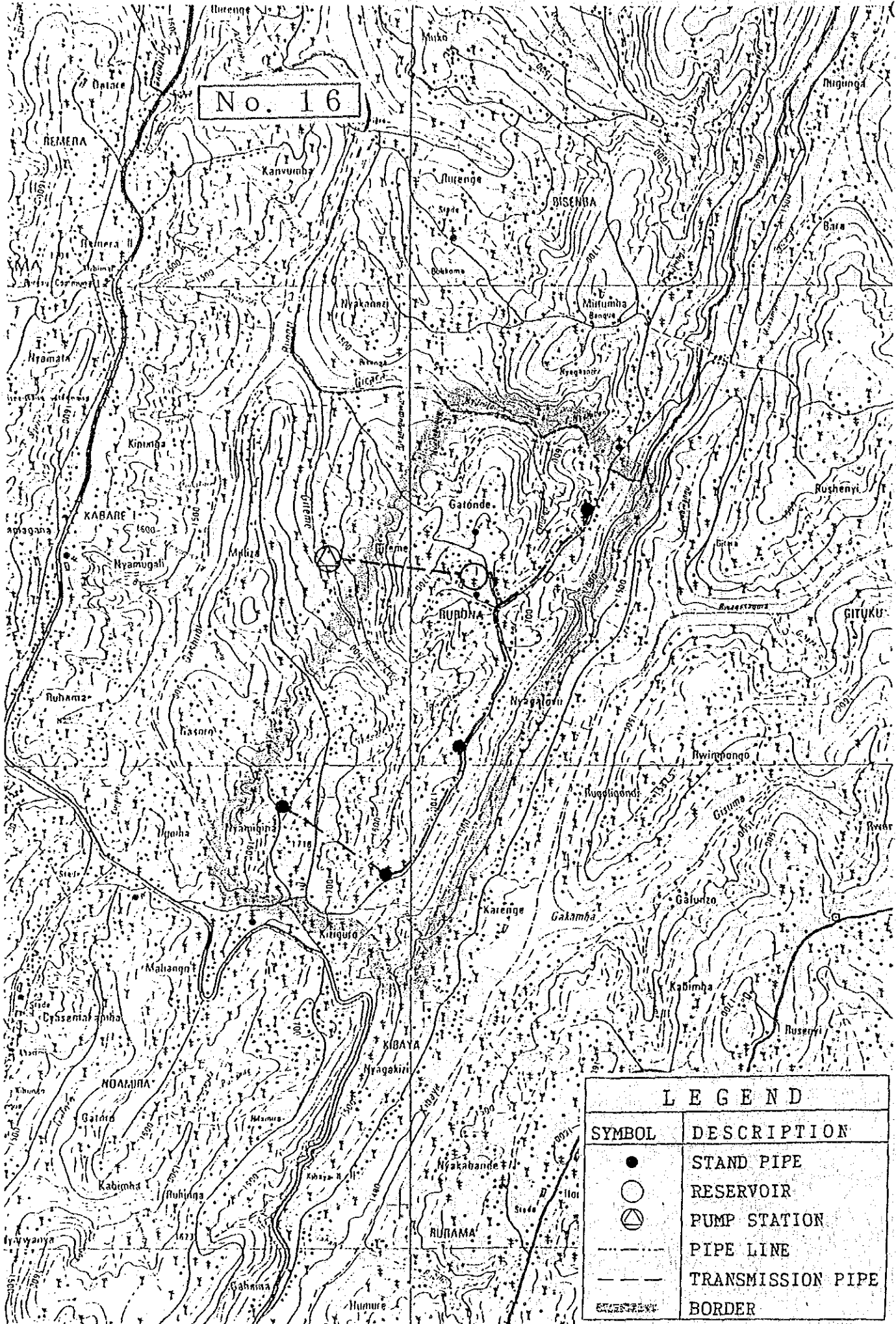
LEGEND	
SYMBOL	DESCRIPTION
●	STAND PIPE
○	RESERVOIR
⊗	PUMP STATION
---	PIPE LINE
---	TRANSMISSION PIPE
---	BORDER

No. 15



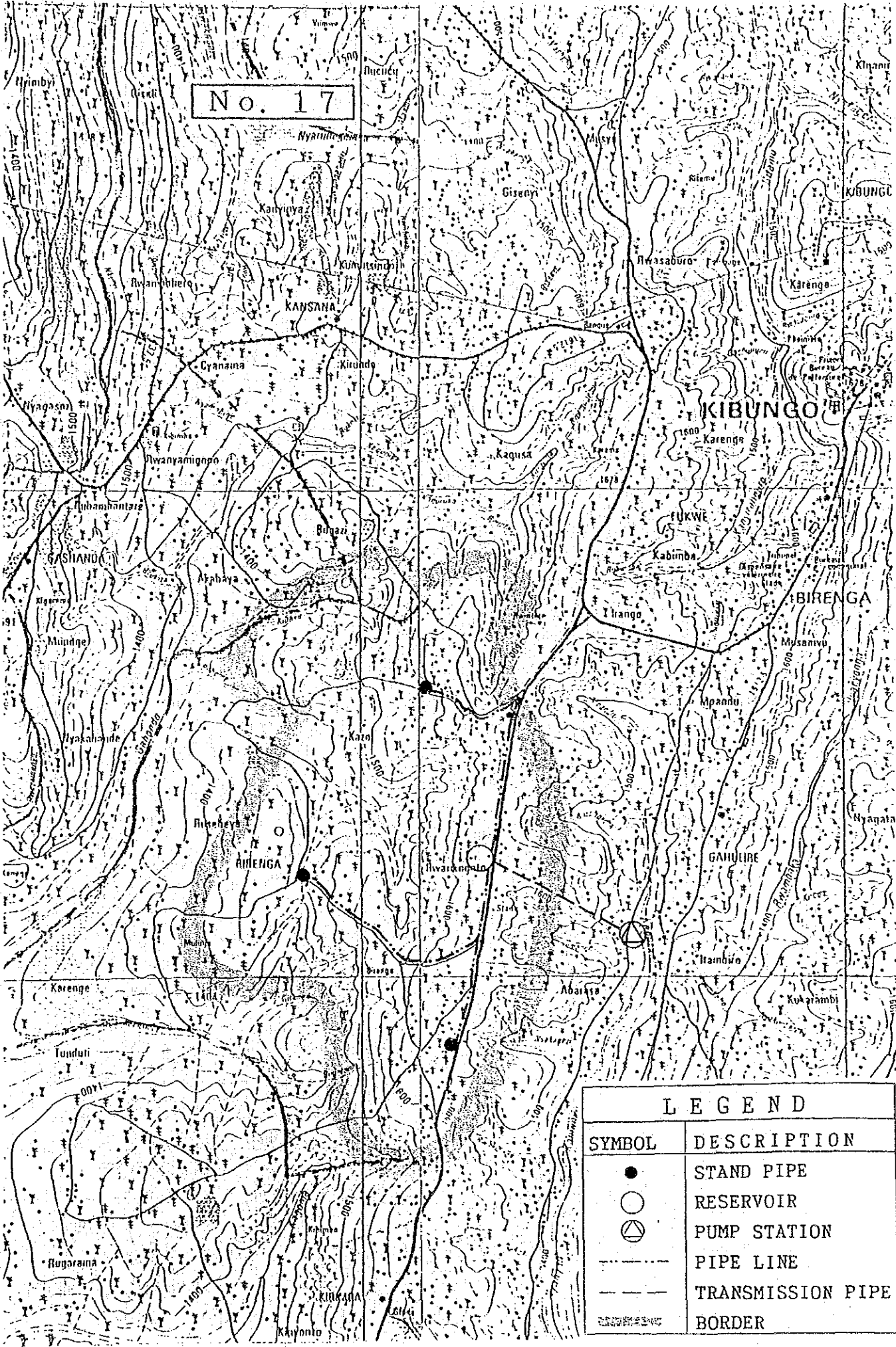
LEGEND	
SYMBOL	DESCRIPTION
●	STAND PIPE
○	RESERVOIR
⊙	PUMP STATION
---	PIPE LINE
---	TRANSMISSION PIPE
---	BORDER

No. 16



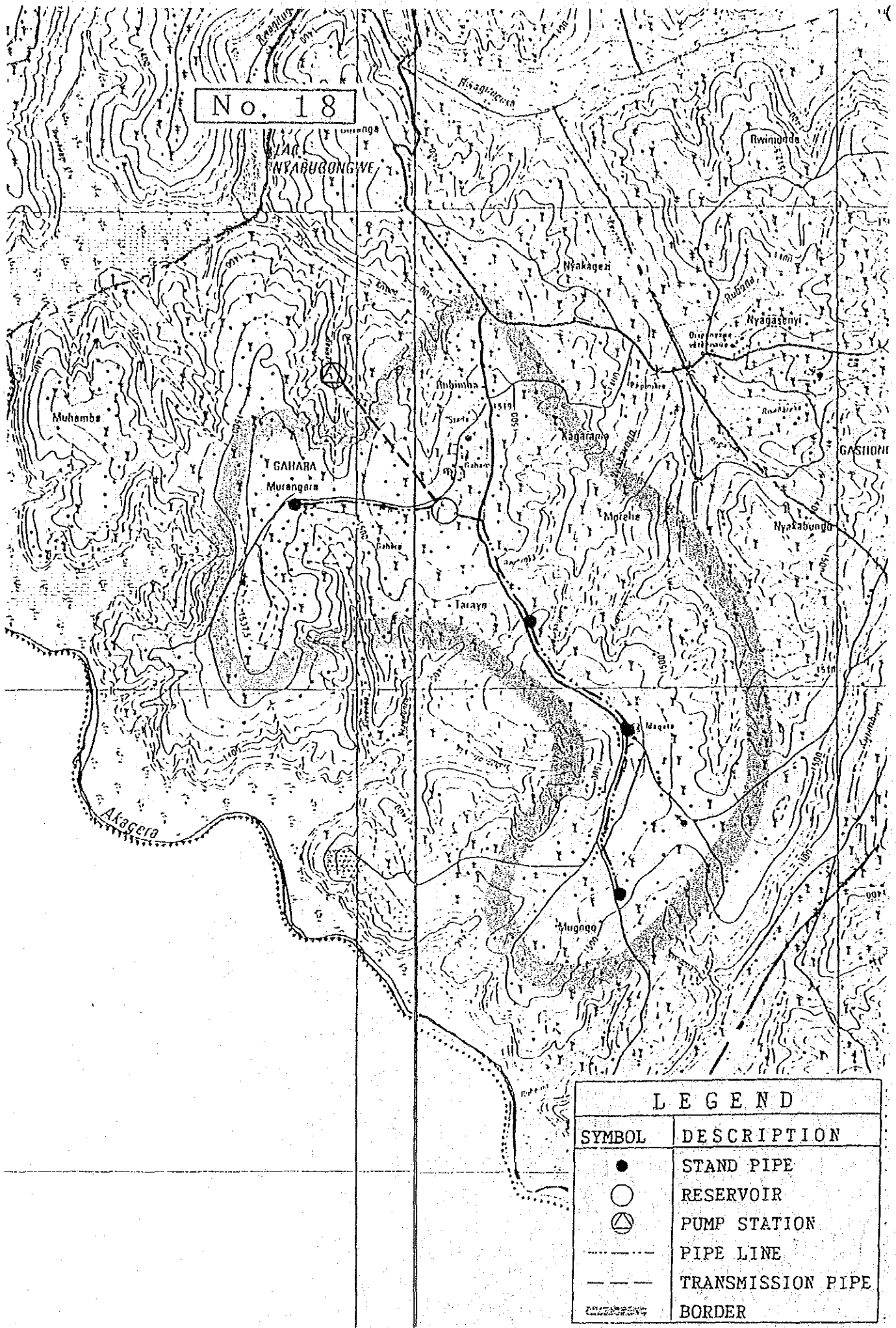
LEGEND	
SYMBOL	DESCRIPTION
●	STAND PIPE
○	RESERVOIR
⊙	PUMP STATION
---	PIPE LINE
---	TRANSMISSION PIPE
---	BORDER

No. 17



LEGEND	
SYMBOL	DESCRIPTION
●	STAND PIPE
○	RESERVOIR
⊙	PUMP STATION
---	PIPE LINE
---	TRANSMISSION PIPE
-----	BORDER

No. 18



LEGEND	
SYMBOL	DESCRIPTION
●	STAND PIPE
○	RESERVOIR
△	PUMP STATION
-----	PIPE LINE
-----	TRANSMISSION PIPE
.....	BORDER

No. 19

