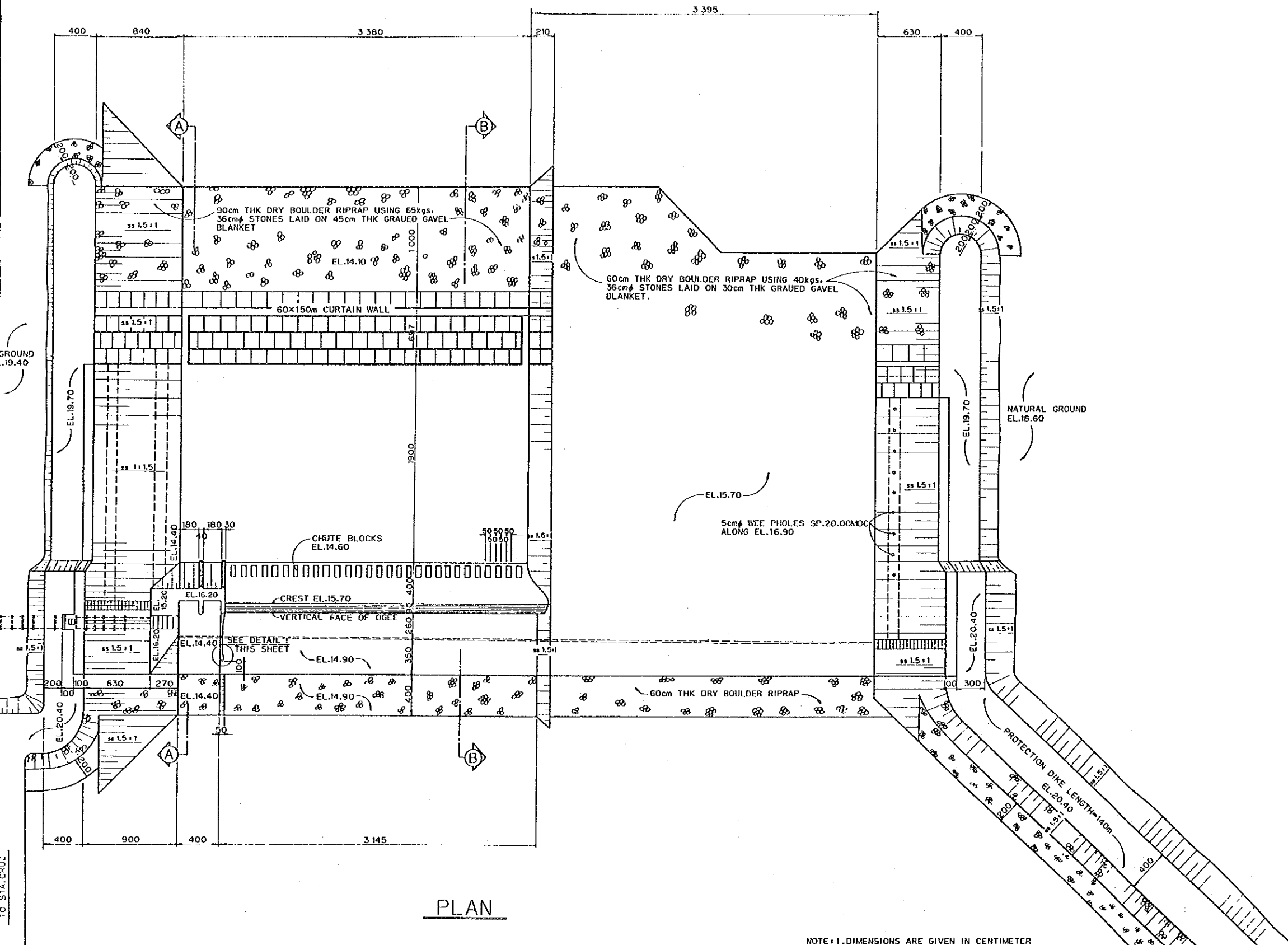


HYDRAULIC ELEMENTS

ELEM	UNITS	CUTACOVER 36" RCP	CANAL BELLOW
Q	cum/sec	487	487
V	m/sec	750	534
A	sqm	617	923
b	m	CIRCULAR	50
d	m	82	54
t	m		50
D	m	1.01	50
R	m	271	324
S		0.004	0.008
ss		CIRCULAR	
n		0.15	

ELEVATIONS

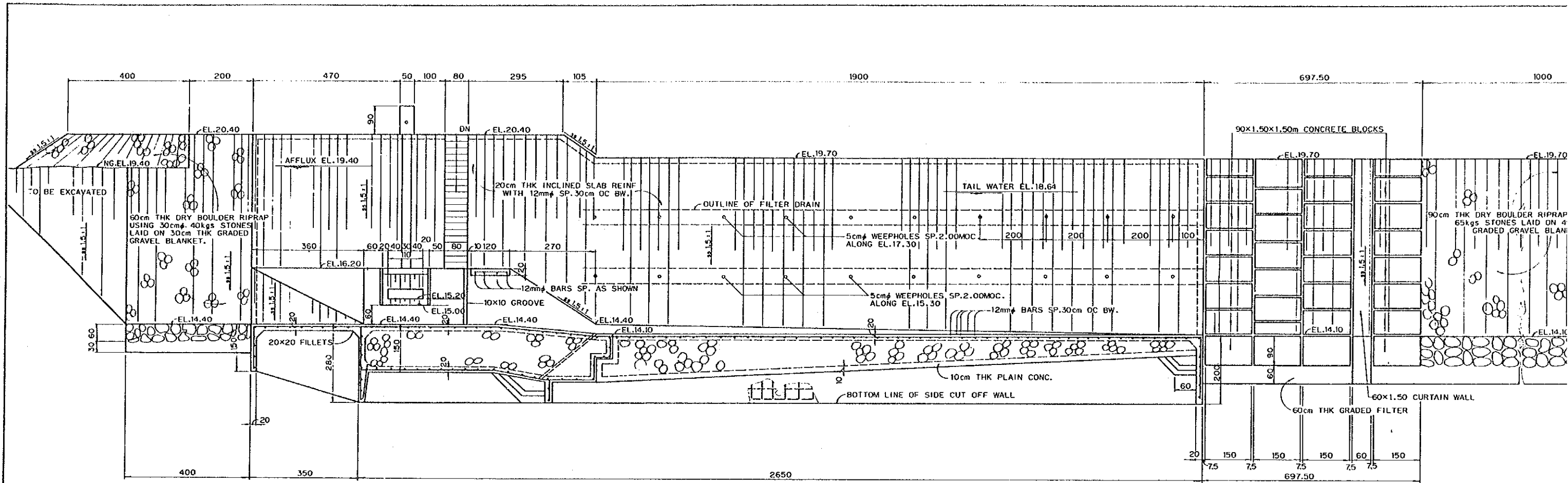
ELEM	UNITS		BELLOW
TS EL	m	15.34	15.42
WS EL	m	15.50	15.06
CB EL		14.88	14.52



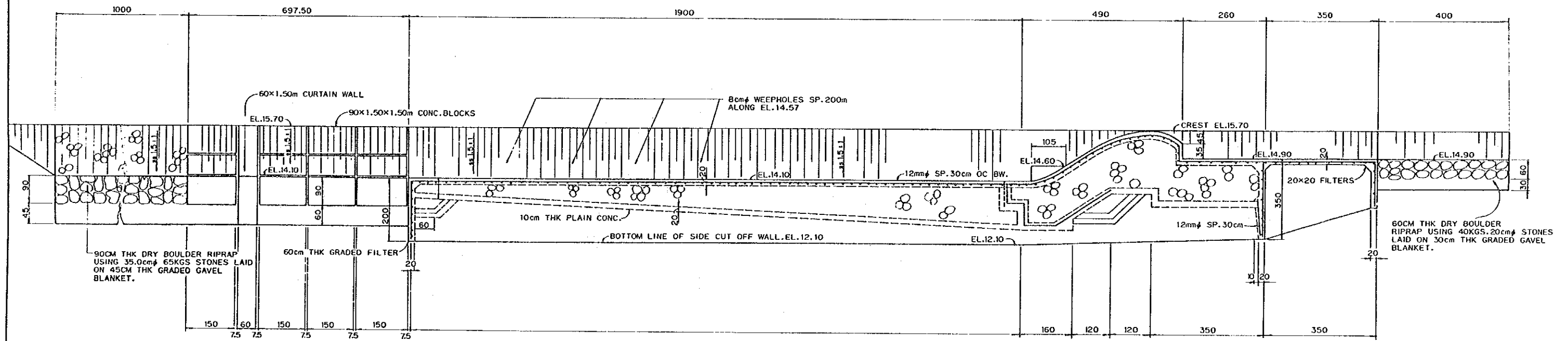
PLAN

NOTE: 1. DIMENSIONS ARE GIVEN IN CENTIMETER UNLESS OTHERWISE NOTED.
2. ELEVATIONS ARE SHOWN IN METER.

THE REPUBLIC OF THE PHILIPPINES THE PROJECT FOR MARINDUQUE AGRICULTURAL DEVELOPMENT & PROMOTION	
PLAN OF DIVERSION DAM LAON-MATAAS	DWG No.11
JAPAN INTERNATIONAL COOPERATION AGENCY	

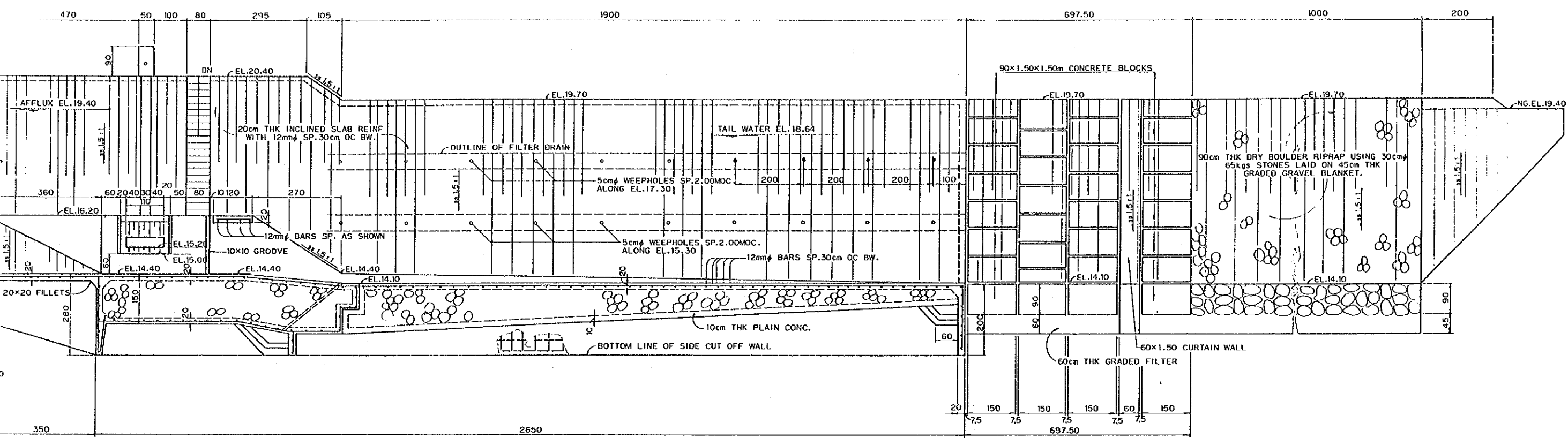


SECTION A-A

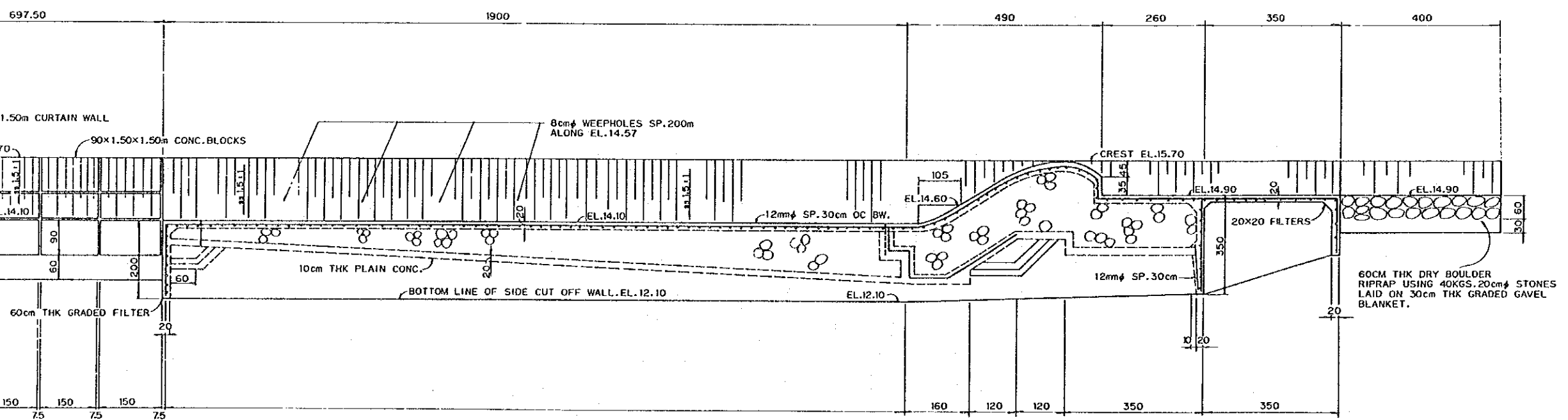


SECTION B-B

NOTE: 1. DIMENSIONS ARE GIVEN IN CENTIMETER UNLESS OTHERWISE NOTED.
 2. ELEVATIONS ARE SHOWN IN METER.



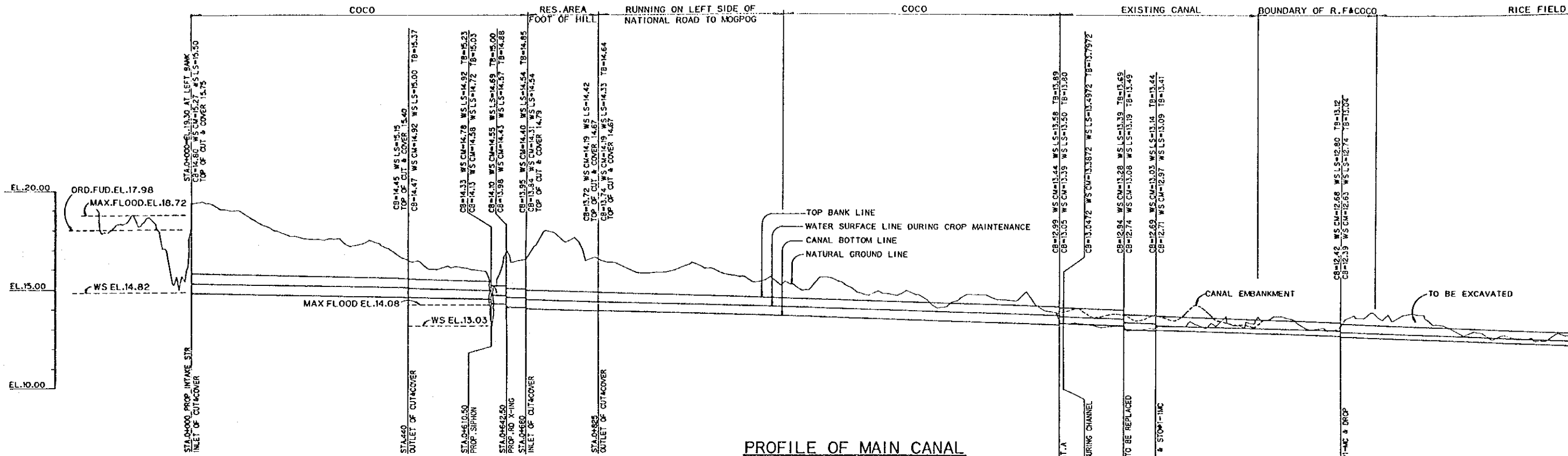
SECTION A-A



SECTION B-B

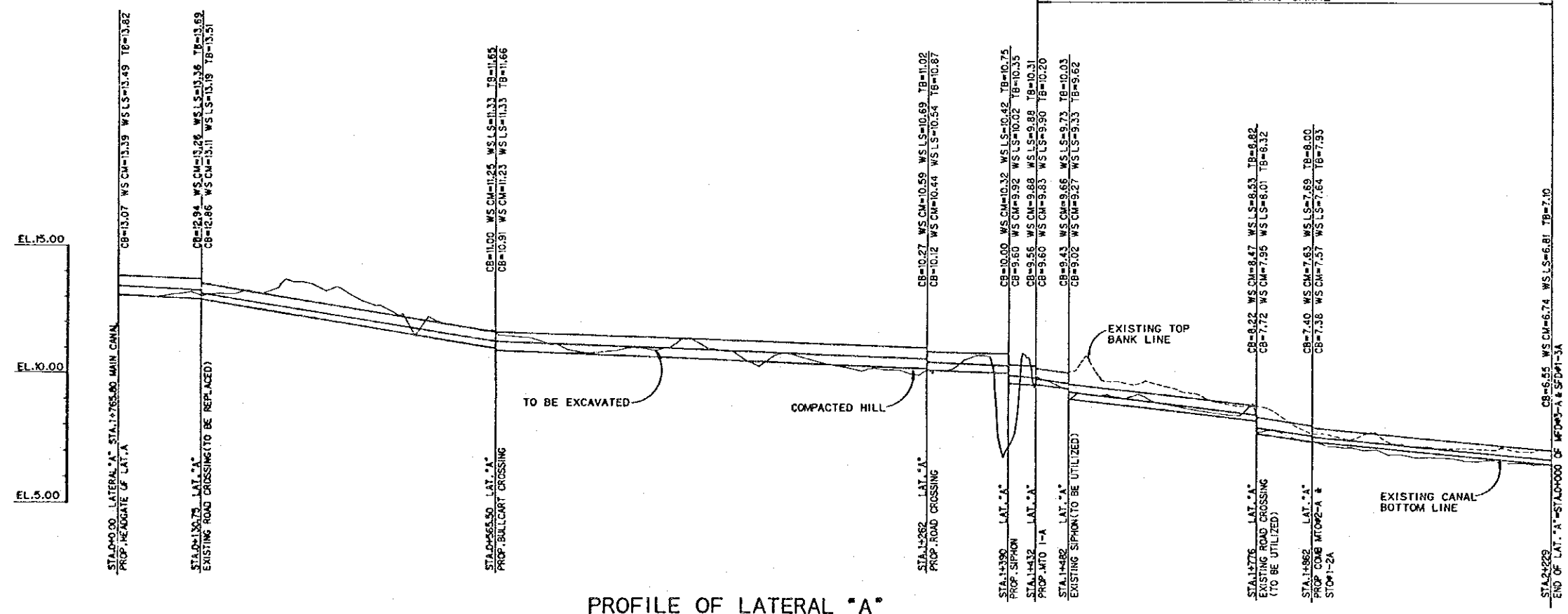
NOTE: 1. DIMENSIONS ARE GIVEN IN CENTIMETER UNLESS OTHERWISE NOTED.
 2. ELEVATIONS ARE SHOWN IN METER.

THE REPUBLIC OF THE PHILIPPINES THE PROJECT FOR MARINDUQUE AGRICULTURAL DEVELOPMENT & MOTION	
SECTION OF DIVERSION DAM LAON-MATAAS	DWG No. 12
JAPAN INTERNATIONAL COOPERATION AGENCY	



PROFILE OF MAIN CANAL

SCALE H=1:4,000
V=1:100M



PROFILE OF LATERAL "A"

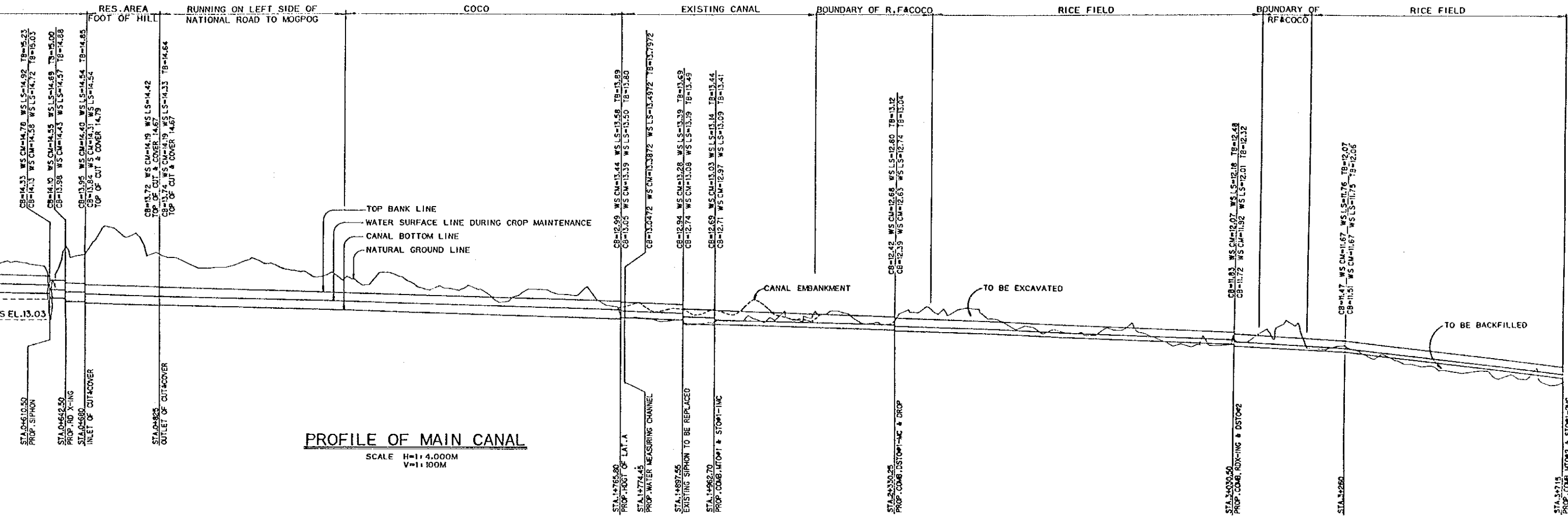
SCALE H=1:4,000
V=1:100M

MAIN CANAL ELEMENTS

STATION	CROP MAINTENANCE				
	Q cu.m/s	A sq.m	V m/s	b m	d m
0+000-0+440	0.338	0.4475	0.756	1.000	0.47
0+440-0+680	0.338	0.708	0.484	0.90	0.45
0+680-0+825	0.338	0.4475	0.756	1.000	0.47
0+825-1+765.80	0.338	0.708	0.484	0.90	0.45
0+765.80-1+962.70	0.159	0.4114	0.404	0.70	0.34
0+962.70-2+330.25	0.074	0.2314	0.333	0.50	0.26
2+330.25-3+030.50	0.062	0.2064	0.321	0.50	0.24
3+030.50-3+260	0.046	0.14	0.331	0.40	0.20
3+260-3+715	0.046	0.1024	0.461	0.40	0.16

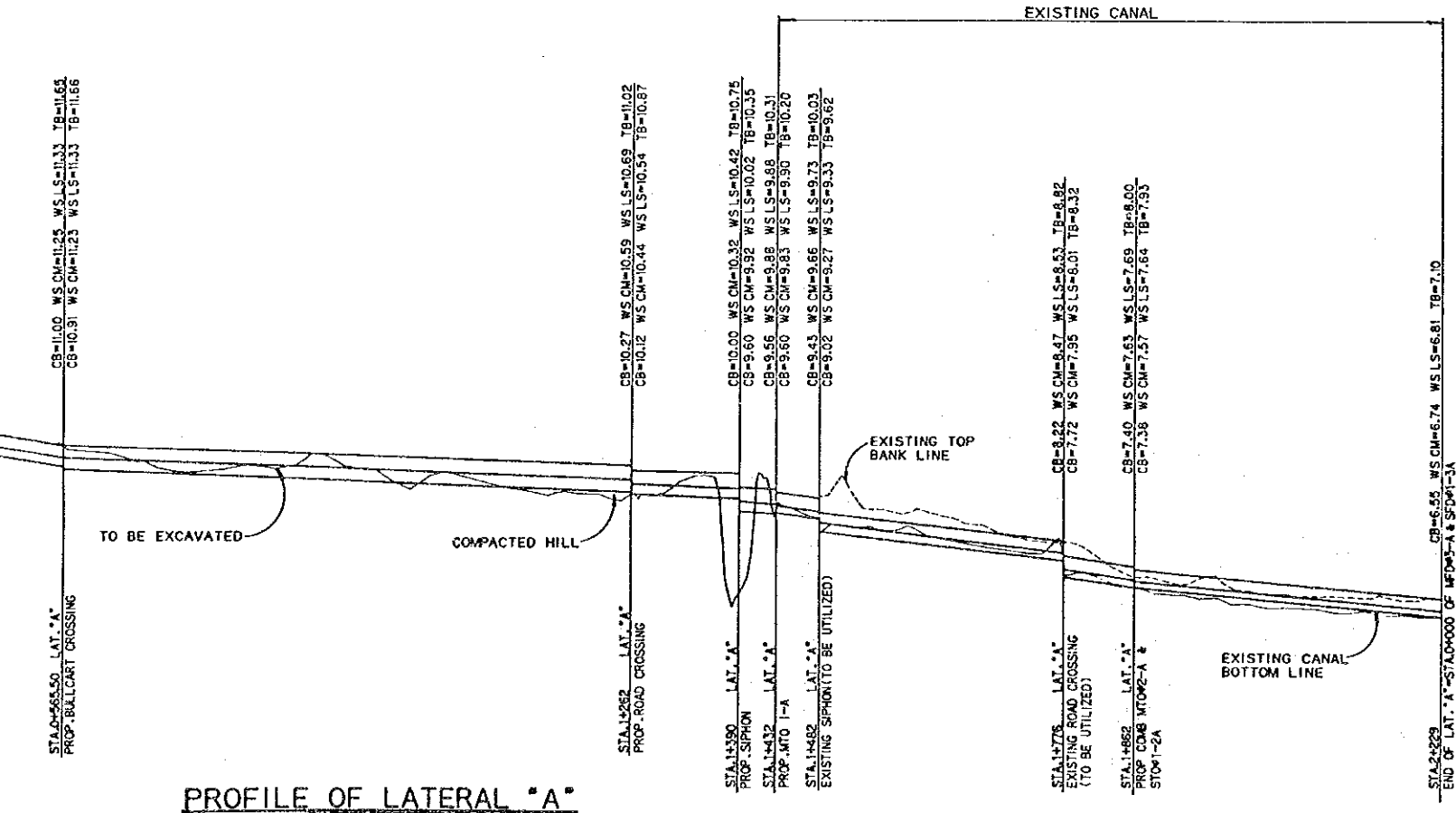
LATERAL "A" CANAL ELEMENTS

STATION	CROP MAINTENANCE				
	Q cu.m/s	A sq.m	V m/s	b m	d m
0+000-0+130.75	0.161	0.3776	0.428	0.70	0.32
0+130.75-0+585.50	0.161	0.218	0.739	0.50	0.25
0+585.50-1+432	0.161	0.3776	0.428	0.70	0.32
1+432-1+482.50	0.123	0.194	0.643	0.50	0.23
1+482.50-1+776	0.123	0.218	0.602	0.50	0.25
1+776-1+862	0.123	0.194	0.675	0.50	0.23
1+862-2+229	0.056	0.130	0.464	0.40	0.19



PROFILE OF MAIN CANAL

SCALE H=1:4,000M
V=1:100M



PROFILE OF LATERAL "A"

SCALE H=1:4,000M
V=1:100M

MAIN CANAL ELEMENTS

STATION	CROP MAINTENANCE						LAND SOAKING						D	f	S	SS	n	REMARKS
	Q	A	V	b	d	R	Q	A	V	b	d	R						
	cu.m/s	sq.m	m/s	m	m	m	cu.m/s	sq.m	m/s	m	m	m						
0+000-0+440	0.338	04475	0.756	1.000	0.47	0.254	0.579	0.6775	0.854	1.000	0.70	0.305	0.95		0.0008	VERT	0.015	CUT & COVER
0+440-0+680	0.338	0.708	0.484	0.90	0.45	0.280	0.579	1.053	0.559	0.90	0.59	0.348	0.90	0.90	0.0008	VERT	1.5+1	0.025
0+680-0+825	0.338	0.4475	0.756	1.000	0.47	0.254	0.579	0.6775	0.854	1.000	0.70	0.305	0.95		0.0008	VERT	0.015	CUT & COVER
0+825-1+765.80	0.338	0.708	0.484	0.90	0.45	0.280	0.579	1.053	0.559	0.90	0.59	0.348	0.90	0.90	0.0008	VERT	1.5+1	0.025
1+765.80-1+962.70	0.159	0.4114	0.404	0.70	0.34	0.214	0.283	0.618	0.467	0.70	0.45	0.266	0.75	0.75	0.0008	VERT	1.5+1	0.025
1+962.70-2+330.25	0.074	0.2314	0.333	0.50	0.26	0.161	0.161	0.4066	0.408	0.50	0.38	0.217	0.70	0.70	0.0008	VERT	1.5+1	0.025
2+330.25-3+030.50	0.062	0.2064	0.321	0.50	0.24	0.151	0.135	0.358	0.390	0.50	0.55	0.203	0.65	0.65	0.0008	VERT	1.5+1	0.025
3+030.50-3+260	0.046	0.14	0.331	0.40	0.20	0.125	0.097	0.242	0.403	0.40	0.29	0.167	0.60	0.60	0.0011	VERT	1.5+1	0.025
3+260-3+715	0.046	0.1024	0.461	0.40	0.16	0.105	0.097	0.0824	0.571	0.40	0.24	0.144	0.55	0.55	0.0027	VERT	1.5+1	0.025

LATERAL "A" CANAL ELEMENTS

STATION	CROP MAINTENANCE						LAND SOAKING						D	f	S	SS	n	REMARKS
	Q	A	V	b	d	R	Q	A	V	b	d	R						
	cu.m/s	sq.m	m/s	m	m	m	cu.m/s	sq.m	m/s	m	m	m						
0+000-0+130.75	0.161	0.3776	0.428	0.70	0.32	0.204	0.288	0.386	0.492	0.70	0.42	0.252	0.75	0.75	0.000953	VERT	1.5+1	0.025
0+130.75-0+585.50	0.161	0.218	0.739	0.50	0.25	0.155	0.288	0.336	0.857	0.50	0.33	0.194	0.65	0.65	0.00409	VERT	1.5+1	0.025
0+585.50-1+432	0.161	0.3776	0.428	0.70	0.32	0.204	0.288	0.586	0.492	0.70	0.42	0.252	0.75	0.75	0.000953	VERT	1.5+1	0.025
1+432-1+482.50	0.123	0.194	0.643	0.50	0.23	0.146	0.206	0.278	0.741	0.50	0.30	0.180	0.60	0.60	0.00337	VERT	1.5+1	0.025
1+482.50-1+776	0.123	0.218	0.602	0.50	0.25	0.155	0.206	0.303	0.679	0.50	0.31	0.185	0.60	0.60	0.00273	VERT	1.5+1	0.025
1+776-1+862	0.123	0.194	0.675	0.50	0.23	0.146	0.206	0.271	0.761	0.50	0.29	0.175	0.60	0.60	0.00372	VERT	1.5+1	0.025
1+862-2+229	0.056	0.130	0.464	0.40	0.19	0.120	0.139	0.254	0.546	0.40	0.26	0.54	0.55	0.55	0.00226	VERT	1.5+1	0.025

THE REPUBLIC OF THE PHILIPPINES
THE PROJECT FOR MARINDUQUE
AGRICULTURAL DEVELOPMENT & PROMOTION

CANAL PROFILE OF
LAON-MATAAS CIP

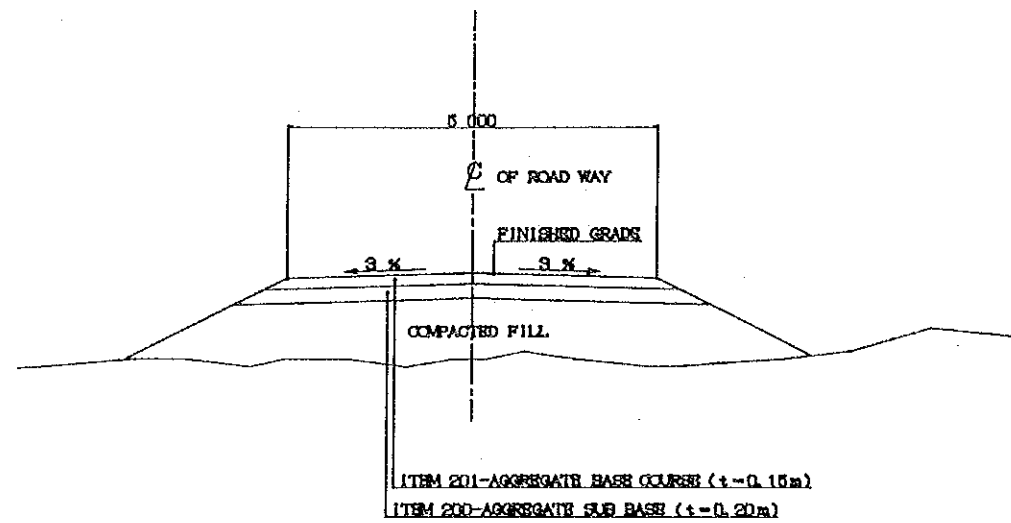
DWG
No.13

JAPAN INTERNATIONAL COOPERATION AGENCY

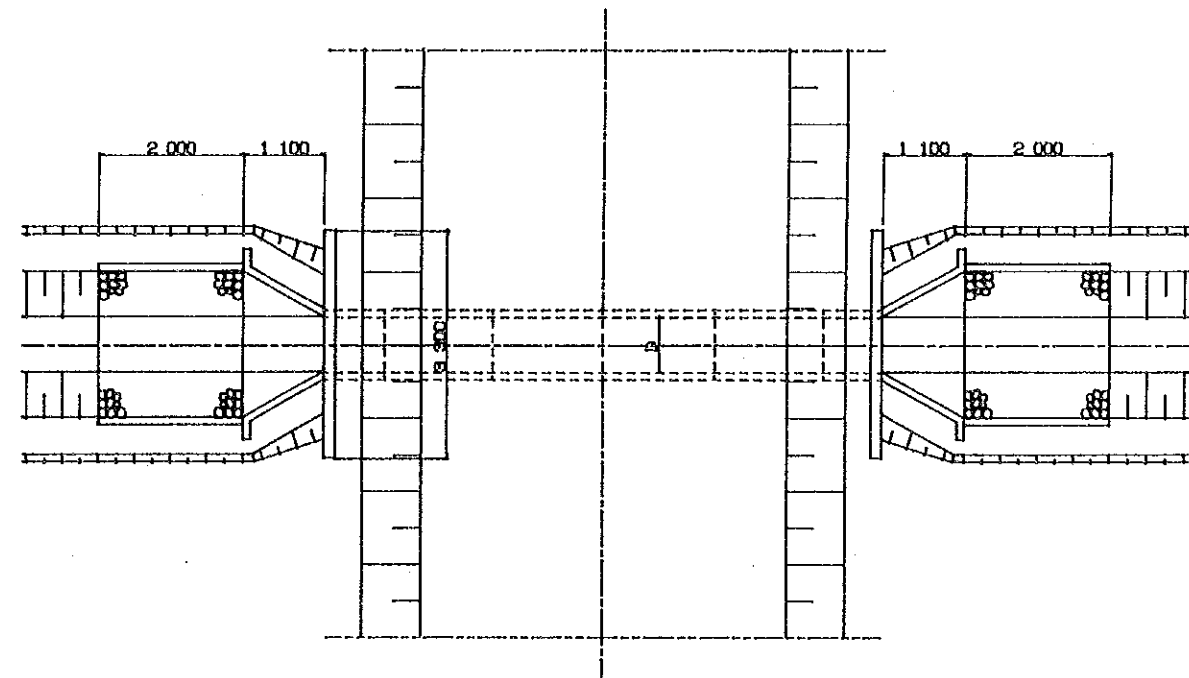
TYPICAL PLAN OF PAVEMENT $\text{S} = 1:100$

REHABILITATION OF UNDERDRAIN $\text{S} = 1:100$

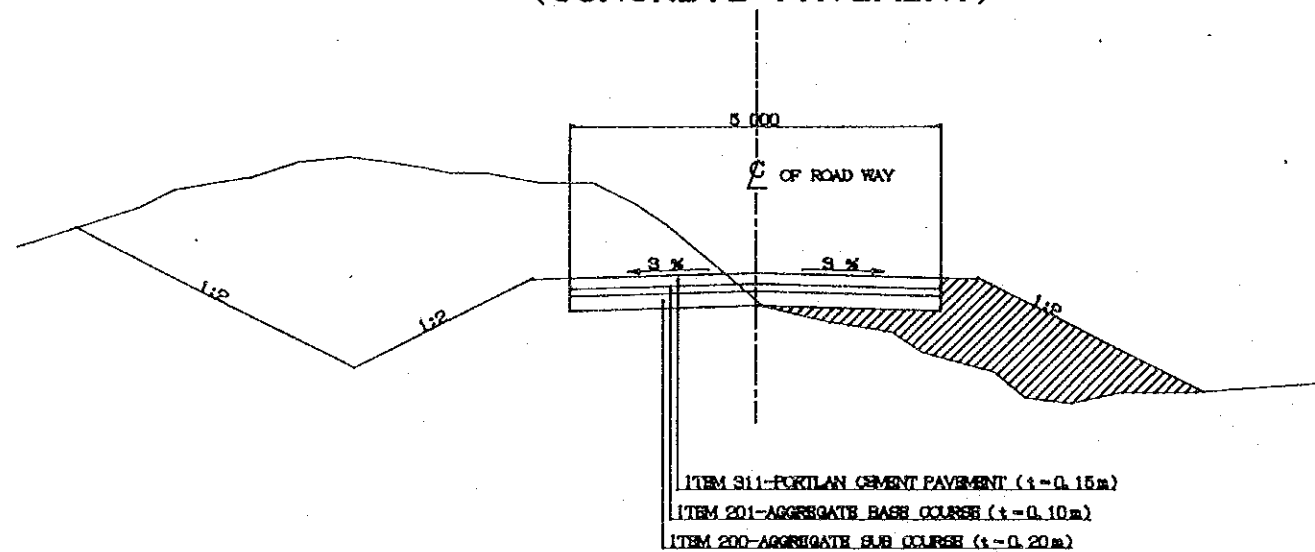
GRAVEL ROAD



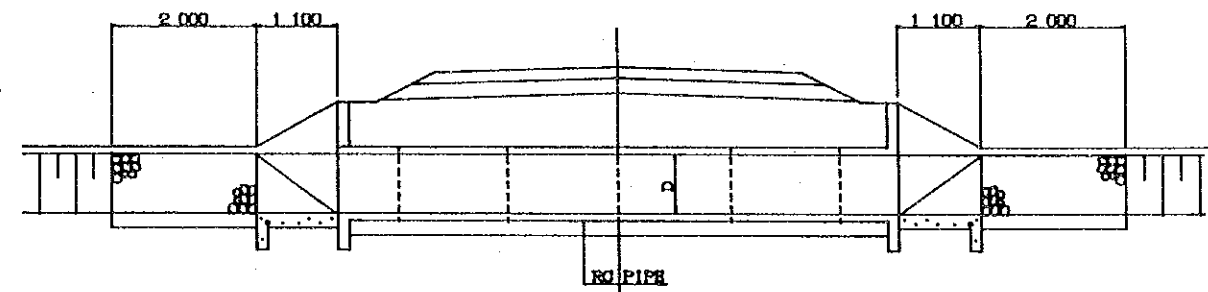
PLAN



MULTI PURPOSE ROAD
(CONCRETE PAVEMENT)



PROFILE



THE REPUBLIC OF THE PHILIPPINES
THE PROJECT FOR MARINDUQUE
AGRICULTURAL DEVELOPMENT & PROMOTION

STANDARD DRAWING OF ROAD
IMPROVEMENT & MULTIPURPOSE
ROAD PAVEMENT

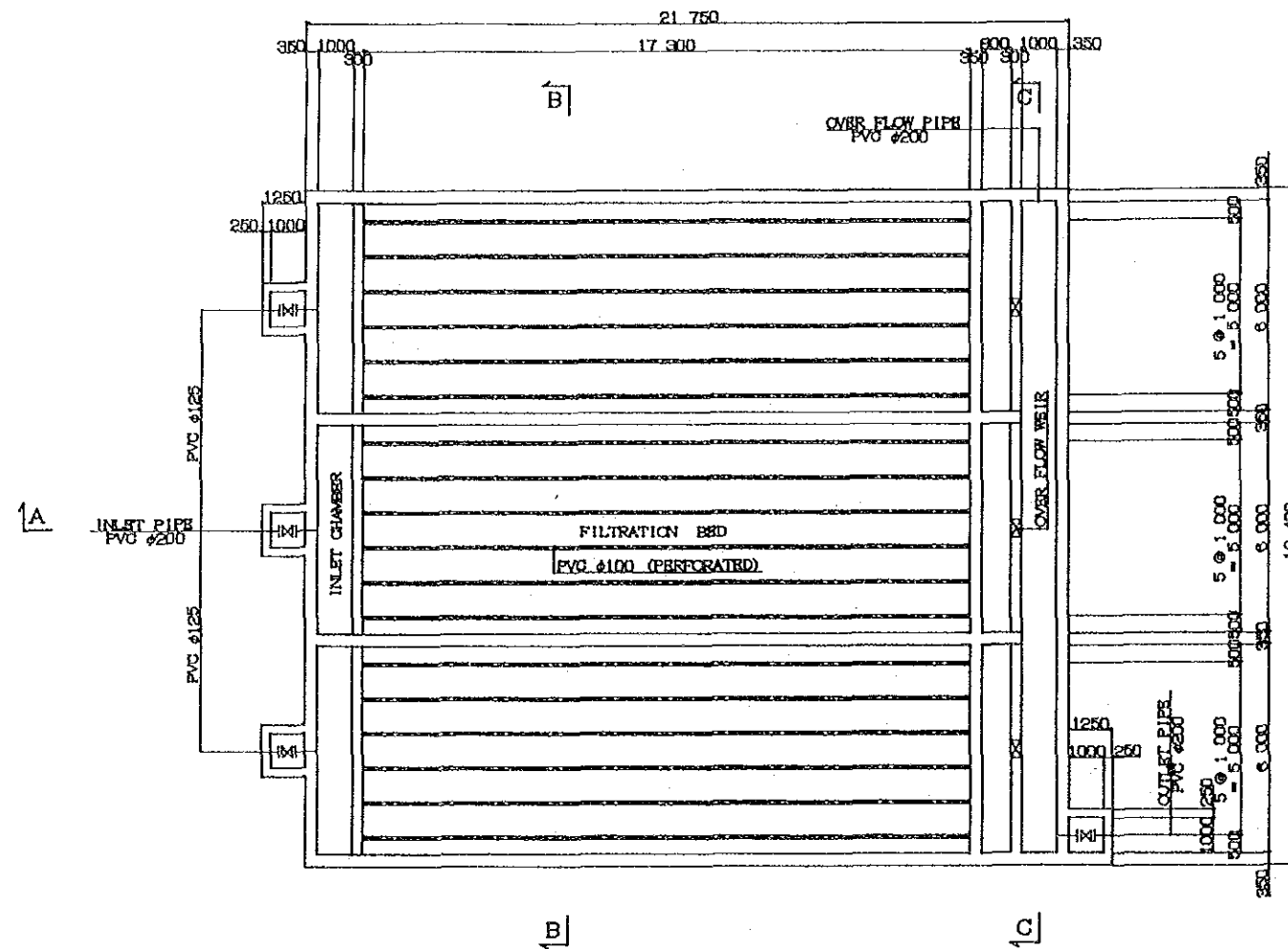
DWG

No.14

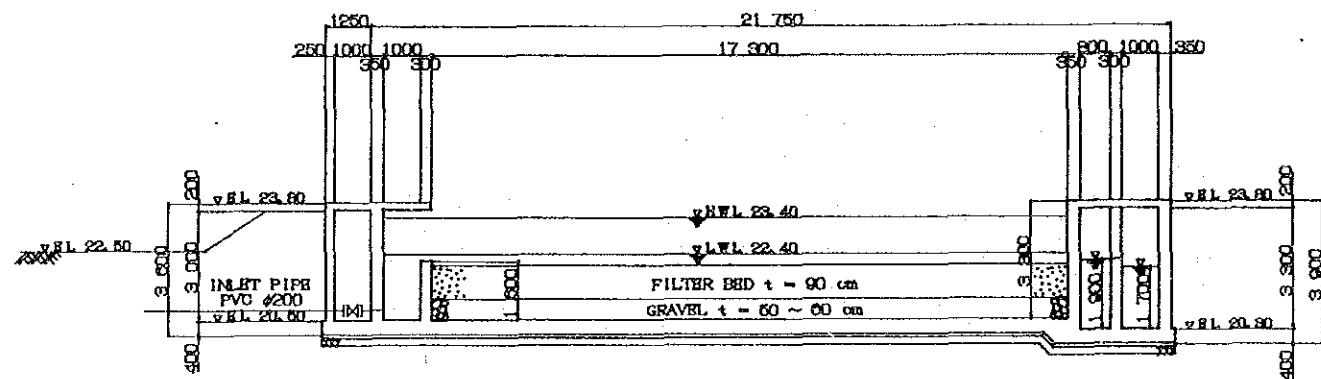
JAPAN INTERNATIONAL COOPERATION AGENCY

SLOW SAND FILTER 8 - 11200

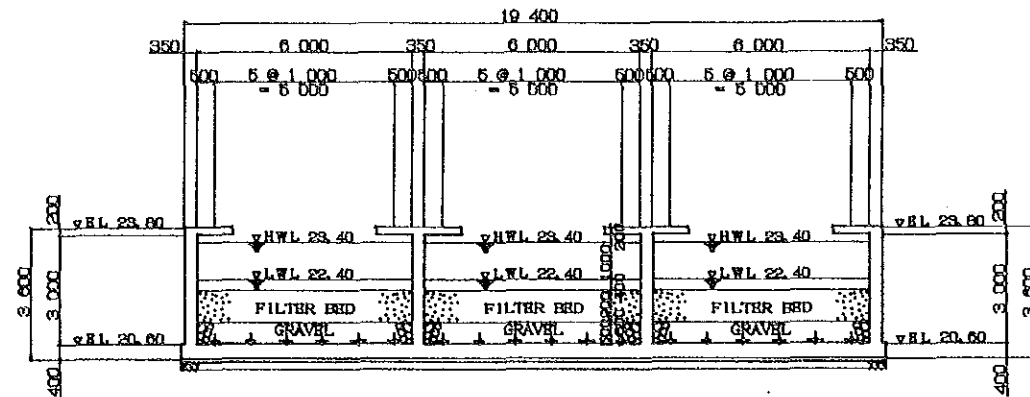
PLAN



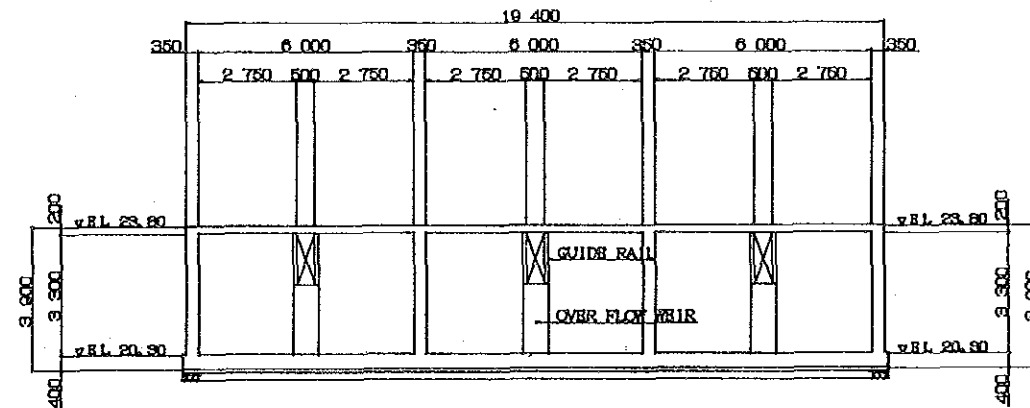
SECTION A-A



SECTION B-B



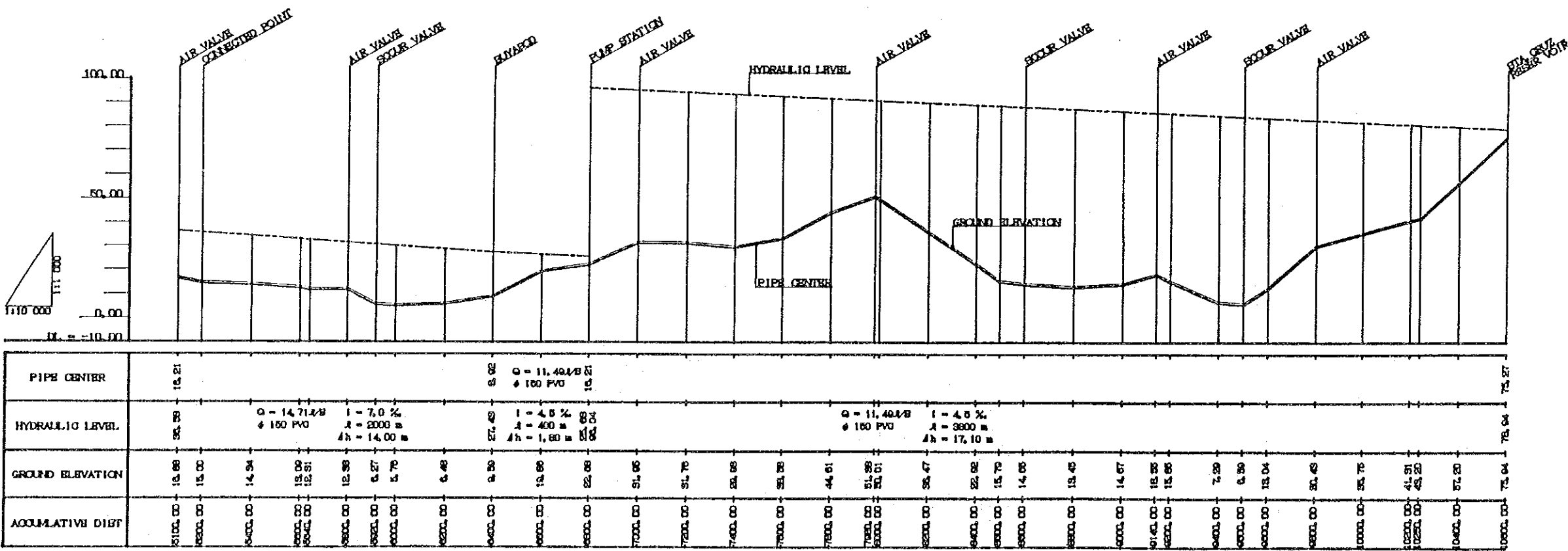
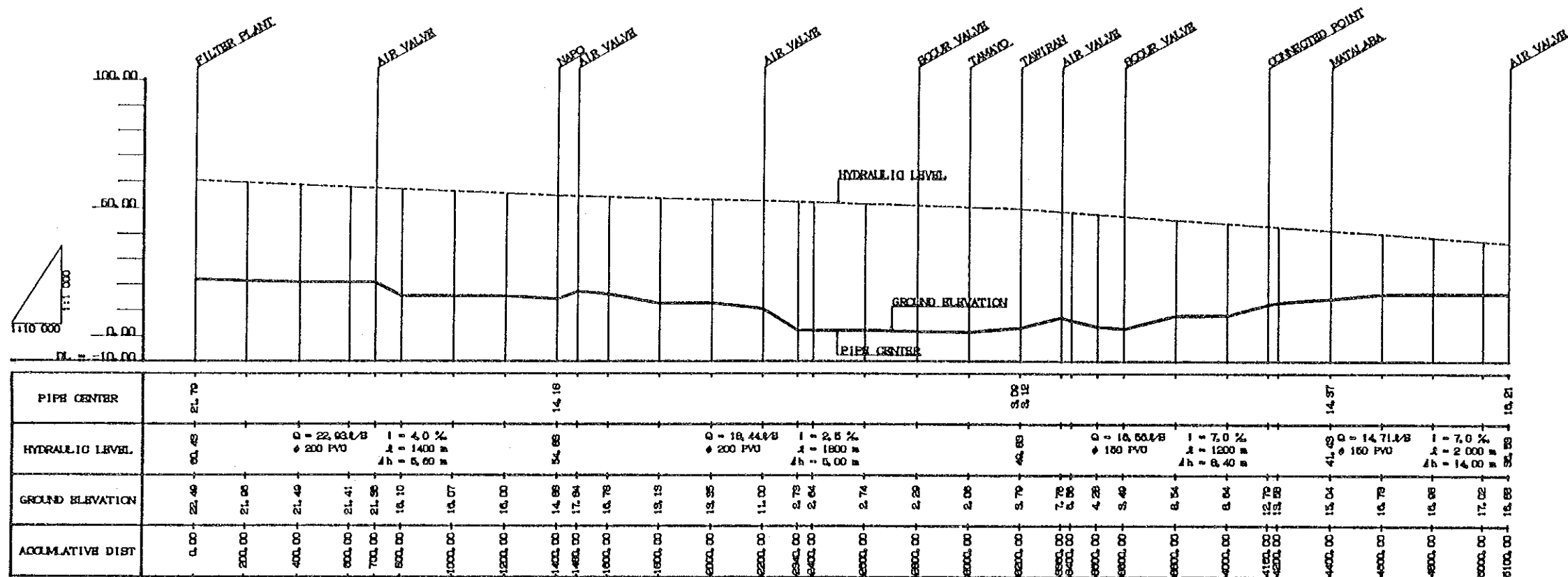
SECTION C-C



PERFORATED PIPE



THE REPUBLIC OF THE PHILIPPINES THE PROJECT FOR MARINDUQUE AGRICULTURAL DEVELOPMENT & PROMOTION	
FILTRATION PLANT OF STA. CRUZ WATER WORKS	DWG No. 16
JAPAN INTERNATIONAL COOPERATION AGENCY	



THE REPUBLIC OF THE PHILIPPINES
THE PROJECT FOR MARINDUQUE
AGRICULTURAL DEVELOPMENT & PROMOTION

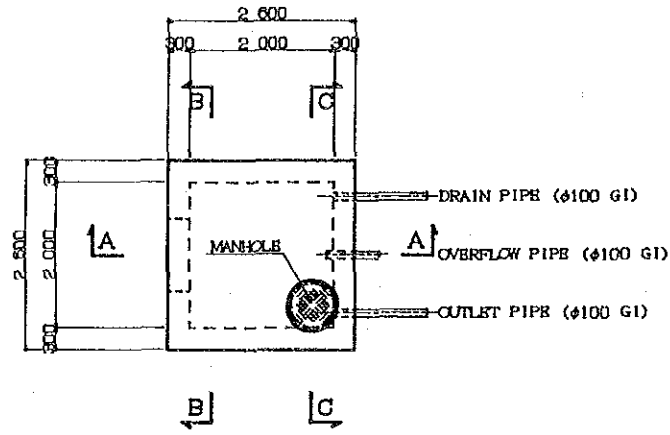
PIPE PROFILE OF TORRIJOS WATER WORKS	DWG No.18
---	--------------

JAPAN INTERNATIONAL COOPERATION AGENCY

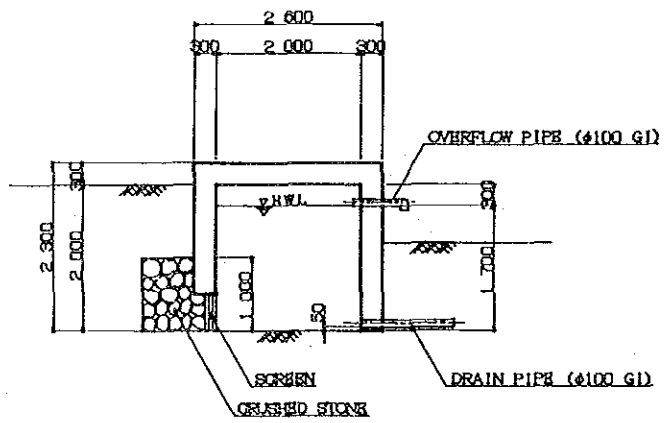
SPRING INTAKE BOX s = 1:100

RESERVOIR s = 1:100

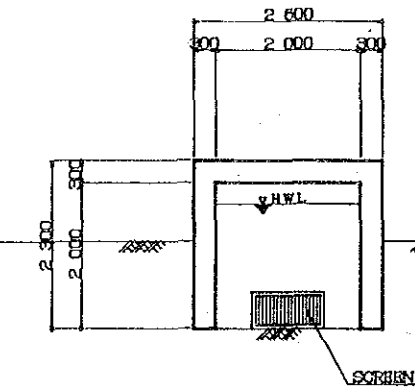
PLAN



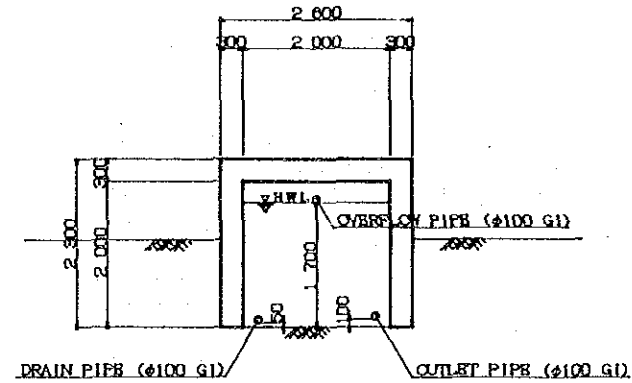
SECTION A-A



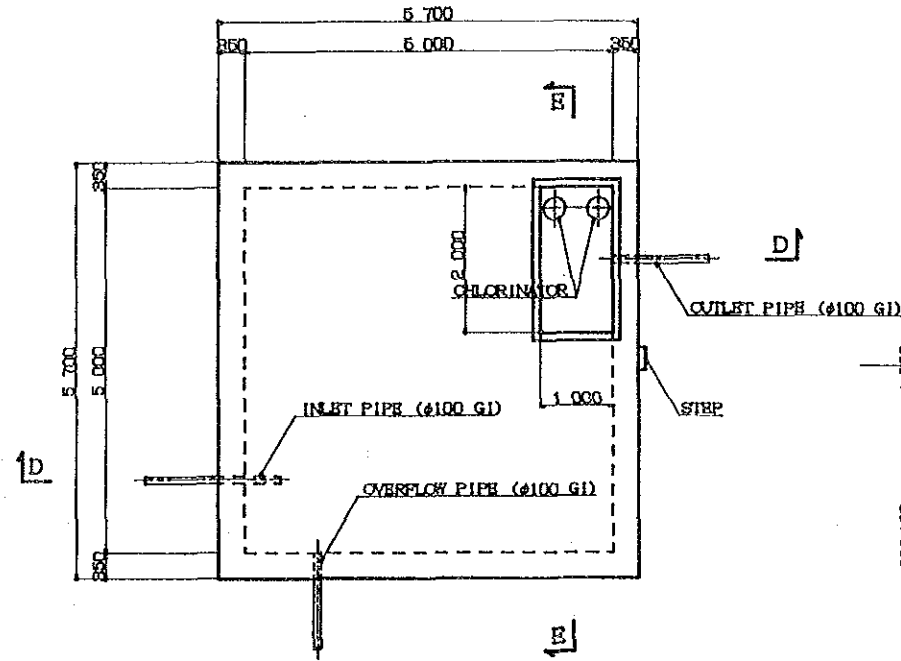
SECTION B-B



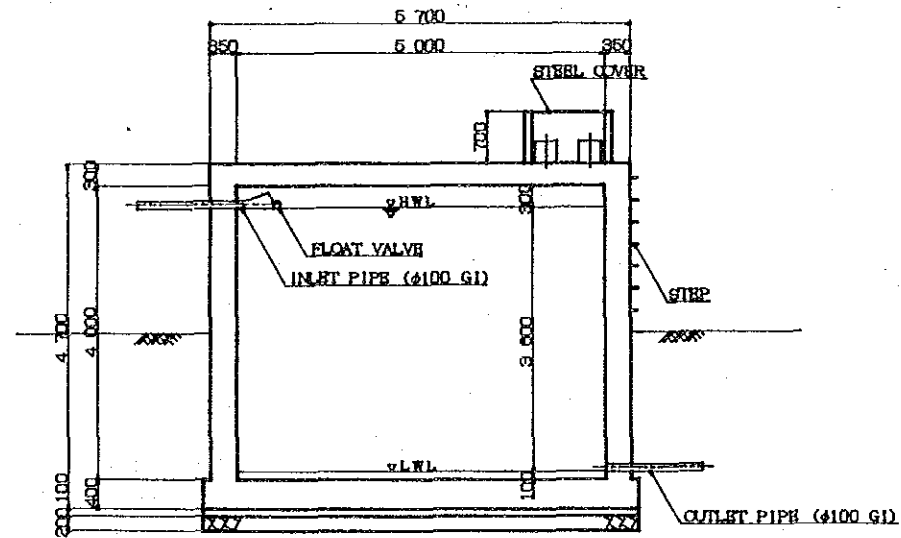
SECTION C-C



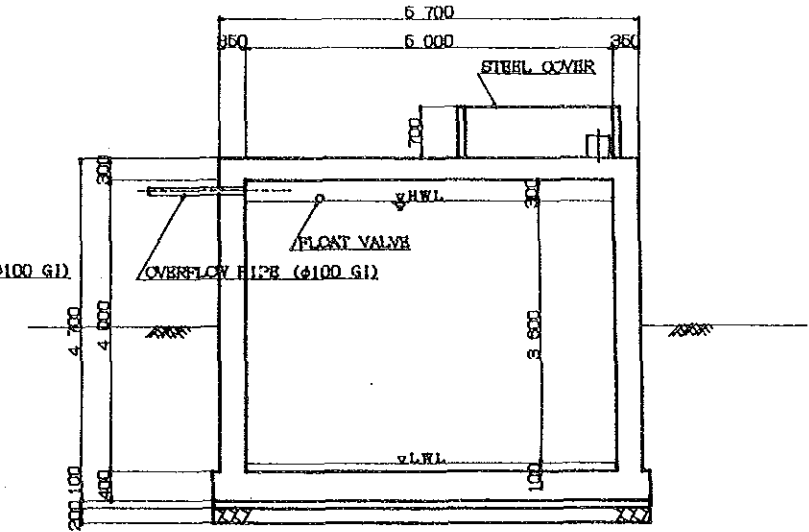
PLAN



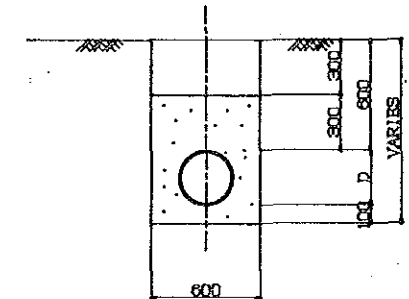
SECTION D-D



SECTION E-E



TYPICAL CROSS SECTION OF PIPELINE s = 1:20

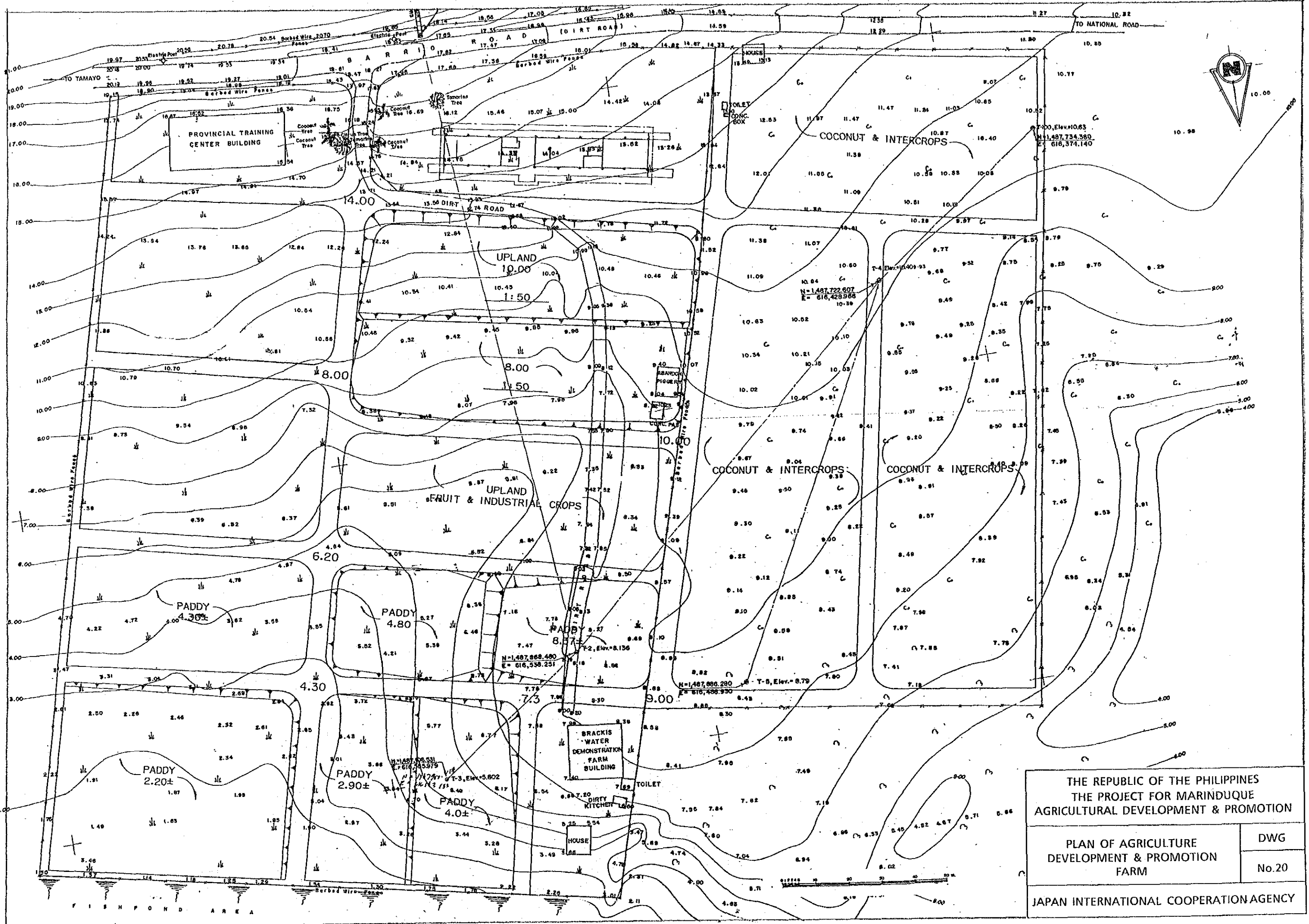


THE REPUBLIC OF THE PHILIPPINES
THE PROJECT FOR MARINDUQUE
AGRICULTURAL DEVELOPMENT & PROMOTION

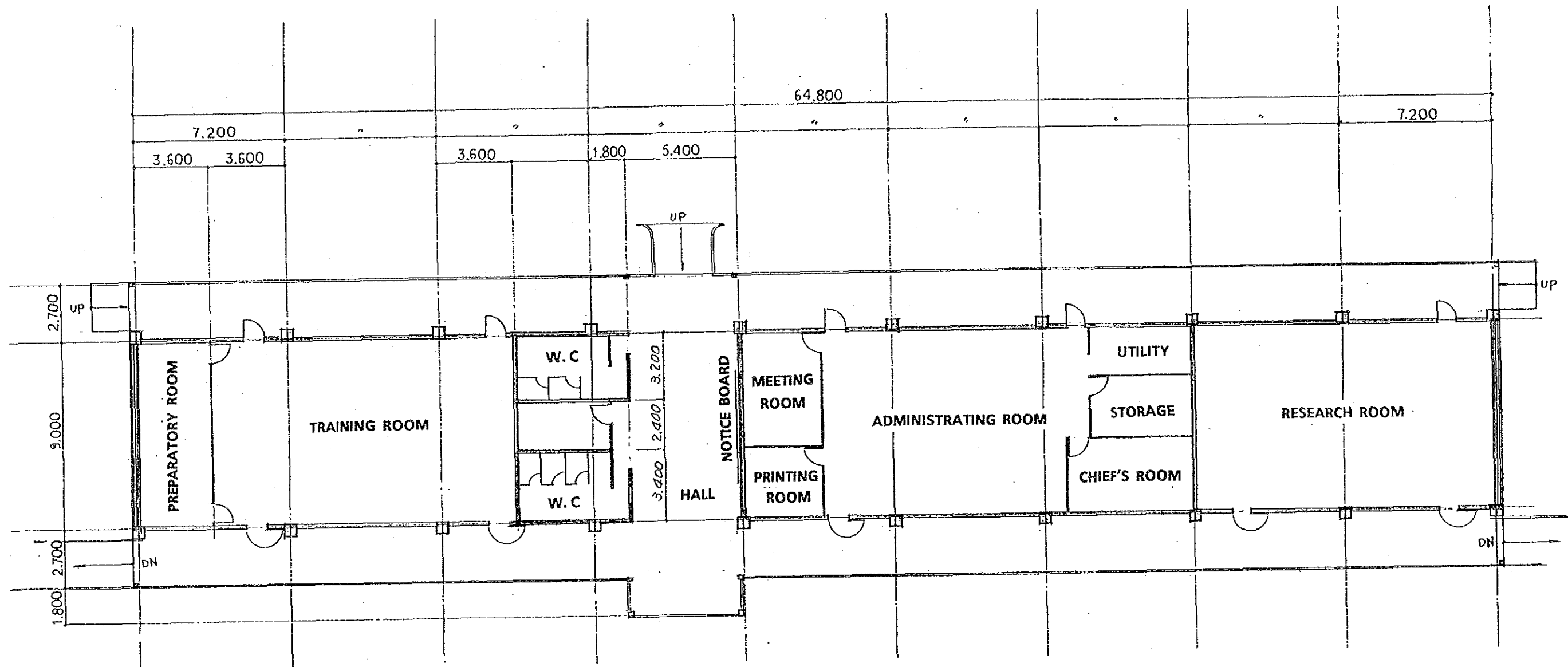
INTAKE & DISINFECTION FACILITY
OF WATER WORKS

DWG
No.19

JAPAN INTERNATIONAL COOPERATION AGENCY



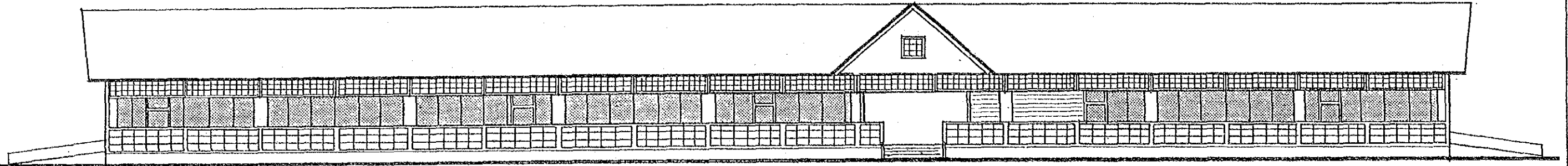
THE REPUBLIC OF THE PHILIPPINES THE PROJECT FOR MARINDUQUE AGRICULTURAL DEVELOPMENT & PROMOTION	
PLAN OF AGRICULTURE DEVELOPMENT & PROMOTION FARM	DWG No.20
JAPAN INTERNATIONAL COOPERATION AGENCY	



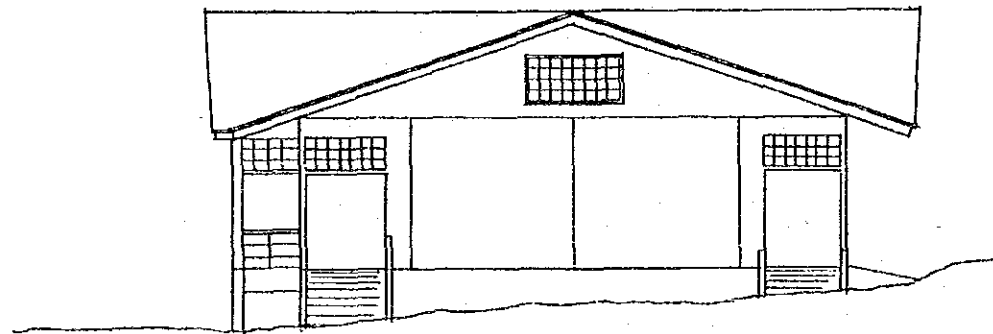
PLAN OF ADMINISTRATION BUILDING

S = 1 : 200

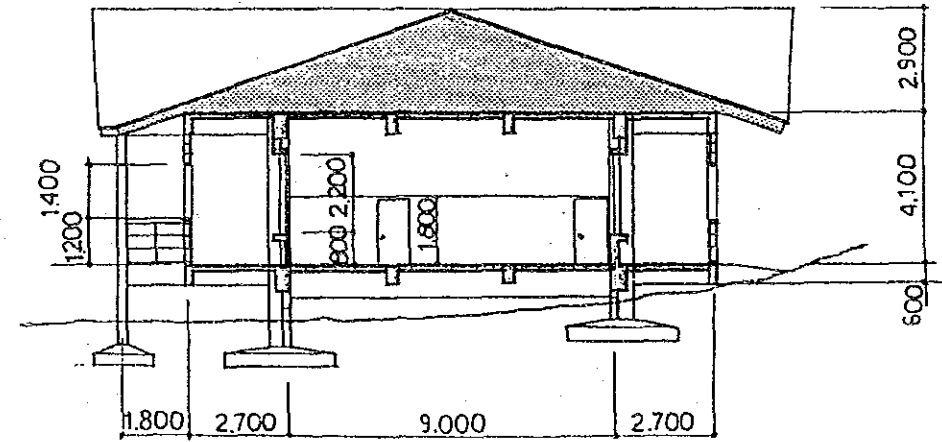
THE REPUBLIC OF THE PHILIPPINES THE PROJECT FOR MARINDUQUE AGRICULTURAL DEVELOPMENT & PROMOTION	
TRAINING & ADMINISTRATION BUILDING (1)	DWG No.21
JAPAN INTERNATIONAL COOPERATION AGENCY	



SOUTH ELEVATION



WEST ELEVATION



SECTION

ADMINISTRATION BUILDING

S = 1 : 200

THE REPUBLIC OF THE PHILIPPINES THE PROJECT FOR MARINDUQUE AGRICULTURAL DEVELOPMENT & PROMOTION	
TRAINING & ADMINISTRATION BUILDING (2)	DWG No.22
JAPAN INTERNATIONAL COOPERATION AGENCY	

JICA