

### 5.1.8 Recognition of Present Problems

At the moment, Hydrological Section of DWA recognizes the following problems in improving the present situation of hydrological observation.

#### 1) Training

The hydrological section would like to update all the rating curves, and to improve the collecting system of hydrological data. To achieve this, it is necessary to give staff training both in-house and institutionally etc.

#### 2) Transportation

At present, there are only two vehicles available for hydrological observation in the whole area of Zambia. This makes it practically impossible to get good discharge data. One vehicle is essential at each regional hydrological office, and three (3) vehicles at the headquarters for hydrological observation. The types of vehicle should be 4-Wheel Drive truck and wagon, vanettes and station, complete with double fuel tanks and winches.

#### 3) Extensive Flow Measurement

The frequency of flow measurement has decreased recently due to budgetary conditions, lack of transport and so on. However, it is desirable to execute the program for extensive discharge data collection for at least two (2) years although five (5) years would be preferred. This will allow the rating curves to be updated or checked.

#### 4) Maintenance of Equipment

It is necessary to improve the present situation as far as observation equipment is concerned. Sufficient equipment for flow measurement with spare parts should be provided to all hydrological offices. It is also impossible to repair or calibrate the equipment due to lack of skilled mechanical staff.

### 5.2 Master Plan for Hydrologic Observation

Through the Study, JICA Study Team has recognized that the activities of hydrological observation should be greater. To improve the present activities of hydrological observation in Zambia, we proposed a Plan as described below.

In preparation of the plan, we employed the realizable methods but ideal ones. With some input and modification of the present system according to the proposed plan, the hydrological observation system in Zambia will work more effectively.

### 5.2.1 General

#### (1) Objectives

##### <Objective of Plan>

The objective of this Master Plan is to facilitate the effective execution of hydrological observation in Zambia by clarifying the activities and organization. The targets of hydrological observation specified in this Master Plan are to obtain river water data such as water level and discharge throughout Zambia on regular basis, and to store these processing data for the use of river water resources development.

Water resources development brings various benefits such as supply of drinking water and industrial water, generation of hydroelectric power, flood control and so on. Moreover, through water resources development, the essential items for living are conserved such as groundwater (closely related to the river water), environment (becoming a serious matter from a global view point) and water quality (important for drinking). The essential data for preparation of plan for such development is hydrological data observed continuously for the long period.

#### (2) Contents

The Master Plan discusses the following four (4) items.

- 1) Activities
- 2) Organization
- 3) Observation frequency
- 4) Observation stations

The contents of each item are the standard for hydrological observation and related work. The contents of the Master Plan will be modified according to the social and technical conditions if necessary.

#### (3) Application

This Master Plan is employed in the Hydrological Section, DWA and applied to the regular work of hydrological observation.

### 5.2.2 Activities

The work of hydrological observation comprises the following activities:

- 1) Hydrological Observation
  - Observation of river water level
  - Measurement of discharge
  - Sediment Sampling and Analysis
  - River Water Quality
  - Others (according to request of other authorities)
- 2) Data processing and archiving

- 3) Basic hydrological analysis
- 4) Maintenance of equipment and station
- 5) Training
- 6) Reporting
  - This year's actual activity
  - Next year's activity plan
- 7) Publication of Hydrological Year Book

#### (1) Hydrological Observation

##### (1-1) Observation of River Water Level

To collect continuous river water level data, daily river water level should be observed at the stations registered by DWA.

Daily observations are done two (2) times a day, in morning and in evening. The average of these two observations is recorded as a daily water level. These observations are done by the observer living near the station and employed by DWA. At the stations where a water level recorder is installed, the river water level recording is obtained.

These observed water level data is converted into discharge using the discharge rating curve established with flow measurement data.

##### (1-2) Measurement of Discharge

To establish the discharge rating curve, flow measurements should be carried out regularly at the selected hydrometric station.

In one measurement, one relationship between a water level and a discharge is obtained. To get reliable rating curve, measurement should cover the full range of water levels and discharges as much as possible. In case of the river where the river bed fluctuation is small, the established rating curve will be used long term with annual checking and with few measurements. In case of remarkable fluctuation of the river bed, the rating curve should be modified with many measurements. The regular flow measurement is carried out by the team belonging to the Regional Hydrological Office.

##### (1-3) Sediment Sampling and Analysis

To establish the sediment discharge rating curve, the sediment sampling and analysis should be carried out at the selected hydrometric stations.

The river flow carries sediments, generally in three types of form: 1) bed-material Load 2) suspended load and 3) wash load. These analyses clarify the relationship between the discharge and the transport sediment amount consisting of suspended load and wash load. The regular sampling and analysis are carried out by the team belonging to the Regional Hydrological Office.

## **(2) Data Processing and Archiving**

The observed data, such as river water level and flow measurement data should be processed and stored at the offices concerned. The Regional Hydrological Office should keep the original data and send copies to the Hydrological Section of Headquarter DWA. The DWA Hydrological Section should process all the data sent from the regional offices and store all the processed data. The main items of data processing are as follows.

- Daily river water level
- Hourly river water level
- Flow measurement data
- Sediment sampling and analysis data

## **(3) Basic Hydrological Analysis**

The following analyses will be done at the DWA Hydrological Section using computer.

- Preparation of discharge rating curve
- Preparation of sediment discharge rating curve
- Calculation of discharge by station
- Calculation of annual flow regime by station
- Calculation of annual river flow in main channels

## **(4) Maintenance of Equipment and Station**

All the equipment used for observation and hydrometric stations shall be maintained by each Regional Hydrological Office.

## **(5) Training**

To maintain and improve the hydrological observation, the DWA Hydrological Section is responsible for training given to the staff inside the section and to staff in the Regional Hydrological Office. The training to gauge readers is given by the Regional Hydrological Office.

## **(6) Reporting**

### **(6-1) Activity Results for The Current Year**

The Regional Hydrological Office shall report the annual activities to DWA Hydrological Section. DWA Hydrological Section shall report the annual activities including the result of hydrological analysis.

### **(6-2) Activity Plan for The Following Year**

To arrange and settle the budgetary condition for hydrological observation, the DWA Hydrological Section and each Regional Hydrological Office shall prepare the following year's activity plan. The Hydrological Section shall compile the plans sent from the Regional Hydrological Office and report them to the DWA Headquarter.

## **(7) Publication of Hydrological Year Book**

All the observation data and analysis results in a fiscal year should be published in the Hydrological Year Book. DWA Headquarters is responsible for this publication. The material for this book is prepared by the DWA Hydrological Section.

### **5.2.3 Organization**

#### **(1) General Organization**

DWA is responsible for hydrological observation in Zambia. In DWA, Hydrological Section has substantial responsibility for hydrological observation. The principal hydrologist heads the Hydrological Section. The Regional Hydrological Offices, belonging to DWA Provincial Offices, execute actual field observation in each Province. The Regional Hydrological Officer heads this office. The activities of this office are coordinated and supervised by the DWA Hydrological Section. The gauge readers belong to each Regional Hydrological Office. Refer to Fig.-5.2.

#### **(2) Responsibilities of Organization and Staff**

The responsibilities of the organization and staff regarding hydrological observation are summarized as follows. Details are referred to Table-5.5. The main responsibilities regarding hydrological observation are summarized as follows. (Refer to Fig.-5.3)

##### **<DWA Headquarter>**

- Approval of Annual Activities Plan
- Approval of Annual Activities Report
- Publication of Hydrological Year Book

##### **<DWA Hydrological Section>**

- Preparation of General Annual Activities Plan
- Supervision in Hydrological Observation
- Data Processing and Archiving
- Basic Hydrological Analysis
- Training for Hydrological Observation
- Reporting of Annual Activities including Observed Data and Analysis Results

##### **<Regional Hydrological Office>**

- Preparation of Regional Annual Activities Plan
- Measurement of Discharge
- Sediment Sampling and Analysis
- Maintenance of Equipment and Stations
- Reporting of Activities
- Observation of River Water Level by Gauge Reader

#### **(3) Number of Staff**

To fulfill the responsibilities of each organization the necessary number of main staff is as follows. Refer to Table-5.5.

<DWA Hydrological Section>

- Section Leader (Principal Hydrologist)
- Sub Section Leader (Officer in Charge)
- 3 (three) Hydrologists
- 8 (eight) Technical Staffs
- 1 (one) Water Quality Specialist
- 1 (one) Assistant of Water Quality Specialist

<Regional Hydrological Office>

- 8 (eight) Assistants for Hydrologist
- Gauge Reader

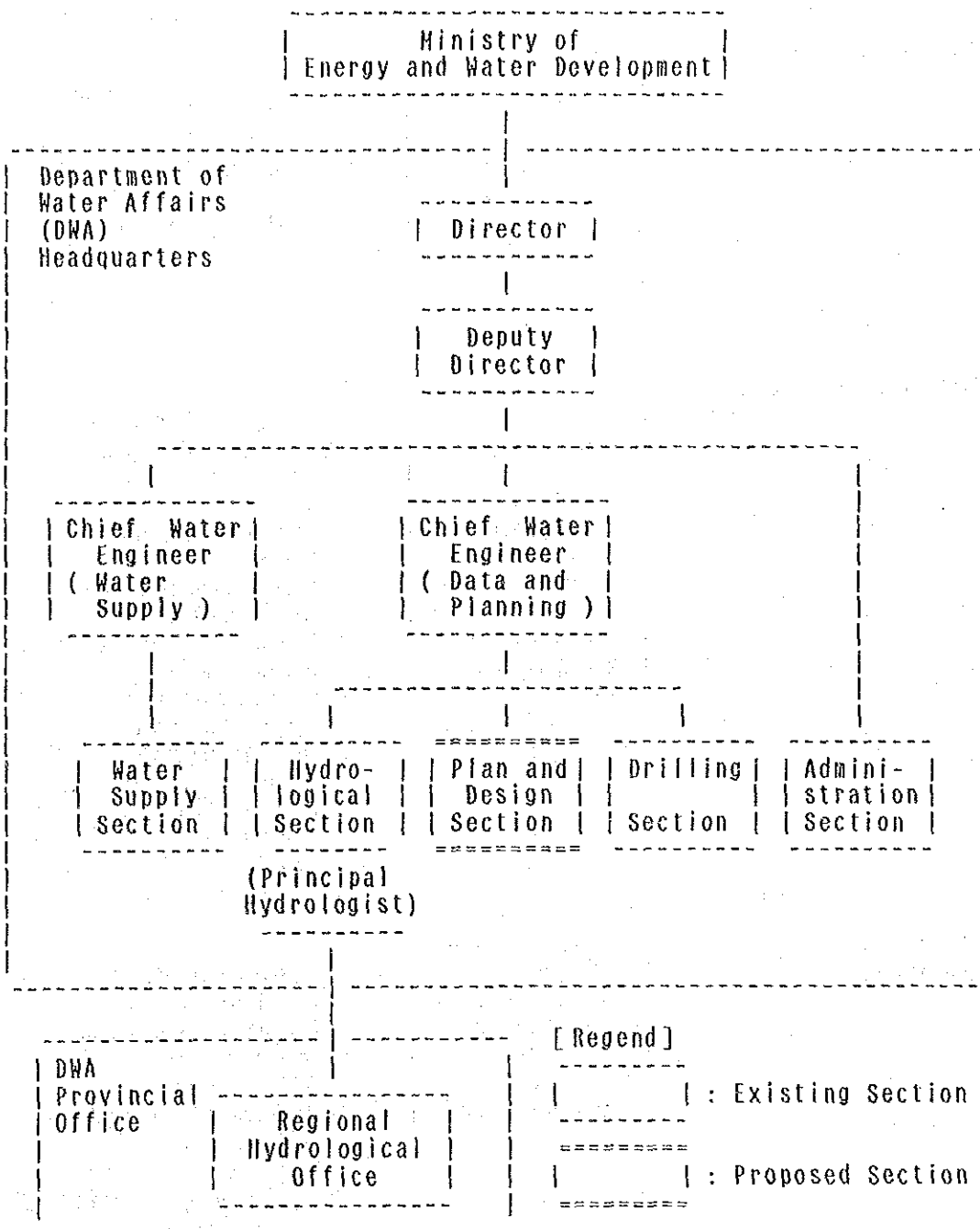
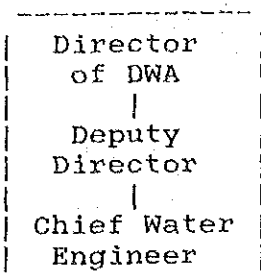


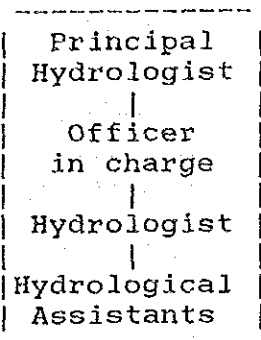
Fig.-5.2 General Organization for Hydrological Observation

<DWA Headquarter>



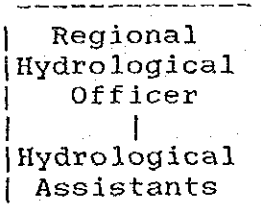
- \* Approval of Annual Activities Plan
- \* Approval of Annual Activities Report
- \* Publication of Hydrological Year Book

<DWA Hydrological Section>

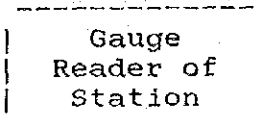


- \* Preparation of General Annual Activities Plan
- \* Supervision in Hydrological Observation
- \* Data Processing and Archiving
- \* Basic Hydrological Analysis
- \* Training for Hydrological Observation
- \* Reporting of Annual Activities including Observed Data & Analysis Results

<Regional Hydrological Office >



- \* Preparation of Regional Annual Activities Plan
- \* Measurement of Discharge
- \* Sediment Sampling & Analysis
- \* Maintenance of Equipment & Stations
- \* Reporting of Activities



- \* Observation of River Water Level

Fig.-5.3 Responsibilities of Organization



Table-5.5 Responsibilities of Organization and Staff

Organization and Staff	Num. of Staff		Responsibilities
	Plan	Now	
<Dep/Water Affairs>			Approval of Annual Report & Plan
<Hydrological Section >			(a) Preparation of Annual Plan (b) Guidance of Hydrologic Observation (c) Water Quality Investigation (d) Data Processing and Archiving (e) Basic Hydrologic Analysis (f) Training for Hydrologic Observation (g) Prepa. of Annual Activities Report (h) Publication of Hydro. Year Book
(1) Prinsipal Hydrologist	1	1	- General Supervision - Finalization of Annual Plan & Report
(2) Officer in Charge	1	1	- Prepa. of Annual Plan and Report - Supervision of Hydrologic Analysis
(3) Hydrologist	5	3	- Execution of Hydrologic Analysis - Supervision of hydro. observation
(4) Assistant for Hydrologist	10	8	- Data Processing and Archiving - Assistance for hydrologist
(5) W/Quality Spec.	1	1	- Plan/Execution/Report of W/Q/Invest.
(6) Assistant for(5)	1	1	- Assistance for W/Quality Specialist
<Regional Hydrological Offices>			(a) Prepa. of Annual Activity Plan (b) Observation of Daily Water Level (c) Discharge Measurement (d) Sediment Sampling Analysis (e) Water Quality Investigation (f) Maintenance of Equipment & Stations (g) Prepa. of Annual Activity Report
(1) Hydrologist	8	0	- Prepa. of Annual Plan and Report - Discharge Measurement - Sediment Sampling and Analysis - Maintenance of Equipment & Stations
(2) Assistant	16	8	- Assistance for Hydrologist
(3) Gauge Reader	1 / Station		- Observation of Daily Water Level
<Plan & Design Section > (For reference)			(a) Prepa. of Annual Plan and Report (b) Investigation of W/Resources Dev. (c) Planning of W/Respurces Development
(1) Section Chief	1	-	- Supervision of Invest. and Planning - Prepa. of Annual Plan and Report
(2) Engineer	1	-	- Investigation of W/Resources Dev. - Planning of W/Respurces Development
(4) Assistant	2	-	- Assistance for Engineer

## 5.2.4 Frequency of Observation

### (1) Frequency of River Water Level Gauging

In principal, the daily gauging of the river water level is done at all the stations registered by DWA. Daily observations are done two (2) times a day, in morning and in evening. The average of these two data is recorded as a daily water level. The recording of river water level is executed, in principal, during the rainy season (from December to May).

### (2) Frequency of Flow Measurement

The flow measurement is done at all the stations where it is necessary to know flow discharge. In principle, the frequency of flow measurement at each station is twice a year (once in wet season, once in dry season). To execute effective measurements with the limited budget, the frequency of measurements will be decided on the basis of the standard shown in Table-5.6 and classified by the importance of station. Refer to Table-5.7. The list of flow measurement frequency by stations are referred to Supplement-5.3.

Table-5.6 Frequency of Flow Measurement

Classification	Minimum Frequency	Standard Frequency
Class - A	Twice / Year	Twice / Year
Class - B	Once / Year	(Once / wet season) (Once / dry season)
Class - C	Once / 2 years	
Class - D	Closed at the moment	

### (3) Frequency of Sediment Sampling and Analysis

The sediment sampling and analysis are done at the stations selected among the registered stations and other points. The sediment sampling and analysis are executed at the time of flow measurement with the same frequency of flow measurement.

### (4) Frequency of Water Quality Investigation

#### <Investigation by Regional Hydrological Office>

This investigation is carried out twice a year (in wet and dry seasons) by the observation team at the hydrometric stations of Class A belonging to the Office and the other problematic points.

#### <Investigation by Hydrological Section>

This investigation is carried out twice a year (in wet and dry seasons) by the water quality investigation team belonging to the

Hydrological Section in Lusaka at all the hydrometric stations of Class A in Zambia.

### 5.2.5 Classification of Hydrometric Stations

The hydrometric stations covered by this plan are all the stations registered in DWA, belonging to each of the Regional Hydrological Offices and are specified as follows. (Refer to Supplement-5.5)

- 1) Station No. and Name
- 2) Regional Hydrological Office in Charge
- 3) Observation Items
  - Daily water level : (all stations)
  - Recording water level : Yes or No
  - Flow measurement : Yes or No
  - Sediment sampling and analysis: Yes or No
  - Water quality : Yes or No
  - Others (meteorology etc.) : Yes or No
- 4) Classification : A or B or C or D

The classification of station is decided according to the importance of station in view point of discharge calculation, availability of rating curve and number of discharge measurement, as shown in Table-5.7.

The Class-A station is an important station to know the discharge of main stream channel. At this Class-A station, periodic measurements of discharge, sediment and water quality besides daily water level observation should be executed.

When the Class-D station, temporally closed at the moment, re-opens, the classification for this stations should be done according to the standard shown in Table-5.7. In Table-5.8 the numbers of stations for each Regional Hydrological Office are shown.

Table-5.7 Classification of Hydrometric Stations

Evaluation	Items	Score	Standard of Classification
Class of River	Main	0	<Class-A>: Main channel and operational
	Sub	1	
	Local	2	
Operation	Open	0	<Class-B>: Total score = 0, 1, 2
	Close	1	
Availability of Rating Curve	No	0	<Class-C>: Total score = 3, 4
	Yes	1	
Number of Discharge Measurement	Few	0	<Class-D>: Closed station at the moment
	Many	1	

Table-5.8 Number of Hydrometric Stations

Regional Hydrological Office	Total	Auto. Recording	Flow Measurement	* Sedi. & Water Quality	Classification			
					A	B	C	D
1) Lusaka	33	1	20	2	2	9	9	13
2) Copperbelt	33	3	16	4	4	4	8	17
3) N/Western	36	0	15	2	2	1	12	21
4) Western	17	0	11	2	2	5	4	6
5) Southern	35	2	11	2	2	5	4	24
6) Eastern	20	0	18	4	3	10	5	2
7) Northern	34	0	31	2	2	8	21	3
8) Luapula	35	0	24	2	2	8	14	11
[Total]	243	6	146	19	19	50	77	97

[Note] \* The number shows the number of hydrometric stations for sediment sampling and water quality test, it does not include the number of other measurement points.

The results of classification for flow measurement by the river basin can be summarized as shown in Table-5.9. Details are referred to Supplement-5.4.

Table-5.9 (1) Results of Classification for Flow Measurement

&lt;&lt; Zambezi River Basin &gt;&gt;

(1/2)

NO	Station No.	Name of River	Location Name	R/H Office	S C O R E				Priority	
					(1)	(2)	(3)	(4) Total		
1	1-040	Luinga	Ikelenge	N-Western	1	0	1	1	3	C
2	1-080	Zambezi	Kaleni Hill R/D	N-Western	0	0	1	1	2	B
3	1-100	Zambezi	Cholose	N-Western	0	1	0	0	1	D
4	1-105	Zambezi	Chavuma Falls	N-Western	0	0	1	1	2	A
5	1-130	Lunkunyi	Lunkunyi school	N-Western	2	1	1	1	5	D
6	1-135	Makonde	Chief Nyakulenga	N-Western	2	1	0	0	3	D
7	1-138	Makonde	Dipalata Mission	N-Western	2	1	1	1	5	D
8	1-141	Lunyiwu	Kakeki School	N-Western	2	1	0	1	4	D
9	1-143	Lunyiwu	Dipalata School	N-Western	2	1	1	1	5	D
10	1-145	Makonde	Chivatu Village	N-Western	2	1	1	1	5	D
11	1-150	Zambezi	Zambezi Pump House	N-Western	0	0	1	1	2	A
12	1-205	Kabompo	Solwezi-Mwinilunga R/B	N-Western	1	0	1	1	3	C
13	1-305	W/Luwana	Solwezi-Mwinilunga R/B	N-Western	2	0	1	1	4	C
14	1-310	Mwombezhi	Solwezi-Mwinilunga R/B	N-Western	2	0	1	1	4	C
15	1-313	Chimiwonga	Luwana	N-Western	2	1	1	1	5	D
16	1-314	E/Luwana	Luwana Camp	N-Western	2	1	0	1	4	D
17	1-315	E/Luwana	Solwezi-Mwinilunga R/B	N-Western	2	1	1	1	5	D
18	1-425	Luakela	Sachibondo	N-Western	2	0	1	1	4	C
19	1-430	W/lunga	Mwinilunga	N-Western	2	1	1	1	5	D
20	1-610	Kabompo	Manyinga R/B	N-Western	1	0	1	1	3	C
21	1-630	Manyinga	Manyinga	N-Western	2	0	0	1	3	C
22	1-650	Kabompo	Kabompo Boma	N-Western	1	0	1	1	3	C
23	1-660	Chikonkwelo	Kashina Village	N-Western	2	1	0	0	3	D
24	1-670	Kabompo	Kabompo Old Pontoon	N-Western	1	1	0	1	3	D
25	1-690	Dongwe	Dongwe	N-Western	2	1	0	0	3	D
26	1-950	Kabompo	Watopa Pontoon	N-Western	1	0	1	1	3	C
27	1-970	Mumbeji	Kabompo-Mwinilunga R/B	N-Western	2	1	0	0	3	D
28	2-020	Lungwebungu	Siakasumbi	N-Western	1	1	0	0	2	D
29	2-030	Zambezi	Lukulu	Western	0	0	1	1	2	A
30	2-120	Luena	Longwe	Western	1	1	0	0	2	D
31	2-123	Luena	Kaoma-Kasempa R/B	Western	1	0	0	0	1	B
32	2-130	Luampa	Njenga School	Western	2	1	0	1	4	D
33	2-150	Luena	Kasambamezi (Hydro.site)	Western	1	0	1	1	3	C
34	2-200	Zambezi	Likapai	Western	0	1	0	0	1	D
35	2-250	Luanginga	Kalabo	Western	1	0	1	1	3	C
36	2-270	Luambimba	Sishekanu	Western	2	0	0	0	2	B
37	2-310	Sikolongo	near zambezi Riv.	Western	2	0	0	0	2	B
38	2-320	Namitome	Namitome	Western	2	0	1	1	4	C
39	2-330	L/Zambezi	Matonga Platform	Western	2	0	0	0	2	B
40	2-340	Sefula	Sefula R/B	Western	2	0	0	1	3	C

[NOTE] Score(1) : Classification of Channel, Score(2) : Operational  
 Score(3) : Availability of H-Q Curve, Score(4) : Number of Flow Mea.

Table-5.9 (2) Results of Classification for Flow Measurement

&lt;&lt; Zambezi River Basin &gt;&gt;

(2/2)

NO	Station No.	Name of River	Location Name	R/H Office	S C O R E				Priority	
					(1)	(2)	(3)	(4) Total		
41	2-350	Nalolo Canal	Nalolo	Western	2	1	0	0	3	D
42	2-360	Kataba	Siandi R/B	Western	2	1	1	1	5	D
43	2-400	Zambezi	Senanga	Western	0	0	1	1	2	A
44	2-450	Lueti/s	Lueti Pontoon	Western	2	0	0	0	2	B
45	2-475	Lui	Luatambo School	Western	2	1	1	1	5	D
46	2-700	Zambezi	Sesheke	Southern	0	0	0	0	0	A
47	2-990	Zambezi	Mambova Harbour	Southern	0	1	0	0	1	D
48	3-050	Zambezi	Livingstone Pump House	Southern	0	0	0	0	0	A
49	3-120	Kalomo	William's Dam	Southern	2	0	0	0	2	B
50	3-130	Kalomo	Kalomo Dam site	Southern	2	1	0	1	4	D
51	3-335	Muzuma	Mwezia school	Southern	2	0	1	1	4	C
52	3-350	Kazinze	Sinak-sikile R/B	Southern	2	0	0	1	3	C
53	3-370	Nangombe	Tobontes's Village	Southern	2	0	1	1	4	C
54	3-375	Lake kariba	Chiyabi	Southern	2	0	0	0	2	B
55	3-380	Lake Kariba	Sikolwenzala Hills	Southern	2	1	0	0	3	D
56	3-950	Zambezi	Lusitu Pump House	Southern	0	1	0	0	1	D
57	3-980	Zambezi	Chirundu R/B	Southern	0	1	1	0	2	D
58	5-012	Chongwe	Chongwe North	Lusaka	2	0	0	1	3	C
59	5-016	Ngwerere	Ngwerere Estate Weir	Lusaka	2	0	0	1	3	C
60	5-024	Chongwe	Chongwe-Ngwerere Conflu	Lusaka	2	0	0	1	3	C
61	5-025	Chongwe	Chongwe(G.E.R.) Bridge	Lusaka	2	0	1	1	4	C
62	5-029	Chalimbana	Romar Farm	Lusaka	2	0	0	1	3	C
63	5-030	Kapiriombwa	Exchange Farm	Lusaka	2	0	0	1	3	C
64	5-099	Zambezi	Feira Boma	Lusaka	0	0	0	0	0	A

[NOTE] Score(1) : Classification of Channel, Score(2) : Operational  
 Score(3) : Availability of H-Q Curve, Score(4) : Number of Flow Mea.

Table-5.9 (3) Results of Classification for Flow Measurement

&lt;&lt; Kafue River Basin &gt;&gt;

(1/3)

NO	Station No.	Name of River	Location Name	R/H Office	S C O R E				Priority	
					(1)	(2)	(3)	(4) Total		
1	4-005	Kafue / Kipushi		Lusaka	0	0	0	1	1	B
2	4-015	Muchindamu / Muchindamu		Lusaka	2	0	0	1	3	C
3	4-040	Kafue / Ngosa Farm		Copperbelt	0	1	0	1	2	D
4	4-050	Kafue / Raglan Farm		Copperbelt	0	0	1	1	2	A
5	4-060	Kafue / Chililabombwe		Copperbelt	0	1	0	1	2	D
6	4-090	Kafue / Kafironda		Copperbelt	0	0	1	1	2	B
7	4-095	Kafironda / Kafironda		Copperbelt	2	1	1	1	5	D
8	4-100	Mutundu / Mutundu		Copperbelt	2	0	1	1	4	C
9	4-120	Mwambashi / Mwambashi		Copperbelt	2	0	1	1	4	C
10	4-130	Kafue / Smith's Bridge		Copperbelt	0	0	1	1	2	A
11	4-150	Kafue / Wusakile Bridge		Copperbelt	0	0	1	1	2	B
12	4-152	Kamfinsa / Kamfinsa		Copperbelt	2	1	1	1	5	D
13	4-170	Baluba / Baluba		Copperbelt	2	1	1	1	5	D
14	4-180	Chapula / St. Joseph's Mission		Copperbelt	2	1	1	1	5	D
15	4-200	Kafue / Mpatamato		Copperbelt	0	0	1	1	2	A
16	4-205	Kafulafuta / Ibenga Mission		Copperbelt	2	0	1	1	4	C
17	4-210	Kafubu / Itawa-Dambo		Copperbelt	2	1	1	1	5	D
18	4-239	Munkulungwe / Kaposi		Copperbelt	2	1	1	1	5	D
19	4-240	Kafubu / Fisenga		Copperbelt	2	1	0	1	4	D
20	4-245	Kafubu / Masaiti R/B		Copperbelt	2	0	1	1	4	C
21	4-250	Kafulafuta / Miputu Hills		Copperbelt	2	0	1	1	4	C
22	4-260	Kafue / Ndubeni		Copperbelt	0	0	1	1	2	B
23	4-265	Lufwanyama / Muteba		Copperbelt	2	1	0	1	4	D
24	4-266	Mpopo / Mpopo School		Copperbelt	2	1	1	1	5	D
25	4-267	Lufwanyama / Mpopo School		Copperbelt	2	1	0	1	4	D
26	4-268	Katembula / Katembula		Copperbelt	2	1	0	1	4	D
27	4-272	Lufwanyama / Kanakila		Copperbelt	2	1	1	1	5	D
28	4-280	Kafue / Machiya Ferry		Copperbelt	0	0	1	1	2	B
29	4-281	Impumpu / Machiya		Copperbelt	2	0	1	1	4	C
30	4-302	Luswishi / Lwendo		Copperbelt	1	0	1	1	3	C
31	4-310	Luswishi / Kilundu		Copperbelt	1	1	1	1	4	D
32	4-340	Luswishi / Kangondi		Copperbelt	1	1	1	1	4	D
33	4-350	Kafue / Chilenga		Copperbelt	0	0	1	1	2	A
34	4-375	Lukanda / Chikanda		Lusaka	2	0	0	0	2	B
35	4-390	Lukanga Swamp / Chilwa Island		Lusaka	2	1	0	0	3	D
36	4-400	Lukanga Swamp / Twenty Village		Lusaka	2	0	0	0	2	B
37	4-435	Kafue / Mwebi		Lusaka	0	0	0	1	1	B
38	4-450	Kafue / Lubungu		Lusaka	0	0	1	1	2	B
39	4-460	Lunga / Konikombe Hills		N-Western	1	1	1	1	4	D
40	4-500	Mutanda / Mutanda Mission		N-Western	2	1	1	1	5	D

[NOTE] Score(1) : Classification of Channel, Score(2) : Operational  
 Score(3) : Availability of H-Q Curve, Score(4) : Number of Flow Mea.

Table-5.9 (4) Results of Classification for Flow Measurement

&lt;&lt; Kafue River Basin &gt;&gt;

(2/3)

NO	Station No.	Name of River	Location Name	R/H Office	S C O R E				Priority	
					(1)	(2)	(3)	(4) Total		
41	4-505	Solwezi / Solwezi		N-Western	2	1	1	1	5	D
42	4-510	Lunga / Mujimanzovu		N-Western	1	1	1	1	4	D
43	4-515	Chifubwa / Solwezi Road		N-Western	2	1	0	1	4	D
44	4-550	Lunga / Kelongwa School		N-Western	1	0	1	1	3	C
45	4-560	Lunga / Chifumpa Pontoon		N-Western	1	0	1	1	3	C
46	4-595	Lunga / Kasonso Mine		Lusaka	1	1	0	1	3	D
47	4-620	Lufupa / Kasempa pump House		N-Western	2	0	1	1	4	C
48	4-669	Kafue / Kafue Hook Bridge		Lusaka	0	0	1	1	2	A
49	4-670	Kafue / Kafue Hook Pontoon		Lusaka	0	1	0	1	2	D
50	4-675	Kafue / Chunga Camp		Lusaka	0	1	0	0	1	D
51	4-676	Kafue / Chunga Rapids		Lusaka	0	1	0	0	1	D
52	4-710	Kafue / Itezhi-Tezhi		Lusaka	0	0	0	1	1	B
53	4-750	Nanzila / Nanzila Mission		Southern	2	0	0	0	2	B
54	4-759	Kafue / Namwala Boma		Southern	0	0	0	0	0	B
55	4-760	Kafue / Namwala Pontoon		Southern	0	0	1	1	2	B
56	4-780	Kafue / Busangu Rapids		Copperbelt	0	1	0	0	1	D
57	4-790	Nansenga / Tepula		Lusaka	2	1	0	0	3	D
58	4-820	Munyeke / Mapanza R/B		Southern	2	1	0	0	3	D
59	4-821	Munyeke / Mapanza Mission		Southern	2	1	1	1	5	D
60	4-850	Mutama / Mutama rapids		Southern	2	1	1	1	5	D
61	4-880	Nangoma / Myooye Bridge		Lusaka	2	0	0	1	3	C
62	4-881	Nangoma / Muchabi		Lusaka	2	1	0	0	3	D
63	4-890	Kafue / Nyimba		Southern	0	1	1	1	3	D
64	4-907	Magoye / Railway Weir		Southern	2	1	0	0	3	D
65	4-915	Magoye / Chimbumbu's		Southern	2	1	1	1	5	D
66	4-918	Mwembeshi / Great North Road		Lusaka	2	0	0	0	2	B
67	4-930	Kabile / Chikoloma Hills		Lusaka	2	1	0	0	3	D
68	4-937	Mwembeshi / Lusaka- Mumbwa		Lusaka	2	1	1	1	5	D
69	4-938	Kafue / Luwato		Lusaka	0	1	0	0	1	D
70	4-940	Mwembeshi / Shibuyunji		Lusaka	2	0	1	1	4	C
71	4-941	Kaleya / Kaleya Dam Site		Southern	2	1	1	1	5	D
72	4-942	Kaleya / Water Valley Weir		Southern	2	1	0	0	3	D
73	4-943	Kaleya / Water Valley R/B		Southern	2	1	0	0	3	D
74	4-945	Kaleya / Avilion Weir		Southern	2	1	1	0	4	D
75	4-946	Kaleya / Avilion R/B		Southern	2	1	1	0	4	D
76	4-947	Kaleya / Mendham Weir		Southern	2	1	0	0	3	D
77	4-949	Kaleya / Kaleya R/B		Southern	2	1	1	0	4	D
78	4-950	Kaleya / Heal's Estate		Southern	2	1	1	1	5	D
79	4-952	Nakambala / Nakambala Upper Weir		Southern	2	1	0	0	3	D
80	4-953	Nakambala / Nakambala Lower Weir		Southern	2	1	0	0	3	D

[NOTE] Score(1) : Classification of Channel, Score(2) : Operational  
 Score(3) : Availability of H-Q Curve, Score(4) : Number of Flow Mea.



Table-5.9 (5) Results of Classification for Flow Measurement

<< Kafue River Basin >>

(3/3)

NO	Station No.	Name of River	Location Name	R/H Office	S C O R E				Priority	
					(1)	(2)	(3)	(4) Total		
81	4-955	Kafue / Cere's		Southern	0	1	0	1	2	D
82	4-958	Mazabuka / Uruaff Farm		Southern	2	0	1	1	4	C
83	4-960	Kafue / Kafue Polder		Southern	0	1	1	0	2	D
84	4-965	Nega-Nega / Nega- Nega		Southern	2	1	1	0	4	D
85	4-975	Kafue / Kafue Railway Bridge		Lusaka	0	0	0	1	1	B
86	4-977	Kafue / Kasaka		Lusaka	0	0	0	1	1	B
87	4-980	Kafue / Kafue Road Bridge		Lusaka	0	1	0	1	2	D
88	4-995	Kafue / Farowe		Lusaka	0	1	0	1	2	D
89	4-999	Kafue / Mafungozi		Lusaka	0	1	0	0	1	D

[NOTE] Score(1) : Classification of Channel, Score(2) : Operational  
 Score(3) : Availability of H-Q Curve, Score(4) : Number of Flow Mea.

<< Luangwa River Basin >>

(1/1)

NO	Station No.	Name of River	Location Name	R/H Office	S C O R E				Priority	
					(1)	(2)	(3)	(4) Total		
1	5-300	Luangwa / Mulopwe Village		Eastern	0	1	0	0	1	D
2	5-350	Lundazi / Lundazi Dam		Eastern	2	0	0	0	2	B
3	5-400	Lunamba / Lunamba Dam		Eastern	2	0	0	0	2	B
4	5-550	Koba / Koba Bridge		Eastern	2	0	0	0	2	B
5	5-554	Lutembwe / St Marry's Mission		Eastern	2	0	0	0	2	B
6	5-555	Lutembwe / Lutembwe weir		Eastern	2	0	1	1	4	C
7	5-557	M'sipazi / Chadidza RD BG		Eastern	2	0	0	0	2	B
8	5-558	Kova / Kova Drift D/S		Eastern	2	0	0	0	2	B
9	5-560	M'sipazi / Madzimoyo Quarry		Eastern	2	0	0	0	2	B
10	5-561	Lutembwe / Madzimoyo Bridge		Eastern	2	1	0	0	3	D
11	5-562	Makungwa / Great East RD BG		Eastern	2	0	1	1	4	C
12	5-563	Nsadzu / Nsadzu Dam		Eastern	2	0	0	0	2	B
13	5-564	Katete / Katete Boma		Eastern	2	0	1	1	4	C
14	5-650	Luangwa / M'fuwe		Eastern	0	0	1	1	2	A
15	5-670	Liswasi / Masase		Eastern	2	0	1	1	4	C
16	5-755	Chiweuwe / M'kushi Boma		Eastern	2	0	0	0	2	B
17	5-775	Mushiweuwe / Johnson's Farm		Eastern	2	0	0	0	2	B
18	5-800	Luangwa / Ndevu Camp		Eastern	0	0	1	1	2	A
19	5-815	Mulungushi / Great North RD BG		Eastern	2	0	1	1	4	C
20	5-940	Luangwa / Luangwa RD BG		Eastern	2	0	1	1	4	A
21	5-948	Rufunsa / Janeiro Village		Copperbelt	2	0	1	1	4	C

[NOTE] Score(1) : Classification of Channel, Score(2) : Operational  
 Score(3) : Availability of H-Q Curve, Score(4) : Number of Flow Mea.

Table-5.9 (6) Results of Classification for Flow Measurement

&lt;&lt; Chambeshi River Basin &gt;&gt;

(1/1)

NO	Station No.	Name of River	Location Name	R/H Office	S C O R E				Priority	
					(1)	(2)	(3)	(4)		Total
1	6-105	China / Senga Hill		Northern	2	1	0	1	4	D
2	6-130	Nakonde / Nakonde Dam Site		Northern	2	0	0	1	3	C
3	6-133	Kabulukutu / Chamfubu		Northern	2	0	0	1	3	C
4	6-135	Chamfubu / Conflu. with Kabulukutu		Northern	2	0	0	1	3	C
5	6-138	Kabulukutu / Ngoli Coffee Estate		Northern	2	0	0	0	2	B
6	6-140	Chambeshi / Chandaweyaya		Northern	0	0	0	1	1	B
7	6-145	Chambeshi / Mbesuma Ferry		Northern	0	0	0	1	1	B
8	6-160	Mansenke / Nansala Falls		Northern	2	0	0	1	3	C
9	6-170	Kalungwishi / Chunga Ranch		Northern	2	0	0	1	3	C
10	6-200	Chozi / Chozi		Northern	2	0	0	1	3	C
11	6-224	Mungu / Mungwi School		Northern	2	0	0	1	3	C
12	6-235	Kalung Bemba / Kalungu		Northern	2	0	0	1	3	C
13	6-242	Chimanabuwi / Chipoma Falls		Northern	2	0	0	1	3	C
14	6-250	Lubu / Mundu Brigde		Northern	2	0	0	1	3	C
15	6-275	Mansha / Shiwa Nganda		Northern	2	0	0	1	3	C
16	6-289	Chambeshi / Chambeshi Pontoon		Northern	0	0	0	1	1	A
17	6-290	Chambeshi / Chambeshi RD BG		Northern	0	1	0	1	2	D
18	6-330	Luombe / Chisimba Falls		Northern	1	0	0	1	2	B
19	6-335	Lukupa / Kateshi Coffee Estate		Northern	2	0	0	1	3	C
20	6-340	Milima / Milima		Northern	2	0	0	1	3	C
21	6-350	Lukulu / Kasama-Luwindu RD BG		Northern	2	1	0	1	4	D
22	6-370	Mulilasolo / Kasama		Northern	2	0	0	0	2	B
23	6-400	Chambeshi / Mbatu		Northern	0	0	0	0	0	A
24	6-480	Luwitikila / Luwtikila Falls		Northern	2	0	0	1	3	C
25	6-486	Luwitikila / Mpika RD BG		Northern	2	0	0	1	3	C
26	6-500	Kanchibya / Mpika-Kasama RD BG		Northern	2	0	0	1	3	C
27	6-510	Kachibya / Kopa Bridge		Northern	2	0	0	1	3	C

[NOTE] Score(1) : Classification of Channel, Score(2) : Operational  
Score(3) : Availability of H-Q Curve, Score(4) : Number of Flow Mea.

Table-5.9 (7) Results of Classification for Flow Measurement

&lt;&lt; Luapula River Basin &gt;&gt;

(1/1)

NO	Station No.	Name of River	Location Name	R/H Office	SCORE				Priority	
					(1)	(2)	(3)	(4) Total		
1	6-020	Lufubu/Green Water Falls	Luwingu	Luapula	2	0	0	1	3	C
2	6-040	Bangweulu Lake/Nsombo Harbour		Luapula	2	0	0	0	2	B
3	6-060	Luena/Luena Mission		Luapula	2	0	0	1	3	C
4	6-065	Bangweulu/Lake Muchinchi		Luapula	2	1	0	0	3	D
5	6-080	Bangweulu/Sanfya		Luapula	2	0	0	0	2	B
6	6-090	Bangweulu Lake/Mpata Point		Luapula	2	0	0	0	2	B
7	6-460	Bangweulu Swamps/Nsalushi Island		Luapula	2	1	0	0	3	D
8	6-465	Bangweulu Swamps/Mutwamina		Luapula	2	1	0	0	3	D
9	6-476	Bangweulu Swamps/Matongo		Luapula	2	0	0	0	2	B
10	6-520	Bangweulu Swamps/Kasoma		Luapula	2	0	0	0	2	B
11	6-525	Bangweulu Swamps/Kalimankonde		Luapula	2	1	0	0	3	D
12	6-665	Lwela/Chipota falls		Luapula	2	0	0	0	2	B
13	6-670	Luapula/Chembe Ferry		Luapula	0	0	1	1	2	A
14	6-700	Mansa/Mansa Pump House		Luapula	2	0	1	1	4	C
15	6-745	Luongo/Mukonshi		Luapula	1	0	1	1	3	C
16	6-750	Loungo/Mwenda-Kashiba RD BG		Luapula	1	0	1	1	3	C
17	6-760	Lufubu/Chibote Mission		Luapula	2	0	0	1	3	C
18	6-765	Lufubu/Chipili		Luapula	2	0	1	1	4	C
19	6-770	Loungo/Musonda Falls		Luapula	1	1	0	1	3	D
20	6-775	Luongo/Chibondo Pontoon		Luapula	1	1	0	1	3	D
21	6-785	Luapula/Kashiba		Luapula	0	0	1	1	2	A
22	6-790	Ngona/Ntumbachushi Falls		Luapula	2	0	0	1	3	C
23	6-800	Mweru Lake/Nchelenge		Luapula	2	1	0	0	3	D
24	6-855	Mutotoshi/Kapuma Falls		Luapula	2	0	1	1	4	C
25	6-860	Luangwa/Mumbuluma Falls		Luapula	2	0	1	1	4	C
26	6-865	Kalungwishi/Chimpempe Pontoon		Luapula	2	0	0	1	3	C
27	6-900	Kalungwishi/Olandi		Luapula	2	0	0	1	3	C
28	6-910	Chishela/Bulaya Pontoon		Luapula	2	0	0	1	3	C
29	6-915	Mwawe/Mwawe Cause Way		Luapula	2	1	0	0	3	D
30	6-920	Choma/Kaputa		Luapula	2	1	0	1	4	D
31	6-925	Mweru Wanitipa/Kampinda		Luapula	2	0	0	0	2	B
32	6-935	Mwambeshi/Nsama		Luapula	2	0	1	1	4	C
33	6-955	Mukubwe/Kambasa		Luapula	2	1	0	1	4	D
34	6-960	Mufuwe Dambo/Mukupu Latanoula		Luapula	2	1	0	0	3	D
35	6-980	Mweru Lake/Kafulwe Mission		Luapula	2	0	0	0	2	B

[NOTE] Score(1) : Classification of Channel, Score(2) : Operational  
 Score(3) : Availability of H-Q Curve, Score(4) : Number of Flow Mea.

Table-5.9 (8) Results of Classification for Flow Measurement

<< Tanganyika River Basin >>

(1/1)

NO Station No.	Name of River	Location Name	R/H Office	S C O R E				Priority	
				(1)	(2)	(3)	(4) Total		
1 7-005	Lunzua / Kambole Bridge		Northern	2	0	0	1	3	C
2 7-006	Lunzua / Lunzua Weir		Northern	2	0	0	1	3	C
3 7-010	Lake Tanganyika / Mpulungu		Northern	2	0	0	0	2	B
4 7-020	Lake Chila / Mbala		Northern	2	0	0	0	2	B
5 7-021	Luheche / Below Lake Chila		Northern	2	0	0	1	3	C
6 7-750	Lufubu / Keso Falls		Northern	2	0	0	1	3	C
7 7-800	Lake Tanganyika / Nsumbu Harbour		Northern	2	0	0	0	2	B

[NOTE] Score(1) : Classification of Channel, Score(2) : Operational  
 Score(3) : Availability of H-Q Curve, Score(4) : Number of Flow Mea.

SUPPLEMENT - 5.1

RAINFALL STATIONS IN ZAMBIA



LIST OF METEOROLOGICAL STATION IN ZAMBIA

NO	STATION NAME	CATCHMENT	LAT.	LONG.	FROM	TO
0010	CHIKOMA	ZAMBEZI	14/02'	32/52'	1958	CONT
0019	CHIMPINGA (WA)	ZAMBEZI	13/51'	32/51'	1955	1971
0039	CHADIZA AGRIC	ZAMBEZI	14/11'	32/38'	1968	CONT
0041	CHAMCHENGA DAM	ZAMBEZI	14/51'	32/25'	1982	CONT
0050	ZENBA TOBACCO HQ	ZAMBEZI	13/39'	32/18'	1972	CONT
0059	KAFIRI MPOSHI	ZAMBEZI	---	---	1981	1981
0066	KATEMBWE TOBACCO	ZAMBEZI	14/03'	32/19'	1970	CONT
0070	NSADZU	ZAMBEZI	14/04'	32/20'	1926	1973
0074	CHADIZA	ZAMBEZI	14/05'	32/24'	1951	1985
0080	TAPELANSONI	ZAMBEZI	---	---	1984	CONT
0110	KATEBE FOREST STATION	ZAMBEZI	14/11'	32/08'	1961	CONT
0120	KATEBE BOMA	ZAMBEZI	14/02'	32/03'	1950	CONT
0121	KATEBE (WA)	ZAMBEZI	14/02'	32/03'	1972	CONT
0130	NYANJE AGRIC	ZAMBEZI	---	---	1984	CONT
0160	NYANJE MISSION	ZAMBEZI	14/23'	31/38'	1938	1981
0165	CHANDOLA PLANTATION	ZAMBEZI	14/21'	31/46'	1968	1984
0168	CHILOWE PLANTATION	ZAMBEZI	14/20'	31/46'	1964	1980
0195	MWANJAWANTHU AGRIC	ZAMBEZI	14/38'	31/25'	1956	CONT
0200	FEIRA	LUANGWA	15/37'	30/25'	1916	CONT
0206	MPUKA AGRIC	LUANGWA	15/27'	30/21'	1971	1978
0214	RUFUNSA AGRIC	LUANGWA	15/06'	29/36'	1971	CONT
0216	RUFUNSA RURAL COUNCIL	LUANGWA	15/06'	29/37'	1971	1974
0220	MPANSHA MISSION	LUANGWA	15/07'	29/43'	1960	1974
0227	CHITOPHE AGRIC	LUANGWA	15/12'	30/14'	1971	1983
0230	KATONDE MISSION	LUANGWA	15/15'	30/15'	1925	CONT
0235	SHIKABETA AGRIC	LUANGWA	14/45'	29/43'	1981	1984
0250	LUANGWA BRIDGE	LUANGWA	14/59'	30/13'	1938	CONT
0255	KAPOCHE	LUANGWA	---	---	1985	CONT
0300	Z.F.D.S. EAST FOUR	LUANGWA	14/50'	29/07'	1969	1972
0345	CHAMUKA AGRIC	LUANGWA	14/50'	28/39'	1981	CONT
0350	CHIPEMBI MISSION	LUANGWA	14/56'	28/35'	1924	1970
0354	CHIPEMBI COLLEGE	LUANGWA	14/56'	28/35'	1971	1972
0360	CHILOBA	LUANGWA	14/58'	28/33'	1947	1979
0386	MUSWISHI AGRIC	LUANGWA	14/33'	28/39'	1972	CONT
0420	MULUNGUSHI FOREBAY	LUANGWA	14/42'	28/51'	1926	CONT
0425	MULUNGUSHI DAM	LUANGWA	14/41'	28/51'	1935	CONT
0470	NSOBE FARM	LUANGWA	14/32'	28/19'	1977	1985
0476	MUKONCHI TOBACCO	LUANGWA	14/15'	28/49'	1972	1985
0478	KABWE MUNIC A	LUANGWA	14/26'	28/21'	1965	1978
0475	KABWE MUNIC B	LUANGWA	14/25'	28/24'	1965	1978
0480	KABWE MUNIC C	LUANGWA	14/27'	28/24'	1965	1969
0481	KABWE MUNIC D	LUANGWA	14/25'	28/22'	1965	1978
0488	KABWE AGRIC	LUANGWA	---	---	1972	1972
0490	KABWE MINE	LUANGWA	14/27'	28/25'	1906	1984
0492	KABWE RAIL	LUANGWA	14/27'	28/27'	1909	1985
0495	KABWE (WA)	LUANGWA	14/27'	28/26'	1970	1985
0496	CHAMCHASHI ESTATES	LUANGWA	---	---	1982	1984
0500	KABWE MET OBSERVATORY	LUANGWA	14/25'	28/29'	1932	CONT
0525	KABWE RES STATION	LUANGWA	14/24'	28/30'	1958	CONT
0533	KALWENO ESTATES	LUANGWA	---	---	1984	CONT
0534	MPIMA FOREST	LUANGWA	14/20'	28/33'	1986	1986
0535	MPIMA	LUANGWA	14/20'	28/33'	1976	1983
0540	MULU FARM	LUANGWA	14/18'	28/31'	1963	1971
0542	LEWIS FARM	LUANGWA	---	---	1984	CONT
0549	DEVONSHIRE ESTATES (WA)	LUANGWA	14/18'	28/28'	1960	CONT
0559	KAFIRI MPOSHI RAIL	LUANGWA	13/58'	28/40'	1926	CONT
0575	MKUSHI OLD BOMA	LUANGWA	14/22'	29/22'	1913	1984
0590	DIXIE FARMS	LUANGWA	13/49'	29/14'	1970	CONT
0640	NKOLONGA FARM	LUANGWA	13/17'	29/38'	1952	CONT
650	CHYUNI SCHOOL	LUANGWA	14/32'	27/36'	1983	1984
0680	LUNSEMFWA FOREBAY	LUANGWA	14/30'	29/08'	1946	1984
0681	CHIBOMBO	LUANGWA	---	---	1983	1983
0688	NASHINGA	LUANGWA	14/25'	29/08'	1973	1979
0695	MITA HILLS PONTOON	LUANGWA	14/18'	29/07'	1966	1972
0700	MITA HILLS DAM	LUANGWA	14/14'	29/07'	1959	CONT
0717	LUNEHU	LUANGWA	14/00'	28/52'	1962	1986
0725	FARM B088	LUANGWA	13/55'	29/10'	1962	1973
0735	MUNWA NKONSE	LUANGWA	13/44'	29/24'	1954	1970
0750	LUNSEMFWA FARMS	LUANGWA	13/59'	29/08'	1980	1982
0775	SHEPLEY	LUANGWA	13/47'	29/05'	1959	1974
0780	MUSOFO MISSION	LUANGWA	13/32'	29/02'	1927	1971
0824	MNUSHI FTC	LUANGWA	13/38'	29/33'	1980	CONT
0825	CHIWEWE	LUANGWA	---	---	1926	CONT
0826	MKUSHI FOREST DEPT.	LUANGWA	---	---	1985	1986
0828	MASAUDA AGRIC	LUANGWA	13/39'	29/35'	1980	CONT
0840	MKUSHI RANGE	LUANGWA	13/33'	29/48'	1970	CONT
0845	C.M.R. FARM	LUANGWA	---	---	1983	CONT
0848	KEEMEE RANCH	LUANGWA	---	---	1983	CONT
0849	CHALATA	LUANGWA	---	---	1983	CONT
0850	CHINGOMBE MISSION	LUANGWA	14/25'	29/57'	1925	CONT
0865	FARM 3151, MKUSHI FARMS	LUANGWA	---	---	1983	1985
0870	ZCCM KABWE MINE	LUANGWA	14/28'	28/26'	1984	1985
0873	MASNSA	LUANGWA	---	---	1984	1985
0883	FIWILA MISSION	LUANGWA	13/58	29/37'	1924	CONT
0908	NSHINSO	LUANGWA	13/47'	29/49'	1963	1970
0949	IPIILA	LUANGWA	13/05'	30/45'	1960	1980
0951	LUKASAKI	LUANGWA	13/34	30/40'	1959	1969
1000	SHIWAKA FARMS	LUANGWA	---	---	1983	CONT
1020	NYIMBA P.O.	LUANGWA	14/33'	30/50'	1959	CONT
1021	NPEVU CAMP	LUANGWA	---	---	1981	CONT
1022	NYIMBA	LUANGWA	14/34'	30/50'	1971	1973
1025	HOFMEYER MISSION	LUANGWA	14/41'	30/52'	1952	1980
1026	CHALUBILO	LUANGWA	---	---	1984	CONT
1080	MINGA FOREST	LUANGWA	14/25'	31/07'	1961	1983
1083	MINGA MISSION	LUANGWA	14/21'	31/09'	1927	1971
1085	PETAUNKE MET.	LUANGWA	14/15'	31/17'	1920	CONT
1088	N. NYMPHANDE SCHEME	LUANGWA	14/14'	31/18'	1974	CONT
1089	MIZYO PR. SCHOOL	LUANGWA	14/15'	31/17'	1981	CONT
1090	CHALUTA	LUANGWA	---	---	1982	1984
1095	PETAUNKE AGRIC	LUANGWA	14/20'	31/30'	1945	CONT

LIST OF METEOROLOGICAL STATION IN ZAMBIA

NO	STATION NAME	CATCHMENT	LAT.	LONG.	FROM	TO
1165	CHIMTENGO FORREST PLANTATION	LUANGWA	14/16'	31/36'	1964	CONT
1195	MASASE (WA)	LUANGWA	13/12'	31/12'	1967	CONT
1300	MUWE MET.	LUANGWA	13/06'	31/49'	1963	1971
1310	MUWE MET.	LUANGWA	13/10'	31/56'	1979	CONT
1311	LUANGWA AT MUWE	LUANGWA			1986	CONT
1315	CHIKOMA MISSION	LUANGWA	13/24'	32/06'	1981	CONT
1343	MSORO MISSION	LUANGWA	13/37'	31/54'	1926	1973
1348	PNATA AGRIC	LUANGWA	13/38'	32/19'	1973	1984
1359	CHIKUNGU MISSION	LUANGWA	13/47'	32/14'	1956	CONT
1373	SINDA TOBACCO	LUANGWA	14/12'	31/45'	1980	CONT
1374	SINDA P.O.	LUANGWA	14/12'	31/45'	1958	1975
1399	KATE HOSPITAL	LUANGWA	14/08'	31/55'	1954	CONT
1400	MAPLE SCHEME	LUANGWA	13/17'	32/08'	1980	1982
1405	JUMBE EXP. CAMP	LUANGWA	13/17'	32/08'	1967	1984
1410	SUMBE	LUANGWA	13/32'	32/19'	1958	1975
1416	KALUNI FARM	LUANGWA	13/39'	32/31'	1967	1969
1418	MSEKERA	LUANGWA	13/39'	32/34'	1916	CONT
1424	NGONI FARM	LUANGWA	13/52'	32/28'	1958	1982
1426	TEREKA	LUANGWA	13/46'	32/31'	1956	1971
1428	MSPAZI NO. 2	LUANGWA	13/48'	32/32'	1951	CONT
1429	MSPAZI FOREST	LUANGWA	13/47'	32/37'	1965	CONT
1430	MTRIZI STATE FARM	LUANGWA				
1431	SALIMA (WA)	LUANGWA	13/47'	32/35'	1956	1971
1434	MAGUYA	LUANGWA	13/50'	32/37'	1956	1971
1436	CHIPATA RURAL DAIRY	LUANGWA	13/41'	32/38'	1973	CONT
1437	LUANGWA AT MUWE	LUANGWA			1983	CONT
1438	CHIKANDO	LUANGWA			1983	1984
1439	CHIPATA CIVIC CENTRE	LUANGWA	13/38'	32/39'	1919	CONT
1440	CHIPATA AGRIC	LUANGWA	13/39'	32/39'	1930	CONT
1441	ZOZWE	LUANGWA			1982	CONT
1443	LUNKHWKA FOREST PLANTATION	LUANGWA	13/39'	32/42'	1965	CONT
1444	CHALUBILO AGRIC	LUANGWA				
1445	CHIPATA (WA)	LUANGWA	13/39'	32/39'	1949	CONT
1455	MAMBWE AGRIC	LUANGWA			1984	CONT
1460	KALICHERO	LUANGWA	13/31'	32/27'	1952	CONT
1465	KAPARA TOBACCO SCHEME	LUANGWA	13/31'	32/32'	1928	1981
1469	SUNNYSIDE FARM	LUANGWA	13/38'	32/42'	1982	CONT
1470	CHIPATA MET.	LUANGWA	13/34'	32/35'	1948	CONT
1474	KATAPULA	LUANGWA	13/37'	32/37'	1960	CONT
1475	TIRITONGWE PR. SCHOOL	LUANGWA			1980	1983
1480	MAPALA AGRIC	LUANGWA			1982	1984
1499	CHASERA UPPER SCHOOL	LUANGWA	12/50'	32/50'	1968	CONT
1500	LUTEMBE (WA)	LUANGWA			1983	CONT
1515	CHIPANGALI	LUANGWA	13/14'	32/43'	1966	CONT
1520	CHANJE AGRIC	LUANGWA	13/27'	32/48'	1964	CONT
1522	TAMANDA MISSION	LUANGWA	13/29'	32/53'	1955	1969
1545	LUSANGAZI	LUANGWA	13/27'	31/34'	1963	1975
1572	KATIBUKA MIDDLE SCHOOL	LUANGWA	11/38'	31/44'	1953	1974
1573	KATIBUNGA MISSION	LUANGWA	11/37'	31/45'	1958	CONT
1575	KATIBUNGA AGRIC	LUANGWA	11/33'	31/47'	1974	1984

LIST OF METEOROLOGICAL STATION IN ZAMBIA

NO	STATION NAME	CATCHMENT	LAT.	LONG.	FROM	TO
1578	LUMIMBA MISSION	LUANGWA	12/23'	32/22'	1950	1968
1630	LUNDASI MET.	LUANGWA	12/17'	33/12'	1919	CONT
1631	LUNDASI FTC	LUANGWA	12/19'	33/12'	1980	CONT
1642	MWASE AGRIC	LUANGWA	12/25'	33/26'	1974	CONT
1648	LUMEZI SCHEME	LUANGWA	12/17'	33/12'	1983	1984
1708	CHASEFU MISSION	LUANGWA	11/55'	33/07'	1926	1974
1711	CHIKWA MANGWERE SCHOOL	LUANGWA	11/40'	33/47'	1968	1970
1712	CHIKWA AGRIC	LUANGWA	11/40'	33/47'	1951	CONT
1731	TEMEWE	LUANGWA	11/21'	32/57'	1951	CONT
1735	CHIKWALE AGRIC	LUANGWA	10/33'	32/47'	1981	CONT
1746	KAMBUMBO	LUANGWA	11/15'	33/05'	1941	CONT
1748	CHAMA AGRIC CAMP	LUANGWA	11/14'	33/12'	1953	CONT
1749	CHAMA BOMA	LUANGWA	11/14'	33/12'	1970	1980
1750	KANYELELE CAMP	LUANGWA			1982	CONT
1751	CHAMA FTC	LUANGWA			1985	CONT
1753	KATANGALIKA AGRIC	LUANGWA			1982	CONT
1787	NYIKA REST HOUSE	LUANGWA	10/37'	33/30'	1978	1980
1790	MUYOBE AGRIC CAMP	LUANGWA	10/35'	33/27'	1959	CONT
1815	MUTANGA MISSION	LUANGWA	10/59'	32/10'	1941	CONT
1863	NANSALA	LUANGWA	10/15'	32/40'	1959	CONT
1870	KAMPUMBU	LUANGWA	10/17'	33/02'	1959	CONT
1874	KATYETE AGRIC	LUANGWA	10/23'	33/09'	1973	1985
1878	MULEKA TEMBO	LUANGWA	10/09'	33/24'	1959	CONT
1881	THENDERE AGRIC	LUANGWA	10/16'	33/22'	1971	CONT
1883	KASEYA GOVT. SCHOOL	LUANGWA	10/21'	33/24'	1971	1978
2104	CHRISTIES FARM	ZAMBEZI	15/28'	28/27'	1973	1975
2110	COOPERATIVE COLLEGE	ZAMBEZI	15/26'	28/20'	1980	CONT
2115	LEOPARDS HILL RANCH	ZAMBEZI	15/35'	27/53'	1922	CONT
2120	GOLDEN VALLEY FARM	ZAMBEZI	15/36'	28/45'	1980	CONT
2133	ELDORADO	ZAMBEZI	15/21'	28/35'	1947	1971
2139	CHALIMBANA NO. 2 (WA)	ZAMBEZI	15/24'	28/28'	1949	CONT
2141	CHALIMBANA NO. 1 (WA)	ZAMBEZI	15/25'	28/26'	1956	CONT
2142	SEED POTATO FARM	ZAMBEZI	15/50'	31/25'	1978	CONT
2145	EXCHANGE FARM (WA)	ZAMBEZI	15/22'	28/28'	1966	CONT
2147	CHALIMBANA AGRIC	ZAMBEZI	15/22'	28/28'	1949	CONT
2150	LUSAKA INTER. AIRPORT	ZAMBEZI	15/20'	28/26'	1965	CONT
2155	PARABANA AGRIC	ZAMBEZI	15/21'	28/28'	1972	CONT
2160	CHONGWE	ZAMBEZI	15/19'	28/42'	1972	CONT
2175	KASIMI MISSION	ZAMBEZI	15/16'	28/29'	1924	CONT
2181	CHELSTONE TOWNSHIP	ZAMBEZI	15/22'	28/23'	1969	1973
2183	N.R.D.C.	ZAMBEZI	15/23'	28/23'	1973	1975
2186	UNIVERSITY	ZAMBEZI	15/22'	28/23'	1971	CONT
2187	MUNALI SEC. SCHOOL	ZAMBEZI	15/22'	28/23'	1982	CONT
2188	MPHONDU FARM	ZAMBEZI				
2193	LUSAKA MET. HQ	ZAMBEZI	15/25'	28/19'	1938	CONT
2194	SABLE ROAD KABULONGA	ZAMBEZI	15/24'	28/21'	1971	1972
2195	LUSAKA STATE HOUSE	ZAMBEZI	15/26'	28/19'	1960	CONT
2196	KABULONG BOY'S SCHOOL	ZAMBEZI	15/26'	28/20'		
2197	NGWERERE (WA)	ZAMBEZI	15/20'	28/20'	1955	CONT
2199	KAFUSHI RICE PROJECT	ZAMBEZI			1984	



LIST OF METEOROLOGICAL STATION IN ZAMBIA

NO	STATION NAME	CATCHMENT	LAT.	LONG.	FROM	TO
2200	LUSAKA HYDRO HQ	ZAMBEZI	15/24'	28/16'	1958	CONT
2205	LUSAKA RAIL	ZAMBEZI	15/25'	28/17'	1917	CONT
2209	YEILDING TREE FARM	ZAMBEZI	15/23'	28/10'	1984	CONT
2215	LUSAKA WATERWORKS	ZAMBEZI	15/27'	28/19'	1967	1986
2219	CHIKUMBI AGRIC	ZAMBEZI	15/15'	28/15'	1972	CONT
2222	KANCHILINGA	ZAMBEZI	15/14'	28/23'	1927	1974
2225	TRIANGLE RANCH	ZAMBEZI	15/07'	28/20'	1980	CONT
2227	FARM 2784 - KARUBWE	ZAMBEZI	15/08'	28/21'	1980	1983
2228	KAMAILA FOREST STATION	ZAMBEZI	15/05'	28/19'	1958	CONT
2229	MARULA	ZAMBEZI	14/58'	28/26'	1971	CONT
2230	NTEENDERER	ZAMBEZI	15/06'	28/26'	1971	CONT
2231	PENYAONSE	ZAMBEZI	15/10'	28/26'	1971	CONT
2232	NLAMBO	ZAMBEZI	15/12'	28/25'	1972	1975
2233	NSADZU	ZAMBEZI	15/08'	28/28'	1972	1975
2234	CHISAMBA RAIL	ZAMBEZI	14/59'	28/23'	1923	1984
2235	FARM 3693	ZAMBEZI	--	--	1983	1984
2236	LION'S BUSH FARM	ZAMBEZI	14/59'	28/28'	1952	1975
2237	KAYANJE SECTION	ZAMBEZI	15/07'	28/29'	1973	1975
2240	CHIPEMBI FARM COLLEGE	ZAMBEZI	--	--	1983	1984
2241	CHAMUKA AGRIC	ZAMBEZI	14/50'	28/39'	1972	1984
2243	CHANGANDA 3997	ZAMBEZI	14/55'	28/25'	1980	1984
2244	KALANGWA ESTATES	ZAMBEZI	14/50'	28/30'	1980	CONT
2259	FAROWE VILLAGE	ZAMBEZI	15/57'	28/48'	1959	CONT
2262	ST. MARY'S SEC. SCHOOL	ZAMBEZI	--	--	1983	1983
2264	NAMALUNDU GORGE	ZAMBEZI	15/49'	28/27'	1973	CONT
2265	SHANTUMBU	ZAMBEZI	--	--	1984	1984
2266	NAMALUNDU FORGE	ZAMBEZI	15/48'	28/26'	1973	CONT
2270	CHALIMBANA	ZAMBEZI	--	--	1984	1984
2280	CHONGWE NORTH	ZAMBEZI	--	--	1983	CONT
2287	NALUAMA AGRIC	ZAMBEZI	15/43'	28/07'	1972	1978
2295	MWAMBESHI FARM	ZAMBEZI	--	--	1984	1985
2297	SHIMBALA QUARRY	KAFUE	15/39'	28/14'	1967	1971
2300	KASAKA (WA)	KAFUE	15/49'	28/13'	1949	CONT
2301	RIVERSIDE FARM	KAFUE	15/49'	28/14'	1977	CONT
2302	KAFUE SEC. SCHOOL	KAFUE	15/49'	28/14'	1924	1973
2305	KAFUE RAIL	KAFUE	15/46'	28/10'	1910	1989
2308	MONGU AGRIC	KAFUE	15/37'	28/11'	1982	1983
2345	CHIPAPA AGRIC	KAFUE	--	--	1982	CONT
2350	LILAYI FARM	KAFUE	15/03'	28/17'	1981	CONT
2352	CHILANGA FISH FARM	KAFUE	15/36'	28/17'	1948	CONT
2354	CHILANGA CEMENT	KAFUE	15/35'	28/17'	1952	CONT
2375	MOUNT MAKULU MET.	KAFUE	15/33'	28/15'	1951	CONT
2382	HEREFORD FARM	KAFUE	15/28'	28/11'	1917	1948
2382	MAKENI ESTATE	KAFUE	15/28'	28/11'	1923	CONT
2384	MAKENI-TEAGLES PLOT	KAFUE	15/27'	28/13'	1969	1978
2385	MAKENI-KIEBUTZ	KAFUE	15/28'	28/14'	1969	1974
2386	FARM 396A	KAFUE	15/28'	27/13'	1980	1985
2393	HONITON FARM	KAFUE	15/50'	28/00'	1938	1970
2400	KAFUE POLDER	KAFUE	15/46'	27/55'	1957	CONT
2401	CHANYANYA R. SCHEME	KAFUE	--	--	1985	CONT

LIST OF METEOROLOGICAL STATION IN ZAMBIA

NO	STATION NAME	CATCHMENT	LAT.	LONG.	FROM	TO
2402	NAKAMBAL S. ESTATE	KAFUE	15/48'	27/48'	1972	CONT
2404	LUBOMBO SIDING (WA)	KAFUE	15/52'	27/52'	1962	CONT
2405	KUSHIYA	KAFUE	15/57'	27/52'	1936	CONT
2407	MONGA FARM	KAFUE	15/58'	27/54'	1962	1969
2410	MAZABUKA RES. STATION	KAFUE	15/50'	27/43'	1925	1970
2411	MAZABUKA TOWN COUNCIL	KAFUE	15/52'	27/46'	1976	1986
2412	MAZABUKA RAIL	KAFUE	15/52'	27/36'	1916	CONT
2413	MAZABUKA (WA)	KAFUE	15/52'	27/46'	1949	CONT
2414	OKLANDS FARM (WA)	KAFUE	15/52'	27/45'	1963	CONT
2420	KALEYA FARM	KAFUE	15/59'	27/50'	1918	CONT
2423	SIMONGA	KAFUE	15/04'	27/59'	1922	CONT
2425	FARM 493A	KAFUE	16/02'	28/07'	1971	1973
2426	KALEYA DAM SITE (WA)	KAFUE	16/11'	28/00'	1950	1971
2428	NADEZWE	KAFUE	16/13'	28/03'	1970	1970
2432	MARTIN LUTHER SCHOOL	KAFUE	15/27'	27/49'	1971	1972
2433	SHIBUYANJI AGRIC	KAFUE	15/24'	27/49'	1952	CONT
2435	MANO FARM	KAFUE	15/22'	27/53'	1952	1969
2440	MKULAIKWA	KAFUE	15/17'	27/45'	1962	CONT
2441	MWACHISOMPOLA	KAFUE	15/17'	27/45'	1962	CONT
2446	KABILE S. SITE (WA)	KAFUE	15/05'	27/37'	--	--
2450	KAUNGA LWETI SCHOOL	KAFUE	14/57'	28/05'	1986	1986
2454	KALOLA FARM	KAFUE	15/54'	27/47'	1957	CONT
2459	KEEMBE AGRIC	KAFUE	--	--	1969	1972
2460	KEEMBE NO. 2	KAFUE	--	--	1970	1985
2462	MUSHIKILI SCHOOL	KAFUE	14/54'	27/51'	--	--
2464	MATERO BOY'S SCHOOL	KAFUE	15/23'	28/16'	--	--
2465	LUSAKA NORTH PLANTATION	KAFUE	15/22'	28/17'	1969	CONT
2467	MAAMBO ROPEWAY	KAFUE	15/23'	28/19'	--	--
2468	EARLSTON PARK	KAFUE	15/33'	28/10'	1971	CONT
2470	MUCHENJE AGRIC	KAFUE	15/14'	28/02'	1953	CONT
2479	KALABO ESTATE	KAFUE	14/53'	28/03'	1930	1972
2488	MSALA SABWE	KAFUE	15/02'	28/15'	1962	1974
2490	KATUBA SCHOOL	KAFUE	15/11'	28/15'	1958	1978
2505	BLUE LAGOON	KAFUE	15/30'	27/25'	1952	CONT
2990	MUFUNYA POST	KAFUE	15/42'	25/20'	1967	1971
2996	TATAVOYO	KAFUE	14/56'	25/26'	1966	1969
2998	CHUNGA CAMP	KAFUE	15/05'	26/01'	1961	CONT
3000	KAFUE HOOK	KAFUE	15/01'	26/00'	1953	CONT
3140	LUSHIMBA CAMP	KAFUE	14/15'	25/57'	1971	1972
3145	KASOMPE	KAFUE	14/04'	25/39'	1967	1974
3155	MUKANASHI SCHOOL	KAFUE	13/52'	25/54'	1956	1971
3159	KANONGO HILL	KAFUE	13/46'	26/07'	1967	1969
3170	MPUNGO PROD. SCHEME	KAFUE	13/36'	26/00'	1970	1985
3174	KENYAUNA	KAFUE	13/28'	25/58'	1058	CONT
3180	KASEMPE MET.	KAFUE	13/27'	25/50'	1903	CONT
3199	KAWANE SCHOOL	KAFUE	13/07'	25/58'	1956	1977
3340	KASEMPE PONTOON	KAFUE	13/59'	26/21'	1963	CONT
3360	KELONGWA SCHOOL	KAFUE	13/42'	26/20'	1951	CONT
3585	Z.F.D.S. WEST 3	KAFUE	13/21'	26/35'	1969	1970
3490	MAPUNGU SCHOOL	KAFUE	13/02'	26/50'	1960	1970

LIST OF METEOROLOGICAL STATION IN ZAMBIA

NO	STATION NAME	CATCHMENT	LAT.	LONG.	FROM	TO
3515	Z.P.D.S. WEST 1	KAFUE	12/52'	27/06'	1969	1972
3540	MUJIMANZOVU (WA)	KAFUE	12/48'	26/32'	1963	CONT
3555	ST. FRANCIS MISSION	KAFUE	12/32'	26/31'	1953	CONT
3560	JWYUNDU S. SCHEME	KAFUE	12/25'	26/32'	1980	1985
3568	BULEYA BALIMA	KAFUE	---	---	1981	CONT
3570	SOLWEZI MET.	KAFUE	12/11'	26/23'	1913	1917
3573	KILUMBA SCHOOL	KAFUE	12/11'	26/23'	1980	CONT
3574	MUMBEZHI	KAFUE	10/15'	25/07'	1982	CONT
3575	KANSANSHI MINE	KAFUE	12/05'	26/24'	1984	1985
3576	CHISASA AGRIC	KAFUE	---	---	1984	CONT
3578	KUMALE SCHOOL	KAFUE	---	---	1982	CONT
3579	KASOMPO-SOLWEZI	KAFUE	12/01'	26/25'	1964	CONT
3580	CHAFUKUMA	KAFUE	---	---	1982	CONT
3584	SIKASUMBI	KAFUE	12/23'	26/16'	1950	CONT
3615	MUTANDA MISSION	KAFUE	12/20'	26/57'	1957	1070
3673	LAMBA SCHOOL	KAFUE	12/10'	26/40'	1957	1980
3690	CHIFUISWA SCHOOL	KAFUE	12/17'	26/31'	1952	CONT
3695	KAPIJA PANGA SCHOOL	KAFUE	12/34'	26/27'	1953	CONT
3700	LBUNGU FONTOON	KAFUE	14/20'	26/57'	1950	CONT
3715	MSWEZI	KAFUE	14/45'	26/59'	1956	1972
3725	KARENDA MISSION	KAFUE	14/40'	27/48'	1971	CONT
3733	LUKANGWA SWAMP	KAFUE	14/25'	27/30'	1963	1972
3740	MAKUNGA	KAFUE	14/38'	27/36'	1955	CONT
3750	CHYLINI SCHOOL	KAFUE	14/45'	28/04'	1972	1979
3752	LITETA AGRIC	KAFUE	14/52'	27/42'	1955	CONT
3755	MALAMBANYAMA SCHOOL	KAFUE	14/37'	27/57'	1962	1981
3758	TWENTY'S VILLAGE	KAFUE	14/40'	28/05'	1955	1972
3760	CHIBOMBO	KAFUE	14/11'	28/13'	1955	1971
3772	CHIFEPO DISP.	KAFUE	14/14'	25/13'	1961	1975
3774	MPUNDE MISSION	KAFUE	14/18'	27/37'	1960	CONT
3798	CHILWA ISLAND (WA)	KAFUE	14/06'	27/24'	1963	CONT
3810	CHELENGA	KAFUE	12/54'	27/22'	1951	CONT
3890	ST. MARY'S MISSION	KAFUE	13/10'	27/14'	1971	1977
3896	KILUNDU (WA)	KAFUE	13/48'	29/29'	1960	1970
3903	Z.P.D.S. WEST TWO (MACHIYA)	KAFUE	13/52'	27/46'	1972	1979
3904	MUKUBWE AGRIC	KAFUE	13/51'	27/42'	1956	CONT
3905	MUKUBWE SCHOOL	KAFUE	13/39'	27/37'	1963	CONT
3910	MACHIYA FARM	KAFUE	13/36'	27/48'	1963	CONT
3914	MUNKUMPU SCHOOL	KAFUE	13/31'	27/43'	1963	1970
3925	MUNKUMPU GAUGING WEIR	KAFUE	13/24'	27/49'	1969	CONT
3935	NDEBENI (WA)	KAFUE	13/29'	27/56'	1963	CONT
3950	ST. ANTHONY'S MISSION	KAFUE	13/03'	27/57'	1953	1980
3974	MWELUSHI MISSION	KAFUE	13/31'	28/10'	1931	CONT
3995	MWONGWE MISSION	KAFUE	13/16'	28/19'	1925	1965
4040	KAFULAFUTA MISSION	KAFUE	13/10'	28/23'	1927	CONT
4053	ROAN ANTELOPE	KAFUE	13/07'	28/24'	1934	CONT
4055	LUANSHYA RAIL	KAFUE	13/07'	28/24'	1969	1978
4056	LUANSHYA TOWN (WA)	KAFUE	---	---	1970	CONT
4058	KAFUBU UNION	KAFUE	13/17'	28/24'	1971	1974
4060	CHAMUNDU SCHOOL	KAFUE	---	---	---	---

LIST OF METEOROLOGICAL STATION IN ZAMBIA

NO	STATION NAME	CATCHMENT	LAT.	LONG.	FROM	TO
4061	MASAITI SCHOOL (WA)	KAFUE	13/16'	28/24'	1969	1975
4062	FARM 1559	KAFUE	13/17'	28/24'	1983	CONT
4073	BWANA MKUBWA	KAFUE	13/03'	28/42'	1912	CONT
4075	BWANA MKUBWA	KAFUE	13/02'	28/43'	1971	1984
4076	NDOLA KAFUBI WATERWORKS	KAFUE	13/05'	28/36'	1965	1979
4085	CHICHELE	KAFUE	13/01'	26/32'	1949	1981
4090	RESEARCH STATION	KAFUE	---	---	1959	1983
4097	NDOLA-ITAMA WATERWORKS	KAFUE	12/59'	28/39'	1959	1984
4100	NDOLA MET.	KAFUE	13/00'	28/40'	1913	CONT
4102	LUPIYE SCHOOL	KAFUE	13/00'	28/48'	1969	1970
4103	NDOLA RAIL	KAFUE	12/57'	28/39'	1914	1985
4104	N.B.A.Z.	KAFUE	---	---	1983	1983
4105	NDOLA-LAKE ISHIXU WATERWORKS	KAFUE	12/59'	28/53'	1959	1979
4106	NDOLA LIME	KAFUE	13/00'	28/43'	1911	CONT
4109	CHIKWALA	KAFUE	12/59'	28/45'	1969	CONT
4115	CHIKUMBI SCHOOL	KAFUE	12/53'	28/42'	1963	1977
4127	KANYENDA SCHOOL	KAFUE	13/27'	28/14'	1968	1973
4128	MPONGWE FTC	KAFUE	13/24'	28/15'	1979	CONT
4129	MIKATA SCHOOL	KAFUE	13/22'	28/19'	1963	CONT
4130	MPONGWE DEV. CAMP	KAFUE	---	---	1985	CONT
4131	IBENGA GIRL'S SCHOOL	KAFUE	13/20'	28/27'	1970	CONT
4135	ST. THERESA'S MISSION (WA)	KAFUE	13/21'	28/25'	1969	CONT
4146	CHINONDO SCHOOL (WA)	KAFUE	13/35'	28/29'	1969	1977
4149	KASHITU GOVT. SCHOOL	KAFUE	13/40'	28/41'	1972	1973
4163	MISHIKISHI (WA)	KAFUE	12/22'	28/42'	1969	1969
4166	ETWALE HILL MISSION	KAFUE	13/13'	28/43'	1940	CONT
4174	SILANGWA	KAFUE	13/26'	28/50'	1963	1972
4181	MUTABA SCHOOL	KAFUE	13/18'	28/50'	1969	1969
4201	MPATAMATO	KAFUE	13/15'	28/08'	1951	CONT
4233	CHAPULA IRR. PROJECT	KAFUE	12/55'	28/01'	1970	CONT
4235	ST. JOSEPH'S MISSION	KAFUE	13/21'	28/25'	1968	CONT
4246	CHIMOTO SCHOOL	KAFUE	12/55'	27/56'	1963	1975
4260	KALULUSHI FARM COLLEGE	KAFUE	12/53'	28/08'	1970	CONT
4261	MUKUMBO PR. SCHOOL	KAFUE	---	---	1981	CONT
4261	LUPAPUMA PRISON	KAFUE	12/54'	28/07'	1970	CONT
4271	KAMFINGA PRISON	KAFUE	12/52'	28/20'	1972	CONT
4274	MZEKERA FISH FARM	KAFUE	12/50'	28/22'	1965	1978
4275	CHINWA	KAFUE	---	---	1983	CONT
4276	KITWE HYDRO	KAFUE	---	---	1984	CONT
4277	KITWE SEWAGE (WA)	KAFUE	12/50'	28/12'	1959	CONT
4278	KITWE FIRE BRIDGE	KAFUE	12/50'	28/12'	1950	CONT
4279	BUTUSHO FARM	KAFUE	---	---	1982	CONT
4280	NKANA RAIL	KAFUE	12/49'	28/13'	1930	CONT
4282	NKANA MINE	KAFUE	12/50'	28/12'	1929	CONT
4305	MINDOLO MISSION	KAFUE	12/47'	28/11'	1937	1973
4310	CHIBULOMA MINE	KAFUE	12/49'	28/03'	1962	CONT
4313	RCM KALULUSHI	KAFUE	12/50'	28/06'	1972	1977
4320	MWAMBASHI (WA)	KAFUE	12/42'	28/09'	1963	CONT
4375	KAFIRONDA MET.	KAFUE	12/38'	28/10'	1966	CONT
4378	CHAMBISHI RAIL	KAFUE	12/39'	28/05'	1961	1982

LIST OF METEOROLOGICAL STATION IN ZAMBIA

NO	STATION NAME	CATCHMENT	LAT.	LONG.	FROM	TO
4379	CHAMBISHI MINE	KAFUE	12/39'	28/03'	1963	CONT
4390	MUFULIRA MINE	KAFUE	12/32'	28/14'	1929	CONT
4392	MUFULIRA RAIL	KAFUE	12/32'	28/15'	1933	CONT
4395	SUNNYSIDE FARM	KAFUE	12/32'	28/16'	1980	CONT
4398	MUKAMBO	KAFUE	12/27'	28/20'	1972	1973
4475	CHATI FOREST	KAFUE	12/26'	27/53'	1962	CONT
4480	TORBOROUGH FARM	KAFUE	12/31'	27/54'	1980	1981
4481	LUANO AGRIC	KAFUE	12/34'	27/55'	1969	CONT
4482	MUSHISHIMA	KAFUE	12/29'	27/51'	1973	1974
4483	CHINGOLA RAIL	KAFUE	12/31'	27/50'	1926	CONT
4485	TWIN RIVERS FARM	KAFUE	12/32'	27/51'	1951	CONT
4487	IDAFU SETTLEMENT	KAFUE	12/31'	27/50'	1970	CONT
4489	BANCROFT MINE NO. 3	KAFUE	12/20'	27/47'	1973	1977
4490	BANCROFT MINE NO. 3	KAFUE	12/21'	27/48'	1954	CONT
4492	BANCROFT RAIL	KAFUE	12/22'	27/50'	1959	CONT
4494	BANCROFT MINE NO. 1	KAFUE	12/22'	27/49'	1954	CONT
4496	LUBENGELE AIRSTRIP	KAFUE	12/18'	27/49'	1972	1973
4510	RAGLAN FARM (WA)	KAFUE	12/25'	27/44'	1956	CONT
4555	NGOSA FARM (WA)	KAFUE	12/18'	27/28'	1964	1977
4650	MUTUTUBANYA	KAFUE	11/54'	27/13'	1960	1969
4660	YOWELA SCHOOL	KAFUE	11/48'	27/11'	1959	1984
5001	CHIANGA BANANA SCHOOL	ZAMBEZI	16/02'	28/58'	1970	1982
5003	CHIRUNDU (WA)	ZAMBEZI	16/02'	28/51'	1971	1072
5005	LUSITU BOMA	ZAMBEZI	16/07'	28/52'	1956	CONT
5007	LUSITU (C.S.) (WA)	ZAMBEZI	16/09'	28/51'	1964	CONT
5010	LUSITU BRIDGE	ZAMBEZI	16/11'	28/45'	1960	CONT
5013	SIMAMBA AGRIC	ZAMBEZI	16/20'	28/44'	1971	1976
5016	SIAMWINGA AGRIC	ZAMBEZI	16/13'	28/32'	1972	CONT
5022	CHAANGA	ZAMBEZI	16/16'	28/25'	1957	CONT
5044	CHIKANKATA	ZAMBEZI	16/15'	28/08'	1944	1982
5050	MAPANGAZIA	ZAMBEZI	16/10'	28/14'	1951	1976
5130	GWEMBE LUMBO	ZAMBEZI	16/32'	28/03'	1961	CONT
5180	GWEMBE CHIPEPO	ZAMBEZI	16/48'	28/03'	1982	1982
5195	GWEMBE-MUNYUBWE	ZAMBEZI	16/39'	27/47'	1984	CONT
5196	MUNYUBWE	ZAMBEZI	16/39'	27/47'	1953	CONT
5200	CHIPEPO	ZAMBEZI	16/48'	27/53'	1964	CONT
5222	NDONDI SCHOOL (WA)	ZAMBEZI	16/44'	27/24'	1963	1978
5233	NATCBA	ZAMBEZI	16/37'	27/29'	1929	1973
5293	WILHELMINA FARM	ZAMBEZI	16/22'	27/17'	1948	1976
5305	GWEMBE BULEYA	ZAMBEZI	17/03'	27/35'	1961	1970
5309	BULEYA MALIMA	ZAMBEZI	17/12'	27/30'	1971	CONT
5310	BULEYA MALIMA (WA)	ZAMBEZI	17/12'	27/30'	1970	1985
5312	MALIMA PTC	ZAMBEZI	---	---	---	---
5313	MALIMA AGRIC	ZAMBEZI	17/10'	25/25'	1971	1985
5315	SINAZEZE	ZAMBEZI	17/08'	27/23'	1956	CONT
5316	CHINYARI PILOT IRR.	ZAMBEZI	---	---	---	---
5317	GOSSNER MISSION	ZAMBEZI	---	---	---	---
5320	MAAMBA COLLIERY	ZAMBEZI	---	---	---	---
5322	MAAMBA AGRIC	ZAMBEZI	17/25'	27/12'	1972	CONT
5324	MAAMBA (WA)	ZAMBEZI	17/25'	27/12'	1967	1985
			17/25'	27/12'	1960	1969

LIST OF METEOROLOGICAL STATION IN ZAMBIA

NO	STATION NAME	CATCHMENT	LAT.	LONG.	FROM	TO
5325	SIATWINDA IRRIG.	ZAMBEZI	17/28'	28/27'	1971	1974
5327	KAFAMBELA	ZAMBEZI	17/48'	27/05'	1973	1976
5329	MASUKA	ZAMBEZI	17/12'	27/08'	1926	CONT
5335	SIKALONGA MISSION	ZAMBEZI	16/58'	27/14'	1926	1983
5340	BATOKA STATE RANCH	ZAMBEZI	16/48'	27/15'	1972	CONT
5347	CHOMA AGRIC	ZAMBEZI	16/52'	27/16'	1954	1971
5350	CHOMA MET.	ZAMBEZI	16/51'	27/04'	1948	CONT
5355	CHOMA RAIL	ZAMBEZI	16/50'	26/58'	1916	CONT
5357	BELT SCHOOL	ZAMBEZI	16/51'	26/59'	1929	1968
5397	HEATHERWOOD FARM	ZAMBEZI	16/52	26/53'	1955	1970
5399	SIBINYANTI	ZAMBEZI	16/52	26/53'	1963	1973
5465	KABANGA MISSION	ZAMBEZI	16/30'	26/47'	1956	1974
5467	CHINKOYO AGRIC	ZAMBEZI	17/32'	26/44'	1972	1978
5475	KALA RANCH	ZAMBEZI	17/20'	26/53'	1956	1972
5524	ZIMBA AGRIC	ZAMBEZI	17/19'	26/13'	1977	1978
5525	ZIMBA RAIL	ZAMBEZI	17/19'	26/12'	1919	CONT
5530	PORSYTH'S ESTATES	ZAMBEZI	17/25'	26/23'	1956	1984
5542	KANCHELE AGRIC	ZAMBEZI	17/17'	26/39'	1972	1981
5547	KALOMO DAM SITE (WA)	ZAMBEZI	17/13'	26/29'	1966	CONT
5550	THE RIDGES	ZAMBEZI	17/14'	26/23'	1953	CONT
5557	NAMWIANGA MISSION	ZAMBEZI	17/03'	26/30'	1939	CONT
5559	KALOMO RAIL	ZAMBEZI	17/02'	26/29'	1910	CONT
5560	NAMWIANGA FARM	ZAMBEZI	---	---	---	---
5561	KALOMO SEC. SCHOOL	ZAMBEZI	17/03'	26/28'	1973	1975
5567	TARA FOREST CAMP	ZAMBEZI	16/54'	26/48'	1961	1971
5574	KALOMO BOMA	ZAMBEZI	16/58'	26/29'	1919	1973
5600	LIVINGSTONE-VICTORIA FALLS POWER STATION	ZAMBEZI	17/56'	25/53'	1952	1970
5603	LIVINGSTONE RAIL	ZAMBEZI	17/52'	25/53'	1910	1980
5604	ZAMBEZI CHURCH	ZAMBEZI	---	---	---	---
5607	LIVINGSTONE LINDA CAMP	ZAMBEZI	17/51'	25/53'	1959	1972
5610	MARAMBA CAMP	ZAMBEZI	17/51'	25/52'	1924	1977
5612	LIVINGSTONE WATERWORKS	ZAMBEZI	17/50'	25/52'	1968	CONT
5620	LIVINGSTONE PUMP STATION	ZAMBEZI	17/53'	25/20'	1968	1974
5625	LIVINGSTONE MET.	ZAMBEZI	17/50'	25/50'	1948	CONT
5627	DAMBWA FOREST STATION	ZAMBEZI	17/48'	25/57'	1956	1969
5640	KATOMBORA REFORMATORY	ZAMBEZI	17/50'	25/24'	1926	CONT
5645	KAZUNGULA	ZAMBEZI	17/48'	25/17'	1926	1972
5660	MAKUMBA CATHOLIC MISSION	ZAMBEZI	17/29'	25/32'	1962	1972
5690	BOWWOOD FARM	ZAMBEZI	17/06'	25/11'	1936	1974
5745	SIMAMBA KNF	ZAMBEZI	16/39'	25/36'	1966	1969
5750	MACHILI	ZAMBEZI	16/50'	25/08'	1938	CONT
5752	MULOBEZI	ZAMBEZI	16/47'	25/10'	1940	1975
5755	KATABA VALLEY	ZAMBEZI	16/04'	25/07'	1971	CONT
5760	SICHITU MISSION	ZAMBEZI	16/44'	24/58'	1938	1983
5780	MASESE	ZAMBEZI	17/18'	24/39'	1941	CONT
5781	LIFUPU PR. SCHOOL	ZAMBEZI	17/15'	24/59'	1966	1971
5783	KALOMO FOREST	ZAMBEZI	17/07'	24/35'	1965	1970
5800	SESHEKE MET.	ZAMBEZI	17/28'	24/18'	1919	CONT
5801	SESHEKE SEC. SCHOOL	ZAMBEZI	---	---	---	---

LIST OF METEOROLOGICAL STATION IN ZAMBIA

NO	STATION NAME	CATCHMENT	LAT.	LONG.	FROM	TO
5802	SEKHE RESEARCH	ZAMBEZI	17/28'	24/19'	1974	CONT
5815	LUSU AGRIC	ZAMBEZI	17/14'	24/07'	1980	CONT
5830	KALOBOLELWA	ZAMBEZI	16/58'	23/34'	1960	CONT
5890	SIOMA FALLS	ZAMBEZI	16/38'	23/35'	1935	1981
5895	SIOMA FOREST	ZAMBEZI	16/29'	23/25'	1963	1976
5920	MWANGANGUMUNE	ZAMBEZI	15/40'	23/35'	1960	1973
5926	MALIKWANDA	ZAMBEZI	15/29'	23/39'	1976	1981
5928	LITAWA	ZAMBEZI	15/28'	23/33'	1972	CONT
5940	LUETEMBO (WA)	ZAMBEZI	15/13'	23/49'	1964	CONT
5955	LUETI PONTON (WA)	ZAMBEZI	16/05'	23/00'	1964	CONT
5975	SIHOLE MISSION	ZAMBEZI	15/20'	22/35'	1956	1980
5979	SENANGA MET.	ZAMBEZI	16/07'	23/16'	1973	CONT
5980	SENANGA	ZAMBEZI	16/07'	23/10'	1931	1980
5995	NAMUSHAKENDE	ZAMBEZI	15/26'	23/12'	1949	CONT
5996	NAMUSHAKENDE RESEARCH	ZAMBEZI	15/25'	23/12'	1976	CONT
5997	SEFUTA SCHOOL	ZAMBEZI	15/23'	23/12'	1925	1972
6008	MONGU-LEALUI SEC. SCHOOL	ZAMBEZI	15/17'	23/08'	1956	CONT
6009	HOLY CROSS SEC. SCHOOL	ZAMBEZI	---	---	1955	CONT
6010	MONGU MET.	ZAMBEZI	15/15'	23/10'	1933	CONT
6011	KAUNGA	ZAMBEZI	---	---	1973	1974
6015	LIMUNGA	ZAMBEZI	15/07'	23/11'	1960	1982
6032	LUKONA SCHOOL	ZAMBEZI	15/20'	22/56'	1934	CONT
6049	LUWANGA (WA)	ZAMBEZI	14/50'	22/49'	1980	CONT
6050	KALABO BOMA	ZAMBEZI	14/57'	22/42'	1920	CONT
6051	BULEYA AGRIC	ZAMBEZI	---	---	1984	CONT
6052	SOKONGO	ZAMBEZI	---	---	1982	CONT
6110	USHAA AGRIC	ZAMBEZI	14/57'	23/17'	1959	CONT
6123	NDANDA	ZAMBEZI	14/53'	23/37'	1959	1984
6155	MAYANKWA	ZAMBEZI	14/31'	23/48'	1960	CONT
6165	KASAMBWEZI (WA)	ZAMBEZI	14/31'	24/06'	1964	CONT
6170	NKENG AGRIC	ZAMBEZI	---	---	1981	CONT
6175	LUAMP	ZAMBEZI	15/03'	24/26'	1938	1977
6185	LUAMPA KUTA	ZAMBEZI	15/25'	24/43'	1960	1982
6210	KAOMA MET.	ZAMBEZI	14/48'	24/48'	1913	CONT
6211	KAOMA RESEARCH	ZAMBEZI	14/48'	24/47'	1980	CONT
6212	KAOMA FIC	ZAMBEZI	14/48'	24/47'	1974	CONT
6213	CHITWA AGRIC	ZAMBEZI	---	---	1985	CONT
6215	MANGANGO STATE FARM	ZAMBEZI	14/38'	24/32'	1980	1984
6220	KAP-TATAYO	ZAMBEZI	14/56'	27/11'	1969	CONT
6224	MVONDOTI AGRIC	ZAMBEZI	---	---	1985	CONT
6225	LUKULU MISSION	ZAMBEZI	14/23'	23/15'	1945	CONT
6230	KULUWANA AGRIC	ZAMBEZI	14/02'	23/39'	1981	CONT
6231	SIKASUMBI (WA)	ZAMBEZI	14/17'	23/05'	1964	CONT
6233	MANGANGO AGRIC	ZAMBEZI	---	---	1984	CONT
6257	MWANBE	ZAMBEZI	13/30'	22/20'	1964	1975
6290	KATUBA KABONPO	ZAMBEZI	13/21'	23/55'	1960	CONT
6315	Z.F.D.S. WEST FIVE	ZAMBEZI	13/57'	24/30'	1969	1971
6337	CHIBULUKASHI	ZAMBEZI	14/38'	25/34'	1969	1970
6339	LALAFUTA CAMP	ZAMBEZI	14/35'	25/19'	1966	1970
6350	KALENGWA MINE	ZAMBEZI	13/28'	24/59'	1967	1976

LIST OF METEOROLOGICAL STATION IN ZAMBIA

NO	STATION NAME	CATCHMENT	LAT.	LONG.	FROM	TO
6395	Z.F.D.S. FOUR	ZAMBEZI	13/39'	25/26'	---	---
6403	KABULAMENA	ZAMBEZI	13/51'	24/01'	1952	CONT
6413	KABOMPO MET.	ZAMBEZI	13/36'	24/12'	1948	CONT
6420	LOLOMA MISSION	ZAMBEZI	13/25'	24/20'	1956	1969
6430	LUSONGWA	ZAMBEZI	12/58'	24/13'	1964	1969
6470	CHIWOMA	ZAMBEZI	12/24'	24/18'	1972	CONT
6476	CHIBWIKWA AGRIC	ZAMBEZI	12/05'	24/18'	1972	CONT
6478	KAMAPANDA MISSION	ZAMBEZI	12/00'	24/07'	1926	1974
6481	KAMAPANDA SCHOOL	ZAMBEZI	---	---	1970	1974
6524	MWINILUNGA ETC	ZAMBEZI	11/46'	24/26'	1979	CONT
6525	MWINILUNGA MET.	ZAMBEZI	11/45'	24/26'	1921	CONT
6528	MWINILUNGA VEGETABLE	ZAMBEZI	11/41'	24/25'	1970	CONT
6535	MWINILUNGA RESEARCH	ZAMBEZI	11/38'	24/24'	1972	CONT
6572	KAKOMA SCHOOL	ZAMBEZI	---	---	1971	1974
6580	KIKONGE SCHOOL	ZAMBEZI	13/04'	25/16'	1971	1974
6583	KAKIKASA FARM	ZAMBEZI	---	---	1982	CONT
6585	CHIZERA MISSION	ZAMBEZI	13/06'	25/02'	1962	CONT
6586	CHIZERA FIC	ZAMBEZI	---	---	1983	CONT
6649	KANKOLOKOLO DISP.	ZAMBEZI	13/01'	26/00'	1951	CONT
6680	MOMBESI DISP.	ZAMBEZI	12/15'	25/34'	1966	1981
6722	NYARABOLA	ZAMBEZI	11/50'	24/53'	1973	CONT
6734	CHOVWE AGRIC	ZAMBEZI	12/25'	25/04'	1973	1976
6738	NTAMBU	ZAMBEZI	12/26'	24/59'	1973	CONT
6745	KISASA AGRIC	ZAMBEZI	12/08'	25/29'	1973	CONT
6748	MUKUMBI AGRIC	ZAMBEZI	12/07'	25/46'	1973	CONT
6780	LUMWANE SCHOOL	ZAMBEZI	11/50'	25/05'	1951	CONT
6830	CHITKOKOLO MISSION	ZAMBEZI	13/50'	23/13'	1934	CONT
6840	BALOVALE	ZAMBEZI	13/34'	25/06'	1921	CONT
6842	ZAMBEZI SEC. SCHOOL	ZAMBEZI	---	---	1970	1974
6847	KASEZI	ZAMBEZI	13/22'	23/10'	1959	1974
6858	KAYOMBO	ZAMBEZI	13/02'	23/52'	1964	1971
6860	DIPALATA	ZAMBEZI	13/18'	23/14'	1952	1971
6864	CHINYINGI	ZAMBEZI	13/22'	23/01'	1955	CONT
6871	LUKOLWE MISSION	ZAMBEZI	13/12'	22/42'	1959	CONT
6874	CHVUMA (WA)	ZAMBEZI	13/06'	22/48'	1938	CONT
6875	CHAVUMA MISSION	ZAMBEZI	13/05'	22/42'	1927	CONT
6880	KANONGESHA	ZAMBEZI	11/42'	24/02'	1952	1971
6881	NYANGOMBE	ZAMBEZI	11/48'	24/34'	1980	CONT
6882	MATONGHI MISSION	ZAMBEZI	11/38'	23/03'	1935	CONT
6885	CHIZERA (KALE/MISSION)	ZAMBEZI	---	---	1982	CONT
6890	KALENE HILL MISSION	ZAMBEZI	11/11'	24/11'	1927	CONT
6891	KALEYA SCHOOL	ZAMBEZI	11/12'	24/11'	1975	1976
6893	IKELANGE AGRIC	ZAMBEZI	11/15'	24/15'	1972	1984
6896	SAKEJI SCHOOL	ZAMBEZI	11/14'	24/18'	1937	CONT
6898	HILLWOOD FARM	ZAMBEZI	11/15'	24/19'	1924	CONT
6802	KANYAMA AGRIC	ZAMBEZI	11/24'	14/45'	1972	1981
7040	CHIPUNGU AGRIC	LUAPULA	8/40'	29/10'	1972	1984
7042	PUTA COUNCIL	LUAPULA	8/42'	29/11'	1972	1982
7048	KAFULWE MISSION	LUAPULA	8/59'	29/05'	1941	CONT
7049	KAFULWE HYDRO	LUAPULA	---	---	1985	CONT

LIST OF METEOROLOGICAL STATION IN ZAMBIA

NO. STATION NAME	CATCHMENT	LAT.	LONG.	FROM	TO
7053 MUNUNGA	LUAPULA	9/04'	29/03'	1966	CONT
7090 MOWE DAMBO (WA)	LUAPULA	9/08'	29/15'	1958	CONT
7095 KALUNGWISHI	LUAPULA	9/13'	29/18'	1971	CONT
7096 KALUNGWISHI RANCH	LUAPULA	9/13'	29/19'	1977	CONT
7098 LWANGWA AT MUMBULOMA FALLS	LUAPULA	9/33'	29/44'	1971	CONT
7100 MUKUPA KATANDULA	LUAPULA	8/59'	29/28'	1954	CONT
7131 MUYELA-KANANDA	LUAPULA	8/50'	29/40'	1981	CONT
7137 MWAMBASHI RIVER NO. 2	LUAPULA	8/50'	29/56'	1970	1985
7158 KASEMPQ AGRIC	LUAPULA	8/55'	29/40'	1980	CONT
7140 CHISELA AGRIC	LUAPULA	8/58'	29/10'	1980	CONT
7142 NSAMA AGRIC CAMP	LUAPULA	8/54'	29/57'	1972	1980
7145 CHISELA	LUAPULA	--	--	1984	CONT
7146 MUKUNTA	LUAPULA	9/58'	29/05'	1975	CONT
7175 KAPUTA	LUAPULA	8/26'	29/45'	1954	1985
7215 KILWA ISLAND	LUAPULA	9/20'	28/30'	1975	1983
7222 CHISENGA ISLAND	LUAPULA	9/28'	28/40'	1975	1985
7229 MUNSA AGRIC	LUAPULA	9/10'	28/52'	1975	CONT
7260 CHIMPENGE MISSION	LUAPULA	9/34'	29/25'	1949	1984
7265 CHIMPENGE PONTOON (WA)	LUAPULA	9/53'	29/27'	1968	1986
7273 CHIBOTE MISSION	LUAPULA	9/52'	29/33'	1926	CONT
7277 KAWAMBWA TEA ESTATES	LUAPULA	9/48'	29/15'	1978	CONT
7280 MUSHUTA AGRIC	LUAPULA	9/46'	29/23'	1950	1983
7282 MUSHUTA RICE SCHEME	LUAPULA	9/46'	29/25'	1971	1976
7285 KABANDA AGRIC	LUAPULA	9/40'	29/25'	1973	CONT
7320 KAHABE MISSION	LUAPULA	9/28'	29/50'	1942	CONT
7345 CHIHALA SCHOOL	LUAPULA	9/22'	30/07'	1913	1971
7350 MPOROKOSO	LUAPULA	9/22'	30/07'	1913	CONT
7351 MPOROKOSO SEC. SCHOOL	LUAPULA	9/22'	30/07'	1968	1985
7365 VINCENT BULAYA	LUAPULA	9/38'	30/27'	1963	1972
7400 KILWA SCHOOL	LUAPULA	8/40'	29/10'	1975	1976
7408 ROSAMO MISSION	LUAPULA	8/35'	29/12'	1975	1985
7410 CHINGE AGRIC	LUAPULA	9/21'	28/45'	1984	CONT
7411 NCHELENGE RESEARCH	LUAPULA	9/21'	28/45'	1954	CONT
7412 NCHELENGE	LUAPULA	9/31'	28/45'	--	--
7415 CHABILIKILA RESEARCH	LUAPULA	9/32'	28/43'	1963	1976
7420 SHIMUKUNDU	LUAPULA	9/44'	28/47'	1923	1974
7428 MBERESI MISSION	LUAPULA	9/45'	28/52'	1954	CONT
7430 LUAPULA LEP. SETTLEMENT	LUAPULA	9/50'	25/50'	1966	CONT
7443 KAPWESI PLANTATION	LUAPULA	9/48'	28/05'	1971	1983
7448 MBENESI AGRIC	LUAPULA	9/48'	28/05'	1966	CONT
7449 ST. MARY'S KAWAMBWA	LUAPULA	9/48'	28/05'	1910	CONT
7450 KARAMBWA MET.	LUAPULA	9/53'	28/47'	1937	1985
7455 LUFUBU MISSION	LUAPULA	--	--	1985	CONT
7456 LUFUBU AT KESO FALLS	LUAPULA	9/58'	28/40'	1970	CONT
7468 MUMUSHI BANANA SCHOOL	LUAPULA	10/05'	28/37'	1951	1976
7480 KAWAMA MISSION	LUAPULA	10/07'	28/37'	1978	CONT
7482 LUKWESA AGRIC	LUAPULA	10/18'	28/46'	1958	CONT
7486 MUBENDE	LUAPULA	--	--	1984	CONT
7487 KATUTO AGRIC	LUAPULA	10/22'	28/42'	1951	1982
7489 NSKALUBA	LUAPULA	--	--	1982	CONT

LIST OF METEOROLOGICAL STATION IN ZAMBIA

NO. STATION NAME	CATCHMENT	LAT.	LONG.	FROM	TO
7491 MWENSE AGRIC	LUAPULA	10/24'	28/37'	1976	CONT
7492 LUBUNDA AGRIC	LUAPULA	--	--	1985	CONT
7493 MWENSE CONSULTING ENG.	LUAPULA	10/22'	28/42'	1985	CONT
7495 MAMBILIMA MISSION	LUAPULA	10/32'	28/38'	1926	CONT
7503 MAGONDA FALLS	LUAPULA	10/42'	28/50'	--	--
7505 CHISUNKA	LUAPULA	10/45'	28/50'	1959	1984
7510 MWENDA	LUAPULA	10/28'	29/01'	1970	CONT
7512 MWENDA SCHOOL	LUAPULA	10/28'	29/11'	1964	1984
7515 CHIPILI MISSION	LUAPULA	10/44'	29/05'	1921	1984
7530 MUFETA	LUAPULA	10/25'	29/02'	1964	1984
7553 MUYEMBE	LUAPULA	9/59'	29/07'	1964	1973
7563 LWENA AGRIC	LUAPULA	10/38'	30/12'	1967	1974
7584 KALUNDU MISSION	LUAPULA	10/17'	29/23'	1938	1971
7586 MUSUNGA	LUAPULA	10/11'	29/19'	1963	1971
7602 CHIBONDO	LUAPULA	10/43'	28/28'	1965	CONT
7610 MWAMBESHI NEAR NSAMA	LUAPULA	--	--	1984	CONT
7615 CHIBILIKILO	LUAPULA	--	--	1984	CONT
7645 KABUNDA MISSION	LUAPULA	11/12'	28/47'	1950	1985
7648 MANSARA RURAL DAIRY	LUAPULA	11/09'	28/51'	1970	CONT
7649 MANSARA (WA)	LUAPULA	11/09'	28/51'	1971	CONT
7650 MANSARA MET.	LUAPULA	11/06'	28/51'	1919	CONT
7652 MANSARA FARM INST.	LUAPULA	--	--	1973	CONT
7654 MOLOSHI AGRIC	LUAPULA	--	--	1985	CONT
7655 BAHATI MISSION	LUAPULA	--	--	1950	CONT
7657 MATENDA	LUAPULA	11/03'	28/50'	1950	CONT
7659 KAHASA-LUKANGABA	LUAPULA	11/03'	28/48'	1970	CONT
7663 MANSARA RESEARCH STATION	LUAPULA	11/17'	28/49'	1969	1982
7665 MABAMBA	LUAPULA	11/15'	28/59'	1976	CONT
7661 KALE FR. SCHOOL	LUAPULA	11/15'	29/02'	1969	CONT
7671 KALABA AGRIC	LUAPULA	11/02'	29/07'	1977	CONT
7673 KALABA	LUAPULA	11/01'	29/08'	1963	1969
7676 CHAMUNDA SCHOOL (WA)	LUAPULA	13/17'	28/24'	1969	1971
7698 CHEMBE AGRIC	LUAPULA	11/59'	28/42'	1969	CONT
7699 CHEMBE PONTOON	LUAPULA	11/59'	28/32'	1958	1971
7700 MILENBE AGRIC	LUAPULA	12/13'	29/30'	1978	CONT
7705 CHAYUWA MWELWA SCHOOL	LUAPULA	11/56'	28/57'	1964	1978
7758 MILAMBO AGRIC	LUAPULA	11/47'	29/02'	1969	CONT
7760 MWELA MISSION	LUAPULA	11/43'	29/07'	1942	CONT
7790 NSONGA KAPOLWE	LUAPULA	11/26'	29/16'	1963	CONT
7814 MALIC SETTLEMENT SCHOOL	LUAPULA	13/05'	30/52'	1979	CONT
7822 CHITAMBO	LUAPULA	12/55'	30/38'	1910	1967
7826 MPUMBA	LUAPULA	12/40'	31/03'	1971	1984
7830 SAS AGRIC CAMP	LUAPULA	13/02'	30/02'	1958	1972
7843 SERENJE	LUAPULA	13/15'	30/10'	1970	CONT
7847 MPELEMBE	LUAPULA	13/14'	30/13'	1984	CONT
7850 SERENJE MET.	LUAPULA	--	--	1948	CONT
7851 LUPIYA	LUAPULA	--	--	1964	CONT
7852 SERENJE BOMA	LUAPULA	13/15'	30/14'	1913	1974
7854 SERENJE	LUAPULA	13/15'	30/15'	1977	1978
7912 MULEMBO	LUAPULA	12/32'	30/19'	1971	1977

LIST OF METEOROLOGICAL STATION IN ZAMBIA

NO	STATION NAME	CATCHMENT	LAT.	LONG.	FROM	TO
7925	LIVINGSTONE MEMORIAL	LUAPULA	12/19'	30/19'	1958	1975
7940	CHUNDAPONDE SCHOOL	LUAPULA	12/15'	30/35'	1963	1982
7942	CHINDAPONDE	LUAPULA	12/15'	30/34'	1970	1976
7980	TWINGI MISSION	LUAPULA	11/41'	29/40'	1939	CONT
7983	Z.F.D.S. EAST ONE	LUAPULA	11/38'	29/42'	1972	1982
8000	SAMFYA MET	LUAPULA	11/21'	29/32'	1957	1984
8001	SAMFYA MISSION	LUAPULA	11/21'	29/33'	1957	CONT
8010	MIBENGE	LUAPULA	11/17'	29/24'	1969	1973
8024	NYUMBO SOCIETY	LUAPULA	---	---	---	---
8040	LUBEWE MISSION	LUAPULA	11/08'	29/27'	1926	1984
8050	MWANA POST OFFICE	LUAPULA	10/58'	29/28'	1939	1979
8060	CHIMANDA SCHOOL	LUAPULA	10/49'	29/28'	1968	1971
8080	KASABA MISSION	LUAPULA	10/44'	29/43'	1944	1983
8112	IPUSUKILO SCHOOL	LUAPULA	10/23'	29/53'	1974	1973
8120	LWINGU	LUAPULA	10/15'	29/55'	1924	1971
8122	LWINGU AGRIC	LUAPULA	10/15'	29/54'	1971	CONT
8123	CHUNGU RICE PROJECT	LUAPULA	---	---	1986	CONT
8124	MUTONDO RICE PROJECT	LUAPULA	---	---	1986	CONT
8125	NSOMBO	LUAPULA	10/45'	29/58'	1958	1972
8135	LAENA	LUAPULA	10/38'	30/12'	1939	1971
8145	TUNGATI	LUAPULA	10/32'	29/58'	1960	1985
8170	CHABA SCHOOL	LUAPULA	10/57'	30/05'	1959	1978
8182	MUCHINSHI (WA)	LUAPULA	11/06'	29/57'	1984	1971
8185	SANTA MARIA MISSION	LUAPULA	11/07'	30/02'	1935	CONT
8225	NGHETA	LUAPULA	11/45'	30/02'	1935	1971
8229	CHAFEYE ISLAND	LUAPULA	11/45'	30/11'	1971	1971
8234	CHIKUNI CAMP	LUAPULA	11/57'	30/12'	1973	1974
8240	KALIMANKONDE (WA)	LUAPULA	11/26'	30/04'	1969	1971
8242	KASOMA (WA)	LUAPULA	11/24'	30/07'	1969	1981
8440	SENIOR CHIEF KOPA	LUAPULA	11/44'	30/46'	1955	1981
8453	LWITIKILA (WA)	LUAPULA	11/51'	31/23'	1970	CONT
8459	LUCHENGE	LUAPULA	11/49'	31/15'	1969	1981
8460	MUFUBUSHI R.R. CENTRE	LUAPULA	12/10'	31/08'	1976	1977
8462	MUFUBUSHI	LUAPULA	12/06'	31/15'	1973	CONT
8464	CHILONGA SCHOOL	LUAPULA	12/03'	31/20'	1975	1976
8465	CHILONGA MISSION	LUAPULA	12/02'	31/19'	1939	CONT
8466	CHILONGA AGRIC	LUAPULA	12/02'	31/19'	1976	CONT
8470	MPIKA MET.	LUAPULA	12/54'	31/26'	1932	CONT
8473	MPIKA BOMA	LUAPULA	11/50'	31/27'	1919	CONT
8474	KABINGA SCHOOL	LUAPULA	11/50'	31/27'	1971	CONT
8475	KAULE AGRIC	LUAPULA	---	---	1985	CONT
8477	MALASHI SCHOOL	LUAPULA	11/48'	31/27'	1964	CONT
8478	MALASHI SCHOOL	LUAPULA	11/48'	31/27'	1976	1982
8480	CHALWA (CHIKWANDA)	LUAPULA	11/40'	31/30'	1958	CONT
8493	KALLANTUTU	LUAPULA	11/36'	30/42'	1969	CONT
8506	CHALABESA AGRIC	CHAMBESHI	11/36'	31/00'	1971	1983
8510	CHALABESA MISSION	CHAMBESHI	11/22'	31/01'	1939	CONT
8515	KANCHIPIYA RIVER	CHAMBESHI	11/30'	31/17'	1970	CONT
8558	MUNKONGE TOBACCO SCHOOL	CHAMBESHI	10/19'	31/40'	1974	CONT
8564	MUNKONGE	CHAMBESHI	10/20'	31/41'	1961	CONT

LIST OF METEOROLOGICAL STATION IN ZAMBIA

NO	STATION NAME	CATCHMENT	LAT.	LONG.	FROM	TO
8575	LUBUSHI MISSION	CHAMBESHI	10/17'	30/28'	1933	1984
8585	CHITOSHI	CHAMBESHI	10/09'	30/11'	1969	CONT
8600	MBATI (WA)	CHAMBESHI	11/15'	30/43'	1958	CONT
8635	CHIBUTUBUTU	CHAMBESHI	10/38'	31/10'	1958	1970
8638	UKOLEMUFU	CHAMBESHI	10/30'	31/10'	1969	1972
8639	MULASHI AGRIC	CHAMBESHI	10/24'	31/15'	1974	CONT
8640	KASAMA PLANTATION	CHAMBESHI	10/15'	31/05'	1972	CONT
8642	KASONDE SCHOOL	CHAMBESHI	10/12'	31/11'	1971	1973
8644	KASAMA BOMA	CHAMBESHI	10/12'	31/11'	1927	1970
8645	KASAMA AGRIC	CHAMBESHI	10/12'	31/11'	1950	CONT
8646	KASAMA HYDRO (WA)	CHAMBESHI	10/10'	30/58'	1939	CONT
8650	KATESHI COFFEE ESTATE	CHAMBESHI	10/08'	30/55'	1968	CONT
8655	CHIBULA MISSION	CHAMBESHI	9/37'	30/37'	1971	CONT
8657	CHISHIMBA FALLS	CHAMBESHI	9/57'	30/47'	1963	1974
8664	CHIIONGOSHI	CHAMBESHI	9/48'	30/44'	---	---
8665	SHIBWALYA KAPILIA	CHAMBESHI	9/48'	30/44'	1963	CONT
8668	SHIBWALYA KAPILIA AGRIC	CHAMBESHI	9/48'	30/44'	1968	1985
8669	SHIBWALYA KAPILIA SCHOOL	CHAMBESHI	9/48'	30/44'	1984	CONT
8675	MWANGE R.R. CENTRE	CHAMBESHI	---	---	---	---
8677	MOSENI SCHOOL	CHAMBESHI	---	---	1984	CONT
8678	KAPUTU MISSION	CHAMBESHI	9/43'	30/44'	1926	CONT
8680	KAPUTU CHEME	CHAMBESHI	9/42'	30/45'	1973	1984
8686	NONDO	CHAMBESHI	9/33'	31/13'	1961	1969
8687	NONDO AGRIC	CHAMBESHI	9/34'	31/13'	1966	CONT
8690	CHIBWA	CHAMBESHI	9/27'	31/16'	1933	1973
8692	MAULA SCHOOL	CHAMBESHI	9/29'	31/19'	1952	1975
8695	MWAMBA KASAMA	CHAMBESHI	10/06'	31/04'	1963	CONT
8697	MWAMBA PR. SCHOOL	CHAMBESHI	10/06'	31/34'	1976	1976
8700	KASAMA MET.	CHAMBESHI	10/13'	31/08'	1945	CONT
8702	KASAMA DAIRY	CHAMBESHI	10/15'	31/12'	1969	1972
8704	MILIMA PRISON	CHAMBESHI	10/11'	31/07'	1976	1984
8705	MISAMFU	CHAMBESHI	10/11'	31/13'	1964	CONT
8799	MUKOLEMUFU PLANTATION	CHAMBESHI	10/12'	31/18'	1970	1980
8790	MUKUFA KAOA	CHAMBESHI	9/58'	30/25'	1963	CONT
8801	CHAMBESHI BRIDGE (WA)	CHAMBESHI	10/57'	31/01'	1968	CONT
8805	MPEFO AGRIC	CHAMBESHI	11/04'	31/08'	1969	1982
8825	SHIWA NG'ANDU	CHAMBESHI	11/12'	31/45'	1922	CONT
8830	MUKWIKILE	CHAMBESHI	10/22'	31/47'	1974	1982
8895	ILONDOLA MISSION	CHAMBESHI	10/43'	31/47'	1939	CONT
8904	MATUMBO AGRIC	CHAMBESHI	10/55'	32/09'	1973	1980
8960	NDASA AGRIC	CHAMBESHI	10/08'	31/58'	1878	CONT
8967	MUMBA AGRIC	CHAMBESHI	10/07'	31/31'	1980	CONT
8969	MALOLE AGRIC	CHAMBESHI	10/07'	31/31'	1972	CONT
8970	MALOLE MISSION	CHAMBESHI	10/07'	31/34'	1926	CONT
8971	ST. FRANCIS SEC. SCHOOL	CHAMBESHI	10/07'	31/24'	1956	CONT
8992	NGULULA	CHAMBESHI	10/06'	31/20'	1963	CONT
8993	MUNGWI AGRIC EXT.	CHAMBESHI	10/08'	31/21'	1972	CONT
8994	MUNGWI AGRIC	CHAMBESHI	10/10'	31/21'	1958	CONT
8999	NGOLI	CHAMBESHI	9/53'	31/15'	1969	CONT

LIST OF METEOROLOGICAL STATION IN ZAMBIA

NO	STATION NAME	CATCHMENT	LAT.	LONG.	FROM	TO
9017	LUBWA SCHOOL	CHAMBESHI	10/34'	32/01'	1929	1985
9019	CHINSALI FIC	CHAMBESHI	10/33'	32/03'	1977	CONT
9020	CHINWALI	CHAMBESHI	10/33'	32/04'	1925	1985
9021	CHISELA	CHAMBESHI	---	---	1983	CONT
9030	MUNDU	CHAMBESHI	10/20'	32/15'	1960	CONT
9033	MUSANYA AGRIC	CHAMBESHI	10/25'	32/24'	1976	1985
9112	MULLANSOZO MISSION	CHAMBESHI	10/05'	32/18'	1939	1977
9115	SHIMWALUJE MISSION	CHAMBESHI	10/05'	32/14'	1966	1981
9117	MUESUMA FARM	CHAMBESHI	10/02'	32/07'	1923	1979
9119	MULEMA SAMPA AGRIC	CHAMBESHI	10/01'	32/06'	1972	CONT
9170	SIKALEMBO	CHAMBESHI	9/07'	32/12'	1961	CONT
9183	KAYAMBI AGRIC	CHAMBESHI	9/27'	32/01'	1972	CONT
1988	KAYAMBI MISSION	CHAMBESHI	9/27'	31/59'	1926	1983
9245	NTATUMBILA	CHAMBESHI	9/05'	31/59'	1958	CONT
9248	CHIFWILE CAMP	CHAMBESHI	---	---	1983	CONT
9249	LUKULU IRDP	CHAMBESHI	---	---	1983	CONT
9250	MURANGA (KASO)	CHAMBESHI	---	---	1983	CONT
9260	KAKAUAUCHA	CHAMBESHI	---	---	1983	CONT
9261	CHAMFUBU SETT. SCHEME	CHAMBESHI	---	---	1983	1984
9262	CHILEFYA KASAMA WEST	CHAMBESHI	---	---	1983	CONT
9263	ZCA MFIKA	CHAMBESHI	---	---	1983	CONT
9275	NSOKOLO	CHAMBESHI	9/11'	31/51'	1961	CONT
9294	MANWE MISSION	CHAMBESHI	9/12'	31/44'	1944	CONT
9309	KANTONGA	CHAMBESHI	9/29'	32/38'	1958	CONT
9330	CHIBALE SCHOOL	CHAMBESHI	---	---	1983	CONT
9345	KANTENSHA MISSION	CHAMBESHI	10/08'	32/35'	1954	1969
9349	ISOKA	CHAMBESHI	10/10'	32/38'	1919	CONT
9350	CHUNGA AGRIC CAMP	CHAMBESHI	---	---	1985	CONT
9355	KALUNGU	CHAMBESHI	9/42'	32/41'	1958	CONT
9398	SHEM AGRIC	CHAMBESHI	---	---	1982	1984
9364	NZOCHÉ AGRIC	CHAMBESHI	9/50'	33/05'	1975	1985
9375	OLD FIFE AGRIC	CHAMBESHI	9/20'	32/44'	1959	CONT
9380	ILOLA AGRIC	CHAMBESHI	9/15'	32/20'	1976	CONT
9409	MAKASA	CHAMBESHI	9/40'	31/53'	1959	CONT
9434	MBENDA	CHAMBESHI	9/21'	31/49'	1961	1979
9450	ROSA MISSION	CHAMBESHI	9/37'	31/22'	1927	CONT
9474	MOSES SCHOOL	CHAMBESHI	9/25'	31/17'	1952	1983
9749	NSUMBU AGRIC	TANGANYIKA	8/31'	30/29'	1980	CONT
9750	NSUMBU GAME RES.	TANGANYIKA	8/31'	30/29'	1971	CONT
9752	CHIPOTE SCHOOL (WA)	TANGANYIKA	8/41'	30/35'	1971	1981
9759	CHITIMWA AGRIC	TANGANYIKA	8/51'	30/52'	1961	1984
9788	SENGA HILL AGRIC	TANGANYIKA	9/22'	30/15'	1971	CONT
9790	KAKUSU SCHOOL	TANGANYIKA	9/20'	31/07'	1952	1982
9792	MUSOMBEZI	TANGANYIKA	9/15'	31/09'	1961	1970
9805	MPULUNGU POST	TANGANYIKA	8/45'	31/07'	1939	1983
9806	STELLA MARIS PARISH	TANGANYIKA	8/45'	31/07'	1973	CONT
9815	LUNZUWA GOVT. SCHOOL	TANGANYIKA	9/10'	31/24'	1951	1974
9817	LUNZUWA AGRIC	TANGANYIKA	9/00'	31/22'	1939	1977
9826	MBALA POWER STATION	TANGANYIKA	8/52'	31/20'	1969	1973
9827	MBALA KATULA	TANGANYIKA	8/50'	31/15'	1969	1972

LIST OF METEOROLOGICAL STATION IN ZAMBIA

NO	STATION NAME	CATCHMENT	LAT.	LONG.	FROM	TO
9828	CHISUNGU	TANGANYIKA	8/50'	31/05'	1931	1969
9830	MBALA MET.	TANGANYIKA	8/51'	31/20'	1905	CONT
9831	MBALA FIC	TANGANYIKA	8/50'	31/24'	1985	CONT
9832	LUCHECHE RES. STATION	TANGANYIKA	8/50'	31/20'	1979	CONT
9834	MBALA TOWN	TANGANYIKA	8/51'	31/22'	1953	1970
9835	MBALA CIVIC CENTRE	TANGANYIKA	8/51'	31/22'	1969	1976
9836	MBALA INT. RED LOCUST C.S.	TANGANYIKA	8/52'	31/22'	1954	CONT
9855	KAWIMBE SCHOOL	TANGANYIKA	8/50'	31/32'	1951	1974
9857	KAWIMBE AGRIC	TANGANYIKA	8/49'	31/32'	1975	CONT
9870	MWAMBA RESETTLEMENT AREA	TANGANYIKA	8/55'	31/46'	1961	CONT
9875	MWAMBALA	TANGANYIKA	9/04'	31/40'	1961	CONT
9880	MWAMBA (MBALA)	TANGANYIKA	8/54'	31/38'	1962	CONT





SUPPLEMENT - 5.2

HYDROMETRIC STATIONS IN ZAMBIA



((1))List of Hydrometric Stations in Zambia

<< Zambezi River Basin >> (1/2)

NO ST. NO.	AREA (km2)	RIVER	LOCATION	R. H. Office/Local.	OPENED	CLOSED	S. G. AUT DIS	D A T A A V A I L A B I L I T Y						
								1940	1950	1960	1970			
1	1-040	122	Ikelenge	N-Western/Solwezi	11/1971		Y	N	Y					
2	1-080	764	Kaleri Hill R/D	N-Western/Solwezi	11/1971		Y	N	Y					
3	1-100		Cholose	N-Western/Solwezi	07/1959	04/1972	Y	N	N					
4	1-105	75,967	Chaturu Falls	N-Western/Solwezi	10/1955		Y	N	Y					
5	1-130	-	Lunkuryi school	N-Western/Solwezi	12/1971		Y	N	Y					
6	1-135	-	Chief Nyakulenga	N-Western/Solwezi	12/1971		Y	N	N					
7	1-138	749	Dipalata Mission	N-Western/Solwezi	12/1971		Y	N	Y					
8	1-141	-	Kakeki School	N-Western/Solwezi	12/1971		Y	N	N					
9	1-143	-	Dipalata School	N-Western/Solwezi	12/1971		Y	N	Y					
10	1-145	3,354	Chivatu Village	N-Western/Solwezi	12/1961		Y	N	Y					
11	1-150	82,275	Zambezi Pump House	N-Western/Solwezi	02/1947		Y	N	Y					
12	1-208	1,075	Solwezi-Wirilungwa R/B	N-Western/Solwezi	01/1972		Y	N	Y					
13	1-308	469	W/Lumwana	Solwezi-Wirilungwa R/B	10/1976		Y	N	Y					
14	1-310	3,041	Mwambezi	Solwezi-Wirilungwa R/B	11/1971		Y	N	Y					
15	1-313	-	Chimikwanga	Lumwana	10/1976	09/1978	Y	N	Y					
16	1-324	-	E/Lumwana	Lumwana Camp	05/1976	12/1978	Y	N	Y					
17	1-315	640	E/Lumwana	Solwezi-Wirilungwa R/B	11/1971	06/1983	Y	N	Y					
18	1-425	632	Iwakela	Sachibondo	10/1970		Y	N	Y					
19	1-430	4,598	W/Lunga	Mwirilungwa	01/1953	11/1986	Y	N	Y					
20	1-610	-	Kabompo	Manyinga R/B	11/1971		Y	N	Y					
21	1-630	-	Manyinga	Manyinga	12/1961		Y	N	Y					
22	1-650	42,740	Kabompo	Kabompo Boma	10/1950		Y	N	Y					
23	1-650	-	Chikonkwelo	Kashira Village	11/1971	10/1977	Y	N	Y					
24	1-670	44,356	Kabompo	Kabompo Old Fontoon	10/1952	05/1972	Y	N	Y					
25	1-690	-	Dongwe	Dongwe	10/1958	10/1962	Y	N	Y					
26	1-950	66,449	Kabompo	Watopa Fontoon	05/1958		Y	N	Y					
27	1-970	-	Mumbeji	Kabompo-Wirilungwa R/B	12/1971	10/1976	Y	N	Y					
28	2-020	43,030	Lungwebungu	Sikasumbi	03/1958	12/1988	Y	N	N					
29	2-030	206,531	Zambezi	Lukulu	10/1950		Y	N	Y					
30	2-120	-	Luaena	Longwe	02/1977	01/1987	Y	N	Y					
31	2-123	-	Luaena	Kaema-Kasempa R/B	01/1977		Y	N	N					
32	2-130	7,016	Luaena	Njanga School	10/1961	01/1987	Y	N	Y					
33	2-150	15,444	Luaena	Kasambanzi (hydro. site)	10/1960		Y	N	Y					
34	2-200	-	Zambezi	Likapa	11/1961	02/1972	Y	N	N					
35	2-230	34,620	Luanginga	Kalabo	11/1957		Y	N	Y					
36	2-270	5,959	Luambimba	Sistekari	07/1959		Y	N	N					
37	2-310	-	Sikolongo	near zambezi Riv.	11/1961		Y	N	N					
38	2-320	831	Namitome	Namitome	02/1962		Y	N	Y					
39	2-330	276,710	L/Zambezi	Matonga Platform	01/1956		Y	N	N					
40	2-340	140	Sefula	Sefula R/S	02/1971		Y	N	Y					

(NOTE) S.G. : Staff Gauge, AUT : Automatic Recorder, Dis : Discharge Rating Curve, Y : Available, (Y) : Previously worked  
 N : Not Available, O : Water level and discharge data are available, \* : Water level data is available,  
 X : Data is not available, R.H.Office/Local. : Regional Hydrological Office and Office location

(2) List of Hyrometric Stations in Zambia

<< Zambezi River Basin >> (2/2)

NO	ST. NO.	AREA (km <sup>2</sup> )	RIVER	LOCATION	R. H. Office/Local	OPENED	CLOSED	S.G	AUT	DIS	D A T A A V A I L A B I L I T Y					
											1940	1950	1960	1970	1980	1990
41	2-350	-	Nalolo Canal/Nalolo		Western/Mongu	11/1961	07/1972	Y	N	N						
42	2-360	206,531	Katuba	Sardi R/B	Western/Mongu	02/1971	03/1988	Y	N	Y						
43	2-400	278,298	Zambezi	Seranga	Western/Mongu	11/1947		Y	N	Y						
44	2-450	15,451	Lueti/s	Lueti Fontoon	Western/Mongu	03/1961		Y	N	Y						
45	2-475	1,854	Lui	Lutembo School	Western/Mongu	11/1960	01/1987	Y	N	Y						
46	2-700	33,605	Zambezi	Seyheko	Southern/Mazabuka	01/1960		Y	N	N						
47	2-990	-	Zambezi	Mambova Harbour	Southern/Mazabuka	10/1971	02/1974	Y	N	N						
48	3-050	223,698	Zambezi	Livingstone Pump House	Southern/Mazabuka	01/1961		Y	N	N						
49	3-120	-	Kalomo	William's Dam	Southern/Mazabuka	10/1980		Y	N	N						
50	3-130	1,899	Kalomo	Kalomo Dam site	Southern/Mazabuka	03/1956	10/1984	Y	N	Y						
51	3-335	940	Muzuna	Mweria school	Southern/Mazabuka	07/1970		Y	N	Y						
52	3-350	215	Kazimpe	Sirak-sikile R/B	Southern/Mazabuka	07/1970		Y	N	N						
53	3-370	228	Nangombe	Tobontes's Village	Southern/Mazabuka	10/1969		Y	N	Y						
54	3-375	-	Lake Kariba	Chiyab!	Southern/Mazabuka	05/1964		Y	N	N						
55	3-380	-	Lake Kariba	Sikolwenzala Hills	Southern/Mazabuka	08/1962	09/1966	Y	N	N						
56	3-950	414,400	Zambezi	Lusitu Pump House	Southern/Mazabuka	06/1961	01/1976	Y	N	N						
57	3-960	687,715	Zambezi	Chirundu R/B	Southern/Mazabuka	04/1963	06/1977	Y	N	Y						
58	5-012	-	Chongwe	Chongwe North	Lusaka/Lusaka	10/1973		Y	N	Y						
59	5-016	303	Ngwewere	Ngwewere Estate Weir	Lusaka/Lusaka	01/1955		Y	(Y)	Y						
60	5-024	-	Chongwe	Chongwe-Ngwewere Confluence	Lusaka/Lusaka	01/1977		Y	N	Y						
61	5-025	1,815	Chongwe	Chongwe (S.E.R.) Bridge	Lusaka/Lusaka	12/1968		Y	N	Y						
62	5-029	118	Chalumba	Romar Farm	Lusaka/Lusaka	11/1993		Y	(Y)	Y						
63	5-030	107	Kapirionbwa	Exchange Farm	Lusaka/Lusaka	04/1987		Y	Y	Y						
64	5-099	-	Zambezi	Feira Boma	Lusaka/Lusaka	03/1962		Y	N	N						

<NOTE> S.G : Staff Gauge, AUT : Automatic Recorder, Dis : Discharge Rating Curve, Y : Available, (Y) : Previously worked  
 N : Not Available, C : Water level and discharge data are available, \* : Water level data is available,  
 X : Data is not available, R.H.Office/Local. : Regional Hydrological Office and Office location

<< Kafue River Basin >> (1/3)

(3) List of Hydrometric Stations in Zambia

NO	ST. NO.	AREA (km <sup>2</sup> )	RIVER	LOCATION	R.H. Office/Loca.	OPENED	CLOSED	S.G	AUT	DIS	DATA AVAILABILITY				
											1940	1950	1960	1970	1980
1	4-005	440	Kafue / Kipushi		Lusaka/Lusaka	08/1963		Y	N	Y					
2	4-015	285	Muchindami / Muchindami		Lusaka/Lusaka	08/1963		Y	N	Y					
3	4-040	4,066	Kafue / Ngosa Farm		Copperbelt/Kitwe	10/1962	04/1976	Y	N	Y					
4	4-050	4,999	Kafue / Raglan Farm		Copperbelt/Kitwe	08/1959		Y	N	Y					
5	4-060	5,207	Kafue / Chaililabombwe		Copperbelt/Kitwe	12/1958	10/1974	Y	N	Y					
6	4-090	7,146	Kafue / Kafironda		Copperbelt/Kitwe	12/1958		Y	N	Y					
7	4-085	27	Kafironda / Kafironda		Copperbelt/Kitwe	05/1973	02/1980	Y	N	Y					
8	4-100	300	Mutunda / Mutunda		Copperbelt/Kitwe	07/1964		Y	N	Y					
9	4-120	869	Mambashi / Mambashi		Copperbelt/Kitwe	10/1959		Y	Y	Y					
10	4-130	8,599	Kafue / Smith's Bridge		Copperbelt/Kitwe	08/1958		Y	Y	Y					
11	4-150	1,195	Kafue / Musakile Bridge		Copperbelt/Kitwe	12/1958		Y	N	Y					
12	4-152	192	Kamfinsa / Kamfinsa		Copperbelt/Kitwe	10/1961	10/1987	Y	N	Y					
13	4-170	339	Baluba / Baluba		Copperbelt/Kitwe	01/1968	04/1985	Y	N	Y					
14	4-180	18	Chagulla / St. Joseph's Mission		Copperbelt/Kitwe	02/1971	11/1986	Y	N	Y					
15	4-200	11,655	Kafue / Mpatamato		Copperbelt/Kitwe	12/1950	10/1987	Y	Y	Y					
16	4-205	2,499	Kafufufu / Ibenga Mission		Copperbelt/Kitwe	10/1969		Y	N	Y					
17	4-210	306	Kafubu / Itawa-Dumbo		Copperbelt/Kitwe	02/1973	09/1984	Y	N	Y					
18	4-239	210	Munkulungwe / Kaposa		Copperbelt/Kitwe	07/1971	04/1987	Y	N	Y					
19	4-240	951	Kafubu / Fisenja		Copperbelt/Kitwe	10/1969	01/1989	Y	N	Y					
20	4-245	1,375	Kafubu / Masaiti R/B		Copperbelt/Kitwe	07/1971		Y	N	Y					
21	4-250	4,317	Kafufufu / Miputu Hills		Copperbelt/Kitwe	11/1962		Y	N	Y					
22	4-260	18,726	Kafue / Ndubeni		Copperbelt/Kitwe	12/1962		Y	N	Y					
23	4-265	829	Lufwanyama / Mureba		Copperbelt/Kitwe	10/1963	02/1972	Y	N	Y					
24	4-266	69	Mpofo / Mpofo School		Copperbelt/Kitwe	05/1971	04/1985	Y	N	Y					
25	4-267	984	Lufwanyama / Mpofo School		Copperbelt/Kitwe	03/1971	04/1985	Y	N	Y					
26	4-268	267	Katembula / Katembula		Copperbelt/Kitwe	06/1971	01/1987	Y	N	Y					
27	4-272	2,890	Lufwanyama / Karakila		Copperbelt/Kitwe	06/1971	08/1987	Y	N	Y					
28	4-280	22,920	Kafue / Machiya Ferry		Copperbelt/Kitwe	06/1962		Y	N	Y					
29	4-281	598	Impumpu / Machiya		Copperbelt/Kitwe	08/1971		Y	N	Y					
30	4-302	2,668	Luswishi / Luwendo		Copperbelt/Kitwe	06/1971		Y	N	Y					
31	4-310	3,600	Luswishi / Kilundu		Copperbelt/Kitwe	10/1964	08/1987	Y	N	Y					
32	4-340	8,708	Luswishi / Kangondi		Copperbelt/Kitwe	08/1971	10/1986	Y	N	Y					
33	4-350	34,162	Kafue / Chilenga		Copperbelt/Kitwe	06/1962		Y	N	Y					
34	4-375	80	Lukanda / Chikanda		Lusaka/Lusaka	02/1976		Y	N	Y					
35	4-390	-	Lukanga Swamp / Chailwa Island		Lusaka/Lusaka	01/1960	01/1987	Y	N	N					
36	4-400	-	Lukanga Swamp / Twenty Village		Lusaka/Lusaka	11/1962		Y	N	N					
37	4-435	50,479	Kafue / Mswabi		Lusaka/Lusaka	09/1950		Y	N	Y					
38	4-450	54,442	Kafue / Lubungu		Lusaka/Lusaka	06/1951		Y	N	Y					
39	4-460	11,605	Lunga / Konkombe Hills		N-Western/Solwezi	02/1964	10/1966	Y	N	Y					
40	4-500	1,700	Mitanda / Mitanda Mission		N-Western/Solwezi	02/1964	09/1965	Y	N	Y					

<NOTE> S.G : Staff Gauge, AUT : Automatic Recorder, Dis : Discharge Rating Curve, Y : Available, (Y) : Previously worked

N : Not Available, O : Water level and discharge data are available, \* : Water level data is available,

X : Data is not available, R.H.Office/Loca. : Regional Hydrological Office and Office location

(4) List of Hydrometric Stations in Zambia

<< Kafue River Basin >> (2/3)

NO	ST. NO.	AREA (km <sup>2</sup> )	RIVER	LOCATION	R.H. Office/locs.	OPENED	CLOSED	S.G	AVT	DIS	1940	1950	1960	1970	1980	1990
41	4-505	427	Solwezi / Solwezi		N-Western/Solwezi	09/1971	09/1985	Y	N	Y						
42	4-510	7,397	Lunga / Mujimambovi		N-Western/Solwezi	09/1963	12/1986	Y	N	Y						
43	4-515	1,083	Chifubwa / Solwezi Road		N-Western/Solwezi	02/1981	11/1986	Y	N	Y						
44	4-550	19,555	Lunga / Kelongwa School		N-Western/Solwezi	12/1963		Y	N	Y						
45	4-560	21,445	Lunga / Chifurupa Pontoon		N-Western/Solwezi	02/1963		Y	N	Y						
46	4-595	24,268	Lunga / Kasombo Mine		Lusaka/Lusaka	01/1958	01/1977	Y	N	Y						
47	4-620	1,062	Lusaka / Kasenga Pump House		N-Western/Solwezi	12/1963		Y	N	Y						
48	4-669	95,053	Kafue / Kafue Hook Bridge		Lusaka/Lusaka	01/1968		Y	N	Y						
49	4-670	95,053	Kafue / Kafue Hook Pontoon		Lusaka/Lusaka	06/1951	07/1973	Y	N	Y						
50	4-675	-	Kafue / Churuga Camp		Lusaka/Lusaka	02/1969	01/1977	Y	N	N						
51	4-676	-	Kafue / Churuga Rapids		Lusaka/Lusaka	02/1969	04/1973	Y	N	N						
52	4-710	105,672	Kafue / Itchi-Tezhi		Lusaka/Lusaka	01/1952		Y	N	Y						
53	4-750	9,065	Nanzala / Nanzala Mission		Southern/Mazabuka	10/1963		Y	N	Y						
54	4-759	116,032	Kafue / Namwala Ecma		Southern/Mazabuka	1954		Y	N	N						
55	4-760	149,443	Kafue / Namwala Pontoon		Southern/Mazabuka	11/1951		Y	N	Y						
56	4-780	120,176	Kafue / Busangu Rapids		Copperbelt/Kitwe	11/1962	01/1987	Y	N	N						
57	4-790	1,528	Nansenga / Tegula		Lusaka/Lusaka	12/1963	01/1980	Y	N	N						
58	4-820	1,787	Munyeka / Mpanza R/B		Southern/Mazabuka	1960	06/1966	Y	N	N						
59	4-821	1,787	Munyeka / Mpanza Mission		Southern/Mazabuka	05/1960	01/1987	Y	N	Y						
60	4-850	1,735	Mutama / Mutama rapids		Southern/Mazabuka	10/1963	01/1987	Y	N	Y						
61	4-880	777	Nangoma / Myoye Bridge		Lusaka/Lusaka	10/1963		Y	N	Y						
62	4-881	-	Nangoma / Muchabi		Lusaka/Lusaka	12/1977	04/1985	Y	N	N						
63	4-890	136,234	Kafue / Nyimba		Southern/Mazabuka	10/1962	11/1987	Y	N	N						
64	4-907	1,010	Magoye / Railway Weir		Southern/Mazabuka	03/1952	05/1970	Y	N	N						
65	4-915	1,665	Magoye / Chimbumbi's		Southern/Mazabuka	08/1970	12/1986	Y	N	N						
66	4-916	62	Mwembeshi / Great North Road		Lusaka/Lusaka	03/1977		Y	N	N						
67	4-930	189	Kabile / Chikoloma Hills		Lusaka/Lusaka	12/1963	05/1971	Y	N	N						
68	4-937	2,163	Mwembeshi / Lusaka-Mumbwa		Lusaka/Lusaka	12/1977	11/1982	Y	N	N						
69	4-938	-	Kafue / Luwato		Lusaka/Lusaka	11/1978	08/1985	Y	N	N						
70	4-940	9,885	Mwembeshi / Shibuyunji		Lusaka/Lusaka	12/1962		Y	N	Y						
71	4-941	45	Kaleya / Kaleya Dam Site		Southern/Mazabuka	12/1952	10/1986	Y	Y	Y						
72	4-942	63	Kaleya / Water Valley Weir		Southern/Mazabuka	10/1951	1975	Y	(Y)	Y						
73	4-943	63	Kaleya / Water Valley R/B		Southern/Mazabuka	10/1958	10/1986	Y	N	N						
74	4-945	206	Kaleya / Avillion Weir		Southern/Mazabuka	12/1950	06/1988	Y	N	Y						
75	4-946	206	Kaleya / Avillion R/B		Southern/Mazabuka	11/1958	06/1988	-	N	Y						
76	4-947	376	Kaleya / Mordham Weir		Southern/Mazabuka	11/1951	07/1961	Y	N	N						
77	4-949	545	Kaleya / Kaleya R/B		Southern/Mazabuka	11/1958	01/1988	Y	N	N						
78	4-950	566	Kaleya / Hea's Estate		Southern/Mazabuka	10/1951	12/1966	Y	(Y)	Y						
79	4-952	7	Nakambala / Nakambala Upper Weir		Southern/Mazabuka	02/1958	10/1953	Y	(Y)	N						
80	4-953	9	Nakambala / Nakambala Lower Weir		Southern/Mazabuka	11/1952	03/1987	Y	(Y)	Y						

<NOTE> S.G : Staff Gauge, AVT : Automatic Recorder, Dis : Discharge Rating Curve, Y : Available, (Y) : Previously worked  
 N : Not Available, O : Water level and discharge data are available, \* : Water level data is available.  
 X : Data is not available, R.H. Office/Loca. : Regional Hydrological Office and Office location

(5) List of Hydropometric Stations in Zambia << Kafue River Basin >> (3/3)

NO ST. NO.	AREA (km <sup>2</sup> )	RIVER	LOCATION	R.H. Office/Loca.	OPENED	CLOSED	ACT DIS	1940	1950	1960	1970	1980	1990
81 4-955	149	Kafue / Cere's		Southern/Mazabuka	05/1951	10/1986	Y	N	Y	Y	Y	Y	Y
82 4-958	140	Mazabuka / Urungi Farm		Southern/Mazabuka	10/1952		Y	Y	Y	Y	Y	Y	Y
83 4-960	149,350	Kafue / Kafue Polder		Southern/Mazabuka	07/1956	12/1987	Y	N	N	N	N	N	N
84 4-968	-	Mega-Mega / Mega-Mega		Southern/Mazabuka	11/1959	12/1987	Y	N	N	N	N	N	N
85 4-975	148,265	Kafue / Kafue Railway Bridge		Lusaka/Lusaka	1905		Y	N	N	N	N	N	N
86 4-977	150,971	Kafue / Kasaka		Lusaka/Lusaka	08/1943		Y	N	Y	Y	Y	Y	Y
87 4-980	150,997	Kafue / Kafue Road Bridge		Lusaka/Lusaka	01/1948	10/1974	Y	N	N	N	N	N	N
88 4-995	148,666	Kafue / Farowe		Lusaka/Lusaka	09/1958	06/1970	Y	N	N	N	N	N	N
89 4-999	154,692	Kafue / Marungozi		Lusaka/Lusaka	09/1958	07/1970	Y	N	N	N	N	N	N

<NOTE> S.G : Staff Gauge, AUT : Automatic Recorder, Dis : Discharge Rating Curve, Y : Available, (Y) : Previously worked  
 N : Not Available, O : Water level and discharge data are available, \* : Water level data is available,  
 X : Data is not available, R.H. Office/Loca. : Regional Hydrological Office and Office location

(6) List of Hydrometric Stations in Zambia

<< Luangwa River Basin >> (1/1)

NO	ST. NO.	AREA (km <sup>2</sup> )	RIVER	AND	LOCATION	R.H. Office/Loca.	OPERED	CLOSED	S.G	AUT	DIS	D A T A A V A I L A B I L I T Y				
												1940	1950	1960	1970	1980
1	5-300	-	Luangwa	/	Mulopwe Village	Eastern/Chipata	09/1975	12/1979	Y	N	Y					
2	5-350	1,101	Lundazi	/	Lundazi Dam	Eastern/Chipata	02/1957		Y	N	Y					
3	5-400	-	Lumamba	/	Lumamba Dam	Eastern/Chipata	03/1976		Y	N	N					
4	5-500	10	Koba	/	Koba Bridge	Eastern/Chipata	01/1970		Y	N	N					
5	5-554	-	Lutembwe	/	St Mary's Mission	Eastern/Chipata					N					
6	5-555	-	Lutembwe	/	Lutembwe weir	Eastern/Chipata	02/1970		Y	(Y)	Y					
7	5-557	75	M'sipazi	/	Chadidza RD BG	Eastern/Chipata	06/1970		Y	N	Y					
8	5-558	-	Kova	/	Kova Drift D/S	Eastern/Chipata	07/1970		Y	N	Y					
9	5-560	319	M'sipazi	/	Madzimoyo Quarry	Eastern/Chipata	06/1970		Y	(Y)	Y					
10	5-561	650	Lutembwe	/	Madzimoyo Bridge	Eastern/Chipata	09/1970	05/1985	Y	N	Y					
11	5-562	65	Makungwa	/	Great East RD BG	Eastern/Chipata	08/1970		Y	N	Y					
12	5-563	-	Nsadzru	/	Nsadzru Dam	Eastern/Chipata	07/1970		Y	N	Y					
13	5-564	60	Katete	/	Katete Boma	Eastern/Chipata	10/1978		Y	N	Y					
14	5-560	-	Luangwa	/	M'fube	Eastern/Chipata	11/1963		Y	N	Y					
15	5-570	995	Lisilwasi	/	Masase	Eastern/Chipata	11/1965		Y	N	Y					
16	5-755	181	Chikwele	/	M'kushi Boma	Eastern/Chipata	09/1982		Y	N	Y					
17	5-775	106	Mushiwembwa	/	Johnson's Farm	Eastern/Chipata	09/1982		Y	(Y)	N					
18	5-800	55,488	Luangwa	/	Ndevu Camp	Eastern/Chipata	09/1960		Y	N	Y					
19	5-815	1,448	Malungushi	/	Great North RD BG	Eastern/Chipata	03/1960		Y	N	Y					
20	5-840	143,781	Luangwa	/	Luangwa RD BG	Eastern/Chipata	10/1948		Y	N	Y					
21	5-948	2,134	Rufunsa	/	Janeiro Village	Copperbelt/Kitwe	06/1975		Y	N	Y					

<NOTE> S.G : Staff Gauge, AUT : Automatic Recorder, Dis : Discharge Rating Curve, Y : Available, (Y) : Previously worked  
 N : Not Available, O : Meter level and discharge data are available, \* : Meter level data is available.  
 X : Data is not available, R.H. Office/Loca. : Regional Hydrological Office and Office location



<< Chambeshi River Basin >> (1/1)

(7) List of Hydrometric Stations in Zambia

NO	ST. NO.	AREA (km <sup>2</sup> )	RIVER	LOCATION	R.H. Office/Loca.	CLOSED	S.G	AUT	DIS	D A T A A V A I L A B I L I T Y					
										1940	1950	1960	1970	1980	1990
1	6-105	23	China / Serqa Hill		Northern/Kasama	02/1970	11/1973	(Y)	N	Y					
2	6-130	-	Nakonde / Nakonde Dam Site		Northern/Kasama	09/1975			Y	Y					
3	6-133	32	Kabulukutu / Chamfubu		Northern/Kasama	12/1986			Y	Y					
4	6-135	12	Chamfubu / Conflu. with Kabulukutu		Northern/Kasama	12/1986			Y	Y					
5	6-138	54	Kabulukutu / Ngoli Coffee Estate		Northern/Kasama	10/1986			Y	Y					
6	6-140	6,628	Chambeshi / Chardaweyaya		Northern/Kasama	10/1959			Y	N					
7	6-145	6,045	Chambeshi / Mbesuma Ferry		Northern/Kasama	10/1974			Y	N					
8	6-160	95	Mansenke / Nansala Falls		Northern/Kasama	10/1961			Y	N					
9	6-170	2,901	Kalungwishi / Chunga Ranch		Northern/Kasama	10/1959			Y	N					
10	6-200	2,198	Chozi / Chozi		Northern/Kasama	12/1959			Y	N					
11	6-224	101	Mungu / Mungwi School		Northern/Kasama	01/1958			Y	N					
12	6-235	2,097	Kalung Bamba / Kalungu		Northern/Kasama	10/1959			Y	N					
13	6-242	640	Chimababwi / Chipoma Falls		Northern/Kasama	05/1956			Y	N					
14	6-250	2,839	Lubu / Munda Bridge		Northern/Kasama	10/1959			Y	N					
15	6-275	1,038	Marsha / Shiwa Nganda		Northern/Kasama	08/1964			Y	N					
16	6-289	34,188	Chambeshi / Chambeshi Pontoon		Northern/Kasama	12/1952			Y	N					
17	6-290	-	Chambeshi / Chambeshi RD BG		Northern/Kasama	02/1963	06/1971	(Y)	N	Y					
18	6-360	2,548	Luombe / Chisamba Falls		Northern/Kasama	09/1954			Y	(Y)					
19	6-335	550	Lukupa / Kateshi Coffee Estate		Northern/Kasama	10/1966			Y	N					
20	6-340	67	Millina / Millina		Northern/Kasama	02/1957			Y	N					
21	6-350	6,527	Lukulu / Kasama-Iwindu RD BG		Northern/Kasama	06/1970			Y	N					
22	6-370	12	Mullasolo / Kasama		Northern/Kasama	09/1961	06/1967	(Y)	N	Y					
23	6-400	42,921	Chambeshi / Mbati		Northern/Kasama	11/1957			Y	N					
24	6-480	175	Luwitkila / Luwitkila Falls		Northern/Kasama	09/1958			Y	N					
25	6-486	839	Luwitkila / Mpika RD BG		Northern/Kasama	10/1969			Y	N					
26	6-500	1,215	Kachibya / Mpika-Kasama RD BG		Northern/Kasama	12/1969			Y	N					
27	6-510	992	Kachibya / Kopa Bridge		Northern/Kasama	10/1970			Y	N					

<NOTE> S.G : Staff Gauge, AUT : Automatic Recorder, Dis : Discharge Rating Curve, Y : Available, (Y) : Previously worked  
 N : Not Available, O : Water level and discharge data are available, \* : Water level data is available,  
 X : Data is not available, R.H. Office/Loca. : Regional Hydrological Office and Office location

(8) List of Hydrometric Stations in Zambia

<< Luapula River Basin >> (1/1)

NO	ST. NO.	AREA (km <sup>2</sup> )	RIVER	LOCATION	R.H. Office/Loca.	OPENED	CLOSED	S.G	AUT	DIS	DATA AVAILABILITY				
											1950	1960	1970	1980	1990
1	6-020	161	Lufubu/Green Water Falls	Luwingu	Luapula/Kawamba	11/1959		Y	N	Y	*****	*****	*****	*****	*****
2	6-040	-	Bargweulu Lake/Nsombi Harbour		Luapula/Kawamba	05/1954		Y	N	N	*****	*****	*****	*****	*****
3	6-060	1.178	Lusena/Lusena Mission		Luapula/Kawamba	02/1970		Y	N	Y	*****	*****	*****	*****	*****
4	6-085	-	Bargweulu/Lake Muchinchi		Luapula/Kawamba	01/1953	02/1971	(Y)	N	N	*****	*****	*****	*****	*****
5	6-080	-	Bargweulu/Sanfya		Luapula/Kawamba	08/1954		Y	N	N	*****	*****	*****	*****	*****
6	6-090	-	Bargweulu Lake/Mpata Point		Luapula/Kawamba	11/1957		Y	N	N	*****	*****	*****	*****	*****
7	6-460	-	Bargweulu Swamps/Nsalushi Island		Luapula/Kawamba	11/1957	02/1971	(Y)	N	N	*****	*****	*****	*****	*****
8	6-465	-	Bargweulu Swamps/Mitwamina		Luapula/Kawamba	11/1957	02/1971	(Y)	N	N	*****	*****	*****	*****	*****
9	6-476	-	Bargweulu Swamps/Matorogo		Luapula/Kawamba	01/1954		Y	N	N	*****	*****	*****	*****	*****
10	6-520	-	Bargweulu Swamps/Kasema		Luapula/Kawamba	02/1953		Y	N	N	*****	*****	*****	*****	*****
11	6-525	-	Bargweulu Swamps/Kalimankonde		Luapula/Kawamba	11/1957	02/1971	(Y)	N	N	*****	*****	*****	*****	*****
12	6-565	2.800	Lwela/Chipota Falls		Luapula/Kawamba	11/1970		Y	N	N	*****	*****	*****	*****	*****
13	6-570	122,507	Luapula/Chembe Ferry		Luapula/Kawamba	06/1957		Y	X	Y	*****	*****	*****	*****	*****
14	6-700	1.510	Marsa/Marsa Pump House		Luapula/Kawamba	10/1955		Y	N	Y	*****	*****	*****	*****	*****
15	6-745	-	Luongo/Mukerashi		Luapula/Kawamba	1977		Y	N	Y	*****	*****	*****	*****	*****
16	6-750	4.170	Luongo/Mwenda-Kashiba RD BG		Luapula/Kawamba	02/1970		Y	N	Y	*****	*****	*****	*****	*****
17	6-760	121.088	Lufubu/Chibote Mission		Luapula/Kawamba	02/1976		Y	N	N	*****	*****	*****	*****	*****
18	6-765	1.220	Lufubu/Chipali		Luapula/Kawamba	11/1970		Y	N	Y	*****	*****	*****	*****	*****
19	6-770	5.957	Luongo/Musonda Falls		Luapula/Kawamba	11/1957	09/1964	(Y)	N	Y	*****	*****	*****	*****	*****
20	6-775	6.045	Luongo/Chibondo Pontoon		Luapula/Kawamba	09/1956	02/1962	(Y)	N	Y	*****	*****	*****	*****	*****
21	6-785	16.058	Luapula/Kashiba		Luapula/Kawamba	10/1955		Y	N	Y	*****	*****	*****	*****	*****
22	6-790	303	Ngona/Ntumbachushi Falls		Luapula/Kawamba	10/1957		Y	N	Y	*****	*****	*****	*****	*****
23	6-800	-	Mweru Lake/Ncheleenge		Luapula/Kawamba	12/1954	05/1969	(Y)	N	N	*****	*****	*****	*****	*****
24	6-855	383	Mitotoshi/Kapawa Falls		Luapula/Kawamba	11/1957		Y	N	Y	*****	*****	*****	*****	*****
25	6-860	4.895	Luongo/Mutuluma Falls		Luapula/Kawamba	09/1970		Y	N	Y	*****	*****	*****	*****	*****
26	6-865	10.218	Kalungwishi/Chimpempe Pontoon		Luapula/Kawamba	03/1951		Y	N	N	*****	*****	*****	*****	*****
27	6-800	12,018	Kalungwishi/Olandi		Luapula/Kawamba	08/1970		Y	N	Y	*****	*****	*****	*****	*****
28	6-910	2.186	Chishala/Bulaya Pontoon		Luapula/Kawamba	06/1958		Y	N	Y	*****	*****	*****	*****	*****
29	6-915	1.166	Mwawa/Mwawa Cause Way		Luapula/Kawamba	09/1958	09/1971	(Y)	N	Y	*****	*****	*****	*****	*****
30	6-920	2.424	Choma/Kaputa		Luapula/Kawamba	09/1957	01/1970	(Y)	N	Y	*****	*****	*****	*****	*****
31	6-925	-	Mweru Wanitipa/Kampinda		Luapula/Kawamba	09/1957		Y	N	Y	*****	*****	*****	*****	*****
32	6-935	707	Mwanbeshi/Nsama		Luapula/Kawamba	06/1959		Y	N	Y	*****	*****	*****	*****	*****
33	6-955	1.015	Mukubwe/Kambasa		Luapula/Kawamba	07/1958	08/1984	(Y)	N	Y	*****	*****	*****	*****	*****
34	6-960	-	Mufawe Dambo/Mukapa Latanolla		Luapula/Kawamba	10/1956	01/1971	(Y)	N	N	*****	*****	*****	*****	*****
35	6-980	-	Mweru Lake/Kafulwe Mission		Luapula/Kawamba	11/1955		(?)	N	N	*****	*****	*****	*****	*****

(NOTE) S.G : Staff Gauge, AUT : Automatic Recorder, Dis : Discharge Rating Curve, Y : Available, (Y) : Previously worked  
 N : Not Available, O : Water level and discharge data are available, \* : Water level data is available,  
 X : Data is not available, R.H. Office/Loca. : Regional Hydrological Office and Office location

<< Tanganyika Lake Basin >> (1/1)

(9) List of Hydrometric Stations in Zambia

NO	ST.NO.	AREA(km2)	RIVER	LOCATION	R.H.Office/Loca.	OPENED	CLOSED	S.G	AUT	DIS	D A T A   A V A I L A B I L I T Y							
											1950	1960	1970	1980	1990			
1	7-005	363	Luzua / Kambole Bridge	Northern/Kasama	05/1970			Y	N	Y								
2	7-006	366	Luzua / Luzua Weir	Northern/Kasama	01/1957			Y	(Y)	Y								
3	7-010	-	Lake Tanganyika / Mpiungu	Northern/Kasama	04/1957			Y	N	Y								
4	7-020	57	Lake Chila / Mbala	Northern/Kasama	10/1955			Y	N	Y								
5	7-021	57	Lucheche / Below Lake Chila	Northern/Kasama	03/1970			Y	N	Y								
6	7-750	6,475	Lufubu / Keso Falls	Northern/Kasama	09/1957			Y	N	Y								
7	7-800	-	Lake Tanganyika / Nsumbu Harbour	Northern/Kasama	12/1960			Y	N	N								
-	-	-	-	-	-													
-	-	-	-	-	-													
-	-	-	-	-	-													
-	-	-	-	-	-													
-	-	-	-	-	-													
-	-	-	-	-	-													
-	-	-	-	-	-													
-	-	-	-	-	-													
-	-	-	-	-	-													
-	-	-	-	-	-													
-	-	-	-	-	-													
-	-	-	-	-	-													

<NOTE> S.G : Staff Gauge, AUT : Automatic Recorder, Dis : Discharge Rating Curve, Y : Available, (Y) : Previously worked  
N : Not Available, O : Water level and discharge data are available, \* : Water level data is available,  
X : Data is not available, R.H.Office/Loca. : Regional Hydrological Office and Office location



SUPPLEMENT - 5.3

LIST OF FLOW MEASUREMENT FREQUENCY BY STATIONS



LIST OF FLOW MEASUREMENT FREQUENCY BY STATIONS -- ZAMBEZI RIVER BASIN --

ST.	1	2	3	4	5	6	7	8	9	10	11	12	13	14	15	16	17	18	19	20	21	22	23	24	25																					
YEAR	1-040	1-080	1-100	1-105	1-130	1-135	1-143	1-145	1-150	1-155	1-205	1-205	1-310	1-310	1-313	1-314	1-315	1-425	1-430	1-610	1-630	1-650	1-670	1-690																						
SEASON	R	D	R	D	R	D	R	D	R	D	R	D	R	D	R	D	R	D	R	D	R	D	R	D	R																					
1945																																														
46																																														
47																																														
48																																														
49																																														
1950																																														
51																																														
52																																														
53																																														
54																																														
1955																																														
56																																														
57																																														
58																																														
59																																														
1960																																														
61																																														
62																																														
63																																														
64																																														
1965																																														
66																																														
67																																														
68																																														
69																																														
1970																																														
71																																														
72																																														
73																																														
74																																														
1975																																														
75																																														
76																																														
77																																														
78																																														
79																																														
1980																																														
81																																														
82																																														
83																																														
84																																														
1985																																														
86																																														
87																																														
88																																														
89																																														
1990																																														
91																																														
SUB-T	137	20	138	20	0	155	46	118	6	0	195	17	8	5	19	13	153	27	7	128	14	119	12	143	21	106	22	110	31	139	20	137	23	110	7	112	13	122	13	7	0	0	24	13	0	0
TOTAL	57	58	0	101	24	3	47	12	32	20	14	42	31	64	128	141	59	50	25	25	35	14	0	37	0																					

LIST OF FLOW MEASUREMENT FREQUENCY BY STATIONS << ZANGUIT RIVER BASIN >>

ST.	26	27	28	29	30	31	32	33	34	35	36	37	38	39	40	41	42	43	44	45	46	47	48	49	50										
YEAR	1-950	1-970	2-020	2-030	2-100	2-123	2-130	2-150	2-200	2-250	2-270	2-310	2-330	2-350	2-360	2-400	2-450	2-475	2-700	2-950	3-050	3-100	3-130	3-130											
SEASON	R	D	R	D	R	D	R	D	R	D	R	D	R	D	R	D	R	D	R	D	R	D	R	D	R										
1945																																			
46																																			
47																																			
48																																			
49																																			
50																																			
51																																			
52																																			
53																																			
54																																			
1955																																			
56																																			
57																																			
58																																			
59																																			
1960																																			
61																																			
62																																			
63																																			
64																																			
1965																																			
65																																			
66																																			
67																																			
68																																			
69																																			
1970																																			
70																																			
71																																			
72																																			
73																																			
74																																			
1975																																			
75																																			
76																																			
77																																			
78																																			
79																																			
1980																																			
80																																			
81																																			
82																																			
83																																			
84																																			
1985																																			
85																																			
86																																			
87																																			
88																																			
89																																			
1990																																			
90																																			
91																																			
SUB-T	110	75	6	2	0	0	7	7	0	0	0	0	10	15	2	0	21	16	0	0	26	17	8	0	2	15	37	0	0	0	0	0	0	13	5
TOTAL	189	6	0	0	14	5	133	153	0	57	0	9	55	2	37	0	43	16	2	68	0	0	0	0	0	0	20								



LIST OF FLOW MEASUREMENT FREQUENCY BY STATIONS << ZAMBEZI RIVER BASIN >>

ST.	51	52	53	54	55	56	57	58	59	60	61	62	63	64				
YEAR	3-335	3-350	3-370	3-375	3-380	3-350	3-380	5-012	5-016	5-024	5-025	5-029	5-030	5-039				
SEASON	R	D	R	D	R	D	R	C	R	C	R	D	R	D				
1945																		
46																		
47																		
48																		
49																		
1950																		
51																		
52																		
53																		
54																		
1955																		
56																		
57																		
58																		
59																		
1960																		
61																		
62																		
63																		
64																		
1965																		
66																		
67																		
68																		
69																		
1970																		
71																		
72																		
73																		
74																		
1975																		
76																		
77																		
78																		
79																		
1980																		
81																		
82																		
83																		
84																		
1985																		
86																		
87																		
88																		
89																		
1990																		
91																		
SUB-T	16	120	11	122	20	6	9	6	6	5	115	30	144	6	131	3	0	0
TOTAL	26	37	48	0	0	0	0	0	22	18	149	50	34	0	0	0	0	

01 00 1 00

LIST OF FLOW MEASUREMENT FREQUENCY BY STATIONS <<KAUPE RIVER BASIN >>

ST.	1	2	3	4	5	6	7	8	9	10	11	12	13	14	15	16	17	18	19	20	21	22	23	24	25																								
YEAR	4-005	4-015	4-040	4-050	4-060	4-090	4-095	4-100	4-109	4-130	4-152	4-170	4-180	4-200	4-210	4-239	4-240	4-245	4-250	4-268	4-265	4-266	4-267	4-267																									
SEASON	R	O	R	D	R	C	R	O	R	D	R	O	R	D	R	O	R	D	R	O	R	D	R	O	R																								
1945																																																	
46																																																	
47																																																	
49																																																	
50																																																	
51																																																	
52																																																	
53																																																	
54																																																	
1955																																																	
56																																																	
57																																																	
58																																																	
59																																																	
1960																																																	
60																																																	
61																																																	
62																																																	
63																																																	
64																																																	
1965																																																	
65																																																	
66																																																	
67																																																	
68																																																	
69																																																	
1970																																																	
70																																																	
71																																																	
72																																																	
73																																																	
74																																																	
1975																																																	
75																																																	
76																																																	
77																																																	
78																																																	
79																																																	
1980																																																	
80																																																	
81																																																	
82																																																	
83																																																	
84																																																	
1985																																																	
85																																																	
86																																																	
87																																																	
88																																																	
89																																																	
1990																																																	
90																																																	
91																																																	
SUB-TOTAL	89	79	67	183	67	178	67	150	183	123	58	15	19	160	49	1135	65	145	94	153	97	29	28	50	38	142	35	1216	165	147	38	141	34	139	31	156	41	154	39	199	17	197	73	156	41	130	23	141	27
TOTAL	371	345	350	1329	68	213	39	115	200	239	250	67	88	77	381	65	75	70	97	93	175	170	57	53	68																								

LIST OF FLOW MEASUREMENT FREQUENCY BY STATIONS << MAPLE RIVER BASIN >>

ST.	YEAR	4-268	4-272	4-280	4-281	4-300	4-302	4-310	4-310	4-330	4-330	4-34	4-35	4-350	4-375	4-400	4-400	4-435	4-450	4-460	4-500	4-505	4-510	4-515	4-550	4-560	4-595	4-620	4-669	4-675																			
SEASON	R	D	R	D	R	D	R	D	R	D	R	D	R	D	R	D	R	D	R	D	R	D	R	D	R	D	R	D	R	D																			
1945																																																	
46																																																	
47																																																	
48																																																	
49																																																	
1950																																																	
51																																																	
52																																																	
53																																																	
54																																																	
1955																																																	
56																																																	
57																																																	
58																																																	
59																																																	
1960																																																	
61																																																	
62																																																	
63																																																	
64																																																	
1965																																																	
66																																																	
67																																																	
68																																																	
69																																																	
1970																																																	
71																																																	
72																																																	
73																																																	
74																																																	
1975																																																	
76																																																	
77																																																	
78																																																	
79																																																	
1980																																																	
81																																																	
82																																																	
83																																																	
84																																																	
1985																																																	
86																																																	
87																																																	
88																																																	
89																																																	
1990																																																	
90																																																	
91																																																	
SUB-TOTAL	124	19	12	8	150	123	122	19	130	26	1117	69	127	24	127	103	11	4	0	0	0	0	1220	175	126	102	198	59	148	30	145	25	1108	62	110	6	160	32	136	28	127	96	168	62	144	43	181	48	0
TOTAL	43	20	273	41	55	106	51	200	4	0	0	395	228	157	78	70	170	15	92	64	273	150	87	128	0																								

LIST OF FLOW MEASUREMENT FREQUENCY BY STATIONS << KAPUE RIVER BASIN >>

ST.	51	52	53	54	55	56	57	58	59	60	61	62	63	64	65	66	67	68	69	70	71	72	73	74	75																			
YEAR	4-676	4-710	4-750	4-759	4-760	4-780	4-790	4-820	4-821	4-850	4-880	4-881	4-880	4-907	4-915	4-918	4-930	4-937	4-938	4-941	4-942	4-943	4-945	4-946																				
SEASON	R D R	R O R	R D R	R D R	R D R	R O R	R O R	R O R	R O R	R R R	R R R	R D R	R O R	R O R	R O R	R D R	R O R	R O R	R O R	R O R	R O R	R O R	R O R	R O R	R O R																			
1945																																												
1946																																												
47																																												
48																																												
49																																												
1950																																												
51					1																																							
52					4																																							
53					9																																							
54																																												
1955																																												
56					2																																							
57					11																																							
58					8																																							
59					14																																							
60					8																																							
61					16																																							
62					23																																							
63					32																																							
64					38																																							
65					30																																							
1960					43																																							
61					43																																							
62					39																																							
63					27																																							
64					39																																							
65					20																																							
66					9																																							
67					20																																							
68					18																																							
69					38																																							
1965																																												
66					28																																							
67					8																																							
68																																												
69																																												
1970																																												
71																																												
72																																												
73																																												
74					10																																							
1975					18																																							
76					27																																							
77					1																																							
78																																												
79					2																																							
1980					2																																							
81																																												
82					2																																							
83																																												
84																																												
1985																																												
86					8																																							
87					20																																							
88					8																																							
89					20																																							
90					18																																							
91					8																																							
SUB-T	0	0	1425	228	0	0	0	0	0	0	0	0	13	10	8	4	22	17	3	1	37	18	0	0	38	20	0	0	6	12	8	0	0	125	6	19	5	0	0	0	0	0	3	0
TOTAL	0	0	653	0	0	0	0	0	0	23	12	39	4	55	0	58	0	2	30	2	30	0	0	0	0	31	24	0	0	0	0	0	0	0	0	0	0	0	0	0	0	3	0	

LIST OF FLOW MEASUREMENT FREQUENCY BY STATIONS <<MAFUE RIVER EAST>>

ST.	76	77	78	79	80	81	82	83	84	85	86	87	88	89
YEAR	4-947	4-949	4-950	4-952	4-953	4-955	4-958	4-960	4-965	4-975	4-977	4-980	4-995	4-999
SEASON	R D R	R D R	R D R	R D R	R D R	R D R	R D R	R D R	R D R	R D R	R D R	R D R	R D R	R D R
1945														
45														
46														
47														
48														
49														
1950														
51														
52					5									
53										12				
54					7					5				
1955														
56														
57														
58														
59														
1960														
61					140									
62					28									
63					10									
64														
1965														
66														
67														
68														
69														
1970														
71														
72														
73														
74														
1975														
75														
76														
77														
78														
79														
1980														
81														
82														
83														
84														
1985														
86														
87														
88														
89														
1990														
91														
SUB-T	0	0	0	0	0	0	0	0	0	0	0	0	0	0
TOTAL	0	9	16	0	0	191	74	16	2	0	3	0	17	15
						185	18	0	3	32	634	111	56	0

LIST OF FLOW MEASUREMENT FREQUENCY BY STATIONS ON TRANOMA RIVER BASIN

ST.	1	2	3	4	5	6	7	8	9	10	11	12	13	14	15	16	17	18	19	20	21
YEAR	5-300	5-350	5-400	5-550	5-554	5-555	5-557	5-558	5-560	5-561	5-562	5-563	5-564	5-650	5-670	5-755	5-775	5-800	5-810	5-818	5-818
SECTION	R. D.	R. D.	R. D.	R. D.	R. D.	R. D.	R. D.	R. D.	R. D.	R. D.	R. D.	R. D.	R. D.	R. D.	R. D.	R. D.	R. D.	R. D.	R. D.	R. D.	R. D.
1945																					
46																					
47																					
48																					
49																					
1950																					
51																					
52																					
53																					
54																					
1955																					
56																					
57																					
58																					
59																					
1960																					
61																					
62																					
63																					
64																					
1965																					
66																					
67																					
68																					
69																					
1970																					
71																					
72																					
73																					
74																					
1975																					
75																					
77																					
78																					
79																					
1980																					
81																					
82																					
83																					
84																					
1985																					
86																					
87																					
88																					
89																					
1990																					
91																					

SUB-TOTAL	2	5	1	0	0	1	1	0	0	17	27	15	14	6	5	1	0	7	11	8	11	0	0	10	8	156	22	140	29	36	22	0	0	152	15	52	23	115	26	9	8
TOTAL	J	5	1	0	0	2	0	44	29	1	18	19	0	18	178	56	58	0	73	75	165	15																			

LIST OF FLOW MEASUREMENT FREQUENCY BY STATIONS < CHAMBERSH RIVER BASIN >

ST.	1	2	3	4	5	6	7	8	9	10	11	12	13	14	15	16	17	18	19	20	21	22	23	24	25																								
YEAR	6-105	6-130	6-133	6-135	6-138	6-140	6-145	6-160	6-170	6-200	6-224	6-235	6-242	6-250	6-275	6-289	6-293	5-330	6-335	5-340	6-350	6-370	6-400	6-480	6-496																								
SEASON	R D R D R D	R D R D R D	R D R D R D	R D R D R D	R D R D R D	R D R D R D	R D R D R D	R D R D R D	R D R D R D	R D R D R D	R D R D R D	R D R D R D	R D R D R D	R D R D R D	R D R D R D	R D R D R D	R D R D R D	R D R D R D	R D R D R D	R D R D R D	R D R D R D	R D R D R D	R D R D R D	R D R D R D	R D R D R D	R D R D R D																							
1945																																																	
46																																																	
47																																																	
48																																																	
49																																																	
1950																																																	
51																																																	
52																																																	
53																																																	
54																																																	
1955																																																	
56																																																	
57																																																	
58																																																	
59																																																	
1960																																																	
60																																																	
61																																																	
62																																																	
63																																																	
64																																																	
1965																																																	
66																																																	
67																																																	
68																																																	
69																																																	
1970																																																	
70																																																	
71																																																	
72																																																	
73																																																	
74																																																	
1975																																																	
75																																																	
76																																																	
77																																																	
78																																																	
79																																																	
1980																																																	
80																																																	
81																																																	
82																																																	
83																																																	
84																																																	
1985																																																	
85																																																	
86																																																	
87																																																	
88																																																	
89																																																	
1990																																																	
90																																																	
91																																																	
SUB-T	11	5	15	18	7	25	7	19	0	0	56	37	13	11	32	28	153	42	128	24	153	24	161	43	163	48	36	22	128	21	9	11	161	46	114	71	4	18	159	41	146	30	0	0	0	165	54	133	21
TOTAL	16	33	32	26	0	93	24	60	95	52	77	104	111	58	49	20	107	185	22	100	76	0	0	0	119	54																							

LIST OF FLOW MEASUREMENT FREQUENCY BY STATIONS <<CHANGES>> RIVER BASIN >>

YEAR	6-500	6-510	26	27
1945				
46				
47				
48				
49				
1950				
51				
52				
53				
54				
1955				
56				
57				
58				
59				
1980				
61				
62				
63				
64				
1985				
66				
67				
68				
69				
1970	4	4		
71	4	2	4	
72	5	5	2	
73	3	3	4	
74	4	5	6	4
1975	4	2	3	
76	4	3	2	5
77	2	3	2	
78	3		1	1
79				1
1980	1	1	1	
81	2		3	
82				1
83				
84				1
1985				
86				
87				
88				
89				
1990				
91				
SUB-TOTAL	137	23	125	22
TOTAL	80		51	



LIST OF FLOW MEASUREMENT FREQUENCY BY STATIONS << LUMULA RIVER BASIN >>

ST.	1	2	3	4	5	6	7	8	9	10	11	12	13	14	15	16	17	18	19	20	21	22	23	24	25		
YEAR	6-020	6-040	6-060	6-085	6-090	6-100	6-165	6-180	6-185	6-220	6-225	6-265	6-270	6-300	6-345	6-350	6-360	6-365	6-370	6-375	6-385	6-390	6-400	6-405	6-410		
SEASON	R	R	R	R	R	R	R	R	R	R	R	R	R	R	R	R	R	R	R	R	R	R	R	R	R	R	
1965																											
46																											
47																											
48																											
49																											
1960																											
51																											
52																											
53																											
54																											
1955																											
56																											
57																											
58																											
59																											
1960																											
61																											
62																											
63																											
64																											
1965																											
66																											
67																											
68																											
69																											
1970																											
71																											
72																											
73																											
74																											
1975																											
75																											
76																											
77																											
78																											
79																											
1980																											
81																											
82																											
83																											
84																											
1985																											
85																											
87																											
88																											
89																											
1990																											
91																											
SUB-T	55	39	0	0	12	8	0	0	0	0	0	0	0	0	0	0	0	0	0	0	0	0	0	0	0	0	
TOTAL	64	0	0	0	20	0	0	0	0	0	0	0	65	23	87	71	58	76	53	46	57	33	193	75	0	189	

LIST OF FLOW MEASUREMENT FREQUENCY BY STATIONS << LUMPIA RIVER BASIN >>

ST.	26	27	28	29	30	31	32	33	34	35
YEAR	5-865	6-900	6-910	6-915	6-920	6-925	6-935	6-960	6-960	6-980
STATION	R	D	R	D	R	D	R	D	R	D
1945										
45										
47										
48										
49										
1950										
51										
52										
53										
54										
1955										
56										
57										
58										
59										
1960										
61										
62										
63										
64										
1965										
66										
67										
68										
69										
1970										
71										
72										
73										
74										
1975										
75										
77										
78										
79										
1980										
81										
82										
83										
84										
1985										
85										
87										
88										
89										
1990										
91										

SUB-T	16	21	12	13	15	20	0	30	25	0	50	45	59	40	0	0	0
TOTAL	37	25	35	1	55	0	95	99	0	0	0	0	0	0	0	0	0

LIST OF FLOW MEASUREMENT FREQUENCY BY STATIONS <<TAMGANIYKA LAKE BASIN >>

ST.	1	2	3	4	5	6	7
YEAR	7-005	7-006	7-010	7-020	7-021	7-750	7-800
SEASON	R	P	R	D	R	D	R
1945							
46							
47							
48							
49							
1950							
51							
52							
53							
54							
1955		3	4				
56		14	2				
57							
58					1	5	5
59		7	8		8	7	5
1960		6	4		7	4	
61		7	3		7	3	
62		7	6		2	12	
63		5	4		4	4	
64		5	5		4	3	
1965		2	1		1	1	
66							
67							
68							
69							
1970		1	2				
71		3	3				
72		5	2			5	2
73		1	4			2	4
74		1	4			5	3
1975		4	2			2	2
76		2	3			1	2
77		2	2			2	2
78							
79							
1980		2	1			1	1
81							
82							
83							
84							
1985							
86		1	2			1	
87							
88							
89							
1990		1	1				
91							
SUB-T	130	27	158	39	0	0	0
TOTAL	57	97	9	0	0	10	112

