

Table 1 List of the Mineral Prospects and Mines in the Survey Area(9)

Area No.5 Ibanes-Murta area(continued)

No.	Prospect and Mine	lat s lon w	Ore metals	Ore mineral Gangue min.	Features of deposit	strike dip	Size of deposit	Ore grade *					Country rock	Alteration	Exploration & Production	Title holder
								Au	Ag	Cu	Pb	Zn				
5-26	Campo Viuda Cisternas (Veta Ramón Cisteranas)	46°08'03" 72°07'40"	Pb-Zn	gn.sp+(cp, py,bn) qz	vein	N10W/ 90	0.15-0.4m in wd 200m in strike	na					Andesite lava(Ibañez Fm.)	na adit:6m 2 shafts: 3-4m in depth	na	
5-27	Media Luna	46°08'53" 72°08'08"	Pb-Cu	Pb and Cu oxides qz	vein	na	8 veins rec- ognized	na					Ibañez Fm.	na	Jose del Carmen Cea Carvajal	
5-28	Ana(Campo Anselmo Medina?)	46°09'47" 72°03'38"	Cu-Pb -Zn	sp.gn,cp, cov.py qz,cal	vein	N40W 80W	0.2-1.5m in wd, 15m in strike	- 0.1 + indications of Au+Pb	0.15	-			Ibañez Fm. qz-limo	na	CIA.MIN. Fenix de Coyhaique	
5-29	Patagonia (Mina Las Horyencias?)	46°10'36" 72°01'42"	Cu-Pb -Zn-(Ag)	sp.gn,cp, cov.py qz,cal	vein	N78W to N60E vertical	1-3cm in wd, 5m in strike Detalles: veta Patagonia: N80W/90 1.3m* veta Algría: N70E/90 0.8m* veta Nire: N60E/90 2-3cm* veta Caiquenes: E-W/90 3-10cm*	- 85 chip samples from old workings	0.527	7.5	-		Volcanic breccia etc. (Ibañez Fm.)	na Old workings are present.	ditto	
5-30	Alteracion Pico Rojo	46°15'54" 71°47'39"	na	na	na alteration only	na	na	na					Basaltic stock int- ruded into Ibañez Fm.	na	na	
5-31	Cerro Ovand Zanjon Francisco	46°22'25" 71°45'23"	Pb-Zn -Ag-(Cu)	cp(other minerals are not described)	Manto (with diss. cp)	na	50-100m thick 3.000m in strike	na					Sequence of lutite+calc. lutite (Ibañez Fm.)	na adits of 25m	na	
5-32	Alteracion Zanjon Francisco	46°23'20" 71°53'55"	na	na	na alteration only	na	na	na					Acidic rock, sil+ changing gradually to intermediate	na	na	

*: expressed as g/t for Au and Ag. and as % for the others.

#: defined as the exploration title or the mining title

Table 1 List of the Mineral Prospects and Mines in the Survey Area(10)

Area No.5 Ibanes-Murta area(continued)

No.	Prospect and Mine	lat lon	Ore metals	Ore mineral Gangue min.	Features of deposit	strike dip	Size of deposit	Ore grade *				Country rock	Alteration	Exploration & Production	Title holder
								Au	Ag	Cu	Pb				
5-32	Alteration Zanjin Francisco (continued)											rock with continental deposit (Ibañez Fm.)			
5-33	Islas Levicanes	46° 23' 17" 71° 45' 56"	Pb	na	na	na	na	na	na	60	na	Ibañez Fm.	na	na	na
5-34	Vista Alegre (Veta Hermosa)	46° 29' 21" 72° 05' 30"	Pb-Zn -Cu	gn.sp.cp.py cal.qz	vein	N10E 70W	0.2m in wd. 40m in strike	na	na	860	133	220	Acidic to intermediate volc. rock (Ibañez Fm.)	production suspended in 1960. 1 adit of 40m and 3 caves	EMA
5-35	Arroyo Escondido	46° 32' 24" 72° 20' 35"	Cu-(Zn)	vein:cp.py cc.bn vein:sp.cp.py	vein (2veins recognized)	N27E/90 N67E/90	1.5/1.2m in wd 10m in strike	na	na	8.12	na	na	Gneis(Pz)	trace of explosives at a small scale	na
5-36	Mina Rosillo	46° 32' 11" 72° 23' 55"	Zn-(Pb)	sp.gn.py.cp gangue:na	Subhorizontal Manto and disseminated ore. Manto shows zonation:- Zinc(+gn) zone(outer) +pyrite zone	na	1.5-2.5m thick Ore reserves proven:400t	na	na	110.09	0.02	4	In contact with marble +phyllite	production: Jan.-Dec.1979 4,984t@15.8% Zn ore in the Jan.1980 western part	EMA
5-37	Veta del Puerto	46° 32' 53" 72° 25' 23"	Pb	gn gangue:na	vein	na	2.5-3m in wd.	na	na	na	na	Marble	na	na	ditto
5-38	Campo de Jose Muñoz Leiva	46° 36' 28" 72° 29' 12"	Cu	cp.Cu-oxides qz	vein	N13W 90	0.3m in wd. 20m in strike	na	na	na	na	In contact of granitic rock+meta-morphic rock	na	na	na

*: expressed as g/t for Au and Ag, and as % for the others.

#: not defined as the exploration title or the mining title

Table 1 List of the Mineral Prospects and Mines in the Survey Area(11)
Area No.5 Ibanes-Murta area(continued)

No.	Prospect and Mine	lat ^s lon ^w	Ore metals	Ore mineral Gangue min.	Features of deposit	Strike dip	Size of deposit	Ore grade *				Country rock	Alteration	Exploration & Production	Title holder%
								Au	Ag	Cu	Pb				
5-39	Olga.Olguita Sur y Roma	46° 32' 12" 72° 28' 17" aprox.	Pb-Zn	gn.sp gangue:na	vein	N35E/90 (Roma)	Olga Sur:0.1m. Roma:1m in wd. 100m in strike	na	na	na	na	Marble with intc.calc. sch.lieing above phy. Schistosity. NE/90.extend to SE of El Pelado	na	Only Olguita was mined at a small scale with 100t of production	EMA
5-40	Minas del Bajo	46° 32' 23" 72° 29' 50"	Pb-Zn -Cu-(Ag -Au)	gn.sp.cp gangue:na	Manto ? dislocated by faults	na	100-150m thick 1000m in length	0.76	2250.935	456.04	-	Brecciated calcareous rock	na	Continuous exploration works were conducted but suspended in 1960.	na
5-41	Prospecto el Toro (Cerro el Toro)	46° 32' 13" 72° 31' 24"	Cu-(Pb -Zn)	po.py.cp sp.gn gangue:na	lenticular vein	N30W 15SW	Distribution area:300x25m Width and continuity in depth: na According to Flores(1964): Strike length is about 1.000m with combining El Toro & Las Piritas Tobar(1964): the deposit is stockwork	-	23	1.0	3.6	Lense of on exploration trench crystalline quoted from Flores(1964) is. with intercalated phyllite.	na	exploration: 3 adits(300m in total). production: na	EMA
5-42	Prospecto las Piritas	46° 32' 12" 72° 31' 25"	Cu	po.py.cp (sp.gn) gangue:na	lense	N30W? 15SW	20-25m in wd. 100m in strike	0.5	-	-	-	Limestone with intc. of phy.	na	No activity	ditto

*: expressed as g/t for Au and Ag, and as % for the others.
#: not defined as the exploration title or the mining title

Table 1 List of the Mineral Prospects and Mines in the Survey Area(12)

Area No.5 Ibanes-Murta area(continued)

No.	Prospect and Mine	lat s lon w	Ore metals	Ore mineral Gangue min.	Features of deposit	Size of deposit	Ore grade *				Country rock	Alteration	Exploration & Production	Title holder	
							Au	Ag	Cu	Pb					Zn
5-43	Farellon Sanchez	46° 32' 45" 72° 32' 48"	Cu	po.cp gangue:na	Vein (rich in po)	1m in wd.	<0.2	-	2.04	-	-	Metamorphic rock	na	An adit of 8m	EMA
5-44	Veta el Llano	46° 34' 19" 72° 32' 43"	Cu-(Au)	po.(cp) gangue:na	Lenticular vein	2m in max.wd. 25m in strike	1.4	-	1.12	-	-	Green sch. (Basement metamorphic rock)	na	2 short adits	ditto
5-45	Las Mulass	46° 34' 45" 72° 33' 49"	Cu	po.cp gangue:na	Small lense	100m in strike	na					ditto	na	production: Oes @ 3%Cu were mined on the scale 10mx2m	ditto
5-46	Pertenencias Costanera	46° 35' 24" 72° 34' 22"	Zn-Cu	sp.cp gangue:na	Manto	0.6-1m thick	na					Schistose rock	na	Very small prospecting adit only	na
5-47	El Flores	46° 35' 31" 72° 33' 45"	Cu-Zn	po.cp.sp gangue:na	Lense	2m in max. wd. 50m in strike	NE dip:na					Basement metamorphic rock	na	Small trenches and pits	EMA
5-48	Veta Pampa	46° 35' 56" 72° 33' 17"	Cu	po.cp gangue:na	Lense swarm	10m in max.wd. 20-30m in strike(max.150m)	N-S dip:na					ditto	na	Trenching	ditto
5-49	Isia Malvina	46° 39' 29" 72° 35' 27"	Cu	py.cp.Cu-oxides qz	Veinlets	0.2m in wd. 6m in strike 3.5m in depth	N35W subvert.					Ls. and phy.	na	na	na
5-50	Cerro Colorado (a part of Prospecto Morro Colorado)	46° 33' 33" 72° 37' 34"	FeS	py.po gangue:na	Lense swarm	1-2m in wd. (max.10m) 30m max in strike	na					Sl. and phy. with segregated qz+ intercalated green phy.	na	na	na
5-51	Veta el Plomo	46° 36' 31" 72° 39' 22"	Pb-Ag	gn gangue:na	Vein	0.2-0.3m in wd. 20m in strike 5-6m in depth	N15E 85E					Mica sch.	na	Open pit: 41x2x6m Adit:25m	EMA

*: expressed as g/t for Au and Ag, as % for the others, #: not defined as the exploration title or the mining title

Table 1 List of the Mineral Prospects and Mines in the Survey Area (13)

Area No. 5 Ibanes-Murta area (continued)

No.	Prospect and Mine	lat ° lon °	Ore metals	Ore mineral Gangue min.	Features of deposit	Strike dip	Size of deposit	Ore grade *				Country rock	Alteration	Exploration & Production	Title holder
								Au	Ag	Cu	Pb				
5-52	Mina Lago Negro	46° 33' 5" 72° 38' 54"	Cu	po.py.(cp) gangue:na	3 lense-shaped ore body	NE 50-80N	2-20m in wd. 50-100m in strike	na				Mica sch+ green phy.	na	Production: 10,000t @ 3.15%Cu (duration not known)	EMA
5-53	Campo Clemente Alarcon	46° 38' 72° 31'	Cu	po.py,py Cu-oxides qz	Veinlets	N30E subvert. in gen-eral	0.1-0.5m in wd. 100m in strike	0.4-0.7 %Cu 4.7-6.6 %Cu 2.1-6.2 %Cu (assays of three veins)				Phy. and ls. (Basement metamorphic rock)	na	Trenches and small pits	na
5-54	Veta Torres	46° 25' 72° 40'	Cu	py,Cu-oxides gangue:na	Vein	N30W 84N	0.25m in max.wd 7m in strike 5m in depth	na				Phy.	na	na	na
5-55	Campo Felix	46° 26' 48"	Cu	cp.py.po	Veinlets	hor.	0.1m in wd.	1.2 - 9.65	- 0.17	-		Intercalated marl in grey schistose rock	na	Some shafts distribute.	na
5-56	Rio Engaño	46° 28' 7" 72° 43' 52"	Mo	mol gangue:na	ditto	irreg. sub-hor.	1km in strike wd.:na	na				Pes. related with Patagonia batholith	na	na	na
5-57	Veta Cascada Murta	46° 29' 45" 72° 45' 23"	Mo	mol.py.cp qz	Vein	N25E 45SE	0.2-1m in wd. 60m in strike (visible part)	na				In contact zone of phy. and grano-diorite	na	Collapsed old workings are present.	na
5-58	Sector Alvarado	43° 30' 16" 72° 45'	Cu	po.py,cp clay	Vein	N45W 75NE	0.6m in max.wd. very short in strike length	- 1.12	-	-		Granite	na	na	na
5-59	Isla Rivera	46° 32' 37" 72° 42' 38"	Cu	py.po.cp Cu-oxides	Lenticular vein	N30E sub-vert	3-7m in wd. 200m in strike (visible part)	- 0.39	-	-		In contact zone of phy. and granite	Nearly none	na	na

*: expressed as g/t for Au and Ag, and as % for the others
 #: not defined as the exploration title or the mining title

Table 1 List of the Mineral Prospects and Mines in the Survey Area (14)

Area No.5 Ibanes-Murta area(continued)

No.	Prospect and Mine	lat lon	Ore metals	Ore mineral Gangue min.	Features of deposit	strike dip	Size of deposit	Ore grade *				Country rock	Alteration	Exploration & Production	Title holder	
								Au	Ag	Cu	Pb					Zn
5-60	Lago Tranquillo	46°39' 72°48'	Cu	cp qz	Vein-shaped	N50E sub-vert	0.4m in wd. 15m in strike (visible only)	na				Andesite dyke int. in black phy.	sil	A pit with 3m depth	na	
5-61	El Encanto	46°42'40" 72°40'52"	Cu	cp,py gangue:na	Vein-shaped manto	N40-70W 45-55S	3m in wd. 200m in strike 20m in depth	-	0.29	-	-	Strata of lm as intc. in phy.	na	Adit of 15m	na	
5-62	Veta De La Mona	46°33'37" 72°32'25"	Cu	cp,py qz	Lenticular veins	N35W 68NE (prin- cipal)	0.8-1m in wd. 100m in strike Other vein(N30E /E)conjoins with principal veins and forms bonanza poss- ibly	na				Metamorphic rock(Pz)	na	na	na	
5-63	Veta Hualo I and II	46°33'49" 72°33'12"	Cu	py(cp) qz	Vein	N50E 80E	0.4m in wd. 100m in strike	0.6 na 0.2 na	na	na	na	Metamorphic na rock(Pz)	na	2 small pits of 2m and 3m in depth.	EMA	
5-64	Veta Olegario	46°33'03" 72°32'47"	Cu	cp qz	Vein	N45W 85E	0.1m in wd. incl.veinlets 1000m in strike	na	na	na	na	Phyllite(Pz)	na	Drift of some 10m Width up to 0.8m Ore grades up to 20% Cu	ditto	
5-64	Janiz	46°33'30" 72°28'15"	Pb-Zn	gn,sp qz	Vein	N20E 80NW	2mx90m	-	1650.055.820.32	-	-	In contact of ls.and sch.	na	na	na	In the vicin- ity, sharn exist
5-65	Afloramiento Juan	46°22'45" 71°52'30"	ditto	gn cal	Diss.and/or veinlet	N80E 20SE	3mx10m	-	0.8	15	30	70	-	Accidic pylociastics and jasper	na	na

*: expressed as g/t for Au and Ag, and as % for the others, #: not defined as the exploration title or the mining title

Table 1 List of the Mineral Prospects and Mines in the Survey Area (15)

Area No.5 Ibanes-Muerta area(continued)

No.	Prospect and Mine	lat ° lon ' w	Ore metals	Ore mineral Gangue min.	Features of deposit	Strike dip	Size of deposit	Ore grade *				Country rock Alteration	Exploration & Production	Title holder%	
								Au	Ag	Cu	Pb				Zn
5-66	Co.Blanco	46° 32' 72° 35'	Cu	na	Skarn	N55W 25NE	0.3mx5m	na	0.47	20	220	na	na	na	na
5-67	El Lucho	46° 35' 42" 72° 26' 46"	Cu	na	ditto	N60E 30NW	3mx30m	na	0.30	14	1877	na	na	na	na
5-68	Veta Cuchara	46° 24' 27" 72° 11' 27"	Cu	cp qz	ditto	N10E 80SE	0.2mx10m	na	1.28	20	50	na	na	na	na
5-69	Veta San Jose	46° 30' 40" 72° 08' 27"	Pb-Zn	gn.sp bar	ditto	N10W 80SW	0.3mx30m 6 parallel veinlets	na	18.60	15	52	1.79	na	na	na
5-70	Veta Seco	46° 27' 34" 72° 23' 40"	Cu	na	ditto	N80W 60NE	1mx15m	na	165	90	1700	na	na	na	na
5-71	Los Leonos No1	46° 25' 11" 72° 19' 16"	ditto	na	ditto	N80W 60SW	0.8mx10m	na	72	10	120	26	na	na	na
5-72	Los Leonos No2	46° 24' 38" 72° 19' 54"	ditto	gn qz	ditto	N65E 80SE	na	na	78	2	38	50	na	na	na

Area No.6 Rio Los Leonos

No.	Prospect and Mine	lat ° lon ' w	Ore metals	Ore mineral Gangue min.	Features of deposit	Strike dip	Size of deposit	Ore grade *				Country rock Alteration	Exploration & Production	Title holder%	
								Au	Ag	Cu	Pb				Zn
6-1	Veta Punta Baja	46° 48' 23" 72° 48' 47"	Cu	na	Skarn	N15W 60NE	0.2mx5m	na	840	215	890	na	na	na	na
6-2	Veta Juan	46° 49' 16" 72° 49' 44"	Cu	na	Vein	N25W 70SW	0.5mx10m	na	3	124	405	16	na	na	na
6-3	Veta Raul	46° 49' 26" 72° 50' 08"	Cu	na	ditto	N5E 90	0.1mx10m	na	2	152	50	0.93	na	na	na

*: expressed as g/t for Au and Ag, and as % for the others.

f: expressed as ppm

--: below detection limit

#: not defined as the exploration title or the mining title

Table 1 List of the Mineral Prospects and Mines in the Survey Area (16)

Area No.7 Chile Chico-Chacabuco area

No.	Prospect and Mine	lat ^s lon ^w	Ore metals	Ore mineral Gangue min.	Features of deposit	Strike dip	Size of deposit	Ore grade *				Country rock	Alteration	Exploration & Production	Title holder%		
								Au	Ag	Cu	Pb					Zn	Mo
7-1	Paulina	46° 36' 09" 72° 11' 28"	Pb - (Zn) - (Ag)	gn.sp, cp. bar, cal	Manto	N20E 25N	0.3m thick 100m in strike (visible part)	-	277	-	4.9	0.3	-	Vol. clastics and chert	na	Adit of 8m	EMA
7-2	Laguna Verde	46° 32' 35" 71° 57'	Cu-Pb	py, cp, gn, sp qz, bar	Vein	N30W/W- N-S/65E	0.2-4m in wd.	vein 1 vein 2	15.7 15	-	-	-	-	Oz ker. alteration zone en- velops the fracture swarm.	larg-sill	prospecting pit (6m deep) was digged in 1950.	na
7-3	Mina La Poza	46° 36' 09" 72° 11' 28"	Pb-Zn -(Ag)	gn.sp bar	Manto	N65E 25S (lower part)	1.5-3.0m thick 300m in strike Ore reserves: probable: 128Kt possible: 84Kt	na	370	na	na	na	na	Mantos occur in pyro- clastics of Ibañez fm. Cherts of 0.5-2m thick intercalate into deposit	na	2 adits of 70 and 30m production: 1980: 130t @ 4.9% Pb + 2.0% Zn 1981 (Feb.): 245t @ 5.3% Pb + 1.2% Zn	EMA
7-4	Valle Del Rio Aviles	46° 38' 15" 72° 15' 47"	Mo-Cu	py, mol, cp qz	Vein	N80E 60S	0.05-0.1m in wd 7m in strike (visible)	-	522.06	-	-	1.6	-	Stock of granodiorite	na	na	na
7-5	Mina Escondida Y Veta Nueva	46° 51' 00" 72° 53' 00"	Cu-Pb-Zn	cp, gn, sp, py qz, cal, chl	Veins (parallel veins)	N80W 60-90S	0.3m av. in wd. 350m in strike 75m in depth (exploited) Ore reserves: Escondida Probable: 7.3Kt @ 12% Cu Possible: 5.4Kt @ 12% Cu	-	-	11.33.37	10.2	-	-	sch.+phy.	na	Operation was suspended in 1981/Feb.	EMA

*: expressed as g/t for Au and Ag, and as % for the others

#: not defined as the exploration title or the mining title

Table 1 List of the Mineral Prospects and Mines in the Survey Area(17)
Area No.7 Chile Chico-Chacabuco area(continued)

No.	Prospect and Mine	lat ^s lon ^w	Ore metals	Ore mineral Gangue min.	Features of deposit	strike dip	Size of deposit	Ore grade *				Country rock	Alteration	Exploration & Production	Title holder
								Au	Ag	Cu	Pb				
7-5	Mina Escondida y Veta Nueva (continued)						Nueva Possible:40Kt@ 4%Cu+1%Pb								
7-6	Arroyo El Saino	46°39'56" 72°22'08"	Cu	cp.py gangue:na	Vein	N45-55W dip:na	0.25m in wd.	na			In contact of Jurassic rock and gr.on fault	na	na	na	na
7-7	Arroyo Mallin Chico	46°42'30" 72°21'	Cu (oxidized)	Cu-oxides gangue:na	na (mineralized floats kown)	na	na	na			Acidic to intermediate rock(Ibañez Fm)	na	na	na	na
7-8	Mina San Sebastian	46°52' 72°42'	Pb-Zn -(Cu-Ag)	gn.sp.cp qz	Vein-shaped manto ?	N60-80W dip:SW	0.9m in max.wd 325m in strike (max.) 25m in depth 2 ore bodies are recognized Ore reserves: Sector 1: Proven, 2.488t Possible,4.050t Sector 2: Proven, 5.700t Possible,2.040t Ore grades are not available.	2502.19 samples of selected rich ore			Phyllite	na	Adits of 117m in total	EXA	
7-9	Los Maquis	46°53' 72°39'	Cu-Pb -(Zn)	cp.gn.py.sp gangue:na	Vein?	NNW-NW 90°	0.5m in max.wd. 100m in strike	na			Phyllite	na	Adit of 15m	na	na

*: expressed as g/t for Au and Ag, and as % for the others
#: not defined as the exploration title or the mining title

Table 1 List of the Mineral Prospects and Mines in the Survey Area (18)

Area No.7 Chile Chico-Chacabuco area(continued)

No.	Prospect and Mine	lat ^s lon ^w	Ore metals	Ore mineral gangue min.	Features of deposit	strike dip	Size of deposit	Ore grade *					Country rock alteration	Exploration & Production	Title holder	
								Au	Ag	Cu	Pb	Zn				Mo
7-10	El Haiten (Dario Márquez)	46° 54' 49" 72° 45' 47"	Pb	gn.py gangue:na	Vein	N25W 90	0.2m in wd. 10m(visible) 300m(inferred) in strike	na	na	na	na	na	Phy. and grey schistose rock	na	na	
7-11	Prospecto Arroyo Hernandez	46° 39' 52" 72° 18' 39"	Mo	mol.py qz	Veinlets stockwork	N-S/70E	0.5-1cm in wd. (spacing:5-20m) Only small indications of Mo in qz-py veins.	na	na	na	na	na	Porphyritic qz monzonite intrusion into volc. of Ibañez Fm.	na	na	
7-12	Prospecto Arroyo Pedregoso	46° 38' 72° 06' 24"	Cu-W-Mo	cp.wol.sche gangue:na	Vein in horizon- tal cleav- ages. Cp occurs in druse with trace of wol.+sche	NNW/NNE dip:na	0.2-0.3m in wd	-	-	27	-	-	Granodiorite	na	na	
7-13	Veta de Oro	46° 37' 72° 15' 14"	Cu-Au	cp.py.ht.mt Mn minerals qz.cal	Vein	N70E 90-85S	1m in wd. 25m in strike (visible)	na	na	na	na	na	Andesite (Ibañez Fm)	na	na	
7-14	Veta Leniz	46° 35' 24" 72° 9' 55"	Pb-(Zn)	gn.sp qz	Vein	N40W vert.	0.2-1.2m in wd 700m in strike	-	-	4	1.75	-	Qz ker (Ibañez Fm.)	na	na	
7-15	Prospecto Sur lago General Carrera	46° 31' 17" 71° 56' 37"	Fe-S-Pb	py.(gn) gangue:na	Disseminated	-	Area of altered rock is aprox. 3kmx1km Distribution of ore minerals is not described.	-	0.5	28	245	360	-	Qz porphyry +porphyritic and+and.lava (Ibañez Fm.)	na	na

*: expressed as g/t for Au and Ag, and as % for the others
 #: not defined as the exploration title or the mining title

Table 1 List of the Mineral Prospects and Mines in the Survey Area (19)

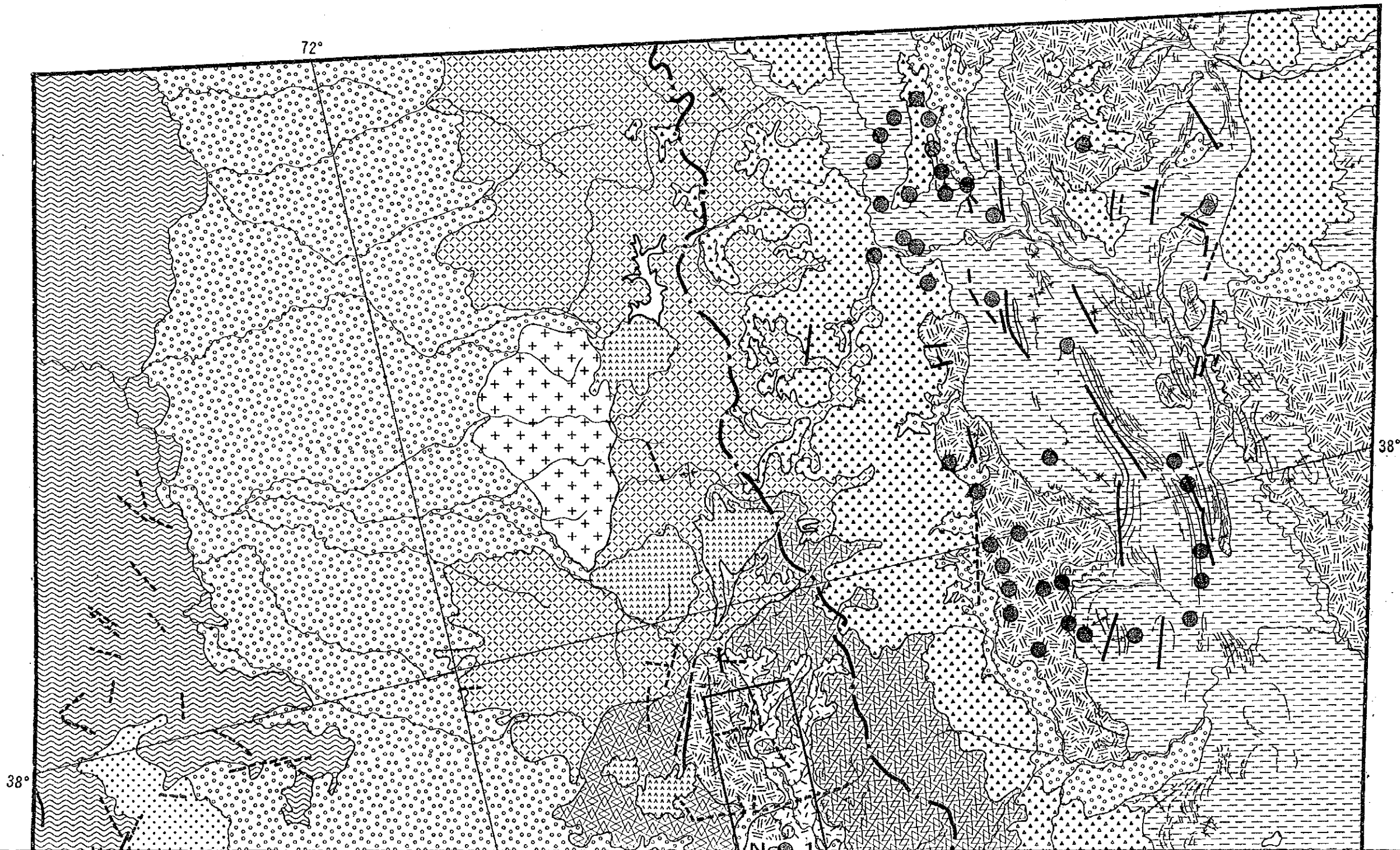
Area No.7 Chile Chico-Chacabuco area(continued)

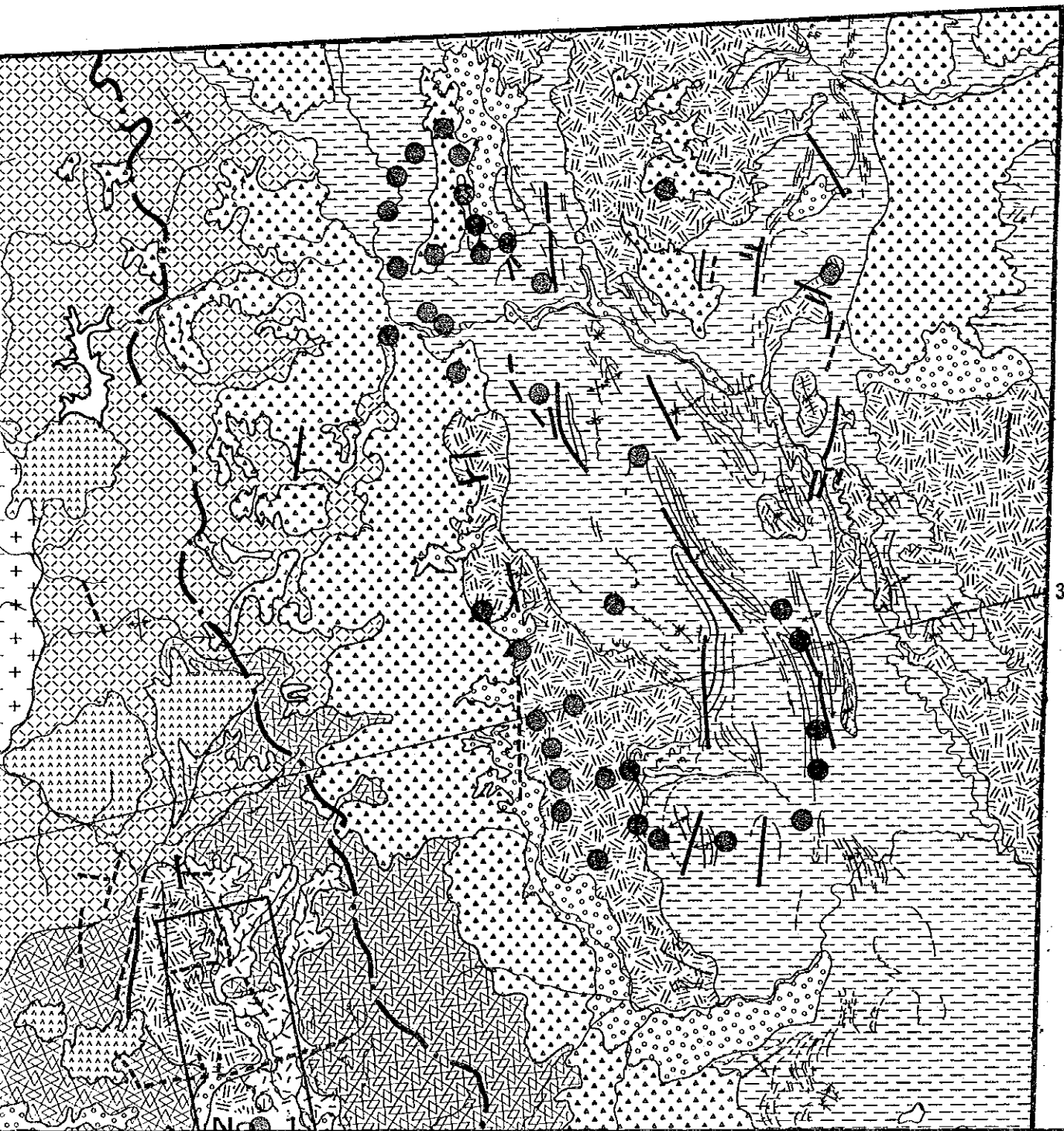
No.	Prospect and Mine	lat ^s lon ^w	Ore metals	Ore mineral Gangue min.	Features of deposit	strike dip	Size of deposit	Ore grade *				Country rock	Alteration	Exploration & Production	Title holder#	
								Au	Ag	Cu	Pb					Zn
7-16	Veta Guadal	46°51'25" 72°41'22"	Pb-Zn	na	Veinlet	N20W 30SW	0.7mx10m	na	na	210	750	1.16	na	Black schist	na	na
7-17	Mallin Grande	46°41'34" 72°24'28"	Cu	na	ditto	N25W 40NE	0.35mx2m	na	na	0.32	665	0.17	na	ditto	na	na
7-18	La Prima	46°36'22" 72°10'06"	Pb-Zn	na	Diss.and/or veinlet	N50E 30SW	2mx10m	na	9.5	na	0.4	69.5	na	Accidic pyroclastic and jasper	na	na
7-19	Veta Victor	46°51'58" 72°30'05"	Pb	na	na	N40E 50SE	0.5mx10m	na	24	11	0.40	110	na	Quart-porphry	na	na

*: expressed as g/t for Au and Ag, and as % for the others

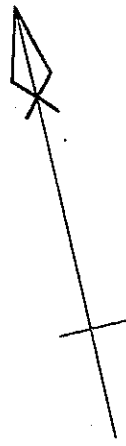
! : expressed as ppm

*: not defined as the exploration title or the mining title





38°



38°

40°

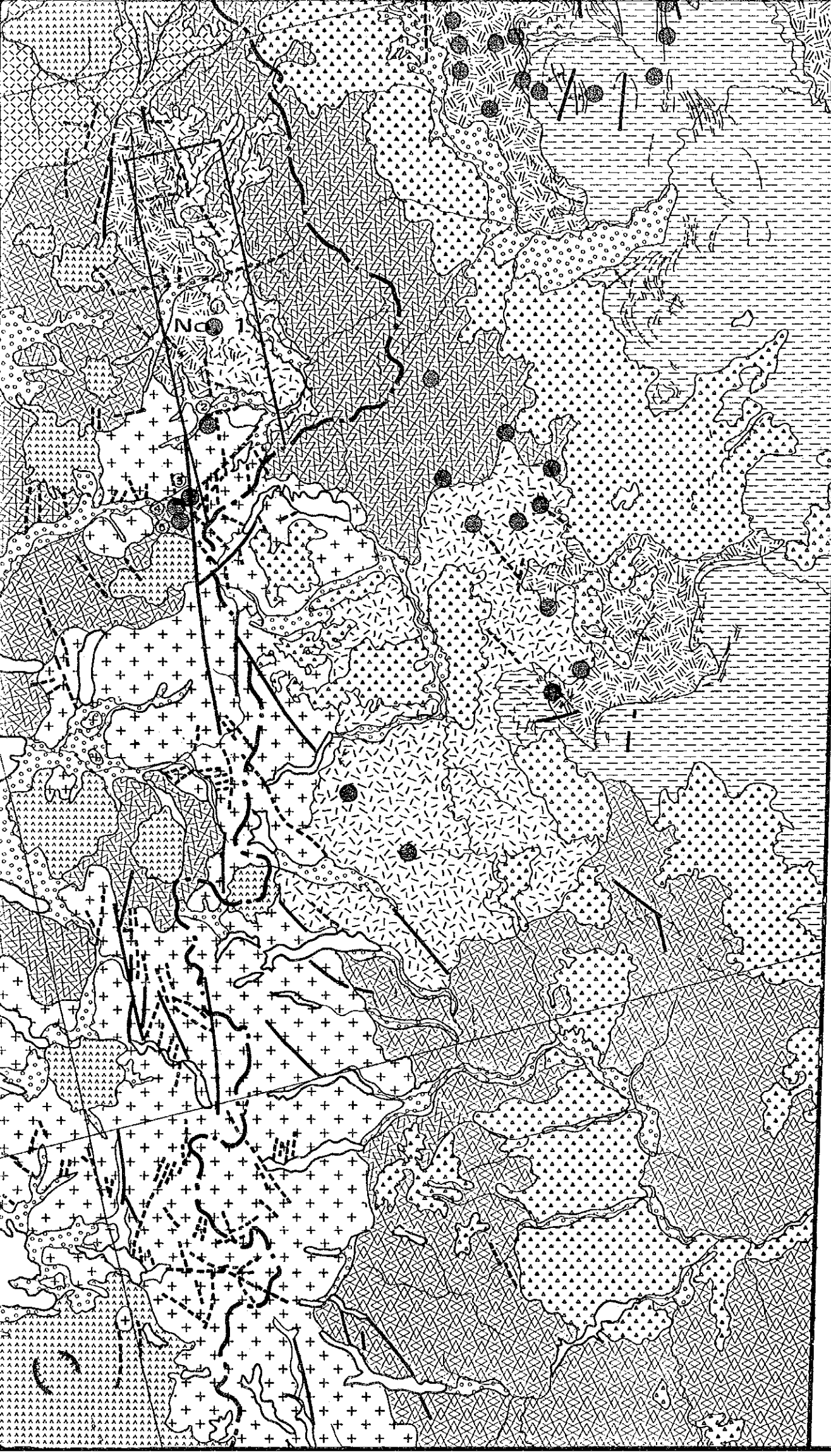


- J
- I
- H
- G
- F
- E
- D
- C
- B
- A
- K


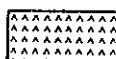



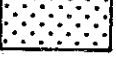
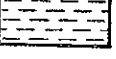
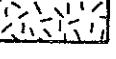
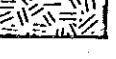

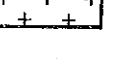
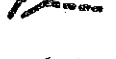

V

B

40°



LEGEND

-  J Alluvium, Talus, Terrace, Glacier Deposit
-  I Lava Flow
-  H Volcanic Rocks
-  G Volcanic Rocks
-  F Volcanic Rocks
-  E Sedimentary Rocks
-  D Sedimentary Rocks
-  C Volcanic Rocks
-  B Volcanic Rocks, Sedimentary Rocks
-  A Metamorphic Rocks
-  K Intrusive Rocks
-  Lineament
-  Bedding trace

40°

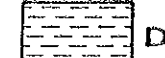
74°

42°

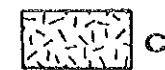
Valdivia

Puerto Montt

No. 2



D



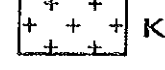
C



B



A



K



L



B



A



S



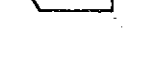
M



D



S



S



G



C



R



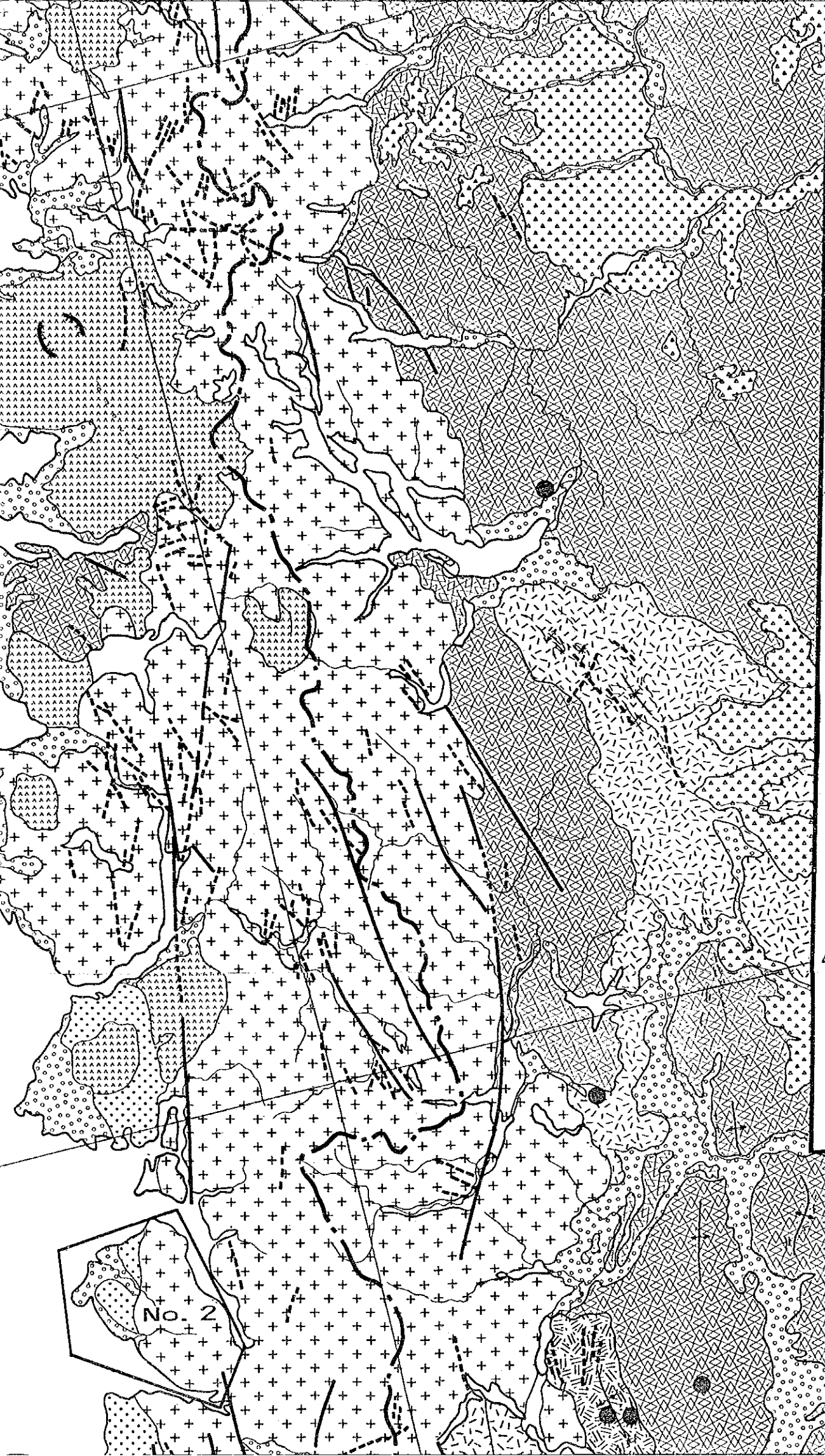
M

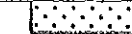
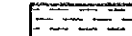
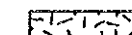
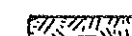











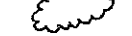
H

in

42°



-  E Sedimentary Rocks
-  D Sedimentary Rocks
-  C Volcanic Rocks
-  B Volcanic Rocks, Sedimentary Rocks
-  A Metamorphic Rocks
-  K Intrusive Rocks

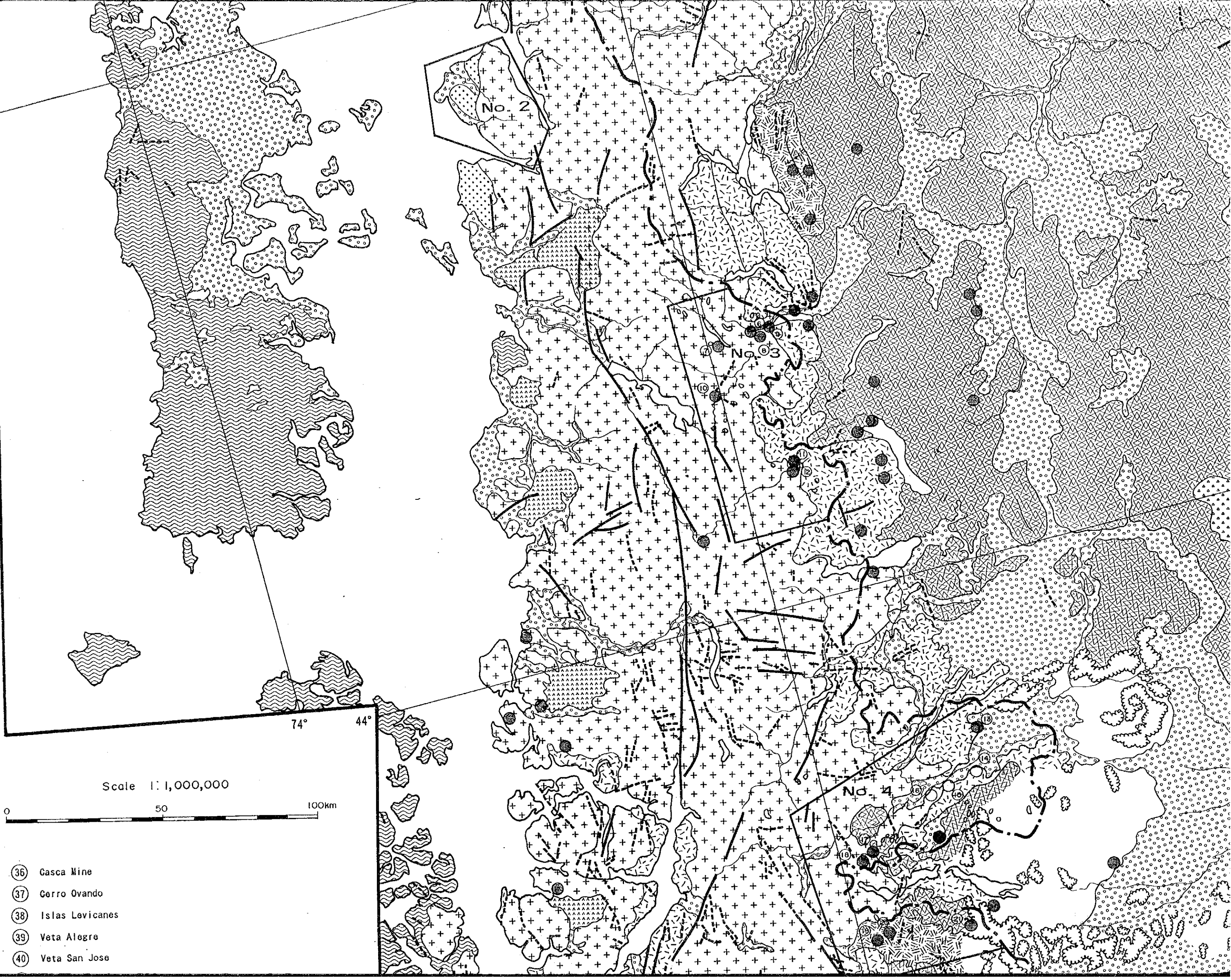
-  Lineament
-  Bedding trace
-  Anticlinal axis
-  Synclinal axis
-  Mine, Mineral prospect
-  Drainage
-  Snow, Cloud
-  Survey area

-  Gold and silver mineralization
-  Copper mineralization
-  Lead and zinc mineralization
-  Molybdenum mineralization
-  Hydrothermal alteration zones interpreted by Landsat TM Image

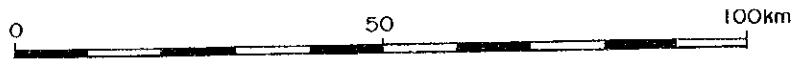
42°

- ① Rio Pacunto
- ② Galletue
- ③ Araucaria Mine
- ④ Estero Curacatou I
- ⑤ Estero Curacatou II
- ⑥ Garcia II

42°



Scale 1:1,000,000



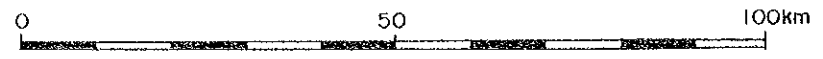
- ③⑥ Gasca Mine
- ③⑦ Cerro Ovando
- ③⑧ Islas Levicanes
- ③⑨ Veta Alegre
- ④⑩ Veta San Jose



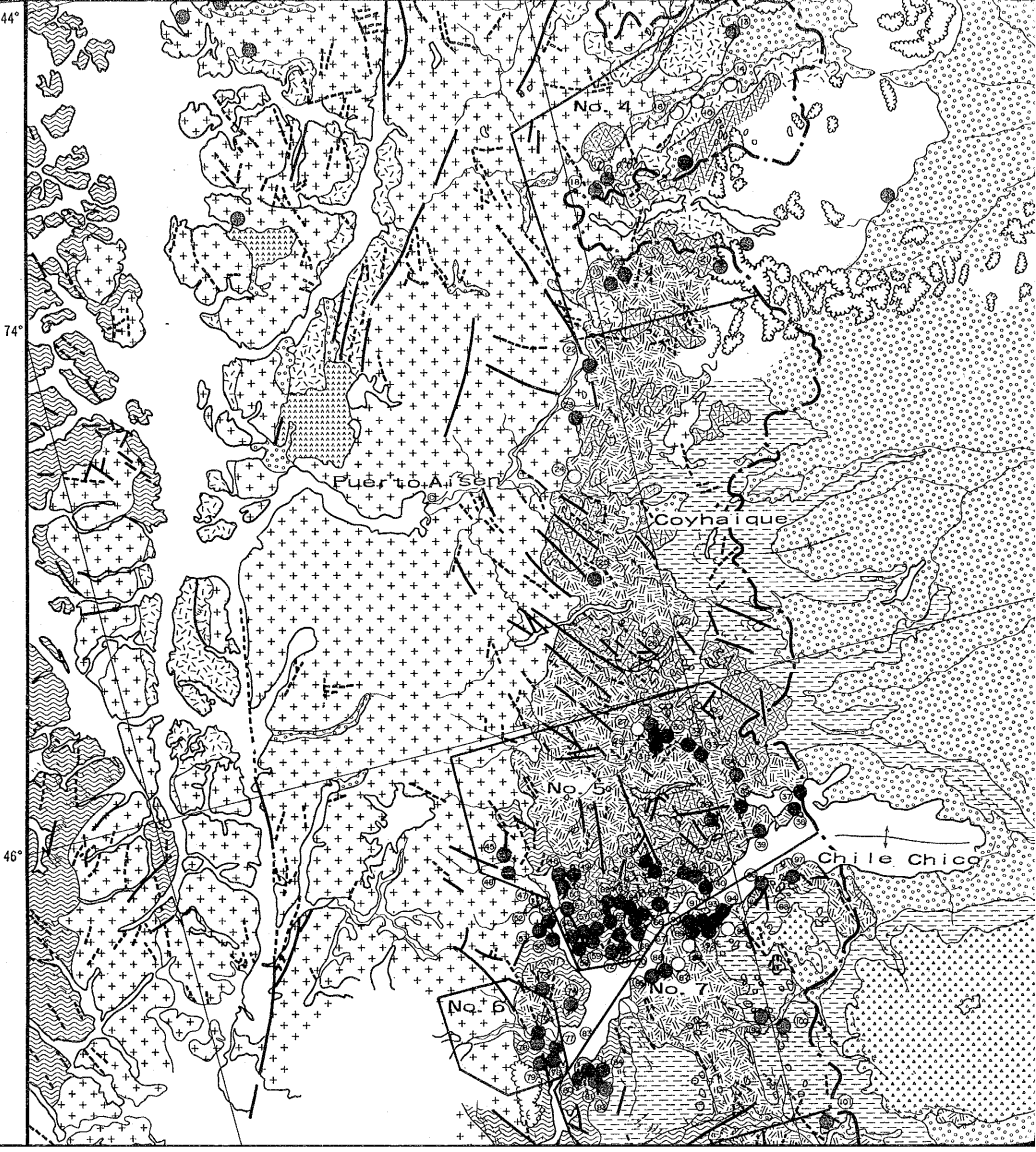
- ① Río Pacunto
- ② Galletue
- ③ Araucaria Mine
- ④ Estero Curacatou I
- ⑤ Estero Curacatou II
- ⑥ Garcia II
- ⑦ Lago Espolón
- ⑧ Garcia I
- ⑨ Puerto Reyes
- ⑩ Estero la Cascada
- ⑪ Arroyo Pedregoso I
- ⑫ Arroyo Pedregoso II
- ⑬ Estancia Cisnes
- ⑭ Veta Campamento
- ⑮ Río Cisnes entre Río Pedregoso y Estero Buitrera
- ⑯ Río Cisnes entre Río Pedregoso y Estero Solis
- ⑰ Santa Teresa
- ⑱ Arroyo de los Canelos
- ⑲ Cerro Estatuas
- ⑳ El Toqui
- ㉑ Katterfeld Mine
- ㉒ Veta Sonia
- ㉓ Vetas Río Malito
- ㉔ Río Correntoso
- ㉕ Lago Atravesado
- ㉖ Veta Bandera
- ㉗ Cerro Castillo Mine
- ㉘ Prospecto Cerro Castillo
- ㉙ Fanix Mine
- ㉚ Campo Viuda Cisternas
- ㉛ Media Luna
- ㉜ Ana
- ㉝ Patagonia
- ㉞ San Jose de Ibañez
- ㉟ Long Mine

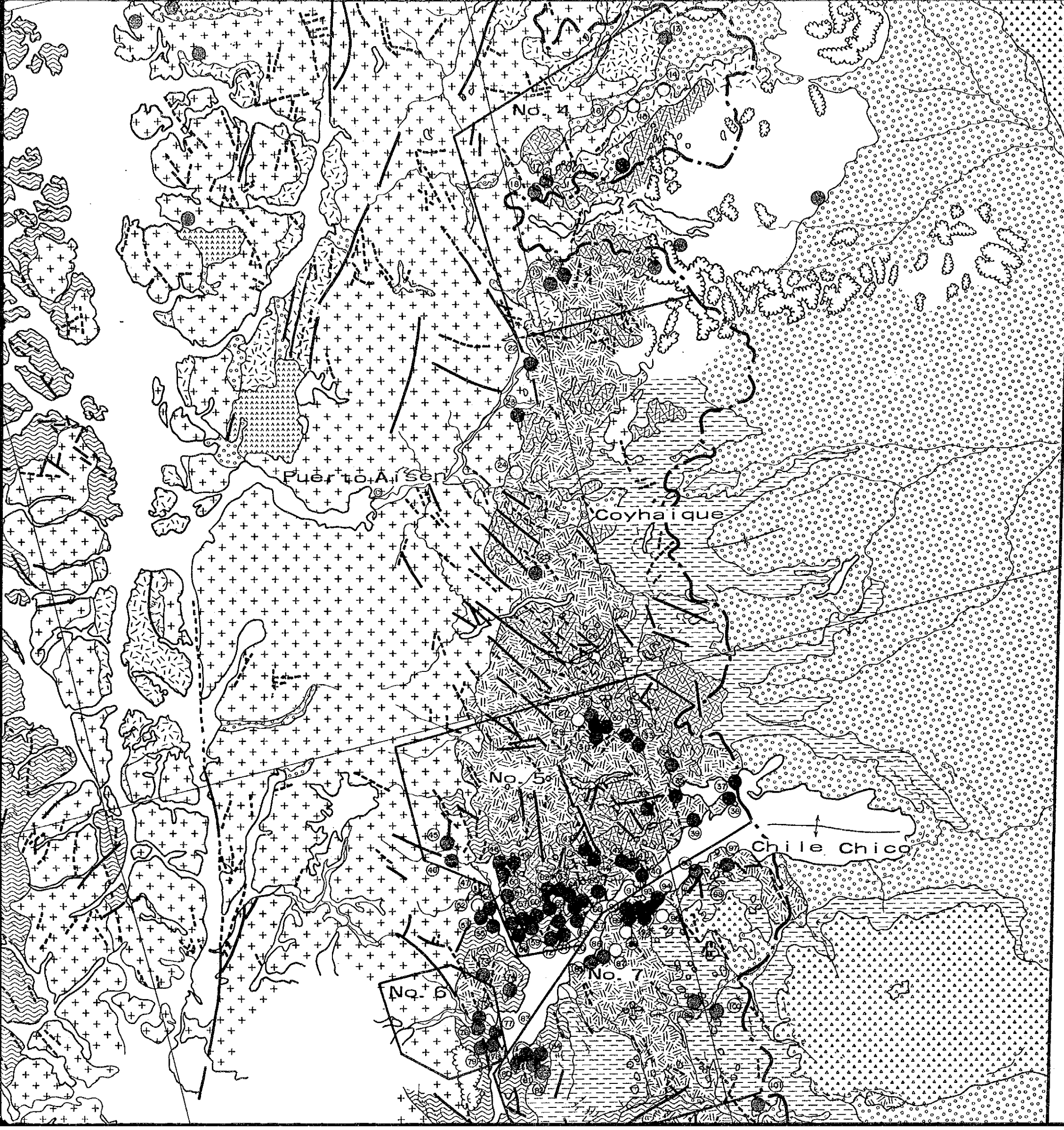
74° 44°

Scale 1:1,000,000



- 36 Gasca Mine
- 37 Cerro Ovando
- 38 Islas Levicanes
- 39 Veta Alegre
- 40 Veta San Jose
- 41 Río Avellanos II
- 42 Veta Cuchara
- 43 Los Leones No. 2
- 44 Los Leones No. 1
- 45 Río Huina
- 46 Cerro El Coco
- 47 Río Engaño
- 48 Veta Dionisio Villarreta
- 49 Río Resbalon
- 50 Veta Torres
- 51 Felix Barria
- 52 Veta Cascada Murta
- 53 Sector Alrarado
- 54 Veta Perez
- 55 Isla Rivera
- 56 Lago Negro Mine
- 57 Cerro Colorado
- 58 Veta El Plomo
- 59 Veta Pampa
- 60 Las Chivas Mine
- 61 Farellon Sanchez
- 62 Prospecto Las Piritas
- 63 El Pelado Mine
- 64 Oel Bajo Mine
- 65 Arroyo Escondida
- 66 Rosillo Mine
- 67 Silva Mine
- 68 El Lucho
- 69 Veta Hualo I and II
- 70 Veta Olegario
- 71 Campo de Jose Muñoz Leiva
- 72 Campo Clemente Alarcon
- 73 Lago Tromquillo

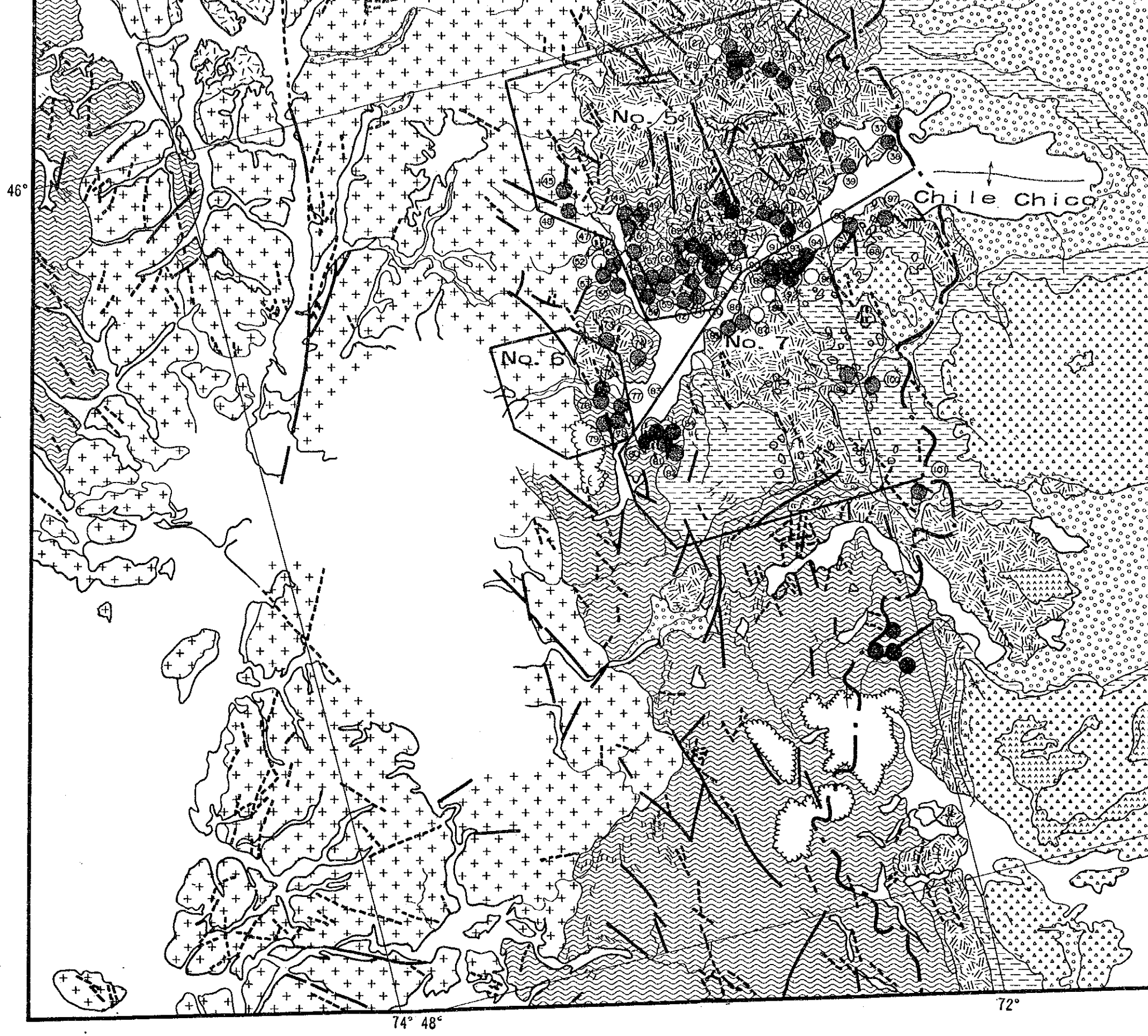




- 30 Campo Vidua Cristallinas
- 31 Media Luna
- 32 Ana
- 33 Patagonia
- 34 San Jose de Ibañez
- 35 Long Mine

46°

- 56 Lago Negro Mine
- 57 Cerro Colorado
- 58 Veta El Plomo
- 59 Veta Pampa
- 60 Las Chivas Mine
- 61 Farellon Sanchez
- 62 Prospecto Las Piritas
- 63 El Pelado Mine
- 64 Oel Bajo Mine
- 65 Arroyo Escondida
- 66 Rosillo Mine
- 67 Silva Mine
- 68 El Lucho
- 69 Veta Hualo I and II
- 70 Veta Olegario
- 71 Campo de Jose Muñoz Leiva
- 72 Campo Clemente Alarcon
- 73 Lago Tromquillo
- 74 El Encanto
- 75 Rio Leones Sector Bajo
- 76 Rio Leones Sector Alto
- 77 Veta Punta Baja
- 78 Veta Juan
- 79 Veta Raul
- 80 El Maiten
- 81 Escondida Mine
- 82 Los Maquis
- 83 San Sebastian Mine
- 84 Veta Victor
- 85 Mallin Grande
- 86 Arroyo El Saino
- 87 Prospecto Arroyo Hernandez
- 88 Valle del Rio Aviles
- 89 Veta de Oro
- 90 Veta Don Juan
- 91 Paulina
- 92 La Plima
- 93 La Poza Mine
- 94 Veta Lemiz
- 95 Prospecto Arroyo Pedregoso
- 96 Laguna Verde
- 97 Cerro Bayo
- 98 El Colegio Alteration zone
- 99 Alteration zone of Northern post of Jeimimani Lake
- 100 Alteration zone of Southern post of Jeimimani Lake



Photogeological Interpretation Map
using Landsat MSS and TM Images