

(9) Present status, problems, and future prospects of this airport in promoting regional development.

2. The Study Team would like to grasp institutional framework of this airport, (i. e. planning, financing, construction, and operation aspects) Since main items are listed in the attached Table-1, please fill in each column.

(Note: The term "organization charged in" includes departments, other public organizations, and private bodies, which are mainly responsible for planning, financing, construction, and operation aspects of the airport.)

II. NECESSARY DATA

The Preparatory Study Team would like to collect documents or maps listed in the attached Table-2, during the Study Teams stay in the Philippines. Please provide us with the data and information to enable us to smoothly execute the Preparatory Study for The Development of Davao International Airport. If there are any data or information unavailable at this time, please enter the applicable symbol letter a, b, or c in the space provided to indicate whether we can expect the answer;

- a) By the time of commencing the detailed survey,
- b) During the detailed survey after a certain progress has been made; or
- c) The answer is not available.

Table - 1 INSTITUTIONAL FRAMEWORK OF AVIATION-RELATED ADMINISTRATION
(PLANNING, FINANCING, CONSTRUCTION, AND OPERATION ASPECTS OF THE AIRPORTS BY FACILITIES)

If organization concerned is department or other public organization, please write down the name of the organization. In case of private body, please write "P.B"

(1)

I T E M	ORGANIZATION CHARGED IN			
	PLANNING	FINANCING	CONSTRUCTION	OPERATION
1. Runway, Taxiway, Apron, Holding bay	DOYC	DOTC	DOTC/AIO	ATO
2. Passenger Terminal building	"	"	"	"
3. Cargo handling facilities	P.B.	P.B.	P.B.	P.B.
4. Residential Quarter for the Airport Staff	"	"	"	"
5. Operation Tower	"	"	"	"
6. Administration Building	"	"	"	"
7. Maintenance Facilities	"	"	"	"
8. Air Navigational Aids	"	"	"	"
9. Lighting System	"	"	"	"
10. Communication system	"	"	"	"
11. Information system	"	"	"	"
12. Concession	P.B.	P.B.	P.B.	P.B.
13. Customs	DOF	DOF	DOF	DOF
14. Immigration	CID	CID	CID	CID

I T E M	ORGANIZATION CHARGED IN			
	PLANNING	FINANCING	CONSTRUCTION	OPERATION
15. Quarantine	DOH	DOH	DOH	DOH
16. Fire Station	DOTC	DOTC	DOTC/ATO	ATO
17. Rescue Station	"	"	"	"
18. Car Parking lot	"	"	"	"
19. Fuel Supply system	P.B.	P.B.	P.B.	P.B.
20. Drainage system	DOTC	DOTC	DOTC/ATO	ATO
21. Water Supply system	"	"	"	"
22. Gas Supply	P.B.	P.B.	P.B.	P.B.
23. Sewage system	DOTC	DOTC	DOTC/ATO	ATO
24. Electric Power Supply system	"	"	"	"
25. Access Road	"	"	"	"
26. Perimeter fence	"	"	"	"

Table - 2 THE LIST OF NECESSARY DATA/INFORMATION

(3)

No.	ITEM OF NECESSARY DATA	AVAILABILITY		THE NAME OF MATERIALS
		AVAILABLE OR NOT	PLACE OF AVAILABLE DATA	
	<p>1. Authorities and Government Agencies Concerned Administrative Organization Chart with jurisdictional responsibilities and brief explanation a) Department of Transportation and Communications b) Air Transportation Office c) Other concerned organization</p> <p>2. Nationwide Socio Economic Data (1) Statistics of the last 10 years and forecast on national economy and economic indicators a) GNP (if unavailable, GDP) b) Population c) Industrial products (by main sort) d) Foreign trade (export and import) values. (2) Materials of latest national economic development plans a) Authorized development plans of economics, industry, agriculture and tourism b) Development programs of transportation facilities (road, rail ways, etc.) c) Long term forecast of economic indicators (GDP: if revised, other indicator: if any)</p> <p>(3) Annual budget (national total and by sector) (4) Public investment by sector, (results and plan) (5) Tourism resources a) Locations and descriptions of major tourism resources b) The number of tourists of the last 10 years and forecast c) Tourism development program</p>	<p>A A A A " " A A NA A A A</p>	<p>DOTC ATO/DOTC PAL, DENR, DOT NEDA " " NEDA, DOT DOTC DOTC " DOT</p>	<p>DOTC Manual DOTC Manual Statistical Yearbook " " Five-Yr. Dev. Plan</p>

(4)

No.	ITEM OF NECESSARY DATA	AVAILABILITY		THE NAME OF MATERIALS
		AVAILABLE OR NOT	PLACE OF AVAILABLE DATA	
	<p>3. Regional Socio Economic Data</p> <p>(1) Statistics of the last 10 years and forecast on regional economy and economic indicators</p> <p>a) Population (by region)</p> <p>b) Industrial Products (by region)</p> <p>(2) Indicator/Statistics and Development Plan</p> <p>a) Industries</p> <p>b) Tourism</p> <p>c) Transportation (other than air)</p> <p>4. Air Transport</p> <p>(1) Major Agency Related to Air Transport</p> <p>a) Name of each agency</p> <p>b) Role of each agency</p> <p>(2) Air Route Network</p> <p>a) Map of international air route network, characteristics and future prospects of the network</p> <p>b) Map of domestic air route network, characteristics and future prospects of the network</p> <p>c) Future plan/policy for air route network</p> <p>(3) Airport in the Philippines</p> <p>a) Geographical distribution of airports</p> <p>b) Major facilities of each airport</p> <p>c) Function and capacities of each airport</p> <p>d) Future development plan</p> <p>e) Design and planning criteria</p>	A	NEDA	Statistical Yearbook
		A	DOTC	DOTC Manual
		A	PAF	
		A	PAL	
		A	PAL	
		A	DOTC/ATO	

(5)

No.	ITEM OF NECESSARY DATA	AVAILABILITY		THE NAME OF MATERIALS
		AVAILABLE OR NOT	PLACE OF AVAILABLE DATA	
	(4) Airport-related budget a) Airport construction budget (last 10 years) b) Airport maintenance budget (last 10 years)	A	DOTC/ATO	
	(5) Statistics (at least last 10 years) (national total and by airport) a) International and domestic passengers b) International and domestic cargo c) Military aircraft activities d) Number of takeoffs and landings (including general aviation) e) Annual Report of DOTC	"	"	
	(6) Airline Company a) Name of airline companies in the Philippines b) International and domestic route map and timetable (by airline) c) Air fleet (actual and future plan) d) Foreign airline companies desiring to serve the airport in the Philippines e) Major airline maintenance facilities in the Philippines	A A A A	DOTC Airline Companies CAB PAL	
	(7) General Aviation a) Statistics of activities b) Demand Forecast of Air Transportation (total and by airport)	A A	GA/IOPA	
	(9) Air Traffic Control a) AIP b) Control area map c) Distribution of navigational facilities d) Control method e) Responsible body	A	DOTC/ATO	

No.	ITEM OF NECESSARY DATA	AVAILABILITY		THE NAME OF MATERIALS
		AVAILABLE OR NOT	PLACE OF AVAILABLE DATA	
	<p>5. Davao International Airport (1) Airport Facilities</p> <p>a) Facilities layout of the existing airport (on scale of 1/5000)</p> <p>b) Inventory of facilities</p> <p>c) Construction history of airport</p> <p>d) Actual strength of runway, taxiway and apron pavement</p> <p>e) Actual supply/disposal volume of following facilities</p> <ul style="list-style-type: none"> - Water supply - Electric power supply - Sewage - Fuel supply <p>f) Profile and cross section of runways and places where cracking and other defects have arisen</p> <p>g) Profile and cross section of taxiways and places where cracking and other defects have arisen</p> <p>h) Profile and cross section of aprons and places where cracking and other defects have arisen</p> <p>i) Utilization status of aprons</p> <ul style="list-style-type: none"> - Layout of apron spots by type of aircraft - Service categories (scheduled domestic, scheduled international, cargo, small aircraft, etc.) - Tabulation of apron spots occupancy table for a typical week - Types of aircraft maneuvering (self-taxiing, push-back, etc.) - Number and distribution of the GSE vehicles - Method and capacity of fueling (hydrant or refueller) 	<p>NA</p> <p>NA</p> <p>NA</p> <p>A</p> <p>NA</p> <p>NA</p> <p>NA</p> <p>NA</p> <p>A</p>	<p>DOTC</p> <p>"</p> <p>"</p> <p>DVO Airport</p> <p>Davao Airport/ PAL</p>	

No.	ITEM OF NECESSARY DATA	AVAILABILITY		THE NAME OF MATERIALS
		AVAILABLE OR NOT	PLACE OF AVAILABLE DATA	
	<p>j) Terminal facilities</p> <ul style="list-style-type: none"> - Floor plans and sections of each floor level of the terminal building and structure - Layout plan of terminal facilities (baggage claim, x-ray check, CIQ, etc.) - Fire station and the number and the size of fire engines - Size, layout and utilization status of parking lots <p>k) Drainage facilities</p> <ul style="list-style-type: none"> - Rainwater drainage system diagram - Method of treating sewage generated in the terminal area <p>l) The date opened for service, problems (degree of congestion, deterioration through ageing, etc.), and requests made by users (airline companies, passengers, etc.) of each of the facilities enumerated in g) through m) above.</p> <p>(2) Air Navigation Facilities</p> <p>a) List of the following facilities</p> <ul style="list-style-type: none"> - Lighting facilities - Air-to-ground telecommunication facilities - Radio navigation facilities - Air traffic control radar facilities - Meteorological facilities <p>b) Agencies responsible for the operation of each of the facilities a) above.</p> <p>c) The date opened for service, problems (deterioration through ageing, etc.) and requests made by the users (airline companies, etc.) of each of the facilities a) above.</p>	A	ATO/Davao	
		A	ATO/Davao	
		A	ATO	
		A	ATO/Davao	
		A	ATO	
		NA		

No.	ITEM OF NECESSARY DATA	AVAILABILITY		THE NAME OF MATERIALS
		AVAILABLE OR NOT	PLACE OF AVAILABLE DATA	
	<p>(3) Utilization</p> <p>a) Map of obstacle limitation surface</p> <p>b) Report of obstacles for limitation surface</p> <p>c) Activities of Military</p> <p>d) Weight restriction of aircraft</p> <p>e) Access transportation volume from Davao city</p> <p>g) Location of residential quarter for airport staff and number of residence</p> <p>(4) Statistics</p> <p>a) International and domestic passengers (Classified with point of departure and destination)</p> <p>b) International and domestic cargo (Classified with point of departure and destination)</p> <p>c) Military aircraft activities</p> <p>d) Number of take offs and landings in runway</p> <p>e) Method of approach-departure</p> <p>f) Aircraft noise level</p> <p>(5) Other matters relevant to the Study</p> <p>a) Conditions in, and development plans for the area surrounding the Airport</p> <p>Ⓐ Present conditions and future plans of land use</p> <p>Ⓑ Conditions of rivers and river improvement plans, if any</p> <p>Ⓒ Present conditions and future plan of roads</p> <p>b) Natural conditions</p> <p>Ⓓ Meteorological conditions</p> <p>- Wind rose</p> <p>- Visibility and cloud height (Frequency of occurrence by range)</p>	A	ATØPAL	
		A	DOTC	
		NA		
		A	PAGASA	

No.	ITEM OF NECESSARY DATA	AVAILABILITY		THE NAME OF MATERIALS
		AVAILABLE OR NOT	PLACE OF AVAILABLE DATA	
	<p>- Atmospherics temperature and precipitation</p> <p>Ⓒ Earthquakes (year of occurrence, magnitude, etc.)</p> <p>Ⓒ Floods (year of occurrence, extent of damages, amount of rainfall at time of each flood)</p> <p>Ⓒ Typhoon (Maximum wind speed, year of occurrence)</p> <p>Ⓒ Topographical map (1/5,000)</p> <p>Ⓒ Underground conditions</p> <p>Ⓒ Boring data</p> <p>Ⓒ Soil data</p> <p>Ⓒ Unit cost of soil investigation and survey (Boring, Soil laboratory test, Soil field test, Topographic survey, Photographic Mapping)</p> <p>Ⓒ List of consultants for Soil investigation, Topographic Survey and Aerial Photographic Mapping in the Philippines</p> <p>c) Maps</p> <p>Ⓒ Nationwide, and Davao city</p> <p>Ⓒ Aerial photograph of each facilities</p> <p>Ⓒ Geographic map</p> <p>6. Laws and Regulations</p> <p>(1) Civil aviation Laws and related regulations</p> <p>(2) Environmental laws, regulations and standards.</p> <p>(3) Aircraft noise standards</p> <p>(4) Tariff structure</p> <p>(5) Agreement on the use of airport by the other Organization</p> <p>(6) Building Standard Law</p> <p>(7) Fire Code</p> <p>7. Others</p> <p>(1) Past aircraft accidents</p>	<p>NA</p> <p>A</p> <p>NA</p> <p>NA</p> <p>NA</p> <p>A</p> <p>A</p> <p>A</p>	<p>NAMRIA</p> <p>ATO Legal</p> <p>ATO</p>	

收集資料一覽

資料リスト (収集資料)

平成3年12月24日作成

主管部長	文書管理部長	主管課長

情報管理部長	広報情報部長

地域	東了シ	調査団名 母国名	フィリピン	調査の種別又は は指導科目 現地調査期間 又は派遣期間	事前調査	作成部課	社、南航、一課
国名	フィリピン	所属機関名		平成3年12月11日~平成3年12月20日		担当者氏名	奈良輪陸美

番号	資料の名称	形態	版	型	ページ数	マイクロ コンピュータ の別	部	数	収載 先名称 又は 発行 機関	野 贈、 購入 (留 付)の 別	取 扱 区 分	利用 表示	利用 者 所 属 氏 名	持 入 日 付 定 日	認 識 番 号
1.	UPDATES ON THE MEDIUM-TERM PHILIPPINE DEVELOPMENT '90-'92	製本	AA	190	1	購入									
2.	91 PHILIPPINE STATISTICAL YEAR BOOK	製本	"	350	1	"									
3.	MEDIUM-TERM PHILIPPINE DEVELOPMENT PLAN '87-'92	"	"	444	1	"									
4.	地図 シンガポール: 50,000 シート A41-I.IV各1枚	シート	-	3	1	"			NMRIA	"					
5.	地図 シンガポール: 250,000 PGCS Z540.45.50.5481X	"	-	4	1	"				"					
6.	AERONAUTICAL INFORMATION PUBLICATION WITH ILLUSTRATIONS PUBLICATION-PHILIPPINES	製本-AA		300	1	"			ATO	寄贈					
7.	QUESTIONNAIRE (国答) 空港	製本-AA	AA	12	1	購入			DOTC	"					
8.	NATIONAL AIRPORT FIVE-YEAR DEVELOPMENT PLAN('92-'97)	"	"	2	1	"			"	"					
9.	DOTC AIRPORT FACILITY REQUIREMENT INCEPTION REPORT	"	AA	4	1	"			"	"					
10.	HS AND MASTER PLANNING CAGAYAN DE ORO - ILLIGAN AIRPORT PROJECT	"	AA	2	1	"			"	"					
11.	FEASIBILITY STUDY AND MASTER PLANNING, FINAL REPORT CAGAYAN DE ORO - ILLIGAN CORRIDOR AIRPORT	"	"	11	1	"			"	"					

国際協力事業団

図書館蔵出用

資料リスト (収集資料)

平成 3 年 12 月 24 日作成

主管部長	文書管理課長	情報管理課長	技術情報課長

地域名	東了じ了	調査団名	東了じ了	調査の種類又は指導科目	事前調査	作成部署	社・南朝一課
国名	フィリピン	配属機関名	フィリピン 国際空港 整備 計画 調査	調査の期間又は派遣期間	平成 3 年 12 月 11 日 ~ 平成 3 年 12 月 20 日	担当者氏名	奈良輪陸美

番号	資料の名称	形態	版数	型	ページ数	オリジナルコピーの数	部数	収蔵先名称又は発行機関	は	苦情・購入(価格)の別	取扱い区分	利用表示	利用者所属氏名	納入予定日	納入確認
12.	ENVIRONMENTAL ASSESSMENT DRAFT FINAL REPORT CAGAYAN DE ORO-ILIGAN CORRIDOR AIRPORT	冊子	1	A4	16	16	1	DOTC	寄贈	JR					
13.	GENERAL SANTOS CITY AIR SERVICE IMPROVEMENT FEASIBILITY STUDY ENVIRONMENTAL ASSESSMENT	"	1	"	19	"	1	"	"	"					
14.	AIR TRAFFIC STUDY REPORT FOR CONSULTING SERVICE-PACIII-	製本	1	"	216	"	1	"	"	"					
15.	DAVAO INTERNATIONAL AIRPORT LAYOUT PLAN 1/4,000	製本	1	A1	1	1	1	"	"	"					
16.	DAVAO CITY TOPOGRAPHICAN MAP 1/6,000	製本	1	A4	1	1	1	DAVAO AIRPORT	"	"					
17.	DAVAO CITY DEVELOPMENT PROFILE	製本	1	A4	1	1	1	"	"	"					
18.	RATES OF PUBLICATIONS (PAGASA)	"	1	"	1	1	1	DAVAO AIRPORT	"	"					

写 真



日出友好道路

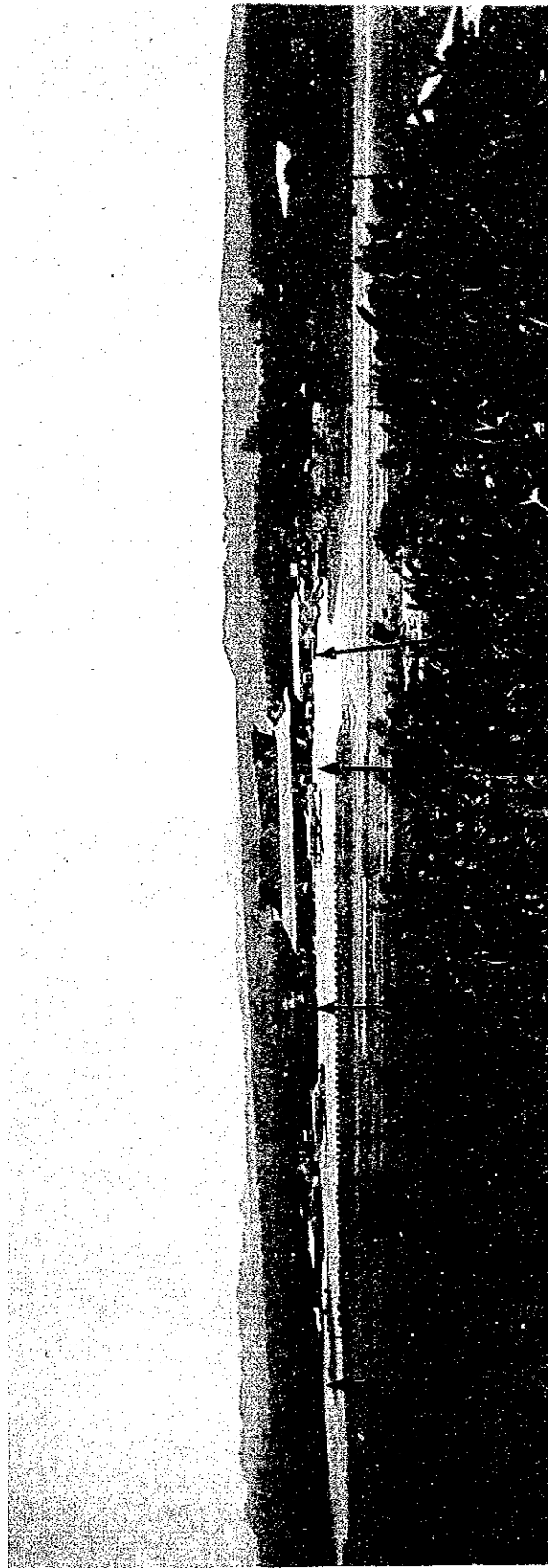
空海ターミナル地区

管制塔（滑走路・手前の白い建物）

北側からの空港全景



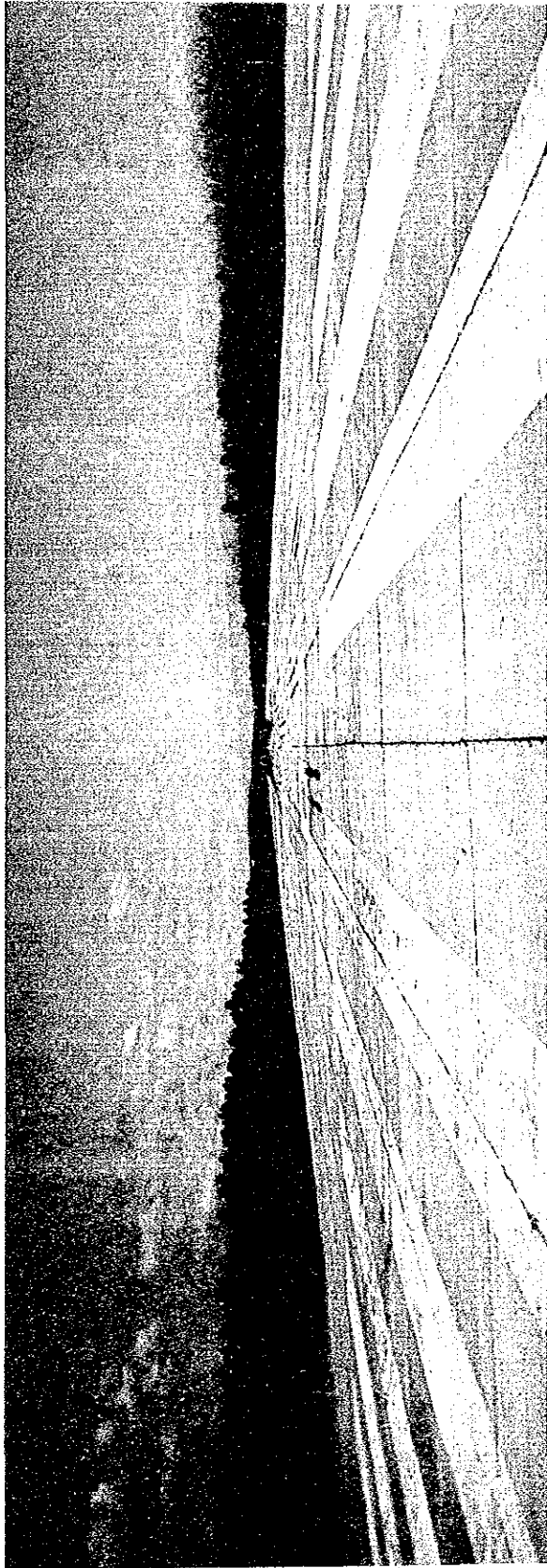
滑走路05側から空港を望む（前方サマル島）



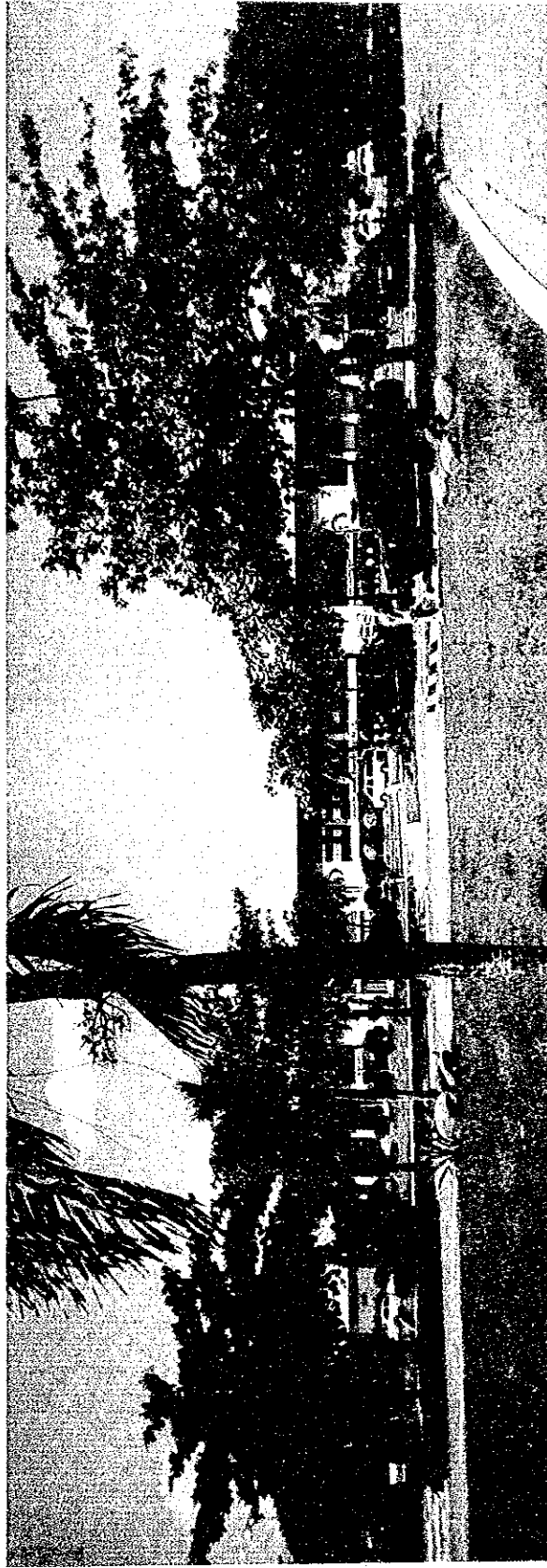
空港管理事務所 旅客ターミナルビル 貨物ターミナルビル

シェネラルアビエーション用エアプロン

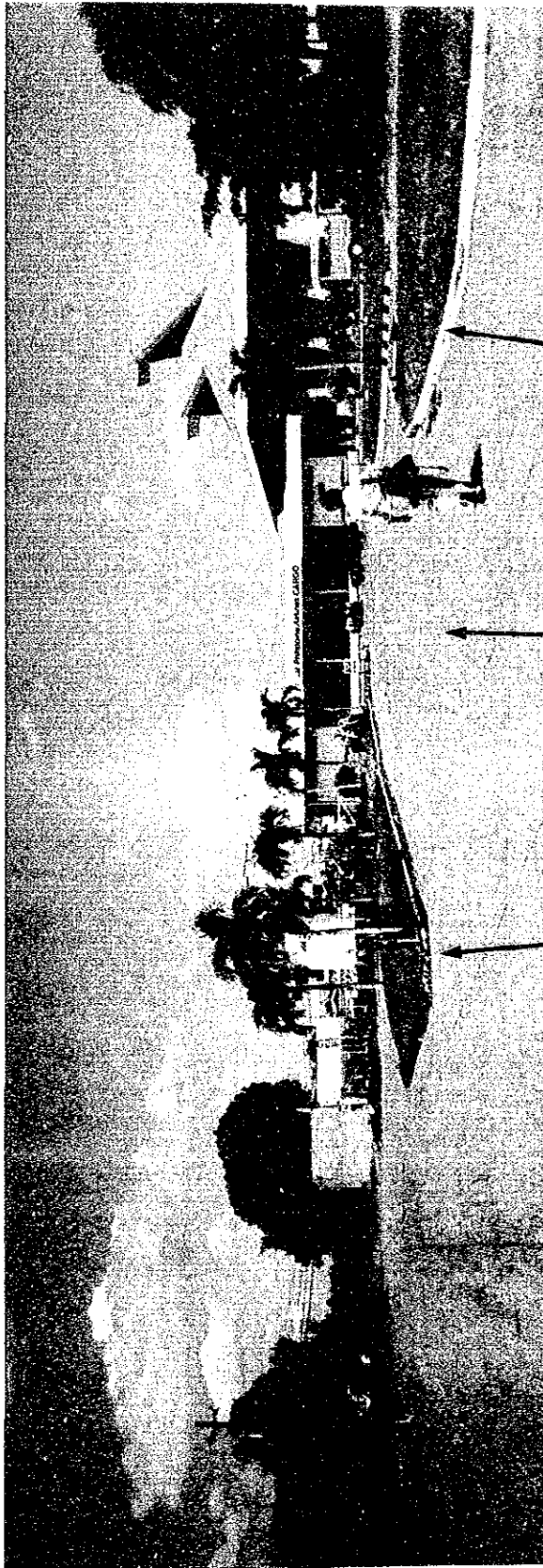
空港北側からエアプロンを望む



滑走路05側から滑走路23側を望む



駐車場から旅客ターミナルビルを望む

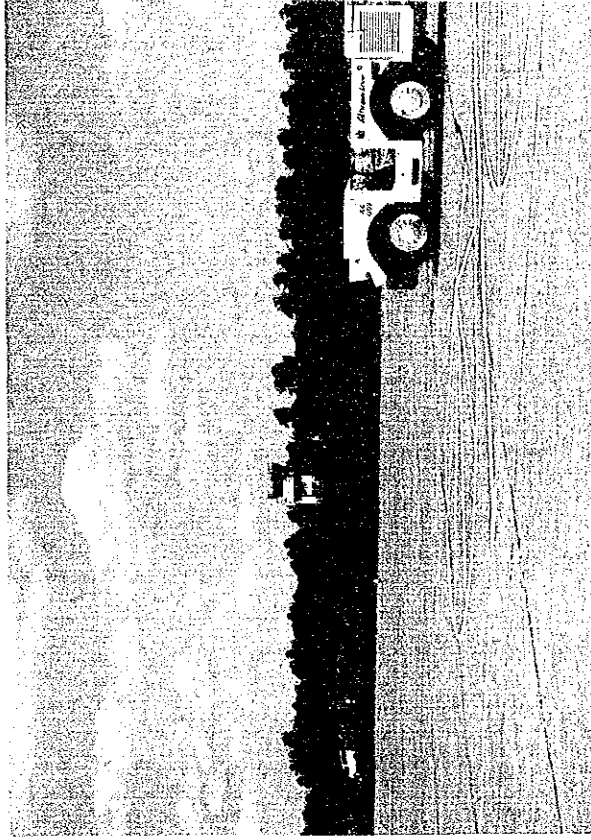


旅客ターミナルビル

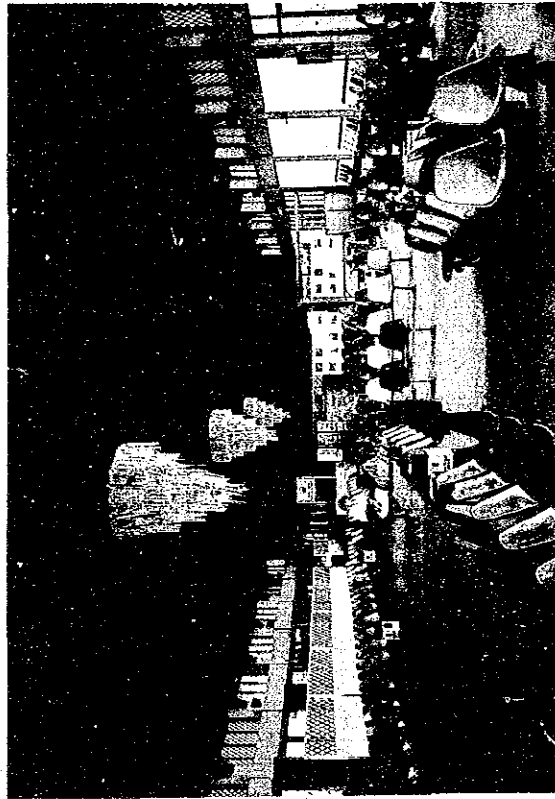
貨物ターミナルビル

給油施設

駐車場から貨物ターミナルビルを望む



エプロンから管制塔を望む

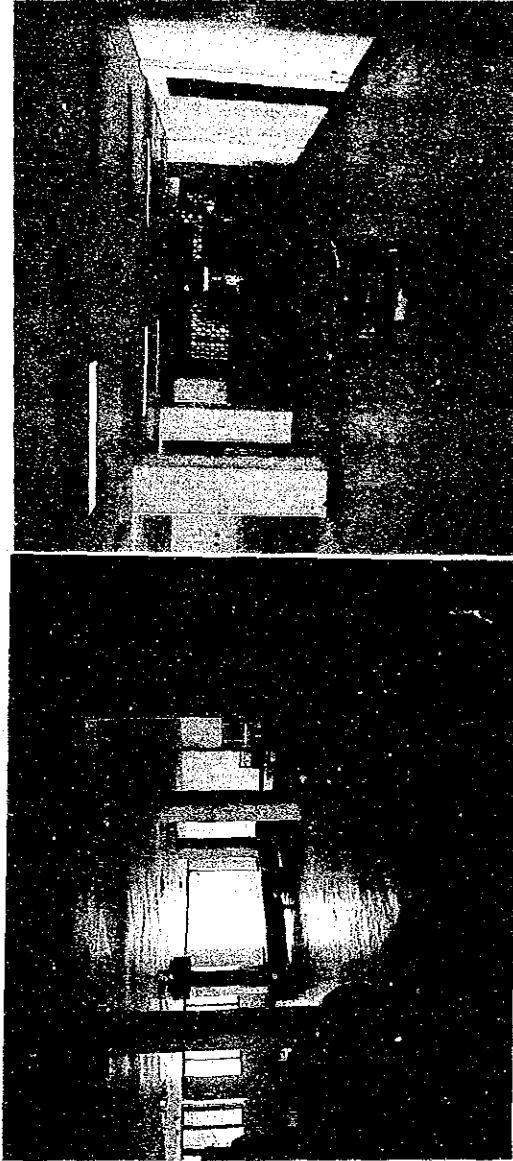


旅客ターミナルビル内部
(出発ロビー)



新巻路

ジェネラルアビエーション格納庫



旅客ターミナルビル（到着ロビー）

JICA