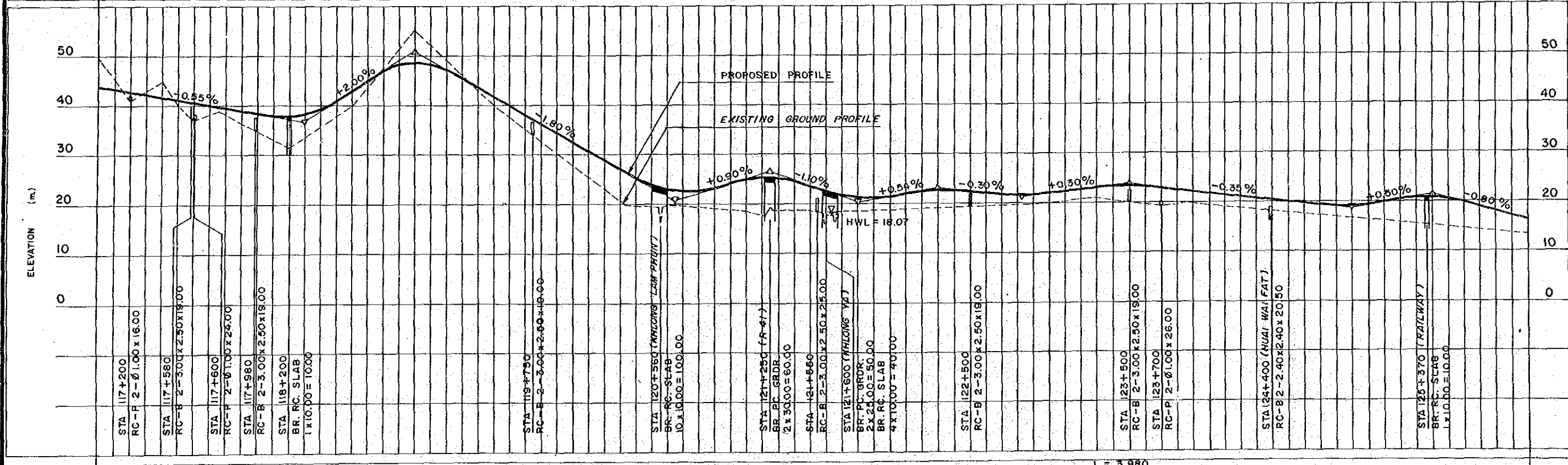


TERRAIN MODERATELY ROLLING FLAT



STATION (Km.)	117+000	118+000	119+000	120+000	121+000	122+000	123+000	124+000	125+000	126+000
CURVATURE BAND	L = 4,720 R = 15,000		L = 3,820 R = 10,000			L = 3,980 R = 15,000			L = 5,350 R = 00	

