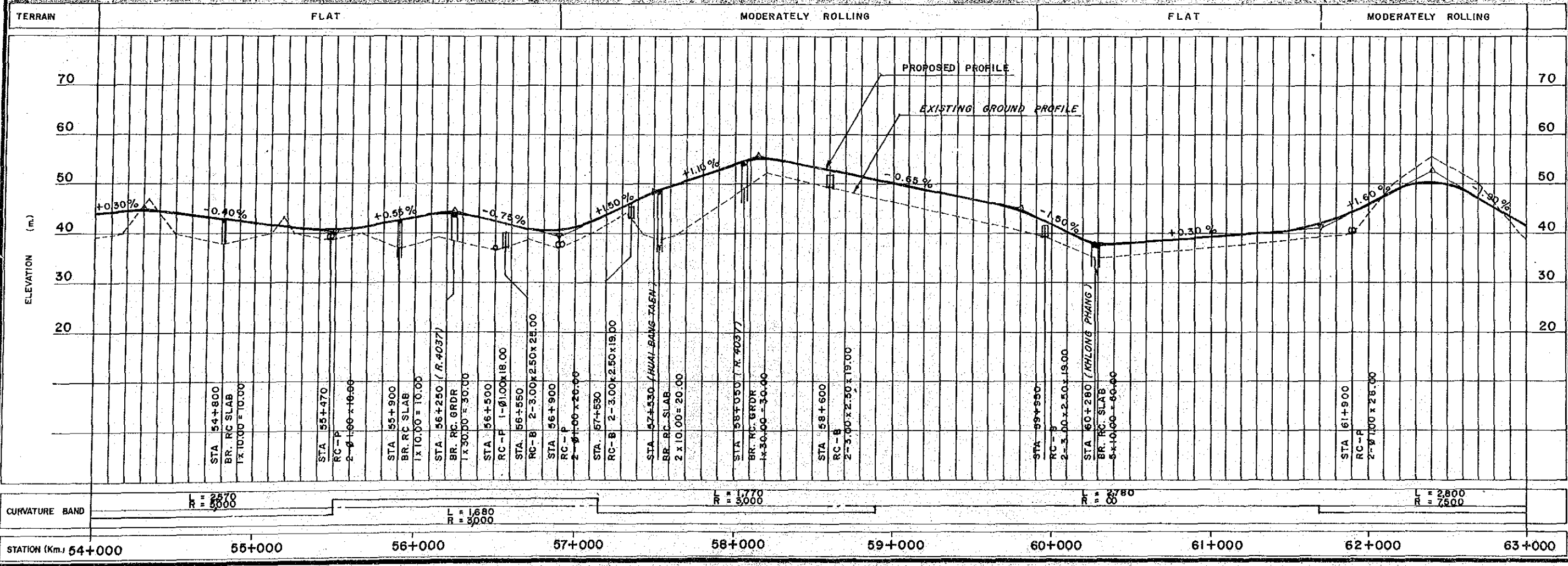
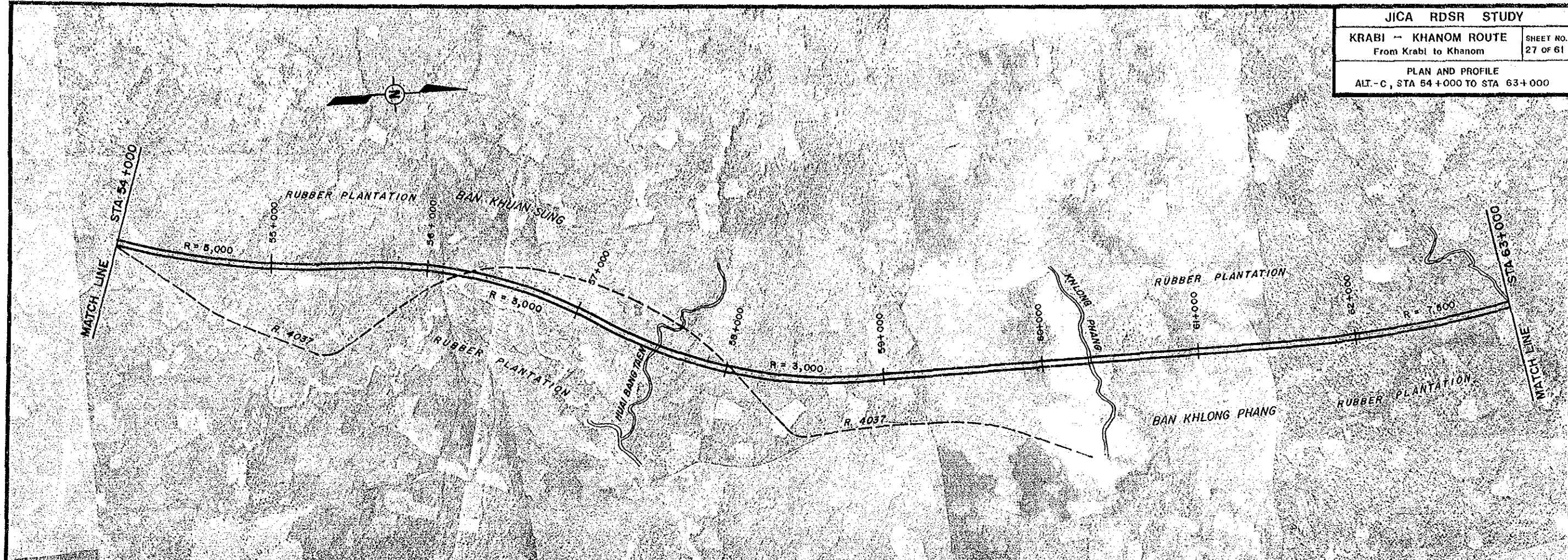
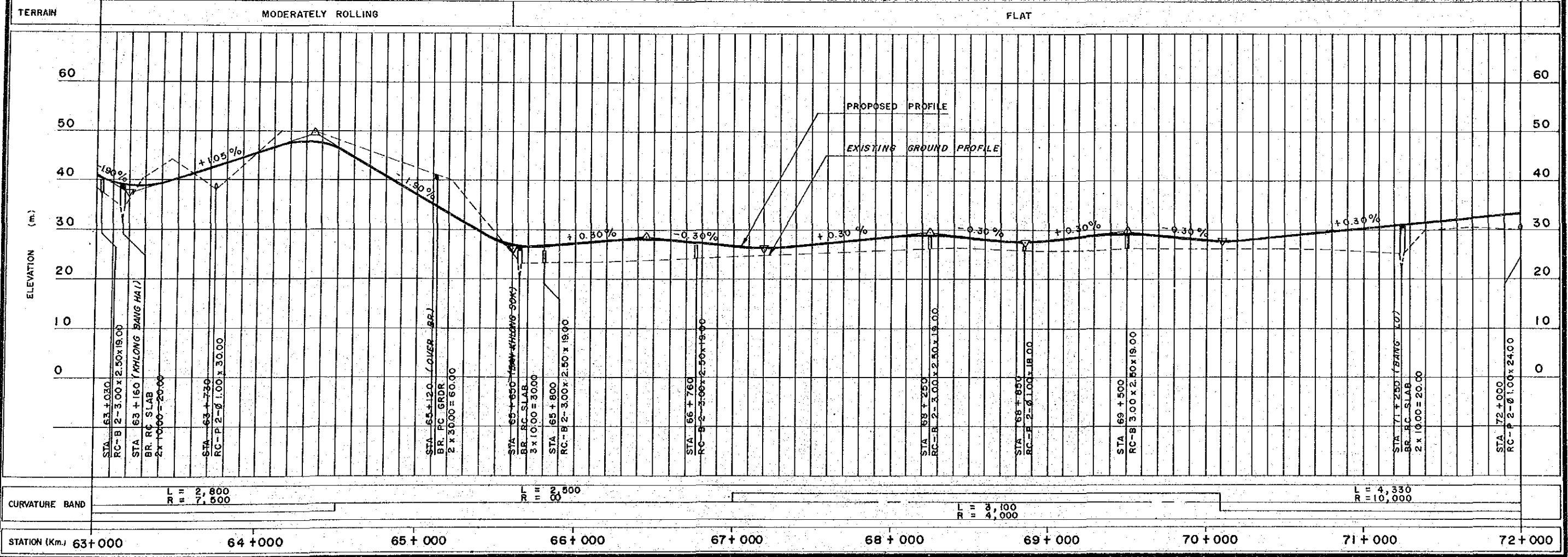
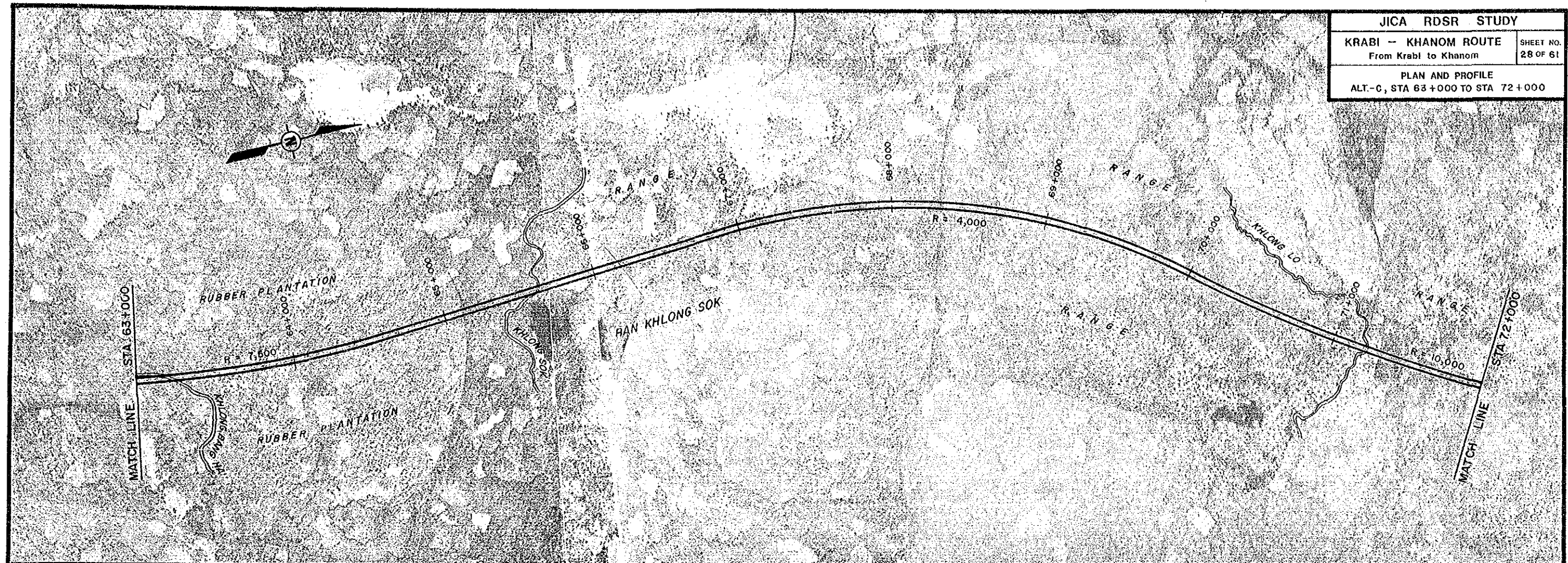
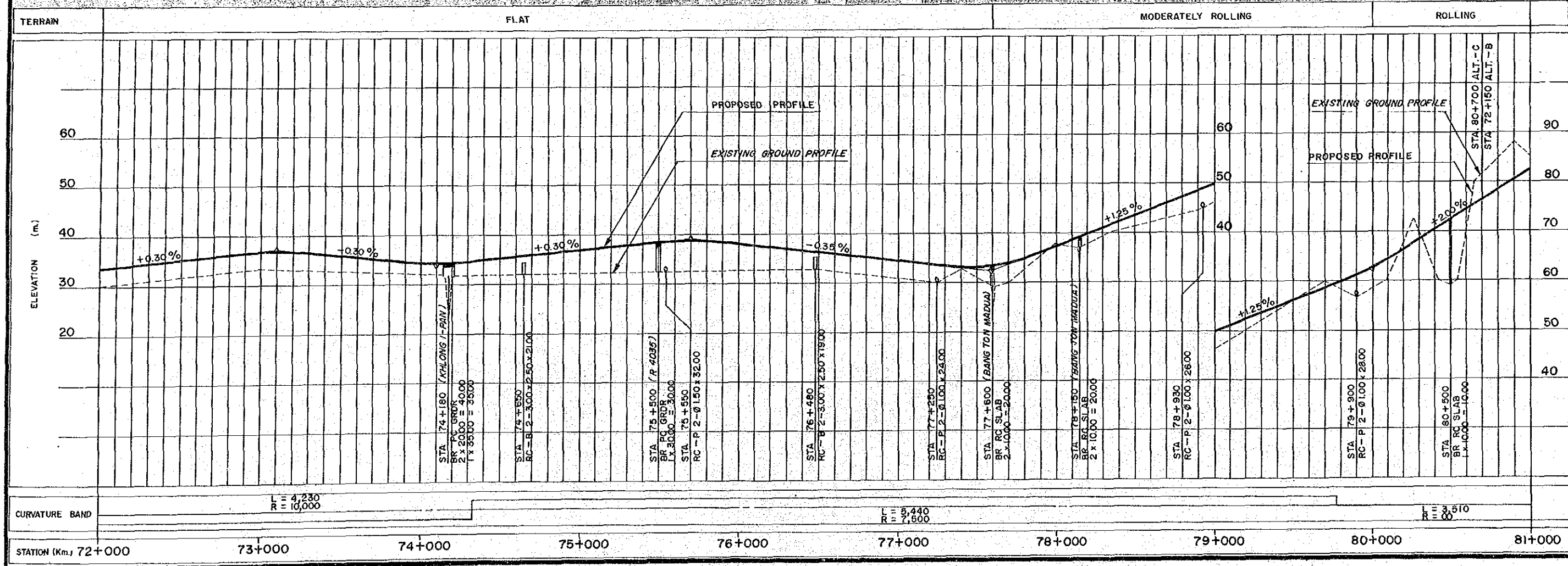
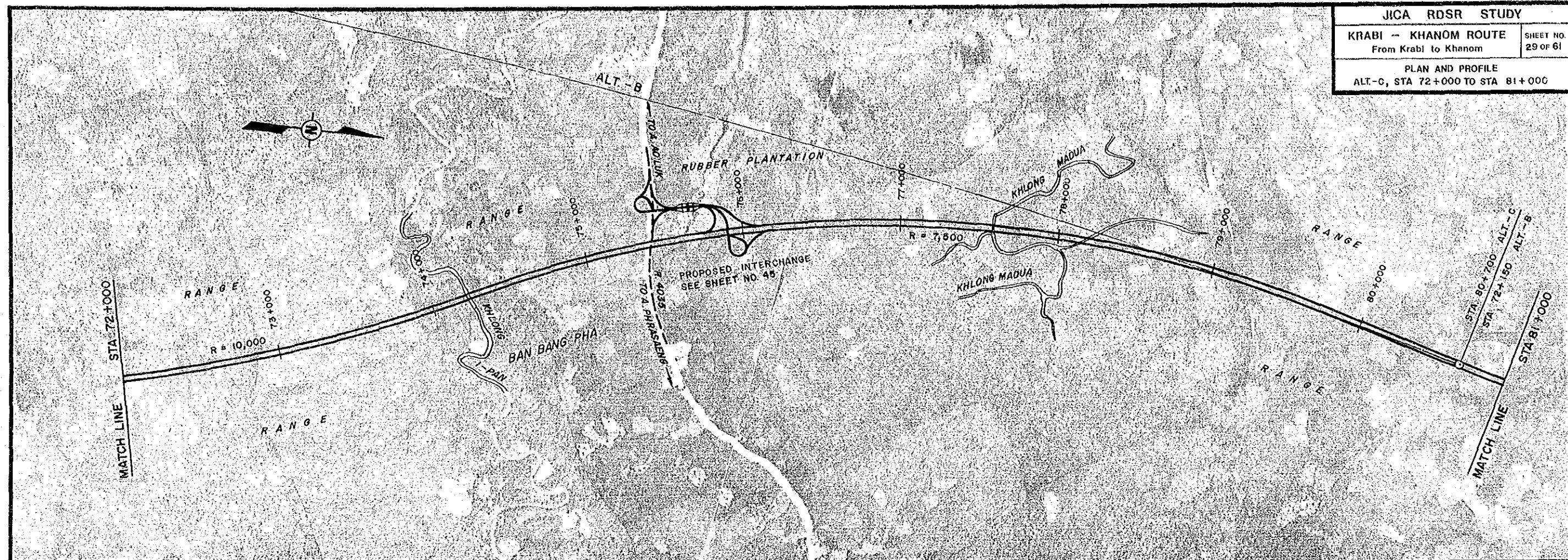
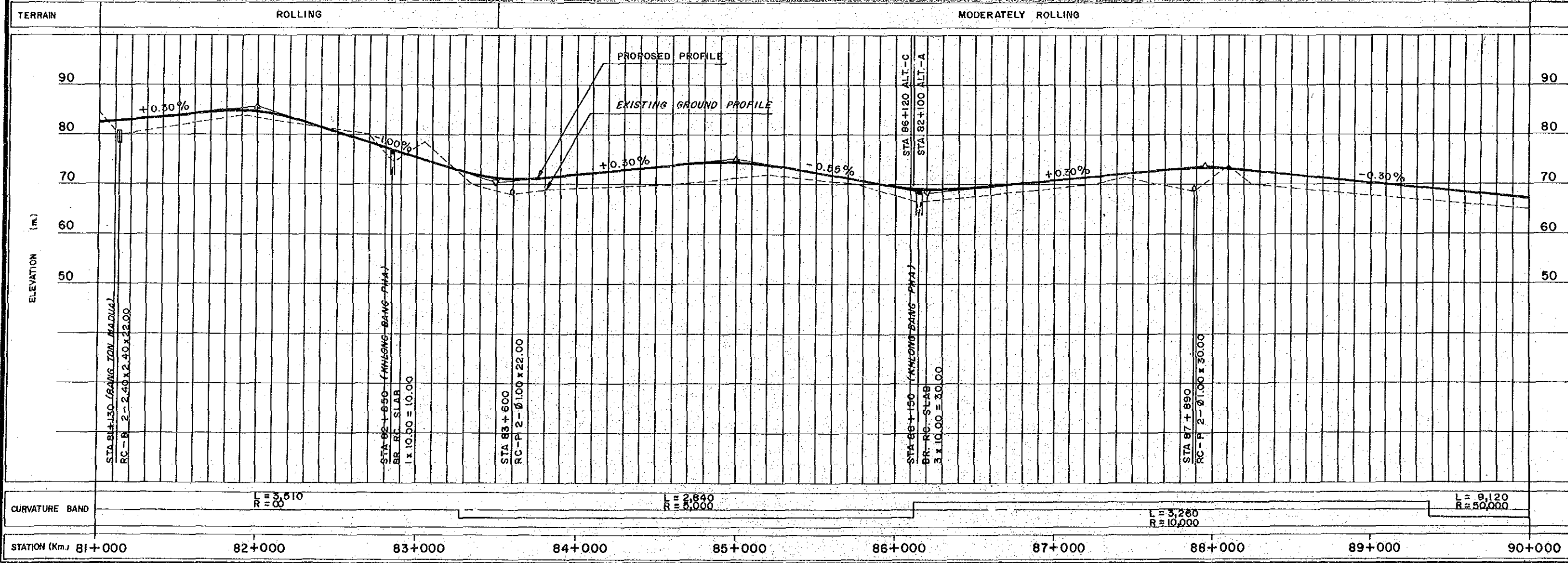
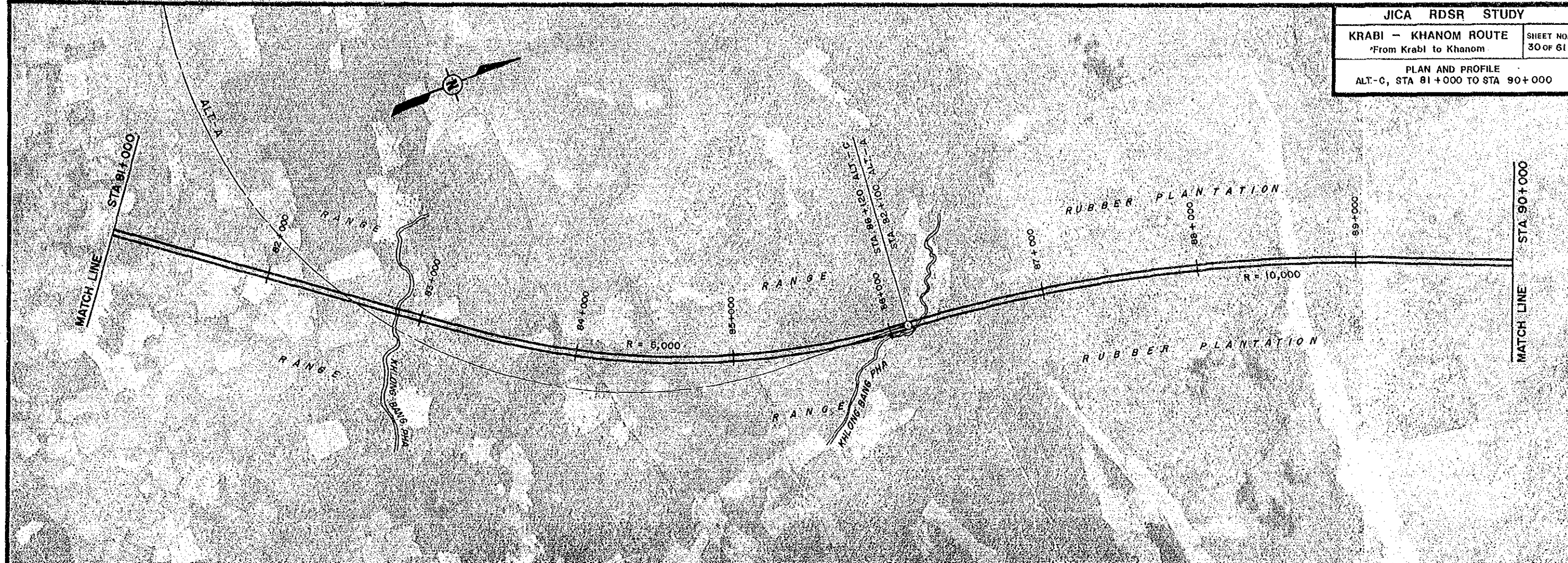


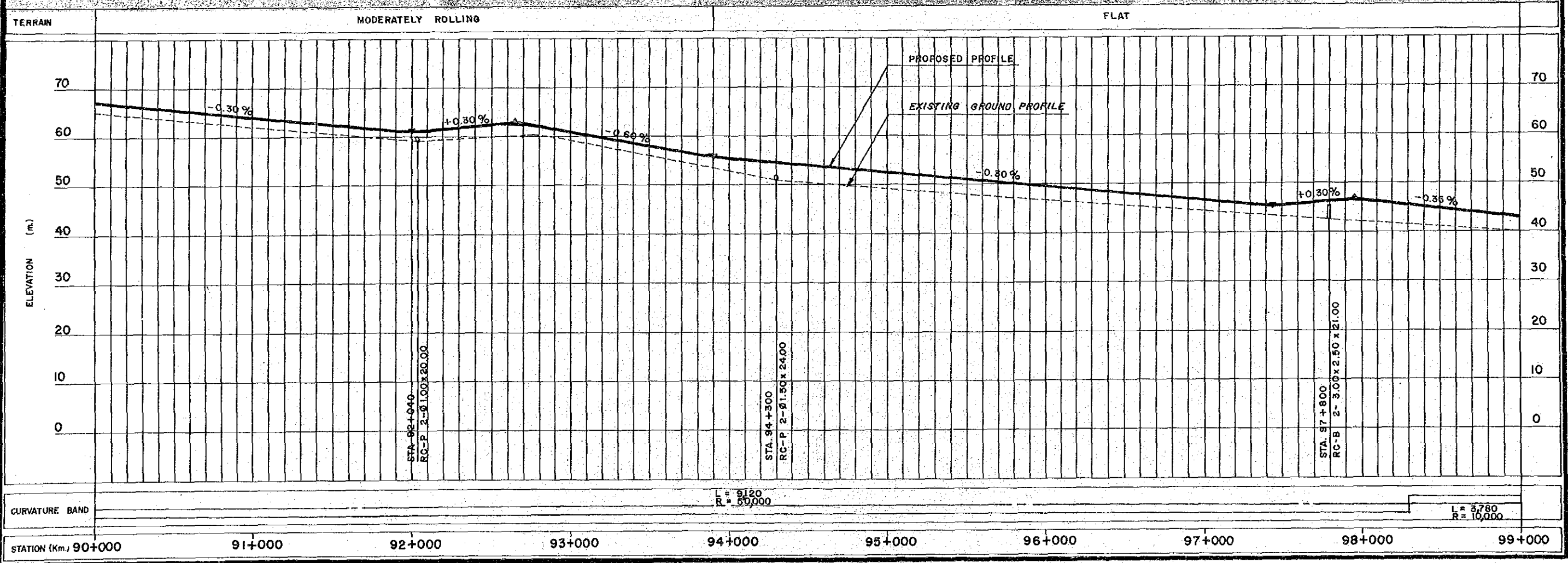
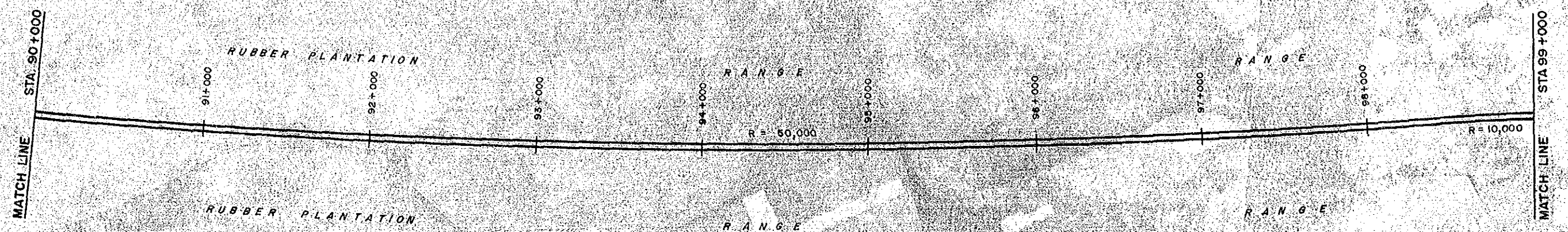
- STA. 45+160
RC-P 2-2.100x24.00
- STA. 45+170
RC-B 2-3.00x2.50x19.00
- STA. 46+220 (KLONG YIK)
BR. RC SLAB
1x10.00 = 10.00
- STA. 47+350
RC-P 2-2.9+0.9x32.00
- STA. 47+700
BR. RC SLAB
1x20.00 = 20.00
- STA. 48+100 (KLONG SRANG)
BR. RC SLAB
8x10.00 = 80.00
- STA. 48+350
RC-B 2-3.00x2.50x19.00
- STA. 48+620
RC-B 2-3.00x2.50x19.00
- STA. 49+700
RC-P 2-2.0100x26.00
- STA. 50+650
BR. RC SLAB
1x10.00 = 10.00
- STA. 51+200
RC-B 2-3.00x2.50x19.00
- STA. 51+800
RC-B 2-3.00x2.50x19.00
- STA. 52+900
BR. RC SLAB
1x10.00 = 10.00
- STA. 53+200
RC-P 2-2.0100x18.00
- STA. 53+900 / R 4037
BR. RC GRD
1x30.00 = 30.00





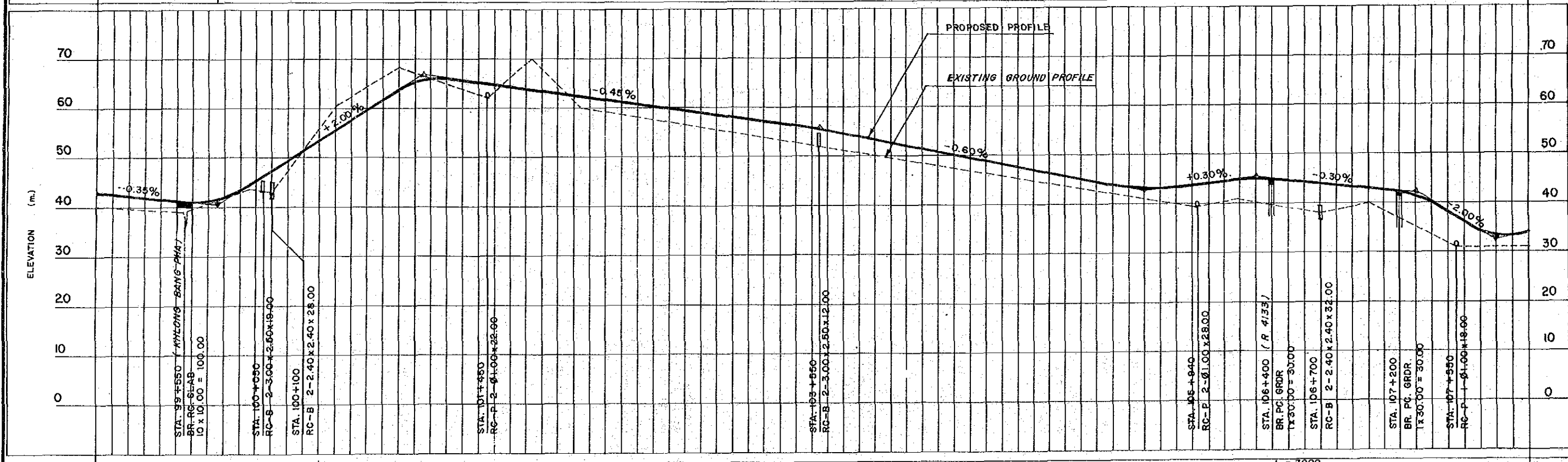




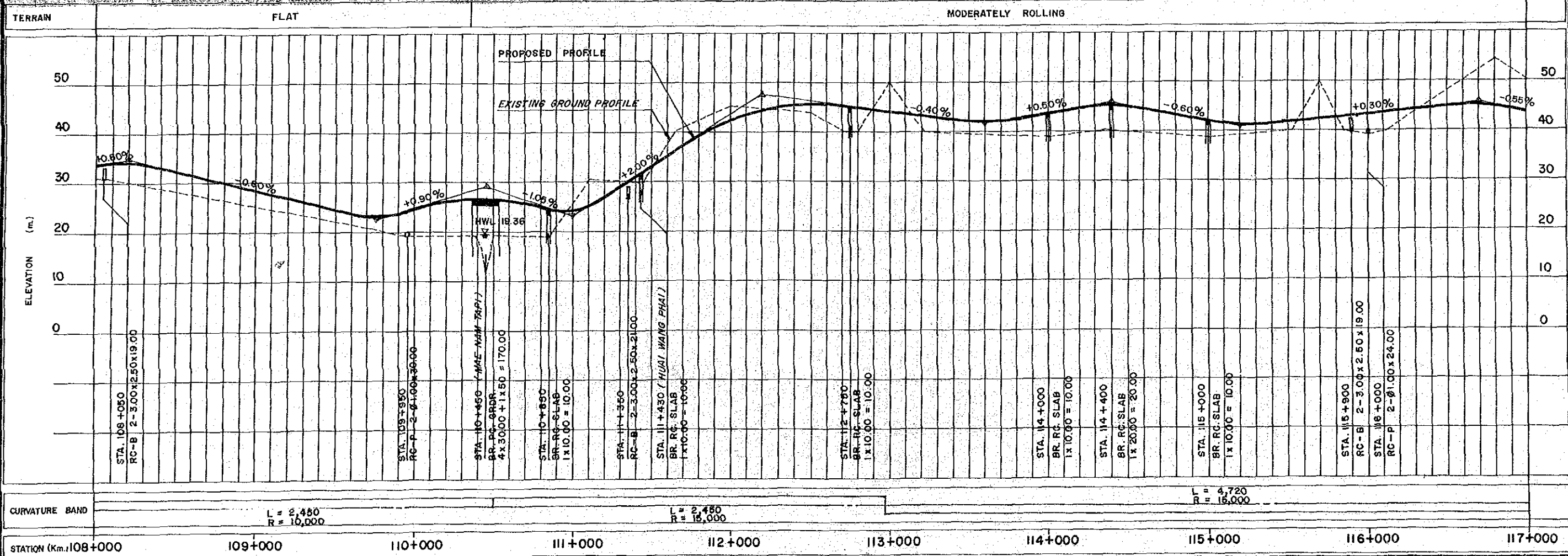
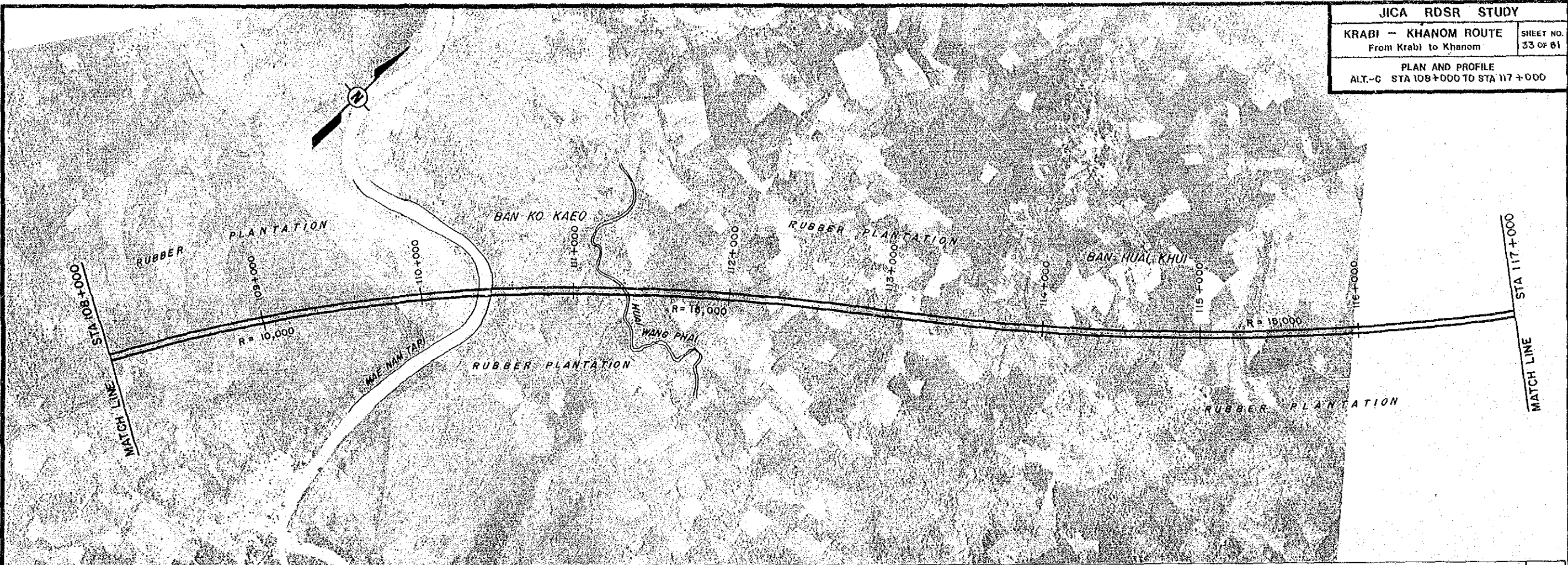




TERRAIN: FLAT (99+000 to 100+000), MODERATELY ROLLING (100+000 to 106+000), FLAT (106+000 to 108+000)



STATION (Km.)	99+000	100+000	101+000	102+000	103+000	104+000	105+000	106+000	107+000	108+000
CURVATURE BAND			L = 3780 R = 10,000			L = 2,500 R = 00		L = 3200 R = 15,000		



STATION (Km.)	108+000	109+000	110+000	111+000	112+000	113+000	114+000	115+000	116+000	117+000
STA. 108+050	RC-B 2-5.00x2.50x19.00									
STA. 109+950	RC-P 2-0.100x30.00									
STA. 110+450 (MAE NAM TAPI)	BR. RC. BRDR. 4x30.00 x 1x50 = 170.00									
STA. 110+850	BR. RC. SLAB 1x10.00 = 10.00									
STA. 111+350	RC-B 2-3.00x2.50x21.00									
STA. 111+450 (HUAI WANG PHAI)	BR. RC. SLAB 1x10.00 = 10.00									
STA. 112+700	BR. RC. SLAB 1x10.00 = 10.00									
STA. 114+000	BR. RC. SLAB 1x10.00 = 10.00									
STA. 114+400	BR. RC. SLAB 1x20.00 = 20.00									
STA. 115+000	BR. RC. SLAB 1x10.00 = 10.00									
STA. 115+900	RC-B 2-3.00x2.50x19.00									
STA. 116+000	RC-P 2-0.100x24.00									
CURVATURE BAND	L = 2,450 R = 10,000		L = 2,450 R = 15,000		L = 4,720 R = 15,000					