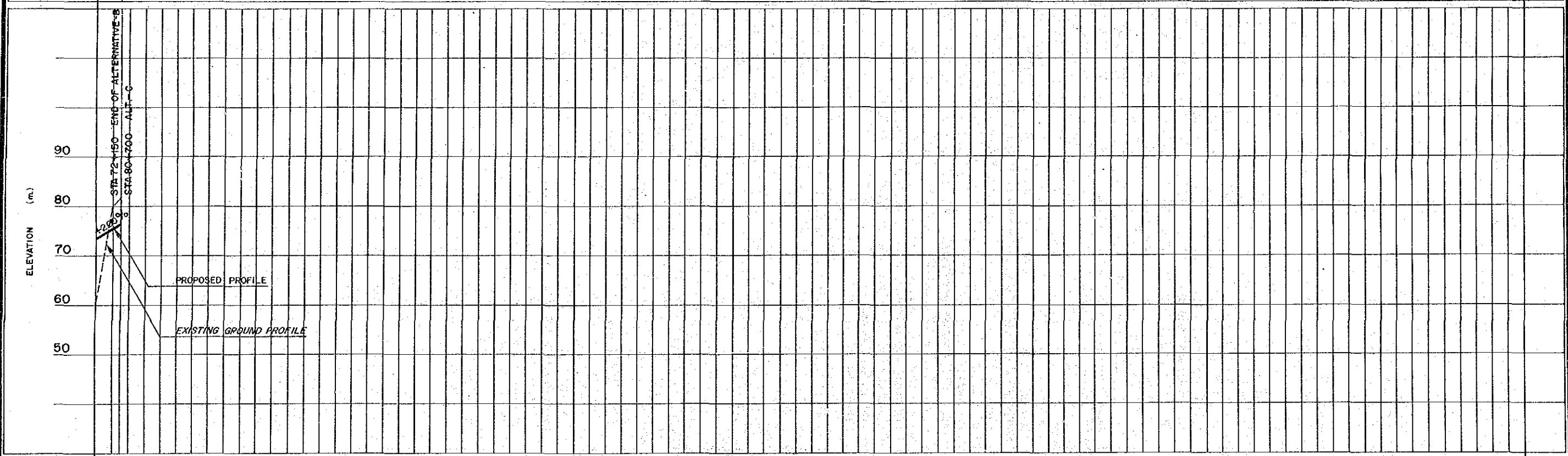
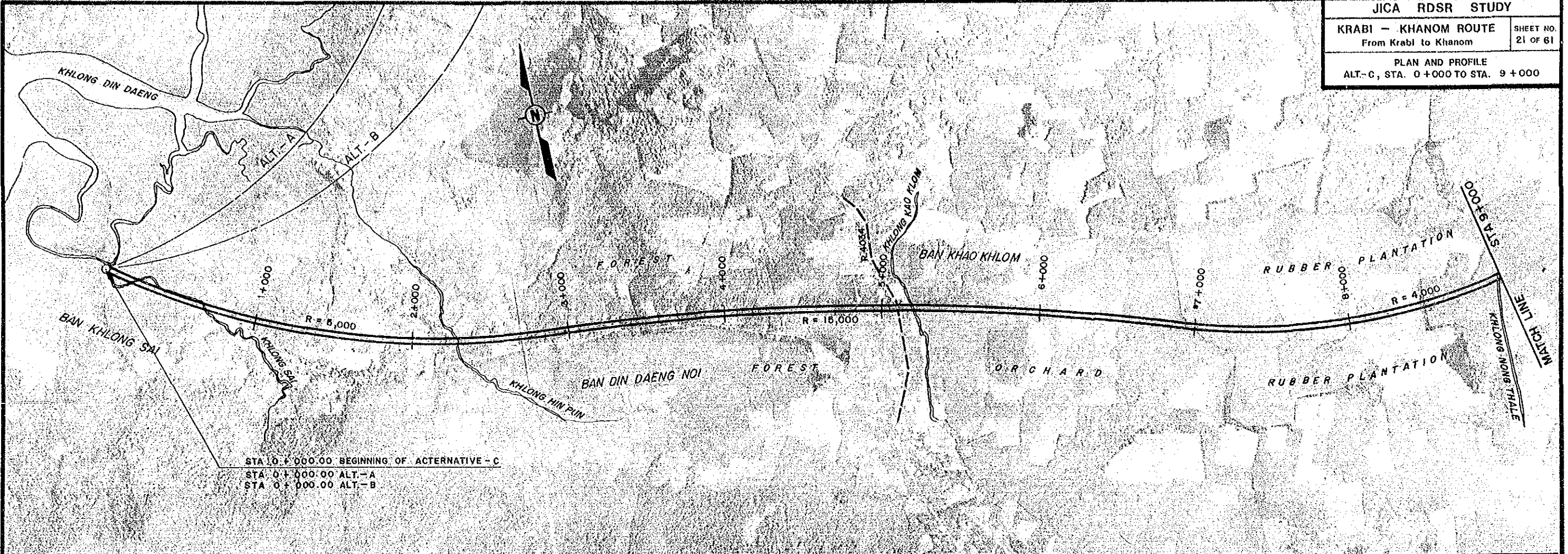


TERRAIN ROLLING

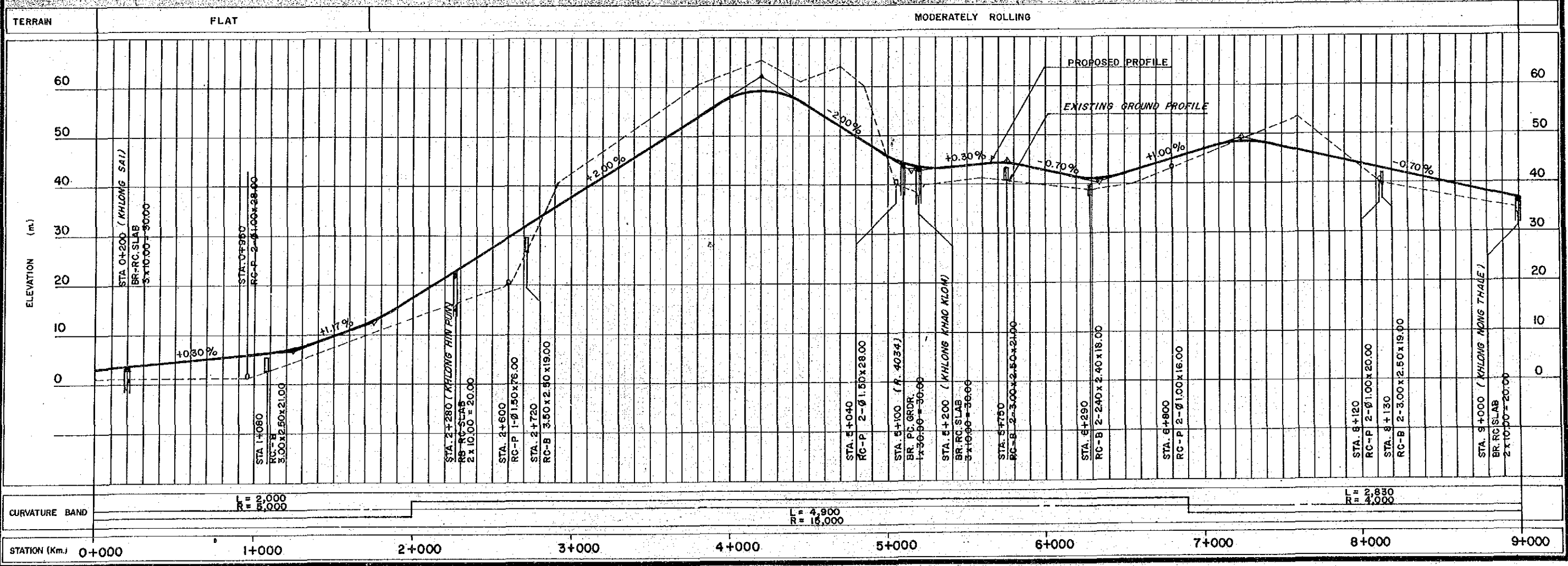


CURVATURE BAND
L=7.20
R=5,000

STATION (Km.) 72+000



STA 0+000.00 BEGINNING OF ALTERNATIVE - C
 STA 0+000.00 ALT - A
 STA 0+000.00 ALT - B



TERRAIN: FLAT (0+000 to 2+000), MODERATELY ROLLING (2+000 to 9+000)

CURVATURE BAND:
 R = 2,000 (0+000 to 1+000)
 R = 5,000 (1+000 to 2+000)
 L = 4,900, R = 16,000 (2+000 to 6+000)
 R = 2,830, R = 4,000 (6+000 to 9+000)

