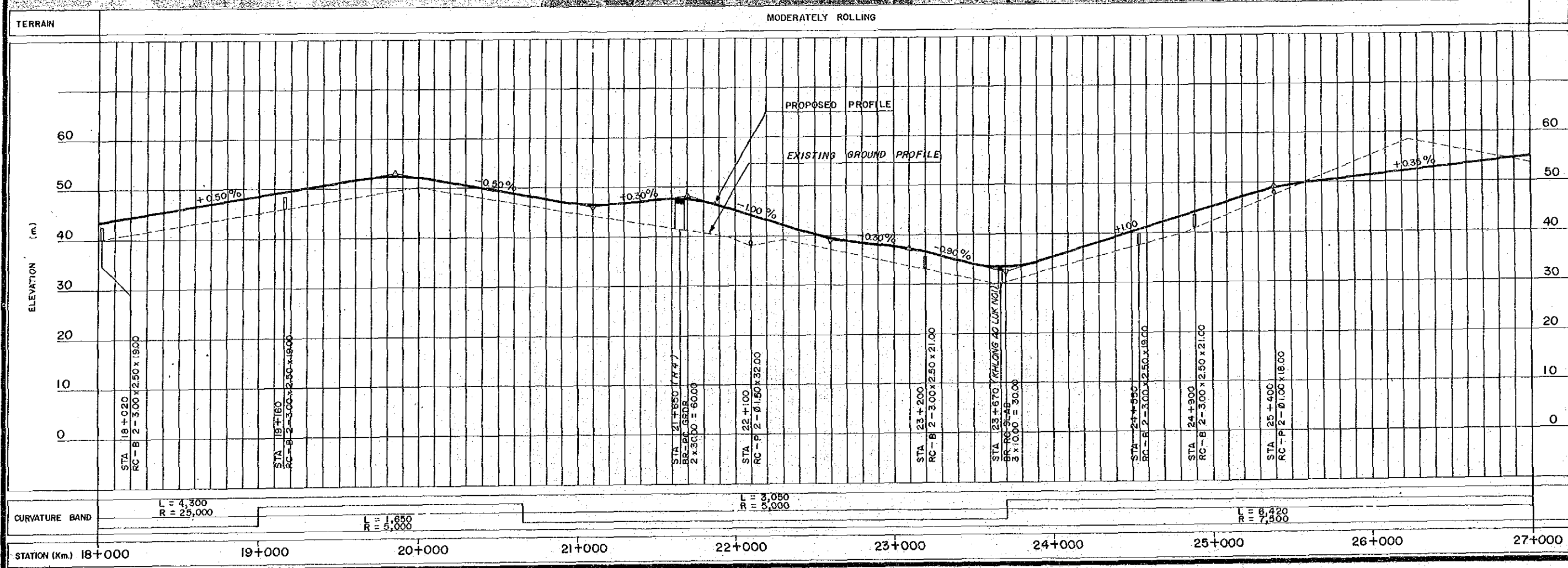
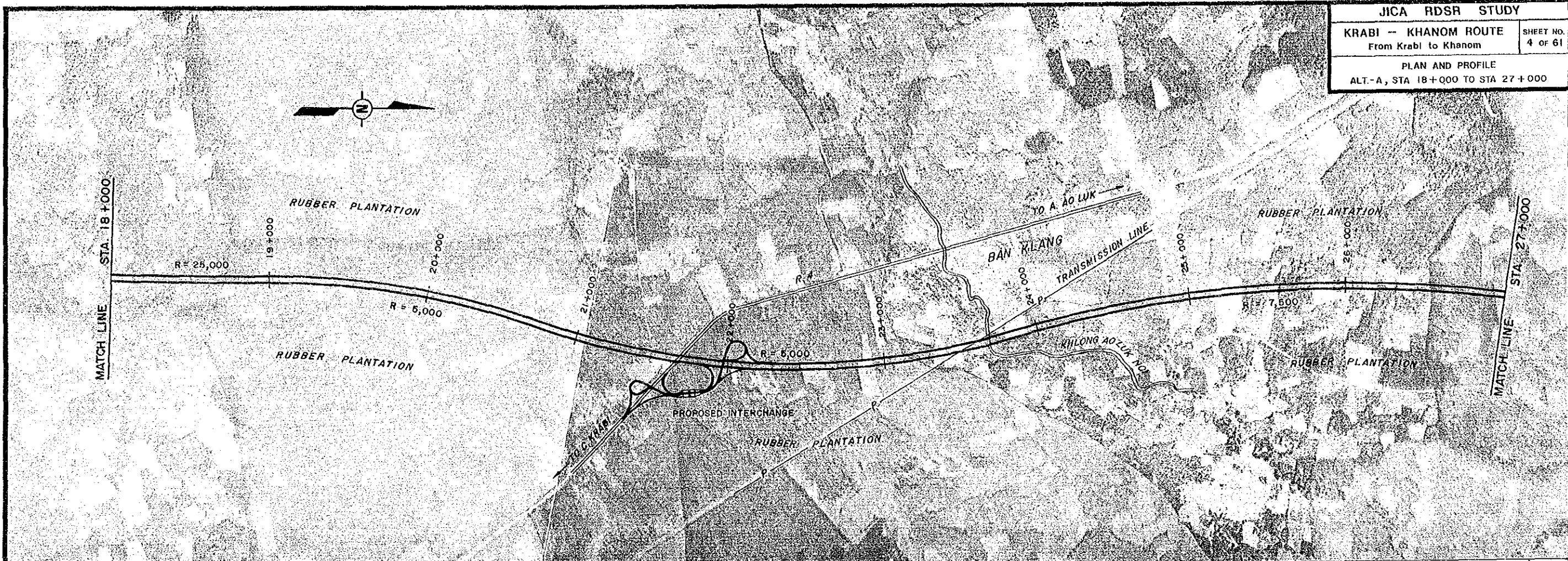


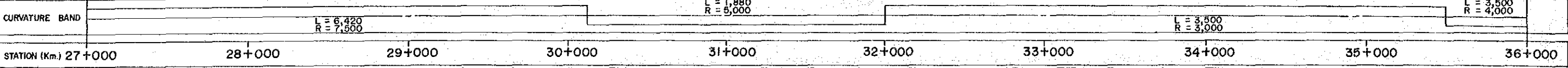
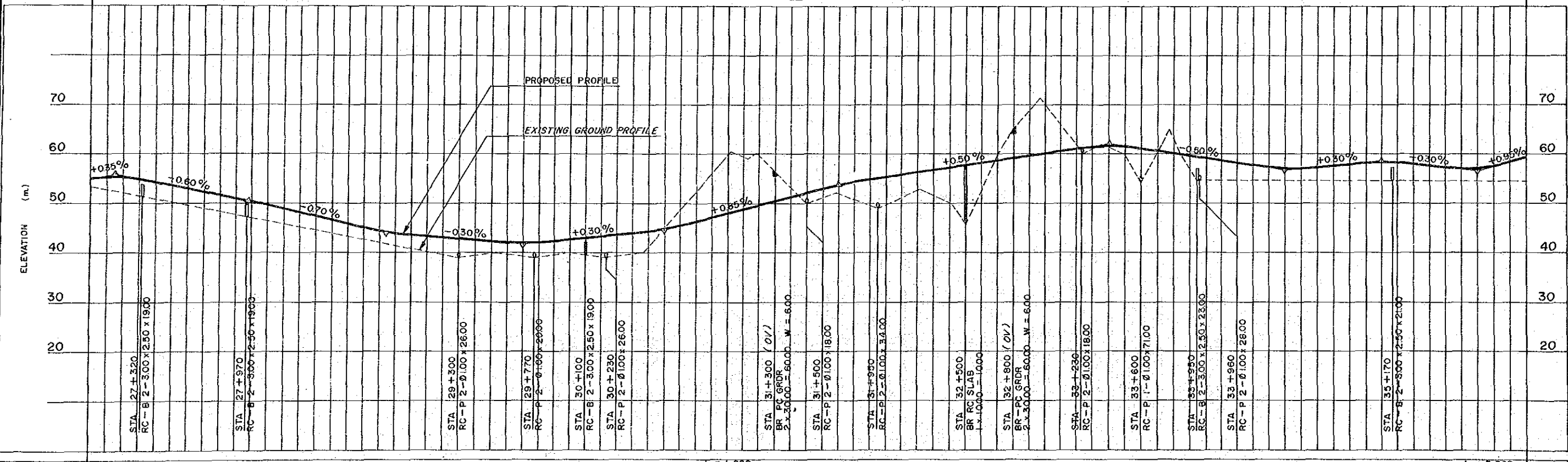
STATION (Km.) 9+000 10+000 11+000 12+000 13+000 14+000 15+000 16+000 17+000 18+000





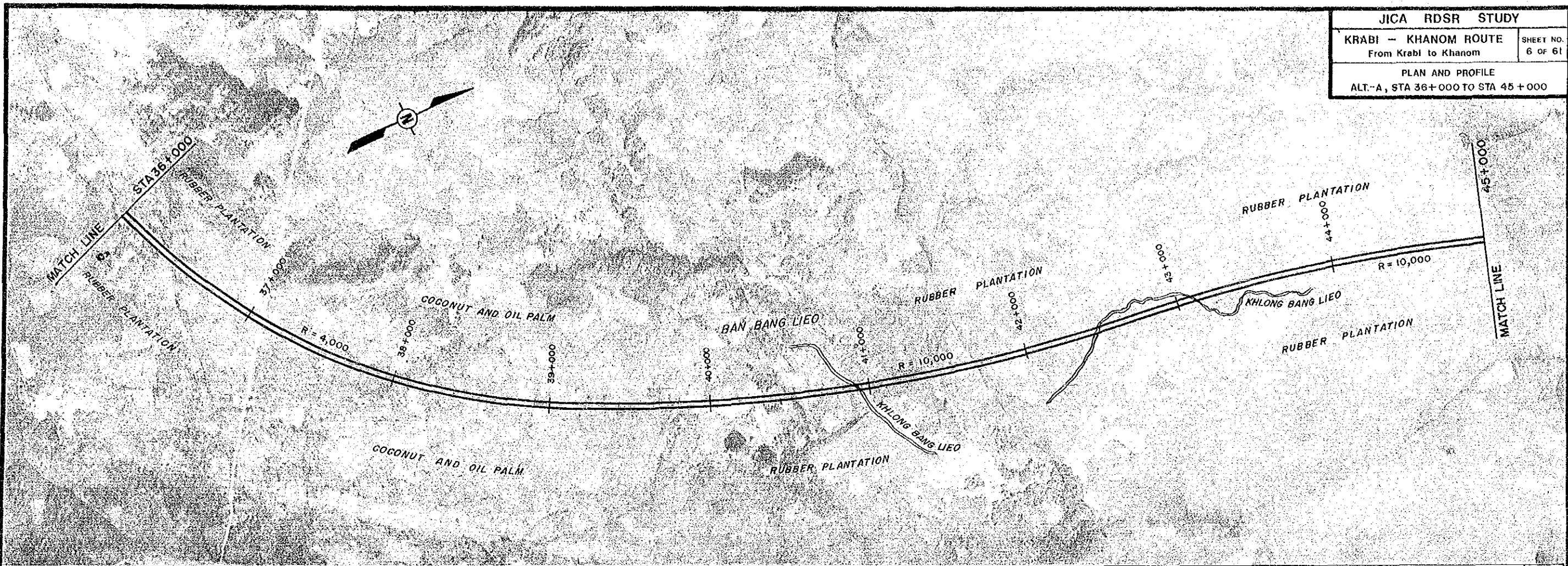


TERRAIN MODERATLY ROLLING

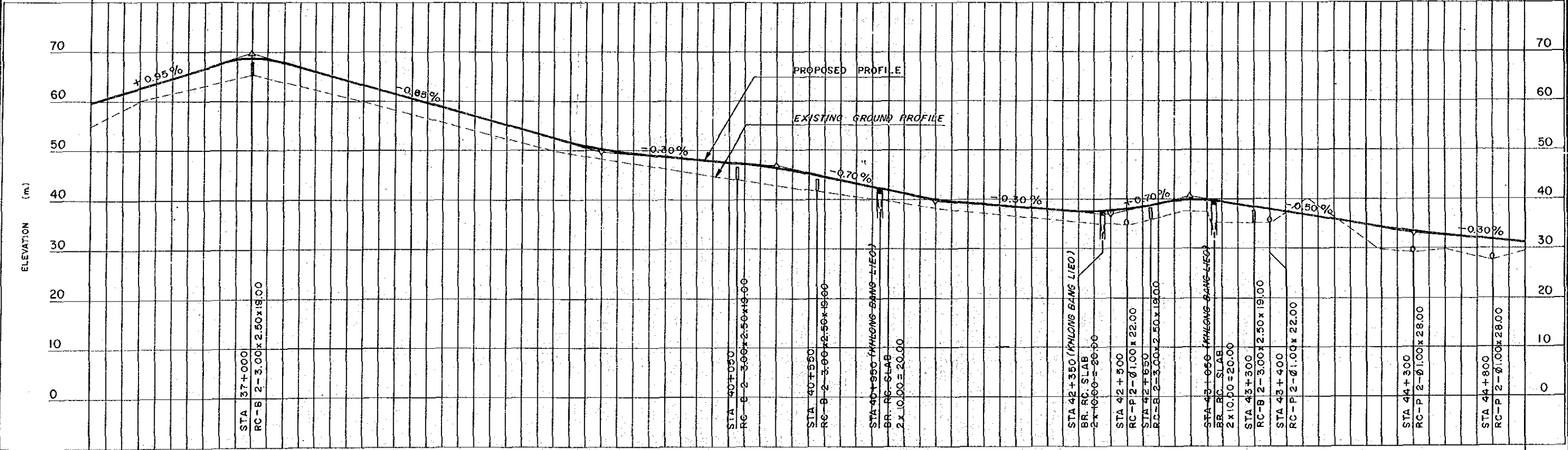


STATION (km) 27+000 28+000 29+000 30+000 31+000 32+000 33+000 34+000 35+000 36+000





TERRAIN MODERATELY ROLLING FLAT



CURVATURE BAND  
 L = 35,000 R = 4,000  
 L = 3,650 R = 10,000  
 L = 6,480 R = 10,000

STATION (Km.) 36+000 37+000 38+000 39+000 40+000 41+000 42+000 43+000 44+000 45+000

