

1990 PROGRESS REPORT OF LAIP FOR THE JOINT COMMITTEE
JAPANESE TECHNICAL CO-OPERATION AGREEMENT (JTCA-LAIP)

1. 1990 Programme:

1990 was the second year of the LAIP-JICA technical co-operation programme.

At the meeting of 25th October, 1989, the Joint Programme for 1990 was summarily presented to cover activities in the following main areas:

- Cropping
- Training
- Provision of basic facilities
- Provision of equipment and spare parts.

2. CROPPING:

2.1 Two croppings were planned as follows for 1990:

- (i) 1st. Cropping - 3,200 ha., (Nov. '89 - May '90)
- (ii) 2nd. cropping - 3,800 ha, (600 ha. peripheral & 3,200 ha Main Season)

But the plan was distorted by: -

- the 1989 Rainy Season Cropping running far into the 1989/90 Dry season Cropping with most of the crops harvested in the period January - March, 1990.
- retrenchment of most of the agric staff in January, 1990, thus delaying the processing of the over 13,000 application forms for the early selection of farmers for the dry season cropping
- break-down in the pumps at the pumping station. It was advised to plan for a maximum of 1,500 ha. with 2 pumps instead of the 3,200 ha. originally planned for 5 pumps. Eventually, 2,036 ha were allocated to over 3,500 farmers for the 1990 Dry Season Cropping by February/March, 1990.

2.2 Problems: The implementation of this programme encountered the following difficulties: -

- shortage of tractor operators through retrenchment in conformity with the re-organisation of the RBDAs.
- slow pace of work due to insufficient rotovators and rotovator blades.

Therefore the Dry Season Cropping spanned far into the Rainy Season Cropping and distorted it.

2.3 Correction of the Cropping Pattern:

It was therefore decided to cancel the 1990 Rainy Season Cropping in order to correct the timing for subsequent cropping seasons henceforth by reverting to the cropping pattern as originally planned for the Project in which the seasons should run thus:

- Dry Season Cropping - November - May
- Rainy Season Cropping - June - December.

3. Semi-Permanent Land Allocation:

Selection of farmers every cropping season was identified as one of the main causes of delay in programme implementation. A Committee was set up in March, 1990 to remove this bottleneck by allocating land on a semi-permanent basis to farmers. The Committee completed its assignment on schedule and published the first list of successful farmers on 6th September, 1990 and a Supplementary List on 25th Sept., 1990. A total of 5,866 farmers were selected and allocated 3,566.5 ha.

The contributions of JICA in this exercise through ideas and computer services are hereby acknowledged.

4. Maintenance Works And Services:

4.1 Overhaul of Pumps & Engines:

In order to ensure adequate water supply for the 1990/91 Dry Season Cropping a total overhaul of the pumps and Engines in the Pumping Station were carried out with the assistance of experts from Japan.

4.2 Repair of Tractors & Rotovators:

At least 60 tractors and 50 rotovators were required for the 1990/91 Dry Season Cropping. By the end of the year, 40 tractors and rotovators were repaired.

728 Rotovator blades were made locally at Ajaokuta while 630 were received from Japan and these were used to assemble about 32 rotovators.

However, propeller shafts still remain a problem as only 27 were available.

4.3 Irrigation Facilities and Road Maintenance:

A total of 22.6 km of canals was desilted and 68.14 km. slashed during the first half of 1990.

4.4 Tractor and Thresher Hire Services

A total of 145 ha. of rice land was rotovated and puddled outside the Project area and 284.5 plots of rice farms were threshed for Project farmers. Only 27 out of the 60 threshers supplied to the Project have so far been mounted on wheels.

4.5. Rice Mill:

A total of about 55.96 tonnes of paddy was processed during the year. The mill was virtually dormant because of the present Government Policy on Privatisation of such facilities.

5. Revenue From Services Rendered in 1990:

(a) 1989/90 Dry Season Cropping

| | | |
|-----------------------------------|--------|---------------|
| (i) Land Preparation | | ₦1,040,625.00 |
| (ii) Water charge | | 1,247,700.00 |
| (iii) Tractor & thresher services | .. | 120,802.50 |
| (iv) Others | | 22,717.50 |

Sub-total ₦2,431,845.00

(b) 1990/91 Dry Season (Oct.-Dec. 1990)

Land Preparation and Water
charges

... .. 949,699.00

Total ₦3,381,544.00

=====

6. Training:

6.1 Training Under JICA Programme:

A. ABROAD

- (a) The General Manager, Engr. E.C. Nwude, was on observation (study) tour of Japan in September, 1990.
- (b) The Project Manager (H.C. Okoye) and a counter-part Agronomist (Mr. Ufondu) visited the Lower Moshi Irrigation Project in Tanzania under Technical Knowledge Exchange Programme.
- (c) Mr. S. I. Melifonwu (Civil Engineer I) - attended a nine-month course in Japan for irrigation & drainage.
- (d) Mr. R. C. Uchefuna's course in Agric. Machinery Management scheduled for May - November, 1990 was postponed because of delay in the submission of necessary application forms.

B. In the Project:

1. Staff Training

The various experts worked closely with their counterpart staff to impart technical knowledge and know-how in their respective fields of expertise.

Most of the experts sent so far are no doubt experienced men in their respective fields of specialisation but language barrier is the greatest constraint in the transfer of knowledge as some of them cannot communicate at all even in broken English.

6.2 Farmers' Training

Rice Cultivation Training Course: About 40 Course Participants were selected in December, 1990 for intensive course in rice cultivation.

6.3 Authority's Training Programme:

- (a) Mr. N. Nwagpuda (STO (Water)) was on a six-month study leave at the Federal University of Technology, Owerri at the end of which he obtained B.Sc. degree in Civil Engineering.
- (b) Messrs. E. Maduechesi & E.O. Iheazor attended 5 days Course on M & W Pumps at Anambra-Imo River Basin Dev. Authority Headquarters, Owerri.
- (c) Dr. C. Achebe (the former PM) attended a 2-day course in Management at Owerri.
- (d) All the drivers of the Project (both established and unestablished) attended a one-day training course in the Project in July, 1990.

7.1 Water Users Association:

With the permanent land allocation exercise now over, JICA is helping the Project to organise an effective Water Users Association in which the farmers will take full control of on-field water management as well as the maintenance of irrigation infrastructures assigned to them.

7.2 LAIP Co-operative Society:

JICA has also helped the farmers to form a Co-operative Society known as LAACS (Lower Anambra Agric. Co-operative Society) which will assist farmers in the procurement of inputs and in marketing and processing of their produce. The membership strength was about 400 by the end of December, 1990.

8. Basic Facilities:

8.1 Experimental Farm:

In furtherance of the project-type co-operative objective, JICA constructed and handed over to the Authority a 4.5 ha. Experimental Farm with facilities for rice cultivation research, machinery test, demonstration and training of farmers in addition to a Farm house, Rice drying yard and washing bay. This was commissioned in June, 1990. It is now used to conduct fertilizer and variety trials as well as disease and soil related problems, e.g. iron toxicity.

8.2 Training Centre (JICA Funded)

The Training Centre and the Project Manager's buildings were completed and furnished during the year under review and were commissioned on 23rd October, 1990 for use in training courses scheduled to start by December, 1990.

8.3 Housing:

One Senior Staff Quarters was completed during the first quarter of the year and the second was nearing completion by the end of the year. Accommodation for all categories of staff still remains a problem.

8.4 Electricity:

A contract was awarded for the extension of NEPA power line to the two Project premises of the Lower Anambra Irrigation Project and work is still in progress.

8.5. Recreational Facilities:

- (a) Tennis Court: A tennis court was donated to the Project by Taisei C. Itoh Consortium and the Nippon Koei Ltd. However, fencing and flood lighting of the Court is yet to be done.
- (b) Staff Club House: The delapidated Club House was cleaned up as a first step towards rehabilitating it.

8.6. Water Supply:

Potable water is a major problem in the Project. Action was taken in 1990 to expand the Water Treatment Plant as well as improve on the reticulation.

8.7 Staff Nursery School:

The need for a Nursery School within the Project premises for staff kids is becoming more urgent as there are no suitable nursery schools in the neighbourhood. Assistance is required both in the building of a suitable structure as well as in running it until such a time that the parent population will be large enough to pay for the bills.

9. PROVISION OF EQUIPMENT AND MATERIALS:

9.1 By JICA:

JICA budgeted and ordered a number of equipment and materials for use in implementing the JICA-LAIP programmes e.g. vehicles, audio visual materials, radio communication equipment, stationeries and photostat machines, portable personal computer with soft ware, etc. Only a few of these items have actually been received in the Project. Some on arrival are detained at the Port because of heavy import duty which is further complicated by equally heavy demurrage they had attracted during the period.

The delay in these equipment reaching the Project is hindering programme implementation. There is need therefore to find ways and means of breaking this bottleneck.

9.2 By Authority:

The Authority concentrated mainly in the routine maintenance of existing infrastructure and equipment. Emphasis was mostly on the rehabilitation of the vehicles with major faults. This was successfully done with the sum of ₦45,000 (forty-five thousand Naira) released in October, 1990.

However, most of these vehicles are very old now; moreover some of them are not appropriate for the purpose they are being used as of now. For example, dump trucks and pick-up vehicles are used as personnel carriers. This of course leads to abuse and over-work of the vehicles.

10. Human Resources

10.1 Project Staff:

The disposition of the staff in the Project is shown in Annexure

The Agronomic and Extension activities of the Project is mainly through the secondment of four Agric. Officers/Superintendents from the Anambra State Min. of Agriculture. They are now working under the direct supervision of JICA in the Agronomy/Research Unit as well as the extension Unit as Counterpart staff.

10.2 Unestablished Staff:

The Project has a total of 57 casual workers working as Ditch tenders, cleaner/messengers, clerical staff, typists, drivers, plant & Tractor Operators and security men. The Ditch tenders (30) were all retrenched in December, 1990.

Action has been taken towards converting some casual staff to permanent staff to the extent the establishment structure can allow.

11. Discipline:

There has been a significant improvement in the general discipline in the Project of recent but there is room for improvement. Some of these can be improved through better infrastructural provisions such as housing in the project, transportation, training of staff and motivation through incentives.

12. Medical:

The dispensary was equipped and furnished during the year. Attempts were made to engage a visiting Doctor who would consult three days in the week and only refer serious cases to the Medical Retainers in Onitsha.

The doctor concerned has not shown any further interest in this matter. This issue will be looked into in the new year.

13. Constraints:

The problems of the Project in the year 1990 can be summed as follows:

- Distortion of the planned cropping programme as only 2,046 ha. instead of the 7,000 ha. planned was cropped
- lack of spares to make the tractors and associated equipment functional to cope with the planned land preparation programme
- lack of adequate vehicles for staff and equipment movements
- frustration of JICA programmes through delay in delivering equipment and materials from the port to the Project,
- inadequate number of personnel
- inadequate infrastructural facilities and services particularly housing and water

14. Achievements

- Rehabilitation of some abandoned vehicles
- semi-permanent land allocation for the period 1991-1994
- commissioning of the Basic Facility Buildings & Training Centre
- commissioning of the experimental farm
- more JICA Experts joining the Programme
- Training of various cadres of staff
- servicing of the pumps and Engines in the Pumping Station
- Establishment of a Farmers Co-operative Society
- construction of a Lawn Tennis Court
- cropping of over 2,000 ha.

JICA-LAIP JOINT COMMITTEE MEETING ON
14TH FEBRUARY, 1991

1991 PROGRAMME FOR THE LOWER ANAMBRA
IRRIGATION PROJECT

Activities in the Programme will be continued in the following areas.

- Cropping
- Maintenance of Infrastructures and Equipment
- Procurement of Equipment and materials
- Management Formation and Extension Services for high productivity
- Infrastructural Development
- Human Resources Development.

1. 1991 CROPPING PROGRAMME

- 1.1. 1991 is the commencement year of Permanent Land Allocation to farmers in which 3,566.5ha of land were allocated to 5,366 farmers for four years. There will be double cropping each year.

The seasons were programmed to run as follows:

- (i) Dry Season - November 1990 - May 1991
- (ii) Rainy Season - June 1991 - December, 1991.

- 1.2. 1991 Dry Season Cropping: Because of protests arising from the permanent land allocation and lack of money on the part of the farmers, the Dry season programme could not start on schedule and payment was in respect of about 2,500ha only. Nursery establishment commenced in January/February. It is now expected that the Dry Season Cropping will end by June/July, 1991. The 1991 cropping programme is attached.

Detailed Budget for the Dry Season Cropping based on 2,500ha has been made and approved by the Management. This amounts to ₦1.9m. The Revenue so far generated from water and tractor service charges is ₦2,632,399.

- 1.3. Rainy Season Cropping: More farmers will be admitted for the Rainy Season Cropping and the total area to be cropped will be about 3,200ha.

- 1.4. Upland Cropping: From protests made by farmers over their allocations and surveys conducted, it is now clear that there are some problem plots within the 3,850ha developed for irrigation.

These are of three categories:

- non-irrigable plots with good soils
- irrigable plots with bad soils
- non-irrigable plots with bad soils.

The total number of plots is estimated at over 1,200 i.e. 600ha.

It is therefore planned to investigate these plots and see how best to bring them into this cropping programme this rainy season. This may entail the use of crops other than rice.

To this end upland crops research will now be included in the LAIP programme.

2. MANAGEMENT FORMATIONS

- 2.1. WUA: Efforts will be made to establish more firmly Water Users Association for LAIP. Election of Officers for the current season has started.

Educating the Officers about their role and responsibilities will be made as soon as the elections are over.

- 2.2. Co-operatives: Membership drive will continue. Attempts will be made to procure and distribute inputs to farmers through LAACS this year.

3. MAINTENANCE OF INFRASTRUCTURE AND EQUIPMENT

3.1. Irrigation Infrastructure:

- 3.1.1. Pumping Station: With the major over-haul of the pumps and engines in November, 1990, only routine and minor maintenance are expected this year. However, availability of spares for these is a cause for concern. It is hoped that spares in the consignments awaiting clearance in Lagos will take care of this. Some allowance has been made in the budget for local purchase of spares.

- 3.1.2. Canals: Major subsidence of parts of the Head Race and Main Canals constitute problems each season. No budgetary allowance has been made for these repairs.

It is hereby suggested that the concreting of these major canals should now be included in the capital budget for the LAIP as a short term objective as it is now clear that these water ways cannot withstand usage much longer.

3.1.2.1. Desilting: Although budgeted for, we encountered equipment problems. The Authority does not have an excavator with Long Arm for the desilting of the Head Race and Main Canals. The two excavators with short arms developed arm cylinder problems and this delayed work on the desilting of the secondary canals. A local repair has been affected and is currently under test.

It is therefore necessary to procure:

- (1) Excavator with Long Arm
- (2) Procure 2 replacement Arm Cylinder for the excavators.

3.1.2.2. Slashing: The cost of slashing by local labour is on the increase yearly. Although it provides local employment, it is therefore proposed that a suitable equipment for canal slashing be considered and procured.

3.1.3. Field Concrete Structures: The damage by farmers is very high especially of turn out gates, division boxes etc. Provision has been made in the budget for the repairs but some of the major gates need changing.

3.2. Road Works and Repairs: Attention is paid mainly to the major access and link roads within the farm lands as it is not possible to attend to all the secondary farm roads during the dry season. Farmers have started to complain of the terrible condition of some of the roads serving their plots.

There is need for a major review of the standards of these roads with a view to making them all season roads.

3.3. Building Maintenance: Most of the older buildings in the Project need renovation and refurbishing. The amount budgeted for is mainly for effecting serious repairs and bat control.

3.4. Equipment Maintenance: Most of the vehicles now in use are very old and require frequent maintenance. There is need to procure new ones.

3.5. Rice Mill Complex: In order to keep the Rice Mill facilities and equipment operational to avoid problems arising from non-usage of the facilities for a long time, an approval has been given by the Management of A.I.R.B.D.A., for the use of the Complex for services to farmers. To this end a loan of ₦40,000 has been granted for the operation.

The Project, therefore, intends to operate the Rice Mill complex during the year on a fairly commercial basis to serve the dual purpose of keeping the facilities in good operating conditions and generating revenue.

4. INFRASTRUCTURAL DEVELOPMENT.

There is need to complete and develop some facilities in the Project.

- 4.1. Workshop: Conversion of the old store house to a Workshop is nearly completed and will be put to use within the first quarter of this year. A number of equipment have already been procured and will be installed. Budgetary allocation for this will come from the Headquarters. The Workshop will be fenced off for better security.
- 4.2. Social Amenities: There is need to revive most of the social amenities programmed for the LAIP because of the peculiar nature of the Project site. In this respect efforts will be made to complete and commission the Club House this year, commercialize the shopping centre probably as part of Lower Anambra Co-operative Association and activate the Guest House. Already, there is an outcry from staff for a proper nursery school in the Project. As a result of this a request for a nursery school will be included in the next budget.
- 4.3. Residential Accommodation: As stated in the Progress Report, residential accommodation is still a problem. Efforts will be made to complete the one semi-detached 2 bedroom bungalow now under construction.

There is still room for four more bungalows in the Project residential site. Although not budgeted for, it is requested that 2 more buildings be erected this year under the Authority's Action Plan Programme.

5. HUMAN RESOURCES DEVELOPMENT.

In addition to the training programmes as mapped out by JICA for staff in Japan for 1991, the local training programme for Water Management and Agro-Machinery Operation is hereby supported. For Water Management, the WUA Officers and Water Master should be the main target.

6. PROJECT BUDGET AND CONTROL.

During the Joint Management Meeting of the LAIP on 1st February, 1991, it was decided that the Project will now open a local account with the Savannah Bank, Oromia into which the operational funds of the Project will be paid.

7. SPECIFIC REQUESTS FOR JICA ASSISTANCE.

We understand and appreciate that JICA has ordered some equipment, vehicles and spare parts for the Project and has got approval to purchase and install a standby generating set and an intercom unit for the Project. We are grateful.

We, however, still solicit JICA's assistance in the provision of the following:

- (1) 2 Nos. Excavator with Long Arm
- (2) 2 Nos. Arm-Cylinders for our existing excavators
- (3) 2 Nos. Graders
- (4) 6 Nos. Field vehicles
- (5) More workshop equipment like Lathe machines, drilling machines, measuring instruments etc.
- (6) More spare parts for pumping Station, Tractors and Earth Moving Equipment.
- (7) Office equipment like photocopying machines, cyclosty-ling machine, printing machine etc.

PROPOSED 1991 CROPPING PROGRAMMS OF LAIP

| | | 1991 | | | | | | | | | | | | | |
|--------------------------------|--|------|-----|-----|-----|-----|-----|-----|------|------|-----|------|-----|-----|-----|
| | | 1990 | | | | | | | | | | | | | |
| DESCRIPTION | | NOV | DEC | JAN | FEB | MAR | APR | MAY | JUNE | JULY | AUG | SEPT | OCT | NOV | DEC |
| FIRST CROPPING (2500 ha) | | | | | | | | | | | | | | | |
| 1 | Plots Payment by regular farmers | | | | | | | | | | | | | | |
| 2 | Plots Payment for Seasend farmers | | | | | | | | | | | | | | |
| 3 | Land Preparation for Nursery | | | | | | | | | | | | | | |
| 4 | Nursery Establishment | | | | | | | | | | | | | | |
| 5 | Main Land Preparation | | | | | | | | | | | | | | |
| 6 | Transplanting | | | | | | | | | | | | | | |
| 7 | Repair / Maintenance of on farm facilities | | | | | | | | | | | | | | |
| 8 | Main Irrigation | | | | | | | | | | | | | | |
| 9 | Harvesting | | | | | | | | | | | | | | |
| 1991 SECOND CROPPING (3200 ha) | | | | | | | | | | | | | | | |
| 1 | Payment for plots by regular farmers | | | | | | | | | | | | | | |
| 2 | Payment by Supplementary farmers | | | | | | | | | | | | | | |
| 3 | Land Preparation | | | | | | | | | | | | | | |
| 4 | Planting both by direct & transplanting | | | | | | | | | | | | | | |
| 5 | Harvesting | | | | | | | | | | | | | | |
| 6 | Repairs / main ten | | | | | | | | | | | | | | |

LEGEND — ACTUAL
 PROPOSED

附属資料 6. プロジェクトスタッフリスト及び配置図

LOWER ANAMBRA IRRIGATION PROJECT

1-4-1991

LAIP 7 Total 141 Senior staffs above GL8 * 31

| | |
|---|----|
| * H.C.Okoye(Project Manager) | 15 |
| * E.I.K.Uche(Assistant Project Manager)) | 13 |
| * L.D.I.Ezeoke(Assistant Chief Public Relation Officer) | 13 |
| * C.N.Ekwanya(Personal Secretary II) | 09 |
| H.A.Opara(Driver) | 04 |
| Caroline Iroh(Typist III) | 03 |
| Ugwu Monica(Head Messenger) | 03 |

JICA 10

| | |
|--|----|
| * J.Inoue(Team Leader) | |
| * K.Kita(Coordinator) | |
| * I.Tsuruki(Water Management Engineer) | |
| * H.Tani(Facility Maintenance Engineer) | |
| * S.Kurosawa(Agricultural Mechanical Engineer) | |
| * G.Takai(Agricultural Machinery Engineer) | |
| * R.Isokawa(Agronomist) | |
| * I.Iikawa(Extension Officer) | |
| * P.O.Okolo(Administrative Secretary) | 12 |
| Friday Ogbodo(Chief Driver) | 07 |

ADMINISTRATION 27

Manpower 15

| | |
|--|----|
| * I.N.Okorafor(Senior Assistant Secretary I) | 10 |
| * G.U.Ogbonna(Senior Nursing Officer) | 09 |
| * Obiora A.B.(Senior Executive Officer) | 09 |
| R.Nwosu(Chief Driver) | 07 |
| Achebe A.I.(Assistant Executive Officer) | 06 |
| Michael Eze(Senior Heavy Lorry Driver) | 06 |
| Euyien Metu(Typist II) | 05 |

| | |
|---------------------------------|----|
| Anthony Okoye(Driver) | 04 |
| Esther Igwebuikwe(Hall Porter) | 04 |
| Obodoeze Simon(Driver) | 04 |
| Imo Emegini(Driver) | 04 |
| Alex Okerulu(Driver) | 04 |
| Dorothy Ugwuanya(Hall Porter) | 03 |
| Josephine Nweke(Head Messenger) | 03 |
| Ejimofofor J.(Cleaner) | 02 |

Account 6

| | |
|---|----|
| * <u>Nweke Charles C.(Principal Accountant)</u> | 12 |
| L.Anago(Assistant Chief Clerical Officer) | 06 |
| G.Obi(Assistant Chief Clerical Officer) | 06 |
| Otu Ewa(Senior Clerical Officer) | 05 |
| C.Ogudu(Senior Clerical Officer) | 05 |
| G.U.Anyaegbunam(Senior Clerical Officer) | 05 |

Store 6

| | |
|---|----|
| <u>Amanchukwu M.C.(Store Officer)</u> | 07 |
| H.Offorbuikwe(Assistant Chief Clerical Officer) | 06 |
| Christy O.Nwachi(Senior Store Keeper) | 05 |
| Okonkwo M.E.(Store Keeper) | 04 |
| Alexander O.Umezuruike(Store Keeper) | 04 |
| F.Ojukwu(Fuel Attendant) | 02 |

IRRIGATION 37

Water Management 7

| | |
|--|----|
| * <u>Chidi Erondue(Principal Technical Officer II)</u> | 10 |
| * <u>N.I.Nwakpuda(Principal Technical Officer II)</u> | 10 |
| * <u>C.C.Mbachu(Principal Technical Officer II)</u> | 10 |
| Michael Ejimofofor(Water Master) | 04 |
| Michael Ugwu(Water Master) | 04 |
| Shedrack Okenwah(Water Master) | 04 |
| Cajetun Eze(Water Master) | 04 |

| | |
|----------------------|----|
| Facility Maintenance | 19 |
|----------------------|----|

| | |
|---|----|
| * <u>Samuel I.Melifeonwu(Civil Engineer I)</u> | 09 |
| * Chinyere Uke(Senior Surveyer) | 10 |
| * Ekpesu Michael A.K.(Senior Forestry Superintendent) | 09 |
| Edwin A.Meduechesi(Higher Technical Officer) | 08 |
| Victor N.Adikuru(Higher Technical Officer) | 08 |
| Francis O.Nnadozie(Chief Heavy Plant Operator) | 07 |
| Philip Nkwocha(Senior Grader Operator) | 06 |
| Peter Okafor(Senior Bulldozer Operator) | 06 |
| Pestus Okafor(Senior Payloader Operator) | 06 |
| Okoye A.O.(Senior Driver I) | 06 |
| Dennis O.Mbah(Senior Plant Operator) | 05 |
| Adolphus Nnadi(Senior Plant Operator) | 05 |
| Okoro I.(Plumber I) | 05 |
| John Okeke(Craftsman) | 04 |
| Mweke A.(Senior Driver II) | 04 |
| Ibeneme O.(Craftsman Electric) | 04 |
| Akpogu C.(Driver) | 03 |
| Michael Obiora(Assistant Craftsman) | 03 |
| Kevin Okoli(Assistant Craftsman) | 03 |

| | |
|--------------|----|
| Pump Station | 11 |
|--------------|----|

| | |
|--|----|
| * <u>E.O.Iheazor(Senior Technical Officer)</u> | 09 |
| Eric I.Ejeabukwa(Higher Technical Officer) | 08 |
| Peter C.Nchekwube(Senior Pump Operator) | 05 |
| Reginald C.Nwaribe(Senior Pump Operator) | 05 |
| Emmanuel N.Okonkwo(Senior Pump Operator) | 05 |
| Lawrence Okoye(Pump Operator) | 04 |
| Pius Okoye(Pump Operator) | 04 |
| Innocent A.Nnalue(Pump Operator) | 04 |
| Ngaesina A.Nwakobu(Pump Operator) | 04 |
| Augustine C.Obuasi(Pump Operator) | 04 |
| Martine Onyibor(Pump Operator) | 03 |

FARM MACHINERY 52

Workshop 16

| | |
|--|----|
| <u>A.I.Okoli(Senior Work Superintendent)</u> | 09 |
| Herbert O.Enyinna(Senior Craftsman) | 06 |
| Hyacinth O.Ngwueche(Senior Tractor Mechnic) | 05 |
| Anthony Igboanugo(Senior Tractor Mechnic) | 05 |
| Peter Agu(Tractor Operator) | 05 |
| Grace Eze(Typist II) | 05 |
| Johnson O.Chukwunenye(Senior Craftsman Mechanic) | 05 |
| Kenneth Chima(Plant Mechanic) | 04 |
| Oguama Patrick(Tractor Mechanic) | 04 |
| Cosmas Ugwu(Tractor Operator) | 04 |
| Emeka Mgbakogu(Plant Operator) | 04 |
| Regina Chieme(Hall Porter) | 04 |
| Ali Joseph(Tractor Mechanic) | 03 |
| Evaristus Chiahoke(Tractor Mechanic)) | 03 |
| George Attama(aut-Electric) | 03 |
| Agnes Ifeacho(Cleaner) | 03 |

Operation 36

| | |
|---|----|
| * <u>Uchefuna R.C.(Assistant Chief Technical Officer)</u> | 13 |
| Basil Ejezie(Higher Technical Officer) | 08 |
| Mokwe Patrick(Senior Tractor Operator I) | 06 |
| Eze Patrick(Senior Technical Officer) | 05 |
| Anekwe Stephen(Senior Tractor Operator) | 05 |
| Nworie Simon N.(Senior Tractor Operator) | 05 |
| Ozioko Mathias(Senior Tractor Operator) | 05 |
| Ozioko Augustine(Senior Tractor Operator) | 05 |
| Amakam Angelina(Typist) | 05 |
| Ekwealor Titus(Senior Tractor Operator) | 04 |
| Anedo Domnic(Senior Tractor Operator) | 04 |
| Onyishi Felix(Senior Tractor Operator) | 04 |
| Okolo Anthony(Tractor Operator) | 03 |
| Richard Chiekwena(Tractor Operator) | 03 |
| Obiorah Cletus(Tractor Operator) | 03 |
| Nnalue John(Tractor Operator) | 03 |
| Onyishi Domnic E.(Tractor Operator) | 03 |
| Ugwneze George(Tractor Operator) | 03 |

| | |
|---------------------------------------|----|
| Chukwuemeka Patrick(Tractor Operator) | 03 |
| Ajenyi Okafor(Tractor Operator) | 03 |
| Okolie Richard E.(Tractor Operator) | 03 |
| Odenigbo Titus U.(Tractor Operator) | 03 |
| Joseph Ede(Tractor Operator) | 03 |
| Amechi Michael(Tractor Operator) | 03 |
| Nwazi Cletus(Tractor Operator) | 03 |
| Ugwoke Marthine O.(Tractor Operator) | 03 |
| Okafor Thomas(Tractor Operator) | 03 |
| Aba Kevin O.(Tractor Operator) | 03 |
| Ozioko Hillary(Tractor Operator) | 03 |
| Mbachu Peter(Tractor Operator) | 03 |
| Anedo Christian(Tractor Operator) | 03 |
| Obi Cyprilin(Tractor Operator) | 03 |
| Anedo Boniface(Tractor Operator) | 03 |
| H.E.Ikechukwu(Tractor Operator) | 03 |
| John I.Ezeh(tractor Operator) | 03 |
| Ibenegbu Cathrine(Cleaner) | 02 |

AGRONOMY 8

Research 2

| | |
|---|----|
| * <u>G.N.C.Ufondu(Agricultural Officer Grade I)</u> | 09 |
| * S.O.Onyiaji(Agricultural Officer Grade I) | 09 |

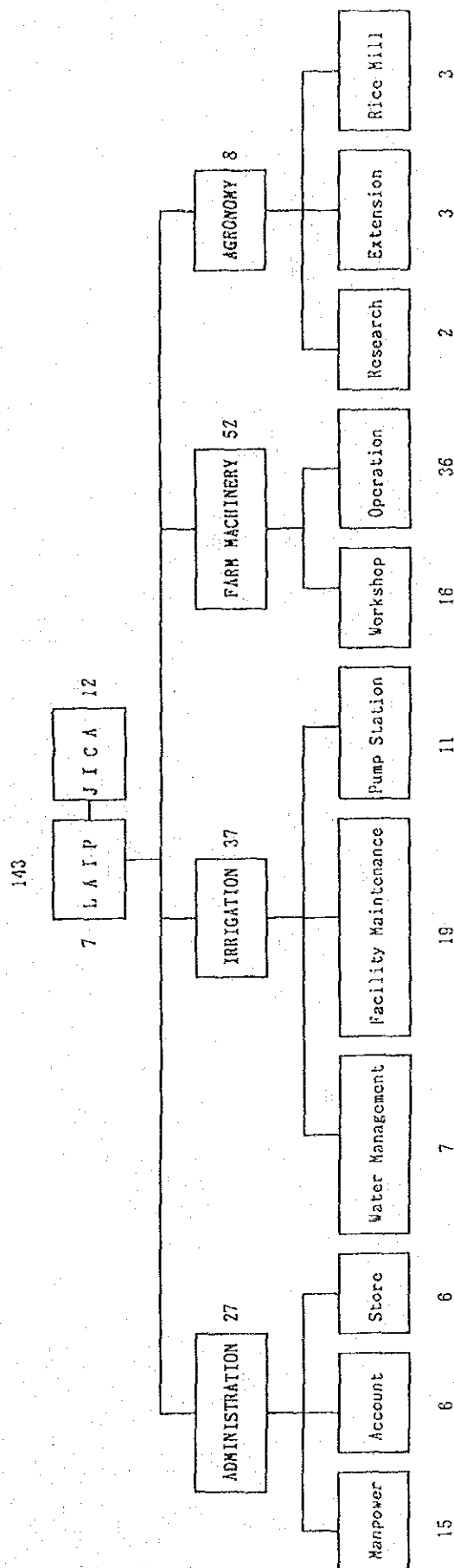
Extension 3

| | |
|---|----|
| * <u>Nwobodo J.I.(Principal Agricultural Officer)</u> | 12 |
| * M.C.Okoye(Senior Agricultural Superintendent) | 09 |
| C.U.Ezeagu(Higher Agricultural Superintendent) | 08 |

Rice Mill 3

| | |
|---|----|
| * <u>Livinus I.Onyeke(Principal Technical Officer II)</u> | 10 |
| * Peter N.Onuba(Principal Work Superintendent I) | 12 |
| Felix N.Aguh(Higher Technical Officer) | 08 |

LONGH ANAPRA IRRIGATION PROJECT
ORGANIZATION CHART



JICA