

4. 要請書 (最終版)

PRINCIPAL PARTICULARS

OF

500 D.W. TYPE GENERAL CARGO VESSEL

12 sheets with cover

JULY - 1991



1. PRINCIPAL PARTICULARS & HULL PART

1 - 1 Dimensions :

Length over all	abt.	45.50	m
Length between perpendiculars	"	42.00	m
Breadth moulded	"	8.20	m
Depth moulded	"	3.80	m
Designed load draft, moulded	"	3.25	m

1 - 2 Dead weight and Capacity :

Dead weight	abt.	500	t
Gross tonnage	"	385	t
Tank Capacity			
Fuel oil	"	60	m ³
Fresh water	"	20	m ³
Water ballast	"	150	m ³
Cargo hold capacity (bale, include hatch coaming)" U-PROF		550	m ³
Container (8' x 8' x 20') (on hatch cover)		4	

1 - 3 Speed :

Service speed (Full load condition, 85% M.C.R. of main engine with 15% sea margin)	abt	12	Knots
---	-----	----	-------

1 - 4 General description

The vessel to be built as a general cargo of single screw driven by a diesel engine and single deck with forecastle and poop deck type.



1 - 5 Classification, etc. :

The vessel including its hull, machinery and equipment, to be built under the survey of a recognized classification society (Coasting service).

The following Rule and Regulation to be applied including any circulars set into force at the date of signing of the Contract.

- 1) Rules and Regulations of Classification Society
- 2) International Convention on Load Lines, 1966
- 3) International Regulation for Tonnage Measurement of ship, 1969
- 4) International Convention for the Prevention of Pollution of ship, 1973 and ammendment.

1 - 6 Complement

Officer : Captain, Chief engineer, chief mate
Crew

Officer total	3 p
Crew total	7 p
<hr/>	
Grand total	10 persons

Three single cabins with WC and shower to be installed for three officer.

1 - 7 Ventikation and Air conditions :

Mechanical ventilation and air conditioning system

Living room, Mess room, ----- Air conditioning system (cooling only, and Wheel house and the wheel house especially to be sport cooled)

Engine room ----- Mechanical ventilation 2 sets

Galley ----- Exhaust fan 1 set

Cargo hold ----- Mechanical ventilation 2 set

Toilet and battery room ----- Natural ventilation each 1 set

1 - 8 Life Saving Equipments :

Life saving equipments to be provided as follows.

Life raft (10p) Vicking ----- 2

Life jacket ----- 24



Life buoy ----- 4
 Self igniting smoking signal ----- 2
 Self ignition light ----- 2
 Parachute distress rocket signal ----- 4
 Rocket signal ----- 2

1 - 9 Deck machinery

- (1) Windlass Hydraulic driven 1 set
 3.0 t x 12 m/min
 hydraulic power : commonuse with Derrick winch
- (2) Capstan Electric - motor driven 1 set
 1.5 t x 10.8 m/min
- (3) Steering gear Electro - hydraulically driven 2 set
 3 t - m,
- (4) Derrick, Boom and Post 2 sets
 3.5 t
 out reach 3,5 m
- (5) Derrick winch
- 1) Cargo winch
 Hydraulic driven
 3 t x 30 m/min 2 sets
- 2) Topping winch
 Hydraulic driven
 3 t x 30 m/min 2 sets
- 3) Guy winch
 Hydraulic driven
 3 t x 30 m/min 2 sets
- 4) Hydraulic pump unit for winch 2 sets
 the pumps unit to be driven
 by auxiliares engine.
 One pump unit to have sufficient capacity
 to operate the 2 sets derrick booms in
 same time.

1 - 10 Cargo hatches

(1) hatch coaming size

15.95 m x 5.50 m

(2) Cargo hatch cover

Type MAC GREGOR steel hatch cover to be provided,
 opening and closing to be operated by hyd. oil motor.
 Hatch cover lashing to be operated by manual



Container fittings to be provided on hatch cover top.

1 - 11 Cargo hold

Wooden bottom sheathing and wooden side sparring to be provided.

1 - 12 Anchor and chain

Bower anchor (stockless)	660 Kg	× 3 sets
Chain cable (stud link, grade 2)	22 mm dia.	× 302.5 m(P&S total)
Hawser (polypropylene)	50 mm dia.	× 120 m × 4 sets
Tow line (stell wire rope)	20 mm dia.	× 180 m × 1 set

1 - 13 Refrigerating system

(1) Electric refrigerator, 300 lit. freezer, 300 lit. 1 set

1 - 14 Side Port and Skylight :

Side scuttles to be provided for living quater, skylight to engine room casing top.

Aluminum frame square windows to be provided for the wheel house.

1 - 15 Living Accommodation:

Living rooms, mess rooms, galley to be arranged as per plan.

Necessary furniture, fittings, instruments, etc. to be provided and discuss with building especificaction

1 - 16 Painting

Surface preparation, steel materials to be generally shot blasted and primed immediately.

Bottom	CHR	A/C × 2,	A/F × 2
Boot top	CHR	A/C × 2,	B/T × 2
Top side	CHR	A/C × 2,	T/S × 2
Weather deck	CON	A/C × 2,	D/P × 1
Exterior house	CON	A/C × 2,	F/P × 2
W.B. tank		T.E × 1,	(H/B)
F.W. tank		P.E × 2,	

Note

CHR ----- Chlorinated ribber paint
CON ----- Conventional oleorresinous paint
P.E ----- Pure epoxy paint



T,E -----	Tar epoxy paint
H/B -----	High-built type
A/C -----	Anti corrosive paint
A/F -----	Anti fouling paint
B/T -----	Boot top paint
T/S -----	Top side paint
D/P -----	Deck paint
F/P -----	Finished paint

1 - 17 Nautical Equipment :

Gyro compass	1
Magnetic compass (reflect type)	1
Air horn	1
Helm indicator	1
Transister clock	1
Clear view screen	1
Ships bell	1
Navigation light	1 set
Black ball	3
Wind indicator	1
Borometer	
Termometer	
Cronometer	

1 - 18 Fire Fighting System :

portable fire extinguishers 9 lit. foam	8
12 kg CO2	1
Fire hose and nozzle 40 p x15 m	each 5



2. MACHINERY PART

2 - 1 Main Engine :

One (1) in - line single acting four (4) cycle marine diesel engine with reduction and reversing gear.

Maximum continuous output abt. × ps abt. 800 r.p.m.

No. of cylinder 6

Cylinder bore mm

Cylinder stroke mm

Fuel oil consumption g/ps/h + 3 % margine (at MCR)

(At the shop trial) When burning fuel with lower calorific value not less than 10,200 Kcal/Kg

Cooling system Sea water and fresh water cooled

Fuel oil Marine diesel Oil

Starting system Compressed air starting

Turning system Manual type

Main engin to be remotely controlled from the contral stand in the whell house. (Speed control, Direction of revolution.)

The main engin to be started and stopped at locality.

2 - 2 Shafting, and Propeller :

One (1) - Intermediate shaft, forged steel solid type

One (1) - Propeller shaft, forged steel solid type kind 1

One (1) - Stern tube, cast iron

One (1) - Intermediate shaft bearing, cast iron

One (1) - Propeller, four (4) bladed solid type, manganese bronze
Type cp propeller

2 - 3 Electric Generating Plant :

Two (2) - Main generator

AC 380 V, 60 KVA, 50 HZ, 3 Phases

Drip proof, self exciting type

Two (2) - Prime mover, diesel engin

74 PS × 1.500 RPM

Fresh water cooling

One (1) - One Porto generator installet in fore-ship

One (1) - One Shaft generator P.T.O. with sufficient power for navegation only.

2 - 4 Air Compressor :

Two (2) - Main air compressor

17.2 m³/h (P.D.) × 30 Kg/cm²

Driven by electric moter 3.7 KW

One (1) - Emergency air compressor



351 cm³/stroke volume (low stage)

Hand type

2 - 5 Pumps :

- One (1) - G.S. and fire pump
Electric motor driven, centrifugal type
40/20 m³/h × 20/35 m × 11 K_w
- One (1) - Bilge ballast pump
Electric motor driven, centrifugal type
40 m³/h × 20 m × 7.5 KW
- One (1) - Air conditioner cooling pump
Electric motor driven, centrifugal type
8 m³/h × 20 m × 2.2 KW
- One (1) - F.W. hydrophore sistem type marine
Cap. aprox. 200 l; and one pump spare
- One (1) - Sanitary hydrophore pump sistem type
Marine and one pump spare
- One (1) - Cooling F.W. pump for main engine
- One (1) - Sanitary hydrophore pump sistem
Electric motor driven, centrifugal type
4 m³/h × 25 m × 1.5 KW
- One (1) - Fuel oil transfer pump
- One (1) - F.O. Service pump
- One (1) - Stand-by L.O. pump for main engine
- One (1) - Cooling S.W. pump for main engine
Electric motor driven, centrifugal type
27 m³/h × 20 m × 3.7 KW
- One (1) - Stand - by L.O. pump for main engine reversing gear
5 m³/h × 140 m × 5.5 KW
- One (1) - L.O. separator
- One (1) - F.O. separator

2 - 6 L.O. fine filter 1 set

2 - 7 Oily water separator with pump 1 set
0.25 m³/h × 0.4 KW

2 - 8 Hydraulic pump unit for which 2 sets

~~the pumps-unit to be driven
by Auxiliares engine.~~

~~One pump unit to have sufficient capacity to operate the
2 set derrick booms in same time.~~



2 - 9 Ventilating Fan for Engine Room

Electric motor driven

165 m³/min x 30 mmAp x 1.5 KW total 20.000 m³/h 2 sets

2 - 10 Tanks

One air service tank

Main engine starting air tank 80 e x 30 Kg/cm² 2

F.O. service tank 2

L.O. storage tank 1

F.W. expansion tank 1

2 - 11 Machine and Deck Tools

to be discuss with building
especifications.

2 - 12 All alarm to be provided in the engine Room.



3. ELECTRIC PART

3 - 1 General:

Whole electrical works to be carried out in accordance with this specifications and Builder's standard.

3 - 2 Power Supply :

Main generators	AC 380 V x 3 ϕ x 50 Hz x 3 wire
Power circuit	Do.
Lighting circuit	AC 220 V x 3 ϕ x 50 Hz x 2 wire
Interior communication	AC 220 V x 3 ϕ x 50 Hz x 2 wire
Nautical equipment	DC 24 V x 2 wire
Radio equipment	AC 220 V, DC 24 V
Emergency light circuit	DC 24 V x 2 wire

3 - 3 Power source :

Two (2) sets of main generator of AC 380 V x 3 ϕ x 50 Hz x 60 KVA to be driven by a diesel engine, respectively.
One (1) porto generator
One (1) shaft generator with suficiente power for navegation only.
Two (2) sets of storage batteries DC 24 V x 200 AH (Emergency lighting)
Two (2) sets of storage batteries DC 24 V x 200 AH (Radio equipment)
One (1) unit of transformer of 15 KVA, 380/320V, dry type

3 - 4 Main Switch Board :

Main Swit Board to be of dead front type, self standing, steel structural and panel constructed, so as to withstand to vessel's vibration.

3 - 5 Battery Charging and Discharging Panel : (Emergency switchboard)

Two (2) sets of battery charging and discharging panel to be provided.
(Emergency lighting and Communication equipment)
Source : AC 380 V x 3 ϕ



3 - 6 Nautical & Radio Equipment

(1) VHF radio telephone SSB 400 WATT	1 set
(2) Radar 10 inch, 4 KW, 48 mile, daylight	2 sets
(3) Gyro compass	1 set
(4) Magnetic compass (reflect type)	1 set
(5) Echo sounder	1 set
(6) Sounder power telephone 1 : 3	1 set
(7) Public addresser 30 W	1 set
(8) Engine telegraph (ramp type)	1 set
(9) Engine revolution indicator	1 set
(10) Air horn	1 set
(11) Radio goniometro	
(12) Satelite	

3 - 7 Navigation Light

Mast light	1 set
Side light	1 Pare
Stern light	1 set
Anchor light	1 set
N.U.C. light	2

3 - 8 One (1) saloon for 8 passenger
provided with seats

3 - 9 The ship to be provided with cable and electric
connection in order to transport FREEZEN container.

NOTE :

This General description its only for quidance and all details
will be discussed together with building specification.



5. 第3次5ヶ年計画（官報一部抜粋）

1991年8月8日発行官報より

カーボ・ベルデ第2共和制 1991年／1996年第3次5ヶ年計画基本方針

カルロス・ヴェイガ首相により提出された第2共和制における1991年／1996年の5ヶ年計画は、1991年5月30日立方議会において承認された。

その基本方針は、国民の基本的人権を尊重し、自由かつ民主的な社会を基盤とする国家の建設を目指すものである。

カーボ・ベルデ政府は、民主主義を国家の発展に欠くべからず要素と考える。国民の生活向上のため、疾病、失業などの社会問題を解決すると同時に、経済発展のための条件を整え、かつ文化活動の活性化をも目指す。政府は、市場経済を核とする経済活動における規則制定とその円滑な運営を支援する役割を担う。かつ開発において生態系の均衡を乱すことのないよう、環境保全にも留意していくものとする。

3.6. 海運

海運は歴史的視点からも、広い意味での国家統一と経済的統合の上でも鍵となる要素を有する。

国家統一と国内市場を結合する手段であるはずの海上輸送は、近年、開発のみに主眼を置く経済政策の典型的な合理化のあおりを受け、軽視されてきた。

一方、国内市場の構造化政策の欠如にかかわらず、島間の商業関係の増大により、国内海上輸送は伝統的に沿岸航海を担ってきた各組織が自然にその役割り分担を行なってきた。

前政権の運輸および空輸間に対立関係を生じさせるような政策選択においては、国民が真の意味で荷客船による海上輸送を選択できる権利を奪っていた。

また信頼感の欠如から、本来伝統的にも地理的条件からも優位に立つべき長距離の商業海運さえも十分な競争力を付けることができなかつた。

政府は、海運に関し次のような政策の適用を提案する。

1) 生産要因に関する条件の確立と擁立については、

一海洋学および海洋環境に関する知識や技術を高め、調査を奨励する意味からサン・ビセンテ島の海員養成センターを強化する。講義の内容を充実させ、船長および機関長の資格取得を可能とすると同時に、海上、港湾における管理、調査などの活動に必要な技術の習得も可能にする。調査、形成のレベルにおける地域協力を促進する。

一水上測量、海図製作および海洋汚染防止などの専門的作業を実施する。

一航海規則の刷新および航海に関する国際条約の批准を行なう。

一全島における小規模港建設と施設設置計画の続行。

一国際海上輸送およびカーボ・ベルデ経済の国際化に要する港湾のインフラストラクチャー整備。

一海上活動（特に技術、 SHIPPING、市場）に関する統計資料センターの設置推進。

2) 国内の要請に応じ、政府はカーボ・ベルデ経済にとってより好ましい方向で海上輸送（貨物、荷客）を統一すべく、また内航、外航それぞれの船舶主を支援する上からも、中断中の数々の計画の続行を検討している。

3) 政府は、船舶の国際登録を増加させる。

海外への移住者が形成する共同体への接近、観光開発支援とカーボ・ベルデ経済の世界経済へのダイナミックな参画などの方針を鑑み、今後の空輸に関する政策は、特に島間海上輸送との協調が必要であることが予想される。

よって政府はそのインフラストラクチャー予算を、増加する需要に対応可能な空港整備を目指し、主要空港および地方空港の整備計画継続などにあてる。

アミルカール、カブラル国際空港に関しては、拡大および近代化プロジェクトを第2段に移すべく、政府は検討および実施を急ぐ。

サン・ビセンテ空港に関しては、経済的、文化的に需要に充分対応できるものにすべく、政府はこの地域を支援する。

他の島に関しても、国家統合のためには空港は必要不可欠であるという立場からその整備を支援する。

政府は、サル島のFI R Oceaniaの拡充計画を続行し、システム運航上の質と安全性向上のため、インフラストラクチャー整備および航空設備の開発計画を実施する。

国営輸送会社については、業務的および経済的改善を考慮し、政府は緊急にその組織改革と環境整備を推進する。企業という立場から、運航計画の再検討、管理体制の合理化、技術革新は非常に重要であると考えられる。

政府は、地域開発に協力する意志の有る外部団体を求め、より効果的に開発を進める。

政府は、国内、外国を問わず、カーボ・ベルデの地理的条件を最大限に活用できる海運、空輸に関係する団体、合併企業などのイニシアチブを歓迎する。

A grande dimensão do esforço financeiro necessário, nomeadamente, para a concretização do produto balnear, não deve ser razão de afastamento do investidor nacional — residente ou não.

O Governo, no quadro da sua política de fomento empresarial, adoptará medidas tendentes ao estímulo do investimento privado nacional — de residentes e de emigrantes — neste sector, possibilitando assim o acesso a um segmento do mundo dos negócios com enormes potencialidades, em termos de geração de fluxos financeiros e de aquisição de técnicas de operação.

O Governo desenvolverá, também, um conjunto de acções no exterior, visando a atracção de empresários credíveis e com capacidades financeiras para o sector do turismo.

3. 6. Transportes e Comunicações

O sector dos Transportes e Comunicações é, em qualquer país, fundamental para a viabilização da economia. Assume, porém, relevância crítica num país como o nosso, dada a sua natureza arquipelágica que a demografia acrescentou características muito específicas, designadamente a criação de outras tantas ilhas nos destinos da nossa emigração.

Transporte e Comunicações eficazes aparecem, assim, como um imperativo da unidade nacional e da estratégia de desenvolvimento de cada ilha e do conjunto do país. É essa aposta que este Governo pretende ganhar durante o seu mandato, apesar do enorme esforço de investimento requerido e da penúria de recursos financeiros do Estado.

A acção do Governo no domínio dos Transportes e Comunicações será orientada do seguinte modo e nos seguintes vectores:

*Transportes Marítimos

Os transportes marítimos foram historicamente um elemento chave na integração nacional — no sentido mais amplo e no domínio económico.

Esta via de integração nacional e de unificação do mercado interno foi penalizado nos últimos anos com a racionalidade típica da política económica de polos de desenvolvimento.

Por outro lado, a ausência de uma política de estruturação do mercado interno e de incremento de relações comerciais inter-ilhas conduziram à marginalização dos transportes marítimos internos e dos agentes económicos privados que tradicionalmente fizeram a nossa cabotagem.

A opção do regime anterior por uma estratégia conflitual entre o desenvolvimento dos transportes marítimos e os transportes aéreos conduziu o país à não existência de uma alternativa real de transportes marítimos internos de passageiros.

Outrossim, por razões que se prendem com a desconfiança então existente face à iniciativa privada, a marinha mercante de longo curso não conseguiu potenciar as condições representadas na nossa tradição marítima de longo curso e localização geográfica privilegiada.

O Governo no referente aos transportes marítimos propõe-se adoptar uma política de relançamento, apoiada nos seguintes vectores e medidas:

a) Quanto à criação e aprofundamento das condições relativas a factores de produção,

— alargamento da importância da missão do Centro de Formação Náutica, em São Vicente, de modo a compreender o estímulo à inves-

tigação e às tecnologias relacionadas com as ciências do mar e do ambiente marítimo; alargamento do leque de cursos a serem ministrados, de molde a integrar os cursos de capitães e chefes de máquinas, bem como quadros técnicos para a gestão e exploração de actividades marítimas e portuárias; promoção da cooperação regional ao nível da investigação e formação.

— implementação do funcionamento dos serviços especializados, nomeadamente no âmbito da hidrografia, cartografia marítima e prevenção da poluição dos mares;

— modernização da legislação marítima e ratificação das convenções marítimas internacionais;

— processuação do programa de construção e equipamento de pequenos portos em todas as ilhas;

— adequação das infraestruturas dos portos às exigências dos transportes marítimos internacionais e à estratégia de internacionalização da economia caboverdiana; promoção da contentorização dos principais portos do país — da Praia e do Porto Grande;

— favorecimento da criação de bancos de dados relativos à actividade marítima — tecnologias, shipping, mercados, nomeadamente;

b) No tocante à procura interna, o Governo propõe-se estimular a prossecução do interrompido processo centenário de busca dos tipos de unidades de transporte marítimo — carga e passageiros — mais adequados à economia cabo-verdiana, apoiando-se na iniciativa dos armadores, com vocação interna e nos com vocação externa.

c) O Governo propõe-se incrementar a prática do registo internacional de navios.

Os transportes aéreos devem ser perspectivados, nomeadamente em articulação com os transportes marítimos inter-ilhas e as políticas de aproximação das nossas comunidades de emigrantes e com o apoio ao desenvolvimento turístico e integração dinâmica da economia caboverdiana na economia mundial.

Neste sentido, e quanto aos factores, o Governo, relativamente aos aeroportos, prosseguirá as acções com vista a dotar a capital do país de infraestruturas aeroportuárias que respondam ao desenvolvimento do tráfego e à sua função de aeroporto regional.

Quanto ao Aeroporto Internacional Amílcar Cabral, o Governo acelerará a reavaliação e execução da II fase do projecto de ampliação e modernização desse factor.

O aeroporto de S. Vicente deverá ser capacitado para acompanhar as funções económicas e culturais que o Governo atribui a essa parcela do território nacional.

Relativamente às outras ilhas, o Governo propõe-se dotá-las das condições aeroportuárias indispensáveis ao processo de integração do todo nacional.

O Governo prosseguirá as acções contudentes ao alargamento da FIR Oceânia do Sal, e porá de pé um programa de desenvolvimento das infraestruturas e meios de apoio à navegação aérea, de forma a melhorar o nível da qualidade e da segurança operacionais do sistema.

No que diz respeito à transportadora nacional, o Governo entende urgente a sua reorganização e saneamento, visando melhorar o seu desempenho opera-

cional e financeiro. A dimensão e composição da frota, segundo as exigências da sua missão empresarial, racionalidade de gestão e eficiência técnica, são variáveis importantes a ter em conta.

O Governo fomentará a procura de cooperação regional com outros parceiros interessados, para explorar sinergias e complementaridades proveitosas.

O Governo favorecerá as iniciativas — nacionais e estrangeiras —, ligadas aos transportes marítimos e aéreos, tendentes a dotar o país de empresas articuladas capazes de tirar o máximo partido da localidade do país.

Transportes Terrestres

Nos transportes terrestres há a considerar três situações distintas:

- o transporte de mercadorias no interior para o litoral e vice-versa e o transporte de mercadorias nos centros urbanos;
- o transporte de mercadorias no interior das ilhas;
- o transporte de passageiro nos centros urbanos, entre os centros urbanos e o interior e o transporte de passageiros no interior das ilhas.

A integração destas três situações num plano nacional coerente de transporte terrestres é a tarefa prioritária do Governo nesta matéria.

Entretanto, algumas medidas de carácter urgente vão ser desencadeadas, nomeadamente:

- no sentido da garantia da segurança rodoviária, da sinalização rodoviária mínima e da simplificação do sistema fiscal que incide sobre os transportes terrestres;
- no sentido da instalação de mecanismos que permitem à Administração Central e Local compensar as explorações deficitárias por motivo de prestação de serviço público de carácter social;
- no sentido da criação de condições para que os órgãos de Poder Local possam exercer a sua missão de planeamento e gestão dos sistemas de transportes nas suas áreas de jurisdição.

Comunicações

As comunicações são simultaneamente indicador e factor de desenvolvimento.

A situação a que o país chegou caracteriza-se pela saturação e quase obsolescência da rede de equipamentos de telecomunicações.

Assim, além da elaboração de projecto da Lei Base para as Comunidades para dar ao sector o devido enquadramento legal que propicie o desenvolvimento, a acção do Governo visará ainda a realização dos projectos de alargamento e modernização de modo a assegurar:

- a resposta adequada à procura actual e à potencial;
- a cobertura satisfatória do território nacional em telecomunicações, com especial atenção às zonas rurais;
- a adopção de soluções tecnologicamente avançadas na instalação de um sistema fiável de telecomunicações que apoie o de-

envolvimento no sentido da desejada inserção do país na economia mundial, a partir da sua posição funcional privilegiada;

- o posicionamento e utilização extensiva das tecnologias de informação;
- a prossecução do programa de melhoria dos serviços postais, modernizando-os e adaptando-os às necessidades sem esquecer uma gestão que visa a sua auto-suficiência.

3.7. Construção e Obras Públicas

No domínio da Construção e Obras Públicas, o Governo propõe-se adoptar um conjunto de medidas destinadas a promover o desenvolvimento do sector, tendo em vista a economia, a segurança e a qualidade dos empreendimentos.

A política global do sector dedicará uma atenção especial a preservação do meio ambiente, a gestão dos recursos naturais e ao ordenamento do território, tendo em devida conta a dimensão social e cultural.

Consciente da insuficiente infraestruturização do país e da fraca capacidade de resposta do sector, a política de construção e obras públicas do Governo visa capacitar o mesmo de modo a responder as exigências do desenvolvimento que se pretende e a colocá-lo a altura de se inserir no mercado internacional.

Neste sentido, uma atenção especial será dada a capacitação dos recursos humanos intervenientes no sector, tendo em vista a superação da lacuna existente quanto a qualificação de operários, formação média e pos-graduação de técnicos.

Programas de estímulo de aprendizagem nas empresas, assim como a criação de escolas profissionais serão dinamizados, tendo em atenção a formação no sector.

O Governo estimulará e apoiará a investigação no sector que vise:

- o uso de materiais locais;
- o controlo de qualidade;
- a normalização do processo de construção.

Gradativamente, o Estado deixará de intervir como executante directo de obras.

Para garantir a transparência do funcionamento do sector, o Governo estimulará e incentivará o desenvolvimento, no sector privado, de empresas que se dediquem tanto a projecção, execução e fiscalização de obras, como área conexas e adoptará um conjunto de medidas, de modo a disciplinar e controlar a sã concorrência entre os operadores.

Atenção especial será dada as empresas que contribuam para a inserção de Cabo Verde no mercado internacional.

PARTE III

O Indivíduo e o Bem Estar Social

1. Educação, Formação e Cultura

1.1. Educação e Formação

A política de Educação e Formação a ser implementada pelo Governo norteia-se por princípios que se coadunam com as opções fundamentais da sociedade cabo-verdiana e, nesse sentido, não é apenas o seu suporte mas, fundamentalmente, parte essencial das mesmas.

A política de Educação e Formação é instrumento e substância dessas opções e, por isso, a democratização do acesso ao saber será uma das suas características básicas.

6. 国家省庁組織（官報一部抜粋）

組織図が現存しないため、官報より一部を抜粋。

1991年4月3日発行官報より

大統領府

大統領令 91年第5号

憲法第69条に基づき、大統領は以下の通り宣言する。

第1項 以下の者を現職より免職する。

グスターボ・アギナルド・リーマ・アラウージョ氏（通産・観光大臣）

マヌエル・カジミーロ・デ・ジェズース・シャントレ氏（運輸・通信大臣）

第2項 以下の省庁は消滅するものとする。

通産・観光省

運輸・通信省

協力庁

移住・共同社会庁

副首相官房

第3項 以下の省庁を新たに設置する。

経済・運輸・通信省

ベラ・クルース氏コメント） 経済は通産・観光を総括。

運輸・通信庁

ベラ・クルース氏コメント） ここがENA POR, ARCA VERDEを統括。

水産庁

第4項 青年庁は青年・スポーツ庁に変更するものとする。

第5項 1 以下は首相が直轄するものとする。

a) 内政庁

b) 青年・スポーツ庁

c) 副首相

2 以下は外務大臣が直轄するものとする。

外務・協力長官

移住・共同長官

3 以下は地域開発・水産大臣が直轄するものとする。

a) 水産庁

b) 地域開発長官

4 経済・運輸・通信大臣は運輸・通信庁を直轄するものとする。

第6項 本大統領令に記載されていない省庁に関しては、1月25日発令の大統領令に基づくものとする。

第7項 各任務の任命を以下の通り行なう。

首相兼防衛大臣：

カルロス・アルベルト・ヴァノン・デ・カルヴァーリョ・ヴェイガ氏

外務大臣：

ジョージ・カルロス・アルメイダ・フォンセッカ氏

法務・行政・労働大臣：

エウリッコ・コレイア・モンテイロ氏

財務・企画大臣：

ジョゼ・トーマス・ヴァノン・デ・カルヴァーリョ・ヴェイガ氏

地域開発・水産大臣：

アントニオ・グアルベルト・ド・ロザーリオ氏

経済・運輸・通信大臣：

マヌエル・カジミーロ・デ・ジェズス・シャントレ氏

厚生大臣：

ルイス・デ・ソウザ・ノーブレ・レイテ氏

教育大臣：

マヌエル・ダ・パイシャン・サントス・ファウスチーノ氏

建設大臣：

テオーフィロ・フィゲレード・アルメイダ・エ・シルヴァ氏

内政庁長官：

マリオ・ラモス・ペレイラ・ダ・シルヴァ氏

青年・スポーツ庁長官：

ルイ・アルベルト・デ・フィゲレード・ソアレス氏

官房長官（副首相）：

アルナルド・ピント・ペレイラ・ダ・シルヴァ氏

外務・協力長官：

ジョゼ・ルイス・バルボーザ・レオン・モンテイロ氏

移住・共同社会長官：

ジョゼ・マヌエル・ピント・モンテイロ氏

行政長官：

アルフレッド・ゴンザルヴェス・テイシェイラ氏

水産庁長官：

マリア・エレナ・ノーブレ・デ・モライス・ケリード・セメード女史

地域開発長官：

ジョゼ・アントニオ・ピント・モンテイロ氏

運輸・通信庁長官：

アントニオ・ペドロ・マウリッシオ・ドス・サントス氏

社会推進長官：

オンジーナ・マリア・フォンセッカ・ロドリゲス・フェレイラ女史

第8項 本大統領令は直ちに施行されるものとする。

大統領府、1991年4月1日

共和国大統領

アントニオ・マヌエル・マスカレーニャス・ゴメス・モンテイロ

Quarta-feira, 3 de Abril de 1991

PaP

Entrada N.º 0525
Em 10/04/91
Rúbrica *PaP*

Número 13

REPÚBLICA DE



CABO VERDE

BOLETIM OFICIAL

PREÇO DESTE NÚMERO — 8\$00

Tudo a correspondência quer oficial, quer relativa a anúncios e à assinatura do Boletim Oficial deve ser enviada à Administração da Imprensa Nacional, na cidade da Praia.

O preço dos anúncios é de 15\$ a linha. Quando o anúncio for exclusivamente de tabelas intercaladas no texto será o respectivo espaço acrescentado de 30%. Não serão publicados anúncios que não tenham acompanhados da importância precisa para garantir o seu custo.

ASSINATURAS:

	Ano	Semestre
Para o país	1 600\$	1 100\$
Para países de expressão portuguesa	2 200\$	1 400\$
Para outros países	2 600\$	1 800\$
AVULSO por cada página		4\$

Os períodos de assinaturas contam-se por anos civis e seus semestres. Os números publicados antes de ser tomada a assinatura, são considerados venda avulsa.

Todos os originais com destino ao Boletim Oficial devem ser enviados à Administração da Imprensa Nacional até às 16 horas de Quinta-feira de cada semana.

Os que o forem depois da data fixada ficarão para o número da semana seguinte.

Os originais dos vários serviços públicos deverão conter a assinatura do chefe, autenticada com o respectivo selo branco.

2º SUPLEMENTO

SUMÁRIO

PRESIDÊNCIA DA REPÚBLICA:

Decreto Presidencial n.º 5/91: *X*

Exonera os membros do Governo que indica, extingue e cria alguns Ministérios e Secretarias de Estado.

PRESIDÊNCIA DA REPÚBLICA

Decreto Presidencial n.º 5/91 *X*

de 3 de Abril

Ouvidos os partidos políticos representados na Assembleia Nacional Popular:

Ao abrigo do artigo 69º da Constituição, o Presidente da República decreta o seguinte:

Artigo 1.º São exonerados dos cargos abaixo indicados os seguintes cidadãos:

Dr. Gustavo Aguiinaldo Lima Araújo, de Ministro da Indústria, Comércio e Turismo;

Dr. Manuel Casimiro de Jesus Chantre, de Ministro dos Transportes e Comunicações.

Art. 2º São extintos os seguintes Ministérios e Secretarias de Estado:

Ministério da Indústria, Comércio e Turismo;

Ministério dos Transportes e Comunicações;

Secretaria de Estado da Cooperação;

Secretaria de Estado da Emigração e das Comunidades;

Secretaria de Estado Adjunto do Primeiro Ministro.

Art. 3º — 1. São criados os Ministérios e as Secretarias de Estado seguintes:

Ministério da Economia e dos Transportes e Comunicações;

Secretaria de Estado dos Transportes e Comunicações; *ECONOMIA - D (COM + INDUST + TURISMO)*
ENAPOR, ARCAV., AG. V. AG + N

Secretaria de Estado das Pescas;

Art. 4º A Secretaria de Estado da Juventude passa a designar-se Secretaria de Estado da Juventude e Desportos.

Art. 5º — 1. Junto do Primeiro Ministro funcionam:

a) A Secretaria de Estado da Administração Interna;

b) A Secretaria de Estado da Juventude e Desportos;

c) Um Secretário de Estado Adjunto.

2. Junto do Ministro dos Negócios Estrangeiro funcionam:

Um Secretário de Estado dos Negócios Estrangeiros e Cooperação;

Um Secretário de Estado da Emigração e das Comunidades;

3. Junto do Ministro do Desenvolvimento Rural e Pescas funcionam:

- a) A Secretaria de Estado das Pescas;
- b) Um Secretário de Estado do Desenvolvimento Rural.

4. Junto do Ministério da Economia e dos Transportes e Comunicações funciona a Secretaria de Estado dos Transportes e Comunicações.

Art. 6º Em tudo o que não estiver expressamente regulado no presente decreto presidencial, mantem-se a estrutura governamental decorrente do Decreto Presidencial Nº 2/91, de 25 de Janeiro.

Art. 7º São nomeados para os cargos abaixo indicados os seguintes cidadãos:

- Primeiro Ministro e Ministro da Defesa, Dr. Carlos Alberto Wahnon de Carvalho Veiga;
- Ministro dos Negócios Estrangeiros, Dr. Jorge Carlos Almeida Fonseca;
- Ministro da Justiça, Administração Pública e Trabalho, Dr. Eurico Correia Monteiro;
- Ministro das Finanças e Plano, Dr. José Tomas Whanon de Carvalho Veiga;
- Ministro do Desenvolvimento Rural e Pescas, Dr. António Gualberto do Rosário;
- Ministro da Economia e dos Transportes e Comunicações, Dr. Manuel Casimiro de Jesus Chantre;
- Ministro da Saúde e Promoção Social, Dr. Luís de Sousa Nobre Leite;
- Ministro da Educação, Dr. Manuel da Paixão Santos Faustino;

Ministro das Obras Públicas, Eng.º Teófilo Figueiredo Almeida e Silva;

Secretário de Estado da Administração Interna Dr. Mário Ramos Pereira da Silva;

Secretário de Estado da Juventude e Desportos, Dr. Rui Alberto de Figueiredo Soares;

Secretário de Estado, Adjunto do Primeiro Ministro, Dr. Arnaldo Pinto Pereira da Silva;

Secretário de Estado dos Negócios Estrangeiros e Cooperação, Dr. José Luís Barbosa Leão Monteiro;

Secretário de Estado da Emigração e das Comunidades, Dr. José Manuel Pinto Monteiro;

Secretário de Estado da Administração Pública, Dr. Alfredo Gonçalves Teixeira;

Secretário de Estado das Pescas, Dr.ª Maria Helena Nobre de Moraes Querido Semedo;

Secretário de Estado do Desenvolvimento Rural, Dr. José António Pinto Monteiro;

Secretário de Estado dos Transportes e Comunicações, Eng. António Pedro Maurício dos Santos;

Secretário de Estado da Promoção Social, Dr.ª Ondina Maria Fonseca Rodrigues Ferreira.

Art. 8º O presente decreto presidencial entra imediatamente em vigor.

Publique-se.

Presidência da República, 1 de Abril de 1991. — O Presidente da República, ANTÓNIO MANUEL MASCARENHAS GOMES MONTEIRO.

7. ARCA VERDE社所有船舶の概要

1) サンタ・ルジア号

種 類 : 貨物船 (乾燥貨物)
建 造 年 : 1977年
所 有 年 : 1983年6月
全 長 : 36.20m
幅 : 7.50m
深 さ : 4.00m
喫 水 : 3.497m
主 機 : 565C/Uから1225R. P. M. のキャタピラー・ディーゼル・エンジン2台
総 ト ン 数 : 272.97 t
純 ト ン 数 : 152.40 t
発 電 機 : 50CV C/U 2台
補 助 発 電 機 : 220V用40キロワットC/U
補 機 : TENJFO RD H-70-ESCタイプ1台
船 倉 : 1 (540m³/410t)、ハッチ : 2
貨 物 棒 : 750kg (過度に弱いため、貨物作業に遅れを来たす)
平 均 速 力 : 8ノット/時
主 機 の 状 況 : 2台とも良好
レ ー ダ ー の 状 況 : 良好
通 信 機 器 の 状 況 : 問題有り
その他の特徴
乗 組 員 数 : 9名

2) ソタヴェント号

全 長 : 約45.00m
垂 線 間 長 : 約40.50m
幅 : 約9.60m
喫 水 : 約3.00m
深 さ : 約4.30m
速 力 : 10.5ノット
載 貨 重 量 : 290dwt
冷 凍 容 積 : 30m³
旅 客 定 員 : 150名

3) バラヴェント号

全 長 : 約45.00m
垂線間長 : 約40.50m
幅 : 約9.60m
喫水 : 約3.00m
深 さ : 約4.30m
速 力 : 10.5ノット
載貨重量 : 290dwt
冷凍容積 : 30m³
旅客定員 : 150名

4) フルナ号

全 長 : 25.4m
垂線間長 : 22.0m
幅 : 7.15m
深 さ : 3.55m
喫水 : 2.50m
総トン数 : 141.86 t
純トン数 : 45.71 t
缶付タンク容積 : 9.30m³
清水タンク容積 : 10.20m³
燃料タンク容積 : 17.30m³
主 機 : 1978年製造ドイツ・ディーゼル400馬力
補 機 : ドイツ・ディーゼル38馬力が2台それぞれに30KVA/220Vの交流発電機
クレーン : 3 t
船倉容積 : 60m³
ハッチ : 2.85m × 2 m
冷蔵室 : 13m³
旅客定員 : 40名 (室内) 20名 (甲板)
乗組員数 : 5名
その他の機器 : Kelvin Hughesタイプ17のレーダー “SA ILLOR” 製の音波水深測定機

5) ブラヴァ号

全 長 : 49.85m
垂線間長 : 44.0m
型 幅 : 10.10m

夏期満載喫水線 : 2.80m
型 深 さ : 3.55m
ハラスト状態時の高さ : 20.50m (水面上)
載 荷 重 量 : 563m/T
総 ト ン 数 : 197.2 t
純 ト ン 数 : 120.71 t
バラストタンク : 359.7 t
燃 料 タ ン ク : 45.6 t
清 水 タ ン ク : 14.0 t
速 力 : 11ノット
主 機 : MWM T 8 D 440-6 タイプ ディーゼルエンジン900馬力
ブリッジ、エンジンルーム双方にコントロールおよびアラーム・
システム搭載



REPÚBLICA DE CABO VERDE
MINISTÉRIO DOS TRANSPORTES E COMUNICAÇÕES
Companhia Nacional de Navegação "Arca Verde" E. P.

CARACTERÍSTICAS DO N/M STA. LUZIA

TIPO DE BARCO	CARGA SECA
DATA DE CONSTRUÇÃO	1977
DATA DE AQUISIÇÃO	JUNHO/83
COMPRIMENTO TOTAL	36,20 M
LARGURA	7,50 M
PONTAL	4,00 M
CALADO	3,497M
MOTORES 2 DIESEL CATERPILAR COM POTÊNCIA 565 C/U a 1225 R.P.M.	
ARQUEAÇÃO TOTAL	272,97 T
ARQUEAÇÃO LÍQUIDA	152,40 T
GRUPOS ELECTROGÊNEOS..... 2M de 50 CV C/U	
COM ALTERNADOR DE 40 KVA C/U PARA	220/440/V
MOLINETE	1 INDUPEMA TIPO 42E60A
MOTOR AUXILIAR	1 TENJFORD TIPO H-70-ESC
1 PORÃO; 2 ESCOTILHAS;	540 M3/410 TONS
BAU DE CARGA	750KG - FRAQUÍSSIMO
ATRASA GRANDEMENTE A MOVIMENTAÇÃO DA CARGA	
VELOCIDADE MÉDIA	8 NÓS/HORA
ESTADO DO FUNCIONAMENTO DOS MOTORES	(2) SUFICIENTES
ESTADO DO FUNCIONAMENTO DO RADAR	SUFICIENTE
ESTADO DO FUNCIONAMENTO DAS TELECOMUNICAÇÕES	SOFRÍVEL
OUTRAS CARACTERÍSTICAS	
NÚMERO DE TRIPULANTES	9

27 31 SONAMENTO

CARACTERISTICAS DO BARCO

Comprimento entre extremos:	45,00 m aprox
Comprimento entre perpendiculares:	40,50 m aprox.
Boca entre cavernas:	9,60 m aprox.
Calado de construção:	3,00 m aprox.
Altura do convés principal:	4,30 m aprox.
Velocidade:	10,5 nós
Capacidade de carga:	290 tdw
Capacidade frigorífica:	30 m ³
Capacidade para passageiros:	150

1157 (autógrafa)

CARACTERISTICAS DO BARCO

Comprimento entre extremos:	45,00 m aprox.
Comprimento entre perpendiculares:	40,50 m aprox.
Boca entre cavernas:	9,60 m aprox.
Calado de construção:	3,00 m aprox.
Altura do convés principal:	4,30 m aprox.
Velocidade:	10,5 nós
Capacidade de carga:	290 tdw
Capacidade frigorífica:	30 m ³
Capacidade para passageiros:	150

FPB "FUNDA"

Substituição do "FUNDA"
6/10

A
DIRECÇÃO GERAL DOS CTT, S.P.

MUITO URGENTE

P R I

28 de Janeiro de 1983

B6/CNN/83

INDICATIVO DE CHAMADA

Servimo-nos da presente para solicitar dessa Direcção-Geral o favor de e dignar conceder o indicativo de chamada para um novo navio adquirido pelo Governo de Cabo Verde e ser recebido em Fevereiro próximo, cujo nome indicaremos oportunamente.

São as seguintes as características da nova unidade para a frota nacional:

Comprimento F.F.	25,4 m
Comprimento entre P.P.	22,6 m
Boca	7,15m
Pontal Casada	3,55m
Calado	2,50m
Tonelagem Bruta de Arqueação	141,86 tons
Tonelagem Líquida de Arqueação	45,71 tons
Capacidade de lastro	9,30 m ³
Capacidade Água doce	10,20 m ³
Capacidade combustível	17,30 m ³
Motor Propulsor : DEUTZ DIESEL 400 H.P. CONSTRUIDO EM	
	1978

Dois grupos auxiliares com motor Deutz Diesel de 38 H.P. cada um e alternadores de 30 KVA 220 V.

3 fase

LU
RS

2/.

Guincho de carga : 3 Toneladas

Capacidade de Porao : 60 m³

Escotilha : 2,85 X 2. metros

Capacidade câmara refrigeração : 13 m³

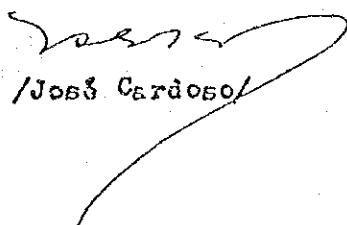
Passageiros: 40 assentados - 20 na coberta

Viaturas : 5

Equipamento Electronico: Radar Kelvin Huges Type 17, Sonda
Sonora, 2 V.H.F marca "SAILLOR"

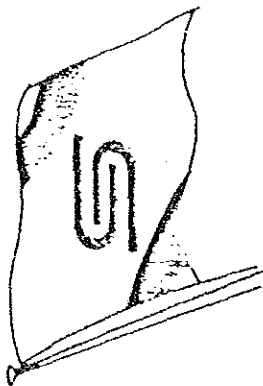
Aproveitamos para endereçar as n/melhores

Saudações Fraternais
UNID. DE TRAB. LHC PROGRESSO
O Director,


/José Cardoso/

LOADING SCALE

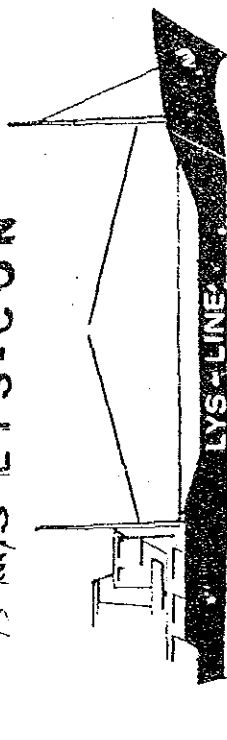
DEPTH	DW TONNAGE		DIM AND CUB		DIM AND CUB	
KMT	FW	SW	F	TS	F	TS
12	0	0	0	0	0	0
14	0	0	0	0	0	0
16	0	0	0	0	0	0
18	0	0	0	0	0	0
20	0	0	0	0	0	0
22	0	0	0	0	0	0
24	0	0	0	0	0	0
26	0	0	0	0	0	0
28	0	0	0	0	0	0
30	0	0	0	0	0	0
32	0	0	0	0	0	0
34	0	0	0	0	0	0
36	0	0	0	0	0	0
38	0	0	0	0	0	0
40	0	0	0	0	0	0
42	0	0	0	0	0	0
44	0	0	0	0	0	0
46	0	0	0	0	0	0
48	0	0	0	0	0	0
50	0	0	0	0	0	0
52	0	0	0	0	0	0
54	0	0	0	0	0	0
56	0	0	0	0	0	0
58	0	0	0	0	0	0
60	0	0	0	0	0	0



1972

1972

1972 M/S LYS-BLINK + M4-10
 73 M/S LYS-BRIS
 73 M/S LYS-BROTT - BOA VISTA
 72 M/S LYS-SKY - BRAVA
 73 M/S LYS-COM



OWNERS: LYS-LINE A/S, OSLO

MANAGERS: SIMONSEN & SLANG A/S, WERGELANDSV. 7, OSLO 1, NORWAY

TELEGRAMS: "LYS-LINE", OSLO

TELEX: 18314

TELEPHONE: (02) 20 72 15

THESE PARTICULARS ARE BELIEVED TO BE RIGHT BUT NOT GUARANTEED

DESCRIPTION: 1973

Built 1972/73 by VEB Eisenwerken, Boizenburg/Rosslau, DDR.

Class: Det Norske Veritas, 1.A.1. --- Ice --- C.

DIMENSIONS:

Length o.a.: 40.85 m = 133.9 ft.
 Length below p.p.: 44.00 m = 144.4 ft.
 Breadth moulded: 10.10 m = 33.0 ft.
 Draught Summerfreeboard: 2.90 m = 9.5 ft.

Moulded depth to maindeck: 5.60 m = 18.3 ft.
 Moulded depth to tweendeck: 2.89 m = 9.5 ft.
 Moulded depth to ballasted: 20.50 m = 67.3 ft. (above water)

DEADWEIGHT: 563 m/T**TONNAGE:** 197.2 Dwt. / 120.59 Net.**HOLD CAPACITY:**

Oats 47,529 cblt.
 Grain 52,191 cblt.

BALLAST CAPACITY: 358.7 tons**BUNKER CAPACITY:** 76.6 -**FRESHWATER CAPACITY:** 14.0 -**CONSUMPTION:**

Main Engine. } 3.2 tons pr. day.
 1 auxiliary engine. }
 1 boiler.

PROPELLER:

One right Lieben pitch propeller type ACG 52/50, diam. 1,860 mm
 control and coupling from the bridge.
 Service speed: 11 knots.

MAINE ENGINE:

One diesel engine MWM Type T6D 440-6 900 Hp, abl. 1040 IHP.
 Both bridge and engine room are equipped with control- and alarm-system.

AUXILIARY NO. 1 AND 2

MWM type TD 208-6, 57 Hp, 1500 RPM.
 Generator FIMAG type DGK 10 3"-4, also connected to the hydraulic pumps
 for the loading equipment.
 AC220 V, 50 Hz, 37 kVA.

AUXILIARY NO. 3

MWM diesel engine type 308-3 air-cooled placed in the forecabin.
 22.5 Hp, 1500 RPM.
 Generator type FIMAG type 15-4 AC 220 V, 50 Hz, 15 kVA.

NAUTICAL EQUIPMENT:

Gyro compass: Auschutz type VI with autopilot.
 Echo sounder: Elrac.
 Radar: Kelvin Hughes Type 17 Major.
 Radio: Dancom RT 101 200 watt.
 VHF: SRA ME - 10.
 Intercom: Phonico, PP - 10 H.
 Directionfinder: ISR PRB 62.
 Docca Navigator: Mark 21.

LOADING AND DISCHARGING EQUIPMENT:

Makers: Hydraulic Brattvaag.
 Hydraulic winches 2 pcs a 3 tons together with slewing/topping winches.
 1 swingboom forward lifting 5 tons.
 1 swingboom aft lifting 3 tons.
 Length of booms: 14 m (46 ft.).

WINDLASS: Hydraulic (Brattvaag).**CAPSTAN:** Electric (Synnus Mek. vorksted).**HATCHES:**

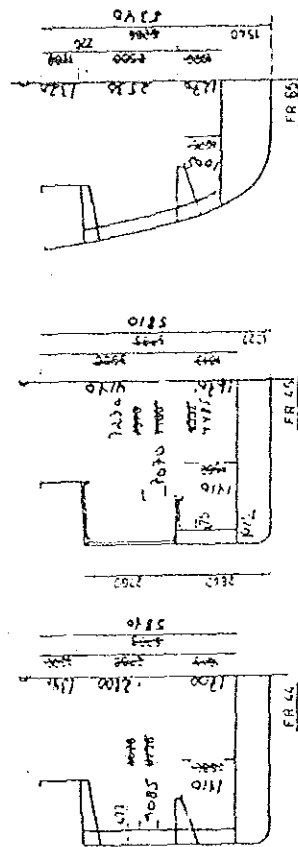
Tweendeck: 9 pcs. steelplateons
 8x6 ft x 24.7 ft.
 Wexinerdeck: ASCA, single
 22.5 m x 6.2 m.
 77.1 ft x 20.3 ft.

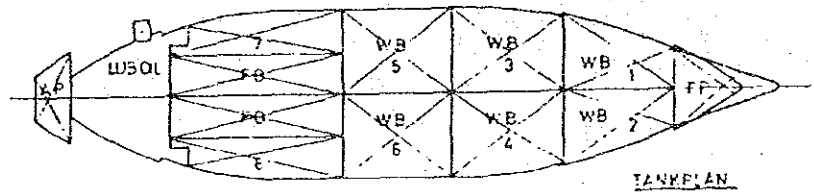
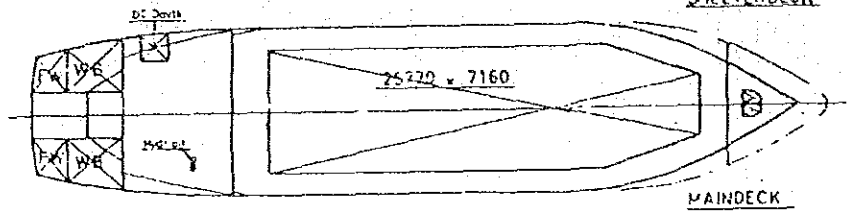
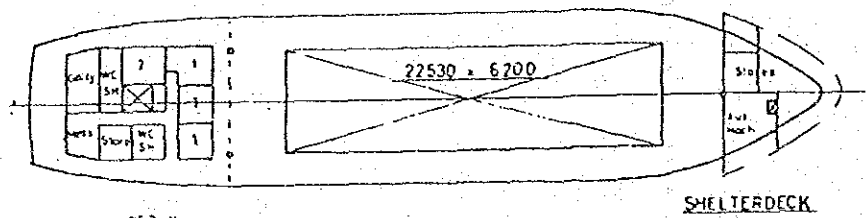
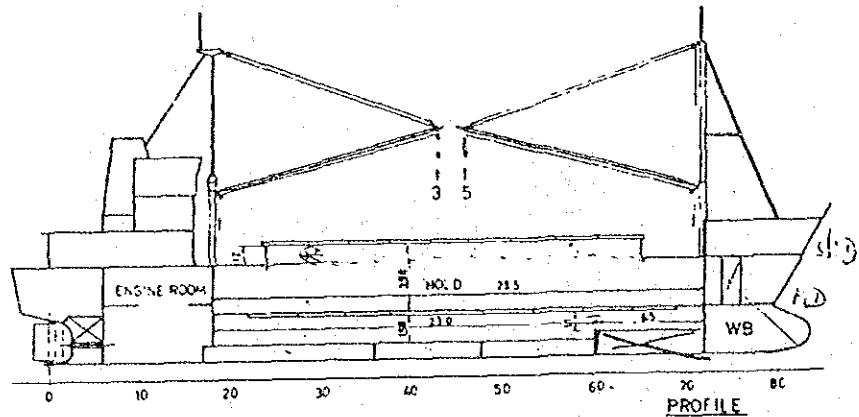
PUMPS:

Dige and ballastpump on Main Engine Q = 40 m³/h.
 Dige and ballastpump Q = 28 m³/h.

VENTILATION:

The holds are equipped with forcep ventilation giving 10 changes pr. hr.

**SECTIONS**



ATA BRAVA

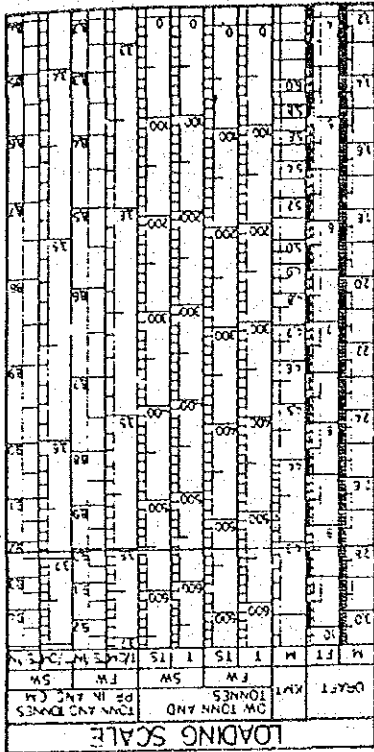
$29,5 \times 7,15 \times 5,56 = 1173 \text{ m}^3$

⊕ Volume / Escotely: 173 m^3

Cap Total 1346 m^3

HOLD CAPACITIES			GRAIN			DALES		
Frame	M ³	CU.FT.	M ³	CU.FT.	M ³	CU.FT.	M ³	CU.FT.
Hold below sh. deck	18-72	476	16609	374	13207			
Hold below main deck	18-72	828	29273	798	28213			
Hatch main deck	24-55	173	6109	173	6109			
Total		1473	52191	1346	47529			

TANK CAPACITIES		
Side	Frame	Capacity
WATER BALLAST $\gamma = 1.025$		
	P + S	72-72
	P	60-72
	S	60-72
	P	48-60
	S	48-60
	P	38-48
	S	36-48
	P	17-36
	S	17-36
	P	0-6
	S	0-6
Total		350.8
FUEL OIL $\gamma = 0.84$		
	S	17-36
	P	17-36
	P	8-11
	S	77-78
Total		50.9
FRESH WATER $\gamma = 1.0$		
	S	0-0
	B	0-0
Total		14.0
HYDRAULIK OIL $\gamma = 0.8$		
	S	13-14
Total		0.17
LUB. OIL $\gamma = 0.82$		
	P	13-15
Total		1.8



THESE PARTICULARS ARE BELIEVED TO BE RIGHT BUT NOT GUARANTEED

N/M Santiago SANTIAGO

m.s. MERCANDIAN PACIFIC AND SISTER SHIPS

Built by AALBORG VÆRFT A/S, Aalborg and FREDERIKSHAVN VÆRFT A/S, Frederikshavn

Deadweight 5.500 tons
 Length over all 96,50 m
 Length between p.p. 87,90 m
 Breadth moulded 16,00 m
 Depth to 1st deck 8,60 m
 Depth to 2nd deck 5,75 m
 Draft on summer freeboard 6,80 m
 Speed abt. 12 knots
Gross Tonnage - 3258

Hatches:
 1st deck: 25,35 x 10,70 m each
 2nd deck: 25,35 x 10,70 m each

Capacities:	grain	bale
Hold No. 1	60.900 cft.	55.421 cft.
Tweendeck No. 1	50.480 cft.	48.502 cft.
Hatch No. 1	14.330 cft.	14.331 cft.
Total No. 1	125.710 cft.	118.254 cft.
Hold No. 2	76.950 cft.	70.000 cft.
Tweendeck No. 2	55.070 cft.	52.880 cft.
Hatch No. 2	14.330 cft.	14.331 cft.
Total No. 2	146.350 cft.	137.211 cft.
Total 1 and 2	272.060 cft.	255.564 cft.

Timber cargo abt. 1.000 stds.
 Oil tanks Bunker capacity .. abt. 240 tons
 Fresh water tanks abt. 100 tons
 Waterballast tanks abt. 1.130 tons

Classification:
 Det Norske Veritas * 1. A 1. Ice C

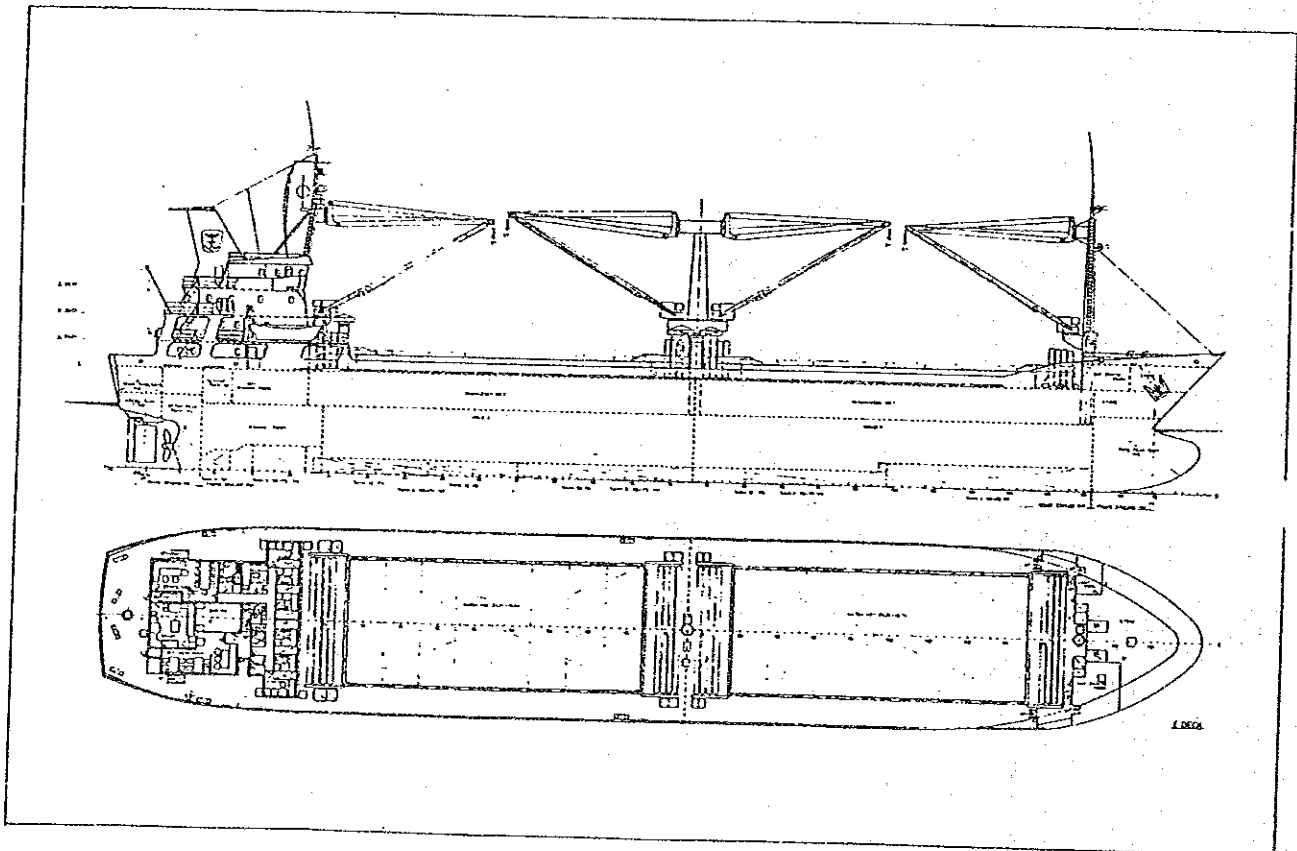
Cargo system:
 2 Liebherr deck cranes of each 5 tons
 2 Liebherr deck cranes of 5/10 tons
 MacGregor single pull steel hatch covers in weatherdeck.
 Sidesliding steel hatch covers in tweendeck.

Hold ventilation:
 25 airchanges per hour on empty holds.

Auxiliary engines:
 2 Mercedes-Benz diesel engines type OM 404, each of 287 HP at 1800 r.p.m. each coupled to a 230 KVA generator.
 1 Mercedes-Benz diesel engine type OM 401 of 118 HP coupled to a generator of 90 KVA.

Propelling machinery:
 One B&W Alpha-Diesel type 12 U 28 L of 3180 HP at 800 r.p.m. through gear coupled to a controllable pitch propeller.

Navigation equipment:
 SSB radio - 400 W Short wave receiver
 VHF radio
 Radio direction finder
 2 radars
 Gyro compass
 Auto pilot
 Echo sounder
 Intercommunication system



K

FPB "FUNDA"

Subsidiária do "FUNDAL"
Vila

DIRECÇÃO GERAL DOS GTP, M.P.

MUITO URGENTE

P R I

, 28 de Janeiro de 1983

B36/CNN/83

INDICATIVO DE CHAMADA

Servimo-nos da presente para solicitar dessa Direcção-Geral o favor de e dignar conceder o indicativo de chamada para um novo navio adquirido pelo Governo de Cabo Verde e ser recebido em Fevereiro próximo, cujo nome indicaremos oportunamente.

São as seguintes as características da nova unidade para a frota nacional:

Comprimento F.F.	25,4 m
Comprimento entre P.P.	22,0 m
Boca	7,15 m
Pontal Usada	3,55 m
Calado	2,50 m
Tonelagem Bruta de Arqueação:	141,86 tons
Tonelagem Líquida de Arqueação	45,71 tons
Capacidade de lastro	9,30 m ³
Capacidade água doce	10,20 m ³
Capacidade combustível	17,30 m ³
Motor Propulsor : DEUTZ DIESEL 400 H.P. CONSTRUÍDO EM	

1978

Dois grupos auxiliares com motor Deutz Diesel de 38 H.P. cada um e alternador de 30 KVA 220 V. 3 fase

LU
RS

2/.

Guincho de carga : 3 Toneladas
Capacidade de Porão : 60 m³
Escotilha : 2,85 X 2. metros
Capacidade câmara refrigeração : 13 m³
Passageiros: 40 assentados - 20 na coberta
Viaturas : 5
Equipamento Electronico: Radar Kelvin Hughes Type 17, Sonda
Sonora, 2 V.H.F marca "SAILLOR"

Aproveitamos para endereçar as n/melhores

Saudações Fraternais
UNID. DE TRABALHO PROGRESSO
O Director,


/José Cardoso/

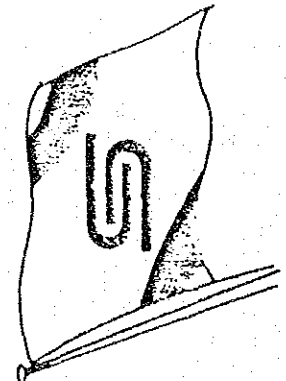
LOADING SCALE
DWT TONS AND CUBIC METERS

DRAFT	DWT TONS		CUBIC METERS	
	FW	TS	FW	TS
10	100	100	100	100
11	110	110	110	110
12	120	120	120	120
13	130	130	130	130
14	140	140	140	140
15	150	150	150	150
16	160	160	160	160
17	170	170	170	170
18	180	180	180	180
19	190	190	190	190
20	200	200	200	200
21	210	210	210	210
22	220	220	220	220
23	230	230	230	230
24	240	240	240	240
25	250	250	250	250
26	260	260	260	260
27	270	270	270	270
28	280	280	280	280
29	290	290	290	290
30	300	300	300	300
31	310	310	310	310
32	320	320	320	320
33	330	330	330	330
34	340	340	340	340
35	350	350	350	350
36	360	360	360	360
37	370	370	370	370
38	380	380	380	380
39	390	390	390	390
40	400	400	400	400
41	410	410	410	410
42	420	420	420	420
43	430	430	430	430
44	440	440	440	440
45	450	450	450	450
46	460	460	460	460
47	470	470	470	470
48	480	480	480	480
49	490	490	490	490
50	500	500	500	500

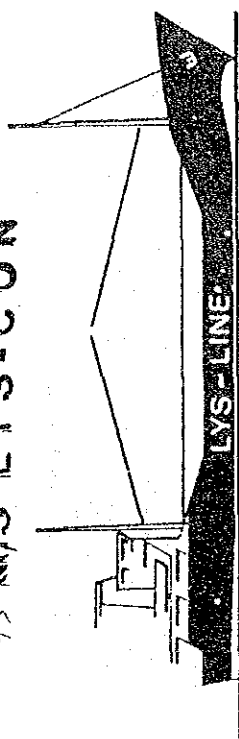


THESE PARTICULARS ARE BELIEVED TO BE RIGHT BUT NOT GUARANTEED

BRAVA n/m BRAVA



- 1972 M/S LYS-BLINK + MACO
- 73 M/S LYS-BRIS
- 73 M/S LYS-BROTT + BOA VISTA
- 72 M/S LYS-SKY + BRAVA
- 73 M/S LYS-CON



OWNERS: LYS - LINE A/S, OSLO

MANAGERS: SIMONSEN & SLANG A/S, WERGELANDSV. 7, OSLO 1, NORWAY

TELEGRAMS: "LYS-LINE", OSLO

TELEX: 18314

TELEPHONE: (02) 20 72 15

DESCRIPTION: 1973

Built 1972/73 by VEB Eibenwertten, Boizenburg/Rosslau, DDR.
 Class: Det Norske Veritas, 1.A.1. — Ice — c.

DIMENSIONS:

Length o.a.: 49.85 m = 163.1 ft.
 Length betw. p.p. 44.00 m = 144.4 ft.
 Breadth moulded 10.10 m = 33.0 ft.
 Draft Summer/freeboard 2.80 m = 9.2 ft.

Moulded depth to maindeck 5.80 m = 18.3 ft.
 Moulded depth to tweendeck 2.89 m = 9.5 ft.
 Mastheight when ballasted 20.50 m = 67.3 ft. (above water)

DEADWEIGHT: 563 m/T

TONNAGE: 197.2 Dwt. / 120.59 Net.

HOLD CAPACITY: Bulk 47,529 cbft.
 Grain 52,191 cbft.

BALLAST CAPACITY: 359.7 tons

BUNKER CAPACITY: 45.8

FRESHWATER CAPACITY: 14.0

CONSUMPTION: Main Engine, 3.2 tons pr. day.
 1 auxiliary engine.
 1 boiler.

PROPELLER: One right Lieben pitch propeller type ACG 52/50, diam. 1,900 mm.
 control and coupling from the bridge.
 Servicespeed: 11 knots.

MAINE ENGINE: One diesel engine MWM Type T6D 440-6 900 Hp, abt. 1040 IHP.
 Both bridge and engineroom are equipped with control- and alarm-system.

AUXILIARY NO. 1 AND 2: MWM type TD 208-6, 57 Hp, 1500 RPM.
 Generator FIMAG type DGK 10 3"-4, also connected to the hydraulic pumps for the loading equipment.
 AC220 V, 50 Hz, 37 kVA.

AUXILIARY NO. 3: MWM diesel engine type 308-3 aircooled placed in the fore-castle.
 22.5 Hp, 1500 RPM.
 Generatortype FIMAG type 15-4 AC 220 V, 50 Hz, 15 kVA.

NAUTICAL EQUIPMENT:

Gyro compass: Auschütz type VI with autopilot.
 Echo sounder: Elac.
 Radar: Kelvin Hughes Type 17 Major.
 Radio: Dencom RT 101 200 watt.
 VHF: SRA ME - 10.
 Intercom: Phonico PP - 10 H.
 Directionfinder: ISR PRB 52.
 Decca Navigator: Mark 21.

LOADING AND DISCHARGING EQUIPMENT:

Makers: Hydraulic Brätvaag.
 Hydraulic winches 2 pcs a 3 tons together with slowing/topping winches.
 1 swingboom forward lifting 5 tons.
 1 swingboom aft lifting 3 tons.
 Length of booms: 14 m (46 ft.).

WINDLASS: Hydraulic (Brätvaag).

CAPSTAN: Electric (Synnes Mek. vorkslød).

HATCHES:

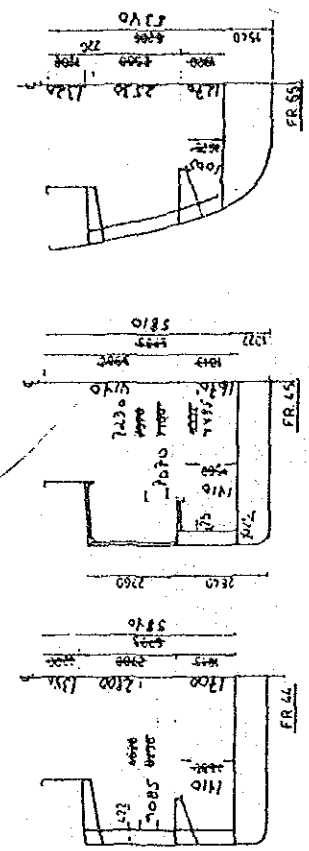
Weatherdeck: ASCA, single 22.5 m x 6.2 m,
 77.1 ft x 20.3 ft.
 Tweendeck: 9 pcs. steel pontoons 25.8 m x 7.2 m,
 84.6 ft x 24.7 ft.

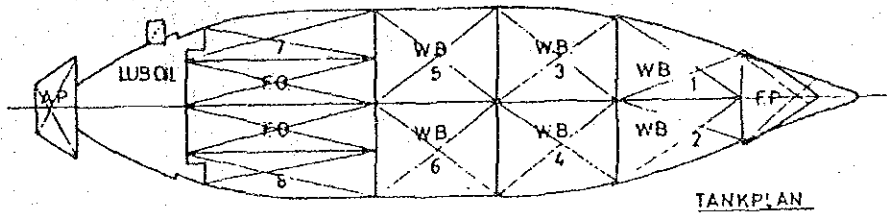
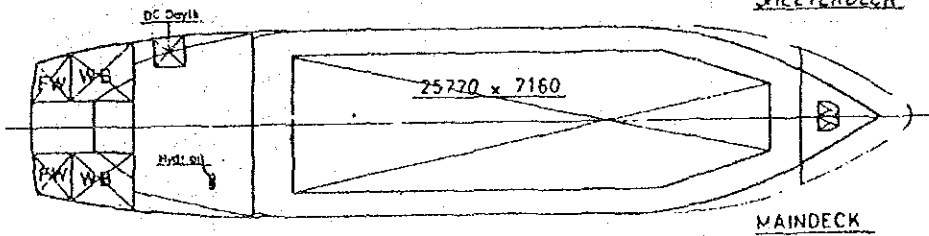
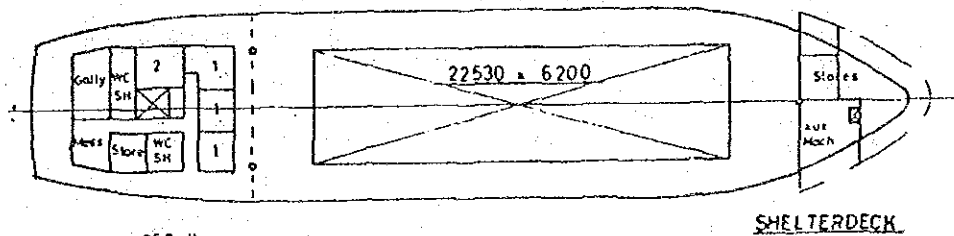
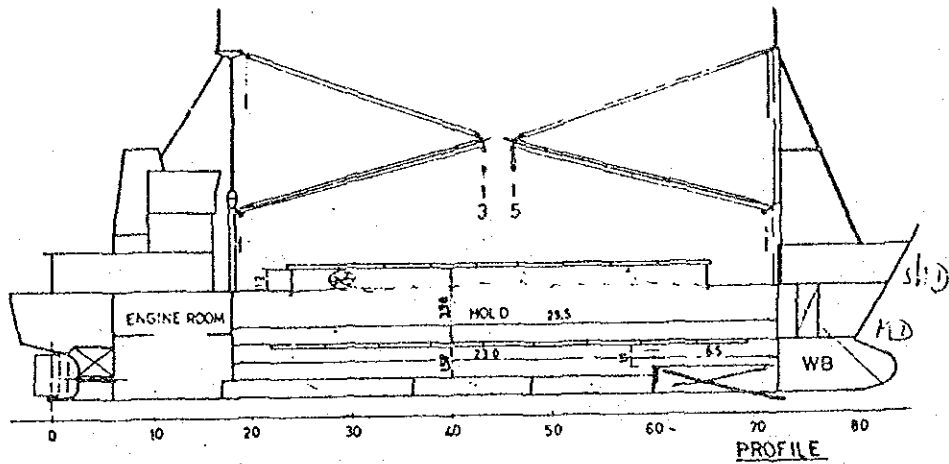
PUMPS:

Dudge and callastpump on Main Engine Q = 40 m³/h.
 Dudge and ballastpump Q = 28 m³/h.

VENTILATION:

The holds are equipped with forced ventilation giving 10 changes pr. hr.

**SECTIONS**



N/KI BRAVA

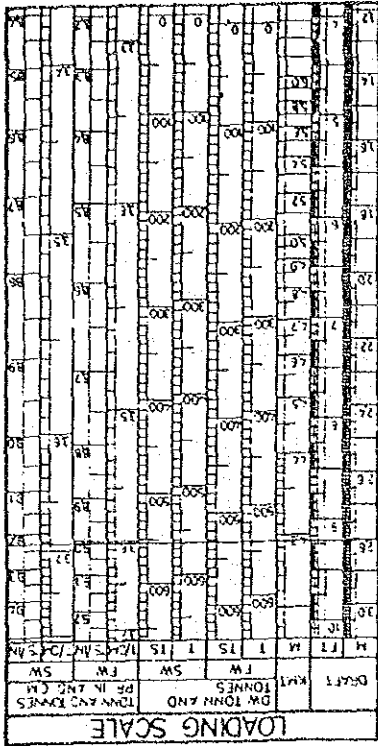
/ Porões = $29,5 \times 7,15 \times 5,56 = 1173 \text{ m}^3$

⊗ Volume / Escotilha = 173 m^3

Cub. Total 1346 m³

HOLD CAPACITIES				
Frames	GRAIN		DALES	
	M ³	CU.FT.	M ³	CU.FT.
Hold below sh. deck	18-72	476	16809	374
Hold below main deck	18-72	829	29273	798
Main deck	24-65	173	6109	173
Total	1478	52191	1246	47539

TANK CAPACITIES				
	Side	Frame	Capacity	
			m ³	t
WATER BALLAST $\gamma = 1.025$				
Forepeak	P + S	72-72	84.2	86.3
D.B. tank No. 1	P	60-72	30.0	30.8
D.B. tank No. 2	S	60-72	30.0	30.8
D.B. tank No. 3	P	48-60	30.6	31.4
D.B. tank No. 4	S	48-60	30.6	31.4
D.B. tank No. 5	P	36-48	32.9	33.7
D.B. tank No. 6	S	36-48	32.9	33.7
D.B. tank No. 7	P	17-36	20.6	21.1
D.B. tank No. 8	S	17-36	20.6	21.1
After peak tank	P	C-6	19.2	19.7
After peak tank	S	C-6	19.2	19.7
Total			350.8	355.7
FUEL OIL $\gamma = 0.84$				
D.B. tank	S	17-36	26.3	21.0
D.B. tank	P	17-36	26.3	21.0
Engine room	P	8-11	9.7	9.1
Alt	S	77-78	0.8	0.5
Total			63.1	45.6
FRESH WATER $\gamma = 1.0$				
After peak	S	-0	7.0	7.0
After peak	B	-0	7.0	7.0
Total			14.0	14.0
HYDRAULIC OIL $\gamma = 0.8$				
Engine room	S	13-14	0.17	0.15
LUB. OIL $\gamma = 0.92$				
Engine room	P	13-15	1.8	1.5



THESE PARTICULARS ARE BELIEVED TO BE RIGHT BUT NOT GUARANTEED

n/m SOTAVENTO

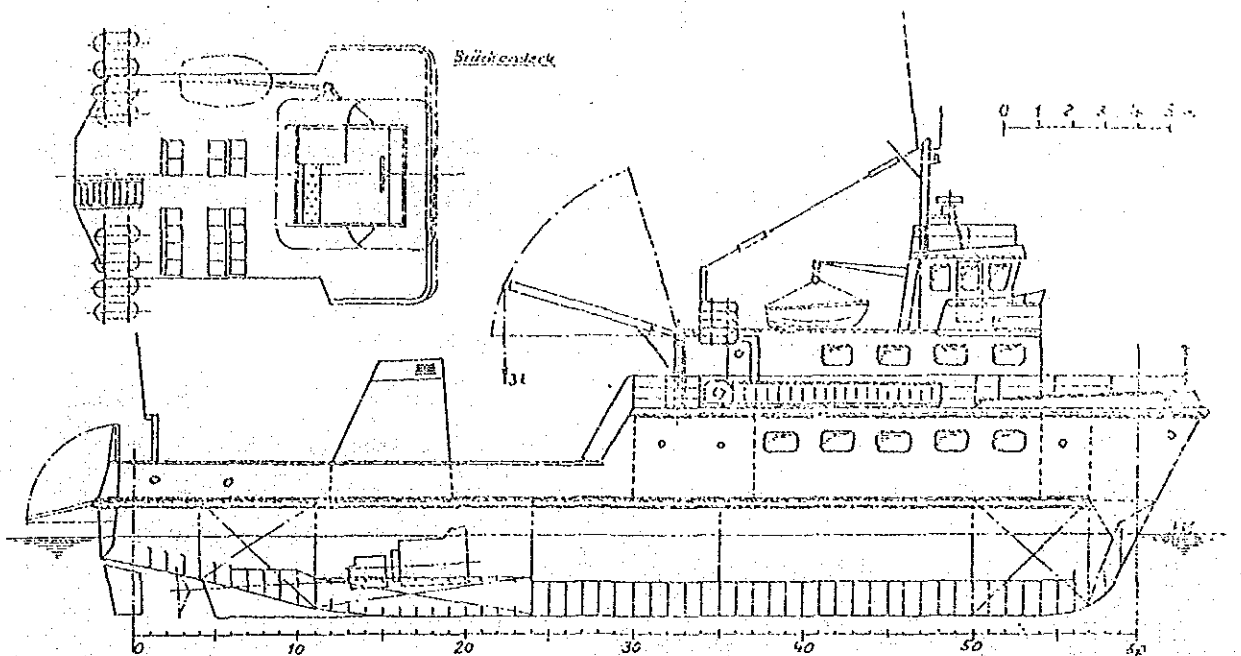
CARACTERISTICAS DO BARCO

Comprimento entre extremos:	45,00 m aprox
Comprimento entre perpendiculares:	40,50 m aprox.
Boca entre cavernas:	9,60 m aprox.
Calado de construção:	3,00 m aprox.
Altura do convés principal:	4,30 m aprox.
Velocidade:	10,5 nós
Capacidade de carga:	290 tdw
Capacidade frigorífica:	30 m ³
Capacidade para passageiros:	150

01/01 BARLAVENTO

CARACTERISTICAS DO BARCO

Comprimento entre extremos:	45,00 m aprox
Comprimento entre perpendiculares:	40,50 m aprox.
Boca entre cavernas:	9,60 m aprox.
Calado de construção:	3,00 m aprox.
Altura do convés principal:	4,30 m aprox.
Velocidade:	10,5 nós
Capacidade de carga:	290 tdw
Capacidade frigorífica:	30 m ³
Capacidade para passageiros:	150



Hauptabmessungen:

Länge über Alles	33,00 m
Länge z. d. Loten	30,00 "
Breite a. Spt.	6,50 "
Seitenhöhe	3,60 "
Tiefgang	2,50 "
Ladung	100 t

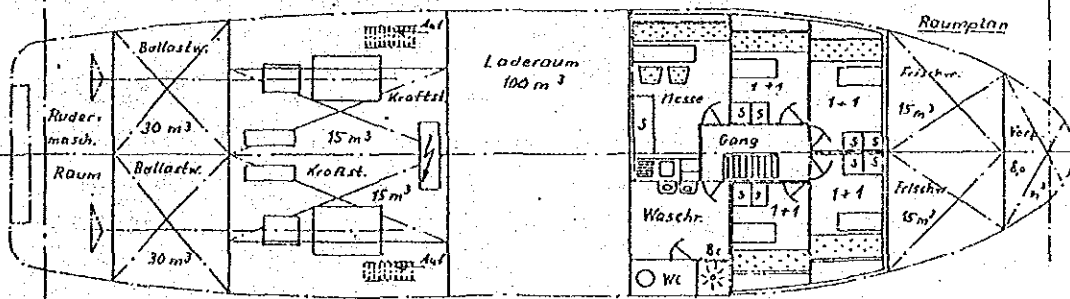
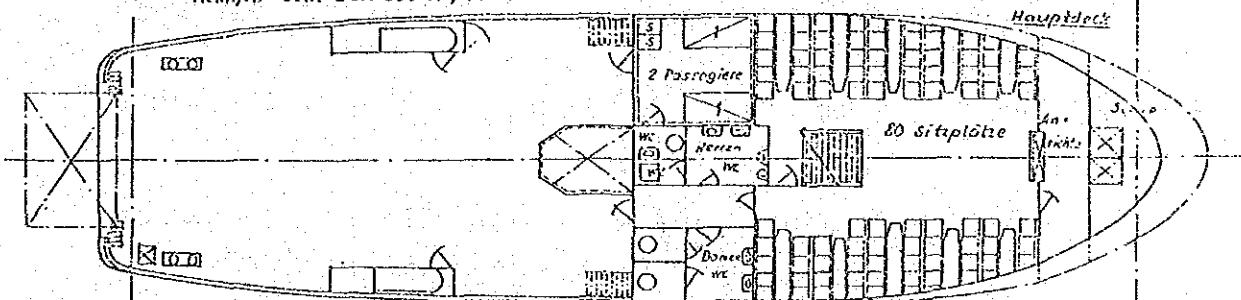
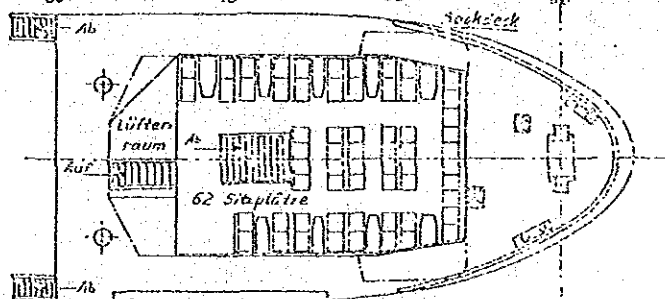
Kraftwagen 4

Fahrgäste 150

Antrieb: 2*305 kW KHD Dieselmotoren

Typ: BA 6 M 616 n = 1500 min⁻¹

Reiniges. Getr. BEA 300 A; i = 4



Schiffswerft Johann Oelkers KG, Hamburg - Neuhof
Fracht- u. Fahrgast Motorfähre Neubau Nr. 579 1980

Auftraggeber: Republik Cap Verde Transportministerium
Stapellauf: 14. 5. 1980 Ablieferung: 6. 1980

MS. „PORTO NOVO“



REPÚBLICA DE CABO VERDE
MINISTÉRIO DOS TRANSPORTES E COMUNICAÇÕES
Companhia Nacional de Navegação "Arca Verde" E. P.

CARACTERÍSTICAS DO N/M STA. LUZIA

TIPO DE BARCO	CARGA SECA
DATA DE CONSTRUÇÃO	1977
DATA DE AQUISIÇÃO	JUNHO/83
COMPRIMENTO TOTAL	36,20 M
LARGURA	7,50 M
PONTAL	4,00 M
CALADO	3,497M
MOTORES	2 DIESEL CATERPILAR COM POTÊNCIA 565 C/U a 1225 R.P.M.
ARQUEAÇÃO TOTAL	272,97 T
ARQUEAÇÃO LÍQUIDA	152,40 T
GRUPOS ELECTROGÊNEOS.....	2M de 50 ØV C/U
COM ALTERNADOR DE 40 KVA C/U PARA	220/440/V
MOLINETE	1 INDUFENA TIPO 42E60A
MOTOR AUXILIAR	1 TENJFORD TIPO H-70-ESC
1 PORÃO; 2 ESCOTILHAS;	540 M3/410 TONS
BAU DE CARGA	750KG - FRAQUÍSSIMO
ATRASA GRANDEMENTE A MOVIMENTAÇÃO DA CARGA	
VELOCIDADE MÉDIA	8 NÓS/HORA
ESTADO DO FUNCIONAMENTO DOS MOTORES	(2) SUFICIENTES
ESTADO DO FUNCIONAMENTO DO RADAR	SUFICIENTE
ESTADO DO FUNCIONAMENTO DAS TELECOMUNICAÇÕES	SOFRÍVEL
OUTRAS CARACTERÍSTICAS	
NÚMERO DE TRIPULANTES	9

CABNAVE 社の概要

AGENTS

ISLAND
 BLODEN MARINE & INDUSTRIAL AGENCIES LIMITED
 and
 MAR MARKETING SERVICES LIMITED

Station house
 1st floor
 Broad Lane
 London EC3M 8AP
 Tel: 071-6231233
 Telex: 269739 CMI G

U.S.A.
 EAST COAST MARINE
 21, West Street
 New York - N. Y. 10006
 U.S.A.
 Tel: (212)9430200
 Telex: 421726 Eastships

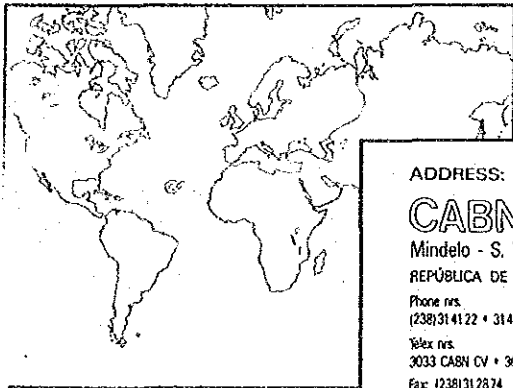
DENMARK
 EBERHARDT AGENCIES & SHIPPING APS
 6A, Amaliegade
 1256 Copenhagen
 Denmark
 Tel: 33136616
 Telex: 15055 Eber DK

BULGARIA
 NUMÉRICA - SOC. DE CONSULTORES, LDA.
 Rua Presidente Wilson, N. 3 R/C Dto.
 1000 - Lisboa
 Portugal
 Tel: 880559/806139
 Telex: 13013 Numera P

FRANCE
 M.P.A. MARINE PROFESSIONALS ASSOCIATED
 110, Rue de Richelieu
 75002 Paris
 France
 Tel: 42615088
 Telex: 240333

GREECE
 P. WIGHAM-RICHARDSON (HELLAS) CO. LTD.
 95, Kolokotroni Street
 18535 - Piraeus
 GREECE
 Telex: 212527/212332 Pwr

SWEDEN - NORWAY
 ULRIK QVALE & PARTNERS AS
 P.O. Box 168
 0212 Oslo
 NORWAY
 Tel: 521190
 Telex: 71307 Heast N
 Fax: 525218



ADDRESS:
CABNAVE
 Mindelo - S. Vicente
 REPÚBLICA DE CABO VERDE
 Phone nos.
 (238) 314122 • 314233 • 314389
 Telex nos.
 3033 CABN CV • 3028 CABN CV
 Fax: 1238) 312874



CABNAVE

SHIP REPAIRING



Mindelo - S. Vicente
 REPÚBLICA DE CABO VERDE

DAY AND NIGHT REPAIRS

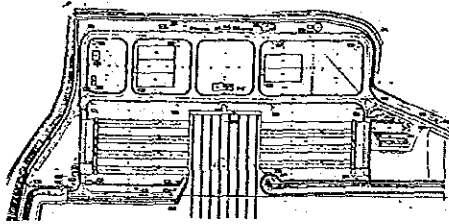
INTRODUCTION

CAPE VERDE ISLANDS situated at a strategic position, in the thorough fare of shipping between Atlantic North and South, is the ideal place for a modern shipyard as CABNAVE.

CABNAVE modern Ship Repair Yard, started making repairs in 1983 with technical support from the well-known Lisnave Ship Repair

Yard. Through years CABNAVE has become one of the first choices for ship repairs in West Africa.

Well supported by facilities unsurpassed in this region (six -6- parks for vessels 110x18 mts 2800 tons of displacement, comprehensive mechanical plate, electrical workshops and a host of other facilities) this yard is ready to undertake repairs on any kind of vessel up to 110x18 mts.



DOCKING

With a slipway system CABNAVE SHIP REPAIR YARD can guarantee four (4) or more docking of vessels on the same day.

Usually no more than two (2) hours are necessary to put a vessel on parks.

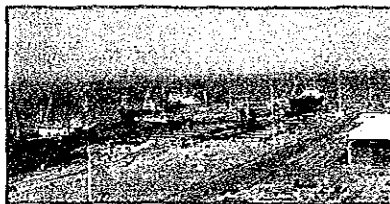
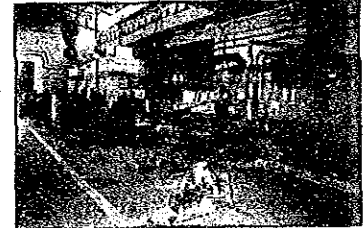
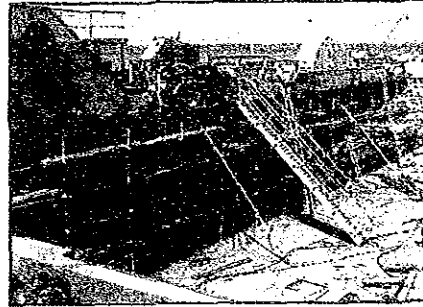


PLATE WORKSHOP

The plate workshop specially designed for ship repair includes various modern machines as follows:

- Assembling and unloading plant
- Welding benches
- Hydraulic portal press 350 tons
- Jib cranes
- Tig welding machines
- Mig welding machines
- Medium rolling machine
- Guillotine shear
- Flame automatic cutting machine
- Grinding machines
- Column drilling machines
- Universal cutting machine
- Universal scissors
- Hydraulic horizontal press
- Profile cutting table
- Saw machines
- Overhead flying machines
- Spot welding machines

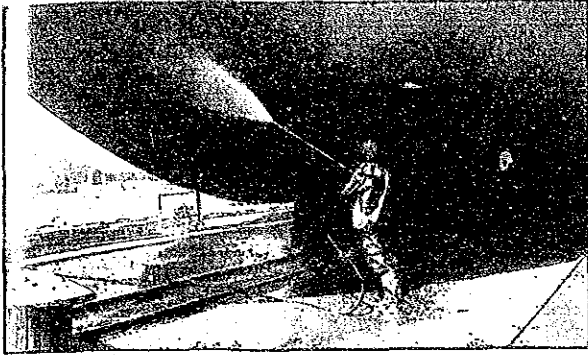


MECHANICAL WORKSHOP

From board to workshop, the well equipped mechanical workshop guarantees fast solution for most problems.

- Listing of principal equipments of Mechanical workshop
- Hydraulic test bench for valves
- Hydraulic portal press 80 tons
- Grinding machine
- Vertical Band saw
- Radial drilling machine 050 mm
- Slotting machine 360 mm
- Universal milling machine (2un)
- Tacing plan and support

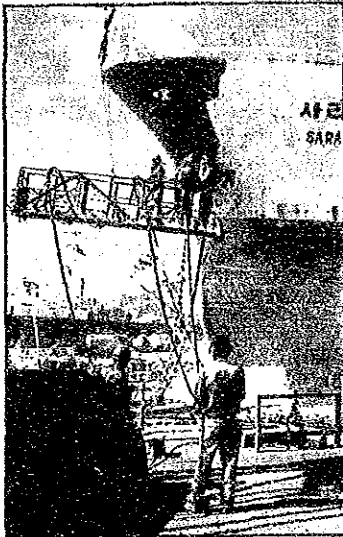
- White metal melting container
- High pressure hot water washing machine
- Balance machine
- Alternative saw
- Large parallel lathe 8 mts
- Small boring machine 60
- Small vertical lathe 2 mts
- Medium parallel lathe (3 un)
- Overhead crane 12 tons
- Acid tanks
- Neutral tanks
- Washing platforms
- Jib cranes (2un)
- Column drilling machine
- Universal cutter and tool grinding machine
- Tool sharpening machine
- Twist drilling grinding bench



HULL TREATMENT DIVISION

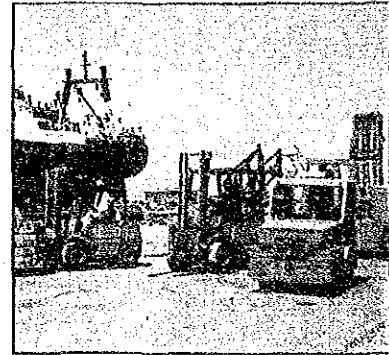
Hull treatment division includes various machines for the following works:

- H. P. wash 200 kg
- Sandsweeping
- Sandblasting up SA 2,5
- Stain removal
- Airless painting



ELECTRICAL WORKSHOP

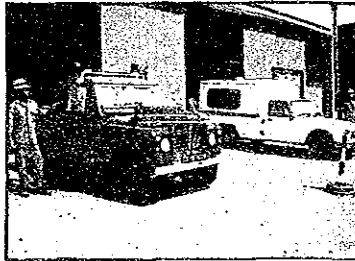
Quality rewinding, electronic and electrical works have been performed with a good quality assisted by special equipments and personal training.



SUPPORT FACILITIES

Support facilities include the following services:

- Docking and berth arrangements
- Rigger
- Safety and fire prevention center
- Heavy lifting and transport equipment
- Carpentry



SAFETY

The Yard considers that no work can be performed without necessary safety measures. Big investments have been made on this field to give full guarantee that work is done without any risk taken.



STOREHOUSE

CABNAVE have put special effort on supplying the clients with materials on time and at least possible cost.

A good custom free stock of materials and paints ready for supply is kept for good service.

9. データ集

島別宿泊施設室数及び収容人員数

島名	1986		1987		1988		1989		1990	
	室数	収容人員	室数	収容人員	室数	収容人員	室数	収容人員	室数	収容人員
サント・アントン	62	115	62	115	85	159	85	159	57	102
サン・ヴィセンテ	112	256	134	278	148	306	148	306	148	306
サン・ニコラウ	15	24	15	24	15	24	25	44	25	44
サル	272	435	298	485	309	503	333	559	333	559
ボア・ヴィスタ	5	10	5	10	5	10	5	10	25	49
マイオ	6	10	6	10	6	10	6	10	6	10
サンチャゴ	199	402	199	402	229	417	222	403	229	409
フォゴ	25	48	25	48	25	48	19	38	19	38
ブラガ	8	16	8	16	13	26	13	26	22	44
計	708	1,316	752	1,388	835	1,503	856	1,555	864	1,561

島別宿泊客数

島名	1986	1987	1988	1989
サント・アントン	453	829	1,845	1,987
サン・ヴィセンテ	21,414	23,586	22,640	27,540
サン・ニコラウ	499	439	594	665
サル	54,507	69,090	95,839	99,660
ボア・ヴィスタ	-	500	1,020	1,502
マイオ	739	737	852	997
サンチャゴ	47,025	57,072	55,490	57,880
フォゴ	4,800	4,842	3,950	5,217
ブラガ	-	200	150	854
計	129,437	157,295	182,380	194,315
対前年比		+21.5	+15.9	+6.5

(1990年11月計画協力省 統計局)

貿易統計

— 輸 入 —

(百万エスクード)

主 品 目	1985	1986	1987	1988	1989
トウモロコシ	411	733	392	196	
米	343	283	160	291	
オリーブ油	70	50	55	71	
脂 肪	44	170	52	55	
油	71	189	59	146	
砂 糖	216	205	213	181	
木 材	78	188	174	221	
織 物	279	201	263	206	
機 械	1,350	688	1,061	1,225	
輸 送 機 械	783	529	590	947	
①	7,663	8,601	8,596	8,626	8,706

— 輸 出 —

鮮 魚	138	126	272	80	
缶詰(魚類)	70	43	18	13	
ロブスター	31	30	31	22	
パ ナ ナ	51	82	63	87	
塩	6	13	-	-	
②	524	355	561	241	527
②/①	6.8 %	4.1 %	6.5 %	2.8 %	6.1 %

(1990年11月 計画協力省 統計局)

各島別宿泊施設定員（ベッド数） 1990年

島名	ホテル	民宿	ペンション	宿泊所	合計
サント・アントン		82		20	102
サン・ヴィセンテ	133	50	52		235
サン・ニコラウ		8	20		28
サル	452	33	74		559
ボア・ヴィスタ	40	11			51
マイオ				24	24
サンチアゴ	215	81	31	80	407
フォゴ	38				38
ブラヴァ			8	16	24
合計	878	265	185	140	1,468

入国者数

国名	1986	1987	1988	1989	1990
ポルトガル	4,346	4,483	5,319	5,576	6,805
フランス	1,661	1,286	1,542	1,734	2,349
ドイツ	408	538	1,046	1,120	1,854
オランダ	1,033	1,113	1,069	994	2,124
アメリカ合衆国	632	956	1,156	806	1,515
イタリア	515	493	711	620	910
南アフリカ	528	394	515	339	302
セネガル	389	396	379	118	476
その他	4,114	4,044	4,593	5,146	6,135
合計	13,626	13,703	16,330	16,453	22,470
(増加率)		0.5%	19.1%	0.8%	36.6%

(経済・運輸・通信省 観光総局)

1990年宿泊者数(観光局/統計部)

国 別	月												総 計	%	入国者数	平 均 滞在日数
	1	2	3	4	5	6	7	8	9	10	11	12				
1 国内居住カーボ・ベルデ人	899	675	780	288	1,317	817	1,194	1,264	927	952	1,396	1,173	11,682	11.2	4,399	2.6
2 国内居住外国人	108	110	175	173	367	143	54	102	90	96	101	68	1,587	1.5	413	3.8
3 国内居住者合計	1,007	785	955	461	1,684	960	1,248	1,366	1,017	1,048	1,497	1,241	13,269	12.7	4,812	2.7
4 南アフリカ	48	114	3	9	13	6	12	67	87	69	63	2	493	0.5	98	5.0
5 ドイツ	1,646	1,404	2,032	1,198	278	246	303	293	287	219	1,881	1,827	11,614	11.1	1,791	6.5
6 オーストリア	158	5	31	34	8	10	60	13	-	1	32	42	394	0.4	97	4.0
7 ベルギー	50	85	13	28	113	66	130	77	79	58	115	102	916	0.9	206	4.4
8 ブラジル	21	23	73	21	85	32	49	45	81	87	206	66	789	0.8	144	5.4
9 カナダ	14	5	14	-	32	44	21	-	9	42	64	24	269	0.3	65	4.1
10 デンマーク	-	11	14	2	68	142	11	-	26	60	67	58	459	0.4	90	5.1
11 国外移住者							3,181	157	182	107	150	90	3,867	3.7	1,084	3.5
12 スペイン	99	93	11	8	109	-	62	116	31	79	135	149	892	0.9	178	5.0
13 アメリカ合衆国	139	245	389	134	302	419	318	287	135	194	74	139	2,775	2.7	699	3.9
14 フィンランド	-	-	-	11	8	2	1	-	-	-	-	-	22	0.0	11	2.0
15 フランス	556	761	455	246	226	233	245	315	134	265	273	742	4,451	4.2	1,037	4.3
16 オランダ	93	227	192	78	133	112	181	240	92	142	99	71	1,660	1.6	395	4.2
17 イギリス	30	92	181	22	80	87	137	75	50	40	103	25	922	0.9	130	7.0
18 イタリア	203	205	110	54	73	125	130	608	197	129	212	207	2,253	2.1	574	3.9
19 日本							-	5	14	20	106	42	187	0.2	42	4.4
20 ノルウェー	12	6	3	21	14	-	9	6	35	92	127	130	455	0.4	54	8.4
21 ポルトガル	829	1,322	828	1,572	1,414	1,534	2,274	3,084	2,754	2,321	1,670	1,295	20,897	20.0	4,598	4.5
22 セネガル	34	96	75	75	73	52	57	113	65	137	45	78	900	0.9	330	2.7
23 スエーデン	60	97	220	45	11	65	28	93	7	26	141	96	889	0.8	226	3.9
24 スイス	321	106	226	173	62	86	60	72	89	150	84	204	1,633	1.6	278	5.8
25 その他のヨーロッパ諸国	381	142	47	74	335	119	532	434	86	119	37	27	2,333	2.2	572	4.0
26 その他のアメリカ諸国	17	-	58	8	48	33	27	7	23	91	122	105	539	0.5	141	3.8
27 その他のアジア諸国	41	-	117	14	61	37	80	107	56	14	57	75	659	0.6	175	3.7
28 ポルトガル語圏アフリカ諸国	32	24	444	9	294	137	272	225	381	1,060	1,055	519	4,452	4.2	592	7.5
29 西アフリカ諸国経済共同体諸国	43	15	104	21	128	102	38	55	40	190	36	40	812	0.8	219	3.7
30 それ以外のアフリカ諸国	26	-	-	8	49	47	51	72	51	224	45	23	596	0.6	170	3.5
31 乗組員	2,100	2,136	1,038	2,100	2,412	2,301	2,368	2,370	2,288	2,275	1,829	1,930	25,147	24.0	10,925	2.3
32 非居住者合計	6,953	7,214	6,678	5,965	6,429	6,037	10,637	8,936	7,279	8,211	8,828	8,108	91,275	87.3	24,921	3.6
33 総 計	7,960	7,999	7,633	6,437	8,121	6,996	11,885	10,302	8,296	9,259	10,325	9,349	104,544	100	29,733	3.5
34 稼働室数	6,664	6,151	7,010	5,591	5,663	4,559	5,605	5,994	5,224	7,288	7,211	6,858	73,818			

1990年12月31日決算表

	支 出	収 入	残 高	
			借 方 残 高	未 収 金
運 營 費				
本 社	17,411,577.10	1,246,517.10	16,165,060.00	
支 社	21,128,870.00	10,025,532.80	11,103,337.20	
小 計	38,540,447.10	11,272,049.90	27,268,397.20	
船 舶				
Arca Verde I	13,494,239.10	10,574,303.50	2,919,935.60	
Arca Verde III	524,690.40	983,985.40		459,295.00
Brava	55,576,786.40	53,550,937.80	2,025,848.60	
Santiago	110,592,881.10	78,839,107.20	31,753,773.90	
Porto Novo	30,088,647.50	35,135,903.00		5,047,255.50
Furna	17,690,622.90	8,461,097.20	9,229,525.70	
Santa Luzia	17,087,869.10	11,278,033.30	5,809,835.80	
Barlavento	58,247,799.40	22,496,472.00	35,751,327.40	
Sotavento	66,180,660.10	42,357,840.20	23,822,819.90	
Ilheu Raso	7,066,119.60	7,094,418.60		28,299.00
小 計	376,550,315.60	270,772,098.20	111,313,066.90	5,534,849.50
総 計	415,090,762.70	282,044,148.10	138,581,464.10	5,534,849.50
税 引 前 残 高				(133,046,614.60)
予 想 税 額				65,000.00
税 引 後 残 高				(133,111,614.60)

1990年12月31日決算表

経 費						経 費			
コード	種 目					コード	種 目		
30	前期繰越 原材料、消費材			7,514,165.50		72	売上		251,910,233.00
				7,514,165.50		75	補助収益		8,844,612.20
31	購入					78	その他の収益		260,754,845.20
312/318	原材料、消費材	36,937,998.90	161,779.00	36,776,219.90			(B)		2,573,616.50
		36,937,998.90	161,779.00	36,776,219.90		82	営業外臨時収益	13,751,449.00	263,328,461.70
						83	前期収益	4,964,237.40	18,715,686.40
36	今期繰越 原材料、消費材			-3,511,533.10					282,044,148.10
				-3,511,533.10					
61	売却、消費材								
612	原材料、消費材	40,778,852.30		40,778,852.30					
63	他社支払経費	131,656,045.80							
641	間接税引当金	445,615.00		132,101,660.80	172,880,513.10				
642	直接税引当金	118,843.00							
65	人件費	85,487,974.00							
66	金融支出引当金	17,691,072.60							
67	その他の経費	1,257,837.60		104,555,727.20					
68	減価償却	108,062,686.00							
69	予備費	770,000.00		108,832,686.00	213,388,413.20				
					386,268,926.30				
82	営業外臨時損失			15,062,949.50					
83	前期損失			13,758,886.90	28,821,836.40				
	法人税引当金				65,000.00				
	純利益				(133,111,614.60)				
					282,044,148.10				

1990決算表

コード	項 目	本 社	支 社	n/m	n/m	n/m	n/m	n/m	n/m	n/m	n/m	n/m	合 計	
				Arca Verde I	Arca Verde III	Brava	Santiago	Porto Novo	Furna	Santa Luzia	Barlavento	Sotavento		Ilheu Raso
612	原材料、消費材													
61251	ペンの材料		27,980.80	240,094.90		181,000.60	153,822.90	333,444.70	220,376.20	165,078.00	184,790.60	739,259.60	208,672.50	2,454,520.80
61259	その他の原料		151,930.20	66,850.40	853.90	185,964.50	35,349.90	216,301.80	197,846.00	89,182.80	196,349.40	434,522.80	10,884.90	1,586,036.60
6126	燃料その他		25,000.00	1,614,634.00		9,568,193.40	8,073,138.50	1,773,816.00	1,986,330.00	993,573.00	5,336,130.00	7,266,760.00	100,720.00	36,738,294.90
	合 計		204,911.00	1,921,579.30	853.90	9,935,158.50	8,262,311.30	2,323,562.50	2,404,552.20	1,247,833.80	5,717,270.00	8,440,542.40	320,277.40	40,778,852.30
63	他社支払経費													
6311	水道	4,896.00	475,500.00	56,500.00		162,676.70	251,694.90	100,820.00	219,700.00	68,650.00	187,000.00	303,883.60	2,200.00	1,833,521.20
6312	電気	70,808.00	224,995.00											295,803.00
6313	燃料その他	159,726.00	365,775.10	275,746.00		57,700.00	2,670,884.70	173,050.00	330,380.00	244,608.00	434,305.00	704,910.00		5,417,084.80
6314	維持、修繕	155,372.00	331,814.00	513,982.80		1,971,258.70	5,410,867.00	1,554,176.40	496,556.40	831,343.80	1,024,366.70	145,831.00	1,244.00	12,436,812.80
6315	短期償却工事	3,670.00	8,309.50	189,693.00		371,091.90	1,103,851.40	279,265.00	219,095.00	272,815.00	248,720.00	368,240.00		3,064,750.80
6316	事務所環境	387,827.90	343,518.00	15,485.00		43,845.40	26,691.40	1,950.00	51,457.50	10,365.00	41,976.00	66,395.00	1,690.00	991,201.20
63191	衛生環境	4,040.00	34,025.00	31,036.50		85,238.50	90,317.20	44,800.00	51,988.00	67,163.00	53,762.50	102,587.50	1,030.00	565,988.20
63192	清掃用具	12,776.00	90,388.00	53,605.00		70,098.40	197,077.90	130,295.50	63,090.00	72,690.00	97,588.00	142,260.00	200.00	930,068.80
63193	雑誌、新聞	500.00					200.00							700.00
63196	タクシー、空気	115,862.50	30,450.00											146,312.50
63199	雑費	19,745.50	10,769.00	6,476.00		9,783.70	26,999.00	52,146.40	1,927.00	6,300.00	5,240.00	3,778.00	230.00	143,394.60
6321	地代、賃貸	315,000.00	258,087.00	2,400.00	11,060.00	89,897.80					572.00	164,671.50		841,688.30
6322	代理店経費	108,975.30	55,075.00			135,192.20	157,712.20				19,600.00	71,407.00		547,961.70
63231	修繕費	124,250.00	70,746.00	35,200.00		1,004,023.40	6,048,660.50	12,450.00	225,246.00	36,780.00	42,495.00	584,130.50	3,000.00	8,186,981.40
63232	ドック			155,425.00		160,770.00		372,980.00						689,175.00
63241	郵便	8,467.00	961.00	863.00		15,283.50	31,558.10		3,805.50		5,402.20	31,431.60	52.00	97,823.90
63242	テレック	141,273.00	241,382.60	5,412.60		228,585.90	274,868.70	3,296.00	4,365.70	11,150.10	59,817.20	125,601.30	325.00	1,096,078.10
63243	電話	1,001,109.00	1,194,929.50	3,191.00		201,810.40	591,681.00	1,102.00	6,704.50	7,366.00	33,502.30	50,005.70	299.50	3,091,706.90
63251	船舶保険			52,458.00		1,604,057.20	4,483,875.90	706,685.00	261,650.60	171,205.00	3,390,679.00	3,108,140.00		13,778,750.70
63252	船舶の他	40,200.00	37,100.00				3,128.00							80,428.00
6326	出版物、広報	20,000.00	62,000.00	680.00		305,322.20		21,690.00	440.00	2,960.00	19,660.00	100,050.00		532,802.20
6327	専門作業		120,000.00											120,000.00
63291	税関			169,508.00		408,724.10	160,150.40	451,820.00	311,188.50	92,633.50	224,733.10	389,826.60	9,504.50	2,218,088.70
63292	港務			157,276.00	390.00	535,500.20	57,279.10	418,790.00	228,742.00	106,609.50	177,099.50	288,830.50	11,456.00	1,981,972.80
63293	港務関係			395,237.00	36,618.00	1,206,715.90	203,387.30	559,005.00	502,372.50	596,638.00	862,688.10	1,501,317.00	110,173.00	5,974,151.80
63294	雑費			1,600.00		149,555.10	13,794.80			800.00	30,481.70	166,190.60		362,422.20
6331	貨物輸送			727,772.00		3,185.80					13,015.00			743,972.80
6333	出張、滞在	471,363.00	252,846.00	89,285.00		164,632.90	2,888,598.60	198,400.00	211,204.00	46,340.00	140,473.00	242,321.70	3,500.00	4,708,964.20
6334	仲介コミッション			495,758.50		4,815,019.00	3,785,855.80	2,929,033.00	118,261.40	615,849.00	956,290.20	2,448,051.00	21,600.50	16,185,718.40
6335	報償	847,634.00												847,634.00
6336	弁護士	1,525.00	52.00										2,600.50	1,577.00
63381	衛生	3,000.00	14,805.00	60,590.00		22,836.70	266,946.40	9,349.00	44,198.50	29,596.00	74,655.00	121,410.00	2,600.50	649,987.10
63382	消毒及び燻蒸			19,000.00		4,280.00	21,162.50		34,330.00	1,540.00	9,630.00	22,535.50		112,478.00
6339	雑費	43,490.70	83,582.10	134,677.00		812,792.80	1,181,505.60	456,387.00	81,105.00	68,910.00	422,591.70	288,703.80	44,271.20	3,617,986.90
63411	荷役（長距離）					12,685,820.40					73,489.10	633,546.80		13,392,856.30
63412	荷役（短距離）			2,133,071.00		420,689.00		5,882,816.00	2,985,289.60	2,947,716.40	4,624,711.10	6,957,626.40	17,282.00	25,969,201.50
	合 計	4,061,510.90	4,307,109.80	5,054,156.40	48,068.00	28,470,980.00	29,951,934.20	14,360,306.30	6,453,097.70	6,310,028.30	13,261,498.40	19,146,697.60	230,658.20	131,656,045.80
64	税金													
6411	関紙							10,746.00						10,746.00
6413	印紙	37,891.50	59,671.80	22,859.90		97,484.90	583.40	111,909.60	210.00	25.00	240.00	2,306.90		333,183.00
6415	その他の間接税							98,032.00						98,032.00
6418	船舶年間の権利	6,000.00	3,654.00											3,654.00
6423	船舶の他		4,150.00											4,150.00
6425	船舶の他			4,696.50	3,638.50	5,022.50	61,212.50	4,822.50	2,558.50	6,585.50	8,042.50	7,897.50	3,106.50	107,583.00
6428	船舶の他		1,110.00											1,110.00
	合 計	43,891.50	68,585.80	27,556.40	3,638.50	102,507.40	61,795.90	225,510.10	2,768.50	6,610.50	8,282.50	10,204.40	3,106.50	564,458.00

1990年決算表

コード	項目	本社	支社	n/m	n/m	n/m	n/m	n/m	n/m	n/m	n/m	n/m	合計
				Arca Verde I	Arca Verde III	Brava	Santiago	Porto Novo	Furna	Santa Luzia	Barlavento	Sotavento	
65	人件費												
6521	従業員給与	6,082,515.00	5,634,892.00	1,721,617.10	132,000.00	3,292,502.00	10,879,927.40	1,519,285.00	1,781,227.00	2,646,560.00	3,438,374.00	3,623,335.00	40,752,234.50
6522	従業員手当	146,009.00	1,204,659.90	252,074.90	105,650.00	258,109.40	561,106.70	285,370.10	173,435.20	220,832.50	282,682.50	348,203.10	4,130,403.30
6531	臨時手当	569,364.00	172,800.00	272,947.00		271,080.00	2,515,877.60	183,979.20	510,025.00	355,146.00	531,620.00	574,607.00	5,957,445.80
6532	臨時手当	331,738.80	390,335.40	56,684.00	8,250.00	212,917.00	424,394.00	73,484.00	142,170.00	172,951.00	264,263.00	212,929.50	2,290,116.70
6533	残業手当	99,236.80	572,119.90			235,460.80	1,465,684.50		57,971.60	235,185.60	315,242.80	400,016.20	3,380,918.20
6534	補助金	379,147.40	14,067.00			3,800.00	401,613.00		4,650.00				803,277.40
6534	補助金	9,563.00	6,000.00										15,563.00
6541	前払利息	833,990.10	1,052,840.90	566,477.60	45,750.00	767,122.00	2,238,869.00	502,997.20	566,389.00	687,314.80	1,018,466.30	1,058,114.30	9,338,331.20
655	厚生費		2,107.20	3,458.00		18,340.80	38,257.20	1,225.00	1,555.00	2,015.50	7,738.00	33,208.50	107,905.20
656	食費			1,650,470.00	146,000.00	1,914,299.60	4,630,445.00	1,373,225.00	1,234,907.60	1,624,760.00	2,375,120.00	2,458,975.00	17,431,002.20
657	労働災害及び職業病保険金	78,012.00	93,372.00	66,006.00	6,480.00	70,380.00	148,140.00	68,664.00	70,488.00	62,406.00	95,742.00	97,920.00	857,610.00
658	従業員慰労費	30,000.00											30,000.00
659	その他の雑費	96,367.00	257,272.50	1,000.00	1,000.00	2,000.00	527.00	9,000.00	2,000.00	9,000.00		15,000.00	393,166.50
	合計	8,655,943.10	9,400,466.80	4,590,734.60	445,130.00	7,046,011.60	23,304,841.40	4,017,229.50	4,544,818.40	6,016,171.40	8,329,248.60	8,822,308.60	85,487,974.00
66	金融支												
661	金融支						17,135,704.60						17,135,704.60
662	手形割引	346,096.00											346,096.00
664	銀行手数料	2,307.10	17,425.00	2,770.90		37,347.70	126,777.50	1,245.10	2,099.50	14,116.20	4,341.50	841.50	209,272.00
	合計	348,403.10	17,425.00	2,770.90		37,347.70	17,262,482.10	1,245.10	2,099.50	14,116.20	4,341.50	841.50	17,691,072.60
67	その他の経費												
674	書籍及び技術書	2,440.00	3,728.00			8,074.70	263,428.80	3,728.00	3,728.00	3,728.00	18,305.50	4,728.00	315,617.00
675	責任当	600,000.00				16,172.60	70,220.00						686,392.60
676	顧客交際費		85,500.00										85,500.00
677	公共機関交際費	89,108.00	13,680.00				7,700.00						110,488.00
679	雑費	55,840.00	4,000.00										59,840.00
	合計	747,388.00	106,908.00			24,247.30	341,348.80	3,728.00	3,728.00	3,728.00	18,305.50	4,728.00	1,257,837.60
68	減価償却												
68221	建物及び付属設備	314,076.00	268,185.20										582,261.20
68222	その他の設備	4,008.00											4,008.00
682312	客船			1,476,840.00				8,032,932.00	1,574,640.00	1,067,064.00	29,313,144.00	29,319,348.00	69,716,904.00
682313	貨物船						9,233,791.80						11,683,658.70
68232	その他の艦装	29,009.90	26,859.80	2,699.00		38,029.20	50,219.40		3,070.00			451.30	149,887.30
68241	特殊工具、用具	40,106.30	136,523.50	7,582.00		54,906.00	54,131.20		1,971.30	15,783.00	218.00		311,672.60
68242	その他の工具、用具		6,646.90				4,502.10	240.00	14,140.00	1,430.00			26,959.00
68251	自動車	185,500.00	76,507.00										262,007.00
68261	事務機器	73,995.20	144,610.00							5,000.00	4,000.00		227,605.20
68262	金属家具	38,351.70	47,797.80			204.10							86,353.60
68263	非金属家具	4,362.00	2,650.00										7,012.00
68264	被服、陶器、ガラス器具		49,300.00	22,880.00		21,143.10	65,441.70	6,600.00	30,815.00	24,790.00	5,440.00	570.00	226,979.80
68265	その他の機器及び家具	285,779.70	132,317.10	6,449.50		69,271.80	116,770.50	2,729.00	38,481.00	21,862.50	4,262.50	12,730.00	690,653.60
68274	その他の車体	136,850.80											136,850.80
6829	その他の不動産	189.00								1,500.00			1,689.00
68713	その他の耐久消費財					7,818,700.80	13,338,996.00	515,375.00	549,597.40	1,725,415.00			23,948,084.20
	合計	1,112,228.60	891,397.30	1,516,450.50		8,002,255.00	22,863,852.70	8,557,876.00	2,212,814.70	2,862,844.50	29,327,064.50	29,333,099.30	108,062,686.00

1990年決算表

コード	項目	本社	支社	n/m Arca Verde I	n/m Arca Verde III	n/m Brava	n/m Santiago	n/m Porto Novo	n/m Furna	n/m Santa Luzia	n/m Barlavento	n/m Sotavento	n/m Ilheu Raso	合計
69	売掛金	460,000.00												460,000.00
6911	顧客掛金													
6912	貸倒引当金	310,000.00												310,000.00
	合計	770,000.00												770,000.00
826	臨時減価償却金		4,246,272.00										4,793,286.60	9,039,558.60
8272	監査外の罰金			5,644.00		34,758.20	41,313.50					28,550.00		41,313.50
8273	その他の罰金													68,952.20
8282	未収入金	199,652.10											15,597.00	199,652.10
8285	その他の不動産損失						133,273.70	101,500.00	1,720,581.00					1,837,678.00
8286	その他の不損						717,557.30							133,273.70
8287	両替	500,000.00										1,569.90		1,219,127.20
8288	非義務寄付金、分担金	63,518.00	9,000.00											72,518.00
8289	雑費		195,454.70				2,255,421.50							2,450,876.20
	合計	763,170.10	4,450,726.70	5,644.00		34,758.20	3,147,566.00	101,500.00	1,720,581.00			30,119.90	4,808,883.60	15,062,949.50
83	前期収益													207,740.00
8383	前解雇費										207,740.00			207,740.00
8389	雑費	909,041.80	1,681,339.60	375,347.00	27,000.00	1,923,520.70	5,396,748.70	497,690.00	346,162.90	626,536.40	1,374,048.40	392,118.40	1,593.00	13,551,146.90
	合計	909,041.80	1,681,339.60	375,347.00	27,000.00	1,923,520.70	5,396,748.70	497,690.00	346,162.90	626,536.40	1,581,788.40	392,118.40	1,593.00	13,758,886.90
61	原材料、消費材		204,911.00	1,921,579.30	853.90	9,935,158.50	8,262,311.30	2,323,562.50	2,404,552.20	1,247,833.80	5,717,270.00	8,440,542.40	320,277.40	40,778,852.30
63	他社支払経費	4,061,510.90	4,307,109.80	5,054,156.40	48,068.00	28,470,980.00	29,951,934.20	14,360,306.30	6,453,097.70	6,310,028.30	13,261,498.40	19,146,697.60	230,658.20	131,656,045.80
64	税金引当金	43,891.50	68,585.80	27,556.40	3,638.50	102,507.40	61,795.90	225,510.10	2,768.50	6,610.50	8,282.50	10,204.40	3,106.50	564,458.00
65	入金事件	8,655,943.10	9,400,466.80	4,590,734.60	445,130.00	7,046,011.60	23,304,841.40	4,017,229.50	4,544,818.40	6,016,171.40	8,329,248.60	8,822,308.60	315,070.00	85,487,974.00
66	金融支出	348,403.10	17,425.00	2,770.90		37,347.70	17,262,482.10	1,245.10	2,099.50	14,116.20	4,341.50	841.50		17,691,072.60
67	その他の経費	747,388.00	106,908.00			24,247.30	341,348.80	3,728.00	3,728.00	3,728.00	18,305.50	4,728.00	3,728.00	1,257,837.60
68	減価償却金	1,112,228.60	891,397.30	1,516,450.50		8,002,255.00	22,863,852.70	8,557,876.00	2,212,814.70	2,862,844.50	29,327,064.50	29,333,099.30	1,382,802.90	108,062,686.00
69	売掛金	770,000.00												770,000.00
82	営業外収益	763,170.10	4,450,726.70	5,644.00		34,758.20	3,147,566.00	101,500.00	1,720,581.00			30,119.90	4,808,883.60	15,062,949.50
83	前期収益	909,041.80	1,681,339.60	375,347.00	27,000.00	1,923,520.70	5,396,748.70	497,690.00	346,162.90	626,536.40	1,581,788.40	392,118.40	1,593.00	13,758,886.90
	合計	17,411,577.10	21,128,870.00	13,494,239.10	524,690.40	55,576,786.40	110,592,881.10	30,088,647.50	17,690,622.90	17,087,869.10	58,247,799.40	66,180,660.10	7,066,119.60	415,090,762.70

1990年決算表

コード	項目	本社	支社	n/m	n/m	n/m	n/m	n/m	n/m	n/m	n/m	n/m	合計	
				Arca Verde I	Arca Verde III	Brava	Santiago	Porto Novo	Furna	Santa Luzia	Barlavento	Sotavento		Ilheu Raso
72	上賃													
7211	客運			4,154,133.00		54,670.00		21,678,090.00	4,367,209.00	32,810.00	9,675,369.70	19,973,822.00	6,990.00	59,943,093.70
7212	ミッショ			226,371.00		3,165.00		1,904,249.00	4,470.50	653.00	137,135.00	293,106.00	252.00	2,569,401.50
7213	印刷			5,641.00				139,714.00	10,209.20	64.00	39,651.50	26,518.20	72.00	221,869.90
7214	紙			105,495.50		693.50		233,866.00	70,916.00	321.00	83,157.50	108,056.80	64.00	602,570.30
7221	貨物運			2,940,925.80		50,312,183.80		7,611,738.00	2,477,763.80	9,795,495.00	7,503,575.00	13,085,373.30	293,550.00	94,020,604.70
7222	ミッショ			173,199.50		42,556.00		800,879.00	174,504.70	694,023.50	231,574.70	341,233.00	31.50	2,458,001.90
7223	印刷			56,469.00		250.00		100,088.00	26,833.00	2,140.00	154,974.00	77,249.00	60.00	418,063.00
7224	荷役			937,521.30		3,065,635.00		2,667,279.00	1,232,339.50	219,394.00	2,544,856.40	3,636,250.80	112.50	14,303,388.50
724	船賃						73,127,400.50		84,741.00	525,000.00	124,500.00	1,511,598.00	2,000,000.00	77,373,239.50
	合計			8,599,756.10		53,479,153.30	73,127,400.50	35,135,903.00	8,448,986.70	11,269,900.50	20,494,793.80	39,053,207.10	2,301,132.00	251,910,233.00
75	補地	165,000.00												165,000.00
752	方不	44,025.50												44,025.50
753	設備										97,500.00	180,000.00		277,500.00
757	バ							89,312.80						89,312.80
7581	無線							246,168.80						246,168.80
7582	無	15,000.00	5,197,676.30					2,800,296.00		8,132.80		1,500.00		8,022,605.10
7589	雑													
	合計	224,025.50	5,197,676.30				3,135,777.60			8,132.80	97,500.00	181,500.00		8,844,612.20
78	その他	15,025.00	12,500.00				2,546,091.50							2,573,616.50
789	の収													2,573,616.50
	合計	15,025.00	12,500.00				2,546,091.50							2,573,616.50
82	営業外	405,500.00		1,973,501.90	983,985.40						694,225.70			3,362,987.30
8294	臨時										13,318.10	13,318.10		694,225.70
8295	の	5,377.50				40.50	20,571.50				8,000.00		4,793,286.60	52,625.70
8296	その他	594,051.70	4,246,272.00											9,641,610.30
8299	の													
	合計	1,004,929.20	4,246,272.00	1,973,501.90	983,985.40	40.50	20,571.50				715,543.80	13,318.10	4,793,286.60	13,751,449.00
83	前期	2,537.40	569,084.50	1,045.50		71,744.00	9,266.10		12,110.50		1,188,634.40	3,109,815.00		4,964,237.40
8399	の													4,964,237.40
	合計	2,537.40	569,084.50	1,045.50		71,744.00	9,266.10		12,110.50		1,188,634.40	3,109,815.00		4,964,237.40
72	上	8,599,756.10		53,479,153.30		73,127,400.50		35,135,903.00	8,448,986.70	11,269,900.50	20,494,793.80	39,053,207.10	2,301,132.00	251,910,233.00
75	補	224,025.50	5,197,676.30			3,135,777.60				8,132.80	97,500.00	181,500.00		8,844,612.20
78	の	15,025.00	12,500.00			2,546,091.50								2,573,616.50
82	営業外	1,004,929.20	4,246,272.00	1,973,501.90	983,985.40	40.50	20,571.50				715,543.80	13,318.10	4,793,286.60	13,751,449.00
83	前期	2,537.40	569,084.50	1,045.50		71,744.00	9,266.10		12,110.50		1,188,634.40	3,109,815.00		4,964,237.40
	合計	1,246,517.10	10,025,532.80	10,574,303.50	983,985.40	53,550,937.80	78,839,107.20	35,135,903.00	8,461,097.20	11,278,033.30	22,496,472.00	42,357,840.20	7,094,418.60	282,044,148.10

ARCA VERE公社 1989年12月31日決算表

	支 出	収 入	残 高	
			借 方 残 高	未 収 金
運 營 費				
本 社	17,544,645.70	276,079.50	17,268,566.20	
支 社	21,527,140.40	9,802,956.40	11,724,184.00	
小 計	39,071,786.10	10,079,035.90	28,992,750.20	
船 舶				
Arca Verde I	13,238,427.50	7,982,353.50	5,256,074.00	
Arca Verde III	966,889.20		966,889.20	
Brava	56,928,093.80	60,383,548.10		3,455,454.30
Primos	145,985.40	1,700,003.00		1,554,017.60
Santiago	124,080,651.20	101,561,464.90	22,519,186.30	
Porto Novo	25,655,493.70	33,773,769.10		8,118,275.40
Furna	16,525,397.90	8,460,814.60	8,064,583.30	
Santa Luzia	18,099,922.10	9,918,449.30	8,181,472.80	
Barlavento	60,718,714.20	30,251,586.20	30,467,128.00	
Sotavento	63,612,711.50	32,420,949.10	31,191,762.40	
Ilheu Raso	7,121,232.90	6,527,569.10	593,663.80	
小 計	387,093,519.40	292,980,506.90	107,240,759.80	13,127,747.30
総 計	426,165,305.50	303,059,542.80	136,233,510.00	13,127,747.30
税 引 前 残 高				(123,105,762.70)
予 想 税 額				700,000.00
税 引 後 残 高				(123,805,762.70)

1989決算表

コード	種 目	本 社	支 社	n/m	n/m	n/m	n/m	n/m	n/m	n/m	n/m	n/m	n/m	合 計	
				Arca Verde I	Arca Verde III	Brava	Primos	Santiago	Porto Novo	Furna	Santa Luzia	Barlavento	Sotavento		Ilheu Raso
612	原材料、消費材														
61251	ベ ン キ		1,740,885.10												1,740,885.10
61259	その他の原料		934,899.70												934,899.70
6126	燃料その他			1,873,649.60		7,191,903.30		19,591,101.40	1,689,823.40	1,721,846.80	1,680,587.00	6,534,055.60	7,123,900.00	214,100.00	47,620,967.10
	合 計		2,675,734.80	1,873,649.60		7,191,903.30		19,591,101.40	1,689,823.40	1,721,846.80	1,680,587.00	6,534,055.60	7,123,900.00	214,100.00	50,296,751.50
63	他社支払経費														
6311	水 道 費	9,480.00	272,620.00	97,203.00		244,717.90		269,109.70	128,200.00	159,691.00	98,484.00	347,558.60	300,500.50	3,260.00	1,930,804.70
6312	電 氣 費	60,299.00	152,530.00			13,922.00									226,751.00
6313	燃 料 其 他	198,422.00	174,985.00	80,776.00		45,445.00	140.00	54,959.70	380.00	53,773.00	16,970.00	21,620.00	7,020.00	700.00	655,184.70
6314	維持、修繕費	374,642.80	539,051.00	953,622.30		1,146,756.80		5,944,012.50	663,897.20	1,189,980.70	1,939,414.20	671,605.60	461,224.00	75,240.80	13,939,448.40
6315	短期償却工	907.50	225.00	110,720.00		244,615.00		690,970.30	372,985.00	226,134.40	340,415.00	225,316.90	327,972.00		2,540,261.60
6316	事務所経費	648,985.20	181,760.50	26,889.00		40,721.90		30,218.60	2,715.00	45,356.00	18,865.40	36,878.00	46,698.00	700.00	1,079,783.20
63191	衛生環境費	13,185.50	48,006.50	31,055.00		66,435.00		64,749.30	34,156.00	52,864.00	31,171.50	45,594.00	105,370.00	355.00	492,941.80
63192	清掃用具	3,590.00	38,929.00	50,250.00		57,682.00		135,426.30	46,014.00	46,290.00	30,823.00	61,112.00	49,310.50	110.00	524,516.80
63193	雑誌、新聞	69,596.50	120.00												69,716.50
63196	タイヤ、空気	1,605.00	8,250.00												9,855.00
63199	雑 費	6,421.80	9,378.00	9,828.00	120.00	15,148.00	120.00	392,872.40	3,000.00	7,351.00	13,513.00	3,300.00	426.00	1,486.00	462,964.20
6321	地代、賃料	105,000.00	4,400.00	1,200.00				23,627.80				4,312.00			138,539.80
6322	代理店経費	225,846.00	218,811.00			100,629.60		119,364.10		5,418.00	15,470.00	56,360.00	73,559.40	2,920.00	818,378.10
63231	修 繕 費	37,890.00	133,418.00	226,465.20		858,848.50		4,112,452.60	149,061.00	179,094.60	775,340.40	922,168.40			7,394,738.70
63241	郵便 費	23,702.00	1,405.00	513.00		17,369.10		25,856.20		2,064.50	4,961.20	28,758.70	19,817.00	26.00	124,472.70
63242	テレック	171,419.90	111,177.20	4,425.00		184,571.30	50.00	322,077.20	886.50	2,799.00	11,961.30	215,821.30	154,692.80	1,048.50	1,190,930.00
63243	電話 費	1,005,945.60	364,078.50	4,231.00		175,106.80	250.00	194,661.30	1,653.00	18,883.50	6,284.30	131,246.20	66,636.90	1,392.00	1,970,369.10
63251	船舶 保険			78,739.50		1,802,315.40		6,473,009.50	571,247.20	1,168,985.50	325,107.70	2,759,673.00	3,287,102.60		16,466,180.40
63252	他物の 保険	30,880.00	37,480.00												68,360.00
6326	出版物、広報		640.00	5,720.00		231,617.50		699.00	20,200.00	8,620.00	1,970.00	28,620.00	22,670.00	900.00	321,656.50
6327	専門 作業 費	90,850.00													90,850.00
63291	税 関 費			145,162.00		489,594.60		386,496.10	297,723.00	291,746.50	129,969.00	328,545.00	241,687.20	14,065.50	2,324,988.90
63292	港 湾 部 費			151,484.50	390.00	194,846.80		278,317.60	443,379.50	207,210.50	101,612.50	211,041.50	245,023.80	11,485.50	1,844,783.20
63293	港 湾 関 係 費			584,007.00	127,288.00	1,228,926.20	75,855.00	5,847,669.80	639,428.00	644,735.00	710,509.30	1,580,560.90	1,676,993.50	152,716.00	13,268,736.70
63294	雑 貨 物 輸 送			800.00		142,590.90		886,610.40		12,138.00	21,607.70	87,184.60	90,497.80	1,476.00	1,242,905.40
6331	貨物 輸送					554,006.20		3,134.80		49.00		1,650.00			558,840.00
6333	出張、滞在費	931,930.50	46,976.00	87,316.00		177,460.60		407,702.80	182,680.00	191,548.00	43,389.00	133,430.60	207,165.20	38,812.00	2,448,411.20
6334	仲介コミッション			630,531.00		4,551,766.80		8,657,136.10	2,835,614.50	201,662.90	506,097.70	2,118,603.20	1,917,055.80		21,444,735.00
6335	報 償 金	624,150.00													624,150.00
6336	弁 護 士 費	13,000.00				300.00	334.00	56,170.80				89,664.10	112,520.00	2,267.50	499,047.70
63381	衛 生 費		300.00	93,201.00		44,747.10		80,794.00	13,227.50	31,670.50	30,656.00	11,060.00	11,300.00		115,050.00
63382	消毒及び燻蒸			16,220.00		26,565.00				45,140.00	4,765.00	11,060.00			87,745.00
6339	雑 費	75,532.50	15,847.70	15,184.00	6,480.00	641,507.40	825.00	3,252,589.00	14,421.00	28,832.50	8,962.40	287,981.80	111,602.90	7,600.00	4,467,366.20
63411	荷役(長距離)					17,644,666.00		2,569,072.40			14,511.50	2,188,605.70	1,223,667.50		23,640,523.10
63412	荷役(短距離)			2,257,371.90		1,388,979.20		1,076,634.30	5,246,639.00	2,892,583.60	1,410,389.10	4,958,620.70	7,256,008.30	32,750.00	26,519,976.10
	合 計	4,728,261.80	2,360,388.90	5,642,888.90	134,278.00	32,331,858.60	77,574.00	42,356,595.10	11,518,437.40	7,684,636.10	6,016,974.40	17,408,414.80	18,940,340.70	375,577.80	149,576,026.50
64	税 関 金														
6411	税 関 権 税	32,125.00	445.00			27,720.00			53,865.00	1,130.00	358.00	20,010.00	37,896.00		173,549.00
6413	印 紙 税	131,330.70	9,843.00			89,094.70		52,630.20	131,800.00	64.00	525.00	2,819.40	4,134.50	2,250.00	424,491.50
6415	関 税	45,862.00													45,862.00
6423	車 両 税	6,895.00	3,400.00												10,295.00
6425	船舶年間権利金			4,619.50	3,713.50	3,997.50	2,029.50	54,537.50	4,922.50	2,998.50	5,266.50	5,535.00	5,535.00		93,155.00
6428	その他の直接税	17,700.00	24,390.00												42,090.00
	合 計	233,912.70	38,078.00	4,619.50	3,713.50	120,812.20	2,029.50	107,167.70	190,587.50	4,192.50	6,149.50	28,364.40	47,565.50	2,250.00	789,442.50

1989決算表

コード	種 目	本 社	支 社	n/m Arca Verde I	n/m Arca Verde III	n/m Brava	n/m Primos	n/m Santiago	n/m Porto Novo	n/m Furna	n/m Santa Luzia	n/m Barlavento	n/m Sotavento	n/m Ilheu Raso	合 計
65	人 件 費														
6521	従業員給与	5,787,193.70	5,881,690.80	1,492,322.00	127,500.00	2,447,126.00		8,115,304.70	1,329,915.10	1,295,745.00	1,309,478.00	2,763,931.00	2,522,860.90		33,073,067.20
6522	定額手当	275,855.00	991,133.00	335,407.40	131,165.00	317,770.30	550.00	987,841.90	186,758.90	302,408.00	483,629.70	282,579.00	531,351.30	308,784.00	5,135,253.50
6531	臨時手当	1,004,018.00	181,650.00	329,947.00	8,250.00	366,273.00		1,435,727.50	162,915.80	497,295.00	249,123.00	685,842.00	684,325.00		5,605,644.50
6532	残業手当	6,000.00	47,833.20	13,408.00		171,425.00		48,556.00		39,099.00	38,117.00	99,665.00	190,499.00		654,602.20
6533	補助金	434,189.90	774,475.90	1,899.20		157,131.50		400,294.00		57,432.40	136,493.80	173,904.10	384,965.00		2,520,585.80
6534	前途金	1,186,899.50	5,700.00							10,500.00		30,333.40			1,233,432.90
6535	福厚生	773,594.40	884,553.90	482,432.70	32,047.80	595,151.80		1,745,318.40	342,003.90	469,952.70	458,591.80	848,148.10	842,058.40		7,473,893.90
655	食費	208.50	2,031.00	1,363.50		13,974.40		16,971.50		1,995.00	4,387.50	1,135.90	8,197.00		50,264.30
656	労働災害及び職業病保険金	74,352.00	85,284.00	77,400.00	6,480.00	70,398.00		3,103,135.50	1,135,709.00	959,532.00	890,505.00	1,938,902.00	1,946,309.00	42,479.10	12,997,192.60
657	従業員慰労費	119,942.00								71,890.00	52,722.00	98,383.00	97,344.00		836,824.30
658	その他の雑費	229,939.50	518,770.50	10,000.00	1,000.00	11,000.00		50,000.00	9,000.00	8,000.00	9,000.00	15,000.00	15,000.00		119,942.00
659															876,710.00
	合 計	9,899,479.50	9,379,122.30	4,189,630.80	419,582.80	5,572,080.00	550.00	16,046,159.50	3,225,859.00	3,713,349.10	3,632,047.80	6,937,828.50	7,222,907.60	351,263.10	70,590,410.00
66	金融支出														
661	金融利子							15,483,663.60							15,483,663.60
662	銀行手数料	8,713.20	713.50	2,434.60		107,941.30		197,706.00	514.80	4,948.00	1,191.90	10,807.80	6,866.70		341,837.80
664	手形割引	224.90													224.90
	合 計	8,938.10	713.50	2,434.60		107,941.30		15,681,369.60	514.80	4,948.00	1,191.90	10,807.80	6,866.70		15,825,726.30
67	その他の経費														
674	書籍及び技術書	12,565.30				31,170.90							3,467.10		47,203.30
675	責任割当金					7,725.10									7,725.10
677	公共機関交際費	17,841.00													17,841.00
679	雑費	3,900.00													3,900.00
	合 計	34,306.30				38,896.00							3,467.10		76,669.40
68	減価償却														
68221	建物及び付属設備	314,076.00	268,185.20												582,261.20
68222	その他設備	4,008.00													4,008.00
682312	貨客船			1,476,840.00					8,032,932.00	1,574,640.00	1,067,064.00	29,313,144.00	29,319,348.00	1,382,802.90	69,716,904.00
682313	貨物船					1,552,749.70		19,984,980.00							23,987,596.60
68232	その他の積装	29,006.00	26,855.00	4,122.00		38,031.00		50,221.00		3,070.00					151,305.00
68241	特種工具、用具	40,106.30	21,026.50	349.00		6,144.00		2,844.40	341.00	5,019.30	15,783.00	218.00	451.30		92,282.80
68242	その他の工具、用具		25,273.00					4,502.00	240.00	14,140.00	1,430.00				45,585.00
68251	軽自動車	185,500.00	76,507.00								5,000.00	4,000.00			262,007.00
68261	事務機器	57,190.00	144,610.00												210,800.00
68262	金属家具	38,351.70	47,797.80			204.10									86,353.60
68263	非金属家具	11,883.00	2,725.00												14,608.00
68264	被服、陶器、ガラス	6,950.00	28,640.00	23,565.00		6,580.00		42,538.30	779.00	55,931.00	23,995.00	85,268.70	61,086.50		335,335.50
68265	その他の機器及び家具	347,965.00	85,691.00	4,904.00		44,070.30		99,552.00	2,729.00	43,926.50	30,228.50	1,962.50	3,330.00		664,358.80
68274	その他の車体	136,850.80								100.00					136,950.80
6829	その他の不動産	189.00									1,500.00				1,689.00
68713	その他の耐久消費財					7,823,320.80		5,971,005.50	883,500.00	1,648,956.00	5,570,820.00				21,897,602.30
	合 計	1,172,075.80	727,310.50	1,509,730.00		9,471,099.90		26,155,643.20	8,920,521.00	3,345,782.80	6,715,820.50	29,404,593.20	29,384,215.80	1,382,802.90	118,189,645.60

1989決算表

コード	種 目	本 社	支 社	n/m Arca Verde I	n/m Arca Verde III	n/m Brava	n/m Primos	n/m Santiago	n/m Porto Novo	n/m Furna	n/m Santa Luzia	n/m Barlavento	n/m Sotavento	n/m Ilheu Raso	合 計
72	売 客 運 上														
7211	旅 客 運 貨			2,726,290.60		461,459.00		22,910.00	21,442,901.00	4,606,742.50	8,750.00	12,847,930.60	11,870,117.30	6,420.00	53,993,520.40
7212	コ ミ ッ シ ョ ン			89,983.90		29,229.00			1,843,485.00	76,277.00	190.00	211,079.00	210,832.60	315.00	2,461,391.50
7213	印 刷 物			11,895.10		257.00			157,379.40	15,334.90	9.00	24,110.00	20,334.30	90.00	229,409.70
7214	印 紙 代			23,615.00		811.00		245.00	208,680.60	47,131.80	106.00	76,284.00	81,494.20	52.00	443,359.60
7221	貨 物 運			4,164,053.00		55,212,308.70		92,762,521.90	6,872,112.50	2,492,627.00	8,941,163.70	12,436,474.30	14,328,604.30	333,377.00	197,543,242.40
7222	コ ミ ッ シ ョ ン			163,536.00		97,500.00		1,225.00	775,239.50	24,039.50	241,156.50	360,923.00	423,337.00	768.50	2,087,725.00
7223	印 刷 物			14,740.00		480.00			97,600.00	26,430.00	1,250.00	29,724.00	40,200.00	40.00	210,464.00
7224	荷 役 料			783,240.50		4,537,307.90		2,160.00	2,270,897.00	1,155,286.50	436,794.00	3,257,546.50	4,316,484.20	18,220.00	16,777,936.60
724	船 舶 賃 貸 料					30,000.00		3,709,740.00	105,000.00		288,000.00	322,000.00		1,375,000.00	5,829,740.00
	合 計			7,932,353.50		60,369,352.60		96,498,801.90	33,773,235.00	8,443,869.20	9,917,419.20	29,566,071.40	31,291,403.90	1,734,282.50	279,576,789.20
75	補 足 収 益														180,000.00
752	地 方 不 動 産 賃 貸 料	180,000.00										180,000.00	180,000.00		360,000.00
757	バ ー 賃 賃 料		1,730.00					5,715.00							7,445.00
7581	無 線 電 信 料							20,938.00							20,938.00
7582	無 線 電 話 料														5,536,997.60
7589	無 雑 費	1,400.00	5,535,197.60							400.00					
	合 計	181,400.00	5,536,927.60					26,653.00		400.00		180,000.00	180,000.00		6,105,380.60
76	補 助 金	30,533.00													30,533.00
	合 計	30,533.00													30,533.00
78	そ の 他 の 収 益									9,750.00					9,750.00
789	雑 収 入														9,750.00
	合 計									9,750.00					9,750.00
82	営 業 外 臨 時 収 支														1,700,000.00
8294	不 動 産					14,195.50	1,700,000.00	173,058.90	34.10	39.40		1,472.60	3,277.60		232,361.40
8296	両 替 差 額 収 益	40,173.20	110.10												4,860,951.10
8297	そ の 他 の 不 動 産 収 入							4,860,951.10			.10				.10
82991	そ の 他 収 入													4,793,286.60	9,039,561.60
82999	雑 収 入 費		4,246,272.00				3.00								
	合 計	40,173.20	4,246,382.10			14,195.50	1,700,003.00	5,034,010.00	34.10	39.40	.10	1,472.60	3,277.60	4,793,286.60	15,832,874.20
83	前 期 収 支														1,504,215.80
8399	そ の 他	23,973.30	19,646.70					2,000.00	500.00	6,756.00	1,030.00	504,042.20	946,267.60		1,504,215.80
	合 計	23,973.30	19,646.70					2,000.00	500.00	6,756.00	1,030.00	504,042.20	946,267.60		1,504,215.80
72	売 客 運 上			7,982,353.50		60,369,352.60		96,498,801.90	33,773,235.00	8,443,869.20	9,917,419.20	29,566,071.40	31,291,403.90	1,734,282.50	279,576,789.20
75	補 助 収 益	181,400.00	5,536,927.60					26,653.00		400.00		180,000.00	180,000.00		6,105,380.60
76	補 助 金	30,533.00													30,533.00
78	そ の 他 の 収 益									9,750.00					9,750.00
82	営 業 外 臨 時 収 支	40,173.20	4,246,382.10			14,195.50	1,700,003.00	5,034,010.00	34.10	39.40	.10	1,472.60	3,277.60	4,793,286.60	15,832,874.20
83	前 期 収 支	23,973.30	19,646.70					2,000.00	500.00	6,756.00	1,030.00	504,042.20	946,267.60		1,504,215.80
	総 計	276,079.50	9,802,950.40	7,982,353.50		60,383,548.10	1,700,003.00	101,561,464.90	33,773,769.10	8,460,814.60	9,918,449.30	30,251,586.20	32,420,949.10	6,527,569.10	303,059,542.80

1989決算表

コード	種 目	本 社	支 社	n/m Arca Verde I	n/m Arca Verde III	n/m Brava	n/m Primos	n/m Santiago	n/m Porto Novo	n/m Furna	n/m Santa Luzia	n/m Barlavento	n/m Solavento	n/m Ilheu Raso	合 計
69 6911 6912	売掛金 顧客売掛金 貸倒れ引当金	600,000.00 420,000.00													600,000.00 420,000.00
	合 計	1,020,000.00													1,020,000.00
82 826 8272 8273 8286 8287 8288 8289	営業外収支 臨時減価償却 監査外罰金 その他の罰金 両替損 違約金 事務費等付金、分租金 雑費	675.00 6,785.90 217,000.00 6,494.00	4,326,780.60 30,000.00	1,072.00	302,670.30	5,719.00 17,809.90	15,010.40	4,208.00 16,208.60		5,705.00	4,668.00	25,384.00 13,227.40 4,406.40	26,988.00	4,793,286.60	9,473,747.90 6,394.00 80,129.90 40,628.30 17,225.00 247,000.00 6,494.00
	合 計	250,954.90	4,392,780.60	1,072.00	302,670.30	23,528.90	15,010.40	20,416.60		5,705.00	4,668.00	50,131.40	31,394.40	4,793,286.60	9,871,619.10
83 8389	前期収益 雑費	216,716.60	1,952,961.80	14,302.10	106,644.60	2,069,973.60	50,821.50	4,122,398.10	109,750.60	44,437.60	42,483.00	341,051.40	855,520.80	1,952.50	9,929,014.20
	合 計	216,716.60	1,952,961.80	14,302.10	106,644.60	2,069,973.60	50,821.50	4,122,398.10	109,750.60	44,437.60	42,483.00	341,051.40	855,520.80	1,952.50	9,929,014.20
61 63 64 65 66 67 68 69 82 83	収支 原材料、消費材 他社支払経費 税金引当金 人件費 金融支出 その他の経費 減価償却 売掛金 営業外収益 前期収益	4,728,261.80 233,912.70 9,899,479.50 8,938.10 34,306.30 1,172,075.80 1,020,000.00 230,954.90 216,716.60	2,675,784.80 2,360,388.90 38,078.00 9,379,122.30 713.50 727,310.50	1,873,649.60 5,642,888.90 4,619.50 4,189,680.80 2,434.60 1,509,780.00	134,278.00 32,331,858.60 3,713.50 419,582.80	7,191,903.30 32,331,858.60 120,812.20 5,572,080.00 107,941.30 38,896.00 9,471,099.90	77,574.00 2,029.50 550.00	19,591,101.40 42,356,395.10 107,167.70 16,046,159.50 15,681,369.60	1,689,823.40 11,518,437.40 190,587.50 3,225,859.00 514.80	1,721,846.80 7,784,636.10 4,192.50 3,713,849.10 4,948.00	1,680,587.00 6,016,974.40 6,149.50 3,632,047.80 1,191.90	6,534,055.60 17,408,414.80 28,363.40 6,937,828.50 10,807.80 3,467.10	7,123,900.00 18,940,340.70 47,565.50 7,222,907.60 6,866.70	214,100.00 375,577.80 2,250.00 351,263.10	50,296,751.90 149,576,026.50 789,442.50 70,590,410.00 15,825,726.30 76,669.40 118,189,645.60 1,020,000.00 9,871,619.10 9,929,014.20
	合 計	17,544,645.70	21,527,140.40	13,238,427.50	966,889.20	56,928,093.80	145,985.40	124,086,651.20	25,655,493.70	16,525,397.90	18,099,922.10	60,718,714.20	63,612,711.50	7,121,232.90	426,165,305.50

ARCA VERE公社 1988年12月31日決算表

	支 出	収 入	残 高	
			借 方 残 高	未 収 金
運 營 費				
本 社	13,714,545.30	81,102.90	13,633,442.40	
支 社	19,456,778.60	8,406,515.60	11,050,263.00	
小 計	33,171,323.90	8,487,618.50	24,683,705.40	
船 舶				
Arca Verde I	14,116,069.30	12,912,193.00	1,203,876.30	
Arca Verde III	813,428.60		813,428.60	
Brava	25,452,296.50	20,119,325.60	5,332,970.90	
Primos	587,825.10		587,825.10	
Santiago	115,932,833.60	101,810,534.70	14,122,298.90	
Porto Novo	23,700,160.20	29,456,062.70		5,755,902.50
Furna	14,639,017.30	8,308,971.60	6,330,045.70	
Santa Luzia	15,470,663.20	11,356,364.20	4,114,299.00	
Barlavento	59,841,595.40	29,988,078.30	29,853,517.10	
Sotavento	56,986,574.80	29,579,609.20	27,406,965.60	
小 計	327,540,464.00	243,531,139.30	89,765,227.20	
総 計	360,711,787.90	252,018,757.80	114,448,932.60	5,755,902.50
税 引 前 残 高				108,693,030.10
予 想 税 額				700,000.00
税 引 後 残 高				109,393,030.10

1988決算表

コード	種 目	本 社	支 社	n/m	n/m	n/m	n/m	n/m	n/m	n/m	n/m	n/m	合 計	
				Arca Verde I	Arca Verde III	Brava	Primos	Santiago	Porto Novo	Furna	Santa Luzia	Barlavento		Sotavento
612	原材料、消費材料		680,871.10										680,871.10	
61251	ベソの他の原料		817,031.00										817,031.00	
61259	燃 料			1,451,681.00		2,939,398.70		17,622,741.70	1,336,783.80	2,039,912.30	2,056,690.00	6,468,218.00	6,508,423.00	40,425,849.40
6126	燃 料													
	合 計		1,497,902.10	1,451,681.00		2,939,398.70		17,622,741.70	1,336,783.80	2,039,912.30	2,056,690.00	6,468,218.00	6,508,423.00	41,921,751.50
63	他社支払経費													
6311	水道	22,767.00	92,110.00	69,732.00		89,502.80		215,879.70	122,570.00	107,216.00	75,271.00	268,626.00	222,960.00	1,286,634.50
6312	電気	50,810.00	263,015.00							1,189.00				315,014.00
6313	燃料	161,805.00	184,885.50	21,560.00		6,060.00	405.00	86,107.50	3,290.00	10,885.00	28,010.00		10,380.00	513,388.00
6314	維持、修繕	235,231.60	1,008,708.60	1,556,364.00		5,512,468.80		5,762,800.30	2,679,684.30	1,126,405.30	815,670.50	1,759,780.10	864,944.00	21,322,057.50
6315	短期償却	1,495.00	16,873.70	27,840.00	877.50	86,872.80		222,360.10	67,225.00	85,360.00	236,350.00	71,760.00	119,868.20	936,882.30
6316	事務所経費	348,388.20	876,452.00	2,387.00		3,464.30		25,775.40	1,282.00	10,144.00	810.00	7,742.30	6,318.00	1,282,763.20
63191	衛生環境													
63192	清掃用具	11,476.00	41,675.00	44,578.50		32,265.00		163,778.00	52,002.00	41,810.00	43,121.00	73,625.00	98,909.00	603,239.50
63193	雑誌、新聞	8,385.00	28,712.50	37,892.50		42,124.00		123,612.40	44,294.00	50,010.00	52,020.00	79,959.50	88,614.00	555,623.90
63196	タクシー、空気	49,623.70	150.00											49,773.70
63199	雑地代、賃貸	34,200.00	17,300.00											51,500.00
6321	代理店経費	12,355.00	14,880.00	6,762.00		3,160.00		19,812.50	2,810.00	4,706.10	4,896.00	2,040.00	119,685.70	191,107.30
6322	修繕費	26,850.00	23,140.00	1,716.00		69,976.00		152,262.00	8,346.00			98,285.00	61,788.00	442,363.00
63231	下ドック	323,809.00	202,657.00			20,920.00		129,458.00				123,725.00	189,574.00	990,143.00
63232	郵便	112,865.00	328,716.50	930,012.80	375.00	943,557.70		1,300,717.20	141,914.00	316,992.20	83,045.00	1,277,673.40	156,823.90	5,592,690.70
63241	リース	17,654.50	832.50	684.50		7,940.60		40,535.80		1,079.50	300.50	281,241.40	7,654.80	357,924.10
63242	電話	352,626.10	164,832.50	2,250.50		82,939.90	75.00	391,077.00	915.00	5,007.00	4,654.40	259,485.80	181,594.50	1,443,457.70
63243	船舶	1,102,459.60	609,710.50	2,158.50		66,444.00		391,161.90	928.00	5,534.00	2,922.40	43,275.80	70,262.40	2,294,857.10
63251	船舶保険	104,968.50				1,781,513.30		6,419,244.00	706,684.80	1,226,753.10	518,235.40	3,381,294.00	3,315,359.80	17,454,052.90
63252	船舶保険	29,700.00	34,692.00									1,273.00		65,665.00
6326	出版物、広報	172,700.00		3,293.30		22,977.20		19,000.10	12,830.00	4,420.00	493.30	129,718.90	122,819.30	488,252.10
6327	専門作業費	42,900.00												42,900.00
63291	税関			130,167.50		159,070.40		95,730.30	183,975.00	220,653.00	113,962.00	197,376.50	186,227.00	1,287,161.70
63292	港務			175,715.50		98,642.60		71,269.50	372,228.50	181,498.50	124,718.00	200,381.50	214,517.00	1,439,361.10
63293	港務関係			414,999.00	116,433.00	498,192.50	60,513.00	7,588,609.80	285,890.00	290,480.00	344,885.70	1,754,903.30	1,054,163.00	12,409,069.50
63294	港務					82,537.40		1,222,966.50				78,570.00	53,641.20	1,437,715.10
63294	港務					4,372.90		450.00	12,493.90	17,389.60	820.00	16,688.80	9,043.50	81,977.20
6331	貨物輸送	10,218.50	10,500.00			88,806.90		376,904.90	157,509.00	204,598.00	45,383.00	162,582.50	215,822.50	1,878,637.70
6333	出張、滞在	234,392.70	245,247.40	147,400.00										

1988決算表

コード	種 目	本 社	支 社	n/m Arca Verde I	n/m Arca Verde III	n/m Brava	n/m Primos	n/m Santiago	n/m Porto Novo	n/m Furna	n/m Santa Luzia	n/m Barlavento	n/m Sotavento	合 計
6334	仲介コミッション	1,900.00		1,180,841.50		1,167,993.70		7,670,056.70	2,336,493.00	355,748.00	369,334.80	2,031,025.70	2,015,600.00	17,128,993.40
6335	償金	330,000.00										15,000.00		345,000.00
6336	弁護士費	17,043.00	90.00			8,484.00		295,840.80						321,457.80
63381	衛生費		1,300.00	76,226.50		20,096.50		106,575.90	11,554.00	27,422.50	35,311.00	89,415.00	78,117.50	446,618.90
63382	消毒及び燻蒸費			17,740.00		3,965.00				50,030.00	3,500.00	16,440.00	10,600.00	102,275.00
6339	雑役 (長距離)	20,430.90	101.00	6,000.00		36,744.90		392,592.90		500.00		64,287.10	125,679.20	646,336.00
63411	荷役 (長距離)					2,104,533.20		1,756,591.80				490,990.50	624,965.90	4,977,021.40
63412	荷役 (短距離)			2,559,718.20		1,156,201.90		366,572.00	3,794,399.00	2,155,747.40	980,979.10	4,862,954.50	5,313,277.10	21,189,849.20
	合 計	3,837,054.30	4,166,581.70	7,416,039.80		14,201,826.30		35,407,743.00	10,999,308.50	6,501,578.20	3,884,693.10	17,840,120.00	15,539,149.30	119,973,163.30
64	税 関 金 権													
6411	税 関 紙	1,733.00	3,098.00	258.00		16,303.60			17,910.00			10,091.30	495.00	49,894.90
6413	印 関 紙		17,599.80	21.10	111.90	68,400.20		138,373.00	35,369.00	37.10	90.50	3,055.60	1,288.30	264,546.50
6415	関 車 兩 税	45,862.00	5,725.00											45,862.00
6423	船 年 間 権 利 接 税	3,725.00		4,620.50	3,713.50	3,997.50	2,029.50	53,842.50	4,922.50	2,998.50	5,266.50	5,535.00	5,535.00	92,401.00
6425	船 年 間 権 利 接 税	15,600.00	23,250.00											38,850.00
6428	船 年 間 権 利 接 税													
	合 計	66,920.00	49,672.80	4,899.60	3,825.40	88,707.30	2,029.50	192,415.50	58,201.50	3,035.60	5,357.00	18,681.90	7,318.30	501,014.40
65	人 従 業 員 給 与 費													
6521	人 従 業 員 給 与 費	4,639,981.00	5,394,606.50	1,237,684.00	78,000.00	1,529,574.00	450.00	6,587,767.00	1,008,607.10	1,011,389.00	1,462,330.00	2,181,524.50	1,732,086.50	26,863,549.60
6522	人 従 業 員 給 与 費	206,634.20	576,446.60	277,547.60	85,708.00	267,726.20		1,086,259.80	107,699.00	125,319.00	286,875.50	287,893.10	226,663.00	3,535,222.00
6531	人 従 業 員 給 与 費	467,085.50	229,900.00	169,325.00		133,250.00		909,214.00	124,380.20	307,211.00	184,911.00	430,653.00	566,779.00	3,522,708.70
6532	人 従 業 員 給 与 費	1,880.00	101,400.00	121,864.00	6,500.00	182,215.00		502,933.00	89,950.00	470,002.00	169,987.00	265,830.00	285,084.00	2,197,645.00
6533	人 従 業 員 給 与 費	280,946.70	854,867.30			225,028.80		777,080.80			203,914.80	203,807.40	144,887.70	2,690,533.50
6534	人 従 業 員 給 与 費	474,200.00	11,400.00					110,487.10		1,900.00		110,000.00	88,000.00	795,987.10
6535	人 従 業 員 給 与 費	9,526.00	6,000.00											15,526.00
6541	人 従 業 員 給 与 費	656,912.80	938,668.30	421,892.30	25,154.40	469,832.10		1,703,664.70	281,288.10	339,222.80	471,453.20	672,369.50	589,798.30	6,570,256.50
655	人 従 業 員 給 与 費	350.00	3,520.00	1,702.00		8,732.20		39,536.70	1,309.00	1,913.50	990.00	13,417.50	3,270.00	74,740.90
656	人 従 業 員 給 与 費			1,180,567.00	89,670.00	1,038,868.00		2,534,918.00	762,930.00	831,287.00	872,200.00	1,516,934.00	1,354,065.00	10,175,439.00
657	人 従 業 員 給 与 費	71,234.00	100,762.00	81,036.00	5,940.00	68,904.00		162,846.00	57,894.50	63,186.00	61,380.00	98,604.00	95,094.00	866,880.50
659	人 従 業 員 給 与 費	199,665.00	169,197.00	10,000.00	1,000.00	5,000.00		41,741.00	10,000.00	10,000.00	10,000.00	43,396.40	15,000.00	514,999.40
	合 計	7,008,415.20	8,386,767.70	3,501,617.90	291,972.40	3,929,130.30	450.00	14,456,448.10	2,444,057.90	3,161,430.30	3,724,041.50	5,818,429.40	5,100,727.50	57,823,488.20

1988決算表

コード	種 目	本 社	支 社	n/m	n/m	n/m	n/m	n/m	n/m	n/m	n/m	n/m	合 計		
				Arca Verde I	Arca Verde III	Brava	Primos	Santiago	Porto Novo	Furna	Santa Luzia	Barlavento		Sotavento	
66	融 資 支 出														
661	融 資 支 出														
666	融 資 支 出	1,286.30				20,284.30		15,483,663.30					15,483,663.30		
	そ の 他							139,351.30	2,405.00	6,455.30	70.00	2,991.00	1,824.90	174,668.10	
	合 計	1,286.30				20,284.30		15,623,014.60	2,405.00	6,455.30	70.00	2,991.00	1,824.90	15,658,331.40	
68	減 価 償 却	34,074.00	253,918.00											567,992.00	
68222	そ の 他 設 備	4,000.00												4,000.00	
				1,476,836.00										69,716,896.00	
682312	貨 客 船					1,859,580.00		19,984,979.00		8,032,926.00	1,574,645.00	1,067,065.00	29,313,140.00	29,319,349.00	69,716,896.00
682313	貨 客 船													22,911,624.00	
68232	そ の 他 の 船 装 備													900.00	
68232	そ の 他 の 船 装 備	29,006.00	26,855.00	58,935.00		39,763.30		50,221.00		3,070.00				207,850.30	
68241	特 種 工 具、用 具	642.00	120,212.40	349.00		5,976.60		2,901.50	343.00	5,041.00	790.00	218.00	451.00	136,924.50	
68242	そ の 他 の 工 具、用 具		25,273.00					4,502.00	240.00	14,140.00	1,430.00			45,585.00	
68251	軽 自 動 車	185,500.00	76,507.00											262,007.00	
68261	事 務 機 器	70,445.70	16,459.00			1,899.20		384.60			5,000.00	4,000.00		98,188.50	
68262	金 属 家 具	22,458.00	42,143.00											64,601.00	
68263	非 金 属 家 具	13,362.00	8,303.00											21,665.00	
68264	被 服、陶 器、ガ ラ ス 器	7,125.00	7,920.00	21,715.00		62,736.60		23,924.00		31,341.00	5,680.00	138,656.00	69,199.00	368,296.60	
68265	そ の 他 の 機 器 及 び 家 具	403,098.90	44,415.00	4,904.00		41,760.00		76,256.30	17,412.00	43,274.00	28,811.00	875.00	3,330.00	664,136.20	
68274	そ の 他 の 車 体	189.00								100.00				100.00	
6829	そ の 他 の 不 動 産										1,500.00			1,689.00	
68713	そ の 他 の 耐 久 消 費 財					2,079,696.00		9,044,724.00	590,099.00	1,095,366.40	4,560,420.00			17,374,305.40	
	合 計	1,049,900.60	622,005.40	1,563,639.00		4,091,411.70		29,187,892.40	8,641,020.00	2,770,977.40	5,670,696.00	29,456,889.00	29,392,329.00	112,446,760.50	
69	掛 金														
6911	売 掛 金	600,000.00												600,000.00	
6912	買 掛 金	400,000.00												400,000.00	
	総 計	16,000,000.00												10,000,000.00	

1988決算表

コード	種 目	本 社	支 社	n/m Arca Verde I	n/m Arca Verde III	n/m Brava	n/m Primos	n/m Santiago	n/m Porto Novo	n/m Furna	n/m Santa Luzia	n/m Barlavento	n/m Sotavento	合 計
82 826 8271 8272 8273 8286 8287 8288 82891 82899	営 業 外 収 支 臨 時 減 価 償 却 監 査 外 罰 金 そ の 他 の 罰 金 両 替 損 金 違 約 金 非 義 務 寄 付 金、分 担 金 雑 費 雑 費		4,246,258.00		371,939.60	19,467.00	507,749.60	31,511.00				1,534.00 7.50		5,125,946. 50,978. 1,500. 1,534. 31,443. 970,687. 271,750. 4. 1,112,448.
	合 計	439,491.30	4,300,008.00		371,939.00	19,633.00	507,749.60	1,925,930.80				1,541.50		7,566,293.
83 8389	前 期 収 益 雑 費	311,477.60	433,840.90	178,191.10	28,006.30	161,904.90	16,213.00	1,516,647.50	218,383.50	155,628.20	129,115.60	234,724.00	436,802.80	3,820,435.
	合 計	311,477.60	433,840.90	178,191.10	28,006.30	161,904.90	16,213.00	1,516,647.50	218,383.50	155,628.20	129,115.60	234,724.00	436,802.80	3,820,935.
	総 計	13,714,545.30	19,456,778.60	14,116,069.30	813,428.60	25,452,296.50	587,825.10	115,932,833.60	23,700,160.20	14,639,017.30	15,470,663.20	59,841,595.40	56,986,574.80	360,711,787.
61 63 64 65 66 68 69 82 83	収 入 原 材 料、消 費 支 材 他 社 支 払 費 税 金 引 当 金 人 金 融 件 支 出 減 価 償 却 金 売 業 外 掛 外 収 入 前 期 収 入													41,921,751. 119,973,163. 501,064. 57,623,488. 15,658,331. 112,446,760. 1,000,000. 7,566,293. 3,820,935.
	合 計													360,711,707.

1988決算表

コード	種 目	本 社	支 社	n/m	n/m	n/m	n/m	n/m	n/m	n/m	n/m	n/m	n/m	合 計
				Arca Verde I	Arca Verde III	Brava	Primos	Santiago	Porto Novo	Furna	Santa Luzia	Barlavento	Sotavento	
72	上貨ン物代貨ン物料													
7211	客運			6,397,135.00		69,060.00		5,600.00	18,067,747.00	4,297,545.50	22,300.00	12,986,929.50	11,335,782.10	53,182,099.10
7212	ミッシヨ			471,208.50		4,752.00		250.00	1,521,775.50	206,199.50	1,463.00	411,386.80	326,133.00	2,943,168.30
7213	印刷紙			39,050.70		460.00		15.00	137,695.70	11,848.90	240.00	25,893.10	24,980.70	240,184.10
7214	印貨物運			63,979.80		556.50		57.50	172,754.30	42,663.60	132.50	78,736.60	72,661.30	431,542.10
7221	貨物運			4,659,161.00		18,632,023.50		95,185,326.60	6,475,973.00	2,540,523.50	8,363,214.80	11,729,304.80	13,119,680.90	160,705,208.10
7222	ミッシヨ			241,065.50		92,249.50			499,143.00	75,616.00	224,945.40	453,180.90	513,180.90	2,099,970.80
7223	印刷役貨			29,597.50		990.00			91,590.00	68,957.00	1,330.00	28,580.00	35,175.00	256,219.50
7224	船賃			975,995.00		1,219,684.60		4,500.00	2,453,541.50	907,893.50	149,931.50	3,625,469.60	4,078,796.00	13,415,811.70
724	船賃			35,000.00				100,000.00		135,000.00	2,562,500.00	400,000.00	50,000.00	3,282,500.00
	合 計			12,912,193.00		20,019,776.10		95,295,749.10	29,420,220.00	8,286,247.50	11,326,057.20	29,739,461.30	29,556,979.50	236,556,703.70
75	補足収益	60,000.00												60,000.00
752	地方不動産賃貸													1,634.00
7581	無線電							1,634.00						53,108.00
7582	無線電							53,108.00						4,160,225.00
7589	無線電		4,160,223.00											
	合 計	60,000.00	4,160,223.00					54,742.00						4,274,905.00
76	補助金	17,998.00												17,998.00
	合 計	17,998.00												17,998.00
82	営業外臨時収支													
8296	両替差額収益	883.90	34.60			295.50		23,809.50	2,303.60	565.70		585.00	12.70	28,490.50
8297	その他の不動産収入							6,136,613.10						6,136,613.10
82991	その他の収入	61.00							36.10					97.10
82999	雑		4,246,258.00											4,246,258.00
	合 計	944.90	4,246,292.60			295.50		6,160,422.60	2,339.70	565.70		585.00	12.70	10,411,458.70
8399	前期収支	2,160.00				99,254.00		299,621.00	33,503.00	22,158.40	30,307.00	248,012.00	22,617.00	757,632.40
	合 計	2,160.00				99,254.00		299,621.00	33,503.00	22,158.40	30,307.00	248,012.00	22,617.00	757,632.40
	総 計	81,102.90	8,406,515.60	12,912,193.00		20,119,325.60		101,810,534.70	29,456,062.70	8,308,971.60	11,356,364.20	29,988,078.30	29,579,609.20	252,018,757.80

1988決算表

コード	種 目	本 社	支 社	n/m Arca Verde I	n/m Arca Verde III	n/m Brava	n/m Primos	n/m Santiago	n/m Porto Novo	n/m Furna	n/m Santa Luzia	n/m Barlavento	n/m Sotavento	合 計
72	売 補 助 収 上 補 助 助 益 の 他 の 金 業 外 臨 時 支 前 期 収 支													236,556,703.70
75														4,274,965.00
76														17,998.00
78														10,411,458.70
82														
83														757,632.40
	総 計													252,018,757.80

JICA