

5-3 EEPIS 物品リスト

EEPIS : - Equipment
- Tools
- Component

CATALOG

Mei 1989

Electronic Engineering Polytechnic institute in Surabaya

G-1 ELECTRIC LABORATORY

ITEM NO	DESCRIPTION	SERIAL NO.
1.	DC Power Supply	18V - 4.5 A 47031934
1.	DC Power Supply	18V - 4.5 A 47031930
1.	DC Power Supply	18V - 4.5 A 47031928
1.	DC Power Supply	18V - 4.5 A 47031932
1.	DC Power Supply	18V - 4.5 A 47031929
1.	DC Power Supply	18V - 4.5 A 47031935
1.	DC Power Supply	18V - 4.5 A 47031933
1.	DC Power Supply	18V - 4.5 A 47031942
1.	DC Power Supply	18V - 4.5 A 47031944
1.	DC Power Supply	18V - 4.5 A 47031931
1.	DC Power Supply	18V - 4.5 A 47031945
1.	DC Power Supply	18V - 4.5 A 47031943
2.	Tester	3007 5J8252
2.	Tester	3007 5J5228
2.	Tester	3007 5J8262
2.	Tester	3007 5J8690
2.	Tester	3007 5J5236
2.	Tester	3007 5J8249
2.	Tester	3007 5J8245
2.	Tester	3007 5J6460
2.	Tester	3007 5J6540
2.	Tester	3007 5J5795
2.	Tester	3007 5J5796
2.	Tester	3007 5J6508
3.	Function Generator	VP-7422A 790002E122
3.	Function Generator	VP-7422A 790010E122
3.	Function Generator	VP-7422A 790003E122
3.	Function Generator	VP-7422A 790019E122
3.	Function Generator	VP-7422A 790012E122
3.	Function Generator	VP-7422A 790001E122
3.	Function Generator	VP-7422A 790005E122
3.	Function Generator	VP-7422A 790011E122
3.	Function Generator	VP-7422A 790007E122
3.	Function Generator	VP-7422A 790004E122
3.	Function Generator	VP-7422A 790008E122
3.	Function Generator	VP-7422A 790006E122
4-1.	AC Ammeter	0.5 200mA 67AE5992
4-1.	AC Ammeter	0.5 200mA 67AE5979
4-1.	AC Ammeter	0.5 200mA 67AE5987
4-1.	AC Ammeter	0.5 200mA 67AE5958
4-1.	AC Ammeter	0.5 200mA 67AE5989
4-1.	AC Ammeter	0.5 200mA 67AE5968
4-1.	AC Ammeter	0.5 200mA 67AE5977
4-1.	AC Ammeter	0.5 200mA 67AE5975
4-1.	AC Ammeter	0.5 200mA 67AE5976

G-1 ELECTRIC LABORATORY

ITEM NO	DESCRIPTION	SERIAL NO.	
4-1.	AC Ammeter	0.5 200mA	67AE5987
4-1.	AC Ammeter	0.5 200mA	67AE6086
4-1.	AC Ammeter	0.5 200mA	67AE5952
4-2.	AC Ammeter	0.5 5A	67AE5876
4-2.	AC Ammeter	0.5 5A	67AE5905
4-2.	AC Ammeter	0.5 5A	67AE5894
4-2.	AC Ammeter	0.5 5A	67AE5950
4-2.	AC Ammeter	0.5 5A	67AE5857
4-2.	AC Ammeter	0.5 5A	67AE5901
4-2.	AC Ammeter	0.5 5A	67AE5962
4-2.	AC Ammeter	0.5 5A	67AE5899
4-2.	AC Ammeter	0.5 5A	67AE6003
4-2.	AC Ammeter	0.5 5A	67AE5969
4-2.	AC Ammeter	0.5 5A	67AE5866
4-2.	AC Ammeter	0.5 5A	67AE5762
5-1.	DC Voltmeter	0.5 10V	77AA004130
5-1.	DC Voltmeter	0.5 10V	77A3563
5-1.	DC Voltmeter	0.5 10V	77AA004074
5-1.	DC Voltmeter	0.5 10V	77A3004128
5-1.	DC Voltmeter	0.5 10V	77A3562
5-1.	DC Voltmeter	0.5 10V	77A3565
5-2.	DC Voltmeter	0.5 100V	77AA3220
5-2.	DC Voltmeter	0.5 100V	77AA004424
5-2.	DC Voltmeter	0.5 100V	77AA2759
5-2.	DC Voltmeter	0.5 100V	77AA004423
5-2.	DC Voltmeter	0.5 100V	77AA004378
5-2.	DC Voltmeter	0.5 100V	77AA3223
6-1.	DC Ammeter	0.5 300uA	77AA004466
6-1.	DC Ammeter	0.5 300uA	77AA4465
6-1.	DC Ammeter	0.5 300uA	77AA3099
6-1.	DC Ammeter	0.5 300uA	77AA004464
6-1.	DC Ammeter	0.5 300uA	77AA004463
6-1.	DC Ammeter	0.5 300uA	77AA2760
6-2.	DC Ammeter	0.5 3mA	77AA004459
6-2.	DC Ammeter	0.5 3mA	77AA004454
6-2.	DC Ammeter	0.5 3mA	77AA004427
6-2.	DC Ammeter	0.5 3mA	77AA004463
6-2.	DC Ammeter	0.5 3mA	77AA004465
6-2.	DC Ammeter	0.5 3mA	77AA004468
6-3.	DC Ammeter	0.5 30mA	77AA004416
6-3.	DC Ammeter	0.5 30mA	77AA004418
6-3.	DC Ammeter	0.5 30mA	77AA004435

G-1 ELECTRIC LABORATORY

ITEM NO	DESCRIPTION	SERIAL NO.	
6-3.	DC Ammeter	0.5 30mA	77AA004317
6-3.	DC Ammeter	0.5 30mA	77AA004314
6-3.	DC Ammeter	0.5 30mA	77AA004322
6-4.	DC Ammeter	0.5 300mA	77AA004441
6-4.	DC Ammeter	0.5 300mA	77AA004434
6-4.	DC Ammeter	0.5 300mA	77AA004312
6-4.	DC Ammeter	0.5 300mA	77AA004431
6-4.	DC Ammeter	0.5 300mA	77AA004430
6-4.	DC Ammeter	0.5 300mA	77AA004414
6-5.	DC Ammeter	0.5 3A	77AA3116
6-5.	DC Ammeter	0.5 3A	77AA004161
6-5.	DC Ammeter	0.5 3A	77AA3555
6-5.	DC Ammeter	0.5 3A	77AA004346
6-5.	DC Ammeter	0.5 3A	77AA00412
6-5.	DC Ammeter	0.5 3A	77AA3012
6-5.	DC Ammeter	0.5 3A	77AA3623
6-5.	DC Ammeter	0.5 3A	77AA3115
6-5.	DC Ammeter	0.5 3A	77AA004146
6-5.	DC Ammeter	0.5 3A	77AA004160
6-5.	DC Ammeter	0.5 3A	77AA3556
6-5.	DC Ammeter	0.5 3A	77AA004372
7-1.	AC Voltmeter	0.5 30V	67AE5871
7-1.	AC Voltmeter	0.5 30V	67AE6032
7-1.	AC Voltmeter	0.5 30V	67AE5865
7-1.	AC Voltmeter	0.5 30V	67AE5798
7-1.	AC Voltmeter	0.5 30V	67AE5834
7-1.	AC Voltmeter	0.5 30V	67AE5843
7-1.	AC Voltmeter	0.5 30V	67AE5999
7-1.	AC Voltmeter	0.5 30V	67AE6013
7-1.	AC Voltmeter	0.5 30V	67AE6019
7-1.	AC Voltmeter	0.5 30V	67AE5596
7-1.	AC Voltmeter	0.5 30V	67AE6005
7-1.	AC Voltmeter	0.5 30V	67AE5808
7-2.	AC Voltmeter	0.5 150V	67AE5869
7-2.	AC Voltmeter	0.5 150V	67AE5626
7-2.	AC Voltmeter	0.5 150V	67AE5483
7-2.	AC Voltmeter	0.5 150V	67AE5860
7-2.	AC Voltmeter	0.5 150V	67AE5533
7-2.	AC Voltmeter	0.5 150V	67AE5759
7-2.	AC Voltmeter	0.5 150V	67AE5476
7-2.	AC Voltmeter	0.5 150V	67AE5495
7-2.	AC Voltmeter	0.5 150V	67AE5875
7-2.	AC Voltmeter	0.5 150V	67AE5891
7-2.	AC Voltmeter	0.5 150V	67AE5524
7-2.	AC Voltmeter	0.5 150V	67AE5789

G-1 ELECTRIC LABORATORY

ITEM NO	DESCRIPTION	SERIAL NO.	
7-3.	AC Voltmeter	0.5 300V	67AE5720
7-3.	AC Voltmeter	0.5 300V	67AE5728
7-3.	AC Voltmeter	0.5 300V	67AE5750
7-3.	AC Voltmeter	0.5 300V	67AE5715
7-3.	AC Voltmeter	0.5 300V	67AE5745
7-3.	AC Voltmeter	0.5 300V	67AE5694
7-3.	AC Voltmeter	0.5 300V	67AE5742
7-3.	AC Voltmeter	0.5 300V	67AE5699
7-3.	AC Voltmeter	0.5 300V	67AE5724
7-3.	AC Voltmeter	0.5 300V	67AE5737
7-3.	AC Voltmeter	0.5 300V	67AE5803
7-3.	AC Voltmeter	0.5 300V	67AE5705
7-3.	AC Voltmeter	0.5 300V	67AE5720
7-3.	AC Voltmeter	0.5 300V	67AE5728
7-3.	AC Voltmeter	0.5 300V	67AE5750
7-3.	AC Voltmeter	0.5 300V	67AE5715
7-3.	AC Voltmeter	0.5 300V	67AE5745
7-3.	AC Voltmeter	0.5 300V	67AE5694
7-3.	AC Voltmeter	0.5 300V	67AE5742
7-3.	AC Voltmeter	0.5 300V	67AE5699
7-3.	AC Voltmeter	0.5 300V	67AE5724
7-3.	AC Voltmeter	0.5 300V	67AE5737
7-3.	AC Voltmeter	0.5 300V	67AE5803
7-3.	AC Voltmeter	0.5 300V	67AE5705
8.	Slidak	S-260-5	TY S-260-5
8.	Slidak	S-260-5	TY S-260-5
8.	Slidak	S-260-5	TY S-260-5
8.	Slidak	S-260-5	TY S-260-5
8.	Slidak	S-260-5	TY S-260-5
8.	Slidak	S-260-5	TY S-260-5
8.	Slidak	S-260-5	TY S-260-5
8.	Slidak	S-260-5	TY S-260-5
8.	Slidak	S-260-5	TY S-260-5
8.	Slidak	S-260-5	TY S-260-5
8.	Slidak	S-260-5	TY S-260-5
8.	Slidak	S-260-5	TY S-260-5
8.	Slidak	S-260-5	TY S-260-5
8.	Slidak	S-260-5	TY S-260-5
8.	Slidak	S-260-5	TY S-260-5
8.	Slidak	S-260-5	TY S-260-5
9.	L.C.R Meter	AG-4303	738104
9.	L.C.R Meter	AG-4303	738102
9.	L.C.R Meter	AG-4303	738108
9.	L.C.R Meter	AG-4303	738107
9.	L.C.R Meter	AG-4303	738105
9.	L.C.R Meter	AG-4303	738110
9.	L.C.R Meter	AG-4303	738112
9.	L.C.R Meter	AG-4303	738103
9.	L.C.R Meter	AG-4303	738111
9.	L.C.R Meter	AG-4303	738109

G-1 ELECTRIC LABORATORY

ITEM NO	DESCRIPTION	SERIAL NO.	
9.	L.C.R Meter	AG-4303	73738101
9.	L.C.R Meter	AG-4303	73738106
10.	Digital Multimeter	VP-2501A	790040E122
10.	Digital Multimeter	VP-2501A	790048E122
10.	Digital Multimeter	VP-2501A	790046E122
10.	Digital Multimeter	VP-2501A	790039E122
10.	Digital Multimeter	VP-2501A	790047E122
10.	Digital Multimeter	VP-2501A	790037E122
10.	Digital Multimeter	VP-2501A	790036E122
10.	Digital Multimeter	VP-2501A	790049E122
10.	Digital Multimeter	VP-2501A	790025E122
10.	Digital Multimeter	VP-2501A	790090E122
10.	Digital Multimeter	VP-2501A	790038E122
10.	Digital Multimeter	VP-2501A	790053E122
11.	Luxmeter	3281	67BH0733
11.	Luxmeter	3281	67BH0729
11.	Luxmeter	3281	67BH0726
11.	Luxmeter	3281	67BH0718
11.	Luxmeter	3281	67BH0715
11.	Luxmeter	3281	67BH0732
11.	Luxmeter	3281	67BH0737
11.	Luxmeter	3281	67BH0736
11.	Luxmeter	3281	67BH0731
11.	Luxmeter	3281	67BH0735
11.	Luxmeter	3281	67BH0738
11.	Luxmeter	3281	67BH0717
12.	Wheatstone Bridge	WP-6C	73738005
12.	Wheatstone Bridge	WP-6C	73738011
12.	Wheatstone Bridge	WP-6C	73738006
12.	Wheatstone Bridge	WP-6C	73738004
12.	Wheatstone Bridge	WP-6C	73738008
12.	Wheatstone Bridge	WP-6C	73738007
12.	Wheatstone Bridge	WP-6C	73738009
12.	Wheatstone Bridge	WP-6C	73738012
12.	Wheatstone Bridge	WP-6C	73738001
12.	Wheatstone Bridge	WP-6C	73738002
12.	Wheatstone Bridge	WP-6C	73738003
12.	Wheatstone Bridge	WP-6C	73738010
13.	Galvanometer	G-41	5959-3
13.	Galvanometer	G-41	5959-20
13.	Galvanometer	G-41	5959-1
13.	Galvanometer	G-41	5959-5
13.	Galvanometer	G-41	5959-7
13.	Galvanometer	G-41	5959-13
13.	Galvanometer	G-41	5959-12

G-1 ELECTRIC LABORATORY

ITEM NO	DESCRIPTION	SERIAL NO.
13.	Galvanometer	G-41 5959-9
13.	Galvanometer	G-41 5959-10
13.	Galvanometer	G-41 5959-8
13.	Galvanometer	G-41 5959-2
13.	Galvanometer	G-41 5959-11
14.	Digital Thermo Meter	PD-500 1906015
14.	Digital Thermo Meter	PD-500 1906001
14.	Digital Thermo Meter	PD-500 1906016
14.	Digital Thermo Meter	PD-500 1906030
14.	Digital Thermo Meter	PD-500 1906014
14.	Digital Thermo Meter	PD-500 1906043
14.	Digital Thermo Meter	PD-500 1906042
14.	Digital Thermo Meter	PD-500 1906011
14.	Digital Thermo Meter	PD-500 1906004
14.	Digital Thermo Meter	PD-500 1906026
14.	Digital Thermo Meter	PD-500 1906028
14.	Digital Thermo Meter	PD-500 1906016
15.	Rotary Vacuum Pump	S50-2 78043
16.	OHP	1 SET 51418
17.	Screen for OHP	1 SET 51418
18.	Clamp Meter	3100 7H1765
18.	Clamp Meter	3100 7H1964
19.	Electronic Voltmeter	VP-960A 7900020122
19.	Electronic Voltmeter	VP-960A 7900010122
19.	Electronic Voltmeter	VP-960A 7900090122
19.	Electronic Voltmeter	VP-960A 7900100122
19.	Electronic Voltmeter	VP-960A 7900070122
19.	Electronic Voltmeter	VP-960A 7900120122
19.	Electronic Voltmeter	VP-960A 7900040122
19.	Electronic Voltmeter	VP-960A 7900050122
19.	Electronic Voltmeter	VP-960A 7900030122
19.	Electronic Voltmeter	VP-960A 7900060122
19.	Electronic Voltmeter	VP-960A 7900080122
19.	Electronic Voltmeter	VP-960A 7900110122
20.	DC Potention Meter	2723 27EF0009
	Standart Cell	27ER0092
	Electronic Galvanometer	27FC0055
	DC Precision Current Supply	57GP0050
21.	Universal Bridge	2768 27FC0048
21.	Universal Bridge	2768 27FC0052

G-1 ELECTRIC LABORATORY

ITEM NO	DESCRIPTION	SERIAL NO.
21.	Universal Bridge	2768 27FC0051
21.	Universal Bridge	2768 27FC0056
21.	Universal Bridge	2768 27FC0058
21.	Universal Bridge	2768 27FC0053
21.	Universal Bridge	2768 27FC0055
21.	Universal Bridge	2768 27FC0047
21.	Universal Bridge	2768 27FC0054
21.	Universal Bridge	2768 27FC0049
21.	Universal Bridge	2768 27FC0050
21.	Universal Bridge	2768 27FC0057
22.	Gauss Meter	3251 27KM0256
22.	Gauss Meter	3251 27KM0251
22.	Gauss Meter	3251 27KM0247
22.	Gauss Meter	3251 27KM0246
22.	Gauss Meter	3251 27KM0253
22.	Gauss Meter	3251 27KM0257
22.	Gauss Meter	3251 27KM0250
22.	Gauss Meter	3251 27KM0254
22.	Gauss Meter	3251 27KM0255
22.	Gauss Meter	3251 27KM0249
22.	Gauss Meter	3251 27KM0248
22.	Gauss Meter	3251 27KM0252
23.	Other Equipment & Tool	
34.	Fixed Self - INDUCTOR	1 MH MH-0495
34.	Fixed Self - INDUCTOR	1 MH MH-0434
34.	Fixed Self - INDUCTOR	1 MH MH-0374
35.	Reference Magnit 1000 Gauss	27KP0076
35.	Reference Magnit 1000 Gauss	27KP0069
35.	Reference Magnit 1000 Gauss	27KP0072
35.	Reference Magnit 1000 Gauss	27KP0080
35.	Reference Magnit 1000 Gauss	27KP0078
35.	Reference Magnit 1000 Gauss	27KP0075
35.	Reference Magnit 1000 Gauss	27KP0077
35.	Reference Magnit 1000 Gauss	27KP0070
35.	Reference Magnit 1000 Gauss	27KP0073
35.	Reference Magnit 1000 Gauss	27KP0071
35.	Reference Magnit 1000 Gauss	27KP0079
35.	Reference Magnit 1000 Gauss	27KP0074
36.	Oscilloscope	7800770122
36.	Oscilloscope	7800380122
36.	Oscilloscope	7800300122
36.	Oscilloscope	7800020122
36.	Oscilloscope	7800260122

G-1 ELECTRIC LABORATORY

ITEM NO	DESCRIPTION	SERIAL NO.
36.	Oscilloscope	780093D122
36.	Oscilloscope	780049D122
36.	Oscilloscope	780021D122
36.	Oscilloscope	780012D122
36.	Oscilloscope	780050D122
36.	Oscilloscope	780043D122
36.	Oscilloscope	780048D122
37.	DC Ammeter	0.5 30uA 68BA0728
37.	DC Ammeter	0.5 30uA 68BA0736
37.	DC Ammeter	0.5 30uA 68BA0737
37.	DC Ammeter	0.5 30uA 68BA0743
37.	DC Ammeter	0.5 30uA 68BA0748
37.	DC Ammeter	0.5 30uA 68BA0749
37.	DC Ammeter	0.5 30uA 68BA0738
37.	DC Ammeter	0.5 30uA 68BA0750
37.	DC Ammeter	0.5 30uA 68BA0747
37.	DC Ammeter	0.5 30uA 68BA0723
37.	DC Ammeter	0.5 30uA 68BA0731
37.	DC Ammeter	0.5 30uA 68BA0733
38.	Single Phase Wattmeter	204103 67AN1387
38.	Single Phase Wattmeter	204103 67AN1399
38.	Single Phase Wattmeter	204103 67AN1371
38.	Single Phase Wattmeter	204103 67AN1357
38.	Single Phase Wattmeter	204103 67AN1388
38.	Single Phase Wattmeter	204103 67AN1389
39.	Plat Probe	325201 27KN0442
39.	Plat Probe	325201 27KN0441
39.	Plat Probe	325201 27KN0433
39.	Plat Probe	325201 27KN0440
39.	Plat Probe	325201 27KN0434
39.	Plat Probe	325201 27KN0443
39.	Plat Probe	325201 27KN0436
39.	Plat Probe	325201 27KN0435
39.	Plat Probe	325201 27KN0437
39.	Plat Probe	325201 27KN0444
39.	Plat Probe	325201 27KN0438
39.	Plat Probe	325201 27KN0439
39.	Plat Probe	325202 27KN1368
39.	Plat Probe	325202 27KN1374
39.	Plat Probe	325202 27KN1370
39.	Plat Probe	325202 27KN1367
39.	Plat Probe	325202 27KN1375
39.	Plat Probe	325202 27KN1377
39.	Plat Probe	325202 27KN1372

G-1 ELECTRIC LABORATORY

ITEM NO	DESCRIPTION	SERIAL NO.
39.	Plat Probe	325202 27KN1369
39.	Plat Probe	325202 27KN1371
39.	Plat Probe	325202 27KN1373
39.	Plat Probe	325202 27KN1378
39.	Plat Probe	325202 27KN1376
40.	Axial Probe	325203 27KN2143
40.	Axial Probe	325203 27KN2139
40.	Axial Probe	325203 27KN2136
40.	Axial Probe	325203 27KN2140
40.	Axial Probe	325203 27KN2134
40.	Axial Probe	325203 27KN2133
40.	Axial Probe	325203 27KN2141
40.	Axial Probe	325203 27KN2142
40.	Axial Probe	325203 27KN2138
40.	Axial Probe	325203 27KN2144
40.	Axial Probe	325203 27KN2137
40.	Axial Probe	325203 27KN2135
41.	Adapter	MH-0442
41.	Adapter	MH-0445
41.	Adapter	MH-0444
41.	Adapter	MH-0443
41.	Adapter	MH-0446
41.	Adapter	MH-0447
42*	Resistor	2791-10 58FR6151
42*	Resistor	2791-10 58FR6152
42*	Resistor	2791-10 58FR6153
42*	Resistor	2791-10 58FR6154
42*	Resistor	2791-10 58FR6155
43*	Personal Computer	IBM-AT
44.	Rotary Oil Vacuum Pump	780843

G-2-3 ELECTRONIC LABORATORY

ITEM NO	DESCRIPTION	SERIAL NO.
1-1.	DC Power Supply	18V - 1A 47261393
1-1.	DC Power Supply	18V - 1A 47261394
1-1.	DC Power Supply	18V - 1A 47261395
1-1.	DC Power Supply	18V - 1A 47261396
1-1.	DC Power Supply	18V - 1A 47261397
1-1.	DC Power Supply	18V - 1A 47261398
1-1.	DC Power Supply	18V - 1A 47261399
1-1.	DC Power Supply	18V - 1A 47261400
1-1.	DC Power Supply	18V - 1A 47261401
1-1.	DC Power Supply	18V - 1A 47261402
1-1.	DC Power Supply	18V - 1A 47261403
1-1.	DC Power Supply	18V - 1A 47261404
1-1.	DC Power Supply	18V - 1A 47261405
1-1.	DC Power Supply	18V - 1A 47261406
1-1.	DC Power Supply	18V - 1A 47261407
1-1.	DC Power Supply	18V - 1A 47261408
1-1.	DC Power Supply	18V - 1A 47261409
1-1.	DC Power Supply	18V - 1A 47261410
1-1.	DC Power Supply	18V - 1A 47261411
1-1.	DC Power Supply	18V - 1A 47261412
1-1.	DC Power Supply	18V - 1A 47261413
1-1.	DC Power Supply	18V - 1A 47261414
1-1.	DC Power Supply	18V - 1A 47261415
1-1.	DC Power Supply	18V - 1A 47261416
1-2.	DC power Supply	350V - 0.2A 4704479
1-2.	DC power Supply	350V - 0.2A 4704490
2.	Tester	3007 510057
2.	Tester	3007 510086
2.	Tester	3007 510176
2.	Tester	3007 510332
2.	Tester	3007 510358
2.	Tester	3007 510367
2.	Tester	3007 510385
2.	Tester	3007 510781
2.	Tester	3007 510785
2.	Tester	3007 510779
2.	Tester	3007 510931
2.	Tester	3007 510986
2.	Tester	3007 511101
2.	Tester	3007 511551
2.	Tester	3007 513986
2.	Tester	3007 515341
2.	Tester	3007 515366
2.	Tester	3007 515613
2.	Tester	3007 515632
2.	Tester	3007 515791

G-2-3 ELECTRONIC LABORATORY

ITEM NO	DESCRIPTION	SERIAL NO.
2.	Tester	3007 5I6535
2.	Tester	3007 5I6562
2.	Tester	3007 5I6722
2.	Tester	3007 5I6779
3.	Oscilloscope	VP-5231A 780005D112
3.	Oscilloscope	VP-5231A 780010D112
3.	Oscilloscope	VP-5231A 780011D112
3.	Oscilloscope	VP-5231A 780017D112
3.	Oscilloscope	VP-5231A 780018D112
3.	Oscilloscope	VP-5231A 780019D112
3.	Oscilloscope	VP-5231A 780023D112
3.	Oscilloscope	VP-5231A 780027D112
3.	Oscilloscope	VP-5231A 780032D112
3.	Oscilloscope	VP-5231A 780033D112
3.	Oscilloscope	VP-5231A 780039D112
3.	Oscilloscope	VP-5231A 780055D112
3.	Oscilloscope	VP-5231A 780056D112
3.	Oscilloscope	VP-5231A 780059D112
3.	Oscilloscope	VP-5231A 780073D112
3.	Oscilloscope	VP-5231A 780081D112
3.	Oscilloscope	VP-5231A 780082D112
3.	Oscilloscope	VP-5231A 780087D112
3.	Oscilloscope	VP-5231A 780088D112
3.	Oscilloscope	VP-5231A 780090D112
3.	Oscilloscope	VP-5231A 780099D112
3.	Oscilloscope	VP-5231A 780100D112
3.	Oscilloscope	VP-5231A 780153D112
3.	Oscilloscope	VP-5231A 780169D112
4.	Function Generator	VP-7402A 790001E122
4.	Function Generator	VP-7402A 790002E122
4.	Function Generator	VP-7402A 790003E122
4.	Function Generator	VP-7402A 790004E122
4.	Function Generator	VP-7402A 790005E122
4.	Function Generator	VP-7402A 790008E122
4.	Function Generator	VP-7402A 790009E122
4.	Function Generator	VP-7402A 790011E122
4.	Function Generator	VP-7402A 790012E122
4.	Function Generator	VP-7402A 790013E122
4.	Function Generator	VP-7402A 790014E122
4.	Function Generator	VP-7402A 790015E122
4.	Function Generator	VP-7402A 790016E122
4.	Function Generator	VP-7402A 790017E122
4.	Function Generator	VP-7402A 790018E122
4.	Function Generator	VP-7402A 790019E122
4.	Function Generator	VP-7402A 790020E122
4.	Function Generator	VP-7402A 790022E122

6-2-3 ELECTRONIC LABORATORY

ITEM NO		DESCRIPTION	SERIAL NO.
4.	Function Generator	VP-7402A	790023E122
4.	Function Generator	VP-7402A	790026E122
4.	Function Generator	VP-7402A	790027E122
4.	Function Generator	VP-7402A	790028E122
4.	Function Generator	VP-7402A	790029E122
4.	Function Generator	VP-7402A	790030E122
5.	Electronic Voltmeter	VP-916A	790004D122
5.	Electronic Voltmeter	VP-916A	790007D122
5.	Electronic Voltmeter	VP-916A	790008D122
5.	Electronic Voltmeter	VP-916A	790009D122
5.	Electronic Voltmeter	VP-916A	790011D122
5.	Electronic Voltmeter	VP-916A	790012D122
5.	Electronic Voltmeter	VP-916A	790014D122
5.	Electronic Voltmeter	VP-916A	790015D122
5.	Electronic Voltmeter	VP-916A	790016D122
5.	Electronic Voltmeter	VP-916A	790018D122
5.	Electronic Voltmeter	VP-916A	790020D122
5.	Electronic Voltmeter	VP-916A	790021D122
5.	Electronic Voltmeter	VP-916A	790022D122
5.	Electronic Voltmeter	VP-916A	790023D122
5.	Electronic Voltmeter	VP-916A	790024D122
5.	Electronic Voltmeter	VP-916A	790025D122
5.	Electronic Voltmeter	VP-916A	790026D122
5.	Electronic Voltmeter	VP-916A	790027D122
5.	Electronic Voltmeter	VP-916A	790028D122
5.	Electronic Voltmeter	VP-916A	790030D122
5.	Electronic Voltmeter	VP-916A	790034D122
5.	Electronic Voltmeter	VP-916A	790036D122
5.	Electronic Voltmeter	VP-916A	790037D122
5.	Electronic Voltmeter	VP-916A	790039D122
6.	Frequency Counter	LDC-824	790219
6.	Frequency Counter	LDC-824	790223
6.	Frequency Counter	LDC-824	790243
6.	Frequency Counter	LDC-824	790245
6.	Frequency Counter	LDC-824	790246
6.	Frequency Counter	LDC-824	790251
6.	Frequency Counter	LDC-824	790254
6.	Frequency Counter	LDC-824	790257
6.	Frequency Counter	LDC-824	790258
6.	Frequency Counter	LDC-824	790259
6.	Frequency Counter	LDC-824	790262
6.	Frequency Counter	LDC-824	790263
6.	Frequency Counter	LDC-824	790265
6.	Frequency Counter	LDC-824	790266
6.	Frequency Counter	LDC-824	790272
6.	Frequency Counter	LDC-824	790275

G-2-3 ELECTRONIC LABORATORY

ITEM NO	DESCRIPTION	SERIAL NO.
6.	Frequency Counter	LDC-824 790278
6.	Frequency Counter	LDC-824 790279
6.	Frequency Counter	LDC-824 790280
6.	Frequency Counter	LDC-824 790282
6.	Frequency Counter	LDC-824 790285
6.	Frequency Counter	LDC-824 790287
6.	Frequency Counter	LDC-824 790288
6.	Frequency Counter	LDC-824 790289
7.	CR Oscillator	VP-7214A 790126A122
7.	CR Oscillator	VP-7214A 790127A122
7.	CR Oscillator	VP-7214A 790128A122
7.	CR Oscillator	VP-7214A 790129A122
7.	CR Oscillator	VP-7214A 790131A122
7.	CR Oscillator	VP-7214A 790132A122
8.	X-Y Recorder	VP-6424A 790002B122
8.	X-Y Recorder	VP-6424A 790003B122
8.	X-Y Recorder	VP-6424A 790004B122
8.	X-Y Recorder	VP-6424A 790006B122
8.	X-Y Recorder	VP-6424A 790008B122
8.	X-Y Recorder	VP-6424A 790009B122
9.	Semi-Conductor Circuit Training Device	ITF-05 9167860
9.	Semi-Conductor Circuit Training Device	ITF-05 9167861
9.	Semi-Conductor Circuit Training Device	ITF-05 9167862
9.	Semi-Conductor Circuit Training Device	ITF-05 9167863
9.	Semi-Conductor Circuit Training Device	ITF-05 9167864
9.	Semi-Conductor Circuit Training Device	ITF-05 9167865
9.	Semi-Conductor Circuit Training Device	ITF-05 9167866
9.	Semi-Conductor Circuit Training Device	ITF-05 9167867
9.	Semi-Conductor Circuit Training Device	ITF-05 9167868
9.	Semi-Conductor Circuit Training Device	ITF-05 9167869
9.	Semi-Conductor Circuit Training Device	ITF-05 9167870
9.	Semi-Conductor Circuit Training Device	ITF-05 9167871

G-2-3 ELECTRONIC LABORATORY

ITEM NO.	DESCRIPTION	SERIAL NO.	
10.	Electronics Circuit		
	Training Device	ITF-01	
	OSC/Modulator Trainer	ITF-011	9147490
	AM-Radio Receiver Trainer	ITF-012	9167462
	LF-Amplifier Trainer	ITF-013	9147507
10.	Rectifier Circuit Trainer	ITF-014	9167510
	Electronics Circuit		
	Training Device	ITF-01	
	OSC/Modulator Trainer	ITF-011	9147483
	AM-Radio Receiver Trainer	ITF-012	9167452
10.	LF-Amplifier Trainer	ITF-013	9127496
	Rectifier Circuit Trainer	ITF-014	9127493
	Electronics Circuit		
	Training Device	ITF-01	
	OSC/Modulator Trainer	ITF-011	9147488
10.	AM-Radio Receiver Trainer	ITF-012	9147457
	LF-Amplifier Trainer	ITF-013	9147501
	Rectifier Circuit Trainer	ITF-014	9147505
	Electronics Circuit		
	Training Device	ITF-01	
10.	OSC/Modulator Trainer	ITF-011	9147484
	AM-Radio Receiver Trainer	ITF-012	9147453
	LF-Amplifier Trainer	ITF-013	9127497
	Rectifier Circuit Trainer	ITF-014	9147500
	Electronics Circuit		
10.	Training Device	ITF-01	
	OSC/Modulator Trainer	ITF-011	9147458
	AM-Radio Receiver Trainer	ITF-012	9147454
	LF-Amplifier Trainer	ITF-013	9147498
	Rectifier Circuit Trainer	ITF-014	9147502
Electronics Circuit			
10.	Training Device	ITF-01	
	OSC/Modulator Trainer	ITF-011	9167494
	AM-Radio Receiver Trainer	ITF-012	9147458
	LF-Amplifier Trainer	ITF-013	9147506
	Rectifier Circuit Trainer	ITF-014	9167508
Electronics Circuit			
10.	Training Device	ITF-01	
	OSC/Modulator Trainer	ITF-011	9147492
	AM-Radio Receiver Trainer	ITF-012	9147459
	LF-Amplifier Trainer	ITF-013	9147502
	Rectifier Circuit Trainer	ITF-014	9167509

G-2-3 ELECTRONIC LABORATORY

ITEM NO	DESCRIPTION	SERIAL NO.
10.	Electronics Circuit Training Device	ITF-01
	OSC/Modulator Trainer	ITF-011 9147487
	AM-Radio Receiver Trainer	ITF-012 9147456
	LF-Amplifier Trainer	ITF-013 9147500
	Rectifier Circuit Trainer	ITF-014 9147504
10.	Electronics Circuit Training Device	ITF-01
	OSC/Modulator Trainer	ITF-011 9147486
	AM-Radio Receiver Trainer	ITF-012 9147455
	LF-Amplifier Trainer	ITF-013 9147499
	Rectifier Circuit Trainer	ITF-014 9147503
10.	Electronics Circuit Training Device	ITF-01
	OSC/Modulator Trainer	ITF-011 9147489
	AM-Radio Receiver Trainer	ITF-012 9147460
	LF-Amplifier Trainer	ITF-013 9147503
	Rectifier Circuit Trainer	ITF-014 9147506
10.	Electronics Circuit Training Device	ITF-01
	OSC/Modulator Trainer	ITF-011 9167493
	AM-Radio Receiver Trainer	ITF-012 9147461
	LF-Amplifier Trainer	ITF-013 9147504
	Rectifier Circuit Trainer	ITF-014 9167511
10.	Electronics Circuit Training Device	ITF-01
	OSC/Modulator Trainer	ITF-011 9147491
	AM-Radio Receiver Trainer	ITF-012 9167463
	LF-Amplifier Trainer	ITF-013 9147505
	Rectifier Circuit Trainer	ITF-014 9167507
11.	Curve Tracer	TCT-2001c H6014068
11.	Curve Tracer	TCT-2001c H6014069
12.	Transistor Checker	LTC-906A 6030603
12.	Transistor Checker	LTC-906A 6030617
12.	Transistor Checker	LTC-906A 6030640
12.	Transistor Checker	LTC-906A 6030699
13.	Digital Storage Oscilloscope	VP-5730A 7800618128
13.	Digital Storage Oscilloscope	VP-5730A 7800748128

G-2-3 ELECTRONIC LABORATORY

ITEM NO	DESCRIPTION	SERIAL NO.
13.	Digital Storage Oscilloscope	VP-5730A 780075B128
13.	Digital Storage Oscilloscope	VP-5730A 780088B128
14-1.	IC Checker	DIC-10 73739001
14-2.	IC Tester	AC-1 709004
14-2.	IC Tester	AC-1 709006
14-3.	Linier IC Checker	SM-3006B H5106364
	Printer INTERFACE UNIT	SN-3006-09 H6111005
	EPSON SP-807	ESC/PTM 09-81 04002689
15.	Digital Multimeter	VP-2501 790001E122
15.	Digital Multimeter	VP-2501 790003E122
15.	Digital Multimeter	VP-2501 790004E122
15.	Digital Multimeter	VP-2501 790005E122
15.	Digital Multimeter	VP-2501 790006E122
15.	Digital Multimeter	VP-2501 790007E122
15.	Digital Multimeter	VP-2501 790008E122
15.	Digital Multimeter	VP-2501 790009E122
15.	Digital Multimeter	VP-2501 790010E122
15.	Digital Multimeter	VP-2501 790021E122
15.	Digital Multimeter	VP-2501 790041E122
15.	Digital Multimeter	VP-2501 790042E122
15.	Digital Multimeter	VP-2501 790043E122
15.	Digital Multimeter	VP-2501 790044E122
15.	Digital Multimeter	VP-2501 790045E122
15.	Digital Multimeter	VP-2501 790061E122
15.	Digital Multimeter	VP-2501 790062E122
15.	Digital Multimeter	VP-2501 790063E122
15.	Digital Multimeter	VP-2501 790064E122
15.	Digital Multimeter	VP-2501 790065E122
15.	Digital Multimeter	VP-2501 790081E122
15.	Digital Multimeter	VP-2501 790082E122
15.	Digital Multimeter	VP-2501 790083E122
15.	Digital Multimeter	VP-2501 790084E122
16.	Q Meter	MQ-1601 33010878
16.	Q Meter	MQ-1601 33010879
16.	Q Meter	MQ-1601 33010880
16.	Q Meter	MQ-1601 33010881
17.	OHP	HP-1450 51415
17.	OHP	HP-1450 51421
18.	Screen for OHP	
18.	Screen for OHP	

G-2-3. ELECTRONIC LABORATORY

ITEM NO	DESCRIPTION	SERIAL NO.
19.	TP Maker	45 657489
20.	Distortion Meter (Audio Analyzer)	VP-7721A 7900010125
20.	Distortion Meter (Audio Analyzer)	VP-7721A 7900020125
20.	Distortion Meter (Audio Analyzer)	VP-7721A 7900030125
20.	Distortion Meter (Audio Analyzer)	VP-7721A 7900040125
20.	Distortion Meter (Audio Analyzer)	VP-7721A 7900050125
20.	Distortion Meter (Audio Analyzer)	VP-7721A 7900060125
21.	Standart Signal Generator	VP-8191A 790176A122
21.	Standart Signal Generator	VP-8191A 790177A122
21.	Standart Signal Generator	VP-8191A 790178A122
21.	Standart Signal Generator	VP-8191A 790179A122
21.	Standart Signal Generator	VP-8191A 790180A122
21.	Standart Signal Generator	VP-8191A 790181A122
22.	FFT Analyzer	VS-3310A 710005A125
23.	PLOTTER	7475A 2641V21436
23.	PLOTTER	7475A 2641V21571
24.	RC OSCILLATOR	VP7201-A 7500070122
24.	RC OSCILLATOR	VP7201-A 7500120122
24.	RC OSCILLATOR	VP7201-A 7500130122
24.	RC OSCILLATOR	VP7201-A 7500140122
25-1.	DC Ammeter	30-3000 fA 6880703
25-1.	DC Ammeter	30-3000 fA 6880708
25-1.	DC Ammeter	30-3000 fA 6880709
25-2.	DC Ammeter	0.3-30mA 688A0715
25-2.	DC Ammeter	0.3-30mA 688A0716
25-2.	DC Ammeter	0.3-30mA 688A0717
25-2.	DC Ammeter	0.3-30mA 688A0718
25-2.	DC Ammeter	0.3-30mA 688A0719
25-2.	DC Ammeter	0.3-30mA 688A0720
25-2.	DC Ammeter	0.3-30mA 688A0721
25-2.	DC Ammeter	0.3-30mA 688A0722
25-2.	DC Ammeter	0.3-30mA 688A0724
25-2.	DC Ammeter	0.3-30mA 688A0725
25-2.	DC Ammeter	0.3-30mA 688A0726
25-2.	DC Ammeter	0.3-30mA 688A0727

G-2-3 ELECTRONIC LABORATORY

ITEM NO	DESCRIPTION	SERIAL NO.	
25-2.	DC Ammeter	0.3-30mA	68BA0729
25-2.	DC Ammeter	0.3-30mA	68BA0730
25-2.	DC Ammeter	0.3-30mA	68BA0732
25-2.	DC Ammeter	0.3-30mA	68BA0733
25-2.	DC Ammeter	0.3-30mA	68BA0734
25-2.	DC Ammeter	0.3-30mA	68BA0739
25-2.	DC Ammeter	0.3-30mA	68BA0740
25-2.	DC Ammeter	0.3-30mA	68BA0741
25-2.	DC Ammeter	0.3-30mA	68BA0742
25-2.	DC Ammeter	0.3-30mA	68BA0744
25-2.	DC Ammeter	0.3-30mA	68BA0745
25-2.	DC Ammeter	0.3-30mA	68BA0746
25-3.	DC Ammeter	10-1000mA	68BA0812
25-3.	DC Ammeter	10-1000mA	68BA0813
25-3.	DC Ammeter	10-1000mA	68BA0814
25-3.	DC Ammeter	10-1000mA	68BA0815
25-3.	DC Ammeter	10-1000mA	68BA0816
25-3.	DC Ammeter	10-1000mA	68BA0817
25-4.	DC Ammeter	0.3-30A	68BA0765
25-4.	DC Ammeter	0.3-30A	68BA0766
25-4.	DC Ammeter	0.3-30A	68BA0767
26-1.	DC Voltmeter	0.3-30 Volt	68BA0780
26-1.	DC Voltmeter	0.3-30 Volt	68BA0785
26-1.	DC Voltmeter	0.3-30 Volt	68BA0787
26-1.	DC Voltmeter	0.3-30 Volt	68BA0788
26-1.	DC Voltmeter	0.3-30 Volt	68BA0789
26-1.	DC Voltmeter	0.3-30 Volt	68BA0790
26-1.	DC Voltmeter	0.3-30 Volt	68BA0791
26-1.	DC Voltmeter	0.3-30 Volt	68BA0792
26-1.	DC Voltmeter	0.3-30 Volt	68BA0793
26-1.	DC Voltmeter	0.3-30 Volt	68BA0794
26-1.	DC Voltmeter	0.3-30 Volt	68BA0795
26-1.	DC Voltmeter	0.3-30 Volt	68BA0796
26-1.	DC Voltmeter	0.3-30 Volt	68BA0797
26-1.	DC Voltmeter	0.3-30 Volt	68BA0798
26-1.	DC Voltmeter	0.3-30 Volt	68BA0799
26-1.	DC Voltmeter	0.3-30 Volt	68BA0800
26-1.	DC Voltmeter	0.3-30 Volt	68BA0801
26-1.	DC Voltmeter	0.3-30 Volt	68BA0802
26-1.	DC Voltmeter	0.3-30 Volt	68BA0803
26-1.	DC Voltmeter	0.3-30 Volt	68BA0804
26-1.	DC Voltmeter	0.3-30 Volt	68BA0805
26-1.	DC Voltmeter	0.3-30 Volt	68BA0806
26-1.	DC Voltmeter	0.3-30 Volt	68BA0807
26-1.	DC Voltmeter	0.3-30 Volt	68BA0808

G-2-3 ELECTRONIC LABORATORY

ITEM NO	DESCRIPTION	SERIAL NO.	
26-2.	DC Voltmeter	3-30 Volt	68BA0809
26-2.	DC Voltmeter	3-30 Volt	68BA0810
26-2.	DC Voltmeter	3-30 Volt	68BA0811
27*	DC Power Supply	PAB350-0.2	480852
27*	DC Power Supply	PAB350-0.2	480853
28.	Other Equipment & Tool.		

G-4 DIGITAL ELECTRONIC LABORATORY

ITEM NO.	DESCRIPTION	SERIAL NO.
1.	AC POWER SUPPLY	PAB 18-1 47261417
1.	AC POWER SUPPLY	PAB 18-1 47261418
1.	AC POWER SUPPLY	PAB 18-1 47261419
1.	AC POWER SUPPLY	PAB 18-1 47261420
1.	AC POWER SUPPLY	PAB 18-1 47261421
1.	AC POWER SUPPLY	PAB 18-1 47261422
1.	AC POWER SUPPLY	PAB 18-1 47261423
1.	AC POWER SUPPLY	PAB 18-1 47261424
1.	AC POWER SUPPLY	PAB 18-1 47261425
1.	AC POWER SUPPLY	PAB 18-1 47261426
1.	AC POWER SUPPLY	PAB 18-1 47261427
1.	AC POWER SUPPLY	PAB 18-1 47261428
2.	OSCILLOSCOPE	VP-5231A 780004 D122
2.	OSCILLOSCOPE	VP-5231A 780006 D122
2.	OSCILLOSCOPE	VP-5231A 780020 D122
2.	OSCILLOSCOPE	VP-5231A 780020 D122
2.	OSCILLOSCOPE	VP-5231A 780025 D122
2.	OSCILLOSCOPE	VP-5231A 780029 D122
2.	OSCILLOSCOPE	VP-5231A 780037 D122
2.	OSCILLOSCOPE	VP-5231A 780047 D122
2.	OSCILLOSCOPE	VP-5231A 780060 D122
2.	OSCILLOSCOPE	VP-5231A 780065 D122
2.	OSCILLOSCOPE	VP-5231A 780060 D122
2.	OSCILLOSCOPE	VP-5231A 780074 D122
2.	OSCILLOSCOPE	VP-5231A 780084 D122
2.	OSCILLOSCOPE	VP-5231A 780085 D122
3.	TESTER	3007 5J 4997
3.	TESTER	3007 5J 6516
3.	TESTER	3007 5J 6523
3.	TESTER	3007 5J 6682
3.	TESTER	3007 5J 8241
3.	TESTER	3007 5J 8245
3.	TESTER	3007 5J 8251
3.	TESTER	3007 5I 5205
3.	TESTER	3007 5I 5227
3.	TESTER	3007 5I 5232
3.	TESTER	3007 5I 5350
3.	TESTER	3007 5I 6667
4.	FREQUENCY COUNTER	LDC-824 7090241
4.	FREQUENCY COUNTER	LDC-824 7090248
4.	FREQUENCY COUNTER	LDC-824 7090249
4.	FREQUENCY COUNTER	LDC-824 7090252
4.	FREQUENCY COUNTER	LDC-824 7090261
4.	FREQUENCY COUNTER	LDC-824 7090264
4.	FREQUENCY COUNTER	LDC-824 7090268

G-4 DIGITAL ELECTRONIC LABORATORY

ITEM NO.	DESCRIPTION	SERIAL NO.
4.	FREQUENCY COUNTER	LDC-824 7090270
4.	FREQUENCY COUNTER	LDC-824 7090274
4.	FREQUENCY COUNTER	LDC-824 7090276
4.	FREQUENCY COUNTER	LDC-824 7090277
4.	FREQUENCY COUNTER	LDC-824 7090290
5.	DIGITAL CIRCUIT TRAINER	DL-3D 73737501
5.	DIGITAL CIRCUIT TRAINER	DL-3D 73737502
5.	DIGITAL CIRCUIT TRAINER	DL-3D 73737503
5.	DIGITAL CIRCUIT TRAINER	DL-3D 73737504
5.	DIGITAL CIRCUIT TRAINER	DL-3D 73737505
5.	DIGITAL CIRCUIT TRAINER	DL-3D 73737506
6.	MICROPROCESSOR BOARD	C 800 Z 6506701 D
6.	MICROPROCESSOR BOARD	C 800 Z 6506702 D
6.	MICROPROCESSOR BOARD	C 800 Z 6506703 D
6.	MICROPROCESSOR BOARD	C 800 Z 6506704 D
6.	MICROPROCESSOR BOARD	C 800 Z 6506705 D
6.	MICROPROCESSOR BOARD	C 800 Z 6506706 D
6.	MICROPROCESSOR BOARD	C 800 Z 6506707 D
6.	MICROPROCESSOR BOARD	C 800 Z 6506708 D
6.	MICROPROCESSOR BOARD	C 800 Z 6506709 D
6.	MICROPROCESSOR BOARD	C 800 Z 6506710 D
6.	MICROPROCESSOR BOARD	C 800 Z 6506711 D
6.	MICROPROCESSOR BOARD	C 800 Z 6506712 D
7.	MICROPROCESSOR PRINTER	VP-135K 14004133
7.	MICROPROCESSOR PRINTER	VP-135K 14004134
7.	MICROPROCESSOR PRINTER	VP-135K 14004135
8.	MICROPROCESSOR PROGRAMER BOARD	CKT-1D 87051901
8.	MICROPROCESSOR PROGRAMER BOARD	CKT-1D 87051902
8.	MICROPROCESSOR PROGRAMER BOARD	CKT-1D 87051505
9.	MICROPROCESSOR ERASER	E-01 123001 D
10.	LOGIC ANALYSER	VP-362A 740003 B122
10.	LOGIC ANALYSER	VP-362A 740009 B122
11.	DIGITAL STORAGE OSCILLOSCOPE	5740A 770734 A125
11.	DIGITAL STORAGE OSCILLOSCOPE	5740A 770764 A125
12.	LOGIC CIRCUIT TRAINER	ITF-02 9147951
12.	LOGIC CIRCUIT TRAINER	ITF-02 9147957
12.	LOGIC CIRCUIT TRAINER	ITF-02 9147959
12.	LOGIC CIRCUIT TRAINER	ITF-02 9147962
12.	LOGIC CIRCUIT TRAINER	ITF-02 9147964
12.	LOGIC CIRCUIT TRAINER	ITF-02 9147967

G-4 DIGITAL ELECTRONIC LABORATORY

ITEM NO.	DESCRIPTION	SERIAL NO.
13.	DIGITAL MULTIMETER	VP-2501A 790021 E122
13.	DIGITAL MULTIMETER	VP-2501A 790022 E122
13.	DIGITAL MULTIMETER	VP-2501A 790026 E122
13.	DIGITAL MULTIMETER	VP-2501A 790027 E122
13.	DIGITAL MULTIMETER	VP-2501A 790028 E122
13.	DIGITAL MULTIMETER	VP-2501A 790029 E122
13.	DIGITAL MULTIMETER	VP-2501A 790030 E122
13.	DIGITAL MULTIMETER	VP-2501A 790066 E122
13.	DIGITAL MULTIMETER	VP-2501A 790067 E122
13.	DIGITAL MULTIMETER	VP-2501A 790068 E122
13.	DIGITAL MULTIMETER	VP-2501A 790069 E122
13.	DIGITAL MULTIMETER	VP-2501A 790070 E122
14.	IC CHECKER	DIC-10 73739002
15.	DC POWER SUPPLY	PAB 8-5 47042943
15.	DC POWER SUPPLY	PAB 8-5 47042944
15.	DC POWER SUPPLY	PAB 8-5 47042945
15.	DC POWER SUPPLY	PAB 8-5 47042946
15.	DC POWER SUPPLY	PAB 8-5 47042947
15.	DC POWER SUPPLY	PAB 8-5 47042948
15.	DC POWER SUPPLY	PAB 8-5 47042949
15.	DC POWER SUPPLY	PAB 8-5 47042950
15.	DC POWER SUPPLY	PAB 8-5 47042951
15.	DC POWER SUPPLY	PAB 8-5 47042952
15.	DC POWER SUPPLY	PAB 8-5 47042953
15.	DC POWER SUPPLY	PAB 8-5 47042954
16.	OVERHEAD PROJECTOR	HP-2450 50934
17.	SCREEN FOR OHP	
18.	MICROCOMPUTER TRAINING SET	PZ-80 MP 780001D
18.	MICROCOMPUTER TRAINING SET	PZ-80 MP 780002D
18.	MICROCOMPUTER TRAINING SET	PZ-80 MP 780003D
18.	MICROCOMPUTER TRAINING SET	PZ-80 MP 780004D
18.	MICROCOMPUTER TRAINING SET	PZ-80 MP 780005D
18.	MICROCOMPUTER TRAINING SET	PZ-80 MP 780006D
18.	MICROCOMPUTER TRAINING SET	PZ-80 MP 780007D
18.	MICROCOMPUTER TRAINING SET	PZ-80 MP 780008D
18.	MICROCOMPUTER TRAINING SET	PZ-80 MP 780009D
18.	MICROCOMPUTER TRAINING SET	PZ-80 MP 780010D
18.	MICROCOMPUTER TRAINING SET	PZ-80 MP 780011D
18.	MICROCOMPUTER TRAINING SET	PZ-80 MP 780012D
19.	PULSE GENERATOR	MG 418A M 48633
20.	FUNCTION GENERATOR	VP-7402A 790007 E122

G-4 DIGITAL ELECTRONIC LABORATORY

ITEM NO.		DESCRIPTION	SERIAL NO.
20.	FUNCTION GENERATOR	VP-7402A	790007 E122
20.	FUNCTION GENERATOR	VP-7402A	790009 E122
20.	FUNCTION GENERATOR	VP-7402A	790010 E122
20.	FUNCTION GENERATOR	VP-7402A	790021 E122
20.	FUNCTION GENERATOR	VP-7402A	790025 E122

G 5 AUTOMATIC CONTROL LABORATORY

ITEM NO	DESCRIPTION	SERIAL NO
1-1.	DC Power Supply	35V - 10A
1-1.	DC Power Supply	35V - 10A
1-2.	DC Power Supply	35V - 5A
1-2.	DC Power Supply	35V - 5A
1-2.	DC Power Supply	35V - 5A
1-2.	DC Power Supply	35V - 5A
1-2.	DC Power Supply	35V - 5A
1-2.	DC Power Supply	35V - 5A
1-2.	DC Power Supply	35V - 5A
1-2.	DC Power Supply	35V - 5A
1-2.	DC Power Supply	35V - 5A
1-2.	DC Power Supply	35V - 5A
1-2.	DC Power Supply	35V - 5A
1-2.	DC Power Supply	35V - 5A
1-2.	DC Power Supply	35V - 5A
2.	Oscilloscope	VP-5231A
2.	Oscilloscope	VP-5231A
2.	Oscilloscope	VP-5231A
2.	Oscilloscope	VP-5231A
2.	Oscilloscope	VP-5231A
2.	Oscilloscope	VP-5231A
2.	Oscilloscope	VP-5231A
2.	Oscilloscope	VP-5231A
2.	Oscilloscope	VP-5231A
2.	Oscilloscope	VP-5231A
2.	Oscilloscope	VP-5231A
2.	Oscilloscope	VP-5231A
2.	Oscilloscope	VP-5231A
2.	Oscilloscope	VP-5231A
2.	Oscilloscope	VP-5231A
3.	Tester	3007
3.	Tester	3007
3.	Tester	3007
3.	Tester	3007
3.	Tester	3007
3.	Tester	3007
3.	Tester	3007
3.	Tester	3007
3.	Tester	3007
3.	Tester	3007
3.	Tester	3007
3.	Tester	3007
3.	Tester	3007
3.	Tester	3007
3.	Tester	3007
3.	Tester	3007
4.	Frequency Counter	LDC-824
4.	Frequency Counter	LDC-824
4.	Frequency Counter	LDC-824
4.	Frequency Counter	LDC-824
4.	Frequency Counter	LDC-824
4.	Frequency Counter	LDC-824
4.	Frequency Counter	LDC-824
4.	Frequency Counter	LDC-824

G 5 AUTOMATIC CONTROL LABORATORY

ITEM NO	DESCRIPTION	SERIAL NO
4.	Frequency Counter	LDC-824 7090281
4.	Frequency Counter	LDC-824 7090273
4.	Frequency Counter	LDC-824 7090267
4.	Frequency Counter	LDC-824 7090250
4.	Frequency Counter	LDC-824 7090220
5.	X-Y Recorder	VP-6424A 780001B122
5.	X-Y Recorder	VP-6424A 790007B122
5.	X-Y Recorder	VP-6424A 790005B122
6.	DC Motor Control Demonstrator	MG-DD-ZE 4861
6.	DC Motor Control Demonstrator	MG-DD-ZE 4862
6.	DC Motor Control Demonstrator	MG-DD-ZE 4863
7.	Servo System Demonstrator	DT-I 36444511Y03
7.	Servo System Demonstrator	DT-I 36444511Y18
7.	Servo System Demonstrator	DT-I 36444511Y10
8.	Sequential Control Demonstrator	DT-I 870701
8.	Sequential Control Demonstrator	DT-I 870703
8.	Sequential Control Demonstrator	DT-I 870702
9.	Digital Multimeter	VP-2501A ID790031E122
9.	Digital Multimeter	VP-2501A ID790016E122
9.	Digital Multimeter	VP-2501A ID790023E122
9.	Digital Multimeter	VP-2501A ID790018E122
9.	Digital Multimeter	VP-2501A ID790020E122
9.	Digital Multimeter	VP-2501A ID790034E122
9.	Digital Multimeter	VP-2501A ID790019E122
9.	Digital Multimeter	VP-2501A ID790032E122
9.	Digital Multimeter	VP-2501A ID790033E122
9.	Digital Multimeter	VP-2501A ID790017E122
9.	Digital Multimeter	VP-2501A ID790024E122
9.	Digital Multimeter	VP-2501A ID790035E122
10.	Tachometer	3632 77GF000157
10.	Tachometer	3632 77GF000175
10.	Tachometer	3632 77GF000151
10.	Tachometer	3632 77GF000167

G 5 AUTOMATIC CONTROL LABORATORY

ITEM NO	DESCRIPTION	SERIAL NO :
10.	Tachometer	3632 77GF000149
10.	Tachometer	3632 77GF000170
10.	Tachometer	3632 77GF000164
10.	Tachometer	3632 77GF000169
10.	Tachometer	3632 77GF000166
10.	Tachometer	3632 77GF000178
10.	Tachometer	3632 77GF000141
10.	Tachometer	3632 77GF000161
11.	Step Motor	9103
11.	Step Motor	9104
12.	OHP	51413
13.	Screen for OHP	
14.	Move Master Total System	BRS-5011A 793001-2
15.	Automatic Control Set	BRK-8002A
15.	Automatic Control Set	BRK-8002A
15.	Automatic Control Set	BRK-8002A
15.	Automatic Control Set	BRK-8002A
15.	Automatic Control Set	BRK-8002A
15.	Automatic Control Set	BRK-8002A
15.	Automatic Control Set	BRK-8002A
15.	Automatic Control Set	BRK-8002A
15.	Automatic Control Set	BRK-8002A
15.	Automatic Control Set	BRK-8002A
15.	Automatic Control Set	BRK-8002A
15.	Automatic Control Set	BRK-8002A
15.	Automatic Control Set	BRK-8002A
15.	Automatic Control Set	BRK-8002A
16.	Analog Computer	ADACL-100 73739101
17.	Other Equipment & Tool	4866

G.6 COMMUNICATION LABORATORY (1)

ITEM NO	DESCRIPTION	SERIAL NO
1-1.	DC Power Supply	35V - 10A 27078436
1-1.	DC Power Supply	35V - 10A 27078437
1-1.	DC Power Supply	35V - 10A 27078438
1-1.	DC Power Supply	35V - 10A 27078439
1-1.	DC Power Supply	35V - 10A 27078440
1-1.	DC Power Supply	35V - 10A 27078441
1-1.	DC Power Supply	35V - 10A 27078442
1-1.	DC Power Supply	35V - 10A 27078443
1-1.	DC Power Supply	35V - 10A 27078444
1-1.	DC Power Supply	35V - 10A 27078445
1-1.	DC Power Supply	35V - 10A 27078446
1-1.	DC Power Supply	35V - 10A 27078447
1-2.	DC POWER SUPPLY	1KV - 10A 27090251
1-2.	DC POWER SUPPLY	1KV - 10A 27090252
1-3.	DC POWER SUPPLY	55V - 10A 27081694
1-3.	DC POWER SUPPLY	55V - 10A 27081695
2.	Oscilloscope	VP-5231A 7800130122
2.	Oscilloscope	VP-5231A 7800160122
2.	Oscilloscope	VP-5231A 7800280122
2.	Oscilloscope	VP-5231A 7800340122
2.	Oscilloscope	VP-5231A 7800410122
2.	Oscilloscope	VP-5231A 7800510122
2.	Oscilloscope	VP-5231A 7800540122
2.	Oscilloscope	VP-5231A 7800680122
2.	Oscilloscope	VP-5231A 7800760122
2.	Oscilloscope	VP-5231A 7800800122
2.	Oscilloscope	VP-5231A 7800830122
2.	Oscilloscope	VP-5231A 7800910122
3.	RF Generator	MG645B M15235
3.	RF Generator	MG645B M15335
3.	RF Generator	MG645B M15435
4.	Spectrum Analyzer	AC-8211 654023
5.	Tester	3007 5J0366
5.	Tester	3007 5J0541
5.	Tester	3007 5J0730
5.	Tester	3007 5J0982
5.	Tester	3007 5J5215
5.	Tester	3007 5J5609
5.	Tester	3007 5J6547
5.	Tester	3007 5J6553
5.	Tester	3007 5J6636
5.	Tester	3007 5J6634

G.6 COMMUNICATION LABORATORY (1)

ITEM NO	DESCRIPTION	SERIAL NO
5.	Tester	3007
5.	Tester	3007
6.	Electronic Voltmeter	VP-916A
6.	Electronic Voltmeter	VP-916A
6.	Electronic Voltmeter	VP-916A
6.	Electronic Voltmeter	VP-916A
6.	Electronic Voltmeter	VP-916A
6.	Electronic Voltmeter	VP-916A
6.	Electronic Voltmeter	VP-916A
6.	Electronic Voltmeter	VP-916A
6.	Electronic Voltmeter	VP-916A
6.	Electronic Voltmeter	VP-916A
6.	Electronic Voltmeter	VP-916A
6.	Electronic Voltmeter	VP-916A
6.	Electronic Voltmeter	VP-916A
6.	Electronic Voltmeter	VP-916A
7.	Frequency Counter	LDC-824
7.	Frequency Counter	LDC-824
7.	Frequency Counter	LDC-824
7.	Frequency Counter	LDC-824
7.	Frequency Counter	LDC-824
7.	Frequency Counter	LDC-824
8.	Color Bar Generator	LCG-399A
8.	Color Bar Generator	LCG-399A
8.	Color Bar Generator	LCG-399A
8.	Color Bar Generator	LCG-399A
8.	Color Bar Generator	LCG-399A
8.	Color Bar Generator	LCG-399A
9.	Color Television Set	TC-850T
9.	Color Television Set	TC-850T
9.	Color Television Set	TC-850T
9.	Color Television Set	TC-850T
9.	Color Television Set	TC-850T
9.	Color Television Set	TC-850T
10.	B/W Television Set	TR-1705D
10.	B/W Television Set	TR-1705D
10.	B/W Television Set	TR-1705D
10.	B/W Television Set	TR-1705D
10.	B/W Television Set	TR-1705D
10.	B/W Television Set	TR-1705D
11.	Key Device	HK-710
11.	Key Device	HK-710
11.	Key Device	HK-710
11.	Key Device	HK-710
11.	Key Device	HK-710

G.6 COMMUNICATION LABORATORY (1)

ITEM NO	DESCRIPTION	SERIAL NO
11.	Key Device	HK-710 KD6
11.	Key Device	HK-710 KD7
11.	Key Device	HK-710 KD8
11.	Key Device	HK-710 KD9
11.	Key Device	HK-710 KD10
11.	Key Device	HK-710 KD11
11.	Key Device	HK-710 KD12
11.	Key Device	HK-710 KD13
11.	Key Device	HK-710 KD14
11.	Key Device	HK-710 KD15
11.	Key Device	HK-710 KD16
11.	Key Device	HK-710 KD17
11.	Key Device	HK-710 KD18
11.	Key Device	HK-710 KD19
11.	Key Device	HK-710 KD20
11.	Key Device	HK-710 KD21
11.	Key Device	HK-710 KD22
11.	Key Device	HK-710 KD23
11.	Key Device	HK-710 KD24
11.	Key Device	HK-710 KD25
11.	Key Device	HK-710 KD26
11.	Key Device	HK-710 KD27
11.	Key Device	HK-710 KD28
11.	Key Device	HK-710 KD29
11.	Key Device	HK-710 KD30
11.	Key Device	HK-710 KD31
11.	Key Device	HK-710 KD32
12-1.	HF Transmitter Receiver Dummy Load	JRS-106 102A-NJ-A BS61561 98385
12-2.	HF Transmitter Receiver DC Power Supply Dummy Load	JSB-51 NBD-502 CT-1010 BS21620 DC.HF1 610613
13.	Very High Frequency Transmitter Receiver Dummy Load	21S10T KS-6A CD64652 31415
13.	Very High Frequency Transmitter Receiver Dummy Load	21S10T KS-6A CD64653 31416
13.	Very High Frequency Transmitter Receiver Dummy Load	21S10T KS-6A CD64654 31417
13.	Very High Frequency Transmitter Receiver Dummy Load	21S10T KS-6A CD64655 31412

G.6 COMMUNICATION LABORATORY (1)

ITEM NO	DESCRIPTION	SERIAL NO
13.	Very High Frequency Transmitter Receiver Dummy Load	21S10T KS-6A CD64656 31413
13.	Very High Frequency Transmitter Receiver Dummy Load	21S10T KS-6A CD64657 31414
14.	Ultra High Frequency Transmitter Receiver Dummy Load	41H10T KS-6A J67799 31593
14.	Ultra High Frequency Transmitter Receiver Dummy Load	41H10T KS-6A J67800 31590
14.	Ultra High Frequency Transmitter Receiver Dummy Load	41H10T KS-6A J67801 31594
14.	Ultra High Frequency Transmitter Receiver Dummy Load	41H10T KS-6A J67802 31591
14.	Ultra High Frequency Transmitter Receiver Dummy Load	41H10T KS-6A J67803 31589
14.	Ultra High Frequency Transmitter Receiver Dummy Load	41H10T KS-6A J67804 31592
15.	Telephone Set Dial	8-E TSD1
15.	Telephone Set Dial	8-E TSD2
15.	Telephone Set Dial	8-E TSD3
15.	Telephone Set Dial	8-E TSD4
15.	Telephone Set Dial	8-E TSD5
15.	Telephone Set Dial	8-E TSD6
16.	Telephone Set Digital	14-P TSDG1
16.	Telephone Set Digital	14-P TSDG2
16.	Telephone Set Digital	14-P TSDG3
16.	Telephone Set Digital	14-P TSDG4
16.	Telephone Set Digital	14-P TSDG5
16.	Telephone Set Digital	14-P TSDG6
17.	Private Automatic Branch Exchange Station Number Station Number	NEAX-D3 EC148255 EC148255 Y 3 Y4097 Y4104
18.	High Tension Meter	LHM-80A 6070540
18.	High Tension Meter	LHM-80A 6070574
19-1.	Sweep Marker Generator	LSW-251 6030344

G.6 COMMUNICATION LABORATORY (1)

ITEM NO	DESCRIPTION	SERIAL NO
19-1	Sweep Marker Generator	LSW-251 6030352
19-1.	Sweep Marker Generator	LSW-251 6030357
19-1	Sweep Marker Generator	LSW-251 6030359
19-1	Sweep Marker Generator	LSW-251 6030360
19-1	Sweep Marker Generator	LSW-251 6030366
19-1	Sweep Marker Generator	LSW-251 6030369
19-2	Sweep Marker Generator	LSW-257 5080053
20.	Digital Multimeter	VP-2501A ID 790011E122
20.	Digital Multimeter	VP-2501A ID 790012E122
20.	Digital Multimeter	VP-2501A ID 790013E122
20.	Digital Multimeter	VP-2501A ID 790014E122
20.	Digital Multimeter	VP-2501A ID 790015E122
20.	Digital Multimeter	VP-2501A ID 790054E122
20.	Digital Multimeter	VP-2501A ID 790055E122
20.	Digital Multimeter	VP-2501A ID 790076E122
20.	Digital Multimeter	VP-2501A ID 790077E122
20.	Digital Multimeter	VP-2501A ID 790078E122
20.	Digital Multimeter	VP-2501A ID 790079E122
20.	Digital Multimeter	VP-2501A ID 790080E122
21.	PCM Training Set	AP-9605 73628401
22.	Satelite Receiver	4GHZTVRO SR2861102143
22.	Satelite Receiver	4GHZTVRO SR2861102144
23.	Noise Generator	GRN-2 73737901
23.	Noise Generator	GRN-2 Nothing
24.	Marine Radar (color video sounder)	FCV-201 217-7345
	Color Video Sounder Switch Box	EX-60 0891
25.	Transmitting Receiver Tester	AH-5403C 70130501
25.	Transmitting Receiver Tester	AH-5403C 70130503
26.	Demagnetizer	HC-211 D1
26.	Demagnetizer	HC-211 D2
27.	Signal Injector	LTC-907 6080150
27.	Signal Injector	LTC-907 6080178
28.	VTR	SE-800ME 848800
28.	VTR	SE-800ME 849047
29.	Camera Video	WV-VF01N 79A14700

G.6 COMMUNICATION LABORATORY (1)

ITEM NO	DESCRIPTION	SERIAL NO
30.	Tape Recorder	RS-705 CB7926A004
30.	Tape Recorder	RS-705 CB7926A005
30.	Tape Recorder	RS-705 CB7926A012
30.	Tape Recorder	RS-705 CB7917A066
30.	Tape Recorder	RS-705 CB7926A070
30.	Tape Recorder	RS-705 CB7917A015
31.	Radio Set	RX-4921F 71ACA79049
31.	Radio Set	RX-4921F 71ACA79051
31.	Radio Set	RX-4921F 71ACA79376
31.	Radio Set	RX-4921F 71ACA79379
31.	Radio Set	RX-4921F 71ACA79046
31.	Radio Set	RX-4921F 71ACA79372
32.	OHP	HP-2450 LV 51414
33.	Screen for OHP	Sc1
34.	Facsimile	UF-400AD 73244355
34.	Facsimile	UF-400AD 73244434
35.	Walkie Talkie	RJ-480Z B0027069
35.	Walkie Talkie	RJ-480Z B0027100
35.	Walkie Talkie	RJ-480Z B0027101
35.	Walkie Talkie	RJ-480Z B0027083
36.	RF Counter	18GHZ D 66771
36.	RF Counter	18GHZ D 66772
36.	RF Counter	18GHZ D 66773
36.	RF Counter	18GHZ D 66774
36.	RF Counter	18GHZ D 66775
36.	RF Counter	18GHZ D 66776
37.	Thermoelectric Power Meter	IP-047B D68771
37.	Thermoelectric Power Meter	IP-047B D68772
37.	Thermoelectric Power Meter	IP-047B D68773
37.	Thermoelectric Power Meter	IP-047B D68774
37.	Thermoelectric Power Meter	IP-047B D68781
37.	Thermoelectric Power Meter	IP-047B D68782
38.	Variable Resistance Attenuator	FAV-BNCJ-1100 97689.1
38.	Variable Resistance Attenuator	FAV-BNCJ-1100 97689.2
38.	Variable Resistance Attenuator	FAV-BNCJ-1100 97689.3
38.	Variable Resistance Attenuator	FAV-BNCJ-1100 97689.4

G.6 COMMUNICATION LABORATORY (1)

ITEM NO	DESCRIPTION	SERIAL NO
39	Variable Resistance Attenuator	FAV-BNCJ-1100 97689.5
39	Variable Resistance Attenuator	FAV-BNCJ-1100 97689.6
39	Variable Resistance Attenuator	FAV-BNCJ-1550 97690.1
39	Variable Resistance Attenuator	FAV-BNCJ-1550 97690.2
39	Variable Resistance Attenuator	FAV-BNCJ-1550 97690.3
39	Variable Resistance Attenuator	FAV-BNCJ-1550 97690.4
39	Variable Resistance Attenuator	FAV-BNCJ-1550 97690.5
39	Variable Resistance Attenuator	FAV-BNCJ-1550 97690.6
40	Pulse Generator	MG418A M48733
41	A - D Training Set	AD-51 73737601
41	A - D Training Set	AD-51 73737602
41	A - D Training Set	AD-51 73737603
42	D - A Training Set	AD-51 73737701
42	D - A Training Set	AD-51 73737702
42	D - A Training Set	AD-51 73737703
43	Antenna Parabola LNB	ANT.PRB1 BS1000855
44	Antenna VHF	ANT VHF1
45	RF Power Meter	Bird Model 43 186728
45	RF Power Meter	Bird Model 43 186729
46	RF Load	Bird Model 8080 25 W 25109
46	RF Load	Bird Model 8080 25 W 25109
47	Element	Bird Model 25C E1
47	Element	Bird Model 25C E2
48	Element	Bird Model 25D E3
48	Element	Bird Model 25D E4
49	Element	Bird Model 1000H E5
49	Element	Bird Model 1000H E6

G.6 COMMUNICATION LABORATORY (1)

ITEM NO	DESCRIPTION	SERIAL NO
50.	Element	Bird Model 250H E7
50.	Element	Bird Model 250H E8
51.	RF Sampler	Bird Model 4274-025 S1
51.	RF Sampler	Bird Model 4274-025 S2
52.	Carring Case	Bird Model CC-3 C1
52.	Carring Case	Bird Model CC-3 C2
53.	RF Load	Bird Model 8431 600 W 944
54*	Personal Computer	IBM-AT
55.	Other Equipment & Tool	

G-7 RADIO FREQUENCY & MICROWAVE LABORATORY

ITEM NO	DESCRIPTION	SERIAL NO
1.	DC Power Supply	35V - 10A 27078453
1.	DC Power Supply	35V - 10A 27078450
1.	DC Power Supply	35V - 10A 27078451
1.	DC Power Supply	35V - 10A 27078449
1.	DC Power Supply	35V - 10A 27078456
1.	DC Power Supply	35V - 10A 27078459
1.	DC Power Supply	35V - 10A 27078457
1.	DC Power Supply	35V - 10A 27078458
1.	DC Power Supply	35V - 10A 27078454
1.	DC Power Supply	35V - 10A 27078455
1.	DC Power Supply	35V - 10A 27078458
1.	DC Power Supply	35V - 10A 27078452
2.	Oscilloscope	COS6150 0550253
2.	Oscilloscope	COS6150 0150074
2.	Oscilloscope	COS6150 8340272
2.	Oscilloscope	COS6150 26020780
2.	Oscilloscope	COS6150 0550266
2.	Oscilloscope	COS6150 26020781
3.	RF Generator	MG649A M10930
3.	RF Generator	MG649A M11233
3.	RF Generator	MG649A M10630
4.	Spectrum Analyzer	MS610B MT93535
5.	Frequency Counter	LDC-825 7080049
5.	Frequency Counter	LDC-825 7080033
6-1.	Signal Level Meter	LCF-945 707028
6-2.	Field Level Meter	ML424B M13731
7.	Dipole Antenna	MP651A M80535
8.	Micro Wave Training Device	15
8.	Micro Wave Training Device	15
9.	Portable Engine Generator	GRF-3000 2817102
9.	Portable Engine Generator	GRF-3000 2817541
10.	Digital Multimeter	VP-2501A ID 790060E122
10.	Digital Multimeter	VP-2501A ID 790075E122
10.	Digital Multimeter	VP-2501A ID 790072E122
10.	Digital Multimeter	VP-2501A ID 790074E122
10.	Digital Multimeter	VP-2501A ID 790071E122
10.	Digital Multimeter	VP-2501A ID 790058E122
10.	Digital Multimeter	VP-2501A ID 790052E122

G-7 RADIO FREQUENCY & MICROWAVE LABORATORY

ITEM NO	DESCRIPTION	SERIAL NO
10.	Digital Multimeter	VP-2501A ID 790073E122
10.	Digital Multimeter	VP-2501A ID 790056E122
10.	Digital Multimeter	VP-2501A ID 790051E122
10.	Digital Multimeter	VP-2501A ID 790059E122
10.	Digital Multimeter	VP-2501A ID 790057E122
11.	Slidak	S-260-S
11.	Slidak	S-260-S
11.	Slidak	S-260-S
11.	Slidak	S-260-S
11.	Slidak	S-260-S
11.	Slidak	S-260-S
11.	Slidak	S-260-S
11.	Slidak	S-260-S
11.	Slidak	S-260-S
11.	Slidak	S-260-S
11.	Slidak	S-260-S
11.	Slidak	S-260-S
11.	Slidak	S-260-S
12.	RF Milivoltmeter	VP-9602A ID 7700290122
12.	RF Milivoltmeter	VP-9602A ID 7700210122
12.	RF Milivoltmeter	VP-9602A ID 7700260122
12.	RF Milivoltmeter	VP-9602A ID 7700120122
12.	RF Milivoltmeter	VP-9602A ID 7700280122
12.	RF Milivoltmeter	VP-9602A ID 7700200122
12.	RF Milivoltmeter	VP-9602A ID 7700290122
12.	RF Milivoltmeter	VP-9602A ID 7700170122
12.	RF Milivoltmeter	VP-9602A ID 7700160122
12.	RF Milivoltmeter	VP-9602A ID 7700150122
12.	RF Milivoltmeter	VP-9602A ID 7700180122
12.	RF Milivoltmeter	VP-9602A ID 7700130122
13.	OHP	HP-2450LV 5091
14.	Screen for OHP	
15-1.	Variable Resistance Attenuator	FAV-BNCJ-1100 97689.8
15-1.	Variable Resistance Attenuator	FAV-BNCJ-1100 97689.7
15-1.	Variable Resistance Attenuator	FAV-BNCJ-1550 97689.7
15-1.	Variable Resistance Attenuator	FAV-BNCJ-1550 97689.8
16.	Tracking Generator	MH672A M25833A
17.	VSWR Amp	MAW-61F 49745

G-7 RADIO FREQUENCY & MICROWAVE LABORATORY

ITEM NO	DESCRIPTION	SERIAL NO
18-1	Power Distributor (2 distribute)	DKH-S-6503 97692.2
18-1	Power Distributor (2 distribute)	DKH-S-6503 97692.2
18-1	Power Distributor (2 distribute)	DKH-S-6503 97692.3
18-2	Power Distributor (4 distribute)	5D 784A R 53541
18-2	Power Distributor (4 distribute)	5D 784A R 53542
18-2	Power Distributor (4 distribute)	5D 784A R 53543
19.	VSWR Comparator	HC-C1 97693.3
19.	VSWR Comparator	HC-C1 97693.2
19.	VSWR Comparator	HC-C1 97693.1
20.	Antenna Rotary Stand	DSA-360
21.	Electro Voltmeter	VP-916A 790006D122
21.	Electro Voltmeter	VP-916A 790031D122
21.	Electro Voltmeter	VP-916A 790002D122
22.	Coaxial Standing Wave Detektor	SD-20DA-30 97694
23.	Microbus	
24.	Copy Machine	3870
25.	RF Amperemeter	2016 67AJ0293
25.	RF Amperemeter	2016 67AJ0307
25.	RF Amperemeter	2016 67AJ0300
25.	RF Amperemeter	2016 67AJ0292
25.	RF Amperemeter	2016 67AJ0301
25.	RF Amperemeter	2016 67AJ0287
26.	Other Equipment & Tool	
27.	Directional Coupler	DK-S-2510Y 98772.1
27.	Directional Coupler	DK-S-2510Y 98772.2
27.	Directional Coupler	DK-S-2510Y 98772.3
28.	Signal Generator	7S023 D6681
28.	Signal Generator	7S023 D6678
28.	Signal Generator	7S023 D6682
28.	Signal Generator	7S023 D6679

G-7 RADIO FREQUENCY & MICROWAVE LABORATORY

ITEM NO	DESCRIPTION	SERIAL NO
28.	Signal Generator	7S023 D6680
29.	Antenna Tripod	MB9A M36434
30.	SWR Bridge	6QN50 761014

G 8 COMPUTER LABORATORY

ITEM NO	DESCRIPTION	SERIAL NO
1.	Personal Computer Monitor CPU	78B00240 7X000926
1.	Personal Computer Monitor CPU	78B00241 7X000926
1.	Personal Computer Monitor CPU	78B00236 7X000946
1.	Personal Computer Monitor CPU	78B00244 7X000106
1.	Personal Computer Monitor CPU	78B00094 7X000016
1.	Personal Computer Monitor CPU	78B00058 7X000146
1.	Personal Computer Monitor CPU	78B00049 7X000186
1.	Personal Computer Monitor CPU	78B00235 7X000366
1.	Personal Computer Monitor CPU	78B00255 7X000046
1.	Personal Computer Monitor CPU	78B00254 7X000026
1.	Personal Computer Monitor CPU	78B00043 7X000966
1.	Personal Computer Monitor CPU	78B00268 7X000996
1.	Personal Computer Monitor CPU	78B00234 7X000396
1.	Personal Computer Monitor CPU	78B00061 8200056
1.	Personal Computer Monitor CPU	78B00210 7X000866
1.	Personal Computer Monitor CPU	78B00106 7X000116

G 8 COMPUTER LABORATORY

ITEM NO	DESCRIPTION	SERIAL NO
1.	Personal Computer Monitor CPU	APC 3 78800248 7X001096
1.	Personal Computer Monitor CPU	APC 3 78800047 7X000376
1.	Personal Computer Monitor CPU	APC 3 78800208 7X001146
1.	Personal Computer Monitor CPU	APC 3 78800239 82000106
1.	Personal Computer Monitor CPU	APC 3 78800250 7X000066
1.	Personal Computer Monitor CPU	APC 3 78800046 7X000266
1.	Personal Computer Monitor CPU	APC 3 78800246 7X000126
1.	Personal Computer Monitor CPU	APC 3 78800045 83000206
1.	Personal Computer Monitor CPU	APC 3 78800066 83000186
1.	Personal Computer Monitor CPU	APC 3 78800233 83000246
1.	Personal Computer Monitor CPU	APC 3 78800084 7X000386
1.	Personal Computer Monitor CPU	APC 3 78800243 7X000836
1.	Personal Computer Monitor CPU	APC 3 78800261 7X000516
1.	Personal Computer Monitor CPU	APC 3 78800247 7X000796
2.	Printer for Computer	P5 573128373T
2.	Printer for Computer	P5 573128277T
2.	Printer for Computer	P5 573128355T
2.	Printer for Computer	P5 573125113T
2.	Printer for Computer	P5 573128249T

G B COMPUTER LABORATORY

ITEM NO	DESCRIPTION	SERIAL NO
2.	Printer for Computer	P5 573128386T
2.	Printer for Computer	P5 573128350T
2.	Printer for Computer	P5 573128240T
2.	Printer for Computer	P5 573128243T
2.	Printer for Computer	P5 573125213T
3.	Personal Computer	APC 3
	Monitor	78800264
	CPU	7X000906
3.	Personal Computer	APC 3
	Monitor	78800265
	CPU	7X000076
3.	Personal Computer	APC 3
	Monitor	78800050
	CPU	7X000970
3.	Personal Computer	APC 3
	Monitor	78800251
	CPU	79000256
3.	Personal Computer	APC 3
	Monitor	78800060
	CPU	7X000826
3.	Personal Computer	APC 3
	Monitor	78800206
	CPU	79000226
3.	Personal Computer	APC 3
	Monitor	78800249
	CPU	7X000986
4.	Printer for Computer	P5 5713128417T
4.	Printer for Computer	P5 5713128357T
4.	Printer for Computer	P5 5713125047T
4.	Printer for Computer	P5 5713128335T
5.	OHP	HP-2450 51416
6.	Screen for OHP	
7.	PLOTTER	7475A 2641V 21435
8*	Personal Computer	IBM
9*	Printer	FX1050 23000003
10*	Mouse	35 PCS

G 9 ELECTRIC POWER SYSTEM LABORATORY

ITEM NO		DESCRIPTION	SERIAL NO
1.	Battery	N70Z	
1.	Battery	N70Z	
1.	Battery	N70Z	
1.	Battery	N70Z	
2.	DC Power Supply	70V - 8A	27090807
2.	DC Power Supply	70V - 8A	27090808
2.	DC Power Supply	70V - 8A	27090809
3.	AC Synchro Generator	MG-DS-ZE	7743
3.	AC Synchro Generator	MG-DS-ZE	7744
4.	AC Induction Motor	MLH3075A	M7098101Y1
4.	AC Induction Motor	MLH3075A	M7098101Y2
4.	AC Induction Motor	MLH3075A	M7098101Y3
5.	DC Motor	GHP-614	1741
5.	DC Motor	GHP-614	1742
5.	DC Motor	GHP-614	M708162Y1
5.	DC Motor	GHP-614	M708162Y2
5.	DC Motor	GHP-614	M708162Y3
6.	Transformer	UD-10	6715
6.	Transformer	UD-10	6716
6.	Transformer	UD-10	6717
6.	Transformer	UD-5	6711
7.	Inverter	YDA-0.3 AMK-S	17-0126
7.	Inverter	YDA-0.3 AMK-S	17-0127
7.	Inverter	YDA-0.3 AMK-S	17-0128
8.	Converter	YDD-0.3	DS7-006
8.	Converter	YDD-0.3	DS7-006
8.	Converter	YDD-0.3	DS7-006
9.	Coil Winding Machine	MKD-200	10.1987
10.	SCR Circuit Training Device	SCR-2	MH-0436
10.	SCR Circuit Training Device	SCR-2	MH-0437
10.	SCR Circuit Training Device	SCR-2	MH-0438
10.	SCR Circuit Training Device	SCR-2	MH-0439
10.	SCR Circuit Training Device	SCR-2	MH-0440
10.	SCR Circuit Training Device	SCR-2	MH-0441
11.	Portable Wattmeter	2041-02	67AN124
11.	Portable Wattmeter	2041-02	67AN124
11.	Portable Wattmeter	2041-02	67AN126
11.	Portable Wattmeter	2041-02	67AN133

G 9 ELECTRIC POWER SYSTEM LABORATORY

ITEM NO	DESCRIPTION	SERIAL NO
11.	Portable Wattmeter	2041-02 67AN1340
11.	Portable Wattmeter	2041-02 67AN1361
12.	Portable Wattmeter	2042-02 67AN1362
12.	Portable Wattmeter	2042-02 67AN1363
12.	Portable Wattmeter	2042-02 67AN1248
12.	Portable Wattmeter	2042-02 67AN1366
12.	Portable Wattmeter	2042-02 67AN1367
12.	Portable Wattmeter	2042-02 67AN1369
13.	Insulation Tester	3213-22 77LB0701
13.	Insulation Tester	3213-22 77LB0602
13.	Insulation Tester	3213-22 77LB0599
13.	Insulation Tester	3213-22 77LB0623
13.	Insulation Tester	3213-22 77LB0630
13.	Insulation Tester	3213-22 77LB0634
14.	Power factor Meter	2039-02 67AR0379
14.	Power factor Meter	2039-02 67AR0378
14.	Power factor Meter	2039-02 67AR0382
14.	Power factor Meter	2039-02 67AR0383
14.	Power factor Meter	2039-02 67AR0384
14.	Power factor Meter	2039-02 67AR0385
15.	Tester	3007 513978
15.	Tester	3007 510625
15.	Tester	3007 512840
15.	Tester	3007 510599
15.	Tester	3007 515363
15.	Tester	3007 510097
16.	Tachometer	3632 77GF000099
16.	Tachometer	3632 77GF000105
16.	Tachometer	3632 77GF000103
16.	Tachometer	3632 77GF000114
16.	Tachometer	3632 77GF000115
16.	Tachometer	3632 77GF000121
17.	Frequency Meter	2038-31 77AF0271
17.	Frequency Meter	2038-31 77AF0274
17.	Frequency Meter	2038-31 77AF0275
17.	Frequency Meter	2038-31 77AF0278
17.	Frequency Meter	2038-31 77AF0281
17.	Frequency Meter	2038-31 77AF0295
18.	Oscilloscope	VP-5231A ID780001
18.	Oscilloscope	VP-5231A ID780007
18.	Oscilloscope	VP-5231A ID780009

6 9 ELECTRIC POWER SYSTEM LABORATORY

ITEM NO	DESCRIPTION	SERIAL NO
18.	Oscilloscope	VP-5231A ID780036
18.	Oscilloscope	VP-5231A ID780063
18.	Oscilloscope	VP-5231A ID780067
19.	Torque Meter	PTC-06-100W TOR TST 1
19.	Torque Meter	PTC-06-100W TOR TST 2
20.	OHP	51412
21.	Screen for OHP	
22.	Clamp Meter	3100 7H1455
22.	Clamp Meter	3100 7H1809
22.	Clamp Meter	3100 7H1962
23.	Automatic Voltage Regulator	ASC-4.5 MX5700
23.	Automatic Voltage Regulator	ASC-4.5 MX5701
23.	Automatic Voltage Regulator	ASC-4.5 MX5702
23.	Automatic Voltage Regulator	ASC-4.5 MX5703
24.	Power Supply	3215 67YH0060
24.	Power Supply	3215 67YH0061
24.	Power Supply	3215 67YH0062
24.	Power Supply	3215 67YH0063
24.	Power Supply	3215 67YH0064
24.	Power Supply	3215 67YH0065
25.	Automatic Voltage Regulator	ASC-4.3 MX5868
25.	Automatic Voltage Regulator	ASC-4.3 MX5867
25.	Automatic Voltage Regulator	ASC-4.3 MX5873
25.	Automatic Voltage Regulator	ASC-4.3 MX5874
25.	Automatic Voltage Regulator	ASC-4.3 MX5876
25.	Automatic Voltage Regulator	ASC-4.3 MX5877
25.	Automatic Voltage Regulator	ASC-4.3 MX5879
25.	Automatic Voltage Regulator	ASC-4.3 MX5871
25.	Automatic Voltage Regulator	ASC-4.3 MX5880
25.	Automatic Voltage Regulator	ASC-4.3 MX5881
26.	Reaktor	M-16 1HOUR 8942
27.	Portable Wattmeter	2042 67AP0400
27.	Portable Wattmeter	2042 67AP0401
27.	Portable Wattmeter	2042 67AP0406
27.	Portable Wattmeter	2042 67AP0395
27.	Portable Wattmeter	2042 67AP0402
27.	Portable Wattmeter	2042 67AP0399
28.	AC Amper Meter	2013 67AE5545

G 9 ELECTRIC POWER SYSTEM LABORATORY

ITEM NO		DESCRIPTION	SERIAL NO
28.	AC Amper Meter	2013	67AE5595
28.	AC Amper Meter	2013	67AE5579
28.	AC Amper Meter	2013	67AE5726
28.	AC Amper Meter	2013	67AE5764
28.	AC Amper Meter	2013	67AE5775
28.	AC Amper Meter	2013	67AE5792
28.	AC Amper Meter	2013	67AE5826
28.	AC Amper Meter	2013	67AE5861
28.	AC Amper Meter	2013	67AE5867
28.	AC Amper Meter	2013	67AE5877
28.	AC Amper Meter	2013	67AE5886
29.	DC Ampere Meter	2011	77AA003728
29.	DC Ampere Meter	2011	77AA003730
29.	DC Ampere Meter	2011	77AA003886
29.	DC Ampere Meter	2011	77AA004238
29.	DC Ampere Meter	2011	77AA004241
29.	DC Ampere Meter	2011	77AA004244
29.	DC Ampere Meter	2011	77AA004295
29.	DC Ampere Meter	2011	77AA004296
29.	DC Ampere Meter	2011	77AA004242
29.	DC Ampere Meter	2011	77AA004265
29.	DC Ampere Meter	2011	77AA004375
29.	DC Ampere Meter	2011	77AA004302
30.	DC Volt Meter	2011	77AA003688
30.	DC Volt Meter	2011	77AA004232
30.	DC Volt Meter	2011	77AA004234
30.	DC volt Meter	2011	77AA004015
30.	DC Volt Meter	2011	77AA004011
30.	DC Volt Meter	2011	77AA004286
30.	DC Volt Meter	2011	77AA004447
30.	DC volt Meter	2011	77AA004448
30.	DC Volt Meter	2011	77AA004449
30.	DC Volt Meter	2011	77AA004511
30.	DC Volt Meter	2011	77AA004543
30.	DC volt Meter	2011	77AA004605
31.	Three Phase Induction Motor	EM-DBF	86040563
32.	Induction Motor	IM-50	538989
33.	Slider	SS3P-200-5	88-3-23
34.	Slide Regulator	Z410M	8705032
35.	Induction Motor	EAM7104-AK3	VDE0530/72

G 9 ELECTRIC POWER SYSTEM LABORATORY

ITEM NO	DESCRIPTION	SERIAL NO
36.	Relay With Socket (Electro Magnetic Relay)	OMRON MK2P AC 220/240V 2C
37.	Push Button Swicth	SA-25 250V AC 6A
38.	Push Button Swicth	SA-25 250V AC 6A
39.	Pilot Lamp	PL-225N
39.	Pilot Lamp	PL-225N
39.	Pilot Lamp	PL-225N
40.	Timer Relay With Socket	PMH-30M AC 220V
41.	Timer Relay With Socket	CSA-E AC 220
42.	Knife Swicth	RC 1000A 15A 600V
42.	Knife Swicth	RC 1000A 15A 600V
42.	Knife Swicth	RC 1000A 15A 600V
42.	Knife Swicth	RC 1000A 15A 600V
43.	Knife Swicth	RC 1000A 15A 600V
43.	Knife Swicth	RC 1000A 15A 600V
43.	Knife Swicth	RC 1000A 15A 600V
43.	Knife Swicth	RC 1000A 15A 600V
43.	Knife Swicth	RC 1000A 15A 600V
43.	Knife Swicth	RC 1000A 15A 600V
43.	Knife Swicth	RC 1000A 15A 600V
43.	Knife Swicth	RC 1000A 15A 600V
44.	Magnetic With Kontactor Socket	SC-1N
44.	Magnetic With Kontactor Socket	SC-1N
45.	GEN-SET TST 1	
46*	Transformer	2410-M
46*	Transformer	2410-M
47*	Motor	220V 150Hz 0.37Kw 071120
47*	Motor	220V 150Hz 0.37Kw 526907
48*	Motor	380V 2.2Kw 460594
49.	Other Equipment & Tool	

G 10 COMMUNICATION LABORATORY (2)

ITEM NO	DESCRIPTION	SERIAL NO.
1.	Optical Fiber Tele Communication System Unit	AQ-8301 73909102
1.	Optical Fiber Tele Communication System Unit	AQ-8301 73909101
2.	Optical Tester	AQ-1006 73737302
2.	Optical Tester	AQ-1006 73737301
3.	Laser Diode	OD-8325 7881Y
3.	Laser Diode	OD-8325 7882Y
3.	Laser Diode	OD-8325 7883Y
3.	Laser Diode	OD-8325 7885Y
3.	Laser Diode	OD-8325 7886Y
3.	Laser Diode	OD-8325 7888Y
3.	Laser Diode	OD-8325 7889Y
3.	Laser Diode	OD-8325 8392Y
3.	Laser Diode	OD-8325 8963Y
3.	Laser Diode	OD-8325 8967Y
4.	Optical Bench	HRA-2412-LM 2024
4.	Optical Bench	HRA-2412-LM 2023
5.	Spectro Analyzer	AQ-1425 782287
6.	LED	OD-8358 20308
6.	LED	OD-8358 20289
6.	LED	OD-8358 20327
6.	LED	OD-8358 20279
6.	LED	OD-8358 20313
6.	LED	OD-8358 20372
6.	LED	OD-8358 21201
6.	LED	OD-8358 21237
6.	LED	OD-8358 21256
6.	LED	OD-8358 21260
7.	Micro Micro Ammeter	PM-18R C95949F
7.	Micro Micro Ammeter	PM-18R C95972F
8.	Lock-in Amplifier	LI-574A 7Y-99674
9.	X-Y Recorder	VP-6424A 790001B122
10.	Pin Photo Diode	OD-8406 49108
10.	Pin Photo Diode	OD-8406 49112
10.	Pin Photo Diode	OD-8406 49118
10.	Pin Photo Diode	OD-8406 49123
10.	Pin Photo Diode	OD-8406 49117
10.	Pin Photo Diode	OD-8406 49107

G 10 COMMUNICATION LABORATORY (2)

ITEM NO	DESCRIPTION	SERIAL NO.
10.	Pin Photo Diode	OD-8406 49124
10.	Pin Photo Diode	OD-8406 49134
10.	Pin Photo Diode	OD-8406 49106
10.	Pin Photo Diode	OD-8406 49131
11.	PART OF OPTICAL FIBER TELECOMMUNICATION SYSTEM UNIT	
	A. OPTICAL FIBER LOSS MEASUREMENT	
1.	Led Light Source	AQ-1317 658784/661850
2.	Led Light Source	AQ-1304 663516/656823
3.	Optical Power Meter	AQ-1125 654143/654140
4.	Optical Sensor	AQ-1950 648605/648602
5.	Optical Sensor	AQ-1951 655842/655838
6.	Launching Fiber For Loss Measurement	LF-2 234/235
7.	FC-A Adapter	301001/301002
8.	Connector Adapter	AQ-1954B 301003/301004
	B. EXPERIMENT HE-EN LASER BEAM	
1.	Desk Vibration Isolators	613/616
2.	HE-EN Laser	GLG 5330 267/265
3.	Laser Holder	301005/301006
4.	Pole Cross Clap	336186/336325
5.	Magneto Stand	104390/104440
6.	Gas Laser Power	GLS 5379 210/217
7.	Micro Manipulator	6835/6778
8.	Fiber Holder	6836/6779
9.	Optical Power Meter	AQ-1125 648059/301008
10.	Optical Sensor	AQ-1951 662179/662180
11.	Connector Adapter	AQ-1954D 301007/301008
	C. OPTICAL FIBER FUSION SPLICING AND SPLICE LOSS MEASUREMENT	
1.	Led Light Source	AQ-1317 661849/658750
2.	Optical Power Meter	AQ-1125 648060/648063
3.	Optical Sensor	AQ-1949 654201/654213
4.	Optical Fiber fusion Splicer	Type 100 43/47
5.	Battery Unit	BU-01 830/829
6.	Optical Fiber Cutter	A.212/A.742
7.	Stripper	301009/301010
8.	Bare Fiber Adapter	FC-Type 301011/301012
9.	Connector Adapter	301013/301014
10.	V.Groved Test Connector	301015/301016
	D. EXPERIMENTAL FIBER OPTIC IMAGE TRANSMISSION	
1.	E/O Converter	AQ-4503 649295/649294
2.	O/E Converter	AQ-5501 659600/659599
3.	VTR Colour Video	301017/301018

G 10 COMMUNICATION LABORATORY (2)

ITEM NO	DESCRIPTION	SERIAL NO.
4.	Monitor TV	301019/301020
5.	Camera	210501/207986
6.	Optical Fixed Attenuator	675/674
7.	Optical Fixed Attenuator	388/387
12. OPTICAL FIBER CONNECTOR ASSEMBLY TRAINING		
A.	FC Plug Kit	SA-2 Connector
	A. FC Plug Kit	SA-2 Connector
		302001
		302002
B.	FC Plug Kit	S1-2 Connector
	B. FC Plug Kit	S1-2 Connector
		302003
		302004
C. CONNECTOR ASSEMBLY SET		
Consist Of :		
1.	Stell Scale	302005
1.	Stell Scale	302006
1.	Stell Scale	302007
1.	Stell Scale	302008
1.	Stell Scale	302009
2.	Markin Pen	302010
2.	Markin Pen	302011
2.	Markin Pen	302012
2.	Markin Pen	302013
2.	Markin Pen	302014
3.	Sheath Cutter	302015
3.	Sheath Cutter	302016
3.	Sheath Cutter	302017
3.	Sheath Cutter	302018
3.	Sheath Cutter	302019
4.	Jackat Stripper	302020
4.	Jackat Stripper	302021
4.	Jackat Stripper	302022
4.	Jackat Stripper	302023
4.	Jackat Stripper	302024
5.	Scissor	302025
5.	Scissor	302026
5.	Scissor	302027
5.	Scissor	302028
5.	Scissor	302029
6.	Gauze	302030
6.	Gauze	302031
6.	Gauze	302032
6.	Gauze	302033
6.	Gauze	302034
7.	Glass Jar	302035
7.	Glass Jar	302036
7.	Glass Jar	302037

G 10 COMMUNICATION LABORATORY (2)

ITEM NO	DESCRIPTION	SERIAL NO.
7.	Glass Jar	302038
7.	Glass Jar	302039
8.	Water Pitcher	302040
8.	Water Pitcher	302041
8.	Water Pitcher	302042
8.	Water Pitcher	302043
8.	Water Pitcher	302044
9.	Fiber Adhesive	302045
9.	Fiber Adhesive	302046
9.	Fiber Adhesive	302047
9.	Fiber Adhesive	302048
9.	Fiber Adhesive	302049
10.	Adhesive	302050
10.	Adhesive	302051
10.	Adhesive	302052
10.	Adhesive	302053
10.	Adhesive	302054
11.	Aspirator (DC 3V DRY CELL)	302055
11.	Aspirator (DC 3V DRY CELL)	302056
11.	Aspirator (DC 3V DRY CELL)	302057
11.	Aspirator (DC 3V DRY CELL)	302058
11.	Aspirator (DC 3V DRY CELL)	302059
12.	Heater	302060
12.	Heater	302061
12.	Heater	302062
12.	Heater	302063
12.	Heater	302064
13.	Automatic Polisher	302065
13.	Automatic Polisher	302066
13.	Automatic Polisher	302067
13.	Automatic Polisher	302068
13.	Automatic Polisher	302069
14.	Polishing Disk (Rough Polishing 6um)	302070
14.	Polishing Disk (Rough Polishing 6um)	302071
14.	Polishing Disk (Rough Polishing 6um)	302072
14.	Polishing Disk (Rough Polishing 6um)	302073
14.	Polishing Disk (Rough Polishing 6um)	302074
15.	Polishing Disk (Medium Polishing 3um)	302075
15.	Polishing Disk (Medium Polishing 3um)	302076
15.	Polishing Disk (Medium Polishing 3um)	302077

G 10 COMMUNICATION LABORATORY (2)

ITEM NO	DESCRIPTION	SERIAL NO.
15.	Polishing Disk (Medium Polishing 3um)	302078
15.	Polishing Disk (Medium Polishing 3um)	302079
16.	Polishing Disk (Fine Polishing 1um)	302080
16.	Polishing Disk (Fine Polishing 1um)	302081
16.	Polishing Disk (Fine Polishing 1um)	302082
16.	Polishing Disk (Fine Polishing 1um)	302083
16.	Polishing Disk (Fine Polishing 1um)	302084
17.	Microscope	302085
17.	Microscope	302086
17.	Microscope	302087
17.	Microscope	302088
17.	Microscope	302089
D.	Voltage Regulator	73909101
D.	Voltage Regulator	73909101
D.	Voltage Regulator	73909101
D.	Voltage Regulator	73909101
E.	Voltage Regulator	73909102
E.	Voltage Regulator	73909102
E.	Voltage Regulator	73909102
E.	Voltage Regulator	73909102
F.	Portable Polishing Equipment	37
G.	Transformer	48
13.	Other Equipment & Tool	

G 11 PHYSICS LABORATORY

ITEM NO	DESCRIPTION	SERIAL NO.
1.	Wave Motion Demonstrator	HB-24 HB-1
1.	Wave Motion Demonstrator	HB-24 HB-2
1.	Wave Motion Demonstrator	HB-24 HB-3
1.	Wave Motion Demonstrator	HB-24 HB-4
1.	Wave Motion Demonstrator	HB-24 HB-5
1.	Wave Motion Demonstrator	HB-24 HB-6
1.	Wave Motion Demonstrator	HB-24 HB-7
1.	Wave Motion Demonstrator	HB-24 HB-8
1.	Wave Motion Demonstrator	HB-24 HB-9
1.	Wave Motion Demonstrator	HB-24 HB-10
1.	Wave Motion Demonstrator	HB-24 HB-11
1.	Wave Motion Demonstrator	HB-24 HB-12
2.	Bimetal Demonstrator	127-180 BD-1
2.	Bimetal Demonstrator	127-180 BD-2
2.	Bimetal Demonstrator	127-180 BD-3
2.	Bimetal Demonstrator	127-180 BD-4
2.	Bimetal Demonstrator	127-180 BD-5
2.	Bimetal Demonstrator	127-180 BD-6
2.	Bimetal Demonstrator	127-180 BD-7
2.	Bimetal Demonstrator	127-180 BD-8
2.	Bimetal Demonstrator	127-180 BD-9
2.	Bimetal Demonstrator	127-180 BD-10
2.	Bimetal Demonstrator	127-180 BD-11
2.	Bimetal Demonstrator	127-180 BD-12
3.	Luxmeter	3281 BH0719
3.	Luxmeter	3281 BH0720
3.	Luxmeter	3281 BH0721
3.	Luxmeter	3281 BH0725
3.	Luxmeter	3281 BH0727
3.	Luxmeter	3281 BH0728
3.	Luxmeter	3281 BH0730
3.	Luxmeter	3281 BH0739
3.	Luxmeter	3281 BH0743
3.	Luxmeter	3281 BH0744
3.	Luxmeter	3281 BH0746
3.	Luxmeter	3281 BH0748
4.	Solar Battery Demonstrator	S0-22C S0-1
4.	Solar Battery Demonstrator	S0-22C S0-2
4.	Solar Battery Demonstrator	S0-22C S0-3
4.	Solar Battery Demonstrator	S0-22C S0-4
4.	Solar Battery Demonstrator	S0-22C S0-5
4.	Solar Battery Demonstrator	S0-22C S0-6
4.	Solar Battery Demonstrator	S0-22C S0-7
4.	Solar Battery Demonstrator	S0-22C S0-8
4.	Solar Battery Demonstrator	S0-22C S0-9

G 11 PHYSICS LABORATORY

ITEM NO	DESCRIPTION	SERIAL NO.
4.	Solar Battery Demonstrator	S0-22C
4.	Solar Battery Demonstrator	S0-22C
4.	Solar Battery Demonstrator	S0-22C
5.	Lenses and Prisms Kit	OH-7
5.	Lenses and Prisms Kit	OH-7
5.	Lenses and Prisms Kit	OH-7
5.	Lenses and Prisms Kit	OH-7
5.	Lenses and Prisms Kit	OH-7
5.	Lenses and Prisms Kit	OH-7
5.	Lenses and Prisms Kit	OH-7
5.	Lenses and Prisms Kit	OH-7
5.	Lenses and Prisms Kit	OH-7
5.	Lenses and Prisms Kit	OH-7
5.	Lenses and Prisms Kit	OH-7
5.	Lenses and Prisms Kit	OH-7
6.	Convex Lens & Concave Lens	CL-1
6.	Convex Lens & Concave Lens	CL-2
6.	Convex Lens & Concave Lens	CL-3
6.	Convex Lens & Concave Lens	CL-4
6.	Convex Lens & Concave Lens	CL-5
6.	Convex Lens & Concave Lens	CL-6
6.	Convex Lens & Concave Lens	CL-7
6.	Convex Lens & Concave Lens	CL-8
6.	Convex Lens & Concave Lens	CL-9
6.	Convex Lens & Concave Lens	CL-10
6.	Convex Lens & Concave Lens	CL-11
6.	Convex Lens & Concave Lens	CL-12
7.	Spectrometer	S-10
7.	Spectrometer	S-10
7.	Spectrometer	S-10
7.	Spectrometer	S-10
7.	Spectrometer	S-10
7.	Spectrometer	S-10
8.	OHP	HP-2450
9.	Screen for OHP	
10.	Light Source	LR-6 361-26258
10.	Light Source	LR-6 361-26258
10.	Light Source	LR-6 361-26258
10.	Light Source	LR-6 361-26258
10.	Light Source	LR-6 361-26258
10.	Light Source	LR-6 361-26258
10.	Light Source	LR-6 361-26258

G 11 PHYSICS LABORATORY

ITEM NO		DESCRIPTION	SERIAL NO.
10.	Light Source	LR-6 361-26258	LS-8
10.	Light Source	LR-6 361-26258	LS-9
10.	Light Source	LR-6 361-26258	LS-10
10.	Light Source	LR-6 361-26258	LS-11
10.	Light Source	LR-6 361-26258	LS-12
11.	Other Equipment & Tool		

G-12 ELECTROMECHANICAL WORK SHOP

ITEM NO.	DESCRIPTION	SERIAL NO.
1.	Bench Drill	FBD - P205 1392
1.	Bench Drill	- HN 60012
2.	Foot Shear	FS - 102 7-FS 30016
3.	Bender	U - 330 7-J 3003
4.	Grinder	GBT 5 H 070003
5.	Spot Welder	UP - 8S 1728912
5.	Spot Welder	UP - 8S 1928912
6.	Painting Instrument	EF OUP D 384907
7.	Precision Lathe	LR - 55A 17971
8.	Other Equipment & Tool	

G-13 TECHNICAL DRAWING ROOM

ITEM NO	DESCRIPTION	SERIAL NO.
1-1.	Drafting Machine	LS-105 16139
1-1.	Drafting Machine	LS-105 16138
1-1.	Drafting Machine	LS-105 16128
1-1.	Drafting Machine	LS-105 16125
1-1.	Drafting Machine	LS-105 16143
1-1.	Drafting Machine	LS-105 16140
1-1.	Drafting Machine	LS-105 16142
1-1.	Drafting Machine	LS-105 16124
1-1.	Drafting Machine	LS-105 16121
1-1.	Drafting Machine	LS-105 16144
1-1.	Drafting Machine	LS-105 16150
1-1.	Drafting Machine	LS-105 16135
1-1.	Drafting Machine	LS-105 16149
1-1.	Drafting Machine	LS-105 16127
1-1.	Drafting Machine	LS-105 16148
1-1.	Drafting Machine	LS-105 16130
1-1.	Drafting Machine	LS-105 16137
1-1.	Drafting Machine	LS-105 16117
1-1.	Drafting Machine	LS-105 16122
1-1.	Drafting Machine	LS-105 16141
1-1.	Drafting Machine	LS-105 16113
1-1.	Drafting Machine	LS-105 16132
1-1.	Drafting Machine	LS-105 16126
1-1.	Drafting Machine	LS-105 16145
1-1.	Drafting Machine	LS-105 16120
1-1.	Drafting Machine	LS-105 16143
1-1.	Drafting Machine	LS-105 16116
1-1.	Drafting Machine	LS-105 16131
1-1.	Drafting Machine	LS-105 16133
1-1.	Drafting Machine	LS-105 16129
1-2.	Drafting Board	VL-105 VL-105-01
1-2.	Drafting Board	VL-105 VL-105-02
1-2.	Drafting Board	VL-105 VL-105-03
1-2.	Drafting Board	VL-105 VL-105-04
1-2.	Drafting Board	VL-105 VL-105-05
1-2.	Drafting Board	VL-105 VL-105-06
1-2.	Drafting Board	VL-105 VL-105-07
1-2.	Drafting Board	VL-105 VL-105-08
1-2.	Drafting Board	VL-105 VL-105-09
1-2.	Drafting Board	VL-105 VL-105-10
1-2.	Drafting Board	VL-105 VL-105-11
1-2.	Drafting Board	VL-105 VL-105-12
1-2.	Drafting Board	VL-105 VL-105-13
1-2.	Drafting Board	VL-105 VL-105-14
1-2.	Drafting Board	VL-105 VL-105-15
1-2.	Drafting Board	VL-105 VL-105-16
1-2.	Drafting Board	VL-105 VL-105-17

6-13 TECHNICAL DRAWING ROOM

ITEM NO	DESCRIPTION	SERIAL NO.
1-2.	Drafting Board	VL-105 VL-105-18
1-2.	Drafting Board	VL-105 VL-105-19
1-2.	Drafting Board	VL-105 VL-105-20
1-2.	Drafting Board	VL-105 VL-105-21
1-2.	Drafting Board	VL-105 VL-105-22
1-2.	Drafting Board	VL-105 VL-105-23
1-2.	Drafting Board	VL-105 VL-105-24
1-2.	Drafting Board	VL-105 VL-105-25
1-2.	Drafting Board	VL-105 VL-105-26
1-2.	Drafting Board	VL-105 VL-105-27
1-2.	Drafting Board	VL-105 VL-105-28
1-2.	Drafting Board	VL-105 VL-105-29
1-2.	Drafting Board	VL-105 VL-105-30
1-3.	Drafting Stand	A-800 A-800-01
1-3.	Drafting Stand	A-800 A-800-02
1-3.	Drafting Stand	A-800 A-800-03
1-3.	Drafting Stand	A-800 A-800-04
1-3.	Drafting Stand	A-800 A-800-05
1-3.	Drafting Stand	A-800 A-800-06
1-3.	Drafting Stand	A-800 A-800-07
1-3.	Drafting Stand	A-800 A-800-08
1-3.	Drafting Stand	A-800 A-800-09
1-3.	Drafting Stand	A-800 A-800-10
1-3.	Drafting Stand	A-800 A-800-11
1-3.	Drafting Stand	A-800 A-800-12
1-3.	Drafting Stand	A-800 A-800-13
1-3.	Drafting Stand	A-800 A-800-14
1-3.	Drafting Stand	A-800 A-800-15
1-3.	Drafting Stand	A-800 A-800-16
1-3.	Drafting Stand	A-800 A-800-17
1-3.	Drafting Stand	A-800 A-800-18
1-3.	Drafting Stand	A-800 A-800-19
1-3.	Drafting Stand	A-800 A-800-20
1-3.	Drafting Stand	A-800 A-800-21
1-3.	Drafting Stand	A-800 A-800-22
1-3.	Drafting Stand	A-800 A-800-23
1-3.	Drafting Stand	A-800 A-800-24
1-3.	Drafting Stand	A-800 A-800-25
1-3.	Drafting Stand	A-800 A-800-26
1-3.	Drafting Stand	A-800 A-800-27
1-3.	Drafting Stand	A-800 A-800-28
1-3.	Drafting Stand	A-800 A-800-29
1-3.	Drafting Stand	A-800 A-800-30
1-4.	Drafting Chair	DC-1 DC-1-01
1-4.	Drafting Chair	DC-1 DC-1-02
1-4.	Drafting Chair	DC-1 DC-1-03

G-13 TECHNICAL DRAWING ROOM

ITEM NO	DESCRIPTION	SERIAL NO.
1-4.	Drafting Chair	DC-1 DC-1-04
1-4.	Drafting Chair	DC-1 DC-1-05
1-4.	Drafting Chair	DC-1 DC-1-06
1-4.	Drafting Chair	DC-1 DC-1-07
1-4.	Drafting Chair	DC-1 DC-1-08
1-4.	Drafting Chair	DC-1 DC-1-09
1-4.	Drafting Chair	DC-1 DC-1-10
1-4.	Drafting Chair	DC-1 DC-1-11
1-4.	Drafting Chair	DC-1 DC-1-12
1-4.	Drafting Chair	DC-1 DC-1-13
1-4.	Drafting Chair	DC-1 DC-1-14
1-4.	Drafting Chair	DC-1 DC-1-15
1-4.	Drafting Chair	DC-1 DC-1-16
1-4.	Drafting Chair	DC-1 DC-1-17
1-4.	Drafting Chair	DC-1 DC-1-18
1-4.	Drafting Chair	DC-1 DC-1-19
1-4.	Drafting Chair	DC-1 DC-1-20
1-4.	Drafting Chair	DC-1 DC-1-21
1-4.	Drafting Chair	DC-1 DC-1-22
1-4.	Drafting Chair	DC-1 DC-1-23
1-4.	Drafting Chair	DC-1 DC-1-24
1-4.	Drafting Chair	DC-1 DC-1-25
1-4.	Drafting Chair	DC-1 DC-1-26
1-4.	Drafting Chair	DC-1 DC-1-27
1-4.	Drafting Chair	DC-1 DC-1-28
1-4.	Drafting Chair	DC-1 DC-1-29
1-4.	Drafting Chair	DC-1 DC-1-30
2.	Computer Aided Drafter	GRADE JR
2-1.	Monitor	XONDEX 860(8066) 10-36
2-2.	CPU	XONDEX 860(8078W) 03-20
2-3.	Hard Disk	XONDEX 860(8555Y) 630067-04
2-4.	Plotter	WX 4636 310042
2-5.	Digitizer	KD 3838 71101179
2-6.	Key Board	8331 631150-02
2-7.	Table	
2-8.	Chair Self-Lifting Type	DC-1
2-9.	Transformer	220/110V 1.5 KV
3.	Drawing Instruments	EC-21 EC-21-01
3.	Drawing Instruments	EC-21 EC-21-02
3.	Drawing Instruments	EC-21 EC-21-03
3.	Drawing Instruments	EC-21 EC-21-04
3.	Drawing Instruments	EC-21 EC-21-05
3.	Drawing Instruments	EC-21 EC-21-06
3.	Drawing Instruments	EC-21 EC-21-01
3.	Drawing Instruments	EC-21 EC-21-08
3.	Drawing Instruments	EC-21 EC-21-09

G-13 TECHNICAL DRAWING ROOM

ITEM NO	DESCRIPTION	SERIAL NO.
3.	Drawing Instruments	EC-21 EC-21-10
3.	Drawing Instruments	EC-21 EC-21-11
3.	Drawing Instruments	EC-21 EC-21-12
3.	Drawing Instruments	EC-21 EC-21-13
3.	Drawing Instruments	EC-21 EC-21-14
3.	Drawing Instruments	EC-21 EC-21-15
3.	Drawing Instruments	EC-21 EC-21-16
3.	Drawing Instruments	EC-21 EC-21-17
3.	Drawing Instruments	EC-21 EC-21-18
3.	Drawing Instruments	EC-21 EC-21-19
3.	Drawing Instruments	EC-21 EC-21-20
3.	Drawing Instruments	EC-21 EC-21-21
3.	Drawing Instruments	EC-21 EC-21-22
3.	Drawing Instruments	EC-21 EC-21-23
3.	Drawing Instruments	EC-21 EC-21-24
3.	Drawing Instruments	EC-21 EC-21-25
3.	Drawing Instruments	EC-21 EC-21-26
3.	Drawing Instruments	EC-21 EC-21-27
3.	Drawing Instruments	EC-21 EC-21-28
3.	Drawing Instruments	EC-21 EC-21-29
3.	Drawing Instruments	EC-21 EC-21-30
3.	Drawing Instruments	EC-21 EC-21-31
3.	Drawing Instruments	EC-21 EC-21-32
4-1.	Drafting Machine	PM-912GX 8725504
4-1.	Drafting Machine	PM-912GX 8725515
4-1.	Drafting Machine	PM-912GX 8725521
4-1.	Drafting Machine	PM-912GX 8725497
4-2.	Drafting Board	MBO-01
4-2.	Drafting Board	MBO-02
4-2.	Drafting Board	MBO-03
4-2.	Drafting Board	MBO-04
4-3.	Drafting Stand	MST-01
4-3.	Drafting Stand	MST-02
4-3.	Drafting Stand	MST-03
4-3.	Drafting Stand	MST-04
4-4.	Drafting Chair	CHITOSE CHI-01
4-4.	Drafting Chair	CHITOSE CHI-02
4-4.	Drafting Chair	CHITOSE CHI-03
4-4.	Drafting Chair	CHITOSE CHI-04

G-14 DARK ROOM

ITEM NO	DESCRIPTION	SERIAL NO
1.	DARK ROOM PROCESS CAMERA	2600 7040371
2.	FILM PROCESSOR	FG-360U 81912681
3.	WHIRLER SENSITIZER CONTACTING MACHINE	YCW-54 SV-641
4-1.	PRINTING DOWN FRACE	YCP-46D SP-2589
4-2.	LIGHTING EQUIREPMENT	FG-1001 G-0758
5.	ETCHING MACHINE	YCE-71A SE-380

G 15 THEATRE

ITEM NO	DESCRIPTION	SERIAL NO.
1.	TV MONITOR	BT/M 1400 TSN FA7330016
2.	AUDIO/VIDEO SWITCHER	AG/SW 100/EM F7A0245 DI
3.	MIXER	WU/M 51 N 717
4.	AUDIO MIXER	WR/X 01 N 6Y0420
5.	VIDEO TUNER/TIMER	UW/ET 180 Z T5LA00108
6.	REMOTE CONTROLE	ET-12R UC 7511236
7.	VIDEO	SL-800 ME 848789
8.	POWER AMPLIFIER	WP-9110 E 8770186
9.	POWER AMPLIFIER	8770218
10.	POWER AMPLIFIER	WU/P 43 N 790481
11.	PROJECTION LAMP	9111733
12.	AUTOMATIC VOLTAGE REGULATOR	ASE 13.6 MA5725
13*	Parabola Receiver TV Set	

DAFTAR PERALATAN

NO.	N A M E	SPECIFICATION	NUMBER	FACTORY
1	Adjustable angle Wrench	150 mm	225 PCS	ENGINEER
2	Alphabet Punch Set	AVS-AZ	6 PCS	AMACHO
	Figure Punch Set	FVS-09	6 PCS	AMACHO
3	Buff Liquid	BLD-01	20 PCS	
4	Center Punch	100 mm	235 PCS	ENGINEER
5	Chasis Punch Set	5 Sizes/Set	258 PCS	ENGINEER
6	Convex Rule	2 M	248 PCS	KDS
7	Copper Hammer	250 Grs	55 PCS	
8	Cord Reel	AC 220V 30W	4 SETS	HATAYA
9	Core Alignment Driver Set	5 Pcs/Set	70 SETS	HOZAN
10	Cutting Pliers	175 mm	300 PCS	HOZAN
11	Circuit Testing Screw Driver	AC 100 - 250V	313 PCS	ENGINEER
12	Circuit Testing Screw Driver	AC 1500 - 15000V	262 PCS	ENGINEER
13	Drill Set	100 Pcs/Set	4 SETS	
14	Electric Soldering Iron	AC 220V 40W	276 PCS	WONDER
15	Electric Drill	AC 220V 360W	17 PCS	HITACHI
16	Electric Drill	AC 220V 250W	13 PCS	HITACHI
17	Grinding Wheel for Grinder	m205 x 19 x 15.88m	20 PCS	NORITAKE
18	Hand Nibbling Tool	HNT - 01	234 PCS	HOZAN
19	Hand Drill	6.5 mm	2 SETS	ENGINEER
20	Hex Key Wrench Set	HKW - 01	1 SET	ENGINEER
21	Hex Nut Driver	4 mm	233 PCS	ENGINEER
22	Hex Nut Driver	5 mm	237 PCS	ENGINEER
23	Hex Nut Driver	5.5 mm	234 PCS	ENGINEER
24	Hex Nut Driver	6 mm	234 PCS	ENGINEER
25	Hex Nut Driver	7 mm	233 PCS	ENGINEER
26	Hex Nut Driver	8 mm	234 PCS	ENGINEER
27	IC Home	175 x 245mm	81 PCS	HOZAN
28	Knife	KFE - 01	251 PCS	ENGINEER
29	Long Nose Pliers	150 mm	271 PCS	ENGINEER
30	Machinist Hammer	450 Grs	92 PCS	TOP
31	Micro Meter	MCR-01	30 PCS	
32	Miniatur Tools Set	7 Pcs/Set	63 SETS	HOZAN
33	Nut Driver Set	6 Pcs/Set	15 SETS	ENGINEER
34	Open end Wrench Set	6 Pcs/Set	252 SETS	ENGINEER
35	Precision Screw Driver Set	6 Pcs/Set	140 SETS	PHILIPS
36	Precision File Set	10 Pcs/Set	228 SETS	HIROSHIMA
37	Straight Drill	SDL - 1-13mm	7 PCS	KOBELKO
38	Steel Compass	200 mm	252 PCS	ENGINEER
39	Steel Rule	300 mm	14 PCS	JIS
40	Steel Rule	600 mm	250 PCS	JIS
41	Screw Driver	(-) 75 mm	244 PCS	ENGINEER
42	Screw Driver	(-) 100 mm	243 PCS	ENGINEER
43	Screw Driver	(-) 125 mm	274 PCS	ENGINEER

DAFTAR PERALATAN

NO.	N A M E	SPECIFICATION	NUMBER	FACTORY
44	Screw Driver	(+) 75 mm	252 PCS	ENGINEER
45	Screw Driver	(+) 100 mm	232 PCS	ENGINEER
46	Screw Driver	(+) 125 mm	244 PCS	ENGINEER
47	Terminal Crimping Tool	275 mm	264 PCS	IZUMI
48	Test Hammer	110 Grs	75 PCS	TOP
49	Tap Handle	3 - 6 mm	225 PCS	SEIKI
50	Tap	3 mm	223 PCS	YAMAWA
55	Tap	4 mm	224 PCS	YAMAWA
52	Taper Reamers	9.0 x 20 x 190mm	224 PCS	ENGINEER
53	Taper Reamers	3.5 x 12 x 135mm	236 PCS	ENGINEER
54	V Block	100 mm	2 PCS	
55	Vernier Caliper	VCR - 01	30 PCS	MITUTOYO
56	Wire Stripper	160 mm	261 PCS	VESSEL
57	Wooden Rule	1 M	250 PCS	ENGINEER
58	Wooder Hammer	50 mm	48 PCS	VESSEL
59	Welded Tipped Tool Bits	WTT - 10	9 PCS	KOSHUHA
60	Welded Tipped Tool Bits	WTT - 11	9 PCS	KOAHUHA
61	Welded Tipped Tool Bits	WTT - 12R	9 PCS	KOSHUHA
62	Welded Tipped Tool Bits	WTT - 12L	9 PCS	KOSHUHA
63	Welded Tipped Tool Bits	WTT - 13R	4 PCS	KOSHUHA
64	Welded Tipped Tool Bits	WTT - 13L	9 PCS	KOSHUHA
65	Welded Tipped Tool Bits	WTT - 14R	4 PCS	KOSHUHA
66	Welded Tipped Tool Bits	WTT - 14L	9 PCS	KOSHUHA
67	Welded Tipped Tool Bits	WTT - 15R	4 PCS	KOSHUHA
68	Welded Tipped Tool Bits	WTT - 15L	9 PCS	KOSHUHA
69	Welded Tipped Tool Bits	WTT - 21	4 PCS	KOSHUHA
70	Welded Tipped Tool Bits	WTT - 22	9 PCS	KOSHUHA
71	Welded Tipped Tool Bits	WTT - 31	9 PCS	KOSHUHA
72	Welded Tipped Tool Bits	WTT - 41	9 PCS	KOSHUHA
73	Welded Tipped Tool Bits	WTT - 42	9 PCS	KOSHUHA
74	Welded Tipped Tool Bits	WTT - 51	9 PCS	KOSHUHA
75	Welded Tipped Tool Bits	WTT - 52	9 PCS	KOSHUHA

DAFTAR KOMPONEN

NO.	N A M E	SPECIFICATION	NUMBER	FACTORY
1	Alcohol	ACL-01	5 BTL	
2	Adhesive	ASE-01	10 PCS	ANDO
3	Arrow Clip	TJ - 1097 (Red)	0 PCS	SATO
4	Arrow Clip	TJ - 1097 (Black)	1 PCS	SATO
5	Arrow Clip	TJ - 6 (Red)	0 PCS	SATO
6	Arrow Clip	TJ - 6 (Black)	0 PCS	SATO
7	Arrow Clip	TJ - 6 (white)	19 PCS	SATO
8	Arrow Clip	TJ - 6 (Yellow)	1 PCS	SATO
9	Arrow Clip	TJ - 6 (Blue)	18 PCS	SATO
10	Aluminium Electrolyt Condenser	1 μ f	40 PCS	SME
11	Aluminium Electrolyt Condenser	2.2 μ f	40 PCS	SME
12	Aluminium Electrolyt Condenser	4.7 μ f	40 PCS	SME
13	Aluminium Electrolyt Condenser	22 μ f	40 PCS	SME
14	Aluminium Electrolyt Condenser	47 μ f	40 PCS	SME
15	Aluminium Electrolyt Condenser	220 μ f	40 PCS	SME
16	Aluminium Electrolyt Condenser	470 μ f	40 PCS	SME
17	Aluminium Electrolyt Condenser	1000 μ f	40 PCS	SME
18	Blank Film for OHP	BFO-01	26 PCS	ELMO
19	BNC Clip Cable	DG8M - 150	10 PCS	
20	BNC Plug	BNC - P58U	10 PCS	
21	Banana Socket	TJ - 3B	200 PCS	SATO
22	BNC Cable	DG - 88100W	10 PCS	
23	BNC Cable	DG - 88100W	10 PCS	
24	BNC Receptacle	BNC - R11	10 PCS	
25	BNC Receptacle	BNC - R10	10 PCS	
26	Banana Plug	TJ - 3A (Red)	162 PCS	SATO
27	Banana Plug	TJ - 3A (Black)	123 PCS	SATO
28	Bolt	3 x 10 mm	300 PCS	
29	Bolt	4 x 10 mm	100 PCS	
30	Bolt	5 x 15 mm	100 PCS	
31	Board Connector	BCR - 04132	0 PCS	KEL
32	Board Connector	BCR - 56132	15 PCS	KEL
33	Board Connector	BCR - 27112	15 PCS	KEL
34	Banana Plug	TJ - 560 (Red)	50 PCS	SATO
35	Banana Plug	TJ - 560 (Black)	50 PCS	SATO
38	Banana Plug	TJ - 560 (Whith)	0 PCS	SATO
39	Banana Plug	TJ - 560 (Blue)	0 PCS	SATO
40	Banana Plug	TJ - 560 (Yellow)	0 PCS	SATO
41	Cotton Gloves	CGS - 01	156 SETS	
42	Cable (Koban)	1.25 mm ²	200 M	FUJI
43	Coaxial Cable	CCE - 01	400 M	FUJIKURA
44	CR Kit	CR - 101	9 PCS	ELNA
45	Cable for GP-IB 408 JE-101	CG1 - 01	10 PCS	DG
46	Cable for GP-IB 408 JE-102	CGI - 02	10 PCS	DG

DAFTAR KOMPONEN

NO.	N A M E	SPECIFICATION	NUMBER	FACTORY
47	Connector	CN - 3352	70 PCS	SATO
48	Connector	CN - 7034	90 PCS	SATO
49	Connector	57 - 30360	5 PCS	SATO
50	Connector	57 - 40360	10 PCS	SATO
51	Connector	57F - 30360	5 PCS	SATO
52	Connector	57F - 40360	5 PCS	SATO
53	Clip	C - 4S (Red)	12 PCS	SATO
54	Clip	C - 4S (Black)	20 PCS	SATO
55	Clip	C - 4M (Blue)	19 PCS	SATO
56	Clip	C - 4M (Red)	0 PCS	SATO
57	Clip	C - 4M (Black)	17 PCS	SATO
58	Clip	C - 4M (White)	0 PCS	SATO
59	Clip	C - 4L (Black)	20 PCS	SATO
60	Clip	C - 4L (Red)	0 PCS	SATO
61	Ceramic Condenser	1 pf	20 PCS	
62	Ceramic Condenser	2.2 pf	40 PCS	
63	Ceramic Condenser	4.7 pf	40 PCS	
64	Ceramic Condenser	10 pf	40 PCS	
65	Ceramic Condenser	22 pf	40 PCS	
66	Ceramic Condenser	47 pf	40 PCS	
67	Ceramic Condenser	100 pf	40 PCS	
68	Ceramic Condenser	220 pf	40 PCS	
69	Ceramic Condenser	470 pf	40 PCS	
70	Ceramic Condenser	102 pf	40 PCS	
71	Ceramic Condenser	472 pf	40 PCS	
72	Ceramic Condenser	103 pf	40 PCS	
73	Ceramic Condenser	223 pf	40 PCS	
74	Ceramic Condenser	473 pf	40 PCS	
75	Ceramic Condenser	104 pf	40 PCS	
76	Carbon Resistor 1/4 W	1 Ω	75 PCS	PHILIPS
77	Carbon Resistor 1/4 W	2 Ω	75 PCS	PHILIPS
78	Carbon Resistor 1/4 W	3 Ω	75 PCS	PHILIPS
79	Carbon Resistor 1/4 W	10 Ω	75 PCS	PHILIPS
80	Carbon Resistor 1/4 W	11 Ω	75 PCS	PHILIPS
81	Carbon Resistor 1/4 W	12 Ω	75 PCS	PHILIPS
82	Carbon Resistor 1/4 W	13 Ω	75 PCS	PHILIPS
83	Carbon Resistor 1/4 W	15 Ω	75 PCS	PHILIPS
84	Carbon Resistor 1/4 W	16 Ω	75 PCS	PHILIPS
85	Carbon Resistor 1/4 W	18 Ω	75 PCS	PHILIPS
86	Carbon Resistor 1/4 W	20 Ω	75 PCS	PHILIPS
87	Carbon Resistor 1/4 W	22 Ω	75 PCS	PHILIPS
88	Carbon Resistor 1/4 W	24 Ω	75 PCS	PHILIPS
89	Carbon Resistor 1/4 W	27 Ω	75 PCS	PHILIPS
90	Carbon Resistor 1/4 W	30 Ω	75 PCS	PHILIPS

DAFTAR PERALATAN

NO.	N A M E	SPECIFICATION	NUMBER	FACTORY
91	Carbon Resistor 1/4 W	33 Ω	75 PCS	PHILIPS
92	Carbon Resistor 1/4 W	36 Ω	75 PCS	PHILIPS
93	Carbon Resistor 1/4 W	39 Ω	75 PCS	PHILIPS
94	Carbon Resistor 1/4 W	43 Ω	75 PCS	PHILIPS
95	Carbon Resistor 1/4 W	47 Ω	75 PCS	PHILIPS
96	Carbon Resistor 1/4 W	51 Ω	75 PCS	PHILIPS
97	Carbon Resistor 1/4 W	56 Ω	75 PCS	PHILIPS
98	Carbon Resistor 1/4 W	62 Ω	75 PCS	PHILIPS
99	Carbon Resistor 1/4 W	68 Ω	75 PCS	PHILIPS
100	Carbon Resistor 1/4 W	75 Ω	75 PCS	PHILIPS
101	Carbon Resistor 1/4 W	82 Ω	75 PCS	PHILIPS
102	Carbon Resistor 1/4 W	91 Ω	75 PCS	PHILIPS
103	Carbon Resistor 1/4 W	100 Ω	75 PCS	PHILIPS
104	Carbon Resistor 1/4 W	110 Ω	75 PCS	PHILIPS
105	Carbon Resistor 1/4 W	120 Ω	75 PCS	PHILIPS
106	Carbon Resistor 1/4 W	130 Ω	75 PCS	PHILIPS
107	Carbon Resistor 1/4 W	150 Ω	75 PCS	PHILIPS
108	Carbon Resistor 1/4 W	160 Ω	75 PCS	PHILIPS
109	Carbon Resistor 1/4 W	180 Ω	75 PCS	PHILIPS
110	Carbon Resistor 1/4 W	200 Ω	75 PCS	PHILIPS
111	Carbon Resistor 1/4 W	220 Ω	75 PCS	PHILIPS
112	Carbon Resistor 1/4 W	240 Ω	75 PCS	PHILIPS
113	Carbon Resistor 1/4 W	270 Ω	75 PCS	PHILIPS
114	Carbon Resistor 1/4 W	300 Ω	75 PCS	PHILIPS
115	Carbon Resistor 1/4 W	330 Ω	75 PCS	PHILIPS
116	Carbon Resistor 1/4 W	360 Ω	75 PCS	PHILIPS
117	Carbon Resistor 1/4 W	390 Ω	75 PCS	PHILIPS
118	Carbon Resistor 1/4 W	430 Ω	75 PCS	PHILIPS
119	Carbon Resistor 1/4 W	470 Ω	75 PCS	PHILIPS
110	Carbon Resistor 1/4 W	510 Ω	75 PCS	PHILIPS
111	Carbon Resistor 1/4 W	560 Ω	75 PCS	PHILIPS
112	Carbon Resistor 1/4 W	620 Ω	75 PCS	PHILIPS
113	Carbon Resistor 1/4 W	680 Ω	75 PCS	PHILIPS
114	Carbon Resistor 1/4 W	750 Ω	75 PCS	PHILIPS
115	Carbon Resistor 1/4 W	820 Ω	75 PCS	PHILIPS
116	Carbon Resistor 1/4 W	910 Ω	75 PCS	PHILIPS
117	Carbon Resistor 1/4 W	1.1 Ω	75 PCS	PHILIPS
118	Carbon Resistor 1/4 W	1.2 Ω	75 PCS	PHILIPS
119	Carbon Resistor 1/4 W	1.3 Ω	75 PCS	PHILIPS
120	Carbon Resistor 1/4 W	1.5 Ω	75 PCS	PHILIPS
121	Carbon Resistor 1/4 W	1.6 Ω	75 PCS	PHILIPS
122	Carbon Resistor 1/4 W	1.8 Ω	75 PCS	PHILIPS
123	Carbon Resistor 1/4 W	2.2 Ω	75 PCS	PHILIPS
124	Carbon Resistor 1/4 W	2.4 Ω	75 PCS	PHILIPS

DAFTAR KOMPONEN

NO.	N A M E	SPECIFICATION	NUMBER	FACTORY
125	Carbon Resistor 1/4 W	2.7 Ω	75 PCS	PHILIPS
126	Carbon Resistor 1/4 W	3.3 Ω	75 PCS	PHILIPS
127	Carbon Resistor 1/4 W	3.6 Ω	75 PCS	PHILIPS
128	Carbon Resistor 1/4 W	3.9 Ω	75 PCS	PHILIPS
129	Carbon Resistor 1/4 W	4.1 Ω	75 PCS	PHILIPS
130	Carbon Resistor 1/4 W	4.3 Ω	75 PCS	PHILIPS
131	Carbon Resistor 1/4 W	4.7 Ω	75 PCS	PHILIPS
132	Carbon Resistor 1/4 W	5.1 Ω	75 PCS	PHILIPS
133	Carbon Resistor 1/4 W	5.6 Ω	75 PCS	PHILIPS
134	Carbon Resistor 1/4 W	6.2 Ω	75 PCS	PHILIPS
135	Carbon Resistor 1/4 W	6.8 Ω	75 PCS	PHILIPS
136	Carbon Resistor 1/4 W	7.5 Ω	75 PCS	PHILIPS
137	Carbon Resistor 1/4 W	8.2 Ω	75 PCS	PHILIPS
138	Carbon Resistor 1/4 W	1 KΩ	75 PCS	PHILIPS
139	Carbon Resistor 1/4 W	2 KΩ	75 PCS	PHILIPS
140	Carbon Resistor 1/4 W	3 KΩ	75 PCS	PHILIPS
141	Carbon Resistor 1/4 W	10 KΩ	75 PCS	PHILIPS
142	Carbon Resistor 1/4 W	11 KΩ	75 PCS	PHILIPS
143	Carbon Resistor 1/4 W	12 KΩ	75 PCS	PHILIPS
144	Carbon Resistor 1/4 W	13 KΩ	75 PCS	PHILIPS
145	Carbon Resistor 1/4 W	15 KΩ	75 PCS	PHILIPS
146	Carbon Resistor 1/4 W	16 KΩ	75 PCS	PHILIPS
147	Carbon Resistor 1/4 W	18 KΩ	75 PCS	PHILIPS
148	Carbon Resistor 1/4 W	20 KΩ	75 PCS	PHILIPS
149	Carbon Resistor 1/4 W	22 KΩ	75 PCS	PHILIPS
150	Carbon Resistor 1/4 W	24 KΩ	75 PCS	PHILIPS
151	Carbon Resistor 1/4 W	27 KΩ	75 PCS	PHILIPS
152	Carbon Resistor 1/4 W	30 KΩ	75 PCS	PHILIPS
153	Carbon Resistor 1/4 W	33 KΩ	75 PCS	PHILIPS
154	Carbon Resistor 1/4 W	36 KΩ	75 PCS	PHILIPS
155	Carbon Resistor 1/4 W	39 KΩ	75 PCS	PHILIPS
156	Carbon Resistor 1/4 W	43 KΩ	75 PCS	PHILIPS
157	Carbon Resistor 1/4 W	47 KΩ	75 PCS	PHILIPS
158	Carbon Resistor 1/4 W	51 KΩ	75 PCS	PHILIPS
159	Carbon Resistor 1/4 W	56 KΩ	75 PCS	PHILIPS
160	Carbon Resistor 1/4 W	62 KΩ	75 PCS	PHILIPS
161	Carbon Resistor 1/4 W	68 KΩ	75 PCS	PHILIPS
162	Carbon Resistor 1/4 W	75 KΩ	75 PCS	PHILIPS
163	Carbon Resistor 1/4 W	82 KΩ	75 PCS	PHILIPS
164	Carbon Resistor 1/4 W	91 KΩ	75 PCS	PHILIPS
165	Carbon Resistor 1/4 W	100 KΩ	75 PCS	PHILIPS
166	Carbon Resistor 1/4 W	110 KΩ	75 PCS	PHILIPS
167	Carbon Resistor 1/4 W	120 KΩ	75 PCS	PHILIPS
168	Carbon Resistor 1/4 W	130 KΩ	75 PCS	PHILIPS

DAFTAR KOMPONEN

NO.	N A M E	SPECIFICATION	NUMBER	FACTORY
169	Carbon Resistor 1/4 W	150 KΩ	75 PCS	PHILIPS
170	Carbon Resistor 1/4 W	160 KΩ	75 PCS	PHILIPS
171	Carbon Resistor 1/4 W	180 KΩ	75 PCS	PHILIPS
172	Carbon Resistor 1/4 W	200 KΩ	75 PCS	PHILIPS
173	Carbon Resistor 1/4 W	1.5 KΩ	75 PCS	PHILIPS
174	Carbon Resistor 1/4 W	1.6 KΩ	75 PCS	PHILIPS
175	Carbon Resistor 1/4 W	1.8 KΩ	75 PCS	PHILIPS
176	Carbon Resistor 1/4 W	2.2 KΩ	75 PCS	PHILIPS
177	Carbon Resistor 1/4 W	2.4 KΩ	75 PCS	PHILIPS
178	Carbon Resistor 1/4 W	2.7 KΩ	75 PCS	PHILIPS
179	Carbon Resistor 1/4 W	3.3 KΩ	75 PCS	PHILIPS
180	Carbon Resistor 1/4 W	3.6 KΩ	75 PCS	PHILIPS
181	Carbon Resistor 1/4 W	3.9 KΩ	75 PCS	PHILIPS
182	Carbon Resistor 1/4 W	4.3 KΩ	75 PCS	PHILIPS
183	Carbon Resistor 1/4 W	4.7 KΩ	75 PCS	PHILIPS
184	Carbon Resistor 1/4 W	5.1 KΩ	75 PCS	PHILIPS
185	Carbon Resistor 1/4 W	5.6 KΩ	75 PCS	PHILIPS
186	Carbon Resistor 1/4 W	6.2 KΩ	75 PCS	PHILIPS
187	Carbon Resistor 1/4 W	6.8 KΩ	75 PCS	PHILIPS
188	Carbon Resistor 1/4 W	7.5 KΩ	75 PCS	PHILIPS
189	Carbon Resistor 1/4 W	8.2 KΩ	75 PCS	PHILIPS
190	Carbon Resistor 1/4 W	9.1 KΩ	75 PCS	PHILIPS
191	Carbon Resistor 1/4 W	1 MΩ	75 PCS	PHILIPS
192	Carbon Resistor 1/4 W	2 MΩ	75 PCS	PHILIPS
193	Carbon Resistor 1/4 W	3 MΩ	75 PCS	PHILIPS
194	Carbon Resistor 1/4 W	10 MΩ	75 PCS	PHILIPS
195	Carbon Resistor 1/4 W	1.1 MΩ	75 PCS	PHILIPS
196	Carbon Resistor 1/4 W	1.2 MΩ	75 PCS	PHILIPS
197	Carbon Resistor 1/4 W	1.3 MΩ	75 PCS	PHILIPS
198	Carbon Resistor 1/4 W	1.5 MΩ	75 PCS	PHILIPS
199	Carbon Resistor 1/4 W	1.6 MΩ	75 PCS	PHILIPS
200	Carbon Resistor 1/4 W	1.8 MΩ	75 PCS	PHILIPS
201	Carbon Resistor 1/4 W	2.2 MΩ	75 PCS	PHILIPS
202	Carbon Resistor 1/4 W	2.4 MΩ	75 PCS	PHILIPS
203	Carbon Resistor 1/4 W	2.7 MΩ	75 PCS	PHILIPS
204	Carbon Resistor 1/4 W	3.3 MΩ	75 PCS	PHILIPS
205	Carbon Resistor 1/4 W	3.6 MΩ	75 PCS	PHILIPS
206	Carbon Resistor 1/4 W	3.9 MΩ	75 PCS	PHILIPS
207	Carbon Resistor 1/4 W	4.3 MΩ	75 PCS	PHILIPS
208	Carbon Resistor 1/4 W	4.7 MΩ	75 PCS	PHILIPS
209	Carbon Resistor 1/4 W	5.1 MΩ	75 PCS	PHILIPS
200	Carbon Resistor 1/4 W	5.6 MΩ	75 PCS	PHILIPS
201	Carbon Resistor 1/4 W	6.2 MΩ	75 PCS	PHILIPS
202	Carbon Resistor 1/4 W	6.8 MΩ	75 PCS	PHILIPS

DAFTAR KOMPONEN

NO.	N A M E	SPECIFICATION	NUMBER	FACTORY
203	Carbon Resistor 1/4 W	7.5 MΩ	75 PCS	PHILIPS
204	Carbon Resistor 1/4 W	8.2 MΩ	75 PCS	PHILIPS
205	Carbon Resistor 1/4 W	9.1 MΩ	75 PCS	PHILIPS
206	Carbon Resistor 1/2 W	1 Ω	75 PCS	PHILIPS
207	Carbon Resistor 1/2 W	10 Ω	75 PCS	PHILIPS
208	Carbon Resistor 1/2 W	12 Ω	75 PCS	PHILIPS
209	Carbon Resistor 1/2 W	15 Ω	75 PCS	PHILIPS
210	Carbon Resistor 1/2 W	18 Ω	75 PCS	PHILIPS
211	Carbon Resistor 1/2 W	22 Ω	75 PCS	PHILIPS
212	Carbon Resistor 1/2 W	27 Ω	75 PCS	PHILIPS
213	Carbon Resistor 1/2 W	33 Ω	75 PCS	PHILIPS
214	Carbon Resistor 1/2 W	39 Ω	75 PCS	PHILIPS
215	Carbon Resistor 1/2 W	47 Ω	75 PCS	PHILIPS
216	Carbon Resistor 1/2 W	56 Ω	75 PCS	PHILIPS
217	Carbon Resistor 1/2 W	68 Ω	75 PCS	PHILIPS
218	Carbon Resistor 1/2 W	82 Ω	75 PCS	PHILIPS
219	Carbon Resistor 1/2 W	100 Ω	75 PCS	PHILIPS
220	Carbon Resistor 1/2 W	120 Ω	75 PCS	PHILIPS
221	Carbon Resistor 1/2 W	150 Ω	75 PCS	PHILIPS
222	Carbon Resistor 1/2 W	160 Ω	75 PCS	PHILIPS
223	Carbon Resistor 1/2 W	180 Ω	75 PCS	PHILIPS
224	Carbon Resistor 1/2 W	220 Ω	75 PCS	PHILIPS
225	Carbon Resistor 1/2 W	270 Ω	75 PCS	PHILIPS
226	Carbon Resistor 1/2 W	680 Ω	75 PCS	PHILIPS
227	Carbon Resistor 1/2 W	1.2 Ω	75 PCS	PHILIPS
228	Carbon Resistor 1/2 W	1.5 Ω	75 PCS	PHILIPS
229	Carbon Resistor 1/2 W	1.8 Ω	75 PCS	PHILIPS
230	Carbon Resistor 1/2 W	2.2 Ω	75 PCS	PHILIPS
231	Carbon Resistor 1/2 W	2.7 Ω	75 PCS	PHILIPS
232	Carbon Resistor 1/2 W	3.3 Ω	75 PCS	PHILIPS
233	Carbon Resistor 1/2 W	3.9 Ω	75 PCS	PHILIPS
234	Carbon Resistor 1/2 W	4.7 Ω	75 PCS	PHILIPS
235	Carbon Resistor 1/2 W	5.6 Ω	75 PCS	PHILIPS
236	Carbon Resistor 1/2 W	1 KΩ	75 PCS	PHILIPS
237	Carbon Resistor 1/2 W	10 KΩ	75 PCS	PHILIPS
238	Carbon Resistor 1/2 W	12 KΩ	75 PCS	PHILIPS
239	Carbon Resistor 1/2 W	15 KΩ	75 PCS	PHILIPS
240	Carbon Resistor 1/2 W	18 KΩ	75 PCS	PHILIPS
241	Carbon Resistor 1/2 W	22 KΩ	75 PCS	PHILIPS
242	Carbon Resistor 1/2 W	27 KΩ	75 PCS	PHILIPS
243	Carbon Resistor 1/2 W	33 KΩ	75 PCS	PHILIPS
244	Carbon Resistor 1/2 W	39 KΩ	75 PCS	PHILIPS
245	Carbon Resistor 1/2 W	47 KΩ	75 PCS	PHILIPS
246	Carbon Resistor 1/2 W	68 KΩ	75 PCS	PHILIPS

DAFTAR KOMPONEN

NO.	N A M E	SPECIFICATION	NUMBER	FACTORY
247	Carbon Resistor	1/2 W	330 KΩ	75 PCS PHILIPS
248	Carbon Resistor	1/2 W	390 KΩ	75 PCS PHILIPS
249	Carbon Resistor	1/2 W	470 KΩ	75 PCS PHILIPS
240	Carbon Resistor	1/2 W	560 KΩ	75 PCS PHILIPS
241	Carbon Resistor	1/2 W	680 KΩ	75 PCS PHILIPS
242	Carbon Resistor	1/2 W	820 KΩ	75 PCS PHILIPS
243	Carbon Resistor	1/2 W	1.2 KΩ	75 PCS PHILIPS
244	Carbon Resistor	1/2 W	1.5 KΩ	75 PCS PHILIPS
245	Carbon Resistor	1/2 W	1.8 KΩ	75 PCS PHILIPS
246	Carbon Resistor	1/2 W	2.2 KΩ	75 PCS PHILIPS
247	Carbon Resistor	1/2 W	2.7 KΩ	75 PCS PHILIPS
248	Carbon Resistor	1/2 W	3.3 KΩ	75 PCS PHILIPS
249	Carbon Resistor	1/2 W	3.9 KΩ	75 PCS PHILIPS
250	Carbon Resistor	1/2 W	4.7 KΩ	75 PCS PHILIPS
251	Carbon Resistor	1/2 W	5.6 KΩ	75 PCS PHILIPS
252	Carbon Resistor	1/2 W	6.8 KΩ	75 PCS PHILIPS
253	Carbon Resistor	1/2 W	1 MΩ	75 PCS PHILIPS
254	Carbon Resistor	1/2 W	10 MΩ	75 PCS PHILIPS
255	Carbon Resistor	1/2 W	1.2 MΩ	75 PCS PHILIPS
256	Carbon Resistor	1/2 W	1.5 MΩ	75 PCS PHILIPS
257	Carbon Resistor	1/2 W	1.8 MΩ	75 PCS PHILIPS
258	Carbon Resistor	1/2 W	2.2 MΩ	75 PCS PHILIPS
259	Carbon Resistor	1/2 W	2.7 MΩ	75 PCS PHILIPS
260	Carbon Resistor	1/2 W	3.3 MΩ	75 PCS PHILIPS
261	Carbon Resistor	1/2 W	3.4 MΩ	75 PCS PHILIPS
262	Carbon Resistor	1/2 W	4.7 MΩ	75 PCS PHILIPS
263	Carbon Resistor	1/2 W	5.6 MΩ	75 PCS PHILIPS
264	Carbon Resistor	1/2 W	6.8 MΩ	75 PCS PHILIPS
265	Carbon Resistor	1/2 W	8.2 MΩ	75 PCS PHILIPS
266	Dusper	DPS - 01	25 PCS	DZU
267	Dioda Kit	TD - 55	5 PCS	
268	Dioda	IS - IN34	40 PCS	
269	Dioda	IS - 1588	40 PCS	
270	Dioda	IS - 1888	40 PCS	
271	Dry Cell	SUM1- 1.5 V	24 PCS	NATIONAL
272	Dry Cell	SUM3- 1.5 V	838 PCS	NATIONAL
273	Dry Cell	SUM6 - 9 V	805 PCS	NATIONAL
274	Extra Tip for Soldering Iron	ETS - 01	107 PCS	WONDEREX
275	EXT Cable	EXCO1 - 010	10 PCS	
276	EXT Cable	EXCO1 - 020	10 PCS	
277	Electric Wire	1.25 mm ²	400 M	YAZAKI
278	Electric Wire	2 mm ²	400 M	YAZAKI
279	Electric Wire	3.5 mm ²	400 M	YAZAKI
280	Fiber Adhesive	FAE - 01	50 PCS	

DAFTAR KOMPONEN

NO.	N A M E	SPECIFICATION	NUMBER	FACTORY
281	Fet	2SK30GR	50 PCS	
282	Flat Cable	50 Wire	100 M	
283	Four Terminal Regulator	79 GUIC	5 PCS	
284	Four Terminal Regulator	78 GUIC	4 PCS	
285	FC Plug Kit	FPK - 01	0 PCS	
286	FC Plug Kit	FPK - 02	0 PCS	
287	Flat Cable Connector	FAS-20-17	8 PCS	YAMAICHI
288	Flat Cable Connector	FAS-30-17	8 PCS	YAMAICHI
289	Flat Cable Connector	FAS-34-17	10 PCS	YAMAICHI
290	Flat Cable Connector	FAS-40-17	10 PCS	YAMAICHI
291	Flat Cable Connector	FAS-50-17	9 PCS	YAMAICHI
292	Flat Cable Connector	FAP-20-07 #1	8 PCS	YAMAICHI
293	Flat Cable Connector	FAP-20-07 #3	10 PCS	YAMAICHI
294	Flat Cable Connector	FAP-30-07 #1	10 PCS	YAMAICHI
295	Flat Cable Connector	FAP-30-07 #3	10 PCS	YAMAICHI
296	Flat Cable Connector	FAP-34-07 #1	10 PCS	YAMAICHI
297	Flat Cable Connector	FAP-34-07 #3	10 PCS	YAMAICHI
298	Flat Cable Connector	FAP-40-07 #1	10 PCS	YAMAICHI
299	Flat Cable Connector	FAP-40-07 #3	7 PCS	YAMAICHI
300	Flat Cable Connector	FAP-50-07 #1	10 PCS	YAMAICHI
301	Flat Cable Connector	FAP-50-07 #3	10 PCS	YAMAICHI
302	Flat Cable Connector	FDS-34-13 #2	10 PCS	YAMAICHI
302	Flat Cable Connector	FDS-50-13 #2	10 PCS	YAMAICHI
302	GP-Ib Cable	408JE - 101	0 PCS	
302	GP-Ib Cable	408JE - 102	0 PCS	
302	Heater for Soldering Iron	HSI - 01	82 PCS	WONDEREX
302	Heat - Proof Wire	0.5mm (RED)	1000 M	
302	Heat - Proof Wire	0.5mm (BLACK)	1000 M	
302	Heat - Proof Wire	0.5mm (WHITE)	1000 M	
302	Heat - Proof Wire	0.5mm (BLUE)	1000 M	
302	Heat - Proof Wire	0.5mm (YELLOW)	1000 M	
303	Heat - Proof Wire	0.5mm (ORANGE)	1000 M	
304	Heat - Proof Wire	0.5mm (VIOLET)	1000 M	
305	Heat - Proof Wire	0.5mm (GRAY)	1000 M	
306	Heat - Proof Wire	0.5mm (GREEN)	1000 M	
307	Heat - Proof Wire	0.5mm (BROWN)	1000 M	
308	Halogen Lamp for OHP	24V - 300W	24 PCS	
309	Half - Fixet Volume Kit	SA - 1	5 PCS	
310	Intra Connector	IC - 20	3 PCS	3 M
311	Intra Connector	IC - 34	3 PCS	3 M
312	Intra Connector	IC - 40	3 PCS	3 M
313	IC Testclip	LTC - 14	3 PCS	3 M
314	IC Testclip	LTC - 16	3 PCS	3 M
315	IC Testclip	LTC - 20	3 PCS	3 M

DAFTAR KOMPONEN

NO.	N A M E	SPECIFICATION	NUMBER	FACTORY
316	IC Testclip	LTC - 24	3 PCS	3 M
317	IC Testclip	LTC - 40	3 PCS	3 M
318	IC Socket	ICP - 8S	5 PCS	
319	IC Socket	ICP - 8W	20 PCS	
320	IC Socket	ICP - 14S	20 PCS	
321	IC Socket	ICP - 14W	16 PCS	
322	IC Socket	ICP - 16S	20 PCS	
323	IC Socket	ICP - 16W	19 PCS	
324	IC Socket	ICP - 18S	20 PCS	
325	IC Socket	ICP - 18W	18 PCS	
326	IC Socket	ICP - 20S	20 PCS	
327	IC Socket	ICP - 20W	20 PCS	
328	IC Socket	ICP - 24S	20 PCS	
329	IC Socket	ICP - 24W	16 PCS	
330	IC Socket	ICP - 28S	20 PCS	
331	IC Socket	ICP - 28W	17 PCS	
332	IC Socket	ICP - 40S	20 PCS	
333	IC Socket	ICP - 40W	18 PCS	
334	IC CMos	4011 BE	30 PCS	
335	IC CMos	4018 BE	30 PCS	
336	IC CMos	4001 BE	30 PCS	
337	IC Linear	4051 BE	30 PCS	
338	IC Linear	4052 BE	30 PCS	
339	IC Linear	4053 BE	30 PCS	
340	IC TTL	7400	30 PCS	
341	IC TTL	7402	30 PCS	
342	IC TTL	7404	30 M	
343	IC TTL	7414	30 M	
344	IC TTL	7425	30 M	
345	IC TTL	7474	30 M	
346	IC TTL	7476	30 M	
347	IC TTL	74121	30 M	
348	IC TTL	74247	30 M	
349	IC TTL	74LS00	30 M	
340	IC TTL	74LS01	30 M	
341	IC TTL	74LS02	30 M	
342	IC TTL	74LS03	30 PCS	
343	IC TTL	74LS04	30 PCS	
344	IC TTL	74LS08	30 PCS	
345	IC TTL	74LS09	30 PCS	
346	IC TTL	74LS10	30 PCS	
347	IC TTL	74LS11	30 PCS	
348	IC TTL	74LS14	30 PCS	
349	IC TTL	74LS15	30 PCS	

DAFTAR KOMPONEN

NO.	N A M E	SPECIFICATION	NUMBER	FACTORY
350	IC TTL	74LS32	30 PCS	
351	IC TTL	74LS74	30 PCS	
352	IC TTL	74LS76	30 PCS	
353	IC TTL	74LS86	30 PCS	
354	IC TTL	74LS90	30 PCS	
355	IC TTL	74LS93	30 PCS	
356	IC TTL	74LS95	30 PCS	
357	IC TTL	74LS123	30 PCS	
358	IC TTL	74LS125	30 PCS	
359	IC TTL	74LS126	30 PCS	
360	IC TTL	74LS138	30 PCS	
361	IC TTL	74LS157	30 PCS	
362	IC TTL	74LS160	30 PCS	
363	IC TTL	74LS161	30 PCS	
364	IC TTL	74LS192	30 PCS	
365	IC TTL	74LS193	30 PCS	
366	IC TTL	74LS195	30 PCS	
367	IC TTL	74LS241	30 PCS	
368	IC TTL	74LS244	30 PCS	
369	IC TTL	74LS245	30 PCS	
370	IC TTL	74LS251	30 PCS	
371	IC TTL	74LS273	30 PCS	
372	IC TTL	74LS290	30 PCS	
373	IC TTL	74LS299	30 PCS	
374	Johnson Terminal	T - 3025 (Red)	130 PCS	SATO
375	Johnson Terminal	T - 3025 (Black)	102 PCS	SATO
376	Johnson Terminal	T - 3025 (Cream)	102 PCS	SATO
377	Johnson Terminal	T - 3025 (Blue)	125 PCS	SATO
378	Johnson Terminal	T - 3025 (Yellow)	125 PCS	SATO
379	Light Emitting Dioda	10W - LED	40 PCS	
380	Light Emitting Dioda	10R - LED	40 PCS	
381	Light Emitting Dioda	10G - LED	40 PCS	
382	Light Emitting Dioda	10Y - LED	40 PCS	
383	Light Emitting Dioda	11R - LED	40 PCS	
384	Light Emitting Dioda	11G - LED	40 PCS	
385	Light Emitting Dioda	11Y - LED	40 PCS	
386	Marker (Water) for OHP	6 Color/Set	27 SETS	ELMO
387	Marker (Oil) for OHP	6 Color/Set	28 SETS	ELMO
388	Mylar Condenser (50 V)	102 pf	40 PCS	
389	Mylar Condenser (50 V)	222 pf	40 PCS	
390	Mylar Condenser (50 V)	472 pf	40 PCS	
391	Mylar Condenser (50 V)	103 pf	40 PCS	
392	Mylar Condenser (50 V)	223 pf	40 PCS	
393	Mylar Condenser (50 V)	473 pf	40 PCS	

DAFTAR KOMPONEN

NO.	N A M E	SPECIFICATION	NUMBER	FACTORY
394	Mylar Condenser (50 V)	104 pf	40 PCS	
395	Mylar Condenser (50 V)	224 pf	40 PCS	
396	Mylar Condenser (50 V)	474 pf	40 PCS	
397	Nut	3 mm	300 PCS	
398	Nut	4 mm	100 PCS	
399	Nut	5 mm	100 PCS	
400	Parts Case B.B	255 x 186 x 42mm	187 PCS	HOZAN
401	Printed Plate Board	CPU - 110 A	19 PCS	SUNHAYATO
402	Printed Plate Board	ADD - 801 R	20 PCS	SUNHAYATO
403	Printed Plate Board	ADD - 807 R	20 PCS	SUNHAYATO
404	Roll Film for OHP	RPO - 01	27 PCS	ELMO
405	Roll Paper for Faximile	RPF - 01	9 PCS	
406	Roll Paper for X-Y Recorder	RPX - 01	28 PCS	NATIONAL
407	Relay	HB2 - DC 5V	18 PCS	
408	Relay	HB2 - DC 12V	19 PCS	
409	Rectify Dioda	200V - 4A	0 PCS	
410	Rectify Dioda	200V - 8A	0 PCS	
411	Solder Coil	1 Kgs	247 PCS	ENGINEER
412	Switch	SWT - 12	50 PCS	SATO
413	Switch	SWT - 22	40 PCS	SATO
414	Switch	SWT - 32	40 PCS	SATO
415	Switch	SWT - 42	40 PCS	SATO
416	Switch	SWT - 52	40 PCS	SATO
417	Switch	SWT - 62	38 PCS	SATO
418	Switch	SWT - 72	10 PCS	SATO
419	Switch	SWT - 82	5 PCS	SATO
420	TP Film for Marker	TFM - 174	5 SETS	SATO
421	TP Film for Marker	TFM - 389	7 SETS	SATO
422	Telephone Cable	TCE - 01	200 PCS	SATO
423	Terminal Block	ML - 6P	100 PCS	SATO
424	Complementary Transistor	2SA606 / 2SC959	6 PCS	SATO
425	Complementary Transistor	2SA985A / 2SC227	9 PCS	NEC
426	Complementary Transistor	2SA1146 / 2SC270	15 PCS	SATO
427	Terminal	T - 24 (Red)	101 PCS	SATO
428	Terminal	T - 24 (Black)	101 PCS	SATO
429	Terminal	T - 24 (White)	100 PCS	SATO
430	Terminal	T - 24 (Blue)	150 PCS	SATO
431	Terminal	T - 24 (Yellow)	101 PCS	SATO
432	Three Terminal Regulator	7805 UC	5 PCS	SATO
433	Three Terminal Regulator	7905 UC	5 PCS	SATO
434	Three Terminal Regulator	7812 UC	5 PCS	SATO
435	Three Terminal Regulator	7912 UC	4 PCS	SATO
436	Three Terminal Regulator	7815 UC	5 PCS	SATO
437	Three Terminal Regulator	7915 UC	5 PCS	SATO

DAFTAR KOMPONEN

NO.	N A M E	SPECIFICATION	NUMBER	FACTORY
438	Transistor	2SA473	15 PCS	
439	Transistor	2SA564	15 PCS	
440	Transistor	2SA952	12 PCS	
441	Transistor	2SA1015	25 PCS	
442	Transistor	2SC733	7 PCS	
443	Transistor	2SC828	3 PCS	
444	Transistor	2SC829	4 PCS	
446	Transistor	2SC1173	16 PCS	
447	Transistor	2SC1815	2 PCS	
448	Transistor	2SC2001	20 PCS	
449	Vinyl Pararel Wire	1.25 mm ²	200 M	YAZAKI
450	Vinyl Tape	VTE - 01	400 PCS	YAZAKI
451	Vinyl Wire	0.75 mm ² (Red)	400 M	KHD
452	Vinyl Wire	0.75 mm ² (Black)	400 M	KHD
453	Vinyl Wire	0.75 mm ² (Whith)	400 M	KHD
454	Vinyl Wire	0.75 mm ² (Blue)	400 M	KHD
455	Vinyl Wire	0.75 mm ² (Yellow)	400 M	KHD
456	Variable Resistance	0.5 KΩ	4 PCS	
457	Variable Resistance	1 KΩ	4 PCS	
458	Variable Resistance	2 KΩ	5 PCS	
459	Variable Resistance	5 KΩ	5 PCS	
460	Variable Resistance	10 KΩ	5 PCS	
461	Variable Resistance	20 KΩ	5 PCS	
462	Variable Resistance	50 KΩ	3 PCS	
463	Variable Resistance	100 KΩ	5 PCS	
464	Waste Cloth	WCH - 01	40 PCS	
465	Wrapping Wire	0.32 ² (RED)	1500 M	ETFE
466	Wrapping Wire	0.32 ² (BLACK)	1500 M	ETFE
467	Wrapping Wire	0.32 ² (WHITH)	1500 M	ETFE
468	Wrapping Wire	0.32 ² (BLUE)	1500 M	ETFE
469	Wrapping Wire	0.32 ² (YELLOW)	1500 M	ETFE
470	Wrapping Wire	0.32 ² (ORANGE)	1500 M	ETFE
471	Wrapping Wire	0.32 ² (VIOLET)	1500 M	ETFE
472	Wrapping Wire	0.32 ² (GRAY)	1500 M	ETFE
473	Wrapping Wire	0.32 ² (GREEN)	1500 M	ETFE
474	Wrapping Wire	0.32 ² (BROWN)	1500 M	ETFE

I N D E X

=====

Code	Location	Page
G-1	ELECTRIC LABORATORY	1
G-2	ELECTRONIC LABORATORY	10
G-3	ELECTRONIC LABORATORY	10
G-4	DIGITAL ELECTRONIC LABORATORY	20
G-5	AUTOMATIC CONTROL LABORATORY	24
G-6	COMMUNICATION LABORATORY (1)	27
G-7	RADIO FREQUENCY & MICRO WAVE LABORATORY	35
G-8	COMPUTER LABORATORY	39
G-9	ELECTRIC POWER SYSTEM LABORATORY	42
G-10	COMMUNICATION LABORATORY (2)	47
G-11	PHYSICS LABORATORY	52
G-12	ELECTRO MECHANICAL WORK SHOP	55
G-13	TECHNICAL DRAWING ROOM	58
G-14	DARK ROOM	60
G-15	THEATRE	61
-----	DAFTAR PERALATAN (EQUIPMENT LIST)	62
-----	DAFTAR KOMPONEN (COMPONENT LIST)	64
-----	DAFTAR PERALATAN (TOOL LIST)	66

5 - 4 日本・インドネシアEEPIS友好育英基金

日本・インドネシア
EEPIS 友好育英基金

JAPAN・INDONESIA
EEPIS FRIENDSHIP FOUNDATION

— 1989 —

日本・インドネシア EEPIS 友好育英基金 (日本とインドネシアの友人達から真心を込めて)

第一章 総 則

第一条、基 金 名 称：

和 名：日本・インドネシア EEPIS 友好 育英基金
インドネシア名：YAYASAN JIEFF
英 名：JAPAN-INDONESIA EEPIS FRIENDSHIP FOUNDATION
略 号：JIEF基金・JIEFF

第二条、目 的：

インドネシア共和国スラバヤ市に所在するインドネシア電子工学ポリテクニク
(THE ELECTRONIC ENGINEERING POLITECHNIC INSTITUTE)に在籍中の、経済的
援助を必要としている学生で、且つ、成績優秀なる者に対し、この育英資金を活
用し、学業の継続を果たさせる。

第三条、形 態：

JIEF基金（以下「基金」という。）は、財団法人とする。

第四条、所 在 地：

基金は事務所を下記に置く。

POLITEKNIK ELEKTRONIKA DAN TELEKOM SI SURABAYA
KAMPUS ITS, Jl. ARIEF RACHMAN HAKIM. PUTIH SUKOLILO,
SURABAYA, INDONESIA. 60111.
電話：596114, 597280 ファクシミリ：62-31-596114

第五条、資 本 金：

- 1、基金の資本金は、発足時元金 \$20,100.-と、下記に記載するところの
寄付金、及び、それらの運用による利益との合計額とする。
- 2、発足時元金 = Rp. 35,585,000.- (1989年7月1日附随)
- 3、寄 付 金 = 当基金は会の主旨に賛同する、個人、法人あるいは、如何
なる立場からでも、寄付を申し出られた場合に、その寄付
金を受領し、基金の元金に追加するものとする。
- 4、寄付金限度額 = 寄付金の額は原則として定めないが、目安として；
インドネシア Rp. = Rp. 100,000.- を、
日本 ¥ = ¥. 10,000.- を、
米国 \$ = \$. 100.- を、
一口として考えたい。

第六条、登 記：

- 1、基金はインドネシア共和国の政令で定めるところにより、財団法人として
登記されなければならない。

第二章 役員及び職員

第一条、 役員：

- 1、 基金に、役員として、特別監査役1人、監査役2人以内を置く。
- 2、 基金には、役員として、前項の監査役のほか、会長1人、会長補佐役として、6人以内を置くことが出来る。

第二条、 役員の仕事及び権限：

- 1、 監査役は、会長以下の役員及び職員の業務遂行を間接的に監査する。
- 2、 監査役は、監査の結果、必要があると認める時は、会長に意見を提出することが出来る。
- 3、 会長は、基金を代表し、基金の業務を掌握、理解し、職務を取り行う。
- 4、 会長補佐役は、基金の業務を掌握、理解し、会長に事故がある時はその職務を代理し、会長が欠員の時はその職務を行う。

第三条、 役員の任命及び解任：

- 1、 特別監査役は、後日、別途、決定する。
- 2、 監査役は、特別監査役、又は、会長と会長補佐役が、合議の上任命する。
- 3、 会長は、E E P I S 校長とする。
- 4、 会長補佐役は、当インドネシア電子工学ポリテクニク J I C A プロジェクトの継続期間中は、J I C A からの派遣専門家とする。
- 5、 上記プロジェクト終了後に於る会長補佐役の任命は、特別監査役及び会長と合議により任命する。
- 6、 特別監査役、会長及び会長補佐役は、その条件となる立場から離任した場合、自動的に、基金の役員からも解任する。
- 7、 その他の役員は、任命した役員が離任した場合、自動的に解任する。

第四条、 職員：

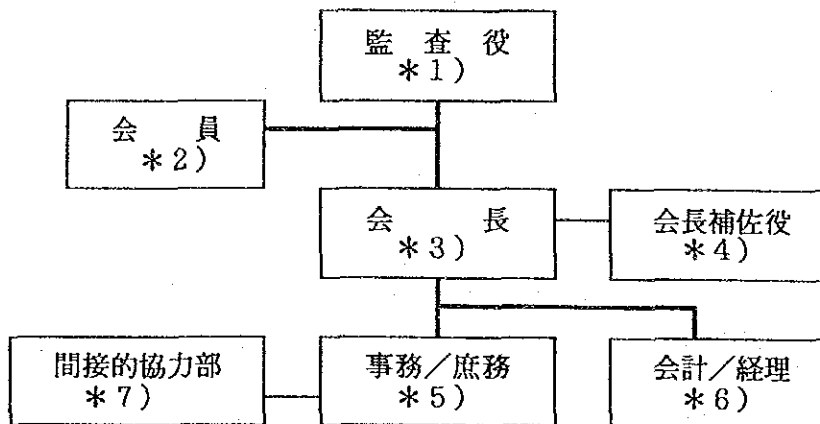
- 1、 基金には、業務を遂行する為に、事務/庶務職員、会計/経理職員を必要最低限の人数で置くことが出来る。
- 2、 基金の職員は会長が採用、任命する。
- 3、 職員の職務は、別項にて詳細を明記する。

第三章 会 員

- 1、 会員とは、基金の主旨に賛同し、寄付を行った者とする。
- 2、 会員は、年次報告書を、基金事務所より受け取ることが出来る。
- 3、 基金の会員を止めたい場合は、その旨を、基金事務所に書面をもって連絡すること。
- 4、 会員を自主的に止めた場合は、原則として、一切の会員としての権利を放棄したと見做す。

第四章 育英基金運営組織

- 1、 基金の運営組織は、次の図に表す。



- * 1) 「特別監査役」と「一般監査役」から成る。
- * 2) 「会員」とは、基金に賛同し寄付をした全ての人とする。
- * 3) 「会長」とは、当「イブツア 電子工学 利カニカ(EEPIS)」の校長とする。
- * 4) 「会長補佐役」とは、当プロジェクト期間中に於いてはJICAより派遣されている、専門家が当たる。
尚、プロジェクト終了後は、後日改めて人選を行い決定する。
- * 5) 「事務/庶務」は、会長であるEEPIS学長により、任命された、EEPIS学生課職員が担当する。
- * 6) 「会計/経理」は、会長である EEPIS 校長により、任命された者が、担当する。
- * 7) 「間接的協力部」とは、事務局が業務を行う際に、必要とする資料の収集や、その整理等の手伝いをする部門で、会長であるEEPISの学長により、任命された、教務課職員が担当する。

第五章 業務

基金は、第1章第Ⅱ条の目的を達成するため、次の業務を行う。

第一条、 資本金運用管理：

- 1、 資本金金額は、インドネシア通貨の定期預金とする。
- 2、 但し、為替の変動が大きく変わる可能性がある場合は、会長及び会計が監査役と相談の上、千ドル単位迄の現地通貨を、米国ドルの定期口座に直ちに切り替える事とする。
- 3、 上記定期預金は、利子が毎月受取れる種類のものとする。
- 4、 利子は、現地通貨の一般口座に、自動振込みされるものとし、随時必要経費をその口座から引出すこととする。
- 5、 一般口座の預金額が、百万ルピアを越えた場合は、その時点で、口座の中から、五十万ルピアを、上記定期預金に、元金として繰り入れる事とする。

第二条、 育英基金の活用：

基金は、資本金の有効的活用の為、下記のような使用目的を定める。
奨学金給付に当たっては、別項に定める細則によるものとする。

- 1、 対象学生の修学の為に使用；
 - a、 授業料援助
 - b、 1+教科書代援助
 - c、 2+制服代、実験着代援助
 - d、 3+寮費援助
 - e、 その他会長の認めるもの
- 2、 業務遂行の為に使用；
 - a、 基金一般業務費
 - b、 年度末報告書特別予算
 - c、 その他会長の認めるもの

第三条、 定期報告書：

- 1、 定期報告書の種類；
 - a、 基金一般業務報告・・・・・・・・・・各学期末毎（年2回）
 - b、 基金会計報告・・・・・・・・・・各学期末毎（年2回）

c、 育英基金受領者に関する特別報告・・・年度末（年1回）

2、 定期報告書の送付；

上記報告書は、下記の要領で報告される。

a、 学期末報告書（Ⅲ-1-a, b）・・・・・・ 監査役及び会長補佐役

b、 年度末報告書（Ⅲ-1-a, b, c）・・・・・・ 監査役、会長補佐役並びに
全会員（海外の会員も含む）

日本・インドネシア EEPIS 友好 育英基金

附 頁

第1条、 発足年月日：

平成元年七月一日（1989年7月1日）

第2条、 発起人：

No.	名 前	職 業	所 属 先
1、	中野 信隆	(JICA 初代チ-ム・リ-ダ-)	元長岡高専教授
2、	牧野 修	(JICA 初代チ-ム・リ-ダ-)	国総研専門員
3、	Ir. SUSANTO	(EEPIS 初代校長)	スラバヤ工科大学教授
-----以下五十音順-----			
4、	京兼 純	(JICA 1989/90 専門家)	奈良高専助教授
5、	下塩 義文	(JICA 1989/90 専門家)	熊本電波高専助教授
6、	蓮田 裕太郎	(JICA 1988/90 調整員)	国際チ-ム・リ-ダ-嘱託員
7、	原 健彦	(JICA 1989/90 専門家)	茨城高専助教授
8、	平林 紘治	(JICA 1989/90 専門家)	沼津高専助教授
9、	山田 和敏	(JICA 対教育文化省高等学術総局専門家)	千葉大学工学部教授
10、			
11、			
12、			
13、			
14、			
15、			

第3条、 後援者：

No. 名 前

1、 Mr. Oedjoe R. Phd. (スラバヤ 工科大学 学長)

第4条、 取引銀行及び口座番号：

1、 銀行名： PT. OVERSEAS EXPRESS BANK
(SURABAYA Branch)

住 所： Jl. Tunjungan No.42 - 48, Surabaya, Indonesia.

電 話： 62-31-42069, 42363, 42491, 42673,

テレックス： 62-31-31399, 31851

2、 口座番号： A/C No. 200-8971

口座名義： J I E F F

第5条、 施行期日：

この総則は平成元年7月1日より施行する。

JICA