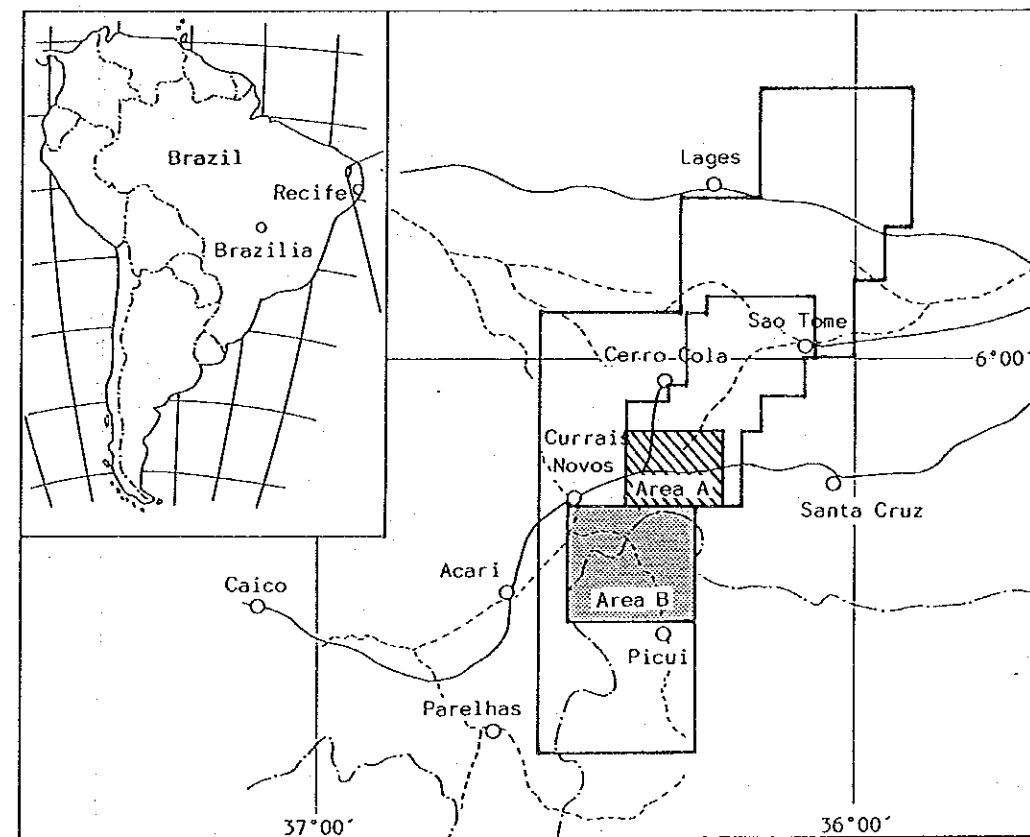
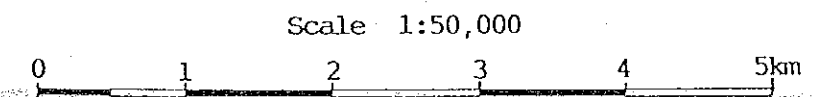


MINERAL EXPLORATION  
 IN THE CURRAIS NOVOS AREA  
 FEDERATIVE REPUBLIC OF BRAZIL  
 PHASE II

Location of Samples:  
 Plants, Soils

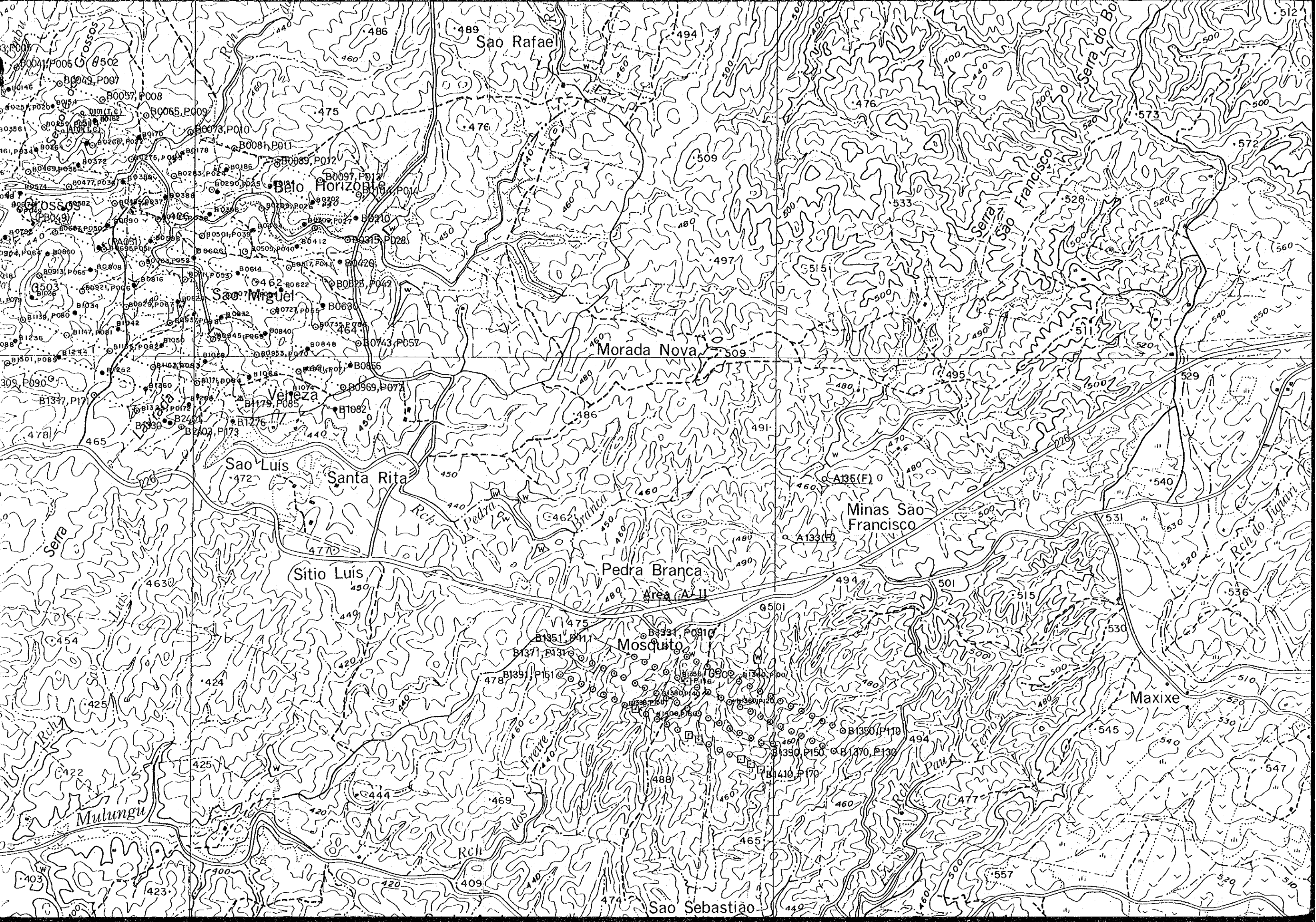


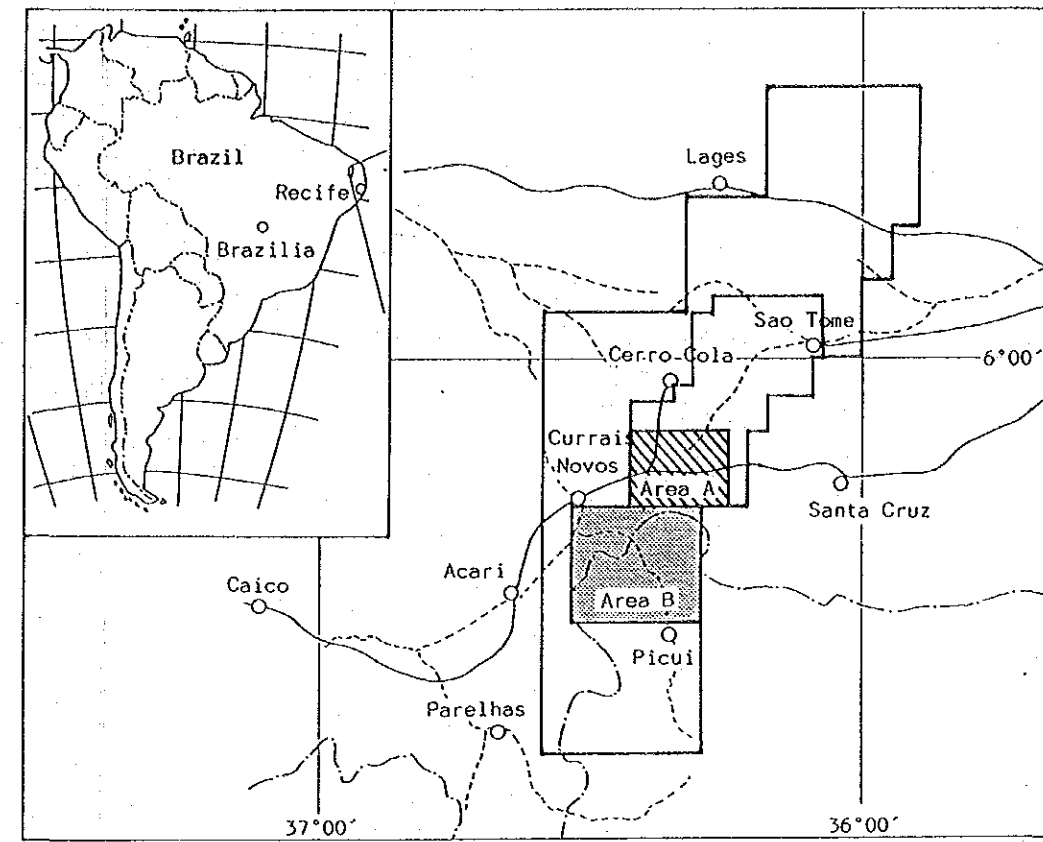
JAPAN INTERNATIONAL COOPERATION AGENCY  
 METAL MINING AGENCY OF JAPAN  
 FEB 1991



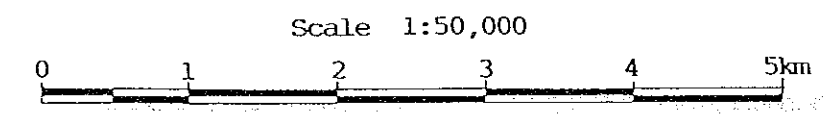






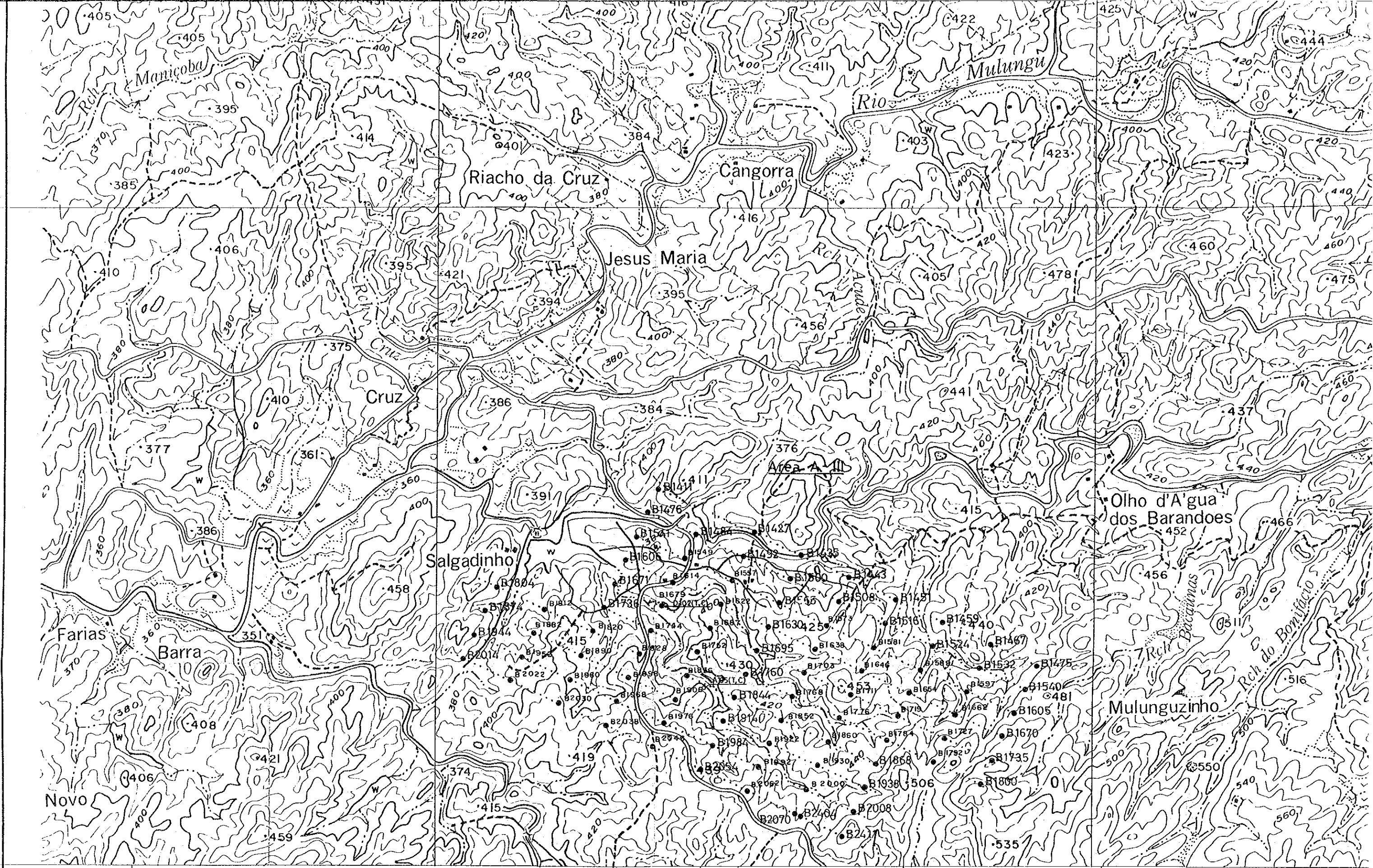


JAPAN INTERNATIONAL COOPERATION AGENCY  
 METAL MINING AGENCY OF JAPAN  
 FEB 1991



- BI930 Location and the number of soil sample
- P020 Location and the number of three kinds of plant
- PI70 Location and the number of two kinds of plant; Jurema, Cat.
- △ P085 Location and the number of one kind of plant, Jurema





36° 24'

E 790

36° 22'

PICUI

E 795

36° 20'



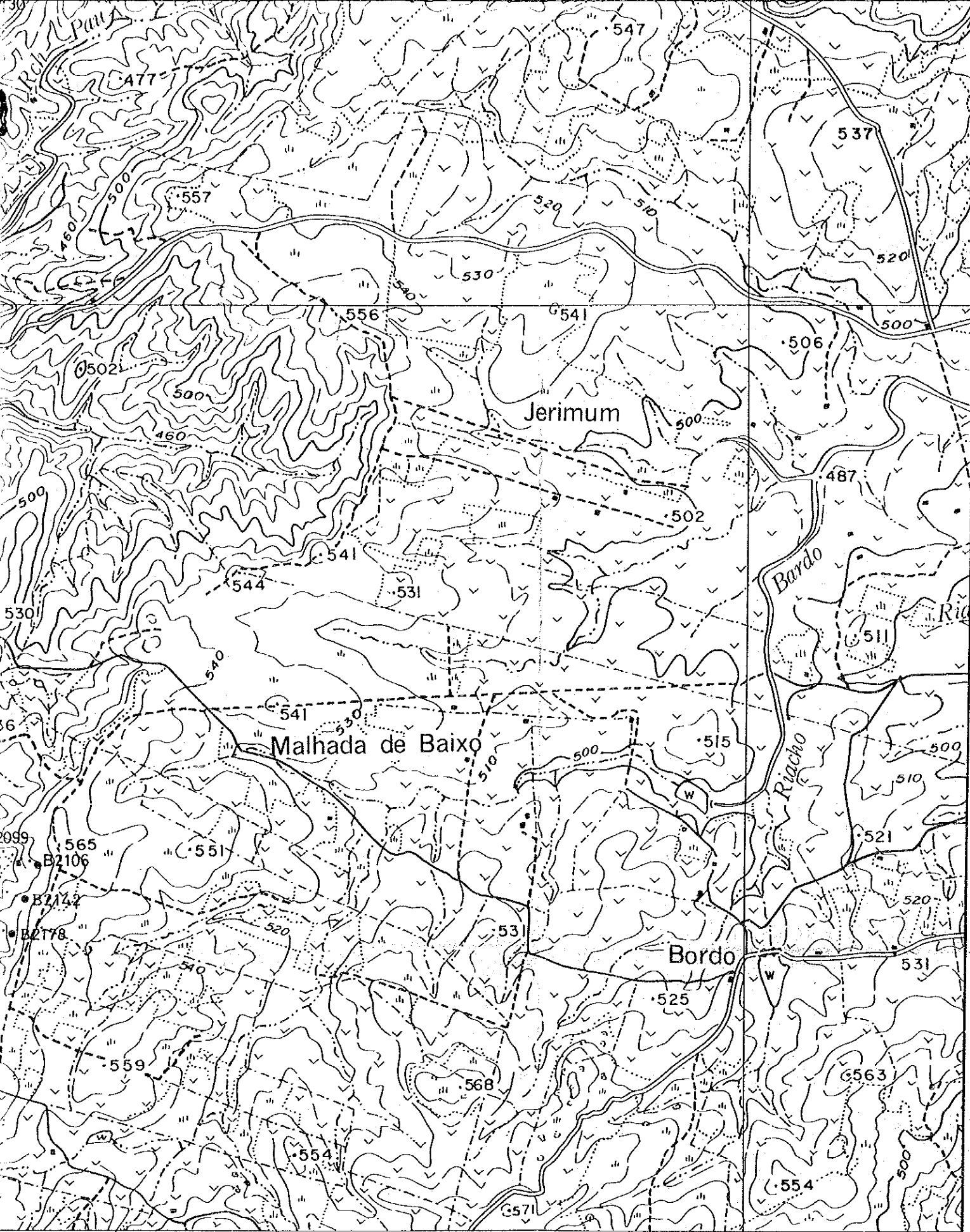
E 795 36° 20'

E 800 36° 18'

E 805 36° 16'

E 810 36° 16'





36° 16'

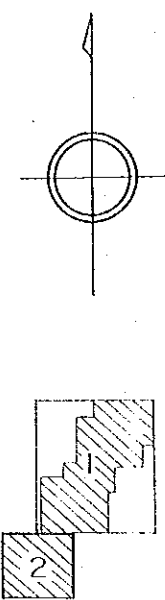
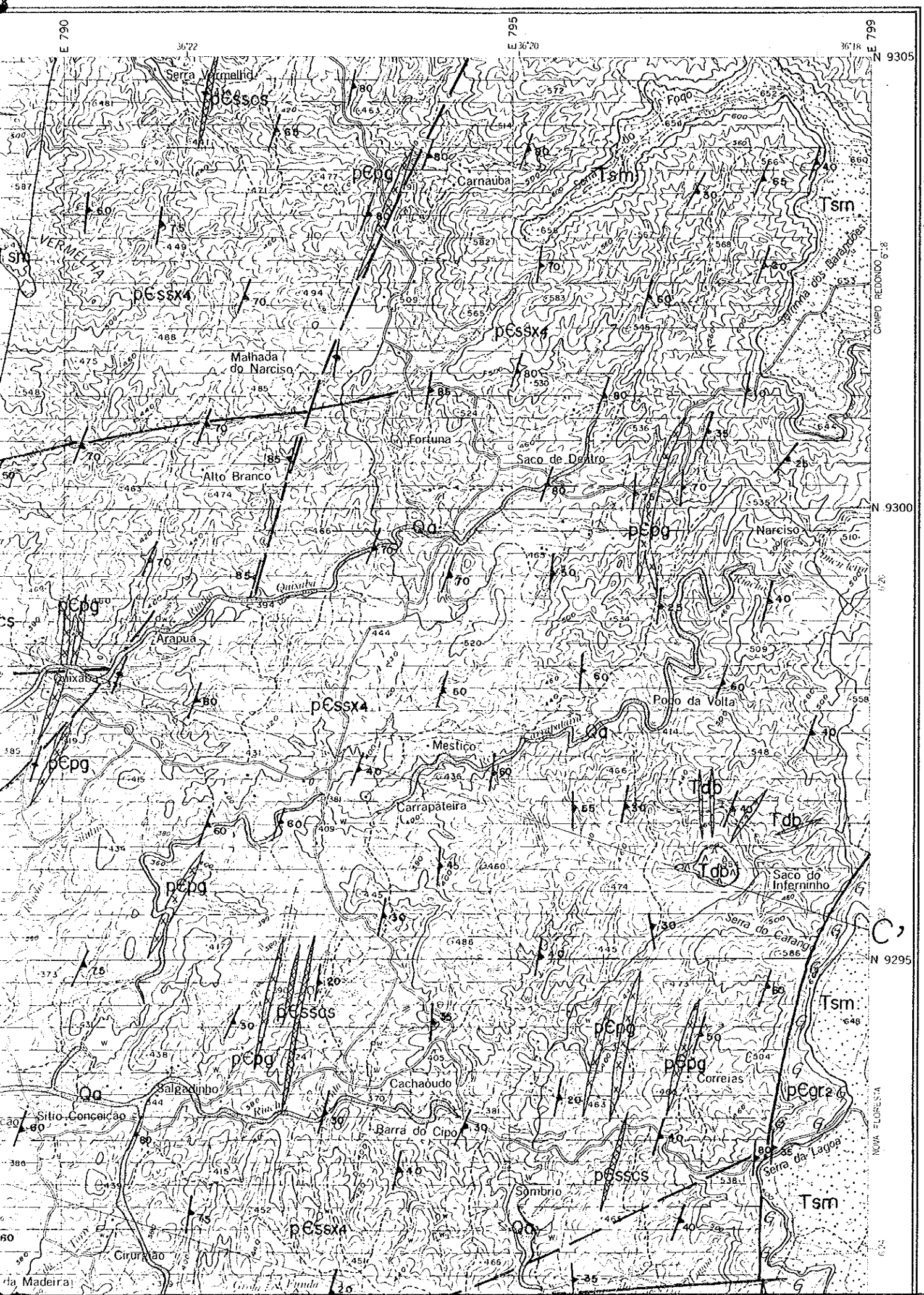
E 805

36°

# CURRAIS NOVOS (Phase II)

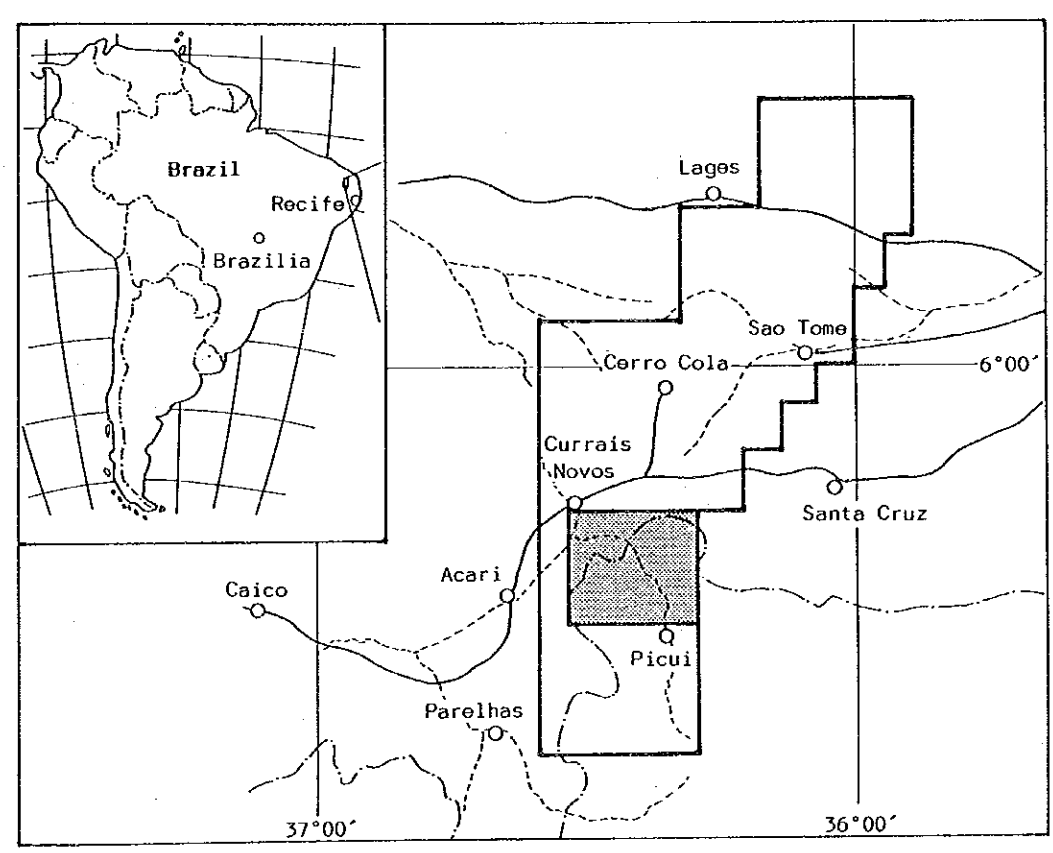




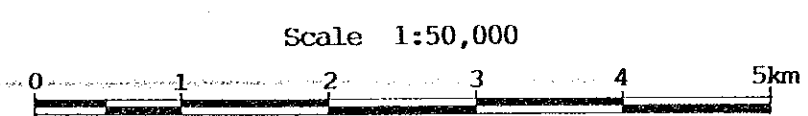


# MINERAL EXPLORATION IN THE CURRAIS NOVOS AREA FEDERATIVE REPUBLIC OF BRAZIL PHASE II

## Geologic Map of the Survey Area



JAPAN INTERNATIONAL COOPERATION AGENCY  
METAL MINING AGENCY OF JAPAN  
FEB 1991



N 9300

D

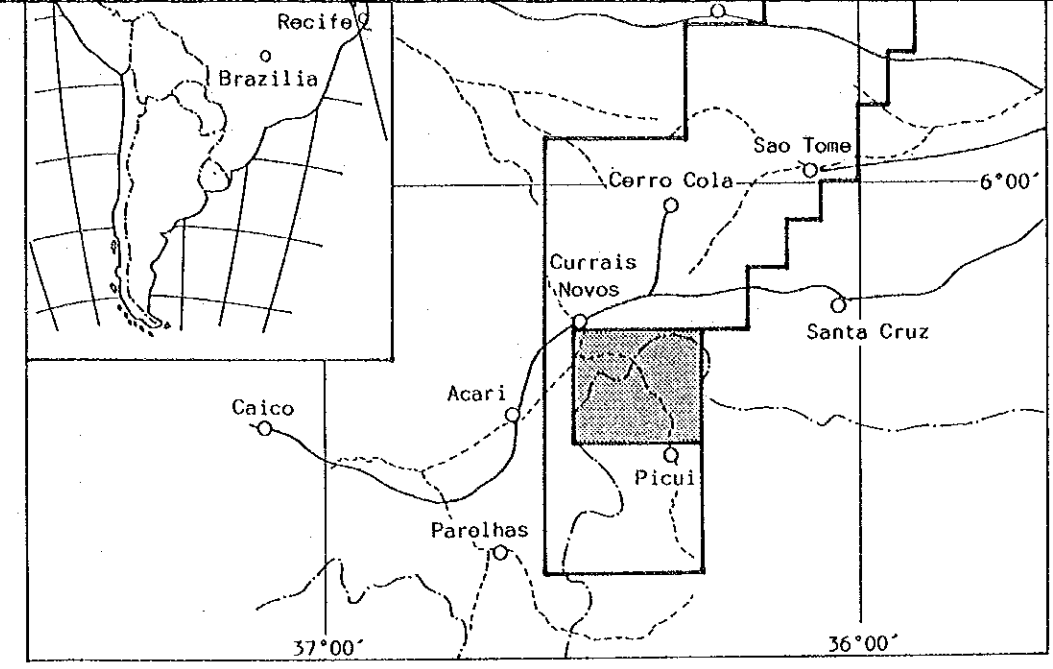
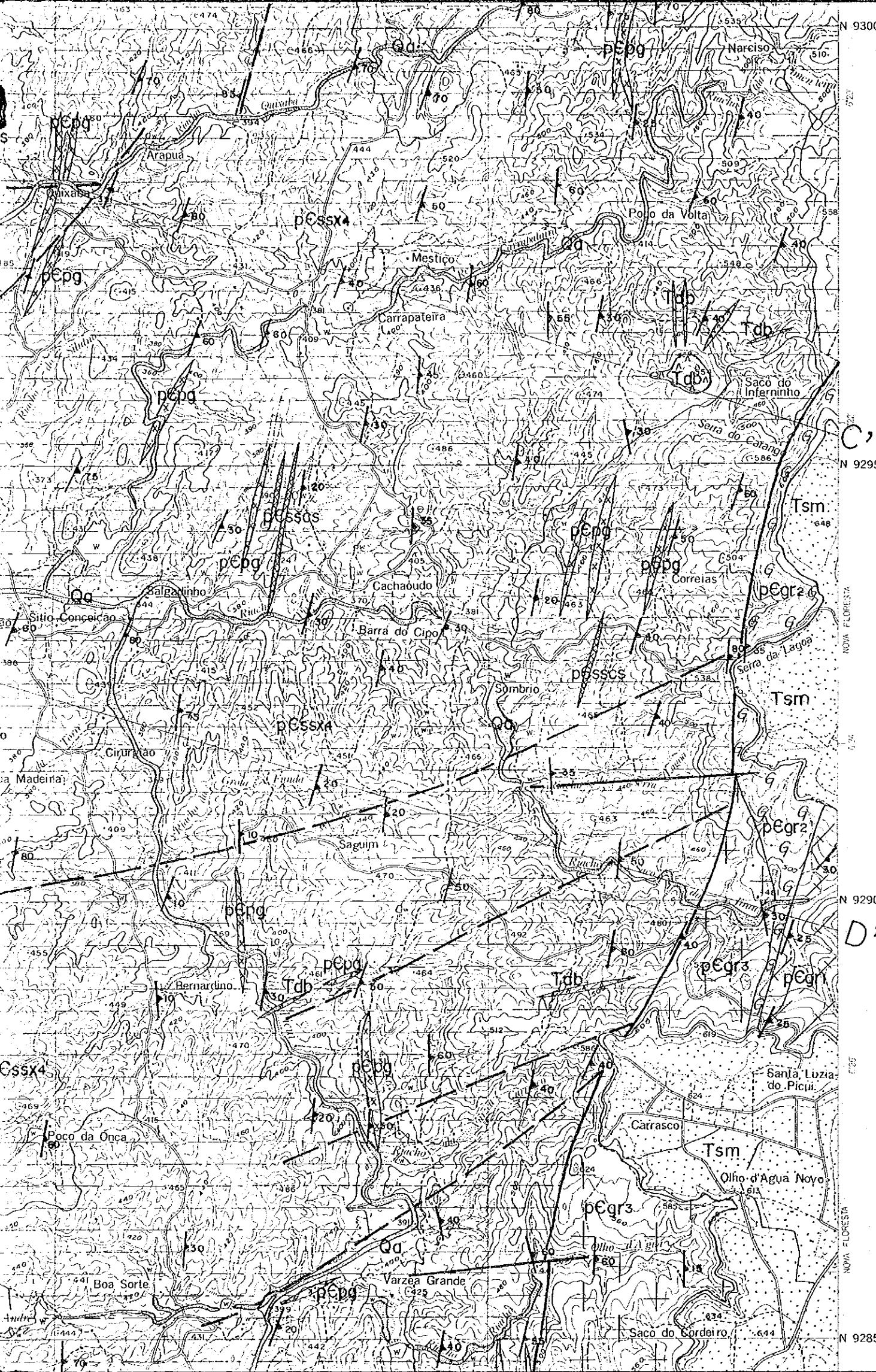
N 9295

N 9290

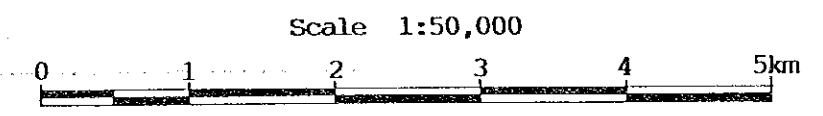
N 9285





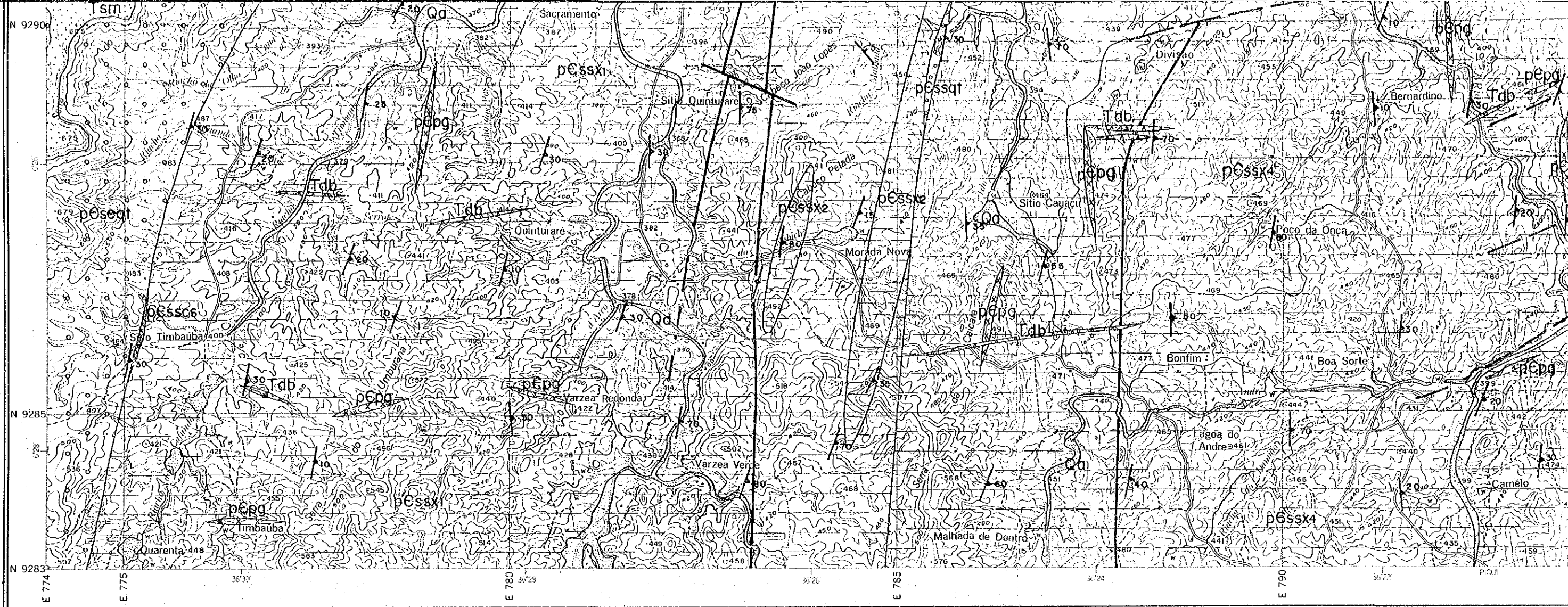


JAPAN INTERNATIONAL COOPERATION AGENCY  
 METAL MINING AGENCY OF JAPAN  
 FEB 1991



### LEGEND

CENOZOIC	QUATERNARY	Aluvium	Qa		Sand and gravel
	TERTIARY	Serra dos Martins Fm	Tsm		Conglomerate and sandstone
		Dykes	Tdb		Basalt and diabase
BRASILIAN PLUTONICS			pCpg		Pegmatite
			pEgr3		Granite
	TRANSAMAZONIAN PLUTONICS		pEgr2		Augen gneiss
				pEssx1	
PROTEROZOIC	SERIDO		pEssx2		Siliceous schist
			pEssx4		Alternation of bi-schist, gt-bi-schist, ct-gt-bi-schist and mu-bi-schist
			pEsscs		Calc silicate



BISHMETAL EXPLORATION CO., LTD.

