

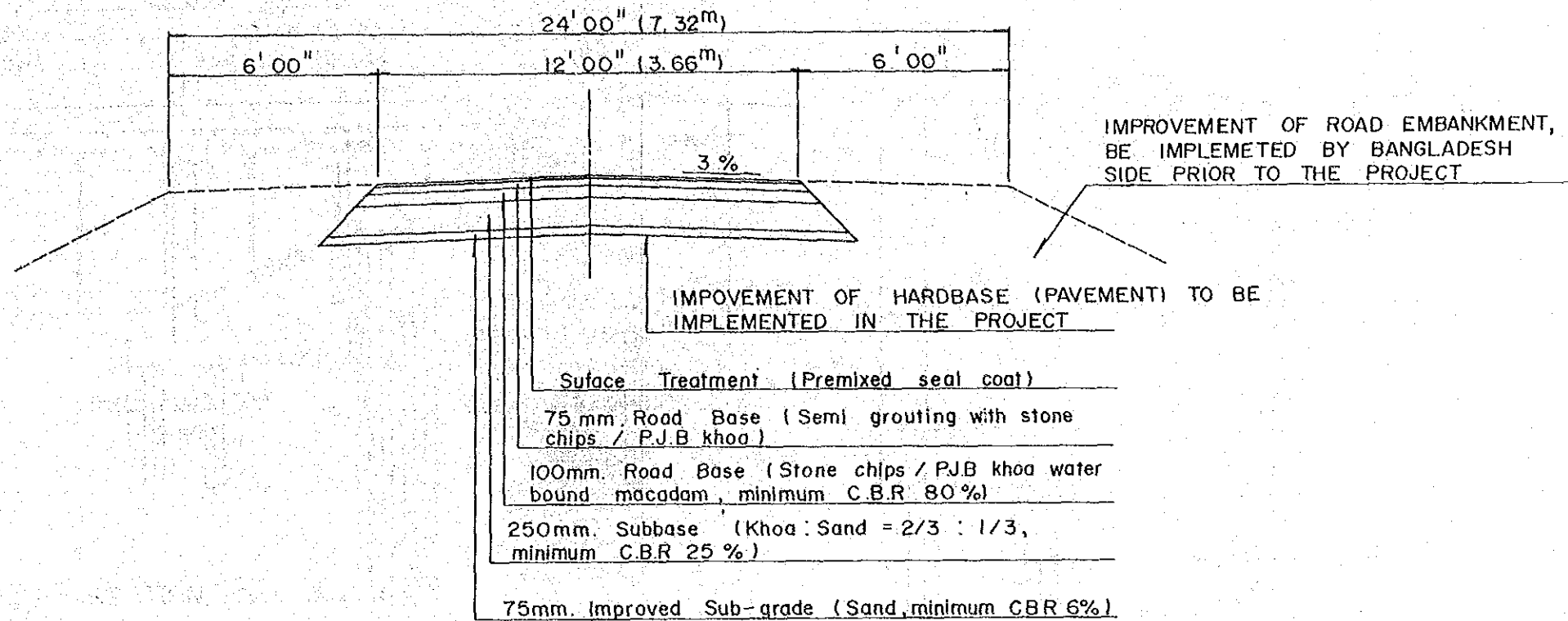
## **DRAWINGS**

## Drawings list

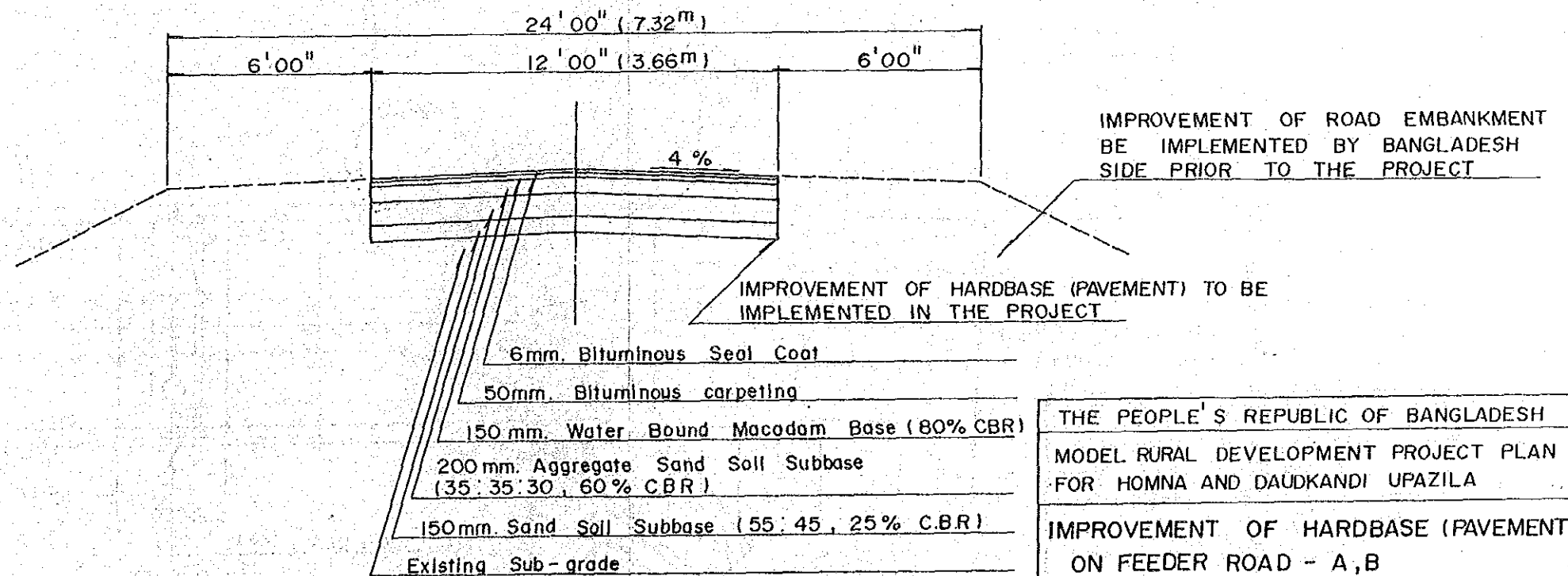
1. IMPROVEMENT OF HARDBASE (PAVEMENT) ON FEEDER ROAD-A, B
2. GENERAL PLAN FOR BRIDGE NO. 1
3. GENERAL PLAN FOR BRIDGE NO. 2
4. GENERAL PLAN FOR BRIDGE NO. 3
5. GENERAL PLAN FOR BRIDGE NO. 4
6. TYPICAL CROSS SECTION FOR CANAL RE-EXCAVATION
7. BURIED PIPELINE PIPE NETWORK
8. BURIED PIPELINE SYSTEM STRUCTURAL DRAWING
9. HOMNA TRAINING CENTER DRAWING LIST AND SITE PLAN
10. HOMNA TRAINING CENTER GROUND FLOOR PLAN
11. HOMNA TRAINING CENTER 1ST FLOOR PLAN
12. HOMNA TRAINING CENTER ELEVATIONS
13. HOMNA TRAINING CENTER ELEVATIONS AND SECTIONS
14. HOMNA TRAINING CENTER STORAGE HOUSE FOR LOE-LIFT PUMPS (WITH WORKSHOP)
15. HOMNA GODOWN DRAWING LIST AND SITE PLAN
16. HOMNA GODOWN (GRAIN) FLOOR PLAN ELEVATIONS AND SECTIONS
17. HOMNA GODOWN (FERTILIZER) FLOOR PLAN ELEVATIONS AND SECTIONS
18. DAUDKANDI TRAINING CENTER DRAWING LIST AND SITE PLAN
19. DAUDKANDI TRAINING CENTER GROUND FLOOR PLAN
20. DAUDKANDI TRAINING CENTER 1ST FLOOR PLAN
21. DAUDKANDI TRAINING CENTER ELEVATIONS
22. DAUDKANDI TRAINING CENTER ELEVATIONS AND SECTIONS
23. HOMNA PRIMARY SCHOOL DRAWING LIST AND SITE PLAN
24. HOMNA PRIMARY SCHOOL GROUND FLOOR PLAN
25. HOMNA PRIMARY SCHOOL 1ST FLOOR PLAN
26. HOMNA PRIMARY SCHOOL ELEVATIONS
27. HOMNA PRIMARY SCHOOL SECTION
28. DAUDKANDI JAMALKANDI PRIMARY SCHOOL DRAWING LIST AND SITE PLAN
29. DAUDKANDI JAMALKANDI PRIMARY SCHOOL GROUND FLOOR PLAN 1ST FLOOR PLAN
30. DAUDKANDI JAMALKANDI PRIMARY SCHOOL ELEVATIONS AND SECTIONS
31. DAUDKANDI ITAKHOLA PRIMARY SCHOOL DRAWING LIST AND SITE PLAN
32. DAUDKANDI ITAKHOLA PRIMARY SCHOOL FLOOR PLAN. ELEVATIONS. SECTIONS
33. DAUDKANDI ICHRPUR PRIMARY SCHOOL DRAWING LIST AND SITE PLAN

34. DAUDKANDI ICHRPUR PRIMARY SCHOOL GROUND FLOOR PLAN 1ST FLOOR PLAN
35. DAUDKANDI ICHRPUR PRIMARY SCHOOL ELEVATIONS AND SECTIONS
36. HOMNA DULALPUR GROWTH CENTER SITE PLAN
37. DAUDKANDI GOALMARI GROWTH CENTER SITE PLAN
38. DULALPUR (GOALMARI) GROWTH CENTER SHED FLOOR PLAN ELEVATION AND SECTION

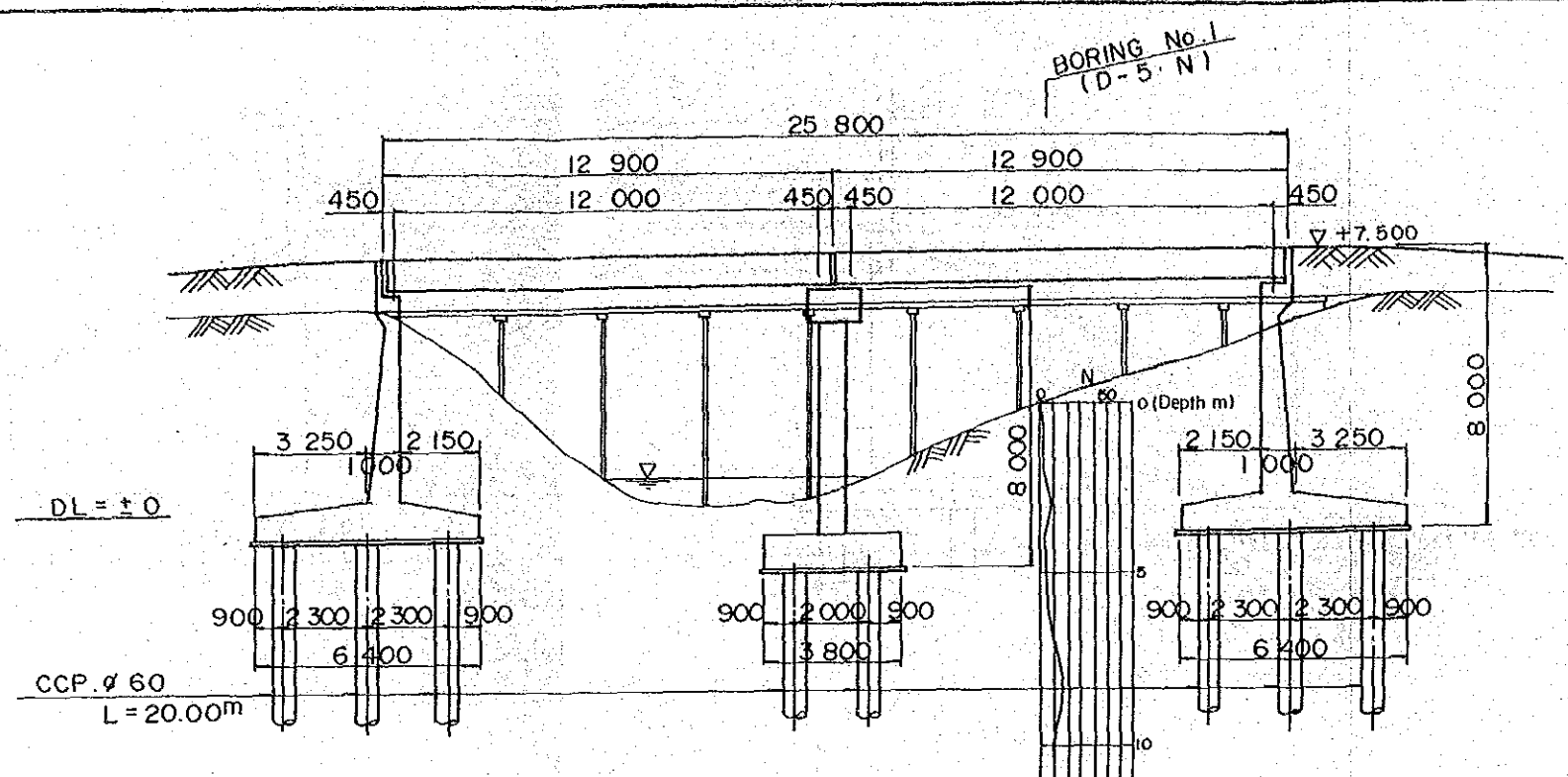
TYPICAL CROSS SECTION FOR FEEDER ROAD-A  
(SCALE : 1/50)



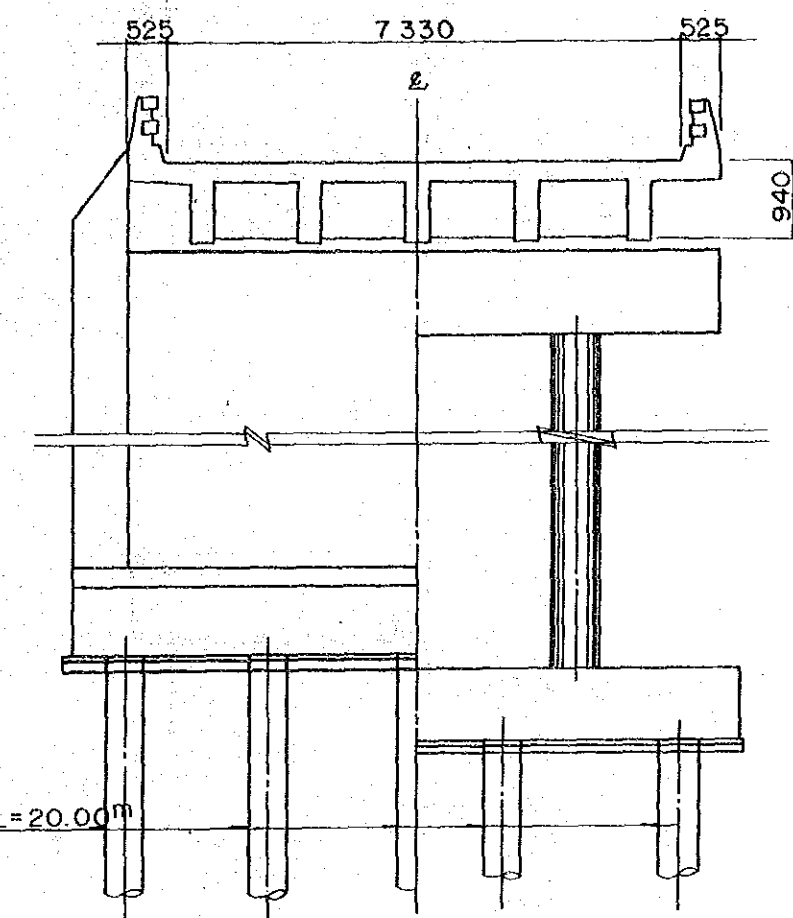
TYPICAL CROSS SECTION FOR FEEDER ROAD - B  
(SCALE : 1/50)



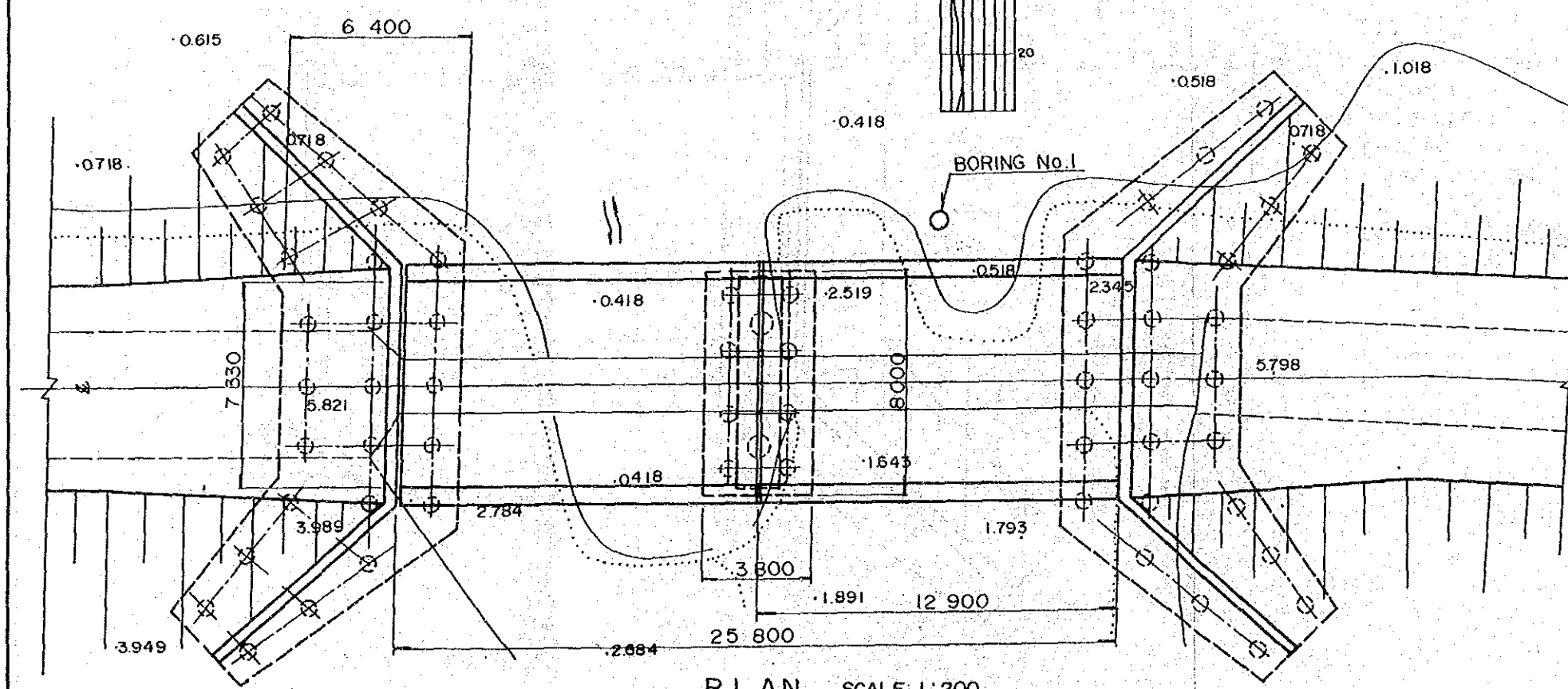
THE PEOPLE'S REPUBLIC OF BANGLADESH		
MODEL RURAL DEVELOPMENT PROJECT PLAN FOR HOMNA AND DAUDKANDI UPAZILA		
IMPROVEMENT OF HARDBASE (PAVEMENT) ON FEEDER ROAD - A, B		
DATE	No.	1
JAPAN INTERNATIONAL COOPERATION AGENCY		



LONGITUDINAL SECTION SCALE 1:200



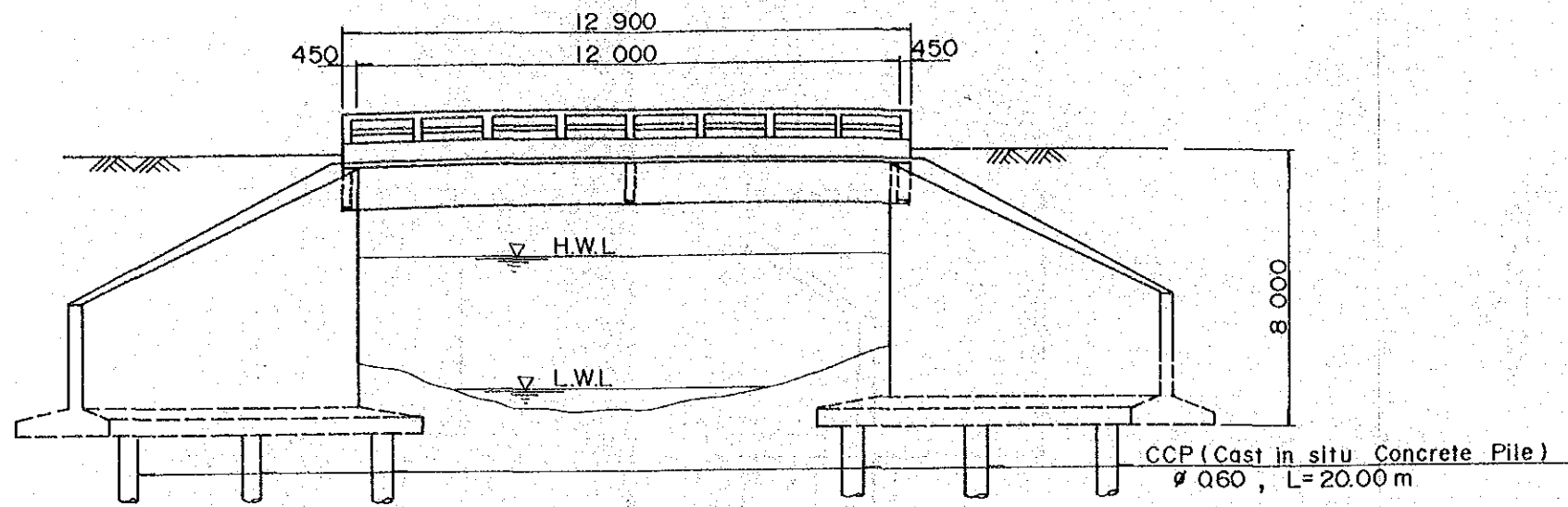
CROSS SECTION SCALE 1:100



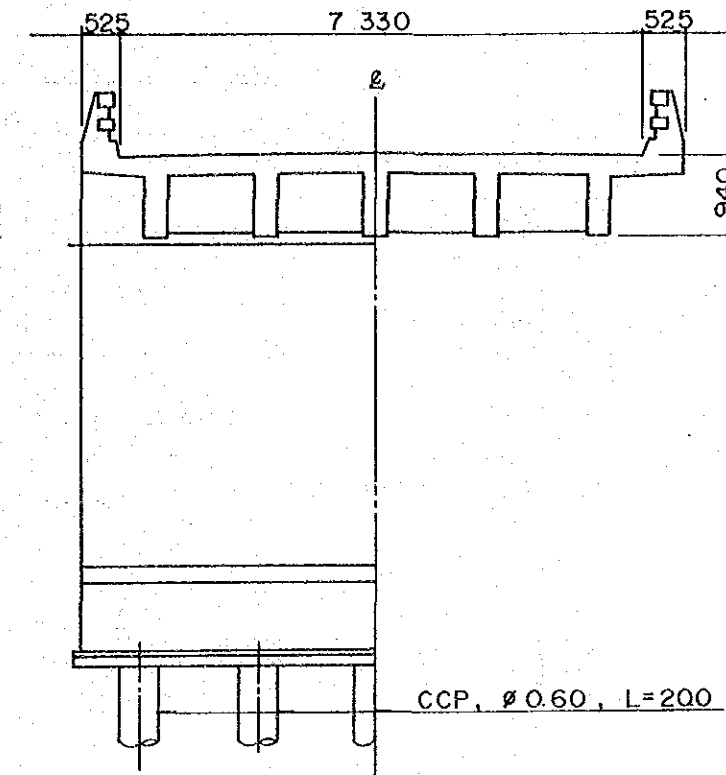
PLAN SCALE 1:200

(DESIGN CRITERIA)  
 LIVE LOAD : H 20-44  
 DESIGN STRENGTH  
 CONCRETE : 21 MN / m<sup>2</sup> (3000psi or 210 kg / cm<sup>2</sup>) -cylinder  
 REINFORCING BAR : Yield strength 240 MN / m<sup>2</sup> (34 000 psi)  
 BEARING FORCE  
 FOUNDATION PILE : 57 ton / pile (Dia.0.45 x 20 meters)  
 75 ton / pile (Dia.0.60 x 20 meters)  
 (DESIGN STANDARD):  
 AASHTO (1983) / Working Stress Design Method

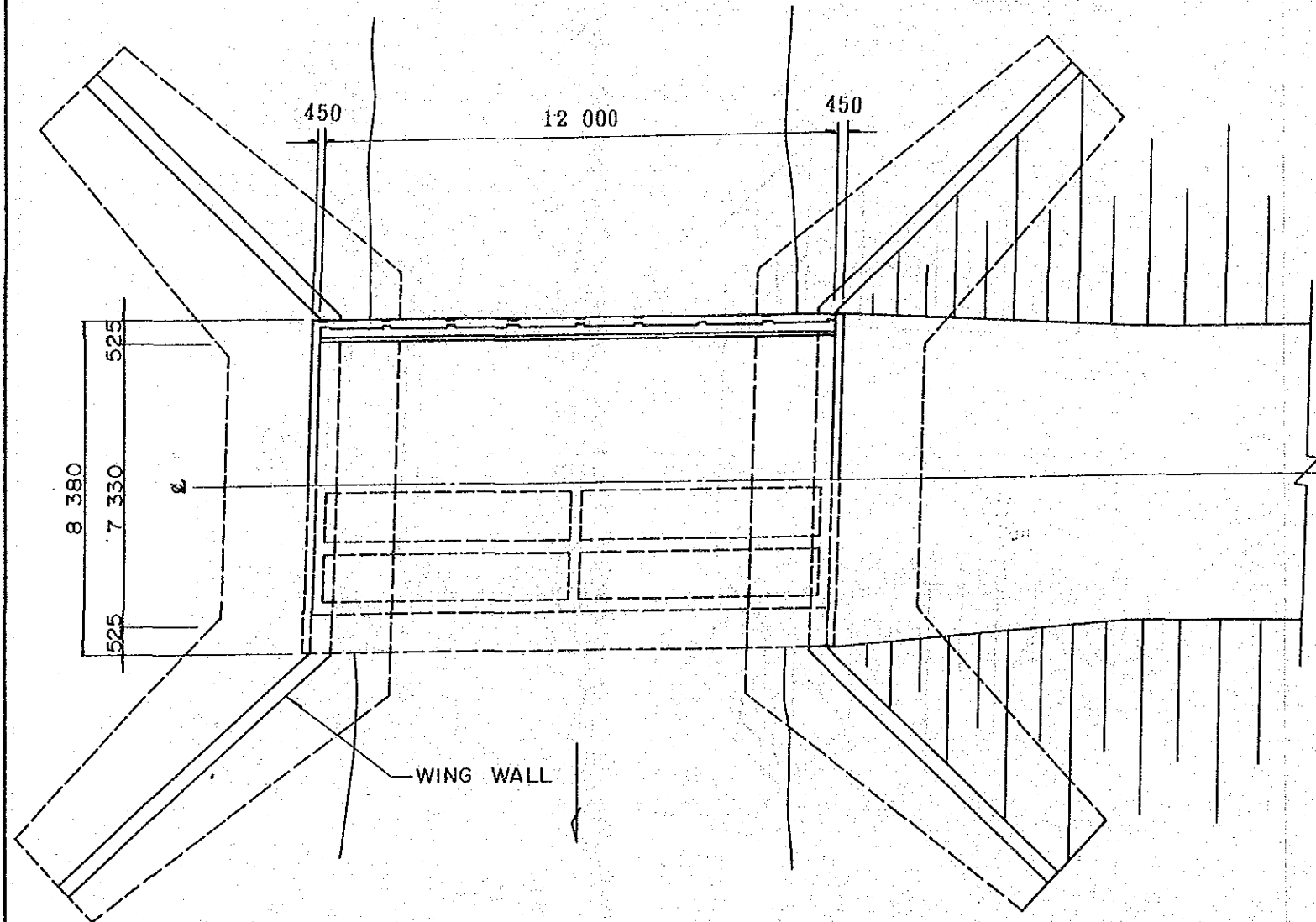
THE PEOPLE'S REPUBLIC OF BANGLADESH			
MODEL RURAL DEVELOPMENT PROJECT PLAN FOR HOMNA AND DAUDKANDI UPAZILA			
GENERAL PLAN FOR BRIDGE NO. 1			
DATE		No.	2
JAPAN INTERNATIONAL COOPERATION AGENCY			



ELEVATION



CROSS SECTION



PLAN

( DESIGN CRITERIA )

LIVE LOAD : H 20-44

DESIGN STRENGTH:

CONCRETE : 2.1 MN/s.m (3 000psi or 210 kg / s.cm) - cylinder

REINFORCING BAR : Yield strength 240 MN / s.m (34 000psi)

BEARING FORCE:

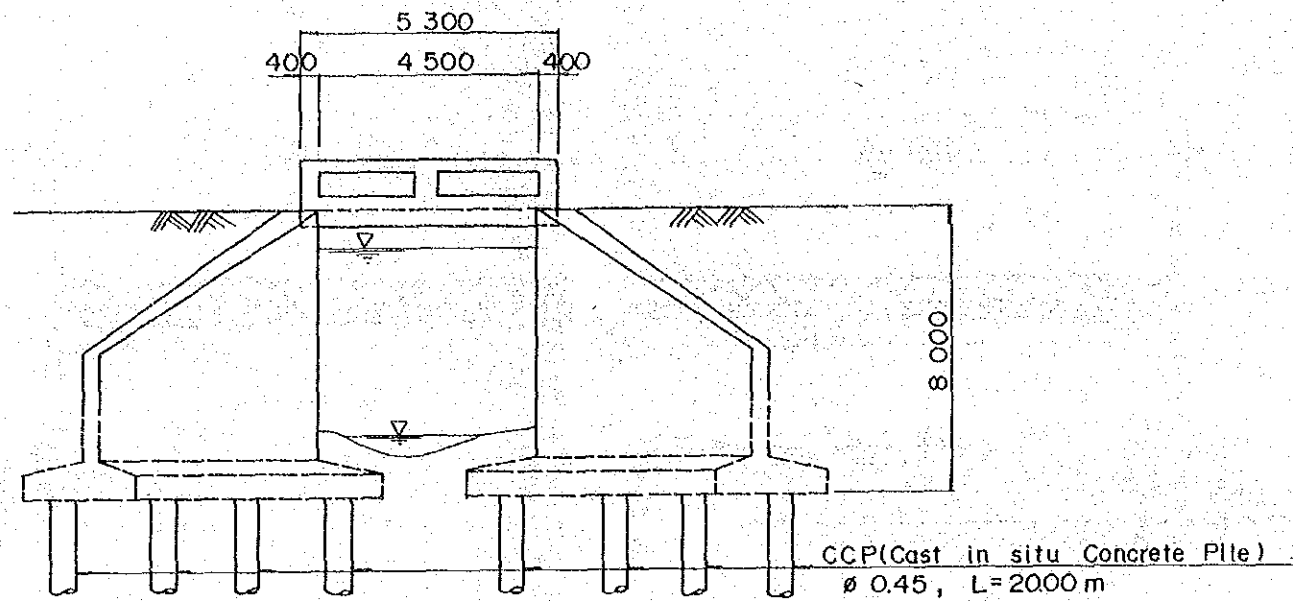
FOUNDATION PILE : 57 ton / pile (Dia. 0.45 x 20 meters)

75 ton / pile (Dia 0.60 20 meters)

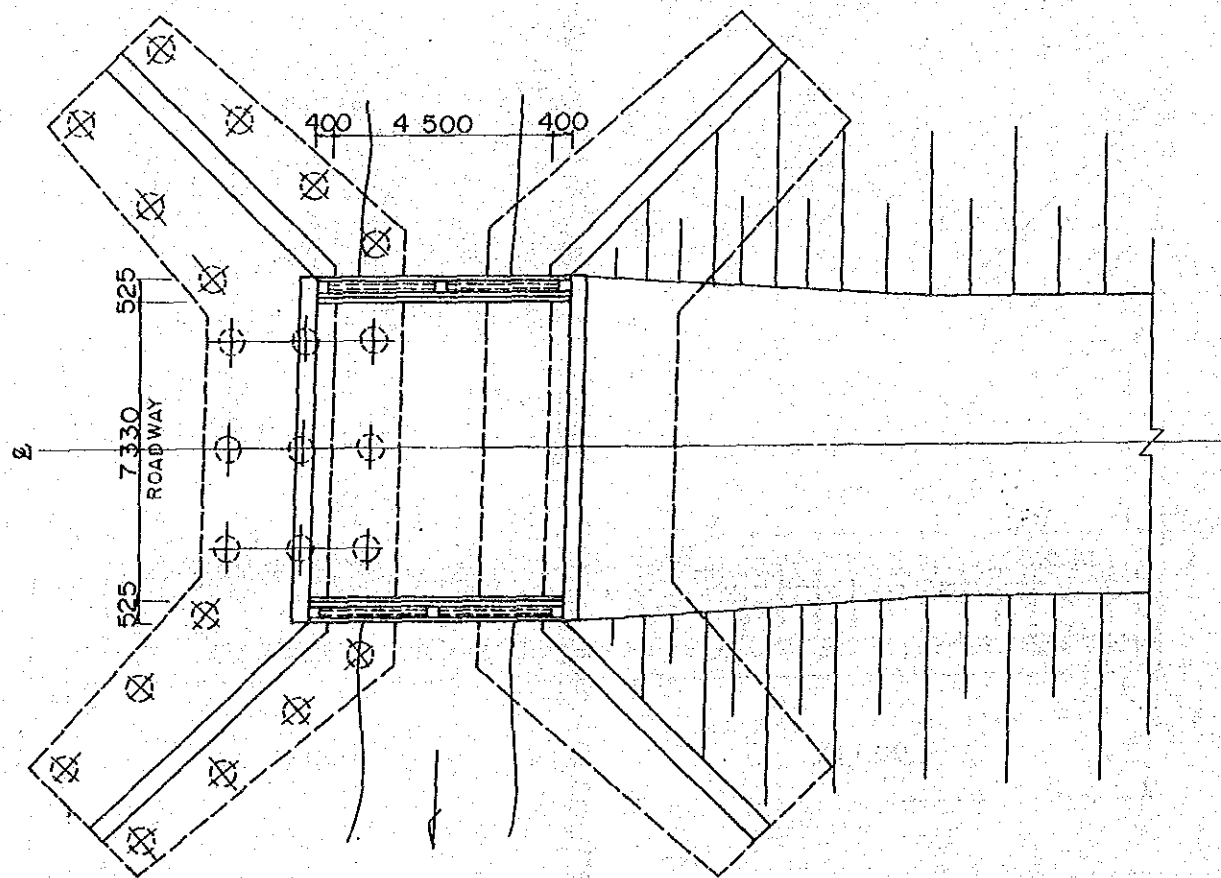
DESIGN STANDARD:

AASHTO (1983) Working stress Design method.

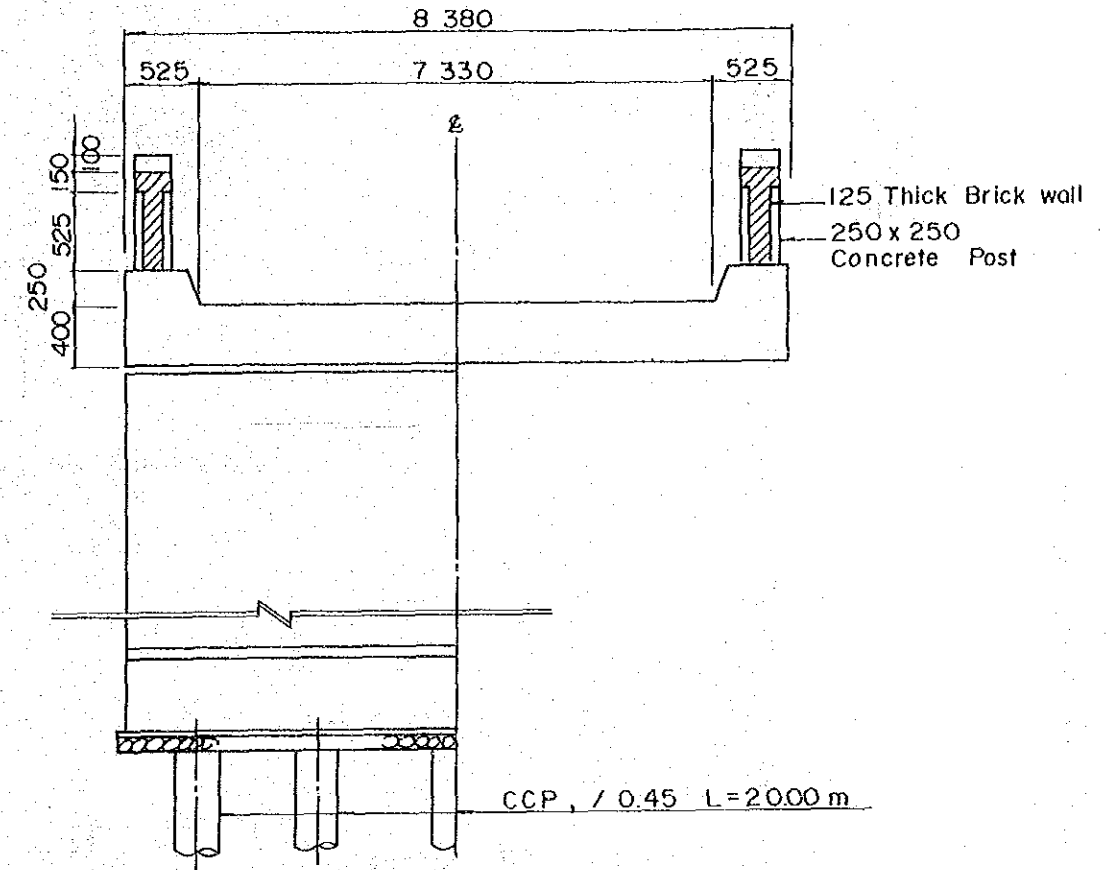
THE PEOPLE'S REPUBLIC OF BANGLADESH			
MODEL RURAL DEVELOPMENT PROJECT PLAN FOR HOMNA AND DAUDKANDI UPAZILA			
GENERAL PLANE FOR BRIDGE NO.2			
DATE		No.	3
JAPAN INTERNATIONAL COOPERATION AGENCY			



ELEVATION



PLAN



CROSS SECTION

(DESIGN CRITERIA)

LIVE LOAD : H20-44

DESIGN STRENGTH

CONCRETE : 21 MN / s.m ( 3 000 psi or 210 kg / s.cm ) - cylinder

REINFORCING BAR: Yield strength 240 MN / s.m ( 34 000 psi )

BEARING FORCE:

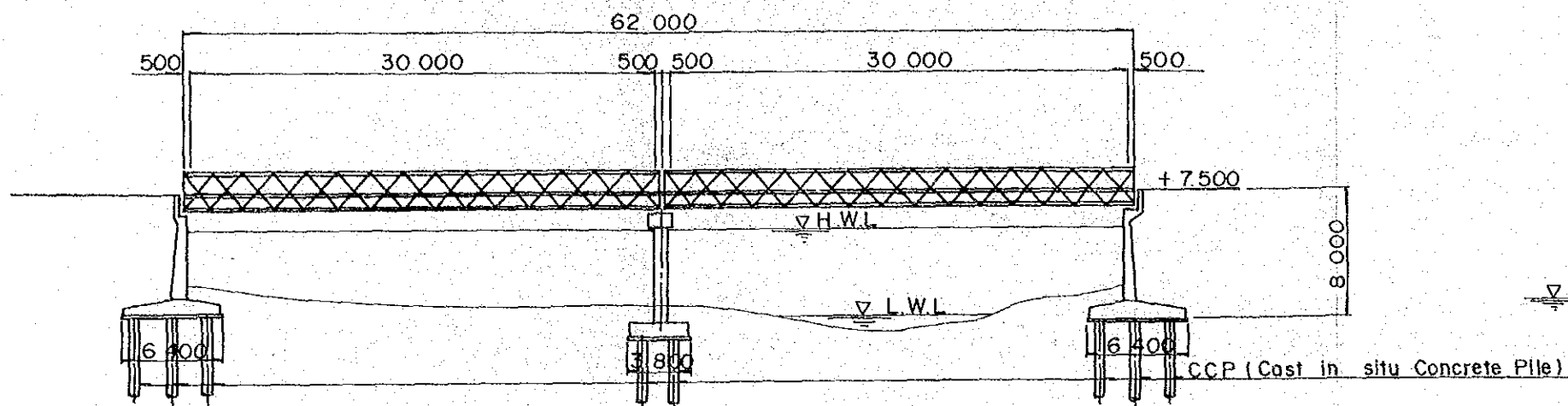
FOUNDATION PILE: 57 ton / pile ( Dia. 0.45 x 20 meters )

75 ton / pile ( Dia. 0.60 x 20 meters )

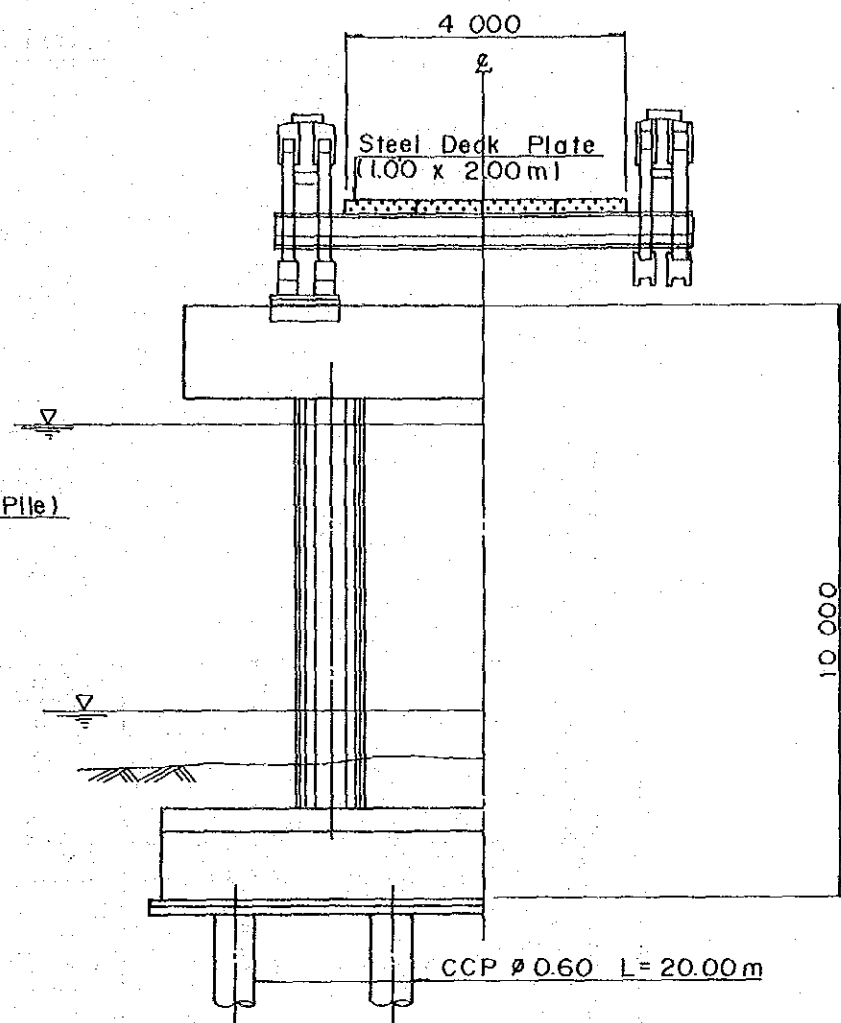
DESIGN STANDARD:

AASHTO (1983) / Working Stress Design Method

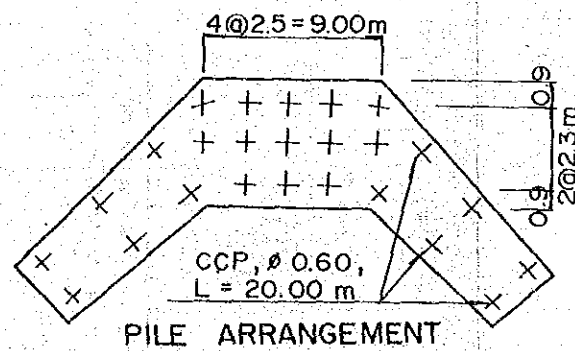
THE PEOPLE'S REPUBLIC OF BANGLADESH			
MODEL RURAL DEVELOPMENT PROJECT PLAN FOR HOMNA AND DAUDKANDI UPAZILA			
GENERAL PLANE FOR BRIDGE NO. 3			
DATE		No.	4
JAPAN INTERNATIONAL COOPERATION AGENCY			



LONGITUDINAL SECTION SCALE 1:400



CROSS SECTION SCALE 1:100

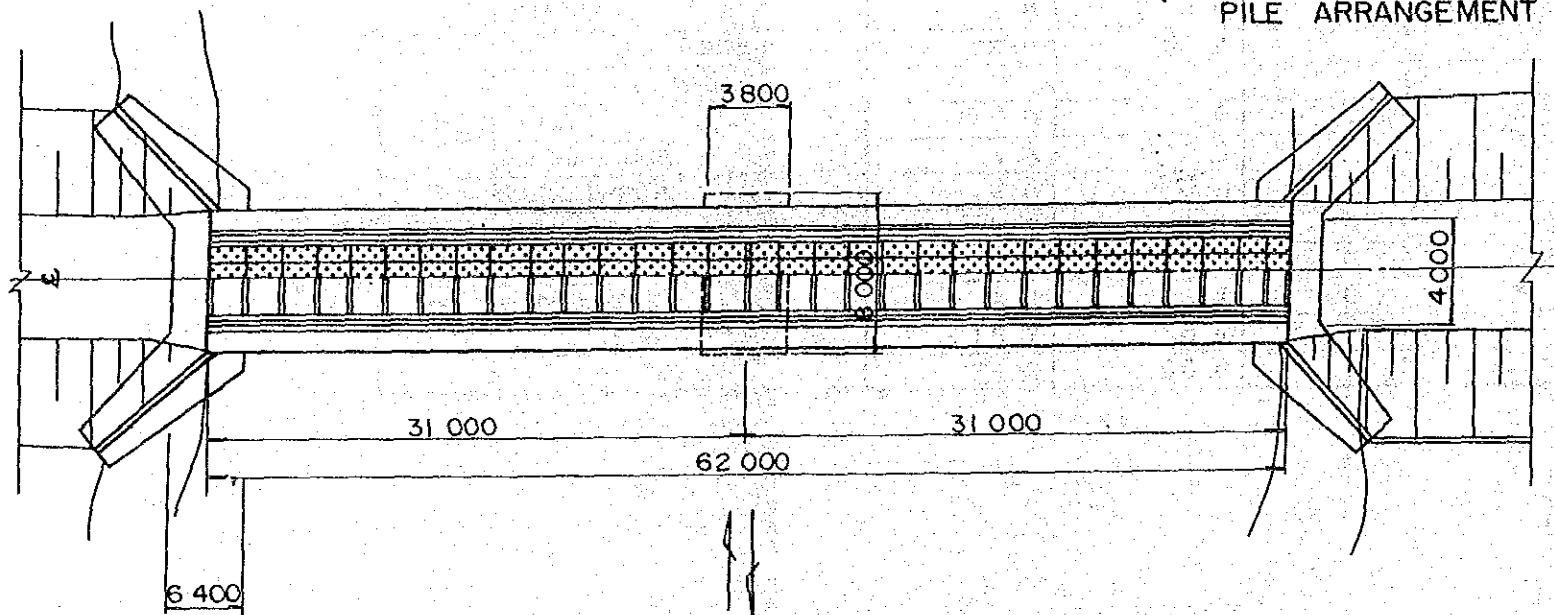


PILE ARRANGEMENT

( DESIGN CRITERIA )

- LIVE LOAD : H 20-44
- DESIGN STRENGTH :
  - CONCRETE : 2.1 MN / s.m (3000psi or 210kg / s.cm) - cylinder
  - REINFORCING BAR : yield strength 240 MN / s.m ( 34 000 psi )
- BEARING FORCE :
  - FOUNDATION PILE : 57 ton / pile ( Dia .045 x 20 meters )
  - 75ton / pile ( Dia .060 x 20 meters )

DESIGN STANDARD : AASHTO (1983) Working Stress Design Method

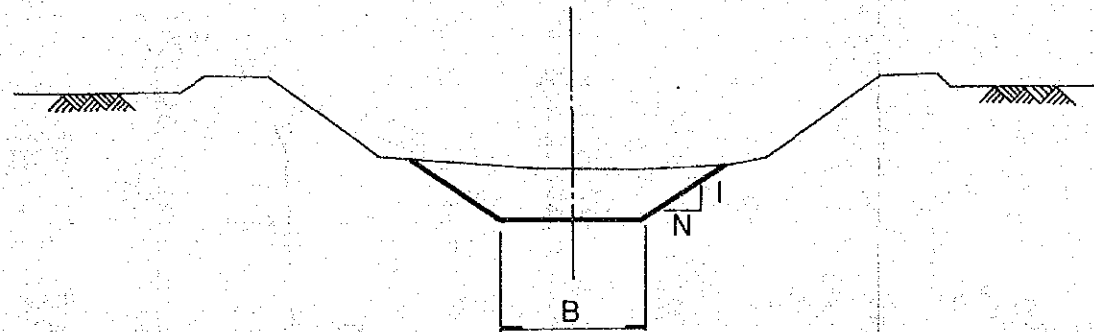


PLAN SCALE 1:400

THE PEOPLE'S REPUBLIC OF BANGLADESH		
MODEL RURAL DEVELOPMENT PROJECT PLAN FOR HOMNA AND DAUDKANDI UPAZILA		
GENERAL PLAN FOR BRIDGE NO.4		
DATE	No.	5
JAPAN INTERNATIONAL COOPERATION AGENCY		



TYPICAL CROSS SECTION FOR CANAL RE-EXCAVATION



NO.	NAME OF CANALS	TOTAL LENGTH (km)	RE-EXCAVATION			CROSS SECTION		N	REMARKS
			LENGTH (km)	B.P (km)	E.P (km)	FH (m)	B (m)		
DAUDKANDI									
1	KHIRAI	25.5	17.5	0.0	25.5	0.5	5.0, 3.0	1.5	Exclude From 4km P. to 12 km P.
2	ASMANIA	5.9	2.9	3.0	5.9	0.0	3.0	1.5	
3	DARAGKHOLA	10.3	4.3	6.0	10.3	0.5	3.0	1.5	
4	NOORPUR	4.4	1.4	3.0	4.4	0.5	3.0	1.5	
5	SATANI-KRISHNAPUR	3.4	3.4	0.0	3.4	0.5	3.0	1.5	B=2.0 after 2.0 km
6	AMTALI	5.3	5.3	0.0	5.3	0.5	3.0	1.5	
7	MAZIBARI	14.7	14.7	0.0	14.7	0.5	5.0	1.5	B=3.0 after 3.5 km
8	LALPUR-SUNDULPUR	4.6	3.7	0.0	3.7	0.0	3.0	1.5	
9	RAMPUR	4.8	2.0	2.5	4.5	0.5	3.0	1.5	
	(SUB TOTAL)	78.9	55.2						
HOMNA									
1	LATIA	3.0	3.0	0.0	3.0	0.0	5.0	1.5	B=3.0 after 2.8 km
2	MATHABANGA	4.3	0.0	-	-	-	-	-	Excluded for Re-excitation
3	RAGNATHPUR	2.0	0.0	-	-	-	-	-	Excluded for Re-excitation
4	OMRABAD	2.0	1.8	0.0	1.8	0.0	3.0	1.5	FH=0.5 after 0.8 km
5	BHASANIA	1.0	0.2	0.0	0.2	0.5	3.0	1.5	
6	CHANDERCHAR	3.4	3.4	0.0	3.4	0.0	3.0	1.5	
	(SUB TOTAL)	15.7	8.4						
	TOTAL	94.6	63.6						

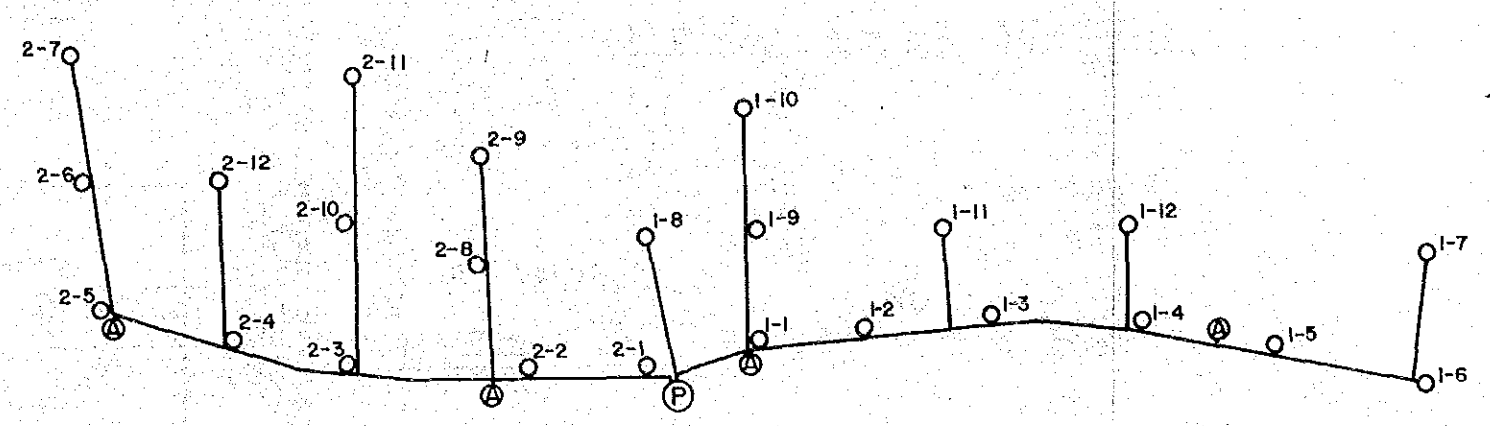
THE PEOPLE'S REPUBLIC OF BANGLADESH  
 MODEL RURAL DEVELOPMENT PROJECT PLAN  
 FOR HOMNA AND DAUDKANDI UPAZILA

TYPICAL CROSS SECTION  
 FOR  
 CANAL RE-EXCAVATION

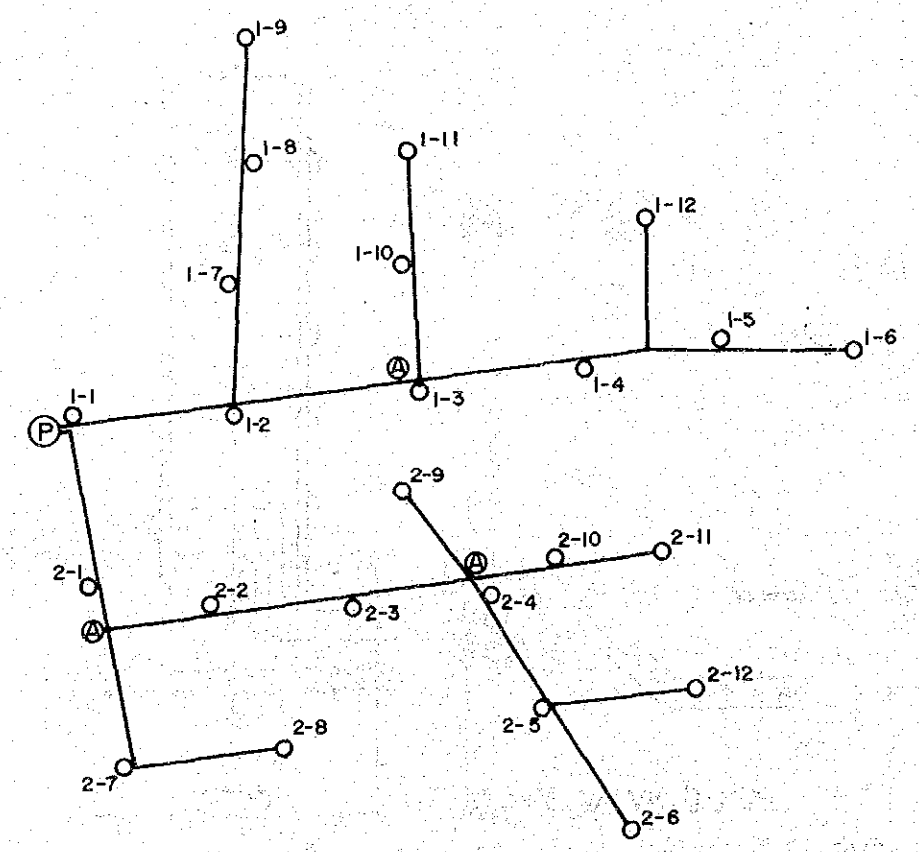
DATE: \_\_\_\_\_ No. 6

JAPAN INTERNATIONAL COOPERATION AGENCY

# KARIKANDI



# KAZIRKONA



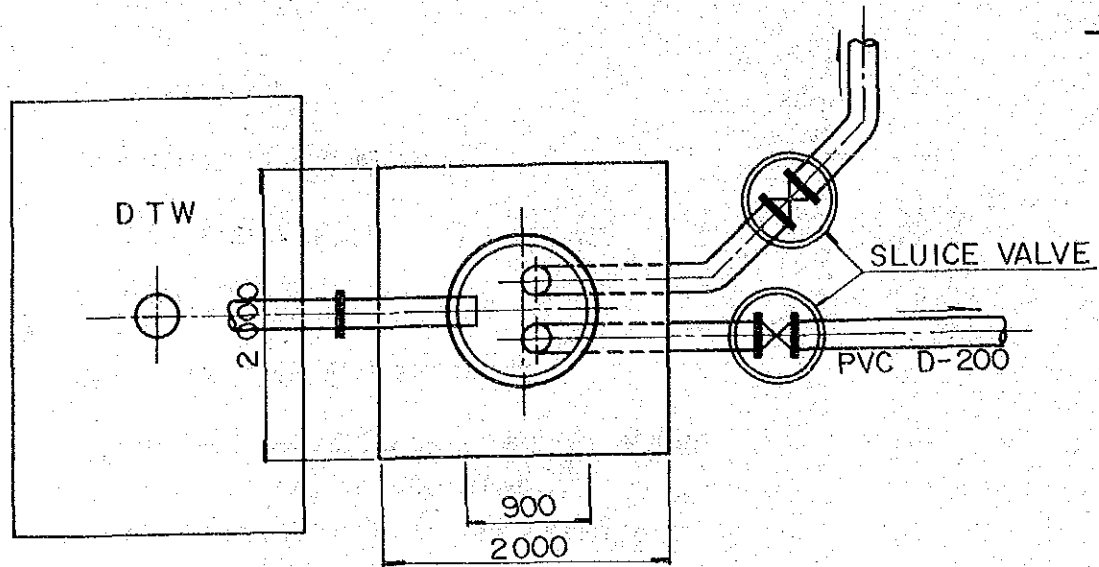
### LEGEND

- OUTLET
- ⊕ AIRVENT
- Ⓟ PRESSURE TOWER
- PIPE: PVC D-200

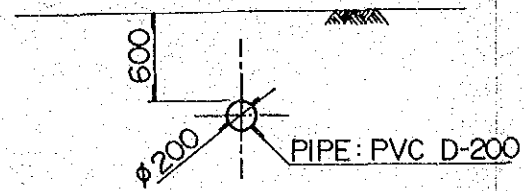
THE PEOPLE'S REPUBLIC OF BANGLADESH			
MODEL RURAL DEVELOPMENT PROJECT PLAN FOR HOMNA AND DAUDKANDI UPAZILA			
<b>BURIED PIPELINE PIPE NETWORK</b>			
DATE		No.	7
JAPAN INTERNATIONAL COOPERATION AGENCY			

PRESSURE TOWER

PLAN

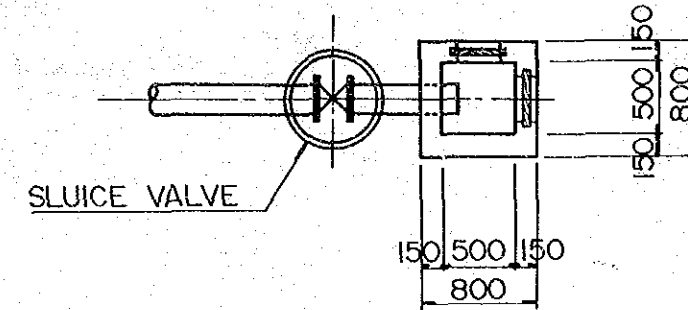


TYPICAL CROSS SECTION

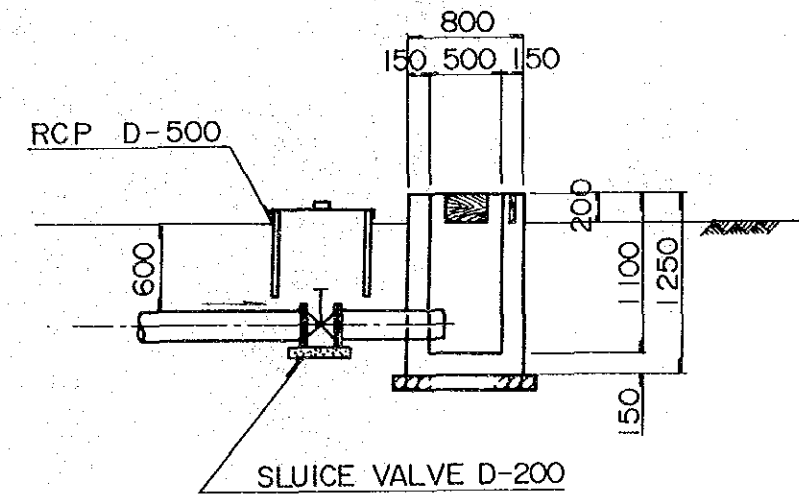


OUTLET

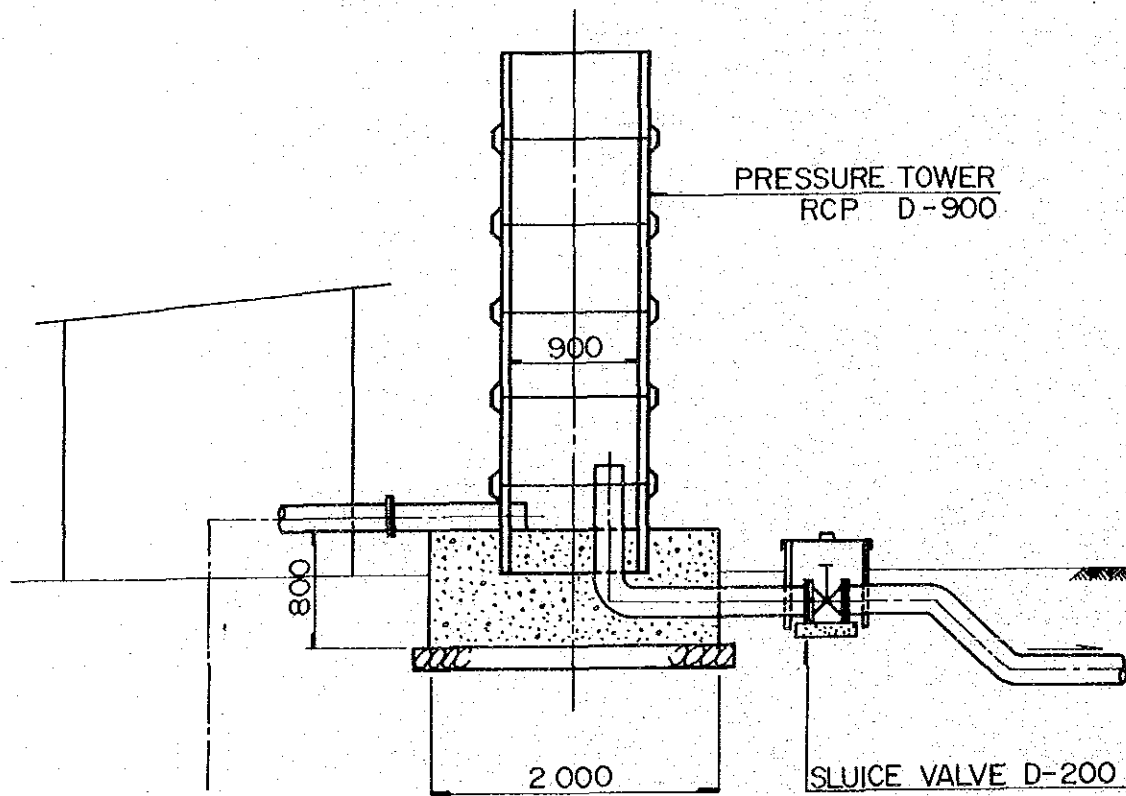
PLAN



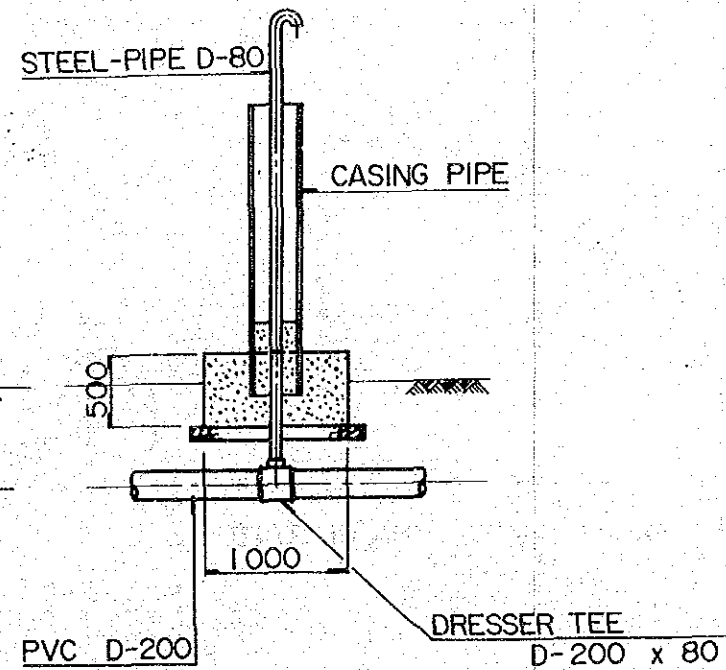
SECTION



SECTION



AIRVENT



SCALE 1:50

THE PEOPLE'S REPUBLIC OF BANGLADESH  
 MODEL RURAL DEVELOPMENT PROJECT PLAN  
 FOR HOMNA AND DAUDKANDI UPAZILA

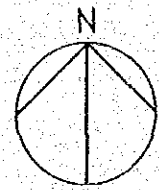
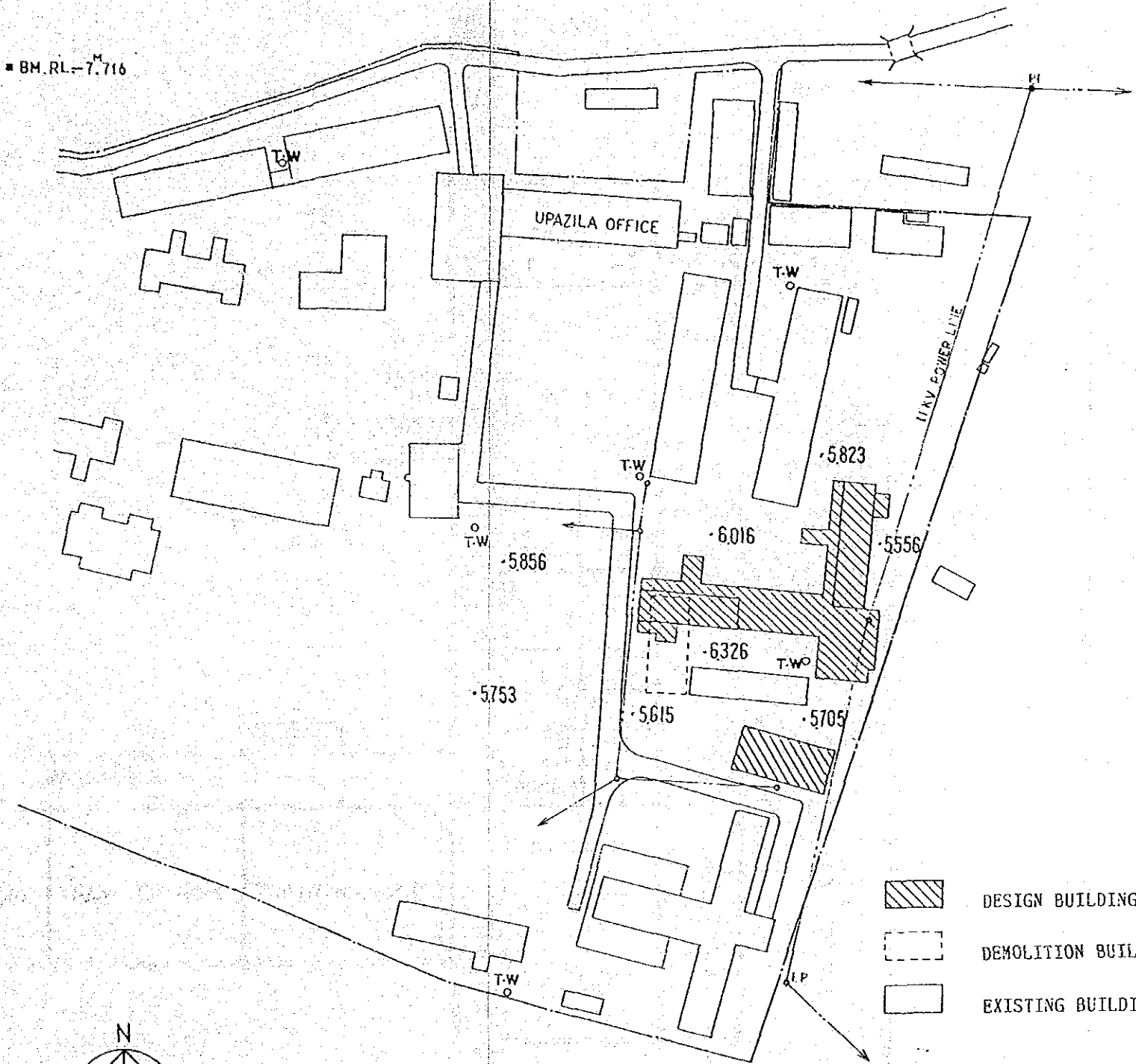
**BURIED PIPELINE SYSTEM  
 STRUCTURAL DRAWING**

DATE	No.	8
JAPAN INTERNATIONAL COOPERATION AGENCY		

DRAWING LIST

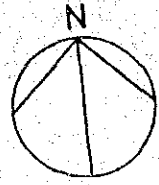
1. SITE PLAN
  2. GROUND FLOOR PLAN
  3. 1 ST FLOOR PLAN
  4. ELEVATIONS
  5. ELEVATIONS AND SECTIONS
  6. STORAGE HOUSES FOR LOW-LIFT PUMPS  
(WITH WORKSHOP)
- FLOOR PLAN ELEVATIONS SECTIONS

BM.RL-7.716

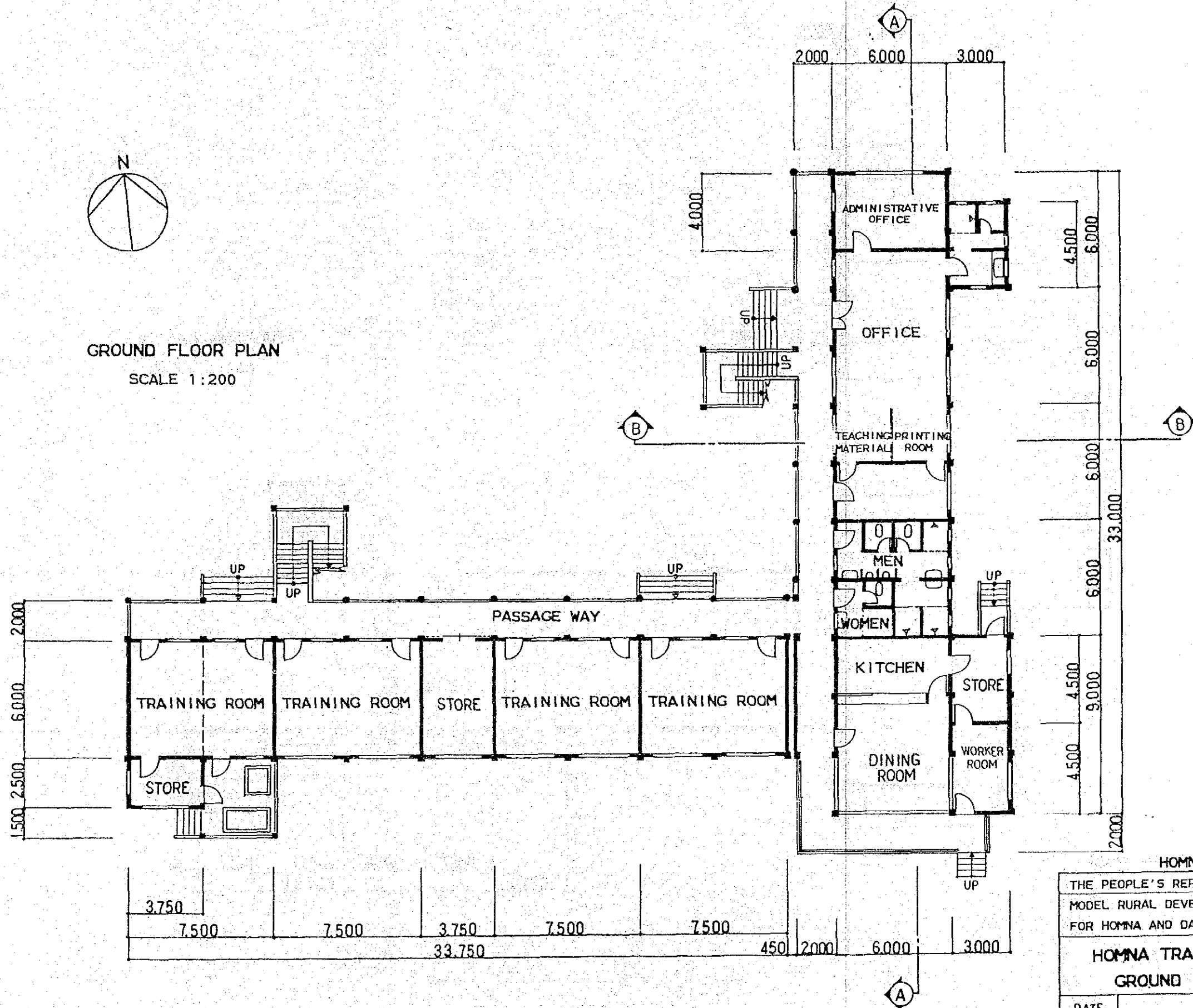


SITE PLAN SCALE 1:1000

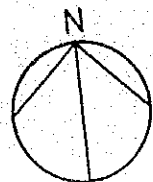
HOMNA UCCA 1			
THE PEOPLE'S REPUBLIC OF BANGLADESH			
MODEL RURAL DEVELOPMENT PROJECT PLAN			
FOR HOMNA AND DAUDKANDI UPAZILA			
HOMNA TRAINING CENTER			
DRAWING LIST AND SITE PLAN			
DATE		No.	9
JAPAN INTERNATIONAL COOPERATION AGENCY			



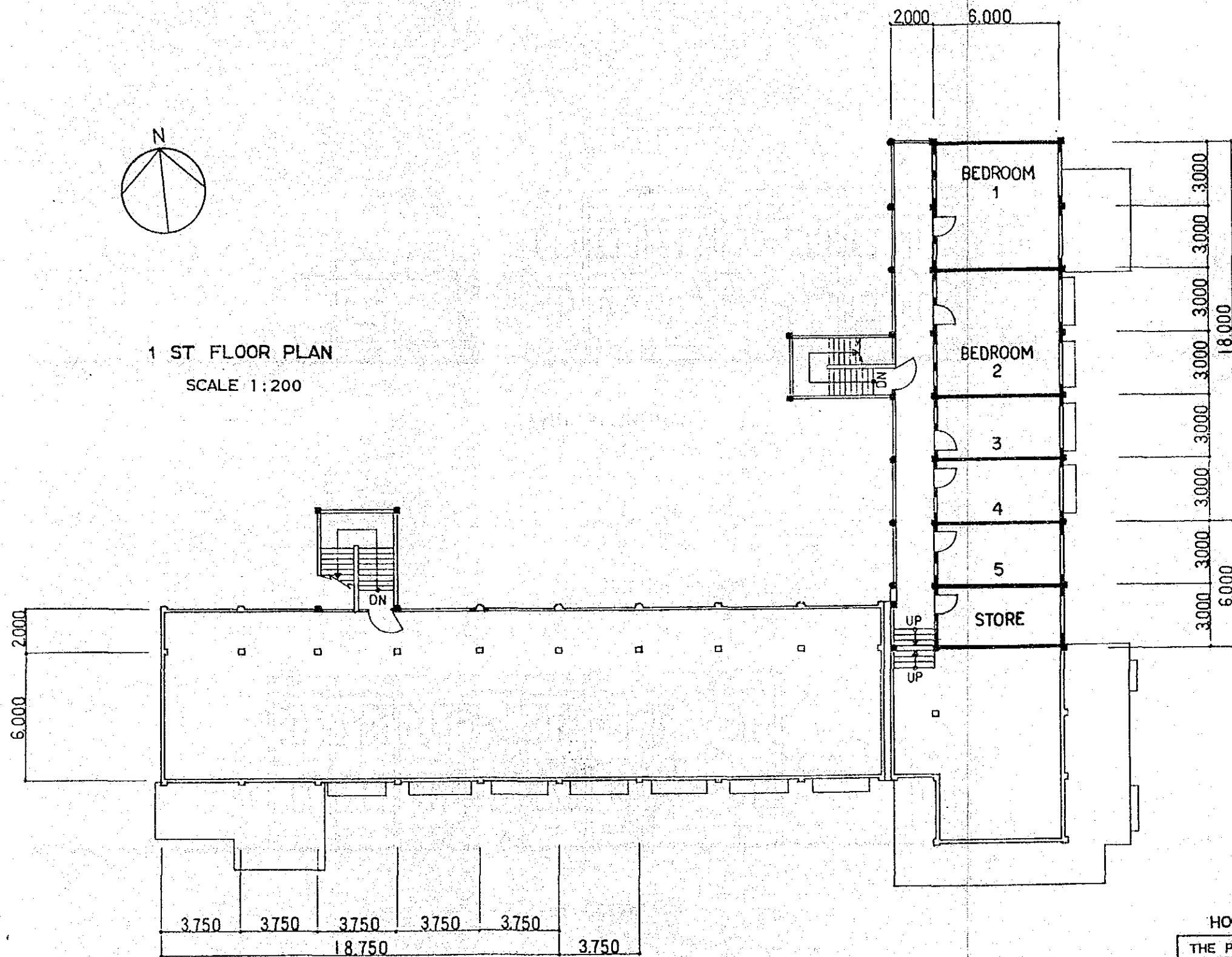
GROUND FLOOR PLAN  
SCALE 1:200



HOMNA UCCA 2.			
THE PEOPLE'S REPUBLIC OF BANGLADESH			
MODEL RURAL DEVELOPMENT PROJECT PLAN			
FOR HOMNA AND DAUDKANDI UPAZILA			
HOMNA TRAINING CENTER			
GROUND FLOOR PLAN			
DATE		No.	10
JAPAN INTERNATIONAL COOPERATION AGENCY			



1 ST FLOOR PLAN  
SCALE 1:200

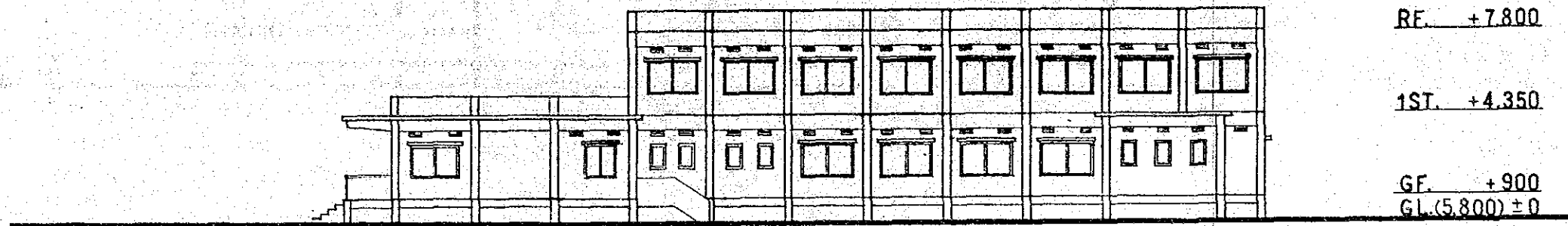


HOMNA UCCA 3.

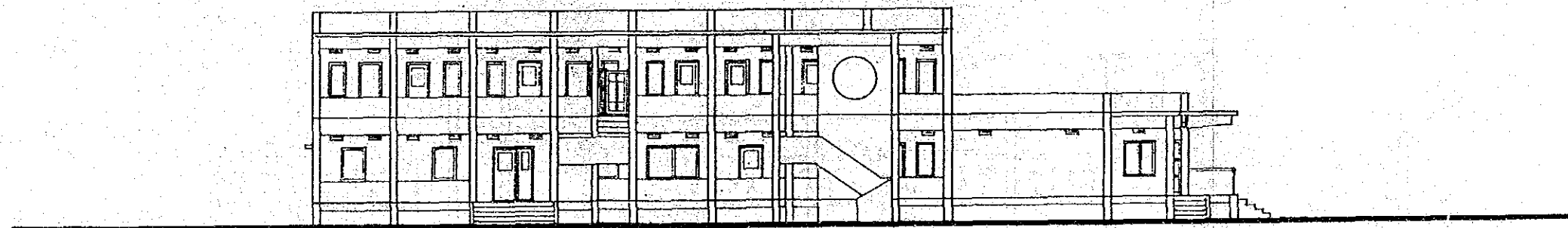
THE PEOPLE'S REPUBLIC OF BANGLADESH  
MODEL RURAL DEVELOPMENT PROJECT PLAN  
FOR HOMNA AND DAUDKANDI UPAZILA

HOMNA TRAINING CENTER  
1 ST FLOOR PLAN

DATE		No.	11
JAPAN INTERNATIONAL COOPERATION AGENCY			



EAST ELEVATION



WEST ELEVATION

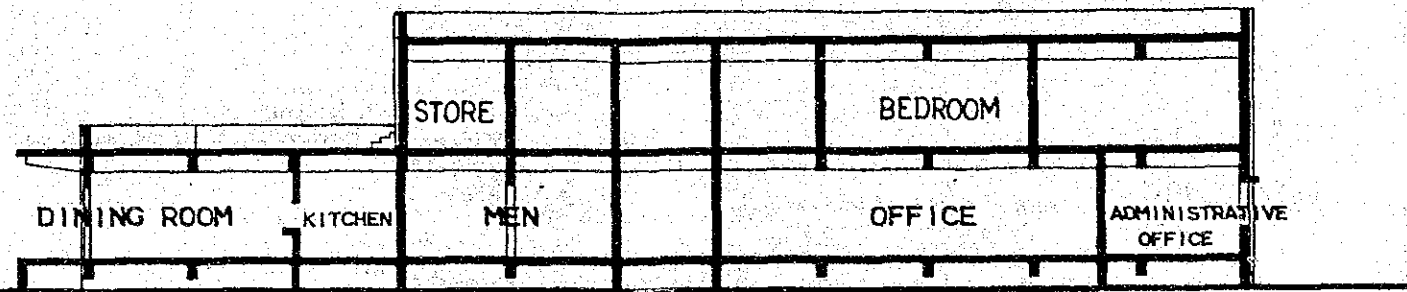
ELEVATIONS  
SCALE 1:200

HOMNA UCCA 4.			
THE PEOPLE'S REPUBLIC OF BANGLADESH			
MODEL RURAL DEVELOPMENT PROJECT PLAN			
FOR HOMNA AND DAUDKANDI UPAZILA			
HOMNA TRAINING CENTER			
ELEVATIONS			
DATE		No.	12
JAPAN INTERNATIONAL COOPERATION AGENCY			

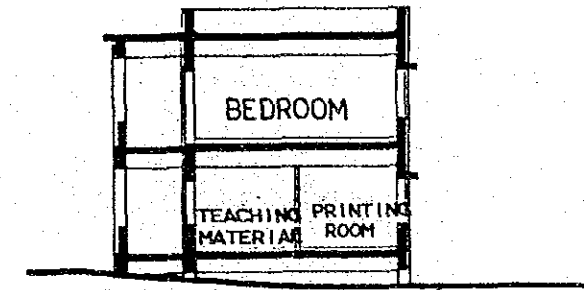
RF. +7.800

1ST. +4.350

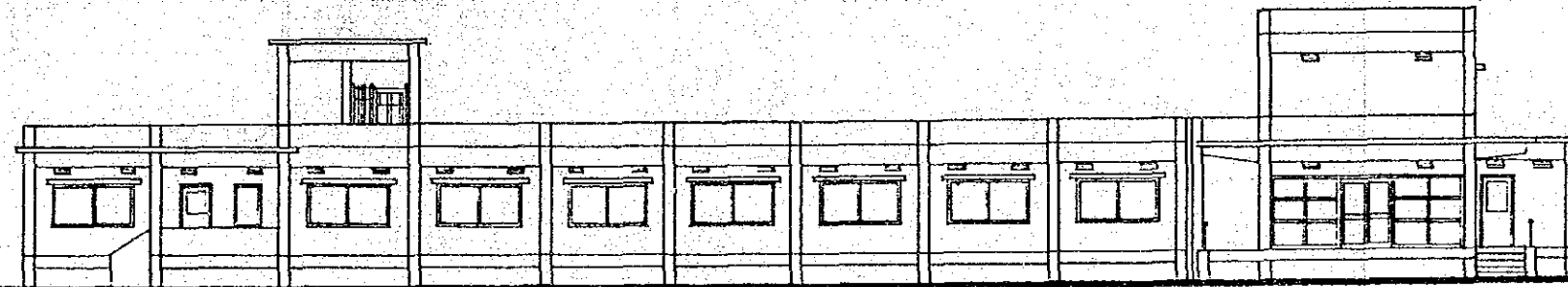
GF. +900  
GL. (5.800) ± 0



A-A SECTION



B-B SECTION

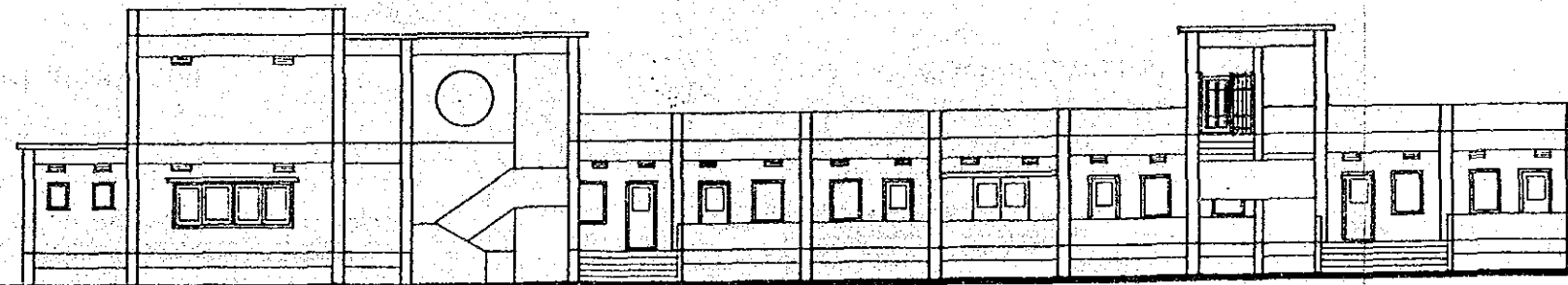


SOUTH ELEVATION

RF. +7.800

1ST. +4.350

GF. +900  
GL. (5.800) ± 0



NORTH ELEVATION

ELEVATIONS AND SECTIONS  
SCALE 1:200

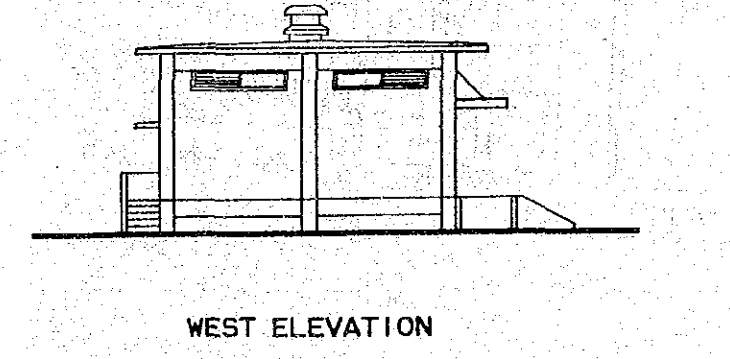
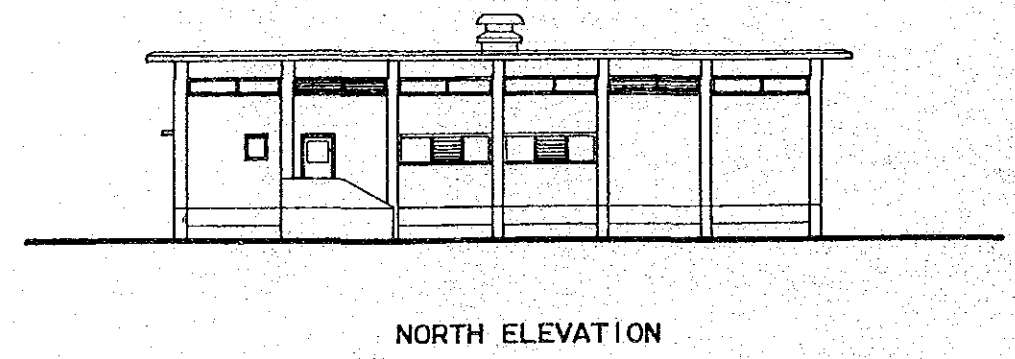
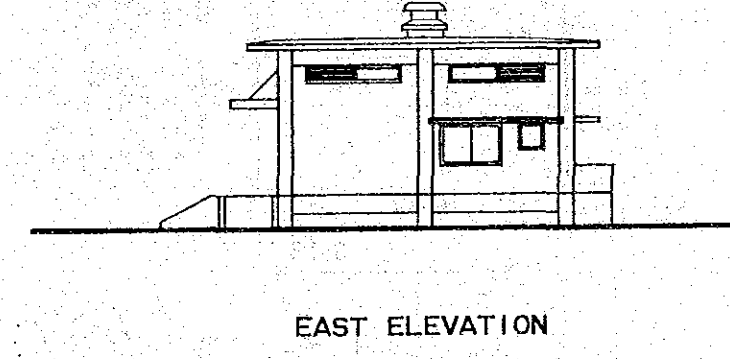
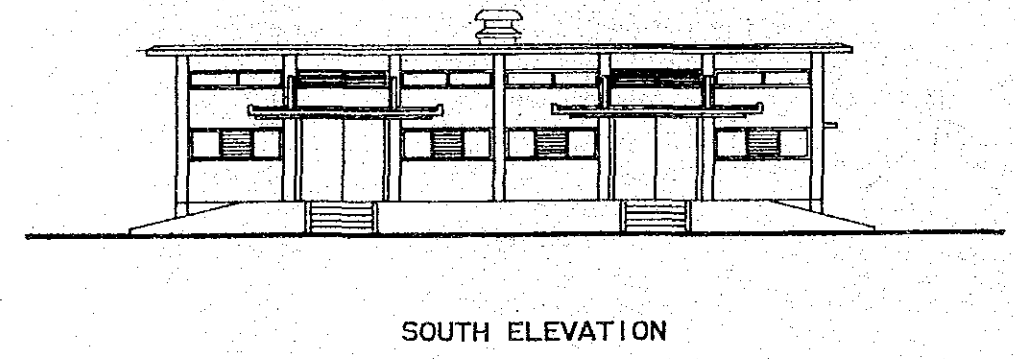
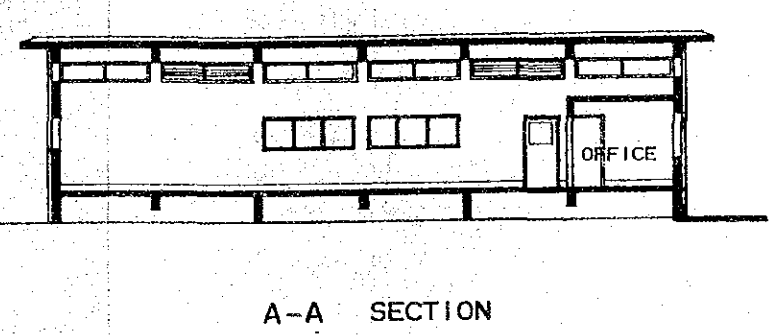
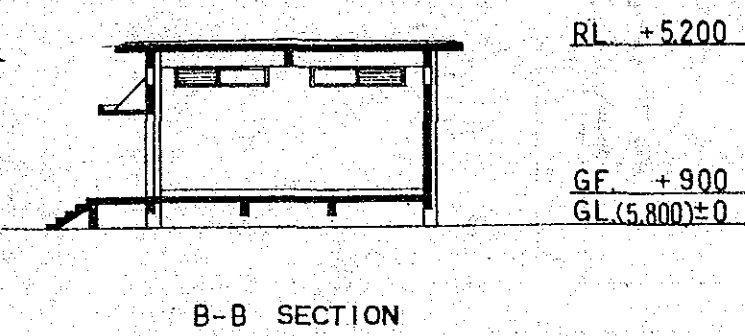
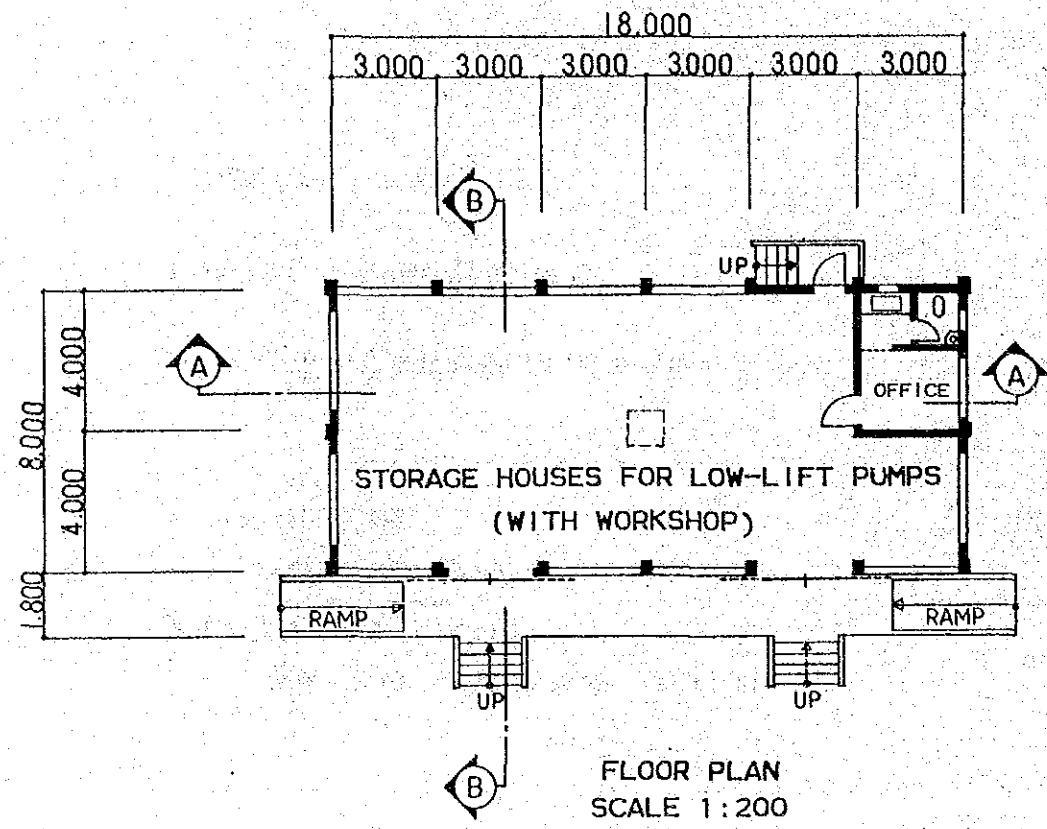
HOMNA UCCA 5.

THE PEOPLE'S REPUBLIC OF BANGLADESH  
MODEL RURAL DEVELOPMENT PROJECT PLAN  
FOR HOMNA AND DAUKANDI UPAZILA

HOMNA TRAINING CENTER  
ELEVATIONS AND SECTIONS

DATE		N o.	13
JAPAN INTERNATIONAL COOPERATION AGENCY			



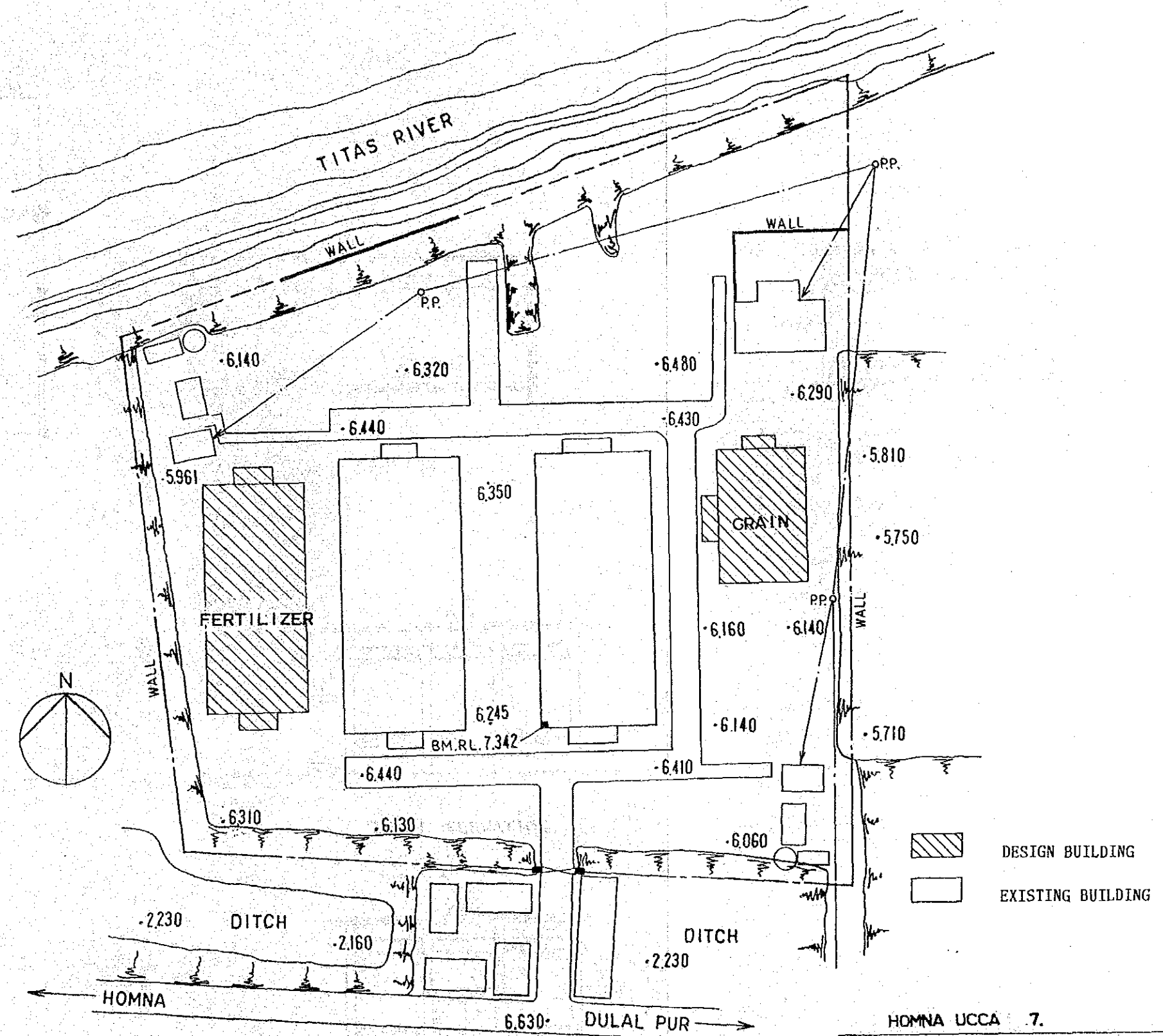


HOMNA UCCA 6.

THE PEOPLE'S REPUBLIC OF BANGLADESH			
MODEL RURAL DEVELOPMENT PROJECT PLAN			
FOR HOMNA AND DAUDKANDI UPAZILA			
HOMNA TRAINING CENTER			
STORAGE HOUSE FOR			
LOW-LIFT PUMPS (WITH WORKSHOP)			
DATE		N o.	14
JAPAN INTERNATIONAL COOPERATION AGENCY			

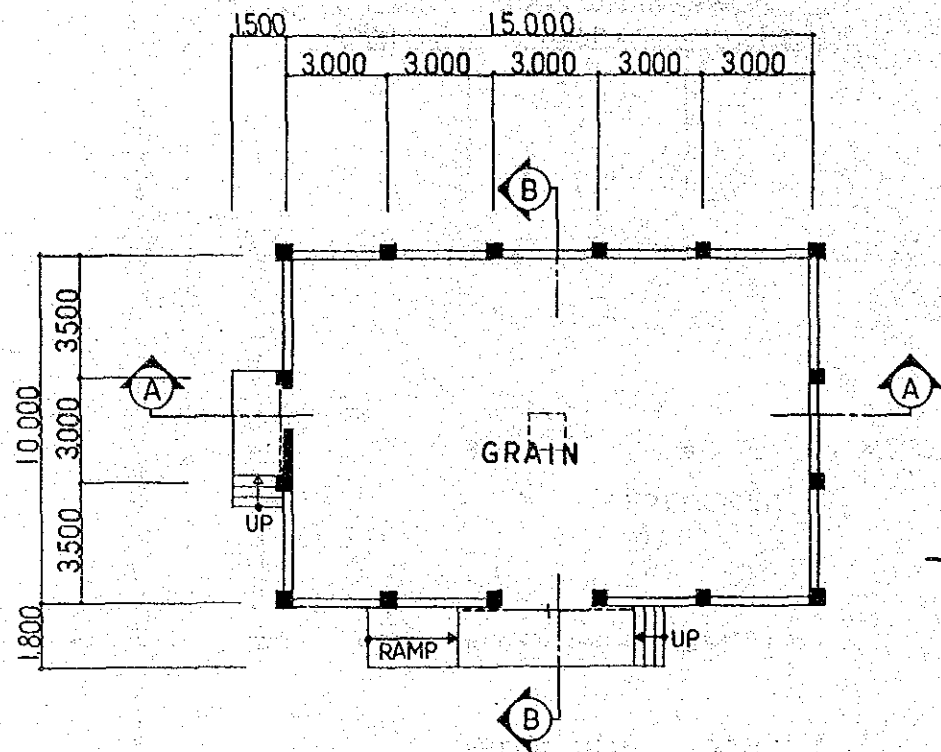
**DRAWING LIST**

1. GRAIN GODOWN SITE PLAN  
FERTILIZER GODOWN SITE PLAN
2. GRAIN GODOWN  
FLOOR PLAN ELEVATIONS SECTION
3. FERTILIZER GODOWN  
FLOOR PLAN ELEVATIONS SECTION

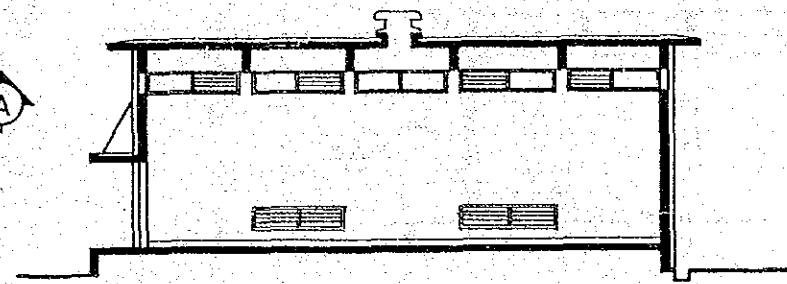


SITE PLAN SCALE 1:500

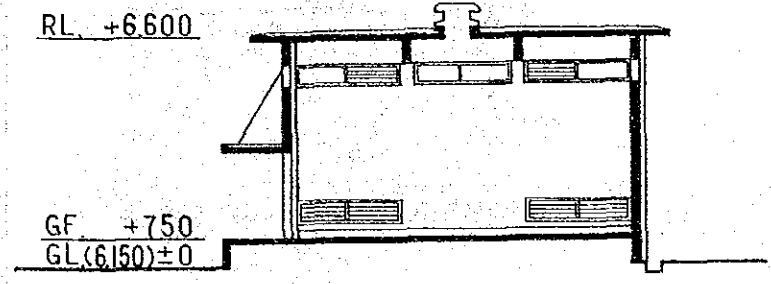
HOMNA UCCA 7.			
THE PEOPLE'S REPUBLIC OF BANGLADESH			
MODEL RURAL DEVELOPMENT PROJECT PLAN			
FOR HOMNA AND DAUDKANDI UPAZILA			
<b>HOMNA GODOWN</b>			
<b>DRAWING LIST AND SITE PLAN</b>			
DATE		N o.	15
JAPAN INTERNATIONAL COOPERATION AGENCY			



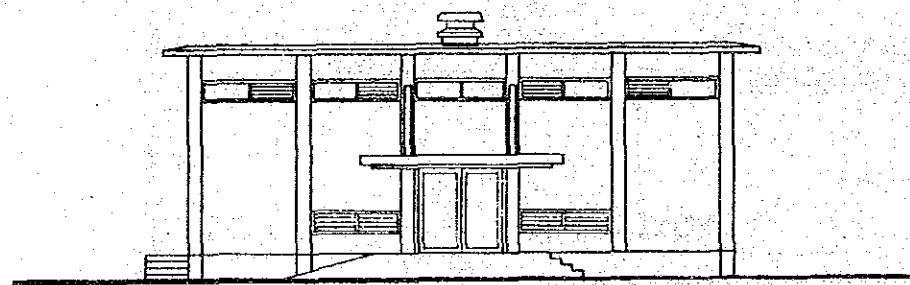
FLOOR PLAN SCALE 1:200



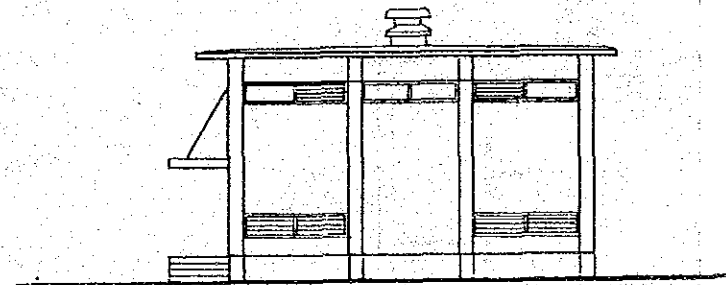
A-A SECTION



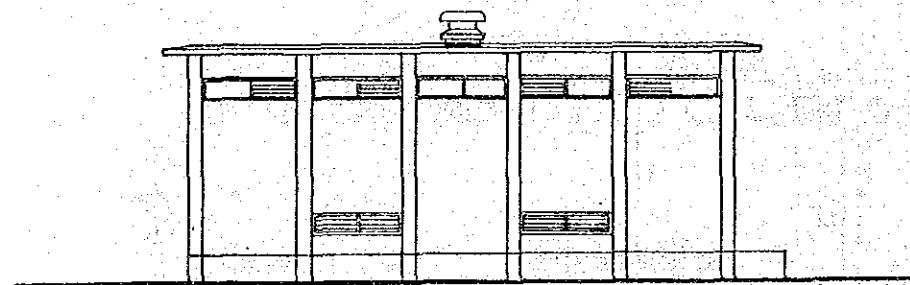
B-B SECTION



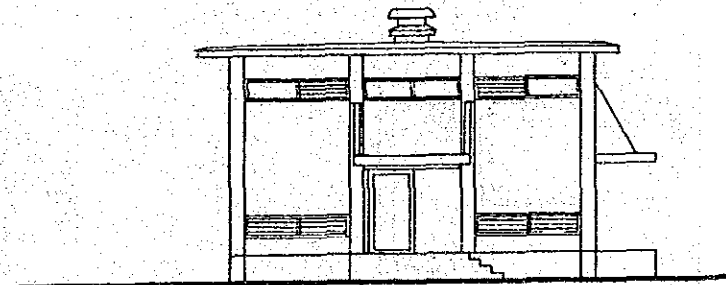
WEST ELEVATION



SOUTH ELEVATION

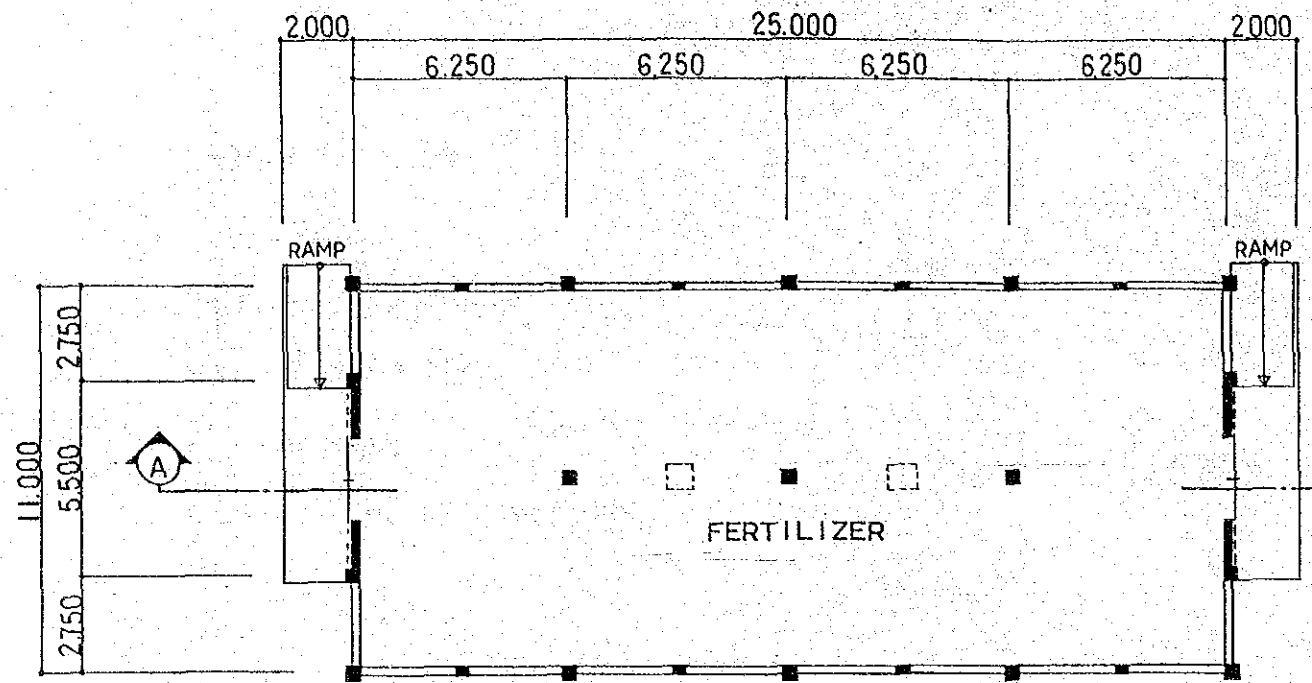


EAST ELEVATION

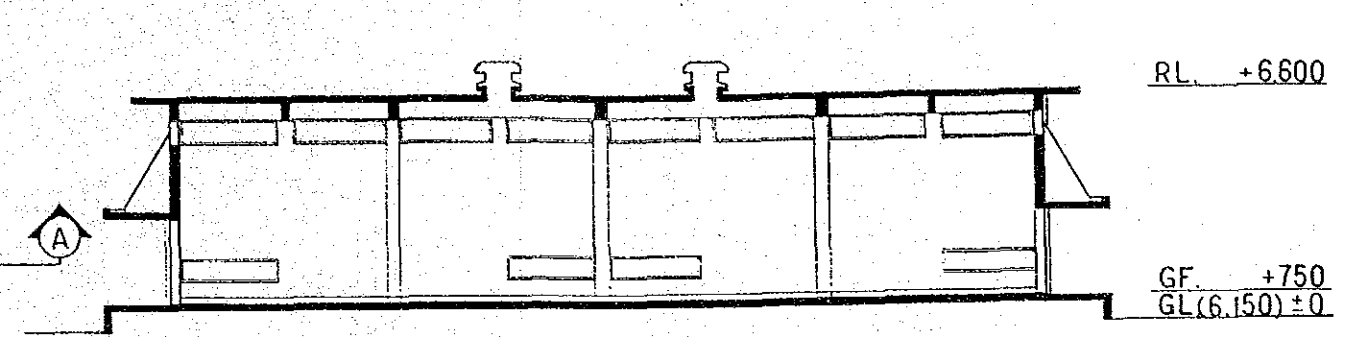


NORTH ELEVATION

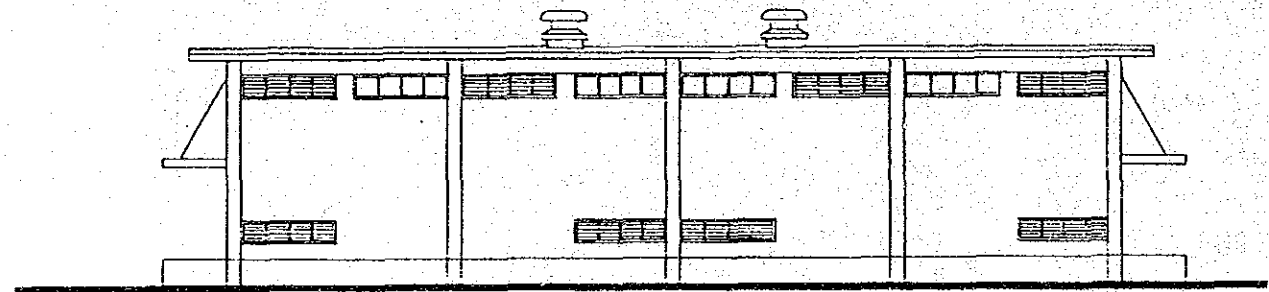
HOMNA UCCA 8.			
THE PEOPLE'S REPUBLIC OF BANGLADESH			
MODEL RURAL DEVELOPMENT PROJECT PLAN			
FOR HOMNA AND DAUDKANDI UPAZILA			
HOMNA GODOWN (GRAIN)			
FLOOR PLAN			
ELEVATIONS AND SECTIONS			
DATE		N.o.	16
JAPAN INTERNATIONAL COOPERATION AGENCY			



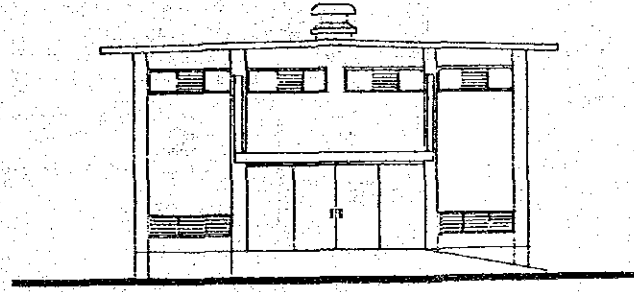
FLOOR PLAN SCALE 1:200



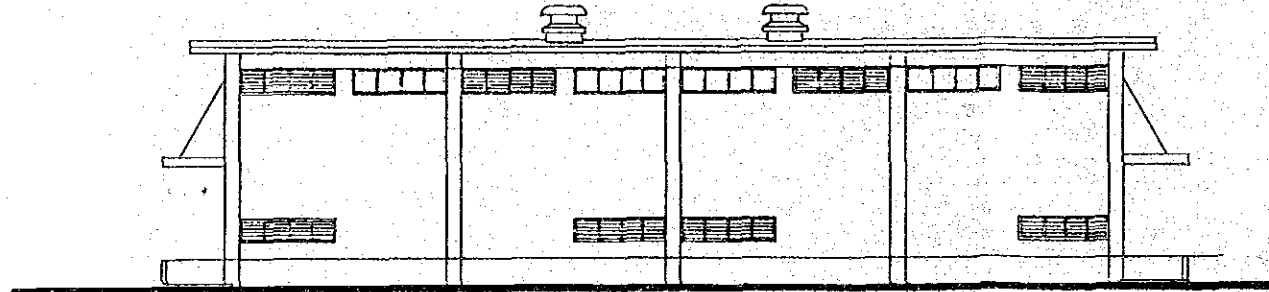
A-A SECTION



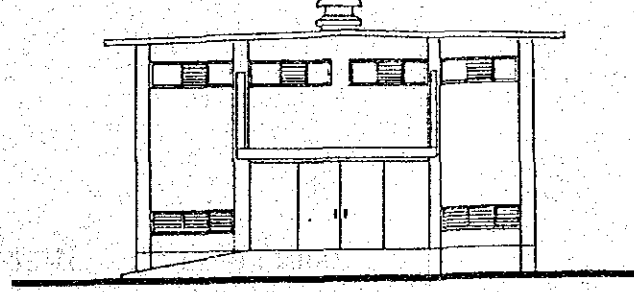
WEST ELEVATION



SOUTH ELEVATION



EAST ELEVATION

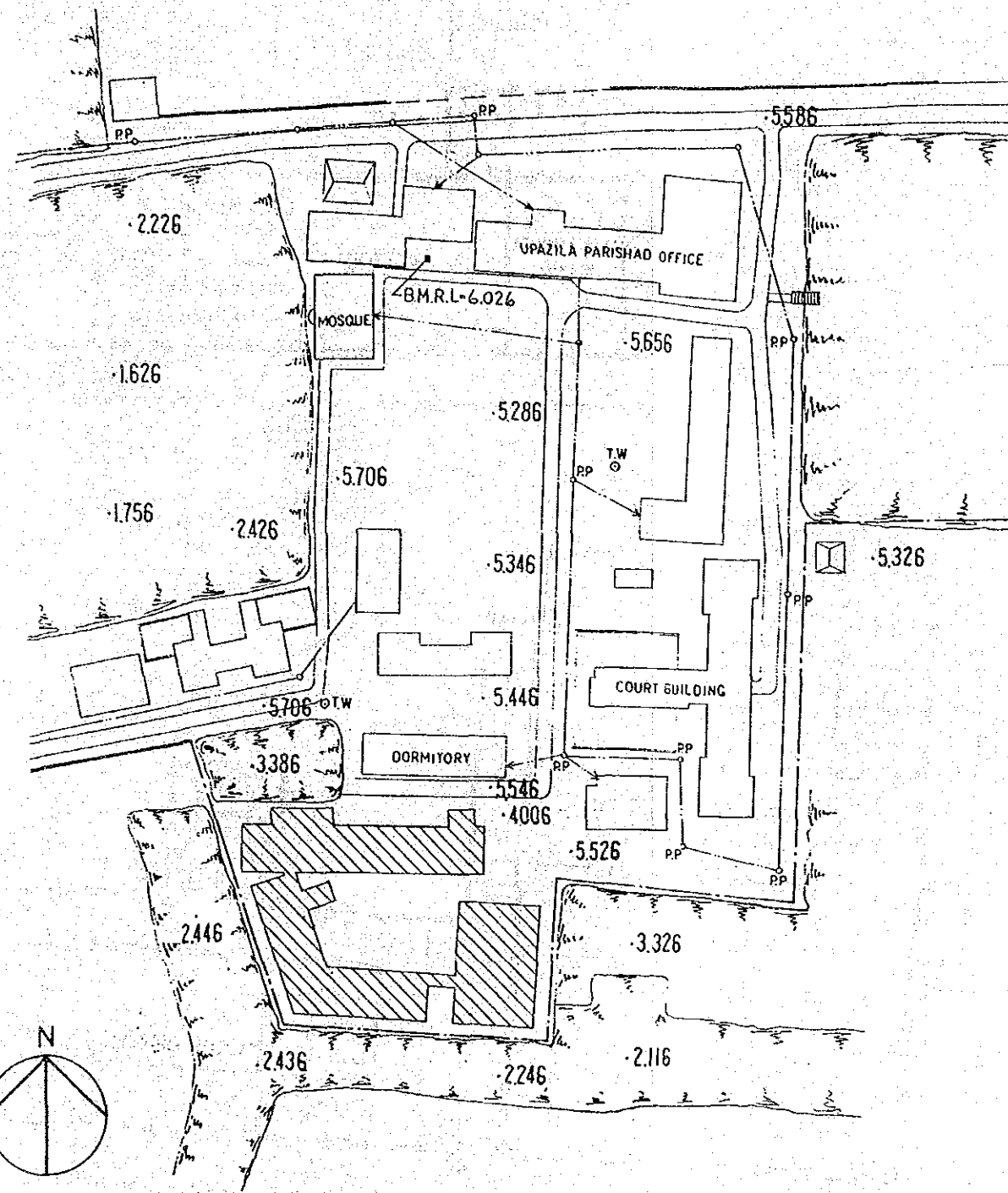


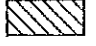
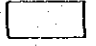
NORTH ELEVATION

HOMNA UCCA 9.			
THE PEOPLE'S REPUBLIC OF BANGLADESH			
MODEL RURAL DEVELOPMENT PROJECT PLAN			
FOR HOMNA AND DAUCKANDI UPAZILA			
HOMNA GODOWN (FERTILIZER)			
FLOOR PLAN			
ELEVATIONS AND SECTIONS			
DATE		No.	17
JAPAN INTERNATIONAL COOPERATION AGENCY			

**DRAWING LIST**

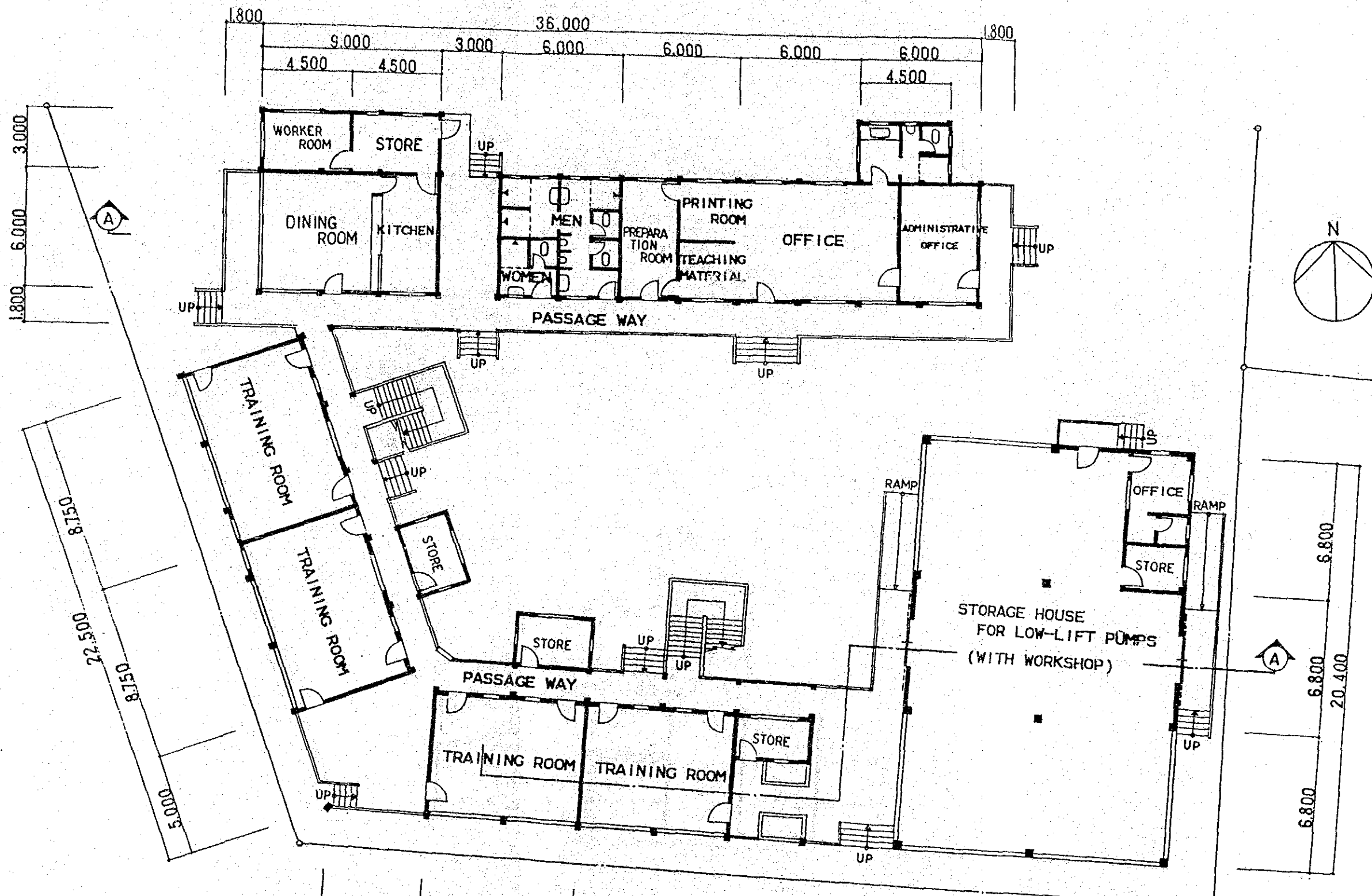
1. SITE PLAN
2. GROUND FLOOR PLAN
3. 1 ST FLOOR PLAN
4. ELEVATIONS
5. ELEVATIONS AND SECTIONS



 DESIGN BUILDING  
 EXISTING BUILDING

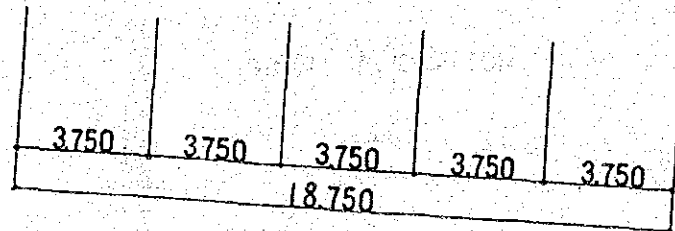
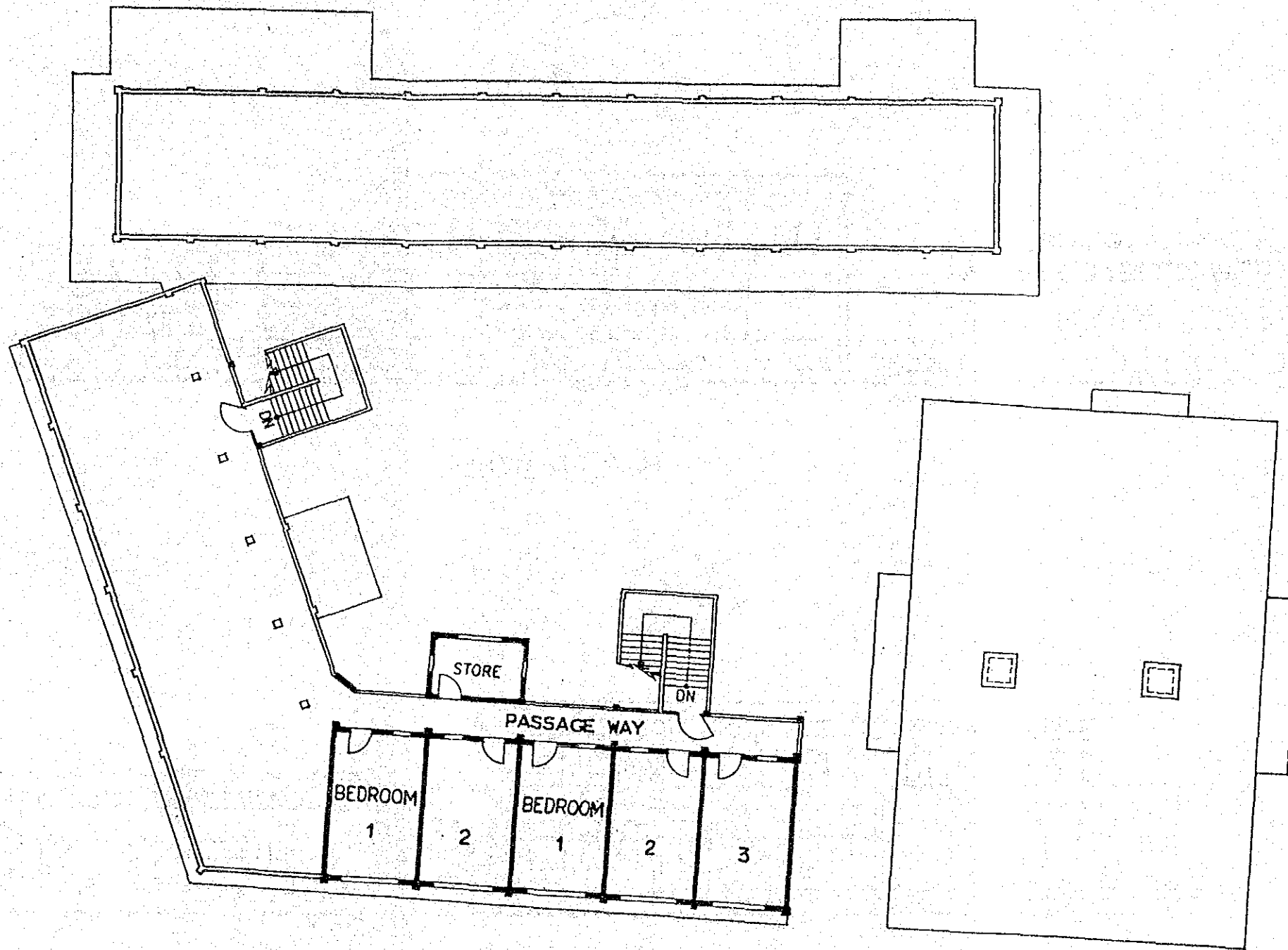
**SITE PLAN SCALE 1:1000**

DAUDKANDI UCCA 1.			
THE PEOPLE'S REPUBLIC OF BANGLADESH			
MODEL RURAL DEVELOPMENT PROJECT PLAN			
FOR HOMNA AND DAUDKANDI UPAZILA			
<b>DAUDKANDI TRAINING CENTER</b>			
<b>DRAWING LIST AND SITE PLAN</b>			
DATE		N o.	18
JAPAN INTERNATIONAL COOPERATION AGENCY			



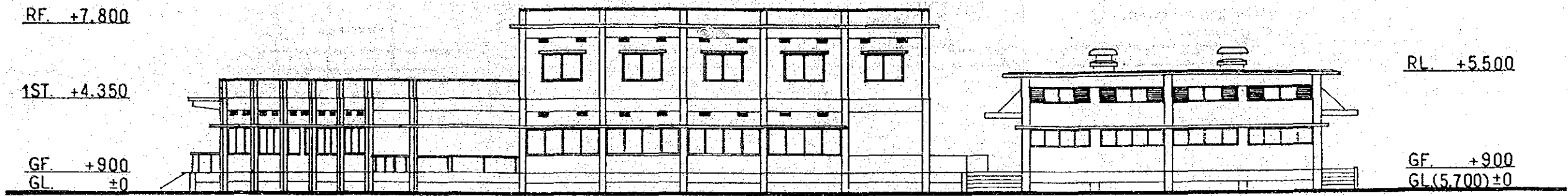
GROUND FLOOR PLAN SCALE 1:200

DAUDKANDI UCÇA' 2.			
THE PEOPLE'S REPUBLIC OF BANGLADESH			
MODEL RURAL DEVELOPMENT PROJECT PLAN			
FOR HOMNA AND DAUDKANDI UPAZILA			
DAUDKANDI TRAINING CENTER			
GROUND FLOOR PLAN			
DATE		No.	19
JAPAN INTERNATIONAL COOPERATION AGENCY			

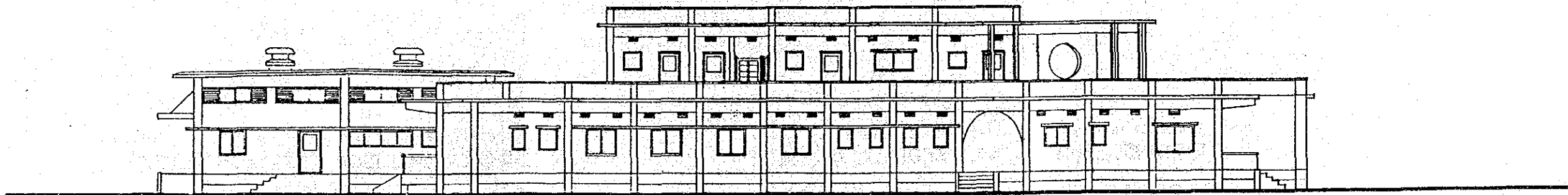


1 ST FLOOR PLAN SCALE 1:200

DAUDKANDI UCCA 3.			
THE PEOPLE'S REPUBLIC OF BANGLADESH			
MODEL RURAL DEVELOPMENT PROJECT PLAN			
FOR HOMNA AND DAUDKANDI UPAZILA			
DAUDKANDI TRAINING CENTER			
1 ST FLOOR PLAN			
DATE		N o.	20
JAPAN INTERNATIONAL COOPERATION AGENCY			



SOUTH ELEVATION

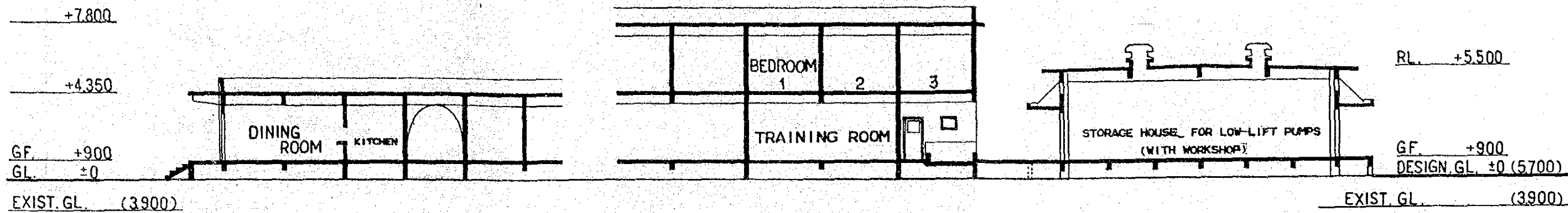


NORTH ELEVATION

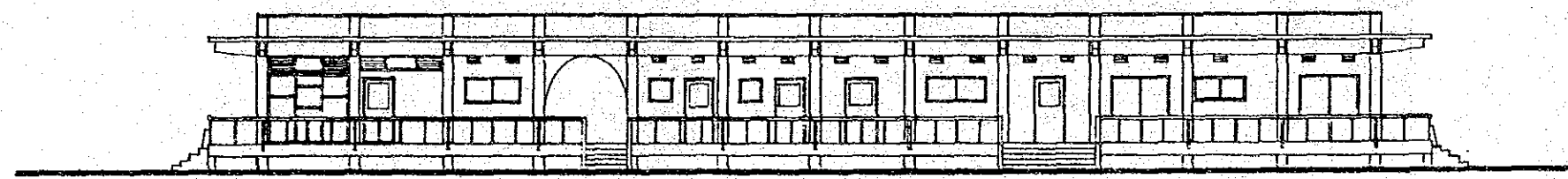
ELEVATIONS SCALE 1:200

DAUDKANDI UCCA 4.			
THE PEOPLE'S REPUBLIC OF BANGLADESH			
MODEL RURAL DEVELOPMENT PROJECT PLAN			
FOR HOMNA AND DAUDKANDI UPAZILA			
DAUDKANDI TRAINING CENTER			
ELEVATIONS			
DATE		No.	21
JAPAN INTERNATIONAL COOPERATION AGENCY			

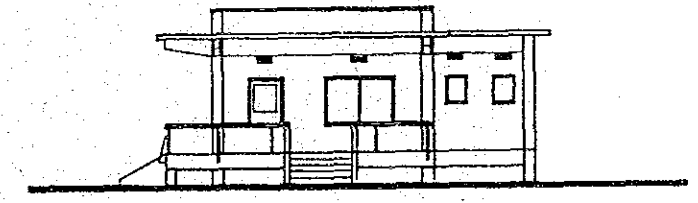




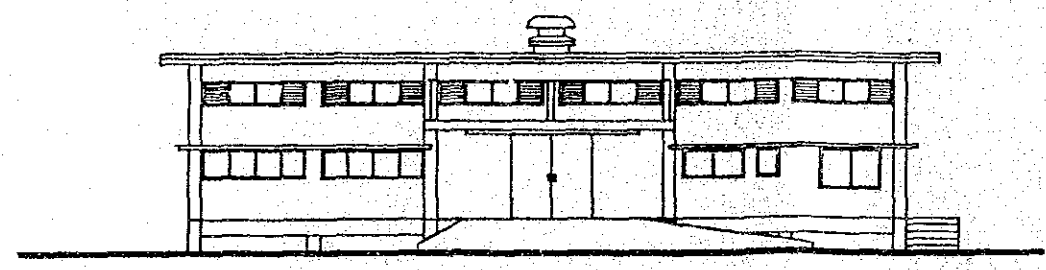
A-A SECTION



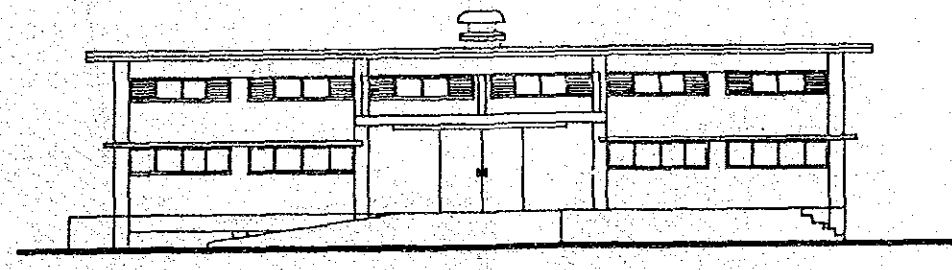
SOUTH ELEVATION



EAST ELEVATION



EAST ELEVATION



WEST ELEVATION

ELEVATIONS AND SECTION  
SCALE 1:200

DAUKANDI UCCA 5.			
THE PEOPLE'S REPUBLIC OF BANGLADESH			
MODEL RURAL DEVELOPMENT PROJECT PLAN			
FOR HOMNA AND DAUKANDI UPAZILA			
DAUKANDI TRAINING CENTER			
ELEVATIONS AND SECTION			
DATE		No.	22
JAPAN INTERNATIONAL COOPERATION AGENCY			