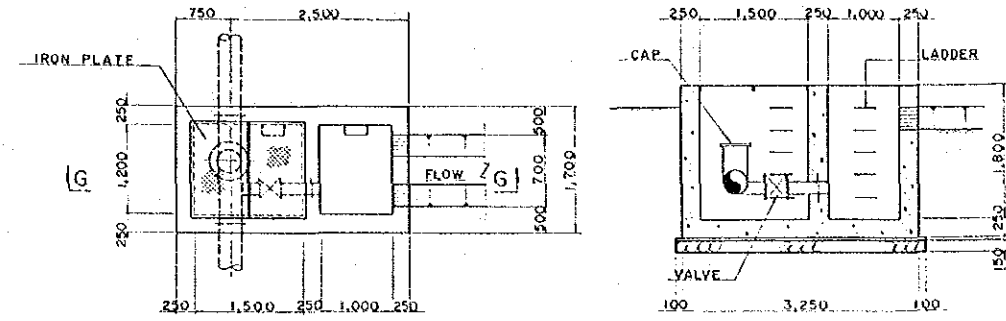
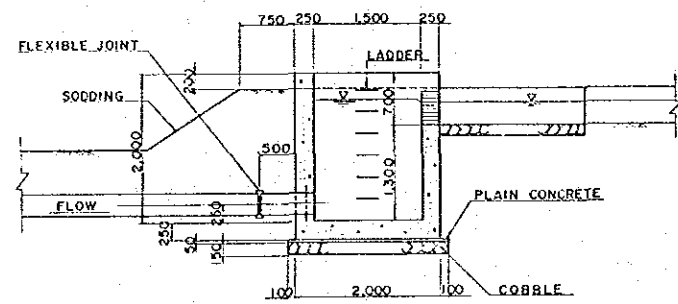


OUTLET BOX

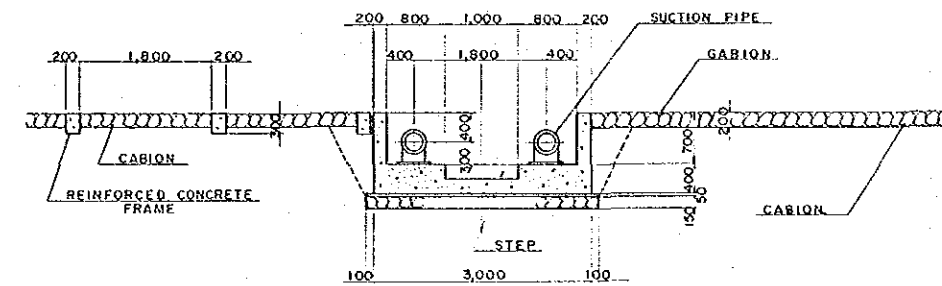


MAINTENANCE BOX

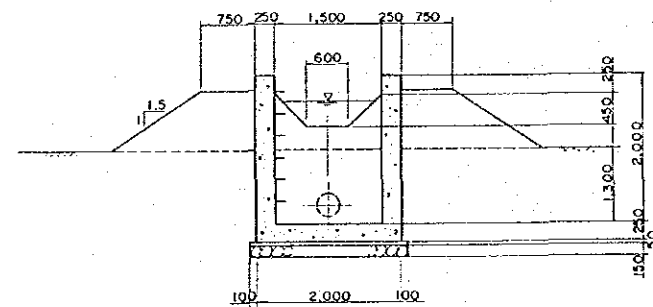
SECTION G-G



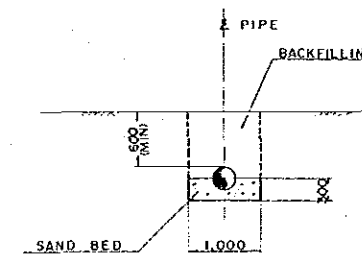
SECTION E-E



TYPICAL SECTION OF INTAKE STRUCTURE

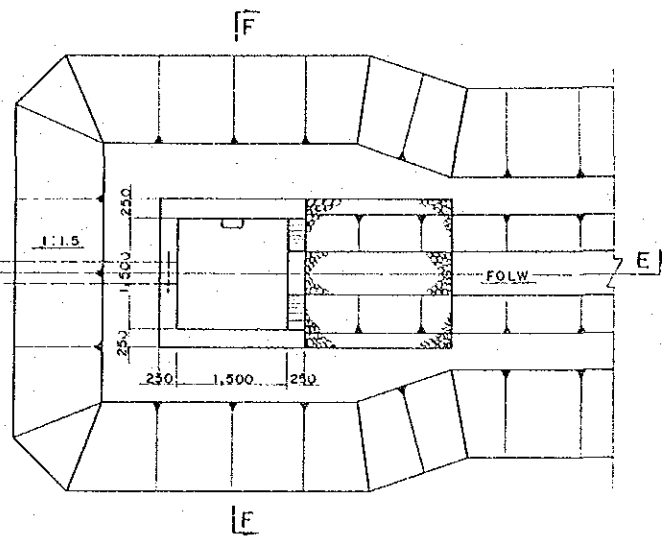


SECTION F-F

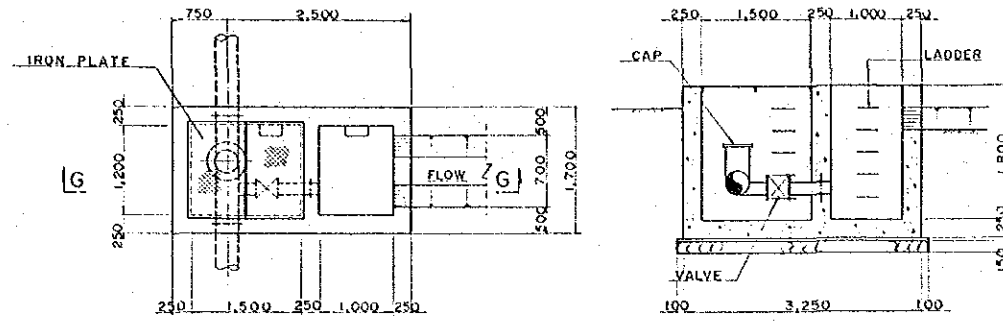


TYPICAL SECTION OF PIPELINE

GOVERNMENT OF
MINISTRY OF
DIRECTORATE GENERAL OF
PUMPING STATION PROJECT
TITLE OF DRAWING:
GENERAL PLAN OF OUTLET
BOX AND PIPELINE
JAPAN INTERNATIONAL

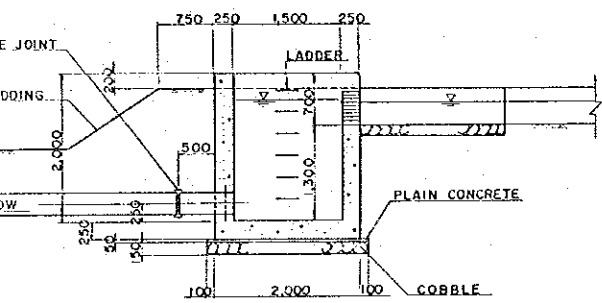


OUTLET BOX

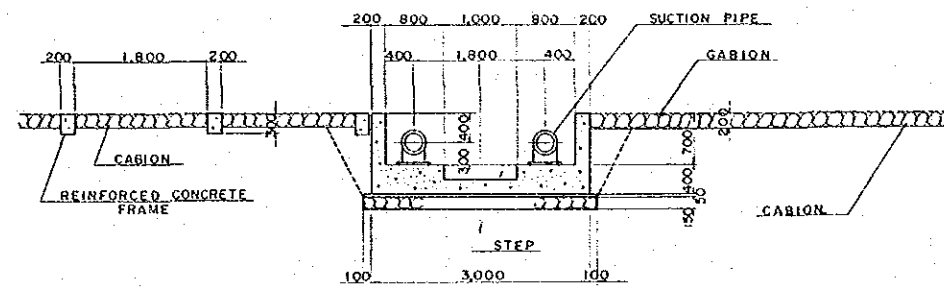


MAINTENANCE BOX

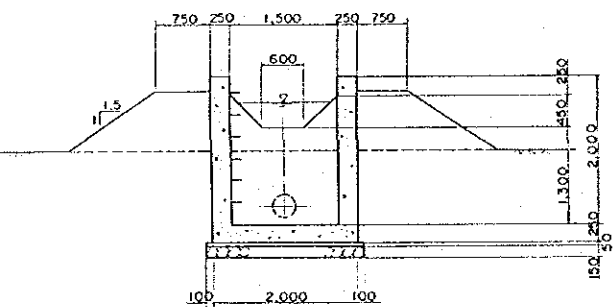
SECTION G-G



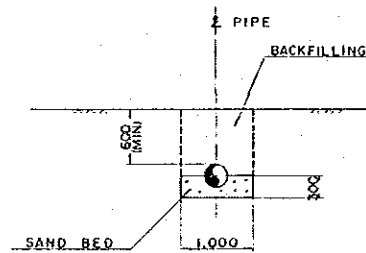
SECTION E-E



TYPICAL SECTION OF INTAKE STRUCTURE



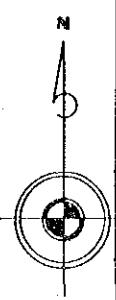
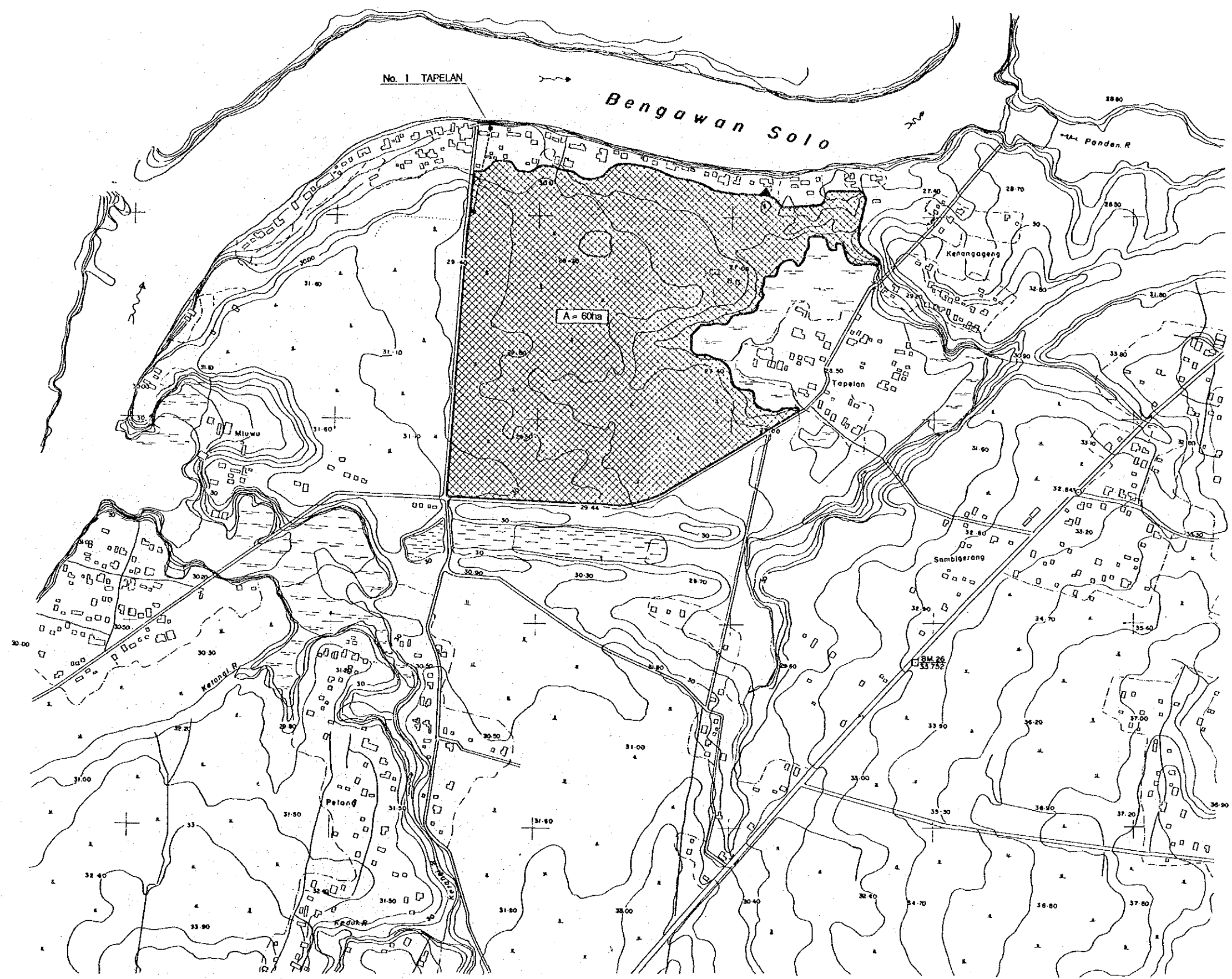
SECTION F-F



TYPICAL SECTION OF PIPELINE



| | |
|---|-----------------------|
| GOVERNMENT OF THE REPUBLIC OF INDONESIA MINISTRY OF PUBLIC WORKS DIRECTORATE GENERAL OF WATER RESOURCES DEVELOPMENT | |
| PUMPING STATION PROJECT FOR BENGAWAN SOLO LOWER REACHES | |
| TITLE OF DRAWING: GENERAL PLAN OF OUTLET, MAINTENANCE BOX AND PIPELINE | PLATE NO. 6 |
| JAPAN INTERNATIONAL COOPERATION AGENCY (JICA) | |



LEG

- : Co
- : B
- : R
- : P
- - - : F
- - - : S
- - - : C
- - - : B
- - - : V
- || : R
- V V : P
- 6 : T
- : H

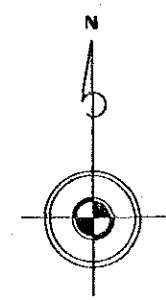
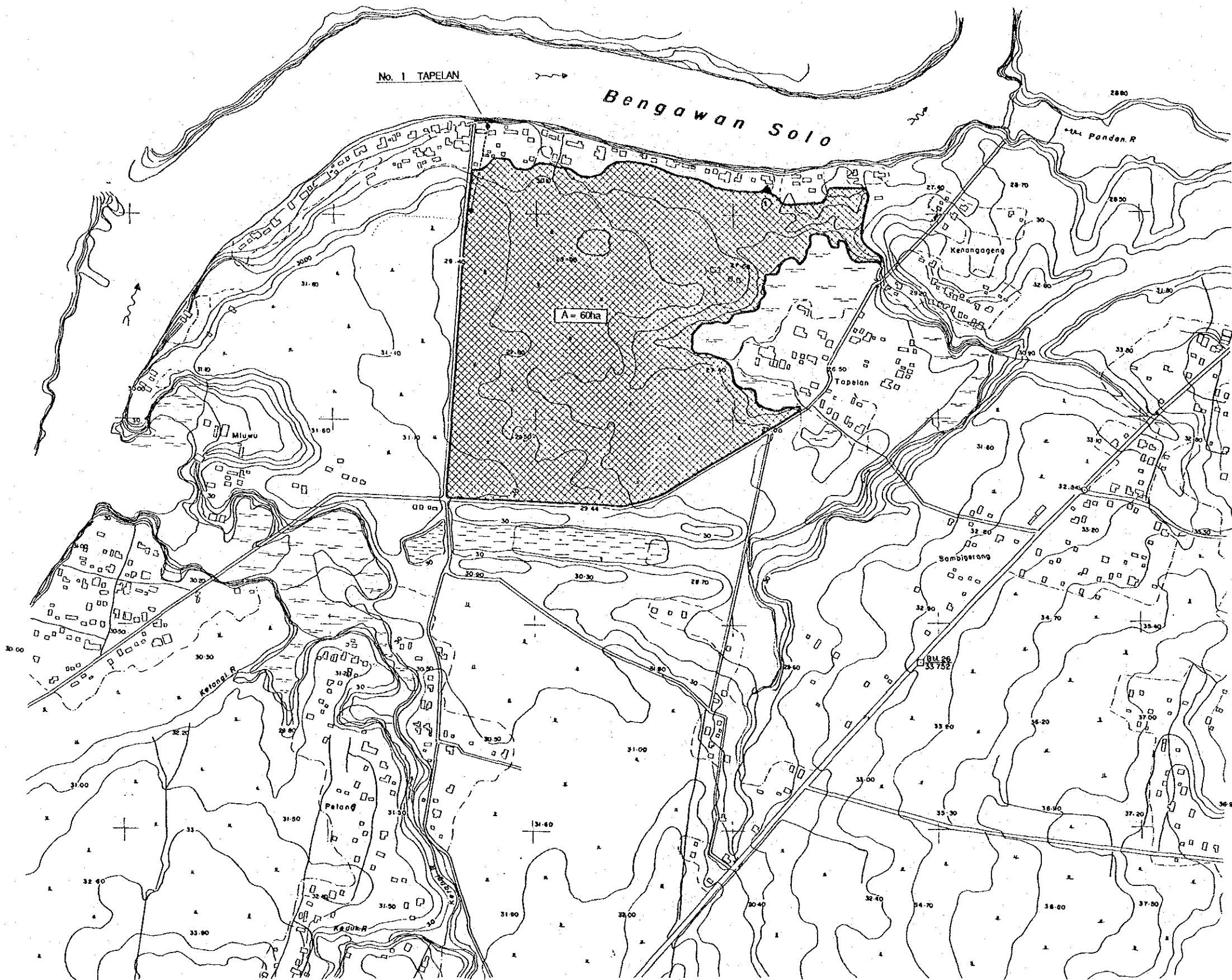
0 100 200

GOVERNMENT OF THE
MINISTRY OF
DIRECTORATE GENERAL OF W

PUMPING STATION PROJECT FOR

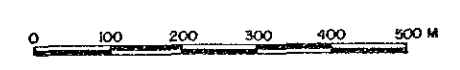
TITLE OF DRAWING :
LOCATION MAP OF EXIS
(TAPELA

JAPAN INTERNATIONAL CO



LEGEND

- : Control Point (CP)
- : Bench Mark (BM)
- : Road (2m)
- - - : Path (1-2m)
- - - : Foot Path
- - - : Rice Field Boundary (Raised path)
- ~ : Swamp
- ~ : Canal
- ~ : River
- ~ : Branch River
- ▨ : Village
- ▨ : Rice Field
- V V : Plantation
- ♣ : Trees
- : House



| | |
|---|-----------------------|
| GOVERNMENT OF THE REPUBLIC OF INDONESIA MINISTRY OF PUBLIC WORKS DIRECTORATE GENERAL OF WATER RESOURCES DEVELOPMENT | |
| PUMPING STATION PROJECT FOR BENGAWAN SOLO LOWER REACHES | |
| TITLE OF DRAWING : LOCATION MAP OF EXISTING PUMP NO.1 (TAPELAN) | PLATE NO. 7 |
| JAPAN INTERNATIONAL COOPERATION AGENCY (JICA) | |



LEGEND

- Center
- Banch
- Road
- Path
- Foot
- Rice f
- Swam
- Canal
- River
- Branc
- Village
- Rice
- Plant
- Tree
- House

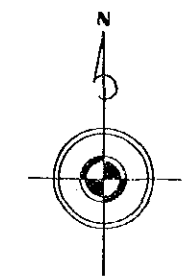
0 100 200

GOVERNMENT OF THE RE
 MINISTRY OF PUB
 DIRECTORATE GENERAL OF WAT

PUMPING STATION PROJECT FOR BE

TITLE OF DRAWING :
 LOCATION MAP OF EXISTIN
 (SUMBERARU)

JAPAN INTERNATIONAL COOPE



LEGEND

- Control Point (CP)
- Bench Mark (BM)
- Road (2m)
- - - Path (1-2m)
- - - Foot Path
- - - Rice Field Boundary (Raised path)
- ~ Swamp
- ~ Canals
- ~ River
- ~ Branch River
- ▨ Village
- ▨▨ Rice Field
- v v v Plantation
- ♣ Trees
- House

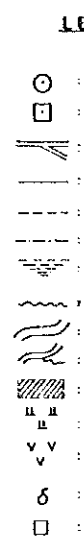
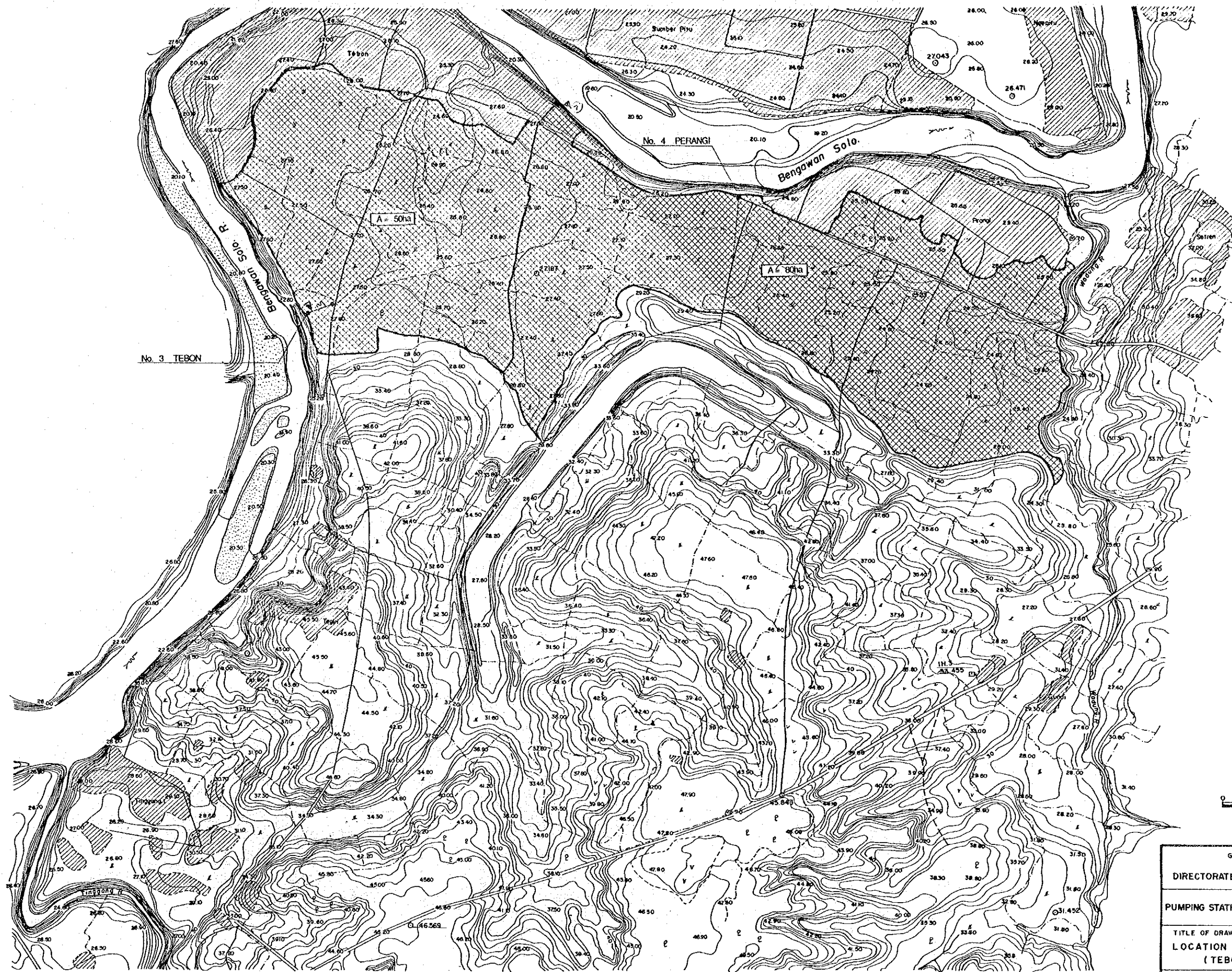


GOVERNMENT OF THE REPUBLIC OF INDONESIA
 MINISTRY OF PUBLIC WORKS
 DIRECTORATE GENERAL OF WATER RESOURCES DEVELOPMENT

PUMPING STATION PROJECT FOR BENGAWAN SOLD LOWER REACHES

| | |
|--|----------|
| TITLE OF DRAWING : | PLATE NO |
| LOCATION MAP OF EXISTING PUMP NO.2 (SUMBERARUM) | 8 |

JAPAN INTERNATIONAL COOPERATION AGENCY (JICA)

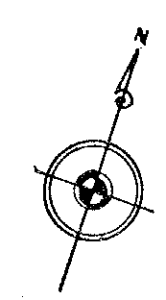
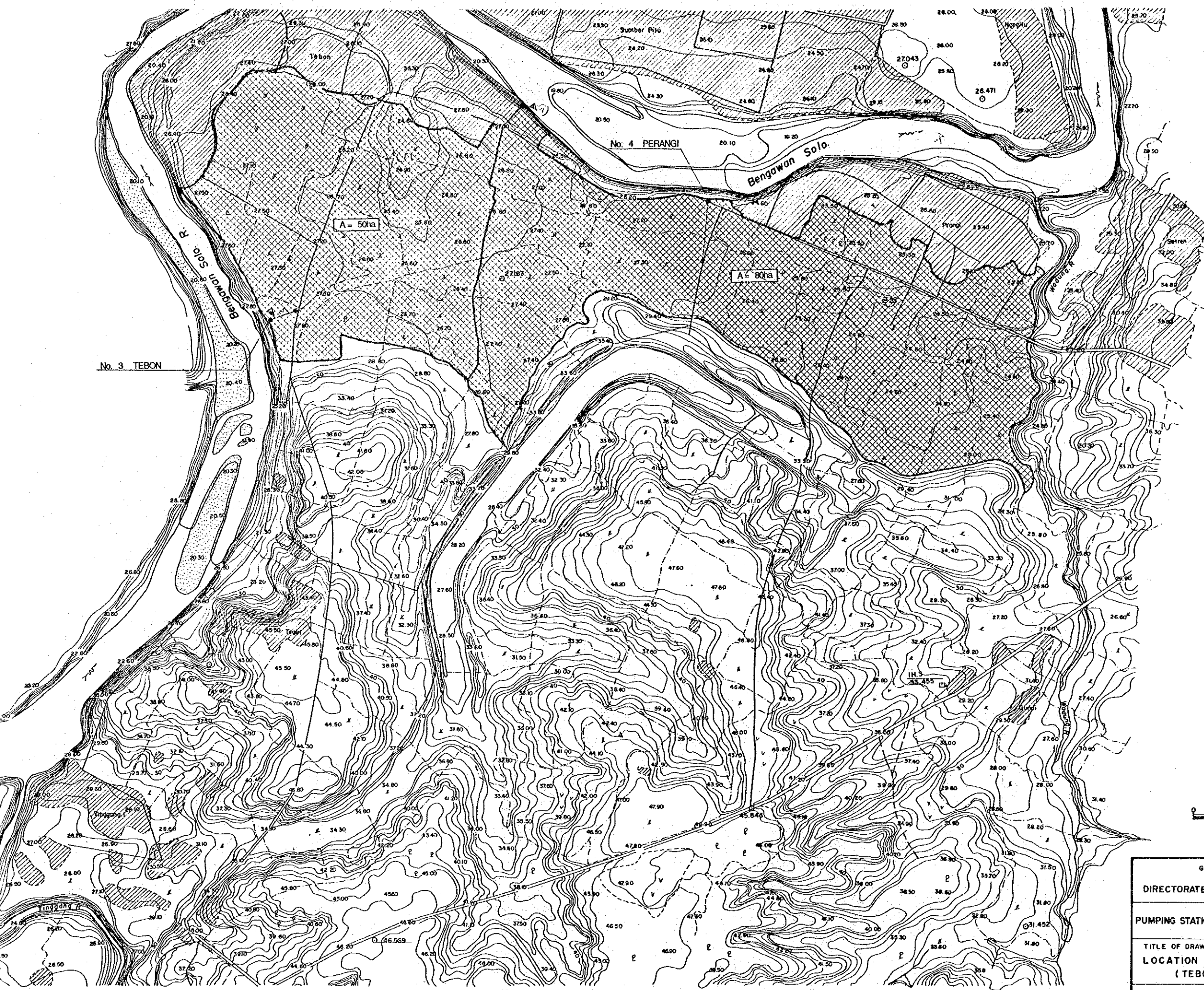


GOVERNMENT OF THE RE.
 MINISTRY OF PUB
 DIRECTORATE GENERAL OF WAT

 PUMPING STATION PROJECT FOR BE

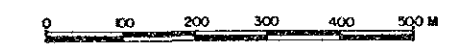
 TITLE OF DRAWING :
 LOCATION MAP OF EXISTIN
 (TEBON) PUMP NO.4

 JAPAN INTERNATIONAL COOPE



LEGEND

- : Control Point (CP)
- : Bench Mark (BM)
- : Road (2m)
- - - : Path (1-2m)
- - - : Foot Path
- - - : Rice Field Boundary (Raised path)
- ▨ : Swamp
- : Canal
- : River
- : Branch River
- ▨ : Village
- ▨ : Rice Field
- V V : Plantation
- ⊕ : Trees
- : House



| | |
|---|-----------------------|
| GOVERNMENT OF THE REPUBLIC OF INDONESIA MINISTRY OF PUBLIC WORKS DIRECTORATE GENERAL OF WATER RESOURCES DEVELOPMENT | |
| PUMPING STATION PROJECT FOR BENGAWAN SOLO LOWER REACHES | |
| TITLE OF DRAWING : LOCATION MAP OF EXISTING PUMP NO.3 (TEBON) PUMP NO.4 (PRANGI) | PLATE NO. 9 |
| JAPAN INTERNATIONAL COOPERATION AGENCY (JICA) | |

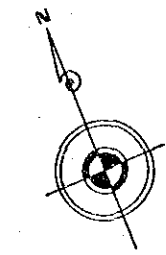


GOVERNMENT OF THE
 MINISTRY OF
 DIRECTORATE GENERAL OF W

PUMPING STATION PROJECT FOR

TITLE OF DRAWING :
 LOCATION MAP OF EXIS
 (BANJAR

JAPAN INTERNATIONAL CO



LEGEND

- : Control Point (CP)
- : Bench Mark (BM)
- : Road (2m)
- - - : Path (1-2m)
- - - : Foot Path
- - - : Rice Field Boundary (Raised path)
- ▨ : Swamp
- ~ : Canal
- ~ : River
- ~ : Branch River
- ▨ : Village
- ▨ : Rice Field
- V V : Plantation
- ⊕ : Trees
- : House
- : Railway



| | |
|---|------------------------|
| GOVERNMENT OF THE REPUBLIC OF INDONESIA MINISTRY OF PUBLIC WORKS DIRECTORATE GENERAL OF WATER RESOURCES DEVELOPMENT | |
| PUMPING STATION PROJECT FOR BENGAWAN SOLO LOWER REACHES | |
| TITLE OF DRAWING : LOCATION MAP OF EXISTING PUMP NO.5 (BANJAREJO) | PLATE NO. 10 |
| JAPAN INTERNATIONAL COOPERATION AGENCY (JICA) | |



GOVERNMENT OF THE R
MINISTRY OF PU
DIRECTORATE GENERAL OF WA

PUMPING STATION PROJECT FOR B

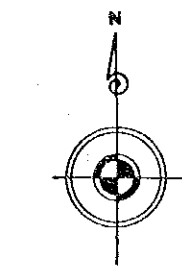
TITLE OF DRAWING :
LOCATION MAP OF EXISTI
(NGRAHO

JAPAN INTERNATIONAL COOP



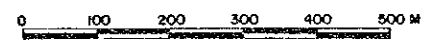
No. 6 NGRAHO

A = 160ha



LEGEND

- : Control Point (CP)
- : Bench Mark (BM)
- : Road (2m)
- - - : Path (1-2m)
- - - : Foot Path
- - - : Rice Field Boundary (Raised path)
- ▨ : Swamp
- ~ : Canal
- ~ : River
- ~ : Branch River
- ▨ : Village
- || : Rice Field
- V V : Plantation
- δ : Trees
- : House
- : Railway



| | |
|---|------------------------|
| GOVERNMENT OF THE REPUBLIC OF INDONESIA MINISTRY OF PUBLIC WORKS DIRECTORATE GENERAL OF WATER RESOURCES DEVELOPMENT | |
| PUMPING STATION PROJECT FOR BENGAWAN SOLO LOWER REACHES | |
| TITLE OF DRAWING : LOCATION MAP OF EXISTING PUMP NO.6 (NGRAHO) | PLATE NO. 11 |
| JAPAN INTERNATIONAL COOPERATION AGENCY (JICA) | |

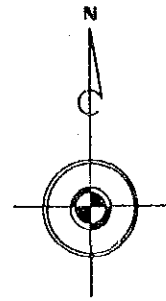
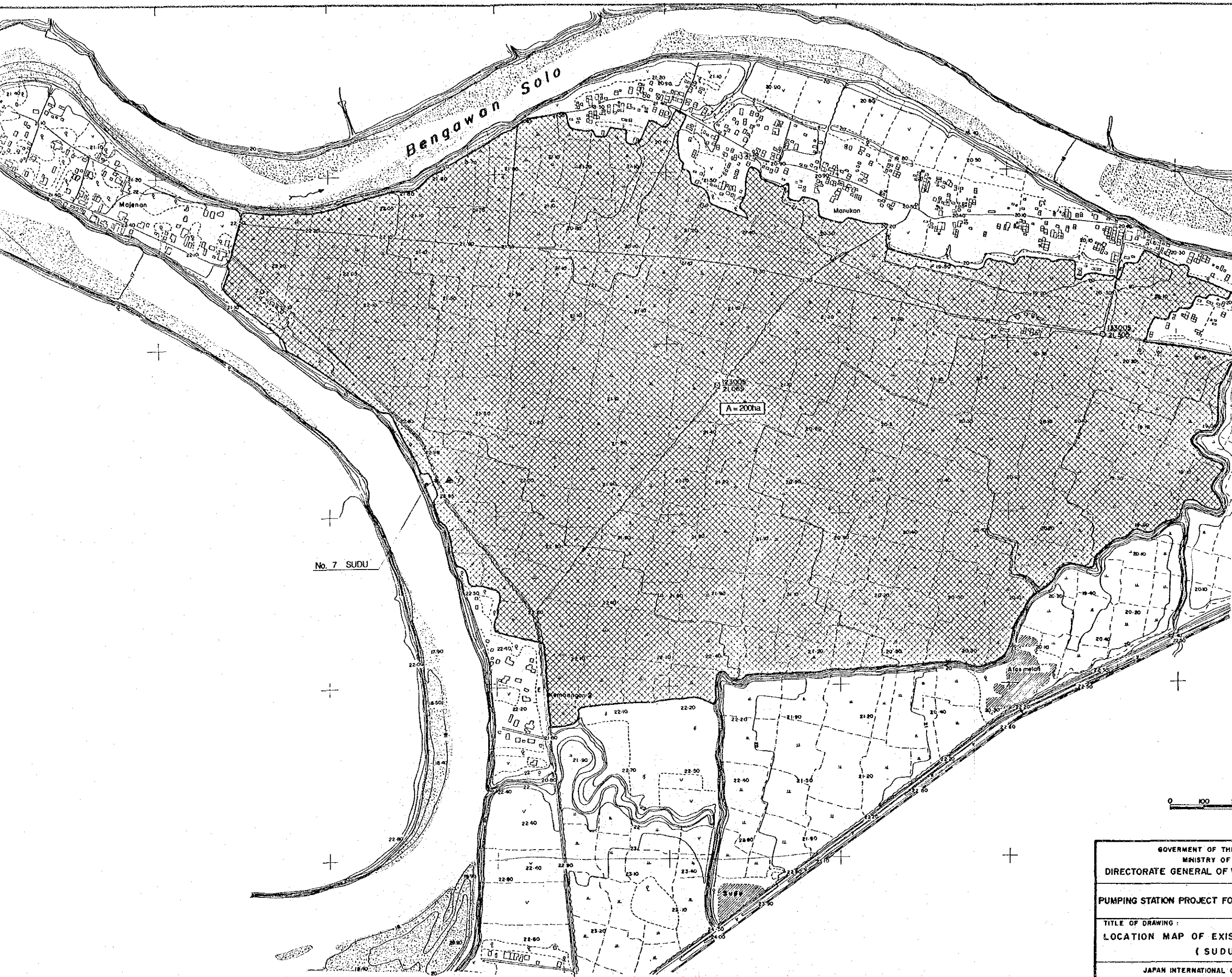


GOVERNMENT OF THE
 MINISTRY OF
 DIRECTORATE GENERAL OF W

PUMPING STATION PROJECT FOR

TITLE OF DRAWING :
 LOCATION MAP OF EXIST
 (SUDU

JAPAN INTERNATIONAL CO

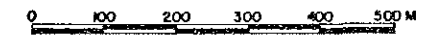


LEGEND

- : Control Point (CP)
- : Bench Mark (BM)
- : Road (2 m)
- - - : Path (1-2 m)
- - - : Foot Path
- - - : Rice Field Boundary (Raised Path)
- ~ : Swamp
- ~ : Canal
- ~ : River
- ~ : Branch River
- ▨ : Village
- ▲ : Rice Field
- ▼ : Plantation
- ♠ : Trees
- : House
- : Railway
- ⊙ : Bushes
- E : Fish Pond

No. 7 SUDU

A = 200ha

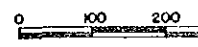


| | |
|---|------------------------|
| GOVERNMENT OF THE REPUBLIC OF INDONESIA MINISTRY OF PUBLIC WORKS DIRECTORATE GENERAL OF WATER RESOURCES DEVELOPMENT | |
| PUMPING STATION PROJECT FOR BENGAWAN SOLD LOWER REACHES | |
| TITLE OF DRAWING : LOCATION MAP OF EXISTING PUMP NO.7 (SUDU) | PLATE NO. 12 |
| JAPAN INTERNATIONAL COOPERATION AGENCY (JICA) | |



LEGEND

- : Control Point
- : Bench Mark
- : Road (2m)
- - - : Path (1-2m)
- - - : Foot Path
- - - : Rice Field Boundary
- ~ : Swamp
- ~ : Canal
- ~ : River
- ~ : Branch River
- ▨ : Village
- ▨ : Rice Field
- ∇ : Plantation
- ⊕ : Trees
- : House
- : Railway

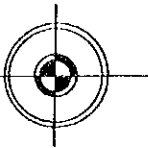


GOVERNMENT OF THE REPUBLIC OF INDONESIA
 MINISTRY OF PUBLIC WORKS
 DIRECTORATE GENERAL OF WATER RESOURCES

PUMPING STATION PROJECT FOR BENGAWAN SOLO

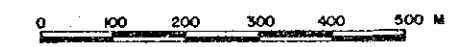
TITLE OF DRAWING :
 LOCATION MAP OF EXISTING
 (NGRINGINREJO)

JAPAN INTERNATIONAL COOPERATION AGENCY



LEGEND

- : Control Point (CP)
- : Bench Mark (BM)
- : Road (2m)
- - - : Path (1-2m)
- - - : Foot Path
- - - : Rice Field Boundary (Raised path)
- ▨ : Swamp
- ~ : Canal
- : River
- - - : Branch River
- ▨ : Village
- ▨ : Rice Field
- ∇ : Plantation
- ⊗ : Trees
- : House
- : Railway



| | |
|---|------------------------|
| GOVERNMENT OF THE REPUBLIC OF INDONESIA MINISTRY OF PUBLIC WORKS DIRECTORATE GENERAL OF WATER RESOURCES DEVELOPMENT | |
| PUMPING STATION PROJECT FOR BENGAWAN SOLO LOWER REACHES | |
| TITLE OF DRAWING : LOCATION MAP OF EXISTING PUMP NO.8 (NGRINGINREJO) | PLATE NO. 13 |
| JAPAN INTERNATIONAL COOPERATION AGENCY (J.I.C.A.) | |