

THE GOVERNMENT OF THE REPUBLIC OF INDONESIA

THE STUDY ON URBAN DRAINAGE
AND
WASTEWATER DISPOSAL PROJECT
IN
THE CITY OF JAKARTA
DRAWING

MARCH 1991

JAPAN INTERNATIONAL COOPERATION AGENCY

L108
61.8
8SS

LIBRARY

SSS

91-012

108/61.8

JICA LIBRARY



1092171(6)

22642

THE GOVERNMENT OF THE REPUBLIC OF INDONESIA

**THE STUDY ON URBAN DRAINAGE
AND
WASTEWATER DISPOSAL PROJECT
IN
THE CITY OF JAKARTA**

DRAWING

MARCH 1991

JAPAN INTERNATIONAL COOPERATION AGENCY

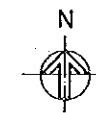


国際協力事業団

22642



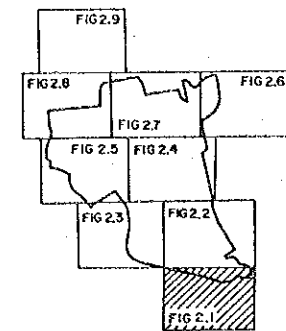
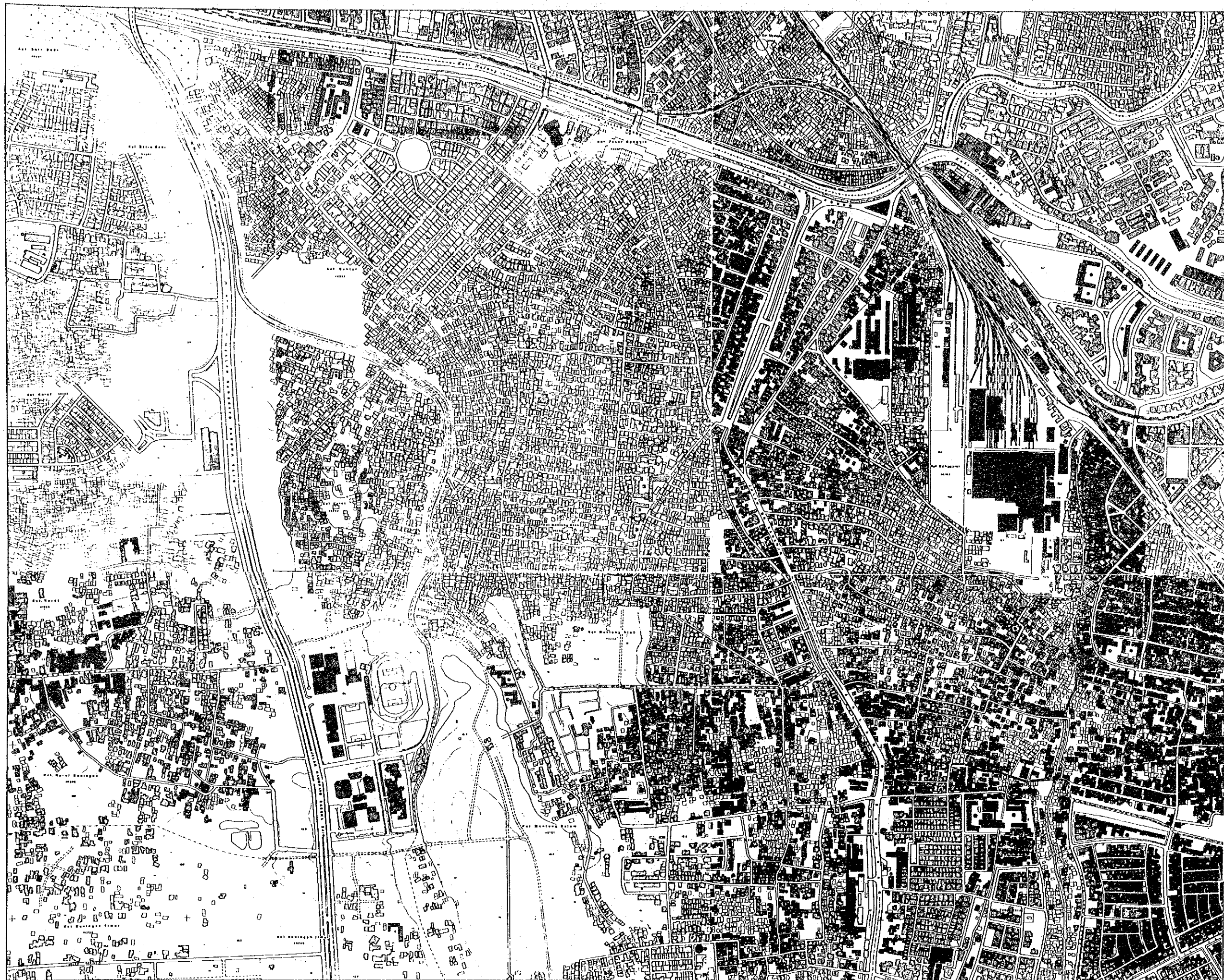
JAKARTA BAY



LEGEND

- T Treatment Plant
- P Lift Pump Station
- Boundary of Sewerage Development Zone
- > Conveyance Sewer
- > Gravity Collection Sewer (Sewer Diameter \geq 600mm)
- > Force Main

PROPOSED MASTER PLAN OF SEWERAGE SYSTEM	
FIG. 1	SCALE: 1:60,000
THE STUDY ON URBAN DRAINAGE AND WASTEWATER DISPOSAL PROJECT IN THE CITY OF JAKARTA	
JAPAN INTERNATIONAL COOPERATION AGENCY	



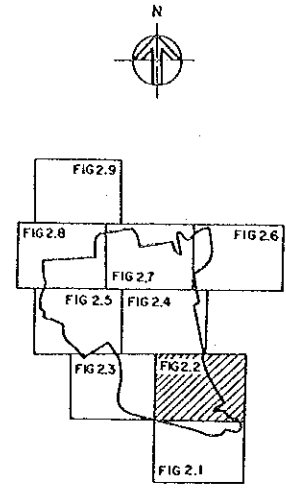
KEY PLAN

LEGEND

- Boundary of Project Area
- Boundary of Wastewater Collection Sector
- Conveyance Sewer
- Main/Trunk Sewer
- Force Main
- Secondary/Tertiary Sewer
- (M) Manhole with Pump
- (P) Lift Pump Station
- Line Number
- 450 Sewer Diameter (mm.)
- 3.0 Sewer Gradient (%)
- 410 Sewer Length (m)
- 12.5Ha Wastewater Collection Sector Area

NOTE: Secondary and Tertiary Sewer lines corresponding to longest Main/Trunk Sewers only shown

SEWER NETWORK PLAN (1)	
FIG. 2.1	SCALE 1:5,000
THE STUDY ON URBAN DRAINAGE AND WASTEWATER DISPOSAL PROJECT IN THE CITY OF JAKARTA	
JAPAN INTERNATIONAL COOPERATION AGENCY	



KEY PLAN

LEGEND

- Boundary of Project Area
- Boundary of Wastewater Collection Sector
- > Conveyance Sewer
- > Main/Trunk Sewer
- - - Force Main
- - -> Secondary/Tertiary Sewer
- ⊙ Manholes with Pump
- ⊕ Lift Pump Station
- Line Number
- Sewer Diameter (mm)
- Sewer Gradient (%)
- Sewer Length (m)
- 12.5Ha Wastewater Collection Sector Area

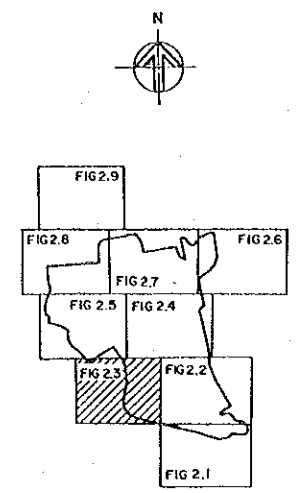
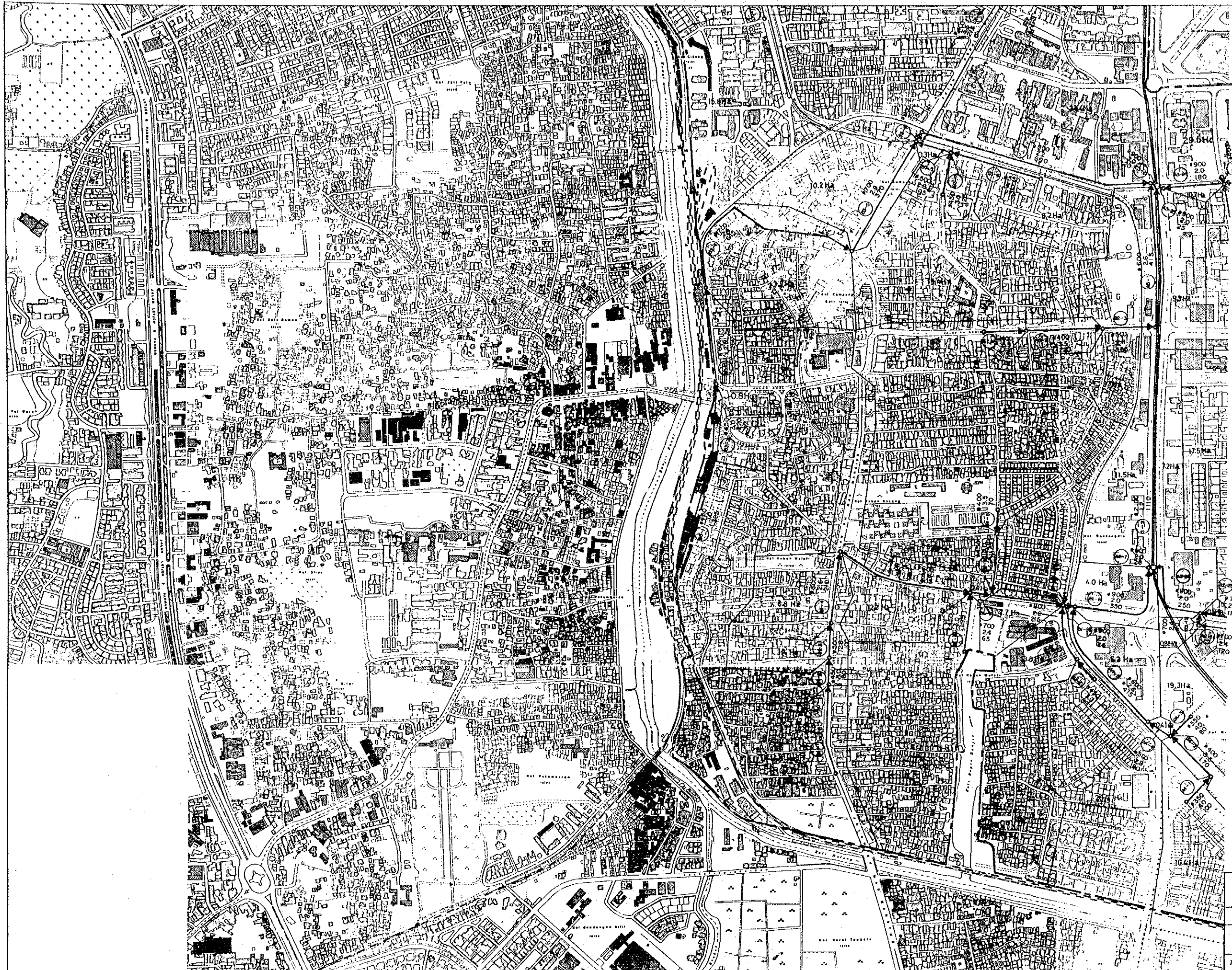
NOTE: Secondary and Tertiary Sewer lines corresponding to longest Main/Trunk Sewers only shown

SEWER NETWORK PLAN (2)

FIG. 2.2 SCALE 1:5,000

THE STUDY ON URBAN DRAINAGE AND WASTEWATER DISPOSAL PROJECT IN THE CITY OF JAKARTA

JAPAN INTERNATIONAL COOPERATION AGENCY



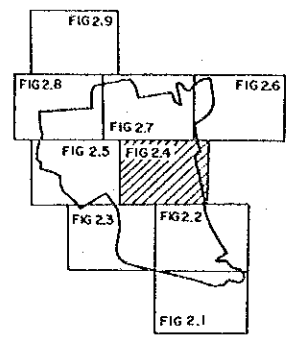
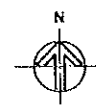
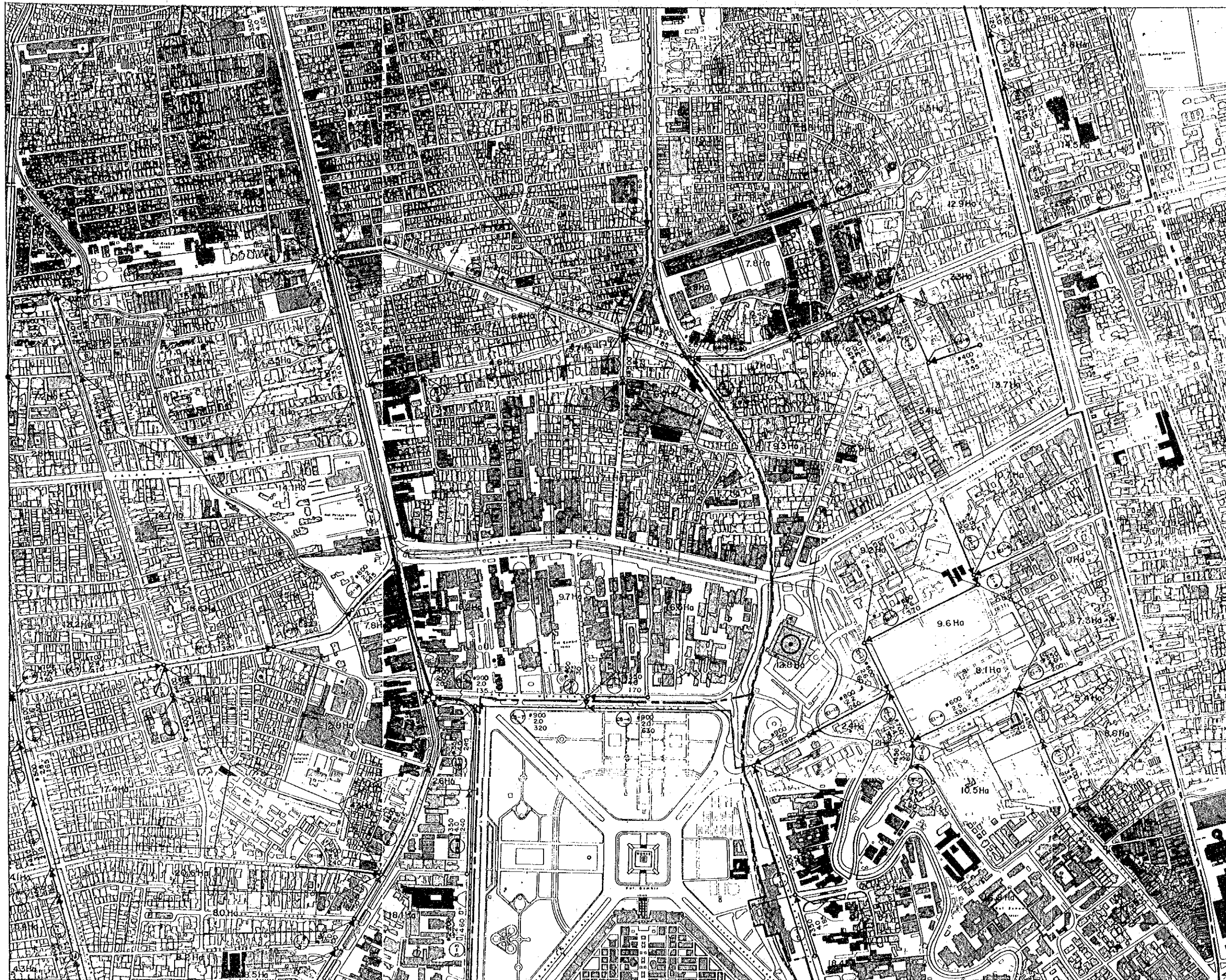
KEY PLAN

LEGEND

- Boundary of Project Area
- Boundary of Wastewater Collection Sector
- Conveyance Sewer
- Main/Trunk Sewer
- Force Main
- Secondary/Tertiary Sewer
- (M) Manhole with Pump
- (P) Lift Pump Station
- Line Number
- Sewer Diameter (mm)
- Sewer Gradient (%)
- Sewer Length (m)
- Wastewater Collection Sector Area

NOTE: Secondary and Tertiary Sewer lines corresponding to longest Main/Trunk Sewers only shown

SEWER NETWORK PLAN (3)	
FIG. 2.3	SCALE 1:5,000
THE STUDY ON URBAN DRAINAGE AND WASTEWATER DISPOSAL PROJECT IN THE CITY OF JAKARTA	
JAPAN INTERNATIONAL COOPERATION AGENCY	



KEY PLAN

LEGEND

- Boundary of Project Area
- Boundary of Wastewater Collection Sector
- Corveyance Sewer
- Main/Trunk Sewer
- ... Force Main
- Secondary/Tertiary Sewer
- (M) Manhole with Pump
- (P) Lift Pump Station
- Line Number
- Sewer Diameter (mm)
- Sewer Gradient (‰)
- Sewer Length (m)
- Wastewater Collection Sector Area

NOTE: Secondary and Tertiary Sewer lines corresponding to longest Main/Trunk Sewers only shown

SEWER NETWORK PLAN (4)

FIG. 2.4	SCALE 1:5,000
THE STUDY ON URBAN DRAINAGE AND WASTEWATER DISPOSAL PROJECT IN THE CITY OF JAKARTA	
JAPAN INTERNATIONAL COOPERATION AGENCY	