

No. 15 MULYOREJO

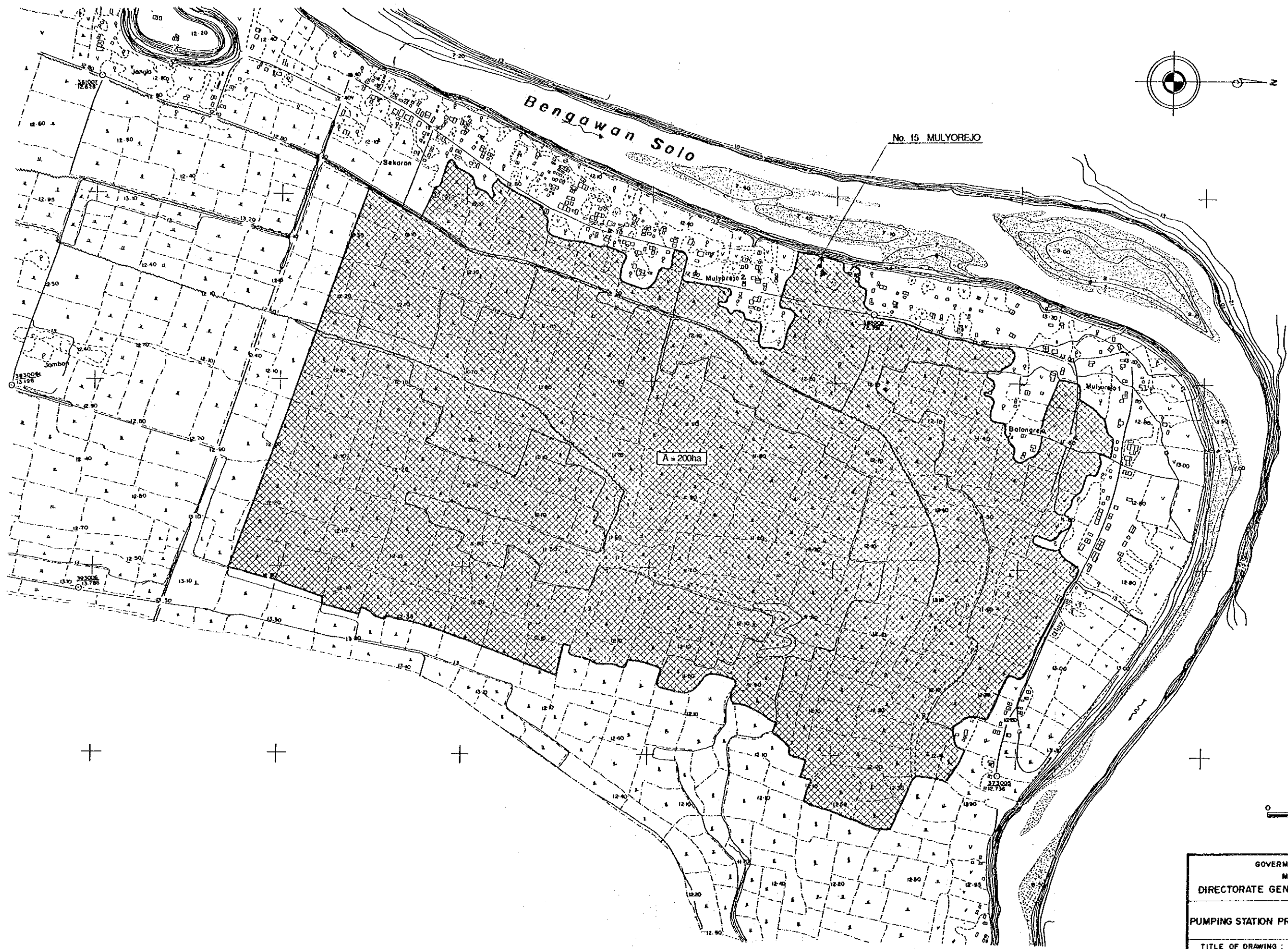
A=200ha

GOVERNMENT OF THE R
 MINISTRY OF PU
 DIRECTORATE GENERAL OF WA

PUMPING STATION PROJECT FOR I

TITLE OF DRAWING :
 LOCATION MAP OF EXIS'
 (MULYOREJO)

JAPAN INTERNATIONAL COOP



LEGEND

- : Control Point (CP)
- : Bench Mark (BM)
- : Road (2m)
- : Path (1-2m)
- : Foot Path
- : Rice Field Boundary (Raised path)
- : Swamp
- : Canal
- : River
- : Branch River
- ▨ : Village
- ▨ : Rice Field
- V V : Plantation
- 6 : Trees
- : House



GOVERNMENT OF THE REPUBLIC OF INDONESIA MINISTRY OF PUBLIC WORKS DIRECTORATE GENERAL OF WATER RESOURCES DEVELOPMENT	
PUMPING STATION PROJECT FOR BENGAWAN SOLO LOWER REACHES	
TITLE OF DRAWING : LOCATION MAP OF EXISTING PUMP NO.15 (MULYOJEJO)	PLATE NO. 19
JAPAN INTERNATIONAL COOPERATION AGENCY (JICA)	



LEGEND

- : Central Point (CP)
- : Bench Mark (BM)
- : Road (2 m)
- - - : Path (1-2 m)
- - - : Foot Path
- - - : Rice Field Boundary
- - - : Swamp
- - - : Canal
- - - : River
- - - : Branch River
- ▨ : Village
- || || : Rice Field
- ∇ ∇ : Plantation
- ⊗ : Trees
- : House
- ⊕ : Grass

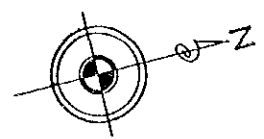


GOVERNMENT OF THE REPUBLIC OF INDONESIA
 MINISTRY OF PUBLIC WORKS AND INFRASTRUCTURE
 DIRECTORATE GENERAL OF WATER RESOURCES AND CONSTRUCTION

PUMPING STATION PROJECT FOR BEN

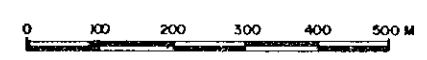
TITLE OF DRAWING :
 LOCATION MAP OF EXISTING
 (SARIREJO)

JAPAN INTERNATIONAL COOPERATION AGENCY

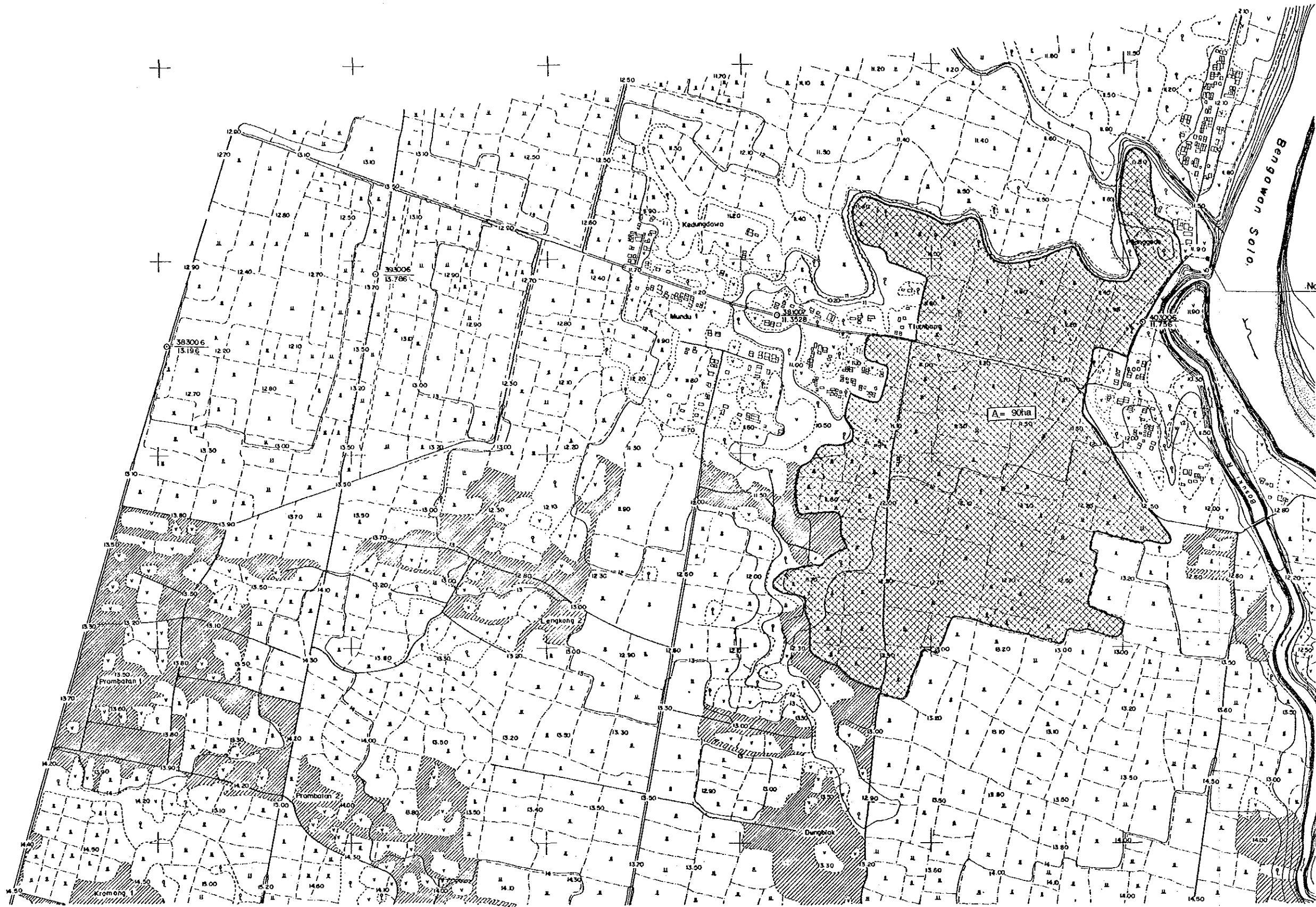


LEGEND

- : Control Point (CP)
- : Bench Mark (BM)
- : Road (2 m)
- - - : Path (1-2 m)
- - - : Foot Path
- - - : Rice Field Boundary (Raised Path)
- ▨ : Swamp
- ~ : Canal
- : River
- - - : Branch River
- ▨ : Village
- || || : Rice Field
- ∨ ∨ : Plantation
- ⊕ : Trees
- : House
- ⊥ : Grass



GOVERNMENT OF THE REPUBLIC OF INDONESIA MINISTRY OF PUBLIC WORKS	
DIRECTORATE GENERAL OF WATER RESOURCES DEVELOPMENT	
PUMPING STATION PROJECT FOR BENGAWAN SOLO LOWER REACHES	
TITLE OF DRAWING :	PLATE NO.
LOCATION MAP OF EXISTING PUMP NO.16 (SARIREJO)	20
JAPAN INTERNATIONAL COOPERATION AGENCY (JICA)	



No. 17 PILANGGEDE

LEGEND

- : Control Point (C)
- : Bench Mark (B)
- : Road (2 m)
- - - : Path (1-2 m)
- - - : Foot Path
- - - : Rice Field Bound
- - - : Swamp
- - - : Canal
- - - : River
- - - : Branch River
- ▨ : Village
- ▨ : Rice Field
- ∇ : Plantation
- ⊕ : Trees
- : House
- : Railway

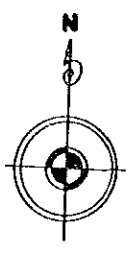
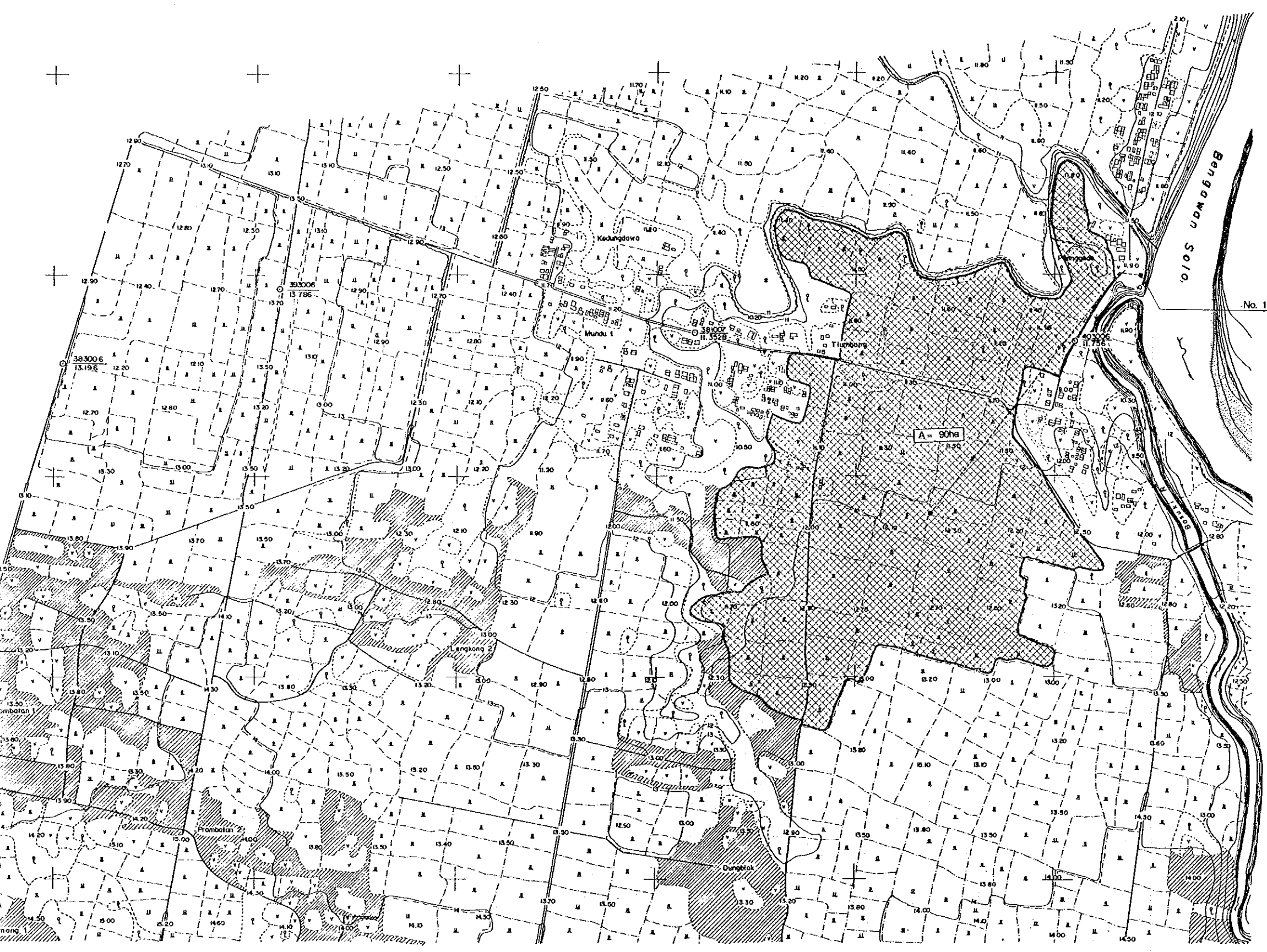


GOVERNMENT OF THE REPUBLIC
 MINISTRY OF PUBLIC
 DIRECTORATE GENERAL OF WATER

PUMPING STATION PROJECT FOR BENGAWAN SOLO

TITLE OF DRAWING :
 LOCATION MAP OF EXISTING
 (PILANGGEDE)

JAPAN INTERNATIONAL COOPERATION



No. 17 PILANGGEDE

LEGEND

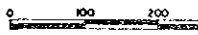
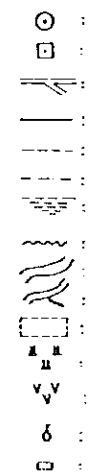
- : Control Point (CP)
- : Bench Mark (BM)
- : Road (2 m)
- - - : Path (1-2 m)
- - - : Foot Path
- - - : Rice Field Boundary (Raised Path)
- ~ : Swamp
- ~ : Canal
- ~ : River
- ~ : Branch River
- ▨ : Village
- || : Rice Field
- ∇ : Plantation
- ♣ : Trees
- : House
- : Railway



GOVERNMENT OF THE REPUBLIC OF INDONESIA MINISTRY OF PUBLIC WORKS DIRECTORATE GENERAL OF WATER RESOURCES DEVELOPMENT	
PUMPING STATION PROJECT FOR BENGAWAN SOLO LOWER REACHES	
TITLE OF DRAWING : LOCATION MAP OF EXISTING PUMP NO.17 (PILANGGEDE)	PLATE NO. 21
JAPAN INTERNATIONAL COOPERATION AGENCY (JICA)	



LEG

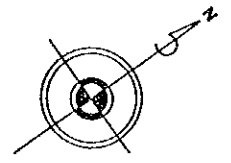


GOVERNMENT OF THE REPUBLIC OF INDONESIA
 MINISTRY OF PUBLIC WORKS
 DIRECTORATE GENERAL OF WATER RESOURCES

PUMPING STATION PROJECT FOR BENGAWAN SOLO

TITLE OF DRAWING :
 LOCATION MAP OF EXISTING
 (KEDUNGBONDO)

JAPAN INTERNATIONAL COOPERATION AGENCY

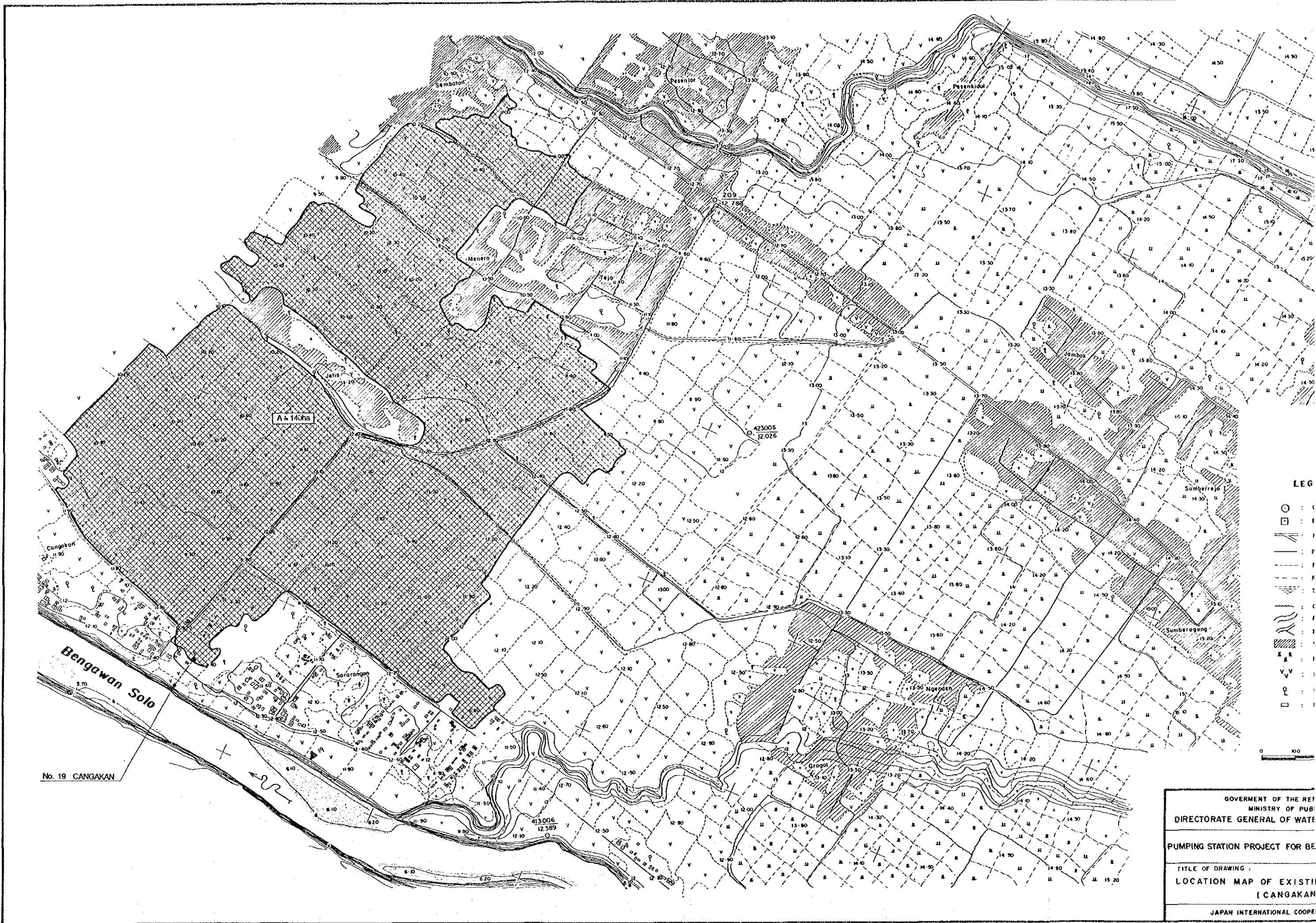


LEGEND

- ⊙ : Control Point (CP)
- : Bench Mark (BM)
- : Road (2m)
- - - : Path (1-2m)
- - - : Foot Path
- - - : Rice Field Boundary (Raised path)
- ▨ : Swamp
- ~ : Canal
- ~ : River
- ~ : Branch River
- ⊠ : Village
- ▨ : Rice Field
- V V : Plantation
- ⊙ : Trees
- : House



GOVERNMENT OF THE REPUBLIC OF INDONESIA MINISTRY OF PUBLIC WORKS DIRECTORATE GENERAL OF WATER RESOURCES DEVELOPMENT	
PUMPING STATION PROJECT FOR BENGAWAN SOLO LOWER REACHES	
TITLE OF DRAWING : LOCATION MAP OF EXISTING PUMP NO.18 (KEDUNGBONDO)	PLATE NO. 22
JAPAN INTERNATIONAL COOPERATION AGENCY (JICA)	



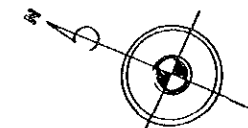
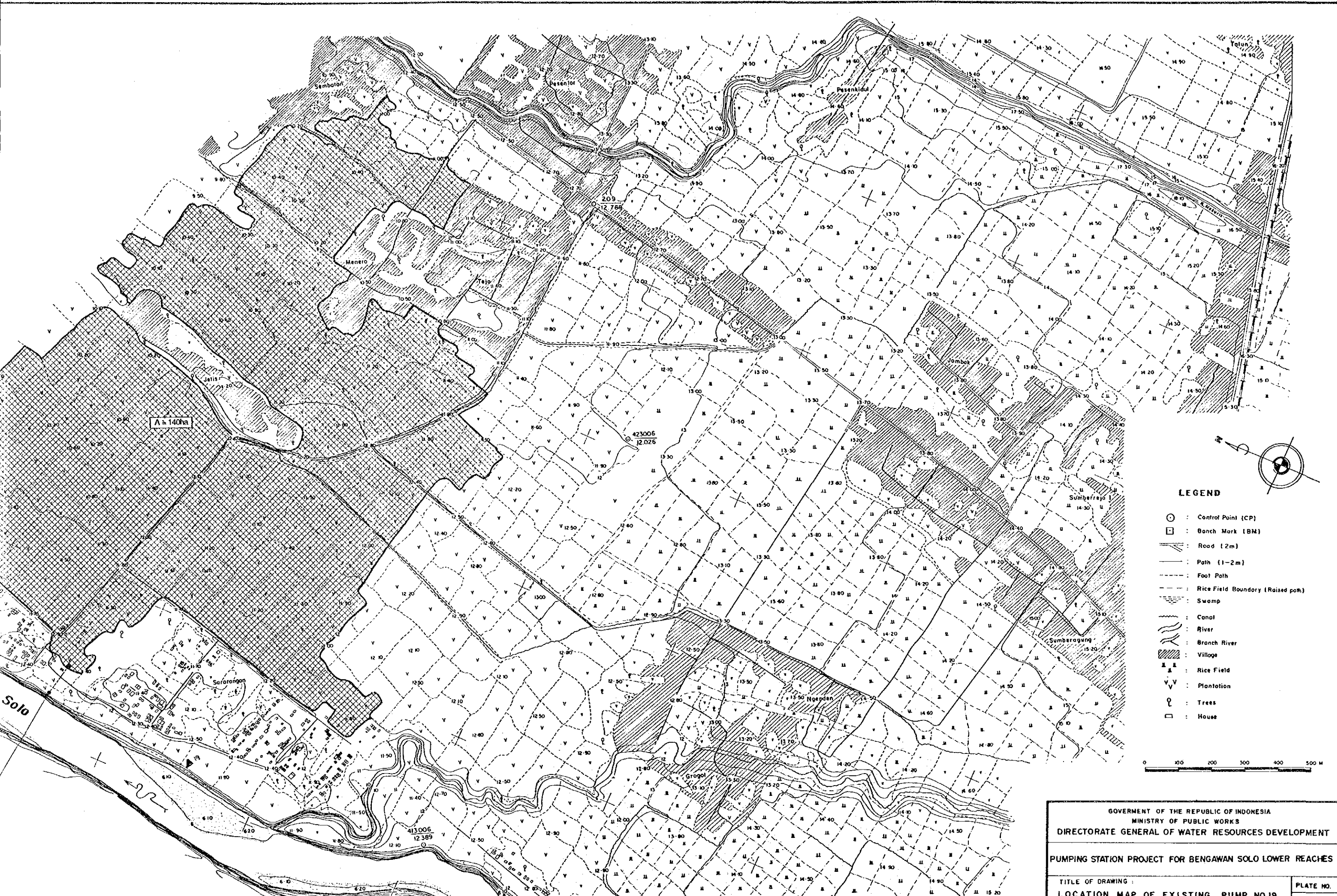
No. 19 CANGAKAN

GOVERNMENT OF THE REP
 MINISTRY OF PUB
 DIRECTORATE GENERAL OF WATE

PUMPING STATION PROJECT FOR BE

TITLE OF DRAWING :
 LOCATION MAP OF EXISTIN
 (CANGAKAN

JAPAN INTERNATIONAL COOPE



LEGEND

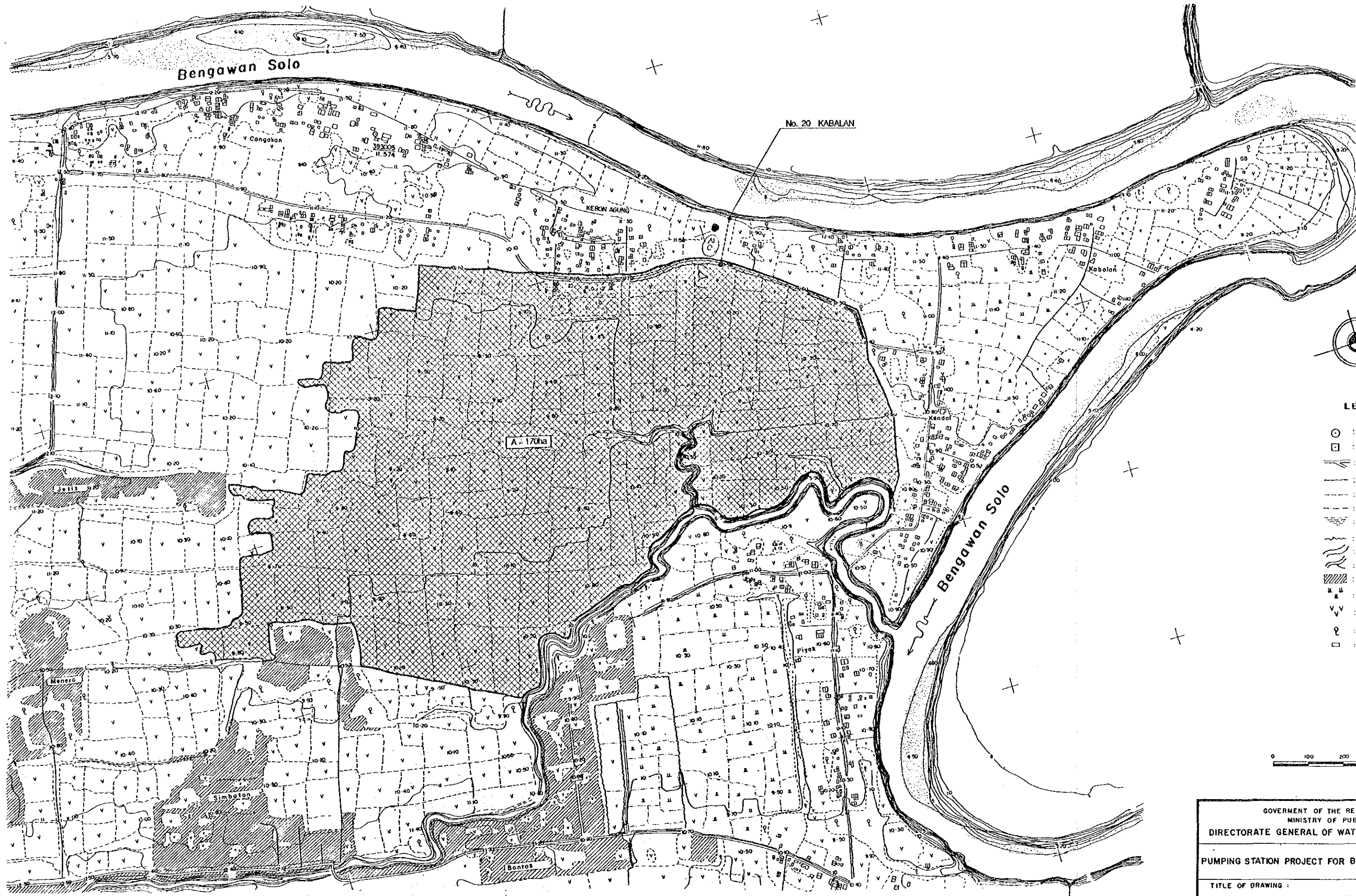
- : Control Point (CP)
- : Bench Mark (BM)
- : Road (2m)
- - - : Path (1-2m)
- - - : Foot Path
- - - : Rice Field Boundary (Raised path)
- ~ : Swamp
- : Canal
- : River
- : Branch River
- ▨ : Village
- : Rice Field
- V V : Plantation
- : Trees
- : House



GOVERNMENT OF THE REPUBLIC OF INDONESIA
 MINISTRY OF PUBLIC WORKS
 DIRECTORATE GENERAL OF WATER RESOURCES DEVELOPMENT

PUMPING STATION PROJECT FOR BENGAWAN SOLO LOWER REACHES

TITLE OF DRAWING :	PLATE NO.
LOCATION MAP OF EXISTING PUMP NO.19 (CANGAKAN)	23
JAPAN INTERNATIONAL COOPERATION AGENCY (JICA)	

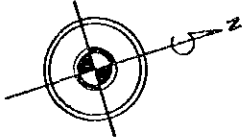
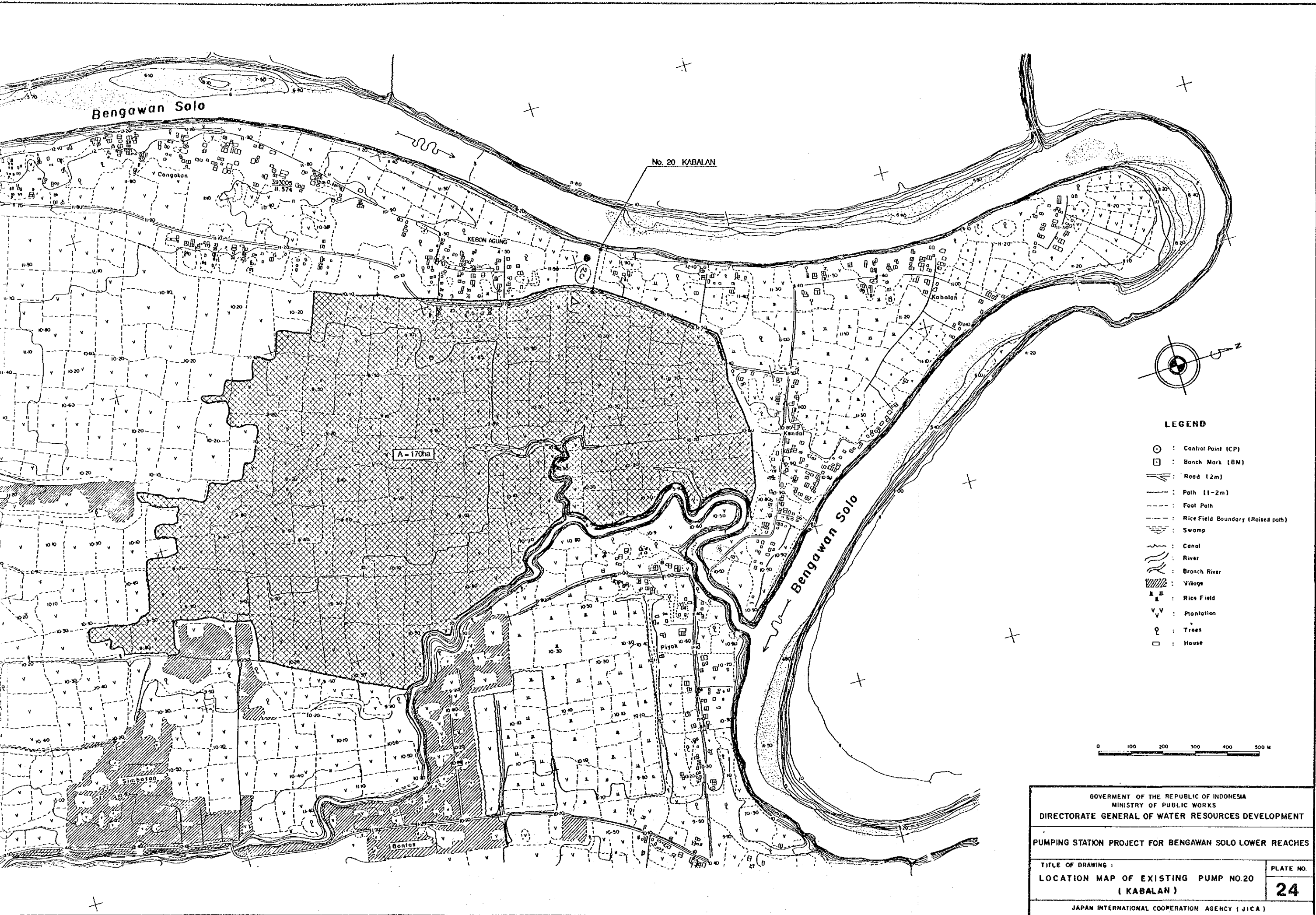


GOVERNMENT OF THE REP.
 MINISTRY OF PUB.
 DIRECTORATE GENERAL OF WATU

PUMPING STATION PROJECT FOR BE

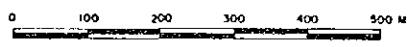
TITLE OF DRAWING :
 LOCATION MAP OF EXISTII
 (KABALAN)

JAPAN INTERNATIONAL COOPER

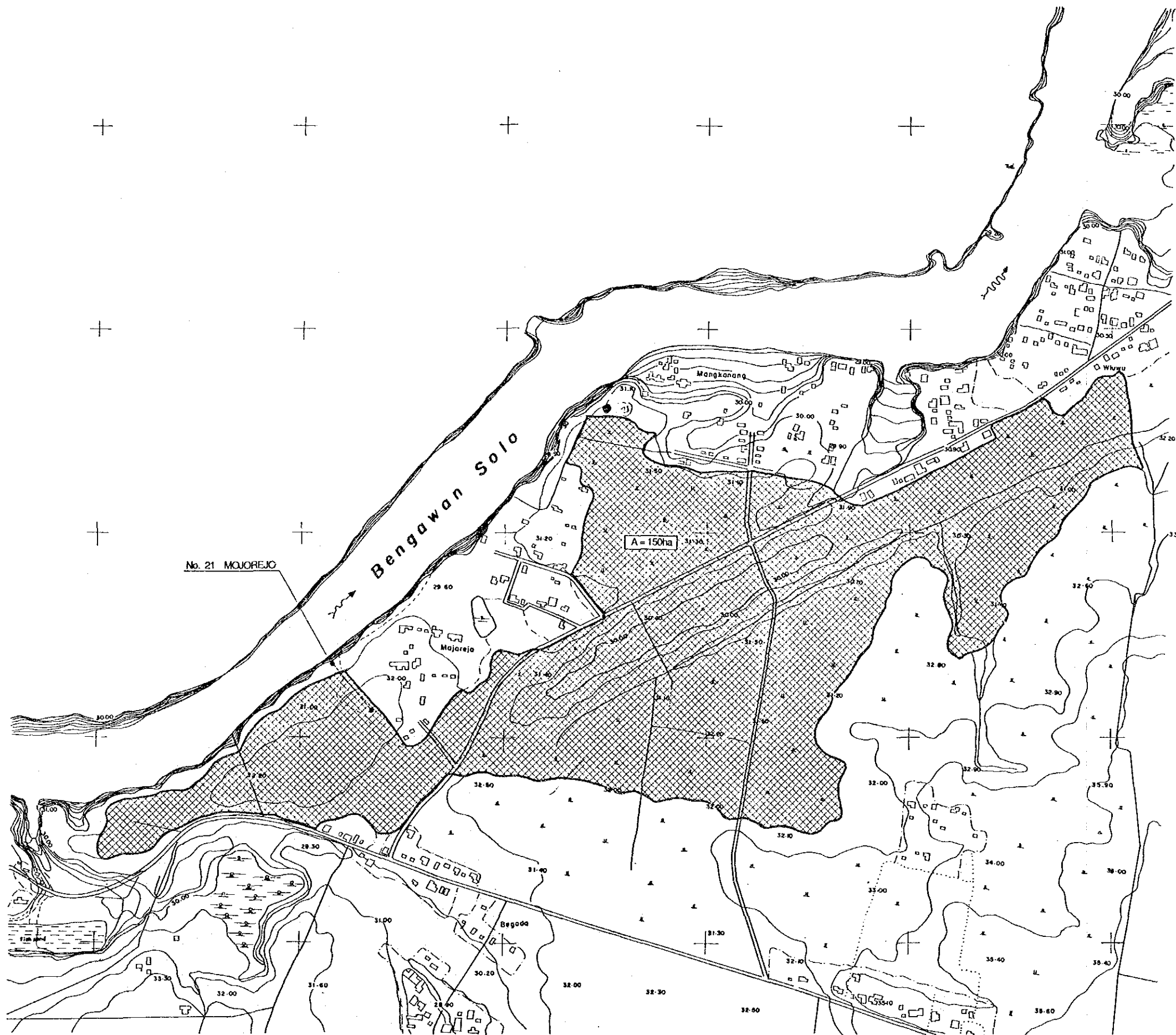


LEGEND

- : Control Point (CP)
- : Bench Mark (BM)
- : Road (2m)
- : Path (1-2m)
- - - : Foot Path
- - - : Rice Field Boundary (Raised path)
- ▨ : Swamp
- : Canal
- : River
- : Branch River
- ▨ : Village
- ▨ : Rice Field
- V V : Plantation
- ⊕ : Trees
- : House



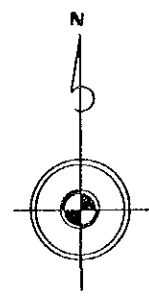
GOVERNMENT OF THE REPUBLIC OF INDONESIA MINISTRY OF PUBLIC WORKS DIRECTORATE GENERAL OF WATER RESOURCES DEVELOPMENT	
PUMPING STATION PROJECT FOR BENGAWAN SOLO LOWER REACHES	
TITLE OF DRAWING : LOCATION MAP OF EXISTING PUMP NO.20 (KABALAN)	PLATE NO. 24
JAPAN INTERNATIONAL COOPERATION AGENCY (JICA)	



No. 21 MOJOREJO

Bengawan Solo

A = 150ha

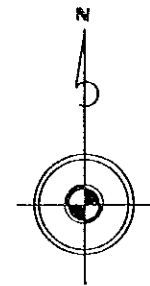
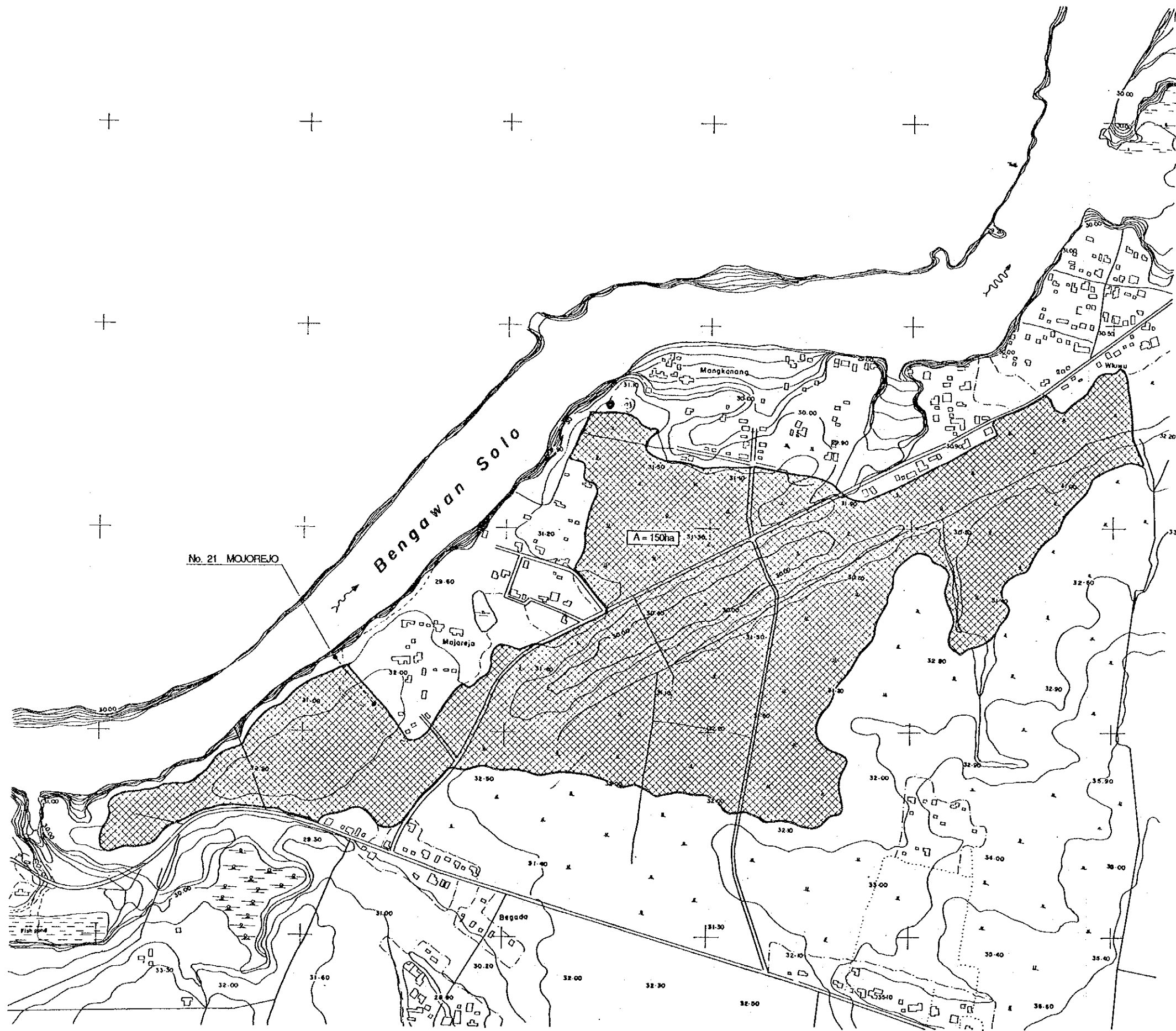


LEGEND

- : Control Point
- : Bench Mark
- : Road (2 m)
- - - : Path (1-2 m)
- - - : Foot Path
- ▨ : Rice Field Bc
- ▨ : Swamp
- ▨ : Canal
- ▨ : River
- ▨ : Branch River
- ▨ : Village
- ▨ : Rice Field
- ▨ : Plantation
- ▨ : Trees
- ▨ : House
- ▨ : Railway

0 100 200

GOVERNMENT OF THE REPUBLIC OF INDONESIA
 MINISTRY OF PUBLIC WORKS AND INFRASTRUCTURE
 DIRECTORATE GENERAL OF WATER RESOURCES AND CONSTRUCTION
 PUMPING STATION PROJECT FOR BENGLAWAN SOLO
 TITLE OF DRAWING : LOCATION MAP OF PROPOSED PUMPING STATION (MOJOREJO)
 JAPAN INTERNATIONAL COOPERATION AGENCY

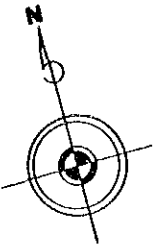
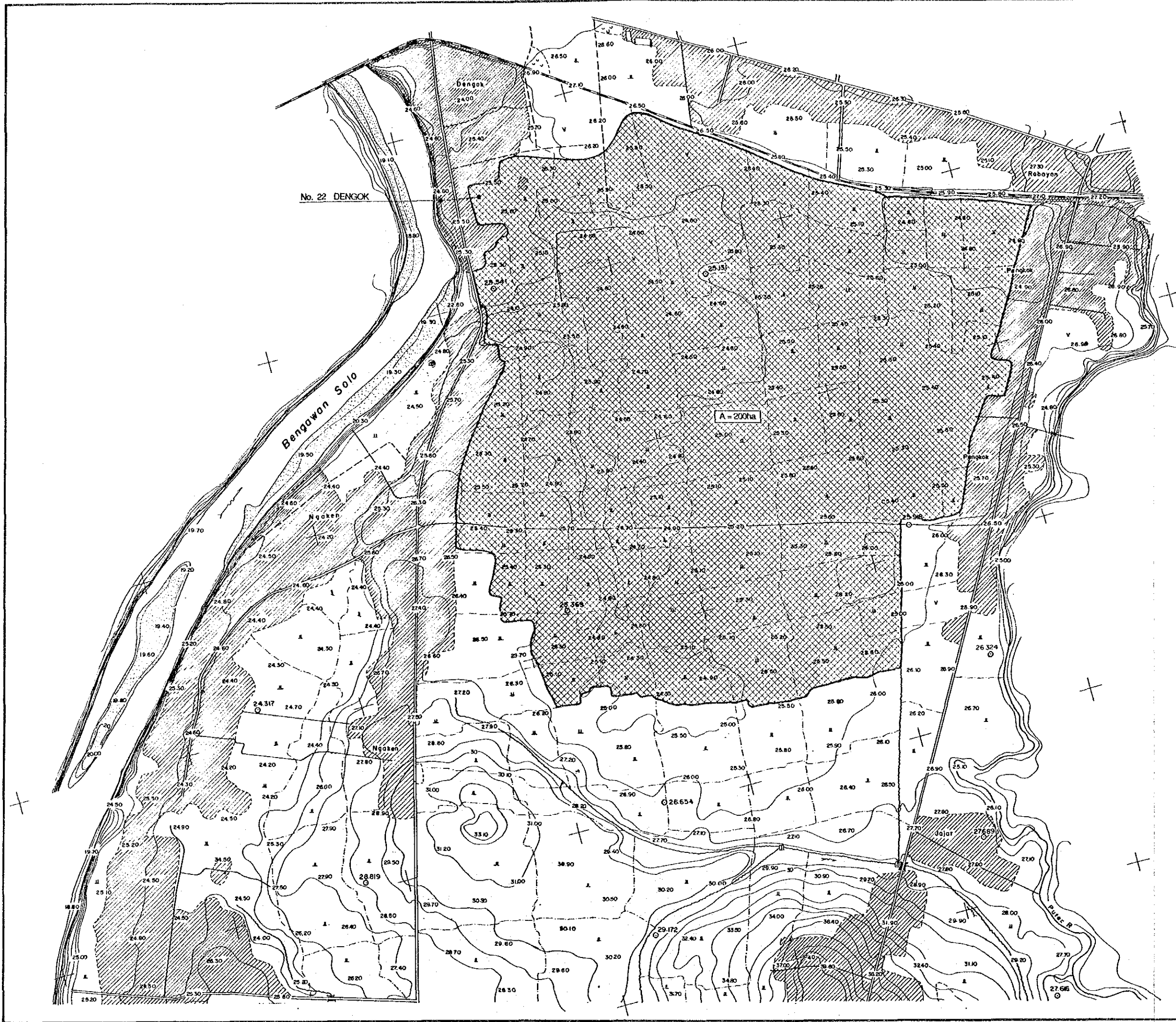


LEGEND

- : Control Point (CP)
- : Bench Mark (BM)
- : Road (2 m)
- : Path (1-2 m)
- - - : Foot Path
- - - : Rice Field Boundary (Raised Path)
- ~ : Swamp
- ~ : Canal
- ~ : River
- ~ : Branch River
- ▨ : Village
- ▨ : Rice Field
- ∇ : Plantation
- △ : Trees
- : House
- : Railway

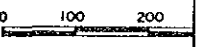


GOVERNMENT OF THE REPUBLIC OF INDONESIA MINISTRY OF PUBLIC WORKS DIRECTORATE GENERAL OF WATER RESOURCES DEVELOPMENT	
PUMPING STATION PROJECT FOR BENGAWAN SOLO LOWER REACHES	
TITLE OF DRAWING : LOCATION MAP OF PROPOSED PUMP NO 21 (MOJOREJO)	PLATE NO. 25
JAPAN INTERNATIONAL COOPERATION AGENCY (JICA)	

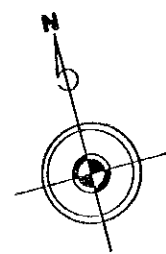
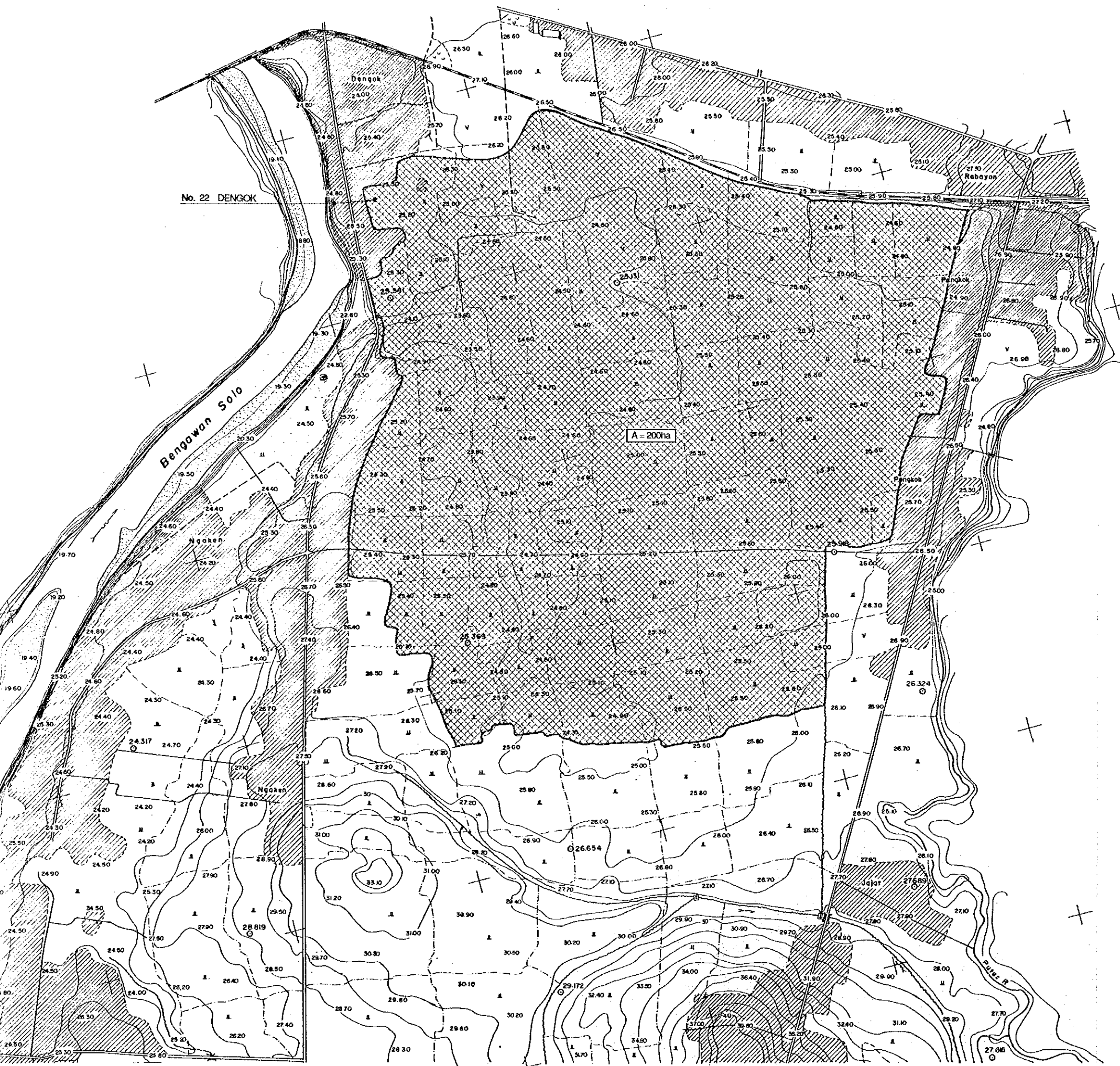


LEGEND

- : Control Point
- : Bench Mark
- : Road (2 m)
- - - : Path (1-2 m)
- - - : Foot Path
- - - : Rice Field Boundary
- ▨ : Swamp
- ~ : Canal
- ~ : River
- ~ : Branch River
- ▨ : Village
- ⊗ : Rice Field
- ⊗ : Plantation
- ⊗ : Trees
- : House
- : Railway
- ⊗ : Draftyard



GOVERNMENT OF THE REPUBLIC OF INDONESIA
 MINISTRY OF PUBLIC WORKS AND INFRASTRUCTURE
 DIRECTORATE GENERAL OF WATER RESOURCES AND CONSTRUCTION
 PUMPING STATION PROJECT FOR BENGLAWAN SOLO
 TITLE OF DRAWING
 LOCATION MAP OF PROPOSED PUMPING STATION
 (DENGKOK)
 JAPAN INTERNATIONAL COOPERATION AGENCY



LEGEND

- : Control Point (CP)
- : Bench Mark (BM)
- : Road (2 m)
- - - : Path (1-2 m)
- - - : Foot Path
- - - : Rice Field Boundary (Raised Path)
- ▨ : Swamp
- ~ : Canal
- ~ : River
- ~ : Branch River
- ▨ : Village
- ▨ : Rice Field
- ▨ : Plantation
- ⌵ : Trees
- : House
- : Railway
- ~ : Drayford



GOVERNMENT OF THE REPUBLIC OF INDONESIA MINISTRY OF PUBLIC WORKS DIRECTORATE GENERAL OF WATER RESOURCES DEVELOPMENT	
PUMPING STATION PROJECT FOR BENGAWAN SOLO LOWER REACHES	
TITLE OF DRAWING LOCATION MAP OF PROPOSED PUMP NO. 22 (DENGOK)	PLATE NO. 26
JAPAN INTERNATIONAL COOPERATION AGENCY (JICA)	