

**TOPOGRAPHIC MAPPING
OF
SOUTH KENYA
IN
THE REPUBLIC OF KENYA
GENERAL REPORT**

MARCH 1991

JAPAN INTERNATIONAL COOPERATION AGENCY

SDF
J R
91-007

**TOPOGRAPHIC MAPPING
OF
SOUTH KENYA
IN
THE REPUBLIC OF KENYA
GENERAL REPORT**

JICA LIBRARY



1090892(9)

224 21

JAPAN INTERNATIONAL COOPERATION AGENCY

国際協力事業団

22421

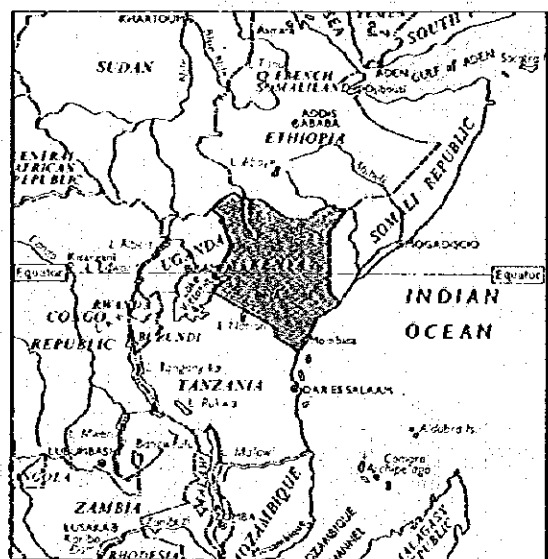
ERRATA

Page	Line	Error	Correct
LETTER OF	9	successful	successful
TRANSMITTAL	11	final	general
iii	6	Tita Hills	Taita Hills
iv	7	Head	Herd
vii	4	Autenna	Antenna
xii	3	Autograh	Autograph
ATTACHMENTS	7	First Year's Work	First Year's Field Work
ATTACHMENTS	8	Meeting	Meetings
12	7	level0ing	leveling
13	11	Final report.	General report
13	11	Final reports	General reports
13	22	1984	1987
18	20	general	public
21	13	phototype	prototype
23	16	Maps	Map
24	14	control	control
25	6	points	(cross out)
28	10	Mombassa	Mombasa
28	22	In	In-
28	23	mounataneous	mountaneous
28	24	svannah	savannah
28	26	arount	around
29	3	fom	from
29	21	plateua	plateau
29	23	central	central.
31	14	Nairobi	Malindi
31	24	assitance	assistance
32	1	Railways	Railway
34	11	English 30	English 50
43	19	invervals	intervals
43	21	cuntour	contour
47	11	actrually	actually
49	14	poistions	positions
51	16	Sessna	Sesuna
52	4	Kodachrome	Kodabrome
53	11	arrnged	arranged
58	16	sstrictly	strictly
58	16	independent from	independent to
60	8	New Ark	New Arc
60	9	thee	three
61	18	apparoximate	approximate
62	6	dofferemce	difference
62	19	obderved	observed
63	8	New Ark	New Arc
65	2	Maxidian	Meridian

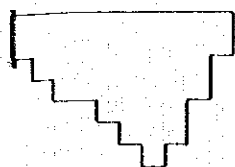
Page	Line	Error	Correct
69	12	goidal	geoidal
69	14	caluculated	calculated
69	22	compuatations	computations
69	24	compuatations	computations
69	25	provisinal	provisional
72	4	exising bernch marks	existing bench marks
72	7	acros	across
74	21	R1 R8	R1 ~ R8
77	12	Cross-sea Liveling	Cross-sea Leveling
86	26	around	a round
89	6	prepararion	preparation
91	18	Progection	Projection
92	2	Stereo-plotter A-8	Autograph A-8
93	16	Buidlings	Buildings
97	5	Adiministrative	Administrative
97	12	symbols rule	symbol rule
97	18	based	were based
98	7	with respect	with respect to
98	21	comipld	compiled
100	11	berween	between
107	5	resgistration	registration
109	10	poisitive	positive
115	22	signinficant	significant
115	24	milimeters	millimeters
118	19	lenth	lengths
118	21	lenghts	lengths
120	4	30	30 μ .
120	6	20	20 μ
120	7	13.3	13.3 μ
121	1	topograhic	topographic
Attachments	16	field Work	Field Work

ケニア南部地区
国土基本図作成事業対象地域

TOPOGRAPHIC MAPPING
OF SOUTH KENYA

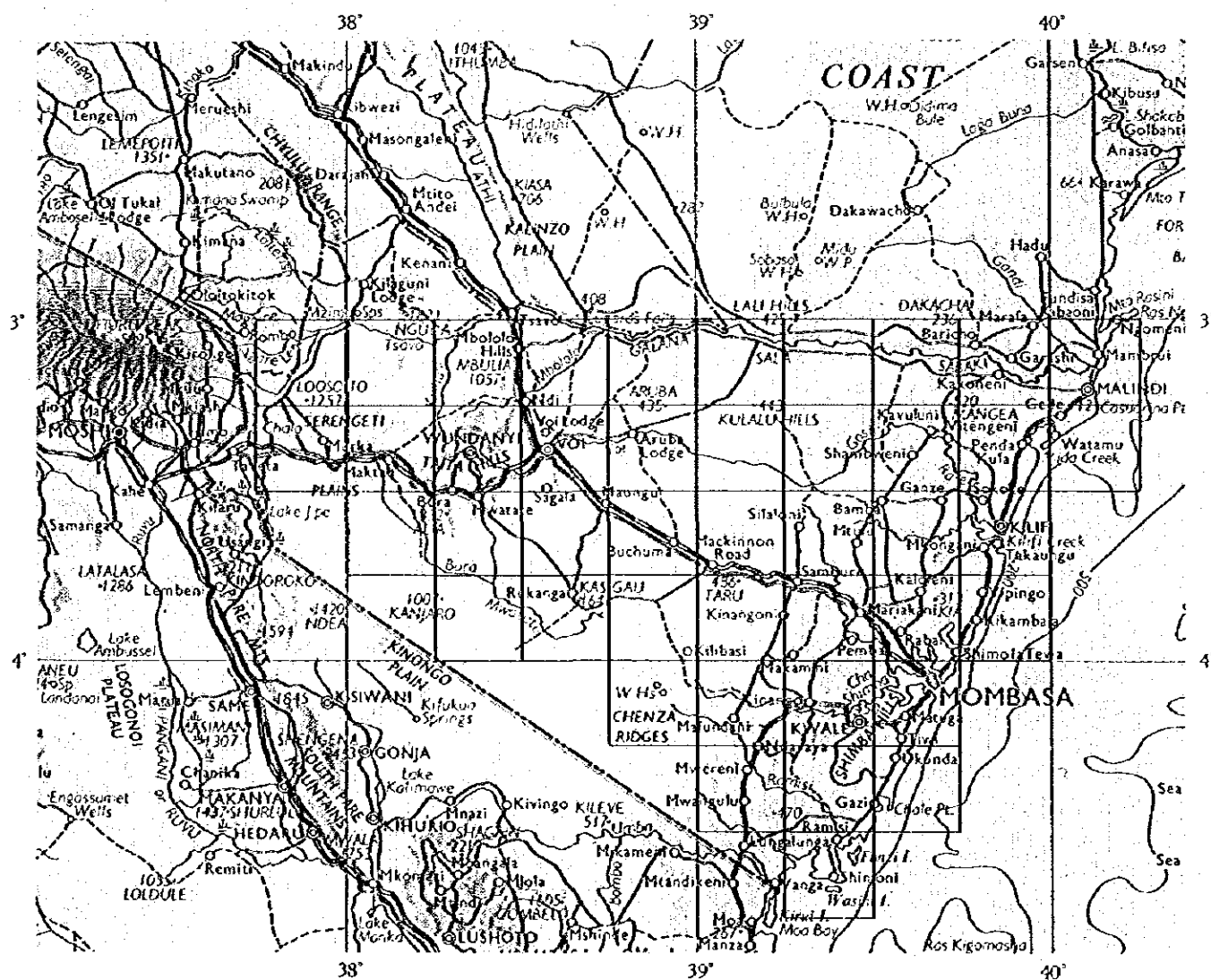


0km 1000km



1 : 50,000国土基本図作成地域
Mapping Area

LOCATION MAP OF PROJECT AREA



0km 20 40 60 80 100km

PREFACE

In response to a request from the Government of the Republic of Kenya, the Japanese Government decided to conduct a project on Topographic Mapping of South Kenya and entrusted the project to the Japan International Cooperation Agency (JICA).

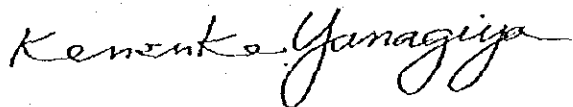
JICA sent to Kenya a study team headed by Mr. Sho Saito, International Engineering Consultants Association, composed of members from International Engineering Consultants Association and Pasco International Inc., several times between October 1987 and March 1991.

The team conducted field surveys in close cooperation with the concerned officials of Kenya. After the team returned to Japan, such works as aerial triangulation, stereo plotting, compilation and drafting were carried out and topographic maps were prepared, together with the present report.

I hope that this report, together with the above maps, will contribute to formulating development plans of the region and to the enhancement of friendly relations between our two countries.

I wish to express my sincere appreciation to the officials concerned of the Government of the Republic of Kenya for their close cooperation extended to the team.

March 1991



Kensuke Yanagiya
President

Japan International Cooperation Agency

LETTER OF TRANSMITTAL

MARCH 1991
TOKYO

Mr. Kensuke Yanagiya
President
Japan International Cooperation Agency
Tokyo

Dear Sir;

Upon the successful completion of the study of the topographic mapping of South Kenya in the Republic of Kenya, which was started from October 1987, I herein submit to you the final report on the study comprising a progress report and a technical report.

The study has been carried out jointly by International Engineering Consultants Association and Pasco International Inc. from October 1987 to March 1991. The results of the study are 1:60,000 aerial photographs and 43 sheets of 1:50,000 topographic map of South Kenya.

We hope that taking advantage of the report together with the results of the study will contribute to the development of the region and promotion of mapping activities in Kenya.

The results of the study can be attributed to the concerted efforts made by members of the study team and Kenyan counterparts from the Survey of Kenya. Truly, our technical cooperation has been brought to fruition through the study.

On behalf of the study team I hereby express my heartfelt gratitude to the officials of our government who gave kind guidance to us during the execution of the study, the officials concerned of the government of the Republic of Kenya, and of the Japanese Embassy in Kenya who helped us.

Your sincerely,



Sho Saito
Leader, Study Team
Topographic Mapping
of South Kenya
Republic of Kenya

Photo - 1 At Survey of Kenya

1) Courtesy call at
Director of Surveys,
SK



2) Meeting at the Field
Headquarters, SK

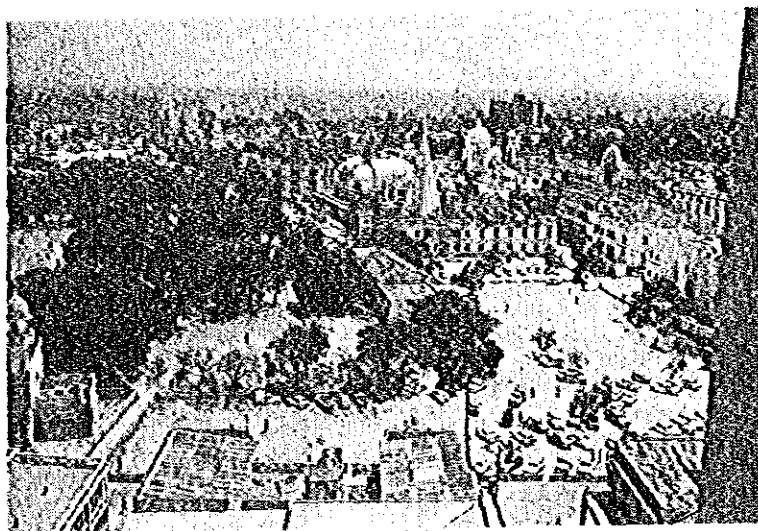


3) Signing on the
Minutes of Meetings



Photo - 2 Study Area -1

1) Mombasa



2) Route A 109 - from
Nairobi to Mombasa

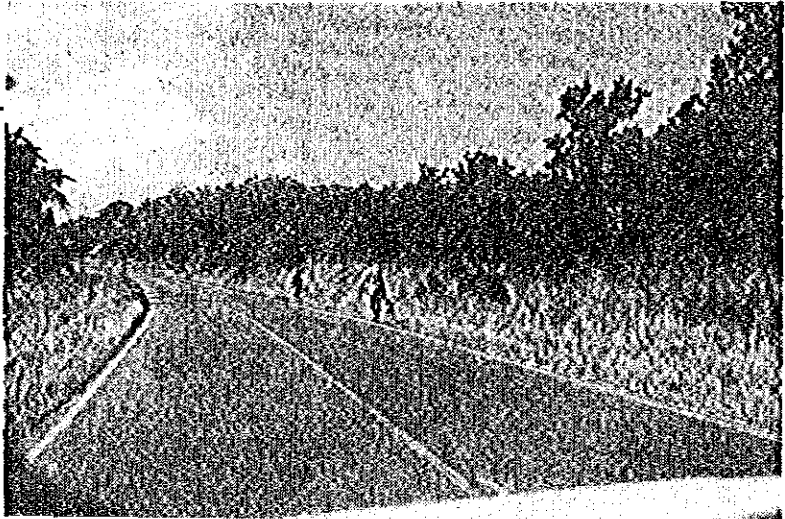


3) Village on A 109
(east of Voi)

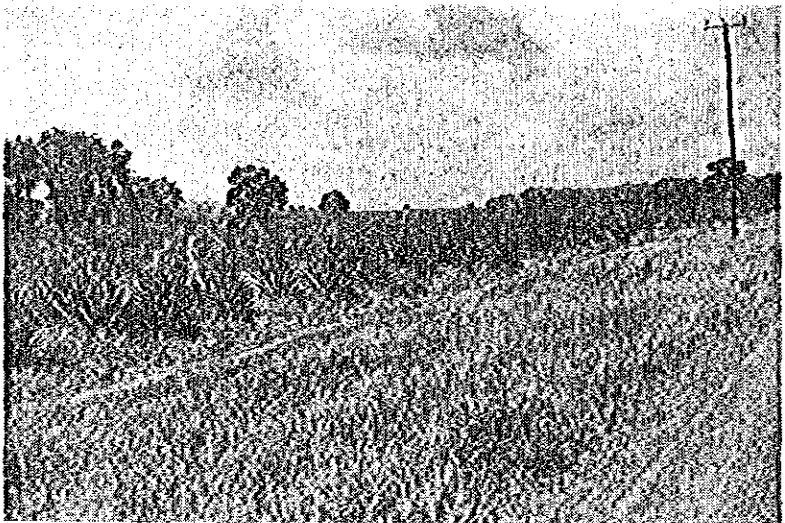


Photo - 2 Study Area - 2

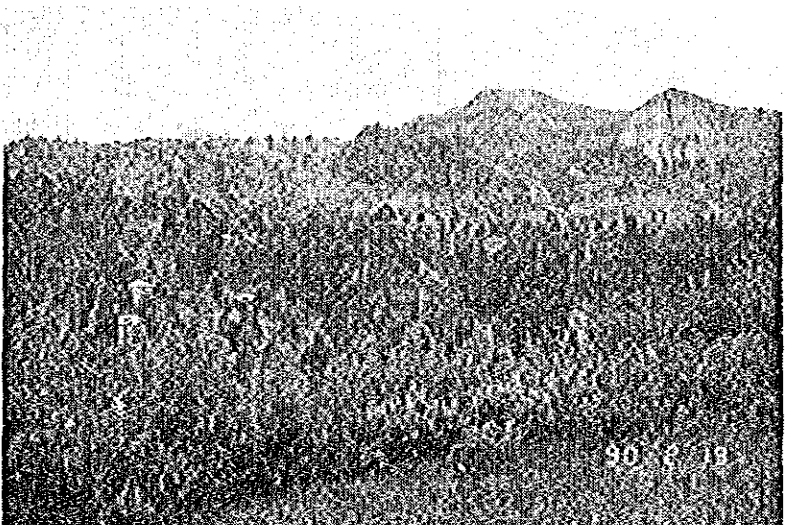
1) Plantation of cashew-nuts on A 14



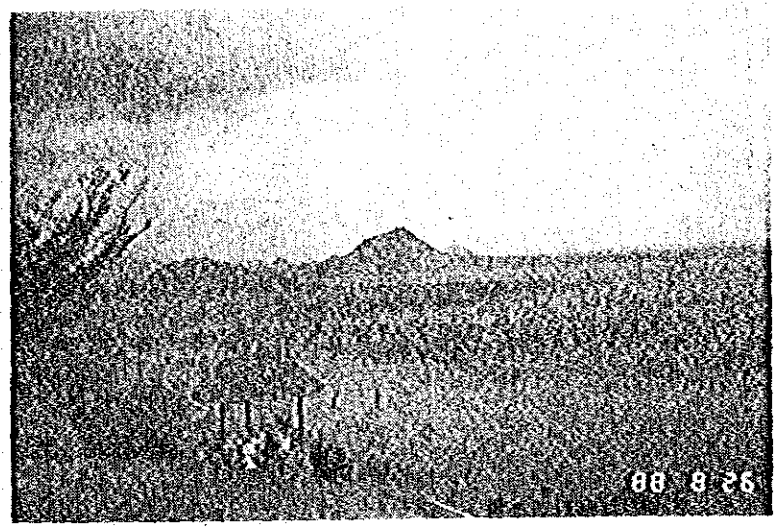
2) Plantation of sisal on B 8



3) Village in Tita Hills



1) Tsavo East National Park



2) Elephant family in Tsavo East National Park

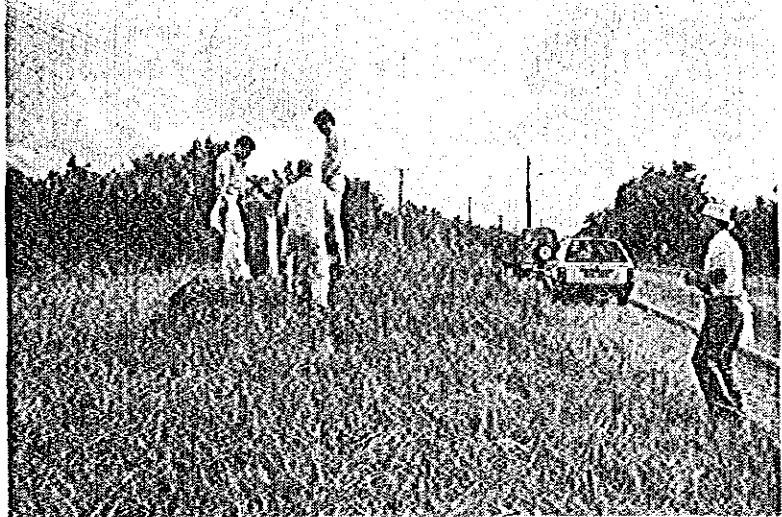


3) Head of buffalos in Tsavo East National Park

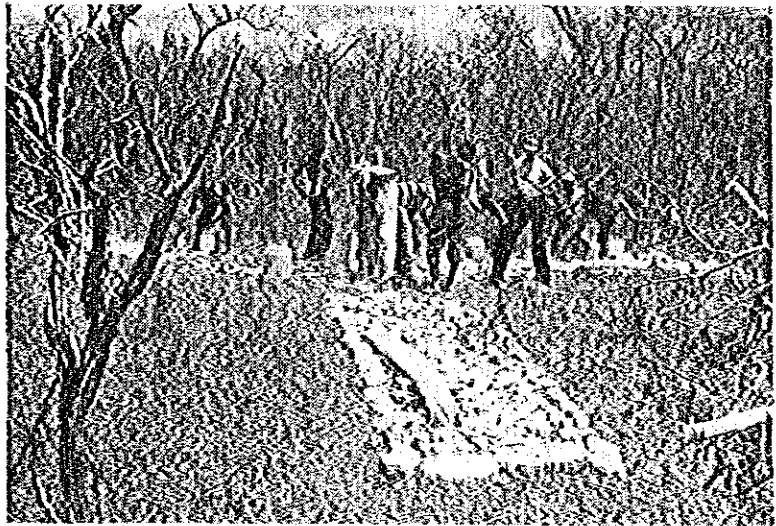


Photo - 3 Geodetic Control Point and Aerial Signal

1) Reconnaissance of geodetic control point



2) Signalization



3) Aerial signal covered by grass (Just before re-establishment)

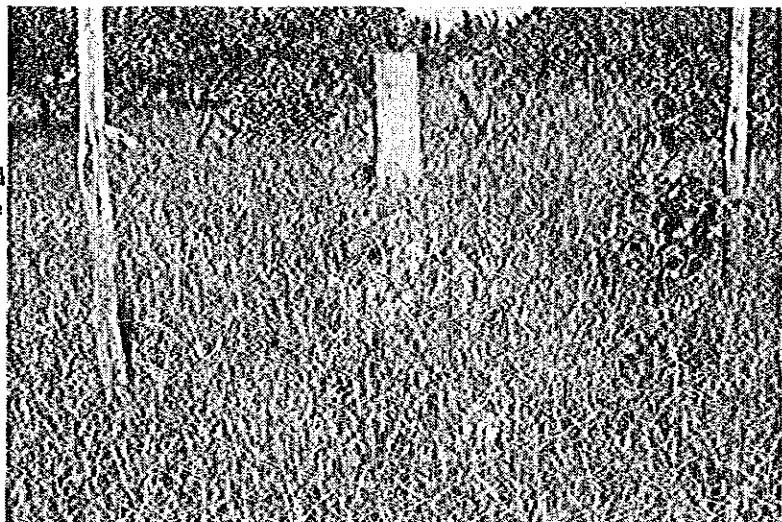
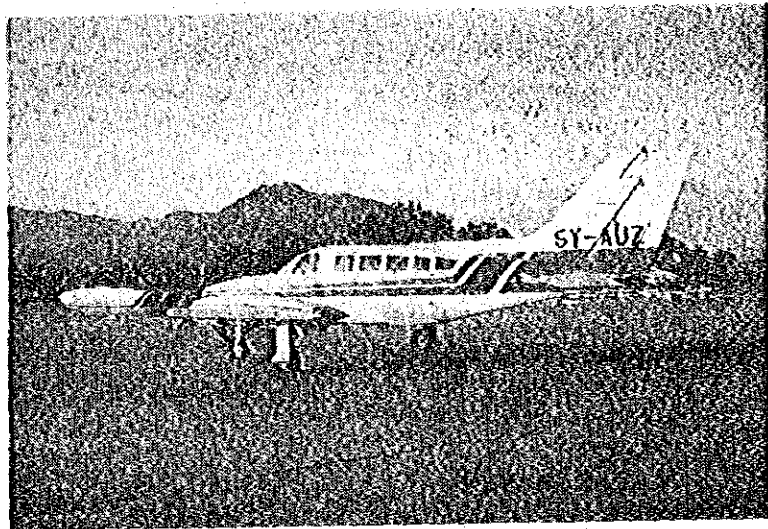
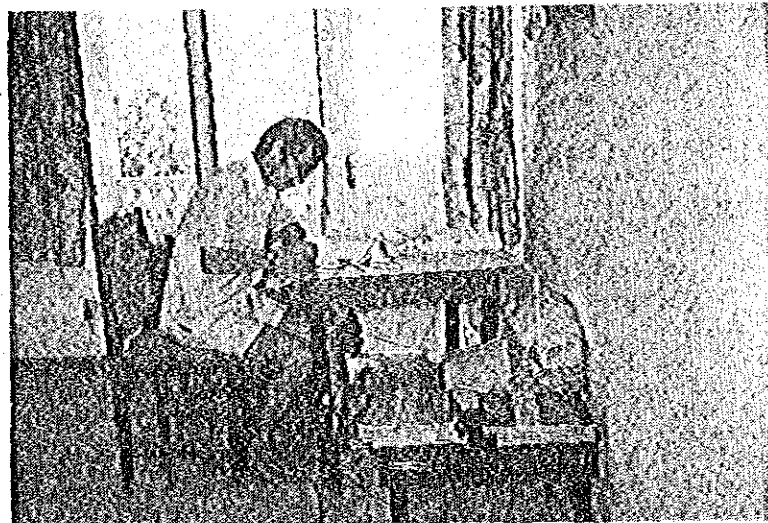


Photo - 4 Aerial Photography

1) Air plane for aerial photography Sesuna 404



2) Inspection of aerial photos

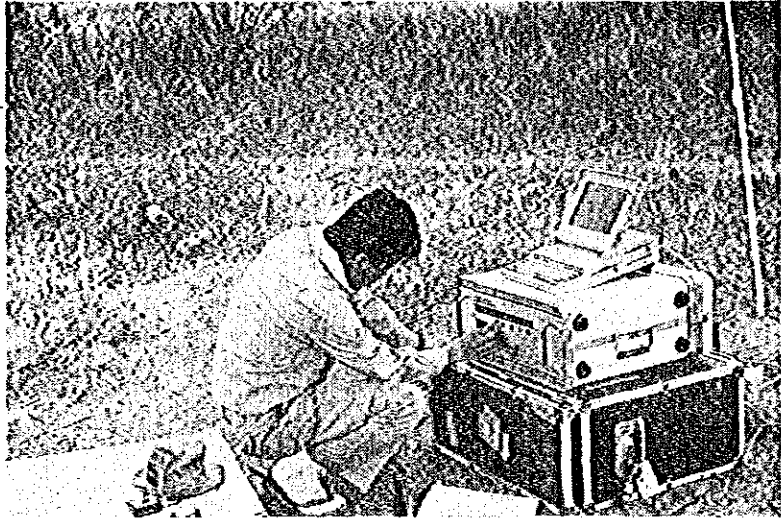


3) Malindi Airport - Base for aerial photography

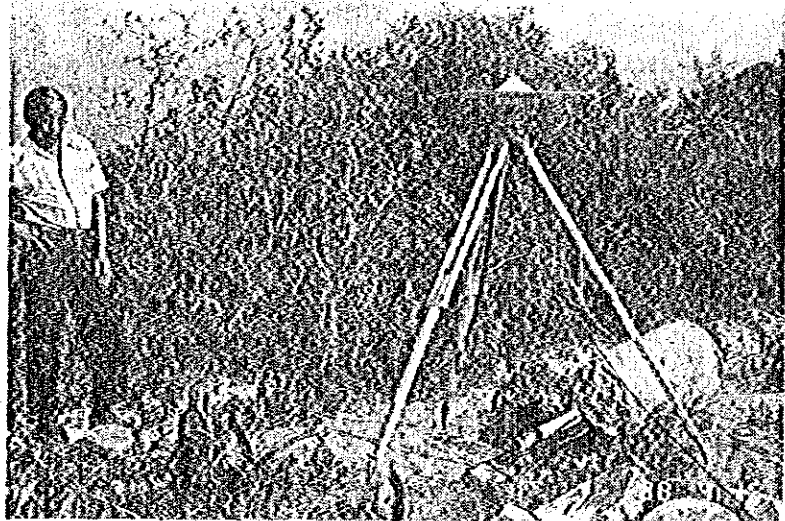


Photo - 5 Control Point Survey (GPS)

1) Receiver and recorder at BM Hangu



2) Antenna set on a geodetic control point



3) Antenna set high above tree to get rid of obstruction by tree at triangulation point SKP62

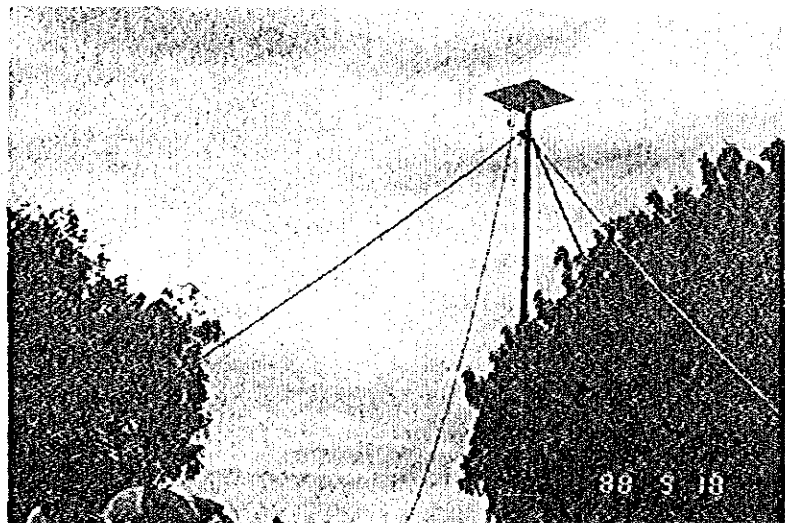
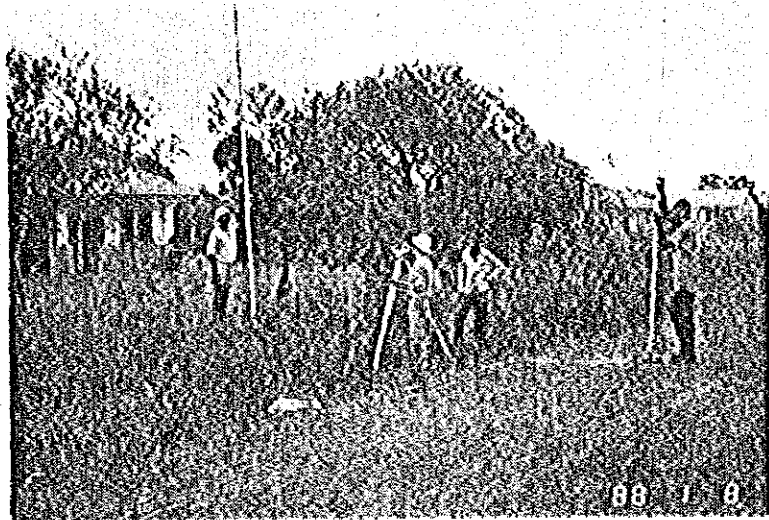
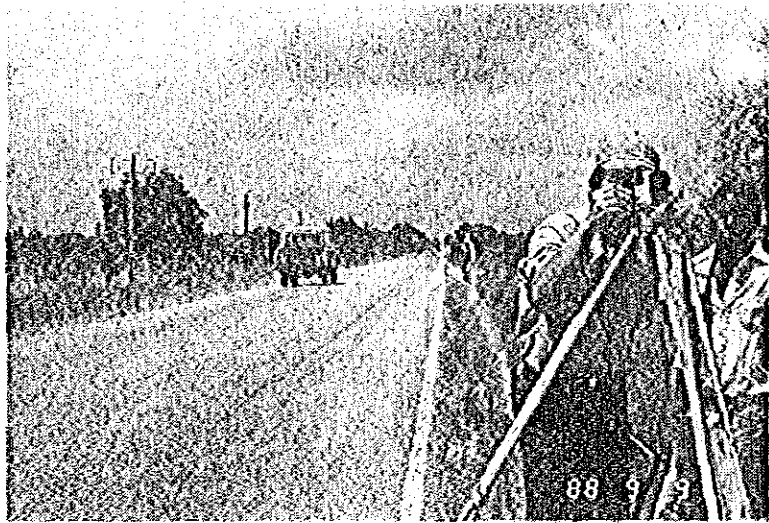


Photo - 6 Minor Order Leveling

1) Leveling at Muangulu



2) Leveling near Vipinpo



3) Bench mark FBM

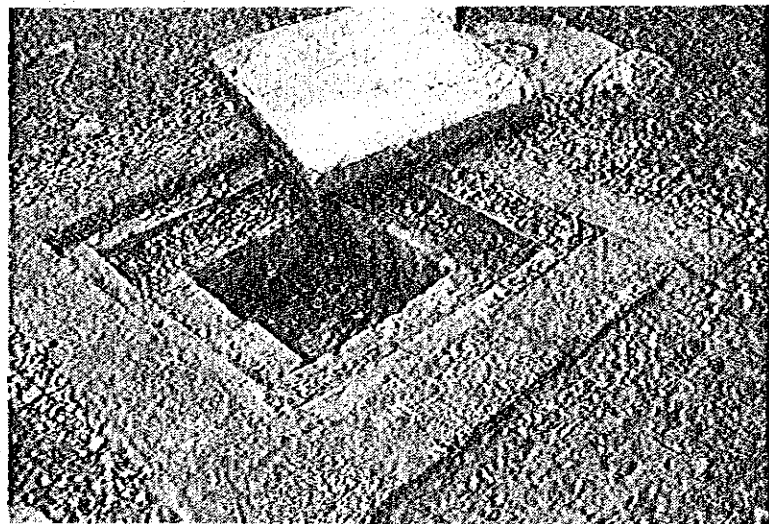
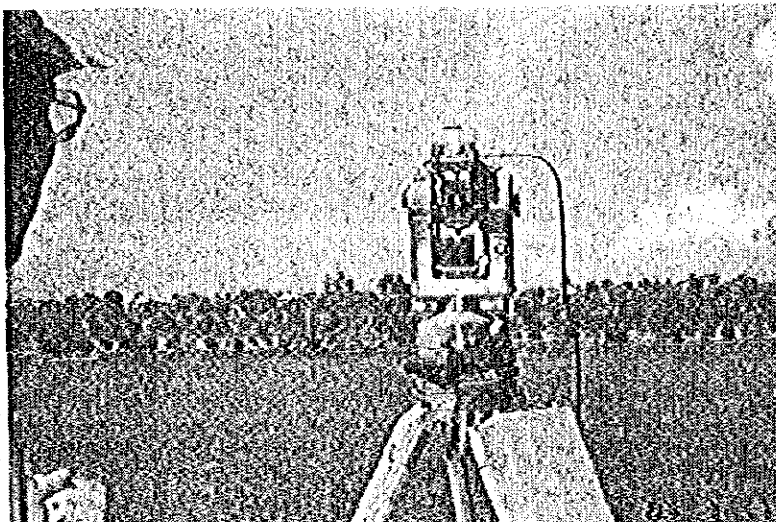
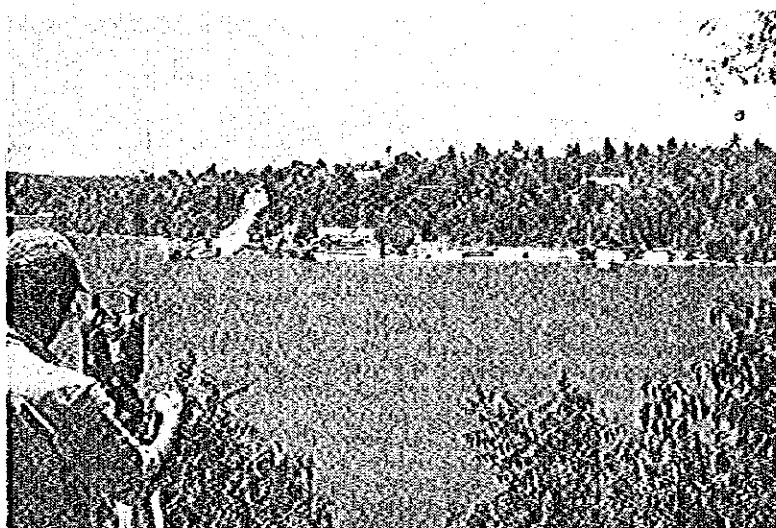


Photo - 7 Cross-sea Leveling

1) Cross-sea leveling at Harbor Kilindini (WILD T2. WILD DI3000)



2) Cross-sea leveling at Kilifi



3) Newly established bench mark

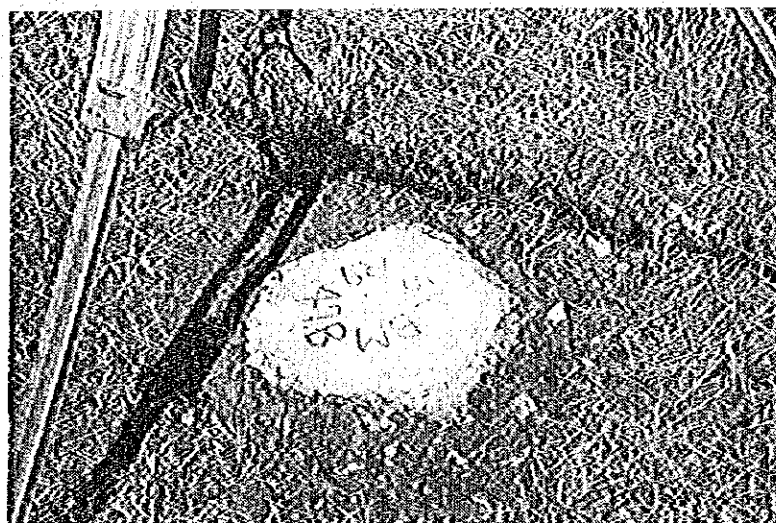
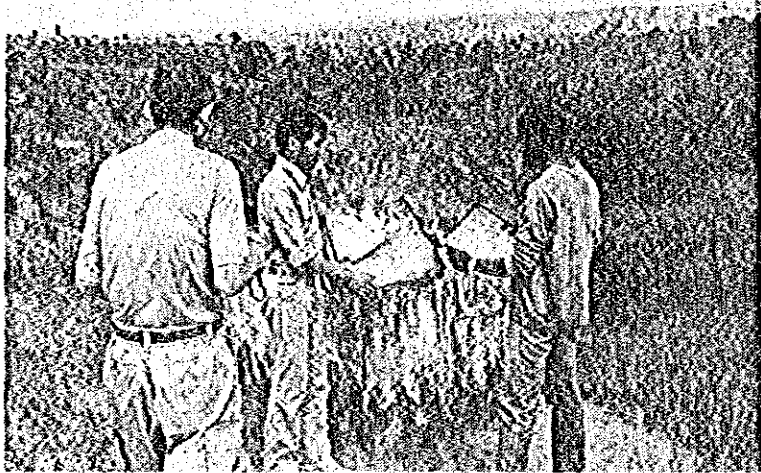


Photo - 8 Field Verification

1) Investigation of road at Mombasa



2) Survey near Pempa

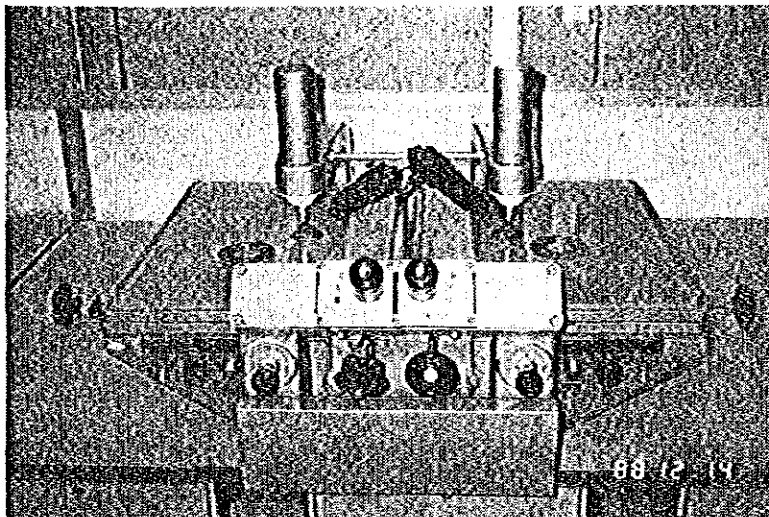


3) Meeting in the base camp



Photo - 9 Aerial Triangulation

1) Pricking device
PUG - 4



2) Stereo comparator
STECOMETER



3) Electronic computer
FACOM M-300

