

<APPENDIX - 4> MINUTES OF MEETING

- (1) Minutes of Meeting  
(Basic Design Study - Sept. 3 ~ Oct. 2, 1990)

MINUTES  
ON  
THE PROJECT FOR THE IMPROVEMENT  
OF  
OUTER ISLANDS SECONDARY SCHOOLS FACILITIES  
IN  
KINGDOM OF TONGA

In response to a request from the Government of the Kingdom of Tonga, the Government of Japan decided to conduct a basic design study on the Project for the Improvement of Outer Islands Secondary Schools Facilities (hereinafter referred to as "the Project") and entrusted the study to the Japan International Cooperation Agency (JICA). JICA sent to the Kingdom of Tonga, the study team headed by Mr. Masahiko Suzuki, Development Planning Specialist, Institute for International Cooperation, JICA, from September 3 to October 2, 1990.

The team had a series of discussions on the Project with the officials concerned of the Government of the Kingdom of Tonga. The team also conducted an in-depth field survey.

As a result of the study, both parties agreed to recommend to their respective Governments that the major points of understanding reached between them, attached herewith, should be examined towards the realization of the Project.

Nuku'alofa, Tongatapu, September 14, 1990

鈴木正彦

Mr. Masahiko Suzuki  
Leader  
Basic Design Study Team



Mr. Paula Sunia Bloomfield  
Director of Education, Youth,  
Sports and Culture  
Ministry of Education  
The Government of Tonga

## ATTACHMENT

### 1) Objective

The objective of the Project is to endeavor to provide an equal educational opportunity for all students on 'Eua and Vava'u. In order to accomplish this task, two separate secondary school facilities will be improved. These are: 1) the current facilities of 'Eua District High School will be replaced with a newly constructed secondary school facilities and 2) the existing facilities of Vava'u High School will be expanded.

The realization of this objective will help to contribute to a better quality of life for all the people of the Kingdom of Tonga.

### 2) Executing agency

The executing agency for the implementation of the Project in Tonga is the Ministry of Education.

### 3) Project sites

The proposed sites of the Project are located in 'Ohonua, 'Eua, and Neiafu, Vava'u. The sites are in the possession of the Government of Tonga (hereinafter referred to as "the Project Sites"). The location area of the two Project Sites are shown in Annex I.

### 4) Requested items

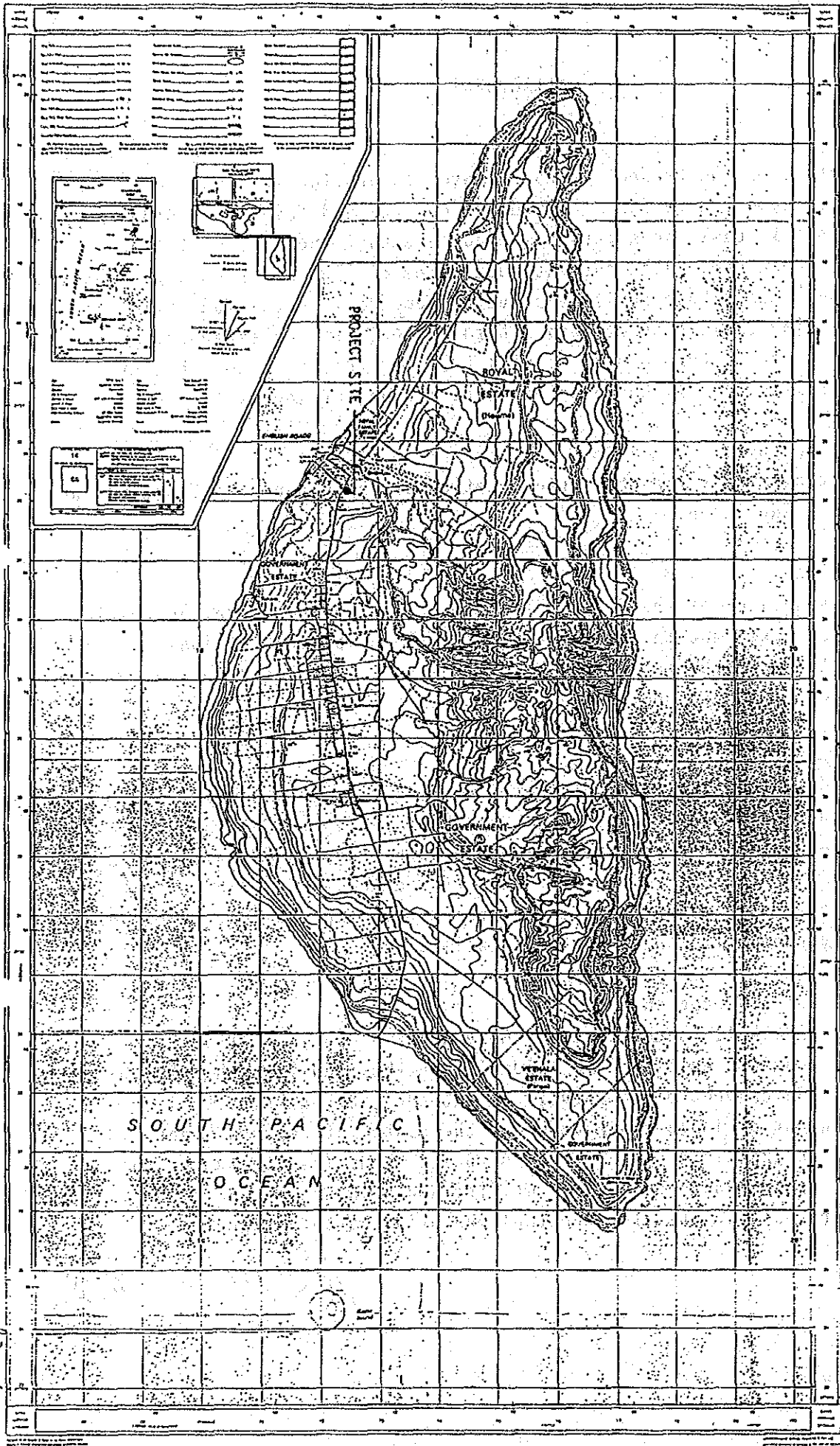
Items requested by the Government of Tonga are listed in Annex II. Besides, the Tonga side Requested to Japanese side a spectators' stand of the sports ground facilities in Vava'u High School and staff houses for both schools, which are, in principle, out of the scope of Japan's Grant Aid. Japanese side will convey to the Government of Japan the most urgent desire of the Government of Tonga for these facilities.

### 5) Japan's Grant Aid programme

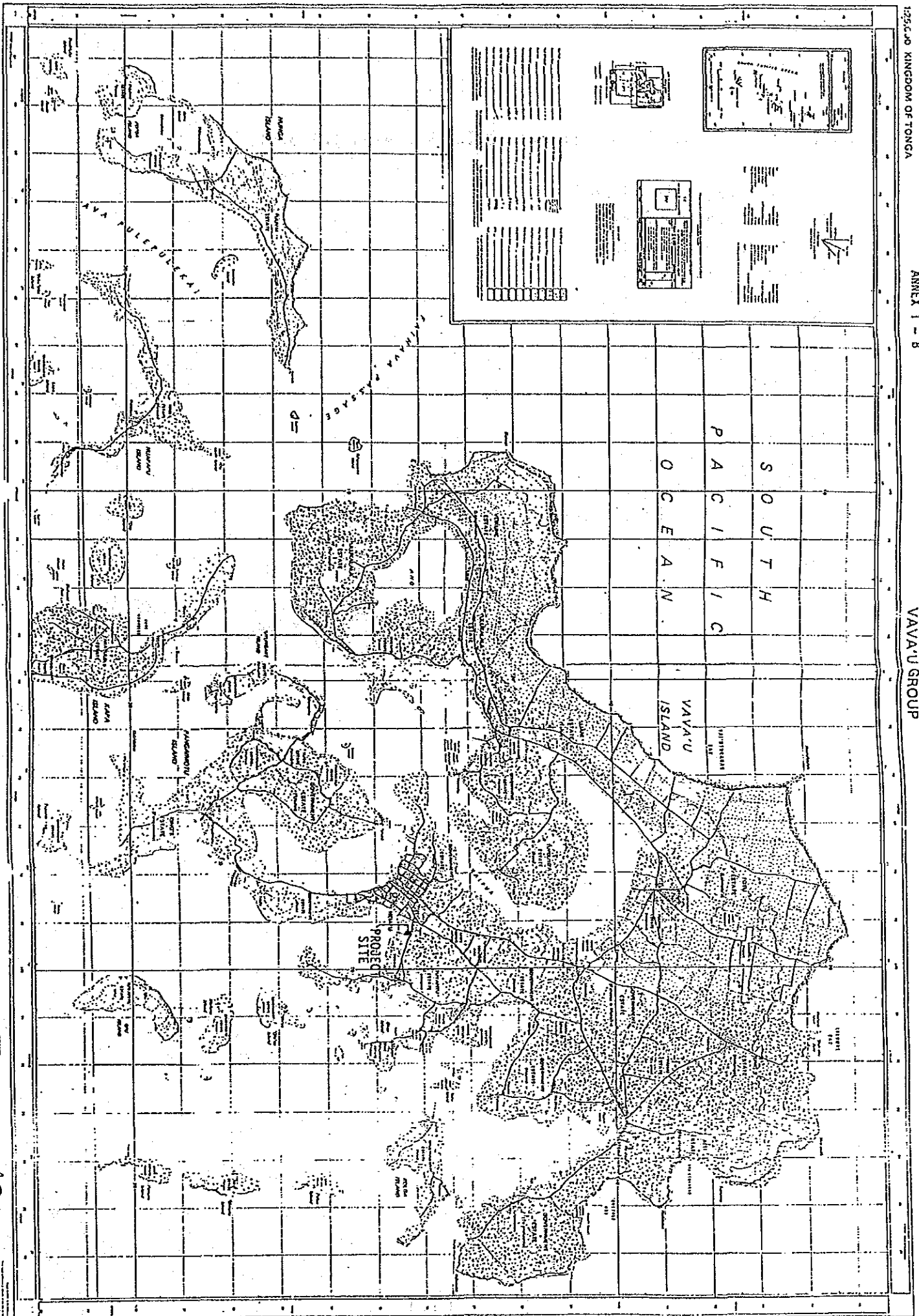
The Tonga side will convey that the Government of Tonga shall take necessary measures as listed in Annex III on the condition that the Grant Aid by the Government of Japan will be extended to the Project.

The Government of Tonga has understood the system of Japan's Grant Aid Programme as explained by the Japanese Basic Study Team, including the principle that a Japanese consultant firm and a Japanese general contractor shall be used for the implementation of the Project.

14/9/90. M.S.



Handwritten notes: *1/14/19/10* and *MS*



Handwritten signature or initials.

ANNEX II

Items requested by the Government of Tonga are as follows:

1. 'Eua District High School

- 1) Administration Office
- 2) Library/Resource Unit
- 3) General Classrooms
- 4) Specialist Classrooms
- 5) Hall
- 6) Necessary Equipment
- 7) Others

2. Vava'u High School

- 1) General Classrooms
- 2) Specialist Classrooms
- 3) Sports Ground Facilities
- 4) Necessary Equipment
- 5) Others


*MS* 14/9/90.

*M.S.*

### ANNEX III

Necessary measures to be taken by the Government of Tonga:

- 1) To secure the ownership and/or the right to use the Project sites
- 2) To clear and prepare the Project sites in a level manner prior to the commencement of construction work
- 3) To construct gates and fences in and around the Project sites
- 4) To provide facilities as necessary for the distribution of electricity, water supply, telephone and any other required works leading up to the sites' boundaries as well as any drainage connections leading away from the sites as may be required. In addition, some incidental items may be provided which contribute to the stated objective of the Project
- 5) To ensure prompt unloading, tax exemption, and custom clearance of the goods for the Project at ports of disembarkation
- 6) To accord Japanese nationals, whose services may be required in connection with the supply of the products and/or the services under the verified contracts, such facilities as may be necessary for their entry into the Kingdom of Tonga and their stay therein during the performance of their work
- 7) To exempt Japanese nationals from customs duties, internal taxes and other fiscal levies which may be imposed in the Kingdom of Tonga with respect to the supply of the products and services under the verified contracts
- 8) To maintain and use properly and effectively all the facilities constructed and all the equipment provided under the Grant Aid Programme
- 9) To bear all the expenses, necessary for the execution of the Project, other than those expenses to be borne by the Grant Aid Programme.

 14/9/90

M.S

- (2) Minutes of Meeting  
(Basic Design Study, Confirmation of Draft - Jan. 14 ~ 26, 1991)

MINUTES OF DISCUSSIONS  
THE BASIC DESIGN STUDY ON THE PROJECT FOR THE IMPROVEMENT  
OF  
OUTER ISLANDS SECONDARY SCHOOLS FACILITIES  
IN  
KINGDOM OF TONGA  
(CONSULTATION ON DRAFT REPORT)

In September 1990, the Japan International Cooperation Agency (hereinafter referred to as JICA) dispatched the Basic Design Study Team on the Project for The Improvement of Outer Islands Secondary Schools Facilities (hereinafter referred to as the Project), and through a series of discussions, field survey in here, and technical examination of the results in Japan, has designed the appropriate plan for the Project and prepared the draft report of the Basic Design Study.

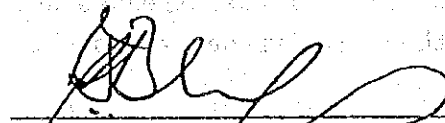
In order to explain and to consult on the components of the Draft report, JICA sent a team, headed by Mr. Yoshio Yabe, Deputy Director, Study Review and Coordination Division, Grant Aid Study and Design Department, JICA, from January 14th to 26th, 1991.

As a result of the discussions, both parties confirmed the main items described on the attached sheets.

Nuku'alofa, January 23, 1991

矢部義夫

Mr. Yoshio Yabe  
Leader  
Draft Report Explanation Team  
JICA



Mr. Paula Sonia Bloomfield  
Director of  
Education, Youth, Sports & Culture  
Ministry of Education

ATTACHMENT

1. Components of Draft Report

The Government of Tonga has agreed and accepted in principle the components of the Draft Report proposed by the Team.

2. Japan's grant aid system

(1) The Government of Tonga has understood the system of Japanese Grant Aid explained by the Team.

(2) The Government of Tonga will take the necessary measures, described in Annex I, for smooth implementation of the Project on condition that the Grant Aid assistance by the Government of Japan is extended to the Project.

3. Further schedule

The team will make the Final report in accordance with the confirmed items, and send it to the Government of Tonga by the end of April 1991.

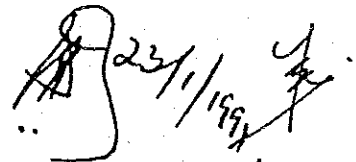
23/1/1991



ANNEX I

Necessary measures to be taken by the Government of Tonga:

- 1) To secure the ownership and/or the right to use the Project sites
- 2) To clear and prepare the Project sites in a level manner prior to the commencement of construction work
- 3) To construct gates and fences in and around the Project sites
- 4) To provide facilities as necessary for the distribution of electricity, water supply, telephone and any other required works leading up to the sites' boundaries as well as any drainage connections leading away from the sites as may be required. In addition, some incidental items may be provided which contribute to the stated objective of the Project
- 5) To ensure prompt unloading, tax exemption, and custom clearance of the goods for the Project at ports of disembarkation
- 6) To accord Japanese nationals, whose services may be required in connection with the supply of the products and/or the services under the verified contracts, such facilities as may be necessary for their entry into the Kingdom of Tonga and their stay therein during the performance of their work
- 7) To exempt Japanese nationals from customs duties, internal taxes and other fiscal levies which may be imposed in the Kingdom of Tonga with respect to the supply of the products and services under the verified contracts
- 8) To maintain and use properly and effectively all the facilities constructed and all the equipment provided under the Grant Aid Programme
- 9) To bear all the expenses, necessary for the execution of the Project, other than those expenses to be borne by the Grant Aid Programme.

 23/1/1991

<APPENDIX - 5> LIST OF GOVERNMENT'S HOUSES IN USE IN VAVA'U ISLAND

LISTS OF GOVERNMENT QUARTERS

<u>QTR. NO.</u>	<u>NAMES</u>	<u>OCCUPATION</u>	<u>NO. BY 2RM</u>	<u>RENT</u>
2	Makafilia Taungatu'a	Lands & Survey	2	7%
3	Malekamu Manu	Labour & Commerce	2	7%
4	Viliami Tautu'a'a	M. O. H.	2	Free
5	'Aisea Tu'ipulotu	Fisheries Dept,	3	7%
6	Peace Corp	do	2	Free
7	Ma'ake Palei	M. O. H.	2	7%
8	Peace Corp	✓Vava'u High School	2	7%
9	Tevita Lolomana'ia	Civil Aviation	2	7%
10	Peace Corp	✓Vava'u High School	2	7%
11	Lesieli Manu	✓Ministry of Education	2	7%
12	Latu Paletu'a	✓Ministry of Education	2	7%
13	Sioeli Kalaleti	Ministry of Health	2	7%
14	Tupou Finau	✓Vava'u High School	2	7%
15	Peace Corp	✓ " " "	2	Free
16	Viliami Ma'ake	Civil Aviation	2	7%
17	Loupua Tapa'atoutai	T & T Commission	2	12 1/2%
18	Samuela Mailau	Lands & Survey	1	3 1/2%
19	Peace Corp	✓Vava'u High School	2	Free
20	Peace Corp	✓Vava'u High School	1	3 1/2%
21	Paane Luke	Government Store	1	3 1/2%
22	Peace Corp	✓Vava'u High School	1	Free
23				
24	Lava Faleola	Sub - Treasurer	3	Free
25	Maile Pasili	Inspector of Police	3	7%
26	Similoni Tufulele	Ministry of Works	2	7%
27	Tevita Soakai	Dentist	2	Free
28	Saia Ika	M. O. H.	2	Free
29	Viliami Puloka	Medical Officer	2	Free
30	Vacant			
31	Samuela Fonua	Medical Officer	3	Free
32	Tomas Talanoalelei	Health Inspector	2	Free
33	Makaloni Taukolo	M. O. H.	2	Free
34	Sililo Tomiki	Dentist	2	Free
35	Vacant			
36	Sione Uta	Cooperative Society	2	7%
37	T. Manu	Tonga Visitors Bureau	2	7%
38	Peace Corp	✓Vava'u High School	2	3 1/2%
39	Vehitau Ma'ukie	Custom Dept.	2	7%
40	'Ikani Prescott	Lands & Survey	3	7%
41				
42	Faka'ilo Penitani	Govt' Hospitality	3	7%
43	Peace Corp	M. A. F. F.	2	Free
44	Semisi 'Apai	do	2	Free
45	Simione Leo	do	2	Free
46	Vacant			
47	'Ofa Takulua	Sister M. O. H.	2	Free
48	Peace Corp	M. A. F. F.	2	Free
49	Peace Corp	do		
50	Peace Corp	do	2	Free
51	Simione Tu'ungafasi	Medical Officer Tefisi	2	
52	Vacant			
53	Vacant			
54				
55	Talaiasi 'Uhila	Medical Officer Falevai		
56	Melemana Penisoni	Medical Officer Falevai		

Regional Comparison and Characteristics of Primary and Secondary Schools in Tonga

(3) Characteristics of Primary and Secondary School in Tonga and the Regional Comparison

Table 1 Regional Comparison of Primary and Secondary School - 1989

Regions	Enrollments at Public-run School						Enrollments in Other Schools			Total Enrollments and (%)		Ratio of Enrollments to Population per District (%)
	Enrollments	Share in District	Enrollment	Ratio of Enrollments in Public-run schools	Number of Schools	Enrollments	Ratio of enrollments	Total Enrollment	Enroll-ment Ratio			
Tongatapu	3	(13.3)	1,332	(49.5)	24	8,652	(77.3)	9,984	(71.9)	(15.7)		
○ 'Eua	1	(91.3)	472	(17.5)	1	45	(0.4)	517	(3.7)	(11.8)		
Ha'Apai		(0)			7	651	(5.8)	651	(4.7)	(7.3)		
○ Vava'u	1	(24.2)	58.0	(21.6)	5	1,813	(16.2)	2,343	(17.2)	(15.8)		
Niuaotuputu	1	(100)	21.5	(8.0)	1			21.5	(1.5)	(13.3)		
Niuafo'ou	1	(78.6)	92	(3.4)	(1)	25	(0.2)	117	(0.8)	(15.3)		
Total	7		2,691	(100)	(1)	13,877	(100)	13,877	(100)	(13.2)		

Primary School											
Regions	Enrollments	Share in District	Enrollment	Ratio of Enrollments in Public-run schools	Number of Schools	Enrollments	Ratio of enrollments	Total Enrollment	Enroll-ment Ratio	Ratio of Enrollments to Population per District (%)	
Tongatapu	45		9,748	(64.1)	8	1,095	(100)	10,843	(66.5)	(17.0)	
○ 'Eua	5		813	(5.3)				813	(5.0)	(18.5)	
Ha'Apai	19		1,497	(9.8)				1,497	(9.2)	(16.7)	
Vava'u	29		2,737	(18.0)	(2)			2,737	(16.8)	(18.0)	
Niuaotuputu	4		287	(1.9)	(1)			287	(1.8)	(17.8)	
Niuafo'ou			133	(0.9)				133	(0.8)	(17.4)	
Total	7		15,215	(100)	11	1,095	(100)	16,310	(100)	(17.6)	

\* Those denoted with ○ are the projected areas.

(Source: Annual Report on Education and Five-year Development Plan)

The above table shows:

- that, in 'Eua and Ha'Apai, the ratio of enrollments to population in the districts is almost average for primary schools, but lower than average for secondary schools.
- that, in Vava'u, the ratio of enrollment to the population in the district is more than the average for both primary and secondary schools.
- that, the dynamic trends in the populations of 'Eua and Vava'u are contrary, the inflow of emigrants increasing in the former, while the outflow of population is increasing in the latter.

In these circumstances, 'Eua needs to enhance its secondary educational facilities to make up for the insufficiency in facilities due to the increase in population while Vava'u needs to enhance its secondary educational facilities to stem the depopulation trend (people leaving the island to go to Tongatapu). Ha'Apai has future plans for construction of a public-run high school, though many of the population are leaving the island because the potential for development is very low due to the formation of the islands and it cannot avoid relying on the other islands.

Statistics and Characteristics of Secondary School in Vava'u and 'Eua Districts

Table 2 Statistics on Vava'u and 'Eua Secondary School

Controlling Authority	District	Number of Schools	Enrollment Male	Enrollment Female	Total	All Tonga	All Tonga %	Population of District	Population ratio (%) of District
<b>1985</b>									
Public-run	Vava'u	1			292				
Church-run	Vava'u	7*	985	1,064	2,049				
Sub-total	Vava'u	9			2,341	14,655	16.0	15,170	16.0*
Public-run	'Eua	0							
Church-run	'Eua	2	123	160	283				
Sub-total	'Eua	2	123	160	282	14,655	1.9	4,393	4.6*
<b>1987</b>									
Public-run	Vava'u	1	237	300	537				
Church-run	Vava'u	7*	856	835	1,623				
Sub-total	Vava'u	8	1,093	1,135	2,228	14,137	15.8	15,170	16.0*
Public-run	'Eua	1	295	285	580				
Church-run	'Eua	1	30	18	48				
Sub-total	'Eua	2	325	303	628	14,137	4.4	4,393	4.6*
<b>1988</b>									
Public-run	Vava'u	1	336	347	683				
Church-run	Vava'u	6*	698	637	1,335				
Sub-total	Vava'u	7	1,034	984	2,018	13,082	15.5	15,170	16.0*
Public-run	'Eua	1	315	329	644				
Church-run	'Eua	1	36	10	46				
Sub-total	'Eua	2	351	339	690	13,082	5.3	4,393	4.6*

Note: Asterisks (\*) denote figures quoted from National Census of 1986 (Source: Ministry of Education of Tonga)

- ① The public-run Vava'u High School was established in 1985 and the public-run 'Eua District High School, in 1986.
- ② The ratio of secondary school students to the population in Tonga is 15.5%~13.8%. The ratio of secondary school students to the population in the districts are:
  - 15.4%~13.3% in Vava'u
  - 6.4%~15.7% in 'Eua.

The reason for the rapidly increasing enrollment is lies in that it is the only high school in the district as well as being of a rather compulsory nature which accept all local applicants for admission because it is the first public-run high school. (The compulsory educational system in Tonga requires that every child between the ages of six and fourteen shall attend school for a period of six years. Forms 1 and 2 of secondary school are the equivalent school ages.)

**< APPENDIX - 7 > NUMBER OF PERSONNEL IN EXECUTING ORGANIZATION AND THE MINISTRY OF  
EDUCATION, YOUTH, SPORTS AND CULTURE (1990)**

<u>Post</u>	<u>Number</u>
Minister	1
Director	1
Deputy-Director	4
Chief Education Officer	4
Senior Education Officer	9
Assistant Senior Education Officer	19
Principal	7
Deputy-Principal	9
Education Officer	17
Senior Executive Officer	4
Accounting Officer	1
Senior Inspector of Schools	1
Inspector	4
Area Organiser	5
Supervising Teacher	10
Schools Broadcasting Officer	1
Assistant schools Broadcasting Officer	1
Attendance Officer	1
Tongan Specialist	1
Specialist Teacher	4
Printing Officer	1
Head Teacher	24
Teacher Incharge	78
First Assistant Teacher	22
Infant Mistress	24
Infant Teacher	78
Senior Assistant Teacher	482
Assistant Teacher	142
Probationary Teacher	70
Teacher Trainee	197
Untrained Teacher	88
Trained Uncertificated Teacher	21
Overseas Trained	46
Clerk Class 1	2
Clerk Class 2	3
Clerk Class 3	11
Chief Clerk	1
Typist Grade 3	2
Clerk/Typist Grade 1	5
Clerk/Typist Grade 2	1
Clerk/Typist Grade 3	10
Driver	15
Boat Operator	1

Master	1
Engineer	1
Technical Supervisor	1
Senior Tutor	1
Senior Mistress	1
Band Master	1
Farm Manager	1
Assistant Farm Manager	1
Cook	4
Caretaker	2
Caretaker/Handyman	2
Chief Librarian	1
Librarian	3
Assistant Instructor	3
Catering Instructor	1
Auxiliary Instructor	1
Secondary Assistant	3
VSA	3
AVA	1
VSO	1
Peace Corps	8
Japanese Volunteers	8
<hr/>	
<b>TOTAL</b>	<b>1477</b>
<hr/>	

## SAVINGRAM

From: The Acting Minister of Lands, Survey & Natural Resources

To: The Director of Education

Saving No. E.3/4/2

Date ... 24 September 19 90

I understand that Ministry of Education requires an additional land to complete plan for Vava'u High School play ground.

I have discussed with the estate holder of the land next to playground. He agreed to surrender the 4 acres requires by Vava'u High School playground and we have to finalise the legal actions to be taken later. Therefore, I would recommend that plan and work to be done for Vava'u High School playground to carry on at present.



*S Ma'afu Tupou*

Dr S Ma'afu Tupou

Acting Minister of Lands, Survey and Natural Resources

DATE RECEIVED	24/9/90 10:20am
	1/12/9
BY	<i>[Signature]</i>
MINISTRY OF EDUCATION D/E	

# PLAN

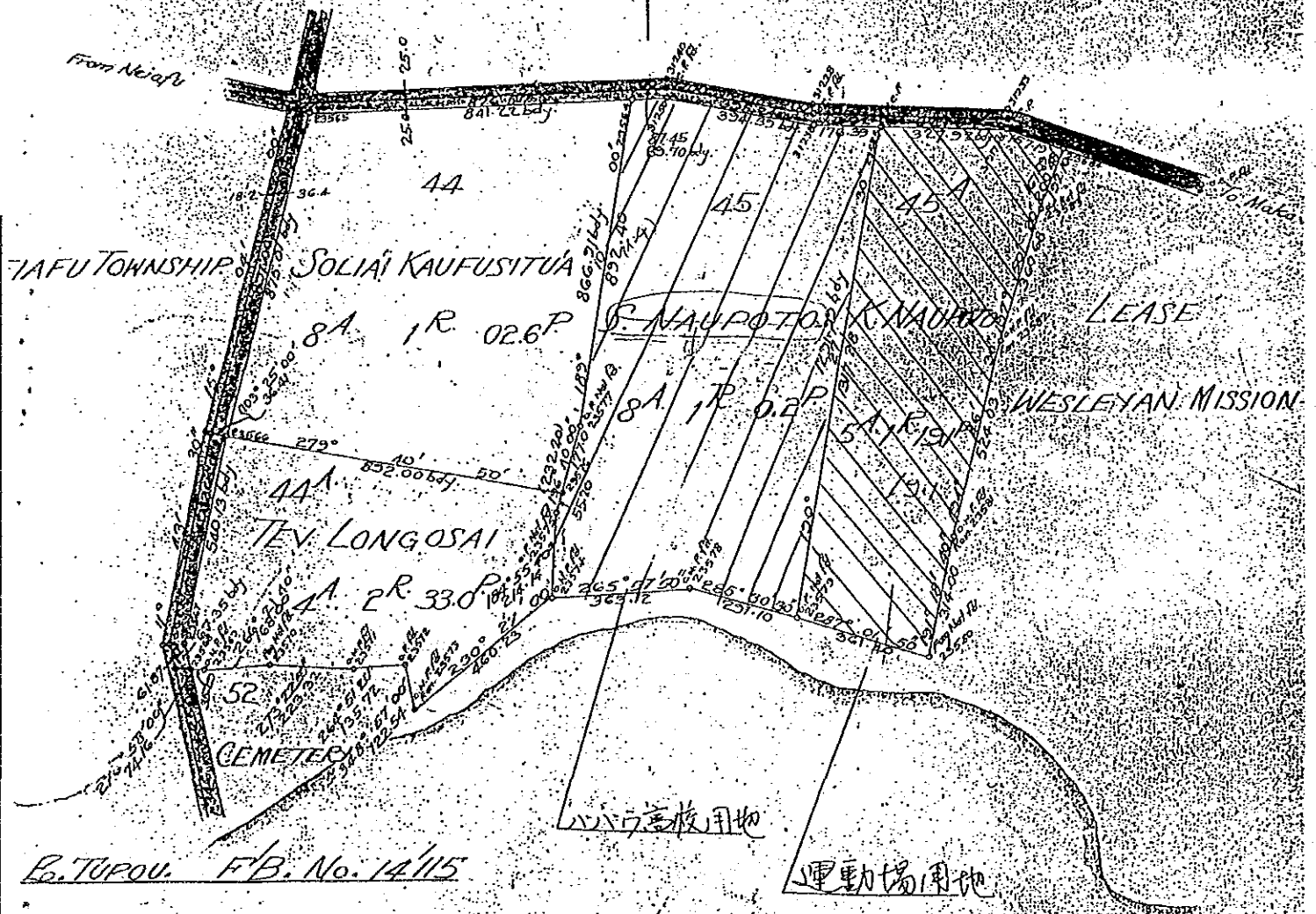
of  
Tax Allotments  
for

Soliai Kaufusitua & Tevita Longosai and Setefano Naupoto & Kelekolio Naupoto  
BLOCK 216/158 NEIAFU VAVAU  
Scale: 3 chain-1 inch

11/July/90  
Ministry of Education  
Mr. Paula Simia Bloomfield  
Director of Education, Youth, Sports  
& Culture (F) 27

(学校の敷地等用地)

80 chain = 1 mile



R. TUPOU. F.B. No. 14/115

ZIMUTH 87° 55' 00"

(SP) SURVEYED BY Tupou DATE 3. 8. 4

PLOTTED BY [Signature]





KINGDOM OF TONGA

MINISTRY OF LANDS, SURVEY & NATURAL RESOURCES,

P.O. Box 5, Nuku'alofa, TONGA.

Telex: 66269 PRIMO TS  
Cable: "MINLANDS".

Telephone: Minister - 23-655  
Secretary - 23-210  
General Office - 23-611

Reference: F 3/4/2

12 September 1990

TO WHOM IT MAY CONCERN

'Eua High School Site at 'Ohonua, 'Eua Island

Please be advised that a portion of land, 8.299 ha (20 acres 2 rood 01 perches) in area has been allocated for the 'Eua High School. The site is at 'Ohonua being Lot 81 and Lot 9, Block 68/105.

The Ministry of Lands, Survey and Natural Resources does not issue Deed of Leases for lands allocated to Government Ministries on Government Estates within the Kingdom.



.....  
Dr S Ma'afu Tupou  
Acting Minister of Lands, Survey  
and Natural Resources

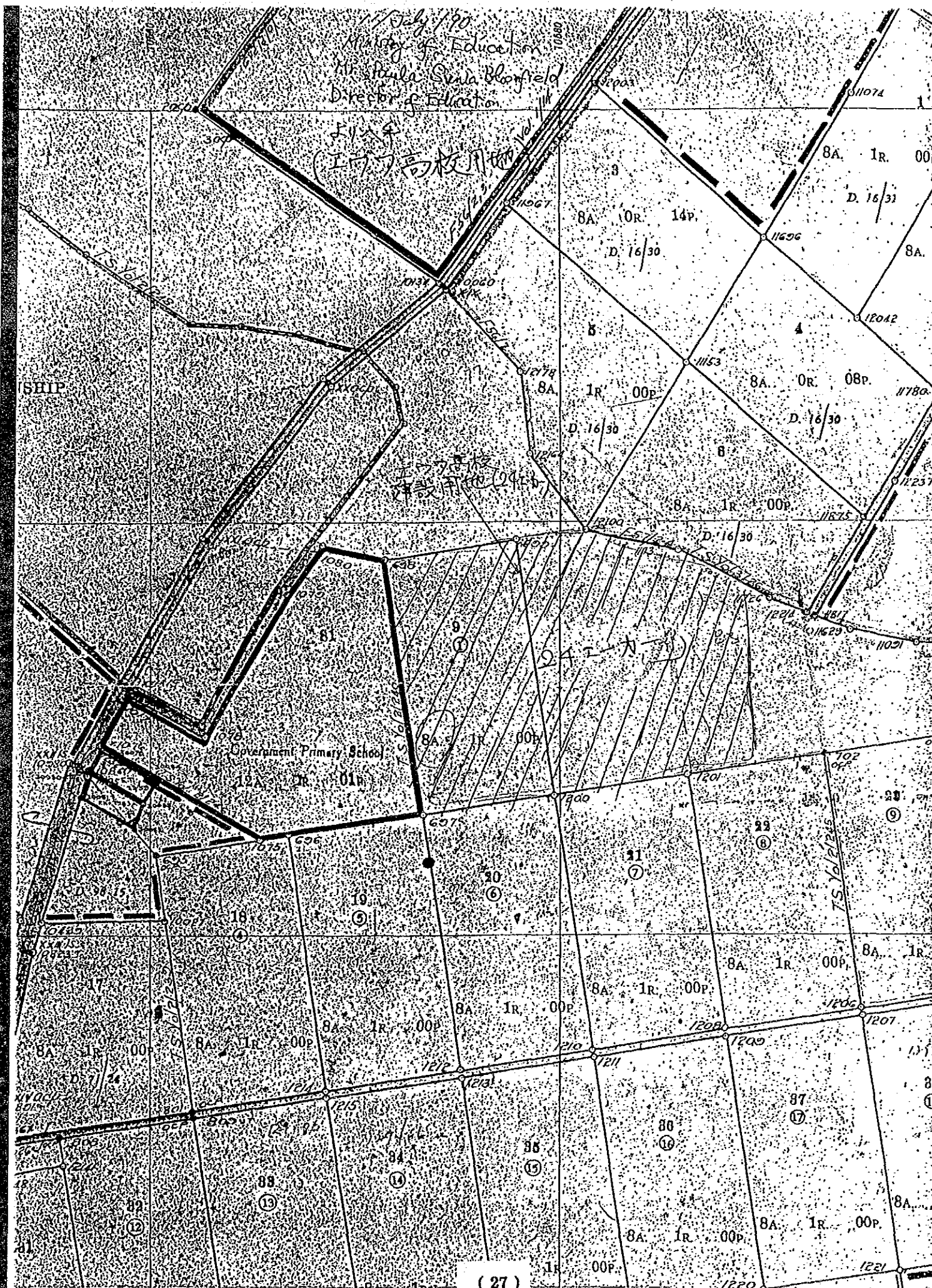
PFM:sm

17 July 190  
Ministry of Education  
Mrs. Paula Sylvia Blomfield  
Director of Education

177  
177

SHIP

Government Primary School



GOVERNMENT OF TONGA

DATE

SAVINGRAM

12/20/90

IX EDHS 10/31/9

IV Tap Aid 1/12/9

From: Secretary for Lands & Survey

To: Director of Education

Saving No. F.3/4/2.....

MINISTRY OF EDUCATION

Date 10 October, 1990.....

CEO(S)

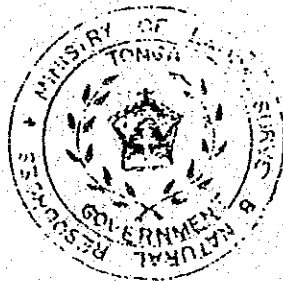
'Eua High School Site - 'Ohonua

I am enclosing herewith the copy of the Hon. Minister of Lands, letter on the above together with plan of the actual site.

When preparing the plan we found that there was an error in the calculation. Please use the area on the plan as the correct one.

*T.A. Puniani*

.....  
(T.A. Puniani)  
for Secretary for Lands,  
Survey & Natural Resources



encl:

PFM;vl.

copy

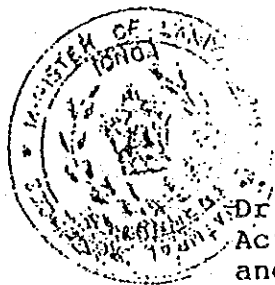
F 3/4/2

3rd October 1990

TO WHOM IT MAY CONCERN

'EUA HIGH SCHOOL SITE AT 'OHONUA, 'EUA ISLAND

Please be advised that a portion of land, 11.64 hectares (28 acres 3 roods 01 perches) in area has been allocated for the 'Eua High School. The site is Lot 81, Lot 9, and Lot 82 in Block 68/105.



*S. Ma'afu Tupou*  
Dr S Ma'afu Tupou  
Acting Minister of Lands, Survey  
and Natural Resources

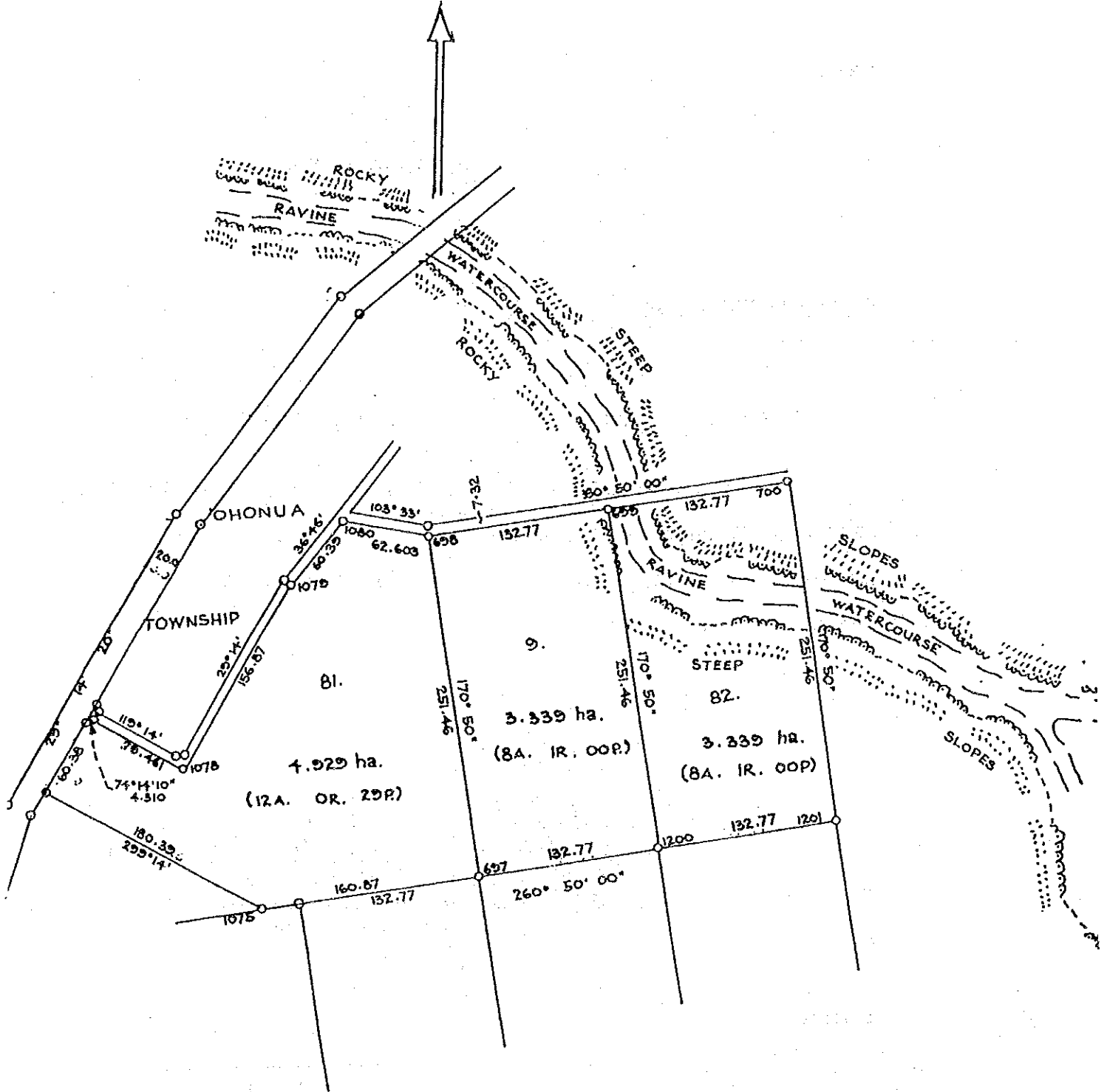
PFM:sm

D	9/10/90
S	IX EDITS IX 1/12/9
	<i>DL</i>

MINISTRY OF EDUCATION, PLE

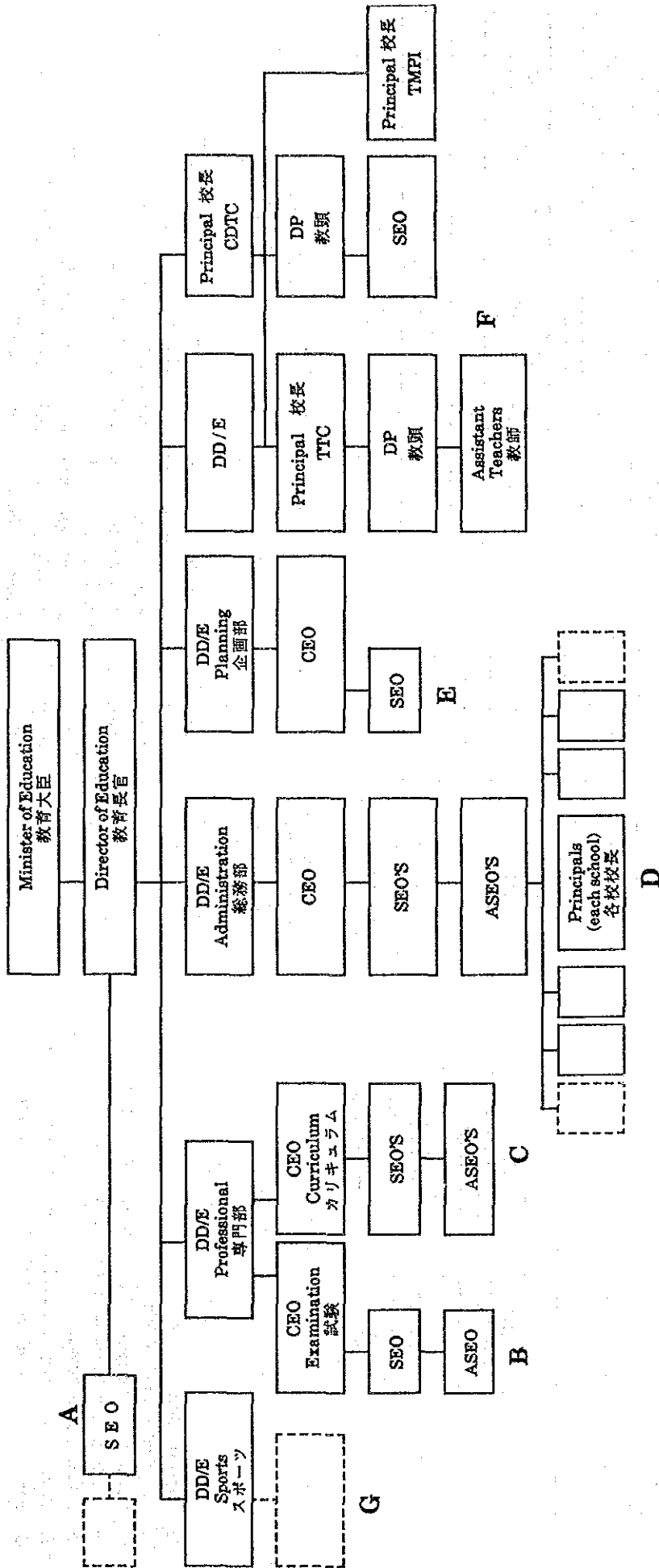
PLAN OF  
PORTION OF LAND ALLOCATED FOR  
'EUA HIGH SCHOOL SITE

Scale 1:3960



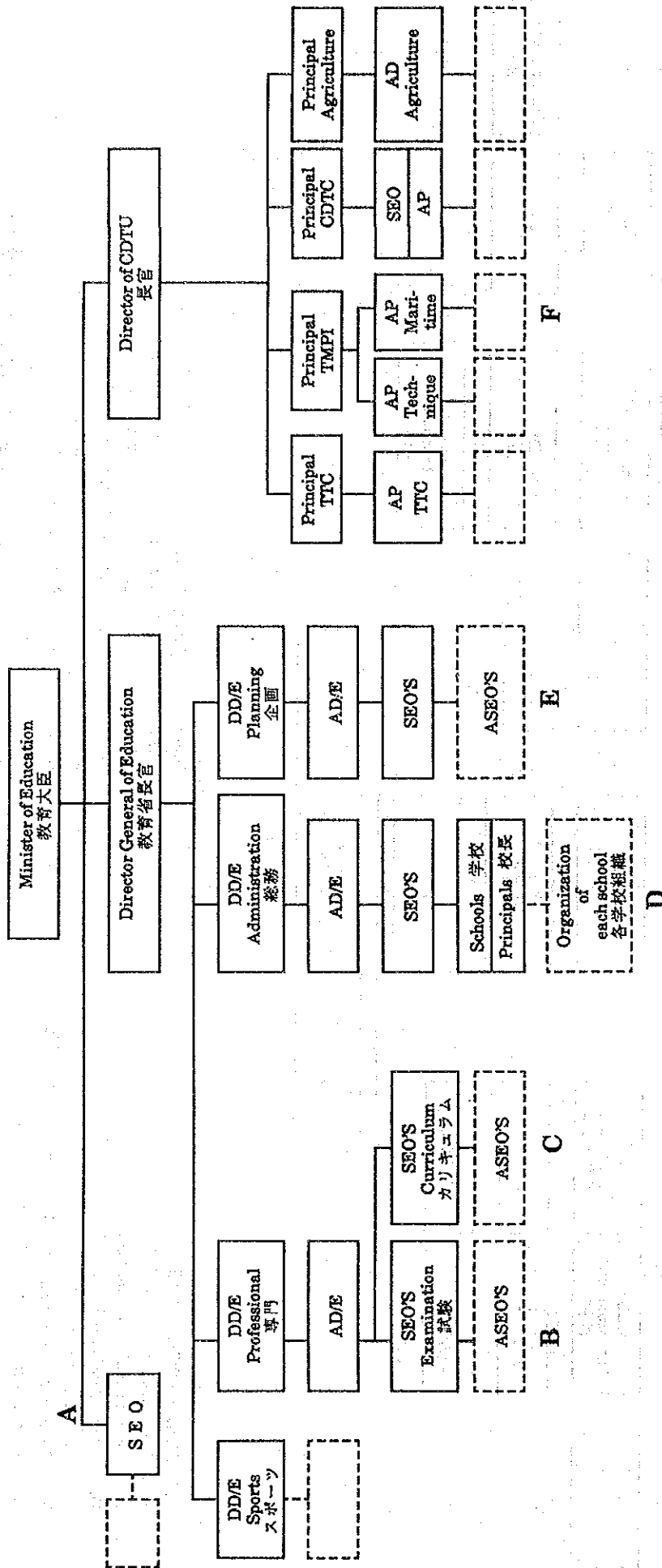
TOTAL AREA : 11.61 ha.  
(28A. 2R. 29P)

表 - 1 EXISTING STRUCTURE  
教育行政機構現状



- A. Minister's Office 大臣室
  - B. Examination Unit 試験部門
  - C. Curriculum Development Unit カリキュラム開発部門
  - D. Administration + Schools 総務部 + 学校
  - E. Planning Unit 企画部
  - F. Community Development and Training Unit 地域開発・訓練部門
  - G. Sports, Youth & Culture スポーツ・青年・文化部
- 
- DD/E : Deputy Director of Education 副長官
  - AD/E : Assistant Director of Education 長官補佐
  - CEO : Chief Education Officer 教育事務長
  - SEO : Senior Education Officer 教育事務官
  - ASEO : Assistant Senior Education Officer 事務官補佐
  - DP : Deputy Principal 教頭
  - CDTC : Community Development and Training Center 地域開発・訓練センター
  - TTC : Teacher Training College 教員養成学校
  - TMPI : Tonga Maritime Polytechnic Institute 海洋技術学院

表-2 PROPOSED STRUCTURE  
教育行政機構構計画



A: Minister's Office 大臣室

B: Examination Unit 試験部門

C: Curriculum Development Unit カリキュラム、開発部門

D: Administration + Schools 総務部+学校

E: Planning Unit 企画部

F: Community Development and Training Unit 地域開発、訓練部門

G: Sports, Youth and Culture スポーツ、青年、文化部

DD/E : Deputy Director of Education 副長官

AD/E : Assistant Director of Education 長官補佐

SEO : Senior Education Officer 教育事務官

ASEO : Assistant Senior Education Officer 事務官補佐

AP : Assistant Principal 教頭

CDTU : Community Development and Training Unit 地域開発、訓練部門

CDTC : Community Development and Training Center 地域開発訓練センター

TTC : Teacher Training College 教員養成学校

TMPI : Tonga Maritime Polytechnique Institute 海洋技術学院

<APPENDIX - 11> STATISTICAL DATA ON SECONDARY SCHOOLS IN TONGA

TABLE - 1 Time per Class, Number of Classes and Total Hours per Day of Each School

	Time per Class	Number of Classes per Day		Number of Total Classes per Day	Hours per Day
		Morning	Afternoon		
<b><u>Government</u></b>					
Tonga High School	60	3	2	5	300
Tonga College	50	5	1	6	300
Talafo'ou Middle School	45	5	2	7	315
○ Vava'u High School	60	3	2	5	300
○ 'Eua District High School	50	4	2	6	300
Niuaotoputapu District High School	-	-	-	-	-
Niuafo'ou Middle School	-	-	-	-	-
<b><u>Private Mission</u></b>					
Tupou High School	60	3	2	5	300
Queen Salote College		5	3		315
Tupou College	40	4	3	7	280
Mo'unga'oliva Middle School				6	315
Tapunisiliva College	40	4	4	8	320
Nuku'alofa College					
Nukunuku Secondary School	35	7	3	10	350
Mailefihī/Sio'ilikutapu College					
Taufa'Ahau/Pilolevo College					
Tailulu College					
Taone College					
'Apifo'ou College		4	4	8	325
Takuilau College	40	4	4	8	320
Chanel High School					
St. Joseph's Community College					
Liahona High School	60	3	3	6	300
Saineha High School					
Liahona Middle School					
Tailulu College Tongatapu	60	4	1	5	300
Tailulu College of Vava'u					
Tailulu College of Ha'apai					
St. Andrew's School	40	6	2	8	320
Beulah College	60	3	2	5	300
Lavengamalie College		4	4	8	325
<b><u>Private Non-Mission Schools</u></b>					
'Atenisi Institute	-	-	-	-	-

○ denotes the objectives of this project



TABLE - 2 Number of Children who has taken the Examination of S. C., went on to Form 6, and a higher stage of education - 1988

	Number of Children who has taken the Examination of S.C.	Number of Children who went on to Form 6	Ratio of Children who went on to a Higher Stage of Education
<u>Government</u>			
Tonga High School	93	80	86
Tonga College	108	41	38
Talafo'ou Middle School	-	-	-
○ Vava'u High School	71	20	28
○ 'Eua District High School	88	11	13
Niuaotoputapu District High School	21	8	38
Niuafo'ou Middle School	-	-	-
<u>Private Mission / Private Non-Mission Schools</u>			
Tupou High School	146	14	10
Queen Salote College	42	29	69
Tupou College	78	15	19
Mo'unga'olive Middle School	-	-	-
Tapunisiliva College	-	-	-
Nuku'alofa College	-	-	-
Nukunuku Secondary School	-	-	-
Mailefifi/Sio'ilikutapu College	128	7	5
Taufa'ahau/Pilolevo College	15	1	7
Tailulu College	-	-	-
Taone College	-	-	-
'Apifo'ou College	182	40	22
Takuilau College	84	12	14
Chanel High School	49	5	10
St. Joseph's Community College	51	19	37
Liahona High School	120	35	29
Saineha High School	94	2	-
Liahona Middle School	-	-	-
Tailulu College Tongatapu	7	3	43
Tailulu College of Vava'u	13	1	8
Tailulu College of Ha'apai	14	0	0
St. Andrew's School	99	8	8
Beulah College	40	13	33
Lavengamalie College	104	18	17

○ denotes the objectives of this project

Vava'u High School	1987	52	23	44
	1988	71	20	28
	1989	75	37	49

**TABLE -- 3** Number of Children who took the Examination to U.E., Number and Ratio of Successful Children - 1988

	Number of those took Examination	Number of successful Children	%
<b><u>Government</u></b>			
Tonga High School	100	30	30.0
Tonga College	37	5	13.5
Talafa'ou Middle School	-	-	-
○ Vava'u High School	39	7	17.9
○ 'Eua District High School	22	3	13.6
Niutoputapu District High School	-	-	-
Niufu'ou Middle School	-	-	-
<b><u>Private Mission</u></b>			
Tupou High School	148	7	4.7
Queen Salote College	26	6	28.1
Tupou College	18	2	11.1
Mo'unga'olive Middle School	-	-	-
Tapunisiliva College	-	-	-
Nuku'alofa College	-	-	-
Nukunuku Secondary School	-	-	-
Mallefihl/Sio'ilikutapu College	58	0	0
Taufa'Ahau/Pilolevo College	-	-	-
Tailulu College	-	-	-
Taone College	-	-	-
'Apifo'ou College	80	16	20.0
Takuilau College	32	6	18.8
Chanel High School	-	-	-
St. Joseph's Community College	-	-	-
Liahona High School	44	6	13.6
Saineha High School	-	-	-
Liahona Middle School	-	-	-
Tailulu College Tongatapu	-	-	-
Tailulu College of Vava'u	-	-	-
Tailulu College of Ha'apai	-	-	-
St. Andrew's School	26	2	7.7
Boulah College	12	2	16.7
Lavengamalie College	44	6	14.6
<b><u>Private Non-Mission Schools</u></b>			
'Atenisi Institute	-	-	-

○ denotes the objectives of this project

<APPENDIX - 12> VAVA'U AND 'EUA DISTRICT HIGH SCHOOL

● School Organization of Vava'u High School and 'Eua District High School

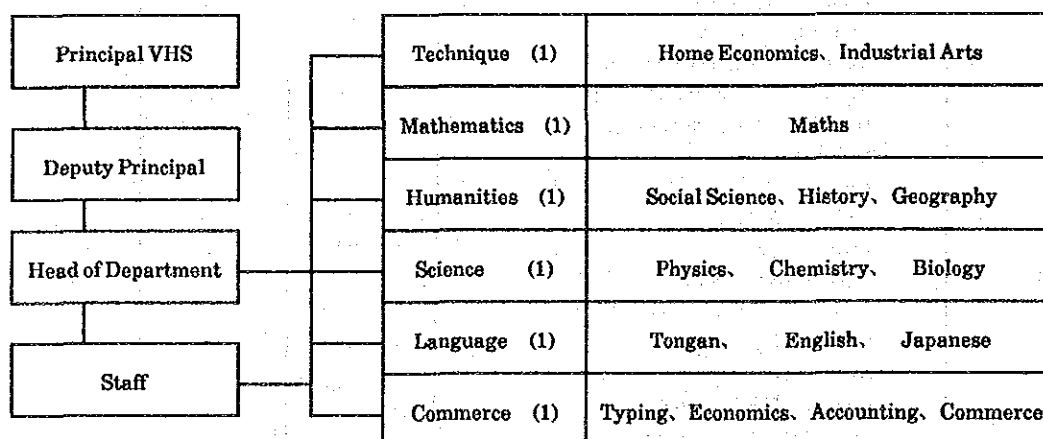
TABLE - 1 Beginning and Ending Time, whether or not There is Resting Time and Time for Lunch

	Time of beginning of class	Break	Lunch Time	Time of finishing last class
<b>Government</b>				
Tonga High School	9 : 00	20	60	3 : 20
Tonga College	8 : 45	15	50	2 : 50
Talafo'ou Middle School	8 : 45	"	60	3 : 15
○ Vava'u High School	9 : 00	-	30	2 : 30
○ 'Eua District High School	8 : 15	20	60	3 : 30
Niuaotoputapu District High School				
Niuafo'ou Middle School				

○ denotes the objectives of this project

● Time Table of Vava'u and 'Eua District High School

TABLE - 2



● Commutation Means of Children and Teachers to Vava'u and 'Eua District High School

TABLE - 3

Time Schedule of Vava'u High School - 1990

8:30	-	9:00	Morning Assembly
9:00	-	9:10	Checking of Attendance
9:10	-	10:10	1st hour
10:10	-	11:10	2nd hour
11:10	-	12:10	3rd hour
12:10	-	12:40	Lunch time
12:40	-	13:40	4th hour
13:40	-	14:40	5th hour
14:40	-	14:50	Cheking

Time Schedule of 'Eua District High School - 1990

8:15	-	8:30	Morning Assembly
8:30	-	9:00	Checking of Attendance
9:00	-	9:50	1st hour
9:50	-	10:40	2nd hour
10:40	-	11:00	Break
11:00	-	11:50	3rd hour
11:50	-	12:40	4th hour
12:40	-	1:40	Lunch time
1:40	-	2:30	5th hour
2:30	-	3:20	6th hour
3:20	-	3:30	Cheking

● Commutation Means of Children and Teachers to Vav'u and 'Eua District High School

Commutation Means of Children and Teachers to Vava'u High School - 1990

TABLE - 4

	Bus	Bicycle	On Foot	Car/ Taxi	Motor- bicycle	Total
Form 1	25	—	85	Several people only on the rainy day	—	110
Form 2	22	2	74		—	98
Form 3	19	1	94		—	114
Form 4	20	3	73		—	96
Form 5	13	1	102		—	116
Form 6	27	—	18		—	45
Total	126	7	446	0	0	579
Staff	2	2	24	7	5	40
TOTAL	128	9	470	7	5	619

Commutation Means of Children and Teachers to 'Eua District High School - 1990

TABLE - 5

	Bus	Bicycle	On Foot	Taxi	Total
Form 1	1	—	39	33	73
Form 2	3	—	47	30	80
Form 3	1	—	37	36	74
Form 4	—	—	38	27	65
Form 5	3	—	33	31	67
Form 6	1	—	16	9	26
Total	9	0	210	166	385
Staff	—	—	19	10	29
TOTAL	9	0	229	176	414

- ※ It is not clear regarding the remaining 200 people.
- ※ The reason why there is no children who go to school on bicycle is the geographical condition with many slopes, which is not suitable for bicycle riding.
- ※ As only a few commercial buses, taxis are available in the town, personal cars and taxis on a share basis are used. Taxis are used for commuting to school because the school is located 5 km from the center of the town and there is no school bus services.

● Curriculum of Vava'u High School and 'Eua District High School

● Level 1 and 2

1. English
2. Tongan
3. Mathematics
4. Science
5. Social Science
6. Health Study

Option (one out of): Industrial Arts, Agriculture, Home Economics

● Level 3 and 4

1. English
2. Tongan
3. Geography/History
4. Science
5. Mathematics

Option (One out of) Business Studies, Agriculture, Home Economics, Industrial Arts, Typing, Nursing, Art, Music

● Level 5 and 6

1. English
2. Tongan

Option (Three out of) Accounting, Economics, History, Geography, Agriculture, Industrial Arts, Home Economics, Mathematics, Science, Biology, Chemistry, Physics, Typing, At, Nursing, Technology/Crafts

● **Physical Education in Vava'u High School**

1st trimestre	1)	School Sports Festival	February
	2)	Inter-Schools Sports Festival	April
	(A)	Personal Training	Every evening
	(B)	Special Sports Programme	Every Friday
2nd trimestre	1)	Boys Rugby	Level 1~7 + Seniors (12 teams)
	2)	Girls Netball	(8 teams)
	(A)	Training	Every evening
	(B)	Competition	Every Friday
	(C)	Training of Tennis, Volleyball	
		(those who participate in inter-schools competition)	
3rd trimestre	1)	Mainly Tennis	Every Friday
	2)	Club activities organized by children	Every evening

• Time Tables per Form at the Vava'u High School

FORM TIME TABLE

	FORM 1A	FORM 1L	FORM 1T
Day 1: Period	1. Social Science 2. Mathematics 3. Tongan Std. 4. Option 5. English	1. Tongan Std. 2. English 3. Mathematics 4. Option 5. English Science	1. Tongan Std. 2. Science 3. Mathematics 4. Option 5. English
Day 2: Period	1. Mathematics 2. Tongan Std. 3. English 4. Health Std. 5. Science	1. Science 2. Health Std. 3. Mathematics 4. Social Science 5. English	1. Social Science 2. Tongan Std. 3. Health Std. 4. Science 5. English
Day 3: Period	1. English 2. English 3. Tongan Std. 4. Science 5. Option	1. English 2. Science 3. Mathematics 4. Tongan Std. 5. Option	1. Science 2. English 3. Mathematics 4. Health Std. 5. Option
Day 4: Period	1. Tongan Std. 2. Science 3. Mathematics 4. Health Std. 5. English	1. Tongan Std. 2. English 3. Science 4. Social Science 5. Mathematics	1. Tongan Std. 2. Mathematics 3. English 4. English 5. Social Science
Day 5: Period	1. Science 2. Social Science 3. English 4. Mathematics 5. Physical Education	1. Social Science 2. Science 3. Mathematics 4. English 5. Physical Education	1. English 2. Science 3. Mathematics 4. Social Science 5. Physical Education
Day 6: Period	1. English 2. Option 3. Social Science 4. Science 5. Mathematics	1. Tongan Std. 2. Option 3. Health Std. 4. English 5. English	1. English 2. Option 3. Science 4. Mathematics 5. Tongan Std.

Option: Home Economics or Industrial Arts or Agriculture

FORM TIME TABLE

FORM 2K

- Day 1: Period 1. Science  
 2. English  
 3. English  
 4. Mathematics  
 5. Health Std

- Day 2: Period 1. Mathematics  
 2. Social Science  
 3. English  
 4. Tongan Stu.  
 5. Option

- Day 3: Period 1. Mathematics  
 2. Tongan Stu.  
 3. English  
 4. Social Science  
 5. Science

- Day 4: Period 1. Science  
 2. English  
 3. Option  
 4. Mathematics  
 5. Tongan Stu.

- Day 5: Period 1. Option  
 2. Health Std  
 3. Science  
 4. English  
 5. Physical Education

- Day 6: Period 1. Social Science  
 2. Mathematics  
 3. Science  
 4. English  
 5. Tongan Std

Option: Home Economics or Industrial Arts or Agriculture

FORM 2P

1. Tongan Std  
 2. Mathematics  
 3. English  
 4. Science  
 5. Social Science

1. Health Std  
 2. Science  
 3. Mathematics  
 4. English  
 5. Option

1. Tongan Stu.  
 2. Social Science  
 3. English  
 4. Science  
 5. Mathematics

1. English  
 2. English  
 3. Option  
 4. Tongan Stu.  
 5. Science

1. Option  
 2. Mathematics  
 3. English  
 4. Tongan Std  
 5. Physical Education

1. Science  
 2. Social Science  
 3. Health Std  
 4. Mathematics  
 5. English

FORM 2S

1. Science  
 2. Social Science  
 3. Mathematics  
 4. English  
 5. English

1. Science  
 2. Mathematics  
 3. English  
 4. Tongan Stu.  
 5. Option

1. Mathematics  
 2. Tongan Stu.  
 3. Health Std  
 4. Social Science  
 5. English

1. Mathematics  
 2. Tongan Std  
 3. Option  
 4. English  
 5. Science

1. Option  
 2. English  
 3. Science  
 4. Tongan Std  
 5. Physical Education

1. Social Science  
 2. Mathematics  
 3. Science  
 4. English  
 5. Health Std



FORM TIME TABLE

FORM 3L

- Day 1: Period 1. Tongan Std  
 2. Option 2  
 3. Mathematics  
 4. Science  
 5. English

FORM 3T

1. English  
 2. Option 2  
 3. Tongan Std  
 4. Mathematics  
 5. Science

FORM 3E

1. Tongan Std  
 2. Option 2  
 3. English  
 4. Science  
 5. Science

FORM 3F

1. Tongan Std  
 2. Option 2  
 3. English  
 4. Mathematics  
 5. Science

- Day 2: Period 1. Geography/History  
 2. Tongan Std  
 3. Mathematics  
 4. Option 1  
 5. English

1. Geography/History  
 2. Tongan Std  
 3. Mathematics  
 4. Option 1  
 5. English

1. Geography/History  
 2. Tongan Std  
 3. English  
 4. Option 1  
 5. Mathematics

1. Geography/History  
 2. Mathematics  
 3. English  
 4. Option 1  
 5. Science

- Day 3: Period 1. Mathematics  
 2. Geography/History  
 3. Science  
 4. Option 2  
 5. English

1. English  
 2. Geography/History  
 3. Mathematics  
 4. Option 2  
 5. Science

1. Science  
 2. Geography/History  
 3. English  
 4. Option 2  
 5. Mathematics

1. Tongan Std  
 2. Geography/History  
 3. Mathematics  
 4. Option 2  
 5. English

(2)

- Day 4: Period 1. Tongan Std  
 2. Option 1  
 3. Science  
 4. Science  
 5. English

1. Science  
 2. Option 1  
 3. Mathematics  
 4. English  
 5. Tongan Std

1. English  
 2. Option 1  
 3. Mathematics  
 4. Tongan Std  
 5. Science

1. Mathematics  
 2. Option 1  
 3. English  
 4. Tongan Std  
 5. Science

- Day 5: Period 1. Tongan Std  
 2. Mathematics  
 3. English  
 4. Option 2  
 5. Physical Education

1. English  
 2. Mathematics  
 3. Science  
 4. Option 2  
 5. Physical Education

1. Mathematics  
 2. Science  
 3. English  
 4. Option 2  
 5. Physical Education

1. English  
 2. Tongan Std  
 3. Science  
 4. Option 2  
 5. Physical Education

- Day 6: Period 1. Science  
 2. English  
 3. Geography/History  
 4. Option 1  
 5. Mathematics

1. Tongan Std  
 2. English  
 3. Geography/History  
 4. Option 1  
 5. Science

1. Mathematics  
 2. Tongan Std  
 3. Geography/History  
 4. Option 1  
 5. English

1. Mathematics  
 2. English  
 3. Geography/History  
 4. ~~Geography~~ *History Option 1*  
 5. Science

Option 1: Commercial Studies or Agriculture or Japanese or Typing

Option 2: Home Economics or Japanese or Industrial Arts or Typing

Students have to do either Geography or History

FORM TIME TABLE

FORM 41

- Day 1: Period 1. Geography/History  
 2. Science  
 3. Mathematics  
 4. English  
 5. Option 1
- Day 2: Period 1. Science  
 2. Option 2  
 3. English  
 4. Tongan Std  
 5. Geography/History

FORM 45

1. Geography/History  
 2. Tongan Std  
 3. Mathematics  
 4. English  
 5. Option 1
1. English  
 2. Option 2  
 3. Science  
 4. Science  
 5. Geography/History

FORM 43

1. Geography/History  
 2. Mathematics  
 3. English  
 4. Science  
 5. Option 1
1. English  
 2. Option 2  
 3. Mathematics  
 4. Tongan Std  
 5. Geography/History

- Day 3: Period 1. Science  
 2. Option 1  
 3. English  
 4. Mathematics  
 5. Tongan Std

1. Tongan Std  
 2. Option 1  
 3. Mathematics  
 4. Science  
 5. English

1. English  
 2. Option 1  
 3. Mathematics  
 4. Science  
 5. Science

- Day 4: Period 1. Option 2  
 2. English  
 3. Tongan Std  
 4. Mathematics  
 5. Geography/History

1. Option 2  
 2. Mathematics  
 3. English  
 4. Science  
 5. Geography/History

1. Option 2  
 2. English  
 3. Mathematics  
 4. Tongan Std  
 5. Geography/History

- Day 5: Period 1. English  
 2. Option 1  
 3. Tongan Std  
 4. Mathematics  
 5. Physical Education

1. English  
 2. Option 1  
 3. Tongan Std  
 4. Mathematics  
 5. Physical Education

1. English  
 2. Option 1  
 3. Science  
 4. Tongan Std  
 5. Physical Education

- Day 6: Period 1. Science  
 2. Science  
 3. Mathematics  
 4. English  
 5. Option 2

1. Mathematics  
 2. Science  
 3. Tongan Std  
 4. English  
 5. Option 2

1. Science  
 2. English  
 3. Tongan Std  
 4. Mathematics  
 5. Option 2

Students have to take either Geography or History

Option 1: Accounting or Home Economics or Industrial Arts

Option 2: Economics or Agriculture or Japanese or Typing

FORM TIME TABLE

FORM 5F

FORM 5H

FORM 2 T

FORM 5E

- Day 1: Period 1. Option 2  
 2. Tongan Stu  
 3. Option 1  
 4. English  
 5. Mathematics

- Day 2: Period 1. Mathematics  
 2. Tongan Stu  
 3. English  
 4. Option 1  
 5. Option 2

- Day 3: Period 1. Option 2  
 2. Mathematics  
 3. Option 1  
 4. Tongan Stu  
 5. English

- Day 4: Period 1. Option 1  
 2. Option 2  
 3. Tongan Stu  
 4. Mathematics  
 5. English

- Day 5: Period 1. Option 1  
 2. Tongan Stu  
 3. English  
 4. Option 2  
 5. Physical Education

- Day 6: Period 1. English  
 2. Option 2  
 3. Option 2  
 4. Tongan Stu  
 5. Mathematics

1. Option 2  
 2. Tongan Stu  
 3. Option 1  
 4. Mathematics  
 5. English

1. Tongan Stu  
 2. English  
 3. Mathematics  
 4. Option 1  
 5. Option 2

1. Option 2  
 2. Tongan Stu  
 3. Option 1  
 4. Mathematics  
 5. English

1. Option 1  
 2. Option 1  
 3. Mathematics  
 4. English  
 5. Tongan Stu

1. Option 1  
 2. English  
 3. Tongan Stu  
 4. Option 2  
 5. Physical Education

1. Tongan Stu  
 2. Option 2  
 3. Option 2  
 4. Mathematics  
 5. English

1. Option 2  
 2. Mathematics  
 3. Option 1  
 4. Mathematics  
 5. English

1. Mathematics  
 2. English  
 3. Tongan Stu  
 4. Option 1  
 5. Option 2

1. Option 2  
 2. Tongan Stu  
 3. Option 1  
 4. English  
 5. Mathematics

1. Option 1  
 2. Option 1  
 3. English  
 4. Mathematics  
 5. Tongan Stu

1. Option 1  
 2. English  
 3. Tongan Stu  
 4. Option 2  
 5. Physical Education

1. Mathematics  
 2. Option 2  
 3. Option 2  
 4. English  
 5. Tongan Stu

1. Option 2  
 2. English  
 3. Option 1  
 4. Mathematics  
 5. Tongan Stu

1. English  
 2. Mathematics  
 3. Tongan Stu  
 4. Option 1  
 5. Option 2

1. Option 2  
 2. Mathematics  
 3. Option 1  
 4. Tongan Stu  
 5. English

1. Option 1  
 2. Option 1  
 3. Mathematics  
 4. Tongan Stu  
 5. English

1. Option 1  
 2. Tongan Stu  
 3. English  
 4. Option 2  
 5. Physical Education

1. English  
 2. Option 2  
 3. Option 2  
 4. Tongan Stu  
 5. Mathematics

Option 1: Economics or Industrial Arts or Science 2 or Geography

Option 2: Accounting or Agriculture or Japanese or Science or History

OPTION 1

FORM 6P

- Day 1: Period 1. English  
 2. Mathematics  
 3. Option 1  
 4. Option 3  
 5. Option 2

1. Mathematics  
 2. English  
 3. Option 1  
 4. Option 3  
 5. Option 2

- Day 2: Period 1. Option 1  
 2. Option 3  
 3. Option 3  
 4. Mathematics  
 5. English

1. Option 1  
 2. Option 3  
 3. Option 3  
 4. English  
 5. Mathematics

- Day 3: Period 1. English  
 2. Mathematics  
 3. Option 3  
 4. Option 2  
 5. Option 1

1. Mathematics  
 2. English  
 3. Option 3  
 4. Option 2  
 5. Option 1

- Day 4: Period 1. English  
 2. Mathematics  
 3. Option 1  
 4. Mathematics  
 5. Option 2

1. Mathematics  
 2. English  
 3. Option 1  
 4. English  
 5. Option 2

- Day 5: Period 1. English  
 2. Option 3  
 3. Option 2  
 4. Option 2  
 5. Physical Education

1. English  
 2. Option 3  
 3. Option 2  
 4. Option 2  
 5. Physical Education

- Day 6: Period 1. Option 1  
 2. English  
 3. Option 2  
 4. Mathematics  
 5. Option 3

1. Option 1  
 2. Mathematics  
 3. Option 2  
 4. English  
 5. Option 3

Option 1: Chemistry or Accounting or History

Option 2: Physics or Geography

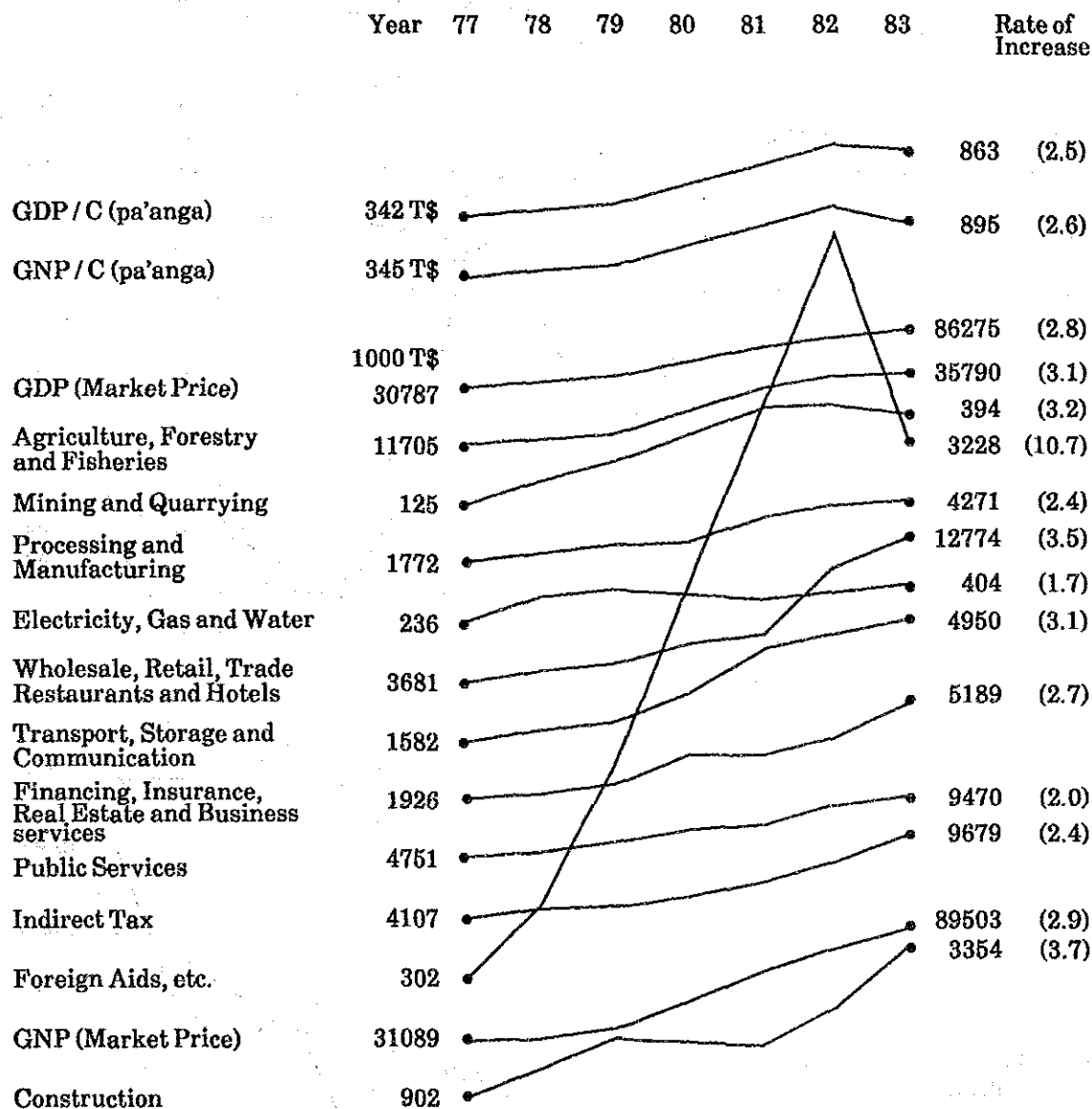
Option 3: Biology or Economics or History



<APPENDIX - 13> CHARACTERISTICS OF CHANGE IN ECONOMIC STRUCTURE IN RECENT YEARS

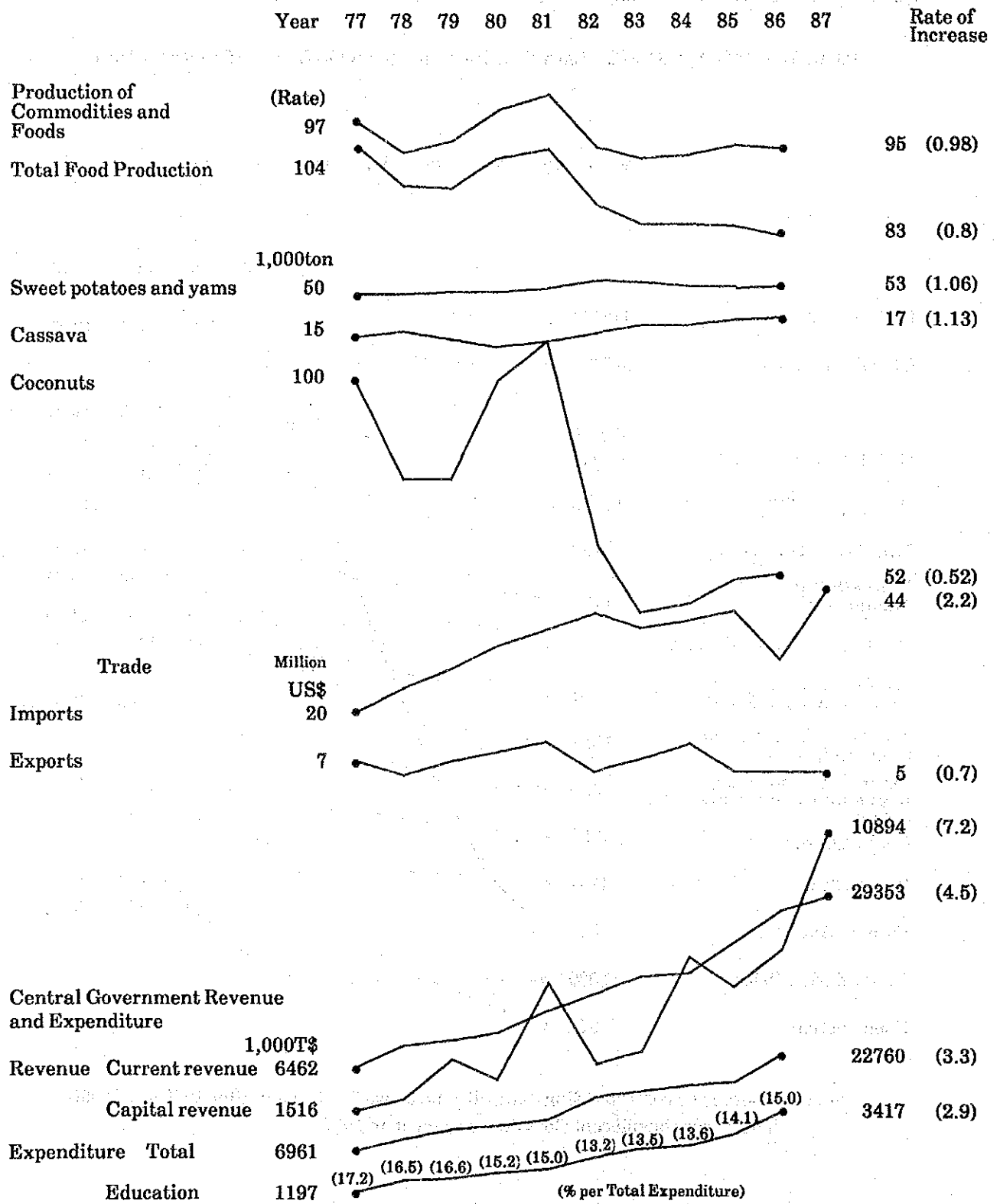
TABLE - 1 Characteristics of Change in Economic Structure in recent years

(Data from "ASIA PACIFIC ALMANAC 1988" and "STATISTICAL ABSTRACT 1987")



Note: There is no corresponding data with the above for the year after 1985 as of 1990. There was considerable loss due to typhoon in 1982.

TABLE - 2 Change in Products, Trade, Revenue and National Expenditure and Education Cost of the Country



Chronological Changes and Characteristics in Main Statistics, and Social and Economic Trends in Togan during the period from 1977~1983 (partly~1987)

- (1) The population of approximately 100,000 remained almost stable during the ten year period in Tonga. However, looking at each region, the population increased almost in all regions during the 20 year period from 1956~1976, and the depopulation was remarkable in regional areas and outer islands during the 10 year period from 1976~1986.
- (2) The rate of utilization of the land in Tonga, mainly the agricultural areas remained stable.
- (3) The GNP increased by approximately 2.5 times during the period from 1977~1983. The breakdown is:
  - 3.7 times in the construction sector
  - 3.4 times in the wholesale, retail, food industry sector
  - 3.1 times in the agriculture/forestries, mining & transportation/communication sector
  - 10.7 times in foreign aid
  - 1.7~2.7 times in others
- (4) However, looking at the commodities and food sectors, they passed their peak in 1991 and has since decreased especially gross production of foods which decreased almost by 20%.
- (5) Looking at the breakdown of the main agricultural products, i.e., potato, cassava, banana, orange and lemon, etc. remained stable, but coconut, which is one of the main products of Tonga passed its peak in 1981 subsequently decreasing to half.
- (6) As for trade, imports increased by 2.2, exports by 0.7, showing a trade deficit increase of 3.

From the outline of the above statistics, the GNP and GDP grew by 2.5 and the growth of the general economy of the country appearing to be leveling out, but, when you look at the breakdown in relation to the agriculture and the food industry, which are the base of the economy of regions or agricultural villages, they are decreasing, especially the production of coconuts which is one of the main industries of Tonga which decreased into half. On the other hand, considering almost triple growth in the industries based in the main part of the bid cities, a drastical opening of the economic gap between urban areas and regional areas can be anticipated.



<APPENDIX - 14>

TOURISM AND FOREIGN AID

• Summary of Tourism in Tonga (Visitors Statistics in 1988)

Table - 1 Visitors in Tonga 1984 - 1988

Classification	1984	1985	1986	1987	1988
Visitors by air	13,713	14,216	16,088	17,239	19,456
Visitors by cargo/passenger liner	116	173	59	428	66
Visitors by yacht	1,290	1,687	1,659	1,982	2,618
Crew of military ship	2,032	1,462	1,294	1,567	2,200
Visitors by passenger liner	43,911	41,748	14,510	9,055	7,536
Crew of passenger liner	20,947	19,320	8,078	6,088	5,032
Crew of Foreign ship	2,760	2,593	2,989	3,211	3,478
<b>Total</b>	<b>84,769</b>	<b>81,199</b>	<b>44,677</b>	<b>39,570</b>	<b>40,386</b>

※ The reason for the decrease in the number of visitors by half during the period from 1984 to 1988 lies in the drastical decrease in the number of tourists by passenger liner.

Table - 2 Income from Tourism 1984 - 1988

Items	1984	1985	1986	1987	1988
Income from Tourism (T\$ Tongan dollars)	6,170,581	10,079,346	11,922,271	14,556,300	9,318,044

• Foreign Aid Plan (New Zealand and Australia)

After the 3rd 5-Year Development Plan, aid from New Zealand and Australia has increased and that from Britain decreased. The reasons lie in the changes of situation in each aid country and geographical conditions.

Table - 1 Aid Programmes for Tonga in New Zealand  
1978/79 - 1980/81

(NZ\$ 1,000)

	1978/79	1979/80	1980/81	For 3 years (Ratio)
Development Plan/Public Affaires	185	225	135	545 ( 6.0)
Public Facilities	883	1,006	784	2,673 ( 29.3)
Agriculture	423	453	275	1,151 ( 12.6)
Forestries	179	55	37	271 ( 3.0)
Industry/Mining	299	244	5	548 ( 6.0)
Commerce/Bank/Tourism/Other Service Industries	120	100	250	470 ( 5.1)
Education	142	427	385	954 ( 10.4)
Health	358	270	60	688 ( 7.5)
Technical Assistance	171	256	300	727 ( 8.0)
Unfixed Projects			1,108	1,108 ( 12.1)
<b>Total Amount of Programme</b>	<b>2,760</b>	<b>3,036</b>	<b>3,339</b>	<b>9,135 (100.0)</b>
<b>Allocated Amount</b>	<b>2,300</b>	<b>2,530</b>	<b>2,783</b>	<b>7,613</b>

\*Source: "Survey on the tendency in industry in Tonga" by Japan/South Pacific Economic Exchange Association

Table - 2 Aid Programme in Australia 1990/91 - 1992/93

(A\$1,000)

Project/Programme	1990/91	1991/92	1992/93
A) Development Plan/Public Affairs/Public Facilities	712	742	742
B) Agriculture/Forestry	799	683	701
C) Industry/Mining/Construction/Commerce/Bank/Tourism	890	940	940
○D) Education/Human Resources Development	1,145	1,215	1,165
E) Health	410	430	450
F) Regional/Outer Island Development	800	950	950
G) Others	100	100	100
<b>Total</b>	<b>4,846</b>	<b>5,060</b>	<b>5,048</b>

Source: The Kingdom of Tonga

Table - 3 Aid Programme in New Zealand 1989/90 - 1991/92

(NZ\$1,000)

Project/Programme	1989/90	1990/91	1991/92
A) Development Plan/Public Affairs	330	400	400
B) Public Facilities	230	121	140
C) Agriculture/Forestry	934	665	546
D) Industry/Mining/Construction	295	40	0
E) Commerce/Bank/Tourism	760	830	930
○F) Education	1,000	1,080	1,200
G) Health	390	410	430
H) Others	700	900	1,050
<b>Total</b>	<b>5,239</b>	<b>4,446</b>	<b>4,696</b>
New Requests (Medical Plan Loan Investment)		500	500
<b>Total</b>	<b>5,239</b>	<b>4,946</b>	<b>5,196</b>

Source: The Kingdom of Tonga

- \* From both Australia and New Zealand, aid in educational and educational materials development sector is increasing. Most of it is used for curriculum development and training programmes.

<APPENDIX - 15> POPULATION AND HOUSING

(1) Characteristics of the region

The Kingdom of Tonga consists of the following four administrative groups:

1. Tongatapu group
2. Vava'u group
3. Ha'apai group
4. Niuas group

Although 'Eua island belongs to the tongatapu group, being adjacent to Tongatapu island, it is the third largest island next to Tongatapu and Vava'u islands.

The population increased by 1.33 on Tongatapu island, 1.12 on Vava'u island, 0.85 on Ha'apai island, 1.30 on 'Eua island and 1.19 on the Niuas group during the period from 1966 to 1986. This shows a remarkable decrease on Ha'apai. The emigrants concentrated toward the Tongatapu group including 'Eua island and the number of people leaving the other regions are drastically increasing on. In particular, the increase in the population and number of people leaving the outer islands, are remarkable

Shown below are the areas, population and population densities of the Kingdom of Tonga.

Table 1 Population and Density

Division	Area (SQ, KM)	Population			Persons/SQ, KM		
		1966	1976	1986	1966	1976	1986
Tongatapu	260.46	47,920	57,411	63,614	184	220	244
Vava'u	119.21	13,533	15,068	15,170	114	127	127
Ha'apai	109.98	10,591	10,792	8,979	96	98	82
'Eua	87.44	3,391	4,486	4,393	39	51	50
Niuas	71.69	1,994	2,328	2,379	28	32	33
Total	648.78	77,429	90,085	94,535	119	139	146

Source: Statistical Abstract, 1987

Shown below is the number of emigrants from the other islands of Tonga in each region.

**Table 2 Regional Number of Emigrates from other Islands of Tonga**

Regions	1957~1966	1967~1976	1977~1984
Tongatapu	+7,314	+9,092	+11,539
○ Vava'u	-3,192	-3,761	-4,233
Ha'Apai	-4,113	-4,888	-6,399
○ 'Eua	+1,270	+1,002	+286
Niuas	-1,279	-1,445	-1,193

※ The regions denoted with ○ are the projected areas. (Source: The Five-Year Development Plan)

From the above two tables, we can consider the characteristics of each island as follows:

- Vava'u island has the highest potential for economic development compared to the other islands in Tonga, based on its size, configuration and climatic conditions, though it is far from Tongatapu island where the capital is situated. Consequently, the depopulation will decrease once the redressing of the regional gap has advanced.
- The inflow of people into Tongatapu, where the capital Nukualofa is located, and the adjacent island, 'Eua island, is remarkable. Only 'Eua island, which shows an influx of population, other than Tongatapu island, is geographically close to Tongatapu, the third largest in size next to Tongatapu and Vava'u and is within the Tongatapu area, appears to have better opportunities of economic development.
- The reason for the higher population outflow rate of Ha'Apai islands is that the islands have physical and geographical disadvantages for economic development, such as its formation consisting of small islands and great distance from the capital of tonga, etc. This makes the economic gap with other regions wider.
- The reason for the higher population outflow rate of Niuas islands also lies in the fact that the islands have disadvantages regarding economic development and modernization, such as the distance from Tongatapu where the capital of tonga is located, the formation consisting of small islands, and so on.

(2) Population and Housing Data

• Population by Division, District and Census years

Table - 3

Division/District	Population			
	1956	1966	1976	1986 1/
<b>1. TONGATAPU</b>	<b>31,264</b>	<b>47,920</b>	<b>57,411</b>	<b>63,614</b>
1.1 Kolofu'ou	6,276	11,245	12,767	15,782
1.2 Kolomotu'a	4,070	7,161	9,794	13,117
1.3 Vaini	5,932	8,063	9,971	11,132
1.4 Tatakamotonga	4,177	1,886	7,151	6,778
1.5 Lapaha	4,324	1,666	7,554	6,992
1.6 Nukunuku	3,634	5,122	6,026	5,790
1.7 Kolovai	2,851	6,698	4,148	4,023
<b>2. VAVAU</b>	<b>12,477</b>	<b>13,533</b>	<b>15,068</b>	<b>15,170</b>
2.1 Neiafu	4,407	4,912	4,661	5,273
2.2 Pangaimotu	957	885	1,118	1,248
2.3 Hahake	1,816	2,000	2,375	2,292
2.4 Leimatu'a	2,162	2,370	2,787	2,875
2.5 Hihifo	1,767	1,797	2,193	2,095
2.6 Motu	1,728	1,569	1,934	1,387
<b>3. HA'APAI</b>	<b>9,918</b>	<b>10,591</b>	<b>10,792</b>	<b>8,979</b>
3.1 Pangai	3,220	3,161	2,938	2,840
3.2 Foa	1,374	1,617	1,703	1,409
3.3 Lulunga	1,541	1,699	1,768	1,588
3.4 Mu'omu'a	944	1,097	1,240	897
3.5 Ha'ano	1,526	1,469	1,496	892
3.6 Uiha	1,313	1,548	1,647	1,353
<b>4. EUA</b>	<b>1,925</b>	<b>3,391</b>	<b>4,486</b>	<b>4,393</b>
4.1 'Eua Motu'a	802	1,721	2,378	2,398
4.2 'Eua Fo'ou	1,123	1,670	2,108	1,995
<b>5. NIUAS</b>	<b>1,254</b>	<b>1,994</b>	<b>2,328</b>	<b>2,379</b>
5.1 Niua Toputapu	1,254	1,395	1,650	1,616
5.2 Niua Fo'ou		599	678	763
<b>Total</b>	<b>56,838</b>	<b>77,429</b>	<b>90,085</b>	<b>94,535</b>

Note: 1/ Figures for 1986 are Provisional Subject to Revision

● Average Number of Persons per Household by Division and Census years

Table - 4

Division	No. of household				Population				Average No. of Persons per Household			
	1956	1966	1976	1986 1/	1956	1966	1976	1986 1/	1956	1966	1976	1986 1/
Tongatapu	4,652	6,632	8,578	9,721	31,264	47,920	57,411	63,614	6.7	7.2	6.7	6.5
Ha'apai	1,472	1,618	1,775	1,616	9,918	10,591	10,792	8,979	6.7	6.5	6.1	5.6
Vava'u	1,916	2,137	2,423	2,547	12,477	13,533	15,068	15,170	6.5	6.3	6.2	6.0
Eua	317	565	748	790	1,925	3,391	4,486	4,393	6.1	6.0	6.0	5.6
Niuas	191	338	384	417	1,254	1,994	2,328	2,379	6.6	5.9	6.1	5.7
∑	8,548	11,290	13,908	15,091	56,838	77,429	90,085	94,535	6.6	6.9	6.5	6.3

Source: Census Reports 1956, 1966 and 1976

Note: 1/ Provisional Figures of 1986 Census Subject to Revision

● Population of Tonga by Size of Households for 1986 and 1976

Table - 5

Size of Household	1986 1/		1976	
	Population in Households	No. of Households	Population in Households	No. of Households
1 Person	754	754	560	560
2 Persons	1,912	956	1,582	791
3 "	4,068	1,356	3,672	1,224
4 "	8,040	1,741	6,088	1,522
5 "	10,050	2,010	8,335	1,667
6 "	11,664	1,944	10,404	1,734
7 "	12,145	1,735	11,571	1,653
8 "	11,168	1,396	10,976	1,372
9 "	9,207	1,023	9,630	1,070
10 "	7,130	713	9,630	963
11 "	5,577	507	4,983	453
12 "	3,852	321	3,732	311
13 "	2,847	219	2,639	203
14 "	1,736	124	2,100	150
15 or more Persons	4,385	292	4,183	235
Total	94,535	15,091	90,085	13,908

Source: Census Report, 1976

Note: 1/ Provisional Figures of 1986 Census Subject to Revision

● Populatoi of Tonga by Religious Denominations by Census years

Table - 6

Religion	1956		1966		1976		1986 2/	
	No.	% (Popula- tion)	No.	% (Popula- tion)	No.	% (Popula- tion)	No.	% (Popula- tion)
Free Wesleyan	28,177	49.6	38,616	49.9	42,687	47.4	40,516	42.9
Roman Catholic	8,364	14.7	12,358	16.0	14,514	16.1	15,181	16.1
Free Church of Tonga	9,942	17.5	11,066	14.3	12,326	13.6	10,403	11.0
Church of Tonga	5,625	9.9	6,967	9.0	8,031	8.9	6,912	7.3
Latter Day Saints	2,925	5.2	5,519	7.1	8,350	9.3	11,436	12.1
Tokaikolo Christian Church	-	-	-	-	...	...	3,025	
Seventh Day Adventists	847	1.5	1,397	1.8	1,919	2.1	2,172	2.3
Anglican Church	529	0.9	811	1.0	874	1.0	666	0.7
Assemblies of God 1/	...	...	24	...	338	0.4	587	0.6
All Others	164	0.3	610	0.8	813	0.9	1,725	5.0
Not Stated	265	0.5	61	0.1	233	0.3	1,917	2.0
<b>Total</b>	<b>56,838</b>	<b>100.0</b>	<b>77,429</b>	<b>100.0</b>	<b>90,085</b>	<b>100.0</b>	<b>94,535</b>	<b>100.0</b>

Source: Census Reports 1956, 1966 and 1976

Note: 1/ Not Tabulated Separately in 1956

2/ Provisional Figures of 1986 Census Subject to Revision

● Households by Type of Dwelling by Census Years 1/

Table - 7

	1956	1966	1976	1986 2/
<u>European Style</u>				
Brick/Cement	14		2,128	2,602
Wood	2,610	4,521	6,316	9,090
<u>Tongan Style</u>				
Iron Roof/Wooden Walls	966	482	1,367	1,127
Thatch Roof/Wooden Walls	743	777	363	630
Iron Roof/Thatch Walls	301	610	438	1,111
Thatch Roof/Thatch Walls	3,244	4,294	2,708	1,111
Others	396	491	536	246
Not Stated	108		52	285
<b>Total</b>	<b>8,382</b>	<b>11,175</b>	<b>13,908</b>	<b>15,091</b>

Source: Census Reports 1956, 1966 and 1976

Note: 1/ This table is for Census year for whole of Tonga

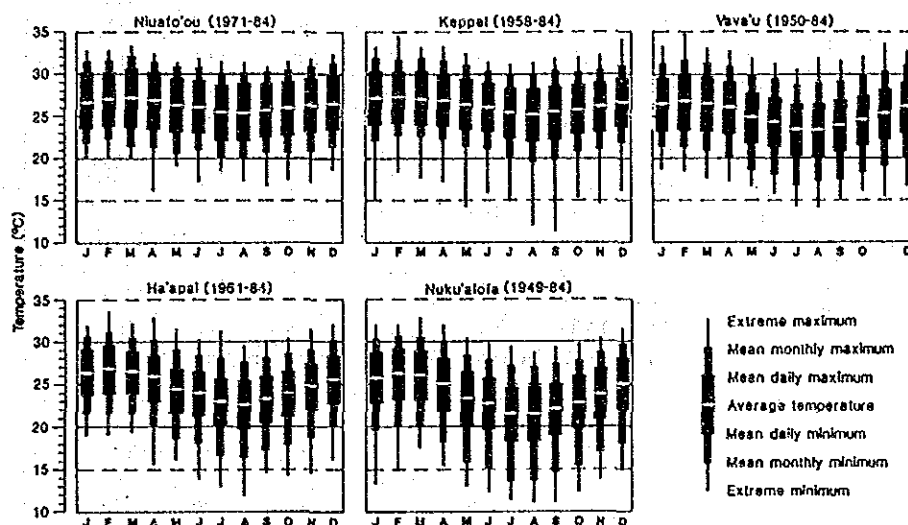
2/ Provisional Figures of 1986 Census Subject to Revision

<APPENDIX - 16>

CLIMATE, WEATHER AND EARTHQUAKE

(1) Air Temperatures

Table - 1



Source: The climate and weather of Tonga  
New Zealand Meteorological Service

(2) Annual Rainfall 1980 - 1987

Table - 2

Year	TONGATAPU	HA'APAI	VAVA'U	NIUATOPUTAPU
1980	177.17	136.00	161.75	138.63
1981	72.83	96.25	176.92	150.33
1982	144.42	114.58	221.67	153.00
1983	69.83	68.86	110.58	141.75
1984	109.25	114.00	150.00	181.83
1985	113.58	109.42	146.08	152.50
1986	105.75	110.67	146.42	181.08
1987	75.08	94.42	148.83	115.91



Table - 3 Monthly rainfall at Tongatapu and Vava'u 1980 - 1987

Month	TONGATAPU							
	1980	1981	1982	1983	1984	1985	1986	1987
January	139	60	386	37	222	97	12	57
February	123	98	238	102	217	162	69	204
March	291	118	253	73	71	212	113	169
April	267	72	136	9	126	54	285	17
May	45	102	241	26	26	102	118	85
June	111	94	58	69	75	140	215	35
July	144	23	87	118	70	56	62	54
August	161	56	149	66	41	27	98	17
September	189	66	75	41	142	28	16	25
October	399	54	34	108	64	53	57	40
November	114	90	19	24	80	3	25	41
December	143	41	57	165	177	429	199	157
Total (Monthly Average)	2,126 (77.17)	874 (72.83)	1,733 (144.42)	888 (69.83)	1,311 (109.25)	1,363 (113.58)	1,269 (105.75)	901 (75.08)
Month	VAVA'U							
	1980	1981	1982	1983	1984	1985	1986	1987
January	162	138	611	173	172	143	92	65
February	161	461	420	218	276	340	80	224
March	343	309	368	42	127	406	186	152
April	368	210	473	42	410	206	277	27
May	69	312	177	78	56	124	80	298
June	84	83	56	20	34	81	451	135
July	84	61	73	34	71	160	99	49
August	202	75	199	21	77	30	66	127
September	197	91	151	51	199	36	189	25
October	76	120	17	42	28	38	159	26
November	91	117	115	86	42	42	18	72
December	104	146	-	520	308	147	60	586
Total (Monthly Average)	1,941 (161.75)	2,123 (176.92)	2,660 (221.67)	1,327 (110.58)	(1,800) (150.00)	1,753 (146.08)	1,757 (146.42)	1,786 (148.83)

(3) Humidity Data of Nuku'alofa and Vava'u

Table - 4 Monthly Average Humidity 1981 - 1986

<u>NUKU'ALOFA: TONGA</u>												Humidity (%) 10:0 AM L.T.		
Year	Month	1	2	3	4	5	6	7	8	9	10	11	12	Average
1981		77	80	74	77	77	76	68	72	67	77	78	76	75
1982		84	80	80	76	77	77	77	74	70	65	70	76	76
1983		78	77	79	71	70	73	72	72	71	68	75	78	74
1984		76	81	75	76	77	76	72	74	74	65	73	78	75
1985		70	79	85	74	75	79	82	72	69	73	70	76	75
1986		71	79	78	77	72	83	71	73	71	72	70	75	74
1981 - 1986														
Average		76	79	79	75	75	77	74	73	70	70	73	77	75%

<u>VAVA'U: TONGA</u>												Humidity (%) 10:0 AM L.T.		
Year	Month	1	2	3	4	5	6	7	8	9	10	11	12	Average
1981		85	89	88	91	84	87	92	89	86	83	89	86	87
1982		93	90	91	89	87	84	79	79	80	82	78	85	85
1983		84	92	87	84	86	85	83	83	89	87	89	94	87
1984		92	94	86	94	88	84	82	89	92	89	91	93	90
1985		88	95	93	88	88	89	88	87	90	91	88	91	90
1986		86	92	91	87	84	95	83	84	85	90	90	88	88
1981 - 1986														
Average		88	92	89	89	86	87	85	85	87	87	88	90	88%

Tonga Meteorological Service

(4) Recent Earthquake Situation in Tonga

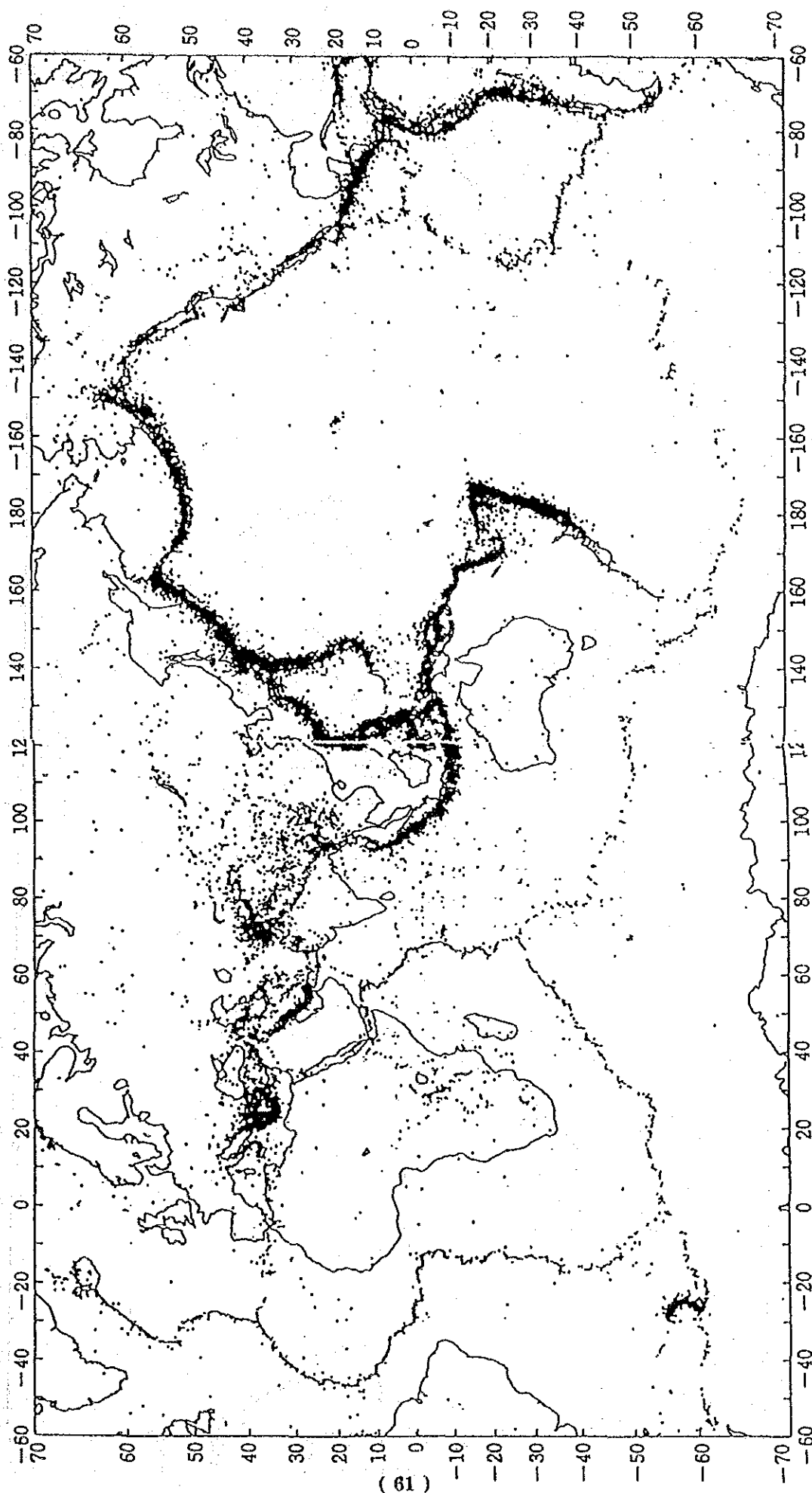
- From World Large Earthquake Chronological Table (1988) -

In this table, earthquakes with a magnitude greater than M5 (5.8 or more regarding  $m_b$  of USGS) and those causing actual death have been selected. The time of incident of earthquake recorded in table below is Greenwich standard time. The number of deaths is shown in brackets in the column "areas". In the column "M", the first letter B, U and P n stands for Barclay, USGS and Pasadena respectively and the second letter, S and B stands for M, and  $m_b$  respectively, ML is the magnitude observed by the local authorities. This information is from "Preliminary Determination of Epicenters" issued by USGS.

Month/Day/Hour/Minutes	M	Latitude	Longitude	Depth (km)	Areas
1 15 8 40	6.2 UB	20.8S	176.0W	214	Tonga Islands
2 29 16 48	6.2 BB	15.3S	174.1W	106	Tonga Islands
6 21 30	5.8 UB	16.2S	173.8W	126	Tonga Islands
3 10 10 25	6.1 BB	20.9S	178.6W	623	Fiji Islands Region
4 2 14 26	6.3 BS	15.4S	173.1W	33	Tonga Islands
6 11 12 17	6.2 BS	15.0S	173.5W	36	Samoa Islands Region
7 19 1 0	6.1 BB	19.6S	175.0W	137	Tonga Islands
8 27 16 30	6.0 UB	15.9S	172.1W	28	Samoa Islands Region
9 30 21 45	5.8 UB	19.4S	177.5W	552	Fiji Islands Region
10 8 4 46	6.5 PS	18.8S	172.4W	35	Tonga Islands Region
11 7 3 50	6.5 PS	22.2S	175.0E	22	South of Fiji Islands
16 5 53	5.8 UB	21.8S	179.4W	582	Fiji Islands Region
12 5 16 5	6.3 BS	15.3S	173.5W	40	Tonga Islands

(Source: Science Chronological Table 1990)

**World Earthquake Distribution Map (M ≥ 4.0, Depth 100km or less, 1970~1985)**



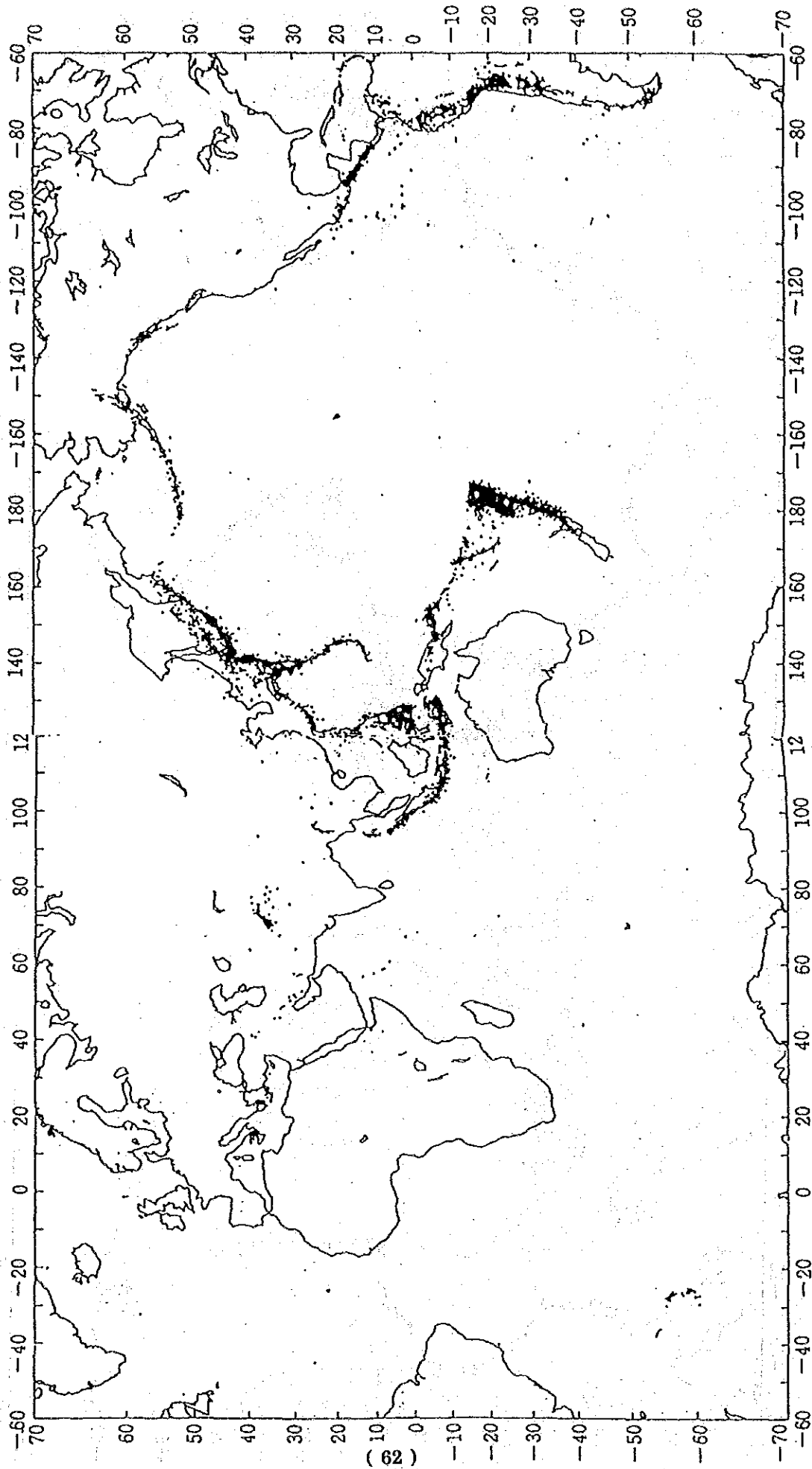
( 61 )

(Data from International Earthquake Center)

\* It shows clearly that earthquakes occur in the area of strip.

Quoted from Science Chronological Tale 1990

**World Earthquake Distribution Map ( $M \geq 4.0$ , Depth 100km or more, 1970~1985)**

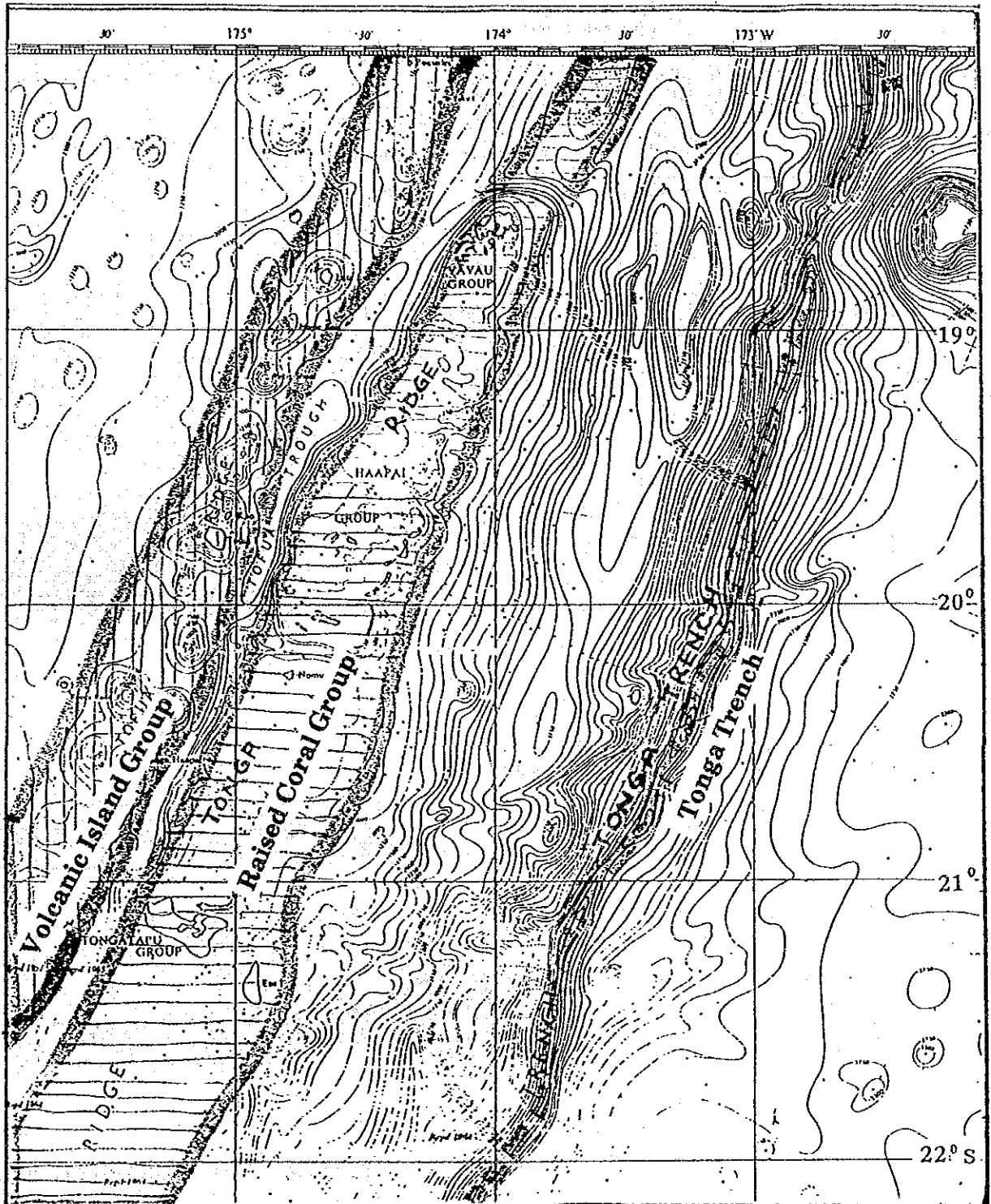


(Data from International Earthquake Center)

Quoted from Science Chronological Tale 1990

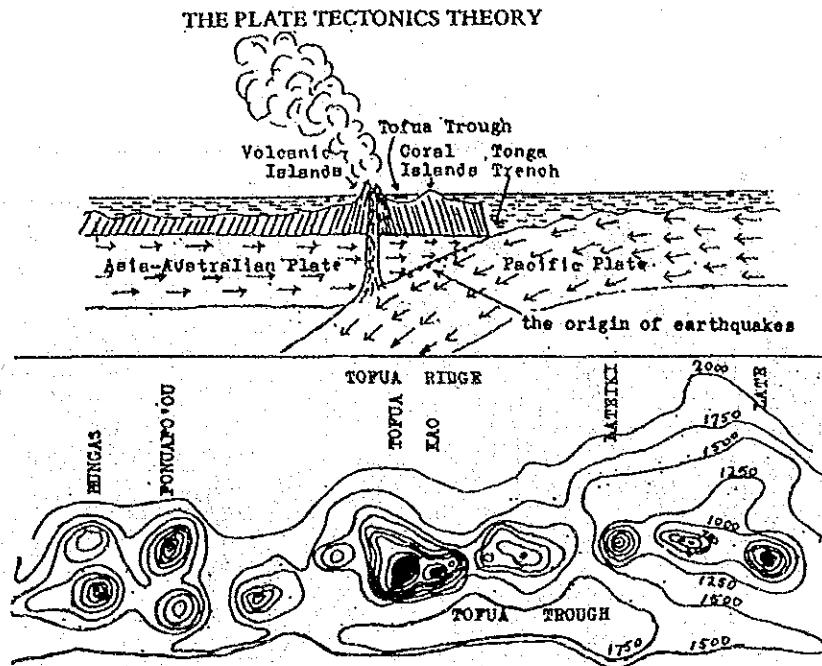
<APPENDIX - 17> CRUSTAL AND GEOLOGICAL CONDITIONS IN TONGA

Fig. - 1 Inset Map of Sea Floor



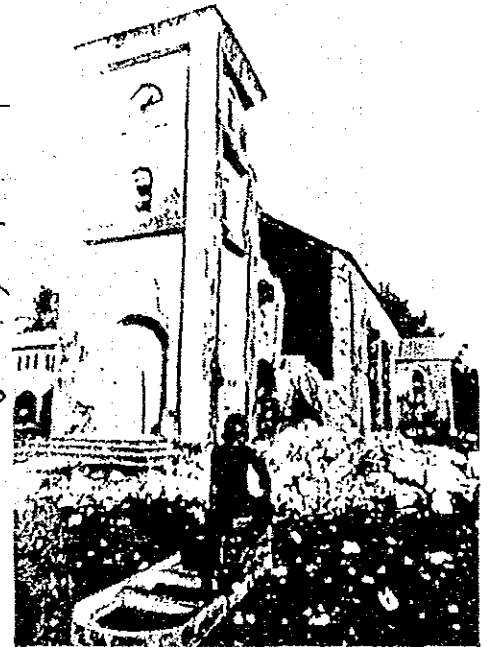
※ Source The GEOGRAPHY of TONGA

Fig. - 2 Plate Tectonics Theory and Cross-section of Crust of 'Eua (1), Lifuka (2) and Vava'u (3)



The structure of part of Tonga's western volcanic ridge extending from the Hungas to Late. The contour lines drawn are 'isobaths', i.e. lines joining all places of the same height below sealevel. The contour interval is 250 metres. The map shows that there are many volcanoes on the summit of the ridge which, while they probably erupted up to the surface in times past, are at present dormant beneath the sea.

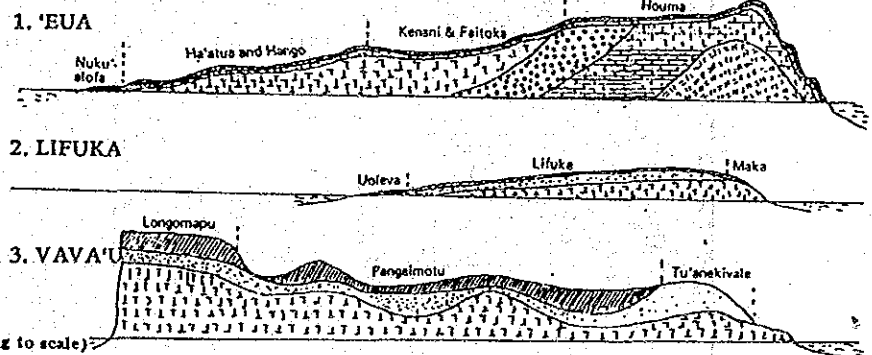
The Catholic Church at Koloval, Tongatapu shattered by the earthquake in June, 1977. (NZ Herald)



**THREE CROSS-SECTIONS**  
Showing Layers of Parent Material and Soil Types

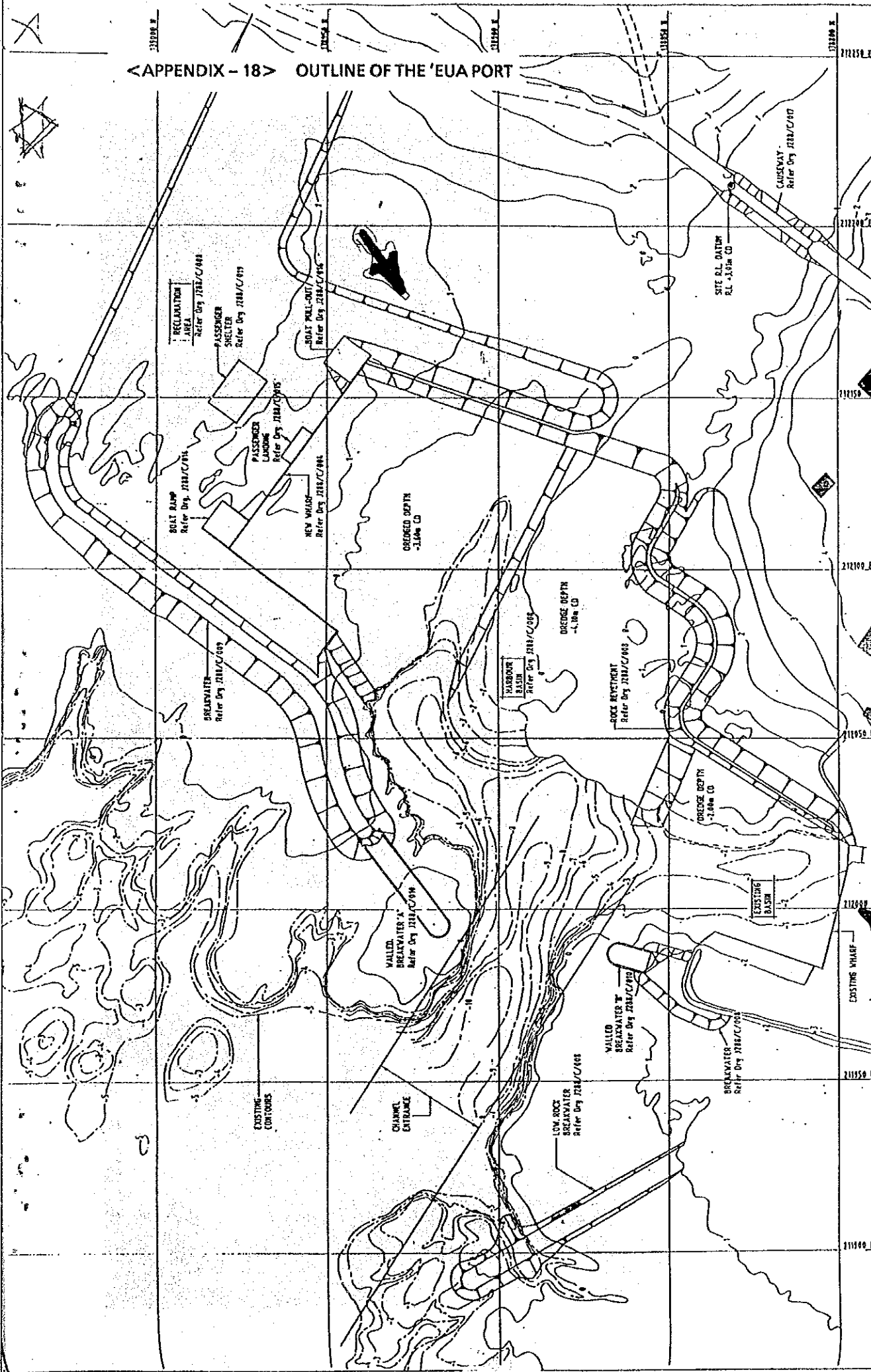
KEY	
<b>VOLCANIC</b>	
	Younger Brown Volcanic Ash
	Older Red Volcanic Ash
	Volcanic rock & dust
	Old Volcanic Core
<b>CORAL</b>	
	Coral Limestone
	Marine Limestone
	Coral Sands

(Cross-Sections and Soil Zones not according to scale)



\* Source The GEOGRAPHY of TONGA

<APPENDIX - 18> OUTLINE OF THE 'EUA PORT



AUSTRALIAN INTERNATIONAL DEVELOPMENT ASSISTANCE BUREAU  
 Project No. 7111  
 Date: DECEMBER 57  
 Drawing No. AS 5909  
 Scale: AS SHOWN  
 Sheet No. 1 of 1  
 Drawing Title: HAFANUA PORT DEVELOPMENT  
 Drawing Sub-Title: GENERAL ARRANGEMENT PLAN  
 Drawing No. J288/C/002

---

**RIEDEL & BYRNE**  
 CONSULTING ENGINEERS PTY. LTD.

Author	Checked	Drawn	Scale
Project	Discipline	Sheet No.	Total Sheets
Site	Client	Contract No.	Contract Name

NOTE: CONTOURS ARE FOR EXISTING LEVELS.  
 Scale: 1" = 100'



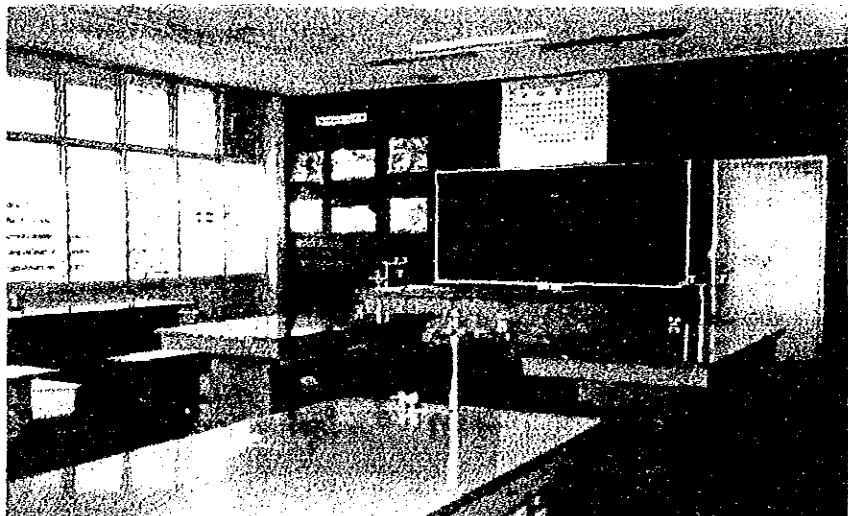
Lecture Hall



General Classroom



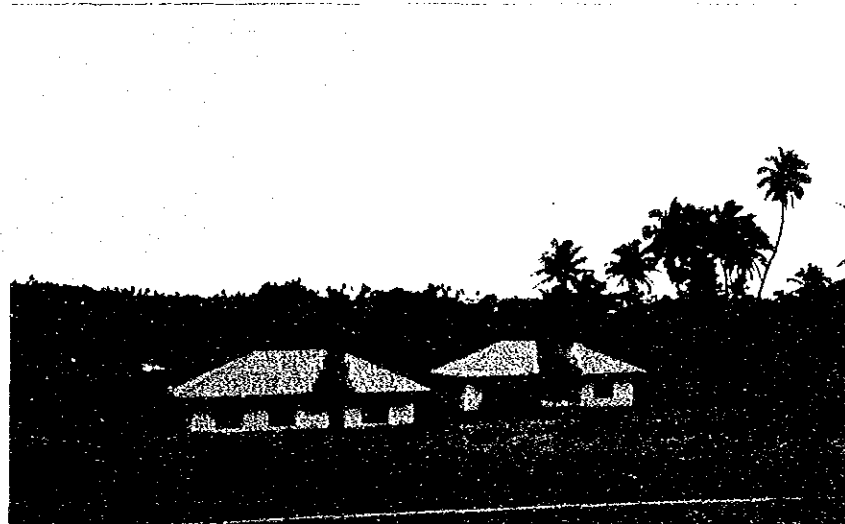
Advanced Science room



General Science Room



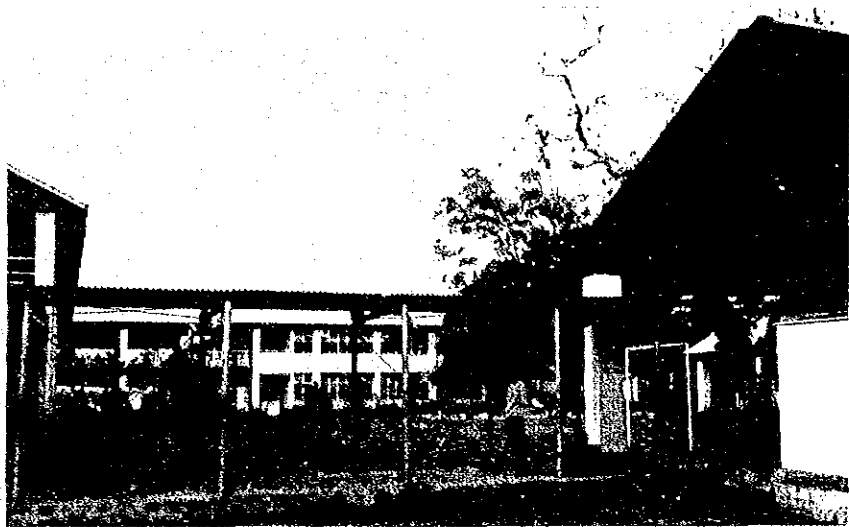
Teachers' Houses  
(constructed at the same time  
as the school building)



Teachers' Houses  
(utilization of the house which  
has been used as a site office  
and storage for construction  
material at the school building  
construction time)



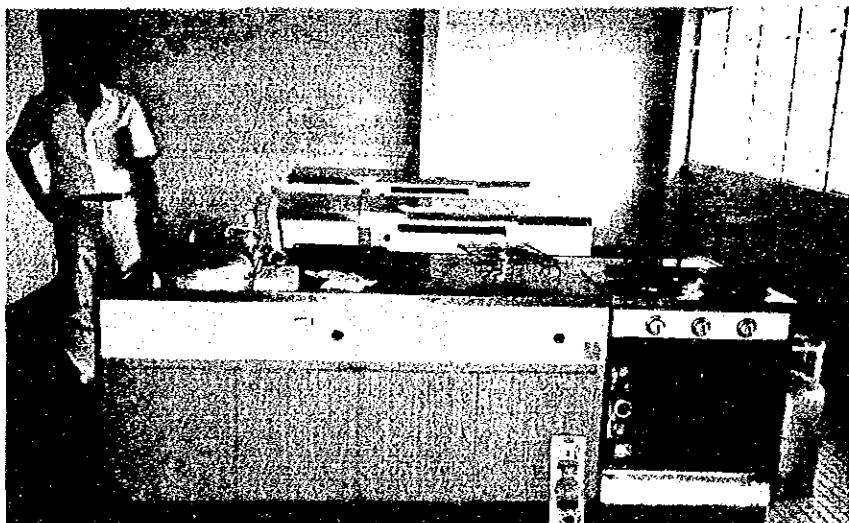
**Roofed Connecting Corridor**  
(Business classroom  
will be expanded here.)



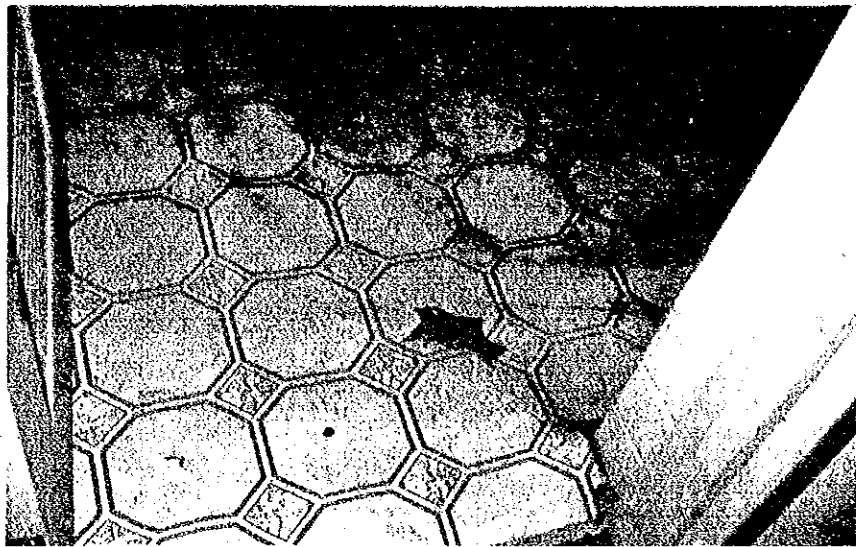
**Home Economics Room**  
(Laundry area)



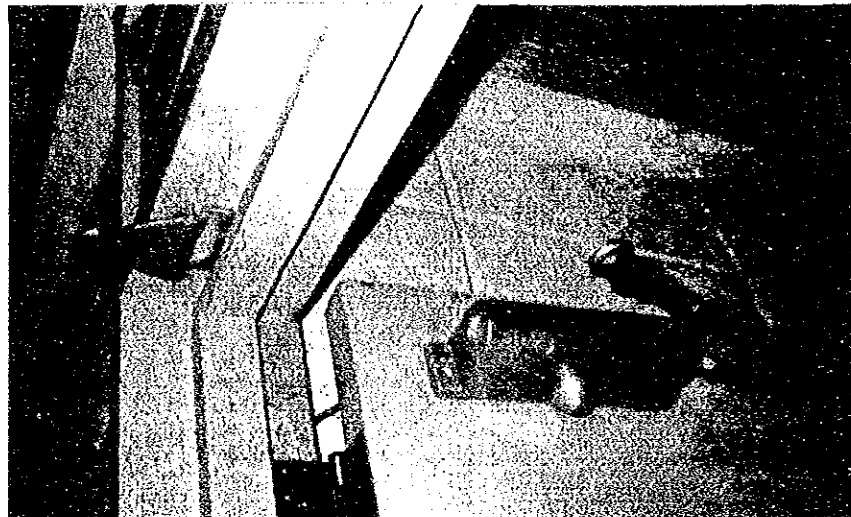
**Home Economics Room**  
(Cooking Practice Table)



Dommmage on Floor Vinyl Sheets



Dommmage on Doorcheck

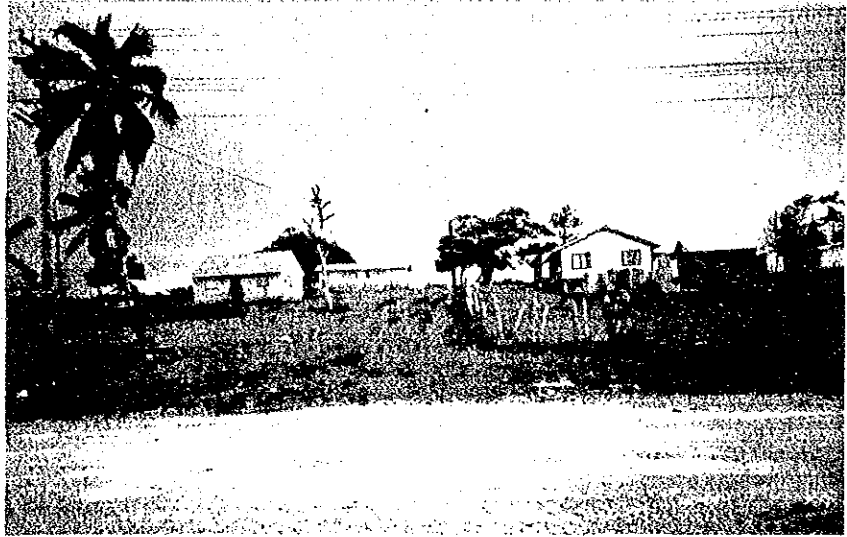


Rusting on the Steel Part



<APPENDIX - 20>    OUTLOOK IN THE VICINITY OF THE 'EUA  
DISTRICT HIGH SCHOOL SITE

Neighbour Primary School



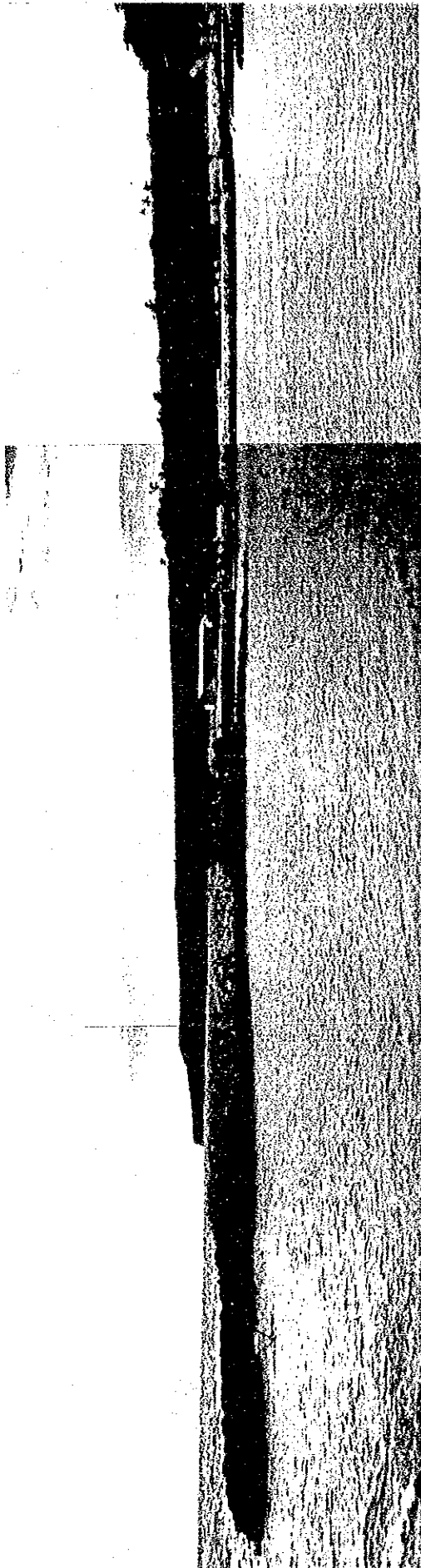
Seeing the Teachers' Housing Site  
from the Neighbour Primary School  
(Over the Fence)



Seeing the Teachers' Housing Site  
from the Court Yard of the Neighbour  
Primary School (Over the Fence)

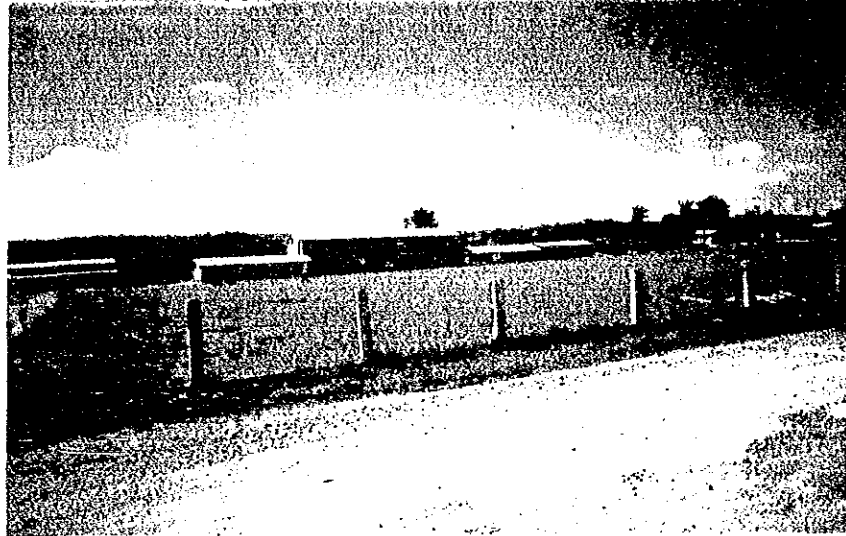


'Eua Port

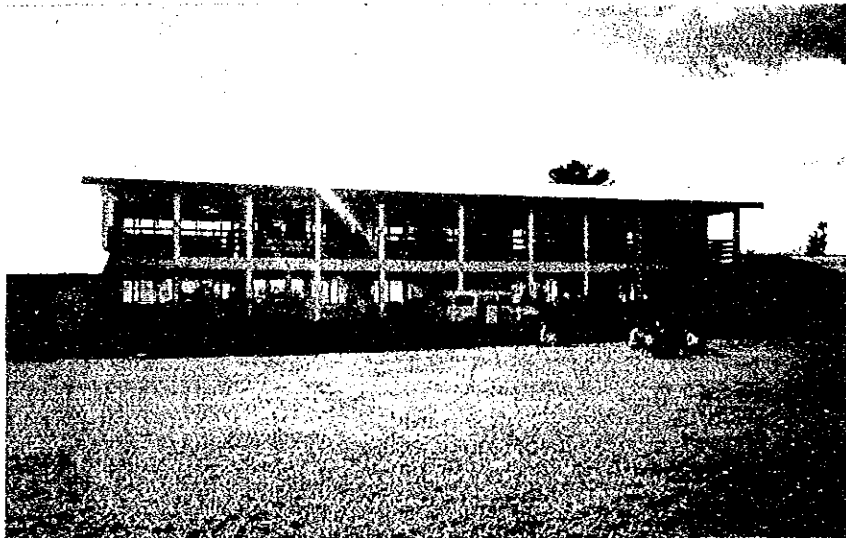


< APPENDIX - 21 >      PRESENT CONDITION OF THE EXISTING SCHOOL  
BUILDING OF THE 'EUA DISTRICT HIGH SCHOOL

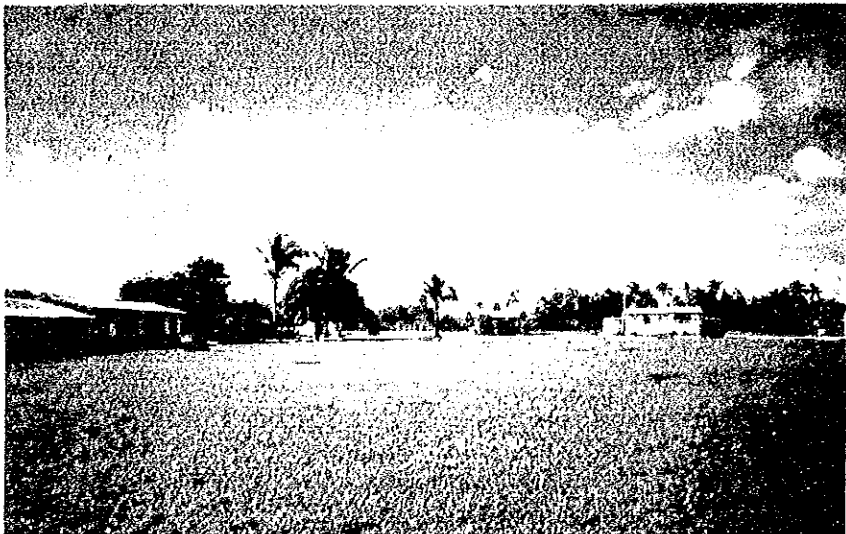
Neighbour Primary School General  
View of the Existing School Building



The Existing Main School Building



The Temporary School Building  
and Teachers' Houses



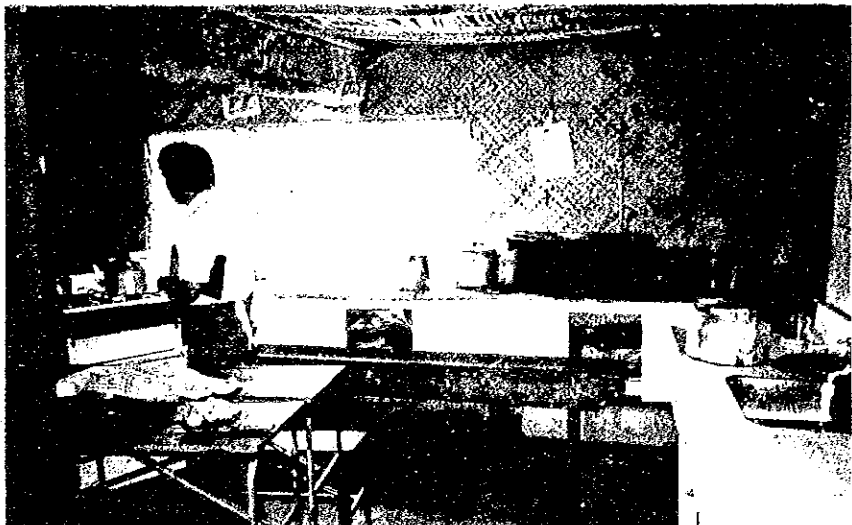
Class Scene



Class Scene

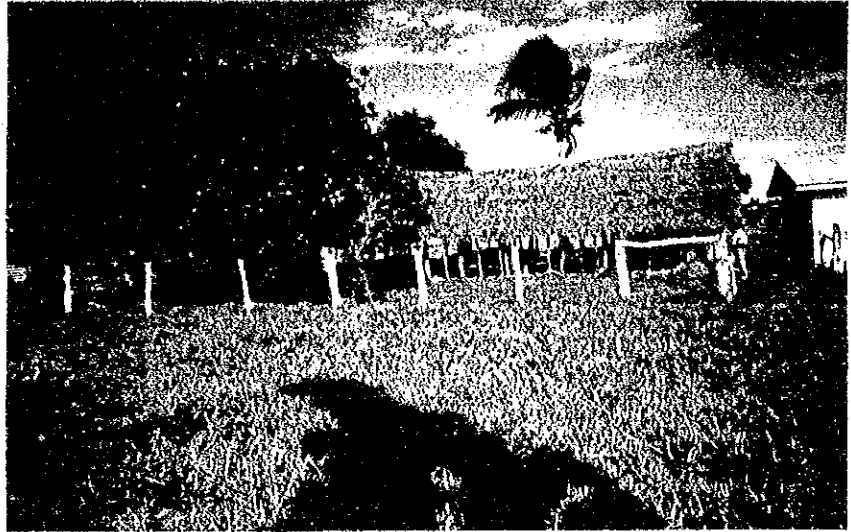


Kitchen Area in Home  
Economics Room

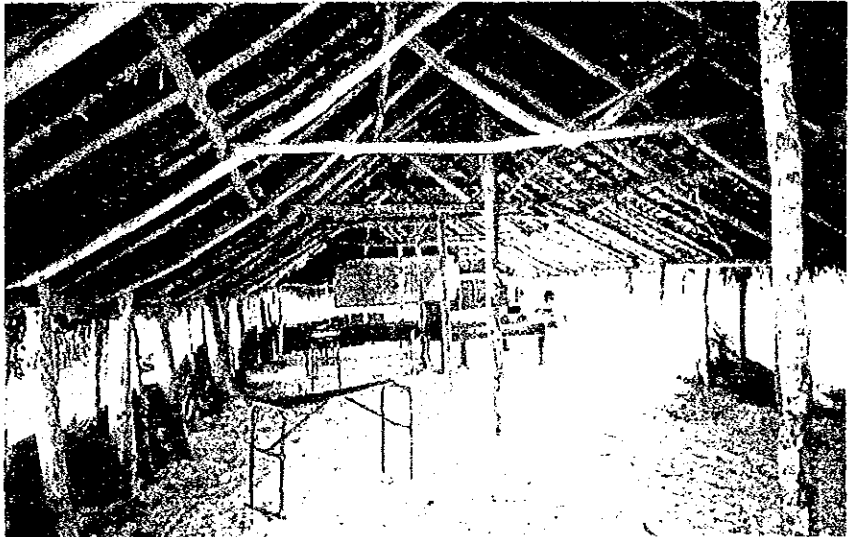




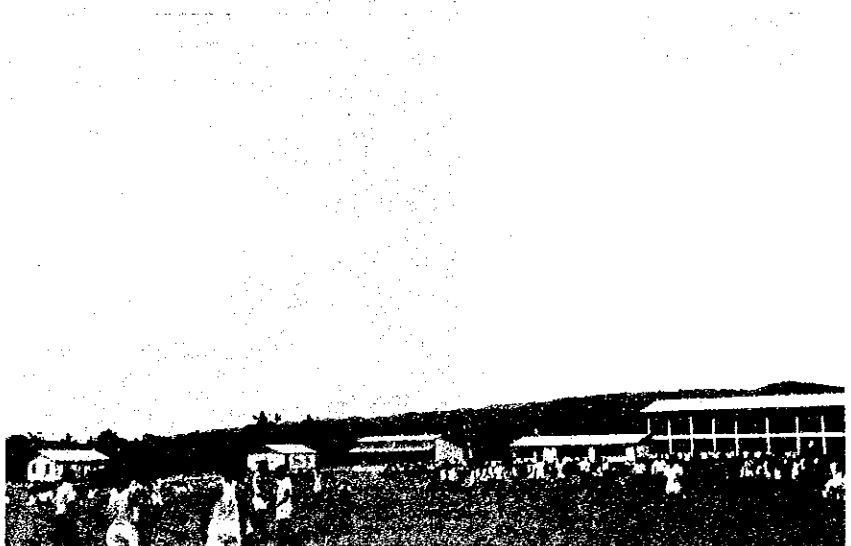
Temporary Classroom



Temporary Classroom



Physical Education class Scene



Morning Meeting Scene



Teachers Office



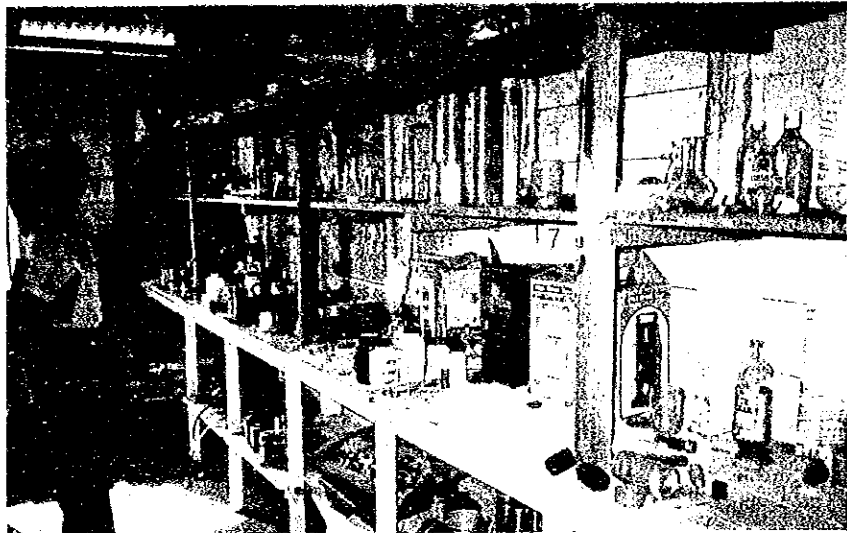
Library



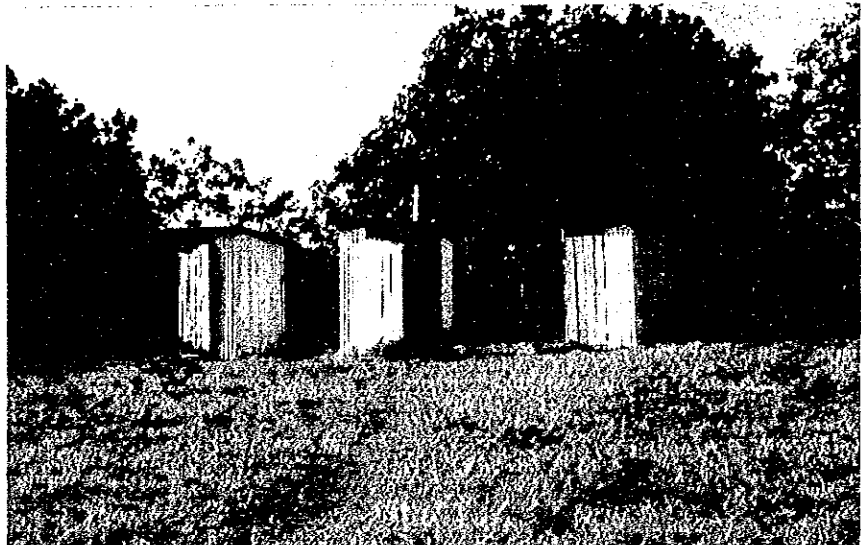
Science Room



Preparation Room



Toilet





JICA