

THE FEASIBILITY STUDY OF SELECTED EXPRESSWAYS IN SINGAPORE

Scale :	PYE ROUTE - I PROFILE (STA. 1+00 - STA. 2+300)	Dwg. No. 92/108
H=1:4000 V=1:400		

This drawing was reduced from original one of scale H=1:2000, V=1:200.

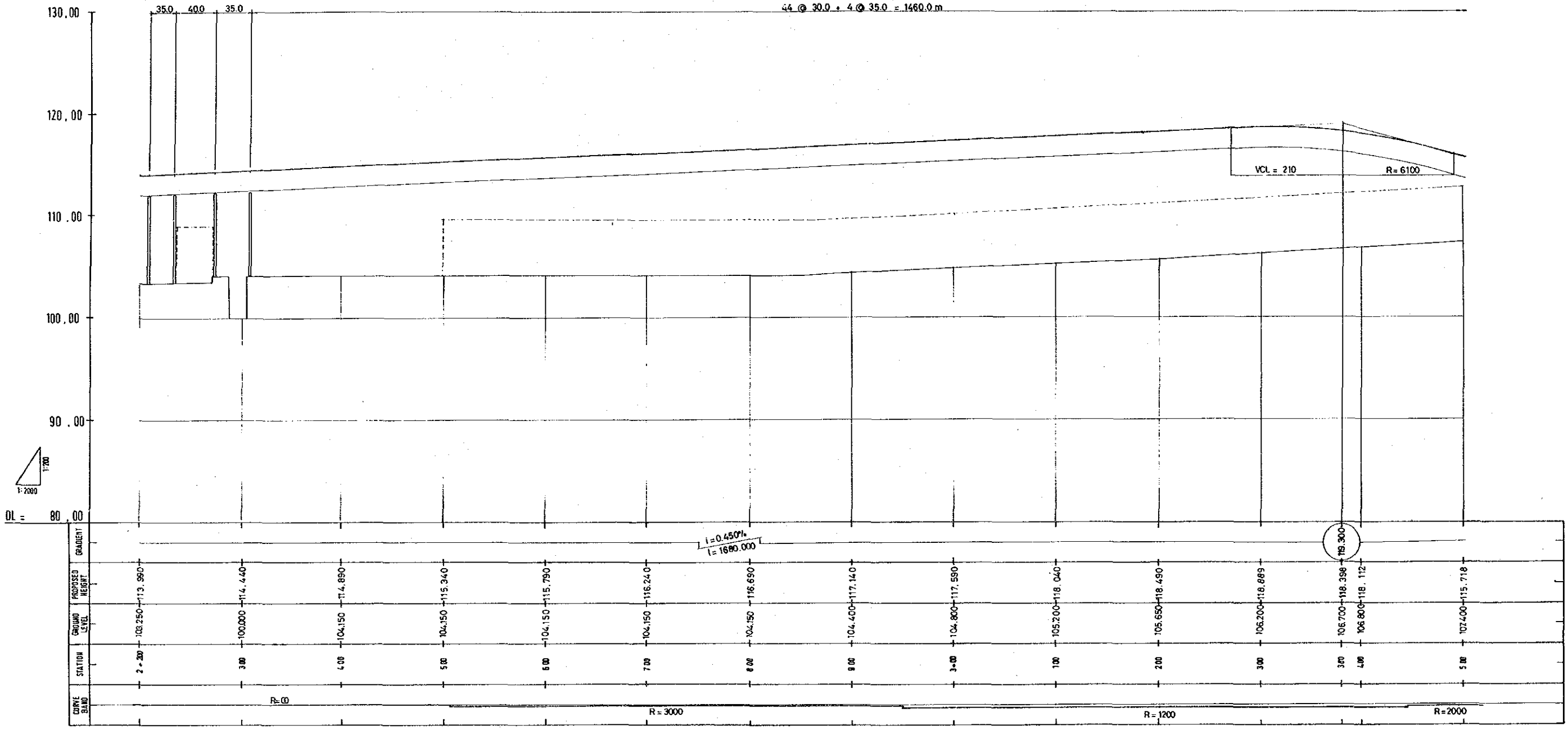
PAYA LEBAR ROAD

PYE/PAYA LEBAR RD. INTERCHANGE

PYE/AIRPORT RD. INTERCHANGE

Precast PC I-beam

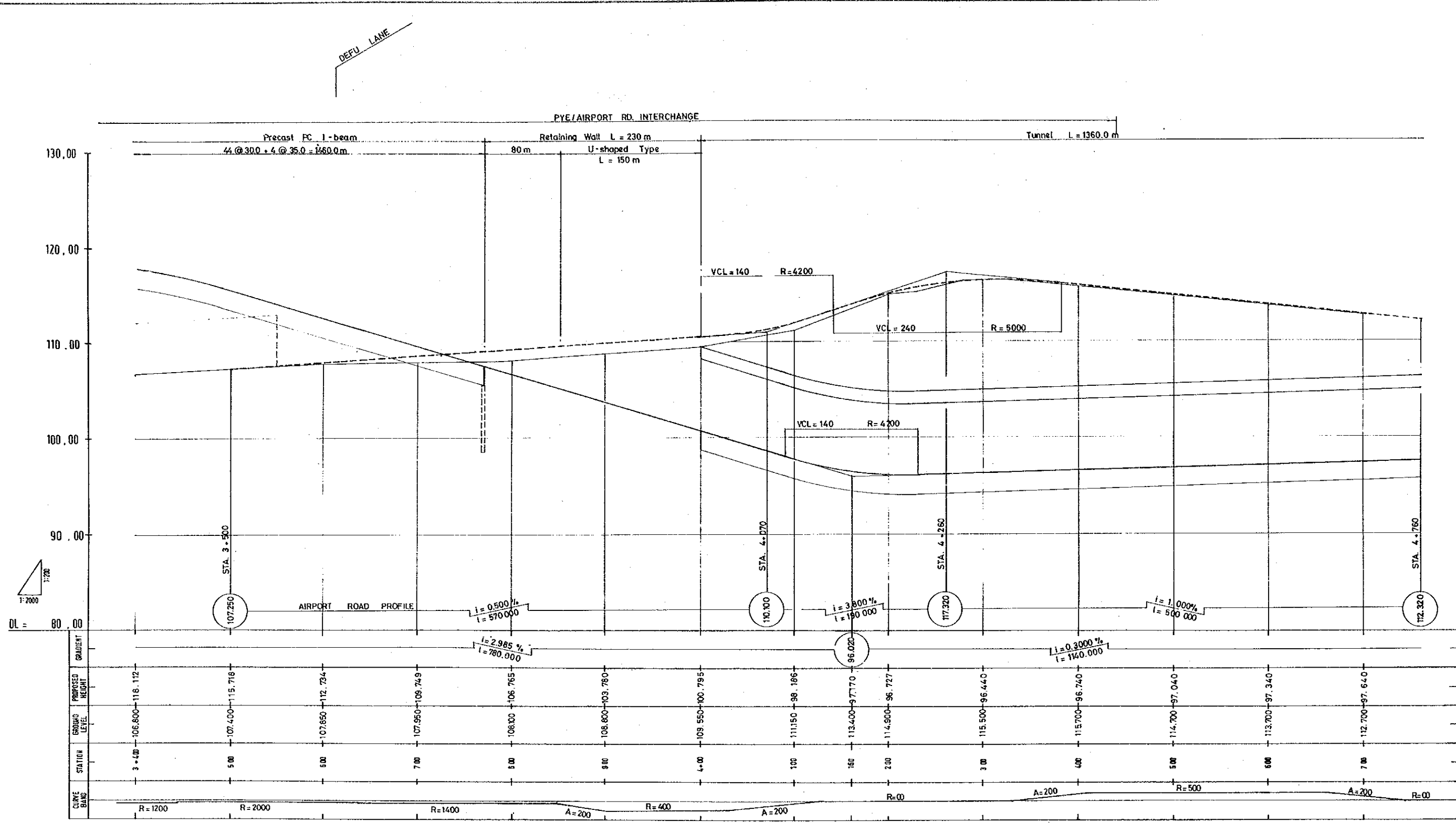
44 @ 30.0 + 4 @ 35.0 = 1460.0m



THE FEASIBILITY STUDY OF SELECTED EXPRESSWAYS IN SINGAPORE

Scale :	PYE ROUTE - I	Dwg. No.:
H=1:4000	PROFILE.	93
V=1:400	(STA. 2+200 - STA. 3+500)	108

This drawing was reduced from original one of scale H=1:2000, V=1:200.



THE FEASIBILITY STUDY OF SELECTED EXPRESSWAYS IN SINGAPORE

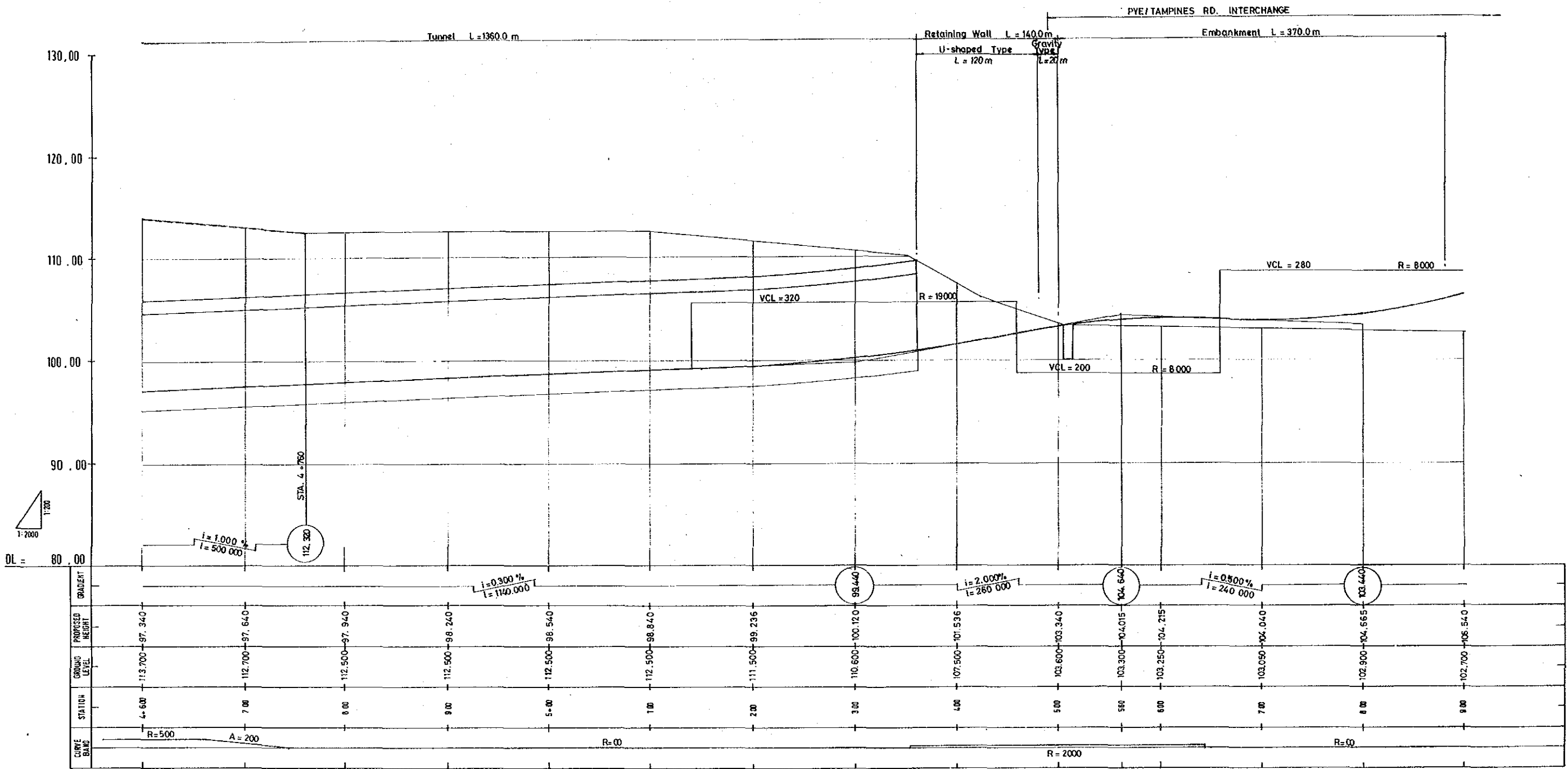
Scale : H=1:4000 V=1:400

PYE ROUTE - I PROFILE. (STA. 3+400 - STA. 4+700)

Dwg. No. 94/108

This drawing was reduced from original one of scale H=1:2000, V=1:200.

ROUTE I ROUTE II



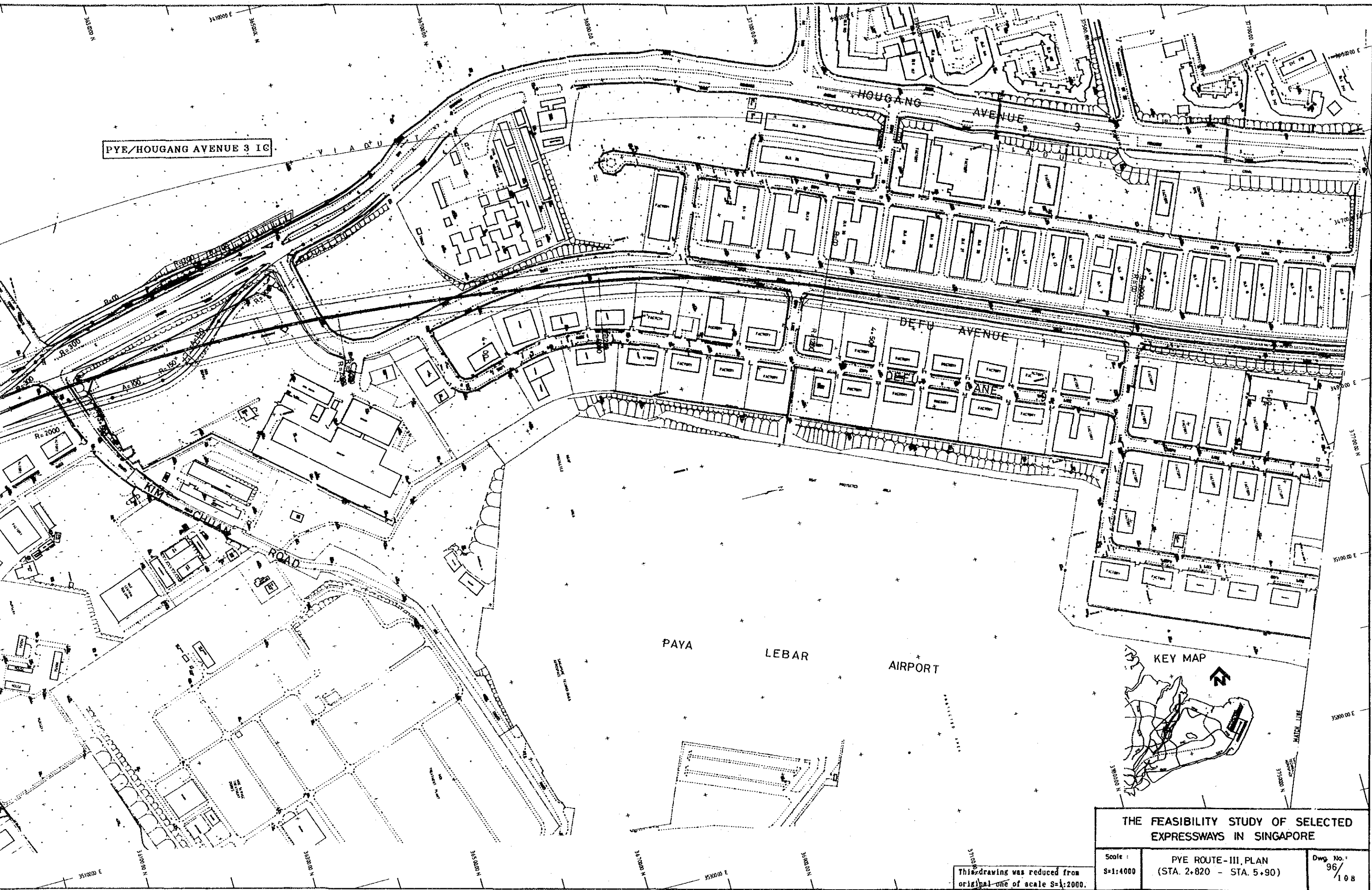
THE FEASIBILITY STUDY OF SELECTED EXPRESSWAYS IN SINGAPORE

This drawing was reduced from original one of scale H=1:2000, V=1:200.

Scale:
H=1:4000
V=1:400

PYE ROUTE - I
PROFILE.
(STA. 4+600 - STA. 5+900)

Dwg. No.:
95/
148



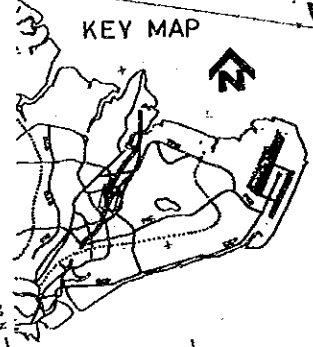
PYE/HOUGANG AVENUE 3 IC

KIM CHUAN ROAD

HOUGANG AVENUE

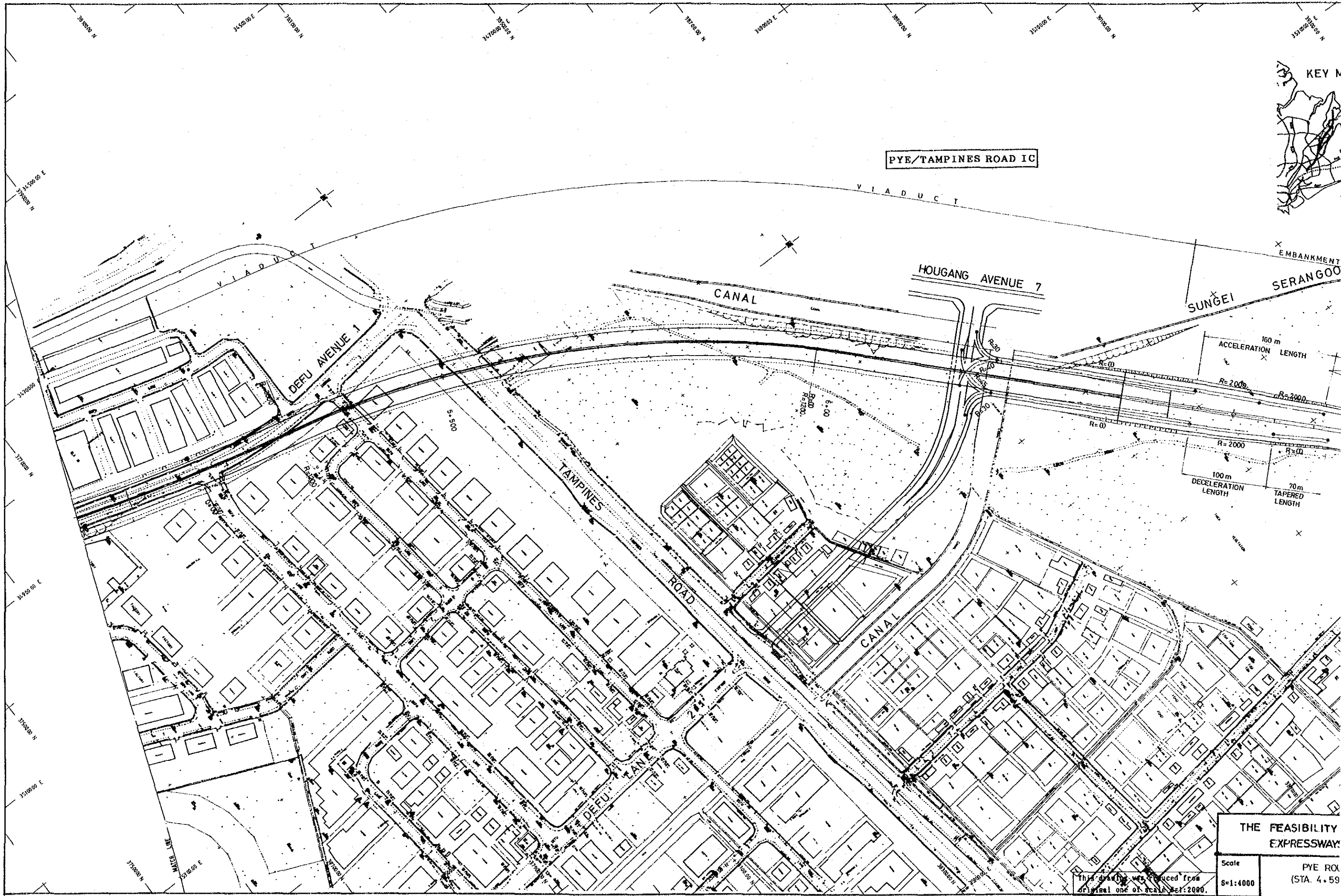
DEFU AVENUE

PAYA LEBAR AIRPORT



THE FEASIBILITY STUDY OF SELECTED EXPRESSWAYS IN SINGAPORE		
Scale : S=1:4000	PYE ROUTE-III, PLAN (STA. 2+820 - STA. 5+90)	Dwg. No. : 96/108

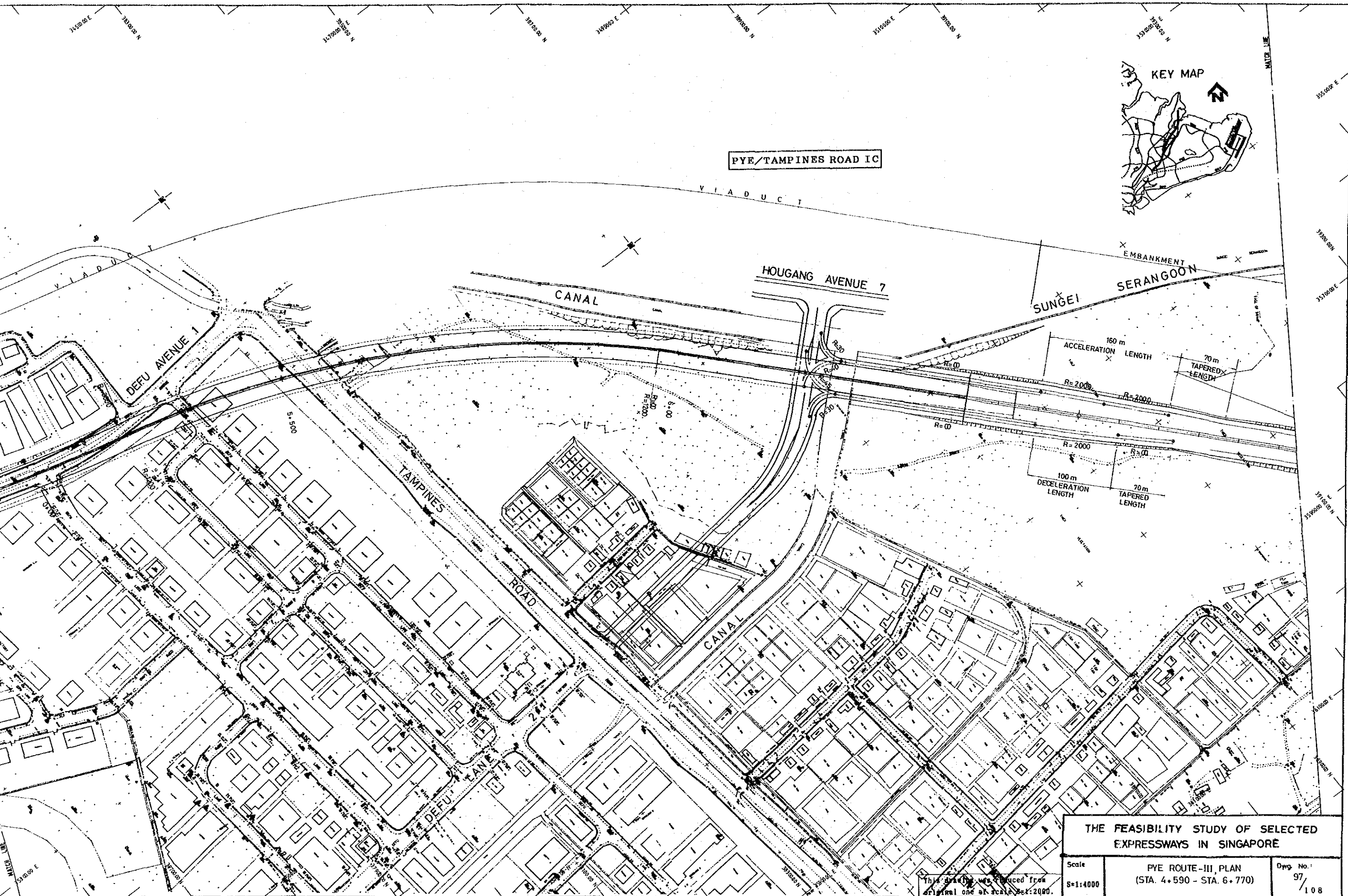
This drawing was reduced from original one of scale S=1:2000.



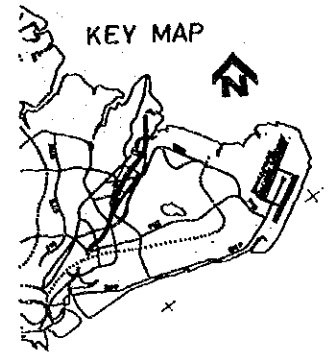
THE FEASIBILITY EXPRESSWAY:

Scale
 S=1:4000
 PYE ROL
 (STA. 4.59)

This drawing was produced from original one of scale 1:2000.



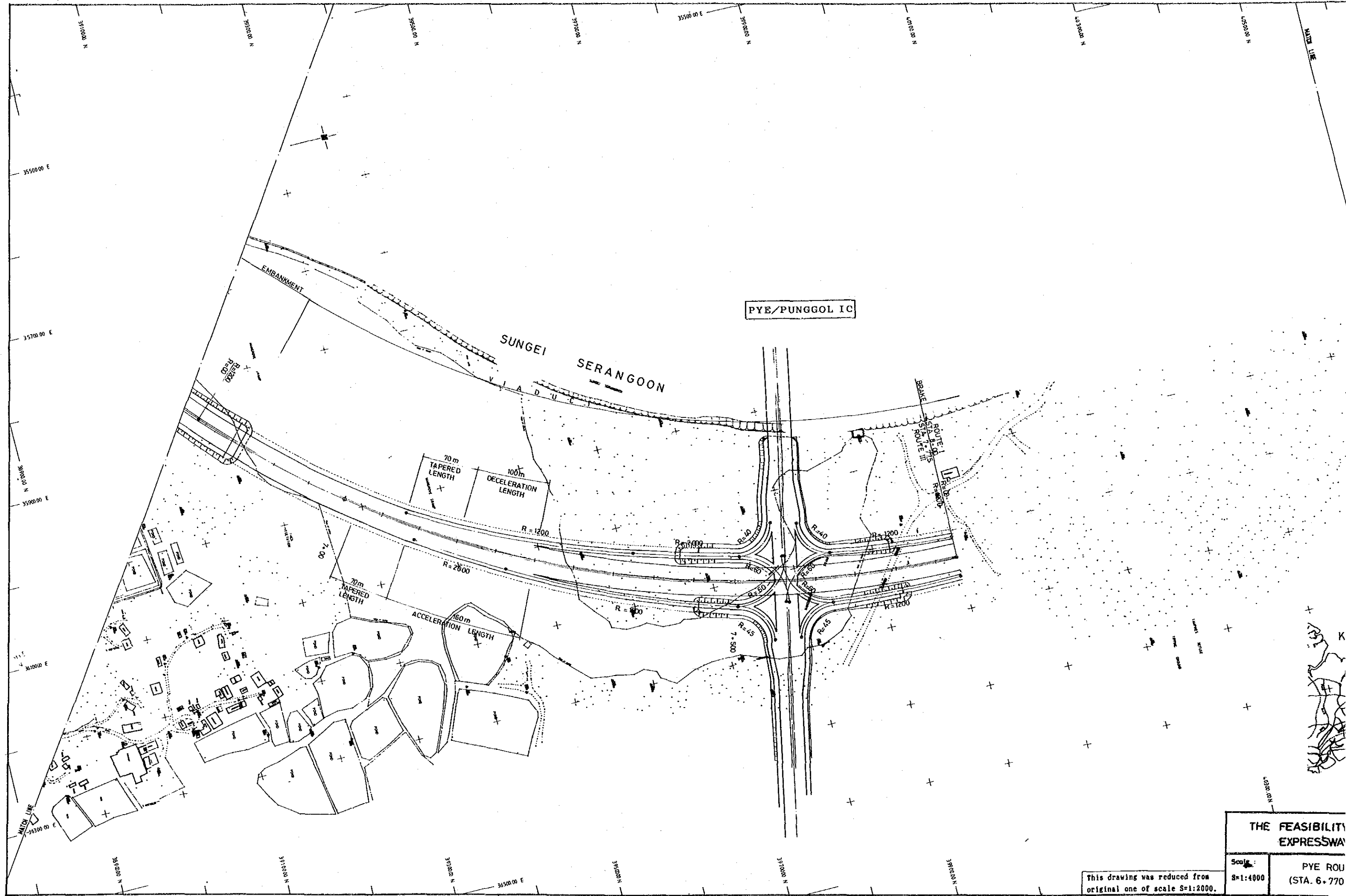
PYE/TAMPINES ROAD IC



THE FEASIBILITY STUDY OF SELECTED EXPRESSWAYS IN SINGAPORE

Scale	PYE ROUTE-III, PLAN (STA. 4+590 - STA. 6+770)	Dwg. No.
S=1:4000		97
		108

This drawing was produced from original one at scale of 1:2000.



PYE/PUNGGOL IC

SUNGEI SERANGOON VIADUCT

70m TAPERED LENGTH
100m DECELERATION LENGTH
R=1200

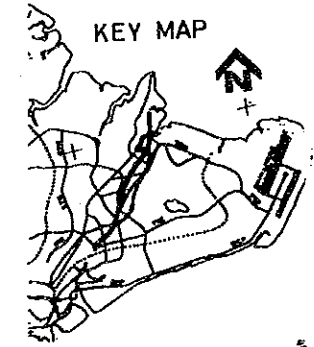
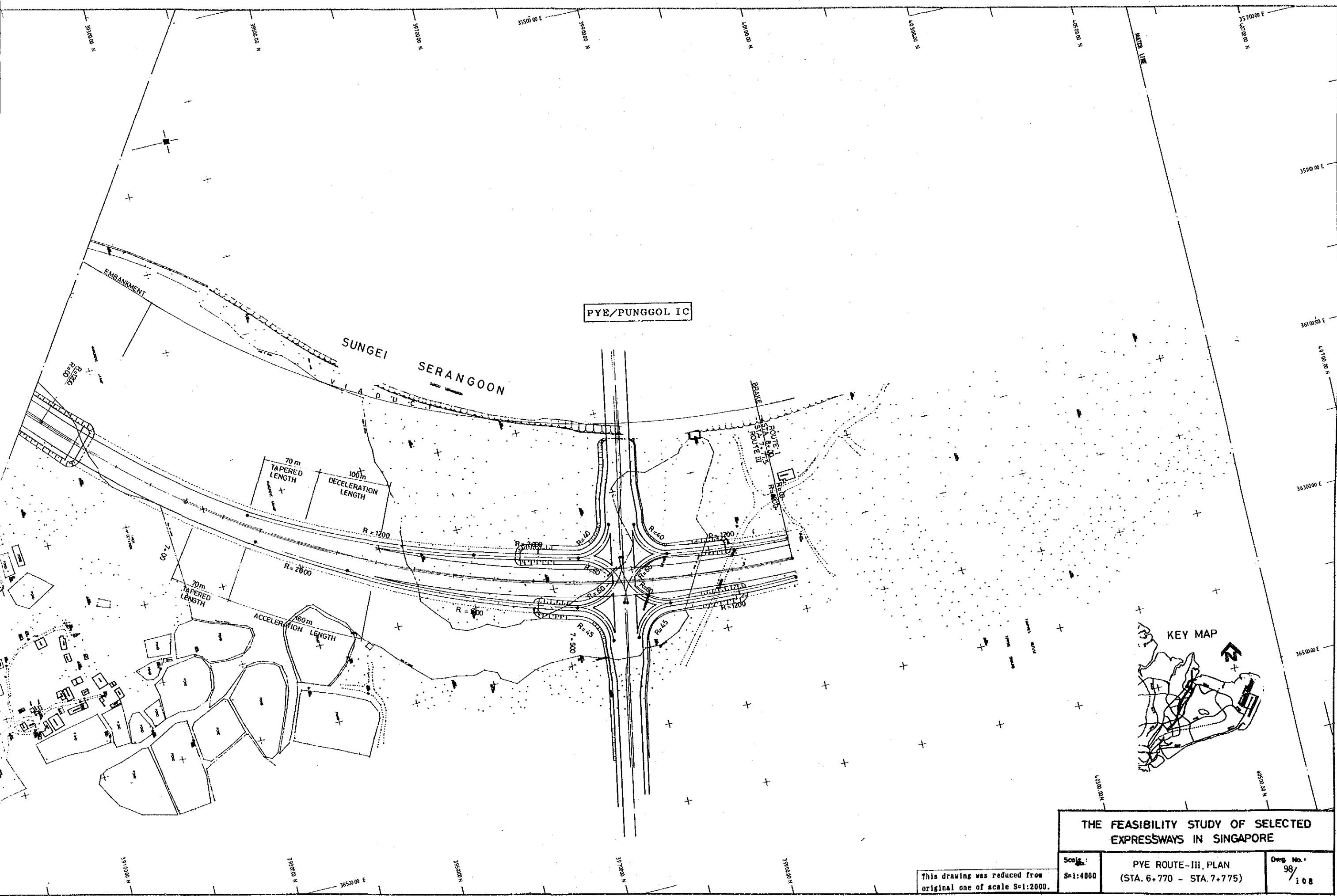
70m TAPERED LENGTH
160m ACCELERATION LENGTH
R=2000

R=40
R=50
R=1200
R=45
R=1200

THE FEASIBILITY EXPRESSWAY

Scale: S=1:4000
PYE ROUTE (STA. 6+770)

This drawing was reduced from original one of scale S=1:2000.



THE FEASIBILITY STUDY OF SELECTED EXPRESSWAYS IN SINGAPORE

Scale: S=1:4000	PYE ROUTE-III, PLAN (STA. 6+770 - STA. 7+775)	Draw. No. 98/108
--------------------	--	---------------------

This drawing was reduced from original one of scale S=1:2000.

ROUTE-II | ROUTE III

MERPATI ROAD

CANAL

CANAL

CANAL

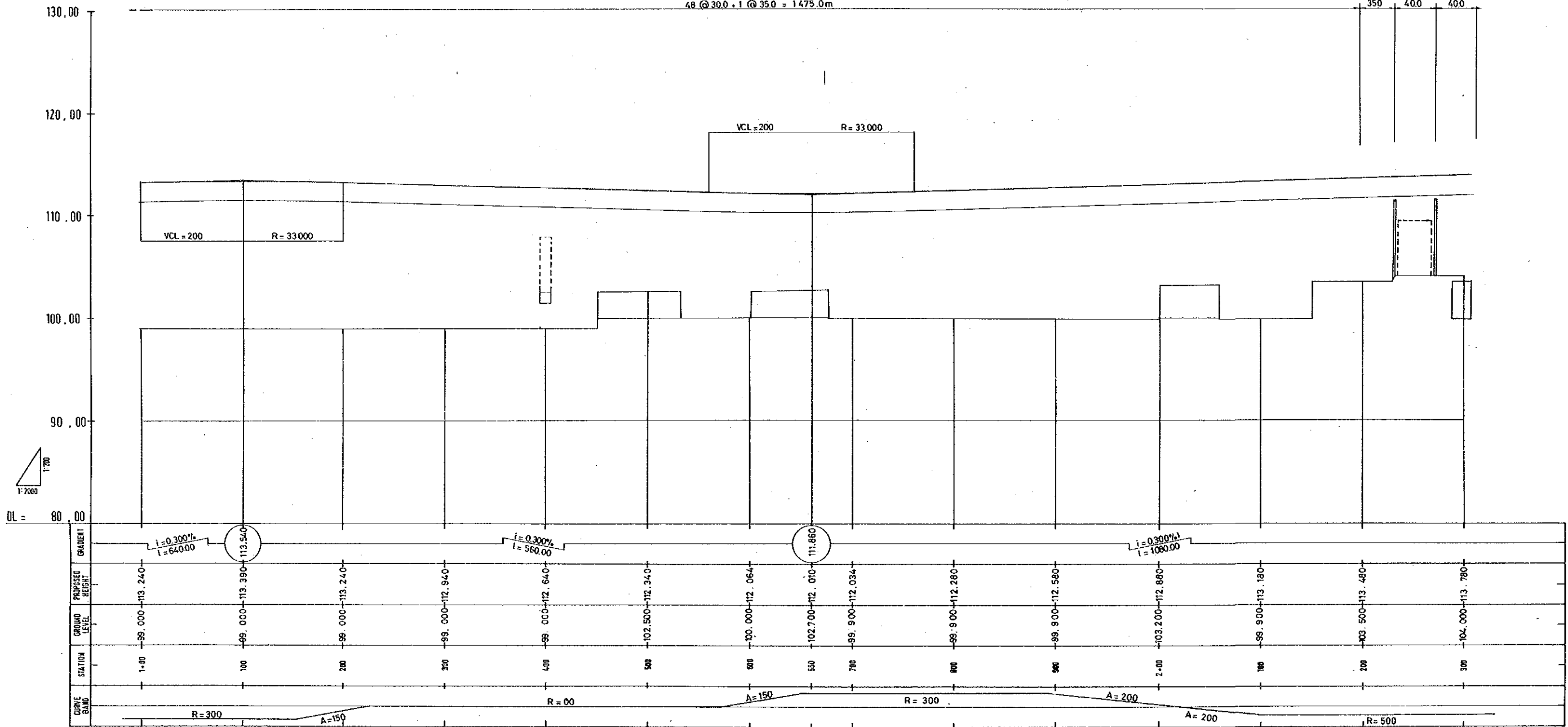
PANA LEBAR ROAD

CANAL

PRECAST PCI-BEAM

48 @ 30.0 + 1 @ 35.0 = 1475.0m

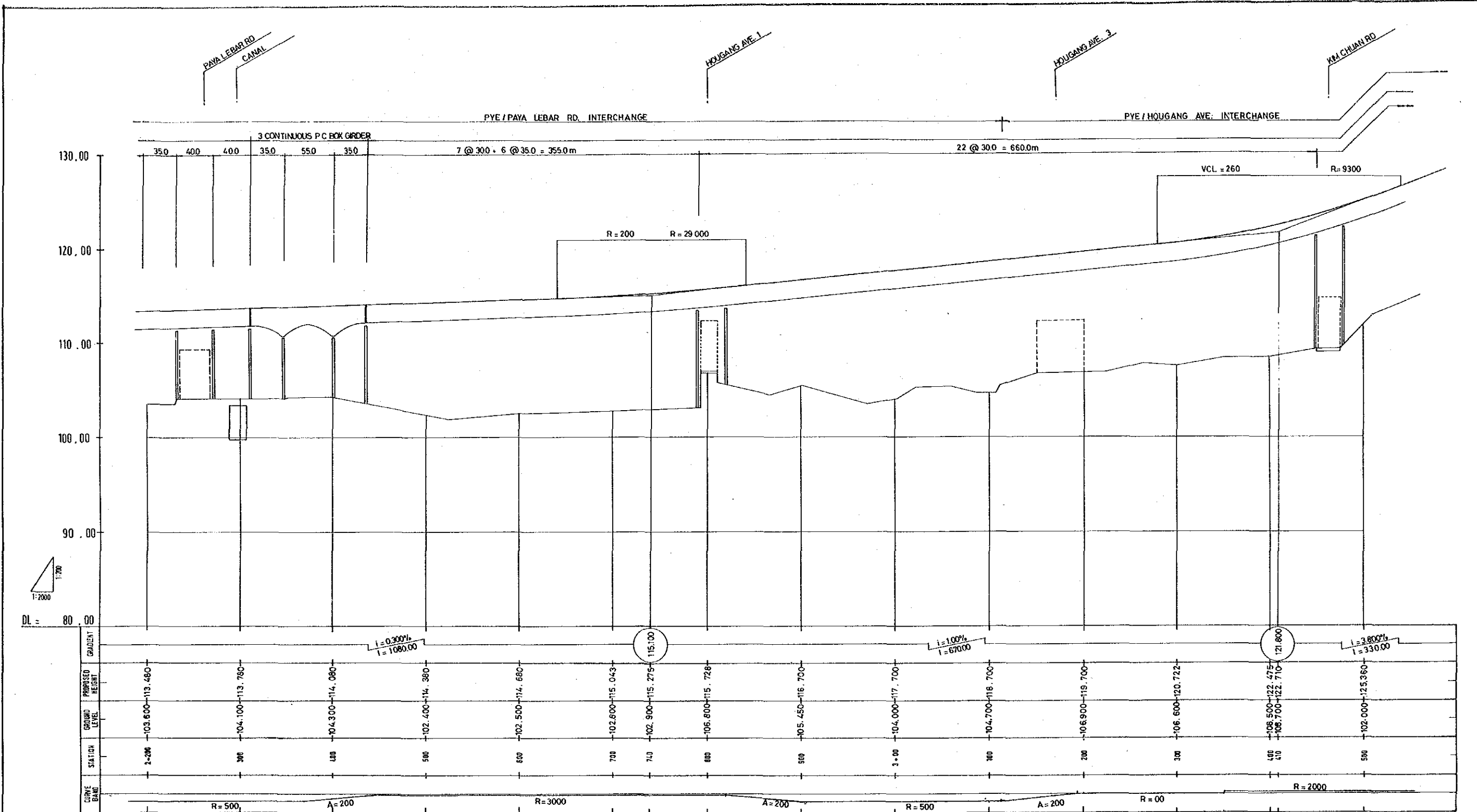
350 400 400



DL = 80.00

THE FEASIBILITY STUDY OF SELECTED EXPRESSWAYS IN SINGAPORE		
Scale :	PVE ROUTE-II, PROFILE (1) (STA.1+00 - STA.2+300)	Dwg No.:
H=1:4000 V=1:400		99/108

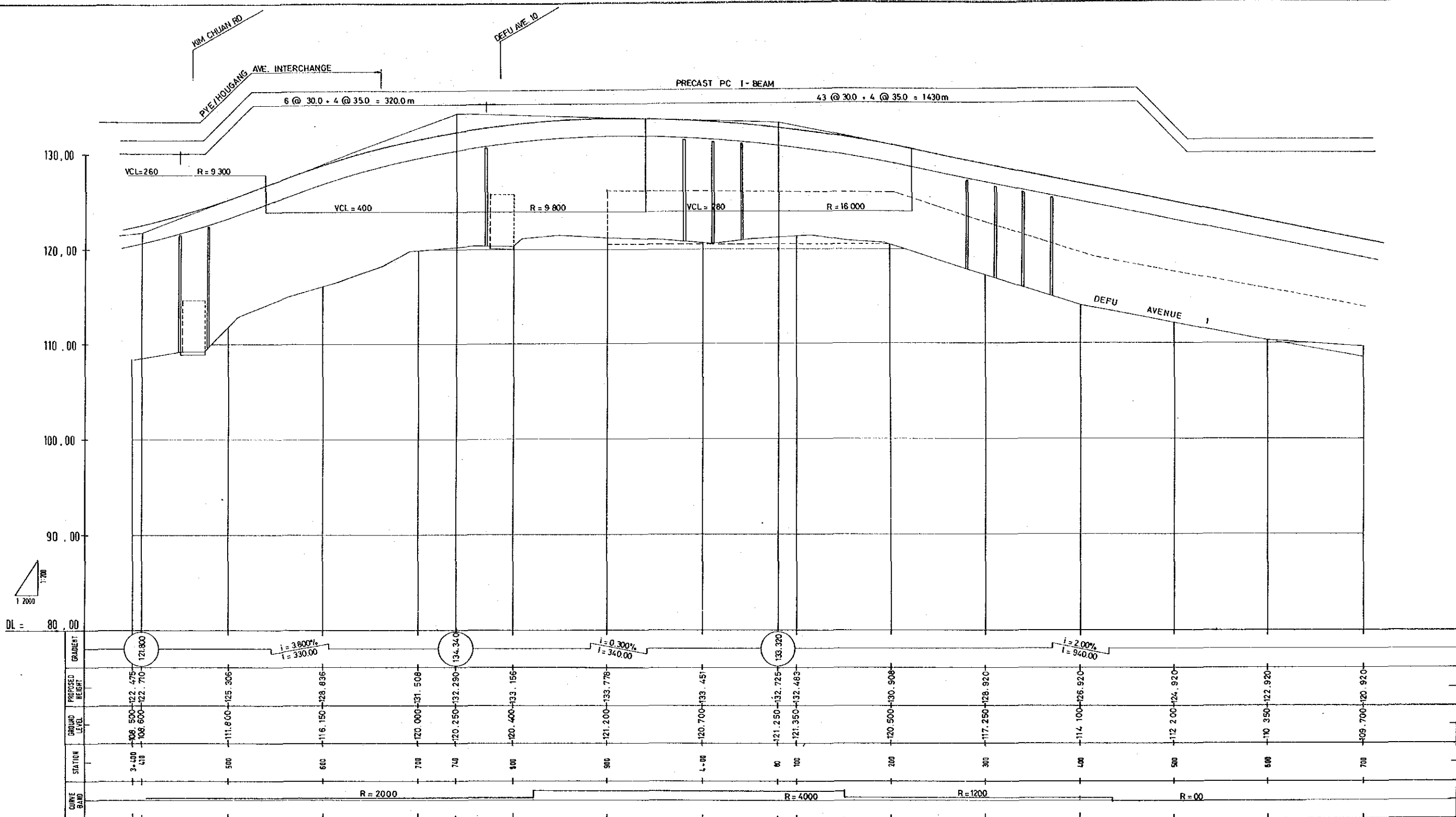
This drawing was reduced from original one of scale H=1:2000, V=1:200.



THE FEASIBILITY STUDY OF SELECTED EXPRESSWAYS IN SINGAPORE

Scale : H=1:4000 V=1:400	PYE ROUTE-III, PROFILE (2) (STA. 2+200 - STA. 3+500)	Dwg. No. 1 100/ 108
--------------------------------	--	---------------------------

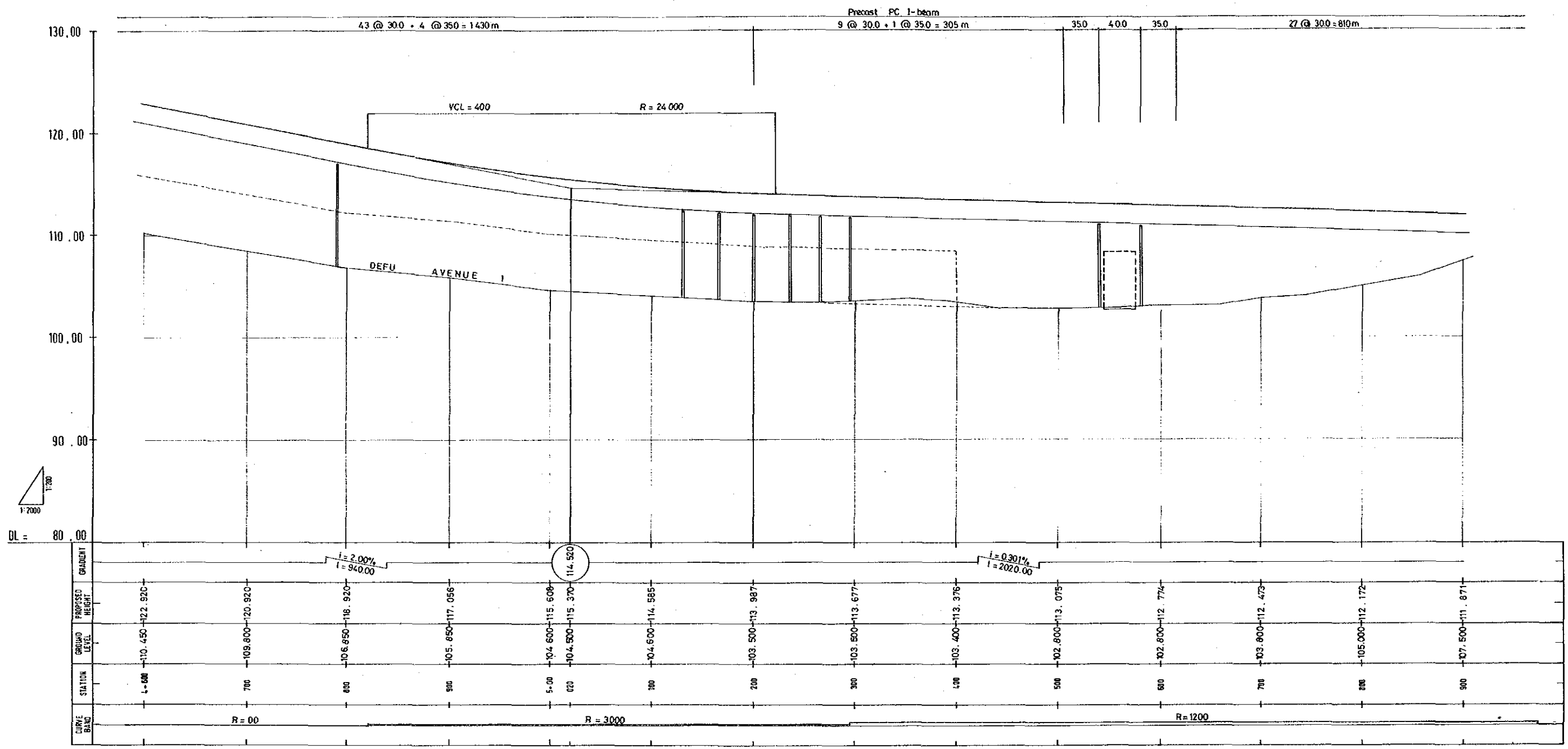
This drawing was reduced from original one of scale H=1:2000, V=1:200.



THE FEASIBILITY STUDY OF SELECTED EXPRESSWAYS IN SINGAPORE
 Scale: H=1:4000, V=1:400
 PYE ROUTE-III, PROFILE(3)
 (STA. 3+400-STA. 4+700)
 Dwg No.: 101/108

This drawing was reduced from original one of scale H=1:2000, V=1:200.

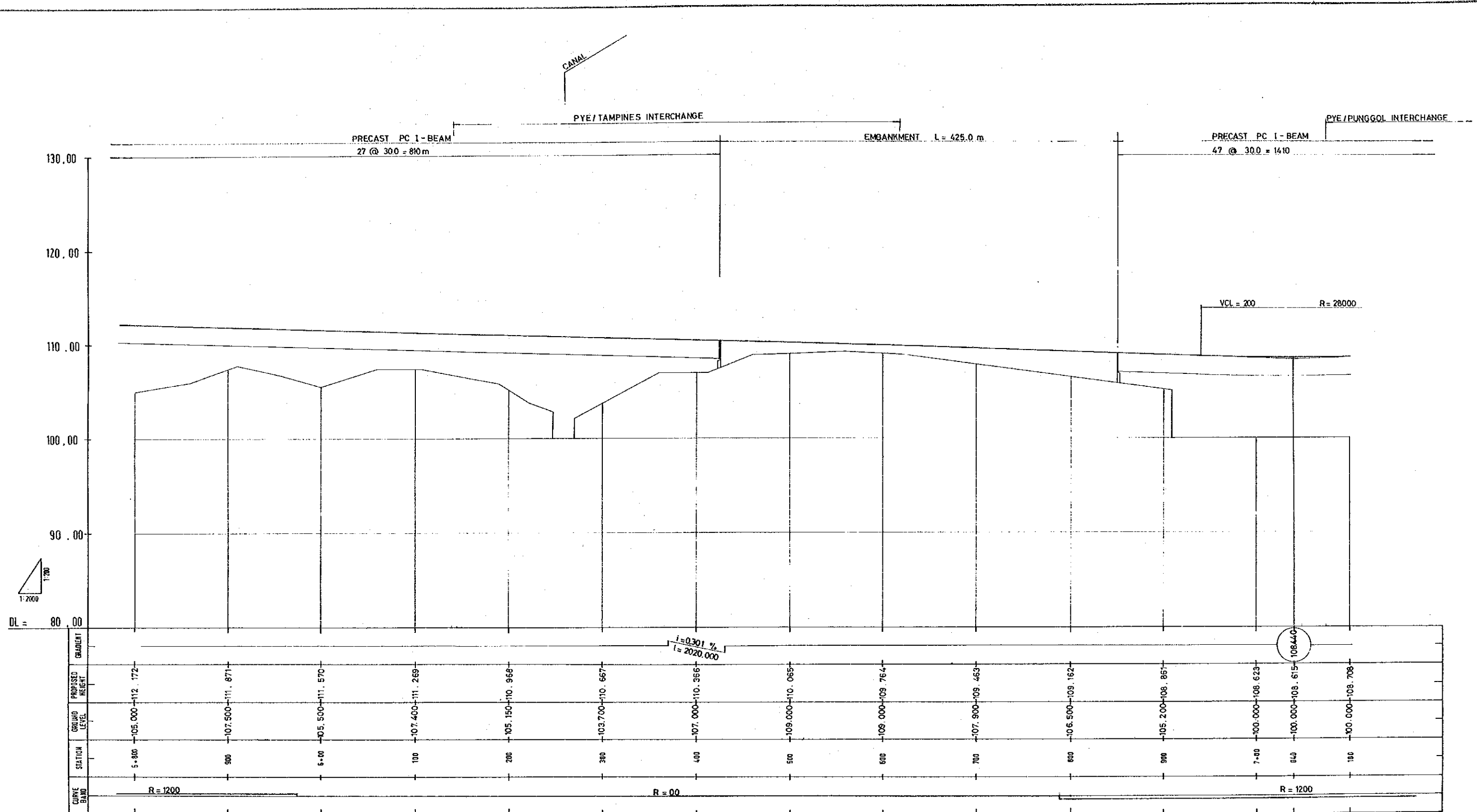
WAPINES ROAD



THE FEASIBILITY STUDY OF SELECTED EXPRESSWAYS IN SINGAPORE

Scale : H=1:4000 V=1:400	PYE ROUTE-III, PROFILE (4) (STA. 4+600 - STA. 5+900)	Dwg. No. 102/ 108
--------------------------------	--	-------------------------

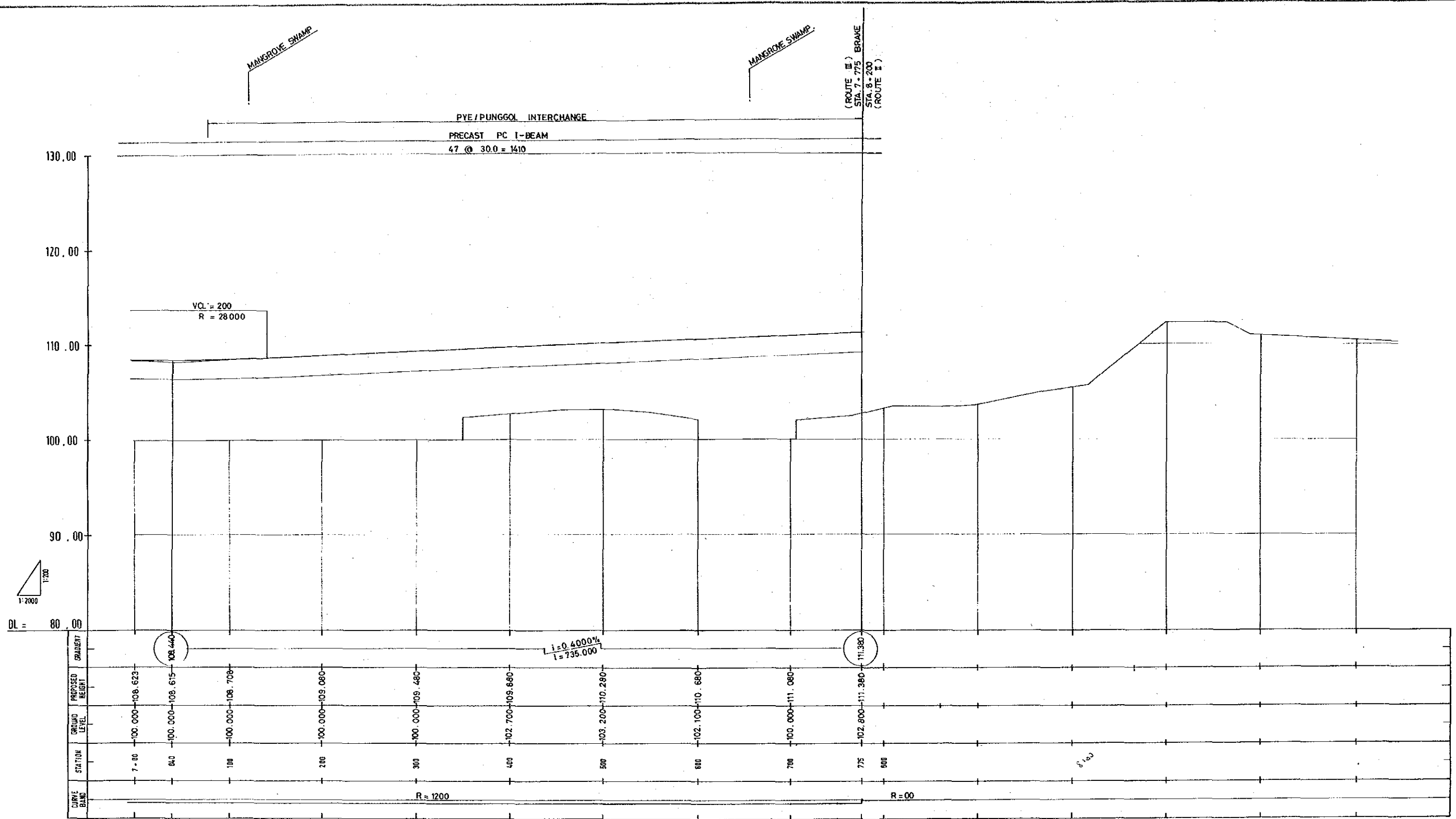
This drawing was reduced from original one of scale H=1:2000, V=1:200.



THE FEASIBILITY STUDY OF SELECTED EXPRESSWAYS IN SINGAPORE

Scale: H=1:4000 V=1:400	PYE ROUTE-III, PROFILE (5) (STA. 5+800 - STA. 7+100)	Dwg No.: 103/ L08
-------------------------------	---	-------------------------

This drawing was reduced from original one of scale H=1:2000, V=1:200.



This drawing was reduced from original one of scale H=1:2000, V=1:200.

THE FEASIBILITY STUDY OF SELECTED EXPRESSWAYS IN SINGAPORE		
Scale : H=1:4000 V=1:400	PYE ROUTE-III, PROFILE (6) (STA.7+100 - STA.7+775)	Dwg No. 104/108

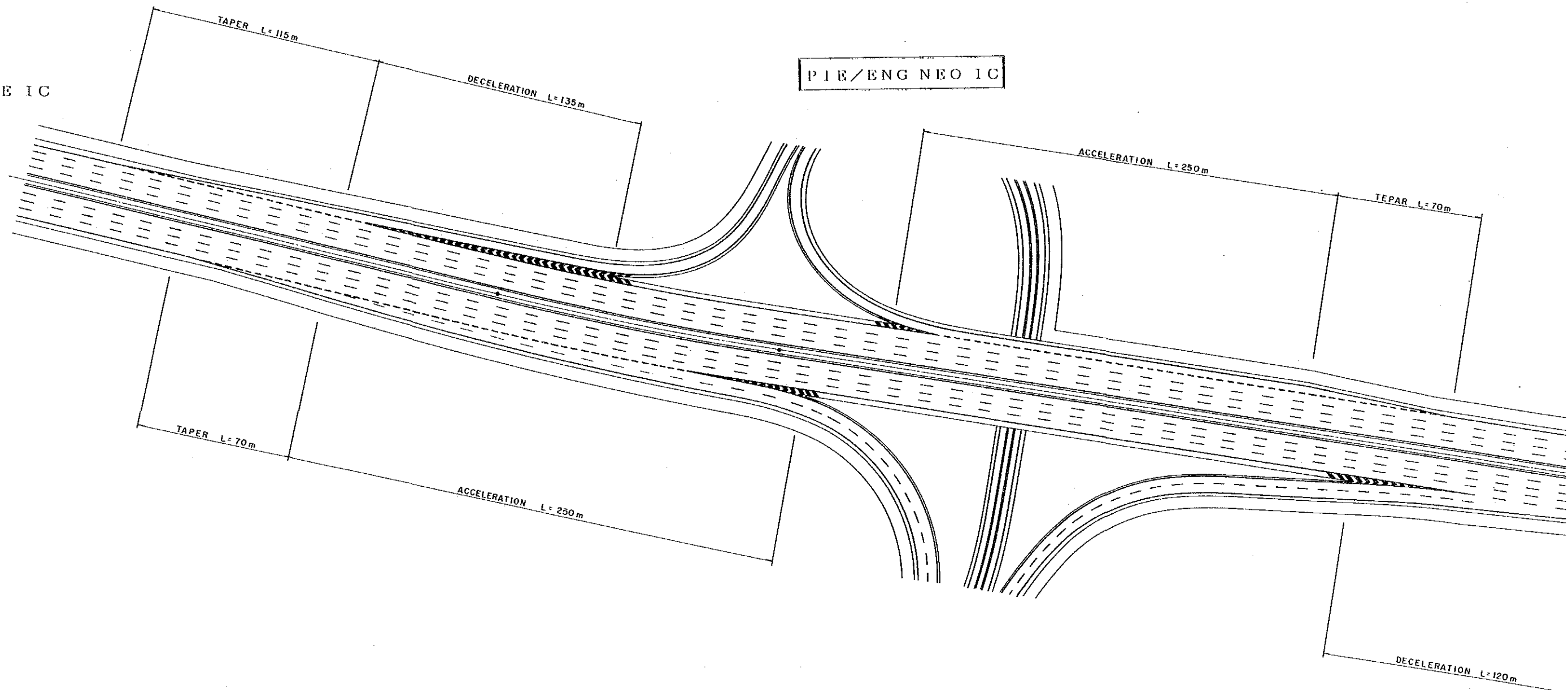


THE FEASIBILITY STUDY OF SELECTED EXPRESSWAYS IN SINGAPORE		
Scale :	PYE/TPE INTERCHANGE PLAN.	Dwg. No.:
S=1:4800		105/108

This drawing was reduced from original one of scale S=1:2000.

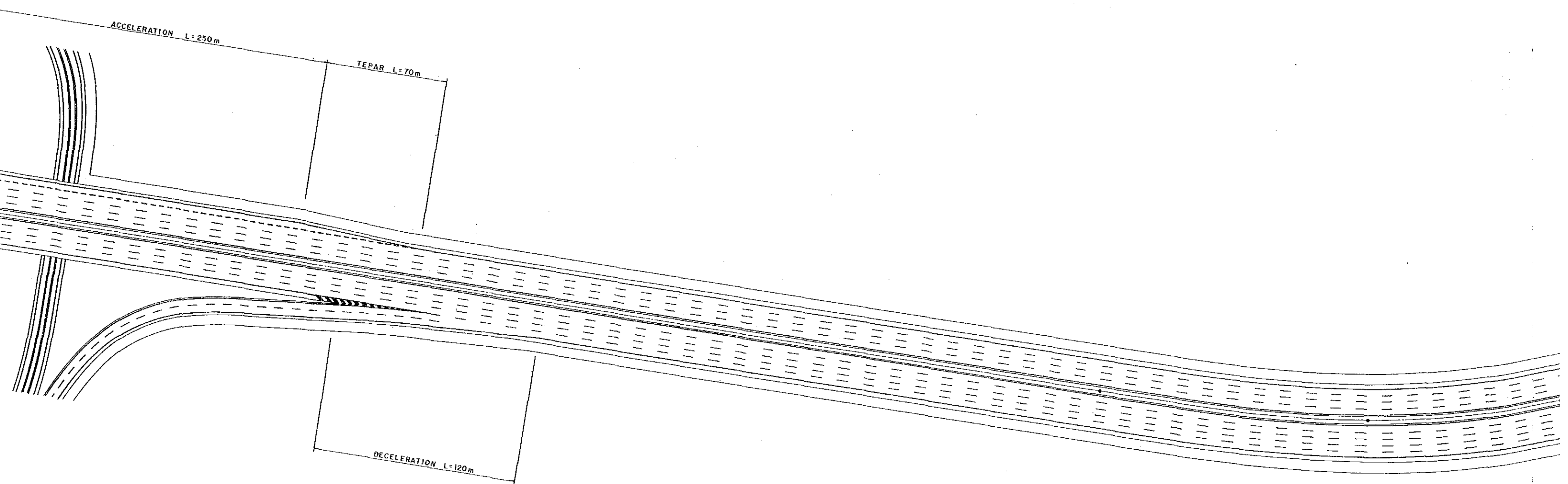
← PIE/BKE IC

PIE/ENGINE IC

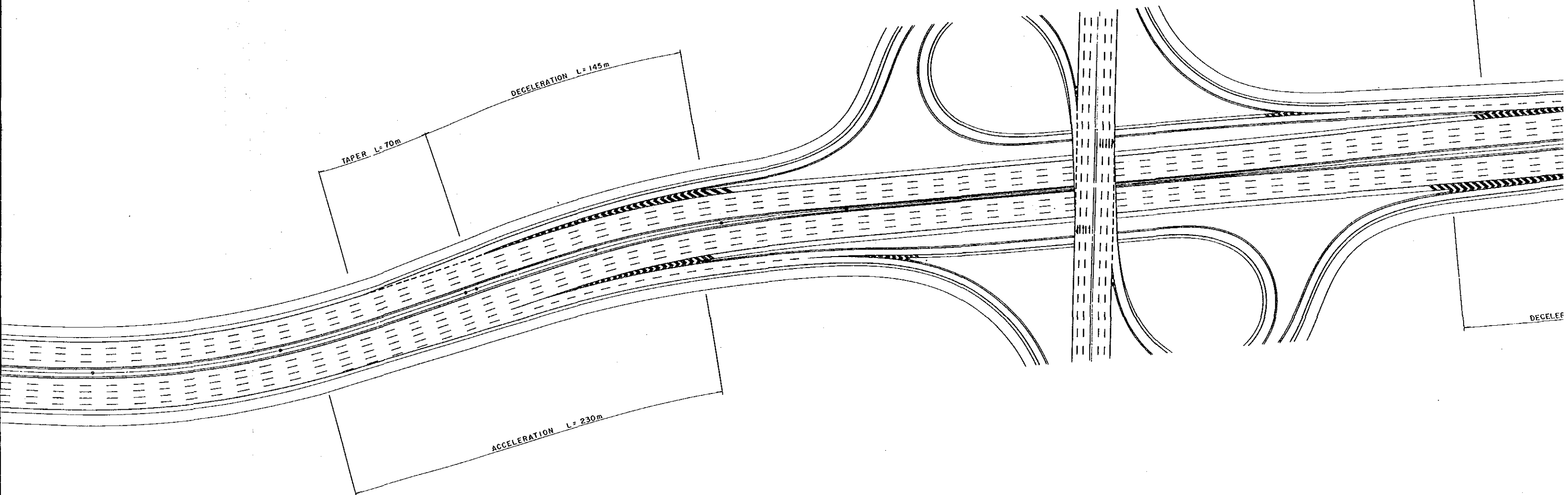


DECELERATION L=120m

OIC



PIE/ADAM ROAD IC

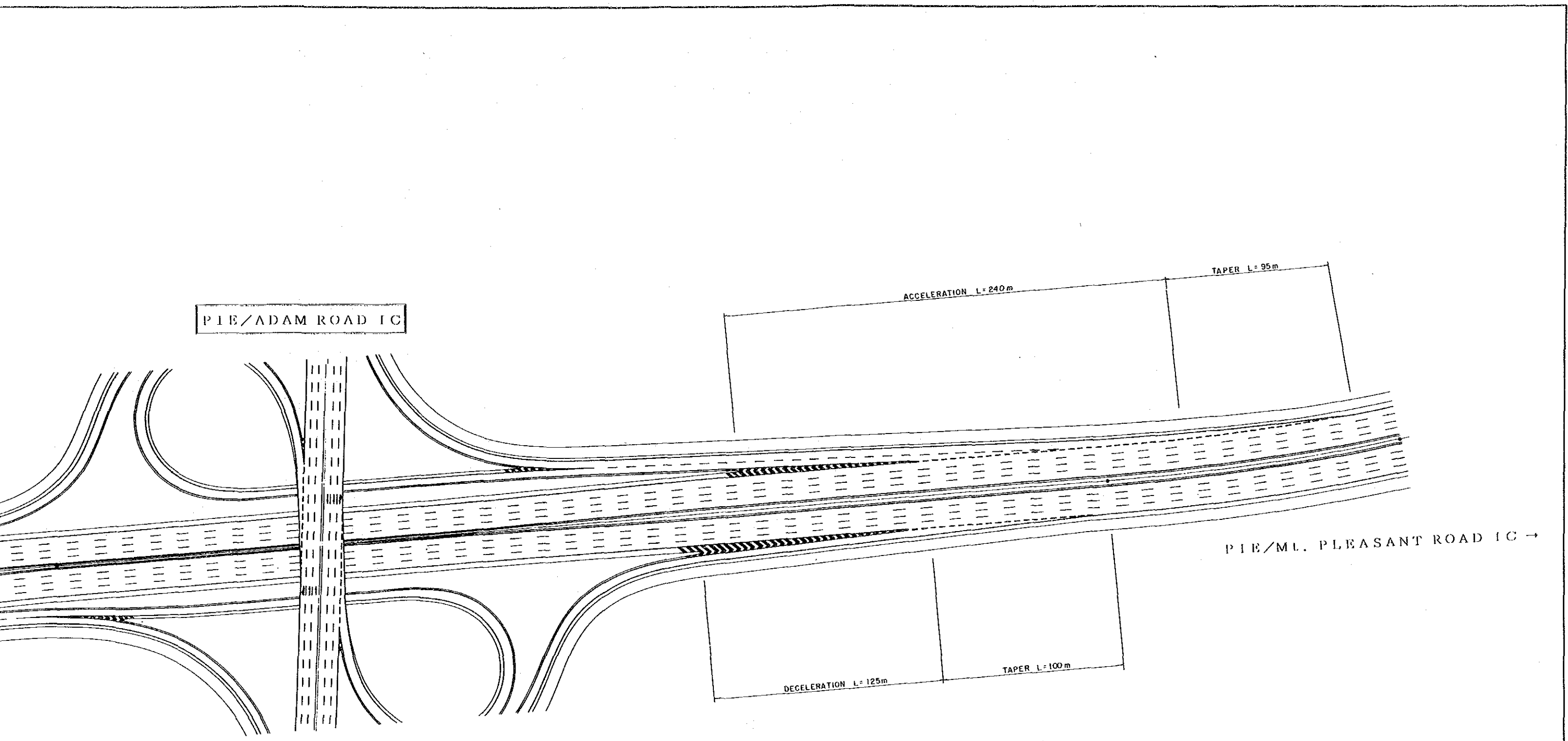


TAPER L=70m

DECELERATION L=145m

ACCELERATION L=230m

DECELEF



PIE/ADAM ROAD IC

ACCELERATION L=240m

TAPER L=95m

DECELERATION L=125m

TAPER L=100m

PIE/ML. PLEASANT ROAD IC →

THE FEASIBILITY STUDY OF SELECTED EXPRESSWAYS IN SINGAPORE

This drawing was reduced from original one of scale S=1:1000

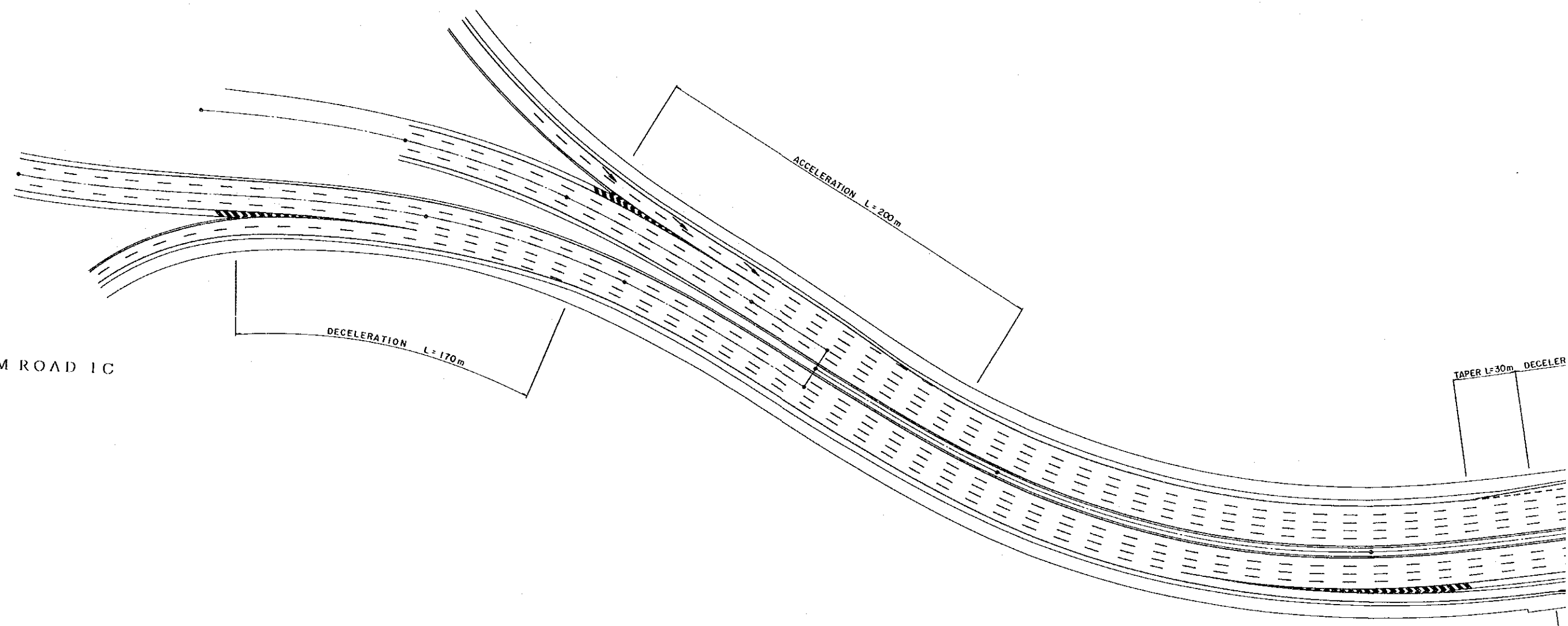
Scale :
S=1:2000

LANE MARKING PLAN
(PIE/ENG NEO IC
- PIE/ADAM ROAD IC)

Dwg No :
106/108

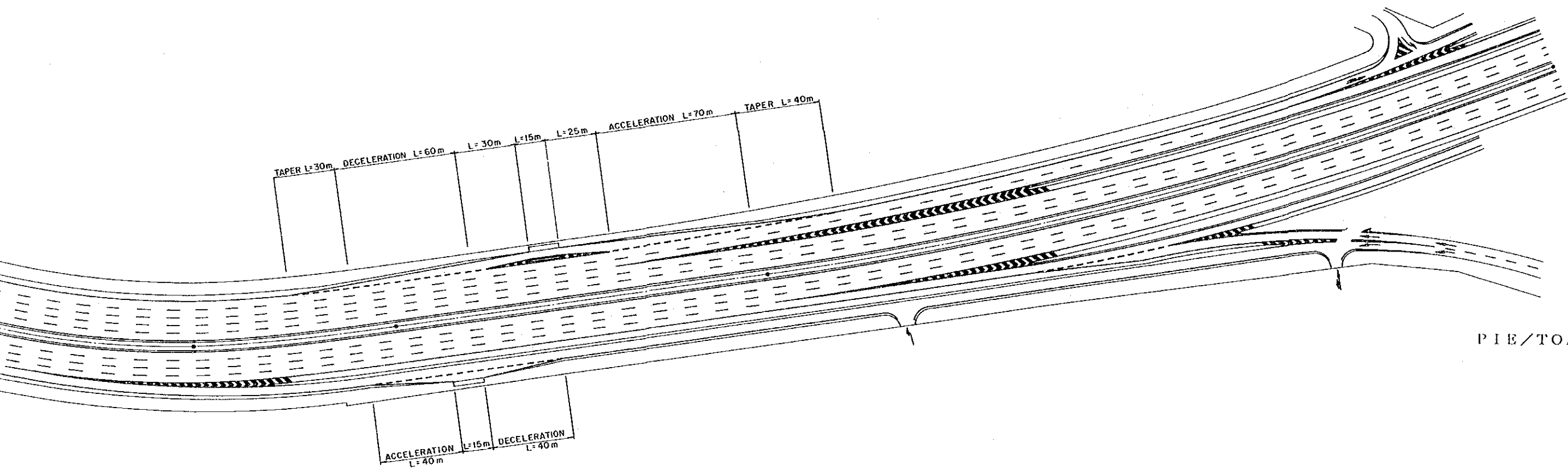
PIE/MU. PLEASANT ROAD 1C

← PIE/ADAM ROAD 1C



TAPER L=30m DECELERATION

PIE/THOMSON ROAD IC



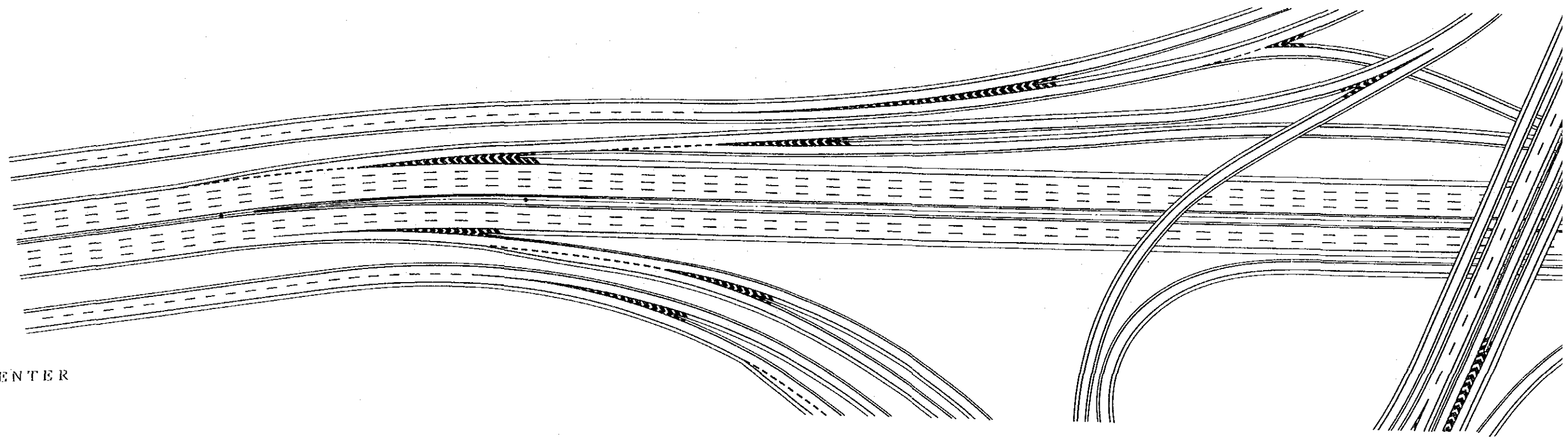
PIE/TOA PAYOH IC →

THE FEASIBILITY STUDY OF SELECTED EXPRESSWAYS IN SINGAPORE

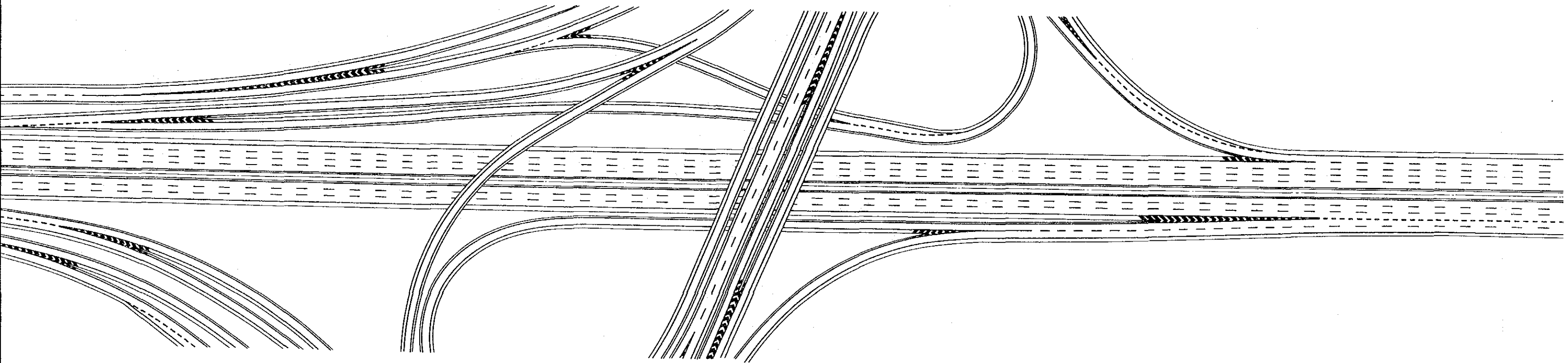
Scale :	LANE MARKING PLAN (PIE/ML. PLEASANT ROAD IC - PIE/THOMSON ROAD IC)	Dwg. No.:
5:1:2000		107/108

This drawing was reduced from original one of scale 5:1:1000

← MARINA CENTER



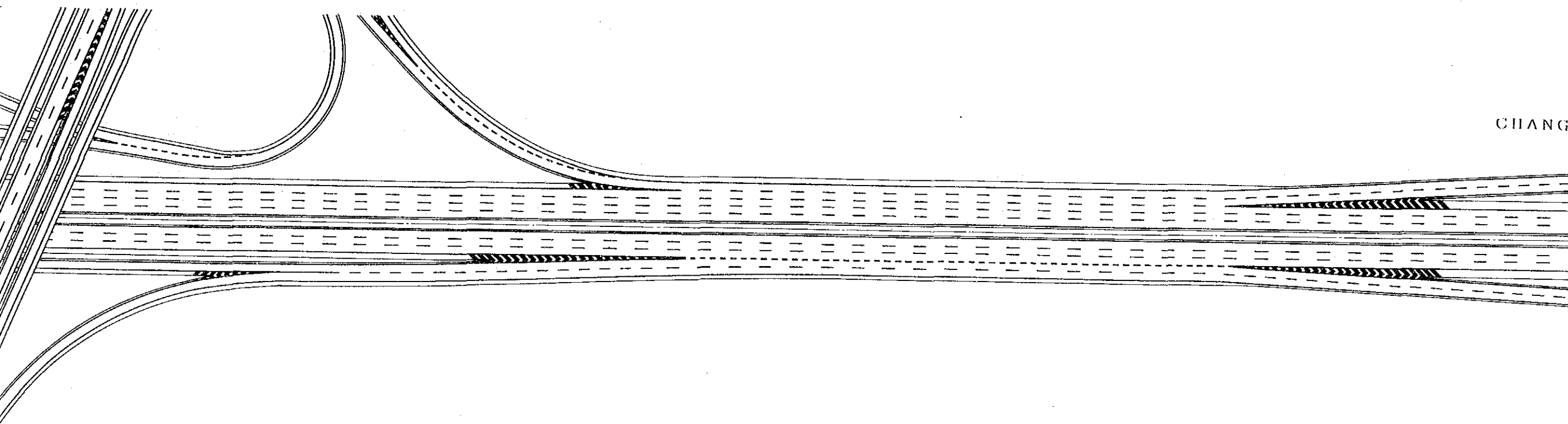
KLE/ECP IC



KLE/ECP IC

ECP/FORT ROAD IC

CHANGI AIRPORT →



This drawing was reduced from original one of scale S-1:1000

THE FEASIBILITY STUDY OF SELECTED EXPRESSWAYS IN SINGAPORE		
Scale : S-1:2000	LANE MARKING PLAN (ECP/FORT ROAD IC - BENJAMIN SHEARES BRIDGE)	Dwg. No. : S108/108

JICA