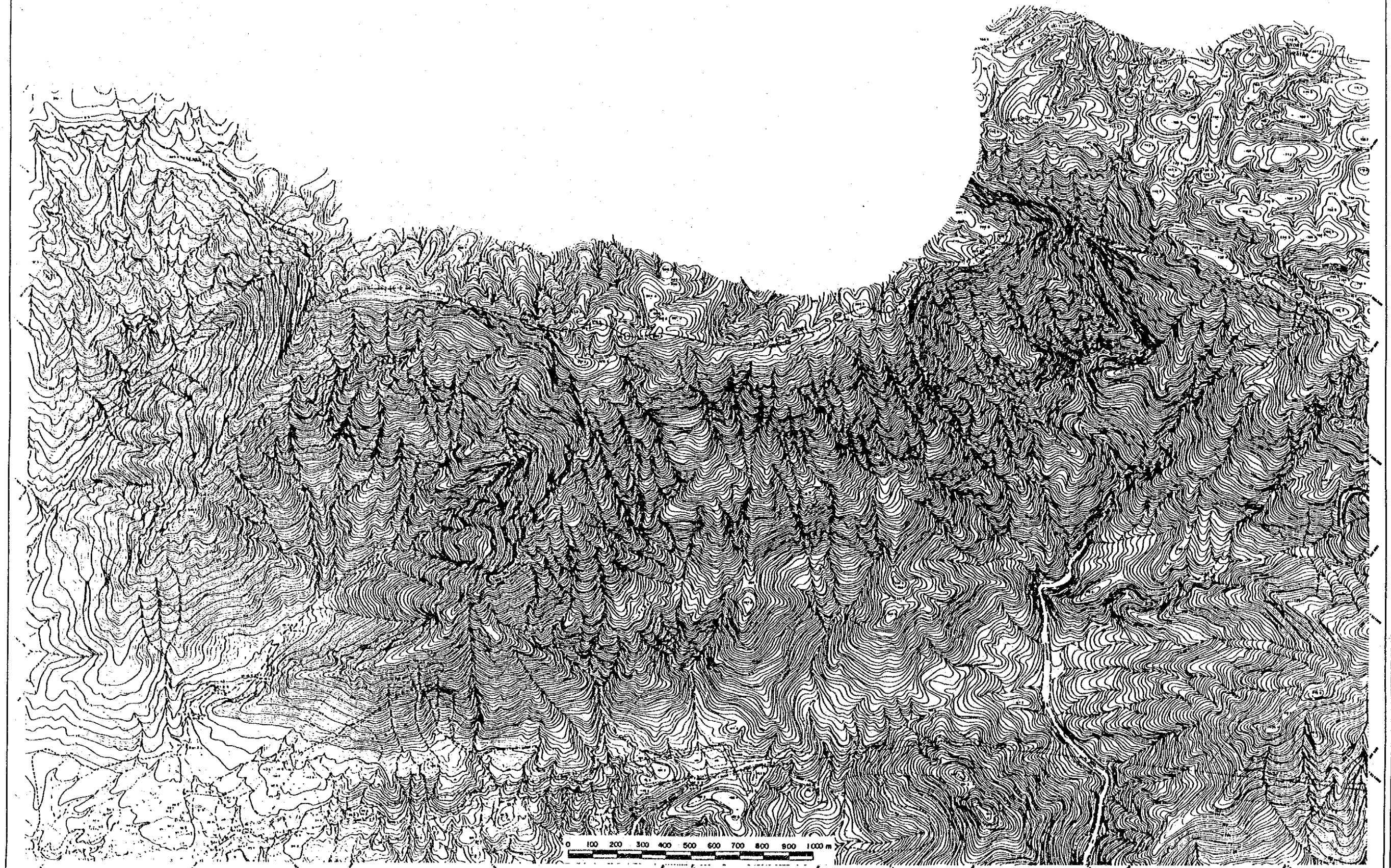


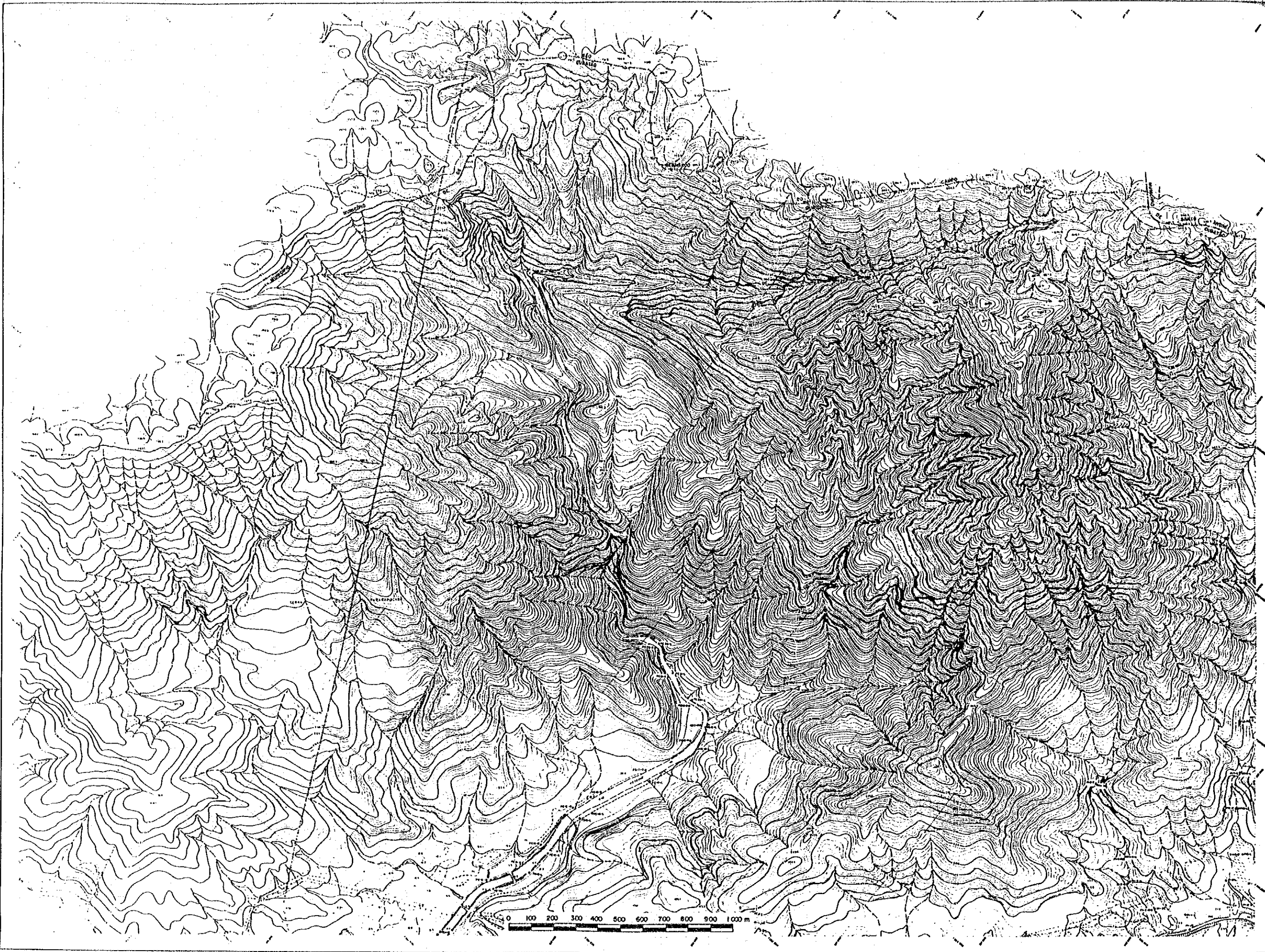
0 100 200 300 400 500 600 700 800 900 1000 m

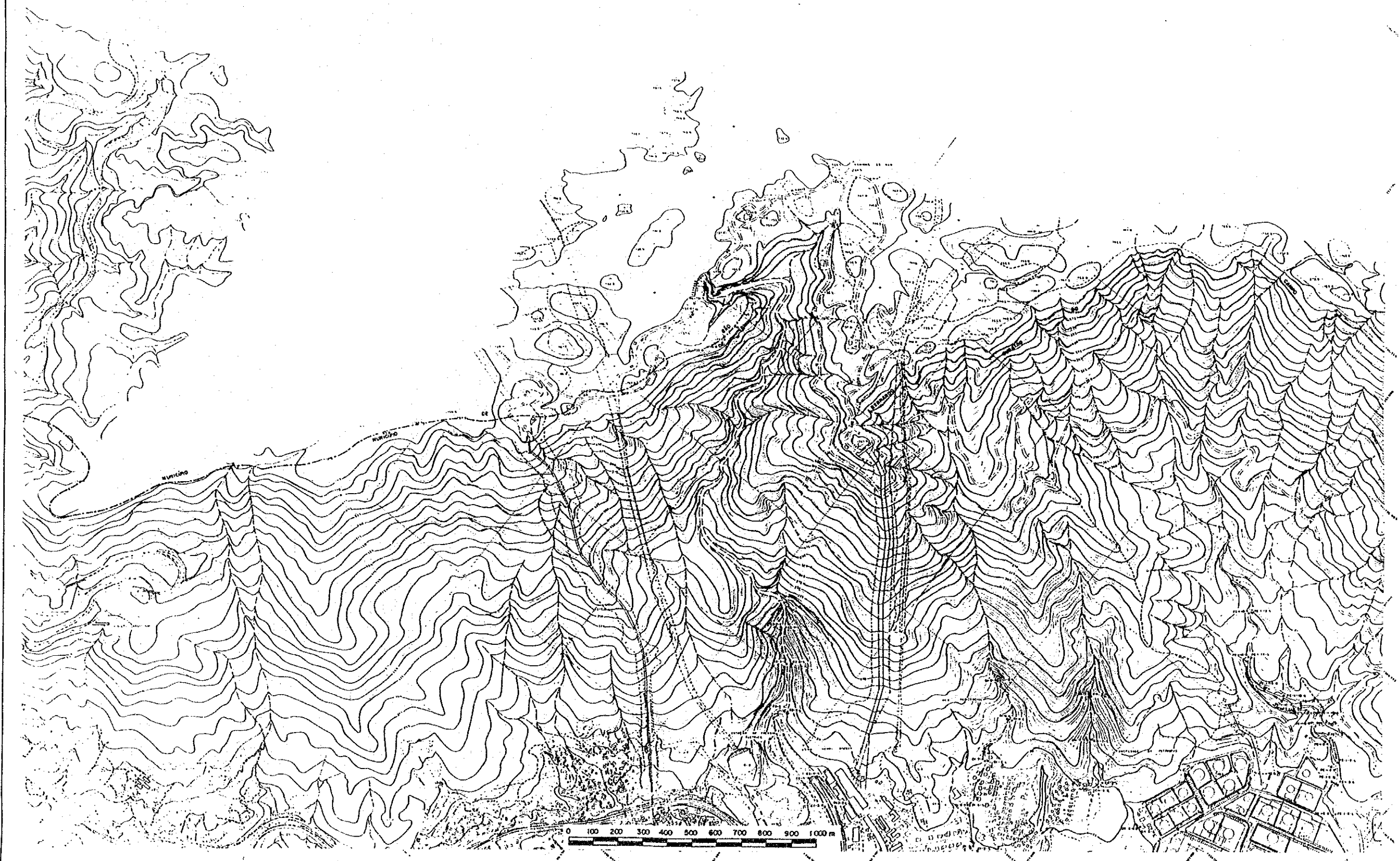


0 100 200 300 400 500 600 700 800 900 1000 m

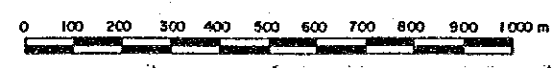
100



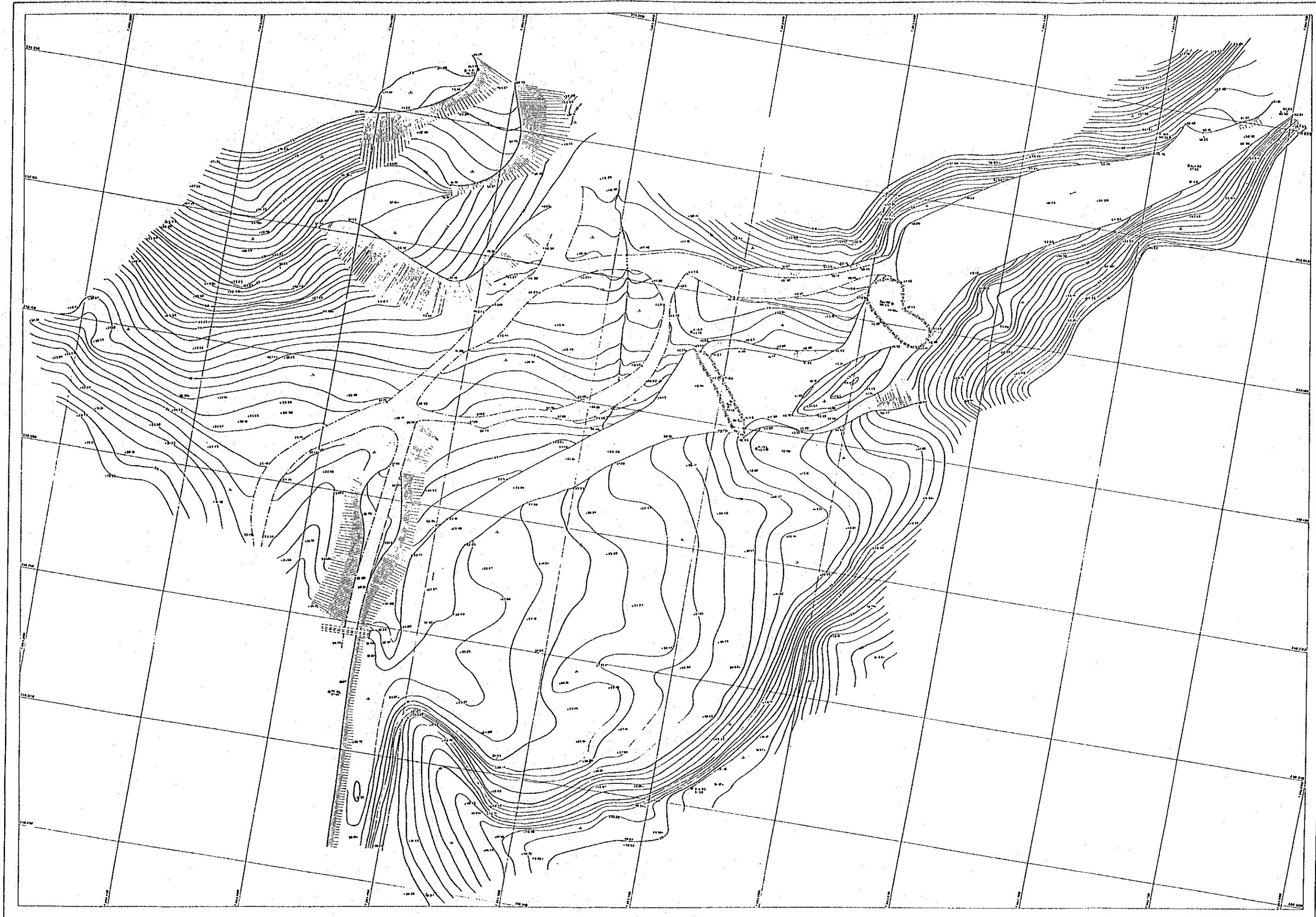




11

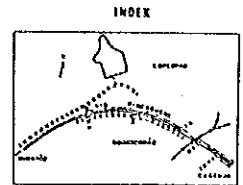


2117



THE
SERV
SHEET
SURVE

SHEET NO.1
SITE NO.2-1



LEGEND

1 CONTROL POINT	16 W. W. W.
2 SPOT HEIGHT	17 CANAL
3 WATER COURSE	18
4 DRAINAGE	19
5 DIRT	20
6 OUTCROP ROCK	21
7 WALL FILL	22
8 DRAINAGE	23
9 TUNNEL	24
10 ROAD	25
11 FORT PATH	26
12 STONE STOP	27
13 POWER TRANSMISSION LINE	28
14 FENCE	29
15 GULLY	30
16 STOP OF WATER DAM	31
17 DAM	32
18 SAND POND	33
19 WADI	34
20 SAND LEAVE LINE	35
21 DRAINAGE POLE	36

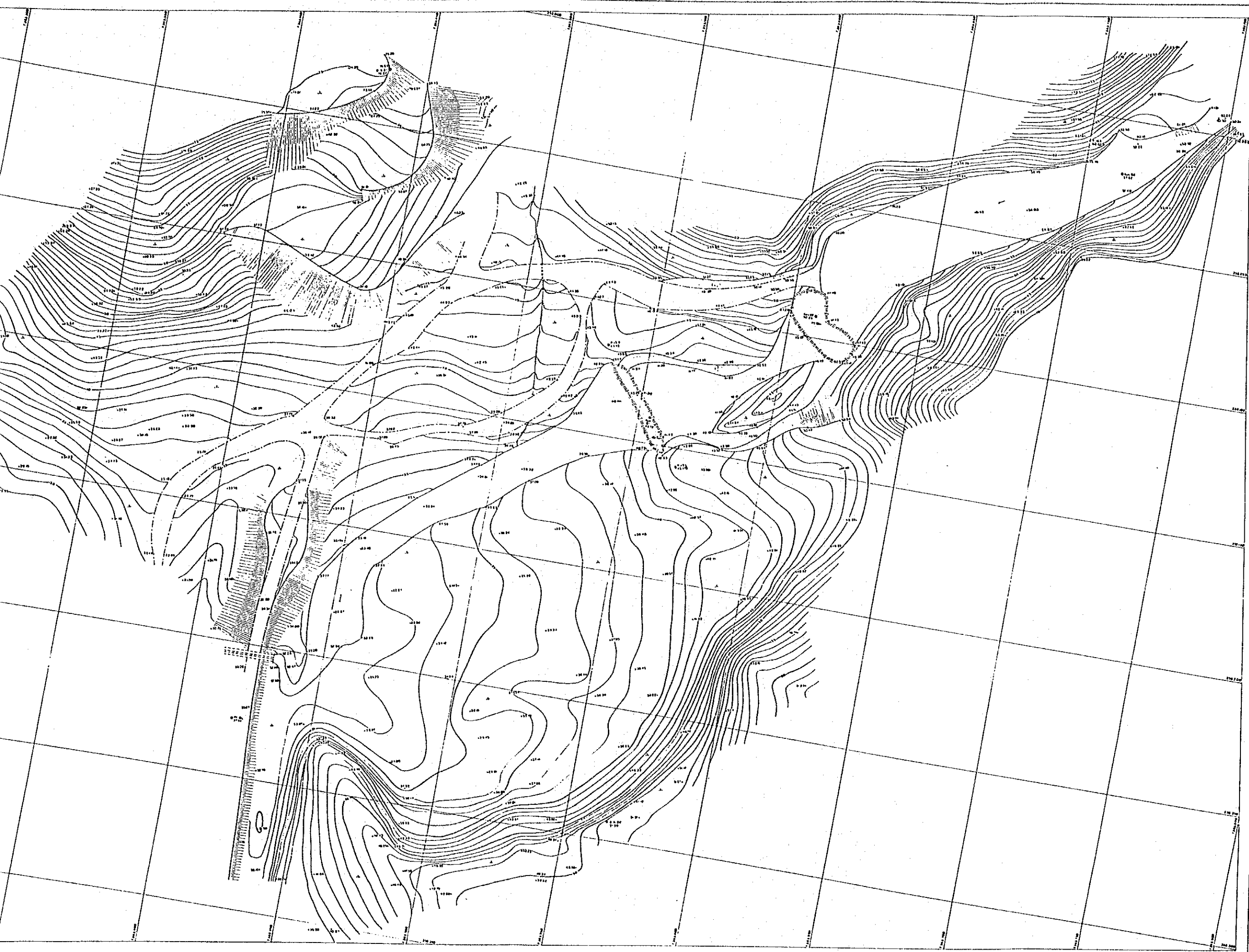
SCALE: 1:500

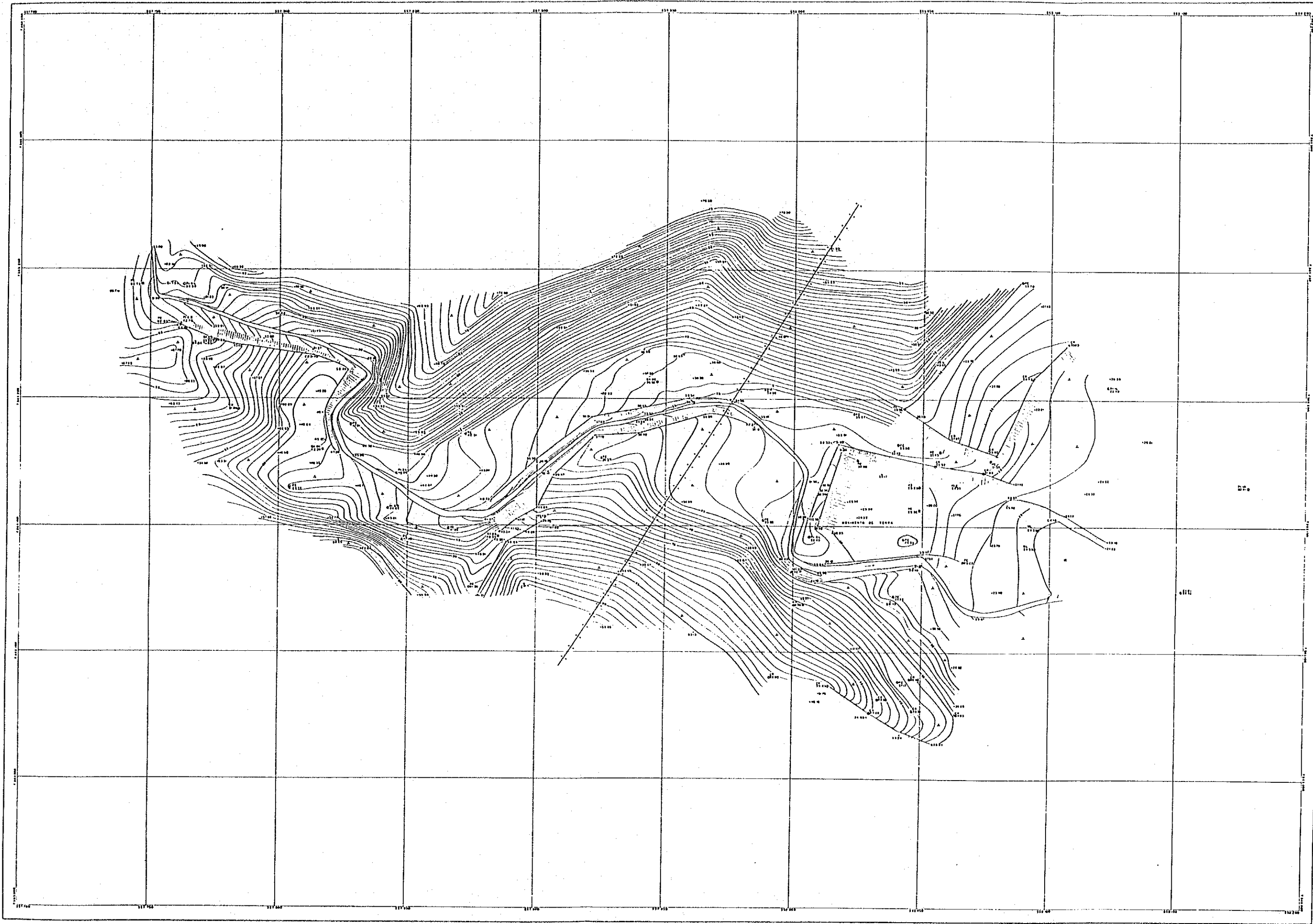
NOTATION
 Projection : Universal Transverse Mercator
 Datum Vertical : Spheroidal - Sea Datum
 Scale Horizontal : 1:500
 Contour Interval : 5 Meters
 Projection No : August 1980

THE DISASTER PREVENTION AND RESTORATION PROJECT IN
SERRA DO MAR, CUBATÃO REGION, STATE OF SÃO PAULO

TOPOGRAPHIC MAP FOR SABO DAM SITE

SHEET NO.	1	OF	7	SCALE	1:500
SURVEYED DATE	AUGUST 1980				
JAPAN INTERNATIONAL COOPERATION AGENCY					
BASE AEROFOTOGRAMETRIA E PROJETOS S.A.					





TH
SH
SU

SHEET NO.2
SITE NO.3-1



INDEX



LEGEND

1 CONTROL POINT	10 1/2" DIA
2 SPOT HEIGHT	10M
3 BANK EROSION	100
4 CONTROL	1000
5 DUMP	10000
6 DIRT	100000
7 DRAINAGE DITCH	1000000
8 WATER TANK	10000000
9 DRAIN	100000000
10 ROAD	1000000000
11 DAM	10000000000
12 DAM POND	100000000000
13 STONE STEP	1000000000000
14 POWER TRANSMISSION LINE	10000000000000
15 TELEPHONE	100000000000000
16 DRAINAGE	1000000000000000
17 DRAIN ON UNITS DAM	10000000000000000
18 WEIR	100000000000000000
19 DAM	1000000000000000000
20 DAM POND	10000000000000000000
21 DAM DAM	100000000000000000000
22 DAM	1000000000000000000000
23 DAM LEAKAGE TANK	10000000000000000000000
24 ELECTRIC POLE	100000000000000000000000

SCALE: 1:500



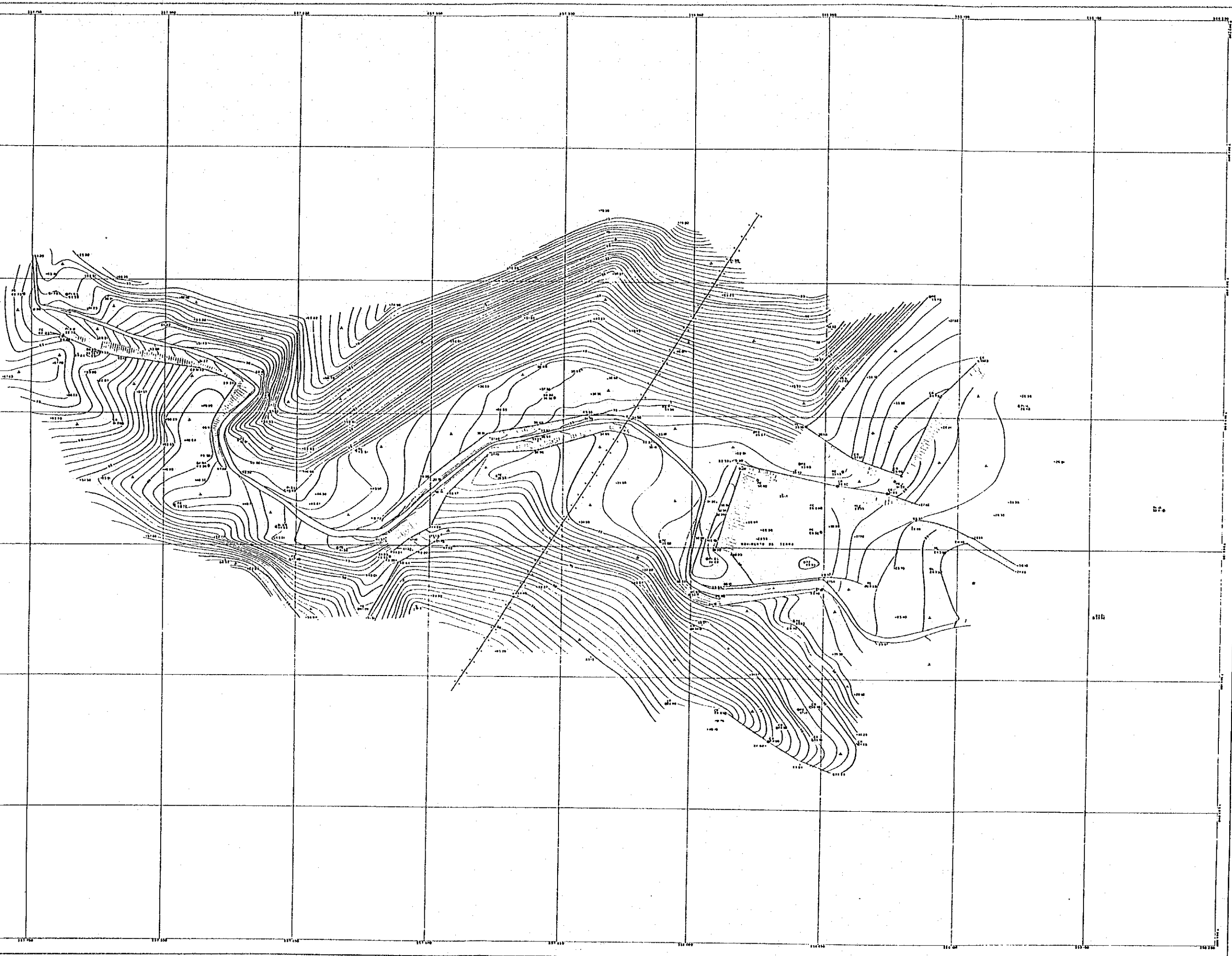
NOTATION

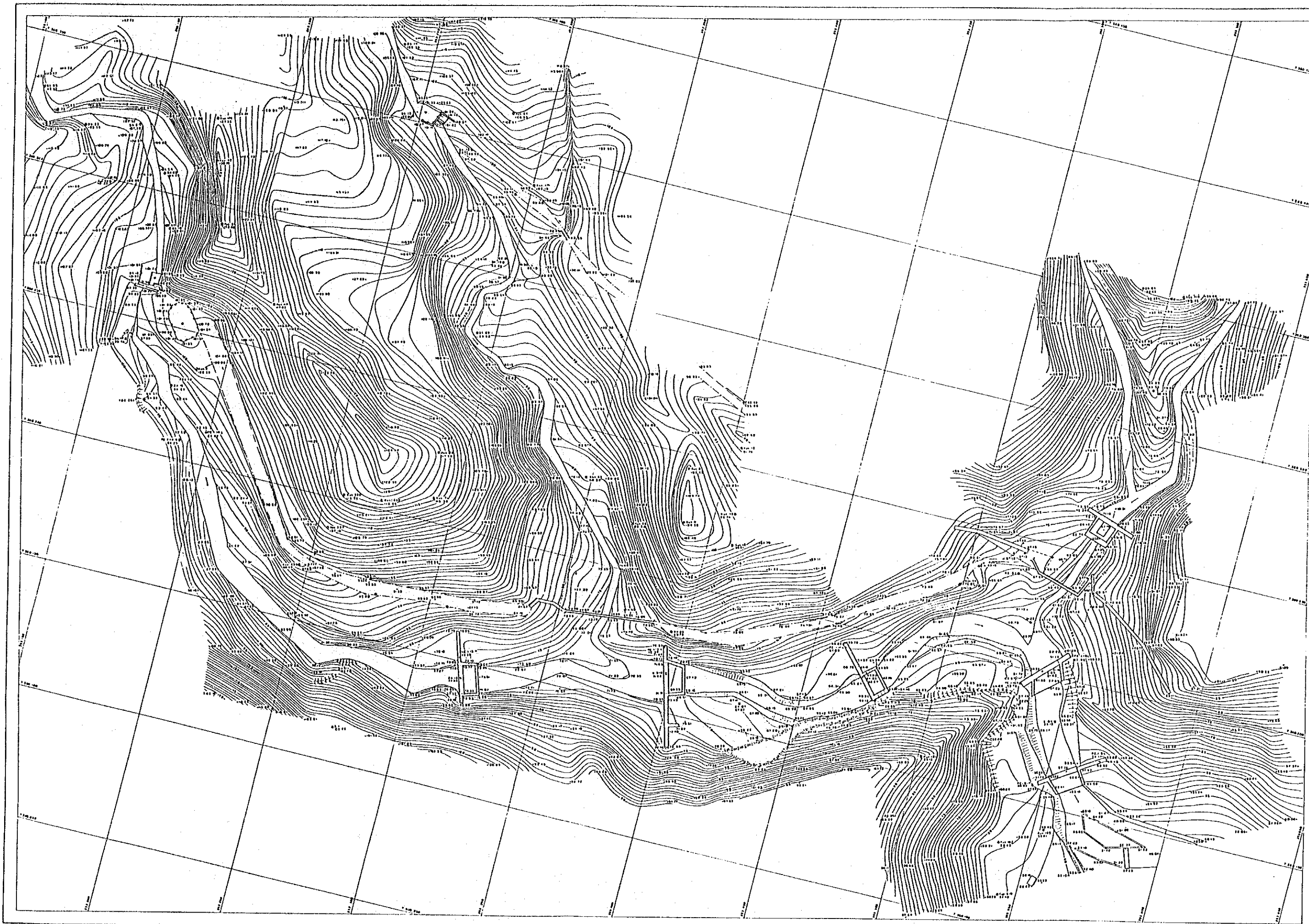
Projector : Universal Transverse Mercator
Datum Vertical : Spheroidal - Rio de Janeiro
Datum Horizontal : SAG - 60
Elevation : Contour Interval 1 Meter
Prepared by : September 1990

THE DISASTER PREVENTION AND RESTORATION PROJECT IN
SERRA DO MAR, CUBATÃO REGION, STATE OF SÃO PAULO

TOPOGRAPHIC MAP FOR SABO DAM SITE

SHEET NO.	2	OF 7	SCALE	1:500
SURVEYED DATE	AUGUST 1990			
JAPAN INTERNATIONAL COOPERATION AGENCY				
BASE AEROFOTOGRAMMETRIA E PROJETOS S.A.				





SHEET NO.3
SITE NO.7-1,73,74



INDEX



LEGEND

1 CONTROL POINT	6 0.50 M
2 HIGH WATER	7 1.00 M
3 DAMS CONTROL	8 1.00 M
4 DAM	9 1.00 M
5 CLIFF	10 1.00 M
6 OUTCROP ROCK	11 1.00 M
7 DITCH FILL	12 1.00 M
8 FLOOD	13 1.00 M
9 RAILWAY	14 1.00 M
10 ROAD	15 1.00 M
11 HIGH PILE	16 1.00 M
12 STONE STEP	17 1.00 M
13 POWER TRANSMISSION LINE	18 1.00 M
14 FENCE	19 1.00 M
15 DRAINAGE	20 1.00 M
16 DRAIN OR DITCH WALL	21 1.00 M
17 FENCEPOST	22 1.00 M
18 DAM	23 1.00 M
19 DAM WALL	24 1.00 M
20 DAM	25 1.00 M
21 DAM FENCE LINE	26 1.00 M
22 VICTIM POLE	27 1.00 M

SCALE: 1:500



NOTATION

Project No. : Damour Francisco Marcano
 Survey Year : 1973
 Survey Station : SAB - 03
 Survey : Control Interval 3 Meters
 Prepared by : September 1978

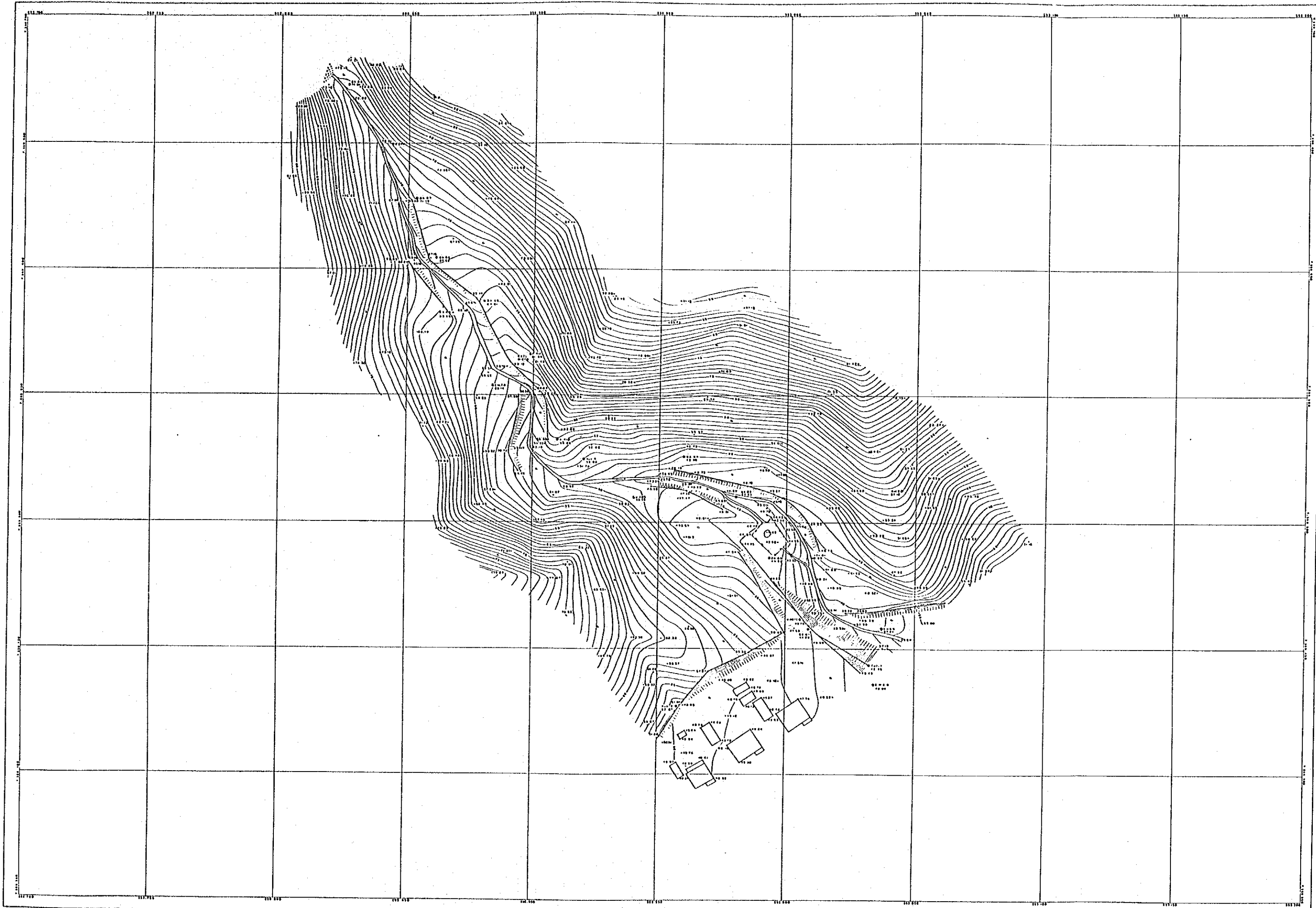
THE DISASTER PREVENTION AND RESTORATION PROJECT IN
SERRA DO MAR, CUBATÃO REGION, STATE OF SÃO PAULO

TOPOGRAPHIC MAP FOR SABO DAM SITE

SHEET NO. 3 WITHIN 7 SCALE 1:500
 SURVEYED DATE AUGUST 1970

JAPAN INTERNATIONAL COOPERATION AGENCY

BASE AEROFOTOGRAFIA E PROJETOS S.A.



THE
S
SHE
SUP

SHEET NO. 4
SITE NO. 8-1



INDEX



LEGEND

1 CONTROL POINT	0 0 0 0
2 OPEN POINT	0 0 0
3 WIRE SIGHTING	— — — — —
4 BOUNDARY	———
5 RIVER	~~~~~
6 CREEK	~~~~~
7 DISTANCE MARK	— — — — —
8 WATER TANK	□
9 DAM	— — — — —
10 FENCE	— — — — —
11 ROAD	— — — — —
12 POWER LINE	— — — — —
13 POWER TRANSMISSION LINE	— — — — —
14 FENCE	— — — — —
15 BOUNDARY	———
16 BOUNDARY OF UNITS MAP	———
17 BOUNDARY	———
18 DAM	———
19 DAM	———
20 DAM	———
21 DAM	———
22 DAM	———
23 DAM	———
24 DAM	———
25 DAM	———
26 DAM	———
27 DAM	———
28 DAM	———
29 DAM	———
30 DAM	———
31 DAM	———
32 DAM	———
33 DAM	———
34 DAM	———
35 DAM	———
36 DAM	———
37 DAM	———
38 DAM	———
39 DAM	———
40 DAM	———
41 DAM	———
42 DAM	———
43 DAM	———
44 DAM	———
45 DAM	———
46 DAM	———
47 DAM	———
48 DAM	———
49 DAM	———
50 DAM	———
51 DAM	———
52 DAM	———
53 DAM	———
54 DAM	———
55 DAM	———
56 DAM	———
57 DAM	———
58 DAM	———
59 DAM	———
60 DAM	———
61 DAM	———
62 DAM	———
63 DAM	———
64 DAM	———
65 DAM	———
66 DAM	———
67 DAM	———
68 DAM	———
69 DAM	———
70 DAM	———
71 DAM	———
72 DAM	———
73 DAM	———
74 DAM	———
75 DAM	———
76 DAM	———
77 DAM	———
78 DAM	———
79 DAM	———
80 DAM	———
81 DAM	———
82 DAM	———
83 DAM	———
84 DAM	———
85 DAM	———
86 DAM	———
87 DAM	———
88 DAM	———
89 DAM	———
90 DAM	———
91 DAM	———
92 DAM	———
93 DAM	———
94 DAM	———
95 DAM	———
96 DAM	———
97 DAM	———
98 DAM	———
99 DAM	———
100 DAM	———

SCALE: 1:500



NOTATION

Projection : Universal Transverse Mercator
Datum : South America 54
Datum Adjustment : 55.84 m
Elevation : 1985
Prepared by : September 1988

THE DISASTER PREVENTION AND RESTORATION PROJECT IN
SERRA DO MAR, CUBATÃO REGION, STATE OF SÃO PAULO

TOPOGRAPHIC MAP FOR SABO DAM SITE

SHEET NO.	4	OF	7	SCALE	1:500
SURVEIED DATE	AUGUST 1988				
JAPAN INTERNATIONAL COOPERATION AGENCY					
BASE AEROFOTOGRAFIA E PROJETOS S.A.					