

3. クウェスチョネア回答（調査団「マ」国出発時までの回収分）

TABLE 1. COMPARATIVE SUMMARY OF MAIN INDICATORS

ITEM	UNIT	MONTH	MONTH			CUMULATIVE TO END OF CURRENT MONTH				
			Current 1989	Month 1990	Change	Calendar 1989	Year 1990	12 Months 1989/89	Cumulative 1989/90	Change
EXTERNAL TRADE										
Total Imports (1)	K'000	APRIL	129,291	133,350	3%	484,902	487,696	1,289,690	1,399,734	10%
Domestic Exports	K'000	APRIL	21,869	28,359	30%	132,955	184,481	758,003	765,954	1%
Re-exports	K'000	APRIL	528	3,392	300%	3,812	6,127	11,545	13,794	19%
Total Exports	K'000	APRIL	22,427	31,788	42%	136,767	170,588	769,548	779,748	1%
Trade Balance	K'000	APRIL	-106,864	-101,612	-5%	-348,135	-317,108	-510,142	-619,986	24%
Tea Exports	K'000	APRIL	11,691	13,861	19%	47,599	66,750	87,856	120,870	37%
Tobacco Exports	K'000	APRIL	2,813	2,935	4%	34,256	42,422	489,101	468,768	-4%
Groundnut Exports	K'000	APRIL	24	-	-100%	1,010	68	11,265	88	-99%
Cotton Exports	K'000	APRIL	835	1,115	33%	3,115	1,115	59,927	17,758	-70%
Sugar Exports	K'000	APRIL	439	2,358	440%	20,041	17,393	89,927	62,618	-30%
Patrol Imports	'000 Ltr.	APRIL	4,349	3,482	-20%	20,078	20,825	54,550	57,183	5%
AGRICULTURE										
ADMARC (2) Domestic Purchases	K'000	MARCH	-	275	++	357	599	65,842	94,672	44%
Tobacco Auction Sales: Total Value	K'000	MAY	55,581	120,450	117%	74,623	172,167	361,805	459,566	27%
: Total Quantity	Tonnes	MAY	11,981	23,780	202%	15,953	31,046	72,510	101,420	40%
Tea Production	Tonnes	APRIL	4,811	5,456	13%	22,126	24,403	41,076	41,746	2%
Cotton Auction Sales: Total Value	K'000	MAY	6,173	8,703	41%	28,287	37,376	47,507	55,403	30%
: Total Quantity	Tonnes	MAY	2,483	2,848	7%	12,104	15,409	18,581	18,586	-
INDUSTRIAL PRODUCTION										
Index of Industrial Production (1984 = 100)		APRIL	104.4	108.6	4%	109.8	115.8	110.9	120.8	9%
ELECTRICITY										
Units sent out by ESCOM	Mn Kwh	APRIL	49.67	55.18	11%	188.32	218.76	587.83	657.60	12%
Units sold in Malawi by ESCOM: Domestic Tariff	Mn Kwh	APRIL	7.94	8.37	5%	30.27	31.72	88.46	95.79	8%
: Other Tariffs	Mn Kwh	APRIL	32.82	39.63	20%	126.29	152.84	390.79	452.88	16%
BUILDING AND CONSTRUCTION										
Value of Plans Approved	: Blantyre K'000	MAY	3,424.4	18,331.2	377%	12,741.9	37,980.5	33,393.7	70,729.5	112%
: Lilongwe K'000	MAY	4,876.5	8,302.8	70%	49,392.0	44,458.0	81,883.7	79,227.1	-3%	
: Mzuzu K'000	APRIL	4,473.0	4,057.4	-9%	5,387.0	7,983.5	14,358.9	21,075.1	47%	
Value of Plans Completed(3)	: Blantyre K'000	MAY	87.0	421.2	391%	1,125.7	3,416.6	8,431.8	8,502.1	1%
: Lilongwe K'000	MAY	379.0	2,053.8	443%	728.5	4,217.1	2,737.5	7,484.6	173%	
: Mzuzu K'000	SEPTEMBER	165.0	130.0	-21%	1,150.0	6,510.8	n.a.	6,791.8	n.a.	
Contract Sales	Tonnes	APRIL	5,558	6,763	21%	22,345	25,595	89,523	81,244	-17%
TRANSPORT										
Freight Carried by: Railways Service	'000 Net Tonnes	MARCH	3,056	5,252	173%	13,317	17,502	70,444	69,726	-1%
: Lake Services	K'Netres	MARCH	817	788	-4%	1,884	2,318	10,640	10,150	-5%
Passengers handled at Chilika Airport	No.	APRIL	6,577	6,816	1%	26,009	23,257	85,376	76,689	-10%
Freight handled at Chilika Airport	Tonnes	APRIL	150	137	-9%	289	756	770	1,174	130%
Passengers handled at K. I. A. (4)	No.	APRIL	22,315	21,362	-4%	104,314	77,353	283,731	294,033	4%
Freight handled at K. I. A.	Tonnes	APRIL	438	248	-43%	1,737	1,730	5,514	5,799	5%
Road Accident Fatalities	No.	APRIL	30	28	-7%	110	99	397	405	2%
TOURISM										
Number of Departing Visitors	No.	MARCH	6,604	9,441	10%	26,101	27,860	103,085	118,800	15%
GOVERNMENT FINANCE										
Total Revenue Account Receipts	K'000	DECEMBER	59,100	75,427	28%	727,371	917,283	727,371	917,263	26%
of which: Income Tax Collections	K'000	DECEMBER	22,723	30,861	36%	250,792	361,785	250,792	351,795	40%
Customs and Excise Collections	K'000	DECEMBER	29,914	37,809	27%	340,918	448,428	340,910	448,428	32%
Expenditure on Revenue Account	K'000	DECEMBER	85,671	55,658	-35%	887,150	1,043,888	887,150	1,043,686	52%
Development Account Expenditure	K'000	DECEMBER	10,908	13,716	26%	184,649	222,158	184,649	222,158	20%
Development Fund Receipts	K'000	DECEMBER	11,873	8,974	-25%	283,122	191,785	261,122	191,785	-27%
MONEY AND BANKING (5)										
Official External Reserves	K'Mn	APRIL	342.6	202.6	-41%	n.a.	n.a.	n.a.	n.a.	n.a.
Money	K'Mn	APRIL	304.9	343.1	13%	n.a.	n.a.	n.a.	n.a.	n.a.
Domestic Credit	K'Mn	APRIL	624.9	795.4	27%	n.a.	n.a.	n.a.	n.a.	n.a.
Currency in Circulation	K'Mn	APRIL	132.8	158.2	19%	n.a.	n.a.	n.a.	n.a.	n.a.
Commercial Banks' Deposits: Total	K'Mn	APRIL	604.5	699.5	16%	n.a.	n.a.	n.a.	n.a.	n.a.
of which: Demand Deposits	K'Mn	APRIL	195.5	231.3	19%	n.a.	n.a.	n.a.	n.a.	n.a.
: Time and Savings	K'Mn	APRIL	408.9	468.1	14%	n.a.	n.a.	n.a.	n.a.	n.a.
Other Deposits: P.O.S.B. Savings Deposits	K'Mn	AUGUST	80.8	128.6	60%	n.a.	n.a.	n.a.	n.a.	n.a.
: N.B.S. (6)	K'Mn	DECEMBER	13.2	18.3	39%	n.a.	n.a.	n.a.	n.a.	n.a.
(a) Savings	K'Mn	DECEMBER	44.9	51.3	14%	n.a.	n.a.	n.a.	n.a.	n.a.
(b) Fixed Investment Deposits	K'Mn	DECEMBER	336.4	619.7	54%	n.a.	n.a.	n.a.	n.a.	n.a.
Commercial Banks' Advances Total	K'Mn	APRIL	336.4	619.7	54%	n.a.	n.a.	n.a.	n.a.	n.a.
Commercial Banks' Debit Entries (for the whole month)	K'Mn	APRIL	800.2	1,158.7	46%	2,241.1	3,002.0	8,687.6	9,176.8	6%
BLANTYRE RETAIL PRICE INDICES (1980 = 100)										
Low Income: All Items		MARCH	414.5	455.7	10%	397.3	438.2	370.6	407.2	10%
: Food costs		APRIL	401.5	431.1	7%	398.3	436.0	375.2	409.7	9%
Medium Income: All Items		MARCH	407.3	483.9	19%	369.6	429.6	336.3	423.6	26%
: Food costs		APRIL	390.1	405.2	7%	372.7	423.5	341.8	425.7	25%
High Income: All Items		JANUARY	369.8	426.6	15%	n.a.	n.a.	n.a.	n.a.	n.a.
: Food costs		APRIL	387.9	440.4	14%	n.a.	n.a.	n.a.	n.a.	n.a.
Low Income: All Items		JANUARY	382.9	397.9	4%	n.a.	n.a.	n.a.	n.a.	n.a.
: Food costs		APRIL	379.3	408.2	8%	n.a.	n.a.	n.a.	n.a.	n.a.
LILONGWE RETAIL PRICE INDICES (1980 = 100)										
Low Income: All Items		MARCH	399.8	416.9	4%	386.1	418.7	359.7	400.7	11%
: Food costs		APRIL	387.2	427.4	10%	386.6	420.9	365.2	404.0	11%
Medium Income: All Items		MARCH	422.0	429.3	2%	387.9	433.2	350.4	445.3	27%
: Food costs		APRIL	332.6	444.7	33%	339.1	438.1	358.9	449.7	26%
High Income: All Items		JANUARY	355.0	403.5	14%	n.a.	n.a.	n.a.	n.a.	n.a.
: Food costs		APRIL	399.2	424.2	6%	n.a.	n.a.	n.a.	n.a.	n.a.
Low Income: All Items		JANUARY	368.4	384.8	4%	n.a.	n.a.	n.a.	n.a.	n.a.
: Food costs		APRIL	370.1	421.1	14%	n.a.	n.a.	n.a.	n.a.	n.a.
COMPOSITE RETAIL PRICE INDEX (1980 = 100) (7)										
All Items		JANUARY	375.4	410.0	9%	n.a.	n.a.	n.a.	n.a.	n.a.
: Food Costs		APRIL	385.2	426.5	10%	n.a.	n.a.	n.a.	n.a.	n.a.
All Items		JANUARY	365.8	450.9	23%	n.a.	n.a.	n.a.	n.a.	n.a.
: Food Costs		APRIL	406.7	459.9	13%	n.a.	n.a.	n.a.	n.a.	n.a.

Footnotes: (1) Reported at c.i.f. value. (2) Agricultural Development and Marketing Corporation. (3) Private Sector only. (4) Kamuzu International Airport. (5) Figures refer to the last day of the month unless otherwise stated. (6) New Building Society. (7) Covers the cities of Blantyre and Lilongwe only.

General Note: August figures refer to 1988 and are compared to 1987 (On P.O.S.B. Savings Deposits). September (value of plans completed for Mzuzu) and December (for Govt. Finance and MBs) figures refer to 1989 and are compared to 1988.

Special Note: ++ indicates an increase by 100% or more. -- indicates a decrease by 100% or more.

EXTERNAL TRADE

TABLE 2. IMPORTS AND EXPORTS
(K'000)

Period	Total Imports	Domestic Exports	Net Exports	Total Exports	Trade Balance	Commodity Exports				
						Tea	Tobacco	Groundnut	Cotton	Sugar
1980	357,294	215,268	12,712	227,980	-129,314	29,751	100,796	15,937	4,517	34,681
1981	312,443	232,710	11,266	243,976	-68,467	30,579	99,391	10,620	1,470	27,007
1982	322,729	245,539	7,454	252,993	-69,736	44,243	143,997	4,596	333	24,255
1983	362,868	263,150	6,025	289,175	-73,693	55,925	145,616	2,908	6	27,052
1984	381,705	430,751	9,927	440,678	+58,973	112,935	225,632	1,075	2,977	28,916
1985	506,192	410,769	11,192	421,961	-84,231	91,389	185,453	5,947	12,998	51,634
1986	477,971	449,067	13,180	462,247	-15,725	68,450	244,368	15,535	2,063	39,924
1987	653,939	602,488	12,567	615,055	-38,884	80,990	373,702	13,196	788	63,461
1988	1,080,151	742,031	9,672	751,703	-328,448	19,507	474,925	22,011	-	69,038
1989*	1,396,940	734,448	11,479	745,927	-661,013	101,519	460,601	1,010	16,643	65,266
1989										
January	107,538	33,359	583	33,942	-73,596	12,698	11,018	695	-	2,883
February	92,276	49,639	472	50,111	-42,165	13,017	13,528	190	-	14,662
March	155,797	28,088	2,199	30,287	-125,510	10,193	6,896	111	-	1,661
April	129,291	21,869	558	22,427	-106,864	11,691	2,813	-	-	635
May	164,722	23,084	486	23,570	-81,152	11,485	3,311	-	-	1,098
June	136,792	71,991	485	72,476	-64,316	9,738	51,344	-	4,757	3,915
July	108,670	59,723	1,833	61,558	-47,114	4,239	43,399	-	-	4,465
August	127,570	92,524	930	93,454	-34,116	3,976	75,991	-	-	4,366
September	104,825	114,105	1,231	115,336	+10,511	3,872	85,878	-	-	18,348
October*	117,813	112,559	1,222	113,781	-4,032	6,134	77,020	-	11,886	6,261
November*	114,432	91,155	741	91,896	-22,536	6,510	70,552	-	-	1,627
December*	97,214	36,352	739	37,091	-60,123	7,964	18,851	-	-	2,338
1990										
January*	111,954	57,004	1,186	58,190	-53,764	19,567	17,314	-	-	10,661
February*	122,605	45,847	651	46,499	-76,106	16,598	16,863	-	-	3,550
March*	119,787	33,266	897	34,163	-85,624	16,724	5,310	66	-	1,627
April*	133,350	28,345	3,393	31,738	-101,612	13,861	2,935	-	1,115	2,255
May										
June										
July										
August										
September										
October										
November										
December										

TABLE 3. IMPORTS OF MAJOR PETROLEUM PRODUCTS, FERTILISERS AND COAL

Period	Petrol		Paraffin		Diesel and Other Fuels		Fertilisers		Coal	
	Qty. ('000 Litres)	Value (K'000)	Qty. ('000 Litres)	Value (K'000)	Qty. ('000 Litres)	Value (K'000)	Qty. (Tonnes)	Value (K'000)	Qty. (Tonnes)	Value (K'000)
1980	53,926	15,876	7,559	2,081	92,104	26,635	80,800	14,921	65,383	3,189
1981	54,104	17,409	6,060	1,720	77,925	23,718	114,172	26,912	47,691	2,859
1982	49,862	18,029	5,612	1,858	68,919	23,263	116,338	27,574	50,866	4,224
1983	48,404	17,112	5,160	1,828	77,661	27,216	114,384	31,572	43,728	4,300
1984	47,190	17,250	4,355	1,622	74,084	26,565	136,223	47,222	41,266	4,220
1985	46,337	17,256	5,165	1,958	63,930	30,379	103,223	49,653	32,752	4,159
1986	45,987	17,122	7,183	2,724	80,549	28,119	98,064	42,869	27,746	3,051
1987	47,526	27,312	7,675	2,910	76,922	42,348	122,870	65,972	24,802	2,734
1988	49,762	42,206	7,761	2,544	78,582	59,878	134,561	103,500	18,097	2,166
1989*	57,436	50,547	8,838	3,353	81,125	66,736	187,094	141,543	18,518	3,571
1989										
January	8,895	7,543	584	221	10,122	7,692	5,031	3,637	1,703	307
February	3,350	2,737	885	336	4,145	3,150	1,744	1,845	3,003	512
March	2,484	3,786	724	274	5,324	4,426	49,570	43,178	703	107
April	4,349	3,979	559	212	4,270	3,485	40,823	23,718	737	170
May	4,334	4,112	1,033	392	5,737	4,907	3,798	2,718	1,002	167
June	4,337	4,121	653	324	8,109	5,221	23,823	17,242	7,148	1,264
July	4,083	3,874	556	212	6,911	5,836	4,740	4,181	400	117
August	5,488	3,207	759	289	7,568	6,459	17,931	14,203	1,025	287
September	5,568	5,283	682	259	10,718	9,139	6,398	5,011	276	80
October*	4,310	4,089	662	251	7,808	6,656	24,386	19,434	1,004	238
November*	5,235	4,968	766	291	6,909	5,899	5,847	4,756	1,299	260
December*	3,002	2,848	773	293	5,106	3,866	2,001	1,617	218	62
1990										
January*	6,089	5,777	697	264	7,073	6,035	7,387	8,223	-	-
February*	4,948	4,692	1,156	438	7,210	6,153	10,092	7,392	266	75
March*	6,328	6,004	1,029	390	6,896	5,893	1,891	1,631	687	187
April*	3,462	3,369	541	205	4,070	3,471	18,512	18,675	842	232
May										
June										
July										
August										
September										
October										
November										
December										

TABLE 4. PRINCIPAL DOMESTIC EXPORT COMMODITIES BY QUANTITY AND VALUE

Year/Month	Tea		Tobacco		Groundnuts		Cotton		
	Quantity (Tonnes)	Value (K'000)	Quantity (Tonnes)	Value (K'000)	Quantity (Tonnes)	Value (K'000)	Quantity (Tonnes)	Value (K'000)	
1981	232,710	31,018	30,579	39,314	99,391	11,121	10,620	1,031	1,470
1982	245,539	36,418	44,243	43,334	143,897	7,166	4,598	500	333
1983	283,150	35,976	55,925	47,084	145,818	4,137	2,808	21	8
1984	430,751	37,205	112,935	67,618	225,652	1,305	1,075	1,851	2,377
1985	410,769	37,777	91,389	59,891	185,453	9,086	5,047	7,270	12,398
1986	449,067	40,211	68,450	50,832	244,389	18,492	15,536	2,158	2,063
1987	602,488	33,404	60,990	61,417	373,702	18,564	13,198	834	786
1988	742,031	36,991	79,507	59,339	474,925	30,321	22,011	-	-
1989*	734,448	38,287	101,519	58,053	460,801	1,292	1,010	2,747	16,643
1989									
January	33,359	5,446	12,698	2,040	11,018	840	695	-	-
February	49,839	5,378	13,017	2,242	13,529	245	180	-	-
March	28,088	4,256	10,193	990	5,898	180	111	-	-
April	21,869	5,063	11,891	429	2,813	17	14	-	-
May	23,094	4,894	11,485	463	3,311	-	-	-	-
June	71,991	3,902	9,738	5,424	51,344	-	-	2	4,757
July	53,723	3,902	4,239	4,997	43,388	-	-	-	-
August	92,524	1,280	3,978	8,219	75,991	-	-	-	-
September	114,105	1,332	3,872	9,550	85,878	-	-	-	-
October*	112,559	1,468	6,134	11,859	77,020	-	-	2,745	11,888
November*	91,155	1,623	6,510	8,538	70,552	-	-	-	-
December*	38,352	2,079	7,964	3,298	18,851	-	-	-	-
1990									
January*	57,004	6,669	19,587	2,702	17,314	-	-	-	-
February*	45,846	4,882	18,598	3,047	16,863	-	-	-	-
March*	33,287	5,872	16,724	864	5,310	40	68	-	-
April*	28,345	4,461	13,661	698	2,935	-	-	275	1,115
May									
June									
July									
August									
September									
October									
November									
December									

Year/Month	Sugar		Pulses		Rice		Coffea		Other
	Quantity (Tonnes)	Value (K'000)	Quantity (Tonnes)	Value (K'000)	Quantity (Tonnes)	Value (K'000)	Quantity (Tonnes)	Value (K'000)	Value (K'000)
1981	121,901	57,007	6,548	2,770	7,901	3,088	478	992	28,815
1982	77,131	24,255	7,367	3,878	2,987	1,590	1,038	2,427	20,420
1983	88,546	27,052	15,513	10,626	374	165	1,028	2,728	38,136
1984	78,589	28,918	9,732	6,379	1,311	733	1,527	4,335	47,749
1985	99,062	51,634	12,363	7,769	419	203	3,251	11,303	44,073
1986	93,878	39,924	18,120	9,053	1,271	1,118	3,704	22,525	48,030
1987	91,727	63,461	48,524	25,581	8	1	4,899	20,365	44,408
1988	96,898	73,179	11,126	8,186	4,272	8,213	3,708	24,802	53,408
1989*	53,106	65,266	7,777	6,312	3,306	4,218	3,608	18,598	62,285
1989									
January	2,356	2,883	966	679	38	49	292	1,620	3,717
February	12,044	14,652	622	500	2,083	2,911	136	773	4,058
March	1,000	1,661	335	330	104	118	97	484	8,297
April	500	835	990	759	91	72	69	235	5,450
May	680	1,098	982	624	25	31	153	379	8,158
June	2,251	3,315	785	620	134	149	263	1,484	584
July	3,266	4,465	210	202	168	189	309	2,287	4,932
August	3,252	4,366	902	597	183	233	198	1,296	6,063
September	18,721	18,348	352	333	142	152	312	1,790	3,732
October*	4,261	6,261	542	573	127	107	434	1,802	8,776
November*	3,320	5,034	305	321	68	53	770	2,788	5,917
December*	1,475	2,338	806	774	143	144	575	1,678	4,603
1990									
January*	8,950	10,081	452	373	549	483	980	3,091	6,115
February*	2,233	3,350	397	452	179	227	790	2,550	5,808
March*	1,273	1,627	365	359	133	140	700	2,769	6,272
April*	1,506	2,355	468	387	516	487	628	1,920	5,285
May									
June									
July									
August									
September									
October									
November									
December									

AGRICULTURE

TABLE 5A. QUANTITY OF ADMARC PURCHASES BY COMMODITY

Period	ADMARC DOMESTIC PURCHASES (Tonnes)							
	Total	Tobacco	Groundnut Shelled	Seed Cotton	Rice Paddy	Maize Shelled	Pulses	(2) Other
1981	215,850	12,755	19,494	21,739	14,882	170,847	7,202	3,331
1982	302,452	8,794	10,432	14,800	12,543	249,082	5,791	4,030
1983	291,906	9,279	10,210	13,388	8,503	244,937	3,185	2,416
1984	378,253	19,162	9,867	32,122	9,771	296,282	5,573	3,466
1985	242,888	17,170	16,235	32,711	10,735	271,567	17,042	1,868
1986	163,461	16,122	44,829	21,383	7,656	58,466	11,132	893
1987	202,594	9,325	15,573	25,716	5,179	135,301	8,546	2,954
1988	284,921	5,805	829	28,312	10,249	233,098	5,585	1,243
1989								
January	568	-	-	-	434	76	1	57
February	65	-	-	-	57	-	1	7
March	-	-	-	-	-	-	-	-
April	176	1	-	-	-	-	175	*
May	2,692	2,080	-	*	-	-	612	*
June	37,858	3,639	17	7,108	610	25,334	993	159
July	70,834	84	279	6,404	2,842	58,237	801	387
August	100,950	*	253	9,253	4,229	85,517	1,458	240
September	60,502	1	79	3,376	1,941	53,864	1,098	144
October	9,841	-	1	173	207	8,834	281	165
November	1,502	-	-	1	68	1,222	150	61
December	133	-	-	*	61	14	35	23
1990								
January	321	-	-	-	266	5	8	42
February	425	-	-	-	404	-	13	8
March	910	*	-	-	908	-	*	2
April	-	-	-	-	-	-	-	-
May	-	-	-	-	-	-	-	-
June	-	-	-	-	-	-	-	-
July	-	-	-	-	-	-	-	-
August	-	-	-	-	-	-	-	-
September	-	-	-	-	-	-	-	-
October	-	-	-	-	-	-	-	-
November	-	-	-	-	-	-	-	-
December	-	-	-	-	-	-	-	-

TABLE 5B. VALUE OF ADMARC PURCHASES BY COMMODITY

Period	ADMARC DOMESTIC PURCHASES (K'000)							
	Total	Tobacco	Groundnut Shelled	Seed Cotton	Rice Paddy	Maize Shelled	Pulses	(2) Other
1981	27,752	5,418	5,976	4,647	1,470	9,053	877	311
1982	41,698	4,433(1)	3,408	3,982	1,367	27,284	732	492
1983	45,777	6,873	5,077	4,658	1,080	27,119	478	292
1984	72,754	15,619	5,695	12,870	1,528	35,573	1,019	450
1985	87,859	20,619	12,375	14,206	1,831	33,247	5,222	357
1986	90,048	16,970	38,595	10,017	2,336	13,703	7,899	529
1987	76,988	18,589	32,700	11,205	1,703	8,712	3,751	328
1988	65,888	10,476	10,870	15,216	1,489	23,326	3,722	787
1989	94,330	9,750	445	20,286	3,327	57,353	2,578	611
1989								
January	231	-	-	-	168	15	*	48
February	26	-	-	-	18	-	1	7
March	-	-	-	-	-	-	-	-
April	62	1	-	-	-	-	81	*
May	3,511	3,203	-	*	-	-	308	*
June	19,061	6,418	9	5,471	184	8,396	544	39
July	22,526	126	192	6,318	842	14,501	391	158
August	29,402	1	183	6,194	1,330	20,956	589	149
September	16,505	1	60	2,174	668	13,045	485	72
October	2,487	-	1	108	72	2,142	78	86
November	437	-	-	1	24	295	85	32
December	62	-	-	*	21	3	16	22
1990								
January	168	-	-	-	103	1	4	60
February	156	-	-	-	138	-	5	12
March	275	*	-	-	272	-	*	3
April	-	-	-	-	-	-	-	-
May	-	-	-	-	-	-	-	-
June	-	-	-	-	-	-	-	-
July	-	-	-	-	-	-	-	-
August	-	-	-	-	-	-	-	-
September	-	-	-	-	-	-	-	-
October	-	-	-	-	-	-	-	-
November	-	-	-	-	-	-	-	-
December	-	-	-	-	-	-	-	-

(1) Includes bonuses paid to local farmers.

(2) Mainly Sunflower seed, Coffee, Cassava and other miscellaneous produce.

SOURCE: Agricultural Development and Marketing Corporation.

TABLE 6. TOBACCO AUCTION SALES

Period (2)	Total Sales (1)		Northern Division Fire-cured		Southern Division Fire-cured		Flue-cured		Burley	
	Quantity (Tonnes)	Value (K'000)	Quantity (Tonnes)	Price (t/Kg)	Quantity (Tonnes)	Price (t/Kg)	Quantity (Tonnes)	Price (t/Kg)	Quantity (Tonnes)	Price (t/Kg)
1982	58,510	133,779	6,521	343.69	804	199.64	22,609	208.80	27,602	218.24
1983	72,243	119,745	7,576	287.54	808	197.39	21,659	187.08	41,537	130.71
1984	72,999	145,812	14,688	215.37	1,497	174.96	24,312	222.52	29,981	172.48
1985	66,680	128,673	12,473	150.73	598	95.16	22,281	237.54	30,373	181.55
1986	63,539	178,583	10,388	224.87	474	172.63	21,034	302.74	30,189	291.40
1987	72,507	278,248	9,849	324.83	493	235.21	24,464	395.97	36,791	1396.30
1988	75,023	387,173	7,743	449.52	424	388.85	20,742	528.27	45,545	524.47
1989	86,327	362,022	4,633	694.53	274	629.92	19,838	502.94	61,213	369.98
1989										
January	-	-	-	-	-	-	-	-	-	-
February	-	-	-	-	-	-	-	-	-	-
March	-	-	-	-	-	-	-	-	-	-
April	3,972	19,062	-	-	-	-	1,083	429.56	2,889	498.87
May	11,981	55,561	-	-	-	-	4,022	489.84	7,959	450.52
June	19,873	93,252	1,509	635.01	89	842.82	5,229	536.64	12,821	420.34
July	14,270	84,325	1,636	737.90	115	859.74	3,574	511.30	8,857	369.82
August	14,913	85,921	1,392	730.31	84	598.39	3,810	539.78	9,600	380.02
September	14,884	50,689	96	373.66	6	333.88	2,118	491.83	12,433	335.92
October	6,654	13,232	-	-	-	-	*	214.89	6,654	198.98
November	-	-	-	-	-	-	-	-	-	-
December	-	-	-	-	-	-	-	-	-	-
1990										
January	-	-	-	-	-	-	-	-	-	-
February	-	-	-	-	-	-	-	-	-	-
March	-	-	-	-	-	-	-	-	-	-
April	9,266	51,717	-	-	-	-	2,575	548.63	8,691	581.81
May	21,780	120,450	1,012	441.13	8	542.10	5,432	626.19	15,278	534.60
June	-	-	-	-	-	-	-	-	-	-
July	-	-	-	-	-	-	-	-	-	-
August	-	-	-	-	-	-	-	-	-	-
September	-	-	-	-	-	-	-	-	-	-
October	-	-	-	-	-	-	-	-	-	-
November	-	-	-	-	-	-	-	-	-	-
December	-	-	-	-	-	-	-	-	-	-

(1) Includes Sun/Air cured tobacco.

(2) Tea Monthly figures do not add up to the totals as some corrections are made to annual totals only

SOURCE: Tobacco Control Commission

TABLE 7. TEA PRODUCTION AND AUCTION SALES AND SUGAR PRODUCTION

Period	Tea Production (Tonnes) (1)	Tea Auction Sales (Lembe) (2)			Sugar Production (Tonnes) (3)
		Quantity (Tonnes)	Value (K'000)	Price (t/Kg)	
1982	38,484	10,106	12,029	119.03	171,794
1983	32,011	9,099	14,585	160.28	175,291
1984	37,530	10,224	30,501	298.33	149,714
1985	39,954	11,585	20,935	180.71	143,818
1986	38,973	12,089	18,077	149.53	163,805
1987	31,908	9,362	15,395	164.42	172,024
1988	40,157	14,906	31,665	212.43	174,472
1989	39,469	17,261	46,284	268.20	162,258
1989					
January	6,545	3,260	7,625	233.90	-
February	5,220	2,139	5,166	241.51	-
March	5,750	1,629	3,671	225.35	-
April	4,611	2,593	6,832	217.20	6,230
May	2,938	2,483	6,173	248.61	16,902
June	1,307	999	2,804	280.68	25,338
July	684	509	1,549	304.32	23,982
August	1,005	406	1,114	274.38	29,996
September	1,810	842	2,251	350.62	35,453
October	1,631	1,215	5,365	441.56	20,815
November	1,868	662	2,305	348.19	3,542
December	6,102	724	2,639	364.50	-
1990					
January	8,368	3,444	10,835	314.81	-
February	6,557	2,390	8,312	284.10	-
March	6,024	3,058	8,233	289.23	-
April	5,458	1,869	5,293	283.20	11,462
May	-	2,648	8,703	253.13	-
June	-	-	-	-	-
July	-	-	-	-	-
August	-	-	-	-	-
September	-	-	-	-	-
October	-	-	-	-	-
November	-	-	-	-	-
December	-	-	-	-	-

SOURCES: (1) The Tea Association of Malawi Limited.
(2) Tea Brokers Central Africa Limited.
(3) Sugar Corporation of Malawi.

EMPLOYMENT AND EARNINGS

TABLE 8A. MONTHLY EMPLOYMENT BY INDUSTRY AND BY MONTH OF REFERENCE

Industry Group	NUMBER OF PAID EMPLOYEES										
	Overall Average	1986					Overall Average	1987			
		March	June	Sept.	Dec.	March		June	Sept.	Dec.	
Agriculture, Forestry and Fishing	185,142	198,357	195,460	168,532	178,218	179,848	195,878	191,939	160,906	170,669	
Mining and Quarrying	311	321	325	295	301	296	341	267	320	255	
Manufacturing	52,910	49,576	57,402	54,311	50,349	49,831	47,390	54,623	51,150	45,363	
Electricity and Water	4,588	4,642	4,603	4,708	4,795	5,515	5,396	5,588	5,552	5,523	
Building and Construction	28,801	28,907	28,480	29,358	28,460	30,707	30,319	30,242	31,309	30,959	
Wholesale/Retail Trade, Hotels and Restaurants	38,472	33,745	40,087	47,518	32,534	34,360	28,729	37,793	43,037	30,241	
Transport, Storage and Communications	26,314	25,151	26,987	26,992	26,225	24,613	24,129	25,449	24,789	24,085	
Financing, Insurance and Business Services	13,029	13,710	13,442	12,632	12,327	12,791	13,569	13,218	12,384	12,013	
Community, Social and Personal Services	63,078	62,358	62,794	63,214	63,944	69,642	69,563	69,758	69,615	69,636	
Total	412,744	420,113	430,474	402,464	397,890	407,393	413,312	428,473	399,042	368,744	

TABLE 8B. MONTHLY EARNINGS BY INDUSTRY AND BY MONTH OF REFERENCE

Industry Group	AVERAGE EARNINGS (KSHACHA)										
	Overall Average	1986					Overall Average	1987			
		March	June	Sept.	Dec.	March		June	Sept.	Dec.	
Agriculture, Forestry and Fishing	26.42	24.20	25.19	28.23	25.49	28.08	27.88	27.94	29.52	31.46	
Mining and Quarrying	52.58	43.40	40.97	47.77	41.51	43.07	42.13	43.26	36.89	52.73	
Manufacturing	101.27	94.02	89.81	100.12	122.78	125.77	118.00	109.74	118.16	168.69	
Electricity and Water	114.42	103.43	104.99	131.78	177.13	116.47	111.89	117.72	117.66	118.61	
Building and Construction	55.08	54.02	55.85	57.34	62.23	64.55	59.22	64.63	62.93	71.95	
Wholesale/Retail Trade, Hotels and Restaurants	99.17	95.52	96.64	85.17	127.74	111.33	123.16	101.24	82.29	146.42	
Transport, Storage and Communications	93.25	86.26	87.33	83.36	103.90	103.12	87.86	88.34	103.27	113.28	
Financing, Insurance and Business Services	265.67	237.55	241.98	270.19	319.24	327.23	284.42	286.10	315.13	422.34	
Community, Social and Personal Services	109.92	102.38	103.69	115.89	117.42	117.61	111.91	115.72	120.63	122.00	
Total	70.59	63.55	65.62	74.07	79.89	80.63	74.33	75.31	81.02	92.75	

INDUSTRIAL PRODUCTION

TABLE 8. INDEX OF INDUSTRIAL PRODUCTION (1)
(1984 = 100)

Period	Goods Manufactured mainly for the Domestic Market									
	Consumer Goods mainly for the Domestic Market				Products for Building and Construction		Export Goods	Total Manufacturing	Electricity and Water	General Industrial Production
	Food Beverages and Tobacco	Clothing, Footwear and Textiles	Other	Total	Total	Total				
Weight	13.0	9.0	23.0	45.0	18.0	63.0	23.0	85.0	14.0	100.0
1981	131.7	113.5	93.9	105.7	116.8	111.0	74.6	101.3	84.1	98.9
1982	116.1	122.0	71.3	94.4	103.3	95.9	85.3	93.8	88.7	93.1
1983	131.8	132.3	98.3	114.8	102.7	111.3	85.5	104.7	95.7	103.4
1984	100.0	100.0	100.0	100.0	100.0	100.0	100.0	100.0	100.0	100.0
1985	111.8	75.4	115.3	106.3	99.9	104.5	109.4	103.4	102.3	103.2
1986	111.3	91.5	117.0	110.3	109.3	110.0	89.7	104.6	109.7	105.3
1987	115.2	89.9	114.0	109.5	80.8	101.3	87.6	97.6	119.9	100.8
1988	127.6	84.2	120.5	111.3	98.0	107.5	95.2	104.2	121.7	106.6
1989	151.1	66.4	128.4	122.6	113.3	119.9	95.1	113.3	130.6	115.7
1989										
January	132.3	53.0	65.3	92.4	121.5	100.7	63.4	96.1	124.0	100.0
February	118.4	62.2	102.7	99.2	133.2	108.9	66.5	97.5	106.2	98.7
March	157.1	67.3	94.3	107.1	107.7	107.2	75.2	98.1	111.7	100.0
April	159.1	63.4	118.0	118.9	106.6	115.4	61.5	101.0	125.8	104.4
May	161.7	63.6	126.3	124.0	95.2	115.8	81.5	108.6	130.9	110.0
June	156.6	63.0	167.0	143.2	124.2	137.8	88.1	124.5	136.4	128.2
July	162.7	56.4	159.1	139.6	97.0	127.4	89.6	117.3	142.2	120.8
August	161.4	93.8	184.1	149.3	83.7	130.8	125.2	129.1	140.7	130.7
September	144.6	79.5	158.2	138.5	146.2	141.3	120.3	135.7	137.5	135.9
October	179.8	75.0	146.0	141.5	150.4	144.0	117.9	137.0	144.9	136.1
November	153.7	73.6	125.0	123.0	124.3	123.4	106.2	118.6	138.4	121.2
December	138.3	45.8	94.7	97.5	67.3	88.9	127.9	99.3	132.9	104.0
1990										
January	168.2	92.8	116.7	127.3	111.3	122.7	121.0	122.2	134.5	124.0
February	149.3	78.8	119.9	119.6	111.5	117.4	98.3	112.3	126.3	114.2
March	174.4	85.8	115.0	126.3	119.6	124.4	76.7	111.6	145.0	116.3
April	136.4	71.5	133.2	121.5	85.8	114.1	75.3	103.7	136.8	108.6
May										
June										
July										
August										
September										
October										
November										
December										

(1) Excludes Mining and Quarrying.

ELECTRICITY

TABLE 10. ELECTRICITY PRODUCTION AND SALES
(Mn Kwh)

(1) Period	Units Sent Out	UNITS SOLD BY ESCOM									
		Domestic Tariff		Power Tariff		General Tariff		Exported to Mozambique		Total	
		(Mn- Kwh)	(K'000)	(Mn- Kwh)	(K'000)	(Mn- Kwh)	(K'000)	(Mn- Kwh)	(K'000)	(Mn- Kwh)	(K'000)
1980	388.00	55.91	3,614.4	257.51	9,349.0	39.27	2,483.3	1.35	70.3	354.04	15,517.0
1981	382.55	57.51	4,218.0	241.55	10,572.0	42.70	3,028.4	1.64	94.1	343.40	17,910.5
1982	405.70	62.19	4,694.2	249.85	12,052.2	44.24	3,468.2	1.52	108.6	357.80	20,323.2
1983	445.83	62.89	5,198.5	282.12	14,012.3	47.63	4,068.0	1.26	92.7	393.90	23,371.5
1984	467.46	65.86	5,890.6	287.22	15,949.6	51.38	4,763.2	1.58	127.1	406.04	26,730.5
1985	473.16	68.74	6,856.3	274.19	13,492.0	56.06	5,823.8	1.09	111.4	400.08	32,286.5
1986	509.53	74.22	7,449.7	289.87	20,422.8	62.83	6,667.2	0.70	85.1	427.42	34,624.6
1987	557.55	77.26	8,673.9	320.39	23,158.9	69.08	7,958.4	*	5.5	466.73	39,796.7
1988	579.48	84.98	10,760.8	310.16	27,117.1	75.68	10,024.5	-	-	470.82	47,902.4
1989	627.15	94.34	13,342.4	344.79	34,645.8	81.34	12,549.7	-	-	520.47	60,537.9
1989											
January	51.05	7.88	1,008.8	29.03	2,500.0	6.54	889.3	-	-	43.45	4,397.9
February	42.19	7.26	1,047.0	22.62	2,690.8	6.51	1,022.2	-	-	36.39	4,760.0
March	45.41	7.19	1,040.9	22.95	2,858.8	5.92	949.9	-	-	35.96	4,649.8
April	49.67	7.94	1,120.3	26.13	2,775.0	6.69	1,024.4	-	-	40.76	4,913.7
May	53.10	7.81	1,112.0	28.93	2,901.3	6.80	1,044.2	-	-	43.54	5,057.5
June	54.39	7.85	1,122.1	30.12	2,933.5	6.97	1,076.8	-	-	44.94	5,132.4
July	55.38	9.44	1,300.1	28.38	2,894.5	7.40	1,139.4	-	-	45.22	5,334.0
August	56.65	8.21	1,157.5	31.56	3,005.4	6.83	1,070.9	-	-	46.60	5,233.8
September	54.55	8.33	1,153.1	31.32	3,053.0	7.53	1,163.1	-	-	47.68	5,199.2
October	57.29	7.15	1,043.8	31.56	3,025.7	7.23	1,111.1	-	-	45.94	5,180.4
November	54.68	7.46	1,084.8	31.53	3,049.8	8.11	995.4	-	-	45.12	5,130.0
December	52.79	7.60	1,122.4	30.26	3,158.0	6.81	1,063.0	-	-	44.87	5,343.4
1990											
January	54.23	8.02	1,149.9	30.29	3,061.6	6.34	1,012.5	-	-	44.65	5,224.0
February	50.80	7.94	1,142.3	30.03	3,320.5	6.62	1,038.1	-	-	44.59	5,200.7
March	58.56	7.39	1,082.3	33.47	3,199.4	6.56	1,035.8	-	-	47.42	5,317.5
April	55.14	8.37	1,311.7	32.25	3,444.1	7.28	1,244.7	-	-	47.90	6,000.5
May											
June											
July											
August											
September											
October											
November											
December											

1. Adjustments have been made to annual totals only hence monthly figures do not add up to the annual figures.

SOURCE: Electricity Supply Commission of Malawi.

TABLE 136. ROAD AND AIR TRANSPORTATION ACTIVITIES AND ROAD ACCIDENTS

Period	(1) AIR				ROAD				
	Freight Handled (Tonnes)		Passengers Handled (Number)		Transportation of (4) Agricultural Produce and Material for ADMARC		Accidents (5)		
	Chileka	Lilongwe/ K. I. A. (2)	Chileka	Lilongwe/ K. I. A. (2)	(Tonnes)	Tonnes Kilometres (000)	Number of Fatal Accidents (3)	Persons Killed	Number of Persons Injured
1979	20,530	612	216,790	53,314	383,863	33,968	278	649	2551
1980	12,337	534	168,555	50,240	475,964	61,825	322	574	2520
1981	6,248	578	191,112	54,396	442,767	70,768	280	576	2164
1982	5,548	853	134,459	56,580	544,879	57,340	275	598	2903
1983	3,866	2,675	166,043	95,577	535,053	10,821	271	556	1952
1984	1,129	8,862	112,285	208,630	747,507	6,791	286	584	1917
1985	961	6,813	105,402	208,501	695,292	6,028	311	667	2423
1986	804	5,295	109,482	215,995	720,130	6,714	321	537	2571
1987	675	4,961	95,879	225,614	554,939	5,891	338	558	2736
1988	2,247	5,664	86,565	255,767	438,144	..	375	742	2807
1989	1,306	5,806	79,441	320,394	430	786	2989
1989									
January	37	361	7,216	45,894	37,938	242	25	49	231
February	44	409	5,381	15,863	16,960	134	21	23	241
March	58	532	6,835	20,245	26,600	217	34	54	291
April	150	436	6,577	22,315	8,141	48	30	65	272
May	153	535	6,779	20,904	27,908	181	41	117	218
June	114	412	6,456	21,496	39	75	249
July	25	446	7,525	26,777	43	87	243
August	215	611	7,353	60,160	40	71	243
September	130	362	7,193	22,873	42	74	305
October	148	699	5,668	20,226	40	63	268
November	116	415	5,753	19,303	38	52	280
December	116	567	6,776	24,401	37*	76	257
1990									
January	102	485	6,363	22,239	268
February	105	365	4,761	15,637	140
March	412	654	5,517	18,715	310
April	137	246	6,616	21,362	288
May									
June									
July									
August									
September									
October									
November									
December									

(1) Includes transit.

(2) From April, 1982 K. I. A. (Kamuzu International Airport) started to operate and Lilongwe Airport ceased to operate forthwith.

(3) Adjustments have been made to annual totals only hence monthly figures may not add up to the annual.

SOURCE: (1) Department of Civil Aviation.
(4) Agricultural Development and Marketing Corporation.
(5) Malawi Police Force.

TABLE 21. BLANTYRE RETAIL PRICE INDICES
(1980 = 100)

Period	All Items	Food-Costs	Beverages and Tobacco	Clothing and Footwear	Housing	Household operation	Transportation	Miscellaneous
LOW INCOME INDEX								
Weight	(1000)	(500)	(39)	(154)	(108)	(86)	(48)	(65)
1984	187.3	153.1	148.4	196.2	205.6	172.0	181.0	140.2
1985	184.9	167.1	165.1	213.7	222.2	207.0	210.6	154.6
1986	210.7	193.3	189.4	244.1	241.9	236.7	236.9	175.4
1987	264.0	245.2	235.8	293.8	307.0	300.9	280.0	222.1
1988	353.5	323.7	303.5	400.8	456.4	371.2	365.3	297.0
1989	397.5	374.7	318.1	451.4	520.4	386.9	385.0	311.3
1989								
January	386.4	345.0	313.9	476.1	512.1	388.1	396.5	317.0
February	390.9	356.6	313.9	472.6	507.8	388.1	397.4	311.7
March	414.5	407.3	313.9	469.1	497.8	388.1	396.3	311.1
April	401.5	380.1	313.4	465.1	511.9	388.1	393.9	308.1
May	401.5	384.3	313.2	467.6	497.1	388.1	376.2	308.2
June	395.0	370.1	313.2	460.8	519.0	380.6	373.5	308.2
July	402.2	382.8	313.2	457.2	529.6	384.4	373.5	307.3
August	416.0	421.7	313.2	420.1	527.4	384.4	376.3	309.5
September	392.5	363.1	323.9	421.0	572.9	388.1	383.1	305.3
October	394.1	373.4	324.7	422.0	537.3	385.6	382.0	310.6
November	398.4	377.2	325.0	440.4	527.9	385.6	384.4	318.4
December	376.3	334.2	336.1	444.4	504.3	393.1	386.5	319.8
1990								
January	420.3	408.5	336.1	449.8	529.0	428.6	386.3	325.5
February	432.7	416.5	335.9	479.1	563.3	428.6	386.3	325.5
March	455.7	463.9	335.9	480.7	555.8	428.6	387.1	326.5
April	431.1	405.2	358.1	500.1	540.1	433.8	428.1	328.3
May								
June								
July								
August								
September								
October								
November								
December								
MEDIUM INCOME INDEX								
Weight	(1000)	(357)	(42)	(137)	(153)	(86)	(130)	(93)
1984	145.7	153.7	149.4	157.5	149.4	141.4	150.2	148.5
1985	178.2	181.0	162.6	178.0	185.8	165.0	190.5	158.5
1986	201.3	205.4	184.8	196.8	198.8	189.0	226.3	179.9
1987	251.5	256.4	234.4	226.8	265.0	228.7	302.9	220.8
1988	331.4	349.2	306.1	309.0	330.9	284.5	376.0	287.7
1989	364.8	386.2	326.7	400.1	404.1	302.6	471.7	307.2
1989								
January	369.8	344.3	326.0	404.6	386.0	316.4	476.3	311.6
April	387.8	305.8	323.8	404.7	388.2	297.4	464.5	300.0
July	393.2	403.5	322.7	410.7	420.4	295.5	469.3	301.2
October	399.5	334.4	334.4	421.9	421.9	300.9	476.6	315.9
1990								
January	426.6	473.3	339.4	419.1	409.8	344.4	476.8	332.5
April	440.4	481.5	369.8	427.2	423.0	349.9	512.6	347.5
July								
October								
HIGH INCOME INDEX								
Weight	(1000)	(203)	(76)	(71)	(130)	(108)	(253)	(159)
1984	143.1	150.7	132.5	136.4	150.0	138.6	145.9	144.9
1985	169.8	182.5	156.0	158.2	168.8	171.7	174.3	157.5
1986	195.1	219.7	178.9	170.8	185.9	179.7	217.4	165.6
1987	252.3	278.9	228.7	189.7	218.4	207.0	315.3	215.9
1988	327.0	355.0	308.5	248.1	291.0	261.1	408.7	279.2
1989	383.8	409.5	337.1	291.8	338.8	274.1	522.6	304.9
1989								
January	382.9	396.7	335.0	285.6	331.8	275.7	532.8	307.5
April	379.3	409.8	338.4	289.4	331.0	272.0	511.2	302.6
July	385.4	417.0	334.1	294.0	346.7	274.5	521.6	300.8
October	367.6	414.5	340.7	298.3	345.7	274.5	524.9	308.5
1990								
January	397.9	434.8	341.1	303.8	348.5	331.8	525.4	302.6
April	408.2	442.9	359.5	318.6	355.0	335.4	534.8	318.9
July								
October								

TABLE 22. LILONGWE RETAIL PRICE INDICES
(1980 = 100)

Period	All Items	Food-Costs	Beverages and Tobacco	Clothing and Footwear	Housing	Household operation	Transportation	Miscellaneous
LOW INCOME INDEX								
Weight	(1000)	(460)	(69)	(158)	(124)	(66)	(39)	(64)
1984	164.2	149.8	152.5	190.9	187.2	185.0	166.7	139.0
1985	178.8	164.5	164.8	204.5	206.0	200.6	191.9	142.5
1986	207.4	204.7	185.9	209.7	226.8	223.3	212.6	182.5
1987	256.5	256.9	223.6	253.2	265.7	301.7	280.2	203.9
1988	341.7	333.8	283.0	364.3	405.6	354.9	352.1	257.9
1989	392.5	398.8	296.5	400.1	453.0	377.7	377.0	266.4
1989								
January	367.0	350.5	292.1	399.7	469.8	377.0	375.7	267.1
February	391.4	391.3	292.1	384.9	534.5	377.0	375.5	267.1
March	399.8	422.0	292.1	394.3	476.9	377.0	374.8	267.1
April	367.2	392.6	291.3	393.4	485.9	377.0	374.8	267.1
May	368.0	394.4	291.3	400.9	480.9	372.4	369.9	267.1
June	385.9	389.4	291.3	401.0	484.3	372.4	364.8	265.9
July	386.6	392.3	291.3	400.4	496.1	372.4	364.0	265.9
August	400.1	412.9	291.3	400.3	509.5	377.0	364.7	265.9
September	404.2	417.2	300.6	401.4	516.0	377.0	376.2	265.9
October	394.8	400.4	300.8	404.3	485.8	387.3	395.7	265.9
November	398.6	409.9	305.1	408.9	476.2	382.7	385.7	265.7
December	404.5	413.3	318.3	411.9	509.5	382.7	383.0	265.9
1990								
January	418.5	432.4	318.3	420.4	510.3	412.1	385.1	267.3
February	420.8	437.9	318.3	420.8	508.2	412.1	385.1	267.3
March	416.9	429.3	318.3	422.6	506.4	412.1	385.1	267.3
April	427.4	444.7	337.9	425.8	509.7	420.3	388.9	271.1
May								
June								
July								
August								
September								
October								
November								
December								
MEDIUM INCOME INDEX								
Weight	(1000)	(388)	(77)	(122)	(146)	(83)	(103)	(81)
1984	150.8	159.9	150.4	124.3	149.5	142.4	156.8	159.3
1985	172.2	188.2	174.9	148.2	157.6	159.9	175.8	162.9
1986	195.6	211.8	185.1	161.5	178.0	189.5	229.5	173.6
1987	245.6	263.7	231.7	191.6	222.3	251.1	316.3	199.4
1988	322.7	351.7	298.1	258.1	297.2	297.0	430.6	240.0
1989	369.3	410.6	313.4	295.3	350.0	319.1	494.7	263.1
1989								
January	355.0	378.7	314.8	300.7	338.5	317.1	487.0	261.8
April	379.2	444.3	309.7	292.4	350.8	317.1	465.9	268.5
July	370.3	468.5	309.7	287.0	358.4	316.7	516.9	260.5
October	372.8	410.9	315.3	301.0	352.3	325.4	508.8	261.6
1990								
January	403.5	490.7	325.9	306.5	363.5	342.5	460.4	267.3
April	424.2	514.6	357.5	313.6	367.9	349.5	517.6	277.1
July								
October								
HIGH INCOME INDEX								
Weight	(1000)	(184)	(48)	(50)	(161)	(128)	(339)	(90)
1984	149.0	167.8	137.6	126.1	140.1	168.2	140.8	148.9
1985	165.8	183.8	151.3	150.6	152.5	185.9	166.4	168.9
1986	193.8	202.9	177.7	159.2	171.2	176.4	212.4	183.6
1987	256.6	280.6	232.8	185.0	216.5	238.4	296.9	205.8
1988	351.3	372.2	314.2	219.8	276.8	271.4	402.1	235.3
1989	375.2	435.5	337.2	242.3	317.3	299.1	451.9	268.4
1989								
January	368.4	407.7	335.0	241.0	320.0	298.7	449.1	258.7
April	370.1	430.3	332.3	246.0	323.0	296.8	438.6	267.1
July	381.6	446.2	336.0	236.0	312.0	299.2	466.9	270.7
October	380.4	455.8	345.3	246.0	314.0	301.6	453.1	276.1
1990								
January	384.8	497.9	365.8	252.2	320.7	346.3	433.2	224.4
April	421.1	515.3	380.3	262.9	403.3	339.3	488.8	231.5
July								
October								

TABLE 23. ZOMBA RETAIL PRICE INDICES
(1984 = 100)

Period	All Items	Food-Costs	Beverages and Tobacco	Clothing and Footwear	Housing	Household operation	Transportation	Miscellaneous
LOW INCOME INDEX								
Weight	(1000)	(493)	(46)	(171)	(109)	(98)	(27)	(56)
1984	100.0	100.0	100.0	100.0	100.0	100.0	100.0	100.0
1985	113.2	114.6	110.3	106.2	123.0	112.4	113.6	106.2
1986	124.7	119.3	126.5	114.1	155.8	132.7	125.0	127.9
1987	160.6	158.6	159.7	144.2	181.8	180.7	146.0	159.2
1988	211.3	209.3	214.0	205.2	226.3	222.7	182.2	210.4
1989	236.7	245.5	222.6	216.3	246.9	242.4	186.8	222.7
1989								
January	232.3	232.8	223.0	226.1	248.3	241.8	189.6	227.9
February	233.9	239.1	223.0	216.6	249.2	241.8	190.4	227.9
March	236.2	244.6	223.0	217.3	244.3	241.8	189.1	228.5
April	237.5	252.3	216.9	209.3	236.9	241.8	187.4	228.5
May	230.1	238.0	216.9	209.7	236.4	241.8	181.7	223.9
June	228.8	234.6	216.9	210.1	240.5	240.3	181.4	223.9
July	241.9	259.6	216.9	211.2	246.4	240.3	181.5	222.7
August	236.1	249.3	216.9	206.0	246.5	241.8	182.3	222.7
September	244.9	265.5	223.8	210.0	252.7	241.8	188.7	204.5
October	238.1	245.1	227.6	220.5	253.6	244.6	187.3	220.6
November	230.0	225.6	231.3	229.1	253.3	244.6	191.3	218.2
December	250.3	258.9	234.8	229.5	254.8	246.8	191.3	222.7
1990								
January	268.1	296.4	239.9	230.8	260.7	259.1	189.9	223.8
February	265.1	291.1	239.9	232.0	255.7	259.1	189.6	223.8
March	258.7	276.9	239.9	235.1	255.9	259.1	189.7	224.9
April	259.4	272.4	254.5	235.8	262.5	261.8	219.9	230.5
May								
June								
July								
August								
September								
October								
November								
December								
MEDIUM INCOME INDEX								
Weight	(1000)	(356)	(52)	(177)	(166)	(100)	(75)	(74)
1984	100.0	100.0	100.0	100.0	100.0	100.0	100.0	100.0
1985	111.1	112.9	111.7	105.3	116.0	109.6	109.2	109.7
1986	123.0	120.1	127.9	115.5	125.1	140.2	119.3	127.3
1987	153.4	155.3	162.9	139.7	151.8	170.3	151.5	152.8
1988	202.9	211.4	220.9	187.1	199.4	205.3	211.3	183.2
1989	234.9	250.8	230.0	220.9	224.0	241.5	247.3	198.0
1989								
January	228.9	235.6	235.2	221.3	213.7	240.1	258.8	198.9
April	233.8	256.7	225.3	210.9	219.2	240.6	242.4	199.0
July	239.3	260.9	225.3	222.3	231.8	240.7	242.5	196.9
October	237.5	250.0	234.1	229.0	231.3	244.5	245.5	197.0
1990								
January	271.0	315.6	238.0	239.3	244.0	277.9	243.5	234.5
April	265.1	299.3	259.5	239.8	236.7	279.2	269.0	205.7
July								
October								

Annual Mid-Year Population Estimates

(File 14/20/11/11 Folio 116)

Area	1981	1982	1983	1984	1985	1986	1987	1988	1989
Rural	5592	5730	5881	6037	6193	6349	6505	6675	6849
Urban	635	679	737	802	866	930	994	1080	1173
Overall	6227	6409	6618	6839	7059	7279	7499	7755	8022

Weighted with 1981 as Base Year

Area	1981	1982	1983	1984	1985	1986	1987	1988	1989
Rural	100	102	105	108	111	114	116	119	122
Urban	100	107	116	126	136	146	157	170	185
Overall	100	103	106	110	113	117	120	125	129

Note : Figures are in thousands ('000).

SOURCE : MINISTRY OF AGRICULTURE, LILONGWE

Figure 5.1: Rail Network

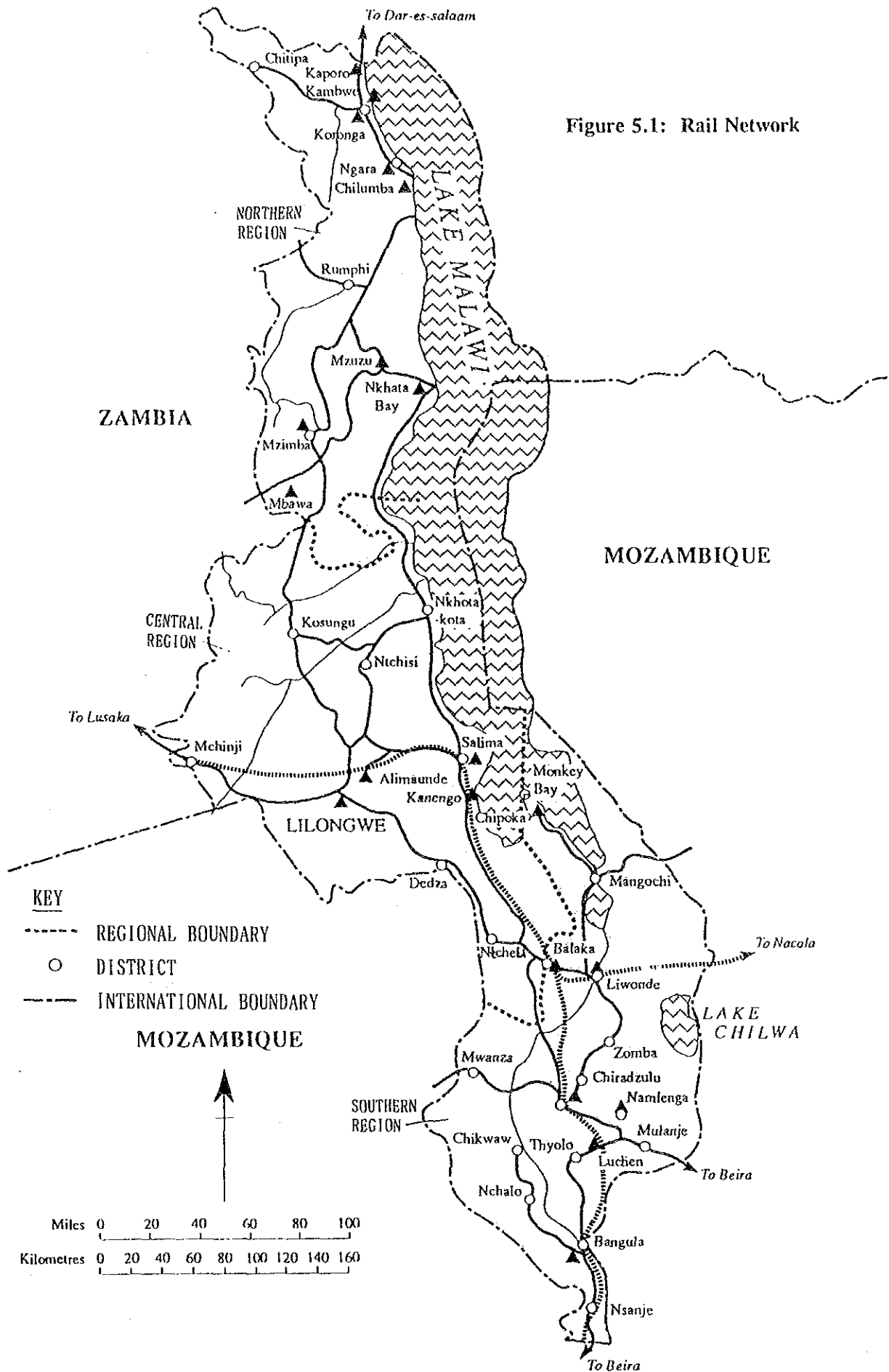


Table 1.1: GDP by sector at constant 1978 prices

	million Kwacha			
Sector	1987	1988	1989	1990
Agriculture - smallholder estate	242.4 70.1	243.6 75.1	247.4 82.3	266.0 80.5
Manufacturing	107.1	110.6	119.3	126.5
Electricity and Water	18.7	19.1	21.1	22.2
Construction	31.1	38.7	41.5	43.5
Distribution	107.4	106.0	110.2	116.5
Transport and Communications	49.1	50.1	51.2	53.5
Financial & Professional Services	53.8	56.2	60.1	62.4
Ownership of Dwellings	37.3	38.6	40.5	41.9
Private Services	38.4	39.8	41.1	42.5
Producers of Government Services	134.5	141.6	144.9	148.8
Unallocable Finance Charges	-21.7	-22.6	-24.2	-25.1
GDP at Factor Cost (1978) prices	868.2	896.8	935.4	979.2
GDP at Current Price	2731.5	3552.3	4364.0	4972.6

Source: Department of Economic Planning and Development

Table 1.2: Principal Exports

million Kwacha

Item	1987	1988	1989	1990
Agricultural Crops				
Tobacco	373.7	474.9	458.0	548.6
Tea	60.9	79.5	101.3	115.9
Sugar	63.5	69.0	62.9	87.6
Groundnuts	13.2	22.0	1.0	0.7
Rice	-	6.2	4.2	3.7
Cotton	0.7	-	16.6	21.6
Pulses	25.6	8.2	6.3	7.0
Coffee	20.4	24.6	16.5	12.6
Sub-total	602.4	742.0	729.5	869.4
Other Exports	44.4	57.6	62.6	71.7
Re Exports	12.6	9.7	11.4	17.1
Total Exports	615.0	751.7	740.9	886.5

Source: Economic Report 1990

TABLE : EXPORTS OF MAIN AGRICULTURAL PRODUCTS

Quantity in Tonnes

Year	Tobacco	Tea	G/nuts	Maize	Cotton Lint	Sugar
1970	17382	17909	22511	-	5859	1545
1971	20914	18157	29192	4602	4820	3131
1972	24583	19855	35704	36838	4787	3637
1973	27463	22666	27381	36250	2470	17001
1974	27350	23778	20654	31000	2491	23143
1975	29569	24851	25814	-	2493	31352
1976	33729	29413	26026	-	2028	42237
1977	37729	29815	11117	-	2043	57634
1978	40501	30656	6850	-	621	47940
1979	57178	31096	13697	-	1361	72281
1980	63069	31347	25556	-	2994	86208
1981	39967	31527	11121	-	1031	123290
1982	43974	37295	7228	-	500	77127
1983	43898	35833	4102	76093	21	88548
1984	69778	37141	1305	130730	1851	76589
1985	59403	38521	9511	45659	3571	89312
1986	56298	40380	17869		2160	94320
1987						
1988						
1989						

EXPORTS OF MAIN AGRICULTURAL PRODUCTS (cont'd)

Quantity in Tonnes

EXPORTS OF MAIN AGRICULTURAL PRODUCTS
Quantity in Tonnes

Year	Rice	Pulses	Cassava	Coffee	Sunflower	Tung Oil
1970	2780	9990	22207	136	1396	1136
1971	5172	8559	20164	204	2713	876
1972	7150	15673	28173	148	3688	539
1973	14293	6825	27823	173	2983	781
1974	11070	4080	5713	198	1761	611
1975	5101	4909	4272	191	4520	343
1976	4380	4781	558	241	3270	503
1977	11982	11598	2168	144	1942	355
1978	7696	8453	4345	152	3287	414
1979	7000	8568	1803	372	3286	545
1980	9822	6578	4000	249	2727	387
1981	8061	6228	-	494	1241	735
1982	3097	3611	-	911	600	-
1983	499	1402	305	1029	1769	427
1984	1310	9785	5695	1527	570	422
1985	572	11532	28	3358	0	n/a
1986	1271	17798		4129		

NOTE: The years are calendar years.

SOURCE: Monthly Statistical Bulletin, NSO.

SMALLHOLDER PRODUCTION AND HECTARE ESTIMATES: 3rd CROP ESTIMATES 1988/1989

(Production in metric tonnes)

June, 1989

CROP	KASONGA		MUTUW		KASUNGU		SALAMA		LILONGWE		BLANTYRE		MGBU		TOTAL				
	HECT	PROD	HECT	PROD	HECT	PROD	HECT	PROD	HECT	PROD	HECT	PROD	HECT	PROD	HECT	PROD			
MAIZE	21,378	24,839	108,644	120,855	228,527	353,086	46,050	74,085	380,029	570,240	220,266	190,596	221,153	160,071	24,205	15,960	1,270,822	1,509,513	MAIZE
local	18,783	17,182	92,433	69,780	193,408	259,180	55,800	51,350	353,672	493,543	209,911	188,089	212,491	146,302	23,487	15,129	1,159,985	1,220,565	local
composite	1,381	2,309	1,832	2,628	8,627	17,740	5,730	9,615	1,917	3,834	3,756	5,789	2,001	2,174	48	34	25,072	44,123	composite
hybrid	1,784	5,148	14,799	48,428	26,492	78,166	4,320	15,110	24,440	72,863	6,599	16,718	6,661	11,959	670	797	85,765	244,875	hybrid
RICE	5,402	13,911	1,118	1,995	0	0	5,630	8,450	0	0	9,165	15,519	2,761	2,556	1,497	3,259	25,573	45,690	RICE
local	1,850	3,167	0	0	0	0	0	0	0	0	0	0	1,846	1,321	0	0	3,496	4,488	local
fava	1,950	4,259	806	976	0	0	5,380	7,450	0	8,159	12,553	1,010	1,004	818	958	18,123	27,200	fava	
b. bonnet	708	2,015	312	1,019	0	0	0	0	0	1,006	2,966	105	231	645	2,165	2,776	8,396	8,396	b. bonnet
LET 4094	894	4,470	0	0	0	0	230	1,000	0	0	0	0	0	0	136	136	1,178	5,606	LET 4094
GROUNDNUTS	1,914	747	7,636	3,050	52,138	11,280	5,300	3,126	55,841	10,324	8,572	3,714	7,453	2,201	87	310	137,691	34,752	GROUNDNUTS
chilabana	0	0	0	0	50,471	10,620	2,180	1,226	0	0	8,572	3,714	7,453	2,201	281	119	69,236	18,012	chilabana
chitebana	0	0	0	0	165	69	0	0	0	0	0	0	0	0	0	0	165	69	chitebana
amointer	0	0	0	0	1,502	591	570	229	0	0	0	0	0	0	0	0	2,072	820	amointer
maliba	1,635	615	0	0	0	0	0	0	0	0	0	0	0	556	191	2,151	806	maliba	
aananga	0	0	0	0	0	0	2,550	1,671	0	0	0	0	0	0	0	0	2,550	1,671	aananga
TOBACCO	58	79	1,042	500	8,256	1,978	32	10	10,867	4,853	688	331	503	183	0	0	21,446	7,934	TOBACCO
noff	28	13	296	133	5,528	1,280	0	0	10,867	4,853	0	0	0	0	0	0	16,719	6,279	noff
sddf	0	0	0	0	0	0	0	0	0	0	672	328	503	183	0	0	1,175	509	sddf
sun-air	0	0	0	0	2,591	503	32	10	0	0	16	5	0	0	0	0	2,639	517	sun-air
oriental	0	0	0	0	0	0	0	0	0	0	0	0	0	0	0	0	746	367	oriental
burley	30	56	0	0	137	195	0	0	0	0	0	0	0	0	0	0	167	261	burley
COTTON	1,494	1,494	66	46	281	142	14,050	10,114	323	194	9,659	8,525	2,434	1,939	19,484	12,652	47,741	35,106	COTTON
WHEAT	0	0	0	0	25	18	0	0	836	586	0	0	1,350	877	0	0	2,211	1,481	WHEAT
SORGHUM	43	22	0	0	0	0	460	202	0	0	4,652	2,972	7,947	3,444	16,726	13,410	29,328	20,050	SORGHUM
MILLET	3,661	3,661	6,142	2,707	200	80	120	59	0	0	0	0	0	0	7,783	4,676	17,916	11,183	MILLET
PULSES	6,500	3,005	14,467	4,996	18,360	5,156	2,189	1,477	43,779	10,385	13,775	6,469	42,564	14,926	7,454	3,975	149,088	50,390	PULSES
beans	6,500	3,005	15,949	4,785	18,360	5,156	805	610	40,724	9,464	2,752	1,136	10,223	3,164	393	202	93,568	27,522	beans
peas	0	0	518	211	0	0	1,584	867	3,055	921	9,527	4,567	26,850	9,603	6,826	1,593	48,380	19,762	peas
grass	0	0	0	0	0	0	0	0	0	0	1,486	757	5,491	2,169	225	180	7,202	3,106	grass
SOYA BEANS	19	19	77	50	174	57	21	24	1,380	686	0	0	0	0	0	0	1,671	836	SOYA BEANS
GROUND BEAN	0	0	366	81	0	0	344	224	0	0	249	112	0	0	0	0	959	417	GROUND BEAN
GUAR BEANS	0	0	0	0	0	0	0	0	0	0	0	0	0	0	0	0	3,000	3,300	GUAR BEANS
CASHEW	18,375	55	0	0	0	0	7,034	13	0	0	5,502	17	2,040	4	0	0	32,951	89	CASHEW
MACADAMIA	0	0	0	0	0	0	0	0	0	0	0	0	0	0	0	0	0	0	MACADAMIA
SESAME	0	0	0	0	0	0	0	0	0	0	260	85	50	14	110	55	420	154	SESAME
SUNFLOWER	0	0	217	97	232	47	0	0	0	0	2,197	1,016	2,080	1,032	0	0	4,726	2,192	SUNFLOWER
CASTOR	0	0	0	0	0	0	0	0	0	0	0	0	353	71	90	36	443	107	CASTOR
COFFEE	0	0	0	0	0	0	0	0	0	0	0	0	0	0	0	0	0	0	COFFEE
CHILLIES	0	0	0	0	0	0	0	0	0	0	25	13	641	562	0	0	746	615	CHILLIES
CASSAVA	5,474	9,372	17,301	36,622	3,592	7,958	9,330	25,505	9,025	18,524	13,111	28,378	14,400	26,506	629	1,887	72,923	154,762	CASSAVA
S. POTATOES	6,512	27,015	3,007	16,348	3,273	7,321	1,780	4,617	16,591	77,140	3,991	8,333	6,869	31,850	1,800	10,800	43,823	177,424	S. POTATOES
I. POTATOES	0	0	0	0	0	0	0	0	3,437	11,973	0	0	0	0	0	0	3,437	11,979	I. POTATOES
	53,005	152,467	314,988	314,988	105,386	466,268	286,610	310,205	83,515	1,772,444									

† = sum of two crops

Note: The figure under hectareage corresponding to Cashew, Macadamia, Castor and Coffee is the number of trees.

20 JUNE, 1988

SMALLHOLDER PRODUCTION AND HECTARE ESTIMATES: 3RD CROP ESTIMATES, 1987/88

(Production in metric tonnes)

CROP	KARONGA		MZUZI		KASUNGU		SALIMA		LILONGWE		LIMPOPO		BLANTYRE		HOBABU		TOTAL		
	HECT	PROD	HECT	PROD	HECT	PROD	HECT	PROD	HECT	PROD	HECT	PROD	HECT	PROD	HECT	PROD	HECT	PROD	
MAIZE	20,502	19,601	98,005	124,878	170,663	249,862	65,370	71,972	362,770	495,940	226,600	203,920	224,509	226,348	26,573	26,668	1,215,087	1,419,694	MAIZE
local	18,455	15,895	82,900	82,900	170,509	200,633	53,300	52,940	346,340	480,210	221,478	195,615	218,324	215,015	25,993	25,227	1,137,499	1,236,436	local
composite	1,024	1,399	2,645	4,678	0	0	10,600	14,760	0	0	1,648	2,667	2,760	4,097	21	38	18,698	27,899	composite
hybrid	1,023	2,306	12,460	37,300	20,154	49,229	1,470	4,332	16,430	46,330	3,174	7,618	3,225	7,336	654	1,308	58,890	155,659	hybrid
RICE	5,366	11,497	1,071	1,756	0	0	3,934	5,220	0	0	7,132	9,000	1,702	1,339	3,053	3,735	32,658	32,847	RICE
local	1,638	2,457	0	0	0	0	0	0	0	0	0	0	1,132	741	0	0	2,760	3,198	local
Java	2,440	4,392	808	1,172	0	0	3,770	4,740	0	0	6,382	6,150	475	388	2,287	1,972	16,142	18,814	Java
b.bonnet	1,488	4,648	263	584	0	0	164	480	0	0	950	2,850	105	210	786	1,763	3,756	10,335	b.bonnet
GROUNDNUTS	2,215	886	12,143	4,705	52,988	22,846	6,047	3,719	72,354	27,269	21,481	8,953	7,682	2,868	899	444	175,820	71,690	GROUNDNUTS
chitebana	300	280	12,050	4,663	50,827	21,838	2,745	1,721	49,350	26,050	21,481	8,953	7,682	2,868	152	61	164,607	66,394	chitebana
manipintar	0	0	93	42	711	330	0	0	3,004	1,219	0	0	0	0	0	0	3,808	1,591	manipintar
malilaba	0	0	0	0	1,650	638	685	418	0	0	0	0	0	0	0	0	2,335	1,076	malilaba
kwanga	1,715	686	0	0	0	0	0	0	0	0	0	0	0	737	363	2,453	1,049	kwanga	
TOBACCO	49	76	525	243	8,170	2,699	40	16	13,605	5,093	1,199	536	507	262	0	0	24,095	8,925	TOBACCO
red	20	12	171	65	6,395	2,200	0	0	13,600	5,092	0	0	0	0	0	0	20,186	7,369	red
sdff	0	0	0	0	0	0	0	0	1,186	0	1,186	530	507	262	0	0	1,693	792	sdff
sun-air	0	0	0	0	1,775	499	40	16	5	1	13	5	0	0	0	0	1,833	822	sun-air
oriental	29	64	354	178	0	0	0	0	0	0	0	0	0	0	0	0	354	178	oriental
burley	0	0	0	0	0	0	0	0	0	0	0	0	0	0	0	0	0	0	burley
COTTON	771	632	94	66	138	65	9,300	6,416	170	102	4,730	3,683	1,934	1,449	26,485	18,539	43,642	30,952	COTTON
WHEAT	0	0	0	0	0	0	0	0	1,260	1,004	0	0	1,321	924	0	0	2,593	1,836	WHEAT
SORGHUM	35	18	0	0	0	0	415	208	0	0	2,544	1,265	8,090	3,859	19,015	16,441	30,099	21,791	SORGHUM
MILLET	3,148	3,074	5,844	2,435	177	71	74	37	47,907	13,303	29,473	11,618	50,383	21,624	10,498	6,297	19,439	11,914	MILLET
PULSES	6,200	3,080	10,174	2,895	3,858	922	2,032	1,080	45,815	12,619	11,082	3,908	13,900	5,418	344	138	160,040	59,984	PULSES
beans	6,200	3,080	9,431	2,879	3,868	922	705	457	45,815	12,619	11,082	3,908	13,900	5,418	344	138	160,040	59,984	beans
grass	0	0	743	216	0	0	1,327	623	2,092	684	16,907	7,020	31,748	14,223	9,439	5,148	62,256	27,914	grass
SOYA BEANS	31	30	51	42	90	36	9	8	580	315	0	0	0	0	0	0	6,439	2,849	SOYA BEANS
GROUND BEAN	0	0	123	29	0	0	168	80	0	0	0	0	0	0	0	0	271	109	GROUND BEAN
SUGAR BEANS	0	0	0	0	0	0	0	0	0	0	0	0	0	0	0	0	2,457	2,211	SUGAR BEANS
CASHEW	18,373	55	0	0	0	0	7,034	13	0	0	89	35	1,804	4	0	0	27,302	107	CASHEW
MACADAMIA	0	0	0	0	0	0	0	0	0	0	0	0	0	0	0	0	0	0	MACADAMIA
SESAME	0	0	0	0	0	0	0	0	0	0	271	114	16	2	100	40	387	156	SESAME
SUNFLOWER	0	0	94	39	36	11	0	0	610	237	2,260	1,208	0	0	0	0	3,000	1,875	SUNFLOWER
CASSTOR	0	0	0	0	0	0	0	0	0	0	0	0	0	0	0	0	400	100	CASSTOR
COFFEE	0	0	0	0	0	0	0	0	0	0	0	0	0	0	0	0	0	0	COFFEE
GRILLIES	6,863	10,083	11,666	28,510	2,633	7,526	9,150	29,500	4,580	9,330	11,347	22,050	12,421	23,002	3,145	272	61,780	135,146	GRILLIES
CASSAVA	2,500	15,500	2,337	9,345	2,755	7,816	1,000	2,125	13,065	47,360	0	0	5,477	11,088	1,383	8,298	28,517	101,832	S. POTATOES
S. POTATOES	0	0	0	0	0	0	0	0	3,080	11,400	0	0	0	0	0	0	3,080	11,400	S. POTATOES
I. POTATOES	0	0	0	0	0	0	0	0	0	0	0	0	0	0	0	0	0	0	I. POTATOES
	36,296	141,727	261,530	521,481	104,573	305,676	318,698	101,739	1,021,740										

NOTE: The figure under hectareage corresponding to Cashew, Macademia, Castor and Coffee is the number of trees.

2ND JULY, 1987

SMALLHOLDER CROP HECTAREAGE AND PRODUCTION: 3RD CROP ESTIMATES, 1986/87

(Production in metric tonnes)

CROP	KARONGA		MZUZU		KASUNGU		SHILIMA		LILONGWE		LIMPOPO		BLANTYRE		NGABU		TOTAL		
	HECT	PROD	HECT	PROD	HECT	PROD	HECT	PROD	HECT	PROD	HECT	PROD	HECT	PROD	HECT	PROD	HECT	PROD	
MILLET	19,515	18,789	100,619	104,747	184,859	225,935	59,385	73,299	341,650	396,550	239,032	179,990	212,119	186,781	25,256	15,866	1,982,415	1,201,757	MILLET
local	18,070	16,314	90,334	70,678	170,283	190,941	52,600	59,940	332,620	373,050	235,625	174,620	207,157	178,361	24,871	15,116	1,331,540	1,078,860	local
composite	808	1,212	2,288	4,469	77	141	5,570	9,774	0	1,861	0	2,190	3,216	4,745	0	0	13,780	22,531	composite
hybrid	537	1,283	8,017	29,600	14,519	34,953	1,215	3,585	9,010	23,300	1,566	3,180	1,746	3,735	385	550	37,095	100,366	hybrid
RICE	4,973	10,414	1,185	1,375	0	0	3,390	4,528	0	6,910	8,575	1,473	2,748	19,076	28,432	0	0	28,432	RICE
faya	2,420	4,432	985	975	0	0	3,190	4,028	0	5,941	5,665	89	89	186	756	867	13,477	16,156	faya
b-bonnett	1,213	3,942	200	0	0	0	200	500	0	969	2,910	90	93	737	1,981	3,499	9,826	b-bonnett	
other	1,340	2,046	0	0	0	0	0	0	0	0	0	0	850	410	0	2,190	2,450	other	
GROUNDNUTS	1,970	665	15,429	7,010	83,250	34,740	4,971	2,929	75,582	31,211	15,870	6,615	12,427	4,671	660	232	209,938	88,073	GROUNDNUTS
chiliebana	420	197	14,874	6,797	81,461	33,709	1,475	703	72,170	29,830	15,870	6,615	12,427	4,671	260	52	198,957	82,774	chiliebana
chitshabana	0	0	104	37	1,312	638	0	3,372	1,281	0	0	0	0	0	0	0	4,768	2,056	chitshabana
antisanjar	0	0	0	0	477	193	1,270	731	0	0	0	0	0	0	0	0	1,747	924	antisanjar
zaliaba	1,170	488	450	175	0	0	0	0	0	0	0	0	0	0	0	300	180	zaliaba	
awanga	0	0	0	0	0	0	2,226	1,495	0	0	0	0	0	0	0	0	2,226	1,495	awanga
TOBACCO	40	59	471	208	14,910	5,866	80	40	15,936	7,628	1,144	364	589	265	0	0	33,170	13,650	TOBACCO
oddi	13	5	246	109	11,410	4,136	0	0	15,898	7,620	0	0	0	0	0	0	27,567	11,870	oddi
soddi	0	0	0	0	0	0	0	0	0	1,129	360	589	265	0	0	0	1,719	625	soddi
sun-air	0	0	0	0	3,509	950	80	40	38	8	15	4	0	0	0	0	3,633	1,002	sun-air
oriental	0	0	225	99	0	0	0	0	0	0	0	0	0	0	0	0	225	99	oriental
burley	27	54	0	0	0	0	0	0	0	0	0	0	0	0	0	0	27	54	burley
COTTON	1,572	1,415	108	58	218	107	7,460	5,254	198	90	1,617	1,360	1,191	723	22,140	11,940	34,504	20,957	COTTON
CASSAVA	8,605	29,463	11,895	30,081	1,703	6,587	13,010	37,716	6,810	8,950	10,739	22,020	11,013	23,784	1,100	11,600	64,975	169,403	CASSAVA
SORGHUM	18	13	0	0	0	0	119	0	0	0	2,271	910	7,410	2,286	29,680	11,234	30,626	14,582	SORGHUM
MILLET	2,510	2,510	7,066	3,293	0	0	207	123	0	0	0	0	0	0	8,440	2,830	18,163	8,646	MILLET
PULSES	5,348	2,280	8,443	2,805	4,162	1,862	2,588	1,499	46,101	15,311	26,512	11,561	48,764	18,619	10,158	3,666	152,076	56,803	PULSES
beans	5,348	2,280	7,813	2,427	4,162	1,862	1,472	821	45,401	14,951	9,808	3,244	12,502	3,879	120	41	86,626	28,725	beans
peas	0	0	630	378	0	0	1,116	678	700	360	15,540	7,890	32,717	13,458	9,907	3,547	60,612	26,311	peas
grass	0	0	0	0	0	0	0	0	0	1,164	427	1,164	3,543	1,262	131	78	4,838	1,767	grass
SESAME	0	0	0	0	0	0	0	0	0	0	93	34	0	0	0	0	93	34	SESAME
CASHEW	18,100	54	0	0	0	0	4,122	8	0	0	5	1	1,804	4	0	0	24,031	67	CASHEW
MACADAMIA	0	0	0	0	0	0	0	0	0	0	0	0	0	0	0	0	0	0	MACADAMIA
GUAR BEANS	0	0	0	0	0	0	0	0	0	0	0	0	0	0	2,000	1,680	2,000	1,680	GUAR BEANS
WHEAT	5	3	5	2	62	31	0	0	1,180	944	0	0	1,273	670	0	0	2,525	1,670	WHEAT
SUNFLOWER	0	0	109	45	52	24	0	0	0	0	219	91	2,170	1,022	0	0	2,551	1,182	SUNFLOWER
CASTOR	0	0	0	0	0	0	0	0	0	95	70	0	300	60	46	14	441	144	CASTOR
COFFEE	0	0	0	0	5,300	5	0	0	6,672	3	0	0	0	0	0	0	11,972	8	COFFEE
CHILLIES	0	0	0	0	0	0	0	0	0	0	0	0	246	278	0	0	246	278	CHILLIES
S. POTATOES	2,010	11,766	2,957	10,094	2,515	10,788	1,321	1,914	13,220	70,710	0	0	5,194	11,923	2,000	4,000	28,977	121,095	S. POTATOES
I. POTATOES	0	0	0	0	0	0	0	0	3,200	13,180	0	0	0	0	0	0	3,200	13,180	I. POTATOES
	64,285		148,726		295,832		96,781		510,584		504,412		305,585		94,173		1,820,879		

NOTE: The figure under hectareage corresponding to Cashey, Macademia and Castor is the number of trees and for Coffee the number of bushes. ; means the sum of two crops.

SOURCE: Agricultural Development Divisions.
 NOTE: ADMARC purchase of Rice from Karonga RDD has not been divided into types, hence the national totals of Faya, Blue Bonnet and Other do not add up to the national total for Rice.
 The percentages calculated use the high estimates of ADMARC purchases.

SOURCE: Agricultural Development Divisions

SMALLHOLDER PRODUCTION AND HECTARE ESTIMATES: 3RD CROP ESTIMATES, 1985/86

CROP	KARONGA		RUZU		KASUNGU		SALITA		LILONGWE		LIMONDE		BLANTYRE		NGARU		TOTAL	
	HECT	PRODUCE	HECT	PRODUCE	HECT	PRODUCE	HECT	PRODUCE	HECT	PRODUCE	HECT	PRODUCE	HECT	PRODUCE	HECT	PRODUCE	HECT	PRODUCE
MATE	19,132	20,057	104,016	125,116	204,614	275,699	66,421	72,125	348,340	421,466	228,852	171,390	202,660	187,671	21,240	21,240	1,193,275	1,294,564
local	17,142	16,124	85,076	64,225	173,300	195,590	58,153	55,224	327,290	359,668	225,272	165,997	176,090	180,012	21,240	21,240	1,104,583	1,058,060
composite	780	978	3,301	6,414	2,932	5,434	7,220	13,942	185	282	2,562	3,565	3,120	4,760	0	0	20,100	34,755
hybrid	1,210	2,955	14,619	54,477	28,382	74,675	1,048	3,559	20,865	61,536	1,018	1,828	1,430	2,699	0	0	68,592	201,729
RICE	6,420	15,945	637	1,025	0	0	2,742	3,762	0	0	9,460	11,430	2,090	2,118	1,525	3,127	22,874	37,407
faya	2,980	7,450	426	523	0	0	2,556	3,204	0	0	8,260	8,430	550	575	930	1,490	15,702	21,772
b.bonnett	1,240	4,095	211	402	0	0	186	588	0	0	1,200	3,000	100	210	595	1,637	3,532	9,902
other	2,200	4,400	0	0	0	0	0	0	0	0	0	0	0	0	0	0	3,640	5,733
GROUNDNUTS	1,240	535	8,593	3,638	64,900	35,066	6,646	4,873	65,239	35,882	15,290	4,280	13,740	3,644	645	359	176,293	88,277
challabana	390	195	8,082	3,370	62,142	33,612	2,402	1,406	64,713	35,585	15,270	4,280	13,740	3,644	0	0	166,759	82,092
chitebana	0	0	65	45	558	374	0	0	526	297	0	0	0	0	0	0	1,149	716
sanipantar	0	0	0	0	2,200	1,100	3,678	2,724	0	0	0	0	0	0	645	359	8,523	4,583
maliba	850	340	446	223	0	0	0	0	0	0	0	0	0	0	0	0	1,296	563
makanga	0	0	0	0	0	0	566	343	0	0	0	0	0	0	0	0	566	343
TOBACCO	8	4	424	154	16,891	6,162	162	73	17,112	8,432	1,908	587	1,540	705	0	0	39,045	16,117
nddf	8	4	151	57	12,185	4,593	0	0	17,078	8,424	0	0	0	0	0	0	29,422	13,178
sddf	0	0	0	0	0	0	0	0	0	0	1,868	574	1,540	705	0	0	3,408	1,279
sun-air	0	0	0	0	4,706	1,469	162	73	34	8	40	13	0	0	0	0	4,942	1,563
oriental	0	0	273	97	0	0	0	0	0	0	0	0	0	0	0	0	273	97
COTTON	1,602	1,602	164	108	281	117	15,500	9,459	438	197	9,329	6,630	3,196	2,207	21,400	15,915	51,910	36,235
CASSAVA	13,440	47,040	17,028	42,315	2,191	32,865	10,054	30,418	6,459	12,318	12,352	24,450	10,320	25,796	1,060	3,080	72,904	218,282
SORGHUM	11	4	0	0	0	0	343	181	0	0	2,125	600	7,580	3,676	22,000	16,100	32,059	20,761
MILLET	1,950	1,950	5,216	2,401	0	0	458	275	0	0	0	0	0	0	9,800	4,900	17,424	9,526
PULSES	5,070	2,128	6,611	1,718	5,753	1,665	1,631	1,140	33,704	9,830	21,864	7,588	34,845	12,748	4,165	2,282	113,663	39,099
beans	5,070	2,128	6,611	1,718	5,753	1,665	640	469	33,704	9,830	9,191	2,806	10,220	3,855	140	84	71,329	22,545
peas	0	0	0	0	0	0	987	679	0	0	11,220	4,332	21,870	7,825	3,900	2,097	37,877	14,933
grams	0	0	0	0	0	0	4	2	0	0	1,433	450	2,755	1,068	145	101	4,337	1,621
SESAME	0	0	0	0	0	0	10	5	0	0	51	22	0	0	0	0	61	27
CASHEW	1,630	45	12	2	0	0	4,902	6	0	0	0	0	0	0	0	0	5	0
MACADAMIA	0	0	0	0	0	0	105	0	0	0	0	0	0	0	0	0	0	0
GUAR BEAN	0	0	0	0	0	0	0	0	0	0	0	0	0	0	0	0	0	0
WHEAT	3	3	34	17	26	15	0	0	880	743	0	0	0	0	0	0	568	509
SUNFLOWER	0	0	97	29	89	48	2	1	0	0	1,610	865	2,280	764	0	0	4,078	1,705
CASTOR	0	0	0	0	0	0	5	2	0	0	0	0	0	0	0	0	4	104
COFFEE	0	0	0	0	0	0	0	0	0	0	0	0	0	0	0	0	0	0
CHILLIES	0	0	0	0	0	0	0	0	0	0	0	0	0	0	0	0	0	0
POTATOES	1,075	4,945	1,469	6,232	3,650	9,125	1,512	3,796	10,261	42,517	0	0	3,080	9,188	1,400	4,200	22,447	86,003
TOTAL	51,583	144,301	444,301	298,395	1,103,368	482,433	302,641	280,189	85,665	1,755,805	85,665	280,189	85,665	1,755,805	85,665	280,189	85,665	1,755,805

*Sum of two crops

NOTE: The figure under hectareage corresponding to Cashew, Macadamia, Castor and Coffee is the number of trees.

CROP	KARONGA		MZUZU		KASUNGU		SALITA		LILONGWE		LIMONDE		BLANTYRE		NGABU		TOTAL	
	HECT	PRODUCE	HECT	PRODUCE	HECT	PRODUCE	HECT	PRODUCE	HECT	PRODUCE	HECT	PRODUCE	HECT	PRODUCE	HECT	PRODUCE	HECT	PRODUCE
MAIZE	16,162	22,668	89,545	116,912	202,625	303,897	44,895	55,848	350,101	456,725	220,270	206,930	200,755	171,855	20,500	20,170	1,144,853	1,555,205
local	13,783	16,481	72,628	62,427	175,015	219,112	35,950	37,665	319,103	365,548	214,950	198,035	196,612	165,334	20,500	20,170	1,048,441	1,084,592
composite	964	2,292	4,841	9,098	1,660	3,320	7,530	13,683	204	300	3,360	4,861	2,918	3,936			21,477	37,490
hybrid	1,415	4,095	12,076	45,387	25,950	81,465	1,415	4,500	30,794	91,077	2,060	4,034	1,225	2,565			74,735	233,123
RICE	5,177	10,822	689	1,155	0	0	2,113	3,474	0	0	9,295	12,686	2,173	2,332	1,860	3,833	21,307	34,202
laya	2,300	4,600	451	689			1,893	2,714			8,095	9,665	835	868	1,130	1,608	14,704	20,365
b-bonnett	1,217	3,234	238	466			220	760			1,200	3,000	86	157	720	2,025	3,691	9,642
other	1,660	2,988											1,252	1,307			2,912	4,295
GROUNDNUTS	1,120	440	9,233	3,735	55,285	26,565	3,105	2,240	40,072	19,696	16,700	6,400	9,781	2,976	470	188	135,966	62,240
chailabana	320	160	8,869	3,491	54,485	26,145	1,120	813	40,072	19,696	16,700	6,400	9,781	2,976	470	188	131,547	59,481
sani/aali	800	280	364	244	800	420	1,985	1,627									4,419	2,759
TOBACCO	23	11	920	294	18,073	6,464	191	95	23,565	11,635	2,400	1,011	1,889	1,005	0	0	47,061	20,515
nddf	23	11	239	94	12,051	4,455			23,519	11,622	2,350	995	1,889	1,005			35,632	16,182
ndf																	4,239	2,000
sun-air																	6,309	2,133
oriental			681	200			191	95	46	13	50	16					661	200
COTTON	1,700	1,360	193	132	400	195	18,880	13,000	634	507	10,700	8,440	3,067	1,832	27,600	20,640	63,574	46,106
CASSAVA	12,857	50,571	16,725	46,652	1,875	3,923	7,880	22,320	7,040	9,916	20,800	40,650	12,225	32,109	1,060	3,180	80,462	209,321
SORGHUM	14	6					262	117			2,510	1,350	8,529	3,400	21,410	17,128	32,725	22,041
MILLET	1,630	1,620	6,436	3,374			247	126							9,100	5,460	17,413	10,580
PULSES	4,330	2,086	6,200	1,435	4,390	1,426	1,049	733	25,387	7,200	10,860	4,058	25,410	8,931	4,235	2,293	82,061	28,132
SESAME											43	19					43	19
CASHEW	45	12	2					3									12	50
MACADAMIA																	0	0
GUAR BEANS															3,000	3,600	3,000	3,600
WHEAT	20	12	11	7	15	8			480	220			600	540			1,126	787
SUNFLOWER	4	1	78	21	210	105					1,486	799	1,735	618			3,513	1,544
CASTOR	5	2											300	60	110	33	415	95
COFFEE																	0	8
DRILLIES	0	0															0	0
POTATOES	735	5,860	1,131	5,087	4,245	11,498	1,050	2,011	11,887	46,662			2,269	7,109	1,400	2,800	22,717	81,047
TOTAL	43,777	131,173	287,319	79,672	459,166	295,464	268,733	90,945	1,656,248									

t=50 of t wo crops

SOURCE : MINISTRY OF AGRICULTURE, LILONGWE

SMALLHOLDER CROP HECTARE AND PRODUCTION: 3RD CROP ESTIMATES, 1983/84

CROP	KARONGA		MIZU		KASUNGU		SALINA		LILONGWE		LIWONGWE		BLANTYRE		MBAZI		TOTAL		ADMARC ACCOUNTS ESTIMATE	REVISED PRODUCTION ESTIMATE
	PRODUCE	SALES	PRODUCE	SALES	PRODUCE	SALES	PRODUCE	SALES	PRODUCE	SALES	PRODUCE	SALES	PRODUCE	SALES	PRODUCE	SALES	PRODUCE	SALES		
MAIZE	20,824	4,791	108,994	41,493	322,430	64,227	56,100	17,899	464,329	86,772	177,700	33,926	225,671	32,773	11,700	1,241	1,397,948	283,122	290,000	
RICE	16,059	3,988	1,198	447			2,492	520	9,656	2,623	1,241	33	4,230	1,170	34,886	8,881	11,000			
faya	6,624		653				2,050	230	7,356	1,323	429	33	1,980		1,586					
b.bonnett	4,215		545				432	390	2,300	1,300			2,278		9,902	1,690				
other	5,220												672		5,892	0				
GROUNDNUTS	277	27	4,323	585	20,917	4,762	1,887	424	20,800	4,122	5,510	130	1,060	6	90	4	54,766	10,060	11,000	
chaliabana	135	27	4,131	585	18,562	4,690	525	47	20,800	4,122	5,510	130	1,060	6	90	4	50,723	9,607		
mani/mai	142	0	194		347	72	1,362	377									2,135	453		
TOBACCO	11	7	423	425	7,576	7,007	75	76	8,731	10,064	603	582	851	982	0	0	18,272	19,143	0	19,545
ndff	11	7	47	40	5,779	5,138			8,718	10,051			851	982			14,555	15,236	1,600	15,500
sun-air																	1,442	1,552	1,600	2,050
oriental																	591	570	1,899	1,970
COTTON	1,070	944	98	385	95		7,080	8,020	145	218	5,404	3,994	2,300	1,189	13,650	14,712	29,842	29,172	32,600	32,600
CASSAVA	50,926		40,855		4,602		46,160		48,830		32,430	14	33,000	1,890			256,693	14	0	0
SORGHUM	6	1					93	32			1,120	425	1,452	2,807	11,600	152	14,271	3,417	0	0
PULSES	1,331	2	1,448	168	1,707	34	130	1	3,840	877	2,705	567	16,825	248	1,462	280	29,479	2,177	0	0
MILLET	1,070		3,245														8,316	0	0	0
SESAME											18	5					18	5	0	0
CASHEW	38	103	2														40	103	0	0
MACADAMIA																	0	0	0	0
GUAR BEANS																	2,700	2,817	2,700	2,817
WHEAT	5	2	82	3	30				938				588	391			1,644	306	0	0
SUNFLOWER	1	3	14	13	4						633	43	618	116			1,270	175	0	0
CASTOR	1	1											75	20			76	44	0	0
COFFEE					5	1											7	1	0	0
CHILLIES	1																1	0	0	0
S.POTATOES			2,095		11,220		1,510		35,740				8,140		1,220		59,926	0	0	0

Issue of the crops

Adjustment made of last crop-estimate of 1983/84 based on purchases by ADMARC. MARC.

'SALES' are sales to ADMARC, as registered by the Regional Offices. 'ADMARC ACCOUNTS' reflects the estimated quantity of purchases by 31st March 1985.

2015

SOURCE : MINISTRY OF AGRICULTURE, LILONGWE

QUANTITY OF GRAIN IMPORTS

YEAR	WHEAT & MESLIN UNMILLED	RYE UNMILLED	BARLEY UNMILLED	OATS UNMILLED	MAIZE UNMILLED	RICE NOT IN HUSK	CEREALS UNMILLED
1980	21442	-	-	-	11160	2121	-
1981	10405	-	-	-	56063	55	2093
1982	7316	-	-	-	1153	360	-
1983	3011	-	-	-	-	80	-
1984	1231	60	-	-	-	5	-
1985	12074	-	-	-	-	-	124
1986	5079	-	-	1	-	-	-

tonne

VALUE OF GRAIN IMPORTS

YEAR	WHEAT & MESLIN UNMILLED	RYE UNMILLED	BARLEY UNMILLED	OATS UNMILLED	MAIZE UNMILLED	RICE NOT IN HUSK	CEREALS UNMILLED
1980	5230	-	41	23	2031458	2031458	747
1981	2959	-	405	318	8624606	8624606	667320
1982	2223	50	-	-	278994	278994	46
1983	11183438	75	-	-	-	-	1226948
1984	830306	4414	-	366	-	-	856817
1985	4233673	-	-	1300	-	-	187
1986	2551321	-	-	-	-	-	-

K

SOURCE: Annual Statement of External Trade 1982, NSO.

AGRICULTURAL PRODUCER PRICES (t/kg, CROP YEAR)

CROP	1967/68	68/69	69/70	70/71	71/72	72/73	73/74	74/75	75/76	76/77	77/78	78/79	79/80	80/81	81/82	82/83	83/84	84/85	85/86	86/87	87/88	
CASHEW NUTS																						
Grade I	-	-	-	-	-	-	-	-	-	-	-	-	-	-	13.0	13.0	13.0	30.0	50.0	55.0	75.0	
Grade II	-	-	-	-	-	-	-	-	-	-	-	-	-	-	11.0	11.0	11.0	15.0	25.0	27.0	30.0	
MACADAMIA NUTS																						
Grade I	-	-	-	-	-	-	-	-	-	-	-	-	-	-	-	15.0	20.0	30.0	45.0	50.0	65.0	75.0
Grade II	-	-	-	-	-	-	-	-	-	-	-	-	-	-	-	-	10.0	15.0	25.0	27.0	30.0	30.0
COFFEE																						
Cherry Grade I	-	7.0	7.0	7.0	8.0	9.0	9.0	9.0	9.0	10.0	13.0	13.0	13.0	13.0	20.0	20.0	25.0	27.0	32.0	33.0	48.0	
Cherry Grade II	-	5.0	5.0	5.0	5.0	5.5	5.5	5.5	5.5	7.0	9.0	9.0	9.0	9.0	14.0	14.0	15.0	15.0	15.0	15.0	18.0	
Mbuni	-	5.5	5.5	5.5	5.5	5.5	5.5	7.0	9.0	9.0	9.0	9.0	9.0	9.0	14.0	14.0	15.0	15.0	15.0	15.0	18.0	
Parchment Grade I	-	33.0	33.0	33.0	37.0	37.0	37.0	44.0	59.0	59.0	59.0	59.0	59.0	59.0	90.0	90.0	120.0	130.0	150.0	155.0	224.0	
Parchment Grade II	-	22.0	22.0	22.0	22.0	22.0	22.0	29.0	40.0	40.0	40.0	40.0	40.0	40.0	60.0	60.0	80.0	80.0	80.0	80.0	96.0	
Parchment Grade III	-	-	-	-	5.5	5.5	5.5	5.0	7.0	7.0	9.0	9.0	9.0	9.0	12.5	12.5	15.0	15.0	15.0	15.0	18.0	
CASTOR SEED																						
	4.0	4.0	7.0	7.0	8.0	8.0	10.0	10.0	11.0	11.0	11.0	11.0	11.0	11.0	11.0	11.0	16.5	25.0	30.0	30.0	33.0	
SESAME																						
	7.0	7.0	9.0	9.0	10.0	11.0	13.0	13.0	14.0	14.0	14.0	14.0	15.0	15.0	15.0	15.0	22.0	30.0	35.0	38.0	41.8	
CASSAVA																						
	-	-	-	-	-	-	-	-	-	3.0	3.0	3.0	3.0	3.0	3.0	3.0	3.0	3.5	4.0	4.0	4.0	6.0
SORGHUM																						
	2.0	2.0	2.0	2.0	3.0	3.0	3.0	4.0	4.0	4.0	5.0	5.0	5.0	5.0	5.0	5.0	10.0	12.0	14.0	14.0	14.0	14.0
WHEAT																						
	4.0	4.0	4.0	5.5	5.5	5.5	7.0	10.0	10.0	11.0	11.0	11.0	11.0	11.0	22.0	22.0	22.0	30.0	35.0	38.0	42.0	
BULLRUSH MILLET																						
	2.0	2.0	2.0	1.0	1.0	1.0	1.0	2.0	2.0	2.0	2.0	2.0	2.0	2.0	2.0	2.0	4.0	6.0	6.0	6.0	6.0	6.0
CHILLIES																						
Birds eye	-	-	-	-	33.0	33.0	44.0	44.0	44.0	44.0	44.0	44.0	44.0	44.0	44.0	44.0	62.0	90.0	90.0	135.0	165.0	
Lge Capsicum(1st Grade)	-	-	-	-	18.0	18.0	22.0	22.0	22.0	22.0	22.0	22.0	22.0	22.0	22.0	22.0	31.0	45.0	45.0	55.0	55.0	
Lge Capsicum(2nd Grade)	-	-	-	-	-	-	9.0	9.0	9.0	9.0	9.0	9.0	9.0	9.0	9.0	9.0	13.0	20.0	20.0	20.0	24.0	
GINGER																						
	-	-	-	-	-	-	-	-	-	-	-	-	-	-	-	-	-	-	-	-	-	75.0
CARDAMOM																						
	-	-	-	-	-	-	-	-	-	-	-	-	-	-	-	-	-	-	-	-	-	75.0

- : not applicable
na: not available

SOURCE: ADMARC

CONSUMER PRICES OF AGRICULTURAL PRODUCE (t/kg)

ITEM	65/70	70/71	71/72	72/73	73/74	74/75	75/76	76/77	77/78	78/79	79/80	80/81	81/82	82/83	83/84	84/85	85/86	86/87	87/88
MAIZE																			
	4.44	4.44	4.44	4.44	4.44	5.56	7.33	7.33	5.50	7.33	10.00	10.00	12.22	14.44	15.56	16.50	20.00	24.00	24.00
RICE																			
Super Fava																58.00	58.00	66.00	
Long Grain																58.00	58.00	66.00	
2A Broken																34.00	34.00	38.00	
Fine Broken																20.00	20.00	22.00	
Parboiled																64.00	64.00	72.00	
GROUNDNUTS																			
Super						25.00	25.00	25.00	25.00	40.00	45.00	45.00	52.00	52.00	70.00	75.00	115.60		
Mixed grades	14.50	14.50	14.50	14.50	17.50	20.00	20.00	20.00	35.00	40.00	40.00	47.00	47.00	47.00	45.00	50.00	64.40		
BEANS																			
White Harrico	11.40	11.40	11.40	11.40	14.45	15.50	17.50	17.50	16.00	20.50	22.50	22.50	28.00	33.00	34.00	40.00	50.00		
White Kidney	-	-	-	-	14.45	15.50	16.50	16.50	15.50	17.50	19.50	19.50	25.50	33.00	34.00	40.00	50.00		
Canadian Wand	-	-	-	-	14.45	15.50	16.50	16.50	15.50	17.50	19.50	19.50	25.50	33.00	34.00	40.00	50.00		
Mixed	10.90	10.90	10.90	10.90	13.95	15.50	17.50	17.50	16.00	19.50	21.50	21.50	27.00	33.00	40.00	40.00	50.00		
Brown	8.40	8.40	8.40	8.40	11.45	11.50	13.50	13.50	12.50	15.50	15.50	20.50	20.50	30.00	30.00	37.80			
Dolichos	5.40	5.40	5.40	5.40	8.45	9.50	11.50	11.50	10.50	13.00	13.00	18.00	18.00	24.48	24.48	24.48			
Soya	10.10	10.10	10.10	10.10	13.95	15.50	16.50	16.50	18.00	18.00	24.00	24.00	30.00	31.11					
Guar	-	-	-	-	-	-	-	-	-	-	-	-	26.00	26.00	26.00	26.00	26.00		
PEAS																			
Chick	9.40	9.40	9.40	9.40	14.45	14.50	17.50	17.50	16.00	17.50	19.50	19.50	25.00	33.00	34.00	41.11	44.40		
Pigeon	6.90	6.90	6.90	6.90	9.45	9.50	12.50	12.50	11.50	12.50	14.50	14.50	21.00	33.00	36.00	41.11	44.40		
Field	5.40	5.40	5.40	5.40	8.45	8.50	11.50	11.50	10.50	11.50	13.50	13.50	18.00	23.00	25.56	26.70			
BLACK & GREEN																			
	11.40	11.40	11.40	11.40	14.45	14.40	17.50	17.50	16.00	17.50	19.50	19.50	25.00	27.00	27.00	25.00	25.00		
DIL SEEDS																			
Castor	7.50	7.55	7.85	7.85	10.35	12.00	14.00	14.00	14.00	14.00	15.00	15.00	21.50	23.00	23.00	25.00			
Sesame	12.05	12.05	12.05	12.05	14.90	17.00	19.00	19.00	19.00	20.00	22.00	22.00	28.00	30.00	30.00	30.00			
SUNFLOWER																			
Grey stripe																			
Black stripe																			
White stripe																			
OTHER PRODUCE																			
Wheat																37.78	41.11		
Sorghum																23.87	24.45		
Millet																18.89	20.00		
Cassava																20.59	20.59		
Chillies																			
Birroseye																			
Large 601																106.67			
Large 602																146.67			
																146.67			

SOURCE : MINISTRY OF AGRICULTURE, LILONGWE

Table III-3. Distribution of Farm Holdings and Cultivated Area by Farm Size--Smallholder Sector, 1984/85

<u>Farm Size</u> (ha)	<u>Households</u> ('000)	<u>%</u>	<u>Cultivated Area</u> ('000 ha)	<u>%</u>
<1	634.7	53	347.5	25
1 < 2	381.2	32	533.4	38
>2	177.2	15	509.4	37
TOTAL	1,193.1		1,309.3	

Source: ASA reported in IFAD Report 0083-MW.

IRRIGATION DEVELOPMENT AND HECTARES

Year	Total Hectare Developed To Date(2)	Hectare Development for Irrigation	Total	Rice	Cotton	Other
1969/70	803	654	593	591	2	-
1970/71	1,396	594	1,289	1,276	12	-
1971/72	1,841	445	1,764	1,715	45	4
1972/73	2,343	502	2,094 (3)	2,016	24	9
1973/74	2,590	247	2,671	2,633	16	22
1974/75	2,590	-	2,081	2,081	-	-
1975/76	3,696	1,106	2,359	2,359	-	-
1976/77	3,798	101	3,078	3,078	-	-
1977/78	3,899	101	3,484	3,468	-	16
1978/79	3,928	29	2,750	2,750	-	-
1979/80	4,016	88	2,201	2,201	-	-
1980/81	4,171	155	2,546	2,546	-	-
1981/82	4,171		3,852	3,372	-	480
1982/83	4,171		3,548	3,194	-	354
1983/84	4,171		2,377	2,274	-	103

(1) Irrigation Development includes hectare development by Ministry of Agriculture, Chinese - Agricultural Mission, German Technical Assistance Project - Salima, British Irrigation Rice Project - Dwangwa and UNDP - Kasinthula. Hectare planted by Smallholders, pilot estates and Agricultural Research Organizations are also included.

(2) Figures are as at 31st March.

(3) Of this total 971 hectares were double cropped with Rice. In case of Rice hectare cropped, the total figures include both summer and winter hectare where two crops per annum are grown. Thus a scheme having 40 hectares of summer crop followed by 20 hectares of winter crop is recorded as 60 hectares cropped.

SOURCE : MINISTRY OF AGRICULTURE, LILONGWE

Table II-1. Cropped Hectarage in Malawi, 1983-87

Crop	Year				
	1982/83	1984	1985	1986	1987
	-(ha)-				
Maize	1,169,402	1,182,601	1,144,853	1,193,275	1,182,415
Local		1,067,527	1,048,441	1,104,583	1,131,540
Composite		26,069	21,477	20,100	13,780
Hybrid		89,005	74,935	68,592	37,095
Rice	20,309	21,917	20,807	22,874	18,803
Groundnuts	146,314	144,935	135,966	176,293	209,938
Tobacco	27,587	44,999	46,939	38,045	39,872
Cotton	32,597	51,059	60,824	51,910	34,504
Cassava	59,351	81,497	80,262	72,904	63,174
Sorghum	22,649	21,302	32,725	32,059	30,626
Pulses	82,932	91,322	79,971	113,663	140,476
Millet	10,870	15,340	17,413	17,424	18,163
Cashew ^a	5,300	1,200	1,200	6,546	24,103
Coffee	2,000	2,000	2,800	2,000	2,000
Sweet potato	-	21,340	22,717	22,447	25,698
Tea	17,500	20,500	21,000	21,000	21,000
Sugarcane	14,457	14,056	13,829	14,000	14,000
Others	8,487	8,096	7,682	7,952	10,288
TOTAL	1,614,455	1,720,964	1,687,788	1,785,846	1,810,957

a. Data for cashew refer to the number of trees. Not included in total hectares.

Source: Ministry of Agriculture, Agricultural Development Divisions.

RECOMMENDED DOSAGE OF FERTILIZER
APPLICATION PER HECTARE BY CROP
AND BY TYPE OF FERTILIZER

CROP	TYPE OF FERTILIZER	RECOMMENDED DOSAGE PER HA (kg/ha)	
1 MAIZE			
a) HYBRID MAIZE	(i) Diammonium Phosphate (DAP) (Basal dressing)	80kg/ha	
	(ii) Urea (Top dressing)	175kg/ha	
	OR (i) 20:20:0 (Basal dressing)	200kg/ha	
	(ii) Calcium Ammonium Nitrate (CAN) or S/A (Top dressing)	200kg/ha	
	b) COMPOSITE MAIZE	(i) DAP (Basal dressing)	40kg/ha
		(ii) Urea (Top dressing)	150kg/ha
OR (i) 20:20:0 (Basal dressing)		100kg/ha	
(ii) CAN (or S/A in low lying areas) (Top dressing)		200kg/ha	
c) LOCAL MAIZE	(i) 20kg of DAP mixed with 40kg urea (Basal dressing)	60kg/ha	
	(ii) Urea (Top dressing)	40kg/ha	
	OR (i) CAN (or S/A in low lying areas) (Top dressing) - single dose	150kg/ha	

CROP

TYPE OF FERTILIZER

RECOMMENDED
DOSAGE PER HECTARE
(kg/ha)

2. RICE

(a) Blue Bonnet variety

- (i) 20:20:0 } at transplanting
(ii) ^{plus} S/A }
(iii) S/A - 30-40 days after
seedling emergence

100 kg/ha

150 kg/ha

150 kg/ha

(b) Faya variety

- (i) 20:20:0 } transplanting
(ii) ^{plus} S/A }
(iii) S/A - 60-70 day after
transplanting

100 kg/ha

100 kg/ha

100 kg/ha

3. SORGHUM

(mostly applied to hybrid
varieties of sorghum)

- (i) 20:20:0 at time of planting
OR
(i) DAP at time of planting
(ii) Urea - two to three weeks after planting

200 kg/ha

90 kg/ha

50 kg/ha

4. BEANS

- (i) 20:20:0
OR
(i) ^{plus} DAP } at planting
(ii) Urea }

200 kg/ha

100 kg/ha

37.5 kg/ha

CROP	TYPE OF FERTILIZER	RECOMMENDED DOSAGE PER HA kg/ha
5 TOBACCO		
(a) Northern Division		
Dark Fire-cured Tobacco - NDDF	(i) 'S' mixture (6:18:6) in nursery	1 kg / 11 m ²
	(ii) "C" mixture at planting	200 kg/ha
	(iii) ^{plus} CAN 3 weeks after planting	200 kg/ha
	OR (i) "C" mixture at planting	200 kg/ha
	(ii) ^{plus} Urea 3 weeks after planting	100 kg/ha
(b) Oriental	(i) "B" compound	200 kg/ha
	OR (ii) DAP at time of planting	50 kg/ha
(c) Burley	(i) 'C' mixture at planting	600 kg/ha
	(ii) CAN 3 weeks after transplanting	400 kg/ha
6 Wheat	(i) 20:20:0	100 kg/ha
	ii ^{plus} CAN	100 kg/ha
	OR (i) DAP	40 kg/ha
	(ii) ^{plus} Urea	85 kg/ha

SOURCE: Ministry of Agriculture, "Guide to Agricultural Production in Malawi 1988 - 1989."

Table 7.5 Total Fertiliser Imports: Smallholder and Estate Sector

Tonnes

Fertiliser	1983	1984	1985	Year 1986	1987	1988	1989
Sodium Nitrate	556	-	726	370	n.r	250	650
Ammonium Nitrate	14381	21	-	-	n.r	1000	18
Ammonium Sulphate	24846	22553	6859	7571	15563	4356	11103
Calcium Nitrate	8	280	-	105	n.r	-	-
Calcium/ Ammonium Nitrate	36152	38090	37466	34079	33189	34502	52141
Urea	7360	15868	12496	17112	26872	35318	69087
Nitrogenous Fertiliser n.e.s.	722	299	1663	2	160	2880	1467
Super Phosphate (Single)	796	788	1696	1501	2284	2802	990
Super Phosphate (Other)	15157	6643	7275	8872	13374	33426	32666
Phosphatic Fertiliser n.e.s.	5386	536	2852	803	3054	4859	3579
Potassium Chloride	4098	1165	3928	3013	3500	7218	3426
Potassium Sulphate	3225	1617	1812	2190	4310	3340	5276
Potassic Fertiliser n.e.s.	2371	2136	2682	1864	1680	1310	2664
Fertilisers n.e.s. a.e. 10 kg pack	244	-	135	172	4	-	3749
Mixed Fertiliser	48	46227	24294	18570	18880	3300	623
TOTAL	115350	136223	103884	96224	122870	134561	187439

Source: National Statistics Office (1990)

NATIONAL LEVEL: ISSUES OF SEASONAL CREDIT

SEASON

	1982/83	1983/84	1984/85	1985/86	1986/87	% Over 85/86
Clubs Members	6,654	7,191	8,148	8,259	8,045	-2.66
Av. Membership	156,703	180,256	211,770	207,996	206,409	-0.77
Loan(K)	23	25	25	25	25	0.00
Av. per Club(K)	8,549,275	11,585,198	15,979,863	19,067,977	18,288,063	-4.26
Av. per Member(K)	1,285	1,611	1,981	2,309	2,273	-1.56
	55	64	75	92	89	-3.47

FERTILIZER (50 Kg Bags)

	1982/83	1983/84	1984/85	1985/86	1986/87	%Over 85/86
20:20:0	200,699	238,422	316,758	317,465	231,694	-37.02
C.A.N.	82,704	189,680	350,926	331,761	268,687	-23.47
S/A	172,441	15,169	25,840	22,834	40,966	44.26
DAP	-	-	-	-	16,680	-
Urea	-	-	-	-	83,318	-
S Mixture	-	5,130	3,575	784	564	-39.01
S Mixture	-	91	3	45	13	-246.15
C Mixture	760	296	843	1,050	1,060	0.94
D Compound	12	663	235	366	379	3.43
3-2-1	-	967	334	1	2	50.00

SEED (10 Kg Packets and Kg for Others)

	1982/83	1983/84	1984/85	1985/86	1986/87	%Over 85/86
MH 12	107,177	84,312	96,714	96,974	51,787	-87.26
NSCM 41	-	1,729	6,107	18,006	6,514	-176.42
UCA	87,952	10,518	6,140	7,378	3,728	-170.45
CCA	9,196	4,013	2,381	2,749	5,261	47.75
GDA	709,517	1,077,445	2,960,785	1,813,281	1,317,615	-37.62
MPG	6,431	56,902	75,310	106,636	245,482	56.56
Malimba	-	125	160	720	5,618	87.18
Chitembana	-	-	-	-	453775	-
Faya	173,822	214,582	260,132	44,011	282,553	84.42
B/Bonnet	70,249	92,335	126,133	68,905	114,102	39.61
Wheat	34,080	6,199	4,441	6,970	13,274	47.49

SOURCE : MINISTRY OF AGRICULTURE, LILONGWE

INPUTS SECTION
MINISTRY OF AGRICULTURE

SMALLHOLDER - FERTILIZER IMPORTS
(TONS)

YEAR	S/A 21%N	CAN 28%N	UREA 46%N	23:21:0+49 23:23:0+49	DAP 18:46:0	TOTAL
1988/89	-	20,000	8,000	15,000	5,000	48,000
1989/90	3,000	41,300	40,000	32,200	9,200	125,700
1990/91 ¹	3,000	20,000	15,000	28,000	18,000	84,000

NOTE:

1/ Provisional figures

INPUTS SECTION
MINISTRY OF AGRICULTURE

FERTILIZER GRANTS 1983/84 - 1990/91
(TONS)

YEAR	S/A 21%N	CAN 28%N	UREA 46%N	20:20:0	DAP 18:46:0	TOTAL
1983/84	13,770	-	-	-	-	13,770
1984/85	-	-	-	-	-	-
1985/86	6,433	-	-	5,479 ⁵ 3,020 ⁶ (8,499)	-	14,932
1986/87	7,727	-	947 ⁴ 897 ⁵ (1844)	2,039 ⁵	3,231 ⁴	14,841
1987/88	3,810	-	10,499 ²	1,717 ⁵	27 ⁴ 2308 ⁵ (2335)	18,361
1988/89	6,198	-	4,072 ²	-	-	10,270
1989/90	-	-	6,783 ²	-	1,763 ³	10,546
1990/91	5,390 ⁷	11,810 ⁷ 100 ⁶ (11,910)	4,024 ¹ 6,585 ¹ 300 ³ 2,410 ² 100 ⁶ (13,419)	-	-	20,719*

NOTES: DONORS

- 1/ = Australia
- 2/ = Canada
- 3/ = FAO
- 4/ = Germany
- 5/ = Japan
- 6/ = Norsk Hydro
- 7/ = U.K.

*As of November 1990

Source: SFFRFM

NATIONAL FERTILIZER SALES TO SMALLHOLDERS

						Tonnes
Year	TOTAL	S/A	20:20:0	CAN	Urea	Others
1972/73	25,185	18,752	2,328	2,668	84	1,353
1973/74	31,739	23,017	4,265	3,277	873	307
1974/75	14,847	11,412	1,636	666	732	401
1975/76	22,349	17,456	2,567	1,312	210	804
1976/77	30,536	23,611	4,148	1,351	133	1,293
1977/78	44,566	33,835	6,374	3,181	177	999
1978/79	45,788	31,839	8,971	3,992	113	873
1979/80	49,141	35,239	9,170	4,166	202	364
1980/81	64,448	43,630	13,469	4,748	240	2,361
1981/82	56,589	42,508	10,619	2,789	673	-
1982/83	57,763	24,845	22,928	9,912	74	4
1983/84	57,009	3,232	21,813	31,964	-	-
1984/85	69,054	5,444	26,107	36,965	37	501
1985/86	64,948	3,585	25,485	35,547	23	308

SOURCE: ADMARC AND SMALLHOLDER FERTILIZER REVOLVING FUND

Table III-1. Fertilizer Consumption in Malawi

Nutrient	Year										
	1978	1979	1980	1981	1982	1983	1984	1985	1986	1987	1988
	- ('000 mt of nutrient) -										
Nitrogen											
Smallholder	9.2	9.5	10.3	13.1	11.8	12.4	13.4	16.0	14.9	17.5	21.7
Estate	<u>6.7</u>	<u>7.6</u>	<u>6.3</u>	<u>8.3</u>	<u>6.7</u>	<u>6.7</u>	<u>6.7</u>	<u>9.3</u>	<u>9.0</u>	<u>8.4</u>	<u>9.2</u>
Subtotal	15.9	17.1	16.6	21.4	18.5	19.1	20.1	25.3	23.9	25.9	30.9
Phosphate											
Smallholder	1.3	1.8	1.8	2.7	2.1	4.6	4.4	5.2	5.0	4.7	6.4
Estate	<u>3.8</u>	<u>4.5</u>	<u>4.8</u>	<u>4.6</u>	<u>4.6</u>	<u>4.8</u>	<u>3.9</u>	<u>4.3</u>	<u>4.4</u>	<u>4.6</u>	<u>4.3</u>
Subtotal	5.1	6.3	6.6	7.3	6.7	9.4	8.3	9.5	9.4	9.3	10.7
Potash											
Smallholder	0	0	0	0	0	0	0	0	0	0	0.1
Estate	<u>3.1</u>	<u>3.6</u>	<u>4.3</u>	<u>3.2</u>	<u>3.4</u>	<u>3.9</u>	<u>3.4</u>	<u>3.4</u>	<u>4.3</u>	<u>4.7</u>	<u>4.6</u>
Subtotal	3.1	3.6	4.3	3.2	3.4	3.9	3.4	3.4	4.3	4.7	4.7
Total smallholder	10.5	11.3	12.1	15.8	13.9	17.0	17.8	21.2	19.9	22.2	28.2
Total estate	<u>13.6</u>	<u>15.7</u>	<u>15.4</u>	<u>16.1</u>	<u>14.7</u>	<u>15.4</u>	<u>14.0</u>	<u>17.0</u>	<u>17.7</u>	<u>17.7</u>	<u>18.1</u>
GRAND TOTAL	24.1	27.0	27.5	31.9	28.6	32.4	31.8	38.2	37.6	39.9	46.3

Source: Ministry of Agriculture; OPTICHEM.

Table III-2. Fertilizer Consumption (by product) in Malawi

Smallholder Sector	1978	1979	1980	1981	1982	1983	1984	1985	1986	1987	1988
20-20-0	6,374	8,971	9,170	13,469	10,619	22,928	21,813	26,107	25,485	21,924	20,273
AS	33,835	31,839	35,239	43,630	42,508	24,845	3,232	5,444	3,585	6,700	3,292
CAN	3,181	3,992	4,166	4,748	2,789	9,912	31,964	36,965	35,547	32,433	28,316
Urea	177	113	202	240	673	74	-	37	-	5,435	16,089
Other	999	873	364	2,361	-	4	-	501	331	1,047	5,816
Subtotal	44,556	45,788	49,141	64,448	56,589	57,763	57,009	69,054	64,948	67,539	73,786
<u>Estate Sector</u>											
6-18-15-9(S)	16,500	18,000	21,700	16,400	17,700	20,000	16,300	16,900	17,100	18,900	23,157 ^a
Other complex	9,800	13,100	3,900	3,500	2,900	3,100	2,900	3,600	3,200	1,700	-
CAN	5,700	5,900	8,600	5,100	7,500	1,700	5,100	5,500	5,600	5,700	4,369
AS	8,100	8,400	1,800	7,300	700	5,300	1,400	2,000	5,700	5,000	2,859
Urea	200	200	3,400	8,600	6,500	7,700	8,300	13,200	11,100	12,000	10,622
TSP	200	400	800	2,300	1,600	1,200	800	1,100	1,400	1,900	445
Potassium chloride	100	400	1,300	800	900	1,200	900	700	2,200	2,500	1,570
Other	1,400	1,600	1,400	700	1,100	500	600	900	900	700	2,657
Subtotal	42,000	48,000	42,900	44,700	38,900	40,700	36,300	43,900	47,200	48,400	45,680
GRAND TOTAL	86,566	93,788	92,041	109,148	95,489	98,463	93,309	112,954	112,148	115,939	119,466

a. Total complex fertilizer.

Source: OPTICHEM and Ministry of Agriculture.

Table III-4. Smallholder Sector Fertilizer Use by Crop, 1984/85

<u>Crop</u>	<u>% of All Farmland</u>	<u>% of Crop Fertilized</u>	<u>% of Land Fertilized</u>	<u>% of Total Fertilizer Use</u>
Maize				
Local	58.9	24.2	54.8	39.5
Composite	1.5	52.7	3.1	4.4
Hybrid	5.9	85.2	19.4	27.4
Mixture	16.6	19.0	12.1	12.2
Tobacco	3.0	77.7	9.1	14.2
Others	32.5	1.1	1.4	2.3

Source: ASA sample as reported by Nathan Associates,
May 1987.

Note: Percentages in column 1 add up to more than 100% due
to intercropping of some areas.

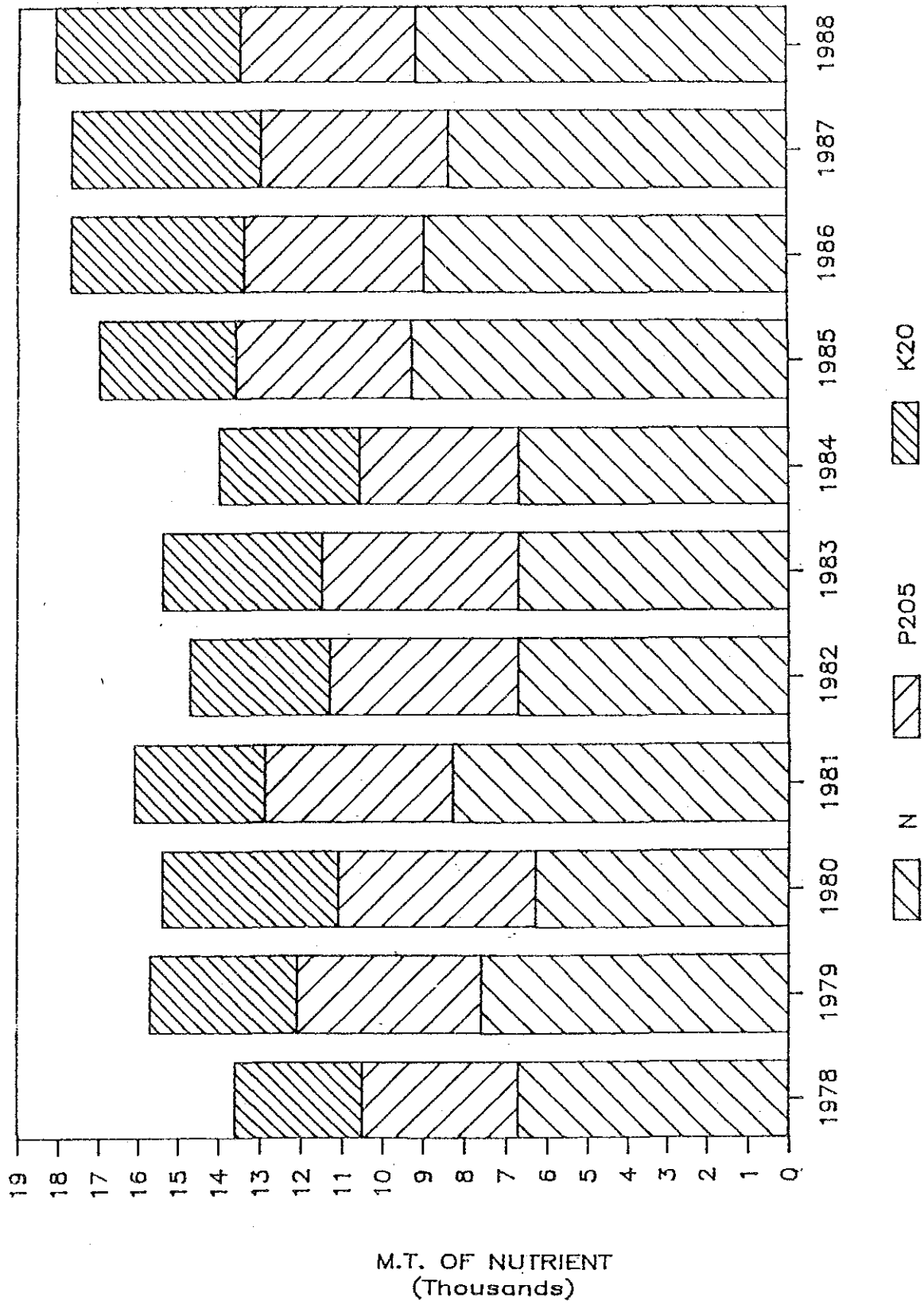


Figure III-4. Fertilizer Nutrient Use in the Estate Sector, 1978-88.

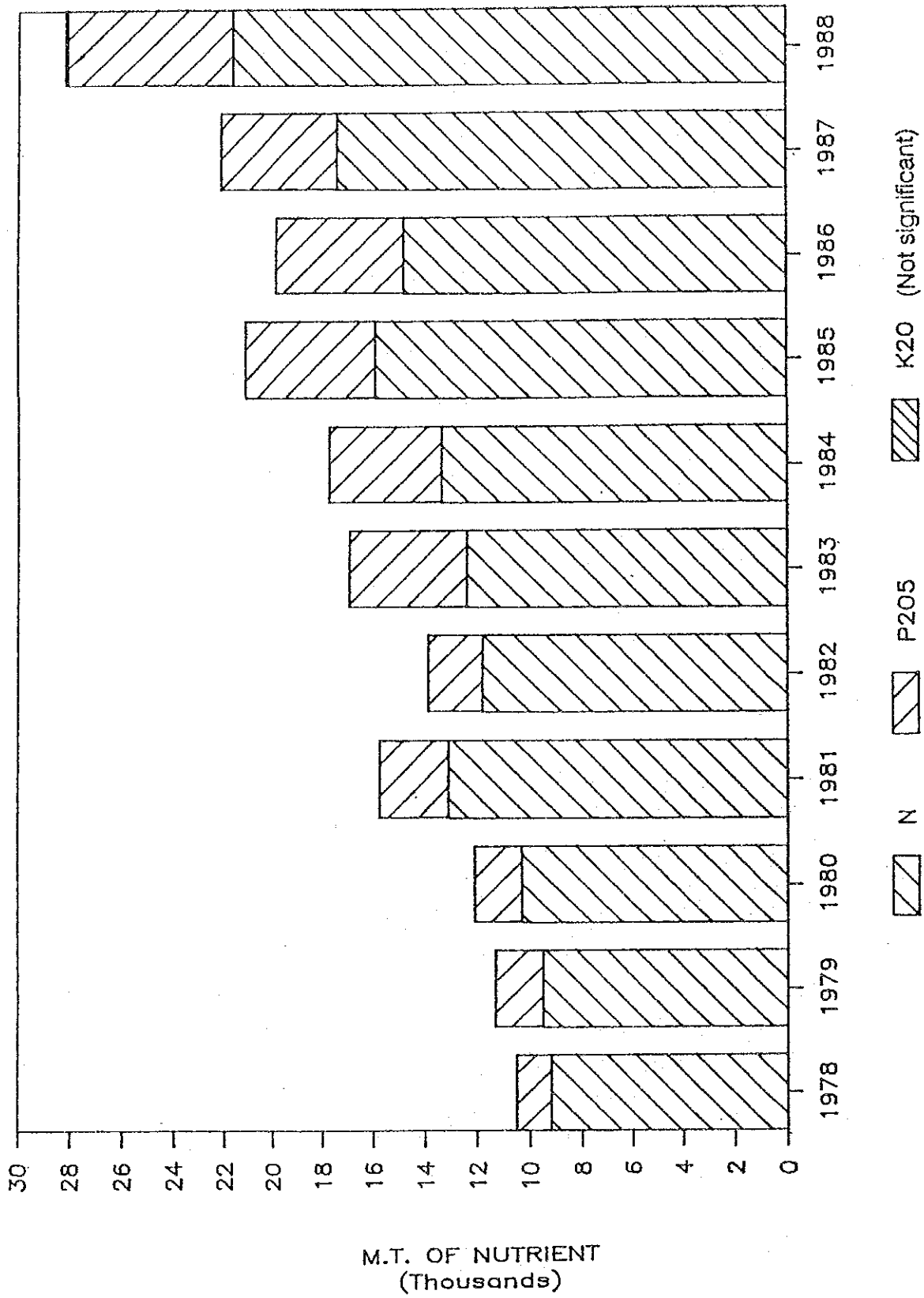


Figure III-2. Fertilizer Nutrient Use in the Smallholder Sector, 1978-88.

ADMARC FERTILIZER SALES

(Tonnes)

Year	SOUTHERN REGION						
	Total	S. of Raxonia	20:20:0	18:18:0	C.A.N.	Urea	Other
1980/81	18,748	14,364	1,968	0	1,919	219	278
1981/82	18,922	14,898	3,437	0	476	111	0
1982/83	16,291	10,506	4,478	7	1,260	35	5
1983/84	10,902	1,451	4,524	0	4,927	0	0
1984/85	14,526	1,020	4,121	0	9,385	0	0
1985/86							

Year	CENTRAL REGION						
	Total	S. of Raxonia	20:20:0	18:18:0	C.A.N.	Urea	Other
1980/81	33,783	21,081	8,281	0	2,455	64	1,902
1981/82	25,496	18,857	4,545	0	1,669	425	0
1982/83	33,557	11,874	8,393	4,639	3,955	39	4,657
1983/84	47,338	826	12,897	75	33,458	6	76
1984/85	37,717	1,608	15,182	0	20,927	0	0
1985/86							

ADMARC FERTILIZER SALES (CONT'D)

(Tonnes)

Year	NORTHERN REGION						
	Total	S. of Ammonia	20:20:0	18:18:0	C.A.N.	Urea	Other
1980/81	11,899	8,557	2,375	0	235	31	701
1981/82	11,890	8,755	2,451	0	664	10	0
1982/83	12,984	3,282	4,381	1,237	2,221	5	1,858
1983/84	12,457	1,118	4,581	7	6,476	0	275
1984/85	14,158	2,737	5,221	0	6,194	0	6
1985/86							

Year	MALAWI						
	Total	S. of Ammonia	20:20:0	18:18:0	C.A.N.	Urea	Other
1980/81	64,430	44,002	12,624	0	4,609	314	2,891
1981/82	56,308	42,510	10,443	0	2,809	546	0
1982/83	62,832	25,662	17,252	5,883	7,436	79	6,520
1983/84	70,697	3,395	22,002	82	44,861	6	351
1984/85	66,401	5,365	24,524	0	36,506	0	6
1985/86							

SOURCE : MINISTRY OF AGRICULTURE, LILONGWE

INPUTS SECTION
 MINISTRY OF AGRICULTURE
 SMALLHOLDER- FERTILIZER DEMAND FORECAST 1991/92 - 1995/96
 (TONS)

YEAR	S/A 21%N	CAN 28%	UREA 46%	23:21:0+4S	DAP 18:46:0	Tobacco Mixtures	TOTAL	Percentage Increase	N U T R I E N T S			TOTAL N, P205, K20	Percen- Total
									N	P205	K20 (Excluding Tobacco Mixtures)		
1991/92	7,000	29,000	55,000	36,000	15,000	8,000	150,000	-	46,420	14,460	-	60,880	-
1992/93	7,000	30,000	60,000	40,000	15,000	10,000	162,000	+7	50,046	15,300	-	65,346	7%
1993/94	7,000	30,000	67,000	43,000	15,000	11,000	173,000	+6	53,280	16,027	-	69,307	6%
1994/95	6,000	30,000	74,000	47,000	15,000	15,000	185,000	+6	57,170	16,810	-	73,980	6%
1995/96	6,000	30,000	75,000	50,000	20,000	15,000	196,000	+6	59,260	19,700	-	78,960	6%

NOTES:

- The overall rate of growth +6% is in step with ASAC.
- Promotion of High Analysis fertilizers is ensured.
- Consumption of DAP is checked owing to difficulties experienced in its application. Hopefully, by 1994/95 a suitable NP/NPK high analysis fertilizer shall be identified as its replacement.
- The demand forecast shall be updated every year on the basis of actual performance and other developments.

29/11/90
 .ilongwe

SOURCE : MINISTRY OF AGRICULTURE, INPUTS SECTION
 SDS (Planing)

LIST OF RESEARCH INSTITUTIONS IN MALAWI

1. Chitedze Agricultural Research Station
2. Tea Research Foundation of Central Africa
3. Brumbwe Agricultural Research Station
4. Malocoka Agricultural Research station
5. Kasinthula Agricultural Research station
6. Central Veterinary Investigation Laboratory
7. Malawi/German Livestock Development Programme
8. Forestry Research Institute of Malawi
9. Fish Culture station
10. Tobacco Research Institute of Malawi
11. University of Malawi
12. Baika Research Station
13. Mbawa Research Station
14. Lufuwu Research Station

DISSEMINATING INSTITUTE

Extension Aids Branch

SOURCE: CHIEF AGRICULTURAL RESEARCH OFFICER,
MINISTRY OF AGRICULTURE HEADQUARTERS, 1990

INPUTS SECTION
MINISTRY OF AGRICULTURE

FERTILIZER PRICES
1969/70 - 1990/91
(MK/50 Kg)

<u>Crop Season</u>	S/A 21%N	CAN 28%N	UREA 46%N	20:20:0	23:21:0+4S	DAF 18:46:0
	-----	-----	-----	-----	-----	-----
1969/70	1.65	-	-	1.65	-	-
1970/71	2.20	3.30	-	2.75	-	-
1971/72	2.75	2.75	-	3.45	-	-
1972/73	2.75	3.30	-	3.45	-	-
1973/74	2.75	3.30	-	3.45	-	-
1974/75	6.70	8.50	-	9.00	-	-
1975/76	5.50	7.75	-	8.50	-	-
1976/77	5.50	7.75	-	8.50	-	-
1977/78	5.50	7.75	-	8.50	-	-
1978/79	5.50	7.75	-	8.50	-	-
1979/80	5.50	7.75	-	8.50	-	-
1980/81	6.50	10.54	-	8.50	-	-
1981/82	9.00	10.54	-	8.50	-	-
1982/83	10.50	13.00	-	12.60	-	-
1983/84	12.00	14.00	-	14.50	-	-
1984/85	13.50	15.50	-	17.50	-	-
1985/86	17.50	19.00	10.00	20.50	-	-
1986/87	18.00	19.50	26.00	21.00	-	24.00
1987/88	23.00	24.50	27.00	27.00	-	31.50
1988/89	27.00	27.50	30.00	30.00	32.50	34.50
1989/90	33.00	34.00	37.00	35.00	39.50	41.50
1990/91	38.00	42.00	40.70	35.00	45.00	44.00

NOTE: Fertilizers available in small bags i.e. 25/15/10 Kgs are priced in direct proportion of the prices of 50 Kg bags.

These are smallholder prices.

Table III-14. Distribution of Fertilizer
by Regions, 1988/89

<u>Type of Fertilizer</u>	<u>Revised Allocation</u> (tons)
<u>South</u>	
20-20-0	2,800
CAN	8,250
AS	1,489
Urea	6,000
DAP	1,000
TOTAL	19,539
<u>Central</u>	
20-20-0	13,450
CAN	14,000
AS	1,061
Urea	15,500
DAP	6,000
TOTAL	50,011
<u>North</u>	
20-20-0	5,250
CAN	4,250
AS	450
Urea	3,500
DAP	2,000
TOTAL	15,450
GRAND TOTAL	85,000

Source: Derived from "1988/89 Allocation
of Fertilizer to ADD markets,"
SFRF.

Table III-15. OPTICHEM Fertilizer Selling Prices 1987/88 Versus 1988/89 at Blantyre^a

	Price Per Ton		X Increase (%)	1989 Price Per Bag ^b (MK)
	1988	1989 (MK)		
Compound "A"	686.60	926.80	34.9	46.34
Compound "B"	695.80	940.20	35.1	47.01
Compound "C"	702.00	942.60	34.3	47.13
Compound "D"	712.80	964.40	35.3	48.22
Compound "S"	638.20	784.00	22.8	39.20
Compound 3-2-0	613.00	877.00	43.1	43.85
0-22-30	715.00	946.80	32.4	47.34
Compound "J"				
15-5-20	-	854.20	-	42.71
Single supers	519.60	774.20	49.0	38.71
Double supers	685.00	915.00	33.6	45.75
Ammonium sulfate	510.20	674.80	32.2	33.74
CAN	565.60	831.40	47.0	41.57
Urea	604.20	850.60	40.7	42.53
MOP (STD)	617.20	818.80	32.7	40.94
MOP (granular)	-	856.60	-	42.83
Potassium nitrate	1,079.80	1,224.60	13.4	61.23
DAP	751.00	1,021.40	36.0	51.07
Nitrate of soda	723.40	1,040.20	43.6	52.01
Super "B"	-	1,051.40	-	52.57
Super "C"	-	1,090.60	-	54.53
Super "D"	-	1,075.20	-	53.76
SOP	-	1,095.40	-	54.77
Borate	-	1,686.60	-	84.33
MAP	-	1,076.20	-	53.81
MCP	-	2,073.60	-	103.68
Dolomitic lime	-	66.00	-	3.30
Magnesium sulfate	-	1,610.00 (21/9/88)	-	80.50
Zinc sulfate	-	2,000.00 (18/10/88)	-	100.00

Dwangwa Sugar Corporation

TSP	850.57
MOP	733.00

- a. OPTICHEM has a warehouse at Lilongwe and farmers in Lilongwe pay an ex-factory Blantyre price plus MK 47 per ton for freight to Lilongwe.
b. 50-kg bags.

Source: OPTICHEM official price list.

OPTICHEM sells fertilizer to the estate subsector

Fertilizer Marketing System
(Product Flow)

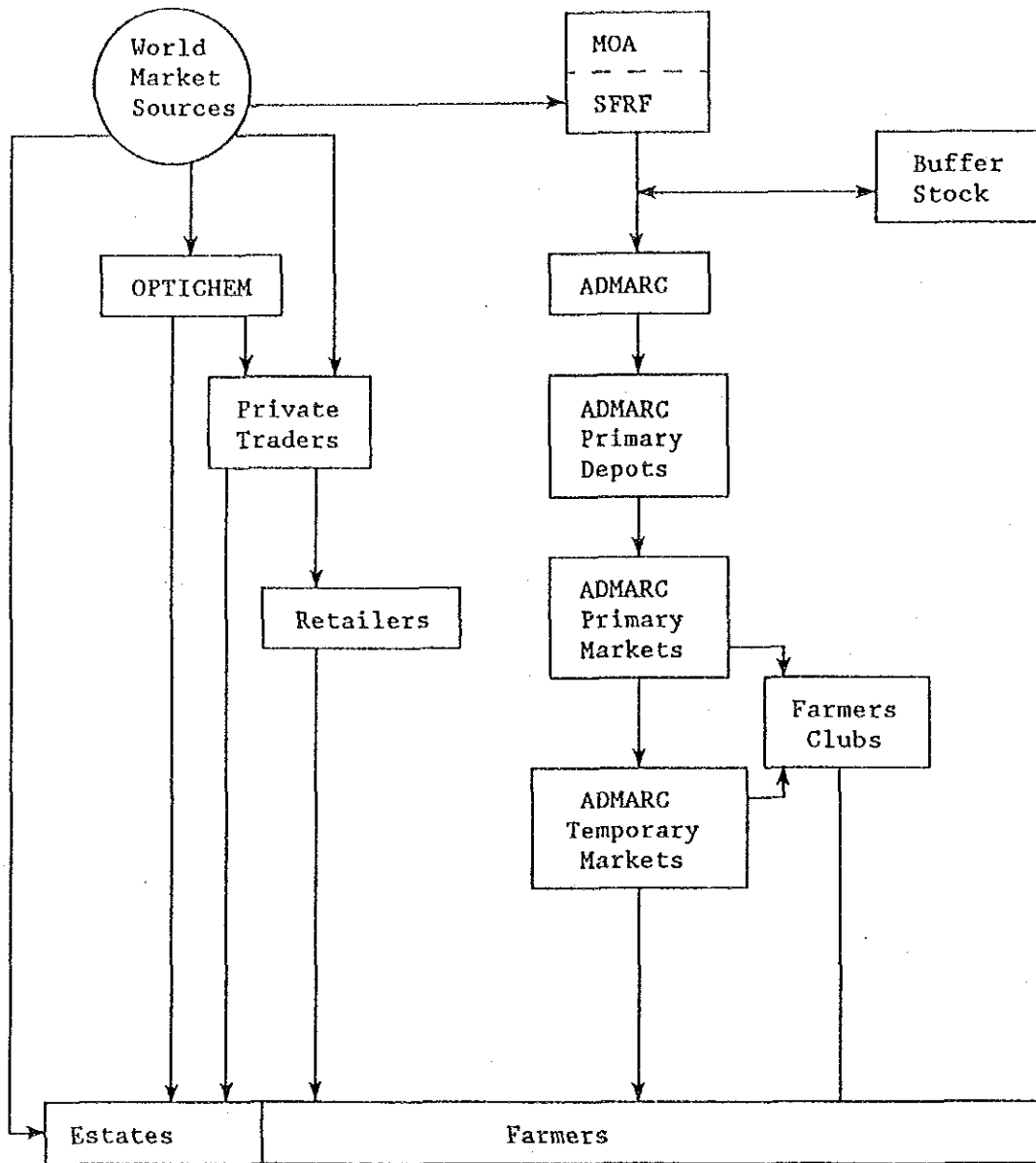


Figure III-1. Product Flow in the Present Fertilizer Marketing Systems.

Fertilizer Marketing
(Title Flow)

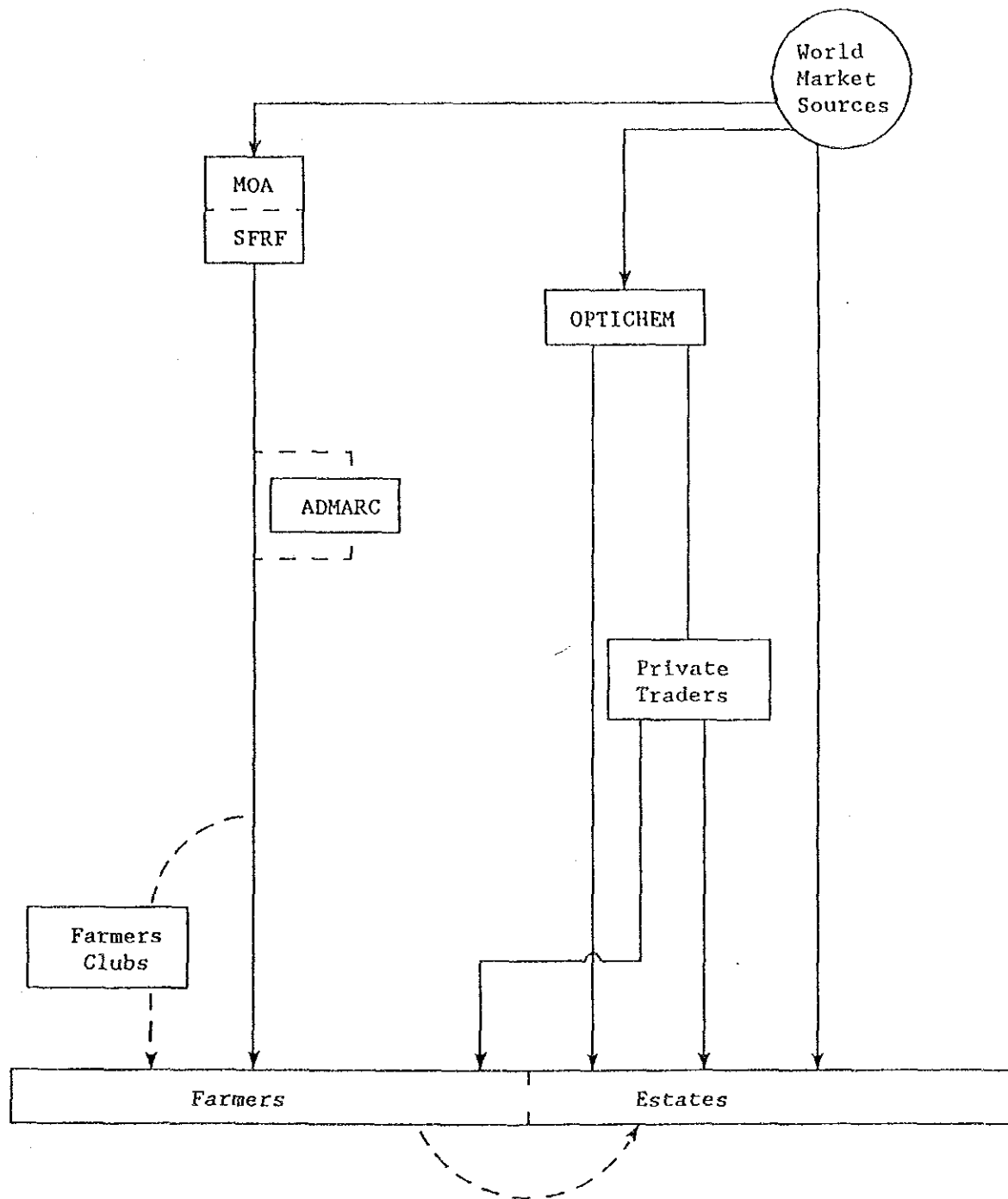


Figure III-2. Title Flow in the Present Fertilizer Marketing System.

Fertilizer Marketing System
(Cash Flows)

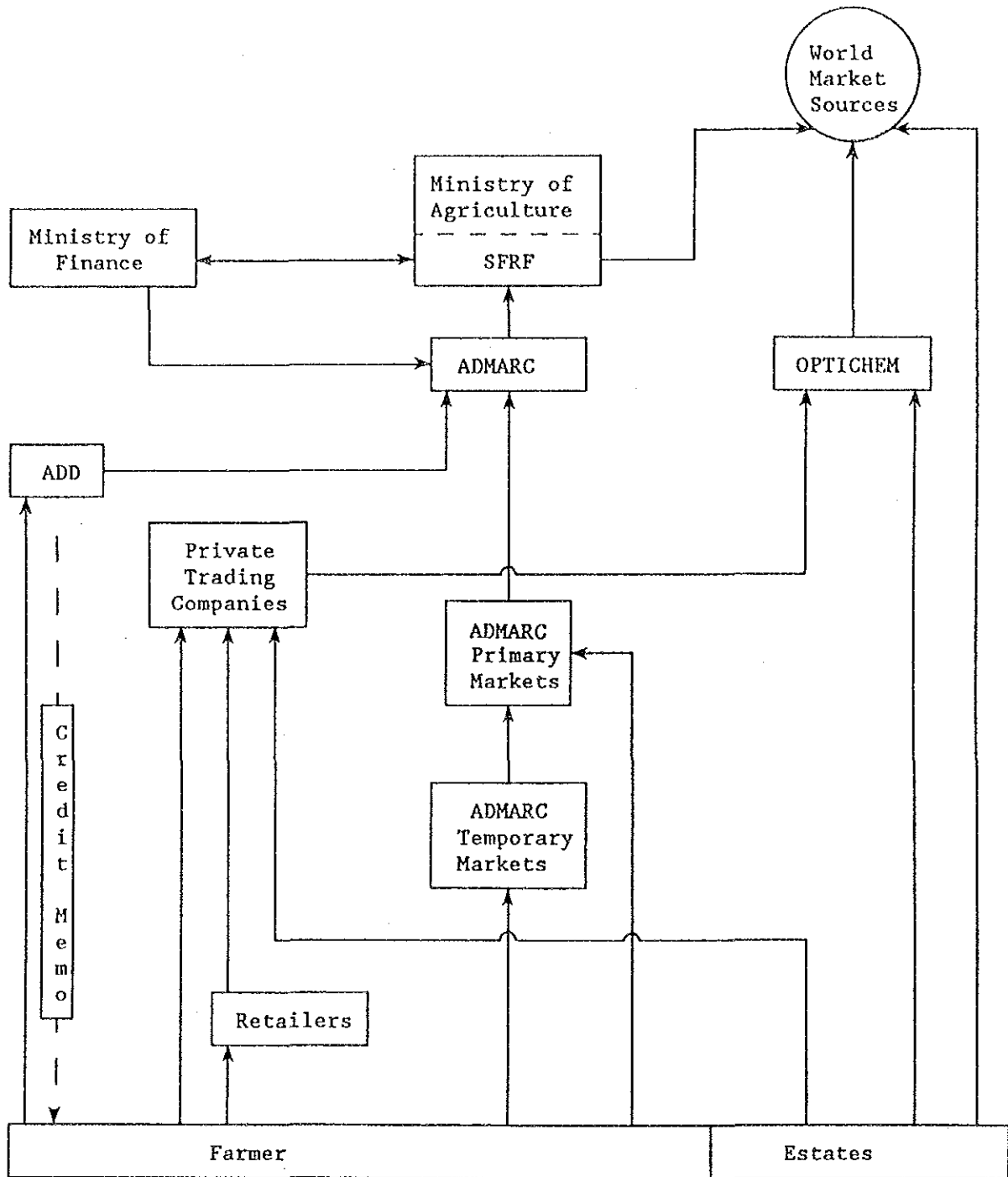


Figure III-3. Cash Flow in the Present Fertilizer Marketing Systems.

Fertilizer Marketing System
(Technology Transfer)

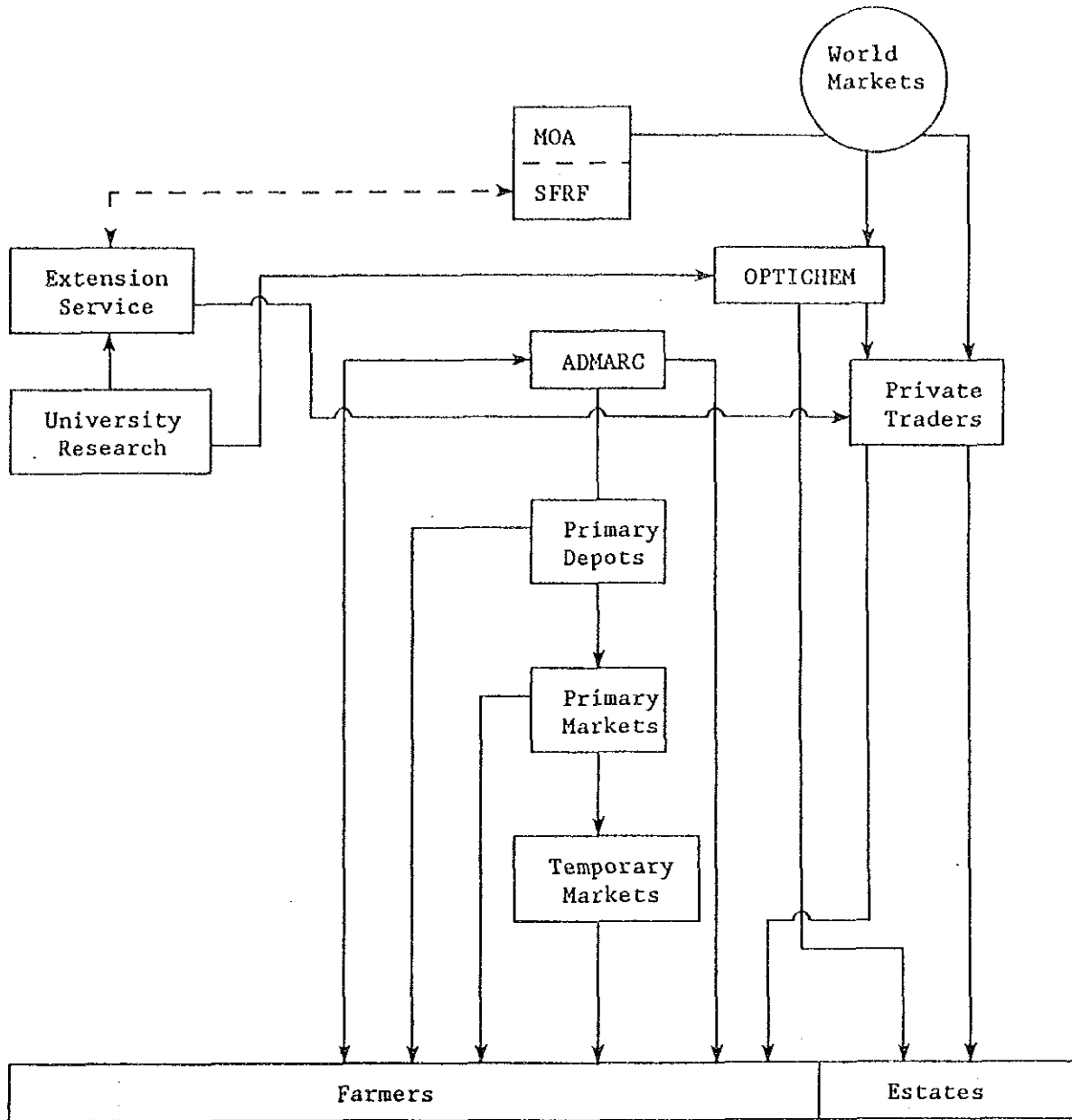


Figure III-4. Technology Transfer Flow in the Present Fertilizer Marketing System.

Marketing System
(Purchase Information Flow)

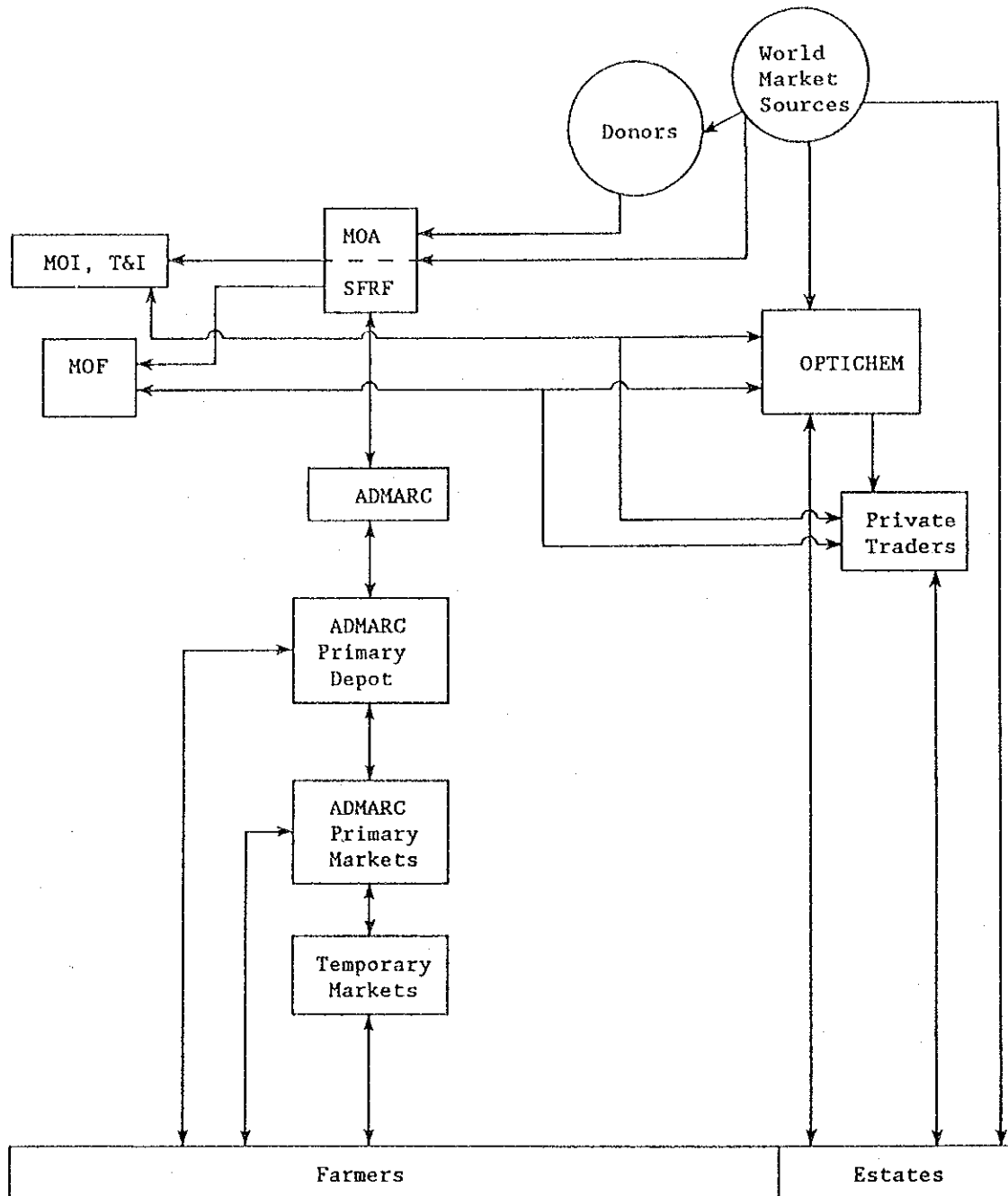


Figure III-5. Information Flow for Purchasing in the Present Fertilizer Marketing System.

SOURCE : International Fertilizer Development Centre (IFDC),
Smallholder Fertilizer Marketing Study:Draft 1989

Table III-13. Comparison of Port Distances and Freight Cost^a

<u>Port</u>	<u>Distance to Lilongwe (km)</u>	<u>MK/Ton of Product</u>	<u>Transport Cost per kg of N Delivered Lilongwe^b (MK)</u>
Dar-es-Salaam via Mbeya	2,000	396	0.86
Durban	3,800	296	0.64
Beira	650	-	-
Nacala	810	87	0.189

a. Based on conversation with International Transport Brokers the Nacala route when opened will be adjusted at approximately 90% of the Durban/Tete route.

b. Nitrogen from urea.

Source: Study of Alternatives Institutional Arrangements For the Smallholder Revolving Fund, 1987 Deloitte, Haskins, and Sells.

VI. Raw Materials

1. Present situation of phosphate rock after the phosphate development survey was conducted by JICA from 1988 to 1989.
2. Further geological survey necessary to be undertaken, if any.
not already done, maybe further drilling to deeper levels than 50m to increase reserves.
3. Reserves, production, consumption and imports.
 - (1) Phosphate rock 0,8mT @ 17% P_2O_5 , No production \rightarrow no local consumption.
 - (2) Magnesium sources *dolomitic marbles* { Lirangui
 - (3) Sulphur sources *ultrabasic rocks* { Matope } $MgO > 20\%$
 - (4) Calcium sources *32mT - Maligunde (Chipp)* Lower shale
Chenkunda *limestone* Mhidi (vevo)
 - (5) ~~limestone~~ Coal / *P Cox* Kazimuzwi - Nchanga - L Shire active mine.

VII. Blueprint of the Project

1. Financing plan
2. Project schedule *As soon as possible.*
3. Economic life span of the project
4. Production Process *FMP.*
5. Price escalation *10%*
6. Prices of raw materials and utilities
7. Manpower cost *~KAS/m.*
8. Insurance and fixed asset tax
9. Depreciation

4. ミニッツ

MINUTES OF MEETING BETWEEN REPRESENTATIVES OF MINISTRY OF FORESTRY AND NATURAL RESOURCES AND JICA AND JAPANESE PROJECT FINDING MISSION.

ON

LOCAL PRODUCTION OF FUSED MAGNESIUM PHOSPHATE FERTILISER FROM TUNDULU ROCK PHOSPHATE.

A meeting was held on 29th November, 1990 at the Ministry of Forestry and Natural Resources Headquarters in Lilongwe. Members that attended the meeting are shown in appendixes I and II. The meeting was chaired by the Deputy Secretary in the Ministry of Forestry and Natural Resources, Mr. H.A. Juwa.

The Chairman, after having introduced the Malawian team and the Head of Mission of Japan did the same for his team moved on to give the background to the proposed project and the previous Technical Cooperation between Malawi Government and the Government of Japan in the exploration for minerals in the Chirwa Alkaline Province. The Chairman explained that Malawi's economy is agriculture based but it has to import all her fertiliser despite the presence of raw materials such as PR in the country. The chairman informed the meeting that an agreement was signed in 1986 between the Malawi Government and the Japanese Government to explore for Rare Earth Minerals and phosphate rock. The project was executed in three phases which were completed in 1989. It is during this project that the results confirmed the previous knowledge that Tundulu has Rock Phosphate of good quality for the production of phosphate fertiliser.

The chairman said it is from these results that Malawi Government has approached the Japanese Government for a feasibility study to assess if Fused Magnesium phosphate fertiliser (FMP) can be produced locally.

The chairman then asked the Chief Geologist (CG) to give a brief background. The Chief Geologist first thanked the Japanese Government for their assistance in the previous projects. He explained that the first interest was in Rare earths (REE) which are in high demand in industrialised countries. But it was also realised that there is Rock phosphate (RP) at Tundulu. So it was decided that they should focus on both exploration for REE and RP. The Chief Geologist pointed out that Geological Survey Department had done some work previously but it was rather sketchy and a detailed investigation was necessary to be carried out. He explained that during the Japanese/GSD Exploration project the first phase looked at 25 centres in order to identify high potential deposits. The second phase concentrated on

Tundulu and Songwe. Results of this work at Tundulu confirmed the presence of 0.5 million tonnes of RP grading 22% P2O5. During phase III again detailed work was carried out to ascertain reserves. An extension of one year to the project was agreed upon with the view to training GSD staff so that they could later on be competent to work on carbonitites on their own. The site for the training was again Tundulu. During this phase, the reserves for RP were increased to 0.88 million tonnes grading 14% P2O5 on average.

With these results at hand and having consulted with Mr. Bojo who is a Japanese expert on fused Magnesium Phosphate fertiliser technology, Malawi Government decided to approach the Japanese government for assistance.

The chairman then asked the Head of the Japanese Mission to briefly explain the purpose of their mission.

The Head of Mission commented on the Chief Geologist's remarks as being very clear. He said the aim of his mission was to see which projects can be implemented in Malawi and having identified the project the second step is to go ahead with development. He said he was very aware that Malawi's economy is agriculture based but it produced no fertiliser of its own. He explained that he was hopeful that if the FMP project is taken up, it will greatly help in the development efforts of the country.

The head of mission then proposed that the information he wanted to have basically relating to data on Agriculture, fertiliser maker, pricing and distribution system of fertiliser, location and infrastructure of possible site for FMP plant, Raw materials and how project would be implemented would be obtained from a detailed questionnaire which they had provided to the MFNR.

The chairman then explained that the questionnaire cannot be answered right away because it reached the ministry very late and some of the information related to Ministry of Agriculture which means it required joint effort. He however promised that his team will try to provide the answers in the shortest time possible.

The Japanese team then moved on to comment that some of them had been to Tundulu and were convinced the rock can be mined. They however expressed a worry over the road condition in the rainy season especially between Migowi and Tundulu.

The Malawi team explained that they are aware of the problem and he is also aware of a Fisheries Department project in the area one of whose tasks will be to rehabilitate the road. It was also expressed that at any rate if mining

started, Ministry of works would help to rehabilitate the road as they did with the road leading to Kaziwiziwi mine.

The Japanese team wanted to know how fertiliser is transported in the country. In reply the Malawi team explained that in Malawi fertiliser is transported by various means depending on the user. In most cases the fertiliser is hauled to ADMARC by trucks or trains. Small scale farmer either use oxcarts or bicycles while estates who get their fertiliser in bulk from OPTICHEM Ltd use trucks. So distribution is not a big problem.

The Japanese team explained that on developing phosphate fertiliser there are several options such as Partial Acidulation of RP (PARP), Direct application and Fused magnesium phosphate (FMP). They then wanted to know if there is any data available on Direct application option.

In reply the Malawi team explained that there is some data available but experiments are in progress which involves GSD, Ministry of Agriculture (MOA), International fertiliser development centre (IFDC) of USA and British Geological Survey (BGS) on using Direct Application and PARP.

From the point of view of environmental protection, the Japanese team wanted to know if there is any law as regards disposal of water from the RP mine, especially considering that Tundulu is very close to Lake Chirwa. In reply the Malawian team explained that an Act exists in the law for the protection of environment. If mining started, a pond would have to be constructed for the disposal of water accumulating in the mine.

On availability of magnesium and silica rich rocks, the Malawi team explained that these were plenty in southern Malawi in the form of Dolomitic marbles and serpentine for magnesium and sand for silica.

The Japanese team explained that for the manufacture of FMP the following are essential:- reliable power supply, fire resistant bricks, carbonyl electrode, and pulveriser (rock crusher). They wanted to know if Malawi's power supply is reliable and if fire resistant bricks can be obtained locally. In reply the Malawi team explained that occasionally power failures are experienced especially in Lilongwe due to maintenance work by ESCOM. But in case of installing the FMP plant, a power generator will have to be included to operate when there's power supply interruption. The team also explained that fire resistant bricks are manufactured at a small scale by MISCOR of Blantyre and there is a mineral called kyanite which can be used to produce better fire resistant bricks if need be in the country.

It was noted that the rest of question related to Ministry of Agriculture and since there was no representative from the ministry the meeting was adjourned until 2.00 pm when MOA representative would be available.

The afternoon session which was chaired by the Chief Geologist resumed at 2.30 pm in the presence of two representatives from Ministry of Agriculture. The representatives gave a general situation as regards fertiliser. He explained that all fertilisers used in the country are imported. Small holder farmers used 150,000kg last year while data for the estates farmer is very difficult to obtain. He explained that on average fertiliser consumption is 10kg/hectare. At the moment, there is a subsidy of 25% on fertiliser for small holder farmer who buys the commodity from ADMARC but none for estate farmer. He however explained that due to fertiliser leakage to estate farmers, the MOA wants to phase out the subsidy. Malawi, being land locked also experiences transport problems which makes imported fertiliser very expensive. He explained a paradox which exists in that as of now Malawi receives little fertiliser grant compared to some countries who have port facilities in the region.

He told the meeting that fertiliser that are used in Malawi are CAN, DAP, Urea, and Sulphate of Ammonia although the later is being phased out, except in rice growing due to the fact that it increases soil acidity.

The representatives then looked at the questionnaire and advised that they will provide answers to it as soon as possible since some of the questions needed consultation with other branches of MOA.

A member of the Japanese team wanted to know if there was available data on soil acidity due to application of sulphate of Ammonia fertiliser and if a soils map of Malawi was available. In reply the representatives of MOA said it would provide both data to the Japanese team before they leave country.

On the pricing of crops, the representative of MOA explained that only major crops have government controlled prices. Things like vegetables etc are not price controlled. He further explained that in setting prices government takes into consideration input cost, world prices, labour costs etc.

Having discussed everything on the questionnaire the Head of Japanese mission decided it was not necessary to meet again on 30th November, 1990 as scheduled. It was agreed then that MFNR would liase with MOA to provide written answers to most of the questions on the

questionnaire. The remaining questions will have answers ready by the 7th December, 1990 according to the representative of MOA.

Mr. Nakai, the Resident Representative for JICA invited the Chief Geologist to take the opportunity to express any projects that the mission might consider for technical assistance. In reply the Chief Geologist explained that Geological Survey Department has acquired vast airborne geophysical data which could be used in targeted mineral exploration. Malawi Government would use the assistance in the form of geologists, geophysists, geochemist and at a latter date driller to carry mineral exploration programme as highlighted by desk study of Geophysical maps.

In reply the Head of mission informed the meeting that the Chief Geologist's request would be passed on to relevant institutions in Tokyo to see what can be done. The JICA Resident Representative will inform the Chief Geologist about the issue once he get results from the Project Identification team.

There being no any other business to discuss, the meeting ended at 3.57pm.

APENDIX II

LIST OF PARTICIPANTS

NAME	MINISTRY/ORGANISATION
H.A. Juwa (Chairman)	MFNR
A.T. Mndala	Geological Survey Dept.
R.T.K. Chisale (Secretary)	Geological Survey Dept.
L.M. Kachikopa	MFNR
Anthony Kamanga	Ministry of Justice
Y.R. Phiri	Department of Mines
E.E.J.S. Kamanga	Ministry of Finance
Nakai	Jica Local office
Mitsugi	Jica Local office
Mmanga	Jica Local office
J.H. Mangisoni	Min. of Agriculture
Mrs. A. Chapuma	Min. of Forestry
L.D.M. Ngwira	Min. of Agriculture