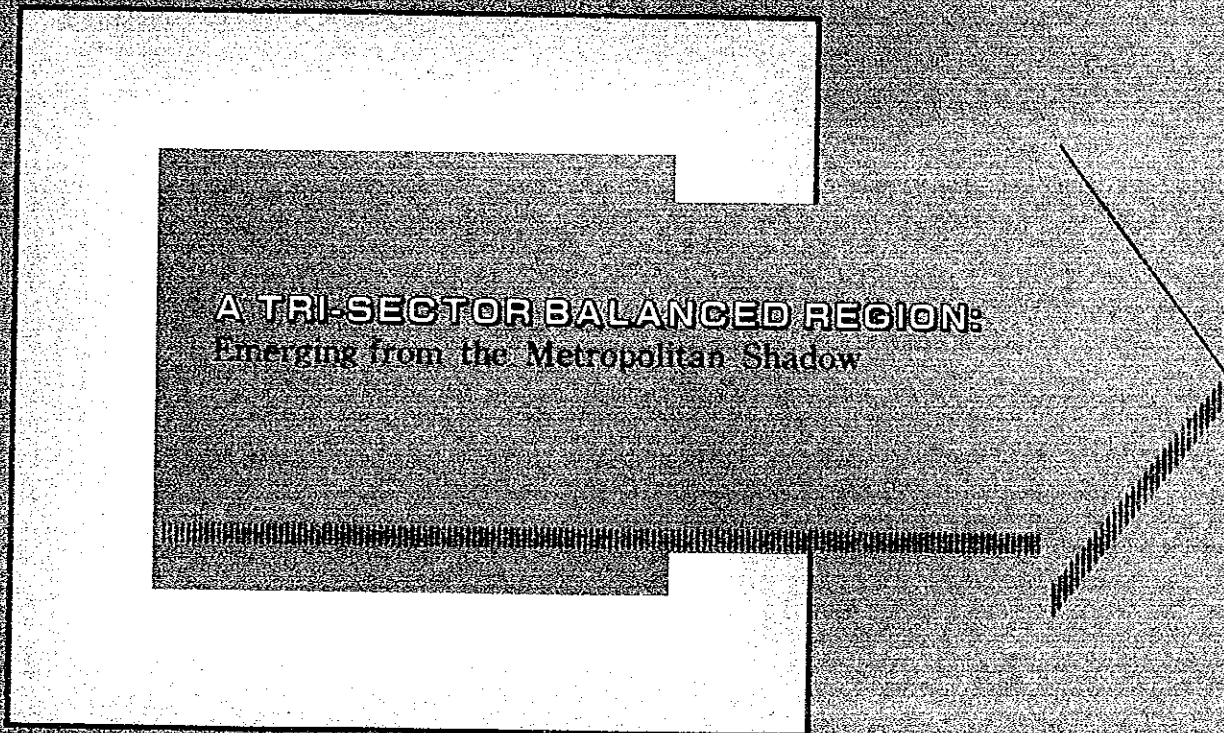


THE ROYAL THAI GOVERNMENT
NATIONAL ECONOMIC AND SOCIAL DEVELOPMENT BOARD

UPPER CENTRAL REGION STUDY

SECTOR REPORT Vol. 4:
WATER RESOURCE MANAGEMENT, AGRICULTURAL
DEVELOPMENT AND LAND USE MANAGEMENT



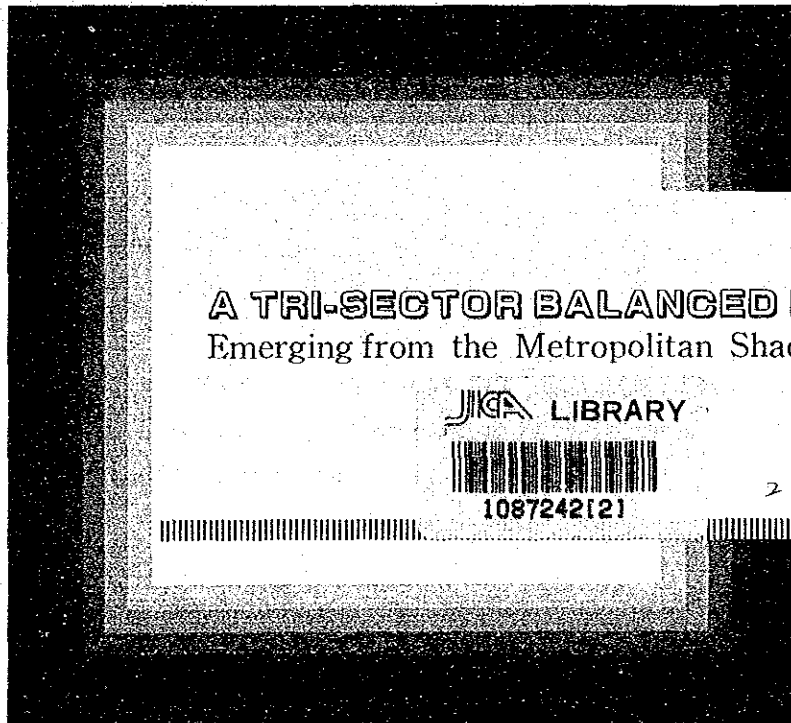
FINAL REPORT NOVEMBER 1990
JAPAN INTERNATIONAL COOPERATION AGENCY



THE ROYAL THAI GOVERNMENT
NATIONAL ECONOMIC AND SOCIAL DEVELOPMENT BOARD

UPPER CENTRAL REGION STUDY

SECTOR REPORT Vol. 4:
WATER RESOURCE MANAGEMENT, AGRICULTURAL
DEVELOPMENT AND LAND USE MANAGEMENT



FINAL REPORT NOVEMBER 1990

JAPAN INTERNATIONAL COOPERATION AGENCY

国際協力事業団

21885

PREFACE

In response to a request from the Government of the Kingdom of Thailand, the Japanese Government decided to conduct the Upper Central Region Study and entrusted the study to the Japan International Cooperation Agency (JICA).

JICA sent to Thailand a study team headed by Mr. Jinichiro Yabuta, and composed of members from International Development Center of Japan and Pacific Consultants International Inc., from December 1988 to July 1990.

The team held discussions with concerned officials of the Government of the Kingdom of Thailand, and conducted field surveys. After the team returned to Japan, further studies were made and the present report was prepared.

I hope that this report will contribute to the promotion of development in the said region and to the enhancement of friendly relations between our two countries.

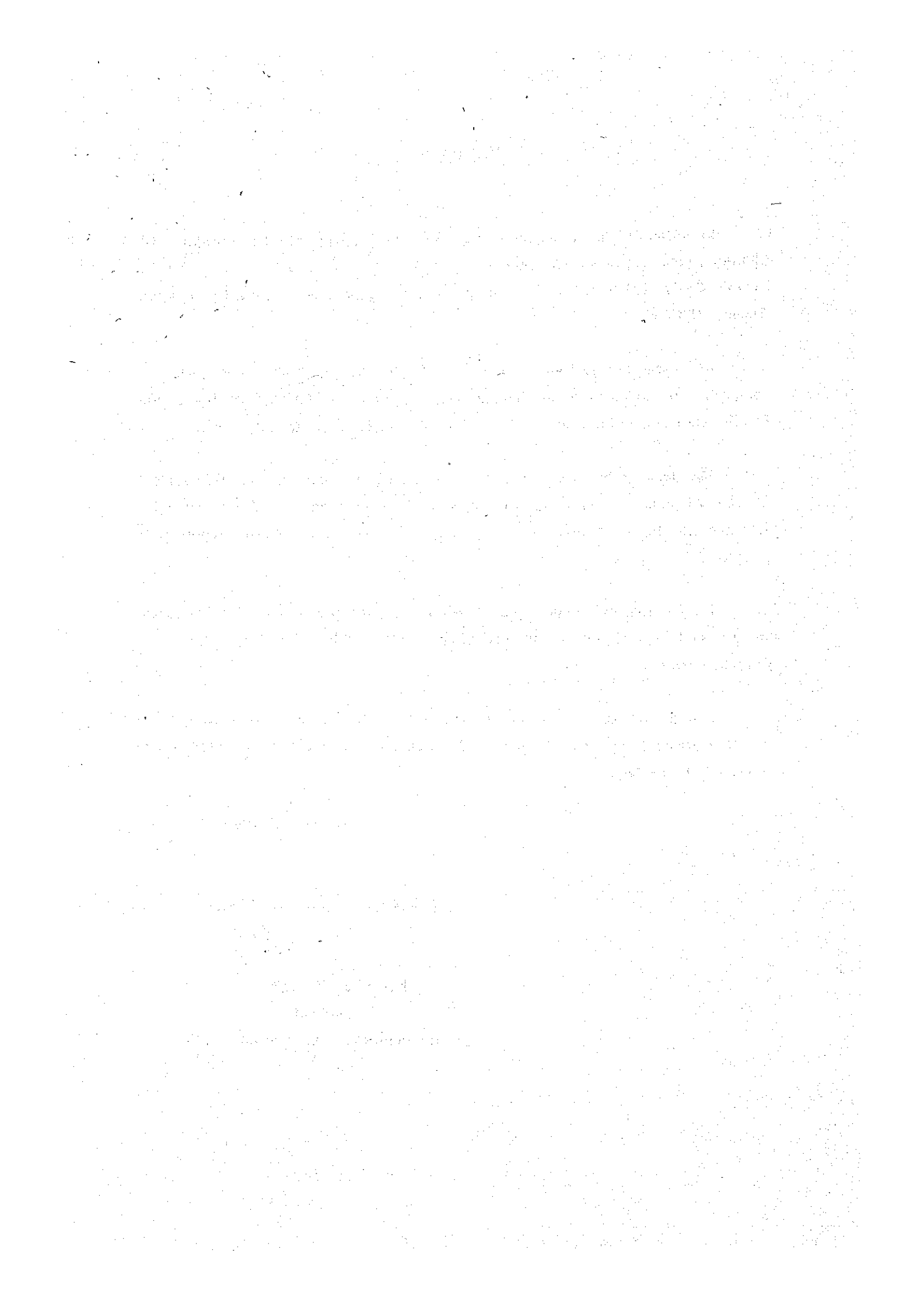
I wish to express my sincere appreciation to the officials concerned of the Government of the Kingdom of Thailand for their close cooperation extended to the team.

November 1990



Kensuke Yanagiya
President

Japan International Cooperation Agency



ACKNOWLEDGEMENT

The impetus for this study was the intention of the Royal Thai Government to revitalize the Upper Central Region (UCR), which had been stagnant under the shadow of the growing Bangkok Metropolitan Region (BMR). The rationale was the need to adjust the agricultural-based economic and spatial structure of the UCR to the rapidly industrializing national economy, and thus to create the tri-sector balanced economy (agriculture, industry and services) in this region.

The main task of this study was to examine whether, and in what way, the UCR could respond to the national intent. The results of the study thus far are summarized in this report and suggest that the UCR will play an important role in the following aspects:

- Retaining the strategic agricultural and forestry space for food self-sufficiency and disaster control
- Decentralizing the BMR systematically for the economies of scale to be maintained
- Developing the agricultural-industrial linkages for high value resource utilization and diversified rural nonfarm employment opportunities

Under the proposed strategies above, the Study Team recommends the incorporation of four priority project packages, which include an Integrated Pasak River Basin Development, Agro-Industrial Linkage Development, the Greater Sara Buri Industrial Core (GSIC) Development, and Human Resource Development.

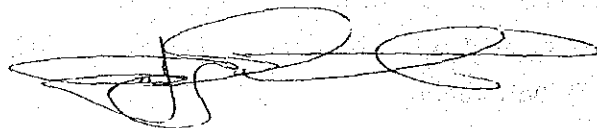
In order to be useful, these strategies need to be supported by continuous improvement in development administration. This effort for the UCR could accelerate an overall reform of regional development administration in Thailand, because the UCR is an early region which will address itself to the growing national need of balancing industry against

agriculture, development against environmental considerations, and urban development against rural development. Bearing this in mind, the Study Team recommends improvements in conventional development administration, with a focus on water resource management, environmental management, and urban management.

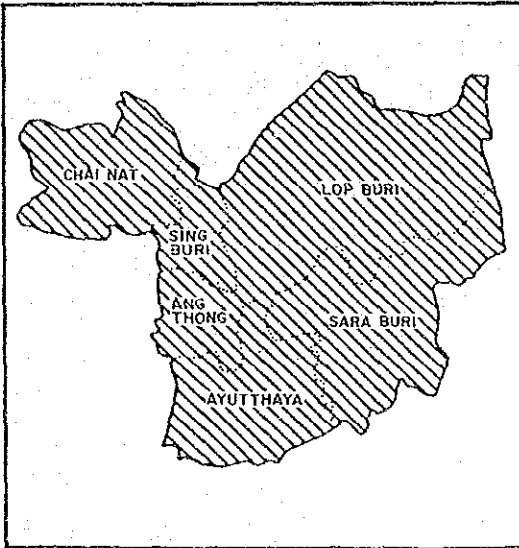
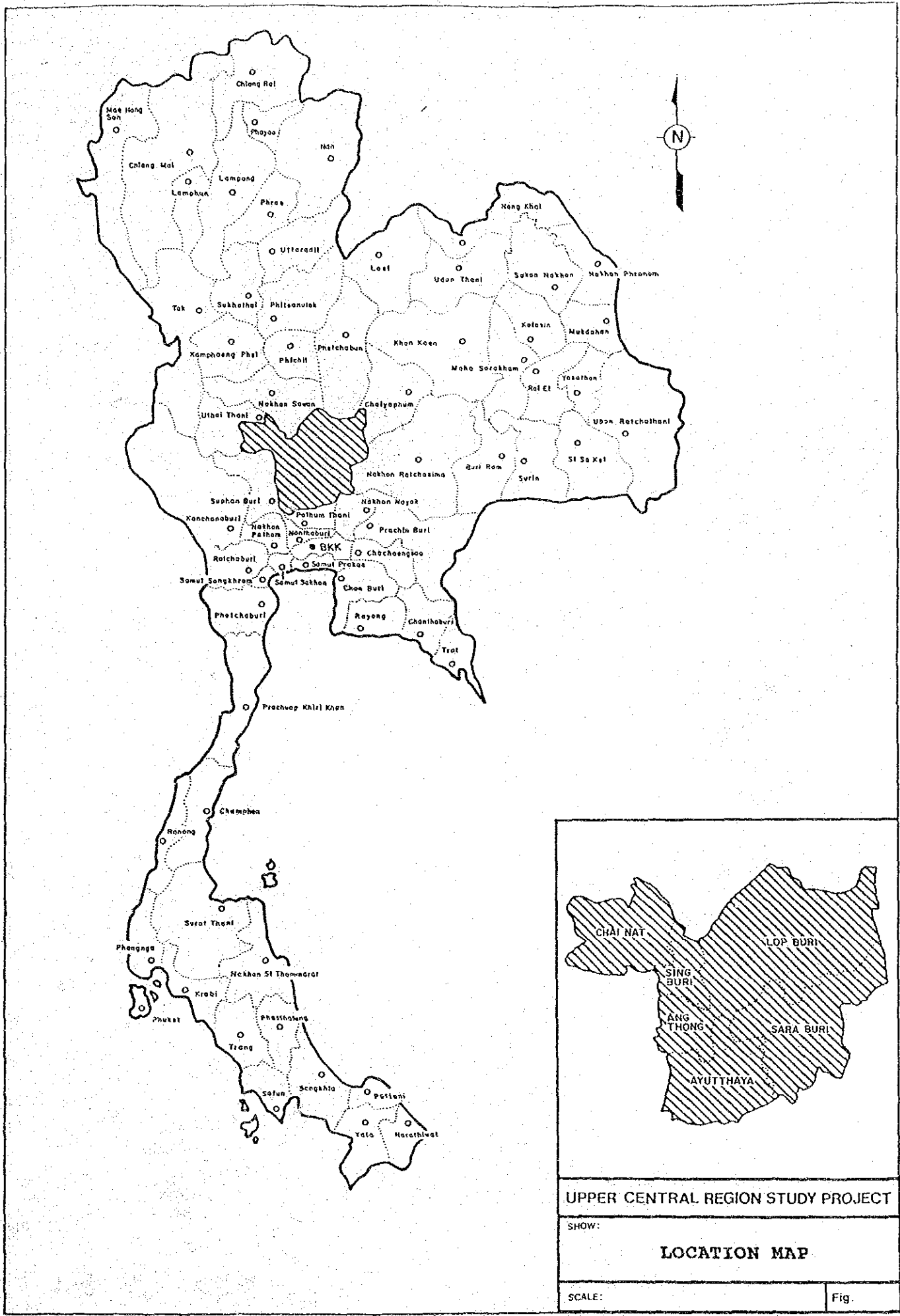
The Study Team acknowledges that its study has been guided by many past studies, such as the Bangkok Metropolitan Region Study by the National Economic and Social Development Board (NESDB), the Upper Central Region Planning Study by the Department of Town and Country Planning, the Road Development Study in the Central Region by the Japan International Cooperation Agency (JICA), and the Rural Industries and Employment in Thailand Study by The Thailand Development Research Institute. In preparing this report, the team was supported by the staff of the NESDB, other central ministries, and local authorities in the UCR throughout its stay in Thailand for nearly fourteen months. Equally important, the team benefited a great deal from cooperation extended by the officers in charge and the advisory committee members of the JICA and other concerned agencies of the Government of Japan. The team also wishes to recognize with gratitude the contributions of the participants in the National Seminar on the Upper Central Region Development: Policies and Programs, held on 28 and 29 July 1990 in Jomtien, Chonburi, to the wide-ranging discussions on the proposals contained in the draft final report of the Study Team.

We wish to add that we sincerely hope that this report will provide an important basis for planning and implementation in the Upper Central Region of Thailand.

November 20, 1990



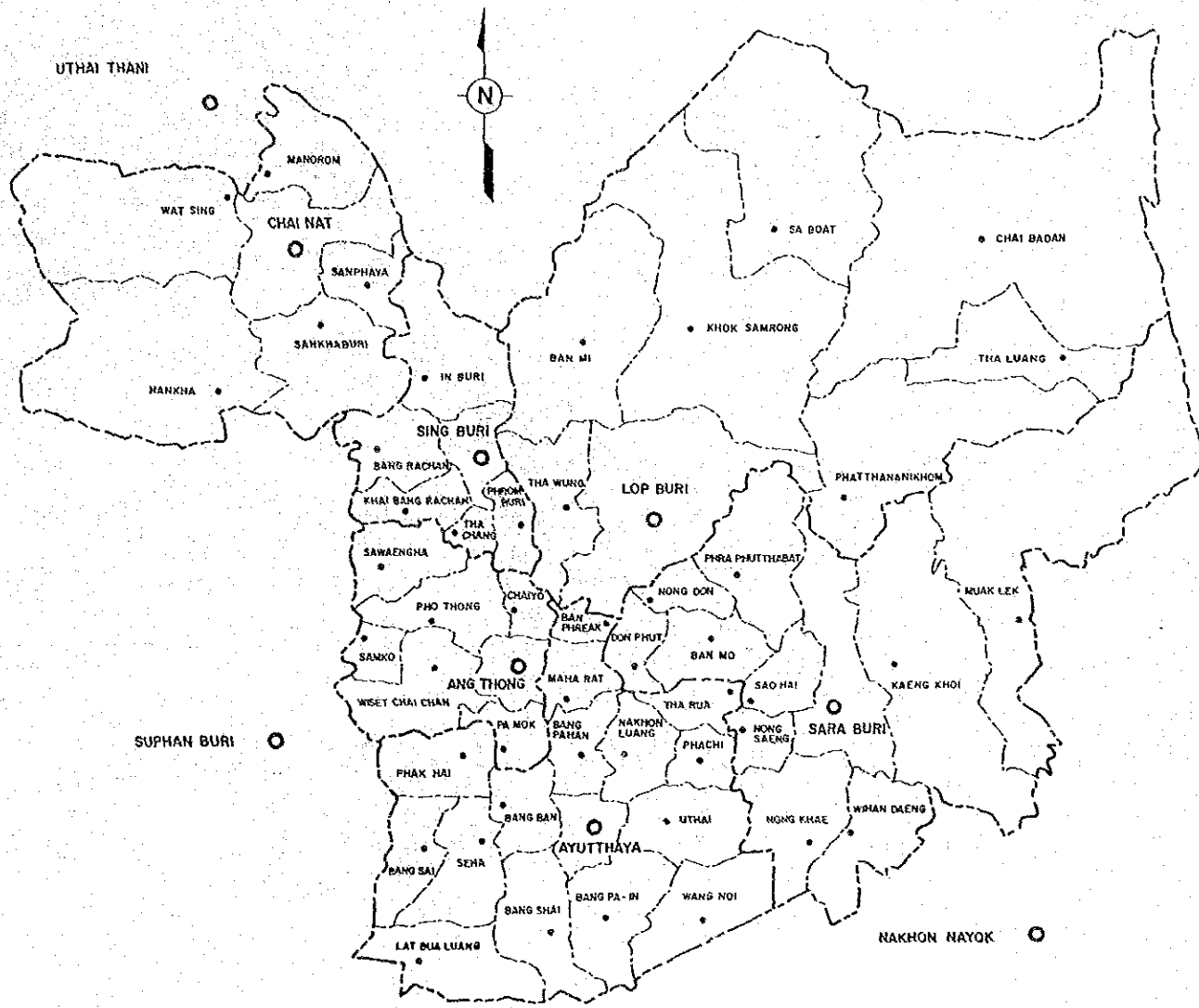
Jinichiro Yabuta
Study Team Leader



UPPER CENTRAL REGION STUDY PROJECT

SHOW:
LOCATION MAP

SCALE: Fig.



LEGEND:

- ● CHANGWAT LOCATION
- AMPHOE LOCATION
- - - - - CHANGWAT BOUNDARY
- AMPHOE BOUNDARY

UPPER CENTRAL REGION STUDY PROJECT

SHOW:

**ADMINISTRATIVE BOUNDARY
OF STUDY AREA**

SCALE:

Fig.

**A Summary :
Policies and Strategies**

Upper Central Region Development

Why Upper Central Region (UCR)

Toward the year 2010, Thailand will have to get through the challenges of :

- (1) shifting export-led to domestic market-based growth,
- (2) balancing development and environment, and
- (3) smoothly transitioning rural to urban employment.

In the national space, these challenges call particularly for :

- (1) decentralizing the capital region systematically, and
- (2) strengthening the linkages between ESB, SSB and other parts of the country, and
- (3) sustaining strategic agricultural and forestry space.

Under these national perspectives, it is the UCR that potentially plays a combined role of :

- (1) National Food Supply Center,
- (2) Subnational Distribution Center, and
- (3) A New Inland Industrial Base,

if this region can overcome :

- (1) the presently unstable rural sector,
- (2) the weak urban sector, and
- (3) consequent regional out-migration.

The UCR is at a crossroads between a tri-sector (agriculture, industry and services) balanced region or a mere transit region over-ridden by sporadic external industrial investments.

Development Policies & Strategies

Objectives of the UCR development are :

1. Maintaining and restoring the ecological environment,
2. Deepening and widening of regional economy, and
3. Enhancing regional human resource base to support the two objectives above.

Recommended policies and strategies are thus as follows:

Agriculture

1. Strengthen capability and willingness of rice farmers,
2. Rehabilitate upland agricultural environment, and
3. Promote linkages between production, processing and market.

Industry

1. Build-up, step-by-step, an industrial development core at Sara Buri,
2. Intensify agro-industrial linkages within the UCR,
3. Foster local entrepreneurship of potential business men, and
4. Control rapidly dispersing industries in Ayutthaya.

Services

1. Develop secondary order centers
2. Develop extensive urban, technological and managerial supporting services at sub-regional urban centers,
3. Strengthen hierarchical system of agricultural distribution, processing and transport network, and
4. Promote tourism especially at Ayutthaya, Lop Buri and Chai Nat.

Development Target

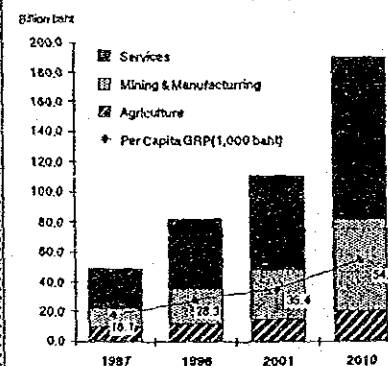
Economic Growth: Toward 2010, it is targeted that per capita GPP growth of the UCR will be accelerated up to that of national average growth rate, 5% p.a. The GPP growth rate will be 6.1% p.a. toward 2010, and sector growth rates are: Agriculture : 1.3%; Manufacturing : 7.0%; and Services : 6.3%.

Population Growth: Population is targeted to growth at a rate of 1.0% so that the targeted per capita GPP will be attained. It will be 3.46 million in 2010, compared with 2.74 million in 1987.

Urbanization: Urban population will increase at a 2.5% growth rate, compared with 1.1% p.a. between 1981 and 1987. The urban population ratio will be 37.2% in 2010.

Employments: Additional 421 thousand job opportunities will newly be created, and a total will be 1.9 million in 2010. The employments in both manufacturing and service sectors shall increase by 568 thousand, while that in agriculture sector will decrease by 147 thousand.

Production Framework (GPP) in the UCR



Profile of Upper Central Region

The Upper Central Region (the UCR) consists of 6 Changwats: Ayutthaya, Sara Buri, Ang Thong, Sing Buri, Lop Buri and Chai Nat, having the population of about 2.7 million and the area of 16,6 thousand sq. km. The UCR is located in the Chao Phraya River Basin Area, an agricultural (particularly rice) advanced region in the Kingdom, and environmentally sensitive.

The UCR is on a frontage of the expanding Bangkok economy, and has been pressured by urbanization and industrialization. Thus, the UCR is a pioneer to the national challenge of agro-industrial coexistence by widening and deepening the UCR economy. For the second generation development of the Thai economy, the UCR's gateway function would be more significant.

Key Concepts for the Upper Central Region Development

Agricultural Diversification and Agro-Industrial Linkage

In order to stabilize income of the farmers, being the leading players in sustaining agricultural and ecological environment, a must is the agricultural diversification at the farmer level. With good access to the expanding and diversifying market in Bangkok, the agricultural diversification should be supported by the intensified linkages among crop production, livestock and processing networks as well as by the improved urban and transport infrastructures.

Industrialization for A New Industrial Base

The country will call in the UCR a strong magnet as (1) one of the centers to facilitate deconcentration of Bangkok, (2) a means to prevent extensive industrial pollution and agro-industrial conflicts, (3) a base to attain agro-processing agglomeration, and (4) an inland supporting base for the Eastern Sea-Board to maximize its spread effect.

Sara Buri offers the best seat of this magnet. Local infrastructure, urban and human resource development should be integrated in timely response to ongoing and forthcoming national projects.

Gateway as A Subnational Distribution Center

The UCR is situated at the gateway of Bangkok to the North and Northeast Regions. In other words, the UCR is in a best position to make use of development in other regions. In addition to traditional concentration of agricultural products, new transport and energy infrastructure inputs will boost various industrial and business opportunities.

Integrated Urbanization and Service Sector Encouragement

Urban and service sector encouragement is strategic to regional development especially in the UCR in order to (1) support externally dependent and thus unstable rural sector, (2) provide nonagricultural job opportunities for decelerating out-migration to Bangkok and (3) offset a missing link existing between foreign-investment-led industrial expansion and regional economic development.

Of particular importance are to meet Basic Urban Needs (BUNs), encourage local entrepreneurship and improve goods distribution functions in selected urban centers at regional level.

Human Resource Development

Focusing on (1) Middle level manpower for industries, (2) Community leaders for environmental management and (3) potential local entrepreneurs.

Implementation & Development Management Systems

Unlike the regional development triggered by intensive central government investments, the UCR development will need not only central initiative but effective management particularly at the local level. Of particular importance are (1) local planning system to meet the cross-boundary expansion of urban and industrial activities, (2) institutional measures to realize the scale of economy in urban services and (3) strengthened financial base of local authorities so as to encourage local initiatives in public investments and business promotion.

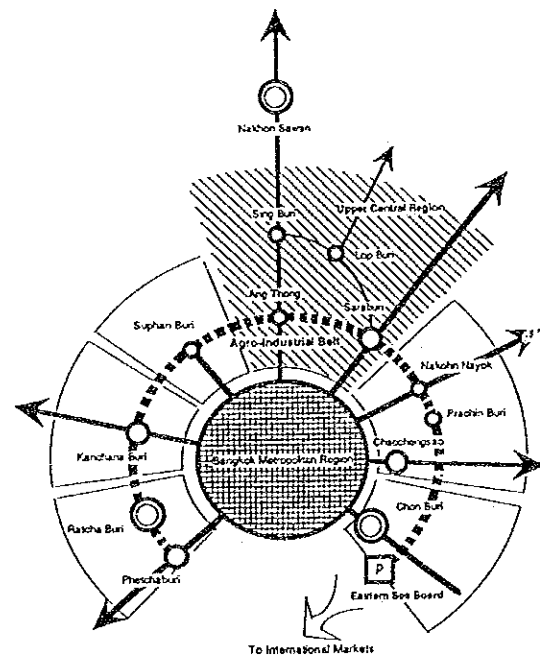
Environment and Water Resources Management

Special importance lies in (1) keeping the Chao Phraya River clean and conserving flood retarding areas for the survival of Bangkok and (2) maximizing water use efficiency and rehabilitating upland soils for the UCR's agriculture of national importance to be maintained. High priority should be given to (1) the integrated management of water and land use for two river basins of Chao Phraya and the Pasak and (2) the strengthened institutions at not only central but local levels to explore environmental control.

Spatial Setting

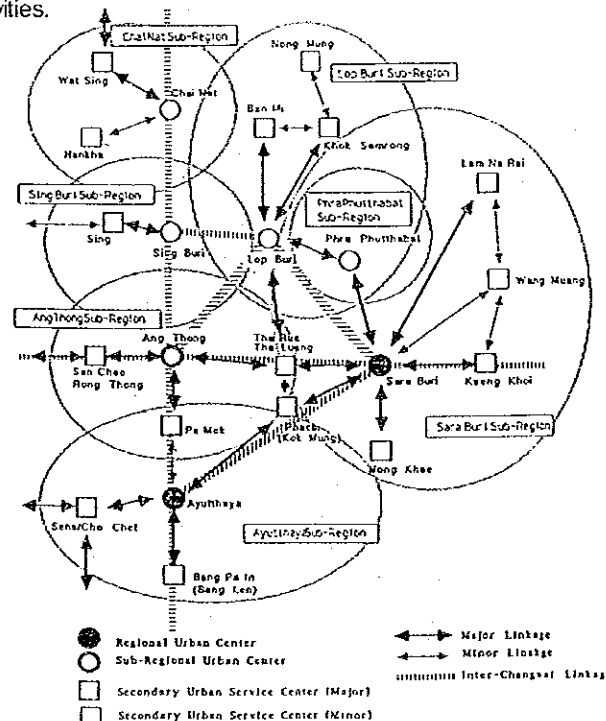
Macro-Spatial Framework

To assure effective economic links between major urban centers centering on Bangkok and the Eastern Sea-Board functions, a well organized macro-spatial network is necessary. The UCR may be situated in the Suburban Agro-Industrial Belt.



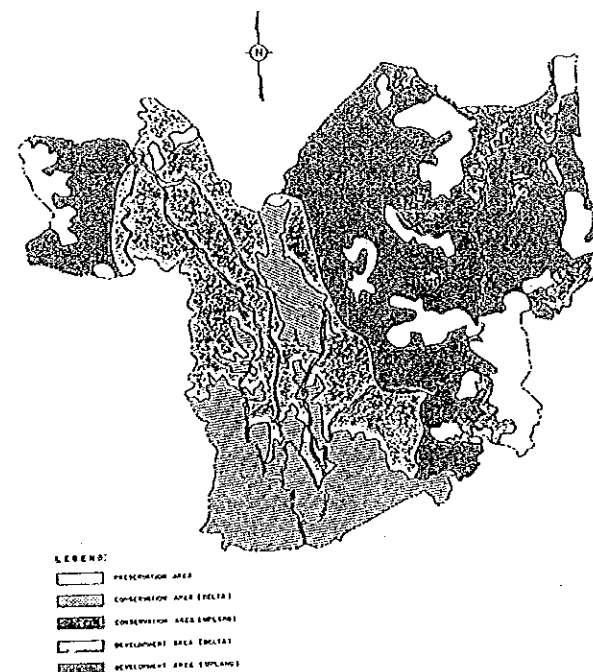
Human Settlement System

Sub-regional system with a urban center hierarchy should be formulated as a basis of regional development. This system assure relations between urban functions and their hinterland activities.



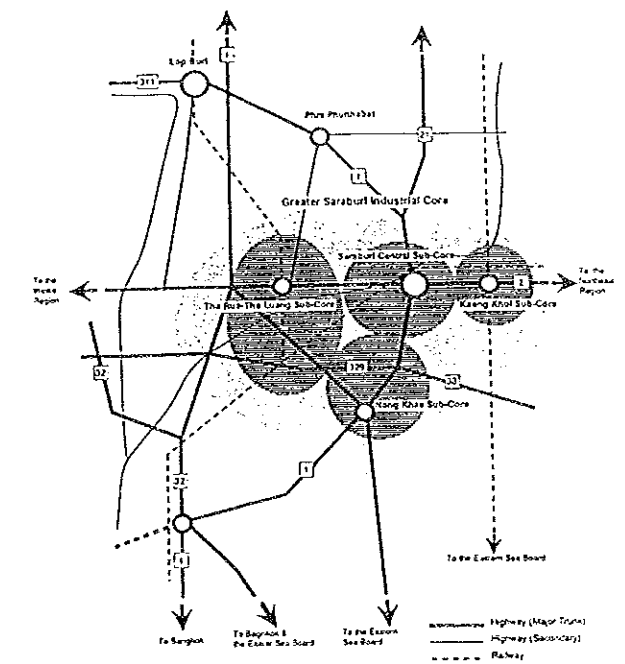
Appropriate Land Use

A clear-cut land use zoning system is essential for a balanced development with an appropriate use of natural environmental resources.

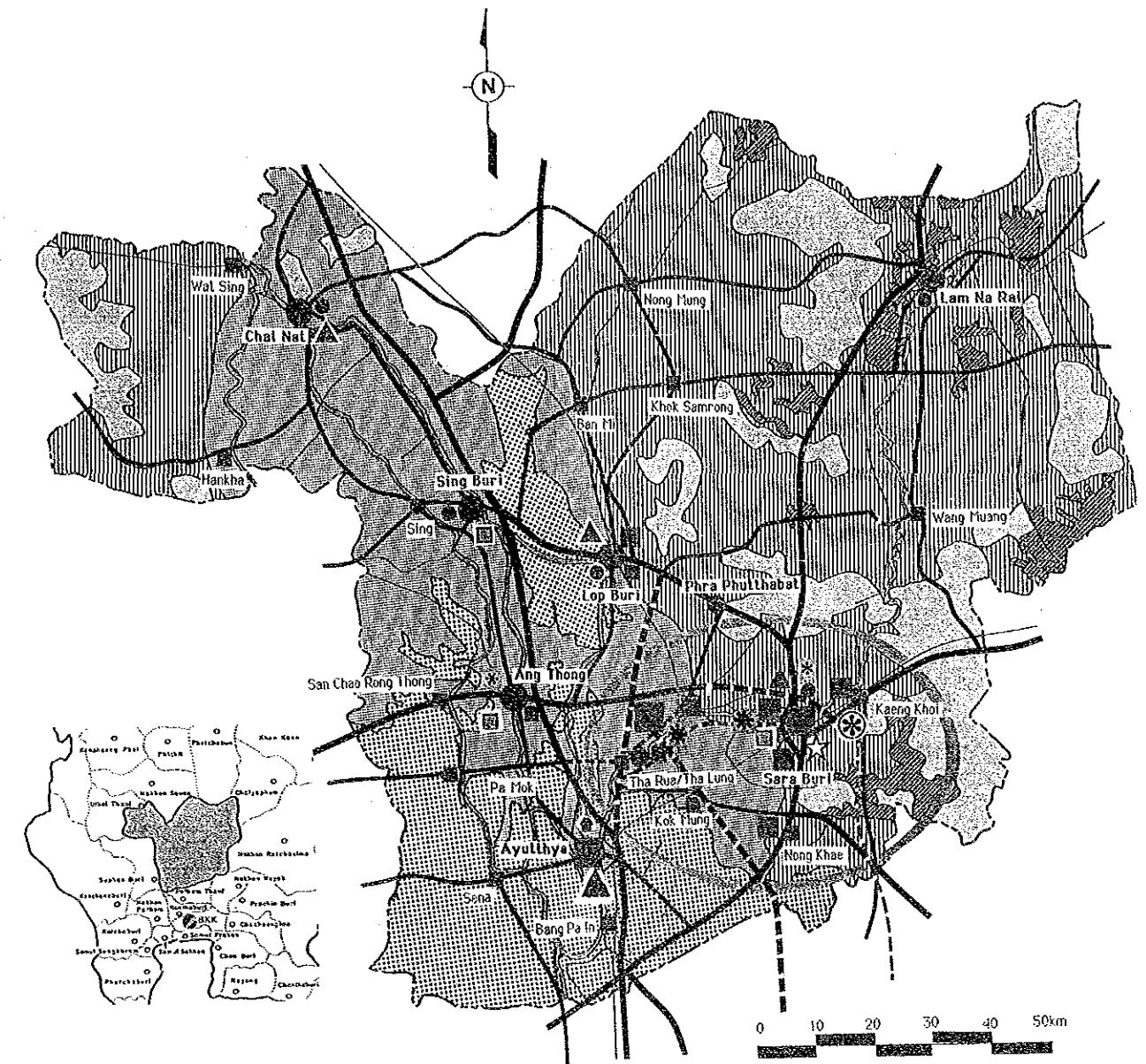
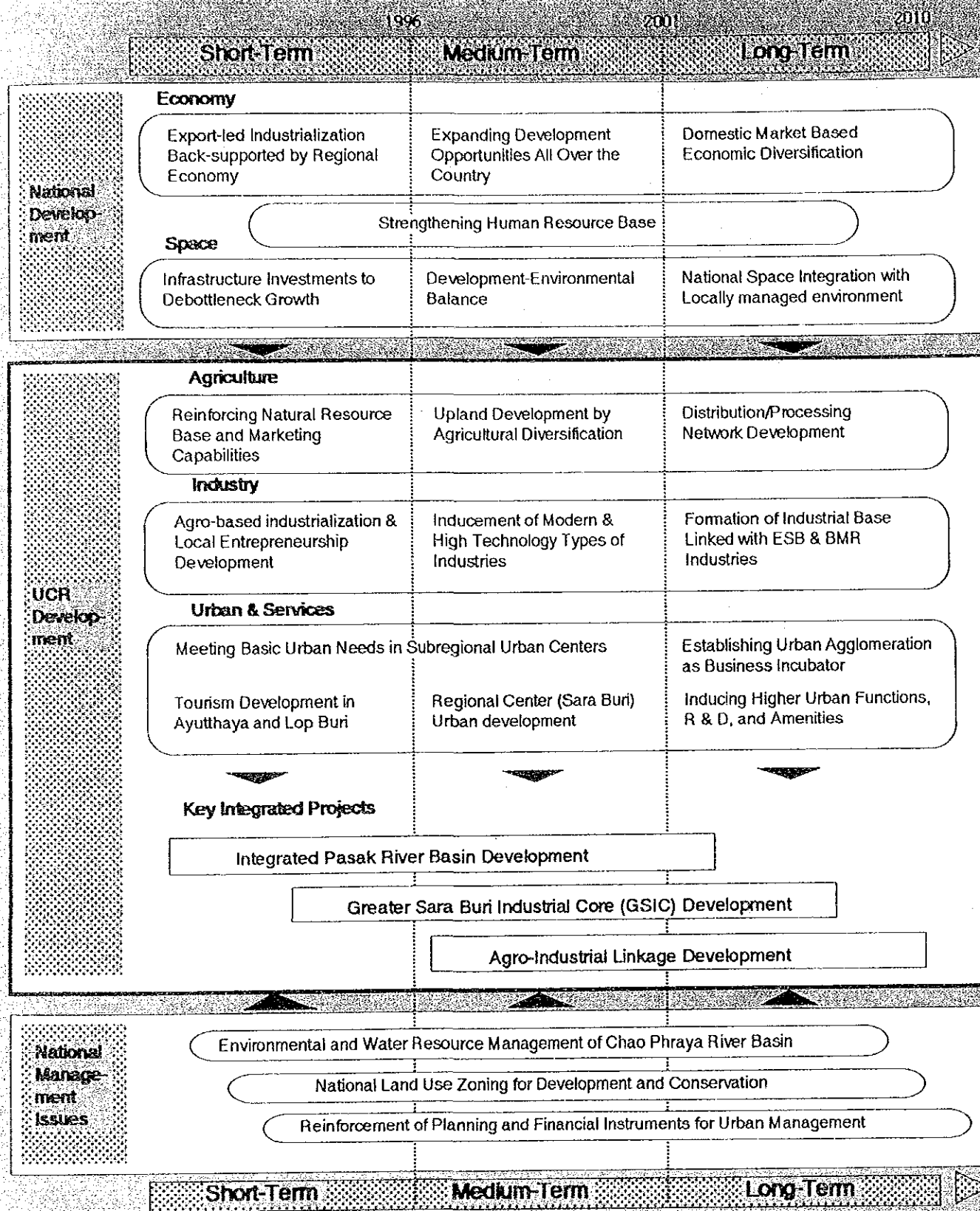


Greater Sara Buri Industrial Core (GSIC) Development

The GSIC development is recommended to receive the potential activities for industrialization and urbanization, being a new inland industrial basis linking with the sea-board development.



Development Strategies & Phasing



Legend

Land Use Zoning

- Development Area (Delta)
- Conservation Area (Delta)
- Development Area (Upland)
- Conservation Area (Upland)
- Preservation Area

Human Settlement Center

- Regional Urban Center
- Sub-Regional Urban Center
- Secondary Major Center

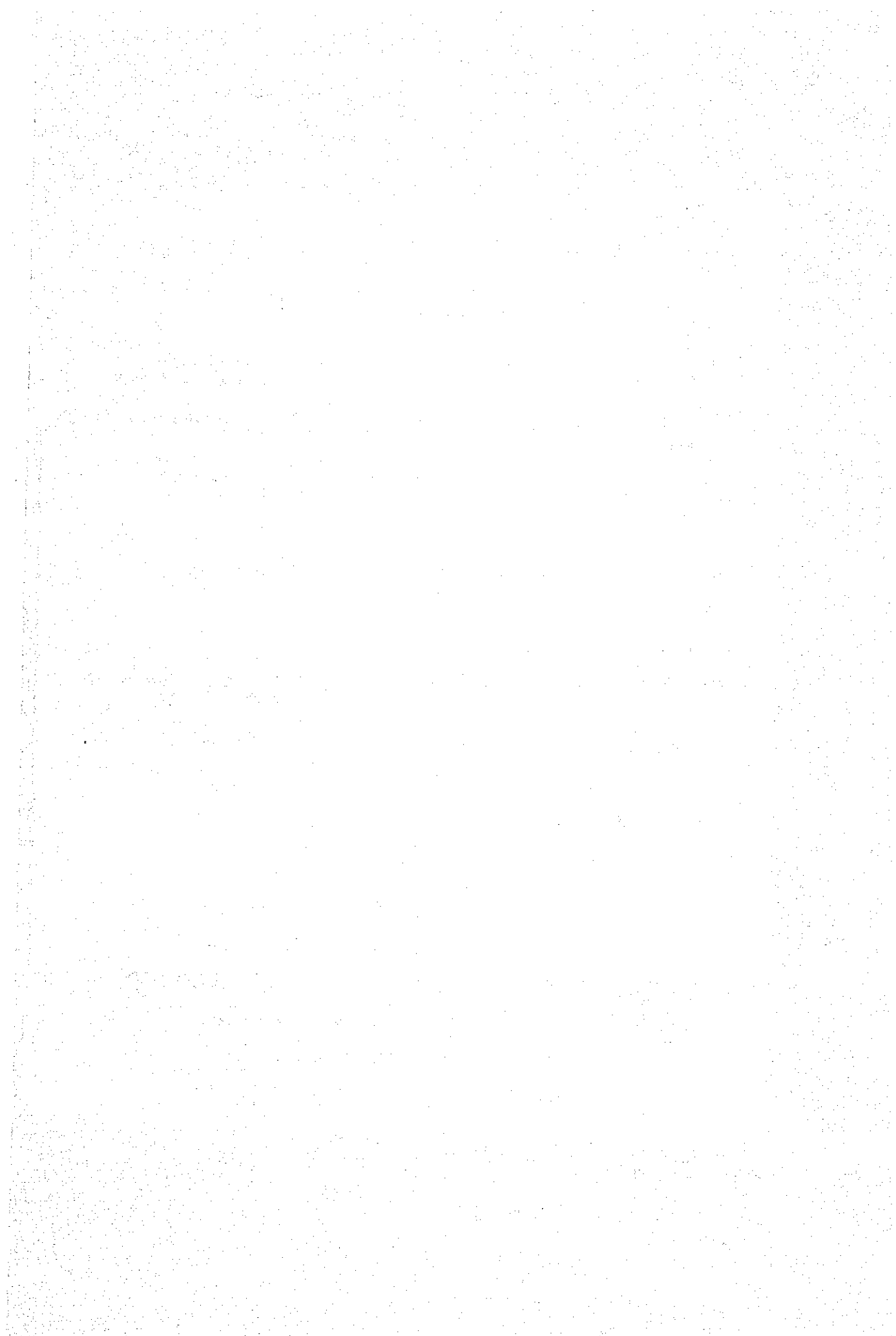
Transportation & Energy

- Arterial Road (Existing)
- Arterial Road (Proposed)
- Collector Road (Existing)
- Collector Road (Proposed)
- Railway (Existing)
- Railway (Planned)
- Goods Distribution Center
- Inter-Modal Transport Facilities (Container Yard & Inland Depot)
- Energy Center


Industrial and Urban Facilities

- Industrial Estates
- Agro-industrial Park
- Business Incubator Center
- Agro-Tech Center
- Handicraft Promotion Center
- Wholesale Food Market
- Higher Educational Facility
- Regional Medical Center
- Regional Tourism Center
- Tourism Promotion Areas
- Greater Sara Buri Industrial Core

General Development Plan 2010 in the Upper Central Region



LIST OF FINAL REPORTS

(This volume is indicated by )

Executive Summary

Master Plan Report

Sector Reports:

Vol. 1 Spatial Framework and Network for Development

Vol. 2 Urban Management

Vol. 3 Environmental Management



Vol. 4 Water Resource Management, Agricultural Development and Land Use Management

Vol. 5 Industrial Development

Vol. 6 Distribution and Marketing

Vol. 7 Energy

Vol. 8 Social Development in Rural Economies

Vol. 9 International and National Economic Environment

Vol. 10 Human Resource Development

Vol. 11 Landsat Analysis

TABLE OF CONTENTS

Page

Preface

Acknowledgement

A Summary: Policies and Strategies

PART I WATER RESOURCES MANAGEMENT

1. WATER RESOURCES IN THE UCR	1
1.1 Water Resources in the Chao Phraya River Basin	1
1.1.1 Hydrology	1
1.1.2 Water Resources Development	3
1.2 Characteristics of Water Resources in the UCR	3
1.2.1 Study Area	3
1.2.2 Rainfall	6
1.2.3 Surface Water	6
1.2.4 Groundwater	7
1.3 Surface Water Available in the UCR	7
1.3.1 Water Allocation to the Chao Phraya River Delta	7
1.3.2 Surface Water Available in the UCR	9
2. PRESENT WATER RESOURCES UTILIZATION	12
2.1 Irrigation Development at the Upstream of UCR	12
2.2 Chao Phraya Irrigation Project in the Delta Area	12
2.2.1 History	12
2.2.2 Present Irrigation Facilities, and their Operation and Maintenance	14
2.3 Water Allocation for Irrigated Agriculture	16
2.3.1 Rotating Irrigation	16
2.3.2 Water Utilization	17
2.3.3 Problems Associated with Water Allocation	18
2.3.4 Constraints for Further Development	22
2.3.5 Potential for Further Development	23

	Page
2.4 Small and Medium Scale Water Resources Development	24
2.5 Urban and Industrial Water Uses	25
2.5.1 Domestic Water	25
2.5.2 Industrial Water	27
2.6 Balance of Water Availability and Utilization	28
3. ISSUES AND STRATEGIES FOR WATER RESOURCES MANAGEMENT	30
3.1 Basin-Wide Strategies	30
3.1.1 Water Resources Development at the Upstream of the Chao Phraya River	30
3.1.2 Inter-regional Issues and Strategies	32
3.2 Strategies to Increase Water Uses in the UCR	33
3.3 Issues and Strategies for Water Resources Management in the UCR	35
3.3.1 Irrigation Water	35
3.3.2 Domestic Water	36
3.3.3 Industrial Water	37
3.3.4 In-stream Flow Needs	37
4. WATER RESOURCES BALANCE OF 2010	39
4.1 Irrigation Water	39
4.1.1 Delta Area	39
4.1.2 Upland Area	40
4.2 Domestic Water	40
4.3 Industrial Water	41
4.4 Water Resources Balance	41

	Page
5. WATER RESOURCES MANAGEMENT PLAN AND RECOMMENDATIONS	43
5.1 Agricultural Water	43
5.1.1 Delta Area	43
5.1.2 Upland Area	45
5.2 Domestic Water	47
5.3 Industrial Water	48
5.4 River Navigation	49
5.5 Flood Mitigation	50
5.6 Water Resources Development for the Chao Phraya River Basin	51

PART II WATER MANAGEMENT INSTITUTIONS

1. ORGANIZATIONAL STRUCTURE OF WATER RESOURCES MANAGEMENT	53
1.1 Government Organization for Irrigation Water	53
1.2 Government Organization for Industrial and Domestic Water	57
2. WATER USER'S ORGANIZATION	60
2.1 Historical Background	60
2.2 Existing Performance of Organization	63
2.3 Proposed Water User's Organization	67
2.3.1 Role and Responsibility	67
2.3.2 Process in Strengthening Water User's Organization	68
2.3.3 Periodical Development on O&M Responsibility	70

	Page
3. LOCAL PARTICIPATION IN WATER ALLOCATION FOR CHAO PHRAYA DELTA	72
3.1 Present Institutional Organization and Procedure in Water Allocation	72
3.2 Proposal for Institutional Improvement	76
3.3 Proposal for Farmer's Organization and Local Government Participation	79
4. LOCAL PARTICIPATION IN WATER MANAGEMENT TO PROMOTE AGRICULTURAL DIVERSIFICATION	81
4.1 Possible Incentives for Farmers to Manage Water by Themselves	82
4.1.1 Reliability of Irrigation Water Supply	82
4.1.2 Technical Assistance	82
4.1.3 Support for Tertiary Ditch Improvement	82
4.1.4 Training and Study Tour	83
4.1.5 Demonstration Plot	83
4.1.6 Award	83
4.1.7 Law Enforcement	84
4.2 Proposed Institutional Set-Up and Mechanism	84
5. WATER CHARGE COLLECTION	88
5.1 Relevant Legislation and Actual Practice	88
5.2 Proposal Regarding Water Charge Collection	90
6. WATER MANAGEMENT FOR INDUSTRY	92

PART III LAND USE

1.	EXISTING LAND USE	97
1.1	Land Utilization	97
1.2	Farm Size and Farm Holding Size	102
1.3	Irrigated Area	102
1.4	Land Use Intensity	104
1.5	Land Consolidation Project Areas	105
2.	LAND USE POTENTIALS AND CONSTRAINTS	107
2.1	Regional Land Use Potentials	107
2.1.1	Upland Crops	107
2.1.2	Paddy	108
2.1.3	Tree Crops	108
2.1.4	Not-Suitable	109
2.2	Land Suitability	109
2.3	Water Saturation Period and Flood Area	112
2.4	Ground Water Productivity	115
2.5	Irrigation Network	115
3.	ISSUES ON LAND USE MANAGEMENT	119
3.1	General	119
3.2	Yield Decline and Forest Land Encroachment	120
3.3	Land Tenure Document	122
3.4	Zoning and Land Use Control	123
3.4.1	National Level	123
3.4.2	Regional and Urban Area	124
3.5	Land Consolidation	124

	Page
4. LAND USE MANAGEMENT STRATEGIES AND PROGRAMS	128
4.1 General	128
4.2 Land Use Zoning	128
4.2.1 Preservation Area	128
4.2.2 Conservation Area	130
4.2.3 Development Area	131
4.3 Land Consolidation Program	133
4.4 Agro-forestry Program	135
4.5 Future Land Utilization in the UCR	135

PART IV AGRICULTURAL DEVELOPMENT

1. UCR IN THE NATIONAL AGRICULTURE	137
2. PRESENT SITUATION, CONSTRAINTS AND POTENTIALS	138
2.1 Production and Planted Area	138
2.1.1 Major Crops	138
2.1.2 Other Crops	141
2.1.3 Livestock	143
2.1.4 Fresh Water Fishery	143
2.2 Agro-Economic Condition	143
2.2.1 Farm Income	143
2.2.2 Agricultural Input	147
2.2.3 Food Consumption	150
2.3 Natural Condition	151
2.3.1 Chao Phraya River Basin	171
2.3.2 Upper Central Region	154
3. DEVELOPMENT POLICY AND ZONE-SPECIFIC STRATEGIES	158
3.1 Zoning System for Agricultural Development	158

	Page
3.2 Development Policy and Strategy	159
3.2.1 Agricultural Intensification	159
3.2.2 Agricultural Diversification	160
3.2.3 Conservation of Agricultural Environment	160
3.3 Development Potentials and Strategies by Zone	161
3.3.1 Zone 1 : Intensive Rice Cultivation	161
3.3.2 Zone 2 : Floating Rice Cultivation	162
3.3.3 Zone 3 : Upland Crop Cultivation	164
3.3.4 Zone 4 : Soil Conservation	170
4. PRODUCTION TARGETS	172
4.1 Measurements and Method for Target Setting	172
4.2 Future Production Scenario	172
4.2.1 Rice	172
4.2.2 Field Crops	274
4.2.3 Fruits	176
4.2.4 Vegetables	176
4.2.5 Livestock and Fisheries	177
4.2.6 Agro-forest and Other Subsectors	177
4.2.7 Overall (Agricultural GRP per Capita)	178
5. PROGRAMS AND PROJECTS	179
5.1 Zone 1 : Intensive Rice Cultivation	179
5.1.1 Improvement of Irrigation System in Chao Phraya River Basin	179
5.1.2 Development of Groundwater	179
5.2 Zone 2 : Floating Rice Cultivation	180
5.3 Zone 3 : Upland Crop Cultivation	180
5.3.1 Water Use Development of Tributary Stream of Pasak River	180

	Page
5.3.2 Establishment of Breeding and Distribution Center of Dairy cow and Forage Seed	181
5.3.3 Establishment of Milk Collecting Stations	181
5.3.4 Improvement and Extension of Agricultural Input	181
5.4 Zone 4 : Soil Conservation	182
6. FARMING-PROCESSING LINKAGES	183

PART V INTEGRATED PASAK RIVER BASIN DEVELOPMENT

1. INTRODUCTION	187
1.1 Objective	187
1.2 Present Status of Pasak Dam Project	188
1.3 Approach of This Study	188
2. PRESENT CONDITIONS	190
2.1 Water Resources and Development	190
2.2 Land Resources	190
2.3 Present Agriculture	192
3. DEVELOPMENT PROGRAM AND PROJECTS	193
3.1 Pasak Dam Project	193
3.1.1 Alternative Development Schemes	193
3.1.2 Selected Alternative of Pasak Dam	195
3.1.3 Needs of Low Flow Augmentation and Water Demands	195
3.1.4 Water Allocation	197
3.1.5 Irrigable Area and Beneficiaries	198
3.1.6 Environmental Consideration	200
3.2 Medium Scale Projects	200

	Page
3.3 Small Scale Projects	201
3.3.1 Potential Projects	201
3.3.2 Satisfying On-farm Needs	201
3.3.3 Coordination among Projects	203
3.4 Land Use Management	204
3.4.1 Land Suitability in the Basin	204
3.4.2 Land Suitability in the Pasak Dam Project Area	204
3.4.3 Land Reform and Consolidation Program	206
3.5 Proposed Farming System	209
3.6 Cost Estimate	210
3.7 Development Schedule	210
4. INSTITUTIONAL ARRANGEMENT AND SET-UP FOR PASAK BASIN DEVELOPMENT	212
4.1 Proposed Institutional Organization	212
4.2 Proposed Guidelines for Solving Problems in Water Shortage and High Demand	214
APPENDIX 1. Land Use Data	219
APPENDIX 2. National Water Resources Committee (NWRC)	231
APPENDIX 3. List of Study Reports and Papers	233
APPENDIX 4. Staff Input	235

List of Tables

Part I

Table 1.1	Monthly Rainfall in UCR Provinces.....	6
Table 1.2	Present Water Resources Availability and Potential.....	9
Table 2.1	Irrigable Area in Northern Chao Phraya River Basin.....	12
Table 2.2	The Chao Phraya Project Area.....	14
Table 2.3	Present Urban Water Supply.....	25
Table 2.4	Present Water Resources Availability/Potential and Uses.....	29
Table 4.1	Water Resources Balance in 2010.....	42

Part II

Table 2.1	Present Numbers of Water User's Organizations and Areas under Each Types of On-Farm Development within Chao Phraya Project.....	64
-----------	---	----

Part III

Table 1.1	Agricultural Land Utilization 1987/1988.....	98
Table 1.2	Land Use 1986 (Unit : 1,000 rai).....	100
Table 1.3	Average Farm Size and Number of Farm in 1986.....	100
Table 1.4	Area and Number of Holding by Size of Holding in 1983.....	101
Table 1.5	Irrigated Area in 1981 and 1986.....	101
Table 1.6	Land Use Intensity 1986 (1).....	104
Table 1.7	Land Use Intensity 1986 (2).....	104
Table 2.1	Land Suitability.....	110
Table 2.2	Distribution of Saturation Period.....	114
Table 2.3	Measured Irrigation Facilities (kilometers).....	117
Table 2.4	Density of Irrigation Facilities (Meter Per sq. kilometer).....	118
Table 3.1	Land Tenure in the UCR.....	122

Table 4.1	Land Utilization Change in the UCR.....	136
-----------	---	-----

Part IV

Table 1.1	Agricultural GNP and GRP.....	137
Table 2.1	Planted Area Production and Yield (1987/88).....	139
Table 2.2	Annual Growth Rate of Planted Area Production and Yield (1982/83 - 1987/88).....	139
Table 2.3	Ratio of Harvested Area Per Planted Area.....	140
Table 2.4	Vegetable Planted Area(1986/87).....	141
Table 2.5	Fruit Planted Area.....	142
Table 2.6	Livestock Production.....	144
Table 2.7	Fresh Water Fish Production.....	145
Table 2.8	Structure of Farmer's Income and Expenditure(1986/87).....	146
Table 2.9	Income and Expenditure of Crop.....	147
Table 2.10	Income and Expenditure of Livestock.....	147
Table 2.11	Chemical Fertilizer Consumption.....	148
Table 2.12	Fertilizer Consumption Per Hectar.....	148
Table 2.13	Supply of Agricultural Chemicals in 1983/84.....	149
Table 2.14	Number of Equipment Used in Agriculture in 1987.....	149
Table 2.15	Private Food Consumption Expenditure at 1987 Prices.....	150
Table 2.16	Availability of Dietary Calories.....	151
Table 2.17	Nutritive Condition of Child (0-60 month) in 1988.....	151
Table 2.18	The Import of Food.....	152
Table 2.19	Soil Distribution in UCR.....	156

Table 4.1	Price Forecasts for Agricultural Commodities.....	173
Table 4.2	Comparative Advantage in Agricultural Production, 1986.....	173
Table 4.3	Land Utilization and Productivity for the year 2010.....	175
Table 4.4	Value Added Per Rai.....	175
Table 4.5	Agricultural GRP Target.....	175

Table 6.1	Growth of Production and Domestic Consumption (1982-1987).....	184
-----------	--	-----

Part V

Table 3.1	Pasak Dam Alternative Schemes at Pattana Nikom.....	194
Table 3.2	Pasak Dam Alternative Schemes at Kang Koy.....	194

Table 3.3	Pasak River Basin Medium Scale Project.....	200
Table 3.4	Small Scale Water Resources Projects in Pasak Basin.....	203
Table 3.5	Land Use Suitability of the District in Pasak Basin.....	205
Table 3.6	Population Density of District in Pasak Dam Project Area.....	205
Table 3.7	Land Tenure of Districts in Pasak Dam Project Area.....	205

Appendix

Table A-1	General Land Use Potential.....	219
Table A-2	Land Use 1986 (Unit: 1,000 Rai).....	219
Table A-3	Land Suitability.....	220
Table A-4	Water Saturation Period of Soil.....	221
Table A-5	Erosion Area.....	222
Table A-6	Soil types and Recommended Land Use.....	223
Table A-7	Regional Breakdown of Land Rights (1980).....	224
Table A-8	Land Tenure in the UCR.....	225
Table A-9	Land Use Zoning in the UCR.....	226
Table A-10	Land Consolidation Procedures (at Present).....	227
Table A-11	Estimation of the Future Land Utilization	228
Table A-12	Land Utilization in 2010 (Actual Planted Area, Unit : 1,000 Rai).....	229

List of Figures

Part I

Fig. 1.1	Isohyet of Average Annual Rainfall	2
Fig. 1.2	Water Resource Projects in Chao Phraya River Basin.....	4
Fig. 1.3	Watershed and Project Boundary.....	5
Fig. 1.4	Groundwater Potential.....	8
Fig. 2.1	Major Canals and Regulators in the Delta.....	15
Fig. 2.2	Delivered Water and Irrigated Area in Wet and Dry Season.....	19
Fig. 2.3	Dry Season Irrigation in the Delta (1987/88).....	21
Fig. 2.4	Small and Medium Scale Irrigation Project.....	26

Part II

Fig. 1.1	Organization of Royal Irrigation Department.....	54
Fig. 1.2	Organizational Structure for Operation and Maintenance of Irrigation Project.....	56
Fig. 1.3	Organization of Sub-Irrigation Project in Chao Phraya Scheme.....	56
Fig. 1.4	Physical Structure of Irrigation Canal.....	59
Fig. 2.1	The Organization of Existing Water User Association.....	61
Fig. 2.2	The Organization of Existing Water User Group at Farm Ditch Level (Basic Group).....	61
Fig. 2.3	The Organization of Proposed Water User Group (at lateral level).....	61
Fig. 2.4	Proposed Organization Structure for Water User Cooperative or Water User Association.....	69
Fig. 2.5	Progressive Development on O&M Responsibility.....	69
Fig. 3.1	Proposed Institutional Organization at Policy Making Level of Water Allocation for Chao Phraya River Basin.....	78
Fig. 3.2	Proposed Institutional Organization for Local Participation in Water Allocation in Chao Phraya Delta.....	80
Fig. 4.1	Proposed Institutional Set-up of Large & Medium Scale Project.....	86
Fig. 4.2	Proposed Institutional Set-up of NEA Project.....	87
Fig. 4.3	Proposed Institutional Set-up of Small Scale Project.....	87
Fig. 6.1	Implementation of Land Consolidation.....	92
Fig. 6.2	Water Supply in Industrial Estate.....	94

Part III

Fig. 1.1	Land Use Composition 1986.....	97
Fig. 1.2	Land Coverage Distribution Map.....	99
Fig. 1.3	Land Consolidation Project Map.....	106
Fig. 2.1	Crop Suitability Map.....	111

Fig. 2.2	Water Saturation.....	113
Fig. 2.3	Saturation Period.....	114
Fig. 2.4	Ground Water Potential.....	116
Fig. 2.5	Length of Irrigation & Drainage Facility.....	117
Fig. 2.6	Density of Irrigation and Drainage Facility.....	118
Fig. 3.1	Problem Structure of Agricultural Land Management.....	119
Fig. 3.2	Erosion Area in the UCR.....	121
Fig. 3.3	The Land Consolidation Procedures (At Present).....	127
Fig. 4.1	Proposed Programs and Projects on Agricultural Land Management.....	129
Fig. 4.2	Agricultural Land Use Zoning.....	132
Fig. 4.3	Land Use Zoning in the UCR.....	133
Fig. 4.4	Proposed Land Consolidation Procedures.....	134
Fig. 4.5	Land Utilization Change in the UCR.....	136
Part IV		
Fig. 2.1	The Chao Phraya River Basin.....	153
Fig. 2.2	Flooded Area.....	155
Fig. 3.1	Pasak River Basin Agriculture Development Concept.....	166
Fig. 3.2	Component of Integrated Farming System.....	166
Fig. 3.3	Existing Farming.....	167
Fig. 3.4	Effects of Integrated Farming System.....	167
Fig. 3.5	Transformation of Agricultural Output with Agro-processing Development.....	168
Fig. 6.1	Nutrient Cycle in the UCR.....	186
Part V		
Fig. 2.1	The Pasak River Basin Map.....	191
Fig. 3.1	Inundating and Beneficiary Area by Pasak Dam.....	199
Fig. 3.2	Location of Medium Scale Projects.....	202
Fig. 3.3	Pasak River Basin Agriculture Development Concept.....	208

Fig. 3.4	Existing Farming.....	208
Fig. 3.5	Effects of Integrated Farming System.....	209
Fig. 4.1	Proposed Institutional Set-up for Pasak River Basin Development.....	213

LIST OF ABBREVIATIONS USED

AGUIW	Administration Group in Using Irrigation Water
ARD	Accelerated Rural Development Office
BMR	Bangkok Metropolitan Region
CPD	Cooperative Promotion Department
DIW	Department of Industrial Works
DMT	Department of Mineral Resources
DOAE	Department of Agriculture Extension
EGAT	Electricity Generating Authority of Thailand
GRP	Gross Regional Products
GSIC	Greater Sara Buri Industrial Core
HD	Harbor Department
IFS	Integrated Farming System
IRO	Irrigation Regional Office
LDD	Land Development Department
MCM	Million Cubic Meter
MCU	Mobile Campaign Unit
MOAL	Ministry of Agriculture and Cooperatives
MWWA(MWA)	Metropolitan Waterworks Authority
NEA	National Energy Administration
NWRC	National Water Resources Committee
O&M	Operation and Maintenance
ONEB	Office of National Environmental Board
PWA(PWWA)	Provincial Waterworks Authority
RFD	Royal Forestry Department
RID	Royal Irrigation Department
UCR	Upper Central Region
WUA	Water User Cooperative
WUC	Water User Cooperative
WUG	Water User Group

