

**GEOLOGY OF THE PROJECT AREA**

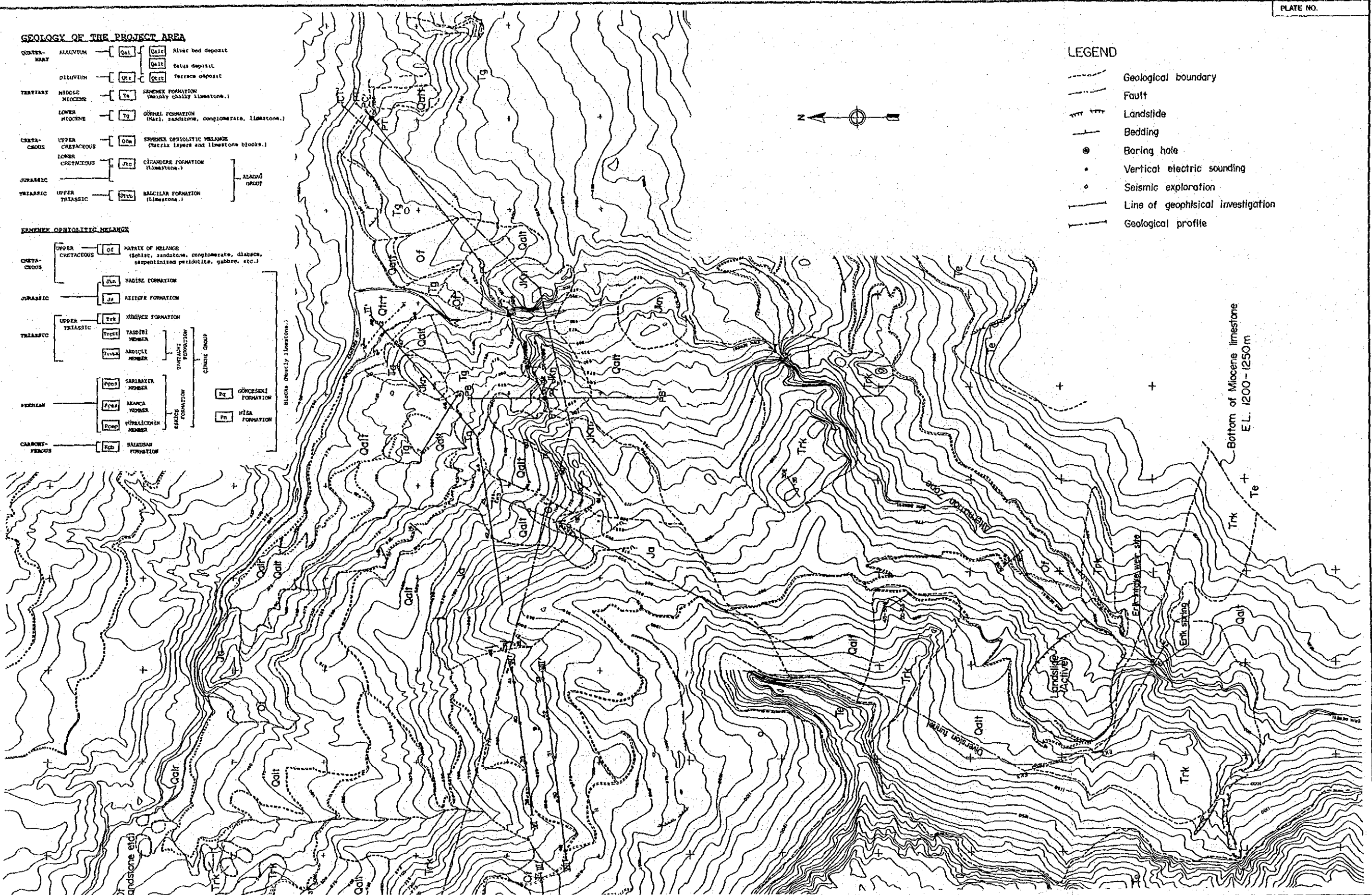
QUATERNARY	ALLUVIUM	Qal	Qal1	Qal2	Qal3	Qal4	Qal5	Qal6	Qal7	Qal8	Qal9	Qal10	Qal11	Qal12	Qal13	Qal14	Qal15	Qal16	Qal17	Qal18	Qal19	Qal20	Qal21	Qal22	Qal23	Qal24	Qal25	Qal26	Qal27	Qal28	Qal29	Qal30	Qal31	Qal32	Qal33	Qal34	Qal35	Qal36	Qal37	Qal38	Qal39	Qal40	Qal41	Qal42	Qal43	Qal44	Qal45	Qal46	Qal47	Qal48	Qal49	Qal50	Qal51	Qal52	Qal53	Qal54	Qal55	Qal56	Qal57	Qal58	Qal59	Qal60	Qal61	Qal62	Qal63	Qal64	Qal65	Qal66	Qal67	Qal68	Qal69	Qal70	Qal71	Qal72	Qal73	Qal74	Qal75	Qal76	Qal77	Qal78	Qal79	Qal80	Qal81	Qal82	Qal83	Qal84	Qal85	Qal86	Qal87	Qal88	Qal89	Qal90	Qal91	Qal92	Qal93	Qal94	Qal95	Qal96	Qal97	Qal98	Qal99	Qal100	Qal101	Qal102	Qal103	Qal104	Qal105	Qal106	Qal107	Qal108	Qal109	Qal110	Qal111	Qal112	Qal113	Qal114	Qal115	Qal116	Qal117	Qal118	Qal119	Qal120	Qal121	Qal122	Qal123	Qal124	Qal125	Qal126	Qal127	Qal128	Qal129	Qal130	Qal131	Qal132	Qal133	Qal134	Qal135	Qal136	Qal137	Qal138	Qal139	Qal140	Qal141	Qal142	Qal143	Qal144	Qal145	Qal146	Qal147	Qal148	Qal149	Qal150	Qal151	Qal152	Qal153	Qal154	Qal155	Qal156	Qal157	Qal158	Qal159	Qal160	Qal161	Qal162	Qal163	Qal164	Qal165	Qal166	Qal167	Qal168	Qal169	Qal170	Qal171	Qal172	Qal173	Qal174	Qal175	Qal176	Qal177	Qal178	Qal179	Qal180	Qal181	Qal182	Qal183	Qal184	Qal185	Qal186	Qal187	Qal188	Qal189	Qal190	Qal191	Qal192	Qal193	Qal194	Qal195	Qal196	Qal197	Qal198	Qal199	Qal200
------------	----------	-----	------	------	------	------	------	------	------	------	------	-------	-------	-------	-------	-------	-------	-------	-------	-------	-------	-------	-------	-------	-------	-------	-------	-------	-------	-------	-------	-------	-------	-------	-------	-------	-------	-------	-------	-------	-------	-------	-------	-------	-------	-------	-------	-------	-------	-------	-------	-------	-------	-------	-------	-------	-------	-------	-------	-------	-------	-------	-------	-------	-------	-------	-------	-------	-------	-------	-------	-------	-------	-------	-------	-------	-------	-------	-------	-------	-------	-------	-------	-------	-------	-------	-------	-------	-------	-------	-------	-------	-------	-------	-------	-------	-------	-------	-------	-------	-------	--------	--------	--------	--------	--------	--------	--------	--------	--------	--------	--------	--------	--------	--------	--------	--------	--------	--------	--------	--------	--------	--------	--------	--------	--------	--------	--------	--------	--------	--------	--------	--------	--------	--------	--------	--------	--------	--------	--------	--------	--------	--------	--------	--------	--------	--------	--------	--------	--------	--------	--------	--------	--------	--------	--------	--------	--------	--------	--------	--------	--------	--------	--------	--------	--------	--------	--------	--------	--------	--------	--------	--------	--------	--------	--------	--------	--------	--------	--------	--------	--------	--------	--------	--------	--------	--------	--------	--------	--------	--------	--------	--------	--------	--------	--------	--------	--------	--------	--------	--------	--------

**ERMENEK OPHIOLITIC MELANGE**

UPPER CRETACEOUS	OF	MATRIX OF MELANGE (Schist, sandstone, conglomerate, diabase, serpentinitized peridotite, gabbro, etc.)
JURASSIC	Ja	NADIRI FORMATION
JURASSIC	Ja	AZITEPE FORMATION
TRIASIC	Trk	KÜMÜNCÜ FORMATION
TRIASIC	Trk1	TASDIRI MEMBER
TRIASIC	Trk2	ARICILCI MEMBER
TRIASIC	Trk3	ZARIFCI MEMBER
TRIASIC	Trk4	TRIASITCI MEMBER
TRIASIC	Trk5	TRIASITCI MEMBER
TRIASIC	Trk6	TRIASITCI MEMBER
TRIASIC	Trk7	TRIASITCI MEMBER
TRIASIC	Trk8	TRIASITCI MEMBER
TRIASIC	Trk9	TRIASITCI MEMBER
TRIASIC	Trk10	TRIASITCI MEMBER
TRIASIC	Trk11	TRIASITCI MEMBER
TRIASIC	Trk12	TRIASITCI MEMBER
TRIASIC	Trk13	TRIASITCI MEMBER
TRIASIC	Trk14	TRIASITCI MEMBER
TRIASIC	Trk15	TRIASITCI MEMBER
TRIASIC	Trk16	TRIASITCI MEMBER
TRIASIC	Trk17	TRIASITCI MEMBER
TRIASIC	Trk18	TRIASITCI MEMBER
TRIASIC	Trk19	TRIASITCI MEMBER
TRIASIC	Trk20	TRIASITCI MEMBER
TRIASIC	Trk21	TRIASITCI MEMBER
TRIASIC	Trk22	TRIASITCI MEMBER
TRIASIC	Trk23	TRIASITCI MEMBER
TRIASIC	Trk24	TRIASITCI MEMBER
TRIASIC	Trk25	TRIASITCI MEMBER
TRIASIC	Trk26	TRIASITCI MEMBER
TRIASIC	Trk27	TRIASITCI MEMBER
TRIASIC	Trk28	TRIASITCI MEMBER
TRIASIC	Trk29	TRIASITCI MEMBER
TRIASIC	Trk30	TRIASITCI MEMBER
TRIASIC	Trk31	TRIASITCI MEMBER
TRIASIC	Trk32	TRIASITCI MEMBER
TRIASIC	Trk33	TRIASITCI MEMBER
TRIASIC	Trk34	TRIASITCI MEMBER
TRIASIC	Trk35	TRIASITCI MEMBER
TRIASIC	Trk36	TRIASITCI MEMBER
TRIASIC	Trk37	TRIASITCI MEMBER
TRIASIC	Trk38	TRIASITCI MEMBER
TRIASIC	Trk39	TRIASITCI MEMBER
TRIASIC	Trk40	TRIASITCI MEMBER
TRIASIC	Trk41	TRIASITCI MEMBER
TRIASIC	Trk42	TRIASITCI MEMBER
TRIASIC	Trk43	TRIASITCI MEMBER
TRIASIC	Trk44	TRIASITCI MEMBER
TRIASIC	Trk45	TRIASITCI MEMBER
TRIASIC	Trk46	TRIASITCI MEMBER
TRIASIC	Trk47	TRIASITCI MEMBER
TRIASIC	Trk48	TRIASITCI MEMBER
TRIASIC	Trk49	TRIASITCI MEMBER
TRIASIC	Trk50	TRIASITCI MEMBER
TRIASIC	Trk51	TRIASITCI MEMBER
TRIASIC	Trk52	TRIASITCI MEMBER
TRIASIC	Trk53	TRIASITCI MEMBER
TRIASIC	Trk54	TRIASITCI MEMBER
TRIASIC	Trk55	TRIASITCI MEMBER
TRIASIC	Trk56	TRIASITCI MEMBER
TRIASIC	Trk57	TRIASITCI MEMBER
TRIASIC	Trk58	TRIASITCI MEMBER
TRIASIC	Trk59	TRIASITCI MEMBER
TRIASIC	Trk60	TRIASITCI MEMBER
TRIASIC	Trk61	TRIASITCI MEMBER
TRIASIC	Trk62	TRIASITCI MEMBER
TRIASIC	Trk63	TRIASITCI MEMBER
TRIASIC	Trk64	TRIASITCI MEMBER
TRIASIC	Trk65	TRIASITCI MEMBER
TRIASIC	Trk66	TRIASITCI MEMBER
TRIASIC	Trk67	TRIASITCI MEMBER
TRIASIC	Trk68	TRIASITCI MEMBER
TRIASIC	Trk69	TRIASITCI MEMBER
TRIASIC	Trk70	TRIASITCI MEMBER
TRIASIC	Trk71	TRIASITCI MEMBER
TRIASIC	Trk72	TRIASITCI MEMBER
TRIASIC	Trk73	TRIASITCI MEMBER
TRIASIC	Trk74	TRIASITCI MEMBER
TRIASIC	Trk75	TRIASITCI MEMBER
TRIASIC	Trk76	TRIASITCI MEMBER
TRIASIC	Trk77	TRIASITCI MEMBER
TRIASIC	Trk78	TRIASITCI MEMBER
TRIASIC	Trk79	TRIASITCI MEMBER
TRIASIC	Trk80	TRIASITCI MEMBER
TRIASIC	Trk81	TRIASITCI MEMBER
TRIASIC	Trk82	TRIASITCI MEMBER
TRIASIC	Trk83	TRIASITCI MEMBER
TRIASIC	Trk84	TRIASITCI MEMBER
TRIASIC	Trk85	TRIASITCI MEMBER
TRIASIC	Trk86	TRIASITCI MEMBER
TRIASIC	Trk87	TRIASITCI MEMBER
TRIASIC	Trk88	TRIASITCI MEMBER
TRIASIC	Trk89	TRIASITCI MEMBER
TRIASIC	Trk90	TRIASITCI MEMBER
TRIASIC	Trk91	TRIASITCI MEMBER
TRIASIC	Trk92	TRIASITCI MEMBER
TRIASIC	Trk93	TRIASITCI MEMBER
TRIASIC	Trk94	TRIASITCI MEMBER
TRIASIC	Trk95	TRIASITCI MEMBER
TRIASIC	Trk96	TRIASITCI MEMBER
TRIASIC	Trk97	TRIASITCI MEMBER
TRIASIC	Trk98	TRIASITCI MEMBER
TRIASIC	Trk99	TRIASITCI MEMBER
TRIASIC	Trk100	TRIASITCI MEMBER

**LEGEND**

- Geological boundary
- Fault
- Landslide
- Bedding
- Boring hole
- Vertical electric sounding
- Seismic exploration
- Line of geophysical investigation
- Geological profile



SCALE 0 10km



THE REPUBLIC OF TURKEY  
ELEKTRİK İŞLERİ ETÜD İDARESİ  
GENEL MÜDÜRLÜĞÜ

ERMENEK HYDROELECTRIC POWER  
DEVELOPMENT PROJECT  
JAPAN INTERNATIONAL COOPERATION AGENCY

TITLE **Plate 8**  
**Location Map of Geological Investigation Around Proposed Power House Site**

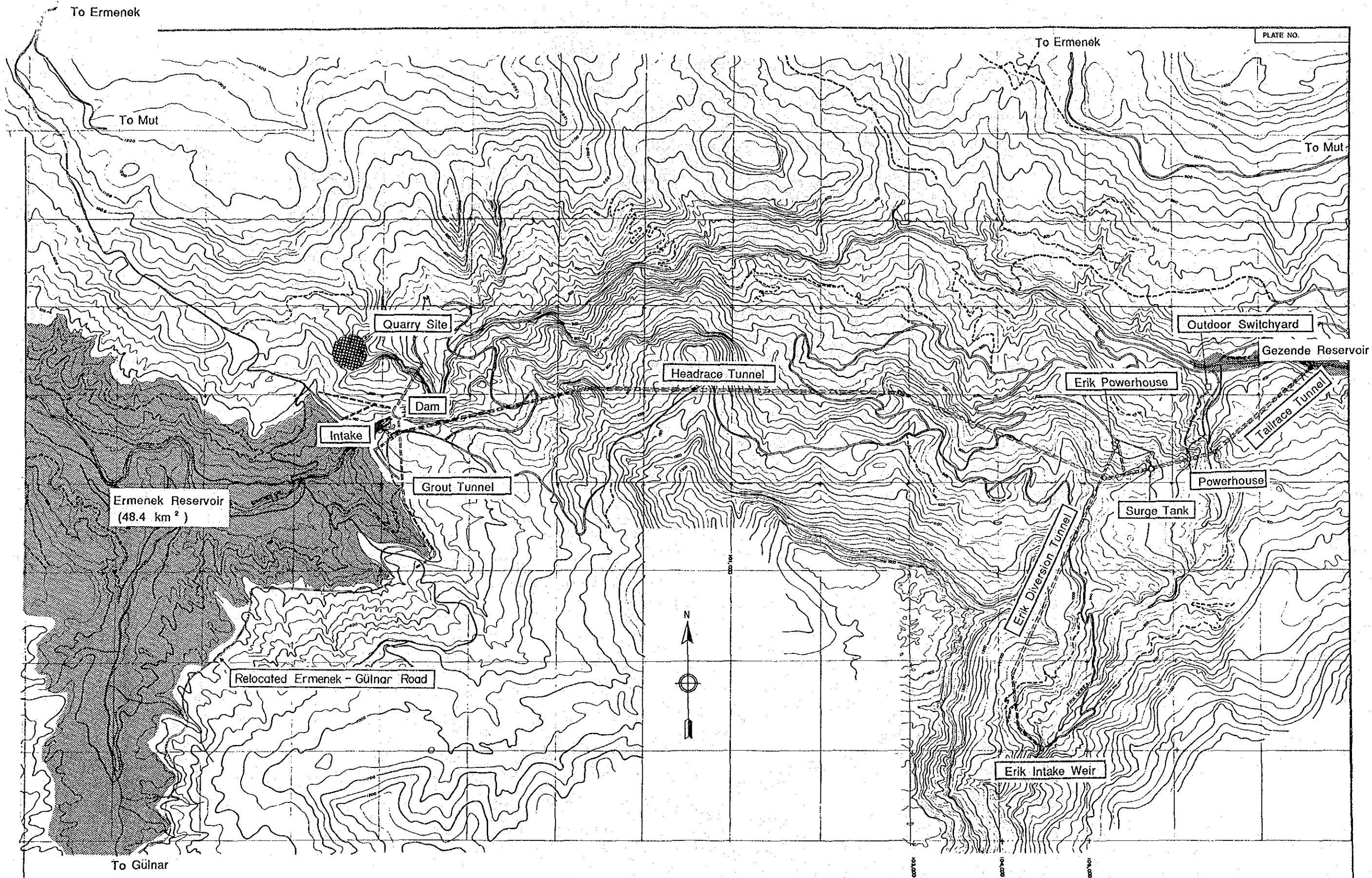



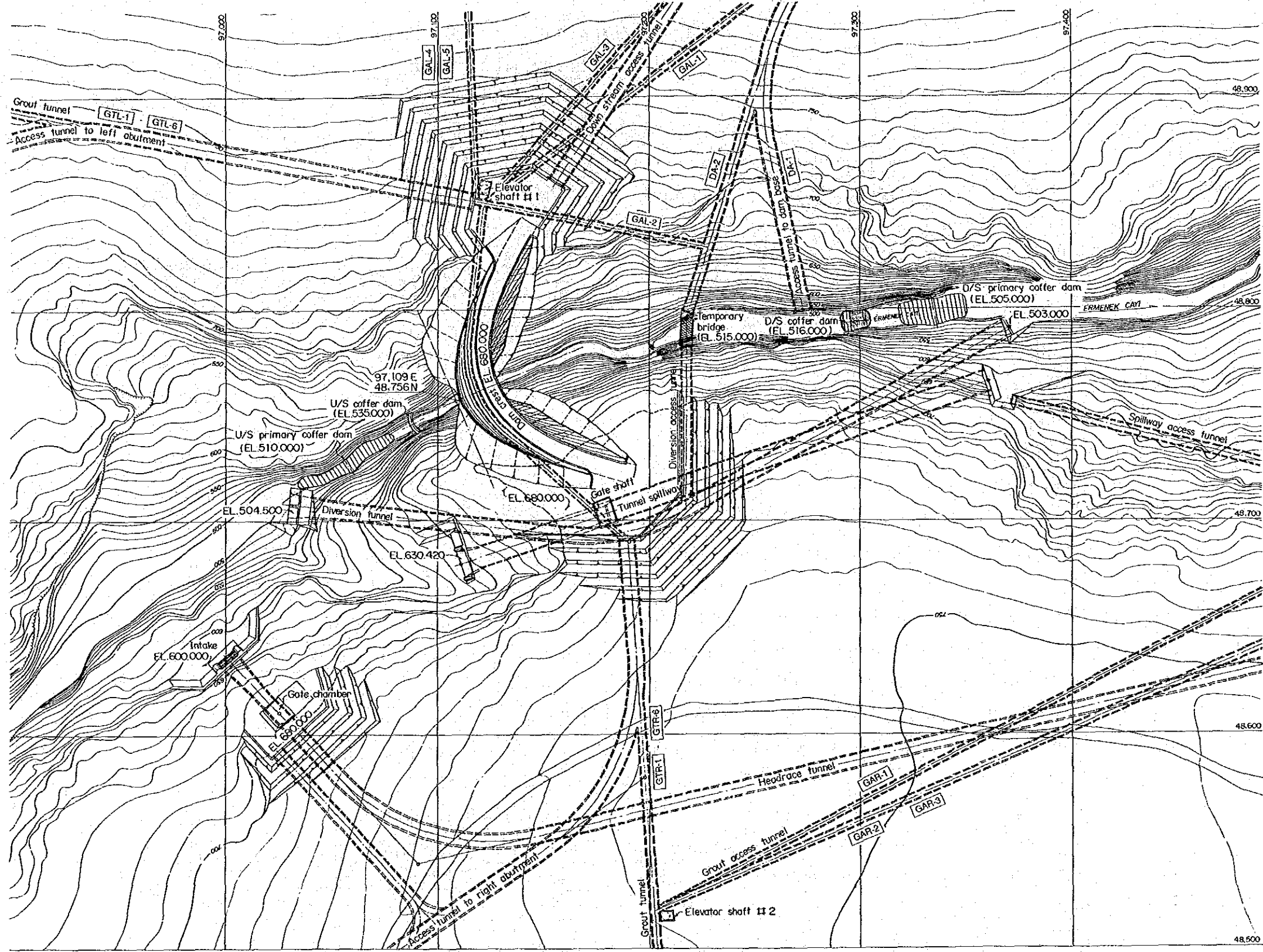
PLATE NO.

Ermenek Reservoir  
(48.4 km<sup>2</sup>)


Relocated Ermenek - Gülnar Road

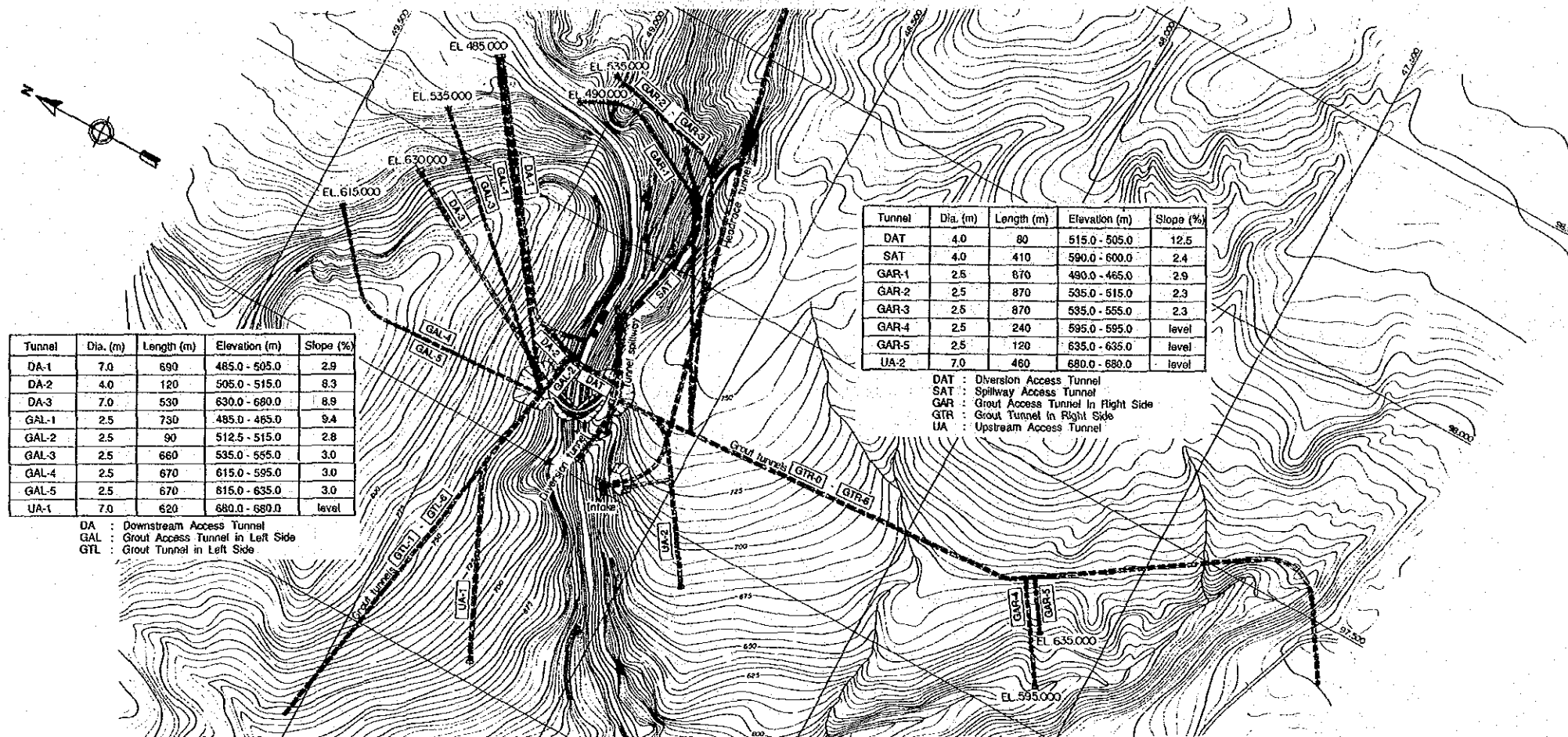
SCALE 0 1 2km

	THE REPUBLIC OF TURKEY ELEKTRİK İŞLERİ ETÜD İDARESİ GENEL MÜDÜRLÜĞÜ	ERMENEK HYDROELECTRIC POWER DEVELOPMENT PROJECT JAPAN INTERNATIONAL COOPERATION AGENCY	TITLE <b>Plate 9</b> <b>General Plan</b> <b>of Ermenek Project</b>

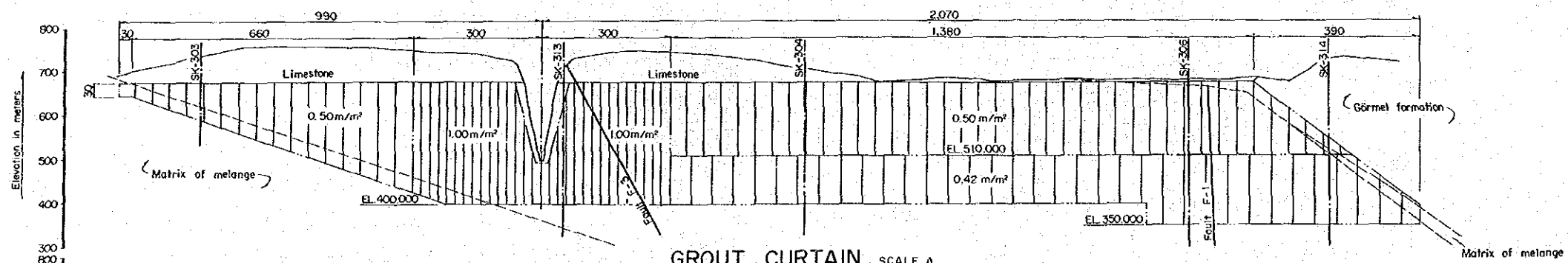


SCALE 0 100m

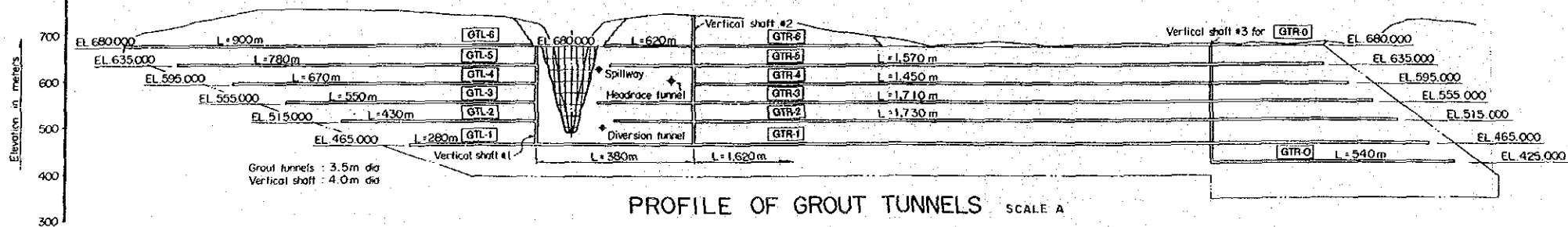
	<b>THE REPUBLIC OF TURKEY</b> ELEKTRİK İŞLERİ ETÜD İDARESİ GENEL MÜDÜRLÜĞÜ	<b>ERMENEK HYDROELECTRIC POWER          DEVELOPMENT PROJECT</b>	TITLE <b>Plate 10          General Plan of Dam</b>
		JAPAN INTERNATIONAL COOPERATION AGENCY	



PLAN SCALE A



GROUT CURTAIN SCALE A



PROFILE OF GROUT TUNNELS SCALE A

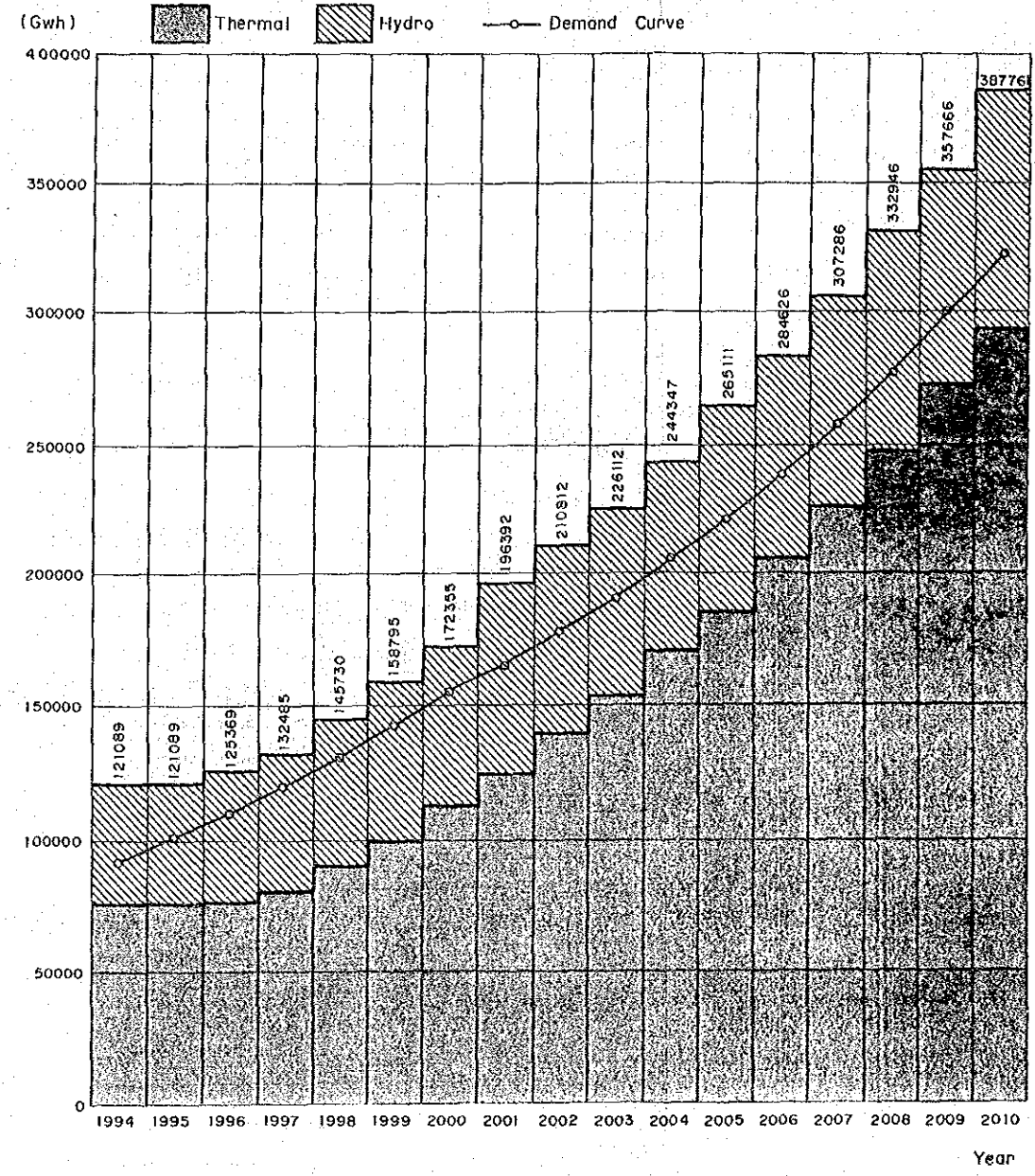
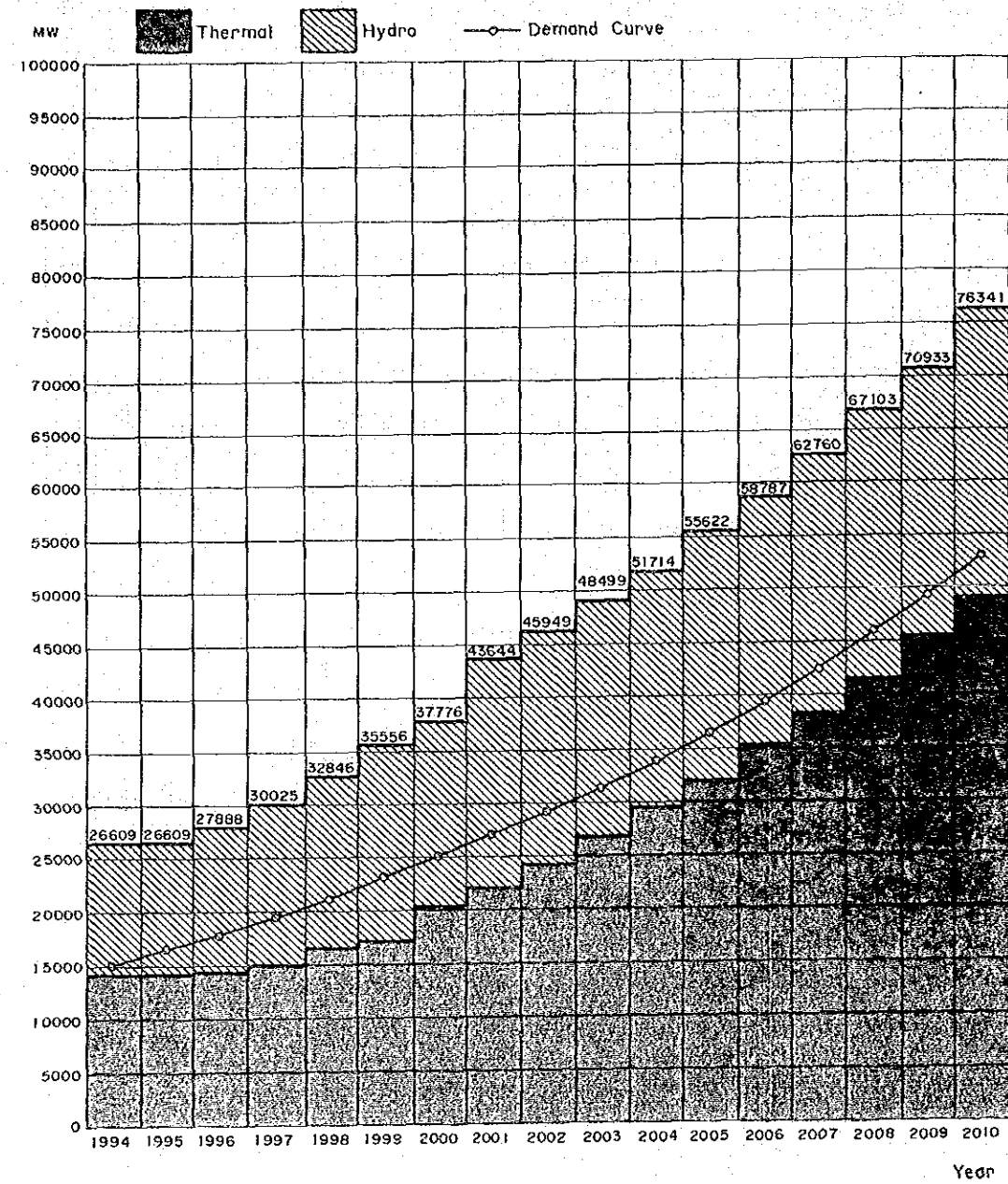
SCALE A 0 500m



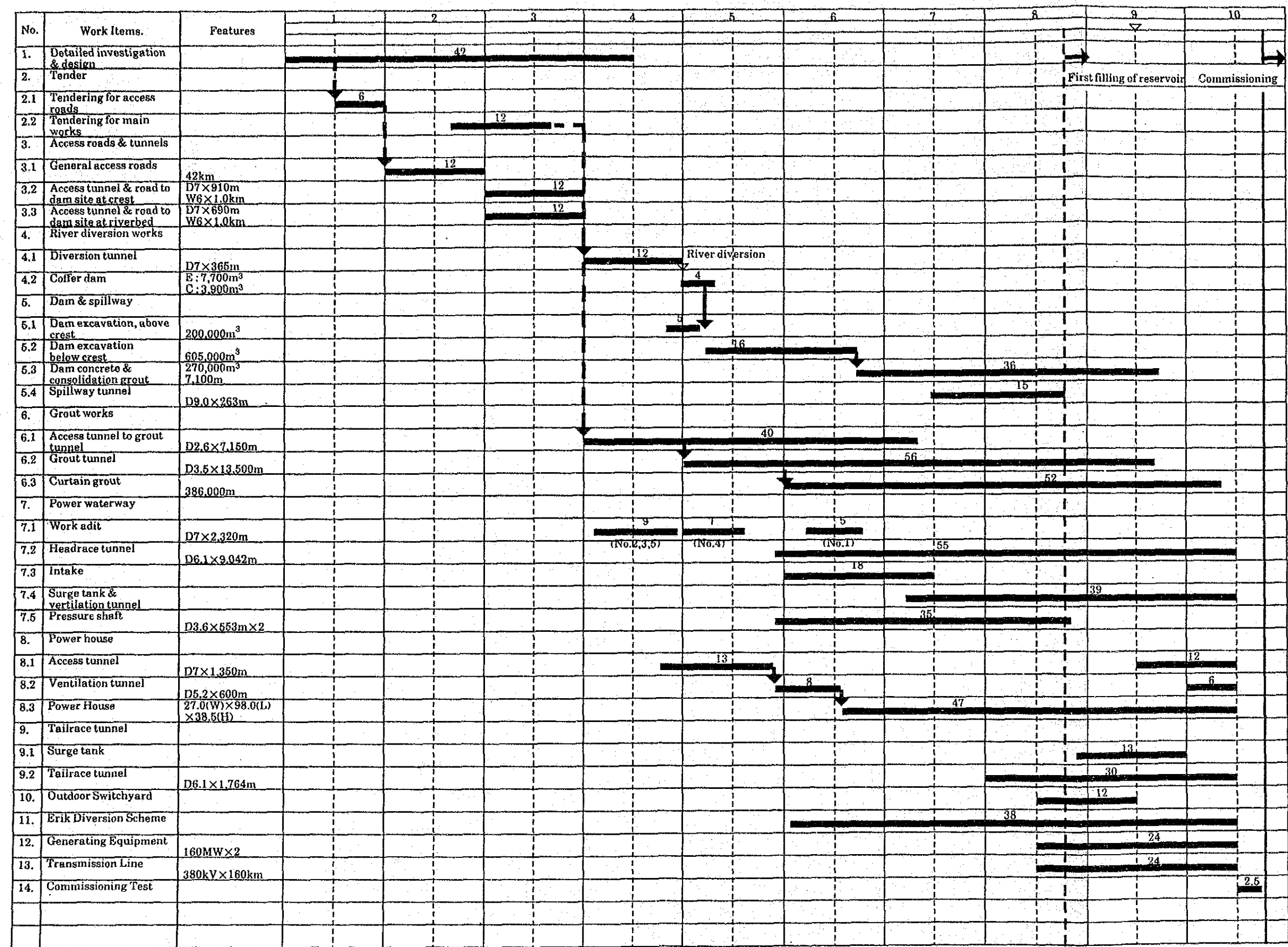
THE REPUBLIC OF TURKEY  
ELEKTRİK İŞLERİ ETÜD İDARESİ  
GENEL MÜDÜRLÜĞÜ

ERMENEK HYDROELECTRIC POWER  
DEVELOPMENT PROJECT  
JAPAN INTERNATIONAL COOPERATION AGENCY

TITLE  
Plate 11  
Grout Curtain



(1994-2010, TEK's Low Scenario with BOT)



THE REPUBLIC OF TURKEY  
ELEKTRİK İŞLERİ ETÜD İDARESİ  
GENEL MÜDÜRLÜĞÜ

ERMENEK HYDROELECTRIC POWER  
DEVELOPMENT PROJECT  
JAPAN INTERNATIONAL COOPERATION AGENCY

TITLE  
**Plate 13**  
**Construction Time Schedule**



那非