

Annex 10 : List of Scheduled Wastes (Case of Malaysia)

This is the list of scheduled wastes prepared and used by the Department of Environment, Ministry of Science, Technology and Environment, Malaysia. The list includes both specific and non-specific sources.

LIST OF SCHEDULED WASTES

1. Mineral oil and oil contaminated waste
2. Waste containing polychlorinated biphenyls (PCB) and polychlorinated triphenyls (PCT)
3. Spent organic solvents containing halogen and/or sulphur e.g.: Methylene chloride, 1, 1, 1, trichloroethane, perchloroethylene, dimethyl sulphide
4. Spent aromatic organic solvent without containing compounds of organic halogen and/or sulphur. e.g.: toluene, xylene, thinner, turpentine, kerosene
5. Spent non-aromatic organic solvent without containing compounds of organic halogen or sulphur; e.g.: acetone, ketones, alcohols, cleansing-benzene, dimethyl formamide
6. Residues from recovery of halogenated solvent, may contain oil, fat and solvents
7. Residues from recovery of non-halogenated solvent, may contain oil, fat and residues of solvent
8. Spent organo-metallic compounds (except mercury compounds; e.g.: tetraethyl lead, tetramethyl lead and organotin compounds; may be mixed with benzene
9. Flux wastes, may contain mixture of organic acids, solvents or compounds of ammonium chloride
10. Spent aqueous alkaline solutions not containing cyanide, may contain heavy metals
11. Spent aqueous alkaline solutions containing cyanide, may contain heavy metals
12. Spent aqueous chromic acid solutions
13. Spent aqueous inorganic acid solutions other than spent chromic acid solutions, may contain heavy metals
14. Spent aqueous or discarded photographic waste from film processing or plates making
15. Metal hydroxide sludges containing one or several of the following metals; i.e.: chromium, copper, nickel, zinc, lead, cadmium, aluminium and tin
16. Plating bath sludges containing cyanide
17. Spent salt containing cyanide
18. Sludges of inks, paints, pigments, lacquer with/without organic solvent
19. Wastes of printing ink, paint, pigment, lacquer, varnish or wood preservative containing organic solvents
20. Sludges, dust, slag, dross and ashes, may contain oxides and/or sulphate of one or several of the following metals; lead, cadmium, copper, zinc, chromium, nickel, iron, vanadium and aluminium
21. Spent or discarded strong acids or alkalis
22. Spent oxidising agents
23. Contaminated soil, water, debris or matter resulting from clean-up of a spill of chemical or scheduled waste
24. Immobilized scheduled wastes; e.g.: chemically fixed/encapsulated sludges
25. Discarded drugs except living vaccines and euphoric compounds

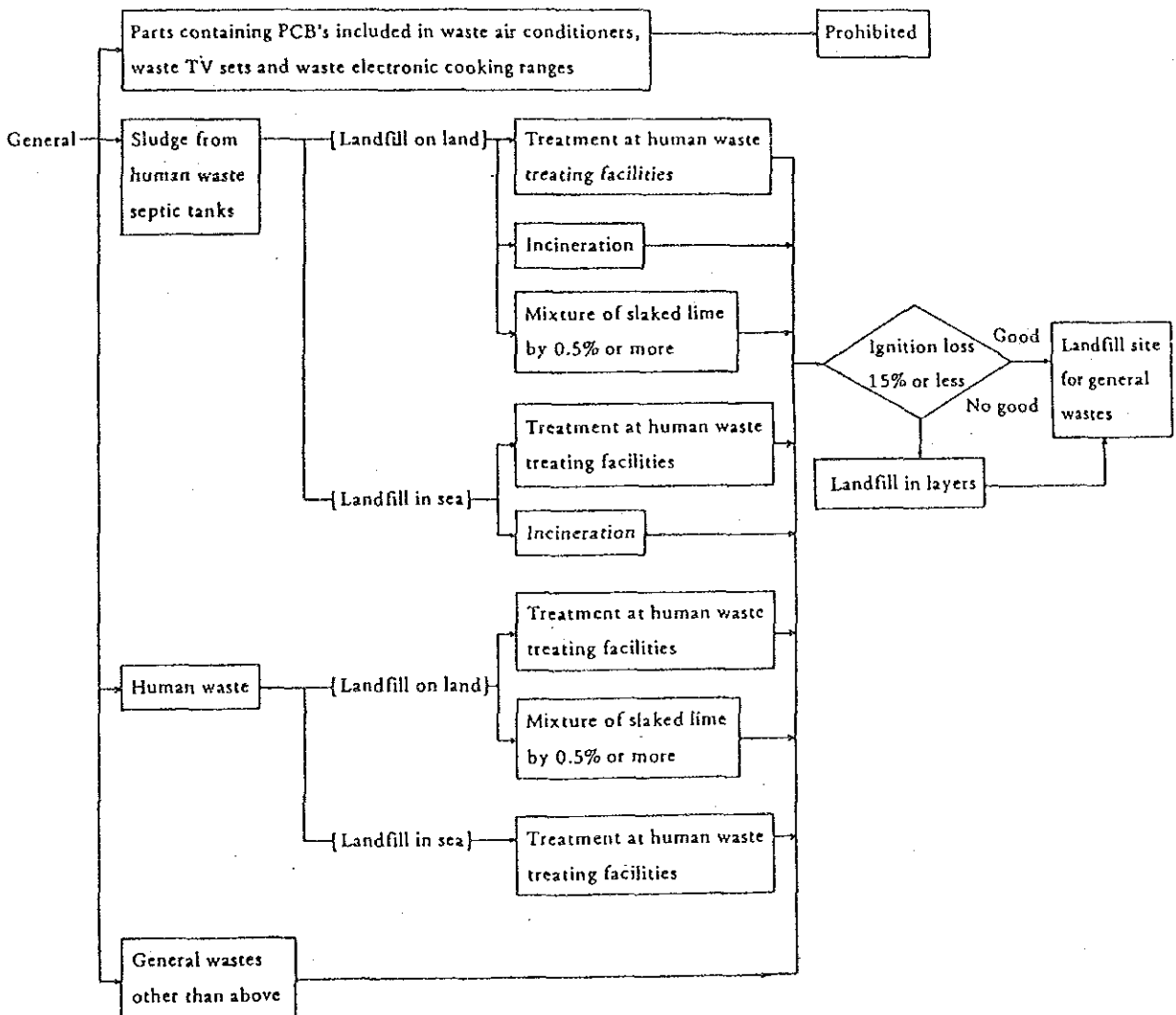
26. Pathogenic and clinical wastes and quarantised materials
27. Containers and bags containing hazardous residues
28. Mixtures of scheduled waste
29. Tar or tarry residues from oil refinery or petrochemical plant
30. Wastes of printing ink, paint, pigment, lacquer varnish or wood preservative containing organic solvents
31. Clinker, slag and ashes from scheduled wastes incinerator
32. Waste of printing ink, pigment, paint, or lacquer without containing solvents
33. Spent tars or anti corrosion oils
34. Spent ethylene glycol
35. Wastes containing phenol and/or formaldehyde
36. Residues of isocyanate compounds, (excluding solid polymeric material)
37. Adhesive or glue waste may contain organic solvents (excluding solid polymeric materials)
38. Uncured resin waste, may contain organic solvents and/or heavy metals; e.g.: epoxy resin, phenolic resin
39. Latex effluent, rubber or latex sludges containing organic solvents or heavy metals
40. Sludges from the re-refining of used oil products; e.g.: oily sludges containing acid or lead compound
41. Sludges containing flouride
42. Mineral sludges; e.g.: calcium hydroxide sludges, phosphating sludges, calcium sulphite sludges, carbonates sludges
43. Asbestos wastes
44. Wastes from the production, formulation and trade of pesticides; e.g.: herbicides, insecticides, rodenticides and fungicides
45. Press cake from pretreatment of glycerol soap lye
46. Wastes containing dye
47. Wastes from wood preserving operation using inorganic salts containing copper, chromium and as arsenic of fluoride compounds or using compound containing chlorinated phenol and/or creosate
48. Mercury wastes, containing metallic mercury, organic and inorganic mercury compounds;
49. Arsenic wastes from the purification process of phosphoric acid
50. Spent catalyts
51. Leachate from scheduled waste landfills
52. Rags, papers, plastics etc. contaminated with organic solvents
53. Discarded or off specification batteries containing lead, mercury, nickel and lithium
54. Pharmaceutical wastes
55. Spent aqueous inorganic acid solution

**Annex 11 : Japanese Technical Standards for Hazardous
Solid Waste Management When the Sanitary
Landfill Is Utilized as Their Final Disposal
Method**

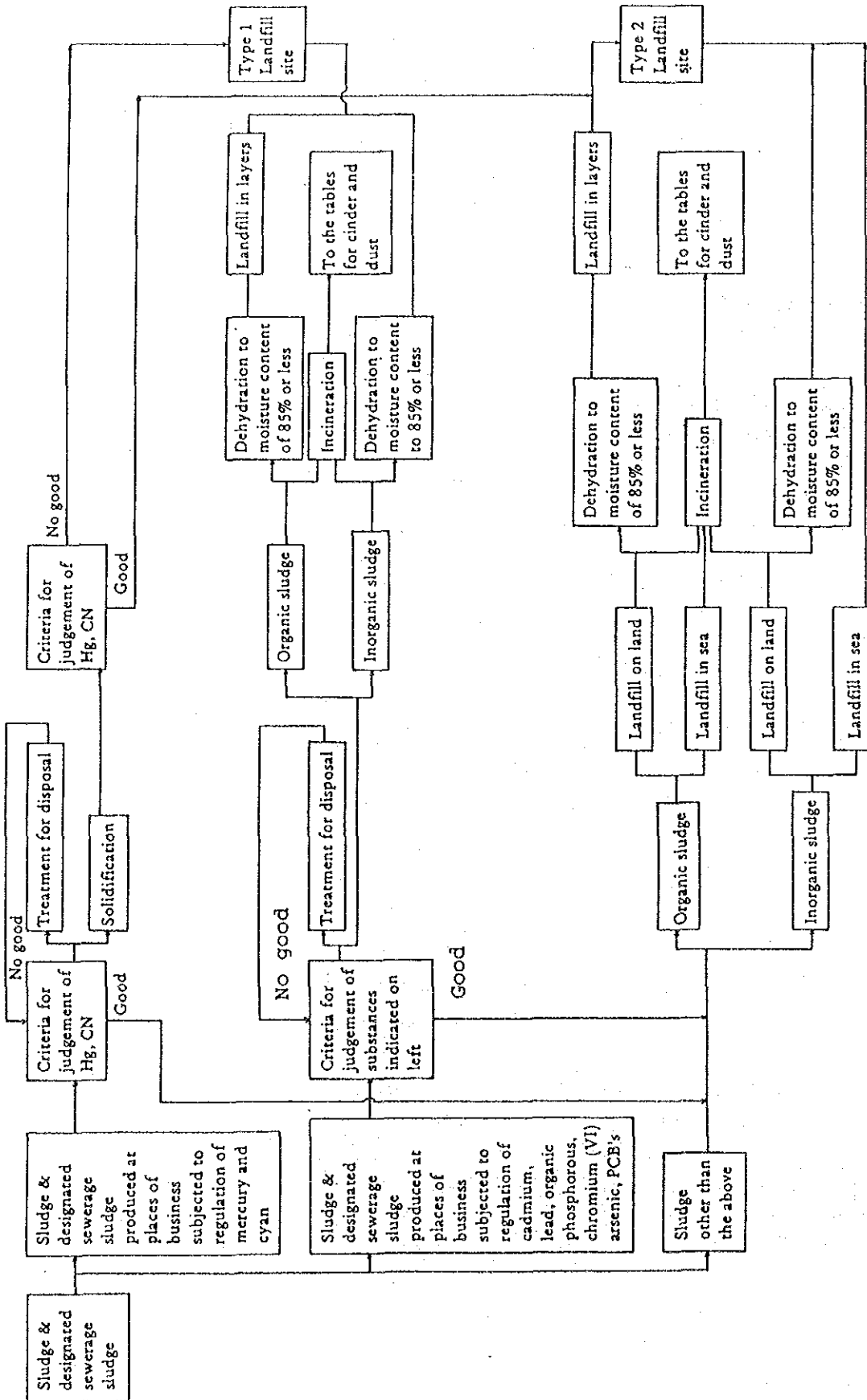
These technical standards are taken from "Waste Disposal and Public
Cleansing Law", 1970, Japan. These standards correspond to the
classification system of solid wastes shown in Figure 6-8 (p.163).

Japanese Technical Standards for Hazardous Solid Waste Management When the Sanitary Landfill is Utilized as Their Final Disposal Method

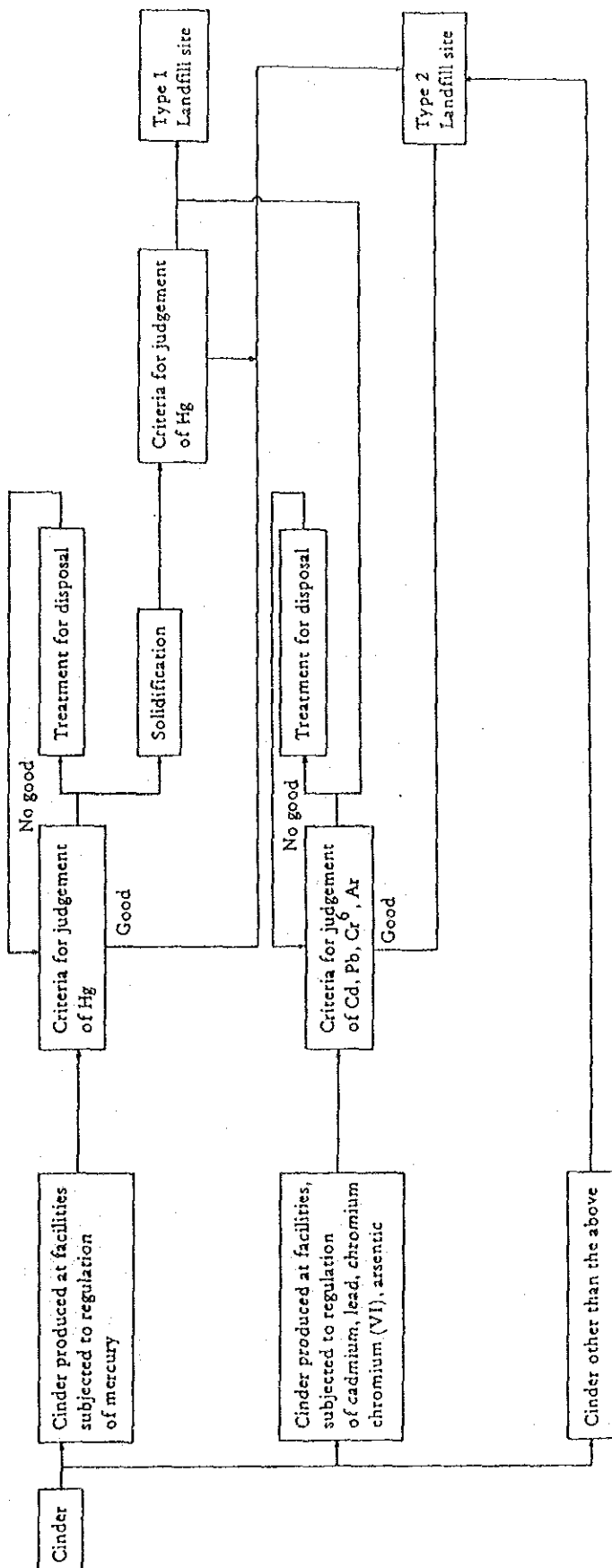
1. General Wastes



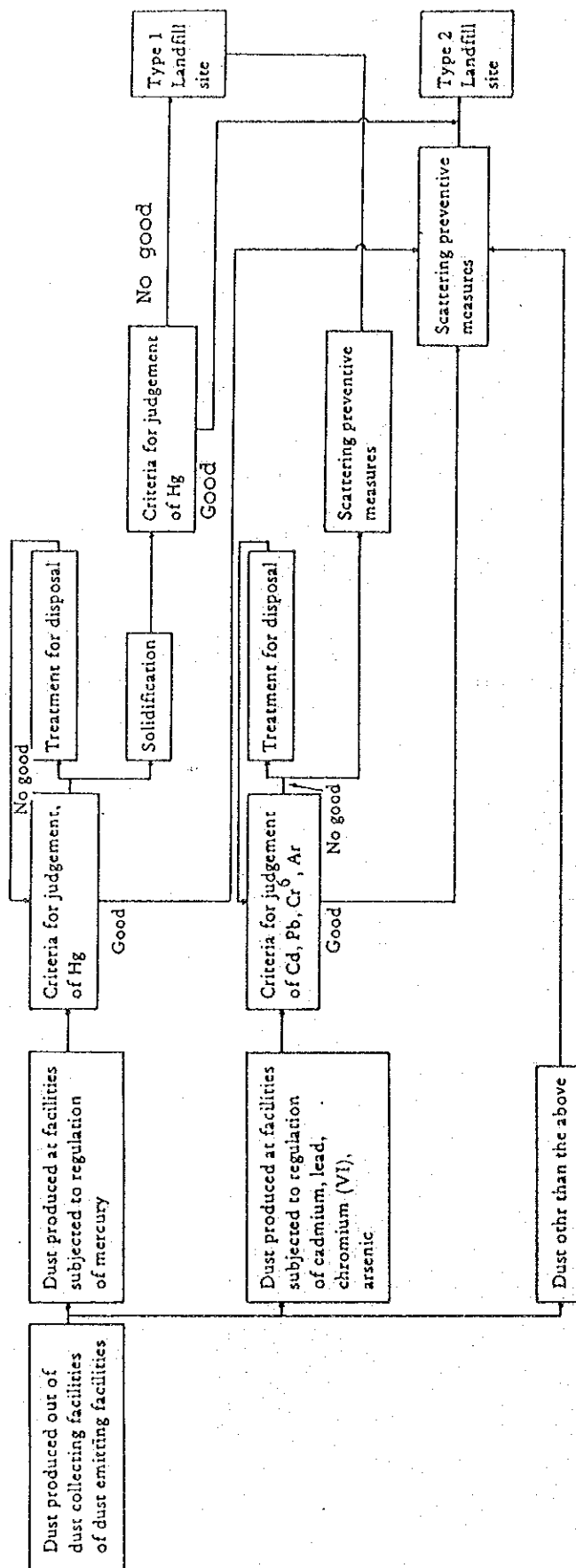
2. Sludge



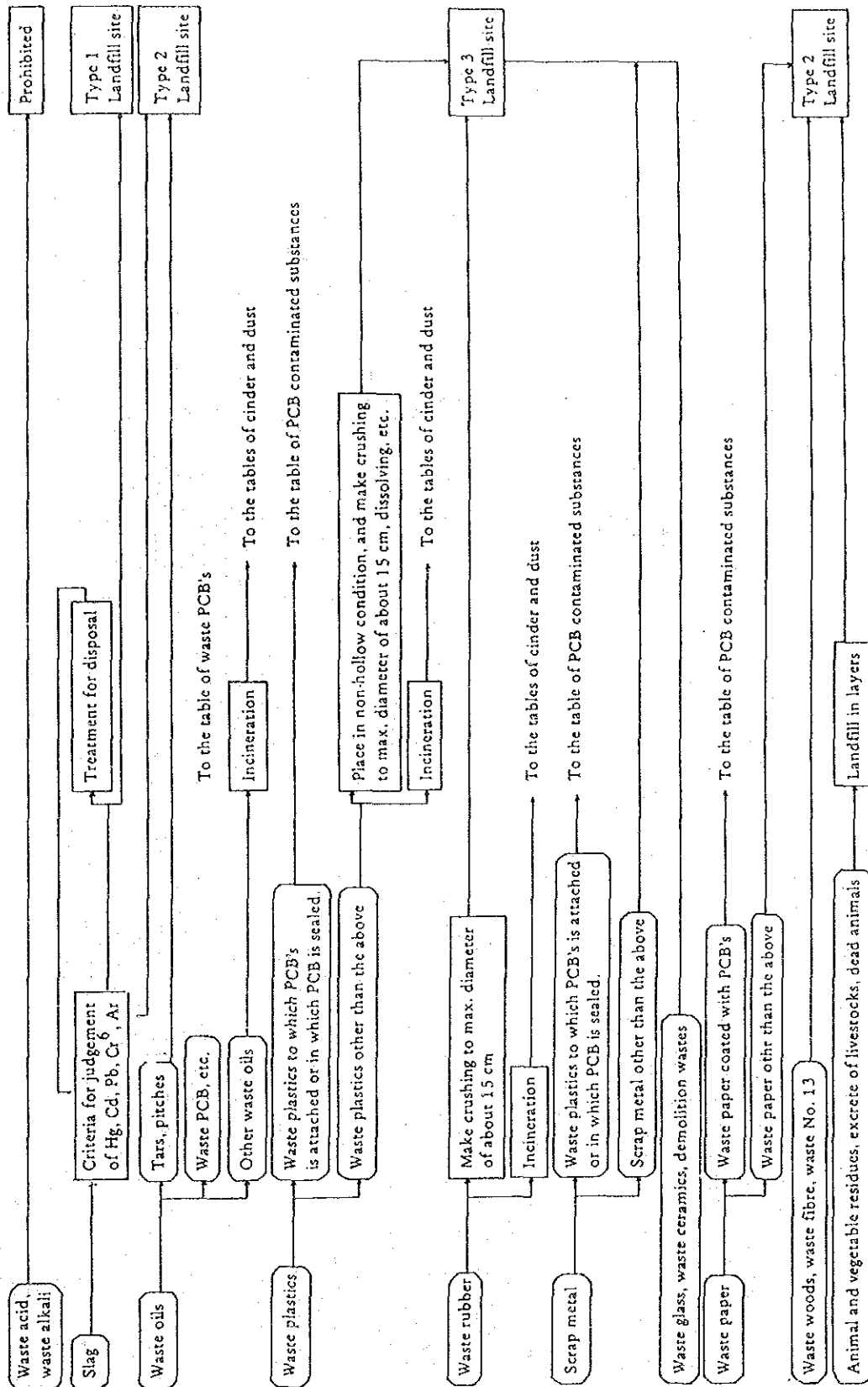
3. Cinder



4. Dust



5. Other Wastes



6. Waste PCB's and PCB's Contaminated Substances

