

Crop Diversification Potential for PH259

Code Number : PH259 Name of Scheme : Tanjong Batu
 State : Pahang District : Maran
 Type of Scheme : Inundation
 Water source : Limited to single cropping
 Soil series : 3d(t)

Irrigable area (ha) Main : 24 Off : 0
 Trafficability of farm machinery : Good
 Paddy planting for last 3 years : Idle

Category	Step 1	Step 2	Step 3		Step 4	Step 5	Step 6	Step 7 (B/C)	Production (ton)
1	*	*	*	Vegetable	B	A	A	6.9	425
2	*	*	*	Coconut	B	-	A		105
				Sago	A	-	A		216
3	*	*	*	Vegetable	B	A	A	6.9	425
4	*	*	*	Fodder grasses	A	-	A		
5									
6									
7	*	*	*		*	*	*		
8	*	*	*		*	*	*		

NOTE Underline : Crops with highest potential (Class A) in terms of crop suitability, profitability, marketability and invest performance (B/C > 1).
 * : Potential categories
 A : Suitable
 B : Marginal suitable due to lack of drainage facilities
 C : Marginal suitable due to limited factors other than drainage conditions
 - : Not suitable

Crop Diversification Potential for PH260

Code Number : PH260 Name of Scheme : Ting & Besar Kertau
 State : Pahang District : Maran
 Type of Scheme : Inundation
 Water source : Limited to single cropping
 Soil series : 3d(t)

Irrigable area (ha) Main : 70 Off : 0
 Trafficability of farm machinery : Good
 Paddy planting for last 3 years : Idle

Category	Step 1	Step 2	Step 3		Step 4	Step 5	Step 6	Step 7 (B/C)	Production (ton)
1	*	*	*	Vegetable	B	A	A	6.9	1,239
2	*	*	*	Coconut	B	-	A		307
				Sago	A	-	A		630
3	*	*	*	Vegetable	B	A	A	6.9	1,239
4	*	*	*	Fodder grasses	A	-	A		
5									
6									
7	*	*	*		*	*	*		
8	*	*	*		*	*	*		

NOTE Underline : Crops with highest potential (Class A) in terms of crop suitability, profitability, marketability and invest performance (B/C > 1).
 * : Potential categories
 A : Suitable
 B : Marginal suitable due to lack of drainage facilities
 C : Marginal suitable due to limited factors other than drainage conditions
 - : Not suitable

Crop Diversification Potential for PH261

Code Number : PH261 Name of Scheme : Temalir
 State : Pahang District : Raub
 Type of Scheme : Gravity & Pump
 Water source : Limited to single cropping
 Soil series : 2dt

Irrigable area (ha) Main : 11 Off : 11
 Trafficability of farm machinery : Good
 Paddy planting for last 3 years : Idle

Category	Step 1	Step 2	Step 3		Step 4	Step 5	Step 6	Step 7 (B/C)	Production (ton)
1	*	*	*	Ginger	B	A	-	2.5	165
				Groundnut	A	A	A	0.9	29
				<u>Vegetable</u>	A	A	A	<u>13.8</u>	<u>195</u>
2	*	*	*	Durian/Mango	C	A	A	11.0	75
				Guava	C	A	-	3.1	264
				Banana	C	A	-	0.7	116
				<u>Cashewnut</u>	A	A	A	<u>8.7</u>	<u>19</u>
				Papaya	B	A	-	0.6	275
				Citrus	B	A	A	2.9	116
				<u>Pineapple</u>	A	A	A	<u>9.5</u>	<u>264</u>
				Coconut	A	-	A		48
				Oilpalm	C	A	A	0.9	211
				Cocoa	C	A	A	0.6	34
				Rubber	B	A	A	0.6	15
				Sago	C	-	A		99
				Coffee	A	A	A	0.7	10
				<u>Tea</u>	A	A	A	<u>10.4</u>	<u>14</u>
Clove	B	A	A	1.1	3				
Tabacco	B	A	A	0.7	99				
<u>Sugarcane</u>	A	A	A	<u>3.3</u>	<u>220</u>				
<u>Pepper</u>	A	A	A	<u>16.4</u>	<u>32</u>				
3	*	*	*	Maize	A	-	-		36
				Sorghum	A	-	A		41
				Ginger	B	A	-	2.5	165
				Groundnut	A	A	A	0.9	29
				<u>Vegetable</u>	A	A	A	<u>13.8</u>	<u>195</u>
4	*	*	*	Fodder grasses	A	-	A		
				Pasture	A	-	A		
5									
6									
7	*	*	*		*	*	*		
8	*	*	*		*	*	*		

NOTE Underline : Crops with highest potential (Class A) in terms of crop suitability, profitability, marketability and invest performance (B/C > 1).
 * : Potential categories
 A : Suitable
 B : Marginal suitable due to lack of drainage facilities
 C : Marginal suitable due to limited factors other than drainage conditions
 - : Not suitable

Crop Diversification Potential for PH262

Code Number : PH262 Name of Scheme : Tat/Tersan
 State : Pahang District : Raub
 Type of Scheme : Gravity & Pump
 Water source : Limited to single cropping
 Soil series : 2dt

Irrigable area (ha) Main : 77 Off : 77
 Trafficability of farm machinery : Good
 Paddy planting for last 3 years : Less than 50% of irrigable area

Category	Step 1	Step 2	Step 3		Step 4	Step 5	Step 6	Step 7 (B/C)	Production (ton)
1	*	*	*	Ginger	B	A	-	2.5	1,155
				Groundnut	A	A	A	0.9	201
				<u>Vegetable</u>	A	A	A	<u>13.8</u>	<u>1,363</u>
2	*	*	*	Durian/Mango	C	A	-	11.0	524
				Guava	C	A	-	3.1	1,848
				Banana	C	A	-	0.7	809
				<u>Cashewnut</u>	A	A	A	<u>8.7</u>	<u>136</u>
				Papaya	B	A	-	0.6	1,925
				Citrus	B	A	-	2.9	809
				Pineapple	A	A	-	9.5	1,848
				Coconut	A	-	A		337
				Oilpalm	C	A	A	0.9	1,478
				Cocoa	C	A	A	0.6	239
				Rubber	B	A	A	0.6	105
				Sago	C	-	A		693
				Coffee	A	A	A	0.7	68
				<u>Tea</u>	A	A	A	<u>10.4</u>	<u>100</u>
Clove	B	A	A	1.1	24				
Tabacco	B	A	A	0.7	693				
<u>Sugarcane</u>	A	A	A	<u>3.3</u>	<u>1,540</u>				
<u>Pepper</u>	A	A	A	<u>16.4</u>	<u>227</u>				
3	*	*	*	Maize	A	-	-		250
				Sorghum	A	-	A		289
				Ginger	B	A	-	2.5	1,155
				Groundnut	A	A	A	0.9	201
				<u>Vegetable</u>	A	A	A	<u>13.8</u>	<u>1,363</u>
4	*	*	*	Fodder grasses	A	-	A		
				Pasture	A	-	A		
5									
6									
7	*	*	*		*	*	*		
8	*	*	*		*	*	*		

NOTE Underline : Crops with highest potential (Class A) in terms of crop suitability, profitability, marketability and invest performance (B/C > 1).
 * : Potential categories
 A : Suitable
 B : Marginal suitable due to lack of drainage facilities
 C : Marginal suitable due to limited factors other than drainage conditions
 - : Not suitable

Crop Diversification Potential for PH263

Code Number : PH263 Name of Scheme : Tersang
 State : Pahang District : Raub
 Type of Scheme : Gravity
 Water source : Sufficient for double cropping
 Soil series : 2dt

Irrigable area (ha) Main : 59 Off : 32
 Trafficability of farm machinery : Good
 Paddy planting for last 3 years : Less than 50% of irrigable area

Category	Step 1	Step 2	Step 3		Step 4	Step 5	Step 6	Step 7 (B/C)	Production (ton)
1	*	*	*	Ginger	B	A	-	2.5	885
				Groundnut	A	A	A	0.9	154
				<u>Vegetable</u>	A	A	A	<u>13.8</u>	<u>1,044</u>
2	*	*	*	Durian/Mango	C	A	-	11.0	401
				Guava	C	A	-	3.1	1,416
				Banana	C	A	-	0.7	620
				<u>Cashewnut</u>	A	A	A	<u>8.7</u>	<u>104</u>
				Papaya	B	A	-	0.6	1,475
				Citrus	B	A	-	2.9	620
				Pineapple	A	A	-	9.5	1,416
				Coconut	A	-	A		258
				Oilpalm	C	A	A	0.9	1,133
				Cocoa	C	A	A	0.6	183
				Rubber	B	A	A	0.6	81
				Sago	C	-	A		531
				Coffee	A	A	A	0.7	52
				<u>Tea</u>	A	A	A	<u>10.4</u>	<u>77</u>
				Clove	B	A	A	1.1	18
Tabacco	B	A	A	0.7	531				
<u>Sugarcane</u>	A	A	A	<u>3.3</u>	<u>1,180</u>				
<u>Pepper</u>	A	A	A	<u>16.4</u>	<u>174</u>				
3	*	*	*	Maize	A	-	-		192
				Sorghum	A	-	A		221
				Ginger	B	A	-	2.5	885
				Groundnut	A	A	A	0.9	154
				<u>Vegetable</u>	A	A	A	<u>13.8</u>	<u>1,044</u>
4	*	*	*	Fodder grasses	A	-	A		
				Pasture	A	-	A		
5	*	*	*			A	-	2.0	
6	*	*	*		A	A	A		
7	*	*	*		*	*	*		
8	*	*	*		*	*	*		

NOTE Underline : Crops with highest potential (Class A) in terms of crop suitability, profitability, marketability and invest performance (B/C > 1).

* : Potential categories

A : Suitable

B : Marginal suitable due to lack of drainage facilities

C : Marginal suitable due to limited factors other than drainage conditions

- : Not suitable

Crop Diversification Potential for PH264

Code Number : PH264 Name of Scheme : Temunga
 State : Pahang District : Raub
 Type of Scheme : Gravity
 Water source : Sufficient for double cropping
 Soil series : 2Dt

Irrigable area (ha) Main : 6 Off : 0
 Trafficability of farm machinery : Good
 Paddy planting for last 3 years : Idle

Category	Step 1	Step 2	Step 3		Step 4	Step 5	Step 6	Step 7 (B/C)	Production (ton)
1	*	*	*	Ginger	C	A	A		90
				Groundnut	C	A	A		16
				Vegetable	C	A	A		106
2	*	*	*	Durian/Mango	C	A	A	11.0	41
				Guava	C	A	-	3.1	144
				Banana	C	A	A	0.7	63
				Cashewnut	C	A	A		11
				Papaya	C	A	-		150
				Citrus	C	A	A		63
				Pineapple	C	A	A	0.5	144
				Coconut	A	-	A		26
				Oilpalm	C	A	A	0.9	115
				Cocoa	C	A	A	0.6	19
				<u>Rubber</u>	A	A	A	1.1	8
				Coffee	C	A	A		5
				Tea	C	A	A		8
				Clove	C	A	A		2
				Tabacco	C	A	A		54
Sugarcane	C	A	A		120				
Pepper	C	A	A		18				
3	*	*	*	Maize	C	-	-		20
				Sorghum	C	-	A		23
				Ginger	C	A	A		90
				Groundnut	C	A	A		16
				Vegetable	C	A	A		106
4	*	*	*	Fodder grasses	C	-	A		
				Pasture	C	-	A		
5	*	*	*			A	-	2.0	
6	*	*	*						
7	*	*	*		*	*	*		
8	*	*	*		*	*	*		

NOTE Underline : Crops with highest potential (Class A) in terms of crop suitability, profitability, marketability and invest performance (B/C > 1).
 * : Potential categories
 A : Suitable
 B : Marginal suitable due to lack of drainage facilities
 C : Marginal suitable due to limited factors other than drainage conditions
 - : Not suitable

Crop Diversification Potential for PH265

Code Number : PH265 Name of Scheme : Tanjung Putus
 State : Pahang District : Raub
 Type of Scheme : Pump
 Water source : Sufficient for double cropping
 Soil series : 2dt

Irrigable area (ha) Main : 35 Off : 30
 Trafficability of farm machinery : Good
 Paddy planting for last 3 years : Less than 50% of irrigable area

Category	Step 1	Step 2	Step 3		Step 4	Step 5	Step 6	Step 7 (B/C)	Production (ton)
1	*	*	*	Ginger	B	A	-	2.5	525
				Groundnut	A	A	A	0.9	91
				<u>Vegetable</u>	A	A	A	<u>13.8</u>	<u>620</u>
2	*	*	*	Durian/Mango	C	A	-	11.0	238
				Guava	C	A	-	3.1	840
				Banana	C	A	-	0.7	368
				<u>Cashewnut</u>	A	A	A	<u>8.7</u>	<u>62</u>
				Papaya	B	A	-	0.6	875
				Citrus	B	A	-	2.9	368
				Pineapple	A	A	-	9.5	840
				Coconut	A	-	A		153
				Oilpalm	C	A	A	0.9	672
				Cocoa	C	A	A	0.6	109
				Rubber	B	A	A	0.6	48
				Sago	C	-	A		315
				Coffee	A	A	A	0.7	31
				<u>Tea</u>	A	A	A	<u>10.4</u>	<u>46</u>
Clove	B	A	A	1.1	11				
Tabacco	B	A	A	0.7	315				
<u>Sugarcane</u>	A	A	A	<u>3.3</u>	<u>700</u>				
<u>Pepper</u>	A	A	A	<u>16.4</u>	<u>103</u>				
3	*	*	*	Maize	A	-	-		114
				Sorghum	A	-	A		131
				Ginger	B	A	-	2.5	525
				Groundnut	A	A	A	0.9	91
				<u>Vegetable</u>	A	A	A	<u>13.8</u>	<u>620</u>
4	*	*	*	Fodder grasses	A	-	A		
				Pasture	A	-	A		
5	*	*	*			A	-	2.0	
6	*	*	*		A	A	A		
7	*	*	*		*	*	*		
8	*	*	*		*	*	*		

NOTE Underline : Crops with highest potential (Class A) in terms of crop suitability, profitability, marketability and invest performance (B/C > 1).
 * : Potential categories
 A : Suitable
 B : Marginal suitable due to lack of drainage facilities
 C : Marginal suitable due to limited factors other than drainage conditions
 - : Not suitable

Crop Diversification Potential for PH266

Code Number : PH266 Name of Scheme : Terpual
 State : Pahang District : Lipis
 Type of Scheme : Gravity
 Water source : Limited to single cropping
 Soil series : 2Dt

Irrigable area (ha) Main : 66 Off : 0
 Trafficability of farm machinery : Good
 Paddy planting for last 3 years : Idle

Category	Step 1	Step 2	Step 3		Step 4	Step 5	Step 6	Step 7 (B/C)	Production (ton)
1	*	*	*	Ginger	C	A	-		990
				Groundnut	C	A	A		172
				Vegetable	C	A	A		1,168
2	*	*	*	Durian/Mango	C	A	-	11.0	449
				Guava	C	A	-	3.1	1,584
				Banana	C	A	-	0.7	693
				Cashewnut	C	A	A		116
				Papaya	C	A	-		1,650
				Citrus	C	A	-		693
				Pineapple	C	A	-	0.5	1,584
				Coconut	A	-	A		289
				Oilpalm	C	A	A	0.9	1,267
				Cocoa	C	A	A	0.6	205
				<u>Rubber</u>	A	A	A	<u>1.1</u>	<u>90</u>
				Coffee	C	A	A		58
				Tea	C	A	A		86
				Clove	C	A	A		20
Tabacco	C	A	A		594				
Sugarcane	C	A	A		1,320				
Pepper	C	A	A		195				
3	*	*	*	Maize	C	-	-		215
				Sorghum	C	-	A		248
				Ginger	C	A	-		990
				Groundnut	C	A	A		172
				Vegetable	C	A	A		1,168
4	*	*	*	Fodder grasses	C	-	A		
				Pasture	C	-	A		
5									
6									
7	*	*	*		*	*	*		
8	*	*	*		*	*	*		

NOTE Underline : Crops with highest potential (Class A) in terms of crop suitability, profitability, marketability and invest performance (B/C > 1).
 * : Potential categories
 A : Suitable
 B : Marginal suitable due to lack of drainage facilities
 C : Marginal suitable due to limited factors other than drainage conditions
 - : Not suitable

Crop Diversification Potential for PH267

Code Number : PH267 Name of Scheme : Tampin/Kuala Kemahang
 State : Pahang District : Lipis
 Type of Scheme : Gravity
 Water source : Sufficient for double cropping
 Soil series : 2Dt

Irrigable area (ha) Main : 19 Off : 12
 Trafficability of farm machinery : Good
 Paddy planting for last 3 years : Less than 50% of irrigable area

Category	Step 1	Step 2	Step 3		Step 4	Step 5	Step 6	Step 7 (B/C)	Production (ton)
1	*	*	*	Ginger	C	A	-		285
				Groundnut	C	A	A		50
				Vegetable	C	A	A		336
2	*	*	*	Durian/Mango	C	A	A	11.0	129
				Guava	C	A	-	3.1	456
				Banana	C	A	A	0.7	200
				Cashewnut	C	A	A		33
				Papaya	C	A	-		475
				Citrus	C	A	A		200
				Pineapple	C	A	-	0.5	456
				Coconut	A	-	A		83
				Oilpalm	C	A	A	0.9	365
				Cocoa	C	A	A	0.6	59
				<u>Rubber</u>	A	A	A	<u>1.1</u>	<u>26</u>
				Coffee	C	A	A		17
				Tea	C	A	A		25
				Clove	C	A	A		6
Tabacco	C	A	A		171				
Sugarcane	C	A	A		380				
Pepper	C	A	A		56				
3	*	*	*	Maize	C	-	-		62
				Sorghum	C	-	A		71
				Ginger	C	A	-		285
				Groundnut	C	A	A		50
				Vegetable	C	A	A		336
4	*	*	*	Fodder grasses	C	-	A		
				Pasture	C	-	A		
5	*	*	*			A	-	2.0	
6	*	*	*						
7	*	*	*		*	*	*		
8	*	*	*		*	*	*		

NOTE Underline : Crops with highest potential (Class A) in terms of crop suitability, profitability, marketability and invest performance (B/C > 1).
 * : Potential categories
 A : Suitable
 B : Marginal suitable due to lack of drainage facilities
 C : Marginal suitable due to limited factors other than drainage conditions
 - : Not suitable

Crop Diversification Potential for PH268

Code Number : PH268 Name of Scheme : Teris
 State : Pahang District : Lipis
 Type of Scheme : Gravity
 Water source : Sufficient for double cropping
 Soil series : 2Dt

Irrigable area (ha) Main : 23 Off : 14
 Trafficability of farm machinery : Good
 Paddy planting for last 3 years : More than 50% of irrigable area

Category	Step 1	Step 2	Step 3		Step 4	Step 5	Step 6	Step 7 (B/C)	Production (ton)
1	*	*	*	Ginger	C	A	-		345
				Groundnut	C	A	A		60
				Vegetable	C	A	A		407
2	*	*	*	Durian/Mango	C	A	A	11.0	156
				Guava	C	A	-	3.1	552
				Banana	C	A	A	0.7	242
				Cashewnut	C	A	A		40
				Papaya	C	A	-		575
				Citrus	C	A	A		242
				Pineapple	C	A	-	0.5	552
				Coconut	A	-	A		101
				Oilpalm	C	A	A	0.9	442
				Cocoa	C	A	A	0.6	71
				<u>Rubber</u>	<u>A</u>	<u>A</u>	<u>A</u>	<u>1.1</u>	<u>32</u>
				Coffee	C	A	A		20
				Tea	C	A	A		30
				Clove	C	A	A		7
				Tabacco	C	A	A		207
Sugarcane	C	A	A		460				
Pepper	C	A	A		68				
3	*	*	*	Maize	C	-	-		75
				Sorghum	C	-	A		86
				Ginger	C	A	-		345
				Groundnut	C	A	A		60
				Vegetable	C	A	A		407
4	*	*	*	Fodder grasses	C	-	A		
				Pasture	C	-	A		
5	*	*	*			A	-	2.0	
6	*	*	*						
7	*	*	*		*	*	*		
8	*	*	*		*	*	*		

NOTE Underline : Crops with highest potential (Class A) in terms of crop suitability, profitability, marketability and invest performance (B/C > 1).
 * : Potential categories
 A : Suitable
 B : Marginal suitable due to lack of drainage facilities
 C : Marginal suitable due to limited factors other than drainage conditions
 - : Not suitable

Crop Diversification Potential for PH269

Code Number : PH269 Name of Scheme : Teka
 State : Pahang District : Lipis
 Type of Scheme : Gravity
 Water source : Sufficient for double cropping
 Soil series : 2Dt

Irrigable area (ha) Main : 35 Off : 24
 Trafficability of farm machinery : Good
 Paddy planting for last 3 years : More than 50% of irrigable area

Category	Step 1	Step 2	Step 3		Step 4	Step 5	Step 6	Step 7 (B/C)	Production (ton)
1	*	*	*	Ginger	C	A	-		525
				Groundnut	C	A	A		91
				Vegetable	C	A	A		620
2	*	*	*	Durian/Mango	C	A	-	11.0	238
				Guava	C	A	-	3.1	840
				Banana	C	A	A	0.7	368
				Cashewnut	C	A	A		62
				Papaya	C	A	-		875
				Citrus	C	A	A		368
				Pineapple	C	A	-	0.5	840
				Coconut	A	-	A		153
				Oilpalm	C	A	A	0.9	672
				Cocoa	C	A	A	0.6	109
				<u>Rubber</u>	A	A	A	1.1	48
				Coffee	C	A	A		31
				Tea	C	A	A		46
				Clove	C	A	A		11
Tabacco	C	A	A		315				
Sugarcane	C	A	A		700				
Pepper	C	A	A		103				
3	*	*	*	Maize	C	-	-		114
				Sorghum	C	-	A		131
				Ginger	C	A	-		525
				Groundnut	C	A	A		91
				Vegetable	C	A	A		620
4	*	*	*	Fodder grasses	C	-	A		
				Pasture	C	-	A		
5	*	*	*			A	-	2.0	
6	*	*	*						
7	*	*	*		*	*	*		
8	*	*	*		*	*	*		

NOTE Underline : Crops with highest potential (Class A) in terms of crop suitability, profitability, marketability and invest performance (B/C > 1).
 * : Potential categories
 A : Suitable
 B : Marginal suitable due to lack of drainage facilities
 C : Marginal suitable due to limited factors other than drainage conditions
 - : Not suitable

Crop Diversification Potential for PH270

Code Number : PH270 Name of Scheme : Triang Hilir
 State : Pahang District : Bentong
 Type of Scheme : Gravity
 Water source : Limited to single cropping
 Soil series : 2Dt

Irrigable area (ha) Main : 245 Off : 245
 Trafficability of farm machinery : Good
 Paddy planting for last 3 years : Less than 50% of irrigable area

Category	Step 1	Step 2	Step 3		Step 4	Step 5	Step 6	Step 7 (B/C)	Production (ton)
1	*	*	*	Ginger	C	A	-		3,675
				Groundnut	C	A	A		639
				Vegetable	C	A	A		4,337
2	*	*	*	Durian/Mango	C	A	-	11.0	1,666
				Guava	C	A	-	3.1	5,880
				Banana	C	A	-	0.7	2,573
				Cashewnut	C	A	A		431
				Papaya	C	A	-		6,125
				Citrus	C	A	-		2,573
				Pineapple	C	A	-	0.5	5,880
				Coconut	A	-	A		1,073
				Oilpalm	C	A	A	0.9	4,704
				Cocoa	C	A	A	0.6	760
				<u>Rubber</u>	A	A	A	1.1	336
				Coffee	C	A	A		216
				Tea	C	A	A		319
				Clove	C	A	A		76
Tabacco	C	A	A		2,205				
Sugarcane	C	A	A		4,900				
Pepper	C	A	A		723				
3	*	*	*	Maize	C	-	-		796
				Sorghum	C	-	A		919
				Ginger	C	A	-		3,675
				Groundnut	C	A	A		639
				Vegetable	C	A	A		4,337
4	*	*	*	Fodder grasses	C	-	A		
				Pasture	C	-	A		
5									
6									
7	*	*	*		*	*	*		
8	*	*	*		*	*	*		

NOTE Underline : Crops with highest potential (Class A) in terms of crop suitability, profitability, marketability and invest performance (B/C > 1).

* : Potential categories

A : Suitable

B : Marginal suitable due to lack of drainage facilities

C : Marginal suitable due to limited factors other than drainage conditions

- : Not suitable

Crop Diversification Potential for PH271

Code Number : PH271 Name of Scheme : Ubai
 State : Pahang District : Kuantan
 Type of Scheme : Inundation
 Water source : Limited to single cropping
 Soil series : 4do(n)

Irrigable area (ha) Main : 49 Off : 0
 Trafficability of farm machinery : No good
 Paddy planting for last 3 years : Idle

Category	Step 1	Step 2	Step 3		Step 4	Step 5	Step 6	Step 7 (B/C)	Production (ton)
1	*	*	*	Vegetable	B	A	A	6.9	867
2	*	*	*						
3	*	*	*	Vegetable	B	A	A	6.9	867
4	*	*	*						
5									
6									
7	*	*	*		*	*	*		
8	*	*	*		*	*	*		

NOTE Underline : Crops with highest potential (Class A) in terms of crop suitability, profitability, marketability and invest performance (B/C > 1).
 * : Potential categories
 A : Suitable
 B : Marginal suitable due to lack of drainage facilities
 C : Marginal suitable due to limited factors other than drainage conditions
 - : Not suitable

Crop Diversification Potential for PH272

Code Number : PH272 Name of Scheme : Ulu Cheka
 State : Pahang District : Jerantut
 Type of Scheme : Inundation
 Water source : Sufficient for double cropping
 Soil series : 2Dt

Irrigable area (ha) Main : 81 Off : 0
 Trafficability of farm machinery : Good
 Paddy planting for last 3 years : Less than 50% of irrigable area

Category	Step 1	Step 2	Step 3		Step 4	Step 5	Step 6	Step 7 (B/C)	Production (ton)
1	*	*	*	Ginger	C	A	-		1,215
				Groundnut	C	A	A		211
				Vegetable	C	A	A		1,434
2	*	*	*	Durian/Mango	C	A	A	11.0	551
				Guava	C	A	-	3.1	1,944
				Banana	C	A	A	0.7	851
				Cashewnut	C	A	A		143
				Papaya	C	A	-		2,025
				Citrus	C	A	-		851
				Pineapple	C	A	-	0.5	1,944
				Coconut	A	-	A		355
				Oilpalm	C	A	A	0.9	1,555
				Cocoa	C	A	A	0.6	251
				<u>Rubber</u>	A	A	A	1.1	111
				Coffee	C	A	A		71
				Tea	C	A	A		105
				Clove	C	A	A		25
Tabacco	C	A	A		729				
Sugarcane	C	A	A		1,620				
Pepper	C	A	A		239				
3	*	*	*	Maize	C	-	-		263
				Sorghum	C	-	A		304
				Ginger	C	A	-		1,215
				Groundnut	C	A	A		211
				Vegetable	C	A	A		1,434
4	*	*	*	Fodder grasses	C	-	A		
				Pasture	C	-	A		
5	*	*	*			A	-	2.0	
6	*	*	*						
7	*	*	*		*	*	*		
8	*	*	*		*	*	*		

NOTE Underline : Crops with highest potential (Class A) in terms of crop suitability, profitability, marketability and invest performance (B/C > 1).
 * : Potential categories
 A : Suitable
 B : Marginal suitable due to lack of drainage facilities
 C : Marginal suitable due to limited factors other than drainage conditions
 - : Not suitable

Crop Diversification Potential for PH273

Code Number : PH273 Name of Scheme : Ulu Retang
 State : Pahang District : Jerantut
 Type of Scheme : Pump
 Water source : Sufficient for double cropping
 Soil series : 2dt

Irrigable area (ha) Main : 5 Off : 0
 Trafficability of farm machinery : Good
 Paddy planting for last 3 years : Idle

Category	Step 1	Step 2	Step 3		Step 4	Step 5	Step 6	Step 7 (B/C)	Production (ton)
1	*	*	*	Ginger	B	A	A	2.5	75
				Groundnut	A	A	A	0.9	13
				<u>Vegetable</u>	A	A	A	<u>13.8</u>	<u>89</u>
2	*	*	*	Durian/Mango	C	A	A	11.0	34
				Guava	C	A	-	3.1	120
				Banana	C	A	A	0.7	53
				<u>Cashewnut</u>	A	A	A	<u>8.7</u>	<u>9</u>
				Papaya	B	A	A	0.6	125
				Citrus	B	A	A	2.9	53
				<u>Pineapple</u>	A	A	A	<u>2.5</u>	<u>120</u>
				Coconut	A	-	A		22
				Oilpalm	C	A	A	0.9	96
				Cocoa	C	A	A	0.6	16
				Rubber	B	A	A	0.6	7
				Sago	C	-	A		45
				Coffee	A	A	A	0.7	4
				<u>Tea</u>	A	A	A	<u>10.4</u>	<u>7</u>
				Clove	B	A	A	1.1	2
Tabacco	B	A	A	0.7	45				
<u>Sugarcane</u>	A	A	A	<u>3.3</u>	<u>100</u>				
<u>Pepper</u>	A	A	A	<u>16.4</u>	<u>15</u>				
3	*	*	*	Maize	A	-	-		16
				Sorghum	A	-	A		19
				Ginger	B	A	A	2.5	75
				Groundnut	A	A	A	0.9	13
				<u>Vegetable</u>	A	A	A	<u>13.8</u>	<u>89</u>
4	*	*	*	Fodder grasses	A	-	A		
				Pasture	A	-	A		
5	*	*	*			A	-	2.0	
6	*	*	*		A	A	A		
7	*	*	*		*	*	*		
8	*	*	*		*	*	*		

NOTE Underline : Crops with highest potential (Class A) in terms of crop suitability, profitability, marketability and invest performance (B/C > 1).
 * : Potential categories
 A : Suitable
 B : Marginal suitable due to lack of drainage facilities
 C : Marginal suitable due to limited factors other than drainage conditions
 - : Not suitable

Crop Diversification Potential for PH274

Code Number : PH274 Name of Scheme : Ulu Temau
 State : Pahang District : Raub
 Type of Scheme : Gravity
 Water source : Sufficient for double cropping
 Soil series : 2Dt

Irrigable area (ha) Main : 22 Off : 8
 Trafficability of farm machinery : Good
 Paddy planting for last 3 years : Idle

Category	Step 1	Step 2	Step 3		Step 4	Step 5	Step 6	Step 7 (B/C)	Production (ton)
1	*	*	*	Ginger	C	A	-		330
				Groundnut	C	A	A		57
				Vegetable	C	A	A		389
2	*	*	*	Durian/Mango	C	A	-	11.0	150
				Guava	C	A	-	3.1	528
				Banana	C	A	-	0.7	231
				Cashewnut	C	A	A		39
				Papaya	C	A	-		550
				Citrus	C	A	-		231
				Pineapple	C	A	-	0.5	528
				Coconut	A	-	A		96
				Oilpalm	C	A	A	0.9	422
				Cocoa	C	A	A	0.6	68
				<u>Rubber</u>	A	A	A	1.1	30
				Coffee	C	A	A		19
				Tea	C	A	A		29
				Clove	C	A	A		7
Tabacco	C	A	A		198				
Sugarcane	C	A	A		440				
Pepper	C	A	A		65				
3	*	*	*	Maize	C	-	-		72
				Sorghum	C	-	A		83
				Ginger	C	A	-		330
				Groundnut	C	A	A		57
				Vegetable	C	A	A		389
4	*	*	*	Fodder grasses	C	-	A		
				Pasture	C	-	A		
5	*	*	*			A	-	2.0	
6	*	*	*						
7	*	*	*		*	*	*		
8	*	*	*		*	*	*		

NOTE Underline : Crops with highest potential (Class A) in terms of crop suitability, profitability, marketability and invest performance (B/C > 1).
 * : Potential categories
 A : Suitable
 B : Marginal suitable due to lack of drainage facilities
 C : Marginal suitable due to limited factors other than drainage conditions
 - : Not suitable

Crop Diversification Potential for PH275

Code Number : PH275 Name of Scheme : Ulu Gali
 State : Pahang District : Raub
 Type of Scheme : Gravity
 Water source : Sufficient for double cropping
 Soil series : 2Dt

Irrigable area (ha) Main : 204 Off : 101
 Trafficability of farm machinery : Good
 Paddy planting for last 3 years : Less than 50% of irrigable area

Category	Step 1	Step 2	Step 3		Step 4	Step 5	Step 6	Step 7 (B/C)	Production (ton)
1	*	*	*	Ginger	C	A	-		3,060
				Groundnut	C	A	A		532
				Vegetable	C	A	-		3,611
2	*	*	*	Durian/Mango	C	A	-	11.0	1,387
				Guava	C	A	-	3.1	4,896
				Banana	C	A	-	0.7	2,142
				Cashewnut	C	A	A		359
				Papaya	C	A	-		5,100
				Citrus	C	A	-		2,142
				Pineapple	C	A	-	0.5	4,896
				Coconut	A	-	A		894
				Oilpalm	C	A	A	0.9	3,917
				Cocoa	C	A	A	0.6	632
				<u>Rubber</u>	<u>A</u>	<u>A</u>	<u>A</u>	<u>1.1</u>	<u>279</u>
				Coffee	C	A	A		180
				Tea	C	A	A		265
				Clove	C	A	A		63
Tabacco	C	A	A		1,836				
Sugarcane	C	A	A		4,080				
Pepper	C	A	A		602				
3	*	*	*	Maize	C	-	-		663
				Sorghum	C	-	A		765
				Ginger	C	A	-		3,060
				Groundnut	C	A	A		532
				Vegetable	C	A	-		3,611
4	*	*	*	Fodder grasses	C	-	A		
				Pasture	C	-	A		
5	*	*	*			A	-	2.0	
6	*	*	*						
7	*	*	*		*	*	*		
8	*	*	*		*	*	*		

NOTE Underline : Crops with highest potential (Class A) in terms of crop suitability, profitability, marketability and invest performance (B/C > 1).
 * : Potential categories
 A : Suitable
 B : Marginal suitable due to lack of drainage facilities
 C : Marginal suitable due to limited factors other than drainage conditions
 - : Not suitable

Crop Diversification Potential for PH276

Code Number : PH276 Name of Scheme : Ulu Lepar
 State : Pahang District : Raub
 Type of Scheme : Gravity
 Water source : Insufficient for main season paddy
 Soil series : 2Dt

Irrigable area (ha) Main : 226 Off : 12
 Trafficability of farm machinery : Good
 Paddy planting for last 3 years : Idle

Category	Step 1	Step 2	Step 3		Step 4	Step 5	Step 6	Step 7 (B/C)	Production (ton)
1	*	*	*	Ginger	C	A	-		3,390
				Groundnut	C	A	A		590
				Vegetable	C	A	-		4,000
2	*	*	*	Durian/Mango	C	A	-	11.0	1,537
				Guava	C	A	-	3.1	5,424
				Banana	C	A	-	0.7	2,373
				Cashewnut	C	A	A		398
				Papaya	C	A	-		5,650
				Citrus	C	A	-		2,373
				Pineapple	C	A	-	0.5	5,424
				Coconut	A	-	A		990
				Oilpalm	C	A	A	0.9	4,339
				Cocoa	C	A	A	0.6	701
				<u>Rubber</u>	<u>A</u>	<u>A</u>	<u>A</u>	<u>1.1</u>	<u>310</u>
				Coffee	C	A	A		199
				Tea	C	A	A		294
				Clove	C	A	A		70
Tabacco	C	A	A		2,034				
Sugarcane	C	A	A		4,520				
Pepper	C	A	A		667				
3									
4	*	*	*	Fodder grasses	C	-	A		
				Pasture	C	-	A		
5									
6									
7	*	*	*		*	*	*		
8	*	*	*		*	*	*		

NOTE Underline : Crops with highest potential (Class A) in terms of crop suitability, profitability, marketability and invest performance (B/C > 1).
 * : Potential categories
 A : Suitable
 B : Marginal suitable due to lack of drainage facilities
 C : Marginal suitable due to limited factors other than drainage conditions
 - : Not suitable

Crop Diversification Potential for PH277

Code Number : PH277 Name of Scheme : Ulu Atok
 State : Pahang District : Raub
 Type of Scheme : Gravity
 Water source : Sufficient for double cropping
 Soil series : 2Dt

Irrigable area (ha) Main : 24 Off : 12
 Trafficability of farm machinery : Good
 Paddy planting for last 3 years : Idle

Category	Step 1	Step 2	Step 3		Step 4	Step 5	Step 6	Step 7 (B/C)	Production (ton)
1	*	*	*	Ginger	C	A	-		360
				Groundnut	C	A	A		63
				Vegetable	C	A	A		425
2	*	*	*	Durian/Mango	C	A	-	11.0	163
				Guava	C	A	-	3.1	576
				Banana	C	A	-	0.7	252
				Cashewnut	C	A	A		42
				Papaya	C	A	-		600
				Citrus	C	A	-		252
				Pineapple	C	A	-	0.5	576
				Coconut	A	-	A		105
				Oilpalm	C	A	A	0.9	461
				Cocoa	C	A	A	0.6	74
				<u>Rubber</u>	A	A	A	<u>1.1</u>	<u>33</u>
				Coffee	C	A	A		21
				Tea	C	A	A		31
				Clove	C	A	A		7
Tabacco	C	A	A		216				
Sugarcane	C	A	A		480				
Pepper	C	A	A		71				
3	*	*	*	Maize	C	-	-		78
				Sorghum	C	-	A		90
				Ginger	C	A	-		360
				Groundnut	C	A	A		63
				Vegetable	C	A	A		425
4	*	*	*	Fodder grasses	C	-	A		
				Pasture	C	-	A		
5	*	*	*			A	-	2.0	
6	*	*	*						
7	*	*	*		*	*	*		
8	*	*	*		*	*	*		

NOTE Underline : Crops with highest potential (Class A) in terms of crop suitability, profitability, marketability and invest performance (B/C > 1).
 * : Potential categories
 A : Suitable
 B : Marginal suitable due to lack of drainage facilities
 C : Marginal suitable due to limited factors other than drainage conditions
 - : Not suitable

Crop Diversification Potential for PH278

Code Number : PH278 Name of Scheme : Ulu Sempalit
 State : Pahang District : Raub
 Type of Scheme : Inundation
 Water source : Limited to single cropping
 Soil series : 2dt

Irrigable area (ha) Main : 43 Off : 44
 Trafficability of farm machinery : Good
 Paddy planting for last 3 years : Idle

Category	Step 1	Step 2	Step 3		Step 4	Step 5	Step 6	Step 7 (B/C)	Production (ton)
1	*	*	*	Ginger	B	A	-	2.5	660
				Groundnut	A	A	A	0.9	115
				<u>Vegetable</u>	A	A	A	<u>13.8</u>	<u>779</u>
2	*	*	*	Durian/Mango	C	A	-	11.0	299
				Guava	C	A	-	3.1	1,056
				Banana	C	A	-	0.7	462
				<u>Cashewnut</u>	A	A	A	<u>8.7</u>	<u>77</u>
				Papaya	B	A	-	0.6	1,100
				Citrus	B	A	-	2.9	462
				Pineapple	A	A	-	9.5	1,056
				Coconut	A	-	A		193
				Oilpalm	C	A	A	0.9	845
				Cocoa	C	A	A	0.6	136
				Rubber	B	A	A	0.6	60
				Sago	C	-	A		396
				Coffee	A	A	A	0.7	39
				<u>Tea</u>	A	A	A	<u>10.4</u>	<u>57</u>
Clove	B	A	A	1.1	14				
Tabacco	B	A	A	0.7	396				
<u>Sugarcane</u>	A	A	A	<u>3.3</u>	<u>880</u>				
<u>Pepper</u>	A	A	A	<u>16.4</u>	<u>130</u>				
3	*	*	*	Maize	A	-	-		143
				Sorghum	A	-	A		165
				Ginger	B	A	-	2.5	660
				Groundnut	A	A	A	0.9	115
				<u>Vegetable</u>	A	A	A	<u>13.8</u>	<u>779</u>
4	*	*	*	Fodder grasses	A	-	A		
				Pasture	A	-	A		
5									
6									
7	*	*	*		*	*	*		
8	*	*	*		*	*	*		

NOTE Underline : Crops with highest potential (Class A) in terms of crop suitability, profitability, marketability and invest performance (B/C > 1).
 * : Potential categories
 A : Suitable
 B : Marginal suitable due to lack of drainage facilities
 C : Marginal suitable due to limited factors other than drainage conditions
 - : Not suitable

Crop Diversification Potential for PH279

Code Number : PH279 Name of Scheme : Ulu Lallang
 State : Pahang District : Lipis
 Type of Scheme : Gravity
 Water source : Sufficient for double cropping
 Soil series : 2Dt

Irrigable area (ha) Main : 35 Off : 14
 Trafficability of farm machinery : Good
 Paddy planting for last 3 years : Less than 50% of irrigable area

Category	Step 1	Step 2	Step 3		Step 4	Step 5	Step 6	Step 7 (B/C)	Production (ton)
1	*	*	*	Ginger	C	A	-		525
				Groundnut	C	A	A		91
				Vegetable	C	A	A		620
2	*	*	*	Durian/Mango	C	A	-	11.0	238
				Guava	C	A	-	3.1	840
				Banana	C	A	A	0.7	368
				Cashewnut	C	A	A		62
				Papaya	C	A	-		875
				Citrus	C	A	A		368
				Pineapple	C	A	-	0.5	840
				Coconut	A	-	A		153
				Oilpalm	C	A	A	0.9	672
				Cocoa	C	A	A	0.6	109
				<u>Rubber</u>	A	A	A	<u>1.1</u>	<u>48</u>
				Coffee	C	A	A		31
				Tea	C	A	A		46
				Clove	C	A	A		11
Tabacco	C	A	A		315				
Sugarcane	C	A	A		700				
Pepper	C	A	A		103				
3	*	*	*	Maize	C	-	-		114
				Sorghum	C	-	A		131
				Ginger	C	A	-		525
				Groundnut	C	A	A		91
				Vegetable	C	A	A		620
4	*	*	*	Fodder grasses	C	-	A		
				Pasture	C	-	A		
5	*	*	*			A	-	2.0	
6	*	*	*						
7	*	*	*		*	*	*		
8	*	*	*		*	*	*		

NOTE Underline : Crops with highest potential (Class A) in terms of crop suitability, profitability, marketability and invest performance (B/C > 1).
 * : Potential categories
 A : Suitable
 B : Marginal suitable due to lack of drainage facilities
 C : Marginal suitable due to limited factors other than drainage conditions
 - : Not suitable

Crop Diversification Potential for PH280

Code Number : PH280 Name of Scheme : Ulu Semel
 State : Pahang District : Bentong
 Type of Scheme : Gravity
 Water source : Limited to single cropping
 Soil series : 2Dt

Irrigable area (ha) Main : 77 Off : 16
 Trafficability of farm machinery : Good
 Paddy planting for last 3 years : Idle

Category	Step 1	Step 2	Step 3		Step 4	Step 5	Step 6	Step 7 (B/C)	Production (ton)
1	*	*	*	Ginger	C	A	-		1,155
				Groundnut	C	A	A		201
				Vegetable	C	A	A		1,363
2	*	*	*	Durian/Mango	C	A	A	11.0	524
				Guava	C	A	-	3.1	1,848
				Banana	C	A	A	0.7	809
				Cashewnut	C	A	A		136
				Papaya	C	A	-		1,925
				Citrus	C	A	A		809
				Pineapple	C	A	-	0.5	1,848
				Coconut	A	-	A		337
				Oilpalm	C	A	A	0.9	1,478
				Cocoa	C	A	A	0.6	239
				<u>Rubber</u>	A	A	A	<u>1.1</u>	<u>105</u>
				Coffee	C	A	A		68
				Tea	C	A	A		100
				Clove	C	A	A		24
Tabacco	C	A	A		693				
Sugarcane	C	A	A		1,540				
Pepper	C	A	A		227				
3	*	*	*	Maize	C	-	-		250
				Sorghum	C	-	A		289
				Ginger	C	A	-		1,155
				Groundnut	C	A	A		201
				Vegetable	C	A	A		1,363
4	*	*	*	Fodder grasses	C	-	A		
				Pasture	C	-	A		
5									
6									
7	*	*	*		*	*	*		
8	*	*	*		*	*	*		

NOTE Underline : Crops with highest potential (Class A) in terms of crop suitability, profitability, marketability and invest performance (B/C > 1).
 * : Potential categories
 A : Suitable
 B : Marginal suitable due to lack of drainage facilities
 C : Marginal suitable due to limited factors other than drainage conditions
 - : Not suitable

Crop Diversification Potential for PH281

Code Number : PH281 Name of Scheme : Kuala Wau/Betong
 State : Pahang District : Maran
 Type of Scheme : Inundation
 Water source : Sufficient for double cropping
 Soil series : 3d(t)

Irrigable area (ha) Main : 26 Off : 0
 Trafficability of farm machinery : Good
 Paddy planting for last 3 years : Idle

Category	Step 1	Step 2	Step 3		Step 4	Step 5	Step 6	Step 7 (B/C)	Production (ton)
1	*	*	*	Vegetable	B	A	A	6.9	460
2	*	*	*	Coconut	B	-	A		114
				Sago	A	-	A		234
3	*	*	*	Vegetable	B	A	A	6.9	460
4	*	*	*	Fodder grasses	A	-	A		
5	*	*	*			A	-	2.0	
6	*	*	*		A	A	A		
7	*	*	*		*	*	*		
8	*	*	*		*	*	*		

NOTE Underline : Crops with highest potential (Class A) in terms of crop suitability, profitability, marketability and invest performance (B/C > 1).
 * : Potential categories
 A : Suitable
 B : Marginal suitable due to lack of drainage facilities
 C : Marginal suitable due to limited factors other than drainage conditions
 - : Not suitable

Crop Diversification Potential for PH282

Code Number : PH282 Name of Scheme : Wah
 State : Pahang District : Pekan
 Type of Scheme : Inundation
 Water source : Limited to single cropping
 Soil series : 3d(t)

Irrigable area (ha) Main : 39 Off : 0
 Trafficability of farm machinery : Good
 Paddy planting for last 3 years : Idle

Category	Step 1	Step 2	Step 3		Step 4	Step 5	Step 6	Step 7 (B/C)	Production (ton)
1	*	*	*	Vegetable	B	A	A	6.9	690
2	*	*	*	Coconut	B	-	A		171
				Sago	A	-	A		351
3	*	*	*	Vegetable	B	A	A	6.9	690
4	*	*	*	Fodder grasses	A	-	A		
5									
6									
7	*	*	*		*	*	*		
8	*	*	*		*	*	*		

NOTE. Underline : Crops with highest potential (Class A) in terms of crop suitability, profitability, marketability and invest performance (B/C > 1).
 * : Potential categories
 A : Suitable
 B : Marginal suitable due to lack of drainage facilities
 C : Marginal suitable due to limited factors other than drainage conditions
 - : Not suitable

Crop Diversification Potential for PH283

Code Number : PH283 Name of Scheme : Nangka
 State : Pahang District : Kuantan
 Type of Scheme : Inundation
 Water source : Limited to single cropping
 Soil series : 4dt

Irrigable area (ha) Main : 131 Off : 0
 Trafficability of farm machinery : Good
 Paddy planting for last 3 years : Idle

Category	Step 1	Step 2	Step 3		Step 4	Step 5	Step 6	Step 7 (B/C)	Production (ton)
1	*	*	*						
2	*	*	*	Coconut	C	-	A		574
				Sago	A	-	A		1,179
3	*	*	*						
4	*	*	*	Fodder grasses	A	-	A		
5									
6									
7	*	*	*		*	*	*		
8	*	*	*		*	*	*		

NOTE Underline : Crops with highest potential (Class A) in terms of crop suitability, profitability, marketability and invest performance (B/C > 1).
 * : Potential categories
 A : Suitable
 B : Marginal suitable due to lack of drainage facilities
 C : Marginal suitable due to limited factors other than drainage conditions
 - : Not suitable

Crop Diversification Potential for PH284

Code Number : PH284 Name of Scheme : Baru Batu Sawar
 State : Pahang District : Temerloh
 Type of Scheme : Inundation
 Water source : Limited to single cropping
 Soil series : 3d(t)

Irrigable area (ha) Main : 8 Off : 0
 Trafficability of farm machinery : Good
 Paddy planting for last 3 years : Idle

Category	Step 1	Step 2	Step 3		Step 4	Step 5	Step 6	Step 7 (B/C)	Production (ton)
1	*	*	*	Vegetable	B	A	A	6.9	142
2	*	*	*	Coconut	B	-	A		35
				Sago	A	-	A		72
3	*	*	*	Vegetable	B	A	A	6.9	142
4	*	*	*	Fodder grasses	A	-	A		
5									
6									
7	*	*	*		*	*	*		
8	*	*	*		*	*	*		

NOTE Underline : Crops with highest potential (Class A) in terms of crop suitability, profitability, marketability and invest performance (B/C > 1).
 * : Potential categories
 A : Suitable
 B : Marginal suitable due to lack of drainage facilities
 C : Marginal suitable due to limited factors other than drainage conditions
 - : Not suitable

Crop Diversification Potential for PH285

Code Number : PH285 Name of Scheme : Nabon
 State : Pahang District : Lipis
 Type of Scheme : Gravity
 Water source : Limited to single cropping
 Soil series : 2Dt

Irrigable area (ha) Main : 21 Off : 6
 Trafficability of farm machinery : Good
 Paddy planting for last 3 years : Idle

Category	Step 1	Step 2	Step 3		Step 4	Step 5	Step 6	Step 7 (B/C)	Production (ton)
1	*	*	*	Ginger	C	A	-		315
				Groundnut	C	A	A		55
				Vegetable	C	A	A		372
2	*	*	*	Durian/Mango	C	A	A	11.0	143
				Guava	C	A	-	3.1	504
				Banana	C	A	A	0.7	221
				Cashewnut	C	A	A		37
				Papaya	C	A	-		525
				Citrus	C	A	A		221
				Pineapple	C	A	-	0.5	504
				Coconut	A	-	A		92
				Oilpalm	C	A	A	0.9	403
				Cocoa	C	A	A	0.6	65
				<u>Rubber</u>	A	A	A	<u>1.1</u>	<u>29</u>
				Coffee	C	A	A		18
				Tea	C	A	A		27
				Clove	C	A	A		7
Tabacco	C	A	A		189				
Sugarcane	C	A	A		420				
Pepper	C	A	A		62				
3	*	*	*	Maize	C	-	-		68
				Sorghum	C	-	A		79
				Ginger	C	A	-		315
				Groundnut	C	A	A		55
				Vegetable	C	A	A		372
4	*	*	*	Fodder grasses	C	-	A		
				Pasture	C	-	A		
5									
6									
7	*	*	*		*	*	*		
8	*	*	*		*	*	*		

NOTE Underline : Crops with highest potential (Class A) in terms of crop suitability, profitability, marketability and invest performance (B/C > 1).

- * : Potential categories
- A : Suitable
- B : Marginal suitable due to lack of drainage facilities
- C : Marginal suitable due to limited factors other than drainage conditions
- : Not suitable

Crop Diversification Potential for PH286

Code Number : PH286 Name of Scheme : Cagar Hutang
 State : Pahang District : Kuantan
 Type of Scheme : Inundation
 Water source : Sufficient for double cropping
 Soil series : 4dt

Irrigable area (ha) Main : 33 Off : 0
 Trafficability of farm machinery : Good
 Paddy planting for last 3 years : Idle

Category	Step 1	Step 2	Step 3		Step 4	Step 5	Step 6	Step 7 (B/C)	Production (ton)
1	*	*	*						
2	*	*	*	Coconut	C	-	A		145
				Sago	A	-	A		297
3	*	*	*						
4	*	*	*	Fodder grasses	A	-	A		
5	*	*	*			A	-	2.0	
6	*	*	*		A	A	A		
7	*	*	*		*	*	*		
8	*	*	*		*	*	*		

NOTE Underline : Crops with highest potential (Class A) in terms of crop suitability, profitability, marketability and invest performance (B/C > 1).
 * : Potential categories
 A : Suitable
 B : Marginal suitable due to lack of drainage facilities
 C : Marginal suitable due to limited factors other than drainage conditions
 - : Not suitable

Crop Diversification Potential for PH287

Code Number : PH287 Name of Scheme : Kemahang
 State : Pahang District : Lipis
 Type of Scheme : Gravity
 Water source : Sufficient for double cropping
 Soil series : 2Dt

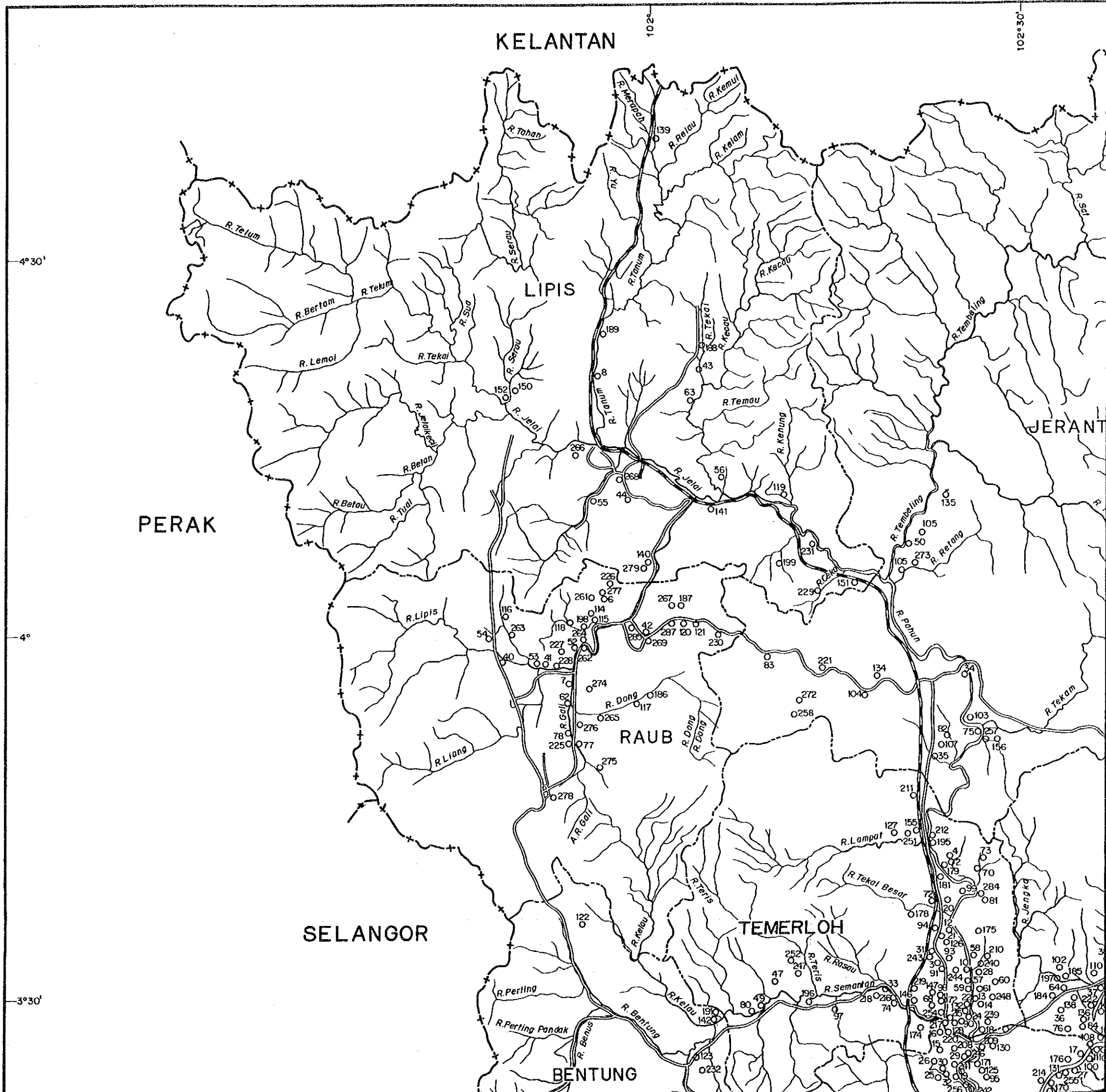
Irrigable area (ha) Main : 23 Off : 23
 Trafficability of farm machinery : Good
 Paddy planting for last 3 years : Idle

Category	Step 1	Step 2	Step 3		Step 4	Step 5	Step 6	Step 7 (B/C)	Production (ton)
1	*	*	*	Ginger	C	A	-		345
				Groundnut	C	A	A		60
				Vegetable	C	A	A		407
2	*	*	*	Durian/Mango	C	A	A	11.0	156
				Guava	C	A	-	3.1	552
				Banana	C	A	A	0.7	242
				Cashewnut	C	A	A		40
				Papaya	C	A	-		575
				Citrus	C	A	A		242
				Pineapple	C	A	-	0.5	552
				Coconut	A	-	A		101
				Oilpalm	C	A	A	0.9	442
				Cocoa	C	A	A	0.6	71
				<u>Rubber</u>	A	A	A	1.1	32
				Coffee	C	A	A		20
				Tea	C	A	A		30
				Clove	C	A	A		7
				Tabacco	C	A	A		207
Sugarcane	C	A	A		460				
Pepper	C	A	A		68				
3	*	*	*	Maize	C	-	-		75
				Sorghum	C	-	A		86
				Ginger	C	A	-		345
				Groundnut	C	A	A		60
				Vegetable	C	A	A		407
4	*	*	*	Fodder grasses	C	-	A		
				Pasture	C	-	A		
5	*	*	*			A	-	2.0	
6	*	*	*						
7	*	*	*		*	*	*		
8	*	*	*		*	*	*		

NOTE Underline : Crops with highest potential (Class A) in terms of crop suitability, profitability, marketability and invest performance (B/C > 1).
 * : Potential categories
 A : Suitable
 B : Marginal suitable due to lack of drainage facilities
 C : Marginal suitable due to limited factors other than drainage conditions
 - : Not suitable

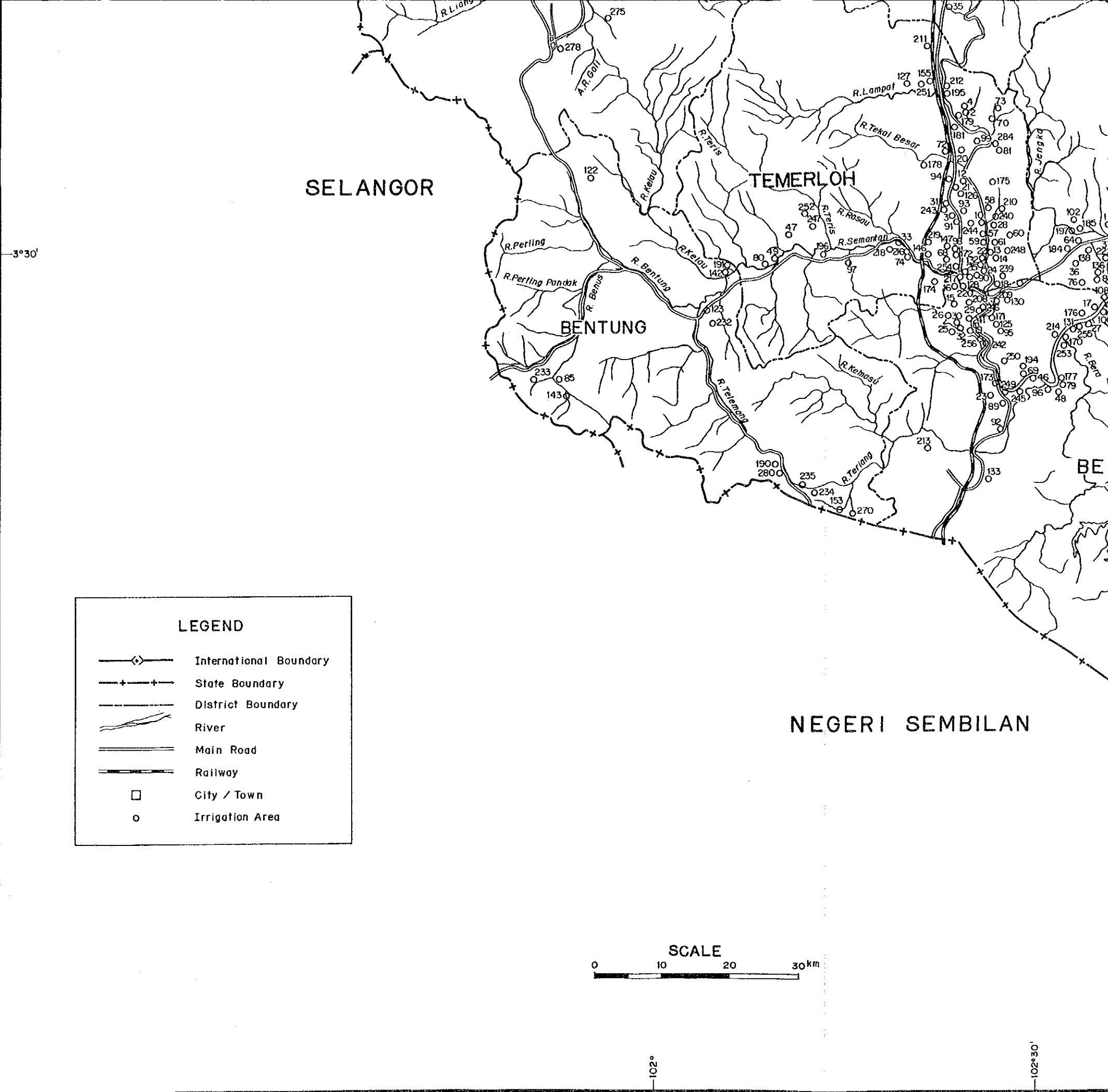
List of Scheme

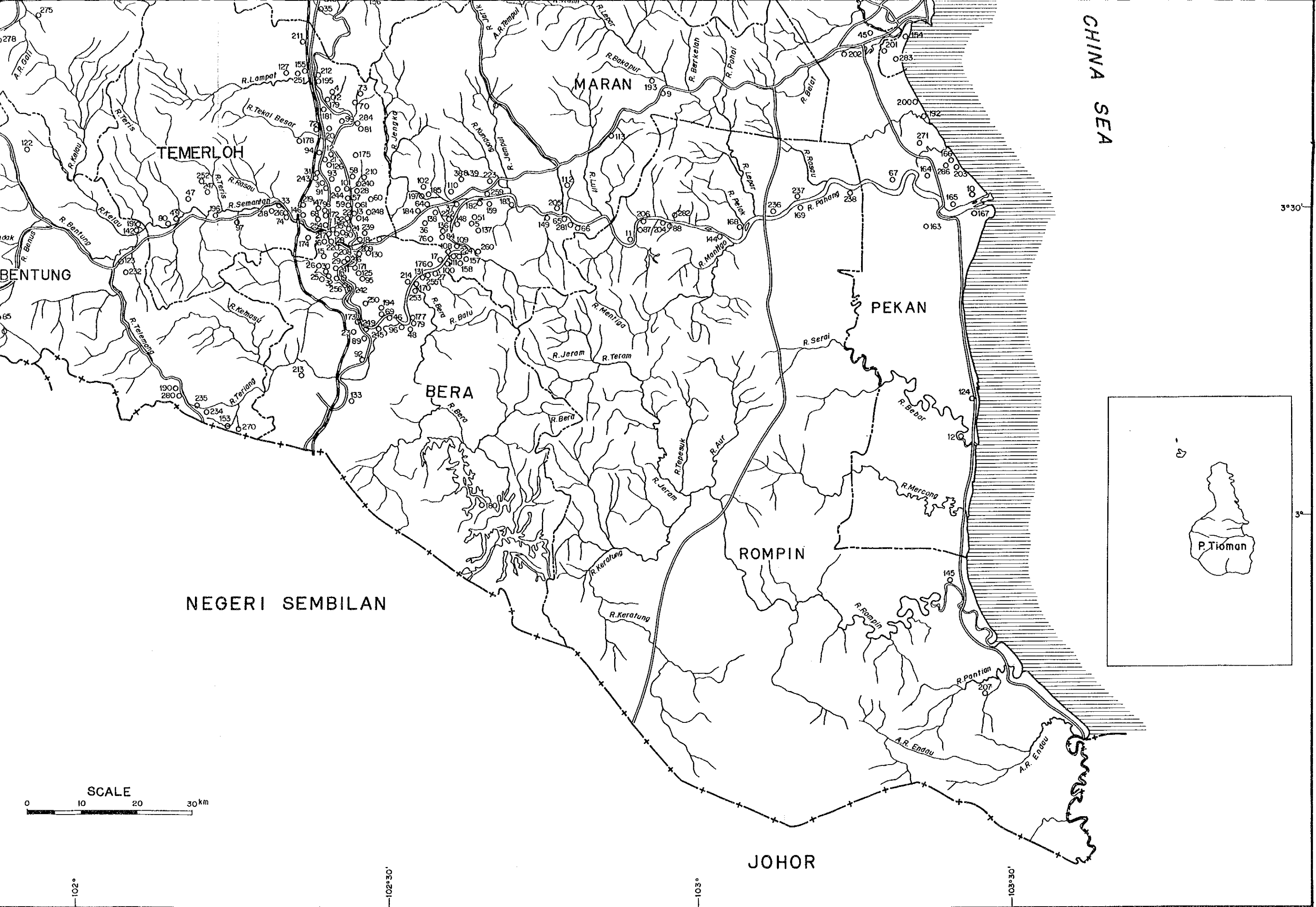
Code	Name	Irrigable area (ha)		Code	Name	Irrigable area (ha)	
		Main season	Off season			Main season	Off season
Bentong				Raub			
PH085	Janda Baik Hilir	16	16	PH006	Atok I and II	49	49
PH185B	Ulu Cheringging	21	21	PH007	Ajai	35	28
PH185C	Chempereh	35	35	PH040	Batu Talam	98	98
PH185D	Cheringging	24	24	PH041	Bukit Gambut	10	0
PH1123	Karak Setia	12	0	PH052	Chenua	98	98
PH1142	Leangkong	50	41	PH053	Cherlang	29	12
PH1143	Lurau	15	15	PH054	Chin	8	0
PH1153	Melan	43	28	PH077	Gali Tengah	147	142
PH1190	Ponsoon	12	4	PH078	Hilir	30	30
PH1191	Pelantar	7	0	PH114	Kuala Merang	29	28
PH1232	Sempa	7	0	PH115	Kuala Atok	30	16
PH1233	Sun-Sun	52	41	PH116	Kenong	39	34
PH1234	Simpang Pelangai	39	10	PH117	Kuala Keloi	17	8
PH1235	Seratus Tujuh	76	32	PH118	Kekabu	17	8
PH1270	Triang Hilir	245	245	PH186	Pemah Bedu	30	30
PH1280	Ulu Senci	77	16	PH198	Renggul	41	41
Jerantut				Rompin			
PH035	Bkt. Dinding	20	0	PH145	Mencali/Gading	92	0
PH050	Cheboong	14	0	PH146	Menakab	30	0
PH051	Celuk Murun	23	0	PH147	Mengkayang	111	0
PH075	Paya Gintong/Sokti	103	103	Temerloh			
PH082	Jerangsang	57	0	PH002	Paya Angut	93	0
PH083	Joor	18	0	PH003	Ara, Kerdu	4	0
PH103	Kangsar	283	283	PH004	Angut Ulu, Jenderak	45	0
PH104	Kampung Baharu	44	0	PH014	Dintang Hulu	5	0
PH105	Kekura	24	0	PH015	Besar Tualang	108	0
PH106	Kuala Retang	10	0	PH016	Busut Jin	28	0
PH107	Kool	40	0	PH017	Batu Bor	73	0
PH131	Lubok Lian	31	0	PH018	Bangau Parit	13	0
PH134	Lata Kasah	65	0	PH019	Berhala Kapas	27	0
PH135	Lubok Payong	16	0	PH020	Biut, Jenderak	64	0
PH156	Nyong	14	0	PH021	Paya Besar, Lipat Kajang	13	0
PH221	Som	7	0	PH022	Banir	15	0
PH257	Terpai	66	8	PH023	Besar Mengkarak	20	0
PH258	Tengah	14	0	PH024	Bangau	25	0
PH272	Ulu Cheka	81	0	PH025	Besar Lebak	18	0
PH273	Ulu Retang	5	0	PH026	Paya Batu	8	8
Kuala Rompin				Perak			
PH1207	Sepayang	244	0	PH027	Besar Bohor	124	0
Kuantan				Raub			
PH001	Ampang	47	0	PH028	Badok	51	0
PH009	Bungor	57	0	PH029	Baroh	36	0
PH086	Kubang Karah	130	0	PH030	Kg. Belungu	13	0
PH154	Nyonyak	18	0	PH031	Bakoh, Kerdu	8	0
PH161	Pinang	67	0	PH032	Beringin	11	0
PH162	Pakoh	88	0	PH033	Datu Hampar	27	0
PH192	Rhu	33	0	PH034	Betong	69	0
PH193	Rambutan	35	0	PH045	Paya Besar	975	0
PH200	Sepat	94	0	PH046	Cik Ali	28	0
PH201	Soi	153	0	PH047	Chempaka	35	0
PH202	Sri Damai	66	0	PH048	Condor	16	0
PH271	Ubai	49	0	PH049	Chukang Paku	16	0
PH283	Nangka	131	0	PH057	Darat Sanggang	87	0
PH284	Baru Batu Sawar, Jenderak	8	0	PH058	Darat Sri Kuala/Ulu	63	0
PH286	Cagar Hutang	33	0	PH059	Dehilir	9	0
Lipis				Temerloh			
PH008	Aur Gading	9	4	PH060	Dodalu	31	0
PH042	Paya Buda	11	6	PH061	Paya Dalam	32	0
PH043	Bandar	23	16	PH062	Paya Dong/Durian Sebatang	167	167
PH044	Baspong	10	0	PH069	Gusi dan Merbau	71	0
PH055	Chemato	17	12	PH070	Gunong, Jenderak	45	45
PH056	Cherba	15	12	PH071	Gerak Keladan	12	0
PH063	Dusun	21	14	PH072	Gajah Mati, Jenderak	18	0
PH119	Kasikin	15	0	PH073	Geduai, Jenderak	8	0
PH120	Kadok	19	12	PH074	Gajah Mati	18	0
PH121	Kong	22	9	PH079	Iman Sulong	8	0
PH122	Keruntung	19	3	PH080	Jerangan	16	0
PH139	Lallolu/Salak	87	32	PH081	Jaapan Keladi, Jenderak	6	0
PH140	Lallang	22	12	PH090	Kenalau	31	0
PH141	Lanar	17	16	PH091	Ketam, Kerdu	81	0
PH151	Melatengah	34	0	PH092	Kerayong	20	0
PH152	Mentiue	8	7	PH093	Kelapi, Kerdu	16	0
PH187	Perangkap	21	12	PH094	Kelibang, Kerdu	23	0
PH188	Pagak Sajak	44	20	PH095	Kuin	30	0
PH189	Peling Hilir	12	0	PH096	Kuala Triang	22	0
PH199	Relai	14	0	PH097	Kepong	71	0
PH229	Samsk/Jani	11	0	PH098	Keladan	20	0
PH230	Sepan	14	8	PH099	Kundang	15	0
PH231	Sungai Beluan	13	13	PH100	Karai	14	0
PH266	Terpai	66	0	PH101	Kubu	6	0
PH267	Tampin/Kuala Kenahang	19	12	PH125	Lebak	39	0
PH268	Teris	23	14	PH126	Lipat Kajang	66	0
PH269	Teka	35	24	PH127	Luas, Jenderak	50	0
PH279	Ulu Lallang	35	14	PH128	Lompat	36	0
PH285	Nabon	21	6	Bentong			
PH287	Kemahang	23	23				
Maran							
PH005	Atur Lintah	41	0				
PH036	Belimbing	20	0				
PH037	Batu Gajah	27	0				
PH038	Bharu Lama	23	0				
PH039	Paya Dharu Stg. 1	48	0				
PH064	Embun	72	0				
PH065	Guntang	18	0				
PH066	Gemayah	23	0				



PH055	Cheantah	17	12
PH056	Cerba	15	14
PH063	Dusun	21	0
PH119	Kasikin	15	0
PH120	Kadok	19	12
PH121	Kong	22	9
PH122	Keruntung	19	3
PH139	Lalloh/Salak	87	32
PH140	Lallang	22	12
PH141	Lanar	17	16
PH151	Metatengah	34	0
PH152	Mentue	8	7
PH187	Perangkap	21	12
PH188	Pagak Sasak	44	20
PH189	Peling Hilir	12	0
PH199	Relai	14	0
PH229	Santak/Jani	11	0
PH230	Sepan	14	8
PH231	Sungai Beluan	13	13
PH266	Terpuat	66	0
PH267	Tampin/Kuala Kemahang	19	12
PH268	Teris	23	14
PH269	Teka	35	24
PH279	Ulu Lallang	35	14
PH285	Nabon	21	6
PH287	Kemahang	23	23
Meran			
PH005	Alur Lintang	41	0
PH036	Belimbing	20	0
PH037	Batu Gajah	27	0
PH038	Bharu Lama	23	0
PH039	Paya Bharu Sg. 1	48	0
PH064	Embun	72	0
PH065	Gunting	18	0
PH066	Gemayah	23	0
PH067	Ganchong	269	269
PH068	Gantok	29	0
PH076	Gumai	68	0
PH084	Jelutung	64	0
PH102	Kenalan Kecil	10	0
PH108	Kening	22	0
PH109	Mertau	99	99
PH110	Krot	69	0
PH111	Kening Seberang	14	0
PH112	Kemep	283	0
PH113	Kertam	153	0
PH136	Lanting	177	0
PH137	Ladang	155	0
PH138	Lubuh	30	0
PH148	Machang Gelap	110	110
PH149	Mentanang	25	61
PH150	Metodu	15	15
PH157	Nyak Besar	182	0
PH158	Nyak Kecil	22	0
PH159	Paya Ngewin	22	0
PH160	Paya Nakoh	60	0
PH182	Pesagi	89	0
PH183	Pejung	174	0
PH184	Paku	32	0
PH185	Padang Tenggara	34	0
PH197	Rantau Panjang	32	0
PH205	Sejabun	24	0
PH222	Sultanate Land	40	0
PH223	Sungai Leng	454	184
PH224	Seniang	14	0
PH259	Tanjong Dau	24	0
PH260	Ting & Besar Kertau	70	0
PH281	Kuala Wau/Betong	26	0
Pekan			
PH010	Paya Beruas	94	0
PH011	Belimbing	78	0
PH012	Beluru	91	0
PH013	Bintang	127	0
PH087	Kampong Melayu	28	0
PH088	Kinchir	22	0
PH089	Kilang	27	0
PH124	Lubok	219	0
PH144	Mambang	341	81
PH163	Permatang Puah	87	0
PH164	Pahang Tua	1038	1038
PH165	Pulau Jawa	68	0
PH166	Padang	52	17
PH167	Pasir Panjang	190	0
PH168	Pelak	30	0
PH169	Pulau Rumpit	62	0
PH203	Serandu	210	0
PH204	Salong	167	0
PH206	Sungai Duri	52	0
PH236	Tebat	166	0
PH237	Tanjung Pulai	71	0
PH238	Temai Hilir	133	0
PH282	Wah	39	0

PH046	Cik An	28	0
PH047	Chempaka	39	0
PH048	Cendor	35	0
PH049	Chukang Paku	16	0
PH057	Darat Sanggang	87	0
PH058	Darat Sir Kuala/Ulu	63	0
PH059	Dchilir	9	0
PH060	Dedalu	31	0
PH061	Faya Dalam	32	0
PH062	Faya Dong/Durian Sebatang	167	167
PH069	Gual dan Merbau	71	0
PH070	Gunong, Jenderak	45	45
PH071	Gertak Keladan	12	0
PH072	Gajah Mati, Jenderak	18	0
PH073	Geduai, Jenderak	8	0
PH074	Gajah Mati	18	0
PH079	Iman Sulong	8	0
PH080	Jerangan	16	0
PH081	Jaipan Keladi, Jenderak	6	0
PH090	Kenlau	31	0
PH091	Keism, Kerdu	81	0
PH092	Kerayong	20	0
PH093	Ketapi, Kerdu	16	0
PH094	Kelibang, Kerdu	23	0
PH095	Kuin	30	0
PH096	Kuala Triang	22	0
PH097	Kepong	71	0
PH098	Keladan	20	0
PH099	Kundang	15	0
PH100	Karai	14	0
PH101	Kubu	6	0
PH125	Lebak	39	0
PH126	Lipat Kajang	66	0
PH127	Luas, Jenderak	50	0
PH128	Lompat	36	0
PH129	Lanjut, Lipat Kajang	11	0
PH130	Luas & Tg. Batu	194	0
PH132	Lubuk Kawan	27	0
PH133	Lang	370	0
PH155	Nawan, Jenderak	16	0
PH170	Pulau Nawar	34	0
PH171	Puyu	18	0
PH172	Pamah Songsang	36	0
PH173	Padang	17	52
PH174	Penak	36	0
PH175	Perak, Lipat Kajang	32	0
PH176	Puchong	131	0
PH177	Pamun & Sebelah	29	0
PH178	Pelung, Jenderak	20	0
PH179	Pulau Chengai, Jenderak	34	0
PH180	Paya Putat	23	0
PH181	Puah, Jenderak	5	0
PH194	Rumput	16	0
PH195	Rambai, Jenderak	20	0
PH196	Rantau Panjang	32	0
PH208	Sg. Rabit	139	0
PH209	Siah	14	0
PH210	Sebelah	30	0
PH211	Sok, Jenderak	75	0
PH212	Sekoh, Jenderak	25	0
PH213	Sg. Tuang	98	0
PH214	Selindang	108	0
PH215	Songsang	23	0
PH216	Sg. Buloh	23	0
PH217	Songsang	6	0
PH218	Sesap	3	0
PH219	Serdang Atas and Bawah	18	4
PH220	Sg. Chengal	65	0
PH239	Telok Era	37	0
PH240	Telok Sentang	60	0
PH241	Tenggoh	29	0
PH242	Teratal	21	0
PH243	Taram, Kerdu	150	0
PH244	Tok Apas	18	0
PH245	Tok Langit	4	0
PH246	Terlang	8	0
PH247	Tedong	48	0
PH248	Terjun	21	0
PH249	Tenggang	34	0
PH250	Tetapa	57	0
PH251	Teringgiing, Jenderak	49	0
PH252	Paya Teris	24	61
PH253	Tanjung, Keladan	33	0
PH254	Tambang	6	0
PH255	Tebing Tinggi	5	0
PH256	Tebing Tinggi	9	0





CHINA SEA

3°30'

3°

P. Tioman

ROMPIN

JOHOR

NEGERI SEMBILAN

TEMERLOH

MARAN

BENTUNG

PEKAN

BERA

SCALE



102°

102°30'

103°

103°30'

JICA