

図 5-6 既存及び計画堤防位置図

Republic of Indonesia
 MASTER PLAN STUDY ON
 LOWER ASAHAN RIVER BASIN DEVELOPMENT
 Japan International Cooperation Agency

Description	Unit	Q'ty	Year in order									
			1	2	3	4	5	6	7	8		
1. Detailed Design												
(1) Budget Arrangement			█									
(2) D/D work				█	█							
2. Construction Works												
(1) Implementation Program				█								
(2) Budget Arrangement				█								
(3) Pre-construction Arrange.					█							
1) Tendering					█							
2) Preparatory works					█							
3) Land acquisition					█	█						
(4) Construction Works						█	█					
1) Silau river system	ha	4,250				█	█					
- Integrated weir	no	1				█	█					
- Canal networks	km	139				█	█					
- On-farm works	ha	3,860				█	█	█				
									(1,200)	(1,330)	(1,330)	
- Land reclamation	ha	670							█	█		
2) Bunut river system	ha	6,050										
- Inter-basin canal	km	8.3					█					
- Rehabilitation of weirs	no	3					█	█				
- Canal networks	km	212					█	█				
- On-farm works	ha	5,650					█	█	█	█		
									(1,400)	(1,430)	(1,420)	(1,400)
- Flood dike	km	35				█	█	█				
(5) Construction of Silau Dike by Directorate of River, DGWRD			▨	▨	▨	▨	▨	▨	▨	▨	▨	
3. Training of Government Staff and Farmers												
								█	█			
4. O&M Works												
								█	█	█	█	
5. Development Area under the Project												
(1) Silau River System	ha							1,590	1,330	1,330		
(2) Bunut River System	ha							1,800	1,430	1,420	1,400	
Total								3,390	2,760	2,750	1,400	
(Accumulated area)								(3,390)	(6,150)	(8,900)	(10,300)	



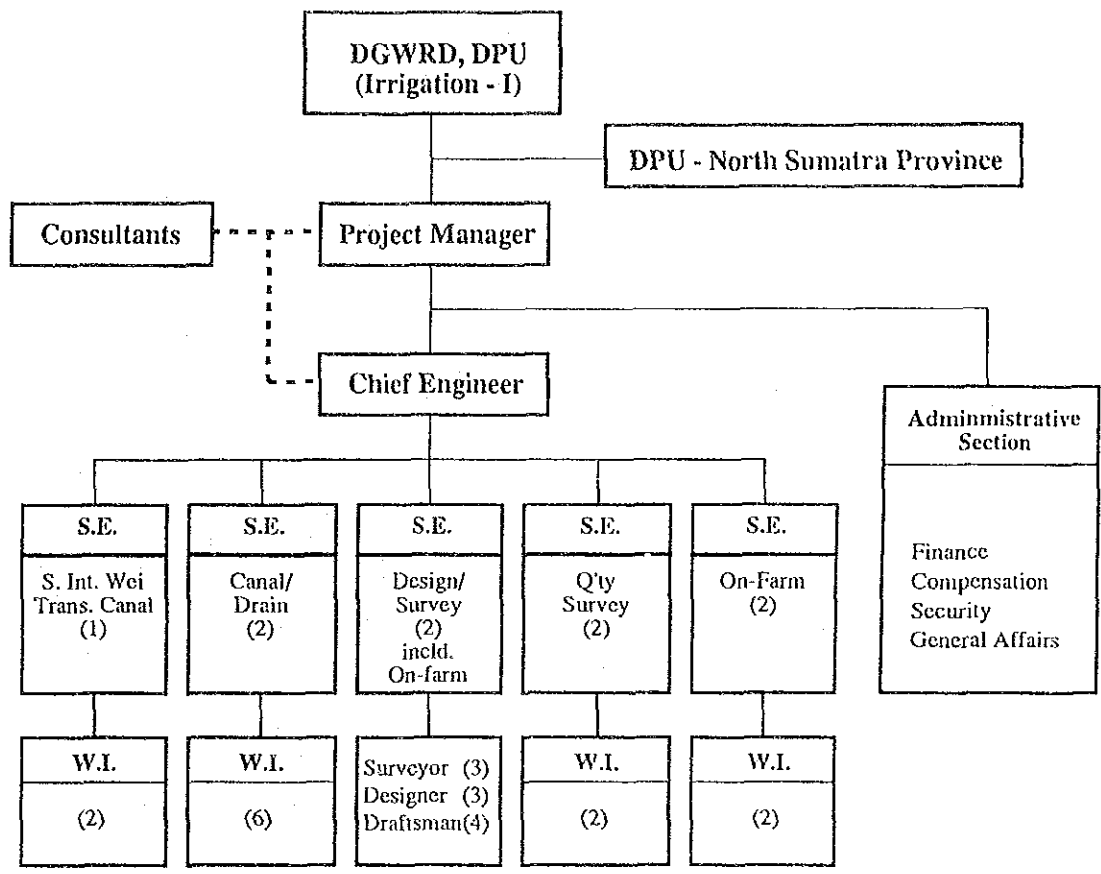
Note  Project Work
 Implemented under Lower Asahan River Flood Control Project, Directorate of River, DGWRD, DPU.

図 5-7 事業の実施スケジュール

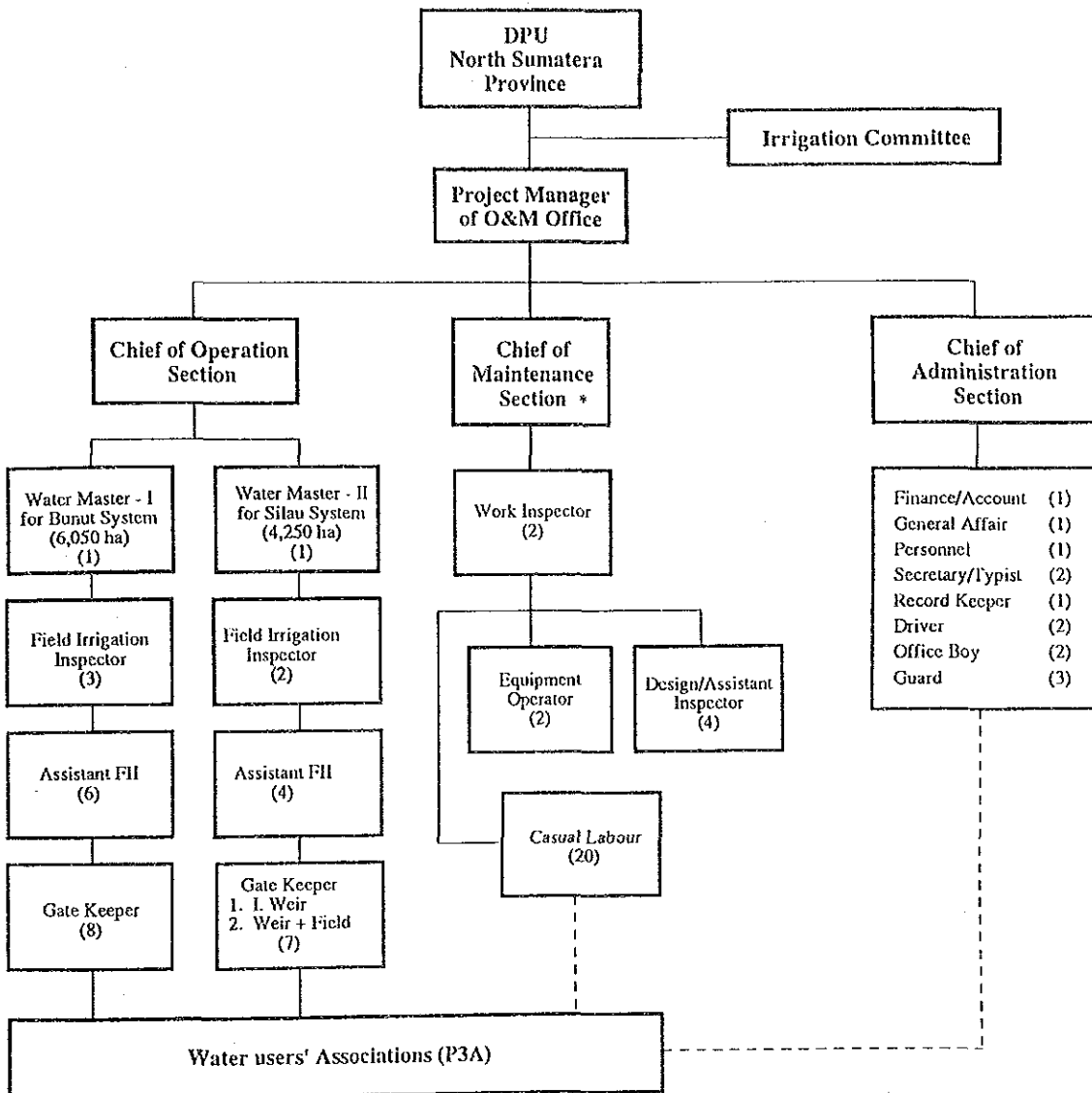
Republic of Indonesia
 MASTER PLAN STUDY ON
 LOWER ASAHAN RIVER BASIN DEVELOPMENT
 Japan International Cooperation Agency



Note: S.E. : Site Engineer
W.I. : Work Inspector

図 5-8 建設管理事務所の計画組織図

Republic of Indonesia
 MASTER PLAN STUDY ON
 LOWER ASAHAN RIVER BASIN DEVELOPMENT
 Japan International Cooperation Agency



Note: FII : Field Irrigation Inspector

* : Repair and periodical maintenance of O&M equipment will be subject to local workshop in Medan

図 5-9 維持管理事務所の計画組織図

