

Table 4. Priority Order of Selected Crops for Each Scheme (7/42)

State : Perak (2/3)

Code No.	Scheme	Annual Crops	Perennial Crops
PK026	Bdg. Jeliang	VG, SP, GG*	DM, CN, PR, SC, CR, RL*, GV*, FC
PK027	Ujib	VG, GG*	DM, CN, PR, SC, CR, PL*, GV*, FC
PK028	Padang Rengas	VG, GG*	CN, PR, SC, DM*, PL*, GV*, CR*
PK029	Bdg. Senggang	VG, SP, GG*	DM, CN, PR, SC, CR, PL*, GV*
PK030	Seterus	VG, GG*	DM, CN, PR, SC, PL*, GV*, CR*
PK031	Bdg. Ketiou	VG, SP, GG*	DM, CN, PR, SC, CR, PL*, FC
PK032	Beluru	DP, VG, GG*	DM, CN, PR, SC, PL*, GV*, CR*
PK033	Bendang Lempar	DP, VG, GG*	DM, SC, PR, SC, PL*, GV*, CR*, FC
PK034	Trosor	VG, SP, GG*	DM, PL, CN, PR, SC, GV, CR, FC
PK035	Kg. Ngor	VG, SP, GG*	DM, PL, CN, PR, SC, CR, GV*, FC
PK036	Berala	VG, SP, GG*	DM, PL, CN, PR, SC, CR, GV*, FC
PK037	Kroh Hulu	VG, SP, GG	DM, PL, CN, PR, SC, GV, CR, FC
PK038	Bendang Talang	VG, SP, GG*	DM, CN, PR, SC, PL*, GV*, CR*, FC
PK039	Bendang Ulu Kenas	SP	DM, RB, GV*, FC
PK040	Kota Lama Kiri	DP, VG, GG*	DM, CN, PR, SC, PL*, GV*, CR*, FC
PK041	Saiong	DP, VG, GG*	DM, CN, PR, SC, PL*, GV*, CR*
PK042	Chepias	SP	DM, RB, GV*, FC
PK043	Jalong	VG, GG	DM, PL, CN, PR, SC, GV, CR, FC
PK044	Bendang Kuala Dal	VG, GG	DM, PL, CN, PR, SC, GV, CR, FC
PK045	Sauk	VG, GG*	DM, CN, PR, SC, CR, PL*, GV*, FC
PK046	Lenggong	SP, VG*, GG*	CN, PR, SC, DM*, PL*, GV*, CR*
PK047	Sumpitan	DP, VG*, GG*	CN, PR, SC, DM*, PL*, GV*, CR*
PK048	Bendang Kg. Padang Gerik	VG*, GG*	CN, PR, SC, DM*, PL*, GV*, CR*, FC
PK049	Gelok	SP, VG*, GG*	CN, PR, SC, DM*, PL*, GV*, CR*
PK050	Bendang Kg. Kerunai	VG*, GG*	CN, PR, SC, DM*, PL*, GV*, CR*, FC

Remarks: Priority order is shown from left to right for each crop group.

*; Needs for regional marketing promotion

DP; Double cropping of paddy

SP; Single cropping of paddy

VG; Vegetables

GG; Ginger

DM; Durian/mango

GV; Guava

CN; Cashewnut

CR; Citrus

PL; Pineapple

RB; Rubber

SC; Sugarcane

PR; Pepper

FC; Freshwater fish pond

Table 4 Priority Order of Selected Crops for Each Scheme (8/42)

State : Perak (3/3)

Code No.	Scheme	Annual Crops	Perennial Crops
PK051	Bendang Pdg. Setang Grik	SP, VG*, GG*	CN, PR, SC, DM*, PL*, GV*, CR*, FC
PK052	Bendang Kg.Padang Kunyit Gerik	VG*, GG*	CN, PR, SC, DM*, PL*, GV*, CR*, FC
PK053	Bendang Kg.Ulu Kenderong Gerik	VG*, GG*	RB, DM*, GV*, FC*
PK054	Bendang Kg. Bonggor Gerik	VG*, GG*	CN, PR, SC, DM*, PL*, GV*, CR*, FC
PK055	Seberang Perak Peringkat1&Tam.	SP	RB, DM*, GV*
PK056	Bota/Lambor	SP	RB, DM*, GV*
PK057	Senin	SP	DM, RB, GV*
PK058	Lambor kiri	SP	RB, DM*, GV*
PK059	Parit Bukit Cupak & Merua	SP	RB, DM*, GV*
PK060	Changkat Jong	DP, VG*	
PK061	Ulu Kuang	VG, GG	DM, PL, CN, PR, SC, GV, CR
PK062	Ulu Chemor	VG, GG	DM, PL, CN, PR, SC, GV, CR, FC
PK063	Sg. Jernang	VG, GG*	DM, PL, CN, PR, SC, CR, GV*, FC

Remarks: Priority order is shown from left to right for each crop group.

*; Needs for regional marketing promotion

DP; Double cropping of paddy

SP; Single cropping of paddy

VG; Vegetables

GG; Ginger

DM; Durian/mango

GV; Guava

CN; Cashewnut

CR; Citrus

PL; Pineapple

RB; Rubber

SC; Sugarcane

PR; Pepper

FC; Freshwater fish pond

Table 4 Priority Order of Selected Crops for Each Scheme (9/42)

State : Selangor

Code No.	Scheme	Annual Crops	Perennial Crops
SG001	Sg. Buloh	SP	DM, RB, FC
SG002	Sg. Air Hitam		DM, RB, FC
SG003	Kg. Batu 30	SP	DM, RB, FC
SG004	Kg. Kalong Tengah	SP	DM, RB, FC
SG005	Kuang	SP	DM, RB
SG006	Jalan Enam Kaki	SP	RB, DM*, FC
SG007	Batu 19 3/4		RB, DM*, FC
SG008	Kuala Lui		RB, DM*, FC
SG009	Sesapan Bt Minangkabau	SP	RB, DM*, FC
SG010	Beranang II		RB, DM*, FC
SG011	Bukit Kepong	SP	RB, DM*, FC
SG012	Paya Lebar		RB, DM*, FC
SG013	Sg. Rinching Hilir	DP, VG*	PR, CN, SC, DM*, PL*
SG014	Kuala Pajam	SP	RB, DM*, FC
SG015	Sg. Merab	SP	DM, RB, FC
SG016	Bt. 17, Dusun Tua		RB, DM*, FC
SG017	Sg. Panjang	SP	PL*, FC

Remarks: Priority order is shown from left to right for each crop group.

*; Needs for regional marketing promotion

DP; Double cropping of paddy

SP; Single cropping of paddy

VG; Vegetables

DM; Durian/mango

CN; Cashewnut

RB; Rubber

SC; Sugarcane

PR; Pepper

FC; Freshwater fish pond

Table 4 Priority Order of Selected Crops for Each Scheme (10/42)

State : Negeri Sembilan (1/7)

Code No.	Scheme	Annual Crops	Perennial Crops
NS001	Sri Menanti	SP	DM, OP, RB
NS002	Terachi Batu 14	SP	OP, RB, DM*
NS003	Inas	SP	OP, RB, DM*
NS004	Ampang Jeram	SP	OP, RB, DM*
NS005	Sg. Muar I & II	SP	OP, RB, DM*
NS006	Kuala Nuri	SP	DM, OP, RB
NS007	Gunong Pasir		DM, OP, RB
NS008	Peraku		DM, OP, RB
NS009	Sg. Pilah		DM, OP, RB
NS010	Tanjong Ipoh	SP	OP, RB, DM*
NS011	Padang Biawas	SP	OP, RB, DM*
NS012	Terachi Batu 17	DP, VG*, GG*	CN, SC, OP, DM*, PL*, CR*
NS013	Kuala Jempol I	SP	OP, DM*
NS014	Kg. Ulu Parit	VG, SP, GG*	DM, CN, SC, CR, OP, PL*
NS015	Kuala Jempol II	SP	OP, DM*
NS016	Kg. Cegor		DM, OP, RB, FC
NS017	Galau	SP	DM, OP, RB
NS018	Serting Ilir	SP	OP, RB, DM*
NS019	Ulu Pilah/Gachong	SP	OP, RB, DM*
NS020	Tanjong Juan		OP, RB, DM*
NS021	Ulu Inas	SP	DM, OP, RB
NS022	Kg. Tanggai I & II	SP	OP, RB, DM*
NS023	Kuala Juaseh		DM, OP, RB
NS024	Cherian		DM, OP, RB, FC
NS025	Ulu Jempol I-V	SP	OP, RB, DM*

Remarks: Priority order is shown from left to right for each crop group.

*; Needs for regional marketing promotion

DP; Double cropping of paddy

SP; Single cropping of paddy

VG; Vegetables

GG; Ginger

DM; Durian/mango

CN; Cashewnut

CR; Citrus

PL; Pineapple

OP; Oil palm

RB; Rubber

TB; Tobacco

SC; Sugarcane

FC; Freshwater fish pond

CC; Cocoa

Table 4 Priority Order of Selected Crops for Each Scheme (11/42)

State : Negeri Sembilan (2/7)

Code No.	Scheme	Annual Crops	Perennial Crops
NS026	Selaru		DM, OP, RB
NS027	Ulu Bendol		DM, OP, RB
NS028	Pelangai I-III		DM, OP, RB
NS029	Buyau		DM, OP, RB
NS030	Kg. Nuri		DM, OP, RB
NS031	Kg. Tumang		DM, OP, RB
NS032	Kg. Gamin		DM, OP, RB, FC
NS033	Ulu Ghalib	VG, GG*	DM, PL, CN, SC, CR, OP
NS034	Sg. Lui		OP
NS035	Bayai		OP, RB, DM*, FC
NS036	Ulu Bemban		DM, OP, RB
NS037	Ulu Melang	VG, SP, GG*	DM, PL, CN, SC, CR, OP
NS038	Air Mawang		DM, OP, RB
NS039	Rembang Panas		DM, OP, RB
NS040	Kepis		DM, OP, RB
NS041	Sg. Talan Panjang	VG, SP, GG*	DM, PL, CN, SC, CR, OP
NS042	Juaseh Tengah		DM, OP, RB, FC
NS043	Kg. Yu I & II		DM, OP, RB, FC
NS044	Kg. Birah		DM, OP, RB
NS045	Anak Air Kata		DM, OP, RB
NS046	Ulu Sungkak		DM, OP, RB, FC
NS047	Sri Jemapoh		DM, OP, RB
NS048	Serting Ulu Batu 43		OP, RB, DM*
NS049	Ulu Punggul		DM, OP, RB, FC
NS050	Majau		DM, OP, RB, FC

Remarks: Priority order is shown from left to right for each crop group.

*; Needs for regional marketing promotion

DP; Double cropping of paddy

SP; Single cropping of paddy

VG; Vegetables

GG; Ginger

DM; Durian/mango

CN; Cashewnut

CR; Citrus

PL; Pineapple

OP; Oil palm

RB; Rubber

TB; Tobacco

SC; Sugarcane

FC; Freshwater fish pond

CC; Cocoa

Table 4. Priority Order of Selected Crops for Each Scheme (12/42)

State : Negeri Sembilan (3/7)

Code No.	Scheme	Annual Crops	Perennial Crops
NS051	Betong		DM, OP, RB
NS052	Merual Jerneh	VG, GG*	DM, PL, CN, SC, CR, OP
NS053	Kuala Klawang	SP	OP, RB, DM*
NS054	Sg. Klawang	SP	OP, RB, DM*
NS055	Durian Gasing	SP	OP, RB, DM*
NS056	Ulu Klawang		OP, RB, DM*
NS057	Peradong	SP	OP, RB, DM*
NS058	Ulu Jelebu	SP	OP, RB, DM*
NS059	Triang Hilir	SP	OP, RB, DM*
NS060	Sg. Jerang	SP	OP, RB, DM*
NS061	Kg. Gagu		DM, OP, RB, FC
NS062	Sg. Relai		DM, OP, RB, FC
NS063	Kg. Renal		OP, RB, DM*, FC
NS064	Kg. Seperi		OP, RB, DM*
NS065	Kg. Geylang		OP, RB, DM*
NS066	Kg. Petasseh		OP, RB, DM*
NS067	Kg. Puom	SP	DM, OP, RB, FC
NS068	Air Baning		OP, RB, DM*
NS069	Kg. Lekai		OP
NS070	Kg. Kemin		DM, OP, RB, FC
NS071	Rantau Pening/Solok		DM, OP, RB, FC
NS072	Pantai		DM, OP, RB
NS073	Kg. Daching	SP	DM, OP, RB
NS074	Labu Bt. 10		OP, RB, DM*
NS075	Kg. Kombok		DM, OP, RB

Remarks: Priority order is shown from left to right for each crop group.

*; Needs for regional marketing promotion

DP; Double cropping of paddy

SP; Single cropping of paddy

VG; Vegetables

GG; Ginger

DM; Durian/mango

CN; Cashewnut

CR; Citrus

PL; Pineapple

OP; Oil palm

RB; Rubber

TB; Tobacco

SC; Sugarcane

FC; Freshwater fish pond

CC; Cocoa

Table 4 Priority Order of Selected Crops for Each Scheme (13/42)

State : Negeri Sembilan (4/7)

Code No.	Scheme	Annual Crops	Perennial Crops
NS076	Kg. Mantin Dalam	SP	DM, OP, RB, FC
NS077	Batang Benar		DM, OP, RB
NS078	Labu Bt.9	SP	DM, OP, RB, FC
NS079	Sg. Tarun		DM, OP, RB
NS080	Kg. Chelogeh		DM, OP, RB
NS081	Batang Penar		DM, OP, RB
NS082	Kayu Ara		DM, OP, RB, FC
NS083	Ulu Beranang		DM, OP, RB, FC
NS084	Kg. Lenggeng	SP	OP, RB, DM*
NS085	Kg. Jijan		DM, OP, RB
NS086	Kg. Siliau		DM, OP, RB
NS087	Labu Hilir		DM, OP, RB
NS088	Kg. Sogoh	VG, GG*	DM, CN, SC, OP, PL*, CR*
NS089	Kg. Lambar		DM, OP, RB
NS090	Kg. Kering I		DM, OP, RB
NS091	Labu Bt. 7 1/2		DM, OP, RB, FC
NS092	Kg. Belangkan		DM, OP, RB, FC
NS093	Kg. Bemban		DM, OP, RB, FC
NS094	Kg. Gebok		DM, OP, RB, FC
NS095	Kg. Junjun		DM, OP, RB, FC
NS096	Kg. Kering II		DM, OP, RB, FC
NS097	Lekong Karpal	SP	DM, OP, RB, FC
NS098	Kg. Machang Hulu		DM, OP, RB
NS099	Kg. Jelatok		DM, OP, RB
NS100	Kg. Kanchong		OP, RB, DM*

Remarks: Priority order is shown from left to right for each crop group.

*; Needs for regional marketing promotion

DP; Double cropping of paddy

SP; Single cropping of paddy

VG; Vegetables

GG; Ginger

DM; Durian/mango

CN; Cashewnut

CR; Citrus

PL; Pineapple

OP; Oil palm

RB; Rubber

TB; Tobacco

SC; Sugarcane

FC; Freshwater fish pond

CC; Cocoa

Table 4 Priority Order of Selected Crops for Each Scheme (14/42)

State : Negeri Sembilan (5/7)

Code No.	Scheme	Annual Crops	Perennial Crops
NS101	Solok Bangkong	VG, GG*	DM, CN, SC, OP, PL*, CR*
NS102	Ulu Sepri		OP, RB, DM*
NS103	Tiga Nenek	SP, VG*, GG*	CN, SC, OP, DM*, PL*, CR*
NS104	Sg. Lalah/Sg. Batu		OP, RB, DM*, FC
NS105	Gadong		OP, RB, DM*, FC
NS106	Mampong	SP	OP, RB, DM*
NS107	Penajis		OP, RB, DM*
NS108	Kendong I-II		OP, RB, DM*
NS109	Legong Hilir	SP, VG*, GG*	CN, SC, OP, DM*, PL*, CR*
NS110	Ampang Serong	SP	OP, RB, DM*
NS111	Ampang Limau	SP	OP, RB, DM*
NS112	Chembong	SP	OP, RB, DM*
NS113	Ulu Gaing		OP, RB, DM*
NS114	Air Panas	VG, SP, GG*	DM, CN, SC, OP, PL*, CR*, FC
NS115	Kg. Pilin	SP, VG*, GG*	CN, SC, DM*, PL*, CR*
NS116	Sg. Layang	SP	OP, RB, DM*
NS117	Miku		OP, RB, DM*
NS118	Ulu Chembong		OP, RB, DM*, FC
NS119	Kundur		OP, RB, DM*
NS120	Kg. Gating		DM, OP, RB, FC
NS121	Chengkau Ulu	VG, GG*	CN, SC, OP, DM*, PL*, CR*
NS122	Kg. Lada	VG, GG*	DM, CN, SC, OP, PL*, CR*, FC
NS123	Ulu Gadong		OP, RB, DM*
NS124	Semerbok		OP, RB, DM*
NS125	Anak Air Tontong	SP	OP, RB, DM*

Remarks: Priority order is shown from left to right for each crop group.

*; Needs for regional marketing promotion

DP; Double cropping of paddy

SP; Single cropping of paddy

VG; Vegetables

GG; Ginger

DM; Durian/mango

CN; Cashewnut

CR; Citrus

PL; Pineapple

OP; Oil palm

RB; Rubber

TB; Tobacco

SC; Sugarcane

FC; Freshwater fish pond

CC; Cocoa

Table 4 Priority Order of Selected Crops for Each Scheme (15/42)

State : Negeri Sembilan (6/7)

Code No.	Scheme	Annual Crops	Perennial Crops
NS126	Sg. Ibor		DM, OP, RB, FC
NS127	Senama		OP, RB, DM*
NS128	Ulu Semin	VG*, GG*	CN, SC, OP, DM*, PL*, CR*
NS129	Pilin Tengah	VG, GG*	CN, SC, OP, DM*, PL*, CR*
NS130	Ulu Padang Besar		OP, RB, DM*
NS131	Sawah Raja		DM, OP, RB, FC
NS132	Kg. Chuai		DM, OP, RB, FC
NS133	Batang Nyamor		OP, RB, DM*
NS134	Bongek		OP, RB, DM*
NS135	Kundur		DM, OP, RB, FC
NS136	Kundur Hilir		OP, RB, DM*, FC
NS137	Pulau Mampat		OP, RB, DM*
NS138	Repah		CC
NS139	Tampin Tengah	SP	DM, OP, RB, FC
NS140	Ulu Repah		CC
NS141	Ulu Gemencheh		DM, OP, RB
NS142	Sg. Dua	SP, VG*, GG*	CN, SC, OP, DM*, PL*, CR*
NS143	Kg. Londah	SP, VG*, GG*	CN, SC, OP, DM*, PL*, CR*
NS144	Kg. Jelawai	VG, SP, GG*	CN, SC, OP, DM*, PL*, CR*
NS145	Kg. Bangkahulu	SP, VG*, GG*	CN, SC, OP, DM*, PL*, CR*
NS146	Gemencheh Lama		OP, RB, DM*
NS147	Kg. Pondo		OP
NS148	Sg. Salah/Sg. Jernih		OP, RB, DM*
NS149	Kg. Keru		OP, RB, DM*
NS150	Batang Rokan		CC

Remarks: Priority order is shown from left to right for each crop group.

*; Needs for regional marketing promotion

DP; Double cropping of paddy

SP; Single cropping of paddy

VG; Vegetables

GG; Ginger

DM; Durian/mango

CN; Cashewnut

CR; Citrus

PL; Pineapple

OP; Oil palm

RB; Rubber

TB; Tobacco

SC; Sugarcane

FC; Freshwater fish pond

CC; Cocoa

Table 4 Priority Order of Selected Crops for Each Scheme (16/42)

State : Negeri Sembilan (7/7)

Code No.	Scheme	Annual Crops	Perennial Crops
NS151	Ulu Tebong		DM, OP, RB, FC
NS152	Sg. Kelamah	VG, GG*	DM, CN, SC, OP, PL*, CR*
NS153	Jimah		OP, RB, DM*
NS154	Sg. Raya	SP, VG*	
NS155	Linggi	VG, SP, GG*	CN, SC, OP, DM*, PL*, CR*
NS156	Tampin Kanan		DM, OP, RB, FC

Remarks: Priority order is shown from left to right for each crop group.

*; Needs for regional marketing promotion

DP; Double cropping of paddy

SP; Single cropping of paddy

VG; Vegetables

GG; Ginger

DM; Durian/mango

CN; Cashewnut

CR; Citrus

PL; Pineapple

OP; Oil palm

RB; Rubber

TB; Tobacco

SC; Sugarcane

FC; Freshwater fish pond

CC; Cocoa

Table 4 Priority Order of Selected Crops for Each Scheme (17/42)

State : Melaka (1/3)

Code No.	Scheme	Annual Crops	Perennial Crops
MA001	Air Paabas	SP	DM, RB, GV*
MA002	Air Hitam Lendu		OP
MA003	Cerana Puteh	SP	DM, RB, GV*
MA004	Durian Daun	SP	DM, RB, GV*
MA005	Kemuning		DM, RB, GV*
MA006	Kuala Sungga	SP	DM, RB, GV*
MA007	Kg. Lakok, Pekan Masjid Tanah	SP	DM, RB, GV*
MA008	Melaka Pindah	SP	DM, RB, GV*
MA009	Melekek	SP	DM, RB, GV*
MA010	Masjid Tanah	SP	RB, DM*, GV*
MA011	Parit Melana		DM, RB, GV*
MA012	Padang Sebang 1 & 11	SP	RB, DM*, GV*
MA013	Rantau Panjang	SP	DM, RB, GV*
MA014	Ramuan Cina Besar	VG, SP, GG*	DM, CN, PR, SC, PL*, CR*
MA015	Ramuan Cina Kechil	VG, SP, GG*	DM, CN, PR, SC, PL*, CR*
MA016	Rembia		DM, RB, GV*
MA017	Solok Melaka Pindah	SP	DM, RB, GV*
MA018	Solok Jementeng		DM, RB, GV*
MA019	Simpang Empat	SP	RB, DM*, GV*
MA020	Solok Kemus		DM, RB, GV*
MA021	Solok Padang Keladi		DM, RB, GV*
MA022	Solok Duku	VG, SP	CN, PR, SC, PL*, GV*
MA023	Sg. Baru Lir	SP, VG*	CN, PR, SC, PL*, GV*
MA024	Sg. Siput	VG, SP	CN, PR, SC, PL*, GV*
MA025	Sg. Buloh	SP	DM, RB, GV*

Remarks: Priority order is shown from left to right for each crop group.

*; Needs for regional marketing promotion

SP; Single cropping of paddy

VG; Vegetables

GG; Ginger

DM; Durian/mango

GV; Guava

CN; Cashewnut

CR; Citrus

PL; Pineapple

OP; Oil palm

CC; Cocoa

RB; Rubber

SC; Sugarcane

PR; Pepper

Table 4 Priority Order of Selected Crops for Each Scheme (18/42)

State : Melaka (2/3)

Code No.	Scheme	Annual Crops	Perennial Crops
MA026	Tanjung Bidara	VG, SP, GG*	CN, PR, SC, DM*, PL*, GV*, CR*
MA027	Bachang	VG, SP	CN, PR, SC, PL*, GV*
MA028	Batu Berendam		CN, PR, SC, DM*, PL*, GV*, CR*
MA029	Durian Tunggal	VG*, GG*	CN, PR, SC, DM*, PL*, GV*, CR*
MA030	Duyong	SP, VG*	CN, PR, SC, PL*, GV*
MA031	Parit China	SP, VG*	CN, PR, SC, PL*, GV*
MA032	Paya Rumput Alor Gajah	SP, VG*	CN, PR, SC, PL*, GV*
MA033	Paya Rumput, Sungai Udang	SP, VG*	CN, PR, SC, PL*, GV*
MA034	Sungai Putat	SP, VG*	CN, PR, SC, PL*, GV*
MA035	Sungai Udang	VG, SP	CN, PR, SC, PL*, GV*
MA036	Tangga Batu	SP, VG*	CN, PR, SC, PL*, GV*
MA037	Tanjung Minyak	SP, VG*	CN, PR, SC, PL*, GV*
MA038	Air Panas	SP	DM, RB
MA039	Bukit Senggeh	SP	DM, RB
MA040	Chabau	VG, SP, GG*	DM, CN, PR, SC, CR, PL*, GV*
MA041	Chohong	SP	RB, DM*
MA042	Jasin 1 & 2	SP	RB, DM*
MA043	Kemengkang		CC
MA044	Lembah Nyalas	SP	DM, RB
MA045	Lubok Buaya	VG, SP, GG*	DM, CN, PR, SC, PL*, CR*, GV*
MA046	Merlimau	VG, SP	CN, PR, SC, DM*, PL*
MA047	Nyalas Gapis	SP	DM, RB
MA048	Parit Keliling	SP	DM, RB
MA049	Selandar 1 & 2	SP	DM, RB
MA050	Sempang Asahan	SP	DM, RB

Remarks: Priority order is shown from left to right for each crop group.

*; Needs for regional marketing promotion

SP; Single cropping of paddy

VG; Vegetables

GG; Ginger

DM; Durian/mango

GV; Guava

CN; Cashewnut

CR; Citrus

PL; Pineapple

OP; Oil palm

CC; Cocoa

RB; Rubber

SC; Sugarcane

PR; Pepper

Table 4 Priority Order of Selected Crops for Each Scheme (19/42)

State : Melaka (3/3)

Code No.	Scheme	Annual Crops	Perennial Crops
MA051	Sempang Rim	SP	
MA052	Tambak Merlang	SP	DM, RB
MA053	Telok Rimba	SP	RB, DM*
MA054	Umbai Serkam	SP	PL*

Remarks: Priority order is shown from left to right for each crop group.

- *; Needs for regional marketing promotion
- SP; Single cropping of paddy
- VG; Vegetables
- GG; Ginger
- DM; Durian/mango
- GV; Guava
- CN; Cashewnut
- CR; Citrus
- PL; Pineapple
- OP; Oil palm
- CC; Cocoa
- RB; Rubber
- SC; Sugarcane
- PR; Pepper

Table 4 Priority Order of Selected Crops for Each Scheme (20/42)

State : Johor

Code No.	Scheme	Annual Crops	Perennial Crops
JR001	Sg. Balang	DP, VG	DM, PL*
JR002	Ulu Benut	DP, VG*	PR, PL*
JR003	Kahang	SP, VG*	
JR004	Padang Endau	VG*	DM, PL*
JR005	Lukut		DM, RB
JR006	Sagil	SP	PL*
JR007	Sawah Bahru	VG	FC
JR008	Juasseh	VG	
JR009	Tenang	VG, SP	
JR010	Jementah	VG, SP	CN, SC, PL*
JR011	Kebun Bahru	SP	DM, RB
JR012	Kesang Gate	DP, VG	FC
JR013	Tangkak	SP	DM
JR014	Kesang Tasik	DP, VG	DM, PL*
JR015	Kurnia Sakti	DP, VG	FC
JR016	Pulau Penarik	DP, VG	
JR017	Sg. Ring	SP	DM
JR018	Teluk Rimba	DP, VG	DM, PL*
JR019	Dengku	DP, VG, GG*	DM, PL, CN, SC, CR
JR020	Liang Batu	VG, SP	DM, SC, FC
JR021	Serom I	VG, GG*	DM, PL, CR, FC
JR022	Sabak Sena	VG, GG*	DM, PL, CR, FC
JR023	Telok Bakong	VG	DM, PL, CN, FC

Remarks: Priority order is shown from left to right for each crop group.

- *; Needs for regional marketing promotion
- DP; Double cropping of paddy
- SP; Single cropping of paddy
- VG; Vegetables
- GG; Ginger
- DM; Durian/mango
- CN; Cashewnut
- CR; Citrus
- PL; Pineapple
- RB; Rubber
- SC; Sugarcane
- PR; Pepper
- FC; Freshwater fish pond

Table 4 Priority Order of Selected Crops for Each Scheme (21/42)

State : Pahang (1/12)

Code No.	Scheme	Annual Crops	Perennial Crops
PH001	Ampang		NA(I)
PH002	Paya Angut		NA(I)
PH003	Ara, Kerdau		NA(I)
PH004	Angut Ulu, Jenderak		NA(I)
PH005	Alur Lintah		NA(I)
PH006	Atok I and II	SP	RB, DM*
PH007	Ajai	VG, GG*	PR, CN, DM*, PL*
PH008	Aur Gading	SP	DM, RB
PH009	Bungor	VG	
PH010	Paya Beruas		NA(I)
PH011	Belimbing	VG(I)	
PH012	Beluru	VG, GG*	PR, CN, DM*, PL*
PH013	Bintang	VG(I), SP(I), GG(I)*	
PH014	Bintang Hulu		NA(I)
PH015	Besar Tualang	VG(I), GG(I)*	
PH016	Busut Jin		NA(I)
PH017	Batu Bor	VG(I), GG(I)*	
PH018	Bangau Parit		NA(I)
PH019	Berhala Kapas		NA(I)
PH020	Biut, Jenderak	VG(I)	
PH021	Paya Besar, Lipat Kajang		NA(I)
PH022	Banir		NA(I)
PH023	Besar Mengkarak		NA(I)
PH024	Bangau		NA(I)
PH025	Besar Lebak		NA(I)

Remarks: Priority order is shown from left to right for each crop group.

*; Needs for regional marketing promotion

(I); Inundation scheme

DP; Double cropping of paddy

SP; Single cropping of paddy

VG; Vegetables

GG; Ginger

DM; Durian/mango

CN; Cashewnut

CR; Citrus

PL; Pineapple

RB; Rubber

SC; Sugarcane

PR; Pepper

NA; Non-agricultural land

Table 4 Priority Order of Selected Crops for Each Scheme (22/42)

State : Pahang (2/12)

Code No.	Scheme	Annual Crops	Perennial Crops
PH026	Paya Batu	SP(I)	
PH027	Besar Bohor		NA(I)
PH028	Badok	VG(I), GG(I)*	
PH029	Baroh		NA(I)
PH030	Kg. Belungu		NA(I)
PH031	Bakoh, Kerdau	SP(I)	
PH032	Beringin		NA(I)
PH033	Batu Hampar		NA(I)
PH034	Betong	SP(I)	
PH035	Bkt. Dinding		NA(I)
PH036	Belimbing		NA(I)
PH037	Batu Gajah		NA(I)
PH038	Bharu Lama	VG	
PH039	Paya Bharu Stg. 1	VG	
PH040	Batu Talam	VG, GG*	PR, CN, DM*, PL*
PH041	Bukit Gambut	VG, GG*	PR, DM, CN, PL
PH042	Paya Budu		DM, RB
PH043	Bandar		DM, RB
PH044	Bapong		DM, RB
PH045	Paya Besar		RB, DM*
PH046	Cik Ali	SP(I)	
PH047	Chempaka		NA(I)
PH048	Cendor		NA(I)
PH049	Chukang Paku		NA(I)
PH050	Chebong		NA(I)

Remarks: Priority order is shown from left to right for each crop group.

*; Needs for regional marketing promotion

(I); Inundation scheme

DP; Double cropping of paddy

SP; Single cropping of paddy

VG; Vegetables

GG; Ginger

DM; Durian/mango

CN; Cashewnut

CR; Citrus

PL; Pineapple

RB; Rubber

SC; Sugarcane

PR; Pepper

NA; Non-agricultural land

Table 4 Priority Order of Selected Crops for Each Scheme (23/42)

State : Pahang (3/12)

Code No.	Scheme	Annual Crops	Perennial Crops
PH051	Caruk Murun		NA(I)
PH052	Chenua	VG, GG*	PR, CN, DM*, PL*
PH053	Cherlang		RB, DM*
PH054	Chin		DM, RB
PH055	Chemato		DM, RB
PH056	Cherba	VG, GG*	DM, PL, CN, CR*
PH057	Darat Sanggang	VG(I), SP(I), GG(I)*	
PH058	Darat Sir Kuala/Ulu	VG(I)	
PH059	Dehilir	VG(I), GG(I), SP(I)	
PH060	Dedalu	VG(I), GG(I)	
PH061	Paya Dalam		NA(I)
PH062	Paya Dong/Durian Sebatang	SP, VG*, GG*	PR, CN, DM*, PL*
PH063	Dusun	VG, SP, GG*	DM, CN, CR
PH064	Embun	VG(I)	
PH065	Gunting		NA(I)
PH066	Gemayah		NA(I)
PH067	Ganchong	DP, VG*	
PH068	Gantok		NA(I)
PH069	Guai dan Merbau	VG(I), SP(I)	
PH070	Gunong, Jenderak		NA(I)
PH071	Gertak Keladan		NA(I)
PH072	Gajah Mati, Jenderak		NA(I)
PH073	Geduai, Jenderak		NA(I)
PH074	Gajah Mati		NA(I)
PH075	Paya Gintong/Sokti	VG, SP	

Remarks: Priority order is shown from left to right for each crop group.

*; Needs for regional marketing promotion

(I); Inundation scheme

DP; Double cropping of paddy

SP; Single cropping of paddy

VG; Vegetables

GG; Ginger

DM; Durian/mango

CN; Cashewnut

CR; Citrus

PL; Pineapple

RB; Rubber

SC; Sugarcane

PR; Pepper

NA; Non-agricultural land

Table 4 Priority Order of Selected Crops for Each Scheme (24/42)

State : Pahang (4/12)

Code No.	Scheme	Annual Crops	Perennial Crops
PH076	Gumai		NA(I)
PH077	Gali Tengah	SP	RB, DM*
PH078	Hilir	VG, SP, GG*	PR, CN, DM*, PL*
PH079	Iman Sulong	SP(I)	
PH080	Jerangan	VG	
PH081	Jaapan Keladi, Jenderak		NA(I)
PH082	Jerangsang		NA(I)
PH083	Joor		DM, RB
PH084	Jelutung	VG(I)	
PH085	Janda Baik Hilir		DM, RB
PH85B	Ulu Cheringging		DM, RB
PH85C	Chemperoh	VG, GG*	PR, DM, PL, CR
PH85D	Cheringging		DM, RB
PH086	Kubang Karah	VG, SP, GG*	DM, CN, SC, CR*
PH087	Kampung Melayu		NA(I)
PH088	Kinchir		NA(I)
PH089	Kilang		NA(I)
PH090	Kenalau		NA(I)
PH091	Ketam, Kerdau	VG(I)	
PH092	Kerayong		NA(I)
PH093	Ketapi, Kerdau		NA(I)
PH094	Kelibang, Kerdau		NA(I)
PH095	Kuin		NA(I)
PH096	Kuala Triang		NA(I)
PH097	Kepong		NA(I)
PH098	Keladan		NA(I)
PH099	Kundang	SP(I)	
PH100	Karai		NA(I)

Remarks: Priority order is shown from left to right for each crop group.

*; Needs for regional marketing promotion

(I); Inundation scheme

DP; Double cropping of paddy

SP; Single cropping of paddy

VG; Vegetables

GG; Ginger

DM; Durian/mango

CN; Cashewnut

CR; Citrus

PL; Pineapple

RB; Rubber

SC; Sugarcane

PR; Pepper

NA; Non-agricultural land

Table 4 Priority Order of Selected Crops for Each Scheme (25/42)

State : Pahang (5/12)

Code No.	Scheme	Annual Crops	Perennial Crops
PH101	Kubu		NA(I)
PH102	Kenalan Kecil		NA(I)
PH103	Kangsar	SP	RB, DM*
PH104	Kampong Baharu		DM, RB
PH105	Kekura		NA(I)
PH106	Kuala Retang		NA(I)
PH107	Kool		NA(I)
PH108	Kening		NA(I)
PH109	Mertau	VG, SP	
PH110	Krot	VG(I)	
PH111	Kening Seberang		NA(I)
PH112	Kemap	VG, SP	
PH113	Kertam	SP, VG*	
PH114	Kuala Merang		RB, DM*
PH115	Kuala Atok	VG, SP, GG*	PR, CN, DM*, PL*
PH116	Kenong		RB, DM*
PH117	Kuala Kelo	VG, SP, GG*	PR, CN, DM*, PL*
PH118	Kekabu		DM, RB
PH119	Kasikin		DM, RB
PH120	Kadok	SP	DM, RB
PH121	Kong	SP	DM, RB
PH122	Keruntung	VG, GG*	PR, DM, PL, CN
PH123	Karak Setia		NA(I)
PH124	Lubok		NA(I)
PH125	Lebak		NA(I)

Remarks: Priority order is shown from left to right for each crop group.

*; Needs for regional marketing promotion

(I); Inundation scheme

DP; Double cropping of paddy

SP; Single cropping of paddy

VG; Vegetables

GG; Ginger

DM; Durian/mango

CN; Cashewnut

CR; Citrus

PL; Pineapple

RB; Rubber

SC; Sugarcane

PR; Pepper

NA; Non-agricultural land

Table 4 Priority Order of Selected Crops for Each Scheme (26/42)

State : Pahang (6/12)

Code No.	Scheme	Annual Crops	Perennial Crops
PH126	Lipat Kajang	VG(I)	
PH127	Luas, Jenderak	VG(I), SP(I)	
PH128	Lompat		NA(I)
PH129	Lanjut, Lipat Kajang		NA(I)
PH130	Luas & Tg. Batu	VG(I)	
PH131	Lubuk Lian		NA(I)
PH132	Lubuk Kawan		NA(I)
PH133	Lang	VG*	NA
PH134	Lata Kasah		DM, RB
PH135	Lubok Payong	VG, SP, GG*	DM, CN, CR, PL*
PH136	Lanting	VG(I)*	NA(I)
PH137	Ladang	VG(I)*	NA(I)
PH138	Lubuh		NA(I)
PH139	Lalloh/Salak	SP	RB, DM*
PH140	Lallang	VG, GG*	DM, CN, CR, PL*
PH141	Lanar	VG, GG*	DM, CN, CR, PL*
PH142	Lengkong		DM, RB
PH143	Lurau	VG, GG*	PR, DM, PL, CR
PH144	Mambang		NA(I)
PH145	Mencali/Gading		NA(I)
PH146	Mentakab		NA(I)
PH147	Mengkuang	VG(I), SP(I)	
PH148	Machang Gelap	VG, SP	
PH149	Mentenang		NA(I)
PH150	Meledu	VG, SP, GG*	DM, PL, CN, CR

Remarks: Priority order is shown from left to right for each crop group.

*; Needs for regional marketing promotion

(I); Inundation scheme

DP; Double cropping of paddy

SP; Single cropping of paddy

VG; Vegetables

GG; Ginger

DM; Durian/mango

CN; Cashewnut

CR; Citrus

PL; Pineapple

RB; Rubber

SC; Sugarcane

PR; Pepper

NA; Non-agricultural land

Table 4 Priority Order of Selected Crops for Each Scheme (27/42)

State : Pahang (7/12)

Code No.	Scheme	Annual Crops	Perennial Crops
PH151	Melatengah		NA(I)
PH152	Mentiu	VG, SP, GG*	DM, PL, CN, CR
PH153	Melan	VG, GG*	PR, DM, CR, PL*
PH154	Nyonyak		NA(I)
PH155	Nawan, Jenderak		NA(I)
PH156	Nyong		NA(I)
PH157	Nyak Besar		NA(I)
PH158	Nyak Kecil		NA(I)
PH159	Paya Ngwin		NA(I)
PH160	Paya Nakoh	VG(I)	
PH161	Pinang	VG, SP	
PH162	Pakoh	VG	
PH163	Permatang Puah		NA
PH164	Pahang Tua	DP, VG*, GG*	CN, SC, DM*
PH165	Pulau Jawa		NA(I)
PH166	Padang		NA(I)
PH167	Pasir Panjang		NA(I)
PH168	Pelak	VG(I)	
PH169	Pulau Rumput	VG(I)	
PH170	Pulau Nawar		NA(I)
PH171	Puyu		NA(I)
PH172	Pamah Songsang		NA(I)
PH173	Padang		NA(I)
PH174	Penak		NA(I)
PH175	Perak, Lipat Kajang		NA(I)

Remarks: Priority order is shown from left to right for each crop group.

*; Needs for regional marketing promotion

(I); Inundation scheme

DP; Double cropping of paddy

SP; Single cropping of paddy

VG; Vegetables

GG; Ginger

DM; Durian/mango

CN; Cashewnut

CR; Citrus

PL; Pineapple

RB; Rubber

SC; Sugarcane

PR; Pepper

NA; Non-agricultural land

Table 4 Priority Order of Selected Crops for Each Scheme (28/42)

State : Pahang (8/12)

Code No.	Scheme	Annual Crops	Perennial Crops
PH176	Puchong	VG(I)	
PH177	Pamun & Sebelah		NA(I)
PH178	Pelong, Jenderak	SP(I)	
PH179	Pulau Chengai, Jenderak		NA(I)
PH180	Paya Putat		NA(I)
PH181	Puah, Jenderak		NA(I)
PH182	Pesagi	VG(I)	
PH183	Pejing		NA(I)
PH184	Paku		NA(I)
PH185	Padang Tenggara		NA(I)
PH186	Pemah Bedu		RB, DM*
PH187	Perangkap		DM, RB
PH188	Pagak Sasak	SP	RB, DM*
PH189	Peling Hilir	VG, SP, GG*	DM, PL, CN, CR
PH190	Ponsoon	SP	DM, RB
PH191	Pelantar		NA(I)
PH192	Rhu		NA(I)
PH193	Rambutan		NA(I)
PH194	Rumput		NA(I)
PH195	Rambai, Jenderak		NA(I)
PH196	Rantau Panjang		NA(I)
PH197	Rantau Panjang		NA(I)
PH198	Renggul	VG, SP, GG*	PR, CN, DM*, PL*
PH199	Relai	SP	DM, RB
PH200	Sepat	SP(I)	

Remarks: Priority order is shown from left to right for each crop group.

*; Needs for regional marketing promotion

(I); Inundation scheme

DP; Double cropping of paddy

SP; Single cropping of paddy

VG; Vegetables

GG; Ginger

DM; Durian/mango

CN; Cashewnut

CR; Citrus

PL; Pineapple

RB; Rubber

SC; Sugarcane

PR; Pepper

NA; Non-agricultural land

Table 4 Priority Order of Selected Crops for Each Scheme (29/42)

State : Pahang (9/12)

Code No.	Scheme	Annual Crops	Perennial Crops
PH201	Soi	VG(I)	
PH202	Sri Damai	VG(I), GG(I)*	
PH203	Serandu		NA(I)
PH204	Salong	VG, GG*	CN, SC, DM*, CR*
PH205	Sejabun		NA(I)
PH206	Sungai Duri		NA(I)
PH207	Sepayang	SP	
PH208	Sg. Rabbit	VG(I)	
PH209	Siah		NA(I)
PH210	Sebelah		NA(I)
PH211	Sok, Jenderak	VG(I)	
PH212	Sekoh, Jenderak		NA(I)
PH213	Sg. Tuang	VG(I)	
PH214	Selindang	VG(I)	
PH215	Songsang		NA(I)
PH216	Sg. Buloh		NA(I)
PH217	Songsang		NA(I)
PH218	Sesap		NA(I)
PH219	Serdang Atas and Bawah		NA(I)
PH220	Sg. Chengal	VG	
PH221	Som		DM, RB
PH222	Sultanate Land		NA(I)
PH223	Sungai Leng		NA(I)
PH224	Sentang		NA(I)
PH225	Suungai Pasu	VG	

Remarks: Priority order is shown from left to right for each crop group.

*; Needs for regional marketing promotion

(I); Inundation scheme

DP; Double cropping of paddy

SP; Single cropping of paddy

VG; Vegetables

GG; Ginger

DM; Durian/mango

CN; Cashewnut

CR; Citrus

PL; Pineapple

RB; Rubber

SC; Sugarcane

PR; Pepper

NA; Non-agricultural land

Table 4 Priority Order of Selected Crops for Each Scheme (30/42)

State : Pahang (10/12)

Code No.	Scheme	Annual Crops	Perennial Crops
PH226	Sungai Tikam		DM, RB
PH227	Sain	VG, GG*	PR, DM, CN, PL*
PH228	Sengkela	VG, GG*	PR, DM, CN, PL*
PH229	Samak/Jani		NA(I)
PH230	Sepan	SP	DM, RB
PH231	Sungai Beluan		DM, RB
PH232	Scmpa		NA(I)
PH233	Sum-Sum		DM, RB
PH234	Simpang Pelangai	VG, SP, GG*	PR, DM, CR
PH235	Seratus Tujuh		DM, RB
PH236	Tebat		NA(I)
PH237	Tanjung Pulau	VG(I)	
PH238	Temai Hilir	VG(I)	
PH239	Telok Era		NA(I)
PH240	Telok Sentang	VG(I)	
PH241	Tenggoh		NA(I)
PH242	Teratai		NA(I)
PH243	Taram, Kerdau		NA(I)
PH244	Tok Apas		NA(I)
PH245	Tok Langit		NA(I)
PH246	Terlang		NA(I)
PH247	Tedong		NA(I)
PH248	Terjun		NA(I)
PH249	Tenggang		NA(I)
PH250	Tetapa		NA(I)

Remarks: Priority order is shown from left to right for each crop group.

*; Needs for regional marketing promotion

(I); Inundation scheme

DP; Double cropping of paddy

SP; Single cropping of paddy

VG; Vegetables

GG; Ginger

DM; Durian/mango

CN; Cashewnut

CR; Citrus

PL; Pineapple

RB; Rubber

SC; Sugarcane

PR; Pepper

NA; Non-agricultural land

Table 4 Priority Order of Selected Crops for Each Scheme (31/42)

State : Pahang (11/12)

Code No.	Scheme	Annual Crops	Perennial Crops
PH251	Teringgi, Jenderak		NA(I)
PH252	Paya Teris		NA(I)
PH253	Tanjung, Keladan		NA(I)
PH254	Tambang		NA(I)
PH255	Tebing Tinggi		NA(I)
PH256	Tebing Tinggi		NA(I)
PH257	Terpai		NA(I)
PH258	Tengah		DM, RB
PH259	Tanjong Batu		NA(I)
PH260	Ting & Besar Kertau	VG(I)	
PH261	Temalir	VG, GG*	PR, DM, PL, CN
PH262	Tal/Tersan	VG, SP, GG*	PR, CN, DM*, PL*
PH263	Tersang	VG, SP, GG*	PR, CN, DM*, PL*
PH264	Temunga		DM, RB
PH265	Tanjung Putus	VG, SP, GG*	PR, CN, DM*, PL*
PH266	Terpuai		RB, DM*
PH267	Tampin/Kuala Kemahang		DM, RB
PH268	Teris	SP	DM, RB
PH269	Teka	SP	RB, DM*
PH270	Triang Hilir	SP	RB, DM*
PH271	Ubai		NA(I)
PH272	Ulu Cheka	SP(I)	
PH273	Ulu Retang	VG, GG	DM, PL, CN, CR
PH274	Ulu Temau		RB, DM*
PH275	Ulu Gali	SP	RB, DM*

Remarks: Priority order is shown from left to right for each crop group.

*; Needs for regional marketing promotion

(I); Inundation scheme

DP; Double cropping of paddy

SP; Single cropping of paddy

VG; Vegetables

GG; Ginger

DM; Durian/mango

CN; Cashewnut

CR; Citrus

PL; Pineapple

RB; Rubber

SC; Sugarcane

PR; Pepper

NA; Non-agricultural land

Table 4 Priority Order of Selected Crops for Each Scheme (32/42)

State : Pahang (12/12)

Code No.	Scheme	Annual Crops	Perennial Crops
PH276	Ulu Lepar		RB, DM*
PH277	Ulu Atok		RB, DM*
PH278	Ulu Sempalit		NA(I)
PH279	Ulu Lallang		RB, DM*
PH280	Ulu Semei		DM, RB
PH281	Kuala Wau/Betong		NA(I)
PH282	Wah		NA(I)
PH283	Nangka		NA(I)
PH284	Baru Batu Sawar, Jenderak		NA(I)
PH285	Nabon		DM, RB
PH286	Cagar Hutang		NA(I)
PH287	Kemahang		DM, RB

Remarks: Priority order is shown from left to right for each crop group.

*; Needs for regional marketing promotion

(I); Inundation scheme

DP; Double cropping of paddy

SP; Single cropping of paddy

VG; Vegetables

GG; Ginger

DM; Durian/mango

CN; Cashewnut

CR; Citrus

PL; Pineapple

RB; Rubber

SC; Sugarcane

PR; Pepper

NA; Non-agricultural land

Table 4 Priority Order of Selected Crops for Each Scheme (33/42)

State : Terengganu (1/2)

Code No.	Scheme	Annual Crops	Perennial Crops
TR001	Telabak	SP, VG*, GG*	DM, CN, SC, TB, CR*
TR002	Bintang	SP	DM*
TR003	Setiu	SP, VG*	CN, SC
TR004	Pelagat	DP, VG*, GG*	CN, SC, TB, DM*, CR*
TR005	Air Puteh	DP, VG	
TR006	Paya Dadong	DP, VG	
TR007	Batu Puteh	DP, VG	
TR008	Paya Paman	DP, VG*, GG*	CN, SC, DM*, CR*
TR009	Paya Dusun	SP	DM
TR010	Cheniah	DP, VG, GG*	DM, CN, SC, CR
TR011	Bukit Peroh	DP, VG*, GG*	CN, SC, DM*, CR*
TR012	Paya Kempian	DP, VG, GG*	PR, DM, CN, SC, GV*, CR*, PL*
TR013	Syukur	VG, SP, GG*	PR, DM, CN, SC
TR014	Keliyu	DP, VG, GG*	DM, CN, SC, CR
TR015	Pulau Musang	DP, VG*, GG*	CN, SC, TB, DM*, CR*
TR016	Nerus	DP, VG*, GG*	CN, SC, TB, DM*, CR*
TR017	Batu Rakit	SP	
TR018	Gelong Gabus	SP	
TR019	Bukit Tumbuh	VG, SP	DM, CN, SC, CR
TR020	Banggol Pauh	SP	
TR021	Sg. Ibai	SP	
TR022	Chenderig	SP	
TR023	Kepong	VG	DM, CN, SC
TR024	Sg. Serai	SP	DM, CN, SC, CR
TR025	Lubok Pandan	SP	DM, CN, SC, CR

Remarks: Priority order is shown from left to right for each crop group.

*; Needs for regional marketing promotion

DP; Double cropping of paddy

SP; Single cropping of paddy

VG; Vegetables

GG; Ginger

DM; Durian/mango

GV; Guava

CN; Cashewnut

CR; Citrus

PL; Pineapple

TB; Tobacco

SC; Sugarcane

PR; Pepper

NA; Non-agricultural land

Table 4 Priority Order of Selected Crops for Each Scheme (34/42)

State : Terengganu (2/2)

Code No.	Scheme	Annual Crops	Perennial Crops
TR026	Bukit Jolong	SP	
TR027	Rusila		NA
TR028	Ban Batangan	SP	
TR029	Paya Kemat	SP	DM*
TR030	Paya Diman	SP, VG*, GG*	CN, SC, DM*, CR*
TR031	Padang Ipoh	VG*, GG*	CN, SC, DM*, CR*
TR032	Kuala Telemong	VG	DM, GV, CN, SC, CR
TR033	Kuala Akob	DP, VG*	CN, SC, DM*, GV*, CR*
TR034	Paya Rapat	DP, VG*, GG*	CN, SC, DM*, GV*, CR*
TR035	Gaung	DP, VG*, GG*	CN, SC, TB, DM*, GV*, CR*
TR036	Peroh	SP	DM*, GV*
TR037	Matang	SP	DM*, GV*
TR038	Langgar	DP, VG*, GG*	CN, SC, TB, DM*, GV*, CR*
TR039	Tapah	SP	DM*

Remarks: Priority order is shown from left to right for each crop group.

*; Needs for regional marketing promotion

DP; Double cropping of paddy

SP; Single cropping of paddy

VG; Vegetables

GG; Ginger

DM; Durian/mango

GV; Guava

CN; Cashewnut

CR; Citrus

PL; Pineapple

TB; Tobacco

SC; Sugarcane

PR; Pepper

NA; Non-agricultural land

Table 4 Priority Order of Selected Crops for Each Scheme (35/42)

State : Kelantan (1/3)

Code No.	Scheme	Annual Crops	Perennial Crops
KN001	Jegor		DM
KN002	R.T. Bendang Muring	SP, VG, GG*	DM, CN, SC, CR
KN003	Danan	SP, VG*	
KN004	Batu Balai	SP, VG*	
KN005	Padang Lindung	SP, VG*	
KN006	Telosan Rasau	SP, VG*	
KN007	R.T. Sg. Yong	DP, VG*	
KN008	Pertok Lama	SP	DM
KN009	Hilir Sat I	SP	DM*
KN010	Galang	SP	DM, FC
KN011	Ulu Sat	SP	DM*
KN012	Putat Mak Sari	SP	DM
KN013	Bagan I	SP	DM
KN014	Sg. Dewan	SP	DM*
KN015	Bagan II	SP	DM*
KN016	Sg. Rusa	SP	DM*
KN017	Pak Yam	SP	DM
KN018	Meranti	DP, VG	
KN019	Repek	DP, VG*	
KN020	Sg. Pinang	SP, VG	
KN021	Kubang Sawa	SP, VG, GG*	DM, CN, SC, CR
KN022	Pasir Hor	SP, VG*, GG*	CN, SC, DM*, CR*
KN023	Bkt. Jering	SP	DM*
KN024	Jerimbong	SP	DM*
KN025	Kuala Balah	SP	DM*

Remarks: Priority order is shown from left to right for each crop group.

*; Needs for regional marketing promotion

DP; Double cropping of paddy

SP; Single cropping of paddy

VG; Vegetables

GG; Ginger

DM; Durian/mango

CN; Cashewnut

CR; Citrus

PL; Pineapple

RB; Rubber

TB; Tobacco

SC; Sugarcane

Table 4 Priority Order of Selected Crops for Each Scheme (36/42)

State : Kelantan (2/3)

Code No.	Scheme	Annual Crops	Perennial Crops
KN026	Lubok Bongor	SP	DM*
KN027	Rengas	SP	DM
KN028	R.T. Sg. Kenor	SP	DM
KN029	R.T. Keluat	SP	DM
KN030	Hilir Sat II	DP, VG*, GG*	
KN031	Sg. Labok	SP, VG*, GG*	
KN032	Bagan III	DP, VG*, GG*	CN, SC, DM*, CR*
KN033	Pulai Chondong	SP, VG*	CN, SC, DM*
KN034	Lubok Awah	SP, VG, GG*	DM, PL, CN, SC, CR*
KN035	R.T. Bedal	SP, VG	DM, CN, SC, CR, PL*
KN036	R.T. Enggong	VG, SP, GG*	DM, CN, SC, CR, PL*
KN037	R.T. Lapan Agor	VG, SP, GG*	DM, CN, SC, CR, PL*
KN038	Rantau Panjang I	SP, VG*	
KN039	Serdang	DP, VG*	DM, CN, SC, CR*
KN040	Gual Ipoh	SP, VG*, GG*	DM, CN, SC, PL*, CR*
KN041	R.T. Air Cina Kelubi	SP	DM
KN042	Nibong	SP	DM, RB
KN043	R.T. Blok Ulu Kusial	SP, VG, GG*	DM, CN, SC, PL*, CR*
KN044	R.T. Gelugor	VG, SP, GG*	DM, CN, SC, CR, PL*
KN045	Lawang Air Batu & Kelisar	SP	RB, DM*
KN046	R.T. Lubok Berangan	DP, VG*, GG*	DM, CN, SC, PL*, CR*
KN047	Ternang Ulu	VG, SP, GG*	DM, CN, SC, CR, PL*
KN048	Panjang	SP, VG, GG*	DM, PL, CN, SC, CR
KN049	Gebok	SP, VG, GG*	DM, PL, CN, SC, CR
KN050	Jelakong	VG, SP, GG*	DM, CN, SC, CR, PL*

Remarks: Priority order is shown from left to right for each crop group.

*; Needs for regional marketing promotion

DP; Double cropping of paddy

SP; Single cropping of paddy

VG; Vegetables

GG; Ginger

DM; Durian/mango

CN; Cashewnut

CR; Citrus

PL; Pineapple

RB; Rubber

TB; Tobacco

SC; Sugarcane

Table 4 Priority Order of Selected Crops for Each Scheme (37/42)

State : Kelantan (3/3)

Code No.	Scheme	Annual Crops	Perennial Crops
KN051	Banjar Parah	DP, VG*, GG*	DM, CN, SC, PL*, CR*
KN052	Rawa Bechah Laut	SP, VG, GG*	DM, CN, SC, PL*, CR*
KN053	Air Lanas	DP, VG*, GG*	DM, CN, SC, PL*, CR*
KN054	Bdg. Paku	VG, GG*	DM, CN, SC, CR, PL*
KN055	Bujung Gertak Serong	VG, GG*	DM, CN, SC, CR, PL*
KN056	Rambai	SP, VG, GG*	DM, PL, CN, SC, CR
KN057	Permatang Sungkai	SP, VG*	
KN058	Bdg. Kamal	SP, VG*	
KN059	Bdg. Bukit Merbau	SP, VG*	
KN060	Pertok I	VG, SP, GG*	DM, PL, CN, SC, CR
KN061	Pertok II	SP, VG, GG*	DM, CN, SC, CR, PL*
KN062	Pertok III	SP, VG, GG*	DM, PL, CN, SC, CR
KN063	Mas Ulu	VG, SP, GG*	DM, CN, SC, CR, PL*
KN064	Tualang Kelikir	SP, VG*, GG*	CN, SC, DM*, PL*, CR*
KN065	Suda	SP, VG*, GG*	CN, SC, DM*, PL*, CR*
KN066	Gaung	SP, VG*, GG*	CN, SC, DM*, PL*, CR*
KN067	Che Wa	VG, SP, GG*	DM, CN, SC, PL*, CR*
KN068	Bechah Pauh	SP, VG*, GG*	CN, SC, DM*, PL*, CR*
KN069	Batu Pahat	VG, SP	
KN070	Bdg. Ujit	VG, SP, GG*	DM, CN, SC, CR, PL*
KN071	Bakat I	VG, SP	
KN072	Bdg. Senor	VG, SP	
KN073	Bdg. Pauh	SP, VG	DM, CN, SC, CR, PL*
KN074	Bdg. Bukit Cina	SP, VG*, GG*	CN, SC, TB, DM*, PL*, CR*
KN075	Kok Keli	VG, GG*	DM, CN, SC, PL*, CR*
KN076	Joh	SP, VG*	
KN077	Pangpong Dalu	VG, SP, GG*	DM, CN, SC, PL*, CR*

Remarks: Priority order is shown from left to right for each crop group.

*; Needs for regional marketing promotion

DP; Double cropping of paddy

SP; Single cropping of paddy

VG; Vegetables

GG; Ginger

DM; Durian/mango

CN; Cashewnut

CR; Citrus

PL; Pineapple

RB; Rubber

TB; Tobacco

SC; Sugarcane

Table 4 Priority Order of Selected Crops for Each Scheme (38/42)

State : Sabah (1/3)

Code No.	Scheme	Annual Crops	Perennial Crops
SA001	Tempasuk North	SP	CN, FC*
SA002	Tempasuk South	SP	CN
SA003	Kawang-Kawang/Pandasan	SP	CN, FC*
SA004	Tamu Darat	SP	FC*
SA005	Tambulian Laut	DP	
SA006	Jawi Jawi	SP	CN, FC*
SA007	Lubok Moyoh	SP	CN
SA008	Gaur	SP	
SA009	Tambulian Ulu	DP	
SA010	Tambilaung	SP	CN
SA011	Pekan Kota Belud	DP	FC*
SA012	Bingkor	DP	FC*
SA013	Tambunan	SP	
SA014	Lagut Sebrang	SP	
SA015	Apin-Apin	DP	FC*
SA016	Transpegalan Phase I	DP	FC*
SA017	Kuala Tomani	DP	FC*
SA018	Tulid	SP	FC*
SA019	Biah	SP	CN
SA020	Nambayan	SP	
SA021	Marais	SP	FC*
SA022	Tandek	SP	
SA023	Kota Marudu	DP	FC*
SA024	Timbang Batu	SP	
SA025	Membakut	DP	FC*

Remarks: Priority order is shown from left to right for each crop group.

*; Needs for regional marketing promotion

DP; Double cropping of paddy

SP; Single cropping of paddy

CN; Cashewnut

FC; Freshwater fish pond

NA; Non-agricultural land

Table 4 Priority Order of Selected Crops for Each Scheme (39/42)

State : Sabah (2/3)

Code No.	Scheme	Annual Crops	Perennial Crops
SA026	Sindumin	SP	CN
SA027	Tunggul Tinggi		CN
SA028	Bundu		NA
SA029	Limbawang		NA
SA030	Pulaimanang	SP	CN
SA031	Lingkungan	SP	CN
SA032	Papar/Benoni	SP	CN
SA033	Bongawan	SP	CN, FC*
SA034	Tuaran I	DP	
SA035	Tuaran II	DP	
SA036	Bantayan	DP	
SA037	Penampang	SP	CN
SA038	Ramaya	SP	CN
SA039	Merungin	DP	FC*
SA040	Kimolohing	DP	FC*
SA041	Sinarul	DP	FC*
SA042	Nalapak	DP	FC*
SA043	Trusan Sapi	SP	
SA044	Bukit Garam		CN
SA045	Ulu Tungku		NA
SA046	Pitas Hilir	DP	
SA047	Bawing	SP	FC*
SA048	Sikuati	SP	CN, FC*
SA049	Liu	SP	FC*
SA050	Torongkongan		NA

Remarks: Priority order is shown from left to right for each crop group.

*; Needs for regional marketing promotion

DP; Double cropping of paddy

SP; Single cropping of paddy

CN; Cashewnut

FC; Freshwater fish pond

NA; Non-agricultural land

Table 4 Priority Order of Selected Crops for Each Scheme (40/42)

State : Sabah (3/3)

Code No.	Scheme	Annual Crops	Perennial Crops
SA051	Dampirit	SP	
SA052	Rokom	SP	
SA053	Buanog	SP	
SA054	Suangpai	SP	CN, FC*
SA055	Kawang Kawang/Bugaron	SP	CN
SA056	Sekoli	SP	CN

Remarks: Priority order is shown from left to right for each crop group.

- *; Needs for regional marketing promotion
- DP; Double cropping of paddy
- SP; Single cropping of paddy
- CN; Cashewnut
- FC; Freshwater fish pond
- NA; Non-agricultural land

Table 4 Priority Order of Selected Crops for Each Scheme (41/42)

State : Sarawak (1/2)

Code No.	Scheme	Annual Crops	Perennial Crops
SK001	Bako	SP	FC**
SK002	Kali Kaba	SP	IADP
SK003	Lubok Nibong	SP	IADP
SK004	Sebubok Engkala	SP	
SK005	Skrang	SP	
SK006	Tg. Bijat	SP	
SK007	Tg. Saduru	SP	
SK008	Tg. Sebukut	SP	IADP
SK009	Lebaan Bawang Assan	SP	FC**
SK010	Bungai Mummon	SP	
SK011	Pujut Lopeng		CN
SK012	Daro Padi	SP, VG*	PL*, FC**
SK013	Paloh Bangau	SP, VG*	PL*, FC**
SK014	Loba Balu	SP	CN, FC**
SK015	Daro Pilot	SP	FC**
SK016	Sadong/Krang	SP	
SK017	Mid-Sadong, Stage I	SP, VG*	PL*
SK018	Mid-Sadong, Stage II	SP	
SK019	Mid-Sadong, Stage III	SP, VG*	PL*
SK020	Banting	SP	
SK021	Benawa	SP	
SK022	Nanga Merit	SP	
SK023	Pandaruan	SP	
SK024	Paya Selanyau I	SP, VG*	PL*, FC*
SK025	Paya Selanyau II	SP	

Remarks: Priority order is shown from left to right for each crop group.
 *; Needs for regional marketing promotion
 SP; Single cropping of paddy
 VG; Vegetables
 CN; Cashewnut
 PL; Pineapple
 FC**; Location expected for brackish water resources availability
 IADP; Possible for incorporation into IADP

Table 4 Priority Order of Selected Crops for Each Scheme (42/42)

State : Sarawak (2/2)

Code No.	Scheme	Annual Crops	Perennial Crops
SK026	Paya Payang	SP	FC*
SK027	Sg. Renan	SP	
SK028	Tg. Purun	SP	
SK029	Entebu Kupang	SP, VG*	PL*
SK030	Lubuk Buntin	SP	
SK031	Merapok	SP	
SK032	Sg. Entulang	SP	
SK033	Sg. Gran	SP	
SK034	Sg. Semalau	SP	CN, FC**
SK035	Sg. Sungai	SP	
SK036	Lower Samarahan	SP	IADP
SK037	Sebandi	SP	
SK038	Sekuduk/Chupak	SP	IADP

Remarks: Priority order is shown from left to right for each crop group.

*; Needs for regional marketing promotion

SP; Single cropping of paddy

VG; Vegetables

CN; Cashewnut

PL; Pineapple

FC**; Location expected for brackish water resources availability

IADP; Possible for incorporation into IADP

Table 5 Distribution of Non-granary Irrigation Schemes by State based on Super Category

State	Super Category								Total
	1	2	3	4	5	6	7	8	
Perlis	3	2	5	-	-	11	1	-	22
Kedah	4	21	9	-	-	11	30	-	75
Pulau Pinang	6	-	5	-	-	-	3	-	14
Perak	6	37	6	-	-	10	4	-	63
Selangor	-	10	-	-	-	-	7	-	17
Negeri Sembilan	14	140	-	-	-	1	1	-	156
Melaka	9	38	2	-	-	-	5	-	54
Johor	9	5	3	-	-	4	2	-	23
Pahang (Inundation scheme)	77 (34)	45 (-)	- (-)	- (-)	- (-)	2 (-)	18 (9)	148 (146)	290 (189)
Trengganu	-	13	5	-	-	8	12	1	39
Kelantan	16	18	12	-	-	11	20	-	77
Sabah	-	3	-	-	-	16	32	5	56
Sarawak	-	1	-	-	-	-	37	-	38
Total	144	333	47	-	-	74	172	154	924

- Remarks: Category
- 1 Schemes converted to high-value upland cropping areas
 - 2 Schemes converted to perennial cropping areas
 - 3 Schemes converted to two cropping areas
 - 4 Schemes converted to animal raising areas
 - 5 Schemes converted to freshwater fish ponds
 - 6 Schemes are used as mini-granary areas
 - 7 Schemes temporarily maintained as paddy growing areas
 - 8 Schemes converted to non-agricultural fields

Table 6 Distribution of Non-granary Irrigation Schemes with Second Priority Potential Categories by State

State	Possible Category							
	1	2	3	4	5	6	7	8
Perlis	9	10	5	-	-	-	3	-
Kedah	12	37	9	-	1	-	13	-
Pulau Pinang	-	11	6	-	-	-	6	-
Perak	20	14	11	-	7	-	19	-
Selangor	-	6	-	-	9	-	-	-
Negeri Sembilan	-	9	6	-	34	-	42	-
Melaka	-	13	5	-	-	-	29	-
Johor	6	4	7	-	1	-	3	-
Pahang (Inundation scheme)	- (-)	39 (-)	16 (-)	- (-)	- (-)	- (-)	14 (6)	- (-)
Trengganu	12	9	2	-	-	-	5	-
Kelantan	13	10	14	-	1	-	16	-
Sabah	-	17	-	-	-	-	1	-
Sarawak	-	-	-	-	-	-	-	-
Total	72	179	81	-	53	-	151	-

- Remarks: Category
- 1 Schemes converted to high-value upland cropping areas
 - 2 Schemes converted to perennial cropping areas
 - 3 Schemes converted to two cropping areas
 - 4 Schemes converted to animal raising areas
 - 5 Schemes converted to freshwater fish ponds
 - 6 Schemes are used as mini-granary areas
 - 7 Schemes temporarily maintained as paddy growing areas
 - 8 Schemes converted to non-agricultural fields

Table 7 Distribution of Non-granary Irrigation Schemes with Third Priority Potential Categories by State

State	Possible Category							
	1	2	3	4	5	6	7	8
Perlis	3	7	3	-	-	-	7	-
Kedah	-	8	-	-	9	-	9	-
Pulau Pinang	-	-	-	-	-	-	-	-
Perak	-	9	-	-	24	-	13	-
Selangor	-	-	-	-	6	-	1	-
Negeri Sembilan	-	6	-	-	5	-	7	-
Melaka	-	-	-	-	-	-	9	-
Johor	-	6	-	-	2	-	5	-
Pahang	-	-	-	-	-	-	18	-
Trengganu	-	2	-	-	-	-	8	-
Kelantan	-	22	-	-	6	-	25	-
Sabah	-	-	-	-	-	-	-	-
Sarawak	-	-	-	-	-	-	-	-
Total	3	60	3	-	52	-	102	-

- Remarks: Category 1 Schemes converted to high-value upland cropping areas
 2 Schemes converted to perennial cropping areas
 3 Schemes converted to two cropping areas
 4 Schemes converted to animal raising areas
 5 Schemes converted to freshwater fish ponds
 6 Schemes are used as mini-granary areas
 7 Schemes temporarily maintained as paddy growing areas
 8 Schemes converted to non-agricultural fields

Table 8 Distribution of Non-granary Irrigation Schemes with Potential Categories requiring Extensive Marketing Promotion by State

State	Possible Category							
	1	2	3	4	5	6	7	8
Perlis	5	1	4	-	-	-	-	-
Kedah	14	1	13	-	-	-	-	-
Pulau Pinang	5	-	-	-	-	-	-	-
Perak	25	-	20	-	-	-	-	-
Selangor	1	1	1	-	-	-	-	-
Negeri Sembilan	9	-	8	-	-	-	-	-
Melaka	11	1	1	-	-	-	-	-
Johor	3	1	2	-	-	-	-	-
Pahang (Inundation scheme)	9 (4)	- (-)	4 (-)	- (-)	- (-)	- (-)	- (-)	- (-)
Trengganu	13	5	12	-	-	-	-	-
Kelantan	27	9	27	-	-	-	-	-
Sabah	-	-	-	-	22	-	-	-
Sarawak	6	7	1	-	3	-	-	-
Total	128	26	93	-	25	-	-	-

Remarks: Category 1 Schemes converted to high-value upland cropping areas
 2 Schemes converted to perennial cropping areas
 3 Schemes converted to two cropping areas
 4 Schemes converted to animal raising areas
 5 Schemes converted to freshwater fish ponds
 6 Schemes are used as mini-granary areas
 7 Schemes temporarily maintained as paddy growing areas
 8 Schemes converted to non-agricultural fields

Table 9 Crop Diversification Potential for Each Scheme (1/27)

State : Perlis

Code	Scheme	Category							
		1	2	3	4	5	6	7	8
PR001	Ban Seberang Ramai	*4	*1	*2	.
PR002	Ban Bukit Tok Poh	*1	*2	.
PR003	Ban Wang Bintong	*1	*2	*3	.
PR004	Tali Air Bt. Pahat Kanan	*2	*2	*1	.	.	.	*3	.
PR005	Sg. Siran	*2	*3	*2	.	.	*1	.	.
PR006	Alur Baroh	*1	*3	*2	.	.	.	*3	.
PR007	Pdg. Melangit	*3	*2	*3	.	.	*1	.	.
PR008	Alor Sena	*2	*3	*2	.	.	*1	.	.
PR009	Bukit Tau	*2	*3	*1	.	.	.	*3	.
PR010	Kubang Badak	*2	*2	*1	.	.	.	*3	.
PR011	Kg. Belukar	*2	.	*1	.	.	.	*3	.
PR012	Kg. Darat/Tok Daboi	.	*4	*1	.
PR013	Sg. Repoh	*4	*2	*4	.	.	*1	.	.
PR014	Titi Tinggi	*2	*3	*2	.	.	*1	.	.
PR015	Pdg. Siding	*4	*2	*4	.	.	*1	.	.
PR016	Kok Klang	*2	*3	*1	.	.	.	*3	.
PR017	Kuala Tunggang	*3	*2	*3	.	.	*1	.	.
PR018	Alor Melaka	*2	*3	*2	.	.	*1	.	.
PR019	Sg. Santan	*4	*2	*4	.	.	*1	.	.
PR020	Pdg. Telela	*4	*2	*4	.	.	*1	.	.
PR021	Kg. Parit	.	*1	*2	.
PR022	Sg.Siran/Jln.Abi/Kurong Batang	*3	*2	*3	.	.	*1	.	.
*1	Super category	3	2	5	.	.	11	1	.
*2	2nd priority category	9	10	5	.	.	.	3	.
*3	3rd priority category	3	7	3	.	.	.	7	.
*4	4th priority category with needs of regional marketing promotion	5	1	4

Table 9 Crop Diversification Potential for Each Scheme (2/27)

State : Kedah (1/2)

Code	Scheme	Category							
		1	2	3	4	5	6	7	8
KH001	Bandar Baharu	*4	*2	*4	.	.	*1	.	.
KH002	Serdang Bt. 16	.	*1	*2	.
KH003	Kilang Bt/Kg. Ulu	.	*2	.	.	*3	.	*1	.
KH004	Serdang Batu 18	.	*1	.	.	*2	.	.	.
KH005	Sg. Tengah	.	*1	.	.	*3	.	*2	.
KH006	Sg. Taka	.	*2	*1	.
KH007	Kg. Berjaya	*4	*1
KH008	Sidam Kanan	.	*4	*1	.
KH009	Sg. Seluang	.	*1
KH010	Ulu Mahang	.	*2	*1	.
KH011	Bendang Sena	.	*2	.	.	*3	.	*1	.
KH012	Jemerli	.	*1
KH013	Otak Kerbau	*1	*2
KH014	Kulim	.	*2	*1	.
KH015	Terat Batu	.	*2	*1	.
KH016	Selarung Panjang	*1	*2
KH017	Merbau Pulas	.	*2	*1	.
KH018	Padang Meha/Pagar Museh	.	*2	*1	.
KH019	Kg. Lobak	*2	*3	*1	.	.	.	*3	.
KH020	Titi Karang	.	*2	*1	.
KH021	Pulai	*2	*3	*2	.	.	*1	.	.
KH022	Kg. Iboi	.	*2	*1	.
KH023	Kg. Tawar	.	*1	.	.	*3	.	*2	.
KH024	Simpang Empat	.	*1	.	.	*3	.	*2	.
KH025	Ulu Bakai	*1	*2
KH026	Kg. Badang	*2	.	*1	.	.	.	*3	.
KH027	Kg. Luar	.	*2	*1	.
KH028	Ulu Sedim/Si Puteh	.	*1	*2	.
KH029	Landak	.	*1	.	.	*3	.	*2	.
KH030	Kg. Mempelam	*2	*3	*1	.	.	.	*3	.
KH031	Sg. Tiak	.	*1	*2	.
KH032	Tg. Pari	.	*1	*2	.
KH033	Pantai Cicak	*2	.	*1	.	.	.	*3	.
KH034	Sg. Limau/Carok Sikin	.	*1
KH035	Sidam Kiri	.	*2	*1	.
KH036	Pekula	*4	*2	*4	.	.	*1	.	.
KH037	Sg. Gelam	.	*1	*2	.
KH038	Merbok Bunding	*4	*1	*4	.	.	.	*2	.
KH039	Pinang Tunngal	*2	*3	*2	.	.	*1	.	.
KH040	Tandop Pekan Merbok	.	*1	*2	.
KH041	Kota II	*4	*2	*4	.	.	*1	.	.
KH042	Pantai Prai/Serukam	.	*2	*1	.
KH043	Kemumbong	.	*1	*2	.
KH044	Lubok Kiab	.	*1
KH045	Kg. Parit	*4	.	*4	.	.	*1	.	.

Table 9 Crop Diversification Potential for Each Schemen (3/27)

State : Kedah (2/2)

Code	Scheme	Category							
		1	2	3	4	5	6	7	8
KH046	Tg. Sik	*4	.	*4	.	.	.	*1	.
KH047	Tg. Besar	*4	.	*4	.	.	*1	.	.
KH048	Sg. Teloi	*2	.	*1	.	.	.	*3	.
KH049	Padang Cicak	*2	.	*1	.	.	.	*3	.
KH050	Sg. Cepir	.	*1
KH051	Gua Ginu	*2	*3	*1	.	.	.	*3	.
KH052	Nawa Gajah Mati	*1	*2
KH053	Binjal	.	*2	*1	.
KH054	Lembah Bata Phase I	.	*2	*1	.
KH055	Sg. Pering	*4	*2	*4	.	.	*1	.	.
KH056	Che Kedo/Putat	*4	*2	*4	.	.	*1	.	.
KH057	Sg. Gelong	.	*2	*1	.
KH058	Lembah Bata II	.	*2	*1	.
KH059	Janing	.	*2	*1	.
KH060	Carok Kejal	*4	.	*4	.	.	.	*1	.
KH061	Kurong Hitam	.	*2	*1	.
KH062	Pdg. Pusing	*4	*1	*4
KH063	Paya Rawa I	*2	*3	*2	.	.	*1	.	.
KH064	Pdg. Kerbau I & II	.	*2	*1	.
KH065	Sg. Lampam/Rambai	.	*2	*1	.
KH066	Kg. Ruat	*2	*3	*1	.	*3	.	*3	.
KH067	Sinkir, Sg. Pial	*4	*1	*4	.	.	.	*2	.
KH068	Bakar Bata	*2	*3	*1	.	*3	.	*3	.
KH069	Bakong/Lubok Boi	*4	*2	*4	.	.	*1	.	.
KH070	Pdg. Gaung	.	*2	*1	.
KH071	Bukit Kemboja	.	*2	*1	.
KH072	Pdg. Matsirat, Limbong, Raggut	.	*2	*1	.
KH073	Terusan Seimbang Sg. Tok Peteri	.	*2	*1	.
KH074	Kg. Kok	.	*2	.	.	*3	.	*1	.
KH075	Pdg. Kerbau III	.	*2	*1	.
*1	Super category	4	21	9	.	.	11	30	.
*2	2nd priority category	12	37	3	.	1	.	13	.
*3	3rd priority category	.	8	.	.	9	.	9	.
*4	4th priority category with needs of regional marketing promotions	14	1	13

Table 9 Crop Diversification Potential for Each Scheme (4/27)

State : P.Pinang

Code	Scheme	Category							
		1	2	3	4	5	6	7	8
PP001	Pinang Tunggal	*4	*2	*1
PP002	Sg. Jarak	*4	*2	*1
PP003	Tasek Gelugor	*4	*2	*1
PP004	Jarak Tengah	*1	*2	*2	.	.	.	*3	.
PP005	Kuala Tasek	*1	*2	*2	.	.	.	*3	.
PP006	Sg. Kulim	*4	*2	*1
PP007	Sg. Kulim	*4	*2	*1
PP008	Sg. Renjau	*1	*2	*2	.	.	.	*3	.
PP009	Juru	*1	*2	*2	.	.	.	*3	.
PP010	Machang Bubok	*1	*2	*2	.	.	.	*3	.
PP011	Tasek Junjung	*1	*2	*2	.	.	.	*3	.
PP012	Alma	*1	.
PP017	Fasa I & IIA/IIB, Sg. Burong	*1	.
PP018	Padang Kumunting	*1	.
*1	Super category	6	.	5	.	.	.	3	.
*2	2nd priority category	.	11	6
*3	3rd priority category	6	.
*4	4th priority category with needs of regional marketing promotion	5

Table 9 Crop Diversification Potential for Each Scheme (5/27)

State : Perak (1/2)

Code	Scheme	Category							
		1	2	3	4	5	6	7	8
PK001	Batu Kurau	*4	*2	*4	.	.	*1	.	.
PK002	Air Kuning	*1	*3	*2	.	.	.	*3	.
PK003	Jelai dan Tambahan	*1	*3	*2	.	.	.	*3	.
PK004	Pantai Besar	*2	*2	*1	.	*3	.	*3	.
PK005	Jemerang Setar	*2	*3	*2	.	.	*1	.	.
PK006	Bukit Gantang	*4	*1	*4	.	.	.	*2	.
PK007	Jebong	*4	*1
PK008	Bukit Bertam	*1	*3	*2	.	.	.	*3	.
PK009	Beruas/Tambahan	.	*1	*2	.
PK010	Dendang A.	.	*1	.	.	*2	.	*3	.
PK011	Dendang B	.	*1	*2	.
PK012	Sg. Segar	*4	.	*4	.	.	.	*1	.
PK013	Sg. Chop	*4	*1	*4	.	*2	.	*3	.
PK014	Sg. Simpol Kiri	*4	*1	*4	.	*3	.	*2	.
PK015	Sg. Rambutan	*4	*1	*4	.	*3	.	*2	.
PK016	Sg. Damak	*4	*1	*4	.	*3	.	*2	.
PK017	Sg. Berdarah	*4	*2	*4	.	.	*1	.	.
PK018	Sg. Nor	*4	*2	*4	.	.	*1	.	.
PK019	Sg. Garok	*4	*1	*4	.	*3	.	*2	.
PK020	Batu 3, Kg. Medan	*4	*1	*4	.	.	.	*2	.
PK021	Gua Petai	*4	*1	*4	.	.	.	*2	.
PK022	Bukit Torak/Lubuk Sengga	*4	*1	*4	.	*3	.	*2	.
PK023	Tapah Hulu	*4	*1	*4	.	*3	.	*2	.
PK024	Bukit Tunggai	.	*1	*2	.
PK025	Belukar Hantu	*4	*1	*4	.	*3	.	*2	.
PK026	Bdg. Jeliang	*2	*2	*1	.	*3	.	*3	.
PK027	Ujib	*2	*1	.	.	*3	.	.	.
PK028	Padang Rengas	*2	*1
PK029	Bdg. Senggang	*1	*3	*2	.	.	.	*3	.
PK030	Seterus	*2	*1
PK031	Bdg. Ketiou	*1	*2	*2	.	*3	.	.	.
PK032	Beluru	*2	*3	*2	.	.	*1	.	.
PK033	Bendang Lempar	*2	*3	*2	.	*3	*1	.	.
PK034	Trosor	*2	*2	*1	.	*3	.	*3	.
PK035	Kg. Ngor	*2	*2	*1	.	*3	.	*3	.
PK036	Berala	*1	*2	*2	.	*3	.	*3	.
PK037	Kroh Hulu	*2	.	*1
PK038	Bendang Talang	*2	*2	*1	.	*3	.	*3	.
PK039	Bendang Ulu Kenas	.	*1	.	.	*2	.	*3	.
PK040	Kota Lama Kiri	*2	*3	*2	.	*3	*1	.	.
PK041	Saiong	*2	*3	*2	.	.	*1	.	.
PK042	Chepias	.	*1	.	.	*3	.	*2	.
PK043	Jalong	*2	*1	.	.	*3	.	.	.
PK044	Bendang Kuala Dal	*2	*1	.	.	*3	.	.	.
PK045	Sauk	*2	*1	.	.	*3	.	.	.

Table 9 Crop Diversification Potential for Each Scheme (6/27)

State : Perak (2/2)

Code	Scheme	Category							
		1	2	3	4	5	6	7	8
PK046	Lenggong	*4	*1	*4	.	.	.	*2	.
PK047	Sumpitan	*4	*2	*4	.	.	*1	.	.
PK048	Bendang Kg. Padang Gerik	*4	*1
PK049	Gelok	*4	*1	*4	.	.	.	*2	.
PK050	Bendang Kg. Kerunai	*4	*1	.	.	*2	.	.	.
PK051	Bendang Pdg. Setang Grik	*4	*1	*4	.	*3	.	*2	.
PK052	Bendang Kg. Padang Kunyit Gerik	*4	*1	.	.	*2	.	.	.
PK053	Bendang Kg. Ulu Kenderong Gerik	.	*1	.	.	*2	.	.	.
PK054	Bendang Kg. Bonggor Gerik	*4	*1	.	.	*2	.	.	.
PK055	Seberang Perak Peringkat 1 & Tam.	.	*2	*1	.
PK056	Bota/Lambor	.	*2	*1	.
PK057	Senin	.	*1	*2	.
PK058	Lambor kiri	.	*2	*1	.
PK059	Parit Bukit Cupak & Merua	.	*1	*2	.
PK060	Changkat Jong	*4	.	*4	.	.	*1	.	.
PK061	Ulu Kuang	*2	*1
PK062	Ulu Chemor	*2	*1	.	.	*3	.	.	.
PK063	Sg. Jernang	*2	*1	.	.	*3	.	.	.
*1	Super category	6	37	6	.	.	10	4	.
*2	2nd priority category	20	14	11	.	7	.	19	.
*3	3rd priority category	.	9	.	.	24	.	13	.
*4	4th priority category with needs of regional marketing promotion	25	.	20

Table 9 Crop Diversification Potential for Each Scheme (7/27)

State : Selangor

Code	Scheme	Category							
		1	2	3	4	5	6	7	8
SG001	Sg. Buloh	.	*1
SG002	Sg. Air Hitam	.	*1	.	.	*2	.	.	.
SG003	Kg. Batu 30	.	*1	.	.	*2	.	*3	.
SG004	Kg. Kalong Tengah	.	*2	.	.	*3	.	*1	.
SG005	Kuang	.	*1
SG006	Jalan Enam Kaki	.	*2	.	.	*3	.	*1	.
SG007	Batu 19 3/4	.	*1	.	.	*2	.	.	.
SG008	Kuala Lui	.	*1	.	.	*2	.	.	.
SG009	Sesapan Bt Minangkabau	.	*2	.	.	*3	.	*1	.
SG010	Beranang II	.	*1	.	.	*2	.	.	.
SG011	Bukit Kepong	.	*2	.	.	*3	.	*1	.
SG012	Paya Lebar	.	*1	.	.	*2	.	.	.
SG013	Sg. Rinching Hilir	*4	*2	*4	.	*3	.	*1	.
SG014	Kuala Pajam	.	*2	.	.	*3	.	*1	.
SG015	Sg. Merab	.	*1	.	.	*2	.	.	.
SG016	Bt. 17, Dusun Tua	.	*1	.	.	*2	.	.	.
SG017	Sg. Panjang	.	*4	*1	.
*1	Super category	.	10	7	.
*2	2nd priority category	.	6	.	.	8	.	.	.
*3	3rd priority category	6	.	1	.
*4	5th priority category with needs of regional marketing promotion	1	1	1

Table 9 Crop Diversification Potential for Each Scheme (8/27)

State : N.Sembilan (1/4)

Code	Scheme	Category							
		1	2	3	4	5	6	7	8
NS001	Sri Menanti	.	*1	*2	.
NS002	Terachi Batu 14	.	*1	*2	.
NS003	Inas	.	*1	*2	.
NS004	Ampang Jeram	.	*1	*2	.
NS005	Sg. Muar I & II	.	*1	*2	.
NS006	Kuala Nuri	.	*1	*2	.
NS007	Gunong Pasir	.	*1
NS008	Peraku	.	*1
NS009	Sg. Pilah	.	*1
NS010	Tanjong Ipoh	.	*1	*2	.
NS011	Padang Biawas	.	*1	*2	.
NS012	Terachi Batu 17	*4	*2	*4	.	.	*1	.	.
NS013	Kuala Jempol I	.	*1	*2	.
NS014	Kg. Ulu Parit	*1	*3	*2	.	.	.	*3	.
NS015	Kuala Jempol II	.	*1	*2	.
NS016	Kg. Cegor	.	*1	.	.	*2	.	.	.
NS017	Galau	.	*1	*2	.
NS018	Serting Ilix	.	*1	*2	.
NS019	Ulu Pilah/Gachong	.	*1	*2	.
NS020	Tanjong Juan	.	*1
NS021	Ulu Inas	.	*1	*2	.
NS022	Kg. Tanggai I & II	.	*1	*2	.
NS023	Kuala Juaseh	.	*1
NS024	Cherian	.	*1	.	.	*2	.	.	.
NS025	Ulu Jempol I-V	.	*1	*2	.
NS026	Selaru	.	*1	.	.	*2	.	.	.
NS027	Ulu Bendol	.	*1
NS028	Pelangai I-III	.	*1
NS029	Buyau	.	*1	.	.	*2	.	.	.
NS030	Kg. Nuri	.	*1
NS031	Kg. Tumang	.	*1
NS032	Kg. Gamin	.	*1	.	.	*2	.	.	.
NS033	Ulu Ghalib	*1	*2
NS034	Sg. Lui	.	*1
NS035	Bayai	.	*1	.	.	*2	.	.	.
NS036	Ulu Bemban	.	*1
NS037	Ulu Melang	*1	*3	*2	.	.	.	*3	.
NS038	Air Mawang	.	*1
NS039	Rembang Panas	.	*1
NS040	Kepis	.	*1	*2	.
NS041	Sg. Talan Panjang	*1	*3	*2	.	.	.	*3	.
NS042	Juaseh Tengah	.	*1	.	.	*2	.	.	.
NS043	Kg. Yu I & II	.	*1
NS044	Kg. Birah	.	*1
NS045	Anak Air Kata	.	*1

Table 9 Crop Diversification Potential for Each Scheme (9/27)

State : N.Sembilan (2/4)

Code	Scheme	Category							
		1	2	3	4	5	6	7	8
NS046	Ulu Sungkak	.	*1	.	.	*2	.	.	.
NS047	Sri Jemapoh	.	*1
NS048	Serting Ulu Batu 43	.	*1
NS049	Ulu Punggul	.	*1
NS050	Majau	.	*1	.	.	*2	.	.	.
NS051	Betong	.	*1
NS052	Merual Jerneh	*1	*2
NS053	Kuala Klawang	.	*1	*2	.
NS054	Sg. Klawang	.	*1	*2	.
NS055	Durian Gasing	.	*1	*2	.
NS056	Ulu Klawang	.	*1
NS057	Peradong	.	*1	*2	.
NS058	Ulu Jelebu	.	*1	*2	.
NS059	Triang Hilir	.	*1	*2	.
NS060	Sg. Jerang	.	*1	*2	.
NS061	Kg. Gagu	.	*1	.	.	*2	.	.	.
NS062	Sg. Relai	.	*1	.	.	*2	.	.	.
NS063	Kg. Renal	.	*1	.	.	*2	.	.	.
NS064	Kg. Seperi	.	*1
NS065	Kg. Geylang	.	*1
NS066	Kg. Petasseh	.	*1
NS067	Kg. Puom	.	*1	.	.	*2	.	*3	.
NS068	Air Banning	.	*1
NS069	Kg. Lekai	.	*1
NS070	Kg. Kemin	.	*1	.	.	*2	.	.	.
NS071	Rantau Pening/Solok	.	*1	.	.	*2	.	.	.
NS072	Pantai	.	*1
NS073	Kg. Daching	.	*1	*2	.
NS074	Labu Bt. 10	.	*1
NS075	Kg. Kombok	.	*1
NS076	Kg. Mantin Dalam	.	*1	.	.	*3	.	*2	.
NS077	Batang Benar	.	*1
NS078	Labu Bt.9	.	*1	.	.	*3	.	*2	.
NS079	Sg. Tarun	.	*1
NS080	Kg. Chelogeh	.	*1
NS081	Batang Penar	.	*1
NS082	Kayu Ara	.	*1	.	.	*2	.	.	.
NS083	Ulu Beranang	.	*1	.	.	*2	.	.	.
NS084	Kg. Lenggeng	.	*1	*2	.
NS085	Kg. Jijan	.	*1
NS086	Kg. Siliau	.	*1
NS087	Labu Hilir	.	*1
NS088	Kg. Sogoh	*1	*2
NS089	Kg. Lambar	.	*1
NS090	Kg. Kering I	.	*1

Table 9 Crop Diversification Potential for Each Scheme (10/27)

State : N.Sembilan (3/4)

Code	Scheme	Category							
		1	2	3	4	5	6	7	8
NS091	Labu Bt. 7 1/2	.	*1	.	.	*2	.	.	.
NS092	Kg. Belangkan	.	*1	.	.	*2	.	.	.
NS093	Kg. Bemban	.	*1	.	.	*2	.	.	.
NS094	Kg. Gebok	.	*1	.	.	*2	.	.	.
NS095	Kg. Junjun	.	*1	.	.	*2	.	.	.
NS096	Kg. Kering II	.	*1	.	.	*2	.	.	.
NS097	Lekong Karpal	.	*1	.	.	*3	.	*2	.
NS098	Kg. Machang Hulu	.	*1
NS099	Kg. Jelatok	.	*1
NS100	Kg. Kanchong	.	*1
NS101	Solok Bangkong	*1	*2
NS102	Ulu Sepri	.	*1
NS103	Tiga Nenek	*4	*1	*4	.	.	.	*2	.
NS104	Sg. Lalah/Sg. Batu	.	*1	.	.	*2	.	.	.
NS105	Gadong	.	*1	.	.	*2	.	.	.
NS106	Mampong	.	*1	*2	.
NS107	Penajis	.	*1
NS108	Kendong I-II	.	*1
NS109	Legong Hilir	*4	*1	*4	.	.	.	*2	.
NS110	Ampang Serong	.	*1	*2	.
NS111	Ampang Limau	.	*1	*2	.
NS112	Chembong	.	*1	*2	.
NS113	Ulu Gaing	.	*1
NS114	Air Panas	*1	*3	*2	.	*3	.	*3	.
NS115	Kg. Pilin	*4	*1	*4	.	.	.	*2	.
NS116	Sg. Layang	.	*1
NS117	Miku	.	*1
NS118	Ulu Chembong	.	*1	.	.	*2	.	.	.
NS119	Kundur	.	*1
NS120	Kg. Gating	.	*1	.	.	*2	.	.	.
NS121	Chengkau Ulu	*1	*2
NS122	Kg. Lada	*1	*2
NS123	Ulu Gadong	.	*1
NS124	Semerbok	.	*1
NS125	Anak Air Tontong	.	*1	*2	.
NS126	Sg. Ibor	.	*1	.	.	*2	.	.	.
NS127	Senama	.	*1
NS128	Ulu Semin	*4	*1
NS129	Pilin Tengah	*1	*2
NS130	Ulu Padang Besar	.	*1
NS131	Sawah Raja	.	*1	.	.	*2	.	.	.
NS132	Kg. Chuai	.	*1	.	.	*2	.	.	.
NS133	Batang Nyamor	.	*1
NS134	Bongek	.	*1
NS135	Kundur	.	*1	.	.	*2	.	.	.

Table 9 Crop Diversification Potential for Each Scheme (11/27)

State : N.Sembilan (4/4)

Code	Scheme	Category							
		1	2	3	4	5	6	7	8
NS136	Kundur Hilir	.	*1	.	.	*2	.	.	.
NS137	Pulau Mampat	.	*1
NS138	Repah	.	*1
NS139	Tampin Tengah	.	*1	.	.	*3	.	*2	.
NS140	Ulu Repah	.	*1
NS141	Ulu Gemencheh	.	*1
NS142	Sg. Dua	*4	*1	*4	.	.	.	*2	.
NS143	Kg. Londah	*4	*1	*4	.	.	.	*2	.
NS144	Kg. Jelawai	*1	*3	*2	.	.	.	*3	.
NS145	Kg. Bangkahulu	*4	*1	*4	.	.	.	*2	.
NS146	Gemencheh Lama	.	*1
NS147	Kg. Pondo	.	*1
NS148	Sg. Salah/Sg. Jernih	.	*1
NS149	Kg. Keru	.	*1
NS150	Batang Rokan	.	*1
NS151	Ulu Tebong	.	*1	.	.	*2	.	.	.
NS152	Sg. Kelamah	*1	*2
NS153	Jimah	.	*1
NS154	Sg. Raya	*4	.	*4	.	.	.	*1	.
NS155	Linggi	*1	*3	*2	.	.	.	*3	.
NS156	Tampin Kanan	.	*1	.	.	*2	.	.	.
*1	Super category	14	140	.	.	.	1	1	.
*2	2nd priority category	.	9	6	.	34	.	42	.
*3	3rd priority category	.	7	.	.	5	.	7	.
*4	4th priority category with needs of regional marketing promotion	9	.	8

Table 9 Crop Diversification Potential for Each Scheme (12/27)

State : Melaka (1/2)

Code	Scheme	Category							
		1	2	3	4	5	6	7	8
MA001	Air Paabas	.	*1	*2	.
MA002	Air Hitam Lendu	.	*1
MA003	Cerana Puteh	.	*1	*2	.
MA004	Durian Daun	.	*1	*2	.
MA005	Kemuning	.	*1
MA006	Kuala Sungga	.	*1	*2	.
MA007	Kg. Lakok, Pekan Masjid Tanah	.	*1	*2	.
MA008	Melaka Pindah	.	*2	*1	.
MA009	Melekek	.	*1	*2	.
MA010	Masjid Tanah	.	*2	*1	.
MA011	Parit Melana	.	*1
MA012	Padang Sebang 1 & 11	.	*2	*1	.
MA013	Rantau Panjang	.	*1	*2	.
MA014	Ramuan Cina Besar	*1	*2	*3	.
MA015	Ramuan Cina Kechil	*1	*2	*2	.	.	.	*3	.
MA016	Rembia	.	*1
MA017	Solok Melaka Pindah	.	*1	*2	.
MA018	Solok Jementeng	.	*1
MA019	Simpang Empat	.	*1	*2	.
MA020	Solok Kemus	.	*1
MA021	Solok Padang Keladi	.	*1
MA022	Solok Duku	*1	*2	*3	.
MA023	Sg. Baru Lilir	*4	*1	*2	.
MA024	Sg. Siput	*1	*2	*3	.
MA025	Sg. Buloh	.	*1	*2	.
MA026	Tanjung Bidara	*1	*2	*3	.
MA027	Bachang	*4	*2	*1
MA028	Batu Berendam	*4	*1
MA029	Durian Tunggal	*4	*1	*1
MA030	Duyong	*4	*2	.
MA031	Parit China	*4	*1	*2	.
MA032	Paya Rumpit Alor Gajah	*4	*1	*2	.
MA033	Paya Rumpit Sg. Udang	*4	*1	*4	.	.	.	*2	.
MA034	Sungai Putat	*4	*1	*2	.
MA035	Sungai Udang	*1	*2	*2	.	.	.	*3	.
MA036	Tangga Batu	*4	*1	*2	.
MA037	Tanjung Minyak	*4	*1	*2	.
MA038	Air Panas	.	*1	*2	.
MA039	Bukit Senggeh	.	*1	*2	.
MA040	Chabau	*1	*2	*2	.	.	.	*3	.

Table 9 Crop Diversification Potential for Each Scheme (13/27)

State : Melaka (2/2)

Code	Scheme	Category							
		1	2	3	4	5	6	7	8
MA041	Chohong	.	*1	*2	.
MA042	Jasin 1 & 2	.	*1	*2	.
MA043	Kemenggang	.	*1
MA044	Lembah Nyalas	.	*1	*2	.
MA045	Lubok Buaya	*1	*2	*2	.	.	.	*3	.
MA046	Merlimau	*1	*2	*2	.	.	.	*3	.
MA047	Nyalas Gapis	.	*1	*2	.
MA048	Parit Keliling	.	*1	*2	.
MA049	Selandar 1 & 2	.	*1	*2	.
MA050	Sempang Asahan	.	*1	*2	.
MA051	Sempang Rim	*1	.
MA052	Tambak Merlang	.	*1	*2	.
MA053	Telok Rimba	.	*1	*2	.
MA054	Umbai Serkam	.	*4	*1	.
*1	Super category	9	28	2	.	.	.	5	.
*2	2nd priority category	.	13	5	.	.	.	29	.
*3	3rd priority category	9	.
*4	4th priority category with needs of regional marketing promotion	11	1	1

Table 9 Crop Diversification Potential for Each Scheme (14/27)

State : Johor

Code	Scheme	Category							
		1	2	3	4	5	6	7	8
JR001	Sg. Balang	*2	*3	*2	.	.	*1	.	.
JR002	Ulu Benut	*4	*2	*4	.	.	*1	.	.
JR003	Kahang	*4	.	*4	.	.	.	*1	.
JR004	Padang Endau	*4	*1
JR005	Lukut	.	*1
JR006	Sagil	.	*4	*1	.
JR007	Sawah Bahru	*1
JR008	Juasseh	*1	.	.	.	*2	.	.	.
JR009	Tenang	*1	.	*2	.	.	.	*3	.
JR010	Jementah	*1	*3	*2
JR011	Kebun Bahru	.	*1	*2	.
JR012	Kesang Gate	*2	.	*1	.	.	.	*3	.
JR013	Tangkak	.	*1	*2	.
JR014	Kesang Tasik	*2	*3	*2	.	.	*1	.	.
JR015	Kurnia Sakti	*2	.	*1	.	.	.	*3	.
JR016	Pulau Penarik	*1	.	*2	.	.	.	*3	.
JR017	Sg. Ring	.	*1	*2	.
JR018	Teluk Rimba	*2	*3	*2	.	.	*1	.	.
JR019	Teluk Rimba	*2	*3	*1	.	*3	.	*3	.
JR020	Liang Batu	*1	*3	*2	.	*3	.	.	.
JR021	Serom I	*1	*2
JR022	Sabak Sena	*1	*2
JR023	Telok Bakong	*1	*2
*1	Super category	9	5	3	.	.	4	2	.
*2	2nd priority category	6	4	7	.	1	.	3	.
*3	3rd priority category	.	6	.	.	2	.	5	.
*4	4th priority category with needs of regional marketing promotion	3	1	2

Table 9 Crop Diversification Potential for Each Scheme (15/27)

State : Pahang (1/7)

Code	Scheme	Category							
		1	2	3	4	5	6	7	8
PH001	Ampang	*7
PH002	Paya Angut	*7
PH003	Ara, Kerdau	*7
PH004	Angut Ulu, Jenderak	*7
PH005	Alur Lintah	*7
PH006	Atok I and II	.	*1
PH007	Ajai	*1	*2
PH008	Aur Gading	.	*1	*2	.
PH009	Bungor	*1
PH010	Paya Beruas	*7
PH011	Belimbing	*5
PH012	Beluru	*1	*2
PH013	Bintang	*5	*6	.
PH014	Bintang Hulu	*7
PH015	Besar Tualang	*5
PH016	Busut Jin	*7
PH017	Batu Bor	*5
PH018	Bangau Parit	*7
PH019	Berhala Kapas	*7
PH020	Biut, Jenderak	*5
PH021	Paya Besar, Lipat Kajang	*7
PH022	Banir	*7
PH023	Besar Mengkarak	*7
PH024	Bangau	*7
PH025	Besar Lebak	*7
PH026	Paya Batu	*6	.
PH027	Besar Bohor	*7
PH028	Badok	*5
PH029	Baroh	*7
PH030	Kg. Belungu	*7
PH031	Bakoh, Kerdau	*6	.
PH032	Beringin	*7
PH033	Batu Hampar	*7
PH034	Betong	*6	.
PH035	Bkt. Dinding	*7
PH036	Belimbing	*7
PH037	Batu Gajah	*7
PH038	Bharu Lama	*1
PH039	Paya Bharu Stg. 1	*1
PH040	Batu Talam	*1	*2
PH041	Bukit Gambut	*1	*2
PH042	Paya Budu	.	*1
PH043	Bandar	.	*1
PH044	Bapong	.	*1
PH045	Paya Besar	.	*1

Table 9 Crop Diversification Potential for Each Scheme (16/27)

State : Pahang (2/7)

Code	Scheme	Category							
		1	2	3	4	5	6	7	8
PH046	Cik Ali	*6	.
PH047	Chempaka	*7
PH048	Cendor	*7
PH049	Chukang Paku	*7
PH050	Chebong	*7
PH051	Caruk Murun	*7
PH052	Chenua	*1	*2
PH053	Cherlang	.	*1
PH054	Chin	.	*1
PH055	Chemato	.	*1
PH056	Cherba	*1	*2
PH057	Darat Sanggang	*5	*6	.
PH058	Darat Sir Kuala/Ulu	*5
PH059	Dehilir	*5	*6	.
PH060	Dedalu	*5
PH061	Paya Dalam	*7
PH062	Paya Dong/Durian Sebatang	*4	*1	*4	.	.	.	*2	.
PH063	Dusun	*1	*2	*3	.
PH064	Embun	*5
PH065	Gunting	*7
PH066	Gemayah	*7
PH067	Ganchong	*4	.	*4	.	.	*1	.	.
PH068	Gantok	*7
PH069	Guai dan Merbau	*5	*6	.
PH070	Gunong, Jenderak	*7
PH071	Gertak Keladan	*7
PH072	Gajah Mati, Jenderak	*7
PH073	Gedual, Jenderak	*7
PH074	Gajah Mati	*7
PH075	Paya Gintong/Sokti	*1	.	*2	.	.	.	*3	.
PH076	Gumai	*7
PH077	Gali Tengah	.	*2	*1	.
PH078	Hilir	*1	*2	*2	.	.	.	*3	.
PH079	Iman Sulong	*6	.
PH080	Jerangan	*1
PH081	Jaapan Keladi, Jenderak	*7
PH082	Jerangsang	*7
PH083	Joor	.	*1
PH084	Jelutung	*5
PH085	Janda Baik Hilir	.	*1
PH85B	Ulu Cheringging	.	*1
PH85C	Chemperoh	*1	*2	*2	.	.	.	*3	.
PH85D	Cheringging	.	*1

Table 9 Crop Diversification Potential for Each Scheme (17/27)

State : Pahang (3/7)

Code	Scheme	Category							
		1	2	3	4	5	6	7	8
PH086	Kubang Karah	*1	*2	*2	.	.	.	*3	.
PH087	Kampong Melayu	*7
PH088	Kinchir	*7
PH089	Kilang	*7
PH090	Kenalau	*8
PH091	Ketam, Kerdau	*5
PH092	Kerayong	*7
PH093	Ketapi, Kerdau	*7
PH094	Kelibang, Kerdau	*7
PH095	Kuin	*7
PH096	Kuala Triang	*7
PH097	Kepong	*7
PH098	Keladan	*7
PH099	Kundang	*6	.
PH100	Karai	*7
PH101	Kubu	*7
PH102	Kenalan Kecil	*7
PH103	Kangsar	.	*2	*1	.
PH104	Kampong Baharu	.	*1
PH105	Kekura	*7
PH106	Kuala Retang	*7
PH107	Kool	*7
PH108	Kening	*7
PH109	Mertau	*1	.	*2	.	.	.	*3	.
PH110	Krot	*5
PH111	Kening Seberang	*7
PH112	Kemap	*1	.	*2	.	.	.	*3	.
PH113	Kertam	*4	.	*4	.	.	.	*1	.
PH114	Kuala Merang	.	*1
PH115	Kuala Atok	*1	*2	*2	.	.	.	*3	.
PH116	Kenong	.	*1
PH117	Kuala Keloi	*1	*2	*2	.	.	.	*3	.
PH118	Kekabu	.	*1
PH119	Kasikin	.	*1
PH120	Kadok	.	*1	*2	.
PH121	Kong	.	*1
PH122	Keruntung	*1	*2
PH123	Karak Setia	*7
PH124	Lubok	*7
PH125	Lebak	*7
PH126	Lipat Kajang	*5
PH127	Luas, Jenderak	*5	*6	.
PH128	Lompat	*7
PH129	Lanjut, Lipat Kajang	*7
PH130	Luas & Tg. Batu	*5

Table 9 Crop Diversification Potential for Each Scheme (18/27)

State : Pahang (4/7)

Code	Scheme	Category							
		1	2	3	4	5	6	7	8
PH131	Lubuk Lian	*7
PH132	Lubuk Kawan	*7
PH133	Lang	*4	*1
PH134	Lata Kasah	.	*1
PH135	Lubok Payong	*1	*2	*2	.	.	.	*3	.
PH136	Lanting	*9	*7
PH137	Ladang	*9	*7
PH138	Lubuh	*7
PH139	Lalloh/Salak	.	*2	*1	.
PH140	Lallang	*1	*2
PH141	Lanar	*1	*2
PH142	Lengkong	.	*1
PH143	Lurau	*1	*2
PH144	Mambang	*7
PH145	Mencali/Gading	*7
PH146	Mentakab	*7
PH147	Mengkuang	*5	*6	.
PH148	Machang Gelap	*1	.	*2	.	.	.	*3	.
PH149	Mentenang	*7
PH150	Meledu	*1	*2	*2	.	.	.	*3	.
PH151	Melatengah	*7
PH152	Mentiue	*1	*2	*3	.
PH153	Melan	*1	*2
PH154	Nyonyak	*7
PH155	Nawan, Jenderak	*7
PH156	Nyong	*7
PH157	Nyak Besar	*7
PH158	Nyak Kecil	*7
PH159	Paya Ngewin	*7
PH160	Paya Nakoh	*5
PH161	Pinang	*1	*2	.
PH162	Pakoh	*1
PH163	Permatang Puah	*1
PH164	Pahang Tua	*4	*2	*4	.	.	*1	.	.
PH165	Pulau Jawa	*7
PH166	Padang	*7
PH167	Pasir Panjang	*7
PH168	Pelak	*5
PH169	Pulau Rumpit	*5
PH170	Pulau Nawar	*7
PH171	Puyu	*7
PH172	Pamah Songsang	*7
PH173	Padang	*7
PH174	Penak	*7
PH175	Perak, Lipat Kajang	*7

Table 9 Crop Diversification Potential for Each Scheme (19/27)

State : Pahang (5/7)

Code	Scheme	Category							
		1	2	3	4	5	6	7	8
PH176	Puchong	*5
PH177	Pamun & Sebelah	*7
PH178	Pelong, Jenderak	*6	.
PH179	Pulau Chengai, Jenderak	*7
PH180	Paya Putat	*7
PH181	Puah, Jenderak	*7
PH182	Pesagi	*5
PH183	Pejing	*9	*7
PH184	Paku	*7
PH185	Padang Tenggara	*7
PH186	Pemah Bedu	.	*1
PH187	Perangkap	.	*1
PH188	Pagak Sasak	.	*2	*1	.
PH189	Peling Hilir	*1	*2	*2	.	.	.	*3	.
PH190	Ponsoon	.	*1	*2	.
PH191	Pelantar	*7
PH192	Rhu	*7
PH193	Rambutan	*7
PH194	Rumput	*7
PH195	Rambai, Jenderak	*7
PH196	Rantau Panjang	*7
PH197	Rantau Panjang	*7
PH198	Renggul	*1	*2	*2	.	.	.	*3	.
PH199	Relai	.	*1	*2	.
PH200	Sepat	*6	.
PH201	Soi	*5
PH202	Sri Damai	*5
PH203	Serandu	*7
PH204	Salong	*1	*2
PH205	Sejabun	*7
PH206	Sungai Duri	*7
PH207	Sepayang	*1	.
PH208	Sg. Rabbit	*5
PH209	Siah	*7
PH210	Sebelah	*7
PH211	Sok, Jenderak	*5
PH212	Sekoh, Jenderak	*7
PH213	Sg. Tuang	*5
PH214	Selindang	*5
PH215	Songsang	*7
PH216	Sg. Buloh	*7
PH217	Songsang	*7
PH218	Sesap	*7
PH219	Serdang Atas and Bawah	*7
PH220	Sg. Chengal	*1

Table 9 Crop Diversification Potential for Each Scheme (20/27)

State : Pahang (6/7)

Code	Scheme	Category							
		1	2	3	4	5	6	7	8
PH221	Som	.	*1
PH222	Sultanate Land	*7
PH223	Sungai Leng	*9	*7
PH224	Sentang	*7
PH225	Suungai Pasu	*1
PH226	Sungai Tikam	.	*1
PH227	Sain	*1	*2
PH228	Sengkela	*1	*2
PH229	Samak/Jani	*7
PH230	Sepan	.	*1	*2	.
PH231	Sungai Beluan	.	*1
PH232	Sempa	*7
PH233	Sum-Sum	.	*1
PH234	Simpang Pelangai	*1	*2
PH235	Seratus Tujuh	.	*1
PH236	Tebat	*7
PH237	Tanjung Pulai	*5
PH238	Temai Hilir	*5
PH239	Telok Era	*7
PH240	Telok Sentang	*5
PH241	Tenggoh	*7
PH242	Teratai	*7
PH243	Taram, Kerdu	*7
PH244	Tok Apas	*7
PH245	Tok Langit	*7
PH246	Terlang	*7
PH247	Tedong	*7
PH248	Terjun	*7
PH249	Tenggang	*7
PH250	Tetapa	*7
PH251	Teriingging, Jenderak	*7
PH252	Paya Teris	*7
PH253	Tanjung, Keladan	*7
PH254	Tambang	*7
PH255	Tebing Tinggi	*7
PH256	Tebing Tinggi	*7
PH257	Terpai	*7
PH258	Tengah	.	*1
PH259	Tanjong Batu	*7
PH260	Ting & Besar Kertau	*5
PH261	Temalir	*1	*2
PH262	Tat/Tersan	*1	*2	*2	.	.	.	*3	.
PH263	Tersang	*1	*2	*2	.	.	.	*3	.
PH264	Temunga	.	*1
PH265	Tanjung Putus	*1	*2	*2	.	.	.	*3	.

Table 9 Crop Diversification Potential for Each Scheme (21/27)

State : Pahang (7/7)

Code	Scheme	Category							
		1	2	3	4	5	6	7	8
PH266	Terpuai	.	*1
PH267	Tampin/Kuala Kemahang	.	*1
PH268	Teris	.	*1	*2	.
PH269	Teka	.	*2	*1	.
PH270	Triang Hilir	.	*2	*1	.
PH271	Ubai	*7
PH272	Ulu Cheka	*6	.
PH273	Ulu Retang	*1	*2
PH274	Ulu Temau	.	*1
PH275	Ulu Gali	.	*2	*1	.
PH276	Ulu Lepar	.	*1
PH277	Ulu Atok	.	*1
PH278	Ulu Sempalit	*7
PH279	Ulu Lallang	.	*1
PH280	Ulu Semei	.	*1
PH281	Kuala Wau/Betong	*7
PH282	Wah	*7
PH283	Nangka	*7
PH284	Baru Batu Sawar, Jenderak	*7
PH285	Nabon	.	*1
PH286	Cagar Hutang	*7
PH287	Kemahang	.	*1
*1	Super category	43	45	.	.	.	2	9	2
*2	2nd priority category	.	39	16	.	.	.	8	.
*3	3rd priority category	18	.
*4	4th priority category with needs of regional marketing promotion	5	.	4
*5	Off season upland crop cultivation in inundation schemes	34
*6	Single cropping of paddy in inundation schemes	15	.
*7	No more use for crop growing purposes in inundation schemes	145
*8	Converted inundation scheme but presently not planted	1
*9	Needs of regional marketing promotion for vegetable cropping in inundation schemes	4

Table 9 Crop Diversification Potential for Each Scheme (22/27)

State : Terengganu

Code	Scheme	Category							
		1	2	3	4	5	6	7	8
TR001	Telabak	*4	*1	*4	.	.	.	*2	.
TR002	Bintang	.	*4	*1	.
TR003	Setiu	*4	*1	*4	.	.	.	*2	.
TR004	Pelagat	*4	*2	*4	.	.	*1	.	.
TR005	Air Puteh	*2	.	*1	.	.	.	*3	.
TR006	Paya Dadong	*2	.	*1	.	.	.	*3	.
TR007	Batu Puteh	*2	.	*1
TR008	Paya Paman	*4	*2	*4	.	.	*1	.	.
TR009	Paya Dusun	.	*1	*2	.
TR010	Cheniah	*2	*3	*1	.	.	.	*3	.
TR011	Bukit Peroh	*4	*2	*4	.	.	*1	.	.
TR012	Paya Kempian	*2	*1	*2	.	.	.	*3	.
TR013	Syukur	*2	*1	*2	.	.	.	*3	.
TR014	Keliyu	*2	*3	*1	.	.	.	*3	.
TR015	Pulau Musang	*4	*2	*4	.	.	*1	.	.
TR016	Nerus	*4	*2	*4	.	.	*1	.	.
TR017	Batu Rakit	*1	.
TR018	Gelong Gabus	*1	.
TR019	Bukit Tumbuh	*2	*1
TR020	Banggol Pauh	*1	.
TR021	Sg. Ibai	*1	.
TR022	Chenderig	*1	.
TR023	Kepong	*2	*1
TR024	Sg. Serai	*2	*1	*3	.
TR025	Lubok Pandan	*2	*1	*3	.
TR026	Bukit Jolong	*1	.
TR027	Rusila	*1	.
TR028	Ban Batangan	*1
TR029	Paya Kemat	.	*4	*1	.
TR030	Paya Diman	*4	*1	*4	.	.	.	*2	.
TR031	Padang Ipoh	*4	*1
TR032	Kuala Telemong	*2	*1
TR033	Kuala Akob	*4	*1	*4	.	.	.	*2	.
TR034	Paya Rapat	*4	*2	*4	.	.	*1	.	.
TR035	Gaung	*4	*2	*4	.	.	*1	.	.
TR036	Matang	.	*4	*1	.
TR037	Matang	.	*4	*1	.
TR038	Langgar	*4	*2	*4	.	.	*1	.	.
TR039	Tapah	.	*4	*1	.

*1	Super category	.	12	5	.	.	8	12	1
*2	2nd priority category	12	9	2	.	.	.	5	.
*3	3rd priority category	.	2	8	.
*4	4th priority category with needs of regional marketing promotion	13	5	12

Table 9 Crop Diversification Potential for Each Scheme (23/27)

State : Kelantan (1/2)

Code	Scheme	Category							
		1	2	3	4	5	6	7	8
KN001 Jegor		.	*1
KN002 R.T. Bendang Muring		*2	*3	*1	.	.	.	*3	.
KN003 Danan		*4	.	*4	.	.	.	*1	.
KN004 Batu Balai		*4	.	*4	.	.	.	*1	.
KN005 Padang Lindung		*4	.	*4	.	.	.	*1	.
KN006 Telosan Rasau		*4	.	*4	.	.	.	*1	.
KN007 R.T. Sg. Yong		*4	.	*4	.	.	.	*1	.
KN008 Pertok Lama		.	*1	*2	.
KN009 Hilir Sat I		.	*4	*1	.
KN010 Galang		.	*1	.	.	*3	.	*2	.
KN011 Ulu Sat		.	*4	*1	.
KN012 Putat Mak Sari		.	*1	*2	.
KN013 Bagan I		.	*1	*2	.
KN014 Sg. Dewan		.	*4	*1	.
KN015 Bagan II		.	*4	*1	.
KN016 Sg. Rusa		.	*4	*1	.
KN017 Pak Yam		.	*1	*2	.
KN018 Meranti		*1	.	*2	.	.	.	*3	.
KN019 Repek		*2	.	*2	.	.	*1	.	.
KN020 Sg. Pinang		*1	.	*2	.	.	.	*3	.
KN021 Kubang Sawa		*2	*3	*1	.	.	.	*3	.
KN022 Pasir Hor		*4	*2	*4	.	.	.	*1	.
KN023 Bkt. Jering		.	*4	*1	.
KN024 Jerimbong		.	*4	*1	.
KN025 Kuala Balah		.	*4	*1	.
KN026 Lubok Bongor		.	*4	*1	.
KN027 Rengas		.	*1	*2	.
KN028 R.T. Sg. Kenor		.	*1	.	.	*3	.	*2	.
KN029 R.T. Keluat		.	*1	*2	.
KN030 Hilir Sat II		*4	.	*4	.	.	*1	.	.
KN031 Sg. Labok		*4	.	*4	.	.	*1	.	.
KN032 Bagan III		*4	*2	*4	.	.	*1	.	.
KN033 Pulau Chondong		*4	*1	*4	.	.	.	*2	.
KN034 Lubok Awah		*2	*3	*1	.	.	.	*3	.
KN035 R.T. Bedal		*2	*3	*1	.	.	.	*3	.
KN036 R.T. Enggong		*1	*3	*2	.	.	.	*3	.
KN037 R.T. Lapan Agor		*1	*3	*2	.	.	.	*3	.
KN038 Rantau Panjang I		*4	.	*4	.	.	.	*1	.
KN039 Serdang		*4	*2	*4	.	.	*1	.	.
KN040 Gual Ipoh		*4	*1	*4	.	.	.	*2	.
KN041 R.T. Air Cina Kelubi		.	*1	*2	.
KN042 Nibong		.	*1	.	.	*2	.	.	.
KN043 R.T. Blok Ulu Kusial		*2	*3	*1	.	.	.	*3	.
KN044 R.T. Gelugor		*1	*3	*2	.	.	.	*3	.
KN045 Lawang Air Batu & Kelisar		.	*2	*1	.

Table 9 Crop Diversification Potential for Each Scheme (24/27)

State : Kelantan (2/2)

Code	Scheme	Category							
		1	2	3	4	5	6	7	8
KN046	R.T. Lubok Berangan	*4	*2	*4	.	.	*1	.	.
KN047	Ternang Ulu	*1	*3	*2	.	.	.	*3	.
KN048	Panjang	*2	*3	*1	.	*3	.	*3	.
KN049	Gebok	*2	*3	*1	.	*3	.	*3	.
KN050	Jelakong	*1	*3	*2	.	.	.	*3	.
KN051	Banjar Parah	*4	*2	*4	.	.	*1	.	.
KN052	Rawa Bechah Laut	*2	*3	*1	.	.	.	*3	.
KN053	Air Lanas	*4	*2	*4	.	.	*1	.	.
KN054	Bdg. Paku	*1	*2
KN055	Bujung Gertak Serong	*1	*2
KN056	Rambai	*2	*3	*1	.	*3	.	*3	.
KN057	Permatang Sungkai	*4	.	*4	.	.	.	*1	.
KN058	Bdg. Kamal	*4	.	*4	.	.	.	*1	.
KN059	Bdg. Bukit Merbau	*4	.	*4	.	.	.	*1	.
KN060	Pertok I	*1	*3	*2	.	.	.	*3	.
KN061	Pertok II	*2	*3	*1	.	.	.	*3	.
KN062	Pertok III	*2	*3	*1	.	*3	.	*3	.
KN063	Mas Ulu	*1	*3	*2	.	.	.	*3	.
KN064	Tualang Kelikir	*4	*1	*4	.	.	.	*2	.
KN065	Suda	*4	*1	*4	.	.	.	*2	.
KN066	Gaung	*4	*1	*4	.	.	.	*2	.
KN067	Che Wa	*1	*3	*2	.	.	.	*3	.
KN068	Bechah Pauh	*4	*1	*4	.	.	.	*2	.
KN069	Batu Pahat	*1	.	*2	.	.	.	*3	.
KN070	Bdg. Ujit	*1	*3	*2	.	.	.	*3	.
KN071	Bakat I	*4	.	*4	.	.	*1	.	.
KN072	Bdg. Senor	*4	.	*4	.	.	*1	.	.
KN073	Bdg. Pauh	*2	*3	*1	.	.	.	*3	.
KN074	Bdg. Bukit Cina	*4	*1	*4	.	.	.	*2	.
KN075	Kok Keli	*1	*2
KN076	Joh	*4	.	*4	.	.	*1	.	.
KN077	Pangpong Dalu	*1	*3	*2	.	.	.	*3	.
*1	Super category	16	18	12	.	.	11	20	.
*2	2nd priority category	13	10	14	.	1	.	16	.
*3	3rd priority category	.	22	.	.	6	.	25	.
*4	4th priority category with needs of regional marketing promotion	27	9	27

Table 9 Crop Diversification Potential for Each Scheme (25/27)

State : Sabah (1/2)

Code	Scheme	Category							
		1	2	3	4	5	6	7	8
SA001	Tempasuk North	.	*2	*1	.
SA002	Tempasuk South	.	*2	*1	.
SA003	Kawang-Kawang/Pandasan	.	*2	*1	.
SA004	Tamu Darat	*1	.
SA005	Tambulian Laut	*1	.	.
SA006	Jawi Jawi	.	*2	*1	.
SA007	Lubok Moyoh	.	*2	*1	.
SA008	Gaur	*1	.
SA009	Tambulian Ulu	*1	.	.
SA010	Tambilaung	.	*2	*1	.
SA011	Pekan Kota Belud	*1	.	.
SA012	Bingkor	*1	.	.
SA013	Tambunan	*1	.
SA014	Lagut Sebrang	*1	.
SA015	Apin-Apin	*1	.	.
SA016	Transpegalan Phase I	*1	.	.
SA017	Kuala Tomani	*1	.	.
SA018	Tulid	*1	.
SA019	Biah	.	*1	*2	.
SA020	Nambayan	*1	.
SA021	Marais	*1	.
SA022	Tandek	*1	.
SA023	Kota Marudu	*1	.	.
SA024	Timbang Batu	*1	.
SA025	Membakut	*1	.	.
SA026	Sindumin	.	*2	*1	.
SA027	Tunggul Tinggi	.	*1
SA028	Bundu	*1
SA029	Limbawang	*1
SA030	Pulaimanang	.	*2	*1	.
SA031	Lingkungan	.	*2	*1	.
SA032	Papar/Benoni	.	*2	*1	.
SA033	Bongawan	.	*2	*1	.
SA034	Tuaran I	*1	.	.
SA035	Tuaran II	*1	.	.
SA036	Bantayan	*1	.	.
SA037	Penampang	.	*2	*1	.
SA038	Ramaya	.	*2	*1	.
SA039	Merungin	*1	.	.
SA040	Kimolohing	*1	.	.

Table 9 Crop Diversification Potential for Each Scheme (26/27)

State : Sabah (2/2)

Code	Scheme	Category							
		1	2	3	4	5	6	7	8
SA041	Sinarul	*1	.	.
SA042	Nalapak	*4	.	.	*1
SA043	Trusan Sapi	*1	.
SA044	Bukit Garam	.	*1
SA045	Ulu Tungku	*1
SA046	Pitas Hilir	*1	.	.
SA047	Bawing	*1	.
SA048	Sikuati	.	*2	*1	.
SA049	Liu	*1	.
SA050	Torongkongan	*1
SA051	Dampirit	*1	.
SA052	Rokom	*1	.
SA053	Buanog	*1	.
SA054	Suangpai	.	*2	*1	.
SA055	Kawang Kawang/Bugaron	.	*2	*1	.
SA056	Sekoli	.	*2	*1	.
*1	Super category	.	3	.	.	.	16	32	5
*2	2nd priority category	.	17	1	.
*3	3rd priority category
*4	4th priority category with needs of regional marketing promotion	1	.	.	.

Table 9 Crop Diversification Potential for Each Scheme (27/27)

State : Sarawak

Code	Scheme	Category							
		1	2	3	4	5	6	7	8
SK001	Bako	*4	.	*1	.
SK002	Kali Kaba	*1	.
SK003	Lubok Nibong	.	*3	*1	.
SK004	Sebubok Engkala	.	*3	*1	.
SK005	Skrang	*1	.
SK006	Tg. Bijat	*1	.
SK007	Tg. Saduru	*1	.
SK008	Tg. Sebukut	.	*3	*1	.
SK009	Lebaan Bawang Assan	*4	.	*1	.
SK010	Bungai Mummon	*1	.
SK011	Pujut Lopeng	.	*1
SK012	Daro Padi	*2	*2	.	.	*4	.	*1	.
SK013	Paloh Bangau	*2	*2	.	.	*4	.	*1	.
SK014	Loba Balu	.	*2	.	.	*4	.	*1	.
SK015	Daro Pilot	*4	.	*1	.
SK016	Sadong/Krang	*1	.
SK017	Mid-Sadong, Stage I	*2	*2	*1	.
SK018	Mid-Sadong, Stage II	*1	.
SK019	Mid-Sadong, Stage III	*2	*2	*1	.
SK020	Banting	*1	.
SK021	Benawa	*1	.
SK022	Nanga Merit	*1	.
SK023	Pandaruan	*1	.
SK024	Paya Selanyau I	*2	*2	*2	.	*2	.	*1	.
SK025	Paya Selanyau II	*1	.
SK026	Paya Payang	*2	.	*1	.
SK027	Sg. Renan	*1	.
SK028	Tg. Purun	*1	.
SK029	Entebu Kupang	*2	*3	*1	.
SK030	Lubuk Buntin	*1	.
SK031	Merapok	*1	.
SK032	Sg. Entulang	*1	.
SK033	Sg. Gran	*1	.
SK034	Sg. Semalau	.	*2	.	.	*4	.	*1	.
SK035	Sg. Sunga	*1	.
SK036	Lower Samarahan	.	*3	*1	.
SK037	Sebandi	*1	.
SK038	Sekuduk/Chupak	*2	.	*1	.
*1	Super category	.	1	37	.
*2	needs of regional marketing promotion	6	7	1	.	3	.	.	.
*3	possible for incorporation into IADP	.	5
*4	location expected for brackish water resources availability	7	.	.	.

*Feasibility Study on Rationalization and Crop Diversification
in Non-granary Irrigated Areas in Malaysia*

*Vol. 2
Crop Diversification Evaluation Methodology*

Figures

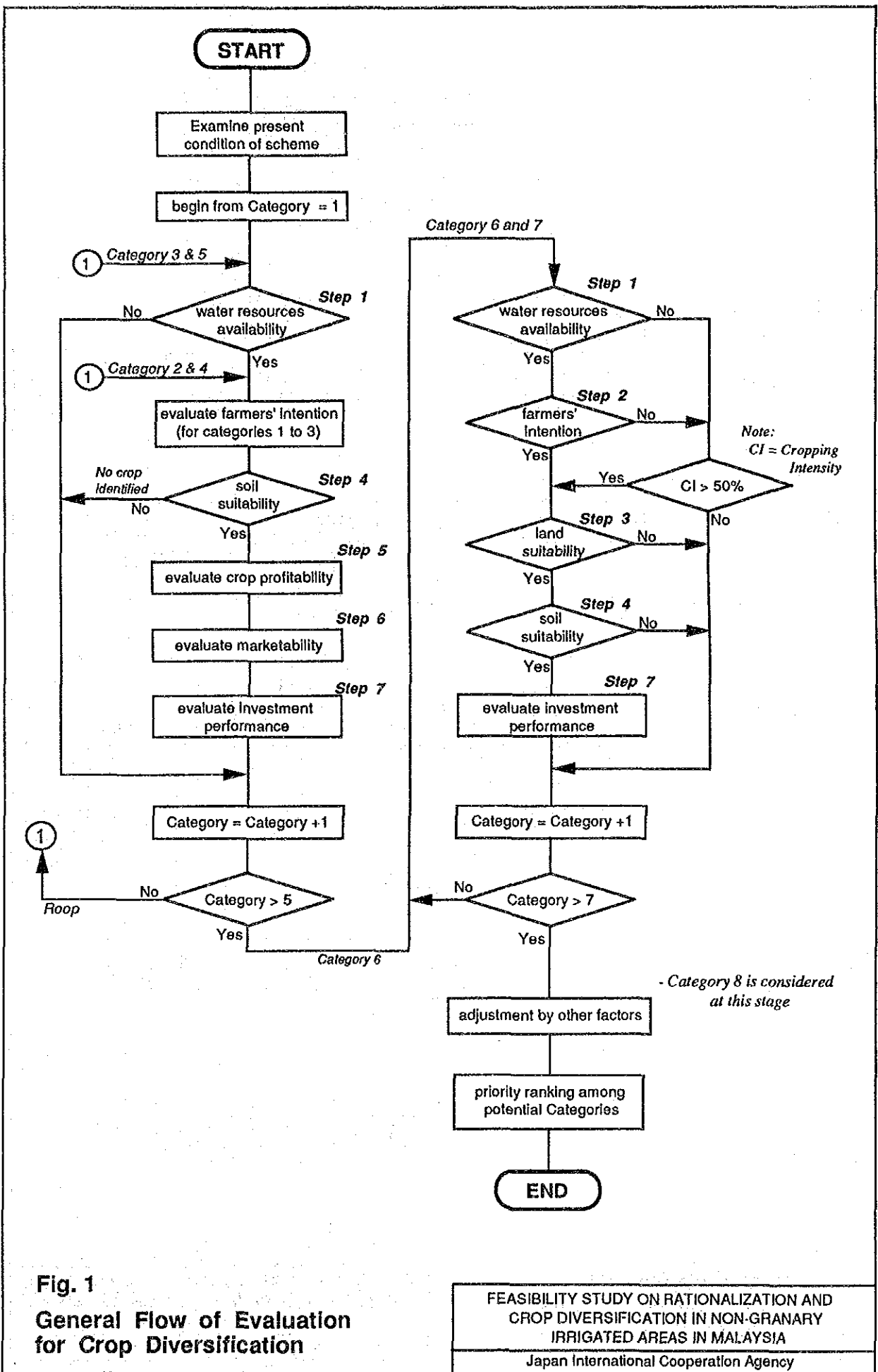
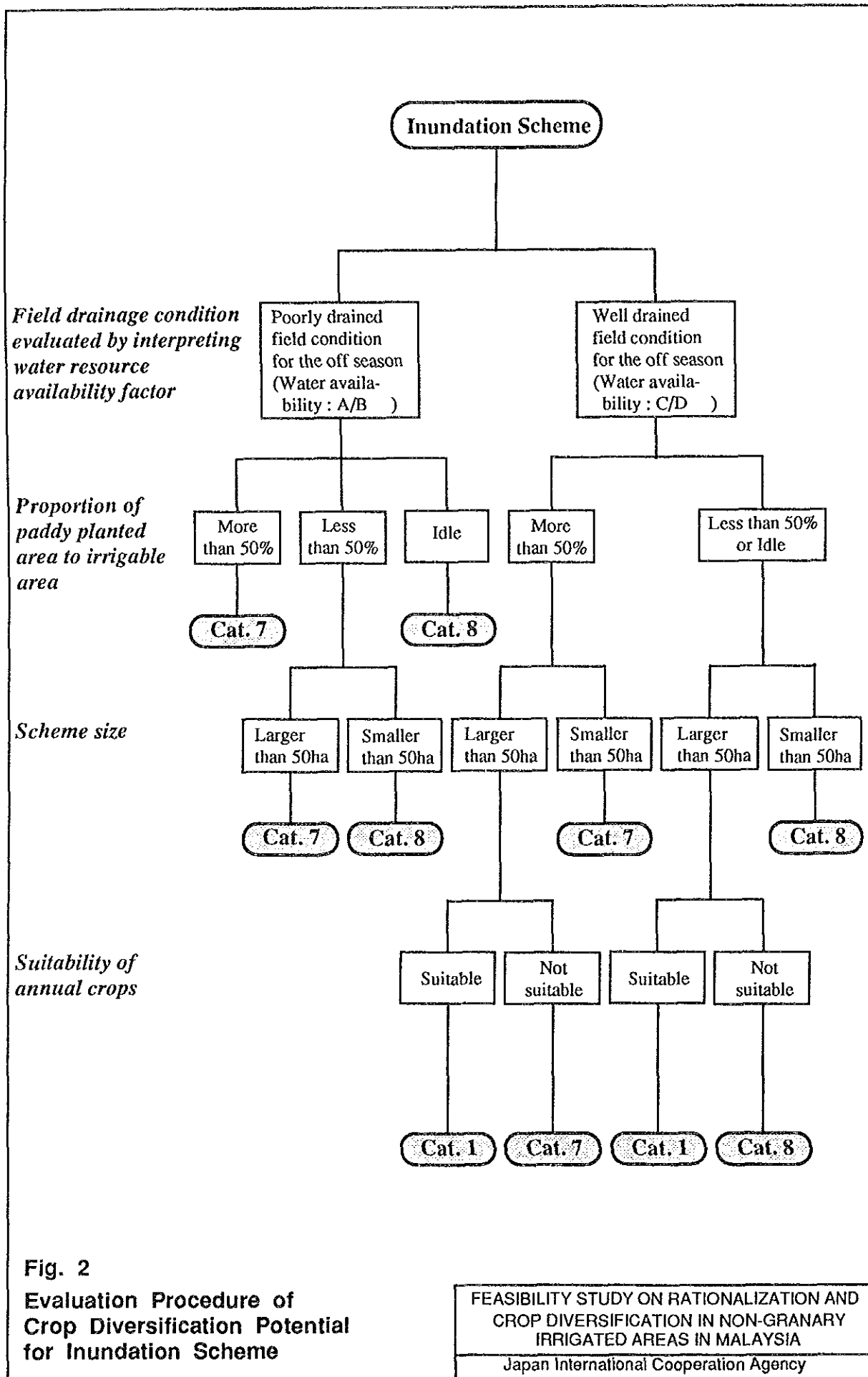


Fig. 1
General Flow of Evaluation
for Crop Diversification

FEASIBILITY STUDY ON RATIONALIZATION AND
 CROP DIVERSIFICATION IN NON-GRANARY
 IRRIGATED AREAS IN MALAYSIA

Japan International Cooperation Agency



*Feasibility Study on Rationalization and Crop Diversification
in Non-granary Irrigated Areas in Malaysia*

Vol. 2

Crop Diversification Evaluation Methodology

Appendix A

Scheme Inventory

*Feasibility Study on Rationalization and Crop Diversification
in Non-granary Irrigated Areas in Malaysia*

Volume 2

Appendix A

Scheme Inventory

CONTENTS

	<u>Page</u>
A.1 Samples and Survey Method	A-1
A.2 Results of Scheme Inventory Survey	A-3
A.3 Present Situation of Non-granary Irrigation Schemes by State	A-7

TABLES

	<u>Page</u>
Table A-1 Main Season Irrigable Area and Size of Scheme by State	A-15
Table A-2 Distribution of Non-granary Irrigation Schemes by Type of Diversion Structure	A-16
Table A-3 Distribution of Non-granary Irrigation Schemes by Water Availability Condition	A-17
Table A-4 Trend of Planted Area of Main Season Paddy from 1983 to 1987	A-18
Table A-5 Trend of Planted Area of Off Season Paddy from 1983 to 1987	A-19
Table A-6 Trend of Cropping Area of Upland Crops from 1983 to 1987.....	A-20
Table A-7 Cropping Intensity of Paddy and Upland Crops by State	A-21
Table A-8 Distribution of Non-granary Irrigation Schemes by Condition of Scheme Utilization	A-22

FIGURES

- Fig. A-1 Distribution of Non-granary Irrigation Schemes by District
- Fig. A-2 Comparison of Irrigable Area and Planted Area by District
- Fig. A-3 Present Situation of Non-granary Irrigation Schemes by State
- Fig. A-4 Trend of Planted Area of Paddy by State
- Fig. A-5 Trend of Planted Area of Upland Crops by State
- Fig. A-6 Proportion of Planted Area of Upland Crops by State

Appendix A

SCHEME INVENTORY

A.1 Samples and Survey Method

There are 924 non-granary irrigation schemes in Malaysia. A Scheme Inventory Survey carried out under the JICA study covers the whole of the non-granary irrigation schemes. Number of non-granary irrigation scheme by State is shown below. The distribution of schemes by District is illustrated in Fig. A-1.

<u>State</u>	<u>No. of Scheme</u>	<u>State</u>	<u>No. of Scheme</u>
Perlis	22	Johor	23
Kedah	75	Pahang	290
P. Pinang	14	Trengganu	39
Perak	63	Kelantan	77
Selangor	17	Sabah	56
N. Sembilan	156	Sarawak	38
Melaka	54	<u>Total</u>	<u>924</u>

The purpose of the Scheme Inventory Survey is to grasp existing situation of schemes and to provide useful information for future development by collecting available and consistent information scheme-by-scheme using forms. For this purpose, questionnaires were designed by the Study Team and subsequently distributed to all DID State Offices for their actions. Since the information requested in the questionnaire covered a variety of issues and involving many agricultural agencies concerned, a State Coordinator was appointed amongst the staff of each State DID to coordinate and to oversee data collection.

Special concerns were given to grasp natural and socio-economic conditions, present utilization of irrigation facilities including those operation and management situation as well as farming conditions for the last five years in the respective non-granary irrigation schemes. The items of information included in the questionnaires are shown below.

<u>Main item</u>	<u>Item</u>	<u>Sub-item</u>
Overall	General	Scheme code number, name of scheme, location, type of scheme, year of completion, area of scheme, major towns nearby, accessibility
	Socio-economy	Name, population, household number and farm household number of Mukim in which scheme is located; total number and land holding size of beneficiary farm households; land holding and tenure situations
	Topography and soil series	Topography, elevation, ground slope, soil survey previously done, soil conditions, typical land use around scheme
	Agricultural development project	Existence of on-going rural and agricultural development projects covering scheme; name, responsible agency and sponsorship of projects
Facility	Water source	Name of water source river, river gauging station, diversion discharge, catchment area at diversion point, representative rainfall and meteorological station, quality of irrigation water
	Irrigation water demand requirement	Designed discharge value, actual diverted discharge, situation and affected area of water shortage in normal year, main reasons of water shortage
	Irrigation facilities	Type of diversion structures, headworks, pumphouse, intake structure at diversion site, total length of irrigation canal, canal structures, specific problems
	Drainage and flood control facilities	Total length of drainage channels, drainage structures, drainage conditions, main reasons of poor drainage, area affected by floods, estimated flood damage, measures for flood mitigation with estimated costs
	Farm road	Length and width of farm roads, surface pavement, specific problems, trunk road connected
	Operation and maintenance	Responsible office, supervisory staff, O&M field staff, annual O&M costs
	Investment cost	Initial investment cost, major rehabilitation cost

<u>Main item</u>	<u>Item</u>	<u>Sub-item</u>
	Water charge	Basic rate, situation of collection, main reason of difficulty to collect water charge
Cropping	Land use	Land use changes and actual cultivated area for the previous five years, situation of idle land
	Farming system	Farm operation system, cropping pattern, farm plot condition, use, possession and rental fee of agricultural machinery
	Crop production	Crop yield and total crop production for the previous five years
	Crop budget	Farm gate prices and production costs of crops, specific problems against increasing crop production
Supporting services	Post harvest facilities	Rice mill facilities, storage facilities, processing facilities other than tree crops
	Agricultural support services association	Farmers' association, farmers' cooperatives, extension services, available credit services, farm input supply, selling of crops, specific problems concerning supporting services

A.2 Results of Scheme Inventory Survey

All the information collected through the Scheme Inventory Survey are checked, verified and stored in two database files created using a standard database management software; dBase IV. Important informations of schemes by State are presented in the State Reports, Volume 5. A manual for information management system is compiled in Volume 4 of this Final Report.

(1) Irrigable area and size of scheme

The total irrigable area of non-granary irrigated areas is estimated at 130,122 ha as shown in Table A-1. The size of scheme in terms of the irrigable area in the main season varies widely ranging from 3 ha at the minimum to 3,052 ha the maximum as shown in Table A-1. The average size of scheme is less than 100 ha in the state of Selangor, Negeri Sembilan and Pahang. The distribution of irrigable area summarized by district is illustrated in Fig. A-2.

(2) Irrigation facilities

In Malaysia, the gravity system is the most common method to divert irrigation water from rivers. Pumps are also extensively used for irrigation. The controlled drainage and inundation schemes are found mainly in the low-lying areas along a large rivers such as the Pahang river. The breakdown of non-granary irrigation schemes by type of diversion structure is shown in Table A-2 and Fig. A-3, and is summarized below.

Gravity	496	Pump	154
Gravity/Pump	21	Controlled drainage	49
Gravity/Controlled drainage	1	Inundation	187
Pump/Inundation	2	Others	2
No record	3	Converted	9

(3) Water availability

Based on the information collected by the Scheme Inventory Survey and referring to the previous "National Water Resources Study, Malaysia" by JICA, 1982, water resources availability is evaluated in quantitative and qualitative terms for each non-granary irrigation scheme. For this, supplemental data are collected including rainfall data, catchment characteristics, river discharges, references on the existing hydrological procedures various previous reports on the availability of water resources in a specific catchment.

The results of the study revealed that 438 schemes (47%) have sufficient irrigation water sources for growing paddy twice a year, while 164 schemes (18%) suffer from water shortage problem during the off season presaturation period. Furthermore, water during the dry season is not available for 217 schemes (23%) and are limited to cultivate single cropping of paddy only in the main season. For 13 schemes water is insufficient even for the main season paddy cultivation.

(4) Planted area and cropping intensity

Data on planted areas of paddy and upland crops for 5 years from 1983 to 1987 were collected by the Inventory Survey. The trend of planted areas for the main season paddy, off season paddy and upland crops are shown in Tables A-4 to A-6, respectively. The total planted area of paddy has been increased gradually during this period. Planted area of upland crops has been increased rapidly.

The trend of planted area of paddy is quite different state by state as shown in Fig. A-4. In the States of Perak, Selangor, N. Sembilan, Melaka and Johor, the planted areas have been decreasing gradually, while in the States of Kedah, Kelantan, Sabah and Sarawak, the planted

areas have been increasing. In the remaining states there is little change in planting area.

In the States of Perlis, Kedah, Kelantan and Sabah, most beneficial farmers in each scheme still rely their main income sources on paddy cultivation so that the main season cropping intensity is maintained at a level of 80% in 230 non-granary irrigation schemes covering 47,000 ha. On the other hand, the main season cropping intensity declines to less than 50% in the States of Selangor, Negeri Sembilan, Melaka, Johor and Pahang in Peninsular Malaysia and Sarawak, where outflow of young generation prevails due to urbanization and industrialization and/or paddy productivity in the schemes is quite low.

Planted area of upland crops has been increasing rapidly from 2,243 ha in 1983 to 6070 ha in 1987 as shown in Table A-6. This increase is remarkable for the most of all States except for Trengganu and Sabah as shown in Fig. A-5. Proportion of the planted area of upland crops against that of total planted area is high in the States of Selangor (60%), N. Sembilan (40%) and Melaka (29%) which a large market for upland crops is available nearby as shown in Fig. A-6.

(5) Utilization of scheme

Through the Inventory Survey, the condition of scheme utilization for the last three years from 1985 to 1987 was revealed as shown in Table A-8 and are summarized below.

<u>Condition of scheme utilization</u>	<u>Nos. of scheme</u>	<u>%</u>
Planted 100% in main season	79	8.5
Planted over 50% in main season	286	31.0
Planted below 50% in main season	250	27.1
Fully converted	11	1.2
Fully idle	298	32.3
(idle inundation schemes in Pahang)	(186)	(20.1)
Total	924	100.0

The situation of utilization of non-granary irrigated areas by district is illustrated in Fig. A-2. Average utilization ratio of non-irrigated areas by state for the period of 1985-1987 is summarized below.

State	Cropping intensity (%)		Utilization Ratio (%)
	Main paddy	Upland crop	
<u>Utilized over 50%</u>			
Perlis	97	1	98
P. Pinang	76	7	83
Sabah	73	0	73
Trengganu	71	5	76
Kedah	70	3	72
Kelantan	64	4	68
Perak	57	6	63
<u>Utilized below 50%</u>			
Sarawak	38	3	41
Johor	34	2	36
Melaka	28	9	37
Selangor	23	24	47
N. Sembilan	21	10	31
Pahang	9	1	10

From late 1970s, the incidence of idle paddy fields in the non-granary irrigated areas has been increased. In 1985 the number of fully idle scheme occupies about one third of non-granary irrigation schemes. Idle paddy fields are found mostly in low productivity areas such as controlled drainage and inundation schemes as well as schemes depending irrigation sources on small rivers. In the State of Pahang, the scheme utilization ratio is exceptionally low because the most of all inundation schemes has not been utilized for many years.

After 1985, however, the total area of idle land in non-granary irrigation schemes in Malaysia has been decreasing gradually owing to increase in paddy planting area in the States of Kedah, Kelantan, Sabah and Sarawak.

A total of 11 schemes (2 in Kedah, 6 in N. Sembilan, 2 in Melaka and 1 in Pahang) has been completely converted to permanent crop cultivation fields through idle paddy field revitalization project led by Farmers' Organization Authority (FOA) and involvement of the Federal Land Consolidation and Rehabilitation Authority (FELCRA) in re-development of idle farm land.

A.3 Present Situation of Non-granary Irrigation Schemes by State

The present situation of 924 non-granary irrigation schemes is described in detail state by state in Volume 5 of this Final Report together with a scheme location map by State. The salient features of non-granary irrigation schemes by State are summarized below.

(1) Perlis

In Perlis there are 25,750 ha of paddy fields in total, of which 23,715 ha are provided with irrigation facilities. Of this, the Muda granary area covers 19,500 ha and non-granary irrigation schemes amount to 4,215 ha comprising 22 schemes.

Due to small catchment areas of rivers and less rainfall during the off season, paddy cultivation in the non-granary irrigation schemes is limited to single cropping only for the main season. Tobacco is grown as the second crop in some parts of paddy cultivation area, but there is no possibility to expand its planted area because the production quota presently allocated to Perlis is already fulfilled. Under the Perlis IADP, one dam is under construction to create the off season irrigation water resources. Drip irrigation system is going to be practiced in hilly areas to grow fruits.

In Perlis, seasonal laborers can be hired at a low cost from the neighboring Thai territory. Therefore, the profit derived from paddy cultivation is on the highest level in the country and paddy farmers strongly adhere to paddy planting.

(2) Kedah

The total paddy fields cover 124,588 ha of which irrigable paddy fields share 92,633 ha including the Muda granary area of 75,500 ha and non-granary irrigated areas of 17,133 ha comprising 75 schemes.

Irrigation facilities were newly constructed and graded up by implementing the Lembah Kedah IADP and the National Small Scale Irrigation Project both aiming to correct infrastructure disparities between the MADA area and its outside areas. As a result, the main season paddy cropping intensity is over 90% in non-granary irrigation schemes where diverted discharge is rich and irrigation facilities are well maintained. In some schemes, there still remains water shortage problem in the off season. To such schemes, irrigation water is supplemented from the MADA system for the off season.

In water shortage areas, oil palm planting under mini-estates has been encouraged by FELCRA, but its implementation shows very slow progress due to farmers' adherence to their paddy cultivation. On the other hand, farmers in Kubang area, northern part of the State,

strongly intend to diversify crops especially by growing tobacco. But they are facing with limitation caused by the existing quota system.

In Kedah, the smallness in land holding size is predominant as a result of the traditional custom of inheritance, and it is a bottleneck in expanding farm size. Some farmers with strong intention towards paddy cultivation have obtained tenancy of paddy fields in other States and migrated there for undertaking paddy cultivation. Recently, serious water use conflict with non-agricultural sectors in the middle to downstream reaches of the Muda river causes to reduce sharply the off season paddy cropping intensity in four non-granary irrigation schemes of 4,195 ha in total.

(3) P. Pinang

Among the whole paddy fields of 17,815 ha, irrigable paddy fields occupy 16,541 ha comprising the Balic Pulan/Seberang Perai granary area of 13,000 ha and non-granary irrigated areas of 3,541 ha comprising 14 schemes.

In 1986, a Master Plan for Agricultural Development of the State of Pulau Pinang was prepared by the Ministry of Agriculture (MOA). In this plan, the existing paddy fields are grouped into two categories. One is demarcated as high productive paddy fields to be maintained, while the other is delineated as paddy fields suitable for promoting crop diversification.

Although the average cropping intensity is less than 50%, double cropping is popularized in the maintained paddy fields coupled with improvement of farm road network, rationalization of water management and strengthening of supporting services under the Balik Pulau/Seberang Perai IADP. Further, revitalization of idle paddy fields are under encouragement. Some 41 farmers have succeeded their group farming system to grow vegetables using sprinkler irrigation. In general, there is no hindrance on promoting crop diversification because the State Government and local community leaders have clear guideline policy towards effective utilization of farm land.

(4) Perak

There exist paddy fields of 55,689 ha as a whole. The irrigable paddy fields cover 52,290 ha in total comprising two granary irrigated areas of Kerian/Sungai Manik and Seberang Perak covering 39,568 ha and non-granary irrigated areas occupying 12,722 ha comprising 63 schemes.

Most schemes are scattered along the main stream of the Perak river flowing down from north to south in the State. The downstream area is flat in topography and stable in water resources resulting in

high cropping intensity. In the upstream area, farm size is small and water resources are not stable due to topographic limitations. Farmers can easily obtain job opportunities with higher wages in the neighboring rubber estates and therefore they don't adhere to paddy cultivation. In some schemes located along the main transportation route, farmers have succeeded crop diversification by growing banana in paddy fields.

(5) Selangor

There exist irrigable paddy fields of 19,961 ha as a whole. The Northwest Selangor granary area covers 19,022 ha and non-granary irrigated areas is equivalent to 939 ha comprising 17 schemes.

By the effect of urbanization, the areas where non-granary irrigation schemes are situated have been suffering from encroachment of farm land and outflow of young farm labor force to other industries. Under such situation, there is a very little possibility of promoting crop diversification and revitalization of idle paddy fields in most schemes.

(6) Negeri Sembilan

The irrigable paddy fields cover 10,934 ha among the total paddy fields of 14,753 ha and fully designated as non-granary irrigated areas comprising 156 schemes.

Remarkable outflow of farm labor forces to other industries has caused continuous occurrence of idle paddy fields in non-granary irrigation schemes. To revitalize such idle paddy fields, FELCRA and FOA have promoted crop diversification programs planting oil palm and cocoa. At present, the proportion of upland cropping to the whole main season cropping area is 37%. Some farmers practice upland irrigation at their own risk. Generally, farmers do not enough courage to continue their farm operation by means of crop diversification although there are many farmers who have strong intention to earn their income in other industries.

(7) Melaka

Out of the total paddy fields of 11,497 ha, the irrigable paddy fields hold 7,149 ha and fully demarcated as non-granary irrigated areas. There are 54 schemes in total comprising 48 gravity, 2 pump, 2 controlled drainage schemes and 2 of fully converted schemes. Irrigable area during the dry season is 2,279 ha in total.

Crop diversification has been promoted under the Melaka IADP. The proportion of upland cropping area is 17%. Vegetables and fruits with high value added have been introduced and there are many successful cases by converting paddy fields to upland crop cultivation

areas. These includes a group farming to grow asparagus and honey melon and also to have found markets in Singapore and Kuala Lumpur. Another successful case is to grow asparagus on a large scale under irrigated condition. On the contrary, there exist completely idle irrigation schemes in the low-lying areas along the coast due to poor drainage conditions.

(8) Johor

There exist paddy fields of 4,239 ha of which 4,010 ha are provided with irrigation facilities and designated as non-granary irrigated areas. There are 23 schemes in total comprising 12 gravity and 11 pump schemes. Irrigable area during the dry season is 2,279 ha in total. At present 5 schemes are fully idle.

Out of 23 schemes, a total of 18 schemes is centered to the Muar river basin. In the downstream part of the basin, double cropping of paddy prevails in non-granary irrigation schemes. As water shortage is common along the upstream of the Muar river and other small rivers, DOA has been promoting conversion to cocoa and oil palm cultivation in non-granary irrigation scheme areas with such water shortage problems. However, such problem schemes are found as unsuccessful vegetable cultivation caused by the poor supporting services, discontinuation of group farming because of unprofitability, and increase in idle schemes due to the outflow of young labor force to the neighboring industrial estates. In the northeastern part of the State, FELCRA has promoted conversion of paddy to oil palm after cancelling the Rompin/Endau IADP.

(9) Pahang

There exist paddy fields of 17,990 ha of which 17,430 ha are provided with irrigation facilities and demarcated as non-granary irrigated areas. Irrigable area during the dry season is 4,503 ha in total.

There are 290 schemes in total comprising 78 gravity, 17 pump, 186 inundation and 9 combination type schemes. Inundation schemes are distributed along the upper and middle reaches of the Pahang river. Gravity and pump irrigation systems are common in the northwestern part of the State where irrigation schemes are located in flood free areas.

In the northwestern part, the occurrence of idle paddy fields is remarkable because most farmers intend to earn cash incomes by working in oil palm and rubber estates instead of growing paddy in their fields. In other parts of the State, such tendency which is lack of willingness to intensive farming is common and therefore crop diversification is under promotion in very limited areas where local opinion leaders with powerful leadership are available.

The inundation schemes have continuously been suffering from poor drainage, small size of plot difficult for introducing farm mechanization, and low yield and productivity due to limited selection of varieties suitable for the circumstance. Accordingly, few farmers intend to improve their farming practices. Without provision of river improvement works on a large scale, it is hardly to promote crop diversification in inundation scheme areas characterized by the above mentioned conditions.

(10) Trengganu

There exist paddy fields of 29,136 ha as a whole. Out of this, the irrigable paddy fields cover 14,183 ha. The Besut granary irrigated area includes 5,100 ha and non-granary irrigated areas amount to 9,083 ha comprising 39 schemes.

In the northern part of the State, farmers have strong intention towards double cropping of paddy by the influence of farm operation in the Besut granary area. However, some farmers are limited to the off season cropping only due to frequent occurrence of floods in the main season. Farm mechanization is commonly practiced in this area. A large-scale paddy cultivation is performed by the neighboring Kelantan farmers borrowing paddy fields.

In the central part of Trengganu, single cropping is usual and recently idle paddy fields have occurred among 25 non-granary irrigation scheme areas. This is mainly blessed with job opportunities in industrialization and urbanization areas in relation to the off-shore oil and natural gas development.

In the southern part, non-granary irrigation schemes as well as land holdings are small in size. Water shortage remains as unsolved problem because catchments of water source rivers are usually small. Farmers in this area are conservative and have no willingness to increase their farm income through crop diversification.

(11) Kelantan

There exist paddy fields of 84,426 ha in total. The irrigable paddy fields amount to 49,474 ha comprising two granary irrigated areas, Kembu (KADA) and Kemasin/Semarak, of 38,807 ha and non-granary irrigated areas of 10,667 ha comprising 77 schemes.

In Kelantan, non-granary irrigation schemes are distributed along the Golok river flowing down on the Thai border, along the Kelantan river and in the downstream right bank areas of the Kelantan river. Every downstream area has been suffering from frequent occurrence of flood, while middle and upstream areas are facing with water shortage problems derived from small catchment areas. Under such situation,

single cropping of the off season paddy is practiced for securing stable yield in some flood-affected non-granary scheme areas where irrigation water is available during that time. Double cropping and farm mechanization are undertaken in limited scheme areas. Due to the small farm size, there is very few potential of extending farm mechanization in most schemes.

Traditionally farmers adhere to paddy cultivation and currently they can hire seasonal labor from Thailand at cheaper cost. As a result, they can expect to earn farm income for meeting their needs to a large extent. No strong intention is observed in Kelantan in terms of crop diversification except tobacco cultivation in the downstream right bank areas of the Kelantan river.

(12) Sabah

There exist paddy fields of 50,100 ha as a whole. The irrigable paddy fields amount to 17,163 ha fully designated as non-granary irrigated areas. There are 56 schemes in total comprising 23 gravity, 26 pump, 2 gravity/pump and 4 controlled drainage schemes.

Most schemes are centered to in the Padas river basin and flat areas in the northern part of the State. As history of paddy cultivation under irrigation in Sabah is relatively short, farmers' concerns are usually given about production of paddy for their self-sufficiency purposes. Despite of available water resources enough to meet irrigation water requirement for double cropping of paddy, a few farmers in the northern part grow paddy twice a year. The pressing need of paddy cultivation in Sabah is to increase paddy production to the level of self-sufficiency within the State. For this, it is prerequisite to strengthen extension services for promoting utilization of irrigation facilities in an effective manner.

(13) Sarawak

There exist paddy fields of 143,900 ha including dry paddy fields. The total irrigable paddy field is 15,136 ha and fully demarcated as non-granary irrigated areas. There are 38 schemes in total comprising 3 gravity, 9 pump and 26 controlled drainage schemes.

In Sarawak, most schemes are located in swamp areas along the coast. Control drainage schemes distributed in peat swamp areas manage water level on the paddy field using tidal gates. Only traditional rice varieties are suitable for such field condition and those yield levels are very low. Paddy production can meet home consumption and local demand of the surrounding areas. In the Samarahan river basin, crop diversification has been gradually performed in non-granary irrigation schemes by the influence of the Samarahan IADP promoting oil palm and cocoa planting.

*Feasibility Study on Rationalization and Crop Diversification
in Non-granary Irrigated Areas in Malaysia*

Vol. 2

Crop Diversification Evaluation Methodology

Appendix A

Tables

Table A-1 Main Season Irrigable Area and Size of Scheme by State

Unit: ha

State	No. of Scheme	Main Season Irrigable Area	Average Size of Scheme	Maximum Size of Scheme	Minimum Size of Scheme
Perlis	22	4,215	192	490	25
Kedah	75	17,133	228	2,149	23
P. Pinang	14	3,541	253	1,328	18
Perak	63	12,722	202	2,309	10
Selangor	17	939	55	160	11
N. Sembilan	156	10,934	70	601	10
Melaka	54	7,149	132	814	12
Johor	23	4,010	174	1,474	22
Pahang	290	17,430	60	1,038	3
Trengganu	39	9,083	233	2,024	17
Kelantan	77	10,667	139	1,487	9
Sabah	56	17,163	306	2,079	15
Sarawak	38	15,136	398	3,052	71
Total	924	130,122	141		

Source: JICA Inventory Survey, 1989

Table A-2 Distribution of Non-granary Irrigation Schemes
by Type of Diversion Structure

Unit: numbers

State	Gravity	Pump	Gravity & Pump	Controlled Drainage	Gravity & C. D.	Inunda- tion	Pump & Inun.	Others	Converted	No Record	Total
Perlis	16	2	1	3	--	--	--	--	--	--	22
Kedah	39	26	9	1	--	--	--	--	--	--	75
P. Pinang	5	5	2	1	--	1	--	--	--	--	14
Perak	51	12	--	--	--	--	--	--	--	--	63
Selangor	15	1	--	1	--	--	--	--	--	--	17
N. Sembilan	142	5	1	--	--	--	--	--	6	2	156
Melaka	48	2	--	2	--	--	--	--	2	--	54
Johor	12	11	--	--	--	--	--	--	--	--	23
Pahang	78	17	4	--	1	186	2	--	1	1	290
Trengganu	9	18	--	11	--	--	--	1	--	--	39
Kelantan	55	20	2	--	--	--	--	--	--	--	77
Sabah	23	26	2	4	--	--	--	1	--	--	56
Sarawak	3	9	--	26	--	--	--	--	--	--	38
Total	496	154	21	49	1	187	2	2	9	3	924

Source: JICA Inventory Survey, 1989

Table A-3 Distribution of Non-granary Irrigation Schemes
by Water Availability Condition

Unit: numbers

State	Sufficient for Double Cropping	Insufficient for Off Season Presaturation	Limited to Main Season Cropping	Insufficient for Main Season Cropping	C.D. or Data Insufficient	Total
Perlis	5	12	2	—	3	22
Kedah	46	21	7	—	1	75
P. Pinang	15	5	2	—	6	14
Perak	43	14	6	—	—	63
Selangor	16	—	—	—	1	17
N. Sembilan	99	23	16	—	18	156
Melaka	9	34	4	1	6	54
Johor	15	5	3	—	—	23
Pahang	106	32	130	12	10	290
Trengganu	19	2	6	—	12	39
Kelantan	24	14	37	—	2	77
Sabah	45	2	4	—	5	56
Sarawak	10	—	—	—	28	38
Total	438	164	217	13	92	924

Source: JICA Inventory Survey, 1989

Table A-4 Trend of Planted Area of Main Season Paddy from 1983 to 1987

State	<i>Unit: ha</i>				
	1983	1984	1985	1986	1987
Perlis	4,086	4,086	4,081	4,084	4,084
Kedah	10,022	11,683	11,544	11,934	12,455
P.Pinang	2,857	2,876	2,571	2,662	2,822
Perak	8,061	6,159	7,438	7,181	7,113
Selangor	300	281	252	238	170
N.Sembilan	2,994	2,989	2,513	2,417	1,996
Melaka	2,936	2,909	2,145	1,781	2,003
Johor	1,579	1,780	1,435	1,572	1,109
Pahang	1,378	1,648	1,557	1,570	1,631
Trengganu	6,455	6,338	6,362	6,479	6,417
Kelantan	6,158	6,703	6,133	6,983	7,452
Sabah	11,400	12,004	11,926	12,942	12,486
Sarawak	2,770	3,999	5,880	5,731	5,477
Total	60,996	63,455	63,837	65,574	65,215

Source: JICA Inventory Survey, 1989

Table A-5 Trend of Planted Area of Off Season Paddy from 1983 to 1987

State	<i>Unit: ha</i>				
	1983	1984	1985	1986	1987
Perlis	0	0	0	0	0
Kedah	7,778	8,447	7,900	8,380	9,172
P.Pinang	2,634	2,973	2,561	2,612	2,808
Perak	6,517	5,584	4,042	5,020	6,833
Selangor	151	63	248	52	153
N.Sembilan	610	719	968	703	906
Melaka	553	473	596	545	552
Johor	1,381	1,483	868	1,385	1,177
Pahang	352	276	483	497	735
Trengganu	2,023	2,293	1,595	1,831	2,947
Kelantan	1,101	1,574	1,617	1,769	1,791
Sabah	1,377	2,198	2,092	2,967	2,748
Sarawak	380	298	322	109	155
Total	24,857	26,381	23,292	25,870	29,977

Source: JICA Inventory Survey

Table A-6 Trend of Cropping Area of Upland Crops from 1983 to 1987

State	<i>Unit: ha</i>				
	1983	1984	1985	1986	1987
Perlis	29	34	34	41	46
Kedah	40	333	386	396	535
P.Pinang	177	186	184	184	341
Perak	364	359	394	1,011	837
Selangor	128	142	187	224	259
N.Sembilan	420	573	806	1,162	1,347
Melaka	227	260	496	583	823
Johor	41	41	49	75	105
Pahang	75	75	94	87	210
Trengganu	442	438	441	465	472
Kelantan	294	239	322	465	351
Sabah	0	2	180	18	49
Sarawak	6	6	249	375	695
Total	2,243	2,688	3,822	5,086	6,070

Source: JICA Inventory Survey, 1989

Table A-7 Cropping Intensity of Paddy and Upland Crops by State

State	Irrigable Area (ha)	Planted area in average of 1985-87						Crop Intensity (%)
		Main Paddy		Off Paddy		Upland crop		
		(ha)	(%)	(ha)	(%)	(ha)	(%)	
Perlis	4,215	4,083	97	0	0	40	1	98
Kedah	17,133	11,978	70	8,484	50	439	3	72
P.Pinang	3,541	2,685	76	2,660	75	236	7	83
Perak	12,722	7,244	57	5,298	42	747	6	63
Selangor	939	220	23	151	16	223	24	47
N.Sembilan	10,934	2,309	21	859	8	1,105	10	31
Melaka	7,149	1,976	28	564	8	634	9	37
Johor	4,010	1,372	34	1,143	29	76	2	36
Pahang	17,430	1,586	9	572	3	130	1	10
Trengganu	9,083	6,419	71	2,124	23	459	5	76
Kelantan	10,667	6,856	64	1,726	16	379	4	68
Sabah	17,163	12,451	73	2,602	15	82	0	73
Sarawak	15,136	5,696	38	195	1	440	3	41
Total	130,122	64,875	50	26,380	20	4,993	4	54

Source: JICA Inventory Survey, 1989

Table A-8 Distribution of Non-granary Irrigation Schemes
by Condition of Scheme Utilization

Unit: numbers

State	No. of Schemes	Fully Idle	Fully Converted	Main Season		
				Planted below 50%	Planted over 50%	Planted 100%
Perlis	22	0	0	0	7	15
Kedah	75	5	2	3	44	21
P. Pinang	14	0	0	5	6	3
Perak	63	15	0	15	26	7
Selangor	17	6	0	5	6	0
N. Sembilan	156	43	6	83	22	2
Melaka	54	8	2	23	17	4
Johor	23	5	0	8	9	1
Pahang	290	195	1	65	28	1
Trengganu	39	5	0	6	21	7
Kelantan	77	5	0	8	57	7
Sabah	56	8	0	8	29	11
Sarawak	38	3	0	21	14	0
Total	924	298	11	250	286	79

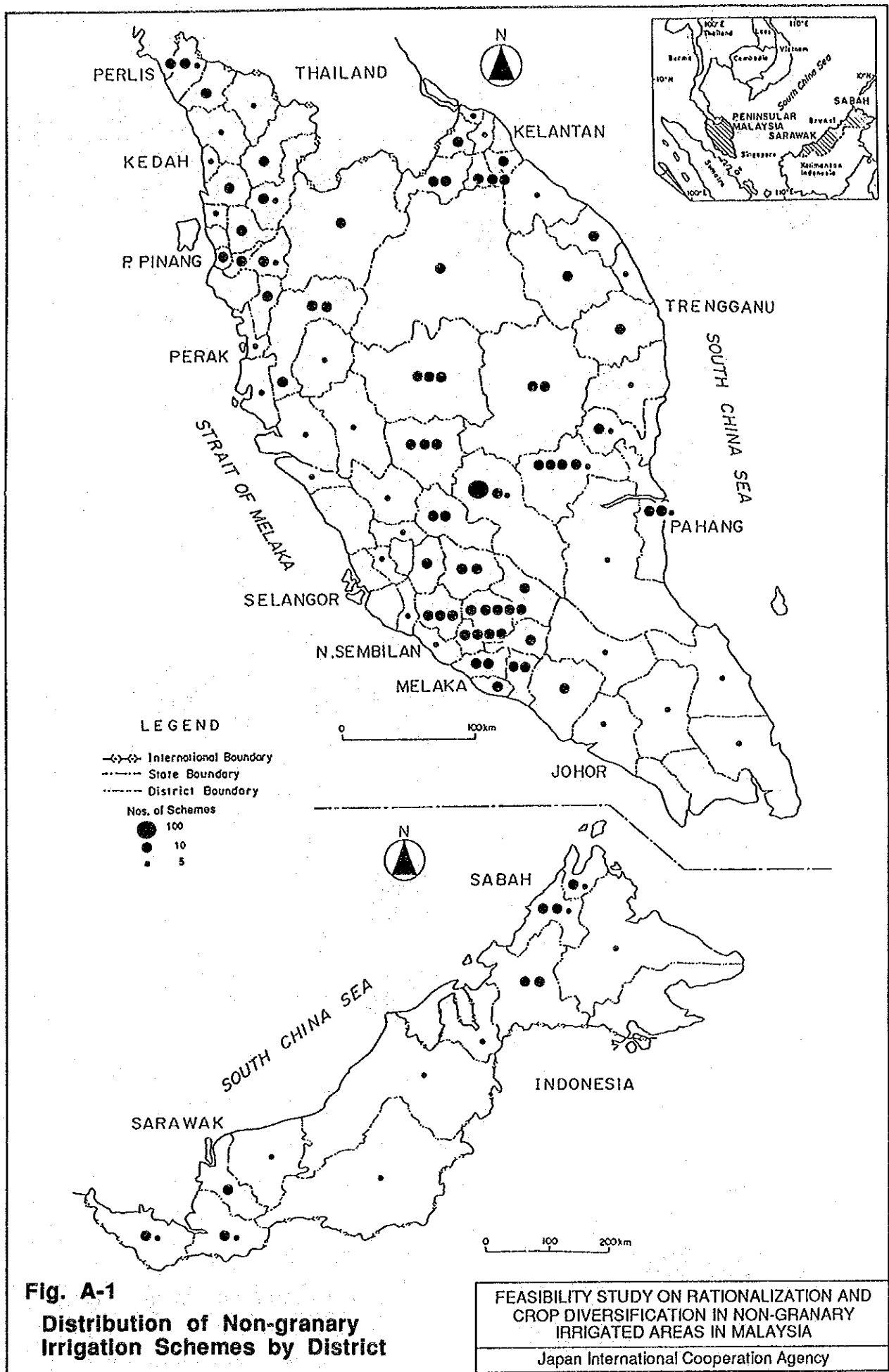
Source: JICA Inventory Survey, 1989

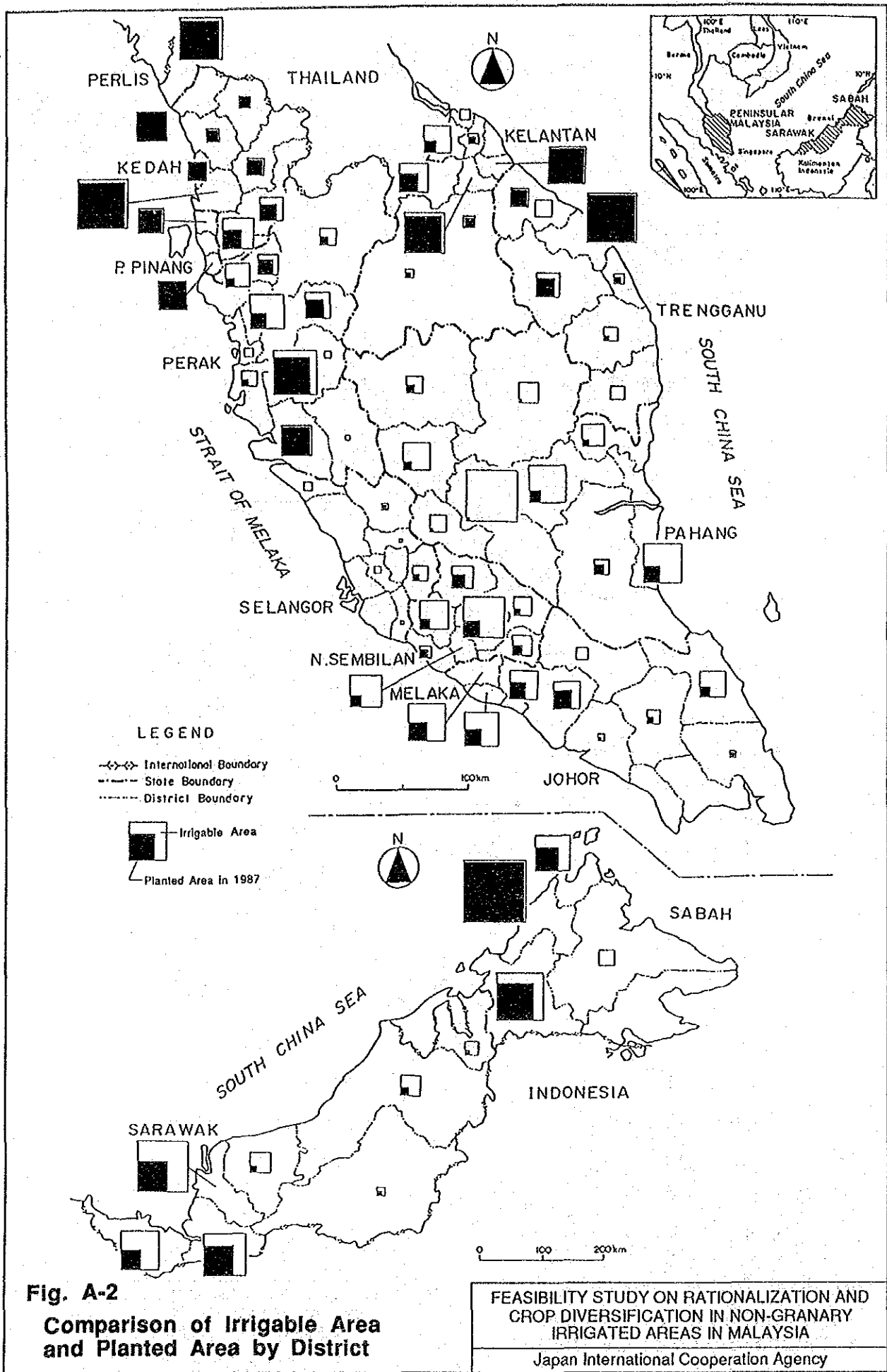
*Feasibility Study on Rationalization and Crop Diversification
in Non-granary Irrigated Areas in Malaysia*

*Vol. 2
Crop Diversification Evaluation Methodology*

Appendix A

Figures

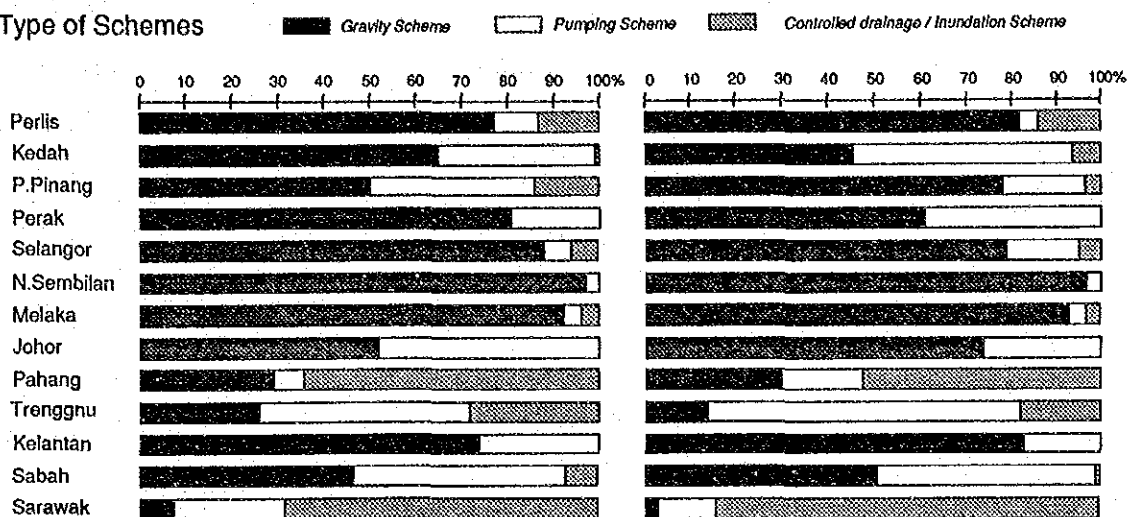




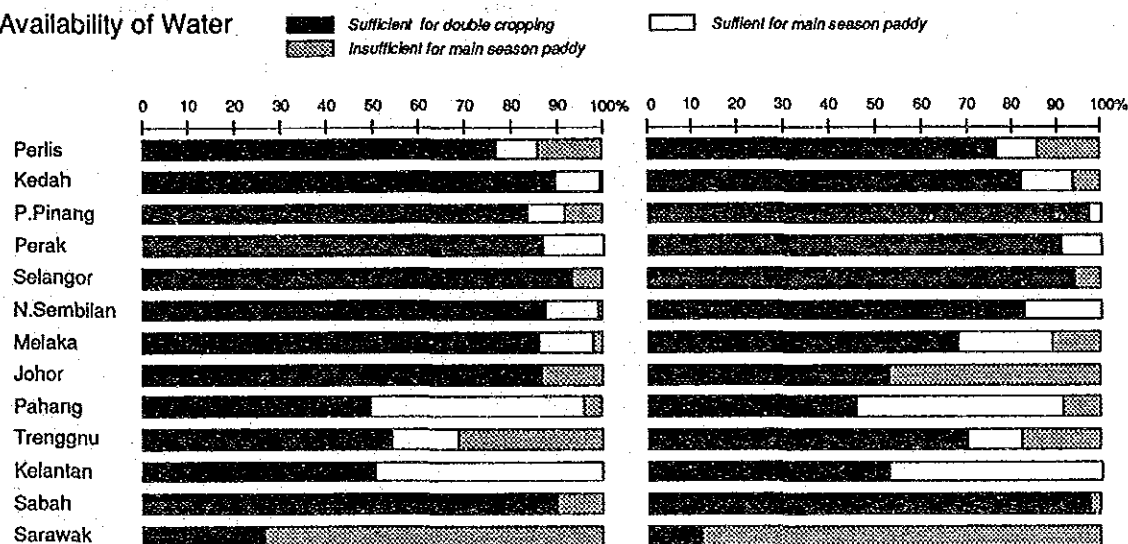
Number of Scheme In Percentage

Irrigable Area in Percentage

(1) Type of Schemes



(2) Availability of Water



(3) Planted Area of Paddy for Past Three Years

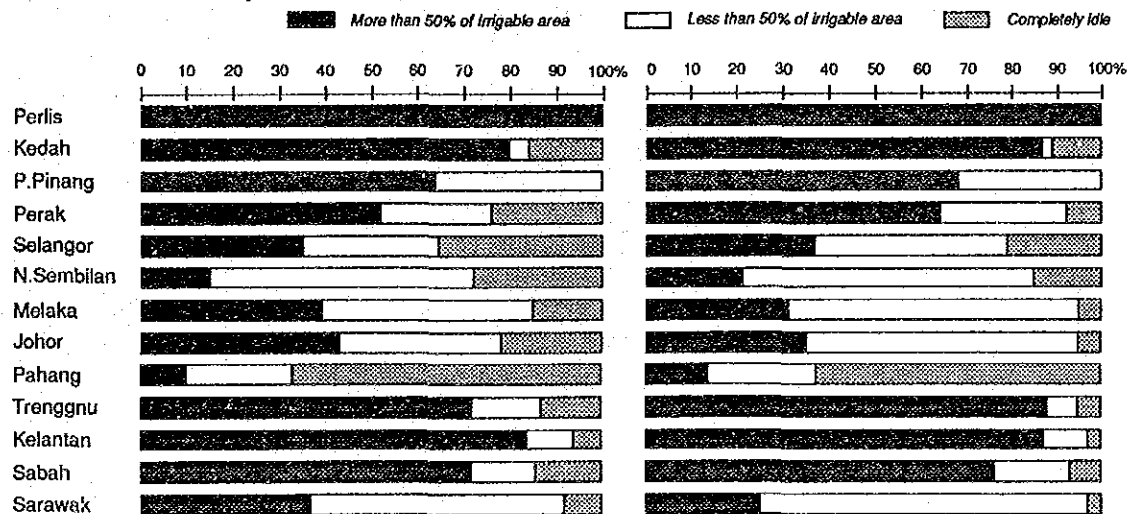


Fig. A-3
Present Situation of Non-granary
Irrigation Scheme by State

FEASIBILITY STUDY ON RATIONALIZATION AND
CROP DIVERSIFICATION IN NON-GRANARY
IRRIGATED AREAS IN MALAYSIA

Japan International Cooperation Agency

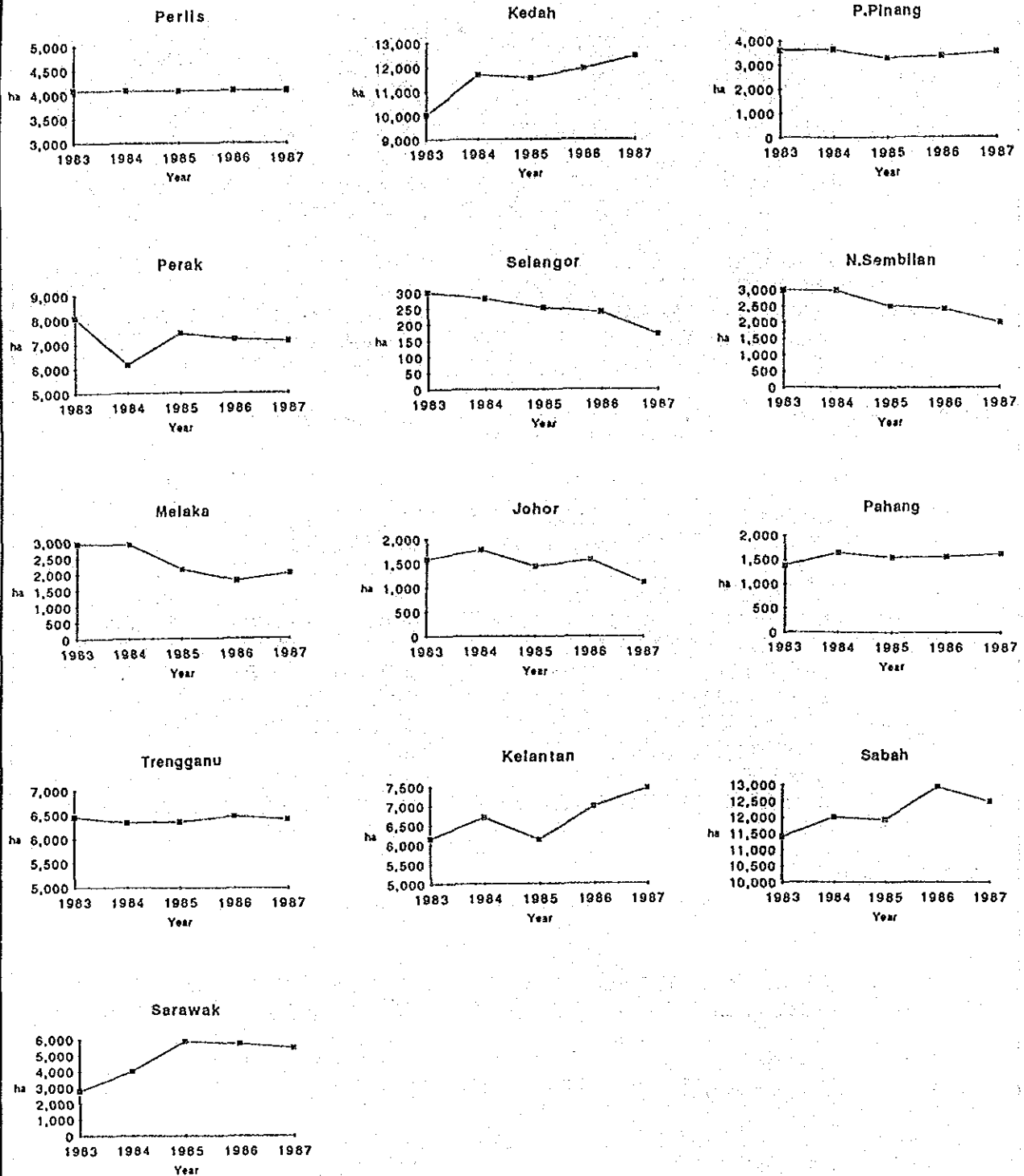


Fig. A-4
Trend of Planted Area of Paddy
by State

FEASIBILITY STUDY ON RATIONALIZATION AND
 CROP DIVERSIFICATION IN NON-GRANARY
 IRRIGATED AREAS IN MALAYSIA

Japan International Cooperation Agency

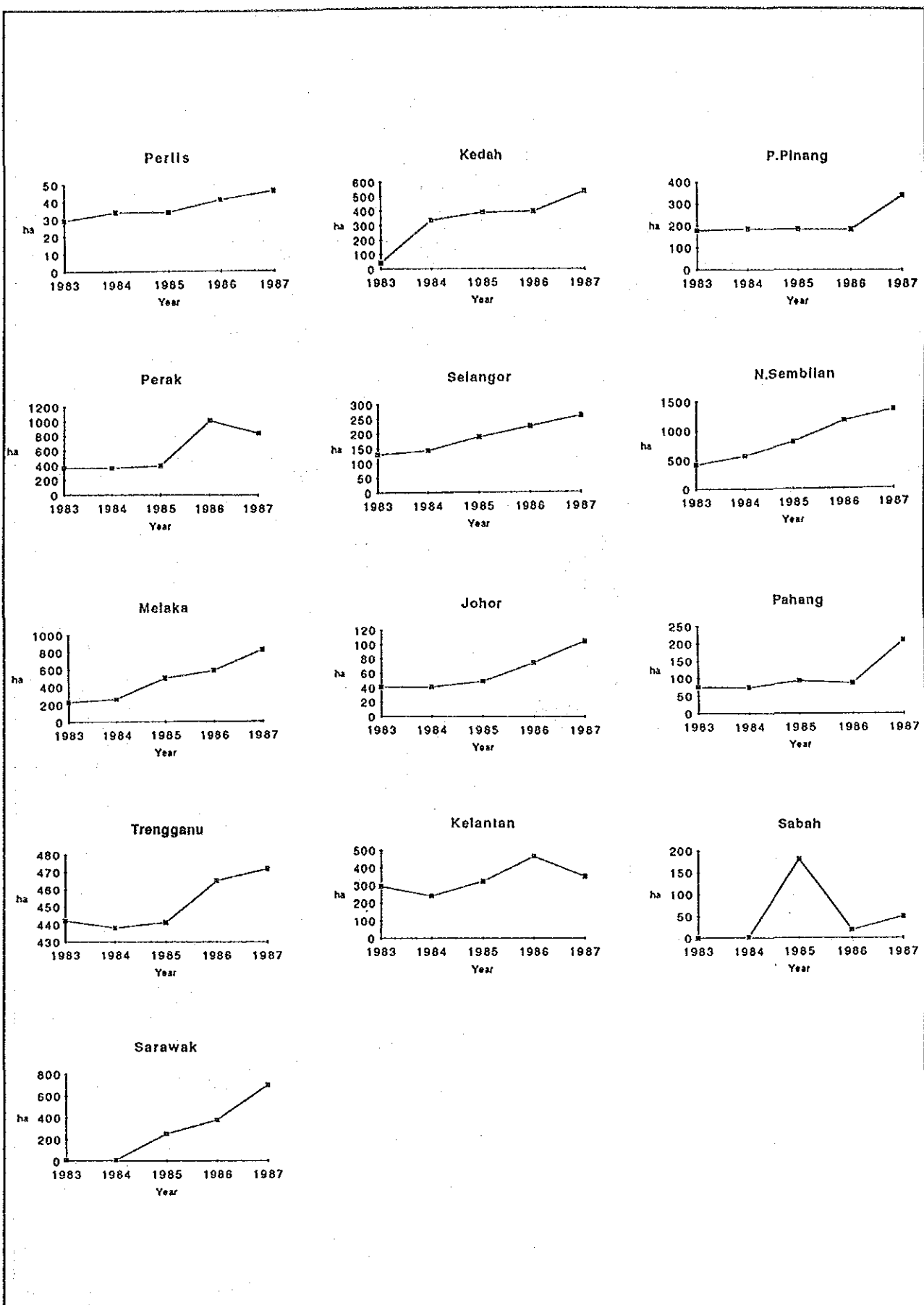
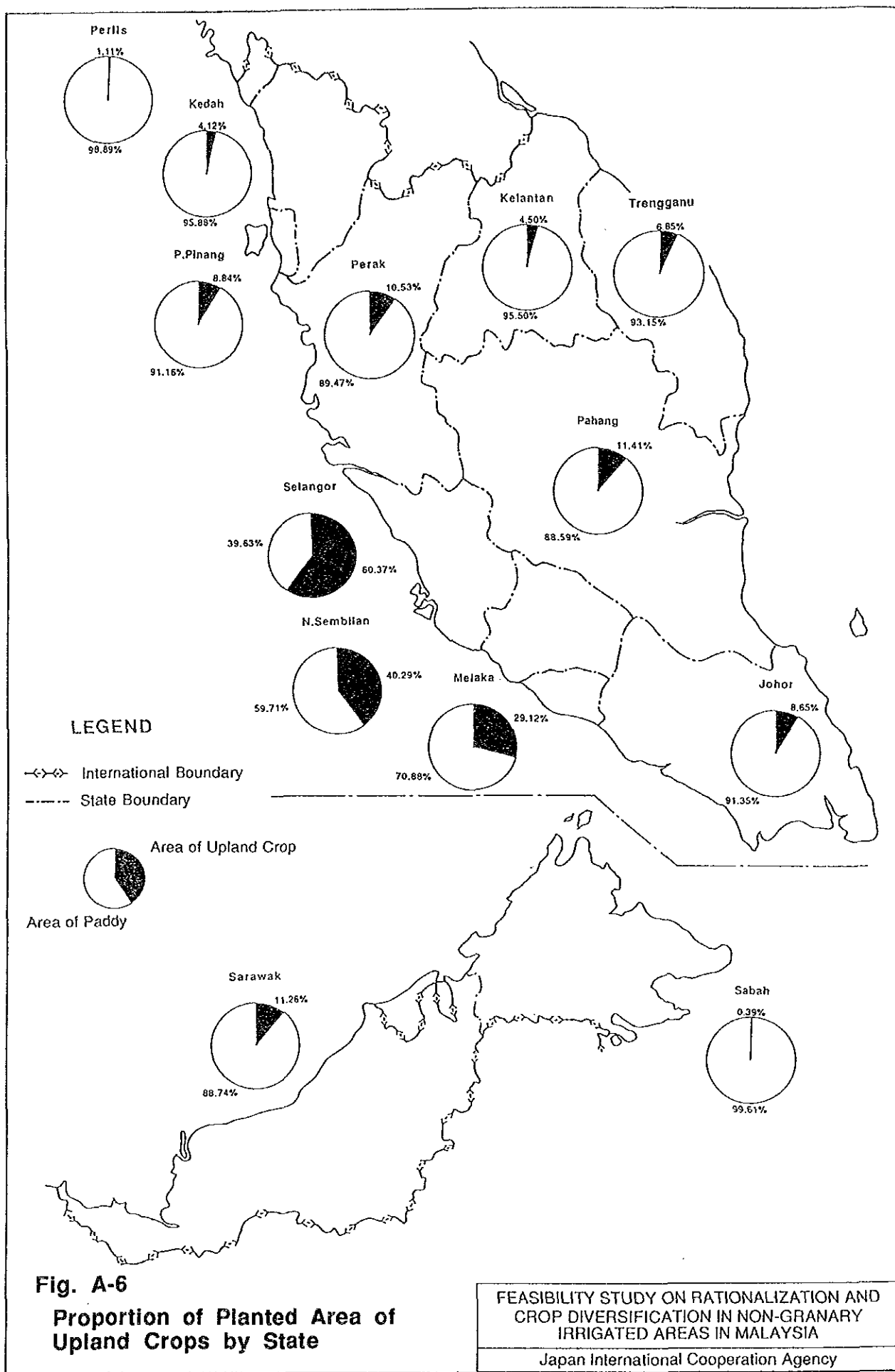


Fig. A-5
Trend of Planted Area of
Upland Crops by State



*Feasibility Study on Rationalization and Crop Diversification
in Non-granary Irrigated Areas in Malaysia*

Vol. 2

Crop Diversification Evaluation Methodology

Appendix B

Farmers' Intentions towards Crop Diversification

*Feasibility Study on Rationalization and Crop Diversification
in Non-granary Irrigated Areas in Malaysia*

Volume 2

Appendix B

Socio Economic Sample Survey (1)

CONTENTS

	<u>Page</u>
B.1 Socio Economic Sample Survey	B-1
B.2 General Profile of Paddy Farmers	B-2
B.3 Living Circumstances	B-3
B.4 Farming Conditions	B-5
B.5 Farmer's Requirements and Intentions	B-9
B.6 Examination of Farmers' Intention from Multiple Viewpoints	B-11

LIST OF TABLES

	<u>Page</u>
Table B-1 General Profile of Paddy Farmers	B-15
Table B-2 Living Circumstances of Paddy Farmers	B-19
Table B-3 Farming Conditions in Non-granary Irrigated Areas ...	B-28
Table B-4 Farmers' Requirements and Intentions	B-39
Table B-5 Intention of Continuing Farm Operation by Age	B-50
Table B-6 Hope for Succession of Farm Operations by Household Members by Age	B-51
Table B-7 Hope for Succession of Farm Operations by Household Members by Income from Major Crops	B-52
Table B-8 Problems or Difficulties Encountered in Farming Practices by Incidence of Full Utilization of Paddy Fields	B-53
Table B-9 Problems or Difficulties Encountered in Farming Practices by Intention of Continuing Farm Operation	B-54
Table B-10 Problems or Difficulties Encountered in Farming Practices by Intention of Paddy Field Conversion	B-55
Table B-11 Major Concerns to Introduce Other Crops in Paddy Fields by Incidence of their Full Utilization	B-56

Appendix B

SOCIO-ECONOMIC SAMPLE SURVEY (1)

- Paddy Farmers' Intentions towards Crop Diversification -

B.1 Socio-economic Sample Survey

The objectives of the Socio-economic Sample Survey are to:

- Determine socio-economic characteristics of farmers by looking into their personal particulars, living circumstances and background of household members,
- Clarify problems and constraints faced by farmers in relation to farming operations,
- Confirm the farmers' preference and behavior towards the rationalization and crop diversification, and
- Provide the key data necessary for categorization of non-granary irrigation schemes.

To ensure the credibility of the sample survey and grasp a changing trend of rural community, the total target numbers of respondents were fixed at 4,700 for paddy farmers and 1,300 for local community opinion leaders through discussions with the Department of Irrigation and Drainage (DID) and the Ministry of Agriculture (MOA).

The above total sampling numbers were allocated according to the planted area of each scheme as below. Respondent opinion leaders were selected in areas where the respective non-granary irrigation schemes were located, while paddy farmers were selected in schemes presently planted with paddy and other crops.

<u>Size of Planted Area in 1984 (ha)</u>	<u>No. of Farmers</u>	<u>No. of Local Opinion Leaders</u>
0	0	1-2
1-10	2	1-2
11-100	5	1-2
101-300	10	1-2
301-500	21	1-2
Over 500	28	1-2

In each scheme, farmers and opinions leaders were selected by simple random sampling. Finally, the total numbers of farmers and opinion leaders interviewed in this survey were 4,728 and 1,309, respectively, as shown below.

State	Paddy Farmers		Opinion Leaders		Total No. of Samples
	No. of Schemes	No. of Samples	No. of Schemes	No. of Samples	
1. Perlis	22	242	22	40	282
2. Kedah	61	654	78	115	769
3. P. Pinang	8	100	15	31	131
4. Perak	44	373	63	91	464
5. Selangor	8	40	15	20	60
6. N. Sembilan	103	504	158	200	704
7. Melaka	54	311	57	116	427
8. Johor	17	152	23	33	185
9. Pahang	155	631	279	321	952
10. Trengganu	33	305	38	65	370
11. Kelantan	72	597	76	125	722
12. Sabah	41	499	53	79	578
13. Sarawak	34	320	38	73	393
Total	652	4,728	915	1,309	6,037

B.2 General Profile of Paddy Farmers

With regard to civil status of 4,728 respondent farmers throughout the country, 92% of them are "married" as shown in Table B-1 (1/4).

The farmers are generally old as shown in Table B-1 (1/4). Farmers over 55 years old occupy 39% of the respondents, followed by those who are 46 to 55 years accounting for 36% and 36 to 45 years sharing 15%. Young farmers of 18 to 25 years and 26-35 years account for only 1% and 9% of the respondents, respectively. The age of the heads of family is one of the most important characteristics, because the way they think and behave and their needs are closely related to their age level. It is interesting to note that in the States of Pulau Pinang and Selangor only 3% of the respondents are below 36, whereas in the State of Sabah 26% are below that age. Such differences are understandable when the scheme areas are urbanized or located near urban centers which provide more job opportunities to the younger generation.

Almost two-thirds of the sampled farm households have no more than six household members. The modal class is between five and six people as shown in Table B-1 (2/4). The farm household members generally consists of the married couple and child/children. There are comparatively few instances of extended families.

The educational standard of farmers is shown in Table B-1 (2/4) and summarized that 27% of the respondents took no schooling and 64% completed primary school. Higher educated respondents

comprise 6% for form 1 to 3, 2% for form 4 to 5 and 1% for religious school. Many of the sample farmers who received some form of primary schooling are relatively young farmers.

As to the religion of farmers, Islam shares 89% followed by Christian of 7%, Buddhist of 2%, Hindu of 0% and others of 2% as shown in Table B-1 (3/4).

As shown in Table B-1 (3/4), 84% of the respondent farmers belong to the ethnic group of Malay. The rest consist of indigenous of 13%, others of 2%, Chinese of 1% and Indian of 0% as shown in Table B-1 (3/4).

In daily life, 88% of them speak Malay or English, while the rest speak Chinese, Dusun, Kadazan, Bajau, Iban and others as shown in Table B-1 (4/4).

B.3 Living Circumstances

In the non-granary irrigated areas, major farm incomes of the respondents are derived from paddy selected by 70% of 4,728 respondent farmers in a multiple answering manner as shown in Table B-2 (1/9). The other farm income sources are rubber chosen by 27%, fruits accounting by 6%, cocoa by 4% and vegetables by 3%. These other incomes are usually seasonal but unstable.

The annual income earned from these major crops is below M\$1,000 for 27% of the respondent farmers followed by that ranging from M\$1,001 to M\$2,000 for 24% and M\$2,001 to M\$3,000 for 17% as shown in Table B-2 (2/9). Of the respondents, 13% gain no income from these crops.

In addition, 64% of the respondents are earning off-farm incomes by subsidiary businesses such as rubber tapping, fishing, blue color works and part-time jobs as shown in Table B-2 (3/9).

As reasons for engaging in side jobs, 82% of 2,998 respondents choose "upgrading of living standard" and 34% select "children's education" as shown in Table B-2 (4/9).

The annual amount of side incomes from other sources ranges from M\$1,001 to M\$2,000 for 27% of 2,998 sample farmers as shown in Table B-2 (4/9).

As expected, household members comprising mainly children of the respondents are better educated than the head of household as summarized below:

<u>Educational Level</u>	<u>Heads of Household (%)</u>	<u>Household Members (%)</u>
Primary	2,970 (63)	7,409 (34)
Form 1-3	287 (6)	4,191 (19)
Form 4-5	115 (2)	3,191 (15)
Form 6	23 (0)	534 (2)
College	7 (0)	142 (1)
Vocational level	3 (0)	50 (0)
Religious school	36 (1)	73 (0)
University	2 (0)	125 (1)
No schooling/ no answer	1,285 (27)	5,897 (27)
Total	4,728 (100)	21,612 (100)

The results in general indicate that the majority of the children have gone to school and obtained a good education. However, this implies a reduction in the farm labor force. The higher the education, the further it tends to take the younger generation away from the farming operations and rural areas.

Annual average gross income of farmers is estimated to range between M\$4,700 and M\$6,300 and the annual average gross outgo amounts to M\$2,100 to M\$3,100. Their annual average saving amounts to M\$1,200 to M\$3,700 and about 20% of the farmers are in debt which ranges from M\$2,000 to M\$4,400. Of them, 63% borrow money from blood relation or friend, whereas 22% lean on the government banks or farmer's association for financial assistance.

Taking M\$4,800 a year or M\$400 a month per family as the poverty line as suggested in the Fourth Malaysia Plan (4MP), the survey results reveal that over half of the households are below the poverty level as shown in Table B-2 (5/9). The situation blocks relatively better in the States of Selangor and Melaka, while the States with a higher incidence of poverty are Perak, Johor, Pahang, Kelantan, Trengganu and Sabah.

The electrification rate run up to really 90% at national level as shown in Table B-2 (6/9). Due to such higher electrification rate, the electric appliances are well diffused: TV set held by 77% of the respondents, radio/cassette by 60%, electric fan by 38%, sewing machine by 32% and refrigerator by 20% as shown in Table B-2 (7/9). As for the possession of video set and conditioner, their equipment rates are still below 5% at national level.

The other components of the level of living index such as piped water and telephone are also available to a good deal of rural population. The piped water is already installed in 66% of the respondent farm households at national level as shown in Table B-2 (6/9).

To look into the community relationship, the existence and participation of farmers' organizations and rural communities are studied as shown in Tables B-2 (7/9) and B-2 (8/9) and summarized below. Most of farmers who answered "participated" cite the names including Farmers' Association (LPP) by 88% of the respondents, Ahli Rela by 42% and/or JKK by 40%.

<u>Activities</u>	<u>Farmers' Organizations (%)</u>	<u>Rural Communities (%)</u>
Participated	3,165 (67)	1,360 (29)
Available, but not participated	781 (17)	890 (19)
Non existence	774 (16)	2,478 (52)
Total	4,728 (100)	4,728 (100)

To the question whether there exist a traditional mutual aid system in your area, 80% of farmers answered "yes". These are Gotong Royon accounting for 85%, JKK for 5% and others for 9% as shown in Table B-2 (8/9). In the States which still retain traditional features, the mutual aid system still remains in such works or activities as construction, rehabilitation or maintenance of community facilities pointed out by 65% of the respondents, cleaning by 34%, planting by 20% and land preparation by 16% as shown in Table B-2 (9/9).

B.4 Farming Conditions

Tenancy status of the respondent farmers is shown in Table B-3 (1/11) and summarized below.

<u>Categories</u>	<u>Country Total (%)</u>	<u>States with Higher Incidence (%)</u>
Owner operator	3,436 (73)	Sabah (91), Sarawak (86), Melaka (82), Pahang (82)
Tenant	910 (19)	Selangor (43), N. Sembilan (39), Trengganu (38)
Owner-tenant	302 (6)	Kedah (19), Perlis (14), Kelantan (11)
No answer	80 (2)	-
No. of Respondents	4,728 (100)	-

Of the respondent farmers, 73% work on their own farm as owner-operators. The relatively high proportion of owner-operator farmers in the States of Sabah, Sarawak and Pahang can be explained by the fact that these areas are traditionally dry-paddy crop growing areas and demand for land for cultivation has not been as great as the demand to grow wet rice. Scarcity of land in relation to demand coupled with the limited opportunities to work off-farm seems to have forced farmers to rent other farmers paddy lands to earn a living. Of the respondent farmers, 19% are pure tenants who are binded by the share-cropping (bagi secara pawah). The incidence of this tenancy is particularly high in the States of Selangor, Negeri Sembilan and Trengganu. Apart from their own land 6% of the respondents, rent

land from the others in the form of share-cropping with higher incidence observed in the States of Kedah, Perlis and Kelantan where the paddy cultivation is developed.

The distribution of farmers by farm size is shown in Table B-3 (1/11). As for total cultivated area and paddy fields, State-by-State distribution data are shown in Table B-3 (2/11). These summaries at national level are as below.

<u>Size (ha)</u>	<u>Total Farm Land (%)</u>		<u>Total Cultivated Area (%)</u>		<u>Total Cultivated Paddy Field (%)</u>		<u>Double Cropping Paddy Field (%)</u>	
Less than 0.4	194	(4)	219	(5)	270	(6)	133	(3)
0.4 - 0.7	776	(16)	882	(19)	1,044	(22)	468	(10)
0.8 - 1.1	748	(16)	795	(17)	905	(19)	312	(7)
1.2 - 1.5	683	(14)	761	(16)	578	(12)	220	(5)
1.6 - 2.0	656	(14)	646	(14)	409	(9)	145	(3)
2.1 - 4.0	1,138	(24)	820	(17)	314	(7)	133	(3)
4.1 - 6.0	317	(7)	209	(4)	55	(1)	24	(1)
More than 6.0	214	(5)	101	(2)	14	(0)	12	(0)
None & no answer	2	(0)	295	(6)	1,139	(24)	3,281	(69)
Total	4,728	(100)	4,728	(100)	4,728	(100)	4,728	(100)

Average farm-size is about 1.6 to 2.6 ha, ranging from an average of 0.8 to 1.3 ha in the State of Melaka to 2.1 to 3.4 ha in the State of Pahang in the Peninsular Malaysia, while these are 2.4 to 3.8 ha in the State of Sabah and 2.3 to 3.7 ha in the State of Sarawak. The preponderance of small uneconomic farm holdings is expressed by the fact with 36% of the active farmers cultivating no more than 1.1 ha. This suggests a strong dependence on off-farm jobs for a large proportion of these households.. Of the respondent farmers, 36% own less than 1.2 ha, while only 5% have more than 6 ha of land.

About the number of paddy cultivation, remarkable variations can be observed among States. One time of paddy cultivation per year is dominant and practiced by 89% of the respondents in the State of Kelantan, by 87% in Sarawak, by 82% in Sabah, by 78% in Trengganu and by 69% in Perlis, while double paddy cropping is prevailing in the State of Kedah where it is performed by 81% of the respondents, Pulau Pinang by 75%, Selangor by 70%, Johor by 64% and Perak by 62% as shown in Table B-3 (4/11).

As to double-cropped paddy fields account for 31% and two cropped paddy fields cover 18% as shown in Table B-3 (3/11), while 18% of the respondents answer that they grow other crops than paddy.

As in many other parts of the paddy growing areas, farms are fragmented and away from their houses. Of the farms, 62% consist of two or more parcels as shown in Table B-3 (4/11). The small farm size seems to arise mainly from the interplay of inheritance custom among the Malays.

Of the sample farmers, 92% enjoy the irrigation facilities in their paddy fields as shown in Table B-3 (4/11). Of the respondent farmers in terms of irrigation water supply quantity, 81% consider that in the main season water is "sufficient", while 19% reply "not sufficient" as shown in Table B-3 (5/11). The situation is more severe in the off-season with the proportion of 53% for "sufficient" and 47% for "not sufficient".

Regarding inundation, 72% of the respondent farmers report that their farm lands are often flooded even after normal rainfall during the monsoon period as shown in Table B-3 (5/11). In case of the heavy rainfall, its incidence increases up to 91% as shown in Table B-3 (6/11).

Irrigation and drainage facilities conditions are reported as shown in Tables B-3 (6/11) and B-3 (7/11) and summarized below. Of the farmers interviewed, 30% have experienced to meet some problems in using the facilities provided. Problems encountered by farmers vary ranging from not receiving water/enough water and/or late arrival of water to non-cooperation among farmers, excessive water supply and no irrigation ditch.

<u>Rating</u>	<u>No. of Responses (%)</u>	
1. Irrigation facilities		
- Well maintained	2,300	(70)
- Structures broken	447	(14)
- Canal broken	348	(11)
- Canal deposited	247	(7)
- Others	163	(4)
Total (No. of respondents: 3,309)	3,505	(106)
2. Drainage control facilities		
- Well maintained	2,055	(70)
- Canal deposited	487	(16)
- Stop log/gate broken	266	(9)
- Others	170	(5)
Total (No. of respondents: 2,954)	2,978	(101)

In Malaysia, mechanization has proceeded swiftly since adoption of double-cropping. Of the total respondents, 57% answer that they use tractors for field preparation, whereas only 7% utilize their draft animals, mostly buffaloes, as shown in Tables B-3 (7/11), B-3 (8/11) and B-3 (9/11).

Usually, paddy farmers enjoy machinery services either on contract basis with private sector or provided by FOS. Some paddy farmers with a large scale farm size use their own machineries of

which are sometimes leased out to private sector services. The ownership status of tractor is shown in Table B-3 (9/11).

To the question whether farmers fully utilize their paddy field currently, 72% of the respondents answer "yes" as shown in Table B-3 (9/11) and summarized below.

<u>Response</u>	<u>Country Total (%)</u>	<u>States with Higher Incidence (%)</u>
a. Yes (86)	3,396 (72)	Sabah (96), Perlis (93), Trengganu (90), Kedah (88), Johor (88), Kelantan (86), Sarawak
b. No	1,331 (28)	Pahang (73), N. Sembilan (61), Melaka (42)
c. No answer	1 (0)	-
Total No. of Respondents	4,728 (100)	-

As to reasons of incidence of the idle paddy fields, paddy farmers' opinions and considerations are listed up in Table B-3 (10/11) and summarized below.

<u>Reasons</u>	<u>Country Total (%)</u>	<u>States with Higher Incidence (%)</u>
a. Shortage of manpower	723 (59)	Pahang (74), N. Sembilan (72), Melaka (66)
b. Low profitability of paddy cultivation	129 (11)	Perlis (53), N. Sembilan (15), Perak (15)
c. Lack of drainage facilities (26)	199 (16)	Perlis (65), Melaka (27), Kedah (26), Sarawak
d. Insufficient water supply (71)	547 (44)	Melaka (79), Sabah (74), Perlis (71), Kelantan
e. Ravage of rats, birds and/or insects	157 (13)	P. Pinang (61), Pahang (22), Perak (19)
f. Others	364 (48)	-
Total No. of Responses	2,119 (174)	-
No. of Respondents	1,217	-

Kinds of crops grown on the converted paddy fields are cocoa, oil palm, banana, durian, rambutan, vegetable and maize.

To another question how is the present condition of the converted paddy field, 30% of 143 the respondent farmers with converted paddy fields reply that they encounter and/or are facing problems such as low level of farming technique, insufficient irrigation water supply, ill drained condition, poor access to farm lots and others as shown in Table B-3 (11/11).

Problems and/or difficulties encountered in farming practices are shown in Table B-3 (11/11) and summarized below. The survey results revealed that farmers in non-granary irrigated areas had experienced a number of problems and difficulties in their farming practices.

Problems & Difficulties	Country		States with Higher Incidence (%)
	Total	(%)	
a. Inefficient irrigation facility	565	(12)	Perlis (31), P. Pinang (20)
b. Insufficient water supply	2,060	(44)	Perlis (71), Kelantan (70), Melaka (63)
c. Poor drainage	768	(16)	Sarawak (35), Perlis (34)
d. Lack of fund	1,182	(25)	Sarawak (47), Perak (39)
e. Lack of labour force	1,181	(25)	N. Sembilan (62), Melaka (40), Pahang (39)
f. Difficult marketing	305	(6)	Sarawak (30)
g. Natural disaster	1,245	(26)	Sabah (57), Melaka (54), Sarawak (43)
h. Frequent pest and diseases	3,530	(75)	Perak (92), Trengganu (90), Kedah (89), Sabah (89)
i. Others	293	(7)	-
j. None	229	(5)	-
Total No. of Responses	11,358	(240)	-
No. of Respondents	4,728		-

B.5 Farmers' Requirements and Intentions

Although 57% of the respondents have from three to six children, many of these children would now be working adults and living outside the respondent households.

Under such circumstances, when asked for their hope about succession of farm operations by household members, 63% express the hope that their children or relatives would remain in farming operations, while 35% answer in the negative as shown in Table B-4 (1/11).

To the question how many candidate successors do you have, 88% answer that they have one to three successors as shown in Table B-4 (1/11). They are composed of son(s) for the case of 72% of the respondents, daughter(s) for 23%, brother(s)/sister(s) for 3% and others for 2% as shown in Table B-4 (2/11).

In the States of Selangor and Negeri Sembilan where the matriarchy system in which inheritance follows the female line remains, nearly half of candidate successors are "daughters". In the States of Sabah and Sarawak, the cases of succession by daughters are also relatively higher ranging from 40% to 50%. According to the Islamic inheritance rule, the land tends to be fragmented and the incidence of multiple ownership of land owned jointly by two or more persons increases due to the continuing process of land fragmentation. In most cases, the multiple ownership is held by siblings who have inherited land from their parents.

As for the future mode of farm operations, 43% of the respondents expect that their successors will continue farming operations as full-time occupation, while 50% reply as part-time occupation and 4% as land owner with full-time job other than agriculture as shown in Table B-4 (2/11).

In addition, the survey results reveal that 33% of the respondent farmers who have no hope about succession of farm operation decide to stop it during their lifetime. Further, 10% consider the transfer or sale of their lands to other persons and 8% say to convert to permanent crop fields as shown in Table B-4 (3/11).

When asked about the utilization of the idle lands to 1,327 respondent farmers with idle paddy fields, 22% of the respondents say that they are planning to convert to tree crop as shown in Table B-4 (3/11). On the other hand, 54% of the respondent farmers have "no plan" due to not enough experiences of crop diversification.

To the question whether or not they have intentions to convert or continue paddy field, 17% of the respondents answer in favour of its conversion, while 45% of them adhere for the continuation of paddy cultivation as shown in Table B-4 (4/11) and summarized below.

	<u>No. of Respondents (%)</u>	
- No intention to convert paddy field to other crop field	2,130	(45)
- Expecting to introduce crop diversification on irrigated paddy field	120	(3)
- Expecting to provide conversion of paddy field to tree planting	267	(6)
- Expecting to introduce crop diversification to some extent	292	(6)
- Expecting others	107	(2)
- No plan idea	353	(7)
- No answer	1,459	(31)
<u>Total</u>	<u>4,728</u>	<u>(100)</u>

To the question what kind of farming expected in the future, 80% of the respondent farmers answer that they expect to participate or expand the following crops such as rice, rubber trees, field crops and oil palm, and breeding of chicken, cattle and duck as shown in Table B-4 (5/11).

In connection with the promotion of crop diversification, farmers expect that the irrigation and drainage facilities, farm roads and other related facilities would be newly installed, rehabilitated or upgraded as shown in Table B-4 (6/11) to B-4 (9/11).

On the question of the expected beneficial effects by growing other crops than paddy, the respondents give their answers as shown in Table B-4 (9/11) and summarized below: