

APPENDICES

APPENDICES

1. Area Photographs.....	134
2. Members List of the Basic Design Study Team.....	139
3. Itinerary of the Study Team.....	140
4. List of Personnel Interviewed.....	142
5. Minutes of Discussions.....	144
6. Collected Statistical Data.....	160

APPENDIX 1. Area Photographs

PRIMARY SCHOOLS



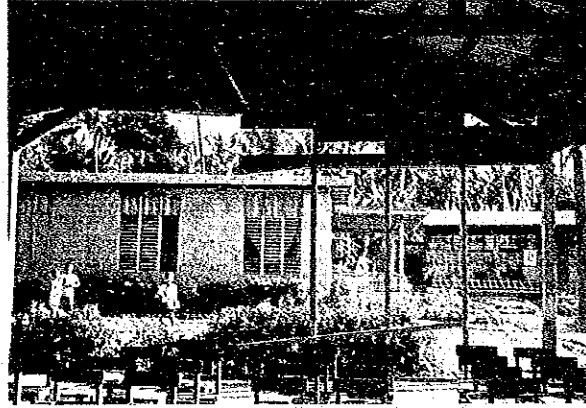
BALANGKAYAN ELEMENTARY SCHOOL



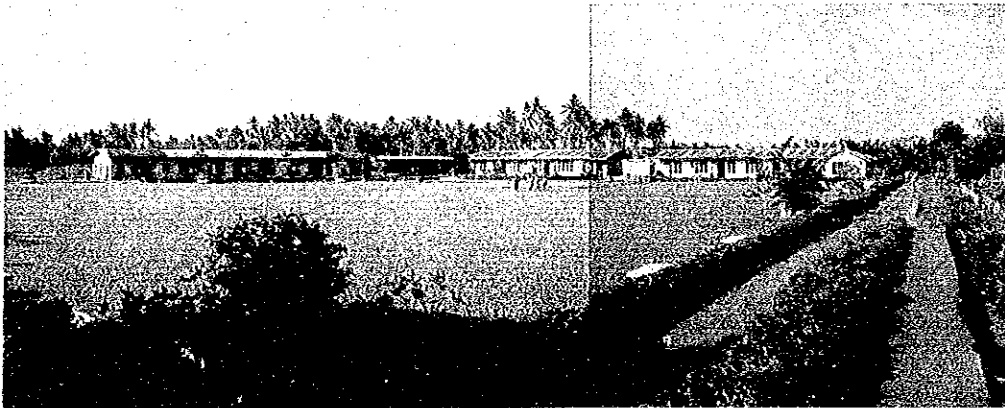
BANAHAO ELEMENTARY SCHOOL



BASEY II CENTRAL SCHOOL



LEMON-SAN JOAQUIN ELEMENTARY SCHOOL



M. CASAUS ELEMENTARY SCHOOL

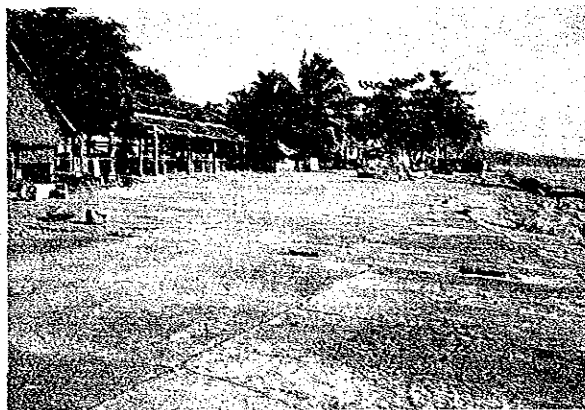


BINONGTOAN ELEMENTARY SCHOOL

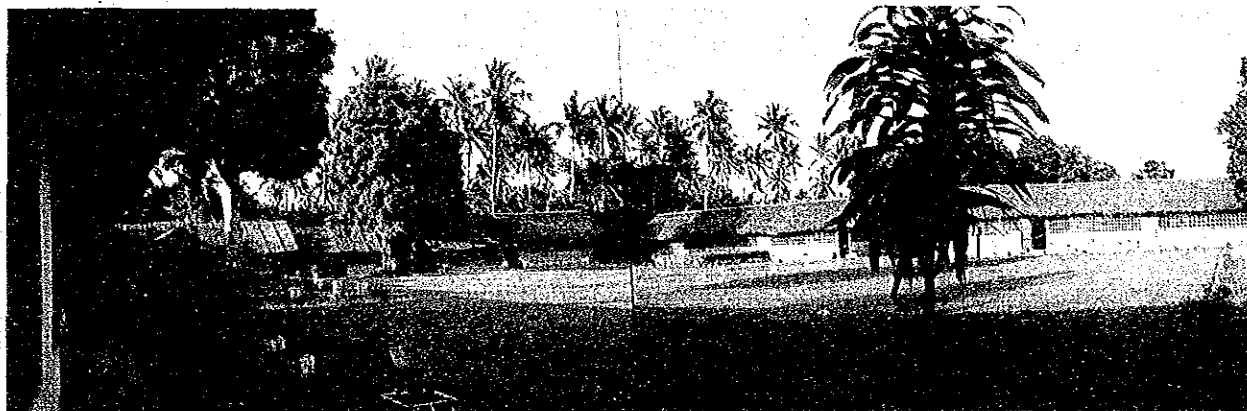
SECONDARY SCHOOLS



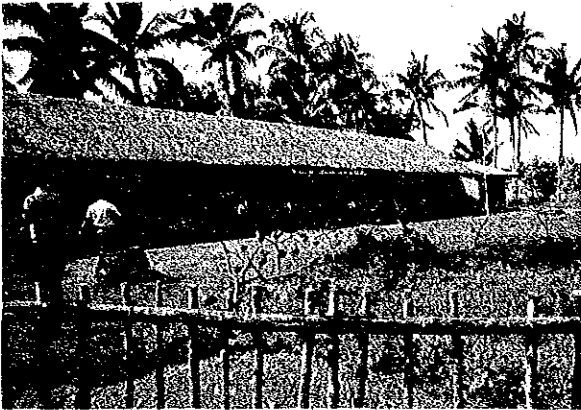
JULITA BARANGAY HIGH SCHOOL



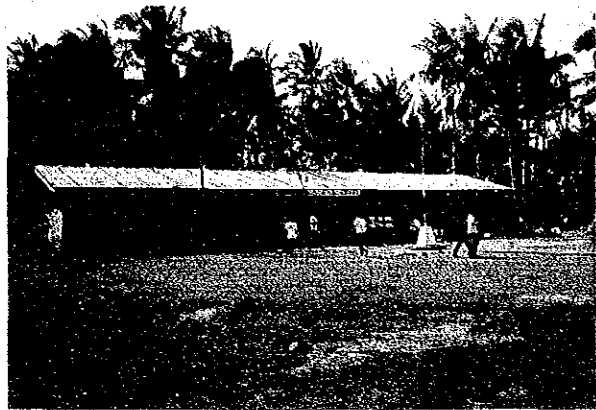
ALBUERA NATIONAL SCHOOL OF FISHERIES



GRANJA-KALINAWAN BARANGAY HIGH SCHOOL



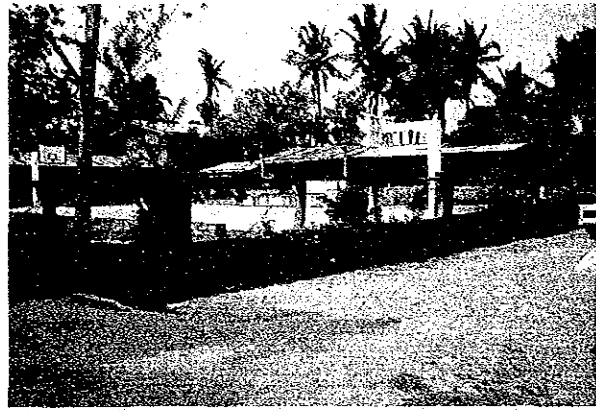
MALABAG MUNICIPAL HIGH SCHOOL



BOBON BARANGAY HIGH SCHOOL



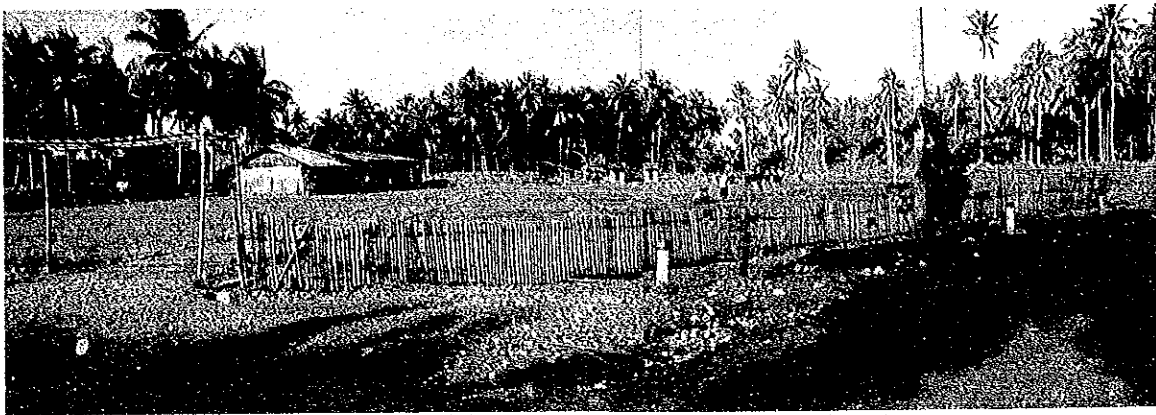
GEN. MACARTHUR NATIONAL AGRICULTURAL HIGH SCHOOL



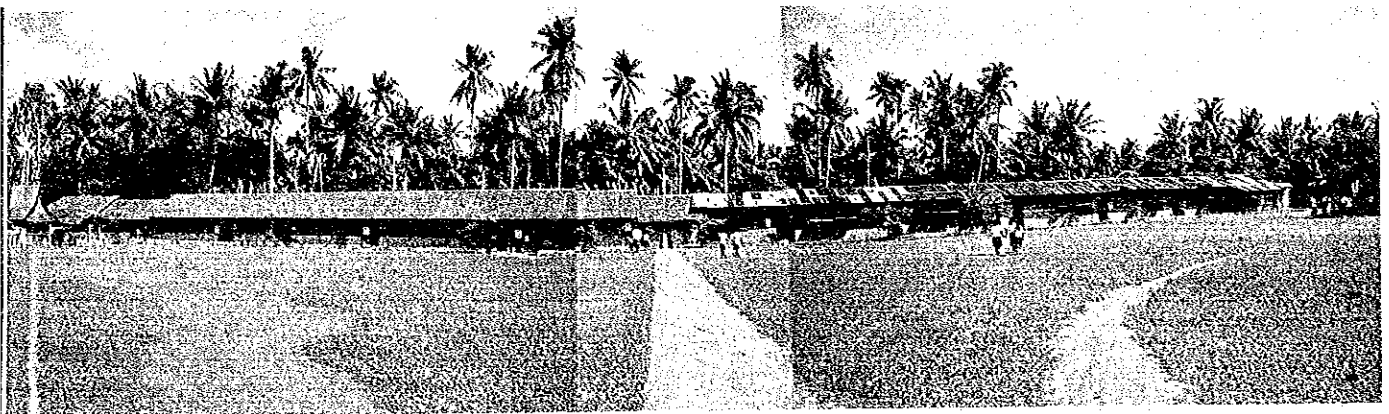
TRINIDAD BARANGAY HIGH SCHOOL



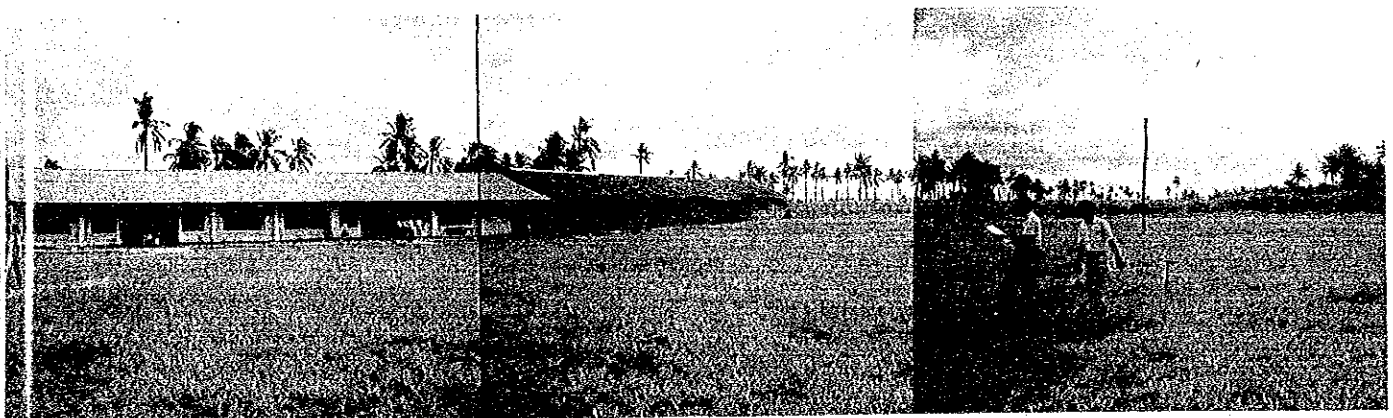
BALOCAWEHAY BARANGAY HIGH SCHOOL



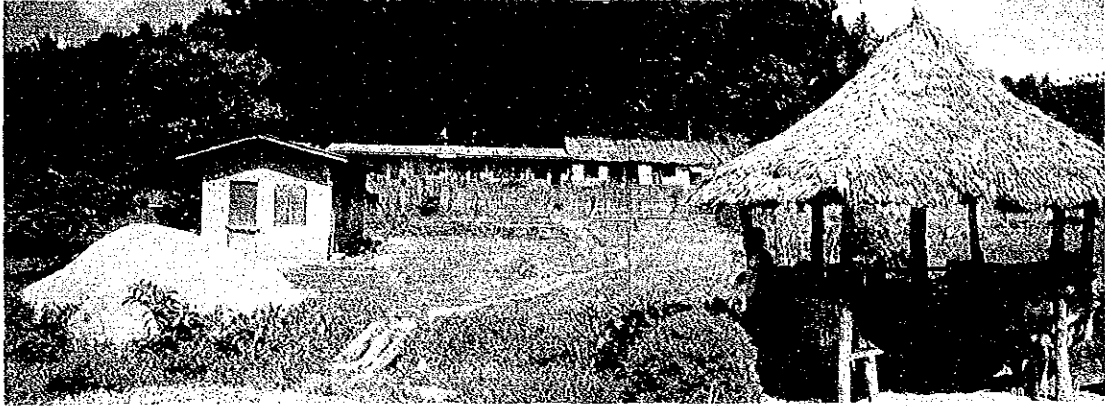
CABACUNGAN BARANGAY HIGH SCHOOL



TUNGA BARANGAY HIGH SCHOOL



MARGEN BARANGAY HIGH SCHOOL



LUCSON PROVINCIAL HIGH SCHOOL



SAN MIGUEL BARANGAY HIGH SCHOOL

APPENDIX 2. Member List of the Basic Design study Team

NAME	ASSIGNMENT	AFFILIATION
Mr. Takuo Kidokoro	Team Leader	Assistant Director Grant Aid Division Bureau of economic Cooperation Ministry of Foreign Affairs
Mr. Takenobu Mohri	Architectural Planner	Mohri, Architect and Associates, Inc.
Mr. Masaaki Suko	Architectural Planner	Mohri, Architect and Associates, Inc.
Mr. Tomihide Chishina	Cost Estimator	Mohri, Architect and Associates, Inc.
Mr. Nobuhiro Mohri	Construction Planner	Mohri, Architect and Associates, Inc.

APPENDIX 3. Itinerary of the Study Team

A Group: Takuo Kidokoro and Takenobu Mohri B Group: Masaaki Suko
 C Group: Tomihide Chishina D Group: Nobuhiro Mohri

No.	Date	Activity
1	1990 Jan 14, Sun	Study Team departed Tokyo and arrived Manila.
2	Jan 15, Mon	Made courtesy visit to JICA Office and the Japanese Embassy in Manila. Visited DECS and made the first and second meetings.
3	Jan 16, Tue	Departed Manila and arrived Tacloban. Conducted field surveys: A Group visited DECS' regional office. A and D groups stayed in Tacloban; B Group in Borongan; C Group in Calbayog.
4	Jan 17, Wed	Conducted field surveys: A Group in Tacloban; B Group in Borongan; C Group in Alen; D Group in Ormoc.
5	Jan 18, Thu	A and B Groups visited DECS' regional office in Tacloban, departed Tacloban and arrived Manila. C Group conducted field surveys in Tacloban; D Group in Maashin.
6	Jan 19, Fri	A and B Groups held the third and fourth meetings with DECS. C and D Groups conducted field surveys in Tacloban.
7	Jan 20, Sat	A and B Groups held a meeting among the Study Team. C and D Groups departed Tacloban and arrived Manila.
8	Jan 21, Sun	All Team members held a meeting and prepared the draft of the Minutes of the Discussions.
9	Jan 22, Mon	Held a meeting with DECS. Reported field survey results to JICA. Examined the contents of the Minutes of the Discussions. The Minutes of the Discussions were signed with the Japanese Ambassador, Mr. Tanaka, and the Education Minister of DECS as witnesses.
10	Jan 23, Tue	Study Team Leader, Mr. Kidokoro, departed Manila and arrived Tokyo. Other team members clarified obtained field survey data.
11	Jan 24, Wed	Held a meeting with DECS.
12	Jan 25, Thu	Held a meeting among the Study Team. C and D Groups departed Manila and arrived Tacloban. C and D groups visited DECS' regional office and conducted field surveys.
13	Jan 26, Fri	A and B Group held a meeting with DECS.

Itinerary of the Study Team (Cont'd)

No.	Date	Activity
14	Jan 27, Sat	A and B Groups held a meeting among the members. C and D groups departed Tacloban and arrived Manila.
15	Jan 28, Sun	Held a meeting among the Study Team members and clarified the obtained field survey data.
16	Jan 29, Mon	Held a meeting among the Study Team members and clarified the obtained field survey data.
17	Jan 30, Tue	Held a meeting with DECS and discussed the schools to be included in the Project.
18	Jan 31, Wed	Held a meeting among the Study Team.
19	Feb 01, Thu	Visited JICA Office in Manila and held a meeting.
20	Feb 02, Fri	Held a meeting with DECS and obtained approval of Project School List (70 schools) by the Education Minister.
21	Feb 03, Sat	Held a meeting among the Study Team.
22	Feb 04, Sun	Held a meeting among the Study Team.
23	Feb 05, Mon	Departed Manila and arrived Tokyo.

APPENDIX 4. List of Personnel Interviewed

During the Basic Design study survey period, the Study Team interviewed the following personnel:

* Concerned personnel of the Philippines

Dr. Isidro Carino	Secretary, DECS
Dr. Victor Ordonez	Under secretary, DECS Executive Director, EDPITAF
Dr. Adriano Arcelo	Under secretary, DECS Chairman, School Building Committee
Mr. Lorenzo Espeleta	Chief Architect Bureau of Design, DPWH
Mr. Huillio Belleza	Engineer IV Bureau of Construction, DPWH
Mr. Pedro Tuboto	Architect, BDC-DPWH
Mr. Felice Guiang	Physical Facilities Div. Head Bureau of Secondary Education Member
Mr. Alberto Bantugan	Project Analyst Office of Planning Services, DECS
Ms. Ma. Lourdes de Vera	Coordinator Research and Project Development Office EDPITAF-DECS
Ms. Yolanda Ramo	Head, Grands Administration Office EDPITAF-DECS
Ms. Teresita Sering	Sector Desk Officer, RPDO-EDPITAF
Ms. Milagros Talinio	Development Project Officer, RPDO-EDPITAF
Dr. Serviliano C. De La Cruz, Jr.	Regional Director
Dr. Filemon O. Tamayo	Education Supervisor II
Mr. Venustiano R. Llosa	Education Supervisor II
Mr. Jaime Mabilangan	Education Supervisor II
Mr. Vivencio R. Siguan	Education Supervisor II

* Resident representatives of the Japanese Government

• Japanese Embassy in the Philippines:

Mr. Tsuyoshi Yamanaka : First Secretary

Mr. Kazuyoshi Yamaguchi : First Secretary

• JICA Manila Office

Mr. Moriya Miyamoto : Resident Representative

Mr. Katsuhiko Ohshima : Staff Member

Mr. Katsuro Saito : Staff Member

APPENDIX 5. Minutes of Discussions

MINUTES OF DISCUSSIONS

ON

THE PROJECT FOR CONSTRUCTING PRIMARY
AND SECONDARY SCHOOLBUILDINGS (PHASE II)

IN

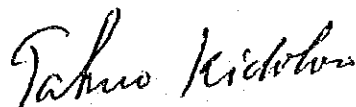
THE REPUBLIC OF THE PHILIPPINES

MINUTES OF DISCUSSIONS
ON
THE PROJECT FOR CONSTRUCTING PRIMARY AND SECONDARY
SCHOOLBUILDINGS (PHASE II) IN
THE REPUBLIC OF THE PHILIPPINES

In response to the request of the Government of the Republic of the Philippines, the Government of Japan decided to conduct a basic design study on the project for constructing primary and secondary schoolbuildings and the Japan International Cooperation Agency (JICA) sent to the Philippines the study team headed by Mr. Takuo KIDOKORO, Assistant Director, Grant Aid Division, Economic Cooperation Bureau, Ministry of Foreign Affairs of the Government of Japan, from January 14th to February 5, 1990. The team had a series of discussions on the Project with the officials concerned of the Government of the Republic of the Philippines and conducted a field survey in Region VIII.

As a result of the study, both parties agreed to recommend to their respective Governments that the major points of understanding reached between them, attached herewith, should be examined towards the realization of the Project.

Manila, 22nd January 1990



Mr. TAKUO KIDOKORO

Leader

Basic Design Study Team
Assistant Director
Grant Aid Division
Economic Cooperation Bureau
The Government of Japan



Dr. ISIDRO D. CARINO

Secretary
DECS, Manila

The Republic of the Philippines

ATTACHMENT

1. Project Title
The Project for Constructing Primary and Secondary Schoolbuildings (Phase II)
2. Objective of the Project
The objective of the Project is to construct typhoon-resistant pre-fabricated schoolbuildings in Region VIII with basic equipment that go with them.
3. Government Organizations Related to the Project
Responsible and Coordinating Agency for the Project:
Department of Education, Culture and Sports (DECS)
Executing and Implementing Agencies for the Project:
Department of Education, Culture and Sports (DECS)
Department of Public Works and Highways (DPWH)
4. Schools to be Covered by the Project
The list of schools where the schoolbuildings and the equipment will be provided is shown in Annex 1.
5. Project Location
The project locations in Region VIII are shown in the map in Annex 2.
6. Major Items Included in the Project
The major items included in the Project are listed in Annex 3.
7. Tentative Floor Plans
Tentative floor plans for the primary and secondary schoolbuildings are shown in Annex 4.
8. Grant Aid Program
 - 1) The Government of the Philippines understands that the Japan's Grant Aid Program includes the requirement for employing a Japanese consulting firm to implement the project to provide the buildings and the equipment.
 - 2) The Study Team will convey to the Government of Japan the desire of the Government of the Philippines that the Government of Japan takes necessary measures in implementing the Project and providing necessary buildings and equipment under the Japan's Grant Aid Program.
 - 3) The Government of the Philippines confirms that it will implement the necessary measures as listed in Annex 5 on condition that a Grant Aid by the Government of Japan will be extended to the Project.

J.K

ANNEX 1

PROPOSED RECIPIENTS OF TYPHOON-RESISTANT BUILDINGS
FROM THE JAPANESE GRANT-IN AID PROGRAM
PHASE II - REGION VIII
FY 1990

NAME OF SCHOOL	LOCATION
<u>ELEMENTARY SCHOOLS</u>	
1. BAGACAY ELEMENTARY SCHOOL	TACLOBAN CITY
2. BAYANIHAN ELEMENTARY SCHOOL	TACLOBAN CITY
3. PALO II CENTRAL SCHOOL	SAN JOAQUIN, LEYTE
4. BALANGKAYAN ELEMENTARY SCHOOL	BALANGKAYAN, EAST SAMAR
5. LUPOK ELEMENTARY SCHOOL	GUIUAN, EAST SAMAR
6. BUNGTOD ELEMENTARY SCHOOL	GUIUAN, EAST SAMAR
7. BANAHAO ELEMENTARY SCHOOL	GUIUAN, EAST SAMAR
8. BASEY I, CENTRAL SCHOOL	BASEY, SAMAR
9. ILO ELEMENTARY SCHOOL	WESTERN SAMAR
10. SAN POLICARPIO ELEMENTARY SCHOOL	CAIBAYOG CITY
11. BASEY II CENTRAL SCHOOL	BASEY, SAMAR
12. GANDARA CENTRAL SCHOOL	GANDARA, NORTH SAMAR
13. CAWAYAN ELEMENTARY SCHOOL	CATARMAN, NORTH SAMAR
14. ALBUERA CENTRAL SCHOOL	LEYTE
15. NAVAL CENTRAL SCHOOL	BILIRAN
16. KAWAYAN CENTRAL SCHOOL	BILIRAN
17. MACUPA ELEMENTARY SCHOOL	LEYTE, LEYTE
18. LEMON-SAN JOAQUIN SCHOOL	LEYTE
19. M. CASASUS ELEMENTARY SCHOOL	ALANG-ALANG, LEYTE
20. BINONGTOAN ELEMENTARY SCHOOL	ALANG-ALANG, LEYTE
<u>SECONDARY SCHOOLS</u>	
1. TANAUAN SCHOOL OF CRAFTSMANSHIP AND HOME INDUSTRIES	TANAUAN, LEYTE
2. KAUSWAGAN BARANGAY HIGH SCHOOL	PALO, LEYTE
3. JULITA BARANGAY HIGH SCHOOL	JULITA, LEYTE
4. ALBUERA NATIONAL SCHOOL OF FISHERIES	ALBUERA, LEYTE
5. CARIGARA MUNICIPAL HIGH SCHOOL	CARIGARA, LEYTE
6. GRANJA-KALINAWAN BARANGAY HIGH SCHOOL	JARO, LEYTE
7. TAFT NATIONAL HIGH SCHOOL	TAFT, EASTERN SAMAR
8. DOLORES NATIONAL HIGH SCHOOL	DOLORES, EASTERN SAMAR
9. LAWAAN SCHOOL OF CRAFTMAN & HI	LAWAAN, EAST SAMAR
10. BARANGIGA NATIONAL AGRICULTURAL SCHOOL	BARANGIGA, EAST SAMAR
11. GIPORLOS NATIONAL TRADE SCHOOL	GIPORLOS, EAST SAMAR
12. MALABAG MUNICIPAL HIGH SCHOOL	MALABAG, GIPORLOS

P.K

h

13. BOBON BARANGAY HIGH SCHOOL	BOBON, MERCEDES, E.SAMAR
14. SALCEDO COMMUNITY HIGH SCHOOL	SALCEDO, EAST SAMAR
15. GEN. MACARTHUR NATIONAL AGRICULTURAL HIGH SCHOOL	GEN. MACARTHUR, E. SAMAR
16. BOBON SCHOOL OF FISHERIES	BOBON, NORTH SAMAR
17. WASHINGTON BARANGAY HIGH SCHOOL	CATARMAN, NORTH SAMAR
18. POLANGI BARANGAY HIGH SCHOOL	POLANGI, CATARMAN
19. ALEGRIA BARANGAY HIGH SCHOOL	SAN ISIDRO
20. OQUENDO BARANGAY HIGH SCHOOL	CALBAYOG
21. TRINIDAD BARANGAY HIGH SCHOOL	TRINIDAD, CALBAYOG
22. SAN POLICARPIO BARANGAY HIGH SCH.	CALBAYOG
23. TARABUCAN BARANGAY HIGH SCHOOL	TARABUCAN, CALBAYOG
24. SAMAR NATIONAL AGRICULTURAL SCH.	TAFT, EAST SAMAR
25. SAMAR NATIONAL HIGH SCHOOL	CATABALONGAN, SAMAR
26. WRIGHT VOCATIONAL SCHOOL	WRIGHT, SAMAR
27. WRIGHT COMMUNITY HIGH SCHOOL	WRIGHT, SAMAR
28. MONDRAGON BARANGAY HIGH SCHOOL	MONDRAGON, NORTH SAMAR
29. LAVEZARES AGROINDUSTRIAL SCHOOL	SAMAR
30. BASEY NATIONAL AGRICULTURAL SCH.	BASEY
31. GANDARA BARANGAY HIGH SCHOOL	GANDARA
32. TUNGA BARANGAY HIGH SCHOOL	TUNGA, LEYTE
33. MARGEN BARANGAY HIGH SCHOOL	MERIDA, LEYTE
34. BURAUEN PROVINCIAL HIGH SCHOOL	BURAUEN, LEYTE
35. STA. FE BARANGAY HIGH SCHOOL	STA.FE, LEYTE
36. MAHAPLAG BARANGAY HIGH SCHOOL	MAHAPLAG, LEYTE
37. LUCSON PROVINCIAL HIGH SCHOOL	NAVAL LEYTE
38. TABON-TABON BARANGAY HIGH SCHOOL	TABON-TABON, LEYTE
39. PATOC BARANGAY HIGH SCHOOL	PATOC, DAGAME, LEYTE
40. STA.MESA BARANGAY HIGH SCHOOL	TANAWAN, LEYTE
41. TABANGO VOCATIONAL HIGH SCHOOL	TABANGO, LEYTE
42. BUNGA BARANGAY HIGH SCHOOL	BAYBAY, LEYTE
43. MINUHIANG BARANGAY HIGH SCHOOL	BARUGO, LEYTE
44. MATLANG BARANGAY HIGH SCHOOL	ISABEL, LEYTE
45. VILLAVA MEMORIAL HIGH SCHOOL	VILLAVA, LEYTE
46. SAN MIGUEL BARANGAY HIGH SCHOOL	SAN MIGUEL, LEYTE
47. STA. ROSA BARANGAY HIGH SCHOOL	BARUGO, LEYTE

REMARKS:

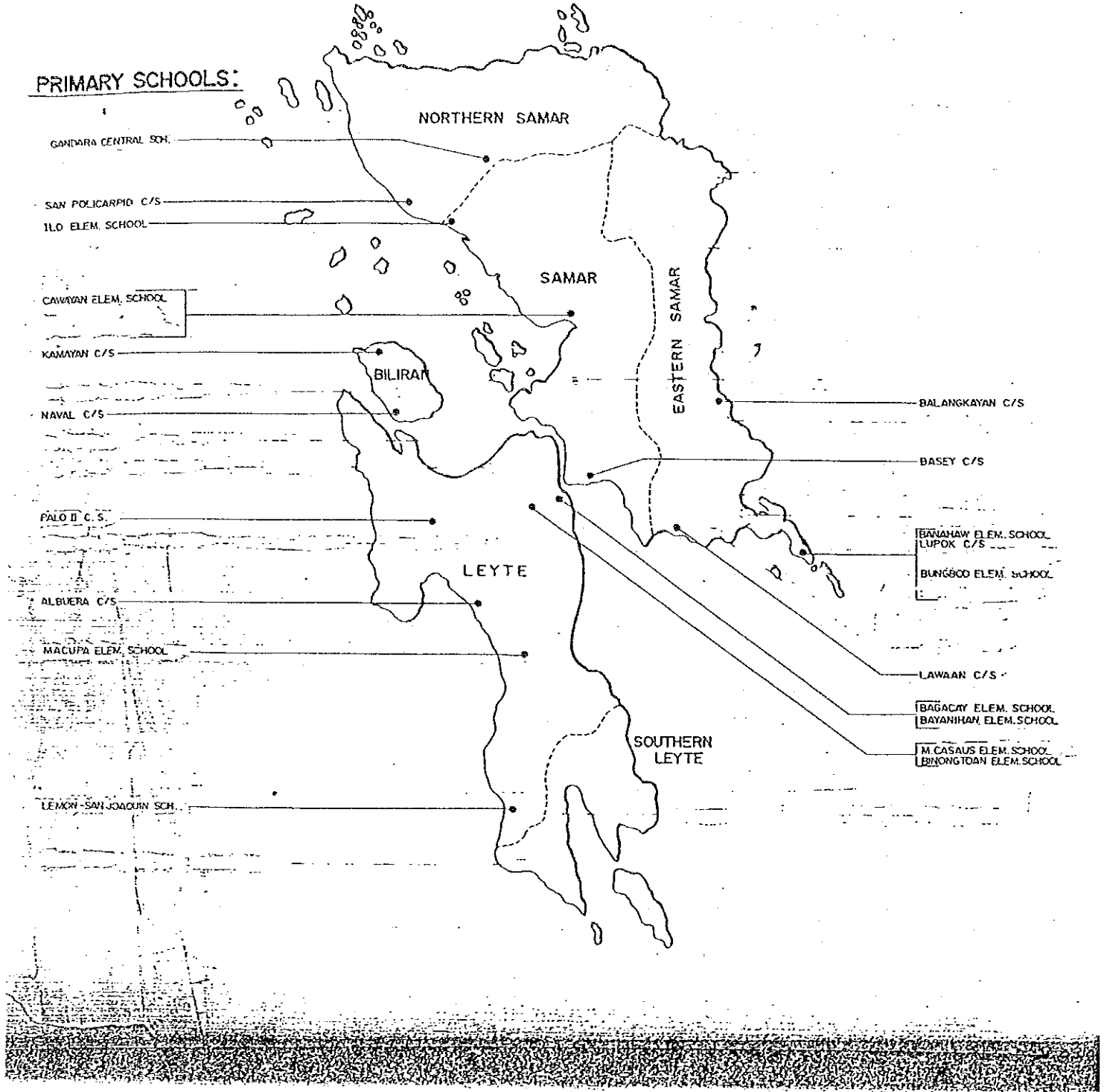
1. This list contains 67 schools as the sites suited for the implementation of the Project after the survey by the Study Team of 91 sites, that includes 72 sites initially proposed by DECS, GOP and 19 sites added during the survey as the substitute candidates.

2. The Study Team, however, will add in the list another five (5) schools to maintain the 72 units as strongly requested by GOP to meet its needs.

RK

REGION VIII

PROPOSED RECIPIENTS OF THE PROJECT FOR CONSTRUCTING PRIMARY AND SECONDARY SCHOOLS



T.K

ANNEX 3

THE MAJOR ITEMS INCLUDED IN THE PROJECT

1. Buildings

(1) Primary School

Classrooms
Toilets

(2) Secondary School

Classrooms
Science Room
Toilet

2. Equipment

(1) Primary School

Pupil's desks, chairs and side shelves
Teacher's desks, chairs and filing
cabinets in the classrooms
Blackboards and bulletin boards

(2) Secondary School

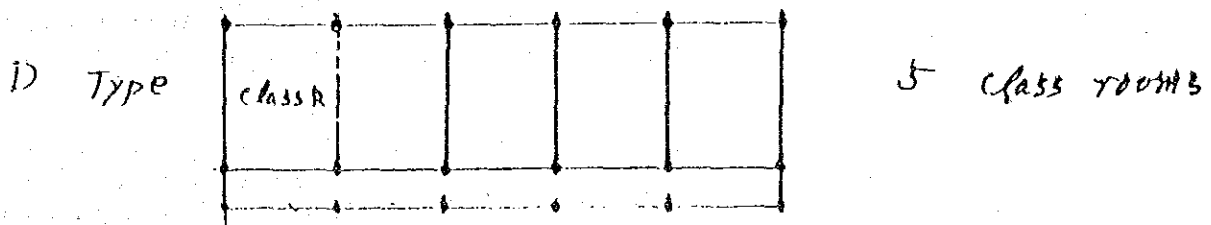
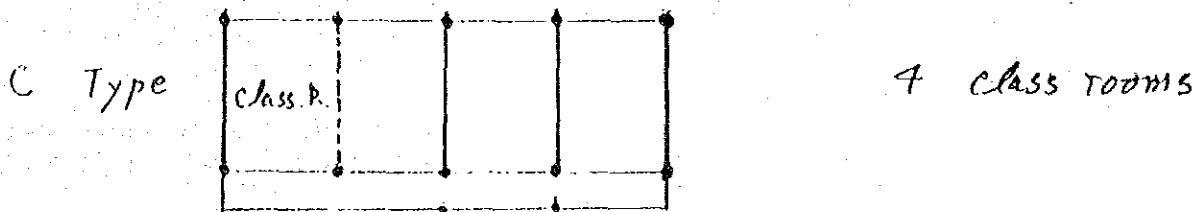
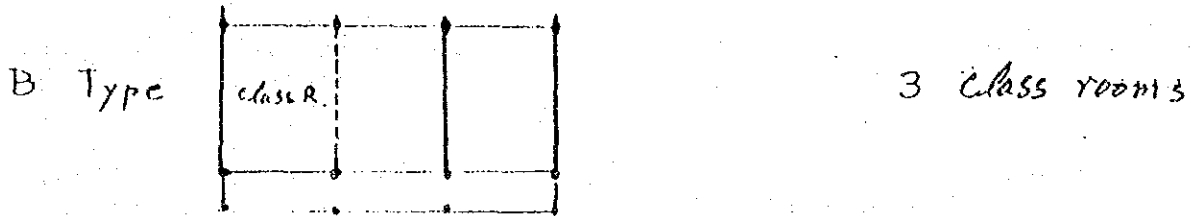
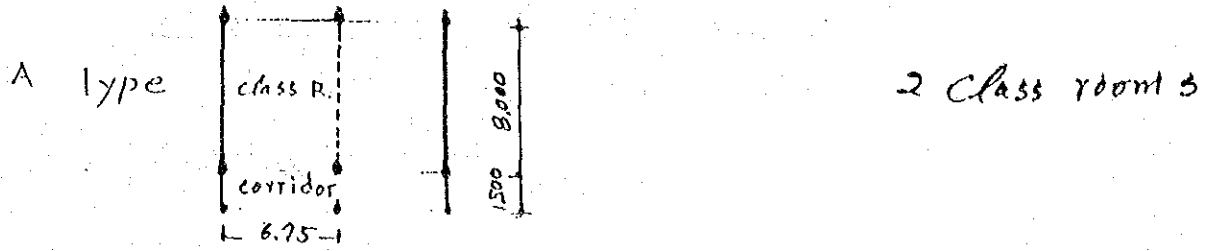
Pupil's desks, chairs and side shelves
Teacher's desks, chairs and filing
cabinets in the classrooms
Tables, stools and workbenches for
science room
Blackboards and bulletin boards

REMARKS:

Toilets of DPWH design, detached from the classrooms, are included by the strong request of DECS, GOP, so that more emphasis can be placed on the typhoon resistant academic classrooms.

T.K.

ANNEX 4. DRAWINGS



N

T.K

ANNEX 5

UNDERTAKINGS BY THE GOVERNMENT OF THE PHILIPPINES

1. To secure the sites for the Project.
2. To clear, level and reclaim the site prior to the commencement of the construction.
3. To undertake incidental out-door works such as gardening, fencing, etc.
4. To construct access roads to the site prior to the commencement of construction (only in case they are not available).
5. To provide facilities for distribution of electricity, water supply, drainage and other incidental facilities to the site when needed.
6. To obtain building, occupancy and all necessary permits for the Project with respect to the laws and regulations in the Philippines.
7. To ensure necessary budget and personnel for the proper and effective maintenance of the schoolbuildings and equipment provided under the Grant Aid.
8. To provide exemptions for taxes and all other levies and duties and to ensure prompt unloading and customs clearances at the port of disembarkation in the Philippines for the materials and the equipment provided under the Grant Aid.
9. To exempt Japanese nationals involved in the Project from customs duties, internal taxes and other fiscal levies which may be imposed in the Philippines with respect to supply of the equipment and services under the verified contracts.
10. To accord Japanese nationals whose services may be required in connection with the supply of the products and the services under the verified contracts such facilities as may be necessary for their entry to the Philippines and stay therein for the execution of the Project.
11. To bear commissions to the Japanese foreign exchange bank for the banking services based on the Banking Arrangement, in accordance with the standard grant procedure.
12. To bear all expenses other than those to be borne by the Grant, necessary for the construction of the schoolbuildings as well as for the transportation and installation of the equipment.

P.K

L

13. To undertake the pre-site survey in the target beneficiary region/s well in advance of the arrival of the Basic Design Mission in the event that GOP requests further assistance to its school building program and to make sure the proposed sites of the GOP will meet project requirements (i.e., from the view point of necessity and feasibility of the construction).

P.K

A

ADDENDUM AND CORRIGENDUM TO
MINUTES OF DISCUSSIONS DATED 22 JANUARY 1990
PROJECT FOR CONSTRUCTING PRIMARY AND SECONDARY SCHOOL BUILDINGS

PHASE II

1.0 ON ANNEX 1, "PROPOSED RECIPIENTS OF TYPHOON-RESISTANT SCHOOL BUILDINGS"

1.1 The number of recipient schools in ANNEX I of the MINUTES is herein increased from 67 to 70 sites (22 elementary and 48 secondary), the final names and locations of which are as follows:

NAME OF SCHOOL	LOCATION
<u>ELEMENTARY SCHOOLS</u>	
1. BAGACAY ELEMENTARY SCHOOL	TACLOBAN CITY
2. BAYANIHAN ELEMENTARY SCHOOL	TACLOBAN CITY
3. PALO II CENTRAL SCHOOL	SAN JOAQUIN LEYTE
4. BALANGKAYAN ELEMENTARY SCHOOL	BALANGKAYAN, EAST SAMAR
5. LUPOK ELEMENTARY SCHOOL	GUIUAN, EAST SAMAR
6. BUNGTOD ELEMENTARY SCHOOL	GUIUAN, EAST SAMAR
7. BANAHAD ELEMENTARY SCHOOL	GUIUAN, EAST SAMAR
8. BASEY I. CENTRAL SCHOOL	BASEY, SAMAR
9. ILO ELEMENTARY SCHOOL	WESTERN SAMAR
10. SAN POLICARPIO ELEMENTARY SCH.	CALBAYOG CITY
11. BASEY II CENTRAL SCHOOL	BASEY, SAMAR
12. GANDARA CENTRAL SCHOOL	GANDARA, NORTH SAMAR
13. CAWAYAN ELEMENTARY SCHOOL	CATARMAN, NORTH SAMAR
14. ALBUERA CENTRAL SCHOOL	LEYTE
15. NAVAL CENTRAL SCHOOL	BILIRAN
16. KAWAYAN CENTRAL SCHOOL	BILIRAN
17. MOCUPA ELEMENTARY SCHOOL	LEYTE, LEYTE
18. LEMON-SAN JOAQUIN ELEMENTARY SCHOOL	LEYTE
19. M. CASASUS ELEMENTARY SCHOOL	ALANG-ALANG, LEYTE
20. BINONGTOAN ELEMENTARY SCHOOL	ALANG-ALANG, LEYTE
21. SAN PASCUAL ELEMENTARY SCHOOL	STA. RITA, SAMAR
22. BURAUEN SOUTH CENTRAL SCHOOL	LEYTE
<u>SECONDARY SCHOOLS</u>	
1. TANAUAN SCHOOL OF CRAFTSMANSHIP AND HOME INDUSTRIES	TANAUAN, LEYTE
2. KAUSWAGAN BARANGAY HIGH SCHOOL	PALO, LEYTE
3. JULITA BARANGAY HIGH SCHOOL	JULITA, LEYTE
4. ALBUERA NATIONAL SCHOOL OF FISHERIES	ALBUERA, LEYTE
5. CARIGARA MUNICIPAL HIGH SCH.	CARIGARA, LEYTE
6. GRANJA-KALINAWAN BARANGAY HIGH SCHOOL	JARO, LEYTE
7. TAFT NATIONAL HIGH SCHOOL	TAFT, EASTERN SAMAR

8.	DOLORES NATIONAL HIGH SCHOOL	DOLORES, EASTERN SAMAR
9.	LAWAAN SCHOOL OF CRAFTMAN & HI	LAWAAN, EAST SAMAR
10.	BALANGIGA NATIONAL AGRICULTURAL SCHOOL	BALANGIGA, EAST SAMAR
11.	GIPORLOS NATIONAL TRADE SCHOOL	GIPORLOS, EAST SAMAR
12.	MALABAG MUNICIPAL HIGH SCHOOL	MALABAG, GIPORLOS
13.	BOBON BARANGAY HIGH SCHOOL	BOBON, MERCEDES EAST SAMAR
14.	SALCEDO COMMUNITY HIGH SCHOOL	SALCEDO, EAST SAMAR
15.	GEN. MACARTHUR NATIONAL AGRICULTURAL HIGH SCHOOL	GEN. MACARTHUR EAST SAMAR
16.	BOBON SCHOOL OF FISHERIES	BOBON, NORTH SAMAR
17.	WASHINGTON BARANGAY HIGH SCHOOL	CATARMAN, NORTH SAMAR
18.	POLANGI BARANGAY HIGH SCHOOL	POLANGI, CATARMAN
19.	ALEGRIA BARANGAY HIGH SCHOOL	SAN ISIDRO
20.	OQUENDO BARANGAY HIGH SCHOOL	CALBAYOG
21.	TRINIDAD BARANGAY HIGH SCHOOL	TRINIDAD, CALBAYOG
22.	SAN POLICARPIO BARANGAY HIGH	CALBAYOG
23.	TARABUCAN BARANGAY HIGH SCHOOL	TARABUCAN, CALBAYOG
24.	SAMAR NATIONAL AGRICULTURAL SCH.	TAFT, EAST SAMAR
25.	BALOCANEHAY BARANGAY HIGH SCH.	ABUYOG, LEYTE
26.	WRIGHT VOCATIONAL SCHOOL	WRIGHT, SAMAR
27.	WRIGHT COMMUNITY HIGH SCHOOL	WRIGHT, SAMAR
28.	MONDRAGON BARANGAY HIGH SCH.	MONDRAGON, NORTH SAMAR
29.	LAVEZARES AGROINDUSTRIAL SCH.	SAMAR
30.	BASEY NATIONAL AGRICULTURAL SCH.	BASEY, SAMAR
31.	CABACUNGAN BARANGAY HIGH SCHOOL	DULAG, LEYTE
32.	TUNGA BARANGAY HIGH SCHOOL	TUNGA, LEYTE
33.	MARDEN BARANGAY HIGH SCHOOL	NERIDA, LEYTE
34.	BURAUEN PROVINCIAL HIGH SCH.	BURAUEN, LEYTE
35.	STA. FE BARANGAY HIGH SCHOOL	STA. FE, LEYTE
36.	MAHAPLAG BARANGAY HIGH SCHOOL	MAHAPLAG, LEYTE
37.	LUCSON PROVINCIAL HIGH SCHOOL	NAVAL LEYTE
38.	TABON-TABON BARANGAY HIGH SCH.	TABON-TABON, LEYTE
39.	PATOC BARANGAY HIGH SCHOOL	PATOC, DAGAME, LEYTE
40.	STA. MESA BARANGAY HIGH SCHOOL	TANAWAN, LEYTE
41.	TABANGO VOCATIONAL HIGH SCHOOL	TABANGO, LEYTE
42.	BUNGA BARANGAY HIGH SCHOOL	BAYBAY, LEYTE
43.	MINUHANG BARANGAY HIGH SCHOOL	BARUGO, LEYTE
44.	MATLANG BARANGAY HIGH SCHOOL	ISABEL, LEYTE
45.	VILLAVA MEMORIAL HIGH SCHOOL	VILLAVA, LEYTE
46.	SAN MIGUEL BARANGAY HIGH SCH.	SAN MIGUEL, LEYTE
47.	STA. ROSA BARANGAY HIGH SCH.	BARUGO, LEYTE
48.	JAVIER BARANGAY HIGH SCHOOL	JAVIER, LEYTE

1.2 The parties hereto agreed beforehand that only those schools without assistance from other similar programs will be included in order to reach out more schools needing classrooms. Since two (2) secondary schools originally listed among the 67 schools were found to be recipients of schoolbuildings under the 1987 Economic Support Fund (Samar NMS) and the SEDP-ADB's 2nd batch of schools (Gandara BHS), said schools are hereby eliminated from JICA's list for Phase II.

2.0 ON ANNEX 2, "PROJECT LOCATIONS"

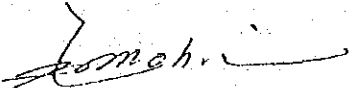
Attachment I shows the location of recipient schools above-enumerated.

3.0 All other provisions of the 22 January 1990 MINUTES not herein modified shall remain in full force and effect.

Signed this 2nd day of February 1990 in Manila, Philippines.

For the Government of Japan:

For the Government of the Philippines



TAKENOBU MOHRI
Member, Basic Design
Study Mission

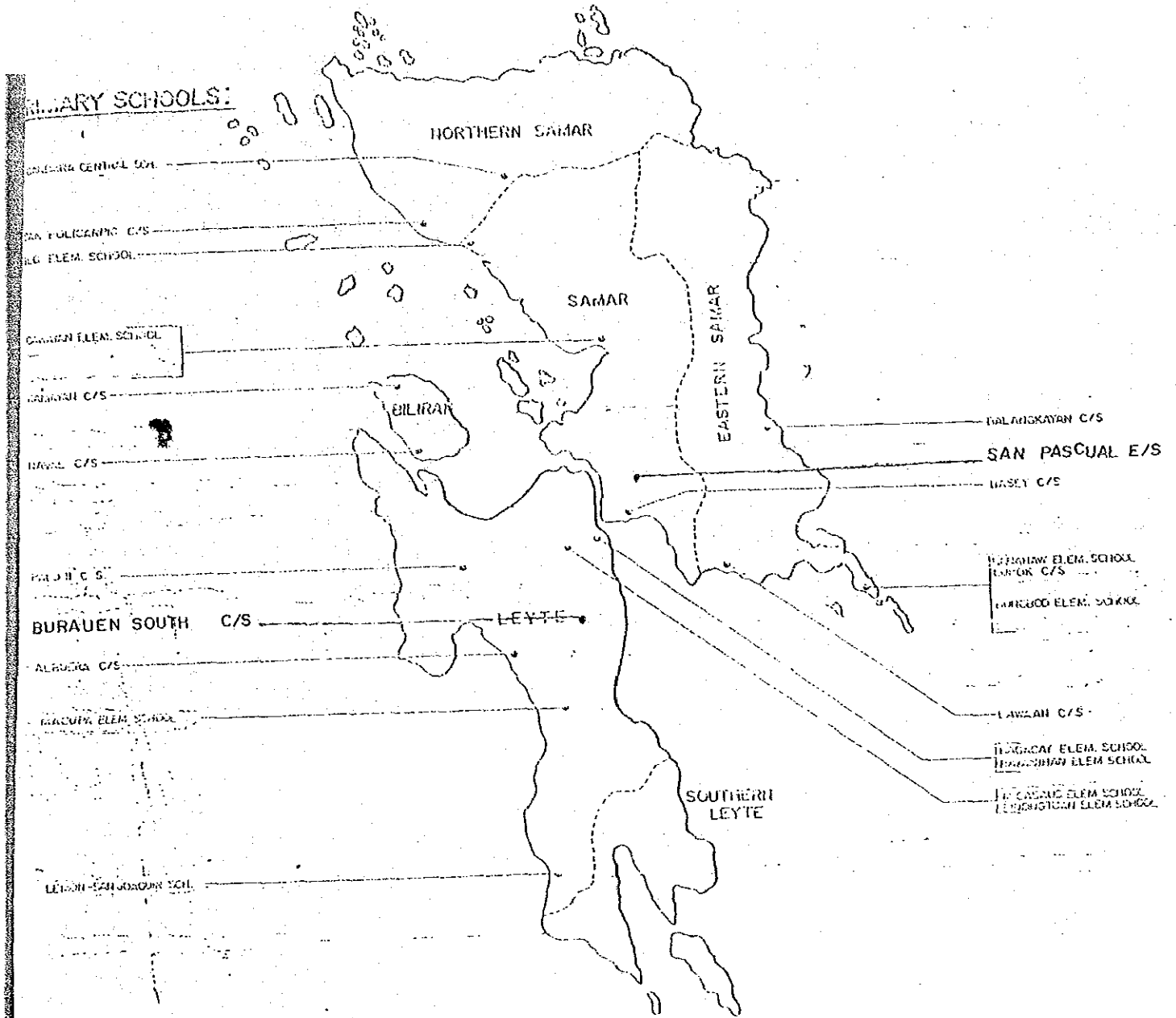


ISIDRO D. CARINO
Secretary, DECS

REGION VIII

attachment 1
sheet 1 of 2

PROPOSED RECIPIENTS OF THE PROJECT FOR CONSTRUCTING PRIMARY AND SECONDARY SCHOOLS



REGION VIII

attachment 1
sheet 2 of 2

PROPOSED RECIPIENTS OF THE PROJECT FOR CONSTRUCTING PRIMARY AND SECONDARY SCHOOLS

SECONDARY SCHOOLS:

WAGON SCHOOL OF FISHERIES

ST. ANNE'S BANGAY HIGH SCHOOL

ST. ANNE'S BGY. HIGH SCHOOL
ST. ANNE'S BGY. HIGH SCHOOL
ST. ANNE'S BGY. HIGH SCHOOL
ST. ANNE'S BGY. HIGH SCHOOL

LUZON BOY'S HIGH SCHOOL

CAROLINA BGY. HIGH SCHOOL

BARCELON BANGAY HIGH SCHOOL

TERESA BANGAY HIGH SCHOOL

VICTORIA MEMORIAL HIGH SCHOOL

EMILIA BARANGAY HIGH SCHOOL

EMILIA BARANGAY HIGH SCHOOL

MARILYN BANGAY HIGH SCHOOL

MARILYN BANGAY HIGH SCHOOL

EMILIA BGY. HIGH SCHOOL

JAVIER BGY. H/S

ALBAIRIA H.S.P.

JULIA BARANGAY HIGH SCHOOL

MARGARET BGY. HIGH SCHOOL

EMILIA BGY. HIGH SCHOOL

CABACUNGAN BGY. H/S

CABACUNGAN BGY. H/S

CABACUNGAN BGY. H/S

CABACUNGAN BGY. H/S

CABACUNGAN BGY. H/S

CABACUNGAN BGY. H/S

CABACUNGAN BGY. H/S

CABACUNGAN BGY. H/S

CABACUNGAN BGY. H/S

CABACUNGAN BGY. H/S

CABACUNGAN BGY. H/S

CABACUNGAN BGY. H/S

CABACUNGAN BGY. H/S

CABACUNGAN BGY. H/S

CABACUNGAN BGY. H/S

CABACUNGAN BGY. H/S

CABACUNGAN BGY. H/S

CABACUNGAN BGY. H/S

CABACUNGAN BGY. H/S

CABACUNGAN BGY. H/S

CABACUNGAN BGY. H/S

CABACUNGAN BGY. H/S

CABACUNGAN BGY. H/S

CABACUNGAN BGY. H/S

CABACUNGAN BGY. H/S

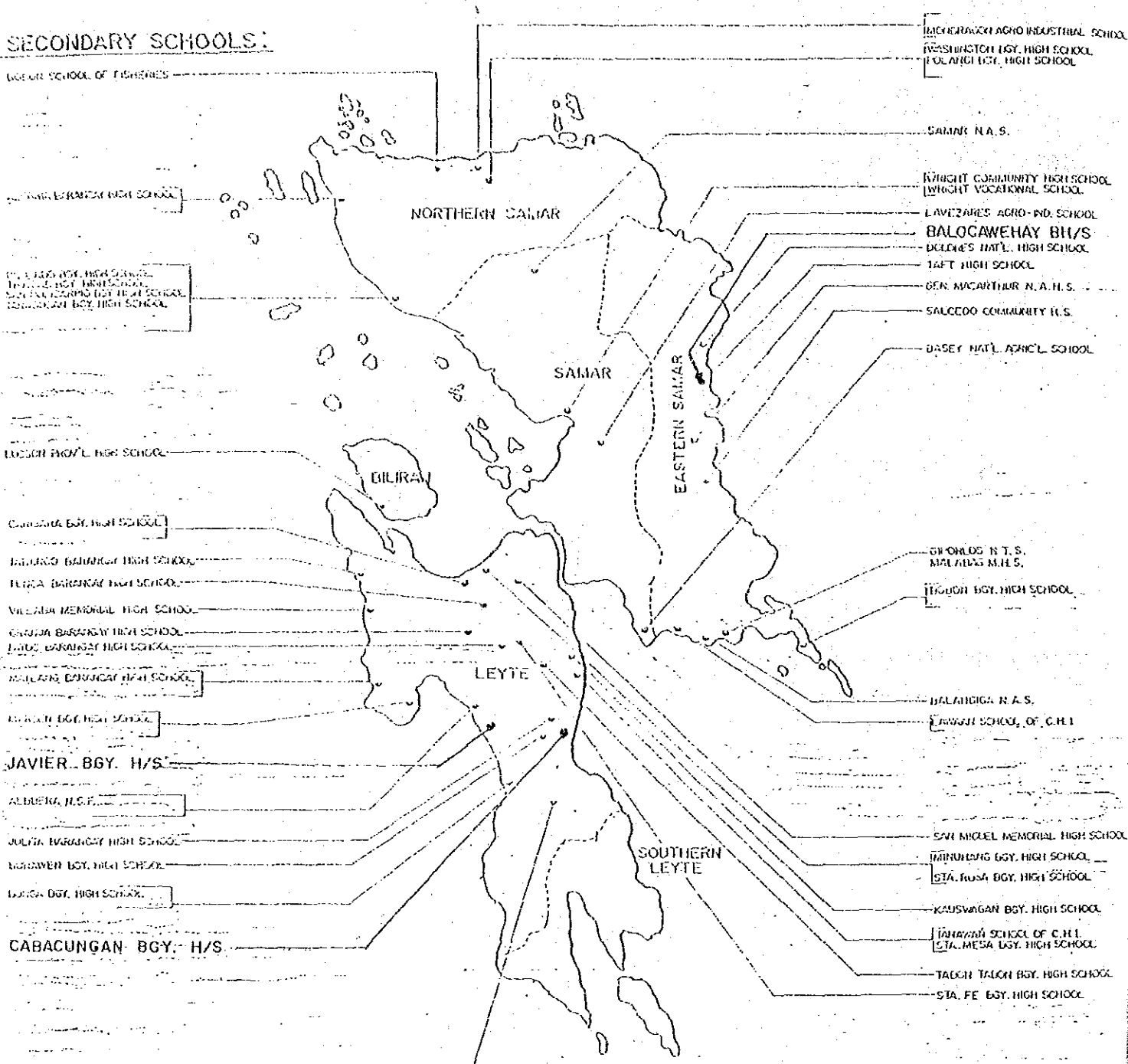
CABACUNGAN BGY. H/S

CABACUNGAN BGY. H/S

CABACUNGAN BGY. H/S

CABACUNGAN BGY. H/S

CABACUNGAN BGY. H/S



APPENDIX 6. Collected Statistical Data

ELEMENTARY SCHOOL INFORMATION SHEET (PHASE II)

Recipient schools	Enrolment				No of Teachers & Adm. staff 1989-90	No of Class Rm Science(a) Work Shop	Road Condi tion	Aprox Site Dimension Length X Width(m)	Site Ter- rain	Soil Type	Leveling Required	Water Supply	Electric- ity availa- ble				
	1985-86	1986-87	1987-88	1988-89													
1. BAGACAY E/S	315	368	389	10	11	12	14	15	Good	40	X	15	Flat	Clayey	Not required	Well	Yes
2. BAYANIHAN E/S	206	240	284	6	31.5	X	15		Good						Not required	Public	Yes
3. PALO ILI C/S	587			24	7	85	X	30	Good						Not required	Public	Yes
4. BALANGRAYAN E/S	575			25	19	132	X	81	Good						Exten- sively	Well	No
5. LUPOK E/S	367			21	14	32	X	12	Good						Much	Well	No
6. BUNGTOD E/S	122			7	5	35	X	22	Good						Slightly	Well	No
7. BANAHAO E/S	126			8	7	50	X	58	Fair						Much	Well	No
8. BASEY I C/S	987	927		44	44	30	X	40	Good						Much	Well	Yes
9. ILO E/S	179	185		8	8	20	X	45	Good						Slightly	Well	Yes
10. SAN POLICARPIO E/S	504	758		18	18	20	X	35	Good						Exten- sively	Well	Yes
11. BASEY II C/S	462	438		31	31	15	X	30	Good						Extensively	Well	Yes
12. GANDARA C/S	1,061	991		38	38	15	X	30	Fair						Slightly	Well	Yes
13. CAWAYAN E/S	774	778		26	26	10	X	20	Good						Not	Well	Yes
14. ALBUERA C/S	2,300	2,700		38	31	Unlimited			Good						Not	Public	Yes
15. NAVAL C/S	1,426	1,500		53	36	Unlimited			Poor						Slightly	Public	No
16. KAWAYAN C/S	2,734			28	12	30	X	10	Poor						Much	Well	No
17. MACUPA E/S	525	550		12	10	Unlimited			Fair						Not	Well	No
18. LEMON-SAN JOAQUIN E/S	402	430		10	1	30	X	30	Good						Exten- sively	Public	Yes
19. M. CASAS E/S	489	500		14	12	Unlimited			Good						Not	Well	No
20. BUNGTODAN E/S	507	600		20	13	35	X	10	Good						Exten- sively	Well	Yes
21. SAN PASCUAL E/S	133			4	4	12	X	30	Good						(Demolish)	Well	Yes
22. BURAUEN SOUTH C/S	762	729		41	17	15	X	25	Good						Slightly	Well	Yes

SECONDARY SCHOOL INFORMATION SHEET (PHASE II)

Recipient schools	Enrolment		1988	1989	1990	1991	No of Teachers & Adm. staff	No of Class Rms	Road Condition	Aprox Site Dimension Length X Width(m)	Site Ter- rain	Soil Type	Leveling Required	Water Supply available	Electricity available			
	1986-88	1987-88																
23. TANAUAN SCHOOL C/H.I	1,300	1,400	1,500	56	60	66	72	18	Good	Unlimited	Flat	Sandy	Slightly	Well	Yes			
24. KADSWAGAN BHS	150	183	214	6	8	9	10	5	Poor	100 X 17	Hilly	Clayey	Extensively	Public	Yes			
25. JULITA BARANGAY H/S	322	303	442	430	504	557	12	14	16	18	10	Fair	15 X 40	Flat	Clayey	Slightly	Well	Yes
26. ALBUERA N/S.F	792	819	834	25	25	28	30	16	Fair	50 X 20	Flat	Clayey	Not required	Public	Yes			
27. CARIGARA ME/S	656	740	810	13	20	21	23	9	Good	45 X 25	Flat	Swamp	Not required	Public	Yes			
28. GRANJA-YALIMAWAN BARANGAY H/S	1,318	1,432	1,468	36	36	37	38	26	Fair	Unlimited	Flat	Rice field	Extensively	Well	Yes			
29. TAFT H/S	792	850		32				16	Good	Unlimited	Flat	Clayey	Slightly	Well	No			
30. DOLORES H/S	1,884	2,047		68				36	Good	220 X 110	Flat	Sandy	Slightly	Well	No			
31. LAWAN SCHOOL C/H.I	390	532		27				19	Fair	52 X 10	Flat	Swamp	Extensively	Well	No			
32. BALANGIGA N AGRICULTURAL S	573			32				17	Fair	32 X 14	Flat	Clayey	Not	Well	No			
33. GIPORLOS H/S	418			26				14	Fair	48 X 30	Flat	Clayey	Slightly	-	No			
34. MALABAG MUNICIPAL H/S	250	563		11				6	Fair	30 X 10	Flat	Clayey	Extensively	-	No			
35. BOBON BARANGAY H/S	161			7				4	Fair	45 X 14	Flat	Clayey	Not	Well	No			
36. SALCEDO COMMUNITY H/S	432	550		12				8	Fair	43 X 12	Flat	Rocky	Not required	Public	No			
37. GEN. MACARTHUR N AGRICULTURAL H/S	420			27				18	Unlimited	Unlimited	Rolling	Clayey	Slightly	Well	Yes			
38. BOBON SCHOOL OF FISHERIES	645	664		48	48			17	Fair	100 X 100	Flat	Sandy	Not	Well	Yes			
39. WASHINGTON BARANGAY H/S	163	165		6	6			4	Fair	100 X 100	Flat	Clayey	Much	Well	No			
40. POLANGI BARANGAY H/S	142	150		6	7			(4)	Fair	100 X 100	Flat	Clayey	Much	Well	No			
41. ALEGRIA BARANGAY H/S	496	632		13	13			(23) borrowed	Good	100 X 100	Flat	Clayey	Much	Well	Yes			

SECONDARY SCHOOL INFORMATION SHEET (PHASE II)

Recipient schools	Enrollment				No of Teachers & Adm. staff 1989 90 91 92	No of Class Rms Science(a) Work Shop	Road Condition	Aprox Site Dimension Length X Width(m)	Site Ter- rain	Soil Type	Leveling Required	Water Supply	Electric- ity availa- ble
	1986 -86	1987 -87	1988 -88	1989 -89									
42. OQUENDO BARANGAY H/S			500	520	18 18	10	Fair	100 X150	Flat	Clayey Much	Much	Well	Yes
43. TRINIDAD BARANGAY H/S			434	455	13 16	5	Fair	20 X 30	Flat	Clayey Exten- sively	Exten- sively	Well	Yes
44. SAN POLICARPIO BARANGAY H/S			514	481	18 19	13	Good	30 X 50	Flat	Clayey Much	Much	Public	Yes
45. TARABUCAN BARANGAY H/S			181	176	7 7	4	Fair	100 X100	Flat	Clayey Much	Much	Public	Yes
46. SAMAR N AGRICULTURAL S			520	494	56 56	14	Good	400 X350	Hilly	Sandy	Exten- sively	Well	Yes
47. SALOCAYERAY BARANGAY H/S	457		567	650	10	9	Good (Poor)	50 X 30	Flat	Clayey	Not required	Well	Yes
48. WRIGHT VOCATIONAL S			885	650	35 37	20	Good	30 X 50	Hilly	Clayey	Exten- sively	Tank	Yes
49. WRIGHT COMMUNITY H/S	241	273	307	441	523	8	Fair	50 X200	Flat	Clayey	Not	Public	Yes
50. MONDRAGON BARANGAY H/S			263	389	22 22	9	Fair	40 X100	Flat	Sandy	Not	Pump	Yes
51. LAVEZARES AGRO- INDUSTRIAL S			1,888	1,015	46 46	6	Good	20 X 30	Flat	Clayey Much	Much	Well	Yes
52. BASEY N AGRICULTURAL S			447	540	48 48	11	Fair	30 X 50	Flat	Clayey	Exten- sively	Public	Yes
53. CABACUNGAY BARANGAY H/S	176	208	245	280	5	5	Fair	30 X 15	Flat	Clayey	Slightly	Well	Yes
54. TUNGA BARANGAY H/S			848	1,000	18	14	Fair	Unlimited	Flat	Clayey	Slightly	Public	Yes
55. MARGEN BARANGAY H/S			341	375	9	3	Good	50 X 24.5	Flat	Clayey	Slightly	Public	Yes
56. BUAEN PROVINCIAL H/S			1,057	1,557	38	23	Good	50 X 30	Flat	Sandy	Slightly	Public	Yes
57. STA. FE BARANGAY H/S			605	700	15	6	Good	35 X 30	Flat	Clayey	Slightly	Well	Yes
58. MARAPLAG BARANGAY H/S			853	970	17	15	Good	100 X 50	Hilly	Clayey	Slightly	Well	Yes
59. LUCSON PROVINCIAL H/S			140	200	7	4	Poor	50 X 20	Hilly	Rocky	Exten- sively	Public	No

SECONDARY SCHOOL INFORMATION SHEET (PHASE II)

Recipient schools	Enrollment:				No of Teachers & Adm. staff 1989-90	No of Class Science 91-92	Road Condition	Aprox Site Dimension Length X Width(m)	Site Ter- rain	Soil Type	Leveling Required	Water Supply	Electric- ity availa- ble	
	1985-86	1986-87	1987-88	1988-89										
60. TABON-TABON BARANGAY H/S	383	550	10	5	Fair	25.5 X 51.6	Flat	Clayey	Not required	Well	Yes	Yes		
61. PATOC BARANGAY H/S	259	350	4	4	Fair	35 X 15	Flat	Clayey	Slightly	Well	Yes	Yes		
62. STA. MESA BARANGAY H/S	258	259	405	364	8	3	Good	35 X 10	Flat	Clayey	Not required	Well	Yes	
63. TABANGO VOCATIONAL H/S	700	800	38	14	Fair	100 X 50	Hilly	Clayey	Much	Well	Yes	Yes		
64. BUNGA BARANGAY H/S	470	520	10	2	Good (Poor)	30 X 10	Hilly	Clayey	Exten- sively	Well	Yes	Yes		
65. MINZHANG BARANGAY H/S	395	500	14	11	Poor	Unlimited		Sandy	Much	Well	Yes	Yes		
66. MATLANG BARANGAY H/S	500	500	10	10	Good	40 X 50	Flat	Clayey	Slightly	Public	No	No		
67. SAN MIGUEL BARANGAY H/S	398	466	556	557	600	8	Fair	Unlimited	Flat	Not required	Well	Yes	Yes	
68. STA. ROSA BARANGAY H/S	194	230	291	301	400	3	Poor	Unlimited	Hilly	Clayey	Not required	Well	Yes	
69. JAVIER BARANGAY H/S	362	341	364	525	542	600	11	Good	35 X 15	Flat	Clayey	Slightly	Well	Yes

