

FEDERATIVE REPUBLIC OF BRAZIL

MINISTÉRIO DA AGRICULTURA  
DEPARTAMENTO NACIONAL DE OBRAS DE SANEAMENTO

FEASIBILITY STUDY  
ON  
THE FLOOD CONTROL PROJECT  
IN  
THE LOWER ITAJAI RIVER BASIN

FINAL REPORT

DATA BOOK

MARCH 1990

JAPAN INTERNATIONAL COOPERATION AGENCY

SSS

90-40(3/3)



**FEDERATIVE REPUBLIC OF BRAZIL**

**MINISTÉRIO DA AGRICULTURA  
DEPARTAMENTO NACIONAL DE OBRAS DE SANEAMENTO**

**FEASIBILITY STUDY  
ON  
THE FLOOD CONTROL PROJECT  
IN  
THE LOWER ITAJAI RIVER BASIN**

JICA LIBRARY



1083276141

21318

**FINAL REPORT  
DATA BOOK**

**MARCH 1990**

**JAPAN INTERNATIONAL COOPERATION AGENCY**



**FEDERATIVE REPUBLIC OF BRAZIL**

**MINISTÉRIO DA AGRICULTURA  
DEPARTAMENTO NACIONAL DE OBRAS DE SANEAMENTO**

**FEASIBILITY STUDY  
ON  
THE FLOOD CONTROL PROJECT  
IN  
THE LOWER ITAJAI RIVER BASIN**

**FINAL REPORT  
DATA BOOK**

**MARCH 1990**

**JAPAN INTERNATIONAL COOPERATION AGENCY**

国際協力事業団

21318

# FEASIBILITY STUDY ON THE FLOOD CONTROL PROJECT IN THE LOWER ITAJAI RIVER BASIN

## FINAL REPORT DATA BOOK

### TABLE OF CONTENTS

		<u>Page</u>
A	TOPOGRAPHIC SURVEY	
A.1	Topographic Map on a Scale of 1: 5,000 .....	A.1.1
A.2	Topographic Map on a Scale of 1: 1,000 at the Diversion Weir Site Proposed in the Master Plan .....	A.2.1
A.3	River Profile and Cross Sections along the Objective Stretches	
	A.3.1 Itajai river .....	A.3.1.1
	A.3.2 Itajai Mirim river .....	A.3.2.1
	A.3.3 Itajai Mirim short-cut channel .....	A.3.3.1
	A.3.4 Floodway route to Piçarras coast .....	A.3.4.1
A.4	Sounding Map along Picarras Coast .....	A.4.1
B	GEOTECHNICAL INVESTIGATION	
B.1	Permeability Test In-situ .....	B.1.1
B.2	Consolidation Test .....	B.2.1
C	COASTAL INVESTIGATION	
C.1	Tide Water Level at Piçarras Coast .....	C.1.1
C.2	Tidal Current at Piçarras Coast .....	C.2.1
C.3	Wave Height and Its Direction observed at the Offshore of Piçarras Coast .....	C.3.1
C.4	Wind Velocity and Its Direction at Piçarras .....	C.4.1

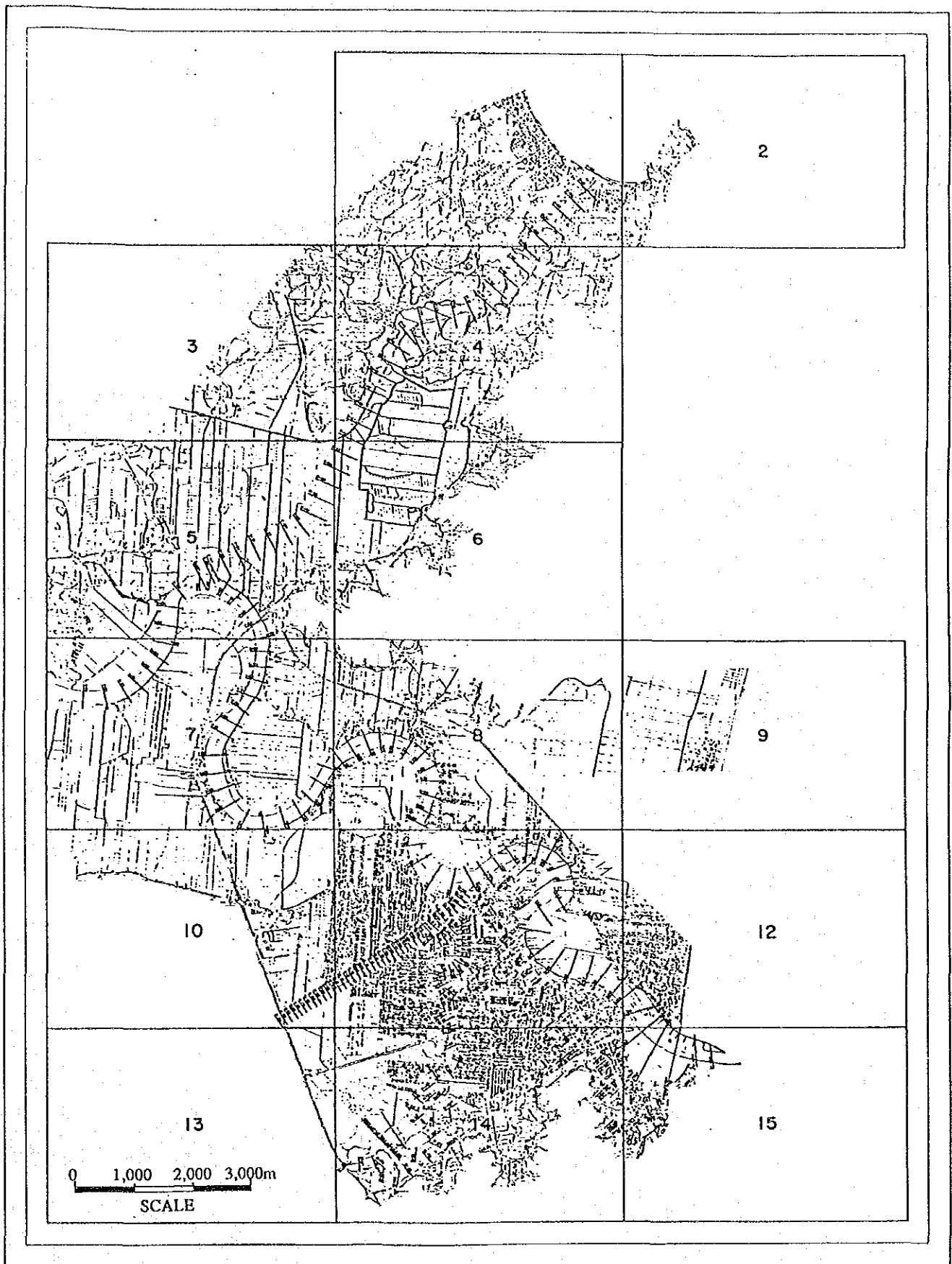




## **A TOPOGRAPHIC SURVEY**

### ***A.1 Topographic Map on a Scale of 1: 5,000***



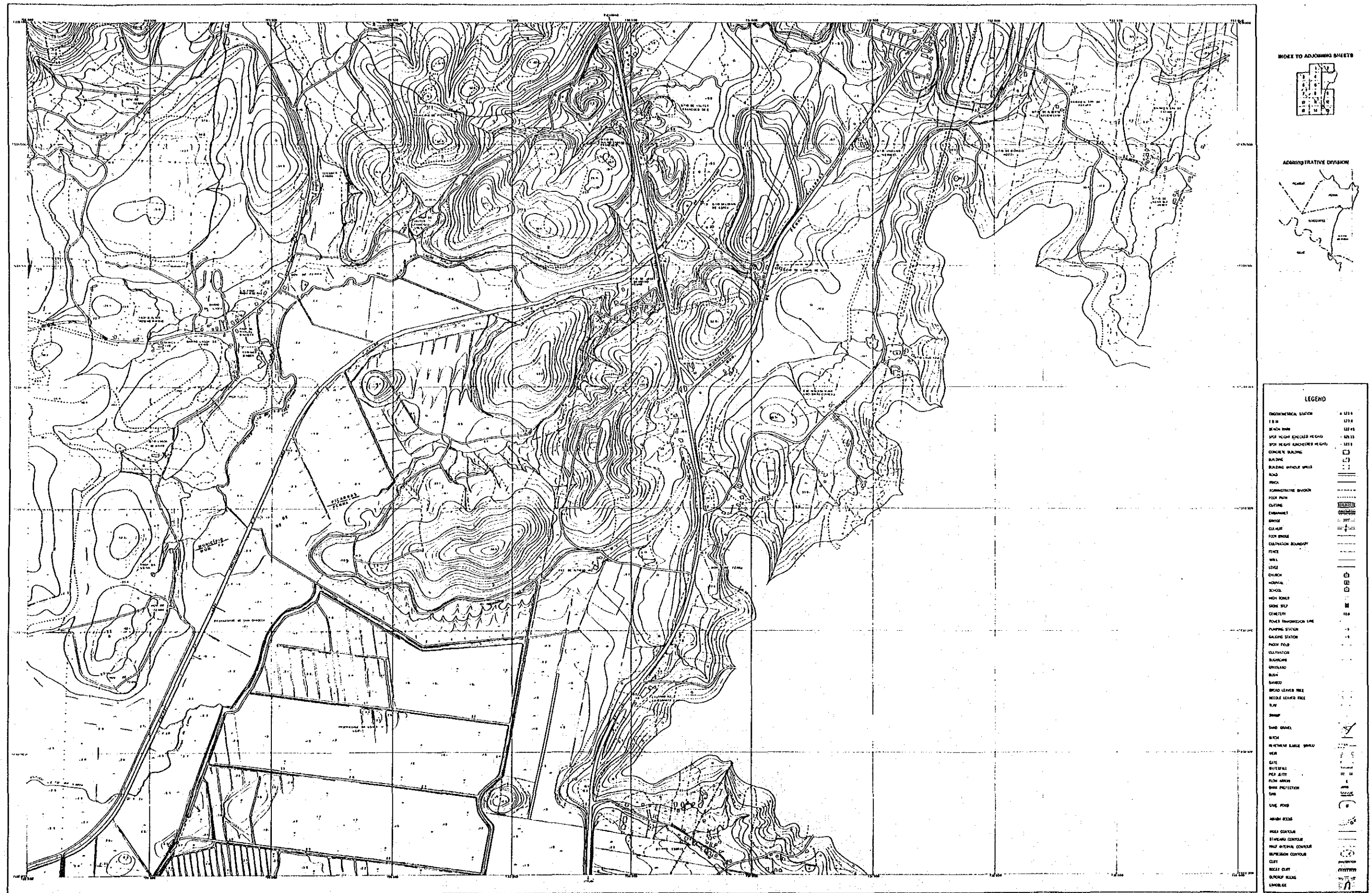


INDEX OF TOPOGRAPHIC MAP ON SCALE OF 1:5,000









INDEX TO ADJOINING SHEETS



ADMINISTRATIVE DIVISION

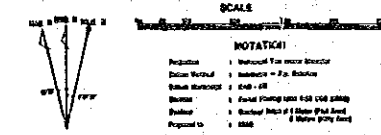


### LEGEND

[illegible]

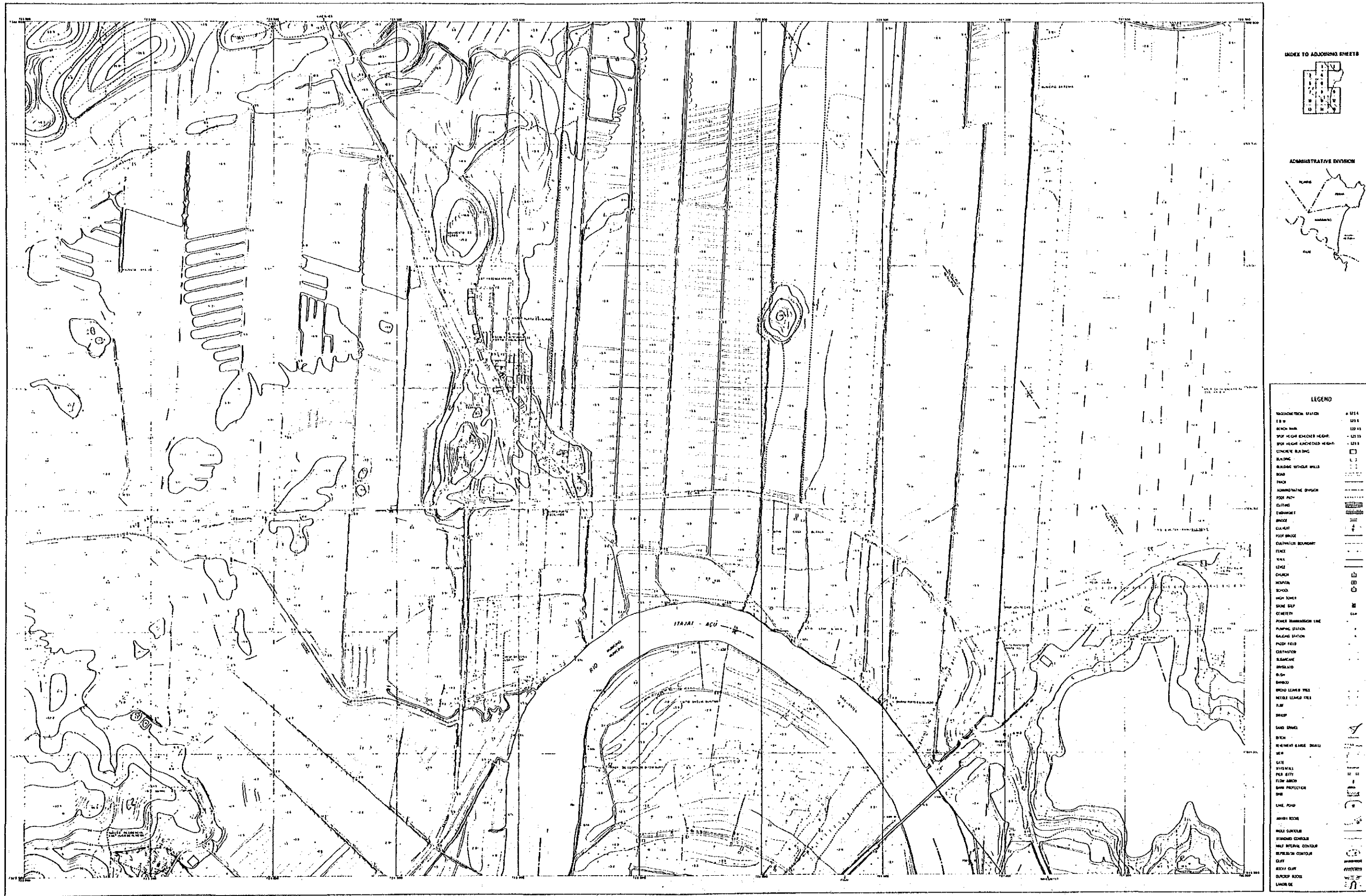
ENCOUNTER #1009

SHEET NO. 4





## THE LOWER ITAJAÍ RIVER BASIN



### INDEX TO ADJOINING SHEETS:



ADMINISTRATIVE DIVISION



### LEGEND

[illegible]

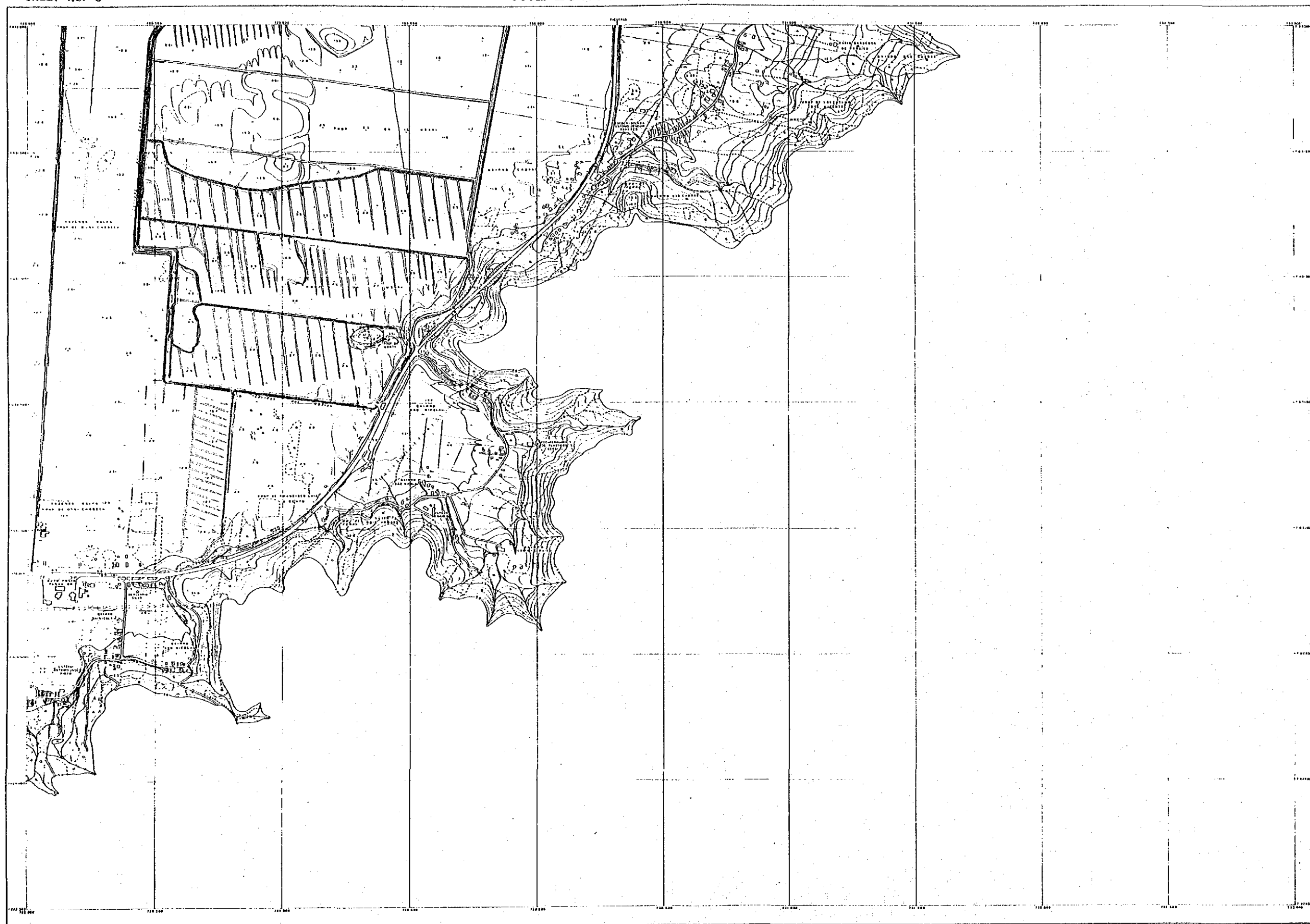
**090720 ZK 1860**

**SHEET NO. 5**

### A.1.6



## THE LOWER ITAJAI RIVER BASIN



INDEX TO ADJOINING SHEETS



ADMINISTRATIVE DIVISION



### LEGEND

[illegible]

**SHEET NO. 6**

## THE LOWER ITAJAÍ RIVER BASIN



HOW TO ADJOINING SHEETS



### ADMINISTRATIVE SESSION

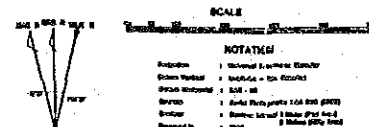


156-540

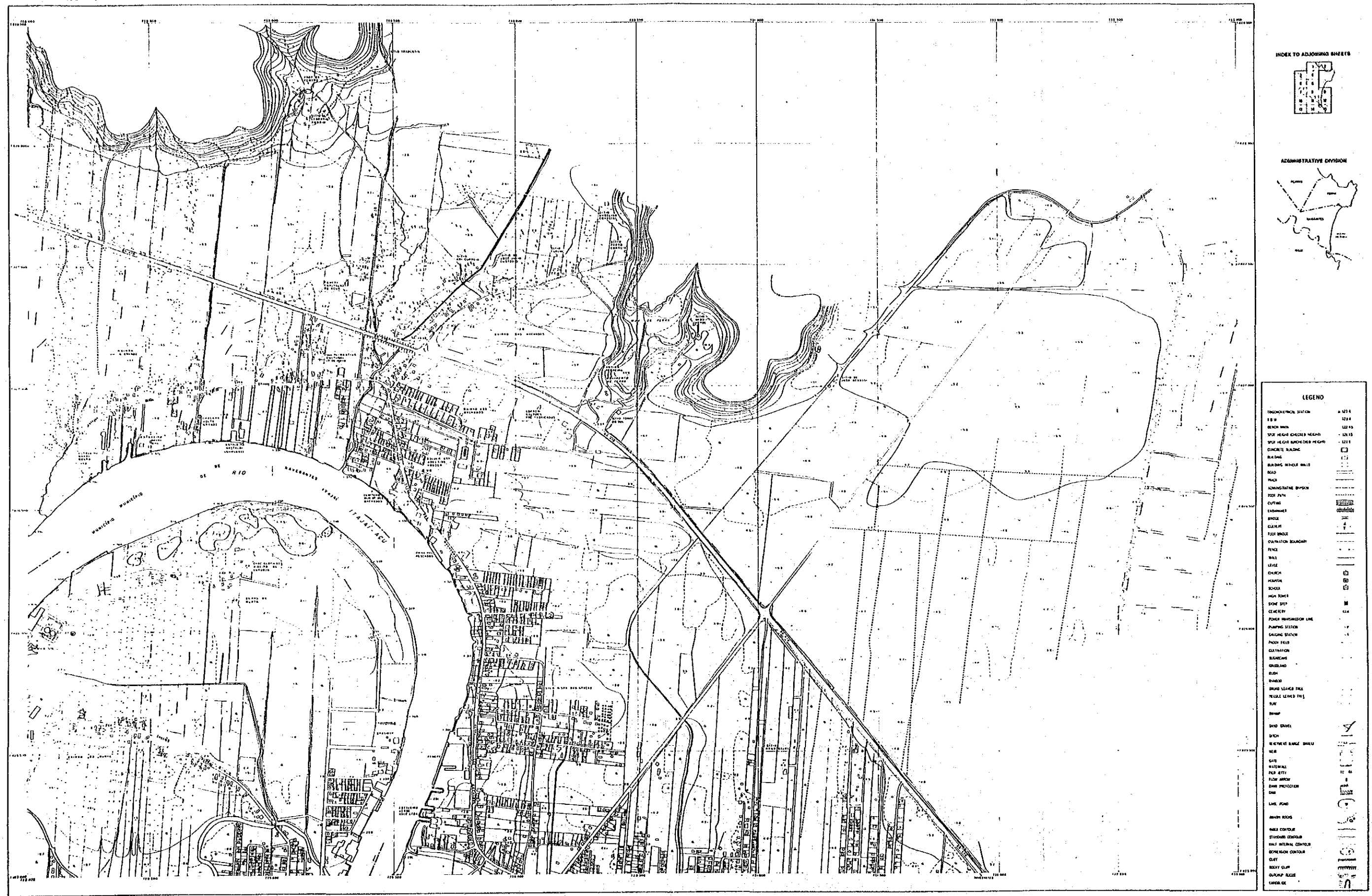
[illegible]

EXCUTED IN: 12-08

**SHEET NO. 7**



A.1. 8





# THE LOWER ITAJAÍ RIVER BASIN



**SHEET NO. 10**



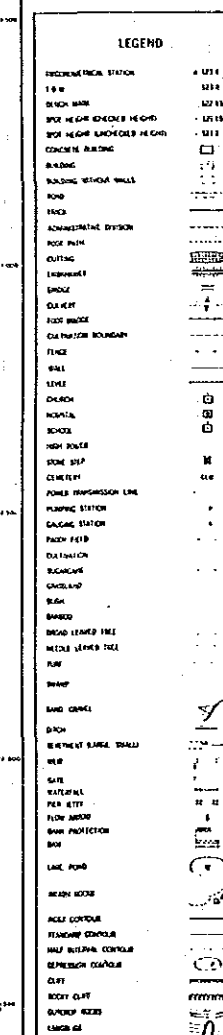
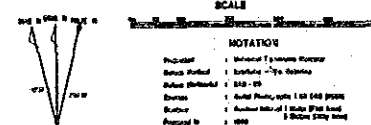
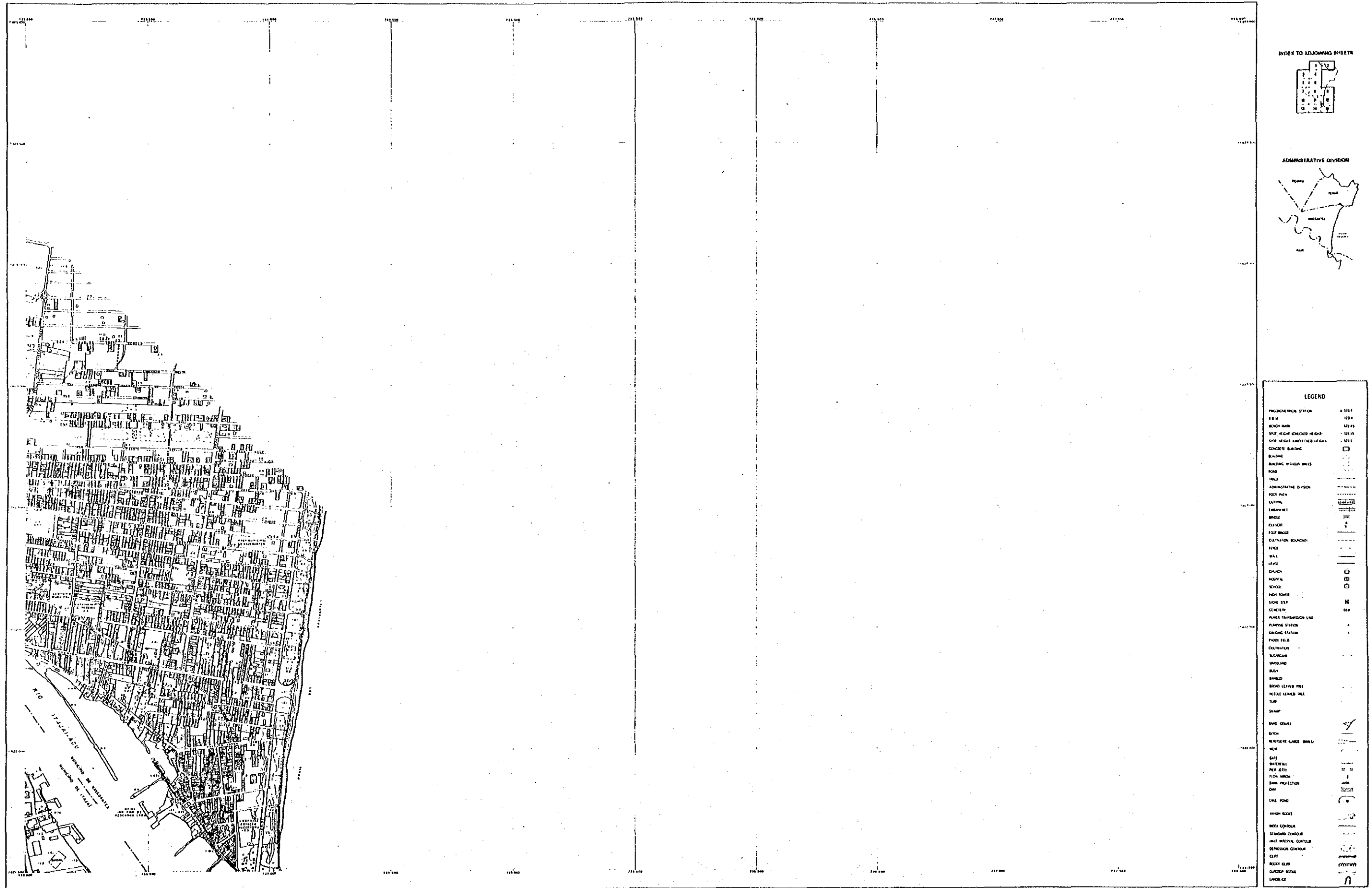
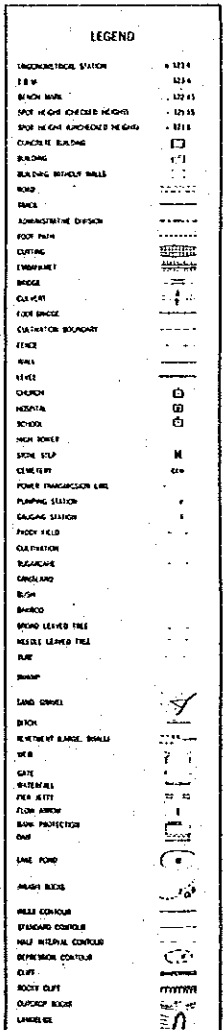


Figure 1 illustrates the relationship between a scale and notation. The vertical scale on the left is labeled "Scale" and has markings for 0 through 9. The horizontal scale on the right is labeled "NOTATION" and also has markings for 0 through 9. Arrows indicate the mapping from the vertical scale to the horizontal scale: 0 maps to 0, 1 maps to 1, 2 maps to 2, 3 maps to 3, 4 maps to 4, 5 maps to 5, 6 maps to 6, 7 maps to 7, 8 maps to 8, and 9 maps to 9.

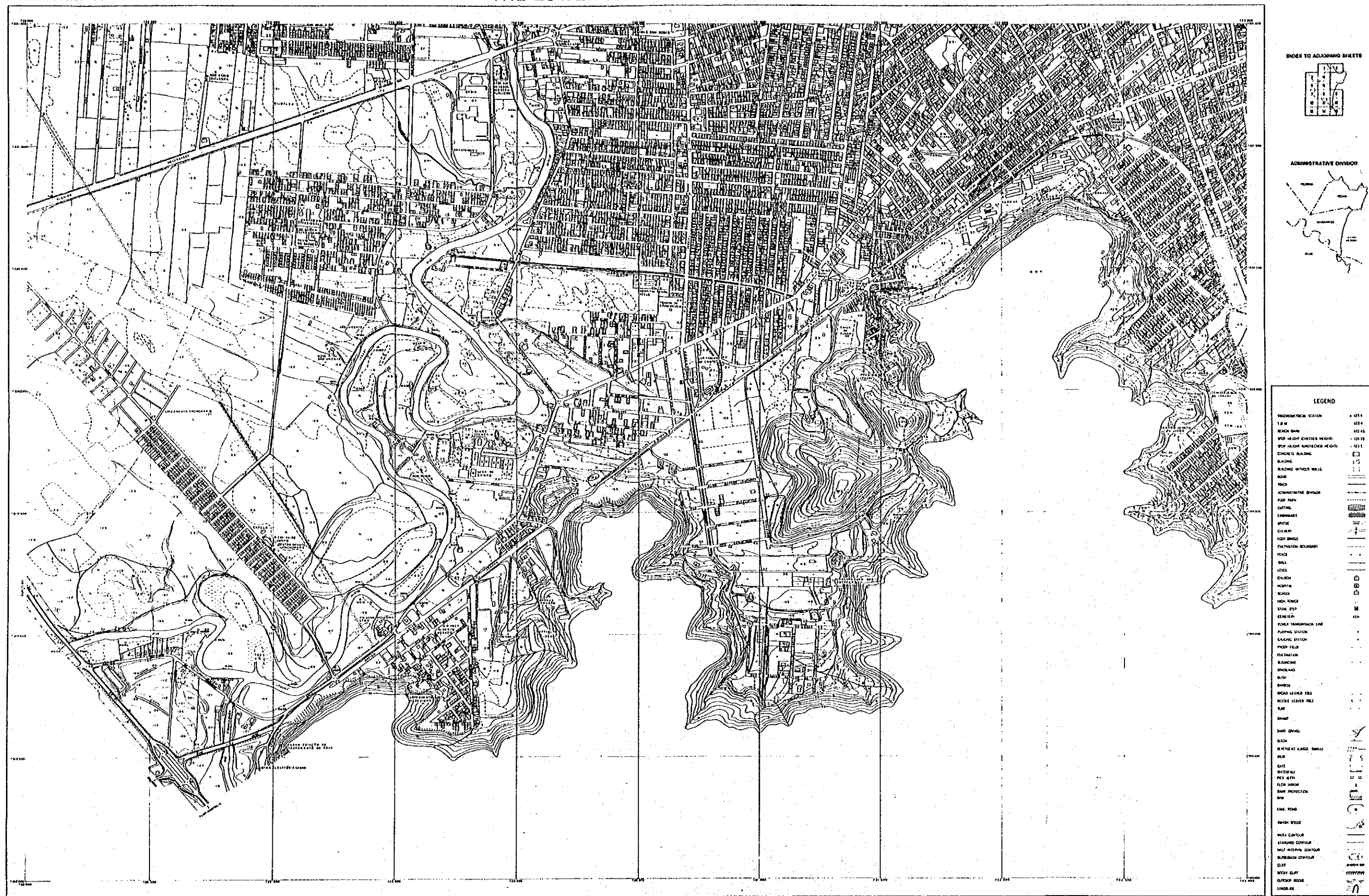
A.1. 12







# THE LOWER ITAJAÍ RIVER BASIN



DISCUSSION No. 1559

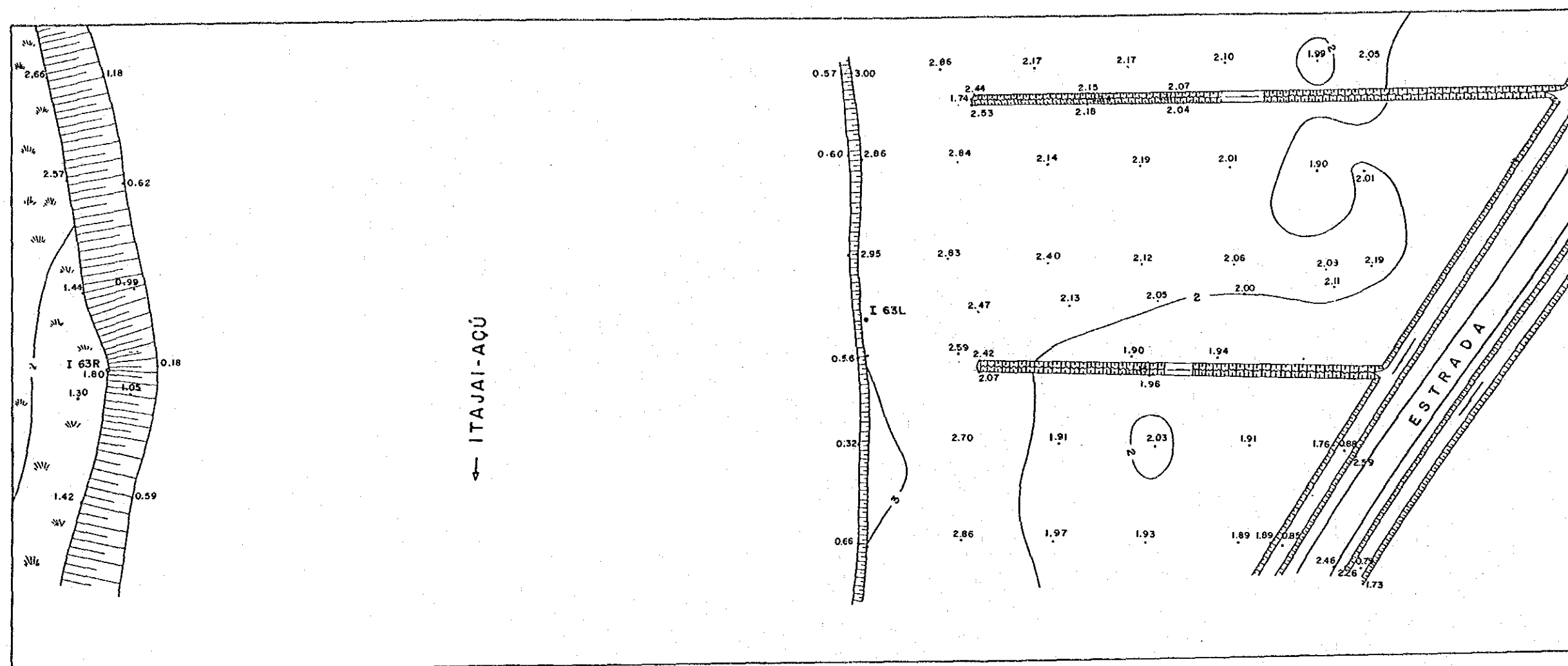
**SHEET NO. 14**

A.1. 15





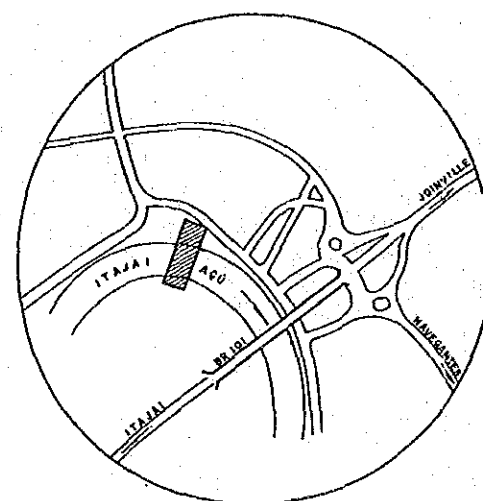
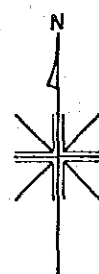
***A.2 Topographic Map on a Scale of 1: 1,000 at the  
Diversion Weir Site Proposed in the Master Plan***



# LEGEND

CONTROL POINT  
SPOT HEIGHT  
INDEX CONTOUR  
DRAINAGE

• I 63R  
2.13  
— 2 —  
— 2 —



SCALE 1/1000  
0 10 20 30 40 50m

## THE FLOOD CONTROL PROJECT IN THE LOWER ITAJAI RIVER BASIN

### TOPOGRAPHIC MAP FOR MAJOR STRUCTURE SITE

SHEET Nº	Within	SCALE	1:1.000
SURVEIED DATE		1989.1	
JAPAN INTERNATIONAL COOPERATION AGENCY			
TERRA FOTO S.A. (SURVEYOR)			

