

REPORT  
ON  
THE MINERAL EXPLORATION  
IN  
THE BOLIVAR AREA  
REPUBLIC OF ECUADOR

(PHASE I)

MARCH 1980

JAPAN INTERNATIONAL COOPERATION AGENCY  
METAL MINING AGENCY OF JAPAN

REPORT ON THE MINERAL EXPLORATION  
IN THE BOLIVAR AREA, REPUBLIC OF ECUADOR

(PHASE I)

MARCH 1980

706  
66.1  
MPN

M P N  
CRS  
91-70



JICA LIBRARY

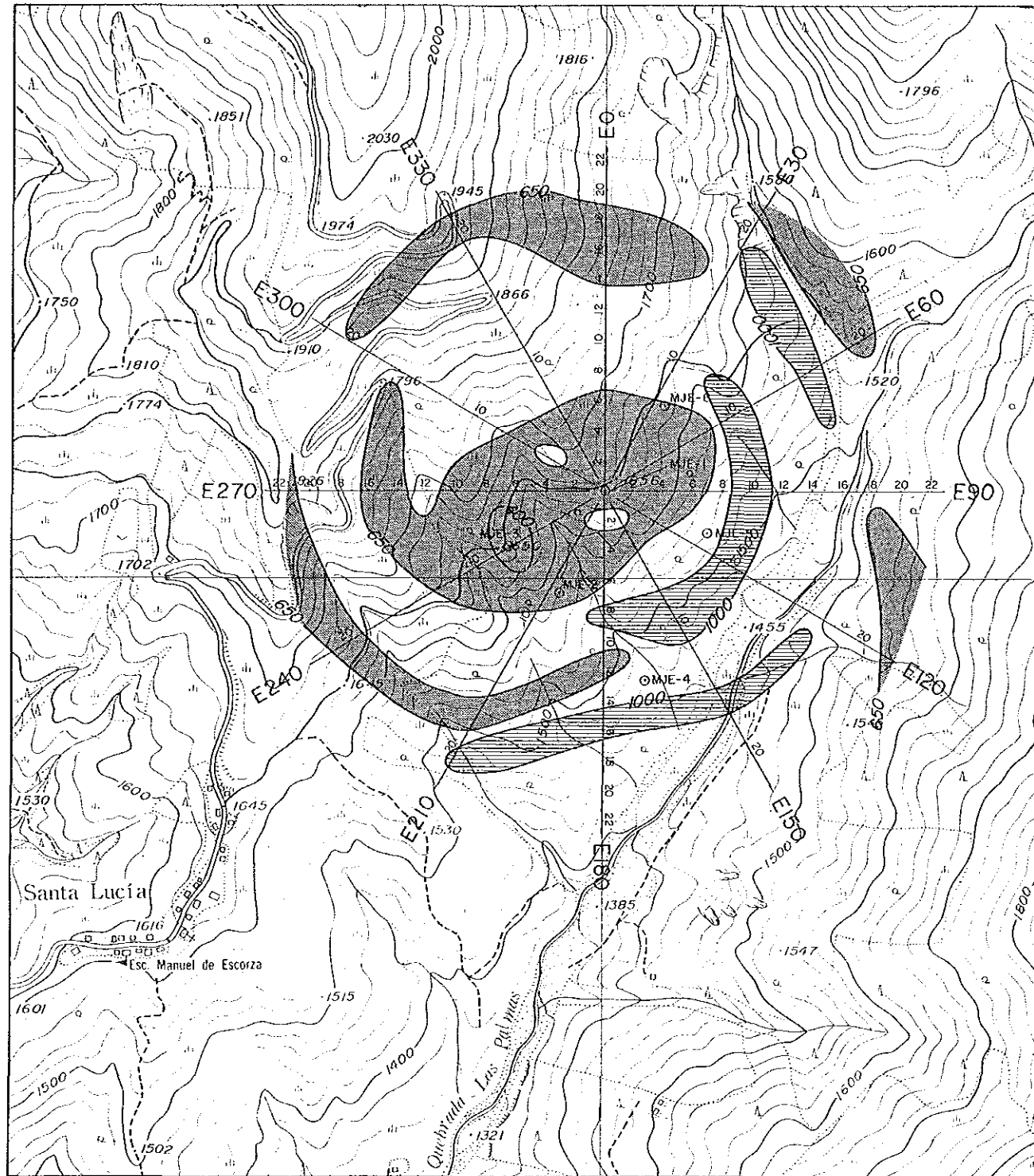


1080491[2]

20819

国際協力事業団  
20819



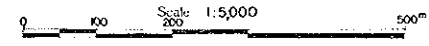


PL. II - 1-2

THE COOPERATIVE MINERAL EXPLORATION  
IN  
THE BOLIVAR AREA, ECUADOR  
PHASE II

Apparent Resistivity Plan Map (Electrode Configuration R-S)  
of the El Tornado, Balzapamba Area

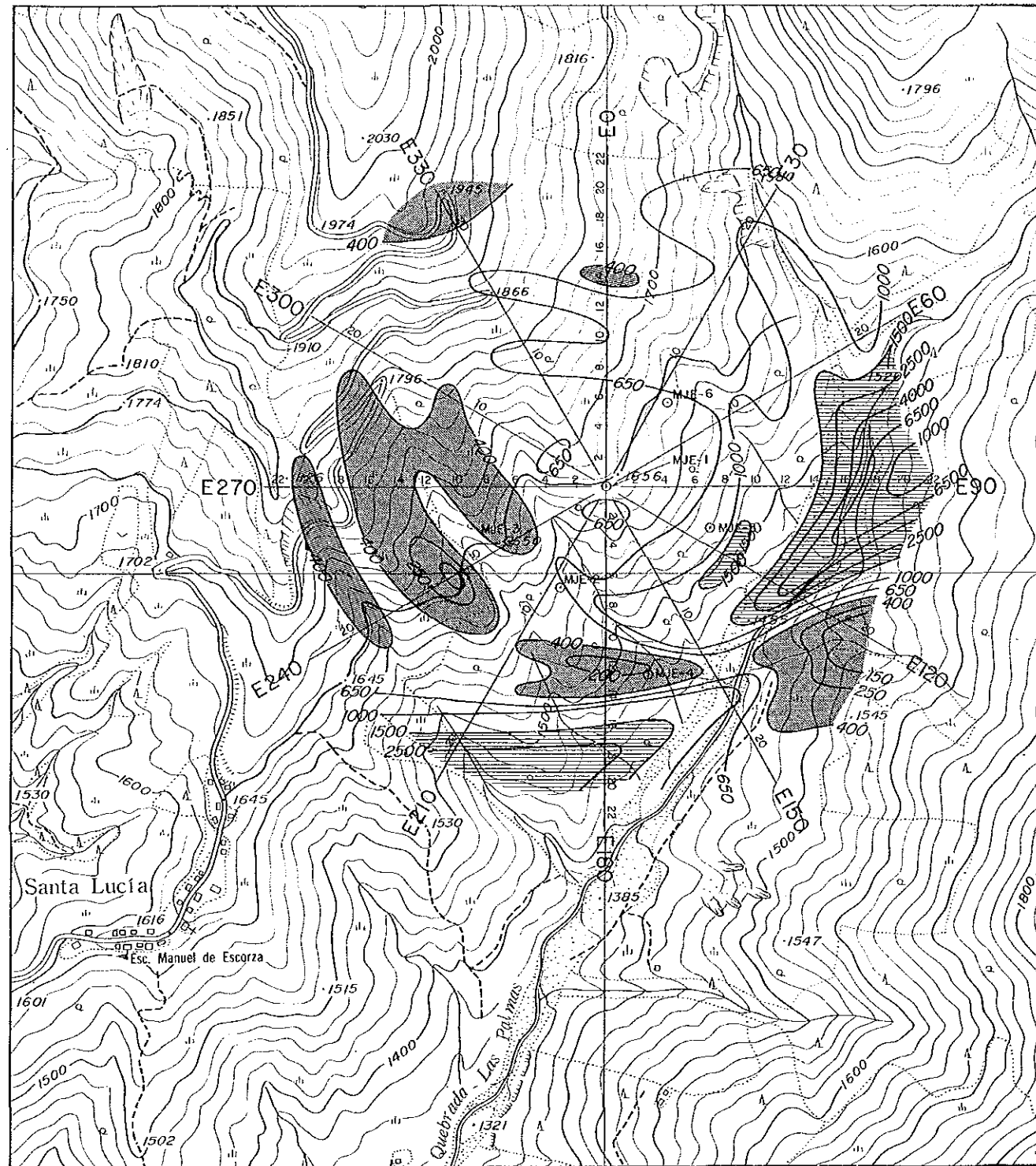
JAPAN INTERNATIONAL COOPERATION AGENCY  
METAL MINING AGENCY OF JAPAN  
JAN. 1990



LEGEND

- $p < 650 \Omega \cdot m$
- $650 \Omega \cdot m \leq p < 1,000 \Omega \cdot m$
- $1,000 \Omega \cdot m \leq p$

UNIT:  $\Omega \cdot m$

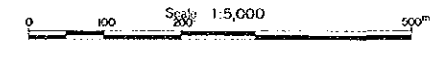


PL. II-1-3

THE COOPERATIVE MINERAL EXPLORATION  
IN  
THE BOLIVAR AREA, ECUADOR  
PHASE II

Apparent Resistivity Plan Map (Electrode Configuration D-S)  
of the El Torneo, Balzapamba Area

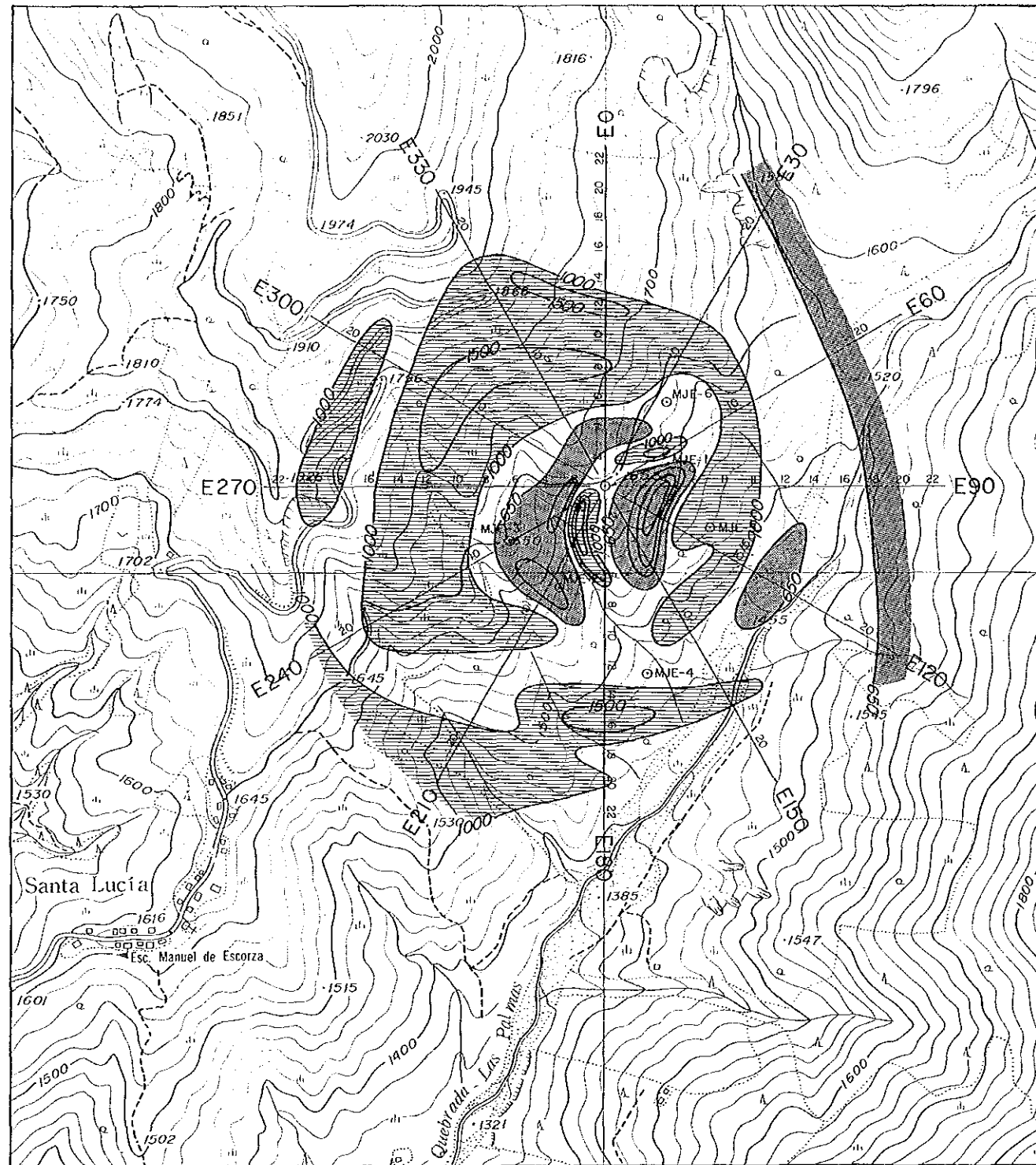
JAPAN INTERNATIONAL COOPERATION AGENCY  
METAL MINING AGENCY OF JAPAN  
JAN. 1990



LEGEND

- $p < 400 \Omega \cdot m$
- $400 \Omega \cdot m \leq p < 1,500 \Omega \cdot m$
- $1,500 \Omega \cdot m \leq p$

UNIT:  $\Omega \cdot m$

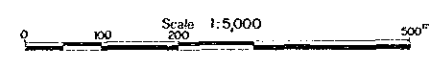


PL. II - 1-4

THE COOPERATIVE MINERAL EXPLORATION  
IN  
THE BOLIVAR AREA, ECUADOR  
PHASE II

Apparent Resistivity Plan Map (Electrode Configuration D-R)  
of the El Tornado, Balzapamba Area

JAPAN INTERNATIONAL COOPERATION AGENCY  
METAL MINING AGENCY OF JAPAN  
JAN. 1990

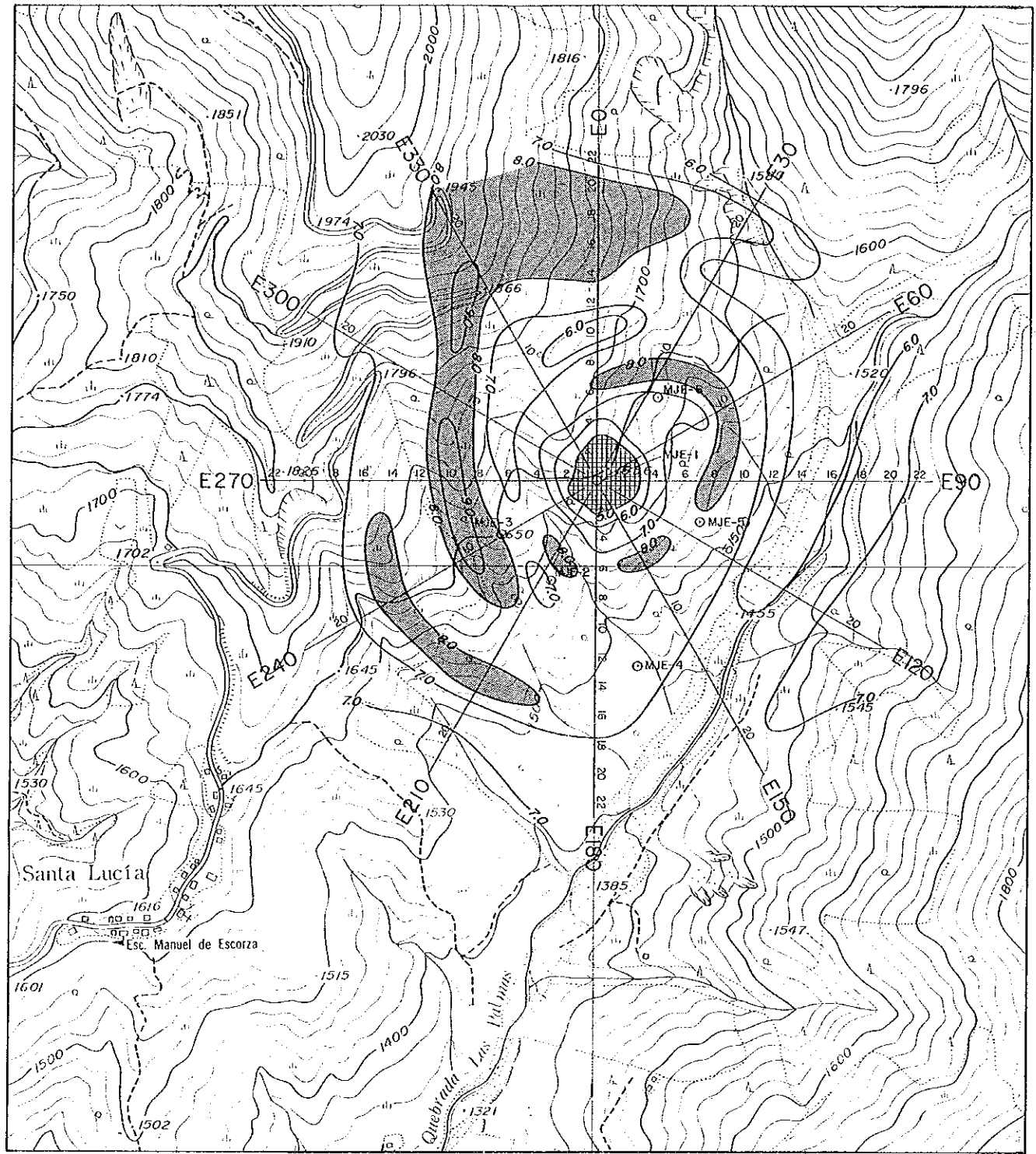


LEGEND

- $\rho < 650 \Omega \cdot m$
- $650 \Omega \cdot m \leq \rho < 1,000 \Omega \cdot m$
- $1,000 \Omega \cdot m \leq \rho$

UNIT :  $\Omega \cdot m$

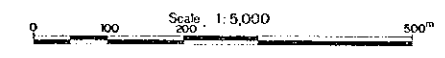




PL. II-1-5

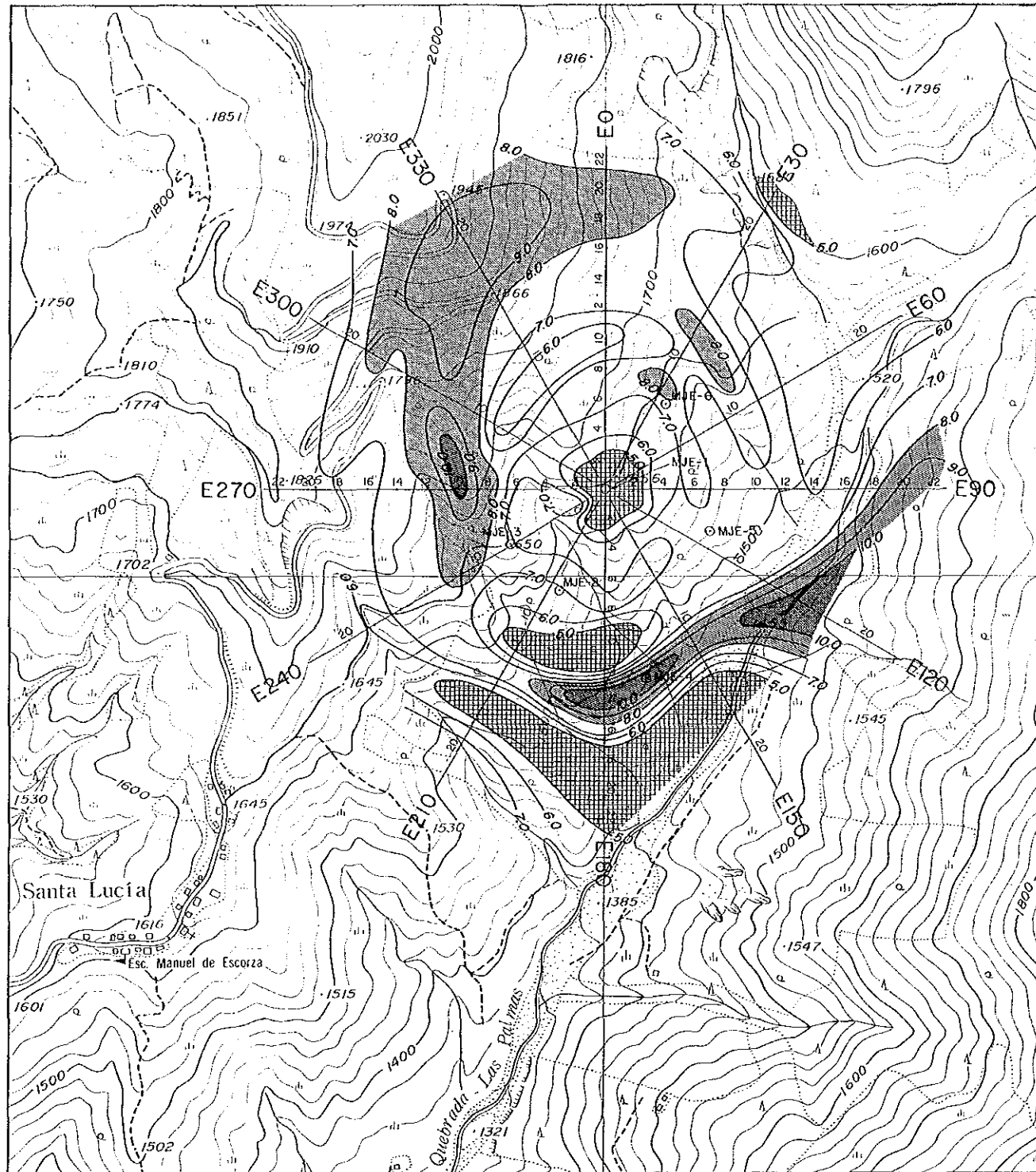
THE COOPERATIVE MINERAL EXPLORATION  
IN  
THE BOLIVAR AREA, ECUADOR  
PHASE II  
PFE Plan Map (Electrode Configuration D-S)  
of the El Tornado, Balzapamba Area

JAPAN INTERNATIONAL COOPERATION AGENCY  
METAL MINING AGENCY OF JAPAN  
JAN. 1990



LEGEND

- 10.0 %  $\leq$  FE
  - 8.0 %  $\leq$  FE < 10.0 %
  - 5.0 %  $\leq$  FE < 8.0 %
  - FE < 5.0 %
- UNIT : %

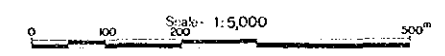


PL. II-1-6

THE COOPERATIVE MINERAL EXPLORATION  
IN  
THE BOLIVAR AREA, ECUADOR  
PHASE II

PFE Plan Map (Electrode Configuration R-S)  
of the El Tornado, Balzapambo Area

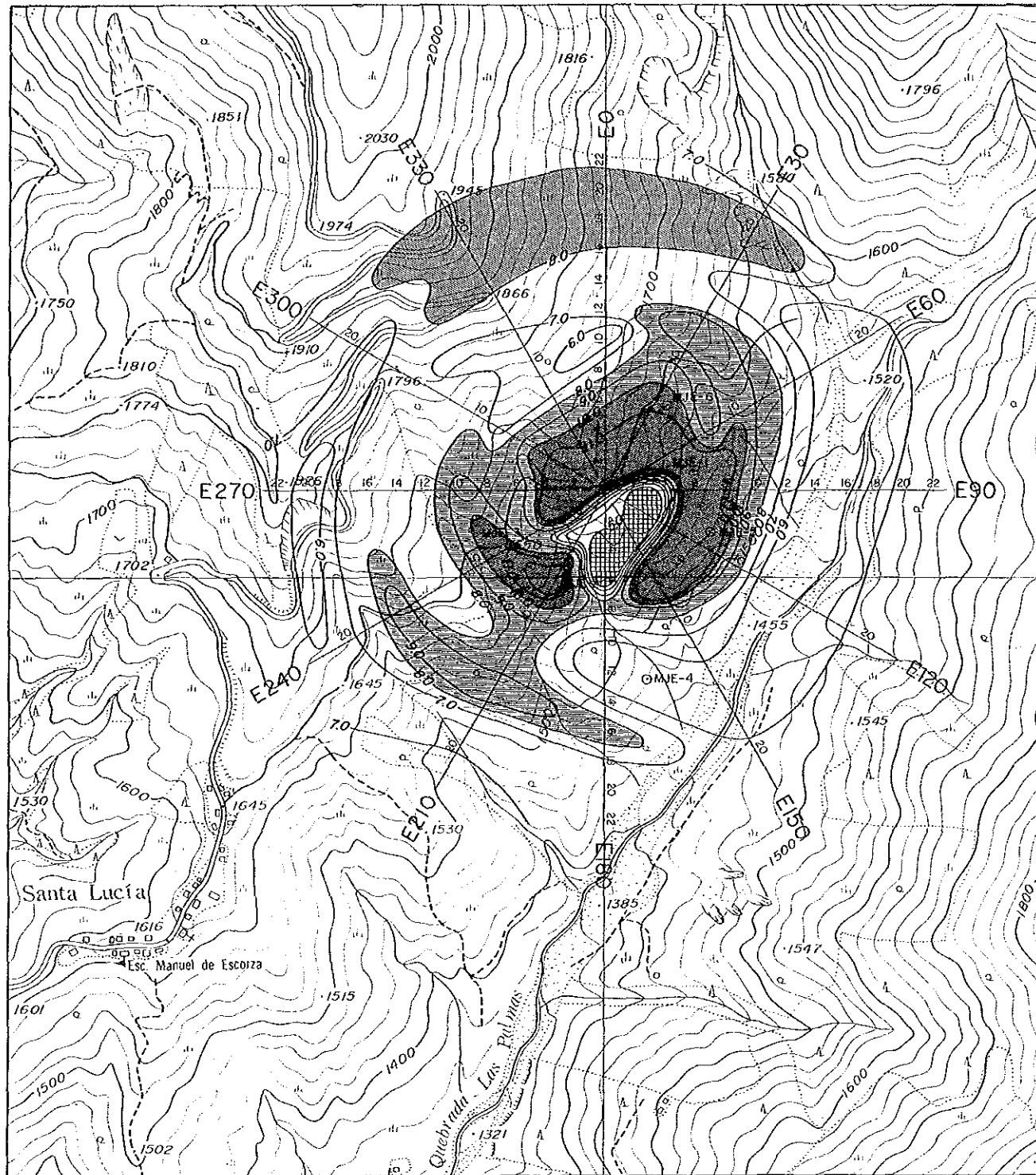
JAPAN INTERNATIONAL COOPERATION AGENCY  
METAL MINING AGENCY OF JAPAN  
JAN. 1990



LEGEND

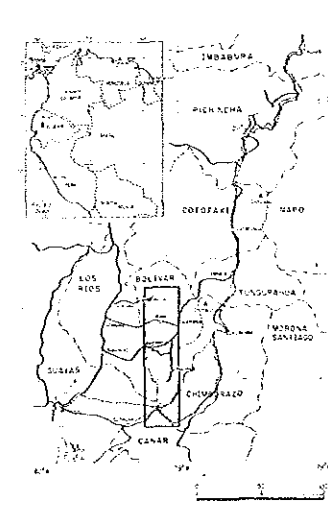
- 10.0 %  $\leq$  FE
  - 8.0 %  $\leq$  FE < 10.0%
  - 5.0 %  $\leq$  FE < 8.0%
  - FE < 5.0%
- UNIT : %



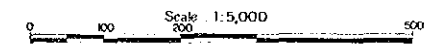


PL. II-1-7

THE COOPERATIVE MINERAL EXPLORATION  
IN  
THE BOLIVAR AREA, ECUADOR  
PHASE II  
PFE Plan Map (Electrode Configuration D-R)  
of the El Tornado, Balzapamba Area



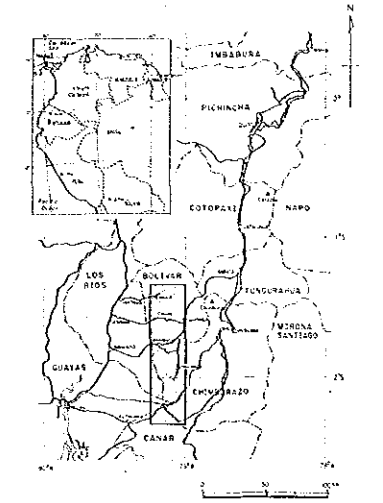
JAPAN INTERNATIONAL COOPERATION AGENCY  
METAL MINING AGENCY OF JAPAN  
JAN. 1990



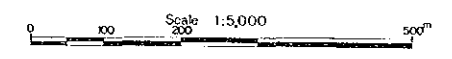
LEGEND

- 10.0 % Fe
  - 8.0 % Fe < 10.0 %
  - 5.0 % Fe < 8.0 %
  - Fe < 5.0 %
- UNIT : %



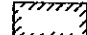
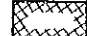

THE COOPERATIVE MINERAL EXPLORATION  
IN  
THE BOLIVAR AREA, ECUADOR  
PHASE II  
Interpretation Map of the El Torneado, Balzapamba Area

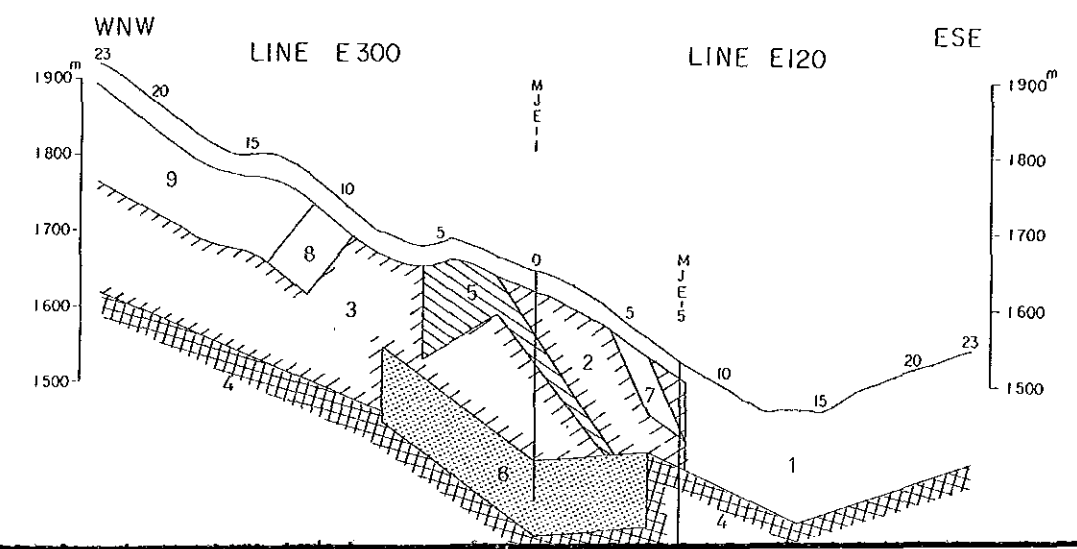
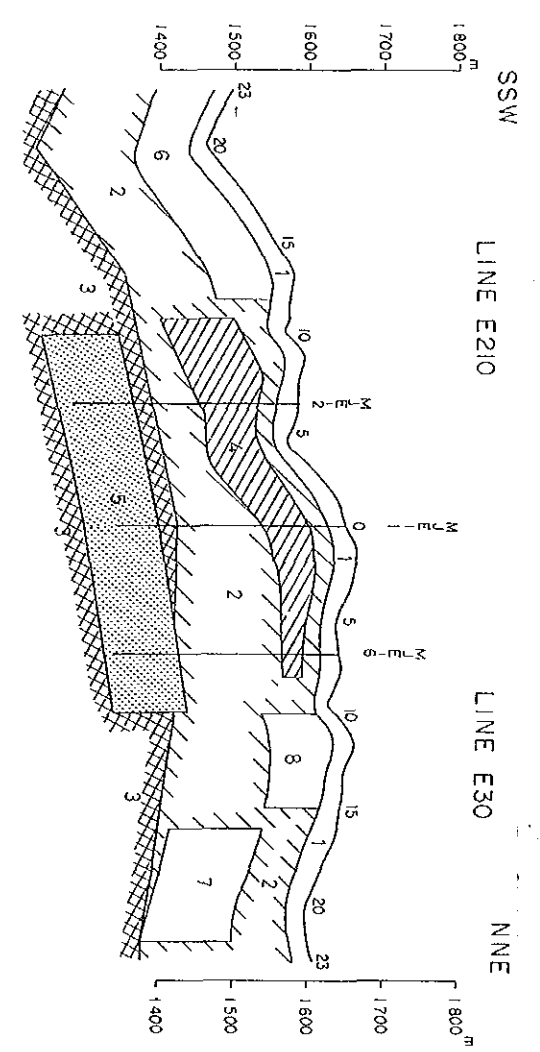
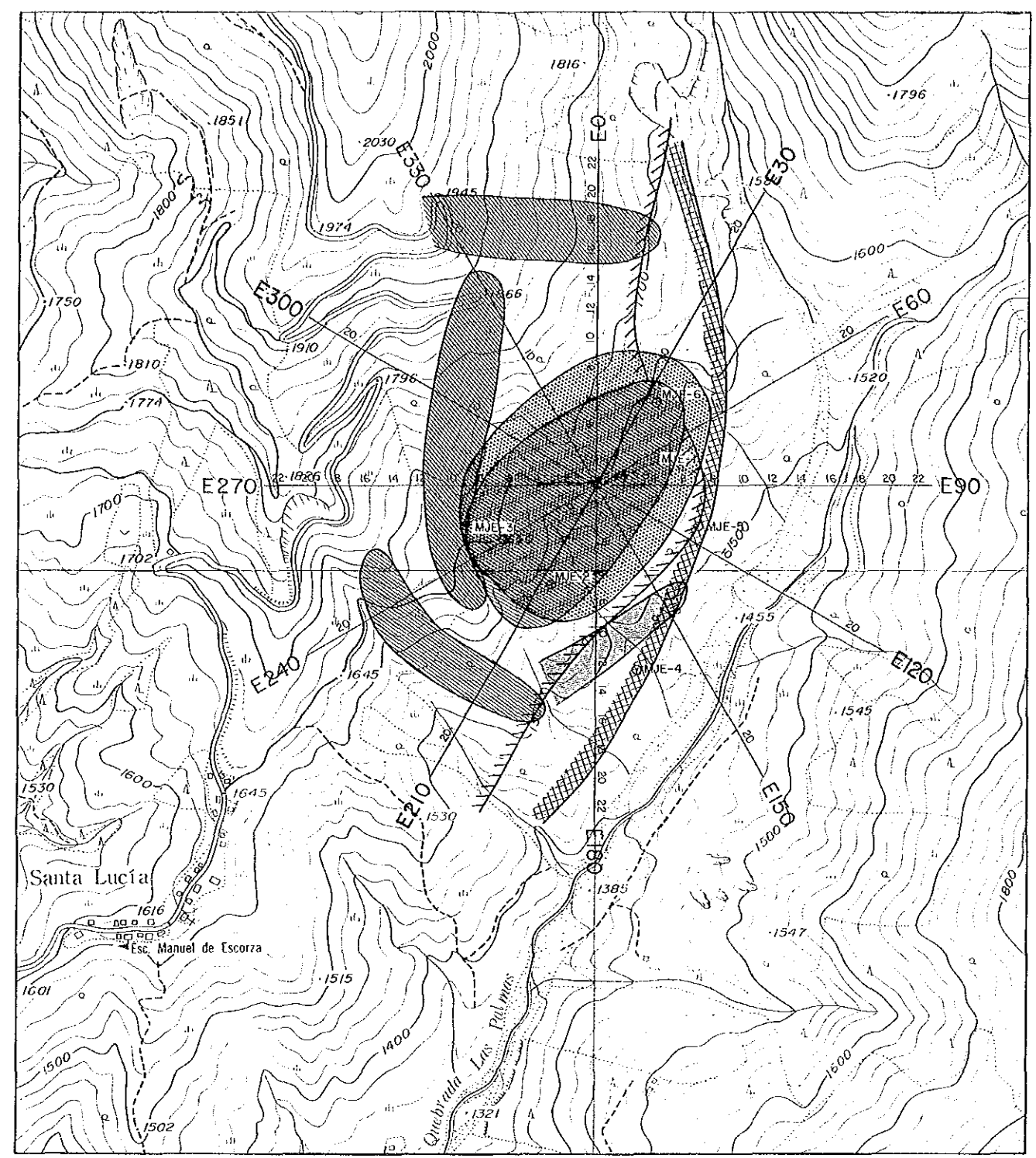


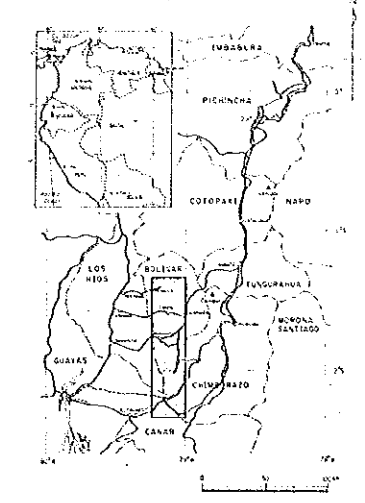
JAPAN INTERNATIONAL COOPERATION AGENCY  
METAL MINING AGENCY OF JAPAN  
JAN. 1990



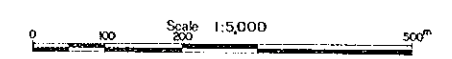
LEGEND

-  High FE Zone (Shallow)
-  High FE Zone (Deep)
-  Low Resistivity Zone (Middle)
-  High Resistivity Zone (Deep)
-  High FE Low Resistivity Zone (Middle)





JAPAN INTERNATIONAL COOPERATION AGENCY  
 METAL MINING AGENCY OF JAPAN  
 JAN. 1990



LEGEND

- High FE Zone (Shallow)
- High FE Zone (Deep)
- Low Resistivity Zone (Middle)
- High Resistivity Zone (Deep)
- High FE Low Resistivity Zone (Middle)

