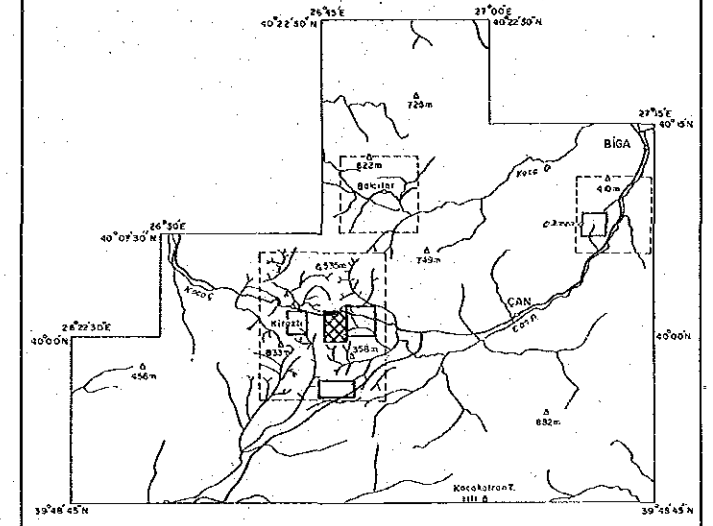
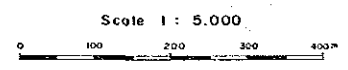


REPORT ON THE MINERAL EXPLORATION
 IN THE ÇANAKKALE AREA, THE REPUBLIC OF TURKEY
 COMPONENT SCORE MAP
 OF
 CHIP SAMPLES IN THE KARABİBRAHİMLER AREA



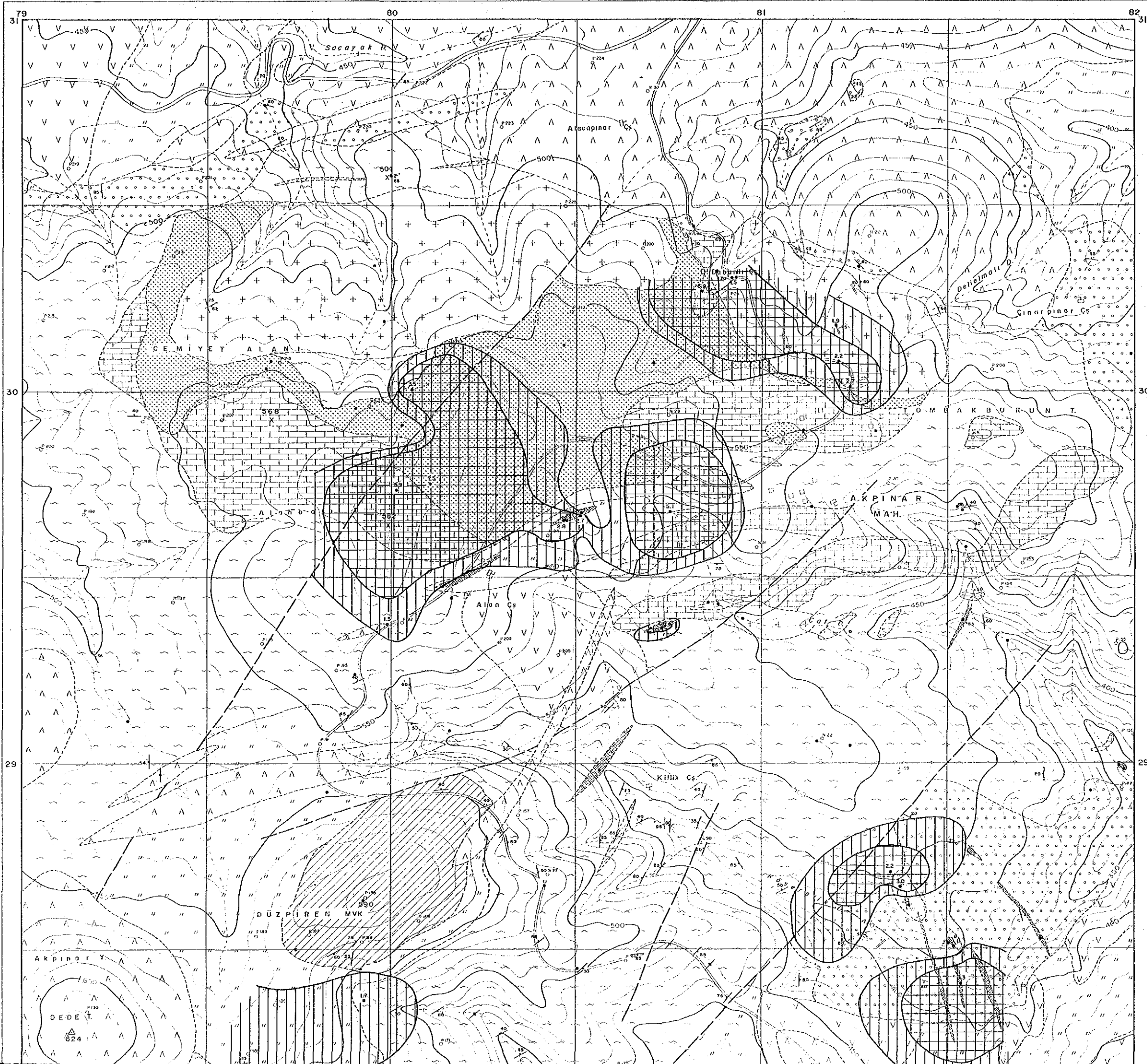
FEBRUARY 1990

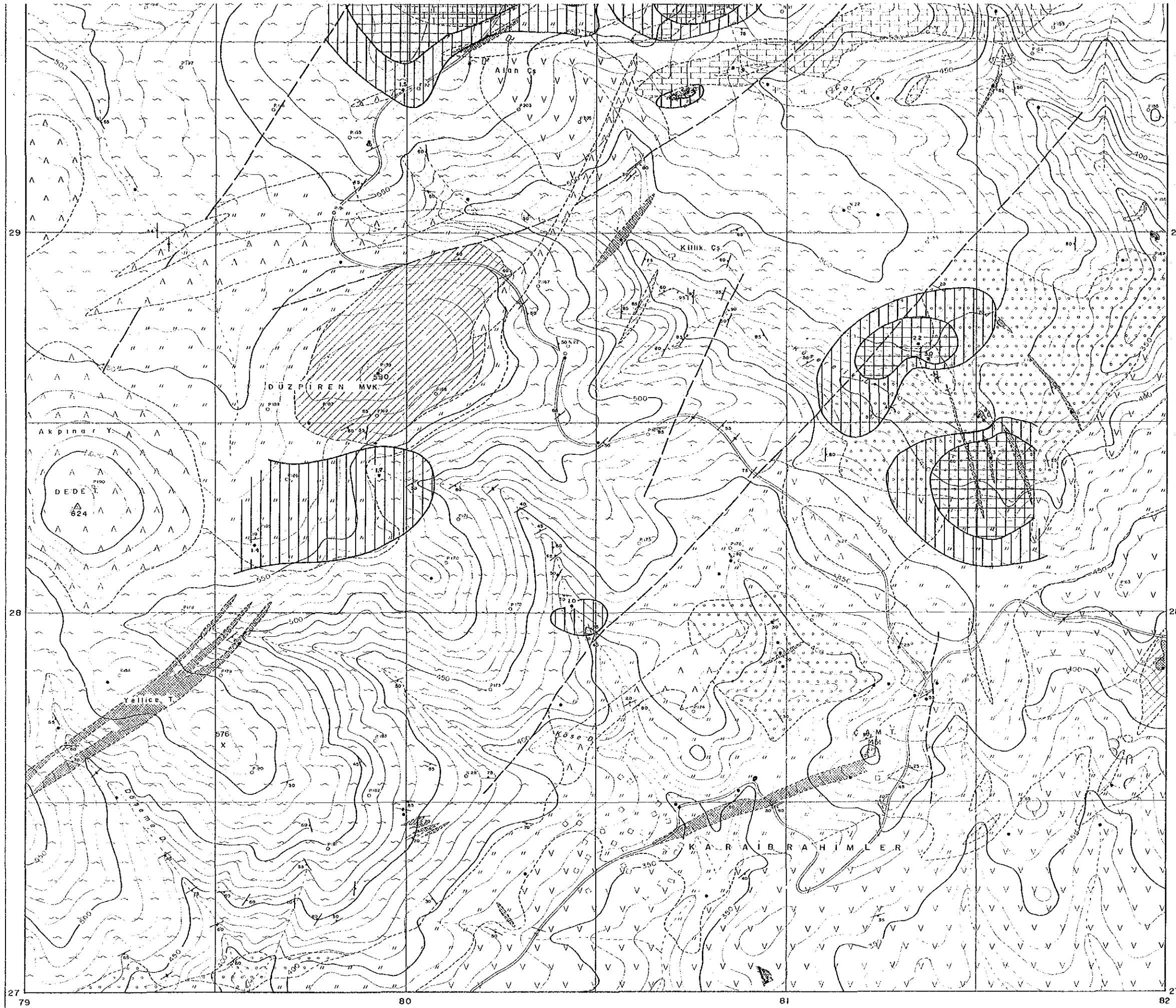
JAPAN INTERNATIONAL COOPERATION AGENCY
 METAL MINING AGENCY OF JAPAN



LEGEND

- | | | | |
|----------------|----------------------|----|--|
| Holocene | Kocaçakıl Basalt | | Basalt lava and dyke |
| Miocene | Şapçı Vol. | | Andesite lava with its pyroclastics |
| Jurassic | Kirazlı Conglomerate | | Conglomerate, mudstones and sandstone |
| Triassic | Taşdıbek F. | | Meta-volcanics with meta-sediments |
| | | | Crystalline limestone |
| | | | Strongly silicified body |
| Alteration | | | Medium silicified, and argillized zone and/or body |
| | | | Argillized zone |
| Mineralization | | | Skarn zone (garnet, hematite) |
| | | | Probable fault |
| | | | Strike and dip of fault |
| | | | Strike and dip of bedding |
| | | | Strike and dip of schistosity |
| | | | Strike and dip of joint |
| | | | Strike and dip of quartz-py vein |
| | | | Trench |
| | | 23 | Component Score of Chip Sample |
| | | | Anomalous Area (more than 1) |
| | | | Anomalous Area (more than 2) |

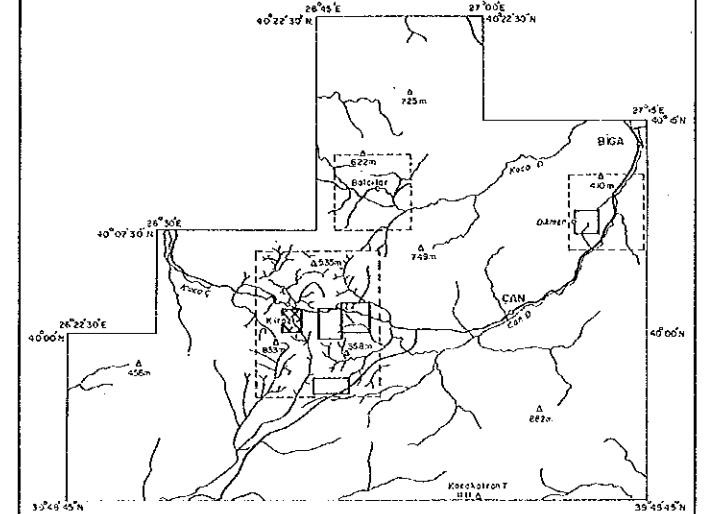




L E G E N D

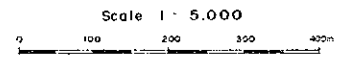
- | | | | |
|----------------|----------------------|--|--|
| Holocene | Kocçakıt Basalt | | Basalt lava and dyke |
| Miocene | Şapçı Vol. | | Andesite lava with its pyroclastics |
| Jurassic | Kızıllı Conglomerate | | Conglomerate, mudstone and sandstone |
| | | | Akpınar granite |
| Triassic | Taşdıbek F. | | Meta-volcanics with meta-sediments |
| | | | Crystalline limestone |
| | | | Strongly silicified body |
| Alteration | | | Medium silicified, and argillized zone and/or body |
| | | | Argillized zone |
| Mineralization | | | Skarn zone (garnet, hematite) |
| | | | Probable fault |
| | | | Strike and dip of fault |
| | | | Strike and dip of bedding |
| | | | Strike and dip of schistosity |
| | | | Strike and dip of joint |
| | | | Strike and dip of quartz-py vein |
| | | | Trench |
| | | | Component Score of Chip Sample |
| | | | Anomalous Area (more than 1) |
| | | | Anomalous Area (more than 2) |

REPORT ON THE MINERAL EXPLORATION
 IN THE ÇANAKKALE AREA, THE REPUBLIC OF TURKEY
 COMPONENT SCORE MAP
 OF
 CHIP SAMPLES IN THE KESTANE DAĞI AREA



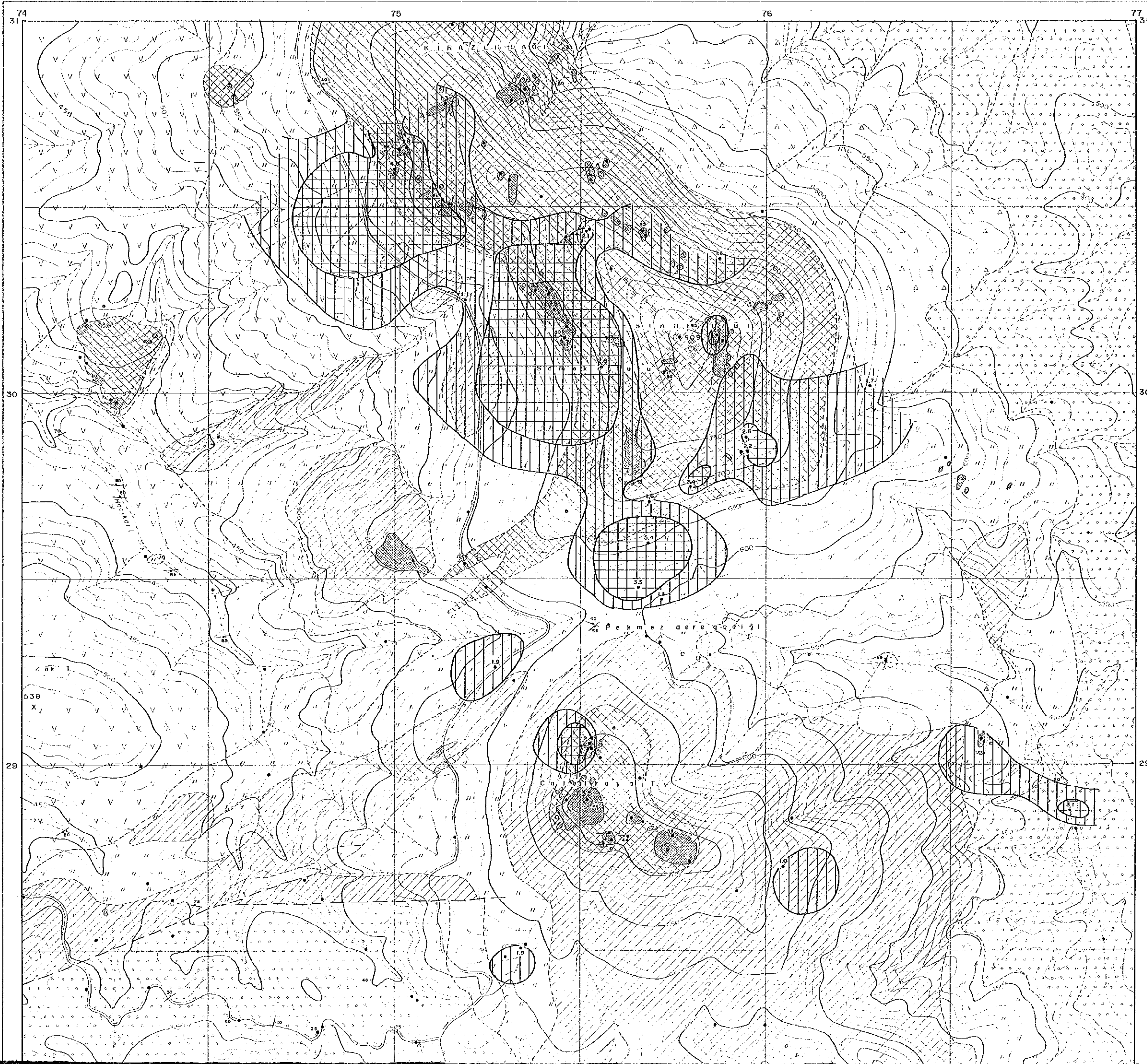
FEBRUARY 1990

JAPAN INTERNATIONAL COOPERATION AGENCY
 METAL MINING AGENCY OF JAPAN

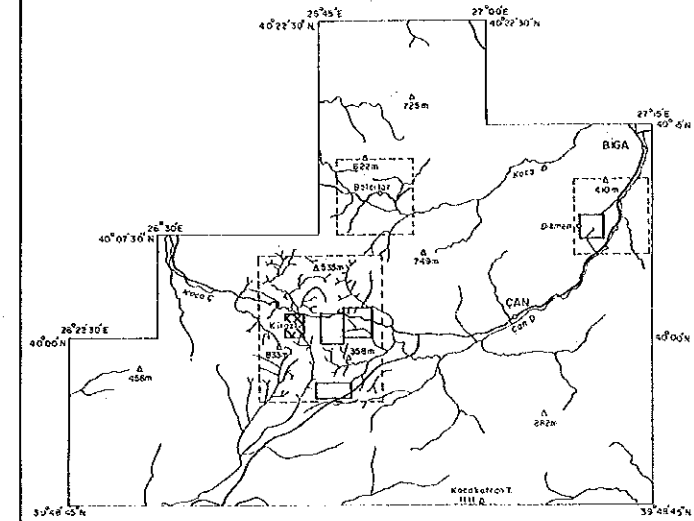


LEGEND

- | | | | |
|------------|----------------------|--|--------------------------------------|
| Holocene | Talus breccia | | Breccia and sand |
| Miocene | Şapçı Vol. | | Andesite lava with its pyroclastics |
| Jurassic | Kirazlı Conglomerate | | Conglomerate, sandstone and mudstone |
| Triassic | Taşdibek F. | | Meta-volcanics |
| Alteration | | | Strongly silicified body |
| | | | Medium silicified body |
| | | | Silicified and argillized zone |
| | | | Argillized zone |
| | | | Probable fault |
| | | | Strike and dip of fault |
| | | | Strike and dip of bedding |
| | | | Strike and dip of joint |
| | | | Strike and dip of quartz vein |
| | | | Fossil |
| | | | Component Score of Chip Sample |
| | | | Anomalous Area (more than 1) |
| | | | Anomalous Area (more than 2) |



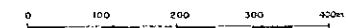
OF
CHIP SAMPLES IN THE KESTANE DAĞI AREA



FEBRUARY 1990

JAPAN INTERNATIONAL COOPERATION AGENCY
METAL MINING AGENCY OF JAPAN

Scale 1 : 5.000



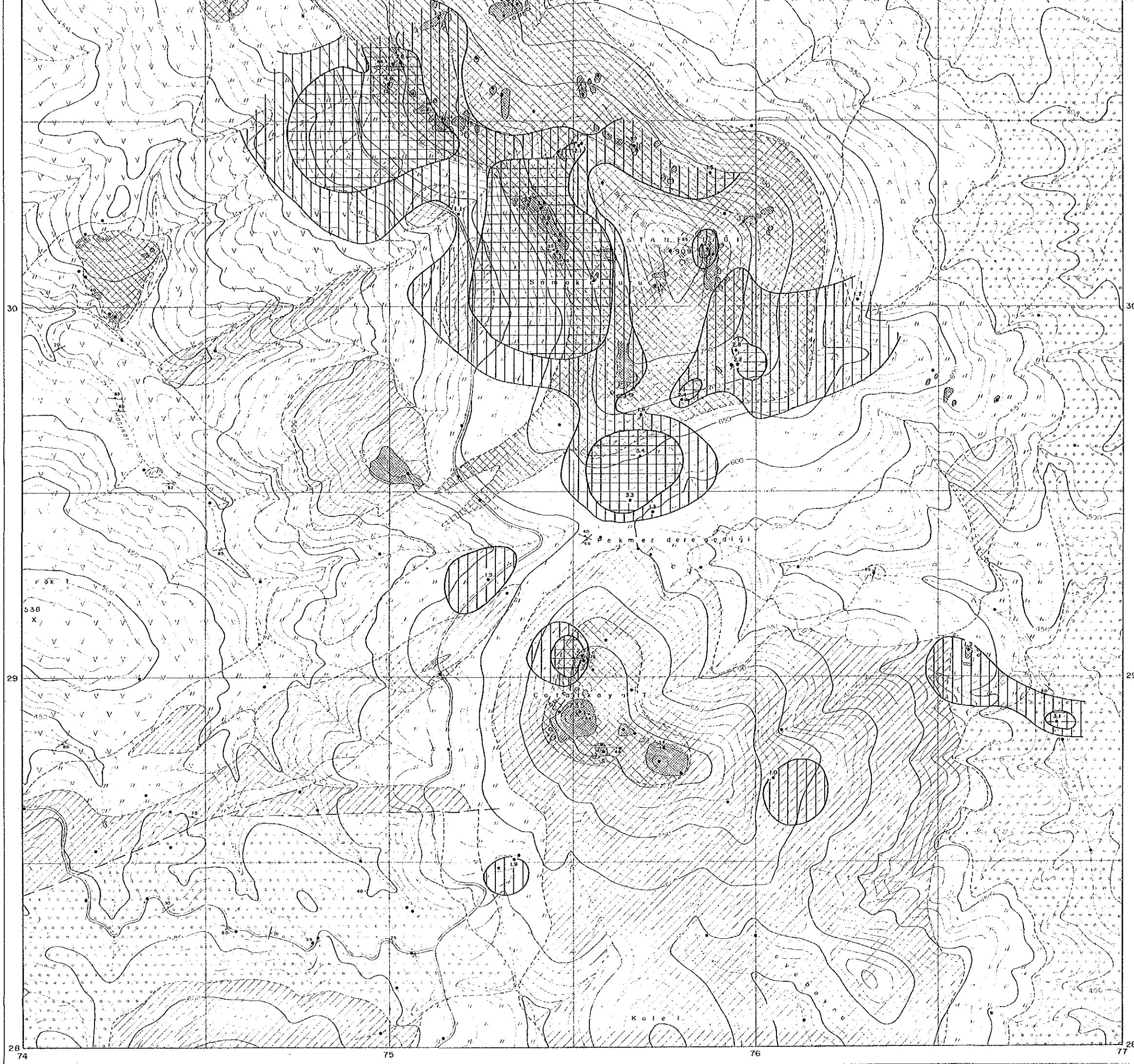
LEGEND

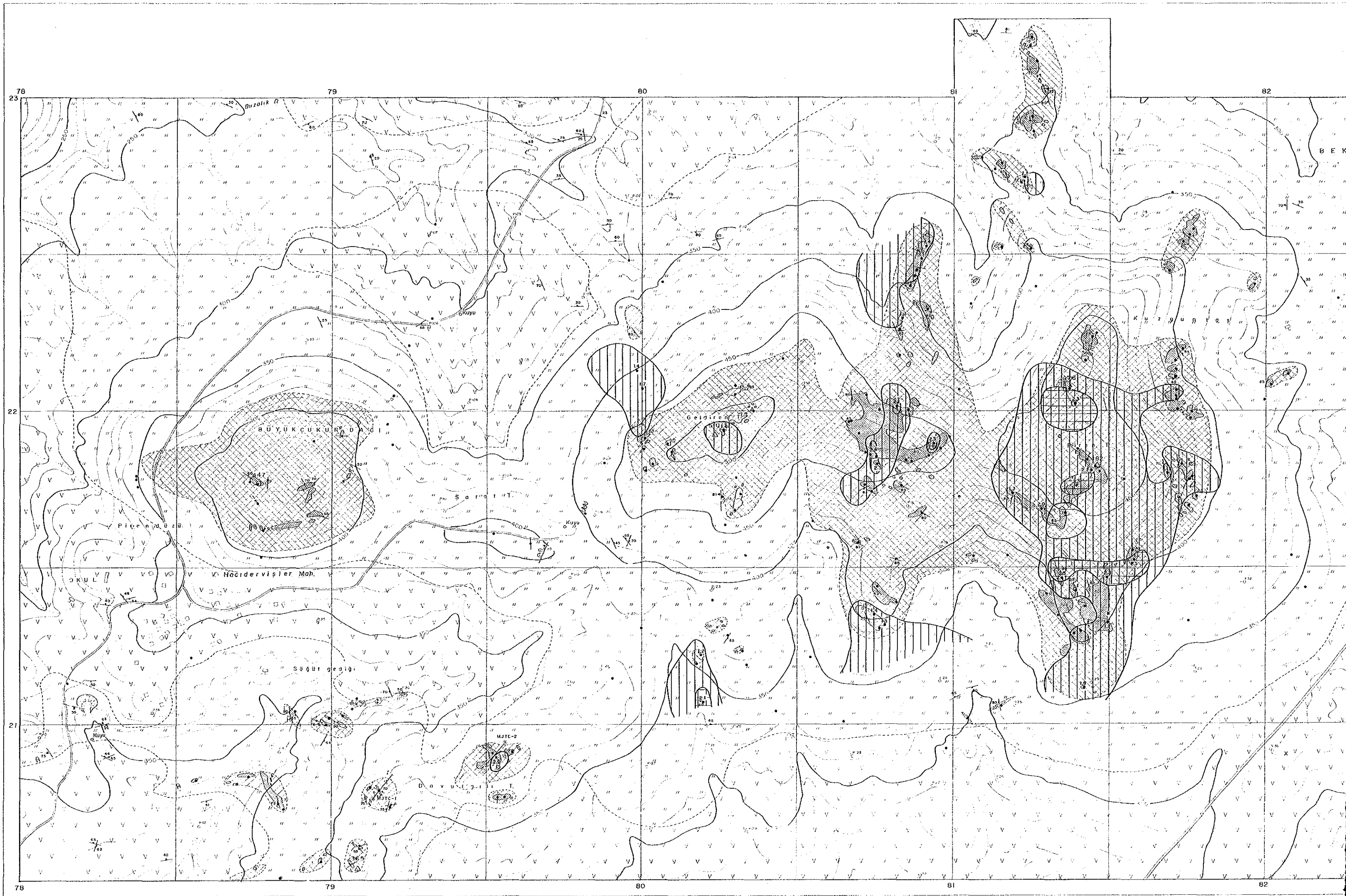
- | | | | |
|------------|----------------------|--|--------------------------------------|
| Holocene | Talus breccia | | Breccia and sand |
| Miocene | Şopçı Vol. | | Andesite lava with its pyroclastics |
| Jurassic | Kirazlı Conglomerate | | Conglomerate, sandstone and mudstone |
| Triassic | Taşdıbek F. | | Meta-volcanics |
| Alteration | | | Strongly silicified body |
| | | | Medium silicified body |
| | | | Silicified and argillized zone |
| | | | Argillized zone |
| | | | Probable fault |
| | | | Strike and dip of fault |
| | | | Strike and dip of bedding |
| | | | Strike and dip of joint |
| | | | Strike and dip of quartz vein |
| | | | Fossil |

Component Score of Chip Sample

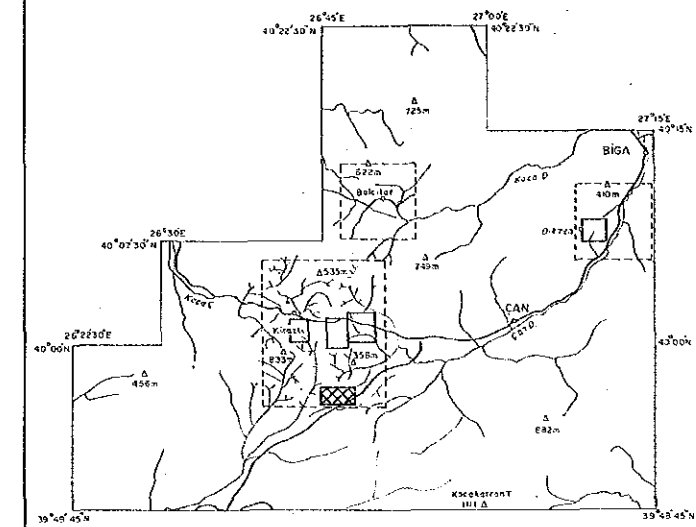
Anomalous Area (more than 1)

Anomalous Area (more than 2)





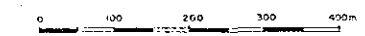
REPORT ON THE MINERAL EXPLORATION
 IN THE ÇANAKKALE AREA, THE REPUBLIC OF TURKEY
 COMPONENT SCORE MAP
 OF
 CHIP SAMPLES IN THE PIREN TEPE AREA



FEBRUARY 1990

JAPAN INTERNATIONAL COOPERATION AGENCY
 METAL MINING AGENCY OF JAPAN

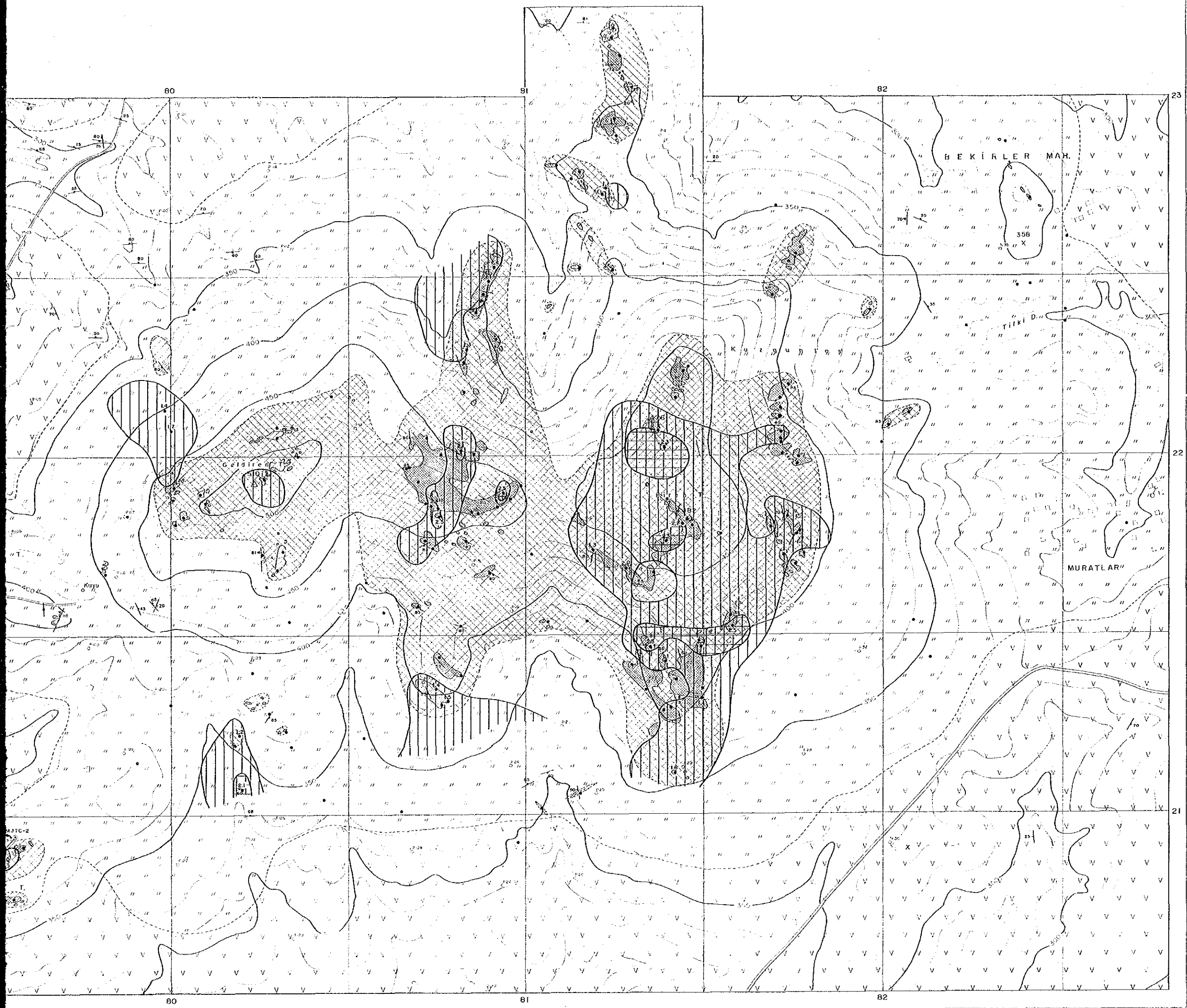
Scale 1 : 5.000

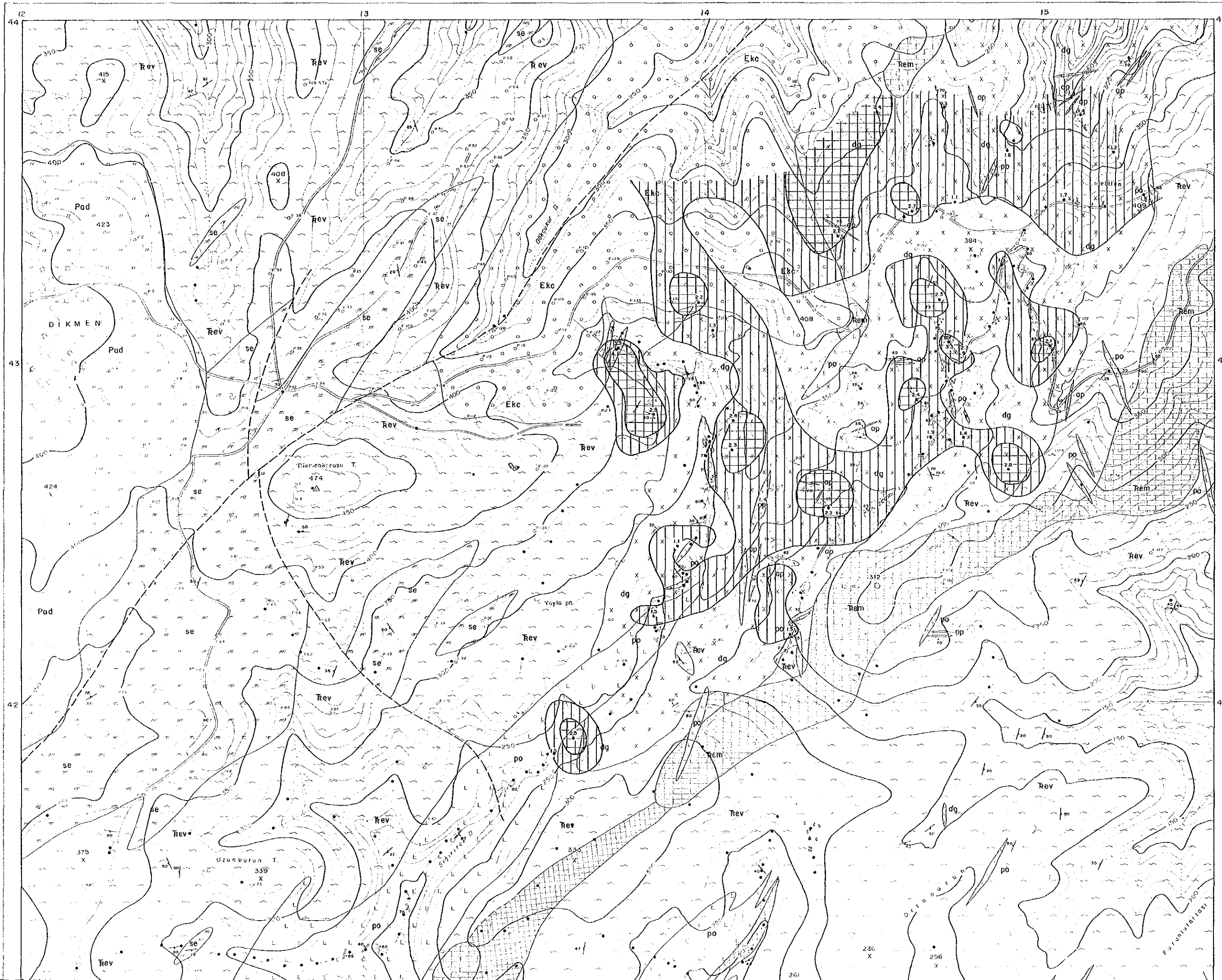


LEGEND

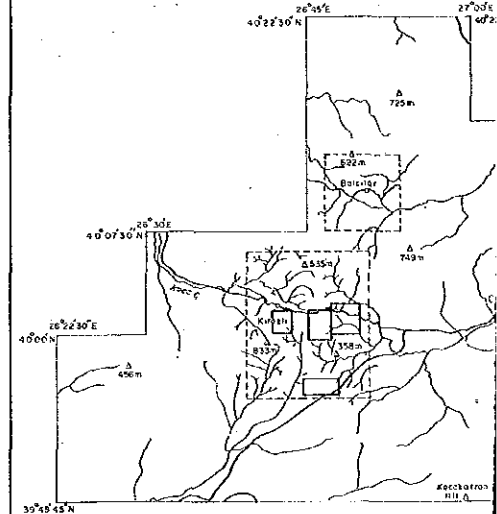
- Miocene Şapçı Vol. Andesite lava
- Alteration Strongly silicified body
- Medium silicified body
- Silicified and argillized zone
- Argillized zone
- Strike and dip of fault
- Strike and dip of flow banding
- Strike and dip of joint
- Underground
- Trench
- Drilling site

- Component Score of Chip Sample
- Anomalous Area (more than 1)
- Anomalous Area (more than 2)





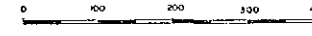
REPORT ON THE MINERAL EXPLORA
 IN THE CANAKKALE AREA, THE REPUBLIC OF
 COMPONENT SCORE MAP
 OF
 CHIP SAMPLES IN THE DIKMEN



FEBRUARY 1990

JAPAN INTERNATIONAL COÖPERATION
 METAL MINING AGENCY OF JAPAN

Scale 1 : 5,000

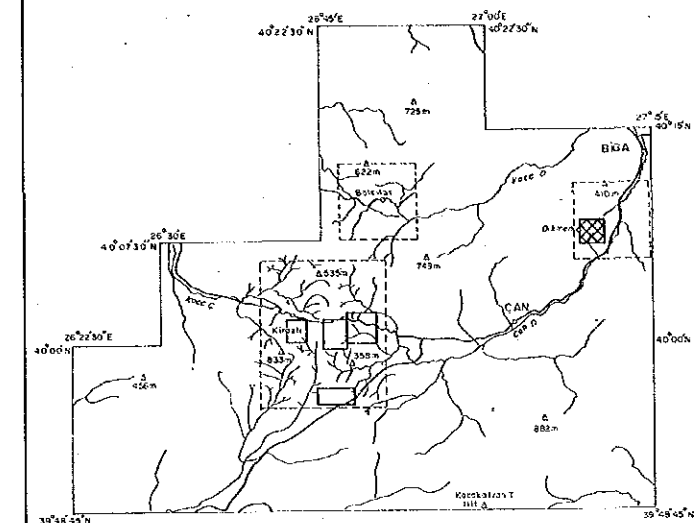


LEGEND

- | | | | |
|-----------------|------------------------------|-------------------------|-----------------------|
| Pliocene | Akkoyrak Vol. | Pad | Dacite and dacitic tu |
| Eocene | Karanlık F.
(Kızılcık M.) | Ekc | Conglomerate |
| Triassic | Emese F. | Rem | Marble |
| | | Rev | Melo-volcanics and m |
| | | ap | Aplite |
| | | po | Porphyry |
| Intrusive rocks | | dg | Dikmen granite |
| | | se | Serpentinite |
| Mineralization | | Skarn zone (Fe) | |
| | | Probable fault | |
| | | Strike and dip of bed | |
| | | Strike and dip of sch | |
| | | Strike and dip of joint | |
| | | Quartz vein | |
| | | Trench | |

- Component Score of Chip Sample
- ⊕ Anomalous Area (more than 1)
- ⊕ Anomalous Area (more than 2)

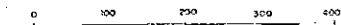
REPORT ON THE MINERAL EXPLORATION
IN THE ÇANAKKALE AREA, THE REPUBLIC OF TURKEY
COMPONENT SCORE MAP
OF
CHIP SAMPLES IN THE DİKMEN AREA



FEBRUARY 1990

JAPAN INTERNATIONAL COOPERATION AGENCY
METAL MINING AGENCY OF JAPAN

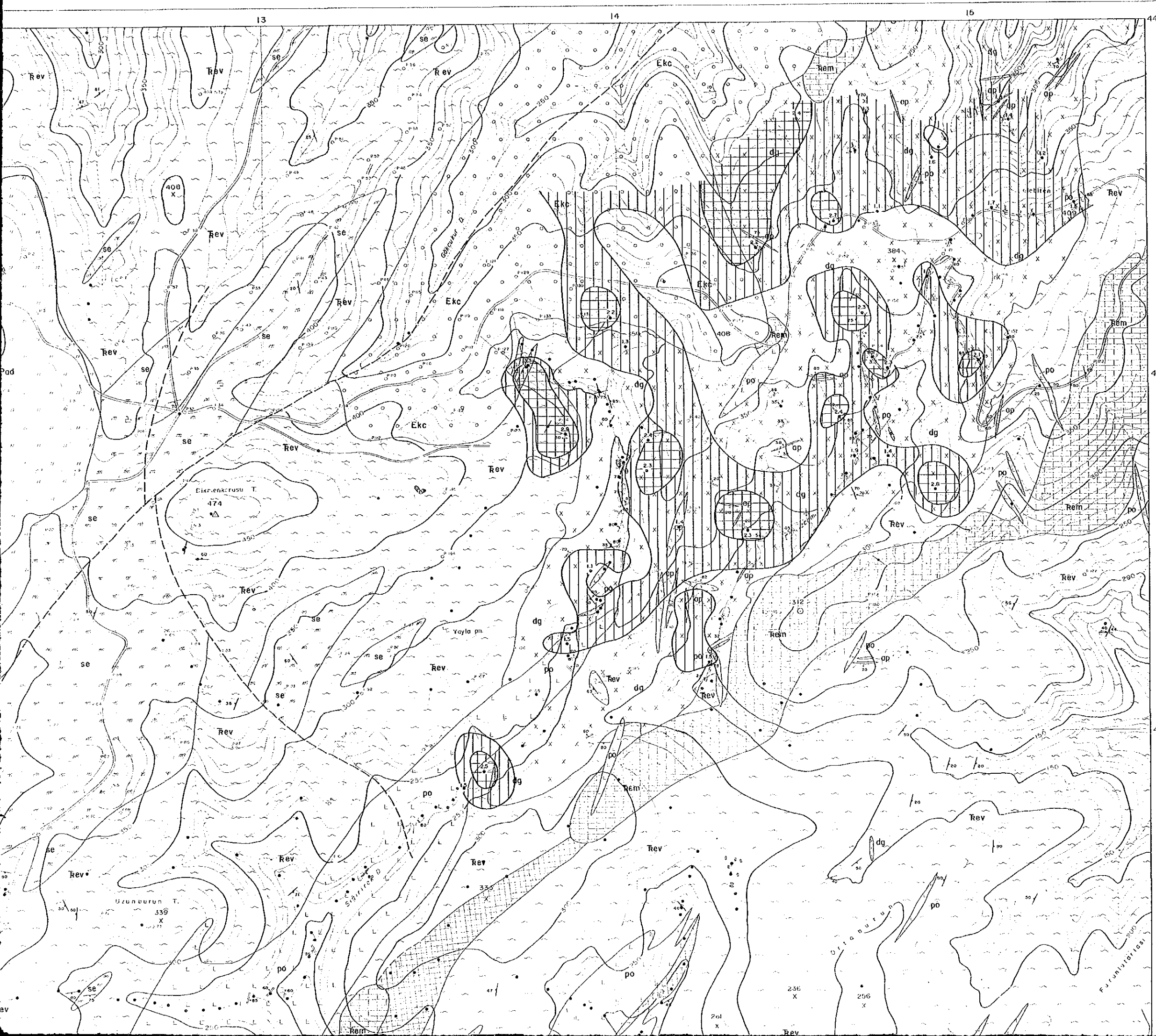
Scale 1 : 5,000

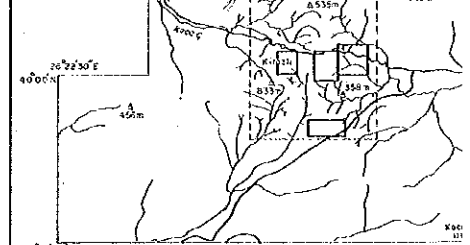
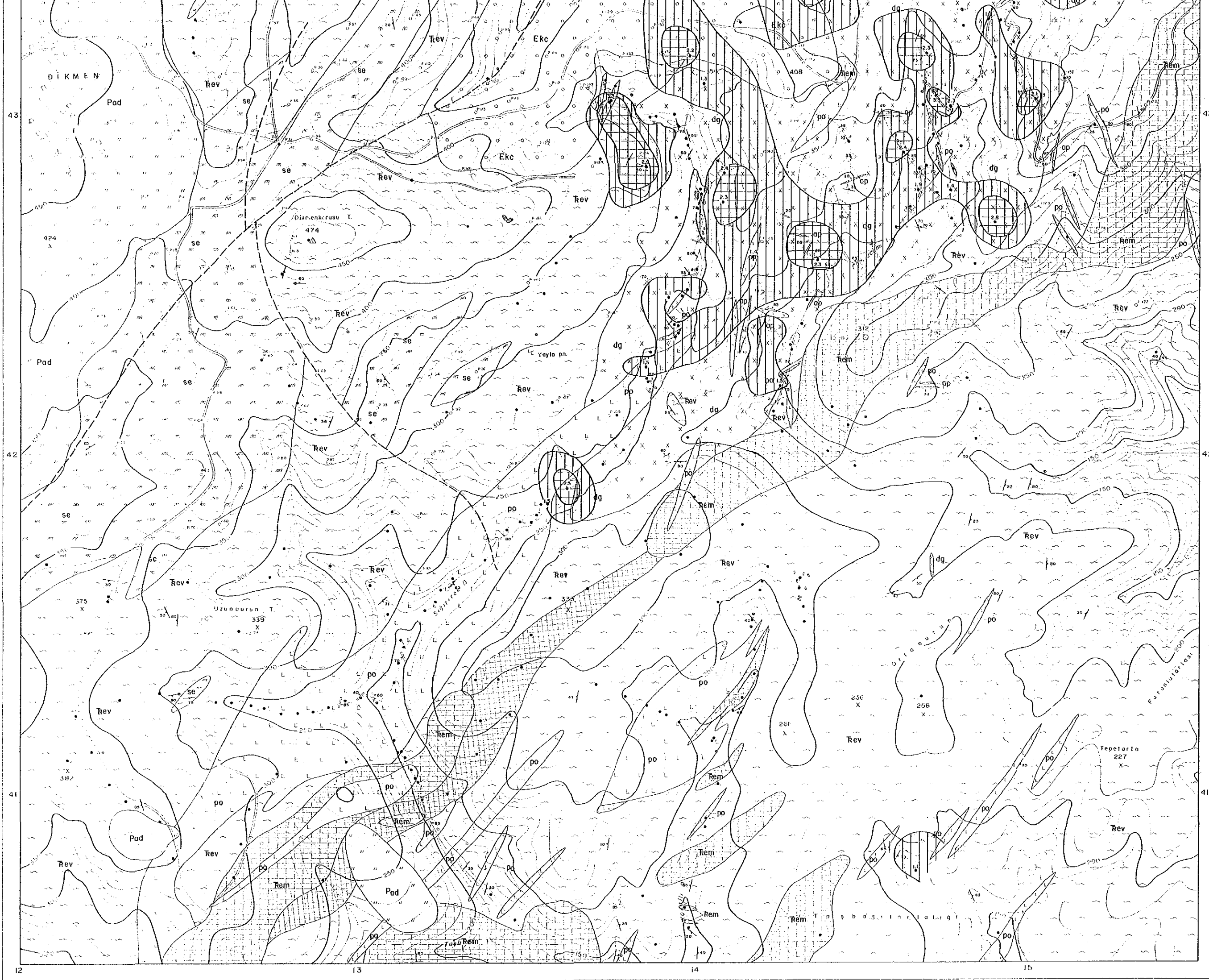


LEGEND

- Pliocene Akkoyrak Vol. Pad Dacite and dacitic tuff
- Eocene Karanlık F. (Kızılcık M.) Ekc Conglomerate
- Triassic Emeşe F. Rem Marble
- Rev Meta-volcanics and meta-sediments
- Intrusive rocks op Aplite
- po Porphyry
- dg Dikmen granite
- se Serpentinite
- Mineralization Skarn zone (Fe)
- Probable fault
- Strike and dip of bedding
- Strike and dip of schistosity
- Strike and dip of joint
- Quartz vein
- Trench

- 2.3 Component Score of Chip Sample
- Anomalous Area (more than 1)
- Anomalous Area (more than 2)





FEBRUARY 1990

JAPAN INTERNATIONAL COOPERATION
METAL MINING AGENCY OF JAPAN

Scale 1 : 5,000

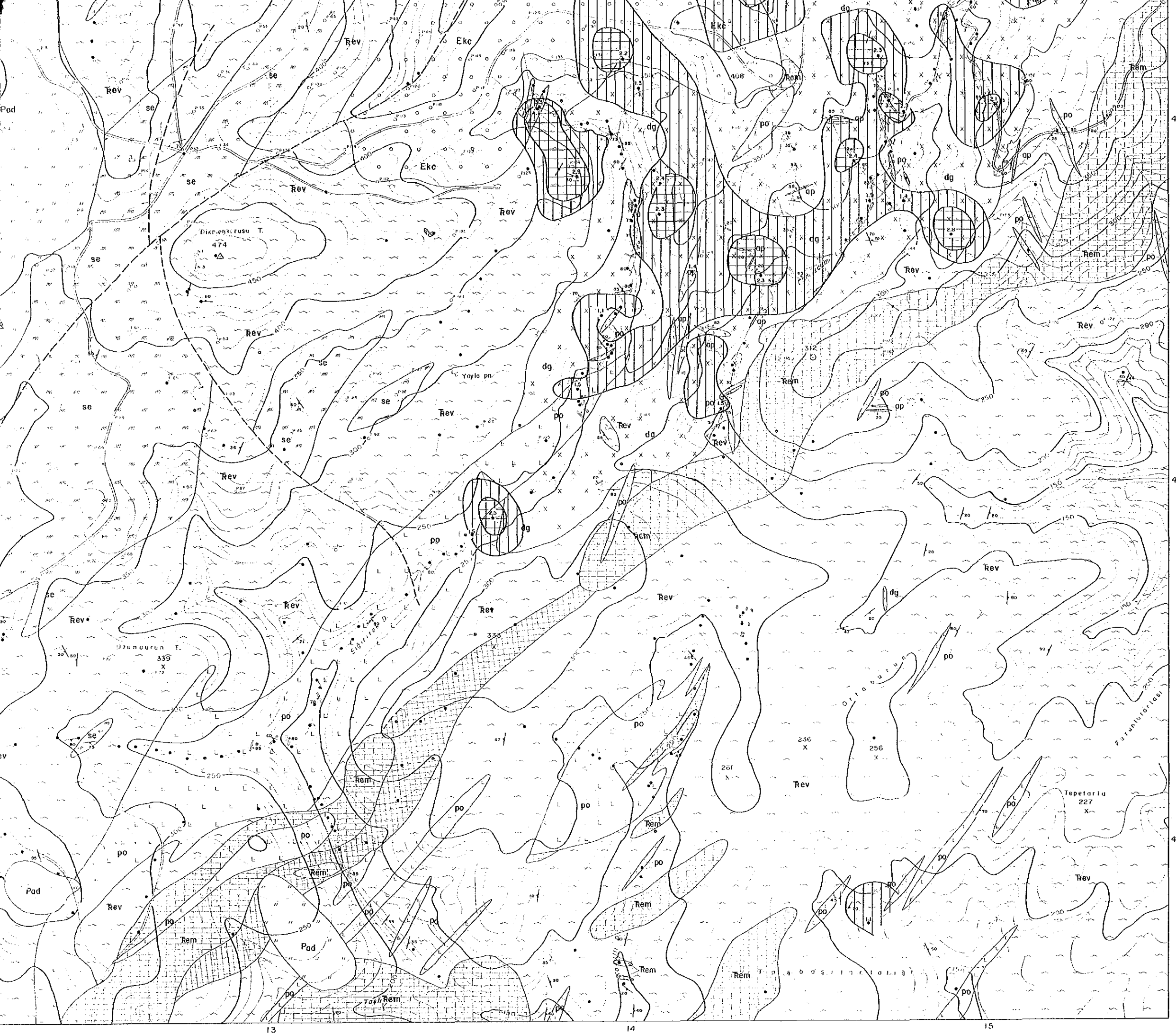


LEGEND

- | | | | |
|----------------|---------------------------|-----------------|-------------------------------------|
| Pliocene | Akkayrak Vol. | Pad | Dacite and diorite |
| Eocene | Karanlık F. (Kızılcık M.) | Ekc | Conglomerate |
| Triassic | Emeşe F. | Rem | Marble |
| | | Rev | Meta-volcanics and
metasediments |
| | | ap | Aplite |
| | | po | Porphyry |
| | | dg | Dikmen granite |
| | | se | Serpentinite |
| Mineralization | | Skorn zone (Fe) | |

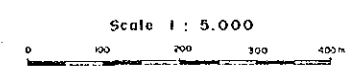
- Probable fault
- Strike and dip of
- Strike and dip of
- Strike and dip of
- Strike and dip of
- Quartz vein
- Trench

- Component Score of Chip Sample
- Anomalous Area (more than 1)
- Anomalous Area (more than 2)



FEBRUARY 1990

JAPAN INTERNATIONAL COOPERATION AGENCY
METAL MINING AGENCY OF JAPAN



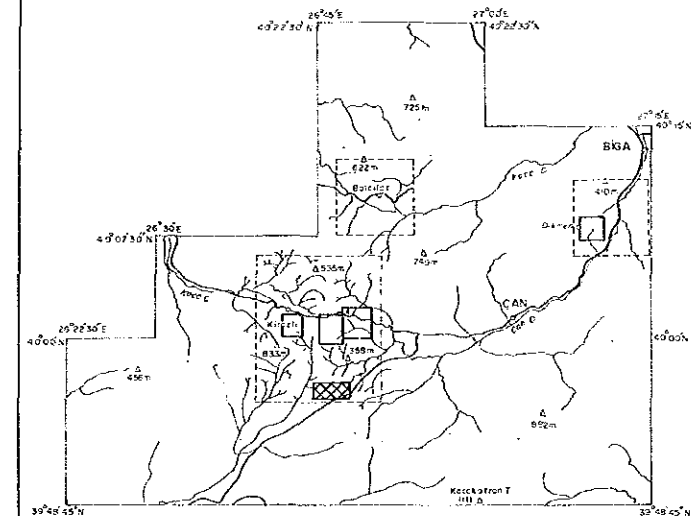
LEGEND

- | | | | |
|-----------------|----------------------------|-----------------|-----------------------------------|
| Pliocene | Akkayrak Vol. | Pad | Dacite and dacitic tuff |
| Eocene | Karanlık F. (Kızılıcik M.) | Ekc | Conglomerate |
| Triassic | Emeşe F. | Rem | Marble |
| | | Rev | Meta-volcanics and meta-sediments |
| Intrusive rocks | | ap | Aplite |
| | | po | Porphyry |
| | | dg | Dikmen granite |
| | | se | Serpentine |
| Mineralization | | Skarn zone (Fe) | |
-
- | | |
|--|-------------------------------|
| | Probable fault |
| | Strike and dip of bedding |
| | Strike and dip of schistosity |
| | Strike and dip of joint |
| | Quartz vein |
| | Trench |

- | | |
|--|--------------------------------|
| | Component Score of Chip Sample |
| | Anomalous Area (more than 1) |
| | Anomalous Area (more than 2) |

REPORT ON THE MINERAL EXPLORATION
IN THE CANAKKALE AREA, THE REPUBLIC OF TURKEY

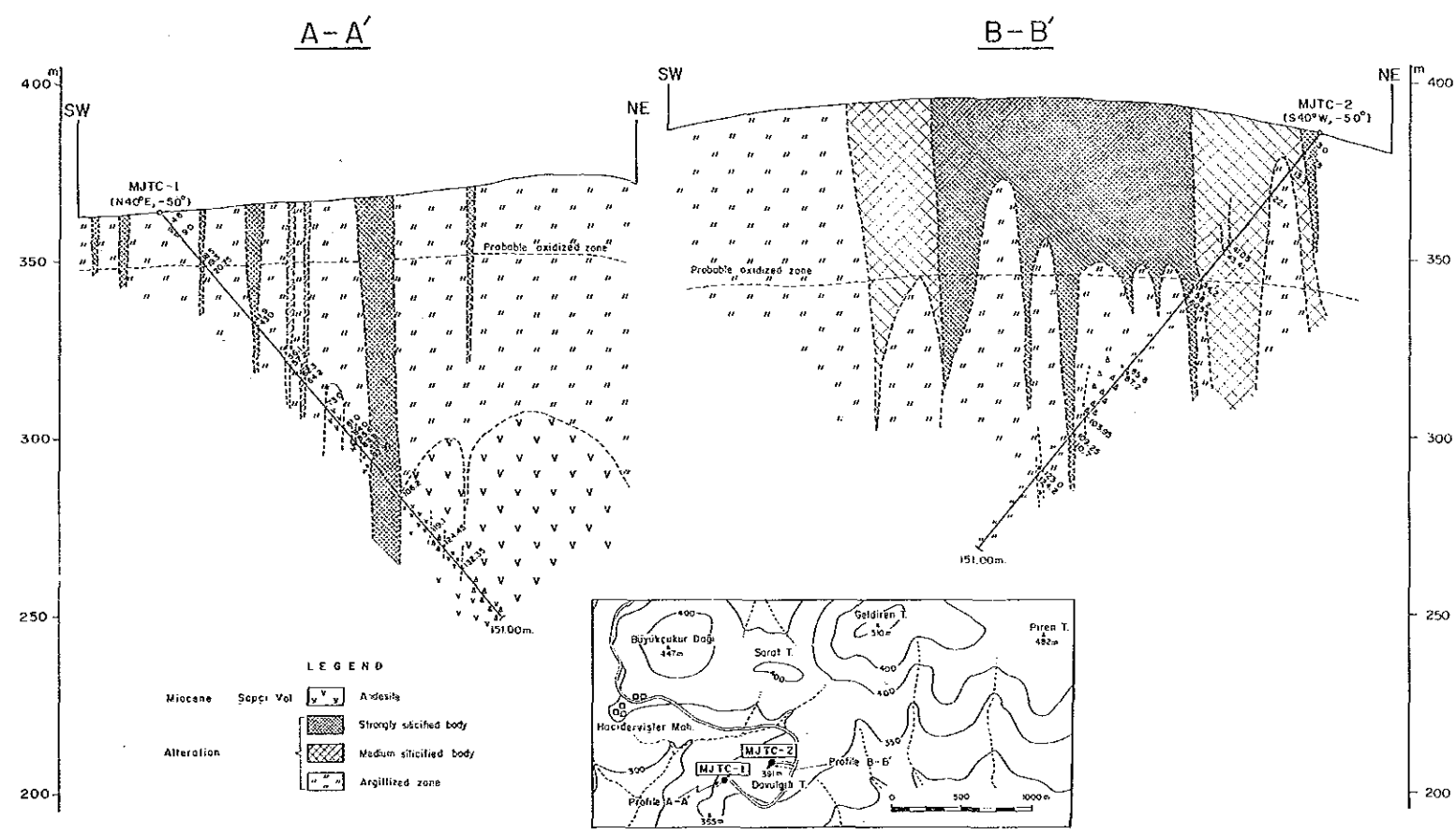
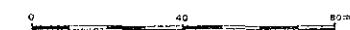
GEOLOGIC CROSS SECTION
OF
DRILLING HOLES (MJTC-1 & 2)

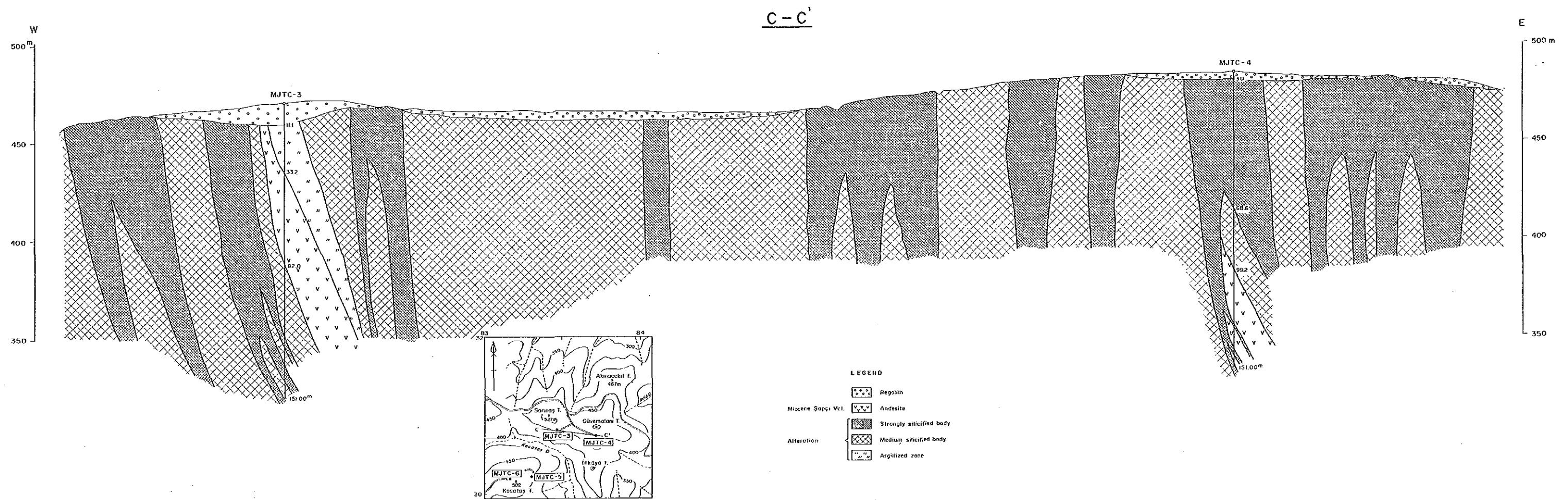


FEBRUARY 1990

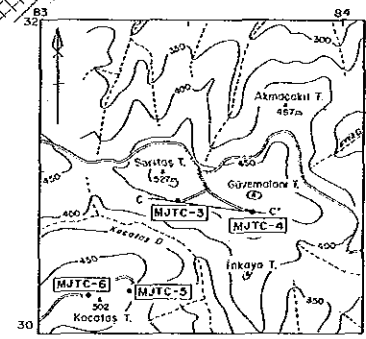
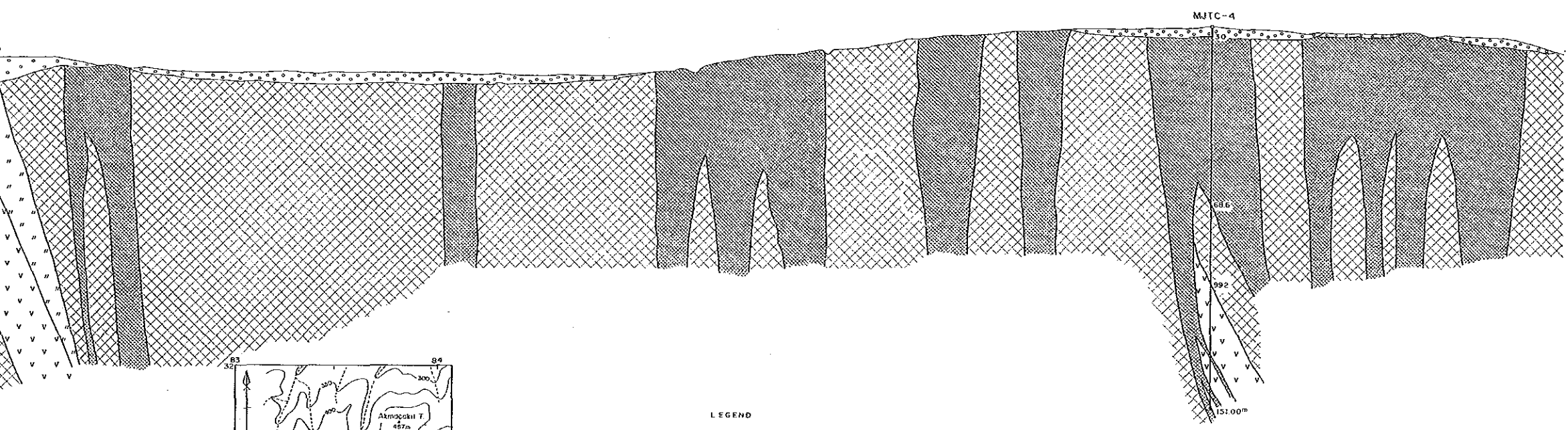
JAPAN INTERNATIONAL COOPERATION AGENCY
METAL MINING AGENCY OF JAPAN

Scale 1 : 1,000





C-C'



- LEGEND
- Regolith
 - Miocene Sapçı Vol.
 - Andesite
 - Strongly silicified body
 - Medium silicified body
 - Argillized zone

PL 27

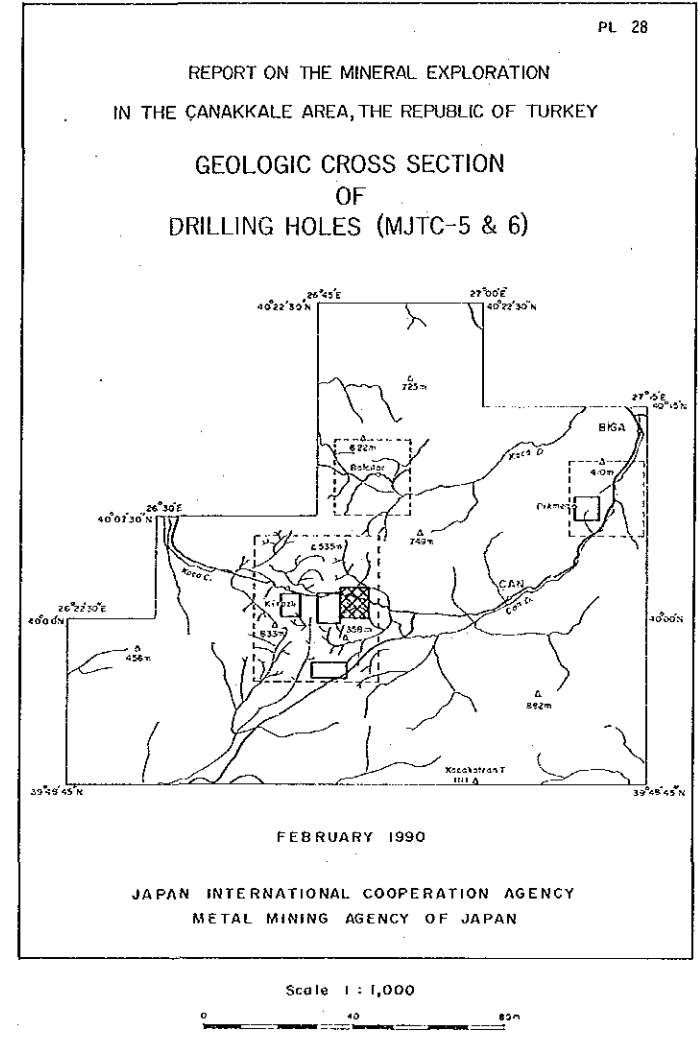
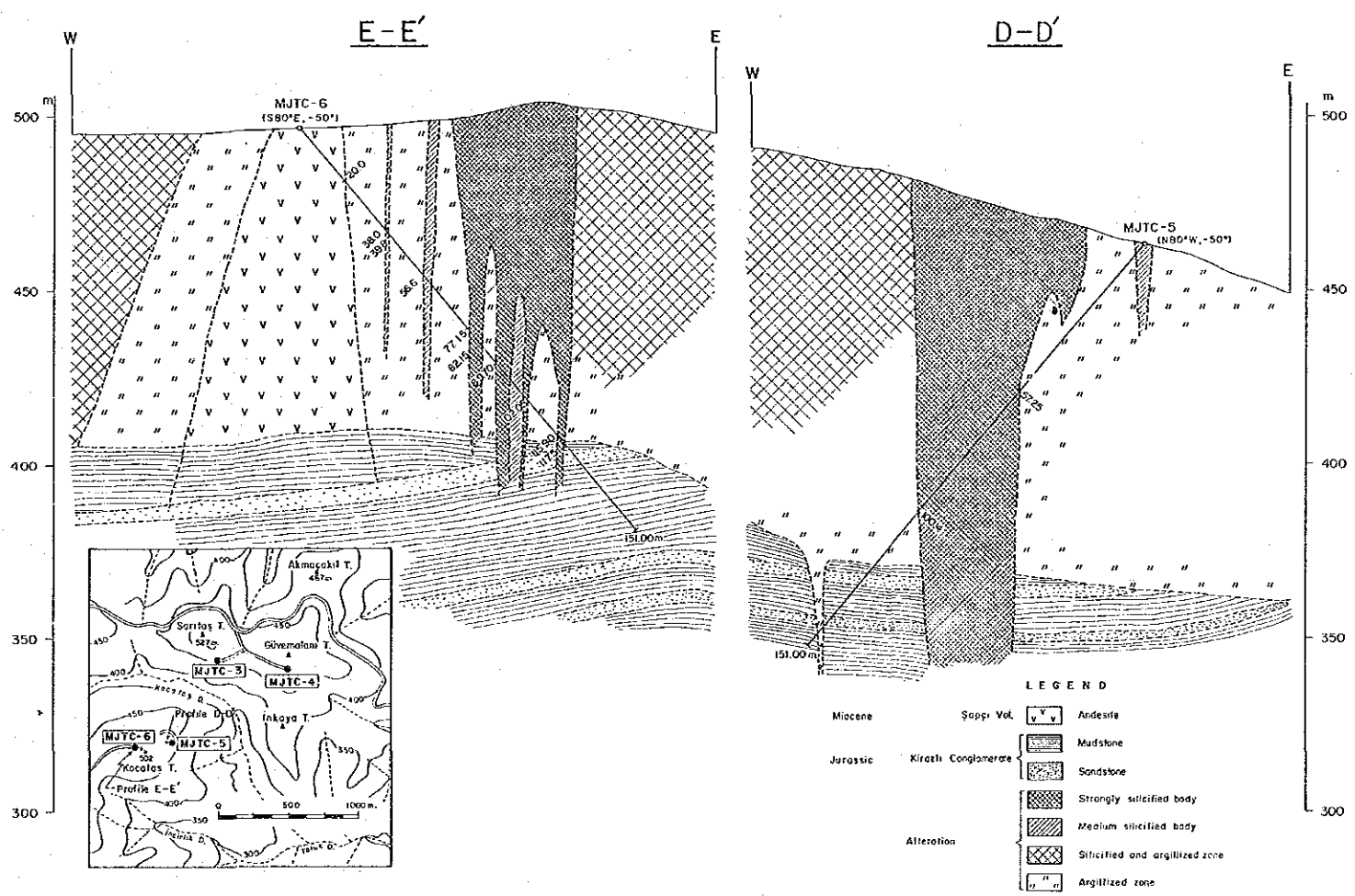
REPORT ON THE MINERAL EXPLORATION
IN THE CANAKKALE AREA, THE REPUBLIC OF TURKEY

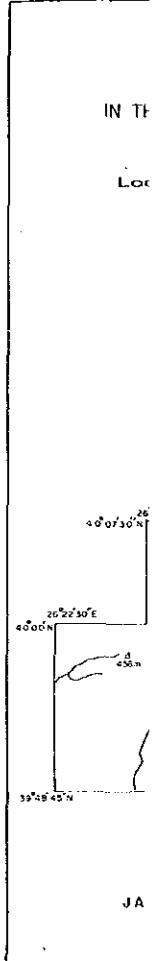
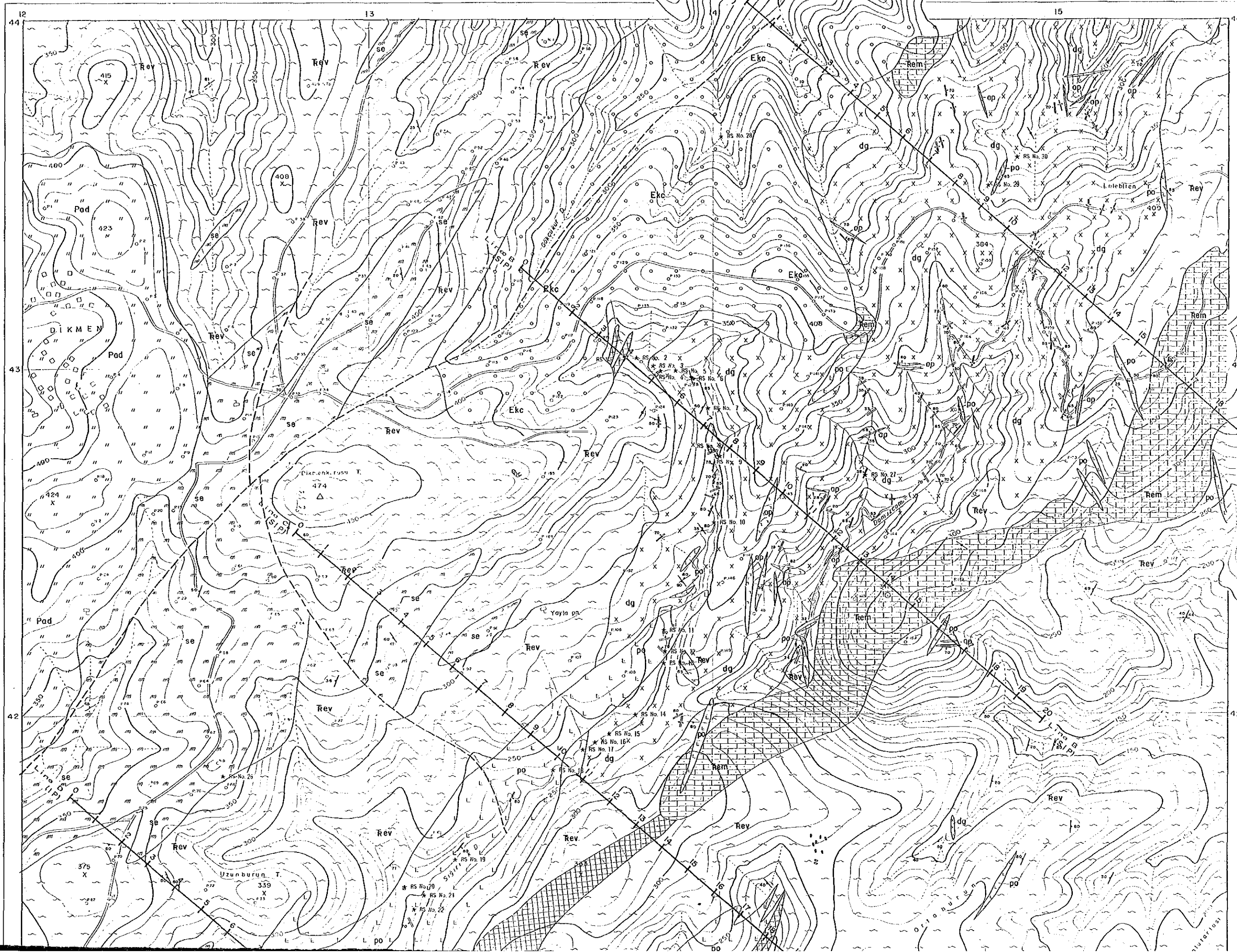
GEOLOGIC CROSS SECTION
OF
DRILLING HOLES (MJTC-3 & 4)

FEBRUARY 1990

JAPAN INTERNATIONAL COOPERATION AGENCY
METAL MINING AGENCY OF JAPAN

Scale 1 : 1,000



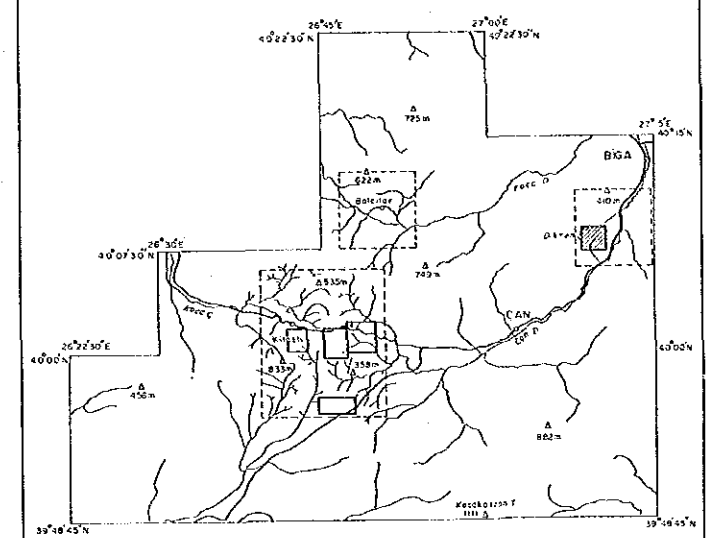


Pliocene
Eocene
Triassic

Int
Mit

REPORT ON THE MINERAL EXPLORATION
IN THE ÇANAKKALE AREA, THE REPUBLIC OF TURKEY

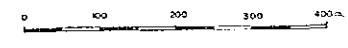
Location map of IP & SIP Survey Lines
in Dikmen Area



FEBRUARY 1990

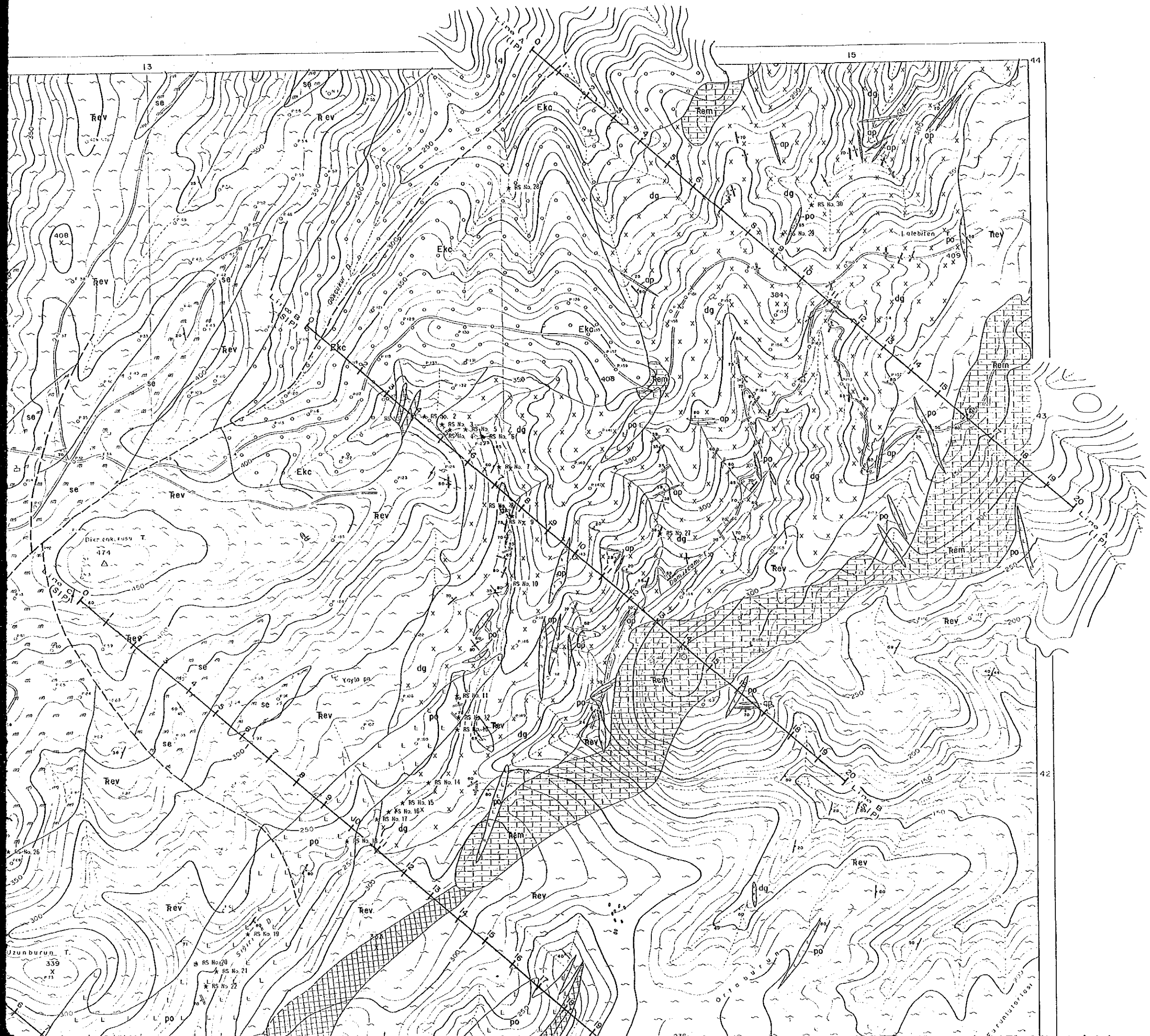
JAPAN INTERNATIONAL COOPERATION AGENCY
METAL MINING AGENCY OF JAPAN

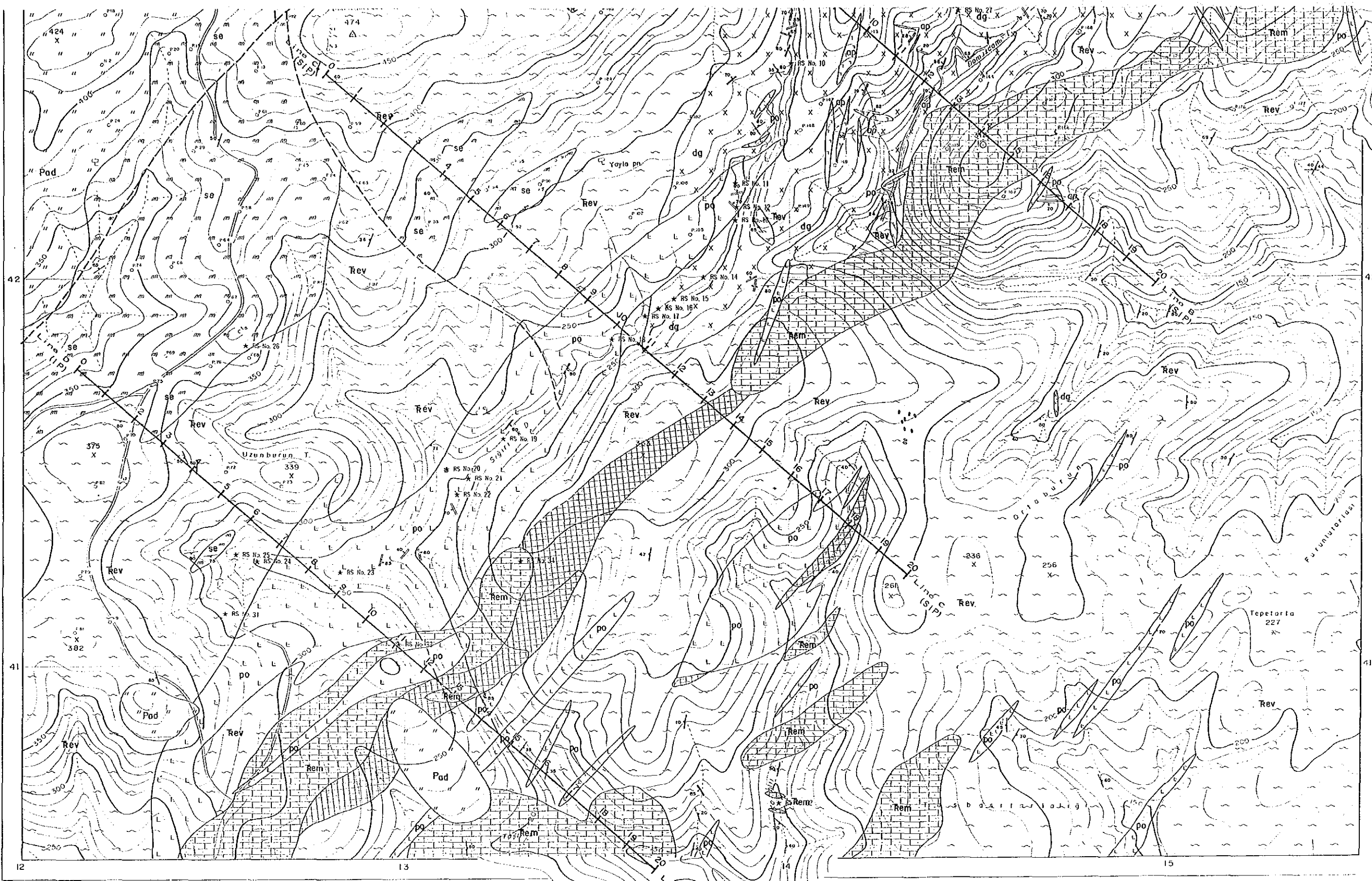
Scale 1 : 5,000



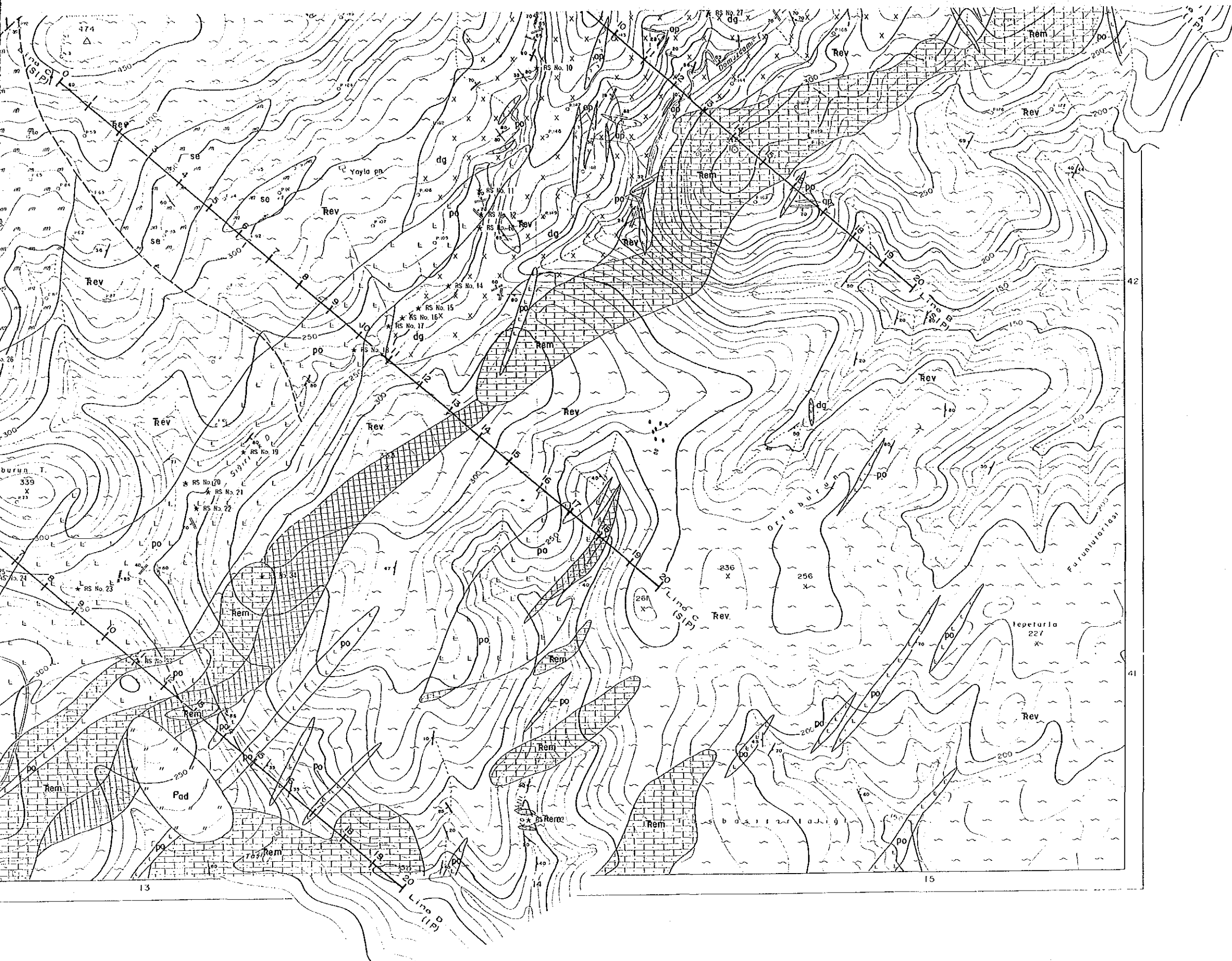
LEGEND

- Pliocene Akkoyrak Vol. Pad Dolite and dacitic tuff
- Eocene Koranik F. (Kızılköy M.) Ekc Conglomerate
- Triassic Emeş F. Rem Marble
- Rev Meta-volcanics and meta-sediments
- Intrusive rocks
 - ap Aplite
 - po Porphyry
 - dg Dikmen granite
 - se Serpentine
- Mineralization
 - Dissemination and veinlet (Mo, Cp, Py)
 - Skarn zone (Fe)
- Probable fault
- Strike and dip of bedding
- Strike and dip of schistosity
- Strike and dip of joint
- Quartz vein
- Trench
- Geophisic Survey and Station NO.
- * RS No.1 Location of Rock Samples



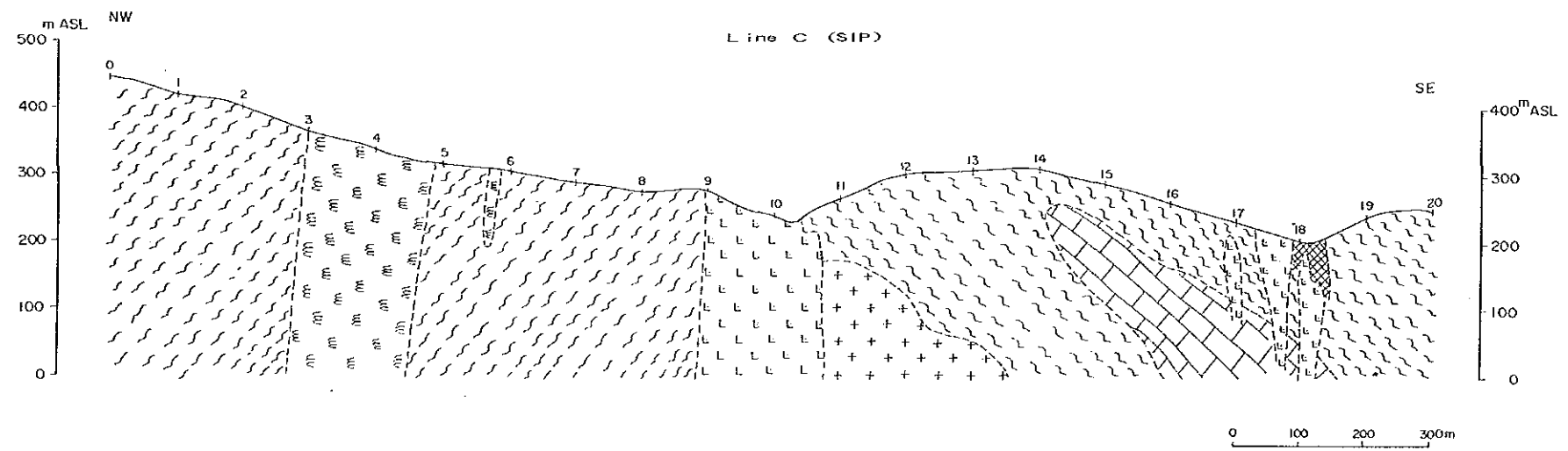
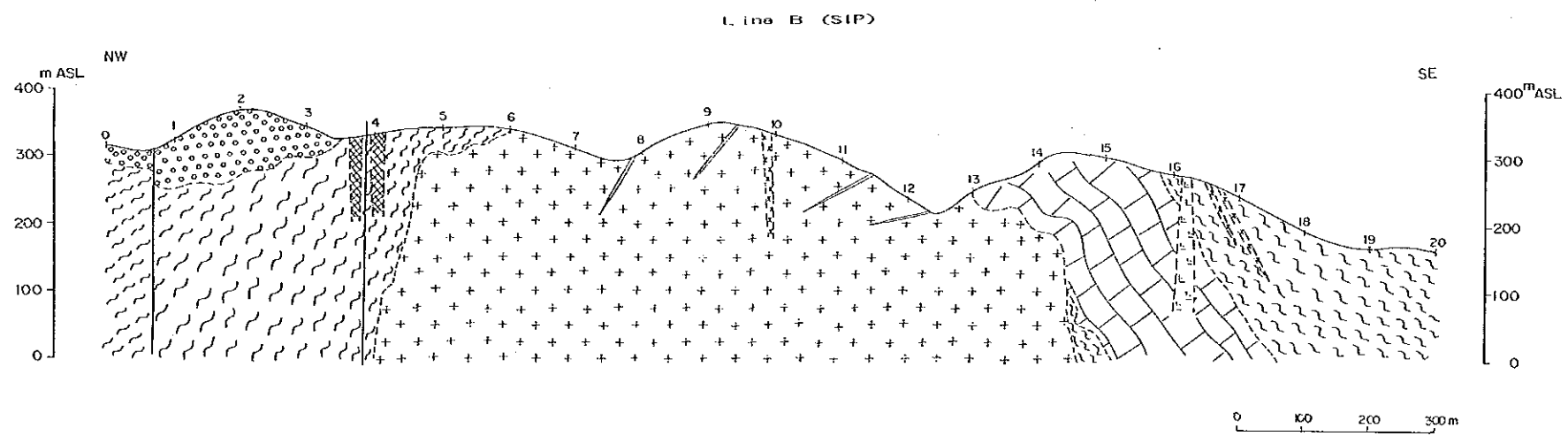
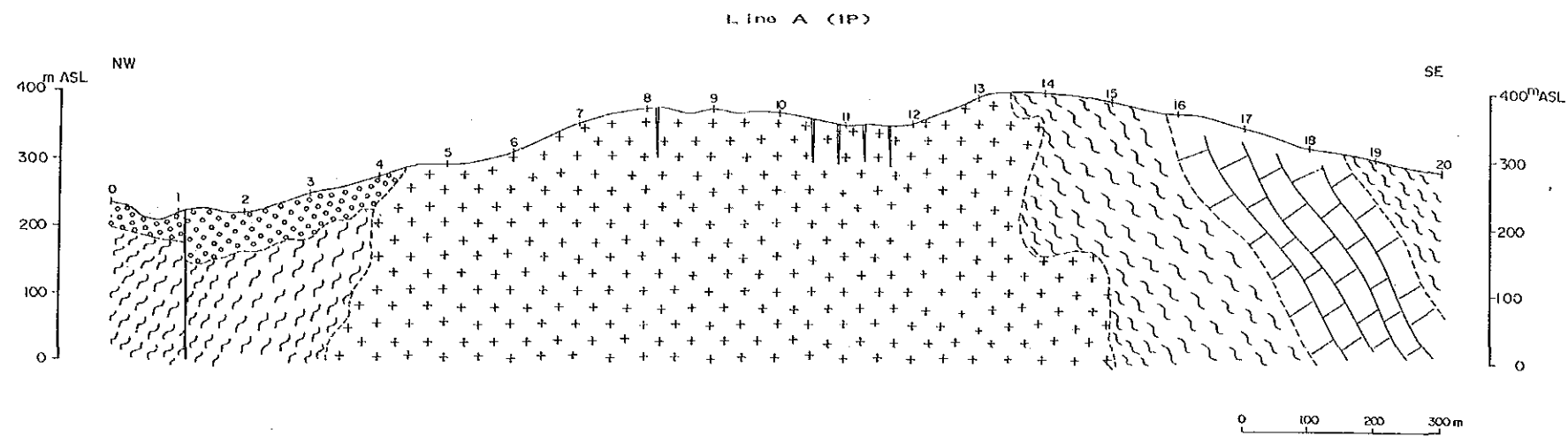


Pliocene
 Eocene
 Triassic
 Intr
 Min



LEGEND

- | | | | |
|-----------------|----------------------------|-----|--|
| Pliocene | Akkoyrak Vol. | Pad | Dacite and dacitic tuff |
| Eocene | Karanlık F. (Kızılıçık M.) | Ekc | Conglomerate |
| Triassic | Emeşe F. | Rem | Marble |
| | | Rev | Meta-volcanics and meta-sediments |
| Intrusive rocks | | ap | Aplite |
| | | po | Porphyry |
| | | dg | Dikmen granite |
| | | se | Serpentine |
| Mineralization | | | Dissemination and veinlet (Mo, Cp, Py) |
| | | | Skarn zone (Fe) |
| | | | Probable fault |
| | | | Strike and dip of bedding |
| | | | Strike and dip of schistosity |
| | | | Strike and dip of joint |
| | | | Quartz vein |
| | | | Trench |
| | | | Geophisic Survey and Station NO. |
| | | | * RS No.1 Location of Rock Samples |



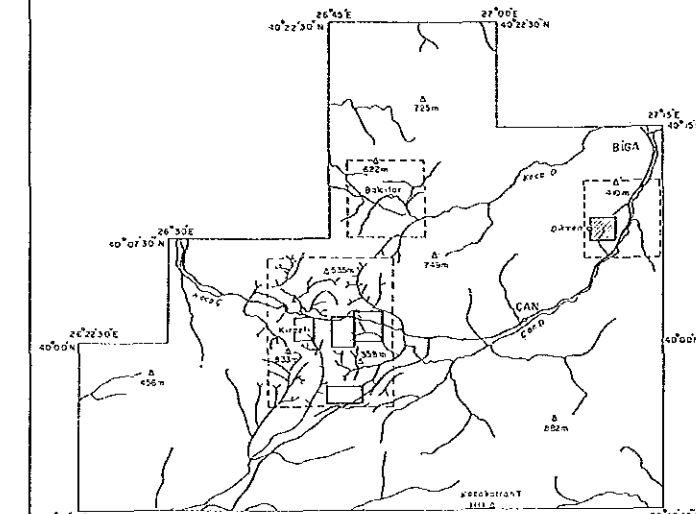
IN THE
 Geology
 in C

JA

Pliocene
 Eocene
 Tertiary

REPORT ON THE MINERAL EXPLORATION
IN THE ÇANAKKALE AREA, THE REPUBLIC OF TURKEY

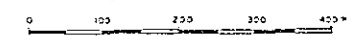
Geological Section of IP & SIP Survey Lines
in Dikmen Area



FEBRUARY 1990

JAPAN INTERNATIONAL COOPERATION AGENCY
METAL MINING AGENCY OF JAPAN

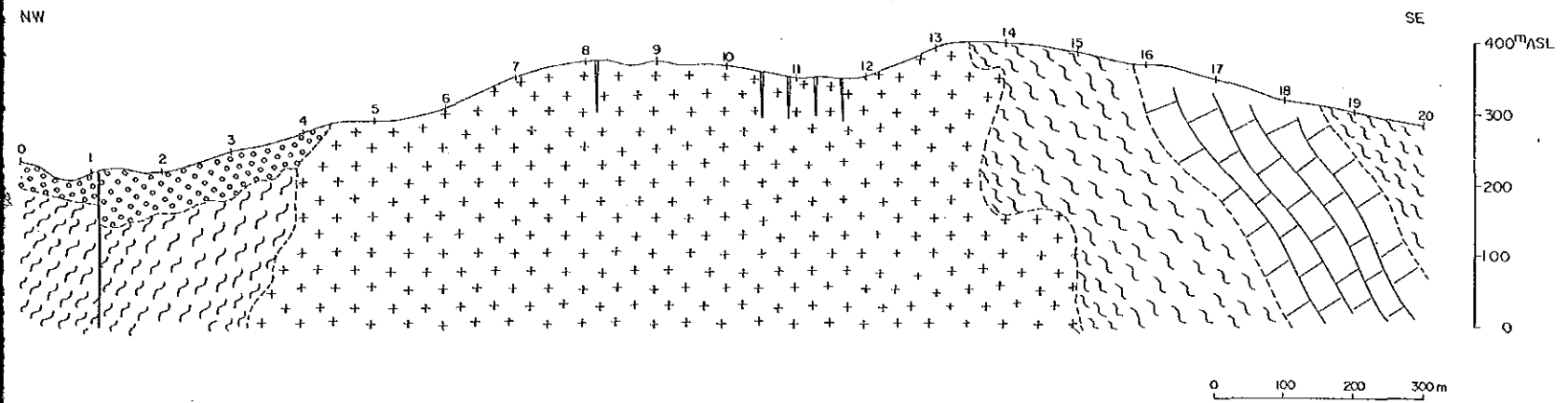
Scale 1 : 5.000



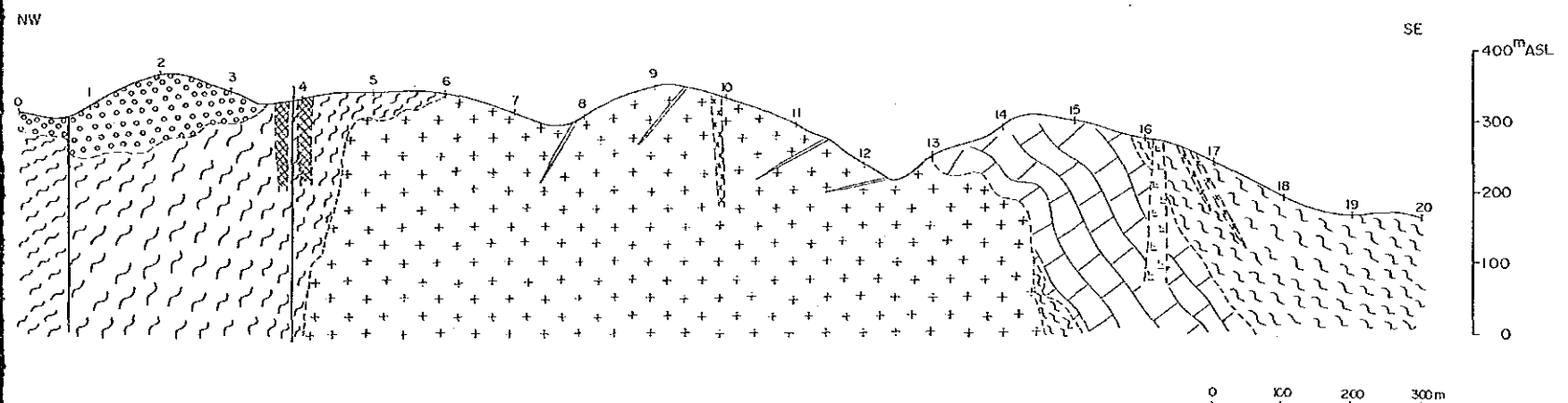
LEGEND

- | | | | |
|-----------------|---------------------------|--|-----------------------------------|
| Pliocene | Akkayrak Vol. | Pad | Dacite and dacitic tuff |
| Eocene | Karanlık F. (Kızılcık M.) | Ekc | Conglomerate |
| Triassic | Emeşe F. | Rem | Marble |
| | | Rev | Meta-volcanics and meta-sediments |
| Intrusive rocks | ap | Aplite | |
| | po | Porphyry | |
| | dg | Dikmen granite | |
| | se | Serpentinite | |
| Mineralization | (diagonal lines) | Dissemination and veinlet (Mo, Cp, Py) | |
| | (cross-hatched) | Skarn zone (Fe) | |
| | (dashed line) | Probable fault | |
| | (wavy line) | Strike and dip of bedding | |
| | (sawtooth line) | Strike and dip of schistosity | |
| | (zigzag line) | Strike and dip of joint | |
| | (line with dots) | Quartz vein | |
| | (circle with cross) | Trench | |
| | (line with 'A') | Geophysical line (IP-SIP) | |
| | (line with 'A-A') | Profile line | |

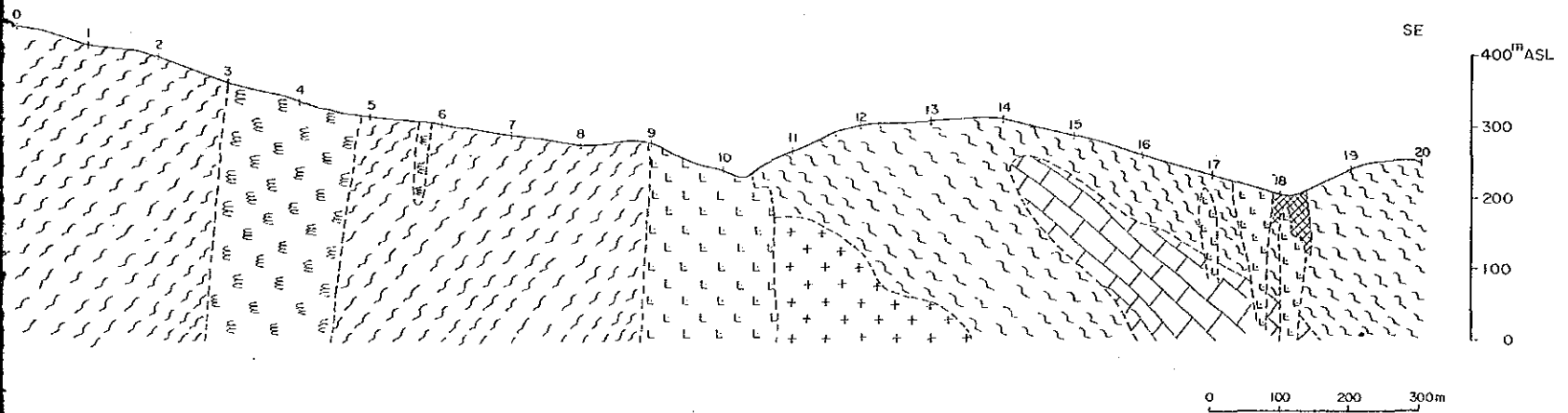
Line A (IP)

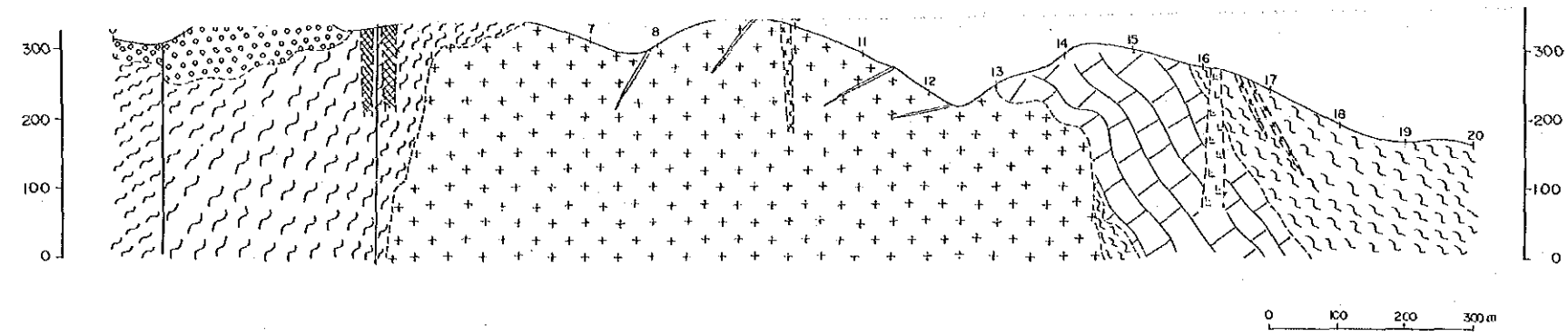


Line B (SIP)

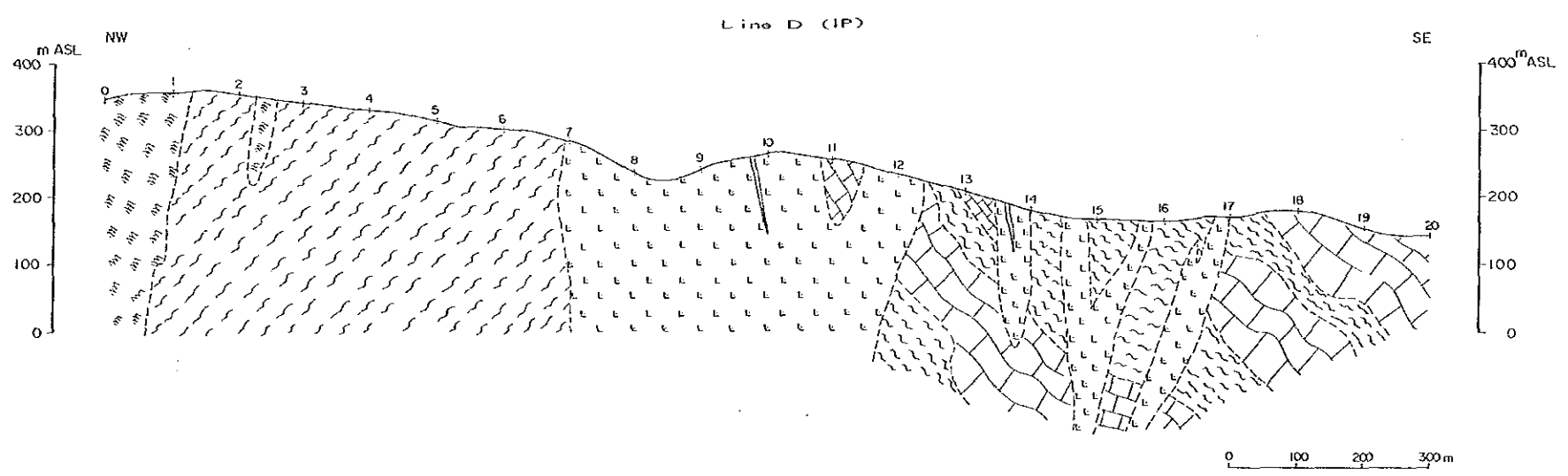
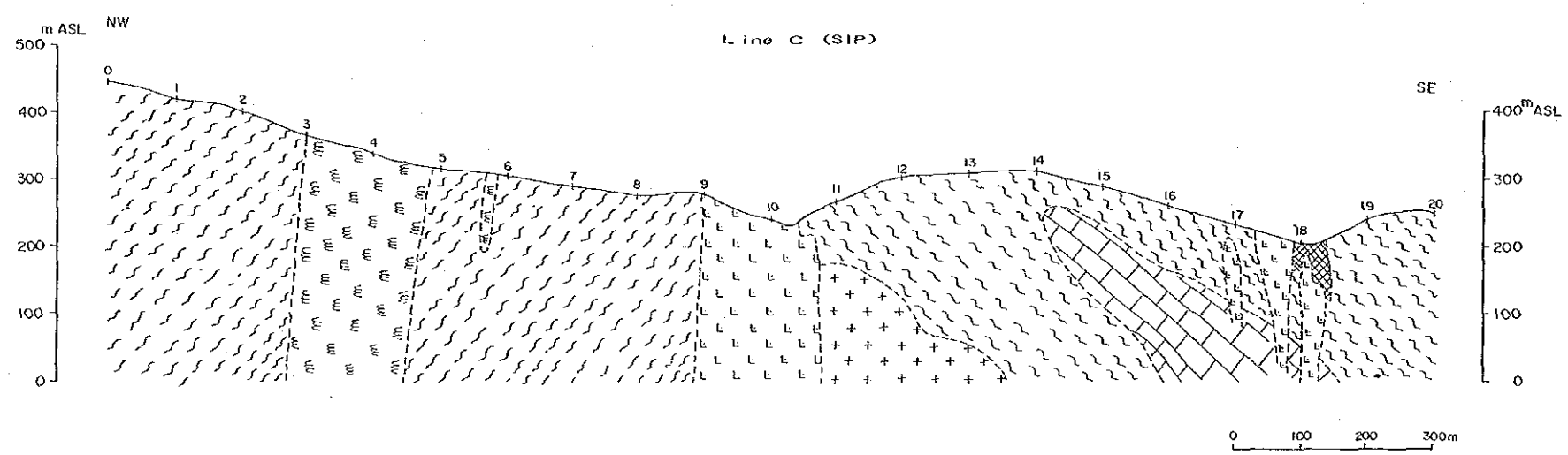


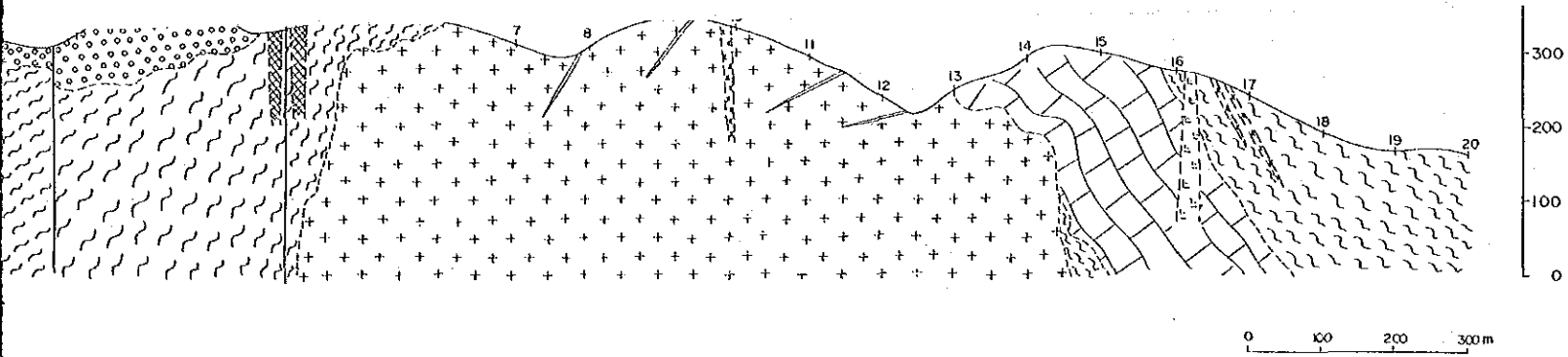
Line C (SIP)



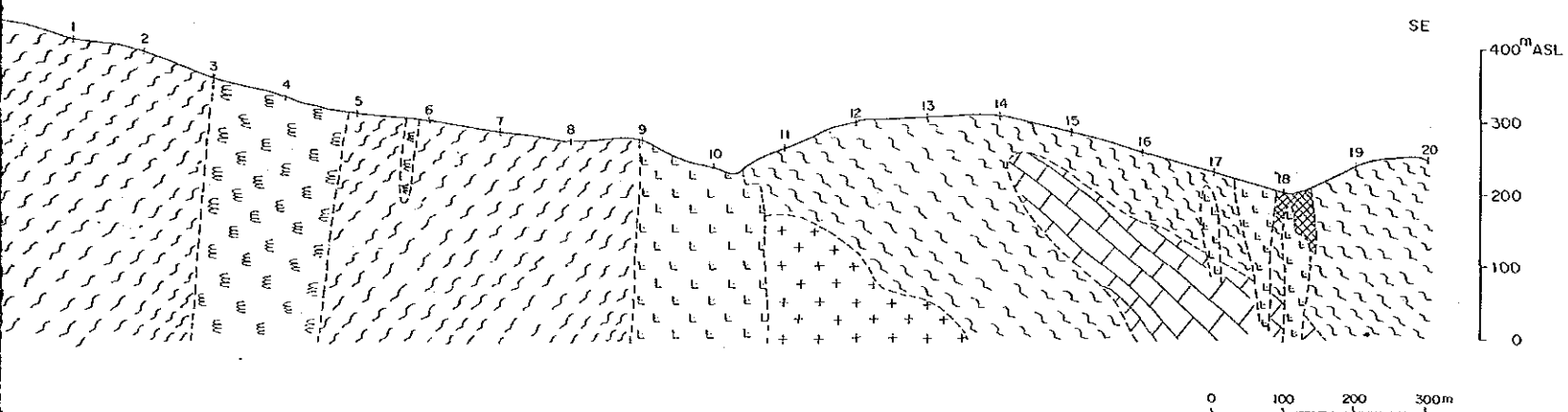


Pliocen
Eocene
Triassic

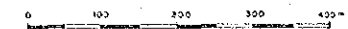
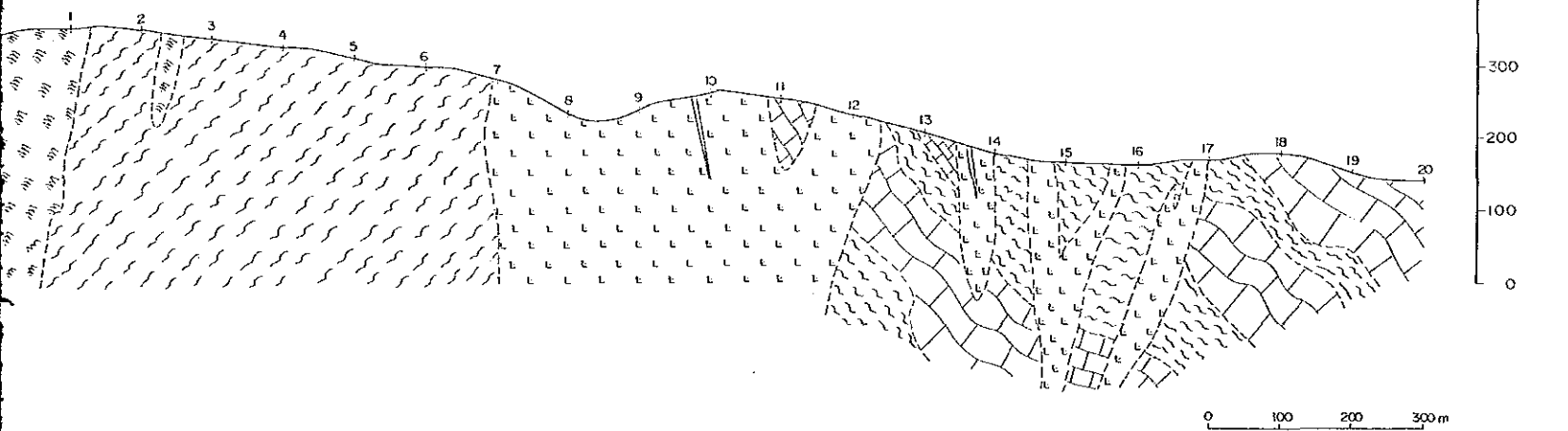




Line C (SIP)



Line D (IP)



LEGEND

- | | | | |
|-----------------|---------------------------|-----|--|
| Pliocene | Akkayrak Vol. | Pad | Dacite and dacitic tuff |
| Eocene | Karanlık F. (Kızıllık M.) | Ekc | Conglomerate |
| Triassic | Erneş F. | Rem | Marble |
| | | Rev | Meta-volcanics and meta-sediments |
| Intrusive rocks | | ap | Aplite |
| | | po | Porphyry |
| | | dg | Dikmen granite |
| | | se | Serpentinite |
| Mineralization | | | Dissemination and veinlet (Mo, Cp, Py) |
| | | | Skarn zone (Fe) |
| | | | Probable fault |
| | | | Strike and dip of bedding |
| | | | Strike and dip of schistosity |
| | | | Strike and dip of joint |
| | | | Quartz vein |
| | | | Trench |
| | | | Geophysical line (IP-SIP) |
| | | | Profile line |