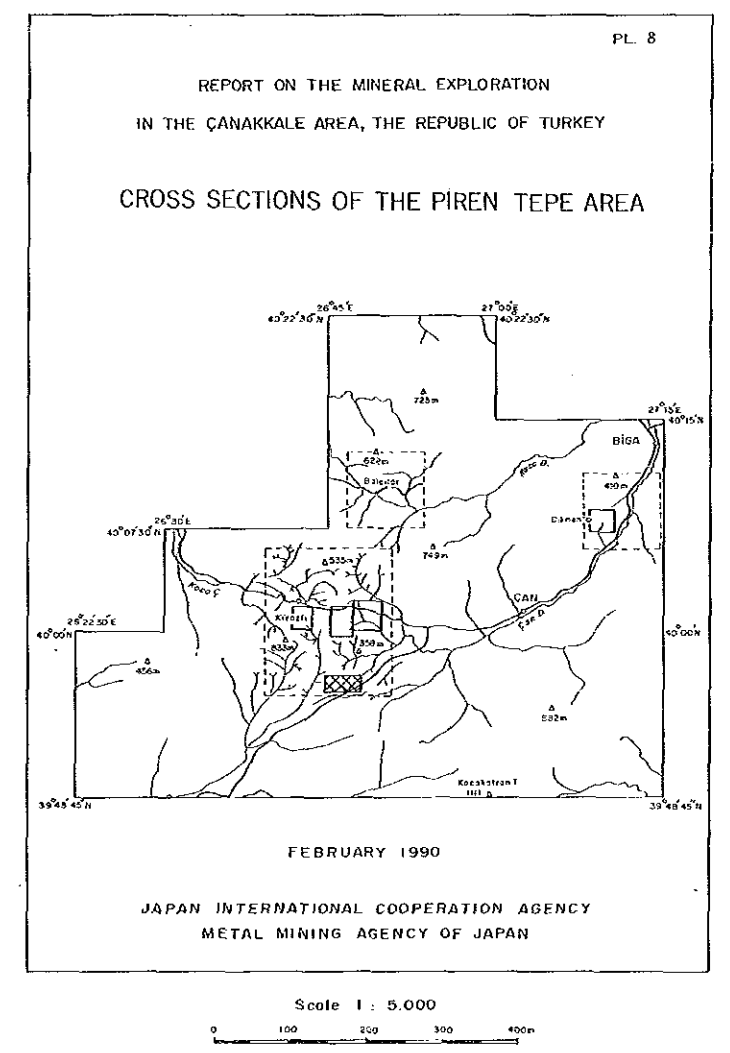


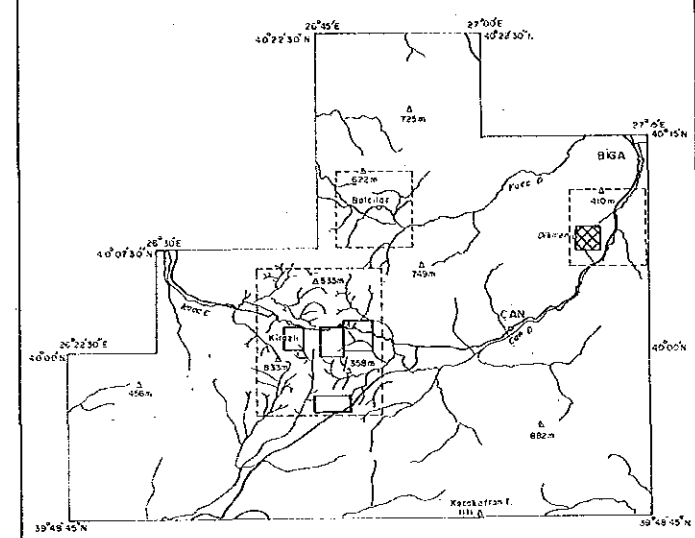
- LEGEND
- Miocene Sappı Vol. Andesite lava
  - Alteration Strongly silicified body
  - Silicified and argillized zone
  - Argillized zone





REPORT ON THE MINERAL EXPLORATION  
IN THE CANAKKALE AREA, THE REPUBLIC OF TURKEY

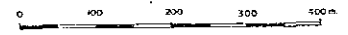
GEOLOGIC MAP OF THE DIKMEN AREA



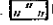
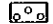
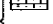
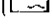
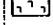
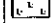
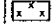


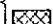


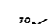




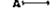
FEBRUARY 1990

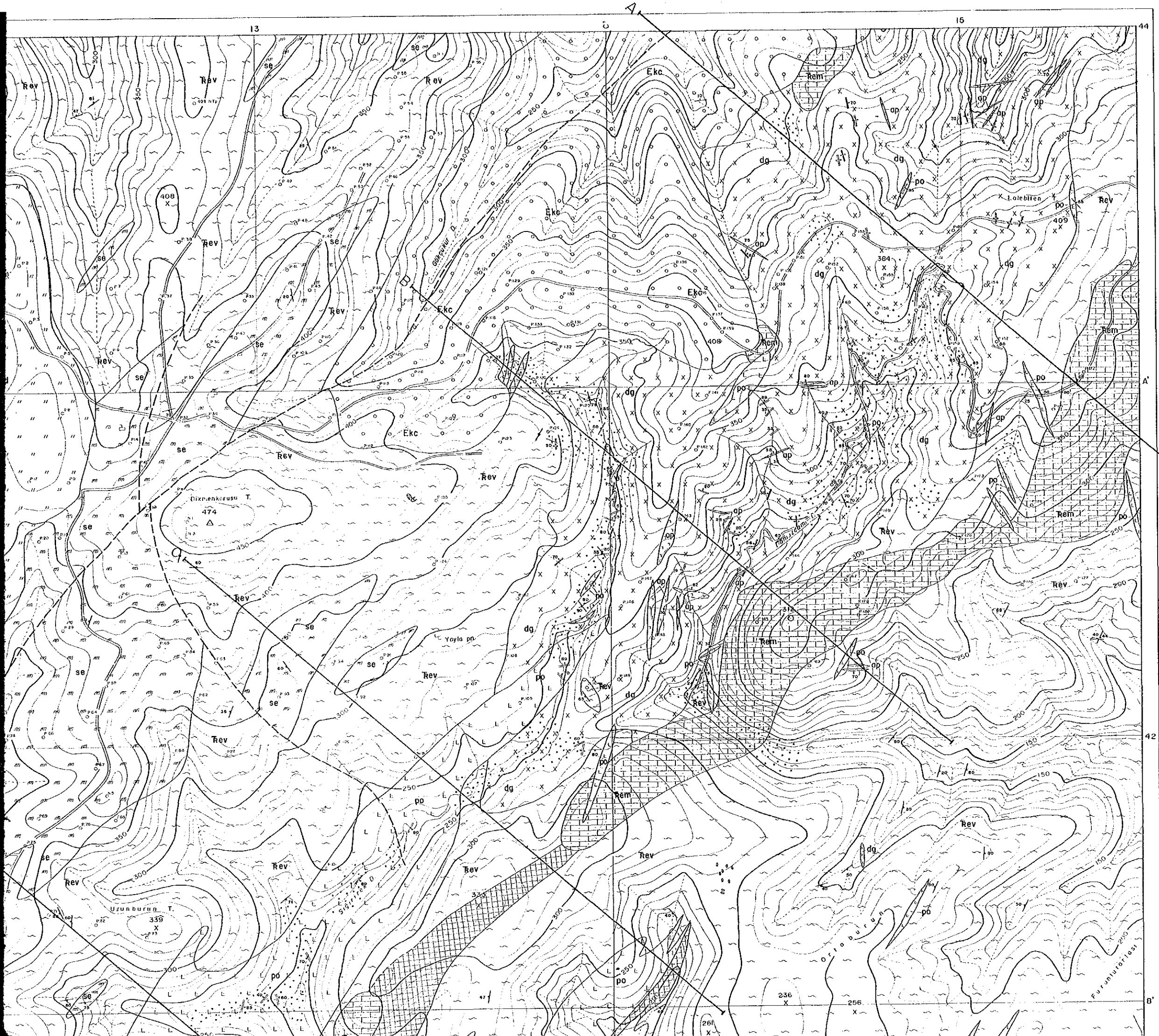
JAPAN INTERNATIONAL COOPERATION AGENCY  
METAL MINING AGENCY OF JAPAN

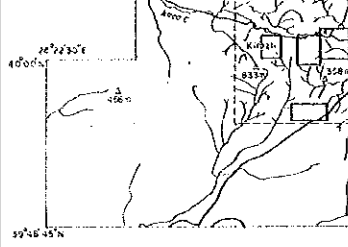
Scale 1 : 5,000



LEGEND

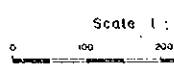
- Pliocene Akkoyrak Vol.  Pad Dacite and dacitic tuff
- Eocene Koranlık F. (Kızılcık M.)  Ekc Conglomerate
- Triassic Emeşe F.  Rem Marble
-  Rev Meta-volcanics and meta-sediments
- Intrusive rocks
  -  ap Aplite
  -  po Porphyry
  -  dg Dikmen granite
  -  se Serpentine
- Mineralization
  -  Dissemination and veinlet (Mo, Cp, Py)
  -  Skarn zone (Fe)
-  Probable fault
-  Strike and dip of bedding
-  Strike and dip of schistosity
-  Strike and dip of joint
-  Quartz vein
-  Trench
-  Geophisic line (1P-S1P)
-  Profile line





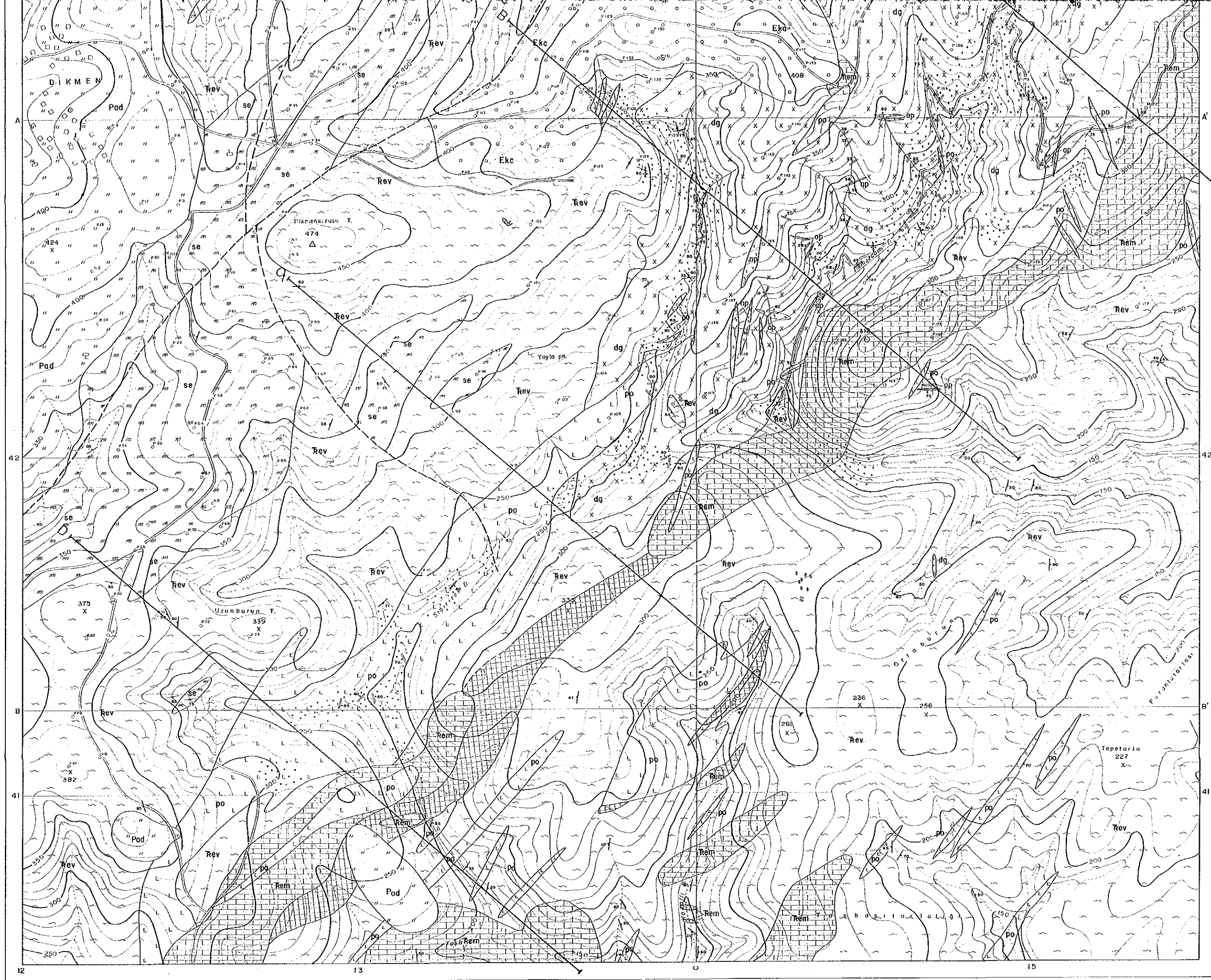
FEBRUARY

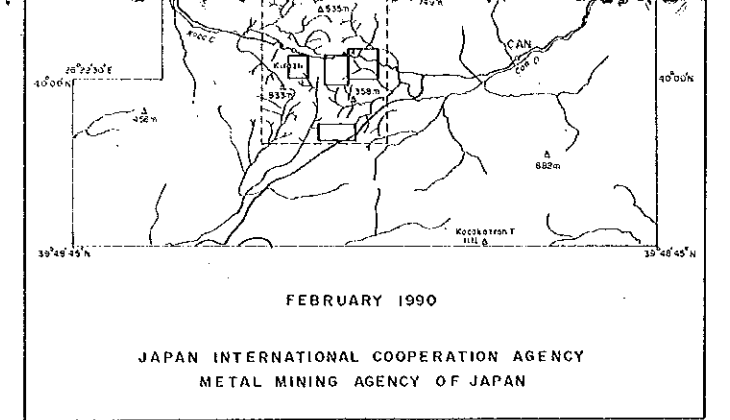
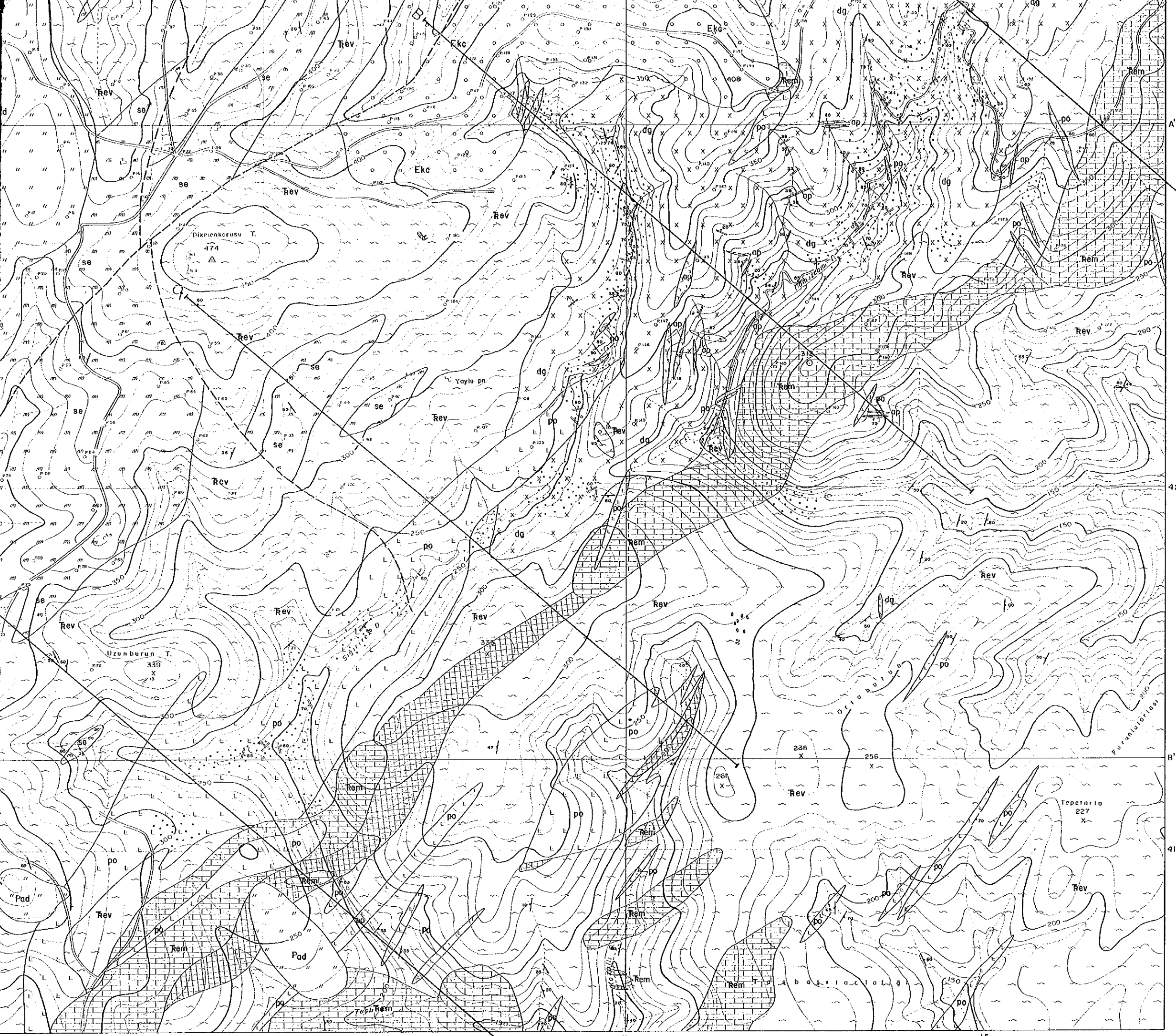
JAPAN INTERNATIONAL CO  
METAL MINING AGE



LEGEND

- Pliocene Akkoyrak Vol. Pad Da
- Eocene Karanik F. (Kizilcik M.) Ekc Cor
- Triassic Emeşe F. Rem Mo
- Intrusive rocks Rev Me
- Mineralization ap Ap
- po Pa
- dg Di
- se Se
- Ot
- Sk
- Pr
- St
- St
- St
- Qu
- Tr
- Ge
- Pr



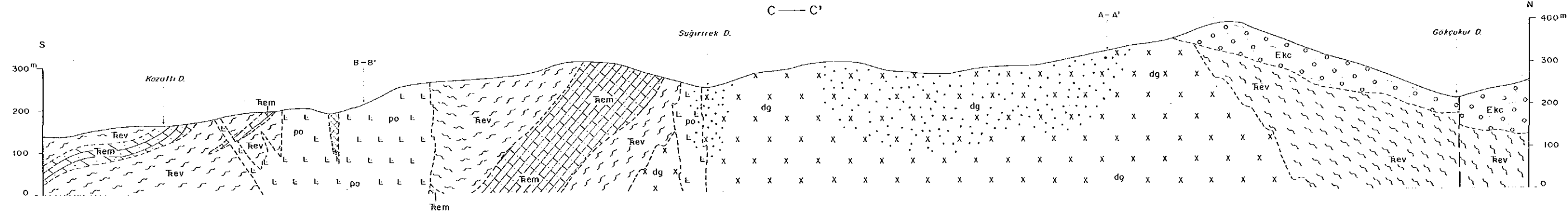
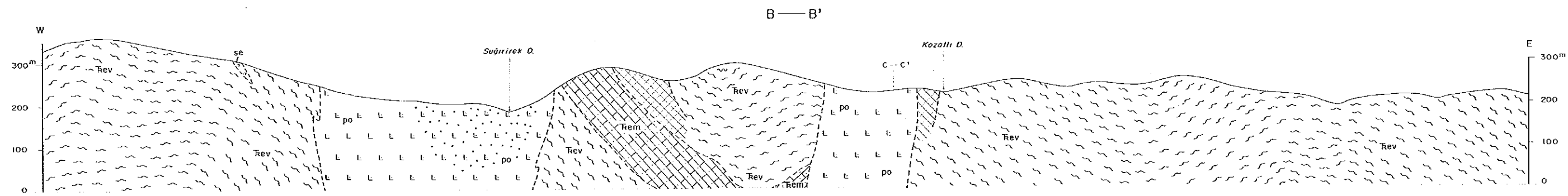
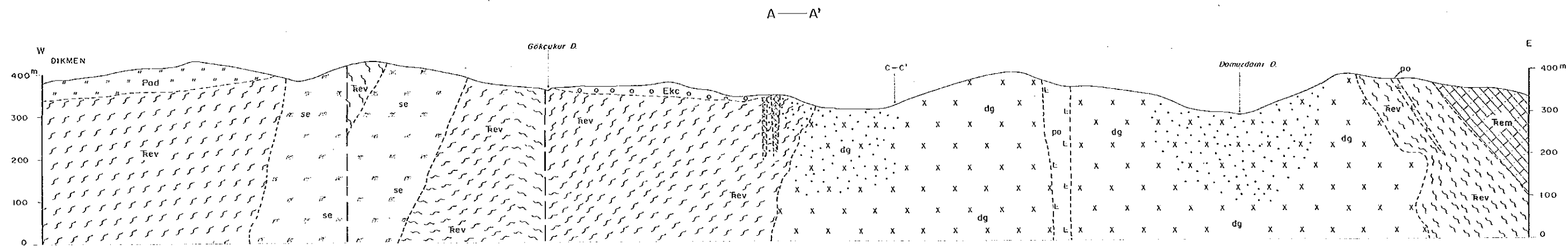


FEBRUARY 1990  
 JAPAN INTERNATIONAL COOPERATION AGENCY  
 METAL MINING AGENCY OF JAPAN

Scale 1 : 5,000  
 0 100 200 300 400m

**LEGEND**

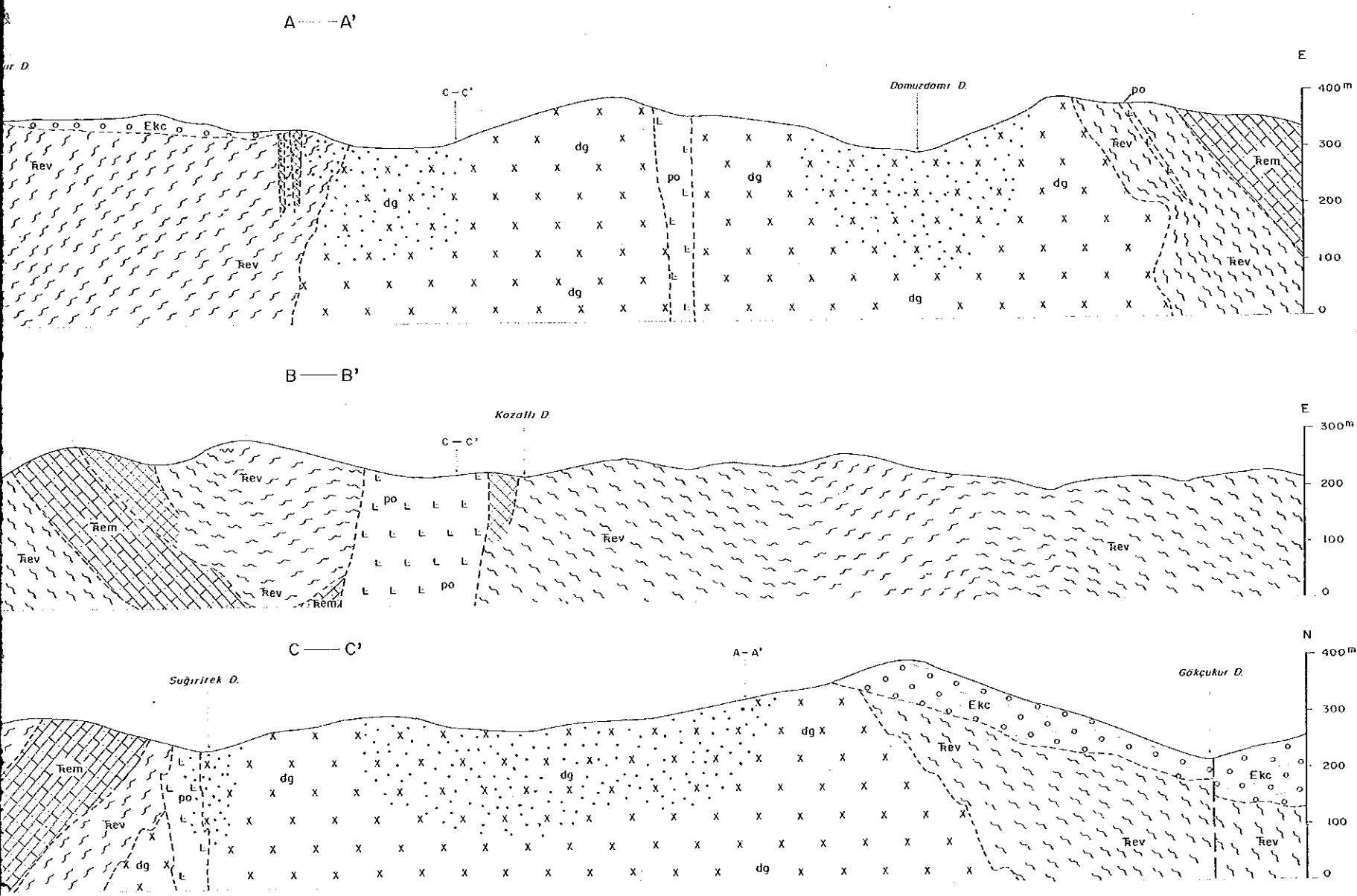
Pliocene	Akkayrak Vol.	Pad	Dacite and dacitic tuff
Eocene	Koranlık F. (Kızıllık M.)	Ekc	Conglomerate
Triassic	Emeşe F.	Rem	Marble
		Rev	Meta-volcanics and meta-sediments
		ap	Aplite
Intrusive rocks		po	Porphyry
		dg	Dikmen granite
		se	Serpentine
Mineralization			Dissemination and veinlet (Mo, Cp, Py)
			Skarn zone (Fe)
			Probable fault
			Strike and dip of bedding
			Strike and dip of schistosity
			Strike and dip of joint
			Quartz vein
			Trench
			Geophysics line (IP-SIP)
			Profile line



**LEGEND**

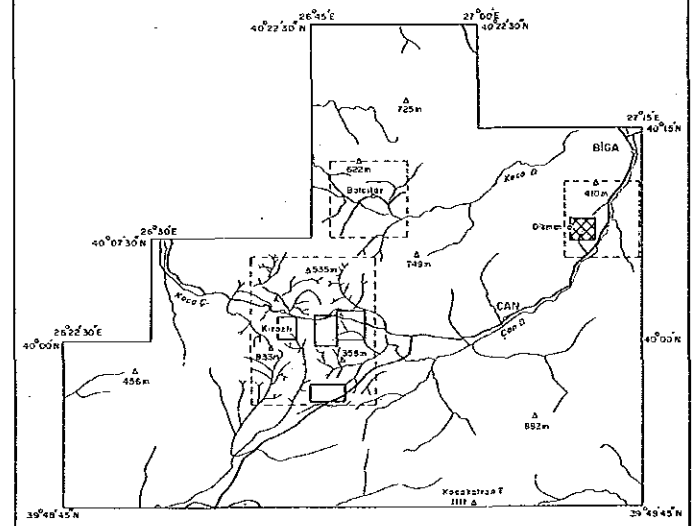
Pliocene	Akkayrak Vol.	Pad	Dacit
Eocene	Karanlık F. (Kızılçak M.)	Ekc	Cong.
Triassic	Emeşe F.	Rev	Mart.
		Rev	Meta.
		po	Porp.
Intrusive rocks		dg	Dikt.
		se	Serp.
Mineralization			Dissé.
			Skor.
			Prob.

REPORT ON THE MINERAL EXPLORATION  
IN THE ÇANAKKALE AREA, THE REPUBLIC OF TURKEY  
CROSS SECTIONS OF THE DİKMEN AREA



LEGEND

- Pliocene Akkayrak Vol. Pad Dacite and dacitic tuff
- Eocene Karanlık F. (Kızıltepe M.) Ekc Conglomerate
- Triassic Emeşe F. Rem Marble
- Rev Meta-volcanics and meta-sediments
- Intrusive rocks po Porphyry
- dg Dikmen granite
- se Serpentinite
- Mineralization Dissemination and veinlet (Mo, Cp, Py)
- Skarna zone (Fe)
- Probable fault

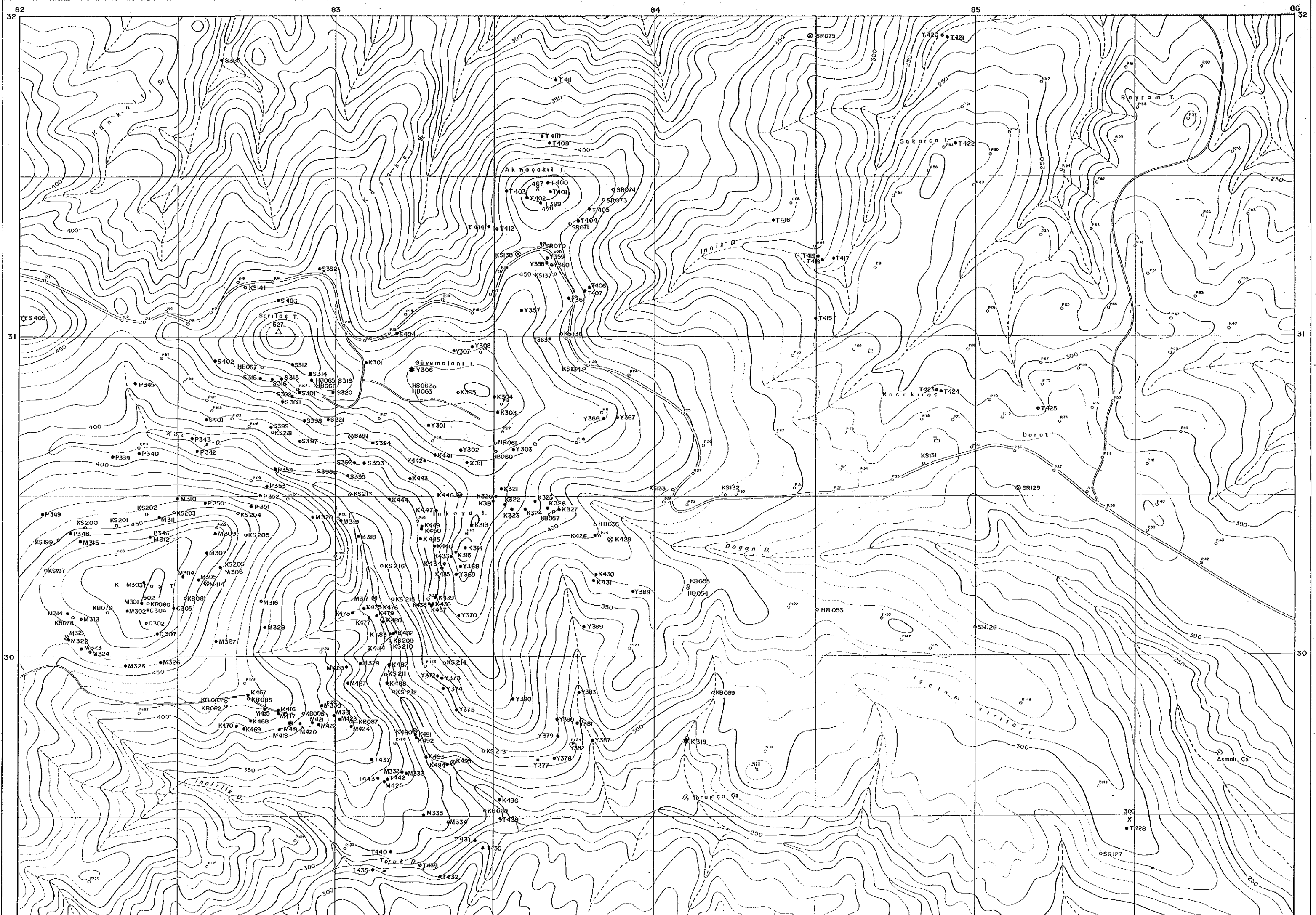


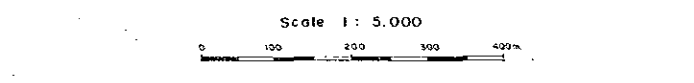
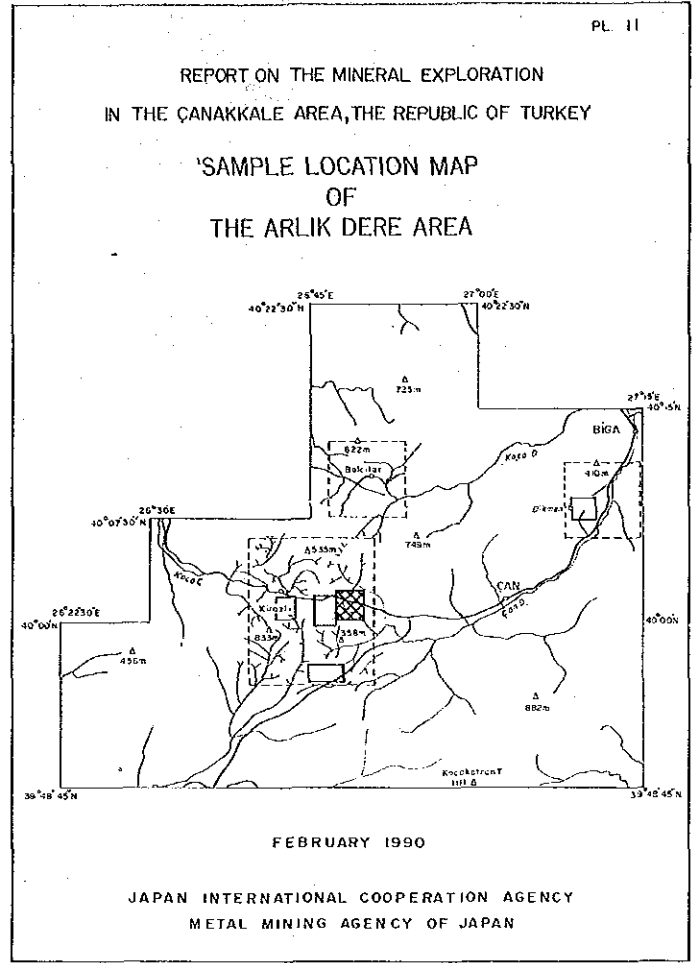
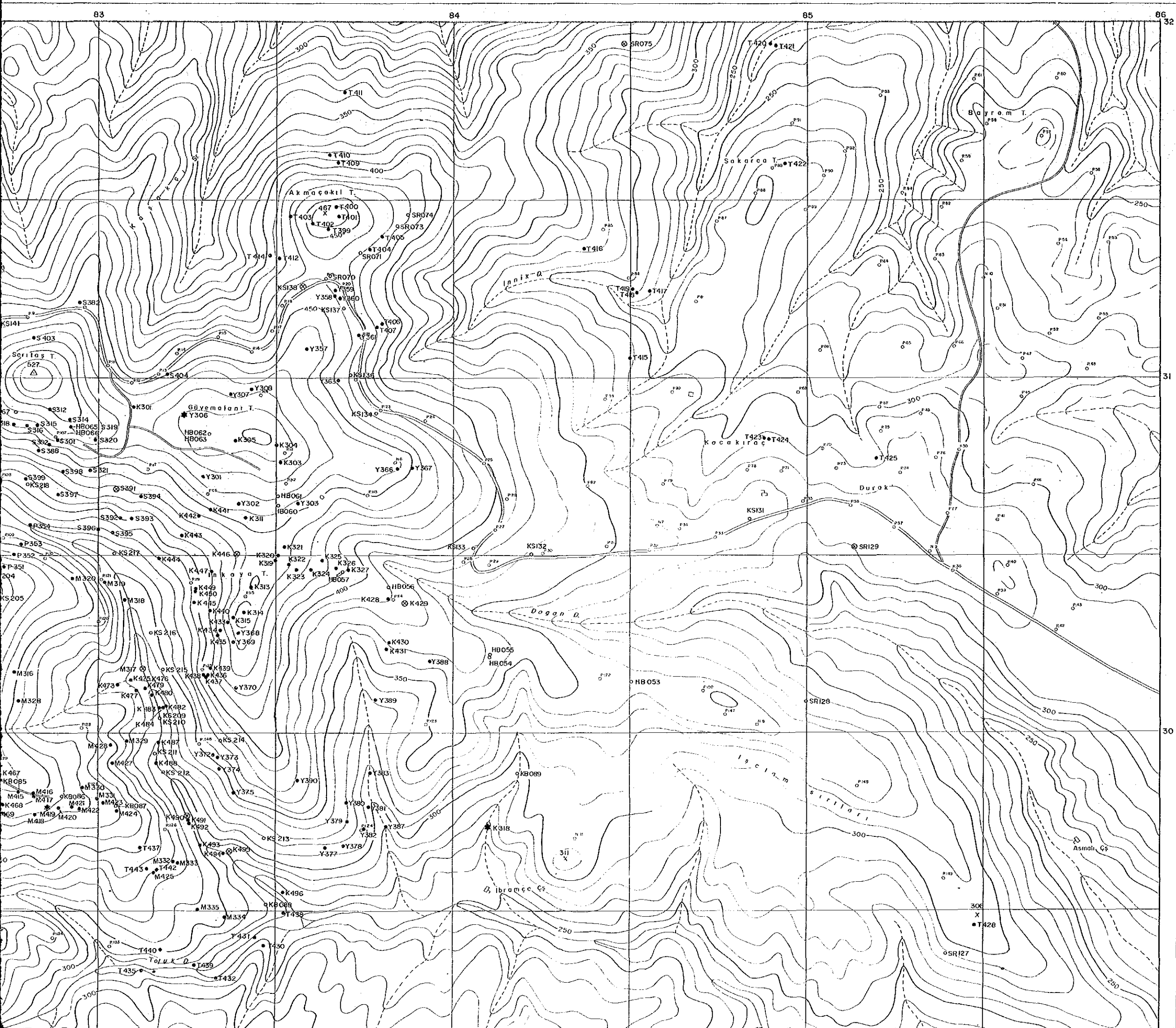
FEBRUARY 1990

JAPAN INTERNATIONAL COOPERATION AGENCY  
METAL MINING AGENCY OF JAPAN

Scale 1 : 5.000

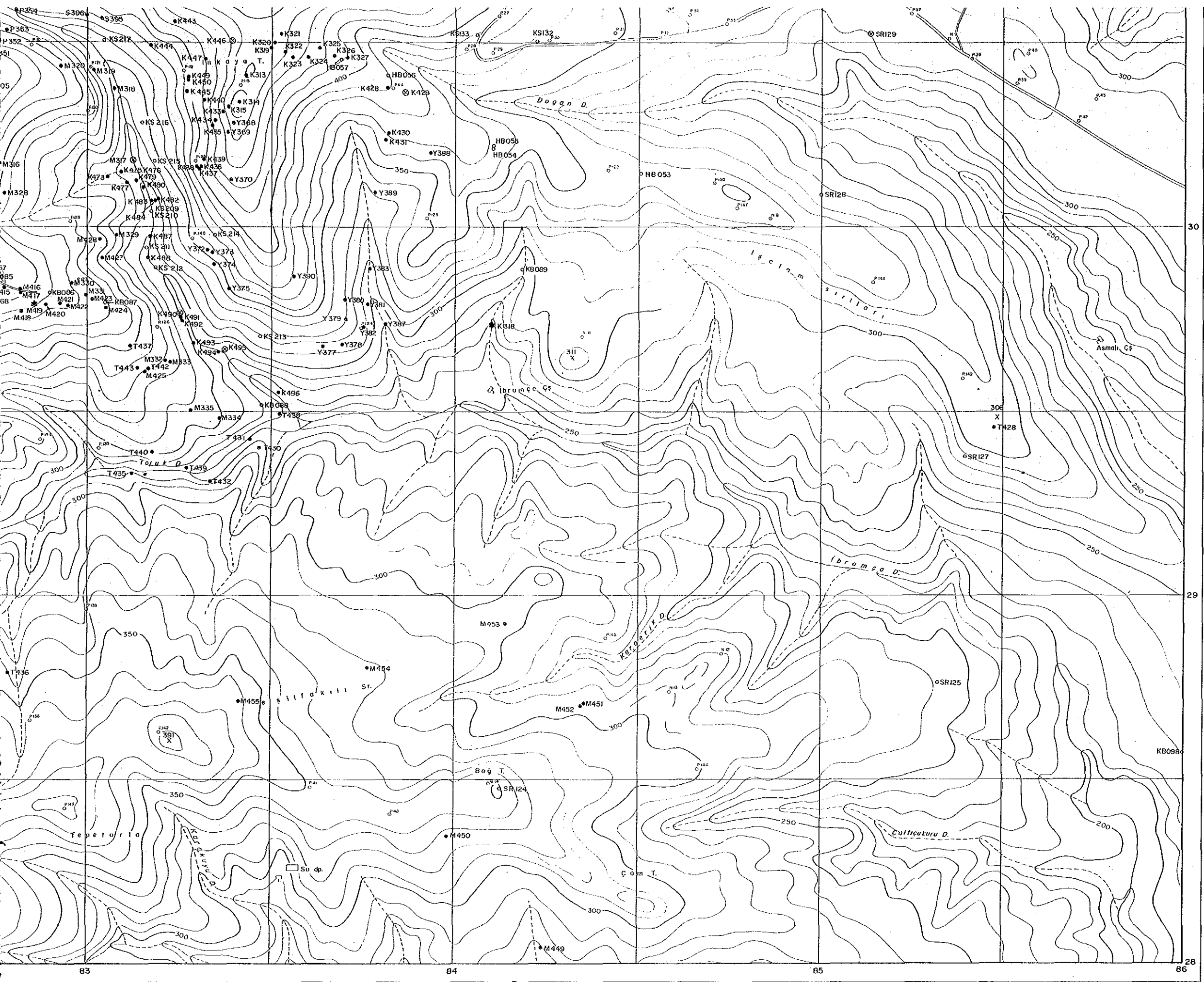






- LEGEND
- Chemical analysis of chip sample (Phase I)
  - Chemical analysis of chip sample (Phase II)
  - ⊗ X-ray diffractive analysis
  - ★ K/Ar isotopic age
  - ⊗ Chemical analysis of whole rock, chemical analysis of chip sample and thin section
  - ⊗ Chemical analysis of whole rock and thin section



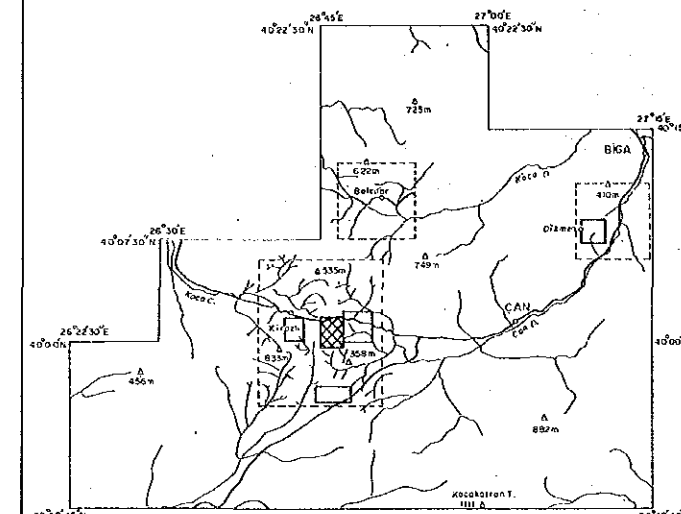


LEGEND

- Chemical analysis of chip sample (Phase I)
- Chemical analysis of chip sample (Phase II)
- ⊙ X-ray diffractive analysis
- ★ K/Ar isotopic age
- ⊛ Chemical analysis of whole rock, chemical analysis of chip sample and thin section
- ⊠ Chemical analysis of whole rock and thin section

REPORT ON THE MINERAL EXPLORATION  
IN THE ÇANAKKALE AREA, THE REPUBLIC OF TURKEY

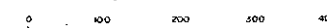
SAMPLE LOCATION MAP  
OF  
THE KARABRAHİMLER AREA



FEBRUARY 1990

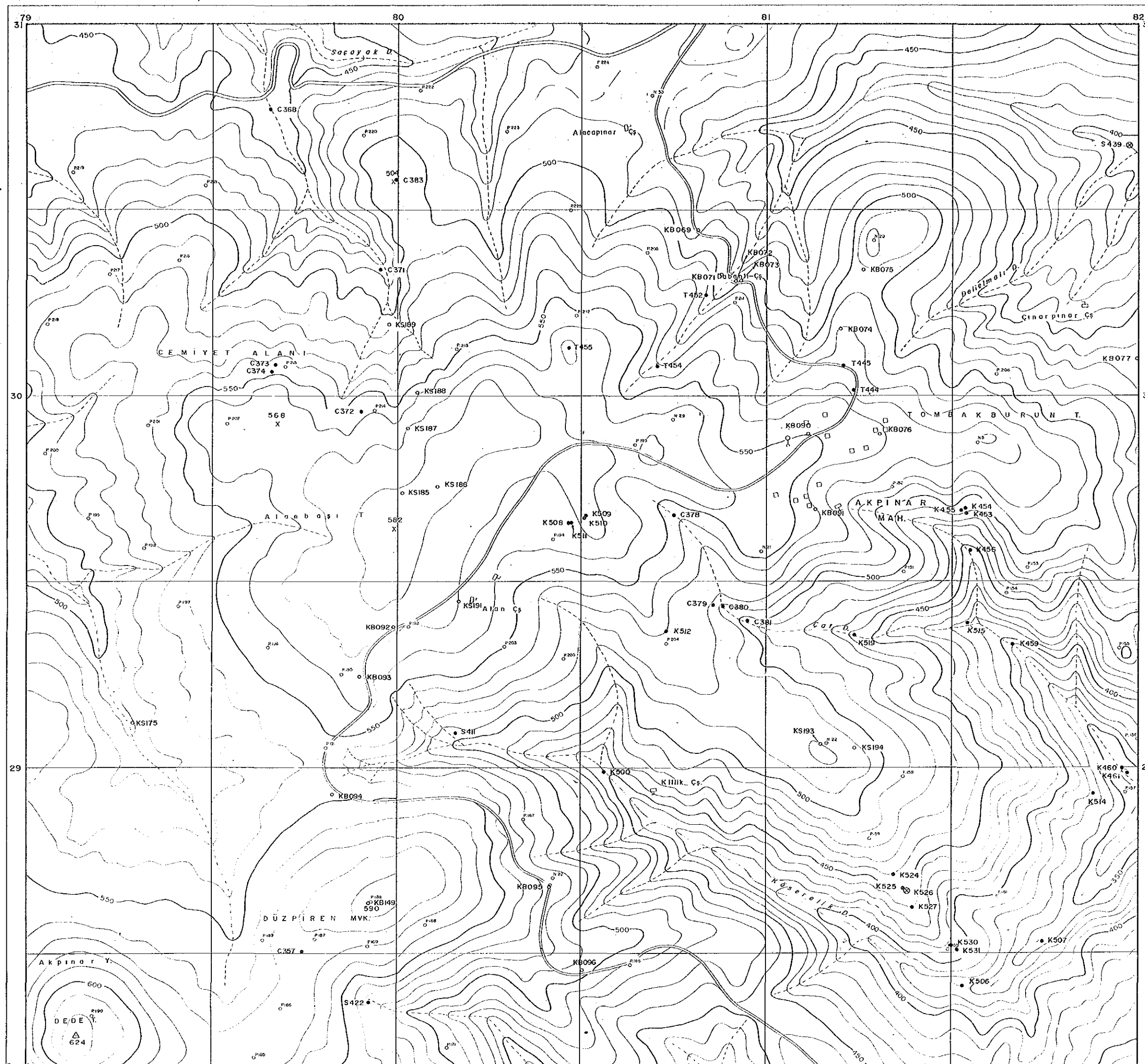
JAPAN INTERNATIONAL COOPERATION AGENCY  
METAL MINING AGENCY OF JAPAN

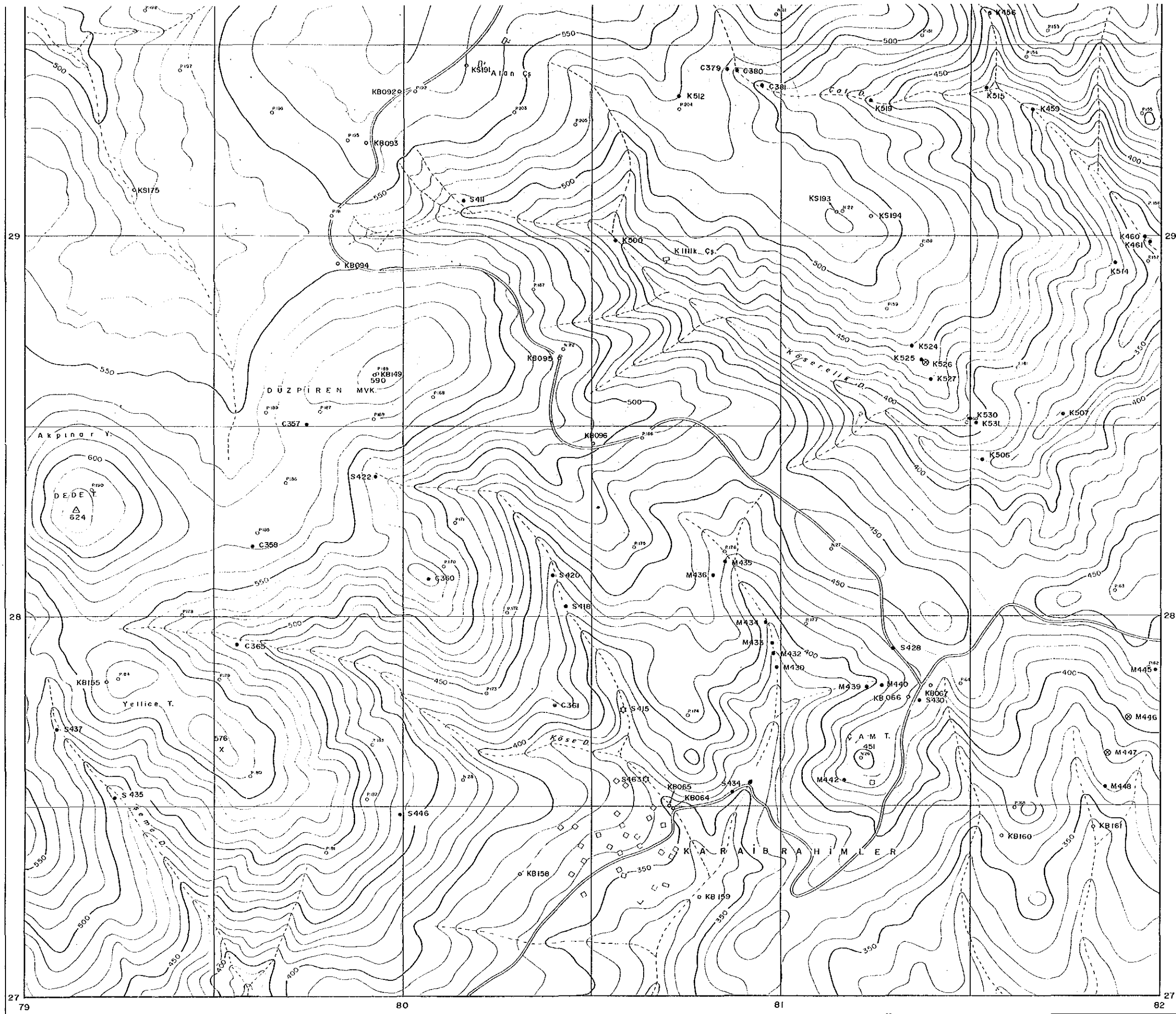
Scale 1 : 5,000



LEGEND

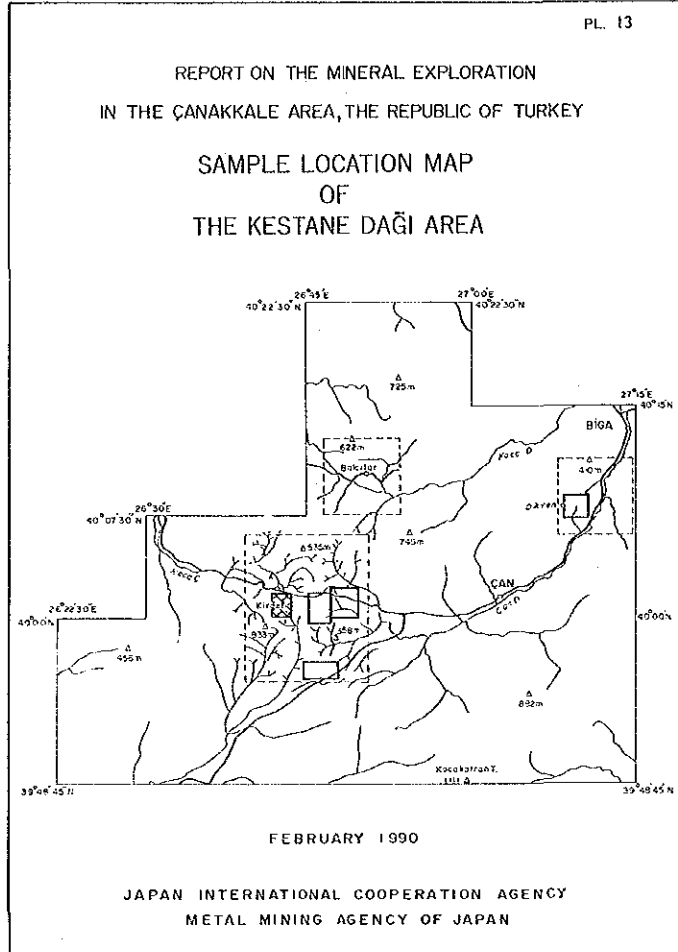
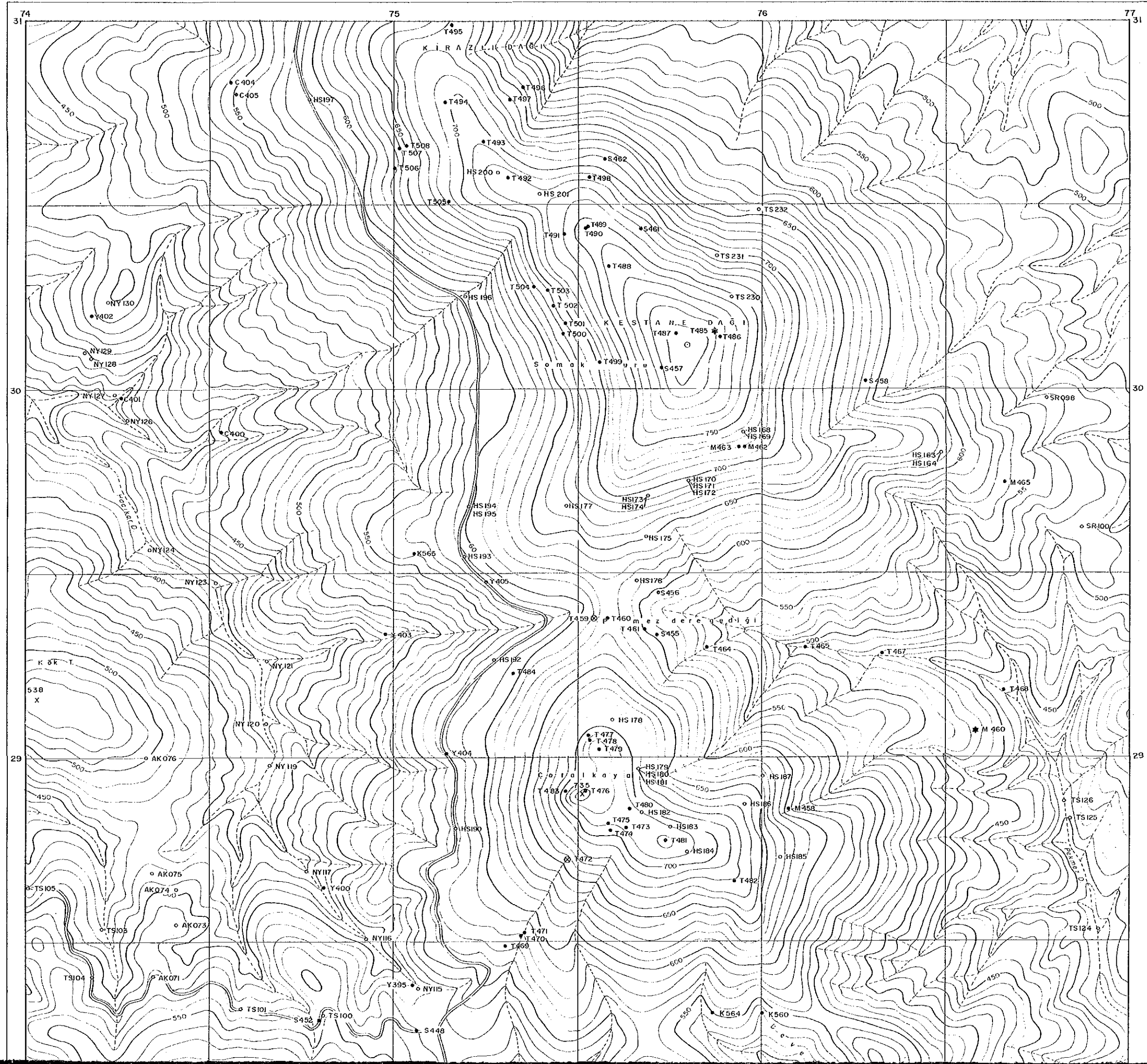
- Chemical analysis of chip sample (Phase I)
- Chemical analysis of chip sample (Phase II)
- ⊗ X-ray diffractive analysis
- ☆ Chemical analysis of whole rock and thin section



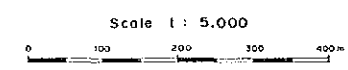
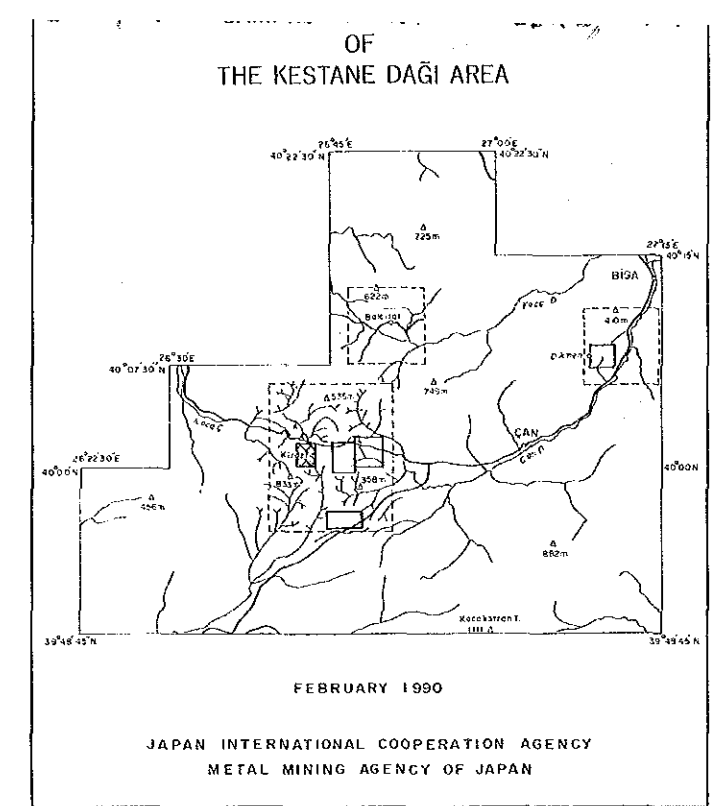
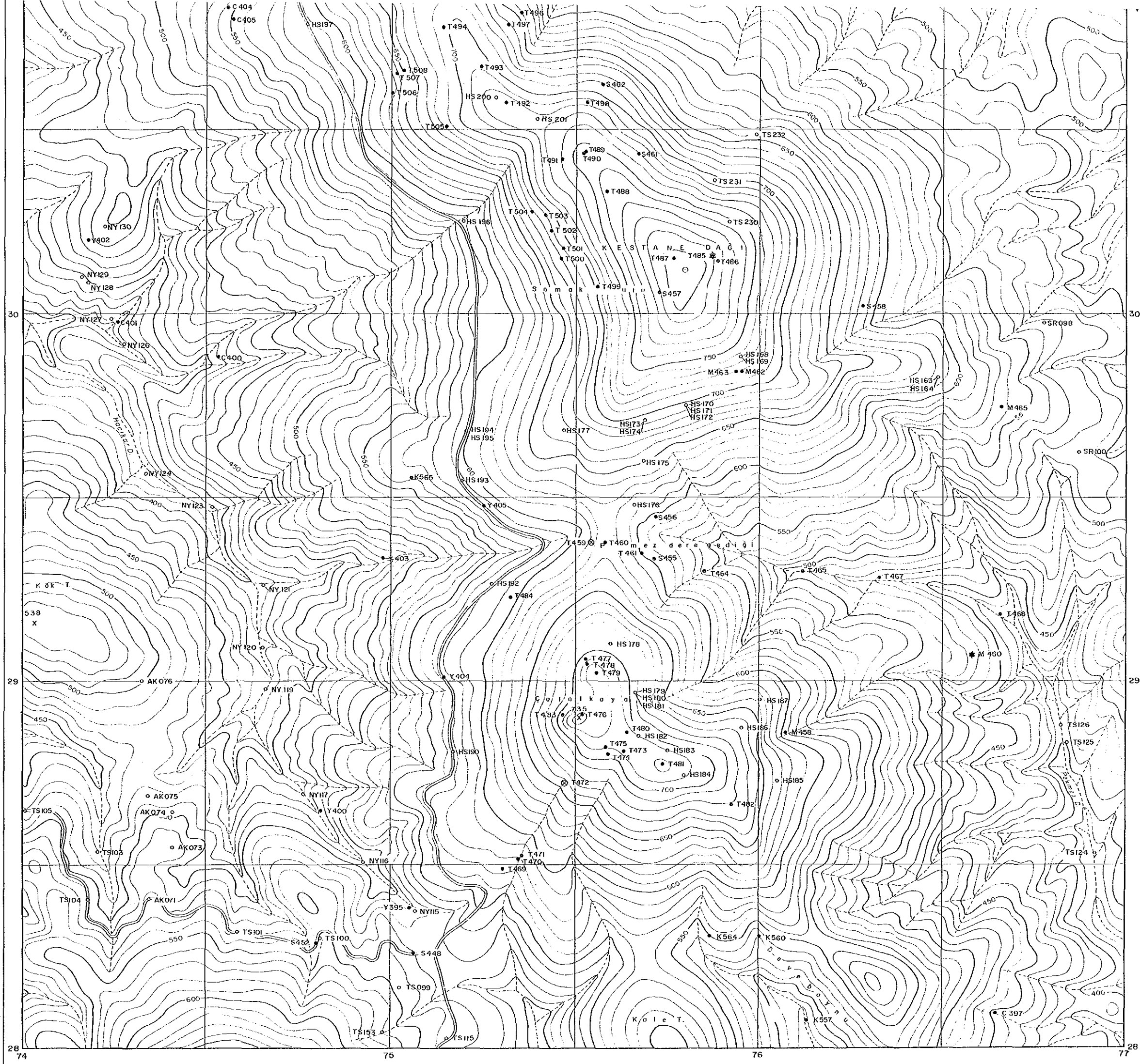


LEGEND

- Chemical analysis of chip sample (Phase I)
- Chemical analysis of chip sample (Phase II)
- ⊗ X-ray diffractive analysis
- ⊛ Chemical analysis of whole rock and thin section



- LEGEND**
- Chemical analysis of chip sample (Phase I)
  - Chemical analysis of chip sample (Phase II)
  - ⊗ X-ray diffractive analysis
  - ⊛ Chemical analysis of whole rock, chemical analysis of chip sample and thin section
  - ★ Chemical analysis of whole rock, x-ray diffractive analysis and thin section



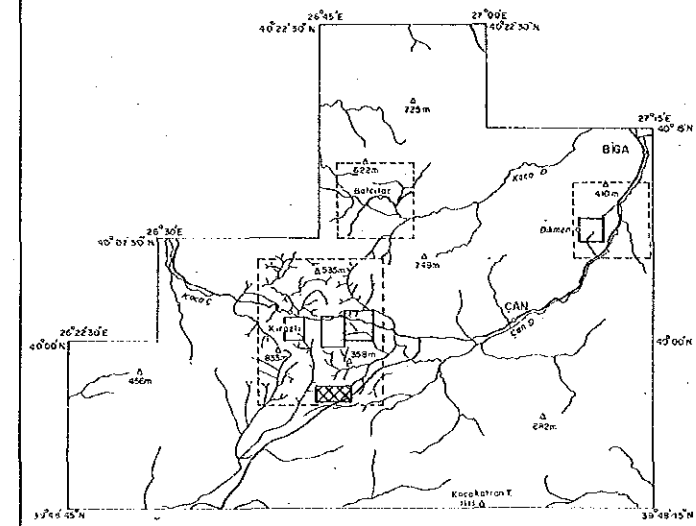
- LEGEND
- Chemical analysis of chip sample (Phase I)
  - Chemical analysis of chip sample (Phase II)
  - ⊗ X-ray diffractive analysis
  - ⊛ Chemical analysis of whole rock, chemical analysis of chip sample and thin section
  - ★ Chemical analysis of whole rock, x-ray diffractive analysis and thin section





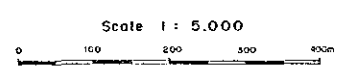
REPORT ON THE MINERAL EXPLORATION  
IN THE ÇANAKKALE AREA, THE REPUBLIC OF TURKEY

SAMPLE LOCATION MAP  
OF  
THE PİREN TEPE AREA



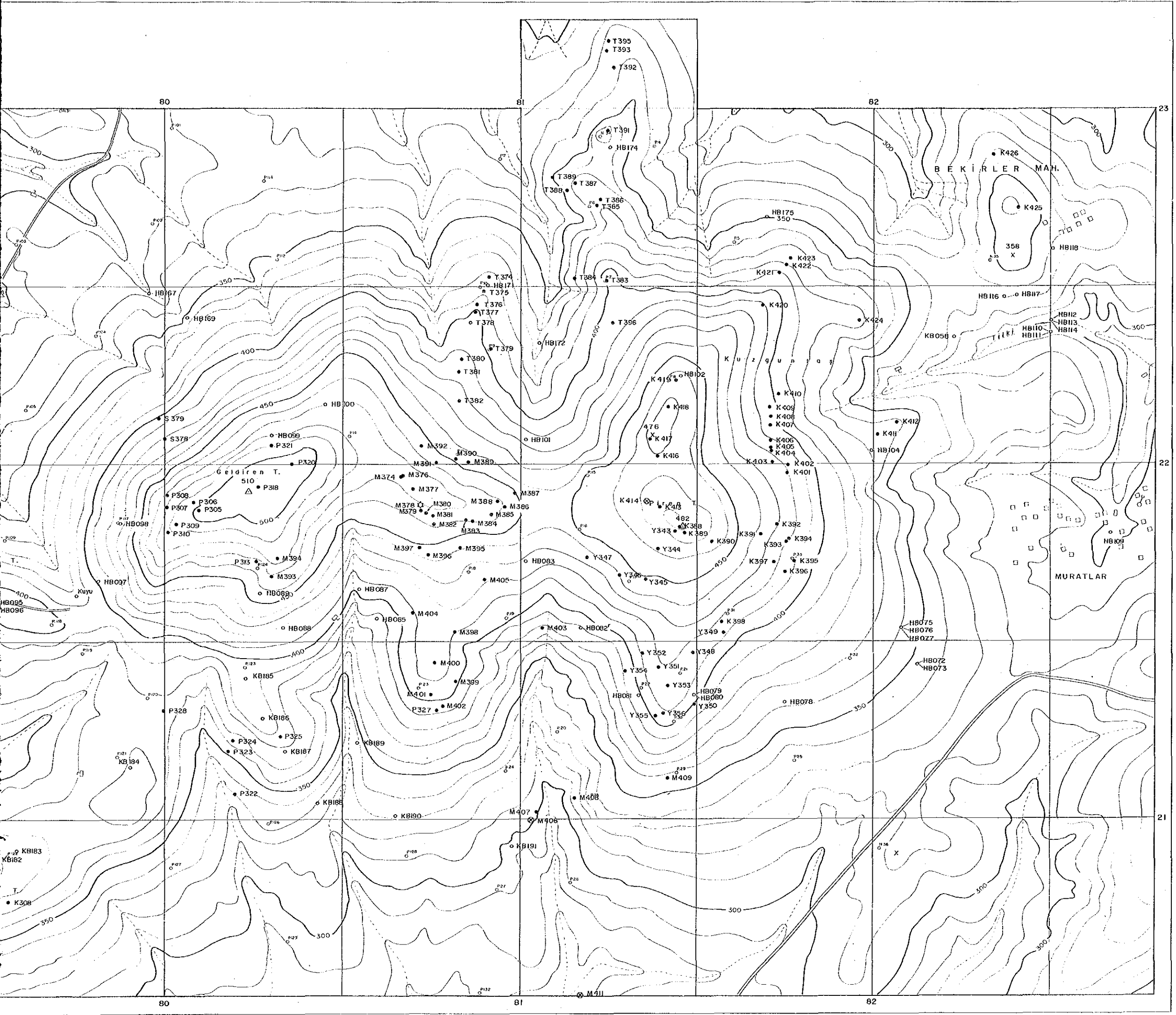
FEBRUARY 1990

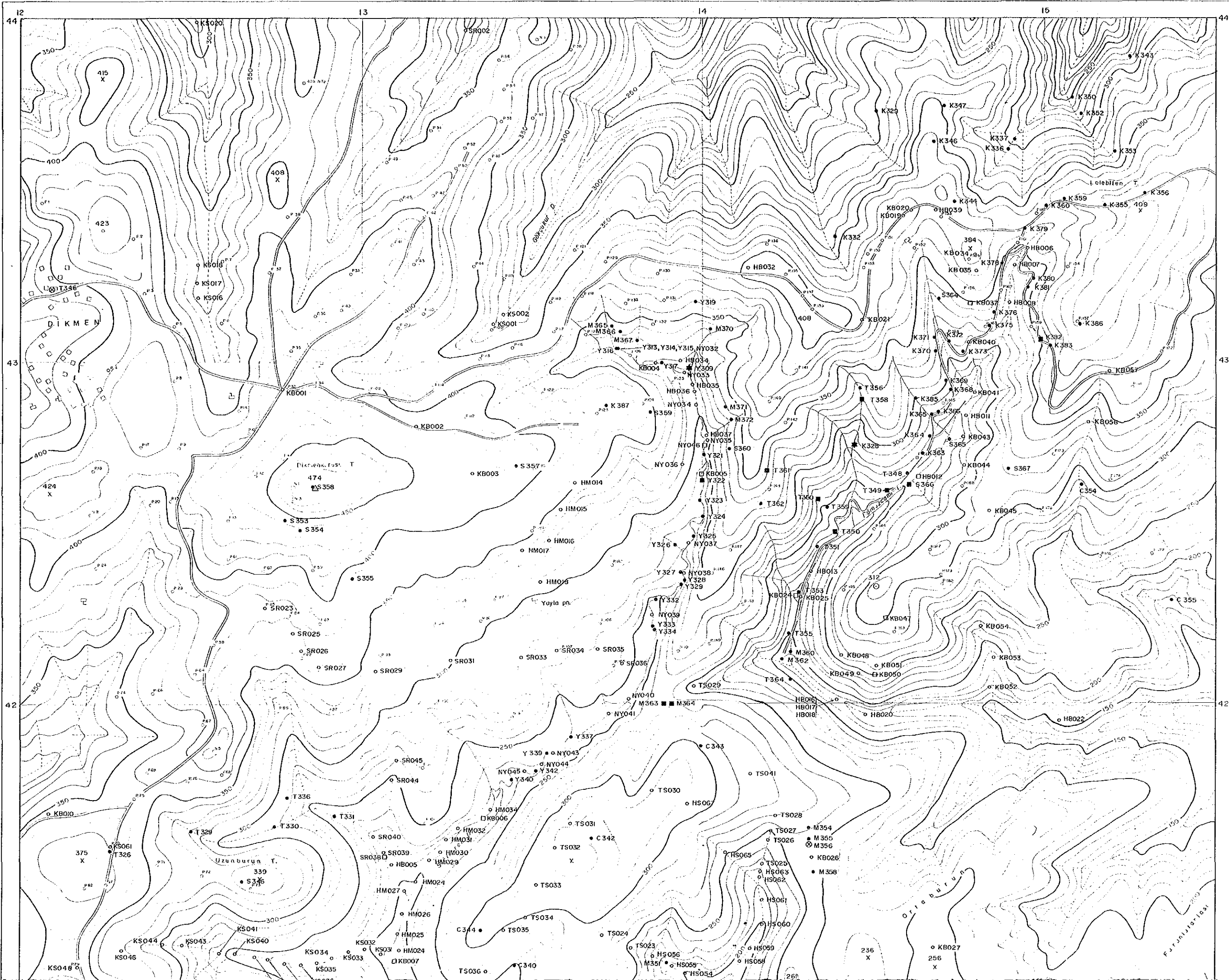
JAPAN INTERNATIONAL COOPERATION AGENCY  
METAL MINING AGENCY OF JAPAN



LEGEND

- Chemical analysis of chip sample (Phase I)
- Chemical analysis of chip sample (Phase II)
- ⊙ Chemical analysis of chip sample (Phase II) and X-ray diffractive analysis
- ⊗ X-ray diffractive analysis
- ☆ Chemical analysis of whole rock and thin section





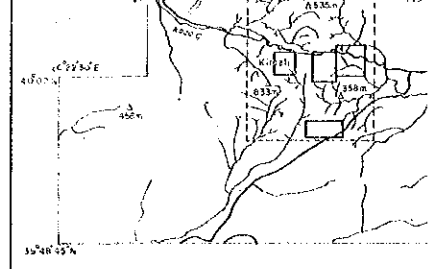
REPORT ON THE MINERAL EXPLORATION  
 IN THE ÇANAKKALE AREA, THE REPUBLIC OF TURKEY  
 SAMPLE LOCATION MAP OF THE DİKMEN AREA

FEBRUARY 1990  
 JAPAN INTERNATIONAL COOPERATION FOR SCIENTIFIC AND TECHNICAL ASSISTANCE  
 METAL MINING AGENCY OF JAPAN

Scale 1 : 5,000

- LEGEND
- Chemical analysis of chip sample (Phase I)
  - Chemical analysis of chip sample (Phase II)
  - Chemical analysis of ore mineral (Phase I)
  - Chemical analysis of ore mineral and polished section
  - ⊗ X-ray diffractive analysis
  - ★ K/Ar isotopic age, chemical analysis of whole rock and thin section

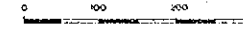




FEBRUARY 1990

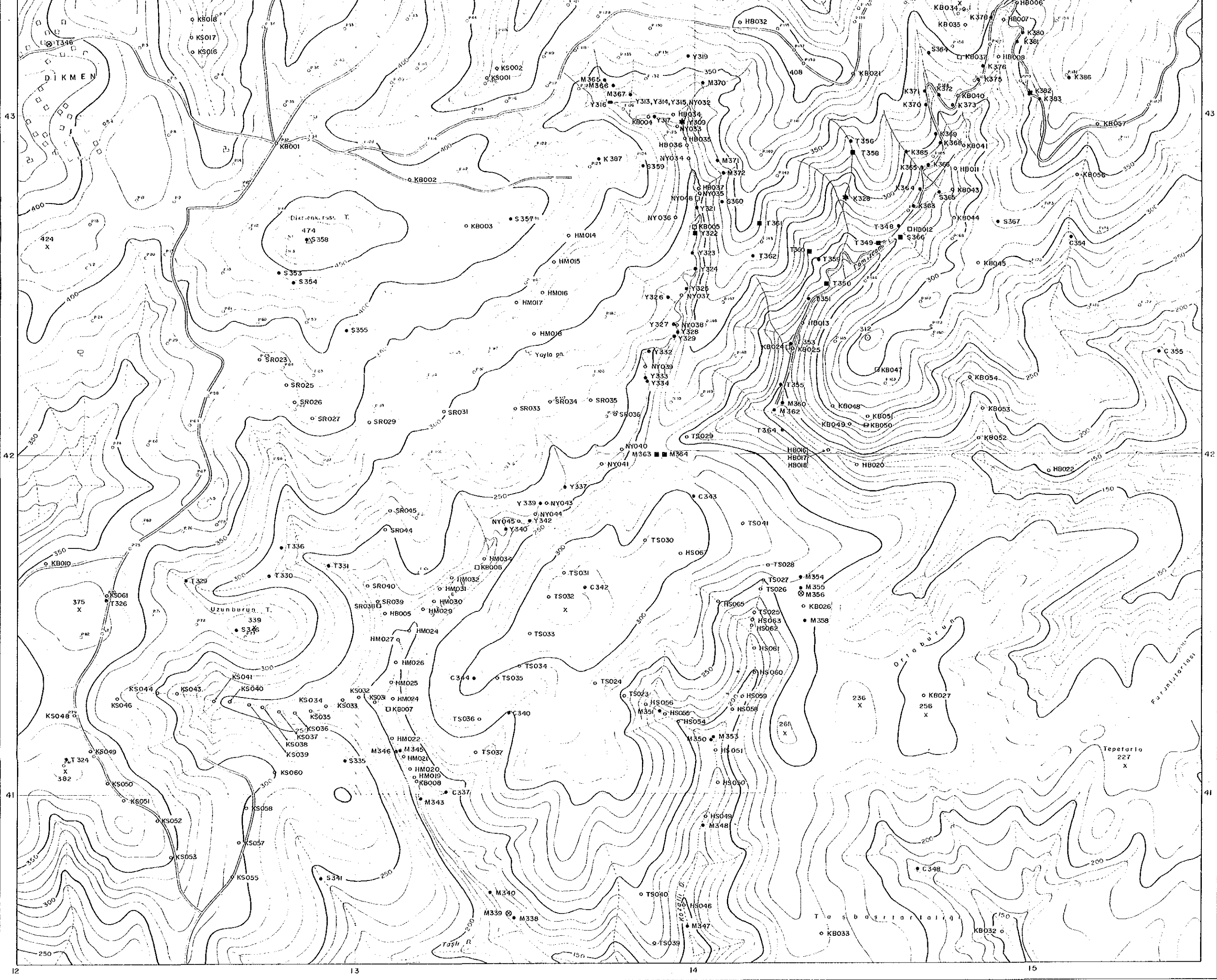
JAPAN INTERNATIONAL COOPER  
METAL MINING AGENCY (C)

Scale 1 : 5,000

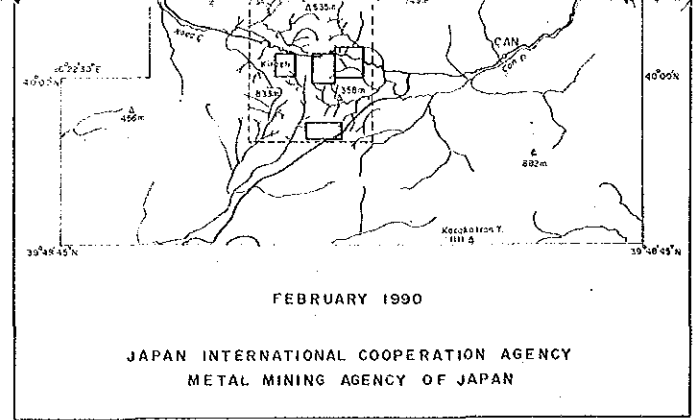
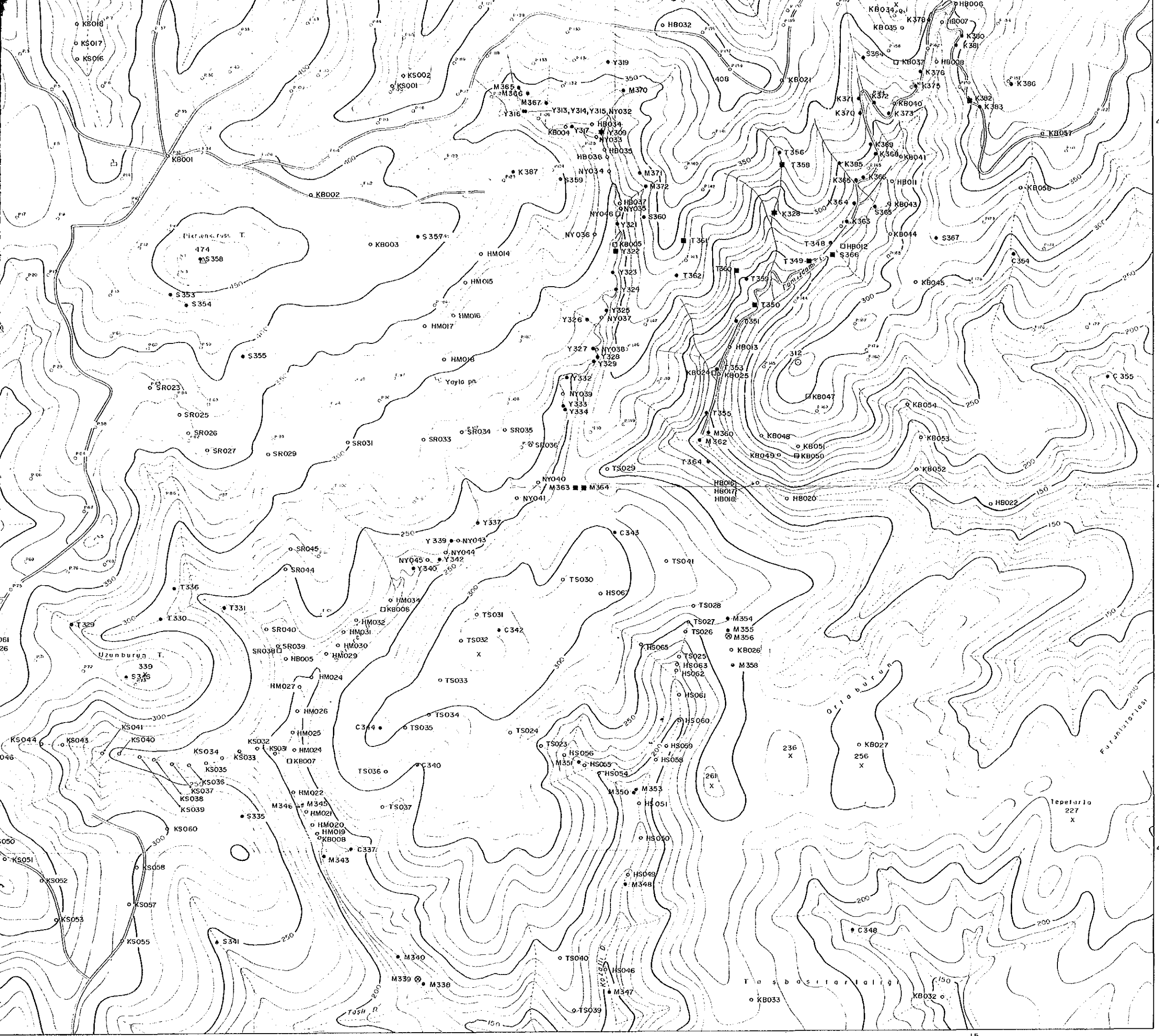


LEGEND

- Chemical analysis of chip sample (Phase)
- Chemical analysis of chip sample (Phase)
- Chemical analysis of ore mineral (Phase)
- Chemical analysis of ore mineral and po
- ⊗ X-ray diffractive analysis
- ★ K/Ar isotopic age, chemical analysis of w and thin section



12 13 14 15



FEBRUARY 1990  
 JAPAN INTERNATIONAL COOPERATION AGENCY  
 METAL MINING AGENCY OF JAPAN



- LEGEND
- Chemical analysis of chip sample (Phase I)
  - Chemical analysis of chip sample (Phase II)
  - Chemical analysis of ore mineral (Phase I)
  - Chemical analysis of ore mineral and polished section (Phase II)
  - ⊗ X-ray diffractive analysis
  - ★ K/Ar isotopic age, chemical analysis of whole rock and thin section