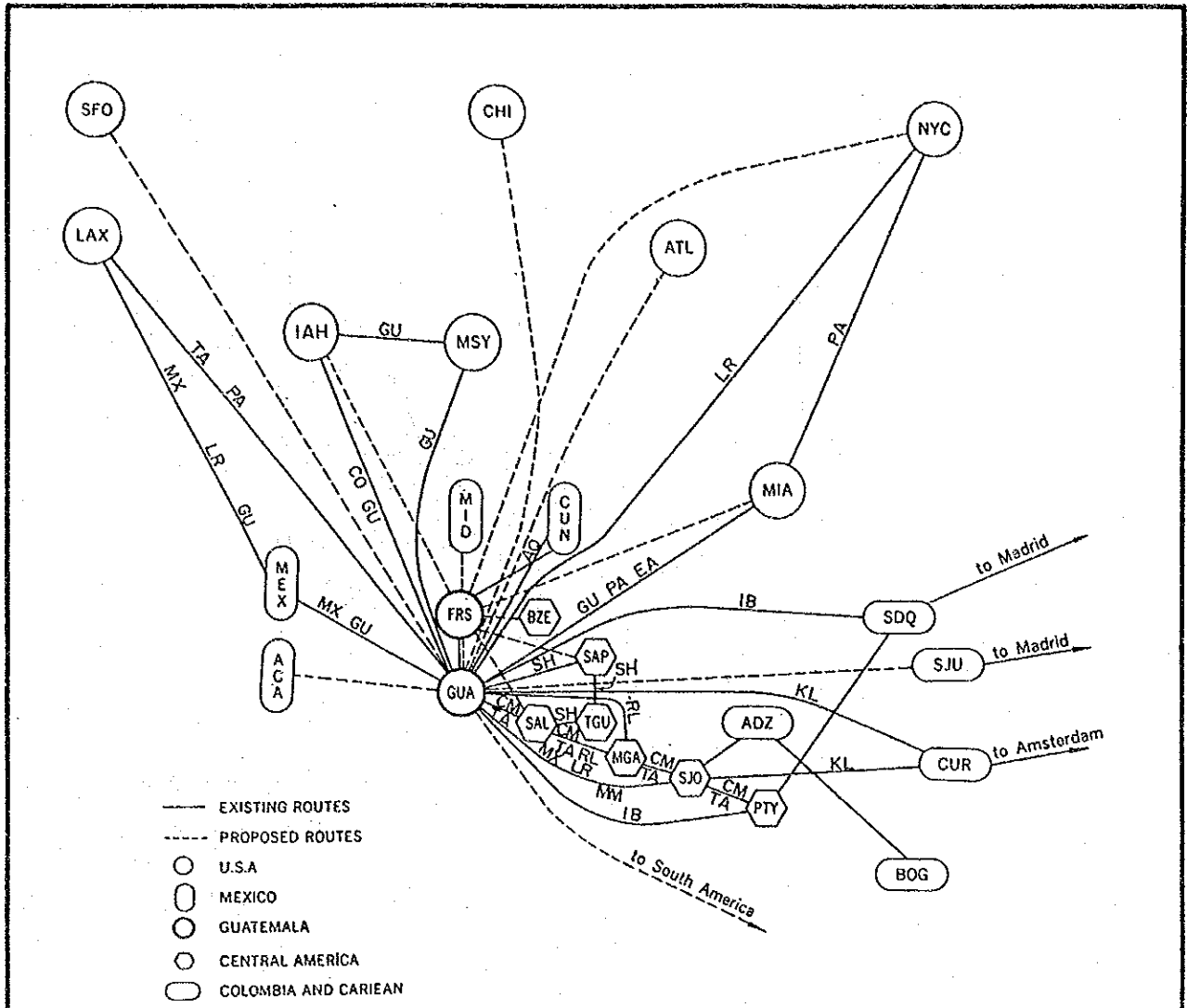


FIGURAS

Lista de las Figuras

			<u>Página</u>
Figura	2-1	Rutas Aéreas Internacional de Guatemala-----	F-1
	2-2	Principal Red de Transporte en Guatemala-----	F-2
Figura	3-1	Pronósticos del Tráfico Aéreo -----	F-3
	3-2	Operaciones Horarios de Aeronaves -----	F-4
Figura	4-1	Rosa de los Vientos en La Aurora-----	F-5
	4-2	Perfil de la Pista de Aterrizaje-----	F-6
	4-3	Obstáculos Existentes del Aeropuerto La Aurora-----	F-7
	4-4	Datos de Vuelo Actuales de La Aurora-----	F-8
	4-5	Operaciones del Tránsito Aéreo en la Plataforma-----	F-9
	4-6	Organigrama de la DGAC-----	F-10
	4-7	Organigrama de Terminal Aérea de La Aurora-----	F-11
Figura	5-1	Cruce para EAT en la Pasarela Central-----	F-12
	5-2	Sistema de la Agrupación de Equipaje-----	F-13
	5-3	Diagrama de Bloque del Sistema de Suministro de Energía-----	F-14
	5-4	Disposición General del Cuarto de Suministro de Energía-----	F-15
	5-5	Sistema de las Instalaciones para la Navegación Aérea-----	F-16
	5-6	Diagrama del Sistema de Radar-----	F-17
	5-7	Carta de Cobertura de ASR/SSR-----	F-18
	5-8	Carta de Cobertura de VOR, No. 1-----	F-19
	5-9	Carta de Cobertura de VOR, No. 2-----	F-20
	5-10	Disposición General de las Instalaciones fuera del Aeródromo-----	F-21
	5-11	Poste de la Iluminación de Plataforma-----	F-22
	5-12	Diagrama Esquemático del Circuito Meteorológico-----	F-23
	5-13	Superficies Limitadoras de Obstáculos-----	F-24
	5-14	Superficies Limitadoras de Obstáculos-----	F-25
	5-15	Nivel de Ruido Percibido y Distancia del Aeródromo-----	F-26
	5-16	Distancia Oblicua-----	F-27
	5-17	Patrones de Tráfico para Medir el Nivel de Ruido-----	F-28
	5-18	Curvas Isosónicas de WECPNL (Año 1988)-----	F-29

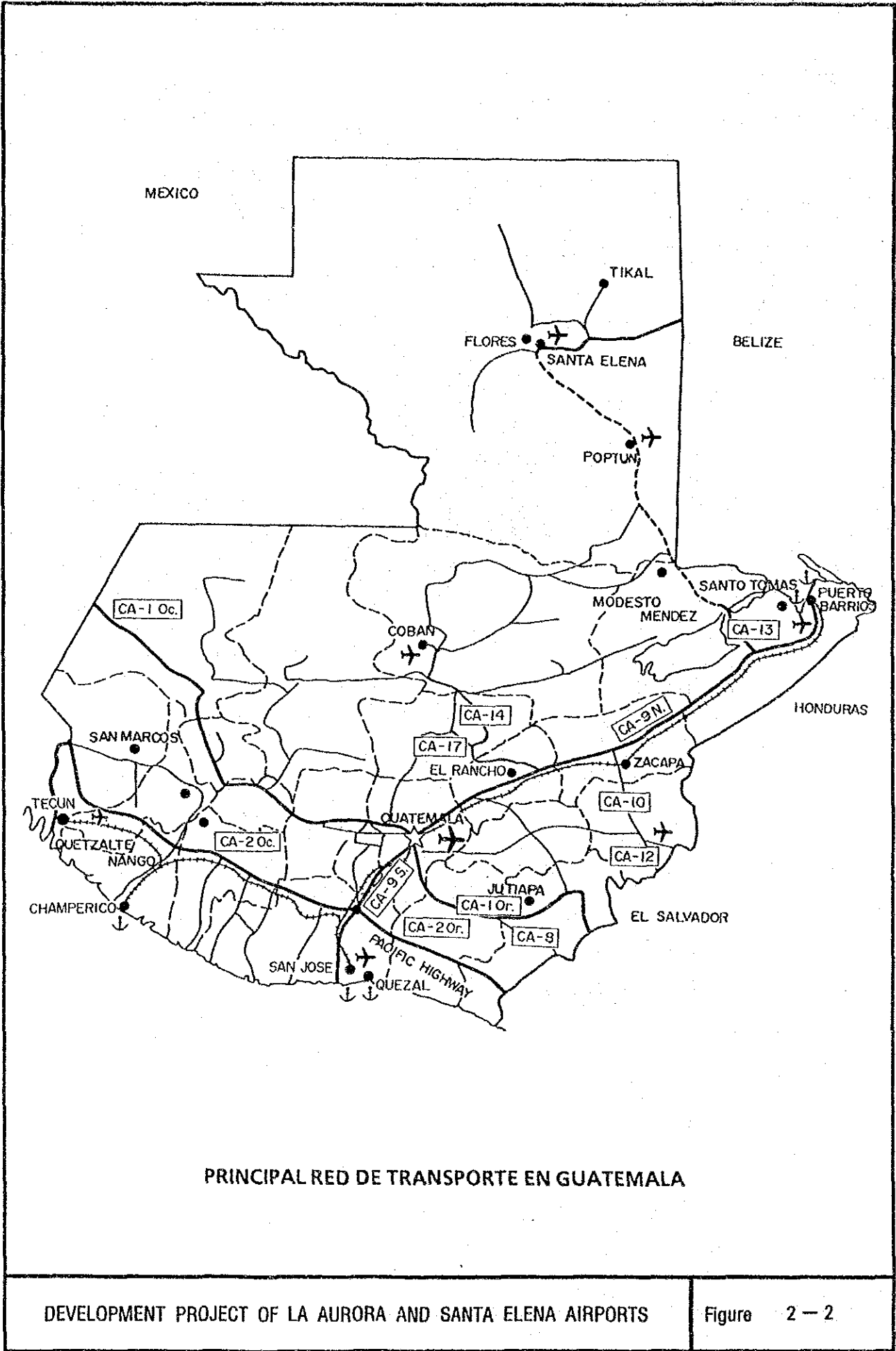
		Página
	5-19	Curvas Isosónicas de WECPNL (Año 1995)----- F-30
	5-20	Perfil del Organigrama Propuesto para AGAI ----- F-31
Figura	6-1	Calendario de Ejecución (La Aurora - Corto Plazo)----- F-32
	6-2	Monogram de Atrazo Promedio por Avión----- F-33
Figura	7-1	Sistema del Flujo de Equipaje para Salidas----- F-34
	7-2	Caminos de Acceso (2005)----- F-35
	7-3	Procedimientos de Aproximación por las Ayudas fuera del Aeródromo ----- F-36
	7-4	Rutas de Aproximación NDB por las Ayudas fuera del Aeródromo ----- F-37
	7-5	Rutas de Aproximación VOR por las Ayudas fuera del Aeródromo -- F-38
	7-6	Curvas Isosónicas de WECPNL (Año 2005)----- F-39
Figura	8-1	Ruta Maya Planeada por la Sociedad Geográfica Nacional----- F-40
Figura	9-1	Rosa de los Vientos en Santa Elena ----- F-41
	9-2	Organigrama del Aeropuerto Santa Elena----- F-42
Figura	10-1	Grietas de los Pavimentos en Santa Elena----- F-43
	10-2	Procedimientos de Salida Normalizada por Instrumentos ----- F-44
	10-3	Ruta de Llegada Normalizada por Instrumentos (VOR/DME) ----- F-45
	10-4	Ruta de Llegada Normalizada por Instrumentos (VOR) ----- F-46
	10-5	Ruta de Llegada Normalizada por Instrumentos (NDB)----- F-47
	10-6	Ruta Aérea ATS Protegida entre La Aurora y Santa Elena ----- F-48
	10-7	Organigrama para la Administración del Aeropuerto Santa Elena ----- F-49
Figura	11-1	Calendario de Ejecución (Santa Elena - Corto Plazo) ----- F-50



AIRLINE CODE	NAME OF AIRLINE	COUNTRY
AQ	Aeroquetzal	GUATEMALA
CM	COPA (Compania Panamena de Aviacion, S.A.)	PANAMA
CO	Continental Airlines (Air Micronesia)	U.S.A.
EA	Eastern Airlines	U.S.A.
GU	AVIATECA (Empresa Guatemalteca de Aviacion Aviateca)	GUATEMALA
IB	Iberia (Lineas Aereas de Espana, S.A.)	SPAIN
KL	KLM (Royal Dutch Airlines)	NETHERLANDS
LR	LACSA (Lineas Aereas Costarricenses, S.A.)	COSTA RICA
MM	SAM (Sociedad Aeronautica de Medellin)	COLOMBIA
MX	Mexicana (Compania Mexicana de Aviacion, S.A.)	MEXICO
PA	Pan American World Airways	U.S.A.
RL	AERONICA (Aerolineas Nicaraguenses, S.A.)	NICARAGUA
SH	SAHSA (Servicio Aero de Honduras, S.A.)	HONDURAS
TA	Taca International Airlines	EL SALVADOR

AERODROME CODE	NAME OF AIRPORT	COUNTRY
ACA	Acapulco	Mexico
ADZ	San Andres Island	Colombia
ATL	Atlanta	U.S.A.
BOG	Bogota	Colombia
BZE	Belize	Belize
CHI	Chicago	U.S.A.
CUN	Cancun	Mexico
CUR	Curacao	Netherlands, Antilles
FRS	Flores (Santo Elena)	Guatemala
IAH	Houston	U.S.A.
LAX	Los Angeles	U.S.A.
MEX	Mexico City	Mexico
MGA	Managua	Nicaragua
MIA	Miami	U.S.A.
MID	Melida	Mexico
MSY	New Orleans	U.S.A.
NYC	New York	U.S.A.
PTY	Panama City	Panama
SAL	San Salvador	El Salvador
SAP	San Pedro Sula	Honduras
SDQ	Santo Domingo	Dominican Rep.
SFO	San Francisco	U.S.A.
SJO	San Jose	Costa Rica
SJU	San Juan	U.S.A.
TGU	Tegucigalpa	Honduras

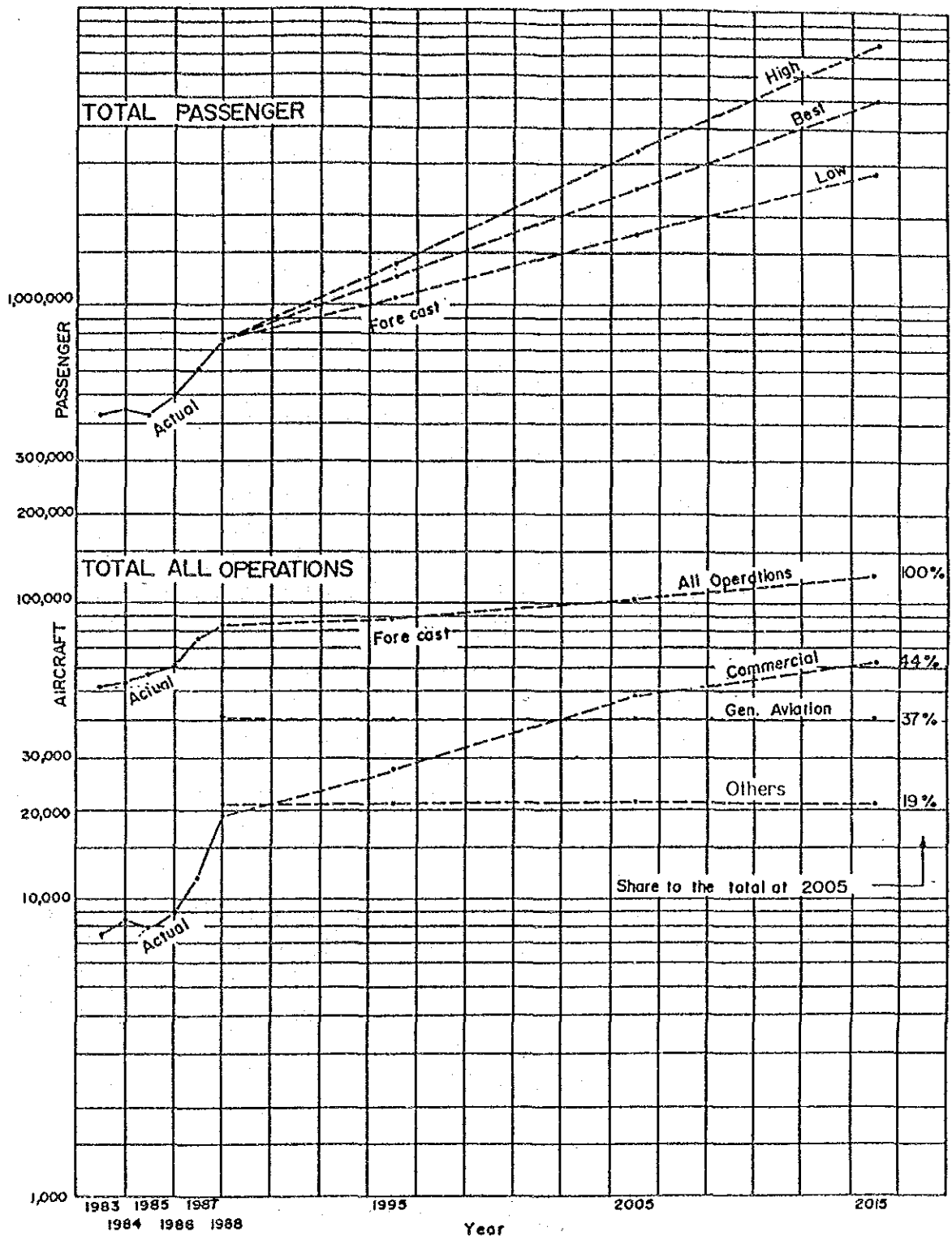
RUTAS AEREAS INTERNACIONAL DE GUATEMALA



PRINCIPAL RED DE TRANSPORTE EN GUATEMALA

DEVELOPMENT PROJECT OF LA AURORA AND SANTA ELENA AIRPORTS

Figure 2 - 2

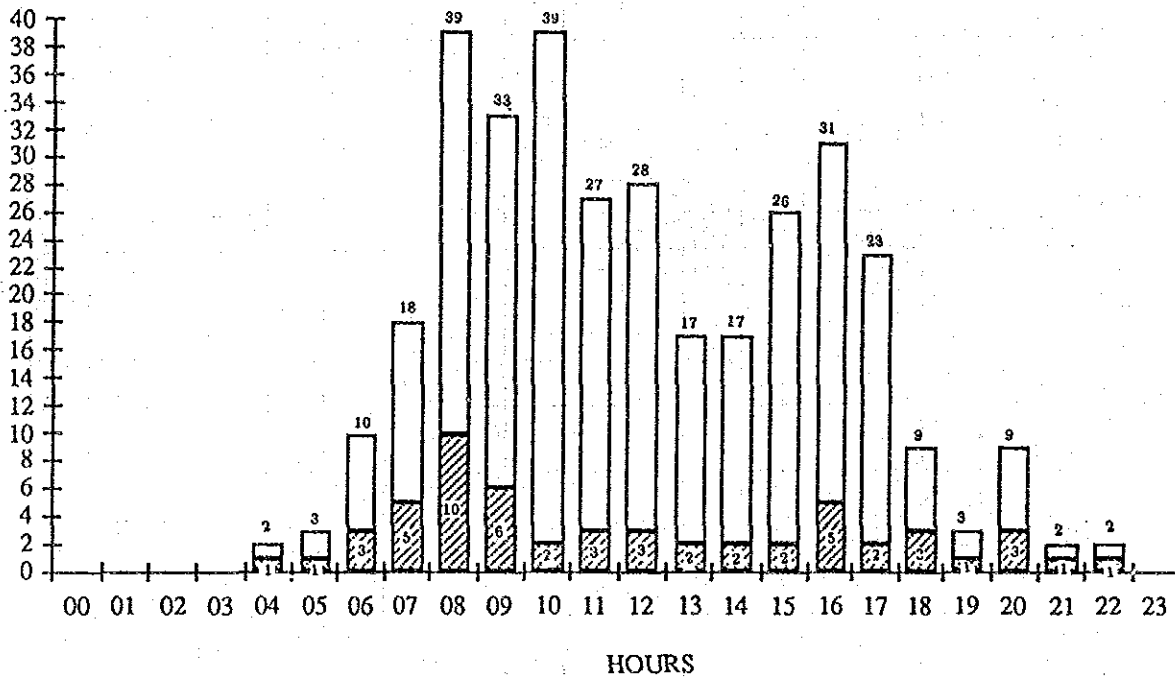




PRONOSTICOS DEL TRAFICO AEREO

DEVELOPMENT PROJECT OF LA AURORA AND SANTA ELENA AIRPORTS

Figure 3-1

TOTAL OPERATIONS

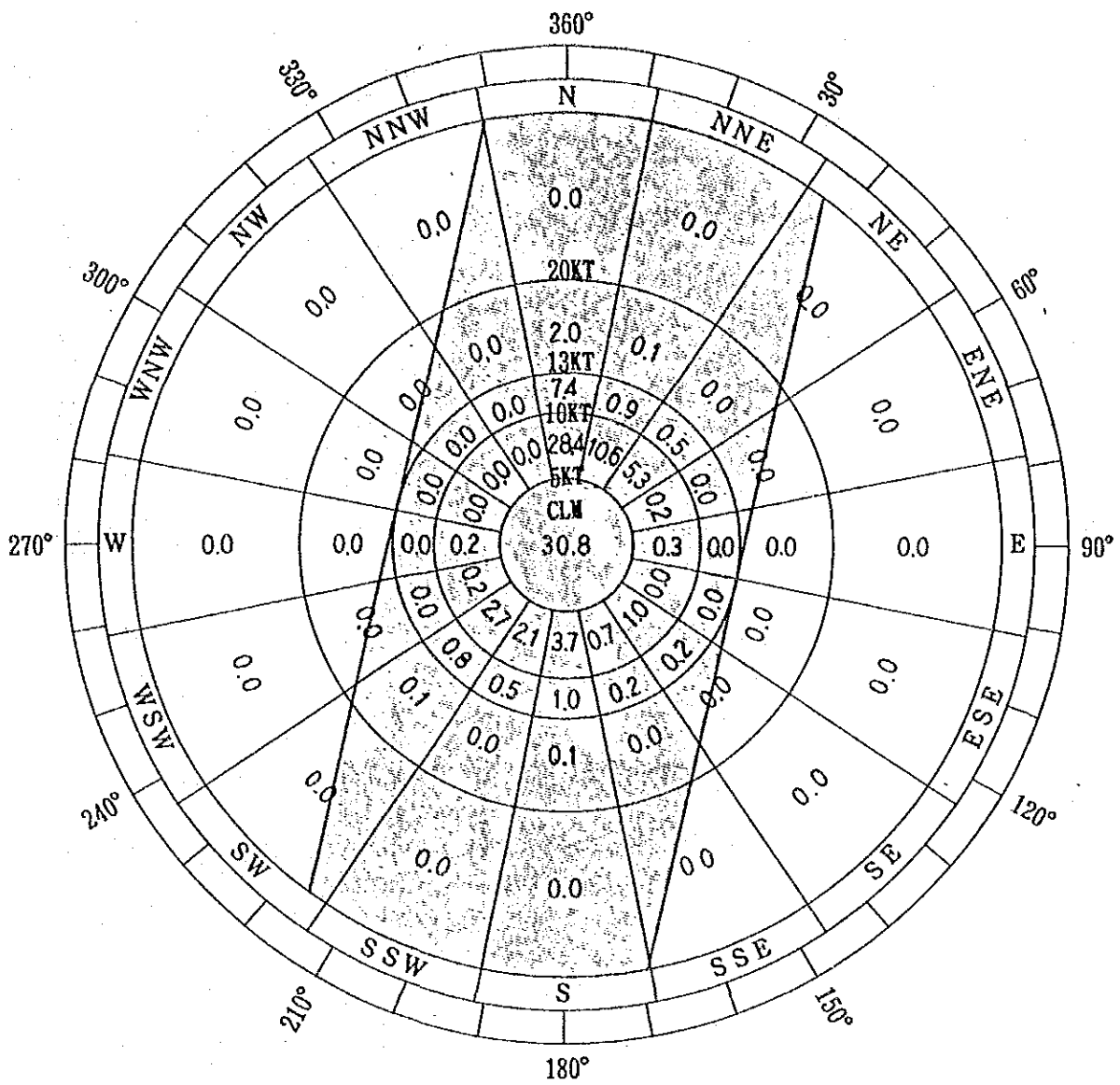


 COMMERCIAL OPERATIONS
 GENERAL AVIATION PLUS MILITARY OPERATIONS

Hours	00	01	02	03	04	05	06	07	08	09	10	11	12	13	14	15	16	17	18	19	20	21	22	23
Commercial Operations	0	0	0	0	1	1	3	5	10	6	2	3	3	2	2	2	5	2	3	1	3	1	1	0
General Aviation and Other Operations	0	0	0	0	1	2	7	13	29	27	37	24	25	15	15	24	26	21	6	2	6	1	1	0
Total Operations	0	0	0	0	2	3	10	18	39	33	39	27	28	17	17	26	31	23	9	3	9	2	2	0

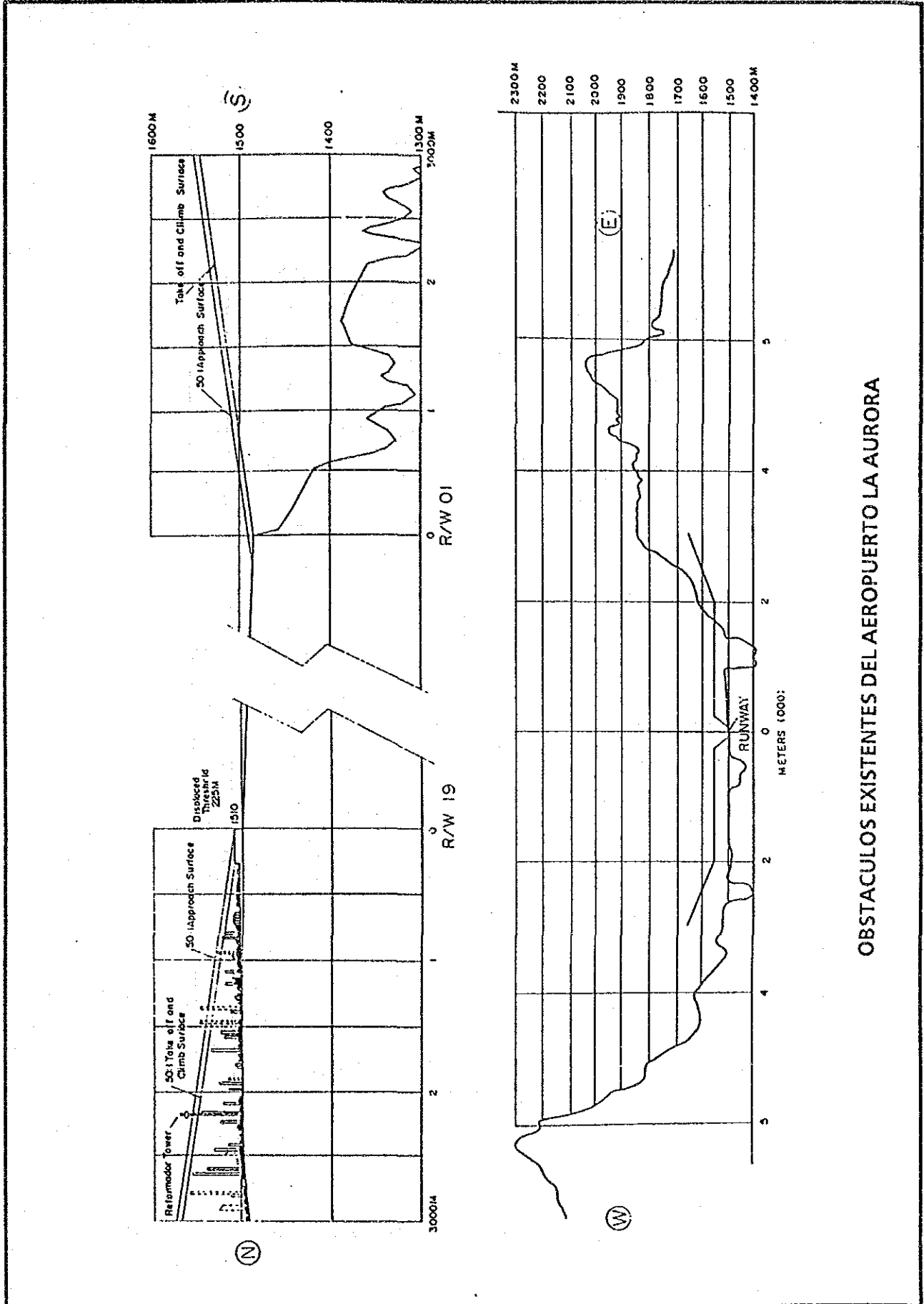
(DECEMBER 15, 1988)

OPERACIONES HORARIAS DE AERONAVES



WIND COVERAGE: 100 %

ROSA DE LOS VIENTOS EN LA AURORA



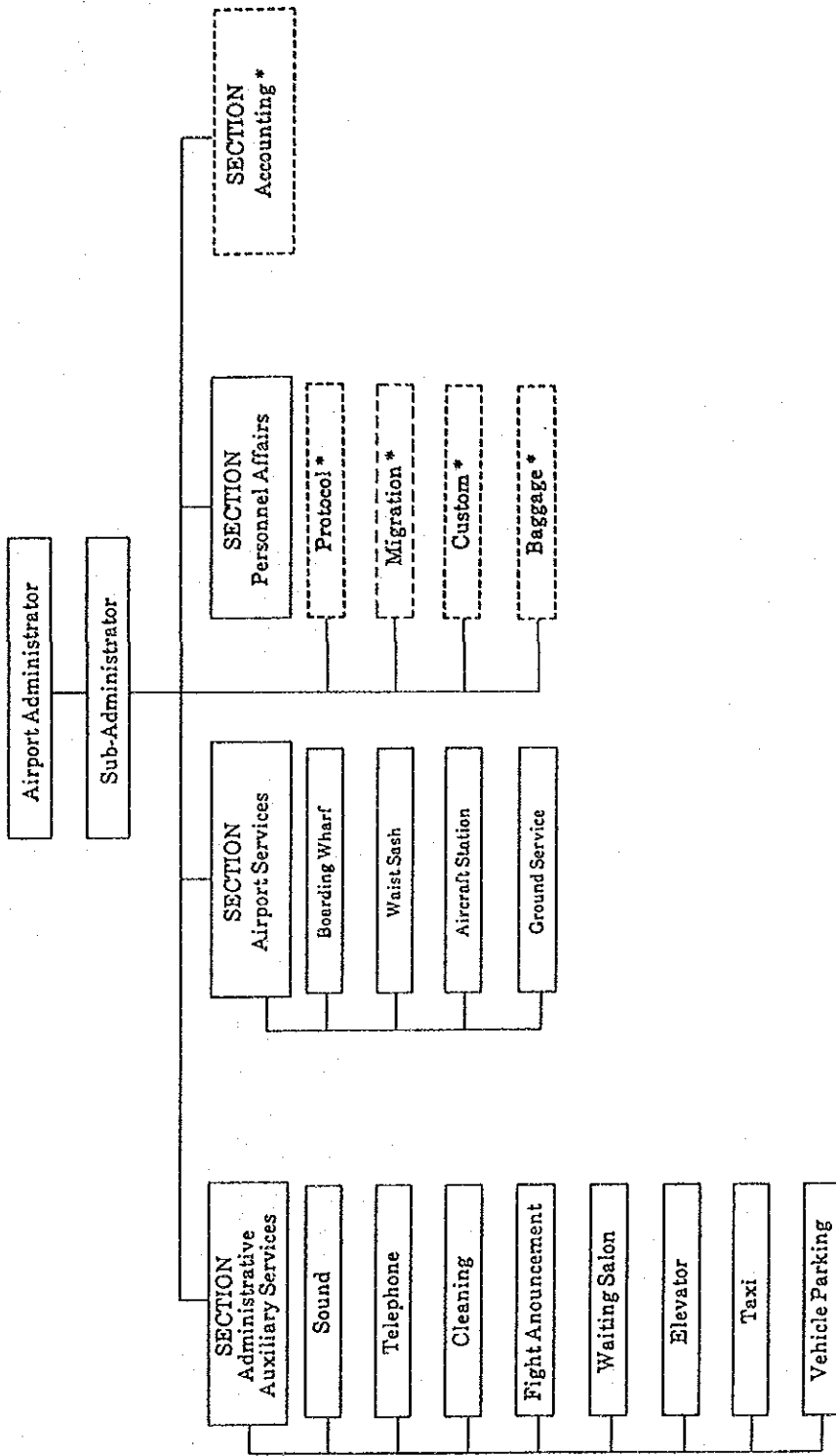
OBSTACULOS EXISTENTES DEL AEROPUERTO LA AURORA

Thursday (16/2/1989)

ROUTE	6	7	8	9	10	11	12	13	14	15	16	17	18	19	20	21	22	23
GUATEMALA~SANSALVADOR (COPA)	B737	SAL 25												SAL 9	B737			
SAN SALVADOR~GUATEMALA~HUSTON (CONTINENTAL)			SAL 12:35	LAM 15:35									LAM 9:40	SAL 10:30				
GUATEMALA~MIAMI (EASTERN)		B727	MIA 20												MIA 20	B727		
PANAMA~GUATEMALA~PANAMA (IBERIA)							PTY DC10 FTY OR (S1) 25											
CURACAO~GUATEMALA~SAN JOSE (KLM)		CUR DC10 SJO 40	(70) 50															
MEXICO~GUATEMALA~SAN JOSE (LACSA)			MEX SJO 28	(30) 36														
MEXICO~GUATEMALA~SAN JOSE (MEXICANA)			MEX B727 SJO 53	(27) 20				SJO B727 MEX 90	(28) 28									
MIAMI~GUATEMALA (PAN AM)		A300	MIA 43												MIA 43	A300		
LOS ANGELES~GUATEMALA~SAN SALVADOR (PAN AM)		LAX A300 SAL 26	(11) 45		SAL A300 LAX 03	(08) 28												
SAN PEDROSULA~GUATEMALA~SAN SALVADOR (SAN SA)		B737 SAL 07												SAP 07	B737			
SAN JOSE~GUATEMALA (SA M)		B727 SJO 55												SJO 13	B727			
LOS ANGELES~GUATEMALA~SAN SALVADOR (TACA)		LAX B737 SAL 48	(40) 28											SAL B737 LAX 05	(28) 28			
SAN SALVADOR~GUATEMALA~MEXICO (TACA)				SAL MEX 20	(23) 45													
GUATEMALA~MANAGUA (AERONICA)		NGA 0740	MGA 16	(24) 21														
GUATEMALA~MIAMI (AVIATECA)		B727	MIA 30															

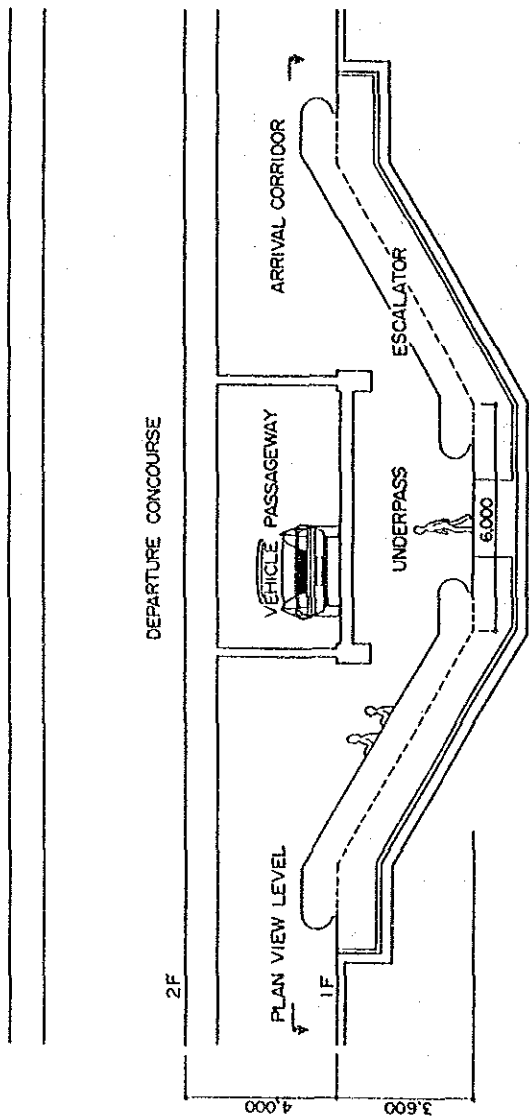
DATOS DE VUELO ACTUALES DE LA AURORA

ORGANIZATION
LA AURORA AREA

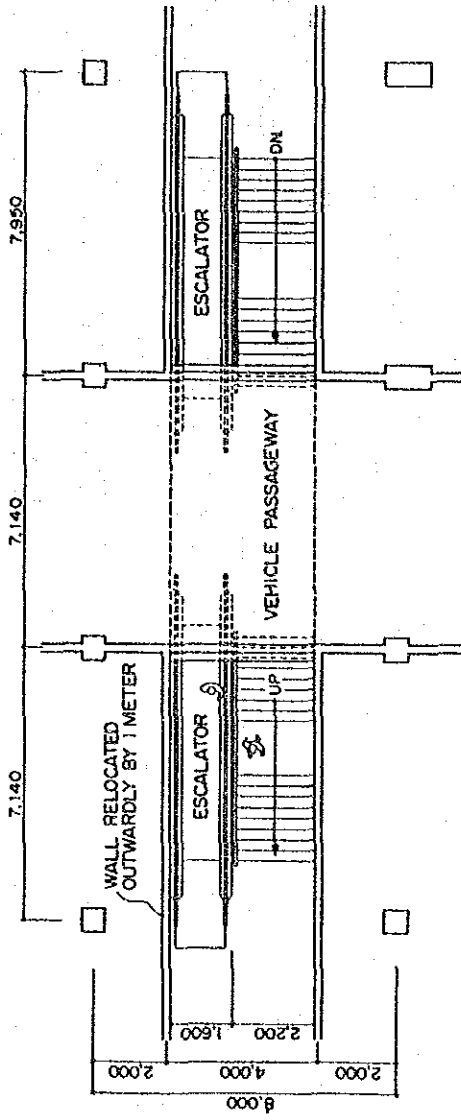


ORGANIGRAMA DE TERMINAL AEREA DE LA AURORA

Note: * Section under the jurisdiction of different authorities.



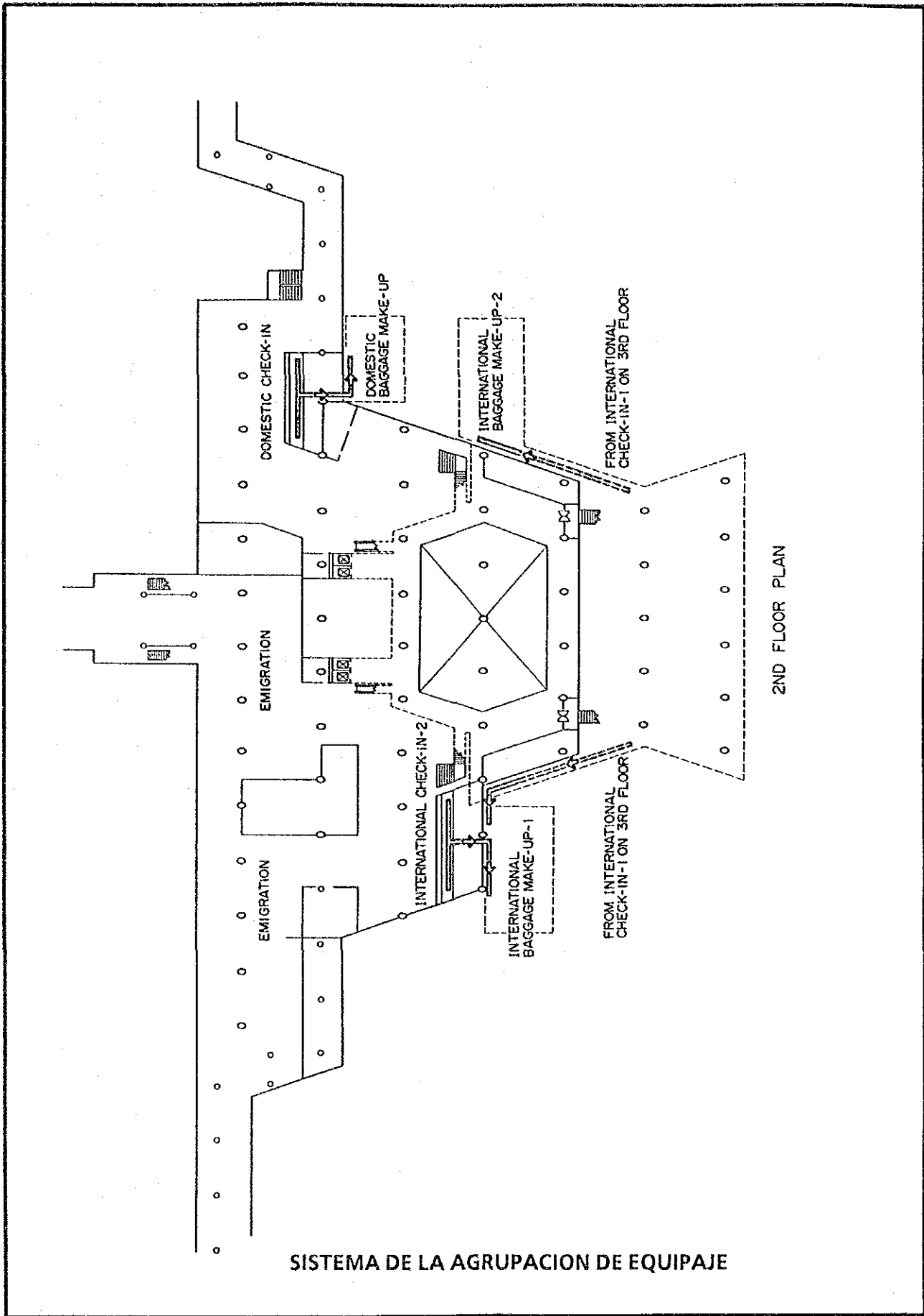
SECTION



PLAN

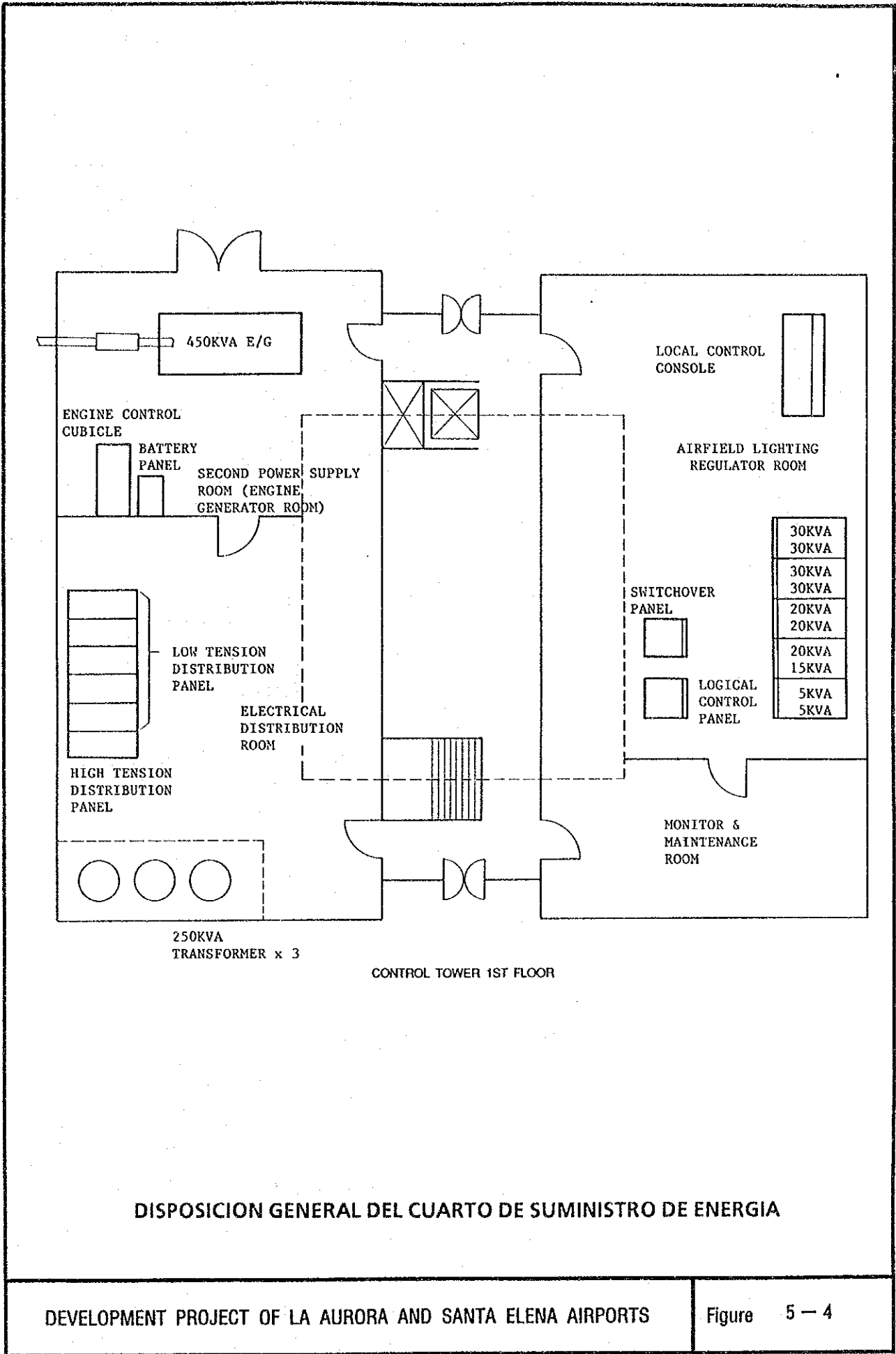
NOTE: CONDITIONS AT EXISTING CONCOURSE.
NEW CONCOURSE TO BE SIMILAR,
BUT WIDER.

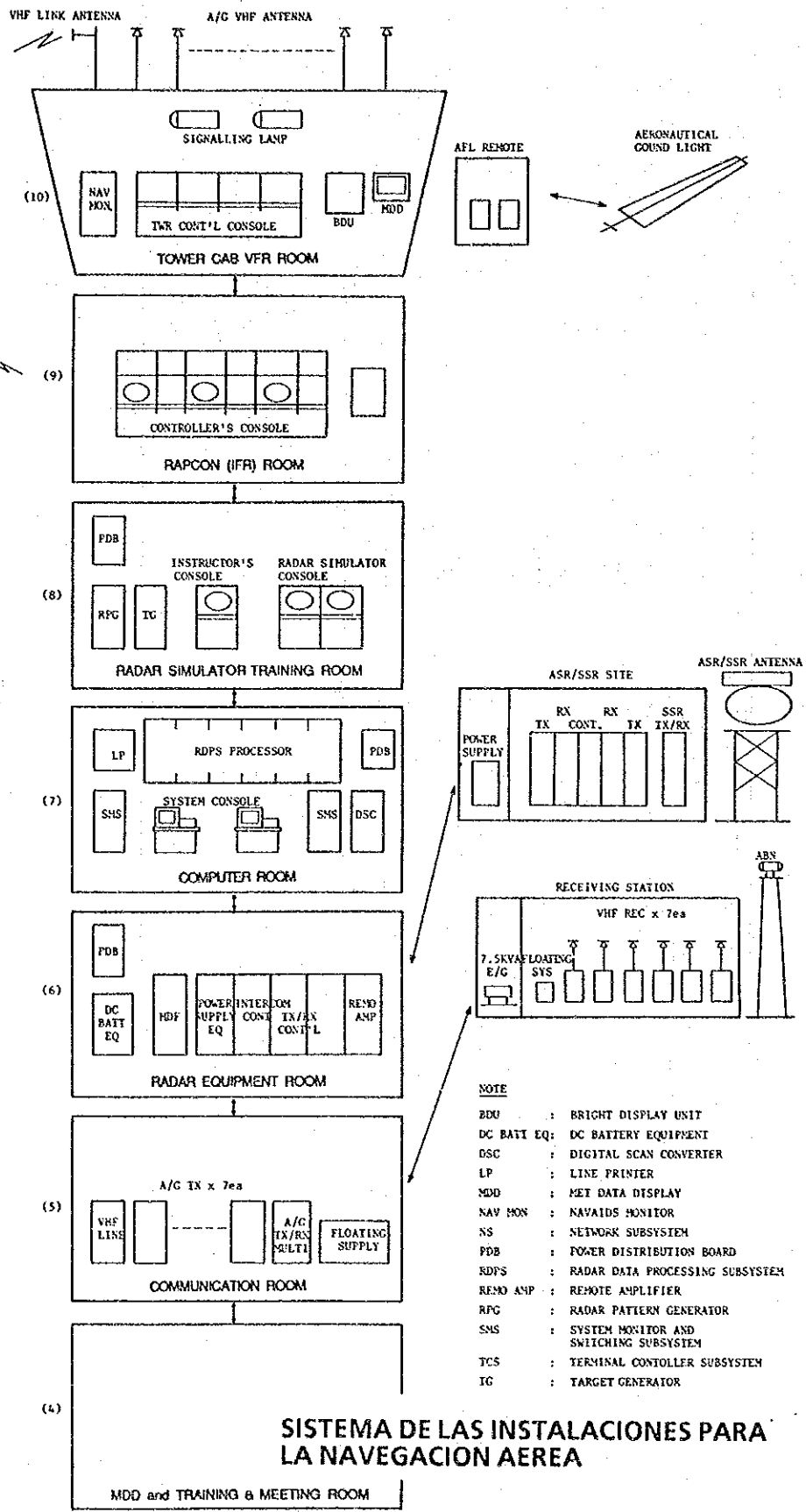
CRUCE PARA EAT EN LA PASARELA CENTRAL



DEVELOPMENT PROJECT OF LA AURORA AND SANTA ELENA AIRPORTS

Figure 5 - 2





- NOTE**
- BDU : BRIGHT DISPLAY UNIT
 - DC BATT EQ: DC BATTERY EQUIPMENT
 - DSC : DIGITAL SCAN CONVERTER
 - LP : LINE PRINTER
 - MDD : MET DATA DISPLAY
 - NAV MON : NAVAIDS MONITOR
 - NS : NETWORK SUBSYSTEM
 - PDB : POWER DISTRIBUTION BOARD
 - RDPS : RADAR DATA PROCESSING SUBSYSTEM
 - REMO AMP : REMOTE AMPLIFIER
 - RPG : RADAR PATTERN GENERATOR
 - SMS : SYSTEM MONITOR AND SWITCHING SUBSYSTEM
 - TCS : TERMINAL CONTROLLER SUBSYSTEM
 - TC : TARGET GENERATOR

SISTEMA DE LAS INSTALACIONES PARA LA NAVEGACION AEREA

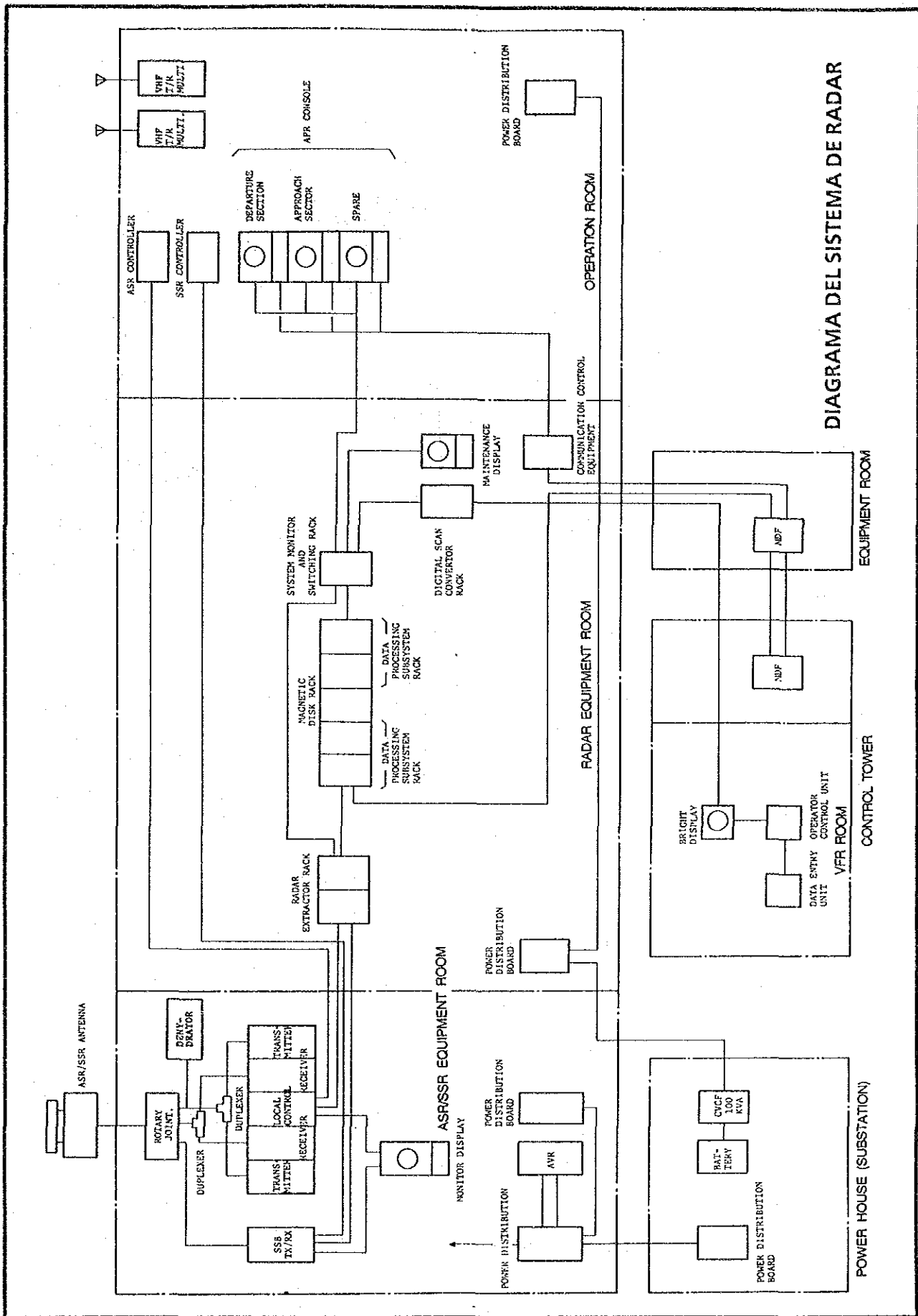
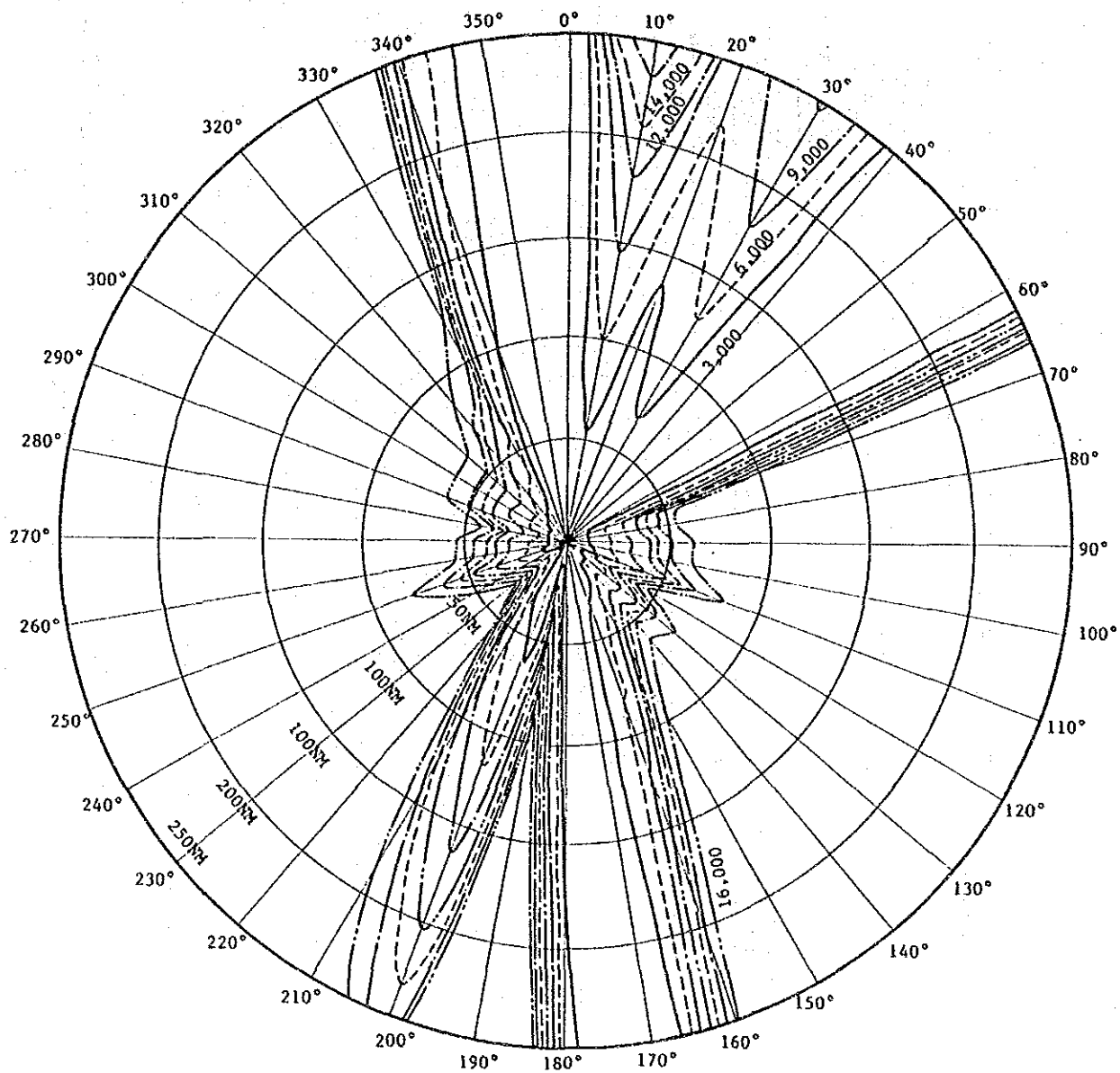


DIAGRAMA DEL SISTEMA DE RADAR

DEVELOPMENT PROJECT OF LA AURORA AND SANTA ELENA AIRPORTS

Figure 5 - 6

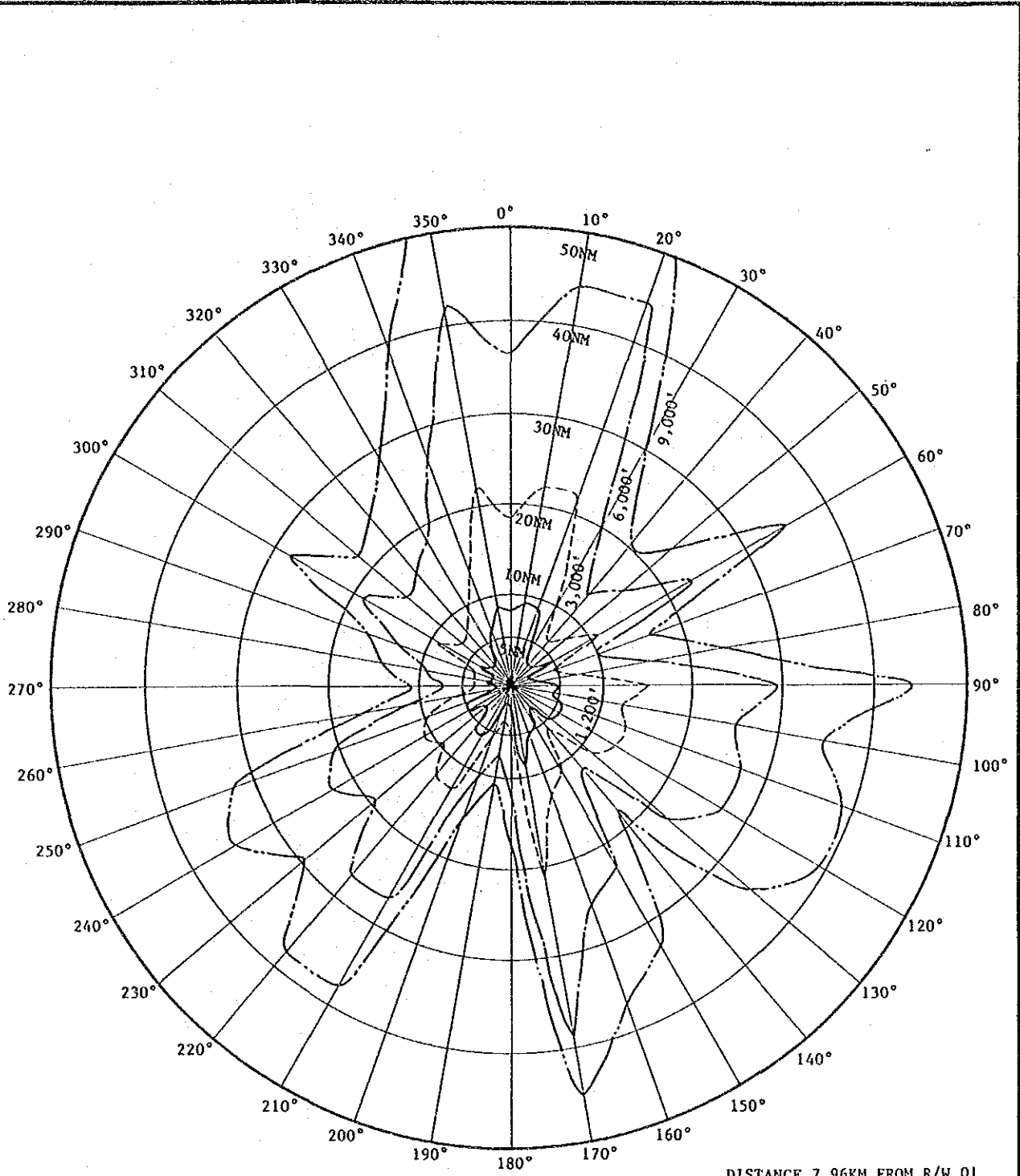


SITE ELEVATION 4,963'

CARTA DE COBERTURA DE ASR/SSR

DEVELOPMENT PROJECT OF LA AURORA AND SANTA ELENA AIRPORTS

Figure 5 - 7

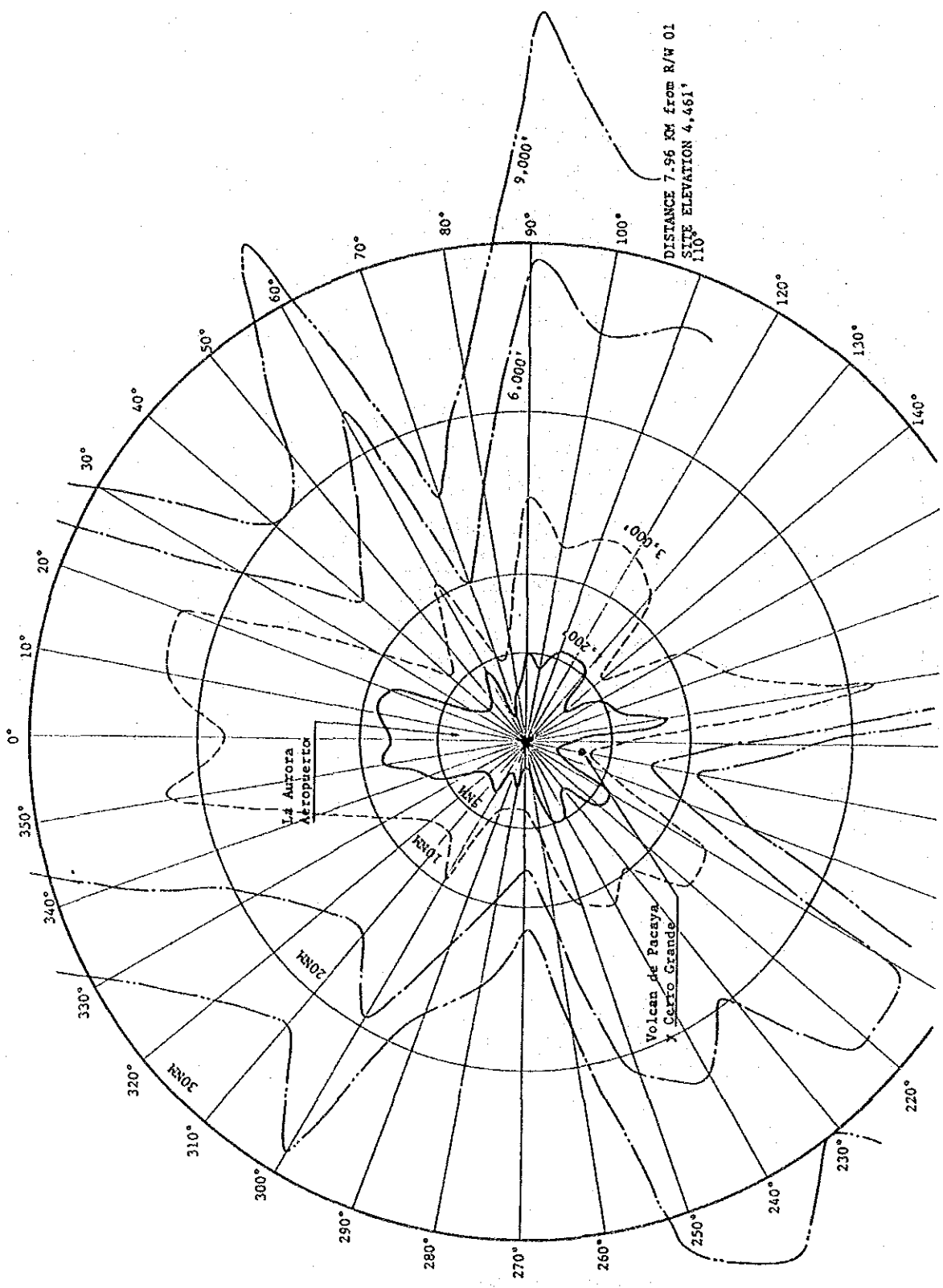


DISTANCE 7.96KM FROM R/W O1
 SITE ELEVATION 4,461'

CARTA DE COBERTURA DE VOR, NO. 1

DEVELOPMENT PROJECT OF LA AURORA AND SANTA ELENA AIRPORTS

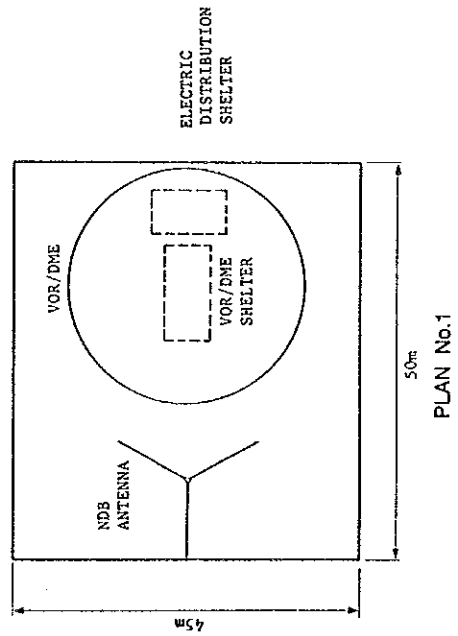
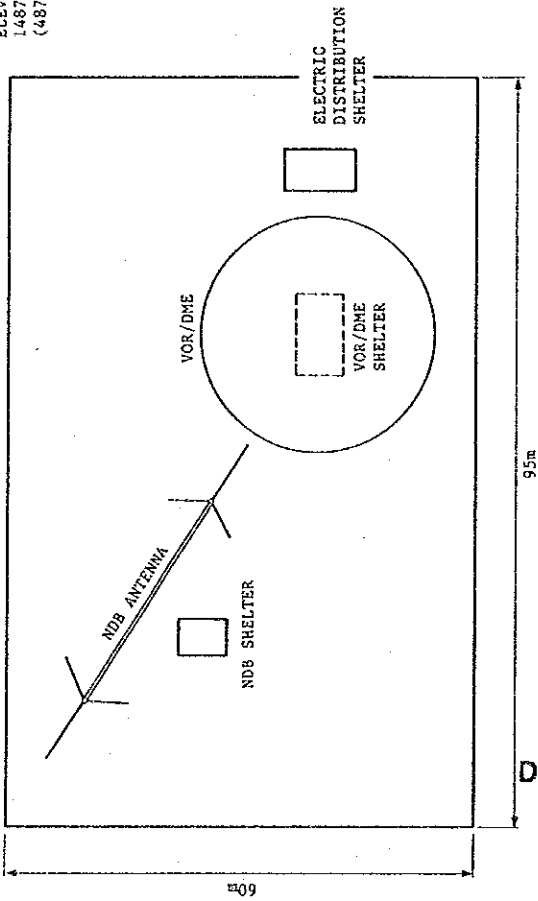
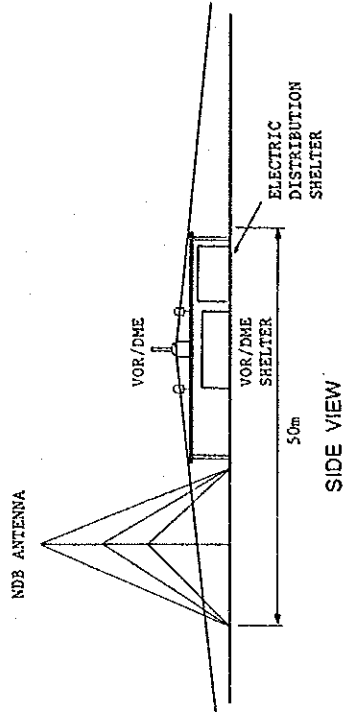
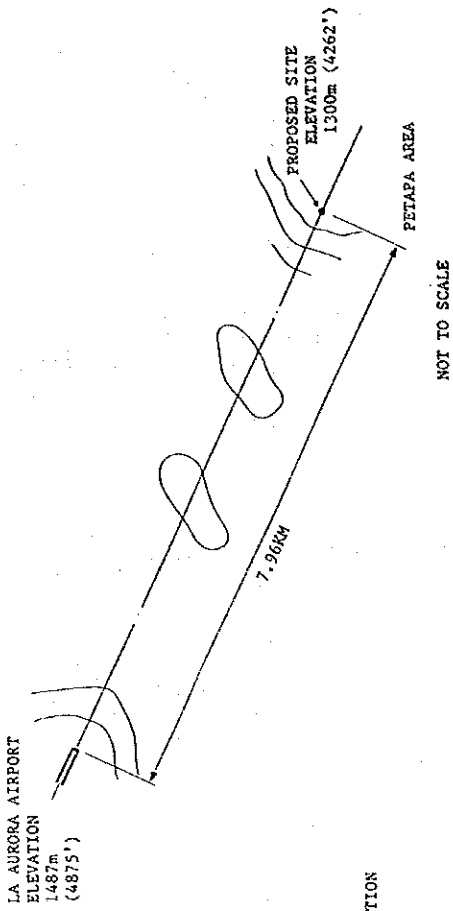
Figure 5 - 8



CARTA DE COBERTURA DE VOR, NO. 2

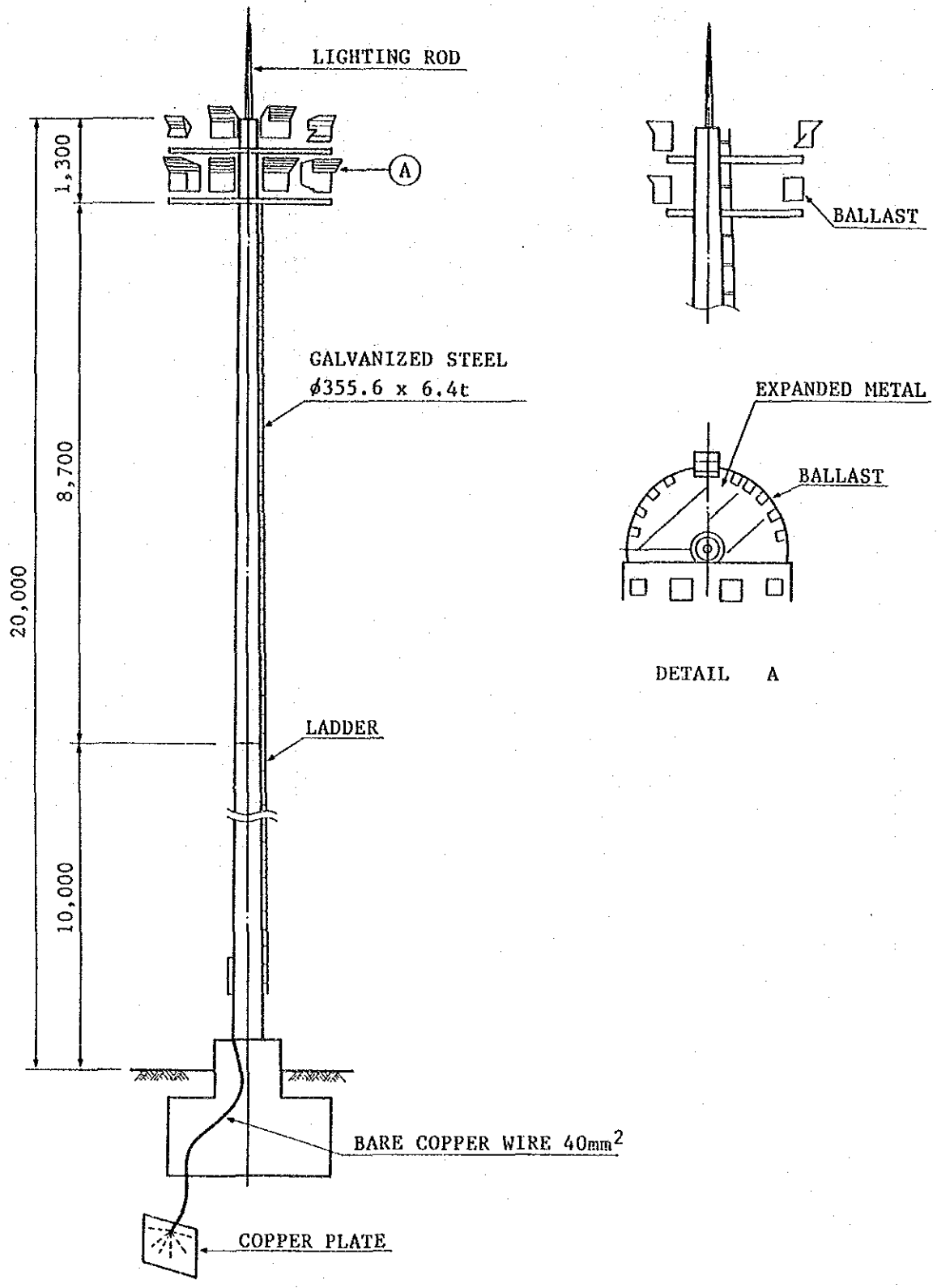
DEVELOPMENT PROJECT OF LA AURORA AND SANTA ELENA AIRPORTS

Figure 5 - 9



DISPOSICION GENERAL DE LAS INSTALACIONES FUERA DEL AERODROMO

OFF AERODROME RADIO FACILITIES LAYOUT PLAN



POSTE DE LA ILUMINACION DE PLATAFORMA

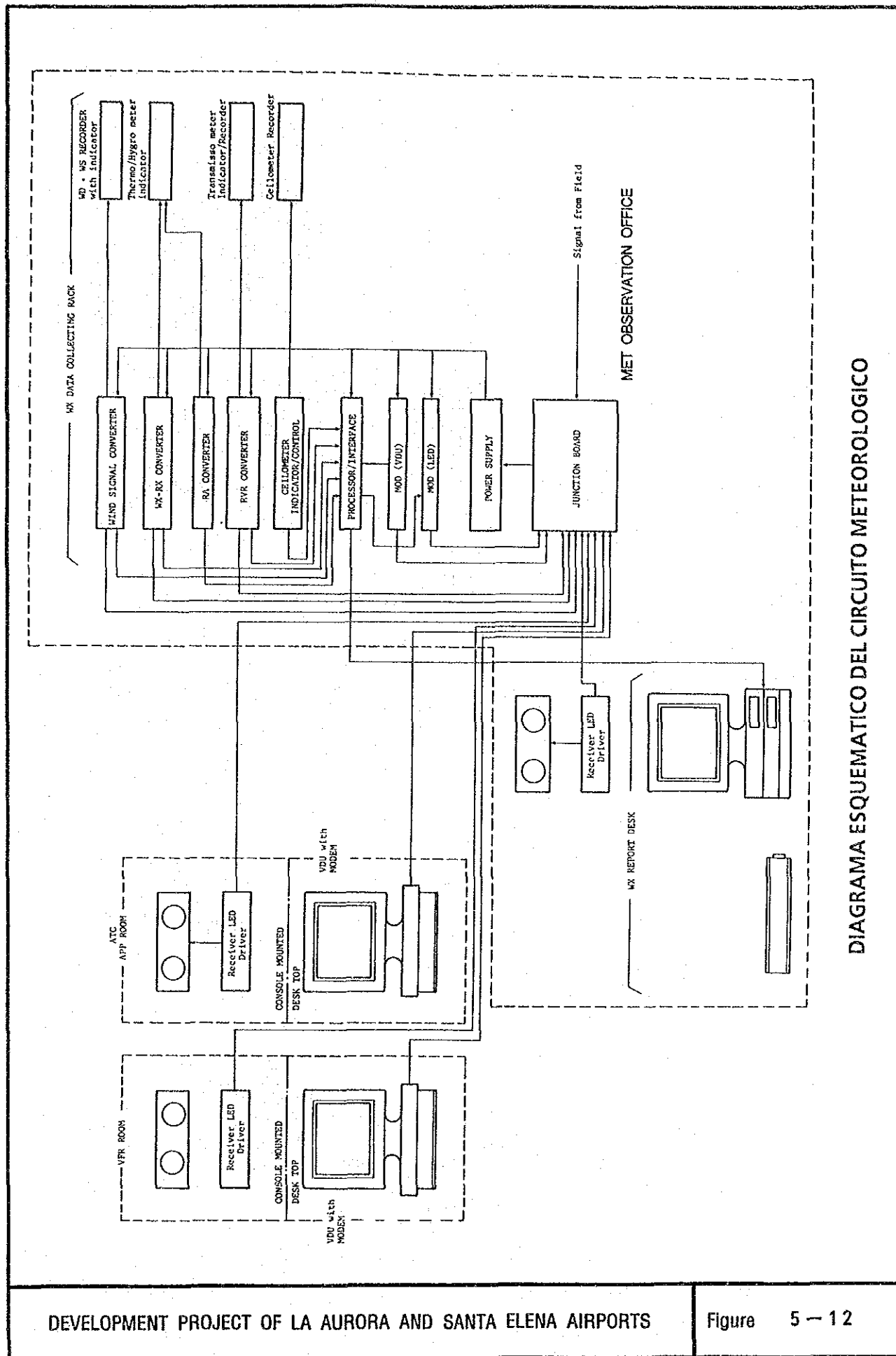
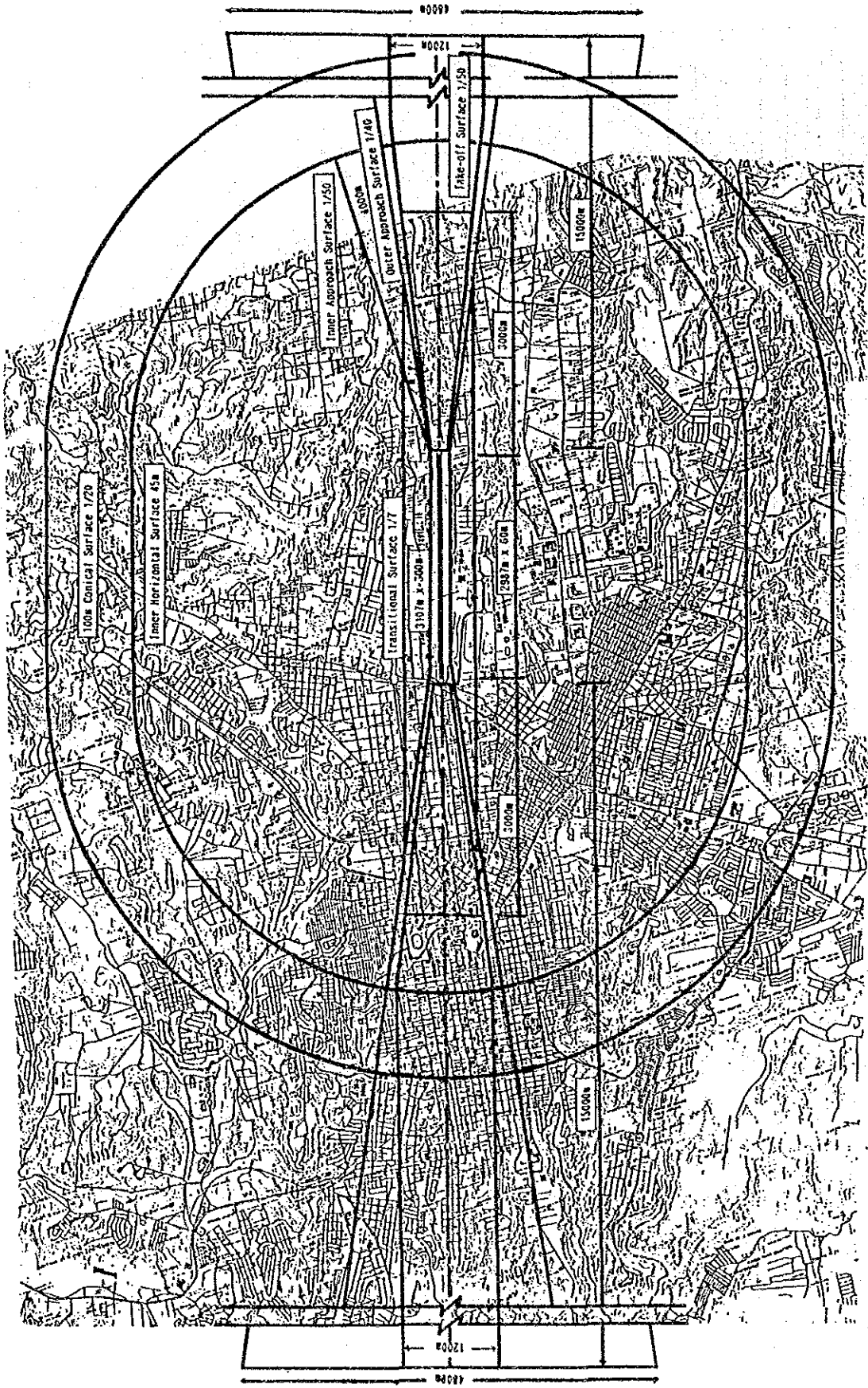


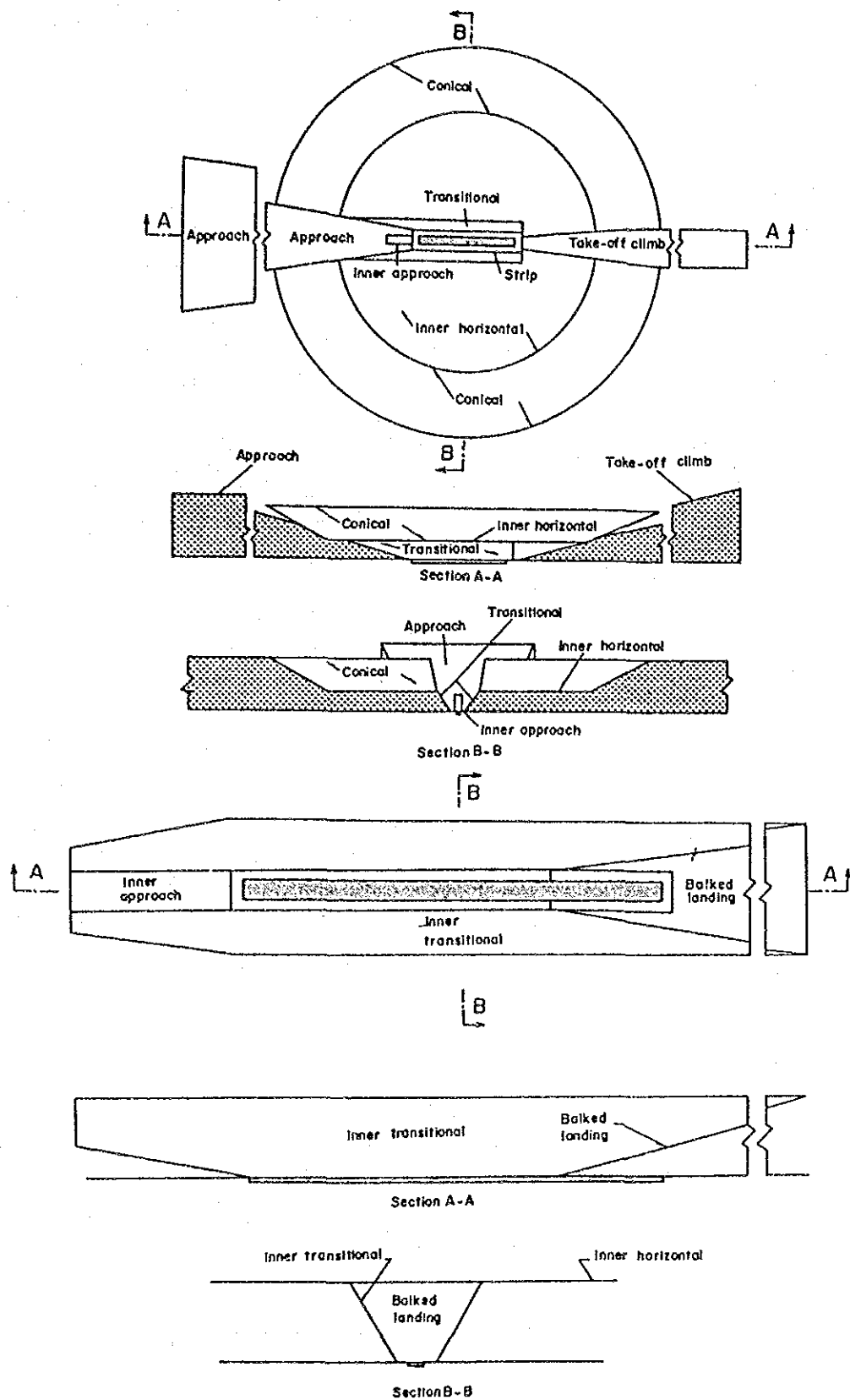
DIAGRAMA ESQUEMATICO DEL CIRCUITO METEOROLOGICO



SUPERFICIES LIMITADORAS DE OBSTACULOS

DEVELOPMENT PROJECT OF LA AURORA AND SANTA ELENA AIRPORTS

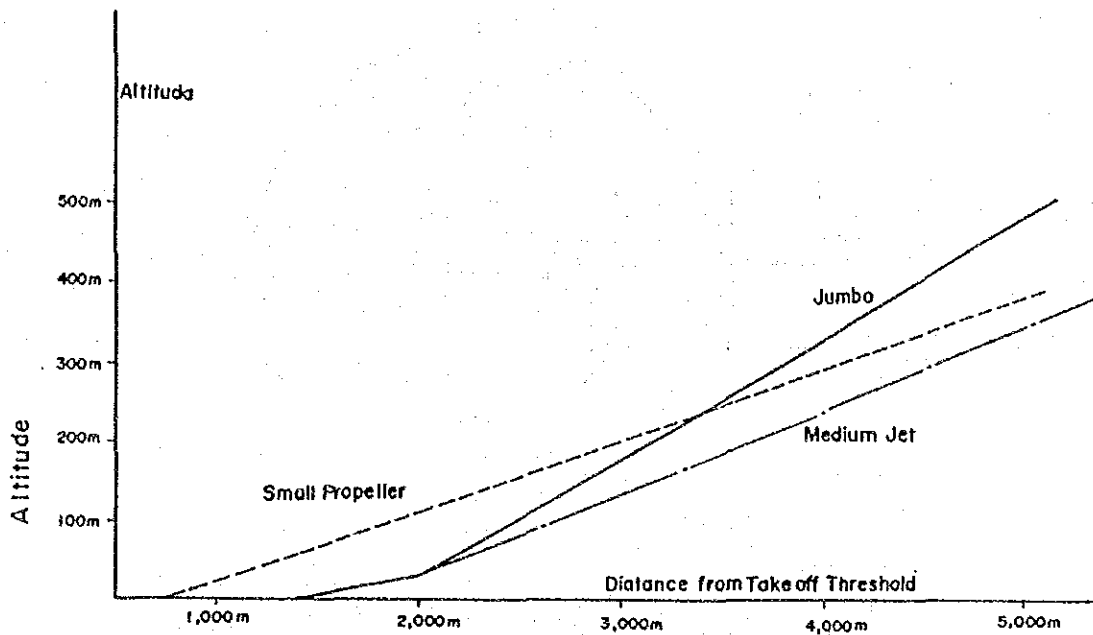
Figure 5 - 13



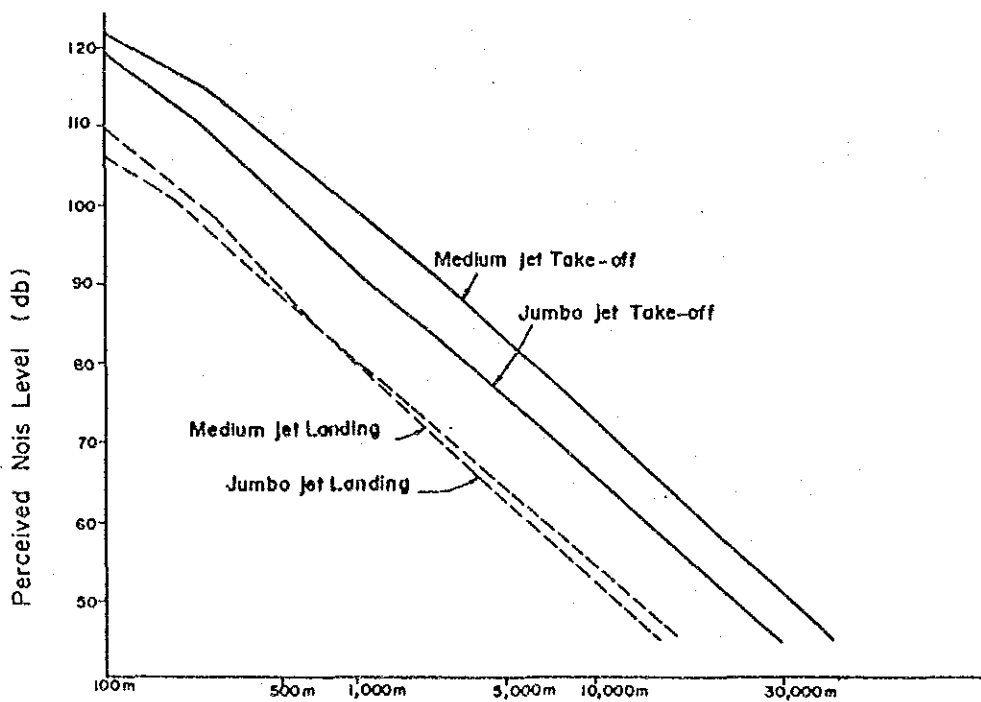
SUPERFICIES LIMITADORAS DE OBSTACULOS

DEVELOPMENT PROJECT OF LA AURORA AND SANTA ELENA AIRPORTS

Figure 5 - 14

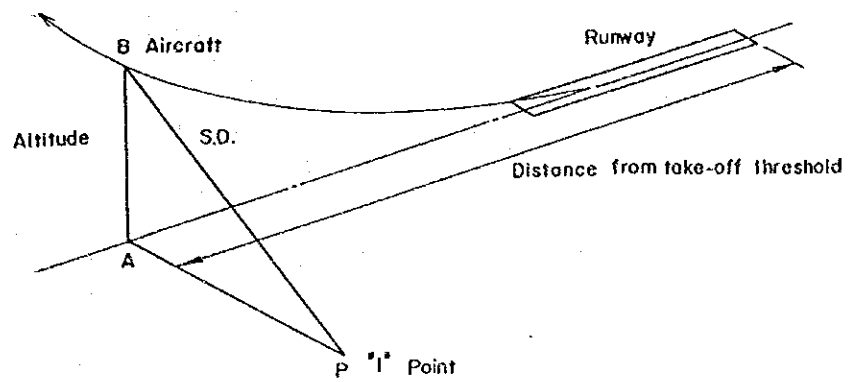


TAKE OFF PROFILE

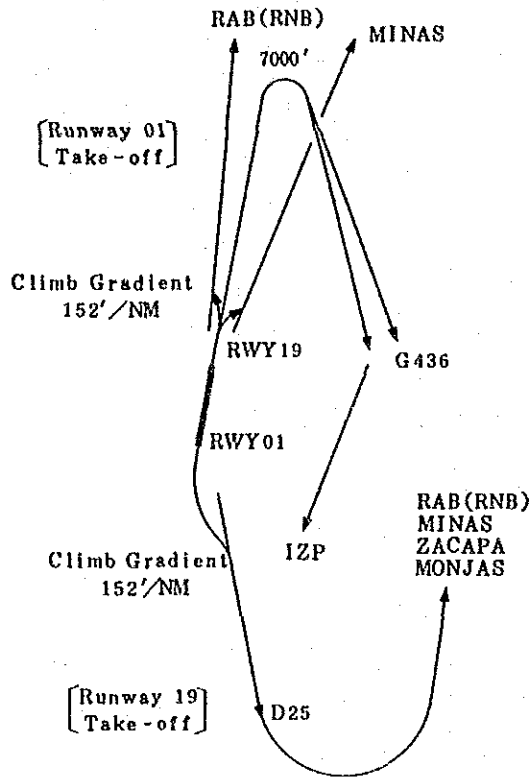


NIVEL DE RUIDO PERCIBIDO Y DISTANCIA DEL AERODROMO

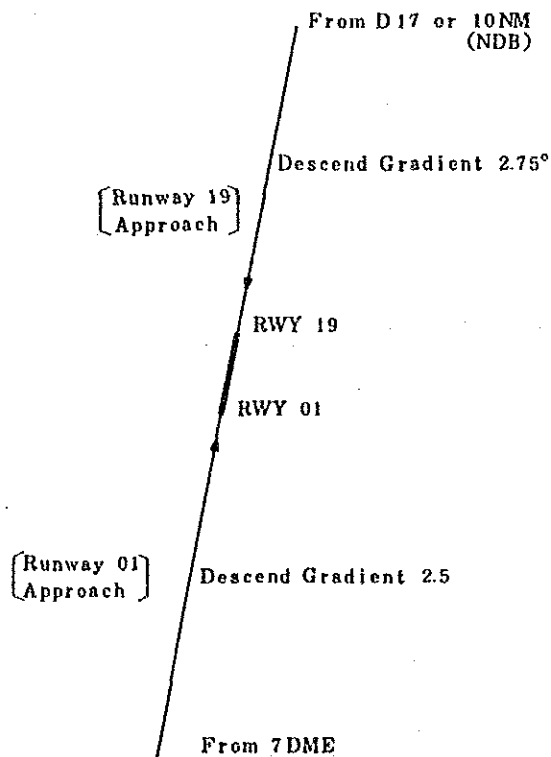
$$\text{Slant Distance (S.O.)} = \sqrt{AP^2 + AB^2}$$



DISTANCIA OBLICUA



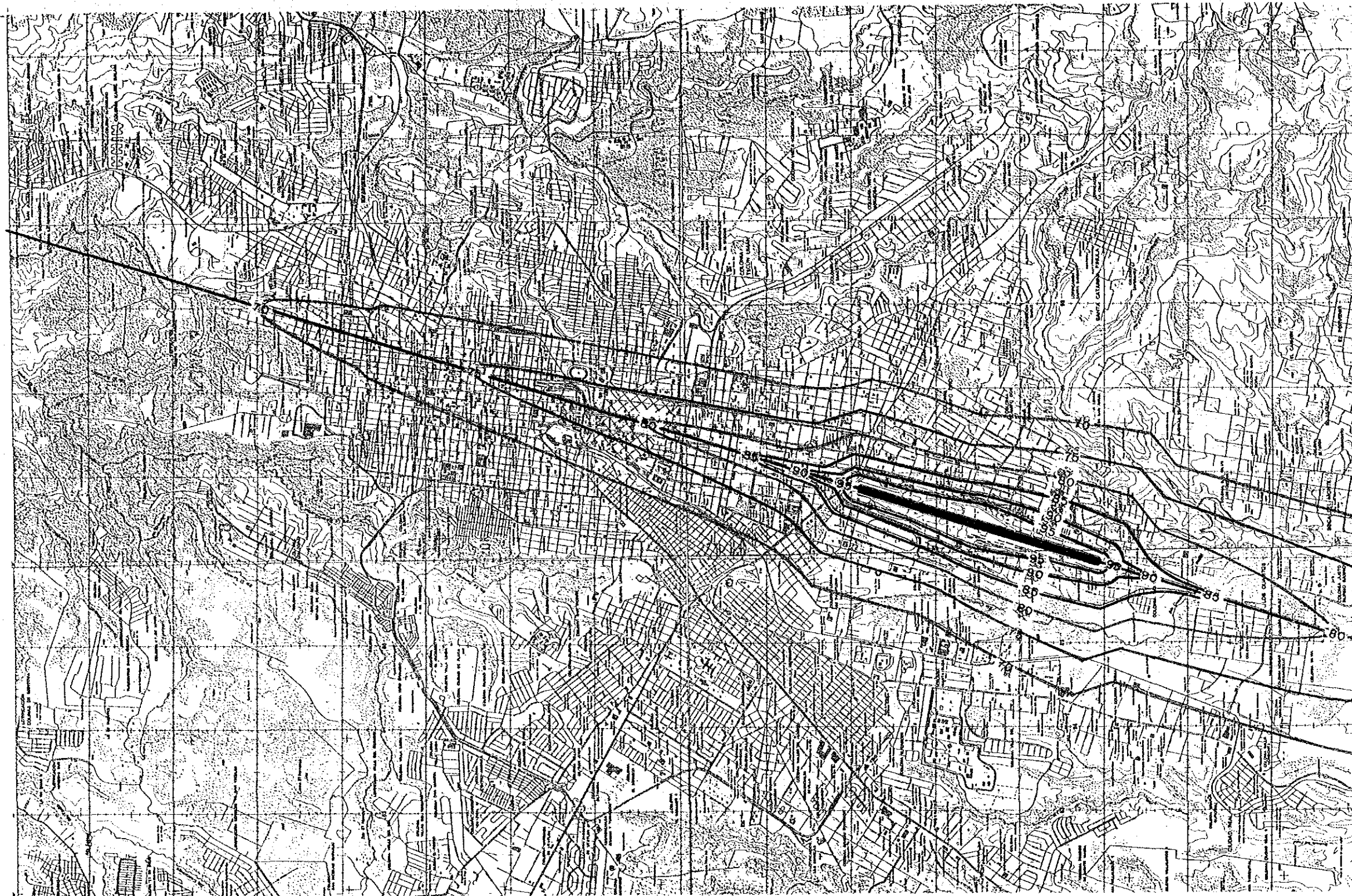
TRAFFIC PATTERN FOR NOISE CONTOUR CALCULATION



PATRONES DE TRAFICO PARA MEDIR EL NIVEL DE RUIDO



CURVAS ISOSONICAS DE WECPNL(AÑO 1988)

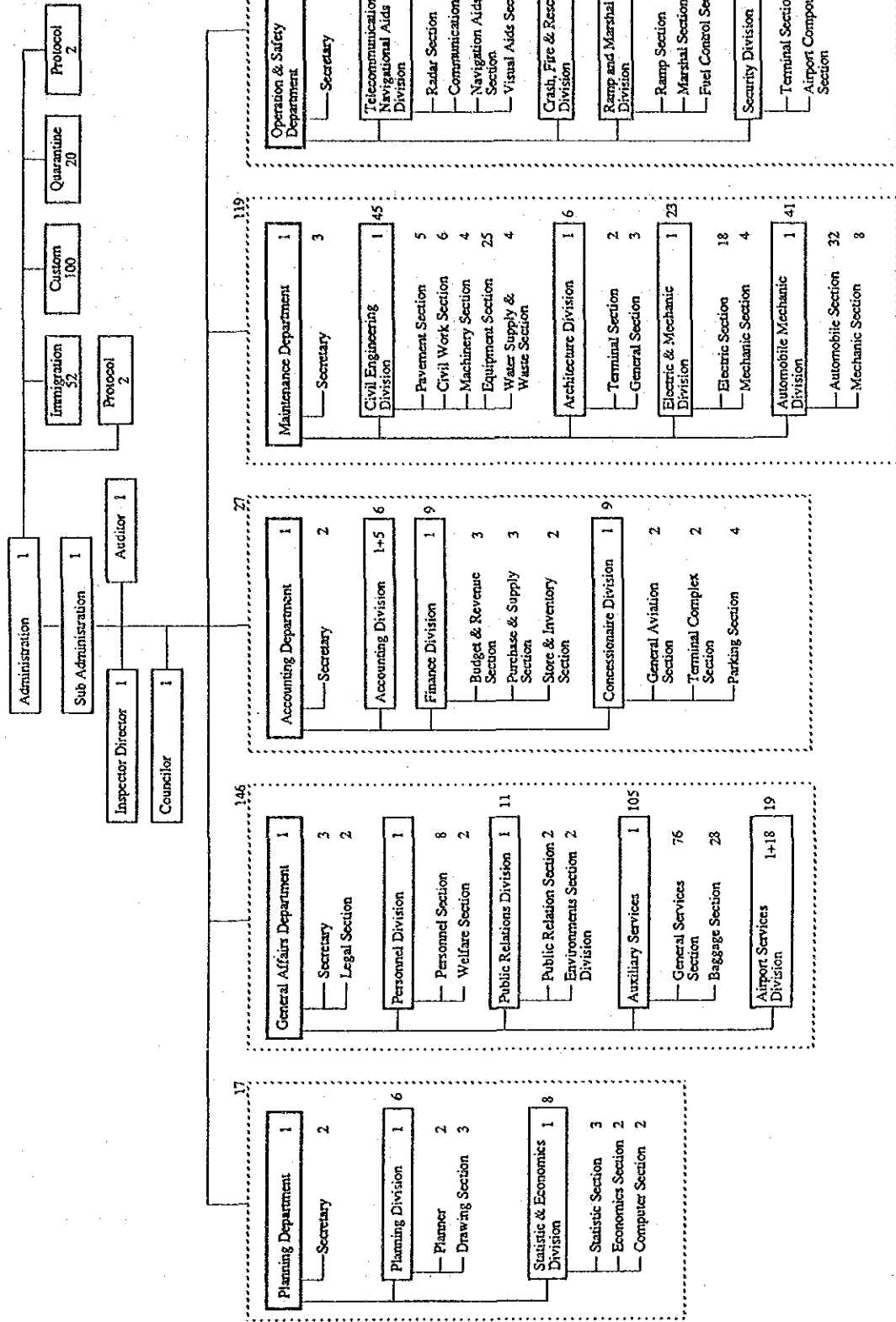


CURVAS ISOSONICAS DE WECPNL(AÑO 1995)

DEVELOPMENT PROJECT OF LA AURORA AND SANTA ELENA AIRPORTS

Figure 5-19

PERFIL DEL ORGANIGRAMA PROPUESTO PARA AGAI



DEVELOPMENT PROJECT OF LA AURORA AND SANTA ELENA AIRPORTS

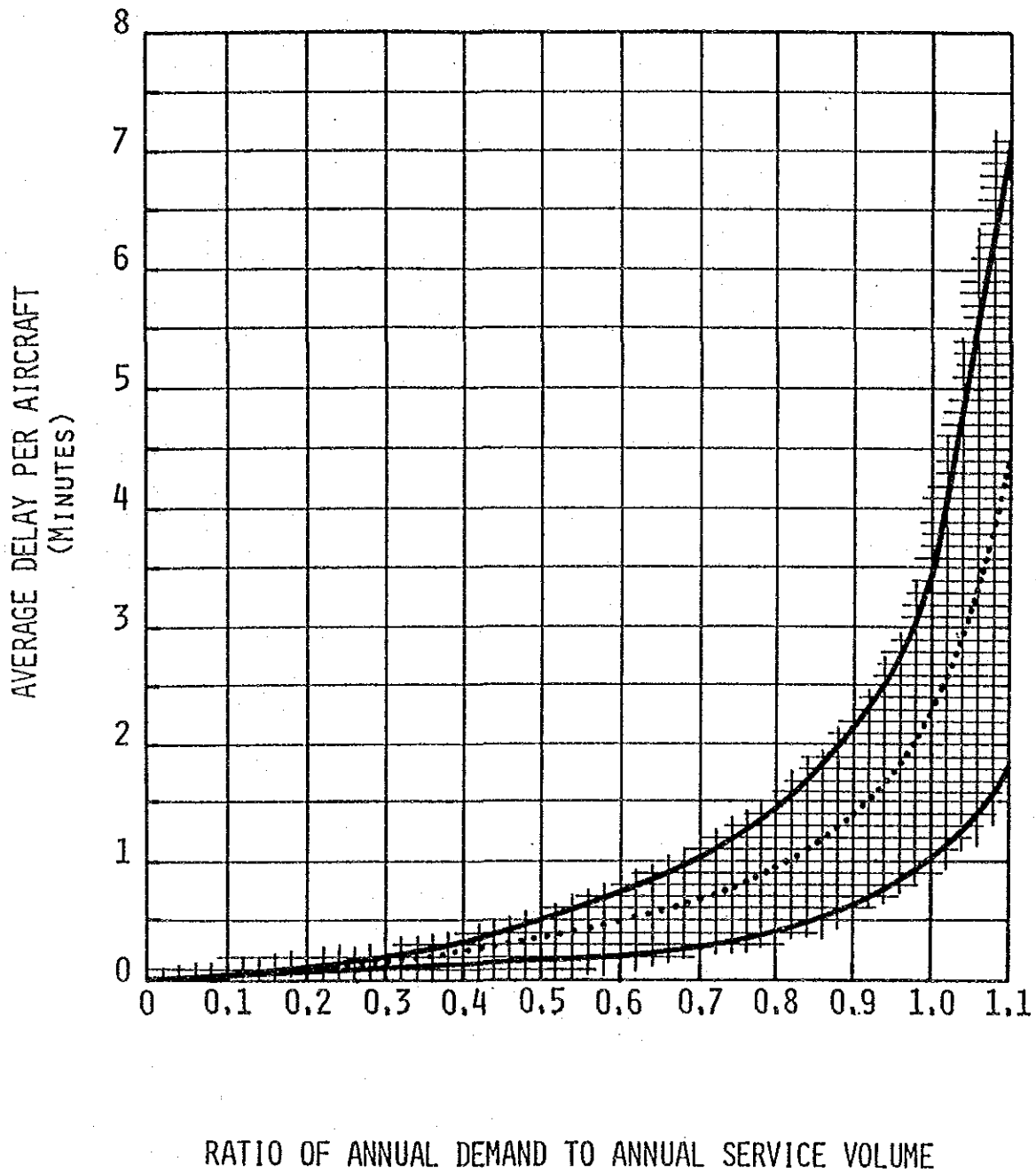
Figure 5 - 20

CALENDARIO DE EJECUCION (LA AURORA - CORTO PLAZO)

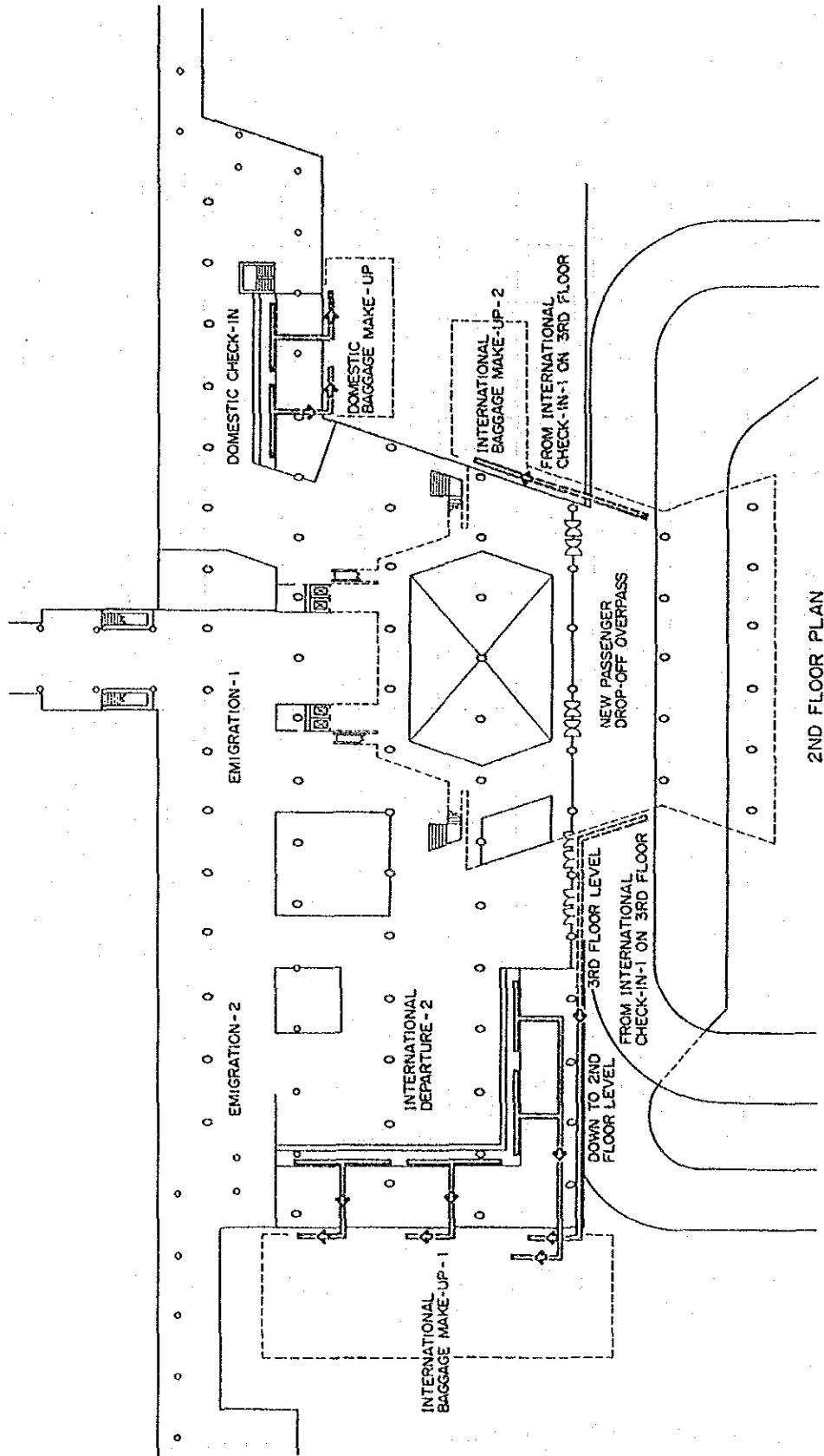
Work Item	Year	1989	1990	1991	1992	1993	1994
A. ENGINEERING AND ADMINISTRATION							
1. Survey and Detailed Design				=====			
2. Tender and Constructing					=====		
3. Construction Supervision						=====	
B. CONSTRUCTION							
1. Preparatory Work					=====		
2. Runway, Taxiway and Parking Apron							
a. Earth work					=====		
b. Taxiway pavement						=====	
c. Parking apron pavement						=====	
d. Grooving and marking						=====	
3. Airfield Drainage System							
a. Airfield storm drainage system						=====	
4. Access Road and Parking Lot							
a. Service road						=====	
b. Parking lot						=====	
5. Building							
a. Passenger terminal					=====		
b. Cargo terminal						=====	
c. CFR building						=====	
d. Control tower					=====		
e. Maintenance shop						=====	
f. General aviation building						=====	
6. Passenger Service Equipment							
a. Boarding bridge					=====		
b. Baggage handling system					=====		
c. Flight information system					=====		
d. Security system					=====		
e. Public address system					=====		
7. Sewage Disposal System							
a. Sewage treatment plan						=====	
8. NAVAID and Telecomm. System							
a. Control tower, VHF, TX, AM, etc.					=====		
b. VHF receiving station					=====		
c. ASR/SSR station					=====		
d. Off-aerodrome radio facility					=====		
9. Airfield Lighting System							
a. Airfield lighting					=====		
b. Apron flood lighting					=====		
10. Power Supply System							
a. Power center					=====		
b. Emergency power supply system					=====		
c. Power distribution system						=====	
11. Meteorological Observation System							
a. Meteorological observation equipment						=====	
12. Special Equipment							
a. CFR vehicle					=====		
b. Maintenance shop equipment						=====	

DEVELOPMENT PROJECT OF LA AURORA AND SANTA ELENA AIRPORTS

Figure 6 - 1



MONOGRAMA DE ATRAZO PROMEDIO POR AVION

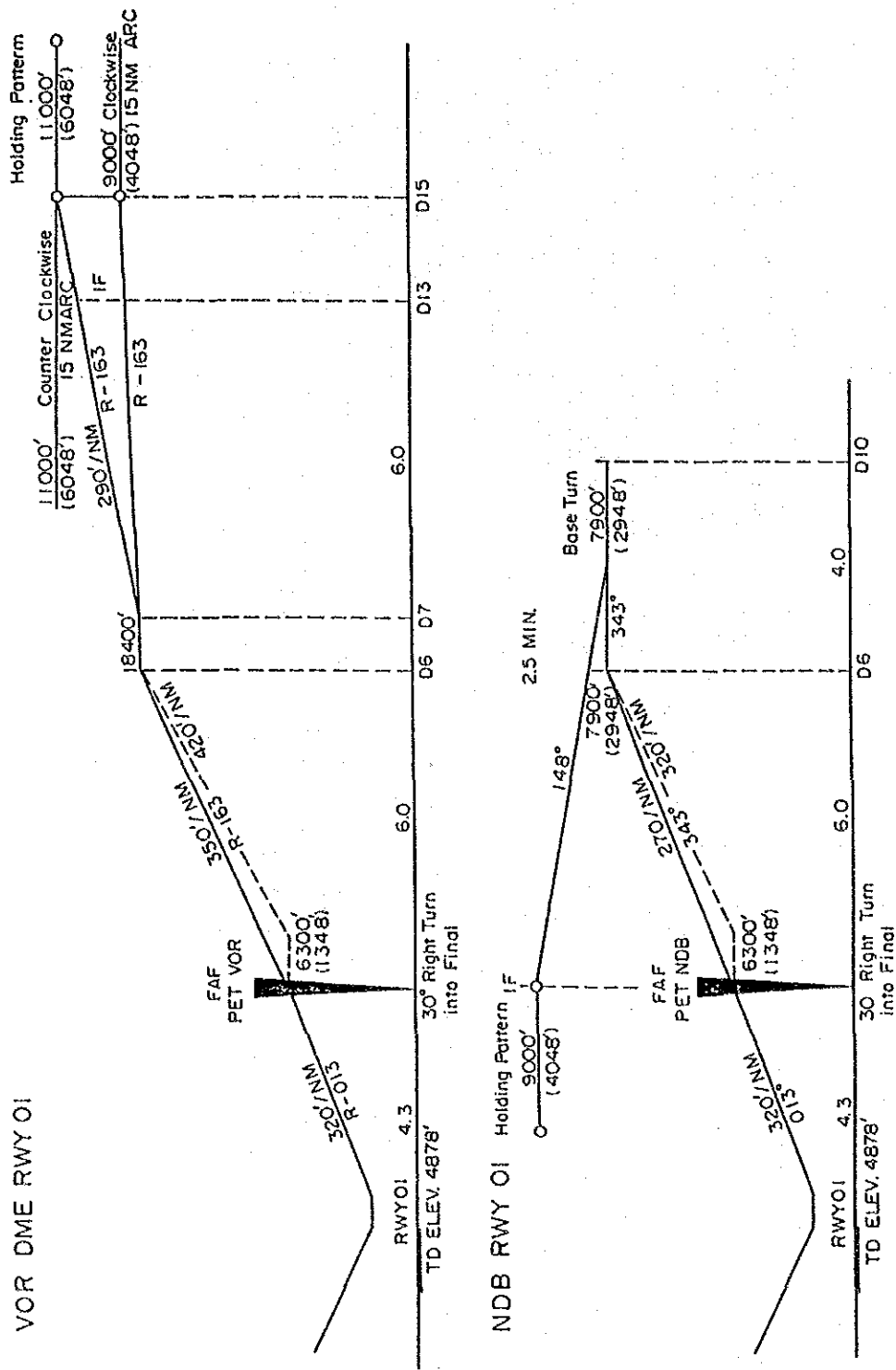


2ND FLOOR PLAN

SISTEMA DEL FLUJO DE EQUIPAJE PARA SALIDAS

DEVELOPMENT PROJECT OF LA AURORA AND SANTA ELENA AIRPORTS

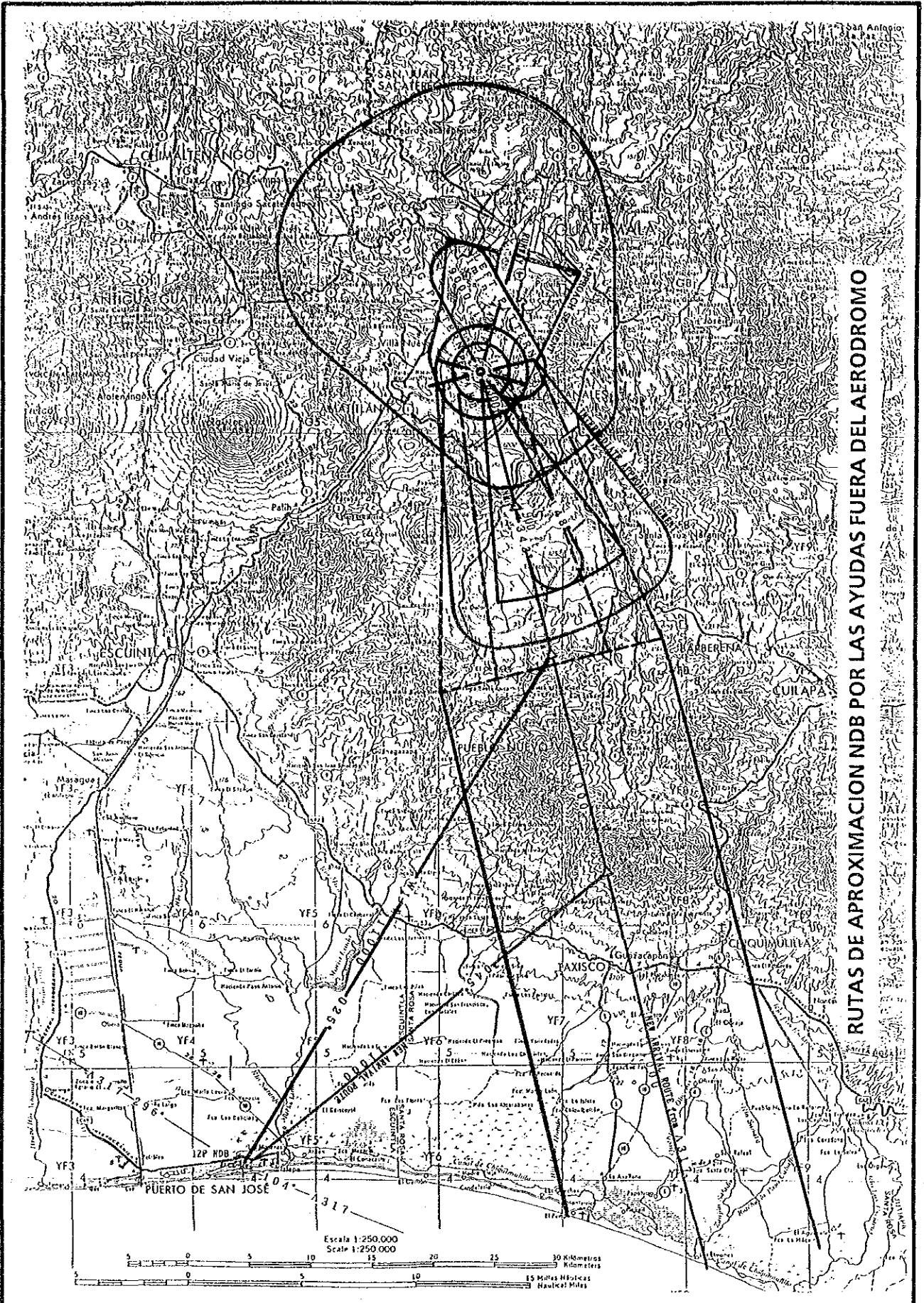
Figure 7-1



PROCEDIMIENTOS DE APROXIMACION POR LAS AYUDAS FUERA DEL AERODROMO

DEVELOPMENT PROJECT OF LA AURORA AND SANTA ELENA AIRPORTS

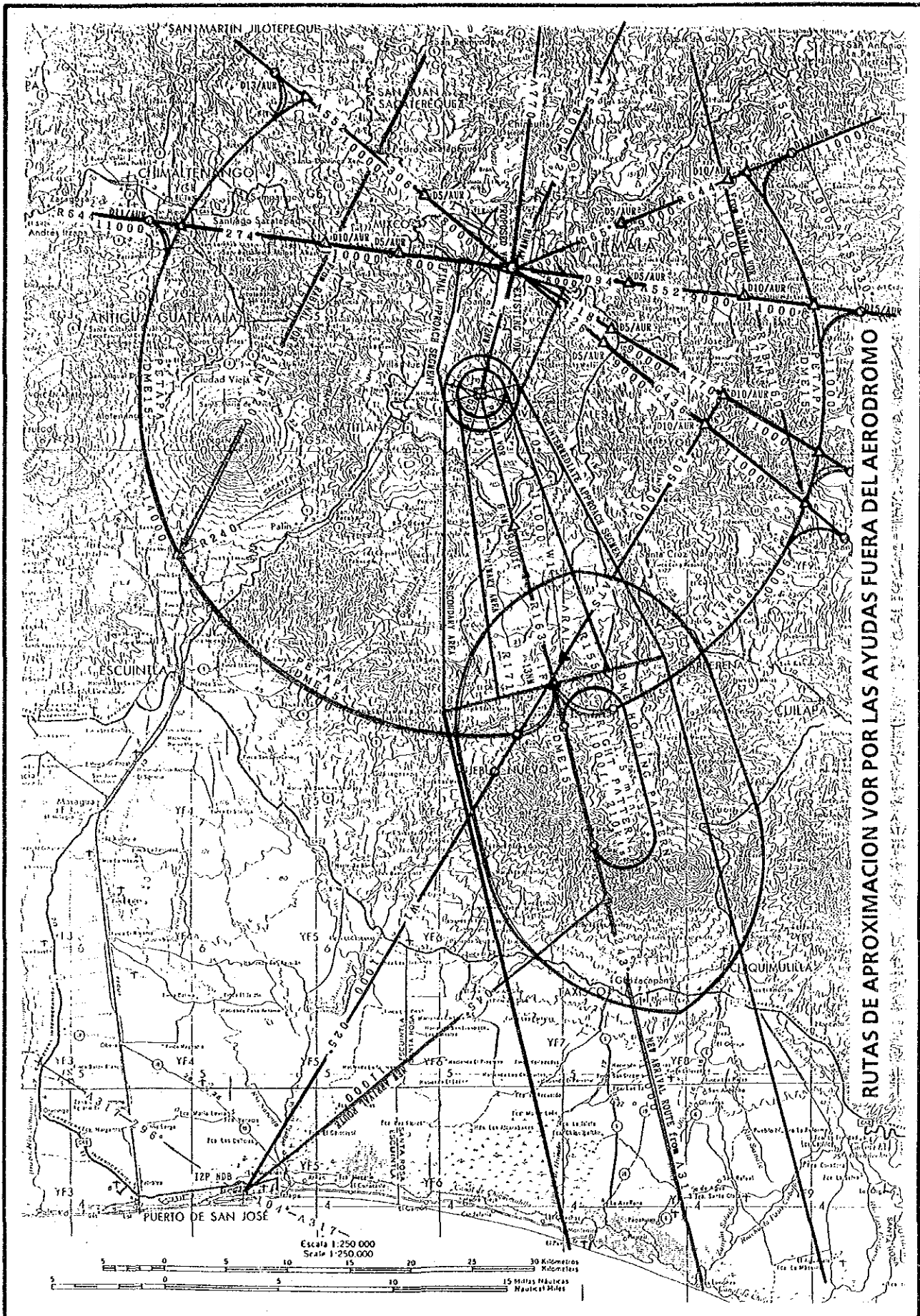
Figure 7-3



RUTAS DE APROXIMACION NDB POR LAS AYUDAS FUERA DEL AERODROMO

DEVELOPMENT PROJECT OF LA AURORA AND SANTA ELENA AIRPORTS

Figure 7 - 4



RUTAS DE APROXIMACION POR LAS AYUDAS FUERA DEL AERODROMO

DEVELOPMENT PROJECT OF LA AURORA AND SANTA ELENA AIRPORTS

Figure 7-5



CURVAS ISOSONICAS DE WECPNL (AÑO 2005)

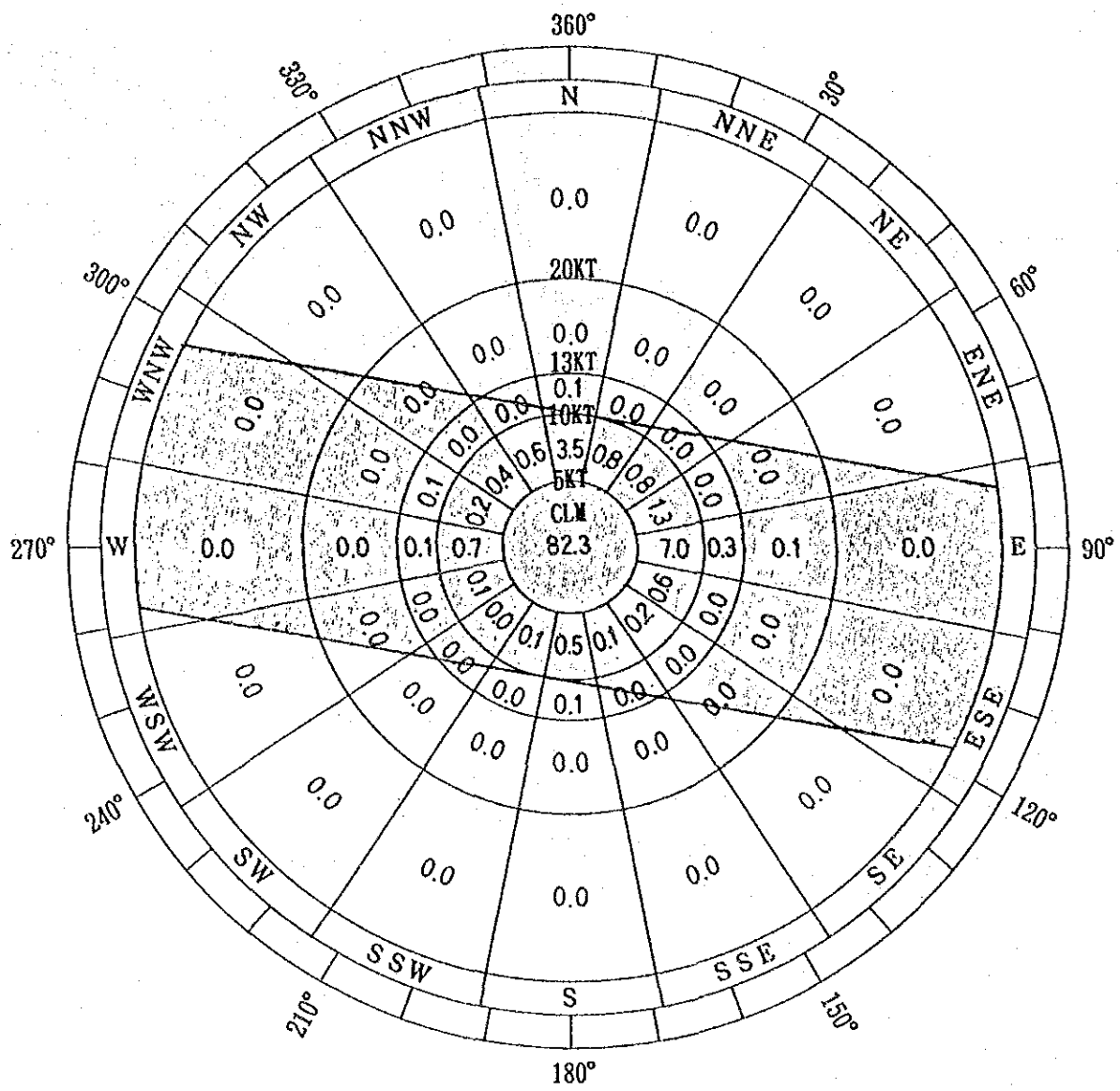
DEVELOPMENT PROJECT OF LA AURORA AND SANTA ELENA AIRPORTS	Figure 7-6
---	------------



RUTA MAYA PLANEADA POR LA SOCIEDAD GEOGRAFICA NACIONAL

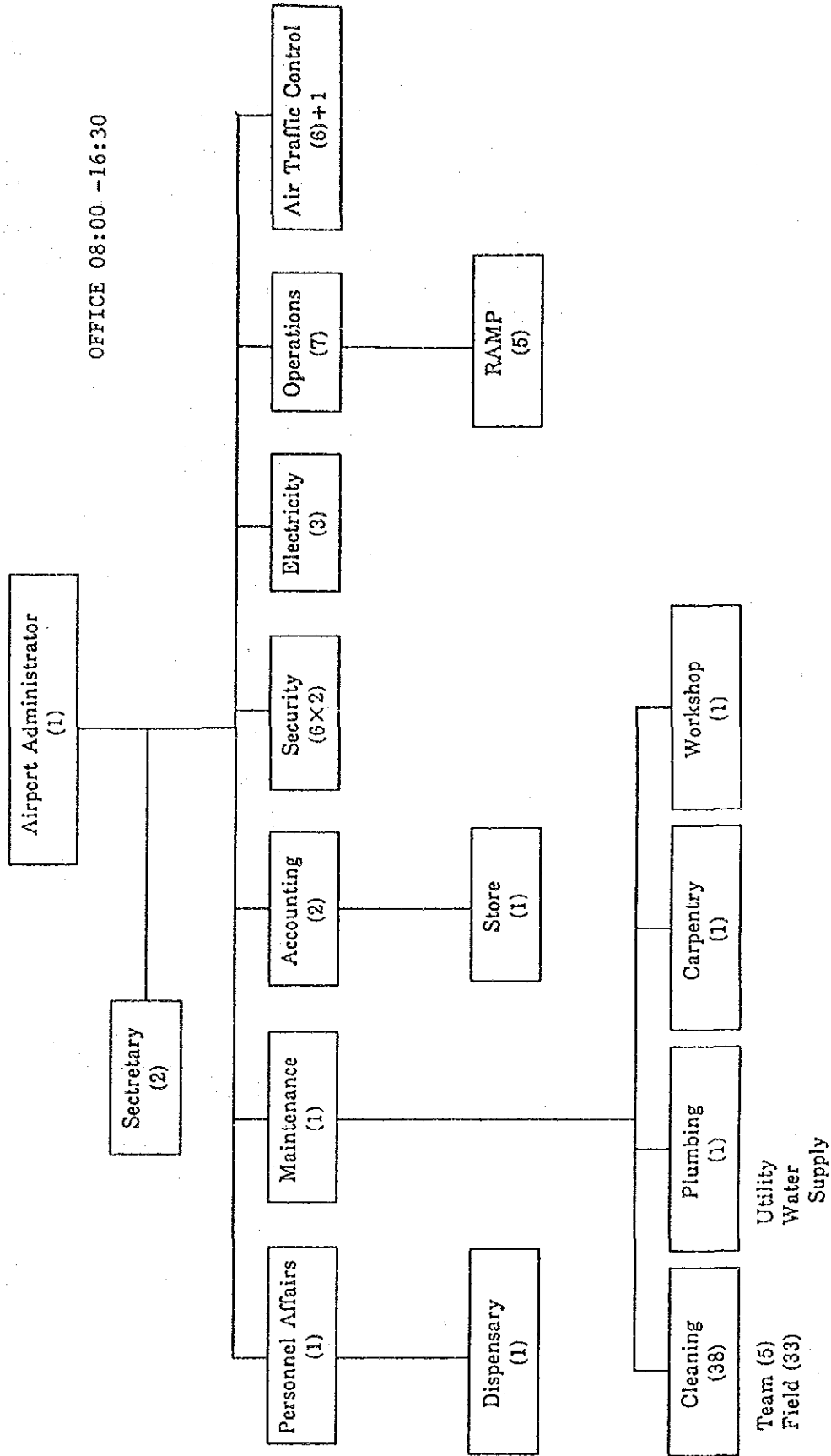
DEVELOPMENT PROJECT OF LA AURORA AND SANTA ELENA AIRPORTS

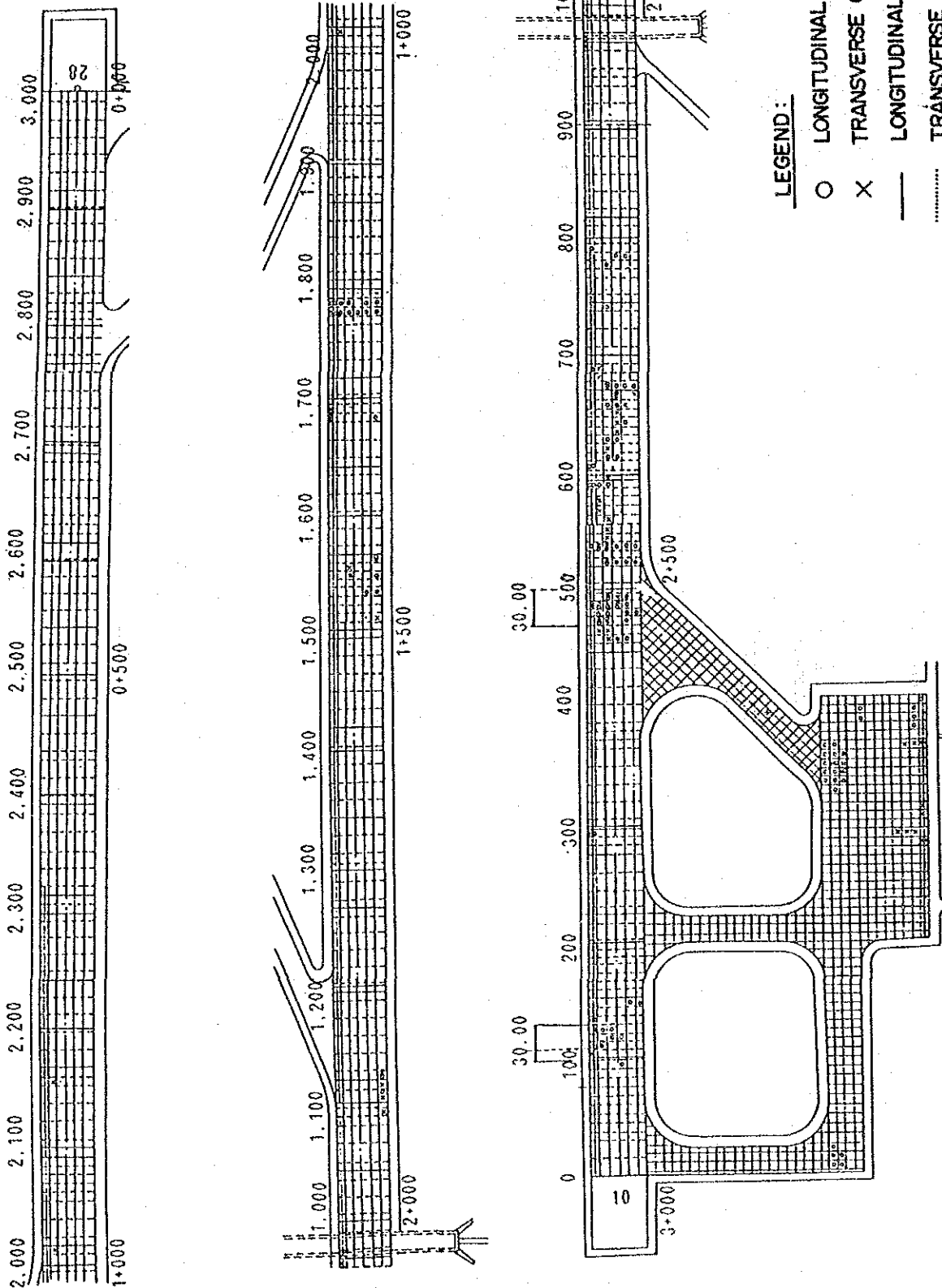
Figure 8 - 1



ROSA DE LOS VIENTOS EN SANTA ELENA

ORGANIGRAMA DEL AEROPUERTO SANTA ELENA





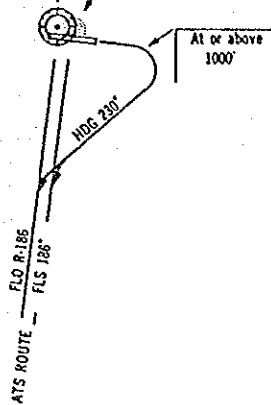
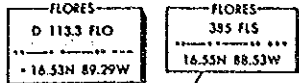
GRIETAS DE LOS PAVIMENTOS EN SANTA ELENA

DEVELOPMENT PROJECT OF LA AURORA AND SANTA ELENA AIRPORTS

Figure 10-1

DEPARTURE 1

(RWY 10)

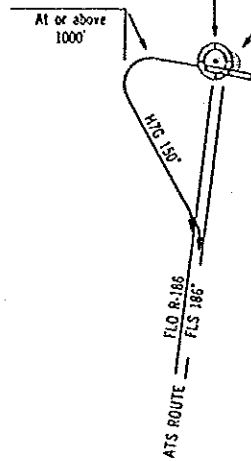
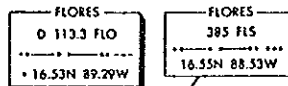


**SOUTHBOUND DEPARTURE
VIA ATS ROUTE to LA AURORA**

1. RWY 10 : Climb on runway heading to at or above 1000', then right turn heading 230° to intercept FLO VOR R-186 (or FLS NDB 186')
2. RWY 28 : Climb on runway heading to at or above 1000', then left turn heading 150° to intercept FLO VOR R-186 (or FLS NDB 186')

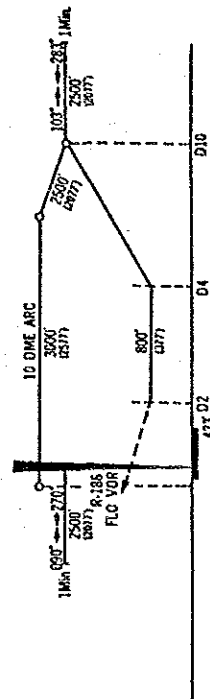
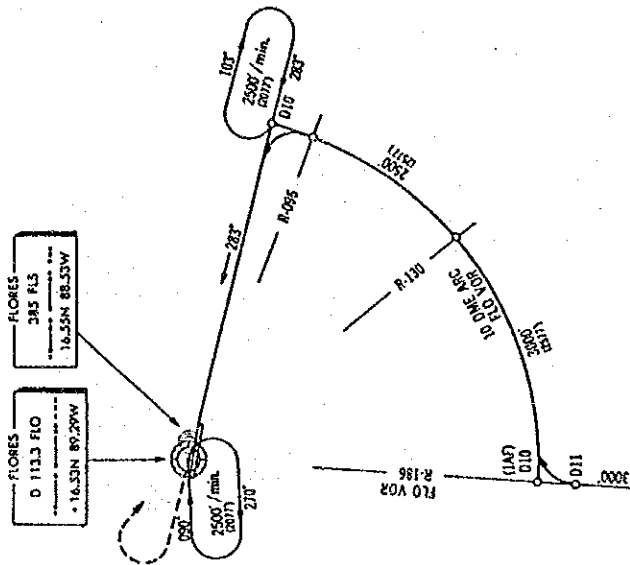
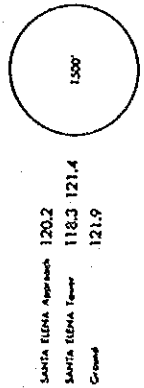
DEPARTURE 2

(RWY 28)



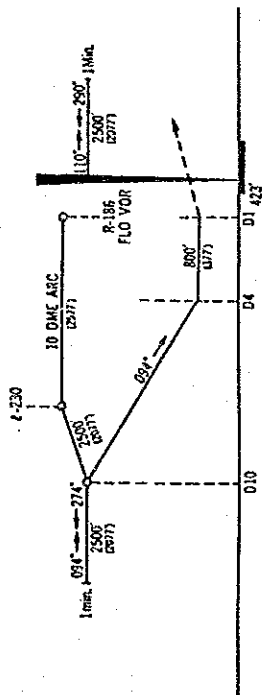
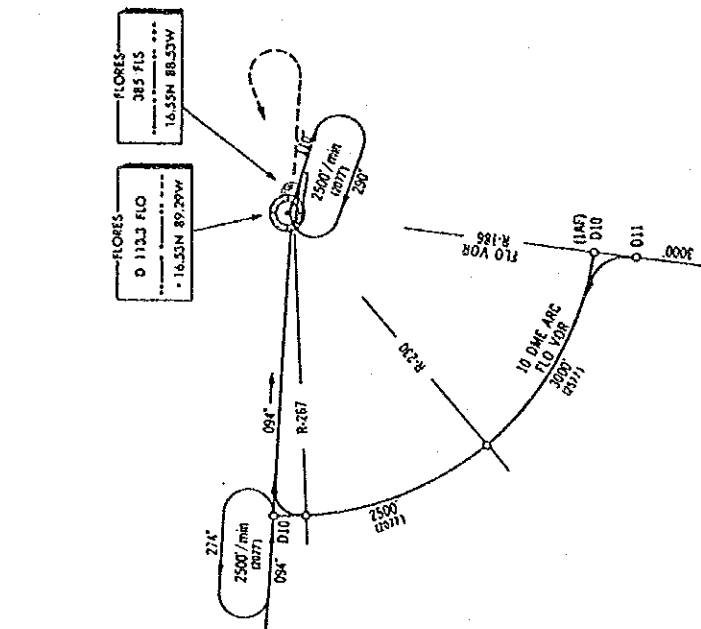
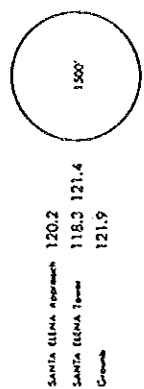
PROCEDIMIENTOS DE SALIDA NORMALIZADA POR INSTRUMENTOS

FLORES, GUATEMALA
VOR DME RWY 28
 VOR 113.3 FLO
 MSA FLO VOR APL. Elev. 423'



MISSED APPROACH: Climb on course -283° to or above 1000', turn right direct to FLO VOR and hold.

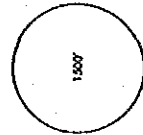
FLORES, GUATEMALA
VOR DME RWY 10
 VOR 113.3 FLO
 MSA FLO VOR APL. Elev. 423'



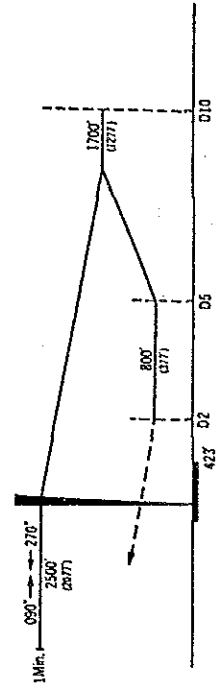
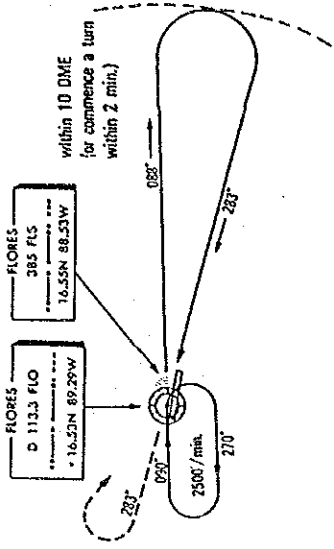
MISSED APPROACH: Climb on course-094° to at or above 1000', turn left direct to FLO VOR and hold.

RUTA DE LLGADA NORMALIZADA POR INSTRUMENTOS (VOR/DME)

FLORES, GUATEMALA
 VOR RWY 28
 VOR 113.3 FLO
 MSA
 FLO VOR
 Apt. Elev. 423'

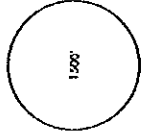


SANTA ELENA Approach 120.2
 SANTA ELENA Tower 118.3 121.4
 Ground 121.9

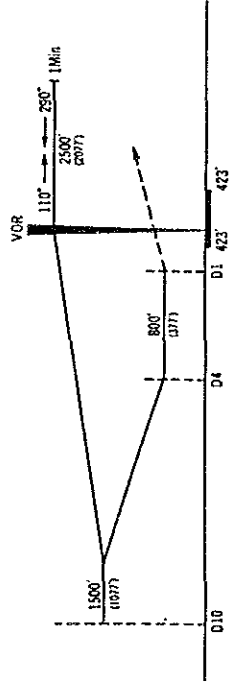
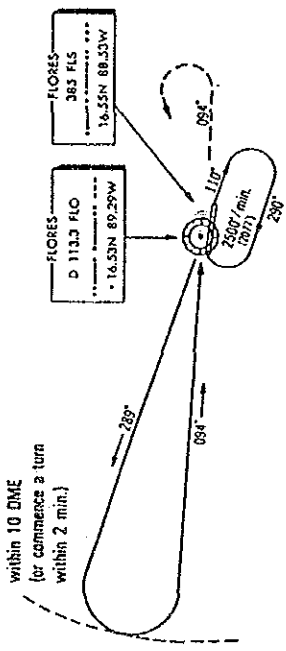


MISSED APPROACH : Climb on course 283° to or above 1000',
 turn right direct to FLO VOR and hold.

FLORES, GUATEMALA
 VOR RWY 10
 VOR 113.3 FLO
 MSA
 FLO VOR
 Apt. Elev. 423'



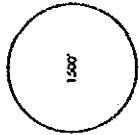
SANTA ELENA Approach 120.2
 SANTA ELENA Tower 118.3 121.4
 Ground 121.9



MISSED APPROACH : Climb on course 094° to or above 1000',
 turn left direct to FLO VOR and hold.

RUTA DE LLGADA NORMALIZADA POR INSTRUMENTOS (VOR)

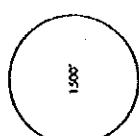
FLORES, GUATEMALA
NDB RWY 28
MOR 385 FLS
App. Elev. 423'



SANTA ELENA Approach 120.2
SANTA ELENA Tower 118.3 121.4
Ground 121.9

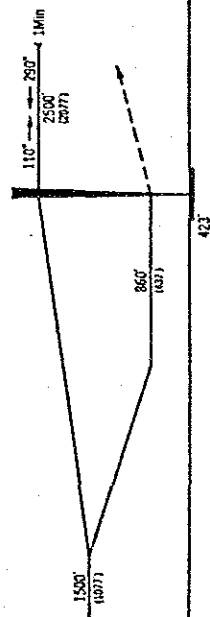
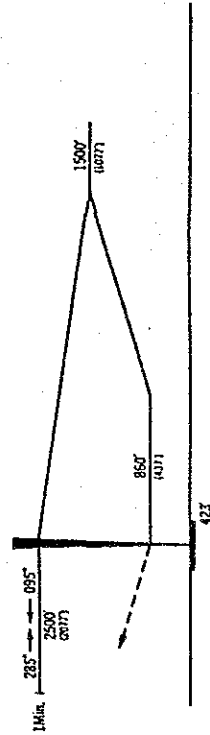
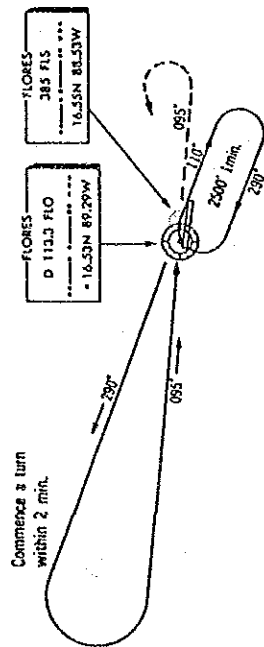
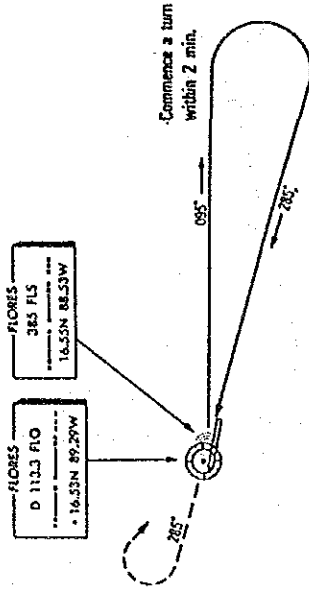
MCA
FLO VOR

FLORES, GUATEMALA
NDB RWY 10
MOR 385 FLS
App. Elev. 423'



SANTA ELENA Approach 120.2
SANTA ELENA Tower 118.3 121.4
Ground 121.9

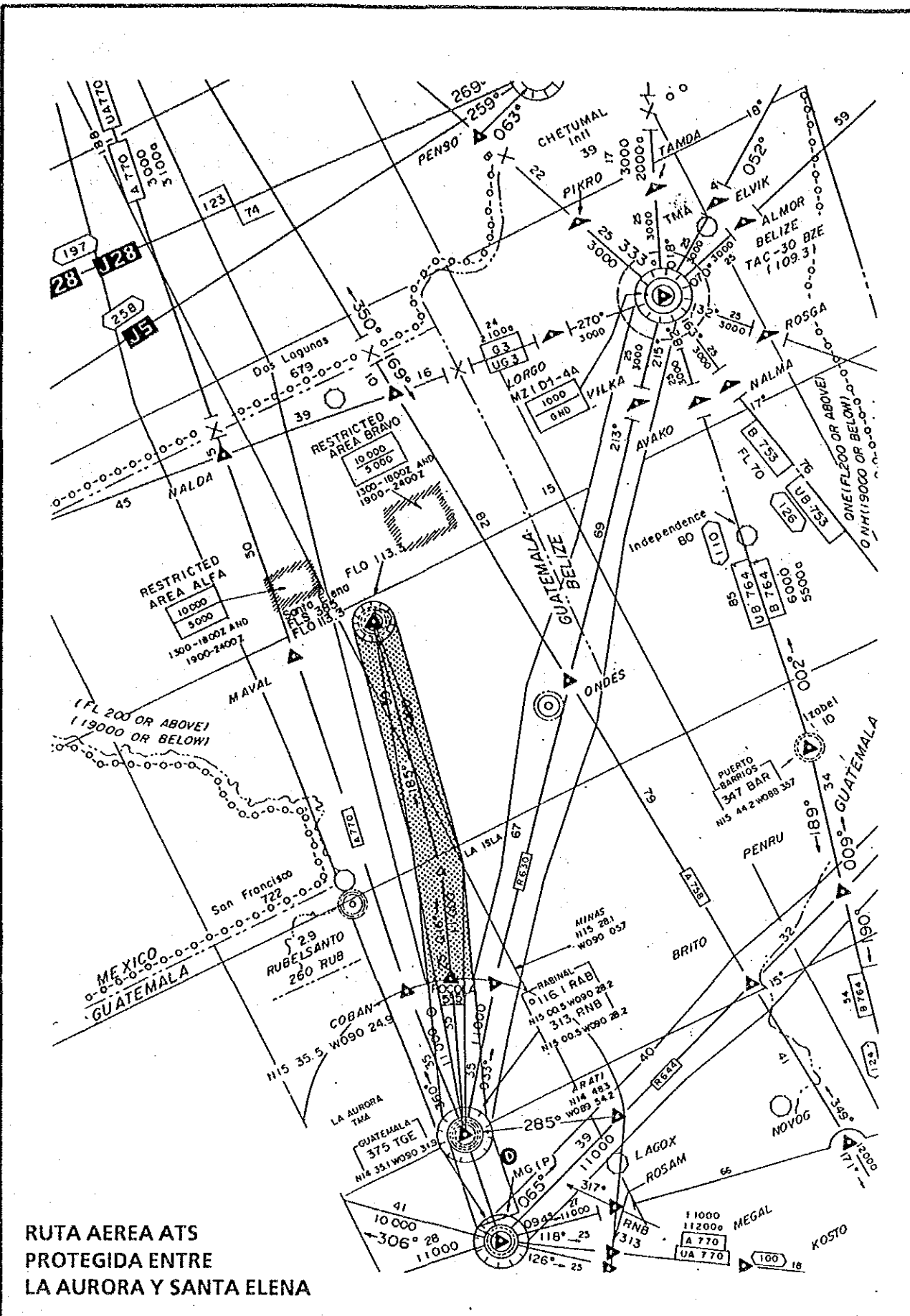
MCA
FLO VOR



MISSED APPROACH : Climb on Course -283° to at or above 1000',
turn right direct to FLO VOR and hold.

MISSED APPROACH : Climb on course -095° to at or above 1000',
turn left direct to FLO VOR and hold.

RUTA DE LLGADA NORMALIZADA POR INSTRUMENTOS (NDB)

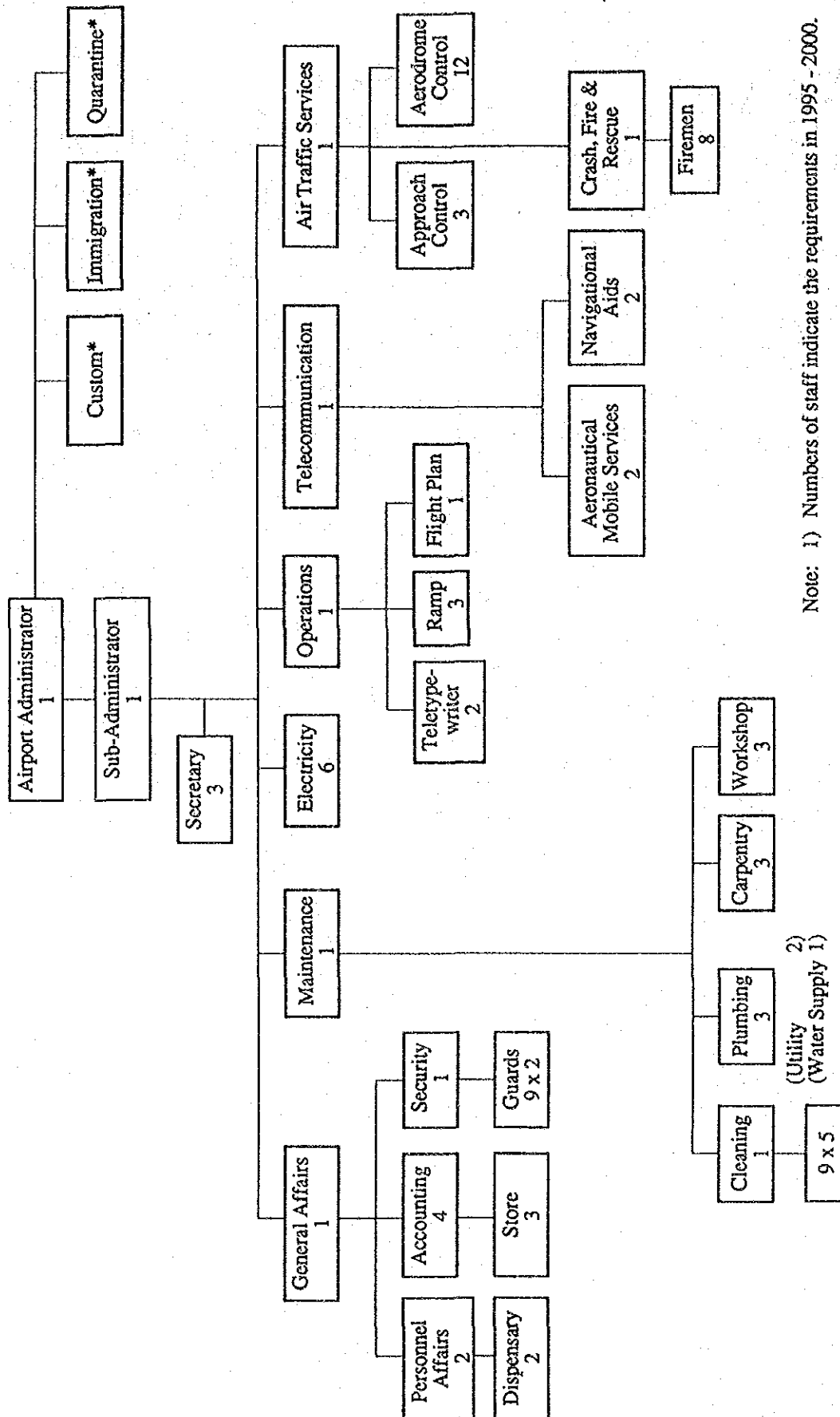


RUTA AEREA ATS
 PROTEGIDA ENTRE
 LA AURORA Y SANTA ELENA

DEVELOPMENT PROJECT OF LA AURORA AND SANTA ELENA AIRPORTS

Figure 10-8

ORGANIGRAMA PARA LA ADMINISTRACION DEL AEROPUERTO SANTA ELENA



Note: 1) Numbers of staff indicate the requirements in 1995 - 2000.
 2) * mark indicates sections under the jurisdiction of different authorities.

Work Item	Year	1989	1990	1991	1992	1993	1994
A. ENGINEERING AND ADMINISTRATION							
1. Survey and Detailed Design				=====			
2. Tender and Constructing					=====		
3. Construction Supervision						=====	
B. CONSTRUCTION							
1. Preparatory Work					=====		
2. Runway, Taxiway and Parking Apron							
a. Earth work						=====	
b. Runway overlay						=====	
c. Parking apron pavement						=====	
d. Marking						=====	
3. Access Road and Parking Lot							
a. Service road						=====	
4. Building							
a. Passenger terminal						=====	
b. CFR building						=====	
5. Passenger Service Equipment							
a. Flight information system						=====	
b. Security system						=====	
c. Public address system						=====	
6. NAVAID and Telecomm. System							
a. VOR/ATIS station						=====	
7. Airfield Lighting System							
a. PAPI system						=====	
8. Power Supply System							
a. Emergency power supply system						=====	
9. Special Equipment							
a. CFR vehicle						=====	
b. Maintenance shop equipment						=====	

CALENDARIO DE EJECUCION (SANTA ELENA - CORTO PLAZO)

