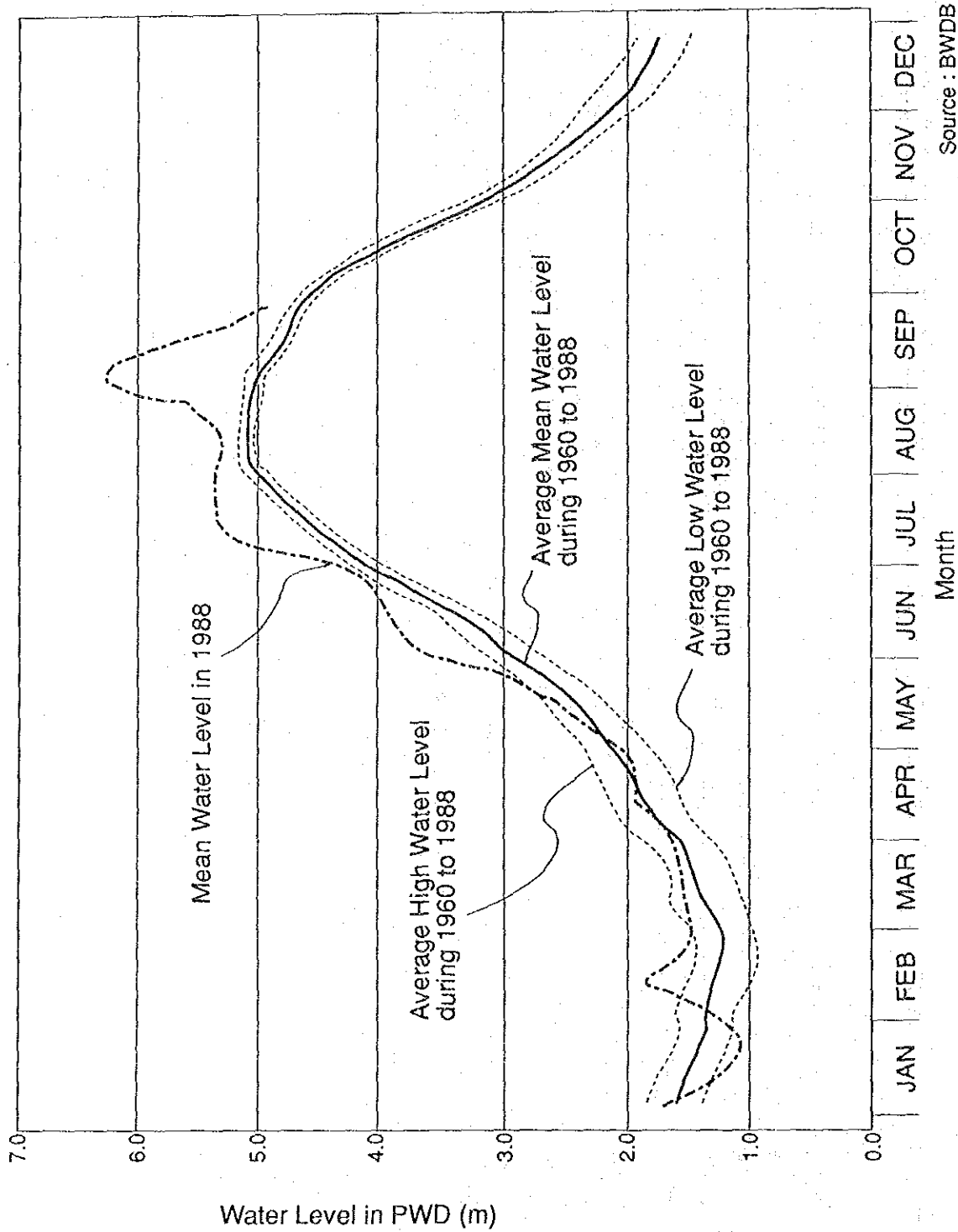


Source : BWDB, Water Development Maps (S= 1/15,840)

図 3.1.3 メグナ河の平均水位及び調査対象地区の地盤標高

THE PEOPLE'S REPUBLIC OF BANGLADESH
 MODEL RURAL DEVELOPMENT PROJECT PLAN
 FOR
 HOMNA AND DAUDKANDI UPAZILA
 JAPAN INTERNATIONAL COOPERATION AGENCY



Source : BWDB

図 3.1.4 メグナ河の水位変化

THE PEOPLE'S REPUBLIC OF BANGLADESH
 MODEL RURAL DEVELOPMENT PROJECT PLAN
 FOR
 HOMNA AND DAUDKANDI UPAZILA
 JAPAN INTERNATIONAL COOPERATION AGENCY

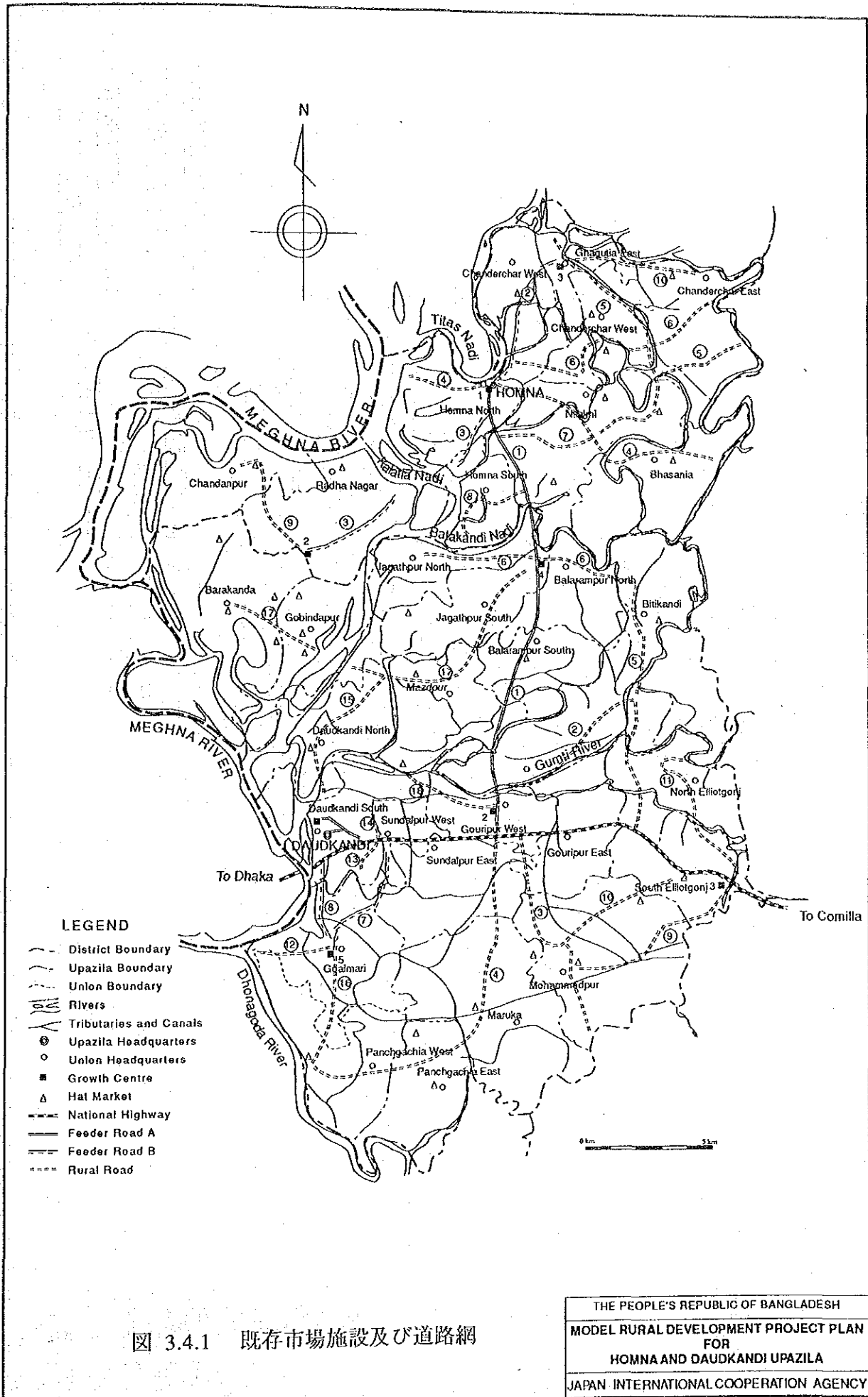
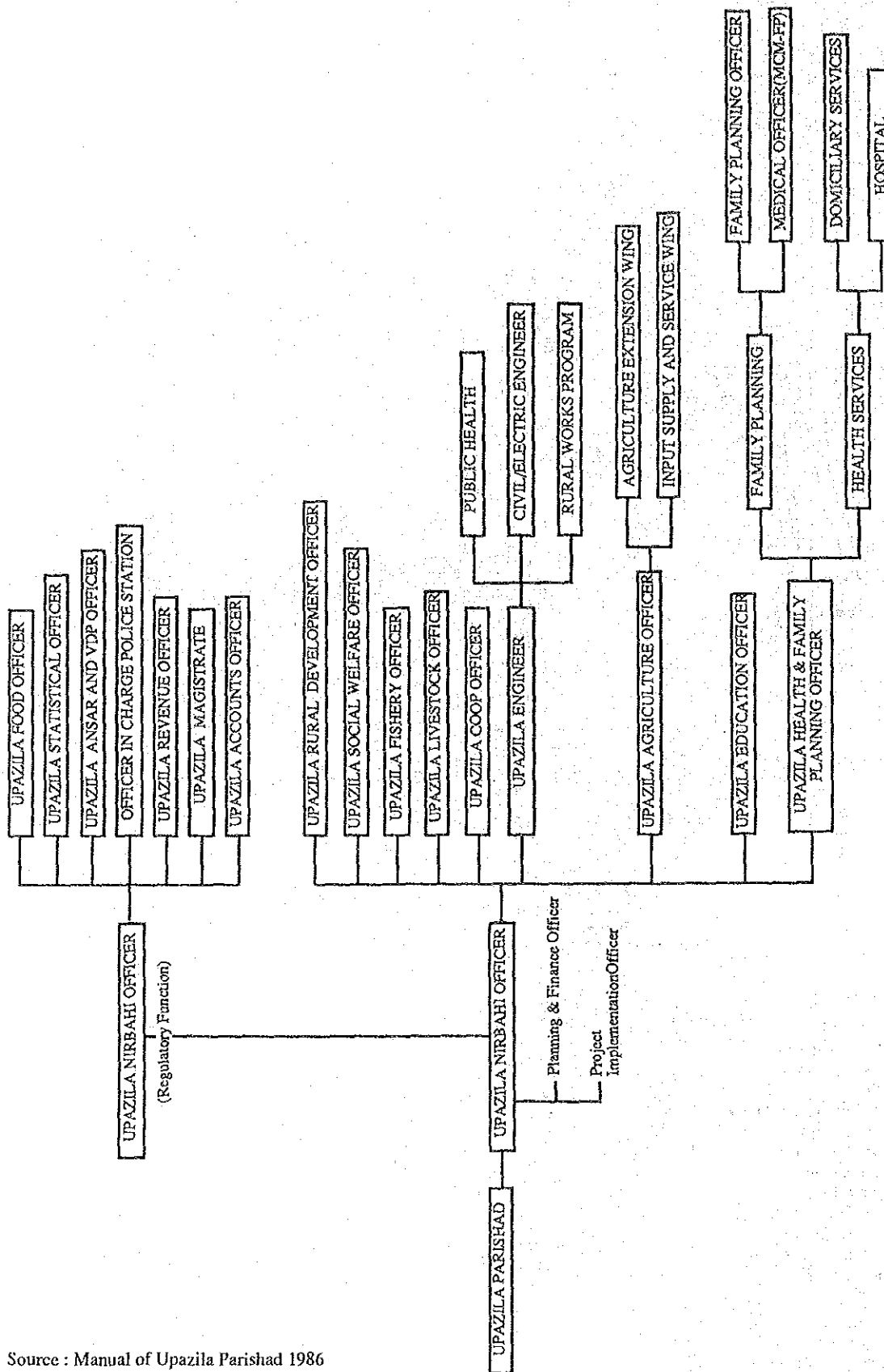


図 3.4.1 既存市場施設及び道路網

THE PEOPLE'S REPUBLIC OF BANGLADESH
 MODEL RURAL DEVELOPMENT PROJECT PLAN
 FOR
 HOMNA AND DAUDKANDI UPAZILA
 JAPAN INTERNATIONAL COOPERATION AGENCY



Source : Manual of Upazila Parishad 1986

図 3.5.1 ウパジラの組織図

THE PEOPLE'S REPUBLIC OF BANGLADESH
 MODEL RURAL DEVELOPMENT PROJECT PLAN
 FOR
 HOMNA AND DAUDKANDI UPAZILA
 JAPAN INTERNATIONAL COOPERATION AGENCY

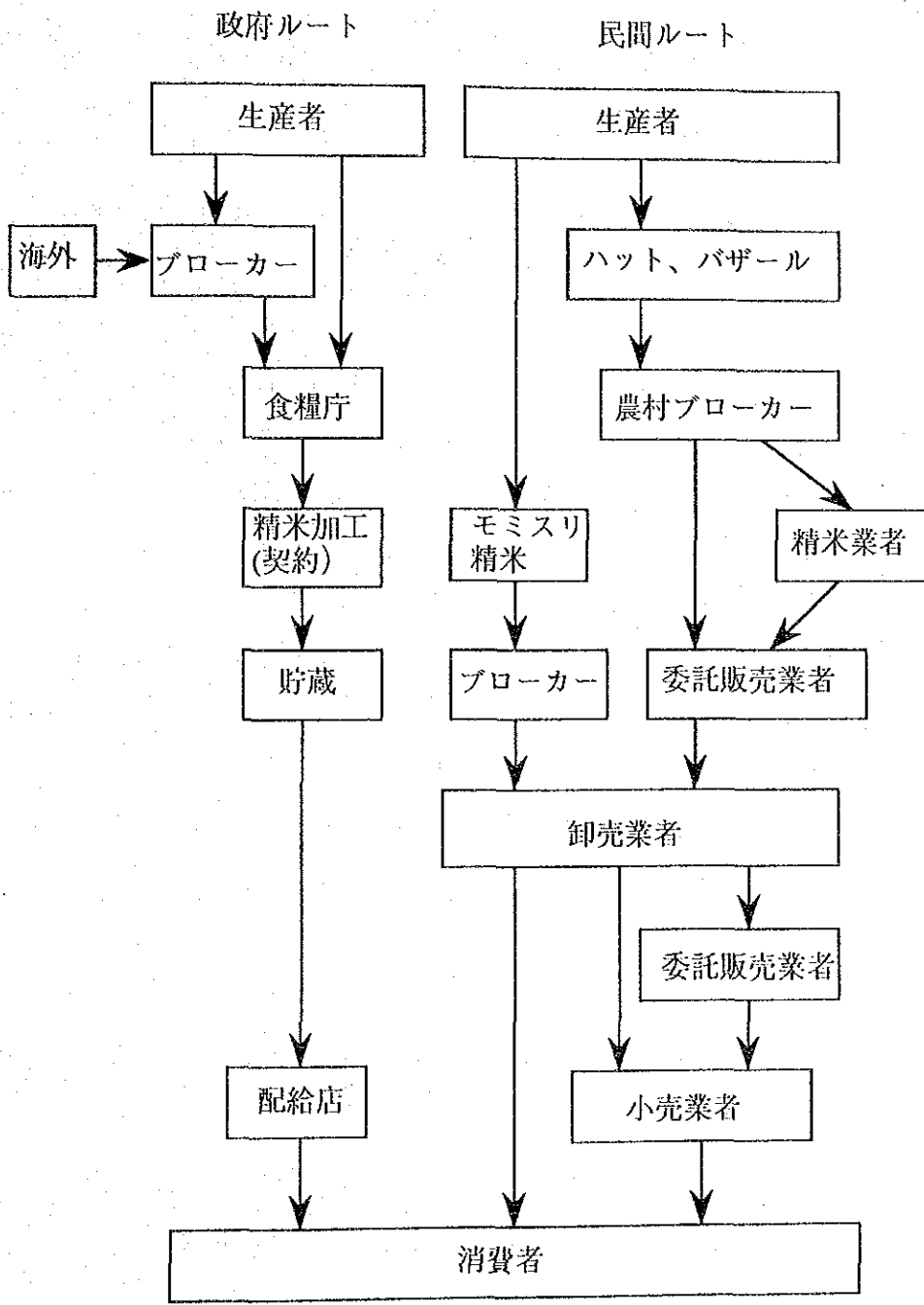


図 3.6.1 米の流通機構図

THE PEOPLE'S REPUBLIC OF BANGLADESH
 MODEL RURAL DEVELOPMENT PROJECT PLAN
 FOR
 HOMNA AND DAUDKANDI UPAZILA
 JAPAN INTERNATIONAL COOPERATION AGENCY

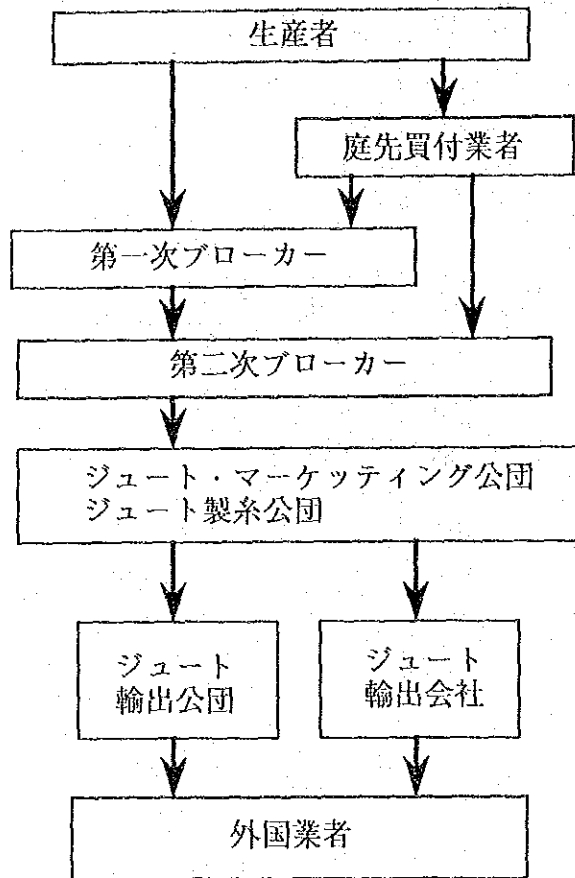
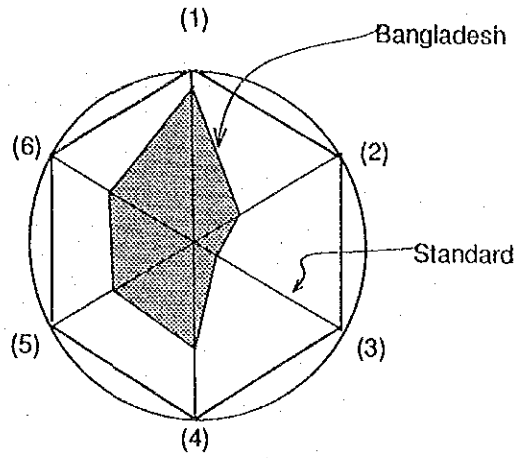


図 3.6.2 ジュート流通機構図

THE PEOPLE'S REPUBLIC OF BANGLADESH
MODEL RURAL DEVELOPMENT PROJECT PLAN FOR HOMNA AND DAUDKANDI UPAZILA
JAPAN INTERNATIONAL COOPERATION AGENCY

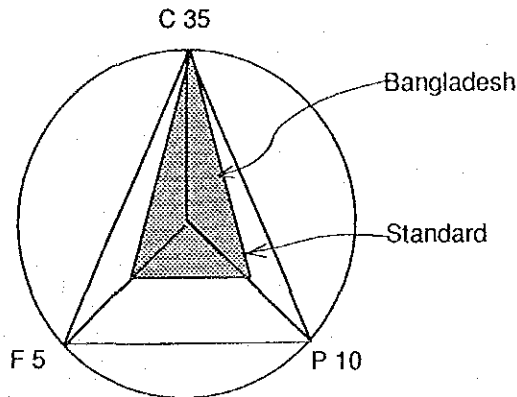
A. Calorie



Recommended 1981/82

	Cal	Cal	
(1) Cereals	1,502	1,688	Rice, Wheat
(2) Starch foods	415	62	Roots, Sugar
(3) Pulses	395	28	
(4) Vege. + Fruits	108	54	
(5) Oil	54	27	
(6) Foods from Animal	115	51	
Total	2,700	1,945	

B. Nutrition



	Cal	Cal	Balance
(1) Carbohydrates	12,129	1,660	57 - 68%
(2) Proteine	400	195	12 - 13%
(3) Fats	171	90	20 - 30%
Total	2,700	1,945	

図 3.6.3 バングラデッシュ国民の栄養バランス

THE PEOPLE'S REPUBLIC OF BANGLADESH
 MODEL RURAL DEVELOPMENT PROJECT PLAN
 FOR
 HOMNA AND DAUDKANDI UPAZILA
 JAPAN INTERNATIONAL COOPERATION AGENCY

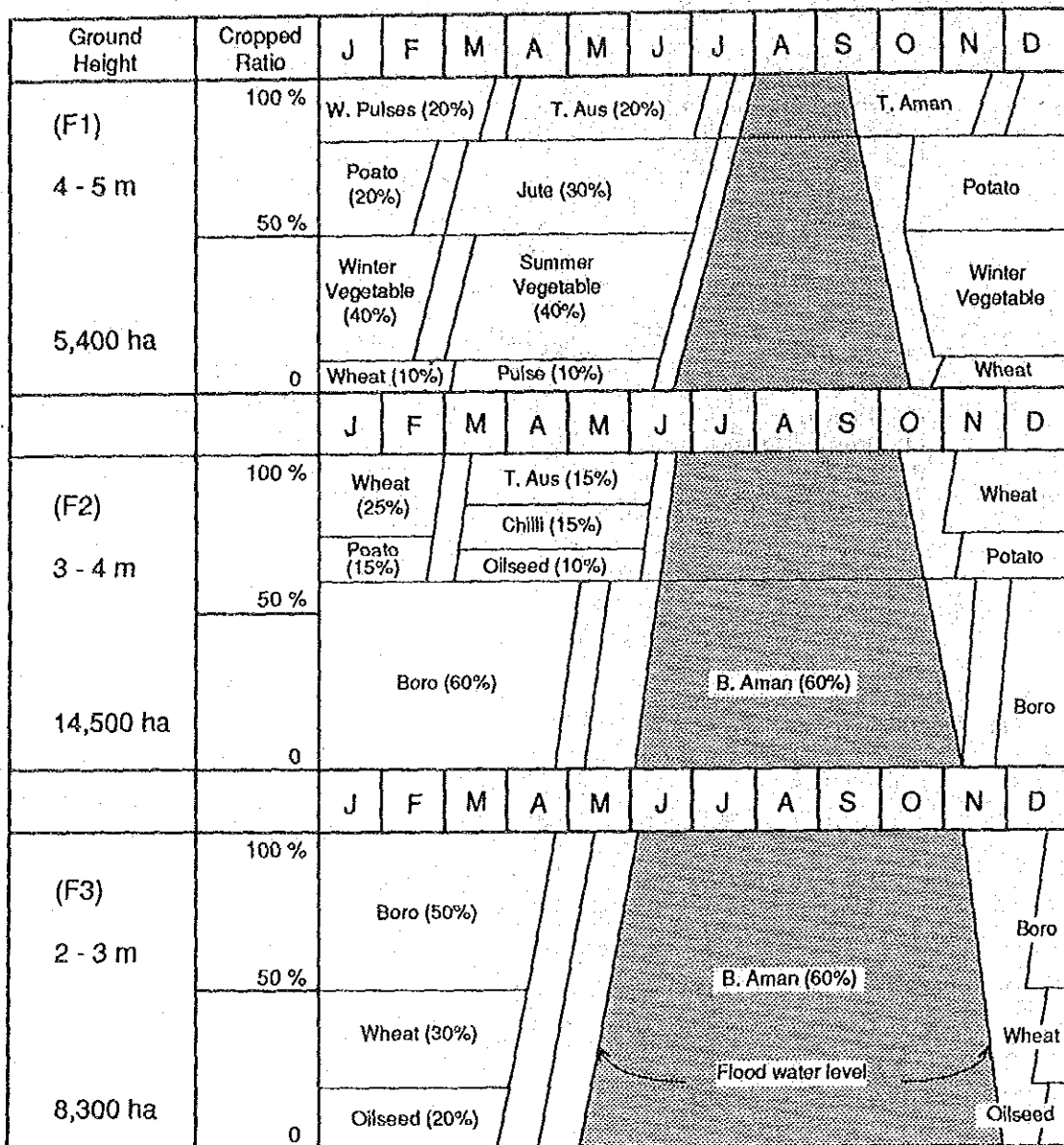


図 4.2.1 作付計画 (ダウダイカンダイ郡)

THE PEOPLES REPUBLIC OF BANGLADESH
 MODEL RURAL DEVELOPMENT PROJECT PLAN
 FOR
 HOMNA AND DAUDKANDI UPAZILA
 JAPAN INTERNATIONAL COOPERATION AGENCY

Ground Height	Cropped Ratio	J	F	M	A	M	J	J	A	S	O	N	D
(F1) 4 - 5 m 3,900 ha	100 %	W. Pulses (15%)		T. Aus (15%)				T. Aman (15%)			Pulses		
	50 %	Potato (35%)		Jute (35%)				Potato					
	0	Winter Vegetable (40%)		Summer Vegetable (40%)				Winter Vegetable					
		Wheat		Pulses (10%)				Wheat					
		J	F	M	A	M	J	J	A	S	O	N	D
(F2) 3 - 4 m 6,200 ha	100 %	Wheat (30%)		T. Aus (10%)				Wheat (30%)					
	50 %	Potato (10%)		Chilli (20%)				Potato (10%)					
				Oilseed (10%)									
	0	Boro (60%)				B. Aman (60%)				Boro			
		J	F	M	A	M	J	J	A	S	O	N	D
(F3) 2 - 3 m 3,900 ha	100 %	Boro (40%)				B. Aman (100%)				Boro			
	50 %	Wheat (30%)				Flood water level				Wheat			
	0	Oilseed (20%)								Oilseed			

図 4.2.2 作付計画 (ホムナ郡)

THE PEOPLE'S REPUBLIC OF BANGLADESH
 MODEL RURAL DEVELOPMENT PROJECT PLAN
 FOR
 HOMNA AND DAUDKANDI UPAZILA
 JAPAN INTERNATIONAL COOPERATION AGENCY

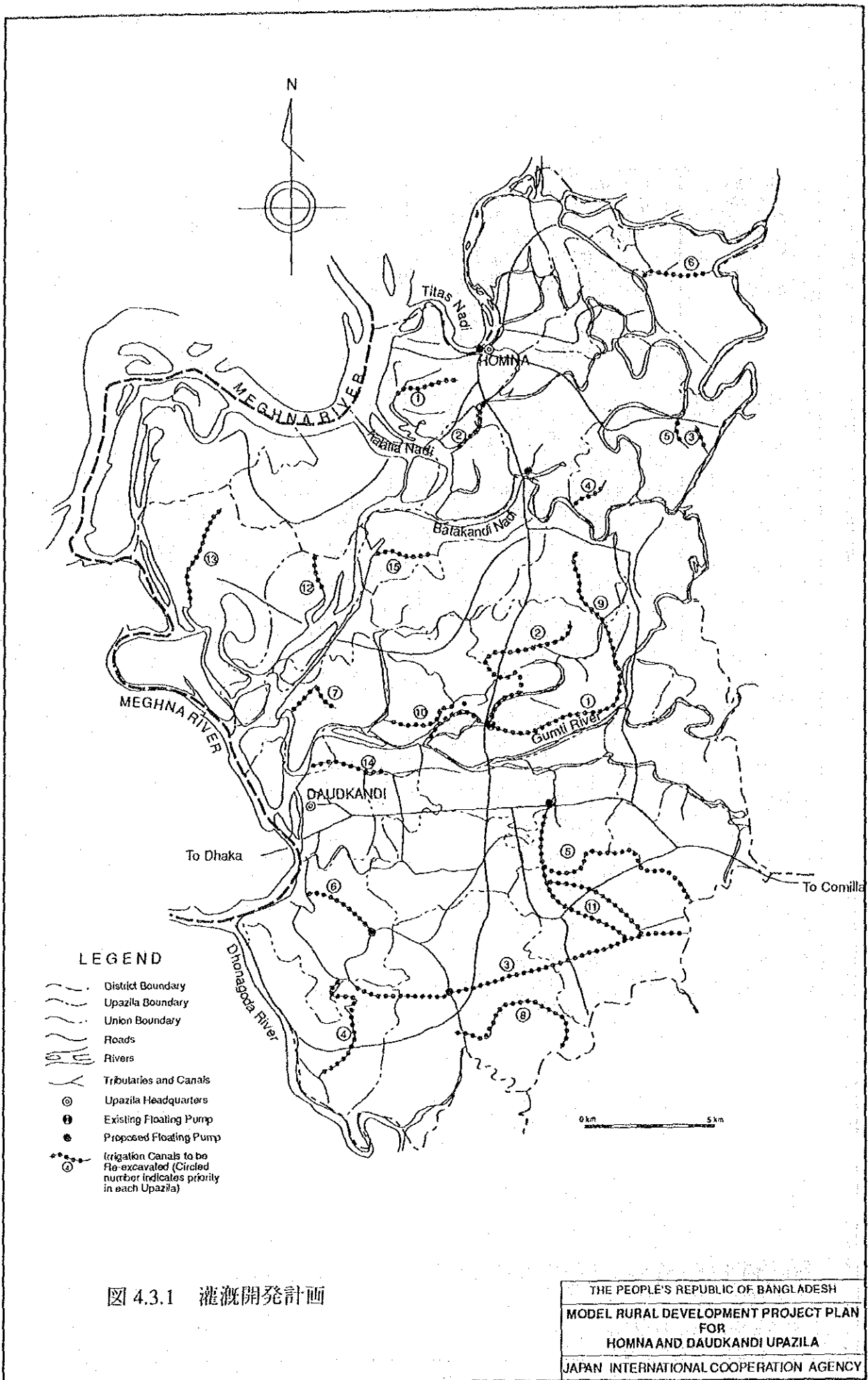
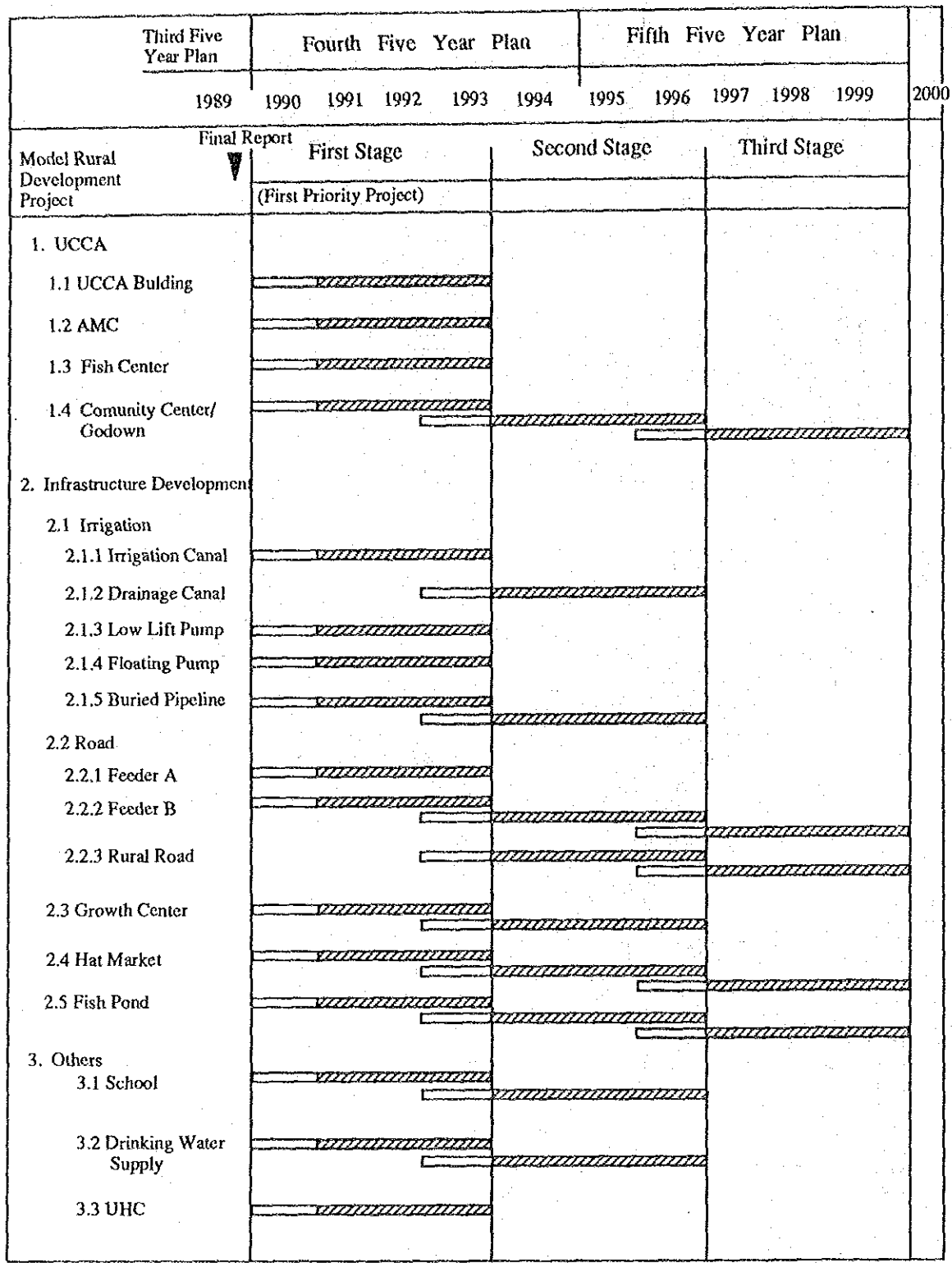


图 4.3.1 灌溉開發計畫



图 4.3.2 計画道路網

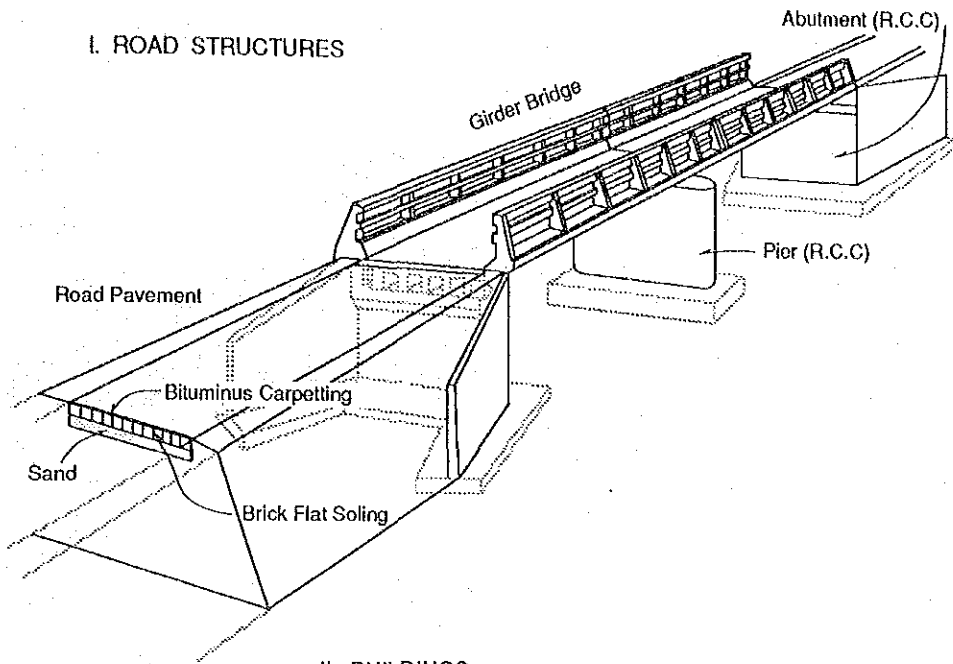


Design Construction

图 5.1.1 事業実施計画

THE PEOPLE'S REPUBLIC OF BANGLADESH
 MODEL RURAL DEVELOPMENT PROJECT PLAN
 FOR
 HOMNA AND DAUDKANDI UPAZILA
 JAPAN INTERNATIONAL COOPERATION AGENCY

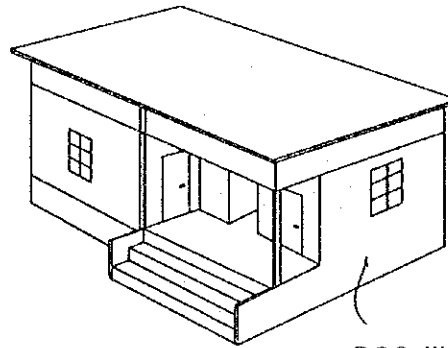
I. ROAD STRUCTURES



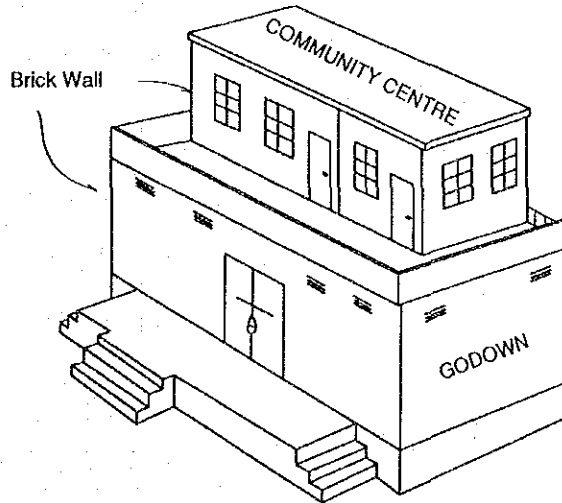
II. BUILDINGS

OFFICE BUILDING

Purpose:
Office, Laboratory, Training Room, etc.
Building Site:
AMC, Inland Fish Culture Center and UCCA



GODOWN CUM COMMUNITY CENTRE

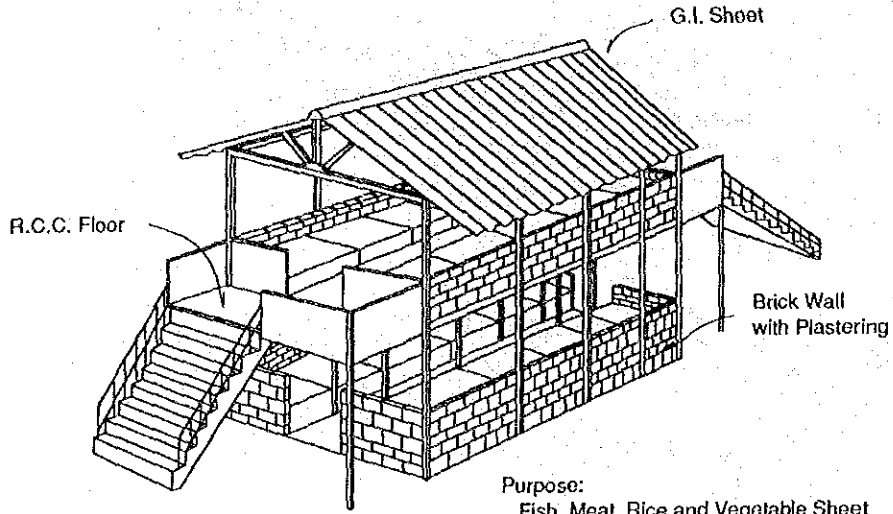


Purpose:
Godown and Community Centre

图 5.2.1 (1/2) 概念图

THE PEOPLE'S REPUBLIC OF BANGLADESH
MODEL RURAL DEVELOPMENT PROJECT PLAN FOR
HOMNA AND DAUDKANDI UPAZILA
JAPAN INTERNATIONAL COOPERATION AGENCY

MARKET SHED



Purpose:
Fish, Meat, Rice and Vegetable Sheet
Building Site:
Growth Centre and Hat market

DRINKING WATER SUPPLY

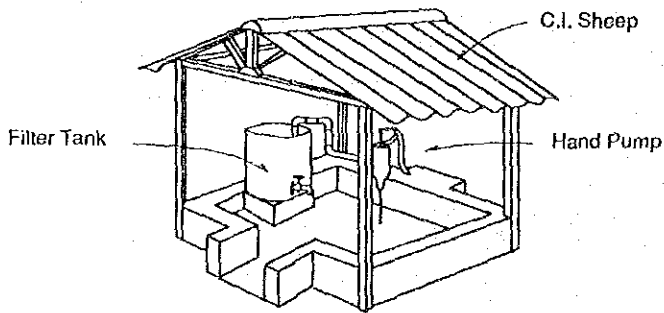


图 5.2.1 (2/2) 概念图

THE PEOPLE'S REPUBLIC OF BANGLADESH
MODEL RURAL DEVELOPMENT PROJECT PLAN
FOR
HOMNA AND DAUDKANDI UPAZILA
JAPAN INTERNATIONAL COOPERATION AGENCY

項 目	建設		運営				
	LGE B	Users' Group	BRDB	UCCA	Upazila Parishad	Users' Group	DR&H
1. UCCA関連事業							
1.1 UCCAの整備	○		○	○			
1.2 農業近代化センター	○		○	○		○	
1.3内水面漁業センター	○		○	○		○	
1.4倉庫ライスミルコンプレックス コミュニティ・センター	○		○	○		○	
2.インフラストラクチャーの整備							
2.1かんがい用水路の再掘削	○				○		
2.2 排水路の再掘削	○				○		
2.3 低揚水 ポンプ	○			○		○	
2.4フローティング・ポンプ	○			○		○	
2.5埋設パイプライン	○				○	○	
2.6フィーダ道路A	○						○
2.7フィーダ道路B	○				○		
2.8ルーラル・道路	○				○		
2.9グロウスセンター	○				○		
2.10ハットマーケット	○				○		
2.11 既設養魚池の改修		○				○	
3.その他の事業							
3.1 学校改修	○				○		
3.2 営農飲雑用水	○				○		
3.3 UHC	○				○		

図 5.3.1 事業実施主体

THE PEOPLE'S REPUBLIC OF BANGLADESH
 MODEL RURAL DEVELOPMENT PROJECT PLAN
 FOR
 HOMNA AND DAUDKANDI UPAZILA
 JAPAN INTERNATIONAL COOPERATION AGENCY

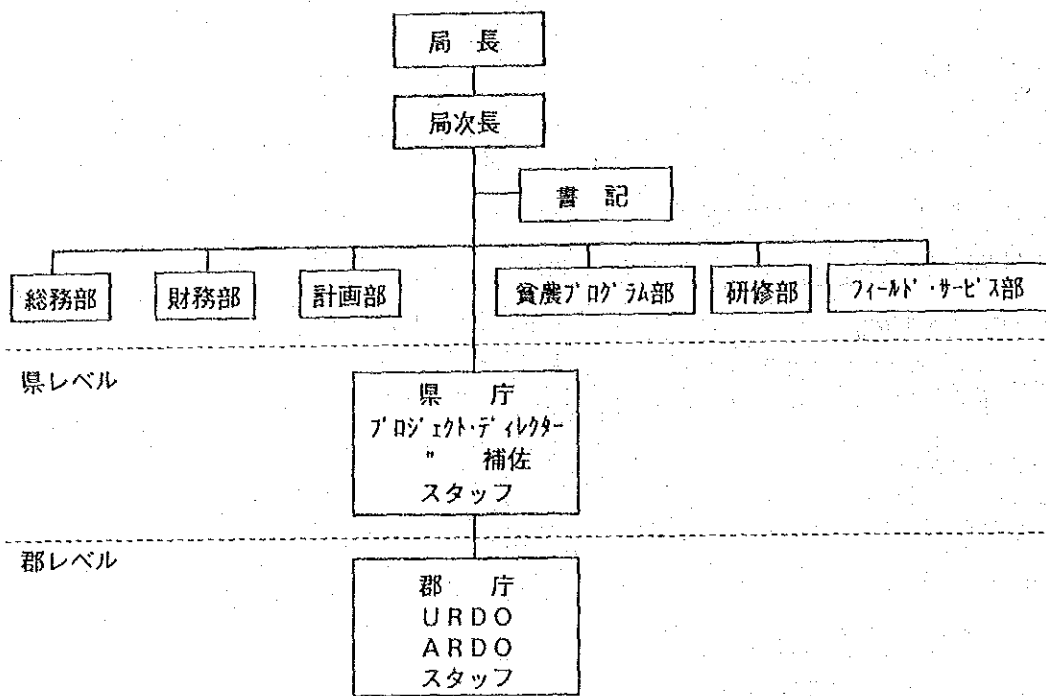


図 7.1.1 BRDBの組織

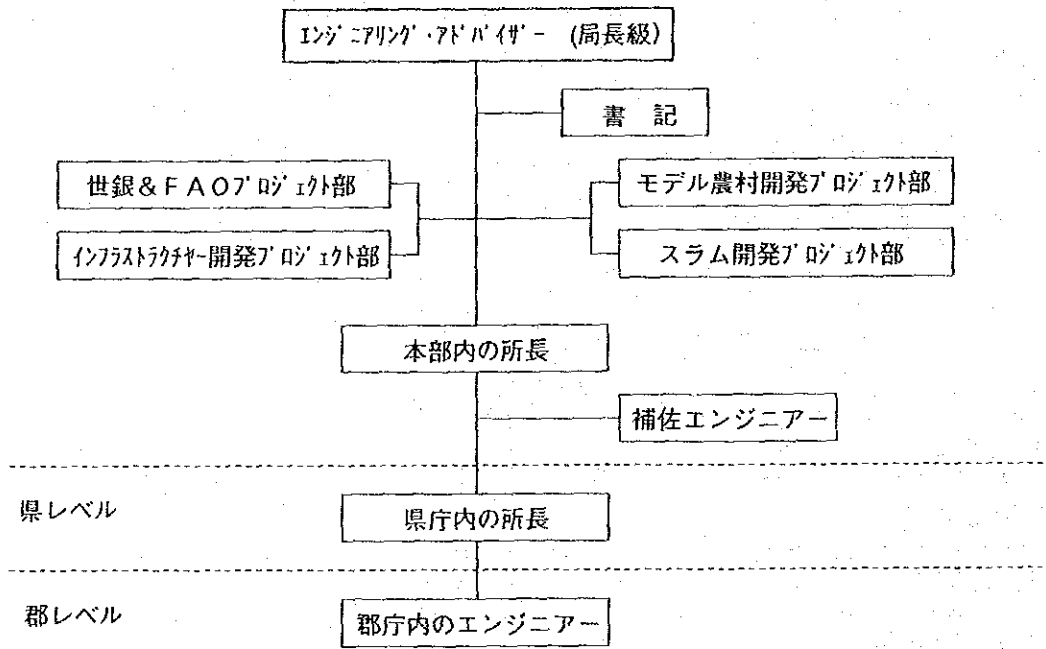


図 7.1.2 LGEBの組織

THE PEOPLE'S REPUBLIC OF BANGLADESH
 MODEL RURAL DEVELOPMENT PROJECT PLAN
 FOR
 HOMNA AND DAUDKANDI UPAZILA
 JAPAN INTERNATIONAL COOPERATION AGENCY

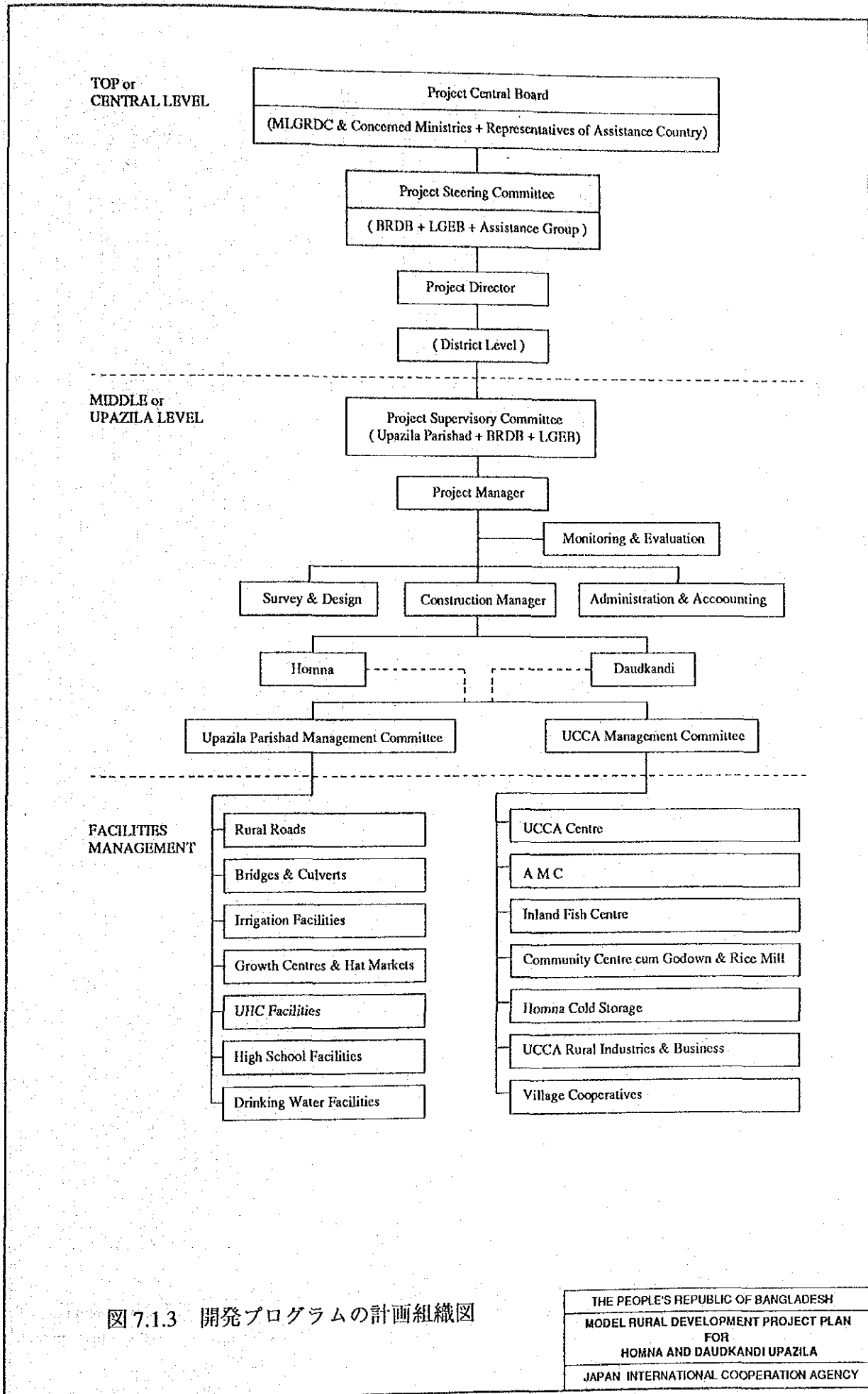


図 7.1.3 開発プログラムの計画組織図

THE PEOPLE'S REPUBLIC OF BANGLADESH
 MODEL RURAL DEVELOPMENT PROJECT PLAN
 FOR
 HOMNA AND DAUDKANDI UPAZILA
 JAPAN INTERNATIONAL COOPERATION AGENCY

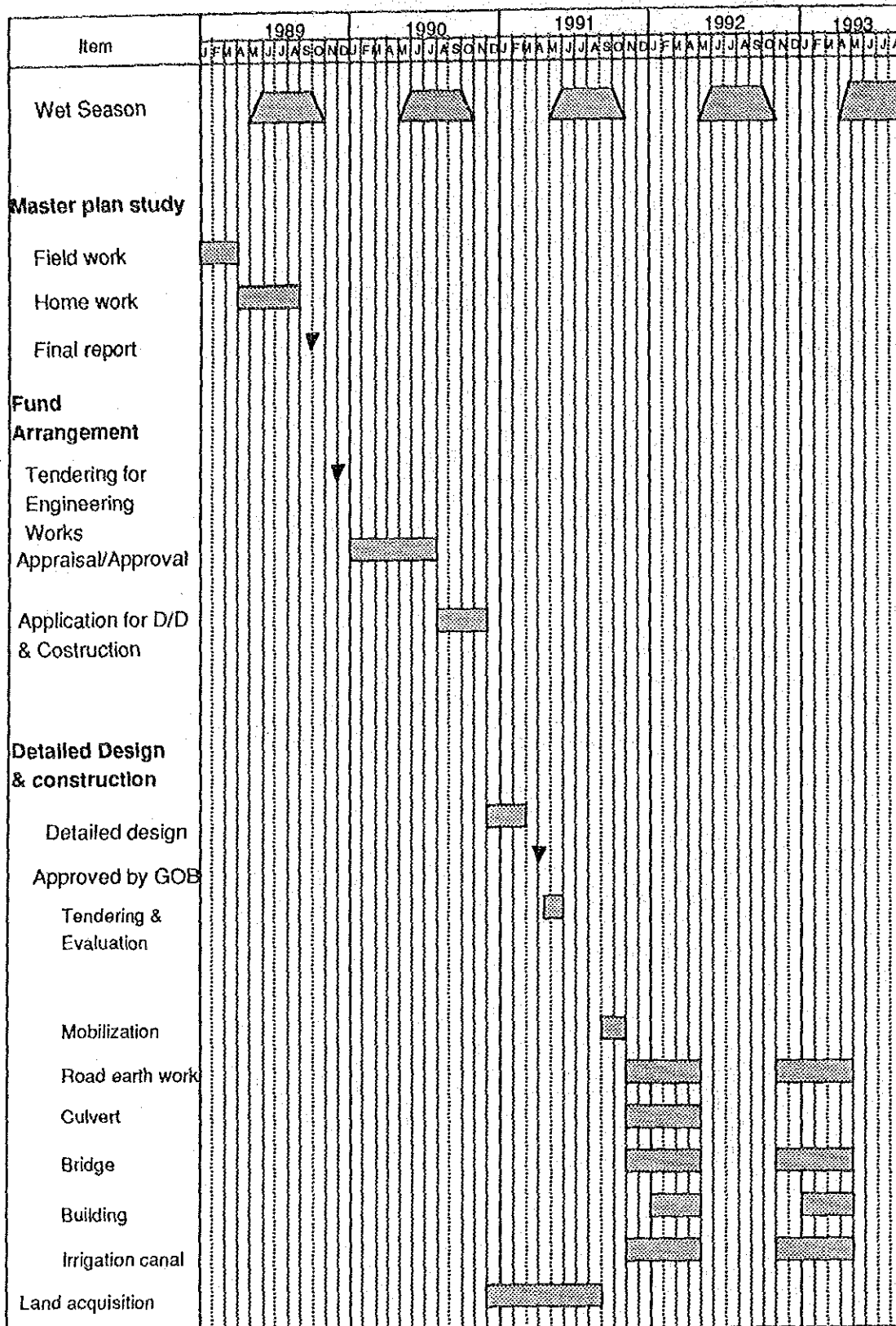


図 7.2 優先事業の工事計画


THE PEOPLE'S REPUBLIC OF BANGLADESH
 MODEL RURAL DEVELOPMENT PROJECT PLAN
 FOR
 HOMNA AND DAUDKANDI UPAZILA
 JAPAN INTERNATIONAL COOPERATION AGENCY

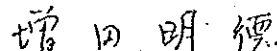
付 属 資 料

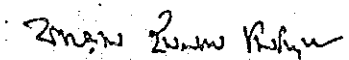
SCOPE OF WORK
FOR
THE MASTER PLAN STUDY ON THE MODEL RURAL DEVELOPMENT PROJECT
FOR HOMNA AND DAUDKANDI UPAZILAS
IN
THE PEOPLE'S REPUBLIC OF BANGLADESH

AGREED UPON BETWEEN
BANGLADESH RURAL DEVELOPMENT BOARD, LOCAL GOVERNMENT ENGINEERING BUREAU
AND
THE JAPAN INTERNATIONAL COOPERATION AGENCY

February 7, 1988
Dhaka, Bangladesh


Hasnat A. Hye
Director General
Bangladesh Rural Development
Board
People's Republic of
Bangladesh.


Akinori Masuda
Team Leader
Preliminary Survey Team
Japan International
Cooperation Agency


Quamrul Islam Siddique
Engineering Advisor
Local Government Engineer-
ing Bureau
People's Republic of
Bangladesh.

I. Introduction

In response to the request of the Government of the People's Republic of Bangladesh (hereinafter referred to as "the GOB"), the Government of Japan has decided to conduct the Master Plan Study on the Model Rural Development Project (hereinafter referred to as "the Study"), in accordance with the relevant laws and regulations in force in Japan.

Accordingly, the Japan International Cooperation Agency (hereinafter referred to as "JICA"), the official agency responsible for the implementation of the technical cooperation programs of the Government of Japan, will undertake the Study, in close cooperation with the authorities concerned of the GOB.

The present document sets forth the Scope of Work with regard to the Study.

II. Objective of the Study

The objective of the Study is to formulate the Model Rural Development Project Plan for Homna and Daudkandi Upazilas (hereinafter referred to as "MRDPP").

III. Study Area

The Study area covers the total area of the Homna and Daudkandi Upazilas in Comilla District.

IV. Scope of the Study

The Study consists of two stages. At the first stage, preliminary formulation of MRDPP will be conducted. The second stage will embrace detail study mainly for selected project components to finalize the MRDPP.

1. First Stage

1-1. Data collection and field survey

To collect and review available data and information relevant to the Study and to carry out field survey on the following items:

(1) Natural condition

- a. Topography
- b. Meteorology
- c. Hydrology
- d. Geology
- e. Groundwater
- f. Soil

(2) Social condition

- a. Population and habitation
- b. Social organizations
- c. Industry and economy
- d. Employment
- e. Education

8

Handwritten marks: a circled 'A', a circled 'B', and a circled 'C'.

- (3) Agriculture
 - a. Farming
 - b. Land use/tenure
 - c. Cropping
 - d. Agricultural organization
 - e. Processing of agricultural products
 - f. Rural forestry
- (4) Agricultural infrastructure
 - a. Irrigation-drainage and flood control systems
 - b. Storage facilities
- (5) Agro-economy
 - a. Marketing system
 - b. Farmer's income and productivity
 - c. Rural credit
 - d. Farmers' organization
 - e. Extension service
 - f. Agro-industry
 - g. Inland fisheries
- (6) Rural infrastructure
 - a. Feeder and rural roads
 - b. Rural electrification
 - c. Communication
 - d. Rural water supply
 - e. Health and welfare
 - f. Education and training

Handwritten mark

Handwritten mark

Handwritten mark

1-2. To conduct preliminary study and analysis based on the results of the above-mentioned survey.

1-3. To prepare preliminary formulation of the MRDPP and identify priority project(s).

2. Second Stage

On the basis of the results of the first stage, the followings will be carried out.

2-1. Supplementary survey and additional data collection

2-2. Comprehensive studies and analysis

(1) To formulate the MRDPP taking into consideration such components as follows:

- a. Improvement of irrigation - drainage and flood control systems.
- b. Improvement of feeder and rural roads
- c. Improvement of growth center
- d. Development of rural industry
- e. Institutional development
- f. Rural employment programme

(2) To formulate priority project(s)

- a. Preliminary design of the major structures

①

b. Approximate estimation of development cost

V. Study Schedule

The Study will be executed in accordance with the attached tentative work schedule.

VI. Reports

JICA shall prepare and submit the following reports in English to GOB.

1. Inception Report:

Twenty (20) copies at the commencement of the first stage field work.

2. Progress Report:

Twenty (20) copies at the end of the first stage field work.

3. Interim Report:

Twenty (20) copies at the commencement of the second stage field work.

4. Draft Final Report:

Twenty (20) copies within one (1) month after the end

②

2/10.01

Tip

of the second stage home office work.

GOB is requested to provide its comments on the draft final report within one (1) month after its receiving.

5. Final Report:

Fifty (50) copies within two (2) months after receiving the comments on the Draft Final Report.

VII. Undertaking of the GOB

1. To facilitate smooth conduct of the Study, the GOB shall take following necessary measures:

- (a) To secure the safety of the Japanese study team (hereinafter referred to as "the Team").
- (b) To permit the members of the Team to enter, leave and sojourn in Bangladesh for the duration of their assignment therein, and exempt them from alien registration requirements and consular fees.
- (c) To exempt the members of the Team from taxes, duties and any other charges on equipments, machinery and other materials brought into Bangladesh for the conduct of the Study.
- (d) To exempt the members of the Team from income tax and other charges of any kind imposed on or in connection with any emoluments or allowances paid to the members of the Team for their services in connection with the implementation of the Study.
- (e) To provide necessary facilities to the Team for

Q

remittance as well as utilization of the funds introduced into Bangladesh from Japan in connection with the implementation of the Study.

- (f) To secure permission for entry into private properties or restricted areas for the conduct of the Study.
- (g) To secure permission for the Team to take all data and documents (including photographs and maps) related to the Study out of Bangladesh to Japan.
- (h) To provide medical services as needed. Its expenses will be chargeable on members of the Team.

2. The GOB shall bear claims, if any arises against the members of the Team resulting from, occurring in the course of, or otherwise connected with the discharge of their duties in the implementation of the Study, except when such claims arise from gross negligence or willful misconduct on the part of the members of the Team.

3. The Bangladesh Rural Development Board (hereinafter referred to as "BRDB") and the Local Government Engineering Bureau (hereinafter referred to as "LGEB") shall act as the counterpart agencies to the Team and also as the coordinating body in relation with other governmental and non-governmental organizations concerned for the smooth implementation of the Study.

Handwritten signature and initials in a circle.

Handwritten mark or signature.

4. BRDB and LGEB shall, at their own expenses, provide the Team with the followings in cooperation with other organizations concerned:

- (1) Available data and information related to the Study.
- (2) Counterpart personnel
- (3) Suitable office spaces with necessary equipments in Dhaka and the study area.
- (4) Credentials for the members of the Study Team.

VIII. Undertaking of JICA

For the implementation of the Study, JICA shall take the following measures:

1. To dispatch, at its own expense, the Team to Bangladesh.
2. To pursue technology transfer to counterpart personnel in the course of the Study.

IX. JICA and the both counterpart agencies mentioned above shall consult with each other in respect of any matter that may arise from or in connection with the Study.

Appendix

Tentative Study Schedule

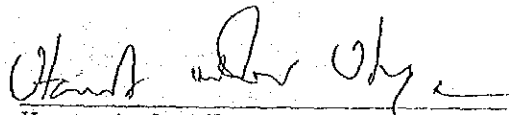
Months Items	1	2	3	4	5	6	7	8	9	10	11	12	13	14
STAGE	STAGE I			STAGE II										
FIELD WORK IN BANGLADESH	[Bar]			[Bar]										
HOME OFFICE WORK IN JAPAN	[Bar]	[Bar]	[Bar]	[Bar]	[Bar]	[Bar]	[Bar]	[Bar]	[Bar]	[Bar]	[Bar]	[Bar]	[Bar]	[Bar]
REPORT	◇				◆		○				◎			●

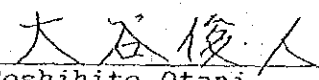
Remarks: ◇ : Inception Report ◆ : Progress Report
 ○ : Interim Report ◎ : Draft Final Report
 ● : Final Report

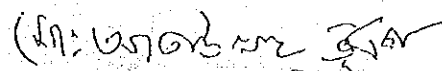
10/27
Tera

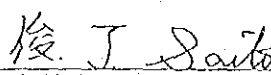
AGREED MINUTES OF MEETING
ON
THE MASTER PLAN STUDY ON THE MODEL RURAL DEVELOPMENT PROJECT
FOR
HOMNA AND DAUDKANDI UPAZILAS
IN
THE PEOPLE'S REPUBLIC OF BANGLADESH

October 31, 1988
Dhaka, Bangladesh


Hasnat A. Hye
Director General
Bangladesh Rural Development
Board
People's Republic of
Bangladesh


Toshihito Otani
Team Leader
JICA Study Team for
the Master Plan Study on
the Model Rural
Development Project


Md. Ataulah Bhuiyan
For Engineering Adviser
Local Government Engineering
Bureau
People's Republic of
Bangladesh


Toshiki Saito
Team Leader
JICA Supervisory Team for
the Master Plan Study on
the Model Rural
Development Project

In response to the request of the Government of the People's Republic of Bangladesh (hereinafter referred to as "the GOB"), the Government of Japan has decided to conduct the Master Plan Study on the Model Rural Development Project (hereinafter referred to as "the Study"), in accordance with the relevant laws and regulations in force in Japan.

Accordingly, the Japan International Cooperation Agency (hereinafter referred to as "JICA"), the official agency responsible for the implementation of the technical cooperation programs of the Government of Japan, dispatched a study team (hereinafter referred to as "the Study Team") for the execution of the Study from 21st October to 16th December, 1988 and a Supervisory Team from 27th October to 1st November, 1988 for the supervision of the Study Team.

The joint meeting was held under the chairmanship of Mr. Hussain Ahmed, Secretary of Local Government Division of the Ministry of Local Government, Rural Development & Cooperatives and successively chaired by Mr. Hasinur Rahman, Additional Secretary in-charge of the Rural Development & Cooperatives Division of the Ministry of Local Government, Rural Development & Cooperatives on 29th and 31st October, 1988 at the Ministry of LGRD & Cooperatives.

The GOB received officially twenty (20) copies of Inception Report which were prepared and submitted by the Study Team at the commencement of the meeting.

Main issues discussed and confirmed by both sides in the meeting are as follows.

1. The GOB agreed the concept of the Inception Report.
2. The title of the Inception Report was revised to "the Master Plan Study on the Model Rural Development Project for Homna and Daudkandi Upazilas in the People's Republic of Bangladesh" from "the Master Plan Study on the Model Rural Development for Comilla District", in accordance with the title of the Study in the Scope of Work agreed on 7th February, 1988.
3. Both counterpart agencies, the Bangladesh Rural Development Board (hereinafter referred to as "BRDB") and the Local Government Engineering Bureau (hereinafter referred to as "LGEB"), will take necessary arrangement between the Study Team and the other organization concerned for the execution of the Study.
4. Both counterpart agencies, BRDB and LGEB, would provide suitable office space for the Study Team as soon as possible. LGEB has provided an office space. Since it is, not

sufficient, the Study Team would like to request to be provided an additional office space.

5. In accordance with the Scope of Work agreed upon between BRDB, LGEB and JICA on 7th February, 1988, both counterpart agencies will provide counterpart personnel as contact point through the study period.
In this connection, the counterpart personnel has been specified as follows:

Position	Number	
	BRDB	LGEB
a. Chief counterpart	one	one
b. Rural Development	one	
c. Agro-Economy	one	
d. Rural Infrastructure		one
e. Agriculture and Land Use		one
f. Irrigation and Drainage		one
g. Construction Plan		one
h. Topographic Survey		one
i. Cost Estimate & Project Evaluation	one	one

Both sides agreed as per the Scope of Work mentioned about the service of the counterparts would be available on part-time basis.

6. In accordance with the Scope of Work mentioned above, a Coordination Committee made up in the Ministry of Local Government, Rural Development & Cooperatives to be chaired alternatively by the Secretary of two Divisions.
The Committee will be represented by :

- Planning Commission
- ERD
- BRDB
- LGEB.

The Committee would also include the Representatives from Ministry of Agriculture, BADC and BWDB.

7. Article 2.4 Implementation Programme and Project Justification in page 5 of Inception Report should be as follows:

The Project aims at up-grading the socio-economic conditions for the people of the project area as well as various intangible benefits.

8. Some words in the Inception Report were corrected and revised as per mentioned in Appendix A.

J. S.

大谷

Revision of the Inception Report

Page	Chapter/Article	Original	Revision	
1	1.2	line 17	bean	been
3	2.1 (a)	line 1	feeder roads	feeder and rural roads
3	2.1 (c)	line 5	improve	alleviate
3	2.1 (c)	line 16	rural roads	feeder and rural roads
4	2.2 (b)	line 1	Rural road	Feeder and Rural Roads
4	2.2 (b)	line 2	Feeder roads B's	Feeder roads B's and rural roads
4	2.2 (c)	line 4	at least one rural	important
4	2.2 (c)	line 5	center	centers
4	2.2 (e)	line 3	farmers	farmers and other professional groups
4	2.2 (e)	line 5-6	health and sanitation	(delete)
4	2.2	(insert after (e))		(f) Social Infrastructure Population, education and health and sanitation will be studied.
4	2.2 (f)	line 1	(f)	(g)
5	2.3	line 10	its multiplying	total
6	Fig.-1	box 6	Rural Infrastructure	Physical and Social Infrastructure
7	Fig.-1	box 3	ditto	ditto
7	Fig.-1	box 6	Rural Road	Feeder and Rural Roads
8	3.2.2	line 1	First	Field
9	3.2.2(1)	line 7	Rural Infrastructure	Physical and Social Infrastructure
9	3.2.2(3), 2)	line 18	Cataria	Dakatia
10	3.2.2(4)	line 1	Rural Infrastructure	Physical and Social Infrastructure
10	3.2.2(4), 3)	line 1	Rural Road	Feeder and Rural Roads
10	3.2.2(4), 3)	line 2	Feeder A	Feeder
10	3.2.2(4), 3)	line 2	upazila road B	upazila road
10	3.2.2(4), 3)	line 2	union roads extension of rural roads.	union roads.
11	3.2.2(4), 4)	line 3	establish in each upazila a growth center.	improve important growth centers.
14	3.3.1(3)	line 1	Rural Infrastructure	Physical and Social Infrastructure
14	3.3.1(3)	line 4	Rural and village roads	Feeder and rural roads
15	3.3.2(1)	line 14	Rural road	Feeder and rural roads

LIST OF PARTICIPANTS

Subject : A joint meeting on the Master Plan Study on the Model Rural Development Project.

Place : Ministry of Local Government, Rural Development & Cooperatives

Bangladesh side

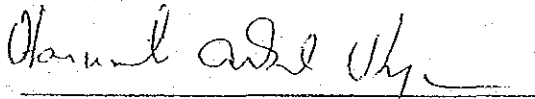
- | | |
|------------------------------|--|
| 1. Mr. Hussain Ahmed | Secretary (Chairman of the Meeting)
Local Government Division |
| 2. Mr. Hasinur Rahman | Additional Secretary in-charge
Rural Development & Cooperatives
Division |
| 3. Mr. Sultan Ahmed | Joint Secretary
Local Government Division |
| 4. Mr. Hasnat Abdul Hye | Director General
Bangladesh Rural Development Board |
| 5. Mr. Qamrul Islam Siddique | Engineering Adviser
Local Government Engineering Bureau |
| 6. Mr. Khandakan M. Rahman | Director (Planning)
Bangladesh Rural Development Board |
| 7. Mr. D. Mondal | Deputy Chief (planning)
Rural Development & Cooperatives
Division |
| 8. Mr. A.K.M. Faruque | Assistant Chief (Planning)
Rural Development & Cooperatives
Division |
| 9. Mr. Serajul Islam | Assistant Chief (Planning)
Local Government Division |
| 10. Mr. Md. Ataulah Bhuiyan | Project Director
Local Government Engineering Bureau |
| 11. Mr. S.M. Salim | Assistant Engineer
Local Government Engineering Bureau |

Japanese side

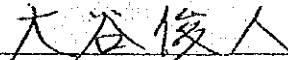
- | | |
|---|---|
| (Study Team) | |
| 1. Mr. Toshihito Otani | Team Leader |
| 2. Mr. Makoto Yokozawa | Co-team Leader, Rural Development
Agro-economy |
| 3. Mr. Bogo Abe | Agriculture and Land Use |
| 4. Dr. Shiro Terasawa | Irrigation and Drainage |
| 5. Mr. Jiro Nozaka
(Supervisory Team) | |
| 6. Mr. Toshiki Saito | Team Leader |
| 7. Mr. Yoshikazu Kariya
(Embassy of Japan) | Coordinator |
| 8. Mr. Katsuo Iwata
(JICA Bangladesh Office) | First Secretary |
| 9. Mr. Hiroshi Umezaki | Deputy Resident Representative |

AGREED MINUTES OF MEETING
ON
THE MASTER PLAN STUDY ON THE MODEL RURAL DEVELOPMENT PROJECT
FOR
HOMNA AND DAUDKANDI UPAZILAS
IN
THE PEOPLE'S REPUBLIC OF BANGLADESH

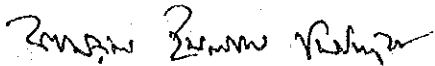
February 6, 1989
Dhaka, Bangladesh



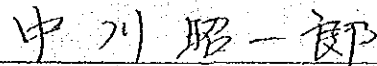
Hasnat A. Hye
Director General
Bangladesh Rural Development
Board
People's Republic of Bangladesh



Toshihito Otani
Team Leader
JICA Study Team for
the Master Plan Study on
the Model Rural
Development Project



Qamrul Islam Siddique
Engineering Advisor
Local Government Engineering
Bureau
People's Republic of Bangladesh



Dr. Shoichiro Nakagawa
Chairman
JICA Advisory Committee
for the Master Plan Study
on the Model Rural
Development Project

In order to conduct the second stage field survey, the Study Team visited Bangladesh on January 31, 1989 and immediately submitted twenty copies of the Interim Report to the Government of Bangladesh. The JICA Advisory Committee for the Master Plan Study headed by Dr. Shoichiro Nakagawa, Chairman of the Advisory Committee, visited Bangladesh from February 3 to February 7, 1989.

50
A joint meeting was held on February 5, 1989 under the chairmanship of Mr. Hasinur Rahman, Additional Secretary in charge of Rural Development & Cooperatives Division, attended by officials of the ministry of LGRD & Coops, BRDB and LGEB, the Study Team members, Advisory Committee members, a staff of Embassy of Japan, and a staff of JICA in Dhaka. The Chairman stated that the GOB duly accepted the Interim Report with ~~gratitude~~ ^{observations}. Team Leader of the Study Team made a brief explanation of the Interim Report including the basic approach, preliminary MRDPP and identified priority components with essential details. Mr. Chairman, Mr. Hye, Director General, BRDB, Mr. Sultan Ahmed, Joint Secretary, Local Government Division, and Mr. Bhuiya, Project Director, LGEB offered their views on the said Interim Report and made their observations for the Second Stage Study.

LIST OF OFFICIALS WHO ATTENDED
THE JOINT MEETING ON FEBRUARY 5TH, 1989

Bangladesh side

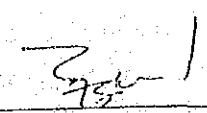
Mr. Hasinur Rahman	Chairman, MLGRDC, RDCD
Mr. Md. Sultan Ahmed	MLGRDC, LGD
Mr. Hasnat A. Hye	MLGRDC, BRDB
Mr. A.K.M. Faruque	MLGRDC, RDCD
Mr. Md. Ataulah Bhuiya	MLGRDC, LGEB
Mr. S. Kumar Sarkar	MLGRDC, LGEB

Japanese Side

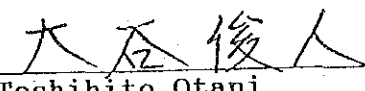
Dr. S. Nakagawa	Chairman, Advisory Committee
Mr. M. Nagatomo	Advisory Committee Member
Mr. K. Iwata	Embassy of Japan
Mr. T. Ohtani	Team Leader, Study Team
Mr. M. Yokozawa	Co-Team Leader, Study Team
Dr. S. Terasawa	Study Team Member
Mr. J. Ishizaka	-do-
Mr. J. Nozaka	-do-
Mr. A. Kojima	-do-
Mr. H. Kanda	-do-
Mr. K. Abdul Mamun	JICA, Dhaka

MINUTES OF MEETING
ON
THE DRAFT FINAL REPORT FOR THE MASTER PLAN STUDY
ON THE MODEL RURAL DEVELOPMENT PROJECT
FOR
HOMNA AND DAUDKANDI UPAZILAS IN THE PEOPLE'S REPUBLIC OF BANGLADESH

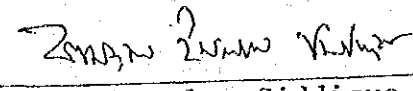
September 26, 1989
Dhaka, Bangladesh



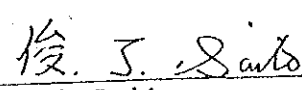
for Nurul Abedin
Director General-in-Charge
Bangladesh Rural Development
Board
People's Republic of Bangladesh



Toshihito Otani
Team Leader
JICA Study Team for
the Master Plan Study on
the Model Rural
Development Project



Quamrul Islam Siddique
Engineering Adviser
Local Government Engineering
Bureau
People's Republic of
Bangladesh



Toshiki Saito
Team Leader
JICA Supervisory Team for
the Master Plan Study on
the Model Rural
Development Project

Japan International Cooperation Agency (JICA) sent a team on September 23, 1989 to Bangladesh for the explanation of the draft final report on the study.

The joint meetings were held on 24th and 25th September, 1989 at the Ministry of LGRD & Cooperatives.

A list of the participants in the meetings is given in a paper attached.

The salient results of the meetings are as follows:

1. The Government of Bangladesh (GOB) received officially twenty (20) copies of Draft Final Report which were prepared and submitted by the JICA Study Team.
2. Both sides agreed that the comments on the Draft Final Report will be made by GOB within two (2) weeks by 9th October 1989 and will be sent to JICA Head Office through JICA, Dhaka Office.
3. The JICA Study Team explained that small revisions will be made in some section in Page 58, 65, 88 and 103 of the Draft Report for the sake of easy understanding. ^{Cl, 78, 81, 92 and 100}
4. JICA will send fifty (50) copies of Final Report to GOB within two (2) months after receiving the comments on the Draft Final Report through JICA Dhaka Office.

3.8

3/8 ✓

JQ

LIST OF PARTICIPANTS

Subject: The Joint meetings held on 24th and 25th September, 1989 on the Draft Final Report for the Master Plan Study on the Model Rural Development Project.

Place: Rural Development & Cooperatives Division.

Bangladesh side

(Rural Development & Cooperatives Division)

Mr. Mohammad Sirajuddin
Mr. D. Mondal
Mr. A.K.M. Faruque

Additional Secretary in-charge
Deputy Chief (Planning)
Assistant Chief (Planning)

(BRDB)

Mr. Md. Nurul Abedin
Mr. K.M. Rahman
Mr. M. Rahman

DG in-charge
Director (RDTI)
Deputy Director (Planning)

(Local Government Division)

Mr. A.K.M. Khairul Alam

Deputy Chief

(LGEB)

Mr. Quamrul Islam Siddique
Mr. Md. Ataullah Bhuiyan

Engineering Adviser
Project Director

(Ministry of Planning)

Mr. Mir Mahfuzul Haq
Mr. Md. Rafiqul Islam

Deputy Chief, Planning Commission
Assistant Chief, ERD

Japanese side

(Study team)

Mr. Toshihito Ohtani
Mr. Makoto Yokozawa

Team Leader
Co-team Leader, Rural Development

(Supervisory team)

Mr. Toshiki Saito
Mr. Mitsuhiko Ota

Team Leader
Coordinator

Bangladesh 人民共和国

モデル農村開発計画調査

現地作業監理調査報告書

(要約)

平成元年9月26日

現地作業監理調査団

Bangladesh国モデル農村開発計画

現地作業監理調査団団員名簿

氏名	担当業務	現職
1. 斎藤 俊樹	団長／総括	農林水産省関東農政局 土地改良事務所長
2. 太田 光彦	調査監理	国際協力事業団農林水産計画調査 部農林水産技術課課長代理

調査日程

月 日 (曜日)	調査日程	宿泊地	調査内容
9月23日 (土)	成田--BKK		
	BKK--Dhaka	Dhaka	
9月24日 (日)		Dhaka	JICA打合わせ 計画省打合わせ 地方自治・農村開発・協同 組合省打合わせ 大使館打合わせ
9月25日 (月)		Dhaka	バ国政府と詳細な打合わせ
9月26日 (火)		Dhaka	大蔵省打合わせ JICA、大使館報告 M/M 署名 パーティ
9月27日 (水)	Dhaka--BKK	BKK	
9月28日 (木)	BKK--Narita		

1. 協議結果

協議は、これまでの合意事項と今回提出したドラフトファイナルレポート (D/F/R) に基づいて進められた。実施調査団を代表して、大谷調査団長が調査結果の概要について説明を行った。

調査結果の説明は日本から持参したMAIN REPORT(DRAFT)に基づいて行われ、別添ミニッツのごとく合意が得られた。

本件協議において議論となった事項は次の通りである。

(1) マスタープランに基づいた事業実施に対する日本の協力について

パ国側は、D/F/Rの内容に基づいて日本の援助により事業が実施されることを強く望んでいる。計画省で海外援助を担当しているMd. Nasim 次官によれば、ローンによる事業実施は、パ国政府としては、工業化部門が優先されるので難しいという見解を示された。

(2) 技術協力について

パ国側のチーフカウンターパートの一人であるLGEBのMr. Siddiqueからの要請により表敬訪問した大蔵省のM.K. Anwar次官は次の様に述べられた。『1) 計画省でこのプロジェクトが日本の協力を得られる様に努力した一人として、調査が当初意図した方向に進んでいることを知り大変嬉しい。2) 道路、灌漑施設などのインフラ整備の優先順位が高いが、報告書に有るような生産施設以外の整備も重要になってくるので、世銀で実施している様に、現地において、日本人専門家の指導を受けると同時に、パ国政府に駐在して助言やコーディネートしてくれるアドバイザーが将来必要と思う。計画を具体化するために、パ国側でやることがあれば積極的に提案して欲しい。』

一方、地方自治・農村開発・協同組合省のAdditional Secretary in-charge のMr. Mohammad Sirajuddin は、将来、この計画を進めるにあたって、青年海外協力隊の参加を強く要請された。特に、企業家マインドを持った、エビ養殖、竹工芸、野菜栽培など農村の活性化にすぐに役立つ協力を望んでいる。この様に、パ国政府内でも技協にたいして若干、考えかたの違い

がある。これについてMr. Siddiqueは、今後、具体的にバ国内で検討する為、alternativesを最終報告書に提示して欲しいと調査団に要請した。

(3) 計画事業費について

計画省のNasim次官は、本計画にしめされた総事業費3,847百万TKについて、対象地域が2つのUpajilaであることを考えると若干、大きすぎるという見解をしめされた。

(4) バ国政府のコメントについて

D/F/Rにたいするコメントは、関係機関と協議調整して、10月9日(2週間後)に文書で日本側に提出したいという申し出があり日本側は了承した。

(5) 内容の訂正について

出発前、作業監理委員会で指摘された事項で今回、まだ訂正されていない箇所について、バ国側に説明し了承を得た。

(6) Cordination Committee について

調査開始時に日本側から要請した関係機関によるCordination Committeeは設置されていなかった。事業の実施段階では、設置する予定であるとのことであった。

(7) 調査事務室の提供について

本件調査の開始に際して(昭和63年11月)、調査団は調査事務室の提供をバ国政府のcounterpart agency に強く申し入れたが、勤務体制の違い、定められた勤務時間終了後、事務室の使用は極めて難しい事等からこの申し入れは現実的で無い事が分かった。今後、このような調査については、事務室の確保は日本側が行う事にせざるを得ないと思われる。

(8) その他の字句訂正について

D/F/Rの中にミスタイプ等があり、最終報告書では訂正することとなった。

2. 留意事項

(1) カウンターパートについて

本調査のカウンターパートは、地方自治技術局(LGEB)と農村開発公社(BRDB)であるが、今回は、これまでBRDBのチーフカウンターパートであったHye局長が外国出張のため、BRDB側の意見は詳しくは聞くことが出来なかった。Khandakar M. Rahman計画部長がとりまとめを約束してくれたが、上層部への説明はまだ十分には行われていない。この計画の将来の運営する上でBRDBの果たす役割は大きいので、十分な検討がバ国政府内で行われる様、要請した。

(2) 実施運営組織について

本計画の運営実施にあたっては、BRDBの指導の下に、農民組織であるUCCA・KSS(ウバジラ中央共同組合連合・村落農業共同組合)が重要な役割を果たすことが期待されている。この点で、UCCAの事業として計画されている近代化センター、漁業センターなどの運営がどのようになされるか、より具体的な検討がバ国内で必要と考えられる旨、調査団から要請した。又、実施段階においては、特に、維持管理の簡単な施設から、段階的に実施していくような体制作りが望まれる。

(3) 協力の継続について

バ国政府は、コミラ県の開発については日本政府の協力を期待している。他地域に対する協力は、ADB, IDA, IFAD, SIDA, DANIDA, USAID, など多くの国、機関に及んで行われている。コミラ県は首都Dhakaと外国貿易の窓口であるChittagongを連絡する重要な位置にある事が、日本に協力を期待する大きな理由と考えられる。又、メグナ橋、メグナグムチ橋の建設を開発の拠点として、点から線へ、線から面への開発協力が期待されている。

コミラ県の社会・経済的背景は、全国レベルより総ての面において低水準にある。その理由は低地(low land)が多く、農業の生産性が低いこと、人口密度が高い事等があげられる。

このことから、この地域において日本が長期的観点にたった協力を行い、協力の効果を確実にしていくことが特に重要と考えられる。

その具体策としては次の案が考えられよう。

1) Steering Committee の設置

バ国政府代表および日本政府代表によるSteering Committee を結成する。メンバー構成の案は次の通り。

(a) Ministry of Finance

(b) Ministry of Planning

(c) Ministry of LGRD&Cooperatives(BRDB,LEGB,BADC)

(d) Ministry of Water Resources and Flood Control (BWDB)

(e) JICA Expert(s) 農村開発はそのコンポーネントが多岐に亙ることから、アドバイスとコーディネートを行う専門家が特に必要である。

2) 日本側の協力の結集

EOJ,JICAを軸として各機関の機能を結集させる。

(a) JICA STUDY TEAM (作監、JICA Study Team)

(b) AGRI PROJECT(JICA、農用地整備公団) Implementation に於けるSupervise 及びMachinery and equipmentのO&Mの指導

(c) CIRDAP(EOJ,JICA Expert(s)) ソフト面の支援、Village Leaders の教育、指導、モデルプロジェクトの実施

(d) JICA Experts 計画、実施、O&Mを総括的に指導する。BRDB のHead Office 及び現地に必要

(e) JOCV 農業、漁業、畜産部門及び農業協同組合の運営に協力

現在、バ国政府から要請されている『モデル農村開発計画フェーズ2』については、フェーズ1の調査結果を踏まえて、調査項目をしぼるなど効率てきな調査が必要である。

(4) D/F/Rの提出時期について

バ国政府内の連絡調整に時間がかかることから、一週間程度の期間で、バ国側の主要なコメントを出して貰い、協議することが困難であることが分かった。協議を効率良く進めるため、今後同様な案件については、事前にD/F/Rをバ国側に送付しておく等の配慮が望まれる。

JICA