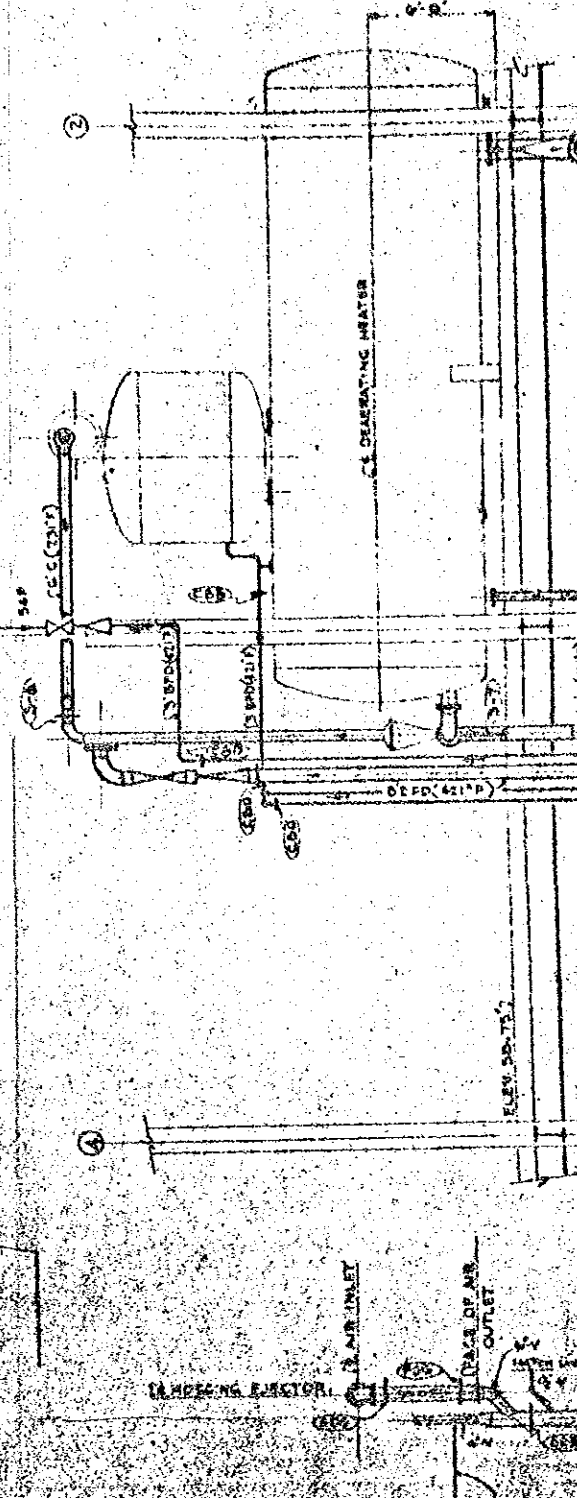


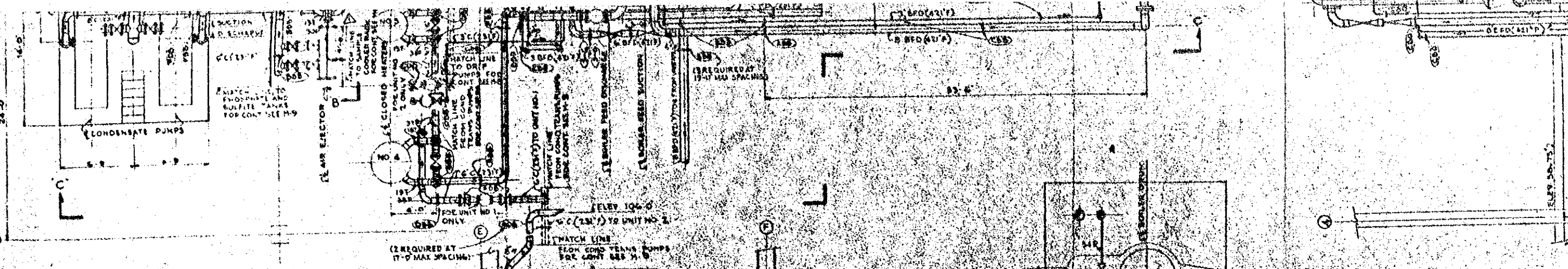
PLAN

- NOTES**
1. ALL PRESSURE GAGE CONNECTIONS (SHOWN AS 1/2" SPI) SHALL BE 1/2" HALF COUPLINGS EXCEPT FOR PIPE SIZES 1" AND SMALLER TAPS SHALL BE USED COUPLINGS AND TAPS SHALL BE BUSHED TO SIZE REQUIRED.
 2. ALL THERMOMETER CONNECTIONS (SHOWN AS 1/2" SPI) AND ALL TEMPERATURE TEST CONNECTIONS (SHOWN AS 1/2" SPI) SHALL BE 1/2" HALF COUPLINGS BUSHED TO SIZE REQUIRED.
 3. ALL CONSTRUCTION CONTROL CONNECTIONS SHALL BE 1/2" HALF COUPLINGS BUSHED TO SIZE REQUIRED SEE DRAWING M-11 FOR SERVICE OF EACH CONNECTION.
 4. ALL FLOW METERS AND GAGE CONNECTIONS SHALL BE 1/2" HALF COUPLINGS BUSHED TO SIZE REQUIRED SEE DRAWING M-11 FOR SERVICE OF EACH CONNECTION.
 5. INDICATED PIPE SUPPORTS, HANGERS AND ANCHORS FOR DETAILS SEE DRAWING M-11.
 6. ALL PUMPS WILL BE PROVIDED WITH TAMPEREVIDENT STEAMERS FOR DETAIL SEE DRAWING M-11.
 7. SINGLE LINE PIPING IS DIAGNOSTIC ONLY AND MAY BE INSTALLED TO SUIT FIELD CONDITIONS.
 8. FOR TRAP SCHEDULES SEE DRAWING M-11.
 9. FOR EXPANSION DRAWINGS SEE MULTILINE FLOW DIAGRAM.
 10. SPECIFICATION SCHEDULES OF PIPING, FITTINGS AND VALVES, METRIC PUMP HANGERS, ANCHORS, SUPPORTS AND SPECIALTIES.
 11. INSULATION DETAILS.
 12. THE BUILDING CONTRACTOR SHALL COMPLETELY DIVULGE AND LOCATE ALL PIPING VALVES, SPECIALTIES ETC. ON THESE CONTRACT DRAWINGS.
 13. IN GENERAL, UNLESS PIPING SHOWN FOR ONE UNIT SECOND UNIT SHALL BE DUPLICATED. REFER TO DRAWING M-11 AND SPECIFICATIONS FOR THESE NUMBERS. ONE.

12. TEMPERATURES SHOWN ON PIPES ARE LBS. CLASS TEMPERATURES. SEE DWG. M-20.
13. PIPE SHALL BE BREEVED WHERE PASSING THROUGH FLOORS, WALLS, OR ROOFS. PASSAGE THROUGH EXTERIOR WALLS AND ROOFS SHALL BE WEATHERPROOFED. FLOOR SLEEVES SHALL EXTEND AT LEAST 2" ABOVE FLOOR. SLEEVES SHALL ALLOW AT LEAST 1" CLEAR AROUND PIPE ON ALL SIDES.
14. GIVING ELEVATIONS KPO-KARACHIN PORT DATUM (AS USED IN EXISTING PLANT).

(2 REQUIRED AT 17'-0" MAX SPACING)
(INSTALL GUIDES AT ELEV. 57.0, 175' ROOF)



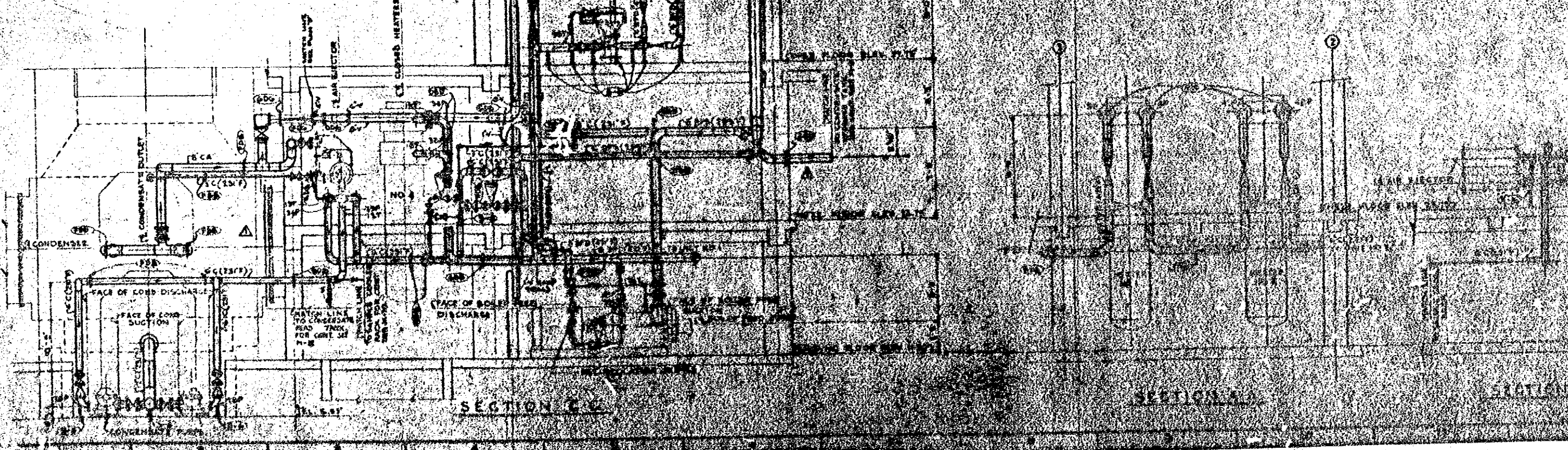


PLAN

NOTES

1. ALL PRESSURE GASK CONNECTIONS (SHOWN AS 1/2" ST) SHALL BE 1/2" WELD COUPLINGS EXCEPT FOR PIPE SIZES 1/2" AND SMALLER TAPS SHALL BE USED COUPLINGS AND TAPS SHALL BE BUSHED TO SIZE REQUIRED.
2. ALL THERMOSTATS CONNECTIONS (SHOWN AS 1/2" ST) AND ALL TEMPERATURE TAP CONNECTIONS (SHOWN AS 1/2" ST) SHALL BE 1/2" WELD COUPLINGS BUSHED TO SIZE REQUIRED.
3. ALL CONDENSATION CONTROL CONNECTIONS SHALL BE 1/2" WELD COUPLINGS BUSHED TO SIZE REQUIRED SEE DRAWING M-1 FOR SERVICE OF EACH CONNECTION.
4. ALL FLOW WATER AND GASE CONNECTIONS SHALL BE 1/2" WELD COUPLINGS BUSHED TO SIZE REQUIRED SEE DRAWING M-1 FOR SERVICE OF EACH CONNECTION.
5. (C) INDICATES PIPE SUPPORTS, HANGERS AND ANCHORS FOR DETAILS SEE DRAWING M-11.
6. ALL PUMPS WILL BE PROVIDED WITH TEMPOUT STRAINERS FOR DETAIL SEE DRAWING M-19.
7. SINGLE LINE PIPING IS DIAGNOSTIC ONLY AND MAYBE INSTALLED TO SUIT FIELD CONDITIONS.
8. FOR TRAP SCHEDULES SEE DRAWING M-11.
9. FOR REFERENCE DRAWINGS SEE M-1, M-2, M-3, M-4, M-5, M-6, M-7, M-8, M-9, M-10, M-11, M-12, M-13, M-14, M-15, M-16, M-17, M-18, M-19, M-20, M-21, M-22, M-23, M-24, M-25, M-26, M-27, M-28, M-29, M-30, M-31, M-32, M-33, M-34, M-35, M-36, M-37, M-38, M-39, M-40, M-41, M-42, M-43, M-44, M-45, M-46, M-47, M-48, M-49, M-50, M-51, M-52, M-53, M-54, M-55, M-56, M-57, M-58, M-59, M-60, M-61, M-62, M-63, M-64, M-65, M-66, M-67, M-68, M-69, M-70, M-71, M-72, M-73, M-74, M-75, M-76, M-77, M-78, M-79, M-80, M-81, M-82, M-83, M-84, M-85, M-86, M-87, M-88, M-89, M-90, M-91, M-92, M-93, M-94, M-95, M-96, M-97, M-98, M-99, M-100.
10. THE SUCCESSFUL CONTRACTOR SHALL COMPLETELY SUBMIT AND OBTAIN ALL NECESSARY SPECIALTIES ETC. FROM THESE CONTRACTOR DRAWINGS.
11. IN GENERAL, UNLESS OTHERWISE SHOWN FOR ONE UNIT, EACH UNIT SHALL BE DUPLICATED. REFER TO DRAWING M-1 AND SPECIFICATIONS FOR PHASE NUMBER ONE.

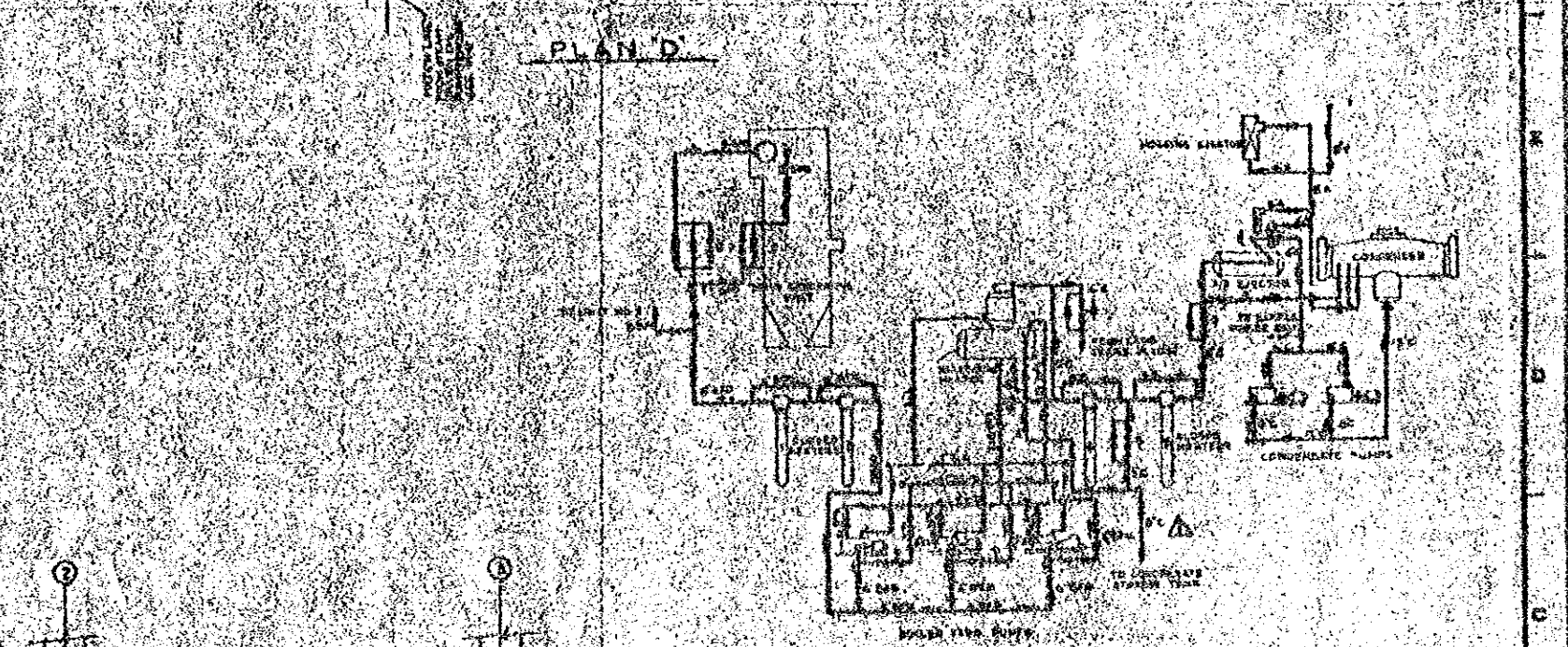
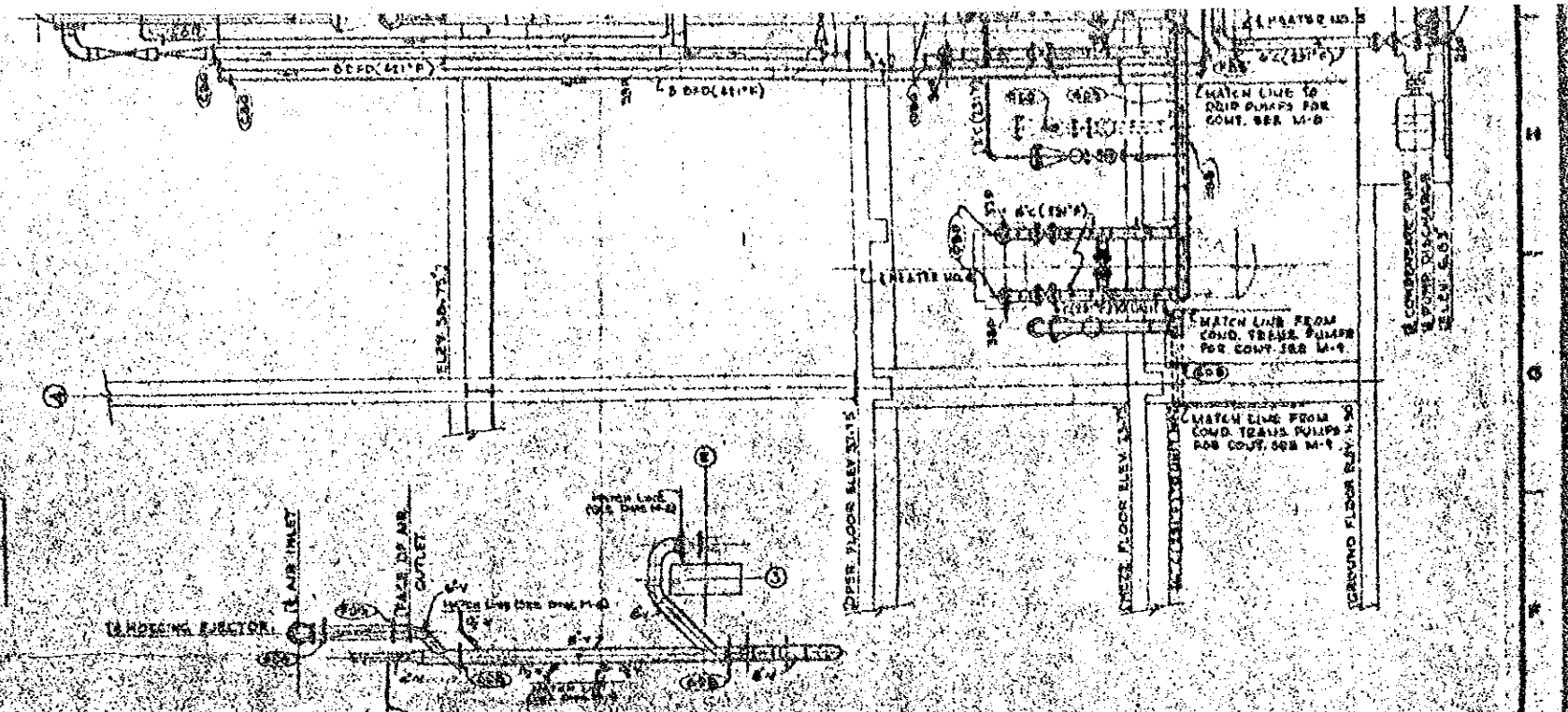
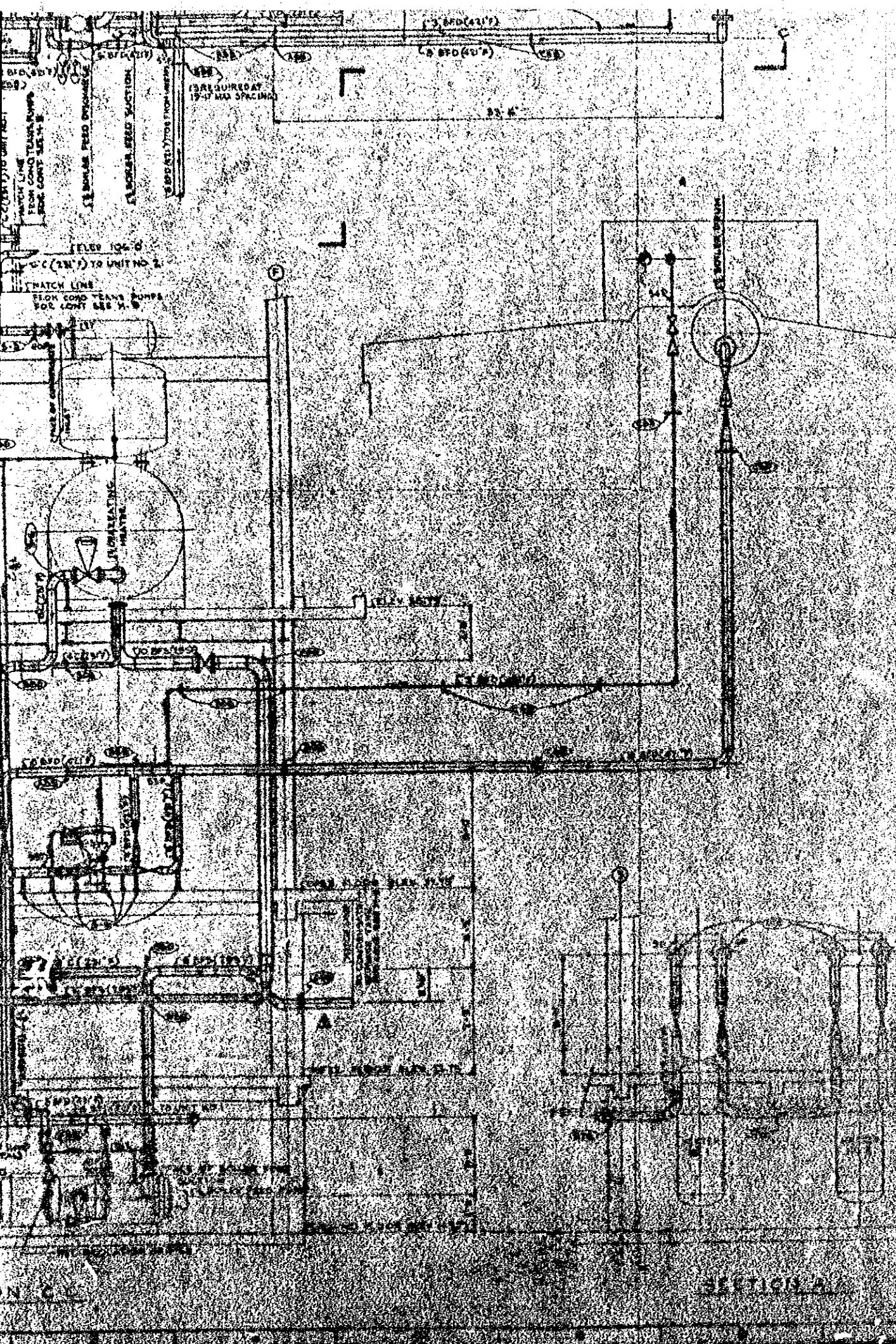
12. TEMPERATURES SHOWN ON PIPES ARE LINE GLASS TEMPERATURES. SEE DWG. M-10 FOR PIPE SIZES 1/2" AND SMALLER TAPS SHALL BE USED COUPLINGS AND TAPS SHALL BE BUSHED TO SIZE REQUIRED.
13. PIPE SHALL BE SLEEVES WHERE PASSING THROUGH FLOORS, WALLS OR ROOFS, PASSAGE THROUGH EXTERIOR WALLS AND ROOFS SHALL BE WEATHERPROOFED. FLOOR SLEEVES SHALL EXTEND AT LEAST 2" ABOVE FLOOR. SLEEVES SHALL ALLOW AT LEAST 1" CLEAR AROUND PIPE ON ALL SIDES.
14. IN GIVING ELEVATIONS, KPD-KARACHI PORT DATUM (AS USED IN EXISTING PLAN)



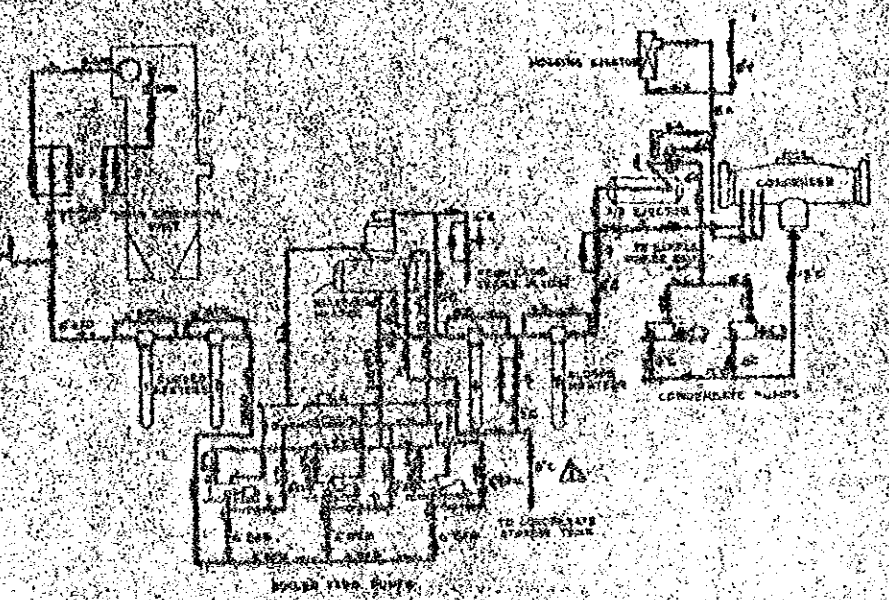
SECTION C

SECTION A

SECTION B



PLAN 'D'



REVISED
 Destroy all Previous Prints

NO.	DESCRIPTION	DATE	BY
1	AS SHOWN		
2	REVISION		
3	REVISION		
4	REVISION		
5	REVISION		
6	REVISION		
7	REVISION		
8	REVISION		
9	REVISION		
10	REVISION		
11	REVISION		
12	REVISION		
13	REVISION		
14	REVISION		
15	REVISION		
16	REVISION		
17	REVISION		
18	REVISION		
19	REVISION		
20	REVISION		
21	REVISION		
22	REVISION		
23	REVISION		
24	REVISION		
25	REVISION		
26	REVISION		
27	REVISION		
28	REVISION		
29	REVISION		
30	REVISION		
31	REVISION		
32	REVISION		
33	REVISION		
34	REVISION		
35	REVISION		
36	REVISION		
37	REVISION		
38	REVISION		
39	REVISION		
40	REVISION		
41	REVISION		
42	REVISION		
43	REVISION		
44	REVISION		
45	REVISION		
46	REVISION		
47	REVISION		
48	REVISION		
49	REVISION		
50	REVISION		
51	REVISION		
52	REVISION		
53	REVISION		
54	REVISION		
55	REVISION		
56	REVISION		
57	REVISION		
58	REVISION		
59	REVISION		
60	REVISION		
61	REVISION		
62	REVISION		
63	REVISION		
64	REVISION		
65	REVISION		
66	REVISION		
67	REVISION		
68	REVISION		
69	REVISION		
70	REVISION		
71	REVISION		
72	REVISION		
73	REVISION		
74	REVISION		
75	REVISION		
76	REVISION		
77	REVISION		
78	REVISION		
79	REVISION		
80	REVISION		
81	REVISION		
82	REVISION		
83	REVISION		
84	REVISION		
85	REVISION		
86	REVISION		
87	REVISION		
88	REVISION		
89	REVISION		
90	REVISION		
91	REVISION		
92	REVISION		
93	REVISION		
94	REVISION		
95	REVISION		
96	REVISION		
97	REVISION		
98	REVISION		
99	REVISION		
100	REVISION		

KANSAS ELECTRIC SUPPLY CORPORATION LTD.
 2-55 W 7th STATION EXTENSION WEST WHARF
 KANSAS CITY, MISSOURI

THE KULJIAN CORPORATION
 ENGINEERS & CONSTRUCTORS
 PHILADELPHIA, PA.

REVISION
 DATE
 BY
 CHECKED
 APPROVED

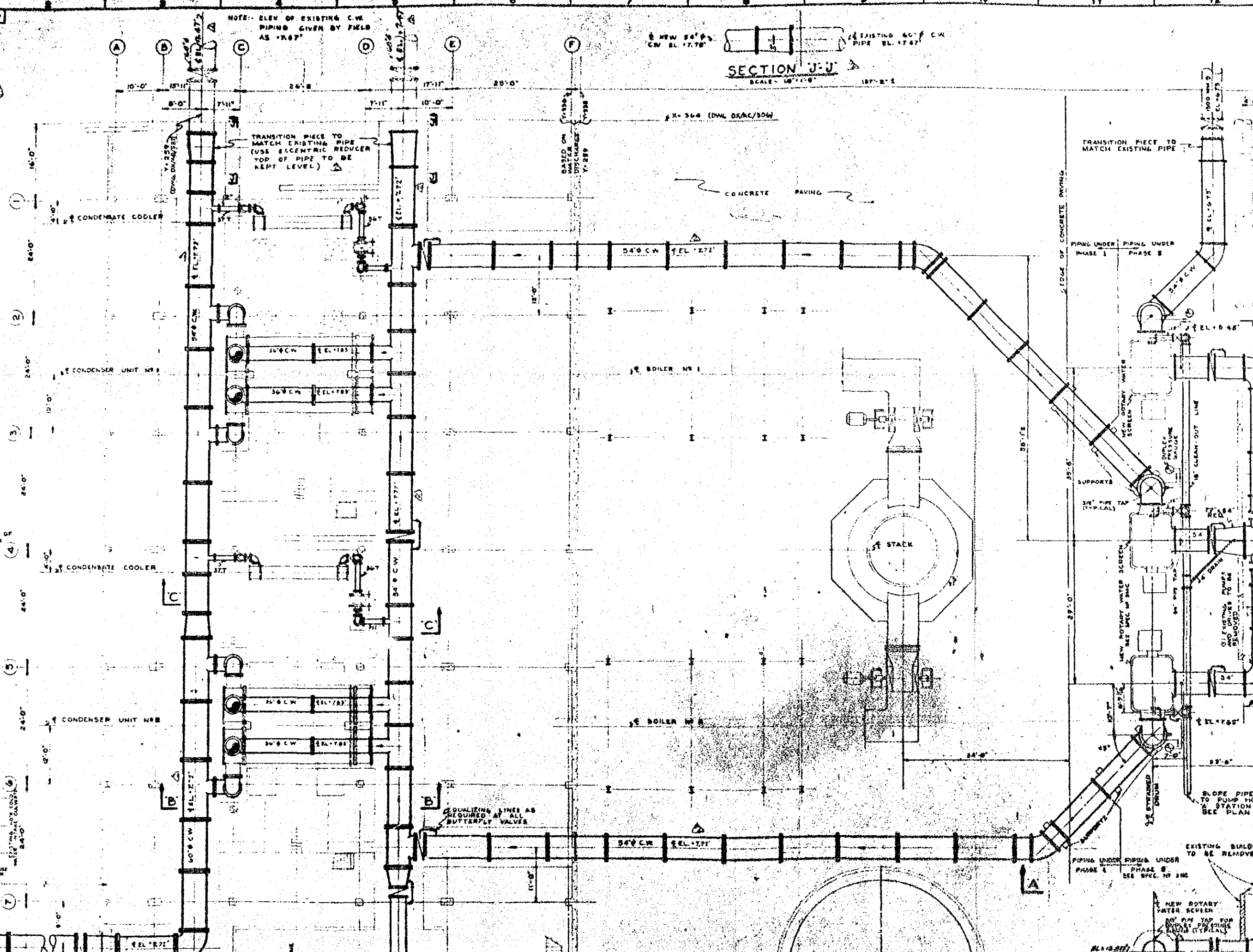
036-X



NOTE: ELEV OF EXISTING C.W. PIPING GIVEN BY FIELD AS "X.XX"

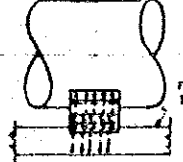
NEW 54" CW EL. 17.72' EXISTING 60" CW PIPE EL. 17.87'

SECTION J-J SCALE 1/4" = 1'-0"

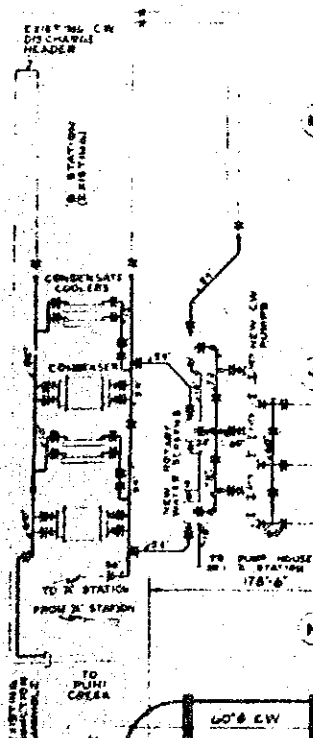


TYPICAL SUPPORT FOR CW PIPING

SIZE VARIES



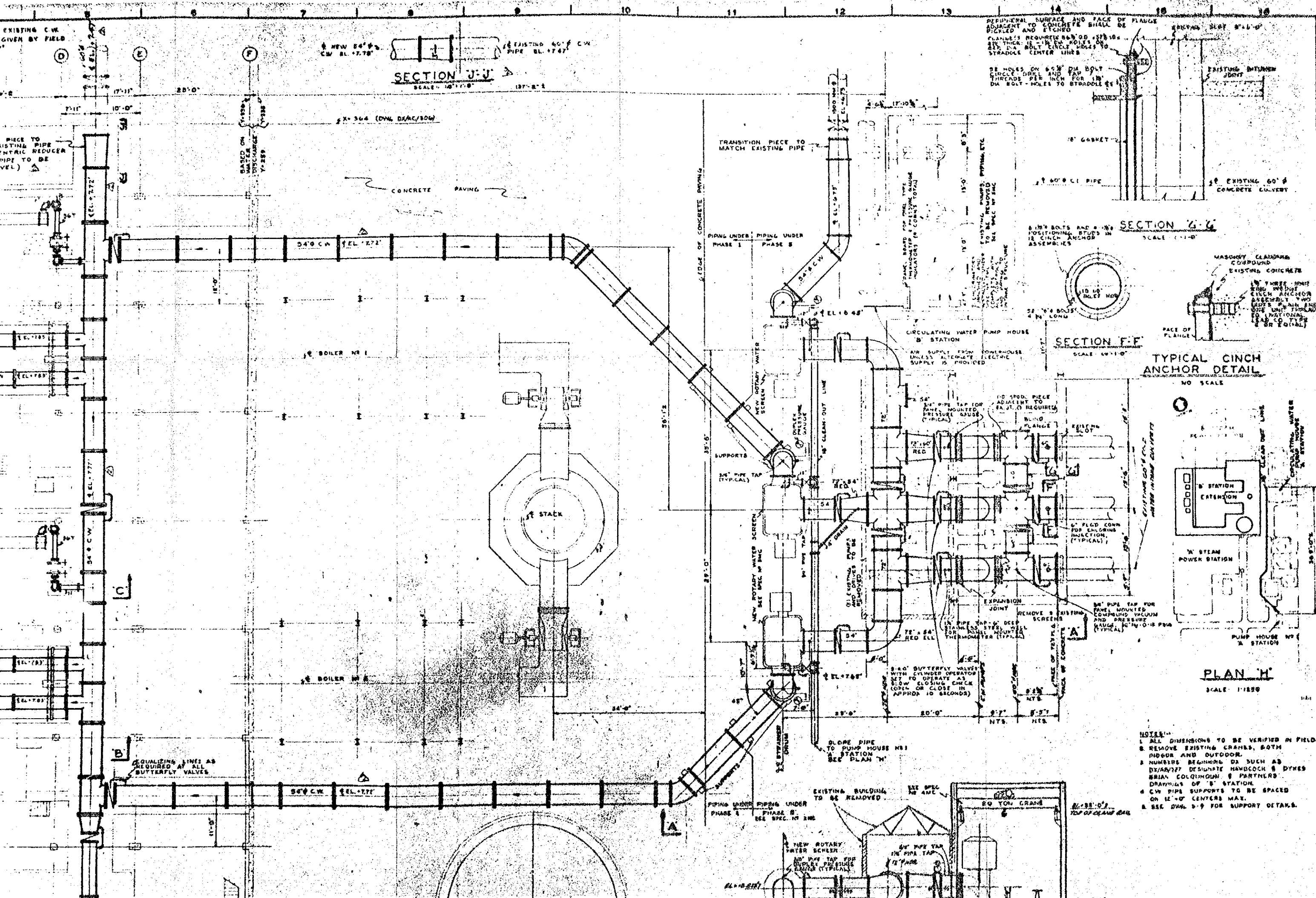
SECTION E-E NO SCALE



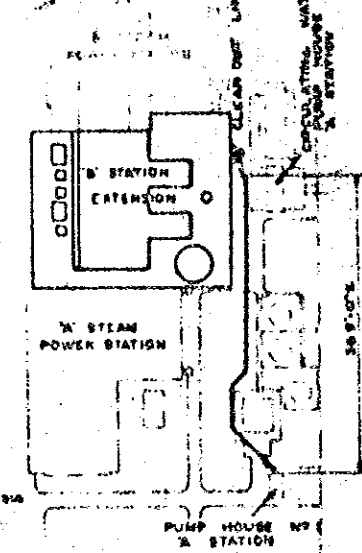
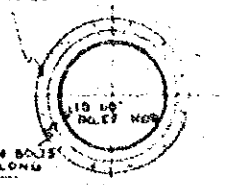
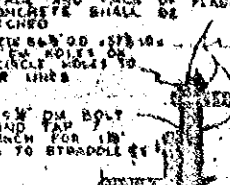
EQUALIZING LINES AS REQUIRED AT ALL BUTTERFLY VALVES

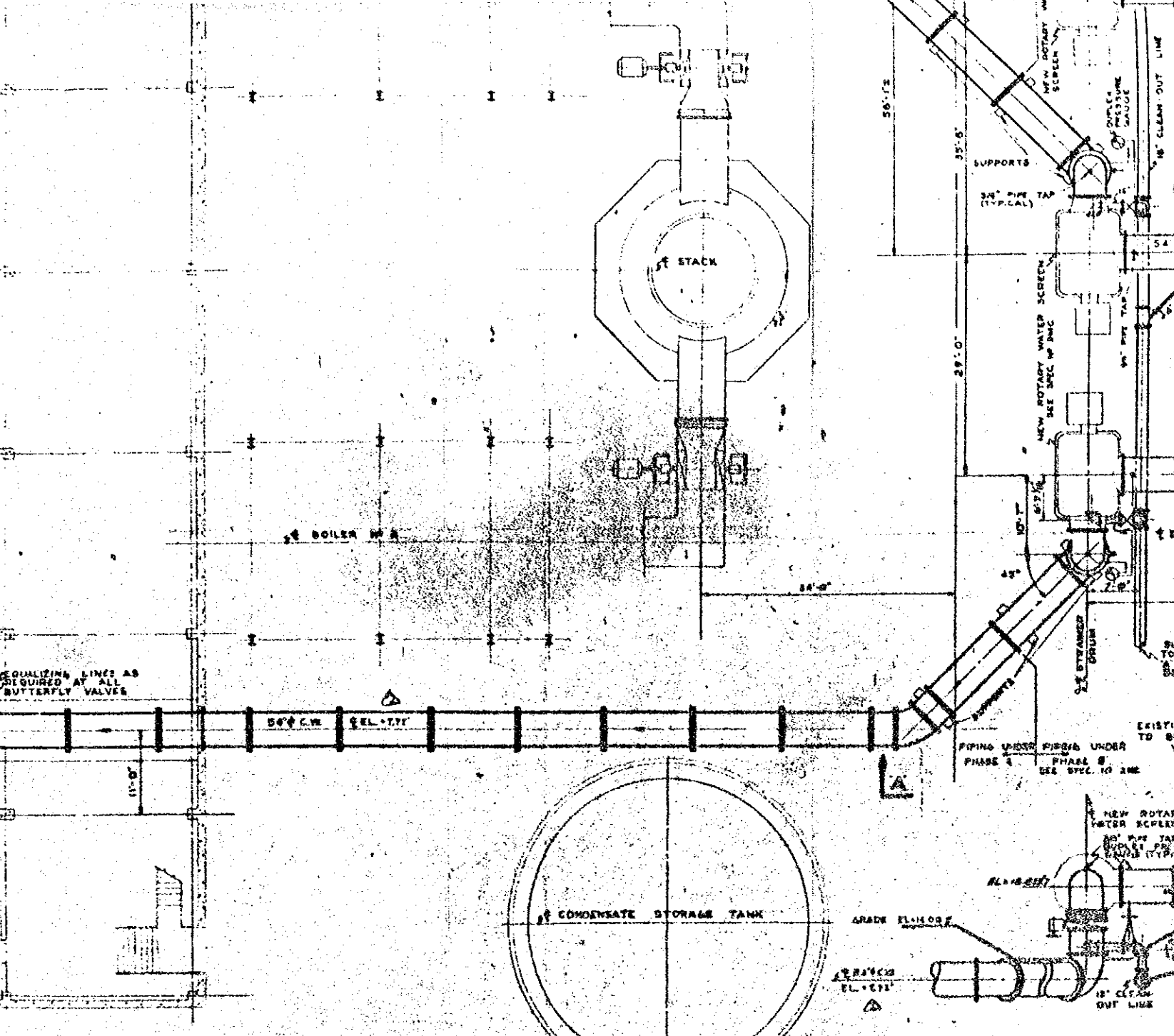
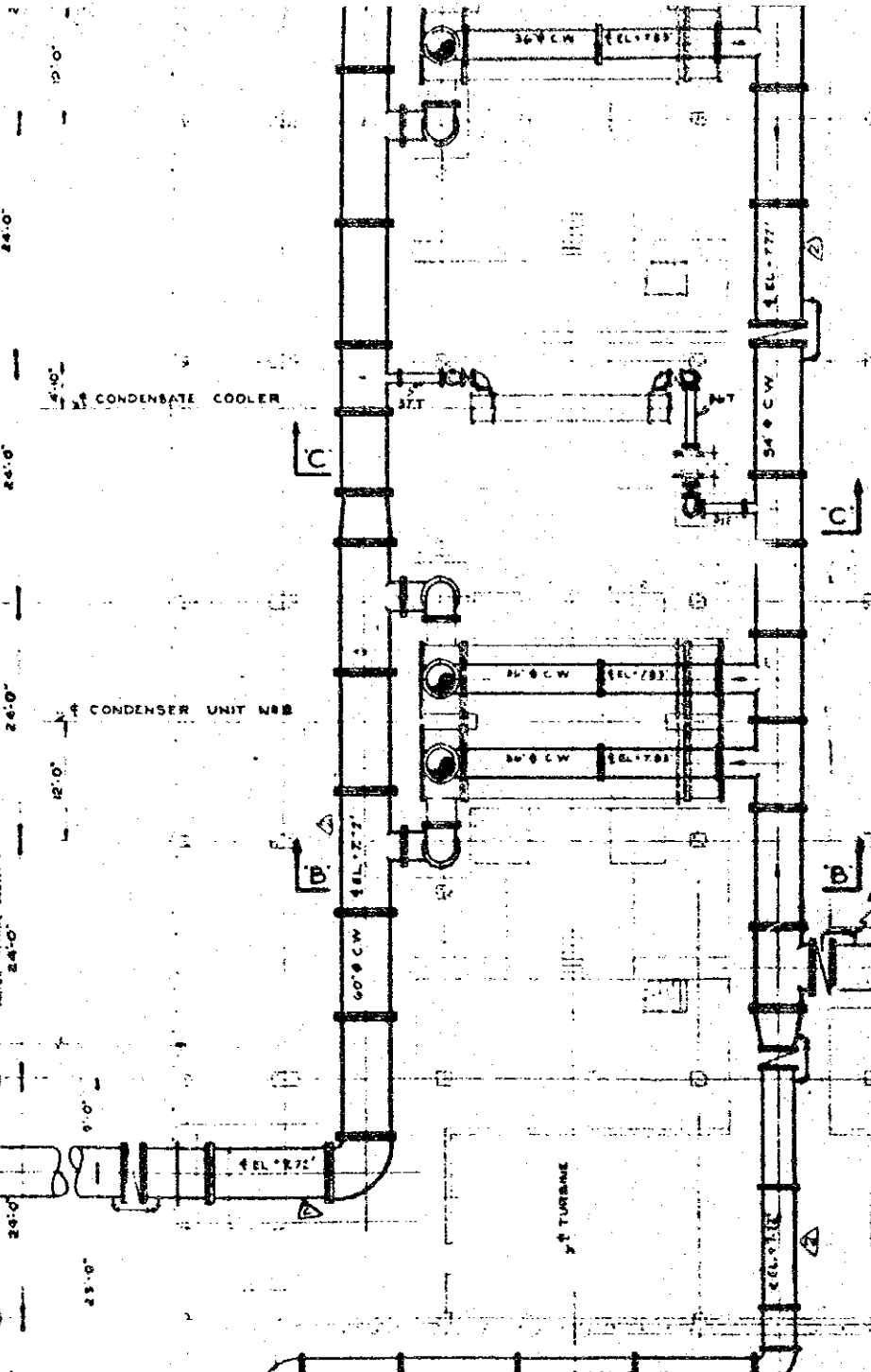
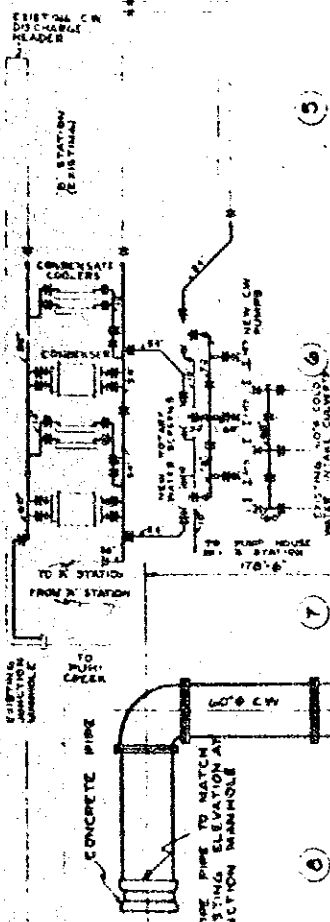
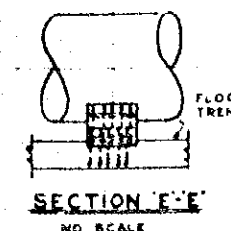
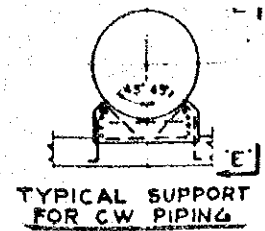
EXISTING BUILDING TO BE REMOVED PIPING UNDER PHASE 1 PIPING UNDER PHASE 2 SEE SPEC. TO SHE

NEW ROTARY WATER SCREEN FOR PUMP HOUSE FROM CYCLONE



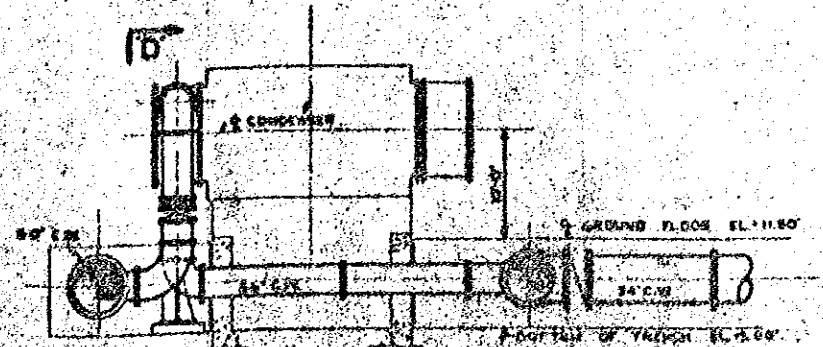
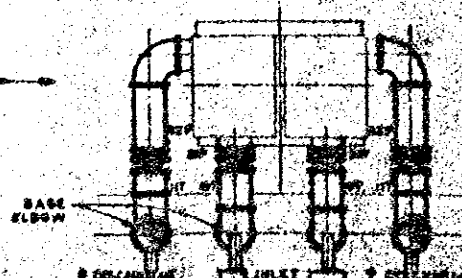
- NOTES:
- 1. ALL DIMENSIONS TO BE VERIFIED IN FIELD.
 - 2. REMOVE EXISTING CRANES, BOTH INDOOR AND OUTDOOR.
 - 3. NUMBER BEHIND OR SUCH AS D2/AA/77 DESIGNATE HANDBOOK & DYNES SERIAL COLUMNS & PARTNERS DRAWINGS OF B STATION.
 - 4. C.W. PIPE SUPPORTS TO BE SPACED ON 12'-0" CENTERS MAX.
 - 5. SEE DWG. D-9 FOR SUPPORT DETAILS.





PLAN - GROUND FLOOR - ELEV 11.50'

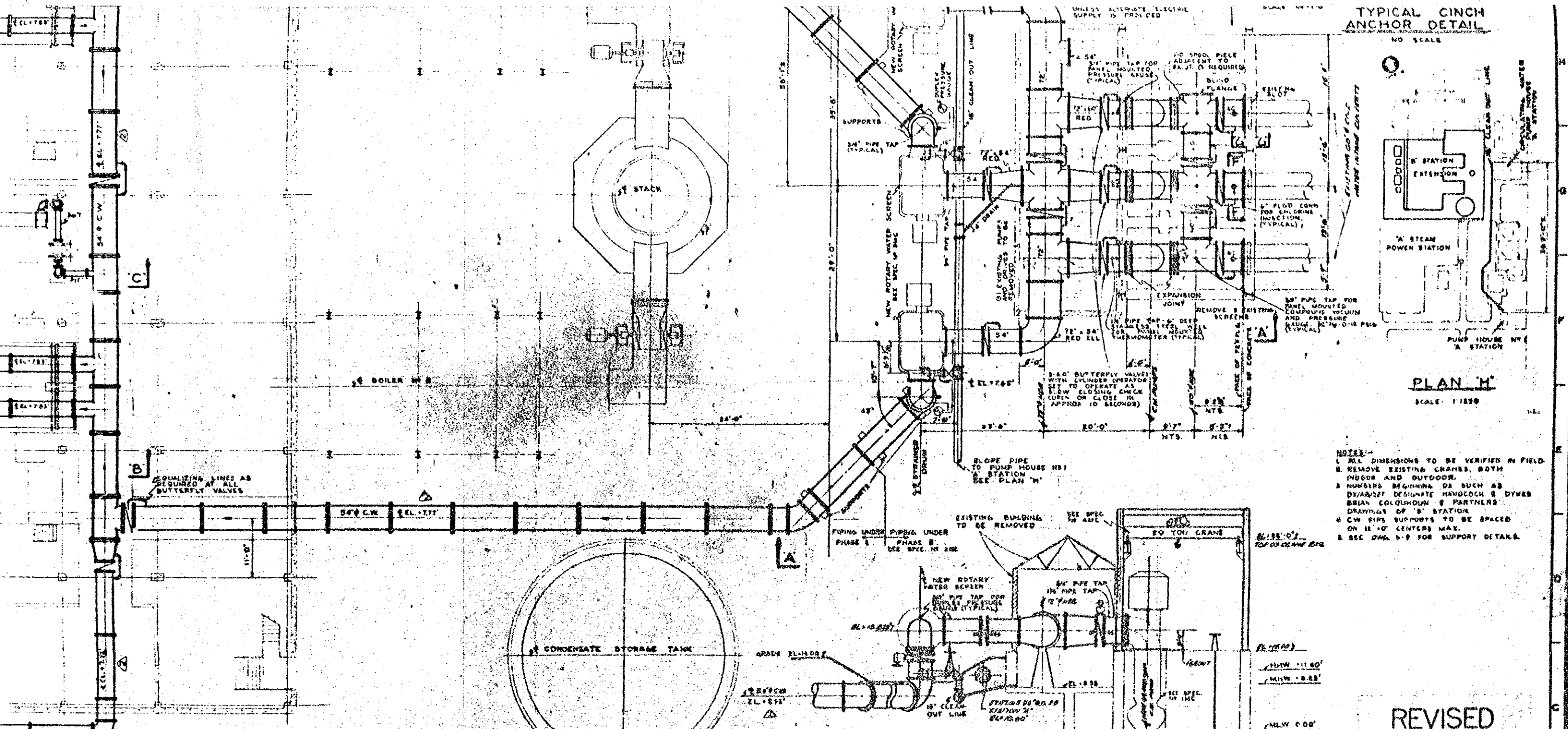
SCALE: 1/8" = 1'-0"



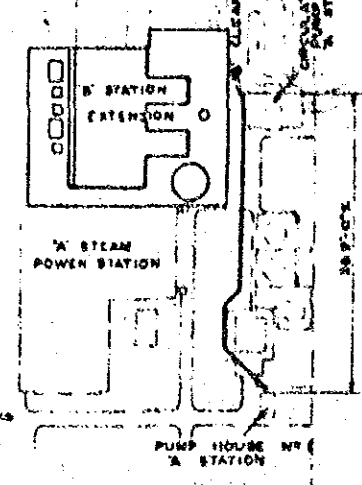
SECTION D-D

SECTION B-B





TYPICAL CINCH ANCHOR DETAIL
NO SCALE

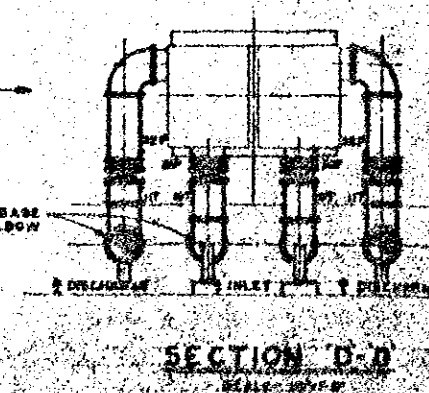


PLAN 'H'
SCALE 1/16" = 1'-0"

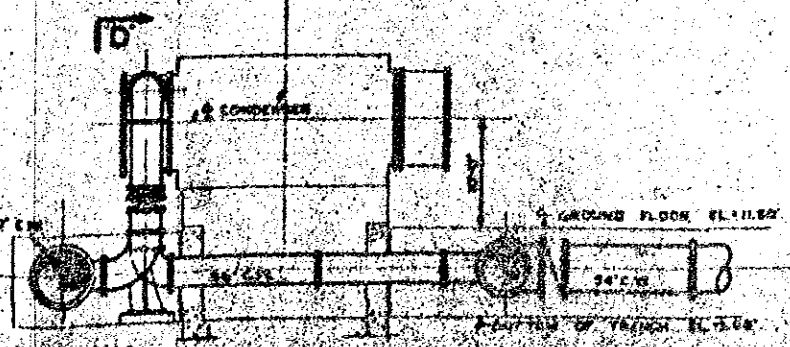
PLAN GROUND FLOOR ELEV. 11.50'
SCALE 1/8" = 1'-0"

- NOTES:-
1. ALL DIMENSIONS TO BE VERIFIED IN FIELD.
 2. REMOVE EXISTING CRANES, BOTH INDOOR AND OUTDOOR.
 3. NUMBERS BEGINNING DL SUCH AS DWYARIST DESIGNATE HANDSOM & DYKES BRYAN COLEMAN & PARTNERS DRAWINGS OF STATION.
 4. CW PIPE SUPPORTS TO BE SPACED ON 12'-0" CENTERS MAX.
 5. SEE DWG. 5-9 FOR SUPPORT DETAILS.

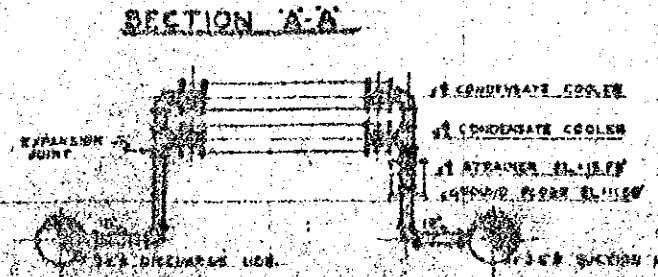
REVISED
Destroy all Previous Prints



SECTION D-D



SECTION B-B



SECTION C-C

KARACHI ELECTRIC SUPPLY CORPORATION LTD 2-20 NEW "B" STATION EXTENSION - WEST WHARF KARACHI - PAKISTAN			
THE KULJIAN CORPORATION ENGINEERS & CONSTRUCTORS PHILADELPHIA, PA.			
PROJECT NO. K-1960		DATE: 1-15-59	
DRAWING NO. M-8-2		REVISION:	
CIRCULATING WATER PIPING PLANS AND SECTIONS			